

1 **Negative association between higher maternal body mass index and**  
2 **breastfeeding outcomes is not mediated by DNA methylation**

3

4 Hannah R. Elliott<sup>1,2\*</sup>, Chloe L. Bennett<sup>3</sup>, Doretta Caramaschi<sup>1,2,4a</sup>, Sinead English<sup>3a\*</sup>

5

6 <sup>1</sup>MRC Integrative Epidemiology Unit, University of Bristol, Bristol, United Kingdom.

7 <sup>2</sup>Population Health Sciences, Bristol Medical School, University of Bristol, Bristol, United  
8 Kingdom

9 <sup>3</sup>School of Biological Sciences, University of Bristol, United Kingdom

10 <sup>4</sup> Faculty of Health and Life Sciences, Department of Psychology, University of Exeter,  
11 Exeter, UK

12

13

14 \*Corresponding author emails: [Hannah.elliott@bristol.ac.uk](mailto:Hannah.elliott@bristol.ac.uk); [sinead.english@bristol.ac.uk](mailto:sinead.english@bristol.ac.uk)

15 <sup>a</sup>These authors jointly supervised the project

16

17

18 **Abstract**

19 The benefits of breastfeeding for the health and wellbeing of both infants and mothers are  
20 well documented, yet global breastfeeding rates are low. One factor associated with low  
21 breastfeeding is maternal body mass index (BMI), which is used as a measure of obesity.  
22 The negative relationship between maternal obesity and breastfeeding is likely caused by a  
23 variety of social, psychological, and physiological factors. Maternal obesity may also have a  
24 direct biological association with breastfeeding through changes in maternal DNA  
25 methylation. Here, we investigate this potential biological association using data from a UK-  
26 based cohort study, the Avon Longitudinal Study of Parents and Children (ALSPAC). We  
27 find that pre-pregnancy body mass index (BMI) is associated with lower initiation to  
28 breastfeed and shorter breastfeeding duration. We conduct epigenome-wide association  
29 studies (EWAS) of maternal BMI and breastfeeding outcomes and candidate-gene analysis  
30 of methylation sites associated with BMI identified via previous meta-EWAS. We find that  
31 DNA methylation at cg11453712, annotated to PHTP1, is associated with maternal BMI.  
32 From our results, neither this association nor those at candidate-gene sites are likely to  
33 mediate the link between maternal BMI and breastfeeding.

34

35 **Keywords:** Breastfeeding, maternal BMI, ALSPAC, DNA methylation, epigenetic,  
36 epigenome-wide association studies (EWAS)

## 37 Introduction

38 Breastfeeding is associated with a multitude of benefits to mothers and infants, both in the  
39 short and long term, including reduced risk of breast cancer, diabetes and obesity, and  
40 improved cognition<sup>1,2</sup>. The World Health Organisation recommends exclusive breastfeeding  
41 (EBF) as the main infant feeding method for the first 6 months of life<sup>3</sup>. Despite health  
42 benefits, rates of breastfeeding initiation and duration remain low globally. A 2010 study on  
43 breastfeeding rates in the UK showed that, while 83% of mothers initiate breastfeeding, only  
44 24% were EBF at 6 weeks, and 1% at 6 months<sup>4</sup>. These trends are apparent in countries  
45 with both high and low income, with evidence suggesting that increasing breastfeeding rates  
46 worldwide could lead to prevention of 823,000 deaths of children under 5 years old  
47 annually<sup>2</sup>. Strategies are required to increase breastfeeding rates, but for these to be most  
48 effective, understanding the mechanisms underlying reduced breastfeeding rates is  
49 essential.

50

51 Of several factors associated with reduced breastfeeding, maternal obesity is of particular  
52 concern. The prevalence of overweight and obesity among women of reproductive age is  
53 increasing globally: in 2016, it was estimated that 40% of women aged 18 or over were  
54 overweight<sup>5,6</sup>. Body mass index (BMI) denotes the weight of an individual relative to the  
55 square of their height and is used to categorise overweight and obesity<sup>5,6</sup>. Extensive studies  
56 have shown that obesity or high pre-pregnancy BMI are associated with lower breastfeeding  
57 initiation and shorter breastfeeding duration<sup>6-9</sup>. Potential causes behind this relationship  
58 include socio-cultural factors such as low self-esteem and body confidence, physical factors  
59 such as difficulties for the infant when latching to the breast, and physiological factors such  
60 as hormone imbalances or low milk supply in women who are overweight or obese<sup>10-12</sup>.  
61 Indeed, there is evidence that the second stage of lactogenesis (i.e., from 3 days up to one  
62 week after birth) is delayed in overweight women<sup>13,14</sup>. While the link between BMI and  
63 psychosocial factors associated with breastfeeding has been well explored<sup>12,15</sup>, there has  
64 been less investigation into the underlying biological or physiological mechanisms.

65

66 Here, we explore the biological association between high maternal BMI and reduced  
67 breastfeeding, focussing on the potential role of DNA methylation. DNA methylation  
68 is typically measured as attachment of a methyl group to a cytosine adjacent to a guanine  
69 nucleotide (referred to as a CpG site). It is a biological mechanism involved in regulation of  
70 gene expression that is influenced by both genetics and environment<sup>16,17</sup>. There is growing  
71 evidence from several cohort studies that there are maternal epigenetic differences  
72 associated with increased BMI<sup>18-28</sup>, with loci in biological pathways involved in lipid  
73 metabolism, adipose tissue hypoxia, and inflammation, although the relevant loci are not

74 always consistent across studies. For most sites identified, causal inference analyses  
75 indicate that the likely pattern is that increased BMI leads to changes in methylation rather  
76 than vice versa<sup>21,23,26</sup>. Breastfeeding has been associated with differential methylation  
77 profiles in offspring<sup>29,30</sup>. Studies have also addressed how the DNA methylation profile of  
78 mothers changes across pregnancy<sup>31</sup>, with differential methylation in loci associated with  
79 metabolism and mammary gland development. Less understood, however, is how maternal  
80 DNA methylation is associated with breastfeeding outcome, and how this might depend on  
81 maternal BMI. For example, the physiological effect of delayed lactogenesis among  
82 overweight mothers may have an epigenetic association.

83

84 Here, we analyse data from a UK population study, the Avon Longitudinal Study of Parents  
85 and Children (ALSPAC), to investigate, first, the extent to which maternal BMI is associated  
86 with breastfeeding outcomes, and second, whether any such associations are potentially  
87 mediated by BMI-associated methylation in pregnant mothers. To achieve the latter, we  
88 conducted epigenome-wide association studies (EWAS) of methylation and its association  
89 with maternal BMI, breastfeeding initiation, and breastfeeding duration.

90

91 We also conducted specific candidate-gene analysis using a predetermined set of CpG sites  
92 known to be associated with BMI in adults, identified using a large meta-analysis of 18  
93 studies<sup>28</sup>, to ascertain whether these sites are also associated with BMI in pregnant women  
94 and whether methylation at these sites is associated with breastfeeding practices. Any  
95 associations found between the traits of interest and DNA methylation within the maternal  
96 epigenome could be used to support the hypothesis that DNA methylation acts as a  
97 mediator in the relationship between increased maternal BMI and reduced breastfeeding  
98 rates.

99

## 100 **Results**

### 101 *Sample characteristics*

102 The descriptive statistics generated for the ALSPAC sample used in our study, and ARIES  
103 subset are shown in Table 1. ARIES mothers are broadly similar to the ALSPAC sample, in  
104 line with previous evidence<sup>32</sup>. Even though the comparisons are generally consistent, ARIES  
105 mothers have a lower prevalence of smoking during pregnancy; and a higher proportion of  
106 ARIES mothers initiated and maintained breastfeeding practice compared to mothers in the  
107 broader ALSPAC dataset. We only included mothers with non-missing information in the  
108 EWAS. As such, 724 samples were included in the EWAS of maternal BMI, 718 samples  
109 were included in the EWAS of breastfeeding initiation and 602 individuals were included in  
110 the EWAS of breastfeeding duration.

111

112 *Association between maternal BMI and breastfeeding (initiation and duration)*

113 In both univariate and multivariate models (including potentially confounding variables of  
114 breastfeeding intention, maternal smoking, age, occupation, parity, and education), maternal  
115 BMI was negatively associated with whether a mother initiated breastfeeding or not  
116 (univariate model,  $n=10,548$ ; odds ratio OR [95% confidence interval CI]: 0.962 [0.951,  
117 0.973]; multivariate model,  $n= 7,704$ ; OR [CI]: 0.944 [0.921, 0.969]). Similarly, among  
118 mothers who did breastfeed, the duration of breastfeeding was lower for those mothers with  
119 higher BMI (univariate model,  $n= 7,166$ ; Beta [CI]: -0.108 [-0.138, -0.079]; multivariate  
120 model,  $n= 5,645$ ; Beta [CI]: -0.091 [-0.123, -0.059]). When we analysed breastfeeding  
121 duration as a categorical variable, we also find that higher BMI is associated with shorter  
122 breastfeeding outcomes (univariate model,  $n= 9,761$ ; OR [CI]: 0.946 [0.936, 0.954;  
123 multivariate model,  $n= 7,298$ ; OR [CI]: 0.944 [0.931, 0.956]). For results describing all  
124 covariates, see Tables S1–3 (ESM). Note that we found qualitatively similar results when we  
125 considered categorised pre-pregnancy BMI (rather than continuous) as a covariate, and  
126 when we analysed breastfeeding duration (in months) as a time-to-event process, with  
127 proportional hazards models (Tables S4, Figure S1, ESM).

128

129 *Epigenome-wide association analyses*

130 (i) *Maternal BMI*

131 In the univariate model, three CpG sites were identified below the genome wide threshold  
132 ( $p < 2.4 \times 10^{-7}$ ) when maternal BMI was modelled as the exposure variable. A total of 45 CpG  
133 sites were associated with maternal BMI at  $p < 1.0 \times 10^{-5}$ . A lambda of 2.34 indicated  
134 moderate inflation of  $p$ -values. In multivariate analysis, one CpG site was identified below  
135 the genome wide threshold ( $p < 2.4 \times 10^{-7}$ ) when maternal BMI was modelled as the  
136 exposure variable (see Figure 1). The lambda value ( $\lambda = 1.29$ ) indicates minor inflation of the  
137 results. A total of 20 CpG sites were associated with maternal BMI at  $p < 1.0 \times 10^{-5}$  in the  
138 multivariate analysis, as detailed in Table 2.

139

140 (ii) *Breastfeeding initiation*

141 In the univariate model, we did not identify any CpGs associated with breastfeeding initiation  
142 at the genome wide threshold ( $p < 2.4 \times 10^{-7}$ ) and only one CpG at  $p < 1.0 \times 10^{-5}$ . A lambda  
143 value of 1.33 indicated minor inflation of  $p$ -values. In the multivariate model, we did not  
144 identify any CpG sites associated with breastfeeding initiation below the genome wide  
145 threshold ( $p < 2.4 \times 10^{-7}$ , Figure 1). The lambda value ( $\lambda=1.27$ ) indicates minor inflation of the  
146 results. Breastfeeding initiation was associated with 6 CpGs in the multivariate model at  $p <$   
147  $1.0 \times 10^{-5}$  (Table 2).

148

149 *(iii) Breastfeeding duration*

150 In the univariate model, we identified one CpG site associated with breastfeeding duration,  
151 coded as a continuous variable, below the genome wide threshold ( $p < 2.4 \times 10^{-7}$ ). Three  
152 CpG sites were at  $p < 1.0 \times 10^{-5}$ . The lambda value ( $\lambda=1.00$ ) indicated no inflation of  $p$ -  
153 values. In multivariate analysis, we did not identify any CpG sites associated with  
154 breastfeeding duration below the genome wide threshold ( $p < 2.4 \times 10^{-7}$ , Figure 1). The  
155 lambda value ( $\lambda=1.02$ ) also showed no genome wide inflation of  $p$ -values versus those  
156 expected. Continuously measured breastfeeding duration was associated with 3 CpG sites  
157 in the multivariate model at  $p < 1.0 \times 10^{-5}$  (Table 2).

158

159 Full EWAS results for all EWAS presented in this paper are detailed in Supplementary  
160 Tables S5-7, ESM and Manhattan plots of fully adjusted models are shown in Figure 1.

161

162 *Candidate gene analysis*

163 The results for the candidate gene analysis found that none of the 52 CpG sites drawn from  
164 the Do *et al.* meta-EWAS analysis of BMI<sup>28</sup> met the  $p$ -value threshold of  $1.00 \times 10^{-05}$  (Table  
165 2) in ALSPAC EWAS of BMI, breastfeeding initiation or breastfeeding duration. ALSPAC test  
166 statistics for the CpG sites identified in Do *et al.* are shown in Supplementary Table 8, ESM.  
167 We evaluated the consistency in direction of effects between our EWAS of maternal BMI  
168 and results reported by Do *et al.* and calculated the proportion of CpGs which had the same  
169 direction of effect using a binomial test of the null hypothesis that the proportion is equal to  
170 0.5. 39/52 CpG sites showed consistency of direction of effect estimate, binomial test  $p$ -  
171 value  $4.1 \times 10^{-4}$ . We therefore demonstrate that there is weak evidence for association  
172 between BMI and DNA methylation in pregnant women in the ALSPAC cohort, but effect  
173 estimates are consistently in the same direction as previously reported in the literature. None  
174 of the CpG sites identified to be associated with BMI in the Do *et al.* study are, however,  
175 associated with the breastfeeding measures assessed in ALSPAC.

176

177

178 **Discussion**

179 In this study, we first confirmed previously established associations between high maternal  
180 pre-pregnancy BMI and lower initiation and duration of breastfeeding, using analysis of the  
181 UK ALSPAC population study. We then conducted EWAS to identify whether maternal BMI  
182 and breastfeeding practice were associated with DNA methylation at CpG sites in the  
183 maternal genome, which could act as potential mediators in the relationship between  
184 increased maternal BMI and lowered breastfeeding rates. We found BMI to be associated

185 with DNA methylation at one CpG site and putatively associated with further 19 CpG sites.  
186 However, none of these sites were associated with breastfeeding initiation or duration.

187

188 We find a negative association between higher maternal BMI and breastfeeding outcome –  
189 both in terms of whether it was initiated and how long it lasted – in line with several other  
190 studies on this topic across diverse cohorts<sup>6,8,11</sup>. Given that obesity rates are rising rapidly  
191 across the world, and breastfeeding rates remain low despite known benefits, studies  
192 investigating why high-BMI mothers are less likely to breastfeed their babies could help  
193 inform policy to improve breastfeeding outcome. We acknowledge limitations of using BMI  
194 as a measure of obesity<sup>33</sup>, yet appreciate that it is a practical measure and can be used at  
195 scale in population studies such as ALSPAC.

196

197 Potential factors explaining the replicated negative relationship between BMI and  
198 breastfeeding outcome include delayed lactogenesis. The second stage of lactogenesis,  
199 which occurs on average around 3 days up to a week after birth, is more likely to be delayed  
200 in overweight women<sup>13,14</sup>. We originally hypothesised that biological factors behind this  
201 phenomenon could be captured by epigenetic biomarkers in peripheral blood during  
202 pregnancy. Finding such biomarkers could have implications in identifying women in need of  
203 extra support and could further our understanding of the mechanisms behind delayed  
204 lactogenesis. However, we did not find strong evidence to support our hypothesis. Other  
205 potential factors that have been previously linked with suboptimal breastfeeding outcomes  
206 are parity, delivery method, experience of epidural, and infant behaviour after birth<sup>13,14</sup>. We  
207 adjusted our analyses for parity as a potential confounder in the associations between  
208 maternal BMI and breastfeeding. Further studies should explore the other factors as  
209 potential mediators between high BMI and low breastfeeding initiation and duration.

210

211 A robust relationship between BMI and DNA methylation was evidenced by previous large  
212 epigenome-wide association studies in the general population<sup>23,28</sup>, therefore we  
213 hypothesised that we would find a similar link in UK pregnant women. Although less  
214 powered, our study found associations in the same directions as found by the largest EWAS  
215 of BMI<sup>28</sup>. We also found novel associations, though we are cautious about these unless  
216 replicated in other cohorts. The strongest association is located on the PHTP1 gene,  
217 encoding a phosphatase not previously linked to obesity. To our knowledge, this is the first  
218 study investigating this question in pregnant women, and our results suggest that during  
219 pregnancy the relationship between BMI and DNA methylation might be altered, potentially  
220 due to immune-metabolic changes typical of pregnancy<sup>34,35</sup>. Previous studies that attempted

221 to investigate the link between BMI and DNA methylation during pregnancy focussed on  
222 candidate genes encoding leptin and adiponectin and found associations<sup>36</sup>. Neither of these  
223 loci appear on our top list of genes associated with BMI, however, using the relaxed *p*-value  
224 threshold.

225

226 Our EWAS of breastfeeding outcome did not identify CpG sites whose methylation in the  
227 peripheral blood of pregnant women is associated with breastfeeding outcomes in our study.  
228 To our knowledge, this is the first study examining this link and we conducted an  
229 epigenome-wide scan across more than 450,000 CpG sites. It is possible that if there are  
230 true associations, their effect sizes will be too small to detect with our sample. The lack of  
231 study populations with DNA methylation data on pregnant women limited our sample size.  
232 However, if the top associations found with breastfeeding using the relaxed threshold are  
233 true, they suggest implications of the LPP and NXN genes. Methylation at these genes in the  
234 offspring at birth was also associated with maternal BMI and pre-pregnancy  
235 overweight/obesity in a previous study, though at different CpG sites in the same loci<sup>37</sup>. DNA  
236 methylation at these genes was not affected antenatally in the mothers in our study. One  
237 explanation for this is an intergenerational effect via alterations of fetal development and with  
238 consequent challenges around delivery and in the baby's feeding behaviour, rather than the  
239 mother's own ability to lactate. For instance, a recent study shows that early pregnancy BMI  
240 is linked with DNA methylation in placental tissue<sup>38</sup>.

241

242 We also conducted a targeted approach, analysing candidate CpG sites previously found to  
243 be associated with BMI from a broader EWAS<sup>28</sup>. Similar to our EWAS analysis, we did not  
244 find support that methylation associated with BMI is linked with reduced breastfeeding  
245 outcomes. These results, together with the EWAS results, do not support our hypothesis that  
246 DNA methylation is implicated in the link between maternal BMI and breastfeeding practice.  
247 It is possible, however, that biological mechanisms unrelated to peripheral blood DNA  
248 methylation are involved in mediating the link between BMI and reduced breastfeeding.  
249 Further studies should be focused on elucidating these mechanisms. Another explanation is  
250 that biological mechanisms are less involved and that social and cultural aspects play a  
251 stronger role in the negative association between maternal overweight and breastfeeding  
252 outcome. For instance, many women fail to reach their own breastfeeding goals because of  
253 discouraging factors such as employer support, husband involvement and social attitudes<sup>39</sup>.  
254 Moreover, studies have shown there can be a general negative public attitude towards  
255 breastfeeding<sup>40</sup>, and it is possible that overweight women are more vulnerable to these



256 attitudes<sup>41</sup>. In any case, considering the challenges that overweight women face around  
257 breastfeeding, more dedicated support might be beneficial to increase breastfeeding rates.

258

259 Despite the main strengths of our study accessing a large and rich intergenerational dataset  
260 and exploring a novel question, our study has several limitations. First, we had a small  
261 sample size for the methylation studies. Although the initial ALSPAC cohort recruited more  
262 than 14,000 pregnancies, the subsample with antenatal blood samples and data on BMI,  
263 breastfeeding outcome and covariates data is lower than 1000 mother-child pairs. This is  
264 considered an under-powered sample size for EWAS studies of outcomes such as BMI and  
265 it is increasingly common to combine multiple cohorts to greatly increase the number of  
266 subjects. For example, Sharp et al<sup>37</sup> were able to meta-analyse the association between  
267 maternal pre-pregnancy BMI and methylation in the peripheral blood of offspring across 19  
268 longitudinal cohorts, resulting in a sample size of 9,340. Obtaining a sample size of this  
269 magnitude increases internal and external validity and reliability of results, as natural  
270 variation can greatly affect DNA methylation and hence the outcomes of the study<sup>42</sup>. A  
271 second drawback to our study was that the analyses were not replicated. Future similar  
272 studies should be conducted to further investigate the association between increased BMI  
273 and DNA methylation in antenatal blood and how this methylation is associated with  
274 breastfeeding practice. An additional limitation of the EWAS in this study is tissue  
275 availability. The advantage of using peripheral blood as a surrogate tissue is that it can be  
276 collected in large quantities and is easy to store. In the context of this study, to assess the  
277 association between breastfeeding practice and changes to the DNA methylation profile,  
278 breast tissue samples (preferably prenatally or during the period where the mother  
279 breastfeeds) would be the optimal sample tissue. This would lead to more accurate and  
280 compelling analyses of associations between breastfeeding practice and breast tissue DNA  
281 methylation.

282

283 In conclusion, this study provides the first insight into the maternal epigenome and its  
284 association with maternal pre-pregnancy BMI and breastfeeding initiation and duration. The  
285 results from this study did not support our mediation hypothesis, that DNA methylation could  
286 explain putative pattern of reduced breastfeeding among overweight mothers, yet owing to  
287 our underpowered study we are cautious to infer that this does not mean that BMI-  
288 associated methylation is not associated with reduced breastfeeding at all. Our novel  
289 investigation into the relationship between maternal exposures such as BMI and  
290 breastfeeding on maternal DNA methylation provides the framework for more in-depth study

291 into the physiological mechanisms that impede a mother's ability to breastfeed, and future  
292 studies could expand our analyses to more cohorts, and consider other biological pathways.

293

## 294 **Methods**

### 295 *Study cohort*

296 The Avon Longitudinal Study of Parents and Children (ALSPAC) is a birth cohort study that  
297 investigates modifiable influences on child health and development<sup>43,44</sup>. Pregnant women  
298 resident in Avon, UK, with expected dates of delivery between 1st April 1991 and 31st  
299 December 1992 were invited to take part in the study. The initial number of pregnancies  
300 enrolled was 14,541. Of the initial pregnancies, there was a total of 14,676 fetuses,  
301 resulting in 14,062 live births and 13,988 children who were alive at 1 year of age.

302

### 303 *Ethical approval*

304 Ethical approval for the study was obtained from the ALSPAC Ethics and Law Committee  
305 and the Local Research Ethics Committees. Informed consent for the use of data collected  
306 via questionnaires and clinics was obtained from participants following the recommendations  
307 of the ALSPAC Ethics and Law Committee at the time. Consent for biological samples has  
308 been collected in accordance with the Human Tissue Act (2004).

309

### 310 *Study measures*

#### 311 (i) *Maternal body mass index (BMI)*

312 BMI is the metric currently used for defining anthropometric height/weight characteristics and  
313 typically categorizing them into groups, and its common interpretation is that it is a measure  
314 of extent of overweight and obesity<sup>5,6</sup>. We used self-reported measures of pre-pregnancy  
315 weight (in kilograms) and height (in metres) from the 'About Yourself' mother-completed  
316 questionnaire which can be found in the ALSPAC data dictionary. Maternal BMI was  
317 calculated as weight (kg) / height (m<sup>2</sup>) as a continuous variable; and analyses were repeated  
318 with maternal BMI categorised as  $\leq 30$  (0) or  $\geq 30$  (1), following standard WHO  
319 categorisation<sup>45</sup> which defines obese as  $\geq 30$ , overweight as 25-29 and 'normal' or  
320 'acceptable' as  $< 25$ .

321

#### 322 (ii) *Breastfeeding outcome*

323 Data regarding breastfeeding outcome were collected from two questionnaires administered  
324 to the mother when the child was 6 months and 15 months of age respectively. Three  
325 different measures of breastfeeding were used: (1) breastfeeding initiation, a binary indicator  
326 ('yes' or 'no') of whether the mother had ever initiated any breastfeeding before the child had  
327 reached 6 months of age; and, for those mothers who initiated breastfeeding, (2) continuous

328 breastfeeding duration, measured as the age in months (from 0–15) of the child when  
329 breastfeeding stopped, derived from the 15-month questionnaire, and (3) categorical  
330 breastfeeding duration, i.e. never, up to 3 months, 3 to 5 months and 6 or more months,  
331 derived from the 6-month questionnaire, as this provided data for a larger number of  
332 mothers. Further details on how these variables were derived can be found in the ‘My  
333 Son/My Daughter’ mother-completed questionnaire in the ALSPAC data dictionary.

334

### 335 (iii) DNA methylation

336 DNA methylation data was obtained using Illumina 450k BeadChip arrays from the  
337 Accessible Resource for Integrated Epigenomics Studies (ARIES) project<sup>32</sup>. Blood samples  
338 from a sub-set of 1,018 ALSPAC participants were taken at three time points for the child  
339 (neonatal, childhood (mean age 7.5 years) and adolescence (mean age 17.1 years)) and at  
340 two time points for the mothers (antenatal and during their child’s adolescence (mean age  
341 17.1 years)). The DNA methylation data used in this study were from samples collected at  
342 the antenatal time point from mothers.

343

344 Normalisation was carried out using the *meffil* R package<sup>46</sup>. Samples showing evidence of  
345 population stratification based on ALSPAC genetic data were removed (n=29). Methylation  
346 status was quantified as the ratio of the methylated probe intensity and the overall intensity  
347 (sum of methylated and unmethylated probe intensities) resulting in a beta-value between 0  
348 (completely unmethylated) and 1 (completely methylated)<sup>47</sup>. This beta-value represents the  
349 proportion of methylated cells within the sample. The impact of outliers was reduced by  
350 setting all methylation data points outside 3 times the interquartile range from the 25<sup>th</sup> to the  
351 75<sup>th</sup> percentiles as missing. Final EWAS analyses included a total of  $N = 482,855$  probes  
352 and 933 individuals.

353

### 354 (iv) Covariates

355 The following variables were included in the analyses to adjust for confounding effects<sup>48-51</sup>.  
356 Maternal age at delivery was derived from a questionnaire administered 8 weeks after the  
357 child’s birth using the self-reported date of birth of the mother and the date of birth of the  
358 child, measured as a continuous variable. Parity was categorised as either nulliparous or  
359 multiparous derived from a questionnaire administered at 18 weeks’ gestation. Maternal  
360 smoking during pregnancy was categorised as either never smoking during pregnancy or  
361 smoking during pregnancy, derived from a questionnaire administered at 23 weeks’  
362 gestation. The following variables were derived from a questionnaire administered at 32  
363 weeks’ gestation: whether the mother intended to breastfeed in the first month  
364 (recategorized as ‘yes’, ‘maybe’ or ‘no’ following methodology of Jones et al.<sup>52</sup>); maternal

365 education, categorised as having completed qualifications below A-Levels or completed the  
366 qualifications of A-Levels and above; and occupational social class, categorised according to  
367 whether the mother or father had a manual or non-manual occupation (whichever was  
368 highest) according to the National Statistics Socio-economic Classification. For the  
369 methylation analyses, estimated cell counts were derived<sup>53</sup> and included as model  
370 covariates. Given the low ethnic diversity in our sample (<3% identified as non-white), we did  
371 not include maternal ethnicity as a covariate.

372

### 373 *Statistical analysis*

374 Analyses were carried out in R (version 4.1.0<sup>54</sup>). Descriptive statistics were calculated for  
375 the ALSPAC sample and for the ARIES subset. Any mothers with missing data for any of the  
376 exposure or covariates were removed, leaving only complete cases for the primary  
377 analyses. The final samples contained only singleton births. Descriptive statistics for each  
378 subset (both for the ALSPAC phenotype dataset and ARIES subset EWAS sample) were  
379 subsequently calculated, to check for similarity of samples across analyses.

380

#### 381 (i) *Association of maternal BMI with breastfeeding*

382 We investigated whether maternal BMI was associated with breastfeeding outcome (i.e.,  
383 initiation and duration) using multiple regression. For each analysis, we first ran a univariate  
384 model considering only the association between maternal BMI and the breastfeeding  
385 measure of interest. We subsequently repeated the analysis including covariates known  
386 previously to be associated with breastfeeding (intention to breastfeed, maternal smoking,  
387 age, occupational social class, parity, and education). For analysis of breastfeeding  
388 initiation, we used a logistic regression with binomial error structure; for analysis of  
389 continuous breastfeeding duration, we used a linear model with gaussian error; and for  
390 analysis of categorical breastfeeding duration, we used ordinal logistic regression. We also  
391 conducted analyses on continuous breastfeeding duration as a time-to-event analysis using  
392 proportional hazards models, using the function `survfit` for univariate analyses and `coxph` for  
393 multivariate, from the 'survival' package in R<sup>55</sup>.

394

#### 395 (ii) *Epigenome-wide association study (EWAS)*

396 Three EWASs were carried out using multiple linear regression to estimate the association  
397 of DNA methylation in maternal antenatal peripheral blood with maternal BMI ( $N = 724$ ),  
398 breastfeeding initiation ( $N = 718$ ), and breastfeeding duration as a continuous measure ( $N =$   
399  $602$ ). For the EWAS of maternal BMI, we modelled DNA methylation as the outcome. For  
400 EWASs of breastfeeding, we modelled breastfeeding as the outcome. For analysis of  
401 breastfeeding initiation, we used a logistic regression with binomial error structure; for

402 analyses of continuous breastfeeding duration and maternal BMI, we used a linear model  
403 with gaussian error. All models were adjusted for maternal age, parity, maternal smoking  
404 behaviour, maternal education, occupational social class, intention to breastfeed, cell-type  
405 estimates and 10 Surrogate Variables generated using Surrogate Variables Analysis to  
406 remove unmeasured confounding<sup>56</sup>. For the EWASs on breastfeeding, maternal BMI was  
407 also included as a covariate, to account for potential direct effects of BMI on breastfeeding  
408 (in addition to those mediated through methylation).

409

410 To control for multiple testing, we set the genome-wide threshold at  $p < 2.4 \times 10^{-7}$ <sup>57</sup> as well  
411 as reporting results at a relaxed threshold of  $p < 1.0 \times 10^{-5}$ . For each EWAS, the genomic  
412 inflation factor (lambda  $\lambda$ ) was calculated to quantify the extent of the inflation and the  
413 excess false positive rate; quantile-quantile (Q-Q) plots were used as a visual tool to mark  
414 deviations of the observed distributions from the expected distribution of  $p$ -values. EWASs  
415 were carried out using R package *ewaff* (version: 0.0.2; <https://github.com/perishky/ewaff>).

416

#### 417 (iii) Candidate-CpG analysis

418 To further investigate the potential association between maternal BMI and DNA methylation  
419 and whether methylation is subsequently associated with breastfeeding practice, a  
420 candidate gene analysis was carried out using a recent meta-EWAS of adult BMI across 18  
421 studies by Do *et al.*<sup>28</sup>. In this analysis, we restricted ALSPAC EWAS results to consider only  
422 CpG sites that were associated with BMI in the Do *et al.* study, which identified 52 CpG sites  
423 passing a false discovery rate adjustment in their meta-EWAS of adult BMI. We then  
424 investigated whether these specific CpG sites were associated with maternal BMI and  
425 breastfeeding practice in ALSPAC. We used a binomial test to assess agreement in  
426 direction of effect estimates between the BMI meta-EWAS of Do *et al.* and the EWAS of BMI  
427 in ALSPAC.

428

#### 429 References

- 430 1 Horta, B. L. & Victora, C. G. Long-term effects of breastfeeding. A systematic review.  
431 (World Health Organisation, 2013).
- 432 2 Victora, C. G. *et al.* Breastfeeding in the 21st century: epidemiology, mechanisms,  
433 and lifelong effect. *The Lancet* **387**, 475-490, doi:10.1016/S0140-6736(15)01024-7  
434 (2016).
- 435 3 World Health, O. & others. *Global strategy for infant and young child feeding*. (World  
436 Health Organization, 2003).
- 437 4 McAndrew, F. *et al.* Infant feeding survey 2010. *Leeds: health and social care*  
438 *information Centre* **2** (2012).
- 439 5 Who. WHO Factsheet; Obesity and overweight. (2021).

- 440 6 Amir, L. H. & Donath, S. A systematic review of maternal obesity and breastfeeding  
441 intention, initiation and duration. *BMC Pregnancy Childbirth* **7**, 9, doi:10.1186/1471-  
442 2393-7-9 (2007).
- 443 7 Li, R., Jewell, S. & Grummer-Strawn, L. Maternal obesity and breast-feeding  
444 practices. *The American Journal of Clinical Nutrition* **77**, 931-936,  
445 doi:10.1093/ajcn/77.4.931 (2003).
- 446 8 Flores, T. R., Mielke, G. I., Wendt, A., Nunes, B. P. & Bertoldi, A. D. Prepregnancy  
447 weight excess and cessation of exclusive breastfeeding: a systematic review and  
448 meta-analysis. *Eur J Clin Nutr* **72**, 480-488, doi:10.1038/s41430-017-0073-y (2018).
- 449 9 Marshall, N. E., Lau, B., Purnell, J. Q. & Thornburg, K. L. Impact of maternal obesity  
450 and breastfeeding intention on lactation intensity and duration. *Maternal & Child*  
451 *Nutrition* **15**, e12732, doi:10.1111/mcn.12732 (2019).
- 452 10 Lovelady, C. A. Is Maternal Obesity a Cause of Poor Lactation Performance? *Nutrition*  
453 *Reviews* **63**, 352-355, doi:10.1111/j.1753-4887.2005.tb00113.x (2005).
- 454 11 Turcksin, R., Bel, S., Galjaard, S. & Devlieger, R. Maternal obesity and breastfeeding  
455 intention, initiation, intensity and duration: a systematic review. *Maternal & Child*  
456 *Nutrition* **10**, 166-183, doi:10.1111/j.1740-8709.2012.00439.x (2014).
- 457 12 Lyons, S., Currie, S., Peters, S., Lavender, T. & Smith, D. M. The association between  
458 psychological factors and breastfeeding behaviour in women with a body mass index  
459 (BMI)  $\geq 30$  kg m<sup>-2</sup>: a systematic review. *Obesity Reviews* **19**, 947-959,  
460 doi:10.1111/obr.12681 (2018).
- 461 13 Nommsen-Rivers, L. A., Chantry, C. J., Peerson, J. M., Cohen, R. J. & Dewey, K. G.  
462 Delayed onset of lactogenesis among first-time mothers is related to maternal  
463 obesity and factors associated with ineffective breastfeeding. *Am J Clin Nutr* **92**, 574-  
464 584, doi:10.3945/ajcn.2010.29192 (2010).
- 465 14 O'Sullivan, E. J., Perrine, C. G. & Rasmussen, K. M. Early Breastfeeding Problems  
466 Mediate the Negative Association between Maternal Obesity and Exclusive  
467 Breastfeeding at 1 and 2 Months Postpartum. *J Nutr* **145**, 2369-2378,  
468 doi:10.3945/jn.115.214619 (2015).
- 469 15 Hauff, L. E., Leonard, S. A. & Rasmussen, K. M. Associations of maternal obesity and  
470 psychosocial factors with breastfeeding intention, initiation, and duration. *The*  
471 *American Journal of Clinical Nutrition* **99**, 524-534, doi:10.3945/ajcn.113.071191  
472 (2014).
- 473 16 Jones, P. A. & Takai, D. The Role of DNA Methylation in Mammalian Epigenetics.  
474 *Science* **293**, 1068-1070, doi:10.1126/science.1063852 (2001).
- 475 17 Duncan, E. J., Gluckman, P. D. & Dearden, P. K. Epigenetics, plasticity, and evolution:  
476 How do we link epigenetic change to phenotype? *Journal of Experimental Zoology*  
477 *Part B: Molecular and Developmental Evolution* **322**, 208-220,  
478 doi:10.1002/jez.b.22571 (2014).
- 479 18 Dick, K. J. *et al.* DNA methylation and body-mass index: a genome-wide analysis. *The*  
480 *Lancet* **383**, 1990-1998, doi:10.1016/S0140-6736(13)62674-4 (2014).
- 481 19 Aslibekyan, S. *et al.* Epigenome-wide study identifies novel methylation loci  
482 associated with body mass index and waist circumference. *Obesity* **23**, 1493-1501,  
483 doi:10.1002/oby.21111 (2015).
- 484 20 Demerath, E. W. *et al.* Epigenome-wide association study (EWAS) of BMI, BMI  
485 change and waist circumference in African American adults identifies multiple

- 486 replicated loci. *Human Molecular Genetics* **24**, 4464-4479, doi:10.1093/hmg/ddv161  
487 (2015).
- 488 21 Mendelson, M. M. *et al.* Association of Body Mass Index with DNA Methylation and  
489 Gene Expression in Blood Cells and Relations to Cardiometabolic Disease: A  
490 Mendelian Randomization Approach. *PLOS Medicine* **14**, e1002215,  
491 doi:10.1371/journal.pmed.1002215 (2017).
- 492 22 Sayols-Baixeras, S. *et al.* DNA methylation and obesity traits: An epigenome-wide  
493 association study. The REGICOR study. *Epigenetics* **12**, 909-916,  
494 doi:10.1080/15592294.2017.1363951 (2017).
- 495 23 Wahl, S. *et al.* Epigenome-wide association study of body mass index, and the  
496 adverse outcomes of adiposity. *Nature* **541**, 81-86, doi:10.1038/nature20784 (2017).
- 497 24 Wilson, L. E., Harlid, S., Xu, Z., Sandler, D. P. & Taylor, J. A. An epigenome-wide study  
498 of body mass index and DNA methylation in blood using participants from the Sister  
499 Study cohort. *Int J Obes* **41**, 194-199, doi:10.1038/ijo.2016.184 (2017).
- 500 25 Geurts, Y. M. *et al.* Novel associations between blood DNA methylation and body  
501 mass index in middle-aged and older adults. *Int J Obes* **42**, 887-896,  
502 doi:10.1038/ijo.2017.269 (2018).
- 503 26 Sun, D. *et al.* Body Mass Index Drives Changes in DNA Methylation. *Circulation*  
504 *Research* **125**, 824-833, doi:10.1161/CIRCRESAHA.119.315397 (2019).
- 505 27 Chen, Y. *et al.* Impact of BMI and waist circumference on epigenome-wide DNA  
506 methylation and identification of epigenetic biomarkers in blood: an EWAS in multi-  
507 ethnic Asian individuals. *Clinical Epigenetics* **13**, 195, doi:10.1186/s13148-021-01162-  
508 x (2021).
- 509 28 Do, W. L. *et al.* Examining the association between adiposity and DNA methylation: A  
510 systematic review and meta-analysis. *Obes Rev* **22**, e13319, doi:10.1111/obr.13319  
511 (2021).
- 512 29 Odintsova, V. V. *et al.* DNA Methylation Signatures of Breastfeeding in Buccal Cells  
513 Collected in Mid-Childhood. *Nutrients* **11**, 2804, doi:10.3390/nu11112804 (2019).
- 514 30 Hartwig, F. P. *et al.* Association between Breastfeeding and DNA Methylation over  
515 the Life Course: Findings from the Avon Longitudinal Study of Parents and Children  
516 (ALSPAC). *Nutrients* **12**, 3309, doi:10.3390/nu12113309 (2020).
- 517 31 Gruzieva, O. *et al.* DNA Methylation Trajectories During Pregnancy. *Genet Epigenet*  
518 **12**, 2516865719867090, doi:10.1177/2516865719867090 (2019).
- 519 32 Relton, C. L. *et al.* Data Resource Profile: Accessible Resource for Integrated  
520 Epigenomic Studies (ARIES). *International Journal of Epidemiology* **44**, 1181-1190,  
521 doi:10.1093/ije/dyv072 (2015).
- 522 33 Adab, P., Pallan, M. & Whincup, P. H. Is BMI the best measure of obesity? *BMJ* **360**,  
523 k1274, doi:10.1136/bmj.k1274 (2018).
- 524 34 Weng, J., Couture, C. & Girard, S. Innate and Adaptive Immune Systems in  
525 Physiological and Pathological Pregnancy. *Biology (Basel)* **12**,  
526 doi:10.3390/biology12030402 (2023).
- 527 35 Forsum, E. & Lof, M. Energy metabolism during human pregnancy. *Annu Rev Nutr* **27**,  
528 277-292, doi:10.1146/annurev.nutr.27.061406.093543 (2007).
- 529 36 Lesueur, C. *et al.* Tissue-specific Leptin promoter DNA methylation is associated with  
530 maternal and infant perinatal factors. *Mol Cell Endocrinol* **381**, 160-167,  
531 doi:10.1016/j.mce.2013.07.024 (2013).

- 532 37 Sharp, G. C. *et al.* Maternal BMI at the start of pregnancy and offspring epigenome-  
533 wide DNA methylation: findings from the pregnancy and childhood epigenetics  
534 (PACE) consortium. *Hum Mol Genet* **26**, 4067-4085, doi:10.1093/hmg/ddx290 (2017).
- 535 38 Ghildayal, N. *et al.* Early-pregnancy maternal body mass index is associated with  
536 common DNA methylation markers in cord blood and placenta: a paired-tissue  
537 epigenome-wide association study. *Epigenetics* **17**, 808-818,  
538 doi:10.1080/15592294.2021.1959975 (2022).
- 539 39 Kong, S. K. & Lee, D. T. Factors influencing decision to breastfeed. *J Adv Nurs* **46**, 369-  
540 379, doi:10.1111/j.1365-2648.2004.03003.x (2004).
- 541 40 Morris, C., Schofield, P. & Hirst, C. Exploration of the Factors Influencing Attitudes to  
542 Breastfeeding in Public. *J Hum Lact* **36**, 776-788, doi:10.1177/0890334419878119  
543 (2020).
- 544 41 Chang, Y. S., Glaria, A. A., Davie, P., Beake, S. & Bick, D. Breastfeeding experiences  
545 and support for women who are overweight or obese: A mixed-methods systematic  
546 review. *Matern Child Nutr* **16**, e12865, doi:10.1111/mcn.12865 (2020).
- 547 42 Michels, K. B. *et al.* Recommendations for the design and analysis of epigenome-  
548 wide association studies. *Nat Methods* **10**, 949-955, doi:10.1038/nmeth.2632 (2013).
- 549 43 Boyd, A. *et al.* Cohort Profile: The 'Children of the 90s'—the index offspring of the  
550 Avon Longitudinal Study of Parents and Children. *International Journal of*  
551 *Epidemiology* **42**, 111-127, doi:10.1093/ije/dys064 (2013).
- 552 44 Fraser, A. *et al.* Cohort Profile: the Avon Longitudinal Study of Parents and Children:  
553 ALSPAC mothers cohort. *Int J Epidemiol* **42**, 97-110, doi:10.1093/ije/dys066 (2013).
- 554 45 Seidell, J. C. & Flegal, K. M. Assessing obesity: classification and epidemiology. *British*  
555 *Medical Bulletin* **53**, 238-252, doi:10.1093/oxfordjournals.bmb.a011611 (1997).
- 556 46 Min, J. L., Hemani, G., Davey Smith, G., Relton, C. & Suderman, M. Meffil: efficient  
557 normalization and analysis of very large DNA methylation datasets. *Bioinformatics*  
558 **34**, 3983-3989, doi:10.1093/bioinformatics/bty476 (2018).
- 559 47 Du, P. *et al.* Comparison of Beta-value and M-value methods for quantifying  
560 methylation levels by microarray analysis. *BMC Bioinformatics* **11**, 587,  
561 doi:10.1186/1471-2105-11-587 (2010).
- 562 48 Noble, S. & Team, T. A. S. Maternal employment and the initiation of breastfeeding.  
563 *Acta Paediatrica* **90**, 423-428, doi:10.1111/j.1651-2227.2001.tb00444.x (2001).
- 564 49 Donath, S., Amir, L. & Team, T. A. S. Relationship between prenatal infant feeding  
565 intention and initiation and duration of breastfeeding: a cohort study. *Acta*  
566 *Paediatrica* **92**, 352-356, doi:10.1111/j.1651-2227.2003.tb00558.x (2003).
- 567 50 Donath, S., Amir, L. & Team, t. A. S. The relationship between maternal smoking and  
568 breastfeeding duration after adjustment for maternal infant feeding intention. *Acta*  
569 *Paediatrica* **93**, 1514-1518, doi:10.1111/j.1651-2227.2004.tb02639.x (2004).
- 570 51 Brion, M.-J. A. *et al.* What are the causal effects of breastfeeding on IQ, obesity and  
571 blood pressure? Evidence from comparing high-income with middle-income cohorts.  
572 *International Journal of Epidemiology* **40**, 670-680, doi:10.1093/ije/dyr020 (2011).
- 573 52 Jones, C. L., Culpin, I., Evans, J. & Pearson, R. M. Relative effects of breastfeeding  
574 intention and practice on maternal responsiveness. *Infant Mental Health Journal* **41**,  
575 82-93, doi:10.1002/imhj.21832 (2020).
- 576 53 Houseman, E. A. *et al.* DNA methylation arrays as surrogate measures of cell mixture  
577 distribution. *BMC Bioinformatics* **13**, 86, doi:10.1186/1471-2105-13-86 (2012).



- 578 54 R: A Language and Environment for Statistical Computing (R Foundation for  
579 Statistical Computing, Vienna, Austria, 2022).
- 580 55 Therneau, T. A Package for Survival Analysis in R. R package version 3.2-7. 2020. URL  
581 <https://CRAN.R-project.org/package=survival> (2020).
- 582 56 Leek, J. T., Johnson, W. E., Parker, H. S., Jaffe, A. E. & Storey, J. D. The sva package for  
583 removing batch effects and other unwanted variation in high-throughput  
584 experiments. *Bioinformatics* **28**, 882-883, doi:10.1093/bioinformatics/bts034 (2012).
- 585 57 Saffari, A. *et al.* Estimation of a significance threshold for epigenome-wide  
586 association studies. *Genet Epidemiol* **42**, 20-33, doi:10.1002/gepi.22086 (2018).
- 587
- 588
- 589

## 590 **Acknowledgements**

591 We are extremely grateful to all the families who took part in this study, the midwives for  
592 their help in recruiting them, and the whole ALSPAC team, which includes interviewers,  
593 computer and laboratory technicians, clerical workers, research scientists, volunteers,  
594 managers, receptionists and nurses.

595

## 596 **Author contribution**

597 C.B. designed the study with input from D.C., S.E. and H.R.E.; C.B. conducted the initial  
598 analyses, S.E. (phenotype analysis), H.R.E. (EWAS) and D.C. (both) verified these and  
599 conducted the final analyses included in the report. All authors drafted the manuscript and  
600 provided comments and edits.

601

## 602 **Data Availability**

603 The ALSPAC study website contains details of all the data that is available through a fully  
604 searchable data dictionary and variable search tool  
605 <http://www.bristol.ac.uk/alspac/researchers/our-data/>. ALSPAC data is available on request  
606 by application to the ALSPAC executive committee (ALSPAC-exec@bristol.ac.uk). The  
607 ALSPAC data management plan (available here:  
608 [www.bristol.ac.uk/alspac/researchers/access/](http://www.bristol.ac.uk/alspac/researchers/access/)) describes in detail the policy regarding data  
609 sharing, which is through a system of managed open access.

610

## 611 **Additional Information**

612

## 613 **Competing Interests**

614 The authors have no competing interests to declare.

615

## 616 **Funding**

617 The UK Medical Research Council and Wellcome (Grant ref: 217065/Z/19/Z) and the  
618 University of Bristol provide core support for ALSPAC. This publication is the work of the  
619 authors. SE, DC and HRE will serve as guarantors for the contents of this paper.

620

621 A comprehensive list of grants funding is available on the ALSPAC website  
622 (<http://www.bristol.ac.uk/alspac/external/documents/grant-acknowledgements.pdf>);  
623 methylation data was supported by BBSRC BBI025751/1 and BB/1025263/1.

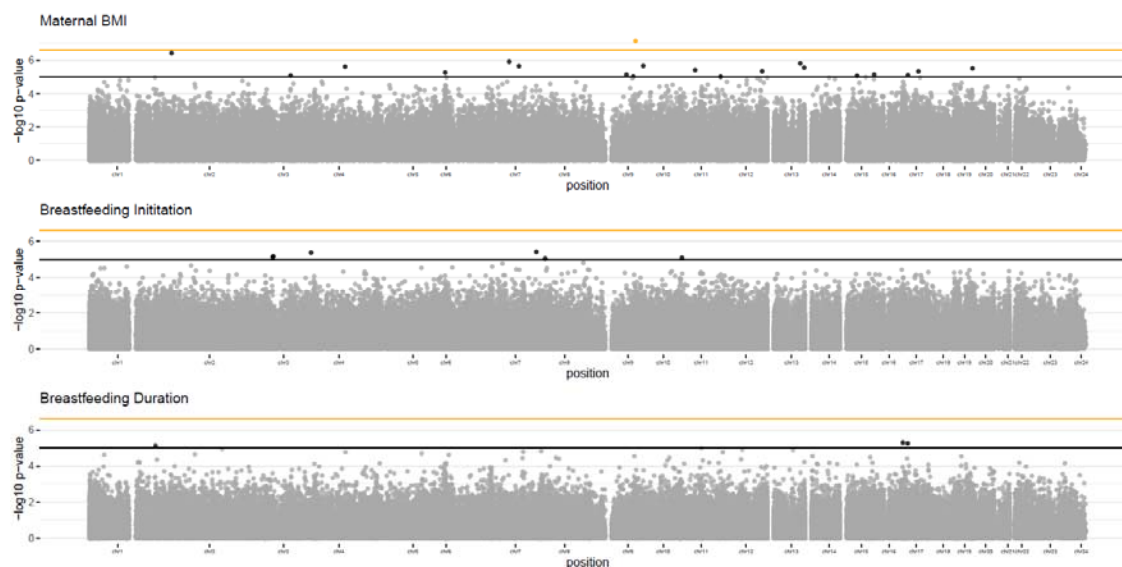
624

625 HRE and DC are members of the Medical Research Council Integrative Epidemiology Unit  
626 at the University of Bristol, which is supported by the Medical Research Council and the  
627 University of Bristol (MC\_UU\_00011/5). SE was supported by a Royal Society Dorothy  
628 Hodgkin Fellowship (DH140236); and SE and CB received support from the University of  
629 Bristol Biological Sciences MSci project programme.

630

631

## 632 Tables and Figures



633

## 634 Figure 1

635 *Manhattan plots showing the association between DNA methylation and phenotype*  
636 *(maternal BMI, breastfeeding initiation, and breastfeeding duration) measured in maternal*  
637 *blood samples from the ALSPAC cohort. Each point on the plots represents an individual*  
638 *CpG site. The orange threshold line represents a genome wide threshold of  $p < 2.4 \times 10^{-7}$*   
639 *and CpG sites with p-values below this threshold are highlighted in orange. The black*  
640 *threshold line represents a relaxed threshold of  $p < 1.0 \times 10^{-5}$  and CpG sites with p-values*  
641 *below this threshold are highlighted in black.*

642



644 **Table 1:** Comparison of the baseline characteristics for the exposure variables and  
 645 covariates used in the EWAS between mothers included in ALSPAC only and the ARIES  
 646 subset.  
 647

<b>Variable</b>	<b>ALSPAC dataset</b>	<b>ARIES subset (n=933)</b>
	<i>Mean (standard deviation) OR %</i>	<i>Mean (standard deviation) OR %</i>
Pre-pregnancy BMI (continuous)	<b>n = 11376</b> 22.9 (3.9)	<b>n = 861</b> 22.8 (3.6)
Pre-pregnancy BMI (categorical)	<b>n = 11376</b>	<b>n = 861</b>
<25	79.33%	82.69%
25-29	15.10%	12.78%
>= 30	5.56%	4.53%
Parity	<b>n = 12774</b>	<b>n = 902</b>
Nulliparous	44.97%	46.90%
Multiparous	55.03%	53.10%
Age at delivery (years)	<b>n = 11539</b> 28.3 (4.8)	<b>n = 898</b> 29.6 (4.3)
Smoked during pregnancy	<b>n = 12912</b>	<b>n = 916</b>
Yes	18.79%	9.28%
No	81.21%	90.72%
Education level	<b>n = 11413</b>	<b>n = 894</b>
Below A-Level	63.36%	48.55%
A Level and above	37.64%	51.45%
Occupation	<b>n = 9855</b>	<b>n = 820</b>
Manual	19.90%	13.29%
Non-manual	80.10%	86.71%
Breastfeeding intention	<b>n = 11694</b>	<b>n = 890</b>
No	19.68%	10.22%
Maybe	14.19%	12.81%
Yes	66.13%	76.97%
Breastfeeding initiation (ever breastfed)	<b>n = 12035</b>	<b>n = 912</b>
Yes	77.25%	89.58%
No	22.75%	10.42%
Breastfeeding duration (categorised)	<b>n = 10875</b>	<b>n = 887</b>
Never	24.51%	13.19%
Up to 3 months	31.99%	28.18%
Up to 5 months	12.83%	16.35%
6 or more months	30.67%	42.28%
Breastfeeding duration (months)	<b>n = 7862</b> 5.7 (4.5)	<b>n = 754</b> 6.4 (4.4)

648  
649  
650  
651

**Table 2** Table showing the associations between DNA methylation and maternal phenotype for fully adjusted EWAS at  $p < 1.0 \times 10^{-5}$  across the three EWAS conducted in ALSPAC

probeID	Gene symbol	Maternal BMI			Breastfeeding Initiation			Breastfeeding Duration		
		coef	SE	p-value	coef	SE	p-value	coef	SE	p-value
cg11453712	PHPT1	1.5E-03	2.8E-04	6.9E-08	-2.1E+00	8.9E+00	8.1E-01	2.0E+00	6.7E+00	7.7E-01
cg05698294		3.9E-03	7.6E-04	3.7E-07	9.4E-01	3.4E+00	7.8E-01	1.9E+00	2.5E+00	4.6E-01
cg00831126		3.6E-03	7.3E-04	1.2E-06	-3.1E+00	4.2E+00	4.6E-01	3.2E-01	2.5E+00	9.0E-01
cg00224563	PCCA	-9.8E-05	2.0E-05	1.5E-06	-1.2E+02	1.3E+02	3.7E-01	1.2E+02	9.5E+01	2.2E-01
cg26176206		-8.5E-05	1.8E-05	2.2E-06	-4.3E+01	1.5E+02	7.8E-01	2.2E+01	1.1E+02	8.4E-01
cg11683732	C7orf23	-1.7E-04	3.6E-05	2.2E-06	1.4E+02	8.0E+01	8.8E-02	5.6E+01	5.3E+01	2.9E-01
cg26612230	PDLIM5	-7.0E-04	1.5E-04	2.4E-06	3.1E+01	1.9E+01	1.1E-01	-2.2E+01	1.4E+01	1.1E-01
cg02188190		-3.5E-03	7.5E-04	2.8E-06	4.4E+00	3.3E+00	1.8E-01	-8.9E-01	2.5E+00	7.2E-01
cg08496404	ISOC2	6.3E-04	1.3E-04	3.1E-06	1.9E+01	2.2E+01	3.7E-01	9.2E+00	1.4E+01	5.2E-01
cg20774552		-1.9E-03	4.0E-04	3.9E-06	-1.0E-01	7.3E+00	9.9E-01	3.6E+00	4.7E+00	4.5E-01
cg03869225	TESC	-1.5E-03	3.3E-04	4.6E-06	1.7E+01	7.8E+00	3.0E-02	3.0E+00	5.8E+00	6.1E-01
cg07168556	WFIKKN2	3.2E-03	7.0E-04	4.7E-06	-2.2E+00	4.4E+00	6.2E-01	1.5E+00	2.6E+00	5.8E-01
cg18086243		-3.2E-03	7.0E-04	5.6E-06	-6.5E+00	4.4E+00	1.4E-01	2.0E+00	2.7E+00	4.5E-01
cg04484916	SRRM2	-2.4E-03	5.4E-04	7.1E-06	3.4E+00	4.7E+00	4.7E-01	-1.0E+00	3.5E+00	7.7E-01
cg13546538	CTNNAL1	-1.2E-03	2.7E-04	7.2E-06	-3.0E-01	1.0E+01	9.8E-01	4.5E-01	7.0E+00	9.5E-01
cg01590416	ZNF287	-1.4E-04	3.0E-05	7.9E-06	2.5E+01	8.5E+01	7.7E-01	1.0E+01	6.5E+01	8.8E-01
cg02749148	KLF15	7.4E-04	1.6E-04	8.4E-06	2.0E+01	1.7E+01	2.3E-01	-1.4E+01	1.1E+01	2.2E-01
cg17447014	MYO5A	-8.1E-05	1.8E-05	8.6E-06	2.4E+01	1.5E+02	8.7E-01	1.5E+02	1.0E+02	1.4E-01
cg13503179	FNBP1	2.3E-03	5.2E-04	9.7E-06	-2.9E+00	5.3E+00	5.8E-01	-2.1E+00	3.7E+00	5.8E-01
cg01162104		-9.8E-05	2.2E-05	9.8E-06	1.1E+02	1.3E+02	4.1E-01	1.3E+02	8.7E+01	1.3E-01
cg16311186	RAB19	-2.7E-04	2.3E-04	2.4E-01	7.1E+01	1.5E+01	3.7E-06	-3.6E+00	8.4E+00	6.7E-01
cg00902153	LPP	-1.7E-04	2.5E-04	5.0E-01	-4.5E+01	9.8E+00	4.1E-06	3.6E+00	7.7E+00	6.4E-01
cg08123528	RYBP	-1.1E-03	6.2E-04	8.4E-02	-1.8E+01	4.1E+00	6.6E-06	-3.1E-01	3.0E+00	9.2E-01
cg09009983	FOXP1	3.7E-04	3.4E-04	2.7E-01	-3.4E+01	7.5E+00	7.4E-06	5.2E+00	6.0E+00	3.9E-01
cg26217318	OR51I2	-5.8E-05	3.4E-04	8.6E-01	-3.9E+01	8.8E+00	8.0E-06	-2.1E-01	5.9E+00	9.7E-01
cg23015041	PRAGMIN	5.1E-04	4.2E-04	2.2E-01	2.8E+01	6.4E+00	8.8E-06	-2.0E+00	4.7E+00	6.7E-01
cg03986557	NXN	-8.3E-05	2.4E-04	7.3E-01	-4.6E+00	1.2E+01	6.9E-01	-3.8E+01	8.2E+00	5.0E-06
cg08192143	ZNF286A	3.4E-04	3.7E-04	3.5E-01	7.1E+00	7.2E+00	3.3E-01	-2.3E+01	5.1E+00	5.5E-06
cg12718426	PPP1R12B	2.3E-04	4.6E-04	6.1E-01	7.6E+00	6.5E+00	2.5E-01	1.8E+01	4.1E+00	7.8E-06

652