

1 **Better therapeutic efficiency of omnidirectional than directional** 2 **subthalamic deep brain stimulation in Parkinson's disease**

3
4 Maximilian Scherer^{1,2}, Luka Milosevic^{1,2}, Idil Cebi^{1,3}, Patrick Bookjans¹, Bastian Brunett¹,
5 Robert Guggenberger¹, Daniel Weiss³ and Alireza Gharabaghi^{1,4,5} *

6
7 1. Institute for Neuromodulation and Neurotechnology, University Hospital and University
8 of Tübingen, 72076 Tübingen, Germany

9 2. Clinical and Computational Neuroscience, Krembil Research Institute, University Health
10 Network, M5T 2S8 11 Toronto, Canada.

11 3. Center for Neurology, Department for Neurodegenerative Diseases, and Hertie Institute
12 for Clinical Brain Research, University of Tübingen, 72076 Tübingen, Germany

13 4. Center for Bionic Intelligence Tübingen Stuttgart (BITS), 72076 Tübingen, Germany

14 5. German Center for Mental Health (DZPG), 72076 Tübingen, Germany

15

16 *Corresponding author: Prof. Alireza Gharabaghi. Address: Institute for Neuromodulation
17 and Neurotechnology, University Hospital Tübingen, Otfried-Müller-Str. 45, 72076
18 Tübingen, Germany. Email: alireza.gharabaghi@uni-tuebingen.de

19

20 **Abstract**

21

22 Background: Deep brain stimulation (DBS) using segmented electrode contacts allows for
23 directionally steered stimulation (DS), while the conventional ring mode provides
24 omnidirectional stimulation (OS). However, with regard to achieving better effects with the
25 same stimulation intensity or equivalent effects with lower intensity, the comparative
26 therapeutic efficiency of these approaches remains unclear.

27

28 Objective: To compare the therapeutic efficiency of subthalamic DBS using segmented and
29 ring contacts in Parkinson's disease (PD) patients with akinetic-rigid symptoms.

30

31 Methods: A double-blind, randomized monopolar review was conducted with patients in the
32 dopaminergic medication-off state at 10 weeks postoperatively on three upper ring
33 contacts and three contacts of the upper segmented level. Impedance measurements
34 were obtained, and the therapeutic threshold (current strength for complete biceps brachii
35 muscle rigidity resolution) was estimated by increasing stimulation intensity in 0.2 mA
36 increments.

37

38 Results: OS with ring contacts showed an improved therapeutic threshold compared to DS
39 with segmented contacts. At 1.1 mA stimulation intensity, complete rigidity resolution was
40 achieved in 90% of patients with the best ring contact, whereas only 40% achieved the
41 same outcome with the best segmented contact. In addition, OS with ring contacts
42 exhibited 50% lower impedance than DS with segmented contacts.

43

44 Conclusions: Incremental adjustments in current intensity during parameter titration
45 generate valuable stimulus-response curves for assessing therapeutic efficiency. In clinical
46 practice, the monopolar review should give priority to identifying the optimal ring level and
47 therapeutic threshold. Segmented contacts should be carefully considered as a potential
48 alternative when side effects limit the feasibility of other options.

49

50 Registration: ClinicalTrials.gov: NCT03548506

51

52 Key words: Deep brain stimulation; directional steering; segmented contacts; ring contacts;
53 circular contacts; threshold.

54

55 **Introduction**

56

57 Fluctuations in dopaminergic response in patients with idiopathic Parkinson's disease (PD)
58 are effectively addressed by deep brain stimulation (DBS) of the subthalamic nucleus
59 (STN), which provides evidence-based and cost-effective treatment with superior clinical
60 outcomes compared to the best medical treatment (Weaver et al., 2012; Schuepbach et
61 al., 2013; Dams et al., 2016; Lhommée et al., 2018). Despite advancements in
62 neurosurgical targeting, intraoperative techniques, awake procedures, and stimulation
63 paradigms, a notable proportion of patients may still require revision surgery due to side
64 effects or insufficient therapeutic benefits (Rosahl et al., 2002; Weiss et al., 2011; Millian et
65 al., 2013; Southwell et al., 2016; Rolston et al., 2016; Naros et al., 2018; Milosevic et al.,
66 2020).

67

68 The latest generation of DBS electrodes introduces a design modification in which the
69 middle two ring contacts are both divided into three segments, enabling directional
70 stimulation (DS) steering in addition to the circular or omnidirectional stimulation (OS) of
71 the traditional ring mode (Contarino et al., 2014; Pollo et al., 2014; Steigerwald et al.,
72 2016; Dembek et al., 2017; Schnitzler et al., 2021; Ramanathan et al., 2023; Debove et al.,
73 2023). While simulation studies indicate that DS can reduce out-of-target stimulation and
74 associated side effects, it may have limitations in achieving optimal therapeutic benefit
75 when compensating for suboptimal electrode placements (Kramme et al., 2021). Recent
76 empirical findings suggest that although DS can alleviate DBS side effects caused by
77 misplaced electrodes, some patients may still require surgical revision (Mishra et al.,
78 2023).

79

80 In this context, it is important to determine the potential of directional stimulation (DS) in
81 enhancing the therapeutic efficiency of DBS in the majority of patients with well-placed
82 electrode leads, where beneficial effects can be achieved without early side effects.
83 However, there is still ambiguity whether DS allows for more efficient stimulation of the
84 target structure by reducing the required stimulation intensity to achieve the desired clinical
85 benefit compared to omnidirectional stimulation (OS) (Pollo et al., 2014; Contarino et al.,
86 2014; Dembek et al., 2017; Schnitzler et al., 2021).

87

88 To address this open question, we performed precise stimulation amplitude titration with
89 0.2 mA step sizes for ring and segmented contacts, resulting in high-resolution clinical

90 stimulation-response curves. This facilitated rigorous comparisons of DS and OS effects at
91 various stimulation intensities, primarily establishing the threshold for resolving muscular
92 rigidity in PD patients. Specifically, ten weeks after DBS lead implantation, a randomized,
93 double-blind monopolar review was conducted on the three upper contact levels and the
94 three parts of the upper segmented level. Impedance measurements were also obtained
95 for each contact to assess potential clinical benefits in relation to power consumption and
96 battery life.

97

98 Our hypothesis was that spatially focused DS of the STN would lead to more efficient
99 resolution of upper limb rigidity compared to OS, i.e., better effects would be achieved with
100 the same stimulation intensity or equivalent effects with lower intensity.

101

102

103 **Methods**

104

105 *Patients*

106 The akinetic-rigid PD patients of this study had participated in the SANTOP study
107 (“Subthalamic Steering for Therapy Optimization in Parkinson’s Disease”;
108 ClinicalTrials.gov: NCT03548506) that evaluated the long-term effects of omnidirectional
109 vs. directional deep brain stimulation in a randomized, cross-over protocol six months after
110 surgery; the respective results are reported elsewhere (Gharabaghi et al., 2023). Here, we
111 report the findings of a monopolar review conducted ten weeks after surgery on two
112 consecutive days, i.e., evaluating the three upper ring contacts (day 1) and the three
113 segments of the upper segmented level (day 2). The complete data for analysis was
114 available in seventeen of twenty-one participating PD patients, in whom the rigidity of the
115 right biceps brachii muscle was assessed during DBS of the left subthalamic nucleus in
116 the dopaminergic medication-off state. Furthermore, impedances were measured for all
117 contacts in every patient.

118 Each patient underwent bilateral implantation of STN-DBS leads (6170, Abbott
119 laboratories, Lake Bluff, Illinois, U.S.) on average 69 days prior to the evaluation. The
120 implantation target was preoperatively identified via magnetic resonance imaging (MRI)
121 and computer tomography (CT) images. Intraoperatively, successful implantation was
122 validated by local field potential beta-peaks (Milosevic et al., 2020) or microelectrode
123 recordings (Hutchison et al., 1998; Knieling et al., 2016). Postoperative CT images were
124 co-registered with preoperative MRI to confirm accurate electrode implantation. Patients
125 were examined several weeks after the DBS lead implantation to avoid micro-lesion
126 effects (Granziera et al., 2008), and after overnight withdrawal from dopaminergic
127 medication. Written informed consent was provided by all patients and the study was
128 approved by the ethics committee of the Medical Faculty of Tübingen. Detailed information
129 on patient demographics is provided in Table 1.

130

131 *Stimulation configuration*

132 The three upper ring contacts were evaluated in all seventeen patients. In addition, the
133 three segments of the upper segmented level were investigated in sixteen patients, and of
134 the lower segmented level in one patient. Stimulation was always applied at 130 Hz and
135 60 μ s while increasing the stimulation intensity by 0.2 mA stepwise (see experimental
136 protocol). Stimulation was applied to the left STN while assessing the rigidity of the right
137 arm.

138

139

| ID | Sex/ gender | Age (years) | Disease duration (years) | Time between surgery and examination (days) |
|----|----------------|----------------|--------------------------------|--|
| 1 | m | 60s | 10-15 | 80-90 |
| 2 | f | 60s | 10-15 | 60-70 |
| 3 | m | 50s | 10-15 | 70-80 |
| 4 | m | 70s | 10-15 | 70-80 |
| 5 | m | 50s | 5-10 | 60-70 |
| 8 | f | 60s | 10-15 | 60-70 |
| 10 | f | 70s | 10-15 | 60-70 |
| 11 | f | 50s | 15-20 | 60-70 |
| 13 | m | 70s | 10-15 | 60-70 |
| 14 | m | 70s | 5-10 | 60-70 |
| 15 | m | 60s | 10-15 | 70-80 |
| 16 | m | 60s | 15-20 | 60-70 |
| 17 | f | 50s | 5-10 | 50-60 |
| 18 | m | 50s | 5-10 | 60-70 |
| 19 | m | 60s | 10-15 | 70-80 |
| 20 | f | 50s | 5-10 | 60-70 |
| 21 | m | 60s | 10-15 | 80-90 |

140

141 **Table 1: Patient information**

142

143 *Data acquisition and experimental protocol*

144 The patients were instructed to relax their arms and to remain awake. Each run lasted 90
145 seconds and comprised two phases; a non-movement phase (30 s) and a continuous
146 passive movement phase (60 s). During the continuous passive movement phase, an
147 examiner moved the subject's arm at a frequency of 0.5 Hz (acoustically communicated to
148 the examiner via headphones). At the end of each run, the examiner provided an estimate
149 of the patient's rigidity according to the Unified Parkinson's Disease Ratings Scale (MDS-
150 UPDRS) assessment. For later analyses, these scores were binarized to represent either
151 a lack (UPDRS score of zero) or the presence of rigidity. In the first run, patients were
152 evaluated at OFF stimulation. In the consecutive runs, stimulation was increased from 0.5
153 mA to 2.5 mA in 0.2 mA increments on one stimulation contact before switching to another
154 contact. The contacts were evaluated in randomized order. Before switching contacts, the
155 paradigm was paused for two minutes to avoid stimulation-related carry-over effects (Levin
156 et al., 2009). Above 2.5 mA, the evaluation was continued in 0.2 mA increments, albeit the
157 evaluation was modified to identify side effects, i.e., without concurrent arm movements.

158 Due to the fact that the programming was performed by a third person, the patient and the
159 examiner were unaware as to which stimulation contact was evaluated at which intensity.

160

161 *Determining the therapeutic threshold*

162 The therapeutic threshold was identified for each ring/segmented contact in each patient. It
163 was defined as the minimal stimulation intensity from which on rigidity remained
164 completely resolved. Specifically, only consistent resolving of rigidity was considered to be
165 the therapeutic threshold. For example, if rigidity was completely resolved at 0.9 mA and
166 1.3 mA and all higher intensities, but was still present at intensities of 0.7 mA and 1.1 mA;
167 the therapeutic threshold was determined at 1.3 mA.

168

169 *Determining the side-effect threshold*

170 The side-effect threshold was also identified for each ring/segmented contact in each
171 patient. It was defined as the lowest stimulation intensity which elicited side-effects such
172 as muscle cramps or double vision.

173

174 *Determining therapeutic window size*

175 The therapeutic window was determined as the difference between the lower (i.e.,
176 therapeutic threshold) and upper (i.e., side-effect threshold) border of clinical efficacy.

177

178 *Determining contact impedance*

179 The impedance values were measured intraoperatively, i.e., via the integrated functionality
180 of the programming device, by attaching an external pulse generator at the end of the
181 surgery. Low intensity bipolar stimulation was utilized to measure the impedance between
182 individual contacts. The impedance of a specific contact was calculated as the average
183 impedance between it and the other contacts.

184

185 *Statistical evaluations*

186 For statistical evaluation, the contacts were classified on the basis of different categories:
187 (i) according to level, i.e., ring 4 (most upper), ring 3 (second most upper), ring 2 (third
188 most upper), frontal segment, medial segment, lateral segment; (ii) best, second best,
189 worst ring/segment with regard to the therapeutic threshold; (iii) best, second best, worst
190 ring/segment with regard to the side-effect threshold; (iv) best, second best, worst
191 ring/segment with regard to the therapeutic window size (as the range between therapeutic
192 threshold and side-effect threshold). The stimulation effect was quantified using a linear

193 mixed model. The measured clinical efficacy was modeled as the dependent variable. The
194 other variables were modeled as independent variables: Stimulation intensity was included
195 as a categorical fixed factor to estimate the effect of stimulation OFF versus a specific
196 stimulation intensity; the patient ID was included as a categorical random factor to
197 compensate for repeated measurements over individual patients.
198 Patient-wise paired t-tests were applied to investigate the differences between the
199 therapeutic thresholds, side effect thresholds and therapeutic window sizes of ring and
200 segmented contacts. Multiple comparison correction (MCC) was applied using the
201 Bonferroni method, an alpha value of 0.05 and a hypothesis count matching the count of
202 all statistical evaluations presented in this work. The results are presented with a marker
203 indicating either significance or non-significance after MCC.

204

205 *Code and data accessibility*

206 Data and evaluation code will be shared by the first author upon request. The toolbox
207 FiNN (Scherer et al., 2022) that was used to analyze the data is available on GitHub.

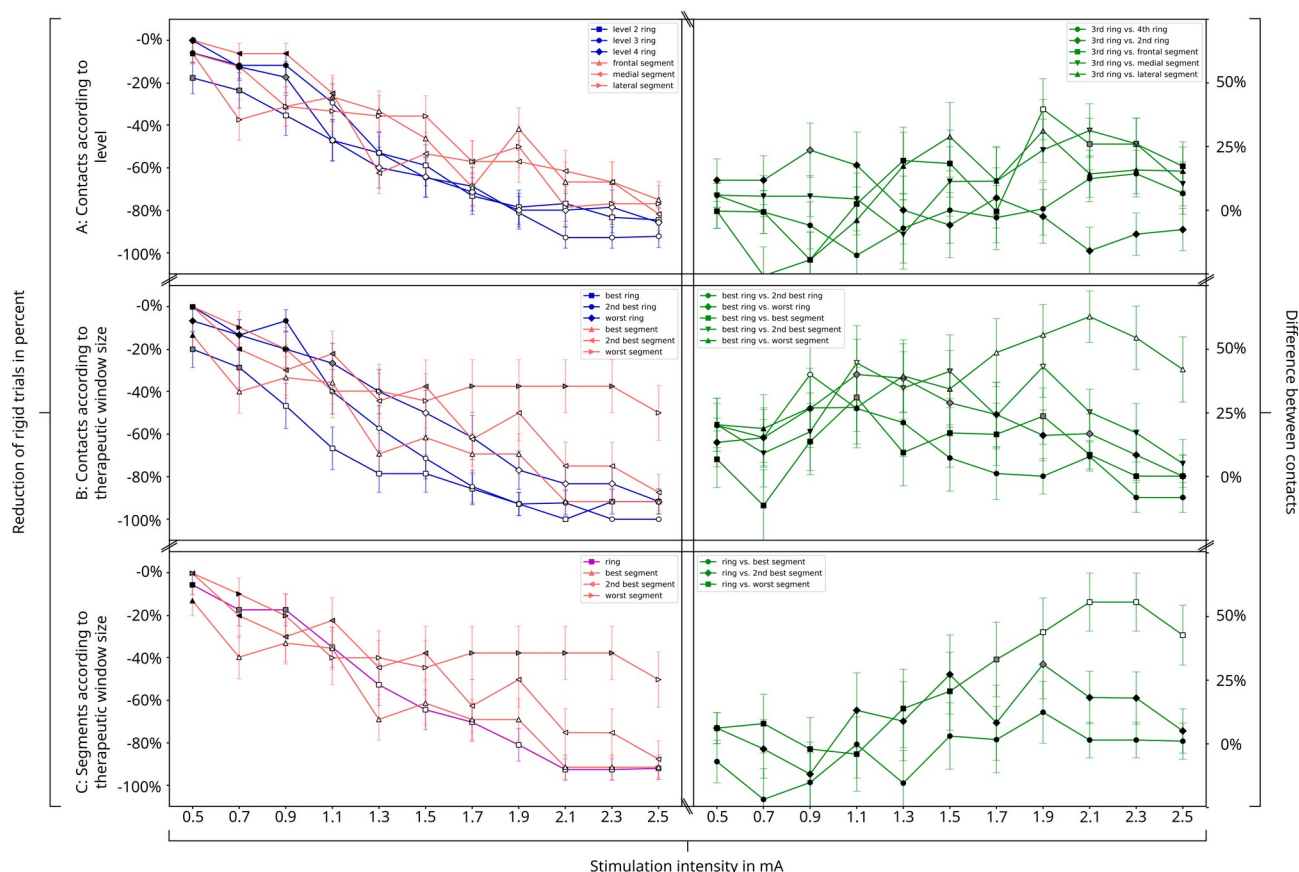
208

209

210 Results

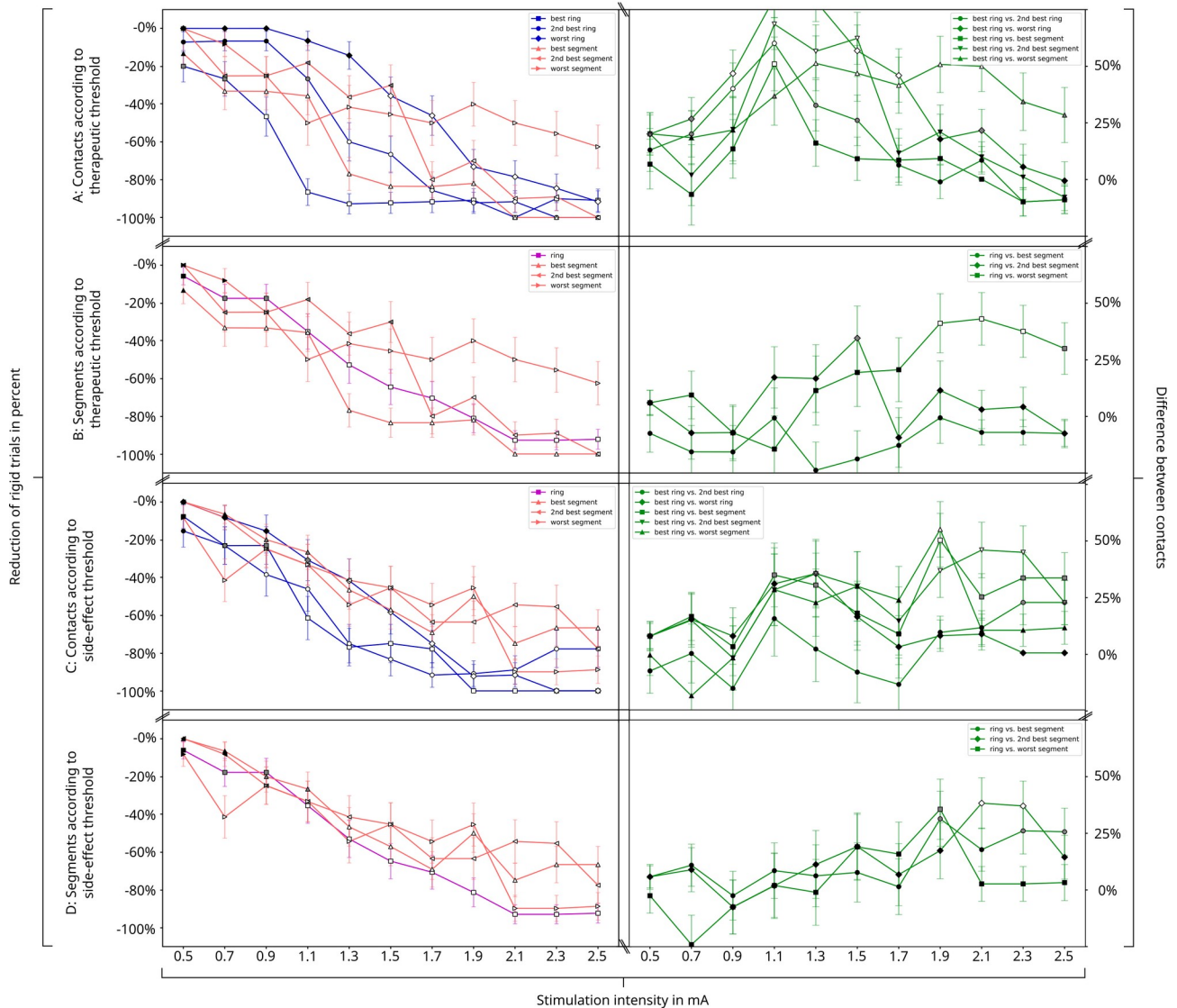
211 The ratio of rigid trials decreased consistently with increasing stimulation intensity. This
 212 result was independent of grouping of the contacts on the basis of different categories, i.e.,
 213 according to the level (2, 3, or 4) of the stimulated electrode (Figure 1 A), therapeutic
 214 window size (Figure 1 B, C), therapeutic threshold (Figure 2 A, B), and side-effect
 215 threshold (Figure 2 C, D).

Effects of stimulation on clinical efficacy - I



216
 217 **Figure 1: Effects of stimulation on clinical efficacy – I.** Subfigure A shows the findings for
 218 contacts grouped by level (spatial position), subfigure B for contacts grouped by
 219 therapeutic window size and subfigure C for segmented contacts ranked by therapeutic
 220 threshold in comparison to the corresponding ring mode of the same segments. White,
 221 gray and black colors of the symbols indicate significant (after MCC), significant (before
 222 MCC) and non-significant (i) reduction of rigid trials across all patients (plots on the left
 223 side), and (ii) differences between contacts (green plots on the right side), respectively.
 224 Specifically, 40% reduction of rigid trials at 0.7 mA with the best segmented contact
 225 indicated that 40% of patients had complete resolving of rigidity at this specific contact and
 226 intensity; a result that was significant after MCC in comparison to baseline without
 227 stimulation. However, when comparing this effect to the effects of the other contacts at the
 228 same stimulation intensity (see plots on the right side), no significant difference was found.

Effects of stimulation on clinical efficacy - II



229

230 **Figure 2: Effects of stimulation on clinical efficacy – II.** Same as figure 1 but for contacts
 231 classified by therapeutic threshold (subfigures A and B), and side-effect threshold
 232 (subfigures C and D)

233

234 In the following, we explain by way of example how the individual plots can be set in
 235 relation to each other: When stimulating at an intensity of 0.7 mA, the ratio of rigid trials
 236 was significantly reduced for one contact in comparison to baseline (i.e., without
 237 stimulation); at this intensity, 40% of patients had complete resolving of rigidity when
 238 stimulated via a laterally steering segmented contact (Figure 1 A). At the intensity of
 239 0.7 mA, also 40% of patients had the best therapeutic window (Figure 1 B, C), the best
 240 therapeutic threshold (Figure 2 A, B), and worst side-effect threshold (Figure 2 C, D). This
 241 may suggest that, at 0.7 mA, laterally steering segments may present large therapeutic
 242 windows via an improved therapeutic threshold. The stimulation effect of the laterally

243 steering contact plateaued from 2.1 mA onwards, and achieved complete resolving of
244 rigidity in 80% of the patients. A comparison of these effects with the other contacts (both
245 segmented and ring) at the same stimulation intensity did not reveal any significant
246 differences (see respective plots on the right side of Figures 1 and 2).

247

248 When stimulated at 1.3 mA, all contacts (both ring and segmented) showed a significant
249 reduction of rigidity in comparison to baseline (i.e., stimulation off); the second-highest ring
250 contact led to the largest reduction of rigidity in comparison to baseline, plateaued from 2.1
251 mA onwards, and achieved complete resolving of rigidity in 90% of the patients (Figure 1
252 A). However, a comparison of these effects with the other contacts (both segmented and
253 ring) at the same stimulation intensity did not reveal any significant differences (see
254 respective plots on the right side of Figures 1 and 2).

255

256 Notably, the ring contact with the lowest therapeutic threshold achieved complete
257 resolution of rigidity at 1.1 mA (and plateaued onwards) in 90% of the patients (Figure 2 A,
258 left). This was significantly better than the segmented contact with the lowest therapeutic
259 threshold, where 40% of the patients had complete resolving of rigidity (Figure 2 A, right).
260 However, a further increase in stimulation intensity did not cause any significant difference
261 between the best ring and the other contacts (apart from the worst segmented contact).

262

263 This suggests that there is an optimal stimulation intensity for complete resolution of rigor
264 for the best ring contact. The best ring contact with the therapeutic threshold at 1.1 mA
265 (Figure 2 A), was usually (but not always) the contact with the largest therapeutic window
266 (Figure 1 B) and the highest side-effect threshold (Figure 2 C), but could not be attributed
267 to a single electrode level (Figure 1 A).

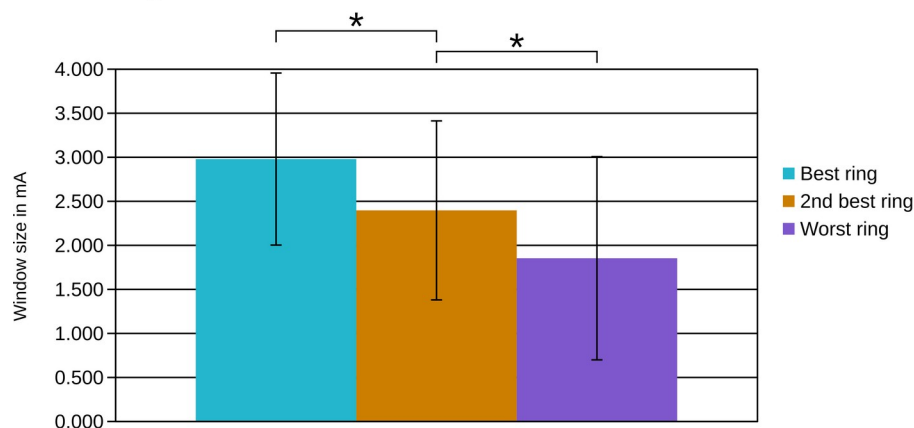
268

269 With regard to the therapeutic threshold, a comparison between the segmented contacts
270 and the corresponding ring mode (Figure 2 B) did not reveal any significant differences,
271 thus indicating that the selection of the optimal ring along the implantation trajectory had a
272 larger influence on rigidity than directional steering (Figure 2 A). This observation is
273 supported by the comparison between the therapeutic windows of ring and segmented
274 electrodes:

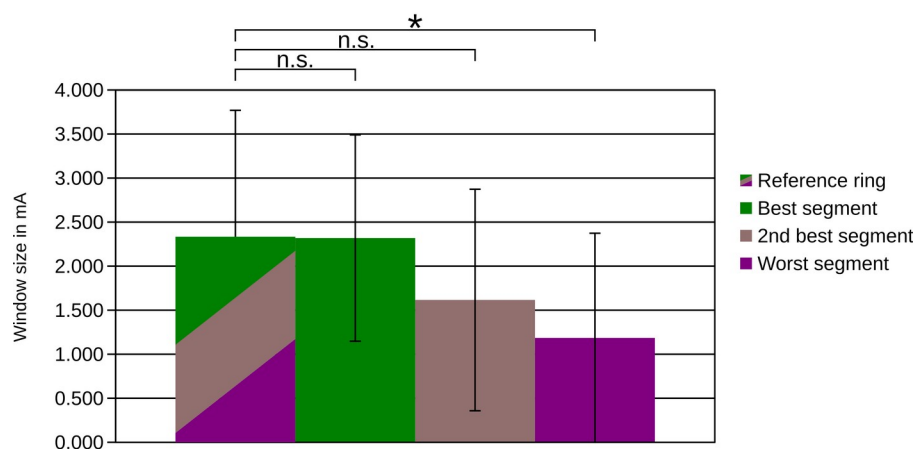
275

Ring and segmented contacts

A: Ring contacts



B: Segmented contacts



276

277 **Figure 3:** Therapeutic window of ring and segmented contacts. A: The best ring contact
278 provided a larger therapeutic window than the other two ring contacts. B: The therapeutic
279 window of the segmented contacts and the corresponding ring contact, i.e., the sum of the
280 three segments, did not differ significantly, except for the worst segment.

281

282 Specifically, with regard to the therapeutic window the best ring contact was significantly
283 larger (Figure 3A) than the second best ($p < 0.05$) and worst ring contact ($p < 0.01$). A
284 comparison between the segments and their corresponding ring mode with regard to the
285 therapeutic window (Figure 3 B) showed a significant difference for the clinically worst
286 segmented contact only ($p < 0.05$).

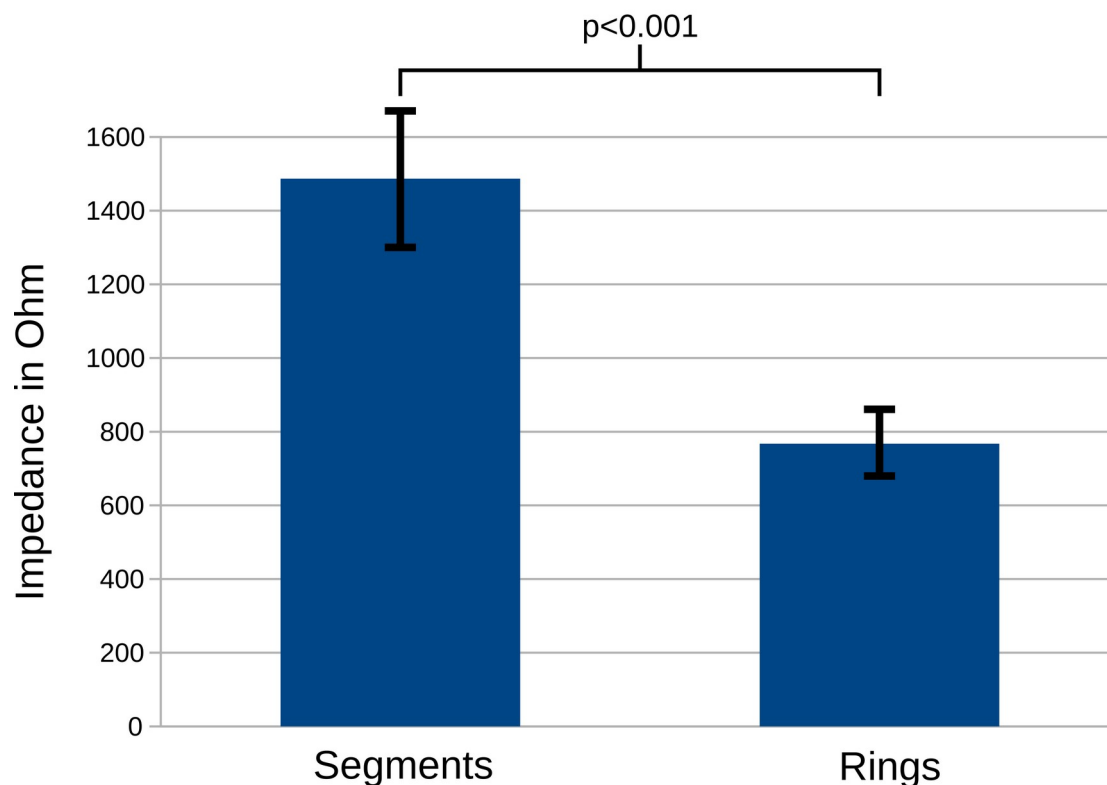
287

288 The therapeutic window sizes were 2.3 mA (1.4 mA – 3.7 mA), 2.3 mA (1.3 mA – 3.6 mA),
289 1.6 mA (1.8 mA – 3.4 mA) and 1.2 mA (2.0 mA – 3.2 mA), for the ring mode; best, second
290 best and worst segmented contacts, respectively. Stimulating via segmented contacts did
291 not improve the therapeutic window in comparison to the respective ring mode (Figure 3

292 B), but doubled the impedance ($p < 0.001$; Figure 4). This indicates that directional
293 stimulation did not improve the treatment-relevant stimulation thresholds and would, when
294 applied, chronically necessitate higher power consumption than ring mode due to
295 increased impedances.

296

Average impedance of contacts



297

298 **Figure 4:** Average impedance of contacts. The impedance of segmented contacts was
299 twice as high as for ring contacts, thus necessitating a higher energy delivery when the
300 same stimulation parameters were applied.

301

302

303

304 **Discussion**

305 The present study yielded new insights with regard to the efficiency of different deep brain
306 stimulation (DBS) approaches in treating muscular rigidity in Parkinson's disease (PD)
307 patients. Contrary to previous research, it was determined that omnidirectional stimulation
308 (OS) with ring contacts outperformed directional stimulation (DS) with segmented contacts,
309 showing greater effects at the same intensity while consuming less energy.

310

311 *Therapeutic efficiency*

312 To determine therapeutic efficiency, a high-resolution threshold detection method involving
313 small-stepped titration (0.2 mA) was employed during the DBS monopolar review ten
314 weeks after implantation. This method was applied to both segmented and ring contacts,
315 which had been previously investigated using larger step sizes of 0.5 mA (Steigerwald et
316 al., 2016) or 1.0 mA (Dembeck et al., 2017) in other studies. This approach allowed for the
317 identification of the optimal therapeutic threshold, representing the minimum electrical
318 current required for maximum clinical effect.

319 Remarkably, at the lowest therapeutic threshold complete resolving of rigidity was
320 achieved in 90% of patients using OS with the best ring contact, at a stimulation intensity
321 of 1.1 mA. In contrast, DS with the segmented contact with the lowest therapeutic
322 threshold achieved complete resolving of rigidity in only 40% of patients at the same
323 stimulation intensity.

324

325 *Vertical vs. horizontal plane*

326 Additionally, the present study revealed that the therapeutic window (which also accounts
327 for the side-effect threshold) of the best ring contact was significantly larger than that of the
328 other ring contacts. Contrary to previous reports (Contarino et al., 2014; Pollo et al., 2014;
329 Dembek et al., 2017; Schnitzler et al., 2021) however, we ascertained that stimulation with
330 the segmented contact with the largest therapeutic window did not enhance the
331 therapeutic window, unlike switching between different ring contacts.

332 While the choice of the ring contact had the largest effect on the therapeutic threshold,
333 switching to segmented stimulation was associated with an unchanged or worsened
334 therapeutic window size and side-effect threshold. Interestingly, the optimal ring contact
335 could not be attributed to a specific electrode level, indicating that determining the best
336 stimulation level along the vertical implantation trajectory was more crucial than identifying
337 the best direction in the horizontal plane.

338

339

340 *Threshold detection*

341 The results of this study diverge from previous reports, suggesting that DS exhibits a
342 larger therapeutic window than OS with ring contacts (Contarino et al., 2014; Pollo et al.,
343 2014; Dembek et al., 2017; Schnitzler et al., 2021). These earlier studies associated DS
344 with either an increased side-effect threshold (Contarino et al., 2014; Dembek et al., 2017)
345 or a decreased therapeutic threshold (Pollo et al., 2014; Schnitzler et al., 2021). However,
346 some studies observed no improvements in therapeutic threshold (Contarino et al., 2014;
347 Dembek et al., 2017) or therapeutic window (Steigerwald et al., 2016; Debove et al., 2023)
348 when comparing DS to OS. These contradictory findings in prior research may be partially
349 attributed to differences in the applied stimulation titration step sizes for DS and OS.

350 Due to the higher surface current density of smaller segmented contacts in comparison to
351 that of larger ring contacts, DS is more sensitive to stimulation amplitude adjustments. It
352 requires smaller amplitude increments (0.1-0.3 mA) than the traditional 0.5 mA used for
353 OS to achieve a similar threshold detection sensitivity. However, if such small-stepped
354 assessment is employed for DS, it should also be applied to OS as there is no drawback
355 from selecting small step sizes also for OS.

356 One of the studies reporting a difference in therapeutic threshold between DS and OS in
357 PD patients did not specify the stimulation titration protocol (Schnitzler et al., 2021). The
358 other study utilized titration step sizes of 0.1 mA for both DS and OS during intraoperative
359 assessments (Pollo et al., 2014). In view of the fact that our study employed titration step
360 sizes of 0.2 mA for both DS and OS, this approach appears to be sufficiently sensitive for
361 identifying threshold differences during a postoperative monopolar review.

362

363 *Power consumption*

364 Furthermore, the smaller stimulating surface area and higher impedance of segmented
365 contacts result in a higher total electrical energy being delivered (TEED) during stimulation
366 compared to ring contacts (Merola et al., 2021). This increased energy consumption leads
367 to more frequent battery replacements for non-rechargeable impulse generators (IPG),
368 thereby posing an increased risk of morbidity due to the potential for surgical site infections
369 (Fakhar et al., 2013; Ondo et al., 2007). The likelihood of infections rises as the number of
370 IPG replacements increases (Pepper et al., 2013).

371 To address this issue, we measured the impedance of both ring and segmented contacts
372 and ascertained that the impedance of segmented contacts was, on average, twice as
373 high as that of ring contacts, which was consistent with earlier studies (Eleopra et al.,

374 2019). This higher impedance leads to increased power consumption by the IPG when ap-
375 plied chronically, since more electrical energy is delivered (Koss et al., 2005).
376 Consequently, to maintain battery longevity, it is necessary to achieve the same stimulation
377 effects with a TEED equivalent to that of OS. This would require approximately 30% less
378 stimulation intensity for DS than for OS (Rebelo et al., 2018). However, even when
379 applying the same stimulation intensity, such as 1.1 mA, DS proved to be either equally or
380 less effective than OS in resolving muscular rigidity.

381

382 *Limitations and considerations*

383 Despite our efforts to ensure a systematic comparison between DS and OS, this study has
384 certain limitations. Firstly, although our sample size is larger than that of other single-
385 center studies, it remains considerably smaller than a recent multicenter study (Schnitzler
386 et al., 2021). However, one major strength of our study is the rigorous procedure employed
387 for parameter titration in each patient, with small increments in current intensity for both
388 stimulation conditions, resulting in consistent stimulus-response curves.

389 Furthermore, to streamline the assessments and minimize examination time for the
390 patients, we made several concessions that may have reduced the sensitivity of the
391 evaluation. Stimulation intensities were increased in step sizes of 0.2 mA instead of 0.1
392 mA (Pollo et al., 2014). The assessment of rigidity was limited to a maximum intensity of
393 2.5 mA, as we anticipated reaching the therapeutic threshold at this stimulation intensity. In
394 addition, evaluations of segmented electrodes were restricted to one level.

395 Moreover, the examinations conducted in this study focused solely on the resolving of
396 rigidity and the acute side effects induced by stimulation. Potential effects, both positive
397 and negative, of DBS on other motor or non-motor symptoms such as cognition were not
398 investigated. Finally, the findings presented in acute assessments need to be
399 complemented by long-term clinical evaluations to establish reliable comparisons between
400 OS and DS (Gharabaghi et al., 2023).

401

402 *Conclusion*

403 By employing incremental increases in stimulation amplitude in steps of 0.2 mA during the
404 monopolar review, it becomes feasible to discern the disparities in therapeutic threshold
405 between OS and DS. Our findings demonstrate that the therapeutic threshold is more
406 dependent on ring contact level selection than steering through segmented contacts.
407 Notably, at a stimulation intensity of 1.1 mA, complete resolution of rigidity was achieved in
408 90% of patients with the best ring contact while concurrently necessitating lower power

409 consumption than DS. Based on the presented insights, we suggest that the monopolar
410 review should prioritize the identification of the optimal ring level and therapeutic threshold.
411 Segmented contacts should only be cautiously considered as an exceptional recourse
412 when side effects preclude alternative options.

413

414 ***Credit authorship contribution statement***

415 Maximilian Scherer: Methodology, Formal analysis, Writing – original draft.

416 Luka Milosevic: Formal analysis, Writing – review & editing.

417 Idil Cebi: Investigation, Writing – review & editing.

418 Patrick Bookjans: Investigation, Writing – review & editing.

419 Bastian Brunnett: Investigation, Writing – review & editing.

420 Robert Guggenberger: Formal analysis, Writing – review & editing.

421 Daniel Weiss: Conceptualization, Writing – review & editing.

422 Alireza Gharabaghi: Conceptualization, Funding acquisition, Project administration, Writing
423 – original draft.

424

425 ***Funding***

426 This investigator-initiated trial was supported by Abbott / St. Jude Medical (SANTOP). The
427 funding had no impact on the study design, on the collection, analysis and interpretation of
428 data, on the writing of the report or on the decision to submit the article for publication.

429

430 ***Acknowledgements***

431 A.G. was supported by the German Federal Ministry of Education and Research (BMBF).

432 M.S. was supported by the Alexander von Humboldt Foundation. D.W. was supported by
433 the German Research Council (WE5375/1-3) and the Michael J Fox Foundation. We
434 acknowledge support by the Open Access Publishing Fund of the University of Tübingen.

435

436 ***Declarations of competing interests***

437 A.G. was supported by research grants from Medtronic, Abbott, Boston Scientific, all of
438 which were unrelated to this work. D. W. was supported by travel grants, speaker
439 honoraria and research grants from Abbott, Abbvie, Bial, Boston Scientific, Medtronic,
440 Kyowa Kirin, Stadapharm, all of which were unrelated to this work.

441 Literature

- Contarino, M.F., Bour, L.J., Verhagen, R., Lourens, M.A.J., de Bie, R.M.A., van den Munckhof, P., Schuurman, P.R., 2014. Directional steering. *Neurology* 83, 1163. <https://doi.org/10.1212/WNL.0000000000000823>
- Dams, J., Balzer-Geldsetzer, M., Siebert, U., Deuschl, G., Schuepbach, W.M.M., Krack, P., Timmermann, L., Schnitzler, A., Reese, J.-P., Dodel, R., EARLYSTIM-investigators, 2016. Cost-effectiveness of neurostimulation in Parkinson's disease with early motor complications. *Mov Disord* 31, 1183–1191. <https://doi.org/10.1002/mds.26740>
- Debove, I., Petermann, K., Nowacki, A., Nguyen, T.-A.K., Tinkhauser, G., Michelis, J.P., Muellner, J., Amstutz, D., Bargiotas, P., Fichtner, J., Schlaepfli, J.A., Krack, P., Schuepbach, M., Pollo, C., Lachenmayer, M.L., 2023. Deep Brain Stimulation: When to Test Directional? *Mov Disord Clin Pract* 10, 434–439. <https://doi.org/10.1002/mdc3.13667>
- Dembek, T.A., Reker, P., Visser-Vandewalle, V., Wirths, J., Treuer, H., Klehr, M., Roediger, J., Dafsari, H.S., Barbe, M.T., Timmermann, L., 2017. Directional DBS increases side-effect thresholds—A prospective, double-blind trial. *Movement Disorders* 32, 1380–1388. <https://doi.org/10.1002/mds.27093>
- Eleopra, R., Rinaldo, S., Devigili, G., Lettieri, C., Mondani, M., D'Auria, S., Piacentino, M., Pilleri, M., 2019. Brain impedance variation of directional leads implanted in subthalamic nuclei of Parkinsonian patients. *Clinical Neurophysiology* 130, 1562–1569. <https://doi.org/10.1016/j.clinph.2019.06.001>
- Fakhar, K., Hastings, E., Butson, C.R., Foote, K.D., Zeilman, P., Okun, M.S., 2013. Management of Deep Brain Stimulator Battery Failure: Battery Estimators, Charge Density, and Importance of Clinical Symptoms. *PLOS ONE* 8, e58665. <https://doi.org/10.1371/journal.pone.0058665>
- Gharabaghi A, Cebi I, Scherer M, Bookjans P, Brunnett B, Milosevic L, Weiss D, 2023. Long-term effects of directional deep brain stimulation in Parkinson's disease: a randomized clinical trial on motor and non-motor symptoms. medRxiv. doi: <https://doi.org/10.1101/2023.10.30.23297793>
- Granziera, C., Pollo, C., Russmann, H., Staedler, C., Ghika, J., Villemure, J.-G., Burkhard, P.R., Vingerhoets, F.J.G., 2008. Sub-acute delayed failure of subthalamic DBS in Parkinson's disease: The role of micro-lesion effect. *Parkinsonism & Related Disorders* 14, 109–113. <https://doi.org/10.1016/j.parkreldis.2007.06.013>
- Hutchison, W.D., Allan, R.J., Opitz, H., Levy, R., Dostrovsky, J.O., Lang, A.E., Lozano, A.M., 1998. Neurophysiological identification of the subthalamic nucleus in surgery

- for Parkinson's disease. *Annals of Neurology* 44, 622–628.
<https://doi.org/10.1002/ana.410440407>
- Knieling, S., Sridharan, K.S., Belardinelli, P., Naros, G., Weiss, D., Mormann, F., Gharabaghi, A., 2016. An Unsupervised Online Spike-Sorting Framework. *Int J Neural Syst* 26, 1550042. <https://doi.org/10.1142/S0129065715500422>
- Koss, A.M., Alterman, R.L., Tagliati, M., Shils, J.L., 2005. Calculating total electrical energy delivered by deep brain stimulation systems. *Annals of Neurology* 58, 168–168.
<https://doi.org/10.1002/ana.20525>
- Kramme, J., Dembek, T.A., Treuer, H., Dafsari, H.S., Barbe, M.T., Wirths, J., Visser-Vandewalle, V., 2020. Potentials and Limitations of Directional Deep Brain Stimulation: A Simulation Approach. *Stereotactic and Functional Neurosurgery* 99, 65–74. <https://doi.org/10.1159/000509781>
- Levin, J., Krafczyk, S., Valkovič, P., Eggert, T., Claassen, J., Bötzel, K., 2009. Objective measurement of muscle rigidity in parkinsonian patients treated with subthalamic stimulation. *Movement Disorders* 24, 57–63. <https://doi.org/10.1002/mds.22291>
- Lhommée, E., Wojtecki, L., Czernecki, V., Witt, K., Maier, F., Tonder, L., Timmermann, L., Hälbig, T.D., Pineau, F., Durif, F., Witjas, T., Pinsker, M., Mehdorn, M., Sixel-Döring, F., Kupsch, A., Krüger, R., Elben, S., Chabardès, S., Thobois, S., Brefel-Courbon, C., Ory-Magne, F., Regis, J.-M., Maltête, D., Sauvaget, A., Rau, J., Schnitzler, A., Schüpbach, M., Schade-Brittinger, C., Deuschl, G., Houeto, J.-L., Krack, P., EARLYSTIM study group, 2018. Behavioural outcomes of subthalamic stimulation and medical therapy versus medical therapy alone for Parkinson's disease with early motor complications (EARLYSTIM trial): secondary analysis of an open-label randomised trial. *Lancet Neurol* 17, 223–231. [https://doi.org/10.1016/S1474-4422\(18\)30035-8](https://doi.org/10.1016/S1474-4422(18)30035-8)
- Merola, A., Singh, J., Reeves, K., Changizi, B., Goetz, S., Rossi, L., Pallavaram, S., Carcieri, S., Harel, N., Shaikhouni, A., Sammartino, F., Krishna, V., Verhagen, L., Dalm, B., 2021. New Frontiers for Deep Brain Stimulation: Directionality, Sensing Technologies, Remote Programming, Robotic Stereotactic Assistance, Asleep Procedures, and Connectomics. *Frontiers in Neurology* 12.
- Milian, M., Luerding, R., Ploppa, A., Decker, K., Psaras, T., Tatagiba, M., Gharabaghi, A., Feigl, G.C., 2013. "Imagine your neighbor mows the lawn": a pilot study of psychological sequelae due to awake craniotomy: clinical article. *J Neurosurg* 118, 1288–1295. <https://doi.org/10.3171/2013.2.JNS121254>

- Milosevic, L., Scherer, M., Cebi, I., Guggenberger, R., Machetanz, K., Naros, G., Weiss, D., Gharabaghi, A., 2020. Online Mapping With the Deep Brain Stimulation Lead: A Novel Targeting Tool in Parkinson's Disease. *Movement Disorders* 35, 1574–1586. <https://doi.org/10.1002/mds.28093>
- Mishra, A., Unadkat, P., McBriar, J.D., Schulder, M., Ramdhani, R.A., 2023. An Institutional Experience of Directional Deep Brain Stimulation and a Review of the Literature. *Neuromodulation* S1094-7159(22)01408–8. <https://doi.org/10.1016/j.neurom.2022.12.008>
- Naros, G., Grimm, F., Weiss, D., Gharabaghi, A., 2018. Directional communication during movement execution interferes with tremor in Parkinson's disease. *Mov Disord* 33, 251–261. <https://doi.org/10.1002/mds.27221>
- Ondo, W.G., Meilak, C., Vuong, K.D., 2007. Predictors of battery life for the Activa® Soletra 7426 Neurostimulator. *Parkinsonism & Related Disorders* 13, 240–242. <https://doi.org/10.1016/j.parkreldis.2006.11.002>
- Pepper, J., Zrinzo, L., Mirza, B., Foltynie, T., Limousin, P., Hariz, M., 2013. The Risk of Hardware Infection in Deep Brain Stimulation Surgery Is Greater at Impulse Generator Replacement than at the Primary Procedure. *SFN* 91, 56–65. <https://doi.org/10.1159/000343202>
- Pollo, C., Kaelin-Lang, A., Oertel, M.F., Stieglitz, L., Taub, E., Fuhr, P., Lozano, A.M., Raabe, A., Schüpbach, M., 2014. Directional deep brain stimulation: an intraoperative double-blind pilot study. *Brain* 137, 2015–2026. <https://doi.org/10.1093/brain/awu102>
- Ramanathan, P.V., Salas-Vega, S., Shenai, M.B., 2023. Directional Deep Brain Stimulation-A Step in the Right Direction? A Systematic Review of the Clinical and Therapeutic Efficacy of Directional Deep Brain Stimulation in Parkinson Disease. *World Neurosurg* 170, 54-63.e1. <https://doi.org/10.1016/j.wneu.2022.11.085>
- Rebelo, P., Green, A.L., Aziz, T.Z., Kent, A., Schafer, D., Venkatesan, L., Cheeran, B., 2018. Thalamic Directional Deep Brain Stimulation for tremor: Spend less, get more. *Brain Stimulation* 11, 600–606. <https://doi.org/10.1016/j.brs.2017.12.015>
- Rolston, J.D., Englot, D.J., Starr, P.A., Larson, P.S., 2016. An unexpectedly high rate of revisions and removals in deep brain stimulation surgery: analysis of multiple databases. *Parkinsonism & related disorders* 33, 72–77.
- Rosahl, S.K., Gharabaghi, A., Liebig, T., Feste, C.D., Tatagiba, M., Samii, M., 2002. Skin markers for surgical planning for intradural lesions of the thoracic spine. Technical note. *Surg Neurol* 58, 346–348. [https://doi.org/10.1016/s0090-3019\(02\)00863-7](https://doi.org/10.1016/s0090-3019(02)00863-7)

- Scherer, M., Milosevic, L., Guggenberger, R., Maus, V., Naros, G., Grimm, F., Bucurenciu, I., Steinhoff, B.J., Weber, Y.G., Lerche, H., Weiss, D., Rona, S., Gharabaghi, A., 2020. Desynchronization of temporal lobe theta-band activity during effective anterior thalamus deep brain stimulation in epilepsy. *NeuroImage* 218, 116967. <https://doi.org/10.1016/j.neuroimage.2020.116967>
- Scherer, M., Wang, T., Guggenberger, R., Milosevic, L., Gharabaghi, A., 2022. FiNN: A toolbox for neurophysiological network analysis. *Network Neuroscience* 1–34. https://doi.org/10.1162/netn_a_00265
- Schnitzler, A., Mir, P., Brodsky, M.A., Verhagen, Leonard, Groppa, S., Alvarez, R., Evans, A., Blazquez, M., Nagel, S., Pilitsis, J.G., Pötter-Nerger, M., Tse, W., Almeida, L., Tomycz, N., Jimenez-Shahed, J., Libionka, W., Carrillo, F., Hartmann, C.J., Groiss, S.J., Glaser, M., Defresne, F., Karst, E., Cheeran, B., Vesper, J., Schnitzler, A., Vesper, J., Mir, P., Verhagen, Leonardo, Tomycz, N., Hartmann, C.J., Groppa, S., Alvarez, R., Pilitsis, J., Pötter-Nerger, M., Groiss, S.J., Brodsky, M.A., 2022. Directional Deep Brain Stimulation for Parkinson’s Disease: Results of an International Crossover Study With Randomized, Double-Blind Primary Endpoint. *Neuromodulation* 25, 817–828. <https://doi.org/10.1111/ner.13407>
- Schuepbach, W. m. m., Rau, J., Knudsen, K., Volkman, J., Krack, P., Timmermann, L., Hälbig, T. d., Hesekamp, H., Navarro, S. m., Meier, N., Falk, D., Mehdorn, M., Paschen, S., Maarouf, M., Barbe, M. t., Fink, G. r., Kupsch, A., Gruber, D., Schneider, G.-H., Seigneuret, E., Kistner, A., Chaynes, P., Ory-Magne, F., Brefel Courbon, C., Vesper, J., Schnitzler, A., Wojtecki, L., Houeto, J.-L., Bataille, B., Maltête, D., Damier, P., Raoul, S., Sixel-Doering, F., Hellwig, D., Gharabaghi, A., Krüger, R., Pinski, M. o., Amtage, F., Régis, J.-M., Witjas, T., Thobois, S., Mertens, P., Kloss, M., Hartmann, A., Oertel, W. h., Post, B., Speelman, H., Agid, Y., Schade-Brittinger, C., Deuschl, G., 2013. Neurostimulation for Parkinson’s Disease with Early Motor Complications. *N Engl J Med* 368, 610–622. <https://doi.org/10.1056/NEJMoa1205158>
- Southwell, D.G., Narvid, J.A., Martin, A.J., Qasim, S.E., Starr, P.A., Larson, P.S., 2016. Comparison of Deep Brain Stimulation Lead Targeting Accuracy and Procedure Duration between 1.5- and 3-Tesla Interventional Magnetic Resonance Imaging Systems: An Initial 12-Month Experience. *Stereotactic and Functional Neurosurgery* 94, 102–107. <https://doi.org/10.1159/000443407>
- Steigerwald, F., Müller, L., Johannes, S., Matthies, C., Volkman, J., 2016. Directional deep brain stimulation of the subthalamic nucleus: A pilot study using a novel

neurostimulation device. *Movement Disorders* 31, 1240–1243.
<https://doi.org/10.1002/mds.26669>

Weaver, F.M., Follett, K.A., Stern, M., Luo, P., Harris, C.L., Hur, K., Marks, W.J., Rothlind, J., Sagher, O., Moy, C., Pahwa, R., Burchiel, K., Hogarth, P., Lai, E.C., Duda, J.E., Holloway, K., Samii, A., Horn, S., Bronstein, J.M., Stoner, G., Starr, P.A., Simpson, R., Baltuch, G., Salles, A.D., Huang, G.D., Reda, D.J., 2012. Randomized trial of deep brain stimulation for Parkinson disease: Thirty-six-month outcomes. *Neurology* 79, 55–65. <https://doi.org/10.1212/WNL.0b013e31825dcdc1>