

**Association between triglyceride glucose index and heart failure with preserved ejection fraction in patients with coronary heart disease — a RCSCD-TCM study in China**

Zhu Li<sup>1</sup>, Xiang Fan<sup>1</sup>, Yijia Liu<sup>2</sup>, Lu Yu<sup>3</sup>, Yuanyuan He<sup>3</sup>, Lin Li<sup>3</sup>, Shan Gao<sup>3</sup>, Wei Chen<sup>4\*</sup>, Rongrong Yang<sup>3\*</sup>, Chunquan Yu<sup>3\*</sup>

<sup>1</sup>School of Basic Medical Sciences, Zhejiang Chinese Medical University, No. 548 Binwen Road, Binjiang District, Hangzhou 310053, China.

<sup>2</sup>Second Teaching Hospital of Tianjin University of Traditional Chinese Medicine, Tianjin 300211, China.

<sup>3</sup>Tianjin University of Traditional Chinese Medicine, 10 Poyanghu Road, West Area, Tuanbo New Town, Jinghai District, Tianjin 301617, China.

<sup>4</sup>Department of Molecular Imaging and Nuclear Medicine, Tianjin Medical University Cancer Institute and Hospital, Tianjin 300060, China; National Clinical Research Center for Cancer, Tianjin Key Laboratory of Cancer Prevention and Therapy, Tianjin's Clinical Research Center for China, Tianjin 300060, China.

**\*Note:** These three authors are co-corresponding authors, and the first corresponding author is Chunquan Yu.

**\* Corresponding Authors**

\*Chunquan Yu, Tianjin University of Traditional Chinese Medicine, Tianjin, 301617,

China. E-mail: [ycqtjutcm@foxmail.com](mailto:ycqtjutcm@foxmail.com).

\*Rongrong Yang, Tianjin University of Traditional Chinese Medicine, Tianjin, 301617, China. E-mail:rongrong0423@hotmail.com.

\*Wei Chen, Department of Molecular Imaging and Nuclear Medicine, Tianjin Medical University Cancer Institute and Hospital; National Clinical Research Center for Cancer, Tianjin Key Laboratory of Cancer Prevention and Therapy, Tianjin's Clinical Research Center for China, Tianjin 300060, China. E-mail: weichen@tmu.edu.cn\_\_\_\_\_

## **Abstract**

### **Background**

The triglyceride glucose (TyG) index serves as a surrogate indicator of insulin resistance. However, there is limited evidence on the association between the TyG index and heart failure with preserved ejection fraction (HFpEF) in patients with coronary heart disease (CHD).

### **Methods**

The 62,794 CHD patients were included used to analyze the relationship between the TyG index and heart failure (HF) in CHD patients. Of these, 8,606 patients who underwent echocardiography were included to identify different types of HF, including HF with reduced ejection fraction (HFrEF), HF with intermediate-range ejection fraction (HFmrEF), and HFpEF. Logistic regression was used to analyze the relationship between the TyG index and HFpEF in CHD patients. The relationship between the TyG index and HFpEF according to sex, age, blood lipids and blood pressure states were also assessed.

### **Results**

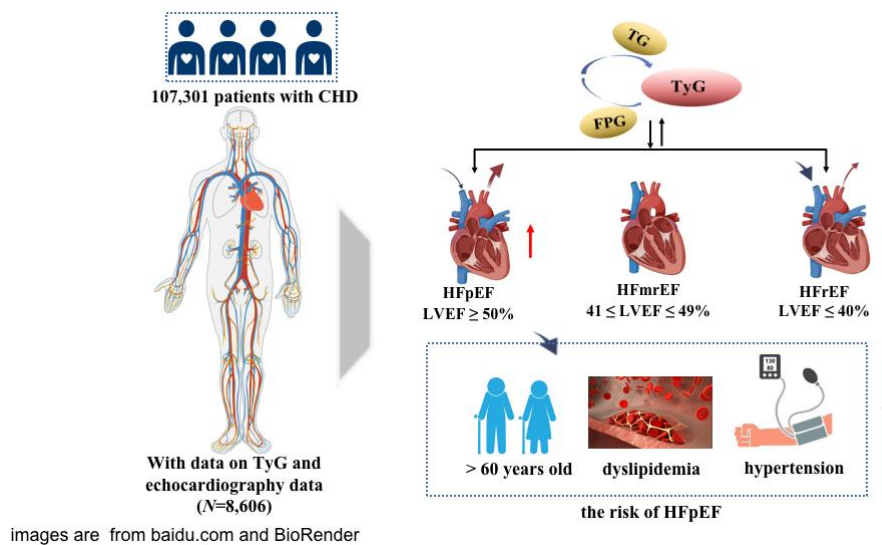
A baseline analysis of CHD patients divided into four groups according to the tertile level of the TyG index showed that there were significant differences in related parameters between the groups. In the multi-adjusted models, the TyG index was significantly associated with the risk of HFpEF (OR: 1.56; 95% CI: 1.08–1.23). In addition, the TyG index of CHD patients was significantly associated with HFpEF in elderly (> 60 years old) patients (OR:1.19; 95% CI: 1.10-1.48), hypertension (OR:1.17; 95% CI: 1.10-1.25) and dyslipidemia (OR:1.16; 95% CI: 1.08-1.23). The association between the TyG index and HFpEF was not affected by sex. And the association between the TyG index of female and HFpEF was (OR:1.21; 95% CI: 1.10-1.34), which was higher than that of male (OR:1.11; 95% CI: 1.02-1.21).

### **Conclusions**

This study demonstrated a significant association of the TyG index and HFpEF in CHD patients. In this study, the results show that the TyG index was independently associated with HFpEF in hypertension, dyslipidemia, and elder patients (> 60 years

old). In addition, the association between the TyG index and HFpEF in CHD patients was higher in female.

**Keywords:** TyG index, Coronary heart disease, heart failure, Heart failure with preserved ejection fraction



## Graphical abstract

### Background

Coronary heart disease (CHD) is a kind of coronary atherosclerotic heart disease. Its pathological process leads to coronary artery stenosis, which leads to myocardial ischemia, myocardial necrosis, myocardial systolic dysfunction, and heart failure (HF) due to decreased ejection capacity<sup>[1-2]</sup>. HF with preserved ejection fraction (HFpEF) is a common type of HF, and about 50% of HF patients suffer from HFpEF<sup>[3]</sup>. According to the guideline of HF<sup>[4]</sup>, the percentage of hospitalization of HFpEF in total HF patients is increasing year by year. It is predicted that by 2020, 65% of hospitalized patients with HF will have left ventricle ejection fraction (LVEF) >40%. Generally speaking, HFpEF has a high morbidity, readmission rate and readmission mortality, and HFpEF and HF with reduced ejection fraction (HFrfEF) have similar morbidity severity and mortality. Therefore, the prevention and treatment of this disease need further research and discussion.

The triglyceride glucose (TyG) is used as a marker of insulin resistance (IR), leading to the occurrence of NCD<sup>[5-6]</sup>. Many studies have shown that the TyG index is

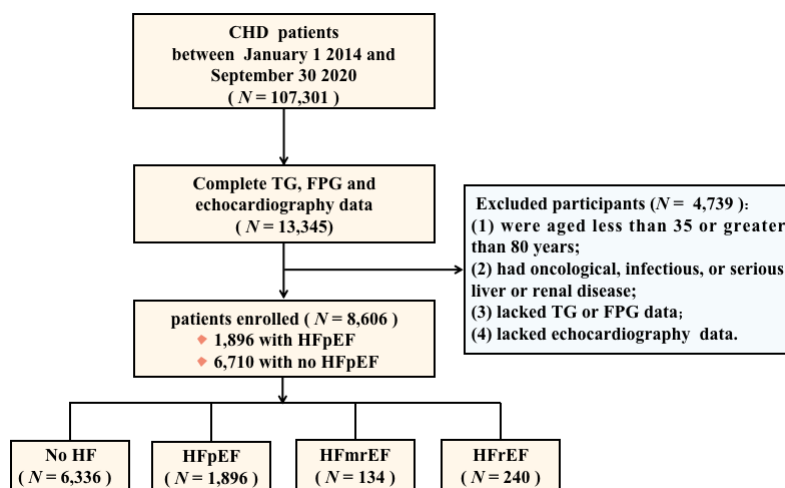
related to the high prevalence of CAD and the increased risk of major adverse cardiovascular and cerebrovascular events<sup>[7-11]</sup>. Previous study showed that the TyG index and CAP showed a significant association in CHD patients<sup>[12]</sup>. A Mendelian Randomization Study showed that the TyG index can be used as a more sensitive prediagnostic indicator of CVD, and that could provide quantitative risk for cardiometabolic outcomes including HF<sup>[13]</sup>. Recently study showed that the TyG index is a novel biomarker of myocardial fibrosis in HF patients and can be considered as a useful risk stratification metric in the management of HF<sup>[14]</sup>. However, there are no relevant studies to investigate the relationship between the TyG index and HF and the different typing of HF in CHD patients, especially HFpEF.

Therefore, the purpose of this study was to clarify the association of the TyG index and HF in CHD patients, and to further investigate the association of the TyG index and the different typing of HF, especially HFpEF. It is hoped that in the clinical treatment of CHD, through the identification of simpler biochemical indicators to prevent the risk of HF.

## **Methods**

### ***Patients***

This study is a large-scale, multi-center retrospective study. The participants included 107,301 CHD inpatients who were admitted to 6 hospitals in Tianjin from January 1, 2014 to September 30, 2020. The root investigation study design excluded age less than 35 years or older than 80 years, patients with tumor, infectious, or severe liver or kidney disease, and patients lacking data on TG, FPG, and echocardiography data. A total of 8,606 patients who underwent echocardiography were included to identify different types of HF, including HF<sub>r</sub>EF, HF with intermediate-range ejection fraction (HF<sub>mr</sub>EF), and HF<sub>p</sub>EF. A flowchart of the patients recruitment was shown in Figure 1. This study was approved by the ethics committee of the Tianjin University of Traditional Chinese Medicine (TJUTCM-EC20190008) and registered with the Chinese Clinical Trial Registry (ChiCTR-1900024535) and in ClinicalTrials.gov (NCT04026724).



**Figure 1. Flow chart of patient recruitment**

### *Data collection*

In this study, age, sex, smoking, drinking, and medication history of patients were recorded through standard structured questionnaires <sup>[15,16]</sup>. All participants collected fasting venous blood samples in early morning. FPG, total cholesterol (TC), high-density lipoprotein cholesterol (HDL-C), and TG, low-density lipoprotein cholesterol (LDL-C), glycated haemoglobin (HbA1c) were measured on automatic haematology analyser. And strictly follow the laboratory standard procedures for quality control. The TyG index was calculated as  $\text{Ln}[\text{TG (mg/dL)} \times \text{FPG (mg/dL)} / 2]$  <sup>[17]</sup>. Hyperlipidemia was defined as  $\text{TC} \geq 6.2\text{mmol/L (240mg/dL)}$ ,  $\text{TG} \geq 2.3\text{mmol/L (200mg/dL)}$ ,  $\text{LDL-C} \geq 4.1\text{mmol/L (160mg/dL)}$ , or  $\text{HDL-C} \leq 1.0\text{mmol/L (40mg/dL)}$  <sup>[18,19]</sup>. Systolic blood pressure (SBP) and diastolic blood pressure (DBP) were measured by experienced technicians at the heart level using automatic blood pressure monitors.  $\text{SBP} \geq 130\text{ mmHg}$  or a  $\text{DBP} \geq 80\text{ mmHg}$  was defined as hypertension <sup>[20]</sup>. Normal glucose tolerance (NGT) was defined as  $\text{FPG} < 5.6\text{ mmol/L}$  or  $\text{HbA1c} < 5.7\%$ , Pre-DM was defined as  $\text{FPG } 5.6\text{-}6.9\text{ mmol/L}$  or  $\text{HbA1c } 5.7\text{-}6.4\%$ , DM was defined as  $\text{FPG} \geq 7.0\text{ mmol/L}$  or  $\text{HbA1c} \geq 6.5\%$  <sup>[21]</sup>.

The HF diagnosis was recorded in the data base of RCSCD-TCM. HF including congestive HF, left ventricular failure, New York Heart Association (NYHA) Heart Function class II-IV <sup>[22]</sup>, and unspecified HF. Different typing of HF use left ventricle

ejection fraction (LVEF) measured using echocardiography as a cut-off for inclusion/exclusion criteria. According to European Society of Cardiology (ESC) Guidelines<sup>[23]</sup>, HF patients into 3 groups/categories based on LVEF: HFpEF patients considered those with  $LVEF \geq 50\%$ . HFmrEF patients considered those with  $41 \leq LVEF \leq 49\%$ . HFfrEF patients considered those with  $LVEF \leq 40\%$ .

### ***Statistical analyses***

The characteristics of participants in the different groups were compared using  $\chi^2$  tests for categorical variables, Mann-Whitney U test and Kruskal-Wallis H test for continuous variables. The odds ratios (ORs) and 95% confidence intervals (CIs) of CAP were estimated for the TyG index using logistic regressions. Age, sex, SBP, DBP, HbA1c, TC, HDL-C, LDL-C, smoking, drinking, hypertension, hyperlipidemia, use of antihypertensives, use of antilipidemic were considered potential confounders in this association. The collinearity of different models was tested before logistic regressions. Missing values are imputed by multiple imputation method. All statistical analyses were performed using SPSS 24.0 (IBM Corp, New York, NY, USA).

## **Results**

### ***Baseline characteristics***

Of these, 8,606 patients underwent echocardiography, among them, 1896 patients had HFpEF. The average age of the participants was 65 years old, and the proportion of male (56.8%) was higher than that of female (43.2%) (**Additional file Table S1**). The subjects were divided into three groups according to the tertile level of the TyG index (T1: TyG index  $< 10.09$ , T2:  $10.09 \leq$  TyG index  $\leq 10.71$ , T3: TyG index  $> 10.71$ ). Generally speaking, FPG, TC, TG, LDL-C, HbA1c, the proportion of HFfrEF, HFmrEF, HFpEF, hyperlipidemia, use of antihypertensives, and use of antilipidemic were positively associated with the tertile level of the TyG index, while HDL-C, the proportion of smoking and drinking were negatively associated with the tertile level of the TyG index (**Table 1**).

**Table 1. General characteristics of the study participants according to the TyG index**

Characteristic	TyG index				P-value
	Total (N = 8,606)	T1 (n = 2,885)	T2 (n = 2,848)	T3 (n = 2,873)	
Sex, n (%)					0.293
Male	4891 (56.8)	1629 (56.5)	1596 (56.0)	1666 (58.0)	
Female	3715 (43.2)	1256 (43.5)	1252 (44.0)	1207 (42.0)	
Age, years, median (IQR)	64 (58-69)	64 (58-69)	64 (59-69)	63 (58-69)	0.003
SBP, mmHg, median (IQR)	140 (125-157)	140 (124-151)	140 (127-156)	140 (128-160)	< 0.001
DBP, mmHg, median (IQR)	80 (80-90)	80 (79-90)	80 (80-90)	80 (80-90)	0.263
TyG index, median (IQR)	10.33 (9.98-10.98)	9.87 (9.73-9.98)	10.34 (10.20-10.51)	11.35 (10.98-11.87)	< 0.001
LVEF, median (IQR)	62 (59-65)	62 (59-65)	62 (59-65)	62 (58-65)	0.023
FPG, median (IQR)	6.22 (5.20-8.59)	4.92 (4.59-5.20)	6.23 (5.83-6.78)	10.34 (8.59-13.40)	< 0.001
HbA1c, median (IQR)	6.50 (5.70-7.96)	5.70 (5.30-6.40)	6.30 (5.70-7.20)	8.10 (6.80-9.60)	< 0.001
LDL-C, mmol/L, median (IQR)	2.82 (2.17-3.52)	2.75 (2.14-3.43)	2.87 (2.22-3.58)	2.85 (2.18-3.55)	0.001
HDL-C, mmol/L, median (IQR)	1.02 (0.85-1.24)	1.06 (0.88-1.30)	1.03 (0.86-1.25)	0.96 (0.80-1.16)	< 0.001
TG, mmol/L, median (IQR)	1.38 (1.00-1.97)	1.24 (0.90-1.70)	1.39 (1.01-1.96)	1.55 (1.10-2.28)	< 0.001
TC, mmol/L, median (IQR)	4.47 (3.68-5.33)	4.43 (3.65-5.23)	4.48 (3.71-5.35)	4.50 (3.68-5.38)	0.028
Smoking, n (%)	3088 (35.9)	1086 (37.6)	1008 (35.4)	994 (34.6)	0.044
Drinking, n (%)	7410 (86.1)	2485 (86.1)	2458 (86.3)	2467 (85.9)	0.890
Type of HF, n (%)					0.880
HFrEF	134 (1.6)	35 (1.2)	42 (1.5)	57 (2.0)	
HFmrEF	240 (2.8)	69 (2.4)	80 (2.8)	91 (3.2)	
HFpEF	1896 (22.0)	531 (18.4)	645 (22.7)	720 (25.1)	
NYHA, n (%)					0.813



I	130 (1.5)	42 (1.5)	38 (1.3)	50 (1.7)	
II	972 (11.3)	261 (9.0)	341 (12.0)	370 (12.9)	
III	687 (8.0)	189 (6.6)	244 (8.6)	254 (8.8)	
IV	152 (1.8)	44 (1.5)	54 (1.9)	54 (1.9)	
Hypertension, n (%)	7501 (87.2)	2455 (85.1)	2494 (87.6)	2552 (88.8)	< 0.001
Dyslipidemia, n (%)	5203 (60.5)	1534 (53.2)	1685 (59.2)	1984 (69.1)	< 0.001
Use of antihypertensives, n (%)	6331 (73.6)	2083 (72.2)	2081 (73.1)	2167 (75.4)	0.016
Use of antilipidemic, n (%)	5450 (63.3)	1823 (63.2)	1792 (62.9)	1835 (63.9)	0.744

Data are presented as median (interquartile) or number (proportion, %).

T1: TyG index < 10.09, T2:  $10.09 \leq$  TyG index  $\leq$  10.71, T3: TyG index > 10.71.

TyG: triglyceride-glucose index, SBP: systolic blood pressure, DBP: diastolic blood pressure, FPG: fasting plasma glucose, TC: total cholesterol, TG: triglycerides, HDL-C: high-density lipoprotein cholesterol, LDL-C: low-density lipoprotein cholesterol, HbA1c: glycated haemoglobin, IQR: interquartile range.

### ***Association between the TyG index and the risk of HFpEF***

As shown in **Table 2**, logistic regression models were constructed to show that the TyG index was significantly related to HFpEF before and after multivariate adjustment ( $P < 0.001$ ). When the TyG index was analyzed as a continuous variable, it was significantly associated with HFpEF (OR: 1.56; 95% CI: 1.08–1.23). When the TyG index served as a classified variable, the risk of HFpEF for patients in T3 was 1.47 times greater than the risk for patients in T1. The association of the TyG index and the risk of different types of HF were further evaluated, including HFfrEF, HFmrEF, and HFpEF. The results show that the association remained significantly different (**Additional file Table S2**).

**Table 2. Association between the TyG index and the risk of HFpEF**

Variables	HFpEF			
	OR (95% CI) <sup>a</sup>	<i>P</i> -value	OR (95% CI) <sup>b</sup>	<i>P</i> -value
TyG index	1.17 (1.10-1.24)	< 0.001	1.56 (1.08-1.23)	< 0.001
T1	Reference		Reference	
T2	1.30 (1.14-1.47)	< 0.001	1.29 (1.13-1.47)	< 0.001
T3	1.50 (1.32-1.71)	< 0.001	1.47 (1.30-1.68)	< 0.001
<i>P</i> -trend		< 0.001		< 0.001

T1: TyG index < 10.09, T2: 10.09 ≤ TyG index ≤ 10.71, T3: TyG index > 10.71.

<sup>a</sup>Model 1: adjusted for sex, age;

<sup>b</sup>Model 2: adjusted for sex, age, smoking, drinking, SBP, DBP, TC, HDL-C, LDL-C, hypertension, hyperlipidemia, use of antihypertensives, and use of antilipidemic.

***Association between TyG index and the risk of carotid artery plaques according to sex and age***

Association between the TyG index and the risk of HFpEF according to age and sex were shown in **Table 3**. After multivariate adjustment, the TyG index of CHD patients was significantly associated with HFpEF in elderly (> 60 years old) patients (OR:1.19; 95% CI: 1.10-1.48). However, there was no independent association in the middle-aged ( $\leq$  60 years old) patients ( $P > 0.05$ ). Regardless of whether it is male or female, this relationship was still statistically significant before and after multivariate adjustment. after multivariate adjustment, the association between the TyG index of female and HFpEF was (OR:1.21; 95% CI: 1.10-1.34), which was higher than that of male (OR:1.11; 95% CI: 1.02-1.21). Multivariate logistic regression analysis showed that the TyG index levels for T2 and T3 were associated with an increased OR for HFpEF when T1 was used as a reference, with the highest association observed for T3 in both female (OR: 1.55; 95% CI: 1.27-2.88) and male (OR: 1.21; 95% CI: 1.10-1.34).

**Table 3. Association between the TyG index and the risk of HFpEF according to age and sex**

Group	Variables	HFpEF				
		OR (95% CI) <sup>a</sup>	<i>P</i> -value	OR (95% CI) <sup>b</sup>	<i>P</i> -value	
Age	TyG index	1.06 (0.94-1.20)	0.320	1.05 (0.93-1.19)	0.438	
	≤ 60	T1	Reference		Reference	
		T2	1.31 (1.01-1.69)	0.045	1.30 (1.00--1.69)	0.052
		T3	1.26 (0.98-1.63)	0.072	1.24 (0.95--1.62)	0.113
	> 60	TyG index	1.21(1.12-1.30)	< 0.001	1.19 (1.10-1.28)	< 0.001
		T1	Reference		Reference	
T2		1.29 (1.11-1.49)	0.001	1.28 (1.10-1.48)	0.001	
Sex	Male	T3	1.59 (1.37-1.84)	< 0.001	1.54 (1.33-1.79)	< 0.001
		TyG index	1.13 (1.04-1.22)	0.005	1.11 (1.02-1.21)	0.017
		T1	Reference		Reference	
	Female	T2	1.26 (1.05-1.50)	0.011	1.25 (1.05-1.49)	0.002
		T3	1.43 (1.20-1.70)	< 0.001	1.40 (1.26-1.67)	< 0.001
		TyG index	1.22 (1.11-1.34)	< 0.001	1.21 (1.10-1.34)	< 0.001
	T1	Reference		Reference		
	T2	1.33 (1.10-1.61)	0.003	1.32 (1.09-1.60)	0.001	
	T3	1.57 (1.30-1.90)	< 0.001	1.55 (1.27-2.88)	< 0.001	

T1: TyG index < 10.09, T2: 10.09 ≤ TyG index ≤ 10.71, T3: TyG index > 10.71.

<sup>a</sup>Model 1: adjusted for sex, age, if applicable ;

<sup>b</sup>Model 2: adjusted for sex, age, smoking, drinking, SBP, DBP, TC, HDL-C, LDL-C, hypertension, hyperlipidemia, use of antihypertensives, and use of antilipidemic, if applicable.

***Association between TyG index and the risk of carotid artery plaques according to metabolic status***

As shown in **Table 4**, The association between the TyG index and HFpEF clearly varied in different blood pressure and lipid states. After multivariate adjustment, the TyG index of CHD patients was significantly associated with HFpEF in hypertension (OR:1.17; 95% CI: 1.10-1.25) and dyslipidemia (OR:1.16; 95% CI: 1.08-1.23). For both hypertension and dyslipidemia, using T1 as the reference, T2 and T3 were significantly related to the increased risks of HFpEF, and T3 observed the highest association in both hypertension (OR: 1.49; 95% CI: 1.30-1.70) and dyslipidemia (OR: 1.48; 95% CI: 1.29-1.68). Even after multivariate adjustment, this relationship remained significant.

**Table 4. Association between the TyG index and the risk of HFpEF according to hypertension and dyslipidemia**

Group	Variables	HFpEF				
		OR (95% CI) <sup>a</sup>	P-value	OR (95% CI) <sup>b</sup>	P-value	
Hypertension	TyG index	1.05 (0.82-1.35)	0.697	1.10 (0.84-1.43)	0.505	
	No	T1	Reference		Reference	
		T2	2.12 (1.26-3.58)	0.005	1.89 (1.17-3.40)	0.011
		T3	1.65 (0.96-2.83)	0.072	1.67 (0.96-2.96)	0.068
	Yes	TyG index	1.17 (1.10-1.25)	< 0.001	1.17 (1.10-1.25)	< 0.001
		T1	Reference		Reference	
T2		1.25 (1.10-1.43)	0.001	1.25 (1.10-1.43)	0.001	
Dyslipidemia	No	T2	1.48 (1.30-1.69)	< 0.001	1.49 (1.30-1.70)	< 0.001
		T3	1.13 (0.84-1.52)	0.410	1.28 (0.89-1.52)	0.426
		TyG index	1.17 (1.10-1.25)	< 0.001	1.16 (1.08-1.23)	< 0.001
	Yes	T1	Reference		Reference	
		T2	1.32 (1.16-1.52)	< 0.001	1.31 (1.15-1.50)	< 0.001
		T3	1.51 (1.33-1.73)	< 0.001	1.48 (1.29-1.68)	< 0.001

T1: TyG index < 10.09, T2: 10.09 ≤ TyG index ≤ 10.71, T3: TyG index > 10.71.

<sup>a</sup>Model 1: adjusted for sex, age;

<sup>b</sup>Model 2: adjusted for sex, age, smoking, drinking, TC, HDL-C, LDL-C, hypertension, hyperlipidemia, use of antihypertensives, and use of antilipidemic, if applicable.

***Association between TyG index and the risk of carotid artery plaques according to age and metabolic status***

As shown in **Table 5**, The TyG index and HFpEF do not show a significant association according to different blood pressure and lipid states in aged ≤ 60 years old CHD patients. Then, After multivariate adjustment, the TyG index of CHD patients was significantly associated with HFpEF aged > 60 years old in hypertension (OR:1.20; 95% CI: 1.11-1.30) and dyslipidemia (OR:1.20; 95% CI: 1.11-1.29) . For both hypertension and dyslipidemia aged > 60 years old, using T1 as the reference, T2 and T3 were significantly related to the increased risks of HFpEF, and T3 observed the highest association in both hypertension (OR: 1.54; 95% CI: 1.32-1.80) and dyslipidemia (OR: 1.56; 95% CI: 1.34-1.82). Even after multivariate adjustment, this relationship remained significant.

**Table 5 Association between the TyG index and the risk of HFpEF according to age and metabolic status**

Group	Variables	HFpEF					
		OR (95% CI) <sup>a</sup>	<i>P</i> -value	OR (95% CI) <sup>b</sup>	<i>P</i> -value		
≤ 60	TyG index	1.25 (0.74-2.12)	0.409	1.44 (0.78-2.66)	0.245		
	No	T1	Reference		Reference		
		T2	5.20 (1.65-16.37)	0.005	6.70 (1.86-24.18)	0.004	
		T3	2.56 (0.69-9.58)	0.162	3.09 (0.72-13.23)	0.129	
	Hypertension	TyG index	1.05 (0.93-1.18)	0.469	1.04 (0.91-1.180)	0.558	
		Yes	T1	Reference		Reference	
			T2	1.18 (0.90-1.54)	0.226	1.20 (0.91-1.57)	0.189
	T3		1.18 (0.91-1.53)	0.211	1.18 (0.90-1.55)	0.228	
	> 60	TyG index	1.68 (0.97-2.90)	0.065	1.63 (0.88-3.02)	0.123	
		No	T1	Reference		Reference	
			T2	0.73 (0.27-1.96)	0.527	0.55 (0.18-1.71)	0.305
			T3	2.39 (0.91-6.24)	0.076	2.34 (0.79-6.99)	0.127
Dyslipidemia		TyG index	1.05 (0.92-1.18)	0.478	1.03 (0.91-1.18)	0.621	
		Yes	T1	Reference		Reference	
			T2	1.37 (1.04-1.79)	0.024	1.37 (1.04-1.81)	0.024
T3			1.25 (0.96-1.63)	0.104	1.22 (0.93-1.61)	0.155	
Hypertension		TyG index	1.04 (0.78-1.38)	0.802	1.06 (0.78-1.43)	0.708	
		No	T1	Reference		Reference	
			T2	1.54 (0.86-2.78)	0.149	1.53 (0.83-2.8)	0.17
			T3	1.48 (0.82-2.69)	0.195	1.50 (0.81-2.78)	0.196
	Yes	TyG index	1.22 (1.13-1.32)	< 0.001	1.20 (1.11-1.30)	< 0.001	
		T1	Reference		Reference		
		T2	1.27 (1.09-1.48)	0.002	1.26 (1.08-1.47)	0.004	
	Dyslipidemia	Yes	T3	1.59 (1.37-1.85)	< 0.001	1.54 (1.32-1.80)	< 0.001
			TyG index	0.97 (0.68-1.37)	0.844	0.95 (0.67-1.35)	0.769
			T1	Reference		Reference	
		No	T2	1.06 (0.62-1.82)	0.827	1.04 (0.60-1.81)	0.89
			T3	1.23 (0.67-2.25)	0.507	1.20 (0.65-2.23)	0.557
TyG index			1.22 (1.13-1.32)	< 0.001	1.20 (1.11-1.29)	< 0.001	
Yes		T1	Reference		Reference		
		T2	1.30 (1.12-1.52)	0.001	1.29 (1.11-1.51)	0.001	
		T3	1.61 (1.38-1.88)	< 0.001	1.56 (1.34-1.82)	< 0.001	

T1: TyG index < 10.09, T2: 10.09 ≤ TyG index ≤ 10.71, T3: TyG index > 10.71.

<sup>a</sup>Model 1: adjusted for sex;

<sup>b</sup>Model 2: adjusted for sex, smoking, drinking, TC, HDL-C, LDL-C, hypertension, hyperlipidemia, use of antihypertensives, and use of antilipidemic, if applicable.

***Association between TyG index and the risk of carotid artery plaques according to sex and metabolic status***

As shown in **Table 6**, The association between the TyG index and HFpEF was similar in CHD patients of different sex under different blood pressure and lipid status. After multivariate adjustment, the TyG index of male CHD patients was significantly associated with HFpEF in hypertension (OR:1.11; 95% CI: 1.02-1.22) and dyslipidemia (OR:1.32; 95% CI: 1.10-1.58) . And the TyG index had the same association with HFpEF in hypertension and dyslipidemia among female CHD patients (OR:1.21; 95% CI: 1.09-1.34) . After multivariate adjustment, using T1 as the reference, T2 and T3 were significantly related to the increased risks of HFpEF, and T3 observed the highest association. Among male CHD patients. the association between the TyG index and HFpEF in dyslipidemia (OR: 1.45; 95% CI: 1.21-1.73) was higher than those and hypertension (OR: 1.36; 95% CI: 1.13-1.62) among male CHD patients. However, hypertension (OR: 1.55; 95% CI: 1.27-1.89) was higher than hyperlipidemia (OR: 1.51; 95% CI: 1.23-1.85) in female with CHD patients.



**Table 6 Association between the TyG index and the risk of HFpEF according to sex and metabolic status**

Group	Variables	HFpEF					
		OR (95% CI) <sup>a</sup>	<i>P</i> -value	OR (95% CI) <sup>b</sup>	<i>P</i> -value		
Male	Hypertension	TyG index	0.97 (0.70-1.36)	0.868	1.04 (0.73-1.48)	0.835	
		No	T1	Reference		Reference	
			T2	2.71 (1.22-6.03)	0.015	2.45 (1.07-5.61)	0.035
			T3	2.11 (0.97-4.62)	0.061	2.35 (1.03-5.37)	0.043
		Yes	TyG index	1.13 (1.04-1.24)	0.004	1.11 (1.02-1.22)	0.017
			T1	Reference		Reference	
	T2		1.20 (1.00-1.44)	0.046	1.19 (1.00-1.43)	0.056	
	Dyslipidemia	No	T1	Reference		Reference	
			T2	0.54 (0.26-1.13)	0.101	0.52 (0.24-1.10)	0.085
			T3	0.92 (0.43-1.99)	0.833	0.99 (0.44-2.23)	0.977
		Yes	TyG index	1.14 (1.04-1.24)	0.003	1.12 (1.03-1.22)	0.011
			T1	Reference		Reference	
			T2	1.33 (1.11-1.59)	0.002	1.32 (1.10-1.58)	0.003
	Hypertension	No	T1	Reference		Reference	
			T2	1.78 (0.88-3.57)	0.107	1.64 (0.78-3.44)	0.193
			T3	1.30 (0.59-2.83)	0.513	1.24 (0.54-2.88)	0.611
		Yes	TyG index	1.17 (0.80-1.72)	0.425	1.18 (0.77-1.79)	0.451
			T1	Reference		Reference	
T2			1.33 (1.11-1.59)	0.002	1.32 (1.10-1.58)	0.003	
Dyslipidemia	No	T1	Reference		Reference		
		T2	1.78 (0.88-3.57)	0.107	1.64 (0.78-3.44)	0.193	
		T3	1.30 (0.59-2.83)	0.513	1.24 (0.54-2.88)	0.611	
	Yes	TyG index	1.22 (1.10-1.34)	0.000	1.21 (1.09-1.34)	< 0.001	
		T1	Reference		Reference		
		T2	1.30 (1.07-1.59)	0.009	1.30 (1.06-1.59)	0.011	
Hypertension	No	T1	Reference		Reference		
		T2	1.57 (1.29-1.92)	< 0.001	1.55 (1.27-1.89)	< 0.001	
		T3	1.57 (1.29-1.92)	< 0.001	1.55 (1.27-1.89)	< 0.001	
	Yes	TyG index	1.29 (0.88-1.89)	0.189	1.30 (0.87-1.94)	0.198	
		T1	Reference		Reference		
		T2	1.55 (0.83-2.89)	0.171	1.60 (0.83-3.09)	0.161	
Dyslipidemia	No	T1	Reference		Reference		
		T2	1.55 (0.83-2.89)	0.171	1.60 (0.83-3.09)	0.161	
		T3	2.11 (1.06-4.20)	0.034	2.23 (1.09-4.59)	0.029	
	Yes	TyG index	1.21 (1.10-1.34)	< 0.001	1.21 (1.09-1.34)	< 0.001	
		T1	Reference		Reference		
		T2	1.31 (1.07-1.60)	0.008	1.30 (1.06-1.60)	0.011	
		T3	1.53 (1.26-1.87)	< 0.001	1.51 (1.23-1.85)	< 0.001	

T1: TyG index < 10.09, T2:  $10.09 \leq \text{TyG index} \leq 10.71$ , T3: TyG index > 10.71.

<sup>a</sup>Model 1: adjusted for age;

<sup>b</sup>Model 2: adjusted for age, smoking, drinking, TC, HDL-C, LDL-C, hypertension, hyperlipidemia, use of antihypertensives, and use of antilipidemic, if applicable.

## Discussion

This is the first large-scale study to demonstrate this relationship between the TyG index and HFpEF in CHD patients, and assessed this relationship according to sex, ages and metabolism states (blood pressure, and blood lipid).

HF is a global epidemic with rising prevalence and the prognosis for patients with HF remains poor. Studies have shown that HF is the leading cause of hospitalization in adults, with a 1-year mortality rate of 10-35%, and mortality is much higher in patients with advanced HF <sup>[24]</sup>. This underscores the importance of primary and secondary prevention of underlying HF conditions, including ischemic HF, management of HFpEF, and HF in the elderly <sup>[25]</sup>. In recent years, studies have found that the number of HFpEF patients has continued to increase. On the one hand, due to insufficient popularization of primary prevention, the number of high-risk groups of HFpEF has increased. On the other hand, due to the continuous improvement of HFpEF treatment methods, the LVEF of patients has gradually improved, more than 50%. Epidemiological data show that patients with HFpEF have similar all-cause mortality and HF hospitalization rates as HFpEF. Patients with HFpEF are more common in elder, female and hypertensive patients <sup>[26-28]</sup>. Consistent with the above studies, our study showed that HFpEF had the highest proportion of patients with HF, and that HFpEF patients were older, more male, and had higher systolic blood pressure.

Studies in recent years have shown the close relationship between the TyG index and the homeostasis model assessment of insulin resistance (HOMA-IR). And the predictive value of the TyG index for IR was better than that for HOMA-IR <sup>[29]</sup>. Studies have shown that the TyG index is positively correlated with the prognosis of HF <sup>[30]</sup>. And the TyG index is a new biomarker of myocardial fibrosis in patients with

HF, which can be regarded as a useful risk stratification indicator in HF management<sup>[31]</sup>. Several mechanisms implicate the interaction between insulin resistance (IR), myocardial fibrosis, and poor prognosis in HF. Firstly, IR is associated with low-grade inflammation and plays an important role in the pathogenesis of cardiomyocyte apoptosis and myocardial fibrosis. Second, IR is associated with increased activity of the sympathetic nervous system and the renin-angiotensin-aldosterone system; both of them are associated with myocardial fibrosis and cardiac dysfunction. Third, IR is associated with extracellular matrix deposition and intramyocardial lipid deposition, leading to subsequent myocardial fibrosis<sup>[31-34]</sup>. These studies provide some evidence for our study that TyG has an independent correlation with HF in CHD patients, and there is a certain correlation with different types of HFpEF, therefore, we propose that the TyG index can be regarded as a more convenient marker of IR and considered a useful predictor of HFpEF.

Established risk factors for ASCVD include age, male gender, family history of ASCVD, obesity, hypertension, hypercholesterolemia, and DM<sup>[35-36]</sup>. Therefore, the association of the TyG index and HFpEF under different risk factor stratification needs to be further explored. In this study, the results show that the TyG index was independently associated with HFpEF in hypertension, dyslipidemia, and elder patients (> 60 years old). In addition, this relationship existed in both male and female patients, with the association being higher in females than in males. A Shanghai-based community-based study on the relationship between macrovascular and microvascular injury and the TyG index in the elderly showed that elevated the TyG index was significantly associated with higher arterial stiffness and risk of renal microvascular injury<sup>[37]</sup>. In the middle-aged and elderly populations, an increase in the TyG index was significantly associated with hypertension and isolated systolic hypertension<sup>[38]</sup>. The TyG index may represent a cost-effective and informative screening tool for metabolically obese normal weight (elevated blood pressure, hypertriglyceridemia, hyperglycemia, and low HDL cholesterol)<sup>[39]</sup>. High TyG index was independently associated with subclinical atherosclerosis (SA) in non-diabetic women, but not in non-diabetic male. TyG index was not associated with the presence of SA in DM

patients<sup>[40]</sup>. While the prevalence of Coronary microvascular dysfunction among men and women with HFpEF is similar, the drivers of microvascular dysfunction may differ by sex. The current inflammatory paradigm of CMD in HFpEF potentially predominates in men, while derangement in ventricular remodelling and fibrosis may play a more important role in women<sup>[41]</sup>. These studies provide some evidence for the findings of this study.

To sum up, with an increasing number of studies on the influence of the TyG index on patients with cardiovascular diseases, the clinical significance of the TyG index is becoming increasingly clear. Evaluation of the TyG index may have important clinical significance for risk stratification and individualized treatment of CHD patients.

### **Strengths and limitations**

Some limitations of the present study should be noted. First, this study was a multi-center study, thus, there may be bias in the measurement methods at different research centers. However, the practitioners conducted external quality assessments between clinical laboratories in each center. Second, the retrospective design of the current research would cause recall bias, and residual confounders could not be totally avoided. Therefore, any changes in the TyG index that may occur after HF treatment are unknown and require further exploration. And the exact mechanism of the relationship between the TyG index and HFpEF requires further prospective large-scale research.

### **Conclusion**

This study demonstrated a significant association of the TyG index and HFpEF in CHD patients. In this study, the results show that the TyG index was independently associated with HFpEF in hypertension, dyslipidemia, and elder patients (> 60 years old). In addition, the association between the TyG index and HFpEF in CHD patients was higher in female. The results of this study may emphasize the need for a risk management strategy for specific sex, age and metabolic status to prevent the occurrence of HFpEF in CHD patient.

### **Abbreviations**

TyG: Triglyceride glucose

HF: Heart failure

HF<sub>r</sub>EF: Heart failure with reduced ejection fraction

HF<sub>mr</sub>EF: Heart failure with mid-range ejection fraction

HF<sub>p</sub>EF: Heart failure with preserved ejection fraction

LVEF: Left ventricle ejection fraction

CHD: Coronary heart disease

DM: Diabetes mellitus

NCD: Non-communicable diseases

T2DM: Type 2 diabetes

CAD: Coronary artery disease

Pre-DM: Prediabetes

AS: Atherosclerosis

SBP: Systolic blood pressure

DBP: Diastolic blood pressure

FPG: Fasting plasma glucose

TC: Total cholesterol

HDL-C: High-density lipoprotein cholesterol

TG: Triglycerides

LDL-C: Low-density lipoprotein cholesterol

CRP: C-reactionprotein

HbA1c: Glycated haemoglobin

OR: Odds ratios

CI: Confidence intervals

HOMA-IR: Homeostasis model assessment of insulin resistance

SA: Subclinical atherosclerosis

### **Authors' contributions**

CQY, RRY, WC, XF and ZL participated in the study design and statistical analysis; ZL and YJL analyzed the data together and drafted the manuscript; LY, YYH, LL, LY, and SG participated in data collection. All authors have read and approved the final

manuscript.

## **Acknowledgments**

We thank all the participants in the study and the members of the survey teams, and the groups providing financial support.

## **Declaration of conflicting interests**

The author(s) declared no potential conflicts of interest with respect to the research, authorship, and/or publication of this article.

## **Funding**

This work was supported by the National Natural Science Foundation of China (82074140).

## **Availability of data and materials**

The datasets used and/or analyzed in the current study are available from the corresponding author upon reasonable request.

## **Ethics approval and consent to participate**

This study was approved by the ethics committee of Tianjin University of Traditional Chinese Medicine (TJUTCM-EC20190008) and registered in the Chinese Clinical Trial Registry (ChiCTR-1900024535) and in Clinical Trials.gov ( NCT04026724).

## **Reference**

- [1] Trøseid M, Andersen GØ, Broch K, et al. The gut microbiome in coronary artery disease and heart failure: Current knowledge and future directions. *EBio Medicine*. 2020;52:102649. doi: 10.1016/j.ebiom.2020.102649.
- [2] Schwinger RHG. Pathophysiology of heart failure. *Cardiovasc Diagn Ther*. 2021;11(1):263-276. doi: 10.21037/cdt-20-302.
- [3] Godfrey S, Peng Y, Lorusso N, et al. Palliative Care for Patients With Heart Failure With Preserved Ejection Fraction. *Circ Heart Fail*. 2023; 23: e010802. doi: 10.1161/CIRCHEARTFAILURE.123.010802.
- [4] Yancy CW, Jessup M, Bozkurt B, Butler J, Casey DE Jr, Colvin MM, Drazner MH, Filippatos GS, Fonarow GC, Givertz MM, Hollenberg SM, Lindenfeld J, Masoudi FA, McBride PE, Peterson PN, Stevenson LW, Westlake C. 2017 ACC/AHA/HFSA Focused Update of the 2013 ACCF/AHA Guideline for the

- Management of Heart Failure: A Report of the American College of Cardiology/American Heart Association Task Force on Clinical Practice Guidelines and the Heart Failure Society of America. *Circulation*. 2017;136(6):e137-e161. doi: 10.1161/CIR.0000000000000509.
- [5] Chamroonkiadtikun P, Ananchaisarp T, Wanichanon W. The triglyceride-glucose index, a predictor of type 2 diabetes development: A retrospective cohort study. *Prim Care Diabetes*. 2020;14(2):161-167. doi:10.1016/j.pcd.2019.08.004.
- [6] Alizargar J, Bai CH, Hsieh NC, Wu SV. Use of the triglyceride-glucose index (TyG) in cardiovascular disease patients. *Cardiovasc Diabetol*. 2020;19(1):8. doi: 10.1186/s12933-019-0982-2.
- [7] da Silva A, Caldas APS, Hermsdorff HHM, Bersch-Ferreira ÂC, Torreglosa CR, Weber B, Bressan J. Triglyceride-glucose index is associated with symptomatic coronary artery disease in patients in secondary care. *Cardiovasc Diabetol*. 2019;18(1):89. doi: 10.1186/s12933-019-0893-2.
- [8] Luo E, Wang D, Yan G, Qiao Y, Liu B, Hou J, Tang C. High triglyceride-glucose index is associated with poor prognosis in patients with acute ST-elevation myocardial infarction after percutaneous coronary intervention. *Cardiovasc Diabetol*. 2019;18(1):150. doi: 10.1186/s12933-019-0957-3.
- [9] Zhao S, Yu S, Chi C, Fan X, Tang J, Ji H, Teliewubai J, Zhang Y, Xu Y. Association between macro- and microvascular damage and the triglyceride glucose index in community-dwelling elderly individuals: the Northern Shanghai Study. *Cardiovasc Diabetol*. 2019;18(1):95. doi: 10.1186/s12933-019-0898-x.
- [10] Huang R, Lin Y, Ye X, Zhong X, Xie P, Li M, Zhuang X, Liao X. Triglyceride-glucose index in the development of heart failure and left ventricular dysfunction: analysis of the ARIC study. *Eur J Prev Cardiol*. 2022;29(11):1531-1541. doi: 10.1093/eurjpc/zwac058.
- [11] Kim MK, Ahn CW, Kang S, Nam JS, Kim KR, Park JS. Relationship between the triglyceride glucose index and coronary artery calcification in Korean adults. *Cardiovasc Diabetol*. 2017;16(1):108. doi: 10.1186/s12933-017-0589-4.
- [12] Li Z, He Y, Wang S, Li L, Yang R, Liu Y, Cheng Q, Yu L, Zheng Y, Zheng H,

- Gao S, Yu C. Association between triglyceride glucose index and carotid artery plaque in different glucose metabolic states in patients with coronary heart disease: a RCSCD-TCM study in China. *Cardiovasc Diabetol.* 2022;21(1):38. doi: 10.1186/s12933-022-01470-3.
- [13] Si S, Li J, Li Y, Li W, Chen X, Yuan T, Liu C, Li H, Hou L, Wang B, Xue F. Causal Effect of the Triglyceride-Glucose Index and the Joint Exposure of Higher Glucose and Triglyceride With Extensive Cardio-Cerebrovascular Metabolic Outcomes in the UK Biobank: A Mendelian Randomization Study. *Front Cardiovasc Med.* 2021;7:583473. doi: 10.3389/fcvm.2020.583473.
- [14] Yang S, Du Y, Liu Z, Zhang R, Lin X, Ouyang Y, Chen H. Triglyceride-Glucose Index and Extracellular Volume Fraction in Patients With Heart Failure. *Front Cardiovasc Med.* 2021 ;8:704462. doi: 10.3389/fcvm.2021.704462.
- [15] Barua RS, Rigotti NA, Benowitz NL, Cummings KM, Jazayeri MA, Morris PB, Ratchford EV, Sarna L, Stecker EC, Wiggins BS. 2018 ACC Expert Consensus Decision Pathway on Tobacco Cessation Treatment: A Report of the American College of Cardiology Task Force on Clinical Expert Consensus Documents. *J Am Coll Cardiol.* 2018;72(25):3332-3365. doi: 10.1016/j.jacc.2018.10.027.
- [16] Fan AZ, Ruan WJ, Chou SP. Re-examining the relationship between alcohol consumption and coronary heart disease with a new lens. *Prev Med.* 2019;118:336-343. doi: 10.1016/j.ypmed.2018.11.022.
- [17] Li Z, Cheng Q, Liu Y, Cheng X, Wang S, He Y, Wang X, Huang M, Li Y, Xue X, Xu Y, Li L, Zheng Y, Yang R, Gao S, Yu C. Low-/high-density lipoprotein cholesterol ratio and carotid plaques in patients with coronary heart disease: a Chinese cohort study. *Lipids Health Dis.* 2021;20(1):144. doi: 10.1186/s12944-021-01575-w.
- [18] Wu S, Xu L, Wu M, Chen S, Wang Y, Tian Y. Association between triglyceride-glucose index and risk of arterial stiffness: a cohort study. *Cardiovasc Diabetol.* 2021;20(1):146. doi: 10.1186/s12933-021-01342-2.
- [19] Yang L, Li Z, Song Y, Liu Y, Zhao H, Liu Y, Zhang T, Yuan Y, Cai X, Wang S, Wang P, Gao S, Li L, Li Y, Yu C. Study on urine metabolic profiling and



- pathogenesis of hyperlipidemia. *Clin Chim Acta*. 2019;495:365-373. doi: 10.1016/j.cca.2019.05.001.
- [20] Flack JM, Adekola B. Blood pressure and the new ACC/AHA hypertension guidelines. *Trends Cardiovasc Med*. 2020;30(3):160-164. doi: 10.1016/j.tcm.2019.05.003.
- [21] American Diabetes Association. 2. Classification and Diagnosis of Diabetes: Standards of Medical Care in Diabetes-2021. *Diabetes Care*. 2021 Jan;44(Suppl 1):S15-S33. doi: 10.2337/dc21-S002.
- [22] New York Heart Association (NYHA) Heart Function Classification Standard Group. Internal Medicine. *Beijing: People's Medical Publishing House*. 2010:195-6.
- [23] Ponikowski P, et al. 2016 ESC Guidelines for the diagnosis and treatment of acute and chronic heart failure: the Task Force for the diagnosis and treatment of acute and chronic heart failure of the European Society of Cardiology (ESC) developed with the special contribution of the Heart Failure Association (HFA) of the ESC. *Eur Heart J*. 2016;37:2129–2200.
- [24] Savarese G, Stolfo D, Sinagra G, Lund LH. Heart failure with mid-range or mildly reduced ejection fraction. *Nat Rev Cardiol*. 2022;19(2):100-116. doi:10.1038/s41569-021-00605-5
- [25] Greene SJ, Spertus JA, Tang W, et al. Heart Failure Across the Range of Mildly Reduced and Preserved Ejection Fraction in the United States. *Circ Heart Fail*. 2023; 16(5): e010430. doi: 10.1161/CIRCHEARTFAILURE.123.010430.
- [26] Shiga T, Suzuki A, Haruta S, Mori F, Ota Y, Yagi M, Oka T, Tanaka H, Murasaki S, Yamauchi T, Katoh J, Hattori H, Kikuchi N, Watanabe E, Yamada Y, Haruki S, Kogure T, Suzuki T, Uetsuka Y, Hagiwara N; HIJ-HF II Investigators. Clinical characteristics of hospitalized heart failure patients with preserved, mid-range, and reduced ejection fractions in Japan. *ESC Heart Fail*. 2019;6(3):475-486. doi: 10.1002/ehf2.12418.
- [27] Savarese G, Vedin O, D'Amario D, Uijl A, Dahlström U, Rosano G, Lam CSP, Lund LH. Prevalence and Prognostic Implications of Longitudinal Ejection

- Fraction Change in Heart Failure. *JACC Heart Fail.* 2019;7(4):306-317. doi: 10.1016/j.jchf.2018.11.019.
- [28] Liang M, Bian B, Yang Q. Characteristics and long-term prognosis of patients with reduced, mid-range, and preserved ejection fraction: A systemic review and meta-analysis. *Clin Cardiol.* 2022;45(1):5-17. doi: 10.1002/clc.23754.
- [29] Kang SW, Kim SK, Kim YS, et al. Risk prediction of the metabolic syndrome using TyG Index and SNPs: a 10-year longitudinal prospective cohort study. *Mol Cell Biochem.* 2023;478(1):39-45. doi: 10.1007/s11010-022-04494-1.
- [30] Yang S, Du Y, Liu Z, et al. Triglyceride-Glucose Index and Extracellular Volume Fraction in Patients With Heart Failure. *Front Cardiovasc Med.* 2021;8:704462. doi:10.3389/fcvm.2021.704462.
- [31] Nishida K, Otsu K. Inflammation and metabolic cardiomyopathy. *Cardiovasc Res.* 2017;113:389–98. doi:10.1093/cvr/cvx012.
- [32] Xu L, Wu M, Chen S, et al. Triglyceride-glucose index associates with incident heart failure: A cohort study. *Diabetes Metab.* 2022;48(6):101365. doi: 10.1016/j.diabet.2022.101365.
- [33] Li X, Chan JSK, Guan B, et al. Triglyceride-glucose index and the risk of heart failure: Evidence from two large cohorts and a mendelian randomization analysis. *Cardiovasc Diabetol.* 2022;21(1):229. doi: 10.1186/s12933-022-01658-7.
- [34] Thai PV, Tien HA, Van Minh H, Valensi P. Triglyceride glucose index for the detection of asymptomatic coronary artery stenosis in patients with type 2 diabetes. *Cardiovasc Diabetol.* 2020;19:137. doi:10.1186/s12933-020-01108-2
- [35] Rosenblit PD. Extreme atherosclerotic cardiovascular disease (ASCVD) risk recognition. *Curr Diab Rep.* 2019;19:61. doi: 10.1007/s11892-019-1178-6.
- [36] Choi S. The potential role of biomarkers associated with ASCVD risk: risk-enhancing biomarkers. *J Lipid Atheroscler.* 2019;8:173–182. doi: 10.12997/jla.2019.8.2.173.
- [37] Zhao S, Yu S, Chi C, Fan X, Tang J, Ji H, Teliewubai J, Zhang Y, Xu Y. Association between macro- and microvascular damage and the triglyceride glucose index in community-dwelling elderly individuals: the Northern Shanghai

- Study. *Cardiovasc Diabetol.* 2019 Jul 25;18(1):95. doi: 10.1186/s12933-019-0898-x.
- [38] Zheng R, Mao Y. Triglyceride and glucose (TyG) index as a predictor of incident hypertension: a 9-year longitudinal population-based study. *Lipids Health Dis.* 2017;16(1):175. doi: 10.1186/s12944-017-0562-y.
- [39] Xu X, Bhagavathula AS, Zhang Y, Ryan PM, Rahmani J, Qi X. Sex Differences in the TyG Index and Cardiovascular Risk Factors in Metabolically Obese Normal Weight Phenotype. *Int J Endocrinol.* 2022;2022:1139045. doi: 10.1155/2022/1139045.
- [40] Lu YW, Chang CC, Chou RH, Tsai YL, Liu LK, Chen LK, Huang PH, Lin SJ. Gender difference in the association between TyG index and subclinical atherosclerosis: results from the I-Lan Longitudinal Aging Study. *Cardiovasc Diabetol.* 2021;20(1):206. doi: 10.1186/s12933-021-01391-7.
- [41] Chandramouli C, Ting TW, Tromp J, Agarwal A, Svedlund S, Saraste A, Hage C, Tan RS, Beussink-Nelson L, Lagerström Fermer M, Gan LM, Lund L, Shah SJ, Lam CSP. Sex differences in proteomic correlates of coronary microvascular dysfunction among patients with heart failure and preserved ejection fraction. *Eur J Heart Fail.* 2022;24(4):681-684. doi: 10.1002/ejhf.2435.

## Figure legends

Figure 1. Flow chart of patient recruitment

## Table legends

Table 1. General characteristics of the study participants according to the TyG index

Table 2. Association between the TyG index and the risk of HFpEF

Table 3. Association between the TyG index and the risk of HFpEF according to age and sex

Table 4. Association between the TyG index and the risk of HFpEF according to hypertension and dyslipidemia

Table 5 Association between the TyG index and the risk of HFpEF according to age and metabolic status

Table 6 Association between the TyG index and the risk of HFpEF according to sex and metabolic status

**Additional file**

Table S1. General characteristics of the study participants according to HFpEF

Table S2. Association between the TyG index and the risk of different types of heart failure

**Table 1. General characteristics of the study participants according to the TyG index**

Characteristic	TyG index				<i>P</i> -value
	Total ( <i>N</i> = 8,606)	T1 ( <i>n</i> = 2,885)	T2 ( <i>n</i> = 2,848)	T3 ( <i>n</i> = 2,873)	
Sex, n (%)					0.293
Male	4891 (56.8)	1629 (56.5)	1596 (56.0)	1666 (58.0)	
Female	3715 (43.2)	1256 (43.5)	1252 (44.0)	1207 (42.0)	
Age, years, median (IQR)	64 (58-69)	64 (58-69)	64 (59-69)	63 (58-69)	0.003
SBP, mmHg, median (IQR)	140 (125-157)	140 (124-151)	140 (127-156)	140 (128-160)	< 0.001
DBP, mmHg, median (IQR)	80 (80-90)	80 (79-90)	80 (80-90)	80 (80-90)	0.263
TyG index, median (IQR)	10.33 (9.98-10.98)	9.87 (9.73-9.98)	10.34 (10.20-10.51)	11.35 (10.98-11.87)	< 0.001
LVEF, median (IQR)	62 (59-65)	62 (59-65)	62 (59-65)	62 (58-65)	0.023
FPG, median (IQR)	6.22 (5.20-8.59)	4.92 (4.59-5.20)	6.23 (5.83-6.78)	10.34 (8.59-13.40)	< 0.001
HbA1c, median (IQR)	6.50 (5.70-7.96)	5.70 (5.30-6.40)	6.30 (5.70-7.20)	8.10 (6.80-9.60)	< 0.001
LDL-C, mmol/L, median (IQR)	2.82 (2.17-3.52)	2.75 (2.14-3.43)	2.87 (2.22-3.58)	2.85 (2.18-3.55)	0.001
HDL-C, mmol/L, median (IQR)	1.02 (0.85-1.24)	1.06 (0.88-1.30)	1.03 (0.86-1.25)	0.96 (0.80-1.16)	< 0.001
TG, mmol/L, median (IQR)	1.38 (1.00-1.97)	1.24 (0.90-1.70)	1.39 (1.01-1.96)	1.55 (1.10-2.28)	< 0.001
TC, mmol/L, median (IQR)	4.47 (3.68-5.33)	4.43 (3.65-5.23)	4.48 (3.71-5.35)	4.50 (3.68-5.38)	0.028
Smoking, n (%)	3088 (35.9)	1086 (37.6)	1008 (35.4)	994 (34.6)	0.044
Drinking, n (%)	7410 (86.1)	2485 (86.1)	2458 (86.3)	2467 (85.9)	0.890
Type of HF, n (%)					0.880
HF <sub>r</sub> EF	134 (1.6)	35 (1.2)	42 (1.5)	57 (2.0)	
HF <sub>mr</sub> EF	240 (2.8)	69 (2.4)	80 (2.8)	91 (3.2)	
HF <sub>p</sub> EF	1896 (22.0)	531 (18.4)	645 (22.7)	720 (25.1)	
NYHA, n (%)					0.813

I	130 (1.5)	42 (1.5)	38 (1.3)	50 (1.7)	
II	972 (11.3)	261 (9.0)	341 (12.0)	370 (12.9)	
III	687 (8.0)	189 (6.6)	244 (8.6)	254 (8.8)	
IV	152 (1.8)	44 (1.5)	54 (1.9)	54 (1.9)	
Hypertension, n (%)	7501 (87.2)	2455 (85.1)	2494 (87.6)	2552 (88.8)	< 0.001
Dyslipidemia, n (%)	5203 (60.5)	1534 (53.2)	1685 (59.2)	1984 (69.1)	< 0.001
Use of antihypertensives, n (%)	6331 (73.6)	2083 (72.2)	2081 (73.1)	2167 (75.4)	0.016
Use of antilipidemic, n (%)	5450 (63.3)	1823 (63.2)	1792 (62.9)	1835 (63.9)	0.744

Data are presented as median (interquartile) or number (proportion, %).

T1: TyG index < 10.09, T2:  $10.09 \leq$  TyG index  $\leq$  10.71, T3: TyG index > 10.71.

TyG: triglyceride-glucose index, SBP: systolic blood pressure, DBP: diastolic blood pressure, FPG: fasting plasma glucose, TC: total cholesterol, TG: triglycerides, HDL-C: high-density lipoprotein cholesterol, LDL-C: low-density lipoprotein cholesterol, HbA1c: glycated haemoglobin, IQR: interquartile range.

**Table 2. Association between the TyG index and the risk of HFpEF**

Variables	HFpEF			
	OR (95% CI) <sup>a</sup>	<i>P</i> -value	OR (95% CI) <sup>b</sup>	<i>P</i> -value
TyG index	1.17 (1.10-1.24)	< 0.001	1.56 (1.08-1.23)	< 0.001
T1	Reference		Reference	
T2	1.30 (1.14-1.47)	< 0.001	1.29 (1.13-1.47)	< 0.001
T3	1.50 (1.32-1.71)	< 0.001	1.47 (1.30-1.68)	< 0.001
<i>P</i> -trend		< 0.001		< 0.001

T1: TyG index < 10.09, T2: 10.09 ≤ TyG index ≤ 10.71, T3: TyG index > 10.71.

<sup>a</sup>Model 1: adjusted for sex, age;

<sup>b</sup>Model 2: adjusted for sex, age, smoking, drinking, SBP, DBP, TC, HDL-C, LDL-C, hypertension, hyperlipidemia, use of antihypertensives, and use of antilipidemic.





**Table 3. Association between the TyG index and the risk of HFpEF according to age and sex**

Group	Variables	HFpEF				
		OR (95% CI) <sup>a</sup>	<i>P</i> -value	OR (95% CI) <sup>b</sup>	<i>P</i> -value	
Age	TyG index	1.06 (0.94-1.20)	0.320	1.05 (0.93-1.19)	0.438	
	≤ 60	T1	Reference		Reference	
		T2	1.31 (1.01-1.69)	0.045	1.30 (1.00--1.69)	0.052
		T3	1.26 (0.98-1.63)	0.072	1.24 (0.95--1.62)	0.113
	> 60	TyG index	1.21(1.12-1.30)	< 0.001	1.19 (1.10-1.28)	< 0.001
		T1	Reference		Reference	
T2		1.29 (1.11-1.49)	0.001	1.28 (1.10-1.48)	0.001	
Sex	Male	T3	1.59 (1.37-1.84)	< 0.001	1.54 (1.33-1.79)	< 0.001
		TyG index	1.13 (1.04-1.22)	0.005	1.11 (1.02-1.21)	0.017
		T1	Reference		Reference	
	Female	T2	1.26 (1.05-1.50)	0.011	1.25 (1.05-1.49)	0.002
		T3	1.43 (1.20-1.70)	< 0.001	1.40 (1.26-1.67)	< 0.001
		TyG index	1.22 (1.11-1.34)	< 0.001	1.21 (1.10-1.34)	< 0.001
	T1	Reference		Reference		
	T2	1.33 (1.10-1.61)	0.003	1.32 (1.09-1.60)	0.001	
	T3	1.57 (1.30-1.90)	< 0.001	1.55 (1.27-2.88)	< 0.001	

T1: TyG index < 10.09, T2: 10.09 ≤ TyG index ≤ 10.71, T3: TyG index > 10.71.

<sup>a</sup>Model 1: adjusted for sex, age, if applicable ;

<sup>b</sup>Model 2: adjusted for sex, age, smoking, drinking, SBP, DBP, TC, HDL-C, LDL-C, hypertension, hyperlipidemia, use of antihypertensives, and use of antilipidemic, if applicable.

**Table 4. Association between the TyG index and the risk of HFpEF according to hypertension and dyslipidemia**

Group	Variables	HFpEF				
		OR (95% CI) <sup>a</sup>	<i>P</i> -value	OR (95% CI) <sup>b</sup>	<i>P</i> -value	
Hypertension	TyG index	1.05 (0.82-1.35)	0.697	1.10 (0.84-1.43)	0.505	
	No	T1	Reference	Reference		
		T2	2.12 (1.26-3.58)	0.005	1.89 (1.17-3.40)	0.011
		T3	1.65 (0.96-2.83)	0.072	1.67 (0.96-2.96)	0.068
	Yes	TyG index	1.17 (1.10-1.25)	< 0.001	1.17 (1.10-1.25)	< 0.001
		T1	Reference		Reference	
	T2	1.25 (1.10-1.43)	0.001	1.25 (1.10-1.43)	0.001	
	T3	1.48 (1.30-1.69)	< 0.001	1.49 (1.30-1.70)	< 0.001	
Dyslipidemia	TyG index	1.13 (0.84-1.52)	0.410	1.28 (0.89-1.52)	0.426	
	No	T1	Reference	Reference		
		T2	1.00 (0.63-1.60)	0.995	0.99 (0.61-1.59)	0.013
		T3	1.49 (0.89-2.47)	0.128	1.50 (0.89-2.52)	0.128
	Yes	TyG index	1.17 (1.10-1.25)	< 0.001	1.16 (1.08-1.23)	< 0.001
		T1	Reference		Reference	
	T2	1.32 (1.16-1.52)	< 0.001	1.31 (1.15-1.50)	< 0.001	
	T3	1.51 (1.33-1.73)	< 0.001	1.48 (1.29-1.68)	< 0.001	

T1: TyG index < 10.09, T2: 10.09 ≤ TyG index ≤ 10.71, T3: TyG index > 10.71.

<sup>a</sup>Model 1: adjusted for sex, age;

<sup>b</sup>Model 2: adjusted for sex, age, smoking, drinking, TC, HDL-C, LDL-C, hypertension, hyperlipidemia, use of antihypertensives, and use of antilipidemic, if applicable.

**Table 5 Association between the TyG index and the risk of HFpEF according to age and metabolic status**

Group	Variables	HFpEF					
		OR (95% CI) <sup>a</sup>	<i>P</i> -value	OR (95% CI) <sup>b</sup>	<i>P</i> -value		
≤ 60	Hypertension	TyG index	1.25 (0.74-2.12)	0.409	1.44 (0.78-2.66)	0.245	
		No	T1	Reference		Reference	
			T2	5.20 (1.65-16.37)	0.005	6.70 (1.86-24.18)	0.004
			T3	2.56 (0.69-9.58)	0.162	3.09 (0.72-13.23)	0.129
		Yes	TyG index	1.05 (0.93-1.18)	0.469	1.04 (0.91-1.180)	0.558
			T1	Reference		Reference	
	T2		1.18 (0.90-1.54)	0.226	1.20 (0.91-1.57)	0.189	
	Dyslipidemia	No	TyG index	1.68 (0.97-2.90)	0.065	1.63 (0.88-3.02)	0.123
			T1	Reference		Reference	
			T2	0.73 (0.27-1.96)	0.527	0.55 (0.18-1.71)	0.305
		Yes	T3	2.39 (0.91-6.24)	0.076	2.34 (0.79-6.99)	0.127
			TyG index	1.05 (0.92-1.18)	0.478	1.03 (0.91-1.18)	0.621
T1			Reference		Reference		
> 60	Hypertension	T2	1.37 (1.04-1.79)	0.024	1.37 (1.04-1.81)	0.024	
		T3	1.25 (0.96-1.63)	0.104	1.22 (0.93-1.61)	0.155	
		TyG index	1.04 (0.78-1.38)	0.802	1.06 (0.78-1.43)	0.708	
		No	T1	Reference		Reference	
			T2	1.54 (0.86-2.78)	0.149	1.53 (0.83-2.8)	0.17
			T3	1.48 (0.82-2.69)	0.195	1.50 (0.81-2.78)	0.196
	Yes	TyG index	1.22 (1.13-1.32)	< 0.001	1.20 (1.11-1.30)	< 0.001	
		T1	Reference		Reference		
		T2	1.27 (1.09-1.48)	0.002	1.26 (1.08-1.47)	0.004	
	Dyslipidemia	No	T3	1.59 (1.37-1.85)	< 0.001	1.54 (1.32-1.80)	< 0.001
			TyG index	0.97 (0.68-1.37)	0.844	0.95 (0.67-1.35)	0.769
			T1	Reference		Reference	
Yes		T2	1.06 (0.62-1.82)	0.827	1.04 (0.60-1.81)	0.89	
		T3	1.23 (0.67-2.25)	0.507	1.20 (0.65-2.23)	0.557	
		TyG index	1.22 (1.13-1.32)	< 0.001	1.20 (1.11-1.29)	< 0.001	
Yes	T1	Reference		Reference			
	T2	1.30 (1.12-1.52)	0.001	1.29 (1.11-1.51)	0.001		
	T3	1.61 (1.38-1.88)	< 0.001	1.56 (1.34-1.82)	< 0.001		

T1: TyG index < 10.09, T2:  $10.09 \leq \text{TyG index} \leq 10.71$ , T3: TyG index > 10.71.

<sup>a</sup>Model 1: adjusted for sex;

<sup>b</sup>Model 2: adjusted for sex, age, smoking, drinking, TC, HDL-C, LDL-C, hypertension, hyperlipidemia, use of antihypertensives, and use of antilipidemic, if applicable.

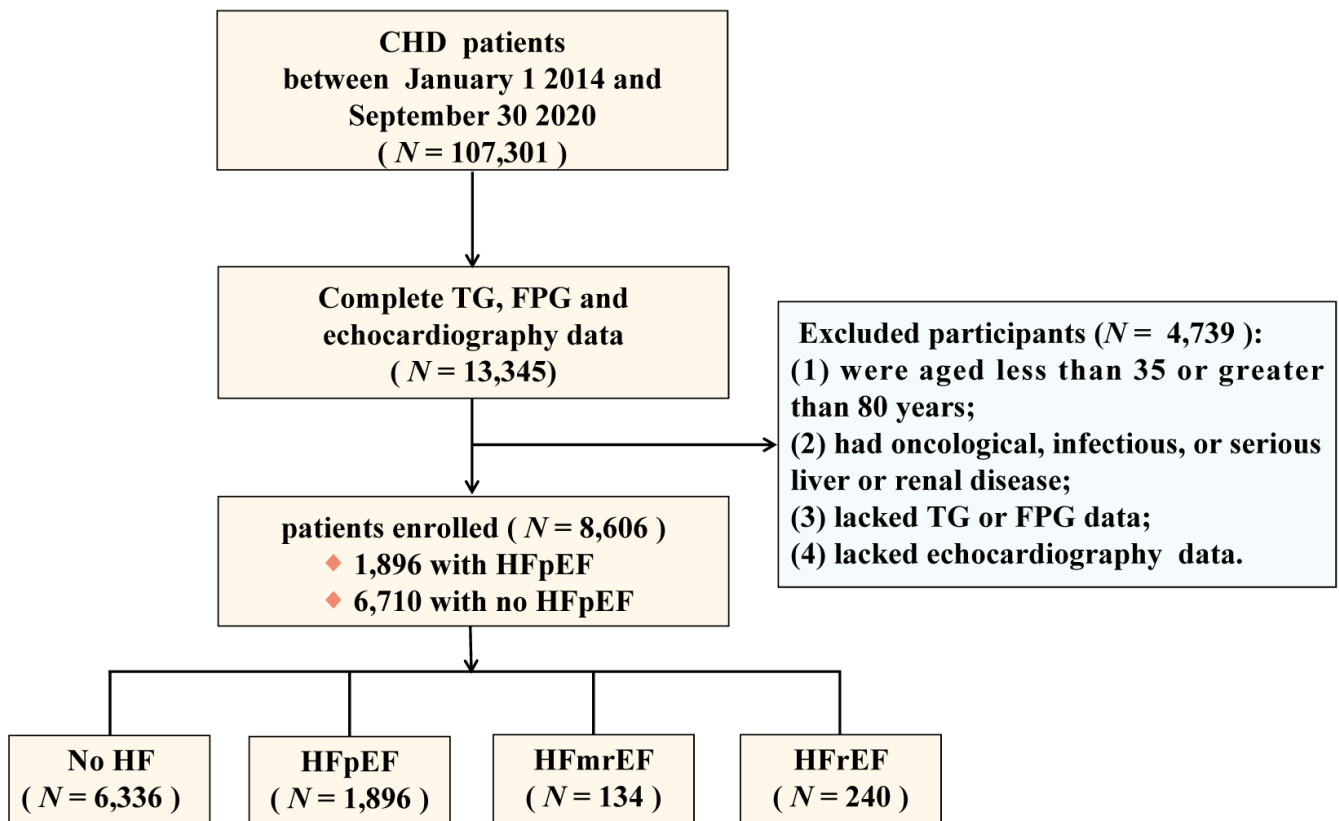
**Table 6 Association between the TyG index and the risk of HFpEF according to sex and metabolic status**

Group	Variables	HFpEF					
		OR (95% CI) <sup>a</sup>	<i>P</i> -value	OR (95% CI) <sup>b</sup>	<i>P</i> -value		
Male	Hypertension	TyG index	0.97 (0.70-1.36)	0.868	1.04 (0.73-1.48)	0.835	
		No	T1	Reference		Reference	
			T2	2.71 (1.22-6.03)	0.015	2.45 (1.07-5.61)	0.035
			T3	2.11 (0.97-4.62)	0.061	2.35 (1.03-5.37)	0.043
		Yes	TyG index	1.13 (1.04-1.24)	0.004	1.11 (1.02-1.22)	0.017
			T1	Reference		Reference	
	T2		1.20 (1.00-1.44)	0.046	1.19 (1.00-1.43)	0.056	
	Dyslipidemia	No	TyG index	0.92 (0.58-1.47)	0.727	0.94 (0.58-1.52)	0.802
			T1	Reference		Reference	
			T2	0.54 (0.26-1.13)	0.101	0.52 (0.24-1.10)	0.085
		Yes	T3	0.92 (0.43-1.99)	0.833	0.99 (0.44-2.23)	0.977
			TyG index	1.14 (1.04-1.24)	0.003	1.12 (1.03-1.22)	0.011
			T1	Reference		Reference	
	Hypertension	No	T2	1.33 (1.11-1.59)	0.002	1.32 (1.10-1.58)	0.003
			T3	1.48 (1.24-1.77)	0.000	1.45 (1.21-1.73)	< 0.001
			TyG index	1.17 (0.80-1.72)	0.425	1.18 (0.77-1.79)	0.451
		Yes	T1	Reference		Reference	
			T2	1.78 (0.88-3.57)	0.107	1.64 (0.78-3.44)	0.193
T3			1.30 (0.59-2.83)	0.513	1.24 (0.54-2.88)	0.611	
Dyslipidemia	No	TyG index	1.22 (1.10-1.34)	0.000	1.21 (1.09-1.34)	< 0.001	
		T1	Reference		Reference		
		T2	1.30 (1.07-1.59)	0.009	1.30 (1.06-1.59)	0.011	
	Yes	T3	1.57 (1.29-1.92)	< 0.001	1.55 (1.27-1.89)	< 0.001	
		TyG index	1.29 (0.88-1.89)	0.189	1.30 (0.87-1.94)	0.198	
		T1	Reference		Reference		
Hypertension	No	T2	1.55 (0.83-2.89)	0.171	1.60 (0.83-3.09)	0.161	
		T3	2.11 (1.06-4.20)	0.034	2.23 (1.09-4.59)	0.029	
		TyG index	1.21 (1.10-1.34)	< 0.001	1.21 (1.09-1.34)	< 0.001	
	Yes	T1	Reference		Reference		
		T2	1.31 (1.07-1.60)	0.008	1.30 (1.06-1.60)	0.011	
		T3	1.53 (1.26-1.87)	< 0.001	1.51 (1.23-1.85)	< 0.001	

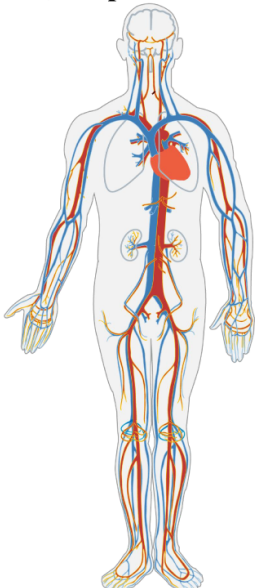
T1: TyG index < 10.09, T2:  $10.09 \leq$  TyG index  $\leq$  10.71, T3: TyG index > 10.71.

<sup>a</sup>Model 1: adjusted for age;

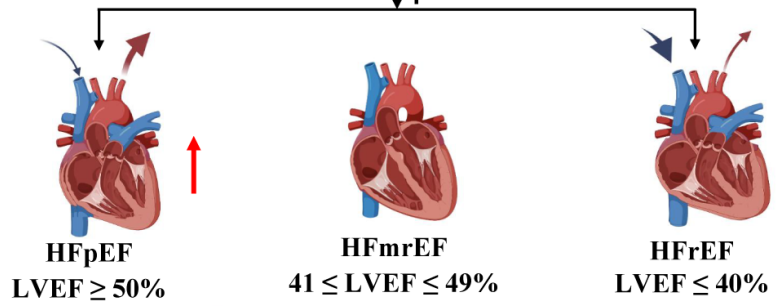
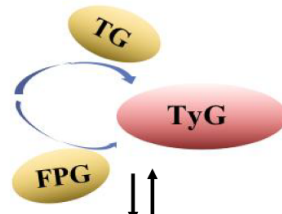
<sup>b</sup>Model 2: adjusted for age, smoking, drinking, TC, HDL-C, LDL-C, hypertension, hyperlipidemia, use of antihypertensives, and use of antilipidemic, if applicable.



  
107,301 patients with CHD



With data on TyG and  
echocardiography data  
( $N=8,606$ )



the risk of HFpEF