

1 ***A novel duplex qualitative real-time PCR assay for the detection and differentiation***
2 ***of Plasmodium ovale curtisi and Plasmodium ovale wallikeri malaria***

3

4 ***Running title: Real-time PCR assay for P. ovale curtisi and P. ovale wallikeri detection***

5

6 Wenqiao He^{1,2}, Rachel Sendor³, Varun R. Potlapalli¹, Melchior M. Kashamuka⁴, Antoinette K.

7 Tshetu⁴, Fernandine Phanzu⁵, Albert Kalonji⁵, Billy Ngasala⁶, Kyaw Lay Thwai¹, Jonathan J.

8 Juliano^{1,3}, Jessica T. Lin¹, Jonathan B. Parr^{1*}

9

10 ¹ Division of Infectious Diseases and Institute for Global Health and Infectious Diseases, University

11 of North Carolina at Chapel Hill, Chapel Hill, NC, United States

12 ² Department of Epidemiology, School of Public Health, Guangdong Provincial Key Laboratory of

13 Tropical Disease Research, Southern Medical University, Guangzhou, China

14 ³ Department of Epidemiology, Gillings School of Global Public Health, Chapel Hill, NC, United

15 States

16 ⁴ Kinshasa School of Public Health, Kinshasa, Democratic Republic of the Congo

17 ⁵ SANRU Asbl, Kinshasa, Democratic Republic of the Congo

18 ⁶ Muhimbili University of Health and Allied Sciences, Dar Es Salaam, Tanzania

19

20 * Corresponding author

21 E-mail: jonathan_parr@med.unc.edu (JBP)

NOTE: This preprint reports new research that has not been certified by peer review and should not be used to guide clinical practice.

22 **Abstract**

23 **Background**

24 *P. ovale* spp. infections are endemic across multiple African countries and are
25 caused by two distinct non-recombining species, *P. ovale curtisi* (*Poc*) and *P. ovale*
26 *walikeri* (*Pow*). These species are thought to differ in clinical symptomatology and
27 latency, but existing diagnostic assays have limited ability to detect and distinguish
28 them. In this study, we developed a new duplex assay for the detection and
29 differentiation of *Poc* and *Pow* that can be used to improve our understanding of these
30 parasites.

31 **Methods**

32 Repetitive sequence motifs were identified in available *Poc* and *Pow* genomes and
33 used for assay development and validation. We evaluated the analytical sensitivity and
34 specificity of the best-performing assay using a panel of samples from Tanzania and the
35 Democratic Republic of the Congo (DRC), then validated its performance using 55 *P.*
36 *ovale* spp. samples and 40 non-*ovale Plasmodium* samples from the DRC. *Poc* and *Pow*
37 prevalence among symptomatic individuals sampled across three provinces of the DRC
38 were estimated.

39 **Results**

40 The best-performing *Poc* and *Pow* targets had 9 and 8 copies within the reference
41 genomes, respectively. Our duplex assay had 100% specificity and 95% confidence
42 lower limits of detection of 4.2 and 41.2 parasite genome equivalents/ μ l for *Poc* and

43 *Pow*, respectively. Species was determined in 80% of all *P. ovale* spp.-positive field
44 samples and 100% of those with >10 parasites/ μ l. Most *P. ovale* spp. field samples from
45 the DRC were found to be *Poc* infections.

46 **Conclusions**

47 We identified promising multi-copy targets for molecular detection and
48 differentiation of *Poc* and *Pow* and used them to develop a new duplex real-time PCR
49 assay that performed well when applied to diverse field samples. Though low-density
50 *Pow* infections are not reliably detected, the assay is highly specific and can be used for
51 high-throughput studies of *P. ovale* spp. epidemiology among symptomatic cases in
52 malaria-endemic countries like the DRC.

53 **Keywords:** *P. ovale curtisi*; *P. ovale wallikeri*; qualitative real-time PCR; prevalence;
54 Congo; non-falciparum malaria

55 **Author Summary**

56 Non-falciparum malaria is gaining attention, especially in settings where *P. falciparum*
57 transmission is declining. *Plasmodium ovale curtisi* (*Poc*) and *wallikeri* (*Pow*) are
58 neglected parasites that can cause relapsing malaria and are thought to differ in clinical
59 symptomatology and latency. However, existing diagnostic assays have limited ability
60 to detect and distinguish *Poc* and *Pow* and are not well-suited for high-throughput use,
61 hindering our understanding of *P. ovale* spp. epidemiology. Mining recently available
62 *Poc* and *Pow* reference genomes, we identify new multi-copy targets for molecular
63 detection and develop a novel duplex qualitative real-time PCR assay capable of species

64 differentiation. The assay is highly specific and requires short turn-around time. While
65 sensitivity can be improved for low-density *Pow* infections, this new assay can be used
66 for high-throughput studies of symptomatic *P. ovale* spp. infections in malaria-endemic
67 countries. We apply this tool to samples collected during a large study conducted in the
68 DRC and investigate *P. ovale* spp. epidemiology across health centers in three provinces.

69 **Introduction**

70 Malaria remains a major global health concern despite decades of sustained
71 investment in elimination efforts. Though most malaria programs prioritize
72 *Plasmodium falciparum*, the parasite species responsible for most deaths, increasing
73 evidence confirms co-circulation of other neglected *Plasmodium* species that cause
74 human malaria [1]. Recent surveys reveal a previously unappreciated burden of
75 *Plasmodium ovale* spp. in multiple African countries [2, 3], where relapsing malaria
76 caused by *P. ovale* spp. may prove to be an obstacle to malaria elimination efforts [4-
77 6]. *P. ovale* comprises two distinct non-recombining species, *P. ovale curtisi* (*Poc*) and
78 *P. ovale wallikeri* (*Pow*) [7]. *Poc* and *Pow* have potential differences in clinical
79 symptomatology and latency [8], but existing diagnostic assays have limited ability to
80 detect and distinguish them, and require multiple steps or prolonged cycling time that
81 increases risk of false-positive results [9].

82 Detection and differentiation of *Poc* and *Pow* is not currently possible using
83 conventional malaria diagnostic assays relying on microscopy. Microscopic
84 examination of blood smears remains the gold standard for malaria diagnosis, but
85 differentiation of parasite species and examination of low parasite density or mixed-
86 species infections is challenging and requires significant expertise [10]. *Poc* and *Pow*
87 infections often occur as mixed infections at low density, and are morphologically
88 indistinguishable on blood slides [11, 12]. Furthermore, widely used malaria rapid
89 diagnostic tests (RDTs) fail to detect samples with low parasite densities and cannot

90 distinguish parasite species other than *P. falciparum* and *Plasmodium vivax* [13, 14].

91 Thus, alternative methods are required to identify these neglected species.

92 Molecular methods are more sensitive and specific for *Plasmodium* detection than
93 microscopic examination or RDTs, but most existing assays target the 18S rRNA gene
94 of both *P. ovale* spp. leading to potential cross-reactivity and a lack of complete species
95 specificity for *Poc* and *Pow*. A duplex real-time PCR assay for *Poc* and *Pow* detection
96 was published in 2011, however, results of the melt-curve analysis can be hard to
97 interpret [15]. A nested PCR assay was developed in 2013 [16], and while it can detect
98 samples with 2-10 parasites/ μ l, this assay requires multiple steps and long turnaround
99 time. Available single-target quantitative real-time PCR assays require separate runs to
100 distinguish *Poc* and *Pow* [9, 17, 18]. Because of the limitations of the existing assays,
101 most studies of *P. ovale* spp. have not distinguished *Poc* and *Pow*. However, recently
102 released *Poc* and *Pow* genomes (PocGH01 and PowCR01) provide opportunities for
103 improved molecular assay development [19]. To improve our understanding of the
104 epidemiology of *P. ovale* spp. malaria, we mined publicly available *Poc* and *Pow*
105 genomes to identify novel multi-copy targets and developed a new duplex qualitative
106 real-time PCR assay for detection and differentiation of *Poc* and *Pow* infection.

107

108 **Materials and Methods**

109 **Mining and selection of multi-copy targets in *P. ovale curtisi***

110 **and *P. ovale wallikeri* genomes**

111 Using the publicly available *Poc* (PocGH01) and *Pow* (PowCR01) reference
112 genomes obtained from the NIH National Center for Biotechnology Information (NCBI)
113 database, we identified sequence motifs of 100 base-pairs (bp) in length with ≥ 6 copies
114 using *Jellyfish* (version 2.2.10) [20] (Fig 1). Sequences with low GC content ($< 25\%$)
115 and highly repetitive short sequences were excluded. The remaining multi-copy targets
116 were aligned to NCBI nt database using *blastn* to investigate their specificity.
117 Sequences aligned to other *Plasmodium* parasites were excluded. We then re-aligned
118 the remaining targets to the *Poc* and *Pow* genomes separately using *blastn* to investigate
119 their copy numbers in each genome. Candidate diagnostic assay targets for *Poc* and
120 *Pow* were selected based on species-specificity and copy numbers. Primer and probe
121 sets were designed manually using Oligo Calc [21] and DNAMAN (version 9, Lynnon
122 BioSoft, Quebec City, Canada) to estimate primer and probe melting temperatures and
123 to avoid self-complementarity and primer dimers (S1 Table).

124

125 **Fig 1. Approach to developing a real-time PCR assay for detection and**
126 **differentiation of *P. ovale curtisi* and *P. ovale wallikeri*.**

127

128 **Assay development and optimization**

129 A panel of 15 well-characterized *Poc* and *Pow* field samples and six non-ovale

130 *Plasmodium* laboratory controls were selected for assay development and analytical
131 specificity analysis. Field samples included 11 *Poc* and four *Pow* leukodepleted blood
132 samples and dried blood spot (DBS) samples from Tanzania and the Democratic
133 Republic of the Congo (DRC). Laboratory controls included two *P. falciparum*, one *P.*
134 *malariae*, two *P. vivax*, and one *P. knowlesi* samples from an external quality assurance
135 program [22]. DNA was extracted from dried blood spot (DBS) and leukodepleted
136 blood samples using Chelex 100 (Bio-Rad, Fishers, Indiana, USA) [23] and the
137 QIAamp DNA Mini Kit (Qiagen, Mettman, North Rhine-Westphalia, Germany),
138 respectively. *P. ovale* parasite densities were estimated using a semi-quantitative real-
139 time PCR assay targeting the 18S rRNA gene of both *P. ovale* spp. as previously
140 described [2]. *Poc* versus *Pow* species was determined using two singleplex real-time
141 PCR assays as previously described [9].

142 Primer sets with the best specificity for *Poc* and *Pow* versus this panel of samples
143 were selected. A duplex qualitative real-time PCR assay was developed based on the
144 selected primer sets and the corresponding probes. Assay optimization was then
145 performed using synthetic plasmids containing targets for *Poc* and *Pow* detection
146 (Azenta Life Sciences, Indianapolis, Indiana, USA). We tested a range of annealing
147 temperatures and of primer and probe concentrations to identify optimal reaction
148 conditions. All optimization analyses were performed in duplicate.

149 **Analytical sensitivity and specificity**

150 We further characterized the best performing assay to determine its analytical
151 sensitivity and specificity. Analytical sensitivity estimates were determined using probit
152 analysis [24] with serially diluted *Poc* and *Pow* plasmid DNA comprising 104 and 161
153 total replicates, respectively (S2 Table). Analytical specificity of the present assay was
154 assessed using the same panel of 15 well-characterized *Poc* and *Pow* field samples and
155 six non-ovale *Plasmodium* laboratory controls described above in duplicate. Samples
156 with Ct values less than 45 in both reactions were considered positive.

157 **Validation using field samples**

158 The assay's clinical sensitivity and specificity were assessed using 95 dried blood
159 spot samples selected from a large sample set from a previous study conducted in the
160 DRC [25], including 55 *P. ovale* spp. samples and 40 non-ovale *Plasmodium* samples
161 (20 *P. falciparum* infections, 10 *P. malariae* infections, and 10 *P. falciparum* and *P.*
162 *malariae* mixed infections) [25]. DNA was extracted using Chelex 100 as described
163 above. *Plasmodium species* and parasite densities were identified using real-time PCR
164 assays for *P. ovale*, *P. falciparum* and *P. malariae* as previously described, with samples
165 positive in duplicate selected for use during validation of the present assay, and the
166 previously published singleplex real-time PCR assay for both *P. ovale* spp. used as the
167 gold standard for clinical sensitivity and specificity calculations [2, 26, 27]. Samples
168 with Ct values lower than 45 in duplicate by our new assay were considered to be
169 positive.

170 **Epidemiology of *Poc* and *Pow* among symptomatic patients in**
171 **the DRC**

172 We investigated the epidemiology of *P. ovale* spp. infection and the distribution of
173 *Poc* vs *Pow* infections using samples from a study of symptomatic malaria across three
174 provinces in the DRC. Among a randomly selected group of 1,000 symptomatic
175 individuals, 64 samples were previously found be positive for *P. ovale* spp. by real-time
176 PCR testing [2, 25]. The χ^2 test or Fisher's exact test was used for comparison with
177 categorical variables that might be associated with *P. ovale* spp.-infections based on
178 results of previously published studies [28-33], including age, sex, *P. falciparum* co-
179 infection, bed net use, education level, recurrent malaria infection (any prior
180 *Plasmodium* species infections within 6 months), and rural residence. Though no
181 significant association between pregnancy and malaria was reported in previous studies,
182 pregnancy was included in the present analysis.

183 We calculated crude odds ratios (cORs) and their 95% confidence intervals (CI) to
184 evaluate associations between each of these eight factors and *P. ovale* infections.
185 Because DNA degradation is possible during long-term storage, we repeated the
186 previously published singleplex *P. ovale* spp. real-time PCR assay on the 64 samples
187 previously identified as *P. ovale* spp.-positive. Among these, 44 tested positive in
188 duplicate and were selected for species determination using the present duplex assay.
189 To determine the proportions of *Poc* and *Pow* within these *P. ovale* spp.-positive
190 samples, inverse probability weighting (IPW) was used to account for differences

191 between selected samples and the original 64 *P. ovale* spp.-positive samples. Selection
192 weights were calculated by multiple logistic regression analysis with the following
193 covariates: gender, age, area, and *P. ovale* spp. parasitemia.

194 **Statistical analysis**

195 Statistical analysis was performed using R software (version 4.2.0; R Core Team,
196 Vienna, Austria) in RStudio (version 2022.02.2). Figures were generated using the
197 *ggplot2* (version 3.4.1) and *forestplot* (version 3.1.1) packages. Mapping was done via
198 *pixelmap* [34].

199 **Ethical approvals**

200 Existing samples from previous studies were chosen based on convenience. DRC
201 samples were collected as part of a 2017 study investigating malaria diagnostic test
202 performance in three provinces, Kinshasa, Bas-Uele, and Sud-Kivu[25]. Tanzania
203 samples were collected from participants enrolled in a malaria transmission study in
204 rural Bagamoyo district from 2018-2019 [9, 35, 36]. Enrolled subjects provided
205 informed consent or assent. Ethical approvals for these studies were obtained from the
206 Kinshasa School of Public Health, Muhimbili University of Health and Allied Sciences,
207 and the University of North Carolina at Chapel Hill.

208

209 **Results**

210 ***P. ovale curtisi* and *P. ovale wallikeri* target selection and assay**

211 **development**

212 A total of 2,585 and 3,978 sequences of 100 bp in length with ≥ 6 repeats were
213 found in the *Poc* and *Pow* reference genomes, respectively. Targets with low GC content,
214 highly repetitive short sequences, or aligned to other *Plasmodium* parasite genomes
215 were excluded. A total of three potential assay targets with ≥ 8 copies in each of the
216 *Poc* and *Pow* genomes were selected. Focusing on these potential targets, we designed
217 five and three primer and probe sets for *Poc* and *Pow*, respectively (S1 Table). After
218 testing all primer and probe sets using a panel of 15 well-characterized *Poc* and *Pow*
219 field samples and six laboratory non-*ovale Plasmodium* controls, we selected two
220 primer and probe sets with the best specificity for *Poc* and *Pow*, respectively, for
221 additional laboratory testing (Table 1). The selected *Poc* target had nine copies within
222 putative liver stage antigen 3 (*lsa3*) gene on chromosome 4 (LT594585.1: 9,968-
223 11,125), while the *Pow* target had eight copies in a non-coding region on chromosome
224 14 (LT594518.1: 1,842,975-1,844,586). Short distances (< 50 bp) were noted between
225 the repetitive *Poc* target motifs and between *Pow* target motifs.

226 Combining these *Poc* and *Pow* primers and probes, we optimized a duplex,
227 qualitative real-time PCR assay for the detection and differentiation for *Poc* and *Pow*.
228 The final, optimized duplex assay was performed in a small final volume of 10 μ l,
229 including 7 μ l of reaction master-mix containing 2x FastStart Universal Probe Master
230 (Rox) (Roche, Basel, Switzerland), primers and probes (240 nM of *Poc_Fwd*, 240 nM
231 of *Poc_Rev*, 60 nM of *Poc_Probe*, 800 nM of *Pow_Fwd*, 800 nM of *Pow_Rev*, 320nM

232 of Pow_Probe); and 3µl of DNA template. Optimal thermocycling conditions were two
233 min at 50°C, 10 min at 95°C, followed by 45 cycles of 15 s at 95°C and 60 s at 58°C,
234 allowing for detection of parasite DNA in less than two hours.

235 **Table 1. Best performing primers and probes for *P. ovale curtisi* and *P. ovale***
236 ***wallikeri* detection**

Name	Sequence (5'→3')
Poc_Fwd	GTTRCCAAATATGCTATCACTTAC
Poc_Rev	GTARCACAAAACGACGAGAC
Poc_Probe	FAM - TACATCTTCTTCAAAGTTGYCATAYGCAT - BHQ1
Pow_Fwd	GRRTCTTCTGAACTTTGRAATG
Pow_Rev	CATCAAGGRTATCCATTCA
Pow_Probe	VIC - AACAACTTCAACATCAA - BHQ1

237 **Analytical sensitivity and specificity**

238 The 95% confidence lower limits of detection for *Poc* and *Pow* were 4.2 and 41.2
239 parasite genome equivalents/µl, respectively (Fig 2A, S1 Fig and S2 Table). All well-
240 characterized *Poc* and *Pow* field samples were successfully detected and differentiated
241 with no cross-reactivity between species, and no cross reactivity was found in six non-
242 ovale *Plasmodium* controls (Fig 2B), consistent with 100% analytical specificity.

243

244 **Fig 2. Duplex *Poc* and *Pow* assay performance. A)** Analytical sensitivity when

245 applied to multiple replicates of serially diluted plasmid DNA (n=104 and 161 total
246 replicates for *Poc* and *Pow*, respectively). Points are colored to display target detection
247 (blue) versus no detection (red). The 95% lower limit of detection (LOD) determined
248 using probit analysis is shown for each species. **B)** Analytical specificity versus
249 genomic DNA extracted from a panel of well-characterized leukodepleted blood (LDB)
250 and dried blood spot (DBS) samples from Tanzania and the DRC with *Poc* and *Pow*
251 confirmed by nested PCR, and non-ovale *Plasmodium* samples from an external quality
252 assurance program. All *Poc* and *Pow* samples were correctly identified, and no false-
253 positives were observed among other *Plasmodium* species.

254 **Validation using field samples**

255 The assay demonstrated excellent clinical sensitivity at higher parasite densities
256 and perfect specificity when applied to 95 field samples collected in the DRC. Parasite
257 densities of 55 *P. ovale* spp.-positive field samples included in this study ranged from
258 0.9 parasites/ μ l to 2,468 parasites/ μ l; 29 (52.7%) had parasite densities <10 parasites/ μ l.
259 The assay's overall sensitivity was 80%, successfully determining *P. ovale* species in
260 44 of the *P. ovale* spp.-positive field samples (Fig 3A); however, assay sensitivity was
261 100% for infections with >10 parasites/ μ l. The lowest parasite densities in which
262 species could be determined were 2.0 and 20.9 parasites/ μ l for *Poc* and *Pow*,
263 respectively. None of the 40 non-ovale *Plasmodium* field samples were detected by the
264 duplex assay, consistent with 100% specificity (Fig 3B).

265

266 **Fig 3. Assay validation using field samples collected in the DRC.** Gold standard
267 species identification was performed previously using a series of semi-quantitative
268 qPCR assays targeting pan-*Plasmodium* 18S rRNA, followed by singleplex species-
269 specific assays including *P. ovale* spp. [2] **A)** Detection of known *P. ovale* spp. PCR-
270 positive samples with varying parasite densities and co-infection status. Analytical 95%
271 lower limits of detection (LOD) are represented by dashed lines. **B)** No detection of
272 other *Plasmodium* species across a range of parasite densities. Abbreviations: Po = *P.*
273 *ovale* spp. (comprising both *Poc* and *Pow*); *Poc* = *P. ovale curtisi*; *Pow* = *P. ovale*
274 *wallerikeri*; Pf = *P. falciparum*; Pm = *P. malariae*.

275

276 **Epidemiology of symptomatic malaria due to *P. ovale* in the** 277 **DRC**

278 A total of 64 *P. ovale* spp.-positive samples were previously identified among
279 randomly selected field samples from 1,000 participants in three provinces in the DRC
280 [25]. The prevalences of *P. ovale* spp.-infection in Bas-Uele, Kinshasa, and Sud-Kivu
281 were 14.3% (47/328), 2.8% (10/353), and 2.2% (7/319), respectively. Among these
282 1,000 participants, urban residence (cOR: 0.31, 0.17-0.55) and bed net use (cOR: 0.50,
283 0.24-0.85) had significant protective associations with *P. ovale* spp. infection; while
284 recurrent malaria infection (within 6 months) (cOR: 1.75, 1.02-3.03) and coinfection

285 with *P. falciparum* (cOR: 7.70, 3.48-17.06) was associated with *P. ovale* spp. infection
286 (Fig 4).

287

288 **Fig 4. Factors associated with *P. ovale* spp. (comprising both *Poc* and *Pow*)**
289 **infections.** Crude odds ratio estimates and associated 95% confidence intervals are
290 displayed.

291

292 Among the subsample of 44 *P. ovale* spp.-positive samples selected for species
293 determination, *P. ovale* species was determined in 37 (84%) samples using the present
294 assay: 28 (75.7%), 6 (16.2%), and 3 (8.1%) were *Poc* infections, *Pow* infections, and
295 *Poc-Pow* mixed infections, respectively. Inverse probability weighting analysis
296 indicated that 89.8% of all *P. ovale* spp. infections in our cohort included *Poc* species,
297 alone or as a *Poc-Pow* mixed infection, and 15.2% included *Pow* species, alone or as a
298 *Poc-Pow* mixed infection.

299

300 **Discussion**

301 We mined recently published genomes of *Poc* and *Pow* to develop a highly specific
302 duplex real-time PCR assay that can be used to improve our understanding of their
303 epidemiology in malaria-endemic countries. Recent studies have revealed a previously

304 unappreciated burden of *P. ovale* spp. in Africa [2, 15, 36, 37]. Though *Poc* and *Pow*
305 are distinct non-recombining species, the few existing assays capable of distinguishing
306 them are not well-suited to large studies, requiring separate assays for each species and
307 higher volumes of DNA, with potential for cross-reactivity at higher parasite densities.
308 Because current assays require multiple steps, long turnaround time, or lack complete
309 species specificity [15-18], most field studies do not distinguish *Poc* and *Pow*, and their
310 prevalence and clinical features remain understudied [38-40]. Our new assay can be
311 used to help bridge this knowledge gap, especially among symptomatic cohorts where
312 low parasite density infections are not predominant.

313 Our assay targets are distinct from those used in prior assays and take advantage of
314 100 bp repetitive motifs in the putative *lsa3* gene on *Poc* chromosome 4 and a non-
315 coding region on *Pow* chromosome 14, respectively. Studies of *P. falciparum lsa3*
316 indicate that it is a mutable non-essential gene expressed during the pre-erythrocytic
317 stages of infection that encodes an antigen with tetrapeptide repeats of unclear function
318 [41, 42]. *P. falciparum lsa3* was shown to be largely conserved across isolates collected
319 from geographically diverse sites [42]. The non-coding *Pow* repetitive motif we
320 targeted has unclear function, with no obvious orthologues identified in publicly
321 available databases. Though non-essential genes are more likely to be lost over time
322 based on *in vitro P. falciparum* studies, genes with putative roles in antigenic variation
323 such as *lsa3* might be important in human infection [41-44]. We leveraged the repetitive
324 nature of these poorly understood *Poc* and *Pow* targets to develop an assay with several

325 advantageous performance characteristics.

326 Compared to published real-time PCR assays that usually target *Poc* and *Pow* 18S
327 rRNA genes [2, 17, 18], inclusion of distinct *Poc* and *Pow* targets enabled development
328 of a highly specific assay. These targets' copy numbers are higher than those reported
329 for 18S rRNA genes in *Plasmodium* genomes [45, 46]. However, published 18S rRNA
330 PCR assays achieve similar limits of detection compared to our assay, with 1.5
331 parasites/ μ l and 50 plasmid copies/ μ l for *Poc* and *Pow* detection, respectively [17, 18].
332 It is possible that the short distances between our *Poc* targets and between *Pow* targets
333 decrease the PCR efficiency, offsetting improved sensitivity that might otherwise be
334 achieved from their increased copy number. Validation using field samples from the
335 DRC confirmed robust species differentiation when the assay was applied to *P. ovale*
336 spp. samples with >10 parasites/ μ L and 100% specificity across all parasite densities.
337 Though its ability to identify *Pow* in particular was limited at lower parasite densities,
338 the simultaneous amplification of *Poc* and *Pow* DNA in a single reaction tube allows
339 our assay to have shorter turnaround time and require less materials compared to
340 published singleplex assays [17, 18, 44]. The duplex assay's high specificity, short
341 turnaround time and capacity for high-throughput use make it an especially useful tool
342 for field studies of symptomatic *P. ovale* infection.

343 The prevalence of *P. ovale* infections in symptomatic individuals from the
344 published study was 6.4% [25], while lower prevalence of *P. ovale* infections were
345 found in nationally representative, asymptomatic adults (0.5%) and children (4.7%) in

346 DRC [28]. *P. ovale* spp. infections in symptomatic individuals had significant
347 association with rural residence and co-infection with *P. falciparum*, which is consistent
348 with previous studies [28, 37, 47]. Also similar to the results of previous studies [48,
349 49], bed net use was found to be protective against *P. ovale* malaria in our study,
350 indicating that it is an effective strategy to reduce *P. ovale*-related malaria burden.
351 People who reported malaria infection within six months before enrollment showed
352 higher odds of *P. ovale*-related malaria infection; this finding could be attributed to re-
353 infection, inadequate treatment of previous malaria infections, or *P. ovale* relapse [50].
354 Existing evidence indicates that the most prevalent *P. ovale* spp. vary across different
355 countries [51]. Using the present duplex qPCR assay, we detected both *Poc* and *Pow*
356 across three provinces in the DRC, with *Poc* more prevalent in symptomatic individuals.
357 A previous, nationally representative study in asymptomatic and symptomatic school-
358 age children in DRC also showed high prevalence of *Poc* [47].

359 Several limitations of our approach should be highlighted. First, the assay's
360 relatively low sensitivity at lower parasite densities, particularly for *Pow* detection,
361 limits its utility in low-density or asymptomatic infections. Thus, the prevalence of *Poc*
362 and particularly *Pow* in our study are likely underestimated. This limitation could be
363 overcome in the future by combining a pan-*P. ovale* spp. 18S rRNA assay (e.g. such as
364 that used by Mitchell et al. [2]) with our *Poc lsa3* assay, allowing definitive
365 identification of *Poc* (pan-*P. ovale* spp.-positive, *Poc lsa3*-positive) and deductive
366 identification of *Pow* mono-infection (pan-*P. ovale* spp.-positive, *Poc lsa3*-negative).

367 Second, our *Poc* and *Pow* prevalence estimates are derived from people presenting with
368 malaria symptoms to health facilities in three DRC provinces. The DRC is a large and
369 diverse country. Our results provide further insight into the epidemiology of *Poc* and
370 *Pow* in three large regions but do not provide precise, nationally representative
371 estimates, nor information about asymptomatic infections. Third, crude associations
372 were analyzed in this study to explore possible factors related to *P. ovale*; no causal
373 relationships were assessed. Fourth, the assay targets two non-essential genomic
374 regions at risk of deletion or disruption if future treatment choices are tied to diagnosis,
375 as has been proposed for *P. falciparum* and observed for *Chlamydia trachomatis* non-
376 essential diagnostic targets [52, 53]. However, this hypothetical threat is unlikely to be
377 realized any time soon. Malaria programs in Africa focus largely on *P. falciparum* and
378 do not routinely offer radical cure to clear *P. ovale* spp. hypnozoites.

379 In conclusion, we developed and validated a novel, highly specific duplex real-
380 time PCR assay capable of detection and differentiation of *Poc* and *Pow*. Though our
381 assay's sensitivity at lower parasite densities could be further improved, its streamlined
382 work-flow reduces complexity and is well suited for high-throughput use in field
383 studies. As some countries progress toward malaria elimination, improved assays for
384 *Poc* and *Pow* like that presented here will become more important and open the way to
385 improved understanding of *P. ovale* spp. epidemiology, clinical impact, to inform
386 eradication strategies.

387

388 **Acknowledgements**

389 We thank the study teams and participants in the DRC and Tanzania research
390 studies from which samples were derived. The following reagents were obtained
391 through BEI Resources, NIAID, NIH: diagnostic plasmid containing the small subunit
392 ribosomal RNA gene (18S) from *Plasmodium ovale*, MRA-180, contributed by Peter
393 A. Zimmerman.

394

395 **Author contributions**

396 J.B.P. and W.H. conceptualized the study. J.B.P., J.J.J., J.T.L., and W.H. designed
397 experiments. M.K., A.T., F.P., A.K., and B.N. collected field samples. W.H., V.R.P.,
398 K.L.T., and R.S. performed laboratory and epidemiological analyses. W.H. prepared the
399 figures and wrote the first draft. All authors reviewed and approved the final draft.

400

401 **Funding**

402 This study was funded by the US National Institutes of Health (NIH R21AI148579
403 to JBP and JTL). It was partly supported by the Global Fund to Fight AIDS,
404 Tuberculosis, and Malaria (MK, AT, FP, AK; DRC sample collection); NIH
405 R01AI137395 (JTL and BN; Tanzania sample collection), K24AI134990 (JJJ), and
406 T32AI070114 (RS).

407

408 **Competing interests**

409 JBP reports research support from Gilead Sciences, non-financial support from
410 Abbott Laboratories, and consulting for Zymeron Corporation, all outside the scope of
411 the manuscript. All other authors declare no competing interests.

412

413 **References**

- 414 1. Talapko J, Škrlec I, Alebić T, Jukić M, Včev A. Malaria: The Past and the Present.
415 Microorganisms. 2019;7(6). Epub 2019/06/27. doi:
416 10.3390/microorganisms7060179. PubMed PMID: 31234443; PubMed Central
417 PMCID: PMC6617065.
- 418 2. Mitchell CL, Brazeau NF, Keeler C, Mwandagalirwa MK, Tshefu AK, Juliano JJ,
419 et al. Under the Radar: Epidemiology of Plasmodium ovale in the Democratic
420 Republic of the Congo. The Journal of infectious diseases. 2021;223(6):1005-14.
421 Epub 2020/08/09. doi: 10.1093/infdis/jiaa478. PubMed PMID: 32766832; PubMed
422 Central PMCID: PMC8006425.
- 423 3. Bredu D, Donu D, Amoah LE. Dynamics of the Composition of Plasmodium
424 Species Contained within Asymptomatic Malaria Infections in the Central Region
425 of Ghana. Journal of tropical medicine. 2021;2021:7419548. Epub 2021/03/18. doi:
426 10.1155/2021/7419548. PubMed PMID: 33727937; PubMed Central PMCID:
427 PMC7936885.
- 428 4. Merrick CJ. Hypnozoites in Plasmodium: Do Parasites Parallel Plants? Trends in
429 parasitology. 2021;37(4):273-82. Epub 2020/12/02. doi: 10.1016/j.pt.2020.11.001.
430 PubMed PMID: 33257270.
- 431 5. Wångdahl A, Sondén K, Wyss K, Stenström C, Björklund D, Zhang J, et al. Relapse
432 of Plasmodium vivax and Plasmodium ovale Malaria With and Without Primaquine
433 Treatment in a Nonendemic Area. Clinical infectious diseases : an official
434 publication of the Infectious Diseases Society of America. 2022;74(7):1199-207.
435 Epub 2021/07/04. doi: 10.1093/cid/ciab610. PubMed PMID: 34216464; PubMed
436 Central PMCID: PMC8994585.
- 437 6. Lover AA, Baird JK, Gosling R, Price RN. Malaria Elimination: Time to Target All
438 Species. The American journal of tropical medicine and hygiene. 2018;99(1):17-23.
439 Epub 2018/05/16. doi: 10.4269/ajtmh.17-0869. PubMed PMID: 29761762;
440 PubMed Central PMCID: PMC6035869.
- 441 7. Sutherland CJ, Tanomsing N, Nolder D, Oguike M, Jennison C, Pukrittayakamee S,
442 et al. Two nonrecombining sympatric forms of the human malaria parasite
443 Plasmodium ovale occur globally. The Journal of infectious diseases.
444 2010;201(10):1544-50. Epub 2010/04/13. doi: 10.1086/652240. PubMed PMID:
445 20380562.
- 446 8. Joste V, Bailly J, Hubert V, Pauc C, Gendrot M, Guillochon E, et al. Plasmodium
447 ovale wallikeri and P. ovale curtisi Infections and Diagnostic Approaches to
448 Imported Malaria, France, 2013-2018. Emerging infectious diseases.
449 2021;27(2):372-84. Epub 2021/01/27. doi: 10.3201/eid2702.202143. PubMed

-
- 450 PMID: 33496652; PubMed Central PMCID: PMC7853592.
- 451 9. Potlapalli V, Muller MS, Ngasala B, Ali IM, Na YB, Williams DR, et al. Real-time
452 PCR detection of mixed *Plasmodium ovale curtisi* and *wallikeri* species infections
453 in human and mosquito hosts. *bioRxiv : the preprint server for biology*. 2023. Epub
454 2023/04/11. doi: 10.1101/2023.03.31.535020. PubMed PMID: 37034766; PubMed
455 Central PMCID: PMC10081274.
- 456 10. Oyegoke OO, Maharaj L, Akoniyan OP, Kwoji I, Roux AT, Adewumi TS, et al.
457 Malaria diagnostic methods with the elimination goal in view. *Parasitology research*.
458 2022;121(7):1867-85. Epub 2022/04/24. doi: 10.1007/s00436-022-07512-9.
459 PubMed PMID: 35460369; PubMed Central PMCID: PMC9033523.
- 460 11. Hawadak J, Dongang Nana RR, Singh V. Epidemiological, Physiological and
461 Diagnostic Comparison of *Plasmodium ovale curtisi* and *Plasmodium ovale*
462 *wallikeri*. *Diagnostics (Basel, Switzerland)*. 2021;11(10). Epub 2021/10/24. doi:
463 10.3390/diagnostics11101900. PubMed PMID: 34679597; PubMed Central
464 PMCID: PMC8534334.
- 465 12. Kotepui M, Masangkay FR, Kotepui KU, De Jesus Milanez G. Misidentification of
466 *Plasmodium ovale* as *Plasmodium vivax* malaria by a microscopic method: a meta-
467 analysis of confirmed *P. ovale* cases. *Scientific reports*. 2020;10(1):21807. Epub
468 2020/12/15. doi: 10.1038/s41598-020-78691-7. PubMed PMID: 33311528;
469 PubMed Central PMCID: PMC7733466.
- 470 13. Mouatcho JC, Goldring JPD. Malaria rapid diagnostic tests: challenges and
471 prospects. *Journal of medical microbiology*. 2013;62(Pt 10):1491-505. Epub
472 2013/09/21. doi: 10.1099/jmm.0.052506-0. PubMed PMID: 24048274.
- 473 14. Mukkala AN, Kwan J, Lau R, Harris D, Kain D, Boggild AK. An Update on Malaria
474 Rapid Diagnostic Tests. *Current infectious disease reports*. 2018;20(12):49. Epub
475 2018/10/26. doi: 10.1007/s11908-018-0655-4. PubMed PMID: 30353400.
- 476 15. Oguike MC, Betson M, Burke M, Nolder D, Stothard JR, Kleinschmidt I, et al.
477 *Plasmodium ovale curtisi* and *Plasmodium ovale wallikeri* circulate simultaneously
478 in African communities. *International journal for parasitology*. 2011;41(6):677-83.
479 Epub 2011/02/15. doi: 10.1016/j.ijpara.2011.01.004. PubMed PMID: 21315074;
480 PubMed Central PMCID: PMC3084460.
- 481 16. Tanomsing N, Imwong M, Sutherland CJ, Dolecek C, Hien TT, Nosten F, et al.
482 Genetic marker suitable for identification and genotyping of *Plasmodium ovale*
483 *curtisi* and *Plasmodium ovale wallikeri*. *Journal of clinical microbiology*.
484 2013;51(12):4213-6. Epub 2013/09/27. doi: 10.1128/jcm.01527-13. PubMed
485 PMID: 24068009; PubMed Central PMCID: PMC3838052.
- 486 17. Perandin F, Manca N, Calderaro A, Piccolo G, Galati L, Ricci L, et al. Development

-
- 487 of a real-time PCR assay for detection of *Plasmodium falciparum*, *Plasmodium*
488 *vivax*, and *Plasmodium ovale* for routine clinical diagnosis. *Journal of clinical*
489 *microbiology*. 2004;42(3):1214-9. Epub 2004/03/09. doi: 10.1128/jcm.42.3.1214-
490 1219.2004. PubMed PMID: 15004078; PubMed Central PMCID: PMC356834.
- 491 18. Calderaro A, Piccolo G, Gorrini C, Montecchini S, Rossi S, Medici MC, et al. A
492 new real-time PCR for the detection of *Plasmodium ovale wallikeri*. *PloS one*.
493 2012;7(10):e48033. Epub 2012/10/31. doi: 10.1371/journal.pone.0048033.
494 PubMed PMID: 23110165; PubMed Central PMCID: PMC3480495.
- 495 19. Rutledge GG, Böhme U, Sanders M, Reid AJ, Cotton JA, Maiga-Ascofare O, et al.
496 *Plasmodium malariae* and *P. ovale* genomes provide insights into malaria parasite
497 evolution. *Nature*. 2017;542(7639):101-4. Epub 2017/01/25. doi:
498 10.1038/nature21038. PubMed PMID: 28117441; PubMed Central PMCID:
499 PMC5326575.
- 500 20. Marçais G, Kingsford C. A fast, lock-free approach for efficient parallel counting
501 of occurrences of k-mers. *Bioinformatics (Oxford, England)*. 2011;27(6):764-70.
502 Epub 2011/01/11. doi: 10.1093/bioinformatics/btr011. PubMed PMID: 21217122;
503 PubMed Central PMCID: PMC3051319.
- 504 21. Kibbe WA. OligoCalc: an online oligonucleotide properties calculator. *Nucleic*
505 *acids research*. 2007;35(Web Server issue):W43-6. Epub 2007/04/25. doi:
506 10.1093/nar/gkm234. PubMed PMID: 17452344; PubMed Central PMCID:
507 PMC1933198.
- 508 22. Cunningham JA, Thomson RM, Murphy SC, de la Paz Ade M, Ding XC, Incardona
509 S, et al. WHO malaria nucleic acid amplification test external quality assessment
510 scheme: results of distribution programmes one to three. *Malaria journal*.
511 2020;19(1):129. Epub 2020/04/02. doi: 10.1186/s12936-020-03200-0. PubMed
512 PMID: 32228615; PubMed Central PMCID: PMC7106789.
- 513 23. Plowe CV, Djimde A, Bouare M, Doumbo O, Wellem TE. Pyrimethamine and
514 proguanil resistance-conferring mutations in *Plasmodium falciparum* dihydrofolate
515 reductase: polymerase chain reaction methods for surveillance in Africa. *The*
516 *American journal of tropical medicine and hygiene*. 1995;52(6):565-8. Epub
517 1995/06/01. doi: 10.4269/ajtmh.1995.52.565. PubMed PMID: 7611566.
- 518 24. Cunningham CH, Hennesly CM, Lin JT, Ubalee R, Boyce RM, Mulogo EM, et al.
519 A novel CRISPR-based malaria diagnostic capable of *Plasmodium* detection,
520 species differentiation, and drug-resistance genotyping. *EBioMedicine*.
521 2021;68:103415. Epub 2021/06/18. doi: 10.1016/j.ebiom.2021.103415. PubMed
522 PMID: 34139428; PubMed Central PMCID: PMC8213918.
- 523 25. Parr JB, Kieto E, Phanzu F, Mansiangi P, Mwandagalirwa K, Mvuama N, et al.
524 Analysis of false-negative rapid diagnostic tests for symptomatic malaria in the

-
- 525 Democratic Republic of the Congo. *Scientific reports*. 2021;11(1):6495. Epub
526 2021/03/24. doi: 10.1038/s41598-021-85913-z. PubMed PMID: 33753817;
527 PubMed Central PMCID: PMC7985209.
- 528 26. Veron V, Simon S, Carme B. Multiplex real-time PCR detection of *P. falciparum*, *P.*
529 *vivax* and *P. malariae* in human blood samples. *Experimental parasitology*.
530 2009;121(4):346-51. Epub 2009/01/07. doi: 10.1016/j.exppara.2008.12.012.
531 PubMed PMID: 19124021.
- 532 27. Pickard AL, Wongsrichanalai C, Purfield A, Kamwendo D, Emery K, Zalewski C,
533 et al. Resistance to antimalarials in Southeast Asia and genetic polymorphisms in
534 *pfmdr1*. *Antimicrobial agents and chemotherapy*. 2003;47(8):2418-23. Epub
535 2003/07/25. doi: 10.1128/aac.47.8.2418-2423.2003. PubMed PMID: 12878499;
536 PubMed Central PMCID: PMC166057.
- 537 28. Mitchell CL, Topazian HM, Brazeau NF, Deutsch-Feldman M, Muwonga J,
538 Sompwe E, et al. Household Prevalence of *Plasmodium falciparum*, *Plasmodium*
539 *vivax*, and *Plasmodium ovale* in the Democratic Republic of the Congo, 2013-2014.
540 *Clinical infectious diseases : an official publication of the Infectious Diseases*
541 *Society of America*. 2021;73(11):e3966-e9. Epub 2020/11/26. doi:
542 10.1093/cid/ciaa1772. PubMed PMID: 33238298; PubMed Central PMCID:
543 PMC8664425.
- 544 29. Gumbo A, Topazian HM, Mwanza A, Mitchell CL, Puerto-Meredith S, Njiko R, et
545 al. Occurrence and Distribution of Nonfalciparum Malaria Parasite Species Among
546 Adolescents and Adults in Malawi. *The Journal of infectious diseases*.
547 2022;225(2):257-68. Epub 2021/07/11. doi: 10.1093/infdis/jiab353. PubMed PMID:
548 34244739; PubMed Central PMCID: PMC8763954.
- 549 30. Otambo WO, Omondi CJ, Ochwedo KO, Onyango PO, Atieli H, Lee MC, et al.
550 Risk associations of submicroscopic malaria infection in lakeshore, plateau and
551 highland areas of Kisumu County in western Kenya. *PloS one*.
552 2022;17(5):e0268463. Epub 2022/05/17. doi: 10.1371/journal.pone.0268463.
553 PubMed PMID: 35576208; PubMed Central PMCID: PMC9109926.
- 554 31. Gul D, Rodríguez-Rodríguez D, Nate E, Auwan A, Salib M, Lorry L, et al.
555 Investigating differences in village-level heterogeneity of malaria infection and
556 household risk factors in Papua New Guinea. *Scientific reports*. 2021;11(1):16540.
557 Epub 2021/08/18. doi: 10.1038/s41598-021-95959-8. PubMed PMID: 34400687;
558 PubMed Central PMCID: PMC8367982.
- 559 32. Mueller I, Widmer S, Michel D, Maraga S, McNamara DT, Kiniboro B, et al. High
560 sensitivity detection of *Plasmodium* species reveals positive correlations between
561 infections of different species, shifts in age distribution and reduced local variation
562 in Papua New Guinea. *Malaria journal*. 2009;8:41. Epub 2009/03/17. doi:

-
- 563 10.1186/1475-2875-8-41. PubMed PMID: 19284594; PubMed Central PMCID:
564 PMC2657150.
- 565 33. Chen J, Wang FK, He ZX, Bai Y. Progress in the Study of Epidemiologic
566 Characteristics and Influencing Factors of Asymptomatic Malaria Infection in
567 Africa. *Alternative therapies in health and medicine*. 2021;27(6):52-6. Epub
568 2021/02/24. PubMed PMID: 33620333.
- 569 34. AM Charts. Available from: Pixel Map Generator
570 (<https://pixelmap.amcharts.com/>).
- 571 35. Rapp T, Amagai K, Sinai C, Basham C, Loya M, Ngasala S, et al. Micro-
572 heterogeneity of transmission shapes the submicroscopic malaria reservoir in
573 coastal Tanzania. *medRxiv : the preprint server for health sciences*. 2023. Epub
574 2023/09/21. doi: 10.1101/2023.09.06.23295089. PubMed PMID: 37732257;
575 PubMed Central PMCID: PMC10508794.
- 576 36. Tarimo BB, Nyasembe VO, Ngasala B, Basham C, Rutagi IJ, Muller M, et al.
577 Seasonality and transmissibility of *Plasmodium ovale* in Bagamoyo District,
578 Tanzania. *Parasites & vectors*. 2022;15(1):56. Epub 2022/02/16. doi:
579 10.1186/s13071-022-05181-2. PubMed PMID: 35164867; PubMed Central
580 PMCID: PMC8842944.
- 581 37. Akala HM, Watson OJ, Mitei KK, Juma DW, Verity R, Ingasia LA, et al.
582 *Plasmodium* interspecies interactions during a period of increasing prevalence of
583 *Plasmodium ovale* in symptomatic individuals seeking treatment: an observational
584 study. *The Lancet Microbe*. 2021;2(4):e141-e50. Epub 2022/05/12. doi:
585 10.1016/s2666-5247(21)00009-4. PubMed PMID: 35544189; PubMed Central
586 PMCID: PMC7613221.
- 587 38. Ehiem RC, Lawson BWL, Larbi JA. Malaria Knowledge-Base and Prevalence of
588 Parasitaemia in Asymptomatic Adults in the Forest Zone of Ghana. *Acta*
589 *parasitologica*. 2022;67(4):1719-31. Epub 2022/10/20. doi: 10.1007/s11686-022-
590 00629-y. PubMed PMID: 36261782.
- 591 39. Le Goff M, Kendjo E, Thellier M, Piarroux R, Boelle PY, Jauréguiberry S. Impact
592 of Chemoprophylaxis on *Plasmodium vivax* and *Plasmodium ovale* Infection
593 Among Civilian Travelers: A Nested Case-Control Study With a Counterfactual
594 Approach on 862 Patients. *Clinical infectious diseases : an official publication of*
595 *the Infectious Diseases Society of America*. 2023;76(3):e884-e93. Epub 2022/08/14.
596 doi: 10.1093/cid/ciac641. PubMed PMID: 35962785.
- 597 40. Holzschuh A, Gruenberg M, Hofmann NE, Wampfler R, Kiniboro B, Robinson LJ,
598 et al. Co-infection of the four major *Plasmodium* species: Effects on densities and
599 gametocyte carriage. *PLoS neglected tropical diseases*. 2022;16(9):e0010760. Epub
600 2022/09/14. doi: 10.1371/journal.pntd.0010760. PubMed PMID: 36099312;

-
- 601 PubMed Central PMCID: PMC9506632.
- 602 41. Zhang M, Wang C, Otto TD, Oberstaller J, Liao X, Adapa SR, et al. Uncovering the
603 essential genes of the human malaria parasite *Plasmodium falciparum* by saturation
604 mutagenesis. *Science (New York, NY)*. 2018;360(6388). Epub 2018/05/05. doi:
605 10.1126/science.aap7847. PubMed PMID: 29724925; PubMed Central PMCID:
606 PMC6360947.
- 607 42. Prieur E, Druilhe P. The malaria candidate vaccine liver stage antigen-3 is highly
608 conserved in *Plasmodium falciparum* isolates from diverse geographical areas.
609 *Malaria journal*. 2009;8:247. Epub 2009/10/31. doi: 10.1186/1475-2875-8-247.
610 PubMed PMID: 19874576; PubMed Central PMCID: PMC2774867.
- 611 43. Perlaza BL, Valencia AZ, Zapata C, Castellanos A, Sauzet JP, Blanc C, et al.
612 Protection against *Plasmodium falciparum* challenge induced in *Aotus* monkeys by
613 liver-stage antigen-3-derived long synthetic peptides. *European journal of*
614 *immunology*. 2008;38(9):2610-5. Epub 2008/09/16. doi: 10.1002/eji.200738055.
615 PubMed PMID: 18792413.
- 616 44. Brahim K, Badell E, Sauzet JP, BenMohamed L, Daubersies P, Guérin-Marchand
617 C, et al. Human antibodies against *Plasmodium falciparum* liver-stage antigen 3
618 cross-react with *Plasmodium yoelii* preerythrocytic-stage epitopes and inhibit
619 sporozoite invasion in vitro and in vivo. *Infection and immunity*. 2001;69(6):3845-
620 52. Epub 2001/05/12. doi: 10.1128/iai.69.6.3845-3952.2001. PubMed PMID:
621 11349050; PubMed Central PMCID: PMC98406.
- 622 45. Nishimoto Y, Arisue N, Kawai S, Escalante AA, Horii T, Tanabe K, et al. Evolution
623 and phylogeny of the heterogeneous cytosolic SSU rRNA genes in the genus
624 *Plasmodium*. *Molecular phylogenetics and evolution*. 2008;47(1):45-53. Epub
625 2008/03/13. doi: 10.1016/j.ympev.2008.01.031. PubMed PMID: 18334303.
- 626 46. Lloyd YM, Esemu LF, Antallan J, Thomas B, Tassi Yunga S, Obase B, et al. PCR-
627 based detection of *Plasmodium falciparum* in saliva using mitochondrial *cox3* and
628 *varATS* primers. *Tropical medicine and health*. 2018;46:22. Epub 2018/07/07. doi:
629 10.1186/s41182-018-0100-2. PubMed PMID: 29977122; PubMed Central PMCID:
630 PMC6013985.
- 631 47. Nundu SS, Culleton R, Simpson SV, Arima H, Muyembe JJ, Mita T, et al. Malaria
632 parasite species composition of *Plasmodium* infections among asymptomatic and
633 symptomatic school-age children in rural and urban areas of Kinshasa, Democratic
634 Republic of Congo. *Malaria journal*. 2021;20(1):389. Epub 2021/10/04. doi:
635 10.1186/s12936-021-03919-4. PubMed PMID: 34600558; PubMed Central
636 PMCID: PMC8487491.
- 637 48. Hershey CL, Florey LS, Ali D, Bennett A, Luhanga M, Mathanga DP, et al. Malaria
638 Control Interventions Contributed to Declines in Malaria Parasitemia, Severe

- 639 Anemia, and All-Cause Mortality in Children Less Than 5 Years of Age in Malawi,
640 2000-2010. *The American journal of tropical medicine and hygiene*.
641 2017;97(3_Suppl):76-88. Epub 2017/10/11. doi: 10.4269/ajtmh.17-0203. PubMed
642 PMID: 28990920; PubMed Central PMCID: PMC5619935.
- 643 49. Wotodjo AN, Richard V, Boyer S, Doucoure S, Diagne N, Touré-Baldé A, et al. The
644 implication of long-lasting insecticide-treated net use in the resurgence of malaria
645 morbidity in a Senegal malaria endemic village in 2010-2011. *Parasites & vectors*.
646 2015;8:267. Epub 2015/05/13. doi: 10.1186/s13071-015-0871-9. PubMed PMID:
647 25963402; PubMed Central PMCID: PMC4489109.
- 648 50. Dini S, Douglas NM, Poespoprodjo JR, Kenangalem E, Sugiarto P, Plumb ID, et al.
649 The risk of morbidity and mortality following recurrent malaria in Papua, Indonesia:
650 a retrospective cohort study. *BMC medicine*. 2020;18(1):28. Epub 2020/02/23. doi:
651 10.1186/s12916-020-1497-0. PubMed PMID: 32075649; PubMed Central PMCID:
652 PMC7031957.
- 653 51. Mahittikorn A, Masangkay FR, Kotepui KU, Milanez GJ, Kotepui M. Comparison
654 of *Plasmodium ovale curtisi* and *Plasmodium ovale wallikeri* infections by a meta-
655 analysis approach. *Scientific reports*. 2021;11(1):6409. Epub 2021/03/21. doi:
656 10.1038/s41598-021-85398-w. PubMed PMID: 33742015; PubMed Central
657 PMCID: PMC7979700.
- 658 52. Feleke SM, Reichert EN, Mohammed H, Brhane BG, Mekete K, Mamo H, et al.
659 *Plasmodium falciparum* is evolving to escape malaria rapid diagnostic tests in
660 Ethiopia. *Nature microbiology*. 2021;6(10):1289-99. Epub 2021/09/29. doi:
661 10.1038/s41564-021-00962-4. PubMed PMID: 34580442; PubMed Central
662 PMCID: PMC8478644.
- 663 53. Ripa T, Nilsson P. A variant of *Chlamydia trachomatis* with deletion in cryptic
664 plasmid: implications for use of PCR diagnostic tests. *Euro surveillance : bulletin*
665 *Europeen sur les maladies transmissibles = European communicable disease*
666 *bulletin*. 2006;11(11):E061109.2. Epub 2007/01/11. doi: 10.2807/esw.11.45.03076-
667 en. PubMed PMID: 17213548.
- 668

669 **Supporting information**

670 **S1 Table. Candidate primer and probe sets evaluated for the detection of *P. ovale***
671 ***curtisi* and *P. ovale wallikeri*.**

672 **S2 Table. Limit of detection of the optimized, duplex *P. ovale curtisi* and *P. ovale***
673 ***wallikeri* assay versus serially diluted plasmid DNA.**

674 **S1 Fig. 95% lower limits of detection determined using probit analysis.** A) *P. ovale*
675 *curtisi* 95% lower limits of detection (4.2 parasites/ μ l [95% CI 3.1-9.5]). B) *P. ovale*
676 *wallikeri* 95% lower limits of detection (41.2 parasites/ μ l [95% CI 33.3-58.3]).
677 Confidence intervals are shown in lighter shade.

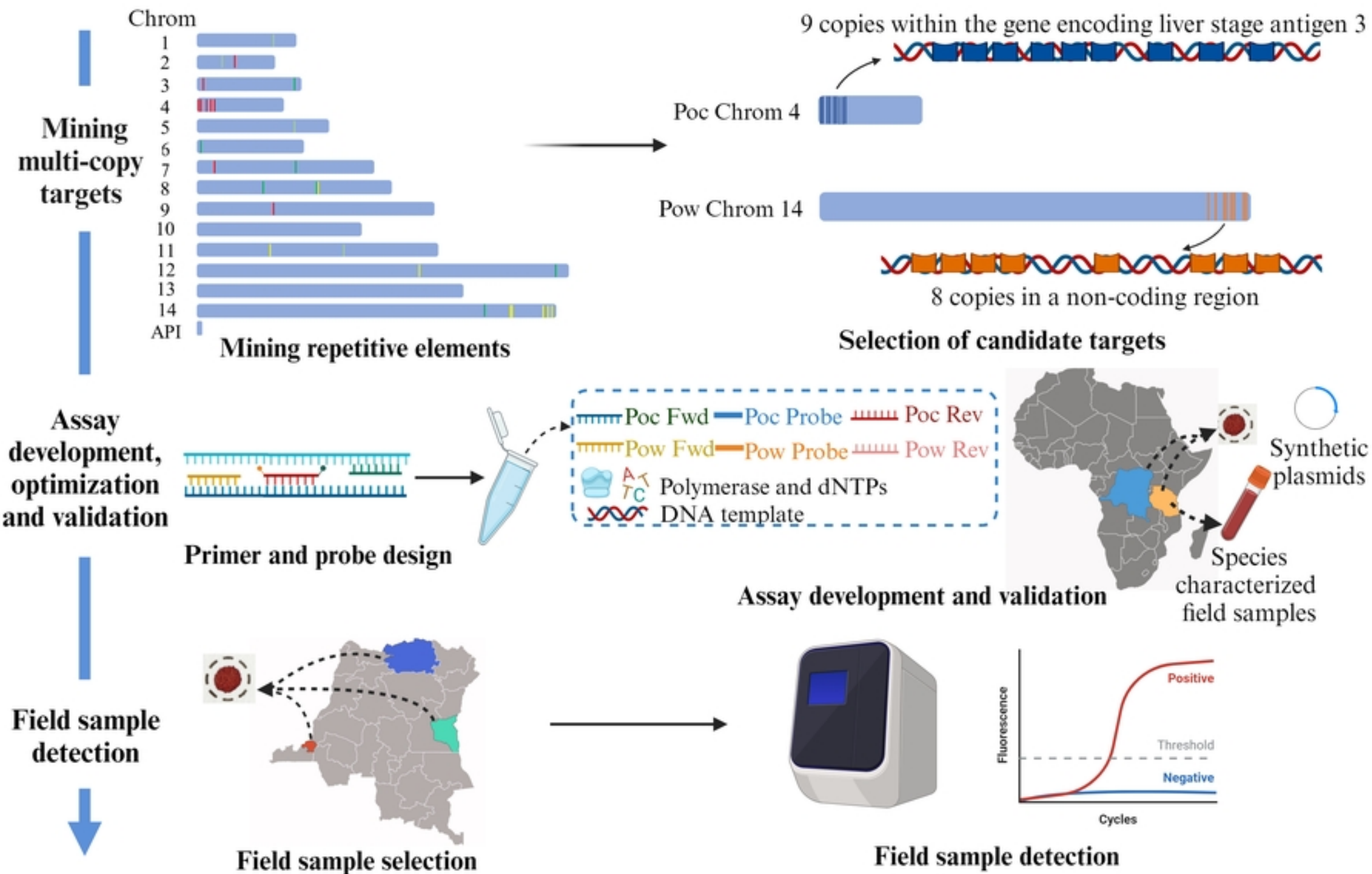
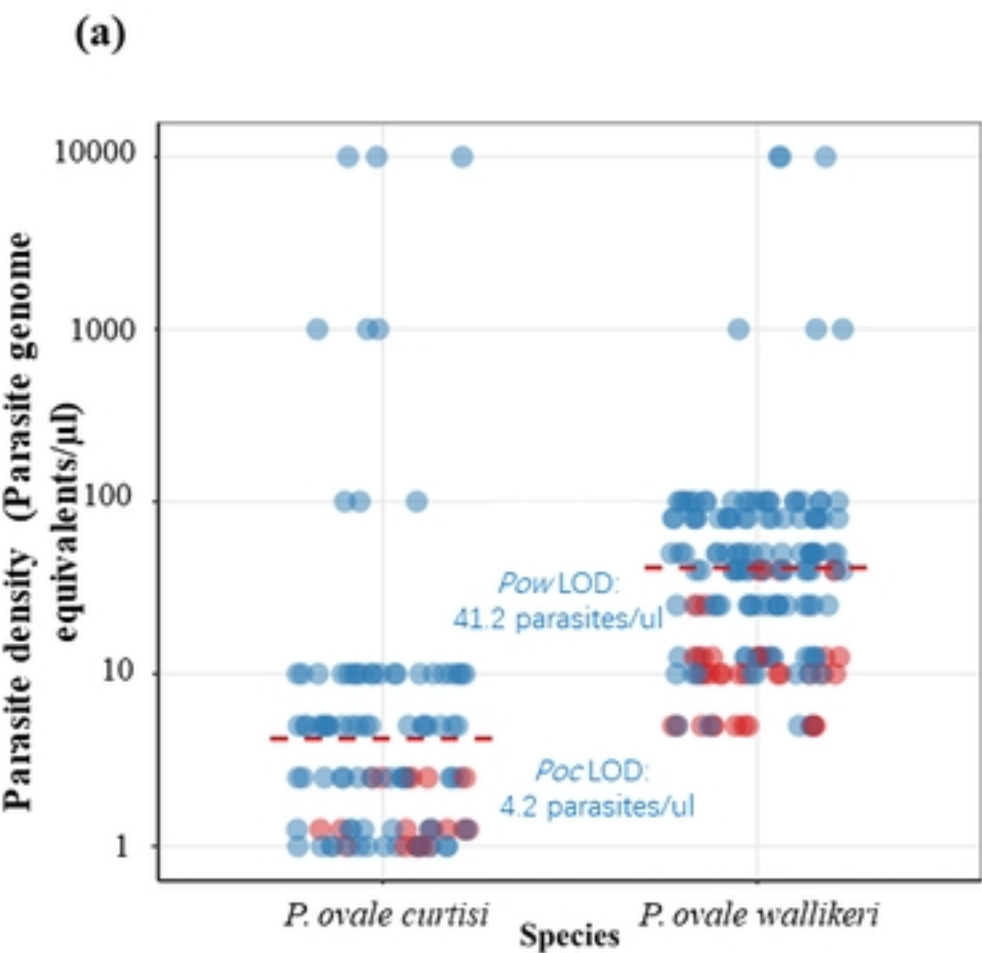


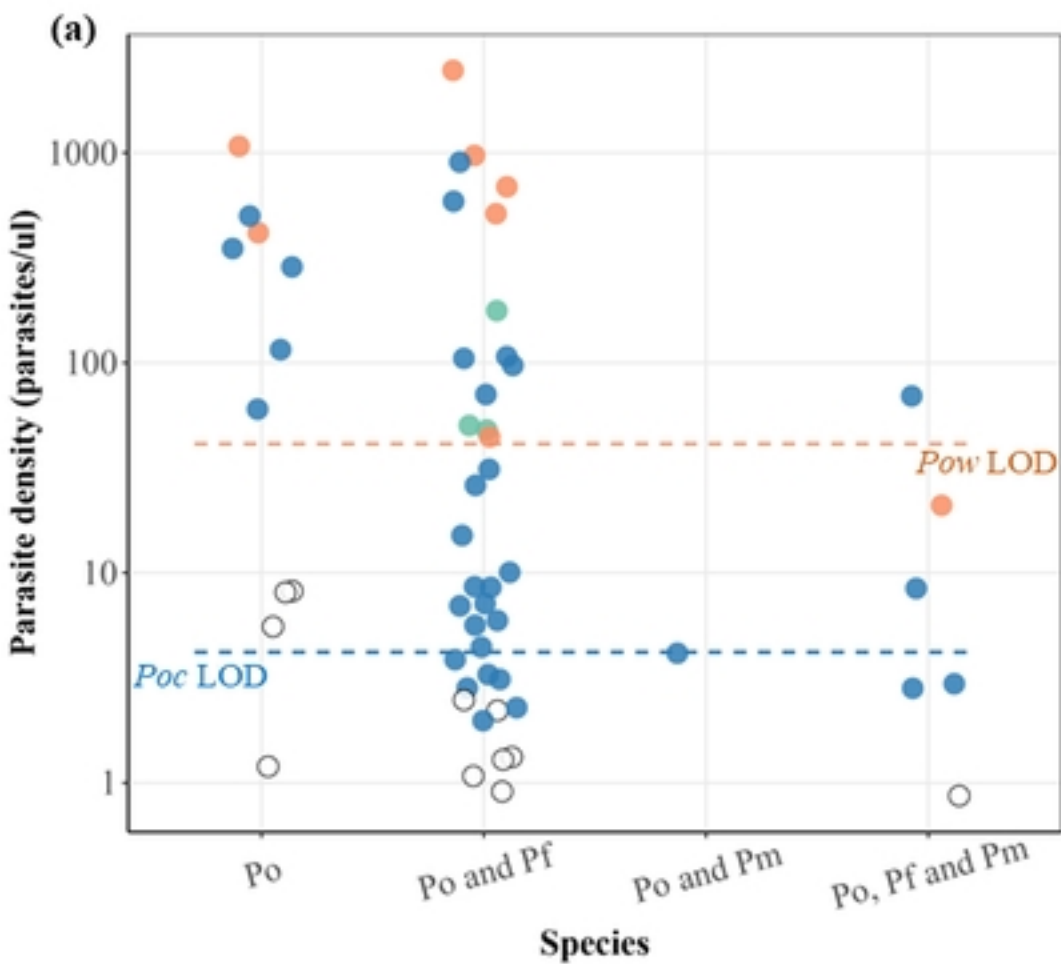
Figure 1



(b)

Samples	Sampling location	Sample type	No.	Parasite density (parasites/ μ l)	Duplex qualitative real-time PCR	
					<i>P. ovale curtisi</i>	<i>P. ovale wallikeri</i>
<i>P. ovale curtisi</i>	Tanzania	LDB	4	0.4-21	4	0
	Tanzania	DBS	1	37	1	0
	DRC	DBS	6	3.7-3890	6	0
<i>P. ovale wallikeri</i>	DRC	DBS	3	221-1150	0	3
	Tanzania	DBS	1	46	0	1
<i>P. falciparum</i>	laboratory control	DBS	2	1,000-10,000	0	0
<i>P. malariae</i>	laboratory control	DBS	1	2.6	0	0
<i>P. vivax</i>	laboratory control	DBS	2	40-66.6	0	0
<i>P. knowlesi</i>	laboratory control	DBS	1	10	0	0

Figure 2



(b)

Samples	No.	Parasite density (Parasites/ μ l)	Duplex qualitative real- time PCR	
			<i>Poc</i>	<i>Pow</i>
<i>Pf</i>	20	329-123,528	0	0
<i>Pm</i>	10	9.8-21,827	0	0
<i>Pf</i> and <i>Pm</i>	10	<i>Pm</i> : 0.5-1,290 <i>Pf</i> : 2.3-1,288	0	0

Figure 3

P. ovale (n)

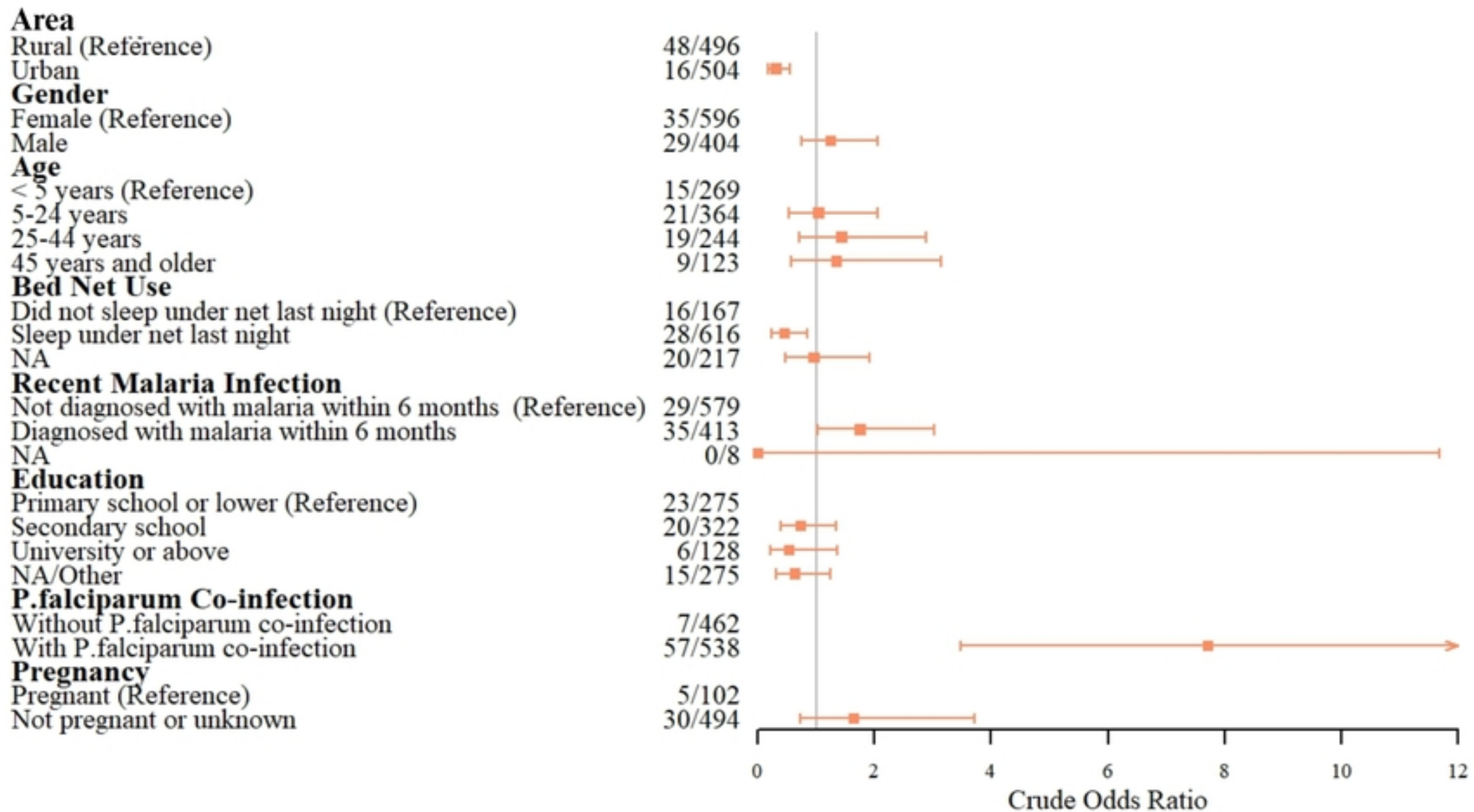


Figure 4