

1
2
3
4 **Clinical value of the fibrosis-4 index in predicting mortality in patients with right**
5 **ventricular pacing**

6
7 Short title: FIB-4 for predicting pacemaker patient mortality

8
9 Naoya Inoue^{1,2*}, Shuji Morikawa^{1,2}, Takashi Ogane¹, Takehiro Hiramatsu^{1,2}, Toyooki Murohara²

10
11 ¹Department of Cardiology, Chutoen General Medical Center, Kakegawa, Shizuoka, Japan

12 ²Department of Cardiology, Nagoya University Graduate School of Medicine, Nagoya, Aichi,
13 Japan

14
15 *Corresponding author

16 E-mail: inouenaoya251410@gmail.com (NI)

17

18 **Abstract**

19 Background: The fibrosis-4 (FIB-4) index has attracted attention as a predictive factor for
20 cardiovascular events and mortality in patients with heart disease. However, its clinical value in
21 patients with implanted pacemakers remains unclear.

22 Methods: This study included patients who underwent pacemaker implantation. The FIB-4 index
23 was calculated based on blood tests performed during the procedure. The primary outcome was
24 all-cause mortality, and secondary outcomes included cardiovascular and non-cardiovascular
25 death. The FIB-4 index was stratified into tertiles. Between-group comparisons were performed
26 using log-rank tests and multivariate analysis using Cox proportional hazards. The predictive
27 accuracy and cut-off value of the FIB-4 index were calculated from the receiver operating
28 characteristic curve for all-cause mortality.

29 Results: This study included 201 participants, of whom 38 (incidence rate: 5.8/100 person-years)
30 experienced death events during the observation period (median: 1097 days). All-cause and non-
31 cardiovascular death differed significantly between groups stratified by the FIB-4 index tertiles
32 (log-rank test: $P < 0.001$ and $P < 0.001$, respectively). Using Cox proportional hazards analysis, the
33 unadjusted hazard ratio was 4.75 (95% confidence interval [CI]: 2.05–11.0, $P < 0.001$) for Tertile
34 3 compared to Tertile 1. After adjustment for confounding factors, including age, sex, the presence
35 or absence of left bundle branch block at baseline, QRS duration during pacing, and pacing rate
36 at the last check, the hazard ratio was 3.61 (95% CI: 1.37–9.48, $P = 0.009$). The cut-off of the FIB-4
37 index was 3.75 (area under the curve: 0.72, 95% CI: 0.62–0.82).

38 Conclusions: The FIB-4 index was a potential predictive factor for all-cause mortality in patients
39 with implanted pacemakers.

40 **Introduction**

41 In the past, right ventricular pacing (RVP) was used for bradycardia arrhythmias; however, this
42 was associated with problems like decreased left ventricular systolic function [1], increased
43 hospitalization for heart failure [2], and the onset of atrial fibrillation [3] due to electrical and
44 mechanical dyssynchrony. To address these issues, pacing techniques involving the His bundle
45 or left bundle area have been recently introduced [4,5]. Many studies have compared the outcomes
46 of these novel pacing techniques with those of conventional RVP [6], and investigated the factors
47 contributing to the problems associated with RVP, with pacing rate and QRS duration reported as
48 problematic factors [7,8]. However, to the best of our knowledge, studies on the relationship
49 between RVP and mortality are limited. The fibrosis-4 (FIB-4) index, a non-invasive marker used
50 to assess the degree of liver fibrosis, has been reported as a predictive factor for right ventricular
51 function and major adverse cardiovascular events in patients with heart diseases, such as heart
52 failure and tricuspid regurgitation [9,10]. In a study targeting heart failure in patients with
53 preserved left ventricular systolic function, those with a FIB-4 index ≥ 3.11 had a 2.202-fold (95%
54 confidence interval: 1.110–4.368) higher risk of major adverse cardiovascular events (composite
55 of cardiovascular death, heart failure-related rehospitalization, non-fatal myocardial infarction,
56 and non-fatal stroke) [10]. The FIB-4 index is related to cardiovascular events because prolonged
57 hepatic congestion due to reduced blood flow and sodium diuresis leads to fluid retention and
58 arterial sclerosis, which impair left ventricular diastolic function [10,11]. However, no study to
59 date has investigated the prognosis of patients with right ventricular pacemakers in relation to the
60 FIB-4 index. Therefore, this study aimed to investigate whether the FIB-4 index is associated with
61 mortality in patients with right ventricular pacemakers. Patients requiring pacemaker implantation
62 often have circulatory insufficiency and congestion at the time of bradycardia arrhythmia onset,

63 and many have elevated B-type natriuretic peptide (BNP) levels. If the FIB-4 index can be
64 confirmed to independently predict prognosis, regardless of the pacing factors, it may have high
65 clinical value.

66

67 **Materials and Methods**

68 **Patients**

69 This retrospective, single-center, observational study included patients who had undergone right
70 ventricular pacemaker implantation for sinus node dysfunction or atrioventricular block between
71 April 2015 and December 2021. The following patients were excluded: 1) those who underwent
72 stimulation conduction system pacemaker implantation, such as His bundle pacing or left bundle
73 area pacing; 2) those with a ventricular pacing rate < 1% at the final pacemaker check; 3) those
74 who did not undergo follow-up at our hospital after right ventricular pacemaker implantation; 4)
75 those for whom right ventricular electrocardiograms were unobtainable (including only fusion
76 waveforms); and 5) those who underwent VVI-pacemaker implantation for bradycardia-induced
77 atrial fibrillation. Ultimately, 201 patients were included in the study.

78 The study was conducted in accordance with the standards of the Declaration of Helsinki and
79 current ethical guidelines and was approved by the Ethics Committee on Medical Research of
80 Chutoen General Medical Center (reference no: 1241230822). As this study was not a clinical
81 trial, and the data were retrospectively and anonymously collected and analyzed, the requirement
82 for patients' written informed consent was waived.

83 **Data collection**

84 The data were accessed for research purposes on August 23, 2023. The authors had access to

85 information that could identify individual participants during and after data collection.

86 The FIB-4 index was calculated based on the patient's age and blood test results at the time of
87 pacemaker implantation using the following formula: $\text{FIB-4 index} = \text{age} \times \text{aspartate}$
88 $\text{aminotransferase [AST] level} / (\text{platelets} \times \text{square root [alanine transaminase level]})$. The study
89 participants were divided into three groups based on their FIB-4 index values: Tertile 1 ($\text{FIB-4} \leq$
90 2.17 ; $n = 67$), Tertile 2 ($2.18 \leq \text{FIB-4} \leq 3.28$; $n = 67$), and Tertile 3 ($\text{FIB-4} \geq 3.29$; $n = 67$). Patient
91 characteristics were compared between the groups.

92 **Primary and secondary outcomes**

93 The primary outcome of this study was all-cause mortality, which included deaths due to
94 cardiovascular disease, cancer, infections, and other causes. Secondary outcomes included
95 cardiovascular death, which comprised deaths resulting from fatal arrhythmias, fatal myocardial
96 infarction, heart failure, and stroke, as well as non-cardiovascular death, which involved deaths
97 caused by non-cardiovascular factors like cancer, infections, and renal failure.

98 **Electrocardiogram analysis**

99 The 12-lead electrocardiograms (ECGs) obtained preoperatively and during pacemaker checks
100 were analyzed. ECGs were recorded at a paper speed of 25 mm/s and an amplitude of 10 mm/mV.
101 Two cardiologists independently evaluated the following parameters from each ECG: 1) the heart
102 rate; 2) the QRS duration (both during bradycardia, arrhythmias, and pacing); 3) the presence or
103 absence of conduction abnormalities.

104 **Right ventricular pacemaker implantation and pacemaker check**

105 Every patient underwent implantation of a dual-chamber pacemaker in the right ventricle (RV).
106 The specific site for RV lead implantation was the RV septum, aimed for under fluoroscopic
107 guidance. Nonetheless, the ultimate determination regarding lead placement was at the discretion

108 of the principal doctor, considering optimal electrical parameters and lead stability.
109 Pacemaker assessments were conducted prior, and subsequent, to implantation. Post-discharge,
110 patients received regular outpatient follow-ups at intervals of 6 to 9 months. During these visits,
111 appropriate ECG and pacemaker parameters were duly documented.

112 **Statistical analysis**

113 Regarding the statistical analysis, categorical variables were analyzed using the chi-square or
114 Fisher's exact tests, and presented as numbers and percentages. Continuous variables were
115 analyzed using non-parametric tests (Kruskal–Wallis test), and, if necessary, the Mann–Whitney
116 U test was performed with the significance level adjusted using the Bonferroni method for
117 multiple comparisons. The occurrence of mortality events during the post-implantation follow-up
118 period was computed, and the curves depicting the incidence of these events were compared
119 between groups utilizing log-rank assessment.

120 Univariate analysis using Cox proportional hazards was conducted for both primary and
121 secondary outcomes. Multivariate analysis, adjusted for age and sex, was performed to determine
122 the primary outcomes. Furthermore, multivariate analysis using the forced entry method was
123 performed for other potential factors influencing clinical outcomes, such as the pacing rate during
124 RVP, QRS duration, estimated glomerular filtration rate (eGFR), BNP level, and tricuspid
125 regurgitation pressure gradient (TR-PG).

126 Statistical significance was set at $P < 0.05$. All statistical analyses were performed using R with
127 EZR software (Saitama Medical Center, Jichi Medical University, Saitama, Japan) [12].
128 Regarding missing data, only the samples with complete data for individual statistical analyses
129 were included.

130

131 Results

132 Among patients who underwent pacemaker implantation at our hospital between April 2015 and
133 December 2021, 201 were included in the final analysis. In the comparison of the FIB-4 index
134 tertiles, the median FIB-4 index values were as follows: Tertile 1, 1.80; Tertile 2, 2.66; and Tertile
135 3, 4.19 ($P < 0.001$). Significant differences were observed in various elements of the FIB-4 index,
136 including age, AST, platelet count, eGFR, hemoglobin, low-density lipoprotein cholesterol, BNP,
137 and dyslipidemia (Table 1).

138 No significant differences were observed in terms of baseline treatment, cardiac ultrasound
139 examination results, or pacemaker parameters at the last follow-up. However, there was a
140 significant difference in the proportion of left bundle branch block (LBBB) on the baseline ECG
141 (Table 1).

142

143 **Table 1. Patient characteristics according to the FIB-4 index tertiles**

	Total	Tertile 1	Tertile 2	Tertile 3	<i>P</i> -value
		FIB-4 \leq 2.17	2.18 \leq FIB-4 \leq 3.28	FIB-4 \geq 3.29	
	(n = 201)	(n = 67)	(n = 67)	(n = 67)	
Age, years	81 (73-87)	71 (67-80)	82 (76-87)	86 (80-89)	<0.001
Sex, male, n (%)	102 (50)	33 (49)	35 (52)	34 (50)	0.98
Laboratory data					
AST, IU/L	26 (20-35)	22 (18-27)	26 (19-31)	33 (25-60)	<0.001
ALT, IU/L	20 (13-31)	21 (14-29)	17 (13-27)	26 (13-53)	0.083
eGFR, mL/min/1.73 m ²	53.3 (39.1-63.8)	61.1 (45.7-72.0)	50.7 (40.8-63.7)	46.4 (34.2-56.8)	0.001
Hb, g/L	12.5 (11.1-13.8)	13.3 (11.9-14.5)	12.7 (11.3-14.0)	11.6 (10.3-12.9)	<0.001
Plt, 10 ⁹ /L	18.6 (15.1-21.5)	21.4 (19.0-24.5)	18.0 (15.6-21.0)	14.8 (12.0-18.1)	<0.001

FIB-4 index	2.66 (1.98-3.61)	1.80 (1.30-1.98)	2.66 (2.39-2.97)	4.19 (3.62-4.88)	<0.001
LDL-C, mg/dL	100 (87-118)	108 (93-130)	95 (82-114)	96 (82-114)	0.001
HbA1c, %	6.1 (5.8-6.5)	6.1 (5.9-6.6)	6.0 (5.7-6.3)	6.0 (5.7-6.7)	0.080
BNP, pg/L	169 (58-464)	97 (46-213)	224(60-498)	369(118-592)	<0.001
CV risk factors					
Hypertension, n (%)	130 (64)	44 (65)	46 (68)	40 (59)	0.58
Diabetes mellitus, n (%)	61 (30)	22 (32)	21 (31)	18 (26)	0.79
Dyslipidemia, n (%)	45 (22)	22 (32)	13 (19)	10 (14)	0.04
Smoking, n (%)	78 (38)	25 (37)	32 (47)	21 (31)	0.15
Post-PCI, n (%)	17 (8)	6 (8)	3 (4)	8 (11)	0.33
Prior MI, n (%)	12 (5)	3 (4)	3 (4)	6 (8)	0.60
AF, n (%)	39 (19)	15 (22)	14 (20)	10 (14)	0.52
Stroke, n (%)	27 (13)	12 (17)	10 (14)	5 (7)	0.18
COPD, n (%)	16 (7)	5 (7)	5 (7)	6 (8)	1
Treatment at baseline					
ACEI/ARB, n (%)	103 (51)	33 (49)	37 (55)	33 (49)	0.74
Beta-blockers, n (%)	21 (10)	6 (8)	8 (11)	7 (10)	0.95
CCB, n (%)	100 (49)	30 (44)	35 (52)	35 (52)	0.64
MRA, n (%)	14 (6)	2 (2)	8 (11)	4 (5)	0.14
Diuretics, n (%)	50 (24)	14 (20)	17 (25)	19 (28)	0.63
Statins, n (%)	58 (28)	26 (38)	18 (26)	14 (20)	0.07
Antiplatelets, n (%)	39 (19)	18 (26)	11 (16)	10 (14)	0.20
Oral anticoagulants, n (%)	29 (14)	9 (13)	14 (20)	6 (8)	0.16
Echocardiogram data at baseline					
LAD size, mm	41 (37-45)	41 (36-44)	42 (38-45)	41 (37-47)	0.33
LVEF, %	67 (60-72)	67 (59-72)	67 (59-71)	67 (63-72)	0.79

LVDD, mm	47 (43-51)	47 (44-51)	46 (43-50)	47 (43-52)	0.45
LVDs, mm	29 (26-32)	29 (27-32)	29 (26-32)	29 (26-33)	0.88
TR-PG, mmHg	26.8 (24.0-30.4)	26.1 (23.4-29.9)	26.8 (24.5-29.9)	29.0 (25.2-35.5)	0.007
ECG at baseline					
SND, n (%)	31 (15)	12 (17)	16 (23)	3 (4)	0.004
AVB, n (%)	170 (84)	55 (82)	51 (76)	64 (95)	
QRS duration, ms	120 (90-140)	122 (90-140)	118 (91-136)	122 (90-141)	0.78
RBBB, n (%)	94 (46)	33 (49)	33 (49)	28 (41)	0.64
LBBB, n (%)	16 (7)	5 (7)	1 (1)	10 (14)	0.016
LAHB, n (%)	35 (17)	11 (16)	12 (17)	12 (17)	1
LPHB, n (%)	10 (4)	5 (7)	3 (4)	2 (2)	0.61
ECG after RVP implant					
HR, bpm	69 (63-78)	69 (63-76)	69 (62-76)	72 (63-81)	0.36
QRS duration, ms	148 (138-160)	148 (136-160)	148 (138-158)	150 (138-163)	0.45
RVP parameters at final check					
Atrium					
Pacing rate, %	20 (5-48)	17 (6-40)	29 (6-55)	15 (4-45)	0.17
P-wave amplitude, mV	2.6 (1.6-3.9)	2.6 (1.7-4.0)	2.5 (1.4-4.0)	2.7 (1.6-3.7)	0.96
Threshold, V	0.6 (0.5-0.8)	0.7 (0.5-0.9)	0.6 (0.5-0.8)	0.6 (0.5-0.7)	0.15
Impedance, Ω	456 (399-539)	470 (418-540)	448 (399-520)	437 (380-560)	0.20
Ventricular					
Pacing rate, %	99 (67-100)	98 (51-100)	99 (27-100)	99 (95-100)	0.06
R-wave amplitude, mV	10.6 (7.9-14.8)	11.0 (7.9-14.8)	9.8 (7.6-14.5)	11.8 (7.8-14.8)	0.79
Threshold, V	0.8 (0.7-1.0)	0.8 (0.6-1.0)	0.8 (0.7-1.0)	0.8 (0.6-1.0)	0.51
Impedance, Ω	494 (440-571)	494 (437-565)	499 (458-585)	494 (433-573)	0.83

144 Data are presented as medians (interquartile ranges) for continuous variables and number of patients (n) and
 145 percentage (%). ACEI, angiotensin-converting enzyme inhibitor; AF, atrial fibrillation; ALT, alanine

146 aminotransferase; ARB, angiotensin receptor blocker; AST, aspartate aminotransferase; AVB, atrioventricular
147 block; BNP, brain natriuretic protein; CCB, calcium channel blocker; COPD, chronic obstructive pulmonary
148 disease; CV, cardiovascular; eGFR, estimated glomerular filtration rate; FIB-4, fibrosis-4; Hb, hemoglobin;
149 HR, heart rate; LAD, left atrium diameter; LAHB, left anterior hemiblock; LBBB, left bundle branch block;
150 LDL, low-density lipoprotein; LPHB, left posterior hemiblock; LVDd, left ventricular end-diastolic diameter;
151 LVDs, left ventricular end-systolic diameter; LVEF, left ventricular ejection fraction; MRA, mineralocorticoid
152 receptor antagonist; OMI, old myocardial infarction; PCI, percutaneous coronary intervention; RBBB, right
153 bundle branch block; SND, sinus node dysfunction; TR-PG, tricuspid regurgitant pressure gradient.

154
155 Among the study patients (median age: 81 years), 38 died during the observation period (median:
156 1097 days), resulting in an incidence rate of 5.8/100 person-years. The incidence rates for each
157 major outcome, stratified into three groups based on the FIB-4 index, were as follows: Tertile 1,
158 2.9/100 person-years; Tertile 2, 2.3/100 person-years; and Tertile 3, 13.3/100 person-years (log-
159 rank test, $P < 0.001$; Fig 1A, Table 2).

160 Between-group comparisons for secondary outcomes, including cardiovascular and non-
161 cardiovascular death, were then performed. The incidence of cardiovascular death was as follows:
162 Tertile 1, 4/67 (5%); Tertile 2, 2/67 (2%); and Tertile 3, 7/67 (10%; log-rank test, $P = 0.17$; Fig
163 1B, Table 2). In contrast, the incidence of non-cardiovascular death was as follows: Tertile 1, 3/67
164 (4%); Tertile 2, 3/67 (4%); Tertile 3, 19/67 (28%), which was significantly different between the
165 groups (log-rank test, $P < 0.001$; Fig 1C, Table 2).

166
167 **Fig 1. All-cause mortality and secondary outcomes stratified by FIB-4 index tertiles**
168 (A) Kaplan–Meier curve of all-cause mortality. (B) Cardiovascular death. (C) Non-cardiovascular
169 death. CVD, cardiovascular death; FIB-4, fibrosis-4.

170

171 **Table 2. Primary and secondary outcomes**

Outcome	Total (n = 201)		Tertile 1 (n = 67)		Tertile 2 (n = 67)		Tertile 3 (n = 67)	
	Events	Incidence rate (/100 person- year)	Events	Incidence rate (/100 person- year)	Events	Incidence rate (/100 person- year)	Events	Incidence rate (/100 person- year)
Primary outcome								
All-cause mortality	38	5.8	7	2.9	5	2.3	26	13.3
Secondary outcome								
CVD	13	2.0	4	1.6	2	0.9	7	3.5
Non-CVD	25	3.8	3	1.2	3	1.4	19	9.6

172 Data are presented as number of patients (n). CVD, Cardiovascular death; FIB-4, Fibrosis-4.

173
174 In subgroup analysis of the association between overall mortality and the FIB-4 index, consistent
175 results were observed (Fig 2).

176
177 **Fig 2. Forest plots from the subgroup analysis assessing the FIB-4 index and incidence of**
178 **all-cause mortality.** BNP, B-type natriuretic peptide; CI, confidence interval; eGFR, estimated
179 glomerular filtration rate; FIB-4, fibrosis-4; Hb, hemoglobin; HR, hazard ratio; LBBB, left bundle
180 branch block; LVEF, left ventricular ejection fraction.

181
182 In the Cox proportional hazards analysis for all-cause mortality, based on the FIB-4 index with
183 Tertile 1 as the reference group, a significant increase in risk was observed in Tertile 3, with an
184 unadjusted hazard ratio of 4.75 (95% CI: 2.05–11.0; $P < 0.001$; Table 3).

185 Subsequently, the adjusted hazard ratio, considering clinically important factors, such as age, sex,

186 and the presence or absence of LBBB at baseline; along with pacemaker-related factors, such as
187 QRS duration during pacing and ventricular pacing rate, was 4.02 (95% CI: 1.57–10.2; $P = 0.003$)
188 and 3.61 (95% CI: 1.37–9.48; $P = 0.009$) for Tertile 3 and Tertile 1, respectively (Table 3). In
189 contrast, the adjusted hazard ratio considering factors related to congestion, such as BNP, eGFR,
190 and TR-PG, was 3.47 (95% CI: 1.25–9.60; $P = 0.016$; Table 3).

191

192 **Table 3. Cox proportional hazard analysis of the primary outcome**

Primary outcome	Hazard ratio (95% CI)	<i>P</i> -value
Model 1: Unadjusted		
Tertile 1 (FIB-4 index ≤ 2.17)	Reference	Reference
Tertile 2 ($2.18 \leq$ FIB-4 index ≤ 3.28)	0.81 (0.25-2.57)	0.73
Tertile 3 (FIB-4 index ≥ 3.29)	4.75 (2.05-11.0)	<0.001
Model 2: Adjusted for age and sex		
Tertile 1 (FIB-4 index ≤ 2.17)	Reference	Reference
Tertile 2 ($2.18 \leq$ FIB-4 index ≤ 3.28)	0.69 (0.21-2.27)	0.55
Tertile 3 (FIB-4 index ≥ 3.29)	4.02 (1.57-10.2)	0.003
Model 3: Adjusted for age, sex, LBBB at baseline, paced-QRSd and Vp rate at final check		
Tertile 1 (FIB-4 index ≤ 2.17)	Reference	Reference
Tertile 2 ($2.18 \leq$ FIB-4 index ≤ 3.28)	0.68 (0.20-2.30)	0.54
Tertile 3 (FIB-4 index ≥ 3.29)	3.61 (1.37-9.48)	0.009
Model 4: Adjusted for age, sex, BNP, eGFR and TR-PG		
Tertile 1 (FIB-4 index ≤ 2.17)	Reference	Reference
Tertile 2 ($2.18 \leq$ FIB-4 index ≤ 3.28)	0.65 (0.19-2.22)	0.50

Tertile 3 (FIB-4 index \geq 3.29) 3.47 (1.25-9.60) 0.016

193 Data are presented as hazard ratios and 95% confidence intervals. BNP, brain natriuretic protein; CI,
194 confidence interval; eGFR, estimated glomerular filtration rate; FIB-4, fibrosis-4; LBBB, left bundle
195 branch block; QRSd, QRS duration; TR-PG, tricuspid regurgitant pressure gradient; Vp, ventricular pacing.

196
197 The evaluation of the predictive accuracy of the FIB-4 index for all-cause mortality was
198 performed using ROC curve analysis, resulting in an area under the curve of 0.72 (95% CI: 0.62–
199 0.82). The cut-off value for the FIB-4 index was 3.75, with a specificity of 0.86 and a sensitivity
200 of 0.63 (Fig 3).

201
202 **Fig 3. ROC curve analysis of the association between the FIB-4 index and the risk of all-**
203 **cause mortality.** ROC, receiver operating characteristic; AUC, area under the curve.

204

205 Discussion

206 This study showed that in patients with RVP implants, a high FIB-4 index was associated with an
207 increased risk of all-cause mortality. This trend remained consistent even after adjusting for
208 pacemaker-related factors. Furthermore, a rightward nonlinear relationship between the FIB-4
209 index and all-cause mortality was demonstrated. These findings are this study's novel
210 contributions.

211 A meta-analysis compared cardiac resynchronization therapy and His/left bundle area pacing
212 [13]; however, there is still a lack of studies specifically focusing on RVP and all-cause mortality.
213 Spath et al. reported on a major composite endpoint, that included all-cause mortality, related to
214 the lead position of RVP [14]; the all-cause mortality rate during the approximately 1000-day

215 follow-up period was approximately 20% of the analyzed participants, which was similar to the
216 death event rate in this study [14]. Subgroup analysis indicated that clinical outcomes improved
217 when the QRS duration during pacing was narrow (< 130 ms) compared to when it was wide (\geq
218 130 ms) [14]. Therefore, we hypothesized that pacemaker-related factors may significantly impact
219 mortality in patients with pacemakers and performed a multivariate analysis with pacing QRS
220 duration and ventricular pacing rate as confounding factors. However, the results of our study
221 revealed that the FIB-4 index was independently associated with all-cause mortality, regardless
222 of these factors.

223 We also evaluated the association between the FIB-4 index and cardiovascular death as a
224 secondary outcome. As mentioned earlier, RVP may significantly affect left ventricular
225 contraction and valvular pathology due to its nonphysiological pacing pattern, increasing the risk
226 of heart failure and atrial fibrillation [1–3]. Considering that the FIB-4 index may reflect the
227 pathophysiology of circulatory failure, we hypothesized that there would be a significant
228 association between the FIB-4 index and cardiovascular death. Although the Kaplan–Meier
229 analysis showed no statistical significance, we believe that this might have been due to the
230 extremely low number of cardiovascular death events during the 3-year follow-up period.

231 Notably, advancements in medical therapy for heart failure reduced ejection fraction, transcatheter
232 aortic valve replacement [15], MitraClip procedures for valvular disease [16], and interventional
233 treatments for myocardial infarction. These factors, along with the widespread adoption of
234 ablation therapy for atrial fibrillation, indicate that long-term follow-up is necessary for further
235 analysis of cardiovascular death. Therefore, although no statistical differences in cardiovascular
236 death were observed, the results of future studies are anticipated to shed light on the clinical
237 significance of the FIB-4 index.

238 This study has some limitations. It was a retrospective single-center study; therefore, the influence

239 of potential biases, such as an imbalance in the patient population, cannot be denied. Moreover,
240 owing to the limited number of deaths, a multivariate analysis with sufficient consideration of
241 confounding factors could not be conducted. In addition, this study included patients with
242 sinoatrial node dysfunction, in whom the degree of fusion pacing may be affected by the delay
243 settings, which could potentially affect the clinical outcomes. Lastly, although the ventricular
244 pacing rate is an important factor in clinical outcomes, this study only considered the pacing rate
245 at the final follow-up. In reality, there may be long-term variations in the pacing rates for each
246 patient, and it is necessary to investigate the relationship between temporal pacing rate changes
247 and death events.

248 **Conclusion**

249 In summary, the FIB-4 index may be a potential predictor of overall mortality in patients with
250 right ventricular pacemakers.

251

252 **Acknowledgments**

253 We are grateful to Dr. Takahiro Imaizumi for helpful discussions and comments on the
254 manuscript.

255 **Authors' Contributions**

256 Naoya Inoue: Conceptualization, data curation, methodology, project administration,
257 visualization, writing – original draft, writing – review & editing.

258 Shuji Morikawa: Formal analysis, writing – review & editing.

259 Takashi Ogane: Data curation, writing – review & editing.

260 Takehiro Hiramatsu: Data curation, conceptualization, formal analysis, investigation, writing –
261 review & editing.

262 Toyoaki Murohara: Conceptualization, supervision, validation, writing – original draft, writing –
263 review & editing.

264

265 **References**

- 266 1. Ponnusamy SS, Syed T, Vijayaraman P. Pacing induced cardiomyopathy: recognition and
267 management. *Heart*. 2023;109: 1407-1415. doi: 10.1136/heartjnl-2022-321723.
- 268 2. Tayal B, Fruelund P, Sogaard P, Riahi S, Polewiartek C, Atwater BD, et al. Incidence of heart
269 failure after pacemaker implantation: a nationwide Danish registry-based follow-up study.
270 *Eur Heart J*. 2019;40: 3641-3648. doi: 10.1093/eurheartj/ehz584.
- 271 3. Zhu H, Li X, Wang Z, Liu Q, Chu B, Yao Y, et al. New-onset atrial fibrillation following left
272 bundle branch area pacing vs. right ventricular pacing: a two-centre prospective cohort study.
273 *Europace*. 2023;25: 121-129. doi: 10.1093/europace/euac132.
- 274 4. Zhang S, Zhou X, Gold MR. Left bundle branch pacing: JACC Review Topic of the Week.
275 *J Am Coll Cardiol*. 2019;74: 3039-3049. doi: 10.1016/j.jacc.2019.10.039.
- 276 5. Zhang W, He L, Zhang J, Fu G, Sheng X, Pan Y, et al. Electrical synchrony optimization for
277 left bundle branch area pacing in patients with bradycardia and heart failure. *Am J Cardiol*.
278 2023;203: 436-443. doi: 10.1016/j.amjcard.2023.07.017.
- 279 6. Palmisano P, Ziacchi M, Dell'Era G, Donateo P, Ammendola E, Coluccia G, et al. Rate and
280 nature of complications of conduction system pacing compared with right ventricular pacing:
281 results of a propensity score-matched analysis from a multicenter registry. *Heart Rhythm*.
282 2023;20: 984-991. doi: 10.1016/j.hrthm.2023.03.009.
- 283 7. Yu Z, Liang Y, Xiao Z, Wang Y, Bao P, Zhang C, et al. Risk factors of pacing dependence
284 and cardiac dysfunction in patients with permanent pacemaker implantation. *ESC Heart Fail*.
285 2022;9: 2325-2335. doi: 10.1002/ehf2.13918.
- 286 8. Qian Z, Wang Y, Hou X, Qiu Y, Wu H, Zhou W, et al. Efficacy of upgrading to left bundle
287 branch pacing in patients with heart failure after right ventricular pacing. *Pacing Clin*

- 288 Electrophysiol. 2021;44: 472-480. doi: 10.1111/pace.14147.
- 289 9. Nakashima M, Tanakaya M, Miyoshi T, Saito T, Katayama Y, Sakuragi S, et al. The fibrosis-
290 4 index predicts cardiovascular prognosis in patients with severe isolated tricuspid
291 regurgitation. *Circ J*. 2022;86: 1777-1784. doi: 10.1253/circj.CJ-22-0109.
- 292 10. Nakashima M, Sakuragi S, Miyoshi T, Takayama S, Kawaguchi T, Kodera N, et al. Fibrosis-4
293 index reflects right ventricular function and prognosis in heart failure with preserved ejection
294 fraction. *ESC Heart Fail*. 2021;8: 2240-2247. doi: 10.1002/ehf2.13317.
- 295 11. Pais R, Redheuil A, Cluzel P, Ratzu V, Giral P. Relationship among fatty liver, specific and
296 multiple-site atherosclerosis, and 10-year Framingham score. *Hepatology*. 2019;69: 1453-
297 1463. doi: 10.1002/hep.30223.
- 298 12. Kanda Y. Investigation of the freely available easy-to-use software “EZR” for medical
299 statistics. *Bone Marrow Transplant*. 2013;48: 452-458. doi: 10.1038/bmt.2012.244.
- 300 13. Abdin A, Aktaa S, Vukadinović D, Arbelo E, Burri H, Glikson M, et al. Outcomes of
301 conduction system pacing compared to right ventricular pacing as a primary strategy for
302 treating bradyarrhythmia: systematic review and meta-analysis. *Clin Res Cardiol*. 2022;111:
303 1198-1209. doi: 10.1007/s00392-021-01927-7.
- 304 14. Spath NB, Wang K, Venkatasubramanian S, Fersia O, Newby DE, Lang CC, et al.
305 Complications and prognosis of patients undergoing apical or septal right ventricular pacing.
306 *Open Heart*. 2019;6: e000962. doi: 10.1136/openhrt-2018-000962.
- 307 15. Schewel J, Schlüter M, Schmidt T, Kuck KH, Frerker C, Schewel D. Early haemodynamic
308 changes and long-term outcome of patients with severe low-gradient aortic stenosis after
309 transcatheter aortic valve replacement. *EuroIntervention*. 2020;15: 1181-1189. doi:
310 10.4244/EIJ-D-19-00399.
- 311 16. Mack MJ, Lindenfeld J, Abraham WT, Kar S, Lim DS, Mishell JM, et al. 3-year outcomes

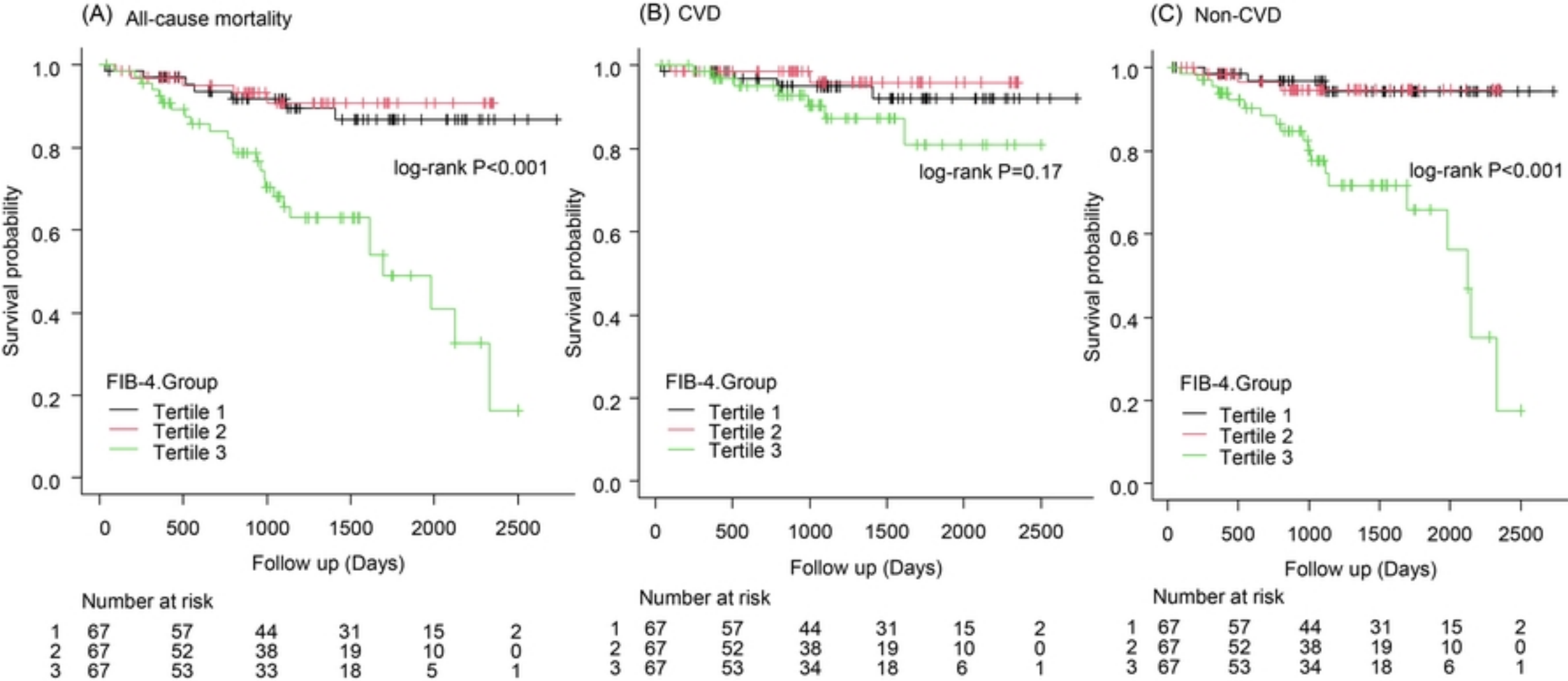
312 of transcatheter mitral valve repair in patients with heart failure. J Am Coll Cardiol. 2021;77:
313 1029-1040. doi: 10.1016/j.jacc.2020.12.047.

314

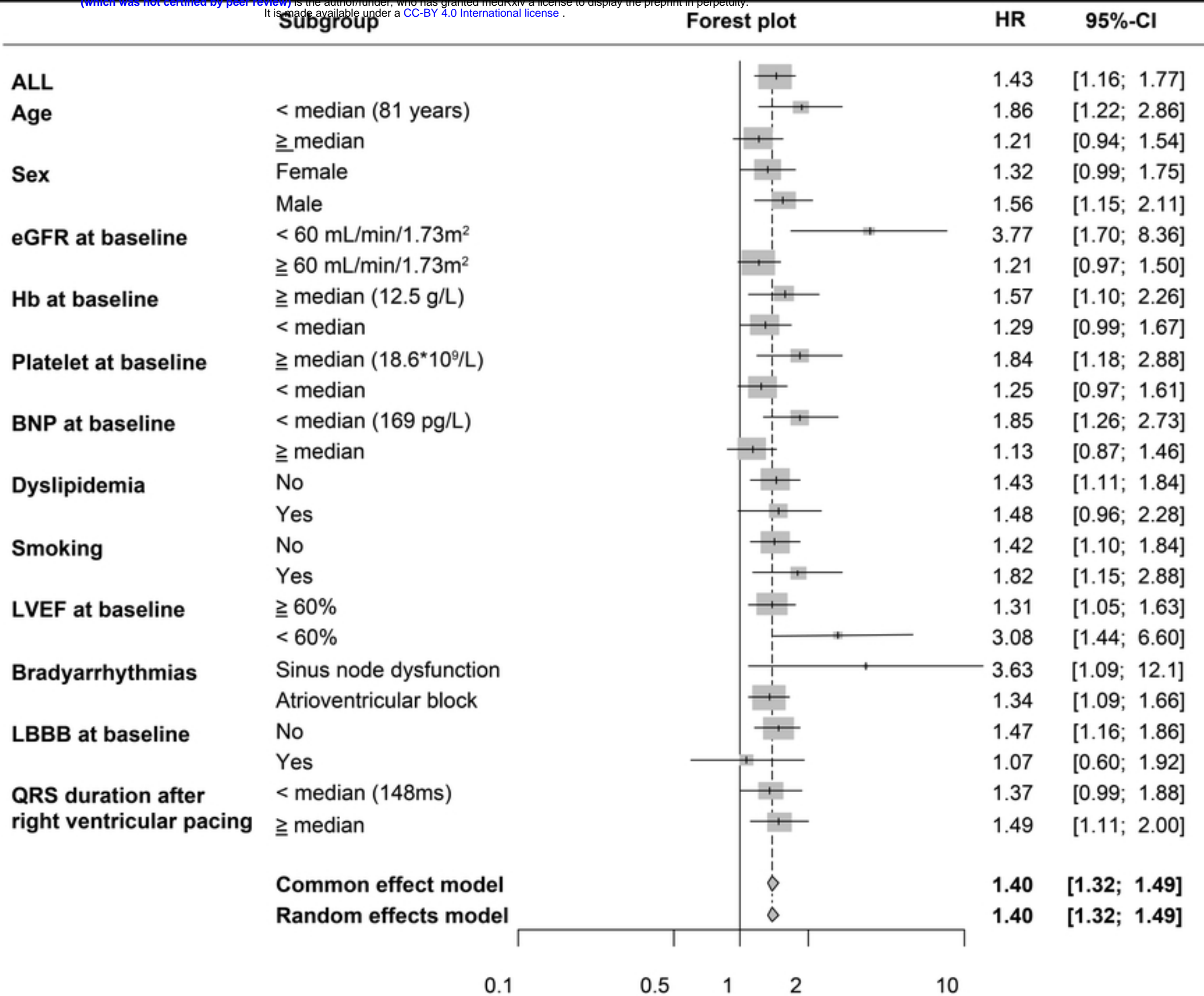
315 **Supporting information**

316 **S1 Table. Anonymous dataset of 201 patients.**

317

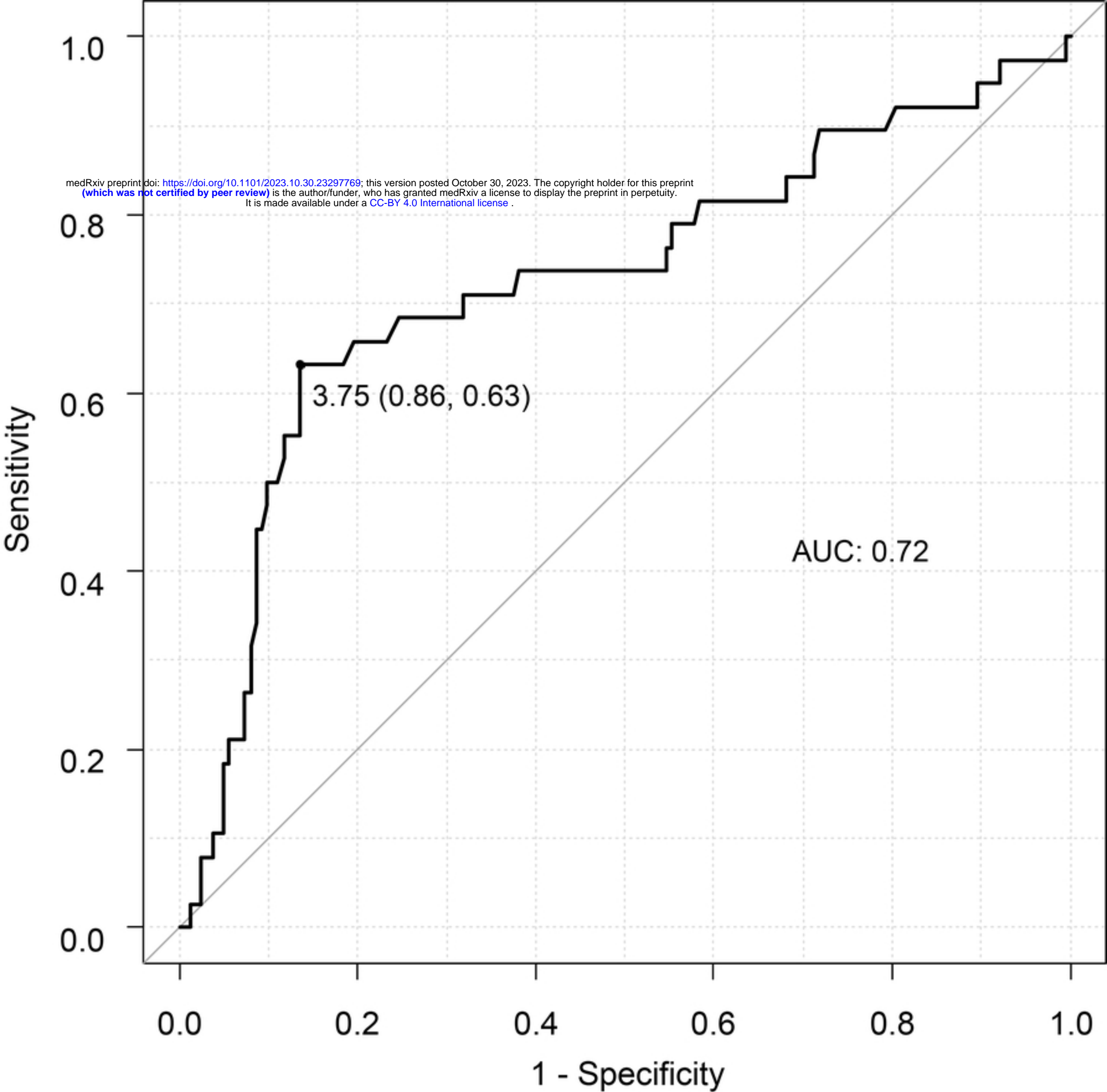


Figure



Figure

medRxiv preprint doi: <https://doi.org/10.1101/2023.10.30.23297769>; this version posted October 30, 2023. The copyright holder for this preprint (which was not certified by peer review) is the author/funder, who has granted medRxiv a license to display the preprint in perpetuity. It is made available under a [CC-BY 4.0 International license](#).



Figure