



1 **Diabetes, glycaemic profile and risk of vitiligo: a Mendelian**
2 **randomisation study**

3 **Shucheng Hu^{1†}, Yuhui Che^{1†}, Jiaying Cai²,Jing Guo^{3*} Jinhao**
4 **Zeng³**

5 **1Chengdu University of Traditional Chinese Medicine, Chengdu, China**

6 **2Hospital of Chengdu University of Traditional Chinese Medicine, Chengdu,**
7 **China**

8 *** Correspondence:**

9 **Shucheng Hu,**

10 **Hushucheng031123@163.com**

11 **Jing Guo,**

12 **guojing66@cdutcm.edu.cn**

13 **Abstract**

14 **Objectives:**

15 **Previous observational studies have shown that vitiligo usually co-manifests with**
16 **a variety of dysglycemic diseases, such as Type 1 diabetes mellitus(T1DM) and**
17 **Type 2 diabetes mellitus(T2DM). Mendelian randomization analysis was**
18 **performed to further evaluate the causal association between fasting plasma**
19 **glucose, glycosylated hemoglobin(HbA1c),T1DM,T2DM and vitiligo.**

20 **Methods:**

21 **We used aggregated genome-wide association data from the (Integrative**

22 **Epidemiology Unit) IEU online database of European adults vitiligo; Glycated**

NOTE: This preprint reports new research that has not been certified by peer review and should not be used to guide clinical practice.



23 **hemoglobin (HbA1c) data were from (IEU). Fasting blood glucose data were**
24 **obtained from the European Bioinformatics Institute(EBI). T1DM and T2DM**
25 **data were from FinnGen(FINN).**

26 **We used bidirectional two-sample and multivariate Mendelian randomization**
27 **analyses to test whether dysglycemic measures (fasting blood glucose, HbA1c),**
28 **diabetes-related measures (T1DM, T2DM) are causatively associated with**
29 **vitiligo. IVW method was used as the main test method, MR-Egger, Weighted**
30 **mode and Weighted median were used as supplementary methods.**

31 **Results:**

32 **We found no statistically significant evidence to support a causal association**
33 **between dysglycemic traits and vitiligo, but in the correlation analysis of diabetic**
34 **traits, our data supported a positive causal association between T1DM and**
35 **vitiligo (p=0.018; 95%OR:1.000(1.000-1.000)); In the follow-up multivariate MR**
36 **Analysis, our results still supported this conclusion (p=0.016, 95% OR=**
37 **1.000(1.000-1.000)), and suggested that Hba1c was not a mediator of T1DM**
38 **affecting the pathogenesis of vitiligo. No reverse causality was found in any of the**
39 **reverse MR Analyses of dysglycemic traits and diabetic traits.**

40 **Conclusions:**

41 **Our findings support that T1DM is a risk factor for the development of vitiligo,**
42 **and this conclusion may explain why the co-presentation of T1DM and vitiligo is**
43 **often seen in observational studies. Clinical use of measures related to T1DM**
44 **may be a new idea for the prevention or treatment of vitiligo.**



45 **Key Words: Vitiligo; Abnormal blood glucose traits; Type 1 diabetes mellitus;**
46 **Type 2 diabetes mellitus; Mendelian randomization**

47 **Introduction.**

48 **Vitiligo is a pigment-loss disorder with a global incidence of about 1%(1). In**
49 **addition to affecting the appearance, vitiligo can also lead to the disorder of the**
50 **patient's autoimmune system. The risk of autoimmune diseases in vitiligo patients**
51 **is significantly higher than that in normal people. For example, several controlled**
52 **trials(2) have been conducted in East Asian and African populations, Chang**
53 **etal.(3) found that the incidence of diabetes in patients with vitiligo was**
54 **significantly higher than that in normal people, and believed that there was a**
55 **correlation effect between vitiligo and diabetes, but the causal relationship was not**
56 **clear. Such a conclusion is not confirmed only at the individual level. Existing**
57 **studies (4)have shown that in the peripheral blood and skin tissue fluid of patients**
58 **with vitiligo, the levels of pro-inflammatory cytokines IL-6, IL- β , TNF- α and CD8**
59 **cells are increased, while the related indicators in patients with diabetes also have**
60 **an increasing trend. It is not a coincidence that the levels of inflammatory**
61 **cytokines such as IL-6 and CD8 cells are often increased in the peripheral blood**
62 **of patients with diabetes. At the big data analysis level, a meta-analysis(3) showed**
63 **that vitiligo was significantly associated with diabetes (OR 2.515, 95% CI 1.972-**
64 **3.208; p: 0.001). However, it is not clear whether there is a causal relationship**
65 **between vitiligo and diabetes.**

66 **Although a number of studies have shown that factors such as blood glucose**



67 **characteristics and diabetes mellitus are associated with the occurrence of vitiligo,**
68 **the current studies are mainly observational studies, and the results are**
69 **susceptible to confounding factors and reverse causality. For diabetic features, the**
70 **causal inference between blood glucose features and vitiligo is less convincing. The**
71 **MR Method can effectively avoid the interference of confounding factors and**
72 **reverse causality.**

73 **Understanding the causal relationship between vitiligo and diabetes mellitus can**
74 **help us prevent or treat the occurrence of diabetes in vitiligo patients, so it is of**
75 **practical significance to explore the causal relationship between vitiligo and**
76 **diabetes.**

77 **Mendelian randomization (5) is a data-analysis method that uses genetic variables**
78 **as instrumental variables for exposure in order to study causal associations**
79 **between exposure and outcomes. It was first proposed by Katan(6) in 1986.**
80 **Because the genetic alleles associated with exposure follow the Mendelian**
81 **inheritance law and are randomly combined at the time of conception, MR**
82 **Analysis can greatly avoid the interference of environmental factors and other**
83 **diseases, thereby enhancing the inference of causal association of exposure**
84 **outcomes(7). Therefore, we conducted a two-sample Mendelian randomization**
85 **(TSMR) study to investigate the causal relationship between levels of fasting**
86 **plasma glucose, glycosylated hemoglobin, type 1 diabetes mellitus, type 2 diabetes**
87 **mellitus and vitiligo.**

88 **Materials and Methods.**



89 **Study Design**

90 **The study adhered to Enhanced Reporting of Observational studies in**
91 **epidemiology (8)- Guidelines for reporting Mendelian randomization. The study**
92 **design is shown in S 1 Fig. Study design and workflow.In order to explore the**
93 **causal relationship between blood glucose characteristics (including fasting blood**
94 **glucose and glycosylated hemoglobin), diabetes characteristics (including type 1**
95 **diabetes, type 2 diabetes) and vitiligo, we performed a total of three MR Analyses.**
96 **First, we used univariate Mendelian randomization to investigate the overall effect**
97 **of blood glucose and diabetes characteristics on vitiligo outcome and performed**
98 **an inverse MR Analysis to investigate the effect of vitiligo on dysglycemia and the**
99 **onset of type T1 and T2DM. On this basis, multivariable MR Models were**
100 **constructed to analyze the direct or independent effects of Hba1c, T1DM, and**
101 **other characteristics on outcomes. The model was developed to determine the**
102 **major factors affecting the prognosis of vitiligo, At present, some studies(9-11)**
103 **have suggested that glycosylated hemoglobin has statistical significance in**
104 **peripheral blood of vitiligo patients, and glycosylated hemoglobin is one of the**
105 **indicators of type 1 diabetes.**

106

107 **S1fig. Study design and workflow.**

108 **Data sources**

109 **Our study used publicly available GWAS data for which informed consent and**
110 **ethical approval had previously been obtained. We used aggregated genome-wide**



111 association data from the (Integrative Epidemiology Unit) IEU online database of
 112 European adults vitiligo; Glycated hemoglobin (HbA1c) data were from (IEU).
 113 Fasting blood glucose data were obtained from the European Bioinformatics
 114 Institute(EBI). T1DM and T2DM data were from FinnGen(FINN).Detailed
 115 GWAS data are shown in the table below (S1 Table1).

116 **Supplementary Table 1.Data Source**

Trait	Year	Consortium	Sample size	Number of SNPs
HbA1c	2022	Within family GWAS consortium	45734	9696819
Fasting glucose	2021	NA	200622	31008728
Type 1 diabetes	2021	NA	—	16380008
Type 2 diabetes	2021	NA	—	16380440
Non-cancer illness code self-reported: vitiligo	2017	Neale Lab	337159	10894596

117

118 **Instrumental variable selection**

119 The selection of instrumental variables generally needs to meet the following three
 120 assumptions(12):

121 1. Correlation hypothesis; The instrumental variable must have a strong
 122 association with the exposure (p value < 0.05).

123 2. Assumption of independence; Instrumental variables were not associated with
 124 confounders.

125 3. Assumption of exclusivity; Instrumental variables can only affect outcomes



126 through exposure and cannot be directly correlated with outcomes.

127 In the univariate Mendelian randomization phase, we first tested for horizontal
128 pleiotropy of exposures and outcomes and ensured that assumptions of
129 independence were valid (linkage disequilibrium, LD cluster r^2 threshold of 0.001
130 and window size of 10 Mb). If the IVW test results were relevant (p value < 0.05),
131 we performed sensitivity analyses for each trait.

132 For multivariable Mendelian randomization, we constructed a multivariable
133 Mendelian randomization model using type 1 diabetes mellitus, glycated
134 hemoglobin, and vitiligo. SNPs for these traits were combined to remove
135 confounding factors. To avoid bias caused by potentially weak instrumental
136 variables, we used the F-statistic (calculated by the formula $F = \beta^2 / se^2$) to
137 evaluate the strength of IV. If the F-statistic > 10, then the correlation between IV
138 and exposure is considered strong enough to guarantee that the results of the MR
139 Analysis are protected from weak instrumental variable bias(13).

140 MR Analysis

141 In univariate MR Analysis, we used the IVW method as our primary test and
142 performed sensitivity tests, such as MR-Egger(14); Weighted Median(15);
143 Weighted Mode(16); MR-MR-PRESSO(17) was used to check for heterogeneity
144 and horizontal pleiotropy to help inform confidence in the results. On this basis,
145 we performed reverse MR Analysis. Specific methodological procedures were the
146 same as for univariate MR Analysis. On the basis of univariate MR Analysis,
147 multivariate MR Models were constructed for abnormal blood glucose, type 1



148 **diabetes mellitus, type 2 diabetes mellitus and vitiligo. A total of 42 nSNPs were**
149 **extracted, and after harmonise was performed to remove unmatchable SNPs, 32**
150 **SNPs were retained for multivariate MR Analysis. At equilibrium, the Inverse-**
151 **Variance Weighted(IVW) method was still used as the main method to test the**
152 **results, and in the case of positive results, we used multivariate MR-Egger**
153 **(intercept), MR-PRESSO, and Weighted Mode to test for heterogeneity and**
154 **horizontal pleiotropy of multivariate results, and heterogeneity, defined as**
155 **variation in causal estimates of different SNPs, was used to assess heterogeneity of**
156 **different SNPs in multivariate MR.**

157 **Results.**

158 **The data selected for this study were all from the European population, and the**
159 **number of instrumental variables and their correlations are shown in S2-S3**
160 **Tables. In univariate MR Analysis, F statistics for all SNPs were > 10, a result that**
161 **suggests no potential causal bias in the data.**

162 **Supplementary Table 2.Genetic variants that were used as instruments for**
163 **diabetes traits and blood sugar traits**

SNP	Chr	Pos	Effect	Effect	Beta	SE	P	F
			Allele	Allele			value	
				Frequ				
				ency				
rs1160	2	165508	T	0.3576	-	0.0108	7.3090	38.2



39340		389			0.0668		3E-10	5652
rs1611	19	461570	C	0.4465	-	0.0105	1.3910	31.8
236		04			0.0593		1E-08	956
rs1836	11	927087	G	0.3567	0.1183	0.0108	8.9166	119.
97542		10					1E-28	9836
rs3129	10	944606	C	0.4769	-	0.0104	3.2077	61.8
871		50			0.0818		5E-15	6428
rs3184	4	451825	G	0.4736	0.0682	0.0104	5.1999	43.0
504		27					6E-11	0333
rs3433	9	221326	C	0.1518	-	0.0145	1.6398	77.4
7125		98			0.1276		3E-18	4
rs4117	9	429192	C	0.3757	0.0584	0.0107	4.9039	29.7
3		8					9E-08	8915
rs6679	12	427108	A	0.0223	-	0.0365	2.8926	98.5
677		8		6	0.3623		8E-23	2602
rs689	17	361035	A	0.6457	-	0.0109	3.0549	39.3
		65			0.0684		9E-10	785
rs7056	6	327104	C	0.0503	0.3246	0.024	1.0108	182.
99		07		2			8E-41	9256
rs7420	8	118185	G	0.3784	-	0.0107	1.9019	49.5
3920		733			0.0753		5E-12	2476
rs9275	18	579086	G	0.1947	0.0775	0.0131	3.0049	34.9



183		75				7E-09	9942
rs9468	3	123365	A	0.1706	-	0.0138	3.6889 62.0
618		07			0.1087	3E-15	4416
rs1244	16	772619	G	0.0584	0.1342	0.0223	1.6199 36.2
9219		43		1		8E-09	1557
rs1314	4	631540	G	0.5422	0.0789	0.0104	3.9774 57.5
3143		6				1E-14	5557
rs1396	2	593140	C	0.4088	-	0.0106	4.2419 29.7
40586		86			0.0578	9E-08	3336
rs1397	12	715266	G	0.4275	-	0.0105	1.2489 32.2
566		77			0.0596	9E-08	1914
rs1441	10	114737	T	0.0235	-	0.0345	8.8691 37.6
55527		633		6	0.2116	1E-10	1778
rs1703	2	605535	A	0.0476	0.1481	0.0243	1.1620 37.1
9732		19				1E-09	4476
rs1815	6	724545	G	0.4053	0.062	0.0106	5.2100 34.2
311		8				3E-09	1146
rs1827	10	714498	T	0.0387	0.1488	0.0269	3.155E 30.5
88819		78		3		-08	9858
rs1933	6	140291	T	0.1913	-	0.0132	4.9029 34.3
742		319			0.0774	8E-09	8223
rs2303	19	797652	C	0.6741	-	0.0111	5.0750 34.1



700		9		0.0649		5E-09	8562
rs2583	12	661704	C	0.0563	0.1526	0.0226	1.4481 45.5
921		81		1		E-11	9237
rs2864	9	139248	G	0.6974	0.1005	0.0113	6.2459 79.0
2213		082				7E-19	9977
rs2943	2	227121	G	0.6174	0.0752	0.0107	1.7151 49.3
656		918				4E-12	9331
rs3110	17	360474	G	0.7867	0.0715	0.0128	2.5080 31.2
641		17				1E-08	027
rs3487	10	114754	C	0.2016	0.2962	0.0131	1.1722 511.
2471		071				E-112	2432
rs3887	3	186665	T	0.463	0.0591	0.0104	1.3949 32.2
925		645				9E-08	9299
rs4293	19	454119	C	0.1825	-	0.0136	1.6330 36.4
58		41			0.0821	1E-09	4253
rs4555	20	576073	T	0.0499	-	0.0243	5.4954 93.1
1238		63		1	0.2345	1E-22	2647
rs4931	12	326908	G	0.6926	0.0625	0.0113	3.0719 30.5
017		57				9E-08	9167
rs4984	7	282562	A	0.6448	-	0.0108	8.2729 33.4
75		40			0.0625	4E-09	898
rs5215	11	174086	T	0.5284	-	0.0104	1.6230 31.7



		30			0.0586		1E-08	4889
rs5599	16	752367	G	0.0871	-	0.0185	5.5962	61.3
3634		63		7	0.1449		9E-15	47
rs5634	12	121432	C	0.2827	-	0.0116	1.2471	45.9
8580		117			0.0786		E-11	1231
rs5810	15	778928	G	0.4094	-0.06	0.0106	1.4119	32.0
2377		57					8E-08	3987
rs6073	20	428880	G	0.0366	0.179	0.0273	5.9251	42.9
386		82		7			6E-11	9132
rs6213	2	434802	T	0.0489	0.1422	0.0239	2.5719	35.4
7406		21		6			9E-09	0001
rs6249	7	150537	A	0.3402	0.074	0.011	1.5219	45.2
2368		635					5E-11	562
rs6550	3	234076	C	0.8216	-	0.0135	1.048E	37.4
758		58			0.0826		-09	3627
rs6780	3	185503	A	0.3066	0.0929	0.0112	1.2240	68.8
171		456					5E-16	011
rs6786	3	170629	A	0.681	0.0654	0.0111	4.1750	34.7
846		884					3E-09	1439
rs7018	9	221376	G	0.279	0.1126	0.0116	2.5310	94.2
475		85					5E-22	2384
rs7109	11	724634	A	0.2374	-	0.0122	3.8806	57.7



575		35			0.0927		1E-14	3508
rs7133	3	123124	A	0.1878	-0.086	0.0133	1.0990	41.8
0995		513					1E-10	113
rs7486	12	436557	T	0.0195	-	0.0388	6.8754	42.5
2545		2			0.2531		3E-11	5208
rs7617	5	102143	A	0.0578	0.1409	0.0222	2.3219	40.2
7300		311		4			9E-10	8246
rs7689	12	438484	G	0.0311	-	0.0325	2.9302	221.
5963		4		6	0.4842		2E-50	9642
rs7765	7	102086	T	0.1835	0.0968	0.0134	6.0841	52.1
5131		552					5E-13	8445
rs7847	12	452151	A	0.0394	-	0.0273	4.3261	70.6
0967		1		4	0.2295		3E-17	7081
rs7998	13	807186	A	0.3894	-	0.0107	1.0690	46.1
259		54			0.0727		5E-11	6377
rs8353	22	207961	T	0.3009	-	0.0113	1.3399	36.8
		17			0.0686		9E-09	5457
rs8785	7	442556	A	0.2071	0.0784	0.0128	8.9400	37.5
21		43					5E-10	1563
rs9348	6	206806	A	0.3289	0.123	0.011	4.9113	125.
441		78					4E-29	0331
rs9933	16	538181	C	0.4129	0.1161	0.0105	2.6242	122.



509		67					2E-28	2604
rs1030	6	390340	T	0.065	0.0235	0.0032	1.2089	53.9
5457		95					3E-14	3066
rs1057	2	273240	A	0.625	-	0.0018	1.9111	47.4
394		36			0.0124		7E-12	5679
rs1081	9	221340	A	0.165	-	0.0022	7.9378	102.
1660		68			0.0223		E-25	7459
rs1083	11	927087	G	0.286	0.0772	0.0019	1E-200	1650
0963		10						.925
rs1083	11	458701	G	0.52	-	0.0016	1.5588	221.
8524		77			0.0238		3E-40	2656
rs1083	11	473505	C	0.314	0.0177	0.0018	3.4419	96.6
8693		53					1E-23	9444
rs1097	9	429192	C	0.38	0.0198	0.0017	9.8469	135.
4438		8					1E-31	654
rs1160	11	724606	C	0.168	-	0.0022	3.1160	115.
3349		94			0.0236		2E-25	0744
rs1161	12	133063	A	0.454	0.0144	0.0019	3.2598	57.4
0045		768					7E-13	4044
rs1161	13	284875	G	0.234	0.0173	0.002	3.4119	74.8
9319		99					3E-20	225
rs1170	3	123065	G	0.177	-	0.002	1.6259	197.



8067		778			0.0281		2E-43	4025
rs1205	6	153431	T	0.384	0.012	0.0017	1.166E	49.8
5786		125					-11	2699
rs1254	8	810768	T	0.479	0.0118	0.0019	4.5109	38.5
1643		74					7E-09	7064
rs1260	2	277309	C	0.587	0.0282	0.0017	4.4812	275.
326		40					6E-65	1696
rs1278	10	113036	G	0.076	-	0.003	2.8628	120.
4552		354					0.0329	6E-31
rs1288	14	100830	A	0.189	-	0.002	6.0186	45.5
8855		818					0.0135	6E-12
rs1289	15	750903	T	0.598	-	0.0017	4.6409	33.2
8997		49					0.0098	8E-09
rs1575	5	558091	C	0.27	-	0.0021	5.426E	40.7
12		27					0.0134	-10
rs1604	3	170709	T	0.288	-	0.0018	4.4678	121
038		193					0.0198	6E-28
rs1685	3	141134	G	0.045	-	0.0042	1.2600	60.6
1397		818					0.0327	9E-12
rs1691	9	111680	G	0.029	-	0.0049	2.8196	64.6
3693		359					0.0394	8E-16
rs1716	7	148982	T	0.176	0.028	0.0021	4.1696	177.



8486		82					5E-36	7778
rs1726	20	398326	C	0.204	0.0158	0.0021	5.1015	56.6
5513		28					2E-14	0771
rs1727	15	608625	G	0.24	0.0104	0.0021	3.6160	24.5
0243		00					1E-08	2608
rs1743	3	152180	T	0.11	-	0.0032	3.3309	29.9
7560		329			0.0175		6E-08	0723
rs1745	11	616097	T	0.375	-	0.0017	3.3713	97.6
83		50			0.0168		2E-22	609
rs1820	5	956965	C	0.296	-	0.002	1.9050	152.
176		85			0.0247		2E-34	5225
rs1895	2	549411	A	0.723	-	0.002	2.8109	37.8
48		12			0.0123		9E-09	225
rs1945	7	898531	A	0.52	0.0102	0.0018	8.7570	32.1
18		49					9E-09	1111
rs2075	1	214154	T	0.376	-	0.0017	3.1827	89.6
423		719			0.0161		3E-21	9204
rs2238	16	401428	G	0.619	-	0.0019	3.8240	34.7
435		2			0.0112		2E-09	4792
rs2461	2	169700	C	0.852	-	0.0024	2.7302	81.7
385		463			0.0217		3E-19	5174
rs2595	7	441485	G	0.683	-	0.0021	4.4781	81



701		53			0.0189		6E-19	
rs2657	12	568653	G	0.202	0.0119	0.0022	7.3339	29.2
879		38					8E-09	5826
rs2839	10	265058	A	0.164	-0.016	0.0022	8.3791	52.8
671		22					5E-14	9256
rs3483	1	229672	A	0.631	-	0.002	3.0359	37.2
30		955			0.0122		9E-10	1
rs3588	14	900554	T	0.617	-0.013	0.0019	3.3650	46.8
9227		68					4E-10	144
rs3778	6	725027	A	0.176	-	0.0021	3.1571	78.4
321		0			0.0186		8E-17	4898
rs3829	9	139256	A	0.276	-	0.002	1.0869	66.4
109		766			0.0163		3E-15	225
rs3842	11	218106	G	0.72	-	0.0022	2.8409	37.0
753		0			0.0134		9E-09	9917
rs3971	22	303431	T	0.062	-	0.0031	1.7670	29.7
3		86			0.0169		1E-08	2008
rs4760	12	577711	A	0.181	-0.011	0.002	3.3309	30.2
278		53					6E-08	5
rs4862	4	185726	T	0.401	0.0123	0.0019	4.4470	41.9
423		548					3E-10	0859
rs5076	9	136149	A	0.189	0.0164	0.0021	6.9919	60.9



66		399					8E-17	8866
rs5371	2	169774	T	0.64	0.0663	0.0017	1E-200	1521
83		646						
rs5892	7	756545	T	0.032	0.0306	0.0053	5.8210	33.3
5536		74					3E-09	3428
rs6113	20	225570	A	0.066	-	0.0044	7.6594	92.8
722		99			0.0424		9E-25	595
rs6489	12	121893	G	0.512	0.011	0.0018	3.2670	37.3
811		626					1E-09	4568
rs6538	12	978489	G	0.377	-	0.0019	9.4123	55.8
804		10			0.0142		9E-14	5596
rs6598	15	992711	G	0.648	-	0.0017	4.1238	44.9
541		35			0.0114		2E-12	6886
rs6662	1	100894	A	0.198	0.0143	0.0023	3.3410	38.6
924		419					3E-10	5595
rs6808	3	187740	C	0.606	0.0127	0.0017	7.2094	55.8
574		523					1E-14	0969
rs7012	8	917320	A	0.47	-0.018	0.0017	9.7454	112.
637		9					1E-25	1107
rs7095	10	953841	T	0.358	-	0.0018	1.9760	34.6
788		52			0.0106		1E-09	7901
rs7163	15	623916	T	0.433	-	0.0016	2.6411	183.



757		08			0.0217		9E-36	9414
rs7178	15	777471	G	0.679	0.0121	0.0018	7.0859	45.1
572		90					8E-10	8827
rs7708	5	764258	A	0.686	-	0.0019	1.253E	49
285		67			0.0133		-09	
rs7798	2	437779	T	0.055	-	0.0035	1.5801	49.4
1966		64			0.0246		6E-14	0082
rs7813	1	150868	A	0.203	-	0.0022	2.5980	44.6
2593		102			0.0147		1E-10	4669
rs7903	10	114758	T	0.307	0.0259	0.0019	1.9948	185.
146		349					E-35	8199
rs8785	7	442556	A	0.249	0.0549	0.002	2.6485	753.
21		43					E-174	5025
rs8968	8	959605	C	0.542	-	0.0016	5.6120	38.2
54		11			0.0099		3E-09	8516
rs9348	6	206806	A	0.272	0.0176	0.0018	4.4025	95.6
441		78					1E-20	0494
rs9650	8	118204	T	0.284	-	0.0018	8.3061	252.
069		020			0.0286		5E-58	4568
rs1042	19	461501	G		-	0.0062	2.869E	39.9
0309		82			0.0392		-10	7503
rs1046	17	806856	G		-	0.007	1.4669	116.



917		55		0.0757		E-27	9488
rs1096	9	221328	C	-	0.0084	1.8400	40.8
5248		78		0.0537		1E-10	6862
rs1106	10	710188	G	0.052	0.0067	6.1887	60.2
676		74				1E-15	3613
rs1170	3	123065	G	-	0.0073	9.5345	64
8067		778		0.0584		5E-16	
rs1457	18	437522	T	-	0.0083	3.8799	30.0
31180		67		0.0455		8E-08	5153
rs1747	10	710945	C	-	0.0101	3.02E-	908.
6364		04		0.3044		199	336
rs1753	19	172578	C	0.045	0.0065	6.0186	47.9
3945		02				6E-12	2899
rs1879	3	170727	A	-	0.0071	1.4288	45.5
442		351		0.0479		9E-11	1498
rs2748	17	761218	G	0.0849	0.0076	9.1579	124.
427		64				9E-29	7924
rs2908	7	442239	A	0.1141	0.0083	6.7158	188.
289		42				3E-43	9797
rs2968	16	888586	G	0.058	0.0064	2.1938	82.1
478		46				1E-19	2891
rs3818	17	177071	C	-	0.0064	1.8399	54.3



717		05		0.0472		2E-13	9063
rs3935	9	139238	G	0.0548	0.0073	4.3052	56.3
875		824				7E-14	5279
rs4300	8	118217	A	-	0.0068	8.3926	65.1
038		915		0.0549		7E-16	8188
rs4340	4	144938	G	-	0.0066	3.1746	95.2
756		216		0.0644		8E-22	1028
rs4737	8	416304	A	0.0735	0.0076	3.5917	93.5
010		47				E-22	2926
rs5608	2	169763	C	0.1156	0.0068	1.4849	289
87		148				1E-64	
rs6602	13	114551	C	0.0492	0.0066	1.2080	55.5
909		993				9E-13	7025
rs7632	7	441859	G	0.0574	0.0098	4.4100	34.3
3047		55				1E-09	0612
rs7903	10	114758	T	0.0655	0.0074	5.7956	78.3
146		349				2E-19	4642
rs7922	6	260984	C	-	0.0112	1.9050	145.
0007		74		0.1353		2E-33	935
rs8557	22	374629	G	-	0.0064	9.4080	73.5
91		36		0.0549		6E-18	8423
rs9376	6	135411	C	-	0.0072	1.0639	59.2



090		228			0.0554		E-14	0448
rs9410	9	914277	G		-	0.0131	2.4541	72.0
357		77			0.1112		4E-17	5547
rs9826	3	122942	G		-	0.0063	2.2550	40.7
367		02			0.0402		2E-10	1655
rs1160	6	328498	T	0.0498	-	0.0514	4.917E	102.
39340		21		4	0.5196		-24	1909
rs1611	6	297486	A	0.2234	-	0.0258	1.6951	49.9
236		90			0.1823		2E-12	2682
rs1836	6	308469	T	0.0166	-	0.0918	5.8762	47.3
97542		41		8	0.6317		5E-12	5179
rs3129	6	324063	C	0.6448	0.7752	0.023	1E-200	1135
871		42						.983
rs3184	12	111884	C	0.5907	-	0.0212	8.9701	60.2
504		608			0.1646		6E-15	8204
rs3433	14	101307	A	0.4153	-	0.0213	3.5109	30.3
7125		703			0.1173		9E-08	2751
rs4117	22	304248	G	0.6835	-	0.0223	1.309E	36.8
3		63			0.1354		-09	6613
rs6679	1	114303	A	0.1473	0.4475	0.0295	8.2375	230.
677		808					9E-52	1135
rs689	11	218222	T	0.792	0.399	0.0274	5.2905	212.



		4					4E-48	0531
rs7056	12	563848	A	0.3857	0.1409	0.0215	5.2444	42.9
99		04					5E-11	4821
rs7420	21	457142	T	0.0372	0.3587	0.0549	6.6343	42.6
3920		94		6			7E-11	892
rs9275	6	326545	G	0.2187	0.9606	0.0256	1E-200	1408
183		02						.008
rs9468	6	297507	T	0.0559	-	0.0483	5.5513	52.0
618		76		7	0.3484		7E-13	3098

164 **Supplementary Table 3. Genetic variants that were used as instruments for vitiligo**

SNP	C	Pos	Effe	Effect	Beta	SE	P	F
	hr		ct	Allele			valu	
			Alle	Freque			e	
			le	ncy				
rs108184	9	123634	G	0.01824	0.000860	0.000154	2.67	30.935
77		029		44	426	697	E-08	936
rs113405	7	644931	T	0.00325	0.002188	0.000383	1.15	32.577
464				031	17	374	E-08	429
rs114423	2	457693	A	0.00328	0.002186	0.000380	9.11	33.023
859		59		441	11	416	E-09	756
rs115241	2	203383	C	0.00856	0.001424	0.000228	4.91	38.716
301		263		171	19	886	E-10	617



rs117217	20	142924	G	0.01397	0.001036	0.000179	7.35	33.441
780		67		25	9	305	E-09	746
rs117918	15	550961	C	0.00983	0.001390	0.000209	3.33	43.974
443		57		544	76	726	E-11	391
rs132701	8	413325	G	0.01730	0.001112	0.000160	4.22	48.024
91		11		73	81	579	E-12	687
rs138415	2	134190	T	0.02434	0.000769	0.000138	2.83	30.818
604		944		47	211	56	E-08	764
rs140098	1	447721	A	0.00902	0.001236	0.000221	2.42	31.129
080		00		138	13	553	E-08	563
rs141164	9	875216	A	0.00774	0.001552	0.000244	2.23	40.252
669		26		024	91	765	E-10	6
rs144017	9	898405	T	0.00975	0.001312	0.000212	6.92	38.044
585		75		537	13	73	E-10	883
rs145651	8	135649	A	0.00318	0.002205	0.000378	5.84	33.887
908		198		803	27	826	E-09	847
rs147122	5	234518	G	0.01637	0.000937	0.000167	2.27	31.253
750		05		76	204	643	E-08	411
rs147843	10	943823	A	0.02850	0.000686	0.000125	3.92	30.190
757		59		25	841	004	E-08	104
rs148393	10	143321	A	0.02631	0.000751	0.000130	8.43	33.175



137		99		68	015	389	E-09	335
rs149961	19	542695	C	0.00608	0.001581	0.000279	1.52	32.028
991		12		543	49	446	E-08	537
rs151035	2	161261	A	0.00711	0.001438	0.000249	8.48	33.164
772		546		746	69	822	E-09	472
rs169420	18	235833	G	0.00454	0.001684	0.000304	3.14	30.621
56		15		183	31	376	E-08	273
rs181638	4	404169	A	0.00606	0.001486	0.000272	4.71	29.835
428		41		912	13	076	E-08	487
rs482381	22	468350	C	0.00100	0.004158	0.000645	1.19	41.483
0		00		089	63	674	E-10	364
rs765297	9	757277	G	0.00709	0.001607	0.000243	4.29	43.480
09		48		225	31	754	E-11	626
rs108184	9	123634	G	0.01824	0.000860	0.000154	2.67	30.935
77		029		44	426	697	E-08	936
rs113405	7	644931	T	0.00325	0.002188	0.000383	1.15	32.577
464				031	17	374	E-08	429
rs114423	2	457693	A	0.00328	0.002186	0.000380	9.11	33.023
859		59		441	11	416	E-09	756
rs115241	2	203383	C	0.00856	0.001424	0.000228	4.91	38.716
301		263		171	19	886	E-10	617



rs117217	20	142924	G	0.01397	0.001036	0.000179	7.35	33.441
780		67		25	9	305	E-09	746
rs117918	15	550961	C	0.00983	0.001390	0.000209	3.33	43.974
443		57		544	76	726	E-11	391
rs132701	8	413325	G	0.01730	0.001112	0.000160	4.22	48.024
91		11		73	81	579	E-12	687
rs138415	2	134190	T	0.02434	0.000769	0.000138	2.83	30.818
604		944		47	211	56	E-08	764
rs140098	1	447721	A	0.00902	0.001236	0.000221	2.42	31.129
080		00		138	13	553	E-08	563
rs141164	9	875216	A	0.00774	0.001552	0.000244	2.23	40.252
669		26		024	91	765	E-10	6
rs144017	9	898405	T	0.00975	0.001312	0.000212	6.92	38.044
585		75		537	13	73	E-10	883
rs147122	5	234518	G	0.01637	0.000937	0.000167	2.27	31.253
750		05		76	204	643	E-08	411
rs147843	10	943823	A	0.02850	0.000686	0.000125	3.92	30.190
757		59		25	841	004	E-08	104
rs148393	10	143321	A	0.02631	0.000751	0.000130	8.43	33.175
137		99		68	015	389	E-09	335
rs149961	19	542695	C	0.00608	0.001581	0.000279	1.52	32.028



991		12		543	49	446	E-08	537
rs151035	2	161261	A	0.00711	0.001438	0.000249	8.48	33.164
772		546		746	69	822	E-09	472
rs169420	18	235833	G	0.00454	0.001684	0.000304	3.14	30.621
56		15		183	31	376	E-08	273
rs181638	4	404169	A	0.00606	0.001486	0.000272	4.71	29.835
428		41		912	13	076	E-08	487
rs482381	22	468350	C	0.00100	0.004158	0.000645	1.19	41.483
0		00		089	63	674	E-10	364
rs765297	9	757277	G	0.00709	0.001607	0.000243	4.29	43.480
09		48		225	31	754	E-11	626
rs108184	9	123634	G	0.01824	0.000860	0.000154	2.67	30.935
77		029		44	426	697	E-08	936
rs113405	7	644931	T	0.00325	0.002188	0.000383	1.15	32.577
464				031	17	374	E-08	429
rs114423	2	457693	A	0.00328	0.002186	0.000380	9.11	33.023
859		59		441	11	416	E-09	756
rs115241	2	203383	C	0.00856	0.001424	0.000228	4.91	38.716
301		263		171	19	886	E-10	617
rs117217	20	142924	G	0.01397	0.001036	0.000179	7.35	33.441
780		67		25	9	305	E-09	746



rs117918 443	15	550961 57	C	0.00983 544	0.001390 76	0.000209 726	3.33 E-11	43.974 391
rs132701 91	8	413325 11	G	0.01730 73	0.001112 81	0.000160 579	4.22 E-12	48.024 687
rs138415 604	2	134190 944	T	0.02434 47	0.000769 211	0.000138 56	2.83 E-08	30.818 764
rs140098 080	1	447721 00	A	0.00902 138	0.001236 13	0.000221 553	2.42 E-08	31.129 563
rs141164 669	9	875216 26	A	0.00774 024	0.001552 91	0.000244 765	2.23 E-10	40.252 6
rs144017 585	9	898405 75	T	0.00975 537	0.001312 13	0.000212 73	6.92 E-10	38.044 883
rs147122 750	5	234518 05	G	0.01637 76	0.000937 204	0.000167 643	2.27 E-08	31.253 411
rs147843 757	10	943823 59	A	0.02850 25	0.000686 841	0.000125 004	3.92 E-08	30.190 104
rs148393 137	10	143321 99	A	0.02631 68	0.000751 015	0.000130 389	8.43 E-09	33.175 335
rs149961 991	19	542695 12	C	0.00608 543	0.001581 49	0.000279 446	1.52 E-08	32.028 537
rs151035	2	161261	A	0.00711	0.001438	0.000249	8.48	33.164



772		546		746	69	822	E-09	472
rs169420	18	235833	G	0.00454	0.001684	0.000304	3.14	30.621
56		15		183	31	376	E-08	273
rs181638	4	404169	A	0.00606	0.001486	0.000272	4.71	29.835
428		41		912	13	076	E-08	487
rs482381	22	468350	C	0.00100	0.004158	0.000645	1.19	41.483
0		00		089	63	674	E-10	364
rs765297	9	757277	G	0.00709	0.001607	0.000243	4.29	43.480
09		48		225	31	754	E-11	626
rs108184	9	123634	G	0.01824	0.000860	0.000154	2.67	30.935
77		029		44	426	697	E-08	936
rs117217	20	142924	G	0.01397	0.001036	0.000179	7.35	33.441
780		67		25	9	305	E-09	746
rs132701	8	413325	G	0.01730	0.001112	0.000160	4.22	48.024
91		11		73	81	579	E-12	687
rs138415	2	134190	T	0.02434	0.000769	0.000138	2.83	30.818
604		944		47	211	56	E-08	764
rs147122	5	234518	G	0.01637	0.000937	0.000167	2.27	31.253
750		05		76	204	643	E-08	411
rs147843	10	943823	A	0.02850	0.000686	0.000125	3.92	30.190
757		59		25	841	004	E-08	104



rs148393	10	143321	A	0.02631	0.000751	0.000130	8.43	33.175
137		99		68	015	389	E-09	335

165

166 **Univariate MR Analysis**

167 **Glycemic traits (fasting blood glucose; Hba1c), diabetes traits (T1DM; T2DM)**
 168 **and vitiligo. IVW method was used as the main test method, and the results**
 169 **showed as S3Table; Cochran's Q(18) was used as the heterogeneity test, and the**
 170 **results showed that the Qpval value was < 0.05, suggesting that there was no**
 171 **heterogeneity. Therefore, we used the fixed effects model IVW approach for the**
 172 **study. The specific results are shown in S4 table. Mendelian randomisation results**
 173 **of causal effects between blood glucose characteristics ,diabetes mellitus and**
 174 **vitiligo.The figure show that T1DM has a causal relationship with the onset of**
 175 **vitiligo (p=0.018; 95%OR:1.000(1.000-1.000)). In sensitivity analysis (MR-**
 176 **Egger,Weighted Mode,Weighted Median), horizontal diversity was not found**
 177 **(p=0.018; 95%OR: 1.000-1.000). We performed Leaveone analysis on the results**
 178 **to evaluate the influence of single SNPs on the outcome, and the results are shown**
 179 **in S2Fig.**

180 **Supplementary Table 4.Unltivariate mendelian randomisation results of causal**
 181 **effects between blood glucose characteristics ,diabetes mellitus and vitiligo (p < 5**
 182 **× 10−8)**

outcome	exposure	method	nsnp	pval
----------------	-----------------	---------------	-------------	-------------



vitiligo	T1DM	Inverse variance weighted	13	0.018
		MR Egger		0.625
		Weighted median		0.543
		Weighted mode		0.231
	T2DM	Inverse variance weighted	56	0.878
		MR Egger		0.914
		Weighted median		0.61
		Weighted mode		0.712
	Fasting glucose	Inverse variance weighted	64	0.247
		MR Egger		0.269
		Weighted median		0.40
		Weighted mode		0.326
	HbA1c	Inverse variance weighted	26	0.303
		MR Egger		0.313
		Weighted median		0.107
		Weighted mode		0.18

183

S2-S5 Fig. MR leave-one-out sensitivity analysis.

184 **Multivariate MR Analysis**

185 **Based on the single-sample MR Analysis, we constructed a multivariate MR**

186 **Model to analyze the causal relationship between Hba1c and T1DM and vitiligo.**

187 **Associations were assessed using the multivariate IVW method as the primary**

188 **analysis method. The results showed that there was still a significant causal**



189 association between T1DM and the onset of vitiligo ($p=0.016$, 95% OR=
 190 1.000(1.000-1.000)), which was consistent with the results of univariate MR
 191 Analysis(S5Table).Horizontal pleiotropy was tested by MR-PRESSO method, and
 192 the results were consistent with the IVW results, and there was no horizontal
 193 pleiotropy.

194 **Supplementary Table 5.Multivariate mendelian randomisation results of causal**
 195 **effects between Type 1 diabetes, glycated haemoglobin and vitiligo ($p < 5 \times 10^{-8}$)**

Exposure	Outcome	SNP	pval	OR	95%OR
T1DM			0.016	1	1.000(1.000
	Vitiligo	32			to 1.000)
H1bAc			0.235	0.999	0.999(0.999to
					1.000)

196

197 Reverse MR Analysis

198 After the univariate MR Analysis demonstrated the causal association of T1DM
 199 in the pathogenesis of vitiligo, we further explored the causal association between
 200 vitiligo and blood glucose features and diabetes features. To this end, we
 201 performed reverse MR Analysis, the specific methods and procedures were
 202 consistent with univariate MR Analysis. The results of IVW method are shown
 203 in S10, with vitiligo as exposure, blood glucose features and glycosuria There
 204 were no significant causal associations between disease characteristics. S3 Fig.
 205 Reverse MR leave-one-out sensitivity analysis.

206 S6 Table.Reverse mendelian randomisation results of causal effects between
 207 vitiligo and Type 1 diabetes, Type 2 diabetes, glycated haemoglobin, fasting blood
 208 glucose ($p < 5 \times 10^{-8}$)

Exposur	NSNPs	Method	OR(95% CI)	P value	Beta	Se
---------	-------	--------	------------	---------	------	----



e

vitiligo	20	IVW	0.033(1.469,745224.259)	0.693	-3.409	8.638
	20		0(1.346,1.587)	0.063	-8.831	4.741
	21		0.092(0.003,2.435)	0.153	-2.391	1.674
	7		0(2.656,31658.427)	0.354	-9.297	10.031

209 **Taken together, our results suggest a significant causal association between T1DM**
 210 **and vitiligo without reverse causality. Other indicators such as blood glucose**
 211 **indicators; There is no significant causal association between T2DM and vitiligo.**

212 **S6-S9 Fig. Reverse MR leave-one-out sensitivity analysis.**

213

214

215

216

217 **Discussion.**

218 **Based on the results of this experiment, we conclude that there is a positive causal**
 219 **association between diabetes and the occurrence of vitiligo in T1 stage, and there**
 220 **is no negative causal association between diabetes and blood glucose traits in T2**
 221 **stage and the occurrence of vitiligo.**

222 **Assumptions to explain the outcomes**

223 **The method used in this study is bidirectional MR Analysis(19) combined with**
 224 **TSMR analysis, which has the advantage of further avoiding the interference of**
 225 **horizontal pleiotropy and heterogeneity on the study results compared with single**



226 **MR Analysis. Pleiotropy refers to genetic variants as SNPs that may be associated**
227 **with multiple phenotypes, which can lead to biased causal predictions from MR**
228 **Analysis.**

229 **A number of studies(20) have shown that diabetes induces different degrees of**
230 **metabolic problems, and many confounding factors may affect the outcome. Some**
231 **observational studies(4) have suggested that T1DM and T2DM are closely related**
232 **to the development of vitiligo. However, in our study, our results do not support**
233 **an association between T2DM and the onset of vitiligo. Because of the complex**
234 **pathogenesis of diabetes and its tendency to be complicated by other disease**
235 **complications, we believe that the association between type T2DM and vitiligo**
236 **mentioned in observational studies may be related to confounding factors. Two**
237 **MR Analyses(21, 22) suggested a significant causal association between T2DM and**
238 **depression, and one meta-analysis(23) concluded that vitiligo induces varying**
239 **degrees of psychological problems. This finding may be an important reason why**
240 **vitiligo is associated with T2DM in several observational studies.**

241 **To investigate the relationship between blood glucose and diabetes characteristics**
242 **and the pathogenesis of vitiligo. Supported by the available data, we conclude that**
243 **T1DM is causally related to vitiligo and that T1DM does not affect the onset of**
244 **vitiligo using Hba1c as a mediator.**

245 **Type 1 diabetes mellitus (T1DM)(24) is an autoimmune disease that results in the**
246 **destruction of insulin-producing pancreatic beta cells. Some studies suggest that**
247 **T cells and B cells play a crucial role(25) in the pathogenesis of diseases. It has**



248 **been shown(26) that β -cell-targeting autoantibodies targeting insulin or GAD65**
249 **can be detected in the serum early in the onset of type 1 diabetes. .In addition,**
250 **CD4+ and CD8+ T cells that are specific for β -cell autoantigens are detectable in**
251 **patients with stage 3 T1DM and even in patients with earlier stages of the**
252 **disease(27, 28) . The specific differentiation of T cells may be one of the**
253 **mechanisms of vitiligo induced by type 1 diabetes. Studies(29) have shown that**
254 **CD8+ cells play an important role in the pathogenesis of vitiligo. On the one hand,**
255 **production of the cytokine IFN- γ by CD8+ cells is central(29) to disease**
256 **progression. T cells(30) secrete IFN- γ and induce keratinocytes to produce T cell**
257 **chemokine receptor CXCR3 ligands such as CXCL9 and CXCL10, thereby**
258 **increasing the number of T cells in the body and promoting the development of**
259 **vitiligo. On the other hand, the concentration of melanocyte-specific CD8 cells(31)**
260 **was significantly increased in the early histological examination of vitiligo lesions,**
261 **and the clones generated by these cells could kill and pigmented cells in vitro(32).**
262 **We therefore suggest that the proliferation of CD8T cells induced by T1DM may**
263 **be a mediator of the effect of T1DM on the pathogenesis of vitiligo. We will explore**
264 **this issue in a follow-up study.**
265 **Our findings are consistent with those of some controlled experiments(33). We**
266 **provide theoretical support for this conclusion from the perspective of MR**
267 **Analysis.**

268 **Limitation analysis**

269 **The main potential limitations of this study are:**



270 **1. The analyzed population was limited to European populations, and since race**
271 **may have influenced our results, we may need to conduct the same MR Study**
272 **in other races for validation.**

273 **A controlled study(34) with 142 samples suggested an association between insulin**
274 **resistance and vitiligo. We did not include data on insulin resistance in our GWAS**
275 **database because the data were current for 2010 and the sample size was not large**
276 **enough to support the MR Analysis. Since insulin resistance is one of the major**
277 **clinical manifestations of type 2 diabetes, we believe that this may have had some**
278 **influence on our study. Further studies on this trait will be conducted after the**
279 **GWAS database updates the relevant data.**

280 **Conclusion.**

281 **The results of MR Studies have shown that T1DM is a potential risk factor for the**
282 **development of vitiligo, and Mendelian randomization (MR) results have provided**
283 **genetic evidence for a causal relationship between T1DM and vitiligo. Clinical use**
284 **of measures to treat T1DM may be a new idea for the prevention or treatment of**
285 **vitiligo.**

286 **Author Contributions**

287 **Conceptualization, S.H.methodology, software, and investigation, Y.C,S.H.;**
288 **validation,Y.C; formal analysis, S.H; data curation, Y.C. and S.H.; writing—**
289 **original draft preparation, S.H; writing—review and editing, S.H., Y.C. and J.C.;**
290 **visualization, Y.C; supervision, Y.C; project administration, J.G,J.Z.; All authors**
291 **have read and agreed to the published version of the manuscript.**



292 **Funding**

293 **This study was supported by the National Natural Science Foundation of**
294 **China(grant nos. 82074443), and by the Program of Science and Technology**
295 **Department of Sichuan Province (2021ZYD0089).**

296 **Abbreviations and standard terms used in this study**

297 **MR, Mendelian randomization; T1DM, Type 1 Diabetes Mellitus; T2DM, Type 2**
298 **Diabetes Mellitus; SNPs ,Single-nucleotide polymorphisms; NA, Not available;**
299 **SE,standard error; OR,Odds ratio; CI, Confidence interval; IV, Instrumental**
300 **variables; IVW,Inverse variance weighting; MR-PRESSO, Mendelian**
301 **Randomization Pleiotropy RESidual Sum and Outlier.**

302 **Acknowledgments**

303 **Special thanks to the IEU open GWAS project developed by The MRC Integrative**
304 **Epidemiology Unit (IEU) at the University of Bristol.We want to acknowledge the**
305 **participants and investigators of the FinnGen study.We would also like to**
306 **acknowledge the summary statistics provided by the UK Biobank and the**
307 **European Bioinformatics Institute.**

308 **“†” on behalf of the cofirst author, The order of authorship was discussed and**
309 **agreed upon by all the authors.**

310 **Data Availability Statement**

311 **Publicly available datasets were analyzed in this study. This data can be found**
312 **here: All GWAS data used in this study are available in the IEU open GWAS**
313 **project (<https://gwas.mrcieu.ac.uk/>). Detailed data on vitiligo are available in the**



314 **GWAS through the UK Biobank data**(<http://www.nealelab.is/uk-biobank/c>).
315 **Summary statistics for T1DM and T2DM are from the FinnGen Consortium**
316 **(<https://r8.finngen.fi>).**

317 **References.**

- 318 **1. Alikhan A, Felsten LM, Daly M, Petronic-Rosic V. Vitiligo: a comprehensive**
319 **overview Part I. Introduction, epidemiology, quality of life, diagnosis, differential**
320 **diagnosis, associations, histopathology, etiology, and work-up. J Am Acad**
321 **Dermatol. 2011;65(3):473-91.**
- 322 **2. Afkhami-Ardekani M, Ghadiri-Anari A, Ebrahimzadeh-Ardakani M, Zaji N.**
323 **Prevalence of vitiligo among type 2 diabetic patients in an Iranian population. Int**
324 **J Dermatol. 2014;53(8):956-8.**
- 325 **3. Chang HC, Lin MH, Huang YC, Hou TY. The association between vitiligo and**
326 **diabetes mellitus: A systematic review and meta-analysis. J Am Acad Dermatol.**
327 **2019;81(6):1442-5.**
- 328 **4. Hosseini E, Mokhtari Z, Salehi Abargouei A, Mishra GD, Amani R. Maternal**
329 **circulating leptin, tumor necrosis factor-alpha, and interleukine-6 in association**
330 **with gestational diabetes mellitus: a systematic review and meta-analysis. Gynecol**
331 **Endocrinol. 2023;39(1):2183049.**
- 332 **5. Burgess S, Thompson SG. Multivariable Mendelian randomization: the use of**
333 **pleiotropic genetic variants to estimate causal effects. Am J Epidemiol.**
334 **2015;181(4):251-60.**
- 335 **6. Katan MB. Apolipoprotein E isoforms, serum cholesterol, and cancer. Lancet.**



- 336 1986;1(8479):507-8.
- 337 7. Davey Smith G, Ebrahim S. What can mendelian randomisation tell us about
338 modifiable behavioural and environmental exposures? *Bmj.* 2005;330(7499):1076-
339 9
- 340 8. Skrivankova VW, Richmond RC, Woolf BAR, Yarmolinsky J, Davies NM,
341 Swanson SA, et al. Strengthening the Reporting of Observational Studies in
342 Epidemiology Using Mendelian Randomization: The STROBE-MR Statement.
343 *Jama.* 2021;326(16):1614-21.
- 344 9. Gough A, Sitch A, Ferris E, Marshall T. Within-subject variation of HbA1c:
345 A systematic review and meta-analysis. *PLoS One.* 2023;18(8):e0289085.
- 346 10. Ghosh K, Das K, Ghosh S, Chakraborty S, Jatua SK, Bhattacharya A, et al.
347 Prevalence of Skin Changes in Diabetes Mellitus and its Correlation with Internal
348 Diseases: A Single Center Observational Study. *Indian J Dermatol.*
349 2015;60(5):465-9.
- 350 11. Kordonouri O, Maguire AM, Knip M, Schober E, Lorini R, Holl RW, et al.
351 Other complications and associated conditions with diabetes in children and
352 adolescents. *Pediatr Diabetes.* 2009;10 Suppl 12:204-10.
- 353 12. Greenland S. An introduction to instrumental variables for epidemiologists.
354 *Int J Epidemiol.* 2000;29(4):722-9.
- 355 13. Burgess S, Thompson SG. Avoiding bias from weak instruments in Mendelian
356 randomization studies. *Int J Epidemiol.* 2011;40(3):755-64.
- 357 14. Burgess S, Thompson SG. Interpreting findings from Mendelian



- 358 randomization using the MR-Egger method. *Eur J Epidemiol.* 2017;32(5):377-89.
- 359 15. Bowden J, Davey Smith G, Haycock PC, Burgess S. Consistent Estimation in
360 Mendelian Randomization with Some Invalid Instruments Using a Weighted
361 Median Estimator. *Genet Epidemiol.* 2016;40(4):304-14.
- 362 16. Bowden J, Del Greco MF, Minelli C, Davey Smith G, Sheehan N, Thompson
363 J. A framework for the investigation of pleiotropy in two-sample summary data
364 Mendelian randomization. *Stat Med.* 2017;36(11):1783-802.
- 365 17. Nikolakopoulou A, Mavridis D, Salanti G. How to interpret meta-analysis
366 models: fixed effect and random effects meta-analyses. *Evid Based Ment Health.*
367 2014;17(2):64.
- 368 18. Verbanck M, Chen CY, Neale B, Do R. Detection of widespread horizontal
369 pleiotropy in causal relationships inferred from Mendelian randomization
370 between complex traits and diseases. *Nat Genet.* 2018;50(5):693-8.
- 371 19. Paaby AB, Rockman MV. The many faces of pleiotropy. *Trends Genet.*
372 2013;29(2):66-73.
- 373 20. Kang P, Zhang WG, Ji ZH, Shao ZJ, Li CY. Association between vitiligo and
374 relevant components of metabolic syndrome: a systematic review and meta-
375 analysis. *J Dtsch Dermatol Ges.* 2022;20(5):629-41.
- 376 21. Yuan S, Merino J, Larsson SC. Causal factors underlying diabetes risk
377 informed by Mendelian randomisation analysis: evidence, opportunities and
378 challenges. *Diabetologia.* 2023;66(5):800-12.
- 379 22. Possidente C, Fanelli G, Serretti A, Fabbri C. Clinical insights into the cross-



- 380 **link between mood disorders and type 2 diabetes: A review of longitudinal studies**
381 **and Mendelian randomisation analyses. *Neurosci Biobehav Rev.* 2023;152:105298.**
- 382 **23. Lai YC, Yew YW, Kennedy C, Schwartz RA. Vitiligo and depression: a**
383 **systematic review and meta-analysis of observational studies. *Br J Dermatol.***
384 **2017;177(3):708-18.**
- 385 **24. Yue Y, Tang Y, Tang J, Shi J, Zhu T, Huang J, et al. Maternal infection during**
386 **pregnancy and type 1 diabetes mellitus in offspring: a systematic review and meta-**
387 **analysis. *Epidemiol Infect.* 2018;146(16):2131-8.**
- 388 **25. Felton JL, Conway H, Bonami RH. B Quiet: Autoantigen-Specific Strategies**
389 **to Silence Raucous B Lymphocytes and Halt Cross-Talk with T Cells in Type 1**
390 **Diabetes. *Biomedicines.* 2021;9(1).**
- 391 **26. Krischer JP, Lynch KF, Schatz DA, Ilonen J, Lernmark Å, Hagopian WA, et**
392 **al. The 6 year incidence of diabetes-associated autoantibodies in genetically at-risk**
393 **children: the TEDDY study. *Diabetologia.* 2015;58(5):980-7.**
- 394 **27. Oling V, Reijonen H, Simell O, Knip M, Ilonen J. Autoantigen-specific**
395 **memory CD4+ T cells are prevalent early in progression to Type 1 diabetes. *Cell***
396 ***Immunol.* 2012;273(2):133-9.**
- 397 **28. Roep BO, Peakman M. Antigen targets of type 1 diabetes autoimmunity. *Cold***
398 ***Spring Harb Perspect Med.* 2012;2(4):a007781.**
- 399 **29. Frisoli ML, Essien K, Harris JE. Vitiligo: Mechanisms of Pathogenesis and**
400 **Treatment. *Annu Rev Immunol.* 2020;38:621-48.**
- 401 **30. Rashighi M, Agarwal P, Richmond JM, Harris TH, Dresser K, Su MW, et al.**



402 **CXCL10 is critical for the progression and maintenance of depigmentation in a**
403 **mouse model of vitiligo. *Sci Transl Med.* 2014;6(223):223ra23.**

404 **31. Richmond JM, Masterjohn E, Chu R, Tedstone J, Youd ME, Harris JE.**
405 **CXCR3 Depleting Antibodies Prevent and Reverse Vitiligo in Mice. *J Invest***
406 ***Dermatol.* 2017;137(4):982-5.**

407 **32. Edwards J, Wilmott JS, Madore J, Gide TN, Quek C, Tasker A, et al. CD103(+)**
408 **Tumor-Resident CD8(+) T Cells Are Associated with Improved Survival in**
409 **Immunotherapy-Naïve Melanoma Patients and Expand Significantly During**
410 **Anti-PD-1 Treatment. *Clin Cancer Res.* 2018;24(13):3036-45.**

411 **33. Gould IM, Gray RS, Urbaniak SJ, Elton RA, Duncan LJ. Vitiligo in diabetes**
412 **mellitus. *Br J Dermatol.* 1985;113(2):153-5.**

413 **34. Ibrahim S, El-Tahlawi S, Mogawer RM, El Ansary M, Esmat S, El-Hawary**
414 **M. Different vitiligo characteristics as predictors of increased risk of metabolic**
415 **syndrome and insulin resistance: A case-control study. *J Cosmet Dermatol.***
416 **2022;21(12):7170-7.**

417 **Supporting information.**

418 **S1 Fig. Study design and workflow.**

419 **S2-S5 Fig. MR leave-one-out sensitivity analysis.**

420 **S6-S9 Fig. Reverse MR leave-one-out sensitivity analysis.**

421 **S1 Table.Data Source**

422 **S2 Table.Genetic variants that were used as instruments for diabetes traits and**
423 **blood sugar traits**

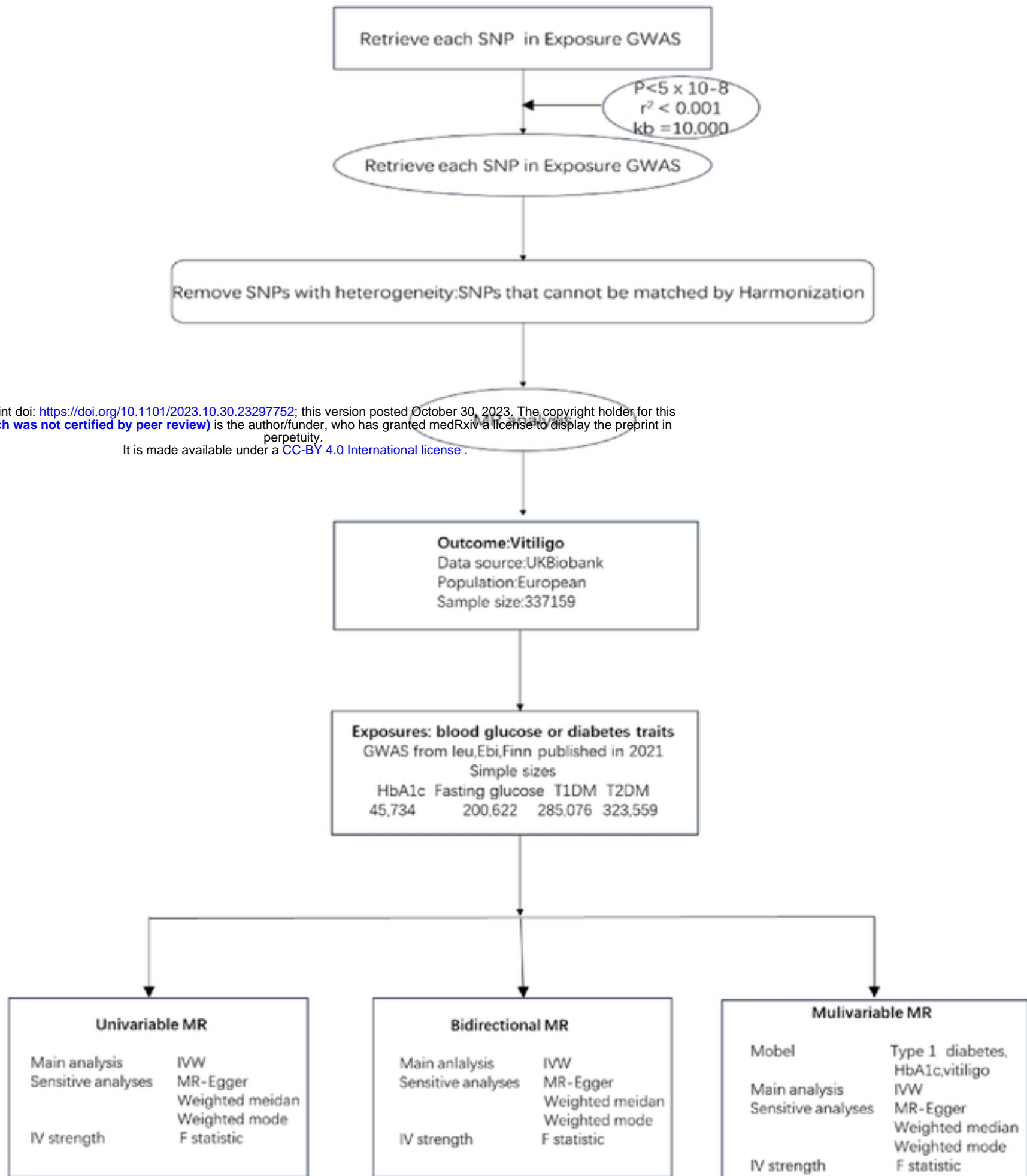
424 **S3 Table.Univariate mendelian randomisation results of causal effects between**
425 **Type 1 diabetes and vitiligo ($p < 5 \times 10^{-8}$)**

426 **S4 Table. Mendelian randomisation results of causal effects between blood**
427 **glucose characteristics ,diabetes mellitus and vitiligo.**

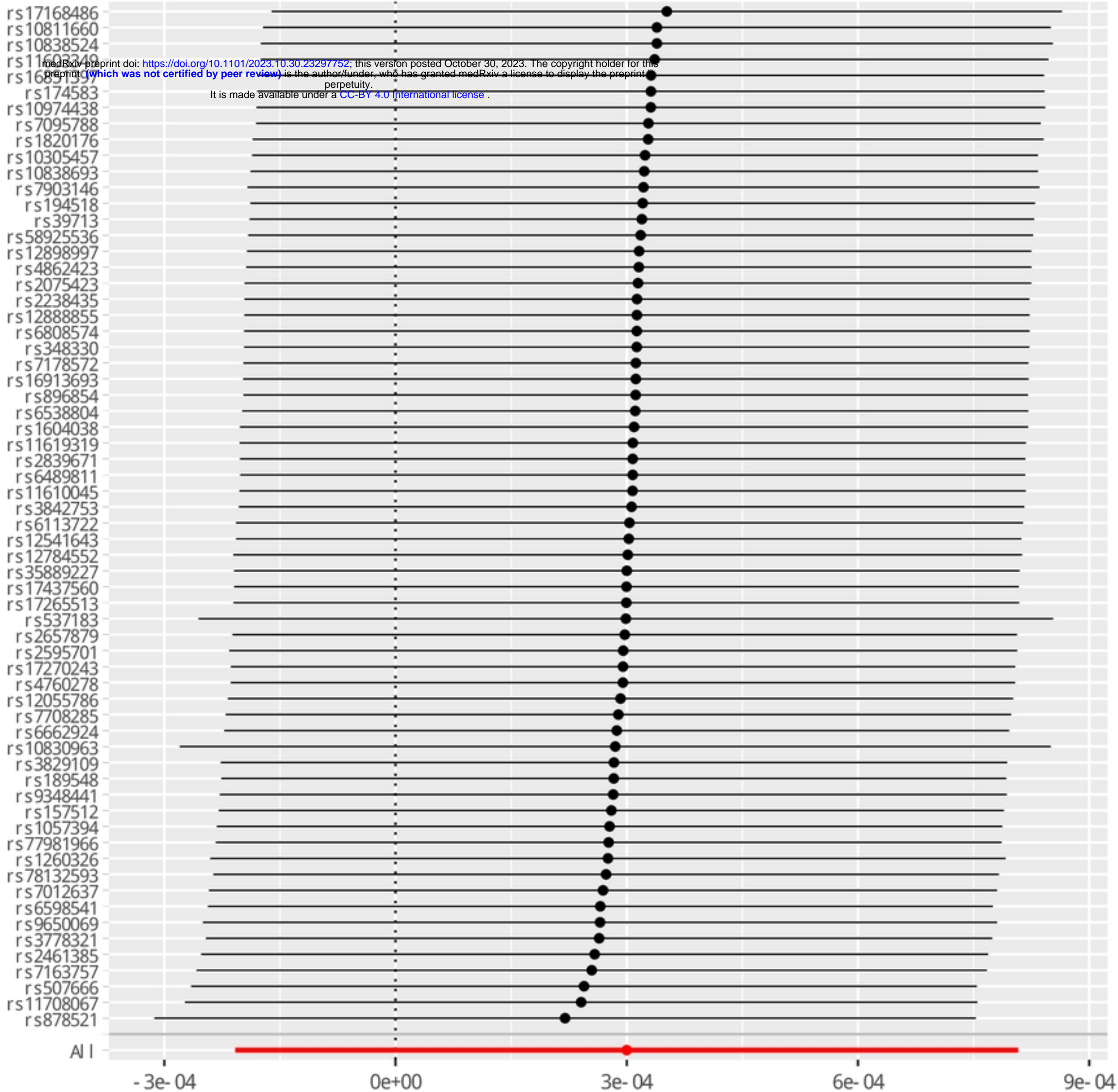
428 **S5 Table.Multivariate mendelian randomisation results of causal effects between**
429 **Type 1 diabetes, glycated haemoglobin and vitiligo ($p < 5 \times 10^{-8}$)**



430 **S6 Table.Reverse mendelian randomisation results of causal effects between**
431 **vitiligo and Type 1 diabetes,Type 2 diabetes, glycated haemoglobin, fasting blood**
432 **glucose ($p < 5 \times 10^{-8}$)**

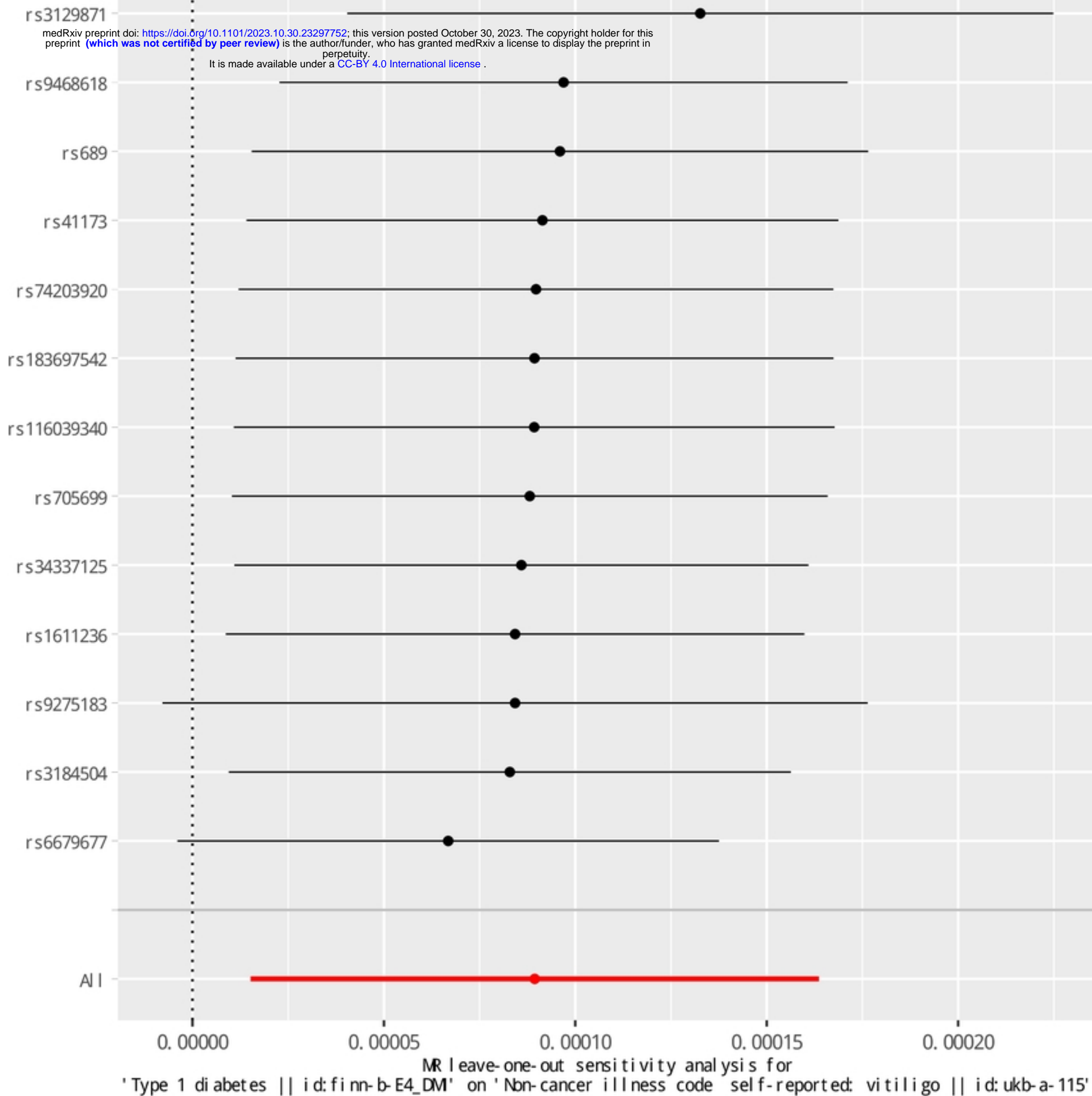


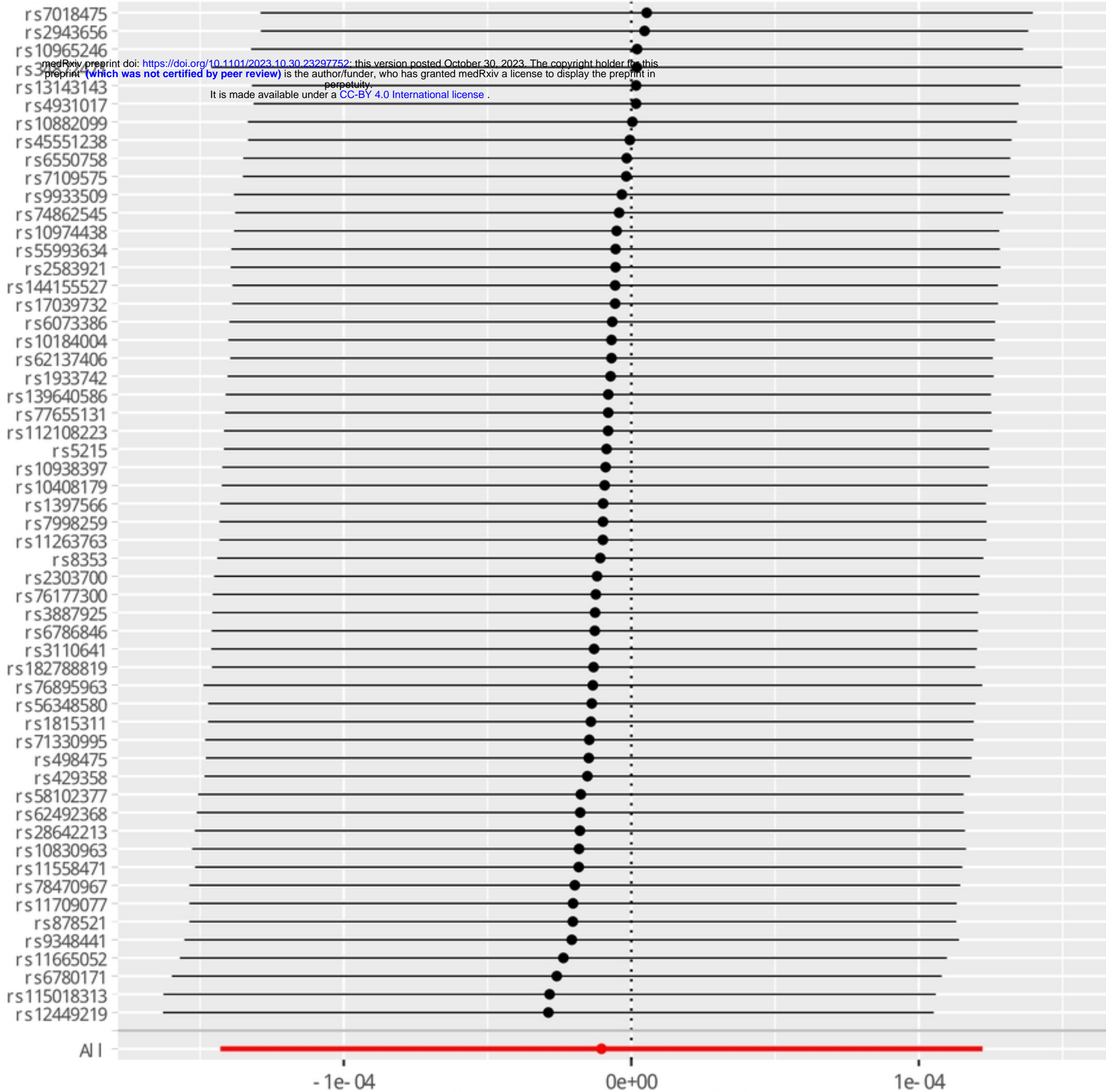
medRxiv preprint doi: <https://doi.org/10.1101/2023.10.30.23297752>; this version posted October 30, 2023. The copyright holder for this preprint (which was not certified by peer review) is the author/funder, who has granted medRxiv a license to display the preprint in perpetuity. It is made available under a [CC-BY 4.0 International license](https://creativecommons.org/licenses/by/4.0/).



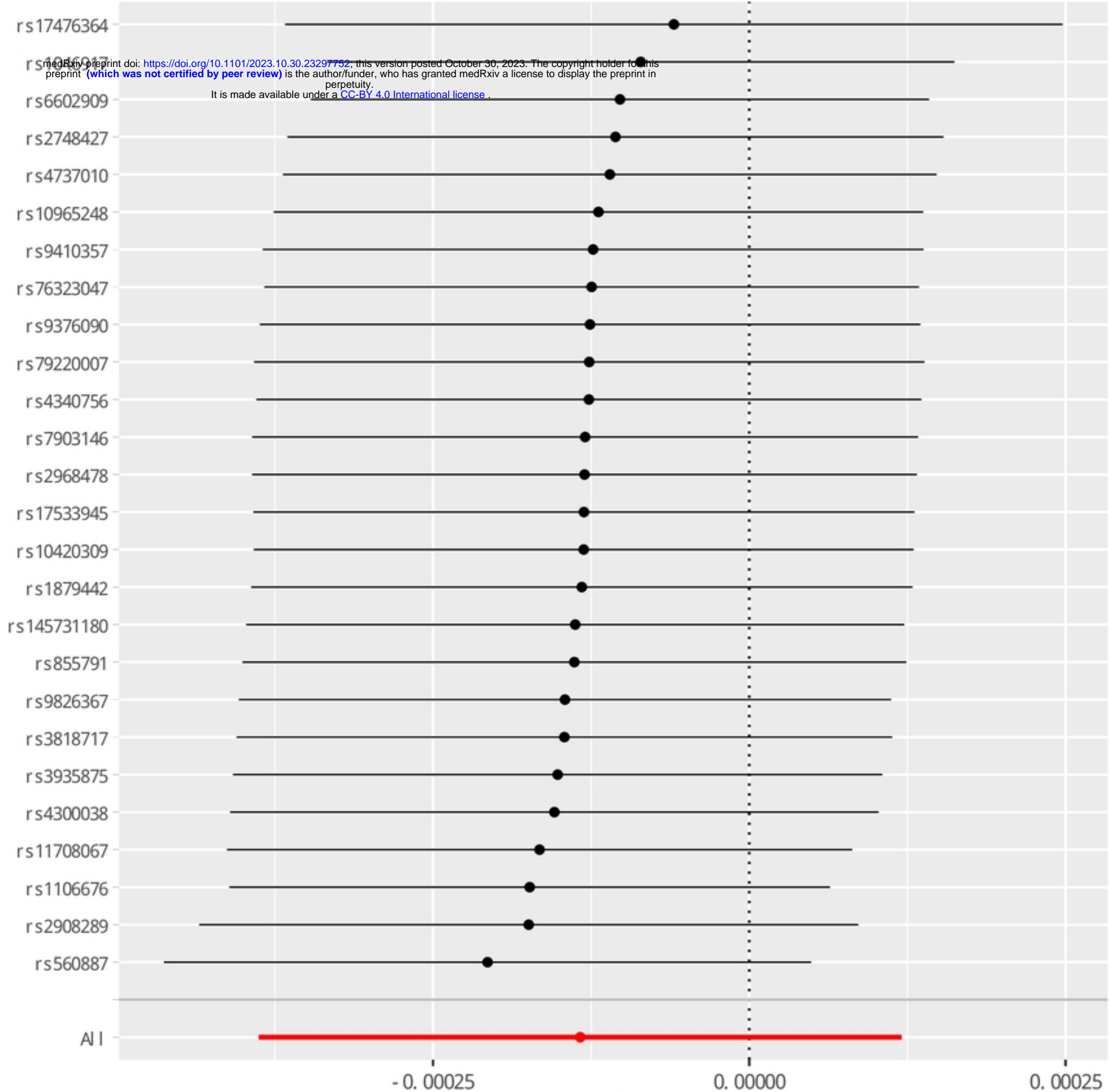
MR leave-one-out sensitivity analysis for 'Fasting glucose || id: ebi-a-GCST90002232' on 'Nbn-cancer illness code self-reported: vitiligo || id: ukb-a-115'

medRxiv preprint doi: <https://doi.org/10.1101/2023.10.30.23297752>; this version posted October 30, 2023. The copyright holder for this preprint (which was not certified by peer review) is the author/funder, who has granted medRxiv a license to display the preprint in perpetuity. It is made available under a [CC-BY 4.0 International license](https://creativecommons.org/licenses/by/4.0/).



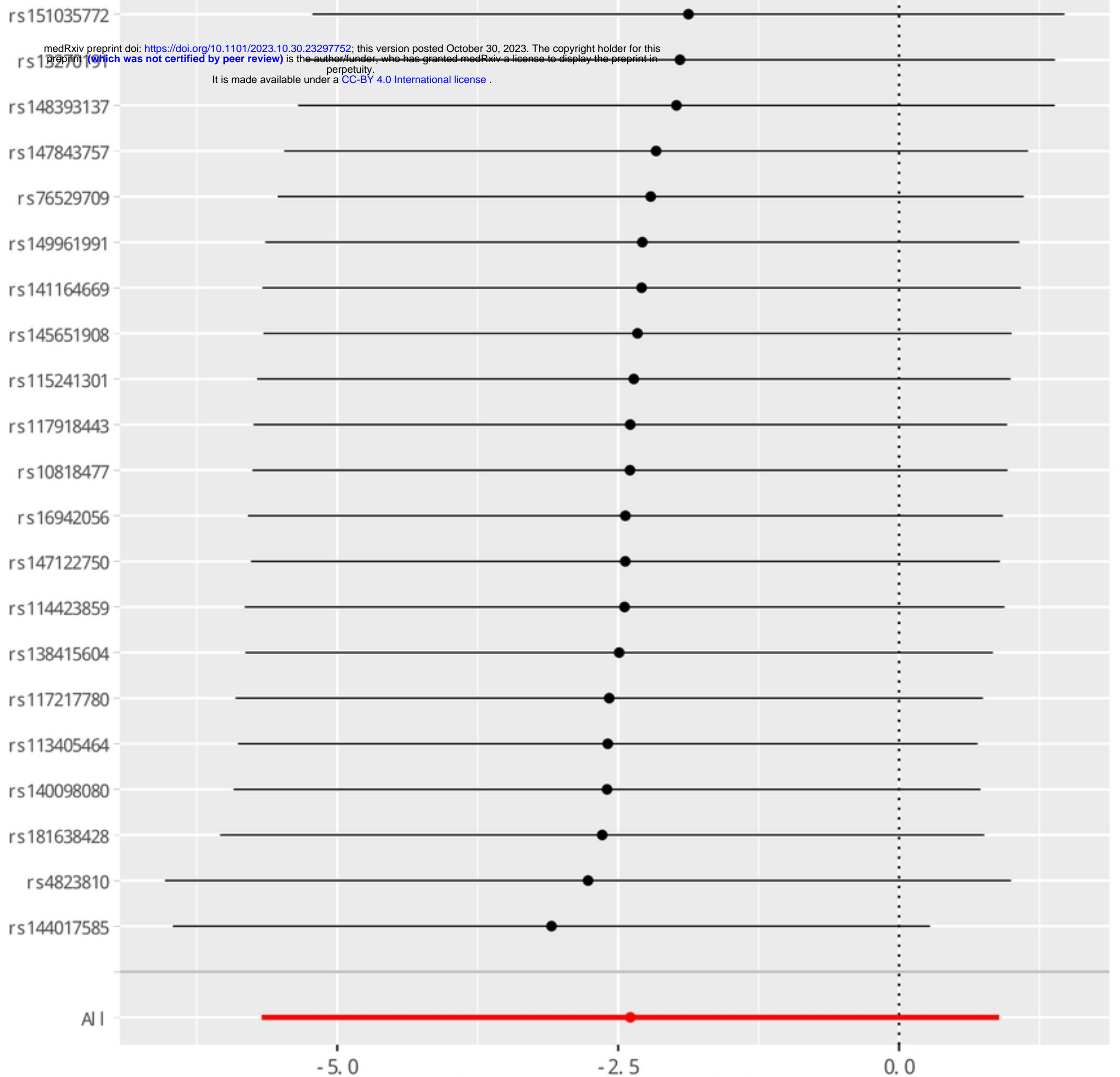


MR leave-one-out sensitivity analysis for 'Type 2 diabetes || id: finn-b-E4_DM2' on 'Nbn-cancer illness code self-reported: vitiligo || id: ukb-a-115'



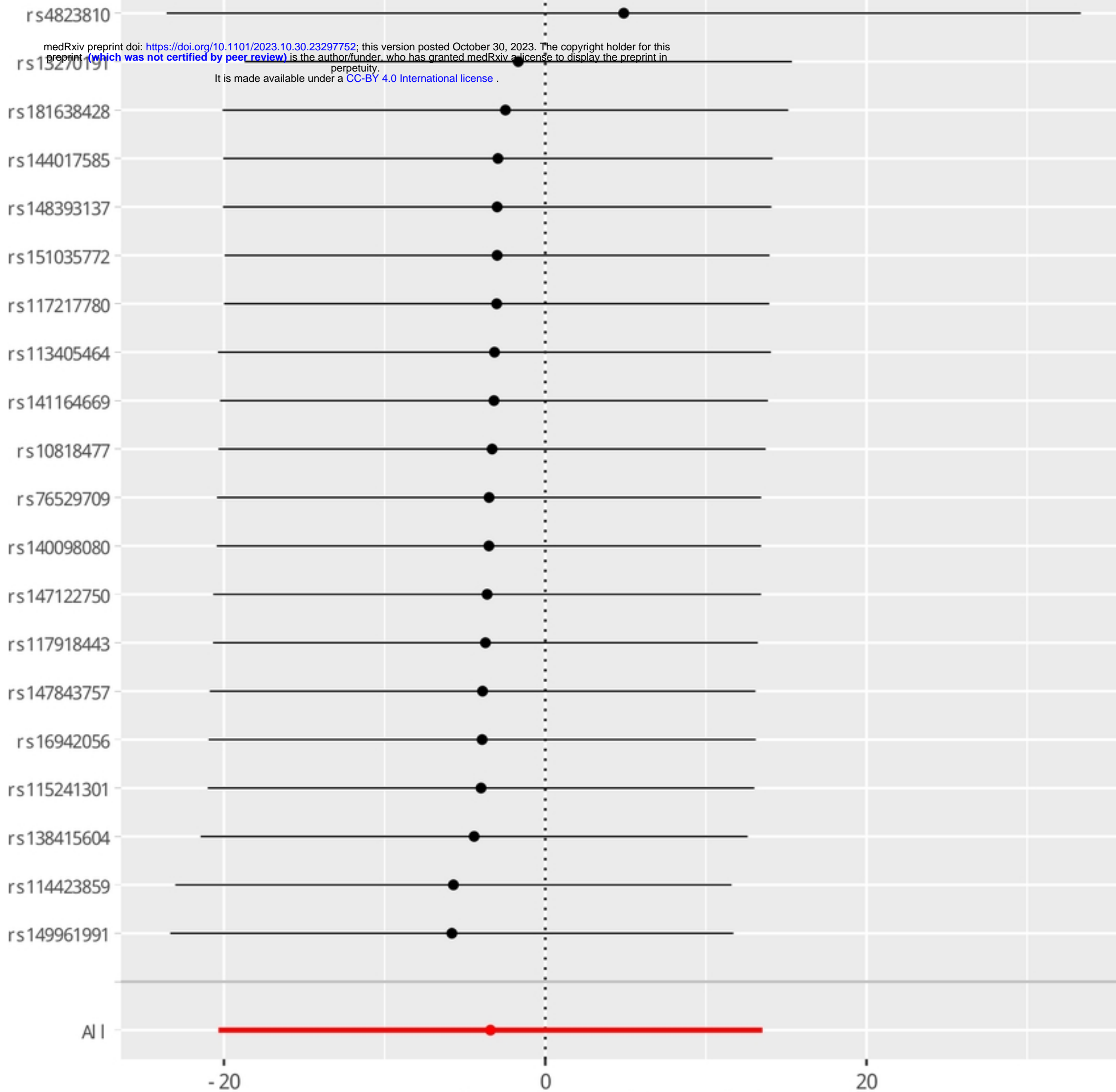
MR leave-one-out sensitivity analysis for 'HbA1c || id:ieu-b-4842' on 'Nbn-cancer illness code self-reported: vitiligo || id:ukb-a-115'

medRxiv preprint doi: <https://doi.org/10.1101/2023.10.30.23297752>; this version posted October 30, 2023. The copyright holder for this preprint (which was not certified by peer review) is the author/funder, who has granted medRxiv a license to display the preprint in perpetuity. It is made available under a [CC-BY 4.0 International license](https://creativecommons.org/licenses/by/4.0/).

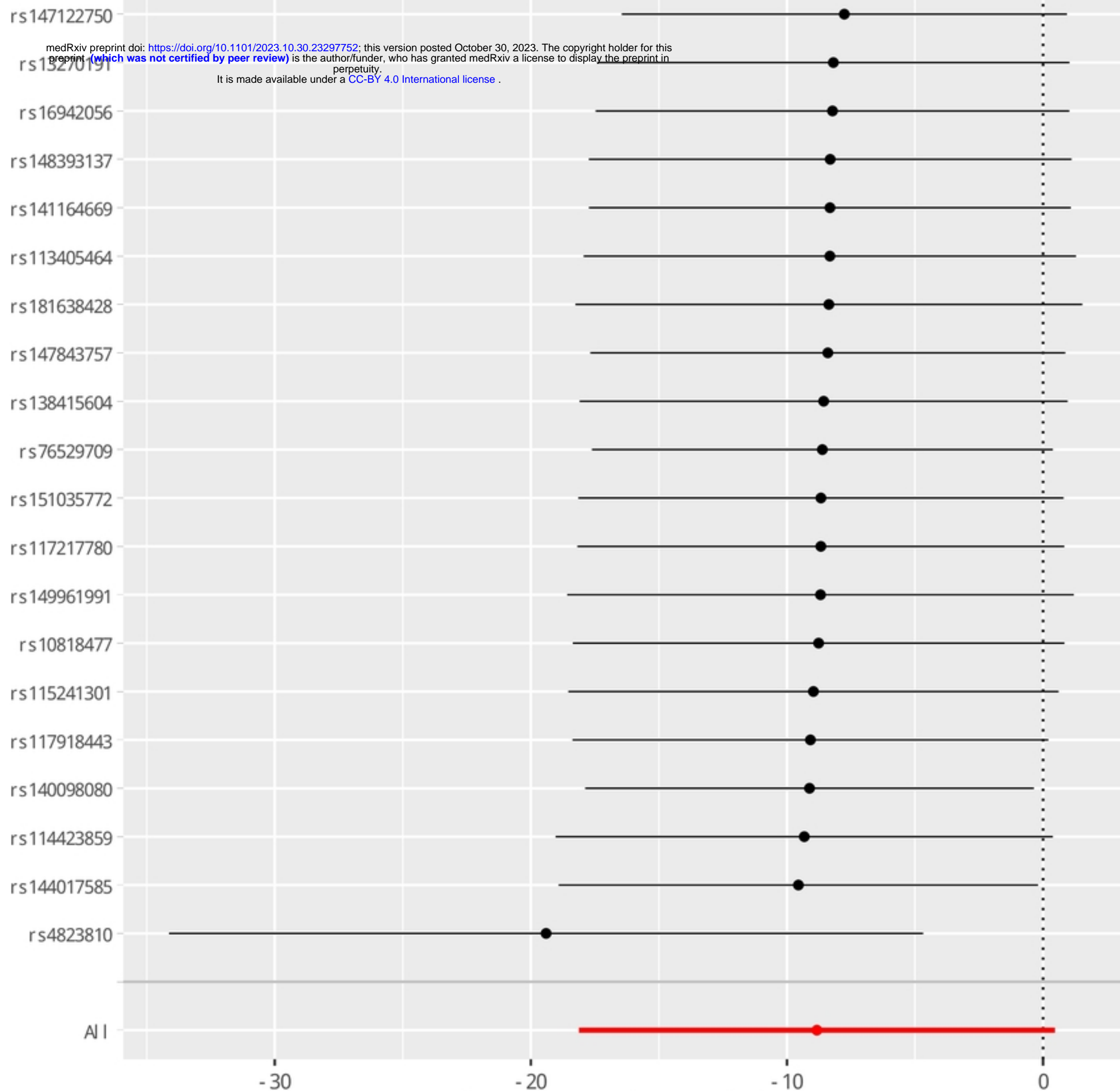


MR leave-one-out sensitivity analysis for 'Nbn-cancer illness code self-reported: vitiligo || id:ukb-a-115' on 'Fasting glucose || id:ebi-a-GCST90002232'

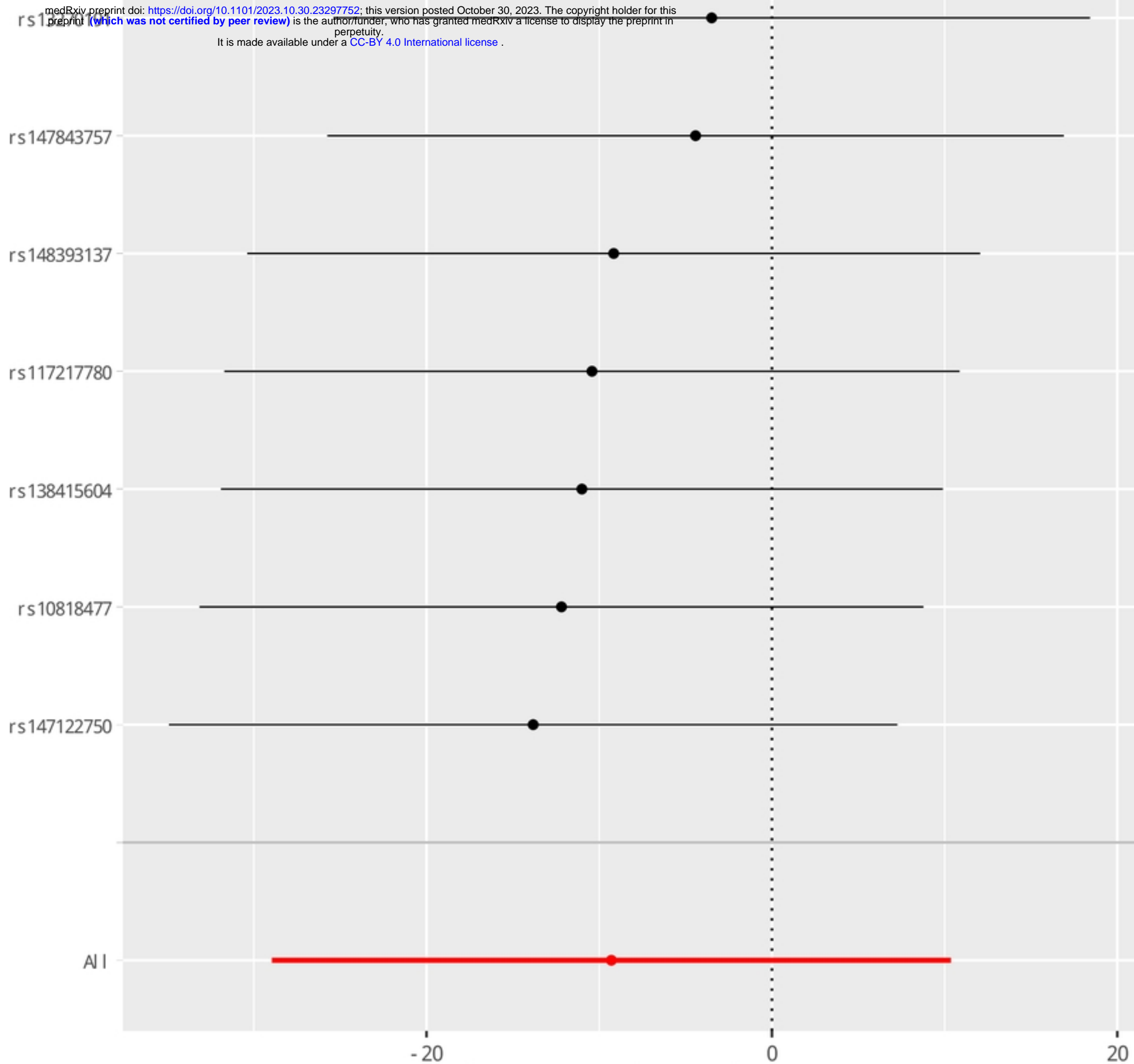
medRxiv preprint doi: <https://doi.org/10.1101/2023.10.30.23297752>; this version posted October 30, 2023. The copyright holder for this preprint (which was not certified by peer review) is the author/funder, who has granted medRxiv a license to display the preprint in perpetuity. It is made available under a [CC-BY 4.0 International license](https://creativecommons.org/licenses/by/4.0/).



medRxiv preprint doi: <https://doi.org/10.1101/2023.10.30.23297752>; this version posted October 30, 2023. The copyright holder for this preprint (which was not certified by peer review) is the author/funder, who has granted medRxiv a license to display the preprint in perpetuity. It is made available under a [CC-BY 4.0 International license](https://creativecommons.org/licenses/by/4.0/).



medRxiv preprint doi: <https://doi.org/10.1101/2023.10.30.23297752>; this version posted October 30, 2023. The copyright holder for this preprint (which was not certified by peer review) is the author/funder, who has granted medRxiv a license to display the preprint in perpetuity. It is made available under a [CC-BY 4.0 International license](https://creativecommons.org/licenses/by/4.0/).



MR leave-one-out sensitivity analysis for
'Nbn-cancer illness code self-reported: vitiligo || id:ukb-a-115' on 'HbA1c || id:ieu-b-4842'