

1                   **Mendelian Randomization Study of Whole Blood Viscosity and**  
2   **Cardiovascular Diseases**

3  
4  
5 Youngjune Bhak<sup>a\*</sup>, Albert Tenesa<sup>a,b\*</sup>  
6

7 <sup>a</sup>MRC Human Genetics Unit at the MRC Institute of Genetics and Molecular Medicine,  
8 University of Edinburgh, Western General Hospital, Edinburgh, UK.

9 <sup>b</sup>The Roslin Institute, University of Edinburgh, Easter Bush Campus, Midlothian, EH25 9RG,

10 United Kingdom  
11  
12  
13

14 **\*Corresponding author:**

15 Youngjune Bhak Ph.D.

16 The Roslin Institute, Easter Bush Campus, Midlothian, EH25 9RG, United Kingdom

17 Tel.: +44 (0) 747 507 5361

18 Email: [ybhak@ed.ac.uk](mailto:ybhak@ed.ac.uk)  
19

20 Albert Tenesa Ph.D.

21 The Roslin Institute, Easter Bush Campus, Midlothian, EH25 9RG, United Kingdom

22 Tel.: +44 (0) 131 651 9226

23 Email: [Albert.Tenesa@ed.ac.uk](mailto:Albert.Tenesa@ed.ac.uk)  
24

## 1 **Abstract**

2 **Aims:** Association between whole blood viscosity (WBV) and an increased risk of  
3 cardiovascular disease (CVD) has been reported. However, the causal relationship between  
4 WBV and CVD remains not thoroughly investigated. The aim of this study was to investigate  
5 the causal relation between WBV and CVD.

6 **Methods:** Mendelian randomization was employed to investigate the casual relationship  
7 between WBV and CVD. Calculated WBV, derived polygenic risk score (PRS) for WBV, and  
8 medical records from 378,210 individuals participating in the UK biobank study were analyzed.

9 **Results:** The means of calculated WBVs were 16.9 (standard deviation: 0.8) and 55.1 (standard  
10 deviation: 17.2) for high shear rate (HSR) and low shear rate (LSR), respectively. 37,859  
11 (10.0%) major cardiovascular event (MACE) consisted of 23,894 (6.3%) cases of myocardial  
12 infarction (MI), 9,245 (2.4%) cases of ischemic stroke, 10,377 (2.7%) cases of  
13 revascularization, and 5,703 (1.5%) cases of Coronary heart disease-related death. WBVs of  
14 individuals with PRS above median were significantly higher than the group that were below  
15 median for both low shear rate ( $P<0.001$ ) and high shear rate ( $P<0.001$ ). The odd ratios (95%  
16 confidence intervals) for MACE in the higher WBV group were 1.22 (1.19 - 1.25) and 1.14  
17 (1.12 - 1.16), for HSR and LSR, respectively. The higher PRS group was insignificant with all  
18 outcomes, for both HSR and LSR.

19 **Conclusions:** The Mendelian randomization analysis conducted in this study does not support  
20 a causal relationship between calculated WBV and CVD.

21 **Keywords:** Whole blood viscosity, cardiovascular disease, Mendelian Randomization

22

## 1 **Introduction**

2 Cardiovascular diseases (CVD), including heart attack and stroke, are one of leading causes of  
3 morbidity and mortality globally [1]. Association between the risk of CVD and Whole blood  
4 viscosity (WBV), a measure of the thickness and flow resistance of bulk blood, have been  
5 reported [2-5]. However, establishing a causal relationship between WBV and CVD remains  
6 challenging due to the potential biases from confounding factors in traditional studies lacking  
7 randomized trial designs.

8 Mendelian randomization (MR), an epidemiological method, utilizes genetic variants robustly  
9 associated with an exposure of interest as instrumental variables (IVs) to investigate the causal  
10 effects of risk factors on specific outcomes [6]. The advantage of MR lies in the random  
11 assignment of these genetic variants at conception, rendering MR studies less susceptible to  
12 confounding factors compared to traditional observational studies [7]. Furthermore, MR is  
13 robust against reverse causality since the development of diseases does not alter individuals'  
14 genotypes. MR have been utilized to investigate casual relationships of risk factors such as  
15 blood pressure [8, 9], obesity [10], type 2 diabetes mellitus [11] and, profile of blood lipids  
16 [12-14] in and CVD.

17 The objective of this study was to use MR to examine the causal relationship between WBV  
18 and CVD. WBV of individuals was calculated by applying the formula previously reported  
19 [15]. Polygenic risk score (PRS), a quantitative genetic risk score, representing the cumulative  
20 impact of genetic variants, was derived and used as the instrumental variable in MR. Causal  
21 relationship of WBV on risk of CVDs were assessed by comparing individuals stratified by  
22 their derived PRS.

23

## 1 **Methods**

### 2 **Participants**

3 The UK Biobank (UKB) is a prospective research resource of population-based cohort study  
4 that include comprehensive phenotype and genotype data from approximately 500,000  
5 participants recruited in 2006 - 2010 residing in England, Scotland, and Wales  
6 ([www.ukbiobank.ac.uk](http://www.ukbiobank.ac.uk)). This an open-access resource was established to support  
7 investigations into the factors influencing various health outcomes [16].

### 8 9 **Ethics Statement**

10 The UK Biobank project was approved by the National Research Ethics Service Committee  
11 North West-Haydock (REC reference: 11/NW/0382). Participants provided written informed  
12 consent to participate in the UK Biobank. An electronic signed consent was obtained from the  
13 participants. This research was conducted using the UK Biobank Resource under project 44986.

### 14 15 **Extrapolation of Whole Blood Viscosity**

16 WBV was calculated for both low shear rate (LSR) ( $0.5 \text{ sec}^{-1}$ ) and high shear rate (HSR) ( $208$   
17  $\text{sec}^{-1}$ ) from hematocrit (HCT) and total plasma protein concentration (TP) using the validated  
18 formulation [15]. HCT was calculated by multiplying red blood cell count by the mean  
19 corpuscular volume.

$$20 \text{ HSR: WBV } (208 \text{ sec}^{-1}) = (0.12 \times \text{HCT}) + (0.17 \text{ TP}) - 2.07$$

$$21 \text{ LSR: WBV } (0.5 \text{ sec}^{-1}) = (1.89 \times \text{HCT}) + (3.76 \text{ TP}) - 78.42$$

22

### 23 **Study outcomes**

1 The data pertaining to each component of the participants' outcomes in the present study was  
2 accessible through the UK Biobank study [16]. The primary outcome of the study was major  
3 cardiovascular events (MACE), which encompassed a composite outcome involving the  
4 occurrence of non-fatal MI, coronary revascularization (defined as “percutaneous transluminal  
5 coronary angioplasty, PTCA” or “coronary artery bypass grafting, CABG”), ischemic stroke,  
6 or death due to coronary heart disease (CHD).

7 These specific outcomes were defined and categorized as follow: non-fatal MI defined  
8 algorithmically by UK Biobank (ICD9: 410.X, 411.0.X, 412.X, 429.79; ICD10: I21.X, I22.X,  
9 I23.X, I24.1, I25.2; self-report 20002: 1075), PTCA or CABG (self-report 20004: 1070, 1095,  
10 1523; Procedures (OPCS): K50.1, K40.X, K41.X, K42.X, K43.X, K44.X), ischemic stroke  
11 (ICD9: 434.X, 436.X; ICD10: I63.X, I64.X; self-report 20002: 1583), and death due to CHD  
12 (Death 40001, 40002: I21.X, I22.X, I23.X, I24.X, I25.1, I25.2, I25.3, I25.5, I25.6, I25.8, I25.9)  
13 [14].

14

### 15 **Genetic instrument.**

16 We conducted a split-sample genome wide association study (GWAS) and MR using the UK  
17 Biobank dataset. The dataset was randomly split into two halves, and for each half, GWASs  
18 for WBVs was performed. The resulting summary statistics from each half were then used to  
19 derive the PRS of WBV (WBV-PRS) for the other half to avoid sample overlap [17].

20 To ensure homogeneity, we limited our analyses to unrelated individuals of White British  
21 ancestry. Additionally, individuals with more than 10% missing genotypes or those with  
22 discrepancies between recorded sex and genetically determined sex were excluded. Following  
23 these exclusions, the final dataset consisted of 378,213 participants (Table 1).

24 GWASs were conducted using genotypes of the unrelated White British individuals. White  
25 British individuals are inferred from UK Biobank records. The unrelated individuals were

1 identified using the KING software with following options: --unrelated --degree 2 (version  
2 2.2.8) [18]. Autosomal genotypes of unrelated White British were further filtered using PLINK  
3 software (version 1.90p) with the following options; --geno 0.01, --hwe 1e-15, --maf 0.01, and  
4 --mind 0.1 [19]. For the GWASs of WBVs, REGENIE software (version 3.2.2) was utilized  
5 with the following option; --apply-rint [20]. Covariates considered in the GWAS included age,  
6 age square, genetic principal components 1 to 20, sex, and genotyping array.  
7 To select independent instrumental variants for Mendelian randomization, summary statistics  
8 were clumped to extract index variants using PLINK software with the following options; --  
9 clump, --clump-p1 0.00000005, --clump-r2 0.001, and --clump-kb 10000 [19]. To avoid the  
10 risk of weak instrument bias, variants with F-statistics  $> 10$  were selected [21]. The variants  
11 were filtered out if a variant had a reported association with CVD and or factors related with  
12 blood viscosity or CVD. The associations were investigated by utilizing PhenoScanner  
13 database with the following options; catalogue: diseases & traits, p-value:  $5 \times 10^{-8}$ , proxies -  
14 EUR,  $r^2$ : 0.8, and build: 37 [22, 23]. Such factors include obesity [10, 24-26], blood pressure  
15 [8, 9, 27], lipid traits [12-14, 28-32], type 2 diabetes mellitus [11, 33, 34], smoking and alcohol  
16 intake [35-37]. For HSR, 53 variant from one half split and 50 variants from the other half split  
17 passed the filters, respectively. For LSR, 58 variant from one half split and 52 variants from  
18 the other half split passed the filters, respectively (Table S1-S4). The filter passed variants were  
19 used to derive WBV-PRS. The WBV-PRS was derived using PRSice-2 software (version 2.3.3)  
20 by using the summary statistics of variants that passed our filters [38].

21

## 22 **Statistical analyses**

23 Categorical variables were presented as counts and percentages, continuous variables were  
24 presented as mean and standard deviations (SD). Odd ratio (OR) with 95% confidence interval  
25 (CI) were analysed using logistic regression. The analysis with WBV-PRS was accompanied

1 by adjustments for the split halves, considering them as a batch effect. All significance tests  
2 were two-tailed, and statistical significance was determined at  $p < 0.05$ . The statistical analyses  
3 were performed using the R version 4.2.1 (R Foundation for Statistical Computing, Vienna,  
4 Austria).

5

## 6 **Results**

7 A total of 378,210 individuals were included in the study (Table 1). The mean age  $\pm$  SD was  
8  $57.0 \pm 7.9$  years. 53.7% of participants were women. The mean  $\pm$  SD of calculated WBV were  
9  $55.1 \pm 17.2$  and  $16.9 \pm 0.8$  for LSR and HSR, respectively. 37,859 (10.0%) of major  
10 cardiovascular events, including 23,893 (6.3%) myocardial infarction, 9,245 (2.4%) ischemic  
11 stroke, 10,376 (2.7%) revascularization, and 5,703 (1.5%) death due to CHD were recorded. A  
12 group of individuals with a WBV-PRS above the median (High WBV-PRS) have higher WBV  
13 compared to those with a WBV-PRS equal to or below the median for both HSR (mean  
14 difference: 0.11,  $P < 0.001$ ) and LSR (2.58,  $P < 0.001$ ).

15 Associations of the WBV and WBV-PRS groups with the risk of CVDs have exhibited  
16 differences. Compared to a group of individual with HSR equal to or below the median, a group  
17 of individuals with HSR above the median showed significant association with the increased  
18 risk of CVDs including MACE (Odd ratio: 1.22, 95% Confidence interval: 1.19 - 1.25,  
19  $P < 0.001$ ), MI (1.23, 1.20 - 1.27,  $P < 0.001$ ), stroke (1.08, 1.03 - 1.12,  $P < 0.001$ ),  
20 revascularization (1.29, 1.23 - 1.34,  $P < 0.001$ ), and death by CVD (1.30, 1.122 - 1.37,  $P < 0.001$ ).  
21 High HSR-PRS was not significant in all CVD categories for both unadjusted and adjusted  
22 study (Fig. 1A).

23 Compared to a group with LSR equal to or below the median, The group with LSR above the  
24 median showed a significant association with the increased risk of CVDs including MACE  
25 (1.15, 1.13 - 1.18,  $P < 0.001$ ), MI (1.15, 1.12 - 1.18,  $P < 0.001$ ), revascularization (1.18, 1.13 -

1 1.23,  $P < 0.001$ ), and death by CVD (1.25, 1.18 – 1.32,  $P < 0.001$ ). Effect of High LSR-PRS was  
2 insignificant in all CVD for both unadjusted and adjusted study (Fig. 1B).

3

#### 4 **Discussion**

5 This study used MR to investigate the potential causal association between WBV and CVD.  
6 The result from this study indicated insufficient evidence to substantiate a causal link between  
7 WBV and the risk of CVD.

8 WBV is susceptible to various influencing factors. Notably, WBV demonstrate non-Newtonian  
9 fluid behaviour. Under conditions of low shear rates, blood cells tend to aggregate, leading to  
10 an elevation in viscosity. Conversely at HSR, the opposite phenomenon occurs [39-41]. WBV  
11 has been noted to exhibit association with CVD and cardiovascular risk factors in previous  
12 studies [3, 42, 43]. However, upon adjustments for these risk factors, the association between  
13 WBV and CVD was found to be statistically non-significant in the subsequent study [44]. The  
14 not significant association following adjustments remained consistently evident in this study  
15 using MR.

16 However, the study result should be interpreted and considered carefully since we have not  
17 utilized directly measured WBV. While the formula employed in our study has undergone  
18 validation and has been applied in previous researches [15, 45, 46], it does not considered  
19 factors for WBV such as blood cell aggregability and deformability [47]. To establish a robust  
20 causal link between WBV and both CVD and CVD-related factors, future studies should  
21 incorporate measured WBV values, taking into account these critical variables.

22

23

#### 24 **Declarations**

#### 25 **Availability of data and materials**



1 Our data is available as a part of the UK Biobank project. Details of procedures for accessing  
2 the UK Biobank data can be found here: [https://www.ukbiobank.ac.uk/enable-your-](https://www.ukbiobank.ac.uk/enable-your-research/apply-for-access)  
3 [research/apply-for-access](https://www.ukbiobank.ac.uk/enable-your-research/apply-for-access)

#### 4 **Competing interests:**

5 The authors have declared that no competing interests exist.

#### 6 **Funding:**

7 This project was funded by the National Institute for Health Research  
8 (NIHR) Artificial Intelligence and Multimorbidity: Clustering in Individuals, Space and  
9 Clinical Context (AIM-CISC) grant NIHR202639. The views expressed are those of  
10 the author(s) and not necessarily those of the NIHR or the Department of Health and Social  
11 Care. The funders had no role in study design, data collection and analysis, decision to publish,  
12 or preparation of the manuscript.

13

#### 14 **Acknowledgments**

15 This work used the Edinburgh Compute and Data Facility (ECDF) (<http://www.ecdf.ed.ac.uk/>).  
16 This research has been conducted using the UK Biobank Resource project 44986. For the  
17 purpose of open access, the author has applied a CC-BY public copyright licence to any Author  
18 Accepted Manuscript version arising from this submission.

19

#### 20 **Authors' contributions**

21 Conceptualization: Y.B.

22 Data curation: Y.B.

- 1 Formal analysis: Y.B.
- 2 Funding Acquisition: A.T.
- 3 Investigation: Y.B.
- 4 Methodology: Y.B.
- 5 Project Administration: Y.B., A.T.
- 6 Resources: Y.B.
- 7 Software: Y.B.
- 8 Supervision: A.T.
- 9 Visualization: Y.B.
- 10 Writing – original draft: Y.B.
- 11 Writing – review & editing: Y.B., A.T.

12

13

#### 14 **Reference**

- 15 1. Lozano, R., et al., *Global and regional mortality from 235 causes of death for 20 age*  
16 *groups in 1990 and 2010: a systematic analysis for the Global Burden of Disease Study*  
17 *2010*. The lancet, 2012. **380**(9859): p. 2095-2128.
- 18 2. Lowe, G., et al., *Blood viscosity and risk of cardiovascular events: the Edinburgh*  
19 *Artery Study*. British journal of haematology, 1997. **96**(1): p. 168-173.

- 1 3. Woodward, M., et al., *Does sticky blood predict a sticky end? Associations of blood*  
2 *viscosity, haematocrit and fibrinogen with mortality in the West of Scotland*. British  
3 *journal of haematology*, 2003. **122**(4): p. 645-650.
- 4 4. Gori, T., et al., *The distribution of whole blood viscosity, its determinants and*  
5 *relationship with arterial blood pressure in the community: cross-sectional analysis*  
6 *from the Gutenberg Health Study*. *Therapeutic Advances in Cardiovascular Disease*,  
7 2015. **9**(6): p. 354-365.
- 8 5. Cetin, E.H.O., et al., *Prognostic significance of whole blood viscosity estimated by de*  
9 *Simone's formula in ST-elevation myocardial infarction*. *Biomarkers in Medicine*, 2016.  
10 **10**(5): p. 495-511.
- 11 6. Davey Smith, G. and G. Hemani, *Mendelian randomization: genetic anchors for causal*  
12 *inference in epidemiological studies*. *Human molecular genetics*, 2014. **23**(R1): p. R89-  
13 R98.
- 14 7. Davies, N.M., M.V. Holmes, and G.D. Smith, *Reading Mendelian randomisation*  
15 *studies: a guide, glossary, and checklist for clinicians*. *bmj*, 2018. **362**.
- 16 8. Chan, I.I., M.K. Kwok, and C.M. Schooling, *The total and direct effects of systolic and*  
17 *diastolic blood pressure on cardiovascular disease and longevity using Mendelian*  
18 *randomisation*. *Scientific Reports*, 2021. **11**(1): p. 21799.
- 19 9. Malik, R., et al., *Relationship between blood pressure and incident cardiovascular*  
20 *disease: linear and nonlinear mendelian randomization analyses*. *Hypertension*, 2021.  
21 **77**(6): p. 2004-2013.
- 22 10. Sun, Y.-Q., et al., *Body mass index and all cause mortality in HUNT and UK Biobank*  
23 *studies: linear and non-linear mendelian randomisation analyses*. *bmj*, 2019. **364**.

- 1 11. Peters, T.M., et al., *Sex differences in the risk of coronary heart disease associated with*  
2 *type 2 diabetes: a Mendelian randomization analysis*. Diabetes Care, 2021. **44**(2): p.  
3 556-562.
- 4 12. Voight, B.F., et al., *Plasma HDL cholesterol and risk of myocardial infarction: a*  
5 *mendelian randomisation study*. The Lancet, 2012. **380**(9841): p. 572-580.
- 6 13. Ference, B.A., et al., *Variation in PCSK9 and HMGCR and risk of cardiovascular*  
7 *disease and diabetes*. New England Journal of Medicine, 2016. **375**(22): p. 2144-2153.
- 8 14. Ference, B.A., et al., *Mendelian randomization study of ACLY and cardiovascular*  
9 *disease*. New England Journal of Medicine, 2019. **380**(11): p. 1033-1042.
- 10 15. de Simone, G., et al., *Relation of blood viscosity to demographic and physiologic*  
11 *variables and to cardiovascular risk factors in apparently normal adults*. Circulation,  
12 1990. **81**(1): p. 107-117.
- 13 16. Sudlow, C., et al., *UK biobank: an open access resource for identifying the causes of a*  
14 *wide range of complex diseases of middle and old age*. PLoS medicine, 2015. **12**(3): p.  
15 e1001779.
- 16 17. Burgess, S., N.M. Davies, and S.G. Thompson, *Bias due to participant overlap in*  
17 *two-sample Mendelian randomization*. Genetic epidemiology, 2016. **40**(7): p. 597-608.
- 18 18. Manichaikul, A., et al., *Robust relationship inference in genome-wide association*  
19 *studies*. Bioinformatics, 2010. **26**(22): p. 2867-2873.
- 20 19. Purcell, S., et al., *PLINK: a tool set for whole-genome association and population-*  
21 *based linkage analyses*. The American journal of human genetics, 2007. **81**(3): p. 559-  
22 575.
- 23 20. Mbatchou, J., et al., *Computationally efficient whole-genome regression for*  
24 *quantitative and binary traits*. Nature genetics, 2021. **53**(7): p. 1097-1103.

- 1 21. Pierce, B.L., H. Ahsan, and T.J. VanderWeele, *Power and instrument strength*  
2 *requirements for Mendelian randomization studies using multiple genetic variants.*  
3 *International journal of epidemiology*, 2011. **40**(3): p. 740-752.
- 4 22. Staley, J.R., et al., *PhenoScanner: a database of human genotype–phenotype*  
5 *associations.* *Bioinformatics*, 2016. **32**(20): p. 3207-3209.
- 6 23. Kamat, M.A., et al., *PhenoScanner V2: an expanded tool for searching human*  
7 *genotype–phenotype associations.* *Bioinformatics*, 2019. **35**(22): p. 4851-4853.
- 8 24. Elagizi, A., et al., *An overview and update on obesity and the obesity paradox in*  
9 *cardiovascular diseases.* *Progress in cardiovascular diseases*, 2018. **61**(2): p. 142-150.
- 10 25. Khan, S.S., et al., *Association of body mass index with lifetime risk of cardiovascular*  
11 *disease and compression of morbidity.* *JAMA cardiology*, 2018. **3**(4): p. 280-287.
- 12 26. Guiraudou, M., et al., *Obesity-related increase in whole blood viscosity includes*  
13 *different profiles according to fat localization.* *Clinical Hemorheology and*  
14 *Microcirculation*, 2013. **55**(1): p. 63-73.
- 15 27. Letcher, R.L., et al., *Direct relationship between blood pressure and blood viscosity in*  
16 *normal and hypertensive subjects: role of fibrinogen and concentration.* *The American*  
17 *journal of medicine*, 1981. **70**(6): p. 1195-1202.
- 18 28. Ference, B.A., et al., *Low-density lipoproteins cause atherosclerotic cardiovascular*  
19 *disease. 1. Evidence from genetic, epidemiologic, and clinical studies. A consensus*  
20 *statement from the European Atherosclerosis Society Consensus Panel.* *European heart*  
21 *journal*, 2017. **38**(32): p. 2459-2472.
- 22 29. Jeong, S.M., et al., *Effect of change in total cholesterol levels on cardiovascular disease*  
23 *among young adults.* *Journal of the American Heart Association*, 2018. **7**(12): p.  
24 e008819.

- 1 30. Laufs, U., et al., *Clinical review on triglycerides*. European heart journal, 2020. **41**(1):  
2 p. 99-109c.
- 3 31. Kosmas, C.E., et al., *High-density lipoprotein (HDL) functionality and its relevance to*  
4 *atherosclerotic cardiovascular disease*. Drugs in context, 2018. **7**.
- 5 32. Irace, C., et al., *Influence of blood lipids on plasma and blood viscosity*. Clinical  
6 Hemorheology and Microcirculation, 2014. **57**(3): p. 267-274.
- 7 33. Liu, B., et al., *Genetically predicted type 2 diabetes mellitus liability, glycated*  
8 *hemoglobin and cardiovascular diseases: a wide-angled Mendelian randomization*  
9 *study*. Genes, 2021. **12**(10): p. 1644.
- 10 34. Andrea, V. and I. Timan. *Relationship between diabetes mellitus and blood viscosity as*  
11 *measured by the digital microcapillary® system*. in *Journal of Physics: Conference*  
12 *Series*. 2018. IOP Publishing.
- 13 35. Rosoff, D.B., et al., *Evaluating the relationship between alcohol consumption, tobacco*  
14 *use, and cardiovascular disease: a multivariable Mendelian randomization study*.  
15 PLoS medicine, 2020. **17**(12): p. e1003410.
- 16 36. Lowe, G., et al., *The effects of age and cigarette-smoking on blood and plasma viscosity*  
17 *in men*. Scottish medical journal, 1980. **25**(1): p. 13-17.
- 18 37. Hamazaki, T. and H. Shishido, *Increase in blood viscosity due to alcohol drinking*.  
19 Thrombosis Research, 1983. **30**(6): p. 587-594.
- 20 38. Choi, S.W. and P.F. O'Reilly, *PRSice-2: Polygenic Risk Score software for biobank-*  
21 *scale data*. Gigascience, 2019. **8**(7): p. giz082.
- 22 39. Pop, G., et al., *The clinical significance of whole blood viscosity in (cardio) vascular*  
23 *medicine*. Netherlands heart journal, 2002. **10**(12): p. 512.
- 24 40. Naghedi-Baghdar, H., et al., *Effect of diet on blood viscosity in healthy humans: a*  
25 *systematic review*. Electronic physician, 2018. **10**(3): p. 6563.

- 1 41. Nwose, E.U., *Cardiovascular risk assessment and support techniques: whole blood*  
2 *viscosity assessment issues I: extrapolation chart and reference values*. North  
3 American Journal of Medical Sciences, 2010. **2**(4): p. 165.
- 4 42. Lowe, G., et al., *Cardiovascular risk and haemorheology—results from the Scottish*  
5 *Heart Health Study and the MONICA Project, Glasgow*. Clinical Hemorheology and  
6 Microcirculation, 1988. **8**(3-4): p. 517-524.
- 7 43. Woodward, M., et al., *Associations of blood rheology and interleukin-6 with*  
8 *cardiovascular risk factors and prevalent cardiovascular disease*. British journal of  
9 haematology, 1999. **104**(2): p. 246-257.
- 10 44. Peters, S.A., et al., *Plasma and blood viscosity in the prediction of cardiovascular*  
11 *disease and mortality in the Scottish Heart Health Extended Cohort Study*. European  
12 journal of preventive cardiology, 2017. **24**(2): p. 161-167.
- 13 45. Høiegggen, A., et al., *Whole-blood viscosity and the insulin-resistance syndrome*.  
14 Journal of hypertension, 1998. **16**(2): p. 203-210.
- 15 46. Moan, A., et al., *Relationship between hemorrheologic factors and insulin sensitivity*  
16 *in healthy young men*. Metabolism, 1994. **43**(4): p. 423-427.
- 17 47. Lowe, G., *I Blood rheology in vitro and in vivo*. Bailliere's clinical haematology, 1987.  
18 **1**(3): p. 597-636.
- 19  
20  
21  
22  
23  
24  
25

1  
2  
3  
4  
5  
6  
7  
8  
9  
10  
11  
12  
13  
14  
15

## Figure legends

### Figure 1. Association of the WBV and WBV-PRS with the risk of cardiovascular events.

Panel A shows the associations between high HSR and high HSR-PRS with the risk of cardiovascular events, and panel B shows the associations between high LSR and high LSR-PRS with the risk of cardiovascular events. The boxes represent point odd ratio estimates of the effect, and the lines represent 95% confidence intervals. MACE denotes major cardiovascular event, MI myocardial infarction, WBV whole blood viscosity, WBV-PRS polygenic risk score for whole blood viscosity.

## Tables

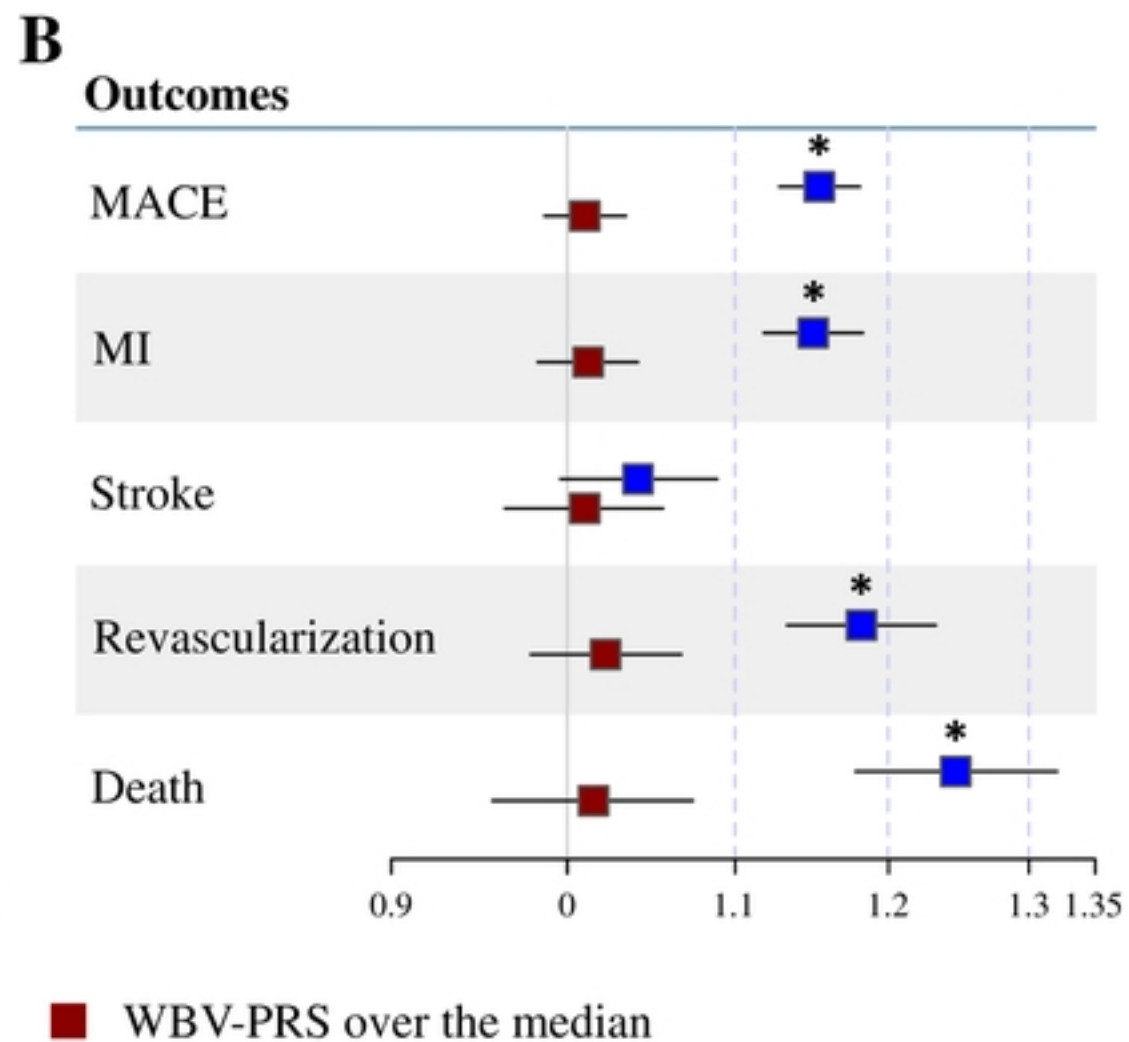
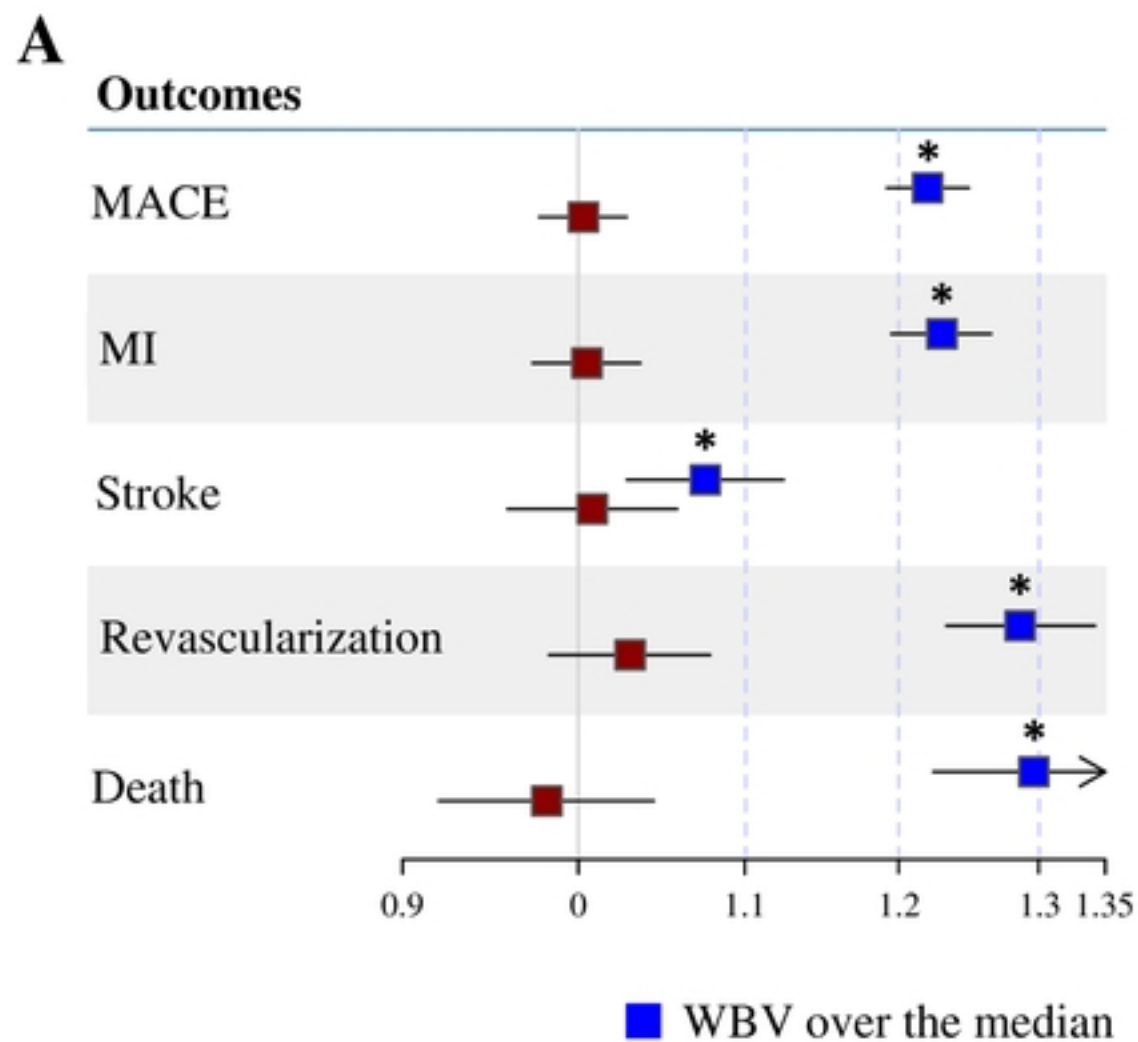
Table 1 Baseline characteristics.

Table 1. Baseline Characteristics of the Participants.*	
Variable	Participants (N=378,210)
Age (yr)	57.0 ± 7.9
Female sex (%)	53.7
Blood pressure (mm Hg)	
Systolic	140.3 ± 19.7
Diastolic	82.3 ± 10.7
Body-mass index	27.4 ± 4.7
Diabetes (%)	4.8
Current smoker (%)	10.1
Lipid levels (mg/dl)	



Total cholesterol	221.0 ± 44.3
LDL cholesterol	138.1 ± 33.7
HDL cholesterol	56.2 ± 14.8
Triglyceride level	155.8 ± 90.6
Whole blood viscosity	
LSR	55.1 ± 17.2
HSR	16.9 ± 0.8
Outcomes (%)	
Major cardiovascular event	37,857 (10.0)
Myocardial infarction	23,893 (6.3)
Ischemic stroke	9,245 (2.4)
Revascularization	10,376 (2.7)
Death due to CHD	5,703 (1.5)

- 1 Plus-minus values are means ±SD. HDL denotes high-density lipoprotein, LDL low-density lipoprotein, LSR
- 2 low-shear rate, HSR high shear rate, and CHD coronary heart disease. Major cardiovascular event includes
- 3 myocardial infarction, ischemic stroke, revascularization, and death due to CHD



Figure