

1 Feasibility and cross-cultural validation of an 2 adapted social skills group training programme 3 (KONTAKT™ CHILD) for Chinese autistic 4 children: a wait-list RCT protocol

5 Authors and Affiliations

6 Uchong Lao^{1†} · Huilin Zhu^{1*} · Fengjing Liang¹ · Enid Wuxia Bai¹² · Peipei Yin¹ · Xiaoqian Huang¹ ·
7 Sonya Girdler²³ · Sven Bölte²³⁴ · Xiaobing Zou^{1*}

8 ¹ Child Development and Behavior Center, The Third Affiliated Hospital, Sun Yat-Sen University,
9 China, 2693 Kai Chuang Avenue, Huangpu District, Guangzhou, 510530, China

10 ² Curtin Autism Research Group, School of Allied Health, Curtin University, Kent Street, Bentley,
11 Perth, Western Australia

12 ³ Center of Neurodevelopmental Disorders (KIND), Centre for Psychiatry Research, Division of
13 Neuropsychiatry, Department of Women's and Children's Health, Karolinska Institutet &
14 Stockholm Health Care Services, Region Stockholm

15 ⁴ Child and Adolescent Psychiatry, Stockholm Health Care Services, Region Stockholm, Stockholm,
16 Sweden

17

18

19 **NOTE: This preprint reports new research that has not been certified by peer review and should not be used to guide clinical practice.**

20 † Equal contributions

21 * Corresponding authors

22 ORCID ID:

23 Uchong Lao: 0000-0001-8658-880X

24 Huilin Zhu: 0000-0002-1052-708X

25 Sonya Girdler: 0000-0001-7992-0800

26 Sven Bölte: 0000-0002-4579-4970

27

28 **Corresponding authors information:**

29 **Huilin Zhu**

30 Email: zhuhlin6@mail.sysu.edu.cn

31

32 **Xiaobing Zou**

33 Email: zouxib@mail.sysu.edu.cn

34

35 **Abstract**

36 **Introduction**

37 School-aged autistic children commonly experience social communication and interaction
38 challenges in their everyday lives. While international evidence suggests that social skills group
39 training (SSGT) programmes can support autistic children, improving their psycho-social
40 functioning, to date there is no standardised evidence-based SSGT tailored towards the needs of
41 autistic children aged 8 to 12 years living in the Chinese Mainland. Therefore, the primary objective
42 is to evaluate the feasibility and acceptability of a culturally adapted 16-session version of the social
43 skills programme KONTAKT™ in Chinese autistic children. Additionally, preliminary efficacy and
44 cost-effectiveness will be assessed to inform a future definitive trial.

45 **Methods and analysis**

46 This study will employ a randomised, single-blinded, wait-list controlled feasibility design
47 with 36 Chinese autistic children aged 8 to 12 years with Intelligence Quotient over 70 referred to
48 the Child Development Behaviour Centre, in Guangzhou, China. Participants will be randomly
49 assigned to either the immediate training group or the delayed training group stratified by sex.
50 Feasibility will be assessed using quantitative and qualitative data obtained from the KONTAKT™
51 CHILD participants, their parents, and facilitators of the programme. Preliminary efficacy and
52 cost-effectiveness are assessed via quantitative data obtained at five time points. The primary
53 efficacy outcome is participants' improvement in social skills as measured by the Contextual
54 Assessment of Social Skills (CASS). Other outcomes include parents' and teachers' reports of

55 participants' autistic traits and adaptive functioning, participants' self-report and projective tests for
56 self-assertiveness and psycho-social functioning, and parent reports on parental reflective
57 functioning and perceived school support. Common process factors and their effects on outcomes
58 will also be explored. Cost-effectiveness will consider both societal and healthcare perspectives.

59 **Ethics and dissemination**

60 The current study protocol has been reviewed and ethics approval has been obtained from the
61 Ethical Board Committee at the Third Affiliated Hospital of Sun Yat-sen University (II2023-119-01).
62 The trial was pre-registered in Chinese Clinical Trials (ChiCTR2300072136) on 2023 June 05. The
63 results of this trial will be actively disseminated through peer-reviewed publications and conference
64 presentations. Any identifiable personal information will be anonymised to protect confidentiality.

65 **Protocol version**

66 2.0, 2024 July 31

67 **Keywords**

68 Social skills group training; Children; KONTAKT™; Cross-cultural adaptation; Feasibility; Autism;
69 Chinese

70 **Strengths and limitations of this study**

- 71 ●Comprehensive assessment of diverse outcomes via multiple informants.
- 72 ●Systematic cultural adaptation using the Integrative Cultural Adaptation Framework (ICAF)

- 73 ensuring the appropriateness of the Chinese version of KONTAKT™.
- 74 ●Collect data on readiness for change, providing insights into “help-seeker” effects.
- 75 ●Limited generalisability due to a single study site, location-specific inclusion, and absence of an
- 76 active comparator.
- 77 ●Given the absence of previous research examining the efficacy of SSGT programs in autistic
- 78 children in the Chinese Mainland, this study is appropriately a feasibility study. As such, only
- 79 the preliminary efficacy of KONTAKT™ with this population in a small sample will be
- 80 examined. The small sample size will limit the power of the study in examining the effect of
- 81 moderators on the study outcomes.

82 **Introduction**

83 **Background and rationale**

84 Autism¹ is a neurodevelopmental condition characterised by persistent challenges in
85 reciprocal social interaction and communication [1]. Autistic children often struggle to comply with
86 social expectations and norms of communication and interaction, impacting their functioning in
87 everyday contexts [2]. The estimated prevalence of autism among children aged 6 to 12 in the
88 Chinese Mainland is 0.7% (~ 1 in 143 children) and nearly half of all autistic children attend
89 mainstream schools [3]. While there is limited research investigating the experiences of these
90 children, their families and teachers, there is a clear and urgent need for evidence-based
91 interventions aiming to support the social competence and well-being of Chinese autistic children in
92 their everyday lives.

93 Internationally, Social Skills Group Training (SSGT) programmes are demonstrating efficacy in
94 supporting verbal and cognitively able school-aged autistic children in developing their social skills
95 [4, 5, 6]. SSGTs facilitate socio-emotional development and promote well-being in autistic children
96 by explicitly and implicitly supporting autistic children in interacting with peers and participating in
97 society more broadly [7]. SSGTs also leverage the benefits of learning in a group, with
98 opportunities for peer learning and support. Multiple meta-analyses of randomised controlled trials
99 (RCTs) evaluating the efficacy of these programmes in autistic youth report moderate to large effect
100 sizes in achieving personally meaningful social goals, enhancing social skills, social skills

¹ Herein, identity-first language is used since this is the endorsed terminology among autistic advocates (Kenny, 2016).

101 knowledge, social participation, and social functioning [4, 8, 9, 10].

102 While there has been considerable investigation on the proximal intervention outcomes of
103 SSGT programmes in autistic children and adolescents and post-test and short-term follow-up
104 periods, there has been limited focus on longer-term outcomes and the generalisation of learnt skills
105 to everyday contexts such as schools. Further, with few exceptions, the outcomes of these
106 programmes have been largely assessed by parents. This is of particular concern given that most
107 study designs have not employed single-blinded observation of outcome measures [4, 8]. Results
108 from previous meta-analyses [4, 8, 11, 12] infer that improvements observed in parent and clinical
109 ratings were primarily related to increased social skills knowledge or specific task-related skills,
110 rather than assessments of the generalisation of skills to everyday contexts [8].

111 SSGT programmes have also been criticised for failing to consider the view of autistic
112 youth themselves in the design and delivery of the programmes [13]. While capturing and
113 accounting for the views of autistic young people may require effort, given their communication
114 challenges [14], increasingly autistic advocates and the Autistic community are calling for
115 researchers and clinicians to consider and incorporate their views in clinical interventions [15]. It is
116 also likely that co-producing SSGT with individuals with lived experience will enhance the efficacy
117 of these programmes in relation to the intended target group [16]. Further, given the inherent
118 challenges experienced by autistic children in understanding social interactions and emotional
119 content, questions have been raised regarding the validity and accuracy of self-report questionnaires
120 aiming to evaluate the impact of SSGT programmes on these children [17]. Despite these cautions,
121 findings from a recent meta-analysis suggest that the emotional self-awareness of school-aged

122 autistic children is comparable to their non-autistic peers [18]. It seems plausible that approaches
123 tailored to the communication needs and preferences of autistic children will be more successful in
124 gathering their perspectives [19]. Further, while unusual in SSGT or autism research context,
125 validated non-verbal psychometric assessments, such as the Draw-A-Person Test [DAPT] [20, 21],
126 may be a worthwhile tool for understanding children’s psycho-social functioning [22, 23, 24].

127 Methodological limitations of previous SSGT efficacy studies include a failure to consider
128 common process factors [25]. Process factors are elements that are inherently present in receiving
129 and delivering a health intervention, that unfold progressively throughout its delivery and include
130 participants’ expectations, willingness to participate, and the alliance between participants and
131 facilitators. While a significant proportion of SSGT studies have reported programme adherence
132 and satisfaction [8], the data obtained by these studies were largely descriptive and failed to
133 systematically examine the impact of process factors in relation to intervention outcomes [25].

134 The KONTAKT™ programme is a well-established SSGT designed for autistic children
135 and adolescents with and without cooccurring conditions [26]. Originating in Germany [27], it has
136 now been further developed, standardised, culturally adapted, and evaluated in Sweden [28, 29] and
137 Australia [30]. Three session-length variants (24-session, 16-session, and 12-session) have been
138 standardised and evaluated through RCTs, demonstrating efficacy and effectiveness in improving
139 participants’ social functioning, adaptive functioning, emotional well-being, emotion recognition
140 and regulation, as well as accomplishment of personally-meaningful social goals [28, 29, 30].
141 Findings across these studies suggest that KONTAKT™ may be particularly beneficial to autistic
142 teenagers and girls. Moreover, both quantitative and qualitative data support the conclusion that

143 KONTAKT™ is effective, safe, and well-received by autistic youth [28, 29, 30, 31, 32].

144 To our knowledge, while a standardised SSGT programme PEERS® has been tailored for
145 use with Chinese autistic adolescents [33], there is no culturally standardised SSGT programme
146 specifically tailored toward the needs of autistic children years in the Chinese Mainland (See
147 **Supplementary Table 1 [online supplemental file 1]** for a comparison between the KONTAKT™
148 CHILD and the Mandarin PEERS®; see also Afsharnejad *et al.* (2023) *pp.*1286-1287 & Table 4 [6]).
149 With its diverse, individualised, and naturalistic session design [26], it is anticipated that
150 KONTAKT™ will effectively support the social functioning and well-being of Chinese autistic
151 children, provided the context of Chinese culture and its associated social norms are incorporated
152 [34].

153 Cultural adaptation involves systematically modifying an evidence-based intervention to
154 align with the target population’s needs, values, languages, conditions, and customs [35, 36, 37].
155 However, only a few cultural adaptation studies on SSGT have well-documented and theoretically
156 based methodologies. Moreover, previous SSGT efficacy studies generally lacked input from the
157 target population, despite language translation and the inclusion of culturally relevant content [6].

158 Ignoring cultural differences can significantly hamper the effectiveness of evidence-based
159 SSGTs for autistic individuals [34]. Given the core characteristics of autism involve social
160 interaction and communication, social-ecological differences across cultures will undoubtedly
161 influence interpretations of “functioning” and “disorder” in autism [38]. Cultural factors also impact
162 established expectations and interactions between families and service providers, and between
163 service providers in various sectors including healthcare, education, and the broader community [39,

164 40, 41].

165 For example, Chinese parents are unlikely to disclose their child's autism diagnosis to
166 school, reflecting the limited collaboration between family-school, prevailing autism stereotypes
167 and fears regarding stigma [42]. Moreover, Chinese autistic children are commonly not informed of
168 their autism diagnosis, with the majority of parents choosing not to disclose the diagnosis to them
169 [43]. There are also clear differences in the prevailing service delivery paradigms relevant to
170 supporting autistic children in the Chinese Mainland compared to many Western countries. Service
171 delivery in the Chinese Mainland is significantly impacted by a large population, and limited health
172 professionals and public health services [44, 45]. Unlike many Western countries, where funding
173 and child health services for autistic children are commonly provided by governmental departments,
174 the Chinese Mainland relies primarily on parents to cover these costs [46].

175 While there are various cultural adaptation frameworks guiding the alignment of health
176 interventions with the needs of a target population [35, 36, 47, 48], despite some methodological
177 distinctions, they share many similarities. In aligning the KONTAKT™ SSGT programme with the
178 needs of autistic children living in the Chinese Mainland, this study adopts the integrative cultural
179 adaptation framework (ICAF) [35]. The ICAF involves five stages: information gathering,
180 preliminary design, preliminary efficacy testing, refinement, and final trial. This study focuses on
181 the first four stages of the ICAF, in preparing for final evaluation trial (the last stage).

182 **Objectives and hypotheses**

183 The overarching purpose of the present study is to assess the feasibility and cross-cultural

184 validity of the adapted 16-session version of the KONTAKT™ CHILD programme for Chinese
185 autistic children in preparation for a larger RCT trial. The specific objectives are:

- 186 (1) Evaluating the integration of KONTAKT™ CHILD programme into a tertiary
187 hospital's routine activity;
- 188 (2) Assessing the acceptability and feasibility of the data collection framework;
- 189 (3) Examining the preliminary efficacy, quantitative and qualitative effects of
190 KONTAKT™ to inform a future, definitive RCT;
- 191 (4) Exploring the impact of common process factors on intervention outcomes; and,
- 192 (5) Examining the cost-effectiveness of KONTAKT™ CHILD compared to standard care.

193 Our primary hypothesis is that the Chinese 16-session KONTAKT™ CHILD programme
194 will be feasible and culturally appropriate for Chinese autistic children with minor revisions and can
195 be successfully implemented in a tertiary clinic. We also hypothesise that participants in the
196 immediate training group (ITG), in comparison to the delayed training group (DTG) [wait-list], will
197 experience greater improvements in outcomes from Time 1 to Time 3 (waiting period of DTG). We
198 expect that participants and their parents with higher readiness for change and a stronger alliance in
199 the ITG will benefit more from KONTAKT™ CHILD. Moreover, we anticipate that the training
200 effects in the ITG will persist at follow-up, and significant improvements in children's outcomes
201 will occur in the DTG from Time 3 to Time 5 (training endpoint of the DTG). For cost-effective
202 analysis, we hypothesise that the additional costs for KONTAKT™ will be offset by participants'
203 improvement in health-related quality of life and out-of-pocket savings in the use of other mental
204 health and psychiatric services.

205 **Trial Design**

206 This study was approved by the Ethical Board Committee at the Third Affiliated Hospital of
207 Sun Yat-sen University (II2023-119-01) and preregistered in Chinese Clinical Trials
208 (ChiCTR2300072136).

209 Any modification to this protocol will be reported to the ethical board and updated in Chinese
210 Clinical Trials. Following Thabane and Lancaster's guidelines in 2019 [49], this Chinese
211 KONTAKT™ CHILD protocol is planned and reported following the Standard and Protocol Items:
212 Recommendations for Interventional Trials (SPIRT) [50]. The findings of this study will be reported
213 adherent to the Consolidated Standards of Reporting Trials for Social and Psychological
214 Interventions (CONSORT-SPI) [51].

215 The Chinese KONTAKT™ CHILD feasibility study has a prospective, wait-list controlled,
216 single-site, stratified, randomised design. Blinding will apply to data collection, outcome
217 adjudicators, and data analysts. All electronic files, including coding videos and scanned drawings,
218 will be named without identifying personal information and group allocation or time-point
219 information. Three major assessment time-points (ITG: Pre-training [T1], Post-training [T3], and
220 Follow-Up [T5]; DTG: Pre-training [T1], Pre-training [T3], Post-training [T5]), with additional
221 mid-point cost and processing factors data collection for each group, are included. Additional
222 mid-point cost data collection follows the two-month follow-up intervals recommended by the
223 Treatment Inventory of Costs in Patients with Psychiatric Disorders - Child version (TiC-PC)
224 manual [52]. Measurements will be taken during face-to-face meetings, with the exception of data

225 from teachers and the prescreening process. Further, this study will employ a mixed-methods design,
226 with both between-group and within-participant comparisons, to explore the feasibility,
227 acceptability of implementing a large-scale RCT, and the preliminary efficacy of the Chinese
228 KONTAKT™ CHILD programme. Randomisation is performed at a 1:1 allocation ratio, with
229 variable block length and stratification by sex. Participant recruitment and training are ongoing
230 between 2023 June 5 and 2025 March 1.

231 **Methods: participants, interventions, and outcomes**

232 **Study setting**

233 All in-person assessments and interventions, except for the excursion session, will take place at
234 the outpatient department of the Child Development and Behaviour Centre (CDBC) of the tertiary
235 academic hospital, the Third-affiliated Hospital of Sun Yat-sen University, in Guangzhou, China.
236 The CDBC is one of China's first established and leading developmental behavioural paediatric
237 units, with over 20 years of experience in diagnosing and promoting the well-being of autistic
238 individuals and their families. The CDBC provides over 10,000 clinic appointments annually to
239 neurodivergent children and their families across China seeking diagnostic and intervention
240 services.

241 Online assessments will be designed using the SurveyStar online survey platform
242 (<https://wjx.cn/>). The SurveyStar is one of the most popular electronic survey platforms in Chinese
243 contexts, with its services covering more than three million enterprises and 90% of universities in
244 China.

245 Due to limited email use in the Chinese Mainland, WeChat[®], the dominant instant messaging
246 and media app, will be the primary channel for participant recruitment, communication with
247 families, and online survey distribution. Additionally, the SurveyStar conveniently integrates with
248 WeChat[®] through a Mini Programme [53], allowing WeChat[®] users to seamlessly complete
249 questionnaires directly on the platform.

250 The KONTAKT[™] certified trainers are experienced CBDC clinicians (clinical psychologists,
251 developmental behavioural paediatricians, and therapists) working with Chinese autistic children
252 (with 3 to 10 years of working experience). They have completed standardised online KONTAKT[™]
253 methodological training provided by experienced trainers from the Center of Neurodevelopmental
254 Disorders at Karolinska Institutet (KIND), including self-directed training and video-conference
255 seminars, followed by a 13-session enhanced in-person training. The enhanced training course
256 mainly included trainers role-playing the child sessions, and more in-depth discussion on the
257 principles of KONTAKT[™].

258 All KONTAKT[™] CHILD sessions, except for the excursion session, will be delivered in a
259 spacious, well-lit room at CDBC, with participants and trainers sitting in a circle. As suggested in
260 the KONTAKT[™] manual, delivery of the programme content will be supported by a flipchart,
261 utilised to record notes during each session, and a board displaying the group rules, session agenda,
262 and points assigned to participants in recognition of their participation in the sessions. The
263 excursion session (session 9) will be to a café, a bubble tea shop, or a convenience store, accessible
264 from CDBC. Parent sessions will take place in a separate room, with parents sitting together in a
265 circle without their children present. A projector will be utilised to present information on the

266 principles and the content of KONTAKT™, and information pertaining to their role, such as
267 completing assignments and providing constructive feedback, in supporting their children during
268 the intervention period.

269 **Recruitment**

270 **Figure 1** displays the flow of participants throughout the study. Thirty-six autistic children will
271 be recruited through the outpatient department of the CDBC in two rounds of recruitment. Multiple
272 recruitment avenues will be utilised including word-of-mouth, referrals from clinicians, posters
273 displaying information about the study at the CDBC clinic, and flyers published on the WeChat®
274 account of CDBC (<https://www.wechat.com/>).

275 Parents will express their interest in the study by completing a brief online registration form
276 (taking approximately 10-15 minutes to complete) obtaining their contact information, their
277 child/children's demographic information, diagnostic statuses, previous evaluations on the Wechsler
278 Intelligence Scale for Children-IV Chinese version (WISC-IV) [54], the Autism Diagnostic
279 Observation Schedule-Generic (ADOS-G) [55], and screening for problem behaviours which may
280 impact on their ability to engage positively in a group setting using the Childhood Behavior
281 Checklist-parent version (CBCL) [56]. Obtaining parents' expression of interest in this way enables
282 estimation of the demand for KONTAKT™ from families engaging with CDBC.

283 Following the submission of their expression of interest, a research coordinator will assess
284 candidates' eligibility to participate in the study. Parents of children meeting the inclusion criteria
285 for the study will subsequently participate in a 10-20 minute prescreening phone interview,

286 discussing with the research team their child's school lives (e.g. how their child is getting along
287 with their classmates and teachers), academic performances, and special needs, and addressing any
288 study-related questions. This brief interview with parents will also ascertain potential participants'
289 suitability to cope with the cognitive and verbal demands of KONTAKT™.

290 If fulfilling the prescreening criteria, candidate participants and their parents will attend CDBC
291 for a 50-minute face-to-face intake interview with the research coordinator. During the intake
292 interview, both children and parents will participate in a 20-minute individual interview with the
293 research coordinator. Families meeting the inclusion criteria of the study will be provided with
294 detailed oral and written information about their participation in the study, including the
295 requirements. Written informed consent will be obtained from parents and children.

296 **Eligibility criteria**

297 *Inclusion criteria*

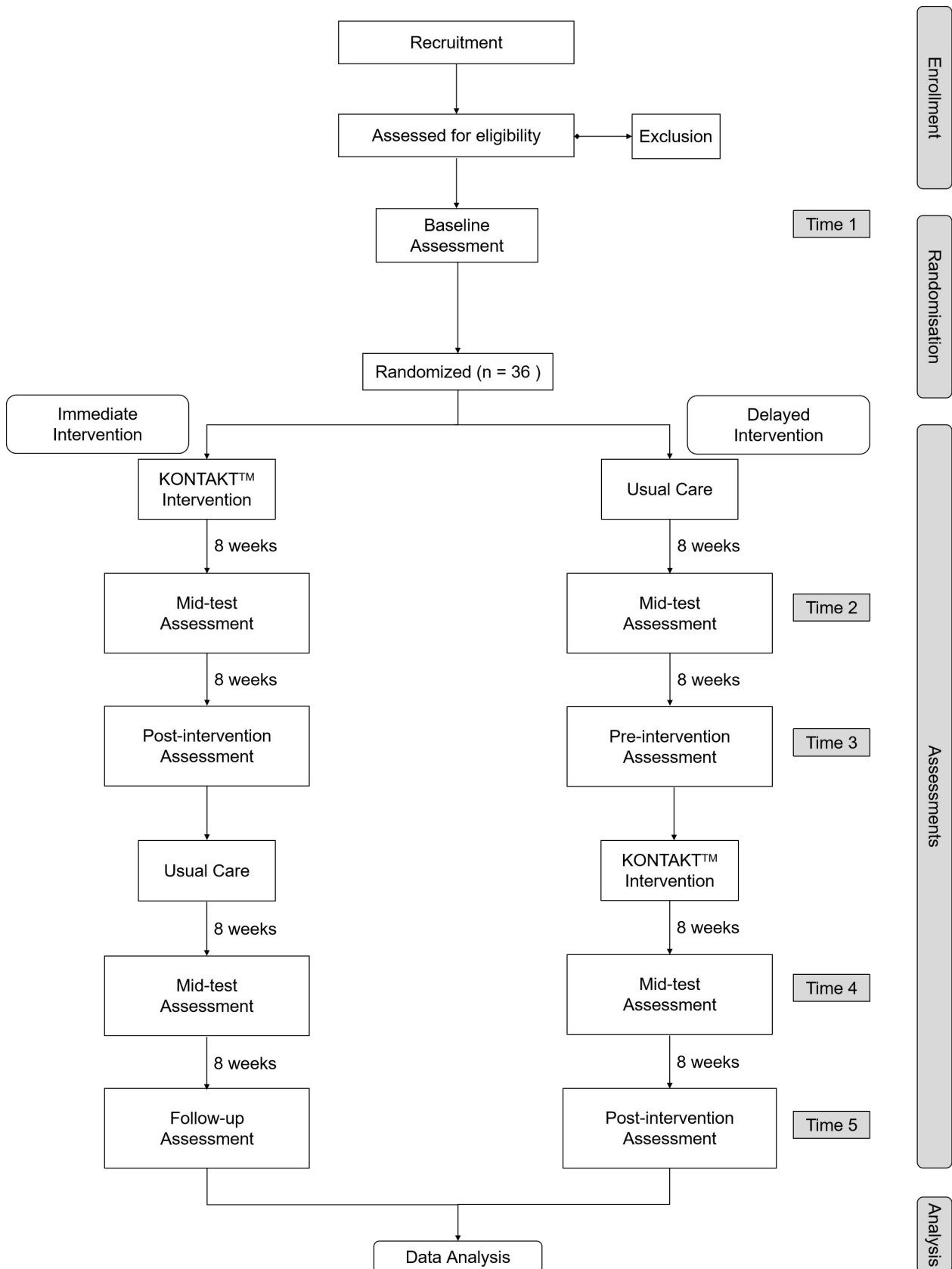
- 298 (1) Aged 8-12 years;
- 299 (2) A clinical diagnosis of autism (confirmed by ADOS-G, module 3);
- 300 (3) A Full-scale IQ > 70 on the WISC-IV; and,
- 301 (4) Resided in Guangzhou city for the past 12 months.

302 *Exclusion criteria*

- 303 (1) Significant physical impairment or severe metabolic disease(s);
- 304 (2) Significant rule-breaking or aggressive behaviours within the last six months, as confirmed
305 by CBCL;

- 306 (3) Low intrinsic motivation to participate as confirmed by the intake interview;
- 307 (4) Significant difficulties with Chinese characters reading comprehension or Mandarin
308 expression and comprehension; and,
- 309 (5) Prior or current behaviour or psychiatric conditions that could disrupt participation or
310 necessitate other treatment(s).

311 Participants with common co-occurring neurodevelopmental or psychiatric conditions in
312 autistic individuals, such as attention-deficiency hyperactivity disorder, depression, anxiety, and tic
313 disorder, are eligible if these conditions do not significantly interfere with participation. Participants
314 will continue with their prescribed pharmacological treatments, psychological therapies, or other
315 interventions while participating in KONTAKT™ CHILD. Written informed consent will be
316 obtained from participants and parents after a thorough explanation of the study during the intake
317 interview.



318 **Figure 1** Chinese KONTAKT™ CHILD feasibility study flowchart.

319 **Intervention**

320 *KONTAKT™ CHILD Intervention*

321 Prior to the development of this study protocol, a preliminary adaptation of KONTAKT™ (The
322 first step of the ICAF - Information gathering) has been completed. The KONTAKT™ programme
323 includes workbooks for trainers, children, and parents, supporting intervention fidelity. In adapting
324 the 16-session variant of KONTAKT™ from the Australian English version to Mandarin Chinese, a
325 rigorous process was employed. Firstly, an initial translation was made and verified for accuracy by
326 bi-lingual authors (LU, ZH, and EW). Then, a working group of KONTAKT™ Chinese trainers,
327 who are also CDBC clinicians, provided feedback on the initial programme materials. This step
328 resulted in significant modifications to the discussion topics, particularly regarding those addressing
329 autism diagnosis, making them more general and implicit (most notably in session 3). In addition,
330 to encourage parents to discuss the autism diagnosis with their child, information relating to “how
331 to talk about the diagnosis with your child”, was added to the first parent session. This adaptation
332 was made given that research has highlighted that over 60% of Chinese autistic children are
333 unaware of their autism diagnosis, with 40% of parents of Chinese autistic children preferring not to
334 disclose an autism diagnosis to their children [43].

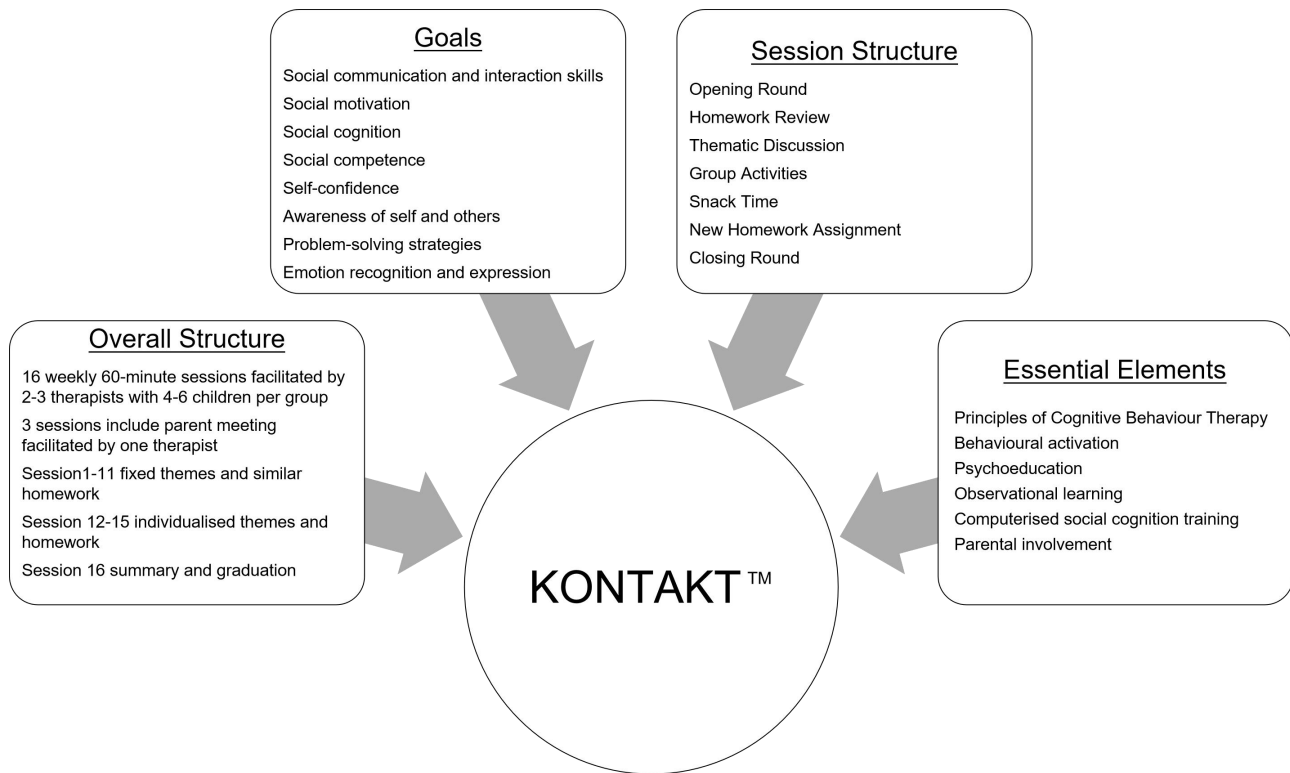
335 The current adaptation of the KONTAKT™ programme also emphasises enhanced parent
336 education and support. Parents will receive information and resources to support their children with
337 the KONTAKT™ homework activities. This includes parents role-playing parent-child interactions
338 during homework completion contexts and demonstration videos. Throughout the programme,
339 KONTAKT™ trainers will also provide session-by-session feedback, interim and final report to

340 parents on their child's progress. Additionally, they will offer ongoing coaching and encouragement
341 to parents. This enhanced parent support directly addresses a need identified in previous research
342 [33] - Chinese parents expressed a desire for additional coaching skills education to facilitate their
343 autistic children's participation in SSGTs.

344 Moreover, members of the Chinese research team further modified and added questions, games,
345 activities, and scenarios aligned with Chinese cultural norms. A Chinese name was also created for
346 KONTAKT™, emphasizing the training's focus on meaningful socialisation (交得益™). Finally, a
347 family with an autistic adolescent proofread the manual and made edits to enhance language fluency
348 and readability, and the inclusion of culturally appropriate terminology. Additionally, a logo for the
349 Chinese version of KONTAKT™ was designed and utilised on customised stationary and course
350 materials, to foster a sense of group cohesion among participants.

351 KONTAKT™ integrates Cognitive Behaviour Therapy principles and learning principles
352 tailored towards the needs of autistic youth (see **Figure 2**) [26]. These include principles of
353 psychoeducation, observational learning, modelling, behavioural activation, homework,
354 computerised cognitive training, opportunities for rehearsal, a structured agenda, and parental
355 involvement. KONTAKT™ employs mandatory, recurring, and variable activities to support
356 participants in achieving their personally meaningful social goals. Sessions aim to enhance
357 understanding of social norms, develop adaptive socio-emotional skills, and promote practical
358 applications. The first 11 sessions of KONTAKT™ consistently present weekly themes and
359 assignments, while later sessions are led by the participants and tailored towards topics of interest to
360 each group. In this way, KONTAKT™ accommodates not only for cultural context but also for the

361 subtle differences and preferences of each KONTAKT™ group.



362 **Figure 2** Elements, structures, and goals of KONTAKT™ [7, 26].

363 A group of 4-6 participants will attend 16 consecutive sessions of KONTAKT™ led by 2 to 3
364 trainers on weekends, with each session lasting approximately 60 minutes. Three parent sessions
365 will take place at the beginning, middle, and end of the training, offering parents individual
366 feedback on their child's progress, presenting educational information on autism and approaches to
367 discussing an autism diagnosis with their child, and encouraging parents in socially coaching their
368 children. During the parent sessions opportunities will be provided encouraging parents to ask
369 questions, provide feedback, and engage with other parents of autistic children. Parents will be
370 encouraged to assist their children with homework, with trainers providing feedback to parents after
371 each session. Refer to **Supplementary Table 2 (online supplemental file 1)** for the structure and
372 content of the Chinese KONTAKT™ CHILD version.

373 To ensure fidelity to the KONTAKT™ training protocol, trainers will complete
374 session-by-session fidelity checklists and receive supervision from certified KONTAKT™ trainers.

375 **Description of the rationale for adopting the Chinese 16-session KONTAKT™**

376 While KONTAKT™ has been previously standardised and published in 12 and 24 session
377 variants, the reasons underpinning the choice to tailor the 16-session variant to the Chinese
378 Mainland were three-fold. Firstly, previous research found that the 12-session variant did not
379 significantly outperform standard care in Sweden in children [28], and the 24-session variant had a
380 higher attrition rate than the 16-session variant and 12-session variant (26% vs 11%/14%) [28, 29,
381 30]. Moreover, aligning with the Chinese academic year structure, which consists of two terms with
382 approximately five months each, the 16-session version is more practical. Lastly, evaluating the
383 16-session variant will result in the DTG waiting for a 4 to 5 month period, which would be
384 extended by evaluating the 24-session variant and negatively impact on adherence and the
385 timeliness of access to the intervention [57].

386 **Explanation for the choice of comparators**

387 The waiting period of the DTG is limited to 4-5 months, roughly equivalent to one round of
388 KONTAKT™ training. While an active comparator in an RCT is typically the most robust, due to
389 limited clinical resources in the Chinese Mainland, a wait-list control group is considered more
390 practical. Moreover, given that “nonspecific” care is common in the Chinese Mainland, a wait-list
391 control group allows for assessing the additional impact of KONTAKT™ CHILD in addition to
392 standard care.

393 **Intervention adherence**

394 We will use a participant attendance sheet to track compliance, aiming for at least 80%
395 attendance (13 out of 16 sessions) as acceptable. Homework completion will also be recorded, with
396 a target of over 60% considered tolerable.

397 We will further adopt several approaches as recommended by Robiner to enhance the wait-list
398 group's adherence [58]:

- 399 (1) Provide detailed study information to families during intake interviews;
- 400 (2) Emphasise to families the importance of adherence;
- 401 (3) Establish a collaborative working relationship with families during intake interviews to
402 develop trust and rapport;
- 403 (4) Offer face-to-face assessments for regular clinical visits during the waiting periods;
- 404 (5) Limit the waiting time for the DTG to 4-5 months with a single-round intervention; and,
- 405 (6) Schedule appointments at times convenient to families, for example on weekends.

406 **Randomisation**

407 After the initial visit to the clinic, participants will be randomised to either ITG or DTG.
408 Randomisation will be conducted by a third party not involved in the Chinese KONTAKT™
409 CHILD trial using computer-generated sequentially random numbers. The permuted block numbers
410 4 to 6 will be used to restrict randomisation within the strata (birth-assigned sex). Each participant
411 will be assigned a unique code.

412 **Assessments/measures**

413 Outcomes will be assessed from the perspective of multiple informants (children, parents,
414 teachers, clinical ratings), via multiple data collection methods (questionnaires, interviews,
415 observations, projective tests). The data collection timeline is presented in **Supplementary Table 2**
416 **(online supplemental file 2)**.

417 All online questionnaire fields are mandatory, requiring completion to progress, eliminating
418 the expectation of missing data. QR codes will be used for distributing the registration and teacher
419 questionnaires, completed via the WeChat[®] app. All teacher questionnaires will be assigned a
420 unique participant identification number.

421 *Primary outcome measures* will inform the feasibility of conducting a full RCT. Feasibility
422 outcomes include acceptability and appropriateness of intervention, and negative effects assessed
423 via quantitative data (fidelity checklists, recruitment rates, attendance rates, homework completion
424 rates, Group Session Rating Scale [59], Theoretical Framework of Acceptability Questionnaire [60],
425 and Negative Effects Questionnaire [61]) and qualitative data from focus groups with both
426 participants and providers conducted post-intervention (ITG: post-training [T3] and follow-up [T5];
427 DTG: post-training [T5]). The relationship between the focus areas of feasibility studies, as outlined
428 by Bowen *et al.* [62] and those addressed in this study is summarized in **Table 1**. **Table 2** provides a
429 detailed description of the quantitative feasibility parameters and criteria for success.

430 *Secondary outcomes* will focus on the preliminary efficacy of the Chinese 16-session
431 KONTAKT[™], which will inform the future full-scale RCT. Outcomes include the following
432 measures:

433 The primary efficacy outcome of the KONTAKT™ CHILD study is improvement in social
434 communication and interaction skills. This is assessed using the Contextual Assessment of Social
435 Skills (CASS), an ecologically valid observational measure [63]. The CASS involves two
436 videotaped role-play assessments where participants engage in reciprocal conversation and
437 interaction. These assessments take place in contexts that are manipulated to be either interesting or
438 boring. This manipulation is achieved by changing how the confederate responds and interacts with
439 the participant. During each role-play, participants and an unknown adult confederate of an opposite
440 birth-assigned sex pretend that they have just joined a new club and are waiting for the first session
441 to begin. During this three-minute waiting period, participants and the adult confederate can talk to
442 each other.

443 Secondary efficacy outcomes include autistic characteristics (Social Responsiveness Scale-2
444 [SRS-2] [64]), generalised social skills (Snack Time Assessment of Relationships and Social Skills
445 [STARSS] [63, 65]), adaptive functioning (Adaptive Behaviour Assessment System-II [66, 67]),
446 self-esteem and self-concept (Self-concept Scale Draw-A-Person [SCS-DAP] [68], Child
447 Rosenberg Self-Esteem Scale [CRSES] [69]), cognitive development and psychosocial well-being
448 (Koppitz Draw-A-Person Test [70, 71], Child Outcome Rating Scale [72, 73]), perceived school
449 support school level [33], and parental reflective functioning [74]. *Common process factors*
450 *measurements* include alliance (Therapeutic Alliance Scales for Children [75, 76]) and readiness for
451 change (Preparedness for Participating in KONTAKT™ Scale [77]). *Cost-effectiveness outcomes*
452 include healthcare consumption and productivity loss (the tailored version of the Treatment
453 Inventory of Costs in Patients with Psychiatric Disorders - Child Version [78, 79]) and

454 health-related quality of life (Child Health Utility 9D [80], EQ-5D-Y [81]).

455 For details of these measures, see **Online supplemental file 2**.

456 **Retention**

457 Families will be requested to attend data collection appointments at a time convenient to them
458 with reminders from research assistants. Paper-pencil questionnaires will be mailed to families
459 unable to attend appointments in person and provided with a pre-paid envelope to return these via
460 post. The reasons for participant withdrawal, adverse events, and other unintended effects will be
461 documented and reported, and drop-outs will not be replaced.

462 **Data management**

463 In the Chinese KONTAKT™ CHILD feasibility study, all paper data will be converted to
464 electronic format. Trained research assistants will input the data within two weeks after each
465 assessment. Both paper and electronic data will be stored in EpiData [82] with double-entry for data
466 integrity. Checks for referenced range values, valid values, and regular data consistency will be
467 applied. Non-numeric data, including open-ended questions and notes, will be entered as originally
468 written.

469 Video and audio recordings will be labelled with unique identifiers, with details recorded in the
470 EpiData repository. Paper documents will be securely stored in locked filing cabinets at CDBC.
471 Electronic textual data will be password-protected. Video and audio files will have dual backups on
472 encrypted hard disks. Only the principal investigator will have full data access.

473 Incremental data and recording files will be backed up daily.

474 **Sample size**

475 The primary outcome of this present study is the CASS. Previous SSGT studies applying the
476 CASS suggested a medium effect size (ES) of 0.42 [83]. Additionally, a rough average ES of 0.40,
477 as measured by the SRS-2, is derived from the three prior RCT studies evaluating KONTAKT™
478 [28, 29, 30], and informs the expected ES for the future Chinese KONTAKT™ CHILD main trial.
479 According to Whitehead *et al.* [84], a feasibility study with a sample size of 15 per treatment arm
480 allows for detecting a medium ES (0.3~0.7) with 90% power and two-sided 5% significance in the
481 main trial. Accounting for a 15% attrition rate from previous KONTAKT™ evaluation studies, we
482 require a sample size of $n = 18$ per arm ($N = 36$ in total).

483 **Statistical analysis**

484 *Statistical methods for primary and secondary outcomes*

485 Feasibility measures will be reported descriptively. Additionally, qualitative data will be
486 transcribed verbatim, de-identified, and then imported into NVivo 12 for theme-based analysis. If
487 all or some feasibility parameters for success are not met (**Table 1 & Table 2**), or if salient themes
488 of unacceptability or unfeasibility emerged within the qualitative analysis, investigators will further
489 examine the potential contributing factors, including participant baseline characteristics and
490 session-composition characteristics. This analysis will inform necessary modifications to the
491 KONTAKT™ CHILD training and its delivery in the Chinese Mainland.

492 For preliminary efficacy analysis, the primary efficacy outcome for this study is
493 social-communication skills improvement as measured by the CASS, with the follow-up being the

494 primary endpoint. The analysis will follow the intent-to-treat (ITT) principles [85], and all data
495 from every participant will be analysed. Missing data will be handled based on established
496 guidelines for each measure or CONSORT-SPI statement. No interim analysis will occur.

497 Data will be checked for normality and variance heterogeneity. Baseline demographics will be
498 compared between ITG and DTG using t-tests or Wilcoxon rank test (continuous variables) and
499 chi-square tests (categorical variables) to verify group comparability. Random mixed effects
500 regression models, which have the advantage of handling missing data, will compare ITG and DTG
501 for primary and secondary analyses, considering time (baseline, endpoint, follow-up), group (ITG,
502 DTG), and their interaction variable (time \times group). Participants' ID will be regarded as a random
503 effect accounting for intra-individual correlations. Intervention effects will be reported as
504 least-square mean differences. ES will be reported by dividing the groups' mean difference
505 (baseline to endpoint and baseline to follow-up) by the pooled standard deviations, with positive
506 values favouring the intervention. Potential moderators, including age, sex, IQ, co-occurring
507 conditions and the common process factors at baseline between participants with high training
508 responses (HR, defined as $\geq 30\%$ improvement on CASS scores at follow-up), medium training
509 responses (MR, defined as 10-30% improvement), and low training responses (LR, defined as \leq
510 10% improvement or worsened) will be compared using either oneway ANOVA (continuous
511 variables) or Chi-square tests (categorical variables) [31, 32, 33]. Post-hoc Dunn test or Chi-square
512 test will be conducted if the ANOVA tests or multiple Chi-square tests demonstrate significant
513 group differences. ES will be presented as either Hedge's g or Cramer's V .

514

515 *Health economic analyses analysis*

516 Cost-effectiveness analysis (CEA) will follow an ITT basis, considering societal and
517 healthcare perspectives. Cost differences will be statistically tested, while resource usage
518 differences will not be compared to prevent false positives. Quality-adjusted life year (QALY) will
519 be calculated from EQ-5D-Y and CHU9D scores using validated algorithms for Chinese children
520 and adolescents [86, 87]. Given potential non-normality in cost data, a non-parametric random
521 forest permutation model will handle missing data. The incremental cost-effectiveness ratio (ICER)
522 will be calculated as $\Delta\text{cost}/\Delta\text{QALYs}$. Cost differences between ITG and DTG at different time
523 points will be analysed via linear regression with bootstrapping for 5,000 repetitions to generate
524 non-parametric confidence intervals (See **online supplemental file 3** for CEA details).

525 **Community and public involvement**

526 The first author, LU, is self-identified as autistic. During the adaptation stage, the training
527 manual for KONTAKT™ was proofread by a family with an autistic adolescent. To assess training
528 burden and programme acceptability, participants will provide feedback through a combination of
529 questionnaires and focus group interviews (mixed methods). Advocating for outcomes focused on
530 well-being and mental health, autistic people continue to emphasise the importance of listening to
531 their voices. Thus, this trial will also capture both quantitative and qualitative data examining
532 participants' experiences of receiving KONTAKT™ CHILD and the impact of the programme on
533 children's well-being. We will further engage the autism community, involving both parents with
534 autistic children and clinicians, in recruiting potential participants. Finally, participants will be

535 invited to share their lived experiences of participating in KONTAKT™ with the autism community
536 through community events and social media in China when the trial has ended.

537 **Discussion**

538 The study commenced recruitment on 2023 June 5. This article presents the design of the
539 Chinese KONTAKT™ CHILD trial, a feasibility wait-list RCT featuring the Chinese 16-session
540 KONTAKT™ variant for autistic children. This design incorporates multiple data sources and
541 diverse outcome assessment methods, facilitating a comprehensive exploration of the feasibility of
542 this programme from different perspectives. Furthermore, a systematic cultural adaptation process
543 ensures the suitability, acceptability, and comprehensiveness of the Chinese KONTAKT™ version.
544 Adhering to the ICAF framework, this study will guide the refinement of the Chinese KONTAKT™
545 version and future larger-scale evaluations, addressing the question of whether SSGT can be
546 effectively implemented for Chinese school-aged autistic children.

547 While there are several strengths in the study design mentioned earlier, it's important to
548 acknowledge some limitations. Firstly, conducted in Guangzhou, one of China's most advanced
549 cities, the study's single-site nature may limit the generalisability of the findings to other clinical
550 settings in the Chinese Mainland, especially to regions with more limited resources. Additionally,
551 certain measures planned for use in the study, such as the CRSES and the SCS-DAP, may have
552 uncertain psychometric properties due to the lack of Chinese population data. However, this
553 feasibility study aims to provide empirical data on the psychometrics of these measures with
554 Chinese autistic children. Another limitation is the absence of an active comparator, as the wait-list

555 control could potentially overestimate treatment effects [88]. Nevertheless, this aligns with the
556 prevailing situation in China. Furthermore, the study will collect data on parents' and children's
557 readiness for change, allowing for an exploration of the "help-seeker" effects, following the
558 recommendation by Cunningham and colleagues in 2013 [88].

559 As mentioned above, the final stage of the ICAF involves running a full-scale RCT trial to
560 evaluate the efficacy of the Chinese version of KONTAKT™. Therefore, upon completing this
561 feasibility study, the investigators will integrate all quantitative and qualitative results to decide
562 whether a full-scale RCT trial will progress or redesigning another KONTAKT™ feasibility study
563 will be needed. The following aspects will be considered: (1) participants' and parents' acceptability
564 and adherence rates, (2) participants' and parents' feedback on demand and training burden for
565 KONTAKT™, (3) trainers' feedback on implementing KONTAKT™ in Chinese clinical setting, (4)
566 trainers' fidelity on implementing KONTAKT™, (5) the feasibility results of the processes for data
567 collecting, and (6) considering the potential capacity of the intervention setting (human resources,
568 materials, and equipment) on implementing a full-scale RCT regarding the sample size calculation
569 for the primary outcome.

570 **Plans for dissemination of finding**

571 The findings of the Chinese KONTAKT™ CHILD trial will be submitted to peer-reviewed
572 journals for consideration. Abstracts will also be submitted to both local and international
573 conferences, and community-based lay abstracts will be written and disseminated to provide
574 feedback to autism stakeholders in China.

575 **References**

- 576 1. American Psychiatric Association. Diagnostic and statistical manual of mental disorders. 5th ed.,
577 text rev.;2022.
- 578 2. Tillmann J, San Jose Caceres A, Chatham CH, et al. Investigating the factors underlying adaptive
579 functioning in autism in the EU-AIMS Longitudinal European Autism Project. *Autism Res*
580 2019;12(4):645-57. <https://doi.org/10.1002/aur.2081>. Epub 2019 Feb 12.
- 581 3. Zhou H, Xu X, Yan W, et al. Prevalence of Autism Spectrum Disorder in China: A Nationwide
582 Multi-center Population-based Study Among Children Aged 6 to 12 Years. *Neurosci Bull*
583 2020;36(9):961-71. <https://doi.org/10.1007/s12264-020-00530-6>. Epub 2020 Jul 02.
- 584 4. Gilmore R, Ziviani J, Chatfield MD, et al. Social skills group training in adolescents with
585 disabilities: A systematic review. *Res Dev Disabil* 2022;125:104218.
586 <https://doi.org/10.1016/j.ridd.2022.104218>. Epub 2022 Mar 21.
- 587 5. Kaat AJ, Lecavalier L. Group-based social skills treatment: A methodological review. *Res Autism*
588 *Spectr Disord* 2014;8(1):15-24. <https://doi.org/10.1016/j.rasd.2013.10.007>.
- 589 6. Afsharnejad B, Black MH, Falkmer M, et al. The Methodological Quality and Intervention
590 Fidelity of Randomised Controlled Trials Evaluating Social Skills Group Programs in Autistic
591 Adolescents: A Systematic Review and Meta-analysis. *J Autism Dev Disord* 2023
592 <https://doi.org/10.1007/s10803-023-05893-z>. Epub 2023 Jan 22.
- 593 7. Girdler S, Afsharnejad B, Black MH, et al. KONTAKT® Manual English version. Australia2021.
- 594 8. Gates JA, Kang E, Lerner MD. Efficacy of group social skills interventions for youth with autism

- 595 spectrum disorder: A systematic review and meta-analysis. *Clin Psychol Rev* 2017;52:164-81.
- 596 <https://doi.org/10.1016/j.cpr.2017.01.006>. Epub 2017 Jan 29.
- 597 9. Wolstencroft J, Robinson L, Srinivasan R, et al. A Systematic Review of Group Social Skills
598 Interventions, and Meta-analysis of Outcomes, for Children with High Functioning ASD. *J*
599 *Autism Dev Disord* 2018;48(7):2293-307. <https://doi.org/10.1007/s10803-018-3485-1>. Epub
600 2018 Feb 10.
- 601 10. Zheng S, Kim H, Salzman E, et al. Improving Social Knowledge and Skills among Adolescents
602 with Autism: Systematic Review and Meta-Analysis of UCLA PEERS(R) for Adolescents. *J*
603 *Autism Dev Disord* 2021;51(12):4488-503. <https://doi.org/10.1007/s10803-021-04885-1>. Epub
604 2021 Jan 30.
- 605 11. Miller A, Vernon T, Wu V, et al. Social Skill Group Interventions for Adolescents with Autism
606 Spectrum Disorders: a Systematic Review. *Rev J Autism Dev Disord* 2014;1(4):254-65.
607 <https://doi.org/10.1007/s40489-014-0017-6>.
- 608 12. Soares EE, Bausback K, Beard CL, et al. Social Skills Training for Autism Spectrum Disorder: a
609 Meta-analysis of In-person and Technological Interventions. *J Technol Behav Sci*
610 2021;6(1):166-80. <https://doi.org/10.1007/s41347-020-00177-0>. Epub 2020 Nov 24.
- 611 13. Bottema-Beutel K, Park H, Kim SY. Commentary on Social Skills Training Curricula for
612 Individuals with ASD: Social Interaction, Authenticity, and Stigma. *J Autism Dev Disord*
613 2018;48(3):953-64. <https://doi.org/10.1007/s10803-017-3400-1>. Epub 2017/11/25.
- 614 14. Kinnaird E, Stewart C, Tchanturia K. Investigating alexithymia in autism: A systematic review
615 and meta-analysis. *Eur Psychiatry* 2019;55:80-89. <https://doi.org/10.1016/j.eurpsy.2018.09.004>.

- 616 Epub 2018 Nov 07.
- 617 15. Pellicano E, Heyworth M. The Foundations of Autistic Flourishing. *Curr Psychiatry Rep*
618 2023;25(9):419-27. <https://doi.org/10.1007/s11920-023-01441-9>. Epub 2023/08/08.
- 619 16. Nicolaidis C, Raymaker D, Kapp SK, et al. The AASPIRE practice-based guidelines for the
620 inclusion of autistic adults in research as co-researchers and study participants. *Autism*
621 2019;23(8):2007-19. <https://doi.org/10.1177/1362361319830523>. Epub 2019/04/04.
- 622 17. Tavernor L, Barron E, Rodgers J, et al. Finding out what matters: validity of quality of life
623 measurement in young people with ASD. *Child Care Health Dev* 2013;39(4):592-601.
624 <https://doi.org/10.1111/j.1365-2214.2012.01377.x>. Epub 2012 Apr 21.
- 625 18. Huggins CF, Donnan G, Cameron IM, et al. Emotional self-awareness in autism: A
626 meta-analysis of group differences and developmental effects. *Autism* 2021;25(2):307-21.
627 <https://doi.org/10.1177/1362361320964306>. Epub 2020 Nov 07.
- 628 19. Tang JSY, Falkmer M, Chen NTM, et al. Designing a Serious Game for Youth with ASD:
629 Perspectives from End-Users and Professionals. *J Autism Dev Disord* 2019;49(3):978-95.
630 <https://doi.org/10.1007/s10803-018-3801-9>. Epub 2018/11/01.
- 631 20. Lee A, Peter Hobson R. Drawing self and others: How do children with autism differ from those
632 with learning difficulties? *Br J Dev Psychol* 2006;24(3):547-65.
633 <https://doi.org/10.1348/026151005X49881>.
- 634 21. Papangelo P, Pinzino M, Pelagatti S, et al. Human Figure Drawings in Children with Autism
635 Spectrum Disorders: A Possible Window on the Inner or the Outer World. *Brain Sci* 2020;10(6)
636 <https://doi.org/10.3390/brainsci10060398>. Epub 2020 Jun 27.

- 637 22. Kotroni P, Bonoti F, Mavropoulou S. Children with autism can express social emotions in their
638 drawings. *Int J Dev Disabil* 2018;65(4):248-56.
639 <https://doi.org/10.1080/20473869.2018.1434855>. Epub 2018 Feb 13.
- 640 23. Schweizer C, Knorth EJ, Spreen M. Art therapy with children with Autism Spectrum Disorders:
641 A review of clinical case descriptions on ‘what works’. *The Arts in Psychotherapy*
642 2014;41(5):577-93. <https://doi.org/10.1016/j.aip.2014.10.009>.
- 643 24. Waller D. Art therapy for children: how it leads to change. *Clin Child Psychol Psychiatry*
644 2006;11(2):271-82. <https://doi.org/10.1177/1359104506061419>. Epub 2006 Nov 08.
- 645 25. Albaum CS, Vashi N, Bohr Y, et al. A Systematic Review of Therapeutic Process Factors in
646 Mental Health Treatment for Autistic Youth. *Clin Child Fam Psychol Rev* 2023;26(1):212-41.
647 <https://doi.org/10.1007/s10567-022-00409-0>. Epub 2022 Aug 24.
- 648 26. Bölte S. Social färdtGhetsträning i grupp med fokus på kommunikation och social interaktion
649 vid autismspektrumtillstånd enligt Frankfurtmodellen (KONTAKT). Göttingen, Stockholm:
650 Hogrefe; 2018.
- 651 27. Herbrecht E, Poustka F, Birnkammer S, et al. Pilot evaluation of the Frankfurt Social Skills
652 Training for children and adolescents with autism spectrum disorder. *Eur Child Adolesc*
653 *Psychiatry* 2009;18(6):327-35. <https://doi.org/10.1007/s00787-008-0734-4>. Epub 2009 Jan 24.
- 654 28. Choque Olsson N, Flygare O, Coco C, et al. Social Skills Training for Children and Adolescents
655 With Autism Spectrum Disorder: A Randomized Controlled Trial. *J Am Acad Child Adolesc*
656 *Psychiatry* 2017;56(7):585-92. <https://doi.org/10.1016/j.jaac.2017.05.001>. Epub 2017 Jun 26.
- 657 29. Jonsson U, Olsson NC, Coco C, et al. Long-term social skills group training for children and

- 658 adolescents with autism spectrum disorder: a randomized controlled trial. *Eur Child Adolesc*
659 *Psychiatry* 2019;28(2):189-201. <https://doi.org/10.1007/s00787-018-1161-9>. Epub 2018 May
660 12.
- 661 30. Afsharnejad B, Falkmer M, Black MH, et al. KONTAKT(R) social skills group training for
662 Australian adolescents with autism spectrum disorder: a randomized controlled trial. *Eur Child*
663 *Adolesc Psychiatry* 2022;31(11):1695-713. <https://doi.org/10.1007/s00787-021-01814-6>. Epub
664 2021 May 31.
- 665 31. Afsharnejad B, Falkmer M, Picen T, et al. "I Met Someone Like Me!": Autistic Adolescents and
666 Their Parents' Experience of the KONTAKT(R) Social Skills Group Training. *J Autism Dev*
667 *Disord* 2022;52(4):1458-77. <https://doi.org/10.1007/s10803-021-05045-1>. Epub 2021 May 05.
- 668 32. Choque Olsson N, Rautio D, Asztalos J, et al. Social skills group training in high-functioning
669 autism: A qualitative responder study. *Autism* 2016;20(8):995-1010.
670 <https://doi.org/10.1177/1362361315621885>. Epub 2016 Feb 26.
- 671 33. Lao U, Li Y, Bai W, et al. Adaptation and Feasibility of the Mandarin Version of PEERS((R))
672 for Autistic Adolescents. *J Autism Dev Disord* 2023
673 <https://doi.org/10.1007/s10803-023-06056-w>. Epub 2023/07/22 21:06.
- 674 34. Hodge DR, Jackson KF, Vaughn MG. Culturally sensitive interventions and health and
675 behavioral health youth outcomes: a meta-analytic review. *Soc Work Health Care*
676 2010;49(5):401-23. <https://doi.org/10.1080/00981381003648398>. Epub 2010 Jun 04.
- 677 35. Barrera M, Jr., Castro FG, Strycker LA, et al. Cultural adaptations of behavioral health
678 interventions: a progress report. *J Consult Clin Psychol* 2013;81(2):196-205.

- 679 <https://doi.org/10.1037/a0027085>. Epub 2012 Feb 01.
- 680 36. Bernal G, Bonilla J, Bellido C. Ecological validity and cultural sensitivity for outcome research:
681 issues for the cultural adaptation and development of psychosocial treatments with Hispanics. *J*
682 *Abnorm Child Psychol* 1995;23(1):67-82. <https://doi.org/10.1007/BF01447045>. Epub 1995
683 Feb 01.
- 684 37. Faregh N, Lencucha R, Ventevogel P, et al. Considering culture, context and community in
685 mhGAP implementation and training: challenges and recommendations from the field. *Int J*
686 *Ment Health Syst* 2019;13:58. <https://doi.org/10.1186/s13033-019-0312-9>. Epub 2019 Aug 30.
- 687 38. Bölte S, Lawson WB, Marschik PB, et al. Reconciling the seemingly irreconcilable: The WHO's
688 ICF system integrates biological and psychosocial environmental determinants of autism and
689 ADHD: The International Classification of Functioning (ICF) allows to model opposed
690 biomedical and neurodiverse views of autism and ADHD within one framework. *Bioessays*
691 2021;43(9):e2000254. <https://doi.org/10.1002/bies.202000254>. Epub 2021 Apr 03.
- 692 39. Bishop-Fitzpatrick L, Kind AJH. A Scoping Review of Health Disparities in Autism Spectrum
693 Disorder. *J Autism Dev Disord* 2017;47(11):3380-91.
694 <https://doi.org/10.1007/s10803-017-3251-9>. Epub 2017 Aug 02.
- 695 40. Kang-Yi CD, Grinker RR, Beidas R, et al. Influence of Community-Level Cultural Beliefs
696 about Autism on Families' and Professionals' Care for Children. *Transcult Psychiatry*
697 2018;55(5):623-47. <https://doi.org/10.1177/1363461518779831>. Epub 2018 Jul 05.
- 698 41. Ravindran N, Myers BJ. Cultural Influences on Perceptions of Health, Illness, and Disability: A
699 Review and Focus on Autism. *J Child Fam Stud* 2012;21(2):311-19.

- 700 <https://doi.org/10.1007/s10826-011-9477-9>.
- 701 42. Clark E, Zhou Z, Du L. Autism in China: Progress and challenges in addressing the needs of
702 children and families. *Int J Sch Educ Psychol* 2019;7(2):135-46.
703 <https://doi.org/10.1080/21683603.2019.1570885>.
- 704 43. Lao UC, Liang FJ, Dai JM, et al. Familiarity vs. Favorability: Exploring Formal Autism
705 Terminology in Chinese Discourse. 2023 <https://doi.org/https://doi.org/10.31219/osf.io/cp73f>.
706 Epub 2023, October 10.
- 707 44. Sun X, Allison C, Auyeung B, et al. Service provision for autism in mainland China:
708 preliminary mapping of service pathways. *Soc Sci Med* 2013;98:87-94.
709 <https://doi.org/10.1016/j.socscimed.2013.08.016>. Epub 2013/12/18.
- 710 45. Wang F, Lao UC, Xing YP, et al. Parents' knowledge and attitude and behavior toward autism: a
711 survey of Chinese families having children with autism spectrum disorder. *Transl Pediatr*
712 2022;11(9):1445-57. <https://doi.org/10.21037/tp-22-113>. Epub 2022/10/18.
- 713 46. Zhao Y, Luo Y, Zhang R, et al. Direct and indirect costs for families of children with autism
714 spectrum disorder in China. *Autism* 2023;27(8):2337-47.
715 <https://doi.org/10.1177/13623613231158862>. Epub 2023/03/08.
- 716 47. Aarons GA, Green AE, Palinkas LA, et al. Dynamic adaptation process to implement an
717 evidence-based child maltreatment intervention. *Implement Sci* 2012;7:32.
718 <https://doi.org/10.1186/1748-5908-7-32>. Epub 2012 Apr 20.
- 719 48. Highfield L, Hartman MA, Mullen PD, et al. Intervention Mapping to Adapt Evidence-Based
720 Interventions for Use in Practice: Increasing Mammography among African American Women.

- 721 Biomed Res Int 2015;2015:160103. <https://doi.org/10.1155/2015/160103>. Epub 2015 Nov 21.
- 722 49. Thabane L, Lancaster G. A guide to the reporting of protocols of pilot and feasibility trials. Pilot
723 Feasibility Stud 2019;5:37. <https://doi.org/10.1186/s40814-019-0423-8>. Epub 2019 Mar 13.
- 724 50. Chan AW, Tetzlaff JM, Altman DG, et al. SPIRIT 2013 statement: defining standard protocol
725 items for clinical trials. Ann Intern Med 2013;158(3):200-7.
726 <https://doi.org/10.7326/0003-4819-158-3-201302050-00583>. Epub 2013 Jan 09.
- 727 51. Grant S, Mayo-Wilson E, Montgomery P, et al. CONSORT-SPI 2018 Explanation and
728 Elaboration: guidance for reporting social and psychological intervention trials. Trials
729 2018;19(1):406. <https://doi.org/10.1186/s13063-018-2735-z>. Epub 2018 Aug 01.
- 730 52. Bouwmans C, Schawo S, Hakkaart-van Roijen L. TiC-P kinderen Handleiding. Netherlands:
731 Institute for Medical TechnologyAssessment, Erasmus University Rotterdam; 2012.
- 732 53. Tencent. WeChat Mini Programs 2024 [Available from: <https://mp.weixin.qq.com/cgi-bin/wx>
733 accessed 08 June, 2024.
- 734 54. Zhang H. The revision of WISC-IV Chinese version. Psychological Science 2009;32(5):1177-79.
735 <https://doi.org/>
- 736 55. Lord C, Rutter M, Le Couteur A. Autism Diagnostic Interview-Revised: a revised version of a
737 diagnostic interview for caregivers of individuals with possible pervasive developmental
738 disorders. J Autism Dev Disord 1994;24(5):659-85. <https://doi.org/10.1007/BF02172145>. Epub
739 1994 Oct 01.
- 740 56. Su L, Li X, Wan G, et al. The norms of achenbach child behavior checklist in hunan province.
741 Chin J Clin Psychol 1996;4(1):24-28. <https://doi.org/>

- 742 57. Thornton CS, Tsai WH, Santana MJ, et al. Effects of Wait Times on Treatment Adherence and
743 Clinical Outcomes in Patients With Severe Sleep-Disordered Breathing: A Secondary Analysis
744 of a Noninferiority Randomized Clinical Trial. *JAMA Netw Open* 2020;3(4):e203088.
745 <https://doi.org/10.1001/jamanetworkopen.2020.3088>. Epub 2020 Apr 21.
- 746 58. Robiner WN. Enhancing adherence in clinical research. *Contemp Clin Trials* 2005;26(1):59-77.
747 <https://doi.org/10.1016/j.cct.2004.11.015>.
- 748 59. Duncan B, Miller S, Sparks J, et al. The child group session rating scale. Jensen Beach, FL,
749 USA 2011 <https://doi.org/>
- 750 60. Sekhon M, Cartwright M, Francis JJ. Development of a theory-informed questionnaire to assess
751 the acceptability of healthcare interventions. *BMC Health Serv Res* 2022;22(1):279.
752 <https://doi.org/10.1186/s12913-022-07577-3>. Epub 2022 Mar 03.
- 753 61. Rozental A, Kottorp A, Forsstrom D, et al. The Negative Effects Questionnaire: psychometric
754 properties of an instrument for assessing negative effects in psychological treatments. *Behav*
755 *Cogn Psychother* 2019;47(5):559-72. <https://doi.org/10.1017/S1352465819000018>. Epub 2019
756 Mar 16.
- 757 62. Bowen DJ, Kreuter M, Spring B, et al. How we design feasibility studies. *Am J Prev Med*
758 2009;36(5):452-7. <https://doi.org/10.1016/j.amepre.2009.02.002>. Epub 2009/04/14.
- 759 63. Ratto AB, Turner-Brown L, Rupp BM, et al. Development of the Contextual Assessment of
760 Social Skills (CASS): a role play measure of social skill for individuals with high-functioning
761 autism. *J Autism Dev Disord* 2011;41(9):1277-86. <https://doi.org/10.1007/s10803-010-1147-z>.
762 Epub 2011 Feb 03.

- 763 64. Constantino JN, Gruber CP. Social responsiveness scale: SRS-2: Western psychological services
764 Torrance, CA; 2012.
- 765 65. Bent S, McDonald MG, Chen Y, et al. Brief report: Game day: A novel method of assessing
766 change in social competence in students with autism spectrum disorder (ASD). Research in
767 Autism Spectrum Disorders 2021;84 <https://doi.org/10.1016/j.rasd.2021.101766>.
- 768 66. Li YQ, Qiu ZY. Standardization of Adaptive Behavior Assessment System-II (6-18 Years Old)
769 Chinese Version. Chin J Rehabil Theory Practice 2016;378-82. <https://doi.org/>
- 770 67. Oakland T, Harrison PL. Adaptive behavior assessment system-II: Clinical use and
771 interpretation: Academic Press; 2011.
- 772 68. Bodwin RF, Bruck M. The adaptation and validation of the Draw-A-Person Test as a measure of
773 self concept. J Clin Psychol 1960 <https://doi.org/>
- 774 69. Wood C, Griffin M, Barton J, et al. Modification of the Rosenberg scale to assess self-esteem in
775 children. Front Public Health 2021;9:655892. <https://doi.org/10.3389/fpubh.2021.655892>.
- 776 70. Koppitz E. El dibujo de la figura humana. Buenos Aires: Guadalupe 2000 <https://doi.org/>
- 777 71. Koppitz EM. Psychological Evaluation of Children's Human Figure Drawings: Grune &
778 Stratton; 1968.
- 779 72. Casey P, Patalay P, Deighton J, et al. The Child Outcome Rating Scale: validating a four-item
780 measure of psychosocial functioning in community and clinic samples of children aged 10-15.
781 Eur Child Adolesc Psychiatry 2020;29(8):1089-102.
782 <https://doi.org/10.1007/s00787-019-01423-4>. Epub 2019 Oct 30.
- 783 73. Sparks JA, Miller SD, Bohanske RT, et al. Giving youth a voice: A preliminary study of the

- 784 reliability and validity of a brief outcome measure for children, adolescents, and caretakers. J
785 Brief Ther 2006;5(2):71-88. <https://doi.org/>
- 786 74. Ye P, Ju J, Zheng K, et al. Psychometric Evaluation of the Parental Reflective Functioning
787 Questionnaire in Chinese Parents. Front Psychol 2022;13:745184.
788 <https://doi.org/10.3389/fpsyg.2022.745184>. Epub 2022 Feb 15.
- 789 75. Accurso EC, Hawley KM, Garland AF. Psychometric properties of the Therapeutic Alliance
790 Scale for Caregivers and Parents. Psychol Assess 2013;25(1):244-52.
791 <https://doi.org/10.1037/a0030551>. Epub 2012 Oct 24.
- 792 76. Shirk SR, Saiz CC. Clinical, empirical, and developmental perspectives on the therapeutic
793 relationship in child psychotherapy. Dev Psychopathol 1992;4(4):713-28. <https://doi.org/>
- 794 77. Albaum C, Tablon P, Roudbarani F, et al. Predictors and outcomes associated with therapeutic
795 alliance in cognitive behaviour therapy for children with autism. Autism 2020;24(1):211-20.
796 <https://doi.org/10.1177/1362361319849985>. Epub 2019 Jun 20.
- 797 78. Afsharnejad B, Falkmer M, Black MH, et al. KONTAKT(c) for Australian adolescents on the
798 autism spectrum: protocol of a randomized control trial. Trials 2019;20(1):687.
799 <https://doi.org/10.1186/s13063-019-3721-9>. Epub 2019 Dec 10.
- 800 79. Bouwmans C, De Jong K, Timman R, et al. Feasibility, reliability and validity of a questionnaire
801 on healthcare consumption and productivity loss in patients with a psychiatric disorder (TiC-P).
802 BMC Health Serv Res 2013;13:217. <https://doi.org/10.1186/1472-6963-13-217>. Epub 2013
803 Jun 19.
- 804 80. Chen G, Xu F, Huynh E, et al. Scoring the Child Health Utility 9D instrument: estimation of a

- 805 Chinese child and adolescent-specific tariff. Qual Life Res 2019;28(1):163-76.
806 <https://doi.org/10.1007/s11136-018-2032-z>. Epub 2018 Oct 31.
- 807 81. Wille N, Badia X, Bonsel G, et al. Development of the EQ-5D-Y: a child-friendly version of the
808 EQ-5D. Qual Life Res 2010;19(6):875-86. <https://doi.org/10.1007/s11136-010-9648-y>. Epub
809 2010 Apr 21.
- 810 82. Lauritsen J, Bruus M. EPIDATA: Data entry system for use with Stata, SPSS, SAS, Excel, text
811 formats. 2000 <https://doi.org/>
- 812 83. Rabin SJ, Laugeson EA, Mor-Snir I, et al. An Israeli RCT of PEERS(R): Intervention
813 Effectiveness and the Predictive Value of Parental Sensitivity. J Clin Child Adolesc Psychol
814 2021;50(6):933-49. <https://doi.org/10.1080/15374416.2020.1796681>. Epub 2020 Aug 12.
- 815 84. Whitehead AL, Julious SA, Cooper CL, et al. Estimating the sample size for a pilot randomised
816 trial to minimise the overall trial sample size for the external pilot and main trial for a
817 continuous outcome variable. Stat Methods Med Res 2016;25(3):1057-73.
818 <https://doi.org/10.1177/0962280215588241>. Epub 2015 Jun 21.
- 819 85. McCoy CE. Understanding the Intention-to-treat Principle in Randomized Controlled Trials.
820 West J Emerg Med 2017;18(6):1075-78. <https://doi.org/10.5811/westjem.2017.8.35985>. Epub
821 2017 Nov 01.
- 822 86. Yang P, Chen G, Wang P, et al. Psychometric evaluation of the Chinese version of the Child
823 Health Utility 9D (CHU9D-CHN): a school-based study in China. Qual Life Res
824 2018;27(7):1921-31. <https://doi.org/10.1007/s11136-018-1864-x>. Epub 2018 May 08.
- 825 87. Yang Z, Jiang J, Wang P, et al. Estimating an EQ-5D-Y-3L Value Set for China.

826 Pharmacoeconomics 2022;40(Suppl 2):147-55. <https://doi.org/10.1007/s40273-022-01216-9>.
827 Epub 2022 Nov 18.
828 88. Cunningham JA, Kypri K, McCambridge J. Exploratory randomized controlled trial evaluating
829 the impact of a waiting list control design. BMC Med Res Methodol 2013;13:150.
830 <https://doi.org/10.1186/1471-2288-13-150>. Epub 2013 Dec 10.
831

832 **Footnotes**

833 **Authors' contributions**

834 LU, ZH, ZX, SB, and SG undertook the conceptualisation and design of the study. LU, ZH,
835 EW translated the manuals and workbooks. LU, ZH, SB, SG, and ZX selected the measures used.
836 EW, FJ, YP, HX, ZH, LU, and ZX improved the content of the manual. FJ, YP, ZH, and ZX assist
837 with administration of groups and offer clinical support. LU drafted the manuscript, with inputs
838 from ZH, SB, SG, and ZX. All authors contributed to, read and approved the final manuscript.

839 **Funding statement**

840 This research now receives fundings from Guangdong Science and Technology Program
841 (2023A1111120012) and Guangzhou Science and Technology Program (2024B03J0529).

842 **Competing interests**

843 Part of this protocol was presented as a poster at the International Society of Autism Research
844 Annual Meeting, 2024 May 16. ZX received funding from the Guangdong Science and Technology
845 Department, and ZH received funding from the Guangzhou Municipal Science and Technology
846 Bureau. The funding organisations do not influence the study design, data
847 collection/analysis/interpretation, manuscript review/approval, or publication decision. All other
848 authors declare that they have no conflicts of interest.

849 **Ethics approval**

850 This study has been approved by the Ethical Board Committee at the Third Affiliated Hospital
851 of Sun Yat-sen University (II2023-119-01), and pre-registered in Chinese Clinical Trials
852 (ChiCTR2300072136).

853 **Availability of data and materials**

854 The ethical consent and funding documents have been reviewed by the review board of the
855 Chinese Clinical Trial Registry and are available for review by the Editorial Office. Anonymised
856 data related to this study will be available from the corresponding author upon reasonable request
857 after study completion and publication of the study. The final dataset generated during this study
858 will upload to the Research Data Deposit of Sun Yat-sen University. Trial results will be reported
859 and published in scientific journals.

860 **Acknowledgments**

861 We acknowledge the generous support from the Swedish team at Karolinska
862 Institutet/Stockholm Health Services and the Australian team at Curtin University. They facilitated
863 the training, provided precious experiences and materials for the CDBC KONTAKT™ trainers . We
864 thanks the CDBC KONTAKT™ team for facilitating the process of this trial. We sincerely thank
865 the autistic individual, Yihan Liu, and her families for validating the translation and contents of the
866 Chinese KONTKAT™ manual. Additionally, we appreciate Yan Li for designing the tools for the
867 KONTAKT™ CHILD programmes.

868

869 **Tables**

870 **Table 1.** Feasibility methodology based on the focus areas outlined by Bowen et al. (2009) [62]

Area of focus	Quantitative measures	Qualitative measures	Other methodology
Acceptability	<ul style="list-style-type: none"> •Theoretical Framework of Acceptability Questionnaire •Group Session Rating Scale •Negative Effects Questionnaire •Homework completion rate 	<ul style="list-style-type: none"> •Focus groups with participants and trainers 	-
Demand	<ul style="list-style-type: none"> •Recruitment rate •Preparedness for Participating in KONTAKT™ Scale 	<ul style="list-style-type: none"> •Focus groups with participants •Expression of interest received by the service provider 	-
Implementation	<ul style="list-style-type: none"> •Intervention fidelity checklist 		<ul style="list-style-type: none"> •Training the trainers and regular

supervision

Practicality	•Attendance rate	•Focus groups with participants	
Adaptation	•Social Responsiveness Scale-2		•Previous evaluation studies in Sweden and West Australia
	•Adaptive Behaviour Assessment System-2		
Integration	-	•Focus groups with trainers and service provider	•Certifying the trainers through supervision
Expansion	•Economic evaluation of the KONTAKT™ compared to usual care	•Focus groups with trainers and service provider	-
Preliminary efficacy	•Primary/secondary efficacy outcomes		-

872 **Table 2.** Feasibility parameters and criteria for success

Parameter	Collection methods	Criteria for success
Recruitment rate	The number of families being approached within the recruitment period versus the actual recruited number of families (consented)	During each round of recruitment within one and a half month period (two rounds in total), a 50% of recruitment rate is consider acceptable
Drop-out rate	The number of families discontinued from the study versus the total number of recruited families	Less than 15% of drop-out (at least 31 families retained)
Retention rate	The number of families, school teachers, and service providers who complete all assessment timepoints, versus those who do not complete all assessment timepoints (reasons for noncompliance will be recorded)	At least 80% of retention rate
Attendance rate	The mean and median number of all sessions attended	At least 80% of attendance (13 out of 16 sessions)
Homework completion	The number of completed	At least 60% of homework

rate assignments versus incomplete completion (Of the 15 assignments, assignments at least 9 are completed or partially completed)

Training fidelity score Trainers self-rated adherence to the sessions protocol using KONTAKT™ fidelity checklist (KFC). Each item will be scored “0” for no adherence and “1” for adherence. The fidelity score for each session will be calculated by summing up all items, and divided by the total items. At least an average fidelity score of 0.8 for all sessions.