

1 Social skills group training (KONTAKT™) for 2 Chinese autistic children: a feasibility wait-list 3 RCT protocol

4 Authors and Affiliations

5 Uchong Lao^{1□} · Huilin Zhu^{1□*} · Fengjing Liang¹ · Wuxia Bai¹² · Peipei Yin¹ · Xiaoqian Huang¹ ·

6 Sonya Girdler²³⁴⁵ · Sven Bölte²³⁴ · Xiaobing Zou^{1*}

7 ¹ Child Development and Behavior Center, The Third Affiliated Hospital, Sun Yat-Sen University,
8 China, 2693 Kai Chuang Avenue, Huangpu District, Guangzhou, 510530, China

9 ² School of Allied Health, Curtin University, Kent Street, Bentley, Perth, WA, 6102, Australia

10 ³ Curtin Autism Research Group (CARG), Curtin University, Perth, WA, Australia

11 ⁴ Center of Neurodevelopmental Disorders (KIND), Centre for Psychiatry Research, Division of
12 Neuropsychiatry, Department of Women's and Children's Health, Karolinska Institutet & Child and
13 Adolescent Psychiatry, Stockholm Health Care Services, Stockholm County Council, Stockholm,
14 Sweden

15 ⁵ School of Allied Health, University of Western Australia, Perth, WA, Australia

16

17

18 □ Equal contributions

19 * Corresponding authors

20 ORCID ID:

21 Uchong Lao: 0000-0001-8658-880X

22 Huilin Zhu: 0000-0002-1052-708X

23 Sonya Girdler: 0000-0001-7992-0800

24 Sven Bölte: 0000-0002-4579-4970

25

26 **Corresponding authors information:**

27 **Huilin Zhu**

28 Email: zhuhlin6@mail.sysu.edu.cn

29

30 **Xiaobing Zou**

31 Email: zouxb@mail.sysu.edu.cn

32

33 **Abstract**

34 **Introduction**

35 School-aged autistic children commonly experience social communication and interaction
36 challenges in their daily lives. While internationally evidence suggests that social skills group
37 training (SSGT) programmes can support autistic children, improving their psycho-social
38 functioning, to date there is no standardised evidence-based SSGT tailored towards the needs of
39 children living in Mainland China. Therefore, this study will evaluate the feasibility, acceptability,
40 preliminary efficacy, and cost-effectiveness of a culturally-adapted 16-session version of the
41 KONTAKT™ programme in Chinese autistic children.

42 **Methods and analysis**

43 This study will employed a randomised, single-blinded, wait-list controlled feasibility design
44 with 36 Chinese autistic children aged 8 to 12 years with Intelligence Quotient over 70 referred to
45 the Child Development Behaviour Centre, in Guangzhou, China. Participants will be randomly
46 assigned to either the immediate training group (ITG) or the delayed training group (DTG) based on
47 birth-assigned sex. Feasibility will be assessed using quantitative and qualitative data obtained from
48 the KONTAKT™ participants, their parents, and facilitators of the programme. Preliminary
49 efficacy and cost-effectiveness are assessed via quantitative data obtained at five-time points. The
50 primary outcome is participants improvement in social skills as measured by the Contextual
51 Assessment of Social Skills (CASS). Other outcomes include parents and teachers report of
52 participants' autistic trait and adaptive functioning, participants self-report and projective tests for

53 self-assertiveness and psycho-social functioning, and parent report on parental reflective
54 functioning and perceived school support. Common process factors and their effects on outcomes
55 will also be explored. Cost-effectiveness will consider both societal and healthcare perspectives.

56 **Ethics and dissemination**

57 The current study protocol has been reviewed and ethics approval has been obtained from the
58 Ethical Board Committee at the Third Affiliated Hospital of Sun Yat-sen University (II2023-119-01).
59 The trial has pre-registered in Chinese Clinical Trials (ChiCTR2300072136) on 05 June 2023. The
60 results of this trial will be actively disseminated through peer-reviewed publications and conference
61 presentations.

62 **Keywords**

63 Social skills group training; Children; KONTAKT™; Cross-cultural adaptation; Feasibility; Autism;
64 Chinese

65 **Strengths and limitations of this study**

- 66 ●Comprehensive assessment of diverse outcomes via multiple informants.
- 67 ●Systematic cultural adaptation using the Integrative Cultural Adaptation Framework (ICAF)
68 ensuring the appropriateness of the Chinese version of KONTAKT™.
- 69 ●Collect data on readiness for change, providing insights into “help-seeker” effects.
- 70 ●Limited generalisability due to a single study site, location-specific inclusion, and absence of
71 active comparator.

72 ●Uncertain psychometric properties of certain measures due to a lack of Chinese population data.

73 **Introduction**

74 **Background and rationale**

75 Autism¹ is a neurodevelopmental condition characterised by persistent challenges in
76 reciprocal social interaction and communication [1]. Autistic children often struggle in complying
77 with social expectations and norms of communication and interaction, impacting their functioning
78 in everyday contexts [2]. The estimated prevalence of autism among children aged 6 to 12 in
79 Mainland China is 0.7% (~ 1 in 143 children) and nearly half of all autistic children attend
80 mainstream schools [3]. While there is limited research investigating the experiences of these
81 children, their families and teachers, there is a clear and urgent need for evidence-based
82 interventions aiming to support the social competence and well-being of Chinese autistic children in
83 their everyday lives.

84 Internationally, Social Skills Group Training (SSGT) programmes are demonstrating efficacy in
85 supporting verbal and cognitively able school-aged autistic children in developing their social skills
86 [4, 5, 6]. Multiple meta-analyses of randomised controlled trials (RCTs) evaluating the efficacy of
87 these programmes in autistic youth report moderate to large effect sizes in achieving personally
88 meaningful social goals, enhancing social skills, social skills knowledge, social participation, and
89 social functioning [4, 7, 8, 9].

90 While there has been considerable investigation the proximal intervention outcomes of SSGT
91 programmes in autistic children and adolescents and post-test and short-term follow-up periods,

¹ Herein, identity-first language is used since this is the endorsed terminology among autistic advocates (Kenny, 2016).

92 there has been limited focus on longer terms outcomes and the generalisation of learnt skills to
93 everyday contexts such as schools. Further, with few exceptions outcomes of these programmes
94 have been largely assess by parents, this of particular concern given most study designs have not
95 employed even single blinded observation of outcomes measures [4, 7]. Results from previous
96 meta-analyses [4, 7, 10, 11] inferred that improvements observed in parent and clinical ratings were
97 primarily related to increased social skills knowledge or specific task-related skills, rather than
98 assessment of the generalisation of skills to everyday contexts [7].

99 SSGT programmes have also been criticised for failing to consider the view of autistic
100 youth themselves in the design and delivery of the programme [12]. While capturing and
101 accounting for the views of autistic young people may require effort, given their communication
102 challenges [13], increasingly autistic advocates and the autistic community are calling for
103 researchers and clinicians to consider and incorporate their views in clinical interventions [14]. It is
104 also likely that co-producing SSGT with individuals with lived experience will enhance the efficacy
105 of these programmes in relation to the intended target group [15]. Further, given the inherent
106 challenges experienced by autistic children in understanding social interactions and emotional
107 content questions have been raised in regard to the validity and accuracy of self-report
108 questionnaires aiming to evaluate the impact of SSGT programmes on these children [16]. Despite
109 these cautions findings from a recent meta-analysis suggests that the emotional self-awareness of
110 school-aged autistic children is comparable to their peers [17]. It seems plausible that approaches
111 which consider the communication needs and preferences of autistic children will be more
112 successful in obtaining their perspectives [18]. Further, applying validated non-verbal psychometric

113 assessments, such as projective tests draw on visual communication styles (Draw-A-Person Test
114 [DAPT], [19, 20]) and may be helpful in exploring autistic children’s mental states [21, 22, 23].

115 Methodological limitations of previous SSGT efficacy studies includes a failure to
116 consider common process factors [24]. Process factors are elements that are universally present in
117 therapies and unfold progressively throughout the therapy sessions, such as therapy expectation or
118 willing to participate, and therapeutic alliance. While a significant proportion of SSGT studies have
119 reported programme adherence and satisfaction [7], the data obtained by these studies was largely
120 descriptive, and failed to systematically examine the impact of process factors in relation to
121 intervention outcomes [24].

122 The KONTAKT™ programme is a well-established SSGT designed for children and
123 adolescents with neurodivergent conditions [25]. Originating in Germany [26], it has now been
124 further developed, standardised, culturally adapted, and evaluated in Sweden [27, 28] and Australia
125 [29]. Three session-length variants (24-session, 16-session, and 12-session) have been standardised
126 and evaluated through RCTs, demonstrating efficacy and effectiveness in improving participants’
127 social functioning, adaptive functioning, emotional well-being, emotion recognition and regulation,
128 personal-meaningful goals, and gaze fixation [27, 28, 29]. Findings across these studies suggest that
129 KONTAKT™ may be particularly beneficial to autistic teenagers and girls. Moreover, both
130 quantitative and qualitative data support the conclusion that KONTAKT™ is effective, safe, and
131 well-received by autistic youth [27, 28, 29, 30, 31].

132 To our knowledge, there is no culturally-standardised SSGT programme specifically
133 tailored towards the needs of school-aged autistic children in Mainland China. With its diverse,

134 individualised, and naturalistic session design [25], it is anticipated that KONTAKT™ will
135 effectively support the social functioning and well-being of Chinese autistic children, provided the
136 context of Chinese cultural and its associated social norms are incorporated [32].

137 Cultural adaptation involves systematically modifying an evidence-based intervention to
138 align with the target population’s needs, values, languages, conditions, and customs [33, 34, 35].
139 However, only a few cultural adaptation studies on SSGT have well-documented and
140 theoretically-based methodologies. Moreover, previous SSGT efficacy studies generally lacked
141 input from the target population, despite language translation and the inclusion of culturally relevant
142 content [6].

143 Ignoring cultural differences can significantly hamper the effectiveness of evidence-based
144 SSGTs for autistic individuals [32]. Given the core characteristics of autism involve social
145 interaction and communication, social-ecological differences across cultures will undoubtedly
146 influence interpretations of “functioning” and “disorder” in autism [36]. Cultural factors also impact
147 on established expectations and interactions between families and services providers, and between
148 service providers in various sectors including healthcare, education, and the broader community [37,
149 38, 39].

150 For example, Chinese parents are unlikely to disclose their child’s autism diagnosis to the
151 child and school, reflecting limited family-school collaboration and potentially affiliated-stigma
152 [40]. Moreover, Chinese autistic children are by large not aware of their autism diagnosis, as their
153 parents tend not to disclose the diagnosis to them [41]. ^{An}other remarkable cultural differences
154 between China and the West is the lack of availability of various professionals and public health

155 services [42, 43]. Unlike the West in which services are mostly provided by the government, health
156 services targeting autistic children are mostly paid by parents in China [44].

157 Various cultural adaptation frameworks are available [33, 34, 45, 46], sharing similar steps
158 despite some methodological distinctions. This study adopts the integrative cultural adaptation
159 framework (ICAF) since it aligns with consensus in the field [33]. The ICAF involves five stages:
160 information gathering, preliminary design, preliminary efficacy testing, refinement, and final trial.
161 This study focuses on the first four stages to prepare in preparation for the final trial (the last stage).

162 **Objectives and hypotheses**

163 The overarching purpose of the present study is to assess the feasibility and cross-cultural
164 validity of the adapted 16-session version of KONTAKT™ programme for Chinese autistic children
165 in preparation for a larger RCT trial. The specific objectives are:

- 166 1. Evaluating the integration of KONTAKT™ into a tertiary hospital's routine activity;
- 167 2. Assessing the acceptability and feasibility of data collection framework;
- 168 3. Examining the preliminary efficacy quantitative and qualitative effects of KONTAKT™;
- 169 and,
- 170 4. Exploring the impact of common process factors on intervention outcomes.

171 Our primary hypothesis is that the Chinese 16-session KONTAKT™ version will be
172 feasible and culturally appropriate for Chinese autistic children with minor revisions, implemented
173 successfully in a tertiary clinic. We also hypothesize that participants in the immediate training
174 group (ITG), in comparison to the delayed training group (DTG) [wait-list], will experience greater

175 improvements in outcomes from Time 1 to Time 3 (waiting period of DTG). We expect that
176 participants and their parents with higher readiness for change and a stronger alliance in the ITG
177 will benefit more from KONTAKT™. Lastly, we anticipate that the training effects in the ITG will
178 persist at follow-up, and significant improvements in children's outcomes will occur in the DTG
179 from Time 3 to Time 5 (training endpoint of the DTG).

180 **Trial Design**

181 This study was approved by the Ethical Board Committee at the Third Affiliated Hospital of
182 Sun Yat-sen University (II2023-119-01) and preregistered in Chinese Clinical Trials
183 (ChiCTR2300072136).

184 Any modification to this protocol will be reported to the ethical board and updated in Chinese
185 Clinical Trials. Following Thabane and Lancaster's guidelines in 2019 [47], this Chinese
186 KONTAKT™ CHILD protocol is planned and reported following the Standard and Protocol Items:
187 Recommendations for Interventional Trials (SPIRT) [48]. The findings of this study will be reported
188 adherent to the Consolidated Standards of Reporting Trials for social and psychological
189 interventions (CONSORT-SPI) [49].

190 The Chinese KONTAKT™ CHILD feasibility study has a prospective, wait-list controlled,
191 single-site, stratified, randomised design. Blinding will apply to data collection, outcome
192 adjudicators, and data analysts. Three major assessment time-points (ITG: Pre-training[T1],
193 Post-training[T3], and Follow Up[T5]; DTG: Pre-training[T1], Pre-training[T3], Post-training[T5]),
194 with additional mid-point cost and processing factors data collection for each group, are included.

195 All measurements will be taken during face-to-face interviews, with the exception of data obtained
196 from teachers and during the prescreening processes. Further, this study will employ a
197 mixed-methods design, with between-group and within-participant comparisons, to explore the
198 feasibility and acceptability of implementing a large-scale RCT. Randomisation is performed at a
199 1:1 allocation ratio, with variable block length and stratification by sex.

200 **Methods: participants, interventions, and outcomes**

201 **Study setting**

202 All in-person assessments and interventions, except for the excursion session, will take place at
203 the outpatient department of the Child Development and Behaviour Centre (CDBC) of the tertiary
204 academic hospital, the Third-affiliated Hospital of Sun Yat-sen University in Guangzhou, China.
205 The CDBC is one of China's first established and leading developmental behavioural paediatric
206 units, with over 20 years experience in diagnosing and promoting the well-being of autistic
207 individuals and their families. The CDBC provides over 10,000 clinic appointments annually to
208 neurodivergent children and their families across China seeking diagnostic and intervention
209 services.

210 Online assessments will be designed and distributed using the SurveyStar online survey
211 platform (<https://wjx.cn/>).The SurveyStar is one of the most popular electronic survey platforms in
212 Chinese contexts, with its services covering more than three million enterprises and 90%
213 universities in China.

214 The KONTAKTTM certified trainers are experienced CBDC clinicians (clinical psychologists,

215 developmental-behavioural paediatricians, and therapists) working with Chinese autistic children
216 (with 3 to 10 years working experiences). They have completed standardised online KONTAKT™
217 methodological training provided by experienced trainers from Center of Neurodevelopmental
218 Disorders at Karolinska Institutet (KIND), including self-directed training and video-conference
219 seminars, followed by a 13-session enhanced in-person training. The enhanced training course
220 mainly included trainers role-playing the child sessions, and more in-depth discussion on the
221 principles of KONTAKT™.

222 All KONTAKT™ sessions, with the exception of the excursion session, will be delivered in a
223 spacious, well-lit room at CDBC, with participants and trainers sitting in a circle. As suggested in
224 the KONTAKT™ manual delivery of the programme content will be supported by a flipchart,
225 utilised to record notes during each session, and a board displaying the group rules, session agenda
226 and points assigned to participants in recognition of their participation in the sessions. The
227 excursion session (session 9) will be to cafes, a bubble tea shops or a convenience store, accessible
228 from CDBC. Parent sessions will take place in a separate room, with parents sitting together in a
229 circle without their children present. A projector will be utilised to present information on the
230 logistics of the study, the content of KONTAKT™, information pertaining to their role, such as
231 completing assignments and providing constructive feedback, in supporting their children during
232 the intervention period.

233 **Recruitment**

234 **Figure 1** displays the flow of participants throughout the study. Thirty-six autistic children will

235 be recruited through the outpatient department of the CDBC. Multiple recruitment avenues will be
236 utilised including word-of-mouth, referrals from clinicians, posters displaying information about the
237 study at the CDBC clinic, and flyers published on the WeChat[®] account of CDBC
238 (<https://www.wechat.com/>).

239 Parents will express their interest in the study by completing a brief online registration form
240 (taking approximately 10-15 minutes to complete) obtaining their contact information, their
241 child/children's demographic information, diagnostic statuses, previous evaluations on the Wechsler
242 Intelligence Scale for Children-IV Chinese version (WISC-IV) [50], the Autism Diagnostic
243 Observation Schedule-Generic (ADOS-G) [51], and screen for problem behaviours which may
244 impact on their ability to engage positively in a group setting using the Childhood Behavior
245 Checklist-parent version (CBCL) [52]. Obtaining parents expression of interest in this way enable
246 estimation the demand for KONTAKT[™] from families engaging with CDBC.

247 Following submission of their expression of interest a research coordinator will assess
248 candidates eligibility to participate in the study. Parents of children meeting the criteria for inclusion
249 of the study will subsequently participate in a 10-15 minute prescreening phone interview,
250 discussing with the research team their child's school lives (e.g. how their child are getting along
251 with their classmates and teachers), academic performances, and special needs, and addressing any
252 study-related questions. This brief interview with parents will also ascertain potential participants'
253 suitability to cope with the cognitive and verbal demands of KONTAKT[™].

254 If fulfilling the prescreening criteria, candidate participants and their parents will attend CDBC
255 for a 50-minute face-to-face intake interview with the research coordinator. During the intake

256 interview, both children and parents will participate in a 20-minute individual interview with the
257 research coordinator. Families meeting the inclusion criteria of the study will be provided with
258 written information detailing their participation and requirements of the study, with written
259 informed consent obtained from parents and assent from children.

260 **Eligibility criteria**

261 *Inclusion criteria*

- 262 (1) Aged 8-12 years;
- 263 (2) A clinical diagnosis of autism (confirmed by ADOS-G, module 3);
- 264 (3) A Full-scale IQ > 70 on the WISC-IV;
- 265 (4) Resided in Guangzhou city for the past 12 months.

266 *Exclusion criteria*

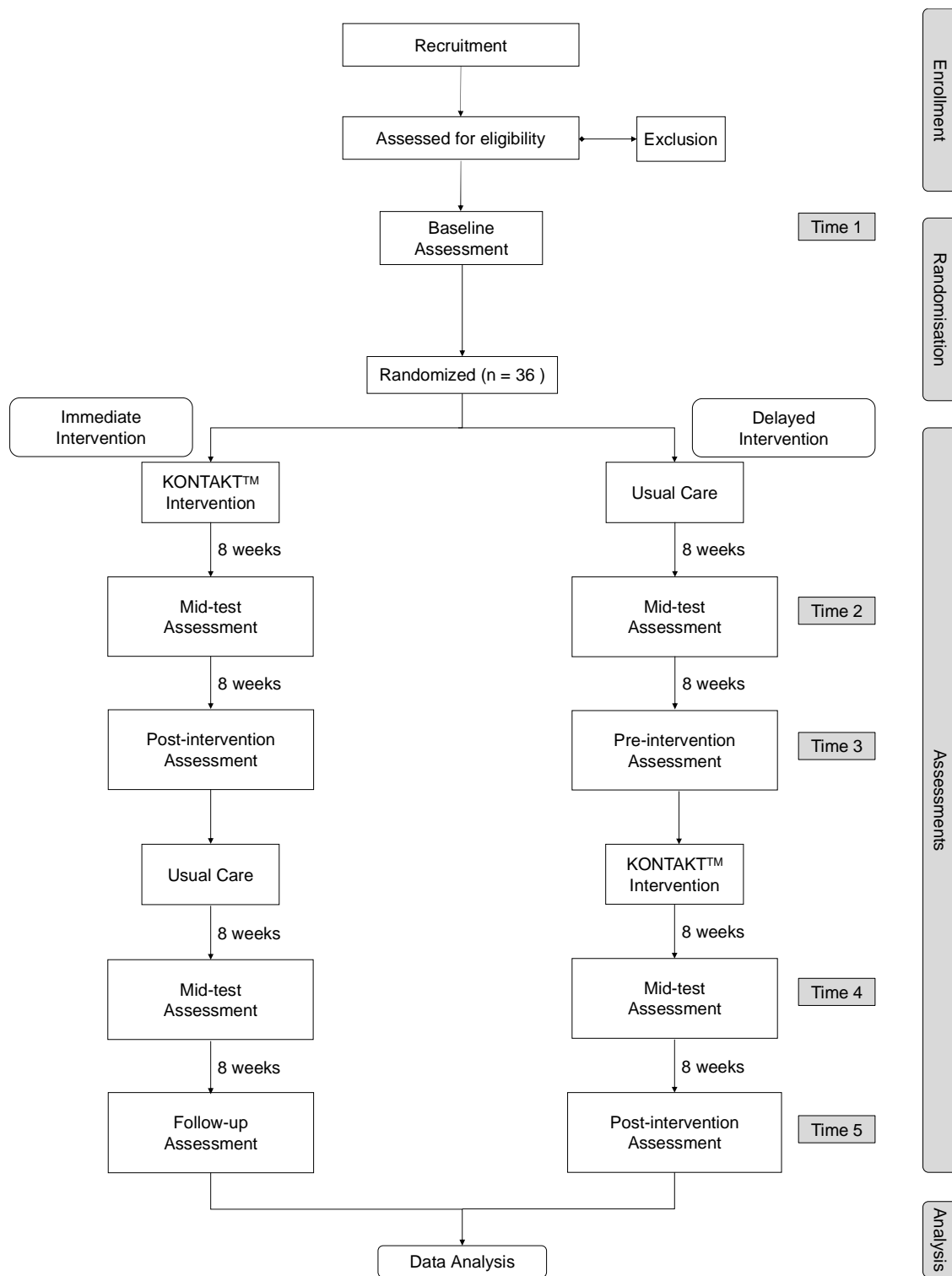
- 267 (1) Significant physical impairment or severe metabolic disease(s);
- 268 (2) Significant rule-breaking or aggressive behaviours within the last six months, as confirmed
269 by CBCL;
- 270 (3) Low intrinsic motivation to participate;
- 271 (4) Significant difficulties with Chinese characters reading comprehension or Mandarin
272 expression and comprehension;
- 273 (5) Prior or current behaviour or psychiatric conditions that could disrupt participation or
274 necessitate other treatment(s).
- 275 Participants with common co-occurring neurodevelopmental conditions in autistic individuals,

276 such as attention-deficiency hyperactivity disorder, depression, anxiety, and tic disorder, are eligible
277 if these conditions do not significantly interfere with participation. Participants will continue with
278 their prescribed pharmacological treatments, psychological therapies, or other interventions while
279 participating in KONTAKT™. Written informed consent will be obtained from participants and
280 parents after a thorough explanation of the study during the intake interview.

281 **Intervention**

282 *KONTAKT™ Intervention*

283 Prior to the development of this study protocol, a preliminary adaptation of KONTAKT™
284 (The first step of the ICAF - Information gathering) has been completed. The KONTAKT™
285 programme includes workbooks for trainers, children, and parents, supporting intervention fidelity.
286 In adapting the 16-session variant of KONTAKT™ from Australian English version to Mandarin
287 Chinese, a rigorous process was employed. Firstly, an initial translation was made and verified for
288 accuracy by bi-lingual authors. Then, a working group of KONTAKT™ Chinese trainers, who are
289 also CDBC clinicians, provided feedback on the initial programme material. This step resulted in
290 significant modifications to the discussion topics, particularly regarding those addressing autism
291 diagnosis, making them more general and implicit (most notably in session 3). In addition, with the
292 goal of encouraging parents to discuss the autism diagnosis with their child, information relating to
293 “how to talk about the diagnosis with your child”, was added to the first parent session. This
294 adaptation was give research has highlighted that over 60% of Chinese autistic children are unaware
295 of their autism diagnoses, with 40% of parents of Chinese autistic children preferring not to disclose
296 an autism diagnosis to their children [41].



297

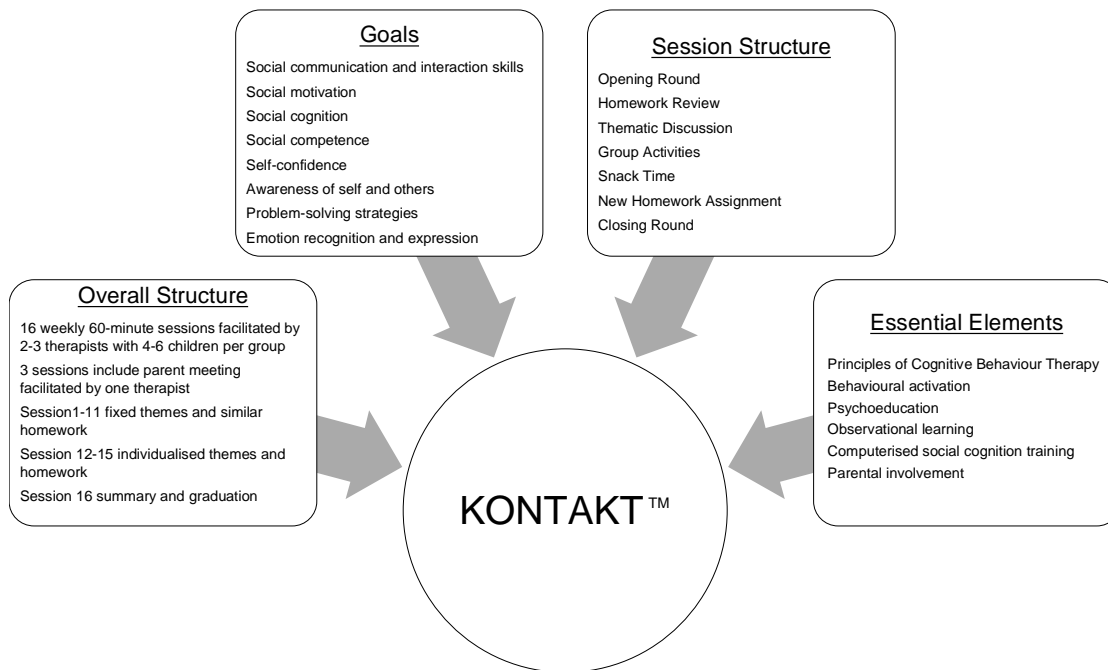
298 **Figure 1** Chinese KONTAKT™ Child feasibility study flowchart.

299

300 Additionally, parents received information on supporting their children with the KONTAKT™
301 homework activities, including enacted demonstrations as to how to facilitate role-play exercises
302 and demonstration videos. Through the programme KONTAKT™ trainers will also provide
303 session-by-session feedback to parents on their child's progress and ongoing coaching and
304 encouragement. Members of the Chinese research team further modified and added questions,
305 games, activities, and scenarios aligned with Chinese cultural norms. A mandarin name was also
306 created for KONTAKT™, emphasizing the interventions focus on meaningful socialisation (交得
307 益). Finally, a parent with of an autistic adolescent proofread the manual, and made edits with the
308 goal of enhancing language fluency and readability, and the inclusion of culturally appropriate
309 terminology. Additionally, a logo for the Chinese version of KONTAKT™ was designed and
310 utilised on customised stationary and course materials, with the goal of fostering a sense of group
311 cohesion among participants.

312 KONTAKT™ integrates Cognitive Behaviour Therapy principles and learning principles
313 tailored towards the needs of autistic youth (see **Figure 2**) [25]. These include principles of
314 psychoeducation, observational learning, modeling, behavioural activation, homework,
315 computerised cognitive training, opportunities for rehearsal, a structured agenda, and parental
316 involvement. KONTAKT™ employs mandatory, recurring, and variable activities with the goal of
317 supporting participants in achieving their personally meaningful social goals. Sessions aim to
318 enhance understanding of social norms, develop adaptive socio-emotional skills, and promote
319 practical applications. The first 11 sessions of KONTAKT™ consistently present weekly themes
320 and assignments, while later sessions are led by the participants and tailored towards topics of

321 interest to each group. In this way KONTAKT™ accommodates not only for cultural context, but
322 also for the subtle differences and preferences of each KONTAKT™ group.



323
324 **Figure 2** Elements, structures, and goals of KONTAKT™.

325 A group of 4-6 participants will attend 16 consecutive sessions of KONTAKT™ led by 2 to 3
326 trainers on weekends, with each session lasting approximately 60 minutes. Three parent sessions
327 will take place at the beginning, middle, and end of the training, offering parents individual
328 feedback on their child's progress, presenting educational information on autism and approaches to
329 discussing an autism diagnosis with their child, and encouraging parents in socially coaching their
330 children. During the parent sessions opportunities will be provided encouraging parents to ask
331 questions, provide feedback, and engage with other parents of autistic children. Parents will be
332 encouraged to assist their children with homework, with trainers providing feedback to parents after
333 each session. Refer to **Supplementary Table 1 (online supplemental file 1)** for the structure and
334 content of the KONTAKT™ Chinese version.

335 With the goal of ensuring fidelity to the KONTAKT™ treatment protocol, trainers will
336 complete session-by-session fidelity checklists and receive supervision from certified
337 KONTAKT™ trainers.

338 **Description on the rationale of adapting the Chinese 16-session KONTAKT™**

339 While KONTAKT™ has been previously standardised and published in 12 and 24 session
340 variants, the reasons underpinning the choice to tailor the 16 session variant to mainland China were
341 four-fold. Firstly, while the RCT efficacy study from Australia indicates that four additional
342 sessions to the 12-session variant of KONTAKT™ showed no additional change in autistic traits
343 [29], and the feasibility and efficacy of the 16-session variant remain unestablished in Chinese
344 autistic children. Additionally, previous research found that the 12-session variant did not
345 significantly outperform standard care in Sweden [27], and the 24-session variant had a higher
346 attrition rate with autistic children in Sweden (26% vs 11%/14%) [27, 28, 29]. Thirdly, aligning
347 with the Chinese academic year structure, which consists of two terms with approximately five
348 months each, the 16-session version is more practical. Lastly, to ensure ethical and practicality, we
349 aim for a 4 to 5 month waiting period in the wait-list group, as extended waiting times can impact
350 adherence negatively [53].

351 **Explanation for the choice of comparators**

352 The waiting period of the DTG is limited to 4-5 months, roughly equivalent to one round of
353 KONTAKT™ training. While an active comparator in an RCT is typically the most robust, due to
354 limited clinical resources in Mainland China, a wait-list control group is considered more practical.

355 Moreover, given that “nonspecific” care is common in Mainland China, a wait-list control group
356 allows for assessing the additional impact of KONTAKT™ in addition to usual care.

357 **Intervention adherence**

358 We will use a participant attendance sheet to track compliance, aiming for at least 80%
359 attendance (13 out of 16 sessions) as acceptable. We also record homework completion, with a
360 target of over 60% considered tolerable.

361 We will further adopt several approaches as recommended by Robiner with the goal of
362 enhancing the wait-list group’s adherence [54]:

363 (1) Provide detailed study information to families during intake interviews;

364 (2) Emphasize to families the importance of adherence;

365 (3) Establish a collaborative working relation with families during intake interviews with the
366 goal of developing trust and rapport;

367 (4) Offer face-to-face assessments for regular clinical visits during the waiting periods;

368 (5) Limit the waiting time for the DTG to 4-5 months with a single-round intervention;

369 (6) Schedule appointments at times convenient to families, for example on weekends.

370 **Randomisation**

371 After the initial visit to the clinic, participants will be randomised to either ITG or DTG.
372 Randomisation will be conducted by a third party not involved in the Chinese KONTAKT™
373 CHILD trial using computer-generated random numbers. The permuted block numbers of 4 to 6
374 will be used to restrict randomisation within the strata (gender). Each participant will have a unique

375 code to denote.

376 **Assessments/measures**

377 Outcomes from multiple informants (children, parents, teachers, clinical ratings) and multiple
378 means (questionnaires, interviews, observations, projective tests) will be acquired. The assessment
379 timeline is presented in **Table 1**.

380 [Table 1]

381 All online questionnaire fields are mandatory, eliminating the expectation of missing data. QR
382 codes will be used for distributing the registration and teacher questionnaires, completed via the
383 WeChat[®] app. Each teacher questionnaire will assign unique research serial numbers for participant
384 identification.

385 *The primary outcome* of the Mandarin KONTAKT[™] CHILD study is social communication
386 and interaction skills improvement measured by the Contextual Assessment of Social Skills (CASS),
387 an observational measure. *Secondary outcomes* include autistic characteristics (Social
388 Responsiveness Scale-2 [SRS-2]), generalised social skills (Snack Time Assessment of
389 Relationships and Social Skills [STARSS]), adaptive functioning (Adaptive Behaviour Assessment
390 System-II), self-esteem and self-concept (Self-concept Scale Draw-A-Person [SCS-DAP], Child
391 Rosenberg Self-Esteem Scale [CRSES]), cognitive development and psychosocial well-being
392 (Koppitz Draw-A-Person Test, Child Outcome Rating Scale), perceived school support school level,
393 and parental reflective functioning. *Feasibility outcomes* include acceptability, appropriateness, and
394 negative effects from quantitative data (fidelity checklists, recruitment rates, attendance rates,

395 homework completion rates, Group Session Rating Scale, Theoretical Framework of Acceptability
396 Questionnaire, and Negative Effects Questionnaire) and qualitative data from focus groups
397 post-intervention. *Common process factors measurements* include treatment alliance (Therapeutic
398 Alliance Scales for Children) and readiness for change (Preparedness for Participating in
399 KONTAKT™ Scale). *Cost-effectiveness outcomes* include healthcare consumption and productivity
400 loss (the tailored version of the Trimbos/iMTA questionnaire for patients with a psychiatric disorder
401 child version) and health-related quality of life (Child Health Utility 9D, EQ-5D-Y).

402 For details of these measures and relation to the focus areas of feasibility study outlined by
403 Bowen et al. [55], see **online supplemental file 2**.

404 **Retention**

405 Families will be requested to attend data collection appointments at a time convenient to them
406 with reminders from research assistants. Paper questionnaires will be mailed to families unable to
407 attend appointments in person, and provided with a pre-paid envelop to return these via post. All
408 non-retention events will be documented and reported.

409 **Data management**

410 In the Chinese KONTAKT™ CHILD feasibility study, all paper data will be converted to
411 electronic format. Trained research assistants will input the data within two weeks after each
412 assessment. Both paper and electronic data will be stored in EpiData [56] with double-entry for data
413 integrity. Checks for referenced range values, valid values, and regular data consistency will be
414 applied. Non-numeric data, including open-ended questions and notes, will be entered as originally

415 written.

416 Video and audio recordings will be labeled with unique serial names, with details recorded in
417 the EpiData repository. Paper documents will be securely stored in locked filing cabinets at CDBC.
418 Electronic textual data will be password-protected. Video and audio files will have dual backups on
419 encrypted hard disks. Only the principal investigator will have full data access.

420 Incremental data and recording files will be back-up daily.

421 **Sample size**

422 The primary outcome measure is CASS. Previous SSGT studies applying the CASS suggested
423 a medium effect size (ES) of 0.42 [57]. Additionally, a rough average ES of 0.40, as measured by
424 the SRS-2, is derived from the three prior RCT studies evaluating KONTAKT™ [27, 28, 29],
425 informs the expected ES for the future Chinese KONTAKT™ CHILD main trial. According to
426 Whitehead et al., a feasibility study with a sample size of 15 per treatment arm allows for detecting
427 a medium ES (0.3~0.7) with 90% power and two-sided 5% significance in the main trial [58].
428 Accounting for a 15% attrition rate from previous KONTAKT™ evaluation studies, we require a
429 sample size of $n = 18$ per arm ($N = 36$ in total).

430 **Statistical analysis**

431 *Statistical methods for primary and secondary outcomes*

432 The primary outcome for this study is social-communication skills improvement as measured
433 by the CASS, with the follow-up being the primary endpoint. The analysis will follow the
434 intent-to-treat (ITT) principles [59], and all data from every participant will be analysed. Missing

435 data will be handled based on established guidelines for each measure or CONSORT-SPI
436 statements. No interim analysis will occur.

437 Data will be checked for normality and variance heterogeneity. Baseline demographics will be
438 compared between ITG and DTG using t-tests or Wilcoxon rank test (continuous variables) and
439 chi-square tests (categorical variables) to verify group comparability. Random mixed effects
440 regression models, which have the advantage of handling missing data, will compare ITG and DTG
441 for primary and secondary analyses, considering time (baseline, endpoint, follow-up), group (ITG,
442 DTG), age, gender, IQ, co-occurring conditions, process factors (PPKS, GSRS at baseline), and the
443 interaction variable (time \times group). Participants' ID will consider a random effect accounting for
444 intra-individual correlations. Intervention effects will be reported as least-square mean differences.
445 ES will be reported by dividing the groups' mean difference (baseline to endpoint and baseline to
446 follow-up) by the pooled standard deviations, with positive values favoring intervention.

447 Feasibility measures will be reported descriptively. Additionally, qualitative data will be
448 transcribed verbatim, de-identified, then imported into Nvivo 12 for theme-based analysis.

449 *Health economic analyses analysis*

450 Cost-effectiveness analysis (CEA) will follow an ITT basis, considering societal and
451 healthcare perspectives. Cost differences will be statistically tested, while resource usage
452 differences will not be compared to prevent false positives. Quality-adjusted life year (QALY) will
453 be calculated from EQ-5D-Y and CHU9D scores using validated algorithms for Chinese children
454 and adolescents [60, 61]. Given potential non-normality in cost data, a non-parametric random
455 forest permutation model will handle missing data. The incremental cost-effectiveness ratio (ICER)

456 will be calculated as $\Delta\text{cost}/\Delta\text{QALYs}$. Cost differences between ITG and DTG at different time
457 points will be analysed via linear regression with bootstrapping for 5,000 repetitions to generate
458 non-parametric confidence intervals (See **online supplemental file 3** for CEA details).

459 **Discussion**

460 The study commenced recruitment on June 5, 2023. This article presents the design of the
461 Chinese KONTAKT™ CHILD trial, a feasibility wait-list RCT featuring the Chinese 16-session
462 KONTAKT™ variant for autistic children. This design incorporates multiple data sources and
463 diverse outcome assessment methods, facilitating a comprehensive exploration of outcome data
464 feasibility from different perspectives. Furthermore, a systematic cultural adaptation process
465 ensures the suitability, acceptability, and comprehensiveness of the Chinese KONTAKT™ version.
466 Adhering to the ICAF framework, this study will guide the refinement of the Chinese
467 KONTAKT™ version and future larger-scale evaluations, addressing the question of whether SSGT
468 can be effectively implemented for Chinese school-aged autistic children.

469 While there are several strengths in the study design mentioned earlier, it's important to
470 acknowledge some limitations. Firstly, the study's single-site nature and its focus on autistic
471 children in Guangzhou city may limit the generalisability of the findings to other clinical settings in
472 mainland China. Additionally, certain measures planned for use in the study, such as the CRSES and
473 the SCS-DAP, may have uncertain psychometric properties due to the lack of Chinese population
474 data. However, this feasibility study aims to provide empirical data on the psychometrics of these
475 measures. Another limitation is the absence of an active comparator, as the wait-list control could

476 potentially overestimate treatment effects [62]. Nevertheless, this aligns with the prevailing
477 situation in China. Furthermore, the study will collect data on parents' and children's readiness for
478 change, allowing for an exploration of the "help-seeker" effects, following the recommendation by
479 Cunningham and colleagues in 2013 [62].

480 As mentioned above, the final stage of the ICAF involves running a full-scale RCT trial to
481 evaluate the efficacy of the Chinese version of KONTAKT™. Therefore, upon completing this
482 feasibility study, the investigators will integrate all quantitative and qualitative results to decide
483 whether a full-scale RCT trial will be progressed or redesigning another KONTAKT™ feasibility
484 study will be needed. The following aspects will be considered: (1) participants and parents'
485 acceptability and adherence rates, (2) participants and parents' feedback on demand for
486 KONTAKT™, (3) trainers' feedback on implementing KONTAKT™ in Chinese clinical setting, (4)
487 trainers' fidelity on implementing KONTAKT™, (5) the feasibility results of the processes for data
488 collecting, and (6) considering the potential capacity of the intervention setting (human resources,
489 materials, and equipment) on implementing a full-scale RCT regarding the sample size calculation
490 for the primary outcome.

491 **Plans for dissemination of finding**

492 The findings of the Chinese KONTAKT™ CHILD trial will be submitted to peer-review
493 journals for consideration. Abstracts will also be submitted to both local and international
494 conferences, and community-based lay abstracts will be written and disseminated to provide
495 feedback for autism stakeholders in China.

496 **References**

- 497 1. American Psychiatric Association. Diagnostic and statistical manual of mental disorders.
498 5th ed., text rev.;2022.
- 499 2. Tillmann J, San Jose Caceres A, Chatham CH, et al. Investigating the factors underlying
500 adaptive functioning in autism in the EU-AIMS Longitudinal European Autism Project.
501 Autism Res 2019;12(4):645-57. <https://doi.org/10.1002/aur.2081>. Epub 2019 Feb 12.
- 502 3. Zhou H, Xu X, Yan W, et al. Prevalence of Autism Spectrum Disorder in China: A
503 Nationwide Multi-center Population-based Study Among Children Aged 6 to 12 Years.
504 Neurosci Bull 2020;36(9):961-71. <https://doi.org/10.1007/s12264-020-00530-6>. Epub 2020
505 Jul 02.
- 506 4. Gilmore R, Ziviani J, Chatfield MD, et al. Social skills group training in adolescents with
507 disabilities: A systematic review. Res Dev Disabil 2022;125:104218.
508 <https://doi.org/10.1016/j.ridd.2022.104218>. Epub 2022 Mar 21.
- 509 5. Kaat AJ, Lecavalier L. Group-based social skills treatment: A methodological review. Res
510 Autism Spectr Disord 2014;8(1):15-24. <https://doi.org/10.1016/j.rasd.2013.10.007>.
- 511 6. Afsharnejad B, Black MH, Falkmer M, et al. The Methodological Quality and
512 Intervention Fidelity of Randomised Controlled Trials Evaluating Social Skills Group
513 Programs in Autistic Adolescents: A Systematic Review and Meta-analysis. J Autism Dev
514 Disord 2023 <https://doi.org/10.1007/s10803-023-05893-z>. Epub 2023 Jan 22.
- 515 7. Gates JA, Kang E, Lerner MD. Efficacy of group social skills interventions for youth with

- 516 autism spectrum disorder: A systematic review and meta-analysis. *Clin Psychol Rev*
517 2017;52:164-81. <https://doi.org/10.1016/j.cpr.2017.01.006>. Epub 2017 Jan 29.
- 518 8. Wolstencroft J, Robinson L, Srinivasan R, et al. A Systematic Review of Group Social
519 Skills Interventions, and Meta-analysis of Outcomes, for Children with High Functioning
520 ASD. *J Autism Dev Disord* 2018;48(7):2293-307.
521 <https://doi.org/10.1007/s10803-018-3485-1>. Epub 2018 Feb 10.
- 522 9. Zheng S, Kim H, Salzman E, et al. Improving Social Knowledge and Skills among
523 Adolescents with Autism: Systematic Review and Meta-Analysis of UCLA PEERS(R) for
524 Adolescents. *J Autism Dev Disord* 2021;51(12):4488-503.
525 <https://doi.org/10.1007/s10803-021-04885-1>. Epub 2021 Jan 30.
- 526 10. Miller A, Vernon T, Wu V, et al. Social Skill Group Interventions for Adolescents with
527 Autism Spectrum Disorders: a Systematic Review. *Rev J Autism Dev Disord*
528 2014;1(4):254-65. <https://doi.org/10.1007/s40489-014-0017-6>.
- 529 11. Soares EE, Bausback K, Beard CL, et al. Social Skills Training for Autism Spectrum
530 Disorder: a Meta-analysis of In-person and Technological Interventions. *J Technol Behav*
531 *Sci* 2021;6(1):166-80. <https://doi.org/10.1007/s41347-020-00177-0>. Epub 2020 Nov 24.
- 532 12. Bottema-Beutel K, Park H, Kim SY. Commentary on Social Skills Training Curricula for
533 Individuals with ASD: Social Interaction, Authenticity, and Stigma. *J Autism Dev Disord*
534 2018;48(3):953-64. <https://doi.org/10.1007/s10803-017-3400-1>. Epub 2017/11/25.
- 535 13. Kinnaird E, Stewart C, Tchanturia K. Investigating alexithymia in autism: A systematic
536 review and meta-analysis. *Eur Psychiatry* 2019;55:80-89.

- 537 <https://doi.org/10.1016/j.eurpsy.2018.09.004>. Epub 2018 Nov 07.
- 538 14. Pellicano E, Heyworth M. The Foundations of Autistic Flourishing. *Curr Psychiatry Rep*
539 2023;25(9):419-27. <https://doi.org/10.1007/s11920-023-01441-9>. Epub 2023/08/08.
- 540 15. Nicolaidis C, Raymaker D, Kapp SK, et al. The AASPIRE practice-based guidelines for
541 the inclusion of autistic adults in research as co-researchers and study participants. *Autism*
542 2019;23(8):2007-19. <https://doi.org/10.1177/1362361319830523>. Epub 2019/04/04.
- 543 16. Tavernor L, Barron E, Rodgers J, et al. Finding out what matters: validity of quality of
544 life measurement in young people with ASD. *Child Care Health Dev* 2013;39(4):592-601.
545 <https://doi.org/10.1111/j.1365-2214.2012.01377.x>. Epub 2012 Apr 21.
- 546 17. Huggins CF, Donnan G, Cameron IM, et al. Emotional self-awareness in autism: A
547 meta-analysis of group differences and developmental effects. *Autism* 2021;25(2):307-21.
548 <https://doi.org/10.1177/1362361320964306>. Epub 2020 Nov 07.
- 549 18. Tang JSY, Falkmer M, Chen NTM, et al. Designing a Serious Game for Youth with ASD:
550 Perspectives from End-Users and Professionals. *J Autism Dev Disord* 2019;49(3):978-95.
551 <https://doi.org/10.1007/s10803-018-3801-9>. Epub 2018/11/01.
- 552 19. Lee A, Peter Hobson R. Drawing self and others: How do children with autism differ
553 from those with learning difficulties? *Br J Dev Psychol* 2006;24(3):547-65.
554 <https://doi.org/10.1348/026151005X49881>.
- 555 20. Papangelo P, Pinzino M, Pelagatti S, et al. Human Figure Drawings in Children with
556 Autism Spectrum Disorders: A Possible Window on the Inner or the Outer World. *Brain Sci*
557 2020;10(6) <https://doi.org/10.3390/brainsci10060398>. Epub 2020 Jun 27.

- 558 21. Kotroni P, Bonoti F, Mavropoulou S. Children with autism can express social emotions
559 in their drawings. *Int J Dev Disabil* 2018;65(4):248-56.
560 <https://doi.org/10.1080/20473869.2018.1434855>. Epub 2018 Feb 13.
- 561 22. Schweizer C, Knorth EJ, Spreen M. Art therapy with children with Autism Spectrum
562 Disorders: A review of clinical case descriptions on ‘what works’. *The Arts in*
563 *Psychotherapy* 2014;41(5):577-93. <https://doi.org/10.1016/j.aip.2014.10.009>.
- 564 23. Waller D. Art therapy for children: how it leads to change. *Clin Child Psychol Psychiatry*
565 2006;11(2):271-82. <https://doi.org/10.1177/1359104506061419>. Epub 2006 Nov 08.
- 566 24. Albaum CS, Vashi N, Bohr Y, et al. A Systematic Review of Therapeutic Process Factors
567 in Mental Health Treatment for Autistic Youth. *Clin Child Fam Psychol Rev*
568 2023;26(1):212-41. <https://doi.org/10.1007/s10567-022-00409-0>. Epub 2022 Aug 24.
- 569 25. Bölte S. Social färdighetsträning i grupp med fokus på kommunikation och social
570 interaktion vid autismspektrumtillstånd enligt Frankfurtmodellen (KONTAKT). Göttingen,
571 Stockholm: Hogrefe; 2018.
- 572 26. Herbrecht E, Poustka F, Birnkammer S, et al. Pilot evaluation of the Frankfurt Social
573 Skills Training for children and adolescents with autism spectrum disorder. *Eur Child*
574 *Adolesc Psychiatry* 2009;18(6):327-35. <https://doi.org/10.1007/s00787-008-0734-4>. Epub
575 2009 Jan 24.
- 576 27. Choque Olsson N, Flygare O, Coco C, et al. Social Skills Training for Children and
577 Adolescents With Autism Spectrum Disorder: A Randomized Controlled Trial. *J Am Acad*
578 *Child Adolesc Psychiatry* 2017;56(7):585-92. <https://doi.org/10.1016/j.jaac.2017.05.001>.

- 579 Epub 2017 Jun 26.
- 580 28. Jonsson U, Olsson NC, Coco C, et al. Long-term social skills group training for children
581 and adolescents with autism spectrum disorder: a randomized controlled trial. Eur Child
582 Adolesc Psychiatry 2019;28(2):189-201. <https://doi.org/10.1007/s00787-018-1161-9>. Epub
583 2018 May 12.
- 584 29. Afsharnejad B, Falkmer M, Black MH, et al. KONTAKT(R) social skills group training
585 for Australian adolescents with autism spectrum disorder: a randomized controlled trial. Eur
586 Child Adolesc Psychiatry 2022;31(11):1695-713.
587 <https://doi.org/10.1007/s00787-021-01814-6>. Epub 2021 May 31.
- 588 30. Afsharnejad B, Falkmer M, Picen T, et al. "I Met Someone Like Me!": Autistic
589 Adolescents and Their Parents' Experience of the KONTAKT(R) Social Skills Group
590 Training. J Autism Dev Disord 2022;52(4):1458-77.
591 <https://doi.org/10.1007/s10803-021-05045-1>. Epub 2021 May 05.
- 592 31. Choque Olsson N, Rautio D, Asztalos J, et al. Social skills group training in
593 high-functioning autism: A qualitative responder study. Autism 2016;20(8):995-1010.
594 <https://doi.org/10.1177/1362361315621885>. Epub 2016 Feb 26.
- 595 32. Hodge DR, Jackson KF, Vaughn MG. Culturally sensitive interventions and health and
596 behavioral health youth outcomes: a meta-analytic review. Soc Work Health Care
597 2010;49(5):401-23. <https://doi.org/10.1080/00981381003648398>. Epub 2010 Jun 04.
- 598 33. Barrera M, Jr., Castro FG, Strycker LA, et al. Cultural adaptations of behavioral health
599 interventions: a progress report. J Consult Clin Psychol 2013;81(2):196-205.

- 600 <https://doi.org/10.1037/a0027085>. Epub 2012 Feb 01.
- 601 34. Bernal G, Bonilla J, Bellido C. Ecological validity and cultural sensitivity for outcome
602 research: issues for the cultural adaptation and development of psychosocial treatments with
603 Hispanics. *J Abnorm Child Psychol* 1995;23(1):67-82. <https://doi.org/10.1007/BF01447045>.
604 Epub 1995 Feb 01.
- 605 35. Faregh N, Lencucha R, Ventevogel P, et al. Considering culture, context and community
606 in mhGAP implementation and training: challenges and recommendations from the field. *Int*
607 *J Ment Health Syst* 2019;13:58. <https://doi.org/10.1186/s13033-019-0312-9>. Epub 2019 Aug
608 30.
- 609 36. Bolte S, Lawson WB, Marschik PB, et al. Reconciling the seemingly irreconcilable: The
610 WHO's ICF system integrates biological and psychosocial environmental determinants of
611 autism and ADHD: The International Classification of Functioning (ICF) allows to model
612 opposed biomedical and neurodiverse views of autism and ADHD within one framework.
613 *Bioessays* 2021;43(9):e2000254. <https://doi.org/10.1002/bies.202000254>. Epub 2021 Apr
614 03.
- 615 37. Bishop-Fitzpatrick L, Kind AJH. A Scoping Review of Health Disparities in Autism
616 *Spectrum Disorder. J Autism Dev Disord* 2017;47(11):3380-91.
617 <https://doi.org/10.1007/s10803-017-3251-9>. Epub 2017 Aug 02.
- 618 38. Kang-Yi CD, Grinker RR, Beidas R, et al. Influence of Community-Level Cultural
619 Beliefs about Autism on Families' and Professionals' Care for Children. *Transcult Psychiatry*
620 2018;55(5):623-47. <https://doi.org/10.1177/1363461518779831>. Epub 2018 Jul 05.

- 621 39. Ravindran N, Myers BJ. Cultural Influences on Perceptions of Health, Illness, and
622 Disability: A Review and Focus on Autism. *J Child Fam Stud* 2012;21(2):311-19.
623 <https://doi.org/10.1007/s10826-011-9477-9>.
- 624 40. Clark E, Zhou Z, Du L. Autism in China: Progress and challenges in addressing the
625 needs of children and families. *Int J Sch Educ Psychol* 2019;7(2):135-46.
626 <https://doi.org/10.1080/21683603.2019.1570885>.
- 627 41. Lao UC, Liang FJ, Dai JM, et al. Familiarity vs. Favorability: Exploring Formal Autism
628 Terminology in Chinese Discourse. 2023
629 <https://doi.org/https://doi.org/10.31219/osf.io/cp73f>. Epub 2023, October 10.
- 630 42. Sun X, Allison C, Auyeung B, et al. Service provision for autism in mainland China:
631 preliminary mapping of service pathways. *Soc Sci Med* 2013;98:87-94.
632 <https://doi.org/10.1016/j.socscimed.2013.08.016>. Epub 2013/12/18.
- 633 43. Wang F, Lao UC, Xing YP, et al. Parents' knowledge and attitude and behavior toward
634 autism: a survey of Chinese families having children with autism spectrum disorder. *Transl
635 Pediatr* 2022;11(9):1445-57. <https://doi.org/10.21037/tp-22-113>. Epub 2022/10/18.
- 636 44. Zhao Y, Luo Y, Zhang R, et al. Direct and indirect costs for families of children with
637 autism spectrum disorder in China. *Autism* 2023;27(8):2337-47.
638 <https://doi.org/10.1177/13623613231158862>. Epub 2023/03/08.
- 639 45. Aarons GA, Green AE, Palinkas LA, et al. Dynamic adaptation process to implement an
640 evidence-based child maltreatment intervention. *Implement Sci* 2012;7:32.
641 <https://doi.org/10.1186/1748-5908-7-32>. Epub 2012 Apr 20.

- 642 46. Highfield L, Hartman MA, Mullen PD, et al. Intervention Mapping to Adapt
643 Evidence-Based Interventions for Use in Practice: Increasing Mammography among African
644 American Women. *Biomed Res Int* 2015;2015:160103. <https://doi.org/10.1155/2015/160103>.
645 Epub 2015 Nov 21.
- 646 47. Thabane L, Lancaster G. A guide to the reporting of protocols of pilot and feasibility
647 trials. *Pilot Feasibility Stud* 2019;5:37. <https://doi.org/10.1186/s40814-019-0423-8>. Epub
648 2019 Mar 13.
- 649 48. Chan AW, Tetzlaff JM, Altman DG, et al. SPIRIT 2013 statement: defining standard
650 protocol items for clinical trials. *Ann Intern Med* 2013;158(3):200-7.
651 <https://doi.org/10.7326/0003-4819-158-3-201302050-00583>. Epub 2013 Jan 09.
- 652 49. Grant S, Mayo-Wilson E, Montgomery P, et al. CONSORT-SPI 2018 Explanation and
653 Elaboration: guidance for reporting social and psychological intervention trials. *Trials*
654 2018;19(1):406. <https://doi.org/10.1186/s13063-018-2735-z>. Epub 2018 Aug 01.
- 655 50. Zhang H. The revision of WISC-IV Chinese version. *Psychological Science*
656 2009;32(5):1177-79. <https://doi.org/>
- 657 51. Lord C, Rutter M, Le Couteur A. Autism Diagnostic Interview-Revised: a revised
658 version of a diagnostic interview for caregivers of individuals with possible pervasive
659 developmental disorders. *J Autism Dev Disord* 1994;24(5):659-85.
660 <https://doi.org/10.1007/BF02172145>. Epub 1994 Oct 01.
- 661 52. Su L, Li X, Wan G, et al. The norms of achenbach child behavior checklist in hunan
662 province. *Chin J Clin Psychol* 1996;4(1):24-28. <https://doi.org/>

- 663 53. Thornton CS, Tsai WH, Santana MJ, et al. Effects of Wait Times on Treatment
664 Adherence and Clinical Outcomes in Patients With Severe Sleep-Disordered Breathing: A
665 Secondary Analysis of a Noninferiority Randomized Clinical Trial. *JAMA Netw Open*
666 2020;3(4):e203088. <https://doi.org/10.1001/jamanetworkopen.2020.3088>. Epub 2020 Apr
667 21.
- 668 54. Robiner WN. Enhancing adherence in clinical research. *Contemp Clin Trials*
669 2005;26(1):59-77. <https://doi.org/10.1016/j.cct.2004.11.015>.
- 670 55. Bowen DJ, Kreuter M, Spring B, et al. How we design feasibility studies. *Am J Prev*
671 *Med* 2009;36(5):452-7. <https://doi.org/10.1016/j.amepre.2009.02.002>. Epub 2009/04/14.
- 672 56. Lauritsen J, Bruus M. EPIDATA: Data entry system for use with Stata, SPSS, SAS,
673 Excel, text formats. 2000 <https://doi.org/>
- 674 57. Rabin SJ, Laugeson EA, Mor-Snir I, et al. An Israeli RCT of PEERS(R): Intervention
675 Effectiveness and the Predictive Value of Parental Sensitivity. *J Clin Child Adolesc Psychol*
676 2021;50(6):933-49. <https://doi.org/10.1080/15374416.2020.1796681>. Epub 2020 Aug 12.
- 677 58. Whitehead AL, Julious SA, Cooper CL, et al. Estimating the sample size for a pilot
678 randomised trial to minimise the overall trial sample size for the external pilot and main trial
679 for a continuous outcome variable. *Stat Methods Med Res* 2016;25(3):1057-73.
680 <https://doi.org/10.1177/0962280215588241>. Epub 2015 Jun 21.
- 681 59. McCoy CE. Understanding the Intention-to-treat Principle in Randomized Controlled
682 Trials. *West J Emerg Med* 2017;18(6):1075-78.
683 <https://doi.org/10.5811/westjem.2017.8.35985>. Epub 2017 Nov 01.

- 684 60. Yang P, Chen G, Wang P, et al. Psychometric evaluation of the Chinese version of the
685 Child Health Utility 9D (CHU9D-CHN): a school-based study in China. Qual Life Res
686 2018;27(7):1921-31. <https://doi.org/10.1007/s11136-018-1864-x>. Epub 2018 May 08.
- 687 61. Yang Z, Jiang J, Wang P, et al. Estimating an EQ-5D-Y-3L Value Set for China.
688 Pharmacoconomics 2022;40(Suppl 2):147-55. <https://doi.org/10.1007/s40273-022-01216-9>.
689 Epub 2022 Nov 18.
- 690 62. Cunningham JA, Kypri K, McCambridge J. Exploratory randomized controlled trial
691 evaluating the impact of a waiting list control design. BMC Med Res Methodol 2013;13:150.
692 <https://doi.org/10.1186/1471-2288-13-150>. Epub 2013 Dec 10.
- 693

694 **Footnotes**

695 **Authors' contributions**

696 LU, ZH, ZX, SB, and SG undertook the conceptualisation and design of the study. LU, ZH,
697 BW translated the manuals and workbooks. LU, ZH, SB, SG, and ZX selected the measures used.
698 BW, FJ, YP, HX, ZH, LU, and ZX improved the content of the manual. FJ, YP, ZH, and ZX assist
699 with administration of groups and offer clinical support. LU drafted the manuscript, with inputs
700 from ZH, SB, SG, and ZX. All authors contributed to, read and approved the final manuscript.

701 **Funding statement**

702 This research received no specific grant from any funding agency in the public, commercial or
703 non-profit sectors.

704 **Competing interests**

705 All authors declare that they have no conflicts of interest.

706 **Ethics approval**

707 This study has been approved by the Ethical Board Committee at the Third Affiliated Hospital
708 of Sun Yat-sen University (II2023-119-01), and pre-registered in Chinese Clinical Trials
709 (ChiCTR2300072136).

710 **Availability of data and materials**

711 The ethical consent and funding documents have been reviewed by the review board of the
712 Chinese Clinical Trial Registry and are available for review by the Editorial Office. Anonymised
713 data related to this study will be available from the corresponding author upon reasonable request
714 after study completion and publication of the study. The final dataset generated during this study
715 will upload to the Research Data Deposit of Sun Yat-sen University. Trial results will be reported
716 and published in scientific journals.

717



718 **Acknowledgments**

719 We acknowledge the generous support from the Swedish team at Karolinska
720 Institutet/Stockholm Health Services and the Australian team at Curtin University. They facilitated
721 the training, provided precious experiences and materials for the CDBC KONTAKT™ trainers . We
722 thanks the CDBC KONTAKT™ team for facilitating the process of this trial. We sincerely thank
723 the autistic individual, Yihan Liu, and her families for validating the translation and contents of the
724 Chinese KONTKAT™ manual. Additionally, we appreciate Yan Li for designing the KONTAKT™
725 China tools.

726

727 **Tables**

728 **Table 1.** Schedule of enrolment, interventions, and assessments for the study

	Involvement ^a					STUDY PERIOD						
						Enrolment	Allocation	Post-allocation				
	C	P	T	E	F							
TIME POINTS ^b						-T1	0	T1	T2	T3	T4	T5
ENROLMENT:												
Eligibility Screen				X		X						
Informed consent				X		X						
Allocation							X					
INTERVENTIONS (KONTAKT TM):												
<i>Immediate Intervention</i>	X	X	X	X	X							X
<i>Delay Intervention</i>	X	X	X	X	X			X				
ASSESSMENTS:												
CBCL		X				X						
WISC-IV	X			X		X						
ADOS-G	X			X		X						
STI		X		X		X						

	SFI	X	X		X									
	SES		X			X								
Primary Outcome	CASS (+CRS)	X			X					X		X	X	
Secondary Outcome	SRS-2		X	X						X		X	X	
	CRSES	X								X		X	X	
	Koppitz	X			X					X		X	X	
	DAPT													
	SCS-DAP	X			X					X		X	X	
	CORS	X												
	PRFQ		X							X		X	X	
	ABAS-2		X	X						X		X	X	
	PSS		X							X		X	X	
STARSS	X			X										
Processing Factors	TPOCS	X			X					X	X	X	X	X
	PPKS	X	X			X								
	TASC	X	X			X				X	X	X	X	X
Fidelity Outcome	Attendance	X	X			X								
	HCR	X				X								
	Focus Group	X	X			X					X		X	

SRS-2: Social Responsiveness Scale-2; WISC-IV: Wechsler Intelligence Scale for Children-IV

Chinese version.

729