



1 **Abstract**

2 **Background:** Olfactory impairment is common in older adults and may be associated with  
3 adverse cardiovascular health; however, empirical evidence is sparse.

4 **Objective:** To examine olfaction and the risk of coronary heart disease (CHD), stroke, and  
5 congestive heart failure (CHF).

6 **Methods:** This study included 2,537 older adults (aged  $75.6 \pm 2.8$  years) from the Health ABC  
7 Study with olfaction assessed by the 12-item Brief Smell Identification Test in 1999-2000,  
8 defined as poor (score  $\leq 8$ ), moderate (9-10), or good (11-12). The outcomes were incident CHD,  
9 stroke, and CHF.

10 **Results:** During up to 12-year follow-up, 353 incident CHD, 258 stroke, and 477 CHF events  
11 were identified. Olfaction was associated with incident CHF, but not with CHD or stroke. After  
12 adjusting for demographics, the cause-specific hazard ratio (HR) of CHF was 1.35 (95%  
13 confidence interval (CI): 1.08, 1.70) for moderate and 1.39 (95%CI: 1.09, 1.76) for poor  
14 olfaction. With additional adjustment for lifestyle, chronic diseases, and biomarkers of CHF, the  
15 HR was modestly attenuated to 1.32 (95%CI: 1.05, 1.66) for moderate and 1.28 (95%CI: 1.01,  
16 1.64) for poor olfaction. These associations were robust in pre-planned subgroup analyses by age,  
17 sex, race, and prevalent CHD/stroke. However, the associations appeared to be evident among  
18 participants who reported very-good-to-excellent health (HR=1.47 (95%CI: 1.02, 2.13) for  
19 moderate and 1.76, (95%CI: 1.20, 2.57) for poor olfaction). In contrast, null association with  
20 CHF was found among those with fair-to-poor self-reported health.

1    **Conclusions:** In community-dwelling older adults, a single olfaction test was associated with a  
2    long-term risk for incident CHF, particularly among those reporting very-good-to-excellent  
3    health.

4    **Key words:** Olfaction, coronary heart disease, stroke, congestive heart failure, older adults, self-  
5    reported health status

6

## 1 **Background**

2           The human sense of smell declines with age in older adults. Prevalence of poor olfaction,  
3 assessed by smell-identification screening, quickly increases from ~6% in age 50s to over 60%  
4 in 80s<sup>1</sup>. This age-dependent olfactory decline has been confirmed in multiple community-based  
5 studies<sup>2,3</sup>. Despite the high prevalence of poor olfaction in older adults, our understanding of its  
6 health implications has been largely limited to its role as a prodromal symptom of  
7 neurodegeneration and its robust association with mortality<sup>4</sup>. Interestingly, our recent findings<sup>5</sup>  
8 indicated that only 22% of the excess mortality associated with poor olfaction could be explained  
9 by dementia and Parkinson’s disease (PD), suggesting that poor olfaction may have more  
10 profound health implications than what is known to date. Further, this association with higher  
11 mortality was limited to participants who self-reported good-to-excellent health at baseline<sup>5</sup>,  
12 raising the possibility that poor olfaction may be a marker of deteriorating health that precedes  
13 the emergence of more traditionally recognized signs and symptoms of health decline.

14           Beyond neurodegenerative diseases and mortality, the health implications of poor  
15 olfaction have been subject to wide speculation, with limited empirical evidence. Recent data  
16 suggest that poor olfaction is associated with carotid intima-media thickness and artery plaques<sup>6,7</sup>,  
17 suggesting that smell loss may be a marker of atherosclerosis – the underlying pathogenesis of  
18 cardiovascular disease. Further, poor olfaction may gradually degrade one’s food choices,  
19 adversely affecting dietary quality and nutrition<sup>8,9</sup>, which may contribute to cardiovascular  
20 disease over time. Therefore, as a nonspecific subclinical marker and/or a potential contributor,  
21 poor olfaction may be related to cardiovascular risk. Because poor olfaction is prevalent among  
22 older adults and cardiovascular disease is the leading cause of death and disability, this potential  
23 association should be investigated further.

1 To the best of our knowledge, only one study<sup>10</sup> has prospectively examined the  
2 association between olfaction and heart diseases, and reported an elevated but statistically non-  
3 significant association with heart attack and/or heart disease. We hereby comprehensively  
4 examined olfaction status in relation to the risk of three major adverse cardiovascular conditions  
5 – coronary heart disease (CHD), stroke, and congestive heart failure (CHF) among community-  
6 dwelling older adult participants in the Health, Aging, and Body Composition (Health ABC)  
7 Study.

8

## 9 **Methods**

### 10 *Study population*

11 The Health ABC Study aims to investigate the interrelationships among aging-related  
12 conditions, social and behavioral factors, and physiological and functional changes in older  
13 adults<sup>11</sup>. Briefly, in 1997 and 1998, this study recruited 3,075 well-functioning, community-  
14 dwelling older adults (51.5% women and 41.7% blacks) aged 70-79 years in the designated zip  
15 code areas surrounding Pittsburgh, Pennsylvania, and Memphis, Tennessee. Eligibility criteria  
16 included no reported difficulty in walking 1/3 mile or climbing up 10 steps, no active fatal  
17 cancers, and no plans to move in 3 years. Study participants were followed with annual clinic  
18 visits through Year 6, and then in Year 8, 10, 11, and 16. Phone interviews were conducted to  
19 update health status every 6 months until Year 15 and then quarterly through Year 17. In the  
20 current analysis, we used the Year-3 clinic visit (1999-2000) as the baseline which was when the  
21 olfaction test was conducted. The primary analysis was limited to 2,537 participants after  
22 excluding those who missed Year-3 clinic visit (n=154) and did not take the smell test (n=384).

1 In the analysis of each cardiovascular outcome, we excluded prevalent cases of each outcome at  
2 baseline, respectively. As case adjudications for major health outcomes (except death) were  
3 conducted through August 14, 2012, we followed at-risk participants from baseline until the first  
4 cardiovascular outcome, death, last contact, or the end of the 12-year follow-up, whichever came  
5 first. The Health ABC study protocol was approved by all relevant institutional review boards,  
6 and all participants provided written informed consent at enrollment.

### 7 ***The Brief-Smell Identification Test (B-SIT)***

8 Olfaction was tested at the Year-3 clinic visit, using the 12-item cross-cultural B-SIT.  
9 This test is a shortened version of the 40-item University of Pennsylvania Smell Identification  
10 Test and has been widely used in large populations<sup>12</sup>. The 12-item test is brief, convenient, and  
11 well-suited to field settings in large epidemiological studies and quick clinical screening<sup>13,14</sup>.  
12 Participants were instructed to smell each of the 12 odorants, one at a time, and then to identify  
13 the odorant from 4 possible answers in a forced multiple-choice format. One point was given for  
14 each correct answer with a total score ranging from 0 to 12. We defined poor olfaction as a B-  
15 SIT score  $\leq 8$ , moderate as 9-10, and good as 11-12, approximately corresponding to the tertile  
16 distribution of the B-SIT testing score in the study population. Using these cut-points, we have  
17 reported strong associations of poor olfaction with PD, dementia, total mortality, and pneumonia  
18 hospitalization in this cohort.

### 19 ***Major adverse cardiovascular outcomes***

20 The Health ABC study closely monitored the health and survival of study participants via  
21 study clinic visits, semiannual phone updates, and surveillance of hospitalization and death. As  
22 detailed previously<sup>15-18</sup>, major adverse cardiovascular outcomes were first identified via the

1 cohort's routine follow-ups and health surveillance and then adjudicated according to a standard  
2 protocol. Briefly, at each clinic visit and semi-annual telephone interview, participants or their  
3 proxies were asked directed questions about cardiovascular disease events diagnosed by a  
4 physician, overnight hospitalizations, and outpatient cardiovascular procedures such as  
5 angioplasty since the last interview. Once an event was reported, local medical event  
6 adjudicators collected and reviewed related medical records according to a standardized study  
7 protocol<sup>19</sup>. For each death event, study investigators had an exit interview with a knowledgeable  
8 proxy who provided detailed information on the death event and the participant's physical  
9 functioning before death. The immediate and underlying causes were adjudicated centrally by an  
10 expert committee after reviewing hospital records, death certificates, autopsy findings, and  
11 informant interviews.

12 In this study, we defined incident CHD as the first event of myocardial infarction (MI),  
13 angina pectoris, or death with CHD as the underlying cause. According to the protocol<sup>19</sup>, MI  
14 adjudication accounted for evolving diagnostic electrocardiogram (ECG) pattern, diagnostic  
15 ECG pattern, and abnormal cardiac enzymes, or ischemic symptoms and either an evolving ST-T  
16 pattern or an obscure ECG pattern. The adjudication of angina pectoris considered symptoms  
17 such as chest pain, chest tightness, shortness of breath, and a diagnosis from a physician, as well  
18 as medical treatment including nitroglycerin, beta-blocker, or calcium channel blocker. We  
19 defined stroke as the first event of stroke or death with cerebrovascular diseases as the  
20 underlying cause, considering evidence of a rapid onset of neurologic deficit attributed to  
21 obstruction or rupture of the arterial system and new CT/MRI lesion consistent with clinical  
22 presentation of stroke without evidence of alternative causes (e.g., tumor or infection). We  
23 defined CHF as the first admission of overnight hospitalization with CHF adjudicated as the

1 primary inpatient reason or a concurrent event. The adjudication considered physician diagnosis,  
2 and medical treatments for CHF including both a diuretic and digitalis or a vasodilator, or the  
3 presence of cardiomegaly and pulmonary edema on chest X-ray, or evidence of a dilated  
4 ventricle and global/ segmental wall motion abnormalities with decreased systolic function either  
5 by ECG or contrast ventriculography.

## 6 *Covariates*

7 As few risk factors have been established for olfactory loss in older adults except for age,  
8 sex, and race, we mainly considered cardiovascular risk factors/predictors as covariates in the  
9 analyses. The adjustment of these covariates may help control for potential confounding and  
10 improve statistical efficiency<sup>20</sup>. With few exceptions, we used covariate data from the Year-3  
11 clinic visit when the smell testing was conducted. Age, sex, race, study site, education level,  
12 smoking status, minutes of brisk walking per week, and general health status were self-reported.  
13 Body mass index (BMI) was calculated by dividing weight by height-squared ( $\text{kg/m}^2$ ) and  
14 systolic blood pressure by averaging two measures in the sitting position. The use of  
15 antihypertensive medication was assessed using the medication inventory method coded with the  
16 Iowa Drug Information System Drug Vocabulary and Thesaurus<sup>21</sup>. We defined comorbidities  
17 according to published protocols, in brief, 1) diabetes as self-reported diagnosis by a physician,  
18 the use of anti-diabetic drugs, a fasting blood glucose level of  $\geq 126$  mg/dL, or an oral glucose  
19 tolerance test of  $\geq 200$  mg/dL<sup>22</sup>; 2) dementia as the score of the Modified Mini-Mental State  
20 examination (3MS) at the Year-1 clinic visit less than 80, a decline in 3MS score from Year 1  
21 through Year 3 at least 1.5 race-stratified standard deviations, an adjudicated diagnosis of  
22 dementia based on hospitalization, or documented medication uses for dementia<sup>5</sup>; 3) PD as  
23 adjudicated by two movement disorder specialists by consensus after review of self-reported



1 diagnosis by a physician, medication uses, hospitalization records, and adjudicated cause of  
2 death<sup>23</sup>. Depressive symptoms were defined as a score of  $\geq 10$  on the Center for Epidemiologic  
3 Studies Depression Scale Short form<sup>24</sup>. When covariate data are not available for the Year-3  
4 clinic visit, we used data from previous years. Resting heart rate was measured at Year 1. Left  
5 ventricular hypertrophy (LVH) was diagnosed using Year-1 ECG according to the Minnesota  
6 code criteria<sup>16</sup>. Abnormal lung function was defined as the forced expiratory volume in the 1<sup>st</sup>  
7 second measured at Year 1 below the lower limit of normal according to the age-, sex- and race-  
8 specific normalized reference values of the National Health and Nutrition Examination Survey  
9 III equations<sup>25</sup>. Plasma total cholesterol (TC) and high-density lipoprotein-cholesterol (HDL-C)  
10 were measured using fasting EDTA plasma collected at Year 2 and Year 1, respectively<sup>26</sup>.  
11 Serum albumin was measured using samples collected at Year 1<sup>27</sup>, interleukin 6 using samples  
12 collected at Year 2<sup>28</sup>, and cystatin C and creatinine using samples collected at Year 3<sup>29</sup>. All these  
13 biomarkers have been widely analyzed in the Health ABC Study with details reported previously.  
14 We estimated the glomerular filtration rate (eGFR) mainly using the Chronic Kidney Disease  
15 Epidemiology Collaboration (CKD-EPI) creatinine-cystatin C equation; for 9.6% of the sample  
16 with missing creatinine data, we estimated eGFR using the CKD-EPI cystatin C equation<sup>30</sup>.  
17 Among those with creatinine measures, these two eGFR estimates were highly correlated with a  
18 Spearman coefficient of 0.82.

### 19 *Statistical analysis*

20 In descriptive analyses, we used linear regression for continuous variables and logistic or  
21 multinomial regressions for categorical variables to estimate their age-adjusted marginal  
22 means/percentages in each olfaction group. We then calculated the cumulative incidence  
23 function (CIF) of each type of cardiovascular outcome and its corresponding competing risk of

1 death, and tested the equality of CIF across baseline olfaction status using the Gray's test. In  
2 multivariable analyses, we used the Cox cause-specific hazard model to account for the  
3 competing risk of death and reported cause-specific hazard ratio (HR) and 95% confidence  
4 interval (CI) for each type of cardiovascular event. This approach quantifies the direct  
5 association between olfaction status and each outcome of interest, not affected by the association  
6 of olfaction with death, fitting our analytical goal<sup>31</sup>. In the analyses, we first controlled for age,  
7 sex, race, education, and study site (model 1), and then further adjusted for key lifestyle  
8 cardiovascular risk factors in model 2<sup>32,33</sup>, including smoking status, brisk walking, BMI, self-  
9 reported general health status, antihypertensive medication use, diabetes, depressive symptoms,  
10 systolic blood pressure, TC, and HDL-C. As prevalent atherosclerotic diseases could be an  
11 important risk factor for CHF<sup>34</sup>, we also included prevalent CHD and stroke in model 2 of the  
12 CHF analysis. Finally, we constructed model 3 for CHF by further adjusting for previously  
13 identified markers of CHF in the cohort<sup>16-18</sup>, including LVH, abnormal lung function, heart rate,  
14 serum albumin, interleukin 6, and eGFR. In all regression analyses, we applied the Supremum  
15 Test to check the proportional hazard assumption and, when applicable, stratified the covariates  
16 that did not satisfy the assumption in the regression model. Finally, given the strong association  
17 of olfaction with dementia and PD, we conducted a sensitivity analysis by excluding participants  
18 with prevalent dementia or PD at baseline.

19 For outcomes that showed a significant association with olfaction in the primary analysis,  
20 we conducted secondary subgroup analyses by age, sex, race, self-reported health status, and  
21 history of other major cardiovascular diseases at baseline. These analyses were pre-planned  
22 because the prevalence of poor olfaction is age-dependent and substantially higher in men than in  
23 women and in blacks than in whites, and our prior analysis showed that the association of poor

1 olfaction with higher mortality was limited to people with self-reported good-to-excellent health  
2 at baseline<sup>5</sup>. Interestingly, for CHF, we found that the association was evident mostly among  
3 individuals who self-reported very-good-to-excellent health. We therefore conducted two post  
4 hoc exploratory analyses in this subgroup. First, we reestimated the full model in this subgroup.  
5 Next, we further modeled the B-SIT score on a continuous scale, the non-linearity form of which  
6 was regressed by using the quadratic term. We used the SAS software (version 9.4; SAS Institute,  
7 Cary, NC) for all the analyses with a two-sided  $\alpha$  of 0.05.

## 8 **Results**

9 At baseline, participants were, on average,  $75.6 \pm 2.8$  years old, with 51.6% female and  
10 38.5% Black. In the overall study sample, compared with participants with good olfaction, those  
11 with poor olfaction were more likely to be older, men, Black, smokers, and from Memphis  
12 (**Table 1**). They were also more likely to report a high-school education level or less and fair-to-  
13 poor general health status, and to have diabetes, abnormal or missing lung function, lower BMI,  
14 TC, HDL-C, and eGFR. As age is the most important risk factor for olfactory loss in older adults,  
15 we also presented age-adjusted covariates by olfaction in Supplementary **Table S1**. Once age  
16 was adjusted, the imbalances of prevalent diabetes, lung function, BMI, and cholesterol level  
17 across olfaction groups disappeared. Finally, we also presented population characteristics  
18 separately for each outcome of interest with the corresponding prevalent cases removed  
19 (Supplementary **Table S2-S4**), and the data were generally comparable to those in **Table 1**.

20 After excluding prevalent cases at baseline, 1,924 participants were at risk for incident  
21 CHD, 2,330 for stroke, and 2,421 for CHF. During 12 years of follow-up, 353 individuals  
22 (18.3%) had an incident CHD event, 258 (11.1%) experienced an incident stroke, and 477  
23 (19.7%) had an incident CHF hospitalization. In the descriptive analysis (**Figure 1**), baseline

1 olfaction status was not associated with the cumulative incidence of CHD or stroke. In contrast,  
2 compared to participants with good olfaction, those with moderate and poor olfaction had a  
3 higher cumulative incidence of CHF. In all analyses, poor olfaction was associated with a higher  
4 competing risk of death.

5         Multivariable models confirmed the unadjusted findings (**Table 2**). After adjusting for  
6 demographics, compared to participants with good olfaction, the cause-specific HR of CHF  
7 during a median 10.8 years of follow-up was 1.35 (95% CI: 1.08,1.70) for those with moderate  
8 olfaction and 1.39 (95% CI: 1.09, 1.76) for those with poor olfaction. The associations were  
9 barely changed with further adjustment for lifestyle risk factors and prevalent CHD/stroke, and  
10 were only modestly attenuated after further adjusting for ECG-based, spirometry-based, and  
11 blood-based biomarkers for CHF. In the fully adjusted model, the HR became 1.32 (95% CI:  
12 1.05, 1.66) for moderate vs. good olfaction and 1.28 (95%CI: 1.01, 1.64) for poor vs. good  
13 olfaction. As in the descriptive analyses, neither CHD nor stroke outcome was associated with  
14 baseline olfaction status. After removing prevalent cases of dementia or PD at baseline, the  
15 results were consistent with our primary findings (Supplementary **Table S5**).

16         The associations of olfaction with CHF were robust across subgroups of age, sex, race,  
17 and baseline history of CHD and stroke (**Figure 2**). Although we did not observe a statistically  
18 significant interaction, the association of poor olfaction and CHF appears to be more evident and  
19 monotonic among participants with very-good-to-excellent health at baseline. In contrast, we  
20 found a null association among participants who self-reported fair-to-poor health.

21         We, therefore, further explored details of this relationship among participants who self-  
22 reported a very-good-to-excellent health at baseline. When we analyzed the B-SIT score as a  
23 continuous variable using the perfect score of 12 as the reference, the cause-specific HR of CHF

1 ascended as the olfaction performance decreased until the B-SIT score of 4, after which the HRs  
2 were slightly attenuated (**Figure 3**).

### 3 **Discussion**

4 To our knowledge, this is the first study that aims to examine the association of olfaction  
5 with major cardiovascular diseases among older adults. Such an investigation is important  
6 because poor olfaction is prevalent in older adults, cardiovascular disease is the leading cause of  
7 death, and their connections are biologically plausible. In this large community-dwelling cohort,  
8 we found that a single test of olfaction status was associated with the risk of developing CHF for  
9 up to 12 years of follow-up. This association was robust across subgroups of age, sex, race, and  
10 prevalent CHD/stroke, but appeared to be more evident among participants who reported very-  
11 good-to-excellent health at baseline. In contrast, olfaction status was not associated with the risk  
12 of developing CHD or stroke. Taken together, this study provides interesting preliminary  
13 evidence that poor olfaction may be associated with long-term CHF risk in older adults,  
14 particularly among those who consider their general health as very good or excellent.

15 Cardiovascular diseases are the leading causes of death worldwide and its risk factors are  
16 among the best characterized<sup>35</sup>. However, as people age, known associations with cardiovascular  
17 diseases may attenuate, possibly due to aging and resilience to existing risk factors among  
18 survivors<sup>36</sup>. There remains a critical need to identify novel factors associated with adverse  
19 cardiovascular outcomes in older adults to further inform risk prediction and intervention. In  
20 contrast to known cardiovascular risk factors, including hypertension, obesity, and smoking,  
21 even health-conscious individuals rarely pay attention to their sense of smell<sup>1,3</sup>. However, poor  
22 olfaction affects about a quarter of older adults with health implications likely beyond its known  
23 associations with neurodegenerative diseases<sup>5</sup>.

1           In older adults, poor olfaction may be related to cardiovascular health either as a  
2   subclinical marker or a potential risk factor. As vascular remodeling develops and progresses,  
3   insufficient blood supply may gradually impair the health of nasal epithelium and structures in  
4   the olfactory signal pathway, limiting normal olfactory functioning<sup>37</sup>. Supporting this viewpoint,  
5   preliminary evidence suggests that carotid intima-media thickness and artery plaques, two  
6   subclinical markers of atherosclerosis, have been associated with the olfactory decline in older  
7   adults<sup>6,7</sup>. On the other hand, it is also biologically plausible that poor olfaction may adversely  
8   affect cardiovascular health. It has been speculated that impaired olfaction may alter ones' diet  
9   and food choices, which could negatively impact their nutritional status and overall health over  
10   time<sup>8,9</sup>. Further, impaired olfaction may contribute to a depressed mood, social isolation, and  
11   physical inactivity<sup>38</sup>. All these may potentially increase one's vulnerability to endogenous and  
12   exogenous stressors, contributing to or exacerbating cardiovascular disease risk. However, to  
13   date, the role of olfaction in cardiovascular health remains speculative with limited direct  
14   empirical evidence.

15           To the best of our knowledge, only one prospective study has explored the association of  
16   poor olfaction with the risk of cardiovascular diseases. In the National Social Life, Health, and  
17   Aging Project, Siegel et al reported that olfactory decline during the first 5 years was associated  
18   with marginally significantly greater odds of reporting a diagnosis of heart disease (odds ratio:  
19   1.75, 95% CI: 0.93–3.31)<sup>10</sup>. Notably, in this study, the diagnosis of heart disease was self-  
20   reported only once at the year-10 follow-up survey and was analyzed as a secondary outcome.  
21   The current study is large, community-based, and specifically designed to examine olfaction in  
22   relation to the risk of adjudicated incident CHD, stroke, and CHF. In the analyses, we carefully  
23   accounted for the competing risk of death and relevant covariates. We found that a single smell

1 test was not associated with incident CHD or stroke events. However, compared to participants  
2 with good olfaction, those with moderate or poor olfaction had a robust, albeit modest, increase  
3 in CHF risk for up to 12 years of follow-up. In contrast to CHD and ischemic stroke where  
4 arterio- and/or atherosclerosis are major mechanisms<sup>39,40</sup>, CHF is etiologically more complex.  
5 The latter is a multiorgan syndrome with a net outcome of a failing heart, characterized by a  
6 reduced cardiac output and increased venous pressure<sup>41</sup>. Coronary arteriosclerosis contributes to  
7 CHF, but any sustained myocardial stress such as increased cardiac pressure and volume  
8 overload may lead to myocardial hypertrophic response and cardiac remodeling, eventually  
9 resulting in CHF<sup>34</sup>. Although speculative, the differential results of CHF from CHD/stroke  
10 support the possibility that poor olfaction may signal or elevate one's vulnerability to myocardial  
11 stressors.

12 Interestingly, the association of poor olfaction with incident CHF appeared to be more  
13 evident among participants who self-reported very-good-to-excellent health status at baseline,  
14 similar to our finding on the association of poor olfaction with mortality<sup>5</sup>. In contrast, we found a  
15 null association among individuals who self-evaluated their overall health as fair or poor. Self-  
16 reported health is a subjective perception that one may integrate their biological, social, mental,  
17 and functional health perspectives with their personal and cultural beliefs and their attitudes  
18 towards health<sup>42</sup>. While the report is subject to individual interpretation, it has been commonly  
19 used in health research to assess one's general health status and it robustly predicts the risk of  
20 mortality in older adults<sup>43</sup>. Although our analysis is mostly exploratory, we speculated  
21 individuals who rated their health as fair or poor might already have multiple comorbidities or  
22 risk factors that play a detrimental role in their myocardial health, outweighing that from poor  
23 olfaction. In contrast, among those who reported very-good-to-excellent health, poor olfaction

1 may serve as an early signal for deteriorating myocardial health in the absence of other clinical  
2 signals for increased CHF risk. Notably, in this subgroup, the association estimate of poor  
3 olfaction with CHF was modestly higher than that of known leading causes of CHF such as  
4 prevalent cardiovascular disease and habitual smoking (Supplementary **Table S6**). Taken  
5 together, we speculate poor olfaction is likely an early indicator for deteriorating myocardial  
6 health in apparently healthy older adults, awaiting independent confirmation and investigation of  
7 underlying mechanisms.

8           Strengths of this study include the relatively large number of community-based  
9 participants, more than a decade of follow-up, meticulous health surveillance and outcome  
10 assessments, careful covariate identification, and statistical analyses. Our study also has several  
11 notable limitations. First, study participants were all older than 70 at enrollment but were  
12 relatively high-functioning. Therefore, study findings may not be readily generalizable to  
13 younger populations or populations with different demographics or health status. Second,  
14 olfaction was only assessed once. As olfactory function declines fast with age in older adults,  
15 participants' olfaction may continuously decline over follow-up, which was not captured in the  
16 current study. We therefore might have underestimated the role of olfaction in signifying or  
17 maintaining cardiovascular health in older adults. Future longitudinal studies with relatively  
18 younger participants and repeated assessments of olfaction may better characterize the role of  
19 olfaction in cardiovascular health in the context of aging. Third, as the B-SIT was designed to  
20 screen for smell identification deficit in large populations, our study did not address the  
21 association of other olfactory modalities (e.g., detection and discrimination) with the risk of  
22 major cardiovascular outcomes. Fourth, while our study findings were robust as evidenced in  
23 multiple sensitivity analyses, as in any observational study, we could not exclude the possibilities



1 of chance finding or residual confounding. Finally, while our study suggests that both poor and  
2 moderate olfaction are associated with the future risk of experiencing a CHF event, it provides  
3 little clue to the underlying mechanisms.

4 In conclusion, in this well-established community-based study of older adults, we found  
5 that poor olfaction was associated with risk for CHF for up to twelve years, but not with risk for  
6 CHD or stroke. Future studies should confirm this observation and investigate underlying  
7 mechanisms.

1 **Acknowledgments:** We thank the participants of the Health ABC study for their contributions  
2 and dedication to health research.

3 **Funding:** This project was supported by a grant from the National Institute on Aging  
4 (1R01AG071517). The Health ABC study was supported by the National Institute on Aging  
5 (NIA), the National Institute of Nursing Research (NINR), the Intramural Research Program of  
6 the NIA/NIH, and NIA contracts N01AG62101, N01AG62103, N01AG62106, NIA grant  
7 R01AG028050 and NINR grant R01NR012459. Opinions, interpretations, conclusions, and  
8 recommendations are those of the authors and are not necessarily endorsed by the funding  
9 agency.

10 **Conflict of interest:** Dr. Jayant M. Pinto is on the speaker's bureau for Sanofi and Regeneron;  
11 he also serves as a site investigator for these two companies. He has served on an advisory board  
12 for Connect Biopharma. Other co-authors have no conflicts of interest to disclose.

13 **Author's contributions:** HC and KWC conceived the study. HC and EMS provided the data.  
14 KWC, CL, ZL, and HC designed the study and conducted statistical analyses. KWC and HC  
15 prepared the first draft of the manuscript and all other coauthors provided critical revision  
16 comments. All authors accessed and verified data. All authors contributed to the interpretation of  
17 the results and approved the final version for submission. HC had final responsibility to submit  
18 for publication.

19 **Data Availability Statement:** Data used in this study are available from the National Institute  
20 on Aging (NIA) Health ABC Study. To access the data, investigators should submit an analytical  
21 proposal online at <https://healthabc.nia.nih.gov/ancillary-biospecimen-proposals>.

22



## 1 Reference

- 2 1. Murphy C, Schubert CR, Cruickshanks KJ *et al.* Prevalence of olfactory impairment in older  
3 adults. *JAMA* 2002;**288**:2307–12.
- 4 2. Pinto JM, Wroblewski KE, Kern DW *et al.* The Rate of Age-Related Olfactory Decline  
5 Among the General Population of Older U.S. Adults. *J Gerontol A Biol Sci Med Sci*  
6 2015;**70**:1435–41.
- 7 3. Dong J, Pinto JM, Guo X *et al.* The Prevalence of Anosmia and Associated Factors Among  
8 U.S. Black and White Older Adults. *J Gerontol A Biol Sci Med Sci* 2017;**72**:1080–6.
- 9 4. Hummel T, Whitcroft KL, Andrews P *et al.* Position paper on olfactory dysfunction.  
10 *Rhinology* 2016;**56**:1–30.
- 11 5. Liu B, Luo Z, Pinto JM *et al.* Relationship Between Poor Olfaction and Mortality Among  
12 Community-Dwelling Older Adults: A Cohort Study. *Ann Intern Med* 2019;**170**:673–81.
- 13 6. Schubert CR, Cruickshanks KJ, Fischer ME *et al.* Carotid Intima Media Thickness,  
14 Atherosclerosis, and 5-Year Decline in Odor Identification: The Beaver Dam Offspring Study. *J*  
15 *Gerontol A Biol Sci Med Sci* 2015;**70**:879–84.
- 16 7. Schubert CR, Cruickshanks KJ, Fischer ME *et al.* Inflammatory and vascular markers and  
17 olfactory impairment in older adults. *Age Ageing* 2015;**44**:878–82.
- 18 8. Gopinath B, Sue CM, Kifley A *et al.* The Association Between Olfactory Impairment and  
19 Total Mortality in Older Adults. *The Journals of Gerontology: Series A* 2012;**67A**:204–9.

- 1 9. Roxbury CR, Bernstein IA, Lin SY *et al.* Association Between Chemosensory Dysfunction  
2 and Diet Quality in United States Adults. *Am J Rhinol Allergy* 2022;**36**:47–56.
- 3 10. Siegel JK, Wroblewski KE, McClintock MK *et al.* Olfactory dysfunction persists after  
4 smoking cessation and signals increased cardiovascular risk. *Int Forum Allergy Rhinol*  
5 2019;**9**:977–85.
- 6 11. National Institute on Aging. Health ABC. <https://healthabc.nia.nih.gov/> (7 Dec 2022)
- 7 12. Doty RL, Marcus A, Lee WW. Development of the 12-Item Cross-Cultural Smell  
8 Identification Test(CC-SIT). *The Laryngoscope* 1996;**106**:353–6.
- 9 13. Palmqvist S, Rossi M, Hall S *et al.* Cognitive effects of Lewy body pathology in clinically  
10 unimpaired individuals. *Nat Med* 2023:1–8.
- 11 14. Westervelt HJ, Bruce JM, Faust MA. Distinguishing Alzheimer’s disease and dementia with  
12 Lewy bodies using cognitive and olfactory measures. *Neuropsychology* 2016;**30**:304–11.
- 13 15. Kalogeropoulos AP, Georgiopoulos VV, Murphy RA *et al.* Dietary Sodium Content,  
14 Mortality, and Risk for Cardiovascular Events in Older Adults: The Health, Aging, and Body  
15 Composition (Health ABC) Study. *JAMA Intern Med* 2015;**175**:410.
- 16 16. Butler J, Kalogeropoulos A, Georgiopoulos V *et al.* Incident Heart Failure Prediction in the  
17 Elderly: The Health ABC Heart Failure Score. *Circ: Heart Failure* 2008;**1**:125–33.
- 18 17. Eckhardt CM, Balte PP, Barr RG *et al.* Lung function impairment and risk of incident heart  
19 failure: the NHLBI Pooled Cohorts Study. *European Heart Journal* 2022;**43**:2196–208.

- 1 18. Kalogeropoulos A, Georgiopoulos V, Psaty BM *et al.* Inflammatory Markers and Incident  
2 Heart Failure Risk in Older Adults: The Health, Aging, and Body Composition Study. *J Am Coll*  
3 *Cardiol* 2010;**55**:2129–37.
- 4 19. National Institute on Aging. CVD adjudication protocol.pdf. 2005.  
5 [https://healthabc.nia.nih.gov/sites/default/files/CVD\\_adjudication\\_protocol.pdf](https://healthabc.nia.nih.gov/sites/default/files/CVD_adjudication_protocol.pdf) (7 Dec 2022)
- 6 20. Schisterman EF, Cole SR, Platt RW. Overadjustment Bias and Unnecessary Adjustment in  
7 Epidemiologic Studies. *Epidemiology* 2009;**20**:488–95.
- 8 21. Marcum ZA, Perera S, Newman AB *et al.* Antihypertensive Use and Recurrent Falls in  
9 Community-Dwelling Older Adults: Findings From the Health ABC Study. *The Journals of*  
10 *Gerontology: Series A* 2015;**70**:1562–8.
- 11 22. Yaffe K, Falvey CM, Hamilton N *et al.* Association Between Hypoglycemia and Dementia in  
12 a Biracial Cohort of Older Adults With Diabetes Mellitus. *JAMA Intern Med* 2013;**173**:1300–6.
- 13 23. Chen H, Shrestha S, Huang X *et al.* Olfaction and incident Parkinson disease in US white  
14 and black older adults. *Neurology* 2017;**89**:1441–7.
- 15 24. Kaup AR, Byers AL, Falvey C *et al.* Trajectories of Depressive Symptoms in Older Adults  
16 and Risk of Dementia. *JAMA Psychiatry* 2016;**73**:525–31.
- 17 25. Hankinson JL, Odencrantz JR, Fedan KB. Spirometric reference values from a sample of the  
18 general U.S. population. *Am J Respir Crit Care Med* 1999;**159**:179–87.
- 19 26. Wang K, Luo Z, Li C *et al.* Blood Cholesterol Decreases as Parkinson’s Disease Develops  
20 and Progresses. *J Parkinsons Dis* 2021;**11**:1177–86.

- 1 27. Gopal DM, Kalogeropoulos AP, Georgiopolou VV *et al.* Serum albumin concentration and  
2 heart failure risk The Health, Aging, and Body Composition Study. *Am Heart J* 2010;**160**:279–  
3 85.
- 4 28. Metti AL, Yaffe K, Boudreau RM *et al.* Trajectories of inflammatory markers and cognitive  
5 decline over 10 years. *Neurobiol Aging* 2014;**35**:2785–90.
- 6 29. Goldenstein L, Driver TH, Fried LF *et al.* Serum bicarbonate concentrations and kidney  
7 disease progression in community-living elders: the Health, Aging, and Body Composition  
8 (Health ABC) Study. *Am J Kidney Dis* 2014;**64**:542–9.
- 9 30. Inker LA, Schmid CH, Tighiouart H *et al.* Estimating glomerular filtration rate from serum  
10 creatinine and cystatin C. *N Engl J Med* 2012;**367**:20–9.
- 11 31. Li Y, Hwang W-T, Maude SL *et al.* Statistical Considerations for Analyses of Time-To-  
12 Event Endpoints in Oncology Clinical Trials: Illustrations with CAR-T Immunotherapy Studies.  
13 *Clin Cancer Res* 2022;**28**:3940–9.
- 14 32. Goff DC, Lloyd-Jones DM, Bennett G *et al.* 2013 ACC/AHA Guideline on the Assessment  
15 of Cardiovascular Risk. *Circulation* 2014;**129**:S49–73.
- 16 33. Harshfield EL, Pennells L, Schwartz JE *et al.* Association Between Depressive Symptoms  
17 and Incident Cardiovascular Diseases. *JAMA* 2020;**324**:2396–405.
- 18 34. Givens RC, Schulze PC. Molecular Changes in Heart Failure. In: Eisen H (ed.). *Heart*  
19 *Failure: A Comprehensive Guide to Pathophysiology and Clinical Care*. London: Springer, 2017,  
20 1–26.

- 1 35. Arnett DK, Blumenthal RS, Albert MA *et al.* 2019 ACC/AHA Guideline on the Primary  
2 Prevention of Cardiovascular Disease: A Report of the American College of  
3 Cardiology/American Heart Association Task Force on Clinical Practice Guidelines. *Circulation*  
4 2019;**140**, DOI: 10.1161/CIR.0000000000000678.
- 5 36. Howard G, Banach M, Kissela B *et al.* Age-Related Differences in the Role of Risk Factors  
6 for Ischemic Stroke. *Neurology* 2023, DOI: 10.1212/WNL.0000000000206837.
- 7 37. Doty RL, Kamath V. The influences of age on olfaction: a review. *Front Psychol* 2014;**5**:20.
- 8 38. Joo Y-H, Hwang S-H, Han K *et al.* Relationship between olfactory dysfunction and suicidal  
9 ideation: The Korea National Health and Nutrition Examination Survey. *Am J Rhinol Allergy*  
10 2015;**29**:268–72.
- 11 39. Vlodayer Z. Pathology of Chronic Obstructive Coronary Disease. In: Vlodayer Z, Wilson RF,  
12 Garry DJ (eds.). *Coronary Heart Disease: Clinical, Pathological, Imaging, and Molecular*  
13 *Profiles*. Boston, MA: Springer US, 2012, 159–85.
- 14 40. Banerjee C, Chimowitz MI. Stroke Caused by Atherosclerosis of the Major Intracranial  
15 Arteries. *Circulation Research* 2017;**120**:502–13.
- 16 41. Ledley GS, Ahmed S, Jones H *et al.* Hemodynamics and Heart Failure. In: Eisen H (ed.).  
17 *Heart Failure: A Comprehensive Guide to Pathophysiology and Clinical Care*. London: Springer,  
18 2017, 27–48.



1 42. Wuorela M, Lavonius S, Salminen M *et al.* Self-rated health and objective health status as  
2 predictors of all-cause mortality among older people: a prospective study with a 5-, 10-, and 27-  
3 year follow-up. *BMC Geriatrics* 2020;**20**:120.

4 43. Lorem G, Cook S, Leon DA *et al.* Self-reported health as a predictor of mortality: A cohort  
5 study of its relation to other health measurements and observation time. *Sci Rep* 2020;**10**:4886.

6

1

2 **Figure 1.** Cumulative incidence function by baseline olfaction status (good, moderate, poor) of  
3 a) coronary heart diseases (CHD) and its competing event of death (n=1,924); b) stroke and its  
4 competing event of death (n=2,330); c) congestive heart failure (CHF) and its competing event  
5 of death (n=2,421)

6

7

8 **Figure 2.** Cause-specific hazard ratios (HRs) and 95% confidence intervals (CIs) of olfaction in  
9 relation to congestive heart failure with up to 12 years of follow-up in subgroup analyses  
10 (n=2,421). Each model was adjusted for the interaction between baseline olfaction status and the  
11 subgroup factor of interest, plus covariates of age, sex, race, education, study site, smoking status,  
12 brisk walking, body mass index, self-reported general health status, systolic blood pressure, use  
13 of antihypertensive medications, diabetes, depressive symptoms, total cholesterol, high-density  
14 lipoprotein-cholesterol, prevalent coronary heart diseases (CHD)/stroke, heart rate, left  
15 ventricular hypertrophy, abnormal lung function, albumin and estimated glomerular filtration  
16 rate, stratified by the tertile of interleukin 6

17

18

19 **Figure 3.** Cause-specific hazard ratios (HRs) and 95% confidence intervals (CIs) for congestive  
20 heart failure (CHF) by continuous olfaction score among participants who self-reported very-  
21 good-to-excellent health (n=1,100). Olfaction was measured by the Brief-Smell Identification  
22 test (B-SIT), the perfect score of which as 12 was used to be the reference. The model was  
23 adjusted for age, sex, race, education, study site, smoking status, brisk walking, body mass index,  
24 use of antihypertensive medications, diabetes, depressive symptoms, total cholesterol, high-  
25 density lipoprotein-cholesterol, prevalent coronary heart disease/stroke, heart rate, left  
26 ventricular hypertrophy, abnormal lung function, albumin, interleukin 6 and estimated  
27 glomerular filtration rate, stratified by groups of systolic blood pressure (140mmHg as the cut-  
28 off)

**Table 1.** Population characteristics by baseline olfaction status (n=2,537)<sup>a</sup>

Variable	Olfaction status		
	Good (n = 845)	Moderate (n = 867)	Poor (n = 825)
Age in years, median (IQR)	75.0 (4.0)	75.0 (5.0)	76.0 (4.0)
<75 years	391 (46.3)	370 (42.7)	279 (33.8)
≥75 years	454 (53.7)	497 (57.3)	546 (66.2)
Male sex, n (%)	324 (38.3)	418 (48.2)	485 (58.8)
Black race, n (%)	265 (31.4)	331 (38.2)	380 (46.1)
Study site, n (%)			
Memphis	377 (44.6)	432 (49.8)	428 (51.9)
Pittsburgh	468 (55.4)	435 (50.2)	397 (48.1)
Education, n (%)			
≤high school	414 (49.0)	490 (56.5)	510 (61.8)
>high school	431 (51.0)	377 (43.5)	315 (38.2)
Body mass index, n (%)			
<25 kg/m <sup>2</sup>	273 (32.3)	270 (31.1)	313 (37.9)
25-30 kg/m <sup>2</sup>	366 (43.3)	363 (41.9)	338 (41.0)
>30 kg/m <sup>2</sup>	206 (24.4)	234 (27.0)	174 (21.1)
Smoking status, n (%)			
Never	429 (50.8)	390 (45.0)	351 (42.5)
Former & <30 pack-years	235 (27.8)	217 (25.0)	215 (26.1)
Current or ≥30 pack-years	181 (21.4)	260 (30.0)	259 (31.4)
Brisk walking, n (%)			
<90 min/wk	744 (88.0)	786 (90.7)	754 (91.4)
≥90 min/wk	101 (12.0)	81 (9.3)	71 (8.6)
General health status, n (%)			
Very good to excellent	423 (50.1)	384 (44.3)	325 (39.4)
Good	292 (34.6)	351 (40.5)	312 (37.8)
Fair to poor	130 (15.4)	132 (15.2)	188 (22.8)
Systolic blood pressure in mmHg, median (IQR)	134 (26)	134 (24)	134 (28)
Antihypertensive drug use, n (%)	497 (58.8)	533 (61.5)	483 (58.5)
Diabetes, n (%)	181 (21.4)	214 (24.7)	220 (26.7)
Depressive symptoms, n (%)	86 (10.2)	108 (12.5)	115 (13.9)
Heart rate in beats per minute, median (IQR)	63 (14)	63 (14)	65 (16)
LVH, n (%)	98 (11.6)	97 (11.2)	96 (11.6)
Abnormal lung function, n (%)			
No	689 (81.5)	682 (78.7)	610 (73.9)
Yes	75 (8.9)	104 (12.0)	104 (12.6)
Missing	81 (9.6)	81 (9.3)	111 (13.5)
Total cholesterol in mg/dL, median (IQR)	206.0 (51.0)	204.0 (49.0)	202.0 (51.0)
HDL-C in mg/dL, median (IQR)	52.0 (19.0)	51.0 (21.0)	51.0 (20.0)
Albumin in g/dL, median (IQR)	4.0 (0.4)	4.0 (0.4)	4.0 (0.5)

Interleukin 6 in pg/mL, median (IQR)	2.27 (2.15)	2.33 (2.49)	2.33 (2.24)
eGFR in mL/min/1.73m <sup>2</sup> , median (IQR)	81.1 (24.3)	81.3 (24.5)	77.3 (26.6)
Prevalent major cardiovascular diseases			
Prevalent CHD, n (%)	199 (23.6)	207 (23.9)	207 (25.1)
Prevalent stroke, n (%)	69 (8.2)	73 (8.4)	65 (7.9)
Prevalent CHF, n (%)	37 (4.4)	44 (5.1)	35 (4.2)

Abbreviations: IQR: inter-quartile range; HDL-C: high-density lipoprotein-cholesterol; LVH: left ventricular hypertrophy; eGFR: estimated glomerular filtration rate; CHD: coronary heart diseases; CHF: congestive heart failure.

<sup>a</sup> Prevalent cases of outcomes of interest are included in this table. Please see Supplementary Materials for tables for each outcome of interest without corresponding prevalent cases.

**Table 2.** The association of baseline olfaction status with incident coronary heart diseases (CHD), stroke, and congestive heart failure (CHF) for up to 12 years of follow-up <sup>a</sup>.

Olfactory function	No. of Event	Person-years	Incidence (per 1,000 person-year)	Model 1 <sup>b</sup>		Model 2 <sup>c</sup>		Model 3 <sup>d</sup>	
				HR (95% CI)	<i>P</i>	HR (95% CI)	<i>P</i>	HR (95% CI)	<i>P</i>
CHD (n=1,924)									
Good	119	6124	19.4	Reference		Reference			
Moderate	127	5939	21.4	1.06 (0.83,1.37)	0.635	1.01 (0.78,1.31)	0.936		
Poor	107	5018	21.3	1.01 (0.77,1.33)	0.921	0.97 (0.73,1.27)	0.813		
Stroke (n=2,330)									
Good	88	7665	11.5	Reference		Reference <sup>e</sup>			
Moderate	78	7514	10.4	0.85 (0.62,1.15)	0.290	0.85 (0.62,1.16)	0.297		
Poor	92	6428	14.3	1.10 (0.81,1.50)	0.529	1.12 (0.82,1.52)	0.475		
CHF (n=2,421)									
Good	130	7792	16.7	Reference		Reference		Reference <sup>f</sup>	
Moderate	180	7533	23.9	1.35 (1.08,1.70)	0.009	1.31 (1.05,1.65)	0.020	1.32 (1.05,1.66)	0.017
Poor	167	6561	25.5	1.39 (1.09,1.76)	0.007	1.37 (1.08,1.74)	0.010	1.28 (1.01,1.64)	0.042

Abbreviations: HR: hazard ratio; 95% CI: 95% confidence interval

<sup>a</sup> Associations were estimated from Cox cause-specific models to account for the competing risk of death.

<sup>b</sup> Model 1 included age, sex, race, education, and study site as covariates.

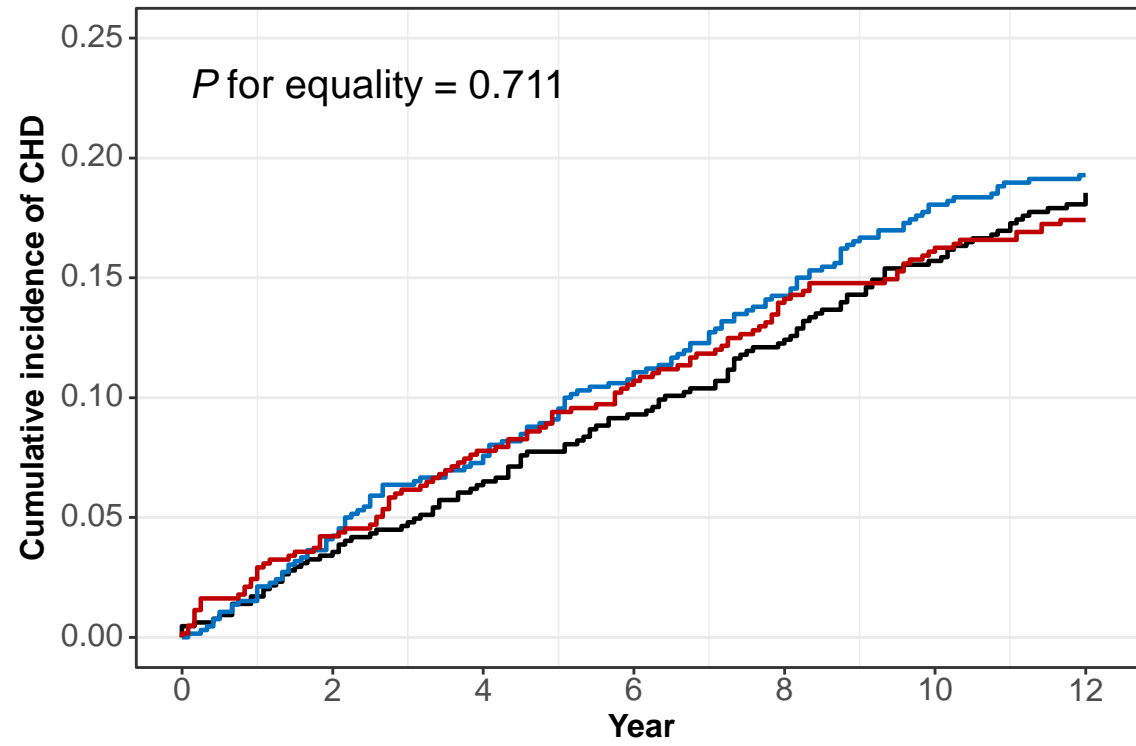
<sup>c</sup> Model 2 further included smoking status, brisk walking, body mass index, self-reported general health status, systolic blood pressure, use of antihypertensive medications, diabetes, depressive symptoms, total cholesterol, and high-density lipoprotein-cholesterol as covariates. For CHF, Model 2 further included prevalent CHD/stroke in addition to the above covariates.

<sup>d</sup> Model 3 (only for CHF) further included heart rate, left ventricular hypertrophy, abnormal lung function, albumin, interleukin 6, and estimated glomerular filtration rate.

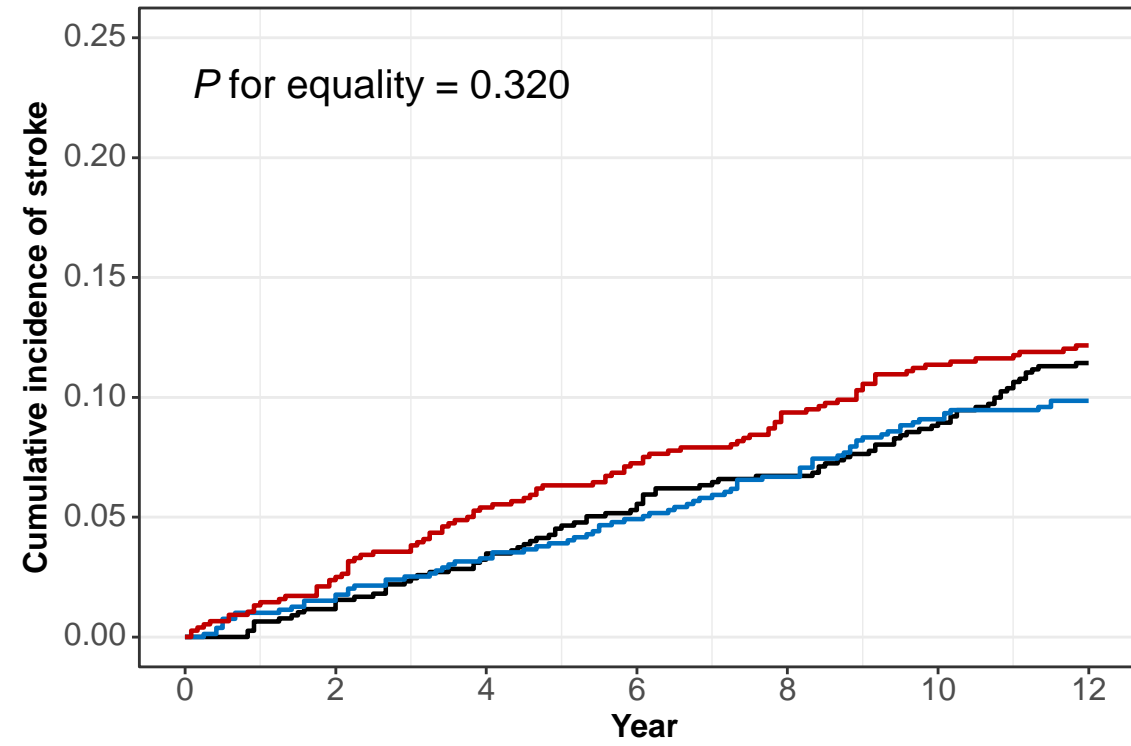
<sup>e</sup> Brisk walking and antihypertensive medication use were stratified in the Cox model.

<sup>f</sup> Tertile of interleukin 6 was stratified in the Cox model.

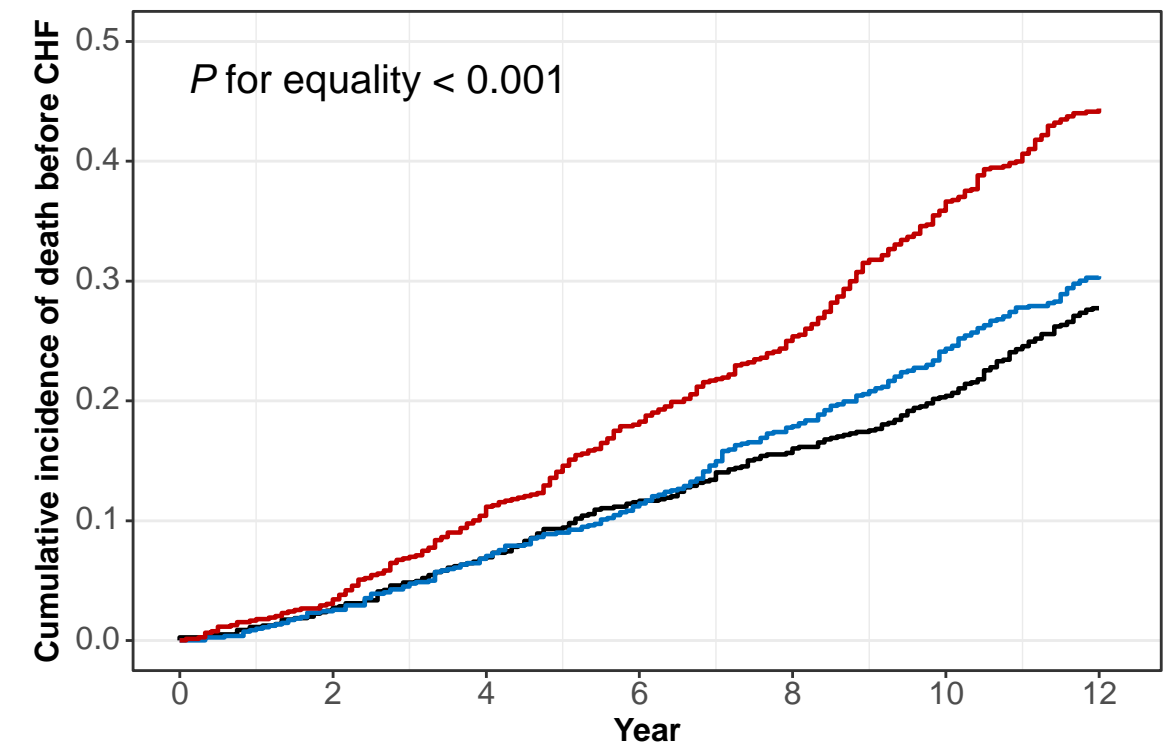
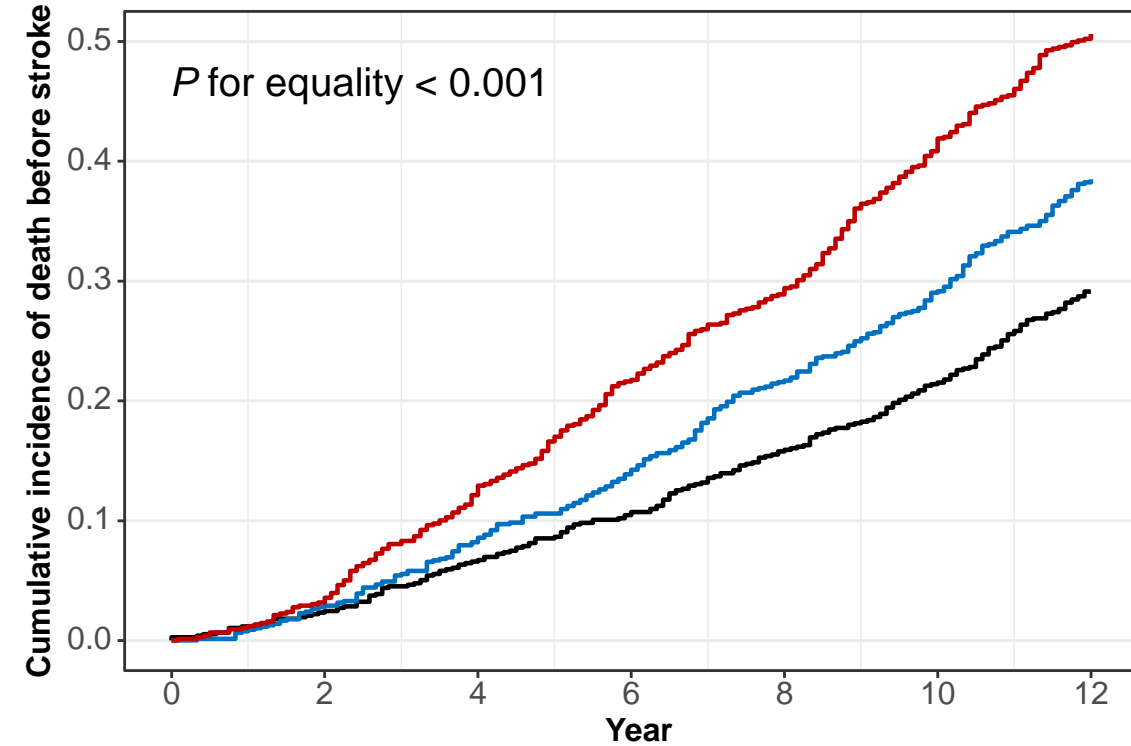
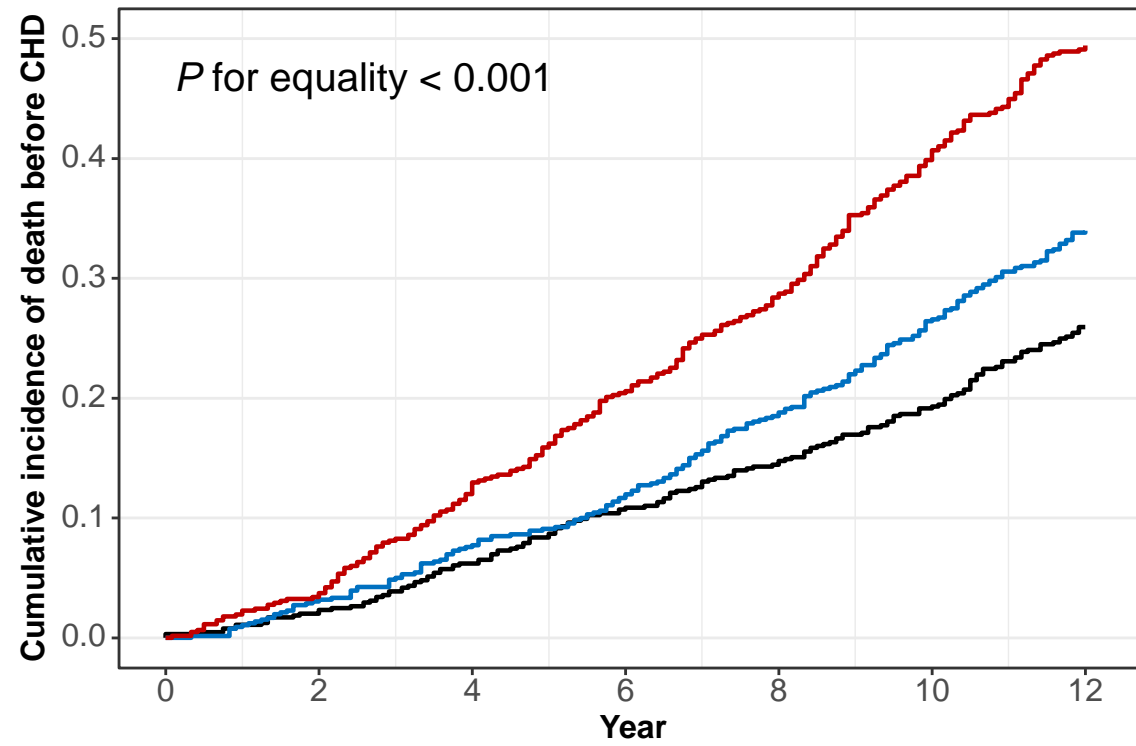
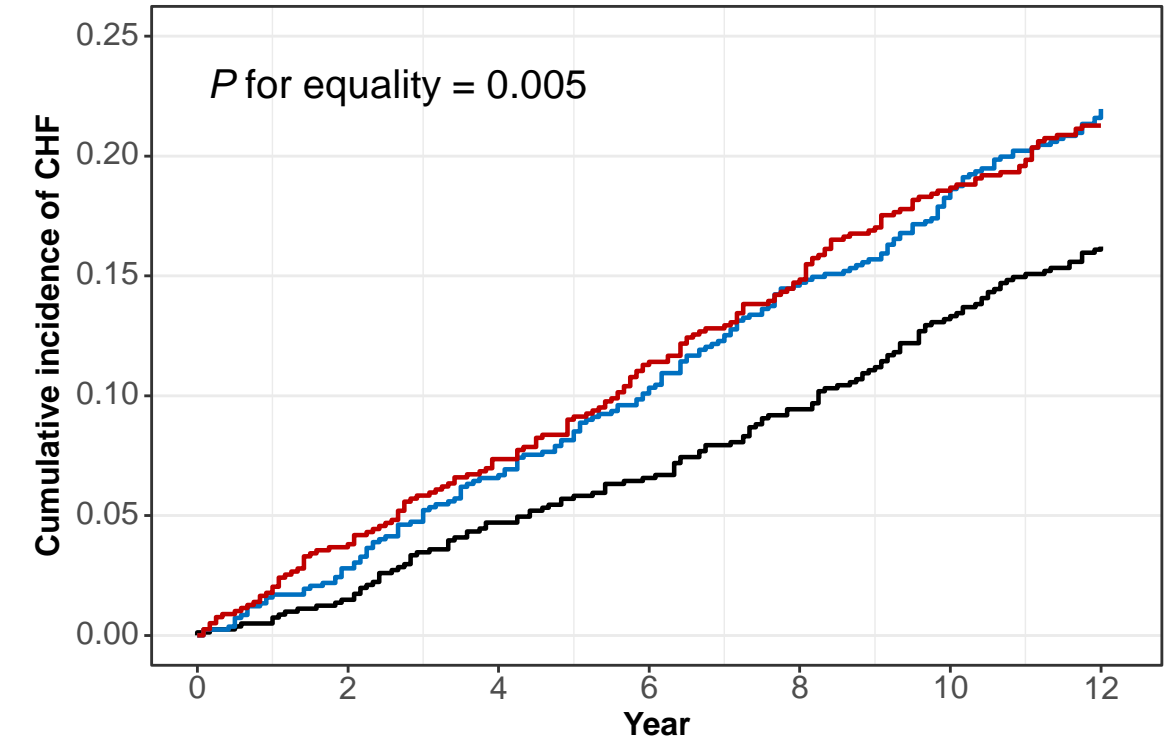
**a. CHD**



**b. Stroke**



**c. CHF**



*No. at risk for both CHD and its competing event of death*

Year	0	2	4	6	8	10	12
Good	646	611	564	515	468	416	349
Moderate	660	613	562	511	443	363	302
Poor	618	570	495	425	352	268	200

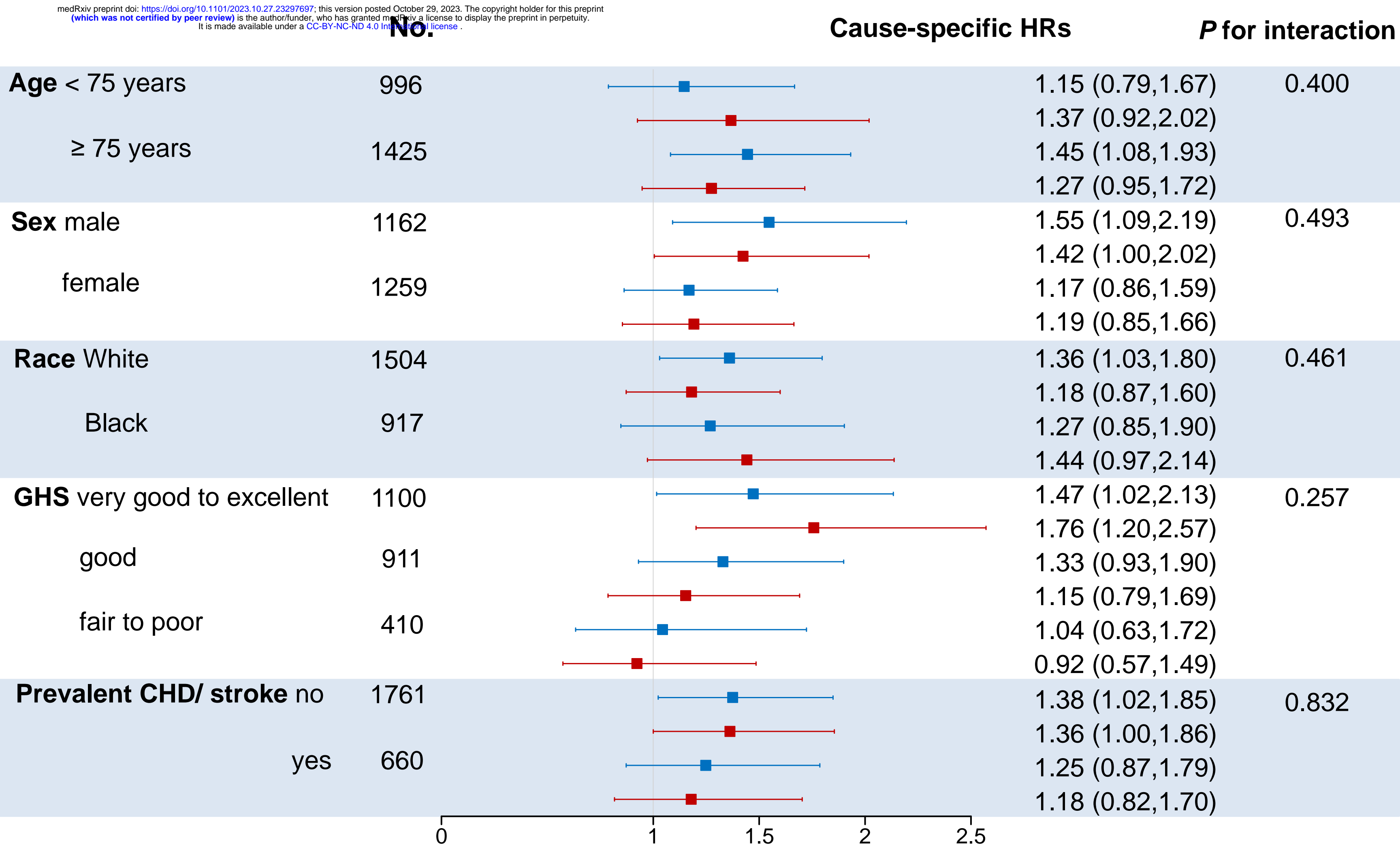
*No. at risk for both stroke and its competing event of death*

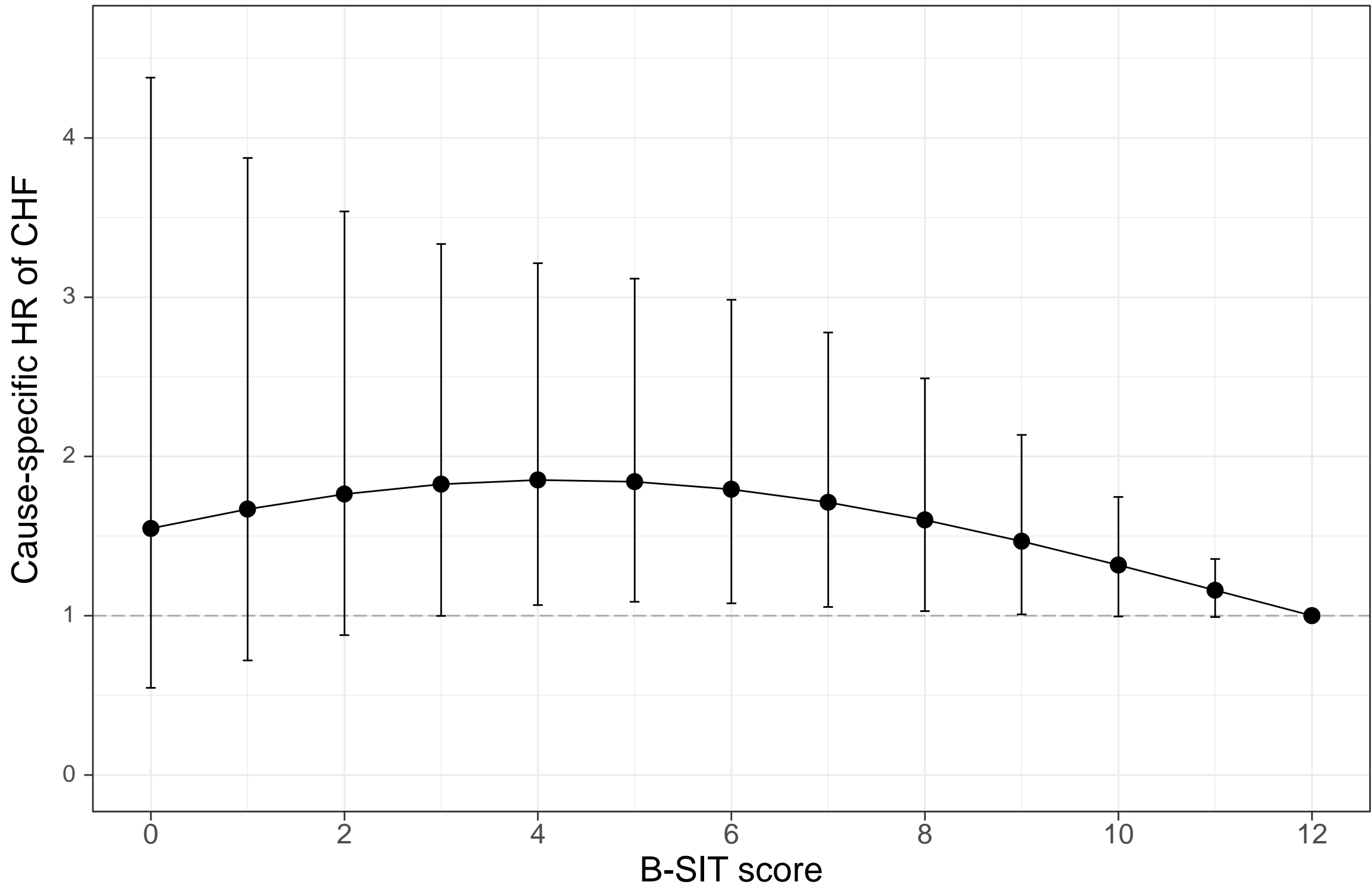
Year	0	2	4	6	8	10	12
Good	776	749	699	651	594	535	447
Moderate	794	760	703	644	569	489	401
Poor	760	717	626	539	465	360	277

*No. at risk for both CHF and its competing event of death*

Year	0	2	4	6	8	10	12
Good	808	776	714	659	598	531	437
Moderate	823	783	713	647	556	471	386
Poor	790	736	649	557	472	356	264

—■— Moderate vs. good —■— Poor vs. good





<b>B-SIT</b>	0	1	2	3	4	5	6	7	8	9	10	11	12
<b>HR</b>	1.55	1.67	1.76	1.83	1.85	1.84	1.79	1.71	1.6	1.47	1.32	1.16	1