

1 **Title: Adapting a Data to Care Approach for HIV to Promote HCV Cure for Persons with**  
2 **HIV/HCV Co-infection**

3  
4 **Short title: Adapting Data to Care for HCV Cure**

5  
6 **Authors:**

7 Maximilian Wegener, MPH<sup>1\*</sup> ([maximilian.wegener@yale.edu](mailto:maximilian.wegener@yale.edu)); Deborah Gosselin, RN<sup>2¶</sup>  
8 ([deborah.gosselin@ct.gov](mailto:deborah.gosselin@ct.gov)); Ralph Brooks, MS<sup>1¶</sup> ([ralph.brooks@yale.edu](mailto:ralph.brooks@yale.edu)); Suzanne Speers,  
9 MPH<sup>2¶</sup> ([Suzanne.Speers@ct.gov](mailto:Suzanne.Speers@ct.gov)); Merceditas Villanueva, MD<sup>1¶</sup>  
10 ([merceditas.villanueva@yale.edu](mailto:merceditas.villanueva@yale.edu))

11  
12 **Affiliations:**

- 13 1. Yale School of Medicine  
14 333 Cedar Street, New Haven CT 06510  
15 203-432-4771  
16  
17 2. Connecticut Department of Public Health  
18 410 Capitol Ave, Hartford, CT 06134  
19 860-509-8000

20  
21 \* Corresponding author

22 E-mail: [maximilian.wegener@yale.edu](mailto:maximilian.wegener@yale.edu)

23  
24 ¶These authors contributed equally to this work  
25  
26  
27  
28  
29  
30  
31  
32  
33  
34  
35  
36  
37  
38  
39  
40  
41

42 **ABSTRACT**

43 With Direct Acting Antivirals for Hepatitis C virus (HCV), cure is possible in >95% including  
44 those with HIV/HCV co-infection. Achieving strategic targets for cure requires addressing  
45 barriers including suboptimal care engagement. We adapted Data to Care (D2C), a public health  
46 strategy designed to identify and link persons out of care (OOC) for HIV, for persons with  
47 HIV/HCV co-infection untreated for HCV. In partnership with Connecticut Department of  
48 Public Health (DPH), persons OOC for HIV (defined as no HIV surveillance laboratory tests  
49 from 10/1/2018-10/1/2019) were matched to a list of persons co-infected with HIV/HCV  
50 (through 12/31/2019). We used a three-phase follow-up approach (pre-work, case conferencing,  
51 and Disease Intervention Specialist (DIS) follow-up) to track outreach outcomes and re-  
52 engagement/HCV cure success. There were 90 HIV/HCV co-infected persons who were OOC  
53 for HIV. The pre-work and case conferencing phases determined that 33 (36.7%) had previous  
54 HCV cure or were in treatment. There were 41 eligible for DIS-follow-up of which 21 (51%)  
55 were successfully contacted and 7 (33%) successfully re-engaged (kept appointment with HCV  
56 provider). No new HCV treatment initiations were recorded. Using a D2C approach, we  
57 identified and conducted outreach to persons who were OOC for HIV to promote HCV  
58 treatment. This approach resulted in intensive data clean-up and outreach efforts which produced  
59 modest re-engagement and no HCV treatment initiations. Future studies should develop  
60 alternative and complementary interventions to promote effective re-engagement and HCV  
61 treatment.

62  
63  
64  
65  
66  
67  
68

## 69 INTRODUCTION

70 Historically, viral hepatitis, including Hepatitis C (HCV), has been the leading cause of chronic  
71 liver disease-related death globally.<sup>1</sup> Persons co-infected with HIV have increased risk of liver-  
72 related complications compared to persons with mono-infection.<sup>2-4</sup> The global burden of co-  
73 infection is estimated at 2.3 million (6.2% of prevalent HIV cases) with persons who inject drugs  
74 (PWID) having the greatest risk.<sup>2-5</sup> HCV co-infection prevalence estimates in the U.S. vary by  
75 location and HIV risk factors.<sup>6-10</sup> Direct acting antiviral (DAA) drugs with >95% cure rates for  
76 HCV have been extended to those with HIV/HCV co-infection, prompting strategic goal setting  
77 by the World Health Organization (WHO) to cure 80% of persons with diagnosed HCV infection  
78 by 2030.<sup>5, 11-12</sup> The Centers for Disease Control and Prevention (CDC) has developed a strategic  
79 plan for the U.S. aimed at increasing HCV cure for chronically infected persons to  $\geq 85\%$  by  
80 2030.<sup>13</sup>

81  
82 Simplified treatment algorithms have been proposed to expand HCV treatment in uncomplicated  
83 patients (e.g., treatment naive, compensated cirrhosis).<sup>14-15</sup> A global study looking at simplified  
84 implementation using a minimal monitoring approach showed sustained virologic response  
85 (SVR) rates of >95% including for persons HIV/HCV co-infected.<sup>14-15</sup> The rollout of DAAs has  
86 resulted in population level success and in individual clinics, SVR rates ranging from 50% to  
87 75% have been reported.<sup>16-20</sup> Nonetheless, gaps in treatment persist due to system, clinic, and  
88 patient level issues. The optimal approach for identifying and engaging untreated persons into  
89 HCV treatment is not known.

90  
91 Data to Care (D2C), a public health strategy originally designed using HIV surveillance and  
92 other data sources to identify and link newly diagnosed or to re-engage out-of-care (OOC) PWH,  
93 is one possible way to address this issue. The CDC's HIV/AIDS Strategic Plan has advocated  
94 expanding D2C programs for PWH who have fallen OOC to improve the HIV continuum of  
95 care. A CDC-funded randomized control trial (RCT) found health-department employed disease  
96 intervention specialists (DIS) were more likely to re-engage newly OOC (i.e. 6 months without  
97 HIV laboratory tests or clinic visit) PWH at 90 days compared to the clinics' standard of care.<sup>21</sup>

98

99 We hypothesized that OOC PWH co-infected with HCV were unlikely to have undergone DAA  
100 treatment due to lack of HIV care engagement and could benefit from this D2C approach. In this  
101 study, we partnered with the Connecticut Department of Public Health (CT DPH) to identify  
102 HIV OOC persons co-infected with HCV and piloted a re-engagement strategy including  
103 working with DIS, to improve the HCV viral clearance cascade.<sup>22-23</sup>

104

## 105 **METHODS**

106 This study was part of a HRSA Special Project of National Significance (SPNS 047) initiative  
107 entitled “Curing Hepatitis C Among People of Color Living with HIV” which was awarded to  
108 Yale School of Medicine and conducted in partnership with the CT DPH. The project goal was  
109 to assess and promote efforts to treat HCV among HIV/HCV co-infected persons with a  
110 secondary goal of improving partnerships between the CT DPH and individual clinics.

111

### 112 Surveillance Data Sources

113 Two CT DPH surveillance databases were used: the enhanced HIV/AIDS Reporting System  
114 (eHARS) for HIV and the CT Electronic Disease Surveillance System (CTEDSS) for HCV. The  
115 CDC developed eHARS for public health agencies to collect and report HIV surveillance data.<sup>23-</sup>

116 <sup>24</sup> The CT DPH uses CTEDSS as their notifiable disease repository for CDC-required reporting.

117 In CT, HIV data in eHARS dates to 1981 and CTEDSS recorded data beginning in 1994.

118 CTEDSS includes HCV antibody (positive only) and polymerase chain reaction (PCR) (positive  
119 and negative) results. Negative PCR results have been reported through electronic lab reporting  
120 (ELR) since 2016. Roughly 80% of all HCV laboratory results in CT are reported through ELR.

121

### 122 Inclusion Criteria for Data to Care Intervention

123 The Data to Care (D2C) intervention focused on persons with HIV/HCV co-infection who were  
124 out of care (OOC) for HIV and had untreated HCV. **Figure 1** outlines the flow of surveillance  
125 data for determining eligibility for the intervention. First, the CT DPH epidemiologist created an  
126 HIV/HCV co-infected list by matching eHARS (from 1/1/2009 to 8/6/2019) and CTEDSS (from  
127 1/1/1994 to 8/17/2019) using a CDC developed hierarchical deterministic matching program in  
128 SAS 9.4.<sup>9</sup> Matching keys consisting of identifiable variables to determine persons present in both  
129 surveillance systems including: first name, last name, date of birth, and social security number.<sup>25</sup>

130 We chose the greater duration of time for CTEDSS to capture the largest possible pool of HCV  
131 data available. We chose the 10-year timeframe for eHARS to optimize the list of PWH who  
132 were more likely to be alive and living in CT.

133

134 **Figure 1:** *Surveillance data flow for identification of Persons with HIV (PWH) who qualify for*  
135 *the Data to Care intervention*

136

137 Using the same eHARS list, the CT DPH epidemiologist created a list of persons with HIV  
138 (PWH) who were diagnosed with HIV prior to or including 2018 which included their most  
139 recent HIV laboratory results (eHARS data from 1/1/2009 to 8/6/2019). Persons who received an  
140 HIV diagnosis in 2019 were excluded since a full year is needed to finalize and confirm HIV  
141 data. The CT DPH epidemiologist created the 12-month PWH OOC list to include persons who  
142 had no HIV laboratory results from 8/1/2018 to 8/6/2019. The Yale epidemiologist generated the  
143 12-month HIV/HCV co-infected OOC cohort list by matching the PWH OOC list to the  
144 HIV/HCV co-infected list. Before finalizing the list, HCV data were evaluated using CTEDSS to  
145 exclude anyone with evidence of HCV viral clearance. (as defined by positive HCV PCR  
146 followed by negative PCR).

147

148 Process for Identifying, Locating, and Re-engaging HIV OOC Persons with HIV/HCV Co-  
149 infection

150 *List generation:* After generating the list of eligible PWH as noted above, a tracking log (an  
151 Excel spreadsheet consisting of patient identifying information, HCV and HIV laboratory  
152 details) was created for recording outcome data, that was manually filled in by the DIS  
153 supervisor and DIS staff. Using this list, three phases of further data cleaning and assignment to  
154 DIS workers began (see **Figure 2**). Efforts began 9/1/2019 and continued until 3/31/2020.

155

156 **Figure 2:** *Consort diagram showing eligibility for the phases of the Data to Care intervention*  
157 *for the 12-month OOC Cohort (N=90)*

158

159 *Phase 1-Pre-Work:* The goal of Phase 1 was to use available DPH data systems to streamline the  
160 co-infected lists to include persons who were alive, residing in CT, not treated for HCV. The DIS  
161 supervisor used the Department of Corrections (DOC) database, LexisNexis, and CTEDSS (data

162 updated regularly throughout the project) as ancillary databases to assess eligibility for Phase 2  
163 case conferencing. Persons who were deceased, incarcerated, out of state (OOS) residents, and  
164 those with at least one negative PCR result reported through CTEDSS (indicating prior  
165 successful treatment or spontaneous clearance) were not eligible for Phase 2. Persons lacking a  
166 provider or sufficient contact information were eligible for Phase 2.

167  
168 *Phase 2-Case Conferencing:* The goal of Phase 2 was to solicit clinic-level information through  
169 a direct conversation between the DPH and clinic staff (case conferencing). The DIS supervisor  
170 spoke with relevant clinic staff who reviewed medical records to verify if their patients were  
171 truly OOC for HIV and to ascertain their HCV treatment status since data in CTEDSS were not  
172 always up-to-date due to data backlogs. If needed, the DIS supervisor contacted eligible patients'  
173 last known HIV provider obtained from eHARS by phone. The ensuing discussions yielded  
174 updated outcomes that were recorded in the tracking log. Persons eligible for active DIS follow-  
175 up (Phase 3) included patients lost to follow-up by the clinic and those with insufficient  
176 information to determine eligibility.

177  
178 *Phase 3-DIS Follow-Up:* The goal of Phase 3 was active case-finding by DIS workers. The CT  
179 DPH employed three dedicated DIS to locate and contact patients needing care engagement  
180 including those OOC for HIV. DIS tracked assigned patients; assessed barriers to care after  
181 contact, provided HIV and HCV brief treatment education, and facilitated re-engagement with  
182 the HIV clinic. Patients were actively followed-up for 30 days once DIS efforts began. If a  
183 patient was contacted, the DIS would work with the patient until they were re-engaged (defined  
184 as making a provider appointment). If after 30 days there was no response to DIS, passive efforts  
185 (awaiting responses to initial contact efforts) would continue for another 60 days.

186  
187 Outreach methods followed a dedicated protocol (see Appendix) and included phone calls, text  
188 messages, emails, field visits, and letters with most recent contact information supplemented by  
189 clinic records; use of these methods was not mutually exclusive, e.g. if needed, phone calls and  
190 field visits were used with the same patient. Tabulation of outreach efforts was designated by  
191 final outcome, e.g. persons who were successfully re-engaged had relevant outreach efforts

192 attributed to that outcome. Progress and outcomes for Phase 3 were recorded in REDCap, a  
193 secure web-based electronic data capture tool hosted at Yale University.

194

#### 195 *Outcome Definitions:*

196 (1) Successful contact - DIS reached a patient to schedule a clinic appointment.

197 (2) Successful re-engagement - patient had either a scheduled appointment or clinic visit with an  
198 HCV treatment provider by the end of study. The re-engagement success rate is calculated as the  
199 ratio of those re-engaged to those successfully contacted.

200 (3) Cure-clinic or surveillance based evidence of SVR (sustained virologic response defined as  
201 HCV PCR negative 12 weeks post treatment).

202

#### 203 Project Variables

204 Surveillance variables included first name, last name, date of birth, birth sex, race/ethnicity, HIV  
205 transmission category and most recent available HIV viral load (VL) results and date.

206

#### 207 Statistical Analysis

208 Descriptive analyses were performed to examine the distribution of demographic and HIV  
209 clinical information variables for each OOC cohort observed during each project phase. The  
210 variables included birth year, age, birth sex, race/ethnicity, HIV VL level, and HIV transmission  
211 category. Descriptive analyses were also performed to examine the outreach methods used and  
212 time spent by DIS for patient follow-up.

213

#### 214 Ethical Considerations

215 This project was approved by the Yale IRB (protocol #2000025960) and the CT DPH Human  
216 Investigations Committee (protocol #914). The CT DPH Human Investigations Committee gave  
217 permission for a Yale researcher (MW) to only view identifiable information while physically at  
218 the DPH and no data was accessible outside the DPH. All study data were located and secured at  
219 the CT DPH according to their internal policies.

220

## 221 **RESULTS**

### 222 Demographics



223 As shown in **Table 1**, there were 90 HIV/HCV co-infected patients who were OOC for HIV  
 224 (66% male, 60% born prior to 1965, 44% Hispanic, 71% persons who inject drugs (PWID),  
 225 74% with most recent HIV VL level undetectable). Out of these, 41 were eligible for DIS  
 226 follow-up. Compared to the total OOC, those eligible for DIS follow-up had greater percentages  
 227 of persons born in 1965 or after (44% vs 40%), Hispanic (54% vs 42%), and detectable HIV VLs  
 228 (34% vs 26%).

229

230 **Table 1: Demographics and clinical characteristics of persons with HIV/HCV co-infection**  
 231 **stratified by HIV Out of Care and eligibility for Disease Intervention Specialist Services**

Variable <sup>†</sup>	Category	Out of Care <sup>¶</sup> (N=90)		DIS Eligible <sup>††</sup> (N=41)		Successfully contacted <sup>‡‡</sup> (N=21)		Successfully re-engaged <sup>§§</sup> (N=7)	
		N	%	N	%	N	%	N	%
Sex	Male	59	66%	27	66%	16	76%	3	43%
	Female	31	34%	14	34%	5	24%	4	57%
Birth Year	Prior to 1965	54	60%	23	56%	10	48%	3	43%
	1965 and after	36	40%	18	44%	11	52%	4	57%
Race/Ethnicity <sup>‡</sup>	White	25	28%	9	23%	4	20%	1	14%
	Black	25	28%	9	23%	7	35%	4	57%
	Hispanic	38	44%	22	54%	9	45%	2	29%
HIV Transmission Category	PWID	64	71%	28	68%	14	67%	5	71%
	Other <sup>§</sup>	26	29%	13	32%	7	33%	2	29%
HIV Viral Load Level	Detectable ( $\geq 200$ )	23	26%	14	34%	8	38%	2	29%
	Undetectable ( $< 200$ )	67	74%	27	66%	13	62%	5	71%

Note: DIS = disease intervention specialists; PWID = persons who inject drugs

<sup>†</sup> Calculated with unknowns excluded

<sup>‡</sup> Does not include other or multiple race categories due to small sample sizes

<sup>§</sup> Includes: heterosexual, Men who have sex with men (MSM), MSM with PWID, and Other transmission categories

<sup>¶</sup> Includes persons with no HIV laboratory tests between 8/1/2018-8/6/2019 and matched to DPH HIV/HCV co-infected list (based on matching eHARS (from 1/1/2009 to 8/6/2019) and CTEDSS (from 1/1/1994 to 8/17/2019))

<sup>††</sup> Persons eligible for active DIS follow-up included patients lost to follow-up by the clinic and those with insufficient information to determine eligibility.

<sup>‡‡</sup> DIS reached a patient to schedule a clinic appointment.

<sup>§§</sup> Patient with a scheduled appointment (excluding no shows) by the end of study or a completed visit with an HCV treatment provider

232

233 Role of Pre-Work and Case Conferencing Phases to Determine DIS Eligibility

234 **Figure 2** illustrates the data cleaning role of the pre-work (Phase 1) and case-conferencing (Phase  
 235 2). Of the 90 OOC persons, 68 (76%) were eligible for case conferencing; 22 persons (24%)



236 were deemed ineligible for case conferencing based on data clean-up from surveillance and other  
237 DPH data. Among those undergoing case conference (N=68), 27 (39.7%) were ineligible for DIS  
238 follow-up. Patients who were already cured/cleared/in treatment were the most common reason  
239 for case conferencing (11, 50%) and DIS follow-up (22, 81%) ineligibility.

240

#### 241 *DIS Re-engagement Outcomes*

242 **Figure 2** shows that among those eligible for DIS (N=41), 20 (48.8%) were not successfully  
243 contacted (11 patients residing out of state (55%); 7 (35%) failing to respond to DIS attempts at  
244 communication; 2 (10%) were deceased). Among the successfully contacted (N=21), 7 (33%)  
245 were successfully re-engaged; 14 (66.7%) were not re-engaged of which 8 (38%) refused DIS  
246 services/clinical care, 4 (19%) were appointment no-shows, 2 (9.5%) were out of state. Overall,  
247 no patients achieved SVR by study's end.

248

#### 249 *Analysis of Successfully Contacted and Re-Engaged*

250 **Table 1** compares the DIS-eligible group to persons who were successfully contacted and re-  
251 engaged. While males accounted for the majority of DIS-eligible and successfully contacted,  
252 females represented the majority (57%) of those successfully re-engaged. While the majority  
253 (56%) of DIS eligible were born prior to 1965, the majority of successfully contacted and re-  
254 engaged were born after 1965. PWID constituted the majority of DIS-eligible (68%) as well as  
255 persons successfully contacted and re-engaged. While Hispanic persons were the majority group  
256 (54%) in the DIS-eligible, Black persons comprised the majority (57%) of those successfully re-  
257 engaged. The majority of DIS-eligible persons as well as successfully contacted and re-engaged  
258 had undetectable HIV VLs (at last measure prior to being OOC).

259

#### 260 *DIS Outreach Modalities*

261 **Table 2** shows DIS outreach tools and the estimated time DIS spent (based on approximate  
262 average time reported) with the 41 eligible patients. Of 192 total outreach attempts, phone calls  
263 were used most frequently (59% of the total attempts); field visits accounted for the greatest  
264 follow-up time (77% of total minutes spent). Other methods include the combination of mailed  
265 letters, text messages, and social media messages which contributed 12% of tools used and 3%  
266 of follow-up time spent. These effort distributions were also reflected among those successfully

267 contacted and re-engaged where phone calls were used most often but field visits took the most  
 268 time. Active follow-up on those ultimately re-engaged (N=7) took 870 minutes or 124.3 minutes  
 269 per patient. For the not re-engaged, the total time was 2,885 minutes cumulatively or 206  
 270 minutes per patient. Compared to the re-engaged, DIS spent more time conducting field visits for  
 271 the not re-engaged (78% vs 64% of total minutes). For those who were re-engaged, DIS spent  
 272 more time with phone calls (29% vs 19%) compared to those not re-engaged.

273

274 **Table 2:** Distribution of outreach attempts and time spent stratified by outreach tools used for  
 275 disease intervention specialist (DIS) follow-up

DIS tools	DIS eligible (N=41) <sup>†</sup>		Successfully contacted (N=21) <sup>‡</sup>		Re-engaged (N=7) <sup>§</sup>		Not re-engaged (N=14) <sup>¶</sup>	
	Total attempts (N=192)	Total Minutes (5,807)	Total attempts (N=137)	Total Minutes (3,755)	Total attempts (N=39)	Total Minutes (870)	Total attempts (N=94)	Total Minutes (2,885)
Phone calls (Avg. 10 mins)	114 (59%)	1,140 (20%)	81 (59%)	810 (22%)	25 (64%)	250 (29%)	56 (60%)	560 (19%)
Field Visits (Avg. 80 mins)	56 (29%)	4,480 (77%)	35 (26%)	2,800 (75%)	7 (18%)	560 (64%)	28 (33%)	2,240 (78%)
Other <sup>††</sup> (Avg. 8.5 mins)	22 (12%)	187 (3%)	21 (15%)	145 (4%)	7 (18%)	60 (7%)	10 (7%)	85 (3%)

<sup>†</sup> Persons eligible for active DIS follow-up included patients lost to follow-up by the clinic and those with insufficient information to determine eligibility  
<sup>‡</sup> DIS reached a patient to schedule a clinic appointment  
<sup>§</sup> Patient with a scheduled appointment (excluding no shows) by the end of study or a completed visit with an HCV treatment provider  
<sup>¶</sup> Patient with no scheduled appointment by the end of study  
<sup>††</sup> Other includes text messages, mailed letters, and social media messages

276

277 **DISCUSSION**

278 We piloted a D2C strategy leveraging HIV OOC status to identify and re-engage persons also  
 279 infected with HCV who lacked HCV treatment. Using surveillance data, clinic case  
 280 conferencing, and DIS field work, we found that efforts resulted in intensive data clean-up  
 281 including updating HCV cure status and re-engagement follow-up activities but failed to achieve  
 282 additional HCV treatment initiations and cures.

283

284 This study highlights challenges associated with outreach within a population defined as OOC  
 285 for HIV, namely lacking HIV surveillance laboratory testing in the preceding 12-months. Given  
 286 that available, timely data is confounded by inherent surveillance data lags (generally one year  
 287 lag for data finalization), the OOC duration in this definition may actually be 24-months or more.

288 Our methodology for D2C highlights the important role of this approach for data cleaning. In the  
289 pre-work and case conferencing phases, we found that 33 patients (37% of the 12-month OOC  
290 cohort) were HCV cleared/cured/in treatment, showing that being HIV OOC did not necessarily  
291 preclude treatment for HCV. This clean-up process illustrates that the current HCV surveillance  
292 database is incomplete, with gaps in ascertainment of cures that are likely due to temporal lags in  
293 populating the database and gaps in CT DPH's Electronic Lab Reporting (ELR) interface.  
294 Another challenge was the lack of updated and accurate patient status and contact information  
295 within public health surveillance databases. Investigation efforts at each phase led to discoveries  
296 of redundant reasons for DIS ineligibility. For example, patients that DIS could not contact  
297 included deceased or out-of-state residents; ideally this should have been captured during the  
298 pre-work phase. Many were DIS ineligible due to lack of reliable contact or provider  
299 information. These determinations were critical in discerning which patients were actually  
300 eligible for DIS re-engagement strategies. Overall, most re-engagement activities were spent  
301 excluding 77% of the initial OOC population. This finding has been highlighted in other D2C  
302 efforts, revealing the extent of data inaccuracy, possibly overestimating the number of OOC  
303 persons.<sup>26-29</sup> In fact, surveillance data clean-up is an important function of D2C, especially  
304 when defining who is OOC. In another D2C study, we found that case conferencing with HIV  
305 clinics revealed PWH identified to be recently OOC by surveillance data (no HIV laboratory  
306 results for 6 months) were actually in care (71%) as defined by the clinics. This refinement of  
307 care status would enable the DIS to more efficiently focus their resources on an at-risk group  
308 needing intensive follow-up.<sup>30</sup>  
309  
310 For those ultimately deemed DIS-eligible, the workload of the DIS was considerable. Most of the  
311 time was spent on field visits (77%) followed by phone calls (20%). We found that once contact  
312 was established, the DIS spent more time following-up with non-re-engaged patients compared  
313 to re-engaged (206 vs 124 minutes per patient), concluding this population is not only hard to  
314 treat but hard to persuade. The low re-engagement yield in this study may have been due to  
315 barriers faced by this long-term OOC population that were simply not amenable to the short  
316 turnaround nature of DIS activities. In other work, we found that successful facilitators of  
317 promoting HCV care are often based on long-term trusting relationships with clinic providers  
318 and go beyond single re-engagement at a clinic visit.<sup>29</sup> We would predict this D2C strategy of

319 using DIS to locate and attempt to re-engage OOC HIV/HCV co-infected persons was neither  
320 time nor cost efficient. We also caution again using field visits as they took the greatest amount  
321 of time and were no more effective than the other tools for this patient population.

322  
323 Previous studies focusing on engaging hard to treat populations into HCV care have looked at  
324 various barriers and facilitators.<sup>30-34</sup> Barriers within the clinical realm have undergone re-  
325 evaluation. For example, extensive pre-treatment evaluation and treatment monitoring have been  
326 addressed with simplified treatment approaches.<sup>14-16, 18, 20</sup> Telehealth interventions may be ideal  
327 for addressing some of these issues.<sup>35</sup> These approaches, while important, may not be adequate  
328 for difficult to reach populations which constitute the HCV cure gap, highlighting personal,  
329 interpersonal, institutional, and social barriers.<sup>31</sup> Because our numbers are low, we were unable  
330 to identify clear demographic predictors for persons who can be successfully re-engaged; PWID,  
331 Black, female, born after 1965 were among this small group. Interestingly, while the majority of  
332 persons successfully re-engaged had undetectable HIV VLs at last measure, it is unknown  
333 whether they remain virally suppressed as this group has been OOC for 12 months. Our previous  
334 studies looking at the HCV viral clearance cascade on the statewide level and within HIV clinics  
335 suggest that a lack of recent HIV viral suppression is a marker for lack of engagement,  
336 correlating with lack of HCV care engagement.<sup>19, 36, 37</sup> Other factors such as treatment literacy,  
337 media representations, trusted and steady provider relationships, perceived lack of adherence  
338 support, concerns for treatment cost, were potential self-identified barriers to engagement in  
339 another study.<sup>38</sup> Often, patients do not enter HCV treatment due to multiple concurrent barriers,<sup>39</sup>  
340 suggesting that the D2C approach using DIS workers which is inherently short-lived and focused  
341 on brief educational efforts and motivational interviewing, may not be sufficient to overcome  
342 such longstanding and complex issues.<sup>31</sup> Additionally, active substance use issues may need to  
343 be addressed, which is beyond the scope of DIS.

344  
345 Finally, this study presents an interesting perspective on how the traditional HCV treatment  
346 models may not best serve all patients, especially those at greater risk of becoming OOC.  
347 Decentralized and simplified HCV treatment approaches including low-barrier rapid start  
348 programs which capitalize on the availability of well-tolerated pan-genotypic regimens, have  
349 been successfully piloted, e.g. in young PWID.<sup>40</sup> We speculate that D2C, a public health

350 approach that is inherently constrained by its retrospective data-focus, can potentially be  
351 combined with rapid start programs to “jump start” HCV treatment in challenging populations  
352 such as those encountered in this study.<sup>40-41</sup> Finally, innovative approaches beyond telephone  
353 calls, texts and field visits which use community networks may provide alternative effective re-  
354 engagement strategies.

355

### 356 *Limitations*

357 Study numbers were low, so it was not possible to make correlations with outcomes. This study  
358 was conducted during the early stages of COVID-19 pandemic which may have limited the  
359 success rate of re-engagement efforts. We did not account for time spent in Phase 1 and Phase 2  
360 which was expended primarily by the DIS supervisor, prior to assignment to DIS for case  
361 finding; this would have given additional information on time expenditures for this intervention.

362

### 363 *Strengths*

364 This study is one of the first to examine D2C re-engagement efforts for PWH co-infected with  
365 HCV in need of HCV treatment. It leverages previous D2C DIS infrastructure designed for and  
366 funded by HIV surveillance efforts. This approach promoted HCV treatment education by DIS in  
367 the field. Surveillance-based data extraction to identify OOC cohorts allowed state-wide  
368 evaluation, proving more efficient than individual clinics creating and validating their own OOC  
369 lists. Surveillance data use allows for reproducibility by other health departments and the case  
370 conferencing methodology allowed the DPH to foster partnerships with clinics, leading to future  
371 public health improvements.<sup>30</sup>

372

## 373 **CONCLUSIONS**

374 We successfully leveraged HIV D2C processes to identify and characterize HIV/HCV co-  
375 infected persons who were long term OOC for HIV who appeared to lack HCV treatment. We  
376 used a 3 phase approach based on DPH and clinic input that enabled surveillance data clean-up  
377 and identification of persons who were eligible for case finding by DIS. The intensive workload  
378 for DPH staff including DIS resulted in a moderate degree of successful re-engagement but no  
379 additional cases of HCV cure. To compliment D2C approaches, future studies should evaluate  
380 D2C cost-effectiveness and enable incorporation of clinic- and community-based interventions

381 that address ongoing and individualized patient barriers and promote rapid, low-barrier  
382 treatment approaches.

383

384 **Acknowledgements:**

385 Special thanks to Venesha Heron, Reina Cordero, and Emily Hartwell from the CT DPH for their  
386 Disease Intervention Specialists (DIS) work and Rodolfo Lopez for his assistance. We also thank  
387 the clinic staff from participating HIV clinics for their help with case conferencing.

388

389 The Department of Public Health Human Investigations Committee approved this research  
390 project, which used data obtained from the Department of Public Health. The Department of  
391 Public Health does not endorse or assume any responsibility for any analyses, interpretations or  
392 conclusions based on the data. The author assumes full responsibility for all such analyses,  
393 interpretations, and conclusions.

394

395 *Funding*

396 This work is supported by the Health Resources and Services Administration (HRSA) of the U.S.  
397 Department of Health and Human Services (HHS) under award U90HA31462.

398 The contents are those of the authors and do not necessarily represent the official views of, nor  
399 an endorsement, by HRSA, HHS or the U.S. Government.

400

401 *Conflicts of Interest*

402 None

403

404



405 **REFERENCES:**

- 406 1. Cheemerla S, Balakrishnan M. Global Epidemiology of Chronic Liver Disease. *Clin Liver*  
407 *Dis (Hoboken)*. 2021;17(5):365-370. Published 2021 Jun 4. doi:10.1002/cld.1061
- 408 2. Cowan E, Herman H, Rahman S, Zahn J, Leider J, Calderon Y. Bundled HIV and Hepatitis C  
409 Testing in the Emergency Department: A Randomized Controlled Trial. *Western Journal of*  
410 *Emergency Medicine*. 2018;19(6):1049-1056. Doi:10.5811/westjem.2018.8.37827
- 411 3. Kronfli N, Bhatnagar SR, Hull MW, et al. Trends in cause-specific mortality in HIV–  
412 hepatitis C coinfection following hepatitis C treatment scale-up. *AIDS*. 2019;33(6):1013-  
413 1022. Doi:10.1097/qad.0000000000002156
- 414 4. Ly KN, Hughes EM, Jiles RB, Holmberg SD. Rising Mortality Associated With Hepatitis C  
415 Virus in the United States, 2003–2013. *Clinical Infectious Diseases*. 2016;62(10):1287-1288.  
416 Doi:10.1093/cid/ciw111
- 417 5. The World Health Organization (WHO). Global Health Sector Strategy on Viral Hepatitis  
418 2016–2021. 2016:1-62.
- 419 6. The Centers for Disease Control and Prevention (CDC). Estimated HIV incidence and  
420 prevalence in the United States, 2015–2019. HIV Surveillance Supplemental Report, 2021.  
421 2021;26(1)
- 422 7. Hofmeister MG, Rosenthal EM, Barker LK, Rosenberg ES, Barranco MA, Hall EW, Edlin  
423 BR, et al. Estimating Prevalence of Hepatitis C Virus Infection in the United States, 2013-  
424 2016. *Hepatology*. 2019;69(3):1020-1031. Doi:10.1002/hep.30297
- 425 8. The Centers for Disease Control and Prevention (CDC). Viral Hepatitis Surveillance, US,  
426 2016. Division of Viral Hepatitis C. 2016; 1-65.
- 427 9. Bosh KA, Coyle JR, Hansen V, et al. HIV and viral hepatitis coinfection analysis using  
428 surveillance data from 15 US states and two cities. *Epidemiology and Infection*.  
429 2018;146(7):920-930. Doi:10.1017/s0950268818000766
- 430 10. The Centers for Disease Control and Prevention (CDC). People Coinfected with HIV and  
431 Viral Hepatitis. 2020.
- 432 11. Falade-Nwulia O, Suarez-Cuervo C, Nelson DR, Fried MW, Segal JB, Sulkowski MS. Oral  
433 Direct-Acting Agent Therapy for Hepatitis C Virus Infection. *Annals of Internal Medicine*.  
434 2017;166(9):637. Doi:10.7326/m16-2575
- 435 12. Pawlotsky JM. Hepatitis C Drugs: Is Next Generation the Last Generation?  
436 *Gastroenterology*. 2016;151(4):587-590. Doi:10.1053/j.gastro.2016.08.043
- 437 13. The Centers for Disease Control and Prevention (CDC). Division of Viral Hepatitis – 2025  
438 Strategic Plan. 2020.
- 439 14. American Association for the Study of Liver Diseases (AASLD) and the Infectious Disease  
440 Society of America (IDSA). Simplified HCV Treatment for Treatment-naïve Adults With  
441 Cirrhosis. 2021. HCV Guidance: Recommendations for Testing, Managing, and Treating  
442 Hepatitis C. 9/29/2021.
- 443 15. American Association for the Study of Liver Diseases (AASLD) and the Infectious Disease  
444 Society of America (IDSA). Simplified HCV Treatment for Treatment-naïve Adults Without  
445 Cirrhosis. 2021. HCV Guidance: Recommendations for Testing, Managing, and Treating  
446 Hepatitis C. 9/29/2021.

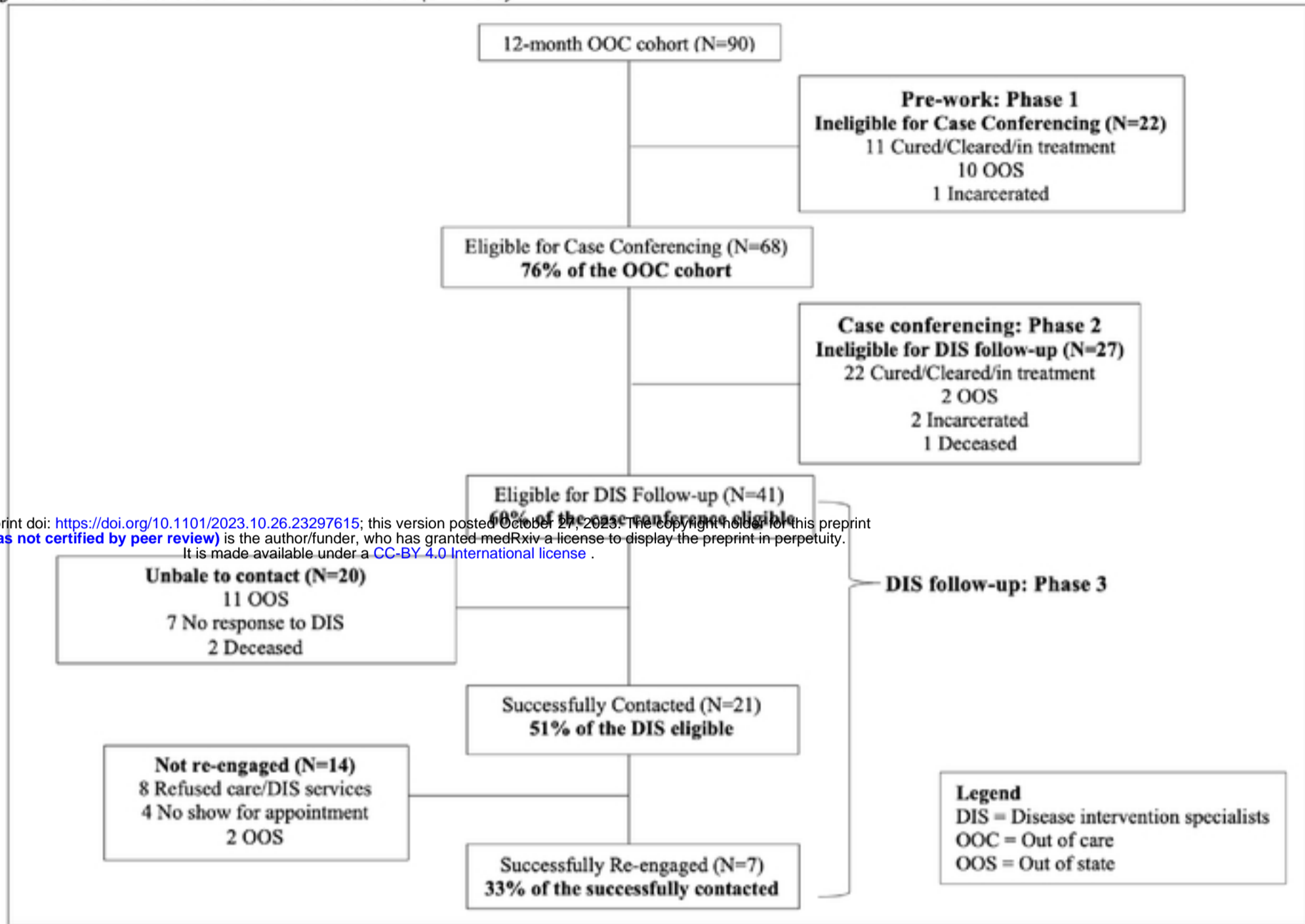


- 447 16. Doyle JS, Van Santen DK, Iser D, Sasa'eusz J, O'Reilly M, Harney B, et al.  
448 Microelimination of Hepatitis C Among People with Human Immunodeficiency Virus  
449 Coinfection: Declining Incidence and Prevalence Accompanying a Multicenter Treatment  
450 Scale-up Trial. *Clinical Infectious Diseases*. 2021;73(7):e2164-e2172.  
451 doi:10.1093/cid/ciaa1500
- 452 17. Smit C, Boyd A, Rijnders BJA, Van De Laar TJW, Leyten EM, Bierman WF, et al. HCV  
453 micro-elimination in individuals with HIV in the Netherlands 4 years after universal access  
454 to direct-acting antivirals: a retrospective cohort study. *The Lancet HIV*. 2021;8(2):E96-e105.  
455 doi:10.1016/s2352-3018(20)30301-5
- 456 18. Solomon SS, Wagner-Cardoso S, Smeaton L, Sowah LA, Wimbish C, Robbins G, et al. A  
457 minimal monitoring approach for the treatment of hepatitis C virus infection (ACTG A5360  
458 [MINMON]): a phase 4, open-label, single-arm trial. *Lancet Gastroenterol Hepatol*.  
459 2022;7(4):307-317. doi:10.1016/S2468-1253(21)00397-6
- 460 19. Rizk C, Miceli J, Shiferaw B, Malinis M, Barakat L, Ogbuagu O, et al. Implementing a  
461 Comprehensive Hepatitis C Virus (HCV) Clinic Within a Human Immunodeficiency Virus  
462 Clinic: A Model of Care for HCV Microelimination. *Open Forum Infectious Diseases*.  
463 2019;6(10)doi:10.1093/ofid/ofz361
- 464 20. Zuckerman A, Douglas A, Nwosu S, Choi L, Chastain C. Increasing success and evolving  
465 barriers in the hepatitis C cascade of care during the direct acting antiviral era. *PLOS ONE*.  
466 2018;13(6):E0199174. doi:10.1371/journal.pone.0199174
- 467 21. Fanfair RN, Khalil G, Williams T, Brady K, DeMaria A, Villanueva M. The Cooperative Re-  
468 Engagement Controlled Trial (CoRECT): A randomized trial to assess a collaborative data to  
469 care model to improve HIV care continuum outcomes. *The Lancet Regional Health -*  
470 *Americas*. 2021;3:100057. doi:10.1016/j.lana.2021.100057
- 471 22. Beltrami J, Dubose O, Carson R, Cleveland JC. Using HIV Surveillance Data to Link People  
472 to HIV Medical Care, 5 US States, 2012-2015. *Public Health Rep*. 2018;133(4):385-391.  
473 doi:10.1177/0033354918772057
- 474 23. Sweeney P, Hoyte T, Mulatu MS, Bickham J, Brantley AD, Hicks C, et al. Implementing a  
475 Data to Care Strategy to Improve Health Outcomes for People With HIV: A Report From the  
476 Care and Prevention in the United States Demonstration Project. *Public Health Reports*.  
477 2018;133(2\_suppl):60S-74S. doi:10.1177/0033354918805987
- 478 24. The Centers for Disease Control and Prevention (CDC). HIV: Surveillance Overview. HIV:  
479 Statistics Center. 2020.
- 480 25. Bosh KA, Coyle JR, Muriithi NW, Ramaswamy C, Zhou W, Brantley AD, et al. Linking  
481 HIV and Viral Hepatitis Surveillance Data: Evaluating a Standard, Deterministic Matching  
482 Algorithm Using Data From 6 US Health Jurisdictions. *American Journal of Epidemiology*.  
483 2018;187(11):2415-2422. doi:10.1093/aje/kwy161
- 484 26. Dombrowski JC, Buskin SE, Bennett A, Thiede H, Golden MR. Use of multiple data sources  
485 and individual case investigation to refine surveillance-based estimates of the HIV care  
486 continuum. *J Acquir Immune Defic Syndr*. 2014;67(3):323-330.  
487 doi:10.1097/QAI.0000000000000302
- 488 27. Christopoulos KA, Scheer S, Steward WT, Barnes R, Hartogensis W, Charlebois ED, et al.  
489 Examining clinic-based and public health approaches to ascertainment of HIV care status. *J*

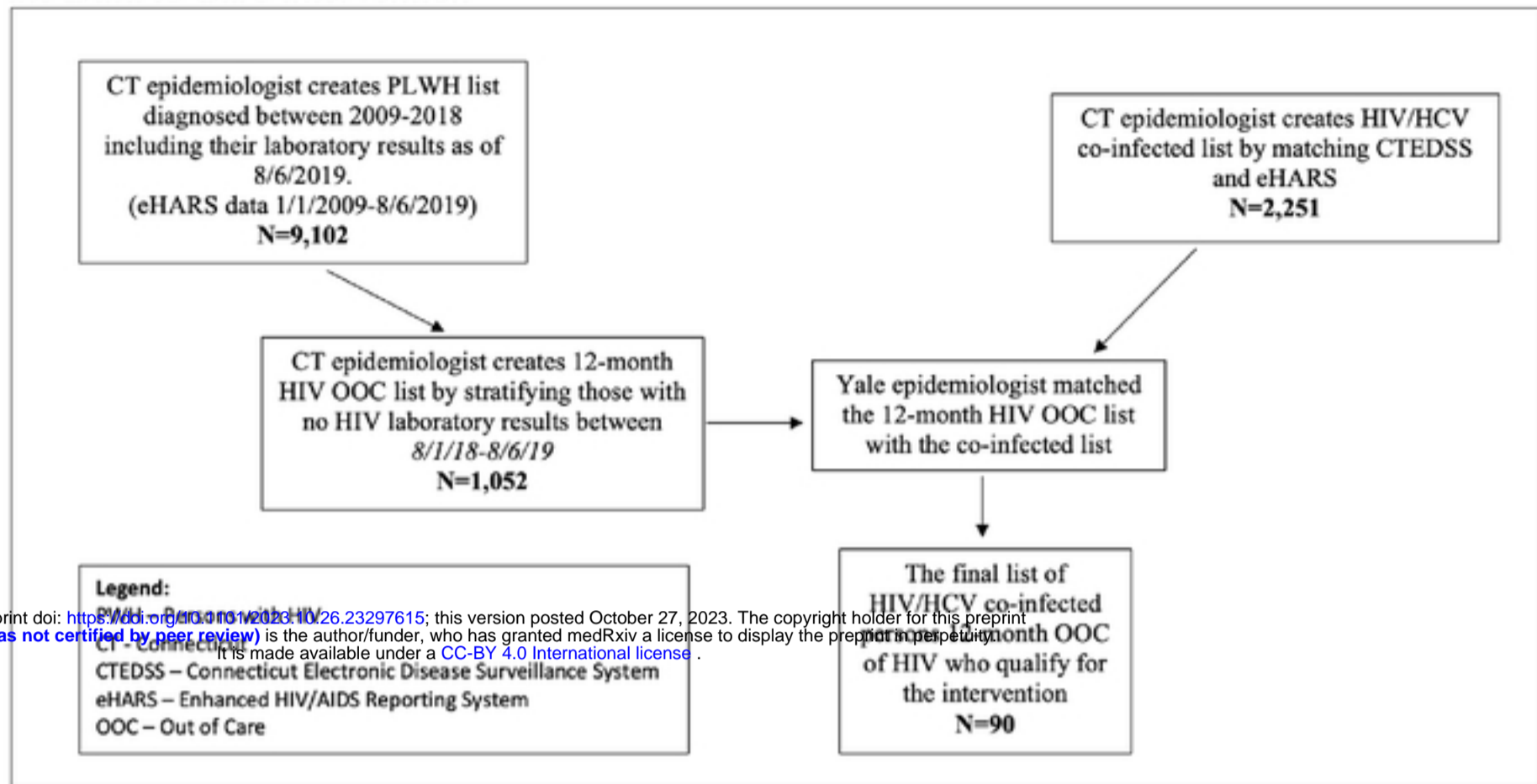
- 490 *Acquir Immune Defic Syndr.* 2015;69 Suppl 1(0 1):S56-S62.  
491 doi:10.1097/QAI.0000000000000571
- 492 28. Arey AL, Cassidy-Stewart H, Kurowski PL, Hitt JC, Flynn CP. Evaluating HIV Surveillance  
493 Completeness Along the Continuum of Care: Supplementing Surveillance With Health  
494 Center Data to Increase HIV Data to Care Efficiency. *J Acquir Immune Defic Syndr.* 2019;82  
495 Suppl 1:S26-S32.
- 496 29. Kunzweiler C, Kishore N, John B, Roosevelt K, Lewis S, Klevens RM, et al. Using HIV  
497 Surveillance and Clinic Data to Optimize Data to Care Efforts in Community Health Centers  
498 in Massachusetts: The Massachusetts Partnerships for Care Project. *J Acquir Immune Defic*  
499 *Syndr.* 2019;82 Suppl 1:S33-S41. doi:10.1097/QAI.0000000000002019
- 500 30. Villanueva M, Miceli J, Speers S, Nichols L, Constance C, Jenkins H, et al. Advancing data  
501 to care strategies for persons with HIV using an innovative reconciliation process. *PLoS One.*  
502 2022;17(5):e0267903. Published 2022 May 5. doi:10.1371/journal.pone.0267903
- 503 31. Brothers S, DiDomizio E, Nichols L, Brooks R, Villanueva M. Perceptions Towards HCV  
504 Treatment with Direct Acting Antivirals (DAAs): A Qualitative Analysis with Persons with  
505 HIV/HCV Co-infection Who Delay or Refuse Treatment [published online ahead of print,  
506 2022 Jul 1]. *AIDS Behav.*
- 507 32. Falade-Nwulia O, Sutcliffe CG, Mehta SH, Moon J, Chander G, Keruly J, et al. Hepatitis C  
508 Elimination in People With HIV Is Contingent on Closing Gaps in the HIV Continuum.  
509 *Open Forum Infectious Diseases.* 2019;6(10)doi:10.1093/ofid/ofz426
- 510 33. Collins LF, Chan A, Zheng J, Zheng J, Chow SC, Wilder JM, et al. Direct-Acting Antivirals  
511 Improve Access to Care and Cure for Patients With HIV and Chronic HCV Infection. *Open*  
512 *Forum Infect Dis.* 2017;5(1):ofx264. Published 2017 Dec 9. doi:10.1093/ofid/ofx264
- 513 34. Gunn J, McNally S, Ryan J, Layton C, Bryant M, Walker S, et al. Barriers to hepatitis C  
514 treatment among secondary needle and syringe program clients and opportunities to  
515 intervene. *Int J Drug Policy.* 2021;96:103387. doi:10.1016/j.drugpo.2021.103387
- 516 35. Sivakumar A, Madden L, DiDomizio E, Eller A, et al. Treatment of Hepatitis C virus among  
517 people who inject drugs at a syringe service program during the COVID-19 response: The  
518 potential role of telehealth, medications for opioid use disorder and minimal demands on  
519 patients. *The International Journal On Drug Policy.* 2022;101: 103570.  
520 DOI:10.1016/j.drugpo.2021.103570.
- 521 36. Wegener M, Brooks R, Speers S, Nichols L, Villanueva M. Implementing a Surveillance-  
522 Based Approach to Create a Statewide Viral Clearance Cascade for Hepatitis C Among  
523 People with HIV and HCV Coinfection in Connecticut. *Public Health Reports.* 2023;0(0).  
524 doi:10.1177/00333549231172173
- 525 37. Brooks R, Wegener M, Speers S, et al. Creating a Longitudinal HCV Care Cascade for  
526 Persons With HIV/HCV Coinfection in Selected HIV Clinics Using Data to Care Methods.  
527 *Health Promotion Practice.* 2023;0(0). doi:10.1177/15248399231169792
- 528 38. Brothers S, DiDomizio E, Nichols L, Brooks R, Villanueva M. Perceptions Towards HCV  
529 Treatment with Direct Acting Antivirals (DAAs): A Qualitative Analysis with Persons with  
530 HIV/HCV Co-infection Who Delay or Refuse Treatment. *AIDS Behav.* 2023;27(1):119-133.  
531 doi:10.1007/s10461-022-03749-8

- 532 39. Zhao A, Wegener M, Brooks R, et al. Characterizing Persons With HIV/HCV Coinfection  
533 Who Remain Untreated for Hepatitis C at Four HIV Clinics in Connecticut (CT): Role of  
534 Multiple Overlapping Barriers at the Individual and Clinic System Levels. *Health Promot*  
535 *Pract.* 2023;24(5):1029-1038. doi:10.1177/15248399231169793
- 536 40. Eckhardt B, Kapadia SN, Mateu-Gelabert P, Pai, M, Fong C, Aponte-Melendez, Y, et al.  
537 Rapid Treatment Initiation for Hepatitis C in Young People Who Inject Drugs: The Seek,  
538 Test, and Rapid Treatment Randomized Trial. *Open Forum Infect Dis.* 2022;9(7):ofac225.  
539 doi:10.1093/ofid/ofac225
- 540 41. Finbraten, Ak, Eckhardt, BJ, Kapadia SN, Marks KM. Rapid Treatment Initiation for  
541 Hepatitis C Virus Infection: Potential Benefits, Current Limitations, and Real-World  
542 Examples. *Gastroenterology & Hepatology.* 2022;18(11).

**Figure 2: Consort diagram showing eligibility for the phases of the Data to Care intervention for the 12-month OOC Cohort (N=90)**



**Figure 1: Surveillance data flow for identification of Persons with HIV (PWH) who qualify for the Data to Care intervention**



medRxiv preprint doi: <https://doi.org/10.1101/2023.10.26.23297615>; this version posted October 27, 2023. The copyright holder for this preprint (which was not certified by peer review) is the author/funder, who has granted medRxiv a license to display the preprint in perpetuity. It is made available under a [CC-BY 4.0 International license](https://creativecommons.org/licenses/by/4.0/).