

26 **Abstract**

27

28 **Background:** High cholesterol level is an important risk factor for cardiovascular
29 disease. We believe that it is important to improve sleep disorders in patients with
30 hyperlipidemia by exploring the effects of different intensities of physical activity on
31 patients with hyperlipidemia.

32

33 **Objective:** The purpose of this study is to explore the relationship between sleep
34 disorder and different intensity of work physical activity in patients with high
35 cholesterol.

36

37 **Method and Materials:** This study used a randomly selected American population
38 from the National Health and Nutrition Survey (NHANES) from 2017 to 2018 as the
39 survey sample, consisting of 1515 individuals (770 males and 745 females, with an
40 average age of 60.53 ± 14.232 years). The Categorical variable uses the Chi-squared
41 test, and the measurement variable uses the rank sum test to calculate the test
42 statistics, which is considered statistically significant (two-sided test) with $P < 0.05$.
43 After single factor analysis, we take physical activity at work as independent variable,
44 take statistically significant variables in Demography (gender, race, marital status,
45 income poverty ratio, physical activity, current health status) as covariates, and take
46 sleep disorder as dependent variable to conduct binary logistic regression analysis.

47

48 **Results:** After excluding all the confounding factors, there was a significant
49 correlation between work physical activity and sleep disorder ($P < 0.001$), and the OR
50 was 1.251 (95% CI: 1.096-1.429).

51

52 **Conclusion:** Physical activity at work is a risk factor for sleep disorder in patients
53 with high cholesterol, and the increased risk of sleep disorder caused by intense
54 physical activity at work is particularly obvious.

55

56 **Keywords:** Work physical activity; Sleep disorder; High cholesterol

57

58

59

60

61

62

63

64

65

66 **1 Research background**

67 **1.1 The risk of high cholesterol levels**

68 According to the global high cholesterol population change and driving force report
69 published by the British journal 《Nature》, about 1000 researchers around the world
70 analyzed 1127 research data and concluded that the population of
71 Hypercholesterolemia in low - and middle-income countries continued to increase
72 from 1980 to 2018. At the same time, changes in diet, physical activity and treatment
73 methods are important causes of Hypercholesterolemia. High cholesterol level is an
74 important risk factor for cardiovascular disease, especially low-density lipoprotein
75 cholesterol will increase the damage to arteries. Therefore, in 2017, low-density
76 lipoprotein cholesterol was considered to be one of the factors affecting 3.9 million
77 deaths worldwide. (1) Due to pathological and physiological changes, patients with
78 high cholesterol will suffer from malignant development of cholesterol levels, cardio
79 cerebral Vascular disease, joint inflammation, and eye diseases. These diseases and
80 symptoms will increase patients' suffering from sleep disorder.

81 **1.2 The relationship between high cholesterol level and sleep disorder**

82 In 2008, Miedema HM et al. conducted a study on serum cholesterol and sleep
83 duration in elderly people and found that longer sleep duration was associated with
84 higher total cholesterol levels. (2) In 2017, Michael K Lemke et al. conducted a
85 study on "the cholesterol level and sleep of long-distance truck drivers in the United
86 States", which showed that long-distance truck drivers have a high cholesterol risk,
87 and sleep quality is one of the factors inducing cholesterol risk, that is, sleep quality is
88 closely related to High-density lipoprotein, low-density lipoprotein and total
89 cholesterol. (3) The research results of Niloufar Rasaei et al. on the
90 cholesterol/Saturated fat acid index CSI and sleep quality of overweight and obese
91 women in 2023 show that people with higher CSI units are more likely to have sleep
92 problems. (4) We can see that high cholesterol levels have a certain impact on the
93 sleep of different people, causing insomnia, sleep apnea syndrome and other diseases,
94 while sleep disorder will induce the risk of high cholesterol, causing Atherosclerosis
95 and other diseases, seriously affecting people's health. Therefore, we chose the special
96 population of high cholesterol patients as the research object.

97 **1.3 The relationship between physical activity and high cholesterol**

98 Hypercholesterolemia is an important health problem worldwide. Many studies have
99 confirmed that active physical activity can improve the level of HDL-C, which is
100 conducive to the reverse operation of cholesterol and regulates the level of human
101 cholesterol and blood lipids. Finally, change the problem of increased incidence rate
102 and mortality caused by high cholesterol levels. (5) However, due to the unique
103 physiological and pathological characteristics of high cholesterol patients, not all
104 types of physical activities are suitable for high cholesterol patients, and their physical
105 activities should be distinguished from those of the general population. (6) It is

106 necessary to conduct targeted research on the exercise patterns, intensity, and
107 frequency of high cholesterol individuals related to physical activity arrangements.
108 Therefore, the pathological and physiological effects on patients with high cholesterol
109 still deserve further attention and research. This study aims to explore whether non
110 Exercise prescription intervention can bring positive effects to high cholesterol
111 patients by studying the intensity of patients' physical activities at work.

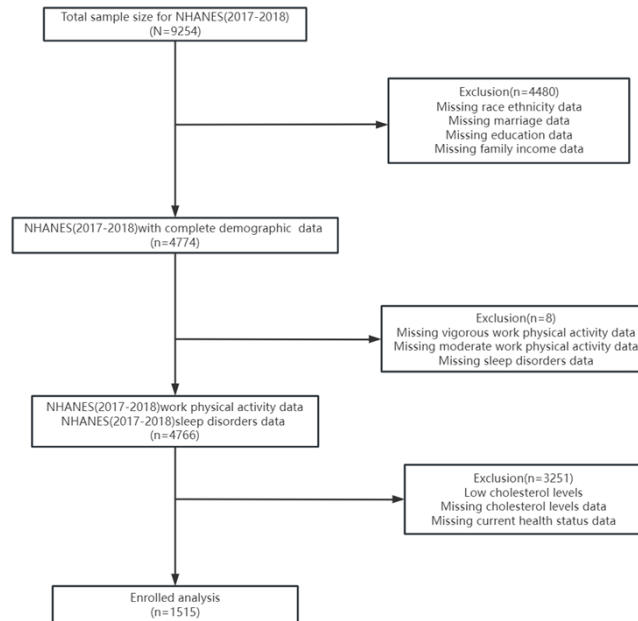
112 **1.4 The relationship between physical activity and sleep disorder**

113 Sleep is a cyclical activity in human life. With the impact of life pressure and
114 excessive use of electronic devices, people of all ages are troubled by sleep disorder
115 and insomnia. Severe sleep disorder is a risk factor leading to mental illness,
116 cardiovascular disease and other diseases. Numerous studies have shown that physical
117 activity has a significant impact on sleep quality. The research results encourage
118 people to increase their physical activity appropriately. (7) At the same time,
119 according to the "Physical Activity Guidelines for the Chinese Population (2021)",
120 people with chronic diseases and the elderly should engage in regular physical
121 activities based on their own physical conditions, reduce sedentary time, improve bad
122 living habits, and improve sleep quality. (8) Therefore, in order to improve sleep
123 disorder of patients with high cholesterol by improving physical activity, the first task
124 is to study whether physical activity is a protective factor for their sleep disorder. In
125 this way, we can avoid the secondary damage to the body of patients with high
126 cholesterol caused by excessive fatigue after physical activity, and formulate Exercise
127 prescription suitable for patients with high cholesterol, so as to reduce patients'
128 troubles.

129 **2 Objects and Methods**

130 **2.1 Research subjects**

131 This study focuses on a random sampling survey of 9254 people conducted by the
132 National Health and Nutrition Survey (NHANES) in the United States from 2017 to
133 2018 to understand the health and nutritional status of the entire population. (9)
134 According to the research direction of "physical activity and sleep disorder of patients
135 with high cholesterol", a total of 1515 patients with high cholesterol were selected as
136 research objects based on the data of Demographics, physical activity, cholesterol
137 level and sleep disorder. The survey plan and secondary analysis of the data were
138 approved by the Ethics Review Committee of the National Center for Health Statistics
139 in the United States, providing written consent notices for all adult participants. (10)
140 Inclusion criteria: ① Adult residents aged 20 and above in the United States; ②
141 Able to independently fill out questionnaires and consciously answer interviewees'
142 questions; ③ Agree to cooperate in completing the entire investigation process.
143 Exclusion criteria: ① Age does not meet the criteria; ② Individuals with unclear
144 awareness or inability to engage in normal conversations with interviewees; ③
145 Refusing to cooperate in completing the entire investigation process. (See Figure 1)



146

147

Figure 1 | Data Screening Flowchart

148 **2.2 Evaluation of Demography Variables**

149 This study belongs to a cross-sectional survey, and 9254 people were randomly
150 sampled across the United States to participate in the survey. We selected gender, age,
151 race, education level, marital status, income poverty ratio, and current health status as
152 demographic variables. Among these variables, age is divided into 20-39 years old,
153 40-59 years old, and over 60 years old. Race is divided into Mexican Americans,
154 other Hispanic, non Hispanic white, non Hispanic black, non Hispanic Asian, and
155 other races. Education level is divided into high school education below, high school
156 graduation, and high school education above. Marital status is divided into
157 cohabitation, married living alone, and never married. The income poverty ratio is the
158 ratio of household income to the poverty criteria of the survey year. In this study, the
159 poverty ratio is divided into two types: poverty (<1.3) and middle-income (≥ 1.3).
160 (11, 12)

161 **2.3 Assessment of physical activity, high cholesterol and sleep disorder**

162 The NHANES physical activity questionnaire for 2017-2018 was designed based on
163 the Global Physical Activity Questionnaire (GPAQ). In the questionnaire, we selected
164 two items: intense work activity (PAQ605) and moderate work activity (PAQ620) as
165 the basis for evaluating the intensity of work physical activity among respondents.
166 The respondents will provide corresponding answers based on whether their paid or
167 unpaid work (work, household chores, or other) within a week has caused a
168 significant or slight increase in breathing or heart rate, and the interviewee will record
169 and evaluate the intensity of physical activity. According to the survey results, in paid
170 or unpaid work, we classify physical activity at work into three categories: 1=intense
171 physical activity; 2=moderate intensity of physical activity, but not intense physical

172 activity; 3=No physical activity.

173

174 The blood pressure and cholesterol dataset of the 2017-2018 NHANES questionnaire
175 includes ten questions about blood pressure and cholesterol, among which there are
176 five questions about cholesterol levels. We chose "diagnosed with high cholesterol by
177 medical institutions" (BPQ080) in the questionnaire as the criterion for determining
178 whether cholesterol levels are high or low.

179

180 The 2017-2018 NHANES questionnaire sleep disorder data set includes ten questions
181 about sleep habits and disorders on weekdays and weekends. We chose "whether to
182 tell doctors about sleep disorder" (SLQ050) in the questionnaire as the basis for this
183 study to judge whether there is sleep disorder.

184 **2.4 Quality Control**

185 To ensure the quality of data collection, all interviewers need to strictly follow the
186 Interviewer Procedure Manual when collecting data. The interviewer uses a
187 computer-assisted personal interview (CAPI) system to ask questions, and the CAPI
188 system is programmed with built-in consistency checks to reduce data input errors;
189 CAPI uses the 'online help screen' to help interviewers define key terms used in
190 survey questionnaires. In addition, to ensure the accuracy and completeness of data,
191 NHANES field office staff will conduct rigorous reviews.

192 **2.5 Statistical Analysis**

193 This study used Microsoft Excel 2010 to sort out and summarize the data of
194 Demography, cholesterol level, physical activity and sleep disorder collected by
195 NHANES from 2017 to 2018, including eliminating invalid data and missing data
196 (rejection and unknown) items, and classifying and assigning values to the data.
197 According to the purpose of the study, statistical testing was conducted on the data
198 using the Statistical Package for Social Sciences (SPSS) version 26.0 analysis
199 software.

200

201 We conducted a significant test on the difference of covariates of "sleep disorder",
202 used Chi-squared test for Categorical variable, and used rank sum test for continuous
203 variables to select statistically significant factors. In the univariate analysis, the
204 variables with statistical significance were included in the stepwise binary logistic
205 regression analysis. The binary logistic regression model was used to analyze the
206 relationship between "work physical activity and sleep disorder in patients with high
207 cholesterol". The P value less than 0.05 was considered statistically significant
208 (bilateral test). Select and exclude confounding variables using A-entry=0.05 and
209 a-exit=0.10.

210

211 Taking physical activity at work as independent variable and sleep disorder as
212 dependent variable, in single factor analysis, gender, race, marital status, income

213 poverty ratio and current health status were statistically significant ($P < 0.05$); Age
214 ($P = 0.527$) and education level ($P = 0.512$) were not statistically significant. When
215 analyzing the relationship between work physical activity and sleep disorder, in order
216 to exclude the influence of mixed factors, we established the following models for
217 single factor and multi factor binary logistic regression analysis. Model I: only
218 adjusted for the independent variable of physical activity; Model II: adjusted by
219 adding Demography variables according to the independent variables in model I.

220 **3 Data analysis**

221 **3.1 Demographics characteristics**

222 According to the research purpose and data validity, this study screened and sorted
223 out the data collected by the National Health and Nutrition Survey Center (NHANES)
224 in 2017-2018, and finally obtained the Demography and work physical activity related
225 data of 1515 patients with high cholesterol. The participants in the survey included
226 770 males and 745 females, with an average age of 60.53 ± 14.232 years. There were
227 572 participants with sleep disorder and 943 participants without sleep disorder.
228 Between the sleep disorder group and the sleep disorder free group, in the univariate
229 analysis, we found that the patients with high cholesterol had statistical significance in
230 gender ($P = 0.003$), race ($P = 0.000$), marital status ($P = 0.008$), income poverty ratio
231 ($P = 0.009$), current health status ($P = 0.000$) and physical activity at work ($P = 0.011$).
232 Age ($P = 0.206$) and education level ($P = 0.512$) were not statistically significant. (See
233 Table 1)

| Characteristics | Sample Capacity | | sleep disorder | | Non-sleep disorder | | Test statistics | P |
|------------------------------|-----------------|---------|----------------|--------|--------------------|--------|---------------------|-----------------------|
| | N=1515 | | n=572 | | n=943 | | | |
| Gender | | | | | | | 8.635 ^a | <0.01 ^{***} |
| Male | 770 | (100.0) | 263 | (34.2) | 507 | (65.8) | | |
| Female | 745 | (100.0) | 309 | (41.5) | 436 | (58.5) | | |
| Age Group | | | | | | | 3.155 ^a | 0.206 |
| | | | | | | | -0.633 ^b | 0.527 |
| 20-39 | 144 | (100.0) | 48 | (33.3) | 96 | (66.7) | | |
| 40-59 | 467 | (100.0) | 190 | (40.7) | 277 | (59.3) | | |
| ≥60 | 904 | (100.0) | 334 | (36.9) | 570 | (63.1) | | |
| Race | | | | | | | 25.018 ^b | <0.001 ^{***} |
| Mexican American | 173 | (100.0) | 52 | (30.1) | 121 | (69.9) | | |
| Other Hispanic | 157 | (100.0) | 54 | (34.4) | 103 | (65.6) | | |
| Non-Hispanic white | 625 | (100.0) | 269 | (43.0) | 356 | (57.0) | | |
| Non-Hispanic Black | 314 | (100.0) | 121 | (38.5) | 193 | (61.5) | | |
| Non-Hispanic Asian | 176 | (100.0) | 45 | (25.6) | 131 | (74.4) | | |
| Other | 70 | (100.0) | 31 | (44.3) | 39 | (55.7) | | |
| Education | | | | | | | 1.338 ^a | 0.512 |
| Below high school | 282 | (100.0) | 100 | (35.5) | 182 | (64.5) | | |
| High school | 361 | (100.0) | 144 | (39.9) | 217 | (60.1) | | |
| Post high school | 872 | (100.0) | 328 | (37.6) | 544 | (62.4) | | |
| Marital Statuses | | | | | | | 9.639 ^a | <0.01 ^{***} |
| Cohabitation | 913 | (100.0) | 317 | (34.7) | 596 | (65.3) | | |
| Married living alone | 465 | (100.0) | 193 | (41.5) | 272 | (58.5) | | |
| Never married | 137 | (100.0) | 62 | (45.3) | 75 | (54.7) | | |
| Income to Poverty | | | | | | | 6.756 ^a | <0.01 ^{***} |
| Impoverished | 358 | (100.0) | 156 | (43.6) | 202 | (56.4) | | |
| Moderate income | 1,157 | (100.0) | 416 | (36.0) | 741 | (64.0) | | |
| Current health status | | | | | | | 52.268 ^a | <0.001 ^{***} |
| Excellent | 1065 | (100.0) | 341 | (32.0) | 724 | (68.0) | | |
| Good | 386 | (100.0) | 193 | (50.0) | 193 | (50.0) | | |
| Bad | 64 | (100.0) | 38 | (59.4) | 26 | (40.6) | | |
| Physical Activity | | | | | | | 9.068 ^a | <0.05 [*] |
| Intense | 327 | (100.0) | 137 | (41.9) | 190 | (58.1) | | |
| Only moderate | 353 | (100.0) | 148 | (41.9) | 205 | (58.1) | | |
| No | 835 | (100.0) | 287 | (34.4) | 548 | (65.6) | | |

235 **TABLE 1** | Demographic characteristics of patients over age with high cholesterol

236 ^a chi-square test, ^b Kruskal-Wallis-test, *P<0.05, **P<0.01, ***P<0.001, same as below

237

238 **3.2 Logistic regression analysis of different intensity work physical activity and**
 239 **sleep disorder in patients with high cholesterol**

240 In Logistic regression analysis, model I (without excluding any confounding
 241 variables) showed that the odds ratio (OR) associated with physical activity and sleep
 242 disorder at work was 1.195 (95% CI: 1.052-1.357); Model II (excluding Demography
 243 variables) shows that the OR value is 1.251 (95% CI: 1.096-1.429). The research
 244 results show that after adjusting all the confounding factors, the Logistic regression is
 245 a Nonlinear regression, and the role of the independent variable "physical activity"
 246 should be determined by the OR value. In this study, the regression coefficient of
 247 "physical activity" is a positive value (b=0.224), which can be understood as the
 248 increase of physical activity intensity during work, and the risk of sleep disorder will
 249 increase. Physical activity at work is a risk factor for sleep disorder in patients with

250 high cholesterol, and the correlation between physical activity at work and high risk
251 of sleep disorder increases. The risk of sleep disorder in patients with high cholesterol
252 who have physical activity at work is 1.251 times that of those who do not have
253 physical activity at work ($P < 0.01$). (Table 2)

254 **Table 2** | Correlation between physical activity at work and sleep disorder

| Mode | <i>b</i> | SE | Wald | <i>P</i> | OR(95%CI) |
|-----------------|----------|-------|--------|-----------|--------------------|
| I ^a | 0.178 | 0.065 | 7.472 | 0.006 | 1.195(1.052-1.357) |
| II ^b | 0.224 | 0.068 | 10.969 | <0.001*** | 1.251(1.096-1.429) |

255 ^a only adjusted for independent variable physical activity; ^bAdjusted according to the independent variables in
256 model I plus Demography variables.

257

258 In this study, physical activity at work is divided into three levels, so we use multiple
259 logistic regression analysis to further analyze the impact of different intensity physical
260 work activities at work on sleep disorder. The research results show that for people
261 with high cholesterol and sleep disorder, "intense physical activity" is 1.444 times of
262 "only moderate physical activity" in work ($p < 0.01$), and "only moderate physical
263 activity" is 1.375 times of "no physical activity" in work ($p < 0.05$). Therefore, with the
264 increase of physical activity intensity at work, the risk of sleep disorder in patients
265 with high cholesterol increases, and the risk of sleep disorder caused by intense
266 physical activity is the highest. (See Table 3)

267 **Table 3** | Effects of physical activity on sleep disorder in different intensity of work

| Physical activity | <i>b</i> | SE | Wald | <i>P</i> | OR(95%CI) |
|-------------------------------------------|----------------|-------|-------|----------|---------------------|
| Intense physical activity | 0.368 | 0.141 | 6.772 | 0.009 | 1.444 (1.095-1.905) |
| Only moderate intensity physical activity | 0.318 | 0.136 | 5.465 | 0.019 | 1.375 (1.053-1.796) |
| No physical activity* | 0 ^b | . | . | . | . |

268 * set as a reference.

269 **4 Discussion**

270 Through the logistic regression analysis of the data of NHANES from 2017 to 2018,
271 we found that among the patients with high cholesterol aged over 20, physical activity
272 at work was associated with sleep disorder. At the same time, by comparing intense
273 physical activity with moderate physical activity at work, we found that with the
274 increase of the intensity of physical activity at work, the risk of sleep disorder in
275 patients with high cholesterol will increase accordingly, that is, high intensity physical
276 activity at work is a risk factor for sleep disorder in patients with high cholesterol.

277 **4.1 Work physical activity is a risk factor for sleep disorder in patients with high** 278 **cholesterol**

279 Sleep is an important process of body repair and energy recovery in the human body.
280 In many studies on the relationship between physical activity and sleep, it has been
281 concluded that physical activity is beneficial for improving sleep quality. And people
282 with various clinical diseases have always been the focus of sleep disorder research.
283 For example, whether daily physical activities of people with coronary heart disease,

284 hypertension, high cholesterol, etc. will affect the sleep quality of clinical patients.
285 Recent studies have shown that for patients with high cholesterol, a good sleep state
286 has a positive effect on controlling the deterioration and development of their
287 condition. As Aho V et al. confirmed in their study, sleep deprivation reduces the
288 expression of genes encoding cholesterol transporters and can increase the expression
289 of inflammatory response pathways. At the same time, the research report also
290 pointed out that the High-density lipoprotein of sleep deprived subjects was low,
291 while in the experimental sleep restriction study, the circulating low-density
292 lipoprotein was reduced, and prolonged sleep disorder would change inflammation
293 and cholesterol levels in terms of gene expression and serum lipoprotein levels. (13)
294 The research of Sol Moch ó n-Benguigui et al. shows that shortening sedentary time
295 and increasing physical activity and fitness time is an important way for middle-aged
296 people to prevent or treat potential diseases, which is conducive to promoting the
297 development of physical and mental health of patients and reducing sleep disorder.
298 (14) Among many forms of lifestyle change, increasing physical activity is widely
299 considered as an important way to reduce blood pressure and blood cholesterol, which
300 can reduce the risk of physical diseases caused by elevated blood pressure and blood
301 cholesterol, including the risk of "sleep disorder". (15) Therefore, changes in
302 sleep and physical activity are closely related to the health status of adults, and
303 previous studies have suggested a bidirectional correlation. (16)

304
305 Although physical activity has been proved to have a positive impact on the physical
306 quality of patients with Dyslipidemia, and can effectively reduce cholesterol levels
307 (17) , perhaps due to the impact of gender, age, race, sleep habits and other
308 differences, there is less research on the correlation between physical activity at work
309 and sleep disorder in patients with high cholesterol. And there is a certain degree of
310 difference between the existing research conclusions and our research. Our research
311 data shows that the increase of physical activity at work in patients with high
312 cholesterol is positively related to the increase of the risk of sleep disorder, which
313 means that the risk of sleep disorder will also increase if they participate in more
314 vigorous physical activities at work.

315
316 For the results of data analysis of this study, "physical activity at work is a risk factor
317 for sleep disorder in patients with high cholesterol, and the greater the intensity of
318 physical activity, the greater the risk of sleep disorder". We may explain it in three
319 aspects: ① The physical activity patterns in work are not suitable for high cholesterol
320 patients. For example, high-intensity continuous handling of heavy objects at work
321 leads to a significant increase in heart rate or respiratory rate, resulting in an increase
322 in oxygen consumption. Patients with high cholesterol may have plaques in their
323 blood vessels due to pathological reasons, which can block blood flow and lead to
324 insufficient blood oxygen supply; In patients with more serious symptoms,
325 Atherosclerosis is triggered, leading to blood flow blockage. Excessive physical
326 activity not only has no effect on the improvement of sleep disorder, but also directly
327 endangers life due to cerebral ischemia in serious cases. ② The best exercise way to

328 improve sleep disorder of patients with high cholesterol is high-intensity aerobic
329 exercise and medium intensity resistance training. (18, 19) The increase in calorie
330 expenditure related to aerobic exercise has a positive impact on lowering cholesterol
331 levels. It is recommended to start with moderate intensity aerobic exercise and target
332 high intensity aerobic exercise to improve high cholesterol levels while also
333 improving sleep quality. (20) At the same time, balancing resistance training can
334 demonstrate more benefits for patients' physiological and psychological systems.
335 (21) ③ The sleep quality of patients with high cholesterol is not only affected by
336 physical activity, but also related to factors such as sleeping habits, eating habits and
337 living environment. The research on the correlation between the above factors and
338 sleep disorder of patients with high cholesterol is also worth further confirmation.

339
340 Related studies have shown that a combination of moderate intensity resistance
341 training and aerobic training has significant effects on improving body composition,
342 lipid metabolism, blood sugar control, blood pressure, cardiovascular health, and
343 muscle strength in high cholesterol individuals. (22) Therefore, if patients with high
344 cholesterol want to improve their sleep disorder through physical activity, they need
345 to comprehensively evaluate their physiological and biochemical indicators and
346 formulate corresponding Exercise prescription. How to balance physical activities at
347 work and daily fitness time for patients with high cholesterol, and how to formulate
348 effective Exercise prescription for patients with high cholesterol to help them improve
349 sleep disorder, are also another important direction proposed through this study.
350 Based on this study, we suggest that patients with high cholesterol maintain a low
351 intensity of physical activity during work and activities as much as possible to avoid
352 causing harm to the body due to factors such as insufficient blood supply to the body;
353 When engaging in non work physical activities, in order to avoid excessive exercise,
354 physical function exercises should be carried out according to the actual physical
355 condition, thereby promoting the improvement of sleep quality. If there is no
356 condition to get professional guidance from doctors or coaches, patients with high
357 cholesterol still need to maintain a low intensity in work physical activities. When
358 doing non work physical activities, we recommend participating in activities with low
359 intensity and sufficient oxygen supply, such as Taijiquan and yoga, within the safe
360 range of exercise to improve sleep disorder.

361 **4.2 Limitations of This Study**

362 Regarding the limitations of this study, we can summarize them as follows: Firstly,
363 the data we used were relevant survey data from US residents, and there is some
364 controversy over whether the research findings can be extended to other countries and
365 regions around the world. Secondly, regarding the strength of physical activity at
366 work, our classification is relatively single, and we only use whether there is a
367 significant increase in breathing or heart rate during work as a criterion to evaluate the
368 intensity of physical activity. Third, the factors that lead to sleep disorder are diverse.
369 This study only studied physical activity at work, and failed to exclude environmental
370 factors, genetic factors and other factors. Fourthly, this study extracted data from

371 2017 to 2018, with a small sample size and a short time period. Future research
372 designs plan to include longer period data with a larger sample size.

373 **5 Conclusions**

374 Our research results show that the increased intensity of physical activity at work is
375 related to the increased risk of high cholesterol sleep disorder, which provides a
376 scientific basis for people with Hypercholesterolemia to engage in physical activity
377 and receive active exercise intervention.

378

379 **Abbreviation**

380 NHANES:National Health and Nutritional Examination Survey

381 OR:Odds Ratio

382 P:P-Value

383 U.S:The United States of America

384 CAPI:Computer-Assisted Personal Interview

385 GPAQ:Global Physical Activity Questionnaire

386 SPSS:Statistical Package for Social Sciences

387

388 **Declarations**

389 **Ethics approval and consent to participate**

390 All procedures performed in the study were in accordance with the Declaration of
391 Helsinki. The study protocols for NHANES were approved by the National Center for
392 Health Statistics (NCHS) Research Ethics Review Board (Protocol#2017–1). All adult
393 participants provided written notification of consent before participating in the study.

394 **Consent for publication**

395 Not applicable.

396 **Availability of data and materials**

397 The datasets generated and/or analysed during the current study are available in the
398 [NHANES] repository, [[NHANES Questionnaires, Datasets, and Related
399 Documentation \(cdc.gov\)](#)]. Raw data supporting the obtained results are available at
400 the corresponding author.

401 **Author Contributions**

402 YC and RF conceived and designed the study. YC organized the database, performed
403 the statistical analysis and wrote the manuscript. Linguist RF confirmed the accuracy
404 of the written language. YC and RF revised the manuscript. All authors edited,
405 revised, and certified the final version of this manuscript.

406 **Funding**

407 This study were supported by the 2019 Sports Research Project of Henan Province
408 Sports Bureau (Grants No. 2019052) and the 2020 General Project of Henan Province
409 Education Science "13th Five-Year Plan" (Grants No. 2020YB0014).

410 **Conflict of Interest**

411 The authors declare that the research was conducted in the absence of any commercial
412 or financial relationships that could be construed as a potential conflict of interest.

413 **Acknowledgments**

414 We would like to thank all the staff and participants of the National Health and
415 Nutrition Examination Survey 201-2018 cycles for their valuable contributions. Any
416 interpretation or conclusion related to this manuscript does not represent the views of
417 the NHANES. We would also like to thank the editors and reviewers for their
418 valuable and constructive comments to help us improve the manuscript. And we
419 especially thank Dr. Feng for his constructive comments.

420

421 **References**

- 422 [1] NCD Risk Factor Collaboration (NCD-RisC). Repositioning of the global epicentre of non-optimal
423 cholesterol. *Nature* 582, 73–77 (2020).
- 424 [2] van den Berg JF, Miedema HM, Tulen JH, Neven AK, Hofman A, Witteman JC, Tiemeier H. Long
425 sleep duration is associated with serum cholesterol in the elderly: the Rotterdam Study.
426 *Psychosom Med.* 2008 Nov;70(9):1005-11.
- 427 [3] Lemke MK, Apostolopoulos Y, Hege A, Wideman L, Sönmez S. Work, sleep, and cholesterol
428 levels of U.S. long-haul truck drivers. *Ind Health.* 2017 Apr 7;55(2):149-161.
- 429 [4] Rasaei N, Samadi M, Khadem A, Badrooj N, Hassan Zadeh M, Ghaffarian-Ensaf R, Gholami F,
430 Mirzaei K. The association between cholesterol/saturated fat index (CSI) and quality of sleep,
431 and circadian rhythm among overweight and obese women: a cross-sectional study. *J Health
432 Popul Nutr.* 2023 Jul 27;42(1):75.
- 433 [5] Kristiansen, J., Sjørðarson, T., Grove, E.L. et al. Feasibility and impact of whole-body
434 high-intensity interval training in patients with stable coronary artery disease: a randomised
435 controlled trial. *Sci Rep* 12, 17295 (2022).
- 436 [6] Celik O, Yildiz BO. Obesity and physical exercise. *Minerva Endocrinol (Torino).* 2021
437 Jun;46(2):131-144.
- 438 [7] Sejbuk M, Mirończuk-Chodakowska I, Witkowska AM. sleep Quality: A Narrative Review on
439 Nutrition, Stimulants, and Physical Activity as Important Factors. *Nutrients.* 2022 May
440 2;14(9):1912.
- 441 [8] Genario, R., Gil, S., Oliveira-Júnior, G. et al. sleep quality is a predictor of muscle mass, strength,
442 quality of life, anxiety and depression in older adults with obesity. *Sci Rep* 13, 11256 (2023).

- 443 [9] Cao C, Liu Q, Yang L, Zheng X, Lan P, Koyanagi A, et al. Handgrip strength is associated with
444 suicidal thoughts in men: Cross-sectional analyses from NHANES. *Scand J Med Sci Spor.*
445 2020;30:92-9.
- 446 [10] Yang L, Cao C, Kantor ED, Nguyen LH, Zheng X, Park Y, et al. Trends in Sedentary Behavior
447 Among the US Population, 2001-2016. *JAMA.* 2019;321:1587-97.
- 448 [11] Fadeyev K, Nagao-Sato S, Reicks M. Nutrient and Food Group Intakes among U.S. Children (2-5
449 Years) Differ by Family Income to Poverty Ratio, NHANES 2011-2018. *Int J Environ Res*
450 *Public Health.* 2021;18(22):11938.
- 451 [12] Mo, H., Zhang, J., Huo, C. et al. The association of vitamin D deficiency, age and depression in
452 US adults: a cross-sectional analysis. *BMC Psychiatry* 23, 534 (2023).
- 453 [13] Aho V , Ollila H M , Kronholm E ,et al.Prolonged sleep restriction induces changes in pathways
454 involved in cholesterol metabolism and inflammatory responses[J].*Scientific Reports*, 2016,
455 6:24828.
- 456 [14] Sol Mochón-Benguigui, Carneiro-Barrera A , Castillo M J ,et al.Role of physical activity and
457 fitness on sleep in sedentary middle-aged adults: the FIT-AGEING study[J].*Scientific*
458 *Reports*[2023-07-23].
- 459 [15] Gibbs, Bethany BaroneHivert, Marie-FranceJerome, Gerald J.Kraus, William E.Rosenkranz, Sara
460 K.Schorr, Erica N.Spartano, Nicole L.Lobelo, Felipe.Physical Activity as a Critical
461 Component of First-Line Treatment for Elevated Blood Pressure or Cholesterol: Who, What,
462 and How?: A Scientific Statement From the American Heart Association[J].*Hypertension: An*
463 *Official Journal of the American Heart Association*, 2021, 78(2).
- 464 [16] Atoui S , Chevance G , Romain A J ,et al.Daily associations between sleep and physical activity:
465 A systematic review and meta-analysis[J].*sleep Medicine Reviews*, 2021:101426.
- 466 [17] Mann S , Beedie C , Jimenez A .Differential Effects of Aerobic Exercise, Resistance Training and
467 Combined Exercise Modalities on Cholesterol and the Lipid Profile: Review, Synthesis and
468 Recommendations[J].*Sports Medicine*, 2014, 44(2):211-221.
- 469 [18] Lira F, Yamashita A, Uchida M, et al. Low and moderate, rather than high intensity strength
470 exercise induces benefit regarding plasma lipid profile. *Diabetol Metab Syndr.* 2010;2:31.
- 471 [19] O'Donovan G, Owen A, Bird S, et al. Changes in cardiorespiratory fitness and coronary heart
472 disease risk factors following 24 wk of moderate- or high-intensity exercise of equal energy
473 cost. *J Appl Physiol.* 2005;98(5):1619–25.
- 474 [20] Mann S, Beedie C, Jimenez A. Differential effects of aerobic exercise, resistance training and
475 combined exercise modalities on cholesterol and the lipid profile: review, synthesis and
476 recommendations[J]. *Sports medicine*, 2014, 44: 211-221.
- 477 [21] Fett C, Fett W, Marchini J. Circuit weight training vs jogging in metabolic risk factors of
478 overweight/obese women. *Arq Bras Cardiol.* 2009;93(5):519–25.
- 479 [22] Cortes, M.B., da Silva, R.S.N., de Oliveira, P.C. et al. Effect of aerobic and resistance exercise
480 training on endothelial function in individuals with overweight and obesity: a systematic
481 review with meta-analysis of randomized clinical trials. *Sci Rep* 13, 11826 (2023).
482
483
484
485
486
487
488
489
490
491
492
493
494
495
496