

## **A Phase 2 random, double-blind, placebo-controlled study of the safety and immunogenicity of a recombinant G protein-based respiratory syncytial virus vaccine in healthy older adults**

Lunan Zhang <sup>1,a</sup>, Gan Zhao <sup>1,a</sup>, Xin Cheng <sup>1</sup>, Shuo Wang <sup>1</sup>, Jiarong Wang <sup>1</sup>, Xuefen Huai <sup>1</sup>, Yu Xia <sup>1</sup>, Yanling Xiao <sup>1</sup>, Sulin Ren <sup>1</sup>, Shijie Zhang <sup>1</sup>, and Bin Wang <sup>1,2,\*</sup>

<sup>1</sup> Advaccine Biopharmaceuticals Suzhou Co., Ltd., Suzhou 215000, China

<sup>2</sup> Key Laboratory of Medical Molecular Virology (MOE/NHC/CAMS), School of Basic Medical Science, Fudan University, Shanghai 200000, China

<sup>a</sup> L.Z. and G.Z. contributed equally to this work.

\* Correspondence: [bwang3@fudan.edu.cn](mailto:bwang3@fudan.edu.cn)

### 1 **ABSTRACT**

#### 2 **Background:**

3 Respiratory syncytial virus (RSV) is an important cause of disease in older adults. Vaccines  
4 against RSV infections and respiratory diseases are in large market demand. Although there  
5 are currently two licensed RSV-based pre-F antigen vaccines available for older adults, no G  
6 antigen-based RSV vaccine is authorized. This phase 2 study aimed to evaluate the safety and  
7 immunogenicity of a recombinant G protein-based RSV vaccine in this population.

#### 8 **Methods:**

9 A phase-2 randomized, double-blind, placebo-controlled, dose-ranging study was conducted  
10 to evaluate the safety, tolerability and immunogenicity of the BARS13 (rRSV G protein with  
11 CsA) when administered by an intramuscular (IM) injection to healthy participants 60 to 80  
12 years old. A total of 125 eligible participants were randomized in a 3:1 ratio (vaccine versus  
13 placebo) for Cohorts 1 and 2 and randomized in a 2:1 ratio for Cohort 3 to receive one of the  
14 three treatment regimens or placebo.

#### 15 **Results:**

16 The average age was 65.3, and 50.4% (63/125) were men. Until the interim analysis (4 weeks  
17 following the last vaccination), no treatment-related SAE occurred. TEAEs did not increase  
18 with vaccination dosage or frequency. All adverse effects were mild or moderate, not severe or

19 **life-threatening. BARS13 vaccination increased IgG anti-RSV antibody levels in all cohorts.**

NOTE: This preprint reports new research that has not been certified by peer review and should not be used to guide clinical practice.

20 but higher doses and frequency boosted immune responses significantly. The high-dose thrice-  
21 administered recipients had serum-specific IgG antibody GMC of 881.0 IU/mL (95% CI:  
22 794.5-1473.4) before the first dose (Week 0), 1116.3 IU/mL (95% CI:990.7-1772.5) 4 weeks  
23 after the first dose (Week 4), 1309.4IU/mL (95% CI: 1162.8-2041.5) 4 weeks after the second  
24 dose (Week 8), and1359.6 IU/mL (95% CI: 1197.9-2525.7) 4 weeks after the third dose (Week  
25 12). For the low-dose twice-administered recipients, 84% responded at 4 weeks after the first  
26 immunization (Week 4) and 83.3% at 4 weeks after the second (Week 8). The high-dose twice-  
27 administered recipients had 95.5% response at 4 weeks after the first immunization (Week 4)  
28 and 72.2% at 4 weeks after the second (Week 8). At Week 4, 85.7% of high-dose thrice-  
29 administered recipients responded, 85.2% at Week 8, and 79.2% at Week 12.

### 30 **Conclusions:**

31 The study demonstrates the safety and tolerability of BARS13 across different dose groups.  
32 Adverse reactions were not significantly different among participants receiving varying doses  
33 of BARS13. Levels of anti-G antibodies exhibited a dose- and frequency-dependent responses  
34 in the older population. The continuous upward trend in antibody concentration up to the  
35 interim analysis is promising for the effectiveness of BARS13.

36 **Key words:** Respiratory syncytial virus, Vaccine, Safety, Immunogenicity

## 37 **1. BACKGROUND**

38 A growing number of complications have been observed in the older adult population as a  
39 consequence of the infection caused by respiratory syncytial virus (RSV). Based on a number  
40 of studies conducted in various regions of China utilizing health care databases and viral  
41 surveillance data, it has been observed that individuals aged 60 years and older who contract  
42 RSV infections account for the second highest proportion (25.2%) of the total annual RSV  
43 infections. Furthermore, this age group exhibits a higher likelihood of hospitalization,  
44 increased rates of admission to intensive care units, longer durations of hospital stay, and  
45 elevated mortality rates when compared to children infected with RSV [1-3]. In the United  
46 States, RSV was also estimated to be the causative agent in up to 12% of acute respiratory  
47 illnesses in older adults who were not selected for comorbidities. The prevalence of RSV varied  
48 depending on the clinical context and the year of study [4]. Treatments for RSV in older adults  
49 are currently limited to supportive care, including oxygen therapy and more advanced breathing  
50 support with continuous positive airway pressure (CPAP) or nasal high-flow oxygen, as no  
51 antiviral therapy is approved for the condition. Vaccination remains a high priority.

52 The development of a formalin-inactivated RSV (FI-RSV) vaccine for newborns and young  
53 age groups was problematic in the early 1960s due to the observation of vaccine-enhanced  
54 disease (VED) after administration of the FI-RSV vaccine [5-7]. Different vaccine strategies  
55 have been considered and investigated for preventing severe RSV infections since then. Until  
56 recently, structural biological studies demonstrated stabilized pre-F protein subunit vaccines to  
57 be a promising approach for RSV vaccination [8]. These subunit vaccines aim to target the pre-  
58 fusion conformation of the RSV fusion (F) protein, which has been shown to induce a stronger  
59 neutralizing antibody response compared to the post-fusion form, both in preclinical and  
60 clinical settings [9, 10]. This breakthrough in vaccine design has revitalized efforts towards  
61 developing an effective and safe RSV vaccine. Two pre-F protein subunit vaccines were  
62 successfully tested in phase III clinical trials in older populations, with approximate 66-85%  
63 and 71-94% protections against RSV-related lower respiratory disease [11, 12]. Currently, the  
64 FDA has approved two RSV subunit vaccines for older adults for marketing. These vaccines  
65 have been shown to be effective in preventing RSV-related respiratory illnesses in older

66 populations, offering great hope for combating this virus. The FDA's approval of these vaccines  
67 for marketing is a significant step forward in addressing the need for an effective and safe RSV  
68 vaccine.

69 With ongoing research and advancements in vaccine design, it is hopeful that similar success  
70 can be achieved in developing preventative measures for other vulnerable populations, such as  
71 infants and young children. However, it is important to note that the effectiveness of the RSV  
72 vaccines in older populations may not necessarily translate to the same level of success in  
73 infants and young children. This is due to differences in immune response and susceptibility to  
74 the virus between age groups [13]. Therefore, further research and clinical trials specifically  
75 targeting these vulnerable populations are necessary to determine the efficacy of RSV vaccines  
76 in preventing respiratory illnesses in infants and young children. Although the pre-F-based  
77 vaccine design has been successful, other non-fusion antigens are still considerable for  
78 developing as RSV vaccine candidate. For example, the glycoprotein G protein of RSV  
79 functions as an attachment protein during RSV infection by interacting with the receptors of  
80 target cells. The attachment of the glycoprotein G protein to the receptor allows the virus to  
81 enter the host's cells and initiate infection [14]. By targeting the RSV G protein in a subunit  
82 vaccine, researchers aim to induce an immune response that can neutralize the virus before it  
83 enters the cells, preventing infection. This approach has shown promising results in preclinical  
84 studies, underscoring the potential of the G protein as a feasible contender for the advancement  
85 of a subunit respiratory syncytial virus (RSV) vaccine [15-17]. In addition, the bacterially  
86 produced un-glycosylated G protein could protect against homologous and heterologous RSV  
87 challenges in mice, suggesting its potential as a broad-spectrum vaccine candidate [18].  
88 Furthermore, the use of the un-glycosylated G protein in a subunit vaccine may offer  
89 advantages such as improved stability and cost effects, making it a promising option for large-  
90 scale production and distribution.

91 We recently conducted the first-in-human phase 1 study that evaluated un-glycosylated G  
92 protein with a CsA as an immunomodulator as the BARS13RSV vaccine in healthy adults with  
93 different dose levels. The results showed no serious adverse events in 18 to 45-year-old  
94 volunteers. The vaccine induced a strong humoral immune response, with increased levels of  
95 RSV-specific antibodies [19]. The recombinant G protein is a promising candidate for

96 developing a subunit RSV vaccine, and further testing is needed in the elderly population. A  
97 phase 2 study is currently underway to determine if BARS13 would result in a stronger immune  
98 response in older adults.

## 99 **2. METHODS**

### 100 **2.1 Study Design**

101 The goal of this phase 2 randomized, double-blind, placebo-controlled, dose-ranging study  
102 (NCT04681833) is to find out if BARS13 (rRSV G protein with CsA) is safe and well tolerated  
103 when injected into healthy people between the ages of 60 and 80. The study follows a low-dose  
104 duplicate (10 µg BARS13 administered on days 1 and 29), high-dose duplicate (20 µg BARS13  
105 administered on days 1 and 29), or high-dose triplicate (20 µg BARS13 administered on days  
106 1, 29, and 57) vaccination schedule. The study was conducted at two sites in Australia. The  
107 results presented here are relevant to the interim analysis, which occurred 4 weeks post last  
108 dose (FU3) for each cohort.

109 The clinical protocol was approved by the Bellberry Human Research Ethics Committee. The  
110 conduct of the study followed the Declaration of Helsinki and the current Good Clinical  
111 Practices. All participants provided written informed consent prior to enrollment. Human  
112 serum samples were prepared at Mater Pathology in Queensland, Australia, and Agilix Biolabs  
113 in Adelaide, Australia, the latter performed the immunological tests in this experiment at the  
114 same time.

115 The primary endpoints focused on safety and tolerability by assessing the incidence and  
116 severity of side effects related to the vaccine, both locally and systemically. The secondary  
117 endpoint was to measure anti-G protein specific IgG antibody levels using an enzyme-linked  
118 immunosorbent assay (ELISA).

119 As specified in the protocol, an unblinded interim analysis is being carried out by an  
120 independent team, and the results will be shared with the unblinded sponsor team to maintain  
121 the blindness of the entire study. Staff managing the general aspects of the trial at the sites, the  
122 CRO, and the sponsor will remain blinded.

## 123 **2.2 Participants**

124 Healthy elderly male and female subjects between the ages of 60 to 80 years with no history of  
125 severe allergies or immunosuppressive therapy were enrolled. All participants provided written  
126 informed consent before participation. Key exclusion criteria included known infection with  
127 HIV, HBV, or HCV, receipt of any other vaccines within 4 weeks before entering the study or  
128 4 weeks within the last dose of study vaccine, and any previous investigational RSV  
129 vaccination. Influenza vaccine and coronavirus SARS-CoV-2 (COVID-19) vaccine should not  
130 be administered within a 14-day interval of each dose of study vaccine. Participants were  
131 assessed at the screening period, dose administration period, follow-up visits, and final follow-  
132 up/end-of-study visit.

## 133 **2.3 The Vaccine**

134 The lyophilized powder of rRSV G protein and CsA diluent was produced by Advaccine  
135 Biopharmaceuticals Suzhou Co. Ltd., located in Suzhou, China. The formulation buffer  
136 without active components was used as placebo. The rRSV G protein lyophilized powder and  
137 sterile CsA diluent solution were mixed together as the active BARS13 vaccine for injection.  
138 Details about the study vaccine lots can be found in Supplementary File S1.

## 139 **2.4 Study Procedures**

140 The study recruited and randomly allocated eligible participants in Cohorts 1 and 2 in a 3:1  
141 ratio (BARS13 versus placebo, 30 active, 10 placebo in each cohort) and in Cohort 3 in a 2:1  
142 ratio (30 active, 15 placebo). Participants in Cohort 1 received low-dose BARS13 (10 µg) or  
143 placebo on days 1 and 29, in Cohort 2 received high-dose BARS13 (20 µg) or placebo on days  
144 1 and 29, while in Cohort 3 received high-dose BARS13 (20 µg) or placebo on days 1, 29 and  
145 57. Follow-up visits were scheduled for 1 week (days 7 and 36 for all cohorts, while days 64  
146 for Cohort 3 only), 2 weeks (days 15 and 43 for all cohorts, while days 71 for Cohort 3 only)  
147 and 4 weeks (days 29 and 57 for all cohorts, while days 85 for Cohorts 3 only) post each  
148 vaccination.

149 As part of the study protocol, an interim analysis was set up to observe the safety, tolerability,  
150 and immunogenicity of all cohorts up to 4 weeks after their last immunization.

## 151 **2.5 Safety Assessment**

152 All safety endpoints were analyzed using the safety population. The severity and relationship  
153 of adverse events (AEs) to the vaccine regimens were assessed by the investigators based on  
154 the US Food and Drug Administration (FDA) standards (FDA 2007, Guidance for Industry:  
155 Toxicity Grading Scale for Health Adult and Adolescent Volunteers Enrolled in Preventive  
156 Vaccine Clinical Trials). Treatment-emergent AEs (TEAEs) were defined as AEs that occurred  
157 or worsened from the first administration of the study vaccine up to 28 days after the last dose.  
158 If a determination couldn't be made as to whether the event was treatment emergent due to  
159 missing or incomplete data, the adverse event would be treated as treatment emergent. For  
160 maximum severity/causality of TEAE, the maximum severity/causality of each participant  
161 across all TEAEs were counted. A treatment-related (Serious) TEAEs was one for which the  
162 causality of a study vaccine administration-related 'Possibly', 'Probably', or 'Definitely' was  
163 established. The number of participants with the percentage (%) of each treatment group were  
164 displayed in the corresponding outputs. All AE summaries were restricted to TEAEs only.  
165 Counts and percentage of systemic reactions (such as fatigue, myalgia and malaise) and  
166 injection site reactions (such as pain, tenderness and erythema) were summarized by reaction  
167 type at each protocol specified timepoint for treatment group under the safety population.

## 168 **2.6 Immunogenicity Assessment**

169 An immunogenicity assessment was conducted to evaluate the immune response elicited by  
170 the vaccinations. Serum samples from participants were collected at specified time points and  
171 analyzed for the presence of antibodies against the recombinant G protein (IgG against rRSV  
172 G protein). Serum samples from Cohorts 1 and 2 were collected on Day 1 (Week 0), Day 29  
173 (Week 4), Day 57 (Week 8), while from Cohort 3 were on Day 1 (Week 0), Day 29 (Week 4),  
174 Day 57 (Week 8), and Day 85 (Weeks 12). The humoral immune responses were analyzed for  
175 the presence of immunoglobulin G (IgG) antibodies targeting the RSV G protein, as indicated  
176 by the data gathered for the interim analysis. The immunogenicity assessment assay was  
177 validated and conducted in accordance with a validated method and analysis results were  
178 presented as the geometric mean concentration values in each group and the proportion of  
179 participants who had an increase in antibody concentration after vaccine immunization.

180 Following the final visit of this trial, additional tests will be performed and analyzed in a  
181 consistent manner.

182 The quantitative enzyme-linked immunosorbent test (ELISA) was used to assess the levels of  
183 G protein-specific IgG antibodies. Plates were first coated with rRSV protein G, following by  
184 a blocking step. The standard curve was established by serially diluting a standard RSV IgG  
185 serum (NIBSC, London, UK, Cat No.:16/284). Human serum samples were diluted (1 in 2000)  
186 and placed on the plate for a 1-hour incubation. Following washing, goat anti-human IgG (H+L)  
187 peroxidase-labeled anti-protein G IgG antibodies (Invitrogen, Carlsbad, CA, USA, Catalog No.:  
188 31410) were added to the plate for a further 1-hour incubation, followed by additional washes.  
189 TMB (Sigma-Aldrich, St. Louis, MO, USA, Catalog No.: T0440) and a stop solution were used  
190 to create a colorimetric signal. An ELISA plate reader (SpectraMax VersaMax, Molecular  
191 Devices, Sunnyvale, CA, USA) was used to read the signal. The signal produced was directly  
192 proportional to the quantity of analyte present and was determined by interpolating from the  
193 calibration curve provided on each plate. The concentrations of anti-G protein IgG antibodies  
194 in the samples were determined using calibration curves, specifically employing a four  
195 parameter logistics (4-PL) curve fitting method with a weighting factor of  $1/Y$ . The data were  
196 then exported to GraphPad Prism (GraphPad, San Diego, CA, USA, version 9.3) for further  
197 analysis.

## 198 **2.7 Statistical Analysis**

199 There were only descriptive statistics performed for the safety data as the main result, and no  
200 statistical hypothesis was developed for this analysis. Immunogenicity data gathered during  
201 both the pre-dose and post-dose periods were meticulously cleaned, summarized, and subjected  
202 to statistical analysis. Numerical data, collected at predetermined intervals, were consolidated  
203 and statistically scrutinized in accordance with their respective cohorts. Given the fact that the  
204 test results were taken from unblinded data, it is postulated that the levels of antibodies in those  
205 who were administered the placebo would remain constant during the pre-dose and post-dose  
206 periods. Hence, based on the distribution of participants within the placebo group, we excluded  
207 data from equivalent percentages of people whose antibody levels exhibited insignificant  
208 changes before and after vaccination from the analysis. The data underwent analysis and output



209 using GraphPad Prism 9.3 software. Statistical analysis was performed using a paired T-test.  
210 All statistical tests conducted in this study were two-sided, and any observed differences with  
211 a *p*-value less than 0.05 were deemed statistically significant.

### 212 **3. RESULTS**

#### 213 **3.1 Participant Demographics**

214 From May 19, 2021, to December 19, 2022, an enrollment screening was conducted on a total  
215 of 223 participants. A total of 127 participants were enrolled and randomized, as illustrated in  
216 Figure 1. Of these, 125 were designated as allocated cohorts. Of the 125 participants overall,  
217 124 (99.2%) participants received the allocated treatment, and 125 (100.0%) participants  
218 completed the FU3 visit, which was 4 weeks after the last dose.

219 The demographic and baseline characteristics were generally balanced and comparable across  
220 all treatment groups (Table 1). Out of all the 125 participants in the safety population, 63 were  
221 male (50.4%) and 62 were female (49.6%). The average age was 65.3 years old (ranging from  
222 60 to 77 years old). The mean BMI was 28.4 kg/m<sup>2</sup> (ranging from 19 to 40 kg/m<sup>2</sup>). 121  
223 participants (96.8%) were white, and 3 participants (2.4%) were Asian.

#### 224 **3.2 Vaccine Safety and Tolerability**

225 As shown in Table 2, none of the treatment-emergent adverse events (TEAEs) resulted in the  
226 termination of participation in the trial. The majority of TEAEs were categorized as mild or  
227 moderate, and there was no observed escalation in either the dosage level or frequency of the  
228 vaccine. Primarily, a total of eight participants experienced TEAEs that were categorized as  
229 severe. Additionally, six participants reported TEAEs that were deemed significant, while one  
230 person chose to withdraw from the study due to TEAEs. Nevertheless, none of these events  
231 were directly associated with vaccinations.

232 As shown in Figure 2, the occurrence of injection site bruising was the most common localized  
233 adverse event. The incidence rates were 3.3% (1 out of 30) in the low dose group (LDR), 3.3%  
234 (1 out of 30) in the high dose group (HDR), and 6.7% (2 out of 30) in the highest dose group  
235 (HTR). All adverse events occurring at the injection site were categorized as mild. The  
236 occurrence of headaches as a systematic adverse reaction was observed most frequently. Its

237 prevalence was found to be 3.3% (1 out of 30) in the HDR group, 6.7% (2 out of 30) in the  
238 HTR group, and 2.9% (1 out of 35) in the pooled placebo group. The sole systematic adverse  
239 event categorized as moderate was fatigue in LDR, occurring at an incidence rate of 3.3% (1  
240 out of 30).

### 241 **3.3 Specific G Protein Binding Antibody Response**

242 In the assessment of immunogenicity, it was shown that the geometric mean concentrations  
243 (GMC) of antibodies binding to the G protein increased after BARS13 vaccination in  
244 comparison to the baseline levels before immunization, across all groups. The initial geometric  
245 mean concentration (GMC) in the low-dose duplicate recipients' group (Cohort 1, LDR) at  
246 Week 0 was determined to be 910.1 IU/mL, with a 95% confidence interval (CI) spanning from  
247 675.1 to 2159.7. During the fourth week following the initial immunization, the GMC was  
248 recorded as 1051.3 IU/mL, with a 95% CI ranging from 836.5 to 2640.6. Subsequently, during  
249 the fourth week after the second immunization, the GMC was measured at 920.4 IU/mL, with  
250 a 95% CI of 438.7 to 2121.0 (Figure 3a). In the cohort consisting of recipients who received a  
251 high-dose duplicate (Cohort 2, HDR), the GMC was found to be 1513.0 IU/mL (95% CI:  
252 1334.0-3503.2) four weeks after the initial immunization. Similarly, at the fourth week  
253 following the second immunization, the GMC was measured to be 1501.0 IU/mL (95% CI:  
254 1049.2-3282.3). The observed values in this study exhibited a small increase compared to the  
255 pre-immunization baseline GMC of 1353.7 IU/mL (95% CI: 1224.6-2907.8), as depicted in  
256 Figure 3b. In Cohort 3, specifically the group of recipients who received high-dose thrice  
257 vaccines (referred to as HTR), the GMC at the beginning of the study (Week 0) was  
258 881.0 IU/mL. The 95% CI for this GMC ranged from 794.5 IU/mL to 1473.4 IU/mL. During  
259 Week 4, the GMC was measured to be 1116.3 IU/mL, with a 95% CI ranging from 990.7 to  
260 1772.5. At Week 8, the GMC increased to 1309.4 IU/mL, with a 95% CI of 1162.8 to 2041.5.  
261 Finally, at Week 12, the GMC further increased to 1359.6 IU/mL, with a 95% CI of 1197.9 to  
262 2525.7. After each administration of BARS13, there was a notable and consistent rise in the  
263 levels of antibodies, as depicted in Figure 3c.

264 Participants who received a high dose regimen of twice 20 µg BARS13 (HDR) had slight  
265 higher antibody levels than those received a low dose regimen of twice 10 µg BARS13 (LDR).

266 This finding suggests the presence of a dose-response correlation. Furthermore, with regard to  
267 the correlation between the total number of vaccinations and the immune response, it was  
268 observed that the levels of antibodies in HTR who received thrice of 20 µg BARS13 had a  
269 considerably superior performance compared to HDR in Cohort 2. This finding indicates that  
270 employing successive vaccination procedures, including increased dosages of BARS13, leads  
271 to enhanced production of anti-RSV antibodies.

272 The rate of responsiveness in individual participants has also been evaluated. The calculation  
273 and definition of the responsiveness rate involved determining the percentage of participants  
274 who exhibited an increase in antibodies relative to their pre-dose levels. For LDR in Cohort 1,  
275 the rate of responsiveness was found to be 84% at Week 4 which was 4 weeks after the initial  
276 dose and 83.3% at Week 8 which was 4 weeks after the second dose. The responsiveness rate  
277 for HDR in Cohort 2 was found to be 95.5% at Week 4 and 72.2% at Week 8. The  
278 responsiveness rate for HTR in Cohort 3 was seen to be 85.7% at Week 4, 85.2% at Week 8,  
279 and 79.2% at Week 12 which was 4 weeks after the third dose, as depicted in Table 3. The  
280 observed responsiveness rates provide an indication of the vaccine's effectiveness in eliciting  
281 an immunological response, as demonstrated by the substantial proportion of individuals who  
282 produced antibodies against the specific antigen. The observed decrease in responsiveness rate  
283 among HDR in Cohort 2 following the second immunization could potentially suggest a  
284 marginal decline in immune response or could be attributed to other factors that have an  
285 influence. Nevertheless, it is worth noting that the responsiveness rates exhibit a consistently  
286 high level across all cohorts, indicating the vaccine is effective in stimulating an immunological  
287 response in the majority of participants. Additional studies are necessary to ascertain the most  
288 effective immunization schedule and evaluate the sustained impact of the immune response  
289 over an extended period.

290 According to the present analysis, it was shown that the treatment of BARS13 led to a  
291 significant and dose-dependent enhancement of humoral responses against RSV in all cohorts.  
292 In order to obtain a more comprehensive assessment of BARS13, we will proceed with the  
293 examination of humoral responses once the trial is no longer blinded.

#### 294 **4. DISCUSSION**

295 The present study presents findings from the interim analysis of an ongoing Phase 2 clinical  
296 trial that aims to assess the safety, tolerability, and immunogenicity of BARS13, a recombinant  
297 G protein-based respiratory syncytial virus (RSV) vaccine combined with the  
298 immunomodulator CsA, in a population of older individuals. The study found that the BARS13  
299 vaccine was administered to an older population with no serious adverse reactions.  
300 Additionally, the BARS13 vaccine induced a significant increase in IgG anti-RSV antibody  
301 levels in all cohorts, but higher doses and frequencies elicited stronger immune responses. Due  
302 to the limited sampling taken for the interim report, there was no duration of anti-RSV antibody  
303 assessment. Further analysis and evaluation are needed to fully understand the vaccine's  
304 efficacy and long-term effects once the trial is officially closed and a full pack of data is  
305 available.

306 Among the 125 participants included in this interim analysis, no treatment-related serious  
307 TEAEs were reported in the safety population. No severe or life-threatening TEAEs were  
308 observed. A notable number of the TEAEs recorded in the study were classified as mild. A  
309 single instance of mild frontal fibrosing alopecia (an autoimmune condition) was reported by  
310 a recipient who received a high dose of the study medicine. This adverse event prompted the  
311 premature discontinuation of the therapy, although it was determined to be unrelated to the  
312 treatment. In general, the occurrence of mild and moderate TEAEs was comparable between  
313 those receiving the active vaccine and those receiving the placebo, and there was no observed  
314 correlation between TEAEs incidence and vaccine dosage. There was no observed correlation  
315 between the frequency of TEAEs and vaccine dosage level or frequency. Similarly, there was  
316 no observed rise in the frequency of treatment-related TEAEs with vaccine dose level or  
317 frequency. The majority of treatment-related TEAEs documented in this interim analysis report  
318 consisted of occurrences of headache and injection site bruising. In the older population, no  
319 clinically significant patterns of changes in the usage of concomitant drugs were observed  
320 among the various treatment groups.

321 The elderly population is frequently susceptible to respiratory syncytial virus (RSV) infections,  
322 which can pose a challenge to the efficacy of RSV vaccines. This is mostly attributed to the

323 presence of pre-existing antibodies that neutralize the vaccine antigens, hence impeding the  
324 vaccination's effectiveness. Developing an effective respiratory syncytial virus (RSV)  
325 vaccination for this particular age range presents a significant hurdle. Furthermore, the  
326 existence of pre-existing medical disorders and the concurrent use of medications may  
327 exacerbate the challenges associated with the effectiveness of the vaccine in older populations.  
328 Additionally, the immune system of older individuals tends to weaken over time, making it  
329 more difficult for vaccines to generate a strong and lasting immune response. This further  
330 emphasizes the need for careful evaluation and consideration of dosing escalation and  
331 frequency to ensure optimal effectiveness of an RSV vaccine in older populations. An analysis  
332 of the anti-RSV-G IgG antibody baseline revealed that subjects with a history of environmental  
333 exposure to RSV infections exhibited a significantly elevated baseline level of this antibody.  
334 To eliminate variables and inconsistencies among individuals, we employed the quantitative  
335 ELISA analysis to measure the concentration of anti-G IgG. These concentrations were  
336 reported in international units per microliter (IU/mL), along with 95% confidence intervals, for  
337 each treatment group during weeks 0, 4, 8, or 12.

338 The administration of two doses of low-dose BARS13 (10 µg) via injection produced  
339 significant anti-G IgG antibodies at Week 4 after vaccination. These antibodies decreased  
340 marginally until the present analysis, during which time more than 80% of the participants  
341 exhibited responsiveness. The cohorts were administered a high dosage of BARS13 (20 µg),  
342 resulting in the sustained production of antibodies at both Weeks 4 and 8. Furthermore, these  
343 antibodies exhibited an enhanced response towards BARS13. The administration of an  
344 additional dosage of BARS13 resulted in a notable increase in antibody production, with levels  
345 significantly above the initial baseline measurements at all observed timepoints. This  
346 demonstrated a dose-dependent increase pattern from the low-dose to high-dose cohorts, as  
347 evidenced by the rise from baseline to post-vaccination. As evidenced by the antibody levels  
348 in Cohort 3, which increased further after the second and third doses, the boost dose also played  
349 an important part in the antibody response.

350 A prior clinical study revealed that the importance of dosage was established in a dose-ranging  
351 investigation of extracted and purified F, G, and M antigens from RSV A viruses through  
352 intramuscular injection at doses of 100, 50, or 25 µg to the aged population. The antibody levels

353 against RSV F and G proteins were found to be equal when administering doses of 25 and  
354 50 µg of the vaccine. However, a considerably greater antibody response was achieved after  
355 administering a dose of 100 µg of the vaccine in comparison to the 25 and 50 µg doses. These  
356 findings suggest that a higher dosage of the vaccine may be necessary to elicit a stronger  
357 immune response in the elderly population. Further studies are needed to determine the optimal  
358 dosage for maximum protection against RSV. These results are significant as they indicate that  
359 the immune response to RSV can be enhanced by increasing the vaccine dosage. This is  
360 particularly important for the elderly population, as they are more susceptible to severe RSV  
361 infections. The findings warrant further investigation into the safety and efficacy of higher  
362 vaccine dosages and could potentially lead to the development of a more effective vaccine  
363 against RSV in older adults. Dosing selection is pivotal for G protein-based vaccines in the  
364 elderly population observed in this current study. The elderly population often has a weaker  
365 immune response to vaccines, making it necessary to administer higher dosages to achieve  
366 optimal protection against RSV. Additionally, our research suggests that dosing selection is  
367 critical in G protein-based vaccines for older adults, as it directly impacts the vaccine's efficacy  
368 and effectiveness. These findings underscore the need for more research and development in  
369 this area to improve the immunity and health outcomes of the elderly population.

370 Overall, this phase II study in older adults showed different dose levels of the rRSV G protein  
371 investigational vaccine to be safe, well tolerated, and highly immunogenic and responsive in  
372 adults 60–80 years of age. Further research and development in this area is crucial in order to  
373 determine the optimal dosage and administration schedule of the RSV G protein investigational  
374 vaccine for maximum effectiveness in elderly individuals. Additionally, studying the long-term  
375 effects of the vaccine and its potential impact on reducing hospitalizations and mortality rates  
376 among older adults will provide valuable insights into improving their overall health outcomes.  
377 Ultimately, investing in the continued development and implementation of the RSV G protein  
378 vaccine has the potential to significantly enhance the immunity and well-being of the elderly  
379 population.

## 380 **5. CONCLUSION**

381 In summary, this phase 2 trial has demonstrated that BARS13, a recombinant G protein-based  
382 RSV vaccine, not only showed a well safety and tolerability profile across different dose groups  
383 in older population, but also, importantly, could induce a meaningful level of anti-G antibodies  
384 in a dose- and frequency-dependent mode. The continuous upward trend in antibody  
385 concentration up to the interim analysis is promising for the effectiveness of BARS13.

## 386 **SUPPLEMENTARY MATERIALS**

387 File S1. Study Vaccine Lots

## 388 **FUNDINGS**

389 This study was funded by the National Major Scientific and Technological Special Project for  
390 “Program of Significant New Drug Developments” [2013ZX09102041], National Natural  
391 Science Foundation of China [81991492 and 82041039], and Major Project of Study on  
392 Pathogenesis and Epidemic Prevention Technology System [2021YFC2302500].

## 393 **INSTITUTIONAL REVIEW BOARD STATEMENT**

394 The study was conducted in accordance with the Declaration of Helsinki and approved by the  
395 Bellberry Human Research Ethics Committee (protocol code ADVA-BARS13-002 and  
396 approved on 01 February 2021) for the clinical trial. See more details at  
397 <https://clinicaltrials.gov/study/NCT04681833?term=NCT04681833&rank=1>.

## 398 **INFORMED CONSENT STATEMENT**

399 Written informed consent has been obtained from the participant(s) to publish this paper.

## 400 **DATA AVAILABILITY STATEMENT**

401 The data generated or analyzed during this study are included in this published article and its  
402 supplementary files.

## 403 **ACKNOWLEDGEMENTS**

404 Advaccine is grateful to all trial participants, including the Principal Investigators (PI), Natasha  
405 Martin and Kristi Mclendon, the Contract Research Organization (CRO), Avance Clinical Pty

406 Ltd., and the Central Laboratory, Agilex Biolabs Pty Ltd., for their important contributions to  
407 this research. We also recognize the outstanding and dedicated support of the clinical trial staff  
408 at two locations in Australia: CMAX Clinical Research Pty Ltd. in Adelaide and Nucleus  
409 Network Brisbane Clinic in Queensland. We are also grateful to our Advaccine team members  
410 who have steadfastly worked even during the COVID-19 pandemic.

## 411 REFERENCES

- 412 [1]. Luo M, Gong C, Zhang Y, et al. Comparison of infections with respiratory syncytial virus  
413 between children and adults: a multicenter surveillance from 2015 to 2019 in Beijing,  
414 China. *Eur J Clin Microbiol Infect Dis*. 2022;41(12):1387-1397.
- 415 [2]. Cowling BJ, Xu C, Tang F, et al. Cohort profile: the China Ageing Respiratory infections  
416 Study (CARES), a prospective cohort study in older adults in Eastern China. *BMJ Open*.  
417 2017;7(10):e017503.
- 418 [3]. Cui D, Feng L, Chen Y, et al. Clinical and Epidemiologic Characteristics of Hospitalized  
419 Patients with Laboratory-Confirmed Respiratory Syncytial Virus Infection in Eastern  
420 China between 2009 and 2013: A Retrospective Study. *PLoS One*. 2016;11(11):e0165437.
- 421 [4]. Colosia AD, Yang J, Hillson E, et al. The epidemiology of medically attended respiratory  
422 syncytial virus in older adults in the United States: A systematic review. *PLoS One*.  
423 2017;12(8):e0182321.
- 424 [5]. Kim HW, Canchola JG, Brandt CD, et al. Respiratory syncytial virus disease in infants  
425 despite prior administration of antigenic inactivated vaccine. *Am J Epidemiol*.  
426 1969;89(4):422-434.
- 427 [6]. Kapikian AZ, Mitchell RH, Chanock RM, Shvedoff RA, Stewart CE. An epidemiologic  
428 study of altered clinical reactivity to respiratory syncytial (RS) virus infection in children  
429 previously vaccinated with an inactivated RS virus vaccine. *Am J Epidemiol*.  
430 1969;89(4):405-421.
- 431 [7]. Fulginiti VA, Eller JJ, Sieber OF, Joyner JW, Minamitani M, Meiklejohn G. Respiratory  
432 virus immunization. I. A field trial of two inactivated respiratory virus vaccines; an  
433 aqueous trivalent parainfluenza virus vaccine and an alum-precipitated respiratory  
434 syncytial virus vaccine. *Am J Epidemiol*. 1969;89(4):435-448.

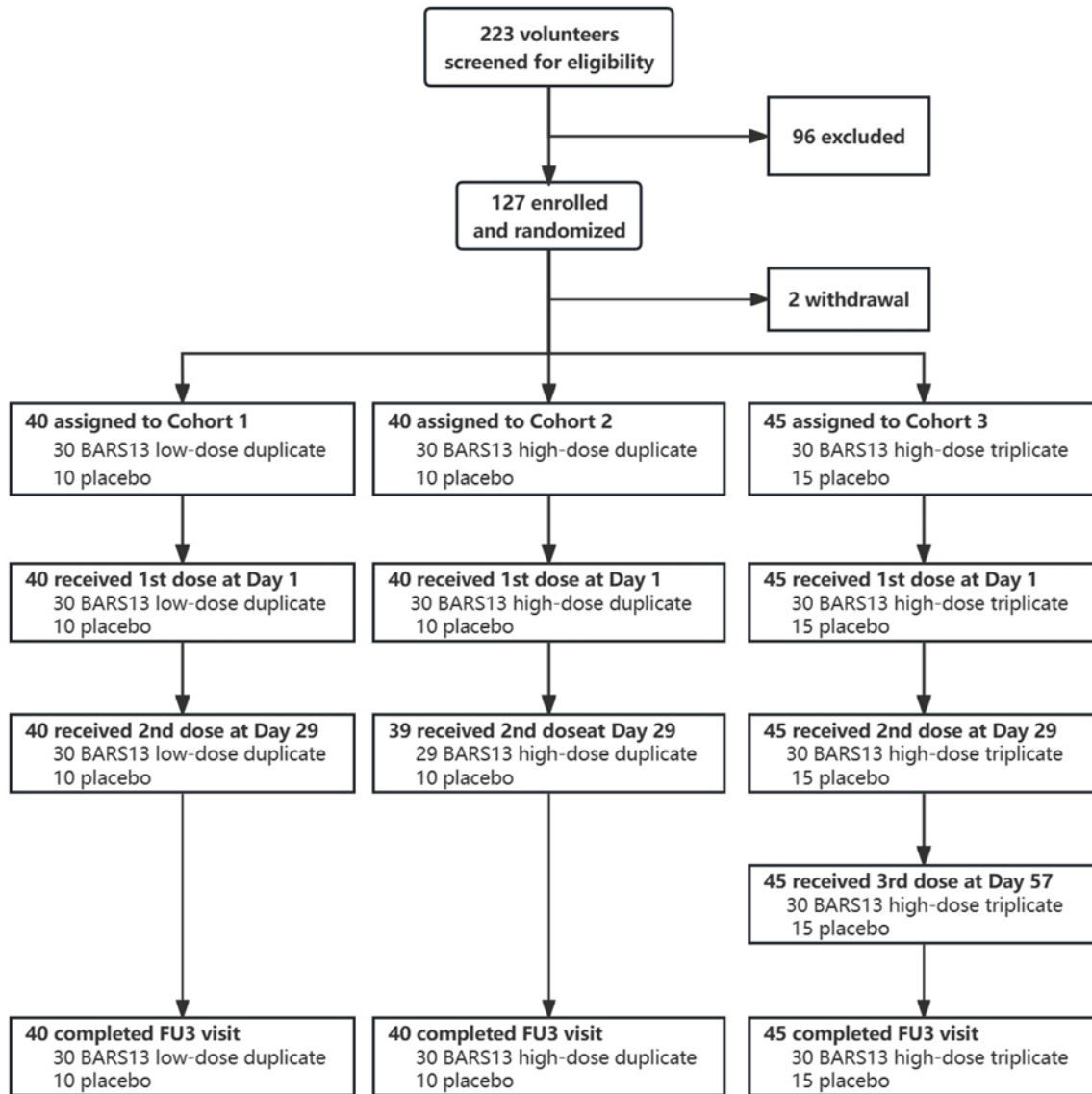


- 435 [8]. Lee CYF, Khan SJ, Vishal F, Alam S, Murtaza SF. Respiratory Syncytial Virus Prevention:  
436 A New Era of Vaccines. *Cureus*. 2023;15(9):e45012.
- 437 [9]. Leroux-Roels I, Davis MG, Steenackers K, et al. Safety and Immunogenicity of a  
438 Respiratory Syncytial Virus Prefusion F (RSVPreF3) Candidate Vaccine in Older Adults:  
439 Phase 1/2 Randomized Clinical Trial. *J Infect Dis*. 2023;227(6):761-772.
- 440 [10]. Baber J, Arya M, Moodley Y, et al. A Phase 1/2 Study of a Respiratory Syncytial Virus  
441 Prefusion F Vaccine With and Without Adjuvant in Healthy Older Adults. *J Infect Dis*.  
442 2022;226(12):2054-2063.
- 443 [11]. Walsh EE, Pérez Marc G, Zareba AM, et al. Efficacy and Safety of a Bivalent RSV  
444 Prefusion F Vaccine in Older Adults. *N Engl J Med*. 2023;388(16):1465-1477.
- 445 [12]. Papi A, Ison MG, Langley JM, et al. Respiratory Syncytial Virus Prefusion F Protein  
446 Vaccine in Older Adults. *N Engl J Med*. 2023;388(7):595-608.
- 447 [13]. Dunn-Walters DK, Stewart AT, Sinclair EL, Serangeli I. Age-Related Changes in B Cells  
448 Relevant to Vaccine Responses. *Interdiscip Top Gerontol Geriatr*. 2020;43:56-72.
- 449 [14]. Fedechkin SO, George NL, Wolff JT, Kauvar LM, DuBois RM. Structures of respiratory  
450 syncytial virus G antigen bound to broadly neutralizing antibodies. *Sci Immunol*.  
451 2018;3(21):eaar3534.
- 452 [15]. Connors M, Collins PL, Firestone CY, Murphy BR. Respiratory syncytial virus (RSV) F,  
453 G, M2 (22K), and N proteins each induce resistance to RSV challenge, but resistance  
454 induced by M2 and N proteins is relatively short-lived. *J Virol*. 1991;65(3):1634-1637
- 455 [16]. Nuñez Castrejon AM, O'Rourke SM, Kauvar LM, DuBois RM. Structure-Based Design  
456 and Antigenic Validation of Respiratory Syncytial Virus G Immunogens. *J Virol*.  
457 2022;96(7):e0220121.
- 458 [17]. Fuentes S, Coyle EM, Golding H, Khurana S. Nonglycosylated G-Protein Vaccine  
459 Protects against Homologous and Heterologous Respiratory Syncytial Virus (RSV)  
460 Challenge, while Glycosylated G Enhances RSV Lung Pathology and Cytokine Levels. *J*  
461 *Virol*. 2015;89(16):8193-8205.
- 462 [18]. Li C, Zhou X, Zhong Y, et al. A Recombinant G Protein Plus Cyclosporine A-Based  
463 Respiratory Syncytial Virus Vaccine Elicits Humoral and Regulatory T Cell Responses  
464 against Infection without Vaccine-Enhanced Disease. *J Immunol*. 2016;196(4):1721-31

465 [19]. Cheng X, Zhao G, Dong A, et al. A First-in-Human Trial to Evaluate the Safety and  
466 Immunogenicity of a G Protein-Based Recombinant Respiratory Syncytial Virus Vaccine  
467 in Healthy Adults 18-45 Years of Age. *Vaccines (Basel)*. 2023;11(5):999.

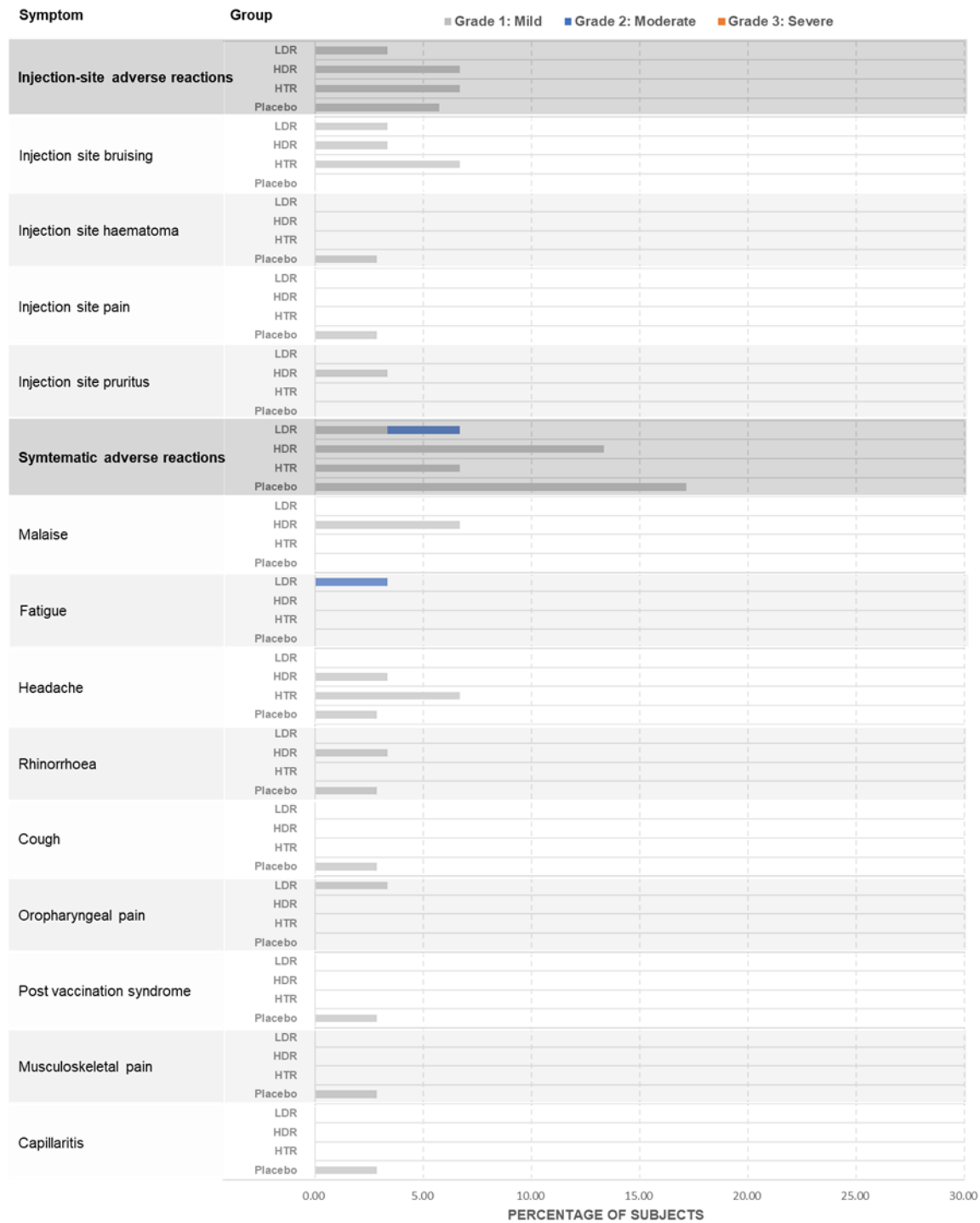
## FIGURES

**Figure 1. Enrollment and Follow-up of the Participants**



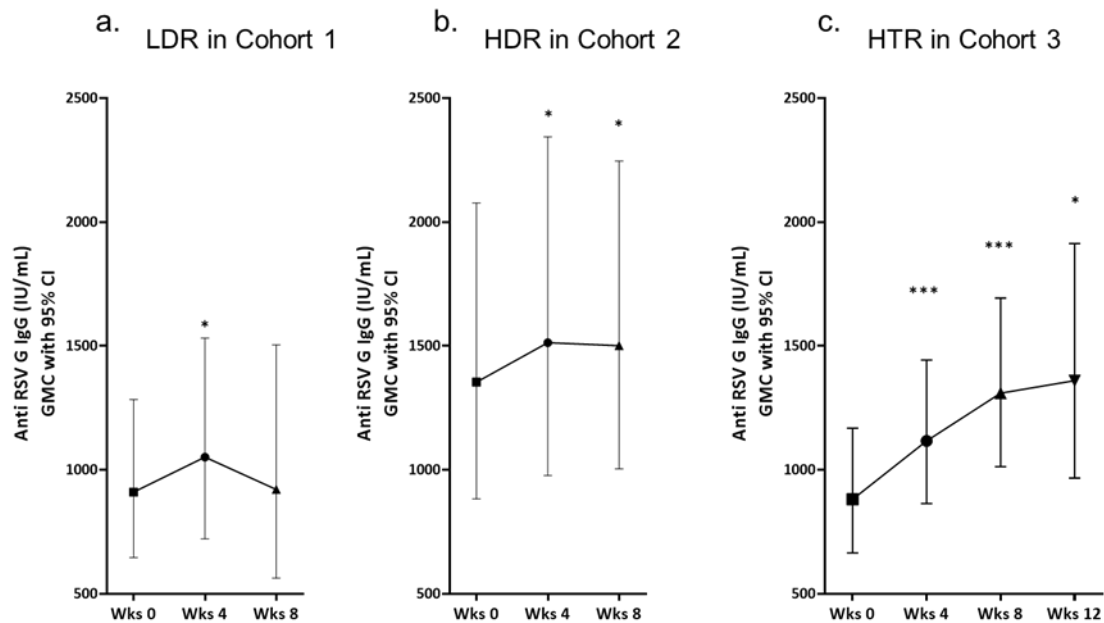
The data cutoff timepoint for Cohorts 1 and 2 was on Day 57, but for Cohort 3, represented by FU3, it was on Day 85. A total of 125 participants, ranging in age from 60 to 80, were subjected to a randomization process in order to be assigned to one of two groups. The first group received BARS13 at different dosage levels, while the second group received a placebo. The safety population consisted of all subjects who were administered either the research therapy BARS13 or a placebo. At the point of data cutoff, a total of 125 participants were under observation.

**Figure 2. Summary of Treatment-related TEAEs for Maximum Severity (Safety Population)**



Treatment-related TEAEs in subjects who received BARS13 in low-dose duplicate, high-dose duplicate, or high-dose triplicate, or placebo, are depicted. Data for placebo have been pooled, as seen above. LDR stands for low-dose duplicate recipient; HDR stands for high-dose duplicate recipient; and HTR is for high-dose triplicate recipient.

**Figure 3. Analysis of Level of Anti-G Antibodies among Cohorts**



Kinetics of vaccine-elicited anti-G responses shown as anti-G IgG GMCs with 95% CIs. Panels a and b show the humoral responses from 2-dose regimen of 10 µg BARS13 and 20 µg BARS13 respectively. Panel c shows the humoral responses of a triple-dose regimen consisting of 20 µg BARS13. The findings were presented using the GMC with a 95% confidence interval. The paired T-test was conducted, excluding estimated data from placebo individuals.

## TABLES

**Table 1. Demographics and Baseline Characteristics (Safety Population)**

<b>Characteristics</b>	<b>LDR (N=30)</b>	<b>HDR (N=30)</b>	<b>HTR (N=30)</b>	<b>Pooled Placebo (N=35)</b>	<b>Overall (N=125)</b>
<b>Age (years)</b>	65.2 (4.87)	65.7 (4.29)	64.3 (4.07)	65.9 (4.63)	65.3 (4.46)
<b>BMI at screening (kg/m<sup>2</sup>)</b>	27.9 (3.68)	28.7 (4.64)	29.2 (4.42)	28.0 (5.46)	28.4 (4.60)
<b>Gender</b>					
Male	16 (53.3%)	12 (40.0%)	18 (60.0%)	17 (48.6%)	63 (50.4%)
Female	14 (46.7%)	18 (60.0%)	12 (40.0%)	18 (51.4%)	62 (49.6%)
<b>Race</b>					
Asian	2 (6.7%)	-	-	1 (2.9%)	3 (2.4%)
Multiple	-	1 (3.3%)	-	-	1 (0.8%)
White	28 (93.3%)	29 (96.7%)	30 (100.0%)	34 (97.1%)	121 (96.8%)
<b>Ethnicity</b>					
Hispanic or Latino	1 (3.3%)	2 (6.7%)	-	-	3 (2.4%)
Not Hispanic or Latino	28 (93.3%)	28 (93.3%)	29 (96.7%)	34 (97.1%)	119 (95.2%)
Not Reported	1 (3.3%)	-	-	1 (2.9%)	2 (1.6%)
Unknown	-	-	1 (3.3%)	-	1 (0.8%)

Notes: Data are mean (SD) or n (%). LDR, low-dose duplicate recipient; HDR, high-dose duplicate recipient; HTR, high-dose triplicate recipient.

**Table 2. Overall Summary of TEAEs (Safety Population)**

	<b>LDR (N=30)</b>	<b>HDR (N=30)</b>	<b>HTR (N=30)</b>	<b>Pooled Placebo (N=35)</b>	<b>Overall (N=125)</b>
<b>TEAEs</b>	20 (66.7%)	18 (60.0%)	22 (73.3%)	24 (68.6%)	84 (67.2%)
Grade 1: Mild	10 (33.3%)	11 (36.7%)	9 (30.0%)	16 (45.7%)	46 (36.8%)
Grade 2: Moderate	8 (26.7%)	6 (20.0%)	10 (33.3%)	6 (17.1%)	30 (24.0%)
Grade 3: Severe	2 (6.7%)	1 (3.3%)	3 (10.0%)	2 (5.7%)	8 (6.4%)
Grade 4: Life-threatening	-	-	-	-	-
<b>Serious TEAEs</b>	2 (6.7%)	1 (3.3%)	1 (3.3%)	2 (5.7%)	6 (4.8%)
<b>TEAEs leading to withdrawal</b>	-	-	1 (3.3%)	-	1 (0.8%)
<b>TEAEs leading to discontinuation</b>	-	-	-	-	-
<b>Treatment-related TEAEs</b>	6 (20.0%)	8 (26.7%)	7 (23.3%)	7 (20.0%)	28 (22.4%)
<b>Treatment-related TEAEs ≥ Grade 3</b>	-	-	-	-	-
<b>Treatment-related Serious TEAEs</b>	-	-	-	-	-
<b>Treatment-related TEAEs leading to withdrawal</b>	-	-	-	-	-

Notes: LDR, low-dose duplicate recipient; HDR, high-dose duplicate recipient; HTR, high-dose triplicate recipient.

**Table 3. Analysis of Responsiveness to BARS13 Vaccinations among Cohorts**

<b>Time</b>	<b>Cohort 1, LDR</b>	<b>Cohort 2, HDR</b>	<b>Cohort 3, HTR</b>
Week 0	-	-	-
Week 4	84.0%	95.5%	85.7%
Week 8	83.3%	72.2%	85.2%
Week 12	-	-	79.2%

Notes: LDR, low-dose duplicate recipient; HDR, high-dose duplicate recipient; HTR, high-dose triplicate recipient. The results were shown without estimated placebo individuals.