

Measures of population immunity can predict the dominant clade of influenza A (H3N2) in the 2017-2018 season and reveal age-associated differences in susceptibility and antibody-binding specificity

Kangchon Kim^{1*†}, Marcos C. Vieira^{1*†}, Sigrid Gouma², Madison E. Weirick², Scott E. Hensley², and Sarah Cobey¹

1 Department of Ecology and Evolution, The University of Chicago, USA

2 Department of Microbiology, Perelman School of Medicine, The University of Pennsylvania, USA

† These authors contributed equally. * kangchonsara@gmail.com

Abstract

For antigenically variable pathogens such as influenza, strain fitness is partly determined by the relative availability of hosts susceptible to infection with that strain compared to others. Antibodies to the hemagglutinin (HA) and neuraminidase (NA) confer substantial protection against influenza infection. We asked if a cross-sectional antibody-derived estimate of population susceptibility to different clades of influenza A (H3N2) could predict the success of clades in the following season. We collected sera from 483 healthy individuals aged 1 to 90 years in the summer of 2017 and analyzed neutralizing responses to the HA and NA of representative strains. The clade to which neutralizing antibody titers were lowest, indicating greater population susceptibility, dominated the next season. Titers to different HA and NA clades varied dramatically between individuals but showed significant associations with age, suggesting dependence on correlated past exposures. This study indicates how representative measures of population immunity might improve evolutionary forecasts and inform selective pressures on influenza.

Introduction

The epidemiological and evolutionary dynamics of antigenically variable pathogens are intrinsically sensitive to immunity in the host population. This understanding has long shaped vaccination strategies against influenza. Twice each year, representative strains from circulating clades are evaluated for their ability to escape antibodies to current vaccine strains, under the expectation that these clades might come to dominate and could be poorly matched by the current vaccine. As surrogates for the human population, influenza-naïve ferrets are infected or vaccinated with one of a set of reference influenza strains (e.g., current vaccine strains), and their post-exposure sera are tested against candidate strains for the next vaccine. The extent to which these sera cross-react or neutralize candidate strains is taken as a measure of their immune escape or antigenic distance [1, 2]. These experimental measures of immune escape, alongside other estimates of variant growth rates and sequence-based fitness models [3], are used to anticipate the dominant clade and need for vaccine updates. In the past few years, escape from human sera has been considered too (e.g., [4]).

An open question is whether more direct and representative estimates of population immunity could lead to better vaccine choices while potentially shedding light on the mechanisms of coevolution between the viral population and host immunity. In the past decade, large differences have occasionally appeared in the antigenic distances inferred from ferret compared to human sera [5, 6]. These differences might arise at the species level, although the antibody responses of ferrets and humans after their first influenza exposures appear roughly similar [7]. A more likely explanation comes from observations of original antigenic sin, whereby individuals exposed to the same strain of influenza can mount antibody responses with different cross-reactivity profiles shaped by their distinct histories of exposure [5, 8–11]. These past infections and vaccinations lead to biases in which viral sites or epitopes antibodies recognize. Consequently, a mutation in one epitope might be antigenically important for some people (or ferrets) but not others. Since most influenza infections occur in people with preexisting immunity to influenza, and antibodies to influenza surface proteins contribute substantially to protection (and transmission) [5, 12–16], accurate measures of population immunity may be useful in viral forecasting and vaccine strain selection.

Using the 2017-2018 influenza season in North America as a case study, we characterized a cross-sectional, age-representative estimate of antibody-mediated immunity in an urban population and asked whether it could predict which of several circulating clades of H3N2 would dominate regionally in the next influenza season. Forecasting for vaccine strain selection often focuses on antigenic changes to the hemagglutinin (HA) surface protein, which vaccines attempt to match. We measured neutralizing antibody titers to the neuraminidase (NA) protein as well as to HA because antibodies to NA are also protective and should thus affect clade fitness. We found large differences in the expected susceptibility of the population to different clades' HA and NA, and these differences in susceptibility predicted clade dominance. They also partially predicted the relative attack rates of clades by age. We furthermore quantified the heterogeneity in neutralizing titers in the population, finding patterns consistent with age-associated epitope targeting. Although data from a single timepoint cannot fully elucidate the role of population immunity in clade evolution, our results demonstrate for the first time how such measures can improve on traditional approaches.

Results

Human sera from the summer of 2017 poorly neutralize the clade that dominated in North America in the next influenza season

We investigated whether neutralizing antibody titers to HA and NA from H3N2 clades circulating in early 2017 could predict the dominant (most frequent) clade in the next influenza season. Antibodies to HA can protect against infection [12, 13, 15–17], and we expected that the clade to which the largest fraction of the population had poorly neutralizing anti-HA titers would be most successful. This expectation implicitly assumes that exposure rates, other factors affecting susceptibility, and the average infectiousness or transmissibility of an infected person do not differ starkly between age groups; it also assumes that antibody-mediated protection derives primarily from neutralization and not Fc-mediated effector functions, or that the two are well correlated.

Antibody neutralization was measured by the focus reduction neutralization test (FRNT) for anti-hemagglutinin antibodies and enzyme-linked lectin assay (ELLA) for the anti-neuraminidase antibodies, and these antibodies levels were assumed proxies for protection. Correlates of protection have not been established for FRNT-derived titers, but because microneutralization titers correlate well with hemagglutination inhibition

(HAI) [18], and a 1:40 HAI titer is traditionally associated with a 50% reduction in infection risk [12], we initially assumed a 1:40 FRNT titer corresponds to a 50% chance of infection, testing other assumptions in sensitivity analyses. We looked at the fraction of the population below this cutoff for each clade to obtain the expected relative susceptibility and ranked clades by this measure. Using a cutoff avoids overestimating protection that might arise from especially high titers in a subset of recently infected individuals, but for robustness, we also estimated the relative susceptibility according to the geometric mean titer (GMT) to each clade, with lower GMT implying higher susceptibility. With both measures, the population-level susceptibility was estimated by weighting the susceptibility of different age groups according to their proportion in the population (Methods). We initially assumed 1:80 NA titer by ELLA to be the 50% protective titer and later explored other assumptions.

We collected serum samples from May to August of 2017 from the University of Pennsylvania BioBank and Children's Hospital of Philadelphia [19] (Methods; Fig S1). Samples from children were primarily obtained for lead testing. Adults with certain health conditions were excluded. No information on vaccination status was available. We measured neutralizing titers to the 8 HA and 2 NA representing common current or recently circulating H3N2 clades (Fig 1A left for HA and Fig S2A left for NA).

The genetic diversity of the H3N2 HA was high in 2017. Two distinct clades, 3C.2A and 3C.3A, which last shared a common ancestor in 2012, circulated globally. These clades differed by amino acid substitutions in epitopes A and B (Fig 1B, C) and in non-epitope sites. Clade 3C.2A had gained a potential glycosylation site at epitope B (K160T; H3 numbering used throughout) and had lost a glycosylation motif at epitope A (N144S). Clade 3C.3A had lost a different glycosylation site in epitope A (T128A) (Fig 1B, C).

We picked at least one reference virus for each clade, further splitting clade 3C.2A into subclades 3C.2A1, 3C.2A2, and 3C.2A3. We chose as the reference virus for basal clade 3C.2A the H3N2 vaccine strain in the 2016-2017 season (A/Hong Kong/4801/2014). For subclades 3C.2A1, 3C.2A2, and 3C.2A3, we picked 3, 2, and 1 reference viruses, respectively, each carrying subclade-specific nonsynonymous substitutions and (for 3C.2A1 and 3C.2A2) potentially important amino acid polymorphisms within the subclade. Each subclade contained an epitope A substitution compared to the 3C.2A reference strain (Fig 1B, C). Notably, one reference virus for clade 3C.2A1 (virus 3C.2A1-3) had the T135K mutation, which removes a glycosylation motif in epitope A. For clade 3C.3A, we picked one reference virus.

For all reference viruses, an undetectable HA titer (titer of 1:10) was the most common HA titer in all age groups except children 5-17 years old (Figs 2A, S3). Most people over 4 years old had detectable NA titers ($1:\geq 20$) (Figs 3A, S4). Even though detectable antibody to H3N2 HA or NA is expected among older children and adults, who have been infected and possibly vaccinated with H3N2, surprisingly large variation was observed among individuals of the same age (Figs 2A, 3A). These are likely genuine differences in titer, as technical replicates had high agreement.

The population-level relative susceptibility inferred using the 1:40 protective cutoff in HA titer was highest to the 3C.2A2 subclade, specifically the group of viruses with 261Q in epitope E (3C.2A2-2 reference strain; the susceptibility to 3C.2A2-2 is higher than the susceptibility to 3C.2A2-1 and 3C.3A, both bootstrap $p < 0.001$), followed by the rest of the 3C.2A2 subclade (3C.2A2-1 reference strain; the susceptibility to 3C.2A2-1 is higher than the susceptibility to 3C.2A1-1, bootstrap $p < 0.05$) and the 3C.3A clade ($p < 0.01$ for the same test; Fig 2B, left panel) (Methods). Using GMTs or alternative titer cutoffs also suggested the susceptibility was highest to the 3C.2A2-2 reference strain followed by 3C.2A2-1 (Figs S5-S8). The greatest protection or lowest susceptibility in the population by both measures was to strains of the 3C.2A1 subclade

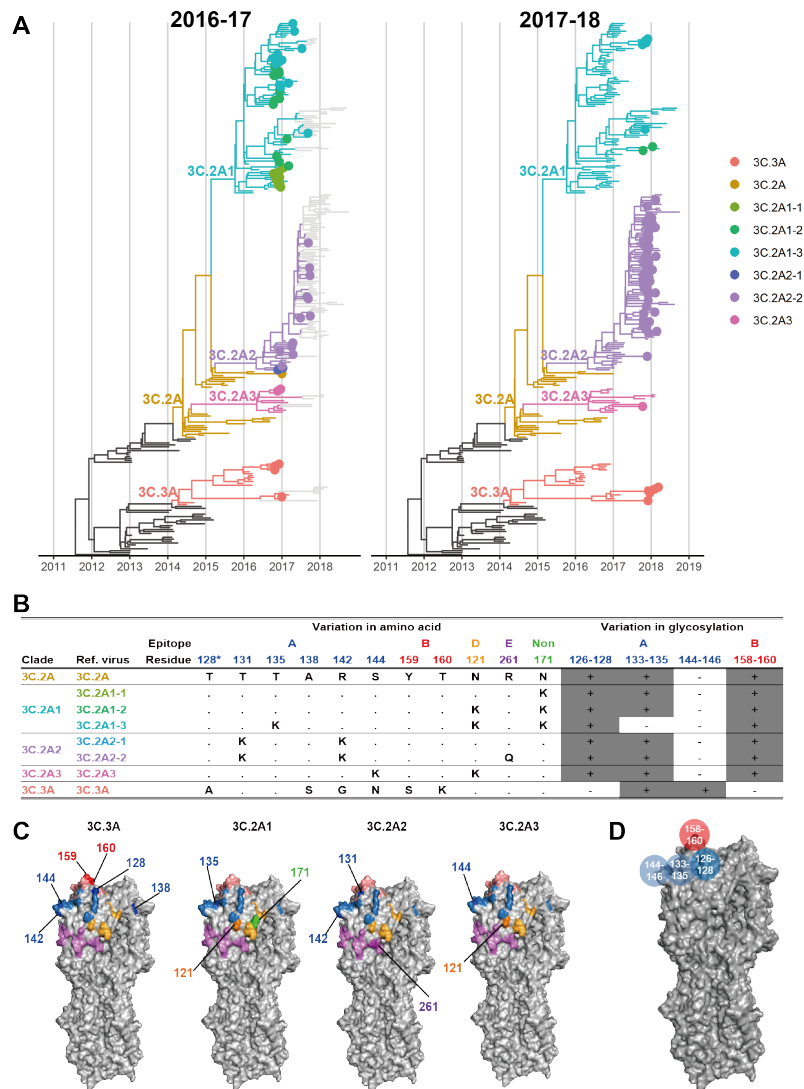


Fig 1. Reference viruses representing co-circulating H3N2 clades during the 2016-2017 season. A. Genealogies of H3N2 HA through the 2016-2017 (left) and 2017-2018 season (right). Branches are colored by clade. Tips are shown as filled circles if collected in North America during the most recent season. B. Amino acid and glycosylation site variation among reference viruses. Clades 3C.3A and 3C.2A diverge at additional non-epitope sites (not shown). Residue 128 belongs to antigenic site B, but the substitution T128A results in loss of glycosylation on residue 126 of epitope A. Therefore, we show residue 128 in epitope A and in the glycosylation site involving residues 126-128, following [1]. C. Variable residues among the reference viruses are shown on the H3 structure of A/Aichi/2/1968 (Protein Data Bank: 1HGG) and colored by epitope as in panel B. For each strain, residues differing from 3C.2A are numbered and darker in color. D. Glycosylation sites used in the model shown on the H3 structure.

with 135K in epitope A and 121K in epitope D (reference strain 3C.2A1-3) and subclade 3C.2A3 (reference strain 3C.2A3).

Consistent with simple predictions, clade 3C.2A2 dominated in North America in the 2017-18 season (Fig 1A, right panel; Fig 2B, gray arrows), followed by 3C.3A. To

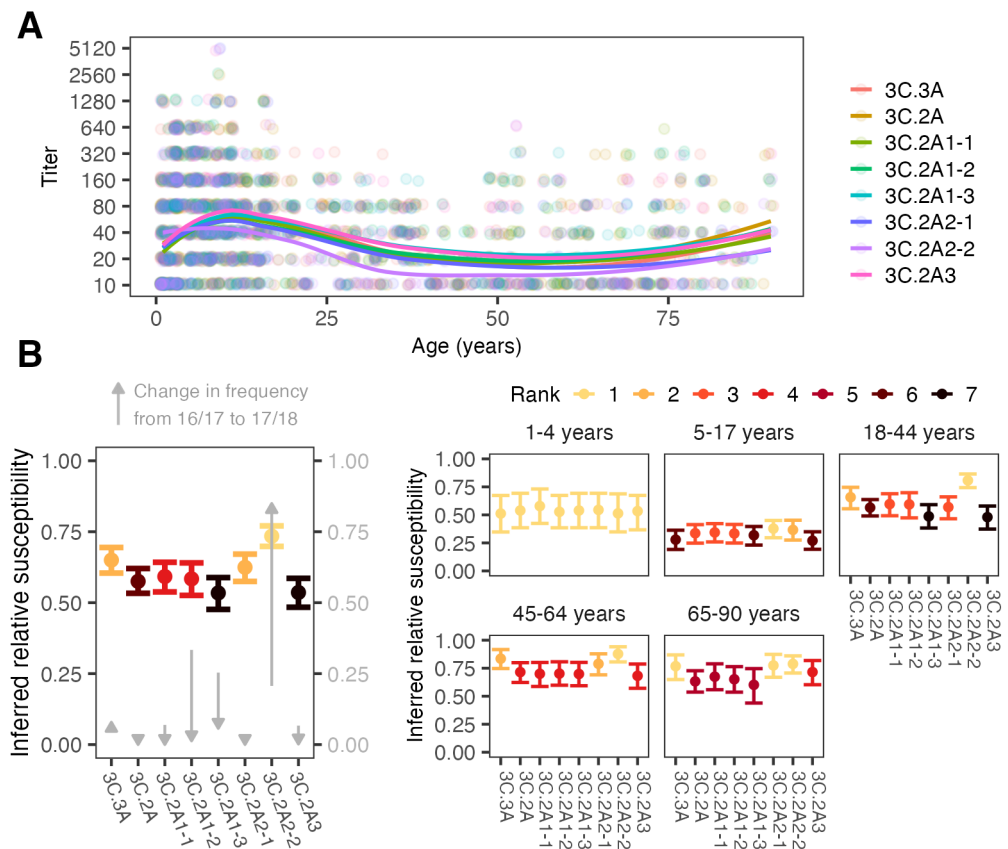


Fig 2. Antibody titers and inferred relative susceptibilities to co-circulating H3 strains show variability by strain and age group. A. FRNT titers with points jittered slightly along the x- and y-axes. Lines are locally estimated scatterplot smoothing (LOESS) curves of geometric mean titers (smoothing parameter $\alpha = 0.75$, degree = 2). B. Inferred relative susceptibility and the susceptibility rank of each reference strain for the whole population (left) and by age group (right). The bars indicate 95% CIs obtained from bootstrapping. A lower rank indicates significantly higher susceptibility: the strain to which susceptibility is highest has rank 1, and strains are tied in rank if their relative susceptibilities do not differ significantly. The gray arrows show how the clades changed in frequency in North America between the 2016/17 and 17/18 seasons.

assess dominance, influenza sequences were downloaded from GISAID [20]. We assigned 9913 sequences collected in North America during the 2016-2017 and 2017-2018 influenza seasons to reference viruses based on their genetic similarity at segregating sites and found that the frequency of sequences genetically similar to reference strain 3C.2A2-2 in clade 3C.2A2 increased from 21% in the 2016-2017 season to 85% in the 2017-2018 season (Fig 2B; Fig S9). Clade 3C.3A increased from 6% to 8% over that period. We did not find a perfect correlation between the rank measured by inferred relative susceptibilities and rank by relative growth: despite having higher estimated susceptibility than subclade 3C.2A1 (3C.2A1-3), subclade 3C.2A1 (3C.2A1-2) experienced a more severe decline. Although the available sequences are not generated from any kind of systematic surveillance program and thus may not accurately reflect relative prevalence, trends were stable regionally (Fig S9A). The results suggest that

population-average anti-HA neutralizing titers reflect strain fitness, but that other factors may be relevant for detailed predictions.

We next measured antibody responses to NA reference strains representing the NAs of clades 3C.2A and 3C.2A2 (“3C.2A (NA)” and “3C.2A2-2 (NA)”, respectively) (Fig 3A) [19]. The two reference viruses differ by 7 amino acid substitutions in the NA head: 176, 245, 247, 329, 334, 339, and 386. We first estimated population-level relative susceptibilities to the two clades using a 1:80 protective cutoff (Fig 3B, left panel). Similar to our findings for HA, serological responses to NA indicated higher susceptibility to 3C.2A2-2 (NA) than to 3C.2A (NA) across all age groups. Using GMT or alternative NA titer thresholds also suggested higher susceptibility to 3C.2A2-2 (Figs S10-S12). Because only two NA reference strains were used, we cannot conclude if anti-NA titers would have predicted clades’ rank frequencies as accurately or perhaps better than titers to HA, but they are generally consistent with higher susceptibility to the 3C.2A2 clade compared to the ancestral 3C.2A.

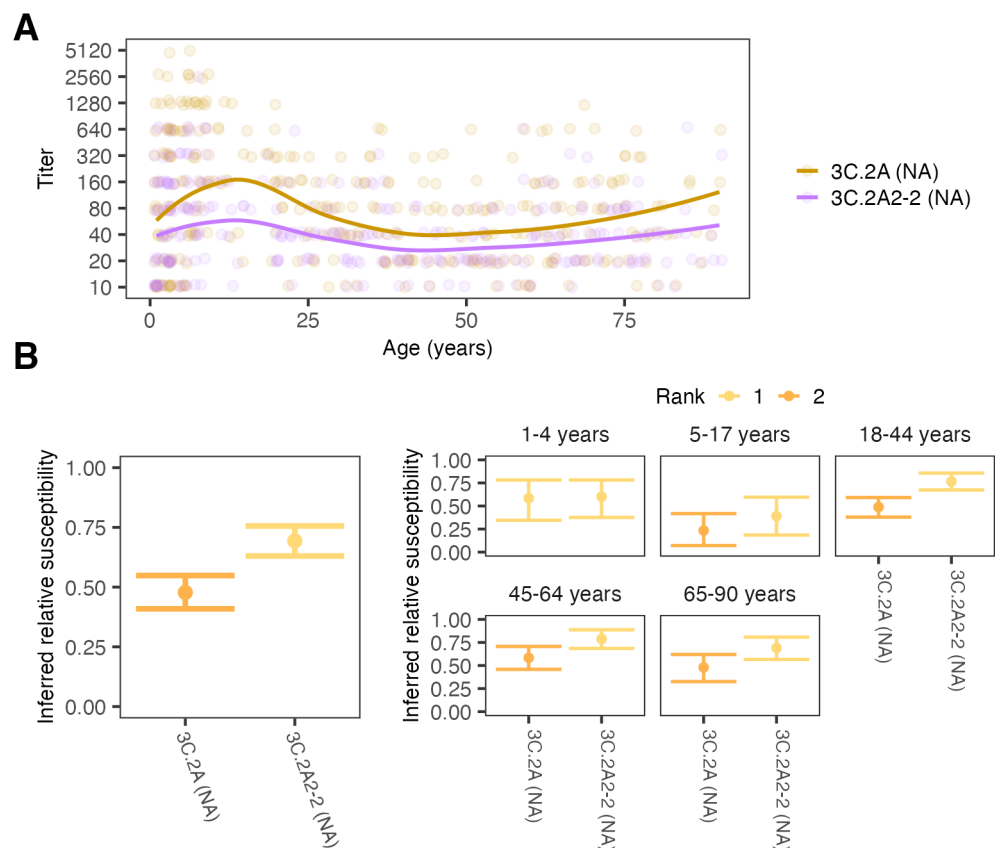


Fig 3. Antibody titers and relative susceptibilities to co-circulating N2 stains show differences by strain and age group. A. ELLA titers with points jittered slightly along the x- and y-axes. Lines are locally estimated scatterplot smoothing (LOESS) curves of geometric mean titers (smoothing parameter $\alpha = 0.75$, degree = 2). B. Inferred relative susceptibility and its rank for each NA for the whole population (left) and by age group (right). A lower rank indicates significantly higher susceptibility. Strains are tied in rank if their relative susceptibilities do not differ significantly.

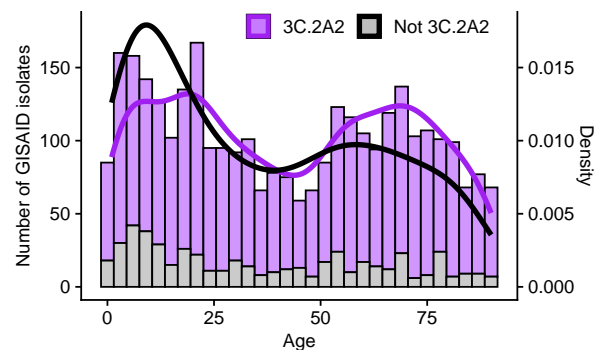


Fig 4. Host age distribution of H3N2 isolates sampled in the United States during the 2017/18 season. We obtained isolate data from GISAID. Viruses from clade 3C.2A2 are shown in purple, and viruses from all other clades combined are shown in gray. 3C.2A2 isolates were more common across all ages than viruses from other clades combined, but viruses from other clades were proportionally more common in children relative to adults.

Age groups differ in their susceptibility to and relative attack rates with different H3N2 clades

Because age-specific patterns of antibody titers have been associated with age-specific infection risk [5, 21], we estimated relative susceptibility to each clade within each age group and measured correlations with their estimated relative clade-specific infection rates in the 2017-2018 influenza season. Age groups differed slightly in their expected susceptibilities to different clades of H3N2 (Fig 2B, right panel). Assessed by their anti-HA titers, children 1 to 4 years old appear equally susceptible to all reference viruses. The anti-HA titers of older children and adults showed heightened susceptibility to the 3C.2A2 clade: titers from 5- to 17-year-olds indicated the highest susceptibility to the basal 3C.2A2 clade (reference strain 3C.2A2-1) followed closely by reference strain 3C.2A2-2, the 3C.2A2 subclade with the R261Q substitution. People aged 18-64 y had pronounced susceptibility to reference strain 3C.2A2-2 compared to other clades. All age groups with previous influenza experience (≥ 5 y) were least susceptible to clades 3C.2A1 and 3C.3A (reference strains 3C.2A1-3 and 3C.2A3, respectively). Interestingly, 5- to 17-year-olds were least susceptible to 3C.3A, while adults were relatively susceptible to 3C.3A. We also found that children 1 to 4 years old had comparable susceptibility to the two clades of NA, and all older age groups demonstrated greater susceptibility to the 3C.2A2 clade (3C.2A2-2 (NA)) (Fig 3B, right panel).

We evaluated whether the age-associated trends in relative susceptibilities to different clades in the summer of 2017 were mirrored in their relative rate of infection with each clade in the 2017-2018 influenza season. Due to lack of systematic surveillance, unbiased estimates of attack rates by clade do not exist for this population. We nonetheless examined the ages associated with sequences uploaded into GISAID to approximate the proportion of infections caused by each clade in each age group. Because the 3C.2A2 clade dominated in the 2017-2018 season and all but the youngest age groups showed particularly high susceptibility to this clade, we expected clade 3C.2A2 to be the most frequent within each age group. This is what we found (Fig 4, Figs S13-S14). However, we observed that children < 5 y old, who seemed approximately equally susceptible to all clades by HA and NA, had a relatively lower proportion of 3C.2A2 infections compared to adults (chi-square test, $p < 0.001$). Children 5-17 y old, who were only slightly more susceptible to 3C.2A2 than other clades, also had a lower proportion of 3C.2A2 infections compared to adults ($p < 0.001$). Consistent with our observation that

18- to 64-year-olds were disproportionately susceptible to clade 3C.2A2, the age distribution of that clade was slightly more skewed toward adults compared to non-3C.2A2 clades, which were more common in children (Fig 4).

Correlations between titers to different strains vary by age, suggesting age-associated differences in epitope targeting

We next investigated the correlations in titers to different clades (Fig 5A): Do individuals with high titers to 3C.3A tend also to have high titers to 3C.2A2, for instance? Closely correlated titers to related viruses suggest that individuals might target epitopes conserved among them, which could underlie differences in neutralizing titers between age groups. (High titers to multiple strains could also indicate recent infections or immunizations with each of those strains and responses to their *non*-shared epitopes, although H3N2 infections typically occur at least several years apart and are less frequent in adults compared to children [17, 22, 23].) Aside from providing insight into the specificity of the antibody response, understanding the structure of titers within the population might lead to improved estimates of selective pressures on viruses. For instance, weakly correlated titers to different clades suggest a population with more heterogeneous immunity, which can affect viral coexistence, vaccination thresholds, and other dynamics [24–27].

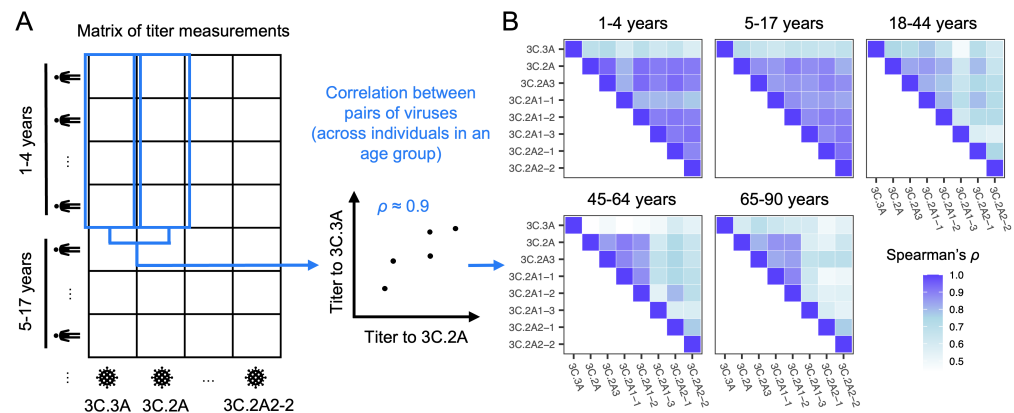


Fig 5. Correlations in titers to different clades A. Schematics demonstrating how we calculated the correlation in titers to each strain pair across people in each age group. For these analyses, we randomly imputed continuous titer values between consecutive dilutions (e.g., a titer of 160 was replaced by a continuous value between 160 and 320 drawn with uniform probability). For each pair of viruses and each age group, we report the average Spearman correlation coefficient across 1000 replicate imputations. We removed individuals with undetectable titers across all reference viruses. B. Correlations between titers to different strains differ by age group, suggesting age-dependent patterns of epitope targeting.

After removing individuals with undetectable titers to all strains from the analysis, we found that the strength of correlation differed by age group and virus pair. In general, titers to all the reference viruses but 3C.3A were highly correlated in children and less correlated in older ages (Figs 5B, S15). This suggests that children target epitopes common to many reference viruses or have been infected by close relatives of each, whereas older age groups target epitopes conserved among only a subset. Results hold when age groups are chosen to span an equal number of years (Fig S16), showing that the weaker correlations in adults 18-44 y, 45-64 y, and 65-90 y are not due simply

to the groups' relative sizes or the diversity of childhood exposures represented in them. In contrast to children and younger adults, 45- to 90-year olds have their highest titers to a distinct subset of reference strains (3C.2A, 3C.2A3, 3C.2A1-1, and 3C.2A1-2) that share many epitope A residues not conserved in the other strains (e.g. 128T, 131T, 135T, 138A, 142R), suggesting antibody responses focused on this antigenic region. In all age groups, titers to 3C.3A were least correlated with titers to other viruses (Fig S17). This might be explained by reduced exposure to 3C.3A viruses, especially in adults (Fig S3), and/or the targeting of sites on 3C.2A clade viruses that are not shared with 3C.3A (e.g., sites 128, 138, 142, and 144 in epitope A, the last potentially masked by a glycan in 3C.3A).

NA-focused antibody responses are more common in adults

We next compared HA and NA antibody titers. Young and middle-aged adults have lower titers to both HA and NA compared to other age groups (Figs 2A, 3A). The fraction of individuals with detectable HA titers decreases with age (Fig 6; logistic regression, $p < 0.01$; Methods), and the fraction of people with detectable titers to only NA increases with age (logistic regression, $p < 0.001$). This pattern suggests a skew toward higher NA relative to HA titers in adults compared to children, which could arise if ELLA is more sensitive than FRNT. To limit the influence of assay sensitivity, we fitted regressions linking NA to HA titers only to people with detectable HA titers in each age group. For one of the strains (3C.2A2-2) but not the other (3C.2A), we found higher NA titers for the same HA titer in adults relative to children (Fig S18). The data suggest that age-specific variability in antibody specificity extends to NA as well as HA.

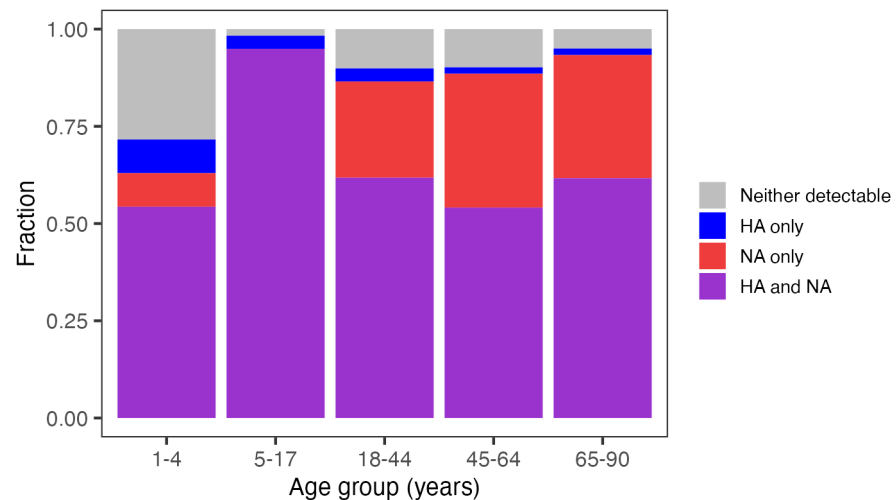


Fig 6. Proportion of people by age group with detectable antibodies to HA, NA, or both. We considered that a person had detectable antibodies if they had a titer $\geq 1:20$ to at least one of the reference strains used in the assay.

Discussion

Current approaches for forecasting influenza and mapping its antigenic evolution rely on antigenic distance measurements that do not always reflect immunity in the human population. Understanding the size of the difference and how much it matters would require analyzing discrepancies between antibody titers and traditional ferret-based

measurements over multiple years from representative cross-sectional surveys in different populations. Multiple years of sampling could also resolve the subpopulations and measures needed to assess immune selective pressures and compare them to other factors influencing fitness and growth rates [3, 28–32]. Here, as a proof of principle, we demonstrate how human sera can reveal differences in expected susceptibility to circulating HA clades that predict the clade circulating in the following season. The sera also demonstrate high heterogeneity in neutralizing titers by age. The consequences of these differences remain unclear, but they partly predict the relative susceptibility of different age groups to different clades in 2017-2018.

These findings might have been useful before the 2017-2018 influenza season in the United States, which was severe, causing approximately 41 million illnesses and 52,000 deaths [33]. The moderate effectiveness of the vaccine that season was attributed to egg adaptations that created a mismatch to circulating strains [34]. The H3N2 component of the vaccine, A/Hong Kong/4801/2014 (a basal 3C.2A strain), had been unchanged from the previous season because no clear indication of antigenic evolution was apparent by early 2017, when vaccine strain composition for the Northern Hemisphere was decided; the 3C.2A2 clade was nonetheless noted to be growing quickly [35]. Over 90% of 3C.2A2 strains isolated from the United States in the 2017-2018 season were described as well inhibited by ferret antisera raised against the cell-propagated reference virus for A/Hong Kong/4801/2014 (A/Michigan/15/2014), and in early 2018, the H3N2 vaccine component was updated only to avoid egg adaptations, not because antigenic change had been detected [36]. (Notably, a later investigation of H3N2 viruses circulating in Japan in 2017-2018 did detect antigenic differences between 3C.2A and 3C.2A2 strains using ferret antisera [37].) Our study shows that antigenic changes in fact were detectable in human sera by at least the summer of 2017, and they could predict the dominance of 3C.2A2 and the populations more susceptible to infection. Consistent with this prediction, Ursin et al. found that individuals testing positive for H3N2 in the 2017-2018 season had consistently lower serum neutralization titers to the 3C.2A2 clade than those testing negative—with no differences between the two groups' titers to cell-grown A/Hong Kong/4801/2014—underscoring the consequences of these neutralization differences for protection and potentially transmission [38].

Measurements of population immunity could be substantially more efficient and useful for forecasting if we understood exactly what to measure and in whom. Antibody titers to HA have been an established correlate of protection for half a century, and antibodies to NA for approximately a decade. The generally good concordance between hemagglutination inhibition assays and microneutralization suggest neutralization is a decent surrogate, but it is unclear how much protection each immune response confers in different people and whether measures of neutralization, total binding, antibody-dependent cellular cytotoxicity or phagocytosis activity, and/or potentially other B- or T-cell or innate immune measures could improve estimates of relative susceptibility. Correlates likely vary in quality over time: large discrepancies between binding antibody titers and neutralization or protection have been reported and are associated with priming to other strains [19, 39, 40]. Furthermore, an accurate evolutionary forecasting model would be grounded on correlates of transmission rather than simply protection against disease. It might also be important to weight immunity in different subpopulations differently: for instance, an infected child might be more likely to transmit than an infected adult. These considerations would affect the need to sample particular populations, such as unvaccinated members of certain age groups. Over larger geographic scales, samples from typical “source” populations may be better predictors or provide a longer lead time than populations that export fewer strains [41–43].

Our data revealed variation in antibody titers between age groups that are broadly consistent with influenza's epidemiology but lack precise explanation. Children over five

years old had the highest geometric mean titers to all strains. This is consistent with the high attack rates in school-age children [44, 45] and other studies that report young children having the high titers to recent strains [46]. Children also had relatively high vaccination coverage (approximately 59% in the 2016-2017 season in children ≥ 6 mos.) compared to younger adults [47]. These two factors might interact, since recent infection can boost vaccine immunogenicity [48, 49]. The relatively high vaccination coverage in the oldest age group (approximately 65% in adults ≥ 65 y) might explain their higher titers compared to middle-aged and younger adults. Surprisingly, most middle-aged individuals had no detectable neutralizing antibodies to the HAs of circulating H3N2 clades. These results suggest antibodies to HA may be a poor correlate of protection in this age group and complement other reports of their discrepant anti-HA titers [19, 50]. We also observed that unlike children, adults had highly correlated titers to a subset of 3C.2A strains suggestive of antibody responses focused on epitope A. Welsh et al. [32] recently applied deep mutational scanning to H3N2 and sera isolated in 2020. They found that compared to children, adults derived a larger fraction of their neutralizing response to epitope A, which had been immunodominant during the early 1990s [51].

Although not presented here, we fitted dozens of generalized linear mixed models to attempt to explain individuals' titers to these strains as a function of potential recent infections, vaccinations, early infections with strains with homologous epitopes, and individual-specific biases in the contributions of different epitopes to titers. These models were inconclusive, suggesting a need for more careful study of how a person's antibody titers change over time in response to exposures, and potentially with some deconvolution of the response to specific epitopes [52].

Our results demonstrate the feasibility of detecting significant differences in neutralizing titers to different H3N2 clades in a convenience sample of few hundred sera. This approach could entail substantial improvements over the use of ferret sera, which do not capture the immune history and heterogeneity in the human population [32]. Testing improved sampling protocols and forecasting models, which would be facilitated by the existence of global blood banks [53, 54] and common standards [55], might yield rapid advances in forecasting not only the dominant clade but also potentially the dominant subtype, and ideally at longer lead times than shown here. If linked to other forms of surveillance, cross-sectional sera might also help predict season severity and attack rates by age, as suggested here. The same samples and similar models might also predict the dynamics of other pathogens.

Materials and methods

Serological data

Sera from 489 individuals were collected between May and August of 2017 from the Children's Hospital of Philadelphia (1- to 17-year-olds) and from the University of Pennsylvania Health care system via Penn BioBank (18- to 90-y-olds), as reported on [19]. Serum samples were originally collected from children for lead testing, and leftover de-identified samples were then used for this study. The Penn BioBank routinely collects serum samples from individuals visiting the University of Pennsylvania Health care system. We did not include samples collected by the Penn BioBank from donors who had a pregnancy reported during the last 9 months, who had a medical history of cancer or organ transplantation, or who had a reported infectious disease within the previous 28 days. The study complied with all relevant ethical regulations and was approved by the Institutional Review Board of the University of Pennsylvania. Leftover de-identified samples collected at CHOP were considered exempt from human research (exemption 4) since the samples were leftover discarded samples that were

completely de-identified before our research team received them. 334

Foci reduction neutralization tests (FRNT) were performed on 437 individuals' sera 335
using 8 viruses (3C.3A, 3C.2A, 3C.2A1-1, 3C.2A1-2, 3C.2A1-3, 3C.2A2-1, 3C.2A2-2 and 336
3C.2A3), and enzyme-linked lectin assays (ELLA) were performed on 352 individuals 337
using NAs from two strains (3C2.A (NA) and 3C.2A2-2 (NA)) as described in [19]. HA 338
and NA test virus used for 3C.2A is A/Colorado/15/2014, which is a reference virus for 339
vaccine strain for the 2016-17 season and is used as a wild type strain to make viruses 340
within 3C.2A. There were no significant titer differences between batches. 341

We visualized titers to different reference strains by age using locally estimated 342
scatterplot smoothing (LOESS) curves with a smoothing parameter $\alpha = 0.75$ and 343
degree = 2. 344

Genealogy of H3N2 and clade-specific amino acid substitutions 345

Prior to our analyses, we downloaded all available H3N2 HA and NA sequences from 346
the 2012-13 season through the 2017-18 season from GISAID (accessed in 01/10/2022). 347
Sequences were aligned using MAFFT 7.310 [56]. 348

We downsampled sequences to construct the phylogeny. From the 2012-13 through 349
the 2015-16 season, we sampled 20 sequences per season. For the 2016-17 and 2017-18 350
season, 100 sequences were sampled per season. The GISAID accession IDs and 351
metadata of the sequences used for the analysis are available in the Supporting 352
Information. We used BEAST 2.6.6 to reconstruct the genealogy [57] with a HKY 353
substitution model [58] with a four-category gamma site model with 4 and a log normal 354
relaxed clock. A coalescent Bayesian Skyline tree was used for the prior. We ran the 355
chain for 50 million steps and saved every 1000 trees, using 5 million steps as burn-in. 356
The maximum clade credibility tree was obtained using TreeAnnotator 2.6.6 version. 357

To visualize the tree, we used the R package ggtree 3.0.4 [59]. The trees were colored 358
by clade. For the genealogy of the 2016-17 season, only tips of sequences collected in 359
North America during the 2016-17 season were shown; these circled tips are colored 360
according to their assigned clade. For sequences collected in other areas or seasons, only 361
branches were shown. Similarly, for the genealogy of the 2017-18 season, only sequences 362
collected in North America in that season are shown as colored circles. 363

Sequence samples were assigned to reference viruses according to reference 364
virus-specific mutations at segregating sites, shown in Fig 1B. Here, sequences were 365
assigned to each reference virus rather than the subclade represented by each reference 366
strain. This is because sequences with 171K, 121K, and 135K, such as reference strain 367
3C.2A1-3, occur multiple times in clade 3C.2A1, and thus these sequences do not belong 368
to any one subclade of 3C.2A1. Additionally, within a subclade, mutations at 369
segregating sites occur so that a sequence in the same clade as a reference virus may not 370
share the same genetic characteristics. Due to frequent mutation at residue 142 across 371
most of clades, we allowed residue 142 to have any amino acid across most of clades, 372
except for clade 3C.2A2, which has a clade-specific 142K substitution. We confirmed 373
that all the sequences assigned to a reference virus fall in the same subclade as the 374
reference virus. 375

Clade-specific substitutions were colored by epitope on the H3 structure using 376
PyMOL version 2.3.3 [60]. 377

Inferring relative susceptibility from titers 378

We defined the relative susceptibility to a strain as the fraction of the population with 379
titers to that strain below some threshold (here, initially 40 for HA and 80 for NA). To 380
estimate this fraction for the U.S. population, we first computed the fraction below the 381
threshold in different age bins in our sample. We then computed a weighted sum in 382

which the weights were the projected fractions of the U.S. population in each age bin in 2017. This adjustment was necessary to obtain a representative estimate of immunity in the overall population, since sample availability varied by age. Suppose S_i is the fraction of the overall U.S. population susceptible to strain i and $\hat{S}_{i,a}$ is the fraction of serum samples in age bin a with titers to i below the threshold. Then

$$S_i = \sum_a \hat{S}_{i,a} \times f_a, \quad (1)$$

where f_a is the projected fraction of the U.S. population in age bin a in 2017. We started with age bins at the resolution of one year using data from [61]. When there were fewer than eight titer measurements for a year of age, that age was grouped with the next year of age to form a larger bin, and so on until the bin contained at least eight titer measurements.

To estimate the susceptible fraction for a particular age group in the U.S. population, we simply computed the sum above across age bins contained in that larger group, divided by the fraction of the U.S. population in those bins combined. For instance, to calculate the susceptible fraction among 5-17 year-olds in the U.S., we used

$$S_i^{5-17} = \frac{\sum_{a \in 5-17} \hat{S}_{i,a} \times f_a}{\sum_{a \in 5-17} f_a}. \quad (2)$$

We found that using alternate titer thresholds for HA (Figs S6, S7, and S8) and NA (Figs S11 and S12) resulted in consistent relative susceptibilities across strains.

We alternatively measured relative susceptibility by the geometric mean titer (GMT). The GMT was weighted analogously by the population fraction of each age bin. Because lower GMTs correspond to higher susceptibility, we used a reverse scale when showing the relative susceptibility by GMT.

To test for meaningful differences in relative susceptibilities, we bootstrapped individuals to determine if the difference in inferred relative susceptibilities between two viruses was significantly greater than zero [62]. For each age bin, individuals were resampled 1000 times with replacement, and the fraction of individuals susceptible to each virus was calculated. For a given pair of viruses, we defined the relative susceptibility difference observed in the data as $\hat{\theta}$. The bootstrap value of $\hat{\theta}$, $\hat{\theta}^*$, was obtained 1000 times by resampling individuals. Then we obtained the null distribution of $(\hat{\theta}^* - \hat{\theta})$ and calculated the probability (p) of observing $\hat{\theta}$ or a greater value under this null distribution. If $p < 0.05$, the relative susceptibility difference is significantly greater than zero, i.e., susceptibility to the first virus significantly exceeded that to the second virus. For a given virus, we perform this comparison against all other viruses and counted the number of significant results. The more significant results, the lower the rank (closer to 1) of the relative susceptibility to a virus. We used the same approach and significance level for all other bootstrapping analyses.

Frequencies of subclades

To calculate the frequencies of different subclades in the 2016-17 and 2017-18 seasons, we downloaded sequences from GISAID on January 10, 2022, and assigned sequences to each subclade using the same method as was used to construct the genealogy. Because there were few sequences from Philadelphia, we calculated subclade frequencies in three different ways, using sequences collected from North America, United States, or the northeastern US. We considered Region 1, Region 2, and Region 3 of the U.S. Outpatient Influenza-like Illness Surveillance Network (ILINet, [47]) as the Northeastern U.S. states. These states are Connecticut, Maine, Massachusetts, New Hampshire,

Rhode Island, Vermont, New Jersey, New York, Delaware, the District of Columbia, Maryland, Pennsylvania, Virginia, and West Virginia. Region 2 of ILINet includes Puerto Rico and the Virgin Islands, but we excluded them from the analysis of the northeastern U.S. For estimates derived from North American sequences, we used 4488 and 5425 sequences from the 2016-17 and 2017-18 seasons, respectively. For the US, 3707 and 3782 sequences were used. For the northeastern US, 782 and 676 sequences were used. The GISAID accession IDs and metadata of the sequences used for the analysis are available in the Supporting Information.

Correlations between titers to different strains

For each age group and pair of viruses, we calculated Spearman's ρ using the `cor` function in R. To account for the interval censoring of titer data and the presence of a lower limit of detection, we randomly imputed continuous titer values and calculated the average regression coefficient across 1000 imputations. Titers below the lower limit of detection (1:20) were uniformly sampled between the lowest possible titer (1:1, indicating no dilution) and 1:20. Titers at or above the limit of detection were randomly sampled from the interval between the recorded titer and the next dilution (e.g., a recorded titer of 1:160 was imputed a value between 1:160 and 1:320, with uniform probability).

For each virus pair, we tested the difference in correlation coefficients between the youngest age group and each other age group by bootstrapping (Fig S15).

We also used bootstrapping to evaluate differences in correlation coefficients between viral pairs within an age group. For each virus pair, we did a series of bootstrap tests comparing the pair's correlation coefficient with the coefficient for each of the other pairs. Then, for each virus pair, the number of tests in which the pair's correlation was significantly weaker than that of other pairs within the group was counted. In each age group, there are 28 virus pairs whose correlation coefficient was calculated. One of the pairs, for example, is 3C.3A and 3C.2A, and this pair's correlation coefficient is compared with the other 27 correlation coefficients of other virus pairs. The 3C.3A v. 3C.2A pair's correlation was weaker than 15 other pairs' correlations. This number of tests in which the pair's correlation was significantly weaker than other pairs within the group is shown as the color intensity of the heat map of Fig S17.

For these bootstrapping procedures, we randomly imputed continuous titers once for each bootstrap replicate.

Comparison of HA and NA antibodies

An individual was determined to have detectable HA antibody if there was at least one detectable HA titer to HA reference viruses (3C.3A, 3C.2A, 3C.2A1-1, 3C.2A1-2, 3C.2A1-3, 3C.2A2-1, 3C.2A2-2, and 3C.2A3). An individual was determined to have detectable NA antibody if there was at least one detectable titer to a NA reference virus (3C.2A (NA) and 3C.2A2 (NA)). For both HA and NA, titers ≥ 20 were defined as detectable.

We performed logistic regression using the `glm` function in R to test if the fraction of individuals with detectable HA antibody, detectable NA antibody, detectable HA antibody (only), and detectable NA antibody (only) changes with age.

To investigate changes with age in NA titer levels relative to HA titers levels, we fitted linear regressions linking NA titers to HA titers for each age group. We excluded people with undetectable HA titers from these regression fits, so that shifts toward higher NA relative to HA with age could not be attributed to a higher fraction of people with undetectable HA titers.

Acknowledgments

We thank Ed Baskerville for extensive help with analytic models that were ultimately not included in this paper but shaped the direction of the work. We thank anonymous reviewers, Manon Ragonnet-Cronin, Richard Neher, Jesse Bloom, and Tal Einav for comments on the manuscript. We gratefully acknowledge all GISAID data contributors, i.e., the authors and their originating laboratories responsible for obtaining the specimens, and their submitting laboratories for generating the genetic sequence and metadata and sharing via the GISAID Initiative, on which this research is based.

Author contributions

Conceptualization–SC, SH. Formal analysis–KK, MCV, SC. Investigation–SG, MW. Supervision–SC, SH. Writing, original draft preparation–KK, MCV, SC. Writing, review and editing–KK, MCV, SG, SH, SC.

Competing interests

The authors declare they have no competing interests.

Funding

This project has been funded in part with Federal funds from the National Institute of Allergy and Infectious Diseases, National Institutes of Health, Department of Health and Human Services under CEIRS contract HHSN272201400005C (to SC) and CEIRR contract 75N93021C00015 to SC and SH and 1R01AI108686 to SH. The content is solely the responsibility of the authors and does not necessarily represent the official views of the NIAID or the National Institutes of Health.

Data and software availability

All data and code used in this analysis are available at https://github.com/cobeylab/population_immunity_predicting_flu.git. The Sequences obtained from GISAID and used for the analyses can be accessed using the accession IDs provided in Supporting information.

References

1. Jorquera PA, Mishin VP, Chesnokov A, Nguyen HT, Mann B, Garten R, et al. Insights into the antigenic advancement of influenza A (H3N2) viruses, 2011–2018. *Scientific reports*. 2019;9(1):1–16.
2. McCauley J, Daniels R, Lin Y, Xiang Z, Gregory V, Whittaker L, et al. Report prepared for the WHO Annual Consultation on the Composition of Influenza Vaccine for the Northern Hemisphere 2017-2018. The Crick Worldwide Influenza Centre (WIC), WHO CC for Reference & Research on Influenza. 2017;.
3. Huddleston J, Barnes JR, Rowe T, Xu X, Kondor R, Wentworth DE, et al. Integrating genotypes and phenotypes improves long-term forecasts of seasonal influenza A/H3N2 evolution. *eLife*. 2020;9. doi:10.7554/elife.60067.

4. Wentworth DE. Vaccines and Related Biological Products Advisory Committee October 6, 2022 Meeting Presentation—Global Influenza Virus Surveillance and Characterization; 2022. Available from: <https://www.fda.gov/media/162115/download>.
511
512
513
514
5. Linderman SL, Chambers BS, Zost SJ, Parkhouse K, Li Y, Herrmann C, et al. Potential antigenic explanation for atypical H1N1 infections among middle-aged adults during the 2013–2014 influenza season. *Proceedings of the National Academy of Sciences*. 2014;111(44):15798–15803.
515
516
517
518
6. Cobey S, Gouma S, Parkhouse K, Chambers BS, Ertl HC, Schmader KE, et al. Poor Immunogenicity, Not Vaccine Strain Egg Adaptation, May Explain the Low H3N2 Influenza Vaccine Effectiveness in 2012–2013. *Clinical Infectious Diseases*. 2018;67(3):327–333. doi:10.1093/cid/ciy097.
519
520
521
522
7. Fonville JM, Fraaij PLA, de Mutsert G, Wilks SH, van Beek R, Fouchier RAM, et al. Antigenic Maps of Influenza A(H3N2) Produced With Human Antisera Obtained After Primary Infection. *Journal of Infectious Diseases*. 2015;213(1):31–38. doi:10.1093/infdis/jiv367.
523
524
525
526
8. Davenport FM, Hennessy AV, Francis Jr T. Epidemiologic and immunologic significance of age distribution of antibody to antigenic variants of influenza virus. *The Journal of experimental medicine*. 1953;98(6):641–656.
527
528
529
9. Francis T, Davenport F, Hennessy A. A serological recapitulation of human infection with different strains of influenza virus. *Transactions of the Association of American Physicians*. 1953;66:231–239.
530
531
532
10. de St Groth SF, Webster R. Disquisitions on original antigenic sin: I. Evidence in man. *The Journal of experimental medicine*. 1966;124(3):331–345.
533
534
11. Li Y, Myers JL, Bostick DL, Sullivan CB, Madara J, Linderman SL, et al. Immune history shapes specificity of pandemic H1N1 influenza antibody responses. *Journal of Experimental Medicine*. 2013;210(8):1493–1500.
535
536
537
12. Hobson D, Curry R, Beare A, Ward-Gardner A. The role of serum haemagglutination-inhibiting antibody in protection against challenge infection with influenza A2 and B viruses. *Epidemiology & Infection*. 1972;70(4):767–777.
538
539
540
13. Tsang TK, Cauchemez S, Perera RA, Freeman G, Fang VJ, Ip DK, et al. Association between antibody titers and protection against influenza virus infection within households. *The Journal of infectious diseases*. 2014;210(5):684–692.
541
542
543
544
14. Monto AS, Petrie JG, Cross RT, Johnson E, Liu M, Zhong W, et al. Antibody to influenza virus neuraminidase: an independent correlate of protection. *The Journal of infectious diseases*. 2015;212(8):1191–1199.
545
546
547
15. Ng S, Nachbagauer R, Balmaseda A, Stadlbauer D, Ojeda S, Patel M, et al. Novel correlates of protection against pandemic H1N1 influenza A virus infection. *Nature medicine*. 2019;25(6):962–967.
548
549
550
16. Cowling BJ, Lim WW, Perera RAPM, Fang VJ, Leung GM, Peiris JSM, et al. Influenza Hemagglutination-inhibition Antibody Titer as a Mediator of Vaccine-induced Protection for Influenza B. *Clinical Infectious Diseases*. 2018;68(10):1713–1717. doi:10.1093/cid/ciy759.
551
552
553
554

17. Ranjeva S, Subramanian R, Fang VJ, Leung GM, Ip DKM, Perera RAPM, et al. Age-specific differences in the dynamics of protective immunity to influenza. *Nature Communications*. 2019;10(1). doi:10.1038/s41467-019-09652-6. 555-557
18. Verschoor CP, Singh P, Russell ML, Bowdish DME, Brewer A, Cyr L, et al. Microneutralization Assay Titres Correlate with Protection against Seasonal Influenza H1N1 and H3N2 in Children. *PLOS ONE*. 2015;10(6):e0131531. doi:10.1371/journal.pone.0131531. 558-561
19. Gouma S, Kim K, Weirick ME, Gumina ME, Branche A, Topham DJ, et al. Middle-aged individuals may be in a perpetual state of H3N2 influenza virus susceptibility. *Nature communications*. 2020;11(1):1–8. 562-564
20. Elbe S, Buckland-Merrett G. Data, disease and diplomacy: GISAID's innovative contribution to global health. *Global Challenges*. 2017;1(1):33–46. doi:10.1002/gch2.1018. 565-567
21. Huang KYA, Rijal P, Schimanski L, Powell TJ, Lin TY, McCauley JW, et al. Focused antibody response to influenza linked to antigenic drift. *Journal of Clinical Investigation*. 2015;125(7):2631–2645. doi:10.1172/jci81104. 568-570
22. Kucharski AJ, Lessler J, Read JM, Zhu H, Jiang CQ, Guan Y, et al. Estimating the Life Course of Influenza A(H3N2) Antibody Responses from Cross-Sectional Data. *PLOS Biology*. 2015;13(3):e1002082. doi:10.1371/journal.pbio.1002082. 571-573
23. Kucharski AJ, Lessler J, Cummings DAT, Riley S. Timescales of influenza A/H3N2 antibody dynamics. *PLOS Biology*. 2018;16(8):e2004974. doi:10.1371/journal.pbio.2004974. 574-576
24. Cobey S, Pascual M. Consequences of host heterogeneity, epitope immunodominance, and immune breadth for strain competition. *Journal of Theoretical Biology*. 2011;270(1):80–87. doi:10.1016/j.jtbi.2010.11.009. 577-579
25. Zinder D, Bedford T, Gupta S, Pascual M. The Roles of Competition and Mutation in Shaping Antigenic and Genetic Diversity in Influenza. *PLoS Pathogens*. 2013;9(1):e1003104. doi:10.1371/journal.ppat.1003104. 580-582
26. Marchi J, Lässig M, Walczak AM, Mora T. Antigenic waves of virus-immune coevolution. *Proceedings of the National Academy of Sciences*. 2021;118(27). doi:10.1073/pnas.2103398118. 583-585
27. Makau DN, Lycett S, Michalska-Smith M, Paploski IAD, Cheeran MCJ, Craft ME, et al. Ecological and evolutionary dynamics of multi-strain RNA viruses. *Nature Ecology & Evolution*. 2022;6(10):1414–1422. doi:10.1038/s41559-022-01860-6. 586-589
28. Powell H, Pekosz A. Neuraminidase antigenic drift of H3N2 clade 3c.2a viruses alters virus replication, enzymatic activity and inhibitory antibody binding. *PLOS Pathogens*. 2020;16(6):e1008411. doi:10.1371/journal.ppat.1008411. 590-592
29. Liu T, Wang Y, Tan TJC, Wu NC, Brooke CB. The evolutionary potential of influenza A virus hemagglutinin is highly constrained by epistatic interactions with neuraminidase. *Cell Host & Microbe*. 2022;30(10):1363–1369.e4. doi:10.1016/j.chom.2022.09.003. 593-596
30. Charu V, Zeger S, Gog J, Bjørnstad ON, Kissler S, Simonsen L, et al. Human mobility and the spatial transmission of influenza in the United States. *PLOS Computational Biology*. 2017;13(2):e1005382. doi:10.1371/journal.pcbi.1005382. 597-599

31. Lam EKS, Morris DH, Hurt AC, Barr IG, Russell CA. The impact of climate and antigenic evolution on seasonal influenza virus epidemics in Australia. *Nature Communications*. 2020;11(1). doi:10.1038/s41467-020-16545-6. 600-602
32. Welsh FC, Eguia RT, Lee JM, Haddox HK, Galloway J, Chau NVV, et al. Age-dependent heterogeneity in the antigenic effects of mutations to influenza hemagglutinin. *bioRxiv*. 2023;doi:10.1101/2023.12.12.571235. 603-605
33. Centers for Disease Control and Prevention. Estimated Flu-Related Illnesses, Medical Visits, Hospitalizations, and Deaths in the United States — 2017–2018 Flu Season; 2021. Available from: <https://archive.cdc.gov/#/details?url=https://www.cdc.gov/flu/about/burden/2017-2018.htm>. 606-608
34. Rolfes MA, Flannery B, Chung JR, O'Halloran A, Garg S, Belongia EA, et al. Effects of Influenza Vaccination in the United States During the 2017–2018 Influenza Season. *Clinical Infectious Diseases*. 2019;69(11):1845–1853. doi:10.1093/cid/ciz075. 609-614
35. Bedford T, Neher RA. Seasonal influenza circulation patterns and projections for 2017-2018. *bioRxiv*. 2017;doi:10.1101/113035. 615-616
36. Garten R, Blanton L, Elal AIA, Alabi N, Barnes J, Biggerstaff M, et al. Update: Influenza Activity in the United States During the 2017–18 Season and Composition of the 2018–19 Influenza Vaccine. *MMWR Morbidity and Mortality Weekly Report*. 2018;67(22):634–642. doi:10.15585/mmwr.mm6722a4. 617-620
37. Kawakami C, Yamayoshi S, Akimoto M, Nakamura K, Miura H, Fujisaki S, et al. Genetic and antigenic characterisation of influenza A(H3N2) viruses isolated in Yokohama during the 2016/17 and 2017/18 influenza seasons. *Eurosurveillance*. 2019;24(6). doi:10.2807/1560-7917.es.2019.24.6.1800467. 621-624
38. Ursin RL, Liu H, Powell HR, Westerbeck JW, Shaw-Saliba K, Sylvia KE, et al. Differential Antibody Recognition of H3N2 Vaccine and Seasonal Influenza Virus Strains Based on Age, Vaccine Status, and Sex in the 2017–2018 Season. *The Journal of Infectious Diseases*. 2020;222(8):1371–1382. doi:10.1093/infdis/jiaa289. 625-628
39. Arevalo CP, Sage VL, Bolton MJ, Eilola T, Jones JE, Kormuth KA, et al. Original antigenic sin priming of influenza virus hemagglutinin stalk antibodies. *Proceedings of the National Academy of Sciences*. 2020;117(29):17221–17227. doi:10.1073/pnas.1920321117. 629-632
40. Yang B, García-Carreras B, Lessler J, Read JM, Zhu H, Metcalf CJE, et al. Long term intrinsic cycling in human life course antibody responses to influenza A(H3N2): an observational and modeling study. *eLife*. 2022;11. doi:10.7554/elife.81457. 633-636
41. Lemey P, Rambaut A, Bedford T, Faria N, Bielejec F, Baele G, et al. Unifying Viral Genetics and Human Transportation Data to Predict the Global Transmission Dynamics of Human Influenza H3N2. *PLoS Pathogens*. 2014;10(2):e1003932. doi:10.1371/journal.ppat.1003932. 637-640
42. Bahl J, Nelson MI, Chan KH, Chen R, Vijaykrishna D, Halpin RA, et al. Temporally structured metapopulation dynamics and persistence of influenza A H3N2 virus in humans. *Proceedings of the National Academy of Sciences*. 2011;108(48):19359–19364. doi:10.1073/pnas.1109314108. 641-644

43. Russell CA, Jones TC, Barr IG, Cox NJ, Garten RJ, Gregory V, et al. The Global Circulation of Seasonal Influenza A (H3N2) Viruses. *Science*. 2008;320(5874):340–346. doi:10.1126/science.1154137. 645
646
647
44. Arevalo P, McLean HQ, Belongia EA, Cobey S. Earliest infections predict the age distribution of seasonal influenza A cases. *Elife*. 2020;9:e50060. 648
649
45. Worby CJ, Chaves SS, Wallinga J, Lipsitch M, Finelli L, Goldstein E. On the relative role of different age groups in influenza epidemics. *Epidemics*. 2015;13:10–16. doi:10.1016/j.epidem.2015.04.003. 650
651
652
46. Lessler J, Riley S, Read JM, Wang S, Zhu H, Smith GJ, et al. Evidence for antigenic seniority in influenza A (H3N2) antibody responses in southern China. *PLoS pathogens*. 2012;8(7). 653
654
655
47. Centers for Disease Control and Prevention. FluVaxView; 2023. Available from: <https://www.cdc.gov/flu/fluview/1516season.htm>. 656
657
48. Auladell M, Phuong HVM, Mai LTQ, Tseng YY, Carolan L, Wilks S, et al. Influenza virus infection history shapes antibody responses to influenza vaccination. *Nature Medicine*. 2022;28(2):363–372. doi:10.1038/s41591-022-01690-w. 658
659
660
661
49. Krammer F, Srivastava K, Alshammary H, Amoako AA, Awawda MH, Beach KF, et al. Antibody Responses in Seropositive Persons after a Single Dose of SARS-CoV-2 mRNA Vaccine. *New England Journal of Medicine*. 2021;384(14):1372–1374. doi:10.1056/nejmc2101667. 662
663
664
665
50. Vinh DN, Nhat NTD, de Bruin E, Vy NHT, Thao TTN, Phuong HT, et al. Age-seroprevalence curves for the multi-strain structure of influenza A virus. *Nature Communications*. 2021;12(1). doi:10.1038/s41467-021-26948-8. 666
667
668
51. Nobusawa E, Omagari K, Nakajima S, Nakajima K. Reactivity of human convalescent sera with influenza virus hemagglutinin protein mutants at antigenic site A. *Microbiology and Immunology*. 2012;56(2):99–106. doi:10.1111/j.1348-0421.2012.00412.x. 669
670
671
672
52. Einav T, Creanga A, Andrews SF, McDermott AB, Kanekiyo M. Harnessing low dimensionality to visualize the antibody–virus landscape for influenza. *Nature Computational Science*. 2022;3(2):164–173. doi:10.1038/s43588-022-00375-1. 673
674
675
53. Metcalf CJE, Farrar J, Cutts FT, Basta NE, Graham AL, Lessler J, et al. Use of serological surveys to generate key insights into the changing global landscape of infectious disease. *The Lancet*. 2016;388(10045):728–730. doi:10.1016/s0140-6736(16)30164-7. 676
677
678
679
54. Mina MJ, Metcalf CJE, McDermott AB, Douek DC, Farrar J, Grenfell BT. A Global Immunological Observatory to meet a time of pandemics. *eLife*. 2020;9. doi:10.7554/elife.58989. 680
681
682
55. Horby PW, Laurie KL, Cowling BJ, Engelhardt OG, Sturm-Ramirez K, Sanchez JL, et al. CONSISE statement on the reporting of Seroepidemiologic Studies for influenza (ROSES-I statement): an extension of the STROBE statement. *Influenza and Other Respiratory Viruses*. 2016;11(1):2–14. doi:10.1111/irv.12411. 683
684
685
686
56. Katoh K, Misawa K, Kuma Ki, Miyata T. MAFFT: a novel method for rapid multiple sequence alignment based on fast Fourier transform. *Nucleic acids research*. 2002;30(14):3059–3066. 687
688
689

57. Bouckaert R, Heled J, Kühnert D, Vaughan T, Wu CH, Xie D, et al. BEAST 2: a software platform for Bayesian evolutionary analysis. *PLoS computational biology*. 2014;10(4). 690
691
692
58. Hasegawa M, Kishino H, Yano Ta. Dating of the human-ape splitting by a molecular clock of mitochondrial DNA. *Journal of molecular evolution*. 1985;22(2):160–174. 693
694
695
59. Yu G, Smith DK, Zhu H, Guan Y, Lam TTY. ggtree: an R package for visualization and annotation of phylogenetic trees with their covariates and other associated data. *Methods in Ecology and Evolution*. 2017;8(1):28–36. 696
697
698
60. Schrödinger, LLC. The PyMOL Molecular Graphics System, Version 2.0;. Available from: <https://pymol.org/2/>. 699
700
61. Colby SL, Ortman JM. Projections of the Size and Composition of the US Population: 2014 to 2060. *Population Estimates and Projections. Current Population Reports*. P25-1143. US Census Bureau. 2015;. 701
702
703
62. Hall P, Wilson SR. Two guidelines for bootstrap hypothesis testing. *Biometrics*. 1991; p. 757–762. 704
705

Supporting information 706

S1 File. GISAID acknowledgment table 707

S2 File GISAID accession IDs and metadata of the sequences used for constructing genealogy 708
709

S3 File GISAID accession IDs and metadata of the sequences used in the analysis of subclade frequency 710
711

Supplementary Figures 712

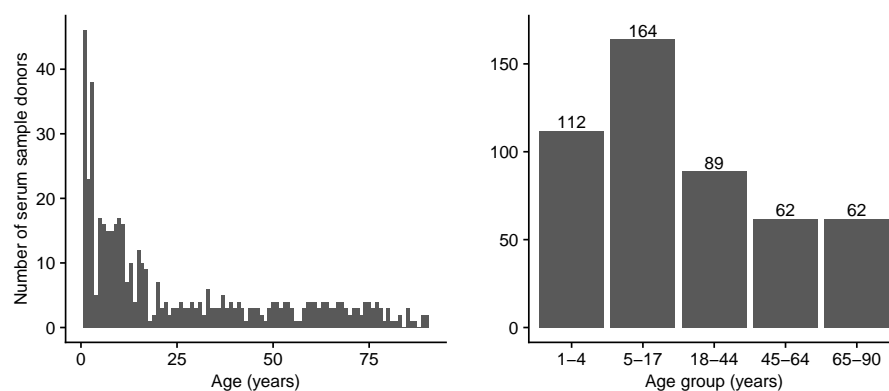


Fig S1. Age distribution of serum sample donors. We collected serum samples from May to August of 2017 from the University of Pennsylvania BioBank and Children’s Hospital of Philadelphia. The age distribution of donors at 1 year resolution is shown on the left, and the sizes of different age groups are shown on the right.

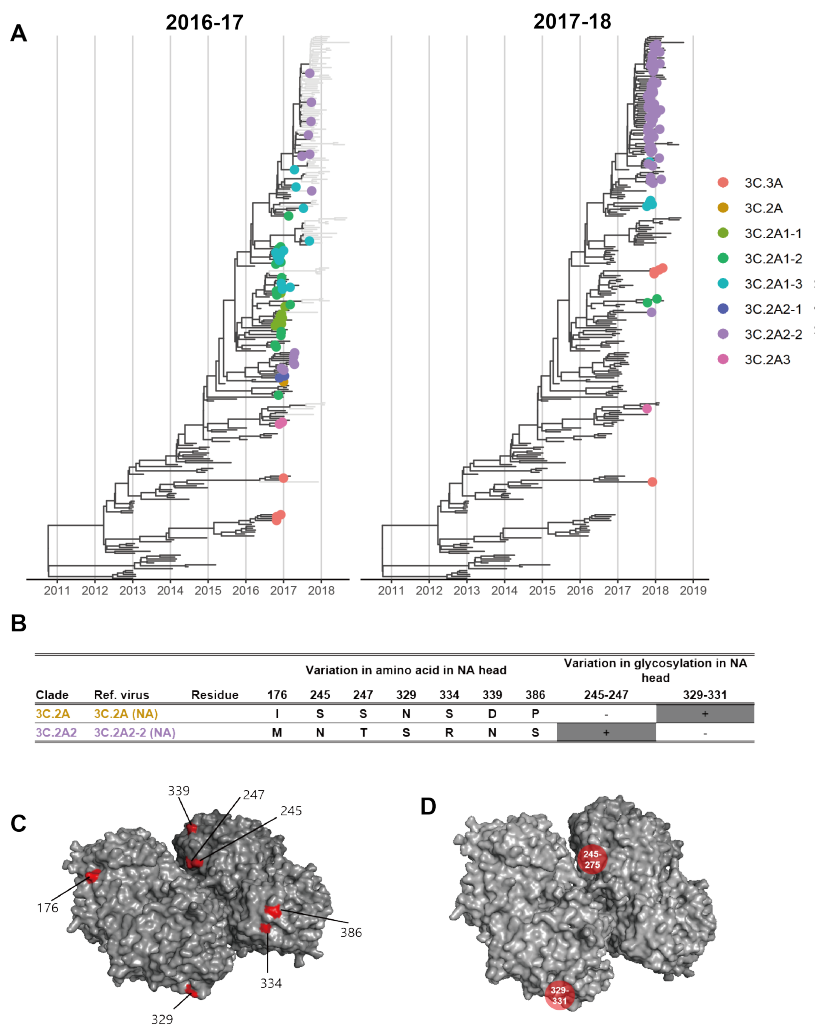


Fig S2. NA of co-circulating H3N2 clades during the 2016-17 and 2017-18 seasons. A. Genealogy of H3N2 showing NA sequence samples through the 2016-17 season (left) and through the 2017-18 season (right). Tips are filled circles if collected in North America during the 2016-17 season (left) and the 2017-18 season (right) and colored according to the associated test virus. B. Variable amino acids and PNGS between test viruses. Between clade 3C.2A (NA) and clade 3C.2A2 (NA), only substitutions at NA head are shown. C. The differences between clade 3C.2A (NA) and 3C.2A2-2 (NA) are shown on N2 head structure (Protein Data Bank: 6n4d). Amino acid differences between the two test viruses are colored in red. D. PNGS that vary between 3C.2A (NA) and 3C.2A2 (NA) are shown on the N2 structure.

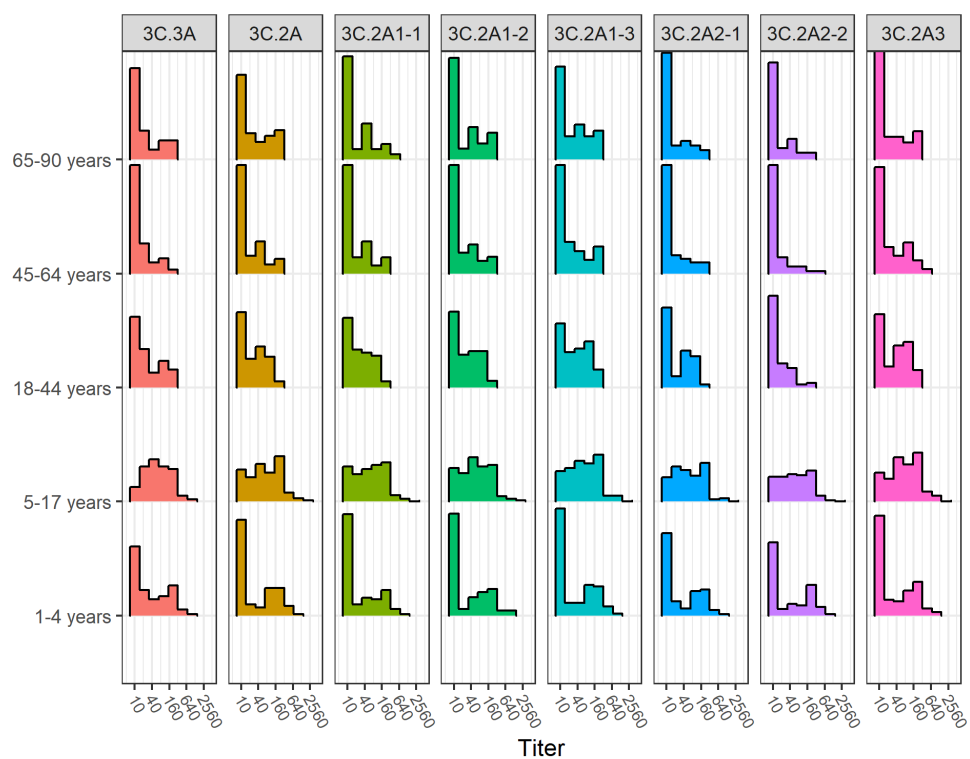


Fig S3. Distribution of HA titers for each strain by age group. A titer of 10 indicates the titer is below the limit of detection.

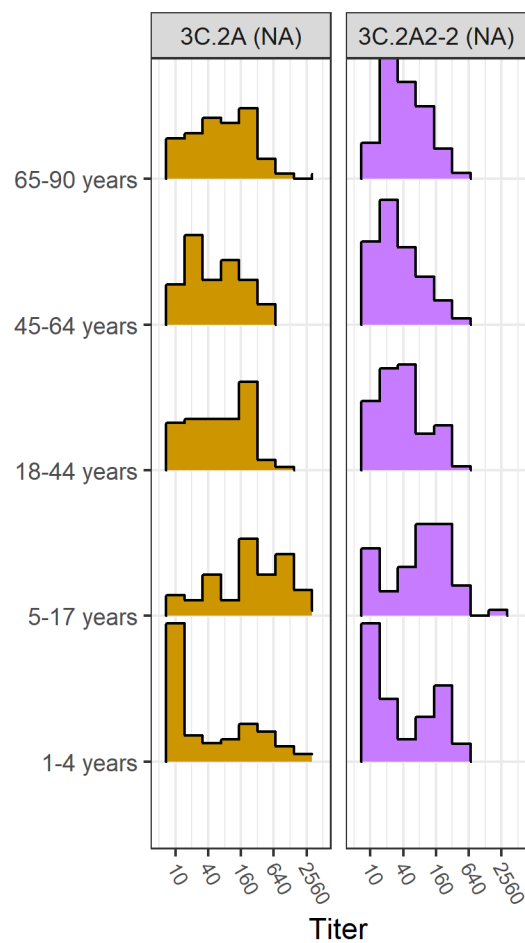


Fig S4. Distribution of NA titers for each strain by age group. A titer of 10 indicates the titer is below the limit of detection.

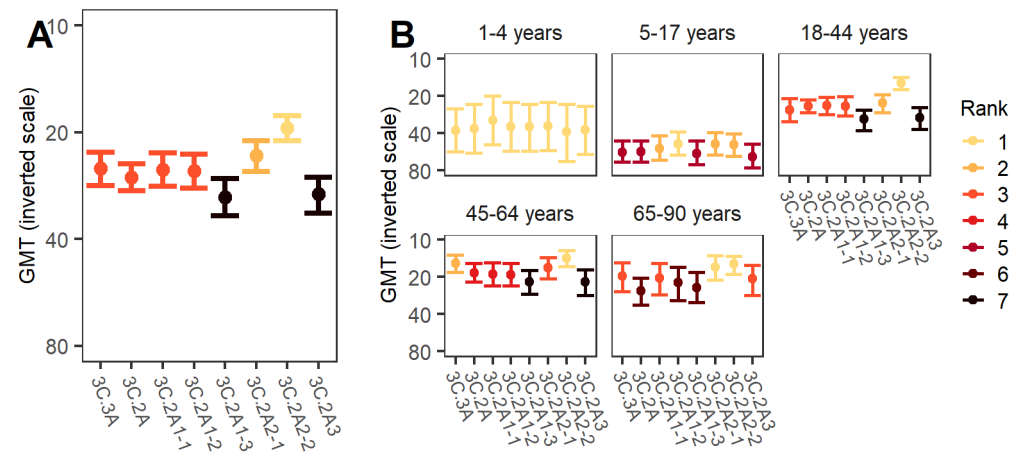


Fig S5. The GMT for each HA reference strain. Since lower GMT corresponds to higher susceptibility, we use an inverse scale to indicate the relative susceptibility. GMTs are shown for the whole population (A) and by age group (B). The bars indicate 95% CIs obtained from bootstrapping. A lower rank indicates significantly higher implied susceptibility: the strain with lowest GMT has rank 1, and strains are tied in rank if their GMTs do not differ significantly.

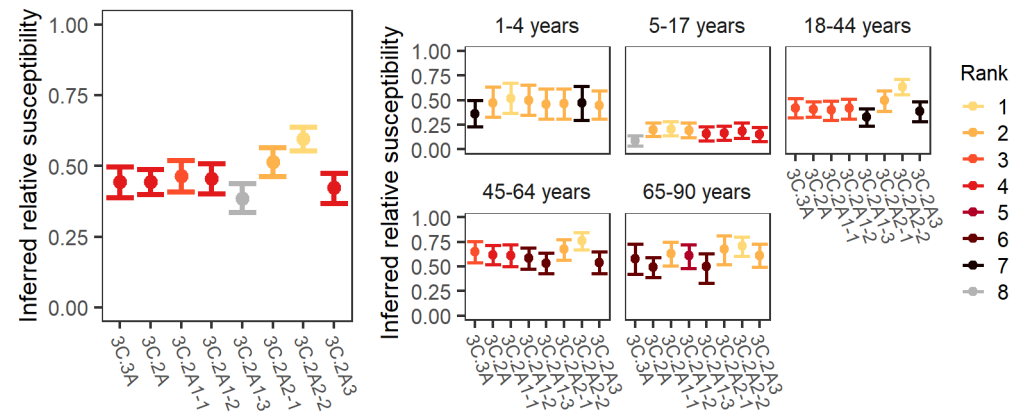


Fig S6. Inferred relative susceptibility to each reference strain using a 1:20 HA titer threshold. Inferred relative susceptibility and the susceptibility rank of each reference strain for the whole population (left) and by age group (right). The bars indicate 95% CIs obtained from bootstrapping. A lower rank indicates significantly higher susceptibility: the strain to which susceptibility is highest has rank 1, and strains are tied in rank if their relative susceptibilities do not differ significantly.

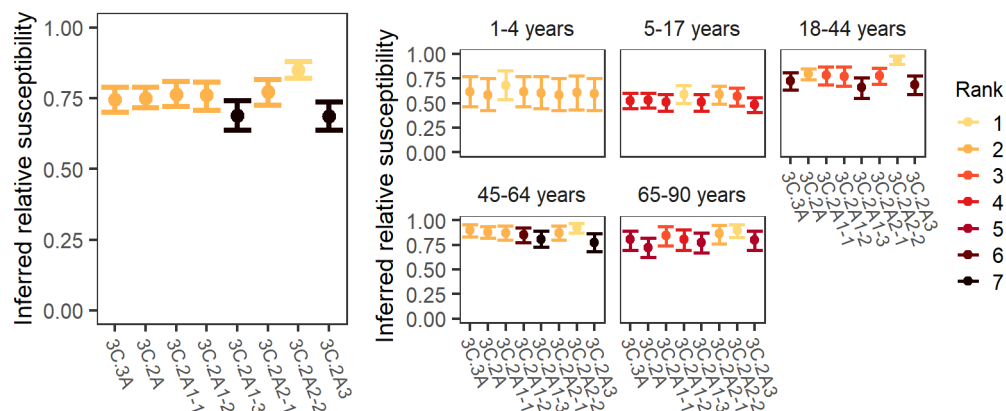


Fig S7. Inferred relative susceptibility to each reference strain using a 1:80 HA titer threshold. Inferred relative susceptibility and the susceptibility rank of each reference strain for the whole population (left) and by age group (right). The bars indicate 95% CIs obtained from bootstrapping. A lower rank indicates significantly higher susceptibility: the strain to which susceptibility is highest has rank 1, and strains are tied in rank if their relative susceptibilities do not differ significantly.

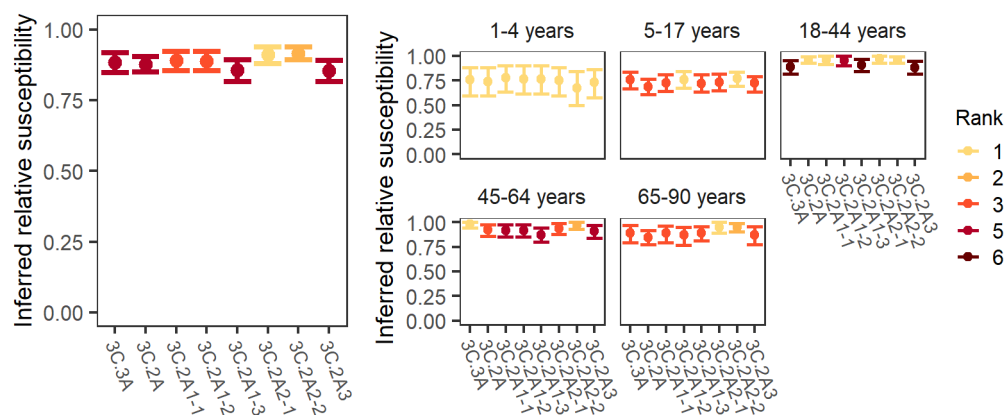


Fig S8. Inferred relative susceptibility to each reference strain using a 1:160 HA titer threshold. Inferred relative susceptibility and the susceptibility rank of each reference strain for the whole population (left) and by age group (right). The bars indicate 95% CIs obtained from bootstrapping. A lower rank indicates significantly higher susceptibility: the strain to which susceptibility is highest has rank 1, and strains are tied in rank if their relative susceptibilities do not differ significantly.

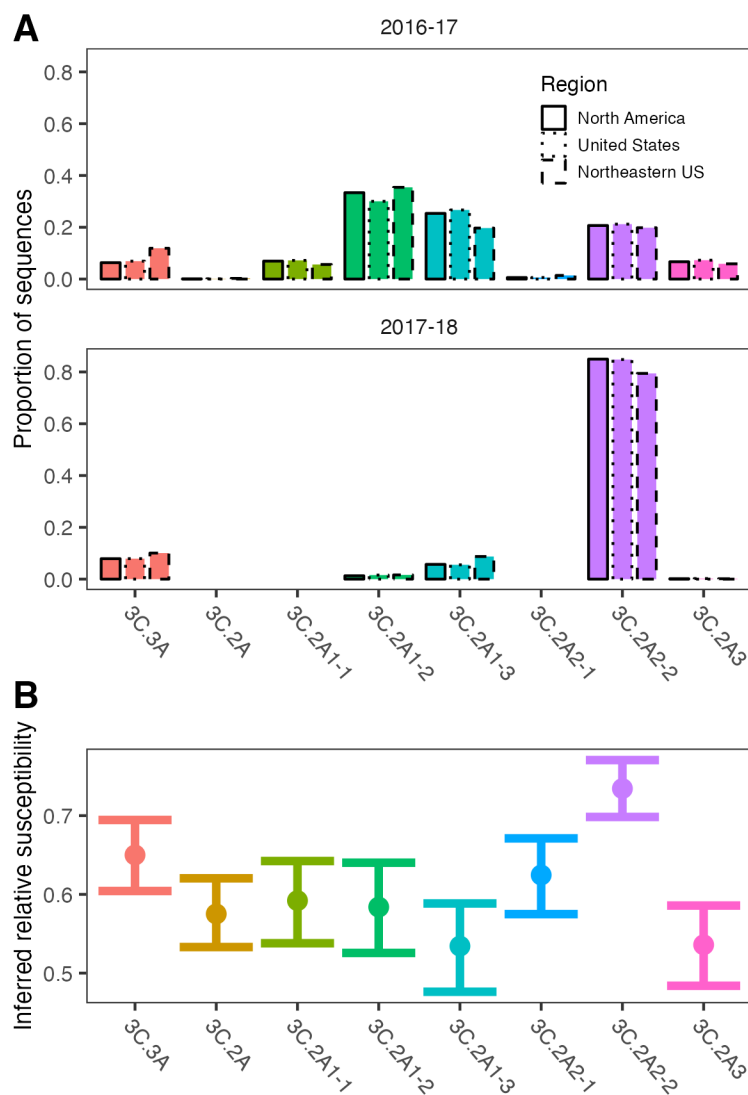


Fig S9. Comparison of H3 proportions by clade (reference strain) and inferred relative susceptibilities. A. Proportion of H3 sequences assigned to each test virus were calculated using GISAID sequences from North America, US, and the Northeastern US during the 2016-17 and 2017-18 season. B. Inferred relative susceptibilities to test viruses assuming a 1:40 HA titer threshold for protection.

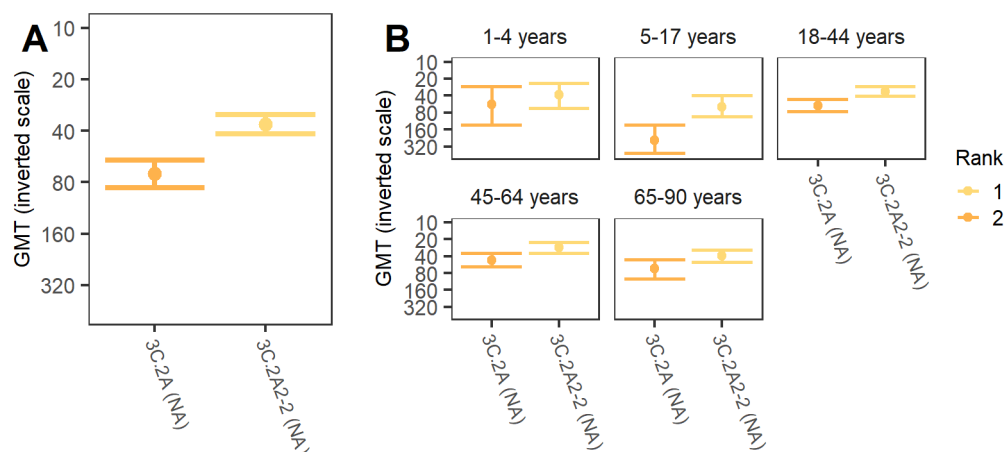


Fig S10. The GMT for each NA reference strain. Since lower GMT corresponds to higher susceptibility, we use an inverse scale to indicate the relative susceptibility. GMTs are shown for the whole population (A) and by age group (B). The bars indicate 95% CIs obtained from bootstrapping. A lower rank indicates significantly higher implied susceptibility: the strain with lower GMT has rank 1.

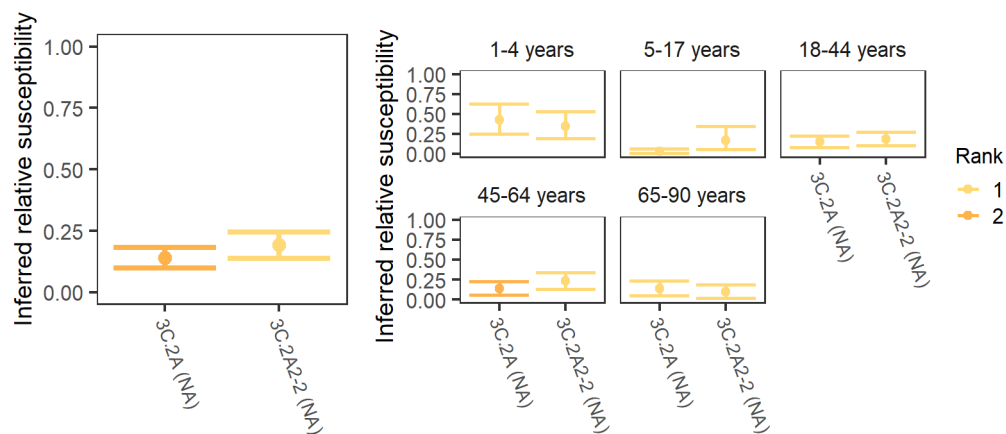


Fig S11. Inferred relative susceptibility to each NA reference strain using a 1:20 threshold. Inferred relative susceptibility and the susceptibility rank of each reference strain for the whole population (left) and by age group (right). The bars indicate 95% CIs obtained from bootstrapping. A lower rank indicates significantly higher susceptibility: the strain to which susceptibility is highest has rank 1, and strains are tied in rank if their relative susceptibilities do not differ significantly.

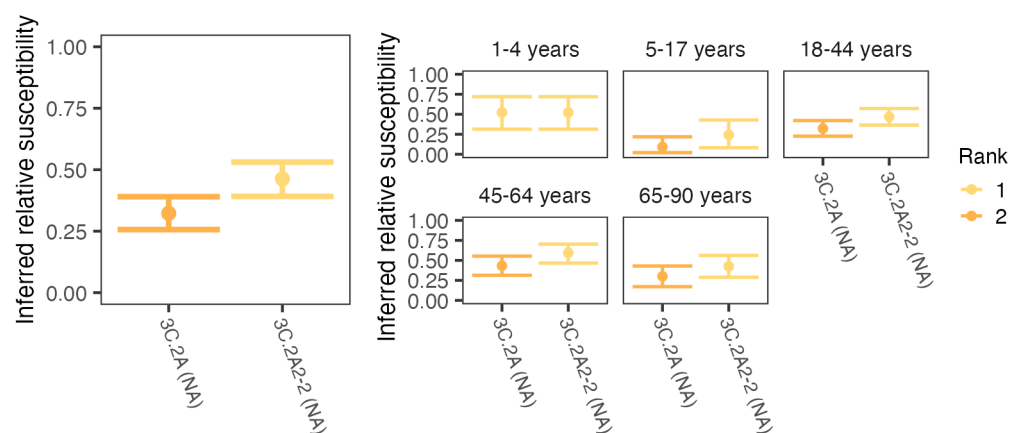


Fig S12. The inferred relative susceptibility to each reference strain using a 1:40 NA titer threshold. Inferred relative susceptibility and the susceptibility rank of each reference strain for the whole population (left) and by age group (right). The bars indicate 95% CIs obtained from bootstrapping. A lower rank indicates significantly higher susceptibility: the strain to which susceptibility is highest has rank 1, and strains are tied in rank if their relative susceptibilities do not differ significantly.

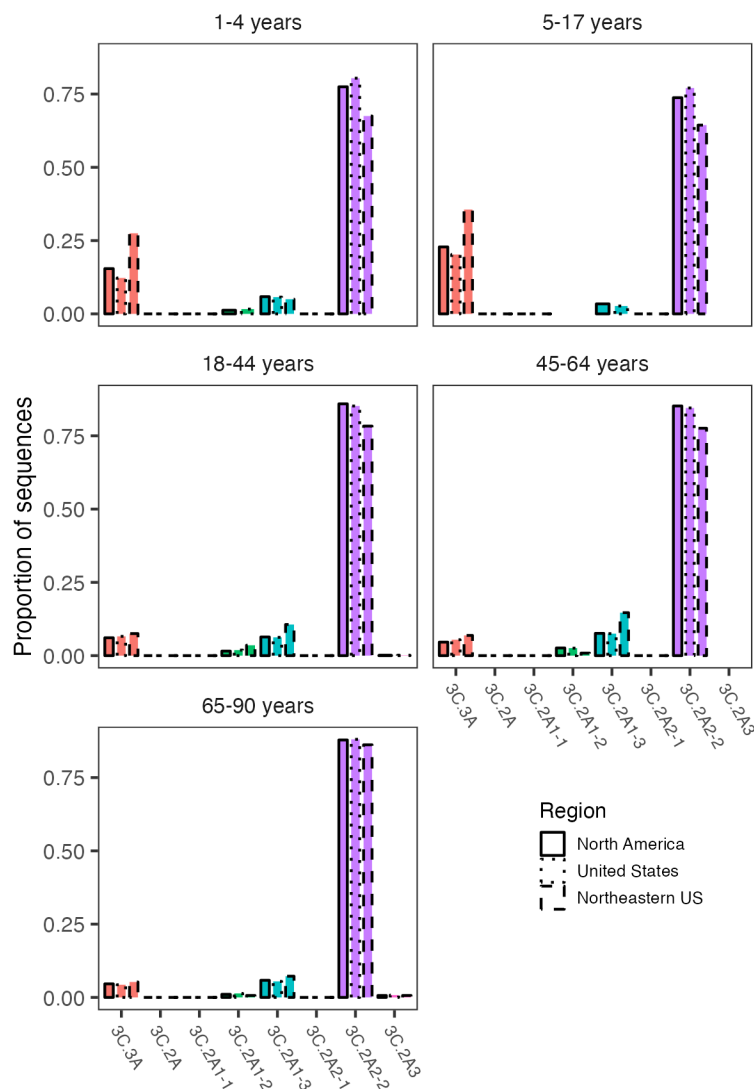


Fig S13. Proportions of H3 sequences in the 2017-18 season assigned to each reference virus by age group. Proportions were calculated using GISAID sequences collected in North America, United States, and the northeastern United States, respectively.

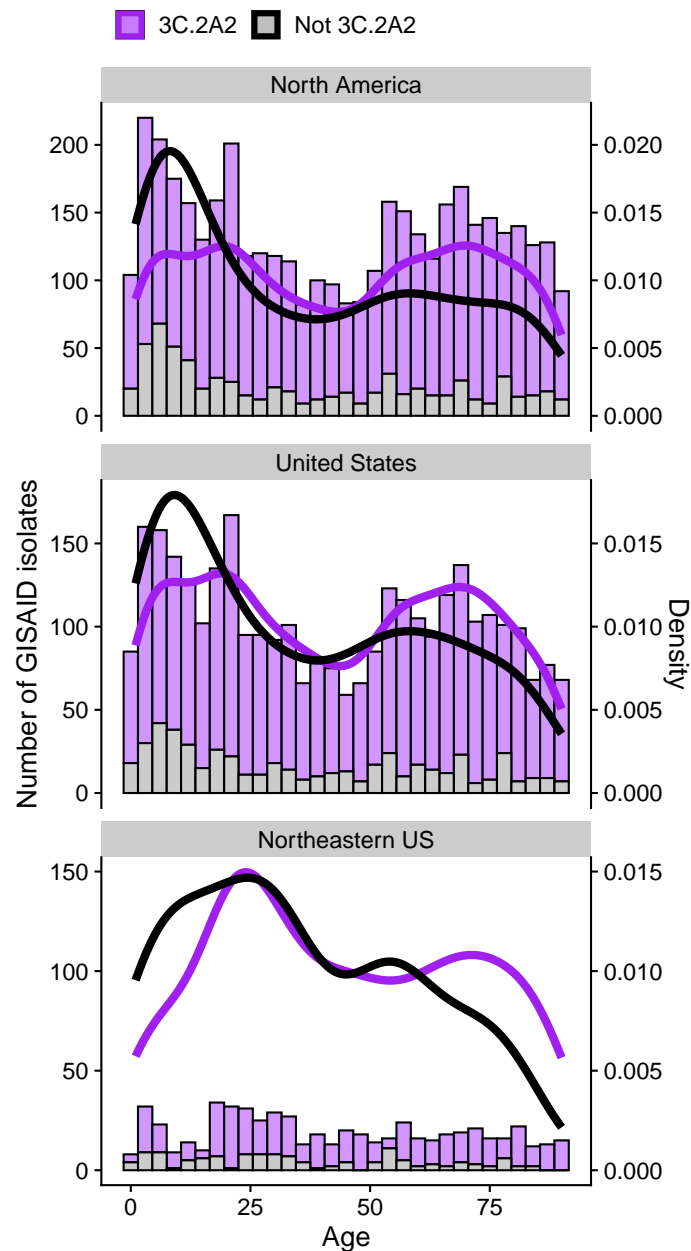


Fig S14. Host age distribution of H3N2 isolates sampled during the 2017/18 season, shown at different geographical resolutions. We obtained isolate data from GISAID. Viruses from clade 3C.2A2 are shown in purple, and viruses from all other clades combined are shown in gray.

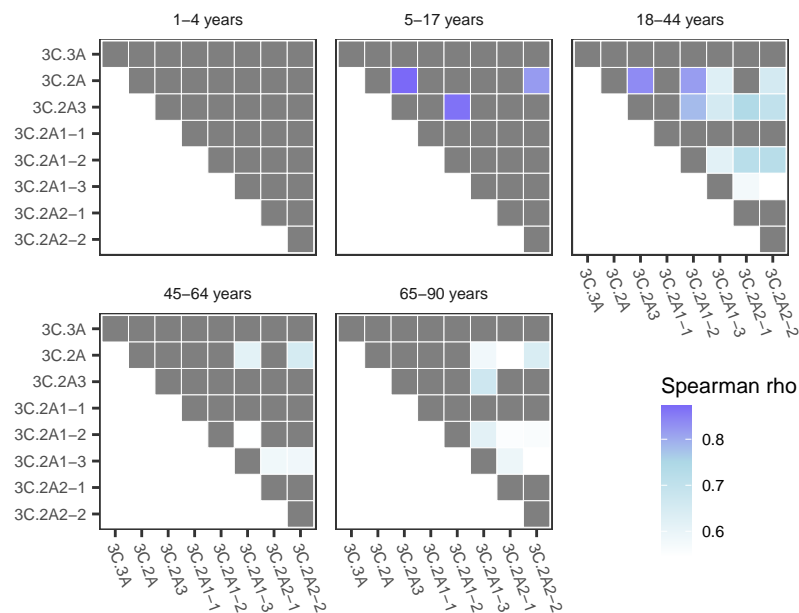


Fig S15. Compared to the youngest age group, older children and adults have significantly more weakly correlated titers to different strains. For each pair of viruses, we calculated the correlation in HA titers within each age group, averaging across 1000 random imputations of continuous titers. For each pair of strains, we used bootstrapping to test if the correlation for that pair in each age group was significantly weaker than in 1-4 year-olds. The cells are colored blue if the correlation is significantly weaker. Individuals with all undetectable titers were removed from these analyses.

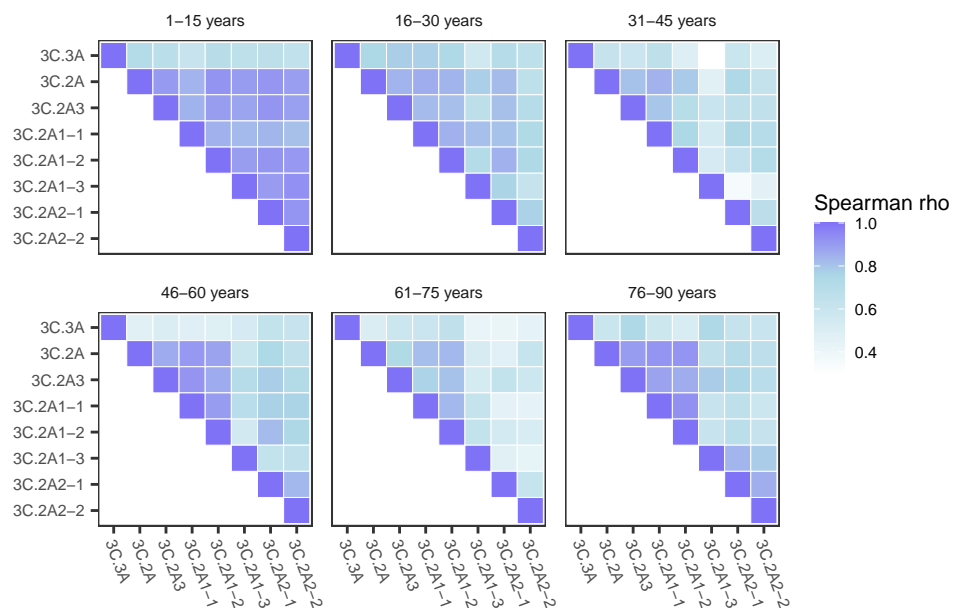


Fig S16. Weak correlations in adults' HA titers between viral strains persist when age groups cover the same number of years. For these analyses, we randomly imputed continuous titer values between consecutive dilutions (e.g., a titer of 160 was replaced by a continuous value between 160 and 320 drawn with uniform probability). For each pair of viruses and each age group, we report the average Spearman correlation coefficient across 1000 replicate imputations. We removed individuals with all undetectable titers from this analysis.

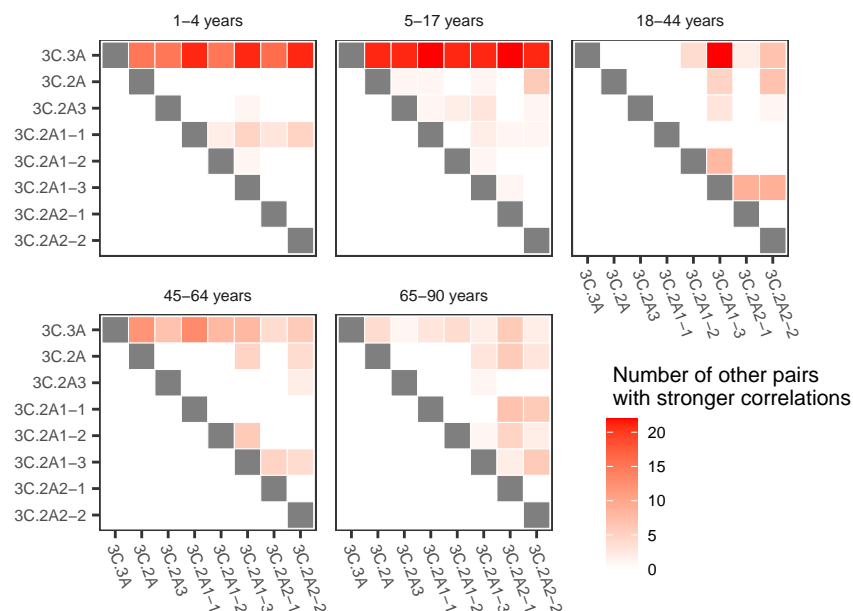


Fig S17. Titers to the 3C.3A virus had the weakest correlation with titers to other viruses. For each pair of viruses, we computed the correlation in HA titers in each age group, averaging across 1000 random imputations of continuous titer values. Within each age group, we used bootstrapping to compare the correlations across different pairs of strains. For each pair of strains, we counted how many other pairs of strains had significantly stronger correlations in the same age group. Strain pairs with weaker correlation than most other pairs appear in dark red. Individuals with all undetectable titers were removed from these analyses. Gray cells indicate the diagonal, where tests were not performed because the correlation is always 1

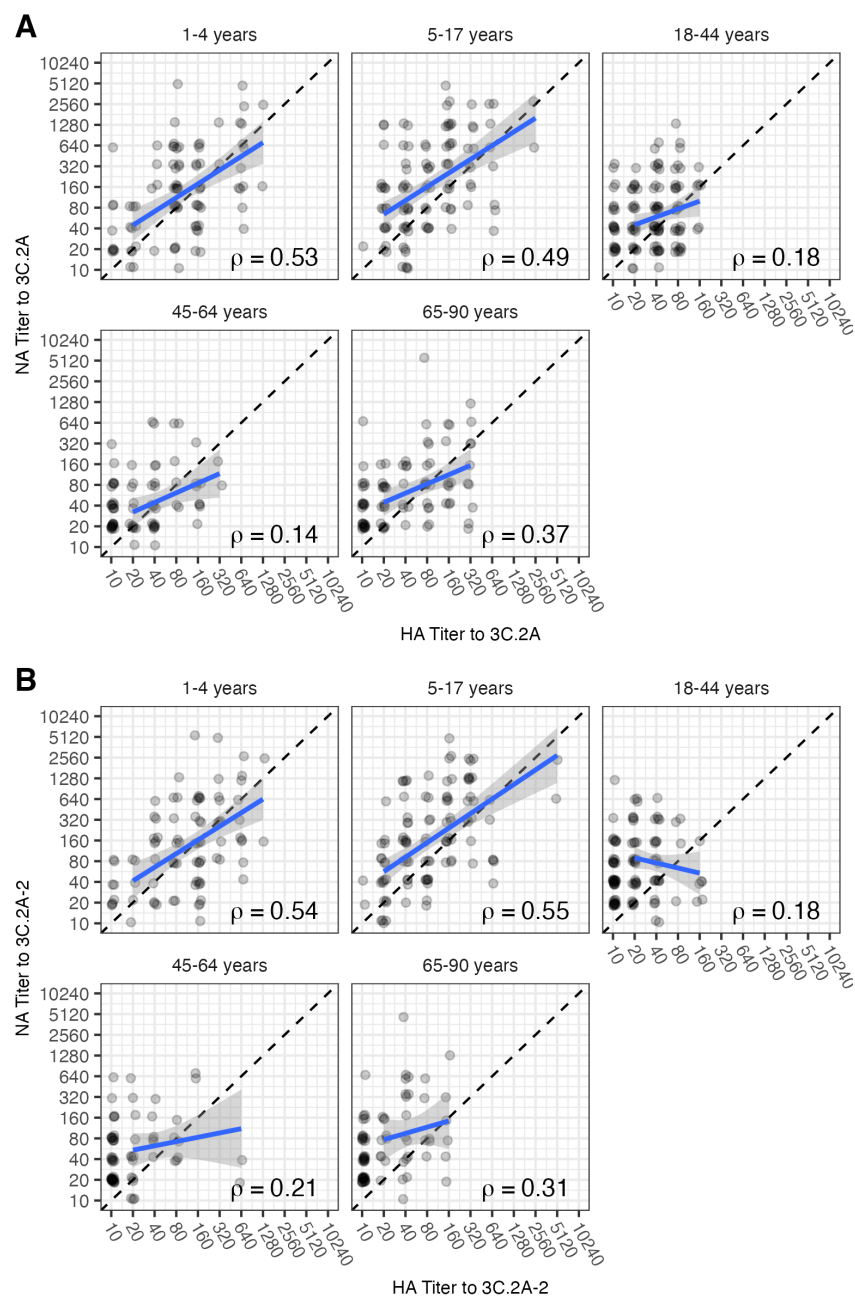


Fig S18. Correlations between HA and NA titers. A. Titers to 3C.2A HA and NA. B. Titers to 3C.2A2 HA and NA. Points have been slightly jittered to show density. Individuals with undetectable titers to both HA and NA were excluded from this analysis. The dashed line shows the diagonal. Titers below the limit of detection for each assay are denoted by 10. We fitted linear regression lines to investigate changes with age in NA titers relative to HA titers. We excluded people with undetectable HA titers from the linear regression fits.