

Saliva direct PCR protocol for HLA-DQB1*02 genotyping

Angeles Carrillo, María Jimena Manzur, Maximiliano Juri Ayub*

Laboratorio de Desarrollo de Diagnósticos Moleculares, Área Biología Molecular, Facultad de Química, Bioquímica y Farmacia, Universidad Nacional de San Luis. Ejército de los Andes 950, D5700HHW San Luis, Argentina

(*) E-mail: mjuriayub@hotmail.com

ABSTRACT

Celiac Disease (CD) is an immune disorder triggered by gluten ingestion in genetically predisposed individuals. The HLA-DQB1*02 allele is the major predisposing genetic factor, and a candidate for first line genotyping screening. We have designed and validated a simple, DNA purification-free PCR protocol directly from crude saliva enabling detection of DQB1*02 allele. This assay also distinguishes homozygous from heterozygous carriers. We postulate this method for use in mass screening and/or epidemiological studies.

INTRODUCTION

Celiac Disease (CD) is an immune disorder triggered by gluten ingestion in genetically predisposed individuals (1). Four alleles in two HLA *loci* (DQA1*03 and *05, DQB1*02 and 03:02) are associated with CD. Moreover, the absence of these alleles has a very high negative predictive value. HLA-DQB1*02 is by far the strongest predictor of genetic susceptibility, being present in 90-95% of CD patients (2). For this reason, it has been suggested that genetic testing for this allele would be desirable if cost-effective strategies were available (2-6). Moreover, a two-step screening strategy has been proposed for

children; a first line screening for HLA-DQB1*02, followed by prospective serological studies only to DQB1*02 carrying individuals (7).

In the present work, we describe a simple, fast and affordable, saliva direct qPCR protocol for HLA-DQB1*02 detection, exploiting a 52 bp insertion located in the second intron of this allele. This simple and low-cost protocol can be used for first-line clinical analyses as well as epidemiological studies.

METHODS

Saliva collection

NOTE: This preprint reports new research that has not been certified by peer review and should not be used to guide clinical practice.

Smoking, eating, and drinking were avoided for 1 hour prior to collection. Saliva was let to naturally accumulate in the mouth and was self-collected in sterile, RNase, DNase- free plastic tubes.

DNA purification from saliva

Total nucleic acids were purified from 140 ul of saliva by using a standard column purification kit according to the manufacturer's instructions (<http://www.pb-l.com.ar/productos/puro-virus-rna>).

Sequence genotyping HLA-DQB1 alleles

Purified DNA was used as template for amplifying a 254 bp region of HLA-DQB1 using the following primers: **T7prom**-DQB1-Fw: **TAATACGACTCACTATAGGG**GATTCCYCGCAGAGGATTTTCG (500 nM), DQB1-Rev1: CCAACTGGTAGTTGTGTCTGC (250 nM) and DQB1-Rev2: CCACCTCGTAGTTGTGTCTGC (250 nM). Cycling conditions were 3 min at 95°C and 40 cycles of 95°C for 10s/63 °C for 30s, using LightCycler Multiplex RNA Virus Master (Roche). Amplicons were submitted to Sanger sequencing using T7promoter primer at MacroGen facility. By analyzing polymorphic sites in chromatograms, both alleles in each sample were resolved.

Design of HLA-DQB1-specific PCR

HLA-DQB1 alleles were retrieved from the IPD-IMGT/HLA Database

(<https://www.ebi.ac.uk/ipd/imgt/hla/alleles/>)

. Sequences were aligned using MAFFT (<https://www.ebi.ac.uk/Tools/msa/mafft>).

Sequence alignment was visualized using MEGA 6 software (8), revealing a DQB1*02-specific 52 bp insertion which would be adequate for designing PCR assays detecting this allele (**Figure 1**). Therefore, we designed two PCR primers (DQB1*02-Fw: CATCAGAGATTAGCATCACCAC and DQB1*02-Rev: CTGATTACTTAAAGTGTTTATCATGTAC) flanking this insertion, which should amplify a fragment of 121 bp (for DQB1*02) or 69 bp (for other alleles). By using *in silico* prediction of Tm (<https://www.dna-utah.org/umelt/quartz/um.php>), the DQB1*02 amplicon (121 bp) was expected to exhibit a Tm around 5°C higher than other alleles (69 bp).

Sequence genotyping HLA-DQB1 alleles

Primers DQB1*02-Fw and DQB1*02-Rev (500 nM each) were used for PCR amplification in 20 ul reactions in the presence of 1 ul EvaGreen under the following cycling conditions: 1 min at 95°C and 40 cycles of 95°C for 10s/60 °C for 30s. DNA purified from saliva as described or, alternatively, crude saliva was used as template (1 ul). After amplification, a melting step from 60°C to

90°C was performed and fluorescence was recorded every 0.5°C. Derivatives of melting curves were plotted to discriminate amplicons derived from DQB1*02 from other alleles. Two commercial PCR master mixes

were used with similar positive results; LightCycler Multiplex RNA Virus Master (Roche) and qScript XLT 1-Step RT-qPCR ToughMix (QuantaBio).

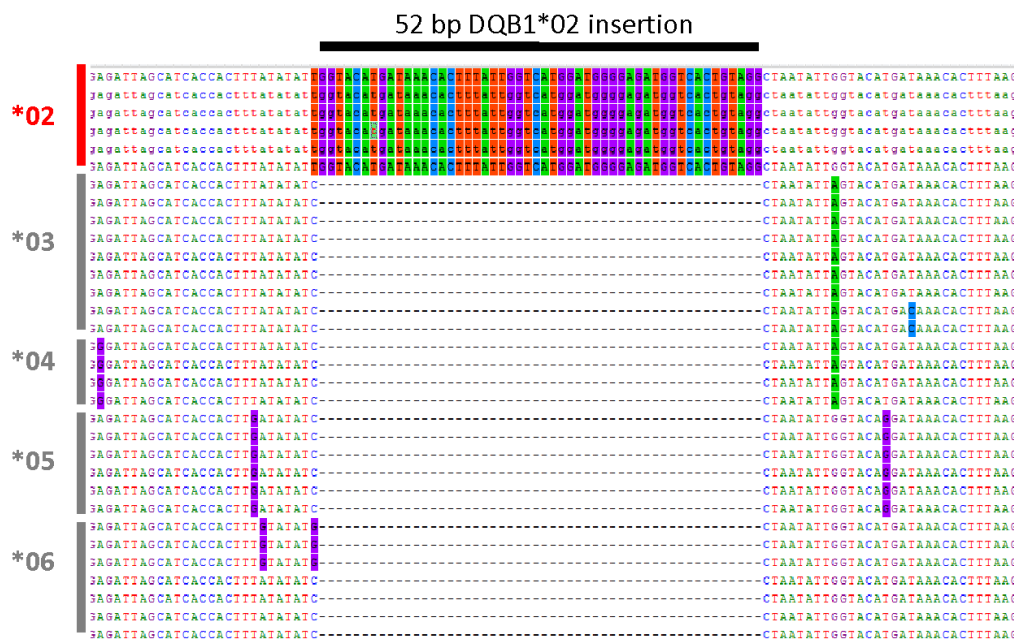


Figure 1. Sequence alignment of DQB1 alleles showing the 52 bp insertion unique to DQB1*02.

RESULTS

Saliva from different individuals was genotyped by PCR amplification and sequencing as described in Methods. Next, samples harboring (in homozygosity or heterozygosity) or lacking DQB1*02 allele were selected and analyzed by DQB1*02 genotyping PCR. **Figure 2** shows representative melting curves obtained from

homozygous (*02-02) or heterozygous (*02-X) positive and negative (*X-X) samples. Non-DQB1*02 alleles show a single melting peak around 70 °C whereas the DQB1*02 allele is clearly detected as a distinct 75 °C peak. As expected, both peaks are revealed in heterozygous. Interestingly, using 1ul of crude saliva samples yielded identical results to using purified DNA.

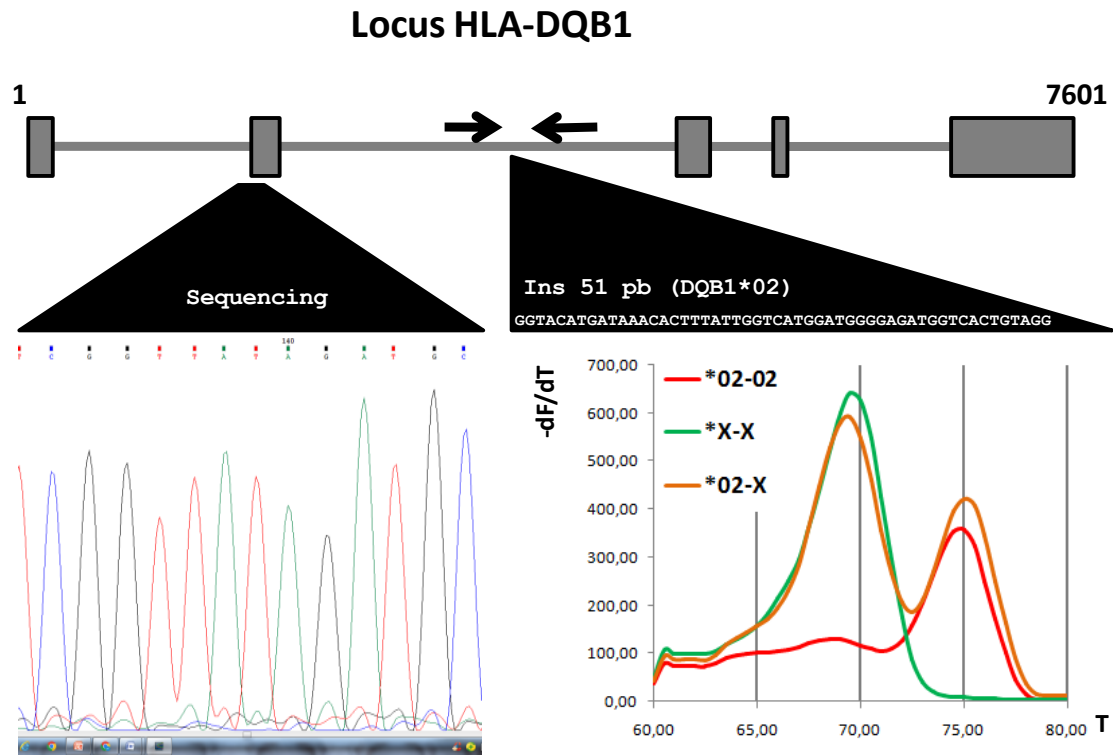


Figure 2. Schematic representation of exón-intron structure of HLA-DQB1 gene. Genomic (NT_167248) and mRNA (NM_001243962) were analyzed using SPLIGN (<https://www.ncbi.nlm.nih.gov/sutils/splign/splign.cgi>) to identify exonic and intronic regions. Fragments amplified for sequencing (left) and melting genotyping (right) are shown. Melting peaks of representative samples are shown.

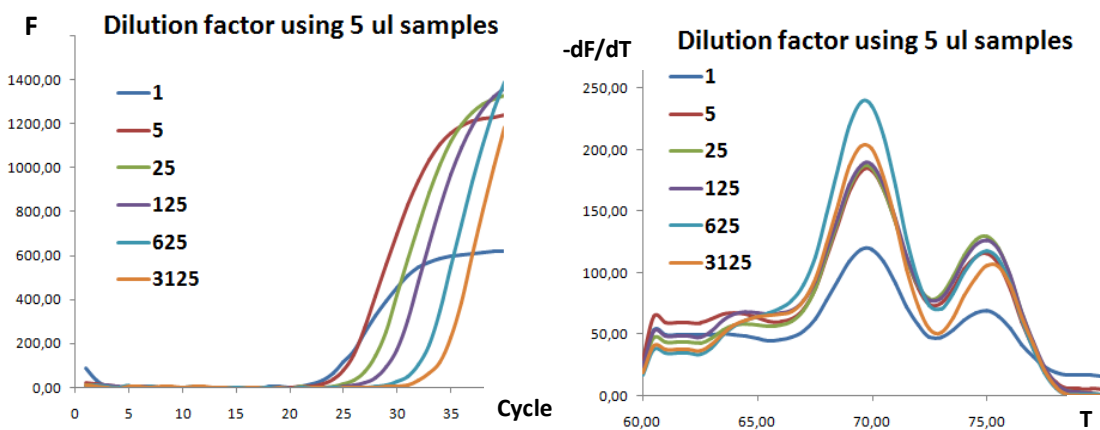


Figure 3. Pure saliva and serial 1:5 dilutions were used as template in 20 ul reactions as described. Amplification (left) and melting curves (right) are shown. All samples yielded significant signals.

In summary, our HLA-DQB1*02 genotyping assay shows the following advantages for general screening or epidemiological studies:

1. It requires a minimal amount of saliva, which can be provided easily by the patient with no assistance from professionals.
2. PCR can be performed using crude saliva, without any processing or purification step required, saving cost and work time, and minimizing the risk of cross-contamination among samples.
3. No control reaction (*e.g.* globin or actin gene) is required, because

amplification should be detected for any genotype, ruling out the chance of false negative results.

4. Homozygous and heterozygous DQB1*02 carriers are clearly distinguished.
5. The protocol is highly tolerant to changes in the amount of template used, yielding clear results both with pure as well as highly diluted saliva samples.

Finally, the general strategy of exploiting specific InDels for detecting specific alleles from a locus can be extended to other disease-associated genes.

REFERENCES

1. Lindfors K, Ciacci C, Kurppa K, Lundin KEA, Makharia GK, Mearin ML, et al. Coeliac disease. Nature reviews Disease primers. 2019;5(1):3.
2. Poddighe D, Rebuffi C, De Silvestri A, Capittini C. Carrier frequency of HLA-DQB1*02 allele in patients affected with celiac disease: A systematic review assessing the potential rationale of a targeted allelic genotyping as a first-line screening. World journal of gastroenterology. 2020;26(12):1365-81.
3. Megiorni F, Mora B, Bonamico M, Barbato M, Nenna R, Maiella G, et al. HLA-DQ and risk gradient for celiac disease. Human immunology. 2009;70(1):55-9.
4. Capittini C, De Silvestri A, Rebuffi C, Tinelli C, Poddighe D. Relevance of HLA-DQB1*02 Allele in the Genetic Predisposition of Children with Celiac Disease: Additional Cues from a Meta-Analysis. Medicina. 2019;55(5).
5. Poddighe D, Capittini C, Gaviglio I, Brambilla I, Marseglia GL. HLA-DQB1*02 allele in children with celiac disease: Potential usefulness for screening strategies. International journal of immunogenetics. 2019;46(5):342-5.
6. Poddighe D. Relevance of HLA-DQB1*02 allele in predisposing to coeliac disease. International journal of immunogenetics. 2019;46(4):274-5.
7. De Silvestri A, Capittini C, Poddighe D, Valsecchi C, Marseglia G, Tagliacarne SC, et al. HLA-DQ genetics in children with celiac disease: a meta-analysis suggesting a two-step genetic screening procedure starting with HLA-DQ beta chains. Pediatric research. 2018;83(3):564-72.
8. Tamura K, Stecher G, Peterson D, Filipinski A, Kumar S. MEGA6: Molecular Evolutionary Genetics Analysis version 6.0. Molecular biology and evolution. 2013;30(12):2725-9.