

## Interventions to improve men's engagement in HIV and other key services in sub-Saharan Africa: a scoping review

Kathryn Dovel<sup>1,2§</sup>, Julie Hubbard<sup>1</sup>, Lycias Zembe<sup>3</sup>, Nathan Ford<sup>4</sup>, Morna Cornell<sup>5</sup>, Will Belshe<sup>1</sup>, Lawrence Long,<sup>6,7</sup> Stephanie Davis,<sup>4</sup> Paula A. Munderi<sup>8</sup>, Rachel Baggaley<sup>4</sup>, Wole Ameyan<sup>4</sup>

<sup>1</sup> University of California, Los Angeles David Geffen School of Medicine

<sup>2</sup> Partners in Hope Medical Center, Lilongwe, Malawi

<sup>3</sup> Joint United Nations Programme on UNAIDS, Switzerland

<sup>4</sup> Department of HIV/AIDS, Viral Hepatitis and STIs, World Health Organization, Geneva, Switzerland

<sup>5</sup> Centre for Infectious Disease Epidemiology & Research, School of Public Health, University of Cape Town, Cape Town, South Africa

<sup>6</sup> Health Economics and Epidemiology Research Office (HE<sup>2</sup>RO), Faculty of Health Sciences, University of Witwatersrand, Johannesburg, South Africa

<sup>7</sup> Department of Global Health, Boston University School of Public Health, Boston, United States

<sup>8</sup> Programme Innovation for Prevention Treatment & Pediatrics | UNAIDS

<sup>§</sup> Corresponding Author: Kathryn Dovel

Division of Infectious Diseases, David Geffen School of Medicine

10833 Le Conte Ave, Los Angeles, CA 90095

Phone: +13108838179

Email: [kdovel@mednet.ucla.edu](mailto:kdovel@mednet.ucla.edu) / [kldovel@gmail.com](mailto:kldovel@gmail.com)

### ABSTRACT

#### Background

Men in sub-Saharan Africa (SSA) continue to have worse health outcomes across HIV, STI, and TB-HIV co-infections as compared to women. Improving service coverage is critical for population health and HIV epidemic control. In HIV, for example, recent models show that improving men's HIV testing and treatment coverage could reduce HIV incidence among women in the region by half. There is potential to combine and optimize services across HIV, STI and TB-HIV co-infections, yet little is known about effective interventions to improve men's outcomes across health services.

#### Methods

We conducted a scoping review of interventions to understand what interventions work for men, and any synergies in interventions that work across health services. We specifically focused on interventions aimed to improve service utilization in the following service domains: condom use; pre-exposure prophylaxis (PrEP); STI testing and treatment; HIV testing, initiation, and retention; and TB testing and treatment among those living with HIV (co-infected). Articles and abstracts had to include sex-disaggregated data or solely focus on men's health service outcomes. We searched PubMed, Medline, Cochrane Central Register of Controlled Trials, the CABI Global Health databases, and major international conference abstracts. We included studies from SSA, published between January 1, 2009 to Dec 31, 2022, quantitative data on at least one of the selected service domains, disaggregated data for the general male population (not solely key populations), an intervention study (report outcomes for

at least one non-standard service delivery strategy) with a comparison group, and available in English. We describe the type of interventions evaluated and synthesize overarching themes of “what works” for reaching men.

### **Findings**

We identified 15,595 intervention articles and included 71 in the scoping review, representing 111 unique interventions. Over a quarter of interventions targeted male partners and only 7 exclusively targeted men. Nearly half of the interventions had HIV testing as their primary outcome. Only a handful of interventions included outcomes related to condom use, STI, or TB co-infection services. No interventions examined the effect of PrEP use among general male populations. Community services was the most common intervention type (n=40, 36%), followed by community outreach (n=19; 17%), incentives (n=16; 14%) and facility services (n=16, 14%). Counseling and peer support had the least number of interventions evaluated (n=8, 7%). We were unable to identify cross-cutting strategies to reach men across HIV and related health services in sub-Saharan Africa, largely because there is little evidence outside HIV testing interventions. The limited evidence available points to the fact that men need convenient, active outreach, and improved experiences with health services. The same principles may apply to all services intended to reach men, including sexual health and TB co-infection services, although the evidence is limited.

### **Conclusion**

This review highlights the need for additional research on cross-cutting strategies to improve men’s engagement in HIV and related health services. The limited evidence available suggests that convenient services, actively engaging men, and providing positive experiences with health services largely improve service utilization. Additional evidence is needed for PrEP use and non-HIV services (such as STI and TB co-infection).

## Introduction

Men in sub-Saharan Africa (SSA) experience higher rates of morbidity and mortality from HIV, TB, and higher rates of many sexually transmitted infections (STIs).<sup>1-6</sup> as compared to women. Among those infected with HIV, men are twice as likely as women to have advanced HIV disease<sup>7</sup> and twice as likely to die from TB.<sup>8,9</sup> Untreated STIs among men are a major contributor to HIV acquisition.<sup>10</sup> Addressing disparities in HIV and related services is critical for population health and HIV epidemic control. Recent models show that improving men's HIV testing and treatment coverage could reduce HIV incidence among women in the region by half.<sup>11</sup>

An important next step is to identify and implement evidence-based strategies to improve men's use of health services across the HIV cascade and related health services, such as STI and TB-HIV co-infection. There is extensive synthesis of what works for men's use of HIV testing services<sup>12-16</sup> and growing evidence around linkage<sup>17-19</sup> and retention<sup>20</sup> to HIV treatment services. There is some evidence about strategies that work to reduce sexual risk behavior among adolescent and young men.<sup>21</sup> However to our knowledge there is little synthesized evidence around what works for HIV-related services such as TB co-infection and STI services, and little to no synthesis of what works across the HIV cascade and related health services.

Identifying cross-cutting strategies that work for men across the HIV cascade and related health services is important. It can promote scalability and sustainability, moving away from siloed interventions and moving toward holistic health systems approaches. Fragmented health systems reduce the ability of health services to respond to the needs of vulnerable clients.<sup>22</sup> Sustainable development goals acknowledge that improving health means improving multiple components of health and health outcomes. Further, men's experiences with health services are not siloed. Positive or negative experiences with any health service can impact men's decision to use HIV services in the future.<sup>23-25</sup> Improved experiences with general health services (not just HIV services) may improve men's engagement with health systems more broadly, and HIV services specifically.

We conducted a scoping review of literature from 2009 to 2022 to examine the impact of interventions on men's use of HIV and other key services (i.e., condom use and PrEP services; STI testing and treatment; HIV testing, initiation, and retention; and TB-HIV co-infection testing and treatment) in sub-Saharan Africa. We identify potential synergies and optimized delivery strategies across HIV and other key services and identify key research gaps to facilitate cross-cutting interventions for men.

## Methods

We used the extended framework by Levac and colleagues<sup>26,27</sup> in accordance with the Preferred Reporting Items for Systematic Reviews and Meta-analysis extension for scoping reviews (PRISMA-ScR) checklist.<sup>28</sup> This review is drawn from larger work to identify interventions that facilitate the use of HIV and related services among men in sub-Saharan Africa conducted to support the development of the World Health Organization's 2023 Men and HIV Framework. Here we describe findings from the scoping review focused on HIV and related services. We focus on articles that report intervention impact on men's use of one or more HIV or related services in SSA. We exclude articles on voluntary medical male

circumcision (VMMC) because, unlike other services, VMMC is only needed once across the life course and barriers/facilitators to service utilization are very different than other services.

### ***Search strategy and data selection***

We included studies of interventions that included some comparison data. Most studies were randomized control trials, quasi-experimental studies, observational cohort studies, and program evaluations. All articles described interventions to improve the use of the following services in SSA: condom use; pre-exposure prophylaxis (PrEP); STI testing and treatment; HIV testing, initiation, and retention; and TB testing and treatment among those living with HIV (co-infected). All articles included at least one intervention (i.e., non-standard service delivery strategy) with a comparison group – comparisons were not required to be standard of care. We excluded articles that exclusively targeted key populations as these populations may need different interventions than the general male population. Articles may include both male and female participants but were only included if they reported sex-disaggregated results. Finally, we only included articles where participants were from SSA (using the United Nations sub-regions of Africa) and articles were available in English. We retrieved articles published between January 1, 2009 to Dec 31, 2022.

To identify articles, we searched the PubMed database and then adapted our search strategy for Medline, Cochrane Central Register of Controlled Trials, the CABI Global Health databases, and major international conference abstracts. We searched using Medical Subject Headings (MeSH), keywords, and filters as appropriate (see Table 1 for keywords). We completed two searches: We first searched for sources published from January 1, 2009, to the date of the literature pull (May 9, 2021). We then completed a revised search from the date of the last literature pull (May 9, 2021) until Dec 31, 2022.

---

**Table 1.** Key search words used

Concept	Text Key Words
ART	ART; Antiretroviral; Retroviral; HAART
HIV	HIV; human immunodeficiency virus
Condom use	Safe* sex; Condom; Pre-exposure prophylaxis; Sexual partner*
PrEP	Pre-exposure prophylaxis; PrEP
STI	Sexually transmitted infection* (Bacterial Vaginosis, Chlamydia, Gonorrhea, Hepatitis, Herpes, Mycoplasma genitalium, Syphilis, Trichomoniasis)
TB-HIV co-infection	Tuberculosis AND HIV; co-infection
Initiation	Initiat*; Uptake; Link*; Early Care
Retention	Retention; Retain*; Viral suppression; Sustained Virological Response"; advanced HIV; Acquired immunodeficiency syndrome
Sub-Saharan Africa	*Saharan Africa ( Angola, Benin, Botswana, Burkina Faso, Burundi, Cabo Verde, Cameroon, Central African Republic, Chad, Comoros, Congo, Democratic Republic of, Congo, Republic of Cote d'Ivoire, Equatorial Guinea, Eritrea, Eswatini (Formerly Known as Swaziland), Ethiopia, Gabon, Gambia, The, Ghana, Guinea, Guinea-Bissau, Kenya, Lesotho, Liberia, Madagascar, Malawi, Mali, Mauritania, Mauritius, Mozambique, Namibia, Niger, Nigeria, Rwanda, Sao Tome and Principe, Senegal, Seychelles, Sierra Leone, Somalia, South Africa, South Sudan, Sudan, Tanzania, Togo, Uganda, Zambia, Zimbabwe)
Intervention	Intervention*; Trial; Random*; Program*; Project; Strateg*
Publication year limit	2009:2021.(sa_year); 2021; 2022 (sa_year)

### ***Selection of sources of evidence***

We first removed duplicates. One author then conducted a title and abstract review and removed sources that did not meet the study inclusion and exclusion criteria. We entered results from the search strategy into an Endnote<sup>29</sup> database and two reviewers reviewed the full text of the remaining sources to determine final study eligibility, with any conflicts resolved by KD.

### ***Data charting process***

We developed a data-charting form (Excel spreadsheet) based on the study objectives. Information included: study and participant characteristics (e.g., country, year of data collection, eligibility criteria), details of intervention and comparison models (e.g. location, frequency, and services provided), health service or clinical outcomes captured, and any concerns regarding quality (including potential bias in

data collection, reporting, or analysis). Data were entered directly into the structured data-charting form independently by four reviewers. After all data were entered into the data-charting form, lead authors reviewed and refined the form iteratively. Any inconsistencies were reconciled and KD performed spot-checks.

### **Synthesis**

We categorized interventions into five intervention types, which were informed by Duncombe's key components of tailored care across the treatment cascade<sup>30</sup>: facility-based services, community-based services, community outreach, counseling and/or peer support, mHealth, and incentives (see Table 2 for definitions). We summarized interventions, key components, and key limitations across service domains.

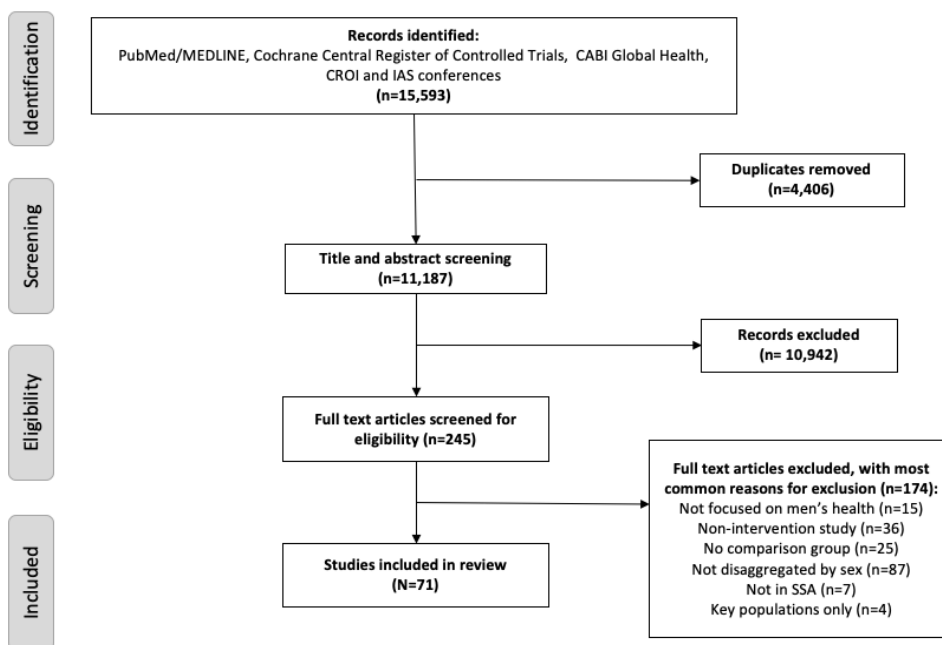
**Table 2.** Intervention type and definitions

<b>Intervention Type</b>	<b>Definition</b>
Facility-based services	Interventions that primarily focused on changes to protocols or services within facilities.
Community-based services	Biomedical services delivered outside the health facility.
Community outreach	Community-based activities to encourage use of biomedical services at health facilities, such as community sensitization campaigns, tracing activities, and facility referrals.
Counseling/peer support	<u>Ongoing</u> counseling and/or peer engagement to encourage positive health outcomes, such as building demand creation, health literacy, self-efficacy and agency, and identifying and developing plans to overcome barriers to care.
Incentives	At least one opportunity to receive monetary/non-monetary incentives conditional on one's use of HIV or related health services.
mHealth	Using mobile devices, tablets, and other technological devices to offer health services, counseling, monitoring and evaluation, or reminders, etc.

### **Results**

We identified 15,595 intervention articles. We removed 4,406 duplicates, reviewed 11,187 titles, and 245 data sources qualified for full review. Under full review we excluded 174 data sources (Fig 1): not focused on men's health (n=15), data not disaggregated by sex (n=87), non-intervention study (n=36), no comparison group (n=25), not in sub-Saharan Africa (n=7) and only included key populations (n=4) (see Figure 1).

**Figure 1.** PRISMA flow diagram



### **Settings and Populations of Included Interventions**

A total of 71 articles were included in the review. Nearly all studies were conducted in eastern and southern Africa (n=70, 99%) and a large proportion of articles were published after 2016 (n=55, 77%), representing interventions within the era of universal treatment (see Table 3). Only 7 (10%) studies examined interventions tailored exclusively to men; these focused on HIV testing (n=7) and ART linkage (n=2). A total of 19 (27%) studies targeted male partners of pregnant and/or breastfeeding women or women living with HIV, 4 (6%) studies explicitly targeted adolescents and young men and no interventions explicitly targeted middle and older age men (not shown). Most studies focused on HIV services (n=64, 90%): among those, the majority had HIV testing services as the primary outcome (n=51, 80%). Only 2 studies focused on condom use, 2 on STIs, and 3 on TB-HIV co-infection. No interventions examined the impact on PrEP for men. About 62% (n=44) were randomized control trials.

**Table 3.** Description of settings and populations included in articles (n=71)

Service Domain	Total	Published >2016	Male Only Intervention	Eastern/Southern Africa	West Africa	Central Africa
Increase condom use	2	0	0	2	0	0
PrEP	0	0	0	0	0	0
STI	2	0	0	2	0	0
HIV/TB-co infection	3	0	0	3	0	0
HIV testing	51	14	6	50	1	0
HIV linkage to care	10	1	2	10	0	0

<b>HIV retention and re-engagement</b>	3	0	0	3	0	0
<b>Total</b>	71	15	8	70	1	0

### ***Interventions Included***

A total of 111 interventions were evaluated (see Table 4). Community services was the most common intervention type (n=40, 36%), followed by community outreach (n=19; 17%), incentives (n=16; 14%) and facility services (n=16, 14%). Counseling and peer support had the least number of interventions evaluated (n=8, 7%). Interventions varied by type of service type.

**Table 4.** Description of interventions by intervention type (n=111)

<b>Service Domain</b>	<b>Total</b>	<b>Facility Services</b>	<b>Community Services</b>	<b>Community Outreach</b>	<b>Counseling/ Peer Support</b>	<b>Incentives</b>	<b>mHealth</b>
<b>Increase condom use</b>	4	0	0	0	4	0	0
<b>PrEP</b>	0	0	0	0	0	0	0
<b>STI</b>	5	2	0	3	0	0	0
<b>TB-co infection</b>	3	1	1	0	0	0	1
<b>HIV testing</b>	82	7	37	16	3	12	7
<b>Linkage to care</b>	12	6	2	0	0	3	1
<b>Retention</b>	5	0	0	0	1	1	3
<b>Total</b>	111	16	40	19	8	16	12

Characteristics of included studies and study results are summarized in Table 5 and 6.



**Table 5.** All studies, stratified by service domain

Study	Study design	Study Year	Country	Setting	Population	Male participants	Total participants	Intervention type	Comparison Description	Intervention Description
<b>Condom use</b>										
Kalichman, 2021	RCT	2014-2017	South Africa	Urban	Men and women	528	1,050	2 Counseling/Peer support	SOC STI education	(1) Risk reduction behavioral counseling (2) Enhanced partner notification communication counseling
Speizer, 2018	RCT	2010-2012	South Africa		Men and women	267	267 couples	2 Counseling/peer support	Women's health counseling + male partners SOC HTC	(1) Couples-based counseling delivered jointly (2) Gender-focused counseling delivered separately to men and women
<b>STI</b>										
Hoffman, 2019	Cross-sectional intervention	2017-2018	South Africa	Rural	Men and women	43	177	1 Community outreach 2 Facility services	No SOC, interventions compared against each other	(1) Clinic poster encouraging testing (2) Training of CHW + pamphlets encouraging testing (3) Training of traditional leaders + pamphlets encouraging testing
Strasser, 2012	Pre-post intervention	2009-2010	Uganda and Zambia	Rural and urban	Male partners and ANC clients	Uganda: 2,941 Zambia: 838	Uganda: 14,540 Zambia: 1,050	2 Community Outreach	Retrospective STI data	(1) Uganda: ANC syphilis/HIV testing + partner testing invitation letter (2) Zambia: ANC syphilis/HIV testing + partner notification when positive
<b>TB-HIV Co-infection: Screening and Treatment</b>										
Kazibwe, 2021	Descriptive study	2018-2019	Zambia	Urban	Men and women	Facility: 2,142,376 Community case-finding: 25,690	Facility: 6,412,387 Community case-finding: 49,620	Community services	Systematic TB screening at points of entry at clinic	Community based TB screening
Gattamanchi 2021 (PLoS)	RCT	2018-2019	Uganda	Unknown	Men and women	1,186	1,913	mHealth	SOC routine TB treatment supervision	99DOTS supervision (daily SMS reminders and phone call dosing confirmation)
Gattamanchi 2021 (NEJM)	RCT	2018-2020	Uganda	Rural and urban	Men and women	4,243	1,0644	Facility services	SOC in-site sputum smear microscopy + referral based molecular testing	Multicomponent diagnostic strategy (on-site molecular testing for tuberculosis, guided restructuring of clinic workflows, and monthly feedback of quality metrics)
<b>HIV Testing</b>										
Fylkesnes, 2013	Non-random controlled trial	2009-2011	Zambia	Rural and urban	Men and women	686	1,501	Community services	SOC facility-based HIV testing	Home-based HIV testing
Parker, 2015	Intervention study	2013	Swaziland	Rural	Men and women	4,001	9,060	Community services	Home-based HIV testing	Mobile HIV testing
McGovern, 2015	Quasi-experimental difference-in-difference	2009-2011	South Africa	Rural	Men and women	6,418	18,478	Incentives	SOC home-based testing	Non-conditional \$5 USD food vouchers + home based testing
Krakowiak, 2016	RCT	2013-2014	Kenya	Rural	Male partners and ANC clients	601	1,202	Community services	Clinic invitation for male HTC and education	Home-based male partner HTC and education
Phiri, 2016	RCT	2016-2019	Zambia and South Africa	Rural and urban	Men and women	81,454	81,454	Community services	Home based HIV testing and counseling from female only community HIV care provider pair	Home based HTC from minimally community HIV care provider pair (male+male or male+female)

Chamie, 2017	RCT	2016	Uganda	Rural	Men	2,530	2,530	2 Incentives	Gain framed incentives (promise of prize for testing)	(1) Loss-framed incentives (shown small prize, taken away for not testing) (2) Lotteries (chance of winning prize for testing)
Medley, 2019	Intervention study	2017	South Africa	Unknown	Male partners and ANC clients	1,166	2,332	2 Community services 1 Incentive	No SOC, interventions compared against each other	(1) Assisted provider testing (combined facility invitation + home-based testing if needed) (2) Offer of two HIVST kits for male partners + counseling pamphlet + phone credit voucher for SMS and confirming results
Tanser, 2021	RCT	2018	South Africa	Urban	Men	13,838	13,838	2 Incentives 2 mHealth	SOC voluntary HIV testing	(1) Incentive for HIV testing (R50 [\$3] food voucher) (2) Male-targeted counseling (3) Incentive for HIV testing + male-targeted counseling
Davey, 2022	RCT	2021	South Africa		Men partners and ART clients	0	180 female partners	Community services	SOC referral slip for male partners index testing	Secondary HIVST distribution for male partner index testing
Coates, 2014	RCT	2001-2011	Zimbabwe, Tanzania, South Africa <sup>2</sup>		Men and women	21,182 <sup>2</sup>	46,378 <sup>2</sup>	Community services	SOC facility-based HTC	Community-based voluntary counseling and testing + post testing services and support groups
Amstutz, 2020	RCT	2018	Lesotho		Men and women	3,507	7,816	Community services	Home based multi disease screening and facility referral	Home based multi-disease screening + HIVST kit distribution
Choko, 2021	RCT	2018-2019	Malawi		Male partners and ANC clients	3,378	4,544	1 Incentives 1 Community services	Enhanced SOC (invitation for partner HIV testing)	(1) Secondary HIVST distribution for male partners of ANC clients (2) HIVST + \$10 USD incentive for confirmatory testing
Mendelsohn, 2018	Cross sectional study	2015	South Africa		Adolescent male and females	779	2,235	Facility services	Public clinic without youth-specific services	Youth only clinic + incentivized sexual and reproductive health services
Maman, 2020	RCT	2013-2016	Tanzania		Men	1,258	1,258	Incentive	Social network without microfinance + peer health leadership training	Social network microfinance + peer health leadership training
Cham, 2019	Intervention study	2014-2017	Tanzania	Urban and rural	Men and women	56,304	133,695	2 Community services	Provider initiated HTC	(1) Home-based HTC (2) Venue-based HTC
Baisley, 2012	Cross sectional	2007-2008	Tanzania	Rural	Men and women	6,962	12,590	Facility services	Opt-in voluntary HTC	Opt-out voluntary HTC
Labhardt, 2014	RCT	2011	Lesotho	Rural	Men and women	483	2,563	Community services	Door-to-door multi-disease campaign	Community gathering multi-disease campaign + mobile clinic
Choko, 2019	RCT	2016-2017	Malawi	Urban	Male partners and ANC clients	2,349	4,698	5 Community services 3 Incentives	SOC invitation card for partner testing	(1) Secondary HIVST distribution for male partners of ANC clients (2) HIVST for male partners + \$3 incentive (3) HIVST for male partners + \$10 incentive (4) HIVST for male partners + lottery incentive (5) HIVST for male partners + phone call reminder
Kikumbih, 2012	Cross sectional	2008-2011	Tanzania		Male partners and ANC clients	33,063	NA	1 Community outreach 1 Facility services	SOC PMTCT's services	Male partner combination intervention with invitation letters and posters, prioritize clients accompanied by partners, couple counseling, and HCW training on engaging male partners

Derksen, 2015	RCT	2015	Malawi	Rural	Men and women	NA	NA	Community outreach	Community health meeting emphasizing personal benefit for ART	Community sensitization emphasizing community wide treatment as prevention
Rosenberg, 2015	RCT	2014	Malawi	Urban	Male partners and ANC clients	0	200 female partners	Community outreach	SOC invitation for male partners to present to ANC for testing	Invitation for male partners to present to ANC+ tracing (phone and community)
Thirumurthy, 2016	RCT	2015-2016	Kenya	Urban	Male partners and ANC clients	0	600 female partners	Community services	SOC invitation for male partners to present to ANC for testing	Secondary distribution of HIVST for male partners
Indravuh, 2021 (BMJ Global Health)	RCT	2016-2018	Malawi	Rural	Men and women	2,339	5,490	Community services	SOC facility-based HTC	Door-to-door community-led HIVST + referral for linkage
Roland, 2019	RCT	2013-2017	Botswana	Rural and urban	Men and women	25,111	49,693	Community services	Mobile HIV testing	Home HIV testing
Geoffroy, 2018	Intervention study	2014-2017	Malawi		Men and women	4,360	6,166	Community services	Weekday mobile clinics over the same period	Targeted testing events (markets, tea estates, and churches/mosques) for HIV testing.
Wirtz, 2019	Intervention study	2016-2018	Mozambique		Men and women	2,263	3,017	1 Community outreach 1 mHealth	SOC facility-based HTC, no additional community activities	Community stigma intervention (Positive Prevention session, community member dialogues, radio announcement, call-in programs, and SMS-based linkage system)
Odhiambo, 2020	Intervention study	2018-2019	Kenya		Men partners and women	102,347	102,347	Community outreach	SOC facility-based HIV approaches	Assisted partner notification services
Makangila, 2020	Intervention study	2016-2019	Zambia		Men and women	4,813	10,282	1 Community services 1 Community outreach	Pre-intervention male testing rates	Faith-based engagement intervention (faith-based leader training, virtual support, community-based services)
Lippman, 2022	RCT	2015-2018	South Africa		Men and women	16,853	38,300	1 Community outreach 1 Community services	SOC facility-based HTC, no additional community activities	Community mobilization intervention (community testing targets, workshops, monthly meetings)
Phiri, 2022	RCT	2013-2017	Zambia and South Africa	Rural	Men	160,763	759,814	1 Community services 3 Community outreach	Door-to-door universal test and treat	(1) Community-wide "Man-up" campaigns (2) Work/social places testing (3) Home-based revisit with HIVST (4) Community hubs
Martelli, 2022	Cross sectional study	2017-2019	Tanzania		Men and women	135,312	255,329	Community services	Facility based HIV testing	Community based HIV testing campaigns + special events
Dovel, 2019	RCT	2018	Malawi	Rural and urban	Men partners and ART clients	113	484	Community services	Standard partner referral slip by female ART client	HIVST distribution to male partner by female ART client
Dovel, 2020	RCT	2017-2018	Malawi	Rural and urban	Men and women	2,252	5,885	2 Facility services	Standard provider HTC	(1) Optimized provider-initiated HTC (2) Facility based HIVST distribution in OPD
Dancy, 2014	Intervention study		Malawi	Rural	Male and women	397	777	Community outreach	SOC facility-based HTC without tailored services	Youth intervention (seven week sexual and reproductive health education and resources)
Brown, 2011	RCT	2008-2009	Malawi	Urban	Male partner and women	100	240	2 Community outreach	Passive partner referral	(1) Contract partner referral (7 days to contact partner, then HCW contact) (2) Assisted provider partner notification

Nglazi, 2012	Retrospective analysis	2008-2010	South Africa	Urban	Unemployed Men	9,416	9,416	1 Community services 1 Incentives	Mobile HTC	Mobile HTC + incentive (\$10USD food voucher)
Knoblauch, 2017	Intervention study	2012-2015	Zambia	Rural	Men and women	9,716	17,202	Community services	Community HTC (offered as mobile outreach activities)	Workforce HTC (offered continuously at various service points accessible to mine workers)
Amstutz, 2020	RCT	2018	Lesotho		Adolescents and young adults (12-24 yrs)	1,252	2,681	Community services	Home-based HIV testing	Home-based testing + HIVST for household members absent or refusing testing
Indravuh, 2021 (PLOS Medicine)	RCT	201-2019	Malawi	Rural	Adolescents, older adults and men	3,072	7,880	Community services	Facility-based HTC	Community health group design and implementation of 7-day HIVST campaigns
Jeremiah, 2021	RCT	2014-	Malawi and Tanzania	Rural and urban	Male partners and ANC clients	0	218 female partners	Facility services	Individual ANC visits	Group ANC visits with same consistent group of women with similar expected delivery date
Meehan, 2014	Intervention study	2011	South Africa	Urban	Men and women	410	1,063	Community services	Facility-based HCT	Mobile HCT
Pettifor, 2020	RCT	2016-2017	South Africa	Rural	Male partners and young women	259	1107	Community services	Partner referral for HTC	Young women given choice of HTC referral or HIVST to give to peer or male partner.
Masyuko, 2016	RCT	2013-2015	Kenya	Rural and urban	Male partners and women	429 index clients + 726 partners	1119 index clients + 1286 partners	Community outreach	Delayed assisted partner notification (six weeks)	Immediate assisted partner notification
Ezeanolue, 2017	RCT	2013-2014	Nigeria	Urban	Male partners and ANC clients	2,498	5,545	Community services	Faith-based baby shower + facility referral for HIV testing and ANC care	Faith-based baby shower + health education, on-site screening and testing for HIV and other condition
Mphonda, 2014	Intervention study	2007-2009	Malawi	Urban	Male partners and ANC clients	1,128	31,194	2 Counseling/Peer support 1 Facility services	Peer education in ANC	(1) Peer education + peer-led drama in ANC waiting area (2) Peer education + male-friendly ANC clinic adjustments
Nigatu, 2015	Cross sectional study	2010-2011	Ethiopia	Rural and urban	Men and women	13,831	29,639	Community outreach	SOC HIV education and testing	Ongoing community engagement and active co-creation of HIV testing strategies
van Heerden, 2015	RCT	2011-2012	South Africa	Rural	Men	90	90	3 mHealth	No SOC, interventions compared against each other	Activities after missing home-based HTC: (1) Follow-up voice call (2) Follow-up SMS (3) Follow-up WhatsApp instant message
Alwano, 2019	RCT	2013-2015	Botswana	Rural and urban	Men and women	27,694	61,655	2 Community services	No SOC, interventions compared against each other	(1) Home HCT (2) Mobile HCT
Gichangi, 2018	RCT	2015-2016	Kenya	Unknown	Male partners and ANC clients	0	1410 female partners	1 Community outreach 1 Community services	SOC partner testing invitation card	(1) Improved partner testing invitation card stating the importance of male HIV testing (2) 2 HIVST + informational material

Audet, 2016	Intervention study	2012-2014	Mozambique	Rural	Male partners and ANC clients	1,772	7,743	Counseling/Peer support	SOC ANC services	Male-to-male traditional birth attendant + counseling of male partners
Hyuha, 2021	RCT	2019-2020	Tanzania	Urban	Male and female trauma patients	211	255	mHealth	Provider-initiated HTC in emergency services	Provider-initiated HTC in emergency services + three SMS reminders for follow-up or retesting
<b>HIV linkage to care</b>										
Sibanda, 2021	RCT	2019	Zimbabwe	Rural	Men and women	5,070	11,150	Community services	Door-to-door HIVST distribution	Community-led HIVST distribution
Makurumidze, 2020	Retrospective cohort study	2016-2017	Zimbabwe	Urban and rural	Men and women	1,436	3,787	Facility services	SOC ART initiation based on clinical stage	Same day ART initiation after diagnosis in facility
Boyd, 2020	Intervention study	2018-2019	Zambia	Urban	Men and women	87,396	248,002	Facility services	SOC facility-based HIV services	Facility workforce strengthening improved facility level documentation, enhanced counseling
Rosen, 2019	RCT	2017-2018	South Africa, Kenya	Urban	Men and women	422	1077	Facility services	ART initiation within 2 weeks	Clinical algorithm for same-day ART initiation in facilities (excluding individuals with TB symptoms)
Maskwe, 2020	RCT	2018	South Africa	Urban	Men and women	220	593	Facility services	ART initiation within 2 weeks	Clinical algorithm for same-day ART initiation in facilities (including individuals with TB symptoms)
Labhardt, 2018	RCT	2016-2017	Lesotho	Rural	Men and women	47	137	Community services	Home based HCT and referral to nearest facility	Home-based HCT + same-day home based initiation with 30-day supply of ART
Barnabas, 2020	RCT	2017-2018	South Africa	Rural	Men	131	131	Incentives	Motivational text messages	3 conditional lottery incentives (phone, data, \$100 gift card) for clinic registration, ART initiation, and viral suppression at 1, 3, and 6 months
Kim, 2021	RCT	2018	South Africa		Men	2,865	2,865	2 Incentives 1 mHealth	SOC	(1) Conditional financial incentives for home-based HIV testing + linkage to care within 6 weeks (R50 [\$3] food voucher each) (2) Male-targeted HIV-specific decision-support app (3) Both conditional financial incentives and support app
Lawn, 2011	Retrospective study	2002-2008	South Africa		Men and women	1,277	3,770	Facility services	SOC TB care; no HIV testing offered	Provider initiated HIV testing + linkage to care in TB clinic
Ahmed, 2020	Retrospective cohort study	2016-2018	Ethiopia	Rural	Men and women	468	988	Facility services	Clients at the same facilities who initiated ART >7 days after diagnosis	Same day ART initiation after diagnosis in facility
<b>HIV retention and re-engagement</b>										
Steward, 2021	RCT	2014-2015	South Africa	Rural and urban	Men and women	292	752	2 mHealth 1 Counseling/Peer support	SOC facility-based HIV services	(1) SMS (appointment reminders, biweekly healthy living messages and twice monthly SMS check-ins) (2) SMS + Peer Navigation (appointment reminders, biweekly healthy living messages and twice monthly discussions with peer navigators to address barriers to care)
Fahey, 2020	RCT	2018	Tanzania	Urban	Men and women	200	530	Incentives	SOC facility-based HIV services without incentives	(1) 6 conditional monthly incentives of \$4.50 each for clinic attendance (2) 6 conditional monthly incentives of \$10.00 each for clinic attendance

van der Kop, 2018	RCT	2013-2015	Kenya	Urban	Men and women	281	700	mHealth	SOC facility-based HIV services without text messages	Weekly interactive text messages for HIV support + follow-up phone calls when reporting challenges for one year
-------------------	-----	-----------	-------	-------	---------------	-----	-----	---------	---	---

ANC; antenatal care, SOC; Standard of care HIVST; HIV self-testing HTC; HIV testing and counseling SMS; short message service, HCW; healthcare worker, DOTS; directly observed therapy; RCT; randomized controlled trial, TB; tuberculosis, STI; sexually transmitted infection

± Thailand included in study design but excluded from analysis due to low prevalence (Coates, 2014) Data only presented from Tanzania, South Africa and South Africa

**Table 6.** Study results, stratified by service domain

Study	Comparison Description	Intervention Description	Verified/ Self-Report	Outcome Definition	Outcome Time Frame	Comparison Outcome	Intervention Outcome
<b>Condom use</b>							
Kalichman, 2021	SOC education	(1) Risk reduction behavioral counseling (2) Enhanced partner notification communication counseling	V + SR	Return STI visits Condom use during vaginal intercourse	12 months; 3, 6 and 9 months	Return for STI visit: 29% Condom use: 3-months: 40% 6-months: 41% 9-months: 38%	(1) Risk reduction counseling-- Return for STI visit: 30% Condom use: 3-months: 40% 6-months: 39% 9-months: 39%  (2) Enhanced partner notification-- Return for STI visit: 23% Condom use: 3-months: 38% 6-months: 39% 9-months: 41%
Speizer, 2018	Women's health counseling + male partners SOC HTC	(1) Couples-based counseling delivered jointly (2) Gender-focused counseling delivered separately to men and women	SR	Consistent condom use, Partner communication about condoms	6 months	Consistent condom use: 9% Partner communication about condoms: 8%	(1) Couples-based counseling delivered jointly Consistent condom use: 25% Partner communication to use condom: 21%  (2) Gender-focused counseling delivered separately Consistent condom use: 21%* Partner communication to use condom: 23%*
<b>STI</b>							
Hoffman, 2019	No SOC, interventions compared against each other	(1) Clinic poster encouraging testing (2) Training of CHW + pamphlets encouraging testing (3) Training of traditional leaders + pamphlets encouraging testing	V	Seeking STI care	Unspecified	Interventions compared to each other	(1) 56% (2) 30% (3) 5%
Strasser, 2012	Retrospective STI data	(1) Uganda: ANC syphilis/HIV testing + partner testing invitation letter (2) Zambia: ANC syphilis/HIV testing + partner notification when positive	V	Syphilis and HIV partner testing	9 months	(1) Uganda retrospective STI data Syphilis: N/A HIV: 10%  (2) Zambia retrospective STI data Syphilis: 0 HIV: 4%	(1) Uganda: ANC syphilis/HIV testing + partner testing invitation letter Syphilis: 10% HIV: 13%  (2) Zambia: ANC syphilis/HIV testing + partner notification when positive Syphilis: 3% HIV: 4%
<b>TB-HIV Co-infection: Screening and Treatment</b>							
Kazibwe, 2021	Systematic TB screening at points of entry at clinic	Community based TB screening	V	TB screening and diagnosis	2 years	Screened: 1,403,024 Presumed TB: 45,007 TB positive: 8,251	Screened: 23,901 Presumed TB: 5,197 TB positive: 953
Cattamanchi 2021 (PLoS)	SOC routine TB treatment supervision	99DOTS supervision (daily SMS reminders and phone call dosing confirmation)	V	TB treatment completion	Unspecified	71%	87%*
Cattamanchi 2021 (NEJM)	SOC in-site sputum smear microscopy + referral based molecular testing	Multicomponent diagnostic strategy (on-site molecular testing for tuberculosis, guided restructuring of clinic workflows,	V	Number of patient treated for confirmed TB within 14-days of TB	16-month period	147	234

		and monthly feedback of quality metrics)		evaluation			
<b>HIV testing</b>							
Fylkesnes, 2013	SOC facility-based HIV testing	Home-based HIV testing	V	HIV testing	1 year	42%	76%
Parker, 2015	Home-based HIV testing	Mobile HIV testing	V	HIV testing	12 months	39%	42%
McGovern, 2015	SOC home-based testing	Non-conditional \$5 USD food vouchers + home based testing	Not specified	HIV testing	1 year	30%	42%
Krakowiak, 2016	Clinic invitation for male HTC and education	Home-based male partner HTC and education	SR	HIV testing	6 months	39%	87%
Phiri, 2016	Home based HIV testing and counseling from female only community HIV care provider pair	Home based HTC from minimally community HIV care provider pair (male+male or male+female)	SR	HIV testing	Not specified	64%	68%
Chamie, 2017	Gain framed incentives (promise of prize for testing)	(1) Loss-framed incentives (shown small prize, taken away for not testing) (2) Lotteries (chance of winning prize for testing)	V	HIV testing	3 months	72%	(1) 77% (2) 80%
Medley, 2019	No SOC, interventions compared against each other	(1) Assisted provider testing (combined facility invitation + home-based testing if needed) (2) Offer of two HIVST kits for male partners + counseling pamphlet + phone credit voucher for SMS and confirming results	V	Confirmed HIV testing	10 months	Interventions compared to each other	(1) 23% (2) 43%
Tanser, 2021	SOC voluntary HIV testing	(1) Incentive for HIV testing (R50 [\$3] food voucher) (2) Male-targeted counseling (3) Incentive for HIV testing + male-targeted counseling	V	HIV testing	11 months	18%	(1) 27%* (2) 17% (3) 27%*
Davey, 2022	SOC referral slip for male partners index testing	Secondary HIVST distribution for male partner index testing	SR	HIV testing	3 months	55%	78%*
Coates, 2014	SOC facility-based HTC	Community-based voluntary counseling and testing + post testing services and support groups	V	HIV incidence rate	3 years	119%	95%
Amstutz, 2020	Home based multi disease screening and facility referral	Home based multi-disease screening + HIVST kit distribution	V	HIV testing	4.5 months	44%	74%*
Choko, 2021	Enhanced SOC (invitation for partner HIV testing)	(1) Secondary HIVST distribution for male partners of ANC clients (2) HIVST + \$10 USD incentive for confirmatory testing	SR	ANC Cohort: Proportion of male partners tested at 28 days  Index Partner Cohort: Geometric mean # of new HIV+ partners per cluster	8 months	ANC cohort Proportion of male partners tested 35%  Index Partner Cohort: Geometric mean # of new HIV+ partners per cluster 1.35 (SD 1.62)	ANC Cohort: Proportion of male partners tested (1) 73%* (2) 65%*  Index Partner Cohort: Geometric mean # of new HIV+ partners per cluster (1) 1.91 (SD 1.78) (2) 3.20 (SD 3.81)



Mendelsohn, 2018	Public clinic without youth-specific services	Youth only clinic + incentivized sexual and reproductive health services	V	HIV testing	12 months	4%	12%
Maman, 2020	Social network without microfinance + peer health leadership training	Social network microfinance + peer health leadership training	SR	STI prevalence Unprotected sex HIV testing	30 months	STI prevalence: 27% Unprotected sex: 69% HIV testing: 47%	STI prevalence: 28% Unprotected sex: 64% HIV testing: 53%
Cham, 2019	Provider initiated HTC	(1) Home-based HTC (2) Venue-based HTC	V	HIV testing	2 years 6 months	35%	(1) 47% (2) 69%
Baisley, 2017	Opt-in voluntary HTC	Opt-out voluntary HTC	V	HIV testing	1 year	75%	76%
Labhardt, 2014	Door-to-door multi-disease campaign	Community gathering multi-disease campaign + mobile clinic	V	HIV testing	1 month	94%	92%
Choko, 2019	SOC invitation card for partner testing	(1) Secondary HIVST distribution for male partners of ANC clients (2) HIVST for male partners + \$3 incentive (3) HIVST for male partners + \$10 incentive (4) HIVST for male partners + lottery incentive (5) HIVST for male partners + phone call reminder	SR	Male partners HIV testing + linkage to care in 28 days	11 months	17%	Testing + linkage (geometric mean)/Male partners tested (% tested): (1) Secondary HIVST distribution for male partners of ANC clients 17.5% / 92.1% (2) HIVST for male partners + \$3 incentive 40.9% / 90.9% (3) HIVST for male partners + \$10 incentive: 51.7% / 94.3% (4) HIVST for male partners + lottery incentive: 18.6% / 87.0% (5) HIVST for male partners + phone call reminder: 22.3% / 95.4%
Kikumbih, 2012	SOC PMTCT services	Male partner combination intervention with invitation letters and posters, prioritize clients accompanied by partners, couple counseling, and HCW training on engaging male partners	V	Male partner HIV testing	3 years	7%	Year 1: 30% Year 2: 40% Year 3: 50%
Derksen, 2015	Community health meeting emphasizing personal benefit for ART	Community sensitization emphasizing community wide treatment as prevention	V	HIV testing	3 months	1.7%	2.3%
Rosenberg, 2015	SOC invitation for male partners to present to ANC for testing	Invitation for male partners to present to ANC + tracing (phone and community)	V	Percentage of partners presenting for couples HIV testing	10 months	52%	74%*
Thirumurthy, 2016	SOC invitation for male partners to present to ANC for testing	Secondary distribution of HIVST for male partners	SR	Partner HIV testing within 3 months	17 months	52%	91%*
Indravuh, 2021 (BMJ Global Health)	SOC facility-based HTC	Door-to-door community-led HIVST + referral for linkage	SR + V	HIV testing in the last 12 months	16 months	42%	65%*
Roland, 2019	Mobile HIV testing	Home HIV testing	V	HIV testing	5 years	67%	33%
Geoffroy, 2018	Weekday mobile clinics over the same period	Targeted testing events (markets, tea estates, and churches/mosques) for HIV testing.	V	HIV testing	3.5 years	26%	71%

Wirtz, 2011	SOC facility-based HTC, no additional community activities	Community stigma intervention (Positive Prevention session, community member dialogues, radio announcement, call-in programs, and SMS-based linkage system)	SR	Self-reported stigma HIV testing	9 months		aOR:1.32; 95%CI:1.01, 1.74*
Odhiambo, 2020	SOC facility-based HIV approaches	Assisted partner notification services	V	HIV prevalence Linkage to care	1 year	HIV prevalence: 0.6% Linkage to treatment: 78%	HIV prevalence: 12% Linkage to treatment: 84%*
Makangila, 2020	Pre-intervention male testing rates	Faith-based engagement intervention (faith-based leader training, virtual support, decentralized services)	V	HIV tests per month	19 month	16	239
Lippman, 2022	SOC facility-based HTC, no additional community activities	Community mobilization intervention (community testing targets, workshops, monthly meetings)	V	Quarterly rates of HIV testing Linkage to care rate Quarterly default rate	3 years	Testing rate: 10%* Linkage to care rate: 0.977* Quarterly default rate: 2%*	Testing rate: 12%* Linkage to care rate: 0.985 Quarterly default rate: 2%*
Phiri, 2022	Door-to-door universal test and treat	(1) Community-wide "Man-up" campaigns (2) Work/social places testing (3) Home-based revisit with HIVST (4) Community hubs	V + SR	Men reached HIV testing HIV+	4 years	Door-to-door only year 1: Men reached: 73% HIV testing: 66% HIV+: 5% Door-to-door only year 2: Men reached: 63% HIV testing: 65% HIV+: 3% Door-to-door only year 3: Men reached: 46% HIV testing: 77% HIV+: 3%	(1) Community-wide "Man-up" campaigns Additional men reached: 1% HIV testing: 83% HIV+: 3% (2) Work/social places testing Additional men reached: 1% HIV testing: 100% HIV+: 10% (3) Home-based revisit with HIVST Additional men reached: 16% HIV testing: 77% HIV+: 2% (4) Community hubs: Additional men reached: 36% HIV testing: 95% HIV+: 2%
Martelli, 2022	Facility based HIV testing	Community based HIV testing campaigns + special events	V	HIV testing	2 years	46%	54%
Dovel, 2020	Standard partner referral slip by female ART client	HIVST distribution to male partner by female ART client	SR	HIV testing among male index partners	4 months	39%	89%*
Dovel, 2020	Standard provider HTC	(1) Optimized provider-initiated HTC (2) Facility based HIVST distribution in OPD	SR	HIV testing on day of enrollment	6 months	14%	(1) 15% (2) 47%
Dancy, 2014	SOC facility-based HTC without tailored services	Youth intervention (seven week sexual and reproductive health education and resources)	SR	HIV test in the last 12 months among men aged 13-15 HIV test in the last 12 months among men aged 16-19	7 months	HIV test in the last 12 months among men aged 13-15: 4% HIV test in the last 12 months among men aged 16-19: 16%	HIV test in the last 12 months among men aged 13-15: 6% HIV test in the last 12 months among men aged 16-19: 25%
Brown, 2011	Passive partner referral	(1) Contract partner referral (7 days to contact partner, then HCW contact) (2) Assisted provider partner notification	V	Partner visit to clinic within 30 days	11 months	16%	(1) 52% (2) 51%
Nglazi, 2012	Mobile HTC	Mobile HTC + incentive (\$10USD food voucher)	SR, V	First-time testers HIV positivity rate	2 years	First-time testers: 4.2% HIV positivity rate: 6%	First-time testers: 60% HIV positivity rate: 17%

Knoblauch, 2017	Community HTC (offered as mobile outreach activities)	Workforce HTC (offered continuously at various service points accessible to mine workers)	V	HIV testing HIV positivity rate	3 years	Year 1: 37%, 2.5% positivity rate Year 2: 42%, 3.2% positivity rate Year 3: 37.9%, 1.9% positivity rate	Year 1: 97%, 5.3% positivity rate Year 2: 95%, 3.1% positivity rate Year 3: 95% 4.2% positivity rate
Amsutz, 2020	Home-based HIV testing	Home-based testing + HIVST for household members absent or refusing testing	V	HIV testing	4.5 months	25%	70%*
Indravuh, 2021 (PLOS Medicine)	SOC facility-based HTC	Community health group design and implementation of 7-day HIVST campaigns	SR	Lifetime testing for adolescents Recent HIV testing (last 3 months) for men	3.5 months	Lifetime testing for adolescents: 57% Recent HIV testing (last 3 months) for men: 34%	Lifetime testing for adolescents: 80% Recent HIV testing (last 3 months) for men: 75%
Jeremiah, 2021	Individual ANC visits	Group ANC visits with same consistent group of women with similar expected delivery date	SR	Male partner HIV testing	12 months	45%	55%
Meehan, 2011	Facility-based HCT	Mobile HCT	V	HIV testing	3 months	27%	51%*
Pettifor, 2020	SOC partner referral for HTC	Young women given choice of HTC referral or HIVST to give to peer or male partner.	SR	Gave at least one test/referral to a male partner at 3 months	9 months	6%	18%
Masyuko, 2016	Delayed assisted partner notification (six weeks)	Immediate assisted partner notification	NA	HIV testing of male partners	23 months	11%	64%
Ezeanolue, 2017	Faith-based baby shower + facility referral for HIV testing and ANC care	Faith-based baby shower + health education, on-site screening and testing for HIV and other condition	V	HIV testing of male partner during pregnancy	9 months	38%	84%*
Mphonda, 2014	Peer education in ANC	(1) Peer education + peer-led drama in ANC waiting area (2) Peer education + male-friendly ANC clinic adjustments	V	Couples HIV testing	3 years	1%	(1) 6% (2) 11%
Nigatu, 2015	HIV education and testing	Ongoing community engagement and active co-creation of HIV testing strategies	SR	HIV testing	1 year	HIV testing: 39%	HIV testing: 60%
van Heerden, 2015	No SOC, interventions compared against each other	Activities after missing home-based HTC: (1) Follow-up voice call (2) Follow-up SMS (3) Follow-up WhatsApp instant message	SR	HIV testing	10 months	Interventions compared to each other	(1) 10% (2) 0% (3) 3%
Alwano, 2019	No SOC, interventions compared against each other	(1) Home HCT (2) Mobile HCT	V	HIV testing HIV+	3 years 2 months	Interventions compared to each other	(1) 41% (2) 55%
Gichangi, 2018	SOC partner testing invitation card	(1) Improved partner testing invitation card stating the importance of male HIV testing (2) 2 HIVST+ informational material	SR	Male partner HIV testing	6 months	27%	(1) 35% (2) 79%
Audet, 2017	SOC ANC services	Male-to-male traditional birth attendant + counseling of male partners	V	Male partner HIV testing	21 months	8%	34%

Hyuha, 2021	Provider-initiated HTC in emergency services	Provider-initiated HTC in emergency services + three SMS reminders for follow-up or retesting or linkage to care	V	HIV- who were retested Linkage to care	5 months	HIV- who were retested: 16% Linkage to care: 75% (3/4)	% HIV- who were retested: 59%* Linkage to care: 100%
<b>HIV linkage to care</b>							
Sibanda, 2021	Door-to-door HIVST distribution	Community-led HIVST distribution	SR	Linkage to confirmatory testing, PrEP or VMMC within 4 months	12 months	34%	39%*
Ma kurumidze, 2020	SOC ART initiation based on clinical stage	Same day ART initiation after diagnosis in facility	V	Linkage to care	4 month	36%	39%*
Boyd, 2020	SOC facility-based HIV services	Facility workforce strengthening improved facility level documentation, enhanced counseling	V	Linked to care (receiving ART)	18 months	34%	35%
Rosen, 2019	ART initiation within 2 weeks	Clinical algorithm for same-day ART initiation in facilities (excluding individuals with TB symptoms)	V	ART initiation	28 days	74%	85%
Maskwe, 2020	ART initiation within 2 weeks	Clinical algorithm for same-day ART initiation in facilities (including individuals with TB symptoms)	V	ART initiation	28 days	66%	90%
Labhardt, 2018	Home based HCT and referral to nearest facility	Home-based HCT + same-day home based initiation with 30-day supply of ART	SR	Linkage-to-care (attended health facility at least once within 90 days of enrollment)	90 days	34%	66%
Barnabas, 2020	Motivational text messages	3 conditional lottery incentives (phone, data, \$100 gift card) for clinic registration, ART initiation, and viral suppression at 1, 3, and 6 months	V	ART initiation	6 months	76%	93%
Kim, 2021	SOC voluntary HIV testing	(1) Conditional financial incentives for home-based HIV testing + linkage to care within 6 weeks (R50 [\$3] food voucher each) (2) Male-targeted HIV-specific decision-support app (3) Both conditional financial incentives and support app	V	Number of men linked to care (new initiation or re-start of ART) within 6 weeks of a home visit	11 months	37	(1) 16 (2) 26 (3) 13
Lawn, 2011	SOC TB care; no HIV testing offered	Provider initiated HIV testing + linkage to care in TB clinic	V	Linkage to care (enrolled in ART by year)	6 years	28%	Year 1: 35% Year 2: 39% Year 3: 36%*
Ahmed, 2020	Clients at the same facilities who initiated ART >7 days after diagnosis	Same day ART initiation after diagnosis in facility	NA	ART retention 6-months after initiation (defined as <30 days late for clinic visit)	6 months	88%	77%
<b>HIV retention and re-engagement</b>							

Steward, 2021	SOC facility-based HIV services	(1) SMS (appointment reminders, biweekly healthy living messages and twice monthly SMS check-ins) (2) SMS + Peer Navigation (appointment reminders, biweekly healthy living messages and twice monthly discussions with peer navigators to address barriers to care)	V	Retention in care	12 months	36%	(1) 34% (2) 50%
Fahey, 2020	SOC facility-based HIV services without incentives	(1) 6 conditional monthly incentives of \$4.50 each for clinic attendance (2) 6 conditional monthly incentives of \$10.00 each for clinic attendance	V	Retention in care	6 months	84%	(1) 88% (2) 91%
van der Kop, 2018	SOC facility-based HIV services without text messages	Weekly interactive text messages for HIV support + follow-up phone calls when reporting challenges for one year	V	12-month retention in care	25 months	80%	76%

ANC; antenatal care, SOC; Standard of care HIVST; HIV self-testing HTC; HIV testing and counseling SMS; short message service, HCW; healthcare worker, DOTS; directly observed therapy; RCT; randomized controlled trial, TB; tuberculosis, STI; sexually transmitted infection  
\* $p < 0.05$

± Thailand included in study design but excluded from analysis due to low prevalence (Coates, 2014) Data only presented from Tanzania, South Africa and South Africa

### **Facility Services**

There were no interventions examining the impact of facility-based interventions on men's use of condoms or PrEP services. Two interventions examined facility-based interventions for STI services and found that including clinic-based education (i.e., posters and pamphlets) and HCW training improved STI identification compared to traditional leader screening campaigns.<sup>31</sup> One facility service intervention was included for TB-HIV co-infection and found that multicomponent diagnostic strategies improved co-infection diagnostics.<sup>32</sup>

Seven facility-based interventions focused on HIV testing as the primary outcome.<sup>33–38</sup> Youth clinics,<sup>33</sup> HCW sensitization on engaging male partners,<sup>35</sup> and male-friendly spaces within ANC clinics<sup>37,38</sup> improved men's testing uptake. Offering opt-out HIV testing to men already attending health facilities has a wide reach but minimal impact<sup>34,36</sup> unless paired with HIV self-testing (HIVST) strategies, which can dramatically increase testing coverage for men attending facilities.<sup>36</sup>

Six facility-based interventions focused on linkage to ART services after a reactive HIV test.<sup>39–44</sup> Same-day initiation is strongly associated with linkage,<sup>39,41,42</sup> although there is mixed evidence on impact on retention.<sup>44</sup> Interventions that improve facility documentation to support enhanced counseling increased ART initiation,<sup>40</sup> as did integrating TB and HIV services within the TB clinic.<sup>43</sup>

There were no facility-based interventions focused on improving retention.

### **Community Services**

There were no interventions examining the impact of community service interventions on use of condoms, PrEP, or STI services. One intervention for TB-HIV co-infection found that community-based TB screening increased screening efforts but decreased presumed TB and TB positive cases identified.<sup>45</sup>

There were a total of 39 community service interventions focused on HIV testing – 17 interventions distributed HIVST to men (primary or secondary distribution),<sup>46–58</sup> 15 provided community/workforce testing (non-HIVST),<sup>52,53,55,59–71</sup> and 11 provided home-based HIV testing services.<sup>46,54,61,69,72–75</sup> Community services outperformed standard of care facility services<sup>48,52,60,61,65,67,72,73</sup> and mobile and targeted venue testing such as work were more cost efficient and had greater reach than home-based testing.<sup>53,59,61,63,69,70,74</sup> Notably no study compared a community service to a facility-based intervention (outside standard of care). Faith-based events and events around pregnancy can increase men's testing during critical life periods.<sup>63,64,68</sup>

Primary distribution of HIVST increased reach testing.<sup>48,52,53,55</sup> Secondary HIVST distribution increased testing among men when given to female partners living with HIV as part of index testing,<sup>47,58</sup> ANC clients,<sup>49–51,57</sup> young women,<sup>56</sup> and when HIVST was left for male adults and adolescents who were not home during door-to-door distribution.<sup>48,54</sup>

Only one community service intervention examined the impact on linkage for men. Same-day initiation at home immediately after home-based testing increased ART initiation rates.<sup>62</sup> No community service interventions examined the impact on men's retention in HIV care.

### ***Community Outreach***

There were no interventions examining the impact of community outreach interventions on use of condoms, PrEP or TB-HIV co-infection. Three community outreach interventions for STI testing or treatment were found.<sup>31,76</sup> Community sensitization through traditional leaders was not as effective as facility-based sensitization for increasing men's treatment for STI services,<sup>31</sup> while partner invitation letters for STI + HIV testing of male partners of ANC clients (using an index testing approach) showed little to no impact on syphilis testing.<sup>76</sup>

There were 16 interventions for HIV testing with community outreach.<sup>35,53,57,64,71,77-84</sup> Most were male partner testing strategies and reached men through invitation letters and a variety of community sensitization strategies.<sup>35,57,78,80,82,83</sup> Partner invitations combined with male-friendly services at the health facility or active tracing were usually effective.<sup>35,78,82,83</sup> One study found that simply distributing HIVST kits dramatically increased men's testing compared to partner invitations.<sup>57</sup> A few interventions used community sensitization to improve knowledge and motivation for HIV services,<sup>53,64,71,84</sup> such as expanding knowledge of treatment as prevention,<sup>77</sup> reducing stigma<sup>79</sup> and youth-specific education,<sup>81</sup> with mixed impact.

There were no interventions examining community outreach interventions for ART initiation and retention.

### ***Counseling / Peer Support***

Four interventions examined the impact of counseling and/or peer support on condom use – all found that couples and male-only counseling groups increased condom use and partner communication about condoms.<sup>85,86</sup> Three interventions examined the impact of counseling and/or peer support on HIV testing. Peer education and mentorship increased couples testing for male partners of ANC clients.<sup>38,87</sup> Peer navigation and mentorship also improved ART retention when compared to standard of care and SMS messages alone.<sup>88</sup>

### ***Incentives***

Twelve interventions examined the impact of incentives on HIV testing, with mixed findings.<sup>46,49,50,66,89-92</sup> Incentives improved HIVST result reporting.<sup>46,49,50</sup> Three interventions examined incentives for ART linkage with mixed results.<sup>93,94</sup> One intervention examined the impact of incentives on retention.<sup>95</sup>

### ***mHealth***

One mHealth intervention examined the impact on TB treatment completion among TB/HIV co-infections and found that SMS reminders and phone calls for direct observation therapy improved treatment completion when implemented with fidelity.<sup>96</sup> mHealth alone showed mixed effects on HIV testing<sup>91,97</sup> but mHealth in combination with other interventions were effective.<sup>79,91</sup>

## Discussion

In this scoping review of interventions, we were unable to identify cross-cutting strategies to reach men across HIV and related health services in sub-Saharan Africa, largely because there is little evidence outside HIV testing interventions. Nearly half of all interventions targeted HIV testing, 13% ART initiation, and 6% retention, while only a handful targeted condom use, STIs or TB-HIV co-infection. Over a quarter of interventions targeted male partners, usually of ANC clients, and only 7 interventions exclusively targeted men as clients. Almost half of interventions took place in the community, with about one-fifth focusing on changes to facility services and another one-fifth providing community outreach. Few interventions focused on counseling and peer support or mHealth strategies. The limited evidence available points to the fact that men need convenience, active outreach, and improved experiences with health services. The same principles may apply to all services intended to reach men, including sexual health and TB-HIV coinfection services.

There is extensive knowledge about community-based services, especially for HIV testing. Self-testing strategies that are convenient and give men autonomy are highly effective and may provide important lessons for other services. For example, STI and TB services may promote self-care through STI self-testing<sup>98</sup> and self-monitoring TB adherence. HIVST may also be used to promote PrEP uptake,<sup>99</sup> although there is no evidence to date for men..

Sex disaggregation within manuscripts and conference abstracts is still not commonplace. The lack of sex-disaggregated outcomes is especially challenging given that men in SSA are often underrepresented in HIV studies. Multiple studies in our scoping review found that men's outcomes were much worse than women, even in intervention arms. We strongly recommend that sex-disaggregated results become part of all primary data analysis plans and be presented whenever possible, including primary outcome articles and abstracts.

Evidence on interventions for men in SSA have several glaring gaps that must be addressed. First, there is very little evidence about interventions to improve linkage to care, retention, condom use, PrEP, STIs, and TB-HIV coinfection among men. There is almost no synergy across services, which may partly explain why so little progress has been made to improve men's use of services to date. We know from qualitative and description studies what men need to make health services work for them. Easy access, quality services, positive patient-provider interactions, and for some men, tailored direct client support are required.<sup>15,100,101</sup> However, we know very little about *how* to meet these needs for men outside of HIV testing. HIV testing services are the starting point for evidence since that's where most evidence has been collected. But it should be the springboard for producing evidence on cross-service, holistic approaches to engaging men. We have more work to do to understand how to make cross-cutting improvements across services. Multi-disease approaches for HIV and NCDs have proven effective within community screening interventions<sup>102</sup> and should be explored, particularly for HIV and related services such as prevention, STI diagnosis and treatment and TB-HIV co-infection.

Second, there is very little evidence on counseling and peer support for men, and nearly no evidence on how to improve quality services, especially HCW-client interactions, client agency, and client satisfaction



with services received. Emerging evidence shows that equitable, positive, and trusting HCW interactions are critical to men’s continued use of services, as well as men’s satisfaction with services.<sup>100,103,104</sup> Recent studies suggest that positive interactions with peer HCWs and HIV messaging that resonates with men’s priorities can lead to positive ART retention outcomes<sup>105,106</sup> and should be explored for other health services. Further research is needed to understand how to best support positive interactions with HCWs and equip HCWs to interact with men well. Across the region, HCWs report implicit bias toward men as clients, misunderstand men and are unsure how to engage men well.<sup>107–109</sup> HCWs often describe men as “difficult”, “too powerful” and simply unable to be “good clients.”<sup>107</sup> Misconceptions and implicit bias stem from a lack of understanding, experience, and professional skills/tools to engage a client population well. This can change. One strategy is to provide HCW sensitization trainings and job aids on how to interact with men as clients.

Our scoping review has several limitations. First, nearly all evidence from southern and eastern Africa and may not be representative of what works in western and northern Africa. Second, we exclude articles and abstracts without a comparison group to ensure quality. Numerous programmatic and qualitative evaluations are now being completed and may provide useful insights into the needs of men and strategies that work – this literature should be explored further regarding cross-cutting strategies to reach men. Third, we include articles across a wide range of years. Effective strategies may shift over time as local epidemics change. Finally, we only included articles that were published in English.

## Conclusion

This review highlights the need for additional research on cross-cutting strategies to improve men’s engagement in HIV and related health services. The limited evidence available suggests that convenient services, actively engaging men, and providing positive experiences with health services largely improve service utilization. Additional evidence is needed for PrEP use and non-HIV services (such as STI and TB co-infection).

## Acknowledgements

We are to grateful to all members of the WHO and UNAIDS Men and HIV technical Working Group (MENHT) who supported this work and to Misheck Mphande and Isabella Robson who supported collection of articles.

## References

1. AIDSinfo | UNAIDS. Accessed February 21, 2023. <https://aidsinfo.unaids.org/>
2. Cornell M, Majola M, Johnson LF, Dubula-Majola V. HIV services in sub-Saharan Africa: the greatest gap is men. *The Lancet*. 2021;397(10290):2130-2132.
3. *World Health Statistics 2019: Monitoring Health for the SDGs, Sustainable Development Goals*. World Health Organization; 2019.

4. Hawkes S, Buse K. Gender and global health: evidence, policy, and inconvenient truths. *The lancet*. 2013;381(9879):1783-1787.
5. Lim SS, Vos T, Flaxman AD, et al. A comparative risk assessment of burden of disease and injury attributable to 67 risk factors and risk factor clusters in 21 regions, 1990–2010: a systematic analysis for the Global Burden of Disease Study 2010. *The lancet*. 2012;380(9859):2224-2260.
6. *Global Progress Report on HIV, Viral Hepatitis and Sexually Transmitted Infections, 2021*. Accessed February 24, 2023. <https://www.who.int/publications-detail-redirect/9789240027077>
7. Chihana ML, Huerga H, Van Cutsem G, et al. Distribution of advanced HIV disease from three high HIV prevalence settings in Sub-Saharan Africa: a secondary analysis data from three population-based cross-sectional surveys in Eshowe (South Africa), Ndhiwa (Kenya) and Chiradzulu (Malawi). *Glob Health Action*. 2019;12(1):1679472.
8. Baluku JB, Mukasa D, Bongomin F, et al. Gender differences among patients with drug resistant tuberculosis and HIV co-infection in Uganda: a countrywide retrospective cohort study. *BMC Infect Dis*. 2021;21:1-11.
9. Azeez A, Ndege J, Mutambayi R. Associated factors with unsuccessful tuberculosis treatment outcomes among tuberculosis/HIV coinfecting patients with drug-resistant tuberculosis. *Int J Mycobacteriology*. 2018;7(4):347-354.
10. Chen L, Jha P, Stirling B, et al. Sexual risk factors for HIV infection in early and advanced HIV epidemics in sub-Saharan Africa: systematic overview of 68 epidemiological studies. *PLoS One*. 2007;2(10):e1001.
11. Monod M, Brizzi A, Galiwango RM, et al. Growing gender disparity in HIV infection in Africa: sources and policy implications. *medRxiv*. Published online 2023:2023-03.
12. Hensen B, Taoka S, Lewis JJ, Weiss HA, Hargreaves J. Systematic review of strategies to increase men's HIV-testing in sub-Saharan Africa. *AIDS Lond Engl*. 2014;28(14):2133.
13. Hamilton A, Thompson N, Choko AT, et al. HIV self-testing uptake and intervention strategies among men in sub-Saharan Africa: a systematic review. *Front Public Health*. 2021;9:594298.
14. Hlongwa M, Mashamba-Thompson T, Makhunga S, Hlongwana K. Barriers to HIV testing uptake among men in sub-Saharan Africa: a scoping review. *Afr J AIDS Res*. 2020;19(1):13-23.
15. Hlongwa M, Mashamba-Thompson T, Makhunga S, Hlongwana K. Mapping evidence of intervention strategies to improving men's uptake to HIV testing services in sub-Saharan Africa: a systematic scoping review. *BMC Infect Dis*. 2019;19(1):1-13.

16. Hampanda KM, Pelowich K, Freeborn K, et al. Strategies to increase couples HIV testing and counselling in sub-Saharan Africa: a systematic review. *J Int AIDS Soc.* 2023;26(3):e26075.
17. Hlongwa M, Hlongwana K, Makhunga S, et al. Linkage to HIV care following HIV self-testing among men: Systematic review of quantitative and qualitative studies from six countries in Sub-Saharan Africa. *AIDS Behav.* 2023;27(2):651-666.
18. Sharma M, Ying R, Tarr G, Barnabas R. Systematic review and meta-analysis of community and facility-based HIV testing to address linkage to care gaps in sub-Saharan Africa. *Nature.* 2015;528(7580):S77-S85.
19. Dovel KL, Hariprasad S, Hubbard J, et al. Strategies to improve antiretroviral therapy (ART) initiation and early engagement among men in sub-Saharan Africa: A scoping review of interventions in the era of universal treatment. *Trop Med Int Health.* Published online 2023.
20. Kusemererwa S, Akena D, Nakanjako D, et al. Strategies for retention of heterosexual men in HIV care in sub-Saharan Africa: a systematic review. *PLoS One.* 2021;16(2):e0246471.
21. Kanyemba R, Govender K, Dzomba A, Mashamba TP, Mantell JE. HIV Focused Sexual Risk-Reduction Interventions Targeting Adolescent Boys and Young Men in Sub-Saharan Africa: A Scoping Review. *AIDS Behav.* 2023;27(10):3356-3391.
22. Ehrenkranz P, Grimsrud A, Holmes CB, Preko P, Rabkin M. Expanding the vision for differentiated service delivery: a call for more inclusive and truly patient-centered care for people living with HIV. *J Acquir Immune Defic Syndr 1999.* 2021;86(2):147.
23. Thorp M, Balakasi KT, Mphande M, et al. Factors associated with men's health facility attendance as clients and caregivers in Malawi: a community-representative survey. *BMC Public Health.* 2022;22(1):1904.
24. Gage AD, Leslie HH, Bitton A, et al. Does quality influence utilization of primary health care? Evidence from Haiti. *Glob Health.* 2018;14(1):1-9.
25. McCarthy EA, Subramaniam HL, Prust ML, et al. Quality improvement intervention to increase adherence to ART prescription policy at HIV treatment clinics in Lusaka, Zambia: A cluster randomized trial. *PLoS One.* 2017;12(4):e0175534.
26. Arksey H, O'Malley L. Scoping studies: towards a methodological framework. *Int J Soc Res Methodol.* 2005;8(1):19-32. doi:10.1080/1364557032000119616
27. Levac D, Colquhoun H, O'Brien KK. Scoping studies: advancing the methodology. *Implement Sci.* 2010;5(1):69. doi:10.1186/1748-5908-5-69

28. Tricco AC, Lillie E, Zarin W, et al. PRISMA Extension for Scoping Reviews (PRISMA-ScR): Checklist and Explanation. *Ann Intern Med*. 2018;169(7):467-473. doi:10.7326/M18-0850
29. The EndNote Team. *EndNote 20*. Clarivate; 2013.
30. Duncombe C, Rosenblum S, Hellmann N, et al. Reframing HIV care: putting people at the centre of antiretroviral delivery. *Trop Med Int Health TM IH*. 2015;20(4):430-447. doi:10.1111/tmi.12460
31. Hoffman CM, Fritz L, Matlakala N, et al. Community-based strategies to identify the unmet need for care of individuals with sexually transmitted infection-associated symptoms in rural South Africa. *Trop Med Int Health*. 2019;24(8):987-993.
32. Cattamanchi A, Reza TF, Nalugwa T, et al. Multicomponent strategy with decentralized molecular testing for tuberculosis. *N Engl J Med*. 2021;385(26):2441-2450.
33. Mendelsohn AS, Gill K, Marcus R, et al. Sexual reproductive healthcare utilisation and HIV testing in an integrated adolescent youth centre clinic in Cape Town, South Africa. *South Afr J HIV Med*. 2018;19(1).
34. Baisley K, Doyle AM, Chagalucha J, et al. Uptake of Voluntary Counselling and Testing among Young People Participating in an HIV Prevention Trial: Comparison of Opt-Out and Opt-In Strategies. *PLOS ONE*. 2012;7(7):e42108. doi:10.1371/journal.pone.0042108
35. Kikumbih N, Nielsen-Bobbit J, Mbandi A, Motta W, Killian R, Mwanga F. Will your partner be attending? Involving men in the prevention of mother-to-child transmission of HIV in antenatal care clinics in Iringa, Tanzania. In: Vol 15. International AIDS Society Conference; 2012:130-130.
36. Dovel K, Shaba F, Offorjebe OA, et al. Effect of facility-based HIV self-testing on uptake of testing among outpatients in Malawi: a cluster-randomised trial. *Lancet Glob Health*. 2020;8(2):e276-e287.
37. Jeremiah RD, Patel DR, Chirwa E, et al. A randomized group antenatal care pilot showed increased partner communication and partner HIV testing during pregnancy in Malawi and Tanzania. *BMC Pregnancy Childbirth*. 2021;21(1):1-9.
38. Mphonda SM, Rosenberg NE, Kamanga E, et al. Assessment of peer-based and structural strategies for increasing male participation in an antenatal setting in Lilongwe, Malawi. *Afr J Reprod Health*. 2014;18(2):97-104.
39. Makurumidze R, Buyze J, Decroo T, et al. Patient-mix, programmatic characteristics, retention and predictors of attrition among patients starting antiretroviral therapy (ART) before and after the implementation of HIV "Treat All" in Zimbabwe. *PLoS One*. 2020;15(10):e0240865.

40. Boyd MA, Shah M, Barradas DT, et al. Increase in antiretroviral therapy enrollment among persons with HIV infection during the Lusaka HIV Treatment Surge—Lusaka Province, Zambia, January 2018–June 2019. *Morb Mortal Wkly Rep*. 2020;69(31):1039.
41. Rosen S, Maskew M, Larson BA, et al. Simplified clinical algorithm for identifying patients eligible for same-day HIV treatment initiation (SLATE): results from an individually randomized trial in South Africa and Kenya. *PLoS Med*. 2019;16(9):e1002912.
42. Maskew M, Brennan AT, Fox MP, et al. A clinical algorithm for same-day HIV treatment initiation in settings with high TB symptom prevalence in South Africa: The SLATE II individually randomized clinical trial. *PLoS Med*. 2020;17(8):e1003226.
43. Lawn SD, Fraenzel A, Kranzer K, Caldwell J, Bekker LG, Wood R. Provider-initiated HIV testing increases access of patients with HIV-associated tuberculosis to antiretroviral treatment. *S Afr Med J*. 2011;101(4):258-262.
44. Ahmed I, Demissie M, Worku A, Gugsu S, Berhane Y. Effectiveness of same-day antiretroviral therapy initiation in retention outcomes among people living with human immunodeficiency virus in Ethiopia: empirical evidence. *BMC Public Health*. 2020;20(1):1-11.
45. Kazibwe A, Twinomugisha F, Musaaazi J, et al. Comparative yield of different active TB case finding interventions in a large urban TB project in central Uganda: a descriptive study. *Afr Health Sci*. 2021;21(3):975-984.
46. Medley AM, Lasry A, Khanyile N, et al. Outcome and cost of 3 methods for increasing male partner testing in South Africa. In: Annual Conference on Retroviruses and Opportunistic Infections (CROI); 2019.
47. Joseph Davey DL, Wall KM, Naidoo N, et al. HIV testing and linkage to ART following secondary distribution of HIV self-test kits to male partners of women living with HIV: a pilot randomized control trial in Mpumalanga, South Africa. *J Int AIDS Soc*. 2022;25(6):e25937.
48. Amstutz A, Lejone TI, Khesa L, et al. Home-based oral self-testing for absent and declining individuals during a door-to-door HIV testing campaign in rural Lesotho (HOSENG): a cluster-randomised trial. *Lancet HIV*. 2020;7(11):e752-e761.
49. Choko AT, Fielding K, Johnson CC, et al. Partner-delivered HIV self-test kits with and without financial incentives in antenatal care and index patients with HIV in Malawi: a three-arm, cluster-randomised controlled trial. *Lancet Glob Health*. 2021;9(7):e977-e988.
50. Choko AT, Corbett EL, Stallard N, et al. HIV self-testing alone or with additional interventions, including financial incentives, and linkage to care or prevention among male partners of antenatal care clinic attendees in Malawi: an adaptive multi-arm, multi-stage cluster randomised trial. *PLoS Med*. 2019;16(1):e1002719.

51. Thirumurthy H, Masters S, Obonyo B, et al. Promoting male partner and couples HIV testing through secondary distribution HIV self-tests: a randomized trial. In: Vol 19. International Aids Society Conference; 2016.
52. Indravudh PP, Fielding K, Chilongosi R, et al. Effect of door-to-door distribution of HIV self-testing kits on HIV testing and antiretroviral therapy initiation: a cluster randomised trial in Malawi. *BMJ Glob Health*. 2021;6(Suppl 4):e004269.
53. Phiri MM, Schaap A, Simwinga M, et al. Closing the gap: did delivery approaches complementary to home-based testing reach men with HIV testing services during and after the HPTN 071 (PopART) trial in Zambia? *J Int AIDS Soc*. 2022;25(1):e25855.
54. Amstutz A, Kopo M, Lejone T, et al. Oral self-testing for adolescents and young adults absent or declining to test during home-based HIV testing-a mixed-method study embedded in a cluster-randomized trial in Lesotho (ADORE study). In: 17th European AIDS Conference; 2019.
55. Indravudh PP, Fielding K, Kumwenda MK, et al. Effect of community-led delivery of HIV self-testing on HIV testing and antiretroviral therapy initiation in Malawi: A cluster-randomised trial. *PLoS Med*. 2021;18(5):e1003608.
56. Pettifor A, Lippman SA, Kimaru L, et al. HIV self-testing among young women in rural South Africa: A randomized controlled trial comparing clinic-based HIV testing to the choice of either clinic testing or HIV self-testing with secondary distribution to peers and partners. *EClinicalMedicine*. 2020;21.
57. Gichangi A, Wambua J, Mutwiwa S, et al. Impact of HIV self-test distribution to male partners of ANC clients: results of a randomized controlled trial in Kenya. *J Acquir Immune Defic Syndr* 1999. 2018;79(4):467.
58. Dovel K, Balakasi K, Phiri K, et al. Effect of index HIV self-testing for sexual partners of clients enrolled in antiretroviral therapy (ART) programs in Malawi: A randomized controlled trial. *PLoS Med*. 2023;20(8):e1004270.
59. Parker LA, Jobanputra K, Rusike L, et al. Feasibility and effectiveness of two community-based HIV testing models in rural Swaziland. *Trop Med Int Health*. 2015;20(7):893-902.
60. Coates TJ, Kulich M, Celentano DD, et al. Effect of community-based voluntary counselling and testing on HIV incidence and social and behavioural outcomes (NIMH Project Accept; HPTN 043): a cluster-randomised trial. *Lancet Glob Health*. 2014;2(5):e267-e277.
61. Cham HJ, MacKellar D, Maruyama H, et al. Methods, outcomes, and costs of a 2.5 year comprehensive facility-and community-based HIV testing intervention in Bukoba Municipal Council, Tanzania, 2014-2017. *PLoS One*. 2019;14(5):e0215654.

62. Labhardt ND, Ringera I, Lejone TI, et al. Effect of offering same-day ART vs usual health facility referral during home-based HIV testing on linkage to care and viral suppression among adults with HIV in Lesotho: the CASCADE randomized clinical trial. *Jama*. 2018;319(11):1103-1112.
63. Geoffroy E, Khozomba N, Jere J, et al. Cracking the code to increase men's uptake of HIV testing: providing convenient and confidential outreach HIV testing services through mobile clinics. In: Vol 21. International AIDS Society Conference; 2018:47-48.
64. Makangila G, Mwango A, Shah M, et al. Faith-engaged community posts associated with over 1200% increase in new HIV case ascertainment, with high linkage and retention, Zambia. In: Vol 23. International AIDS Society Conference; 2020:153-154.
65. Martelli G, Van Duffel L, Salehe IA, et al. Outreach-based HIV testing approach from Test & Treat project in Tanzania: Mid-term results. In: Vol 23. International AIDS Society Conference; 2020:34-34.
66. Nglazi MD, van Schaik N, Kranzer K, Lawn SD, Wood R, Bekker LG. An incentivized HIV counseling and testing program targeting hard-to-reach unemployed men in Cape Town, South Africa. *J Acquir Immune Defic Syndr 1999*. 2012;59(3):e28.
67. Meehan SA, Naidoo P, Claassens MM, Lombard C, Beyers N. Characteristics of clients who access mobile compared to clinic HIV counselling and testing services: a matched study from Cape Town, South Africa. *BMC Health Serv Res*. 2014;14:1-8.
68. Ezeanolue EE, Obiefune MC, Yang W, et al. What do you need to get male partners of pregnant women tested for HIV in resource limited settings? The baby shower cluster randomized trial. *AIDS Behav*. 2017;21:587-596.
69. Alwano MG, Bachanas P, Block L, et al. Increasing knowledge of HIV status in a country with high HIV testing coverage: Results from the Botswana Combination Prevention Project. *PloS One*. 2019;14(11):e0225076.
70. Knoblauch AM, Divall MJ, Owuor M, et al. Experience and lessons from health impact assessment guiding prevention and control of HIV/AIDS in a copper mine project, northwestern Zambia. *Infect Dis Poverty*. 2017;6(04):22-32.
71. Lippman SA, Pettifor A, Dufour MSK, et al. A community mobilisation intervention to improve engagement in HIV testing, linkage to care, and retention in care in South Africa: a cluster-randomised controlled trial. *Lancet HIV*. 2022;9(9):e617-e626.
72. Fylkesnes K, Sandøy IF, Jürgensen M, Chipimo PJ, Mwangala S, Michelo C. Strong effects of home-based voluntary HIV counselling and testing on acceptance and equity: a cluster randomised trial in Zambia. *Soc Sci Med*. 2013;86:9-16.

73. Krakowiak D, Kinuthia J, Osoti AO, et al. Home-based HIV testing among pregnant couples increases partner testing and identification of serodiscordant partnerships. *J Acquir Immune Defic Syndr 1999*. 2016;72(Suppl 2):S167.
74. Roland M, Block L, Bachanas P, et al. Home-based testing identifies more previously undiagnosed older men than mobile testing in Botswana. In: Vol 21. International AIDS Society Conference; 2018:48-49.
75. Phiri MM, Shanaube K, Floyd S, et al. Does a male chip increase uptake of HIV testing by men? Lessons from HPTN 071 study. In: 23rd Conference on Retroviruses and Opportunistic Infections (CROI); 2016.
76. Strasser S, Bitarakwate E, Gill M, et al. Introduction of rapid syphilis testing within prevention of mother-to-child transmission of HIV programs in Uganda and Zambia: a field acceptability and feasibility study. *JAIDS J Acquir Immune Defic Syndr*. 2012;61(3):e40-e46.
77. Derksen L, Muula A, van Oosterhout J. Love in the time of HIV: How beliefs about externalities impact health behavior. *J Dev Econ*. 2022;159:102993.
78. Rosenberg NE, Mtande TK, Saidi F, et al. Recruiting male partners for couple HIV testing and counselling in Malawi's option B+ programme: an unblinded randomised controlled trial. *Lancet HIV*. 2015;2(11):e483-e491.
79. Wirtz A, Mallalieu E, Chidassica J, Pinho D, Devos P, Van Lith L. The Sawa Sawa Intervention: A quasi-experimental trial to reduce community level stigma and improve HIV testing service uptake among men in Sofala Province, Mozambique. In: Vol 22. International AIDS Society Conference; 2019:18-19.
80. Odhiambo F, Dande C, Onyango R, et al. Closing the HIV identification gap for men: The impact of assisted partner notification services in a real-world setting in Kenya. In: International AIDS Society Conference; 2020.
81. Dancy BL, Jere DL, Kachingwe SI, Kaponda CP, Norr JL, Norr KF. HIV risk reduction intervention for rural adolescents in Malawi. *J HIV/AIDS Soc Serv*. 2014;13(3):271-291.
82. Brown LB, Miller WC, Kamanga G, et al. HIV partner notification is effective and feasible in sub-Saharan Africa: opportunities for HIV treatment and prevention. *J Acquir Immune Defic Syndr 1999*. 2011;56(5):437.
83. Masyuko S, Cherutich P, Goyette M, Maingi P, Wamuti B. Variation in Effectiveness of HIV Assisted Partner Services by Region, Rural Location and Gender in Kenya: A Cluster Randomized Trial. In: AIDS Research and Human Retroviruses; 2016.
84. Nigatu YT, Abera S, Mekonnen MG, Melesse WN. The role of the community conversation approach in facilitating HIV/AIDS competence and utilisation of testing services in Africa: the case of Ethiopia. *Afr J AIDS Res*. 2015;14(4):295-301.



85. Kalichman S, Banas E, Kalichman M, et al. Brief enhanced partner notification and risk reduction counseling to prevent sexually transmitted infections, Cape Town, South Africa. *Sex Transm Dis*. 2021;48(3):174.
86. Speizer IS, Zule WA, Carney T, Browne FA, Ndirangu J, Wechsberg WM. Changing sex risk behaviors, gender norms, and relationship dynamics among couples in Cape Town, South Africa: Efficacy of an intervention on the dyad. *Soc Sci Med*. 2018;209:95-103.
87. Audet CM, Blevins M, Chire YM, et al. Engagement of men in antenatal care services: increased HIV testing and treatment uptake in a community participatory action program in Mozambique. *AIDS Behav*. 2016;20(9):2090-2100.
88. Steward WT, Agnew E, de Kadt J, et al. Impact of SMS and peer navigation on retention in HIV care among adults in South Africa: results of a three-arm cluster randomized controlled trial. *J Int AIDS Soc*. 2021;24(8):e25774.
89. McGovern ME, Canning D, Tanser F, Herbst K, Gareta D, Mutevedzi T. A household food voucher increases consent to home-based HIV testing in rural KwaZulu-Natal. In: Vol 2014. 20th Conference on Retroviruses and Opportunistic Infections (CROI); 2014.
90. Chamie G, Schaffer E, Ndyabakira A, Emperador D, Kwarisiima D, Kanya MR. A randomized trial of novel strategies to incentivize HIV testing among men in Uganda. In: 24th Conference on Retroviruses and Opportunistic Infections (CROI); 2017.
91. Tanser FC, Kim H, Mathenjwa T, et al. Home-Based Intervention to Test and Start (HITS): a community-randomized controlled trial to increase HIV testing uptake among men in rural South Africa. *J Int AIDS Soc*. 2021;24(2):e25665.
92. Maman S, Mulawa MI, Balvanz P, et al. Results from a cluster-randomized trial to evaluate a microfinance and peer health leadership intervention to prevent HIV and intimate partner violence among social networks of Tanzanian men. *PLoS One*. 2020;15(3):e0230371.
93. Barnabas RV, van Heerden A, McConnell M, et al. Lottery incentives have short-term impact on ART initiation among men: results from a randomized pilot study. *J Int AIDS Soc*. 2020;23:e25519.
94. Kimaru L, Pettifor A, Lippman S, et al. HIV Self-test Distribution by Young Women: An Innovative Way to Reach Men in Rural South Africa. In: Vol 34. AIDS Research and Human Retroviruses Conference; 2018:138-138.
95. Fahey CA, Njau PF, Katabaro E, et al. Financial incentives to promote retention in care and viral suppression in adults with HIV initiating antiretroviral therapy in Tanzania: a three-arm randomised controlled trial. *Lancet HIV*. 2020;7(11):e762-e771.

96. Cattamanchi A, Crowder R, Kityamuwesi A, et al. Digital adherence technology for tuberculosis treatment supervision: A stepped-wedge cluster-randomized trial in Uganda. *PLoS Med*. 2021;18(5):e1003628.
97. Van Heerden A, Msweli S, Van Rooyen H. “Men don’t want things to be seen or known about them”: A mixed-methods study to locate men in a home based counselling and testing programme in KwaZulu-Natal, South Africa. *Afr J AIDS Res*. 2015;14(4):353-359.
98. Habel MA, Brookmeyer KA, Oliver-Veronesi R, Haffner MM. Creating innovative sexually transmitted infection testing options for university students: the impact of an STI self-testing program. *Sex Transm Dis*. 2018;45(4):272.
99. WHO recommends optimizing HIV testing services. Accessed October 25, 2023. <https://www.who.int/news/item/22-07-2023-who-recommends-optimizing-hiv-testing-services>
100. Bruns C. Using human-centered design to develop a program to engage South African men living with HIV in care and treatment. *Glob Health Sci Pract*. 2021;9(Supplement 2):S234-S243.
101. Hubbard J, Mphande M, Robson I. Core components of male-specific person-centered care: Client and healthcare worker perspectives in Malawi. In: AIDS Impact Conference; 2023.
102. Barnabas RV, Szpiro AA, van Rooyen H, et al. Community-based antiretroviral therapy versus standard clinic-based services for HIV in South Africa and Uganda (DO ART): a randomised trial. *Lancet Glob Health*. 2020;8(10):e1305-e1315.
103. Camara BS, Belaid L, Manet H, et al. What do we know about patient-provider interactions in sub-Saharan Africa? a scoping review. *Pan Afr Med J*. 2020;37(1).
104. Hubbard J, Mphande M, Robson I. Core components of male-specific person-centered care: client and healthcare worker perspectives in Malawi. Published online October 2023.
105. Malone S, Hlongwa M, Little K, Hasen N, Levy M, Clutton L. Coach Mpilo: a peer-support intervention to improve men’s ART linkage & retention. In: Vol 29(1). 2021 Conference on Retroviruses and Opportunistic Infections; 2021:296.
106. Dovel K, Balakasi K, Hubbard J. Improving re-engagement in treatment for men with HIV in Malawi: comparison of two trials Paper accepted for poster presentation. In: Conference on Retroviruses and Opportunistic Infections (CROI); 2023.
107. Dovel K, Paneno R, Balakasi K, et al. Health care workers’ internal bias toward men as HIV clients in Malawi and Mozambique: A qualitative study. *medRxiv*. Published online 2022:2022-11.

108. Mbokazi N, Madzima R, Leon N, et al. Health worker experiences of and perspectives on engaging men in HIV care: A qualitative study in Cape Town, South Africa. *J Int Assoc Provid AIDS Care JIAPAC*. 2020;19:2325958220935691.
109. Beia T, Kielmann K, Diaconu K. Changing men or changing health systems? A scoping review of interventions, services and programmes targeting men's health in sub-Saharan Africa. *Int J Equity Health*. 2021;20(1):1-16.