

1 **Title:** Viral and host factors associated with SARS-CoV-2 disease severity in Georgia, USA

2 **Authors:** Ludy R. Carmola<sup>1\*</sup>, Allison Dorothy Roebling<sup>2,3,4</sup>, Dara Khosravi<sup>1</sup>, Rose M.

3 Langsjoen<sup>1</sup>, Andrei Bombin<sup>1,4</sup>, Bri Bixler<sup>5</sup>, Alex Reid<sup>1</sup>, Cara Chen<sup>1</sup>, Ethan Wang<sup>1</sup>, Yang Lu<sup>1</sup>,

4 Ziduo Zheng<sup>6</sup>, Rebecca Zhang<sup>6</sup>, Phuong-Vi Nguyen<sup>4</sup>, Robert A. Arthur<sup>7</sup>, Eric Fitts<sup>1</sup>, Dalia Arafat

5 Gulick<sup>8</sup>, Dustin Higginbotham<sup>8</sup>, Azmain Taz<sup>1</sup>, Alaa Ahmed<sup>1,9</sup>, John Hunter Crumpler<sup>1</sup>, Colleen

6 Kraft<sup>1,4</sup>, Wilbur A. Lam<sup>10,11,12,13</sup>, Ahmed Babiker<sup>1,4</sup>, Jesse J. Waggoner<sup>4</sup>, Kyle P. Openo<sup>2,3,4</sup>,

7 Laura M. Johnson<sup>14</sup>, Adrianna Westbrook<sup>14</sup>, Anne Piantadosi<sup>1,4\*</sup>

8 **Affiliations:**

9 <sup>1</sup>Department of Pathology and Laboratory Medicine; Emory University School of Medicine;  
10 Atlanta, GA, 30322; USA.

11 <sup>2</sup>Georgia Emerging Infections Program; Georgia Department of Health; Atlanta, GA, 30303;  
12 USA.

13 <sup>3</sup>Atlanta Veterans Affairs Medical Center; Decatur, GA, 30033; USA.

14 <sup>4</sup>Division of Infectious Diseases; Department of Medicine, Emory University School of  
15 Medicine; Atlanta, GA, 30322; USA.

16 <sup>5</sup>Graduate Program in Genetics and Molecular Biology, Emory University; Atlanta, GA, 30322;  
17 USA.

18 <sup>6</sup>Department of Biostatistics and Bioinformatics; Rollins School of Public Health, Emory  
19 University; Atlanta, GA, 30322; USA

20 <sup>7</sup>Emory Integrated Computational Core; Emory University School of Medicine; Atlanta, GA,  
21 30322; USA.

22 <sup>8</sup>Georgia Clinical & Translational Science Alliance; Emory University School of Medicine;  
23 Atlanta, GA, 30322; USA.

24 <sup>9</sup>Emory Integrated Genomics Core; Emory University School of Medicine; Atlanta, GA, 30322;  
25 USA.

26 <sup>10</sup>The Atlanta Center for Microsystems-Engineered Point-of-Care Technologies; Atlanta, GA,  
27 30322; USA.

28 <sup>11</sup>Department of Pediatrics, Emory University School of Medicine; Atlanta, GA, 30322; USA.

29 <sup>12</sup>Aflac Cancer and Blood Disorders Center at Children's Healthcare of Atlanta; Atlanta, GA,  
30 30322; USA

31 <sup>13</sup>Wallace H. Coulter Department of Biomedical Engineering, Emory University and Georgia  
32 Institute of Technology, Atlanta, GA, USA.

33 <sup>14</sup>Pediatric Biostatistics Core; Department of Pediatrics; School of Medicine; Emory University;  
34 Atlanta, GA, 30322; USA

35 \*Corresponding authors. Email: [anne.piantadosi@emory.edu](mailto:anne.piantadosi@emory.edu), [ludy.registre@emory.edu](mailto:ludy.registre@emory.edu)

36 **Keywords:** SARS-CoV-2, post-vaccine infection, disease severity

37

38 **ABSTRACT**

39           While SARS-CoV-2 vaccines have shown strong efficacy, their suboptimal uptake  
40 combined with the continued emergence of new viral variants raises concerns about the ongoing  
41 and future public health impact of COVID-19. We investigated viral and host factors, including  
42 vaccination status, that were associated with SARS-CoV-2 disease severity in a setting with low  
43 vaccination rates. We analyzed clinical and demographic data from 1,957 individuals in the state  
44 of Georgia, USA, coupled with viral genome sequencing from 1,185 samples. We found no  
45 difference in disease severity between individuals infected with Delta and Omicron variants  
46 among the participants in this study, after controlling for other factors, and we found no specific  
47 mutations associated with disease severity. Compared to those who were unvaccinated,  
48 vaccinated individuals experienced less severe SARS-CoV-2 disease, and the effect was similar  
49 for both variants. Vaccination within 270 days before infection was associated with decreased  
50 odds of moderate and severe outcomes, with the strongest association observed at 91-270 days  
51 post-vaccination. Older age and underlying health conditions, especially immunosuppression and  
52 renal disease, were associated with increased disease severity. Overall, this study provides  
53 insights into the impact of vaccination status, variants/mutations, and clinical factors on disease  
54 severity in SARS-CoV-2 infection when vaccination rates are low. Understanding these  
55 associations will help refine and reinforce messaging around the crucial importance of  
56 vaccination in mitigating the severity of SARS-CoV-2 disease.

57

## 58 INTRODUCTION

59 Vaccinations against SARS-CoV-2 have undeniably demonstrated high efficacy in  
60 preventing COVID-19 infections and improving disease outcomes<sup>1-3</sup>, but their impact is  
61 challenged by the emergence of new variants carrying immune evasion mutations and the  
62 waning of immune responses over time<sup>4</sup>. Partly due to these issues, public trust in COVID-19  
63 vaccines has diminished with each round of booster recommendations, especially in the  
64 southeast United States (US)<sup>5</sup>. Throughout the SARS-CoV-2 pandemic, the state of Georgia has  
65 consistently held one of the lowest rates of vaccine coverage in the nation<sup>6</sup>. One important  
66 approach to addressing vaccine hesitancy is to conduct studies – and disseminate their results –  
67 to populations with low vaccine uptake.

68 Understanding the impact of vaccination on SARS-CoV-2 disease outcomes requires  
69 consideration of other host factors such as underlying health conditions, sex, race, and  
70 socioeconomic factors, which impact SARS-CoV-2 disease severity<sup>7-17</sup>. Viral factors are also  
71 important, especially as variants emerge with distinctive properties affecting pathogenesis and  
72 immune evasion. For example, the Delta variant has been associated with high risk of ICU  
73 admission and mortality<sup>11,18,19</sup>, while Omicron shows low neutralization sensitivity to vaccine  
74 induced immunity<sup>20</sup>.

75 In order to elucidate viral and host factors that contribute to disease outcomes in the  
76 context of low vaccination rates, we analyzed demographic and clinical data from 1,957  
77 individuals in the state of Georgia. We also analyzed full viral genome sequences from 1,185 of  
78 these individuals to examine the influence of variants and mutations on disease severity. We  
79 leveraged a large study population and extensive demographic, clinical, and sequence data to

80 define factors associated with SARS-CoV-2 disease severity in a region marked by low  
81 vaccination rates.

82

## 83 **RESULTS**

### 84 **Clinical and demographic factors differ by SARS-CoV-2 vaccine status**

85       Between May 2021 and May 2022, we identified 1,957 individuals who tested positive  
86 for SARS-CoV-2 within the Emory Healthcare system in Atlanta, Georgia. The majority of  
87 participants (66%) were residents of the Metro Atlanta area (Table 1, Figure 1A). The median  
88 age was 51 years (Interquartile range [IQR]=36,65), and 56% of individuals were female. The  
89 racial distribution of participants was predominantly Black (58%) or White (31%). Individuals  
90 experienced a range of clinical presentations and outcomes, from asymptomatic infection (15%)  
91 to death (2.8%) (Table 2). Among the 967 individuals in this study who were hospitalized, 625  
92 (65%) of the hospitalizations were due to COVID-19.

93       During the period of this study, the state of Georgia had the 7<sup>th</sup> lowest vaccination rate in  
94 all 50 United States and the District of Columbia, with 55.1% of the population vaccinated  
95 (Figure 1B). In our study, a slightly lower proportion (48%) of individuals were vaccinated, in  
96 part based our study was designed to ensure inclusion of unvaccinated individuals. Vaccinated  
97 individuals were significantly older than unvaccinated individuals (median age of 58 years vs 43  
98 years,  $p<0.001$ ) (Table 1). We observed a large disparity in vaccine status by race; among the  
99 unvaccinated participants, 70% were Black and 21% White, while among the vaccinated  
100 participants, 45% were Black and 43% were White (Table 1). Vaccination status was not  
101 significantly associated with any other demographic variable evaluated.

102 We found that vaccinated individuals were more likely to have underlying medical  
103 comorbidities than unvaccinated individuals. Notably, 28% of vaccinated individuals were  
104 immunocompromised, compared to 17% of unvaccinated individuals ( $p < 0.001$ , Table 2).  
105 Vaccinated individuals were also more likely to have hypertension (56% vs. 39%,  $p < 0.001$ ),  
106 cardiovascular disease (36% vs. 23%,  $p < 0.001$ ), diabetes (28% vs. 19%,  $p < 0.001$ ), renal disease  
107 (24% vs. 11%,  $p < 0.001$ ), and autoimmune disease (7% vs. 4%,  $p = 0.03$ ) (Table S1).  
108 Vaccinated individuals were less likely to be pregnant (1% vs. 6%,  $p < 0.001$ ) (Table 2, Table  
109 S1), however, at the time of the study, vaccines were not yet approved for pregnant individuals.  
110 These findings are consistent with higher rates of vaccination in individuals with medical  
111 comorbidities.

112 We also found differences in clinical symptoms by vaccination status. Compared to  
113 unvaccinated individuals, those who were vaccinated were less likely to have fever (52% vs.  
114 42%,  $p < 0.001$ ), chills (38% vs. 32%,  $p = 0.02$ ), nausea/vomiting (35% vs. 25%,  $p < 0.001$ ), and  
115 shortness of breath or difficulty breathing (49% vs. 39%,  $p < 0.001$ ); they were more likely to  
116 have sore throat (17% vs. 22%,  $p = 0.02$ ) and runny nose/nasal congestion (27% vs. 45%,  $p$   
117  $< 0.001$ ) (Table S1). These findings are consistent with milder disease in vaccinated individuals.

118 SARS-CoV-2  $C_T$  value by qRT-PCR is often used as a rough proxy for viral load, and we  
119 found several key factors associated with SARS-CoV-2  $C_T$ . Because multiple qRT-PCR assays  
120 were used within the Emory Healthcare system during this time, we controlled for assay  
121 variability (Table 3). Vaccinated individuals had a slightly lower  $C_T$  than those who were  
122 unvaccinated ( $-0.70$ ,  $SE=0.26$ ,  $p=0.01$ ). Though this finding seems counterintuitive, we attribute  
123 it to vaccinated individuals presenting for testing earlier after symptom onset, compared to  
124 unvaccinated individuals (Table 2). Symptom duration was significantly inversely associated

125 with  $C_T$  (Table 3). Specifically, after controlling for other variables, and compared to  
126 asymptomatic individuals, those who were tested within 0-3 days after symptom onset had a  
127 lower  $C_T$  value by 3.0 cycles (Standard Error [SE]=0.55,  $p < 0.001$ ) and those who were tested  
128 within 4-7 days had a lower  $C_T$  value by 1.62 cycles (SE=0.61,  $p = 0.01$ ). Those who were tested  
129 8 or more days from symptom onset did not have a significantly different  $C_T$  than those who  
130 were asymptomatic ( $p = 0.77$ ) (Table 3). No significant differences in  $C_T$  were observed  
131 between variants, after adjusting for other factors (Table 3).

### 132 **Variant frequency differs between vaccinated and unvaccinated individuals**

133 We sequenced full SARS-CoV-2 genomes from residual nasopharyngeal swab samples  
134 from 1,185 individuals. The minimum genome coverage of the samples was 76% and the median  
135 sequencing depth was 1,804 (Supplementary Data File). Sequences were primarily Delta (68%)  
136 and the BA.1 sublineage of the Omicron variant (23%), followed by other Omicron sublineages  
137 (5.1%), Alpha (2.5%) and less than 1% each of Beta, Gamma, Mu, A.2.5, and B.1 (Table 4). In  
138 Georgia, during the time of this study (May 2021- May 2022), Delta accounted for 55% of  
139 infections, Omicron for 40%, and Alpha for 2.5% (Figure 1C, Table S2). Therefore, our study  
140 included a somewhat higher proportion of Delta and a lower proportion of Omicron than was  
141 circulating in the state. The distribution of all other variants aligned with the overall variant  
142 distribution observed in Georgia (Table S2, Table 4).

143 The distribution of SARS-CoV-2 variants in our study was different for vaccinated and  
144 unvaccinated individuals ( $p < 0.001$ ) (Table 4). Omicron had a higher frequency in vaccinated  
145 individuals (32%) than unvaccinated (25%), whereas Alpha and Delta were more common in  
146 unvaccinated compared to vaccinated individuals (Table 4). These differences correspond with

147 the timing of each variant’s circulation compared to vaccine rollout, though decreased vaccine  
148 effectiveness against Omicron may also contribute<sup>21</sup>.

149 In addition to the frequency of VOCs among vaccinated and unvaccinated individuals,  
150 we investigated the frequency of individual mutations. Within each VOC – Alpha, Delta, and  
151 Omicron – no sequence characteristics, including mutations, deletions, and insertions, were  
152 different between viruses infecting vaccinated and unvaccinated individuals (Figure 2, Figure  
153 S1). However, the number of non-lineage defining mutations was lower in vaccinated compared  
154 to unvaccinated individuals (Figure 1D) suggesting that vaccination may have an impact on viral  
155 diversity within a host. Phylogenetic analysis demonstrated that sequences from vaccinated  
156 individuals were intermixed with sequences from unvaccinated individuals, further confirming  
157 no distinct features of post vaccination infections (Figure S2).

158 In-depth metagenomic analysis of 513 samples did not reveal any viral co-infections  
159 (Supplementary Data File).

### 160 **Age, underlying conditions, and vaccination status are associated with disease severity**

161 We evaluated associations between disease severity and demographic characteristics,  
162 underlying health conditions, vaccination status, and SARS-CoV-2 variant. Disease severity was  
163 defined according to the WHO clinical progression scale<sup>22</sup>. Mild disease included asymptomatic  
164 infection and symptomatic infection without hospitalization. Moderate disease included  
165 hospitalized individuals without oxygen therapy or oxygen by mask or nasal prongs. Severe  
166 disease included the use of oxygen by noninvasive or high flow, intubation and mechanical  
167 ventilation, vasopressors, dialysis, or extracorporeal membrane oxygenation. Death included in-  
168 hospital deaths directly linked to COVID.



169 Using an adjusted multinomial logistic regression model that included demographic  
170 characteristics, underlying conditions, vaccination status and variant, we found that age, certain  
171 underlying medical conditions, and time since most recent vaccination were significantly  
172 associated with disease severity (Table 5). Underlying health conditions significantly associated  
173 with disease severity included chronic lung disease, renal disease, and the use of systemic  
174 immunosuppressive therapy prior to hospitalization. Other conditions showed weak or non-  
175 significant associations with disease severity, including pregnancy, diabetes, liver disease, and  
176 autoimmune disease. The Omicron variant did not show a significant association with disease  
177 severity compared to the Delta variant in the adjusted model although an association was  
178 observed in an unadjusted model (Table 5, Table S3). Finally, compared to unvaccinated  
179 individuals, vaccination within 91-180 days (about 3 – 6 months) was associated with lower odds  
180 of moderate disease, severe disease, and death (Table 5). There were similar effects across all  
181 disease severity outcomes when vaccination occurred between 181 – 270 days (about 6 to 9  
182 months). When vaccination occurred more than 270 days ago, however, there were no significant  
183 differences in disease severity when compared to the unvaccinated group. Additionally,  
184 vaccination that had occurred within the past 90 days (about 3 months) was associated with  
185 lower odds of moderate disease relative to mild disease but was not associated with lower odds  
186 of severe disease or death. In short, vaccinations were most protective against moderate disease,  
187 severe disease, and death when they occurred within the prior 3-9 months. Overall, after  
188 controlling for multiple host and viral factors, we found that age, chronic lung disease, renal  
189 disease, and immunosuppressive therapy increased the odds of progressively more severe  
190 COVID-19 disease, while vaccination decreased the odds and SARS-CoV-2 variant had no  
191 effect.

192

## 193 **DISCUSSION**

194 Our comprehensive analysis of host and viral factors associated with SARS-CoV-2  
195 disease severity in a setting with low vaccination rates led to several key findings. First, age and  
196 underlying health conditions – especially chronic lung disease, renal disease, and the use of  
197 immunosuppressive therapy – were associated with more severe disease and death. Second,  
198 SARS-CoV-2 variant and viral mutations were not associated with disease severity in this study  
199 population, which was comprised of individuals who sought medical care. And third, vaccination  
200 was protective against severe outcomes for both Delta and Omicron variants to a similar degree.  
201 Unique features of our study included the analysis of a large number of SARS-CoV-2 full viral  
202 genome sequences linked to extensive clinical and demographic data, and our focus on a  
203 relatively under-studied region of the U.S.

204 Georgia is an important proxy for the southeastern U.S. and other populations with high  
205 numbers of vaccine refusals, inequitable access to healthcare, and low insurance coverage<sup>23-25</sup>.  
206 Emphasizing the positive impact of SARS-CoV-2 vaccination among this population, similar to  
207 others in the U.S.<sup>26,27</sup>, is critical as new variants emerge. It is also important to note that among  
208 the individuals in this study who contracted SARS-CoV-2 after being vaccinated, a greater  
209 proportion reported milder upper respiratory symptoms like sore throat and runny nose, while a  
210 lower percentage experienced more severe symptoms such as nausea/vomiting, fever, and  
211 shortness of breath/difficulty breathing, in comparison to unvaccinated individuals. Vaccinations  
212 were most protective against severe COVID outcomes when they occurred within the prior 3-9  
213 months. This finding has timely implications on a national level, given persistently low vaccine  
214 uptake, especially of the bivalent SARS-CoV-2 vaccine<sup>5</sup>, and the need for ongoing vaccine

215 updates targeting emerging variants<sup>4</sup>. Results from our study will help emphasize the benefits of  
216 vaccination to the public as a means of safeguarding against severe COVID outcomes.

217 Our results also indicated the importance of demographic and clinical factors associated  
218 with SARS-CoV-2 disease severity, despite vaccination. Age was a key risk factor; after  
219 accounting for vaccination status, demographic factors, health conditions, and SARS-CoV-2  
220 variant, our analysis revealed that for each additional year of age, the odds of experiencing more  
221 severe outcomes compared to mild disease increased by 5%. The association between age and  
222 disease severity has been consistently observed, particularly among individuals aged 65 and  
223 above<sup>7-10</sup>. Thus, relying solely on vaccination may be insufficient for reducing disease severity  
224 and mortality among older individuals. U.S. Census Bureau data indicates that the population is  
225 aging, with Georgians aging at an even faster rate<sup>28</sup>, underscoring the need for additional  
226 preventative and treatment measures.

227 In addition to age, we found that chronic lung disease, renal disease, and the use of  
228 immunosuppressive therapy also increased the odds of experiencing moderate and/or severe  
229 infection and/or death. In previous studies, cardiovascular disease, diabetes, chronic respiratory  
230 conditions, obesity, and compromised immune systems have also been found to increase the risk  
231 of severe illness<sup>10-17</sup>. Interestingly, we found that cardiovascular disease was only associated with  
232 moderate disease (without any association with severe disease or mortality), while diabetes and  
233 being overweight were not associated with disease severity in our final multivariate model. One  
234 explanation for this discrepancy could be that these two conditions serve as indicators for factors  
235 that we controlled in our study. It is noteworthy that when we did not adjust for any factors, these  
236 conditions were significantly associated with increased odds of severe disease.

237 It is surprising that we found no difference in disease severity between Delta and  
238 Omicron variants, since multiple prior studies have found that the risk of hospitalization, ICU  
239 admission, and mortality vary by variant<sup>11,18,19,29</sup>. This discrepancy may be due to the fact that all  
240 individuals in our study sought medical care, so we did not include individuals with minimal  
241 symptoms. Our observation that vaccination was similarly protective for individuals with Delta  
242 and Omicron is consistent with results from another recent study among hospitalized patients<sup>30</sup>.

243 We did not find viral factors associated with post-vaccine infection. Most post-vaccine  
244 infections were caused by the predominant lineage of the time. Within each variant (Delta and  
245 Omicron), no SARS-CoV-2 SNPs, deletions, or insertions were more common in vaccinated  
246 individuals than unvaccinated individuals. These results are different from a prior study of  
247 similar size, which found more resistance mutations (e.g. L452\* and E484\*) in vaccinated  
248 compared to unvaccinated individuals in the pre-Omicron era<sup>16</sup>. Our negative finding likely  
249 reflects the challenge of identifying the effect of an individual virus mutation in an increasingly  
250 complex immune landscape. Interestingly, we found that vaccinated individuals had fewer non-  
251 lineage-defining SNPs than unvaccinated individuals, suggesting less diversity and potentially  
252 less viral evolution within vaccinated individuals. This is consistent with a recent study  
253 investigating within-host genetic diversity of SARS-CoV-2 in unvaccinated and vaccinated  
254 individuals.<sup>31</sup>

255 Our study had several limitations: We only included individuals who presented to care,  
256 thus skewing our study population towards individuals with more severe disease than the general  
257 population. In addition, due to our study design, we could not collect reliable data regarding prior  
258 SARS-CoV-2 infection(s) thus, we were unable to account for natural immunity. Given the  
259 retrospective study design, there may be residual confounding, however we adjusted for

260 important variables such age, demographics, pre-existing health conditions and vaccination  
261 status.

262 In summary, our findings underscore the critical role of vaccination status, age, and  
263 medical comorbidities – especially immunosuppression, chronic kidney disease, and chronic  
264 lung disease – in determining disease severity and outcomes among SARS-CoV-2 infected  
265 individuals, regardless of virus variant. We contribute valuable insights into the nuanced  
266 relationship between these factors, highlighting the importance of considering demographic,  
267 clinical, and genetic variables when evaluating disease severity. Ultimately, our results will be  
268 valuable in strengthening and reinforcing messaging around SARS-CoV-2 vaccination,  
269 especially in settings of low vaccine uptake.

270

## 271 **METHODS**

### 272 **Clinical and demographic data**

273 This study was approved by the institutional review board at Emory University under  
274 protocol STUDY00000260, with a waiver of consent. All positive SARS-CoV-2 samples from  
275 Emory University Hospital Molecular and Microbiology Laboratories collected between 5/3/21  
276 and 5/31/22 were reviewed for inclusion in this study. In addition to symptomatic testing, SARS-  
277 CoV-2 tests were administered before admission or outpatient procedure as part of Emory  
278 Healthcare System’s universal SARS-CoV-2 screening. Individuals were considered vaccinated  
279 if they had received a complete vaccine series (2 doses of the Pfizer-BioNTech or Moderna  
280 vaccines or 1 dose of the Janssen vaccine) at least 14 days before their first positive test result.  
281 Individuals were excluded from the study if they were partially vaccinated or reported out-of-

282 state residency. From May 2021- September 2021, individuals were included in the study on a  
283 case-match basis; for each post-vaccine case identified, 2-3 non-vaccinated control cases were  
284 selected at random from the positive samples tested in the same calendar week. From October  
285 2021- May 2022, all SARS-CoV-2 positive individuals identified who met inclusion criteria  
286 were included.

287         The Centers for Disease Control and Prevention (CDC)-funded Georgia Emerging  
288 Infections Program (GA EIP) performs active, population- and laboratory- based surveillance for  
289 hospitalized cases of SARS-CoV-2 in metropolitan Atlanta, GA (population ~4 million). Patient  
290 vaccination status was retrieved by GA EIP from the Georgia Registry of Immunization  
291 Transactions and Services (GRITS) database. State of residency was retrieved from Georgia’s  
292 State Electronic Notifiable Disease Surveillance System (SENDSS). Patient demographics,  
293 SARS-CoV-2 RT-PCR results, and  $C_T$  value, underlying medical conditions, symptomatic  
294 illness, hospitalization, and disease outcome were obtained from the electronic medical record  
295 (EMR). In constructing symptom categories, systemic symptoms were defined as fatigue, fever,  
296 chills, rigors, myalgia, and headache. Gastrointestinal symptoms were defined as  
297 nausea/vomiting and diarrhea. Upper respiratory symptoms were defined as sore throat, runny  
298 nose, and nasal congestion. Lower respiratory symptoms were defined as cough, and shortness of  
299 breath/difficulty breathing. Immunosuppressed was defined as HIV, active cancer, autoimmune  
300 disease, or immunosuppressive therapy. “Other” underlying conditions were defined as  
301 overweight, diabetes, renal, cardiovascular, pregnant, and liver disease.

302         Disease severity was defined according to the WHO clinical progression scale<sup>22</sup>. The  
303 scale includes mild disease- asymptomatic and symptomatic SARS-CoV-2 infection without  
304 hospitalization, moderate disease- hospitalization without oxygen therapy or hospitalization with

305 oxygen by mask or nasal prongs, severe disease- hospitalization with use of oxygen by  
306 noninvasive or high flow, intubation and mechanical ventilation, vasopressors, dialysis, or  
307 extracorporeal membrane oxygenation, and death.

308 Data management and cleaning were conducted in Excel v16.73 and SAS studio v3.81.

### 309 **SARS-CoV-2 sequencing and analysis**

310 Residual nasopharyngeal (NP) swab samples were obtained from the Emory University  
311 Hospital Molecular and Microbiology Laboratories. NP samples underwent RNA extraction,  
312 DNase treatment, and cDNA synthesis followed by metagenomic or amplicon-based library  
313 construction. For metagenomic sequencing, Nextera XT (Illumina) and Illumina sequencing  
314 were performed as previously described<sup>32</sup>. Amplicon-based sequencing was performed using the  
315 xGEN SARS-CoV-2 kit (IDT) as previously described<sup>33</sup>.

316 Reference-based SARS-CoV-2 genome assembly was performed using viral-ngs  
317 v2.1.12.0<sup>34</sup> or Viralrecon<sup>35</sup> for metagenomic and amplicon sequencing, respectively, with  
318 reference strain NC\_045512. SARS-CoV-2 lineages were determined using Pangolin<sup>36</sup>.  
319 Sequences were aligned and visualized in Geneious Prime (<https://www.geneious.com>).  
320 Consensus-level single nucleotide polymorphisms (SNPs) and insertions/deletions were  
321 identified using the Nextstrain web-based mutation calling tool<sup>37</sup>.

322 For phylogenetic analysis, 411,634 reference sequences, collected between May 1, 2021,  
323 and May 31, 2022, were downloaded from NCBI and were aligned with our study sequences to  
324 reference strains Wuhan/Hu-1/2019 and Wuhan/WHO/2019 using Nextalign within the  
325 Nextstrain v3.2.4 pipeline 7. This dataset was subsampled in Nextstrain using a custom scheme,  
326 in which crowd penalty was set to 0.0 to select 1000 sequences most genetically similar to our

327 sequence dataset. Maximum likelihood phylogenetic trees were constructed using default  
328 settings of the Nextstrain SARS-CoV-2 Workflow with TreeTime v0.8.6<sup>38</sup>.

### 329 **Viral metagenomic analysis**

330 To assess the presence of viral co-infections in 513 samples that underwent metagenomic  
331 sequencing, reads were first passed through a pre-processing pipeline including deduplication  
332 with Clumpify.sh in the BMap tools (<https://sourceforge.net/projects/bbmap/>). Deduplicated  
333 reads were trimmed with Trimmomatic Version 0.40 and filtered for quality, with flags  
334 leading:3, trailing:3, slidingwindow:4:15, minlen:36  
335 (<https://github.com/usadellab/Trimmomatic>). Pre-processed reads were run through kraken2  
336 v2.1.3 against the k2\_pluspf\_20210127 database to assign each read to a taxonomic group, then  
337 adjusted for significance with Bracken. Within the Kraken Tools packages, the  
338 extract\_kraken\_reads.py script was used to separate reads by taxonomic ID for human  
339 taxID\_hg="9606", bacteria taxID\_bac="2", fungus taxID\_fungus="4751", viruses  
340 taxID\_virus="10239", and COVID-19 taxID\_COVID="2697049". Custom shell and R scripts  
341 were used to determine if the following viruses were found in each sample:  
342 Human mastadenovirus C taxID=129951, Coronavirus HKU1 taxID=443239, Coronavirus  
343 NL63 taxID=277944, Coronavirus 299E taxID=11137, Coronavirus OC43 taxID=31631, SARS-  
344 CoV-2 taxID=2697049, Paramyxoviridae taxID=11158, Human metapneumovirus  
345 taxID=162145, Parainfluenza virus taxID=2905673, Respiratory syncytial virus taxID=12814,  
346 Picornaviridae taxID=12058, Rhinovirus taxID=31708, Enterovirus taxID=12059,  
347 Orthomyxoviridae taxID=11308, Influenza A taxID=382835, and Influenza B taxID=11520.  
348

### 349 **Statistical Analysis**



350 Demographics, symptoms, underlying conditions, and outcomes were described using  
351 frequency distributions for categorical variables and medians and interquartile ranges for  
352 continuous variables. Subgroup differences were evaluated to compare individuals who were  
353 vaccinated with individuals who were not vaccinated, using chi-square tests and Fisher's exact  
354 tests for categorical variables and Wilcoxon rank-sum test for continuous variables.

355 Prior to testing, the association between clinical factors and mean  $C_T$  was compared  
356 between qRT-PCR testing platforms using ANOVA. There were significant differences between  
357 the platforms indicating that platform is an important covariate to control for while modeling  
358 factors associated with  $C_T$ .

359 Missing values were imputed using the chained equations algorithm in the MICE R  
360 package<sup>39</sup> (R Version 4.1.3) to create 10 imputed data sets. Predictive mean matching, logistic  
361 regression imputation, and polytomous regression imputation were used for numerical, binary,  
362 and multcategory variables, respectively. Results from the 10 linear regression models ran on  
363 the imputed datasets were then pooled according to Rubin's rule to provide an overall estimate  
364 for the variables.

365 Multinomial logistic regressions were used to test the association between demographic  
366 characteristics, underlying conditions, vaccine status, and SARS-CoV-2 variant with disease  
367 severity (1=Mild [Reference Category], 2=Moderate, 3=Severe, 4=Death). First, unadjusted  
368 models tested each variable's association with disease severity separately. Next, multivariable  
369 models were constructed in a step-wise fashion, adding variables in blocks of demographic  
370 variables, including age (continuous), sex (0=Female[Reference], 1=Male), and  
371 race(0=Black[Reference], 1=White), followed by a block of underlying condition variables, all  
372 of which were binary (0=No, 1=Yes; pregnant, chronic lung disease, hypertension, overweight,

373 cardiovascular disease, diabetes, renal disease, liver disease, autoimmune disease,  
374 immunocompromised, systemic immunosuppressive therapy/medications), and the final model  
375 added a block of SARS-CoV-2-related characteristics including vaccination status  
376 (1=Unvaccinated [Reference], 2=Vaccinated, 3=Vaccinated and Boosted), Days Since Most  
377 Recent Vaccination/Booster (1=Unvaccinated [Reference], 2=Within past 90 Days, 3=91 - 180  
378 Days Ago, 4=181 - 270 Days Ago, 5=More than 270 Days Ago) and variant  
379 (1=Delta[Reference], 2=Omicron). The multivariable models were tested for multicollinearity  
380 using variance inflation factor (VIF), though collinearity was not present, so all variables were  
381 retained.

382 All analyses were conducted in R Version 4.1.3 (R Foundation for Statistical Computing,  
383 Vienna, Austria).

#### 384 **ACKNOWLEDGEMENTS:**

385 The study was supported by Centers for Disease Control and Preventions contract  
386 75D30121C10084 under BAA ERR 20-15-2997 (to A.P) and by the Emory WHSC COVID-19  
387 Urgent Research Engagement (CURE) Center, made possible by generous philanthropic support  
388 from the O. Wayne Rollins Foundation and the William Randolph Hearst Foundation (to A.P.).  
389 L.R.C. was supported by Award Number T32AI074492 from the National Institute of Allergy  
390 and Infectious Diseases. EIP Surveillance of COVID-19 was funded through the Centers for  
391 Disease Control and Preventions Emerging Infections Program [U50CK000485]. The study was  
392 supported by the National Institute of Biomedical Imaging and Bioengineering at the National  
393 Institutes of Health under award U54 EB027690 (to W.A.L.) and the National Center for  
394 Advancing Translational Sciences of the National Institutes of Health under Award Number  
395 UL1TR002378 (to W.A.L.). Additional support was provided by the Georgia Clinical &

396 Translational Science Alliance of the National Institutes of Health under Award Number  
397 UL1TR002378. The study was supported in part by the Emory Integrated Genomics Core  
398 (EIGC) and Emory Integrated Computational Core (EICC), which are subsidized by the Emory  
399 University School of Medicine and are one of the Emory Integrated Core Facilities. The study  
400 was supported by the Data Analytics and Pediatric Biostatistics Core, Department of Pediatrics,  
401 Emory University School of Medicine. The content is solely the responsibility of the authors and  
402 does not necessarily represent the official views of the National Institute of Allergy and  
403 Infectious Diseases or the National Institutes of Health. The funders played no role in study  
404 design, data collection and analysis, decision to publish, or preparation of the manuscript.

405

#### 406 **Data Availability**

407 All sequence data are available in NCBI under BioProject PRJNA634356. The GISAID  
408 accession number for each sequence is listed in the Supplementary Data File.

409

#### 410 **Author contributions:**

411 Conceptualization: LRC, ADR, AB, AP

412 Methodology: LRC, KPO, JJW, AP, RZ, ZZ, RA, LJ, AW

413 Investigation: LRC, ADR, JJW, DHK, ECF, AP, PN, AT

414 Validation: ADR, DHK, AP

415 Visualization: LRC, EW, YL, RML

416 Data Curation: LRC, ADR, DHK, AB, AA, JHC

417 Funding acquisition: KPO, WAL, AP

418 Project administration: LRC, DHK, AP

419 Supervision: LRC, DAG, AP, RZ

420 Writing – original draft: LRC, RML, ZZ

421 Writing – review & editing: DHK, ECF, AB, AP, RML, RZ, RA, JJW, LJ, AW, WAL

422 Resources: DHK, ECF, DAG, AP, CK, DH

423 Statistical analyses: RZ, AA, ZZ, LJ, AW

424 Unrestricted access to all data: KPO, AP

425 First draft of the manuscript, reviewed it and edited it: LRC, AP

426 All authors agreed to submit the manuscript, read and approved the final draft and take full

427 responsibility of its content, including the accuracy of the data and the fidelity of the trial to the

428 registered protocol and its statistical analysis.

429 **Competing interests:**

430 The authors have declared that no competing interests exist.

431

432

## 433 REFERENCES:

- 434 1. Polack FP, Thomas SJ, Kitchin N, et al. Safety and Efficacy of the BNT162b2 mRNA  
435 Covid-19 Vaccine. *N Engl J Med*. Dec 31 2020;383(27):2603-2615.  
436 doi:10.1056/NEJMoa2034577
- 437 2. Baden LR, El Sahly HM, Essink B, et al. Efficacy and Safety of the mRNA-1273 SARS-  
438 CoV-2 Vaccine. *New England Journal of Medicine*. 2020;384(5):403-416.  
439 doi:10.1056/NEJMoa2035389
- 440 3. Sadoff J, Gray G, Vandebosch A, et al. Safety and Efficacy of Single-Dose  
441 Ad26.COV2.S Vaccine against Covid-19. *New England Journal of Medicine*.  
442 2021;384(23):2187-2201. doi:10.1056/NEJMoa2101544
- 443 4. Food and Drug Administration. Updated COVID-19 Vaccines for Use in the United  
444 States Beginning in Fall 2023. Updated June 16, 2023. Accessed August 10, 2023,  
445 [https://www.fda.gov/vaccines-blood-biologics/updated-covid-19-vaccines-use-united-states-](https://www.fda.gov/vaccines-blood-biologics/updated-covid-19-vaccines-use-united-states-beginning-fall-2023)  
446 [beginning-fall-2023](https://www.fda.gov/vaccines-blood-biologics/updated-covid-19-vaccines-use-united-states-beginning-fall-2023)
- 447 5. Centers for Disease Control and Prevention. COVID-19 Vaccinations in the United  
448 States. Updated May 11, 2023. Accessed August 10, 2023, [https://covid.cdc.gov/covid-data-](https://covid.cdc.gov/covid-data-tracker/#vaccinations_vacc-people-booster-percent-pop5)  
449 [tracker/#vaccinations\\_vacc-people-booster-percent-pop5](https://covid.cdc.gov/covid-data-tracker/#vaccinations_vacc-people-booster-percent-pop5)
- 450 6. Murthy BP, Sterrett N, Weller D, et al. Disparities in COVID-19 Vaccination Coverage  
451 Between Urban and Rural Counties - United States, December 14, 2020-April 10, 2021. *MMWR*  
452 *Morb Mortal Wkly Rep*. May 21 2021;70(20):759-764. doi:10.15585/mmwr.mm7020e3
- 453 7. Zhou F, Yu T, Du R, et al. Clinical course and risk factors for mortality of adult  
454 inpatients with COVID-19 in Wuhan, China: a retrospective cohort study. *The Lancet*.  
455 2020;395(10229):1054-1062. doi:10.1016/S0140-6736(20)30566-3
- 456 8. Antonelli M, Penfold RS, Merino J, et al. Risk factors and disease profile of post-  
457 vaccination SARS-CoV-2 infection in UK users of the COVID Symptom Study app: a  
458 prospective, community-based, nested, case-control study. *Lancet Infect Dis*. Sep 1  
459 2021;doi:10.1016/S1473-3099(21)00460-6
- 460 9. Chemaitelly H, Tang P, Hasan MR, et al. Waning of BNT162b2 Vaccine Protection  
461 against SARS-CoV-2 Infection in Qatar. *N Engl J Med*. Dec 9 2021;385(24):e83.  
462 doi:10.1056/NEJMoa2114114
- 463 10. Levin EG, Lustig Y, Cohen C, et al. Waning Immune Humoral Response to BNT162b2  
464 Covid-19 Vaccine over 6 Months. *N Engl J Med*. Dec 9 2021;385(24):e84.  
465 doi:10.1056/NEJMoa2114583
- 466 11. Fisman DN, Tuite AR. Evaluation of the relative virulence of novel SARS-CoV-2  
467 variants: a retrospective cohort study in Ontario, Canada. *Cmaj*. Oct 25 2021;193(42):E1619-  
468 e1625. doi:10.1503/cmaj.211248
- 469 12. Lustig Y, Sapir E, Regev-Yochay G, et al. BNT162b2 COVID-19 vaccine and correlates  
470 of humoral immune responses and dynamics: a prospective, single-centre, longitudinal cohort  
471 study in health-care workers. *Lancet Respir Med*. Sep 2021;9(9):999-1009. doi:10.1016/S2213-  
472 2600(21)00220-4
- 473 13. Russell CD, Lone NI, Baillie JK. Comorbidities, multimorbidity and COVID-19. *Nature*  
474 *Medicine*. 2023/02/01 2023;29(2):334-343. doi:10.1038/s41591-022-02156-9
- 475 14. Di Fusco M, Moran MM, Cane A, et al. Evaluation of COVID-19 vaccine breakthrough  
476 infections among immunocompromised patients fully vaccinated with BNT162b2. *J Med Econ*.  
477 Jan-Dec 2021;24(1):1248-1260. doi:10.1080/13696998.2021.2002063

- 478 15. Johnson AG, Amin AB, Ali AR, et al. COVID-19 Incidence and Death Rates Among  
479 Unvaccinated and Fully Vaccinated Adults with and Without Booster Doses During Periods of  
480 Delta and Omicron Variant Emergence - 25 U.S. Jurisdictions, April 4-December 25, 2021.  
481 *MMWR Morb Mortal Wkly Rep.* Jan 28 2022;71(4):132-138. doi:10.15585/mmwr.mm7104e2  
482 16. Servellita V, Morris MK, Sotomayor-Gonzalez A, et al. Predominance of antibody-  
483 resistant SARS-CoV-2 variants in vaccine breakthrough cases from the San Francisco Bay Area,  
484 California. *Nat Microbiol.* Feb 2022;7(2):277-288. doi:10.1038/s41564-021-01041-4  
485 17. Tenforde MW, Self WH, Adams K, et al. Association Between mRNA Vaccination and  
486 COVID-19 Hospitalization and Disease Severity. *JAMA.* 2021;326(20):2043-2054.  
487 doi:10.1001/jama.2021.19499  
488 18. Lin L, Liu Y, Tang X, He D. The Disease Severity and Clinical Outcomes of the SARS-  
489 CoV-2 Variants of Concern. Systematic Review. *Frontiers in Public Health.* 2021-November-30  
490 2021;9doi:10.3389/fpubh.2021.775224  
491 19. Funk T, Pharris A, Spiteri G, et al. Characteristics of SARS-CoV-2 variants of concern  
492 B.1.1.7, B.1.351 or P.1: data from seven EU/EEA countries, weeks 38/2020 to 10/2021. *Euro*  
493 *Surveill.* Apr 2021;26(16)doi:10.2807/1560-7917.Es.2021.26.16.2100348  
494 20. Willett BJ, Grove J, MacLean OA, et al. SARS-CoV-2 Omicron is an immune escape  
495 variant with an altered cell entry pathway. *Nature Microbiology.* 2022/08/01 2022;7(8):1161-  
496 1179. doi:10.1038/s41564-022-01143-7  
497 21. Chaguza C, Coppi A, Earnest R, et al. Rapid emergence of SARS-CoV-2 Omicron  
498 variant is associated with an infection advantage over Delta in vaccinated persons. *Med.* May 13  
499 2022;3(5):325-334 e4. doi:10.1016/j.medj.2022.03.010  
500 22. Marshall JC, Murthy S, Diaz J, et al. A minimal common outcome measure set for  
501 COVID-19 clinical research. *The Lancet Infectious Diseases.* 2020;20(8):e192-e197.  
502 doi:10.1016/S1473-3099(20)30483-7  
503 23. Medcalfe SK, Slade CP. Racial residential segregation and COVID-19 vaccine uptake: an  
504 analysis of Georgia USA county-level data. *BMC Public Health.* Jul 20 2023;23(1):1392.  
505 doi:10.1186/s12889-023-16235-0  
506 24. Nguyen TH, Shah GH, Schwind JS, Richmond HL. Community Characteristics and  
507 COVID-19 Outcomes: A Study of 159 Counties in Georgia, United States. *J Public Health*  
508 *Manag Pract.* May-Jun 01 2021;27(3):251-257. doi:10.1097/phh.0000000000001330  
509 25. Berman AE, Miller DD, Rahn DW, et al. A County-Level Analysis of Socioeconomic  
510 and Clinical Predictors of COVID-19 Incidence and Case-Fatality Rates in Georgia, March-  
511 September 2020. *Public Health Reports.* 2021/09/01 2021;136(5):626-635.  
512 doi:10.1177/00333549211023267  
513 26. Skarbinski J, Wood MS, Chervo TC, et al. Risk of severe clinical outcomes among  
514 persons with SARS-CoV-2 infection with differing levels of vaccination during widespread  
515 Omicron (B.1.1.529) and Delta (B.1.617.2) variant circulation in Northern California: A  
516 retrospective cohort study. *Lancet Reg Health Am.* Aug 2022;12:100297.  
517 doi:10.1016/j.lana.2022.100297  
518 27. Lewnard JA, Hong VX, Patel MM, Kahn R, Lipsitch M, Tartof SY. Clinical outcomes  
519 associated with SARS-CoV-2 Omicron (B.1.1.529) variant and BA.1/BA.1.1 or BA.2 subvariant  
520 infection in Southern California. *Nat Med.* Sep 2022;28(9):1933-1943. doi:10.1038/s41591-022-  
521 01887-z  
522 28. United States Census Bureau. U.S. Older Population Grew From 2010 to 2020 at Fastest  
523 Rate Since 1880 to 1890. Updated May 25,2023. Accessed August 10, 2023,

- 524 [https://www.census.gov/library/stories/2023/05/2020-census-united-states-older-population-](https://www.census.gov/library/stories/2023/05/2020-census-united-states-older-population-grew.html#:~:text=The%20older%20population%20increased%20by,total%20population%20(ab)  
525 [grew.html#:~:text=The%20older%20population%20increased%20by,total%20population%20\(ab](https://www.census.gov/library/stories/2023/05/2020-census-united-states-older-population-grew.html#:~:text=The%20older%20population%20increased%20by,total%20population%20(ab)  
526 [out%20200%25\)](https://www.census.gov/library/stories/2023/05/2020-census-united-states-older-population-grew.html#:~:text=The%20older%20population%20increased%20by,total%20population%20(ab).
- 527 29. Hyams C, Challen R, Marlow R, et al. Severity of Omicron (B.1.1.529) and Delta  
528 (B.1.617.2) SARS-CoV-2 infection among hospitalised adults: a prospective cohort study in  
529 Bristol, United Kingdom. *The Lancet Regional Health – Europe*.  
530 2023;25doi:10.1016/j.lanpe.2022.100556
- 531 30. Robinson ML, Morris CP, Betz JF, et al. Impact of Severe Acute Respiratory Syndrome  
532 Coronavirus 2 Variants on Inpatient Clinical Outcome. *Clinical Infectious Diseases*.  
533 2022;76(9):1539-1549. doi:10.1093/cid/ciac957
- 534 31. Gu H, Quadeer AA, Krishnan P, et al. Within-host genetic diversity of SARS-CoV-2  
535 lineages in unvaccinated and vaccinated individuals. *Nature Communications*. 2023/03/31  
536 2023;14(1):1793. doi:10.1038/s41467-023-37468-y
- 537 32. Babiker A, Bradley HL, Stittleburg VD, et al. Metagenomic Sequencing To Detect  
538 Respiratory Viruses in Persons under Investigation for COVID-19. *J Clin Microbiol*. Dec 17  
539 2020;59(1)doi:10.1128/JCM.02142-20
- 540 33. Sexton ME, Waggoner JJ, Carmola LR, et al. Rapid Detection and Characterization of  
541 Severe Acute Respiratory Syndrome Coronavirus 2 (SARS-CoV-2) Omicron Variant in a  
542 Returning Traveler. *Clin Infect Dis*. Aug 24 2022;75(1):e350-e353. doi:10.1093/cid/ciac032
- 543 34. Park DJ, Dudas G, Wohl S, et al. Ebola virus epidemiology, transmission, and evolution  
544 during seven months in Sierra Leone. *Cell*. 2015;161(7):1516-1526.
- 545 35. Patel H, Varona S, Monzón S, et al. nf-core/viralrecon: nf-core/viralrecon v2.2 - Tin  
546 Turtle. 2021;doi:<https://doi.org/10.5281/zenodo.5146252>
- 547 36. Rambaut A, Holmes EC, O'Toole A, et al. A dynamic nomenclature proposal for SARS-  
548 CoV-2 lineages to assist genomic epidemiology. *Nat Microbiol*. Nov 2020;5(11):1403-1407.  
549 doi:10.1038/s41564-020-0770-5
- 550 37. Hadfield J, Megill C, Bell SM, et al. Nextstrain: real-time tracking of pathogen evolution.  
551 *Bioinformatics*. Dec 1 2018;34(23):4121-4123. doi:10.1093/bioinformatics/bty407
- 552 38. Sagulenko P, Puller V, Neher RA. TreeTime: Maximum-likelihood phylodynamic  
553 analysis. *Virus Evolution*. 2018;4(1)doi:10.1093/ve/vex042
- 554 39. van Buuren S, Groothuis-Oudshoorn K. mice: Multivariate Imputation by Chained  
555 Equations in R. *Journal of Statistical Software*. 12/12 2011;45(3):1 - 67.  
556 doi:10.18637/jss.v045.i03

557

558

560 **TABLES:**

**Table 1. Demographic Characteristics by Vaccination Status**

| Variable                                | Overall,<br>N = 1,957 <sup>1</sup> | Unvaccinated,<br>N = 1,024 <sup>1</sup> | Vaccinated,<br>N = 933 <sup>1</sup> | p <sup>2</sup> |
|---|------------------------------------|---|-------------------------------------|----------------|
| Age                                     |                                    |   |                                     |                |
| Age (in years)                          | 51 (36, 65)                        | 43 (31, 59)                             | 58 (43, 70)                         | <0.001         |
| Age (by decade)                         |                                    |   |                                     | <0.001         |
| 18-29                                   | 275 (14%)                          | 216 (21%)                               | 59 (6.3%)                           |                |
| 30-39                                   | 342 (17%)                          | 225 (22%)                               | 117 (13%)                           |                |
| 40-49                                   | 325 (17%)                          | 178 (17%)                               | 147 (16%)                           |                |
| 50-59                                   | 317 (16%)                          | 152 (15%)                               | 165 (18%)                           |                |
| 60-69                                   | 332 (17%)                          | 133 (13%)                               | 199 (21%)                           |                |
| 70-79                                   | 228 (12%)                          | 80 (7.8%)                               | 148 (16%)                           |                |
| 80-89                                   | 113 (5.8%)                         | 31 (3.0%)                               | 82 (8.8%)                           |                |
| 90+                                     | 25 (1.3%)                          | 9 (0.9%)                                | 16 (1.7%)                           |                |
| Sex                                     |                                    |   |                                     | 0.10           |
| Female                                  | 1,093 (56%)                        | 590 (58%)                               | 503 (54%)                           |                |
| Male                                    | 864 (44%)                          | 434 (42%)                               | 430 (46%)                           |                |
| Race                                    |                                    |   |                                     | <0.001         |
| American Indian/Alaska Native           | 64 (3.3%)                          | 23 (2.2%)                               | 41 (4.4%)                           |                |
| Asian/Native Hawaiian/ Pacific Islander | 3 (0.2%)                           | 1 (<0.1%)                               | 2 (0.2%)                            |                |
| Black                                   | 1,137 (58%)                        | 721 (70%)                               | 416 (45%)                           |                |
| White                                   | 611 (31%)                          | 211 (21%)                               | 400 (43%)                           |                |
| Other                                   | 6 (0.4%)                           | 5 (0.5%)                                | 1 (0.1%)                            |                |
| Unknown                                 | 134 (6.9%)                         | 62 (6.1%)                               | 72 (7.7%)                           |                |
| (Missing)                               | 2                                  | 1                                       | 1                                   |                |
| Ethnicity                               |                                    |   |                                     | 0.99           |
| Hispanic/Latino                         | 64 (3.6%)                          | 34 (3.6%)                               | 30 (3.6%)                           |                |
| Non-Hispanic/Latino                     | 1,726 (96%)                        | 918 (96%)                               | 808 (96%)                           |                |
| (Missing)                               | 167                                | 72                                      | 95                                  |                |
| Residence Region                        |                                    |   |                                     | 0.28           |
| Metro Atlanta                           | 1,301 (66%)                        | 692 (68%)                               | 609 (65%)                           |                |
| Other                                   | 656 (34%)                          | 332 (32%)                               | 324 (35%)                           |                |

<sup>1</sup> n (%) or median (Interquartile Range [IQR])

<sup>2</sup> Pearson's Chi-squared test or Fisher's exact test for categorical variables and Wilcoxon rank-sum test for continuous variables



**Table 2. Clinical Characteristics by Vaccination Status**

| Variable   | Overall,<br>N = 1,957 <sup>1</sup> | Unvaccinated,<br>N = 1,024 <sup>1</sup> | Vaccinated,<br>N = 933 <sup>1</sup> | p <sup>2</sup> |
|--|------------------------------------|---|-------------------------------------|----------------|
| <b>COVID Symptoms</b>                                  |                                    |   |                                     |                |
| Any Systemic Symptoms <sup>3</sup>                     | 1,301 (82%)                        | 713 (84%)                               | 588 (81%)                           | 0.08           |
| (Missing)  | 379                                | 175                                     | 204                                 |                |
| Any GI Symptoms <sup>4</sup>                           | 642 (42%)                          | 387 (47%)                               | 255 (37%)                           | <0.001         |
| (Missing)  | 440                                | 205                                     | 235                                 |                |
| Any Upper Respiratory <sup>5</sup> Symptoms            | 636 (43%)                          | 281 (35%)                               | 355 (53%)                           | <0.001         |
| (Missing)  | 474                                | 216                                     | 258                                 |                |
| Any Lower Respiratory <sup>6</sup> Symptoms            | 1,275 (80%)                        | 675 (80%)                               | 600 (80%)                           | 0.71           |
| (Missing)  | 364                                | 177                                     | 187                                 |                |
| <b>Symptom Duration at Time of Testing</b>             |                                    |   |                                     |                |
|  |                                    |   |                                     | <0.01          |
| 0-3 days   | 681 (43%)                          | 338 (39%)                               | 343 (48%)                           |                |
| 4-7 days   | 428 (27%)                          | 255 (29%)                               | 173 (24%)                           |                |
| 8+ days  | 238 (15%)                          | 147 (17%)                               | 91 (13%)                            |                |
| Asymptomatic   | 233 (15%)                          | 125 (14%)                               | 108 (15%)                           |                |
| (Missing)  | 377                                | 159                                     | 218                                 |                |
| <b>Underlying Conditions</b>                           |                                    |   |                                     |                |
| Any Immunosuppressed Underlying Condition <sup>7</sup> | 407 (22%)                          | 162 (17%)                               | 245 (28%)                           | <0.001         |
| (Missing)  | 145                                | 73                                      | 72                                  |                |
| Any Other Underlying Condition <sup>8</sup>            | 1,164 (65%)                        | 573 (60%)                               | 591 (70%)                           | <0.001         |
| (Missing)  | 155                                | 71                                      | 84                                  |                |
| <b>Disease Severity</b>                                |                                    |   |                                     |                |
|  |                                    |   |                                     | 0.70           |
| Mild   | 1,148 (62%)                        | 609 (62%)                               | 539 (62%)                           |                |
| Moderate   | 463 (25%)                          | 251 (26%)                               | 212 (24%)                           |                |
| Severe   | 182 (9.9%)                         | 92 (9.4%)                               | 90 (10%)                            |                |
| Death  | 51 (2.8%)                          | 24 (2.5%)                               | 27 (3.1%)                           |                |
| (Missing)  | 113                                | 48                                      | 65                                  |                |
| <b>Vaccination</b>                                     |                                    |   |                                     |                |
| Days Since Full Vaccination                            | 198 (141, 272)                     | —                                       | 198 (141, 272)                      |                |
| (Missing)  | 1,024                              | —                                       | 0                                   |                |
| Days Since Booster                                     | 115 (63, 163)                      | —                                       | 115 (63, 163)                       |                |
| (Missing)  | 1,796                              | —                                       | 772                                 |                |
| Days Since Most Recent Vaccination/Booster             |                                    |   |                                     |                |
| Unvaccinated   | 1,024 (52%)                        | 1,024 (100%)                            | —                                   |                |
| Within past 90 Days                                    | 136 (6.9%)                         | —                                       | 136 (15%)                           |                |
| 91 - 180 Days Ago                                      | 402 (21%)                          | —                                       | 402 (43%)                           |                |
| 181 - 270 Days Ago                                     | 283 (14%)                          | —                                       | 283 (30%)                           |                |
| More than 270 Days Ago                                 | 112 (5.7%)                         | —                                       | 112 (12%)                           |                |
| <b>Viral Load</b>                                      |                                    |   |                                     |                |
| C <sub>T</sub> Value                                   | 23 (19, 30)                        | 24 (19, 31)                             | 22 (18, 27)                         | <0.001         |
| (Missing)  | 339                                | 164                                     | 175                                 |                |

<sup>1</sup> n (%) or median (Interquartile Range [IQR])

<sup>2</sup> Pearson's Chi-squared test or Fisher's exact test for categorical variables and Wilcoxon rank-sum test for continuous variables

<sup>3</sup> Any Systemic symptoms included fatigue, fever, chills, rigors, myalgia, and headache

<sup>4</sup> Any GI symptoms included nausea/vomiting, and diarrhea

<sup>5</sup> Any Upper Respiratory symptoms included sore throat, runny nose, and nasal congestion

<sup>6</sup> Any Lower Respiratory symptoms included cough, shortness of breath, and difficulty breathing

<sup>7</sup> Any Immunosuppressed Underlying Condition included HIV, active cancer, autoimmune disease, immunosuppressed, or immunosuppressive therapy

<sup>8</sup> Any Other Underlying Condition included overweight, diabetes, renal, cardiovascular, pregnant and liver disease

562

563

**Table 3. Association between C<sub>T</sub> value and clinical factors**

| <b>Variable</b>                              | <b>Beta</b> | <b>SE</b> | <b>p</b> |
|--|-------------|-----------|----------|
| Vaccination status                           |             |           |          |
| Unvaccinated                                 | Ref         | —         | —        |
| Vaccinated                                   | -0.70       | 0.26      | 0.01     |
| Lineage                                      |             |           |          |
| Alpha  | Ref         | —         | —        |
| Delta  | -0.23       | 0.87      | 0.79     |
| Omicron                                      | 1.68        | 0.92      | 0.07     |
| Symptom Duration at Time of Testing          |             |           |          |
| Asymptomatic                                 | Ref         | —         | —        |
| 0-3 days                                     | -2.99       | 0.55      | <0.001   |
| 4-7 days                                     | -1.62       | 0.61      | 0.01     |
| 8+ days                                      | 0.20        | 0.68      | 0.77     |
| Assay  |             |           |          |
| Cepheid Gene Xpert                           | Ref         | —         | —        |
| BioFire Defense, LLC - BioFire COVID-19 Test | -1.78       | 2.82      | 0.54     |
| Cepheid - Xpert Xpress SARS-CoV-2/Flu/RSV    | -0.39       | 2.85      | 0.89     |
| Roche Cobas                                  | -0.56       | 0.35      | 0.11     |
| Other  | 4.37        | 7.81      | 0.59     |

SE = Standard Error, Ref = Reference Level

564

**Table 4. SARS-CoV-2 Variants by Vaccination Status**

| <b>Variable</b> | <b>Overall,<br/>N = 1,957<sup>1</sup></b> | <b>Unvaccinated,<br/>N = 1,024<sup>1</sup></b> | <b>Vaccinated,<br/>N = 933<sup>1</sup></b> | <b>p<sup>2</sup></b> |
|-----------------|---|--|--|----------------------|
| Variant         |   |  |  | <0.001               |
| A.2.5           | 1 (<0.1%)                                 | 0 (0%)   | 1 (0.2%)                                   |                      |
| Alpha           | 30 (2.5%)                                 | 24 (4.0%)                                      | 6 (1.0%)                                   |                      |
| B.1             | 1 (<0.1%)                                 | 0 (0%)   | 1 (0.2%)                                   |                      |
| Beta            | 1 (<0.1%)                                 | 0 (0%)   | 1 (0.2%)                                   |                      |
| Delta           | 805 (68%)                                 | 415 (70%)                                      | 390 (66%)                                  |                      |
| Gamma           | 6 (0.5%)                                  | 5 (0.8%)                                       | 1 (0.2%)                                   |                      |
| Mu              | 4 (0.3%)                                  | 4 (0.7%)                                       | 0 (0%)                                     |                      |
| Omicron         | 337 (28%)                                 | 146 (25%)                                      | 191 (32%)                                  |                      |
| (Missing)       | 772                                       | 430  | 342  |                      |

565

**Table 5. Adjusted Multinomial Logistic Regression Models Testing the Association between Demographics, Underlying Health Conditions, and COVID-Related Characteristics with Disease Severity**

| Variable   | Moderate <sup>1</sup> |                     |                  | Severe <sup>1</sup> |                     |                  | Death <sup>1</sup> |                     |                  |
|--|-----------------------|---------------------|------------------|---------------------|---------------------|------------------|--------------------|---------------------|------------------|
|  | aOR <sup>2</sup>      | 95% CI <sup>2</sup> | p                | aOR <sup>2</sup>    | 95% CI <sup>2</sup> | p                | aOR <sup>2</sup>   | 95% CI <sup>2</sup> | p                |
| <i>Demographics</i>                                |                       |                     |                  |                     |                     |                  |                    |                     |                  |
| <b>Age</b>   | <b>1.05</b>           | <b>1.03, 1.06</b>   | <b>&lt;0.001</b> | <b>1.05</b>         | <b>1.03, 1.07</b>   | <b>&lt;0.001</b> | <b>1.09</b>        | <b>1.05, 1.13</b>   | <b>&lt;0.001</b> |
| Male   | 1.28                  | 0.89, 1.85          | 0.18             | 1.34                | 0.82, 2.19          | 0.24             | 1.21               | 0.52, 2.81          | 0.66             |
| White  | 0.70                  | 0.46, 1.06          | 0.09             | 0.89                | 0.51, 1.54          | 0.67             | 0.73               | 0.27, 1.96          | 0.53             |
| <i>Underlying Conditions</i>                       |                       |                     |                  |                     |                     |                  |                    |                     |                  |
| <b>Chronic Lung Disease</b>                        | <b>2.10</b>           | <b>1.38, 3.17</b>   | <b>&lt;0.001</b> | <b>1.98</b>         | <b>1.15, 3.41</b>   | <b>0.01</b>      | 1.31               | 0.50, 3.46          | 0.58             |
| Hypertension                                       | 1.02                  | 0.65, 1.59          | 0.94             | 0.97                | 0.53, 1.76          | 0.91             | 3.46               | 0.88, 13.57         | 0.08             |
| Overweight   | 1.40                  | 0.95, 2.07          | 0.09             | 1.17                | 0.69, 1.99          | 0.56             | 1.61               | 0.65, 4.01          | 0.30             |
| <b>Cardiovascular Disease</b>                      | <b>1.63</b>           | <b>1.06, 2.50</b>   | <b>0.03</b>      | 1.45                | 0.82, 2.55          | 0.20             | 1.08               | 0.44, 2.63          | 0.87             |
| Diabetes   | 0.99                  | 0.64, 1.54          | 0.98             | 1.45                | 0.83, 2.54          | 0.20             | 1.09               | 0.43, 2.74          | 0.86             |
| <b>Renal Disease</b>                               | <b>2.64</b>           | <b>1.61, 4.32</b>   | <b>&lt;0.001</b> | <b>1.91</b>         | <b>1.01, 3.64</b>   | <b>0.05</b>      | <b>3.63</b>        | <b>1.41, 9.36</b>   | <b>0.01</b>      |
| Liver Disease                                      | 1.13                  | 0.48, 2.69          | 0.78             | 1.84                | 0.69, 4.92          | 0.22             | 1.48               | 0.25, 8.78          | 0.67             |
| Autoimmune Disease                                 | 1.78                  | 0.87, 3.65          | 0.11             | 1.95                | 0.77, 4.95          | 0.16             | 3.96               | 1.00, 15.65         | 0.05             |
| Immunocompromised <sup>3</sup>                     | 1.08                  | 0.55, 2.11          | 0.82             | 0.59                | 0.25, 1.40          | 0.23             | 3.26               | 0.83, 12.71         | 0.09             |
| <b>Systemic Immunosuppressive Therapy or Meds.</b> | <b>3.45</b>           | <b>1.88, 6.32</b>   | <b>&lt;0.001</b> | <b>5.01</b>         | <b>2.38, 10.51</b>  | <b>&lt;0.001</b> | 1.48               | 0.38, 5.71          | 0.57             |
| <i>Days Since Most Recent Vaccination/Booster</i>  |                       |                     |                  |                     |                     |                  |                    |                     |                  |
| Unvaccinated                                       | Ref                   | —                   |                  | Ref                 | —                   |                  | Ref                | —                   |                  |
| <b>Within past 90 Days<sup>4</sup></b>             | <b>0.37</b>           | <b>0.16, 0.88</b>   | <b>0.02</b>      | 0.40                | 0.13, 1.26          | 0.12             | 0.72               | 0.18, 2.86          | 0.64             |
| <b>91 - 180 Days Ago<sup>4</sup></b>               | <b>0.32</b>           | <b>0.19, 0.54</b>   | <b>&lt;0.001</b> | <b>0.42</b>         | <b>0.21, 0.82</b>   | <b>0.01</b>      | <b>0.31</b>        | <b>0.10, 0.96</b>   | <b>0.04</b>      |
| <b>181 - 270 Days Ago<sup>4</sup></b>              | <b>0.32</b>           | <b>0.18, 0.56</b>   | <b>&lt;0.001</b> | <b>0.38</b>         | <b>0.17, 0.80</b>   | <b>0.01</b>      | <b>0.14</b>        | <b>0.04, 0.59</b>   | <b>0.01</b>      |
| More than 270 Days <sup>4</sup> Ago                | 0.53                  | 0.23, 1.21          | 0.13             | 0.88                | 0.34, 2.29          | 0.79             | 0.34               | 0.06, 1.95          | 0.23             |
| <i>Lineage</i>                                     |                       |                     |                  |                     |                     |                  |                    |                     |                  |
| Delta  | Ref                   | —                   |                  | Ref                 | —                   |                  | Ref                | —                   |                  |
| Omicron <sup>5</sup>                               | 0.95                  | 0.61, 1.47          | 0.81             | 1.42                | 0.81, 2.50          | 0.22             | 2.07               | 0.84, 5.12          | 0.12             |

<sup>1</sup> "Mild" is the Reference Category

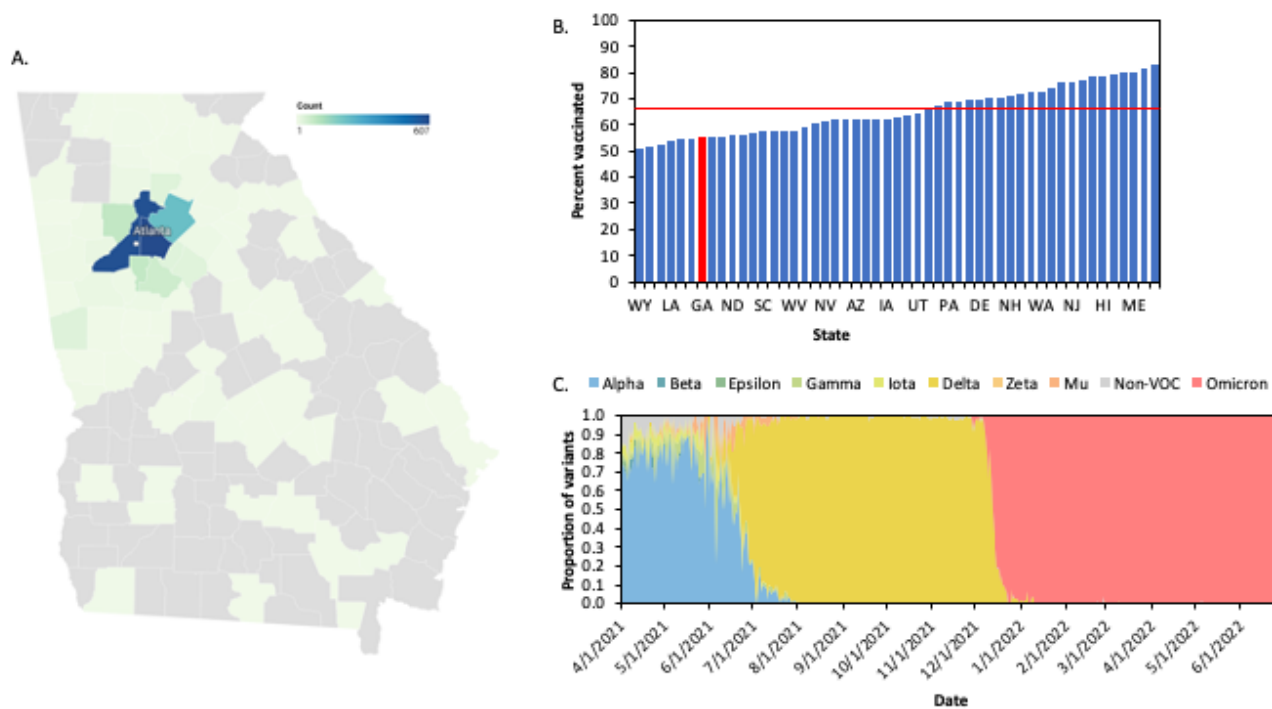
<sup>2</sup> aOR = Adjusted Odds Ratio, CI = Confidence Interval, Ref = Reference Level

<sup>3</sup> HIV infection, active cancer, solid organ transplant, hematopoietic stem cell transplant

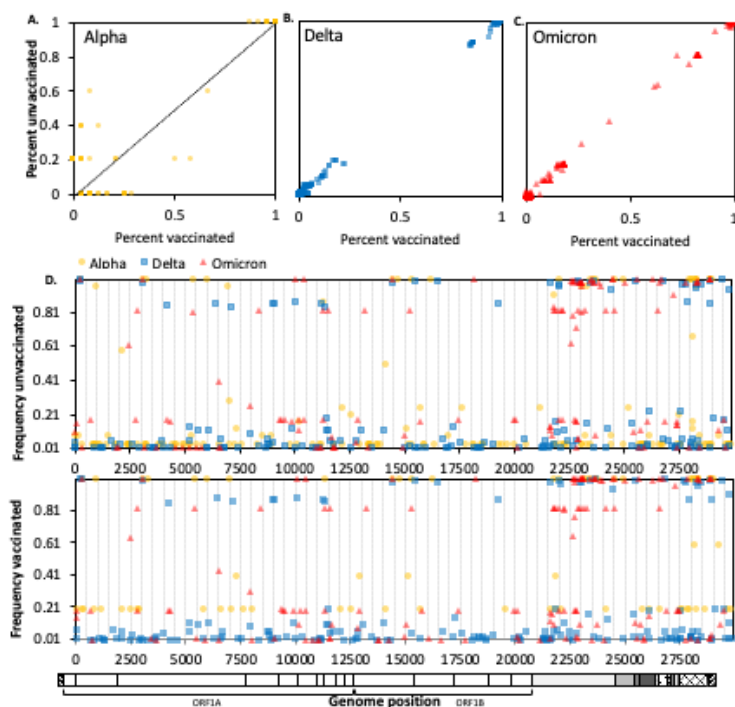
<sup>4</sup> Compared to unvaccinated individuals

<sup>5</sup> Compared to Delta

566 **FIGURES:**



567 **Figure 1. COVID-19 cases from May 2021-May 2022 in Georgia, US. A.** 1,957 Emory  
568 Healthcare COVID-19 case mapped by counties in and around Atlanta, GA. **B.** Percent of  
569 population fully vaccinated against SARS-CoV-2 by May 2022 in each state in the United States.  
570 Red line represents national average (66.7%). Red bar represents Georgia. **C.** Proportion of  
571 variants circulating in Georgia from April 2021- June 2022. Sequences obtained from GISAID.  
572



573

574 **Figure 2. Frequencies of single nucleotide polymorphisms (SNPs) among SARS-COV-2**  
575 **genome sequences from vaccinated and unvaccinated individuals.** Each point represents a  
576 single SNP plotted by its frequency in sequences from unvaccinated individuals (Y-axis) versus  
577 its frequency in sequences from vaccinated individuals (X-axis). Data is divided by WHO variant  
578 classifications Alpha (A), Delta (B), and Omicron (C). Mutations observed along the diagonal  
579 depict mutations observed equally among vaccinated and unvaccinated individuals. Mutations  
580 observed moving away from the diagonal represent mutations observed in either vaccinated (X-  
581 axis) or unvaccinated (Y-axis) individuals. (D) Frequency of SNPs in SARS-CoV-2 sequences  
582 from unvaccinated (top) and vaccinated (bottom) individuals, by genome position (x-axis). In all  
583 panels, Alpha is represented by yellow circles, Delta by blue squares, and Omicron by red  
584 triangles.

585 SUPPLEMENTARY TABLES

**Table S1. Extended COVID Symptoms and Underlying Conditions by Vaccination Status**

| Variable                                    | Overall,<br>N = 1,957 <sup>1</sup> | Unvaccinated, N<br>= 1,024 <sup>1</sup> | Vaccinated, N =<br>933 <sup>1</sup> | p <sup>2</sup> |
|---|------------------------------------|---|-------------------------------------|----------------|
| <b>COVID Symptoms</b>                       |                                    |   |                                     |                |
| Fever                                       | 720 (47%)                          | 430 (52%)                               | 290 (42%)                           | <0.001         |
| (Missing)                                   | 435                                | 197                                     | 238                                 |                |
| Chills                                      | 537 (35%)                          | 314 (38%)                               | 223 (32%)                           | 0.02           |
| (Missing)                                   | 435                                | 198                                     | 237                                 |                |
| Rigors                                      | 29 (2.0%)                          | 17 (2.1%)                               | 12 (1.8%)                           | 0.67           |
| (Missing)                                   | 491                                | 221                                     | 270                                 |                |
| Myalgia                                     | 501 (34%)                          | 279 (35%)                               | 222 (33%)                           | 0.59           |
| (Missing)                                   | 484                                | 218                                     | 266                                 |                |
| Headache                                    | 521 (35%)                          | 299 (37%)                               | 222 (33%)                           | 0.12           |
| (Missing)                                   | 476                                | 215                                     | 261                                 |                |
| Sore Throat                                 | 286 (20%)                          | 138 (17%)                               | 148 (22%)                           | 0.02           |
| (Missing)                                   | 496                                | 228                                     | 268                                 |                |
| Nausea / Vomiting                           | 451 (30%)                          | 282 (35%)                               | 169 (25%)                           | <0.001         |
| (Missing)                                   | 455                                | 209                                     | 246                                 |                |
| Diarrhea                                    | 369 (25%)                          | 212 (26%)                               | 157 (23%)                           | 0.13           |
| (Missing)                                   | 470                                | 220                                     | 250                                 |                |
| Fatigue                                     | 630 (41%)                          | 337 (41%)                               | 293 (41%)                           | 0.81           |
| (Missing)                                   | 418                                | 195                                     | 223                                 |                |
| Runny Nose or Nasal Congestion              | 519 (35%)                          | 217 (27%)                               | 302 (45%)                           | <0.001         |
| (Missing)                                   | 473                                | 215                                     | 258                                 |                |
| Cough                                       | 1,087 (70%)                        | 576 (69%)                               | 511 (72%)                           | 0.37           |
| (Missing)                                   | 414                                | 195                                     | 219                                 |                |
| Shortness of Breath or Difficulty Breathing | 690 (44%)                          | 408 (49%)                               | 282 (39%)                           | <0.001         |
| (Missing)                                   | 401                                | 188                                     | 213                                 |                |
| Loss of Taste                               | 264 (18%)                          | 151 (19%)                               | 113 (17%)                           | 0.33           |
| (Missing)                                   | 505                                | 233                                     | 272                                 |                |
| <b>Underlying Conditions</b>                |                                    |   |                                     |                |
| Pregnant                                    | 69 (3.6%)                          | 59 (6.0%)                               | 10 (1.1%)                           | <0.001         |
| (Missing)                                   | 66                                 | 42                                      | 24                                  |                |
| Chronic Lung Disease                        | 387 (21%)                          | 193 (20%)                               | 194 (22%)                           | 0.33           |
| (Missing)                                   | 134                                | 75                                      | 59                                  |                |
| Hypertension                                | 874 (47%)                          | 377 (39%)                               | 497 (56%)                           | <0.001         |
| (Missing)                                   | 95                                 | 50                                      | 45                                  |                |
| Overweight                                  | 584 (32%)                          | 315 (33%)                               | 269 (32%)                           | 0.50           |
| (Missing)                                   | 150                                | 70                                      | 80                                  |                |
| Cardiovascular Disease                      | 534 (29%)                          | 217 (23%)                               | 317 (36%)                           | <0.001         |
| (Missing)                                   | 126                                | 65                                      | 61                                  |                |
| Diabetes                                    | 426 (23%)                          | 180 (19%)                               | 246 (28%)                           | <0.001         |
| (Missing)                                   | 101                                | 53                                      | 48                                  |                |



|   |            |           |           |        |
|---|------------|-----------|-----------|--------|
| Renal Disease                                     | 316 (17%)  | 106 (11%) | 210 (24%) | <0.001 |
| (Missing)   | 132        | 69        | 63        |        |
| Liver Disease                                     | 83 (4.5%)  | 37 (3.8%) | 46 (5.2%) | 0.16   |
| (Missing)   | 107        | 59        | 48        |        |
| Autoimmune Disease                                | 101 (5.5%) | 42 (4.4%) | 59 (6.8%) | 0.03   |
| (Missing)   | 135        | 69        | 66        |        |
| Immunocompromised <sup>3</sup>                    | 269 (15%)  | 89 (9.3%) | 180 (21%) | <0.001 |
| (Missing)   | 137        | 69        | 68        |        |
| Systemic Immunosuppressive Therapy or Medications | 293 (16%)  | 117 (12%) | 176 (20%) | <0.001 |
| (Missing)   | 115        | 59        | 56        |        |

<sup>1</sup> n (%) or median (Interquartile Range [IQR])

<sup>2</sup> Pearson's Chi-squared test or Fisher's exact test for categorical variables and Wilcoxon rank-sum test for continuous variables

<sup>3</sup> Immunocompromised (e.g., HIV infection, active cancer, solid organ transplant, hematopoietic stem cell transplant)

586

587

**Table S2. Circulation of VOC/VOI in Georgia, USA as measured by available sequences on GISAID**

| VOC/VOI  | Period variant circulated in GA <sup>1</sup> | Date range of sequences obtained from GISAID | Sequences available on GISAID | Total sequences available from May 2021 to May 2022 (%) |
|--|--|--|-------------------------------|---|
| <b>Alpha</b>   | 12/10/2020-08/26/2021                        | 05/01/2021-08/26/2021                        | 1,361                         | 2.66  |
| <b>Beta</b>  | 02/01/2021-05/25/2021                        | 05/01/2021-05/25/2021                        | 16                            | 0.03  |
| <b>Delta</b>   | 4/29/2021-03/10/2022                         | 05/01/2021-03/10/2022                        | 28,320                        | 55.5  |
| <b>Gamma</b>   | 03/05/2021-09/24/2021                        | 05/01/2021-09/24/2021                        | 185                           | 0.36  |
| <b>Lambda</b>  | 02/07/2021-08/05/2021                        | 05/01/2021-08/05/2021                        | 18                            | 0.04  |
| <b>Mu</b>  | 04/23/2021-09/14/2021                        | 05/01/2021-09/14/2021                        | 142                           | 0.28  |
| <b>Omicron</b>   | 11/30/2021-4/18/2023                         | 11/30/2021-04/18/2023                        | 20,759                        | 40.6  |
| <b>Total VOC/VOI</b>   |  |  | <b>50,801</b>                 | <b>99.46</b>  |
| <b>Total sequences available on GISAID from May 2021 to May 2022 from the state of Georgia</b> |  |  | <b>51,075</b>                 | <b>---</b>  |

<sup>1</sup>Period of circulation based on sequences available on GISAID including Emory Healthcare samples.

588

**Table S3. Unadjusted Multinomial Logistic Regression Models Testing the Association between Demographics, Underlying Health Conditions, and COVID-Related Characteristics with Disease Severity**

| Variable  | Moderate <sup>1</sup> |                     |                  | Severe <sup>1</sup> |                     |                  | Death <sup>1</sup> |                     |                  |
|---|-----------------------|---------------------|------------------|---------------------|---------------------|------------------|--------------------|---------------------|------------------|
|   | OR <sup>2</sup>       | 95% CI <sup>2</sup> | p                | OR <sup>2</sup>     | 95% CI <sup>2</sup> | p                | OR <sup>2</sup>    | 95% CI <sup>2</sup> | p                |
| <b>Unadjusted Models</b>                          |                       |                     |                  |                     |                     |                  |                    |                     |                  |
| Age   | <b>1.04</b>           | <b>1.03, 1.05</b>   | <b>&lt;0.001</b> | <b>1.05</b>         | <b>1.04, 1.05</b>   | <b>&lt;0.001</b> | <b>1.07</b>        | <b>1.05, 1.09</b>   | <b>&lt;0.001</b> |
| Male <sup>3</sup>                                 | <b>1.40</b>           | <b>1.13, 1.74</b>   | <b>&lt;0.01</b>  | 1.30                | 0.95, 1.78          | 0.10             | 1.26               | 0.72, 2.22          | 0.40             |
| White <sup>4</sup>                                | 0.86                  | 0.67, 1.10          | 0.20             | 1.27                | 0.91, 1.77          | 0.20             | 1.04               | 0.57, 1.91          | 0.90             |
| Chronic Lung Disease                              | <b>2.07</b>           | <b>1.59, 2.68</b>   | <b>&lt;0.001</b> | <b>1.95</b>         | <b>1.35, 2.81</b>   | <b>&lt;0.001</b> | <b>2.65</b>        | <b>1.44, 4.86</b>   | <b>&lt;0.01</b>  |
| Hypertension                                      | <b>2.94</b>           | <b>2.35, 3.68</b>   | <b>&lt;0.001</b> | <b>4.19</b>         | <b>2.98, 5.90</b>   | <b>&lt;0.001</b> | <b>11.4</b>        | <b>5.09, 25.6</b>   | <b>&lt;0.001</b> |
| Overweight  | <b>1.45</b>           | <b>1.15, 1.83</b>   | <b>&lt;0.01</b>  | <b>1.58</b>         | <b>1.14, 2.19</b>   | <b>0.01</b>      | <b>2.02</b>        | <b>1.13, 3.61</b>   | <b>0.02</b>      |
| Cardiovascular Disease                            | <b>2.89</b>           | <b>2.28, 3.67</b>   | <b>&lt;0.001</b> | <b>3.46</b>         | <b>2.48, 4.81</b>   | <b>&lt;0.001</b> | <b>4.80</b>        | <b>2.70, 8.54</b>   | <b>&lt;0.001</b> |
| Diabetes  | <b>2.04</b>           | <b>1.58, 2.63</b>   | <b>&lt;0.001</b> | <b>3.21</b>         | <b>2.29, 4.50</b>   | <b>&lt;0.001</b> | <b>4.35</b>        | <b>2.43, 7.80</b>   | <b>&lt;0.001</b> |
| Renal Disease                                     | <b>3.88</b>           | <b>2.90, 5.19</b>   | <b>&lt;0.001</b> | <b>3.86</b>         | <b>2.62, 5.67</b>   | <b>&lt;0.001</b> | <b>9.86</b>        | <b>5.46, 17.8</b>   | <b>&lt;0.001</b> |
| Liver Disease                                     | 1.47                  | 0.87, 2.50          | 0.20             | <b>2.36</b>         | <b>1.25, 4.45</b>   | <b>&lt;0.01</b>  | <b>3.08</b>        | <b>1.16, 8.21</b>   | <b>0.02</b>      |
| Autoimmune Disease                                | <b>1.60</b>           | <b>1.01, 2.56</b>   | <b>0.046</b>     | <b>1.58</b>         | <b>0.82, 3.03</b>   | <b>0.20</b>      | <b>2.45</b>        | <b>0.93, 6.47</b>   | <b>0.07</b>      |
| Immunocompromised                                 | <b>2.65</b>           | <b>1.97, 3.58</b>   | <b>&lt;0.001</b> | <b>2.44</b>         | <b>1.61, 3.69</b>   | <b>&lt;0.001</b> | <b>3.69</b>        | <b>1.93, 7.09</b>   | <b>&lt;0.001</b> |
| Systemic Immunosuppressive Therapy/Meds.          | <b>3.49</b>           | <b>2.61, 4.67</b>   | <b>&lt;0.001</b> | <b>3.24</b>         | <b>2.18, 4.81</b>   | <b>&lt;0.001</b> | <b>3.48</b>        | <b>1.79, 6.78</b>   | <b>&lt;0.001</b> |
| <u>Vaccination Status</u>                         |                       |                     |                  |                     |                     |                  |                    |                     |                  |
| Unvaccinated                                      | Ref                   | —                   |                  | Ref                 | —                   |                  | Ref                | —                   |                  |
| Vaccinated <sup>5</sup>                           | <b>0.80</b>           | <b>0.64, 1.01</b>   | <b>0.07</b>      | 0.86                | 0.61, 1.21          | 0.40             | 1.00               | 0.54, 1.84          | >0.90            |
| Vaccinated & boosted <sup>5</sup>                 | <b>2.28</b>           | <b>1.52, 3.43</b>   | <b>&lt;0.001</b> | <b>3.24</b>         | <b>1.95, 5.40</b>   | <b>&lt;0.001</b> | <b>3.69</b>        | <b>1.58, 8.59</b>   | <b>&lt;0.01</b>  |
| <u>Days Since Most Recent Vaccination/Booster</u> |                       |                     |                  |                     |                     |                  |                    |                     |                  |
| Unvaccinated                                      | —                     | —                   |                  | —                   | —                   |                  | —                  | —                   |                  |
| Within past 90 Days <sup>5</sup>                  | 1.34                  | 0.86, 2.08          | 0.20             | 1.68                | 0.93, 3.03          | 0.09             | 2.81               | 1.17, 6.79          | 0.02             |
| 91 - 180 Days Ago <sup>5</sup>                    | 0.98                  | 0.74, 1.29          | 0.90             | 0.92                | 0.60, 1.40          | 0.70             | 1.14               | 0.55, 2.37          | 0.70             |
| 181 - 270 Days Ago <sup>5</sup>                   | 0.72                  | 0.51, 1.01          | 0.06             | 0.74                | 0.45, 1.24          | 0.30             | 0.71               | 0.27, 1.89          | 0.50             |
| More than 270 Days Ago <sup>5</sup>               | 1.18                  | 0.72, 1.94          | 0.50             | 2.49                | 1.43, 4.36          | <0.01            | 1.91               | 0.64, 5.72          | 0.20             |
| <u>Lineage</u>                                    |                       |                     |                  |                     |                     |                  |                    |                     |                  |
| Delta   | Ref                   | —                   |                  | Ref                 | —                   |                  | Ref                | —                   |                  |
| Omicron <sup>6</sup>                              | <b>1.51</b>           | <b>1.09, 2.07</b>   | <b>0.01</b>      | <b>2.25</b>         | <b>1.46, 3.48</b>   | <b>&lt;0.001</b> | <b>4.55</b>        | <b>2.25, 9.20</b>   | <b>&lt;0.001</b> |

<sup>1</sup> "Mild" is the Reference Category

<sup>2</sup> OR = Odds Ratio, CI = Confidence Interval, Ref = Reference Level

<sup>3</sup> Compared to "Female"

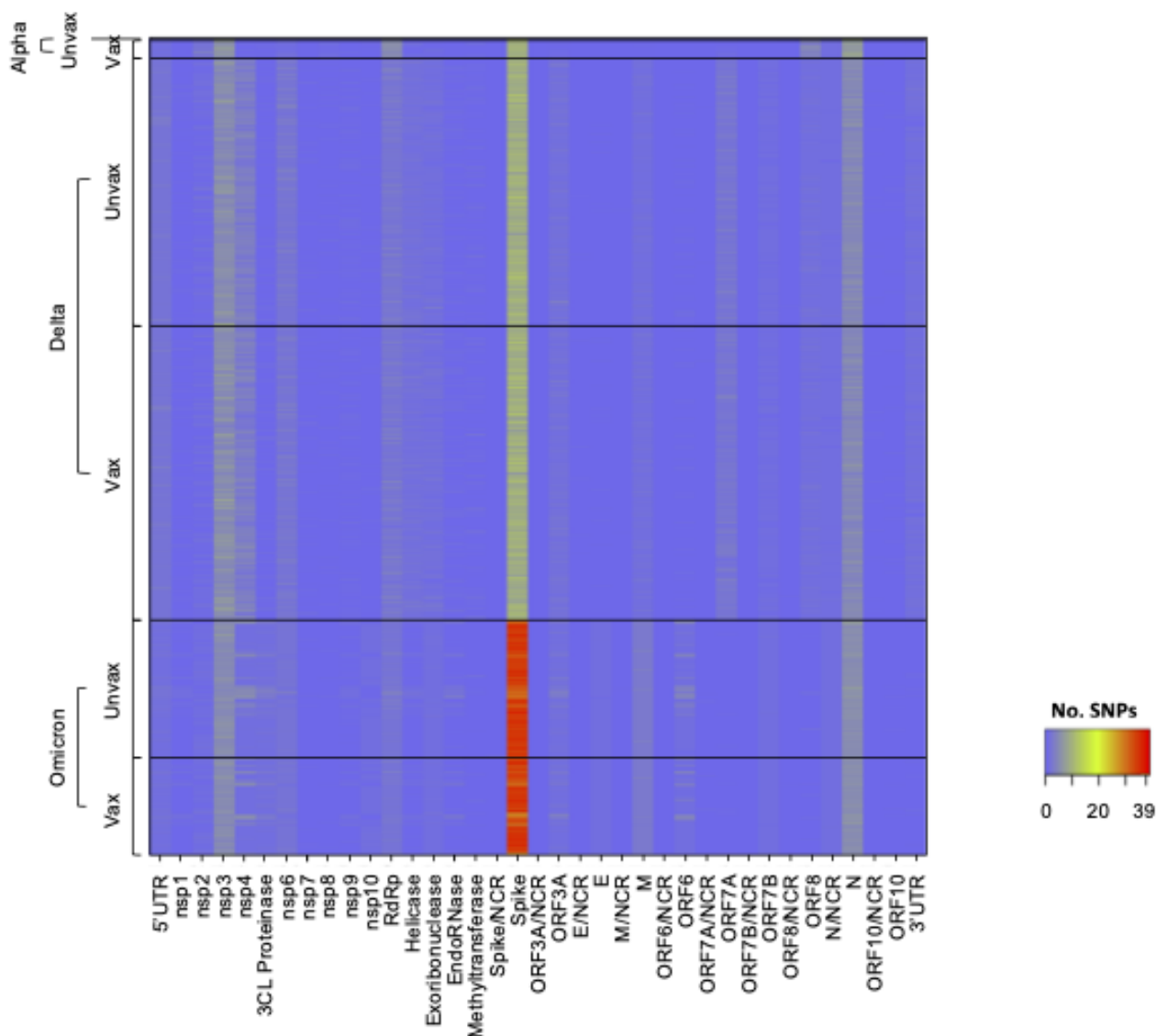
<sup>4</sup> Compared to "Black"

<sup>5</sup> Compared to "Unvaccinated individuals"

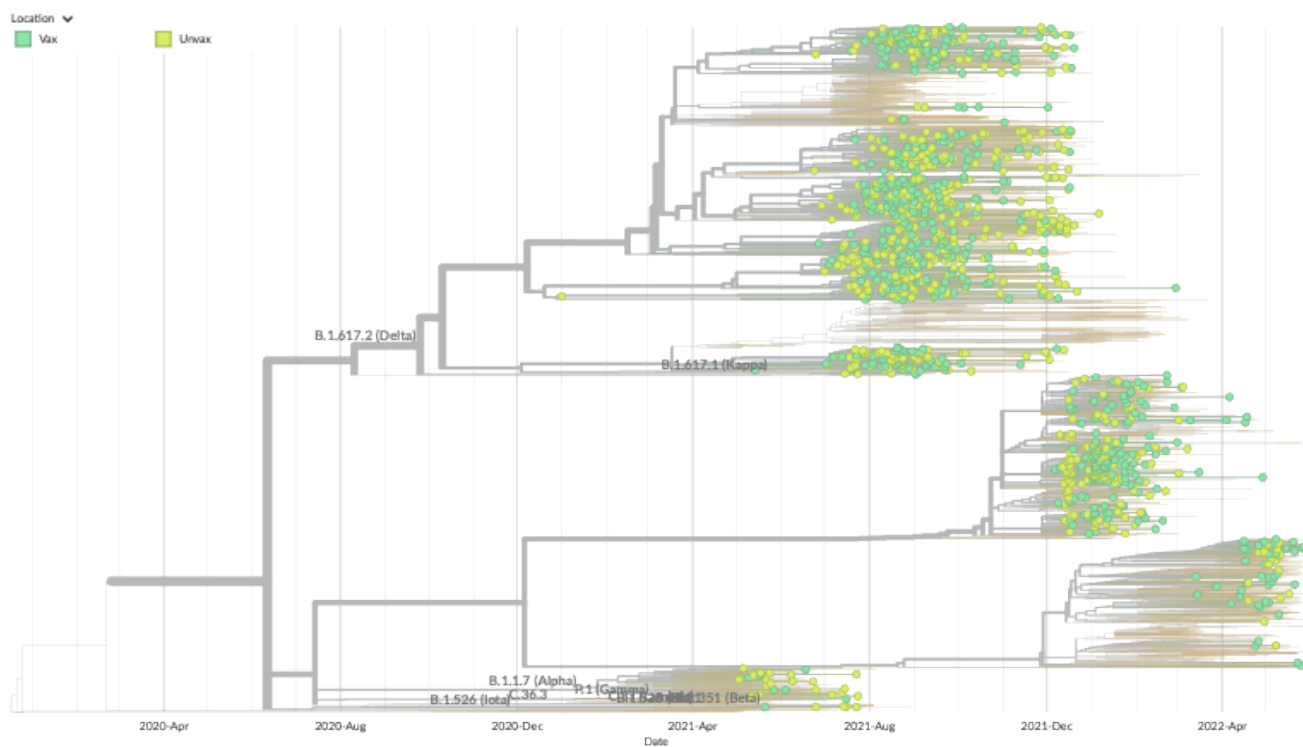
<sup>6</sup> Compared to "Delta"

590 **SUPPLEMENTARY FIGURES**

591



592 **Figure S1. Mutations across SARS-CoV-2 genes.** Alpha, delta, and omicron sequences were  
593 aligned to Wuhan/Hu-1/2019. For each variant, samples from vaccinated (“vax”) and  
594 unvaccinated (“unvax”) individuals are labeled. Each square in the heatmap represents the  
595 number of single nucleotide polymorphisms (SNPs) in each gene, labeled on the x-axis. Each  
596 row represents one sample.  
597



598

599 **Figure S2. Phylogenetic analysis does not reveal differences in SARS-CoV-2 sequences**  
600 **from vaccinated and unvaccinated individuals.** Maximum likelihood tree containing  
601 sequences from vaccinated (green) and unvaccinated (yellow) individuals in the context of 2000  
602 global sequences from GISAID (orange) selected by a custom Nextstrain subsampling scheme  
603 and rooted to NC\_045512.

604 **KEY RESOURCES TABLE**

| REAGENT or RESOURCE                    | SOURCE                                | IDENTIFIER  |
|--|---------------------------------------|---|
| <b>Biological samples</b>              |                                       |   |
| Residual NP swabs                      | Emory Microbiology Lab                | N/A   |
| <b>Critical commercial assays</b>      |                                       |   |
| Nextera XT DNA Library Preparation kit | Illumina                              | FC-131-1096   |
| Illumina MiSeq kit                     | Illumina                              | MS-102-3001   |
| <b>Deposited data</b>                  |                                       |   |
| SARS-CoV-2 consequence sequences       | This paper                            | GISAID: PRJNA634356   |
| SARS-CoV-2 reads                       | This paper                            | NCBI: PRJNA634356   |
| <b>Software and algorithms</b>         |                                       |   |
| Geneious                               |                                       | <a href="https://www.geneio.us.com">https://www.geneio.us.com</a>   |
| Nextstrain                             | Hadfield et al., 2018                 | <a href="https://clades.nextstrain.org/">https://clades.nextstrain.org/</a>   |
| IQtree                                 | Trifinopoulos et al., 2016            | <a href="http://iqtree.cibiv.univie.ac.at/">http://iqtree.cibiv.univie.ac.at/</a>   |
| Interactive Tree of Life (iTOL)        | Letunic et al., 2021                  | <a href="https://itol.embl.de/">https://itol.embl.de/</a>   |
| ViReMA                                 | Routh et al., 2013                    | <a href="https://sourceforge.net/projects/virema/">https://sourceforge.net/projects/virema/</a>   |
| Pangolin                               | Rambaut et al., 2020                  | <a href="https://pangolin.cog-uk.io">https://pangolin.cog-uk.io</a>   |
| Pilon                                  | Walker et al., 2014                   | <a href="https://github.com/broadinstitute/pilon">https://github.com/broadinstitute/pilon</a>   |
| Bowtie2                                | Langmead et al., 2012                 | <a href="http://bowtie-bio.sourceforge.net/index.shtml">http://bowtie-bio.sourceforge.net/index.shtml</a>                                     |
| samtools                               | Li et al., 2009                       | <a href="http://www.htslib.org/">http://www.htslib.org/</a>   |
| seqtk                                  |                                       | <a href="https://github.com/lh3/seqtk">https://github.com/lh3/seqtk</a>   |
| DESeq2                                 | Love et al., 2014                     | <a href="https://bioconductor.org/packages/release/bioc/html/DESeq2.html">https://bioconductor.org/packages/release/bioc/html/DESeq2.html</a> |
| R Studios                              | RStudio: Integrated Development for R | <a href="https://www.rstudio.com">Rstudio.com</a>   |
| SAS                                    | SAS Institute                         | <a href="https://www.sas.com/en_us/home.html">https://www.sas.com/en_us/home.html</a>   |

605

606