

1 **Low booster uptake in cancer patients despite health benefits**

2
3 Jane C. Figueiredo,^{1,2} Julia Levy,¹ So Yung Choi,² Alexander M. Xu³, Noah M. Merin,⁴ Omid
4 Hamid,^{1,5} Tucker Lemos,⁴ Nathalie Nguyen,¹ Maimoona Nadri,¹ Alma Gonzalez,¹ Simeon
5 Mahov,⁴ Justin M. Darrah,⁴ Jun Gong,¹ Ronald L. Paquette,⁴ Alain C. Mita,¹ Robert A. Vescio,⁴
6 Sarah J. Salvy,⁶ Inderjit Mehmi,⁵ Andrew E. Hendifar,¹ Ronald Natale,¹ Warren G.
7 Tourtellotte,^{7,8} V. Krishnan Ramanujan,⁸ Carissa A. Huynh,⁸ Kimia Sobhani,⁸ Karen L.
8 Reckamp,¹ and Akil A. Merchant ⁴

9
10 ¹ Department of Medicine, Samuel Oschin Comprehensive Cancer Institute, Cedars-Sinai
11 Medical Center, Los Angeles, CA 90048;

12 ² Department of Computational Biomedicine, Cedars-Sinai Medical Center, Los Angeles, CA
13 90048;

14 ³ Department of Biomedical Sciences, Cedars-Sinai Medical Center, Los Angeles, CA 90048

15 ⁴ Division of Hematology and Cellular Therapy, Department of Medicine, Samuel Oschin
16 Comprehensive Cancer Institute, Cedars-Sinai Medical Center, Los Angeles, CA 90048;

17 ⁵ The Angeles Clinic and Research Institute, A Cedars-Sinai Affiliate, Los Angeles, CA 90025,

18 ⁶ Research Center for Health Equity, Department of Biomedical Sciences, Los Angeles, CA
19 90048;

20 ⁷ Department of Neurology, Neurological Surgery and Biomedical Sciences, Cedars-Sinai
21 Medical Center, Los Angeles, CA 90048;

22 ⁸ Department of Pathology and Laboratory Medicine, Cedars-Sinai Medical Center, Los Angeles,
23 CA 90048;

24

25 **Corresponding authors:**

26 Jane C. Figueiredo, Ph.D., Department of Medicine, Division of Medical Oncology, Cedars-

27 Sinai Medical Center, 8700 Beverly Blvd, Los Angeles, CA 90048, Email:

28 Jane.Figueiredo@cshs.org, Phone: 310-423-2746

29 Akil Merchant, M.D., Division of Hematology and Cellular Therapy, Samuel Oschin

30 Comprehensive Cancer Institute, Cedars-Sinai Medical Center, 8700 Beverly Blvd, Los Angeles,

31 CA 90048, Email: Akil.Merchant@cshs.org, Phone: 310-423-2746

32

33 **Highlights**

- 34 • COVID-19 booster vaccinations increase antibody levels and maintain T-cell responses
- 35 against SARS-CoV-2 in patients receiving various anti-cancer therapies
- 36 • Booster vaccinations reduced all-cause mortality in patients
- 37 • A significant proportion of patients remain unboosted and strategies are needed to
- 38 encourage patients to be up-to-date with vaccinations

39

40 **Summary**

41 Patients with cancer are at increased risk of death from COVID-19 and have reduced immune
42 responses to SARS-CoV2 vaccines, necessitating regular boosters. We performed
43 comprehensive chart reviews, surveys of patients attitudes, serology for SARS-CoV-2 antibodies
44 and T-cell receptor (TCR) β sequencing for cellular responses on a cohort of 982 cancer patients
45 receiving active cancer therapy accrued between November-3-2020 and Mar-31-2023. We
46 found that 92.3% of patients received the primer vaccine, 70.8% received one monovalent
47 booster, but only 30.1% received a bivalent booster. Booster uptake was lower under age 50, and
48 among African American or Hispanic patients. Nearly all patients seroconverted after 2+ booster
49 vaccinations (>99%) and improved cellular responses, demonstrating that repeated boosters
50 could overcome poor response to vaccination. Receipt of booster vaccinations was associated
51 with a lower risk of all-cause mortality (HR=0.61, P=0.024). Booster uptake in high-risk cancer
52 patients remains low and strategies to encourage booster uptake are needed.

53 **Introduction**

54 Effective vaccines were developed, tested, and issued emergency use authorization (EUA) by the
55 U.S. Food and Drug Administration (FDA), European Medical Agency and other regulatory
56 agencies around the world in record time. Immunocompromised individuals were prioritized in
57 vaccine rollout strategies;[1] however, none of the Phase III clinical trials included patients with
58 cancer, fueling concerns about potential side effects and the robustness of their post-vaccine
59 immune responses.[2] Data quickly emerged to reassure patients that available vaccines were
60 safe and effective,[3] and subsequent studies reported that over 90% of patients with cancer have
61 received at least one COVID-19 vaccine.[4] However, it is unclear how many are following
62 recommendations for additional doses or “boosters.”

63
64 Booster vaccinations have been reported to counteract waning immune responses to vaccination
65 and natural infection in healthy populations.[5] Several studies of the Omicron (B.1.1.529)
66 subvariants reported heightened capacity for immune evasion,[6] and reduced vaccine
67 effectiveness for first-generation monovalent COVID-19 vaccines.[7] Other reports suggest that
68 additional doses of the monovalent mRNA vaccines,[8, 9] heterologous boosting,[10, 11] and the
69 bivalent mRNA vaccines provide additional immune protection to SARS-CoV-2 B.1.1.529
70 infection and severe COVID-19 illness.[12]

71
72 For patients with cancer, evidence suggests that primer vaccinations elicit lower antibody titers
73 compared to healthy individuals, albeit dependent on disease state, co-morbidities, and
74 anticancer treatment status.[13-18] Subsequent booster vaccinations have been reported to

75 restore and increase antibody titers in patients similar to healthy controls,[11, 18, 19] except for
76 patients receiving B-cell-depleting therapies and chemotherapies.[11, 19] However, even
77 seronegative individuals appear capable of mounting T-cell responses,[14, 20] and some data
78 suggest that T-cell responses are more robust over time compared to antibody levels.[21]

79
80 Changes in vaccine availability and the evolving nature of the science and public health
81 recommendations for additional doses have likely impacted the psychosocial wellbeing of
82 patients. During the pandemic, there was an increase in depression and anxiety rates among
83 patients with cancer, which was exacerbated by social distancing.[22] Disruptions in cancer care
84 services were also reported to contribute to higher levels of anxiety, loneliness and social
85 isolation among patients.[22, 23]

86
87 There are unanswered questions about changes in the mental, social, and immunologic health of
88 patients with cancer as we enter into the endemic phase of SARS-CoV-2. In this follow-up study
89 from the SeroNet-CORALE Cancer Cohort Study, we report on vaccine uptake patterns, and
90 examine humoral and cellular immune responses, psychosocial health, and all-cause mortality.

91

92 **Results**

93 *Patient characteristics and attitudes on SARS-CoV-2 vaccines:* We enrolled 986 patients with
94 either solid (48·7%) or hematologic (51·3%) malignancies (median age=63·0 [IQR, 52·0-70·0]
95 years; 48·6% women, **Table 1, Figure S1**). Less than 8% of patients refused vaccination, and
96 <2·0% of survey responses reported being against vaccination at any timepoint during follow-up
97 (**Figure S2**). Patients who agreed that vaccines may not be safe were less likely to be up-to-date

98 with vaccinations at any timepoint (range: 11·8–40·0% v. 4·3–6·7%). Fear of adverse events has
99 remained a common concern, but has decreased over time (46·2% from Jan to Aug–2021 v.
100 42·7% from Oct–2022 to Mar–2023).

101
102 ***SARS-CoV-2 vaccine booster uptake:*** Following FDA EUA recommendations for the 1st
103 monovalent booster in Aug–2021, a total of 698 patients (49·7% with solid tumors and 50·3%
104 with hematologic malignancies) were boosted with a monovalent booster with a median time
105 from first dose of 238·5 days (IQR=207·2–280) days. Most patients received a homologous first
106 booster (94·6% BNT/BNT-primed with BNT 1st monovalent booster; 93·6% m1273/m1273-
107 primed with m1273 1st monovalent booster), but heterologous boosting became more frequent
108 for subsequent doses (only 84·0% of patients receiving 2nd homologous booster which dropped
109 to 62·5% for the 3rd booster).

110
111 Less than 35% of patients received two monovalent booster doses (median of 196 days from the
112 1st monovalent booster) and only 30·1% received at least one bivalent booster (95·6% after
113 receiving at least one monovalent, **Figure 1 Panel A**). When we examined vaccine uptake by
114 age groups and self-identified race and ethnicity, the lowest uptake was among patients under 50
115 years of age compared to those over age 70 (**Figure 1 Panel B**), and for individuals who self-
116 identified as either Black or Hispanic compared to non-Hispanic White (**Figure 1 Panel C**).

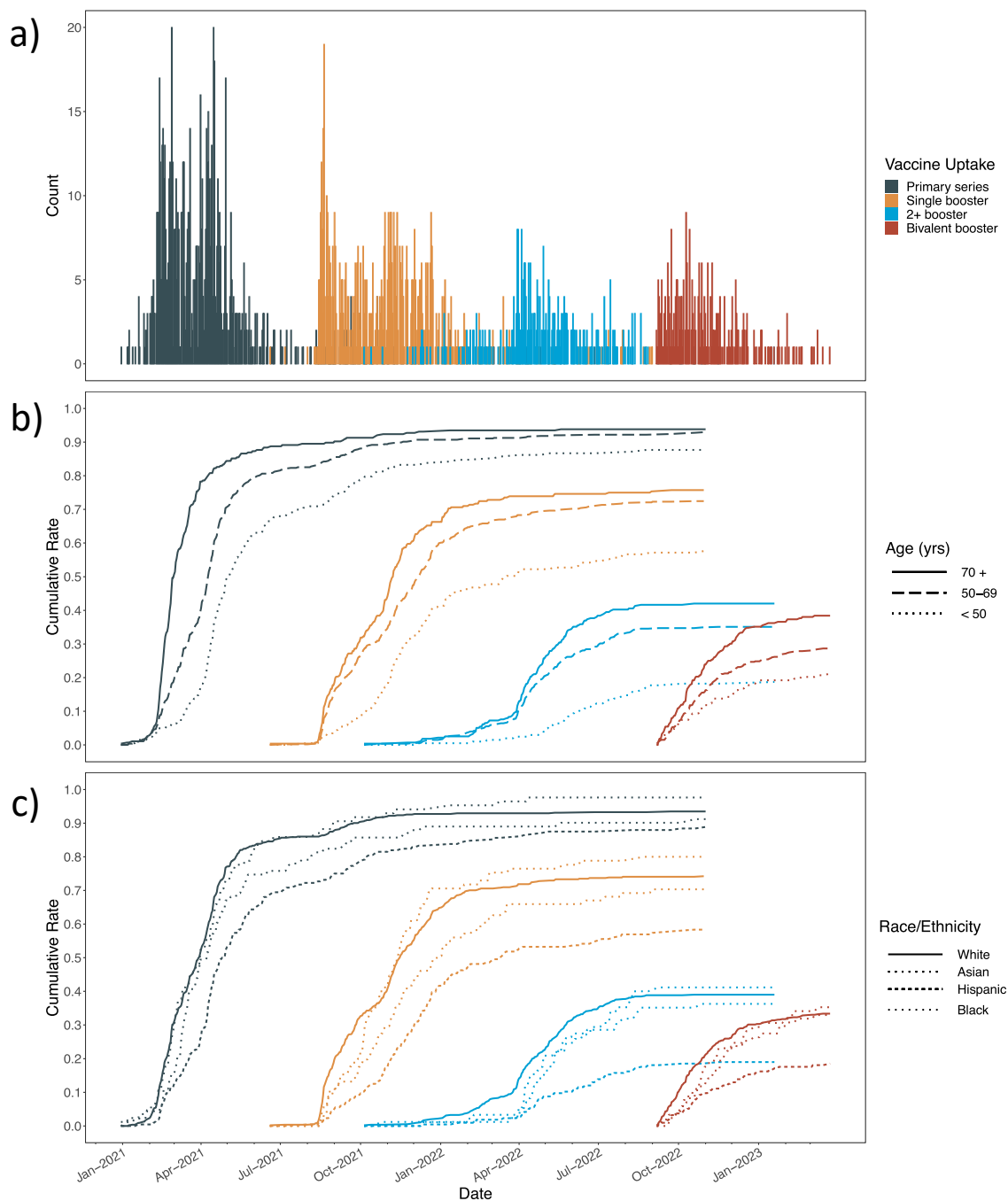


Figure 1: Dynamics of SARS-CoV-2 vaccine uptake after primer and booster vaccinations in patients with cancer. **Panel A.** Plot showing number of patients with cancer who received the primer series (dark blue), 1st booster (orange), 2nd or more boosters (light blue) and bivalent booster (red) over time. **Panel B.** Plot showing cumulative number of patients with cancer who received the primer series (dark blue), 1st booster (orange), 2nd or more boosters (light blue) and bivalent booster (red) over time by age categories (< 50, 50-59, 70+) (p-values for difference in vaccine uptake by age: <0.0001 (primer series), <0.0001 (1st booster), <0.0001 (2nd+ booster), <0.0001 (bivalent booster)). **Panel C.** Plot showing cumulative number of patients with cancer who received the primer series (dark blue), 1st booster (orange), 2nd or more boosters (light blue) and bivalent booster (red) over time by self-reported race and ethnicity (non-Hispanic White, non-Hispanic Black, Hispanic/Latino, Asian, Other) (p-value for difference in vaccine uptake by race and ethnicity: <0.0001 (primer series), <0.0001 (1st booster), <0.0001 (2nd+ booster), 0.0003 (bivalent booster)).

118 ***Humoral immune responses post-vaccination:*** For the primer series, median peak IgG(S-RBD)
119 antibody levels post-vaccination (available in 44·4% of patients) differed by demographic and
120 clinical characteristics. Peak antibody levels were highest in patients <50 years of age ($p<0\cdot001$),
121 patients who self-identified as Hispanic ($p=0\cdot005$), patients with a prior SARS-CoV-2 infection
122 ($p<0\cdot001$), and patients receiving B-cell therapies ($p<0\cdot001$, **Figure 2 Panel A**). 10·6% of
123 patients (88·4% hematologic malignancies) did not seroconvert after priming.
124
125 Median peak IgG(S-RBD) levels increased with booster doses from 372 (IQR=51–2,475)
126 BAU/ml to 2,150 (IQR=639–3,550) BAU/ml after one booster and to 3,550 (IQR=1,324–3,550)
127 BAU/ml after two boosters. Factors related to antibody levels after one booster dose were:
128 race/ethnicity ($p=0\cdot001$), vaccine type ($p=0\cdot046$), prior SARS-CoV-2 infection ($p<0\cdot001$),
129 ECOG status ($p=0\cdot022$) and chemotherapy use ($p=0\cdot023$, **Figure 2 Panel B**). Among those with
130 2+ boosters, nearly all reached the threshold of IgG(S-RBD) antibody levels; male patients and
131 those with a prior COVID infection had higher peak levels (**Figure 2 Panel C**). Rates of non-
132 seroconversion after boosting were: 3·3% after one monovalent dose and 1·0% after two
133 monovalent doses.

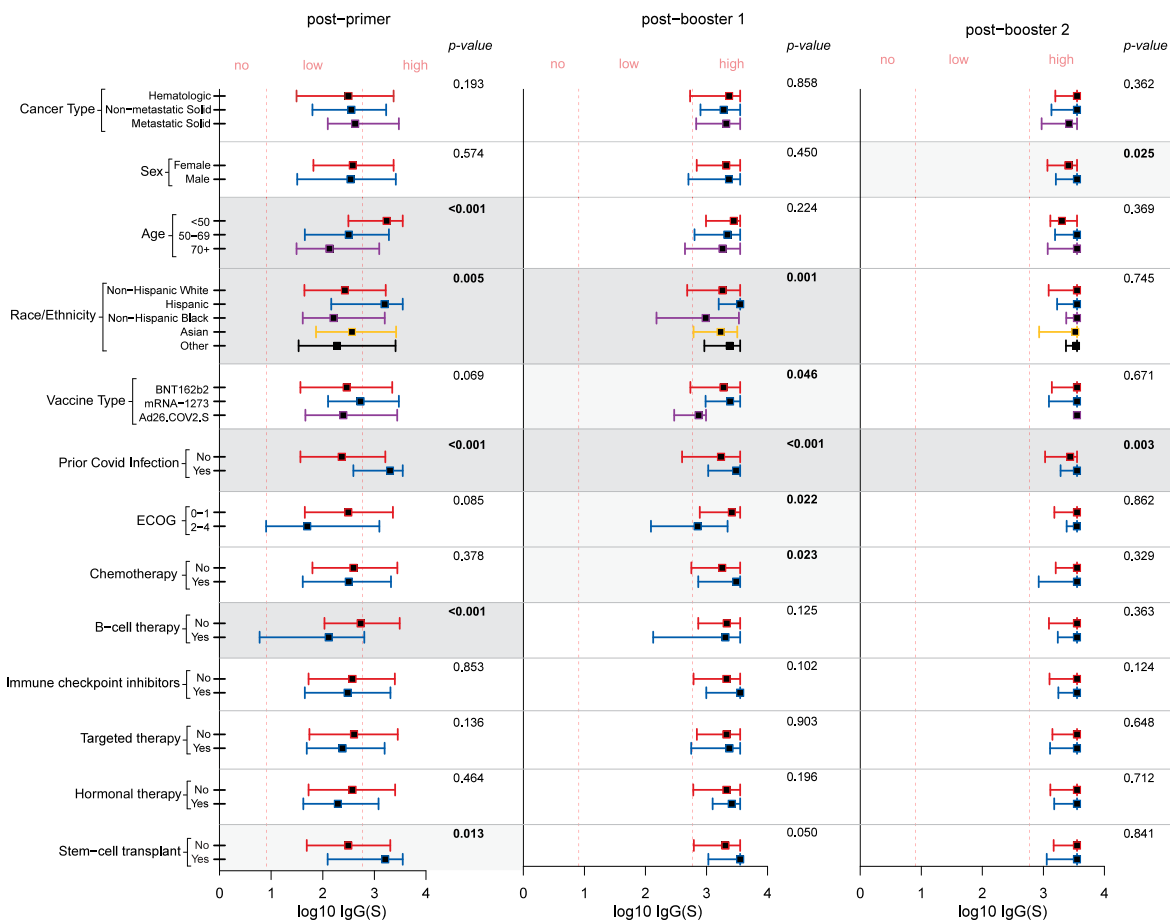


Figure 2: Box and whisker plots showing peak IgG (S-RBD) antibody levels after primer (n=404), post-monovalent booster #1 (n=389) and post-monovalent booster #2 (n=203) among patients with cancer by selected clinical and vaccine characteristics. P-values less than 0.05 are bolded.

134

135 **Cellular immune responses post-vaccination:** Following primer vaccination, clonal breadth was

136 lower among the patients who received B-cell therapy compared to those that did not ($p=0.025$);

137 and among those receiving BNT and Ad26 compared to m1273 ($p<0.001$, **Figure S4, Panel A**).

138 In contrast, clonal depth response was lower not only in patients receiving B-cell therapy

139 ($p<0.001$) and those receiving BNT and Ad26 ($p=0.015$), but also in patients with hematological

140 malignancies vs. solid tumors ($p<0.001$), male patients vs female ($p<0.001$), by age ($p=0.031$)

141 and by race and ethnicity ($p=0.034$). (**Figure S4, Panel B**). Upon receiving one monovalent

142 booster, these significant differences were not observed, other than male patients continuing to

143 have lower clonal depth compared to female patients ($p=0.015$) (**Figure S4, Panels C and D**).

144 Among patients who were seronegative after priming, 18·9% exhibited a T-cell response using
145 the T-detect metric. These patients were all hematologic malignancies with most receiving B-cell
146 targeted therapies. Among all patients after priming, we observed a modest correlation was
147 between IgG(S) and breadth, and IgG(S) and depth [Spearman's $\rho=0.602$ and 0.595 , p -
148 values <0.001 , respectively].

149
150 ***Symptoms post-vaccination:*** Among vaccinated patients completing a post-vaccination survey,
151 symptoms were highest for the second dose and lowest for the third dose. Symptoms included
152 site pain (59·5%, 48·1%, 9·1%), fatigue (39·2%, 48·1%, 4·5%), headaches or dizziness (15·2%,
153 16·0%, 6·8%), fever (19·0%, 37·7%, 11·4%) and muscle aches (6·3%, 11·3%, 4·5%) after dose
154 1, 2 and 3, respectively (**Figure S3**). No serious toxicities attributable to vaccination were
155 observed in the cohort.

156
157 ***Patient-reported outcomes:*** Self-reported anxiety levels decreased from 50·7 (SD=9·4) during
158 the period from Jan-2021 to Aug-2021 to 48·1 (SD=8·5) from Oct-2022 to Mar-2023 in all
159 patient groups regardless of their infection and vaccination status ($p=0.007$, **Figure 3**). Social
160 support as measured by its three constructs – informational, instrumental and emotional – also
161 improved over time [Jan-2021 to Aug-2021: mean T-scores=53·9 (SD=11·1), 54·7 (SD=9·8),
162 54·9 (SD=8·5) and Sept-2021 to Mar-2022: mean T-scores=57·7 (SD=10·3), 57·7 (SD=8·1),
163 57·5 (SD=7·7), respectively]. Self-reported loneliness also decreased after the first booster was
164 introduced (Jan-2021 to Aug-2021: 4·0 (SD=1·4) and Sept-2021 to Mar-2022: 3·8 (SD=1·5),
165 $p=0.042$). However, depression levels remained constant over time.

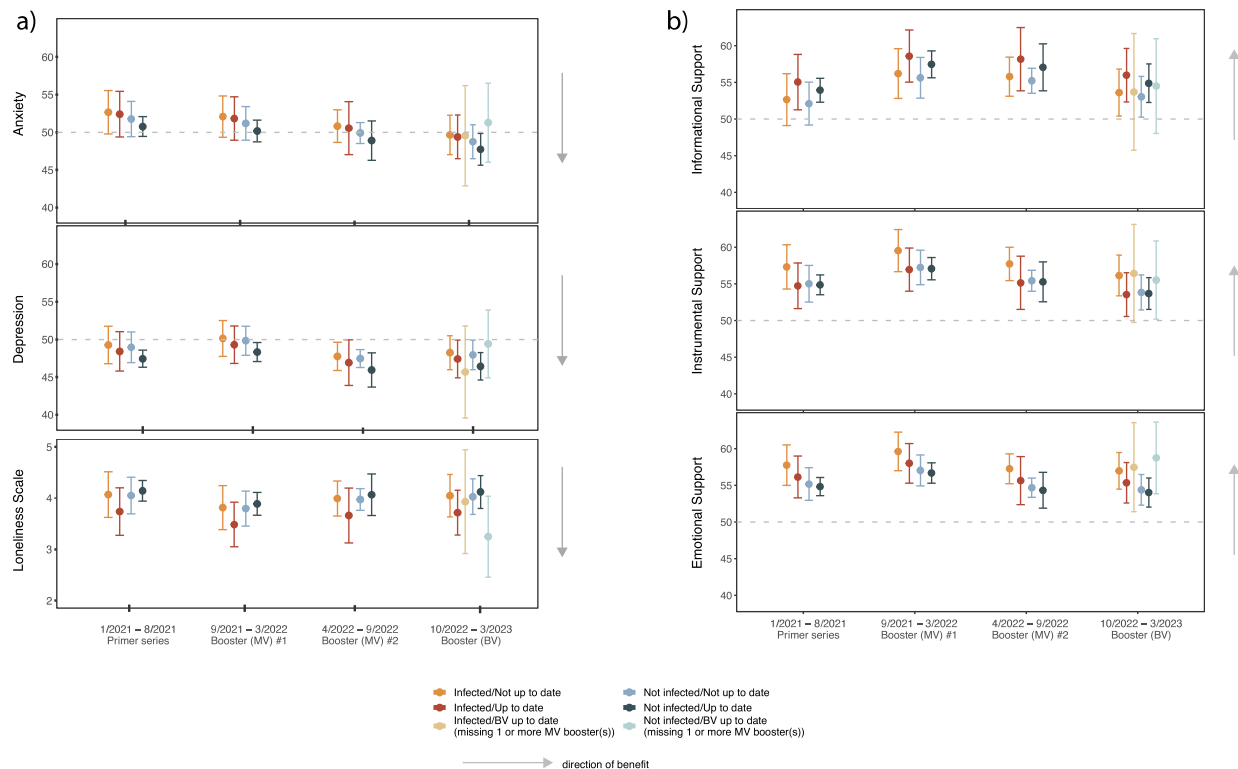


Figure 3: Change in six self-reported HR-QOL measures over the course of the pandemic defined by four time periods: (1) Jan-2021 through Aug-2021 when the primer series was recommended/available; (2) Sept-2021 through Mar-2022 when the first monovalent (MV) booster was recommended/available; (3) April-2022 through Sept-2022 when the second MV booster was recommended/available; and (4) Oct-2022 through Mar-2023 when a bivalent booster was recommended/available. **Panel A** show scores for anxiety, depression and loneliness; and **Panel B** show scores for informational support, instrumental support and emotional support. Scores for anxiety, depression and support were converted to a T-score, which is used to compare sample scores versus the general population (mean=50, SD=10). Higher T-scores correspond to higher levels. For the loneliness scale, scores were summed and ranged from 3 (least) to 9 (most lonely). The arrow depicts the direction of benefit. For each of the four time periods, least-squares means and 95% confidence limits were plotted for patients separately by their infection and vaccination status at that time.

166

167 **Predictors of SARS-CoV-2 infection and all-cause mortality:** Overall, 40.4% of patients in this

168 patient cohort were infected either prior to (3.5%) or after (33.2%) vaccination including

169 multiple infections. Multiple infections were reported by 19.2% of patients, and 3.7% of patients

170 had infections both prior to and after vaccination. The majority of breakthrough infections was

171 after Dec-2021 when Omicron became the dominant lineage in the county. In multivariable Cox

172 model, B-cell treatment (HR=1.46, 95% CI=1.17-1.82, p=0.001), ECOG status (HR=0.69, 95%

173 CI=0.48-1.00, p=0.0497), and prior covid infection(s) (HR=3.51, 95% CI=2.85-4.34, p<0.001)

174 were significant risk factors for infection (**Table S8**). Hospitalization and ICU admissions for

175 COVID-19 after the emergence of Omicron were less common than before (27·9% v. 85·3% and
176 5·9% v. 19·2%, respectively).

177
178 In multivariable Cox model, all-cause mortality was associated with male sex (HR=1·72, 95%
179 CI=1·14–2·57, p=0·009), receipt of chemotherapy (HR=1·76, 95% CI=1·18–2·63, p=0·006),
180 ECOG status of 2 to 4 (HR=2·27, 95% CI=1·27–4·06, p=0·006) and not receiving a booster dose
181 (HR=0·61, 95% CI=0·40–0·94, p=0·024, **Table 2**). By cancer type, receiving a booster dose was
182 significantly associated with reduced mortality in adjusted models for those with hematologic
183 malignancies (HR=0·48, 95% CI=0·24–0·94, p=0·032), but not among individuals with solid
184 malignancies (HR=0·82, 95% CI=0·45–1·51, p=0·528).

185

186 **Discussion**

187 In this cohort study, nearly all patients with cancer who received two or more boosters reached
188 the threshold level indicative of seroconversion. Booster vaccinations did not appear to
189 significantly reduce risk of infection and over 40% of patients in our cohort became infected
190 with SARS-CoV-2 after vaccination, the majority after the emergence of Omicron. However, the
191 likelihood of severe illness and COVID-related death were exceedingly low. There was also a
192 significantly reduced risk of all-cause mortality associated with booster vaccinations after
193 adjustment for known demographic and clinical variables. Despite this evidence of protection,
194 booster uptake was low in this cohort of patients, with 21·9% who remain unboosted with either
195 a monovalent or bivalent booster.

196

197 Booster uptake did not appear to be linked to vaccine hesitancy in this cohort. In our first report
198 early in the pandemic, we observed higher hesitancy related to vaccine safety and adverse events
199 especially among female compared to male patients.[24] Other studies examining vaccine
200 hesitancy among patients with cancer from 2020 to 2021 also reported patients were concerned
201 about vaccine safety, adverse effects, and efficacy due to the rapid development and novelty of
202 mRNA vaccines,[25, 26] with only 49% of patients reporting that they had discussed vaccination
203 with their oncologist.[26] In this updated report, we show that patients remain concerned about
204 vaccine safety, efficacy and occurrence of adverse events, but this proportion has decreased with
205 time and the availability of booster vaccinations.

206

207 The importance of additional booster doses in maintaining immune protection against SARS-
208 CoV-2 has been documented in this cohort and other studies.[18, 19, 27] Although vaccination is
209 associated with robust serological response in most cancer patients following vaccination, the
210 durability of this response is reduced in cancer patients.[13] Booster vaccinations appears to
211 increase titers beyond levels initially elicited with the primer series, even among patients with
212 initially low or no antibody titers after two vaccine doses in the primer series. Serial boosters
213 may continue to strengthen and help maintain the humoral immune response in the vast majority
214 of patients with cancer under active treatment. Still some patients, including those receiving anti-
215 CD20 therapy, CD19-directed chimeric antigen receptor T-cell therapy and ibrutinib,[11][19,
216 28] may require alternative protective measures such as recombinant antibodies or high titer
217 intravenous immunoglobulin.

218

219 In addition to the humoral cellular response, we measured the T cell response post-vaccination.
220 While TCR response as measured by breadth/depth is influenced by HLA type,[29] the overall
221 trends indicated that TCR response was correlated with humoral response, including for those
222 with hematologic malignancies. Previous studies have shown T-cell vaccination responses in 46–
223 88% of patients with solid tumors and 45–75% of patients with hematological cancers.[14, 30] In
224 patients with cancer, reduced T-cell responses to vaccination have been associated with Bruton
225 tyrosine kinase inhibitors and steroid use.[30][31] Immune checkpoint inhibitors have been
226 found to be associated with increased T-cell immunity,[32] although it remains to be seen how
227 other explicitly T-cell-involved therapies and malignancies such as bispecific T-cell engagers for
228 hematologic malignancies or T cell lymphomas interact with vaccination. Additional factors to
229 consider for T cell immunity are the effects of exhaustion or cancer-associated T-cell anergy,[33]
230 which can prevent existing clones from expanding. This phenomenon is reflected by differential
231 clonal breadth versus depth responses, for instance in hematological cancers, where patients have
232 similar clonal breadth response as solid tumor patients but poor clonal depth, indicating a lack of
233 clonal expansion. In our data, older patients, male patients, and B-cell therapy patients all exhibit
234 this same disparity, which is abrogated in all groups after boosters, except in male patients. Thus,
235 while boosters do not appear to significantly increase T-cell immunity, they may address
236 differences seen after primer series. Additional functional studies of T cells cancer patients after
237 boosters are needed to better correlate TCR clonal studies with direct functional assays.
238
239 We also noted improvement in self-reported anxiety levels in patients in this cohort over the last
240 two years of the pandemic regardless of their vaccine status or infection history. However,
241 depression did not significantly change over time, and remained lower than the average cancer

242 population. The World Health Organization reported that the COVID-19 pandemic triggered a
243 25% increase in the prevalence of anxiety and depression worldwide.[34] In patients with cancer,
244 previous studies reported heightened anxiety and depression as a results of the uncertainty of the
245 pandemic and associated delays in cancer diagnosis or treatment.[22, 23] Patients also expressed
246 fear and worry about the implications of their immunodeficiencies and the negative consequences
247 of contracting COVID-19 infection.[23] Our data would suggest improvement in pandemic-
248 induced anxiety, but further data is needed to confirm this observation.

249
250 We further evaluated changes in three types of social support among patients in this cohort:
251 instrumental, emotional and informational. We observed significant improvement in all three
252 types of social support after the first booster was introduced in Aug-2021, but no substantive
253 changes since that time. We also observed lower levels of loneliness once boosters were
254 introduced compared to early in the pandemic. Other reports highlighted loneliness as a potential
255 concern among immunocompromised patients who were more likely to practice recommended
256 preventive social distancing measures than adults without cancer,[35] leading to increased social
257 isolation.[22] However, in recent years as the COVID-19 shifted from pandemic to endemic,
258 more guidance on vaccination schedules became available in addition to treatment options for
259 illness, and accordingly greater reassurance that has increased social interactions.

260
261 There are several limitations in this study. Observational studies are subject to potential selection
262 biases, missing data and other unmeasured confounders. In this cohort study, we did not have
263 complete serological or cellular immune data at all timepoints. Furthermore, patients who are
264 seropositive would be expected to have a T cell response, but our finding of discordant results

265 could suggest a limitation of the T detect assay. Notably, the percentage of discordance between
266 serologic response and TCR response differed by race and ethnicity, suggesting that perhaps
267 differences in HLA could play a part in this discordance. Our sample size limitations also
268 precluded analysis of certain subgroups of interest.

269

270 In summary, this study provides evidence that booster vaccination improved immune responses
271 and reduced risk of mortality in cancer patients. Additional doses of COVID-19 vaccines are
272 recommended for immunocompromised individuals, but a substantial proportion of patients are
273 not receiving boosters. Avoiding pandemic-fatigue and simplifying an immunization schedule
274 may encourage more patients to keep up-to-date with vaccinations.

275

276 **Methods**

277 ***Study Design and Participants:*** The U.S. National Cancer Institute-funded Serological Sciences
278 Network (SeroNet)-Coronavirus Risk Associations and Longitudinal Evaluation (CORALE)[13,
279 24] study is a longitudinal cohort including cancer patients over age 18 with histologically
280 confirmed solid or hematological malignancies. Patients were recruited in the clinical setting
281 from Nov-3-2020 to Mar-31-2023. To focus on cancer patients with altered immunity, we over-
282 sampled patients with B-cell/plasma cell malignancies (B-cell) and any cancer patient receiving
283 immune checkpoint inhibitors (ICI). The study was approved by the institutional review board
284 and all participants provided written informed consent.

285

286 ***Clinical Data Collection:*** Electronic medical records were reviewed to extract clinical data
287 including tumor type (ICD-10 codes) and anti-cancer treatment regimens and timing of

288 administration relative to vaccination. Active anticancer treatment status was defined as any
289 therapy within six months prior to and up to 14 days post-vaccination. For transplant recipients,
290 patients within one year of autologous stem cell transplant or within two years of allogeneic stem
291 cell transplant from vaccination were regarded as under active treatment. SARS-CoV-2
292 vaccination status, vaccine type and dates of administration were obtained from medical records
293 and linkage to the California Immunization Registry. We use the date of Dec-25-2021 to define
294 the timepoint when the Omicron SARS-CoV-2 lineage became dominant in the local catchment
295 area. Primer vaccination was defined as receiving either one, two or three doses of mRNA
296 vaccine [Pfizer-BioNtech BNT162b2 (BNT) or Moderna/NIH mRNA-1273 (m1273)] within 120
297 days, or one-dose of the Janssen Ad26.COVS.S (Ad26). Booster vaccinations were defined as
298 receipt of any type of mRNA vaccine or Ad26 after 120 days the first dose. In August and
299 September 2022, bivalent versions (original and omicron BA.4/BA.5 variant) of the vaccine
300 from Pfizer and Moderna were authorized for use as booster doses in individuals aged 18 years
301 of age or older in the U.S.

302
303 ***Questionnaire Data:*** Self-administered questionnaires were sent electronically to patients at the
304 time of enrollment, following vaccinations, 6-month after enrollment and annually thereafter.
305 Surveys included questions regarding medical history, lifestyle, vaccine attitudes and quality of
306 life.

307 ***Vaccine hesitancy:*** Perspectives and attitudes towards the vaccine were measured using a
308 modified version of the World Health Organization (WHO) Vaccine Hesitancy Scale and Group-
309 Based Medical Mistrust Scale. The resulting instrument had eight questions and participants

310 were asked to indicate how strongly they agreed or disagreed with a statement using a five-point
311 likert scale.

312 **Patient Reported Outcomes (PROs):** The Patient-Reported Outcomes Measurement Information
313 System (PROMIS) short form measures were used to assess anxiety, depression, instrumental
314 support, informational support, and emotional support. Items assessing emotional support
315 inquired about whether respondents had a confidante or someone to talk about problems, or
316 someone who made them feel appreciated.[36] Instrumental support items asked whether
317 respondents had someone to help them take care of daily living tasks as needed, such as helping
318 with chores, running errands, helping out when sick, or helping with transportation for medical
319 care.[36] Items on informational support asked about whether respondents had someone who
320 could give advice, provide suggestions, or give helpful information about life decisions.[36]
321 Higher T scores indicated higher perceived depression, anxiety, emotional, instrumental, and
322 informational social support.

323 **Loneliness:** The UCLA 3-Item Loneliness Scale [37] was used to capture how often individuals
324 felt that they “lack companionship”, were “left out”, and “isolated from others.” Responses to all
325 items were averaged to create a composite loneliness score with higher values indicating greater
326 loneliness.[38] This scale has been used in previous longitudinal studies and shows good internal
327 consistency, as well as concurrent and discriminant validity.[37]

328 **Side effects:** A self-administered symptoms questionnaire was given to patients after vaccine
329 administrations (dose 1, 2 and 3) to collect occurrence and severity of injection site pain,
330 headache, fatigue, fever, pain, redness, and/or swelling at the injection site.

331

332 ***SARS-CoV-2 Immunoglobulin G Antibody Testing:*** Peripheral blood was collected from
333 participants approximately every 3-6 months. Serological testing for antibodies to the receptor
334 binding domain (RBD) of the S1 subunit of the viral spike protein [IgG(S-RBD)] and antibodies
335 targeting the viral nucleocapsid protein (IgG(N)) was performed using the SARS-CoV-2 IgG II
336 and SARS-CoV-2 IgG assays, respectively [Abbott Diagnostics (Illinois, U.S.)]. We present
337 findings using the WHO unit (binding antibody unit per ml [BAU/ml]) based on the
338 mathematical relationship of $BAU/ml = 0.142 * AU/ml$. [39] The minimal threshold for
339 seroconversion was defined as $IgG(S-RBD) = 7.1 BAU/ml$. [40] Detectable antibody responses
340 were classified as “low” (7.1–590.72 BAU/ml) and “high” ($\geq 590.72 BAU/ml$). The 590.72
341 BAU/ml threshold was shown to correspond to a 0.95 probability of obtaining a PRNT ID50 at a
342 1:250 dilution and is a representative of a high titer and correlate of neutralization. [41] Values
343 were cutoff at 25,000 AU/ml (3,550 BAU/ml).

344

345 ***T-Cell Receptoire (TCR):*** Sequencing of human TCR β chains was performed on DNA extracted
346 from buffy coat specimens using the immunoSEQ Assay (Adaptive Biotechnologies, Seattle,
347 WA). After bias-controlled multiplex PCR and high-throughput sequencing, the absolute
348 abundance of unique TCR β CDR3 regions and the corresponding T cell fractions by template
349 count normalization are quantified. [42] SARS-CoV-2 spike or other non-spike SARS-CoV-2
350 protein specificities for CDR3s are assigned using reference lists generated by Adaptive
351 Biotechnologies, which have been described previously. [29]

352

353 The primary metrics used to summarize SARS-CoV-2 TCR results are: T-detect, breadth and
354 depth. T-detect is a binary variable analogous to seropositivity, with a threshold defined by

355 Adaptive Biotechnologies. Clonal breadth is defined as the number of unique annotated
356 rearrangements divided by the total number of unique productive rearrangements in each sample
357 (*1000 in all figures). Clonal depth is calculated by a formula described previously, [43] which
358 can be interpreted as the relative number of clonal expansion generations across the TCRs, as
359 normalized by the total number of TCRs in the sample.[44]

360
361 ***Statistical Analysis:*** Time of vaccine uptake was visualized using cumulative incidence curve
362 and compared by age and self-reported race/ethnicity categories using log-rank tests. Patient
363 demographic and clinical characteristics were summarized by cancer type (solid v. hematologic)
364 using median and interquartile range (IQR) or mean and standard deviation (SD) for continuous
365 variables and frequencies and percentages for categorical variables. Kruskal-Wallis or Wilcoxon
366 Rank Sum tests were used to compare continuous variables and Chi-squared tests or Fisher's
367 exact tests for categorical variables. Peak quantitative IgG(S-RBD) levels were compared across
368 patients' characteristics using Kruskal-Wallis test at time of priming and boosting separately.
369 Similarly, TCR depth and breadth were compared across patient characteristics at vaccine
370 timepoints. The correlation between IgG levels and TCR depth and breadth were examined by
371 calculating Spearman's rank correlation coefficient.

372
373 For PROs, scores were converted to a T-score, which is used to compare sample scores versus
374 the general population (mean=50, SD=10). Higher T-scores correspond to higher levels (for
375 example, greater anxiety). For the loneliness scale, scores were summed and ranged from 3
376 (least) to 9 (most lonely). Mixed models and least-squares means were used to compare

377 constructs over the time course of vaccine recommendations adjusted for infection and status of
378 vaccine uptake .

379

380 Primary clinical outcomes of interest were SARS-CoV-2 infection (at any timepoint) and all-
381 cause mortality. Cox models with time dependent covariates were used to examine associations
382 of selected predictors and SARS-CoV-2 infection and all-cause mortality. We focused on the
383 following demographic and clinical predictors: age, sex, race and ethnicity, tumor type,
384 treatment, ECOG status, booster vaccination status and infection statu. For all-cause mortality,
385 we excluded individuals who were never vaccinated (76 individuals) and who died within 120
386 days from the first vaccination (9 individuals).

387

388 *P* value <.05 was considered statistically significant. Statistical analysis was performed in R,
389 version 4.2.2.

390

391 **Acknowledgements**

392 We sincerely appreciate all SeroNet-CORALE participants and study staff. This work was
393 supported by NCI SeroNet U54 CA260560, and by the Biobank and Biostatistics Shared
394 Resource of Cedars-Sinai Cancer. We are also grateful to all the front-line healthcare workers in
395 our healthcare system who continue to be dedicated to delivering the highest quality care for all
396 patients.

397

398 **Authors Contributions**

399 J.C.F, A.M., K.R., N.M. were responsible for the conceptualization. K.R., R.V., J.D., J.G., N.N.,
400 A.G. W.T., M.N., J.L., N.M., O.M., R.N., I.M., A.H., A.M., R.P., R.N. were responsible for
401 patient recruitment. N.N., K.S., W.T., S.C. were responsible for the sample preparation. S.S. and
402 J.C.F. were responsible for the selection of surveys. S.C., J.C.F., E.K., K.S., T.L., S.M., O.H.
403 were responsible for the data analysis and data curation. J.C.F, A.M., S.C., N.M., O.H. were
404 responsible for interpreting findings. J.C.F., K.R., A.M. W.T., N.M., O.H. were responsible for
405 the overall supervision and funding acquisition. This work was supported by the Biobank and
406 Biostatistics Shared Resources of Cedars-Sinai Cancer (S.C., V.K.R., C.H., W.T., and K.S.) All
407 authors were responsible for reviewing and editing the final manuscript.

408

409 **Declaration of Interests**

410 NM holds a consultant or advisory role at Amgen, Kite, Epizyme, TG Therapeutics, ADC
411 Therapeutics, and has research funding from Miltenyi, Teva, and Amgen. JG holds a consultant
412 or advisory role at EMD Serono; Elsevier; Exelixis; QED Therapeutics; Natera, Basilea,
413 HalioDx, Eisai, Janssen. OH has obtained consulting fees/support meetings/travel/Financial

414 interests in Alkermes, Amgen, Bactonix, Beigene, Bioatla, BMS, Esai, Roche, Genentech,
415 Georgiamune, GigaGen, Grit Bio, GSK, Idera, Immunocore, Incyte, Instilbio, IO Bio, Iovance,
416 Janssen, KSQ, Merck Moderna, Novartis, Obsidian, Pfizer, Regeneron, Sanofi, Seattle Genetics,
417 Tempus, Vial, Zelluna. KR holds a consultant or advisory role at Amgen, AstraZeneca,
418 Blueprint, Boehringer Ingelheim, Daiichi Sankyo, EMD Soreno, Genentech, GSK, Janssen,
419 Lilly, Merck KGA, Mirati, Seattle Genetics, Takeda. JD holds a consultant or advisory role Kite
420 Pharma and Morphosys. RV is on the Speaker's Bureau for: Amgen, Bristol Myers Squib, Glaxo
421 Smith Klein, Janssen, Karyopharm, and Takeda Pharmaceuticals. AM holds a consultant or
422 advisory role at Novartis and Morphosys and has research funding from Amgen and Pfizer. All
423 remaining authors have no COI to report.

424

425 **Inclusion and Diversity**

426 We support inclusive, diverse and equitable conduct of research.

427

428

429 **Figure Legends**

430 **Figure 1:** Dynamics of SARS-CoV-2 vaccine uptake after primer and booster vaccinations in
431 patients with cancer. **Panel A.** Plot showing number of patients with cancer who received the
432 primer series (dark blue), 1st booster (orange), 2nd or more boosters (light blue) and bivalent
433 booster (red) over time. **Panel B.** Plot showing cumulative number of patients with cancer who
434 received the primer series (dark blue), 1st booster (orange), 2nd or more boosters (light blue) and
435 bivalent booster (red) over time by age categories (< 50, 50-59, 70+) (p-values for difference in
436 vaccine uptake by age: <0.0001 (primer series), <0.0001 (1st booster), <0.0001 (2nd+ booster),
437 <0.0001 (bivalent booster). **Panel C.** Plot showing cumulative number of patients with cancer
438 who received the primer series (dark blue), 1st booster (orange), 2nd or more boosters (light blue)
439 and bivalent booster (red) over time by self-reported race and ethnicity (non-Hispanic White,
440 non-Hispanic Black, Hispanic/Latino, Asian, Other) (p-value for difference in vaccine uptake by
441 race and ethnicity: <0.0001 (primer series), <0.0001 (1st booster), <0.0001 (2nd+ booster),
442 0.0003 (bivalent booster).

443 **Figure 2:** Box and whisker plots showing peak IgG (S-RBD) antibody levels after primer
444 (n=404), post-monovalent booster #1 (n=389) and post-monovalent booster #2 (n=203) among
445 patients with cancer by selected clinical and vaccine characteristics. P-values less than 0.05 are
446 bolded.

447 **Figure 3:** Change in six self-reported HR-QOL measures over the course of the pandemic
448 defined by four time periods: (1) Jan-2021 through Aug-2021 when the primer series was
449 recommended/available; (2) Sept-2021 through Mar-2022 when the first monovalent (MV)
450 booster was recommended/available; (3) April-2022 through Sept-2022 when the second MV
451 booster was recommended/available; and (4) Oct-2022 through Mar-2023 when a bivalent

452 booster was recommended/available. **Panel A** show scores for anxiety, depression and
453 loneliness; and **Panel B** show scores for informational support, instrumental support and
454 emotional support. Scores for anxiety, depression and support were converted to a T-score,
455 which is used to compare sample scores versus the general population (mean=50, SD=10).
456 Higher T-scores correspond to higher levels. For the loneliness scale, scores were summed and
457 ranged from 3 (least) to 9 (most lonely). The arrow depicts the direction of benefit. For each of
458 the four time periods, least-squares means and 95% confidence limits were plotted for patients
459 separately by their infection and vaccination status at that time.
460

461 References

- 462 1. Ribas, A., et al., *Priority COVID-19 Vaccination for Patients with Cancer while Vaccine*
463 *Supply Is Limited*. *Cancer Discov*, 2021. **11**(2): p. 233-236.
- 464 2. Fendler, A., et al., *COVID-19 vaccines in patients with cancer: immunogenicity, efficacy*
465 *and safety*. *Nat Rev Clin Oncol*, 2022. **19**(6): p. 385-401.
- 466 3. Tran, S., T.H. Truong, and A. Narendran, *Evaluation of COVID-19 vaccine response in*
467 *patients with cancer: An interim analysis*. *Eur J Cancer*, 2021. **159**: p. 259-274.
- 468 4. Hirst, J., et al., *Uptake of COVID-19 vaccination in people with blood cancer:*
469 *Population-level cohort study of 12 million patients in England*. *Eur J Cancer*, 2023. **183**:
470 p. 162-170.
- 471 5. Goldberg, Y., et al., *Waning Immunity after the BNT162b2 Vaccine in Israel*. *N Engl J*
472 *Med*, 2021. **385**(24): p. e85.
- 473 6. Planas, D., et al., *Resistance of Omicron subvariants BA.2.75.2, BA.4.6, and BQ.1.1 to*
474 *neutralizing antibodies*. *Nat Commun*, 2023. **14**(1): p. 824.
- 475 7. Feikin, D.R., et al., *Assessing COVID-19 vaccine effectiveness against Omicron*
476 *subvariants: Report from a meeting of the World Health Organization*. *Vaccine*, 2023.
477 **41**(14): p. 2329-38.
- 478 8. Rottenberg, Y., et al., *Assessment of Response to a Third Dose of the SARS-CoV-2*
479 *BNT162b2 mRNA Vaccine in Patients With Solid Tumors Undergoing Active Treatment*.
480 *JAMA Oncol*, 2022. **8**(2): p. 300-301.
- 481 9. Ligumsky, H., et al., *Immunogenicity and safety of BNT162b2 mRNA vaccine booster in*
482 *actively treated patients with cancer*. *Lancet Oncol*, 2022. **23**(2): p. 193-195.
- 483 10. Munro, A.P.S., et al., *Safety and immunogenicity of seven COVID-19 vaccines as a third*
484 *dose (booster) following two doses of ChAdOx1 nCov-19 or BNT162b2 in the UK (COV-*
485 *BOOST): a blinded, multicentre, randomised, controlled, phase 2 trial*. *Lancet*, 2021.
486 **398**(10318): p. 2258-2276.
- 487 11. Debie, Y., et al., *Humoral and Cellular Immune Responses against SARS-CoV-2 after*
488 *Third Dose BNT162b2 following Double-Dose Vaccination with BNT162b2 versus*
489 *ChAdOx1 in Patients with Cancer*. *Clin Cancer Res*, 2023. **29**(3): p. 635-646.
- 490 12. Lin, D.Y., et al., *Effectiveness of Bivalent Boosters against Severe Omicron Infection*. *N*
491 *Engl J Med*, 2023. **388**(8): p. 764-766.
- 492 13. Figueiredo, J.C., et al., *Longitudinal SARS-CoV-2 mRNA Vaccine-Induced Humoral*
493 *Immune Responses in Patients with Cancer*. *Cancer Res*, 2021. **81**(24): p. 6273-6280.
- 494 14. Monin, L., et al., *Safety and immunogenicity of one versus two doses of the COVID-19*
495 *vaccine BNT162b2 for patients with cancer: interim analysis of a prospective*
496 *observational study*. *Lancet Oncol*, 2021. **22**(6): p. 765-778.
- 497 15. Goshen-Lago, T., et al., *Serologic Status and Toxic Effects of the SARS-CoV-2 BNT162b2*
498 *Vaccine in Patients Undergoing Treatment for Cancer*. *JAMA Oncol*, 2021. **7**(10): p.
499 1507-1513.
- 500 16. Massarweh, A., et al., *Evaluation of Seropositivity Following BNT162b2 Messenger RNA*
501 *Vaccination for SARS-CoV-2 in Patients Undergoing Treatment for Cancer*. *JAMA*
502 *Oncol*, 2021. **7**(8): p. 1133-1140.
- 503 17. Naranbhai, V., et al., *Immunogenicity and Reactogenicity of SARS-CoV-2 Vaccines in*
504 *Patients With Cancer: The CANVAX Cohort Study*. *J Clin Oncol*, 2022. **40**(1): p. 12-23.

- 505 18. Valanparambil, R.M., et al., *Antibody Response to COVID-19 mRNA Vaccine in Patients*
506 *With Lung Cancer After Primary Immunization and Booster: Reactivity to the SARS-*
507 *CoV-2 WT Virus and Omicron Variant*. J Clin Oncol, 2022. **40**(33): p. 3808-3816.
- 508 19. Haggengburg, S., et al., *Antibody Response in Immunocompromised Patients With*
509 *Hematologic Cancers Who Received a 3-Dose mRNA-1273 Vaccination Schedule for*
510 *COVID-19*. JAMA Oncol, 2022. **8**(10): p. 1477-1483.
- 511 20. Oosting, S.F., et al., *mRNA-1273 COVID-19 vaccination in patients receiving*
512 *chemotherapy, immunotherapy, or chemoimmunotherapy for solid tumours: a*
513 *prospective, multicentre, non-inferiority trial*. Lancet Oncol, 2021. **22**(12): p. 1681-1691.
- 514 21. McKenzie, D.R., et al., *Boosting of Waned Humoral and Cellular Responses to SARS-*
515 *CoV-2 Variants of Concern Among Patients with Cancer*. Cancer Res Commun, 2022.
516 **2**(11): p. 1449-1461.
- 517 22. Leach, C.R., et al., *Cancer survivor worries about treatment disruption and detrimental*
518 *health outcomes due to the COVID-19 pandemic*. J Psychosoc Oncol, 2021. **39**(3): p.
519 347-365.
- 520 23. Kosir, U., et al., *The impact of COVID-19 on the cancer care of adolescents and young*
521 *adults and their well-being: Results from an online survey conducted in the early stages*
522 *of the pandemic*. Cancer, 2020. **126**(19): p. 4414-4422.
- 523 24. Figueiredo, J.C., et al., *SARS-CoV-2 vaccine uptake, perspectives, and adverse reactions*
524 *following vaccination in patients with cancer undergoing treatment*. Ann Oncol, 2022.
525 **33**(1): p. 109-111.
- 526 25. Marijanovic, I., et al., *Acceptance of COVID-19 Vaccination and Its Associated Factors*
527 *Among Cancer Patients Attending the Oncology Clinic of University Clinical Hospital*
528 *Mostar, Bosnia and Herzegovina: A Cross-Sectional Study*. Med Sci Monit, 2021. **27**: p.
529 e932788.
- 530 26. Souan, L., et al., *An update on the impact of SARS-CoV-2 pandemic public awareness on*
531 *cancer patients' COVID-19 vaccine compliance: Outcomes and recommendations*. Front
532 Public Health, 2022. **10**: p. 923815.
- 533 27. Gounant, V., et al., *Efficacy of Severe Acute Respiratory Syndrome Coronavirus-2*
534 *Vaccine in Patients With Thoracic Cancer: A Prospective Study Supporting a Third Dose*
535 *in Patients With Minimal Serologic Response After Two Vaccine Doses*. J Thorac Oncol,
536 2022. **17**(2): p. 239-251.
- 537 28. Mairhofer, M., et al., *Humoral and cellular immune responses in SARS-CoV-2 mRNA-*
538 *vaccinated patients with cancer*. Cancer Cell, 2021. **39**(9): p. 1171-1172.
- 539 29. Dalai, S.C., et al., *Clinical Validation of a Novel T-Cell Receptor Sequencing Assay for*
540 *Identification of Recent or Prior Severe Acute Respiratory Syndrome Coronavirus 2*
541 *Infection*. Clin Infect Dis, 2022. **75**(12): p. 2079-2087.
- 542 30. Ehmsen, S., et al., *Antibody and T cell immune responses following mRNA COVID-19*
543 *vaccination in patients with cancer*. Cancer Cell, 2021. **39**(8): p. 1034-1036.
- 544 31. Fiorcari, S., et al., *Effects of the BTN162b2 mRNA COVID-19 vaccine in humoral and*
545 *cellular immunity in patients with chronic lymphocytic leukemia*. Hematol Oncol, 2023.
546 **41**(1): p. 120-127.
- 547 32. Yatim, N., et al., *Immune checkpoint inhibitors increase T cell immunity during SARS-*
548 *CoV-2 infection*. Sci Adv, 2021. **7**(34).
- 549 33. Schietinger, A. and P.D. Greenberg, *Tolerance and exhaustion: defining mechanisms of T*
550 *cell dysfunction*. Trends Immunol, 2014. **35**(2): p. 51-60.

- 551 34. Organization, W.H. *COVID-19 pandemic triggers 25% increase in prevalence of anxiety*
552 *and depression worldwide*. 2022 [cited 2023 25 Aug]; Available from:
553 [https://www.who.int/news/item/02-03-2022-covid-19-pandemic-triggers-25-increase-in-](https://www.who.int/news/item/02-03-2022-covid-19-pandemic-triggers-25-increase-in-prevalence-of-anxiety-and-depression-worldwide)
554 [prevalence-of-anxiety-and-depression-worldwide](https://www.who.int/news/item/02-03-2022-covid-19-pandemic-triggers-25-increase-in-prevalence-of-anxiety-and-depression-worldwide).
- 555 35. Islam, J.Y., M. Camacho-Rivera, and D.C. Vidot, *Examining COVID-19 Preventive*
556 *Behaviors among Cancer Survivors in the United States: An Analysis of the COVID-19*
557 *Impact Survey*. *Cancer Epidemiol Biomarkers Prev*, 2020. **29**(12): p. 2583-2590.
- 558 36. Hahn, E.A., et al., *Measuring social health in the patient-reported outcomes*
559 *measurement information system (PROMIS): item bank development and testing*. *Qual*
560 *Life Res*, 2010. **19**(7): p. 1035-44.
- 561 37. Hughes, M.E., et al., *A Short Scale for Measuring Loneliness in Large Surveys: Results*
562 *From Two Population-Based Studies*. *Res Aging*, 2004. **26**(6): p. 655-672.
- 563 38. Luo, Y., et al., *Loneliness, health, and mortality in old age: a national longitudinal study*.
564 *Soc Sci Med*, 2012. **74**(6): p. 907-14.
- 565 39. Kristiansen, P.A., et al., *WHO International Standard for anti-SARS-CoV-2*
566 *immunoglobulin*. *Lancet*, 2021. **397**(10282): p. 1347-1348.
- 567 40. Chew, K.L., et al., *Clinical evaluation of serological IgG antibody response on the*
568 *Abbott Architect for established SARS-CoV-2 infection*. *Clin Microbiol Infect*, 2020.
569 **26**(9): p. 1256 e9-1256 e11.
- 570 41. *SARS-CoV-2 IgG II Quant Assay User Manual (Abbott Laboratories, Diagnostics*
571 *Division, 2000)*.
- 572 42. Carlson, C.S., et al., *Using synthetic templates to design an unbiased multiplex PCR*
573 *assay*. *Nat Commun*, 2013. **4**: p. 2680.
- 574 43. Snyder, T.M., et al., *Magnitude and Dynamics of the T-Cell Response to SARS-CoV-2*
575 *Infection at Both Individual and Population Levels*. medRxiv, 2020.
- 576 44. Li, D., et al., *The T-Cell Response to SARS-CoV-2 Vaccination in Inflammatory Bowel*
577 *Disease is Augmented with Anti-TNF Therapy*. *Inflamm Bowel Dis*, 2022. **28**(7): p. 1130-
578 1133.
579
- 580

Table 1: Characteristics of the study cohort

	Primer		1 st booster (monovalent)		≥2 nd booster (monovalent)		Bivalent booster	
	Solid (n=444)	Hematologic (n=466)	Solid (n=347)	Hematologic (n=351)	Solid (n=156)	Hematologic (n=181)	Solid (n=152)	Hematologic (n=145)
Vaccinated proportion (%)	92.5%	92.1%	78.2%	75.3%	45.0%	51.6%	31.7%	28.7%
Age at enrollment, median (IQR) years	64.0 (55.0, 72.0)	62.0 (51.0, 69.0)	65 (56.0, 73.0)	63.0 (53.0, 70.0)	66.0 (59.8, 74.0)	66.0 (56.0, 71.0)	66.5 (60.0, 74.0)	63.0 (54.0, 71.0)
Age at diagnosis, n	416	445	322	333	145	174	137	139
Age at diagnosis, median (IQR) years	62.0 (52.0, 70.0)	57.0 (47.0, 66.0)	62.0 (52.0, 70.0)	58.0 (50.0, 66.0)	64.0 (55.0, 72.0)	60.0 (52.0, 68.8)	64.0 (55.0, 72.0)	59.0 (51.0, 69.0)
Female sex (n, %)	243 (54.7%)	197 (42.3%)	196 (56.5%)	148 (42.2%)	92 (59.0%)	70 (38.7%)	93 (61.2%)	65 (44.8%)
Race and ethnicity (n, %)								
Non-Hispanic White	273 (62.0%)	235 (50.5%)	213 (61.9%)	193 (55.1%)	104 (67.1%)	111 (61.3%)	93 (61.6%)	90 (62.1%)
Hispanic	61 (13.9%)	126 (27.1%)	47 (13.7%)	75 (21.4%)	15 (9.7%)	24 (13.3%)	17 (11.3%)	22 (15.2%)
Non-Hispanic Black	29 (6.6%)	54 (11.6%)	22 (6.4%)	42 (12.0%)	7 (4.5%)	26 (14.4%)	14 (9.3%)	16 (11.0%)
Asian	44 (10.0%)	34 (7.3%)	37 (10.8%)	28 (8.0%)	19 (12.3%)	16 (8.8%)	14 (9.3%)	15 (10.3%)
Other	33 (7.5%)	16 (3.4%)	25 (7.3%)	12 (3.4%)	10 (6.5%)	4 (2.2%)	13 (8.6%)	2 (1.4%)
Anti-cancer treatment* (n, %)								
Chemotherapy	110 (24.8%)	119 (25.5%)	104 (30.0%)	106 (30.2%)	57 (36.5%)	44 (24.3%)	59 (38.8%)	48 (33.1%)
B-cell therapy	2 (0.5%)	148 (31.8%)	2 (0.6%)	132 (37.6%)	1 (0.6%)	67 (37.0%)	1 (0.7%)	64 (44.1%)
Immune checkpoint inhibitors	118 (26.6%)	7 (1.5%)	88 (25.4%)	5 (1.4%)	37 (23.7%)	3 (1.7%)	35 (23.0%)	0 (0.0%)
Targeted therapy	53 (11.9%)	115 (24.7%)	59 (17.0%)	103 (29.3%)	34 (21.8%)	58 (32.0%)	30 (19.7%)	60 (41.4%)
Hormonal therapy	35 (7.9%)	10 (2.1%)	31 (8.9%)	5 (1.4%)	19 (12.2%)	1 (0.6%)	17 (11.2%)	2 (1.4%)
Stem cell transplant (allogeneic)	0 (0.0%)	43 (9.2%)	0 (0.0%)	36 (10.3%)	0 (0.0%)	22 (12.2%)	0 (0.0%)	17 (11.7%)
Stem cell transplant (autologous)	0 (0.0%)	28 (6.0%)	0 (0.0%)	25 (7.1%)	0 (0.0%)	17 (9.4%)	0 (0.0%)	8 (5.5%)
ECOG Status (n, %)								
0-1	241 (93.8%)	289 (94.4%)	243 (95.3%)	267 (94.3%)	130 (94.9%)	163 (97.0%)	129 (94.2%)	129 (91.5%)
2-4	16 (6.2%)	17 (5.6%)	12 (4.7%)	16 (5.7%)	7 (5.1%)	5 (3.0%)	8 (5.8%)	12 (8.5%)
Vaccine Type (n, %)								
Ad26.COV2.S	19 (4.3%)	18 (3.9%)	4 (1.2%)	3 (0.9%)	0 (0.0%)	1 (0.6%)	84 (55.3%)	84 (57.9%)
BNT162b2	224 (50.5%)	268 (57.5%)	166 (47.8%)	206 (58.7%)	68 (43.6%)	99 (55.0%)	68 (44.7%)	61 (42.1%)
mRNA-1273	201 (45.3%)	180 (38.6%)	177 (51.0%)	142 (40.5%)	88 (56.4%)	80 (44.4%)	40 (26.3%)	42 (29.0%)
Heterologous boosting (n, %)	--	--	29 (8.4%)	26 (7.4%)	26 (16.7%)	28 (15.6%)	39 (25.7%)	65 (44.8%)
SARS-CoV-2 infection prior to vaccination (n, %)	19 (4.3%)	32 (6.9%)	32 (9.2%)	51 (14.5%)	18 (11.5%)	38 (21.0%)	0 (0.0%)	1 (1.2%)
Serology available (n, %)	161 (36.3%)	243 (52.1%)	174 (50.1%)	215 (61.3%)	83 (53.2%)	120 (66.3%)	69 (45.4%)	84 (57.9%)
No seroconversion after vaccination	5 (3.1%)	38 (15.6%)	1 (0.6%)	12 (5.6%)	1 (1.2%)	1 (0.8%)	0 (0.0%)	1 (1.2%)

*Up to 3 months prior to the time point of vaccination indicated in the column

Table 2: Multivariable model for all-cause mortality among patients with cancer in this cohort

Predictors	Hazard Ratio		
	Estimate	CI	p
Age at enrollment (ref: <50 years)			
50-69 years old	1.46	0.79 – 2.68	0.225
70+ years old	1.19	0.61 – 2.31	0.610
Male (ref: female)	1.72	1.14 – 2.57	0.009
Race/Ethnicity (ref: Non-Hispanic White)			
Hispanic	0.88	0.51 – 1.53	0.653
Non-Hispanic Black	0.97	0.47 – 1.99	0.933
Asian	1.57	0.85 – 2.90	0.151
Mixed/Other	1.06	0.45 – 2.47	0.897
Patient Type (ref: Non-metastatic Solid Tumor)			
Hematologic Malignancy	0.93	0.41 – 2.11	0.865
Metastatic Solid Tumor	1.94	0.97 – 3.87	0.059
Chemotherapy (ref: none)	1.76	1.18 – 2.63	0.006
B-cell Treatment (ref: none)	0.95	0.50 – 1.81	0.882
Immune checkpoint inhibitors (ref: none)	1.07	0.63 – 1.81	0.807
Targeted Therapy (ref: none)	1.37	0.89 – 2.11	0.156
Hormonal Therapy (ref: none)	0.79	0.32 – 1.98	0.619
Stem Cell Transplant (ref: none)	0.82	0.38 – 1.78	0.618
ECOG (ref: 0 or 1)			
2-4	2.27	1.27 – 4.06	0.006
At least one booster vaccination (ref: none)	0.61	0.40 – 0.94	0.024
Any Covid Infection (ref: none)	1.53	1.00 – 2.35	0.052

Supplementary Appendix

This appendix has been provided by the authors to give readers additional information about their work.

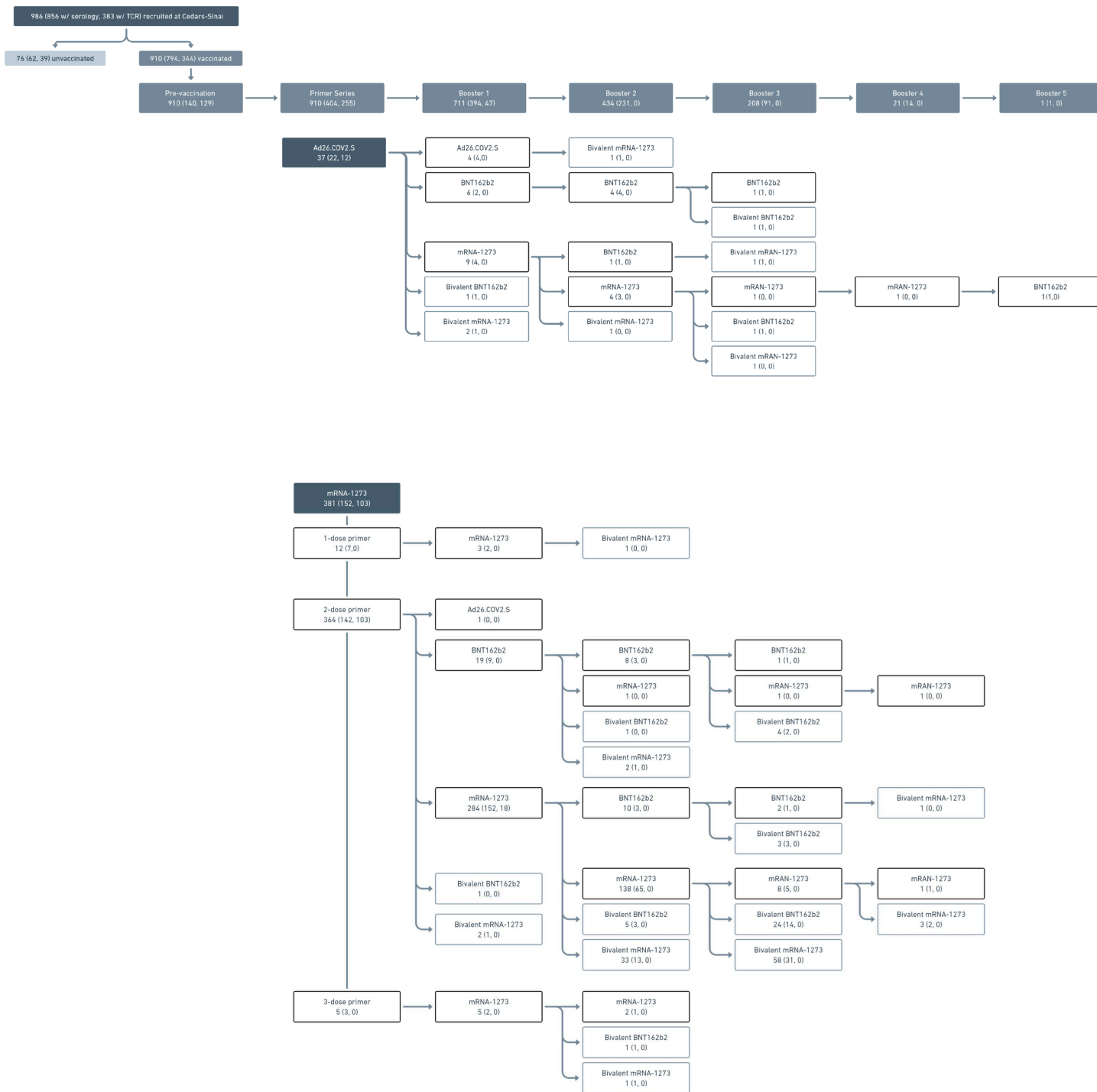
Supplement to: Figueiredo et al.

Supplementary Appendix

Contents

Figure S1: Consort diagram of study participants and their vaccine status	3
Figure S2: Vaccine perspectives among patients with cancer	5
Figure S3: Acute side-effects after vaccination among cancer patients	6
Figure S4: Post-vaccination T-cell repertoire responses among cancer patients	7
Table S1: Multivariable analyses of SARS-CoV-2 infection among patients with cancer	8

Figure S1: Consort diagram of study participants and their vaccine status



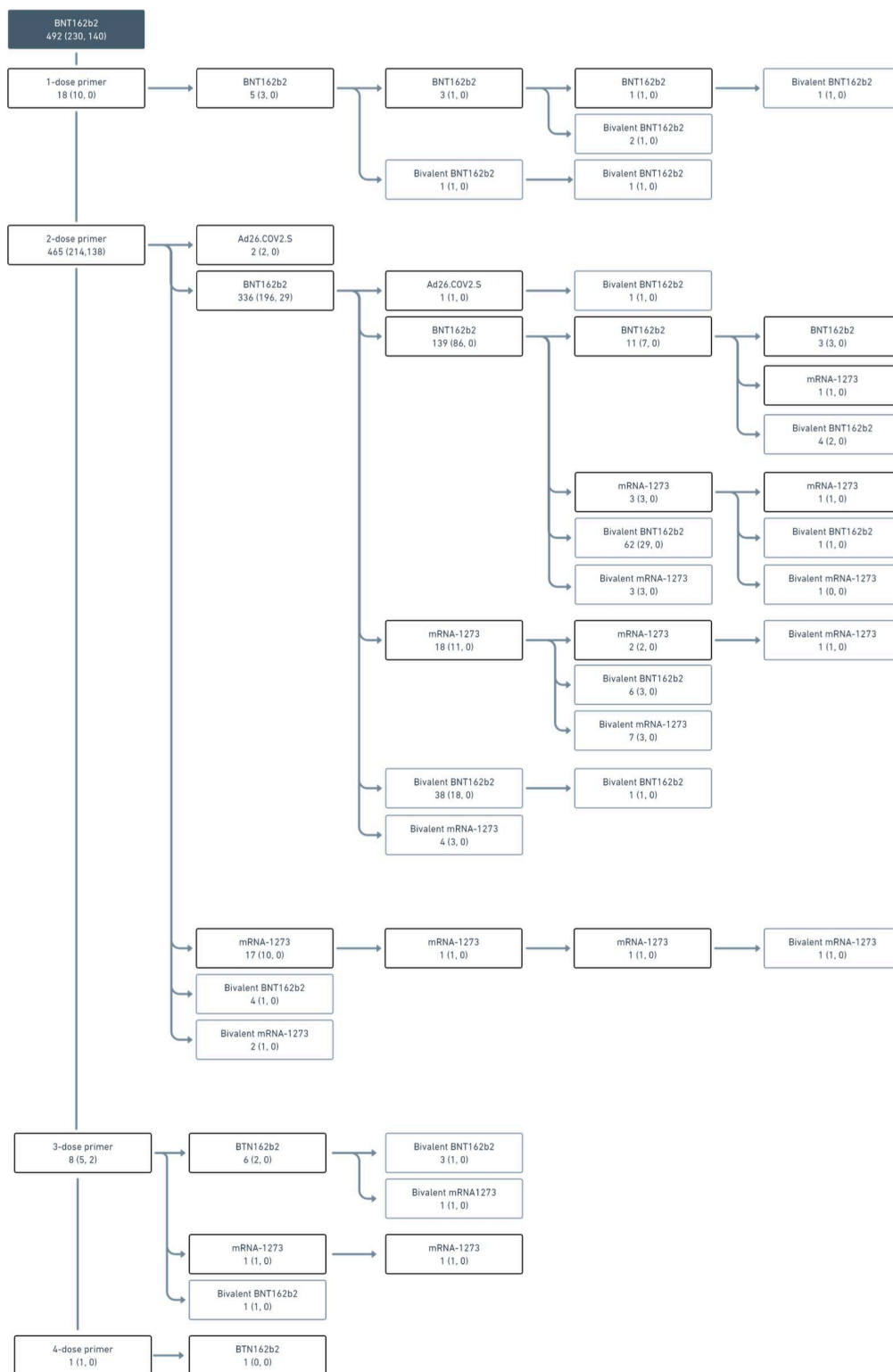


Figure S3: Acute side-effects after vaccination among cancer patients

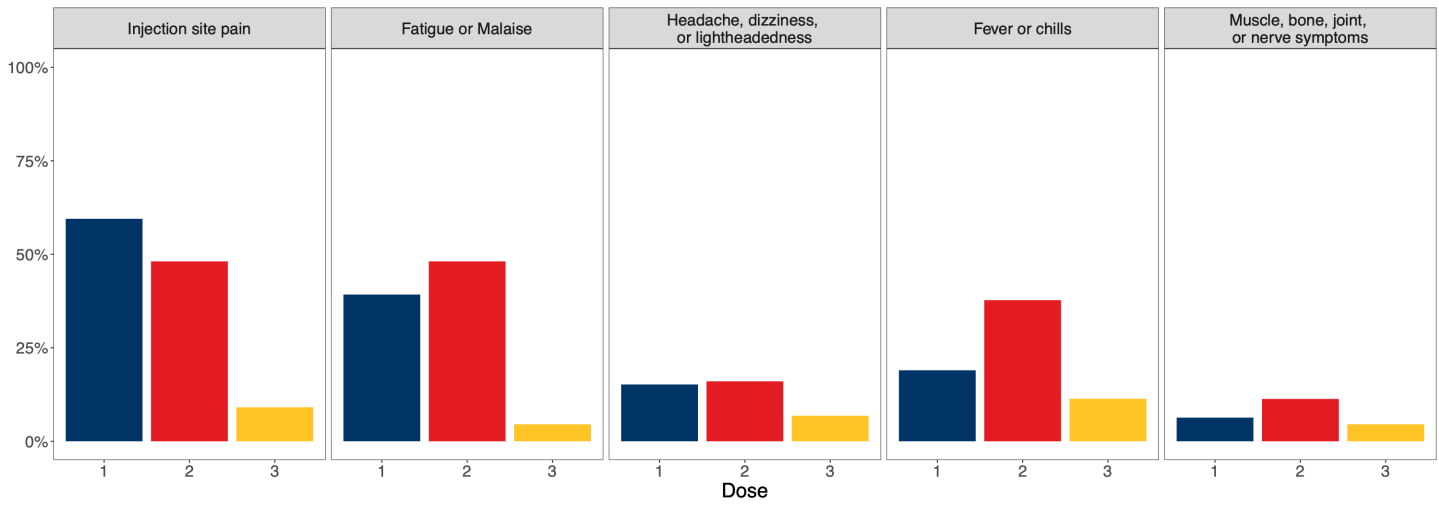


Figure S4: Post-vaccination T-cell repertoire responses among cancer patients

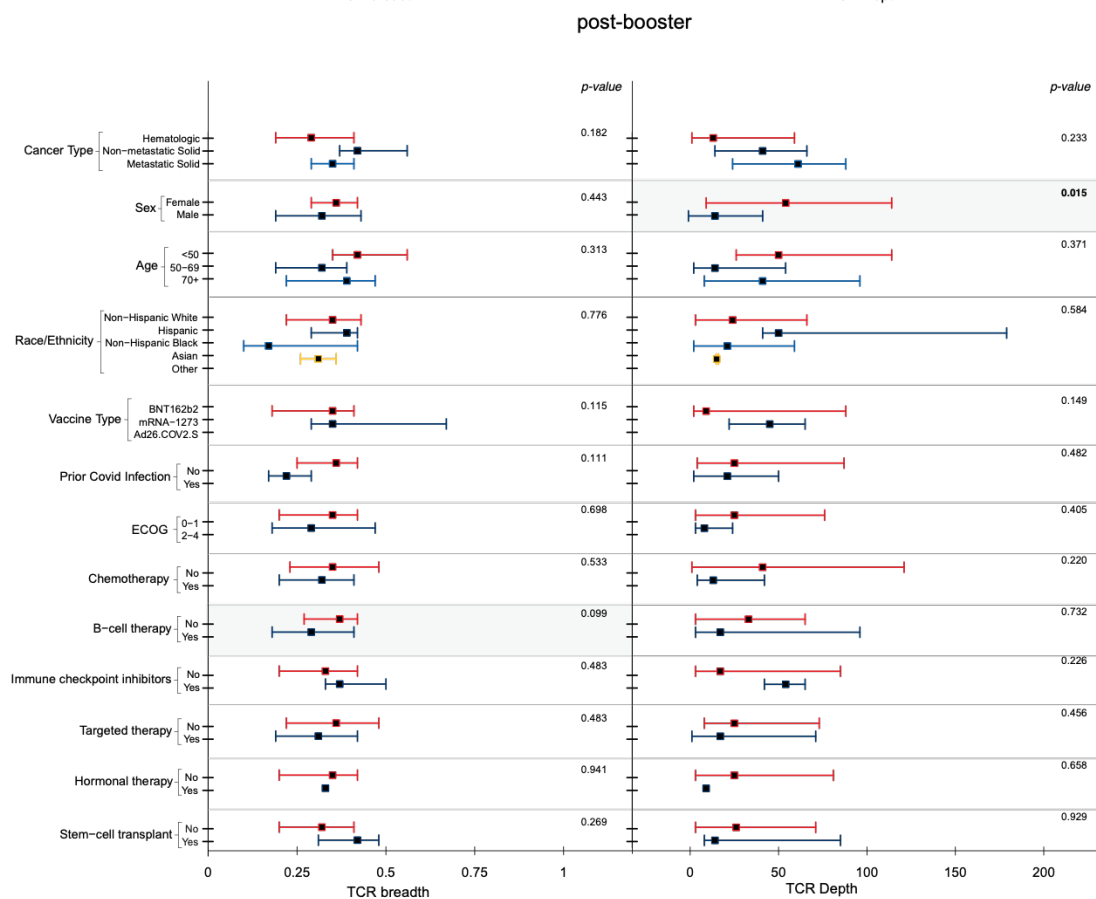
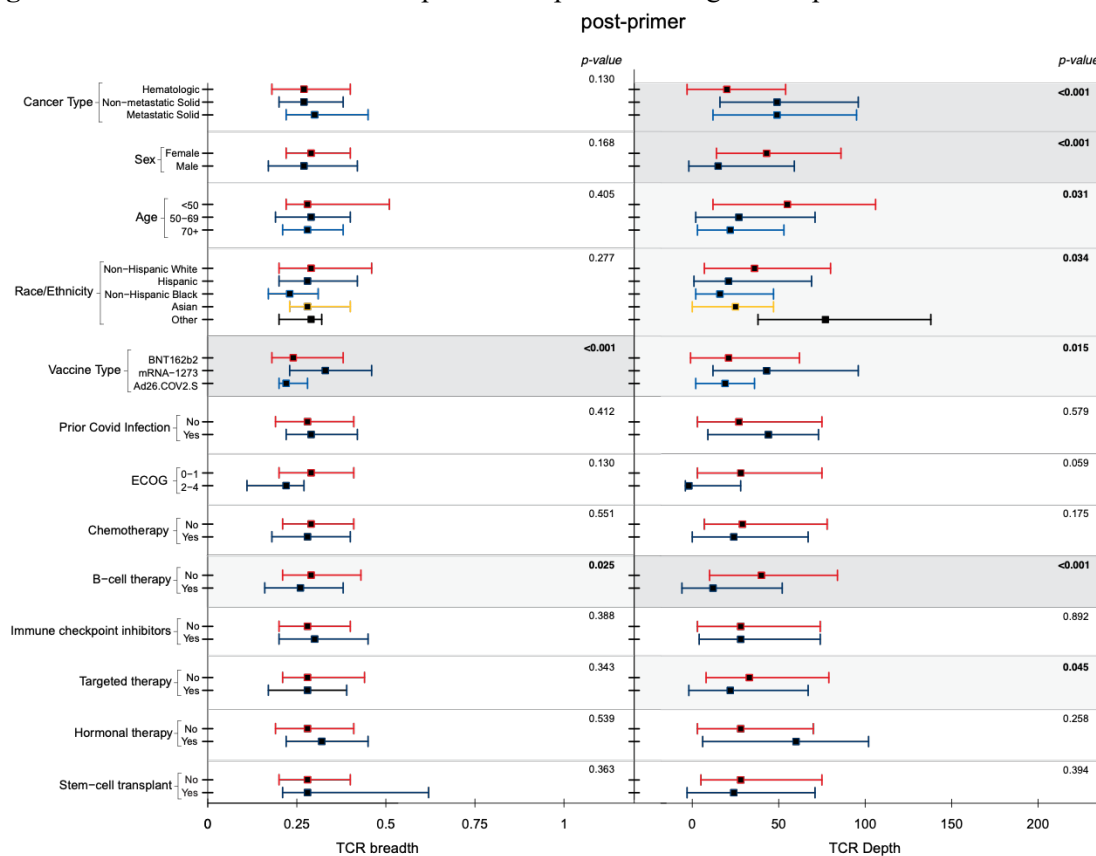


Table S1: Multivariable analyses of risk of SARS-CoV-2 infection among patients with cancer

Predictors	Hazard Ratio (Infection)		
	Estimate	95% CI	p-value
Age at enrollment (ref: <50 years)			
50-69 years old	0.95	0.76–1.21	0.697
70+ years old	1.04	0.79–1.38	0.783
Male (ref: female)	0.89	0.75–1.07	0.225
Race/Ethnicity (ref: Non-Hispanic White)			
Hispanic	1.22	0.98–1.52	0.072
Non-Hispanic Black	0.88	0.62–1.23	0.438
Asian	0.77	0.51–1.16	0.214
Mixed/Other	1.01	0.67–1.53	0.952
Patient Type (ref: Non-metastatic Solid Tumor)			
Hematologic Malignancy	1.29	0.91–1.83	0.153
Metastatic Solid Tumor	1.16	0.81–1.65	0.426
Chemotherapy (ref: none)	1.14	0.96–1.34	0.135
B-cell Treatment (ref: none)	1.46	1.17–1.82	0.001
Immune checkpoint inhibitors (ref: none)	0.85	0.60–1.20	0.358
Targeted Therapy (ref: none)	1.18	0.98–1.43	0.086
Hormonal Therapy (ref: none)	0.78	0.47–1.32	0.357
Stem Cell Transplant (ref: none)	1.26	0.99–1.60	0.060
ECOG (ref: 0 or 1)			
2-4	0.69	0.48–1.00	0.0497
Vaccine Uptake (ref: None)			
At least 1 dose	0.92	0.51–1.66	0.793
At least 1 mono-valent booster	0.84	0.45–1.54	0.567
At least 1 bi-valent booster	0.63	0.31–1.27	0.195
Any Prior Covid Infection (ref: none)	3.51	2.85–4.34	<0.001