

1 **Edematous Type of Malnutrition Takes Longer Recovery Time Compared to Severe Wasting**  
2 **(Marasmus): Findings on 6-59 months old children treated for Severe Acute Malnutrition**  
3 **After the War in Northern Ethiopia, 2023: Prospective Longitudinal Study**

4 Wagnew Tesfay<sup>1</sup> and Mebrahtu Abay<sup>2\*</sup>

5 <sup>1</sup>Nutrition Supervisor, Medical Teams International (MTI), Shire field office.

6 Email: [wagnew.tesfaye@gmail.com](mailto:wagnew.tesfaye@gmail.com)

7 <sup>2</sup>College of Health Sciences, Aksum University, Aksum, Ethiopia.

8 Email: [gmebrahtuabay@gmail.com](mailto:gmebrahtuabay@gmail.com), **ORCID:** 0000-0002-3307-0588

9 \*Corresponding author: Aksum, Ethiopia.

10  
11  
12  
13  
14  
15  
16  
17  
18  
19  
20  
21  
22  
23  
24  
25  
26

**NOTE: This preprint reports new research that has not been certified by peer review and should not be used to guide clinical practice.**

27 **Abstract**

28 **Background:** Severe acute malnutrition (SAM) is still having public health significance by  
29 attributing almost fifty percent of the estimated ten to eleven million deaths encountered in less than  
30 five-years old children, imposing nine-fold likelihood of death compared with well-nourished  
31 children of similar age group. It increases terrifyingly and become lethal during conflicts due to  
32 lack of food, compromised water supply and hygienic practices along with insufficient healthcare  
33 services.

34 **Methods:** Hospital-based prospective cohort study was conducted using regularly collected  
35 programme data of children admitted to the stabilization center in Suhul general hospital from  
36 January 1<sup>st</sup>, 2023 up to July 31<sup>st</sup>, 2023. To collect the data, pretested structured questionnaire was  
37 generated referring to the national SAM management protocol. Then collected data get coded and  
38 entered into Microsoft Excel spreadsheet 2016 version. All forms of analyses were done using  
39 statistical package for social sciences (SPSS) version 25.

40 **Results:** From the total 168 children aged 6-59 months enrolled in the study, ninety-four per cent  
41 of them were recovered and transferred to the outpatient therapeutic programme while the rest six  
42 per cent of the participants were censored. Appetite test (AHR = 1.874; 95% CI: 1.180-2.978), level  
43 of dehydration (AHR = 0.538; 95% CI: 0.361-0.800 for some/moderate dehydration and AHR =  
44 0.250; 95% CI: 0.128-0.489 for severe dehydration or shock), diagnosis at admission (AHR = 0.452;  
45 95% CI: 0.294-0.694), blood transfusion (AHR = 5.559; 95% CI: 2.419-12.773), type of antibiotics  
46 (AHR = 0.365; 95% CI: 0.192-0.692) and nasogastric tube feeding (AHR = 0.531; 95% CI: 0.372-  
47 0.758) were declared significant predictors of recovery time.

48 **Conclusion:** Bottom line of the study shows the inpatient therapeutic feeding center has met the  
49 agreed indicators for nutrition interventions during humanitarian crises. We recommend the hospital  
50 leadership, the regional health bureau and other humanitarian agencies to stress on training clinical  
51 workforce directly involved in patient management and care.

52 **Key words:** Recovery time, severe acute malnutrition, war, northern Ethiopia

## 53 **Background**

54 The World Health Organization (WHO) defines severe acute malnutrition (SAM) as having severe  
55 wasting (measured by mid-upper arm circumference (MUAC) of less than 11.5 centimetre in  
56 children 6 to 59 months old, and/or weight-for-length/height (WFL/H) below -3 Z scores in kids 0-  
57 59 months of age) and/or bilateral pitting oedema (1).

58 Acute undernutrition is affecting more than 45 million under-five years old children worldwide, of  
59 whom about 14 million are severely malnourished (2–4). Although significant and productive  
60 efforts made to tackle it, SAM is still having public health significance by attributing almost 50%  
61 of the estimated 10 to 11 million deaths encountered in less than five-years old children, imposing  
62 nine folds likelihood of death compared with well-nourished children of similar age group (5,6).  
63 SAM increases terrifyingly and become lethal during conflicts due to lack of food, compromised  
64 water supply and hygienic practices along with insufficient healthcare services (7). All population  
65 segments are affected by acute malnutrition during emergencies, but SAM it is main cause of  
66 morbidity and mortality in infants and young children (8).

67 The armed conflict between Tigray regional forces and the federal government of Ethiopia erupted  
68 in November the 4<sup>th</sup>, 2020 has led to mass displacements and destruction of healthcare system in  
69 the region. As a result, with six and twenty two per cent of SAM and moderate acute malnutrition  
70 (MAM) rates respectively, nutritional status of children under-five years of age reached above the  
71 emergency threshold level for acute malnutrition (9,10). The regional rate of SAM before the  
72 conflict was about one per cent.

73 Recent studies in Ethiopia showed that rates of recovery are below the standard set for stabilization  
74 center (SC) (11,12) while others concluded with findings in line with the standards (13–15). Similar  
75 study in Uganda also reported unacceptably high death rate (16). Age, breastfeeding, immunization  
76 and presence or absence of co-morbidities during admission were associated with recovery time  
77 and related outcomes of SC (11,14,15). Co-morbidities like diarrhea, pneumonia, human immune-  
78 deficiency virus (HIV) sero-status and anemia were found as independent predictors of SC

79 treatment outcomes (17,18). Variables like type of SAM, intravenous (IV) fluid resuscitation,  
80 nasogastric (NG) tube feeding, appetite and admission status were also significantly associated with  
81 therapy outcomes in SC (13,19–21).

82 During conflicts, research plays decisive role in understanding the main challenges faced by  
83 humanitarian organizations and enables them make scientifically informed decisions (22,23).  
84 Prolonged stay in SC is associated with a higher risk of hospital acquired infection which can raise  
85 the increased risk of death as well. Meanwhile, as a quality service indicator, recovery time and  
86 other related outcomes of nutrition interventions during humanitarian situation should be monitored  
87 to get better results of efforts and to take further actions based on evidence. Nevertheless, very little  
88 is known about the SC performance indicators in comparison against the standards during  
89 humanitarian interventions. This study would be the first of its kind since the armed conflict in the  
90 region broke out. Therefore, aim of this study is to avail evidences about recovery time and other  
91 performance indicators in Suhul general hospital, Tigray region, Northern Ethiopia.

## 92 **Methods and materials**

### 93 **Study design**

94 Health institution based prospective cohort study was conducted using regularly collected  
95 programme data of children admitted to suhul general hospital SC.

### 96 **Context and period of study**

97 Located 1087 kilometers north of Addis Ababa, Shire town is the capital of north west zone of  
98 Tigray regional state and main host for internally displaced persons (IDPs). The inpatient  
99 therapeutic feeding center (ITFC) in Shire's Suhul hospital has been the main management center  
100 for children suffering from complicated severe undernutrition, both for host and IDPs residing in  
101 the zone. Like almost all healthcare facilities in the region, this hospital has experienced extensive  
102 looting of medical supplies and equipment, electrical installations and destruction of water supply  
103 system. The cessation of hostilities agreement between the warring bodies signed in Pretoria paved  
104 the way for humanitarian organizations to access the region as well as the zone. As a result, the

105 paediatrics ward of the general hospital, including the ITFC, has been receiving medical supplies  
106 and equipment as well as technical support from United Nations' agencies and other international  
107 non-governmental organizations (NGOs).

108 Admission, treatment and discharge procedures were done as per the Ethiopian federal ministry of  
109 health (FMoH) SAM management guideline (24). Pediatrician and general practitioners were doing  
110 ward rounds on a daily basis to diagnose, prescribe or revise medications and other interrelated  
111 decisions while the nurses and nutrition nurses were assigned to do appetite test and move children  
112 from Phase-I to transition phase and phase-II. Collective and individual infant and young child  
113 feeding (IYCF) counselling sessions were given for mothers or guardians about conditions of their  
114 child, sanitation and hygiene practices and the necessary follow up until discharged from the ward.  
115 This study was conducted from January 1st, 2023 to July 31, 2023.

#### 116 **Source and Study population**

117 **Source population:** All 6-59 months old children admitted to suhul general hospital SC, both from  
118 host and displaced communities.

119 **Study population:** All 6-59 months old children admitted to suhul general hospital SC, both from  
120 host and displaced communities from January 01, 2023 to 31<sup>st</sup> of July, 2023.

121 **Study unit:** Severely undernourished 6-59 months old child hospitalized to the stated SC from  
122 January 01, 2023 to 31<sup>st</sup> of July, 2023.

#### 123 **Inclusion and exclusion criteria**

124 **Inclusion criteria:** All 6-59 months old children hospitalized to the SC both from host and  
125 displaced communities from January 01, 2023 to July 31, 2023.

126 **Exclusion criteria:** Children less than six months old, those with ready-to-use therapeutic food  
127 (RUTF) intolerance and children having secondary causes of malnutrition like cerebral palsy,  
128 congenital heart defects and cleft lip and palate were excluded from the study.

#### 129 **Sampling procedure and sample size**

130 We exhaustively included all 6-59 months old children hospitalized to the SC from January 01,  
131 2023 to July 31, 2023 and our final sample was 168 children.

## 132 **Variables of the study**

133 **Outcome variable:** Recovery time

134 Event: Stabilized and transferred to out-patient therapeutic programme (OTP)

135 Censored: Death, left against medical advice (LAMA), and medical referrals

## 136 **Independent variables**

- 137 • Main exposure variable: Type of SAM
- 138 • Other independent variables: Socio-demographic characteristics, routine medications,  
139 supplements and co-morbidities during admission

## 140 **Operational definitions**

- 141 • **Recovery time or length of stay (LoS):** refers to the number of days it takes from admission  
142 until the child got recovered from medical complications.
- 143 • **Stabilized and transferred to OTP:** 6-59 months old children can continue the nutritional  
144 rehabilitation phase at OTP once they become free of medical problems, grade three oedema  
145 and regained appetite.
- 146 • **Defaulted or left against medical advice (LAMA):** Patients who are not found in SC for  
147 two consecutive days, or who left the hospital contrary to medical advice offered while the  
148 child has not recovered.
- 149 • **Death:** child who deceases while taking management in stabilization center.

## 150 **Data collection tools and data quality control**

### 151 **Data collection tool**

152 Structured questionnaire was generated referring to the FMoH SAM management protocol. The  
153 questionnaire was attached with the patient file and needed information was collected as stated in

154 the important documents like SAM registration logbook, SAM monitoring multi-chart and patient  
155 clinical files.

### 156 **Data quality assurance**

157 The structured questionnaire was prepared in English, same language used by the Ethiopian SAM  
158 treatment protocol. It is pretested in 17 patients from a different health facility (ten per cent of our  
159 total sample), was reviewed for sequence and layout. After receiving one-day training on data  
160 collection, the nurses, nutrition nurses and nutrition supervisor were in charge of completing the  
161 questionnaire along with their routine activities. The collected data was checked by the nutrition  
162 supervisor for its accuracy, completeness & consistency and remedial actions were taken on spot.

### 163 **Data processing and analysis**

164 The collected data got coded and entered into Microsoft Excel spreadsheet 2016 version and then  
165 exported to statistical package for social sciences (SPSS) version 25 for analysis. For analytical  
166 convenience, variables were transformed and recoded into numeric variables. Data was cleaned  
167 earlier to analysis by exploring levels of missing values and applied standardized Z score to check  
168 presence of significant outliers and did not found any extreme values. Variance inflation factor  
169 (VIF) and levels of tolerance was used to assess multicollinearity among independent variables and  
170 none of them was suggestive of significant correlation.

171 Descriptive analysis is executed and presented in tables and percentages along with the appropriate  
172 central tendency measure (median survival time in days). Kaplan-Meier & Cox regression was  
173 applied to determine the association of independent variables with dependent. Length of stay was  
174 (LoS) estimated using Kaplan-Meier procedure with Log Rank (Mantel-Cox) test to examine  
175 whether the observed difference of LoS between different groups of predictor variables is  
176 significant or not. Chi-square test was done to determine if there were adequate cell counts for each  
177 categorical variable. Independent variables with *p-value* of <0.2 during the bivariate Cox regression  
178 were nominated for multivariable Cox regression.

179 The proportional hazard assumption was checked by examining plots of LoS for model variables.  
180 The plotted points approximately lie nearby a line that has unit slope and zero intercept. Overall  
181 fitness of the model was assured by Omnibus tests of model coefficients at 5% level of significance.  
182 With entry and removal probabilities of 0.05 and 0.1 respectively, multivariable Cox regression was  
183 run using Stepwise Backward Wald method to detect independent predictors of recovery time.  
184 Finally, adjusted hazard ratio (AHR) with 95% confidence interval (CI) was used to show the  
185 strength of association and declare a statistical significance at p-value of  $< 0.05$ .

## 186 **Results**

187 From the total 194 children aged 6-59 months admitted to suhul hospital with complicated SAM,  
188 168 were enrolled in this study while the remaining 26 were ineligible due to the exclusion criteria.  
189 Recovery rate was 94% while the rest six per cent of the participants were censored.

### 190 **Socio-demographic characteristics and baseline clinical conditions at admission**

191 With mean and median age of 21.65 and 18 months respectively, majority (68.5%) of the  
192 participants fall under the 6-24 months old category while 54.2 per cent out of the whole cohort  
193 were females. About 29.2 per cent of patients were from IDPs and most of participants were new  
194 admissions (97%). Ninety-six children (57.1 per cent) of children were breastfed while one fourth  
195 of them had edematous type of SAM at admission. Dehydration, failed appetite, pneumonia,  
196 persistent diarrhea, hyperthermia, malaria and skin lesions found to be main contributors of  
197 hospitalization whereas anemia, unconsciousness and vomiting were less encountered  
198 complications comparatively. **(Table 1)**

### 199 **Treatment, feeding and final outcome**

200 Fifteen patients received blood transfusion, exactly the same number of patients were also  
201 resuscitated with intravenous (IV) fluids. Only sixteen patients took oral antibiotics while the rest  
202 received their medications through IV line. Nasogastric (NG) tube was inserted to administer  
203 therapeutic milk and rehydration solutions in seventy-one patients. Out of the 156 children eligible  
204 for measles vaccination, only 89 of them got vaccinated because of lack of the antigen. However,



205 all children in the appropriate age for deworming ( $\geq 24$  months) took single dose of albendazole or  
206 mebendazole. 95.2% of patients hospitalized with severe wasting were recovered whereas the  
207 recovery rate for children having edematous type of SAM at admission was 90.5%. Finally, 158  
208 patients (94%) got stabilized and transferred to OTP whereas four (2.4%) and six (3.6%) were  
209 defaulted and dead respectively. The overall median length of stay until final outcome was 8 days  
210 (95% CI: 7.4, 8.6). **(Figure 1)**

### 211 **Kaplan Meier estimates of recovery time**

212 Recovery time was estimated using Log Rank (Mantel-Cox) test of equality of survival distribution  
213 for all independent variables. **(Table 1)**. The minimum, maximum, mean and median length of stay  
214 estimated to be two, twenty, eight point nine and eight days respectively. The LoS for children aged  
215 25-59 months was higher than those aged 6-24 months. Nonetheless, this detected difference is by  
216 chance as it is not significant statistically (*p-value* 0.051). Similarly, we found some differences in  
217 LoS in residence of patient, breastfeeding status and persistent diarrhea with no statistical  
218 significance. However, the observed LoS differences in variables like type of SAM at admission  
219 **(Figure 2)**, appetite test **(Figure 3)**, hyperthermia, malaria status, anemia, blood transfusion **(Figure**  
220 **4)**, type of antibiotics, dehydration **(Figure 5)**, NG tube feeding, skin lesions and deworming were  
221 statistically significant. The recovery time for those having edematous type of SAM was 10 days  
222 (95% CI: 8.7, 11.3), significantly longer compared with children having marasmus. **(Figure 2)**

### 223 **Predictors of recovery time**

224 Fourteen independent variables with *p-value*  $< 0.2$  during the bivariate Cox regression were  
225 included in the final multivariable Cox regression. Once validity of the model assumptions  
226 ascertained and amendment for potential confounders, six significant predictors of recovery time  
227 were identified, namely; appetite test, level of dehydration, diagnosis at admission, blood  
228 transfusion, antibiotics and NG tube feeding.

229 Patients hospitalized with failed appetite found to have about two times highly likely to stabilize  
230 compared to those admitted with other medical complications, for whom appetite test is not

231 indicated (AHR = 1.874; 95% CI: 1.180-2.978). Level of dehydration resulted in 46.2% (AHR =  
232 0.538; 95% CI: 0.361-0.800) and 75% (AHR = 0.250; 95% CI: 0.128-0.489) less likelihood of  
233 recovering from SAM in children being dehydrated and shocked at admission respectively.  
234 Compared with patients having severe wasting, those suffering from edematous SAM were less  
235 likely to recover by 55% (AHR = 0.452; 95% CI: 0.294-0.694). Patients who did not receive blood  
236 transfusion had more than fivefold likelihood of quicker recovery compared with their blood  
237 transfused counter parts (AHR = 5.559; 95% CI: 2.419-12.773).  
238 Similarly, children treated with IV antibiotics and those who took the therapeutic milk via NG tube  
239 were 63.5 (AHR = 0.365; 95% CI: 0.192-0.692) and 46.9 per cent (AHR = 0.531; 95% CI: 0.372-  
240 0.758) less likely in recovering early compared to their counterparts who took oral antibiotics and  
241 who were able to take the therapeutic milk orally respectively. **(Table 2)**

## 242 **Discussion**

243 This research has assessed whether there is significant difference in recovery among different  
244 groups of patients and the overall recovery time from complicated SAM with its predictors. We  
245 have compared the reproducibility of our current findings with different studies of similar titles.

246 Hence, marasmus was the main provisional diagnosis at admission, consistent with reports from  
247 recent studies in Aksum (17), Addis Ababa (25) and Southern Ethiopia (6). The median recovery  
248 time was 8 days (95% CI: 7.4, 8.6) which fulfils the requirement for maximum LoS in SC by WHO  
249 to be less than four weeks (26). This finding is similar with prospective study conclusions from  
250 Sidama regional state of Ethiopia (27). Conversely, this is much better (shorter) compared to  
251 findings from different public hospitals in the capital city of the country and different institutions  
252 in Oromia (25,28), at which children were staying for about 19 and 21 days to be stabilized  
253 respectively. Such variability could be due to differences in adhering to the national guideline  
254 strictly and lack of trainings on the protocol as well as supply shortage among hospitals.

255 The rates of recovery, defaulter and death from the whole cohort were 94, 2.4 and 3.6 per cent  
256 respectively. This satisfies the performance indicators for SC set by the sphere association (29) and  
257 is way better achievement in reference to recent study findings from Jimma university medical  
258 center (30), that found only a quarter of the participants recovered. This is probably attributed to  
259 the comprehensive medical supplies interconnected with training, health promotion and  
260 supplementary IYCF services Suhul hospital was receiving from several humanitarian  
261 organizations during the crisis. Nonetheless, our achievements are similar with reports from Katsina  
262 state of Nigeria (31), a project received similar assistance from humanitarian NGO, achieved 95.7%  
263 of recovery and 4.3% death rate with LoS till outcome of 6 days.

264 In the final multivariable analysis using Cox proportional hazard regression, failed appetite test was  
265 significant predictor of time to recover, that in line with study results from Adama hospital (32).

266 Likewise, we detected edematous type of SAM at admission resulted in reduced chance of earlier

267 recovery by 55% compared to those hospitalized with marasmus. This is compatible with findings  
268 from Benishangul Gumuz (20) who declared children admitted with severe wasting had 1.7 times  
269 higher chance of recovering early than those with edema, Amhara regional state of Ethiopia (33)  
270 who concluded hospitalized with edematous type of SAM resulted in 41% lower likelihood of  
271 recovery and researchers from Uganda (34) as well as Nigeria (31) stated that edematous form of  
272 SAM had extended LoS till recovery. But this is contradicting to reports from southern Ethiopia  
273 (27,35). This might be due to the added co-morbidities either forms of SAM, which opens areas of  
274 further studies to figure out reasons.

275 Our conclusion of special treatments like blood transfusion and provision of IV antimicrobials as  
276 independent predictors of LoS is on the same page with findings of researchers from Hawassa  
277 tertiary hospital, Southern Ethiopia (36) and other African Nations (34,37). By the same token, our  
278 finding on NG tube feeding resulted in significantly longer recovery time is backed by several  
279 researchers (38–40).

## 280 **Conclusion and Recommendations**

281 Bottom line of the study shows the inpatient therapeutic feeding center has met the agreed  
282 requirements (indicators) for nutrition interventions during humanitarian crises, which is relatively  
283 superior achievement compared with majority of latest studies in the thematic area. Appetite test,  
284 level of dehydration, diagnosis at admission, blood transfusion, type of antibiotics and nasogastric  
285 tube feeding were confirmed predictors of time till recovery from SAM.

286 Therefore, the hospital leadership along with the regional health bureau and other humanitarian  
287 agencies should give emphasis on training clinical workforce directly involved in severely  
288 undernourished child management and care, so that the clinicians will become skillful to identify  
289 and properly manage the main complications of SAM like severe anemia, dehydration and shock.  
290 Furthermore, the blood bank unit and the laboratory of the hospital should be looked after to ensure  
291 safe blood transfusion for those who need it.

## 292 **Abbreviations**

293 AHR: Adjusted Hazard Ratio; CHR: Crude Hazard Ratio; CI: Confidence Interval; IDP: Internally  
294 Displaced Person; IV: Intravenous; LoS: Length of Stay; NG: Naso-Gastric; NGO: Non-  
295 Governmental Organization; OTP: Outpatient Therapeutic Programme; SAM: Severe Acute  
296 Malnutrition; SC: Stabilization Center

## 297 **Declarations**

### 298 **Ethical approval and consent to participate**

299 Complying by the declaration of Helsinki for studies involving human beings, this research was  
300 commenced after receiving expedited ethics approval from Aksum university, college of health  
301 sciences, health research ethics review board (HRERB) with reference number: **IRB 009/2023**. This  
302 also fulfills the ethical standards set by the country (41). Permission was obtained from those in  
303 charge of the hospital's stabilization center to collect relevant data items for this study. Approved  
304 by HRERB in Aksum university, college of health sciences, informed written consent was taken  
305 from each participant's caretaker (legal guardian).

### 306 **Consent for publication**

307 Not applicable

### 308 **Availability of data and materials**

309 The records used to yield analytical outputs for this study are attached along with the manuscript as  
310 supplemental file (**S1: anonymized SC data. SAV**). Additionally, we have attached the steps we  
311 applied in the final multivariable Cox regression model (**S2**).

### 312 **Conflicts of interest**

313 We do not have any conflicting interests

### 314 **Funding**

315 We didn't receive any funding intended for this work.

### 316 **Authors' contributions**

317 WT proposed and designed the study. Analysis, writing up the manuscript and its final approval is  
318 done by both authors.

### 319 **Acknowledgements**

320 Our earnest appreciation goes to the healthcare workers of the hospital who never gave up and were  
321 tirelessly serving their society with almost no medical supplies and without salaries due to the war  
322 for nearly two years. We are warmly grateful for the nurses assigned in the paediatrics ward for  
323 their cooperation in collecting the data appropriately.

324

325

326

327

328

329

330

331

332

333

334

335

336

337

338

339

340

341

## 342 **References**

- 343 1. Dr Phoebe CM Williams and Prof James A Berkley. Severe Acute Malnutrition Update:  
344 Current WHO Guidelines and the WHO Essential Medicine List for Children. 2016.
- 345 2. UNICEF, WHO WBG. Levels and trends in child malnutrition. 2023;
- 346 3. World Health Organization. World Health Statistics: Monitoring health for the SDGs,  
347 Sustainable Development goals. 2022.
- 348 4. UNICEF. Nutrition, for Every Child: UNICEF Nutrition Strategy 2020-2030. 2020.
- 349 5. Republic of the Philippines and World Food Programme (WFP). National Guidelines on the  
350 Management of Moderate Acute Malnutrition for Children under Five Years: Manual of  
351 Operations. 2020.
- 352 6. Abrham Bire, Shifeta M. Treatment Outcome From Severe Acute Malnutrition Among  
353 Children 6 to 59 Months Admitted To Hawassa University Comprehensive Specialized  
354 Hospital, Southern Ethiopia. *Ethiop J Pediatr Child Heal*. 2023;18(June):49–67.
- 355 7. Save the Children, UNHCR. Infant and Young Child Feeding in Refugee Situations: A Multi-  
356 Sectoral Framework for Action. 2018.
- 357 8. World Health Organization. Guideline: Updates on the Management of Severe Acute  
358 Malnutrition in Infants and Children. 2013.
- 359 9. UNICEF. Nutrition Situation in Tigray: A Rapid analysis of Nutrition Programme data.  
360 2021;2020(September).
- 361 10. Mulugeta A, Gebregziabher M. Saving children from man-made acute malnutrition in  
362 Tigray, Ethiopia: a call to action. *Lancet Glob Heal* [Internet]. 2021;10(4):e469–70.  
363 Available from: [http://dx.doi.org/10.1016/S2214-109X\(22\)00023-7](http://dx.doi.org/10.1016/S2214-109X(22)00023-7)
- 364 11. Kabthymmer RH, Gizaw G, Belachew T. Time to Cure and Predictors of Recovery Among  
365 Children Aged 6 – 59 Months with Severe Acute Malnutrition Admitted in Jimma University  
366 Medical Center , Southwest Ethiopia : A Retrospective Cohort Study. *Cinical Epidemiol*.

- 367 2020;
- 368 12. Wagnew F, Dejen G, Eshetie S, Alebel A, Worku W, Abajobir AA. Treatment cure rate and  
369 its predictors among children with severe acute malnutrition in northwest Ethiopia : A  
370 retrospective record review. PLoS One. 2019;14(2):1–13.
- 371 13. Workneh ZB, Alebel A, Worku T, Alemu A. Recovery rate and its predictors among children  
372 with severe acute malnutrition in Addis Ababa , Ethiopia : A retrospective cohort study. PLoS  
373 One [Internet]. 2020;1–16. Available from: <http://dx.doi.org/10.1371/journal.pone.0235259>
- 374 14. Adimasu M, Sebsibie G, Abebe F, Baye G, Abere K. Recovery time from severe acute  
375 malnutrition and associated factors among under-5 children in Yekatit 12 Hospital , Addis  
376 Ababa , Ethiopia : a retrospective cohort study. Epidemiol Health. 2020;1–11.
- 377 15. Hassen SL, Astatkie A, Mekonnen TC, Bogale GG. Survival Status and Its Determinants  
378 among Under-Five Children with Severe Acute Malnutrition Admitted to Inpatient  
379 Therapeutic Feeding Centers in South Wollo Zone , Amhara Region , Ethiopia. Hindawi J  
380 Nutr Metab. 2019;1–9.
- 381 16. Nduhukire T, Atwine D, Rachel L, Byonanebye JE. Predictors of in-hospital mortality among  
382 under-five children with severe acute malnutrition in South-Western Uganda. PLoS One  
383 [Internet]. 2020;1–15. Available from: <http://dx.doi.org/10.1371/journal.pone.0234343>
- 384 17. Tesfay W, Abay M, Hintsu S, Zafu T. Length of stay to recover from severe acute  
385 malnutrition and associated factors among under-five years children admitted to public  
386 hospitals in Aksum , Ethiopia. PLoS One [Internet]. 2020;1–13. Available from:  
387 <http://dx.doi.org/10.1371/journal.pone.0238311>
- 388 18. Karunaratne R, Sturgeon JP, Patel R, Prendergast AJ. Predictors of inpatient mortality among  
389 children hospitalized for severe acute malnutrition : a systematic review and meta-analysis.  
390 Am J Clin Nutr [Internet]. 2020;112(4):1069–79. Available from:  
391 <https://doi.org/10.1093/ajcn/nqaa182>



- 392 19. Oumer A, Mesfin L, Tesfahun E, Ale A. Predictors of Death from Complicated Severe Acute  
393 Malnutrition in East Ethiopia: Survival Analysis. *Int J Gen Med Dovepress*. 2021;8763–73.
- 394 20. Bizuneh FK, Tolossa T, Bekonjo NE, Wakuma B. Time to recovery from severe acute  
395 malnutrition and its predictors among children aged 6 – 59 months at Asosa general hospital  
396 , Northwest Ethiopia . A retrospective follow up study. *PLoS One* [Internet]. 2022;(August).  
397 Available from: <http://dx.doi.org/10.1371/journal.pone.0272930>
- 398 21. Fassikaw Kebede T, Kebede, Belete Negese, Atitegeb Abera, Getahun Fentaw AK. Incidence  
399 and predictors of severe acute malnutrition mortality in children aged 6 – 59 months admitted  
400 at Pawe general hospital ,. *PLOS ONES ONE* [Internet]. 2022;568:1–10. Available from:  
401 <http://dx.doi.org/10.1371/journal.pone.0263236>
- 402 22. Allen C, Jansen J, Naude C, Durao S, Mehta M, Elm E Von, et al. Prevention and treatment  
403 of acute malnutrition in humanitarian emergencies : a multi-organisation collaboration to  
404 increase access to synthesised evidence. Vol. 8, *Journal of International Humanitarian*  
405 *Action*. 2019.
- 406 23. Ali E, Delchevalerie P, Shams Z, Alders P, Zachariah R. Community Based Management of  
407 Severe Acute Malnutrition: The MSF Experience from an Urban Slum Setting in Bangladesh.  
408 *Food Nutr Sci*. 2020;578–89.
- 409 24. The Government of Ethiopia; Federal Ministry of Health. National Guideline for the  
410 Management of Acute Malnutrition. 2019.
- 411 25. Mezemir M, Girma M, Bekele D. Treatment Outcome and Associated Factors of Acute  
412 Malnutrition Among Children in the Therapeutic Feeding Center of Public Hospitals in Addis  
413 Ababa , Ethiopia : An Institutional-Based Cross-Sectional Study. *Pediatr Heal Med Ther*.  
414 2022;(March):145–54.
- 415 26. WHO child growth standards and the identification of severe acute malnutrition in infants  
416 and children. A Joint Statement by the World Health Organization and the United Nations

417 Children's Fund. 2009

418 27. Abebe A, Simachew Y, Delbiso TD. Effect of ready-to-use therapeutic foods on time to  
419 recovery among children with severe acute malnutrition in Ethiopia : a prospective cohort  
420 study. *BMC Pediatr*. 2023;1–10.

421 28. Eyi SE, Debele GR, Negash E, Bidira K, Tarecha D, Nigussie K, et al. Severe acute  
422 malnutrition ' s recovery rate still below the minimum standard : predictors of time to  
423 recovery among 6 - to 59 - month - old children in the healthcare setting of Southwest  
424 Ethiopia. *J Heal Popul Nutr* [Internet]. 2022;1–12. Available from:  
425 <https://doi.org/10.1186/s41043-022-00331-9>

426 29. Sphere Association. *The Sphere Handbook: Humanitarian Charter and Minimum Standards  
427 in Humanitarian Response*, fourth edition, Geneva, Switzerland. 2018.

428 30. Adem F, Edessa D, Bayissa B, Hassen MM, Mohammed MA. Treatment Outcomes and  
429 Associated Factors in Hospitalised Children with Severe Acute Malnutrition : A Prospective  
430 Cohort Study. *Dovepress Pediatr Heal Med Ther*. 2020;

431 31. Joseph FI, Falade A, Earland J. Time to recovery and its predictors among children 6 – 59  
432 months with acute malnutrition admitted to community inpatient therapeutic feeding centers  
433 in Katsina State , Northwest Nigeria : a retrospective review of health records ( 2010 – 2016  
434 ). *J Heal Popul Nutr* [Internet]. 2023;1–11. Available from: [https://doi.org/10.1186/s41043-  
435 023-00352-y](https://doi.org/10.1186/s41043-023-00352-y)

436 32. Derbe S, Rebitu AD, Nemo H. Treatment Outcome of Severe Acute Malnutrition and its  
437 Determinants among Under Five Children Admitted to Pediatrics Ward at Adama Hospital  
438 Medical College, Adama, Ethiopia. *ACTA Sci Clin Case Reports*. 2021;2(8):72–83.

439 33. Derseh B, Mruts K, Demie T, Gebremariam T. Co-morbidity , treatment outcomes and  
440 factors affecting the recovery rate of under -five children with severe acute malnutrition  
441 admitted in selected hospitals from Ethiopia: retrospective follow up study. *BMC Nutr J*.

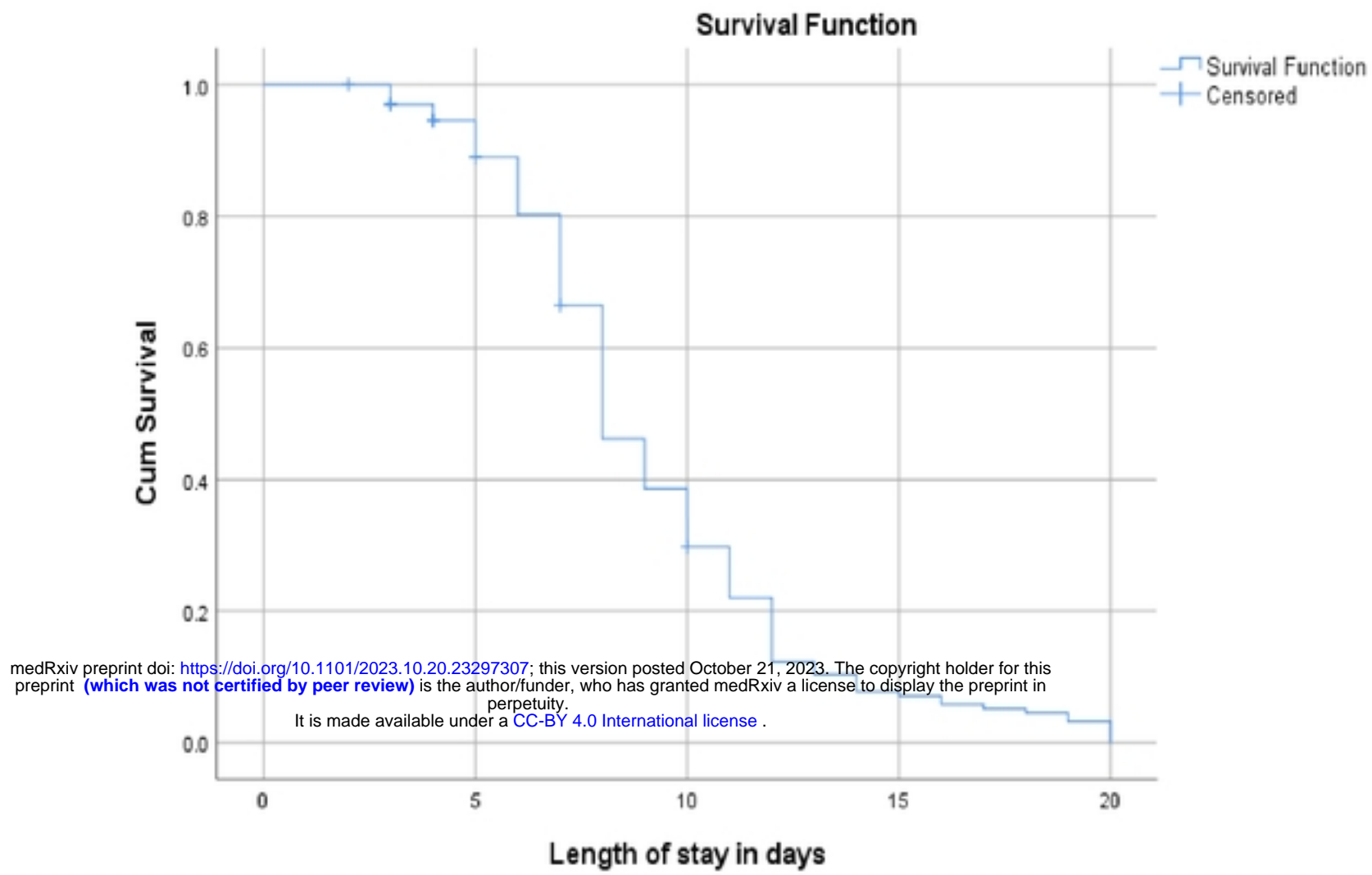
- 442 2018;1–8.
- 443 34. E. Muwanguzi, J. Eros Oboi AN and RW. Treatment outcome and associated factors for  
444 severely malnourished children (1-5 years) admitted to Lacor hospital and Gulu Regional  
445 referral hospital in Uganda. *J Nutr Sci*. 2021;1–7.
- 446 35. Gebremichael DY. Predictors of nutritional recovery time and survival status among children  
447 with severe acute malnutrition who have been managed in therapeutic feeding centers ,  
448 Southern Ethiopia: retrospective cohort study. *BMC Public Health* [Internet]. 2015;1–11.  
449 Available from: <http://dx.doi.org/10.1186/s12889-015-2593-5>
- 450 36. Fikrie A, Alemayehu A, Gebremedhin S. Treatment outcomes and factors affecting time-to-  
451 recovery from severe acute malnutrition in 6 – 59 months old children admitted to a  
452 stabilization center in Southern Ethiopia : A retrospective cohort study. *Ital J Pediatr*.  
453 2019;45(46):1–9.
- 454 37. Vonasek BJ, Chiume M, Crouse HL, Mhango S, Kondwani A, Ciccone EJ, et al. Risk factors  
455 for mortality and management of children with complicated severe acute malnutrition at a  
456 tertiary referral hospital in Malawi. *Paediatr Int Child Health* [Internet]. 2020;40(3):148–57.  
457 Available from: <https://doi.org/10.1080/20469047.2020.1747003>
- 458 38. Tefera TK, Abebe SM, Hunegnaw MT, Mekasha FG. Time to Recovery and Its Predictors  
459 among Children 6 – 59 Months Admitted with Severe Acute Malnutrition to East Amhara  
460 Hospitals , Northeast Ethiopia : A Multicenter Prospective Cohort Study. *Hindawi J Nutr*  
461 *Metab*. 2020;
- 462 39. Lencha B, Urgessa M, Lemessa F, Minda Z, Beressa G, Ganfure G, et al. Severe Acute  
463 Malnutrition (SAM) among Children in Bale Zone Southeast Ethiopia: Treatment Outcome  
464 and its determinants factors. *J Pediatr* [Internet]. 2023;113743. Available from:  
465 <https://doi.org/10.1016/j.jpeds.2023.113743>
- 466 40. Ahmed JA, Yusuf N, Wilfong T, Tukeni KN, Berhanu H, Roba KT. Treatment outcomes

467 among children admitted stabilization centers in Eastern Ethiopia: retrospective study. Front  
468 Public Heal. 2023;2(July).

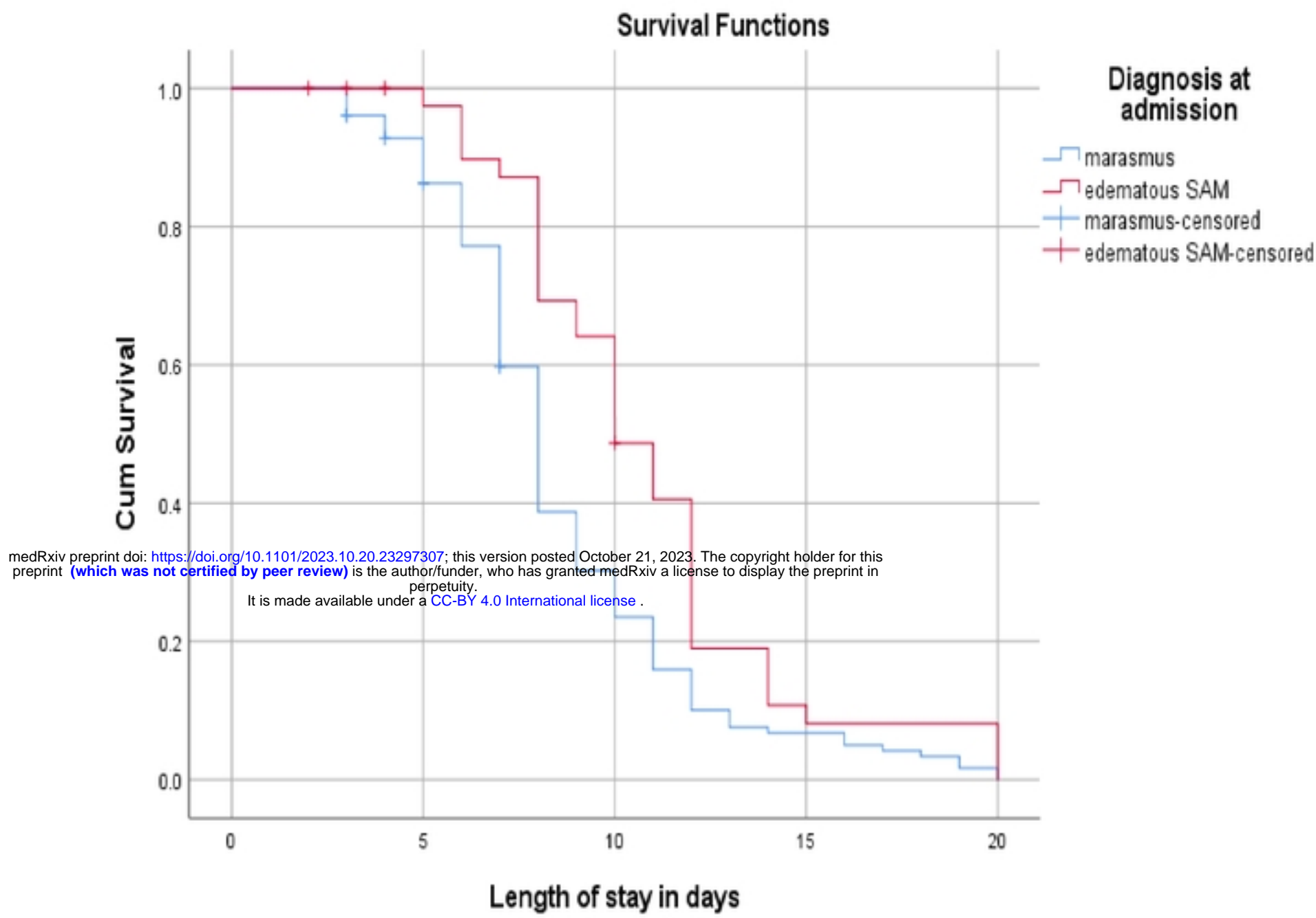
469 41. Federal Democratic Republic of Ethiopia (FDRE): Ministry of Science and Technology.

470 National Research Ethics Review Guidline. 2014.

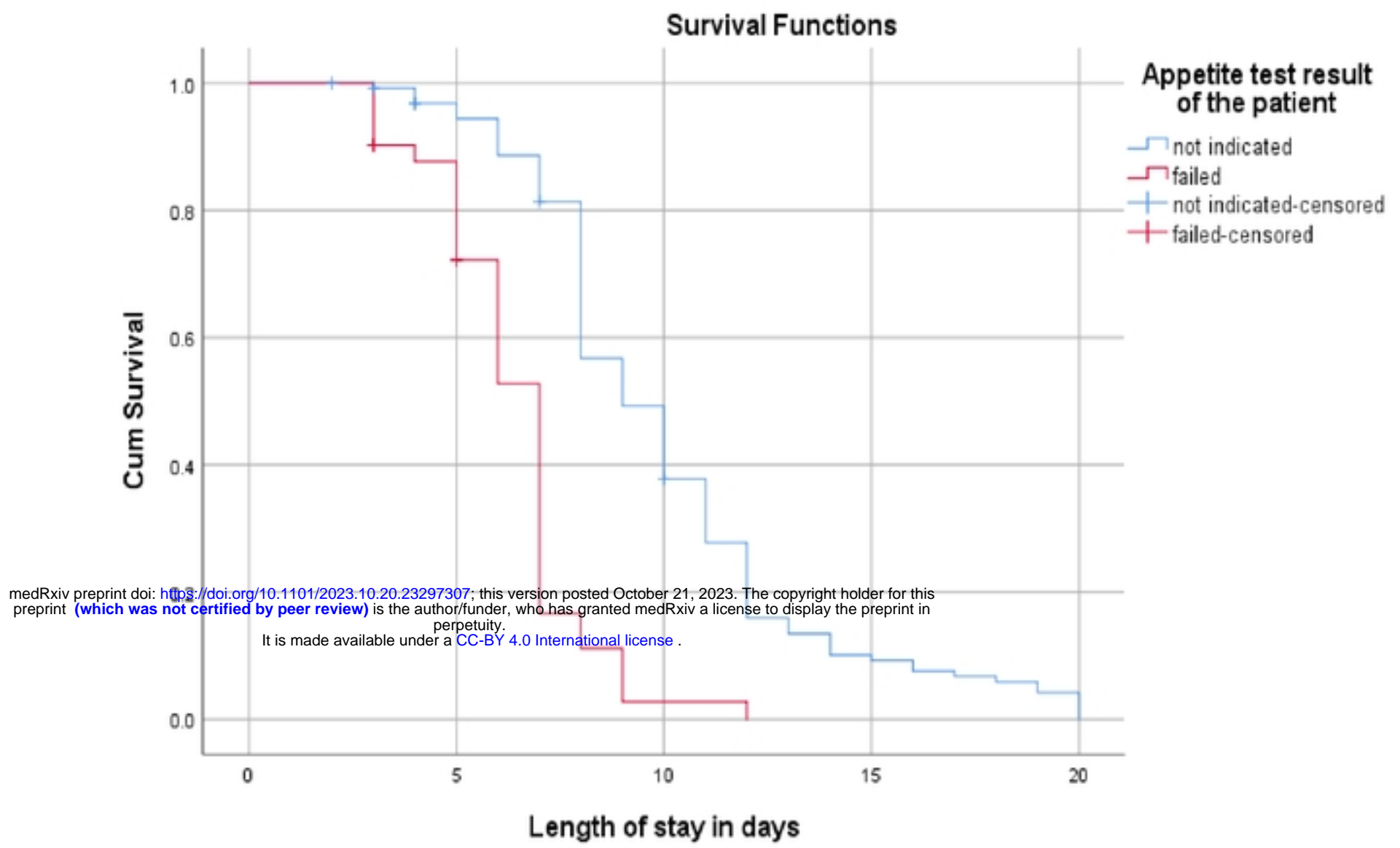
471



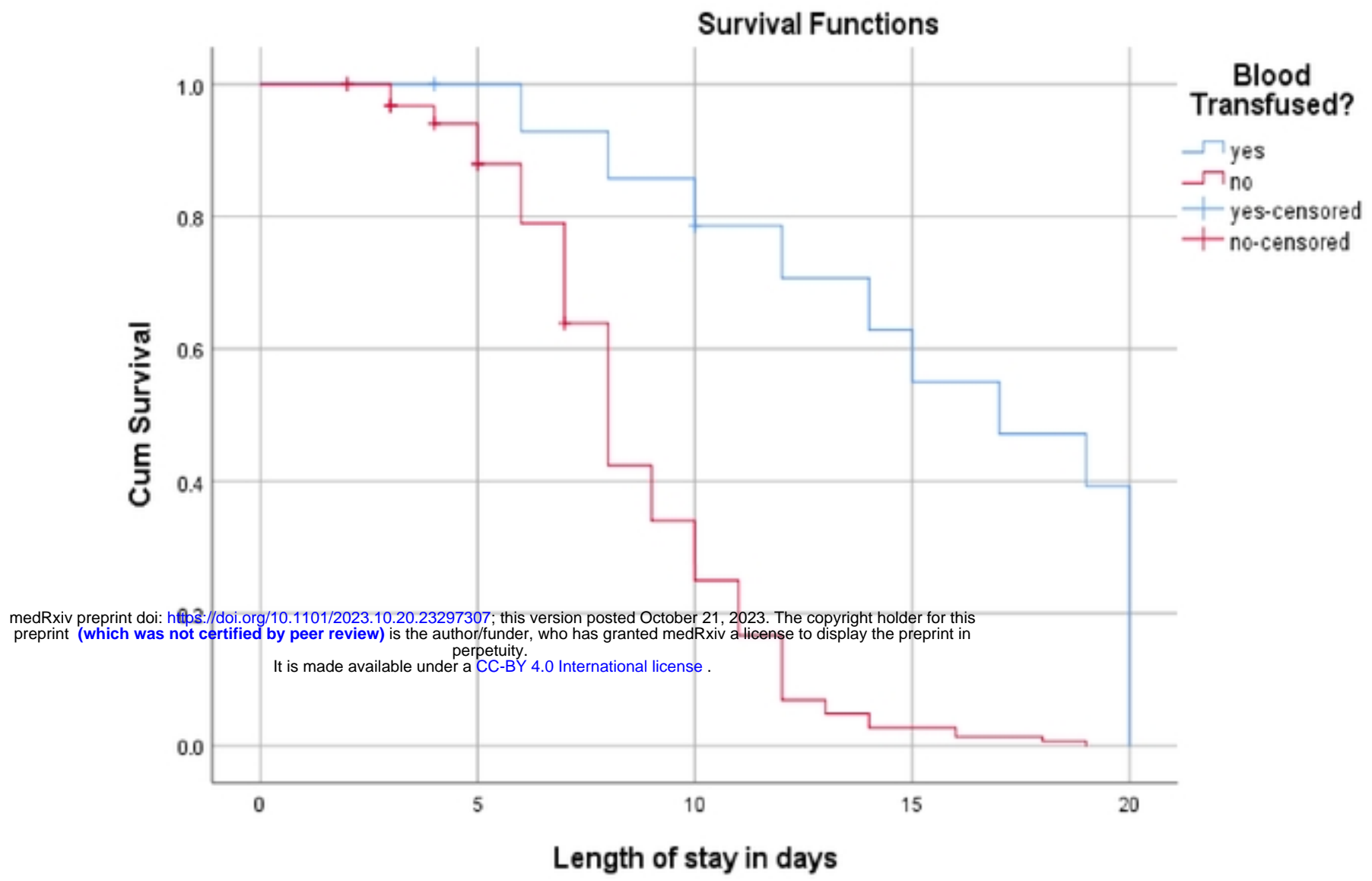
**Figure 1:** Final Kaplan Meier survival estimates of recovery time among 6-59 months old children treated for SAM in Suhul general hospital, 2023



**Figure 2:** Kaplan Meier Survival curves of recovery time among 6-59 months old children by their diagnosis at admission, Suhul general hospital, 2023

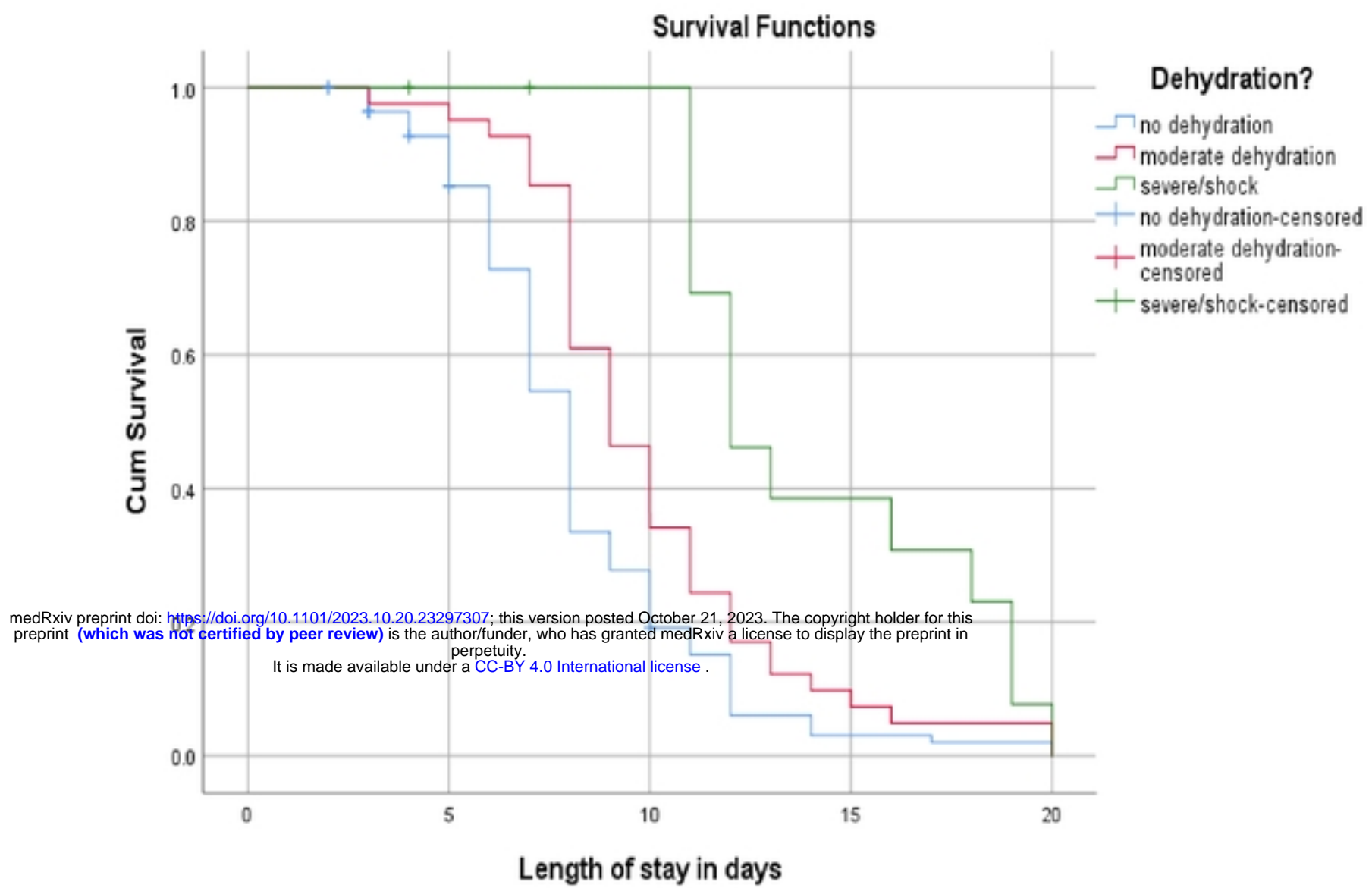


**Figure 3:** Kaplan Meier Survival estimates of recovery time among 6-59 months old children by their appetite test result at admission, Suhul general hospital, 2023



**Figure 4:** Kaplan Meier Survival curves of recovery time among 6-59 months old children based on blood transfusion after admission, Suhul general hospital, 2023





**Figure 5:** Kaplan Meier Survival curves of recovery time among 6-59 months old children by their level of at dehydration during admission, Suhul general hospital, 2023

**Table 1: Log Rank (Mantel-Cox) test of equality of survival distributions for sociodemographic characteristics, clinical conditions at admission, routine medications and feeding in children with severe undernutrition treated in suhul hospital, 2023**

Variable	Category	Percentage of outcome			Median survival (days)	95% CI		Log rank (Mantel-Cox)	
		Recovered no. (%)	Censored no. (%)	Total no. (%)		LB	UB	Chi-square	<i>p-value</i>
Age in months	6-24	108 (64.3)	7 (4.2)	115 (68.5)	8	7.6	8.4	3.804	0.051
	25-59	50 (29.7)	3 (1.8)	53 (31.5)	10	8.8	11.2		
Sex	Female	85 (50.6)	6 (3.6)	91 (54.2)	8	7.4	8.6	0.404	0.525
	Male	73 (43.4)	4 (2.4)	77 (45.8)	8	6.9	9.1		
Residence	Host-urban	29 (17.3)	1 (0.6)	30 (17.8)	9	8	10	0.728	0.695
	Host-rural	80 (47.6)	9 (5.4)	89 (52.9)	8	7.6	8.4		
	IDP	49 (29.1)	0 (0)	49 (29.1)	9	7.9	10.1		
Type of Admission	New	154 (91.6)	9 (5.4)	163 (97)	8	7.4	8.6	0.05	0.945
	Re-admission	4 (2.4)	1 (0.6)	5 (3)	8	7.4	8.6		
Breastfeeding Status	Yes	90 (53.5)	6 (3.6)	96 (57.1)	8	7.5	8.5	3.265	0.195
	No	25 (14.9)	3 (1.8)	28 (16.7)	8	7.4	8.6		
	Not indicated	43 (25.6)	1 (0.6)	44 (26.2)	10	8.1	11.9		
Appetite Test	Not indicated	121 (72)	6 (3.6)	127 (75.6)	9	8	10	58.082	< 0.001
	Failed	37 (22)	4 (2.4)	41 (24.4)	7	6.6	7.4		
Pneumonia	Yes	39 (23.2)	2 (1.2)	41 (24.4)	8	7.5	8.5	1.366	0.242
	No	119 (70.8)	8 (4.8)	127 (75.6)	8	7.2	8.8		
Persistent Diarrhea	Yes	39 (23.2)	0 (0)	39 (23.2)	10	8.5	11.5	2.077	0.150
	No	119 (70.8)	10 (6)	129 (76.8)	8	7.6	8.4		
Vomiting	Yes	5 (2.9)	1 (0.6)	6 (3.6)	9	7.9	10.1	1.488	0.223
	No	153 (91.1)	9 (5.4)	162 (96.4)	8	7.4	8.6		
Hyperthermia	Yes	23 (13.7)	2 (1.2)	25 (14.9)	8	6.5	9.5	5.997	0.014
	No	135 (80.3)	8 (4.8)	143 (85.1)	8	7.4	8.6		
	Overall	158 (94)	10 (6)	168 (100)	8	7.4	8.6		

**Table 1: Log Rank (Mantel-Cox) test of equality of survival distributions (Continued)**

Variable	Category	Percentage of outcome			Median survival (days)	95% CI		Log rank (Mantel-Cox)	
		Recovered no. (%)	Censored no. (%)	Total no. (%)		LB	UB	Chi-square	<i>p-value</i>
Malaria Test	Not indicated	108 (64.3)	4 (2.4)	112 (66.7)	8	7.5	8.5	17.529	< 0.001
	Negative	30 (17.8)	5 (3)	35 (20.8)	8	6.5	9.5		
	Positive	20 (11.9)	1 (0.6)	21 (12.5)	12	7.7	16.3		
Lethargic or Unconscious	Yes	6 (3.6)	3 (1.8)	9 (5.4)	17	8.6	25.4	11.946	0.001
	No	152 (90.4)	7 (4.2)	159 (94.6)	8	7.6	8.4		
Anemia	Yes	12 (7.1)	4 (2.4)	16 (9.5)	17	12.1	21.9	23.878	< 0.001
	No	146 (86.9)	6 (3.6)	152 (90.5)	8	7.6	8.4		
Skin Lesions	Yes	19 (11.3)	3 (1.8)	22 (13.1)	12	10.1	13.9	8.738	0.003
	No	139 (82.7)	7 (4.2)	146 (86.9)	8	7.6	8.4		
Dehydration Status	No Dehydration	104 (61.9)	8 (4.8)	112 (66.7)	8	7.5	8.5	21.825	< 0.001
	Moderate/Some	41 (24.4)	0 (0)	41 (24.4)	9	7.9	10.1		
	Severe/Shock	13 (7.7)	2 (1.2)	15 (8.9)	12	10.2	13.8		
Diagnosis at Admission	Marasmus	120 (71.4)	6 (3.6)	126 (75)	8	7.6	8.4	10.207	0.001
	Edematous SAM	38 (22.6)	4 (2.4)	42 (25)	10	8.7	11.3		
Blood Transfusion	Yes	13 (7.7)	2 (1.2)	15 (8.9)	17	10.1	23.9	30.141	< 0.001
	No	145 (86.3)	8 (4.8)	153 (91.1)	8	7.6	8.4		
IV Fluid Given	Yes	13 (7.7)	2 (1.2)	15 (8.9)	12	9.7	14.3	8.272	0.004
	No	145 (86.3)	8 (4.8)	153 (91.1)	8	7.6	8.4		
Antibiotics	Oral	15 (8.9)	1 (0.6)	16 (9.5)	6	5.3	6.7	52.786	< 0.001
	Intravenous	143 (85.1)	9 (5.4)	152 (90.5)	9	8.5	9.5		
NG Tube Feeding	Not indicated	94 (55.9)	3 (1.8)	97 (57.7)	8	7.5	8.5	22.890	< 0.001
	Yes	64 (38.1)	7 (4.2)	71 (42.3)	11	10.1	11.9		
Measles Vaccination	Not indicated	7 (4.2)	5 (3)	12 (7.1)	8	6.8	9.2	4.553	0.103
	No	62 (36.9)	5 (3)	67 (39.9)	9	8.1	9.9		
	Yes	89 (52.9)	0 (0)	89 (53)	8	7.2	8.8		
Deworming	Not indicated	89 (53)	10 (6)	99 (59)	8	7.6	8.4	6.604	0.010
	Yes	69 (41)	0 (0)	69 (41)	10	7.7	12.3		
	Overall	158 (94)	10 (6)	168 (100)	8	7.4	8.6		

**Table 1: Predictors of recovery time among children treated for SAM in Suhul general hospital from January 01, 2023 to July 31, 2023**

Variable	Category	Percentage of outcome			CHR (95% CI)	AHR (95% CI)	P-value
		Recovered	Censored	Total			
Age in months	6-24	108	7	115	1	1	0.591
	25-59	50	3	53	0.745 (0.531-1.045)	0.900 (0.612-1.322)	
Appetite test	Not indicated	121	6	127	1	1	<b>0.008</b>
	Failed	37	4	41	3.934 (2.619-5.911)	1.874 (1.180-2.978)	
Hyperthermia	Yes	23	2	25	1	1	0.948
	No	135	8	143	1.670 (1.040-2.681)	1.020 (0.565-1.839)	
Malaria Test	Not indicated	108	4	112	1	1	0.263
	Negative	30	5	35	0.790 (0.526-1.186)	1.045 (0.651-1.677)	
	Positive	20	1	21	0.358 (0.204-0.629)	0.430 (0.140-1.323)	
Lethargy/unconsciousness	Yes	6	3	9	1	1	0.512
	No	152	7	159	3.271 (1.419-7.542)	1.429 (0.429-4.149)	
Anemia	Yes	12	4	16	1	1	0.545
	No	146	6	152	3.775 (1.992-7.153)	0.546 (0.077-3.876)	
Skin lesions	Yes	19	3	22	1	1	0.370
	No	139	7	146	1.862 (1.146-3.024)	1.340 (0.707-2.540)	
Level of dehydration	No dehydration	104	8	112	1	1	<b>&lt; 0.001</b>
	Moderate/Some	41	0	41	0.650 (0.452-0.935)	0.538 (0.361-0.800)	
	Severe/shock	13	2	15	0.339 (0.188-0.611)	0.250 (0.128-0.489)	
Diagnosis at admission	Marasmus	120	6	126	1	1	<b>&lt; 0.001</b>
	Edematous SAM	38	4	42	0.594 (0.411-0.860)	0.452 (0.294-0.694)	
Blood transfusion	Yes	13	2	15	1	1	<b>&lt; 0.001</b>
	No	145	8	153	5.667 (2.652-12.110)	5.559 (2.419-12.773)	
IV fluid	Yes	13	2	15	1	1	0.204
	No	145	8	153	2.050 (1.154-3.643)	1.785 (0.731-4.363)	
Antibiotics	Oral	15	1	16	1	1	<b>0.002</b>
	Intravenous (IV)	143	9	152	0.162 (0.090-0.291)	0.365 (0.192-0.692)	
NG tube feeding	Not indicated	94	3	97	1	1	<b>0.001</b>
	Yes	64	7	71	0.503 (0.364-0.697)	0.531 (0.372-0.758)	
Deworming	Not indicated	89	10	99	1	1	0.805
	Yes	69	0	69	0.691 (0.500-0.954)	1.076 (0.601-1.925)	

Table 2