

1 Enrichment of the local synaptic transcriptome for genetic risk
2 associated with schizophrenia and autism spectrum disorder

3 Nicholas E Clifton^{1*}, Julie Qiaojin Lin^{2,3}, Christine E Holt⁴, Michael C O'Donovan⁵, Jonathan Mill¹

4

5 1. Department of Clinical & Biomedical Sciences, Faculty of Health and Life Sciences, University
6 of Exeter, Exeter, UK

7 2. UK Dementia Research Institute, Department of Clinical Neurosciences, University of
8 Cambridge, Cambridge, UK

9 3. UK Dementia Research Institute, King's College London, London, UK

10 4. Department of Physiology Development and Neuroscience, University of Cambridge,
11 Cambridge, UK

12 5. Division of Psychological Medicine and Clinical Neurosciences, Cardiff University, Cardiff,
13 United Kingdom

14

15 *Corresponding author

16 Nicholas E Clifton

17 RILD Building, Royal Devon and Exeter Hospital, Barrack Road, Exeter, EX2 5DW

18 n.clifton@exeter.ac.uk

19

20 Running title: Local synaptic transcriptome in schizophrenia and ASD

21 Keywords: Local translation; synapse; schizophrenia; autism spectrum disorder; genome-wide
22 association study; transcriptome

23

24 Abstract

25 Background

26 Genes encoding synaptic proteins or mRNA targets of the RNA binding protein, Fragile X mental
27 retardation protein (FMRP), have been linked to schizophrenia and autism spectrum disorder (ASD)
28 through the enrichment of genetic variants conferring risk to these disorders. FMRP binds many
29 transcripts with synaptic functions and is thought to be a key regulator of their local translation, a
30 process which enables rapid and compartmentalized protein synthesis required for development and
31 plasticity.

32 Methods

33 Here, we used summary statistics from large-scale genome-wide association studies to test the
34 hypothesis that the subset of synaptic genes encoding localized transcripts is more strongly associated
35 with schizophrenia and ASD than non-localized transcripts. We also postulated that this subset of
36 synaptic genes is responsible for associations attributed to FMRP targets.

37 Results

38 We show that schizophrenia associations were enriched in genes encoding localized synaptic
39 transcripts compared to the remaining synaptic genes, or to the remaining localized transcripts; this
40 also applied to ASD associations, although only for transcripts observed after stimulation by fear
41 conditioning. The genetic associations with either disorder captured by these gene sets were
42 independent of those derived from FMRP targets. Furthermore, we found that schizophrenia
43 association was related to FMRP interactions with mRNAs in somata, but not in dendrites, whilst ASD
44 association was related to FMRP binding in either compartment.

45 Conclusions

46 Our data suggest that synaptic transcripts capable of rapid and compartmentalized local translation
47 are particularly relevant to the pathogenesis of schizophrenia and ASD, but do not characterize the
48 associations attributed to current sets of FMRP targets.

49 Introduction

50 Common neuropsychiatric and neurodevelopmental disorders are leading causes of disability among
51 young adults and many cases remain poorly treated by current medications (1). Advances in
52 psychiatric genetics (2–6) have highlighted regions of the genome, and specific genes, associated with
53 risk for neuropsychiatric disorders, yet our understanding of the cellular mechanisms through which
54 they confer risk has been insufficient to effectively target new therapies. To reach a point where we
55 can improve treatments, there is a need to refine the biological context in which genetic risk converges
56 on common pathways, taking into account the dynamic and compartmentalised nature of neuronal
57 processes.

58 Genomic and functional evidence implicates the molecular machinery responsible for synaptic
59 function and plasticity in the pathophysiology of schizophrenia and autism spectrum disorders (ASD)
60 (7–11). Synaptic plasticity is a time-sensitive process, occurring in response to localized extrinsic
61 stimuli. An important requirement of synaptic plasticity is the ability of cells to regulate the maturation
62 and strength of individual synapses quickly and independently of other synapses from the same cell,
63 a process that is facilitated by local synthesis of new proteins in specific neuronal compartments
64 undergoing plasticity (12). The RNA binding protein (RBP), Fragile-X mental retardation protein
65 (FMRP), is considered to be important for this process, as it plays a key role in regulating both the
66 transport and activity-dependent local translation of many transcripts required for synaptic
67 development and plasticity (13, 14). Loss of FMRP function is a monogenic cause of developmental
68 disorders, including ASD, and the transcripts bound by FMRP are enriched for genetic variation
69 associated with both schizophrenia (15, 16) and ASD (14, 17–20). Furthermore, cytoplasmic FMRP-
70 interacting protein 1 (CYFIP1), which forms a complex with FMRP and the translation initiation
71 machinery to repress translation, has also been linked to both schizophrenia and ASD through copy
72 number variant (CNV) deletions at 15q11.2 (21, 22). Collectively, these findings highlight the
73 importance of studying local synaptic gene translation, and specifically, of investigating the relative
74 contributions to risk of schizophrenia and ASD of genes translated locally, compared to those
75 translated prior to transport to the synapse.

76 Whilst genetic variants associated with schizophrenia and ASD show a degree of pleiotropy (3, 23–25),
77 the age of onset and clinical presentation of each disorder differs. One way these differences may
78 originate is through variation in the effects of risk alleles on transcripts that influence synaptic
79 plasticity during brain development, learning and memory, many of which may be locally translated.
80 To evaluate the contribution of locally translated transcripts in driving the association of genes
81 encoding synaptic proteins with schizophrenia and ASD, we used published, *in vivo* subcellular

82 transcriptome and translome datasets to classify synaptic genes by subcellular localization, and test
83 their relationship with genetic variation. Second, with the aim of better characterising the
84 schizophrenia association attributed to FMRP-regulated transcripts specifically, we examined the
85 overlap between association signals derived from the local synaptic translome and that from FMRP
86 targets.

87 Methods and Materials

88 Gene sets

89 *Synaptic gene ontology*

90 Synaptic gene definitions were taken from manually curated functional annotations provided by the
91 SynGO consortium (26). 1089 genes annotated to “synapse” were filtered to exclude those with a non-
92 traceable author statement, leaving 1016 genes used for analysis and referred to herein as
93 SynGO:*synapse*. These were subdivided into postsynaptic and presynaptic genes using SynGO
94 annotations “postsynapse” and “presynapse”, consisting of 624 genes and 536 genes, respectively,
95 with 236 genes being annotated to both compartments. A comparison set of synaptic gene
96 annotations was obtained from the Gene Ontology (GO) database (27) (GO:0045202). After removing
97 gene annotations with evidence codes NAS (non-traceable author statement), IEA (inferred from
98 electronic annotation), or RCA (inferred from reviewed computational analysis), 611 genes remained
99 for analysis, referred to as GO:*synapse*. Between SynGO:*synapse* and GO:*synapse* gene sets, 384 genes
100 overlap.

101 *Localized transcripts*

102 Transcripts localized to synaptoneuroosomes (fractionated synaptic terminals containing pre- and
103 postsynaptic machinery) from mouse cortex at postnatal day 21 were obtained from Ouwenga et al
104 (28). The local transcriptome was defined as transcripts enriched in synaptoneuroosomes compared to
105 the whole cell homogenate, with a false discovery rate (FDR) < 0.01. Mouse Ensembl IDs for 3408
106 genes encoding these transcripts were converted to human Ensembl IDs using Bioconductor biomaRt
107 (29), for downstream analysis. Following removal of genes with zero or multiple human homologs,
108 3199 genes remained.

109 We obtained a set of ribosome-bound transcripts enriched in dendrites from adult (6-10 weeks)
110 mouse hippocampal CA1 pyramidal neurons compared to ribosome-bound transcripts in cell bodies
111 of the same set of neurons (30). The translome was captured using compartment-specific translating

112 ribosome affinity purification (TRAP) in conditionally tagged mice with RiboTag expression driven by
113 *Camk2a*-Cre, directing the ribosome tag to CA1 pyramidal neurons. 1211 mouse gene symbols were
114 converted to 1147 human Ensembl IDs, as above.

115 Thirdly, ribosome-bound transcripts from dendrites of adult (2-3 months) mouse hippocampal CA1
116 pyramidal neurons following exposure to a contextual fear conditioning trial were obtained from
117 Ainsley et al (31). The dendritic transcriptome was extracted using TRAP with epitope-tagged ribosomal
118 proteins driven by a *Camk2a* promoter through a tetracycline-controlled transactivator system.
119 Mouse gene symbols, representing 1890 unique mRNAs enriched in dendritic ribosomes following fear
120 conditioning compared to samples from home caged mice, were converted to 1577 human Ensembl
121 gene IDs, after filtering, for analysis. For comparison, we obtained a second set of 2903 mRNAs bound
122 to ribosomes in the soma after fear conditioning, from the same study. These were converted to 2442
123 human Ensembl gene IDs.

124 By intersecting synaptic functional annotations (*SynGO:synapse* or *GO:synapse*) with
125 synaptoneurosome or dendrite transcriptomes or transcriptomes (Figure 1A; Supplementary Figure 1A),
126 we created, for each intersection, three gene sets for comparison in genetic association analyses:
127 synaptic genes translated locally; synaptic genes not translated locally; and non-synaptic genes
128 translated locally.

129 *FMRP targets*

130 Pyramidal neuron FMRP-bound mRNA targets were taken from a study of RNA:protein cross-linking
131 immunoprecipitation (CLIP) in mouse hippocampal CA1, in which FMRP was conditionally tagged using
132 Cre-lox driven by a *Camk2a* promoter (32). Mouse samples were taken at 28-32 postnatal days. FMRP
133 targets with a CLIP score > 1 were included (*stringent* and *high-binding* targets (32)). These 1265
134 FMRP-bound mRNAs were converted from mouse RefSeq mRNA IDs to human Ensembl gene IDs. 1242
135 FMRP targets remained after removal of genes with zero or multiple human homologs.

136 We acquired subcellular FMRP binding statistics, taken from pyramidal neuron dendrites and cell
137 bodies separately, from published data by Hale and colleagues (30). Hippocampal slices from *Camk2a*-
138 Cre-driven FMRP conditionally tagged adult (6-10 weeks) mice were microdissected into neuropil and
139 cell body regions of CA1 before CLIP to purify FMRP-bound mRNA from these specific cellular
140 compartments. Mouse RefSeq mRNA IDs for 5614 genes with CLIP scores were converted to 5303
141 human Ensembl IDs. CLIP scores were taken forward for gene property analysis. For gene set analysis,
142 genes were ranked by their CLIP scores and the top 5300 were split into 25 bins of 212 genes.

143 GWAS summary statistics

144 Common SNP associations with schizophrenia were determined from a recent genome-wide
145 association study (GWAS) meta-analysis of 74,776 cases and 101,023 control individuals of European,
146 East Asian, African American and Latino ancestry (2, 33) (primary meta-analysis). ASD GWAS summary
147 statistics were taken from a meta-analysis of 18,381 individuals with ASD and 27,969 controls of
148 European ancestry (4). SNPs with a minor allele frequency of less than 1% were excluded.

149 Genetic association testing

150 Gene set and gene property association analyses were performed using multiple regression models in
151 MAGMA v1.10 (34). GWAS SNPs were summarised to gene-wide *P*-values using the *SNP-wise Mean*
152 model. A window of 35kb upstream and 10kb downstream was included to account for proximal
153 regulatory regions. The Ensembl GRCh37 genome build was used for mapping and the European Phase
154 3 1000 Genomes Project reference data (35) was used to control for linkage disequilibrium. One-tailed
155 competitive gene set analyses were performed to determine the strength of genetic associations with
156 the phenotype in a set of genes compared to all remaining protein-coding genes, adjusting for
157 potentially confounding effects of gene size, SNP density, and variations in sample size between SNPs.
158 To compare the enrichment for associations between two non-overlapping or partially overlapping
159 gene sets, a z-test of beta values was used. To compare the association between two sets of genes
160 where one is a subset of the other, the smaller set was re-tested, and the larger set was added to the
161 model as a conditional variable (34). MAGMA gene property analyses were used to test if continuous
162 gene-level variables (e.g. FMRP CLIP scores) are related to stronger enrichment for genetic
163 associations. Gene property analyses were two-tailed. Multiple independent tests were controlled for
164 by adjusting *P*-values using the Bonferroni method.

165 Results

166 Genetic association with schizophrenia and ASD of synaptic genes split by mRNA localization

167 In competitive tests against all protein-coding genes, schizophrenia associations were enriched both
168 in synaptic genes encoding mRNAs localized to cortical synaptoneuroosomes (28) ($\beta = 0.37$, Bonferroni
169 adjusted *P* (*P*.*adj*) = 5.4×10^{-9}) and in synaptic genes encoding non-localized mRNAs ($\beta = 0.055$, *P*.*adj* =
170 0.030). However, from a comparison of effect sizes, we observed that localized synaptic mRNAs
171 exhibited much stronger enrichment than non-localized synaptic mRNAs ($Z = 3.2$, $P = 6.2 \times 10^{-4}$) (Figure
172 1B). This relationship did not generalise to all transcripts localized to synaptoneuroosomes, since
173 localized transcripts without synaptic functions were depleted for associations with schizophrenia in

174 comparison to those with synaptic functions ($Z = -4.7$, $P = 1.4 \times 10^{-6}$). Presynaptic and postsynaptic
175 subsets of the local transcriptome exhibited no significant differences in association with
176 schizophrenia (Supplementary Figure 2).

177 The enrichment for schizophrenia associations among local synaptic transcripts was reflected in
178 repeated analyses using ribosome-bound mRNAs in dendrites from hippocampal pyramidal neurons
179 (30) (Figure 1B). Genes encoding localized synaptic transcripts were more strongly associated than the
180 remaining synaptic genes ($Z = 2.2$, $P = 0.013$) supporting the view that schizophrenia-related variants
181 from GWAS preferentially impact the local synaptic transcriptome. Through repeated analyses using
182 alternative synaptic gene annotations obtained from the GO database (27), we observed the same
183 enrichment for schizophrenia associations in local synaptic transcripts (Supplementary Figure 3),
184 indicating that this result is robust to variation in the definitions used for synaptic functioning.

185 In contrast, genetic associations with ASD were not significantly enriched in synaptic mRNAs localized
186 to cortical synaptoneuroosomes (28) ($\beta = 0.10$, $P_{adj} = 0.061$) or pyramidal neuron dendritic ribosomes
187 (30) ($\beta = 0.12$, $P_{adj} = 0.15$), nor was it enriched in the remaining non-localized sets of synaptic genes
188 which exhibited comparable effect sizes (Figure 1C).

189 The sets of localized mRNAs identified in studies by Ouwenga et al and Hale et al were captured in
190 unstimulated tissues (28, 30). Since local protein synthesis is a key mechanism in activity-dependent
191 synaptic processes (12, 36, 37) and the association of mRNAs with ribosomes is altered following
192 stimulation (31), we performed an additional analysis to test whether transcripts bound to localized
193 ribosomes following memory stimulation are enriched for genetic associations with schizophrenia and
194 ASD. Synaptic genes encoding ribosome-bound mRNAs in hippocampal pyramidal neuron dendrites
195 following a novel experience, consisting of a contextual fear conditioning trial (31), were enriched for
196 associations with both schizophrenia and ASD (Schizophrenia: $\beta = 0.36$, $P_{adj} = 3.0 \times 10^{-4}$; ASD: $\beta = 0.27$,
197 $P_{adj} = 0.0011$). These associations were stronger than the remaining synaptic genes (schizophrenia:
198 $Z = 1.7$, $P = 0.048$; ASD: $Z = 2.8$, $P = 0.0028$) (Figure 1B, C). The same gene set was enriched for
199 schizophrenia and ASD associations in comparison to the remaining local transcriptome (schizophrenia:
200 $Z = 2.4$, $P = 0.0081$; ASD: $Z = 2.7$, $P = 0.0039$), showing that these relationships did not extend to all
201 mRNAs binding to dendritic ribosomes after stimulation.

202 To determine if the selective enrichment of ASD associations in the activity-induced synaptic
203 transcriptome is specific to the dendritic compartment, we performed further association analyses on
204 mRNAs bound to ribosomes in the soma of the same neurons after contextual fear conditioning.
205 Synaptic genes encoding transcripts in this somatic transcriptome were not enriched for ASD

206 associations compared to all protein-coding genes ($\beta = 0.10$, $P_{adj} = 0.062$) or to the remaining synaptic
207 genes ($Z = 0.82$, $P = 0.21$).

208 Independence of genetic associations in the local synaptic translome and FMRP targets

209 We hypothesised that the genetic associations with schizophrenia and ASD attributed to the local
210 synaptic translome are captured by the associations attributed to mRNA targets of FMRP. FMRP
211 targets derived from hippocampal pyramidal neurons (32) were enriched for genetic associations with
212 schizophrenia ($\beta = 0.29$, $P = 2.0 \times 10^{-15}$) and ASD ($\beta = 0.091$, $P = 6.5 \times 10^{-4}$). On average, 27.7% of FMRP
213 targets overlapped with localized transcripts and 18.0% of FMRP targets overlapped with
214 SynGO:*synapse* annotations (Supplementary Figure 1B). Conditioning on FMRP targets resulted in only
215 minor reductions in the association of localized synaptic transcripts with schizophrenia or ASD (Figure
216 2A). Furthermore, localized subsets of FMRP targets were no more strongly enriched for schizophrenia
217 or ASD associations than FMRP targets as a whole (Figure 2B). Taken together, these results suggest
218 that the local synaptic translome captures genetic association with these disorders that is
219 independent of the association conferred through FMRP targets.

220 To investigate this further, we explored the relationship between schizophrenia and ASD genetic
221 association and FMRP-mRNA binding CLIP scores obtained in hippocampal pyramidal neuron
222 dendrites and cell bodies separately (30). Schizophrenia association was related to FMRP CLIP scores
223 derived from somata ($\beta = 0.045$, $P = 5.7 \times 10^{-4}$) but not with those from dendrites ($\beta = -0.023$, $P = 0.87$).
224 On the other hand, ASD association was significantly related to FMRP CLIP scores from both soma (β
225 $= 0.023$, $P = 0.012$) and dendrites ($\beta = 0.036$, $P = 0.0087$). Accordingly, bins of genes with higher FMRP
226 CLIP scores in cell bodies were enriched for associations with both schizophrenia and ASD, whilst bins
227 with high dendritic FMRP CLIP scores were only enriched for ASD associations (Figure 2C). Hence,
228 mRNA-FMRP binding in the somata, but not in dendrites, was related to schizophrenia genetic risk.
229 This provides additional evidence that schizophrenia genetic risk conferred through FMRP targets is
230 separate from that conferred through the local synaptic translome.

231 Discussion

232 Genes annotated to synaptic functions are strongly implicated in risk conferred to schizophrenia and
233 ASD (2, 3, 7, 8, 10). We tested whether the common variant associations attributed to the synapse in
234 these disorders are over-represented within genes encoding mRNAs localized to dendrites, available
235 for rapid synthesis in response to synaptic activity. Schizophrenia associations were enriched in
236 localized synaptic transcripts identified from cortical synaptoneuroosomes or hippocampal dendritic

237 ribosomes, including those captured following memory stimulation. ASD associations were enriched
238 in localized synaptic transcripts only following memory stimulation. In each case, the genetic
239 associations captured by localized synaptic transcripts did not explain the enrichment of associations
240 in FMRP targets.

241 Our results support the hypothesis that synaptic pathways responsible for time- and spatially-sensitive
242 molecular processes are particularly impacted by risk variants associated with schizophrenia. These
243 processes may include those required for synaptic plasticity in adulthood, such as long-term
244 potentiation, and those responsible for establishing early synaptic connectivity and maturation during
245 development. Both mature and developmental plasticity pathways have been previously implicated
246 in risk for schizophrenia (7). The present findings now highlight a subset of these pathways which may
247 be particularly adapted to rapid, compartment-specific activity-dependent functions.

248 The pattern of association with ASD was somewhat different to that for schizophrenia, with
249 enrichment for associations only being observed in genes encoding the local synaptic transcriptome of
250 hippocampal pyramidal neurons from mice exposed to a contextual fear conditioning trial (31).
251 Localized synaptic transcripts obtained from the same cellular compartment in mice without
252 stimulation (30), or from cortical synaptoneuroosomes (28), were not enriched for ASD associations.
253 Our results suggest that ASD risk is enriched in a subset of synaptic genes encoding mRNAs which
254 rapidly bind to dendritic ribosomes during neuronal stimulation in the hippocampus, such as that
255 accompanying memory acquisition. Since this relationship between ASD association and stimulation-
256 induced ribosome binding was not reflected in the cell body, we conclude that specifically dendrite-
257 localized mRNA translation after stimulation was responsible for the enrichment of genetic
258 associations among synaptic genes. More broadly, our results are consistent with previous reports
259 linking activity-dependent pathways to ASD (38, 39). It is important to note that the ASD GWAS is
260 substantially less powered than the schizophrenia GWAS which may influence comparisons between
261 the disorders. Furthermore, comparisons of transcriptomic datasets adopted by our study may be
262 affected by undefined variables from methodological differences between the original studies.

263 Our investigation focused on the local transcriptome in excitatory glutamatergic neurons and may not
264 reflect patterns of genetic risk in other neuronal subtypes (or non-neuronal cells). Previous evidence
265 shows that inhibitory neurons, including cortical interneurons and medium spiny neurons, and their
266 synaptic complexes may play an important role in conferring risk to schizophrenia (2, 40, 41). However,
267 recent work comparing local transcriptomes between multiple cell types reported few differences in
268 transcripts observed in dendritic fractions of glutamatergic and GABAergic neurons (42) or in

269 synaptosomes from glutamatergic and dopaminergic neurons (43). Therefore, impacts of psychiatric
270 risk variants on localized synaptic transcripts may be common to multiple types of neurons.

271 Local translation plays an important role in both developing and mature neurons (12), but our study
272 focused only on transcriptomic data from mice of at least 21 postnatal days. Localization of mRNAs in
273 neurites differs by developmental stage (44, 45) in response to altered spatial and temporal
274 dependencies, and this divergence is likely amplified by stimulation. Local translatoemes in developing
275 neurons may capture additional genetic risk for neuropsychiatric and neurodevelopmental disorders,
276 conferring effects as the brain matures. Establishing precisely at which developmental stages, and
277 under what conditions, localized transcripts confer genetic risk to these disorders could help refine
278 targets for treatment.

279 Despite the proposed role of FMRP as a key regulator of local translation of synaptic mRNAs (46) and
280 the association of its targets with schizophrenia and ASD (15, 19, 20), we observed that the genetic
281 risk attributed to the local synaptic translatoeme was independent of FMRP targets in both disorders.
282 Furthermore, the localization of FMRP targets to dendrites was not related to increased genetic
283 association with either disorder. In the case of schizophrenia, only FMRP binding in the cell body was
284 related to genetic risk. Soma-derived FMRP targets are enriched for synaptic functional annotations
285 (30), but those contributing to psychiatric risk, particularly for schizophrenia, may encode proteins
286 translated prior to transport, or bound for reasons unrelated to translational regulation. In two
287 previous studies of altered translation or ribosome occupancy following loss of FMRP in retinal
288 ganglionic cells (47) or Cath.a-differentiated (CAD) neurons (48), affected transcripts were not
289 enriched for synaptic functions. FMRP is reported to have functions beyond translational repression,
290 including RNA transport (48), regulation of RNA stability (49), and RNA splicing (50, 51), for which it
291 may target distinct pools of transcripts (48). It has been suggested that FMRP preferentially targets
292 and stabilizes long transcripts encoding complex proteins required for synaptic development and
293 plasticity (52–54), thereby tagging a set of genes characterized by an intersection of function and
294 regulatory requirements. The FMRP binding data used in the present study were obtained from
295 mature hippocampal tissue at rest. Under stimulation, or at alternative developmental stages, the
296 transcripts targeted, or where in the cell they are bound, may differ, and therefore the relationships
297 between FMRP binding and genetic associations with schizophrenia and ASD may also differ.

298 Aside from FMRP, additional, functionally related RBPs have genetic links to schizophrenia and ASD.
299 Transcripts bound by RBPs of the cytoplasmic polyadenylation element binding (CPEB) family are also
300 enriched for common genetic associations with schizophrenia and ASD (55, 56). Furthermore, rare
301 variants in RBP genes, *CSDE1* and *RBFOX1*, have been linked to ASD (57–59), whilst common variation

302 in *RBFOX1* is associated with schizophrenia and other psychiatric conditions (2, 59). Critically, the
303 binding targets of CPEBs, CSDE1 and RBFOX1 are enriched for FMRP targets and share similar
304 functional representation, including the regulation of neuronal development and synaptic plasticity
305 (55, 57, 60, 61).

306 To conclude, we provide evidence that the degree of synaptic gene enrichments for common genetic
307 associations with schizophrenia and ASD depends on the subcellular localizations in neurons of the
308 cognate encoded mRNAs, and suggest that those that locally translated in dendritic compartments
309 are particularly relevant to the pathogenesis of these disorders. However, despite FMRP playing a role
310 in local translation, and the fact that genes encoding mRNA targets of FMRP are also enriched for
311 genetic associations to schizophrenia and ASD, those associations are independent of localized
312 synaptic mRNAs. In schizophrenia, the subset of mRNAs bound by FMRP in the cell body rather than
313 proximal to synapses are associated with genetic risk. These results imply that the pathophysiological
314 effects on schizophrenia and ASD indexed by FMRP binding function are unlikely to be related to local
315 translation of those transcripts. Further work examining RNA regulation across neurodevelopment
316 and states of activation could help to elucidate precisely which mechanisms are key to the genetic risk
317 conferred to a range of different neurodevelopmental and neuropsychiatric disorders.

318 Acknowledgements

319 This work was funded by a UKRI Career Development Award to NEC (MR/W017156/1). The study was
320 supported by the National Institute for Health and Care Research Exeter Biomedical Research Centre.
321 The views expressed are those of the author(s) and not necessarily those of the NIHR or the
322 Department of Health and Social Care. We thank the Psychiatric Genomics Consortium for making
323 available genomics datasets used in this study.

324 Disclosures

325 The authors declare that there is no conflict of interest.

326

327 References

328

- 329 1. GBD 2019 Mental Disorders Collaborators (2022): Global, regional, and national burden of 12
330 mental disorders in 204 countries and territories, 1990-2019: a systematic analysis for the
331 global burden of disease study 2019. *Lancet Psychiatry*. 9(2): 137–50.
- 332 2. Trubetskoy V, Pardiñas AF, Qi T, Panagiotaropoulou G, Awasthi S, Bigdeli TB, *et al.* (2022):
333 Mapping genomic loci implicates genes and synaptic biology in schizophrenia. *Nature*.
334 604(7906): 502–8.
- 335 3. Singh T, Poterba T, Curtis D, Akil H, Al Eissa M, Barchas JD, *et al.* (2022): Rare coding
336 variants in ten genes confer substantial risk for schizophrenia. *Nature*. 604(7906): 509–16.
- 337 4. Grove J, Ripke S, Als TD, Mattheisen M, Walters RK, Won H, *et al.* (2019): Identification of
338 common genetic risk variants for autism spectrum disorder. *Nat. Genet.* 51(3): 431–44.
- 339 5. Wang T, Kim CN, Bakken TE, Gillentine MA, Henning B, Mao Y, *et al.* (2022): Integrated
340 gene analyses of de novo variants from 46,612 trios with autism and developmental disorders.
341 *Proc. Natl. Acad. Sci. USA*. 119(46): e2203491119.
- 342 6. Satterstrom FK, Kosmicki JA, Wang J, Breen MS, De Rubeis S, An J-Y, *et al.* (2020): Large-
343 scale exome sequencing study implicates both developmental and functional changes in the
344 neurobiology of autism. *Cell*. 180(3): 568–584.e23.
- 345 7. Hall J, Bray NJ (2022): Schizophrenia genomics: convergence on synaptic development, adult
346 synaptic plasticity, or both? *Biol. Psychiatry*. 91(8): 709–17.
- 347 8. Hansel C (2019): Deregulation of synaptic plasticity in autism. *Neurosci. Lett.* 688: 58–61.
- 348 9. Klein ME, Monday H, Jordan BA (2016): Proteostasis and rna binding proteins in synaptic
349 plasticity and in the pathogenesis of neuropsychiatric disorders. *Neural Plast.* 2016: 3857934.
- 350 10. Bourgeron T (2015): From the genetic architecture to synaptic plasticity in autism spectrum
351 disorder. *Nat. Rev. Neurosci.* 16(9): 551–63.
- 352 11. Forsyth JK, Lewis DA (2017): Mapping the consequences of impaired synaptic plasticity in
353 schizophrenia through development: an integrative model for diverse clinical features. *Trends*
354 *Cogn. Sci. (Regul. Ed.)*. 21(10): 760–78.

- 355 12. Holt CE, Martin KC, Schuman EM (2019): Local translation in neurons: visualization and
356 function. *Nat. Struct. Mol. Biol.* 26(7): 557–66.
- 357 13. Stefani G, Fraser CE, Darnell JC, Darnell RB (2004): Fragile x mental retardation protein is
358 associated with translating polyribosomes in neuronal cells. *J. Neurosci.* 24(33): 7272–76.
- 359 14. Darnell JC, Van Driesche SJ, Zhang C, Hung KYS, Mele A, Fraser CE, *et al.* (2011): FMRP
360 stalls ribosomal translocation on mRNAs linked to synaptic function and autism. *Cell.* 146(2):
361 247–61.
- 362 15. Clifton NE, Rees E, Holmans PA, Pardiñas AF, Harwood JC, Di Florio A, *et al.* (2021):
363 Genetic association of fmrp targets with psychiatric disorders. *Mol. Psychiatry.* 26(7): 2977–90.
- 364 16. Pardiñas AF, Holmans P, Pocklington AJ, Escott-Price V, Ripke S, Carrera N, *et al.* (2018):
365 Common schizophrenia alleles are enriched in mutation-intolerant genes and in regions under
366 strong background selection. *Nat. Genet.* 50(3): 381–89.
- 367 17. Iossifov I, O’Roak BJ, Sanders SJ, Ronemus M, Krumm N, Levy D, *et al.* (2014): The
368 contribution of de novo coding mutations to autism spectrum disorder. *Nature.* 515(7526): 216–
369 21.
- 370 18. De Rubeis S, He X, Goldberg AP, Poultney CS, Samocha K, Cicek AE, *et al.* (2014): Synaptic,
371 transcriptional and chromatin genes disrupted in autism. *Nature.* 515(7526): 209–15.
- 372 19. Jansen A, Dieleman GC, Smit AB, Verhage M, Verhulst FC, Polderman TJC, *et al.* (2017):
373 Gene-set analysis shows association between fmrp targets and autism spectrum disorder. *Eur. J.*
374 *Hum. Genet.* 25(7): 863–68.
- 375 20. Zhou X, Feliciano P, Shu C, Wang T, Astrovskaya I, Hall JB, *et al.* (2022): Integrating de novo
376 and inherited variants in 42,607 autism cases identifies mutations in new moderate-risk genes.
377 *Nat. Genet.* 54(9): 1305–19.
- 378 21. Butler MG (2017): Clinical and genetic aspects of the 15q11.2 bp1-bp2 microdeletion disorder.
379 *J. Intellect. Disabil. Res.* 61(6): 568–79.
- 380 22. Clifton NE, Thomas KL, Wilkinson LS, Hall J, Trent S (2020): FMRP and cyfip1 at the
381 synapse and their role in psychiatric vulnerability. *Complex Psychiatry.* 6(1–2): 5–19.
- 382 23. Rees E, Creeth HDJ, Hwu H-G, Chen WJ, Tsuang M, Glatt SJ, *et al.* (2021): Schizophrenia,
383 autism spectrum disorders and developmental disorders share specific disruptive coding
384 mutations. *Nat. Commun.* 12(1): 5353.

- 385 24. Autism Spectrum Disorders Working Group of The Psychiatric Genomics Consortium (2017):
386 Meta-analysis of gwas of over 16,000 individuals with autism spectrum disorder highlights a
387 novel locus at 10q24.32 and a significant overlap with schizophrenia. *Mol. Autism*. 8: 21.
- 388 25. McCarthy SE, Gillis J, Kramer M, Lihm J, Yoon S, Berstein Y, *et al.* (2014): De novo
389 mutations in schizophrenia implicate chromatin remodeling and support a genetic overlap with
390 autism and intellectual disability. *Mol. Psychiatry*. 19(6): 652–58.
- 391 26. Koopmans F, van Nierop P, Andres-Alonso M, Byrnes A, Cijssouw T, Coba MP, *et al.* (2019):
392 SynGO: an evidence-based, expert-curated knowledge base for the synapse. *Neuron*. 103(2):
393 217–234.e4.
- 394 27. The Gene Ontology Consortium (2017): Expansion of the gene ontology knowledgebase and
395 resources. *Nucleic Acids Res*. 45(D1): D331–38.
- 396 28. Ouwenga R, Lake AM, O’Brien D, Mogha A, Dani A, Dougherty JD (2017): Transcriptomic
397 analysis of ribosome-bound mrna in cortical neurites in vivo. *J. Neurosci*. 37(36): 8688–8705.
- 398 29. Smedley D, Haider S, Durinck S, Pandini L, Provero P, Allen J, *et al.* (2015): The biomart
399 community portal: an innovative alternative to large, centralized data repositories. *Nucleic*
400 *Acids Res*. 43(W1): W589-98.
- 401 30. Hale CR, Sawicka K, Mora K, Fak JJ, Kang JJ, Cutrim P, *et al.* (2021): FMRP regulates mRNAs
402 encoding distinct functions in the cell body and dendrites of ca1 pyramidal neurons. *Elife*. 10:
- 403 31. Ainsley JA, Drane L, Jacobs J, Kittelberger KA, Reijmers LG (2014): Functionally diverse
404 dendritic mRNAs rapidly associate with ribosomes following a novel experience. *Nat. Commun*.
405 5: 4510.
- 406 32. Sawicka K, Hale CR, Park CY, Fak JJ, Gresack JE, Van Driesche SJ, *et al.* (2019): FMRP has a
407 cell-type-specific role in ca1 pyramidal neurons to regulate autism-related transcripts and
408 circadian memory. *Elife*. 8:
- 409 33. Bigdeli TB, Genovese G, Georgakopoulos P, Meyers JL, Peterson RE, Iyegbe CO, *et al.*
410 (2020): Contributions of common genetic variants to risk of schizophrenia among individuals
411 of african and latino ancestry. *Mol. Psychiatry*. 25(10): 2455–67.
- 412 34. de Leeuw CA, Mooij JM, Heskes T, Posthuma D (2015): MAGMA: generalized gene-set
413 analysis of gwas data. *PLoS Comput. Biol*. 11(4): e1004219.
- 414 35. 1000 Genomes Project Consortium, Auton A, Brooks LD, Durbin RM, Garrison EP, Kang HM,

- 415 *et al.* (2015): A global reference for human genetic variation. *Nature*. 526(7571): 68–74.
- 416 36. Monday HR, Kharod SC, Yoon YJ, Singer RH, Castillo PE (2022): Presynaptic fmrp and local
417 protein synthesis support structural and functional plasticity of glutamatergic axon terminals.
418 *Neuron*. 110(16): 2588–2606.e6.
- 419 37. Bradshaw KD, Emptage NJ, Bliss TVP (2003): A role for dendritic protein synthesis in
420 hippocampal late ltp. *Eur. J. Neurosci*. 18(11): 3150–52.
- 421 38. Boulting GL, Durreesi E, Ataman B, Sherman MA, Mei K, Harmin DA, *et al.* (2021): Activity-
422 dependent regulome of human gabaergic neurons reveals new patterns of gene regulation and
423 neurological disease heritability. *Nat. Neurosci*. 24(3): 437–48.
- 424 39. Ebert DH, Greenberg ME (2013): Activity-dependent neuronal signalling and autism spectrum
425 disorder. *Nature*. 493(7432): 327–37.
- 426 40. Pocklington AJ, Rees E, Walters JTR, Han J, Kavanagh DH, Chambert KD, *et al.* (2015):
427 Novel findings from cnvs implicate inhibitory and excitatory signaling complexes in
428 schizophrenia. *Neuron*. 86(5): 1203–14.
- 429 41. Skene NG, Bryois J, Bakken TE, Breen G, Crowley JJ, Gaspar HA, *et al.* (2018): Genetic
430 identification of brain cell types underlying schizophrenia. *Nat. Genet*. 50(6): 825–33.
- 431 42. Perez JD, Dieck ST, Alvarez-Castelao B, Tushev G, Chan IC, Schuman EM (2021):
432 Subcellular sequencing of single neurons reveals the dendritic transcriptome of gabaergic
433 interneurons. *Elife*. 10:
- 434 43. Hobson BD, Kong L, Angelo MF, Lieberman OJ, Mosharov EV, Herzog E, *et al.* (2022):
435 Subcellular and regional localization of mrna translation in midbrain dopamine neurons. *Cell*
436 *Rep*. 38(2): 110208.
- 437 44. Shigeoka T, Jung H, Jung J, Turner-Bridger B, Ohk J, Lin JQ, *et al.* (2016): Dynamic axonal
438 translation in developing and mature visual circuits. *Cell*. 166(1): 181–92.
- 439 45. Pouloupoulos A, Murphy AJ, Ozkan A, Davis P, Hatch J, Kirchner R, *et al.* (2019): Subcellular
440 transcriptomes and proteomes of developing axon projections in the cerebral cortex. *Nature*.
441 565(7739): 356–60.
- 442 46. Darnell JC, Klann E (2013): The translation of translational control by fmrp: therapeutic targets
443 for fxs. *Nat. Neurosci*. 16(11): 1530–36.

- 444 47. Jung J, Ohk J, Kim H, Holt CE, Park HJ, Jung H (2022): mRNA transport, translation, and
445 decay in adult mammalian central nervous system axons. *Neuron*
- 446 48. Goering R, Hudish LI, Guzman BB, Raj N, Bassell GJ, Russ HA, *et al.* (2020): FMRP
447 promotes rna localization to neuronal projections through interactions between its rgg domain
448 and g-quadruplex rna sequences. *Elife*. 9:
- 449 49. Shu H, Donnard E, Liu B, Jung S, Wang R, Richter JD (2020): FMRP links optimal codons to
450 mrna stability in neurons. *Proc. Natl. Acad. Sci. USA*. 117(48): 30400–411.
- 451 50. Shah S, Molinaro G, Liu B, Wang R, Huber KM, Richter JD (2020): FMRP control of
452 ribosome translocation promotes chromatin modifications and alternative splicing of neuronal
453 genes linked to autism. *Cell Rep*. 30(13): 4459–4472.e6.
- 454 51. Zhou L-T, Ye S-H, Yang H-X, Zhou Y-T, Zhao Q-H, Sun W-W, *et al.* (2017): A novel role of
455 fragile x mental retardation protein in pre-mrna alternative splicing through rna-binding protein
456 14. *Neuroscience*. 349: 64–75.
- 457 52. Seo SS, Louros SR, Anstey N, Gonzalez-Lozano MA, Harper CB, Verity NC, *et al.* (2022):
458 Excess ribosomal protein production unbalances translation in a model of fragile x syndrome.
459 *Nat. Commun*. 13(1): 3236.
- 460 53. Flanagan K, Baradaran-Heravi A, Yin Q, Dao Duc K, Spradling AC, Greenblatt EJ (2022):
461 FMRP-dependent production of large dosage-sensitive proteins is highly conserved. *Genetics*.
462 221(4):
- 463 54. Greenblatt EJ, Spradling AC (2018): Fragile x mental retardation 1 gene enhances the
464 translation of large autism-related proteins. *Science*. 361(6403): 709–12.
- 465 55. Ollà I, Pardiñas AF, Parras A, Hernández IH, Santos-Galindo M, Picó S, *et al.* (2023):
466 Pathogenic mis-splicing of cpeb4 in schizophrenia. *Biol. Psychiatry*
- 467 56. Parras A, Anta H, Santos-Galindo M, Swarup V, Elorza A, Nieto-González JL, *et al.* (2018):
468 Autism-like phenotype and risk gene mrna deadenylation by cpeb4 mis-splicing. *Nature*.
469 560(7719): 441–46.
- 470 57. Guo H, Li Y, Shen L, Wang T, Jia X, Liu L, *et al.* (2019): Disruptive variants of csdel
471 associate with autism and interfere with neuronal development and synaptic transmission. *Sci*.
472 *Adv*. 5(9): eaax2166.
- 473 58. Bacchelli E, Cameli C, Viggiano M, Iglizzi R, Mancini A, Tancredi R, *et al.* (2020): An

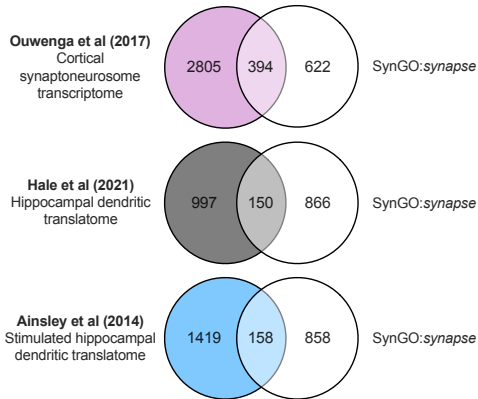
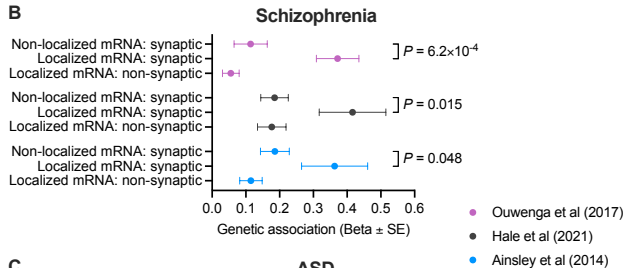
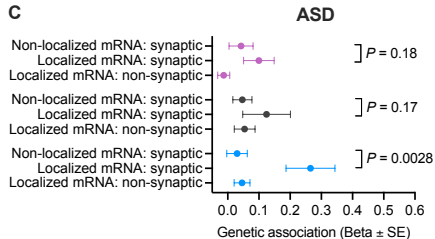
- 474 integrated analysis of rare cnv and exome variation in autism spectrum disorder using the
475 infinium psycharray. *Sci. Rep.* 10(1): 3198.
- 476 59. O’Leary A, Fernàndez-Castillo N, Gan G, Yang Y, Yotova AY, Kranz TM, *et al.* (2022):
477 Behavioural and functional evidence revealing the role of rbfox1 variation in multiple
478 psychiatric disorders and traits. *Mol. Psychiatry*
- 479 60. Ivshina M, Lasko P, Richter JD (2014): Cytoplasmic polyadenylation element binding proteins
480 in development, health, and disease. *Annu. Rev. Cell Dev. Biol.* 30: 393–415.
- 481 61. Lee J-A, Damianov A, Lin C-H, Fontes M, Parikshak NN, Anderson ES, *et al.* (2016):
482 Cytoplasmic rbfox1 regulates the expression of synaptic and autism-related genes. *Neuron.*
483 89(1): 113–28.
- 484

485 Figure legends

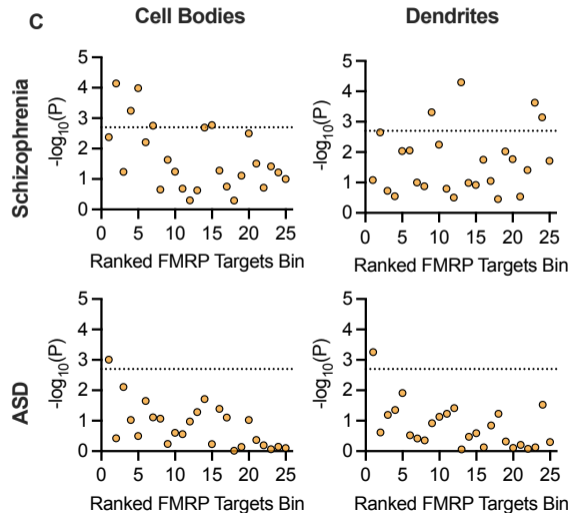
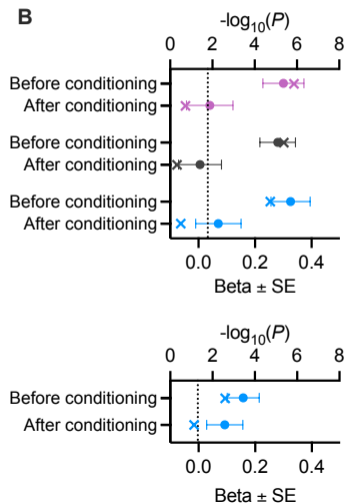
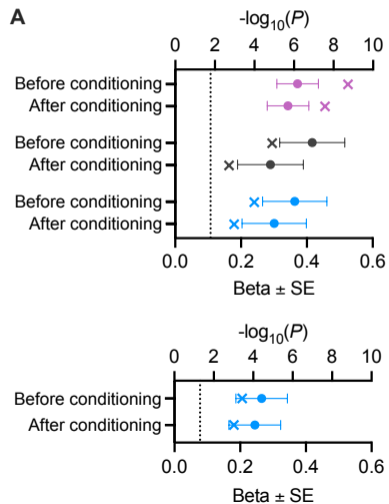
486 Figure 1. **A.** Intersection of localized mRNA transcripts with SynGO:*synapse* annotations. **B,C.**
487 Enrichment for common genetic associations with schizophrenia or ASD in groups of genes defined by
488 mRNA localization and synaptic function. Displayed is the effect size (Beta) \pm standard error from
489 MAGMA competitive gene set association analysis. *P*-values denote significance of effect size
490 comparisons between locally and distally translated synaptic transcripts in z-tests. “Localized mRNA:
491 synaptic”: genes annotated to SynGO:*synapse* and enriched in the local transcriptome or translome.
492 “Non-localized mRNA: synaptic”: genes annotated to SynGO:*synapse* not enriched in the local
493 transcriptome or translome. “Localized mRNA: non-synaptic”: genes enriched in the local
494 transcriptome or translome but not annotated to SynGO:*synapse*.

495
496 Figure 2. **A.** Enrichment of localized synaptic transcripts for common genetic associations with
497 schizophrenia or ASD before and after conditioning on FMRP targets (32). Circles are the effect sizes
498 (Beta) \pm standard error in MAGMA competitive gene set association analysis. Crosses indicate $-\log_{10}(P$ -
499 value) for each test. The dotted lines indicate the threshold for significance (for schizophrenia, after
500 correcting for 3 tests using the Bonferroni method). **B.** Enrichment of localized FMRP targets for
501 common genetic associations with schizophrenia or ASD before and after conditioning on all FMRP
502 targets. Displayed is the effect size (Beta) \pm standard error. Crosses indicate $-\log_{10}(P$ -value) for each
503 test. **C.** Schizophrenia and ASD association of gene sets ranked by FMRP binding confidence in
504 pyramidal neuron cell bodies and dendrites. Genes were ranked by CLIP score and divided into 25 bins
505 of 212 genes. Each bin was subjected to competitive gene set association analysis in MAGMA.
506 Displayed is $-\log_{10}(P$ -value) for each test. The dotted line indicates the threshold for significance after
507 adjusting for 25 tests using the Bonferroni method.

508

A**B****C**

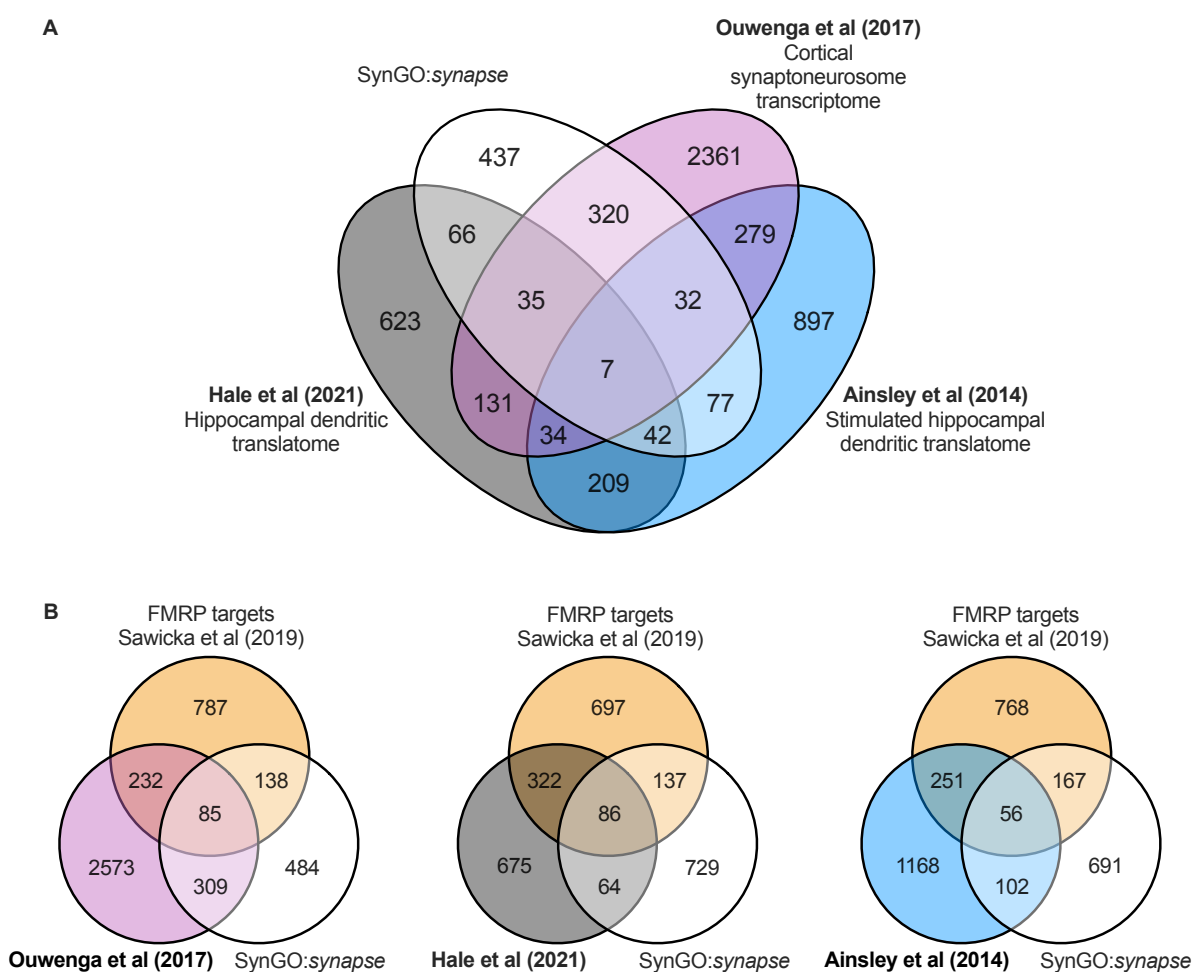
- Ouwenga et al (2017)
- Hale et al (2021)
- Ainsley et al (2014)

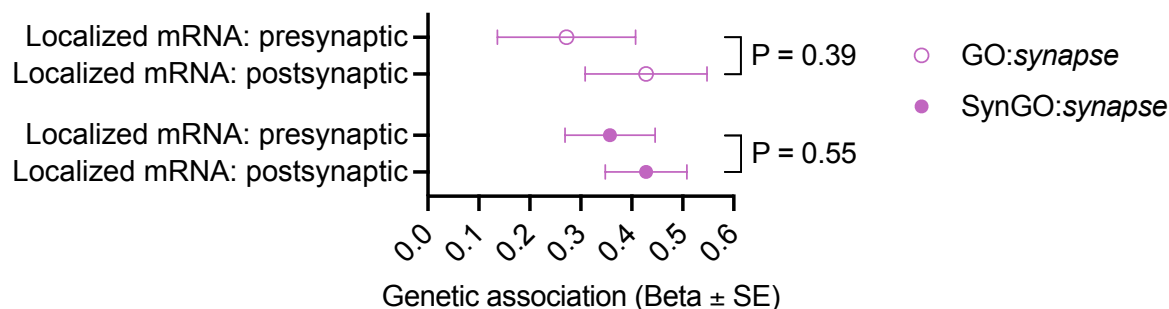


Enrichment of the local synaptic translome for genetic risk associated with schizophrenia and autism spectrum disorder

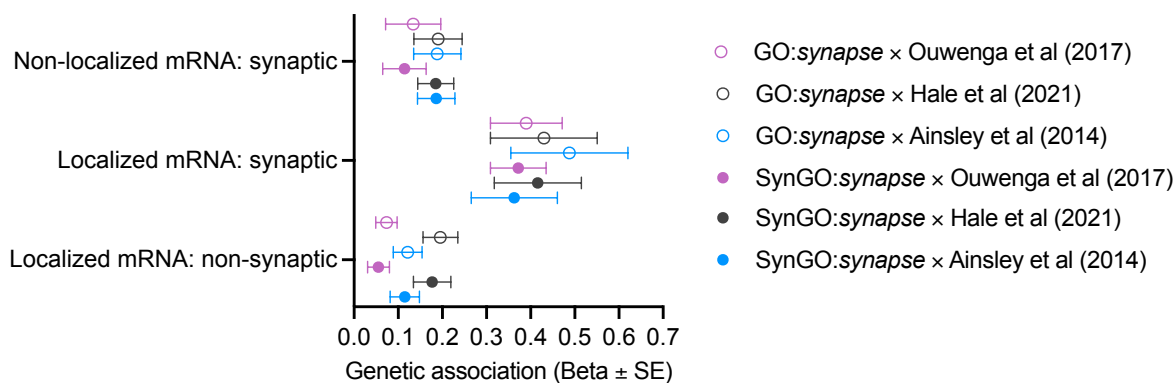
Nicholas E Clifton, Julie Qiaojin Lin, Christine E Holt, Michael C O'Donovan, Jonathan Mill

Supplementary Information





Supplementary Figure 2. Comparison of genetic association with schizophrenia of the local synaptic transcriptome (Ouwenga et al, 2017) from presynaptic or postsynaptic compartments. Analyses were repeated using functional annotations from SynGO:synapse or GO:synapse. Displayed is the effect size (Beta) ± standard error from MAGMA competitive gene set association analysis of common genetic variation associated with schizophrenia through GWAS. P-values represent significance in z-test of beta values obtained from analyses of presynaptic and postsynaptic subsets.



Supplementary Figure 3. Enriched genetic associations with schizophrenia in localized synaptic transcripts is robust to variation in synaptic functional annotations. Localized transcripts identified in each of three studies were intersected with either *GO:synapse* annotations or *SynGO:synapse* annotations. “Localized mRNA: synaptic”: genes annotated to *SynGO:synapse* and enriched in the local transcriptome or translatoome. “Non-localized mRNA: synaptic”: genes annotated to *SynGO:synapse* not enriched in the local transcriptome or translatoome. “Localized mRNA: non-synaptic”: genes enriched in the local transcriptome or translatoome but not annotated to *SynGO:synapse*. Displayed is the effect size (Beta) \pm standard error from MAGMA competitive gene set association analysis of common variation associated with schizophrenia.