

## **Isoniazid preventive therapy during infancy does not adversely effect growth among HIV-exposed uninfected children: secondary analysis of data from a randomized controlled trial**

Ashenafi S. Cherkos<sup>1</sup>, Sylvia M. LaCourse<sup>2,3,4</sup>, Daniel A. Enquobahrie<sup>2</sup>, Jaclyn N. Escudero<sup>4</sup>, Jerphason Mecha<sup>5</sup>, Daniel Matemo<sup>6</sup>, John Kinuthia<sup>6,7</sup>, Grace John-Stewart<sup>2,3,4,8</sup>

- 1) Biostatistics and Epidemiology Department, School of Public Health, University of North Texas Health Science Center, Fort Worth, Texas, USA.
- 2) Department of Epidemiology, School of Public Health, University of Washington, Seattle, Washington, USA.
- 3) Department of Medicine, Division of Allergy and Infectious Diseases, University of Washington, Seattle, Washington, USA.
- 4) Department of Global Health, School of Public Health, University of Washington, Seattle, Washington, USA.
- 5) Centre for Respiratory Diseases Research, Kenya Medical Research Institute, Nairobi, Kenya
- 6) Medical Research Department, Kenyatta National Hospital, Nairobi, Kenya.
- 7) Department of Obstetrics and Gynaecology, Kenyatta National Hospital, Nairobi, Kenya.
- 8) Department of Pediatrics, University of Washington, Seattle, Washington, USA.

Corresponding author:

Ashenafi S Cherkos, PhD, MPH, MPH/MCH  
Assistant Professor, Biostatistics and Epidemiology Department  
School of Public Health, University of North Texas Health Science Center at Fort Worth  
3500 Camp Bowie Blvd, Fort Worth, TX 76107 | +1 8177350487 | [Ashenafi.Cherkos@unthsc.edu](mailto:Ashenafi.Cherkos@unthsc.edu)

Clinical Infectious Diseases®

## Abstract

**Background:** Isoniazid preventive therapy (IPT) decreases risk of tuberculosis (TB) disease; impact on long-term infant growth is unknown. In a recent randomized trial (RCT), we assessed IPT effects on infant growth without known TB exposure.

**Methods:** The infant TB Infection Prevention Study (iTIPS) trial was a non-blinded RCT among HIV-exposed uninfected (HEU) infants in Kenya. Inclusion criteria included age 6-10 weeks, birthweight  $\geq 2.5$  kg, and gestation  $\geq 37$  weeks. Infants in the IPT arm received 10 mg/kg isoniazid daily for 12 months, while the control trial received no intervention; post-trial observational follow-up continued through 24 months of age. We used intent-to-treat linear mixed-effects models to compare growth rates (weight-for-age z-score [WAZ] and height-for-age z-score [HAZ]) between trial arms.

**Results:** Among 298 infants, 150 were randomized to IPT, 47.6% were females, median birthweight was 3.4 kg (interquartile range [IQR] 3.0-3.7), and 98.3% were breastfed. During the 12-month intervention period and 12-month post-RCT follow-up, WAZ and HAZ declined significantly in all children, with more HAZ decline in male infants. There were no growth differences between trial arms, including in sex-stratified analyses. In longitudinal linear analysis, mean WAZ ( $\beta=0.04$  [95% CI:-0.14, 0.22]), HAZ ( $\beta=0.14$  [95% CI:-0.06, 0.34]), and WHZ ( $\beta=-0.07$  [95% CI:-0.26, 0.11]) z-scores were similar between arms as were WAZ and HAZ growth trajectories. Infants randomized to IPT had higher monthly WHZ increase ( $\beta$  to 24 months 0.02 [95% CI:0.01, 0.04]) than the no-IPT arm.

**Conclusion:** IPT administered to HEU infants did not significantly impact growth outcomes in the first two years of life.

## 1 Background

2 Infection with *Mycobacterium tuberculosis* (Mtb) before the age of 2 years can progress to severe TB  
3 disease, with rapid progression occurring within the first year of Mtb infection (1–5). Without treatment,  
4 children with Mtb infection, also called latent TB infection (LTBI), have about a 19% risk of developing TB  
5 within two years (1–4,6,7). HIV-exposed uninfected (HEU) children have a higher risk of TB and Mtb  
6 infection than HIV-unexposed uninfected (HUU) children (8). Africa accounted for 30.5% of the global  
7 pediatric TB burden in 2018 (9) and 37.0% of TB-related deaths among children under 15 years of age.  
8 Therefore, approaches to prevent and treat TB infection in TB endemic areas among HEU children are a  
9 priority.

10 Isoniazid preventive treatment (IPT) decreases the progression of Mtb infection to TB disease (10–12).  
11 The World Health Organization (WHO) recommends IPT in children under 5 years with known TB exposure  
12 and children with HIV (CHIV) older than one year of age (13). Recent studies suggest that household  
13 exposure accounts for less than 30% of Mtb transmission to children, with most occurring without known  
14 contact (14). This suggests that WHO recommendations may miss many children at risk for TB. Because  
15 progression from Mtb infection to TB disease is rapid during infancy, IPT administration, regardless of  
16 contact history, may be warranted in some higher-risk groups of infants. We conducted a randomized trial  
17 (RCT) (NCT02613169) to examine the impact of IPT on the incidence of Mtb infection in HEU infants (15).  
18 In the primary trial, IPT was associated with a non-significant trend for decreased Mtb infection  
19 (predominantly assessed by tuberculin skin tests (TST) during the first year of life (16), which was not  
20 sustained up to 24 months of age (17).

21 While IPT has clear benefits in decreasing the risk of TB disease, it has side effects that can potentially  
22 compromise caloric intake, including loss of appetite, nausea, vomiting, and upset stomach (18). These,  
23 in turn, could influence infant growth. Although trials of IPT in children have shown no signs of an

24 increased risk of adverse events (17), the effects of IPT on the growth of infants remain unclear. In  
25 observational studies, assessing the impact of IPT on infant growth has been challenging due to  
26 confounding by indication. IPT is prescribed to children who have been exposed to TB or HIV-infected  
27 children regardless of their exposure. Consequently, children receiving IPT may have different  
28 characteristics that influence their growth than those who do not receive IPT.

29 The infant TB Infection Prevention Study (iTIPS) provided a unique opportunity to compare growth in HEU  
30 infants receiving IPT versus those not receiving IPT in a randomized controlled trial, unconfounded by  
31 known TB exposure or other related characteristics. Therefore, we leveraged the RCT design of the parent  
32 study to rigorously examine the effect of IPT on infants' growth over the first two years of life.

33

## 34 **Methods**

### 35 **Parent trial design and Intervention**

36 This secondary analysis used data from the iTIPS trial, a non-blinded RCT among HIV-exposed infants in  
37 Western Kenya. As reported in detail previously (15), randomization was stratified by site and generated  
38 by the study statistician using a computer-generated random block size. Inclusion criteria for the parent  
39 study were 6-10 weeks of age, birth weight  $\geq 2.5$  kg, and not premature ( $>37$  weeks of gestation).  
40 Exclusion criteria included known household TB exposure, including mothers with a history of TB in the  
41 past year and infants enrolled in other TB prevention programs or vaccine studies. Infants 6-10 weeks of  
42 age in the IPT arm initiated isoniazid 10 mg/kg once daily for 12 months. The control arm received no  
43 intervention. Standardized weight-based isoniazid dosing (by weight band using 100 mg scored tablets)  
44 was used, corresponding to Kenya and WHO recommendations (15). Pyridoxine was provided to children  
45 randomized to isoniazid to decrease peripheral neuropathy risk. To ensure full dose usage and ease of  
46 infant administration, caregivers were advised to pulverize isoniazid and pyridoxine and mix them with  
47 small quantities of breastmilk, clean water, or liquid cotrimoxazole. The Intervention ended after 12  
48 months post-randomization ( $\sim 14$  months of age); post-trial observational follow-up continued until 24  
49 months of age for both arms.

### 50 **Participants and study period**

51 Overall, 300 HIV-exposed infants were enrolled in prevention of mother-to-child HIV Transmission  
52 (PMTCT) clinics in Western Kenya. Follow-up visits were conducted at 10 and 14 weeks of age and 6, 9,  
53 12, and  $\sim 14$  (12 months post-randomization) months of age. Observational follow-up continued through  
54 24 months of age. The trial lasted from August 2016 to July 2019, but the observational follow-up  
55 continued until September 2020. Enrolled infants with at least follow-up after enrollment were eligible  
56 for this secondary analysis. The parent trial and this analysis excluded two infants diagnosed with HIV. We  
57 had 298 HEU children for this analysis.

## 58 **Ethical approvals**

59 The University of Nairobi/Kenyatta National Hospital Ethics and Research Committee (P571/08/2015),  
60 Jaramogi Oginga Odinga Teaching and Referral Hospital Ethical Review Committee, the University of  
61 Washington Institutional Review Board (STUDY00000761), and Kenya Pharmacy and Poisons Board  
62 approved the study. Caregivers gave informed consent. Caretakers gave written informed consent and an  
63 external and independent Data and Safety Monitoring Board monitored adverse events in the parent trial.

## 64 **Infant growth characterization**

65 Infants were enrolled at 6-10 weeks of age, and their birth weight was based on a review of maternal child  
66 health cards and maternal reports. Weight and length of children were measured at 6, 10, 14 weeks, 6,  
67 12, ~14 (12 months post enrolment), and 24 months of age. A CDC-Kenya team trained study staff for two  
68 days on growth monitoring prior to trial initiation. Infants were measured twice at each visit, and the  
69 average weight and length were rounded to the nearest 0.1 kg and 0.1 cm, respectively.

70 Weight-for-age z-score [WAZ], weight-for-length z-score [WLZ], and length-for-age z-score [LAZ]) were  
71 defined using WHO child growth standards (19). Growth faltering was defined as underweight WAZ <-2,  
72 wasting WLZ <-2, and stunting LAZ <-2 (19).

## 73 **Maternal and infant information**

74 Baseline maternal and infant characteristics were collected using standardized questionnaires and  
75 medical record abstraction administered by trained study staff. Maternal characteristics, including age in  
76 years, educational achievement of mothers, current marital status, employment status, household  
77 income, mode of delivery, smoking, alcohol, and drug use during pregnancy, timing of the mother's HIV  
78 diagnosis, use of antiretroviral therapy (ART), TB diagnosis and, any maternal IPT used during pregnancy  
79 were collected. The following baseline infant characteristics were collected: age in weeks, sex assigned at

80 birth, current breastfeeding status, presence of BCG scar, birth weight, current cotrimoxazole use, and  
81 ART use for PMTCT of HIV.

## 82 **Statistical analyses**

83 Means and standard deviations (SD) were used to describe normally distributed continuous variables,  
84 medians and interquartile ranges (IQR) were used to describe skewed distributions, and frequency and  
85 percentage to describe categorical variables. We compared baseline maternal and infant characteristics  
86 between IPT and no-IPT arms using a two-sided t-test (the Mann-Whitney U test if assumptions were not  
87 met) for continuous variables and the Pearson  $\chi^2$  test (Fisher's exact test if assumptions were not met) for  
88 categorical variables.

89 The primary analysis was an intent-to-treat (ITT) analysis, comparing infants' growth (WAZ, HAZ, and WHZ)  
90 in IPT and no-IPT arms. Linear regression was used to compare the WAZ, HAZ, and WHZ of children  
91 measured at ~14 months of age (12 months post-randomization – the end of the trial) and 24 months of  
92 age (extended observational follow-up) between the arms. We also fitted linear mixed-effects models  
93 (LMEMs) with autoregression correlation structure, random intercept for subjects, and random slope for  
94 follow-up time to compare growth (WAZ, WHZ, HAZ) trajectories between IPT vs no-IPT arms from  
95 enrollment to ~14 and 24 months of age.

96 Linear regression was used to determine factors associated with WAZ, HAZ, and WHZ of children  
97 measured at ~14 and 24 months of age, and LMEMs to determine factors associated with WAZ, HAZ, and  
98 WHZ of children from enrollment to ~14 and 24 months of age.

## 99 **Approach to data missingness**

100 There were missing data in this study: overall WAZ (9.2%), HAZ (9.7%), and WHZ (9.7%). Multiple  
101 imputations by chained equations (MICE) (20), which ran a series of regression models for each missing

102 variable conditional upon other specified variables, were used to manage missing data. Baseline infant  
103 and maternal characteristics (infant's age, sex, BCG scar, current cotrimoxazole use, baseline WAZ, HAZ,  
104 WHZ, and maternal age, education, employment, and marital status) were used in the MICE analyses. We  
105 imputed the data 25 times. Pooled parameter estimates and their standard errors were calculated  
106 according to Rubin's rules to account for the between- and within-imputation variance (20). We employed  
107 one single imputation model to obtain imputed values for outcomes (WAZ, HAZ, and WHZ) missed at each  
108 visit during follow-up. In the imputation models, we specified the appropriate distributions for each of the  
109 variables in the model. In the presence of missing data, the multiple imputation approach should yield  
110 unbiased estimates assuming data are missing at random (MAR) (20).

111



112 **Results**

113 **Maternal and infant baseline characteristics**

114 Among 298 HEU infants enrolled in the parent trial, 150 were randomized to IPT and 148 to the control  
115 no-IPT arm, and all were included in this secondary analysis. Baseline maternal and infant characteristics  
116 were previously reported in the primary RCT publication and were uniformly distributed between the  
117 randomization arms (Table 1) (15). The mean (SD) age of mothers was 28 ( $\pm$ 5) years, and the median (IQR)  
118 monthly income was 10,000 KSH (6K – 15K). Most (86.6% [258/298]) were currently married, 53.3%  
119 (159/298) completed primary school or less, and 49.7% (148/298) were unemployed. Few (14.4%  
120 [43/298]) mothers delivered via cesarean section. Only one mother smoked, 9 mothers drank alcohol, and  
121 10 used drugs during pregnancy. All participating mothers had HIV, 23.8% (71/298) of whom were  
122 diagnosed with HIV during pregnancy, 73.2% (218/298) started ART before the pregnancy, 51.3%  
123 (153/298) had taken IPT during pregnancy, and 10.4% (31/298) had ever been diagnosed with TB.

124

125

126 **Tables**

127 **Table 1: Baseline maternal and infant demographics and clinical characteristics**

Characteristics	IPT* (n=150)	No-IPT*(n=148)	P-value
<b>Maternal characteristics</b>			
Mean age (SD) – years	27.6 (5.1)	28.1 (4.9)	0.344
Primary school completed or less – no. (%)	75 (50.0)	84 (56.8)	0.292
Currently married mothers – no. (%)	134 (89.3)	124 (83.8)	0.217
Maternal employment status – no. (%)			
Unemployed	73 (48.7)	75 (50.7)	0.402
Salaried or irregular working hours	17 (11.3)	23 (15.5)	
Self-employed	60 (40.0)	50 (33.8)	
Median income in 1000 KSH (IQR)	10 (6 – 15)	10 (6 – 15)	0.598
Delivered by c-section – no. (%)	17 (11.4)	26 (17.6)	0.179
Tobacco use during pregnancy – no. (%)	1	0	1.000
Alcohol use during pregnancy – no. (%)	3 (2.0)	6 (4.0)	0.494
Drug use during pregnancy – no. (%)	5 (3.4)	5 (3.4)	0.999
Timing of HIV diagnosis – no. (%)			
Before pregnancy	115 (76.6)	110 (74.3)	0.841
While pregnant for this child	34 (22.7)	37 (25.0)	
After delivery of this child	1 (0.7)	1 (0.7)	
Any IPT exposure during pregnancy – no. (%)	77 (51.3)	76 (51.4)	1.00
Ever diagnosed with tuberculosis – no. (%)	15 (10.0)	16 (10.8)	0.967
<b>Infant characteristics</b>			
Mean infant age in weeks (SD)	6.6 (1.0)	6.6 (1.2)	0.882
Female infants – no. (%)	71 (47.3)	71 (48.0)	1.000
Currently breastfeeding – no. (%)	146 (97.3)	147 (99.3)	0.375
Infant has BCG scar – no. (%)	140 (93.3)	136 (92.5)	0.962
Taking cotrimoxazole	136 (90.7)	132 (89.2)	0.817
Mean weight-for-age z-score	0.2 (1.0)	0.3 (1.0)	0.503
Underweight at enrollment	3 (2)	2 (1.3)	1.000
Mean height-for-age z-score	-0.2 (1.2)	-0.3 (1.3)	0.176
Stunted at enrollment	9 (6.0)	16 (10.9)	0.148
Mean weight-for-height z-score	0.5 (1.6)	0.9 (1.7)	<b>0.043</b>
Wasted at enrollment	10 (6.7)	5 (3.4)	0.290

128 \*IPT – isoniazid preventive therapy.

129 The median age of the infants at enrollment was 6.3 weeks (6.0-6.6 weeks), and the median birthweight  
130 was 3.4 kg (IQR 3-3.7). All infants were of normal birth weight ( $\geq 2.5$  kg) due to eligibility criteria which  
131 excluded low birth weight infants. Of all infants, 47.6% (142/298) were females, 92.6% (276/298) had BCG  
132 scars, 90.0% (268/298) were on cotrimoxazole, and almost all, 99.0% (295/298), received ART for PMTCT

133 after birth. Most (98.3% [293/298]) infants were breastfed. Infant mean WAZ (SD) was 0.2 (1.0), mean  
134 HAZ was -0.25 (1.2), and mean WHZ was 0.7 (1.6) at enrollment and similar between infants randomized  
135 to IPT or no-IPT. As reported in primary analyses, only 3.7% of infants in this study experienced  
136 gastroenteritis during the trial period (17).

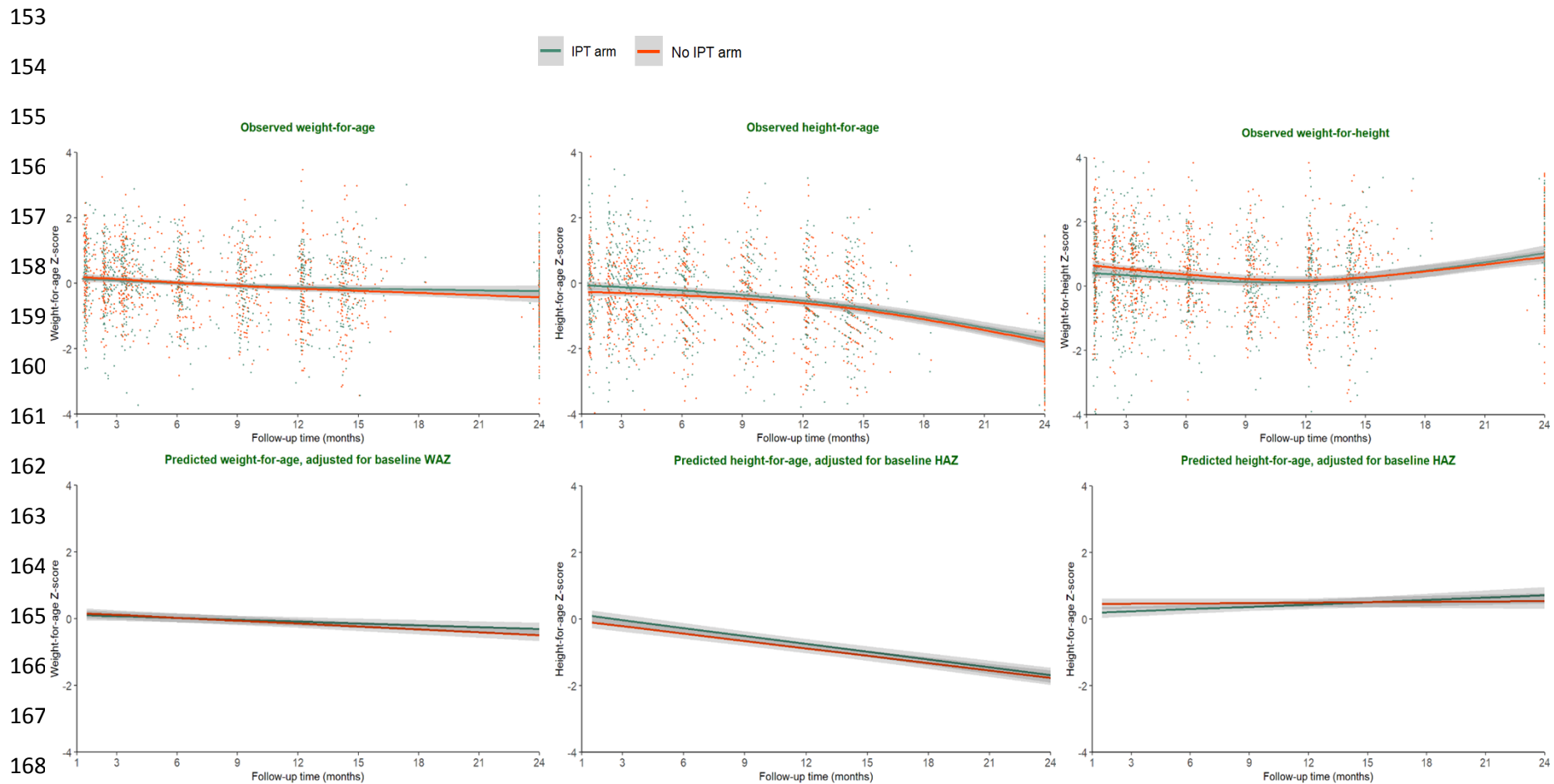
### 137 **Changes in growth by ~14 and 24 months of age**

138

139

140 There was a decline in growth z-scores, with average WAZ value of all infants decreasing by 0.33 ( $\beta = -0.33$   
141 [95% CI: -0.48, -0.19]) and 0.58 ( $\beta = -0.58$  [95% CI: - 0.75, - 0.42]) z-scores by ~14 and 24 months of age,  
142 respectively. Similarly, the average HAZ of infants participating in this study decreased by 0.50 ( $\beta = - 0.50$   
143 [95% CI: -0.66, -0.34]) and 1.74 z-scores ( $\beta = - 1.74$  [95% CI: - 1.99, - 1.52]) by ~14 and 24 months of age,  
144 respectively. WHZ decreased significantly by 0.40 ( $\beta = -0.40$ [95% CI: -0.65, -0.16]) by ~14 months of age  
145 but the change was not significant ( $\beta=0.27$  [95% CI: -0.02, 0.56]) by 24 months of age. There were no  
146 significant differences between the IPT vs. no-IPT arms in WAZ, HAZ, and WHZ at ~14 months and 24  
147 months. Infants in the IPT arm had similar mean WAZ ( $\beta = 0.22$  [95% CI: -0.07, 0.50]), HAZ ( $\beta = 0.08$  [95%  
148 CI: -0.31, 0.47]), and WHZ ( $\beta = 0.21$  [95% CI: -0.19, 0.60]) at 24 months of age compared with children in  
149 the non-IPT arm. The observed mean change in growth is shown in Figure 1. At 24 months of age, 5.8%  
150 (13/225) were underweight, 47.9% (104/217) stunted, and 1.4% (3/215) wasted and did not differ  
151 significantly by arm.

152



169 **Figure 1: Scatter plots of change in WAZ, HAZ, and WHZ, over time by the randomized arm**  
 170 (The Lowess curves represent a change in mean growth from randomization to 24 months of age. Bottom curves are adjusted change in  
 171 WAZ, HAZ, and WHZ.)  
 172

173 **Effect of IPT on growth – WAZ, HAZ, and WHZ – at all follow-up timepoints**

174 Multivariable models adjusted sex of infants, maternal education, age of mothers, timing of maternal HIV  
175 diagnosis, maternal IPT use during pregnancy, viral load, WAZ at baseline. Adjusted for all other factors,  
176 IPT use during infancy did not have a statistically significant effect on growth, either during the trial period  
177 up to ~14 months of age or through the observational follow-up until 24 months of age ( $p$ -value > 0.05).  
178 Infants in IPT arm had similar mean WAZ ( $\beta$  to ~14 months of age 0.00 [95% CI: -0.19, 0.19] and  $\beta$  to 24  
179 months of age  $\beta=0.04$  [95% CI: -0.14, 0.22]), HAZ ( $\beta$  to ~14 months of age 0.16 [95% CI: -0.05, 0.37] and  $\beta$   
180 to 24 months of age  $\beta=0.13$  [95% CI: -0.06, 0.33]), and WHZ ( $\beta$  to ~14 months of age -0.14 [95% CI: -0.32,  
181 0.05] and  $\beta$  to 24 months of age  $\beta=-0.08$  [95% CI: -0.26, 0.10]) z-scores compared to infants in no-IPT arm.  
182 There was no statistically significant difference in rate of WAZ ( $\beta$  to ~14 months of age 0.00 [95% CI: -0.01,  
183 0.02] and  $\beta$  to 24 months of age 0.01 [95% CI: 0.00, 0.02]), and HAZ ( $\beta$  to ~14 months of age - 0.01 [95%  
184 CI: -0.03, 0.01] and  $\beta$  to 24 months of age -0.01 [95% CI: -0.02, 0.00]) change in a month between the  
185 randomized groups. However, infants in IPT arm had an increased rate of WHZ ( $\beta$  to ~14 months of age  
186 0.02 [95% CI: 0.00, 0.04] and  $\beta$  to 24 months of age 0.02 [95% CI: 0.01, 0.04]) change in a month than  
187 infants in no-IPT arm (Table 2). The adjusted change in growth is also shown in Figure 1.

188

189 **Table 2: Effect of IPT on Growth – WAZ, HAZ, WHZ – from enrollment to ~14 and 24 months of age – intent-to-treat analysis – longitudinal**  
 190 **and cross-sectional linear analyses**

Follow-up	Model	Randomization arm	WAZ at all follow-up timepoints <sup>¶</sup> (95% CI)		HAZ <sup>‡</sup> at all follow-up timepoints (95% CI)		WHZ <sup>®</sup> at all follow-up timepoints (95% CI)	
			Coefficient (95% CI)	P-value	Coefficient (95% CI)	p-value	Coefficient (95% CI)	P-value
Longitudinal <sup>§</sup> up to ~14 months of age	Overall	IPT arm (ref: no-IPT)	0.00 (-0.19, 0.19)	0.985	0.16 (-0.05, 0.37)	0.139	-0.14 (-0.32, 0.05)	0.139
	Male	IPT arm (ref: no-IPT)	0.02 (-0.27, 0.31)	0.886	0.22 (-0.07, 0.52)	0.141	-0.18 (-0.45, 0.10)	0.202
	Female	IPT arm (ref: no-IPT)	-0.02 (-0.26, 0.21)	0.852	0.09 (-0.19, 0.37)	0.535	-0.09 (-0.33, 0.14)	0.435
Longitudinal <sup>§</sup> up to ~24 months of age	Overall	IPT arm (ref: no-IPT)	0.04 (-0.14, 0.22)	0.657	0.13 (-0.06, 0.33)	0.189	-0.08 (-0.26, 0.10)	0.399
	Male	IPT arm (ref: no-IPT)	0.07 (-0.20, 0.34)	0.611	0.17 (-0.11, 0.46)	0.231	-0.09 (-0.36, 0.18)	0.521
	Female	IPT arm (ref: no-IPT)	0.01 (-0.21, 0.24)	0.927	0.09 (-0.17, 0.35)	0.500	-0.07 (-0.30, 0.17)	0.578
Cross-sectional <sup>¶</sup> at ~14 months of age	Overall	IPT arm (ref: no-IPT)	-0.01 (-0.28, 0.25)	0.915	0.13 (-0.17, 0.42)	0.392	-0.11 (-0.42, 20)	0.487
	Male	IPT arm (ref: no-IPT)	0.10 (-0.30, 0.50)	0.610	0.32 (-0.09, 0.72)	0.123	-0.07 (-0.53, 0.38)	0.751
	Female	IPT arm (ref: no-IPT)	-0.14 (-0.48, 0.19)	0.401	-0.08 (-0.49, 0.33)	0.697	-0.15 (-0.58, 0.28)	0.488
Cross-sectional <sup>¶</sup> at 24 months of age	Overall	IPT arm (ref: no-IPT)	0.19 (-0.08, 0.45)	0.171	0.00 (-0.35, 0.35)	0.995	0.25 (-0.13, 0.62)	0.200
	Male	IPT arm (ref: no-IPT)	0.22 (-0.18, 0.62)	0.275	-0.11 (-0.60, 0.39)	0.676	0.40 (-0.14, 0.94)	0.148
	Female	IPT arm (ref: no-IPT)	0.15 (-0.20, 0.50)	0.396	0.12 (-0.37, 0.60)	0.636	0.08 (-0.43, 0.59)	0.745

191 <sup>¶</sup>WAZ – weight-for-age. <sup>‡</sup>HAZ – height-for-age. <sup>®</sup>WHZ – weight-for-height z-score. <sup>\*</sup>IPT – Isoniazid preventive therapy. <sup>§</sup>Longitudinal – analysis included  
 192 all data from 6<sup>th</sup> weeks to 14/24 months of age. <sup>¶</sup>Cross-sectional – analysis is based on one-time data at 14/24 months of age.  
 193

194 **Factors associated with growth change**

195 Variables fitted in the model to identify factors associated with growth include infant IPT use, sex of infants  
196 and age, maternal educational status, timing of maternal HIV diagnosis (before vs. during pregnancy), any  
197 maternal IPT exposure during pregnancy, and viral load. Adjusted for all other variables, infants whose  
198 mothers completed secondary school had 0.26 WAZ (at ~14 months of age  $\beta = 0.26$  [95% CI: 0.00, 0.52])  
199 and HAZ (at 24 months of age  $\beta = 0.38$  [95% CI: 0.00, 0.75]) higher than infants whose mothers completed  
200 primary school or less. Male infants had 0.53 HAZ ( $\beta = -0.53$  [95% CI: -0.83, -0.23]) lower at ~14 months of  
201 age than female infants (Supplemental Table 1).

202 Adjusted for all factors, male infants had significantly lower WAZ ( $\beta$  to ~14 months of age -0.21 [95% CI: -  
203 0.04, 0.02] and  $\beta$  to 24 months of age -0.18 [95% CI: -0.36, -0.01]) and lower HAZ ( $\beta$  to ~14 months of age  
204 -0.34 [95% CI: -0.55, -0.13] and  $\beta$  to 24 months of age -0.28 [95% CI: -0.48, -0.09]) than female infants  
205 (Table 3).

206

207 **Table 3: Factors associated with growth at ~14 and 24-month age – longitudinal**

Follow-up	Variable	WAZ <sup>¶</sup> at all follow-up timepoints			HAZ <sup>‡</sup> at all follow-up timepoints			WHZ <sup>§</sup> at all follow-up timepoints		
		cCoefficient	aCoefficient*	P-value	cCoefficient	aCoefficient*	P-value	cCoefficient	aCoefficient*	P-value
Up to ~14 months of age	Infant in IPT-arm <sup>¶</sup>	-0.00 (-0.19, 0.19)	-0.04 (-0.22, 0.14)	0.675	0.17 (-0.05, 0.38)	0.15 (-0.06, 0.36)	0.166	-0.14 (-0.33, 0.04)	-0.18 (-0.37, 0.00)	0.054
	Male infants	-0.11 (-0.29, 0.08)	<b>-0.21 (-0.40, -0.02)</b>	<b>0.027</b>	-0.35 (-0.56, -0.14)	<b>-0.34 (-0.55, -0.13)</b>	<b>0.002</b>	0.13 (-0.06, 0.31)	0.07 (-0.12, 0.25)	0.490
	Secondary school or above	0.13 (-0.06, 0.32)	0.12 (-0.07, 0.30)	0.210	0.07 (-0.15, 0.28)	-0.03 (-0.18, 0.24)	0.771	0.13 (-0.05, 0.32)	0.14 (-0.05, 0.32)	0.141
	Age of mothers	-0.01 (-0.03, 0.01)	-0.00 (-0.02, 0.01)	0.646	-0.02, -0.04, 0.00)	-0.02 (-0.04, 0.00)	0.120	0.01 (-0.01, 0.03)	0.01 (-0.01, 0.03)	0.397
	Tested HIV positive during pregnancy	0.08 (-0.15, 0.30)	0.06 (-0.17, 0.29)	0.605	0.09 (-0.16, 0.34)	-0.03 (-0.30, 0.23)	0.808	0.03 (-0.19, 0.25)	0.11 (-0.12, 0.34)	0.348
	Pregnancy-IPT	0.21 (0.02, 0.39)	0.17 (-0.01, 0.36)	0.062	0.12 (-0.10, 0.33)	0.14 (-0.07, 0.35)	0.182	0.14 (-0.04, 0.33)	0.13 (-0.05, 0.32)	0.166
	Suppressed viral load (<40 copies/ml)	0.08 (-0.17, 0.33)	0.04 (-0.19, 0.28)	0.706	-0.01 (-0.28, 0.26)	0.05 (-0.22, 0.32)	0.730	0.10 (-0.14, 0.33)	0.02 (-0.21, 0.26)	0.846
	WAZ at birth	0.27 (0.18, 0.36)	0.27(0.20, 0.38)	<0.001				0.17 (0.09, 0.26)	<b>0.17 (0.08, 0.26)</b>	<b>&lt;0.001</b>
Up to 24 months of age	Infant in IPT-arm	0.04 (-0.14, 0.22)	-0.01 (-0.18, 0.17)	0.945	0.14 (-0.06, 0.34)	0.13 (-0.07, 0.33)	0.215	-0.08 (-0.26, 0.10)	-0.13 (-0.31, 0.05)	0.143
	Male infants	-0.08 (-0.26, 0.10)	-0.18 (-0.36, -0.01)	0.041	-0.29 (-0.49, 0.10)	<b>-0.28 (-0.48, -0.09)</b>	<b>0.005</b>	0.11 (-0.07, 0.29)	0.04 (-0.14, 0.22)	0.693
	Secondary school or above	0.06 (-0.02, 0.33)	0.15 (-0.02, 0.32)	0.090	0.11 (-0.09, 0.31)	0.09 (-0.11, 0.29)	0.399	0.13 (-0.05, 0.31)	0.13 (-0.05, 0.31)	0.153
	Age of mothers	-0.00 (-0.02, 0.01)	0.00 (-0.02, 0.02)	0.931	-0.02 (-0.04, 0.00)	-0.02 (-0.04, 0.00)	0.090	0.01 (-0.01, 0.03)	0.01 (-0.00, 0.03)	0.134
	Tested HIV positive during pregnancy	0.06 (-0.15, 0.27)	0.08 (-0.14, 0.30)	0.486	0.05 (-0.18, 0.28)	-0.04 (-0.29, 0.21)	0.751	0.06 (-0.16, 0.27)	0.14 (-0.08, 0.36)	0.223
	Pregnancy-IPT	0.15 (-0.03, 0.32)	0.12 (-0.06, 0.29)	0.188	0.08 (-0.12, 0.27)	0.11 (-0.09, 0.31)	0.275	0.14 (-0.04, 0.32)	0.12 (-0.06, 0.30)	0.199
	Suppressed viral load (<40 copies/ml)	0.00 (-0.23, 0.23)	-0.04 (-0.26, 0.18)	0.740	-0.05 (-0.31, 0.20)	0.01 (-0.26, 0.24)	0.946	0.05 (-0.18, 0.28)	-0.01 (-0.24, 0.21)	0.903
	WAZ at birth	0.24 (0.16, 0.33)	<b>0.26 (0.18, 0.35)</b>	<b>&lt;0.001</b>				0.17 (0.08, 0.26)	<b>0.17 (0.08, 0.26)</b>	<b>&lt;0.001</b>

208 <sup>¶</sup>WAZ – weight-for-age. <sup>‡</sup>HAZ – height-for-age. <sup>§</sup>WHZ – weight-for-height z-score. <sup>¶</sup>IPT – Isoniazid preventive therapy. <sup>c</sup>cCoefficient - crude  
209 coefficient. <sup>a</sup>aCoefficient – adjusted coefficient for all other variables (infant IPT-arm, sex of infants (ref: female infants), maternal education (ref: primary or  
210 less), age of mothers, timing of maternal HIV diagnosis (ref: tested positive before pregnancy), any maternal IPT exposure during pregnancy (ref: no use of IPT  
211 during pregnancy), viral load (ref: >=40 copies/ml), and WAZ at baseline.

212



## 213 Discussion

214 In this secondary analysis of a randomized clinical trial, we found that IPT administered to HEU infants  
215 during the first year of life without known TB exposure did not significantly impact growth outcomes  
216 (WAZ, HAZ, and WHZ) during a 2-year follow-up. Infants in the IPT arm had similar mean WAZ, HAZ, and  
217 WHZ z-scores compared to infants in the no-IPT arm at the trial end to 14 months of age and through  
218 extended observational follow-up through 24 months of age. Despite the fact that isoniazid can cause side  
219 effects that could compromise caloric intake, including nausea, vomiting, and upset stomach (18), only  
220 3.7% of the children in this study experienced gastroenteritis during trial period (16). Our data suggest  
221 that infant IPT did not impact growth, adding to safety data for IPT administered to infants (1–5). The risk  
222 of exposure (8), progression, morbidity (21–24), and mortality (25–27) for Mtb infection is high among  
223 infants and even higher in those who are HEU children and CHIV. Approaches to prevent and treat TB  
224 infection in TB endemic areas in young children are important to decrease TB-related morbidity and  
225 mortality.

226 Considering the benefits of IPT in treating Mtb infection and preventing active TB disease in children (10–  
227 12) and people with HIV and without HIV, WHO recommends IPT to children with known TB exposure and  
228 children living with HIV (CHIV), older than one year of age (13) However, most TB cases in children occur  
229 without a known contact (14) and therefore are missed by current WHO recommendations. The iTIPS trial  
230 did not find a significant benefit of IPT to prevent Mtb infection among HEU children (16,17); a post-hoc  
231 analysis demonstrated that with the observed ~10% cumulative incidence of Mtb infection (which was  
232 lower than anticipated at study design), there may not have been sufficient sample size to demonstrate  
233 benefit of IPT to prevent Mtb infection. It is plausible while IPT decreases progression to TB, it may not  
234 prevent Mtb infection. The analysis of the parent RCT demonstrated no difference in adverse events  
235 between trial arms. Our new findings of comparable growth between arms provide additional evidence  
236 of safety applicable to pediatric IPT use in general.

237 In our study, WAZ and HAZ significantly declined after enrollment in all HEU cohort irrespective of trial  
238 arm. The mean HAZ of all infants significantly decreased by 1.74 Z-scores in 24 months. The proportion  
239 of stunting increased from 8.4% to 47.9% from baseline to 2 years of age. This implies that a significant  
240 number of HEU infants born with normal HAZ in this study became stunted within 24 months of their  
241 birth. Stunting often indicates poor growth and development, and the fact that 'stunting can be  
242 irreversible after 1000 days of life makes (28) losing HAZ in the first 730 days a concern for HEU children.

243 A significant decline in HAZ was observed in male infants. This is in line with other findings (29). Numerous  
244 epidemiological studies have consistently demonstrated higher morbidity and mortality rates among male  
245 children during early life (29–32). Although the biological mechanisms for males' higher neonatal mortality  
246 and morbidity are unclear (32,35), behavioral patterns, including a preference for females and favoritism  
247 toward daughters, may be caused by the high value placed on women's agricultural labor (33,34) and low  
248 socioeconomic status (29).

249 Our study had several strengths, with a strong study design – a randomized trial with over 90% retention.  
250 The weight and length of infants were measured twice, and the average values were used for analysis to  
251 reduce measurement error. This study also has limitations. Only normal birth weight and term infants  
252 were included in the parent trial, so results do not generalize to low-birthweight and preterm babies.

253 **Conclusion:** In this secondary analysis of an RCT, IPT administered to healthy HEU infants ages 6-10 weeks  
254 over the first year of life without a known TB exposure did not significantly impact growth outcomes  
255 through the first 2 years of life. However, there was universally poor linear growth, especially in height, in  
256 this cohort of children with HIV exposure.

## Acknowledgments

Our sincere gratitude goes out to the study participants and their families. We are also grateful to the funders. This work was supported by the Thrasher Research Fund, National Institute of Allergy and Infectious Diseases (NIAID), Fulbright program awarded to the Northern Pacific Global Health Fellows Program by the Fogarty International Center of the National Institutes of Health (NIH/Fogarty), and National Center for Advancing Translational Sciences at National Institutes of Health (NIH) (Thrasher to GJ-S, NIH/NIAID K23AI120793 to SML, NIH/NIAID 2K24AI137310 to TRH, NIH/Fogarty R25TW009345 to AJW and NIH UL1TR000423 for REDCap). ASC had a diversity supplement grant from NIH (NIH/NIAID 1R01AI142647).

## Contributors

ASC\* participated in all activities of this secondary analysis: data management, analysis, writing, and editing of the manuscript.

DAE participated in all activities of this secondary analysis: data management, analysis, writing, and editing of the manuscript.

DM participated in the investigation and validation of the parent study and reviewed and edited this manuscript.

GJS designed and analyzed the parent study. Participated in all activities of this secondary analysis: data management, analysis, writing, and editing manuscript.

JM participated in the investigation and validation of the parent study and reviewed and edited this manuscript.

JNE\* participated in the investigation and validation of the parent study and reviewed and edited this manuscript.

SML designed and analyzed the parent study. Participated in all activities of this secondary analysis: data management, analysis, writing, and editing manuscript.

\*ASC and JNE have accessed and **verified** the underlying data.

## Declaration of interests:

None declared.

## References

1. Lamb GS, Starke JR. Tuberculosis in Infants and Children. *Microbiol Spectr*. 2017 Apr 1;5(2).
2. Perez-Velez CM, Marais BJ. Tuberculosis in Children. *New England Journal of Medicine*. 2012 Jul 26;367(4):348–61.
3. Basu Roy R, Whittaker E, Seddon JA, Kampmann B. Tuberculosis susceptibility and protection in children. Vol. 19, *The Lancet Infectious Diseases*. Lancet Publishing Group; 2019. p. e96–108.
4. Marais BJ, Gie RP, Schaaf HS, Hesselning AC, Obihara CC, Starke JJ, et al. The natural history of childhood intra-thoracic tuberculosis: A critical review of literature from the pre-chemotherapy era. *International Journal of Tuberculosis and Lung Disease*. 2004;8(4):392–402.
5. Seddon JA, Shingadia D. Epidemiology and disease burden of tuberculosis in children: A global perspective. Vol. 7, *Infection and Drug Resistance*. 2014. p. 153–65.
6. Marais BJ. Intrathoracic tuberculosis in children. *Arch Dis Child Educ Pract Ed*. 2006 Apr 1;91(1):1–7.
7. Martinez L, Cords O, Horsburgh CR, Andrews JR, Acuna-Villaorduna C, Desai Ahuja S, et al. The risk of tuberculosis in children after close exposure: a systematic review and individual-participant meta-analysis. *The Lancet*. 2020 Mar 21;395(10228):973–84.
8. Marquez C, Chamie G, Achan J, Luetkemeyer AF, Kyohere M, Okiring J, et al. Tuberculosis Infection in Early Childhood and the Association with HIV-exposure in HIV-uninfected Children in Rural Uganda. *Pediatric Infectious Disease Journal*. 2016 May 1;35(5):524–9.
9. WHO. Global tuberculosis report. 2019.
10. Ayieko J, Abuogi L, Simchowitz B, Bukusi EA, Smith AH, Reingold A. Efficacy of isoniazid prophylactic therapy in prevention of tuberculosis in children: A meta-analysis. *BMC Infect Dis*. 2014;14(1):1–10.
11. Zar HJ, Cotton MF, Strauss S, Karpakis J, Hussey G, Schaaf S, et al. Effect of isoniazid prophylaxis on mortality and incidence of tuberculosis in children with HIV: Randomised controlled trial. *Br Med J*. 2007;334(7585):136–9.
12. Frigati LJ, Kranzer K, Cotton MF, Schaaf HS, Lombard CJ, Zar HJ. The impact of isoniazid preventive therapy and antiretroviral therapy on tuberculosis in children infected with HIV in a high tuberculosis incidence setting. *Thorax*. 2011 Jun 1;66(6):496–501.
13. WHO. Latent tuberculosis infection: updated and consolidated guidelines for programmatic management. 2018.
14. Martinez L, Lo NC, Cords O, Hill PC, Khan P, Hatherill M, et al. Paediatric tuberculosis transmission outside the household: challenging historical paradigms to inform future public health strategies. Vol. 7, *The Lancet Respiratory Medicine*. Lancet Publishing Group; 2019. p. 544–52.

15. LaCourse SM, Richardson BA, Kinuthia J, Warr AJ, Maleche-Obimbo E, Matemo D, et al. Infant TB Infection Prevention Study (iTIPS): A randomised trial protocol evaluating isoniazid to prevent M. tuberculosis infection in HIV-exposed uninfected children. *BMJ Open*. 2020 Jan 21;10(1).
16. Lacourse SM, Richardson BA, Kinuthia J, Warr AJ, Maleche-Obimbo E, Matemo D, et al. A Randomized Controlled Trial of Isoniazid to Prevent Mycobacterium tuberculosis Infection in Kenyan Human Immunodeficiency Virus-Exposed Uninfected Infants. *Clin Infect Dis*. 2021 Jul 15;73(2):E337–44.
17. LaCourse SM, Escudero JN, Mecha J, Warr A, Richardson BA, Carimo N, et al. Cumulative Mtb infection incidence (measured primarily by TST) among infants with HIV exposure: observational follow-up of an isoniazid prophylaxis trial. *Clinical Infectious Diseases*. 2022 May 24;
18. Isoniazid - oral side effects, medical uses, and drug interactions. [Internet]. [cited 2020 Mar 11]. Available from: <https://www.medicinenet.com/isoniazid-oral/article.htm>
19. World Health Organization, United Nations Children’s Fund (UNICEF) & World Bank. Levels and trends in child malnutrition: UNICEF / WHO / The World Bank Group joint child malnutrition estimates: key findings of the 2021 edition [Internet]. World Health Organization. [cited 2022 Feb 19]. Available from: <https://apps.who.int/iris/handle/10665/341135>
20. Kenward MG, Carpenter JR. Multiple imputation. In: *Longitudinal Data Analysis*. 2008. p. 477–99.
21. Rupérez M, González R, Maculuvé S, Quintó L, López-Varela E, Augusto O, et al. Maternal HIV infection is an important health determinant in non-HIV-infected infants. *AIDS*. 2017 Jul 17;31(11):1545–53.
22. Marais BJ, Schaaf HS. Tuberculosis in children. *Cold Spring Harb Perspect Med*. 2014;4(9):4:a017855.
23. Afran L, Garcia Knight M, Nduati E, Urban BC, Heyderman RS, Rowland-Jones SL. HIV-exposed uninfected children: a growing population with a vulnerable immune system? *Clin Exp Immunol*. 2014 Apr;176(1):11–22.
24. Koyanagi A, Humphrey JH, Ntozini R, Nathoo K, Moulton LH, Iliff P, et al. Morbidity among human immunodeficiency virus-exposed but uninfected, human immunodeficiency virus-infected, and human immunodeficiency virus-unexposed infants in zimbabwe before availability of highly active antiretroviral therapy. *Pediatric Infectious Disease Journal*. 2011 Jan;30(1):45–51.
25. Shapiro RL, Lockman S, Kim S, Smeaton L, Rahkola JT, Thior I, et al. Infant morbidity, mortality, and breast milk immunologic profiles among breastfeeding HIV-infected and HIV-uninfected women in Botswana. *Journal of Infectious Diseases*. 2007;196(4):562–9.
26. Marinda E, Humphrey JH, Iliff PJ, Mutasa K, Nathoo KJ, Piwoz EG, et al. Child mortality according to maternal and infant HIV status in Zimbabwe. *Pediatric Infectious Disease Journal*. 2007 Jun;26(6):519–26.
27. Afshin A, Forouzanfar MH, Reitsma MB, Sur P, Estep K, Lee A, et al. Health effects of overweight and obesity in 195 countries over 25 years. *New England Journal of Medicine*. 2017 Jul 6;377(1):13–27.

28. Georgiadis A, Penny ME. Child undernutrition: opportunities beyond the first 1000 days. *Lancet Public Health*. 2017 Sep 1;2(9):e399.
29. Wamani H, Åström AN, Peterson S, Tumwine JK, Tylleskär T. Boys are more stunted than girls in Sub-Saharan Africa: A meta-analysis of 16 demographic and health surveys. *BMC Pediatr* [Internet]. 2007 Apr 10 [cited 2023 May 31];7(1):1–10. Available from: <https://bmcpediatr.biomedcentral.com/articles/10.1186/1471-2431-7-17>
30. Elsmén E, Pupp H, Hellström-Westas L, Elsmén E. Preterm male infants need more initial respiratory and circulatory support than female infants. [cited 2023 May 31]; Available from: <https://onlinelibrary.wiley.com/doi/10.1080/08035250410024998>
31. Chen SJ, Vohr BR, Oh W. Effects of birth order, gender, and intrauterine growth retardation on the outcome of very low birth weight in twins. *J Pediatr* [Internet]. 1993 [cited 2023 May 31];123(1):132–6. Available from: <https://pubmed.ncbi.nlm.nih.gov/8320607/>
32. Synnes AR, Ling EWY, Whitfield MF, Mackinnon M, Lopes L, Wong G, et al. Perinatal outcomes of a large cohort of extremely low gestational age infants (twenty-three to twenty-eight completed weeks of gestation). *J Pediatr* [Internet]. 1994 [cited 2023 May 31];125(6 Pt 1):952–60. Available from: <https://pubmed.ncbi.nlm.nih.gov/7996370/>
33. Svedberg P. Undernutrition in Sub-Saharan Africa: Is there a gender bias? <http://dx.doi.org/10.1080/00220389008422165> [Internet]. 2007 Apr 1 [cited 2023 May 31];26(3):469–86. Available from: <https://www.tandfonline.com/doi/abs/10.1080/00220389008422165>
34. Crognier E, Baali A, Hilali MK, Villena M, Vargas E. Preference for Sons and Sex Ratio in Two Non-Western Societies. *J Anthropol Res* [Internet]. [cited 2023 May 31];47:1–37. Available from: <https://onlinelibrary.wiley.com/doi/10.1002/ajhb.20499>
35. Green MS. The male predominance in the incidence of infectious diseases in children: a postulated explanation for disparities in the literature. *Int J Epidemiol* [Internet]. 1992 Apr [cited 2023 May 31];21(2):381–6. Available from: <https://pubmed.ncbi.nlm.nih.gov/1428496/>