

Real-world data: A systematic literature review on the barriers, challenges, and opportunities associated with their inclusion in the health technology assessment process

Konstantinos Zisis^{1,2}¶, Elpida Pavi¹¶, Mary Geitona³&, Kostas Athanasakis¹¶

¹ Laboratory for Health Technology Assessment (LabHTA), Department of Public Health Policy, School of Public Health, University of West Attica, Athens, Greece

² Institute for Health Economics, Athens, Greece

³ Department of Social & Educational Policy, Faculty of Social and Political Sciences, University of Peloponnese, Corinth, Greece

* Corresponding author: Konstantinos Zisis, kzisis@uniwa.gr

¶ These authors contributed equally to this work.

& These authors also contributed equally to this work.

Abstract

Objective: This systematic review aimed to assess the current use and acceptance of real-world data (RWD) and real-world evidence (RWE) in health technology assessment (HTA) process. It additionally aimed to discern stakeholders' viewpoints concerning RWD and RWE in HTA and illuminate the obstacles, difficulties, prospects, and consequences associated with the incorporation of RWD and RWE into the realm of HTA.

Methods: A comprehensive PRISMA-based systematic review was performed in July 2022 in PubMed/Medline, Scopus, IDEAS-RePEc, International HTA database, and Centre for Reviews and Dissemination with ad-hoc supplementary search in Google Scholar and international organization websites. The review included pre-determined inclusion criteria while the selection of eligible studies, the data extraction process and quality assessment were carried out using standardized and transparent methods.

Results: Twenty-nine (n=29) studies were included in the review out of 2.115 studies identified by the search strategy. In various global contexts, disparities in RWD utilization were evident, with randomized controlled trials (RCTs) serving as the primary evidence source. RWD and RWE played pivotal roles, surpassing relative effectiveness assessments (REAs) and significantly influencing decision-making and cost-effectiveness analyses. Identified challenges impeding RWD integration into HTA encompassed limited local data access, complexities in non-randomized trial design, data quality, privacy, and fragmentation. Addressing these is imperative for optimal RWD utilization. Incorporating RWD/RWE in HTA yields multifaceted advantages, enhancing understanding of treatment efficacy, resource utilization, and cost analysis, particularly via patient registries. RWE complements assessments of

advanced therapy medicinal products (ATMPs) and rare diseases. Local data utilization strengthens HTA, bridging gaps when RCT data is lacking. RWD aids medical device decision-making, cancer drug reassessment, and indirect treatment comparisons. Challenges include data availability, stakeholder acceptance, expertise, and privacy. However, standardization, training, collaboration, and guidance can surmount these barriers, fostering enhanced RWD utilization in HTA.

Conclusions: RWD and RWE are recognized as valuable when RCTs are lacking. Acceptance and use of RWD/RWE vary, with challenges including limited availability, methodological issues, expertise gaps, fragmentation, and data quality concerns. Addressing these barriers is crucial for effective utilization in HTA.

Key-words: Real-world data, real-world evidence, health technology assessment, acceptance, barriers, challenges, opportunities, systematic review

1. Introduction

RWE and RWD are increasingly used for evaluating health technologies to inform decision-making in the healthcare sector. RWD refers to data related to patient health status and/or the delivery of healthcare that are routinely collected from various sources outside of traditional clinical trial settings. RWE refers to data generated from RWD and it's actually the clinical evidence about the usage, benefits, and risks of medical products, which is derived from the analysis of RWD. The evidence derives from sources such as electronic health records, claims data, product or disease registries, pragmatic trials, and data generated by patients (patient-reported outcomes) as well as digital health technologies, among others [1, 2]. RWE can provide a more comprehensive and representative picture of how treatments and interventions work in real-world conditions, beyond the controlled environment of clinical trials. The role of RWE is undergoing continuous development and broadening while has gained prominence in healthcare decision-making, particularly during the COVID-19 pandemic [3]. While RCTs are still considered the benchmark for assessing the effectiveness of treatments including new cancer treatments, there is a growing consensus that relying solely on RCTs may not provide comprehensive solutions to all pertinent clinical or research inquiries and RWE can contribute in advancing decisions by providing complementary evidence [4].

In a general context, the advantages of using RWD in patient care are to:

- Evaluate the effectiveness and safety of treatments and interventions in real-world populations and environments provides a more holistic view of patient health and care outcomes, as data is derived from routine clinical care rather than controlled settings

- generate data on subpopulations that may be underrepresented in clinical trials by capturing a wider range of patient populations and health conditions, including underrepresented groups, and identify rare or long-term adverse events that may not be captured in clinical trials
- monitor the safety and efficacy of new treatments or interventions in real-world settings, beyond the limited scope of clinical trials [5].

The utilization of RWD and the generation of RWE hold immense promise for transforming healthcare decision-making. However, there are also challenges associated with the use of RWD, including issues related to inconsistent data quality, comparability and bias (subject to bias and measurement errors, both random and non-random) [6], as well as the need for appropriate statistical methods and analytical frameworks. Such challenges among others, are the following:

- **Data Quality and Consistency:** RWD originates from various sources in the real-world healthcare ecosystem, including electronic health records, claims databases, and patient registries. Consequently, data quality can be inconsistent due to differences in data collection methodologies and standards across healthcare institutions. Incomplete, inaccurate, or missing data can lead to flawed analyses and unreliable conclusions. Furthermore, the diverse nature of RWD sources means that data may vary in terms of completeness, timeliness, and relevance.
- **Bias and Measurement Errors:** RWD is inherently subject to bias and measurement errors, which can emanate from several sources. Selection bias can occur when certain patient populations are overrepresented or underrepresented in the data due to factors such as healthcare seeking behavior or data collection practices. Information bias may arise from discrepancies in the way data is recorded or measured, leading to inaccuracies. Additionally, non-random error can be introduced through factors like data entry mistakes, misclassification of variables, or systematic

differences in data collection across institutions. These biases and errors can skew RWE findings, potentially leading to misleading conclusions about the safety and effectiveness of medical interventions [7].

Considering the formidable challenges inherent in the field, it is noteworthy that the prominence of RWE in shaping healthcare decision-making continues to ascend and the importance of RWE in healthcare decision-making is growing. Regulatory agencies such as the U.S. Food and Drug Administration (FDA) recognize its potential and have issued guidance on its use in regulatory decision-making. These guidelines provide a structured framework for how RWE can be employed to support various stages of drug development and post-market surveillance. For example, the FDA has issued guidance on the use of RWE in regulatory decision-making [8], while the Institute for Clinical and Economic Review (ICER) has developed a framework [9] for integrating RWE into coverage decisions and acknowledges the value of RWE in evaluating the real-world effectiveness and cost-effectiveness of medical interventions, particularly in comparison to traditional clinical trial evidence. While RWE is progressively attaining prominence in influencing healthcare decision-making, it remains a subject of discernible complexity and resistance within the healthcare milieu.

Based on the above, the objective of the study is to investigate the integration of real-world data and real-world evidence in health technology assessment process around the world. In particular, the aim of this systematic review was to capture, through a comprehensive systematic review: a) the current use and acceptance of RWD and RWE in the health technology assessment process; b) the prioritization of barriers, challenges, opportunities, and potential implications arising from the integration of evidence generated from RWD/RWE within the HTA process; c) the identification of stakeholders' perspectives concerning to RWD and RWE in the HTA process.

2. Materials and Methods

Considering the above objective, the research questions defined for this review were the following:

- Is the utilization and acceptance of RWD and RWE prevalent in the HTA process?
- What are the barriers, challenges, potential benefits and feasibilities, as well as opportunities presented by the integration of RWD into the HTA process?
- What are the viewpoints and declarations of stakeholders concerning to RWD and RWE in the HTA process?

No formal protocol was established or registered for this systematic review.

2.1 Study design, inclusion and exclusion criteria

A PRISMA-based systematic review [10, 11] was conducted to identify articles assessed by the researchers, employing inclusion criteria to ascertain study eligibility aligned with the review's objectives. The search strategy, as detailed in section 2.2, was utilized to encompass these criteria.

Inclusion criteria were as follows:

- Population: There were no restrictions on populations, and studies were included from populations and sub-populations from all countries around the world and without any unique characteristics.
- Intervention: RWD and evidence that arise from the use and analysis of RWD.
- Comparator: No comparator.
- Outcomes: Data regarding the current use of RWD in HTA, the barriers, challenges, weaknesses of their integration in the process, opportunities, as well as the perspectives of stakeholders regarding the use of RWD in the HTA process were included. Additionally, data related to the views of stakeholders regarding RWD in the HTA process were also included.

- Types of studies: All types of studies were included, such as reviews, policy texts, primary research, RCTs, qualitative research studies.
- Language: Only studies written in English were included.
- Timeline: No time restrictions were specified for the publication of studies and policy reports.

The exclusion criteria for studies in this analysis were as follows:

- Study Types: Abstracts (oral and posters) that did not include at least one of the above outcome criteria were excluded.
- Language: Any other written language apart from English was not included in this review.

2.2 Search strategy

The detailed search strategy, which was performed on July 2022, is provided in S1 Appendix.

Search strategy was implemented to the following databases: PubMed/Medline, Scopus, IDEAS-RePEc, International HTA database, Centre for Reviews and Dissemination. In addition, supplementary ad-hoc searches for relevant information were performed on Google Scholar, as well as various international organizations such as the World Health Organization (WHO) and Organisation for Economic Co-operation and Development (OECD), and specific health technology assessment organizations such as National Institute for Health and Care Excellence (NICE), Haute Autorité de santé (HAS), and Institute for Clinical & Economic Review (ICER) to identify relevant texts and references related to the study objectives.

2.3 Study selection methods

The literature discovered through the search was archived in a bibliographic database (EndNote), with duplicate entries subsequently removed. A pilot training check process was conducted initially to ensure consistency in selection and identify areas for modifications in the inclusion criteria to provide a more

comprehensive and explicit list of study types that would be considered eligible for this review. Two researchers independently checked a random sample of approximately fifty (50) titles and abstracts for eligibility, and a high level of agreement was achieved which indicates that the two researchers largely agreed on whether each of these documents met the inclusion criteria established for the study. After this, a single researcher checked the remaining titles and abstracts for eligibility. Later, the studies resulting from the removal of duplicate entries were uploaded into Abstrackr [12], a specialized software developed by Brown University and the Center for Evidence Synthesis in Health. All abstracts were examined, and full-text documents were retrieved for the files that were flagged for inclusion. The retrieved articles were then analyzed in detail based on the full text.

2.4 Data extraction and synthesis methods

The study data was meticulously extracted and organized into four tables, a process undertaken to streamline and enhance the subsequent analysis and synthesis of the information. The design of these tables was thoughtfully structured to systematically capture pertinent information derived from the selected studies. The first table contained details relevant to the characteristics including author, year of study, country, study type, objectives, health technology studied, population and therapeutic category, and subcategory of real-world data. The second table was dedicated to encompassing data concerning the contemporary utilization and reception of RWD and RWE. In contrast, the third table comprehensively addressed the hurdles, challenges, and complexities encountered when integrating RWD-RWE into HTA. Meanwhile, the fourth table was designed to encompass the potential advantages, opportunities, and viability associated with the adoption of RWD-RWE within the realm of HTA. To ensure consistency and pinpoint any potential adjustments required for the data extraction model, two researchers initially conducted an independent pilot test on a random sample of ten (10) studies. During this process, an appropriate level of agreement was observed, denoting that there was a

satisfactory degree of consensus or concurrence among the researchers involved in the extraction of data from the selected studies. The extraction of the remaining studies was conducted by a primary researcher, supported by a secondary researcher who remained readily available to offer assistance in clarifying information or in situations where the primary researcher encountered challenges or uncertainties during the extraction process.

2.5 Appraisal of methodological quality

The methodological quality of the studies included in this review was assessed using several critical appraisal tools, namely the Critical Appraisal Skills Programme (CASP) tool for qualitative research [13], the Joanna Briggs Institute (JBI) checklist for systematic reviews and evidence syntheses [14], and Joanna Briggs Institute (JBI) checklist for text and opinions [15]. Each tool evaluated different aspects of study quality by one reviewer, including the study design, data collection methods, data analysis, and reporting of results. For the assessment of each study done using the CASP tool, the reviewer assessed the quality of the study design, data collection methods, data analysis, and interpretation of findings. The Critical Appraisal Skills Programme (CASP) tool is the most used tool for quality appraisal in health-related qualitative evidence syntheses [16]. Meanwhile, the JBI checklist was used to evaluate the relevance of the studies to the review question, study design, sample size, data collection methods, data analysis, and reporting of results.

Quality appraisal, in detail, of eligible studies can be found in the S2 Appendix. In the overarching context, it is pertinent to elucidate that the quality of the incorporated studies exhibits a discernible spectrum, wherein, a number of studies may be aptly delineated as demonstrating a standard of moderate quality, while the preponderance of the corpus can be distinguished as manifesting a commendable standard of good quality.

3. Results

During the search process, a total of 2.115 studies were identified based on the pre-specified selection criteria after removing duplicates (n=50). Among these, 137 studies were selected for inclusion after title and abstract review. Full-text versions of all studies were obtained, with the exception of eleven studies whose authors did not respond to the request of their manuscript since were also not available in the literature. Following a thorough examination of the complete texts, 108 studies were excluded due inadequate data (n = 80), oral/poster presentations without much data (n = 14), non-availability of full-text (n = 11) and non-English manuscripts (n = 3). Eventually, 29 studies out of the 137 met the inclusion criteria and were considered eligible for analysis.

Figure 1 illustrates the study selection process in accordance with the PRISMA flow diagram.

Insert here Figure 1. PRISMA flow chart of the search strategy

3.1 Description of study characteristics

Overall, 29 studies were included in this review, among which, most of them were referring to European countries. Most of these 29 studies were referring to multiple countries within their analyses while few of them assessed information related to RWD/RWE for HTA in continents. In particular, England (n=6), Germany (n=5), UK (n=4), Sweden (n=4), Netherlands (n=3), Scotland (n=3), France (n=3), Norway (n=2), Italy (n=2), Spain (n=1), Austria (n=1), Denmark (n=1), and Belgium (n=1). In addition, Europe was referred in three studies, while one study included European Union countries and another one study included Central and Eastern Europe. On the other hand, several included studies referred to North America, and particularly United States (n=2) and Canada (n=2) and one study referred to South America countries and particularly to Argentina, Brazil, Colombia, and Chile. The review also included

one study referring to Asian countries (Bhutan, China, India, Indonesia, Japan, Malaysia, Philippines, Singapore, South Korea, Taiwan, Thailand). Last, but not least, Middle East and North Africa (n=1) as well as Saudi Arabia (n=1) were part of the final studies while international scope was referred in five studies.

Insert here Table 1. Characteristics of included studies

3.2 Current use and acceptance of real-world data/real-world evidence in HTA

Insert here Table 2. Current use and acceptance of RWD and RWE in HTA

Out of the twenty-nine studies (n=29) reviewed, twenty-four studies (n=24) highlighted the current use or acceptance of RWD and/or RWE in the process of HTA. Hagen et al. (2021) [17] outlined the Norwegian HTA process and highlighted the use of RWD from observational studies when RCTs are lacking. Guidelines in Norway govern the collection and utilization of RWD, including data from Norwegian patient registries. Fasseeh et al. (2020) [18] found that the use of local data in HTA processes is not obligatory in the Middle East and North Africa region, suggesting that reliance on local data may not be a prerequisite in the region's HTA processes. The utilization and acceptance of evidence from primary care databases in HTA conducted by the NICE was investigated by Leahy et al. (2020) [19]. These databases were used to depict disease epidemiology, describe treatments, and provide clinical inputs for cost-effectiveness models. Fuchs et al. (2016) [20] conducted a systematic review on the utilization of real-world data/evidence (RWD/RWE) in HTA for medical devices in European HTA organizations. The review found that while RCTs are preferred, alternative study designs such as observational studies are acknowledged in certain circumstances. On the other hand, Patel et al. (2021)

[21] found that the use of RWD/RWE in single-arm based HTA submissions was relatively low, accounting for only 5% of total submissions. Oncological and hematological-oncological diseases were the most common areas of study. The use of external comparators derived from real-world data increased over time, with varying acceptance rates among HTA organizations. Furthermore, the clinical evidence used in the evaluation of new pharmaceutical technologies in the UK's HTA system was analyzed by Tolley (2010) [22]. In particular, the study highlighted challenges related to evidence requirements, cost-effectiveness assessments, and stakeholder involvement. NICE emphasized the importance of including pragmatic trials for real-world documentation. Kent et al. (2021) [23] provided recommendations on the use of evidence from non-randomized studies on treatment effects in the HTA process. Most HTA bodies prefer RCT data due to lower bias risk, but there are variations in the acceptance of non-randomized trials among organizations. Furthermore, the consideration and acceptance of external control arms (ECAs) using real-world data in regulatory and HTA evaluations for specific drugs in oncology was reviewed by Jaksa et al. (2022) [24]. Varying levels of acceptance were observed among different HTA organizations, including NICE, G-BA, HAS, pCODR, and PBAC.

Additional included studies showed the significance of RWE in decision-making processes, variations in its utilization across different countries, and the prevailing preference for RCTs as a primary source of evidence in HTA. Justo et al.'s (2019) [25] systematic review and qualitative research across Argentina, Brazil, Colombia, and Chile explored RWD sources, attributes, and applications for health technologies. Findings indicate RWD's growing role in Health Technology Assessments (HTA) and reimbursement, driven by anticipated increases and pharmaceutical industry investment. Colombia emphasizes RWD in economic evaluations, while Chile anticipates wider use for HTA and cost data. These insights inform future legislation and RWD management strategies. Timbie et al.'s (2021) [26] qualitative thematic analysis, conducted internationally, explores the contemporary application of RWE in the realm of

medical devices. The research advances comprehension of RWE's role in regulatory and reimbursement decision-making, despite prevailing payer preferences for RCTs and concerns about potential bias in RWE. Notably, RWE has yet to assume the principal role in pre-market approval processes. Bullement et al. (2020) [27] conducted a systematic review showing extensive incorporation of RWE in the cost-effectiveness analysis of cancer drugs evaluated by NICE in England, emphasizing its significant role in decision-making. Al-Omar et al. (2021) [28] identified differing stakeholder perspectives in Saudi Arabia regarding the mandatory integration of RWE and RCT data in HTA, indicating the need for further discussions in developing HTA processes for pharmaceuticals. The utilization of RWD in HTA was also observed by Makady et al. (2018) [29] and particularly in melanoma medicine assessments across five European countries, noting variations in the types and extent of RWD incorporation, with an increasing trend over time. The importance of RWE in reimbursement decision-making process of specific technologies related to genomics was investigated by Deverka et al. (2020) [30]. They found limited utilization of RWE in coverage decision-making for next-generation sequencing (NGS) tests by US payers, with a primary reliance on clinical guidelines and RCTs. Lou et al. (2020) [31] reported positive acceptance of RWD and RWE for clinical efficacy assessment by HTA organizations in multiple Asian countries, but with varying opinions on the requirement to justify the rationale for using RWD. The frequent use of RWE in decision analysis and modeling for HTA was highlighted by Bowrin et al. (2019) [32], with RWE influencing various aspects of decision-making, drug access, and licensing. In addition, Brogaard et al. (2021) [33] observed the inclusion and utilization of RWD in HTA assessments and reimbursement decisions for entrectinib and larotrectinib, demonstrating its varying impact and benefits in different countries. Hogervorst et al.'s (2022) [34] primary qualitative research in European countries examined the acceptance challenges surrounding RWD for complex health technologies. Survey results indicated that patient registry data received high acceptance (86%), while

unpublished data and expert opinions had lower acceptance rates (approximately 25% to 28%). Sievers et al. (2021) [35] conducted qualitative research on stakeholder perceptions of post-marketing RWE and RWD collection requirements in several European countries. The study highlighted a prevailing preference for RCT data and limited utilization of RWE in the evaluation of health technologies, particularly in the German context.

On the other hand, Hampson et al. (2018) [36] conducted research in the United States, finding that initial assessments of health technologies relied on data from RCTs by organizations such as the United States ICER and payers. The use of RWE for comparative clinical effectiveness posed challenges, but RWE was considered more relevant for re-evaluations by payers. Difficulties in collecting similar data hindered the widespread adoption of RWE. George (2016) [37] emphasized the common use of non-randomized clinical trial data in health technology assessments by the NICE in the United Kingdom. Non-randomized clinical trial data was valuable for assessing medical devices due to limitations in RCTs. NICE recognized the importance of including non-randomized clinical trial data to comprehensively evaluate health technologies. Makady et al. (2017) [38] examined the policies of six HTA organizations in Europe and found that they accepted various types of clinical evidence, including RWD, for initial reimbursement discussions. RWD was particularly requested for pharmacoeconomic assessments, and local RWD sources such as databases and registries were recommended. The use of RWD had a positive impact on the decision-making process. Pongiglione et al. (2021) [39] investigated RWD sources for HTA documentation on medical devices in Europe, focusing on procedures such as hip and knee arthroplasty, percutaneous aortic valve implantation (TAVI), mitral valve repair (TMVR), and da Vinci robotic surgery. Four categories of RWD sources were identified: administrative data, registry data, other observational studies, and other RWD sources with health outcomes data. Data availability varied across cases, and some sources lacked comparable data for HTA. Ciminata (2019)

[40] explored the use of RWD to support HTA in Scotland, specifically for anticoagulant drugs in atrial fibrillation. RWD studies consistently showed that direct oral anticoagulants (DOACs) were at least as effective as warfarin in preventing stroke and systemic embolism, with a lower risk of major bleeding.

3.3 Barriers, challenges, and difficulties encountered in incorporating RWD/RWE within HTA

Insert Table 3. Barriers, challenges, and difficulties encountered in incorporating RWD-RWE within HTA

The scoping review by Hagen et al. (2021) [17] emphasized the growing recognition of RWD from observational studies in Norwegian HTA. Real-world data contributes significantly to verifying clinical efficacy across different therapeutic categories within the general population. The editorial by Gonçalves (2020) [41] highlighted the importance of integrating ethical assessment into the HTA process for advanced therapy medicinal products (ATMPs). The inclusion of real-world data in HTA processes for ATMPs is crucial to provide a more comprehensive understanding of their real-world effectiveness but there is absence of satisfactory data from both clinical studies or real-world sources. The study by Fasseeh et al. (2020) [18] focused on HTA implementation in the Middle East and North Africa (MENA) region. The study revealed limitations in the availability and transferability of local real-world data, emphasizing the challenges faced in accessing and utilizing comprehensive local data sources for HTA processes in the region. The systematic review by Leahy et al. (2020) [19] investigated the use of documentation derived from primary care databases in health technology assessments conducted by NICE in the UK. Tailored analyses using data from primary care databases were better received by evaluation committees, highlighting the importance of generating specific analyses for NICE submissions. Another systematic review conducted by Fuchs et al. (2016) [20] focused on HTA

activities for medical devices among European HTA organizations. The review highlighted the differences in the interpretation of MDs and variations in the willingness to embrace alternative study designs. This from another perspective could pose challenges in the pursuit of standardizing the integration of RWD across institutions. The qualitative study by Dai et al. (2021) [42] evaluated a proposed re-evaluation process for cancer drugs in Canada. The study emphasized the importance of reliable RWE, challenges in establishing an incremental cost-effectiveness ratio (ICER) for reassessments, and the importance of rigorous evaluation criteria in the re-evaluation process for cancer drugs. The retrospective review by Patel et al. (2021) [21] assessed the use of external comparators (ECs) based on single-arm test data in HTA submissions. Variability in the acceptance of RWD and RWE among HTA stakeholders was found, with challenges identified in study design, analysis, publication bias, and limited information. Tolley's (2010) [22] commentary examined challenges within the UK's HTA system, including clinical evidence requirements, cost-effectiveness evaluations, and stakeholder involvement. The commentary emphasized the specific requirements of UK HTA agencies for demonstrating clinical effectiveness and cost-effectiveness compared to placebo. Kent et al. (2021) [23] provided recommendations on the use of evidence from non-randomized trials in HTA. The study identified challenges in study planning, design, analysis, reporting, and systematic protocols in using non-randomized clinical evidence in HTA. Jaksa et al. (2022) [24] reviewed regulatory and HTA agencies' critiques of external control arms (ECAs) with real-world data. The study emphasized the need for future recommendations in ECA design and production based on different critiques raised by HTA agencies. Justo et al. (2019) [25] explored RWD sources, characteristics, and uses in South America. The study identified problems with RWD quality, consistency, collection methods, lack of expertise, and confidence in observational research. Kamusheva et al. (2022) [43] conducted a scoping review and qualitative research in Central and Eastern European countries to identify barriers to implementing RWE

in health technology assessment. The study found technical, regulatory, clinical, and scientific barriers, as well as other barriers, that hinder the adoption and integration of RWE into healthcare decision-making processes in the region. Timbie et al. (2021) [26] conducted a survey and interviews to examine the challenges faced by manufacturers in utilizing RWE for regulatory and reimbursement decisions in the medical device industry. The study identified barriers such as uncertain return on investment, difficulty in accessing high-quality data, and lack of RWE expertise, which hinder the widespread use of RWE. In addition, the systematic review conducted by Bullement et al. (2020) [27] on the use of RWE in single technology assessments (STAs) of cancer medicines by the NICE in England, found key criticisms regarding the sources of RWE, such as the comparability of real patient cohorts with clinical trial patients and the relevance of RWE patient cohorts to current clinical practice. Al-Omar et al. (2021) [28] conducted a scoping review and primary qualitative research in Saudi Arabia to explore the perspectives of local experts on potential evidence relevant to HTA processes and methods for pharmaceutical products. The study identified barriers such as limited availability and quality of real-world data, concerns about data privacy and confidentiality, and lack of standardization in data collection and reporting practices. What's more, Makady et al. (2018) [29] conducted a retrospective study on the use of RWD in the HTA process for melanoma drugs in Europe. The study found that RWD inclusion was more common in CEAs compared to REAs, but there was a lack of consistent evaluation of RWD and variability across different HTA organizations. Deverka et al. (2020) [30] conducted a systematic review identifying barriers and issues related to the use of RWE in payer decision-making. The study found concerns about the relevance and timeliness of RWE studies, perceived inadequacy of RWE methods, limited influence of genomic studies on coverage decisions, and lack of expertise among payers and clinicians in using RWE. Lou et al. (2020) [31] conducted a qualitative study in multiple Asian countries on the use of RWD and RWE in all health technologies.

The study identified challenges such as lack of representative patient samples, incomplete patient information, inadequate infrastructure and skills for RWD analysis, and lack of support for data sharing. Facey et al. (2020) [44] conducted a qualitative study in European Union countries to explore the use of RWD in decision-making processes for highly innovative technologies. The study identified challenges such as fragmentation, lack of clarity and harmonization, isolated approaches, and a lack of collaboration among payers and HTA organizations. An additional systematic review by Bowrin et al. (2019) [32] with the aim to explore the limitations of using RWE in decision analysis and modeling, identified limitations such as confounding bias, lack of accuracy in drug exposure and outcome data, challenges in data protection and confidentiality, and insufficient patient numbers. Brogaard et al.'s (2021) [33] analysis encompassed England, Germany, France, Canada, Denmark, Sweden, and Scotland, focusing on HTA agency reviews and reimbursement decisions for entrectinib and larotrectinib. The study aimed to compare assessments and reimbursement outcomes for these medications across countries, shedding light on similarities and differences in their evaluation and acceptance. Key findings included variation in evidence criteria, payer concerns about clinical data, especially non-traditional datasets like RWD, and limited integration of RWD in HTA evaluations, suggesting the need for guidance on RWD acceptance and indirect comparison methods. Hogervorst et al. (2022) [34] conducted a qualitative research study in European countries to assess challenges related to the acceptance of RWD in the context of complex health technologies. The study identified obstacles such as a lack of necessary data sources, inadequate policy structures, difficulties in interpretation and verification, absence of relevant variables, and time constraints in accessing data. Sievers, et al. (2021) [35] conducted a qualitative research study in multiple European countries to explore stakeholder perceptions of post-marketing RWE. The study identified challenges including methodological issues, low data quality, limited infrastructure for RWD collection, and ensuring data representativeness.

Stakeholders emphasized the value of RWE but stressed the need to address these challenges for optimal use in decision-making processes. Hampson et al. (2018) [36] investigated RWE utilization by conducting a literature review and interviews with RWE experts revealed challenges: bias, incomplete data, accessibility issues, methodological disparities, and a shortage of qualified researchers. Enhancing RWE's role in reimbursement decisions requires addressing these concerns and fostering consensus on methodologies. George E (2016) [37] provided a UK perspective on the use of non-RCT data within the NICE. The commentary highlighted challenges associated with non-RCT data, such as confusion, biases, incomplete data, limited use of quality-of-life data, and uncertainty regarding data accuracy. The discussion shed light on considerations for utilizing real-world data in evaluating health technologies across various therapeutic categories. Husereau et al. (2019) [45] conducted a qualitative research study in Canada on the use of RWD for drug pricing and reimbursement decisions. The study identified barriers to increasing RWD utilization, including lack of trust, difficulty in accessing data, lack of standardization, insufficient infrastructure, perceived threats to stakeholders' interests, lack of cooperation, and challenges in translating data into action. Pongiglione et al.'s (2021) [39] systematic review encompassed 15 European countries, examining the availability and quality of real-world data pertinent to Life Cycle Information Systems (LIS) for medical devices. The study critically evaluated real-world data sources, emphasizing their relevance to medical device-associated ATHENA (Assessment of Therapeutic Effectiveness by National Authorities). Focused on hip and knee arthroplasty, TAVI, TMVR, and da Vinci robotic surgery, the research identified barriers, including data accessibility challenges, lack of outcome standardization, limited comparable data, data quality concerns, and demographic and epidemiological data gaps. The latest study by Ciminata (2019) [40] focusing on the use of RWE for assessing anticoagulant medications in patients with atrial fibrillation, explored the opportunities and challenges of using RWD in the decision-making process. It highlighted

challenges such as limited availability of high-quality data, data quality issues, methodological challenges, and data access barriers. The thesis stressed the need for standardization in RWD collection, management, and analysis to improve the quality and comparability of results.

3.4 Potential Benefits, Opportunities, and Feasibility of Utilizing RWD/RWE in the HTA Process

Insert Table 4. Potential Benefits, Opportunities, and Feasibility of Utilizing RWD-RWE in the HTA Process

The first study conducted by Hagen et al. (2021) [17] focused on the Norwegian HTA system and highlighted the importance of patient registries as valuable sources of evidence. The study emphasized that well-organized registries have the potential to provide crucial data on health utilities, resource use, and costs, enhancing the assessment of health technologies and informing decision-making processes. Patient registries were found to offer insights into treatment patterns, real-world treatment adherence, and the natural history of diseases, contributing to accurate economic evaluations and modeling. In the editorial by Gonçalves (2020) [41], the integration of ethical evaluation into the HTA process for advanced therapy medicinal products (ATMPs) is discussed, with a specific focus on the use of RWD. The editorial emphasizes the importance of collecting and analyzing evidence from RWD to complement the assessment of ATMPs, particularly in the context of rare diseases. It highlights the need for long-term efficacy and comparative effectiveness data, supplemented by real-world evidence, to ensure comprehensive evaluations of these advanced therapies. Fasseeh et al. (2020) [18] conducted a Middle East and North Africa Primary Survey to assess the implementation of HTA in the region. The study revealed a willingness among respondents to invest in patient registries and make payer databases accessible to the HTA sector. It underscored the importance of collecting and utilizing local data to enhance the quality of HTA practices. Furthermore, Leahy et al. (2020) [19] conducted a UK Systematic

Review that explored the utilization of evidence from primary care databases in NICE HTA assessments. The study identified primary care databases as a key source of RWD for informing NICE submissions and aiding healthcare decision-making. The acceptance and positive feedback from review committees and the Evidence Review Group (ERG) indicate the reliability and accuracy of primary care databases as a data source. Another systematic review by Fuchs et al. (2016) [20] with the aim to review and compare the activities of HTA for medical devices among European organizations involved in Mutual Recognition Agreements (MRAs), highlighted various initiatives to address the challenges in medical device assessment, such as standardized data elements, outcome measures, and data exchange platforms. These initiatives aim to enhance the consistency and quality of MD assessment processes across European HTA organizations. Dai et al. (2021) [42] evaluated the proposed re-evaluation process for cancer medicines in Canada, focusing on the use of RWD and indicated that stakeholders expressed confidence in the results, citing the availability of RWE on clinical benefit and cost-effectiveness from various Canadian provinces. The study recommended involving patients in the reassessment process and leveraging RWE for studying rare cancers and targeted therapies. Patel et al. (2021) [21] conducted an international retrospective study reviewing HTA submissions from various countries. The study highlighted the need for a well-designed strategy and robust data collection methods for indirect treatment comparison. It emphasized the increasing use of RWD in HTA submissions and the importance of monitoring and developing guidelines for RWD submissions. Tolley (2010) [22] offered a commentary on the evaluation of new pharmaceutical technologies within the UK's HTA system. The commentary highlighted the importance of observational studies, including registers, for assessing the real-life efficacy and cost-effectiveness of medicines during the post-marketing phase. It emphasized the need for conditional drug reimbursement schemes and the adaptation of research and development strategies to meet the demand for evidence from unproven clinical trials. On the other hand, the author

discusses challenges in evaluating new pharmaceutical technologies within the UK's HTA system and highlights the importance of real-world data during the post-marketing phase. Kent et al. (2021) [23] provides recommendations for using evidence from non-randomized trials in HTA processes, emphasizing study design, reporting potential errors, and strengthening scientific advice processes. Jaksa et al. (2022) [24] review critiques of ECAs utilizing real-world data, highlighting selection bias and confusion as key issues. The expansion of healthcare coverage and increasing number of diseases and interventions covered put pressure on healthcare budgets as mentioned in the systematic review and qualitative research through workshops with stakeholders conducted by Justo et al. (2019) [25]. RWE can help monitor outcomes and cost-effectiveness, but careful data recording and evidence-based policy planning are crucial. Kamusheva et al. (2022) [43] conducted a scoping review and qualitative research by having internal discussions and a webinar with stakeholders from Central and Eastern European countries to identify barriers to the use of RWE in healthcare. The study focused on Central and Eastern European countries. Those countries face challenges in collecting RWE due to limited IT infrastructure and frequently changing legislation. Collaborative initiatives and infrastructure development are needed. Timbie et al. (2021) [26] explored the use of RWE for medical devices, recommending clearer guidance, rigorous study design, engagement in RWE-related activities, and alternative reimbursement strategies. Bullement et al. (2020) [27] conducted a systematic review with the aim of how RWE has been used to inform Single Technology Assessments (STAs) of cancer drugs conducted by the NICE. Developing best practice guidelines and addressing common criticisms can enhance the use of RWE in submissions to NICE. Al-Omar et al. (2021) [28] identify challenges in utilizing RWD in HTA processes in Saudi Arabia, including data availability, acceptance by stakeholders, and expertise and resources. In Makady's, et al. (2018) [29] literature review focusing on England, Scotland, Netherlands, France, and Germany, it was examined whether RWDs are included in the REAs and CEAs of melanoma drugs, and

the evaluation of RWDs for their intended purposes by five HTA organisations in Europe. Alignment with policies, quantitative methods, and the role of RWD in re-evaluations are discussed. RWDs could play a critical role in drug reassessment by confirming previous efficacy estimates, cost-effectiveness ratios (ICERs) and budget implications. Comprehensive re-evaluation reports under conditional reimbursement systems (CRS) could benefit from the use of RWDs. Deverka et al. (2020) [30] examined the use of RWE in coverage decision-making for NGS-based tests. Opportunities for training and development incentives in RWE and NGS were identified, including providing training on observational study methods and pragmatic trials for stakeholders, particularly payers. Additionally, encouraging funding for RWE studies that demonstrate the benefits and harms of NGS testing was recommended. Improving the methods of studies that generate RWE was also highlighted. Several groups have developed RWE assessment tools specifically for payers, and it was suggested that multi-stakeholder groups should adapt these best practices and evaluation tools to NGS. Furthermore, transparent engagement processes should be established to incorporate payer information needs. Lastly, the study emphasized the potential of artificial intelligence (AI)-based methods, such as natural language processing and machine learning, in processing and analyzing unstructured data from electronic health records and patient-generated data, reducing the need for manual curation.

The first study conducted by Hagen et al. (2021) [17] focused on the Norwegian HTA system and Lou et al. (2020) [31] conducted a study across multiple Asian countries, examining the use of real-world data and evidence in the assessment of health technologies in the general population. The study identified challenges and proposed the development of a guidance document specifically tailored for Asia to address these challenges. Collaboration and the adoption of good practices among stakeholders were emphasized as crucial strategies to overcome these challenges and effectively utilize real-world data and evidence in health technology assessment processes across Asia. Facey et al. (2020) [44]

investigated the use of RWD in decision-making by payers and HTA organizations in European Union countries. The study employed a mixed-methods approach and identified several opportunities and applications for leveraging RWD, including collaboration with academia, engaging industry in multilateral dialogues, promoting governance and transparency in RWD production, establishing an EU multilateral learning network for RWD, and seeking regulatory support and guidance. These actions have the potential to improve the use of RWD in decision-making processes, enhance the reliability and relevance of RWD, and foster knowledge exchange in the health sector across European Union countries. Bowrin et al. (2019) [32] conducted a systematic review to investigate the limitations of using RWE in decision analysis, particularly in modeling, and to identify existing recommendations on RWD-based modeling. The review highlighted the need for a practical guide on utilizing registry data for cost-effectiveness decisions and proposed a checklist to assess statistical issues when evaluating cost-effectiveness models with observational data. It also revealed opportunities for incorporating RWE in decision-making, as several agency guidelines recognized its usefulness in providing evidence on clinical practice, treatment pathways, resource utilization, disease natural history, and intervention efficacy and safety. Brogaard et al. (2021) [33] analyzed HTA agency assessments and reimbursement decisions for tumor-agnostic therapies in multiple countries. The study focused on the role of RWD in these assessments and highlighted the importance of monitoring future evaluations and potential re-evaluations to enhance the acceptability of RWD as a data source. Conditional reimbursement procedures and the need for clear guidance on indirect comparisons and acceptable use of RWD were identified as opportunities. The study also emphasized the lack of guidance on structuring HTA assessments and developing economic models for future tumor-agnostic therapies, calling for further guidance and integration of RWD into the assessment process. Hogervorst et al. (2022) [34] conducted qualitative research in European countries to assess the challenges associated with the acceptance of

RWD in the evaluation of new health technologies. The study identified circumstances where RWD could be deemed acceptable, such as high disease burden, severe indications, outdated or inconsistent RCT findings, uncertainty regarding resource utilization, innovative technologies, limited treatment options, and clinical practice comparisons. The study also highlighted the importance of reliable documentation, clinical uncertainty, high uncertainty in cost-effectiveness analyses, and well-established use according to European legislation as factors that could warrant the use of RWD. Sievers et al. (2021) [35] conducted qualitative research in several European countries to explore stakeholder perceptions of post-marketing RWE and its value in healthcare decision-making. The study identified key challenges and opportunities related to RWE utilization, emphasizing its potential to complement RCT data, address gaps, and reduce uncertainty. Opportunities included harmonizing documentation requirements, fostering greater acceptance, and facilitating dialogue among stakeholders through platforms like the Joint Scientific Advice and EUnetHTA. The study highlighted the importance of coordinating post-marketing RWE requirements between regulatory agencies and HTA organizations. Hampson et al. (2018) [36] explored the use of RWE in the healthcare system in the USA. They identified opportunities for improvement, including the establishment of a national mandatory register for observational studies, national data repositories, and better quality electronic medical records. The study recommended rigorous protocols and consensus on good practice guidelines for generating high-quality RWE. Effective governance arrangements for data sharing and pragmatic trials that bridge the gap between RWE and TC were also suggested. The study proposed fast-track licensing processes to utilize RWE for decision-making on innovative therapies with limited documentation. George (2016) [37] focused on using RWD in health technology assessments by the NICE in the UK. The article emphasized the need for improvements in non-RCT data, including better case identification, data source linkage, and standardized recording of health-related quality of life and patient preferences. Transnational

participation in projects such as IMI Get Real and ADAPT SMART was highlighted to develop frameworks and methodologies for integrating RWD into NICE assessments. The article suggested that using both RCTs and RWD can provide a more comprehensive understanding of healthcare interventions' effectiveness and safety. Makady et al. (2017) [38] reviewed policies of six health technology assessment organizations in Europe regarding the use of RWD in assessments of medicines. The study found a lack of alignment and guidance on practical aspects of RWD collection and analysis, which may discourage investment in RWD production. The researchers recommended aligning policies and providing guidance on RWD collection and analysis to incentivize stakeholders. Harmonization of policies can support the generation of additional or alternative data for medicines where RCTs are not feasible, especially for rare diseases or orphan drugs. Husereau et al. (2019) [45] conducted qualitative research in Canada to explore stakeholders' views on using RWD for drug pricing and reimbursement decisions. The study highlighted the need for investments in data infrastructure, standardization, analytical tools, and staff training to fully leverage the potential of RWD. Collaboration among researchers, regulators, payers, and industry stakeholders was emphasized to ensure the quality and reliability of RWD. Data standardization and harmonization, along with cooperation and partnerships, were identified as important for effective utilization of RWD in decision-making processes. Pongiglione et al. (2021) [39] conducted a systematic review on the use of RWD in HTA of medical devices in Europe. The study emphasized the need for standardization in the selection, measurement, use, and reporting of RWD to address biases and ensure consistency in clinical research and practice. Stronger coordination at the EU level and a coordinated approach involving stakeholders and industry were recommended to enhance the use of RWD in HTA processes and inform policy decisions. Ciminata (2019) [40] explored the opportunities and challenges of using RWE to support the Authorization for Temporary Use (ATF) decision-making process in Scotland, specifically focusing on anticoagulant

medication in patients with atrial fibrillation. The study emphasized the need for standardization in RWD collection, management, and analysis to improve the quality and comparability of results.

4. Discussion

In this study, we conducted a systematic review to comprehensively evaluate the available evidence on RWD and RWE for HTA process. Multiple included studies emphasize the significance of RWD and RWE as alternative sources of evidence when RCTs are lacking or not feasible. While HTA organizations typically favor systematic reviews and RCTs as primary sources of clinical effectiveness data for economic evaluations of health technologies, they also recognize the value of observational studies, patient registries, and primary care databases as valuable sources of real-world evidence. However, the acceptance and utilization of RWD/RWE vary among different HTA organizations and countries. Over time, there has been a noticeable trend towards increased acceptance and use of RWD/RWE in HTA. Nonetheless, certain challenges and limitations associated with its acceptance and use in HTA have been highlighted in studies, including concerns about bias, methodological issues, and the need for further discussions and considerations. Although stakeholders, including HTA agencies, payers, and pharmaceutical companies, generally acknowledge the value of RWD/RWE, there is still a prevailing preference for data from RCTs. RWD/RWE is frequently employed in HTA for several purposes, including describing disease epidemiology, illustrating treatment landscapes, providing clinical inputs for cost-effectiveness models, assessing long-term effectiveness and costs, and evaluating health-related quality of life. However, there is regional variation in the implementation of HTA and the use of RWD/RWE, with differences observed between countries in Europe, South America, the Middle East, and Asia.

On the other hand, this review concluded important findings in regards to the barriers and issues arise with the use and acceptance of RWD and RWE for HTA. These findings highlight the challenges faced in leveraging real-world data for informed decision-making in healthcare. One of the prominent barriers identified is the limited availability and transferability of local real-world data. This limitation poses a challenge in accessing comprehensive and relevant data sources, particularly in specific regions or healthcare contexts. The lack of local data hinders the ability to generate evidence that is tailored to the specific needs and characteristics of the population under assessment. Accessing high-quality data is crucial for reliable and credible evidence generation. However, several studies revealed difficulties in accessing reliable and high-quality real-world data. The challenges can arise from issues such as data privacy and confidentiality concerns, limited data standardization, and variations in data collection and reporting practices. These barriers undermine the reliability and credibility of the evidence derived from real-world data sources. Methodological challenges were also identified as a significant barrier to utilizing real-world data and evidence in HTA. Studies pointed out challenges in study design, analysis, and reporting when relying on non-randomized clinical evidence. Addressing these methodological challenges is crucial to ensure the validity and robustness of findings derived from real-world data sources. Insufficient expertise among stakeholders in utilizing real-world evidence emerged as a common barrier. This lack of expertise can hinder the effective use and interpretation of real-world data. Stakeholders, including policymakers, payers, and clinicians, need to possess the necessary skills and knowledge to critically evaluate and utilize real-world evidence in decision-making processes. Fragmentation and lack of collaboration among stakeholders were found to hinder the utilization of real-world data. The absence of harmonized approaches, data sources, methodologies, and decision-making processes limit the consistent and efficient use of real-world evidence. Enhancing collaboration and promoting standardization among stakeholders are essential for maximizing the potential of real-world

data in HTA. Data quality and reliability were highlighted as significant concerns. Studies identified issues related to low data quality, confounding biases, incomplete data, and challenges in data protection and confidentiality. These limitations can undermine the validity and generalizability of findings derived from real-world data sources. Overall, the studies underscore the need to address these barriers and challenges to effectively utilize real-world data and evidence in HTA. Improving data availability, ensuring data quality and standardization, addressing methodological challenges, promoting collaboration, and enhancing expertise among stakeholders are key considerations for advancing the use and acceptance of real-world data in healthcare decision-making processes. The results of this review concerning to opportunities related to the RWD inclusion in HTA are in line with the literature and particularly with published manuscript of Crane G, et al. (2022) [46] whom results were similar and highlighted the importance of recommending approaches and initiatives for improving RWE utilization in healthcare decision-making in East Asia and beyond and Encouraging large-scale collaborations among government agencies, hospitals, research organizations, patient groups, and the pharmaceutical industry to ensure access to robust real-world data and alignment on addressing evidence needs.

The systematic review methodology employed in this study offers several strengths, enhancing the reliability and credibility of our findings. One of the key strengths of a systematic review is its comprehensive and rigorous approach. By adhering to a predefined and transparent methodology, we ensured that all relevant studies on the research question were identified, appraised, and synthesized. This minimizes bias and increases the validity of our results. An additional notable strength inherent to the systematic review methodology is its innate capacity to mitigate selection bias. This was achieved through the meticulous application of explicit inclusion and exclusion criteria, thereby effectively diminishing the prospect of selectively favoring studies that align with a particular perspective. Such an approach significantly bolsters the objectivity and neutrality of our review. Moreover, our systematic

review facilitated the amalgamation of a diverse body of evidence. We thoughtfully incorporated studies employing a spectrum of methodologies, spanning various populations and settings. This comprehensive and inclusive approach underscores the robustness of our findings, fostering a more holistic perspective on the research question at hand. Despite these strengths, it is important to acknowledge the limitations of our systematic review. Firstly, although we aimed to conduct a comprehensive search, it is possible that some relevant studies may have been inadvertently missed, mainly due to the strict inclusion criteria of English-written manuscripts. This linguistic restriction may introduce a potential source of bias, as relevant studies or data published in languages other than English were not incorporated into our analysis, which could impact the comprehensiveness and generalizability of our findings. While conscientiously implementing strategies to mitigate bias within this systematic review, it is imperative to acknowledge that the specter of publication bias persists as a potential limitation. Despite our diligence in data collection and analysis, it is challenging to wholly obviate this concern, as it hinges upon the selective dissemination of research findings, rendering an absolute negation of its influence unattainable. In conclusion, it is essential to underscore that the efficacy of systematic reviews is intrinsically tied to the caliber and lucidity of the underlying studies. Regrettably, any deficiencies or methodological shortcomings present within the primary studies inherently permeate our review, thereby potentially undermining the veracity of our collective findings. It is imperative to note that, by and large, the studies incorporated into our review demonstrated commendable quality, although a minority exhibited a moderate level of quality, signaling the importance of interpreting our findings within this context.

5. Conclusions

RWD and RWE have gained significance in healthcare decision-making when RCTs are impractical. While systematic reviews and RCTs are preferred for HTA process, HTA organizations acknowledge

the value of observational studies, patient registries, and primary care databases. Acceptance and utilization of RWD/RWE vary globally, with a growing trend towards their increased use. However, challenges persist, including concerns about bias, methodological issues, and the need for further discussions. Stakeholders generally recognize the value of RWD/RWE but still prefer data from RCTs. RWD/RWE are frequently employed in HTA to describe disease epidemiology, illustrate treatment landscapes, inform cost-effectiveness models, assess long-term effectiveness and costs, and evaluate health-related quality of life. This review identified key barriers, such as limited availability and transferability of local data, difficulties accessing reliable data, methodological challenges, insufficient expertise, and fragmentation among stakeholders. Data quality and reliability, including issues of low quality, biases, and confidentiality, are also concerns. Overcoming these barriers is crucial for effective use of real-world data in HTA. Improving data availability, ensuring quality and standardization, addressing methodological challenges, promoting collaboration, and enhancing stakeholder expertise are essential considerations. By addressing these challenges, the full potential of real-world data can be harnessed, leading to more informed and evidence-based healthcare decisions.

6. Acknowledgments

Not applicable/no acknowledgments

7. References

[1] U.S. Food and Drug Administration. Real-world evidence. Retrieved May 11, 2023, from <https://www.fda.gov/science-research/science-and-research-special-topics/real-world-evidence>

[Accessed on 02 Sep 2022]

[2] Dang, A. Real-World Evidence: A Primer. *Pharm Med* 37, 25–36 (2023).
<https://doi.org/10.1007/s40290-022-00456-6>

[3] Schad F, Thronicke A. Real-World Evidence-Current Developments and Perspectives. *Int J Environ Res Public Health*. 2022 Aug 16;19(16):10159. doi: 10.3390/ijerph191610159.

[4] Batra A, Cheung WY. Role of real-world evidence in informing cancer care: lessons from colorectal cancer. *Curr Oncol*. 2019 Nov;26(Suppl 1):S53-S56. doi: 10.3747/co.26.5625.

[5] Ho YF, Hu FC, Lee PI. The Advantages and Challenges of Using Real-World Data for Patient Care. *Clin Transl Sci*. 2020 Jan;13(1):4-7. doi: 10.1111/cts.12683.

[6] Liu F, Panagiotakos D. Real-world data: a brief review of the methods, applications, challenges and opportunities. *BMC Med Res Methodol*. 2022 Nov 5;22(1):287. doi: 10.1186/s12874-022-01768-6.
Erratum in: *BMC Med Res Methodol*. 2023 May 2;23(1):109.

[7] Naidoo P, Bouharati C, Rambiritch V, Jose N, Karamchand S, Chilton R, et al. Real-world evidence and product development: Opportunities, challenges and risk mitigation. *Wien Klin Wochenschr*. 2021 Aug;133(15-16):840-846. doi: 10.1007/s00508-021-01851-w.

[8] U.S. Food and Drug Administration. (2018). Use of real-world evidence to support regulatory decision-making for medical devices: Guidance for industry and Food and Drug Administration staff. Retrieved from: <https://www.fda.gov/media/120060/download> [Accessed on 07 Sep 2022]

[9] Pearson SD, Dreitlein WB, Towse A, Hampson G, Henshall C. A framework to guide the optimal development and use of real-world evidence for drug coverage and formulary decisions. *J Comp Eff Res*. 2018 Dec;7(12):1145-1152. doi: 10.2217/cer-2018-0059.

[10] Page MJ, McKenzie JE, Bossuyt PM, Boutron I, Hoffmann TC, Mulrow CD, et al. The PRISMA 2020 statement: an updated guideline for reporting systematic reviews. *BMJ*. 2021 Mar 29;372:n71. doi: 10.1136/bmj.n71.

[11] Moher D, Liberati A, Tetzlaff J, Altman DG; PRISMA Group. Preferred reporting items for systematic reviews and meta-analyses: the PRISMA statement. *PLoS Med*. 2009 Jul 21;6(7):e1000097. doi: 10.1371/journal.pmed.1000097.

[12] Brown University School of Public Health - Center for Environmental Health and Technology. Software Resources. Retrieved from <https://www.brown.edu/public-health/cesh/resources/software>, [Accessed on 10 Oct 2022]

[13] Critical Appraisal Skills Programme. CASP Qualitative Studies Checklist, available from: [CASP- Qualitative-Checklist-2018 fillable form.pdf \(casp-uk.net\)](https://casp-uk.net/qualitative-checklist-2018-fillable-form.pdf) [Accessed on 10 April 2023]

[14] The Joanna Briggs Institute. Checklist for Systematic Reviews and Research Syntheses, available from: [EMT Report \(jbi.global\)](https://jbi.global/emt-report), [Accessed on 10 April 2023]

[15] The Joanna Briggs Institute. Checklist for Text and Opinion, available from: [EMT Report \(jbi.global\)](https://jbi.global/emt-report), [Accessed on 10 April 2023]

[16] Long HA, French DP, Brooks JM. Optimising the value of the critical appraisal skills programme (CASP) tool for quality appraisal in qualitative evidence synthesis. *Research Methods in Medicine & Health Sciences*. 2020;1(1):31-42. doi:10.1177/2632084320947559

[17] Hagen, G, & Wisløff, T. Registry data for use in health technology assessments in Norway – Opportunities and challenges. *Norsk Epidemiologi*, 2021, 29(1-2). <https://doi.org/10.5324/nje.v29i1-2.4042>

[18] Fasseeh A, Karam R, Jameleddine M, George M, Kristensen FB, Al-Rabayah AA, et al. Implementation of Health Technology Assessment in the Middle East and North Africa: Comparison Between the Current and Preferred Status. *Front Pharmacol*. 2020 Feb 21;11:15. doi: 10.3389/fphar.2020.00015.

[19] Leahy TP, Ramagopalan S, Sammon C. The use of UK primary care databases in health technology assessments carried out by the National Institute for health and care excellence (NICE). *BMC Health Serv Res*. 2020 Jul 22;20(1):675. doi: 10.1186/s12913-020-05529-3.

[20] Fuchs S, Olberg B, Panteli D, Busse R. HEALTH TECHNOLOGY ASSESSMENT OF MEDICAL DEVICES IN EUROPE: PROCESSES, PRACTICES, AND METHODS. *Int J Technol Assess Health Care*. 2016 Jan;32(4):246-255. doi: 10.1017/S0266462316000349.

[21] Patel D, Grimson F, Mihaylova E, Wagner P, Warren J, van Engen A, et al. Use of External Comparators for Health Technology Assessment Submissions Based on Single-Arm Trials. *Value Health*. 2021 Aug;24(8):1118-1125. doi: 10.1016/j.jval.2021.01.015.

[22] Tolley K, Pharmaceutical market access and the challenges of health technology assessment in the United Kingdom. 2010, *Drug Dev. Res.*, 71: 478-484. <https://doi.org/10.1002/ddr.20422>

[23] Kent S, Salcher-Konrad M, Boccia S, Bouvy JC, Waure C, Espin J, et al. The use of nonrandomized evidence to estimate treatment effects in health technology assessment. *J Comp Eff Res*. 2021 Oct;10(14):1035-1043. doi: 10.2217/ce-2021-0108.

[24] Jaksa A, Louder A, Maksymiuk C, Vondeling GT, Martin L, Gatto N, Richards E, Yver A, Rosenlund M. A Comparison of Seven Oncology External Control Arm Case Studies: Critiques From Regulatory and Health Technology Assessment Agencies. *Value Health*. 2022 Dec;25(12):1967-1976. doi: 10.1016/j.jval.2022.05.016.

[25] Justo N, Espinoza MA, Ratto B, Nicholson M, Rosselli D, Ovcinnikova O, et al. Real-World Evidence in Healthcare Decision Making: Global Trends and Case Studies From Latin America. *Value Health*. 2019 Jun;22(6):739-749. doi: 10.1016/j.jval.2019.01.014.

[26] Timbie JW, Kim AY, Concannon TW. Use of Real-World Evidence for Regulatory Approval and Coverage of Medical Devices: A Landscape Assessment. *Value Health*. 2021 Dec;24(12):1792-1798. doi: 10.1016/j.jval.2021.07.003.

[27] Bullement A, Podkonjak T, Robinson MJ, Benson E, Selby R, Hatswell AJ, et al. Real-world evidence use in assessments of cancer drugs by NICE. *Int J Technol Assess Health Care*. 2020 Jul 10:1-7. doi: 10.1017/S0266462320000434.

[28] Al-Omar HA, Aljuffali IA, Solà-Morales O. Value drivers for pharmaceutical products in HTA in Saudi Arabia: Results from a capacity Building, Multi-Stakeholder workshop. *Saudi Pharm J*. 2021 Sep;29(9):946-954. doi: 10.1016/j.jsps.2021.08.001.

[29] Makady A, van Veelen A, Jonsson P, Moseley O, D'Andon A, de Boer A, Hillege H, Klungel O, Goettsch W. Using Real-World Data in HTA Practice: A Comparative Study of Five HTA Agencies. *Pharmacoeconomics*. 2018 Mar;36(3):359-368. doi: 10.1007/s40273-017-0596-z.

[30] Deverka PA, Douglas MP, Phillips KA. Use of Real-World Evidence in US Payer Coverage Decision-Making for Next-Generation Sequencing-Based Tests: Challenges, Opportunities, and Potential Solutions. *Value Health*. 2020 May;23(5):540-550. doi: 10.1016/j.jval.2020.02.001.

[31] Lou J, Kc S, Toh KY, Dabak S, Adler A, Ahn J, et al. Real-world data for health technology assessment for reimbursement decisions in Asia: current landscape and a way forward. *Int J Technol Assess Health Care*. 2020 Oct;36(5):474-480. doi: 10.1017/S0266462320000628.

[32] Bowrin K, Briere JB, Levy P, Millier A, Clay E, Toumi M. Cost-effectiveness analyses using real-world data: an overview of the literature. *J Med Econ*. 2019 Jun;22(6):545-553. doi: 10.1080/13696998.2019.1588737.

[33] Brogaard N, Abdul-Ghani R, Bayle A, Henderson N, Bréant A, and Steuten L. Learnings from the Assessments of Entrectinib and Larotrectinib: Health Technology Assessment Challenges Associated with Tumour-Agnostic Therapies. OHE Contract Research. 2022. Available from: <https://www.ohe.org/publications/learnings-assessments-entrectinib-and-larotrectinib-health-technology-assessment/> [Accessed on 14 May 2023]

[34] Hogervorst MA, Pontén J, Vreman RA, Mantel-Teeuwisse AK, Goettsch WG. Real World Data in Health Technology Assessment of Complex Health Technologies. *Front Pharmacol*. 2022 Feb 10;13:837302. doi: 10.3389/fphar.2022.837302.

[35] Sievers H, Joos A, Hiligsmann M. Real-world evidence: perspectives on challenges, value, and alignment of regulatory and national health technology assessment data collection requirements. *Int J Technol Assess Health Care*. 2021 Feb 24;37:e40. doi: 10.1017/S0266462321000131.

[36] Hampson G, Towse A, Dreitlein B, Henshall C, and Pearson S, (2018) Real World Evidence for Coverage Decisions: Opportunities and Challenges. OHE Grant-Funded Research. Available from <https://www.ohe.org/publications/real-world-evidence-coverage-decisions-opportunities-and-challenges/> [Accessed on 21 May 2023]

[37] George E. How real-world data compensate for scarce evidence in HTA. *Z Evid Fortbild Qual Gesundheitswes.* 2016;112 Suppl 1:S23-6. doi: 10.1016/j.zefq.2016.04.012.

[38] Makady A, Ham RT, de Boer A, Hillege H, Klungel O, Goettsch W; GetReal Workpackage 1. Policies for Use of Real-World Data in HTA: A Comparative Study of Six HTA Agencies. *Value Health.* 2017 Apr;20(4):520-532. doi: 10.1016/j.jval.2016.12.003.

[39] Pongiglione B, Torbica A, Blommestein H, de Groot S, Ciani O, Walker S, Dams F, Blankart R, Mollenkamp M, Kovács S, Tarricone R, Drummond M. Do existing real-world data sources generate suitable evidence for the HTA of medical devices in Europe? Mapping and critical appraisal. *Int J Technol Assess Health Care.* 2021 Apr 26;37(1):e62. doi: 10.1017/S0266462321000301.

[40] Ciminata, Giorgio (2019) The role of real-world evidence in health technology assessment: a case study of direct oral anticoagulants in the atrial fibrillation population. PhD thesis, University of Glasgow. Available from: [The role of real-world evidence in health technology assessment: a case study of direct oral anticoagulants in the atrial fibrillation population - Enlighten Theses \(gla.ac.uk\)](#) [Accessed on 01 Jun 2023]

[41] Gonçalves E. Advanced therapy medicinal products: value judgement and ethical evaluation in health technology assessment. *Eur J Health Econ.* 2020 Apr;21(3):311-320. doi: 10.1007/s10198-019-01147-x.

[42] Dai WF, Craig E, Fraser B, Chambers A, Mai H, Brown MB, et al. On Behalf Of The CanREValue Collaboration. Building a National Reassessment Process for Oncology Drugs: Lessons Learned by the

Canadian Real-World Evidence for Value of Cancer Drugs (CanREValue) Collaboration through a Simulated Reassessment Exercise. *Curr Oncol.* 2021 Nov 12;28(6):4645-4654. doi: 10.3390/currenocol28060392.

[43] Kamusheva M, Németh B, Zemplényi A, Kaló Z, Elvidge J, Dimitrova M, et al, Using real-world evidence in healthcare from Western to Central and Eastern Europe: a review of existing barriers. *J Comp Eff Res.* 2022 Aug;11(12):905-913. doi: 10.2217/ceer-2022-0065.

[44] Facey KM, Rannanheimo P, Batchelor L, Borchardt M, de Cock J. Real-world evidence to support Payer/HTA decisions about highly innovative technologies in the EU-actions for stakeholders. *Int J Technol Assess Health Care.* 2020 Sep 3:1-10. doi: 10.1017/S026646232000063X.

[45] Husereau D, Nason E, Ahuja T, Nikai E, Tsakonas E, Jacobs P. Use of Real-World Data Sources for Canadian Drug Pricing and Reimbursement Decisions: Stakeholder Views and Lessons for Other Countries. *Int J Technol Assess Health Care.* 2019 Jan;35(3):181-188. doi: 10.1017/S0266462319000291.

[46] Crane G, Lim JCW, Gau CS, Xie J, Chu L. The challenges and opportunities in using real-world data to drive advances in healthcare in East Asia: expert panel recommendations. *Curr Med Res Opin.* 2022 Sep;38(9):1543-1551. doi: 10.1080/03007995.2022.2096354.

TABLES AND FIGURES



PRISMA 2009 Flow Diagram

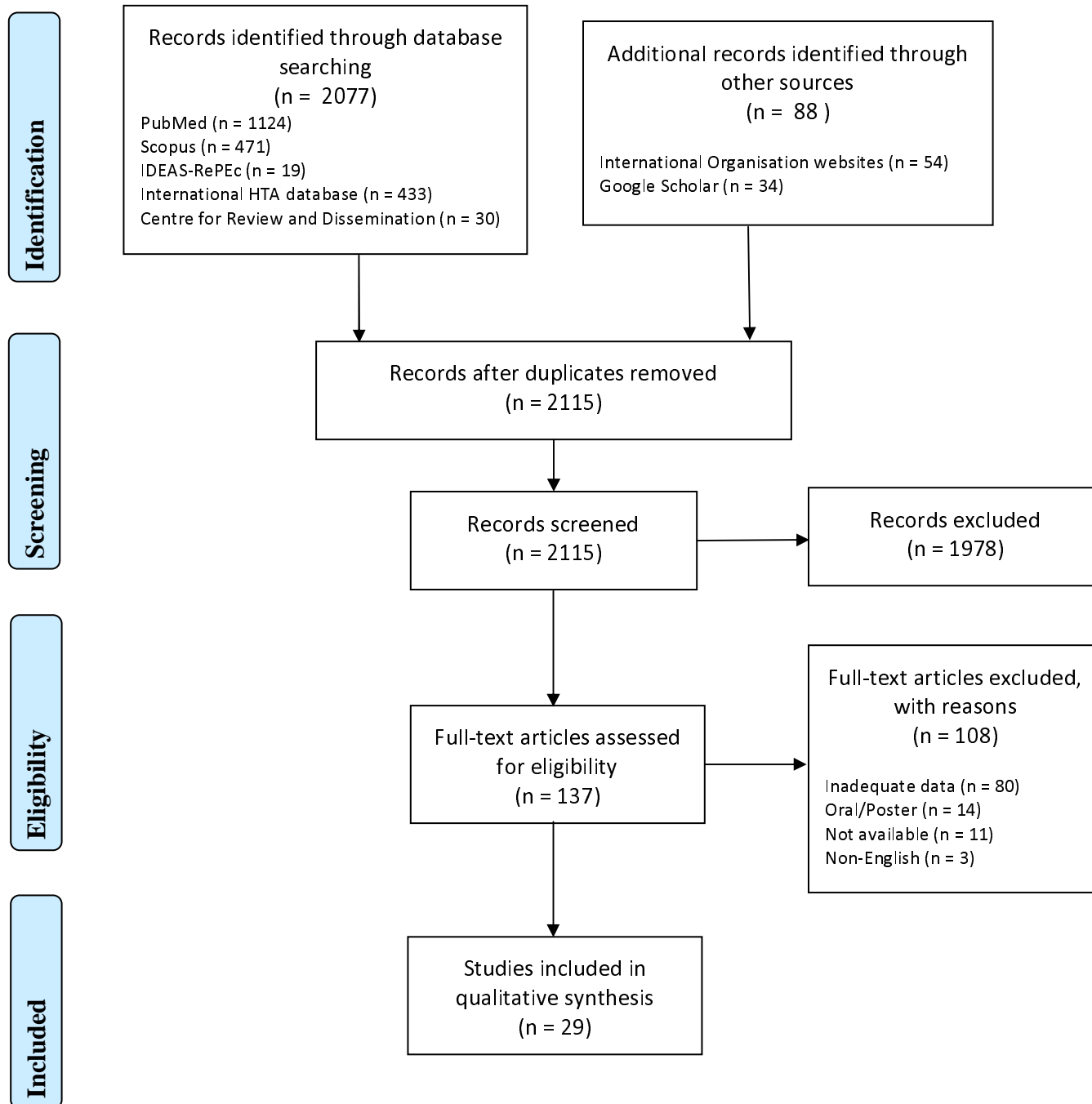


Table 1. Characteristics of included studies

Author/year	Country	Type of study	Objectives	Type of health technology	Population/therapeutic category	Subcategory/type RWD
Hagen G, et al (2021)	Norway	Scoping review	The Mapping of the Norwegian HTA System, including its Central Components and Partners, with an Emphasis on Different Sources of Evidence, such as Norwegian Patient Registries and the Recommendation for Using Observational Study Data at the Norwegian and International Level. This study focuses on mapping the Norwegian HTA system, examining its central components and partners.	Pharmaceuticals, medical devices, procedures	General population/all therapeutic categories	Patient registry
Gonçalves E, (2020)	Internationally	Editorial	To present a comprehensive analysis of the current status of the evaluation of advanced therapy medicinal products and the integration of ethical evaluation into the HTA process.	Advanced Medicinal Products	Rare population/Rare diseases	RWD - General
Fasseeh A, et al. (2020)	Middle East and North Africa	Primary research with questionnaires (qualitative)	To assess, through questionnaires to HTA experts, the current and future state (for the next 10 years) of HTA implementation in the Middle East and North Africa region, focusing on regional similarities rather than differences.	All health technologies	General population/all therapeutic categories	Patient registers and payer databases
Leahy T P, et al. (2020)	United Kingdom	Systematic review	To investigate the use and acceptability of evidence derived from primary care databases, a key source of RWE in the UK, in NICE health technology assessments and to provide recommendations on their use in future submissions.	All health technologies	General population/all therapeutic categories	Primary care databases
Fuchs S, et al (2016)	Europe	Systematic review	To review and compare the existing activities of HTA for MD among European PTI (Payers, Technology Assessors, and Industry) organizations. The specific objectives are twofold: (i) to identify the institutions involved in MD-HTA across Europe, and (ii) to examine their structural, procedural, and methodological characteristics, with a specific focus on the assessment of medical devices.	Medical devices	General population/all therapeutic categories	Observational studies
			To conduct a simulation-based evaluation of a proposed re-evaluation process for cancer medicines in Canada.			

Dai WF, et al, (2021)	Canada	Qualitative study using simulation	<p>The proposed process was developed by the CanREValue stakeholder collaboration with the objective of improving the re-evaluation process. The stakeholders involved in this collaboration included health professionals, patient representatives, CADTH specialist staff, and other representatives from Canadian regulatory authorities. To evaluate the proposed process, a case study was conducted using real-world data on bevacizumab for metastatic colorectal cancer.</p> <p>Through this simulation-based evaluation, the study aimed to assess the effectiveness and feasibility of the proposed re-evaluation process and its potential impact on decision-making regarding cancer medicines in Canada.</p>	Medicinal products	Oncology patients/oncology	RWD - General
Patel D, et al, (2021)	International ly	Review (Retrospective study)	<p>To assess the current practices and challenges related to the use of external comparators in HTA submissions based on single-leg test data.</p> <p>The assessment involved a retrospective review of 433 submissions from 100 HTA organizations across 40 countries. The review analyzed associated data collected between 2011 and 2019. The study seeks to provide insights into the utilization of external comparators in HTA submissions and highlight any challenges encountered during this process.</p>	All health technologies	General population/all therapeutic categories	RWD: registers, databases, chart review and non-prescriptive study design
Tolley, K. (2010)	United Kingdom	Commentary	<p>The primary aim of this article is to furnish a comprehensive overview of the challenges intertwined with the United Kingdom's Health Technology Assessment (HTA) system. This is achieved through a retrospective analysis of an HTA database, with a specific focus on scrutinizing the clinical evidence base in the assessment of novel pharmaceutical technologies within the UK context. The analysis focuses on issues related to clinical evidence requirements, cost-effectiveness evaluations, and the role of stakeholders in decision-making processes. By examining the clinical evidence base and identifying challenges within the UK's HTA system, the article aims to contribute to a better</p>	All health technologies	General population/all therapeutic categories	Non-randomized studies, observational studies

			understanding of the evaluation process for new pharmaceutical technologies in the UK.			
Kent, S. et al, (2021)	UK, Netherlands, Spain, Germany, Norway, Sweden, Austria, Italy	Pragmatic review and qualitative research	<p>To provide recommendations on the appropriate use of evidence from non-randomized studies on treatment effects in the appraisal and technology identification (ATI) process.</p> <p>To achieve this objective, pragmatic-type reviews and workshops were conducted involving 16 experts from appraisal and regulatory agencies across eight European countries. Through these reviews and workshops, the study aimed to gather insights and expertise to inform the development of recommendations regarding the utilization of evidence from non-randomized studies in assessing treatment effects within the HTA process. The input and perspectives of the experts involved are crucial in ensuring the relevance and applicability of the recommendations within the context of HTA evaluations.</p>	All health technologies	General population/all therapeutic categories	Non-randomized studies
Jaksa A, et al, (2022)	Internationally	Literature review	To evaluate the critiques of regulatory agencies and HTA organizations regarding the use of external control arms (ECAs) with real-world data. The objective is to highlight the need for developing recommendations for the design and production of ECAs in the future. A review was conducted on the FDA website, analyzing drug and biologics approvals from 2018 to 2021. By examining the challenges and critiques faced by regulatory agencies and HTA organizations in utilizing ECAs with real-world data, the study seeks to contribute to the development of improved guidelines and practices for their use in future research.	Medicinal products	Oncology patients/oncology	External control arms designed with RWD (general)
Justo N, et al, (2019)	South America (Argentina, Brazil,	Systematic review and primary qualitative	To investigate and identify the sources, characteristics, and uses of RWD in Argentina, Brazil, Colombia, and Chile. The investigation also explores the implications of these findings for future legislation and the management of RWD. Additionally, workshop discussions were conducted with stakeholders to validate and verify the results obtained. By examining the sources and characteristics of RWD in these countries and	All health technologies	General population/all therapeutic categories	National health information systems, clinical registries (disease/condition

	Colombia, Chile)	research	considering stakeholder perspectives, the study provides valuable insights for the development of effective legislation and strategies for managing RWD in the future.			specific), electronic health record systems,
Kamusheva M, et al, (2022)	Central and Eastern Europe	Scoping review and qualitative research	To identify the main barriers to the implementation of evidence-derived RWE for the purposes of health technology assessment in Central and Eastern European countries. This is a mixed methods study using a literature review, internal discussions and a webinar with stakeholders from Central and Eastern European countries to identify barriers to the use of RWE in healthcare.	All health technologies	General population/all therapeutic categories	RWD - General
Timbie JW, et al, (2021)	International ly	Qualitative thematic analysis research	To describe the current utilization of RWE for medical devices and assess the challenges faced by manufacturers regarding the generation and utilization of RWE for regulatory and reimbursement decisions. The investigation involved interviews with specific stakeholder categories, and a thematic analysis was conducted to identify key findings. The study provides insights into the existing use of RWE, highlights the obstacles encountered by manufacturers, and identifies opportunities for further utilization of RWE in the context of medical devices. By analyzing stakeholder perspectives, the study contributes to a better understanding of RWE's role and potential in regulatory and reimbursement decision-making processes.	Medical technologies	General population/all therapeutic categories	RWD and RWE - General
Bullement A, et al, (2020)	England	Systematic review	The investigation of the utilization of RWE in informing STAs of cancer drugs conducted by the NICE. A review was conducted, spanning the period from April 2011 to October 2018. The objective of the study is to examine how RWE has been incorporated into the assessment process for cancer drugs by NICE. By analyzing the use of RWE during this time frame, the study aims to provide insights into the role and impact of RWE in informing STAs of cancer drugs conducted by NICE.	Medicinal products	Oncology patients/oncology	RWD and RWE - General
			To explore the perspectives of a multi-stakeholder group			

Al-Omar HA, et al, (2021)	Saudi Arabia	Scoping review and primary qualitative research	comprising local experts regarding potential value-adding elements that could be applicable to HTA processes and methods for pharmaceutical products in Saudi Arabia. To achieve this objective, a review and workshop were conducted using a pooling system for data collection. The study seeks to gather insights from a diverse range of stakeholders to identify and assess elements that can enhance the effectiveness and relevance of HTA processes and methods specifically for pharmaceutical products in the Saudi Arabian context. By engaging stakeholders and utilizing a pooling system, the study aims to provide valuable input for the improvement of HTA practices in Saudi Arabia.	Medicinal products	General population/all therapeutic categories	RWD and RWE - General
Makady A, et al, (2018)	England, Scotland, Netherlands, France, Germany	Literature review (retrospective study)	<p>This study examines the use of RWD in the HTA process. Specifically, it focuses on the inclusion of RWD in the REAs and CEAs of melanoma drugs by five HTA organizations in Europe.</p> <p>The study investigates the differences and similarities in the utilization of RWD, including the types of RWD employed, sources of data, methodological approaches, and the challenges faced. It also explores the potential benefits and limitations associated with incorporating RWD in HTA. By analyzing these aspects, the study contributes to a better understanding of the role and impact of RWD in HTA and identifies areas for improvement in the utilization of RWD for melanoma drug assessments.</p>	Medicinal products	Oncology patients/oncology	RWD and RWE - General
Deverka PA, et al, (2020)	US	Literature review	This study endeavor sought to elucidate the contemporary panorama concerning the utilization of real-world evidence (RWE) by payers in the context of shaping their coverage determinations, while also exploring prospective remedies aimed at surmounting associated impediments.	Next generation sequencing (NGS) test	General population/all therapeutic categories	RWD and RWE - General
			The primary objective of this paper was to address the growing interest in using RWD and RWE for HTA in Asia, by conducting several activities to gather personal and health system level experiences of using RWD/RWE			

Lou J, et al, (2020)	Asia (Bhutan, China, China, India, Indonesia, Japan, Malaysia, Philippines, Singapore, Singapore, South Korea, Taiwan and Thailand)	Primary qualitative research	<p>to inform HTA for reimbursement decisions in eleven health systems in Asia. It highlights the need for a conceptual framework to standardize the collection, analysis, and utilization of RWD and RWE in the region. It aims to inform HTA processes and proposes the establishment of an international collaboration called the REAL World Data In ASia for HEalth Technology Assessment in Reimbursement (REALISE) working group to provide guidance on using RWD and RWE in decision-making for healthcare technologies in Asia.</p> <p>The survey was conducted in three stages: a distance meeting (online), a face-to-face meeting and a videoconference.</p>	All health technologies	General population/all therapeutic categories	RWD and RWE - General
Facey KM, et al, (2020)	European Union countries	Primary qualitative research	The study investigates highly innovative technologies that pose a challenge for payers and HTA organizations, as they have to make decisions based on limited evidence and significant uncertainties. The objective is to explore potential actions that stakeholders can take to enhance the utilization of RWD in this specific environment, focusing on the decision-making process from the perspective of payers and HTA organizations. A mixed methods approach was employed, involving an examination of recent policy proposals regarding RWD use in payer/HTA decisions. Stakeholder engagement took place through workshops, teleconferences, and email consultations.	All health technologies	General population/all therapeutic categories	RWD and RWE - General
Bowrin K, et al, (2019)	International ly	Systematic review	The study aims to examine the constraints associated with utilizing RWE in decision analysis, particularly in modeling, while also identifying existing recommendations for RWD-based modeling. It explores various aspects, including the current limitations of real-world studies, the application of real-world evidence in the context of RWE, the presence or absence of guidelines, and provides recommendations based on these findings. The study seeks to shed light on the challenges and provide guidance for the effective utilization of real-world data in decision analysis and modeling processes.	All health technologies	General population/all therapeutic categories	RWD and RWE - General
	England,					

Brogaard N, et al, (2021)	Germany, France, Canada, Denmark, Sweden and Scotland	Literature review	An analysis was conducted on the HTA agency reviews and reimbursement decisions for entrectinib and larotrectinib in multiple countries, including England, France, Germany, Canada, Denmark, Sweden, and Scotland. The objective was to examine and compare the assessments and reimbursement outcomes of these two medications across the selected countries. By analyzing the HTA agency reviews and reimbursement decisions, the study aimed to gain insights into the similarities and differences in the evaluation and acceptance of entrectinib and larotrectinib among these countries.	Medicinal products	Oncology patients/oncology	RWD and RWE - General
Hogervorst Milou A, et al, (2022)	European countries	Primary qualitative research	The study aimed to assess the challenges associated with the acceptance of RWD in the context of new and complex health technologies. A survey was conducted by distributing questionnaires to representatives of HTA organizations. The objective was to gather insights into the specific obstacles that make the acceptance of RWD more likely for HTA evaluations. By examining the responses and feedback from HTA organization representatives, the study sought to identify the key challenges and barriers that hinder the wider utilization of RWD in the assessment of new health technologies.	All health technologies	General population/all therapeutic categories	RWD and RWE - General
Sievers H, et al, (2021)	Germany, England, Belgium, Sweden, Netherlands	Primary qualitative research	The study aimed to assess stakeholder perceptions regarding the challenges and value of evidence derived from post-marketing RWE. It also examined the differences in requirements for RWD collection between regulatory and HTA organizations in Germany under the Regulation for Greater Safety in Medicines Supply (GSAV). Additionally, the study explored future coordination opportunities to establish a complementary framework for post-marketing requirements related to RWE. The research methodology involved conducting semi-structured interviews with stakeholders, which were conducted via conference calls. The interviews provided valuable insights into the perspectives of various stakeholders, contributing to a comprehensive understanding of the challenges, opportunities, and potential coordination efforts related to the utilization of post-marketing RWE.	All health technologies	General population/all therapeutic categories	RWD and RWE - General

Hampson G, et al, (2018)	US	Literature review and primary qualitative research	To explore the current utilization of RWE in the US healthcare system, summarize key concerns raised in this field, and identify opportunities that could arise from improved use of RWE for reimbursement decisions. The research involved conducting a review of literature and data collection on the challenges and opportunities associated with RWE. Additionally, telephone interviews were conducted with nine RWE experts from the pharmaceutical industry, payers, and academia. These interviews provided valuable insights into the current landscape of RWE utilization, the concerns surrounding its use, and the potential opportunities that can be realized through its improved application in reimbursement decisions.	All health technologies	General population/all therapeutic categories	RWD and RWE - General
George E, (2016)	UK	Perspective/opinion/commentary	The primary objective of this paper was to elucidate how the NICE incorporates evidence from sources beyond RCTs in its decision-making process, by identifying cases, and emphasizing NICE's pivotal role in guiding healthcare practices and resource allocation in England.	All health technologies	General population/all therapeutic categories	RWD - General
Makady E, et al, (2017)	England, Sweden, Germany, Italy, Netherlands, France	Literature review and primary qualitative research	The objective of this study was to investigate the policies implemented by six (6) HTA agencies in Europe concerning the utilization of RWD in the assessment of medicines through the process of REA. Specifically, the article examines the policies of these organizations regarding the acceptance or requirement of RWD, as well as their policies concerning the assessment of RWD in three distinct contexts: IRDs, PEAs, and CRS. Additionally, the study involves conducting semi-structured interviews with representatives from the six (6) HTA agencies.	All health technologies	General population/all therapeutic categories	RWD - General
Husereau, D,	Canada	Primary	To obtain stakeholders' perspectives on the utilization of RWD in decision-making pertaining to drug pricing and reimbursement in Canada, and to identify the obstacles and enablers to the application of RWD in this context, this study aims to conduct qualitative research. Additionally, the study seeks to extract valuable insights	All health	General	RWD - General

et al, (2019)		qualitative research	that could be beneficial to other countries contemplating the use of RWD for similar objectives. The qualitative study will involve conducting semi-structured interviews and organizing focus group discussions with a diverse range of stakeholders, including payers, researchers, patient groups, and industry representatives.	technologies	population/all therapeutic categories	
Pongiglione B, et al, (2021)	Europe (15 countries)	Systematic review	<p>The aim of this study was to investigate the availability and quality of real-world data concerning the documentation production for the Life Cycle Information Systems (LIS) of medical devices in Europe. The study primarily focuses on mapping and conducting a critical evaluation of existing real-world data sources in Europe that are relevant to the process of medical device-associated ATHENA (Assessment of Therapeutic Effectiveness by National Authorities).</p> <p>In particular, the researchers concentrate on three specific cases: hip and knee arthroplasty, TAVI, and TMVR, as well as da Vinci robotic surgery procedures.</p>	Medical technologies	General population/all therapeutic categories	<ol style="list-style-type: none"> 1. Administrative data 2. Registry data 3. Other data from observational studies 4. Other data
Ciminata, G, (2019)	Scotland	Diploma thesis including (i) an economic evaluation case study, (ii) a systematic review	<p>The aim of this research was to investigate the potential advantages and obstacles associated with utilizing RWE to support the ATY. Specifically, the study focuses on exploring the viability of employing RWD in the decision-making process of HTA in Scotland, with a specific focus on cases involving anticoagulant medication for patients with atrial fibrillation.</p> <p>Furthermore, the study aims to examine the perspectives of health technology evaluators regarding the utilization of real-world data in evaluating anticoagulant drugs for atrial fibrillation. The research also provides suggestions for enhancing the application of real-world data in health technology evaluation.</p>	All health technologies	Cardiac patients/Cardiological diseases	RWD and RWE - General

HTA: Health Technology Assessment, RWE: Real-World Evidence, NICE: National Institute for Health and Care Excellence, MD: Medical Devices, CADTH: Canadian Agency for Drugs and Technologies in Health, FDA: Food and Drug Administration, RWD: Real-World Data, STAs: Single Technology Assessments REAs: Relative Effectiveness Assessments, CEAs: Cost-Effectiveness Assessments, GSAV: Regulation for Greater Safety in Medicines Supply, RCTs: Randomized-Controlled Trials, CRS: Conditional Reimbursement Schemes, IRDs: Initial Reimbursement Discussions, PEAs: Pharmacoeconomic Assessments ATHENA: Assessment of Therapeutic Effectiveness by National Authorities, ATY: Assessment of Therapeutic Yield, TAVI: transcatheter aortic valve implantation, TMVR: mitral valve repair

Note: RWD and RWE – General encapsulates a comprehensive scope encompassing all varieties and subcategories of RWD and RWE.

Table 2. Current use and acceptance of RWD and RWE in HTA

Author/year	Current use and acceptance
Hagen G, et al (2021)	Today, multiple HTA organizations have released guidelines regarding the gathering and utilization of RWD. Within the scope of HTA, the primary recommended sources of clinical effectiveness data for evaluating the economic value of a health technology are systematic reviews and randomized clinical trials. When trials are not available, data from observational studies are utilized. These data sources inform various aspects of HTA, from economic evaluations to treatment patterns. RWD and RWE's expanding roles in HTA are anticipated, underpinning robust health policy decisions.
Fasseeh A, et al. (2020)	Most participants (84%) stated that the utilization of local data in the HTA process was not obligatory. Notably, it is revealed that a substantial majority of respondents (84%) do not operate in countries where the use of local data in HTA processes is mandated, indicating the limited acceptance or requirement of local data in the current HTA framework.
Leahy T P, et al. (2020)	Among the 52 HTA submissions examined, it was observed that databases were incorporated for several purposes. These included describing the present epidemiology of a disease, detailing current treatment practices, and providing clinical inputs for cost-effectiveness models.
Fuchs S, et al (2016)	<p>All organizations generally express a strong preference for direct evidence obtained from RCTs, but they also acknowledge and may recommend considering evidence from various study designs under specific circumstances. The Austrian Ludwig Boltzmann Institute for HTA emphasizes that, when investigating specific research hypotheses related to biomarker tests, the only practical and ethically acceptable evidence should be derived from observational studies. Different levels of hierarchy can be applied in evaluating such evidence. HAS acknowledges that comparative non-randomized observational studies may be acceptable in cases where conducting a randomized controlled trial is not feasible. However, such studies should be considered as exceptions.</p> <p>Furthermore, NICE states that, when assessing the accuracy of a diagnostic test, it takes into account prospective cohort studies, synchronous studies, and retrospective case-control studies. On the other hand, the Medical Technology Assessment Programme evaluates primary and secondary research, including modeling studies and post-analysis, to form its assessments.</p>
	<p>More generally, the use of RWD/RWE in single-arm (SAT) based submissions to HTA appeared to be relatively low, comprising only 5% of total submissions to HTA operators. This suggests that there is a lack of widespread adoption and use of RWD/RWE in HTA processes.</p> <p>The largest proportion of submissions were for oncology and haematology-oncology diseases (65% of HTA</p>

<p>Patel D, et al, (2021)</p>	<p>submissions). Approximately half (52%) of the deposits included a dataset based on external comparators, of which 20% of these deposits (87 deposits) contained exclusively RWD with clear reference to the type of RWD source with undefined RWD studies dominating followed by a combination of RWD (37) and prior trials (35), registries (24), databases (23) and chart reviews (3). Of note, between 2015-2019 there is a significant increase in the use of external comparators derived from RWD in contrast to the decrease recorded in the use of ECs from previous trials.</p> <p>With regard to the acceptance of submissions with ECs by the HTA organisations, the highest proportion was for those deposits that included ECs from RWD (59% or 50/87 deposits with RWD). NICE had the highest acceptance of deposits with ECs exclusively from RWD followed by HAS, G-BA, CADTH, PBAC. In addition, the same organisations also showed a significantly high acceptance rate for deposits with ECS based on a combination of RWD and previous clinical trials.</p>
<p>Tolley, K. (2010)</p>	<p>Prior to 2010, a limited number of positive evaluations, often accompanied by conditions, were identified that were based on observational study data from NICE or evaluations conducted by academics for NICE. In recent years, the NICE agency has shown support for the inclusion of pragmatic-type trials, recognizing their potential to generate evidence from real-world technology usage.</p>
<p>Kent, S. et al, (2021)</p>	<p>Most HTA bodies state a strong preference for evidence on treatment outcomes from RCTs over non-randomised studies due to lower risk of impartiality. The quality of the non-randomised studies accepted so far by the HTA agencies for decision making varies</p>
<p>Jaksa A, et al, (2022)</p>	<p>Level of influence of external control arms (ECAs) in the decision-making process of HTA organizations, by drug:</p> <ol style="list-style-type: none"> 1) <u>Blinatumomab Ph- ALL</u> -NICE: Low, G-BA: Low, HAS: Low, pCODR: Low, PBAC: High 2) <u>Abelumab</u> - NICE: High, G-BA: Low, HAS: Low, pCODR: Low, PBAC: High 3) <u>Blinatumomab MRD + ALL</u> - NICE: Low, G-BA: Low, HAS: N/A, pCODR: Low, PBAC: High 4) <u>Erdafitinib</u> - N/A for all HTA organizations 5) <u>Endectinib</u> - NICE: N/A, G-BA: Low, HAS: N/A, pCODR: Low, PBAC: N/A 6) <u>Fam-trastuzumab deruxtecan-nxk</u> - NICE: N/A, G-BA: -, HAS: Low, pCODR: -, PBAC: - 7) <u>Idecabtagene vicleucel</u> - NICE: -, G-BA: -, HAS: Low, pCODR: -, PBAC: -
	<p>Argentina: RWD is utilized in HTA submissions in Argentina, and there is an anticipated significant increase in the use of RWD in financial assessments. Additionally, the pharmaceutical industry is funding cost-effectiveness studies based on RWD.</p>

<p>Justo N, et al, (2019)</p>	<p>Brazil: RWD is regularly incorporated into HTA submissions to the national HTA agency (CONITEC) in Brazil. These submissions primarily involve epidemiological, resource utilization, and treatment data sourced from specific databases. Notably, between 2011 and 2014, 88.2% of the submissions included RWD. Furthermore, the reimbursement filing process for "expensive drugs" mandates the provision of an RWD file to CONITEC.</p> <p>Colombia: RWD is predominantly employed in economic evaluations, particularly in modeling exercises, in Colombia.</p> <p>Chile: A further rise in the utilization of RWD is expected in HTA submissions, aiming to facilitate the reimbursement of health technologies in Chile. Economic evaluations conducted in the HTA context rely on international data, but there is a recognition of the use of local data from registries concerning resource utilization and cost information.</p>
<p>Timbie JW, et al, (2021)</p>	<p>Payers prefer data from RCTs and have concerns about possible bias on the part of RWE. More generally, RWE has not yet served as the primary source to support a pre-market approval.</p>
<p>Bullement A, et al, (2020)</p>	<p>In nearly all evaluations (96% or 108 out of 113 cases), some form of RWE was integrated to support the cost-effectiveness analysis within the HTA process. In ten HTA evaluations, RWE was specifically included in response to requests or criticisms from the Evidence Review Group (ERG) or the Panel. RWE was utilized in the following proportions across evaluations: 70% for utility issues (related to health-related quality of life), 48% for cost issues, 40% for resource use, 18% for general effectiveness concerns, 17% for issues related to patient characteristics, and 16% for effectiveness comparisons against other interventions. Consequently, the most prevalent types of RWE presented in the evaluations included analysis of health-related quality of life (HRQoL) of patients, cost data utilized in economic models, and quantification of medical resource utilization.</p>
<p>Al-Omar HA, et al, (2021)</p>	<p>Significant variations were observed, particularly in the mean scores for the acceptability and applicability of RWE in HTA. A small percentage of participants (11.1%) expressed rejection towards the obligatory inclusion of RWE to validate results from randomized controlled trials (RCTs). Similarly, 13.9% of respondents opposed the mandatory requirement of RCT data in the HTA process.</p>
<p>Makady A, et al, (2018)</p>	<p>The main sources of RWD were the registers and national statistical databases of the countries.</p> <p>Integration of RWD into REAs: RWD was included in 54% of REAs, primarily to assess the prevalence and incidence of melanoma in 28 out of 28 REAs. Additionally, RWDs were sometimes used to evaluate the efficacy and safety of new drugs in 7 out of 28 REAs and 6 out of 28 REAs, respectively.</p> <p>Integration of RWDs in CEAs: RWD was included in 88% of cost-effectiveness evaluations, primarily to extrapolate the efficacy of new drugs beyond the duration of randomized clinical trials and estimate long-term effectiveness in 21 out of 22 CEAs. RWD also contributed to cost data in 12 out of 22 CEAs, resource use in 8 out of 22 CEAs, and quality of life data in 4 out of 22 CEAs. Regarding the assessment of RWD by the HTA organizations, no assessments could be identified for 33% (16 out of 49) and 32% (27 out of 58) of parameters used in REAs and CEAs, respectively. For the few assessments that were identified, the results were either unknown or rated negatively.</p>

	<p>The use of RWD varied significantly among the five organizations (NICE, SMC, IQWiG, HAS, ZIN). All organizations utilized RWD in their assessments, primarily to estimate the prevalence/incidence of diseases. However, SMC did not make significant use of this data. On the other hand, all organizations utilized RWD in CEAs, mainly for evaluating long-term effectiveness and costs. In general, the use of RWD in both REAs and CEAs experienced a significant increase from 2011 to 2016. It is worth noting that only 2 out of 58 submissions utilizing RWD were associated with initial HTA submissions.</p>
Deverka PA, et al, (2020)	<p>Although RWE has been acknowledged as a valuable information source for clinical, regulatory, and payment decisions, its utilization for Next-Generation Sequencing (NGS) coverage determinations remains limited. Payers primarily rely on clinical guidelines and RCTs rather than RWE to justify their decisions. Despite the challenges associated with the acceptance and use of RWD and RWE in NGS coverage decisions, ongoing efforts are being made to address these barriers. Collaboration among stakeholders, awareness of data and methodological advancements, and the presentation of credible studies relevant to payer decision-making can contribute to an increased and more effective utilization of RWE by payers.</p>
Lou J, et al, (2020)	<p>The use and acceptance of RWD and RWE by the HTA organizations were assessed in this study. All respondents (14 out of 14) expressed a positive response towards accepting RWD/RWE for clinical effectiveness assessment by the HTAs in their respective countries, either as stand-alone documentation or as supplementary documentation for technology reimbursement. Regarding the requirement for HTAs to justify their rationale for using RWD, 50% of respondents provided a positive response, indicating support for such a requirement. Similarly, when asked about the acceptance of data from real-world trials, 7 out of 14 respondents provided positive responses, indicating that acceptance is already in place. The remaining respondents mentioned that acceptance of real-world trial data is planned but not expected to happen soon. Overall, the study suggests a generally positive attitude towards the use and acceptance of RWD/RWE by HTAs for clinical effectiveness assessment and technology reimbursement, although some aspects, such as justifying the rationale for using RWD and acceptance of real-world trial data, still require further attention and development.</p>
Bowrin K, et al, (2019)	<p>According to one study included in Bowrin's systematic review, all HTA organizations asked RWE for documentation on costs, epidemiological data, and model transition probabilities. Indeed, RWE was ultimately shown to have played a complementary role in the decision-making process.</p> <p>In the UK, it was found that RWE was incorporated in 80% of single technology appraisal (STI) submissions. In 10% of these, RWE was used to inform clinical effectiveness and safety of the technology, while in a larger proportion it was used to report survival and resource use data.</p> <p>Finally, according to one study in the review, RWE was shown to have a direct influence on decision-making, drug access and licensing depending on the HTA organisation - a prime example was the approval of a drug by the Pharmaceutical Benefits Advisory Committee of Canada, which was attributed to cost-effectiveness data derived from registries.</p>
	<p>RWD was included in three (3) out of ten (10) HTA submissions. In particular, in Germany and Sweden for entrectinib, where they were used as comparative arms, and in Canada for larotrectinib, where they provided supplementary</p>

Brogaard N, et al, (2021)	evidence. In Germany, methodological issues were encountered, while in Sweden, it was found to aid the evaluation process. On the other hand, in Canada, it assisted in the evaluation process by providing additional evidence for an unmet need.
Hogervorst Milou A, et al, (2022)	The survey results showed that 86% of the respondents reported that data derived from patient registries were acceptable. Similarly, there was a positive response regarding the acceptance of RWD from observational studies (cohort studies) by 55% of the respondents (19 out of 33), while 13 out of 33 respondents expressed positive views on accepting case-control studies, and 12 out of 33 respondents expressed positive views on accepting cross-sectional studies. On the other hand, RWD from unpublished data and expert opinions were accepted by only approximately 25% to 28% of the respondents (8 out of 33 and 9 out of 33 respondents, respectively).
Sievers H, et al, (2021)	According to five (5) respondents representing HTA organizations, pharmaceutical companies, and academia, RWE does not play a significant and scientifically decisive role in the evaluation of health technologies. Instead, the use of data from Randomized Controlled Trials (RCTs) is preferred. Most respondents from HTA organizations indicated a continued preference for using RCT data for evaluations. Furthermore, it was noted that the utilization of RWE is not considered suitable for the German AMNOG system. Respondents from pharmaceutical companies also reported infrequent usage of RWE in their HTA submissions.
Hampson G, et al, (2018)	All interviewees highlighted methodological issues and the lack of robust infrastructure for collecting RWD as significant challenges. The implementation of the new GSAV law in Germany is anticipated to enhance the comprehensiveness of RWD collection. Furthermore, insights from other countries' experiences with patient registries can offer valuable support in improving the data collection process in Germany. However, achieving harmonization of documentation requirements between countries is deemed challenging, primarily due to legal complexities. Nonetheless, there is a possibility of aligning data collection methodologies, which can facilitate better comparability and collaboration across countries.
George E, (2016)	In the case of data regarding disease and especially modelling, data from non-randomised clinical trials (observational studies, pragmatic-type trials, extension studies of RCTs) are the norm in NICE HTAs, while the use of such data is more common in medical devices. RCTs may have limitations in terms of sample size, duration of follow-up, various comparators, crossover and statistical power. As a result, non-RCT clinical data are often used, especially for devices, interventions with difficult RCTs and conditions with poor prognosis.
	Initial Reimbursement Discussions: All six (6) HTA organizations accept all types of clinical evidence regarding REA, including RWD. HTA organizations require comprehensive documentation of RWD use (in cases where RCTs are not used for drug effectiveness or in cases of supplementary RWD use for subgroups). They also require assessment of biases arising from RWD use and any impacts on effectiveness assessments. No HTA organization reports the source for collecting RWD or a specific data collection method. For certain organizations, the impact of RWD may be higher during the assessment process, particularly for rare diseases.

Makady E, et al, (2017)	<p>Pharmacoeconomic Evaluations: HTA organizations request RWD for pharmacoeconomic evaluations. The use of local RWD (databases and registries) is recommended and accepted for direct/indirect costs, resource utilization, epidemiological indicators, as well as transition probabilities and quality of life data. Patient compliance data are also accepted from registries and epidemiological studies. Regarding modeling, the organizations state that data related to treatment effects should primarily come from RCTs and can be verified/supplemented with RWD for evidence support.</p> <p>Conditional Reimbursement Schemes: HTA organizations prefer the use of RWD in conditional reimbursement schemes. These schemes are applied to investigate gaps in effectiveness and cost-effectiveness issues. Specifically, three HTA organizations (AIFA, ZIN, HAS) that have implemented such schemes reported a preference for these data. The Italian organization mentioned its participation in RWD collection and support for the applicant. Additionally, the positive impact of RWD on decision-making for conditional reimbursement was noted by all three organizations.</p>
Pongiglione B, et al, (2021)	<p>RWD sources with health outcomes data: Almost all the RWD sources included in the mapping exercise contained health outcomes data relevant to HTA. However, for hip replacement and knee arthroplasty, four studies either did not incorporate RWD related to HTA or were not retrievable. Conversely, RWD related to HTA was captured from all sources for TMVR, TAVI, and da Vinci robotic surgery procedures, except for three German RWD sources that did not include HTA-related data or could not be retrieved.</p> <p>RWD sources with resource use data: For hip and knee arthroplasty, nearly one-third of the registries and over half of the observation sources did not include economic data. Among the RWD sources analyzed, the most cited elements were length of hospital stay and type of procedure, while some references were made to hospitalization costs and procedure costs.</p> <p>RWD sources with comparators data: In the case of hip and knee arthroplasty, eighteen RWD sources did not present comparable data suitable for HTA. For TAVI/TMVR, the number was thirty-one sources, and for da Vinci procedures, it was twenty-six sources.</p>
Ciminata, G, (2019)	<p>RWDs have been extensively employed in various studies conducted during the investigation of this thesis to assess the effectiveness and safety of DOACs compared to warfarin in real-world clinical settings. These studies consistently demonstrate that DOACs are at least as effective as warfarin in preventing stroke and systemic embolism. Furthermore, the use of DOACs is associated with a lower risk of major bleeding events when compared to warfarin. The findings from these studies provide robust evidence supporting the favorable efficacy and safety profile of DOACs in real-world clinical practice.</p>

HTA: Health Technology Assessment, RWD: Real-World Data, SAT: Single-Arm Trials, HAS: French National Authority for Health (Haute Autorité de Santé), NICE: National Institute for Health and Care Excellence, G-BA: Gemeinsamer Bundesausschuss (Federal Joint Committee, Germany), CADTH: Canadian Agency for Drugs and Technologies in Health, PBAC: Pharmaceutical Benefits Advisory Committee (Australia), AMNOG: Arzneimittelmarkt-Neuordnungsgesetz (German Pharmaceutical Market Reorganisation Act), GSAV: Gesetz für mehr Sicherheit in der Arzneimittelversorgung (Law for Greater Security in Drug Supply, Germany), SMC: Scottish Medicines Consortium, IQWiG: Institut für Qualität und Wirtschaftlichkeit im Gesundheitswesen (Institute for Quality and Efficiency in Healthcare, Germany), ZIN: Zorginstituut Nederland (National Health Care Institute,

Table 3. Barriers, challenges, and difficulties encountered in incorporating RWD/RWE within HTA

Author/year	Barriers, challenges, and difficulties
Hagen G, et al (2021)	The preference for RCTs as the primary source of clinical evidence is undergoing a global shift, especially in situations where challenges arise in trial design (particularly in the case of rare diseases), blinding (involving medical devices and procedures), and ethical considerations. There is growing acceptance that RWD plays a significant role in validating clinical effectiveness. Utilizing registry data for reassessments can shed light on real-world effectiveness and safety, particularly when RCT efficacy estimates may not fully apply. Challenges arise in reconciling limited oncology treatment data and ensuring their inclusion in analysis due to database limitations.
Gonçalves E, (2020)	While the clinical efficacy of these drugs may be excellent, clinical trials for advanced therapies do not provide long-term results regarding their clinical benefits. Conversely, the lack of RWD for advanced therapies is apparent. The absence of satisfactory data from clinical studies or real-world sources requires reliance on outcomes modeling, indirect comparisons, and extrapolations, particularly relevant for ATMPs. Indirect comparisons are necessary when the pivotal trial's comparator doesn't align with local standards of care or in situations requiring single-arm studies for ethical reasons. Also, demonstrating the long-term effectiveness and comparative benefits of ATMPs requires continuous data collection and analysis. Managing data collection and ensuring its reliability can be a substantial challenge, including collection of RWD.
Fasseeh A, et al. (2020)	Although the transferability of data regarding the relative effectiveness of treatments can lead to resource and time savings, and is recommended by HTA organizations, it still has its limitations, necessitating adaptation to local data. In these countries, there is a scarcity of local RWD from patient registries, and HTA submitters face restricted access to payer databases.
Leahy T P, et al. (2020)	The committees predominantly raised comments and sought clarifications regarding the incorporation of documentation derived from primary care databases into cost-effectiveness models, particularly in relation to informing clinical inputs. Both the ERG (Evidence Review Group) and the committees expressed concerns when data from a published study were repurposed for the NICE submission. Analyses specifically conducted to inform the NICE submission were better received by both the ERGs and the review committees.
Fuchs S, et al (2016)	Variability in the understanding of MDs and variability to acceptance for alternative study designs are likely to be a barrier when trying to standardize the use of RWD across institutions, as each may have a unique approach to incorporate RWD into their assessments. Additionally, the limited availability of specific guidelines for MD assessment and a lack of publicly available information pose difficulties in creating a unified framework for RWD usage in HTA, reflecting a broader challenge in promoting RWD use in healthcare decision-making.
	Stakeholders do not consider RWE derived from individual institutions as reliable due to its limited scope, lack of

<p>Dai WF, et al, (2021)</p>	<p>generalizability, and potential for bias. The sources of RWE data and the methods of collecting RWD are crucial factors when reassessing oncology drugs. They can either increase or reduce uncertainty, especially when considering the representation of the Canadian population in cases where data from international literature is utilized. Therefore, it is important to adhere to accepted procedures and guidelines in these aspects.</p> <p>Establishing a cost-effectiveness threshold (Incremental Cost-Effectiveness Ratio or ICER) for re-evaluations poses challenges in Canada. When it comes to re-evaluation, the documentation submitted for evaluation should demonstrate lower levels of uncertainty compared to the original submission. Therefore, strict adherence to cost-effectiveness thresholds should be employed to support continued funding. In cases where the ICER threshold is exceeded, negotiations should be initiated.</p>
<p>Patel D, et al, (2021)</p>	<p>Acceptance of RWD and RWE by HTA stakeholders appears to vary. While there is a growing trend of utilizing and accepting RWD/RWE, the specific reasons behind the greater acceptance of RWD-based external comparators (ECs) are not clearly identified. The level of maturity and familiarity with non-traditional documentation packages, including RWD/RWE, differs among HTA agencies. This can impact the acceptance and evaluation of RWD/RWE data. Some agencies may be more open to considering the use of RWD/RWE, while others may require additional study data.</p> <p>Challenges arise in study design and analysis when incorporating RWD/RWE into HTA assessments. Ongoing research on statistical methods for external comparison suggests that there are methodological challenges in effectively utilizing RWD/RWE. Publication bias may be a factor, as some HTA bodies do not publish their evaluations, and the availability of information on documentation, including RWD/RWE, may be limited in certain cases.</p>
<p>Tolley, K. (2010)</p>	<p>The UK HTA agencies have specific requirements concerning the demonstration of clinical effectiveness and cost-effectiveness of new medicines compared to placebo. An additional challenge lies in the growing utilization of indirect or mixed treatment comparisons, which prove to be highly impractical when designing and utilizing observational studies.</p> <p>Although pragmatic-type trials aim to strike a balance between internal and external validity, they still present challenges. These challenges include the complexity of trial design, the need for longer follow-up periods, and relatively lower demand from regulatory authorities.</p>
<p>Kent, S. et al, (2021)</p>	<p>Issues associated with utilizing non-randomized clinical evidence to assess treatment effects in HTA include:</p> <p>Study Planning and Design: The primary challenges encountered during these studies revolve around the planning and design phase. This encompasses errors stemming from participant selection, data limitations, confounding factors, and the adequacy of the sample size.</p> <p>Analysis: Analyzing non-randomized data presents several key problems. These include potential errors arising from participant selection biases, limitations in available data, confounding variables, and insufficient sample sizes. Addressing these challenges requires robust analytical methods. Unclear Reporting of Data,</p> <p>Methods, and Results: Another critical issue is the lack of clarity in reporting the data, methods employed, and the resulting outcomes of non-randomized studies. This ambiguity hinders the assessment of the study's reliability and replicability.</p>

	<p>Absence of Systematic Protocols: The absence of systematic protocols for designing non-randomized studies is identified as a significant concern. The lack of standardized protocols can lead to inconsistencies in study design, implementation, and reporting, posing challenges in evaluating and comparing the results across studies.</p>
Jaksa A, et al, (2022)	<p>The HTA organizations have provided specific ratings for external control arms (ECAs) for various drugs, in terms of challenges and issues:</p> <ol style="list-style-type: none"> 1) <u>Blinatumomab</u> - NICE: Unmeasured confounding, G-BA: Inconsistent standard of care over time, HAS: Unmeasured confounding, inconsistent outcome definitions, pCODR: Inconsistent standard of care over time, unmeasured confounding, selection bias, PBAC: Inconsistent pattern of care over time, unadjusted confounders, incorrect adjustment methods 2) <u>Abelumab</u> - NICE: Selection bias, G-BA: Selection bias, HAS: Inconsistent outcome definitions pCODR: Not specified, PBAC: Data loss/inadequacy 3) <u>Blinatumomab MRD + ALL</u> - NICE: Non-generalizability of ECAs in clinical practice, G-BA: Selection bias, HAS: Not specified, pCODR: Inconsistent pattern of care over time, unadjusted confounders, PBAC: Inconsistent pattern of care over time, non-generalizability of ECAs in clinical practice, unmeasured confounding, selection bias, loss/inadequate data 4) <u>Erdafitinib</u> - No rating provided by any HTA organization 5) <u>Entrectinib</u> - NICE: Not specified, G-BA: Non-generalizability of ECAs in clinical practice, unmeasurable confusion, HAS: Not specified, pCODR: Unmeasurable confounding, selection bias, PBAC: Not specified 6) <u>Fam-trastuzumab deruxtecan-nxk</u> - NICE: Not specified, G-BA: Not specified, HAS: Unmeasured confounding, pCODR: Not specified, PBAC: Not specified 7) <u>Idecabtagene vicleuce</u> - NICE: Not specified, G-BA: Not specified, HAS: Unmeasurable confusion, loss/inadequate data, pCODR: Not specified, PBAC: Not specified
Justo N, et al, (2019)	<p>There are issues and difficulties regarding the quality, consistency and method of collection of RWD, and there is a lack of expertise and training of staff. In addition, there is also a lack of confidence in observational research as good practices are often not followed and procedures are not transparent.</p> <p>Expertise and capacity: There is a lack of qualified staff with the expertise to analyse the large volume of RWD available.</p>
	<p>Technical barriers:</p> <ol style="list-style-type: none"> 1) HTA organizations lack expertise and capacity to critically assess RWE adequately. 2) Limited financial resources are available for the utilization and management of RWE. 3) Inadequate methods and practices exist for reporting the diligence of RWD. <p>Regulatory barriers:</p> <ol style="list-style-type: none"> 1) Absence of unified, widely accepted, and implemented guidance documents for publishing and sharing RWE across all EU

<p>Kamusheva M, et al, (2022)</p>	<p>countries. 2) Lack of cooperation and standardized data integration practices for common RWE throughout Europe. 3) Requirements mandating the use of only local documentation in HTA. 4) Unclear and ambiguous requirements regarding the appropriate utilization and timing of RWE. 5) Insufficient local/national governance framework supporting the use of RWE. 6) Frequent changes in regulations related to RWE.</p> <p>Clinical/scientific barriers: 1) Unique demographic, racial, ethnic, and genetic characteristics pose challenges for RWE analysis. 2) Variations in epidemiological data exist among different countries. 3) Differences in disease severity affect the transferability of RWE for specific patient groups. 4) Variations in medical practices hinder the applicability of RWE across regions. 5) Divergent predefined criteria for assessing the effectiveness of drugs complicate RWE evaluation. 6) Lack of transparency in the planning, execution, and reporting of RWD use. 7) Absence of established methodological standards for curating RWD. 8) Uncertainty surrounding the results of RWE studies.</p> <p>Other obstacles: 1) Uncertainty about the quality of RWE. 2) Limited confidence in RWE due to restricted access to RWD. 3) Variation in the impact and importance of RWE in decision-making processes across different CEE countries.</p>
<p>Timbie JW, et al, (2021)</p>	<p>The industry faces several challenges, which include: 1) Uncertain return on investment, causing hesitation in investing in RWE due to a lack of clarity on how the FDA assesses its value. 2) Difficulty in finding partners with large-scale and high-quality data, as researchers and customers often have limited access to relevant data. This can lead to delays in establishing new partnerships. 3) Insufficient staff with expertise in RWE to identify appropriate sources of RWD and conduct thorough analyses. This limitation hampers the exploration of RWE utilization. 4) Limited availability of unique device identifiers in RWD, particularly in electronic file systems and contracts, posing challenges for device-specific analysis. 5) Inadequate recording of longitudinal data with a short follow-up period, restricting the ability to capture comprehensive and meaningful information over an extended period of time. 6) Difficulties in linking data from different sources, hindering efforts to integrate and analyze data from multiple perspectives.</p> <p>These challenges collectively impede the effective use of RWE in the industry.</p>
<p>Bullement A, et al, (2020)</p>	<p>Critique of RWE sources revolves around two main concerns: the comparability of real patient cohorts to those in clinical trials and the relevance of RWE patient cohorts to current medical practice. These concerns highlight potential biases when interpreting data collected outside of controlled randomized trials.</p>
	<p>Lack of availability and quality of RWD: One of the prominent barriers identified in Saudi Arabia is the limited availability and</p>

<p>Al-Omar HA, et al, (2021)</p>	<p>inadequate quality of RWD. This hinders the effective utilization of such data in healthcare decision-making processes.</p> <p>Concerns about data privacy and confidentiality: Workshop participants expressed apprehensions regarding data privacy and confidentiality. Ensuring the protection of patient information and maintaining confidentiality while utilizing RWD was regarded as a significant concern that needs to be addressed.</p> <p>Data standardization and harmonization: The lack of standardized practices for data collection and reporting across healthcare institutions was recognized as a barrier. Workshop participants stressed the importance of implementing data standardization and harmonization efforts to enhance the usability of RWD for HTA purposes.</p>
<p>Makady A, et al, (2018)</p>	<p>The nature of RWD differs, influencing melanoma prevalence data in REAs and long-term effectiveness and costs in CEAs. However, the appraisal of RWD often remains unaddressed or leans negatively, attributed to concerns about biases and statistical approaches. Little change in RWD's role over time, declining inclusion rates in 2016, and policy variations among agencies raise questions about its effectiveness. The lack of robust RWD at initial assessments, absence of systematic guidance, and logistical challenges with Pragmatic Clinical Trials (PCTs) contribute to the difficulties in RWD integration. While quantitative methods may alleviate some issues, RWD remains essential for HTA, particularly for long-term effectiveness in a diverse clinical population. The untapped potential of Clinical Reassessment Studies (CRSs) in incorporating RWD highlights a need for future research to explore their role. Collaboration among HTA agencies is crucial to overcome these challenges.</p>
<p>Deverka PA, et al, (2020)</p>	<p>Challenges and issues:</p> <p>A. Lack of relevance and timeliness: Payers express concerns that many RWE studies lack relevance and timely information for coverage or utilization management decisions.</p> <p>B. Perceived lack of rigor and transparency: Ratepayers may not consider the study methods used in RWE research as sufficiently rigorous and transparent.</p> <p>C. Limited impact outside specific areas: There is a limited number of RWE studies beyond oncology, pharmacogenomics (PGx), and perinatal/pediatric examples that directly influence coverage decisions for NGS.</p> <p>Additional training issues: Insufficient experience and expertise: Payers and clinicians may lack the necessary experience and expertise in utilizing RWE study results and evaluating the clinical utility of NGS testing.</p> <p>Other issues:</p> <p>Lack of structured genomic data in electronic health records (EHRs): Genomic data are often not represented in a structured format in EHRs, making it challenging to integrate them into RWD/RWE analysis.</p> <p>Limited publicly available information: It can be difficult to understand how RWE specifically informs payer decision-making based on publicly available data without conducting an in-depth review of coverage policies and their evolution over time. This lack of transparency may impede the use of RWE in decision making.</p> <p>Inconsistent adherence to methodological guidance: There is a lack of consistency in the methods employed to conduct RWE studies, and researchers often do not report adherence to methodological guidance documents or best practices for RWE studies. This can undermine the reliability and comparability of the generated evidence.</p>
	<p>Challenges: Many respondents (9 out of 14) indicated that there was insufficient evidence in the HTA dossier to ensure that the</p>

Lou J, et al, (2020)	<p>patient sample selected truly represented patients in routine clinical care. This suggests the presence of potential selection bias and a reduction in the external validity of the results. Another challenge mentioned by respondents (6 out of 14) regarding the use of RWD/RWE for technology reimbursement was the lack of reporting on other treatments patients were receiving and the absence of information on patient comorbidities in the HTA dossier. This hinders a comprehensive understanding of the overall treatment context. Additional challenges reported included the lack of long-term patient follow-up (4 out of 14), the inclusion of unrelated outcomes in the HTA dossier (4 out of 14), and the similarity of the sample population in the HTA dossier to that of the clinical trials (3 out of 14). These issues can impact the accuracy and generalizability of the findings.</p> <p>Problems: One major problem identified is the lack of infrastructure and skills to support processes related to the collection of RWD. This includes the absence of electronic medical records in some Asian health systems, which hampers the efficient collection and utilization of RWD. Furthermore, respondents highlighted the lack of clinician, institution, or legislative support for data collection and sharing, as well as the insufficient expertise in RWD/RWE analysis. This leads to confusion and bias and poses challenges in ensuring data quality assurance.</p>
Facey KM, et al, (2020)	<p>Fragmentation, lack of clarity, and harmonization: It is widely recognized that there is fragmentation and divergent guidelines in the approaches to using RWD and RWE in HTA. This situation presents challenges due to the lack of clarity regarding which RWDs are suitable for addressing specific questions and how to develop robust RWE to inform payer decisions.</p> <p>Moreover, the absence of harmonized approaches further exacerbates the issue. Isolated approaches and lack of collaboration among stakeholders: The study highlights the detrimental effects of isolated approaches and the insufficient collaboration among stakeholders. To overcome these challenges, collaboration, trust, and transparency are identified as essential factors. By fostering collaboration and establishing effective communication channels among stakeholders, it is possible to mitigate fragmentation, harmonize guidelines, and enhance clarity in utilizing RWD/RWE in HTA.</p>
Bowrin K, et al, (2019)	<p>The limitations encountered in the integration of RWD into modeling are as follows:</p> <ul style="list-style-type: none"> A. Confounding bias and bias from selection (confounding bias) B. Lack of data accuracy regarding drug exposure and outcomes, as derived from the use of pharmacoepidemiological data C. Errors in the data recording process of medical records D. Inadequate assurance of data protection and confidentiality, which arises in cases of E. RWD utilization from medical records <p>Insufficient patient numbers.</p>
Brogaard N, et al, (2021)	<p>Variation in requirements and evidence criteria: Different HTA organizations internationally have different requirements for evidence and criteria for evaluating treatments regardless of indication. This variation can lead to mixed assessment outcomes and challenges regarding reimbursement. From the analysis of 13 submissions from seven countries, different clinical evidence requirements were identified by HTA organizations in the evaluations of larotrectinib and entrectinib.</p> <p>Uncertainty regarding clinical data: Payers express concerns about clinical data, especially when non-traditional datasets such as RWD are used. This uncertainty can contribute to negative or partial funding recommendations in certain countries.</p> <p>Limited integration of RWD: The use of RWD in HTA evaluations is relatively low. The limited acceptance of RWD by some HTA organizations or the availability of RWD during the evaluation process can contribute to this. Further guidance is needed to</p>

	clarify the acceptance of RWD as a data source for treatments regardless of indication and acceptable methods of indirect comparisons.
Hogervorst Milou A, et al, (2022)	<p>Several significant barriers include:</p> <p>A. Lack of necessary data sources: One of the obstacles is the unavailability or insufficient access to the required data sources for conducting robust RWD studies.</p> <p>B. Existing policy structures or information governance: The presence of rigid policy structures or inadequate information governance frameworks can hinder the integration and utilization of RWD.</p> <p>C. Interpretation and verification challenges: Difficulties may arise in interpreting and verifying the results obtained from RWD studies, leading to uncertainty or lack of confidence in the findings.</p> <p>D. Absence of relevant variables in registries: In some cases, registries may lack essential variables or data elements necessary for comprehensive analysis, limiting the potential insights that can be derived from the RWD.</p> <p>E. Lengthy data access process: Delays or lengthy procedures to access the required data can impede timely utilization of RWD, affecting the efficiency and effectiveness of decision-making processes.</p>
Sievers H, et al, (2021)	<p>Challenges of RWE include:</p> <p>A. Methodological issues: This encompasses concerns such as selection bias, difficulty in accessing relevant data, and the lower degree of evidence compared to Randomized Controlled Trials (RCTs).</p> <p>B. Lower data quality: RWE may have a lower degree of data quality when compared to data derived from RCTs. This can be attributed to various factors, including variations in data collection methodologies and potential limitations in data accuracy.</p> <p>C. Limited infrastructure for collecting RWD: There is a lack of well-established and standardized systems for collecting high-quality RWD. This poses challenges in ensuring the reliability and consistency of the data used for analysis.</p> <p>D. Representativeness of RWD data: RWD may not always fully represent the broader population or specific subgroups of interest. This can limit the generalizability of findings and raise concerns about the applicability of RWE in decision-making processes.</p>
Hampson G, et al, (2018)	<p>Challenges in Utilizing RWE:</p> <p>A. Bias and Confounding Factors</p> <p>B. Incomplete Data Availability</p> <p>C. Data Accessibility Challenges</p> <p>D. Absence of Consensus on Methodologies for Design, Collection, and Analysis of Data</p> <p>E. Shortage of Qualified Researchers</p>
	Issues in the Use of Non-Randomized Controlled Trials (non-RCTs):

<p>George E, (2016)</p>	<p>A. Confusion and Bias: The use of non-RCTs can lead to confusion and bias in the interpretation of results. Factors such as selection bias and confounding variables can impact the validity and reliability of the findings.</p> <p>B. Incomplete Data and Limited Use of Quality of Life Data: Non-RCTs often lack comprehensive data and may have limited utilization of quality of life data from sources outside of RCTs. This limitation can affect the ability to capture relevant information and adequately assess patient-reported outcomes.</p> <p>C. Uncertainty in Data Accuracy: There is inherent uncertainty in the accuracy of data collected through non-RCTs. The lack of rigorous randomization and control measures may introduce additional variability, making it challenging to ascertain the true effect of interventions.</p>
<p>Husereau, D, et al, (2019)</p>	<p>The barriers to increasing the use of RWD are as follows:</p> <ol style="list-style-type: none"> 1. Lack of trust in RWD due to concerns about data quality and reliability. 2. Difficulty in accessing RWD due to privacy and security concerns or regulatory and legal barriers that restrict access. 3. Lack of standardization and harmonization of RWD, as data may be collected using different methods and standards, making it challenging to compare data from different sources or jurisdictions. 4. Insufficient infrastructure to support the use of RWD, such as funding for data collection and analysis or a lack of expertise in data analysis. 5. Perceived threat to vested interests, as some stakeholders may feel that the use of RWD threatens their interests or can be used against them. 6. Lack of collaboration and coordination among stakeholders, as successful use of RWD requires collaboration and partnerships among stakeholders. 7. Need for education and training to increase understanding of RWD and their decision-making capabilities. 8. Difficulty in translating RWD into actionable insights, as the data may be complex or require advanced analytical tools.
<p>Pongiglione B, et al, (2021)</p>	<p>Barriers identified include:</p> <ol style="list-style-type: none"> (i) Difficulty in accessing data. (ii) Lack of standardization in measuring health and economic outcomes. (iii) Insufficient availability of comparable data. (iv) Concerns about data quality and accuracy in certain sources. (v) Inadequate presence of demographic and epidemiological data in some sources.
	<p>The challenges associated with utilizing RWD to evaluate direct oral anticoagulation (DOAC) in the atrial fibrillation population include:</p>

Ciminata, G, (2019)	<p>1) Limited availability of high-quality RWD: There is a scarcity of reliable and comprehensive RWD specifically for evaluating DOACs in the atrial fibrillation population. This limitation hinders the ability to obtain robust evidence for assessing the effectiveness and safety of DOACs.</p> <p>2) Data quality issues: Challenges arise from incomplete data, inconsistent coding practices, and limited clinical information within the available datasets. These issues may compromise the reliability and validity of the results derived from the RWD.</p> <p>3) Methodological challenges: The utilization of RWD for HTA purposes is subject to methodological challenges, including potential selection bias, confounding factors, and misclassification of outcomes. These challenges can impact the accuracy and interpretation of the results obtained from the analysis of RWD.</p> <p>4) Data access issues: Accessing RWD can be challenging due to concerns regarding privacy, data ownership, and regulatory barriers. These factors may restrict the use of RWD in HTA and impede the ability to derive meaningful insights from the data.</p>
---------------------	--

RCT: Randomized Clinical Trials, RWD: Real-World Data, HTA: Health Technology Assessment, ERG: Evidence Review Group, NICE: National Institute for Health and Care Excellence, G-BA: Gemeinsamer Bundesausschuss (Federal Joint Committee, Germany), CADTH: Canadian Agency for Drugs and Technologies in Health, PBAC: Pharmaceutical Benefits Advisory Committee (Australia), AMNOG: Arzneimittelmarkt-Neuordnungsgesetz (German Pharmaceutical Market Reorganisation Act), GSAV: Gesetz für mehr Sicherheit in der Arzneimittelversorgung (Law for Greater Security in Drug Supply, Germany), SMC: Scottish Medicines Consortium, IQWiG: Institut für Qualität und Wirtschaftlichkeit im Gesundheitswesen (Institute for Quality and Efficiency in Healthcare, Germany), ZIN: Zorginstituut Nederland (National Health Care Institute, Netherlands), AIFA: Agenzia Italiana del Farmaco (Italian Medicines Agency), ICER: Incremental Cost-Effectiveness Ratio, EC: External Comparator, FDA: Food and Drug Administration, HER: Electronic Health Record, CEA: Cost-Effectiveness Analysis, REA: Relative Effectiveness Assessment, RWE: Real-World Evidence, RCTs: Randomized Controlled Trials, TAVI: transcatheter aortic valve implantation, TMVR: transcatheter mitral valve repair, DOAC: Direct Oral Anticoagulation

Table 4. Potential Benefits, Opportunities, and Feasibility of Utilizing RWD/RWE in the HTA Process

Author/year	Potential Benefits, Opportunities, and Feasibility
Hagen G, et al (2021)	<p>Efficiently structured registries can offer valuable data on health utilities, resource utilization, and costs related to the event/adverse action procedure of HTA. Patient registries play a crucial role in providing insightful information about current treatment patterns and adherence to treatment in real-world scenarios.</p> <p>Patient registries offer the most comprehensive documentation of the natural progression of a disease based on local data and are recommended for consideration in economic evaluation modeling. Patient registries can serve as additional evidence to validate the real-world clinical effectiveness derived from clinical trials. This is especially relevant in the case of oncology medications that receive approval based on limited data, as registries can provide substantial contributions to the evidence base. There is a proposal to enhance collaboration between epidemiologists and HTA researchers, aiming to integrate data from population studies and registries more effectively. The data obtained from registries can significantly</p>

	<p>contribute to health technology reassessments within the HTA process, and we can anticipate significant advancements in their utilization in the years to come.</p>
Gonçalves E, (2020)	<p>Collecting and analyzing RWD should complement the assessment of the long-term efficacy and comparative effectiveness of advanced therapies.</p> <p>Highlighting outcome modeling can provide an important opportunity to address indirect comparisons between different treatments and extrapolate data, potentially bridging the gap caused by the absence of appropriate short-term clinical trial and RWE data.</p>
Fasseeh A, et al. (2020)	<p>A significant majority of respondents (82%) expressed their willingness to invest in patient registries and make payer databases accessible to HTA professionals. The endeavor to collect and utilize local data can serve as a valuable learning experience for HTA providers, particularly in countries that have made substantial investments in information technology infrastructure for healthcare financing and delivery. This can contribute to enhancing the quality of HTA assessments. In policy decision-making, there is a need to reinforce the significance of local documentation and local RWD, which can be achieved by extensively utilizing local patient registries and payer databases.</p>
Leahy T P, et al. (2020)	<p>Primary care databases are playing an increasingly important role in informing NICE submissions and showcasing the utilization of RWE in healthcare decision-making. The inclusion of primary care databases to inform clinical inputs in cost-effectiveness (CE) models is well received by both the Evidence Review Group (ERG) and the review committees, particularly when a dedicated study is conducted to extract these inputs. The absence of extensive commentary observed when databases were utilized to inform current treatment practices may indicate a general acceptance that databases serve as reliable sources of such data. The potential of UK primary care databases in NICE submissions is being increasingly recognized and utilized, particularly in informing the parameters of economic models.</p>
Fuchs S, et al (2016)	<p>In response to these challenges, several initiatives have been undertaken to tackle them. These initiatives include the implementation of standardized data elements and outcome measures, the advancement of analytical methods and tools for analyzing RWE, and the establishment of data exchange platforms and networks. RWD and evidence from non-randomized controlled trials (non-RCTs) are progressively gaining recognition for HTA of medical devices in Europe.</p>
Dai WF, et al, (2021)	<p>The participating stakeholders acknowledged that the availability of evidence generated through the utilization of RWE on clinical benefit and cost-effectiveness from various provinces in the country instills confidence in the results. They particularly emphasized the usefulness of this evidence in the context of the re-evaluation process, which aims to support policy decisions. When considering the use of RWE from other jurisdictions or districts in decision support, it should only be considered as an option if the data collection adheres to accepted standards and potential biases are effectively managed by experts in survey methodology. However, participants expressed that the use of RWE from other jurisdictions is more acceptable in cases involving rare diseases, as it can be challenging to adequately represent the population solely based on Canadian data.</p> <p>Another noteworthy aspect highlighted was the inclusion of patient experience in the reporting of documentation. In other words, patients should be actively involved in the reassessment processes by providing data on their experience through questionnaires, for instance. Additionally, patient-generated outcomes (PROs) can make a valuable contribution to the</p>

	<p>desired evidence. It was also suggested to engage the same patients who participated in the initial evaluation when conducting the re-evaluation of oncology drugs.</p>
<p>Patel D, et al, (2021)</p>	<p>The evaluation of evidence-based submissions for HTA based on single-arm trials lacks formal guidance and established best practices, making it challenging to construct comparison cohorts. Therefore, it is necessary to develop a well-designed strategy when relying on single-arm trial data, incorporating robust methods for data collection and a well-executed analytical approach for indirect treatment comparison.</p> <p>Monitoring and guideline development: The increasing utilization of RWD in HTA submissions, albeit still relatively low (5% of all submissions), indicates a growing trend. It is important to closely monitor this category of submissions, and the study can assist HTA providers and payers in developing guidelines and policies for effectively handling such submissions.</p> <p>Oncology, rare diseases, and orphan drugs: Submissions for orphan drugs have a higher acceptance rate compared to non-orphan drugs. HTA agencies have a higher acceptance threshold for external comparators (ECs) than for RWD in the case of non-orphan drugs, underscoring the importance of reliable EC data. RWD-based ECs have shown more positive results for non-orphan drug submissions compared to other types of EC data. Furthermore, a significant proportion of single-arm trial-based submissions focus on oncology and hemato-oncology indications, reflecting the industry's emphasis on novel targeted therapies, cellular and gene therapies, and rare cancers with biomarker-targeted subpopulations. This presents an opportunity to leverage RWD for studying these specific populations and therapeutic interventions.</p> <p>Between 2015 and 2019, there was an observed increase in the use and acceptance of external comparators (ECs) based on RWD, while the acceptance of submissions without ECs decreased. Notably, NICE demonstrated a significantly higher acceptance of non-randomized clinical trial data compared to other HTA agencies.</p>
<p>Tolley, K. (2010)</p>	<p>The use of observational studies, including registries, is anticipated to gain greater importance in the post-marketing phase, as initiatives are increasingly being implemented to evaluate the effectiveness and cost-effectiveness of medicines in real-life settings.</p> <p>Certain countries, like the Netherlands, have implemented conditional drug reimbursement schemes, where reimbursement is provided temporarily for expensive and innovative medicines, with subsequent provision of evidence-based RWE. A similar case was observed in the UK regarding multiple sclerosis. As a result, drug access strategies are being formulated, which will eventually lead to increased demand for data beyond traditional clinical trials. In light of these developments, companies should consider adapting their research and development strategies accordingly.</p> <p>Traditional randomized clinical trials alone may not be adequate for the comprehensive evaluation of health technologies, unlike in the regulatory process where they currently remain the primary approach. To address the requirements of drug access and reimbursement, a broad range of studies is necessary, considering both internal and external validity. Pragmatic trials and observational studies tend to offer a higher level of external validity, which is crucial when assessing cost-effectiveness relationships.</p>
	<p>When data from RCTs are insufficient for making informed decisions, it is crucial to implement rigorous and</p>

<p>Kent, S. et al, (2021)</p>	<p>comprehensive procedures to ensure the quality of data derived from non-randomized studies. Recommendations for addressing the issues encountered in conducting studies:</p> <ul style="list-style-type: none"> A) Provide justification for the need to conduct the study and highlight the use of non-randomized study data. B) Design prospective studies and engage in early scientific advisory processes. C) Understand potential systematic errors and provide clear references to mitigation and management strategies. D) Perform sensitivity analyses for hypothetical scenarios. E) Pre-specify protocols with clear references to statistical methods. Z) Provide comprehensive reporting of methods and results, with the additional use of checklists. H) Offer quantitative evidence when identifying uncertainty. ⊕) Describe impartiality and utilize well-validated tools for assessing overall risk. <p>Recommendations for addressing issues in HTA:</p> <ul style="list-style-type: none"> A) Enhance and standardize the provision of scientific advisory processes to determine the value of specific evidence. B) Strengthen conditional reimbursement processes to ensure the production of further evidence after initial reimbursement decisions. C) Invest in and develop skills of HTA agency personnel in the design, analysis, and interpretation of non-randomized studies. D) Issue guidelines on best practices. E) Support further research on non-randomized studies and international initiatives for high-quality data.
<p>Jaksa A, et al, (2022)</p>	<p>While the organizations did not reach a consensus on the quality and impact of external control arms (ECAs), two main criticisms were identified: selection bias and confusion. These concerns can be addressed through careful data selection and study design, aiming to minimize bias and improve clarity. The incorporation of RWD and RWE in HTA offers an opportunity to complement single-arm oncology trials with contextual information on patient experience. This broader inclusion of data can provide a more comprehensive understanding of treatment outcomes and patient perspectives. Exploring the evaluation of ECAs beyond oncology and in different conditions is important to gain insights into their influence on regulatory and HTA decision-making processes. This ongoing exploration can contribute to enhancing the understanding and utilization of ECAs in a wider range of therapeutic areas.</p> <p>Selection bias and confounding emerged as common criticisms of ECAs, emphasizing the importance of utilizing high-quality RWD and implementing rigorous study designs. There is a clear need for additional guidance on study design and implementation when utilizing ECAs, as well as specific guidance on RWD-based ECAs from regulatory bodies such as the FDA.</p>
<p>Justo N, et al, (2019)</p>	<p>The HTA organizations must strike a balance between promoting local RWE without excessively delaying assessments. Assessments can be expedited by considering international RWE after addressing transferability concerns. The expansion of healthcare coverage and the inclusion of a growing number of diseases and interventions are exerting pressure on healthcare budgets. RWE can be invaluable for monitoring the outcomes and cost-effectiveness of high-cost interventions, making careful monitoring essential. Enhancing data recording: Initiatives aimed at improving data recording, such as the implementation of electronic medical records (EMRs), standardizing coding systems, reducing free</p>

	<p>text, and providing coding systems training to staff, are viewed as opportunities to enhance the usability of RWD.</p> <p>Establishment of RWD units and evidence-based policy: The increasing number of HTA units and the adoption of pharmacoeconomic guidelines and evidence-based policy planning are encouraging trends for the utilization of RWE. These advancements offer a promising outlook for the expanded use of RWE in South America.</p>
<p>Kamusheva M, et al, (2022)</p>	<p>Adequate management of collected RWE from other countries is crucial, and the electronic collection of RWE is necessary. However, some Central and Eastern European countries face challenges due to their limited operational information technology infrastructure. Furthermore, the lack of government stability and frequent policy changes in the healthcare sector result in regularly amended and unstable legislation. The dynamic environment leads to constant changes in local legislative requirements for HTA and significant differences in approaches to managing the process of RWE utilization. Therefore, achieving stability is essential in this regard.</p> <p>Moreover, collaborative initiatives and infrastructure development are expected to increase to facilitate the transferability of RWE to CEE countries. The focus will shift towards determining the appropriate implementation of RWE. Lastly, there is a need for improvement in factors such as pharmacotherapy guidelines and the availability of health technologies in certain CEE countries. Additionally, the development of suitable statistical analysis methods for the transmission of RWE is urgently required.</p>
<p>Timbie JW, et al, (2021)</p>	<p>Recommendations for addressing the issues related to the inclusion of RWE:</p> <ol style="list-style-type: none"> 1) Provide more specific and up-to-date guidance on the utilization of RWE, including successful examples of its application. Industry stakeholders emphasize the need for clear guidance from payers, which would assist in designing studies using RWD. 2) Enhance the robustness of RWE by improving study design and analytical methods. This would ensure that the research conducted using RWD meets rigorous standards and produces reliable and valid results. 3) Engage in RWE-related activities sponsored by organizations like NESTcc, CDRH, and industries, which bring together stakeholders to develop a framework for enhancing RWE generation and detection methods. 4) Take part in the FDA's Payor Communication Task Force and share insights gained from working group discussions. This collaboration allows the industry to gather important information for designing studies using RWD, while payers gain a deeper understanding of reimbursement decisions in studies utilizing RWD. 5) Develop alternative reimbursement strategies supported by RWE when sufficient experimental data is not available to support full coverage. Some payers are exploring alternative payment arrangements that are tied to the performance of medical devices in real-world settings, providing an avenue for reimbursement based on RWE outcomes.
<p>Bullement A, et al, (2020)</p>	<p>To enhance the utilization of RWE in submissions to NICE (National Institute for Health and Care Excellence), it is advisable for companies to take proactive steps in addressing common criticisms associated with RWE. This includes justifying the methodologies employed for RWE analysis and demonstrating the relevance and reliability of the RWE sources used. Additionally, the development of best practice guidelines for reporting RWD and adhering to these standards when presenting RWE can significantly enhance the effectiveness of documentation submitted to NICE.</p> <p>RWE has demonstrated its significance in decision-making processes by filling data gaps in cost-effectiveness analyses</p>

	<p>submitted by companies. This data is ultimately utilized to inform decisions, particularly through its impact on the ICER (incremental cost-effectiveness ratio) estimate. This study indicates that the utilization of RWE in NICE submissions for cancer drugs is widespread and generally proves to be a valuable source of information, effectively supporting the decision-making process.</p>
<p>Al-Omar HA, et al, (2021)</p>	<p>In relation to the challenges associated with RWD in the assessment, treatment, and evaluation (ATY) process, the following observations were made:</p> <p>Availability and accuracy of data: The availability and accuracy of data, including registries, RWE, quality of life (QoL), and costing data, were deemed important by 86.4% of participants.</p> <p>Scattered healthcare system in Saudi Arabia: The fragmented nature of the healthcare system in Saudi Arabia was recognized as a challenge, which could impact the collection, integration, and accessibility of reliable RWD.</p> <p>Lack of acceptance by stakeholders: There was a lack of acceptance and recognition of the value of RWD by various stakeholders involved in the HTA process, which may hinder its effective utilization.</p> <p>Lack of expertise and human resources: Insufficient expertise and limited human resources in the field of RWD were identified as challenges, potentially impeding the effective analysis and interpretation of available data.</p> <p>Lack of reliable data on diseases: The absence of reliable and comprehensive data on specific diseases was highlighted as a challenge, which may limit the applicability and generalizability of RWD in the HTA process.</p>
<p>Makady A, et al, (2018)</p>	<p>Alignment with policies: The findings of this study are in line with a previous review of policies regarding the use of RWD by HTA organizations. The review discovered that the current utilization of RWD in practice is consistent with the policies, which may vary slightly between agencies and depending on the specific context being analyzed.</p> <p>Pragmatic type trials (PCTs) as a potential source of RWD: PCTs were suggested as a potential means of gathering RWD that can bridge the gap between randomized controlled trials (RCTs) and real-world settings.</p> <p>Quantitative methods and sensitivity analyses: The study discusses quantitative modeling and sensitivity analysis methods, such as bootstrapping and probabilistic sensitivity analyses (PSA), as potential alternatives to RWD for addressing the efficacy-effectiveness gap. However, it should be noted that these methods are still based on hypotheses and RCT data, and the importance of RWD remains crucial for evaluating long-term efficacy in a diverse clinical population.</p> <p>Potential role in re-assessments: RWDs could play a significant role in the reassessment of drugs by confirming previous efficacy estimates, cost-effectiveness ratios (ICERs), and budget implications. Comprehensive re-evaluation reports conducted under conditional reimbursement systems (CRS) could greatly benefit from the utilization of RWDs.</p>

<p>Deverka PA, et al, (2020)</p>	<p>Opportunities for training and development incentives in RWE and NGS: A. Offer training programs on observational study methods and pragmatic type trials (PCTs) to stakeholders, including payers, to enhance their understanding and utilization of RWE.</p> <p>B. Encourage funding initiatives to support the conduct and publication of RWE studies that demonstrate the benefits and risks associated with NGS testing. This would provide valuable evidence to inform coverage decisions.</p> <p>Opportunities for improving methods of generating RWE:</p> <p>A. Existing RWE assessment tools developed specifically for payers should be adapted to the context of NGS through the collaboration of multi-stakeholder groups. This would ensure best practices and evaluation tools are tailored to the unique aspects of NGS.</p> <p>B. Develop transparent engagement processes that involve payers to better understand their information needs and incorporate them into the design and execution of RWE studies.</p> <p>C. Additionally, the use of artificial intelligence (AI)-based methods, such as natural language processing, machine learning, and deep learning, can be leveraged to process and analyze unstructured data from electronic health records (EHRs) and patient-generated data. This would alleviate the burden of manual curation and enhance the efficiency of data analysis in RWE studies.</p> <p>Despite the potential benefits, payers still heavily rely on clinical guidelines and randomized controlled trials (RCTs) as the primary sources of clinical evidence for coverage decisions, rather than RWE. Several factors contribute to this reliance, including challenges surrounding the quality of RWE data, standardization of genomic data representation, limited involvement of payers in study development, and a preference for RCTs over observational data. Efforts are underway to address these barriers, such as the development of data infrastructure, increased payer participation in study design, adherence to methodological best practices, and consensus on NGS guidelines.</p> <p>Outcomes-based contracts (OBCs) between industry and payers can benefit from the utilization of RWE. However, challenges related to obtaining accurate data, defining appropriate outcome measures, ensuring patient data privacy, and managing costs often impede the widespread implementation of OBCs.</p>
<p>Lou J, et al, (2020)</p>	<p>The development of a guidance document specifically tailored to the context of Asia can be instrumental in addressing the challenges identified in this study. This guidance document can provide recommendations, best practices, and standardized approaches for the utilization of RWD and RWE in the region, thereby supporting stakeholders in navigating the complexities and mitigating the identified challenges.</p> <p>Collaboration among various stakeholders, including healthcare providers, researchers, policymakers, and industry representatives, is crucial in overcoming the challenges associated with RWD/RWE utilization. By fostering collaboration and promoting the adoption of good practices, stakeholders can share knowledge, experiences, and expertise, leading to improved methodologies, data quality, and overall effectiveness in utilizing RWD/RWE.</p> <p>All participants reached a consensus that RWE should serve as supplementary documentation and is unlikely to replace data derived from clinical trials for reimbursement decisions. The findings suggest a recognition of the potential of RWD/RWE in HTA, along with a need for further understanding, capacity-building, and improved collaboration among</p>

	<p>stakeholders to fully harness the benefits of utilizing RWD/RWE in the HTA process.</p>
<p>Facey KM, et al, (2020)</p>	<p>Opportunities and applications:</p> <p>A. Collaborating with the academic community to develop methods for utilizing RWD in the decision-making process, as well as promoting cooperation between countries, especially in the context of rare diseases.</p> <p>B. Involving the industry in multilateral dialogues regarding RWD, through initiatives such as public-private partnerships and international programs like the IMI Big Data for Better Outcomes in Europe and the US FDA's Sentinel program.</p> <p>C. Governance and transparency: Ensuring transparency in the production of RWE is crucial. Efforts are being made to address this issue through initiatives like the ISPOR RWE Transparency Task Force, which aims to promote transparency in the generation and reporting of RWE.</p> <p>D. EU Multilateral Learning Network for RWE: Establishing a learning network that involves relevant stakeholders is essential for harnessing the potential of RWD and RWE in healthcare. This network should focus on data standardization, improving data quality, facilitating data sharing, and implementing robust data processing and analysis methods.</p> <p>E. Regulatory support: Regulatory agencies, such as the US FDA, are actively engaged in RWE projects aimed at providing guidance on the relevance and reliability of RWD. These initiatives involve leadership engagement and target shared knowledge and consistency in regulatory approaches. They are widely recognized as necessary measures to address the challenges associated with RWD/RWE and ensure their effective utilization in regulatory decision-making processes.</p>
<p>Bowrin K, et al, (2019)</p>	<p>According to a study included in the review, the limitations encountered in modeling data through registries can be addressed by using a practical guide for utilizing registry data to inform evidence-based decisions regarding the cost-effectiveness relationship of new drugs. Furthermore, the evaluation of cost-effectiveness models using observational data can be achieved using a specialized checklist that includes five questions for assessing statistical issues.</p> <p>Opportunities: According to ten (10) guidelines from organizations, it has been determined that RWE is useful (but not mandatory) in providing evidence for clinical practice regarding treatment pathways, comparative interventions, resource utilization and costs, long-term natural history of the disease, as well as the actual effectiveness and safety of interventions. Sixteen (16) pharmacoeconomic guidelines recommend or consider the integration of RWE into pharmacoeconomic models and HTA submissions, with Canada, Belgium, and Poland recommending the incorporation of RWD into HTA submissions.</p>
<p>Brogaard N, et al, (2021)</p>	<p>Monitoring future assessments and potential reassessments would provide a better acceptance of RWD as a data source for tumor-agnostic therapies, and further guidance is needed to clarify what is acceptable regarding indirect comparisons.</p> <p>Conditional reimbursement: Some countries, such as England and France, have established conditional approval processes. This allows treatments with data uncertainty to receive funding recommendations while requiring the provision of additional data at a later date. This provides an opportunity for the acceptance of currently available evidence, including RWD/RWE, with the potential for further data collection and evaluation.</p>

	<p>Lack of guidance for HTA evaluations: There is a need for more guidance on how HTA evaluations and economic models should be structured for future oncology-agnostic therapies. Some HTA systems are developing internal guidelines to ensure consistent assessment of oncology-agnostic therapies, but further guidance is still needed to address uncertainties in clinical data and the integration of RWD.</p>
<p>Hogervorst Milou A, et al, (2022)</p>	<p>RWD could be considered acceptable in the following situations:</p> <ul style="list-style-type: none"> A. In cases of high disease burden or when the indications of the evaluated treatment are severe or even life-threatening. B. If the findings of randomized controlled trials (RCTs) are outdated or conflicting with the available literature of RCTs. C. When there is uncertainty regarding resource utilization in clinical practice. D. In the case of highly innovative health technologies or when alternative access is not feasible. E. When the trials used for licensing are compared with treatments not used in the country's practice. F. In situations of lack of reliable evidence and when there is uncertainty in the clinical domain as well as a high degree of uncertainty in cost-effectiveness analyses. G. In cases of well-established use, according to European legislation.
<p>Sievers H, et al, (2021)</p>	<p>Capabilities of RWE include:</p> <ul style="list-style-type: none"> A. Filling gaps and reducing uncertainty: RWE can provide supplementary documentation that supports the data obtained from Randomized Controlled Trials (RCTs), helping to address any gaps or uncertainties in the evidence base. B. Demonstrating real-world value: RWE allows for the evaluation of a medicine's effectiveness and value in everyday clinical practice, providing insights into its performance outside the controlled environment of clinical trials. C. Ethical considerations: In situations where conducting an RCT may be ethically challenging or not feasible, RWE offers an opportunity to gather evidence and generate insights. <p>Opportunities associated with RWE include: Harmonization and greater acceptance:</p> <ul style="list-style-type: none"> A. RWE presents an opportunity for harmonizing documentation requirements and increasing the acceptance of RWE as a valuable source of evidence in healthcare decision-making processes. B. Stakeholder dialogue and consensus: Through pHTAorms like the Joint Scientific Advice, stakeholders can engage in discussions and reach consensus on various issues, bridging the gaps between regulatory requirements and the expectations of HTA agencies. C. Early joint dialogues: Particularly during the stages when the European Medicines Agency (EMA) is considering

	<p>technology licensing, early joint dialogues involving multiple stakeholders can help facilitate a more comprehensive understanding of the evidence landscape.</p> <p>D. Alignment of HTA documentation: The EUnetHTA pIHTAorm provides an opportunity for aligning documentation requirements between different HTAs, promoting consistency and efficiency in the evaluation of healthcare technologies.</p>
<p>Hampson G, et al, (2018)</p>	<p>Opportunities for Improving the Use of RWE:</p> <p>A) Enhancing the quality and reliability of RWE studies through the establishment of a national mandatory registry for observational studies, national data repositories, investments in the quality and consistency of electronic medical records, and the development of strict protocols and consensus on best practice guidelines.</p> <p>B) Implementing effective governance regulations that clarify the scope of RWE data that can be shared.</p> <p>C) Greater commitment to the development of pragmatic trial designs, which can bridge the evidence gap between RWE and Randomized Controlled Trials (RCTs).</p> <p>D) Fast-track approval processes, such as accelerated approval pathways, for various innovations where sufficient evidence is lacking. In these processes, RWE can play a decisive role.</p>
<p>George E, (2016)</p>	<p>Opportunities for Improving Non-Randomized Controlled Trials (non-RCTs):</p> <p>A. International Collaboration: The participation of NICE in cross-border projects, such as the IMI Get Real project and the ADAPT SMART project, can contribute to the development of frameworks and methodologies for integrating RWD into HTA processes.</p> <p>B. Areas for Improvement: There are opportunities to enhance the usability and reliability of non-RCT data. This includes improvements in case identification and data source linkage, the routine capture of health-related quality of life (HRQL) and patient preferences, the inclusion of important patient variables (sociodemographic, disease severity, comorbidities), and explicit variable definitions to minimize data gaps.</p> <p>C. Complementary Use of RCTs and RWD: RCTs alone cannot address all the needs of HTA and decision-makers. The utilization of data from non-RCT sources provides an opportunity to strengthen evidence standards and generate evidence throughout the technology lifecycle. RCTs and RWD can complement each other to provide a more comprehensive understanding of effectiveness and safety in healthcare interventions.</p>
<p>Makady E, et al, (2017)</p>	<p>The lack of alignment and guidance regarding the practical aspects of RWD collection and analysis may discourage marketing authorization holders from investing in RWD generation for HTA purposes. Clarity and harmonization of policies could provide incentives for stakeholders to collect and utilize RWD more effectively.</p> <p>The approach of policy alignment regarding the use of RWD by HTA organizations in Europe is useful, and the presentation of guidelines for the collection and analysis of such data is recommended. Policy harmonization can appropriately support the industry in producing additional or alternative data for drugs where RCTs cannot provide strong evidence. EUnetHTA can support harmonization through a discussion pIHTAorm. The use of RWD can be particularly valuable for rare diseases or orphan drugs where conducting randomized controlled trials (RCTs) may be challenging.</p>

	RWD can provide data on treatment outcomes in situations where conventional clinical trials are not feasible.
Husereau, D, et al, (2019)	<p>Opportunities: The use of RWD is expected to increase in the future, supported by technological advancements, the growing availability of data, and the increasing demand for evidence to support decision-making. To fully harness the potential of RWD, there is a need for continuous investment in data infrastructure, including standardization and harmonization of data, development of analytical tools, and personnel training.</p> <p>There is a need for greater collaboration and partnerships among stakeholders, including researchers, regulatory authorities, payers, and industry, to ensure the quality and reliability of RWD and promote their use in decision-making. These opportunities highlight the potential for leveraging RWD to generate RWE that can inform healthcare policies, improve patient outcomes, and enhance the efficiency and effectiveness of healthcare interventions. By addressing the challenges and investing in the necessary infrastructure and collaborations, RWD can be a valuable resource in shaping the future of healthcare.</p>
Pongiglione B, et al, (2021)	Ensuring standardization is essential, encompassing consistent and appropriate selection, measurement, utilization, and reporting of results in clinical research and practice. This approach will aid in mitigating biases and enhancing the validity and reliability of findings. Enhanced coordination at the European Union (EU) level would be particularly advantageous in facilitating the generation of comparable RWD across countries. To further advance the utilization of RWD, a collaborative approach involving stakeholders is necessary for the initiation, design, and analysis of RWD, with industry cooperation. If discussions at the EU level regarding early HTA and the requirement for registers or observation studies become more prevalent, the quality and nature of RWD collected will assume increasing importance in informing policy decisions.
Ciminata, G, (2019)	There is a need to standardize the collection, management, and analysis of RWD in order to enhance the quality and comparability of the results. By incorporating RWD, cost-effectiveness analyses can inform HTA decisions regarding the utilization of DOACs versus warfarin in individuals with atrial fibrillation.

HTA: Health Technology Assessment, RWD: Real-World Data, RWE: Real-World Evidence, NICE: National Institute for Health and Care Excellence, ECs: External Comparators, FDA: U.S. Food and Drug Administration, EMRs: Electronic Medical Records, CEE: Central and Eastern European, NESTcc: National Evaluation System for health Technology Coordinating Center, CDRH: Center for Devices and Radiological Health, ICER: Incremental Cost-Effectiveness Ratio, EMA: European Medicines Agency, IMI: Innovative Medicines Initiative, RCTs: Randomized Controlled Trials, HRQL: Health-Related Quality of Life, EU: European Union, DOACs: Direct Oral Anticoagulants