

1 **A qualitative analysis of community health worker perspectives on the implementation of**
2 **the preconception and pregnancy phases of the *Bukhali* randomised controlled trial.**

3 Larske M Soepnel^{1,2}; Shane A Norris^{1,3}; Khuthala Mabetha¹; Molebogeng Motlhatlhedi¹;
4 Nokuthula Nkosi¹; Stephen Lye⁴; Catherine E Draper¹

5

6 ¹SAMRC/Wits Developmental Pathways for Health Research Unit, Department of
7 Paediatrics, Faculty of Health Sciences, School of Clinical Medicine, University of the
8 Witwatersrand, Johannesburg, South Africa.

9 ²Julius Global Health, Julius Center for Health Sciences and Primary Care, University Medical
10 Center Utrecht, Utrecht University, Utrecht, The Netherlands.

11 ³School of Human Development and Health, University of Southampton, Southampton, UK.

12 ⁴Lunenfeld-Tanenbaum Research Institute, Sinai Health System, Department of Obstetrics
13 and Gynecology, Department of Physiology and Medicine, University of Toronto, Toronto,
14 ON, Canada

15

16 *Corresponding author:* Larske M Soepnel, SAMRC/Wits Developmental Pathways for Health
17 Research Unit, Faculty of Health Sciences, University of the Witwatersrand, Private Bag 3,
18 Wits, 2050 Johannesburg, South Africa. Larske.soepnel@gmail.com.

19 Abstract

20 Community health workers (CHWs) play an important role in health systems in low- and
21 middle-income countries, including South Africa. *Bukhali* is a CHW-delivered intervention as
22 part of a randomised controlled trial, to improve the health trajectories of young women in
23 Soweto, South Africa. This study aimed to qualitatively explore factors influencing
24 implementation of the preconception and pregnancy phases of *Bukhali*, from the
25 perspective of the CHWs (Health Helpers, HHs) delivering the intervention.

26 As part of the *Bukhali* trial process evaluation, three focus group discussions were
27 conducted with the 13 HHs employed by the trial. A thematic approach was used to analyse
28 the data, drawing on elements of a reflexive thematic and codebook approach.

29 The following six themes were developed, representing factors impacting implementation
30 of the HH roles: interaction with the existing public healthcare sector; participant
31 perceptions of health; health literacy and language barriers; participants' socioeconomic
32 constraints; family, partner, and community views of trial components; and the HH-
33 participant relationship. HHs reported uses of several trial-based tools to overcome
34 implementation challenges, increasing their ability to implement their roles as planned. The
35 relationship of trust between the HH and participants seemed to function as one important
36 mechanism for impact. The findings supported a number of adaptations to the
37 implementation of *Bukhali*, such as intensified trial-based follow-up of referrals that do not
38 receive management at clinics, continued HH training and community engagement parallel
39 to trial implementation, with an increased emphasis on health-related stigma and
40 education.

41 HH perspectives on intervention implementation highlighted adaptations relevant to the
42 *Bukhali* intervention, other CHW-delivered preconception and pregnancy trials, and 'real-
43 world' CHW roles, across three broad strategic areas: navigating and bridging healthcare
44 systems, adaptability to individual participant needs, and navigating stigma around disease.

45
46 **Key words:** community health workers, preconception intervention, pregnancy
47 intervention, low- and middle-income, implementation, process evaluation.

48 1. Introduction

49 Community health workers (CHWs) play an important and growing role in health systems in
50 low- and middle-income countries, due to their potential to improve health at a community
51 level while shifting tasks away from often overburdened formal healthcare sectors (1–3). As
52 a cost-effective link between communities and primary healthcare services, CHWs also have
53 the potential to strengthen health in contexts when regular access of healthcare services is
54 otherwise rare, such as during the preconception period (4,5).

55
56 In South Africa, CHWs provide services, such as health screening, education, and advocacy,
57 for various conditions, such as HIV, maternal and child health-related care, TB, and non-
58 communicable diseases (NCDs) (2,6,7). However, previous research has identified challenges
59 with implementing CHW programmes within the public health sector, including resource
60 limitations, limited supervisor availability, low wages, and safety concerns (2). Particularly
61 when contending with such contextual factors, insights are needed into the ways in which
62 preconception and pregnancy intervention strategies with CHWs can strengthen health
63 systems, and why they do or do not work.

64

65 1.1 CHWs in the *Bukhali* intervention: Health Helpers

66 *Bukhali* is a randomised controlled trial in South Africa, forming part of the Healthy Life
67 Trajectories Initiative (HeLTI), a research initiative in collaboration with the World Health
68 Organisation (WHO) with additional trials in India, Canada, and China. *Bukhali* is a complex,
69 continuum of care intervention for 18-28 year old women, delivered by community health
70 workers known as Health Helpers (HHs). It aims to improve women’s mental health, physical

71 health, and nutrition to establish healthier trajectories for them and their future children,
72 through four phases: preconception, pregnancy, infancy, and early childhood (up to five
73 years), to offset obesity and NCD risk in offspring and improve development (8). *Bukhali* was
74 developed with the goal of functioning within and complementing the realities of the South
75 African public healthcare sector, and within Soweto, an urban, predominantly low-income
76 setting in Johannesburg. Young women living in Soweto have been found to face a number
77 of challenges in terms of their physical and mental health (9,10). In order to maximise the
78 applicability and relevance of the intervention, a pragmatic approach has been adopted to
79 the trial design (10,11), allowing for the incorporation of new learnings as the trial is
80 implemented, and for adaptability in the face of challenges inherent to the trial context (8).

81

82 Due to its multi-phase nature, the emphasis of the *Bukhali* trial will shift as participants
83 transition from preconception, to pregnancy, and subsequently to the postpartum follow-up
84 of index children during infancy and early childhood. Consolidating the learnings gleaned
85 from the implementation of the initial preconception and pregnancy phases can therefore
86 provide important feedback for the trial, but also, insights into the mechanisms and
87 challenges specific to preconception and pregnancy interventions, particularly in lower
88 resource settings. Lastly, it can improve understanding around how CHW roles might be
89 further leveraged to strengthen the healthcare sector outside of the trial, and where
90 potential challenges lie. Therefore, the aim of this paper was to describe factors influencing
91 implementation of the preconception and pregnancy phases of the HeLTI *Bukhali*
92 intervention, from the perspective of the HHs delivering the intervention.

93

94 2. Methods

95 This study uses qualitative data from focus group discussions (FGDs) collected as part of the
96 trial's ongoing process evaluation.

97

98 2.1 Ethical considerations

99 The Human Research Ethics Committee (Medical) at the University of the Witwatersrand
100 approved the study (M190449). All procedures were carried out according to the Declaration
101 of Helsinki of 1975, revised in 2008, and the HHs gave written informed consent to
102 participate in the study.

103

104 2.2 Setting and participants

105 Participants were HHs delivering the *Bukhali* trial intervention in Soweto, South Africa.
106 Supplementary Figure 1 (reproduced with permission (10)) provides an overview of the
107 following four main HH roles within *Bukhali*. Firstly, HHs provide risk screening, through
108 identification, referral and management for obesity, anaemia, hypertension, diabetes,
109 depression, anxiety, and HIV (and pregnancy testing). To assist with risk screening, the HHs
110 use a 'traffic light' system, with red indicating high risk requiring referral for further
111 management, orange indicating medium risk, and green indicating low risk, based on
112 established cut-offs per condition. Secondly, HHs provide social support, including
113 emotional support, phase-specific health literacy materials and resources. The third role is
114 to assist with adopting healthier behaviours, using Healthy Conversation Skills and
115 individual-derived goal setting with SMARTER planning (12,13). Lastly, HHs provide and
116 support uptake of multi-micronutrient supplements (MMS) (10). All of the HHs employed by

117 the trial at the time of data collection (n=13) were invited to, and agreed to, participate,
118 between 24 February and 13 March, 2023. The HHs were female, aged 23 to 35 years, with
119 high school degrees and limited additional formal education.

120

121 [2.3 Patient and public involvement](#)

122 The public was involved in the design, conduct, and dissemination plans of *Bukhali*.

123 Intervention development was guided by formative work conducted with community

124 members (5,8,10,14,15). Engagement with trial stakeholders (e.g. representatives from the

125 South African government, World Health Organisation, and UNICEF) is ongoing, and a

126 participant advisory group has been involved in the qualitative research strategy. The

127 participants of the present study (*Bukhali* HHs) are engaged in regular debrief sessions with

128 their project coordinator and quarterly focus group discussions, through the *Bukhali* process

129 evaluation (8).

130

131 [2.4 Data collection](#)

132 Three FGDs were conducted between 6 and 13 March 2023 at the trial study site at Chris

133 Hani Baragwanath Hospital in Soweto. The FGDs included 4-5 HHs per group, and lasted 1

134 hour 35 minutes, 1 hour 58 minutes, and 3 hours 5 minutes. FGDs were facilitated in English

135 by LS and KM, researchers affiliated with the trial but not involved in direct management,

136 evaluation, or day-to-day duties of the HHs. KM was able to translate from participants'

137 home languages into English, where necessary. A topic guide developed by the co-authors

138 was used, including around HH perceptions of their delivery of the intervention

139 components. The FGDs were recorded and transcribed verbatim by a professional

140 transcriber.

141 2.5 Data analysis

142 A thematic approach was used to analyse the data, drawing on reflexive thematic analysis as
143 outlined by Braun and Clarke (16), but additionally incorporating more structured elements
144 of a codebook approach to allow for exploration of the pre-determined, process-evaluation
145 driven questions posed by the study (17). Analysis was informed by the UKMRC guidance on
146 process evaluations of complex interventions, which identifies context, implementation, and
147 mechanisms of impact as key components of process evaluation (18). Following
148 familiarisation with the transcripts, a conceptual coding framework was developed by CD,
149 with input from the co-authors. This coding framework identified various factors impacting
150 implementation across the four HH roles. Subsequently, the coding framework was applied
151 to the transcripts, and themes and sub-themes were developed, defined, and refined with
152 input from the co-author team. The resulting revised themes were: interaction with existing
153 public healthcare sector; participant perceptions of health; health literacy and language
154 barriers; participants' socioeconomic constraints; family, partner, and community views of
155 trial components; and the HH-participant relationship.

156

157 3. Results

158 Figure 1 provides a conceptual overview of how the themes relate to the four HH roles.

159

160 [Figure 1: Overview of themes and how these conceptually relate to the four HH roles in the
161 *Bukhali* intervention.]

162

163 3.1 Interaction with existing public healthcare sector: opportunities vs challenges

164 HHs described how the trial intervention complements existing public healthcare for young
165 women. Although the level of one-on-one care received was different per facility, the main
166 roles that the HHs felt they provided over and above the public health clinics, included
167 provision of necessary information, support and time, and access to resources such as free
168 pregnancy tests and ultrasounds during pregnancy. HH also stated that, in case of health
169 concerns or symptoms, participants often turn to HHs first to ask for advice, including on
170 whether to seek care at the clinic. In this way, the support provided by the HHs seemed to
171 help participants interact with the public healthcare system.

172 “I will go back to the support that we give to them. If the participant has a problem we are
173 probably the first people they will ask: ‘I’ve got rash I don’t understand what this rash is’ or,
174 ‘I’m bleeding.’ They won’t go straight to the clinic, so they will always start with us first to
175 find out what we know, what we think, before they go to the actual clinics.” (FGD 2)

176 “Because at the clinic they don’t really have time to have a one on one session; ...Ja, we go
177 as far as explaining the clinic card, you know, and they don’t do that.” (FGD 3)

178 However, particularly for their role of providing risk screening and referrals, the HHs
179 described challenges of implementing an intervention within the resource-strained health
180 system that it is aiming to complement. Firstly, HHs noted that many participants were
181 reluctant to follow up their referral at public health clinics. Reasons included difficulty
182 getting to the clinic; lack of privacy, particularly for more stigmatised health concerns such
183 as HIV; and poor treatment by clinic staff. Some tools that HHs used to alleviate these
184 challenges included providing trial-based transport to clinics, accompanying their
185 participants to the clinic to ensure they went and were attended to, and emphasising the
186 importance of the referral (Figure 2).

187 “Especially if you are going to refer them to the local clinic, they always tell you: ‘The reason
188 why I don’t like going to the clinic is because they shout at us, they don’t like us being there,
189 they ask us why are you here if you are not sick’...so when you refer them they are like ‘yoh
190 no, no, no at the clinic no they’re going to shout at us.’” (FGD 1)

191
192 “They are going to try and avoid the clinics by all means.” (FGD 3)
193
194 Referrals for mental health concerns such as depression, suicidality, and anxiety were
195 identified as particularly difficult, despite HHs engaging the services of mental health
196 advocacy organisations. HHs expressed that, aside from advocating for their participants to
197 ensure they get help, a trial-based mental health service could be key to filling this gap.

198 “I have one incident where we had to go like walk in, me and [Project Coordinator]...so you
199 have to lose your cool in order for you to get something. So they said we must go back to
200 the local clinic so that the local clinic can write a letter for her to come back here and our
201 participant was suicidal so it was hectic, she needed medication like ASAP, ASAP.” (FGD 1)
202

203 “*And concerning to referral uh my participant like she didn’t get help from [public health
204 service], she had to come back to me and said she don’t want to go back again, she’d rather
205 wait until we have a psychology or a social worker in this study, yes... So I think if we can
206 have our social worker or psychology it would be better.*” (FGD 3)
207

208 Particularly for health risks such as high blood pressure and low haemoglobin, participants
209 who did go to their clinic often reported back to their HHs that the identified health risk was
210 dismissed at the clinic, with staff insisting no management was necessary. The HHs
211 described that this not only forestalled participant health improvement, but that it also
212 undermined the trust between the HHs and their participants (and thereby their ability to
213 provide support). HHs described feeling powerless in the face of this pattern of inaction by
214 the public clinics: “I was defeated”.

215 “*And I also think our health facilities are failing us...Because now you send a participant
216 because they are red [high risk on the traffic light system] and they go to the clinic and they
217 test them, with the same results that you got but they tell them that they are okay, they are
218 fine...So it’s a bit of a challenge because now you are saying one thing to them and the clinic
219 is saying something different... They don’t know who to believe and what to do now*” (FGD
220 1)
221

222 [Figure 2: The relationship between the theme “interaction with existing public health
223 system” and the Health Helper roles (orange). Red arrows: negative impact of the theme on
224 role; blue arrows: positive impact between role and theme.]

225

226

227 3.2 Participants' perceptions of health

228 HHs described a number of ways in which participants' perceptions of health (and health
229 feedback) influenced implementation of their roles to provide risk screening, assist with
230 healthy behaviours, and provide MMS. In providing health screening feedback, one
231 challenge experienced by HHs was participants not accepting a screening result. For
232 example, participants often did not see themselves as having a high BMI. HHs attributed this
233 in part to cultural norms, with bigger body size representing a cultural ideal, and a lack of
234 awareness of health consequences associated with overweight/obesity. HHs found it helpful
235 to be able to refer to the trial-based dietitian, as an additional expert resource to encourage
236 behaviour change. High blood pressure was reportedly seen by participants as largely an
237 issue of the elderly, and a lack of any notable symptoms made the health risk harder for
238 participants to accept. To help navigate this, HHs described the usefulness of the health
239 screening cue cards which use the traffic light system mentioned earlier, using easy to
240 understand categories of green, orange, and red. HHs also used trial health literacy
241 resources, employed Healthy Conversation Skills and personalised plans for change
242 (SMARTER plans), and emphasised health consequences (sometimes through flawed
243 methods such as scaring participants into action) (Figure 3).

244 "You find a participant when you let them know like, okay, so your BMI is above 30 which
245 means you are obese, and they say no I'm not, and from there you find that that's a
246 challenge number one, because now you're thinking, okay, what am I going to do next, what
247 do I say because this person is saying 'no, I'm not.'" (FGD 1)

248
249 "I'm not feeling sick, I'm okay; why are you saying my BP is this and that; so... ja and some
250 they have this thing that BP uh like high blood is for older people, I'm still young, you can see
251 I'm still, like I can walk and all that, so they don't believe it when you explain BP to them."
252 (FGD 3)

253
254 "I find that using the robot [traffic light] system is simple ... Even the colours, the fact that
255 they see different colours also makes it easier for them to actually understand the results
256 when you give them out to them." (FGD 2)

257
258 [Figure 3: The relationship between the theme “participants perceptions of health” and the
259 Health Helper roles (orange). Red arrows: negative impact of the theme on role; blue
260 arrows: positive impact between role and theme.]

261
262 In addition, HHs described how participant perceptions of conditions that tend to carry
263 stigma, such as HIV and mental health challenges, impacted their preparedness to openly
264 discuss, accept and act upon these conditions. Participants’ strong emotional response to
265 newly identified positive HIV status was described by the HHs as one of the most
266 challenging aspects of health screening and feedback. In response, HHs used tools such as
267 HIV diagnosis counselling, providing emotional support and space, and accompanying them
268 to the HIV clinic to initiate management.

269 “I once had a participant that was the very difficult one, and she was my first participant to
270 test [HIV] positive, yoh, I remember being locked in the office for two hours, she cried.... I
271 allowed her to cry and then once she calmed down we talked about the way forward, I
272 asked her if I could write her [a referral] for [HIV care clinic], but she refused.” (FGD 1)

273
274 “The only difficulty that I have is with relating their HIV results. That one is a difficult one
275 because the mood just changes immediately.” (FGD 2)

276
277 The HHs noted that participants wanted HHs to discuss socioemotional concerns, prioritising
278 these over physical health topics which seemed to be seen as less relevant to their everyday
279 lives. In such cases, HHs found it helpful to break the ice by discussing and providing support
280 for such socioemotional needs first, and subsequently relating these back to the session’s
281 physical health topics and resources. This aligns with the person-centred Healthy
282 Conversation Skills approach, empowering the participant to identify their own challenges
283 and solutions.

284 “They go through a lot of things, different things at home; their backgrounds; so once you
285 touch on the emotions topic they get more comfortable, they open up and they tell you
286 about their lives; I think so, when you want to get a session you need to touch based on the
287 emotions topic a bit, for them to open up.” (FGD 1)

288
289 Lastly, HHS found that participants were more receptive of health screening and referrals,
290 health behaviour change, and MMS in the pregnancy phase of the trial, compared to
291 preconception. They attributed this to participants' concern for their child's health, which
292 seemed to be received as more tangible and actionable feedback than the often-
293 asymptomatic preconception health risks.

294 "It's [preconception] very tricky. Very. Because you are trying to win them at that stage;
295 you are trying to make sure that they understand the session...And sometimes
296 preconception they tell you sometimes that I don't feel anything, I feel fine." (FGD 3)

297
298 "At pregnancy and infancy they are scared something will happen to the baby... And then
299 they will immediately go to the clinic. Even if they shout at them, they will go." (FGD 1)

300

301 [3.5 Health literacy gaps and language barrier](#)

302 Participant health literacy impacted how HHS provided risk screening (feedback) and
303 assisted with adopting healthy behaviours. Depending on participants' prior knowledge and
304 education level, reported topics with poorer health literacy amongst participants included
305 NCDs, mental health, sexually transmitted illnesses, and healthy diet and sleeping
306 behaviours. These gaps required HHS to tailor the sessions according to participants' needs.
307 For example, HHS dedicated effort and time to finding creative ways to explain content and
308 avoid medical jargon, simplifying key messages per session, repeating key pieces of
309 information between sessions (Figure 4).

310 "You give them the results when they come for their 6 months and when they come back
311 again and ask them, "Do you still remember your results? Do you still understand?" They
312 don't know anything. So you need to go back again and recap everything." (FGD 2)

313
314 "We usually make them [blood pressure] sounds because it's easier. Imagine telling
315 someone the systolic is like this, they don't know what systolic is, so we have to be like
316 (knocks on table)... And then they're like oh okay, then they get to understand what the
317 word is; so I wouldn't say that there's resistance, I'd just say that it's a bit tricky changing
318 those words into something they will understand. You have to be creative." (FGD 3)

319

320 [Figure 4: The relationship between the theme “health literacy gap and language barrier”
321 and the Health Helper roles (orange). Red arrows: negative impact of the theme on role;
322 blue arrows: positive impact between role and theme.]

323
324 Another identified challenge was that some participants experience a language barrier and
325 are not able to read the trial’s English resource books, making it difficult for them to engage
326 with the trial resources. In these cases, HHs needed to spend time explaining and verbally
327 translating the resources during their session, enlist the help of a colleague who speaks the
328 participant’s home language if necessary, and use pictures to explain the content. This was
329 anticipated in the planning of the intervention, but was considered more feasible and
330 preferable to translating all the materials into the multiple possible languages (South Africa
331 has 11 official languages), when the written version of participants’ home language may not
332 necessarily be preferred.

333 “I think with the language barrier you can switch with one of the HHs who actually
334 understands that language for them to assist you with that regard...You need to try by all
335 means... Maybe opening Google as well showing them pictures from there as well, that also
336 helps. Making examples, maybe using yourself as an example.” (FGD 2)

337 3.4 Participants’ socioeconomic circumstances

338 Participants’ socioeconomic realities, especially food insecurity and unemployment, were
339 found to impact how participants received and were able to act upon the intervention
340 content. Specifically, participants could be prevented from adopting healthier behaviours
341 (dietary and sleep behaviours), following through on referrals (due to lack of transport to
342 healthcare clinics), and taking MMS (Figure 5).

343 “It is always a challenge with unemployment. Not having enough food to eat, yeah...It is
344 because you eat what’s in the house. You eat what’s cooked. You can’t tell them that “I
345 don’t want this, I want that...” So, it is a very tricky one when it comes to diet. It is very
346 tricky.” (FGD 2)

347 “Most of them they are sleeping because they are unemployed.” (FGD 1)

348 [Figure 5: The relationship between the theme “participants’ socioeconomic circumstances”
349 and the Health Helper roles (orange). Red arrows: negative impact of the theme on role;
350 blue arrows: positive impact between role and theme.]

351 In such situations, HHs informed participants of local church groups who can assist, but also
352 described occasionally going above and beyond to help participants in a personal capacity.
353 Lastly, socioeconomic issues, including substance abuse, were described as contributing to
354 challenges tracing participants, as participants in these circumstances were more likely to
355 move between addresses.

356 “Like, we are expected to find them, they change locations... it becomes a challenge when
357 you get there, their parents don’t know where the girl is, they started using drugs, they live
358 in a drug house somewhere, now it becomes unsafe for us as well to go and track them.”
359 (FGD 3)

360

361 3.5 Family, partner, and community views of trial components

362 The HHs identified family, partner, and community views of trial components as influential
363 to whether participants were able to enact the intervention (Figure 6). This included
364 negative views on MMSs and lack of support for adopting healthy behaviours, particularly in
365 terms of diet. The participant’s living situation influenced the way family or her partner
366 impacted implementation, highlighting the importance of integrating intervention aspects
367 such as supplementation and dietary behaviour within families and communities.

368 “Cause of the beliefs at home, uh they don’t believe in using any form of supplements.”
369 (FGD 1)

370

371 “I think their backgrounds, their backgrounds; because sometimes it’s hard to change a
372 behaviour if you are not being supported; if at home that is what they eat and you now
373 come all of a sudden and you are like let’s change this, then they are all going to ask you why
374 must we change it because of you, and now it’s going to seem like you are the bad person.”
375 (FGD 1).

376

377 [Figure 6: The relationship between the theme “family, partner, and community views of
378 trial components” and the Health Helper roles (orange). Red arrows: negative impact of the
379 theme on role; blue arrows: positive impact between role and theme.]

380

381 Community stigma around sickness, and particularly around HIV and taking medication
382 (which supplements were perceived as), also impacted the degree to which HHs were able
383 to effectively assist with behaviour change and risk management (see also section 3.2). On
384 the other hand, MMS were also sometimes shared between family members, preventing
385 optimal intake by participants.

386 “Another thing is the stigma; if we go to the locations and we’re carrying these small
387 packages and then we’re like I’m going to deliver iron supplements then they’ll be prying like
388 what is iron supplements, how do you take them, Why are they so important; and then
389 they’ll be like isn’t she sick?... sick like as in HIV or something.” (FGD 1)

390
391 “And then the 80% has challenges when it comes to supplements, ‘no I can’t take them
392 because of Gogo [grandmother] took them’, ‘I can’t take them because of at home they’ll
393 think I’m sick.’” (FGD 2)

394

395 3.6 Health Helper -participant relationship

396 A relationship of trust between the HH and participant was seen as critical to providing risk
397 screening (making it more likely that participants go to the clinic when advised to do so),
398 assisting with healthy behaviours, providing social support, and supporting the uptake of
399 MMS [Figure 7]. HHs commented on the challenge of switching between a supporting,
400 trusted role and their more practical tasks, such as completing session content and data
401 capturing. In addition, the bond of trust occasionally created a challenge when another HH
402 needed to assist a participant. This could be navigated if the HH vouches for the
403 trustworthiness of their colleague stepping in.

404 “As [HH] said that we are the first that they come to, so, I think it is because of we give them
405 an opportunity to build trust together. Because she knows that the moment she leaves,
406 whatever she said to [HH], it is between her and [HH]. So it is private, even when she gets
407 home nobody is going to know about it.” (FGD 3)

408

409 [Figure 7: The relationship between the theme “Health Helper-participant relationship” and
410 the Health Helper roles (orange). Blue arrows: positive impact between role and theme.]

411 4. Discussion

412 This paper reports on HHs' perspectives of the implementation of the initial preconception
413 and pregnancy phases of *Bukhali*. The results indicate that the HHs are largely able to
414 implement their roles as intended, despite facing context-related challenges to
415 implementation of the intervention. These challenges stemmed from barriers within the
416 public health system, participant perceptions of health, limited participant health literacy,
417 participant socioeconomic constraints, and family and community views of trial
418 components. The HHs also highlighted tools that they use to navigate these challenges, and
419 emphasised previously documented findings around the importance of the HH-participant
420 relationship is a mechanism of implementation, which can help to alleviate some of the
421 identified implementation challenges (9). These findings provide support for a number of
422 implementation adaptations specific to the *Bukhali* intervention, which fall into three more
423 broadly applicable strategic areas for optimising CHW-delivered preconception and
424 pregnancy interventions: navigating and bridging health care systems, adaptability to
425 individual patient needs, and navigating stigma around disease.

426

427 The strategic potential of HHs to support participants in navigating the public healthcare
428 system aligns with a well-described role for CHWs to improve continuity and bridge gaps
429 between healthcare sectors (6,19,20). From our results, this even included HHs' being
430 participants' first call in case of a health emergency, an unintended form of task shifting
431 towards HHs that requires adequate training to empower HHs to react appropriately in such
432 situations (21).

433

434 Additionally, the lack of management and treatment by clinics in response to some
435 participants' referrals, particularly for hypertension, was identified as a challenge. Aside
436 from possibly impacting trial outcomes, this finding is concerning for participants' health, as
437 preconception hypertension presents a risk for future cardiovascular disease in mothers
438 (22–24), and for adverse outcomes in a potential pregnancy (25–27). The reported
439 undermanagement may reflect a lack of current preconception care within the South
440 African public healthcare system (28–30). In response to this finding, the *Bukhali*
441 intervention team plans to implement more extensive follow-up of these high-risk,
442 unmanaged cases. This will be done through guideline-based confirmatory testing of
443 hypertension on three separate occasions (NDOH national user guideline), followed by a
444 more hands-on, directive referral to a point of (if necessary, tertiary) care. This will help
445 participants to navigate the referral pathway with more support from the trial and their HH,
446 help prevent their hypertension from going untreated, and hopefully provide a clearer
447 understanding of why the clinics are not be providing management in these cases. Within
448 our context, this challenge also illustrates how increased health screening during
449 preconception and pregnancy introduces an increased caseload within an under-resourced
450 healthcare system, requiring policy-level investments into primary prevention. This could
451 include, for example, solutions such as private-public healthcare partnerships (31).

452

453 Within an urban setting that is heterogenous in terms of participants' education, food
454 security, and cultural and linguistic backgrounds, many of the tools described by the HHS
455 reflect the need to adapt intervention delivery to cater for individual participant needs
456 and/or circumstances. Examples from this analysis include switching between languages,
457 finding creative ways to explain the resources across levels of education, and helping

458 participants find individualised solutions to socioeconomic barriers to participation.
459 Although this kind of adaptability can have implications for fidelity to the study protocol, an
460 adaptable, pragmatic approach to a CHW-delivered intervention improves the applicability
461 and feasibility of the implementation (10,32). For *Bukhali*, our results highlighted the
462 importance of ongoing training of the HHs, with emphasis on how to adapt sessions and
463 explanations in multiple ways, using pictures, drawings, and different languages and
464 avoiding adverse tactics such as ‘scaring participants into action’. In the broader context of
465 CHW programmes across South Africa, which requires coverage across demographics,
466 cultural variations, and rural versus urban settings, programmes will likely benefit from an
467 emphasis on adaptability on CHW programme level (2), and on the individual CHW-patient
468 level (9). Achieving this may require additional investments in CHW training, support, and
469 resources.
470
471 Lastly, the themes of ‘participant perceptions of health’ and ‘family and community views
472 on trial components’ illustrated that HHs needed to navigate stigma around sickness and
473 disease. In South Africa, the widespread impact of the HIV epidemic and associated stigma
474 provide important context to stigma and views around (chronic) disease and taking
475 medication, more generally (33–37). For example, a correlation between HIV stigma and
476 stigma around COVID-19, was recently documented amongst people living with HIV (38). For
477 *Bukhali*, HIV-related stigma was found to impact participants’ reluctance to test for HIV,
478 their denial around HIV diagnoses, and their fear of judgement when taking MMS. In this
479 context, the design of preconception and pregnancy interventions should acknowledging
480 the impact of health-related stigma, and its intersection with stigma related to other factors
481 such as race, gender, and class (39,40), on implementation practices. For *Bukhali*, this has

482 signalled the need for ongoing community engagement and education efforts with a focus
483 on de-stigmatisation of health conditions, in parallel to the trial implementation.

484

485 The results of this study emphasise the importance of reporting process evaluation
486 outcomes at an early point in the trial. Particularly in a multi-phase trial of such long
487 duration, this allows for the reporting of phase-specific findings, and for suggested
488 improvements to be applied to the ongoing trial. One limitation of this approach is that it
489 provides a snapshot of current perspectives on the implementation of *Bukhali*, rather than
490 an overview representative of the whole trial and each of its phases. However, as part of the
491 process evaluation we will continue examining the implementation longitudinally and across
492 all phases. Secondly, since the HHs were employed by the trial, power dynamics between
493 the researchers/interviewers and HHs may have influenced their responses in the FGDs.
494 However, in order to minimise any such effect, the FGDs were facilitated by researchers
495 who were not directly involved in the management or day-to-day work of the HHs.

496 5. Conclusions

497 In conclusion, this qualitative evaluation of HH perspectives of an ongoing multi-phase
498 randomised controlled trial identified three main strategic areas for optimising CHW-
499 delivered interventions in our setting, namely navigating the healthcare system, adapting to
500 individual participant needs and circumstances, and navigating health-related stigma.
501 Within all three of these strategies, the HH/CHW-participant relationship was found to be a
502 pivotal mechanism for the interventions' impact. These findings provide insights and
503 recommendations for the next phases of the *Bukhali* intervention, for other CHW-delivered

504 preconception and pregnancy trials, and for the strengthening of ‘real-world’ CHW roles in
505 settings with similar implementation challenges.

506 Acknowledgements

507 Acknowledgements

508 We thank the participants and staff of the *Bukhali* trial for their contribution to this study.

509 References

- 510 1. Ahmed S, Chase LE, Wagnild J, Akhter N, Sturridge S, Clarke A, et al. Community
511 health workers and health equity in low- and middle-income countries: systematic
512 review and recommendations for policy and practice. *Int J Equity Health* [Internet].
513 2022 Dec 1 [cited 2023 Aug 7];21(1). Available from:
514 <https://pubmed.ncbi.nlm.nih.gov/35410258/>
- 515 2. Murphy JP, Moolla A, Kgowedi S, Mongwenyana C, Mngadi S, Ngcobo N, et al.
516 Community health worker models in South Africa: a qualitative study on policy
517 implementation of the 2018/19 revised framework. *Health Policy Plan* [Internet].
518 2021 May 1 [cited 2023 Aug 7];36(4):384. Available from:
519 [/pmc/articles/PMC8128020/](https://pubmed.ncbi.nlm.nih.gov/35410258/)
- 520 3. Vaughan K, Kok MC, Witter S, Dieleman M. Costs and cost-effectiveness of
521 community health workers: evidence from a literature review. *Hum Resour Health*
522 [Internet]. 2015 Sep 1 [cited 2023 Aug 7];13(1). Available from:
523 <https://pubmed.ncbi.nlm.nih.gov/26329455/>
- 524 4. Mason E, Chandra-Mouli V, Baltag V, Christiansen C, Lassi ZS, Bhutta ZA.
525 Preconception care: Advancing from “important to do and can be done” to “is being
526 done and is making a difference.” *Reprod Health* [Internet]. 2014 Sep 26 [cited 2020
527 Sep 29];11(S3):S8. Available from: [https://reproductive-health-](https://reproductive-health-journal.biomedcentral.com/articles/10.1186/1742-4755-11-S3-S8)
528 [journal.biomedcentral.com/articles/10.1186/1742-4755-11-S3-S8](https://reproductive-health-journal.biomedcentral.com/articles/10.1186/1742-4755-11-S3-S8)
- 529 5. Draper C, Prioreshi A, Ware L, Lye S, Norris S. Pilot implementation of “Bukhali”: A
530 preconception health trial in South Africa. *SAGE Open Med*.
531 2020;8:205031212094054.
- 532 6. South African National Department of Health. Policy Framework and Strategy for
533 Ward Based Primary Healthcare Outreach Teams. Pretoria; 2018.
- 534 7. Thomas LS, Buch E, Pillay Y. An analysis of the services provided by community health
535 workers within an urban district in South Africa: a key contribution towards universal
536 access to care. *Hum Resour Health* [Internet]. 2021 Dec 1 [cited 2023 Sep 7];19(1).
537 Available from: <https://pubmed.ncbi.nlm.nih.gov/33602255/>
- 538 8. Norris SA, Draper CE, Prioreshi A, Smuts CM, Ware LJ, Dennis C, et al. Building
539 knowledge, optimising physical and mental health and setting up healthier life
540 trajectories in South African women (Bukhali): a preconception randomised control
541 trial part of the Healthy Life Trajectories Initiative (HeLTI). *BMJ Open* [Internet]. 2022
542 Apr 1;12(4):e059914. Available from:
543 <http://bmjopen.bmj.com/content/12/4/e059914.abstract>

- 544 9. Draper C, Motlathledi M, Klingberg S, Mabetha K, Soepnel L, Pentecost M, et al.
545 Young Women's Health Behaviours in Context: A Qualitative Longitudinal Study in the
546 Bukhali Trial. *PsyArXiv Prepr.* 2023;
- 547 10. Draper CE, Thwala N, Slemming W, Lye SJ, Norris SA. Development, implementation,
548 and process evaluation of Bukhali: an intervention from preconception to early
549 childhood. *Glob Implement Res Appl [Internet].* 2023; Available from:
550 <https://doi.org/10.1007/s43477-023-00073-8>
- 551 11. Treweek S, Zwarenstein M. Making trials matter: pragmatic and explanatory trials and
552 the problem of applicability. *Trials [Internet].* 2009 Jun 3 [cited 2023 Sep 7];10.
553 Available from: <https://pubmed.ncbi.nlm.nih.gov/19493350/>
- 554 12. Black C, Lawrence W, Cradock S, Ntani G, Tinati T, Jarman M, et al. Healthy
555 Conversation Skills: increasing competence and confidence in front-line staff. *Public
556 Health Nutr [Internet].* 2014 [cited 2021 Oct 10];17(3):700. Available from:
557 </pmc/articles/PMC3776723/>
- 558 13. Draper CE, Mabena G, Motlathledi M, Thwala N, Lawrence W, Weller S, et al.
559 Implementation of Healthy Conversation Skills to support behaviour change in the
560 Bukhali trial in Soweto, South Africa: A process evaluation. *SSM - Ment Heal
561 [Internet].* 2022;2(March):100132. Available from:
562 <https://doi.org/10.1016/j.ssmmh.2022.100132>
- 563 14. Draper CE, Bosire E, Pioreschi A, Ware LJ, Cohen E, Lye SJ, et al. Urban young
564 women's preferences for intervention strategies to promote physical and mental
565 health preconception: A Healthy Life Trajectories Initiative (HeLTI). *Prev Med Reports.*
566 2019;14.
- 567 15. Bosire EN, Ware LJ, Draper CE, Amato B, Kapueja L, Lye S, et al. Young women's
568 perceptions of life in urban south africa: Contextualising the preconception
569 knowledge gap. *Afr J Reprod Health.* 2021;25(2):39–49.
- 570 16. Braun V, Clarke V. Reflecting on reflexive thematic analysis. *Qual Res Sport Exerc Heal
571 [Internet].* 2019 Aug 8 [cited 2022 Jun 7];11(4):589–97. Available from:
572 <https://www.tandfonline.com/doi/abs/10.1080/2159676X.2019.1628806>
- 573 17. Gale NK, Heath G, Cameron E, Rashid S, Redwood S. Using the framework method for
574 the analysis of qualitative data in multi-disciplinary health research. *BMC Med Res
575 Methodol [Internet].* 2013 Sep 18 [cited 2021 Nov 16];13(1):1–8. Available from:
576 [https://bmcmmedresmethodol.biomedcentral.com/articles/10.1186/1471-2288-13-
577 117](https://bmcmmedresmethodol.biomedcentral.com/articles/10.1186/1471-2288-13-117)
- 578 18. Moore GF, Audrey S, Barker M, Bond L, Bonell C, Hardeman W, et al. Process
579 evaluation of complex interventions: Medical Research Council guidance. *BMJ
580 [Internet].* 2015 Mar 19 [cited 2021 Nov 11];350. Available from:
581 <https://pubmed.ncbi.nlm.nih.gov/25791983/>
- 582 19. Mhlongo EM, Lutge E, Adepeju L. The roles, responsibilities and perceptions of
583 community health workers and ward-based primary health care outreach teams: a
584 scoping review. *Glob Health Action [Internet].* 2020;13(1). Available from:
585 <https://doi.org/10.1080/16549716.2020.1806526>
- 586 20. Olaniran A, Smith H, Unkels R, Bar-Zeev S, van den Broek N. Who is a community
587 health worker? - A systematic review of definitions. *Glob Health Action [Internet].*
588 2017;10(1). Available from: <http://dx.doi.org/10.1080/16549716.2017.1272223>
- 589 21. Olaniran A, Madaj B, Bar-Zeev S, Van Den Broek N. The roles of community health
590 workers who provide maternal and newborn health services: case studies from Africa

- 591 and Asia. *BMJ Glob Heal* [Internet]. 2019 Aug 1 [cited 2023 Apr 11];4(4). Available
592 from: <https://pubmed.ncbi.nlm.nih.gov/31478012/>
- 593 22. Allen NB, Khan SS. Blood Pressure Trajectories Across the Life Course. *Am J Hypertens*
594 [Internet]. 2021 Mar 1 [cited 2023 Sep 7];34(3):234–41. Available from:
595 <https://pubmed.ncbi.nlm.nih.gov/33821941/>
- 596 23. Theodore RF, Broadbent J, Nagin D, Ambler A, Hogan S, Ramrakha S, et al. Childhood
597 to Early-Midlife Systolic Blood Pressure Trajectories: Early-Life Predictors, Effect
598 Modifiers, and Adult Cardiovascular Outcomes. *Hypertension* [Internet]. 2015 Dec 1
599 [cited 2023 Sep 7];66(6):1108–15. Available from:
600 <https://www.ahajournals.org/doi/abs/10.1161/HYPERTENSIONAHA.115.05831>
- 601 24. Wilson BJ, Watson MS, Prescott GJ, Sunderland S, Campbell DM, Hannaford P, et al.
602 Hypertensive diseases of pregnancy and risk of hypertension and stroke in later life:
603 results from cohort study. *BMJ* [Internet]. 2003 Apr 19 [cited 2023 Sep
604 7];326(7394):845–9. Available from: <https://pubmed.ncbi.nlm.nih.gov/12702615/>
- 605 25. Nobles CJ, Mendola P, Mumford SL, Silver RM, Kim K, Andriessen VC, et al.
606 Preconception Blood Pressure and Its Change Into Early Pregnancy: Early Risk Factors
607 for Preeclampsia and Gestational Hypertension. *Hypertens (Dallas, Tex 1979)*
608 [Internet]. 2020 Sep 1 [cited 2023 Sep 7];76(3):922–9. Available from:
609 <https://pubmed.ncbi.nlm.nih.gov/32755413/>
- 610 26. Moodley J, Ngene NC. Assessment of maternal deaths due to chronic hypertension:
611 Lessons to learn - a “red flag” for maternal and fetal complications. *SAMJ South*
612 *African Med J* [Internet]. 2018 Nov 1 [cited 2023 Sep 7];108(11):896–900. Available
613 from: [http://www.scielo.org.za/scielo.php?script=sci_arttext&pid=S0256-](http://www.scielo.org.za/scielo.php?script=sci_arttext&pid=S0256-95742018001200009&lng=en&nrm=iso&tlng=en)
614 [95742018001200009&lng=en&nrm=iso&tlng=en](http://www.scielo.org.za/scielo.php?script=sci_arttext&pid=S0256-95742018001200009&lng=en&nrm=iso&tlng=en)
- 615 27. Battarbee AN, Sinkey RG, Harper LM, Oparil S, Tita ATN. Chronic hypertension in
616 pregnancy. *Am J Obstet Gynecol* [Internet]. 2020 Jun 1 [cited 2023 Sep 7];222(6):532–
617 41. Available from: <https://pubmed.ncbi.nlm.nih.gov/31715148/>
- 618 28. Ukoha WC, Mtshali NG. “We Are Having a Huge Problem with Compliance”: Exploring
619 Preconception Care Utilization in South Africa. *Healthc (Basel, Switzerland)* [Internet].
620 2022 Jun 1 [cited 2023 Aug 28];10(6). Available from:
621 <https://pubmed.ncbi.nlm.nih.gov/35742106/>
- 622 29. Woldeyohannes D, Tekalegn Y, Sahiledengle B, Hailemariam Z, Erkallo D, Zegeye A, et
623 al. Preconception care in sub-Saharan Africa: A systematic review and meta-analysis
624 on the prevalence and its correlation with knowledge level among women in the
625 reproductive age group. *SAGE Open Med* [Internet]. 2023 Jan 1 [cited 2023 Aug
626 28];11. Available from: [/pmc/articles/PMC9929922/](https://pubmed.ncbi.nlm.nih.gov/39929922/)
- 627 30. Ukoha WC, Mtshali NG. Preconception Care Recommendations, Training, and
628 Competency of Primary Healthcare Nurses in South Africa: A Quantitative Descriptive
629 Study. *SAGE Open Nurs*. 2023;9.
- 630 31. Mokhele I, Mashamaite S, Majuba P, Xulu T, Long L, Onoya D. Effective public-private
631 partnerships for sustainable antiretroviral therapy: outcomes of the Right to Care
632 health services GP down-referral program. *BMC Public Health* [Internet]. 2019 Nov 7
633 [cited 2023 Sep 7];19(1). Available from: [/pmc/articles/PMC6836664/](https://pubmed.ncbi.nlm.nih.gov/3466664/)
- 634 32. Soepnel LM, Draper CE, Mabetha K, Dennis CL, Prioreshi A, Lye S, et al. A protocol for
635 monitoring fidelity of a preconception-life course intervention in a middle-income
636 setting: the Healthy Life Trajectories Initiative (HeLTI), South Africa. *Trials* [Internet].
637 2022;23(1):1–16. Available from: <https://doi.org/10.1186/s13063-022-06696-w>

- 638 33. Idemudia ES, Olasupo MO, Modibo MW. Stigma and chronic illness: A comparative
639 study of people living with HIV and/or AIDS and people living with hypertension in
640 Limpopo Province, South Africa. *Curationis* [Internet]. 2018 Oct 25 [cited 2023 Aug
641 28];41(1):1–5. Available from:
642 [http://www.scielo.org.za/scielo.php?script=sci_arttext&pid=S2223-](http://www.scielo.org.za/scielo.php?script=sci_arttext&pid=S2223-62792018000100023&lng=en&nrm=iso&tlng=en)
643 [62792018000100023&lng=en&nrm=iso&tlng=en](http://www.scielo.org.za/scielo.php?script=sci_arttext&pid=S2223-62792018000100023&lng=en&nrm=iso&tlng=en)
- 644 34. Wouters E, Sommerland N, Masquillier C, Rau A, Engelbrecht M, Van Rensburg AJ, et
645 al. Unpacking the dynamics of double stigma: how the HIV-TB co-epidemic alters TB
646 stigma and its management among healthcare workers. *BMC Infect Dis* [Internet].
647 2020 Feb 6 [cited 2023 Aug 28];20(1). Available from: </pmc/articles/PMC7006097/>
- 648 35. Ameh S, D’Ambruso L, Gómez-Olivé FX, Kahn K, Tollman SM, Klipstein-Grobusch K.
649 Paradox of HIV stigma in an integrated chronic disease care in rural South Africa:
650 Viewpoints of service users and providers. *PLoS One* [Internet]. 2020 Jul 1 [cited 2023
651 Aug 28];15(7):e0236270. Available from:
652 <https://journals.plos.org/plosone/article?id=10.1371/journal.pone.0236270>
- 653 36. Visser MJ, Makin JD, Vandormael A, Sikkema KJ, Forsyth BWC. HIV/AIDS Stigma in a
654 South African community. *AIDS Care* [Internet]. 2009 Feb [cited 2023 Sep
655 8];21(2):197. Available from: </pmc/articles/PMC4238924/>
- 656 37. Chambers LA, Rueda S, Baker DN, Wilson MG, Deutsch R, Raeifar E, et al. Stigma, HIV
657 and health: A qualitative synthesis. *BMC Public Health* [Internet]. 2015 Sep 3 [cited
658 2023 Sep 8];15(1):1–17. Available from:
659 <https://link.springer.com/articles/10.1186/s12889-015-2197-0>
- 660 38. Jarolimova J, Yan J, Govere S, Ngobese N, Shazi ZM, Khumalo AR, et al. Medical
661 Mistrust and Stigma Associated with COVID-19 Among People Living with HIV in
662 South Africa. *AIDS Behav* [Internet]. 2021 Dec 1 [cited 2023 Aug 28];25(12):3967.
663 Available from: </pmc/articles/PMC8127851/>
- 664 39. Nyblade L, Stockton MA, Giger K, Bond V, Ekstrand ML, Lean RM, et al. Stigma in
665 health facilities: why it matters and how we can change it. *BMC Med* [Internet]. 2019
666 Feb 15 [cited 2023 Aug 28];17(1). Available from: </pmc/articles/PMC6376713/>
- 667 40. Stangl AL, Earnshaw VA, Logie CH, Van Brakel W, Simbayi LC, Barré I, et al. The Health
668 Stigma and Discrimination Framework: A global, crosscutting framework to inform
669 research, intervention development, and policy on health-related stigmas. *BMC Med*.
670 2019;17(1):18–23.

671
672
673

674 [Supporting information captions](#)

675 **Supplementary Figure 1** Overview of the four Health Helper roles within *Bukhali*.

676 Reproduced with permission (10).

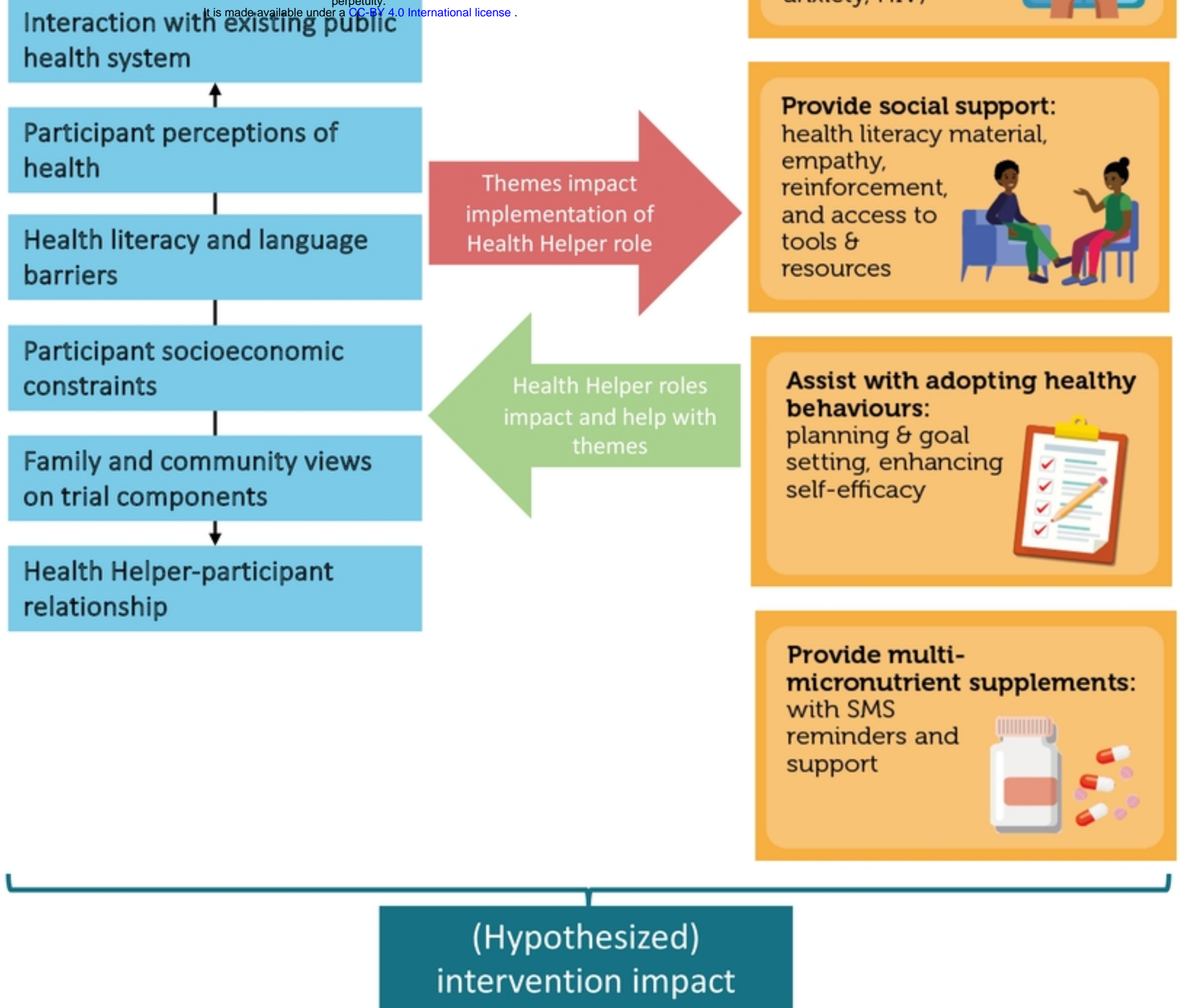


Figure 1

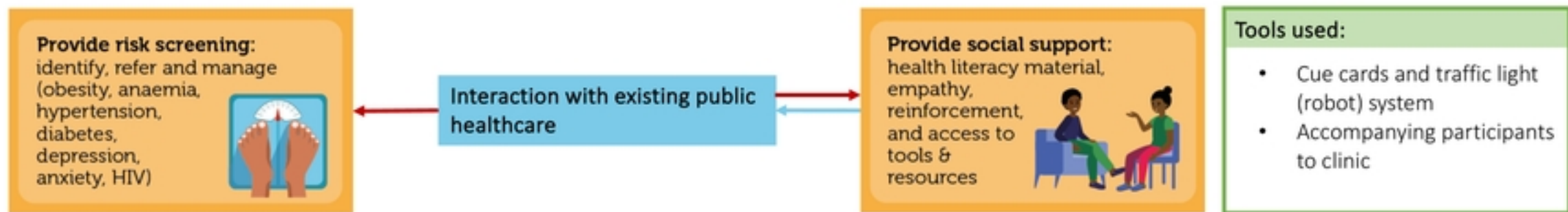


Figure 2

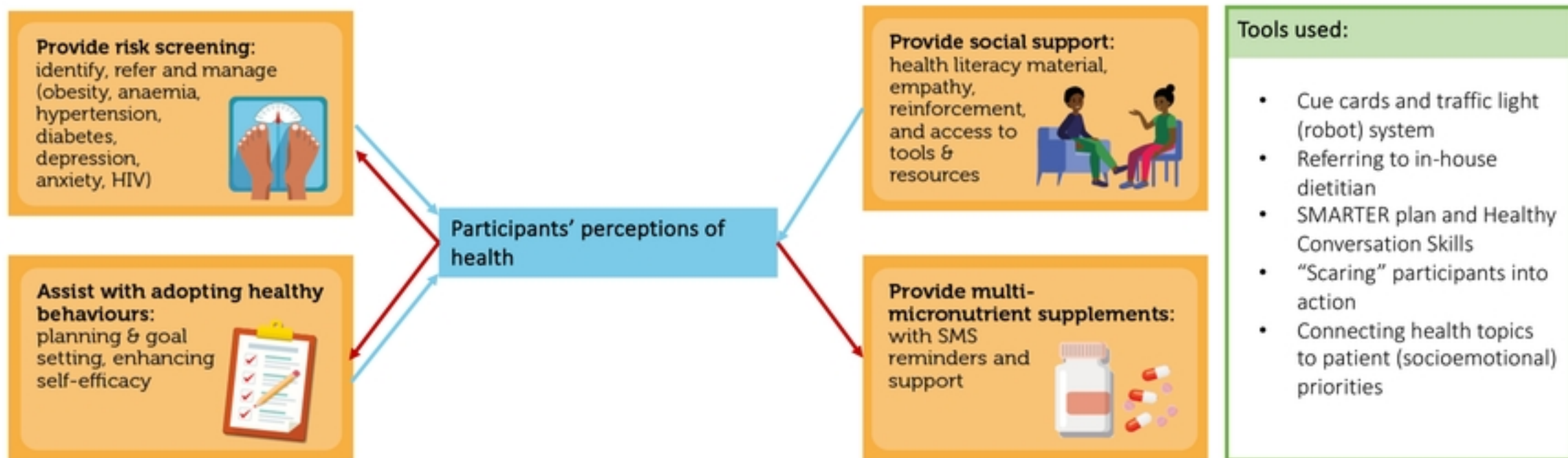


Figure 3

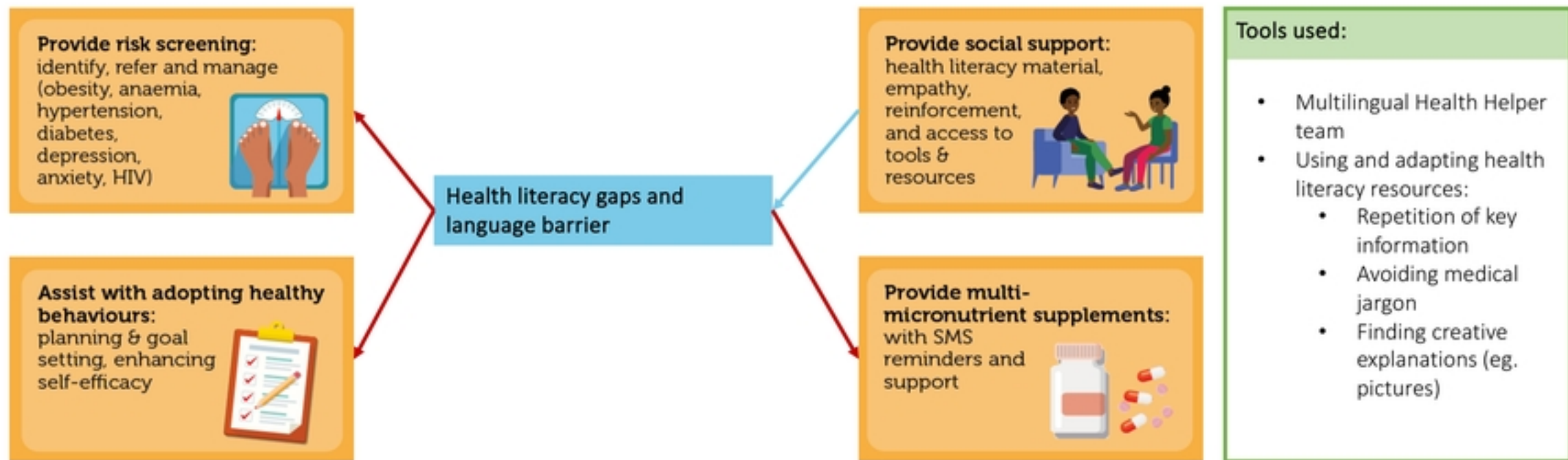


Figure 4

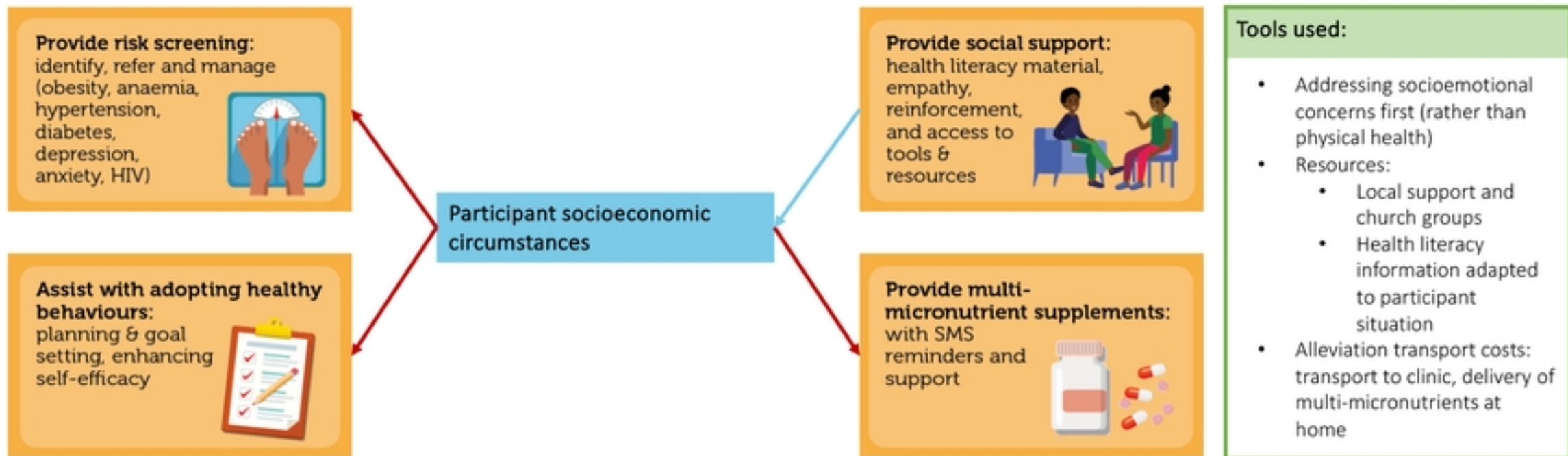


Figure 5

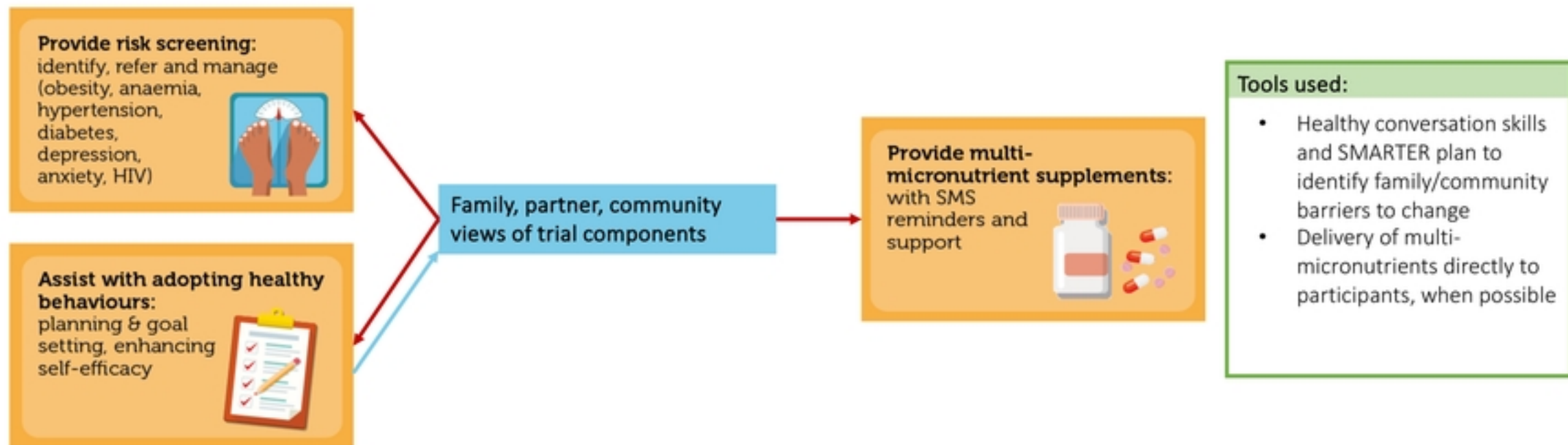


Figure 6

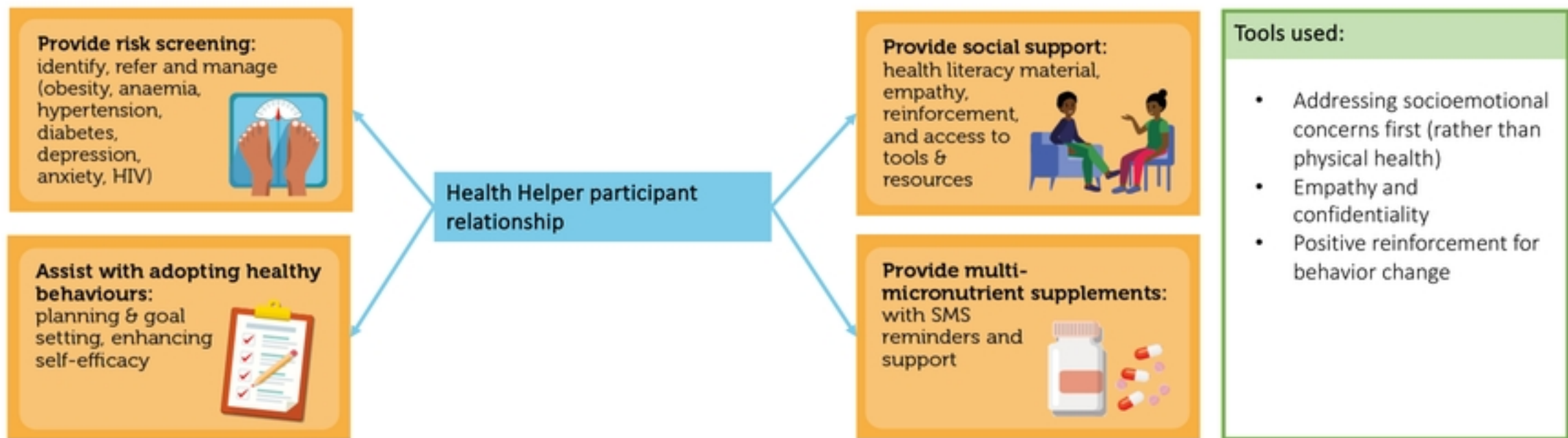


Figure 7