

1            Ranked severe maternal morbidity index for population-level surveillance at delivery  
2                                    hospitalization based on hospital discharge data  
3

4   Elena V. Kuklina<sup>1</sup>, Alexander C. Ewing<sup>1</sup>, Glen A. Satten<sup>1</sup>, William M. Callaghan<sup>1</sup>, David A.  
5   Goodman<sup>1</sup>, Cynthia D. Ferre<sup>1</sup>, Jean Y. Ko<sup>1,2</sup>, Lindsay S. Womack, PhD<sup>1,2\*</sup>, Romeo R. Galang<sup>1</sup>,  
6   Charlan D. Kroelinger<sup>1</sup>

7  
8   <sup>1</sup> Division of Reproductive Health, National Center for Chronic Disease Prevention and Health  
9   Promotion, Centers for Disease Control and Prevention, Atlanta, Georgia, United States of  
10   America

11   <sup>2</sup> United States Public Health Service, Commissioned Corps, Rockville, Maryland, United States  
12   of America

13  
14   \* Corresponding author

15   [LWomack@cdc.gov](mailto:LWomack@cdc.gov) (LSW)

16  
17   **Disclaimer:**

18   The findings and conclusions in this paper are those of the authors and do not necessarily  
19   represent the official position of the Centers for Disease Control and Prevention.

20

## 21 **Abstract**

22 **Background:** Severe maternal morbidity (SMM) is broadly defined as an unexpected and  
23 potentially life-threatening event associated with labor and delivery. The Centers for Disease  
24 Control and Prevention (CDC) produced 21 different indicators based on International  
25 Classification of Diseases, 9th Revision, Clinical Modification (ICD-9-CM) hospital diagnostic  
26 and procedure codes to identify cases of SMM.

27 **Objectives:** To examine existing SMM indicators and determine which indicators identified the  
28 most in-hospital mortality at delivery hospitalization.

29 **Methods:** Data from the 1993–2015 and 2017–2019 Healthcare Cost and Utilization Project's  
30 National Inpatient Sample were used to report SMM indicator-specific prevalences, in-hospital  
31 mortality rates, and population attributable fractions (PAF) of mortality. We hierarchically  
32 ranked indicators by their overall PAF of in-hospital mortality. Predictive modeling determined  
33 if SMM prevalence remained comparable after transition to ICD-10-CM coding.

34 **Results:** The study population consisted of 18,198,934 hospitalizations representing 87,864,173  
35 US delivery hospitalizations. The 15 top ranked indicators identified 80% of in-hospital  
36 mortality; the proportion identified by the remaining indicators was negligible (2%). The top 15  
37 indicators were: restoration of cardiac rhythm; cardiac arrest; mechanical ventilation;  
38 tracheostomy; amniotic fluid embolism; aneurysm; acute respiratory distress syndrome; acute  
39 myocardial infarction; shock; thromboembolism, pulmonary embolism; cerebrovascular  
40 disorders; sepsis; both DIC and blood transfusion; acute renal failure; and hysterectomy. The  
41 overall prevalence of the top 15 ranked SMM indicators (~22,000 SMM cases per year) was  
42 comparable after transition to ICD-10-CM coding.

43 **Conclusions:** We determined the 15 indicators that identified the most in-hospital mortality at  
44 delivery hospitalization in the US. Continued testing of SMM indicators can improve  
45 measurement and surveillance of the most severe maternal complications at the population level.

## 46 **Introduction**

47           Severe maternal morbidity (SMM) is broadly defined as an unexpected and potentially  
48 life-threatening event associated with labor and delivery [1]. SMM is associated with prolonged  
49 [2] and increased costs of hospital stay [3], fetal deaths [4], preterm deliveries [5], and long-term  
50 consequences for maternal physical and mental health [1,6,7]. At the population level, SMM  
51 surveillance is commonly conducted using administrative hospital discharge data based on  
52 International Classification of Diseases (ICD) codes [8]. The Centers for Disease Control and  
53 Prevention (CDC) produced an index consisting of 21 indicators based on ICD diagnostic and  
54 procedure codes to identify SMM cases [9]. Combining the 21 indicators into a single index  
55 enables population-level surveillance of life-threatening events, interventions, and organ failure  
56 types given analyzing individual indicators may not be feasible due to rare occurrence at delivery  
57 hospitalization. Research shows combining multiple indicators into a single index offers  
58 consistency in monitoring trends and is more straightforward to both communicate and  
59 understand than are individual indicators described in complex medical terminology [10].

60           However, some individual SMM indicators have measurement concerns or may lack  
61 specificity for disease severity. Numerous studies have assessed measurement issues for  
62 individual SMM indicators (e.g., blood transfusion, disseminated intravascular coagulation  
63 [DIC], eclampsia) [11–13]. For example, blood transfusion and DIC are the most prevalent SMM  
64 indicators in the US [9], yet these indicators have low sensitivity (65% and 22%, respectively)  
65 [13] in validation studies using medical records and a substantial proportion of hospital discharge  
66 records with blood transfusion and DIC do not reflect severe morbidity [11,13]. Similarly, a  
67 previous study has reported a low positive predictive value (41.7%) for ICD codes associated

68 with eclampsia [14]. Composite measurements, like the SMM index, only perform well if  
69 individual indicators in the index meet specific criteria (reliability, validity, feasibility) [10].

70 To determine how well individual indicators perform in identifying severe morbidity, our  
71 study ranks individual indicators according to how they identify in-hospital mortality, a well-  
72 accepted measure of severity [2]. We rank each indicator hierarchically according to its  
73 contribution to the overall SMM index using its population attributable fraction (PAF) of in-  
74 hospital mortality and a novel signal-to-noise ratio (SNR), that compares the level of a signal  
75 (measurement) to the level of background noise (variability) [15]. To assess whether patterns and  
76 prevalence of SMM indices remained consistent across the transition from ICD-9 to ICD-10  
77 coding, we estimated predicted prevalence for 2017–2019 using ICD-9 coded data and compared  
78 these to the observed prevalence using ICD-10 coded data.

79

## 80 **Methods**

81 We used the 1993–2019 National Inpatient Sample (NIS), the largest database of all-  
82 payer hospital discharge records in the US [16]. The NIS is a uniform, standardized dataset based  
83 on state in-patient data that are contributed to the Healthcare Cost and Utilization Project that is  
84 weighted by the Agency for Healthcare Research and Quality (AHRQ) to produce nationally  
85 representative estimates.

86 The NIS contains up to 40 diagnosis and 25 procedure codes per discharge including  
87 Diagnosis-Related Group (DRG) codes, as well as hospitalization characteristics, including  
88 patient demographics, admission source, discharge disposition, length of stay, and hospital  
89 charges. In-hospital mortality was identified using the variable “died during hospitalization.” To  
90 ensure comparability of data across all years, AHRQ created trend weights for 1993–2011 that

91 are consistent with the 2012 and later redesigned NIS datasets [17]. The cross-sectional nature of  
92 NIS prevented identification of multiple delivery hospitalizations for the same woman; thus, the  
93 unit of analysis in this study was the delivery hospitalization, not the individual.

94 Due to the transition from ICD-9 to ICD-10 coding on October 2015, we first limited our  
95 analysis to delivery hospitalizations between January 1993 and September 2015 for  
96 comparability of codes across years and to obtain a sufficient sample size to produce reliable  
97 estimates of SMM and death, since these are rare events. We identified delivery hospitalizations  
98 using a previously described algorithm [18].

99

## 100 **SMM indicators**

101 The starting point for indicator selection was the 21 current SMM indicators identified by  
102 CDC; however, as discussed previously, there are measurement concerns for DIC, blood  
103 transfusion, and eclampsia [11]. We recoded these three indicators having measurement  
104 concerns. We recoded the data into three mutually exclusive indicators for DIC and blood  
105 transfusion: 1) a combination indicator, including codes for both DIC and blood transfusion; 2)  
106 an indicator including DIC codes but no blood transfusion codes; and 3) an indicator including  
107 blood transfusion codes but no DIC codes. The eclampsia indicator was recoded into a new  
108 indicator for severe types of hypertensive disorders of pregnancy and included severe pre-  
109 eclampsia, HELLP syndrome (hemolysis, elevated liver enzymes, and low platelet count), or  
110 eclampsia, consistent with the latest revision of the Canadian SMM index [2]. In summary, we  
111 removed the three current indicators with measurement issues (DIC; blood transfusion;  
112 eclampsia), and added four recoded indicators (DIC and blood transfusion; DIC without  
113 transfusion; transfusion only; severe pre-eclampsia, HELLP syndrome, or eclampsia), resulting

114 in 22 SMM indicators for ranking according to how each indicator identifies in-hospital  
115 mortality.

116

## 117 **Statistical analysis**

118 We calculated the prevalence, in-hospital mortality rate (%) and relative risk (RR) for  
119 each of the 25 SMM indicators (21 current indicators and four recoded indicators). Next, we  
120 calculated the PAF for the in-hospital mortality rate of each indicator [19]. PAFs for all SMM  
121 indicators were calculated using the formula  $p_d ((RR-1)/RR)$  where  $p_d$  is the proportion with the  
122 indicator among all hospital discharge records with in-hospital death and RR is the estimated  
123 relative risk of indicator-specific in-hospital death [19]. The estimated RR associated with a  
124 specific indicator was obtained from log-linear models, adjusting for year, payer, age, race [20],  
125 hospital region, hospital location (urban, rural and teaching), and all other SMM indicators.  
126 Missing was treated as a separate category when analyzing data on race. Covariates were  
127 selected a priori, based on the literature and clinical significance. Some indicators had a large  
128 PAF due to high prevalence, but a low in-hospital mortality rate indicating these indicators may  
129 not represent severe complications. To address this, we developed a SNR [15] formula: the PAF  
130 for an indicator (signal) divided by the increase in standard deviation (noise) in the entire ranked  
131 SMM index that occurs when the indicator is included in the model compared to when it is not  
132 included (indicator-specific SNR equation, S1 Appendix). A higher SNR value suggests that an  
133 indicator's higher PAF is due to a higher mortality rate rather than a higher prevalence in the  
134 population.

135 We used a hierarchical, iterative process to rank the 22 indicators (21 current indicators,  
136 removing three indicators with measurement issues and adding four recoded indicators), ordering

137 by the highest SNR. This process included: 1) calculating the SNR for each indicator and ranking  
138 the indicators by this value; 2) selecting the indicator with the highest SNR; 3) removing all as-  
139 yet-unselected indicators from a delivery hospitalization if that hospitalization also had the  
140 selected indicator. This final step in an iteration forces the selected indicator to be mutually  
141 exclusive of the remaining indicators, regardless of whether the hospitalization included other  
142 co-occurring indicators. This step is appropriate for our application, as we only wanted to rank  
143 indicators by their capacity to identify deaths not already identified by indicators having higher  
144 ranking. We repeated this iterative, ranking process until all 22 indicators were selected and  
145 mutually exclusive.

146 When an indicator was selected and made mutually exclusive, the resulting PAF was  
147 recalculated and designated as the *hierarchical* PAF (hPAF) and was held constant for  
148 subsequent iterations. Because the indicator conditions were made mutually exclusive, the  
149 cumulative hPAF comprised of the ranked indicators was then calculated by summing the hPAF  
150 values. This approach to indicator selection allowed us to rank the indicators in order of  
151 importance in identifying in-hospital mortality.

152 We then calculated the annual SMM prevalence per 10,000 delivery hospitalizations  
153 based on (1) all 21 current SMM indicators identified by CDC, (2) 20 current SMM indicators  
154 (excluding blood transfusion), (3) blood transfusion alone, and (4) the top 15 ranked SMM  
155 indicators that identified the most in-hospital mortality. To assess whether patterns and  
156 prevalence using the top ranked SMM indicators remained consistent across the ICD coding  
157 transition, we estimated predicted prevalences for 2017–2019 using ICD-9 coded data and  
158 compared these to the observed prevalence calculated using ICD-10 coded data. The predicted  
159 estimates and 95% confidence intervals were based on logistic regression models using NIS data



160 from 2010–2015, preceding the ICD coding transition, with the year as a covariate and the  
161 prevalence of the individual top ranked SMM indicators as outcomes. We excluded data from  
162 2016 as this was the first year after the ICD transition and coding practices were in transition.  
163 Percent differences were calculated to compare predicted values with observed values.

164 All national estimates and 95% confidence intervals were produced using SUDAAN  
165 11.0.3, using NIS-provided weights and design variables. All other analyses were conducted  
166 using SAS 9.4 (SAS Institute Inc).

167

## 168 **Ethics approval**

169 Because the NIS are de-identified data, this study did not require approval by an  
170 institutional review board at the CDC.

171

## 172 **Results**

173 The study population consisted of 18,198,934 hospitalizations representing 87,864,173  
174 US delivery hospitalizations of women ages 12–55 years (1993–2015; S1 Table). There were 0.8  
175 in-hospital deaths per 10,000 delivery hospitalizations (n = 6,685). The indicator-specific  
176 prevalence, in-hospital mortality rate, PAF, and SNR for the 21 current SMM indicators and the  
177 four recoded indicators (n=25 indicators) are summarized in Table 1. The recoded indicator for  
178 severe pre-eclampsia, HELLP syndrome, or eclampsia was most common (160.9 per 10,000  
179 delivery hospitalizations). However, its in-hospital mortality rate (0.1%) was the lowest of all  
180 indicators and 10 other indicators had a higher PAF (>9.8). Blood transfusion and the recoded  
181 blood transfusion without DIC were the second and third most common indicators at 70.1 and  
182 65.6 per 10,000 delivery hospitalizations, respectively, but had low mortality rates (0.3% and

183 0.2%). Indicator-specific mortality rates were greatest for restoration of cardiac rhythm (37.1%),  
184 cardiac arrest (36.5%), and amniotic fluid embolism (15.9%).

185 Table 2 shows the order of the indicators established by our iterative process with hPAF  
186 and SNR values, excluding the three current indicators with measurement issues and adding four  
187 recoded indicators (n=22 indicators). The indicators with the three highest hPAFs, mechanical  
188 ventilation (29.4%), restoration of cardiac rhythm (25.2%), and cardiac arrest (14.4%), were  
189 ranked third, first and second, respectively. Cardiac arrest had the highest SNR (69.4).

190 Among all delivery hospitalizations, the 22 SMM indicators identified 82% of in-hospital  
191 mortality. The top three ranked indicators (restoration of cardiac rhythm, cardiac arrest,  
192 mechanical ventilation) identified approximately 69% of in-hospital mortality. The top 15 ranked  
193 SMM indicators accounted for 80% of in-hospital mortality, while the bottom seven indicators  
194 together only identified an additional 2% of in-hospital mortality. Therefore, the top 15  
195 indicators were combined into a ranked index for further analysis.

196 From 1993–2015, the overall SMM prevalence using the combined 21 current SMM  
197 indicators increased 143%, from 72.9 to 177.1 per 10,000 delivery hospitalizations (Fig 1).  
198 During this time, the prevalence of blood transfusion increased by almost 400%, driving a large  
199 portion of the increase in prevalence. The SMM prevalence of the 20 current SMM indicators,  
200 excluding blood transfusion, increased by 37% from 1993–2015. By contrast, the prevalence of  
201 the top 15 ranked SMM indicators increased by 79%, from 23.4 to 41.8 per 10,000 delivery  
202 hospitalizations from 1993–2015.

203 The observed cumulative SMM prevalence estimates are within the predicted 95%  
204 confidence intervals in 2017 and 2019 among delivery hospitalizations, but fell slightly outside  
205 in 2018 (Table 3, Fig 1). Eleven of the 15 indicators had observed prevalences within the

206 predicted 95% confidence interval in 2017 and 2019, while nine did in 2018. In 2019, the  
207 estimated SMM prevalence using the top 15 ranked indicators that identified the most in-hospital  
208 mortality was 55 per 10,000 delivery hospitalizations (approximately SMM 21,800 [range  
209 20,800 to 22,900] cases per year assuming 4 million delivery hospitalizations per year  
210 nationally).

211

## 212 **Discussion**

213       Among approximately 88 million delivery hospitalizations, 15 SMM indicators identified  
214 80% of in-hospital mortality in 1993–2015. The overall prevalence of this 15-indicator ranked  
215 SMM index increased by approximately 80% from 1993–2015. In contrast, while the prevalence  
216 of the current 20 SMM indicators, excluding blood transfusion, only increased 37% from 1993–  
217 2015. Using predicted estimates for 2017–2019, the prevalence of this 15-indicator ranked SMM  
218 index is 54.6 per 10,000 delivery hospitalizations or approximately 22,000 SMM cases per year.

219       A major strength of this study is the use of NIS, a large, representative national all-payer  
220 database widely used in the US to provide generalizable estimates and trends. NIS provided a  
221 unique opportunity to determine which SMM indicators, though rare outcomes, identified the  
222 most in-hospital mortality at delivery hospitalization. Our study has several limitations. First, the  
223 SMM indicators include both diagnosis and procedure-based indicators from administrative data,  
224 for which coding rules change over time. Procedure-based indicators may be a proxy for multiple  
225 diagnosis-based indicators. For example, ventilation may be an indirect indicator of acute  
226 respiratory distress syndrome, pulmonary edema, and/or pulmonary embolism. Second, we used  
227 pre-defined conditions or procedures to ascertain SMM indicators from the hospital discharge  
228 records. The indicators identified 82% of in-hospital mortality, therefore approximately 18% is

229 attributable to conditions not identified by these analyses. Conditions not included as indicators  
230 of severe morbidity that identify in-hospital mortality include those that clinicians encounter in  
231 the Intensive Care Unit (ICU; e.g., motor vehicle crashes, poisoning, suicides, malignancies).  
232 The NIS does not include ICU admission status for all reporting states.[16] Additionally, the  
233 SMM indicators do not capture information on comorbidities such as mental health conditions or  
234 substance use disorders which may also contribute to in-hospital mortality. Third, our study only  
235 examines in-hospital mortality at delivery hospitalization and does not look at antepartum or  
236 postpartum hospitalizations. This study does not capture the full spectrum of pregnancy related  
237 deaths that occur during pregnancy or up to one year postpartum. Fourth, we did not incorporate  
238 length of stay (LOS) in our algorithm. The SMM indicators with and without LOS  
239 considerations demonstrated excellent reliability ( $\kappa$  statistic=0.927) in a study from  
240 California [21]. Hence, its inclusion may add methodological complexity and may not contribute  
241 to meaningful interpretation of the association between SMM and in-hospital mortality. Fifth, the  
242 quality of documentation by physicians, coders' training, and ongoing initiatives may affect  
243 coding accuracy [22]. Several validity studies reported high to moderate specificity but low  
244 sensitivity for some ICD-9 codes for SMM [11–13]. Although limited studies on the validity of  
245 ICD-10 codes are available, the sensitivity of these codes may be lower than for ICD-9 codes  
246 [13], though it may vary by indicator. Sixth, we were limited in examining pulmonary edema  
247 and acute congestive heart failure separately due to interchangeable coding practices for  
248 pulmonary edema and heart failure [23]. Pulmonary edema is labeled as a left ventricular failure  
249 in the coding manual and described as a left ventricular failure or heart failure in the medical  
250 chart [23], though ambiguity of medical diagnoses like this are inherent when using  
251 administrative data sets for analyses rather than individual medical records. Finally, we

252 combined the top 15 SMM indicators into a ranked index for further analysis because these  
253 indicators identified 80% of in-hospital mortality and the remaining indicators only identified  
254 2%; however, this threshold of 15 was arbitrary.

255 Our study offers an index for SMM population-level surveillance. While there are  
256 limitations to using administrative data to identify SMM, the ranked SMM index provides a  
257 measurement that is associated with the most severe outcome, in-hospital mortality, and can be  
258 used as a marker for maternal health.

259 The top three ranked indicators (restoration of cardiac rhythm, cardiac arrest, mechanical  
260 ventilation), all markers of acute cardiac and respiratory compromise, identified approximately  
261 69% of in-hospital mortality. While cardiac arrest may result from a variety of cardiovascular  
262 and non-cardiovascular conditions, cardiovascular conditions are among the leading causes of  
263 maternal death [24]. This highlights the importance of rapid response teams, checklists, huddles,  
264 and debriefs to ensure successful and prompt resuscitation [25,26].

265 The most prevalent indicators were the recoded severe type of hypertension of pregnancy  
266 indicator, the current blood transfusion indicator, and the recoded blood transfusion without DIC  
267 indicator; however, none of these indicators ranked among the top 15 indicators. Hypertensive  
268 disorders in pregnancy and postpartum hemorrhage are significant contributors to maternal  
269 morbidity and mortality and have increased in prevalence over the last two decades [24,27]. In  
270 our analysis, we recoded the eclampsia indicator to include severe pre-eclampsia and HELLP  
271 syndrome in order to capture a broader spectrum of hypertensive disorders in pregnancy. While  
272 the severe pre-eclampsia, HELLP syndrome, or eclampsia indicator was last on our mutually  
273 exclusive, ranked SMM index, it is possible that an SMM code indicating a consequence of  
274 severe pre-eclampsia, HELLP syndrome, or eclampsia that is more strongly associated with in-

275 hospital mortality (e.g., a puerperal cerebrovascular disorder; mechanical ventilation) would also  
276 be present. This would produce a lower hierarchical ranking of this indicator individually. The  
277 current blood transfusion indicator and the recoded blood transfusion without DIC indicator were  
278 the second and third most prevalent indicators. Obstetric transfusions are primarily associated  
279 with postpartum hemorrhage, and we sought to capture severe cases of postpartum hemorrhage  
280 by recoding the blood transfusion and DIC indicators. The NIS data do not quantify transfusion  
281 of blood products in units which might serve as a proxy for severity [28]. However, hospital  
282 discharge records with severe blood loss resulting in hemorrhagic shock are expected to have  
283 ICD codes for blood transfusion and multiple organ failure, including DIC. Thus, most  
284 hospitalizations with severe hemorrhage in our study should be captured by indicators of organ  
285 failure. The recoded indicator for both DIC and blood transfusion was among the 15 top ranked  
286 indicators. By making indicators mutually exclusive during the ranking process, we identified  
287 how many *additional SMM deaths* an indicator would capture, accounting for indicators already  
288 ranked. This process does not account for the true burden of the condition which informs  
289 population-based initiatives for prevention through organizations such as perinatal quality  
290 collaboratives [29].

291 Our methodology allowed the ranking of rare indicators with high in-hospital mortality  
292 and requires further testing. The strength and quality of evidence generated by its use could  
293 provide the basis for further refinement of SMM indicators, increasing potential applicability.  
294 Validation studies of the indicators used for the ranked SMM index are needed and may inform  
295 index utility.

296 Our results have important public health and surveillance implications. While this ranked  
297 SMM index results in a lower rate and total number of SMM cases compared with estimates of

298 SMM using the combined 21 current indicators, it directly addresses the criticism of the  
299 combined 21 current SMM indicators: a lack of specificity for disease severity [11,21]. While  
300 “severe” is difficult to define, linking diagnosis and procedure codes to in-hospital mortality  
301 underscores that selected conditions and events precede the most severe event, death. However, a  
302 ranking of indicators for the purpose of determining how many deaths could be prevented by  
303 sequentially eliminating indicators would need to use a different definition of PAF than we used  
304 (e.g., Benichou 2007) [30]; in particular, our hPAF is not appropriate for this purpose.

305         The ranked SMM index is for surveillance at the population level and was not developed  
306 for individual facility reviews [8]. Criteria for facility review of SMM are outlined by clinical  
307 organizations such as the American College of Obstetricians and Gynecologists and the Society  
308 for Maternal and Fetal Medicine [31]. The indicators included in the ranked SMM index could  
309 facilitate further refinement of SMM indicators for other uses (e.g., facility-based identification  
310 and review of SMM) and improve overall utility.

311         The ranked SMM index is unsuitable for comparison of individual health care institutions  
312 for multiple reasons. Health care institutions have access to the medical record and detailed and  
313 reliable data on comorbidities and severity, unavailable in the NIS, yielding more accurate,  
314 informative, and comparable case results. Comorbid conditions are strong predictors of overall  
315 SMM [32], but comorbid conditions are under-reported in hospital discharge data [33], with  
316 limited studies of reliability of ICD codes among hospitals [34], especially among delivery  
317 hospitalizations. The NIS data lack information on prenatal care and antepartum risk factors that  
318 are important determinants of SMM [35]. These factors are not considered in this ranked SMM  
319 index to adjust for differences in case-mix among institutions. Facilities with higher levels of  
320 maternal care are expected to have more high-risk deliveries and may have higher SMM rates

321 compared with lower-level facilities [32]. Our approach of creating mutually exclusive indicators  
322 through iterative ranking may not be appropriate for care management goals in individual health  
323 care institutions. For instance, the risk of in-hospital death and thus, the condition severity and  
324 complexity of clinical management, increases with the growing number of SMM indicators [36].  
325 Clinical reviews allow identification of preventable causes of SMM including determinants of  
326 clinical practices associated with SMM [31]. Only clinical reviews can guide design of hospital-  
327 level interventions and quality improvement initiatives to reduce SMM. A recent study of ICD-  
328 10 coding for blood transfusion, DIC, and acute renal failure confirmed wide variability of code  
329 sensitivity among hospitals in administrative discharge data and cautioned against using this type  
330 of data to compare inter-hospital safety and quality improvement initiatives at the facility level  
331 [13].

332

## 333 **Conclusions**

334 This study offers an index for reporting severe conditions using 15 indicators that identify  
335 4 in 5 in-hospital deaths at delivery hospitalization. These indicators, when considered together,  
336 yield an index for population-level SMM surveillance based on in-hospital mortality. SMM  
337 surveillance is a promising method to further the understanding of maternity care and ultimately  
338 improve it [37]. Surveillance quality can be improved by reviewing medical records and  
339 corresponding ICD-10 codes to determine validity. Since a substantial proportion of pregnancy-  
340 related deaths and serious pregnancy-related complications occur outside of the delivery  
341 hospitalization, additional indices for antenatal and postpartum periods are needed [24]. Our  
342 findings underscore the need for continued testing of SMM indicators to refine metrics that  
343 provide simplified measurement of severe obstetric complications at the population level.



344

## 345 **References**

- 346 1. Lewkowitz AK, Rosenbloom JI, Keller M, López JD, Macones GA, Olsen MA, et al.  
347 Association between severe maternal morbidity and psychiatric illness within 1 Year of  
348 hospital discharge after delivery. *Obstet Gynecol.* 2019;134(4): 695–707.  
349 doi:10.1097/AOG.0000000000003434
- 350 2. Dzakpasu S, Deb-Rinker P, Arbour L, Darling EK, Kramer MS, Liu S, et al. Severe  
351 maternal morbidity surveillance: Monitoring pregnant women at high risk for prolonged  
352 hospitalisation and death. *Paediatr Perinat Epidemiol.* 2020;34(4): 427–439.  
353 doi:10.1111/PPE.12574
- 354 3. Debbink MP, Metz TD, Nelson RE, Janes SE, Kroes A, Begaye LJ, et al. Directly  
355 measured costs of severe Maternal morbidity events during delivery admission compared  
356 with uncomplicated deliveries. *Am J Perinatol.* 2022;39(6): 567–576. doi:10.1055/S-0041-  
357 1740237
- 358 4. Wall-Wieler E, Carmichael SL, Gibbs RS, Lyell DJ, Girsen AI, El-Sayed YY, et al.  
359 Severe maternal morbidity among stillbirth and live birth deliveries in California. *Obstet*  
360 *Gynecol.* 2019;134(2): 310–317. doi:10.1097/AOG.0000000000003370
- 361 5. Kilpatrick SJ, Abreo A, Gould J, Greene N, Main EK. Confirmed severe maternal  
362 morbidity is associated with high rate of preterm delivery. *Am J Obstet Gynecol.*  
363 2016;215(2): 233.e1-233.e2337. doi:10.1016/J.AJOG.2016.02.026
- 364 6. Fenech G, Thomson G. Tormented by ghosts from their past’: a meta-synthesis to explore  
365 the psychosocial implications of a traumatic birth on maternal well-being. *Midwifery.*  
366 2014;30(2): 185–193. doi:10.1016/J.MIDW.2013.12.004

- 367 7. Wall-Wieler E, Carmichael SL, Urquia ML, Liu C, Hjern A. Severe maternal morbidity  
368 and postpartum mental health-related outcomes in Sweden: A population-based matched-  
369 cohort study. *Arch Womens Ment Health*. 2019;22(4): 519–526. doi:10.1007/S00737-018-  
370 0917-Z
- 371 8. Kuklina EV, Goodman DA. Severe maternal or near miss morbidity: Implications for  
372 public health surveillance and clinical audit. *Clin Obstet Gynecol*. 2018;61(2): 307–318.  
373 doi:10.1097/GRF.0000000000000375
- 374 9. Callaghan WM, Creanga AA, Kuklina E V. Severe maternal morbidity among delivery  
375 and postpartum hospitalizations in the United States. *Obstet Gynecol*. 2012;120(5): 1029–  
376 1036. doi:10.1097/AOG.0B013E31826D60C5
- 377 10. Shwartz M, Restuccia JD, Rosen AK. Composite measures of health care provider  
378 performance: A description of approaches. *Milbank Q*. 2015;93(4): 788–825.  
379 doi:10.1111/1468-0009.12165
- 380 11. Main EK, Abreo A, McNulty J, Gilbert W, McNally C, Poeltler D, et al. Measuring severe  
381 maternal morbidity: validation of potential measures. *Am J Obstet Gynecol*. 2016;214(5):  
382 643.e1-643.e10. doi:10.1016/J.AJOG.2015.11.004
- 383 12. Sigakis MJG, Leffert LR, Mirzakhani H, Sharawi N, Rajala B, Callaghan WM, et al. The  
384 validity of discharge billing codes reflecting severe maternal morbidity. *Anesth Analg*.  
385 2016;123(3): 731–738. doi:10.1213/ANE.0000000000001436
- 386 13. Friedman AM, Oberhardt M, Sheen JJ, Kessler A, Vawdrey D, Green R, et al.  
387 Measurement of hemorrhage-related severe maternal morbidity with billing versus  
388 electronic medical record data. *J Matern Fetal Neonatal Med*. 2022;35(12):2234-2240.  
389 doi:10.1080/14767058.2020.1783229

- 390 14. Geller SE, Ahmed S, Brown ML, Cox SM, Rosenberg D, Kilpatrick SJ. International  
391 classification of diseases-9th revision coding for preeclampsia: How accurate is it? *Am J*  
392 *Obstet Gynecol.* 2004;190(6): 1629–1633. doi:10.1016/j.ajog.2004.03.061
- 393 15. George F, Kibria BMG. Confidence intervals for estimating the population signal-to-noise  
394 ratio: a simulation study. *J Appl Stat.* 2012;39(6): 1225–1240.  
395 doi:10.1080/02664763.2011.644527
- 396 16. Healthcare Cost and Utilization Project (HCUP). Introduction to the HCUP National  
397 Inpatient Sample (NIS), 2015. Available: [https://www.hcup-](https://www.hcup-us.ahrq.gov/db/nation/nis/NIS_Introduction_2015.jsp)  
398 [us.ahrq.gov/db/nation/nis/NIS\\_Introduction\\_2015.jsp](https://www.hcup-us.ahrq.gov/db/nation/nis/NIS_Introduction_2015.jsp) [Accessed 11 May 2023].
- 399 17. Healthcare Cost and Utilization Project (HCUP). Trend weights for HCUP NIS data.  
400 Available from: <https://www.hcup-us.ahrq.gov/db/nation/nis/trendwghts.jsp> [Accessed 11  
401 May 2023].
- 402 18. Kuklina E V., Whitman MK, Hillis SD, Jamieson DJ, Meikle SF, Posner SF, et al. An  
403 enhanced method for identifying obstetric deliveries: implications for estimating maternal  
404 morbidity. *Matern Child Health J.* 2008;12(4): 469–477. doi:10.1007/S10995-007-0256-6
- 405 19. Rockhill B, Newman B, Weinberg C. Use and misuse of population attributable fractions.  
406 [published correction appears in *Am J Public Health.* 2008 Dec;98(12):2119]. *Am J Public*  
407 *Health.* 1998;88(1):15-19. doi:10.2105/ajph.88.1.15
- 408 20. Healthcare Cost and Utilization Project (HCUP). HCUP NIS Description of Data  
409 Elements. Available from: <https://www.hcup-us.ahrq.gov/db/vars/race/nisnote.jsp>  
410 [Accessed 11 May 2023].
- 411 21. Snowden JM, Lyndon A, Kan P, El Ayadi A, Main E, Carmichael SL. Severe maternal  
412 morbidity: A comparison of definitions and data sources. *Am J Epidemiol.* 2021;190(9):

- 413 1890–1897. doi:10.1093/AJE/KWAB077
- 414 22. Konrad R, Zhang W, Bjarndóttir M, Proaño R. Key considerations when using health  
415 insurance claims data in advanced data analyses: an experience report. *Heal Syst*  
416 (Basingstoke, England). 2019;9(4): 317–325. doi:10.1080/20476965.2019.1581433
- 417 23. Quach S, Blais C, Quan H. Administrative data have high variation in validity for  
418 recording heart failure. *Can J Cardiol*. 2010;26(8):306–312. doi:10.1016/S0828-  
419 282X(10)70438-4
- 420 24. Petersen EE, Davis NL, Goodman D, Cox S, Mayes N, Johnston E, et al. Vital Signs:  
421 Pregnancy-related deaths, United States, 2011-2015, and strategies for prevention, 13  
422 States, 2013-2017. *MMWR Morb Mortal Wkly Rep*. 2019;68(18):423–429.  
423 doi:10.15585/MMWR.MM6818E1
- 424 25. Solomon RS, Corwin GS, Barclay DC, Quddusi SF, Dannenberg MD. Effectiveness of  
425 rapid response teams on rates of in-hospital cardiopulmonary arrest and mortality: A  
426 systematic review and meta-analysis. *J Hosp Med*. 2016;11(6): 438–445.  
427 doi:10.1002/JHM.2554
- 428 26. Trejo FE, Igel CM, Chuang M, Bajaj K, Bernstein PS. Checklists, huddles, and debriefs:  
429 Critical tools to improve team performance in obstetrics. *Clin Obstet Gynecol*.  
430 2019;62(3): 518–527. doi:10.1097/GRF.0000000000000464
- 431 27. Ford ND, Cox S, Ko JY, Ouyang L, Romero L, Colarusso T, et al. Hypertensive disorders  
432 in pregnancy and mortality at delivery hospitalization - United States, 2017-2019.  
433 *MMWR Morb Mortal Wkly Rep*. 2022;71(17): 585–591.  
434 doi:10.15585/MMWR.MM7117A1
- 435 28. Mhyre JM, Shilkrut A, Kuklina EV, Callaghan WM, Creanga AA, Kaminsky S, et al.

- 436 Massive blood transfusion during hospitalization for delivery in New York State, 1998-  
437 2007. *Obstet Gynecol.* 2013;122(6): 1288–1294. doi:10.1097/AOG.0000000000000021
- 438 29. Centers for Disease Control and Prevention. Perinatal Quality Collaboratives. Available  
439 from: <https://www.cdc.gov/reproductivehealth/maternalinfanthealth/pqc.htm> [Accessed 11  
440 May 2023].
- 441 30. Benichou J. Biostatistics and epidemiology: measuring the risk attributable to an  
442 environmental or genetic factor. *C R Biol.* 2007;330(4): 281–298.  
443 doi:10.1016/J.CRVI.2007.02.015
- 444 31. Obstetric Care Consensus No. 5. Severe maternal morbidity: Screening and review. *Obstet*  
445 *Gynecol.* 2016;128(3): e54–e60. doi:10.1097/AOG.0000000000001642
- 446 32. Main EK, Leonard SA, Menard MK. Association of maternal comorbidity with severe  
447 maternal morbidity: A cohort study of California mothers delivering between 1997 and  
448 2014. *Ann Intern Med.* 2020;173(11 Suppl): S11–S18. doi:10.7326/M19-3253
- 449 33. Salemi JL, Hansen MA, Modak S, Matas JL, Germanos GJ, Raza SA, et al. Estimating the  
450 obstetric co-morbidity burden using administrative data: The impact of the pregnancy-  
451 related assessment window. *Paediatr Perinat Epidemiol.* 2020;34(4): 440–451.  
452 doi:10.1111/PPE.12593
- 453 34. McPheeters ML, Sathe NA, Jerome RN, Carnahan RM. Methods for systematic reviews  
454 of administrative database studies capturing health outcomes of interest. *Vaccine.* 2013;31  
455 Suppl 10:K2–K6. doi:10.1016/J.VACCINE.2013.06.048
- 456 35. Howell EA. Reducing disparities in severe maternal morbidity and mortality. *Clin Obstet*  
457 *Gynecol.* 2018;61(2): 387–399. doi:10.1097/GRF.0000000000000349
- 458 36. Ray JG, Park AL, Dzakpasu S, Dayan N, Deb-Rinker P, Luo W, et al. Prevalence of

459 severe maternal morbidity and factors associated with maternal mortality in Ontario,  
460 Canada. JAMA Netw Open. 2018;1(7):e184571.  
461 doi:10.1001/JAMANETWORKOPEN.2018.4571  
462 37. Callaghan WM. Identifying cases of severe maternal morbidity: Moving beyond the  
463 delivery hospitalization. Obstet Gynecol. 2022;139(2): 163–164.  
464 doi:10.1097/AOG.0000000000004665  
465

466 **Tables**

467 **Table 1. Prevalence, in-hospital mortality, population attributable fraction (PAF), and signal-to-noise ratio (SNR) for severe**  
 468 **maternal morbidity indicators (SMM), Nationwide Inpatient Sample, 1993–2015 (weighted sample = 87,864,173, unweighted**  
 469 **sample = 18,198,934).**

SMM Indicators	Prevalence among delivery hospitalizations		In-hospital mortality		PAF <sup>a</sup>	SNR
	n <sup>c</sup>	Per 10,000 deliveries (95% CI <sup>d</sup> )	n	% (95% CI <sup>d</sup> )	%	<sup>b</sup>
Severe pre-eclampsia, HELLP <sup>d</sup> syndrome, or eclampsia <sup>e</sup>	1,414,150	160.9 (155.8, 165.9)	1,379	0.1 (0.1, 0.1)	9.8	0.8
Blood transfusion	615,984	70.1 (67.7, 72.5)	2,143	0.3 (0.3, 0.4)	21.4	2.6
Blood transfusion without DIC <sup>d,e</sup>	576,929	65.6 (63.4, 67.9)	1,065	0.2 (0.2, 0.2)	13.9	1.7
DIC	209,700	23.9 (23.0, 24.8)	2,029	1.0 (0.9, 1.1)	16.6	3.4
DIC <sup>d</sup> without blood transfusion <sup>e</sup>	170,644	19.4 (18.6, 20.3)	951	0.6 (0.5, 0.6)	12.2	2.8
Hysterectomy	73,178	8.3 (8.1, 8.6)	780	1.1 (0.9, 1.2)	3.9	1.3
Eclampsia	72,025	8.2 (7.9, 8.5)	230	0.3 (0.2, 0.4)	0.1	0.0
Acute respiratory distress syndrome	46,070	5.2 (5.1, 5.4)	2,401	5.2 (4.7, 5.7)	12.0	5.2
Pulmonary edema/acute congestive heart failure	42,256	4.8 (4.6, 5.0)	372	0.9 (0.7, 1.1)	-0.6	-0.3

Mechanical ventilation	40,320	4.6 (4.4, 4.7)	3,351	8.3 (7.7, 9.0)	49.2	23.0
Both DIC <sup>d</sup> & blood transfusion <sup>e</sup>	39,056	4.4 (4.2, 4.7)	1078	2.8 (2.4, 3.1)	14.0	6.6
Acute renal failure	35,409	4.0 (3.9, 4.2)	1,212	3.4 (3.0, 3.9)	4.2	2.1
Sepsis	33,403	3.8 (3.6, 4.0)	976	2.9 (2.5, 3.4)	9.2	4.7
Cerebrovascular disorders	28,715	3.3 (3.2, 3.4)	968	3.4 (2.9, 3.9)	12.2	6.8
Severe anesthetic complications	22,079	2.5 (2.4, 2.7)	214	1.0 (0.7, 1.3)	1.8	1.1
Shock	20,290	2.3 (2.2, 2.4)	1,027	5.1 (4.4, 5.7)	1.4	0.9
Thromboembolism, pulmonary embolism	13,866	1.6 (1.5, 1.7)	528	3.8 (3.1, 4.6)	5.0	4.0
Heart failure during surgery or procedure	10,155	1.2 (1.1, 1.2)	135	1.3 (0.8, 1.8)	-0.2	-0.2
Sickle cell crisis	8,360	1.0 (0.9, 1.0)	68	0.8 (0.4, 1.2)	0.7	0.7
Cardiac arrest	5,347	0.6 (0.6, 0.7)	1,952	36.5 (33.6, 39.5)	25.0	32.1
Restoration of cardiac rhythm	5,220	0.6 (0.6, 0.6)	1,932	37.1 (34.0, 40.1)	25.2	32.6
Amniotic fluid embolism	3,858	0.4 (0.4, 0.5)	612	15.9 (13.3, 18.5)	3.1	4.6
Tracheostomy	2,104	0.2 (0.2, 0.3)	260	12.3 (9.3, 15.4)	-2.6	-5.3
Acute myocardial infarction	1,633	0.2 (0.2, 0.2)	134	8.2 (5.2, 11.2)	0.2	0.4
Aneurysm	1,077	0.1 (0.1, 0.1)	51	4.8 (2.0, 7.5)	0.8	2.2

470 <sup>a</sup> Population attributable fraction (PAF) calculated adjusting for other SMM indicators in this table. PAFs for all SMM indicators were

471 calculated using the formula  $p_d \cdot ((RR-1)/RR)$  where  $p_d$  is the proportion with the indicator among all hospital discharge records with



472 in-hospital death and RR is the estimated relative risk of indicator-specific in-hospital death [19]. The estimated RR associated with a  
473 specific indicator was obtained from log-linear models, adjusting for year, payer, age, race, hospital region, hospital location (urban,  
474 rural and teaching), and all other SMM indicators.

475 <sup>b</sup> Signal-to-noise ratio (SNR) is the selection criterion used to select the indicator that would maximize the ratio of the expected  
476 number of SMM cases detected (signal) to the increase in the standard deviation of the cumulative sum of indicators (noise).

477 <sup>c</sup> Weighted count (n).

478 <sup>d</sup> Other abbreviations: 95% CI: 95% confidence interval. HELLP syndrome: hemolysis, elevated liver enzymes, and low platelet  
479 count. DIC: disseminated intravascular coagulation.

480 <sup>e</sup> Recoded indicator

481 NOTE: The total number of indicators presented in this table is 25. This includes the 21 current CDC SMM indicators and four  
482 recoded indicators.

483 **Table 2. Results of the hierarchical population attributable fraction (hPAF) approach for**  
 484 **severe maternal morbidity indicator selection, with the selection iteration (k) of each**  
 485 **indicator, the cumulative hPAF, and the signal-to-noise ratio (SNR) selection criterion at**  
 486 **iteration of selection.**

Indicator <sup>a</sup>	k <sup>b</sup>	hPAF <sup>c</sup>	Cumulative hPAF <sup>d</sup>	SNR <sup>e</sup>
		%	%	
Restoration of cardiac rhythm	1	25.2	25.2	32.6
Cardiac arrest	2	14.4	39.5	69.4
Mechanical ventilation	3	29.4	69.0	23.0
Tracheostomy	4	0.6	69.6	51.0
Amniotic fluid embolism	5	1.4	70.9	28.7
Aneurysm	6	0.3	71.2	13.3
Acute respiratory distress syndrome	7	2.3	73.6	5.3
Acute myocardial infarction	8	0.1	73.7	6.5
Shock	9	1.0	74.7	4.0
Thromboembolism, pulmonary embolism	10	0.8	75.5	3.9
Cerebrovascular disorders	11	1.3	76.8	3.2
Sepsis	12	1.0	77.8	2.6
Both DIC <sup>f</sup> & blood transfusion	13	1.0	78.8	2.6
Acute renal failure	14	0.7	79.5	2.5
Hysterectomy	15	0.6	80.1	1.0
Sickle cell crisis	16	0.1	80.2	1.0
Heart failure during surgery or procedure	17	0.1	80.3	0.9
Severe anesthetic complications	18	0.1	80.4	0.7

Pulmonary edema/acute congestive heart failure	19	0.2	80.6	0.7
DIC without blood transfusion	20	0.3	80.9	0.2
Blood transfusion without DIC <sup>f</sup>	21	0.7	81.6	0.2
Severe pre-eclampsia, HELLP <sup>f</sup> syndrome, or eclampsia	22	0.5	82.1	0.1

487 <sup>a</sup> Three of the 21 current SMM indicators were excluded from this analysis, while four recoded  
 488 indicators were included.

489 <sup>b</sup> The order of the indicators is based on the hierarchical, iterative process to determine the  
 490 ranking of indicators. The indicator with the highest signal-to-noise ratio was selected at each  
 491 iteration. The selected indicator is mutually exclusive of the remaining indicators, regardless of  
 492 whether the hospitalization included other co-occurring indicators.

493 <sup>c</sup> The hierarchical population attributable fraction (hPAF) value is displayed for an indicator after  
 494 previously selected indicators were made mutually exclusive. It is calculated controlling for year,  
 495 payer, age, race, hospital region, and hospital location/teaching status and for all remaining (in  
 496 hierarchical order) indicators.

497 <sup>d</sup> The cumulative hPAF is calculated as the sum of hPAF for the individual indicator and those  
 498 above in ranking.

499 <sup>e</sup> Signal-to-noise ratio (SNR) is the selection criterion used to select the indicator that would  
 500 maximize the ratio of the expected number of SMM cases detected (signal) to the increase in the  
 501 standard deviation of the cumulative sum of indicators (noise).

502 <sup>f</sup> Other abbreviations: DIC: disseminated intravascular coagulation. HELLP syndrome:  
 503 hemolysis, elevated liver enzymes, and a low platelet count.

504 **Table 3. Observed and predicted prevalences for years 2017–2019 per 10,000 deliveries of the 15 highest ranked severe maternal**  
 505 **morbidity (SMM) indicators for in-hospital mortality, Nationwide Inpatient Sample (weighted sample = 11,001,554, unweighted**  
 506 **sample = 2,200,312).**

Rank	Indicator	2017			2018			2019		
		Observed <sup>a</sup>	Predicted (95% CI) <sup>b</sup>	Difference <sup>c</sup>	Observed	Predicted (95% CI) <sup>b</sup>	Difference <sup>c</sup>	Observed	Predicted (95% CI) <sup>b</sup>	Difference <sup>c</sup>
1	Restoration of cardiac rhythm	0.85	0.65 (0.46,0.91)	0.20	0.95	0.63 (0.41,0.95)	0.32	0.99	0.61 (0.38, 0.99)	0.38
2	Cardiac arrest	0.93	0.88 (0.63,1.23)	0.05	1.21	0.91 (0.61,1.36)	0.30	1.05	0.93 (0.58, 1.50)	0.12
3	Mechanical ventilation	4.85	5.05 (4.41,5.77)	-0.20	5.21	4.98 (4.24,5.86)	0.23	4.74	4.92 (4.07, 5.95)	-0.18
4	Tracheostomy	0.18	0.26 (0.14,0.47)	-0.08	0.23	0.26 (0.12,0.54)	-0.03	0.24	0.26 (0.11, 0.61)	-0.02
5	Amniotic fluid embolism	0.62	0.36 (0.23,0.55)	0.26	0.62	0.34 (0.21,0.58)	0.28	0.64	0.33 (0.18, 0.60)	0.31
6	Aneurysm	0.34	0.47 (0.27,0.81)	-0.13	0.41	0.55 (0.29,1.06)	-0.14	0.38	0.64 (0.30, 1.39)	-0.26

7	Acute respiratory distress syndrome	9.21	8.59 (7.66,9.62)	0.62	10.25	8.78 (7.65,10.08)	1.47	10.14	8.97 (7.62, 10.56)	1.17
8	Acute myocardial infarction	0.31	0.17 (0.09,0.32)	0.14	0.37	0.16 (0.08,0.34)	0.21	0.49	0.16 (0.07, 0.37)	0.33
9	Shock	5.55	6.15 (5.33,7.09)	-0.60	6.84	6.88 (5.79,8.18)	-0.04	6.92	7.70 (6.29, 9.43)	-0.78
10	Thromboembolism, pulmonary embolism	3.02	2.26 (1.84,2.77)	0.76	3.62	2.31 (1.80,2.96)	1.31	2.99	2.37 (1.77, 3.16)	0.62
11	Cerebrovascular disorders	2.82	3.77 (3.21,4.43)	-0.95	3.40	3.81 (3.14,4.62)	-0.41	3.50	3.84 (3.06, 4.82)	-0.34
12	Both DIC & blood transfusion	4.90	6.45 (5.71,7.29)	-1.55	4.81	6.48 (5.59,7.51)	-1.67	4.66	6.50 (5.46, 7.74)	-1.84
13	Acute renal	11.47	10.29	1.18	13.04	11.14	1.90	15.27	12.05 (10.15, 3.22)	

	failure		(9.12,11.61)			(9.63,12.89)			14.31)	
14	Sepsis	9.37	9.45	-0.08	10.55	10.80	-0.25	11.14	12.33 (10.06,	-1.19
			(8.20,10.90)			(9.09,12.84)			15.10)	
15	Hysterectomy	11.65	12.63	-0.98	12.67	13.28	-0.61	12.53	13.97 (12.03,	-1.44
			(11.39,14.01)			(11.71,15.07)			16.23)	
	Top 15 ranked SMM indicators (cumulative)	46.62	45.83	0.79	52.40	48.20	4.20	54.63	50.69 (46.24,	3.94
			(43.02,48.81)			(44.60,52.08)			55.57)	

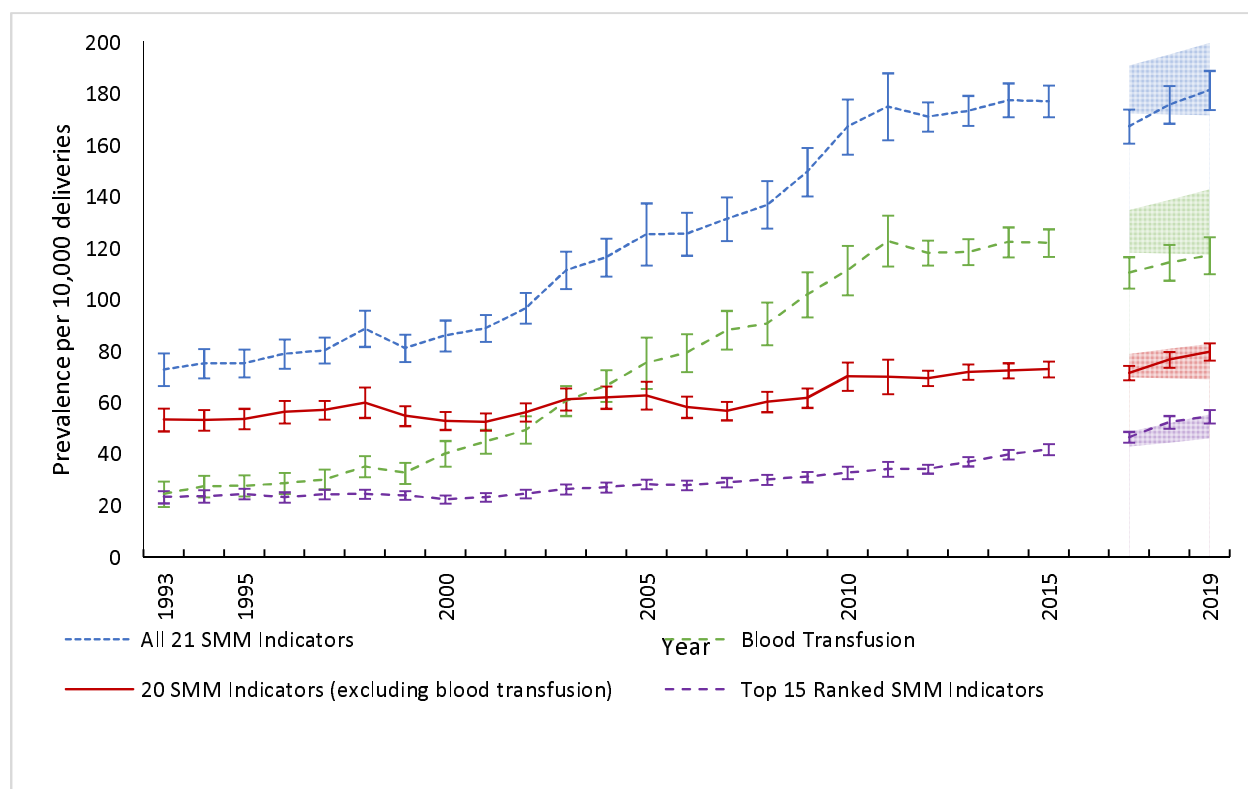
507 <sup>a</sup> According to the hierarchical population attributable fraction approach in the ranked SMM index for in-hospital mortality.

508 <sup>b</sup> Predictions and 95% confidence intervals were estimated based on logistic regression models using observed data from 2010 to 2015,  
509 accounting for the complex sample design of the Healthcare Cost and Utilization Project National Inpatient Sample.

510 <sup>c</sup> Difference calculated by subtraction: Observed – Predicted. A positive number indicates the observed prevalence was greater than the  
511 predicted prevalence. A negative number indicates the predicted prevalence was greater than the observed. Rounding occurred.

## 512 Figure

513 **Fig 1. Prevalence of severe maternal morbidity (SMM) per 10,000 delivery hospitalizations**  
514 **for (1) all 21 SMM indicators, (2) 20 SMM indicators (excluding blood transfusion), (3)**  
515 **blood transfusion alone, and (4) the top 15 ranked SMM indicators that identify the most**  
516 **in-hospital mortality, NIS, 1993–2019.**



517  
518 The blue, dotted line represents the 21 current SMM indicators developed by the Centers for  
519 Disease Control and Prevention (CDC). The green, dashed line represents the current indicator  
520 for blood transfusion alone. The red, solid line represents 20 SMM indicators (excluding blood  
521 transfusion). The purple dashed line represents the top 15 ranked SMM indicators that identify  
522 the most in-hospital mortality. Shaded areas represent the 95% confidence intervals for the  
523 regression-based SMM prevalence predictions, using 2010–2015 (ICD-9 coding) data, in 2017–  
524 2019 (ICD-10 coding). Interval colors correspond to the respective line colors. Data from the last

525 quarter of 2015 and for the year 2016 were omitted because of changes in coding practices

526 during the first year after ICD-10 coding implementation.

527



528 **Supporting information**

529 **S1 Appendix. S1 Appendix. The signal to noise ratio: formula for calculation.**

530 **S1 Table. Characteristics of study population, Nationwide Inpatient Sample, 1993–2015**

531 **(weighted sample = 87,864,173, unweighted sample = 18,198,934).**