

HIV incidence among women engaging in sex work in sub-Saharan Africa: a systematic review and meta-analysis.

Harriet S Jones^{1#}, and Rebecca L Anderson^{2#}, Henry Cust^{1,3}, R. Scott McClelland^{4,5,6}, Barbra A. Richardson^{6,7}, Harsha Thirumurthy⁸, Kalonde Malama⁹, Bernadette Hensen¹⁰, Lucy Platt¹, Brian Rice¹¹, Frances M Cowan^{12,13}, Jeffrey W. Imai-Eaton^{2,14}, James R Hargreaves¹, Oliver Stevens²

1. Faculty of Public Health and Policy, London School of Hygiene and Tropical Medicine, London, UK
2. MRC Centre for Global Infectious Disease Analysis, School of Public Health, Imperial College London, London, United Kingdom
3. Department of Global Health and Development, London School of Hygiene and Tropical Medicine, London, UK
4. Department of Medicine, University of Washington, Seattle, WA, USA
5. Department of Epidemiology, University of Washington, Seattle, WA, United States of America
6. Department of Biostatistics, University of Washington, Seattle, WA, USA
7. Department of Global Health, University of Washington, Seattle, WA, United States of America
8. Department of Medical Ethics and Health Policy, University of Pennsylvania, Philadelphia, Pennsylvania, USA
9. University of Toronto Factor-Inwentash Faculty of Social Work, Toronto Ontario, Canada
10. Sexual and Reproductive Health Group, Department of Public Health, Institute of Tropical Medicine, Antwerp, Belgium
11. Sheffield Centre for Health and Related Research (SCHARR); School of Medicine and Population Health, University of Sheffield, UK
12. Department of International Public Health, Liverpool School of Tropical Medicine, Liverpool, UK
13. Centre for Sexual Health and HIV/AIDS Research Zimbabwe, Harare, Zimbabwe
14. Center for Communicable Disease Dynamics, Department of Epidemiology, Harvard T. H. Chan School of Public Health, Boston, MA, USA

#: Harriet S. Jones and Rebecca L. Anderson have contributed equally to the manuscript and share first authorship

Abstract 299/300

Main text 3471/3500

NOTE: This preprint reports new research that has not been certified by peer review and should not be used to guide clinical practice.

36 **Abstract**

37

38 *Introduction*

39 HIV incidence among women in sub-Saharan Africa (SSA) has declined steadily, but it is unknown whether
40 new infections among women who engage in sex work (WESW) have declined at a similar rate. We
41 synthesised estimates of HIV incidence among WESW in SSA and compared these to the wider female
42 population to understand levels and trends in incidence over time.

43 *Methods*

44 We searched Medline, Embase, Global Health, Popline, Web of Science, and Google Scholar from
45 January 1990 to October 2022, and grey literature for estimates of HIV incidence among WESW in SSA.
46 We included studies reporting empirical estimates in any SSA country. We calculated incidence rate ratios
47 (IRR) compared to age-district-year matched total female population incidence estimates. We conducted
48 a meta-analysis of IRRs and used a continuous mixed-effects model to estimate changes in IRR over time.

49 *Results*

50 From 32 studies between 1985 and 2020, 2,194 new HIV infections were observed in WESW over 51,000
51 person-years (py). Median HIV incidence was 4.3/100py (IQR 2.8-7.0/100py), declining from a median of
52 5.96/100py between 1985 and 1995 to a median of 3.2/100py between 2010 and 2020. Incidence among
53 WESW was nine times higher than in matched total population women (RR 8.6, 95%CI: 5.7-12.9), and
54 greater in Western and Central Africa (RR 22.4, 95%CI: 11.3-44.3) than in Eastern and Southern Africa
55 (RR 5.3, 95%CI: 3.7–7.6). Annual changes in log IRRs were minimal (–0.1% 95%CI: -6.9 to +6.8%).

56 *Conclusions*

57 Across SSA, HIV incidence among WESW remains disproportionately high compared to the total female
58 population but showed similar rates of decline between 1990 and 2020. Improved surveillance and
59 standardisation of approaches to obtain empirical estimates of sex worker incidence would enable a
60 clearer understanding of whether we are on track to meet global targets for this population and better
61 support data-driven HIV prevention programming.

62

63 Introduction

64 New HIV infections have steadily declined among women in sub-Saharan Africa (SSA) since 1994,
65 including by 65% between 2010–2022 in Eastern and Southern Africa (ESA).¹ However, among women
66 across SSA, those who engage in sex work bear a disproportionate burden of HIV.^{1,2} Women who engage
67 in sex work (WESW) comprise an estimated 1.2% of woman aged 15-49 in SSA, but an estimated 3.5%
68 of women living with HIV in the region.² HIV prevention programmes for WESW were a core component
69 of the early HIV response in SSA, however reduced funding and a shift to general population programming
70 meant a decline in programmes focused on WESW from the early 2000s.³ More recently, renewed energy
71 in targeted approaches for key populations has resulted in the re-expansion of programming for WESW.⁴⁻
72 ⁶ Assessing the success of these efforts on preventing new HIV infections is challenging, and it is unknown
73 whether HIV incidence among WESW has declined in line with women in the wider population.

74 Despite increasing surveillance and programmatic support for WESW, studies of HIV incidence in SSA
75 remain infrequent and challenging. Identifying and following-up WESW is often difficult due to the
76 heterogeneous, informal, and hidden nature of sex work, commonly driven by stigma and criminalisation.⁷
77 For these reasons WESW are largely unidentified in population-based surveys and constructing a national
78 sampling frame usually impractical. Sex work encompasses a broad spectrum of sexual transactions
79 occurring in a range of settings, from on the streets, to in homes, brothels, or hotels.⁸ Women who engage
80 in transactional sex may not self-identify as sex workers. For surveillance, this presents challenges, as
81 those not identifying as sex workers are unlikely to present at WESW-dedicated programmes. Additionally,
82 mobility among WESW is high,⁹ and repeated initiation and cessation of sex work common, thus
83 programmes and cohort studies encounter challenges with loss to follow-up.^{10,11} To mitigate these
84 challenges, there is growing focus on techniques leveraging cross-sectional data to estimate
85 incidence,^{12,13} whilst recruitment approaches such as respondent-driven sampling (RDS) and time-location
86 sampling (TLS) are increasingly used to capture more representative samples of WESW.

87 As countries seek to reach the global goal of ending AIDS as a public health threat by 2030 through ending
88 inequalities, quantifying HIV incidence trends in WESW is required to guide national HIV programme
89 planning and delivery. In this study we aimed to synthesise and appraise empirical estimates of HIV
90 incidence in WESW in SSA, estimate relative HIV incidence between WESW and the total female
91 population for WCA and ECA, and estimate the change in relative HIV incidence over time.

92 **Methods**

93 We searched published and grey literature to identify empirical estimates of HIV incidence among WESW
94 in SSA. We conducted two searches of peer-reviewed literature available in English and published
95 between January 1990 and December 2022. Medline, EMBASE, Popline, Web of Science, and Global
96 Health were searched on 19th June 2019 using medical subject headings (MeSH) and text words adapted
97 for each database covering three domains: 'Female sex workers', 'HIV', and 'sub-Saharan Africa'.
98 Searches were updated in January 2023 in Medline, EMBASE, Global Health, and Google Scholar using
99 text words addressing four domains: 'sex workers', 'sub-Saharan Africa', 'HIV' and 'incidence'
100 (Supplementary Text S1). The initial title, abstract, and full text screening was conducted by HSJ and HC
101 in 2019 for an earlier review of HIV testing among WESW¹⁴ and full texts subsequently searched for those
102 reporting HIV incidence. A second search was conducted by RLA in January 2023, with all papers selected
103 for final inclusion based on consensus between HSJ, RLA, and OS. RLA additionally searched key
104 population biobehavioural surveillance reports, collated during an earlier key population data collation
105 exercise.²

106 *Study inclusion*

107 For inclusion, studies needed to report an empirically measured estimate of HIV-test confirmed HIV
108 incidence in WESW in any SSA country or report the number of HIV events and total person-years (py)
109 at-risk to manually calculate incidence. WESW could be women either self-reporting being a sex worker,
110 engaged in a sex worker programme, or reporting selling or exchanging sex for money or goods. For multi-
111 country studies, nationally disaggregated data were required. For closed cohort studies reporting annual
112 estimates, only the overall estimate of incidence from the study was extracted to mitigate against artificial
113 declines in incidence observed with follow-up of the same individuals. Studies were excluded if the study
114 cohort was exposed to an intervention specifically thought to have impacted HIV incidence, i.e. HIV pre-
115 exposure prophylaxis (PrEP). In randomised control trials (RCT), data from the study control arm were
116 included and, in interventional cohort studies, data from early in the intervention or pre-intervention period
117 included. Conference abstracts or published short communications were excluded. Where multiple papers
118 reported incidence estimates for the same study population, the paper reporting the greatest number of
119 person-years of follow-up was selected as the primary study for data extraction (Figure 1).

120 *Data extraction*

121 From each study, two authors extracted the study location (country, subnational area), time period, study
122 population definition, recruitment strategy, mean/median age and recruitment range, incidence
123 measurement method (e.g. recency testing, repeat HIV tests), study type (e.g. cohort, RCT), sample size,
124 person-years of follow-up, number of seroconversions, incidence per 100py, and confidence intervals,
125 disaggregated by age-group where available. We contacted study authors where estimates were not
126 clearly available in existing publications (n=1),¹⁵ not disaggregated to WESW (n=1),¹⁶ or from studies
127 reporting data for extended time periods which could provide annual estimates to assess temporal trends
128 (n=2).^{17,18}

129 *Quality assessment*

130 We appraised studies using the Global HIV Quality Assessment Tool for Data Generated through Non-
131 Probability Sampling (GHQAT).¹⁹ The tool comprises three domains: study design, study implementation
132 and a measurement specific domain for HIV incidence. Domain specific assessment criteria are in the tool
133 and supplementary material (Supplementary Table 2). We defined scoring requirements for subjective
134 assessment criteria, stipulating reporting requirements needed to score positively. Measurement quality
135 scored positively if studies stated their approach to seroconversion date measurement. Sample
136 recruitment scored positively if studies used a network sampling approach (e.g. RDS²⁰), TLS, or clinic
137 sampling with peer recruitment. Where physical locations were used for recruitment, location mapping
138 needed to be reported. Studies were also scored positively if study length was at minimum 12 months,
139 retention >70%, tracing was conducted for participants lost-to-follow-up or statistical adjustments made to
140 account for loss-to-follow-up. We chose not to score studies on overall reporting quality. Based on a score
141 of 1 if studies met the assessment criteria and 0 if they did not, each was classified as good, fair, or poor
142 for each domain, and then overall. Studies scoring $\geq 70\%$ were classified as good, between 30% and 70%
143 fair and <30% poor. We adapted scoring to account for exclusion of reporting criteria and for studies
144 calculating incidence from cross-sectional recent infection testing or serial HIV prevalence measures.^{12,13}

145 *Data synthesis and meta-analysis*

146 HIV incidence observations among WESW were matched to HIV incidence in the total female population
147 by district (subnational location where each study was conducted), age, and year. Estimates missing age
148 information were matched to incidence in total population women aged 15-39, reflecting the age
149 distribution observed in sex workers in studies reporting age data. District-level estimates in 2022 for the
150 total female population were extracted from UNAIDS subnational HIV estimates created using the Naomi
151 model.²¹ Naomi is a district-level small-area estimation model that calibrates to nationally representative
152 household survey and routine ART and antenatal health system data. District-level incidence estimates for
153 1985-2021 were created by extrapolating 2022 estimates backwards in time, parallel to UNAIDS national-
154 level female incidence trajectories, assuming the proportional change in incidence at district-level mirrored
155 that at national-level.^{22,23} For studies where annual incidence estimates were unavailable, the midpoint
156 study year was used for matching. When a subnational location was not specified in the text (n=3), national
157 total population incidence was used as the comparator. One study presented incidence for a control group
158 of women not engaged in sex work,²⁴ which was used as the total population comparator instead of
159 matching to UNAIDS' district estimate.

160 We assessed correlation between WESW and matched total population female incidence and calculated
161 incidence rate ratios (IRRs). We used a meta-analysis of IRRs, with study-country-district nested random
162 effects to account for variation in study type, and regional fixed effects to stratify our pooled IRRs by region
163 (ESA and Western and Central Africa (WCA)). We examined trends in IRRs over time using a Bayesian
164 mixed-effects log-linear model, predicting log-IRRs using calendar year fixed effects, study-level random
165 effects, and total female population incidence and person-years of follow-up as offsets (Supplementary
166 Text S2). Lastly, we conducted case studies for the two countries with the most available data. We used
167 data from an open cohort in Mombasa, Kenya,¹⁸ and from a national key populations programme in

168 Zimbabwe run by the Centre for Sexual Health and HIV/AIDS Research Zimbabwe (CeSHHAR),¹⁷ to
169 descriptively assess temporal trends between WESW and total female population incidence.

170 We conducted several sensitivity analyses. Firstly, to address uncertainty surrounding the district-level
171 total population incidence estimates, we repeated the meta-analysis using national age-sex matched
172 population incidence as the denominator for IRRs. To assess the impact of study quality, we repeated the
173 meta-analysis filtered to only higher quality studies (those scoring 60% or above on the GHQAT). Finally,
174 as the majority of empirical incidence estimates for WESW were from populations in Kenya and Zimbabwe,
175 we refit the mixed-effects model to data from both countries. Analyses were implemented in R v4.2.1²⁵
176 using the *metafor* v3.8.1²⁶ and *R-INLA* v22.5.7²⁷ packages.

177 *Ethical approval*

178 This study received ethical approval from the Imperial College Research and Ethics Committee
179 (#6412027). For use of CeSHHAR's Key Populations programme data, ethical approval was obtained from
180 the London School of Hygiene and Tropical Medicine (16543) and the Medical Research Council of
181 Zimbabwe (MRCZ/A/2624).

182

183 **Results**

184 We extracted 83 estimates of HIV incidence among WESW in sub-Saharan Africa from 32 studies reported
185 in 69 peer-reviewed papers and one surveillance report (Tables 1 and 2). The majority of estimates were
186 from ESA (78%; 65/83), predominantly from Kenya and Zimbabwe (59%, 49/83). In WCA, 18 incidence
187 estimates were reported from eight countries. Median study year was 2008 (IQR: 2000-2015). Between
188 1985 and 2020, 2,194 new HIV infections were observed from 51,000py with median HIV incidence of
189 4.3/100py (interquartile range [IQR] 2.8-7.0/100py).

190 Over half the studies were cohort studies (59%; 19/32), one fifth were randomised control trials or
191 intervention studies (22%; 7/32), five were cross-sectional studies (16%, 5/32), and one study used routine
192 clinic data (1/32; Table 2). Study populations included women who self-identified as sex workers (7/32),
193 exchanged sex for money or goods (13/32), either over a defined period or as a primary or secondary
194 source of income, or worked in a known sex work location (2/32). Six study populations were women linked
195 to clinics or sex worker programmes. Study reach varied widely, from studies in single clinic populations
196 (6/32) to single towns, cities, or regions (19/32), or multiple locations nationally in South Africa and
197 Zimbabwe (8/32). Recruitment methods included network sampling approaches (7/32), time location
198 sampling (4/32), clinic recruitment (7/32), or convenience samples from peer outreach activities or
199 community meetings (9/32). Study participant ages ranged from a median of 15 (IQR 14-17)²⁸ to a mean
200 of 38²⁹ with 11/32 studies reporting a mean or median age between 25 and 30. Incidence estimates were
201 predominantly derived from inference of a seroconversion date between HIV tests (26/32). Most of these
202 studies used the midpoint between first positive and last negative test result (13/25), two used the HIV-
203 positive test date, and seven did not report a clear seroconversion date estimation approach. Four studies
204 estimated incidence from recency assays, and two used back calculation from age-specific HIV
205 prevalence.

206 *Quality assessment*

207 Assessment with the GHQAT classified 8/32 (25%) studies as 'good' quality, and the remaining 24/32
208 (77%) as 'fair' (Supplementary Table S2). Studies all scored well in terms of study design, with study
209 objectives and study populations clearly defined. Most studies either had robust approaches to sampling
210 or did not seek to generalise their findings beyond their study population so were considered adequately
211 representative (26/32). Power calculations were presented in one-third of studies (9/32). Scores under
212 study implementation varied, with only 10/31 studies reporting participation rates, of which six reported
213 over 85% participation. For 19/32 studies, it was likely that participants enrolled were representative of the
214 source population. Scoring for measurement of HIV incidence was variable. Among longitudinal studies,
215 12 report >70% participant retention at 12 months or study endpoint. Only five described methods to
216 address loss to follow up.

217 *Data synthesis & meta-analysis*

218 Incidence among WESW was correlated with matched female incidence ($R = 0.41$; Figure 2A). In meta-
219 analysis, the HIV incidence rate in WESW was nine times higher than in matched total population women
220 (RR 8.6, 95%CI 5.7–12.9; Figure 1). Rate ratios were greater in WCA (RR 22.4, 95%CI 11.3-44.3) than in
221 ESA (RR 5.3, 95%CI 3.7–7.6). The sensitivity analysis using the 21 studies scoring above 60% through

222 quality assessment yielded a pooled IRR of 6.9 (95% CI 4.4-10.8, Supplementary Figure 1). Sensitivity
223 analysis using nationally-matched incidence increased relative risk (RR: 10.6, 95% CI 7.4-15.2,
224 Supplementary Figure 2).

225 HIV incidence in WESW halved between 1985-1995 and 2010-2020, from a median of 5.96/100py (IQR
226 3.0-11.3/100py) to median 3.2/100py (IQR 2.2-4.3/100py; Figure 2B). Compared to matched female
227 population incidence, there was no evidence for a change in IRR over time (Odds ratio [OR] 1.00, 95%CI
228 0.93-1.07; Figure 3). Incidence in WESW was nearly 6 times higher than in the total female population in
229 2003 according to the mixed-effects model (IRR 5.5, 95% CI 3.8-8.7; Figure 3, Supplementary Table S2).

230 In separate model fits to data from Kenya and Zimbabwe, log IRR did not change over time in Kenya (OR
231 1.01, 95% CI: 1.00-1.03), but increased in Zimbabwe between 2009 and 2019 (OR 1.11, 95% CI 1.05-
232 1.16; Supplementary Table S1). Two studies from these countries provided annual incidence estimates
233 over their follow up-period (Figure 4). In the Kenyan cohort, incidence in WESW peaked at 16/100py in
234 1994 and declined to 1/100py in 2017. However, the declines in incidence in WESW were matched by
235 reductions in total female population incidence, resulting in a stable IRR over the cohort period. In the
236 Zimbabwean cohort, the HIV incidence rate in WESW also declined from 5/100py to 3/100py from 2010-
237 2019, but the IRR increased due to faster relative declines in total population female incidence.

238 Discussion

239 In sub-Saharan Africa, HIV incidence among women who engage in sex work was nearly nine times
240 greater than in the wider female population. This disparity was larger in WCA, where incidence was almost
241 23 times higher than in all women, compared to six times higher in ESA. Between 1985 and 2020,
242 incidence in WESW declined at a similar rate to incidence in age-location-year matched total population
243 women, however case studies of Kenya and Zimbabwe illustrated that these trends may vary between
244 countries. Sensitivity analyses using national incidence estimates and restricted to high-quality studies did
245 not alter the interpretation of our findings.

246 Our analysis builds on existing evidence that WESW are disproportionately impacted by HIV. Our large
247 IRR echoes the five-fold discrepancy reported in HIV prevalence between WESW and the wider population
248 in sub-Saharan Africa.² We additionally estimated a greater relative risk in lower HIV prevalence epidemics
249 in WCA compared to ESA. The declining HIV incidence among WESW found in this analysis was aligned
250 with modelling studies from WCA that estimate the proportion of total new HIV infections attributable to
251 commercial sex has fallen over time.^{30,31} These parallel incidence declines are in contrast with a systematic
252 review of incidence among men who have sex with men in sub-Saharan Africa, which found no such
253 evidence.³²

254 Studies varied in their geographic reach, and their definition and recruitment of WESW. Inclusion criteria
255 often defined the age range and duration or frequency of selling sex, or sought women self-identifying as
256 WESW, leading to a range of study populations with likely varying degrees of HIV acquisition risk. Studies
257 among women linked to targeted programmes or clinics may have recruited women at lower risk of HIV
258 acquisition, who may be older or had sold sex for longer durations, potentially missing younger women,
259 those yet to identify as selling sex and in the highest risk period immediately following sex work initiation.³³
260 Preliminary findings from South Africa suggest that sex work dynamics are changing with the mean age
261 of sex workers increasing and longer durations at-risk,³⁴ whilst young WESW remain at highest incidence
262 risk.³⁵ Different sampling and recruitment approaches were also likely to identify different women for study
263 inclusion. Studies have shown that participants recruited through RDS are younger than those recruited
264 through venue-based snowball sampling.³⁶ Using district-age-matched IRRs in our analysis likely mitigated
265 some of the bias that would have come from geographical and age differences if raw estimates of incidence
266 were analysed independently.

267 Whilst declining incidence in WESW may in part be a product of incidence trends and increased
268 programme coverage across all women in SSA, it also reflects substantial efforts in roll-out of WESW-
269 dedicated programmes, treatment, and health services in SSA, and rising treatment coverage among
270 men.¹ Whilst this finding is positive, our study also highlights the need to sustain and continue to expand
271 effective HIV prevention options and treatment services for WESW, given the persistently large disparity
272 in HIV incidence between WESW and the wider female population, particularly in WCA. Counterfactual-
273 based modelling shows that fully meeting HIV prevention and treatment needs of WESW would
274 substantially impact the HIV epidemic in SSA, and that averting HIV transmission associated with sex work
275 should remain a programmatic priority.^{6,31}

276 Our study was subject to limitations. Data were available from fewer than half of SSA countries, with WCA
277 particularly under-represented, and estimates for ESA largely from Kenya and Zimbabwe. This prevented
278 estimation of country-specific IRRs and non-linear time trends and limited the generalisability of our
279 findings. Data were insufficient to estimate pooled age-disaggregated IRRs which may have provided
280 further insights, given evidence of higher incidence among younger WESW.³⁵ For all but one study which
281 provided a comparator non-WESW group,²⁴ our IRR denominators were based on extrapolations of
282 subnational estimates backwards in time parallel to national female incidence trajectories. Whilst this
283 approach aimed to capture spatial variation over time, there is substantial uncertainty in these subnational
284 incidence denominators, particularly for older studies, which is not reflected in the calculated IRRs.
285 Additionally, given high mobility among WESW,⁹ matching on district boundaries may not yield the most
286 comparable total female population denominator. However, sensitivity analysis using nationally-matched
287 IRRs gave similar results to the district-matched analysis, alleviating concerns around subnational
288 uncertainties.

289 We appraised studies using the GHQAT. Although we did not quantify changes in study quality over time,
290 it is likely that study quality improved with improvements in HIV testing and sampling methods. Most studies
291 did not make inferences beyond the study population they recruited and scored positively on adequately
292 representing the wider WESW population. However, it is unlikely that many would have been
293 representative had they made these inferences. Ascertaining the degree of bias associated with sample
294 recruitment posed challenges. There is no standardised approach to sampling individuals from key
295 populations, and although respondent driven sampling is widely accepted as a gold standard to achieving
296 a representative sample,³⁸ there was variation in implementation and reporting across studies. We
297 excluded studies providing interventions beyond standard of care but were unable to account for wide
298 variation in programme interventions and intensity, or the influence in historical or geographically proximal
299 HIV responses.

300 Our review highlights that while HIV incidence data are available for WESW populations, geographical
301 gaps remain, and temporal trends difficult to ascertain from WESW estimates alone, particularly at country
302 level. Individual studies are challenging to compare due to substantial heterogeneity in study design and
303 the limited generalisability of findings beyond individual study populations. Standardisation in definitions
304 for WESW and reporting of age ranges may improve comparability of estimates. The application of
305 methodological standards for directly measuring incidence in key populations would also be beneficial.
306 Data gaps could be addressed by incorporating incidence measurements into survey and routine
307 programmatic data analysis via serial cross-sectional prevalence data from biobehavioural surveys and
308 recency testing,^{12,13,17,39} instead of resource-intensive cohort studies. This would increase the number of
309 available estimates to enable country-specific estimation and support real-time data-driven programming.

310 **Conclusion**

311 Across SSA, HIV incidence in WESW has declined over the past 20 years but substantial inequalities
312 remain, with incidence nine times greater among WESW compared to the wider female population. While
313 declines are currently hard to ascertain from empirical estimates alone, these can be inferred from the
314 limited change in WESW incidence relative to incidence among women in the wider population. Future

315 surveillance activities should fill these gaps, ensuring a more standardised approach to obtaining empirical
316 estimates of WESW incidence with repeat measures in the same populations to guide data-driven HIV
317 prevention and treatment programme planning and ensure incidence continues to decline, and inequalities
318 are addressed.

319

320 **Author contributions**

321 OS, RLA, and HSJ conceptualised the study. JRH and HSJ conceived and conducted the initial literature
322 review with HC. RLA updated the review and identified additional unpublished data. RLA led the
323 quantitative data extraction and HSJ led data extraction of study methods. RSM, HT, FMC, and HSJ
324 provided unpublished data. HSJ led the quality assessment. RLA and OS led the quantitative analysis.
325 HSJ, RLA, and OS wrote the manuscript. JWI-E and JRH provided technical input throughout the study.
326 All authors contributed to interpretation of results and edited the manuscript for intellectual content. All
327 authors read and approved the final version of the manuscript for submission.

328 **Conflicts of interest**

329 The authors declare no conflicts of interest.

330 **Funding**

331 OS, RLA, and JWI-E were funded by UNAIDS and the MRC Centre for Global Infectious Disease Analysis
332 (reference MR/R015600/1), jointly funded by the UK Medical Research Council (MRC) and the UK Foreign,
333 Commonwealth & Development Office (FCDO), under the MRC/FCDO Concordat agreement and is also
334 part of the EDCTP2 programme supported by the European Union. JWI-E was funded by the Bill and
335 Melinda Gates Foundation (OPP1190661) and the National Institute of Allergy and Infectious Disease of
336 the National Institutes of Health under award number R01AI152721. HSJ is a PhD candidate funded by
337 the Medical Research Council London Intercollegiate Doctoral Training Partnership. JRH, FMC, BR, LP
338 and HSJ are members of the Measurement and Surveillance of HIV Epidemics Consortium (London
339 School of Hygiene & Tropical Medicine, London, UK), which received a grant from the Bill & Melinda Gates
340 Foundation (INV-007055) to develop, test, and implement innovative and efficient methods for routine HIV
341 measurement and surveillance. FMC and JRH were partly funded by the Wellcome Trust (214280/Z/18/Z).

342 Under the grant conditions of the UKRI and Bill & Melinda Gates Foundation, a Creative Commons
343 Attribution 4.0 Generic License (CC BY) has already been assigned to any Author Accepted Manuscript
344 version arising from this submission.

345 **Disclaimer**

346 The findings here are those of the authors and do not necessarily represent the views or official position
347 of the funding agencies.

348

349 References

- 350 1. Joint United Nations Programme on HIV/AIDS (UNAIDS). *The Path That Ends AIDS: UNAIDS Global AIDS Update 2023 | UNAIDS.*; 2023. Accessed August 10, 2023.
351 <https://www.unaids.org/en/resources/documents/2023/global-aids-update-2023>
352
- 353 2. Stevens O, Sabin K, Garcia SA, et al. Key population size, HIV prevalence, and ART
354 coverage in sub-Saharan Africa: systematic collation and synthesis of survey data. *medRxiv*.
355 Published online July 29, 2022:2022.07.27.22278071. doi:10.1101/2022.07.27.22278071
- 356 3. Beyrer C, Crago AL, Bekker LG, et al. An action agenda for HIV and sex workers. *The*
357 *Lancet*. 2015;385(9964):287-301. doi:10.1016/S0140-6736(14)60933-8
- 358 4. Wheeler T, Wolf RC, Kapesa L, Cheng Surdo A, Dallabetta G. Scaling-Up HIV Responses
359 with Key Populations in West Africa. *JAIDS Journal of Acquired Immune Deficiency*
360 *Syndromes*. 2015;68(Supplement 2):S69-S73. doi:10.1097/QAI.0000000000000534
- 361 5. Cowan FM, Chabata ST, Musemburi S, et al. Strengthening the scale-up and uptake of
362 effective interventions for sex workers for population impact in Zimbabwe. *J Int AIDS Soc*.
363 2019;22(S4). doi:10.1002/JIA2.25320/FULL
- 364 6. Stone J, Bothma R, Gomez GB, et al. Impact and cost-effectiveness of the national scale-
365 up of HIV pre-exposure prophylaxis among female sex workers in South Africa: a modelling
366 analysis. *J Int AIDS Soc*. 2023;26(2). doi:10.1002/JIA2.26063/FULL
- 367 7. Platt L, Grenfell P, Meiksin R, et al. Associations between sex work laws and sex workers'
368 health: A systematic review and meta-analysis of quantitative and qualitative studies. *PLoS*
369 *Med*. 2018;15(12):e1002680. doi:10.1371/JOURNAL.PMED.1002680
- 370 8. UNAIDS. *UNAIDS Guidance Note on HIV and Sex Work (Updated April 2012).*; 2009.
371 Accessed October 14, 2023.
372 [https://www.unaids.org/en/resources/documents/2012/20120402_UNAIDS-guidance-note-](https://www.unaids.org/en/resources/documents/2012/20120402_UNAIDS-guidance-note-HIV-sex-work)
373 [HIV-sex-work](https://www.unaids.org/en/resources/documents/2012/20120402_UNAIDS-guidance-note-HIV-sex-work)
- 374 9. Davey C, Dirawo J, Mushati P, Magutshwa S, Hargreaves JR, Cowan FM. Mobility and sex
375 work: why, where, when? A typology of female-sex-worker mobility in Zimbabwe. *Soc Sci*
376 *Med*. 2019;220:322-330. doi:10.1016/j.socscimed.2018.11.027
- 377 10. Malama K, Sagaon-Teyssier L, Gosset A, et al. Loss to follow-up among female sex workers
378 in Zambia: findings from a five-year HIV-incidence cohort. *African Journal of AIDS Research*.
379 2020;19(4):296-303. doi:10.2989/16085906.2020.1836005
- 380 11. Graham SM, Raboud J, McClelland RS, et al. Loss to follow-up as a competing risk in an
381 observational study of HIV-1 incidence. *PLoS One*. 2013;8(3).
382 doi:10.1371/JOURNAL.PONE.0059480

- 383 12. Ali MS, Wit MDE, Chabata ST, et al. Estimation of HIV incidence from analysis of HIV
384 prevalence patterns among female sex workers in Zimbabwe. *AIDS*. 2022;36(8):1141-1150.
385 doi:10.1097/QAD.0000000000003198
- 386 13. Kassanje R, Welte A, Otjombe K, et al. HIV incidence estimation among female sex
387 workers in South Africa: a multiple methods analysis of cross-sectional survey data. *Lancet*
388 *HIV*. 2022;9(11). doi:10.1016/S2352-3018(22)00201-6
- 389 14. Jones H, Cust H, Cowan F, Hensen B, Hargreaves J. Trends in HIV testing and knowledge
390 of HIV status among female sex workers in sub-Saharan Africa: a systematic review.
391 PROSPERO. Published 2020. Accessed October 14, 2023.
392 https://www.crd.york.ac.uk/prospéro/display_record.php?RecordID=162769
- 393 15. Malama K, Price MA, Sagaon-Teyssier L, et al. Evolution of Condom Use Among a 5-Year
394 Cohort of Female Sex Workers in Zambia. *AIDS Behav*. 2022;26(2):470-477.
395 doi:10.1007/S10461-021-03403-9
- 396 16. Thirumurthy H, Bair EF, Ochwal P, et al. The effect of providing women sustained access to
397 HIV self-tests on male partner testing, couples testing, and HIV incidence in Kenya: a cluster-
398 randomised trial. *Lancet HIV*. 2021;8(12):e736-e746. doi:10.1016/S2352-3018(21)00248-4
- 399 17. Jones HS, Hensen B, Musemburi S, et al. Interpreting declines in HIV test positivity: an
400 analysis of routine data from Zimbabwe's national sex work programme, 2009-2019. *J Int*
401 *AIDS Soc*. 2022;25(7). doi:10.1002/JIA2.25943
- 402 18. McClelland RS, Richardson BA, Cherutich P, et al. A 15-year study of the impact of
403 community antiretroviral therapy coverage on HIV incidence in Kenyan female sex workers.
404 *AIDS*. 2015;29(17):2279-2286. doi:10.1097/QAD.0000000000000829
- 405 19. Rao A, Schwartz S, Viswasam N, et al. Evaluating the quality of HIV epidemiologic evidence
406 for populations in the absence of a reliable sampling frame: a modified quality assessment
407 tool. *Ann Epidemiol*. 2022;65:78. doi:10.1016/J.ANNEPIDEM.2021.07.009
- 408 20. UNAIDS, FHI 360, WHO, CDC, PEPFAR. *Biobehavioural Survey Guidelines For*
409 *Populations At Risk For HIV*.; 2017. Accessed February 17, 2022.
410 <http://apps.who.int/bookorders>.
- 411 21. UNAIDS. HIV sub-national estimates viewer. 2021. Accessed August 23, 2023.
412 <https://naomi-spectrum.unaids.org/>
- 413 22. Stover J, Glaubius R, Teng Y, et al. Modeling the epidemiological impact of the UNAIDS
414 2025 targets to end AIDS as a public health threat by 2030. *PLoS Med*.
415 2021;18(10):e1003831. doi:10.1371/journal.pmed.1003831
- 416 23. UNAIDS. Spectrum file request – UNAIDS HIV Tools. Published 2023. Accessed August 24,
417 2023. <https://hivtools.unaids.org/spectrum-file-request/>

- 418 24. Kilburn K, Ranganathan M, Stoner MCD, et al. Transactional sex and incident HIV infection
419 in a cohort of young women from rural South Africa. *AIDS*. 2018;32(12):1669-1677.
420 doi:10.1097/QAD.0000000000001866
- 421 25. R: The R Project for Statistical Computing. Accessed February 7, 2023. [https://www.r-](https://www.r-project.org/)
422 [project.org/](https://www.r-project.org/)
- 423 26. Viechtbauer W. The metafor Package: A Meta-Analysis Package for R. Accessed February
424 6, 2023. <https://www.metafor-project.org/doku.php/metafor>
- 425 27. R-INLA Project - What is INLA? Accessed February 6, 2023. [https://www.r-inla.org/what-is-](https://www.r-inla.org/what-is-inla)
426 [inla](https://www.r-inla.org/what-is-inla)
- 427 28. Kilburn K, Ranganathan M, Stoner MCD, et al. Transactional sex and incident HIV infection
428 in a cohort of young women from rural South Africa. *AIDS*. 2018;32(12):1669-1677.
429 doi:10.1097/QAD.0000000000001866
- 430 29. Lyons CE, Olawore O, Turpin G, et al. Intersectional stigmas and HIV-related outcomes
431 among a cohort of key populations enrolled in stigma mitigation interventions in Senegal.
432 *AIDS*. 2020;34 Suppl 1(Suppl 1):S63-S71. doi:10.1097/QAD.0000000000002641
- 433 30. Mukandavire C, Walker J, Schwartz S, et al. Estimating the contribution of key populations
434 towards the spread of HIV in Dakar, Senegal. *J Int AIDS Soc*. 2018;21(S5).
435 doi:10.1002/jia2.25126
- 436 31. Maheu-Giroux M, Vesga JF, Diabaté S, et al. Changing Dynamics of HIV Transmission in
437 Côte d'Ivoire: Modeling Who Acquired and Transmitted Infections and Estimating the Impact
438 of Past HIV Interventions (1976–2015). *JAIDS Journal of Acquired Immune Deficiency*
439 *Syndromes*. 2017;75(5):517-527. doi:10.1097/QAI.0000000000001434
- 440 32. Stannah J, Soni N, Keng J, et al. Trends in HIV testing, the treatment cascade, and HIV
441 incidence among men who have sex with men in Africa: A systematic review and meta-
442 regression analysis. *medRxiv*. Published online November 15, 2022:2022.11.14.22282329.
443 doi:10.1101/2022.11.14.22282329
- 444 33. Neufeld B, Cholette F, Sandstrom P, et al. HIV acquisition prior to entry into formal sex work:
445 inference from next-generation viral sequencing. *AIDS*. 2023;37(6):987.
446 doi:10.1097/QAD.0000000000003484
- 447 34. Anderegg N, Johnson L. Increasing age and duration of sex work among female sex workers
448 in South Africa and its potential impact: a meta-analysis and simulation exercise. *IAS 2023*.
449 Published online 2023.
- 450 35. Stoner MCD, Rucinski KB, Lyons C, Napierala S. Differentiating the incidence and burden
451 of HIV by age among women who sell sex: a systematic review and meta-analysis. *J Int*
452 *AIDS Soc*. 2022;25(10). doi:10.1002/jia2.26028

- 453 36. Rao A, Stahlman S, Hargreaves J, et al. Sampling Key Populations for HIV Surveillance:
454 Results From Eight Cross-Sectional Studies Using Respondent-Driven Sampling and
455 Venue-Based Snowball Sampling. *JMIR Public Health Surveill.* 2017;3(4).
456 doi:10.2196/PUBLICHEALTH.8116
- 457 37. Scorgie F, Chersich MF, Ntaganira I, Gerbase A, Lule F, Lo YR. Socio-Demographic
458 Characteristics and Behavioral Risk Factors of Female Sex Workers in Sub-Saharan Africa:
459 A Systematic Review. *AIDS Behav.* 2012;16(4):920-933. doi:10.1007/s10461-011-9985-z
- 460 38. Sabin K, Johnston LG, Sabin K. Sampling Hard-to-Reach Populations with Respondent
461 Driven Sampling. *Methodological Innovations Online.* 2010;5(2):38.1-48.
462 doi:10.4256/MIO.2010.0017
- 463 39. Botswana Ministry of Health. 2012 Mapping, Size Estimation & Behavioral and Biological
464 Surveillance Survey (BBSS) of HIV/STI Among Select High-Risk Sub-Populations in
465 Botswana BIOLOGICAL SURVEILLANCE SURVEY (BBSS) OF HIV/STI AMONG SELECT
466 HIGH-RISK SUB-POPULATIONS IN BOTSWANA Technical Report July 2013 2 | Page
467 RESULTS FROM THE 2012 BIOLOGICAL AND BEHAVIOURAL SURVEILLANCE
468 SURVEY (BBSS) AMONG MOST AT RISK POPULATIONS IN BOTSWANA. Accessed
469 November 22, 2022.
470 <https://www.fhi360.org/sites/default/files/media/documents/BBSS%202012%20Final.pdf>
- 471 40. Braunstein SL, Ingabire CM, Kestelyn E, et al. High human immunodeficiency virus
472 incidence in a cohort of Rwandan female sex workers. *Sex Transm Dis.* 2011;38(5):385-
473 394. doi:10.1097/OLQ.0B013E31820B8EBA
- 474 41. Braunstein SL, van de Wijgert JH, Vyankandondera J, Kestelyn E, Ntirushwa J, Nash D.
475 Risk Factor Detection as a Metric of STARHS Performance for HIV Incidence Surveillance
476 Among Female Sex Workers in Kigali, Rwanda. *Open AIDS J.* 2012;6(1):112-121.
477 doi:10.2174/1874613601206010112
- 478 42. Braunstein SL, Nash D, Kim AA, et al. Dual Testing Algorithm of BED-CEIA and AxSYM
479 Avidity Index Assays Performs Best in Identifying Recent HIV Infection in a Sample of
480 Rwandan Sex Workers. *PLoS One.* 2011;6(4). doi:10.1371/JOURNAL.PONE.0018402
- 481 43. Chabata ST, Hensen B, Chiyaka T, et al. The impact of the DREAMS partnership on HIV
482 incidence among young women who sell sex in two Zimbabwean cities: results of a non-
483 randomised study. *BMJ Glob Health.* 2021;6:3892. doi:10.1136/bmjgh-2020-003892
- 484 44. Chersich MF, Bosire W, King'ola N, Temmerman M, Luchters S. Effects of hazardous and
485 harmful alcohol use on HIV incidence and sexual behaviour: a cohort study of Kenyan female
486 sex workers. *Global Health.* 2014;10(1). doi:10.1186/1744-8603-10-22

- 487 45. Diabaté S, Chamberland A, Geraldo N, Tremblay C, Alary M. Gonorrhoea, Chlamydia and
488 HIV incidence among female sex workers in Cotonou, Benin: A longitudinal study. *PLoS*
489 *One*. 2018;13(5). doi:10.1371/JOURNAL.PONE.0197251
- 490 46. Faini D, Msafiri F, Munseri P, et al. The Prevalence, Incidence, and Risk Factors for HIV
491 Among Female Sex Workers-A Cohort Being Prepared for a Phase IIb HIV Vaccine Trial in
492 Dar es Salaam, Tanzania. *J Acquir Immune Defic Syndr (1988)*. 2022;91(5):439-448.
493 doi:10.1097/QAI.0000000000003097
- 494 47. Forbi JC, Entonu PE, Mwangi LO, Agwale SM. Estimates of human immunodeficiency virus
495 incidence among female sex workers in north central Nigeria: Implications for HIV clinical
496 trials. *Trans R Soc Trop Med Hyg*. 2011;105(11):655-660.
497 doi:10.1016/J.TRSTMH.2011.08.001/2/105-11-655-FIG002.GIF
- 498 48. Fowke KR, Nagelkerke NJD, Kimani J, et al. Resistance to HIV-1 infection among
499 persistently seronegative prostitutes in Nairobi, Kenya. *Lancet*. 1996;348(9038):1347-1351.
500 doi:10.1016/S0140-6736(95)12269-2
- 501 49. Ghys PD, Diallo MO, Ettiègne-Traoré V, et al. Effect of interventions to control sexually
502 transmitted disease on the incidence of HIV infection in female sex workers. *AIDS*.
503 2001;15(11):1421-1431. doi:10.1097/00002030-200107270-00012
- 504 50. Gilbert PB, Mckeague IW, Eisen G, et al. Comparison of HIV-1 and HIV-2 infectivity from a
505 prospective cohort study in Senegal. *STATISTICS IN MEDICINE Statist Med*. 2003;22:573-
506 593. doi:10.1002/sim.1342
- 507 51. Kanki PJ, Travers KU, Marlink RG, et al. Slower heterosexual spread of HIV-2 than HIV-1.
508 *The Lancet*. 1994;343(8903):943-946. doi:10.1016/S0140-6736(94)90065-5
- 509 52. Kanki PJ, Hamel DJ, Sankalé JL, et al. Human immunodeficiency virus type 1 subtypes differ
510 in disease progression. *J Infect Dis*. 1999;179(1):68-73. doi:10.1086/314557
- 511 53. Travers K, Mboup S, Marlink R, et al. Natural Protection Against HIV-1 Infection Provided by
512 HIV-2. *Science (1979)*. 1995;268(5217):1612-1615. doi:10.1126/SCIENCE.7539936
- 513 54. Hargreaves JR, Mtetwa S, Davey C, et al. Cohort Analysis of Program Data to Estimate HIV
514 Incidence and Uptake of HIV-Related Services Among Female Sex Workers in Zimbabwe,
515 2009-2014. *J Acquir Immune Defic Syndr*. 2016;72(1):e1-e8.
516 doi:10.1097/QAI.0000000000000920
- 517 55. Kasamba I, Nash S, Shahmanesh M, et al. Missed Study Visits and Subsequent HIV
518 Incidence Among Women in a Predominantly Sex Worker Cohort Attending a Dedicated
519 Clinic Service in Kampala, Uganda. *J Acquir Immune Defic Syndr*. 2019;82(4):343-354.
520 doi:10.1097/QAI.0000000000002143

- 521 56. Kasamba I, Nash S, Seeley J, Weiss HA. Human Immunodeficiency Virus Incidence Among
522 Women at High-Risk of Human Immunodeficiency Virus Infection Attending a Dedicated
523 Clinic in Kampala, Uganda: 2008-2017. *Sex Transm Dis.* 2019;46(6):407-415.
524 doi:10.1097/OLQ.0000000000000978
- 525 57. Abaasa A, Mayanja Y, Asiki G, et al. Use of propensity score matching to create
526 counterfactual group to assess potential HIV prevention interventions. *Sci Rep.* 2021;11(1).
527 doi:10.1038/S41598-021-86539-X
- 528 58. Abaasa A, Nash S, Mayanja Y, et al. Simulated vaccine efficacy trials to estimate HIV
529 incidence for actual vaccine clinical trials in key populations in Uganda. Published online
530 2019. doi:10.1016/j.vaccine.2019.02.072
- 531 59. Vandepitte J, Weiss HA, Bukonya J, et al. Association between *Mycoplasma genitalium*
532 infection and HIV acquisition among female sex workers in Uganda: evidence from a nested
533 case–control study. *Sex Transm Infect.* 2014;90(7):545. doi:10.1136/SEXTRANS-2013-
534 051467
- 535 60. Redd AD, Ssemwanga D, Vandepitte J, et al. Rates of HIV-1 superinfection and primary
536 HIV-1 infection are similar in female sex workers in Uganda. *AIDS.* 2014;28(14):2147-2152.
537 doi:10.1097/QAD.0000000000000365
- 538 61. Kaul R, Kimani J, Nagelkerke NJ, et al. Monthly Antibiotic Chemoprophylaxis and Incidence
539 of Sexually Transmitted Infections and HIV-1 Infection in Kenyan Sex Workers: A
540 Randomized Controlled Trial. *JAMA.* 2004;291(21):2555-2562.
541 doi:10.1001/JAMA.291.21.2555
- 542 62. Kaul R, Rutherford J, Rowland-Junes SL, et al. HIV-1 Env-specific cytotoxic T-lymphocyte
543 responses in exposed, uninfected Kenyan sex workers: a prospective analysis. *AIDS.*
544 2004;18(15):2087-2089. doi:10.1097/00002030-200410210-00015
- 545 63. Peterson TA, Kimani J, Wachihi C, et al. HLA class I associations with rates of HIV-1
546 seroconversion and disease progression in the Pumwani Sex Worker Cohort. *Tissue*
547 *Antigens.* 2013;81(2):93-107. doi:10.1111/TAN.12051
- 548 64. Plummer FA, Chubb H, Simonsen JN, et al. Antibodies to opacity proteins (Opa) correlate
549 with a reduced risk of gonococcal salpingitis. *J Clin Invest.* 1994;93(4):1748-1755.
550 doi:10.1172/JC1117159
- 551 65. Plummer FA, Simonsen JN, Cameron DW, et al. Cofactors in Male-Female Sexual
552 Transmission of Human Immunodeficiency Virus Type 1. *J Infect Dis.* 1991;163(2):233-239.
553 doi:10.1093/INFDIS/163.2.233
- 554 66. Willerford DM, Bwayo JJ, Hensel M, et al. Human immunodeficiency virus infection among
555 high-risk seronegative prostitutes in Nairobi. *J Infect Dis.* 1993;167(6):1414-1417.
556 doi:10.1093/INFDIS/167.6.1414

- 557 67. MacDonald KS, Fowke KR, Kimani J, et al. Influence of HLA supertypes on susceptibility
558 and resistance to human immunodeficiency virus type 1 infection. *J Infect Dis.*
559 2000;181(5):1581-1589. doi:10.1086/315472
- 560 68. Kerrigan D, Mbwambo J, Likindikoki S, et al. Project Shikamana: Community Empowerment-
561 Based Combination HIV Prevention Significantly Impacts HIV Incidence and Care
562 Continuum Outcomes Among Female Sex Workers in Iringa, Tanzania. *J Acquir Immune*
563 *Defic Syndr.* 2019;82(2):141-148. doi:10.1097/QAI.0000000000002123
- 564 69. Ranganathan M, Kilburn K, Stoner MCD, et al. The Mediating Role of Partner Selection in
565 the Association Between Transactional Sex and HIV Incidence Among Young Women. *J*
566 *Acquir Immune Defic Syndr.* 2020;83(2):103-110. doi:10.1097/QAI.0000000000002225
- 567 70. Laga M, Alary M, Behets F, et al. Condom promotion, sexually transmitted diseases
568 treatment, and declining incidence of HIV-1 infection in female Zairian sex workers. *Lancet.*
569 1994;344(8917):246-248. doi:10.1016/S0140-6736(94)93005-8
- 570 71. Laga M, Manoka A, Kivuvu M, et al. Non-ulcerative sexually transmitted diseases as risk
571 factors for HIV-1 transmission in women: results from a cohort study. *AIDS.* 1993;7(1):95-
572 102. doi:10.1097/00002030-199301000-00015
- 573 72. Lyons CE, Olawore O, Turpin G, et al. Intersectional stigmas and HIV-related outcomes
574 among a cohort of key populations enrolled in stigma mitigation interventions in Senegal.
575 *AIDS.* 2020;34(Suppl 1):S63. doi:10.1097/QAD.0000000000002641
- 576 73. Baeten JM, Benki S, Chohan V, et al. Hormonal contraceptive use, herpes simplex virus
577 infection, and risk of HIV-1 acquisition among Kenyan women. *AIDS.* 2007;21(13):1771-
578 1777. doi:10.1097/QAD.0B013E328270388A
- 579 74. Baeten JM, Lavreys L, Sagar M, et al. Effect of contraceptive methods on natural history of
580 HIV: studies from the Mombasa cohort. *J Acquir Immune Defic Syndr.* 2005;38 Suppl 1.
581 doi:10.1097/01.QAI.0000167030.18278.0E
- 582 75. Graham SM, Raboud J, Jaoko W, Mandaliya K, McClelland RS, Bayoumi AM. Changes in
583 Sexual Risk Behavior in the Mombasa Cohort: 1993–2007. *PLoS One.* 2014;9(11).
584 doi:10.1371/JOURNAL.PONE.0113543
- 585 76. Lavreys L, Thompson M Lou, Martin HL, et al. Primary human immunodeficiency virus type
586 1 infection: clinical manifestations among women in Mombasa, Kenya. *Clin Infect Dis.*
587 2000;30(3):486-490. doi:10.1086/313718
- 588 77. Lavreys L, Baeten JM, Overbaugh J, et al. Virus load during primary human
589 immunodeficiency virus (HIV) type 1 infection is related to the severity of acute HIV illness
590 in Kenyan women. *Clinical Infectious Diseases.* 2002;35(1):77-81.
591 doi:10.1086/340862/2/35-1-77-FIG001.GIF

- 592 78. Martin HL, Nyange PM, Richardson BA, et al. Hormonal Contraception, Sexually Transmitted
593 Diseases, and Risk of Heterosexual Transmission of Human Immunodeficiency Virus Type
594 1. *J Infect Dis*. 1998;178(4):1053-1059. doi:10.1086/515654
- 595 79. Martin HL, Richardson BA, Mandaliya K, Achola JO, Overbaugh J, Kreiss JK. The early work
596 on hormonal contraceptive use and HIV acquisition. *J Acquir Immune Defic Syndr*. 2005;38
597 Suppl 1(SUPPL. 1). doi:10.1097/01.QAI.0000167027.33525.1C
- 598 80. Martin HL, Richardson BA, Nyange PM, et al. Vaginal Lactobacilli, Microbial Flora, and Risk
599 of Human Immunodeficiency Virus Type 1 and Sexually Transmitted Disease Acquisition. *J*
600 *Infect Dis*. 1999;180(6):1863-1868. doi:10.1086/315127
- 601 81. McClelland RS, Hassan WM, Lavreys L, et al. HIV-1 acquisition and disease progression
602 are associated with decreased high-risk sexual behaviour among Kenyan female sex
603 workers. *AIDS*. 2006;20(15):1969-1973. doi:10.1097/01.AIDS.0000247119.12327.E6
- 604 82. McClelland RS, Lavreys L, Hassan WM, Mandaliya K, Ndinya-Achola JO, Baeten JM.
605 Vaginal washing and increased risk of HIV-1 acquisition among African women: A 10-year
606 prospective study. *AIDS*. 2006;20(2):269-273. doi:10.1097/01.AIDS.0000196165.48518.7B
- 607 83. McClelland RS, Lavreys L, Katingima C, et al. Contribution of HIV-1 infection to acquisition
608 of sexually transmitted disease: A 10-year prospective study. *Journal of Infectious Diseases*.
609 2005;191(3):333-338. doi:10.1086/427262/2/191-3-333-TAB002.GIF
- 610 84. McClelland RS, Sangaré L, Hassan WM, et al. Infection with *Trichomonas vaginalis*
611 increases the risk of HIV-1 acquisition. *J Infect Dis*. 2007;195(5):698-702.
612 doi:10.1086/511278
- 613 85. McClelland RS, Lingappa JR, Srinivasan S, et al. Evaluation of the association between the
614 concentrations of key vaginal bacteria and the increased risk of HIV acquisition in African
615 women from five cohorts: a nested case-control study. *Lancet Infect Dis*. 2018;18(5):554-
616 564. doi:10.1016/S1473-3099(18)30058-6
- 617 86. Richardson BA, Lavreys L, Martin HL, et al. Evaluation of a low-dose nonoxynol-9 gel for the
618 prevention of sexually transmitted diseases: a randomized clinical trial. *Sex Transm Dis*.
619 2001;28(7):394-400. doi:10.1097/00007435-200107000-00006
- 620 87. Sabo MC, Richardson BA, Lavreys L, et al. Does bacterial vaginosis modify the effect of
621 hormonal contraception on HIV seroconversion. *AIDS*. 2019;33(7):1225-1230.
622 doi:10.1097/QAD.0000000000002167
- 623 88. Willcox AC, Richardson BA, Shafi J, et al. Derivation of an HIV Risk Score for African Women
624 Who Engage in Sex Work. *AIDS Behav*. 2021;25(10):3292-3302. doi:10.1007/S10461-021-
625 03235-7

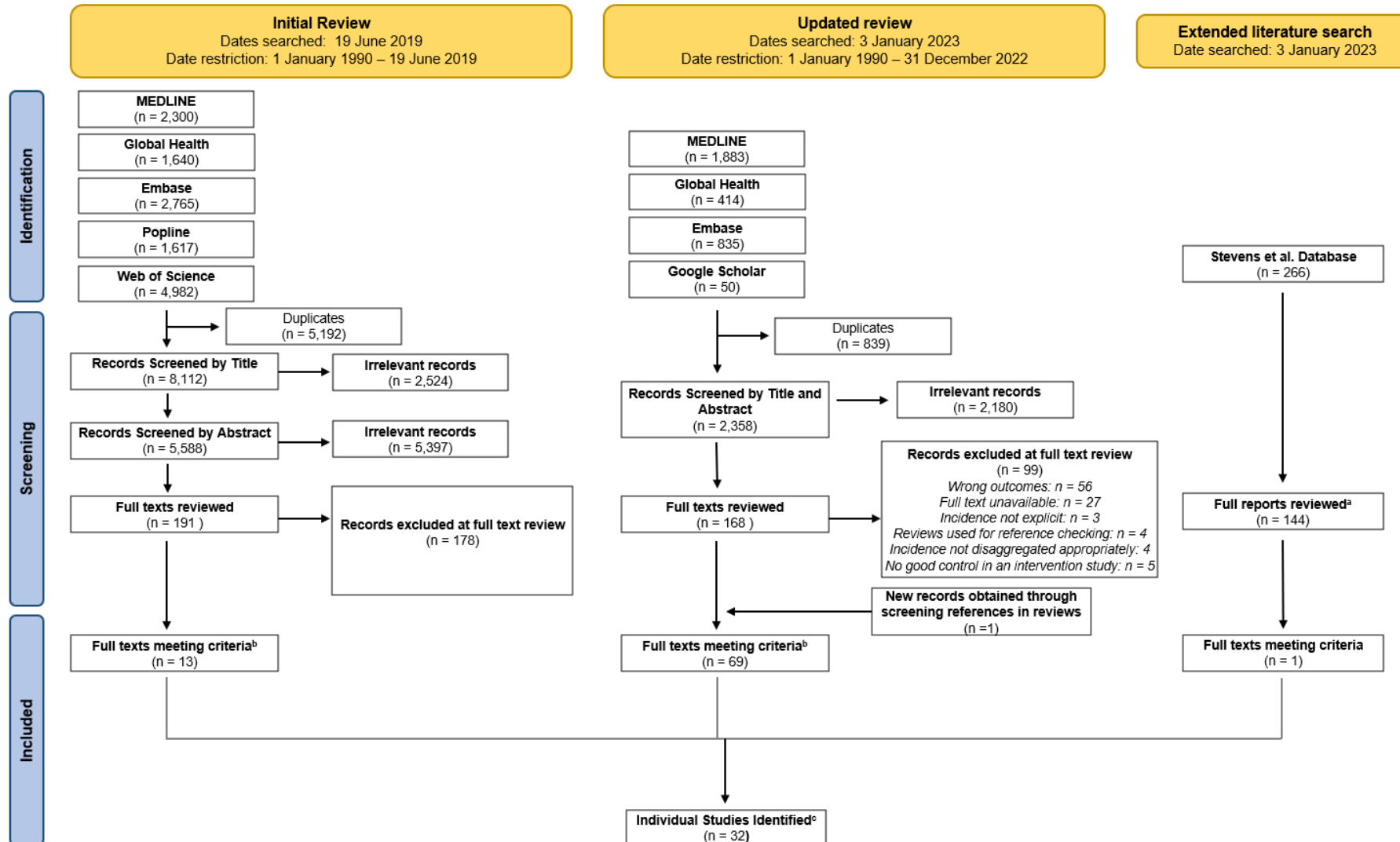
- 626 89. McKinnon LR, Izulla P, Nagelkerke N, et al. Risk Factors for HIV Acquisition in a Prospective
627 Nairobi-Based Female Sex Worker Cohort. *AIDS Behav.* 2015;19(12):2204-2213.
628 doi:10.1007/S10461-015-1118-7
- 629 90. Nagot N, Ouedraogo A, Ouangre A, et al. Is sexually transmitted infection management
630 among sex workers still able to mitigate the spread of HIV infection in West Africa? *J Acquir*
631 *Immune Defic Syndr* (1988). 2005;39(4):454-458.
632 doi:10.1097/01.QAI.0000152399.54648.B9
- 633 91. Naicker N, Kharsany ABM, Werner L, et al. Risk factors for HIV acquisition in high risk
634 women in a generalised epidemic setting. *AIDS Behav.* 2015;19(7):1305.
635 doi:10.1007/S10461-015-1002-5
- 636 92. van Loggerenberg F, Mlisana K, Williamson C, et al. Establishing a cohort at high risk of HIV
637 infection in South Africa: challenges and experiences of the CAPRISA 002 acute infection
638 study. *PLoS One.* 2008;3(4). doi:10.1371/JOURNAL.PONE.0001954
- 639 93. Nouaman MN, Becquet V, Plazy M, et al. Incidence of HIV infection and associated factors
640 among female sex workers in Côte d'Ivoire, results of the ANRS 12361 PrEP-CI study using
641 recent infection assays. *PLoS One.* 2022;17(11). doi:10.1371/JOURNAL.PONE.0271988
- 642 94. Price MA, Rida W, Mwangome M, et al. Identifying at-risk populations in kenya and south
643 africa: HIV incidence in cohorts of menwho report sex with men, sex workers, and youth. *J*
644 *Acquir Immune Defic Syndr* (1988). 2012;59(2):185-193.
645 doi:10.1097/QAI.0B013E31823D8693
- 646 95. Priddy FH, Wakasiaka S, Hoang TD, et al. Anal Sex, Vaginal Practices, and HIV Incidence
647 in Female Sex Workers in Urban Kenya: Implications for the Development of Intravaginal
648 HIV Prevention Methods. *AIDS Res Hum Retroviruses.* 2011;27(10):1067.
649 doi:10.1089/AID.2010.0362
- 650 96. Riedner G, Hoffmann O, Rusizoka M, et al. Decline in sexually transmitted infection
651 prevalence and HIV incidence in female barworkers attending prevention and care services
652 in Mbeya Region, Tanzania. *AIDS.* 2006;20(4):609-615.
653 doi:10.1097/01.AIDS.0000210616.90954.47
- 654 97. Roddy RE, Zekeng L, Kelley RA, Tamoufé U, Weir SS, Wong EL. A Controlled Trial of
655 Nonoxynol 9 Film to Reduce Male-to-Female Transmission of Sexually Transmitted
656 Diseases. <https://doi.org/101056/NEJM199808203390803>. 1998;339(8):504-510.
657 doi:10.1056/NEJM199808203390803
- 658 98. Van Damme L, Ramjee G, Alary M, et al. Effectiveness of COL-1492, a nonoxynol-9 vaginal
659 gel, on HIV-1 transmission in female sex workers: A randomised controlled trial. *Lancet.*
660 2002;360(9338):971-977. doi:10.1016/S0140-6736(02)11079-8

- 661 99. Auvert B, Marais D, Lissouba P, Zarca K, Ramjee G, Williamson AL. High-risk human
662 papillomavirus is associated with HIV acquisition among South African female sex workers.
663 *Infect Dis Obstet Gynecol.* 2011;2011. doi:10.1155/2011/692012

664

665

666



667

668 **Figure 1: Flow diagram summarising identification, screening, and inclusion of studies.**

669 a: Reports retrieved through key term search for the word “incidence” in File Explorer.

670 b: **Full texts meeting criteria** include multiple papers reporting on the same study.

671 c. **Individual Studies Identified** are the primary texts which data were extracted from.

Table 1: Annual incidence estimates for women who engage in sex work (WESW) and total population women aged 15-39

Study ^a	Country	Study Period	Area ^b	Mid-point Year	Age Group ^c	WESW New HIV Infections	Person-years (py) of follow-up	WESW Incidence/100py	Total female population incidence/100/py	IRR ^d
Ali (2020) ^e	Zimbabwe	2011-2017	Zimbabwe	2014	15-24	7	105	6.3	1.12	5.64
					25-39	6	175	3.3	0.92	3.58
Botswana MoH (2013) ^f	Botswana	2012	Gaborone, Francistown, Kasane	2012	15-39	46	450	12.5 (7.3, 17.1)	1.65	7.57
<i>Project Ubuzima Braunstein (2011)</i>	Rwanda	2006-2008	Kigali	2007	15-39	3	91	3.3 (0.0, 7.0)	0.47	6.96
Chabata (2021)	Zimbabwe	2017-2019	Chinhoyi	2018	15-24	16	226	7.1 (4.3, 11.5)	0.51	13.83
					Karoi	11	193	5.7 (3.2, 10.3)	0.48	11.96
					Kwekwe	12	278	4.3 (2.5, 7.6)	0.71	6.04
					Zvishavane	9	210	4.3 (2.2, 8.2)	0.68	6.28
Chersich (2014)	Kenya	2006-2007	Mombasa (Kisauni and Chaani)	2007	15-39	10	381	2.6	0.58	4.54
Diabate (2018)	Benin	2008-2012	Cotonou	2010	15-39	6	425	1.4 (0.3, 2.5)	0.28	5
Faini (2022)	Tanzania	2018-2019	Dar es Salaam	2019	15-24	12	278	4.3	0.05	89.86
					25-34	5	234	2.1	0.06	36.35
					35-44	4	97	4.1	0.05	88.44

Forbi (2011)	Nigeria	2006	Nasarawa State	2006	15-34	71	590	11.97 (8.5, 15.4)	0.3	39.56
Fowke (1996)	Kenya	1985-1994	Nairobi	1990	15-39	239	569	42.0	3.01	13.96
Ghys (2001)	Cote d'Ivoire	1994-1998	Abidjan	1996	15-39	11	68	16.3	1.79	9.11
Gilbert (2003)	Senegal	1985-1999	Dakar	1987	15-24	34	1628	2.1	0.01	219.9
			Dakar		25-34	91	5474	1.7	0.02	77.08
			Dakar		35-44	58	1939	3.0	0.01	201.7
			Dakar		45-49	12	260	4.6	0.01	597
Jones (2023) ^g	Zimbabwe	2010-2019	Zimbabwe	2010	15-39	3	56	5.4 (3.2, 10.9)	1.33	4.04
				2011	6	139	4.3 (2.2, 14.6)	1.25	3.45	
				2012	15	264	5.7 (1.9, 22.8)	1.16	4.88	
				2013	12	410	2.9 (1.5, 8.1)	1.09	2.69	
				2014	33	731	4.5 (2.5, 8.2)	1.01	4.46	
				2015	62	1402	4.4 (3.6, 5.4)	0.93	4.78	
				2016	58	1857	3.1 (2.5, 4.1)	0.82	3.81	
				2017	94	2422	3.9 (3.3, 4.65)	0.71	5.46	
				2018	114	2946	3.9 (3.3, 4.7)	0.57	6.75	
				2019	44	1432	3.1 (2.1, 5.0)	0.49	6.32	
Kasamba (2019)	Uganda	Cohort 1: 2008-2017 Cohort 2: 2013-2017	Kampala	2010	15-39	59	2007	2.9	1.06	2.74
				2014	46	1394	3.3	0.86	3.82	
				2016	65	2138	3.0	0.77	3.89	

Kassanje (2022) ^f	South Africa	2019	South Africa	2019	15-49	190	4130	4.6 (1.5, 8.5)	1.1	4.18
Kaul (2004)	Kenya	1998-2002	Nairobi	2000	15-39	16	495	3.2	1.2	2.67
Kerrigan (2017)	Tanzania	2015-2017	Mafinga	2002	15-39	10	144	6.9	2.28	3.04
Kilburn (2018)	South Africa	2012-2015	Mpumalanga	2014	15-19	41	1273	3.2	1.85	1.74
Laga (1994)	DRC	1988-1991	Kinshasa	1988	15-39	70	880	11.7	0.32	36.55
Lyons (2020)	Senegal	2015-2017	Dakar, Mbour, Theis	2016	15-39	4	303	1.3 (0.5, 3.5)	0.01	151.2
Malama (2022)	Zambia	2012-2017	Ndola, Lusaka	2015	15-44	24	884	2.7	1.59	1.73
McClelland (2015) ^g	Kenya	1993-2017	Mombasa	1993	15-39	20	335	6.0	3.02	1.97
				1994		36	228	15.8	2.72	5.83
				1995		24	213	11.3	2.29	4.92
				1996		29	325	8.9	1.86	4.8
				1997		41	364	11.3	1.56	7.24
				1998		31	271	11.4	1.3	8.78
				1999		24	207	11.6	1.13	10.28
				2000		16	188	8.5	0.99	8.65
				2001		8	216	3.7	0.88	4.22
				2002		19	251	7.6	0.81	9.34
				2003		14	245	5.7	0.73	7.8
				2004		13	263	5.0	0.69	7.22
				2005		14	271	5.2	0.65	7.98
				2006		8	228	3.5	0.6	5.8
				2007		7	244	2.9	0.58	4.98

				2008		4	211	1.9	0.54	3.51
				2009		9	163	5.5	0.52	10.73
				2010		3	187	1.6	0.48	3.34
				2011		3	283	1.1	0.45	2.37
				2012		2	334	0.6	0.41	1.47
				2013		4	280	1.4	0.37	3.84
				2014		5	225	2.2	0.34	6.57
				2015		5	222	2.3	0.31	7.25
				2016		4	216	1.9	0.27	6.78
				2017		3	237	1.3	0.24	5.27
McKinnon (2015)	Kenya	2008-2011	Nairobi	2010	15-39	34	1514	2.2 (1.6, 3.1)	0.58	3.78
Nagot (2005)	Burkina Faso	1998-2002	Bobo-Dioulasso	2000	15-39	19	594	3.2 (1.9, 4.9)	0.18	17.72
Naiker (2015)	South Africa	2004-2006	Durban	2005	25-49	10	248	4.0	1.82	2.22
					15-24	8	59	13.5	2.53	5.32
Nouaman (2022)	Cote d'Ivoire	2016-2017	San Pedro	2017	15-39	4	188	3.3	0.08	43.75
			Abidjan			3	293	1.6	0.14	11.08
Price (2012)	Kenya	2008	Kilifi	2007	15-39	9	339	2.7 (1.4, 5.1)	0.36	7.51
			Nairobi			2	527	0.4 (0.1, 1.5)	0.7	0.57
Priddy (2011)	Kenya	2008	Nairobi (Mukuru District)	2008	15-39	5	89	5.6 (1.6, 12.0)	0.66	8.54
Riedner (2006)	Tanzania	2000-2003	Mbeya Region	2002	15-39	19	99	19.2	1.32	14.56
Roddy (1998)	Cameroon	1994-1996	Yaounde, Douala	1995	15-39	46	698	6.6	0.7	9.4

Thirumurthy (2021) ^g	Kenya	2017-2020	Siaya County	2018	15-39	0	939	0.0	0.41	0
Van Damme (2002)	South Africa	1996-2000	KwaZulu-Natal	1998	15-39	30	182	16.5	2.96	5.57
	Benin		Cotonou		10	121	8.3	0.77	10.79	
	Cote d'Ivoire		Abidjan		5	67	7.4	1.4	5.29	
Van der Loeff (2001)	Guinea-Bissau	1989-1998	Guinea-Bissau	1994	15-39	3	126	2.4	0.41	5.78
					40-49	7	160	4.4	0.22	19.89
					50-59	5	67	7.5	0.12	60.77

- 673 a. Referenced study taken as the primary study from which estimates extracted from, or from whom unpublished estimates were received.
- 674 b. Area used to matching WESW incidence to total female population incidence estimates to calculate incidence rate ratios.
- 675 c. Age group used to match WESW incidence to total female population incidence estimates; when no age information was specified a default of 15-39
- 676 years was used.
- 677 d. Incidence Rate Ratios (IRR) calculated by dividing study-reported WESW incidence by area-year matched total population female incidence. Total
- 678 population female incidence in 2022 extracted from Naomi, the UNAIDS-supported district-level estimation model²¹, and extrapolated parallel to
- 679 national-level female HIV incidence trajectories from UNAIDS Global HIV Estimates 2022, National Spectrum estimates^{22,23}.
- 680 e. Incidence estimate derived from serial cross-sectional prevalence testing with no estimate of person-years or number of new infections. The number
- 681 of person-years was imputed using the median number of person-years across all studies and split proportionally according to the denominator in
- 682 each age group. Imputed person-years values were then multiplied by the study-reported HIV incidence to back-calculated the number of HIV
- 683 infections.
- 684 f. Incidence estimate derived from recent infection testing with a mean duration of recent infection of six months. The number of person-years was
- 685 derived by multiplying the number of tested individuals by 0.5.
- 686 g. Unpublished WESW incidence and person-years of follow-up obtained through personal communications with study authors.

687 IRR = incidence ratio ratio; WESW = female sex worker; py = person-years; DRC = Democratic Republic of Congo

688
689
690

Table 2: Study characteristics

Study	Country	Age	Definition of women who engage in sex work (WESW)	Study design & recruitment	Incidence estimation	Additional papers identified
Ali (2020) ¹²	Zimbabwe	18-39	WESW that had exchanged sex for money in the past 30 days and had been living or working in the survey site for at least 6 months	Cross-sectional respondent-driven sampling surveys conducted between 2011-2017 at sex-work hotspots	Prevalence back calculation, pooling data from RDS surveys. Estimation of HIV incidence from analysis of HIV prevalence patterns	
Braunstein (2011) ⁴⁰	Rwanda	Median: 24, Range: 18-46	Women who had exchanged sex for money at least once in the last month and/or currently having sex with multiple partners plus having sex at least twice per week (all enrolled women self-reported sex workers)	Cohort recruited through community meetings conducted by community mobilisers	Seroconversion at follow-up 6-12 months after baseline survey. Midpoint estimation between last HIV-negative and first-HIV positive test	41,42
Botswana MoH (2013) ³⁹	Botswana	18+	Women who received either money or a gift or incentive in exchange for sexual favours within the past three months	Time-location sampling at hotspots for recruitment to cross-sectional IBBS survey	Recent infection testing algorithm. BED incidence assay	
Chabata (2021) ⁴³	Zimbabwe	18-24	Young women who had exchanged sex for money and/or material support in the past month, and explicitly stated that sex acts with men would not have happened in	Non-randomised 'plausibility' evaluation of DREAMS on HIV incidence. respondent-driven sampling with seeds selected from sex-work hotspots	Seroconversion at follow-up 24 months post-recruitment. Midpoint estimation between an HIV-negative and HIV-positive test.	

			the absence of an exchange, and if they were not planning to move from the site within the next 6 months.	identified through a community mapping		
Chersich (2014) ⁴⁴	Kenya	16+ Mean: 25.1, SD: 5.2	Women reporting receipt of money in exchange for sex as part of their livelihood in the last 6 months, sexually active in the past 3 months, and not pregnant at the time of enrolment	Cohort recruited in locations with existing community links through long-standing service provision by implementers and peers through snowball sampling	Seroconversion between quarterly follow-ups. Midpoint estimation between an HIV-negative and HIV-positive test	
Diabete (2018) ⁴⁵	Benin	≥ 18	Women attending Dispensaire IST, the main clinic dedicated to WESW in Cotonou	Clinic recruited cohort – all women attending invited to participate	Seroconversion between quarterly follow-ups. Midpoint estimation between an HIV-negative and HIV-positive test.	
Faini (2022) ⁴⁶	Tanzania	18-45	Women self-identifying as sex workers who resided within Dar es Salaam, reported to have exchanged sexual intercourse for money within the past month, considered themselves to be at increased risk for HIV infection and willing to undergo pregnancy testing.	Respondent driven sampling recruited cohort	Seroconversion follow-up visits at 3, 6, 9, and 12 months. Midpoint estimation between an HIV-negative and HIV-positive test	
Forbi (2011) ⁴⁷	Nigeria	18-35	Active WESW living in brothels within Nasarawa state of North	Cross-sectional cohort recruited from brothels	Recent infection testing algorithm. BED assay. Calculation - Hargrove	

			Central Nigeria (results show all reported >1 partner/week)		adjustments and Mcwalter and Welte's correction.	
Fowke (1996) ⁴⁸	Kenya		Prostitutes of lower socioeconomic status (from a slum area in Nairobi) who practice prostitution from their home	Cohort recruited from an existing community-based cohort set up in 1985	Seroconversion between follow-ups every 6 months. Midpoint estimation.	
Ghys (2001) ⁴⁹	Cote d'Ivoire	Median: 27, IQR: 22-32	WESW attending the Clinique de Confiance, a HIV/STD clinic only available for those who are WESW or their stable sex partners.	Intervention study - peer educator recruited for a survey before recruitment of HIV-negative WESW for the study	Seroconversion between biannual follow-ups. (from: - HIV -ve to HIV-1 seropositive - HIV-2 seropositive to seroreactive to both HIV-2 and HIV-1 - HIV-ve to HIV-2 seropositive). Midpoint estimation.	
Gilbert (2003) ⁵⁰	Senegal	Mean: 30.4, Range: 19-56	Registered sex workers (self-identifying SWs were required by government to register and regularly attend a health clinic)	Clinic recruited cohort	Seroconversion between follow-ups every 6 months. Midpoint estimation.	51-53
Jones (2022) ¹⁷	Zimbabwe	Median age at first test 27	Women attending programme clinics - predominantly cis-women who self-identify as selling sex.	Routinely collected clinic data from Sisters with a Voice, a national sex worker programme including community outreach	Seroconversion between two tests after first attending the programme. Midpoint estimation.	54

Kasamba (2019) ⁵⁵	Uganda	18+ (under 18 included if pregnant, had children or provided for their own livelihood)	Women who reported engaging in commercial sex (self-identified WESW or received money, goods, or other favours in exchange for sex) or employed in an entertainment facility. Our analysis only includes outcomes for those whose source of income at follow-up was sex work alone, or sex work and another job (results were available for those who did not undertake sex work, but these were excluded)	Peer recruited cohort at mapped sex work hotspots	Seroconversion between 3-monthly follow-ups. Random estimation with uniform distribution.	56–60
Kassanje (2022) ¹³	South Africa	18+ Median: 32, IQR 27–38	Cisgender women who had sold or transacted in sex in the preceding 6 months and worked in one of the districts that were studied.	Cross-sectional respondent driven sampling survey recruitment at hotspots visited by outreach programmes	Recent infection testing algorithm. Kassanje method for incidence calculation. MDRI 145, FRR 0-50%	
Kaul (2004) ⁶¹	Kenya	18+ Mean: 29.1, SD: 7.8	Women who reported having received money or gifts in exchange for sex over the past month	RCT recruited through a series of community visits assisted by peer educators.	Seroconversion between follow-ups every 6 months.	62–67
Kerrigan (2017) ⁶⁸	Tanzania	18+ Mean: 27.8	Women who reported exchanging sex for money in the past month.	RCT recruited through time location sampling at entertainment venues	Seroconversion between baseline and follow-up at 18 months.	

Kilburn (2018) ²⁴	South Africa	Recruited ages 13-20, enrolled in high school. Median 15, IQR: 14-17	Young women who reported transactional sex (where they felt that they had to have sex with a male partner as he gave them money or gifts) with any partner in the past 12 months	RCT recruited through the Agincourt Health and Social Demographic Surveillance System (HDSS). Participants visited at home to check eligibility for enrolment	All participants were assessed before randomization and then reassessed annually at 12, 24, and 36 months until they graduated from high school or the study ended,	69
Laga (1994) ⁹⁷	Democratic Republic of Congo		Women who self-identified as sex workers	Cohort study (recruitment method not reported)	6-monthly HIV-1 incidence rates were computed assuming that seroconversion had occurred at mid-point between the first positive HIV-1 serological test and the last negative one.	98
Lyons (2020) ⁷⁰	Senegal	18+ Mean: 38.5, IQR: 30-45	Women aged assigned the female sex at birth and having been engaged in sex work as a primary source of income during the year prior to enrolment.	Cohort recruited through respondent driven sampling with additional purposive sample recruitment	Time to event survival analysis - seroconversion date was the diagnosis date. 4-month follow-up visits	
Malama (2022) ¹⁵	Zambia	18-45	Women who reported currently exchanging sex for money.	Community recruited cohort through peers and health care workers at bars, lodges, and street	First visit 1 month after enrolment, then 2 months later and then quarterly.	
McClelland (2015) ¹⁸	Kenya	18+ Median:	Participants self-reported exchanging sex for cash or in-kind payment. The majority of	1993-1997: Clinic recruited cohort with outreach meetings in bars. 1998-2017: Cohort	Seroconversion estimated between monthly follow-ups. For women who became infected with HIV and	11,71-86

		31, IQR: 26-37	women reported working in bars, where they met local male clients	recruited through peer-led community outreach meetings at bars	had a positive VL first measured at/after seroconversion, the date of infection was estimated at midpoint between the last seronegative and first seropositive visit. For women with a detectable VL prior to seroconversion (i.e., HIV RNA was detected but antibodies were not), the date of infection was estimated to be 17 days prior to the positive VL	
McKinnon (2015) ⁸⁷	Kenya		Anyone enrolled at the SWOP-City clinic – a sex worker outreach program offering integrated HIV prevention, care & treatment services	Community recruited cohort at hotspots through peers and health care workers	Seroconversion between quarterly follow-ups.	
Nagot (2005) ⁸⁸	Burkina Faso	15-56	Professional sex workers ("seaters" and "roamers", averaging 18 to 28 clients per week) and non-professional sex workers (waitresses, fruit/beer sellers, students - who did not identify as a sex worker but reported an average of 2-3 clients per week	Community recruited cohort at workplaces through peers	Seroconversion during follow-up visits which took place every 3 months	

Naicker (2015) ⁸⁹	South Africa	18+	Self-identifying sex workers	Purposively recruited cohort through community liaison partners	Seroconversion during monthly follow-ups. Midpoint estimation.	⁹⁰
Nouaman (2022) ⁹¹	Cote d'Ivoire	18+ Median: 25, IQR: 21-29	WESW working at a site of prostitution at the time of the study.	Cross-sectional convenience sample recruitment by CBO staff	Recent infection testing algorithm. MDRI 0.3 years, FRR 0.013	
Price (2012) ⁹²	Kenya	Median:25, Range: 18–65	Women who had received goods or money for sex	Cohort recruitment through hotspots, VCT centres and peer recruitment	Seroconversion between quarterly follow-ups.	
		Median: 28, Range: 18–59				
Priddy (2011) ⁹³	Kenya	Mean: 28, Range: 18-55	Women age 18–60, HIV negative, not pregnant, and who reported exchanging sex for money or gifts at least three times in the past month.	Cohort recruited HIV-negative women who attended education sessions for female sex workers in the Mukuru neighbourhood of Nairobi	Seroconversion at follow-up 6 months after baseline.	
Riedner (2006) ⁹⁴	Tanzania	16-39	Women working in modern and traditional bars, guesthouses and hotels.	Cohort recruited from project sites (seem to be hotspots)	Seroconversion between 3-monthly follow-ups. Midpoint estimation.	
Roddy (1998) ⁹⁹	Cameroon	18-45 Mean: 26	Female sex workers residing in Yaoundé or Douala, Cameroon, who averaged at least four sexual partners per month	RCT recruitment not clear	Seroconversion at yearly follow-up	

Thirumurthy (2021) ¹⁶	Kenya	18+ Median 25, IQR: 22-31	Women who reported sex work as their primary or secondary source of income with ≥2 male sexual partners in the previous 4 weeks, owning or having access to a mobile phone, intending to remain in the study area for 24 months and not being enrolled in another prevention study	Cohort recruited through random sampling in beach and hotspot clusters from a list of all eligible WESW	Seroconversion between 6-monthly follow-ups.	
Van Damme (2002) ⁹⁵	Benin, Cote d'Ivoire, South Africa	18+ (16+ South Africa)	Participants are not users of intravenous drugs or intravaginal spermicides other than the study drug; not pregnant or no wish to become pregnant in the next 6 months	RCT clinic recruitment	Seroconversion between follow-ups occurring every 2 months. Midpoint estimation.	96

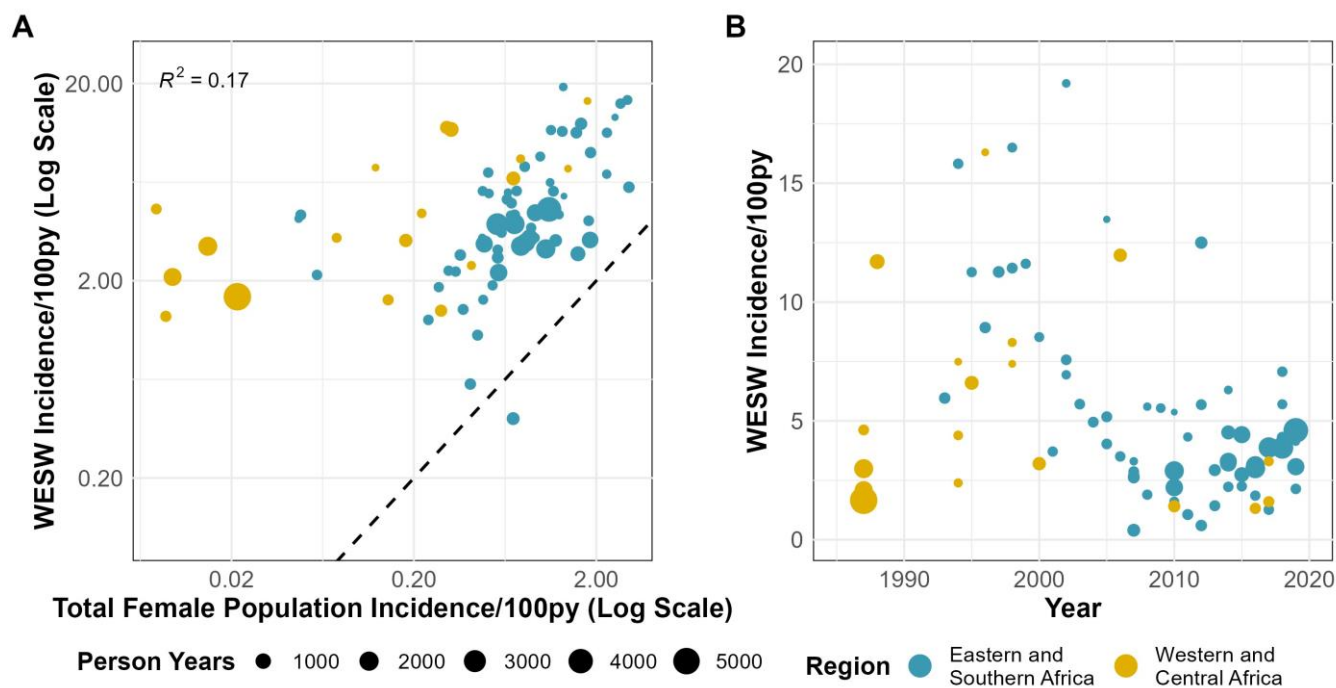


Figure 2: Empirical estimates of HIV Incidence among women engaging in sex work. A) Association between HIV incidence in sex workers and in the district-year-sex matched total population. B) Empirical estimates of HIV incidence in sex workers over time. Black dashed line in A represents the line of equality; WESW = women who engage in sex work; py = person-years

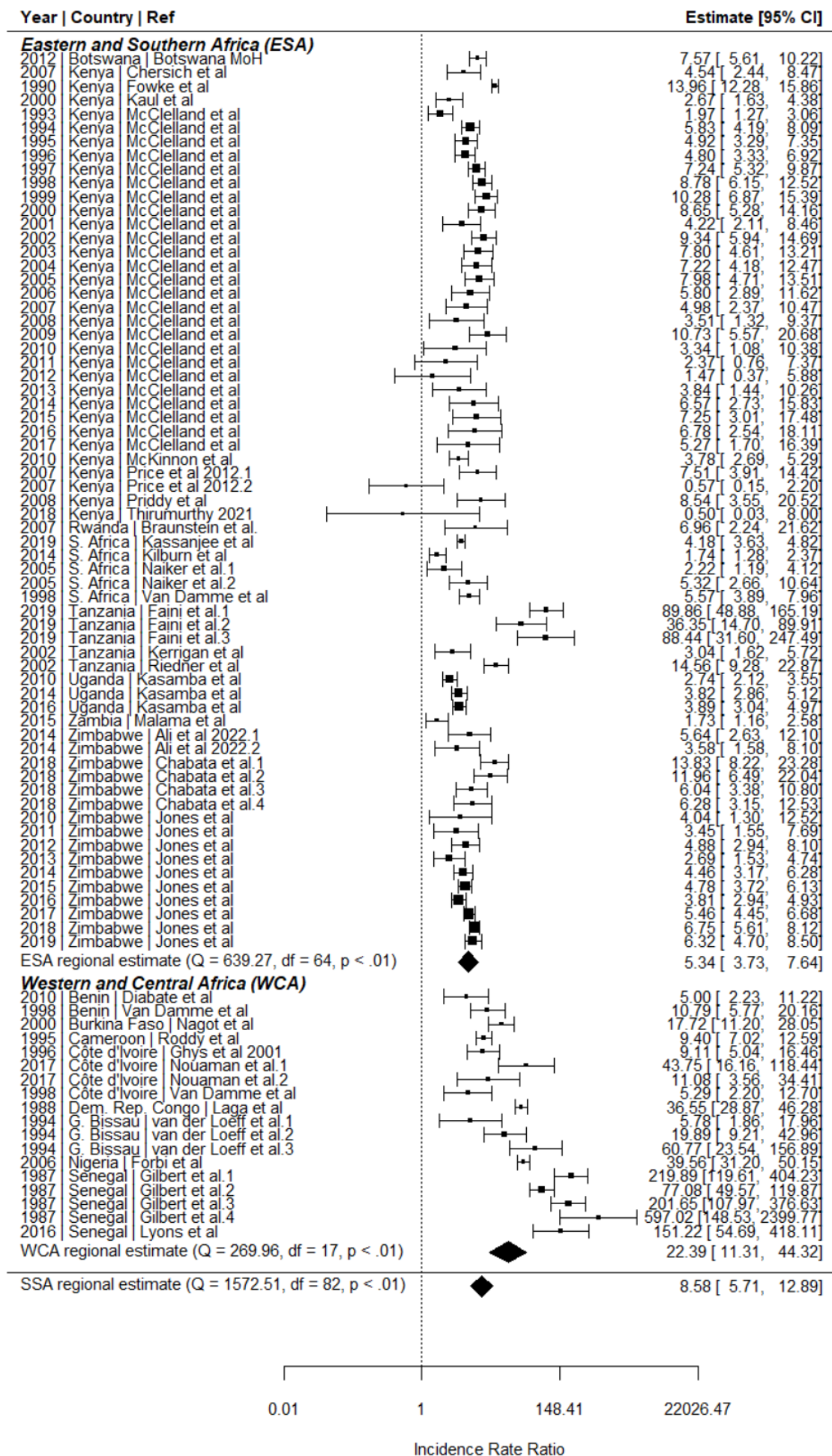


Figure 3 Meta-analysis of HIV incidence in women engaging in sex work relative to the total female population in Sub-Saharan Africa. IRRs calculated by dividing empirical estimates of sex worker HIV incidence by HIV incidence among age-district-year matched total population women derived from the district-level estimation model Naomi²¹. ESA: Eastern and Southern Africa; WCA: Western and Central Africa; SSA: Sub-Saharan Africa.

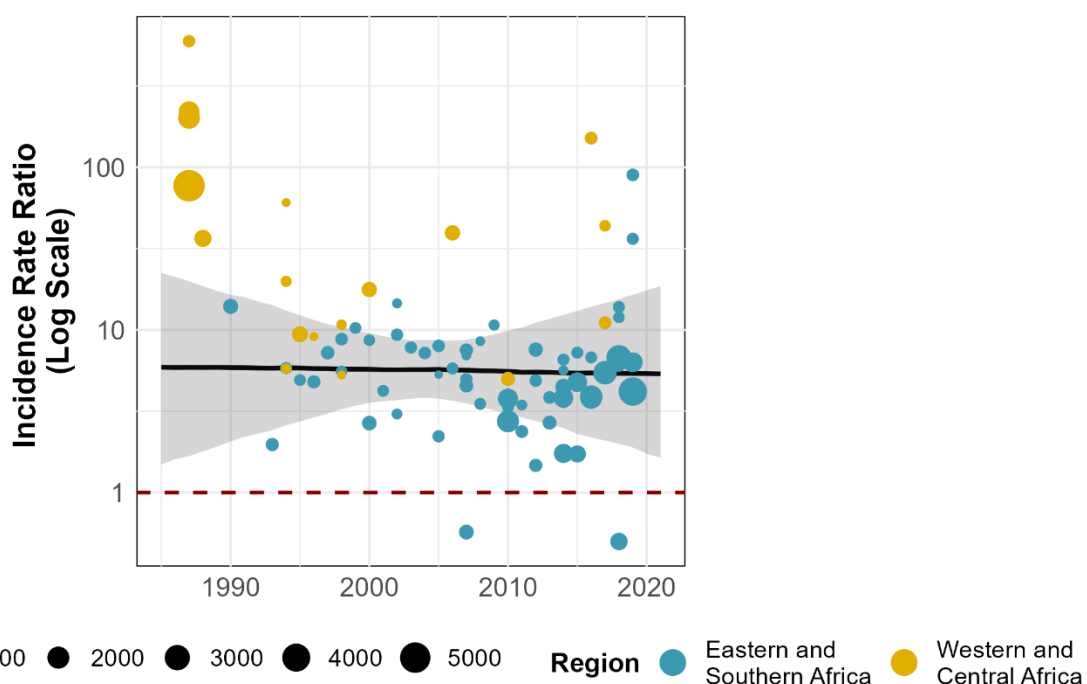


Figure 4: HIV incidence rate ratios modelled over time, presented on the logarithmic scale. Points represent incidence rate ratios calculated by dividing study-reported HIV incidence in women engaging in sex work by age-district-year matched total population HIV incidence derived from the Naomi model²¹. Black line represents the estimated incidence rate ratio (IRR) for Sub-Saharan Africa, with the grey shading capturing the 95% uncertainty range. The red dashed line represents an IRR of 1 (HIV incidence in sex workers = total female population HIV incidence).

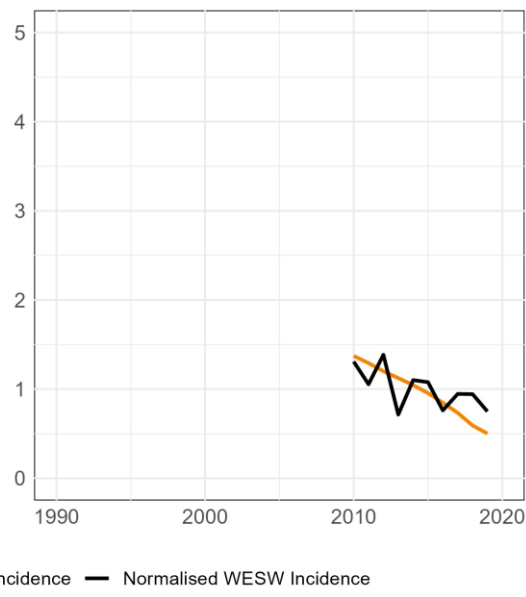
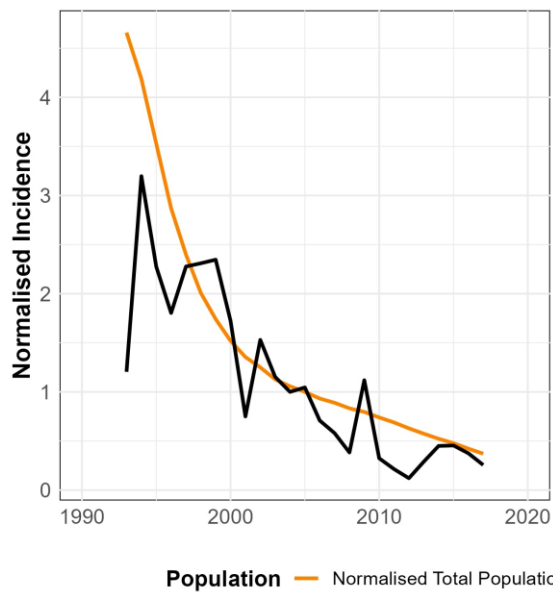
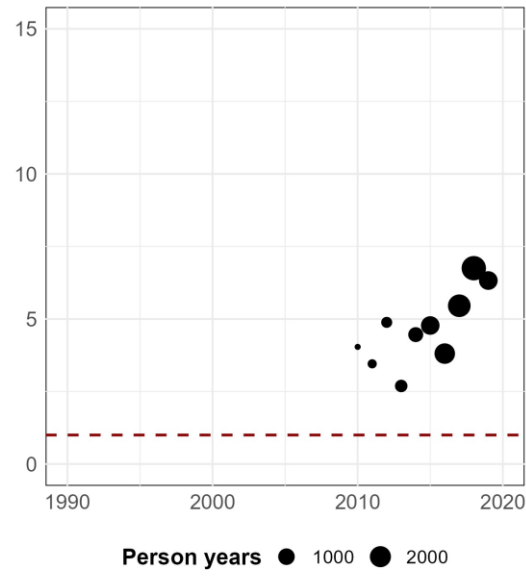
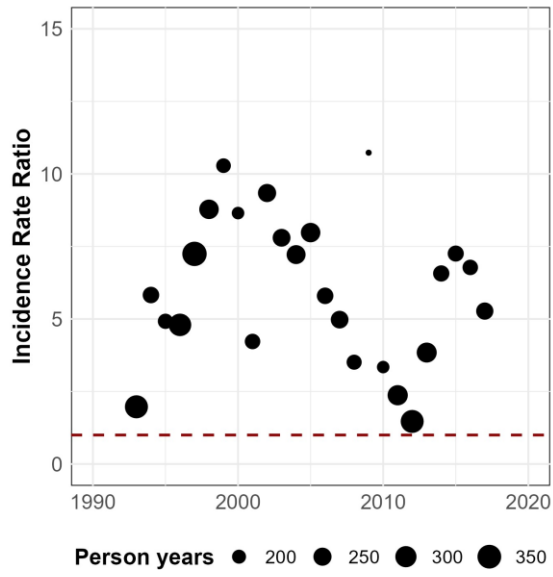
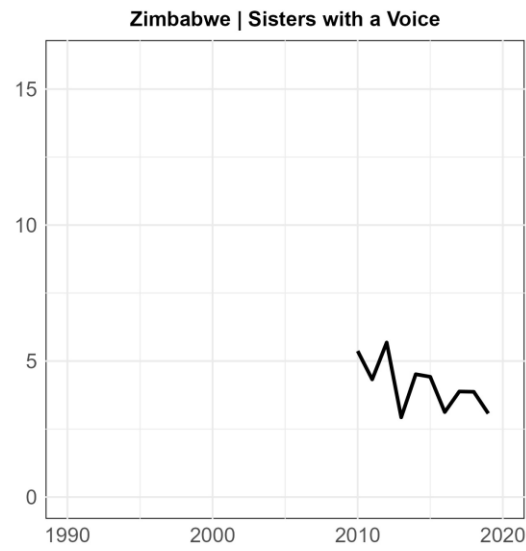
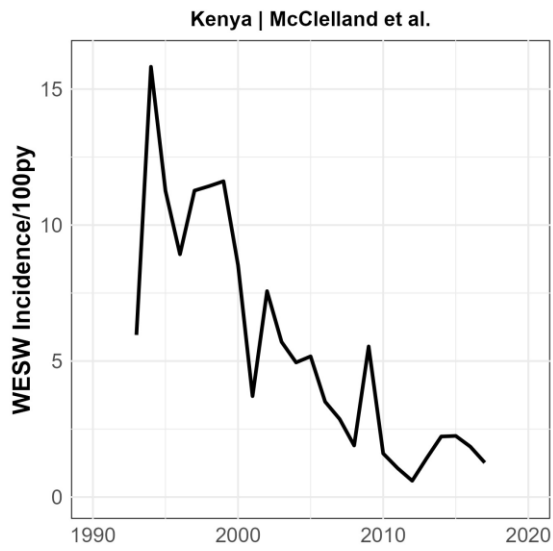


Figure 5: Case Studies - Incidence and Incidence Rate Ratio (IRR) trends over time in data from Mombasa, Kenya (McClelland et al) and Zimbabwe (Jones et al). Upper row: Empirical incidence in women engaging in sex work over time. Middle row: Incidence rate ratio over time. The red dashed line represents an IRR of 1 (HIV incidence in sex workers = total female population HIV incidence). Lower row: Normalised incidence over time. Calculated as a ratio of annual HIV incidence divided by incidence in the median year (1993-2018 for McClelland et al: median year = 2005; 2010-2019 for Jones et al: median year = 2015). WESW: Women who engage in sex work; IRR: Incidence Rate Ratio.