

1 **Pharmacogenetics of efavirenz exposure in cervicovaginal fluid during pregnancy and postpartum**

2 Oluwasegun Eniyewu¹, Uche Azuka², Jonah Ogah², Ebunoluwa Adejuyigbe³, Oluseye Bolaj⁴i, Adeniyi
3 Olagunju⁵

4 ¹Department of Pharmaceutical and Medicinal Chemistry, Faculty of Pharmaceutical Sciences, University of
5 Ilorin, Ilorin, Nigeria;

6 ²Federal Medical Centre, Makurdi, Nigeria;

7 ³Department of Paediatrics and Child Health, Faculty of Clinical Sciences, Obafemi Awolowo University, Ile-
8 Ife, Nigeria;

9 ⁴ Department of Pharmaceutical Chemistry, Faculty of Pharmacy, Obafemi Awolowo University, Ile-Ife,
10 Nigeria.

11 ⁵Department of Pharmacology and Therapeutics, University of Liverpool, Liverpool, United Kingdom.

12 *Correspondence: Dr Adeniyi Olagunju, Sherrington Building, Ashton Street, Liverpool, L69 3GE, United
13 Kingdom. Email: olagunju@liverpool.ac.uk. Tel.: +44151 794 0418.

14 Running Head: Efavirenz disposition into the FGT

15 **Conflict of interest:** None to declare.

16 **Source of funding:** This work was supported in whole, or in part, by the Wellcome Trust International
17 Training Fellowship to Adeniyi Olagunju (204776/Z/16/Z). The funder played no role in study design, data
18 collection and analysis, decision, preparation of the manuscript or decision to publish.

19 **Abstract**

20 **Objectives**

21 Adequate antiretroviral drug distribution into the female genital tract (FGT) could play an important role in
22 reducing the risk of heterosexual and mother-to-child transmission of HIV. In this study, we investigated
23 the combined influence of pregnancy and genetic polymorphisms on efavirenz pharmacokinetics in
24 cervicovaginal fluid (CVF) of women receiving antiretroviral therapy.

25 **Methods**

26 A total of 159 women (147 pregnant and 12 postpartum) living with HIV and receiving efavirenz-containing
27 antiretroviral therapy were recruited across two sites in Nigeria (Federal Medical Centre, and Bishop
28 Murray Medical Centre, Makurdi) between 2017-2020. In stage 1, sparse CVF and dried blood spot (DBS)
29 samples were obtained from each participant during pregnancy to assess possible association between
30 drug concentration and *CYP2B6* polymorphisms (516G>T and 983 T>C). In the second stage, participants
31 were stratified into three genotype groups (extensive, intermediate and low metabolisers) and re-enrolled
32 for intensive pharmacokinetic sampling.

33 **Results**

34 In stage 1 (88 CVF, 81 plasma and 73 paired samples), *CYP2B6* 516G>T was independently associated with
35 both CVF ($\beta = 997$ ng/mL (90% CI: 598, 1357), $p = 5.7 \times 10^{-5}$) and plasma ($\beta = 1400$ ng/mL (90% CI: 1051,
36 1748), $p = 5.7 \times 10^{-9}$) efavirenz concentration during pregnancy. In the second stage (12 pregnant, 12
37 postpartum), median (IQR) efavirenz C_{min} in CVF during pregnancy versus postpartum was 243 ng/ml (168-
38 402) vs 447 ng/ml (159-974), C_{max} was 1031 ng/ml (595-1771) vs 1618 ng/ml (675-2695), and AUC_{0-24} was
39 16465 ng.h/ml (9356-30417) vs 30715 ng.h/ml (10980-43714). Overall, median CVF-to-plasma AUC ratio
40 was 0.34 during pregnancy and 0.46 postpartum. When patients were stratified using *CYP2B6* 516G>T,
41 efavirenz median clearance increased by 57.9% during pregnancy compared with postpartum control ($p =$
42 0.232) in patients with the *CYP2B6* 516GT genotype. The AUC_{0-24h} , C_{max} and C_{min} reduced by 33.8%
43 (($p=0.182$), 8.6% (0.175) and 59.5% (0.171) during pregnancy, with values of 20671 ng.h/ml (15993-28712),
44 1550 ng/ml (1090-2090) and 330 ng/ml (250-440), respectively, compared with 31229 ng.h/ml (27660-
45 41873), 1695 ng/ml (1540-3003) and 814 ng/ml (486-981) during postpartum in this genotype.

46 Median efavirenz C_{min} in CVF was 1.93 and 3.55 times higher than the $PBIC_{90}$ of 126 ng/ml in the pregnant
47 and postpartum cohorts, respectively.

48

49 **Conclusions**

50 Efavirenz is well distributed into the CVF, and both pregnancy and polymorphisms in its disposition genes
51 affect CVF exposure.

52 **Keywords:** Cervicovaginal fluid, Pregnancy, Postpartum, Efavirenz, Pharmacogenetics.

53 **Introduction**

54 The understanding of antiretroviral pharmacokinetics in the female genital tract (FGT) is of growing interest
55 in the HIV prevention field because of its importance in designing more effective therapeutic options to
56 reduce serodiscordant and mother-to-child HIV transmission[1]. Although a number of clinical studies that
57 focus on quantifying antiretroviral drugs in the FGT have been reported in the literature[2–6]. ARV
58 characterization in this compartment has not yet been well understood. While pregnancy and
59 polymorphisms have been established to alter ARV plasma exposure[7–10], the knowledge of the effect of
60 these factors on ARV disposition in the FGT is very limited. With evidence of an ongoing risk of viral
61 shedding in FGT, even in patients on suppressive antiretroviral therapy (ART) despite undetectable plasma
62 viremia[11–13], there is a need to further understand antiretroviral dynamics in this compartment to
63 enable the design of effective therapies.

64 MTCT HIV-1 transmission is essentially minimized by suppressing HIV replication and reducing plasma viral
65 load to an undetectable level, particularly at the early stages of pregnancy[14]. Vaginal viral shedding in the
66 instance of suppressed plasma viremia and in patients newly placed on ART drugs can potentially increase
67 the risk of heterosexual and MTCT HIV transmission[15,16]. As of 2022, an approximated 76.4% (29.8
68 million of the 39 million people living with HIV globally) were reported to be receiving antiretroviral
69 therapies (ART), including at least 8 out of every 10 pregnant women with HIV [17]. Despite this high access
70 to ART, new HIV transmission among children remains substantial, most of it through the perinatal route.
71 Since a substantial proportion of MTCT occurs at the time of delivery via contact with infected female
72 genital fluids [18,19], a significant percentage of these new pediatric HIV infections can be prevented by
73 having a better understanding of ARV disposition in the FGT and factors that could affect FGT drug
74 exposure.

75 The importance of improving the current understanding of ARV pharmacokinetics within and outside the
76 context of pregnancy and pharmacogenetics cannot be overemphasized in the context of designing more
77 effective HIV preventive therapy. However, obtaining robust pharmacokinetic data to achieve this has been
78 constrained by the invasiveness and increased cost associated with sampling genital tissues[20] and the
79 limitations of standardizing existing bioanalytic methods used to quantify ARVs in these compartments[21].
80 To circumvent these challenges, , cervicovaginal fluids (CVF are used as an acceptable surrogate for vaginal
81 tissue concentrations of ARVs[20]. In our laboratory, we recently validated a minimally invasive LC-MS/MS
82 method to quantify the HIV drug efavirenz in cervicovaginal fluid collected on flock swabs[6], which
83 improved our ability to conduct intensive clinical pharmacokinetic studies with CVF.

84 In this component of the VADICT study, whose protocol was previously published [22], we set out to
85 characterize efavirenz disposition in the FGT and determine the impact of the combined effect of
86 pregnancy and CYP 2B6 Single Nucleotide Polymorphisms (SNPs) on the FGT disposition of the drug.

87 **Methods**

88 **Study sites, participants, and ethics**

89 Participants in the VADICT study were recruited from four sites in Benue State, Nigeria (Federal Medical
90 Centre, Makurdi; Bishop Murray Medical Centre, Makurdi; St. Monica's Hospital, Adikpo; and St. Thomas'
91 Hospital, Ihugh) between December 2017 and September 2020. Pregnant or recently postpartum women
92 living with HIV who were at least 18 years old, receiving WHO recommended first-line ART regimen, not
93 taking other medications with known or suspected interaction with ART components, and who had no
94 severe illness were eligible. The study was approved by the National Health Research Ethics Committee,
95 Abuja, Nigeria (approval number: NHREC/01/01/2007-05/06/2017). The study is registered on
96 ClinicalTrials.gov (NCT03284645) and the full protocol has been published elsewhere [22]. Participants for
97 parts of the study reported here were recruited only from Makurdi sites where ultra-low temperature
98 facilities were available.

99 **Study design**

100 The VADICT study was an observational cohort study with a pharmacokinetic component conducted in two
101 stages. In the first stage, we assessed association between established functional single nucleotide
102 polymorphisms (SNPs) in efavirenz disposition gene *CYP2B6* (516G>T and 983 T>C) and mid-dose efavirenz
103 concentration in both cervicovaginal fluid and plasma during pregnancy. For stage two, participants were
104 stratified into three metabolizer groups using the independently associated SNP based on the number of
105 variant alleles present: 'slow' (two), 'intermediate' (one), and 'fast' (none). Participants from each group
106 who still satisfied the eligibility criteria at the time the pharmacogenetic data became available were
107 invited for re-enrollment into the intensive pharmacokinetic stage.

108 **Sample collection and handling**

109 Paired plasma and cervicovaginal fluid samples were collected from each participant at a single recorded
110 timepoint after the last dose. About 1-2 mL of plasma was obtained from each participant by centrifugation
111 (4000 rpm) of venous blood samples and transferred into cryovials. Cervicovaginal fluid samples were
112 collected with flocked swabs by a female nurse as described in our paper on this method [23]. In summary,
113 participants laid down on their backs for 5 min before each sample collection to allow pooling of fluid in the

114 back of the vagina. The swab was gently inserted approximately 3 inches into the vagina at first, and
115 inserted further until it touched the back of the posterior fornix. The swab was gently rubbed against the
116 mid-vaginal walls for at least 30 sec, withdrawn and immediately transferred into a cryovial.

117 Participants who were re-enrolled in stage 2 after stratification into slow, intermediate and fast
118 metaboliser underwent intensive pharmacokinetic sampling. CVF and dried blood spot (DBS) samples were
119 collected at six different time points over a single dosing period (pre-dose and at 0.5, 1, 2, 4, 8, and 12 h
120 after dose) following an observed evening dose of ART regimen containing 600 mg efavirenz. Within a few
121 minutes of CVF collection, DBS samples were prepared by spotting drops of whole blood collected on
122 Whatman protein saver cards by finger prick using a 2 mm safety lancet (BD, Oxford, Oxfordshire, UK). DBS
123 cards were dried at ambient temperature (18-25°C) for at least 2 hours, and thereafter packed in ziplock
124 bags with desiccants. Standard operating procedures were prepared for all sample collection processes,
125 and these were performed by trained staff involved in routine care of study participants at each site. All
126 samples were stored at -80°C at the Federal; Medical Centre, Makurdi until transferred to the Translational
127 Pharmacokinetics Research Laboratory, Obafemi Awolowo University, Ile-Ife using Arctic Express® Dry
128 Shipper (Thermo Scientific, Waltham, MA, USA) where they were stored at -80 °C until analysis.

129 **Pharmacogenetic analysis and drug quantification**

130 Two *CYP2B6* SNPs (*CYP2B6* 516G > T and *CYP2B6* 983 T > C) known to be associated with efavirenz plasma
131 exposure were included in this analysis. Genomic DNA was extracted from DBS using the QIAamp DNA
132 Blood Mini Kit (Qiagen, Germantown, USA) and quantified using Nanodrop® spectrophotometer (Thermo
133 Fisher Scientific Inc., Wilmington, DE, USA) and stored at -70°C. Genotyping was performed by real-time
134 PCR based allelic discrimination using TaqMan® SNP genotyping assays for *CYP2B6* 516G>T (rs3745274 with
135 product ID C_7817765_60) and *CYP2B6* 983T>C (rs28399499 with product ID C_60732328_20) on a DNA
136 Engine Chromo4 system (Bio-Rad Laboratories, Inc., Hercules, CA, USA). The three-step PCR protocol
137 included a 15-minute denaturation step at 95°C, 50 cycles of amplification at 95°C for 15 s each, and a 1-
138 minute annealing step at 60°C. Opticon Monitor® version 3.1 (Bio-Rad Laboratories, Inc., Hercules, CA, USA)
139 enabled genotype calls based on allelic discrimination plots.

140 Determination of efavirenz concentration in CVF, plasma and DBS samples was conducted on a TSQ
141 Quantum Access LC-MS/MS system (Thermo Fisher Scientific Inc., Hemel Hempstead, Hertfordshire, UK) at
142 the Bioanalytical Laboratory, Faculty of Pharmacy, Obafemi Awolowo University, Ile-Ife, Nigeria using
143 previously reported methods [24,23]. To estimate plasma efavirenz concentration from DBS concentration ,

144 the equation originally reported by Eyles et al ([25]) which accounts for the effect of fraction unbound to
145 plasma proteins and haematocrit was used.

146 **Statistical analysis**

147 Compliance with Hardy–Weinberg Equilibrium was tested as previously described. Efavirenz plasma and
148 CVF concentration dataset were subjected to Kolmogorov-Smirnov normality test prior to statistical
149 analysis. Spearman correlation was performed to test the relationship between continuous variables.
150 Variables associated with efavirenz concentration in plasma and CVF were determined using the univariate
151 linear regression analysis. Variables that showed significant association with efavirenz plasma and CVF
152 concentration in the univariate linear regression analysis were included in a multivariate stepwise linear
153 regression analysis. Differences in efavirenz plasma and CVF concentrations and pharmacokinetic
154 parameters between patient groups were investigated using 1-way analysis of variance (ANOVA) and
155 Mann–Whitney *U* test All these analyses were performed using IBM SPSS Statistics version 29.0.1.0 (171)
156 (IBM, Armonk, New York) and GraphPad Prism 10 (GraphPad Software, Inc., La Jolla, California).

157 **Results**

158 **Study participants**

159 A total of 147 pregnant women contributed sparse pharmacokinetic samples in stage 1 at a mean (SD)
160 gestational age of 34.5 weeks (3.12), age 28.9 years (4.9) and body weight 64.3 kg (11.9). Median (range)
161 duration on therapy prior to enrolment into the preliminary phase of the study was 40.9 months (0.03 -
162 149). Twelve pregnant women aged 28.9 years (4.9) old with body weight 65.7 kg (7.00) participated in the
163 intensive pharmacokinetic sampling of stage 2 at gestational age of 26.0 weeks (6.70). Postpartum
164 intensive pharmacokinetic sampling was conducted in 12 women aged 32.9 years (5.1) at 37.1 weeks (4.1)
165 after delivery. Total duration on ART prior to enrolment for stage 2 was 41.2 weeks (36.7) during pregnancy
166 and 55.8 weeks (27.3) for postpartum women. All study participants received efavirenz (600 mg),
167 lamivudine (300 mg) and tenofovir disoproxil fumarate (300 mg) fixed dose combination ART.

168 A total of 169 sparse samples (88 CVF, 81 plasma, and 73 paired samples at third trimester), 168 intensive
169 CVF samples (84 samples each from the 12 pregnant and 12 postpartum women), and 98 DBS (48 samples
170 each from 7 pregnant and 7 postpartum women) were available for analysis. The *CYP2B6* 516G>T SNP was
171 in Hardy-Weinberg equilibrium within the study population.

172

173 **Are *CYP2B6* 516G>T and 983 T>C associated with efavirenz CVF concentration?**

174 In stage 1, 88 sparse CVF and 81 plasma samples were obtained from a total of 92 participants during
175 pregnancy (73 paired samples) to assess possible association between efavirenz concentration and *CYP2B6*
176 polymorphisms (516G>T and 983 T>C). CVF and plasma samples were collected 14.45 h (1.30-17.02) after
177 the last dose. The median (IQR) CVF and plasma efavirenz concentrations were 788 ng/mL (502-1542) and
178 1487 ng/mL (1041-2363), respectively. There was significant correlation in efavirenz CVF and plasma
179 concentration at 90% confidence interval ($p = 1.32 \times 10^{-6}$, Pearson's $r = 0.51$ (0.37-0.66)). The average CVF-
180 to-plasma ratio computed from the 73 paired sparse samples was 0.55.

181 The result indicates that only *CYP2B6* 516G>T is independently associated with efavirenz CVF and plasma
182 concentration during pregnancy. The unstandardized regression coefficient (β)(90% confidence interval, p -
183 value) for this association is 997 ng/mL (598-1357, $p = 5.7 \times 10^{-5}$) and 1400 ng/mL (1051-1748, $p = 5.7 \times 10^{-9}$),
184 respectively. Notably, *CYP2B6* 516G>T alone accounted for 20 % (adjusted R square = 0.20) and 40 %
185 (adjusted R square = 0.40) of the observed differences in the efavirenz CVF and plasma concentrations
186 during pregnancy, respectively. The association between *CYP2B6* 516G>T and efavirenz CVF as well as
187 plasma concentration is presented in Figure 1.

188 No significant association was observed between efavirenz CVF concentration and *CYP2B6* 983T>C ($p =$
189 0.573), age ($p = 0.134$), body weight ($p = 0.716$), body mass index ($p = 0.873$), and time after dose ($p =$
190 0.729). Similarly, *CYP2B6* 983T>C, age, body weight, body mass index, and time after dose were not
191 significantly associated with efavirenz plasma concentration.

192 Upon stratification based on *CYP2B6* 516G>T, we observed significant differences ($p < 0.0001$) in efavirenz
193 median (IQR) CVF concentrations: GG (n=28), 559 ng/mL (342-874); GT (n= 45), 791 ng/mL (630-1475); TT
194 (n=15), 3310 ng/mL (1332-4718). Similarly, plasma concentrations varied based on *CYP2B6* 516G>T ($p <$
195 0.0001): GG (n= 21), 1085 ng/mL (888-1305); GT (n= 48), 1495 ng/mL (1095-1983); TT (n=13), 4164 ng/mL

196 (2698-5903). Only *CYP2B6* 516G>T, was used to stratify study participants invited for the intensive
197 pharmacokinetic phase.

198 **What is the combined influence of pregnancy and genetics on efavirenz CVF exposure?**

199 In the second stage, 12 pregnancy women (6GG and 6GT) and 12 postpartum women (4GG , 5GT and 3TT)
200 were invited for intensive pharmacokinetic sampling. Efavirenz concentration-time profile during
201 pregnancy and postpartum in the combine population and in *CYP2B6* 516GG and *CYP2B6* 516GT groups are
202 presented in Figure 2A. The corresponding pharmacokinetic parameters are presented in Table 2. In
203 pooled analysis, we observed a 87.7% increase (p -value at 90% confidence interval = 0.072) in the median
204 clearance, 46.4 % decrease in AUC_{0-24h} ($p = 0.042$), 36.3% decrease in C_{max} ($p = 0.069$), and 45.6 % decrease
205 in C_{min} ($p = 0.085$). However, upon stratification based on *CYP2B6* 516G>T , efavirenz median clearance
206 increased by 57.9% during pregnancy compared with postpartum control ($p = 0.232$) in patients with the
207 *CYP2B6* 516GT genotype. The AUC_{0-24h} , C_{max} and C_{min} reduced by 33.8% ($p=0.182$) , 8.54% (0.175) and
208 59.9% (0.171) during pregnancy, with values of 20671 ng.h/ml (15993-28711), 1551 ng/ml (1087-2086) and
209 330 ng/ml (251-442), respectively, compared with 31229 ng.h/ml (27660-41873), 1695 ng/ml (1540-3003)
210 and 814 ng/ml (486-981) during postpartum. In the contrary, efavirenz CVF exposure was marginally
211 increased during pregnancy in patients with the *CYP2B6* 516GG genotype (Table 2). We could not compare
212 between the pharmacokinetic parameters of patients with the *CYP2B6* 516TT genotype in the pregnancy
213 and postpartum cohorts because there were no patients with the *CYP2B6* 516TT genotype in the pregnancy
214 cohort.

215 **Efavirenz CVF and Plasma pharmacokinetics during pregnancy and postpartum**

216 Efavirenz pharmacokinetic parameters differed significantly in CVF and plasma. Median (IQR)
217 pharmacokinetic parameters in CVF (n=12) versus plasma (n=7) were AUC_{0-24} , 16465 ng.h/mL (9356-30417)
218 versus 48983 ng.h/mL (41414-54311); C_{max} , 1031 ng/mL (585-1771) versus 5080 ng/mL (4535-5364); and

219 C_{min} , 243 ng/mL (168-402) versus 844 ng/mL (534-1109) during pregnancy, and 30715 ng.h/mL (10980-
220 43714) versus 67339 ng.h/mL (57492-106868); C_{max} , 1618 ng/mL (675-2695) versus 5174 ng/mL (4643-
221 6988); and C_{min} , 447 ng/mL (159-974) versus 2192 ng/mL (1637-6485) in postpartum women. CVF-to-
222 plasma C_{max} and AUC_{0-24} ratios were 0.20 and 0.34 during pregnancy, and 0.31 and 0.46 during postpartum.
223 Time to reach efavirenz maximum plasma versus CVF concentration were 2.00 h (2.00-4.00) vs 8.00 h (7.00
224 – 9.00) and 2.00 h (2.00-2.00) vs 8.00 h (8.00 – 12.0) in pregnant and postpartum women, respectively.

225 Discussion

226 The female genital tract (FGT) is an important sanctuary site where a significant proportion of MTCT occur
227 during delivery. Strategies to reduce HIV transmission rates focuses on reducing the amount of virus in the
228 FGT with antiretroviral therapy [26]. A good knowledge of the factors that affect the disposition of
229 antiretroviral drug into the FGT of HIV-infected pregnant women can potentially aid accurate assessment of
230 antiretroviral-exposure relationships and improve maternal-infant survival outcomes. The impact of
231 pregnancy and host genetics on the disposition of ART into the FGT has not been well studied. In this study,
232 we performed a clinical pharmacokinetic study to describe efavirenz FGT disposition in genetically defined
233 pregnant and postpartum women.

234 Our findings indicates that efavirenz distributes rapidly into the cervicovaginal fluid (CVF) of pregnant and
235 postpartum women after oral dosing. Although efavirenz minimum effective concentration in the FGT has
236 not been established, concentrations exceeding the efavirenz $PBIC_{90\%}$ (126 ng/ml) for wild-type HIV-1
237 measured within 30 minutes post-drug administration in 83% of pregnant and postpartum women studied
238 may suggest that efavirenz administration at 600 mg may be sufficient to reduce HIV MTCT at the time of
239 delivery. Comparatively, we observed that efavirenz CVF disposition is positively correlated with plasma
240 exposure (Pearson's $r = 0.76$ (0.65 – 0.85), $R^2 = 0.58$, P -value < 0.0001), with CVS:plasma efavirenz AUC_{0-24h}
241 observed to be 0.34 and 0.46 in the pregnant and postpartum women who contributed the intensive
242 pharmacokinetic samples. Some other studies have also reported good penetration of antiretroviral drugs

243 into the FGT. For example, CVF-plasma concentration ratios of 2.3 (1.4 – 4.1), 3.2 (1.2 – 8.5) and 5.2 (1.2 –
244 22.6) have been reported for raltegravir [27], lamivudine [2] and tenofovir [2], respectively.

245 Factors such as molecular weight and protein binding can determine the extent of drug distribution into the
246 FGT. Efavirenz is a low molecular drug and it is expected to be able to penetrate the female genital tissues
247 and fluid. Drugs penetration into the female genital tissues appear to be influence by its protein binding
248 ability. Highly protein bound drugs generally tends to have more capacity to penetrate the FGT compared
249 to poorly bound drugs [28]. Efavirenz protein binding in the CVF was not determined in this study. However,
250 based on previous reports, the concentrations of drug binding proteins (mainly albumin and alpha 1- acid
251 glycoproteins) has been previously reported to be approximately 1% of what is obtained in blood plasma
252 [29]. Also, maraviroc CVF protein binding have been reported to be 10% of plasma protein binding [30].
253 Based on this information, it can be assumed that efavirenz CVF protein binding is limited hence the high
254 concentration of the drug in the CVF.

255 Our results indicate a 46% reduction in efavirenz CVF $AUC_{0-24\text{ h}}$ during pregnancy relative to postpartum
256 values. Both efavirenz CVF C_{\min} and C_{\max} during pregnancy were substantially lower than postpartum by
257 45.6% and 36.3% respectively. Efavirenz clearance from the CVF was markedly increased (87.6% increment)
258 during pregnancy compared to postpartum control. Reduced antiretroviral CVF exposure during pregnancy
259 may be associated with sub-optimal suppression of viral replication in the FGT and increased risk of MTCT
260 of HIV, particularly among HIV-positive pregnant women who were diagnosed of HIV and commence ART in
261 late pregnancy. The onset of pregnancy is well known to be associated with maternal physiological changes
262 [31]. These changes could alter drug disposition and may explain the reduction in the CVF exposure of
263 efavirenz observed in this study.

264 Efavirenz is predominantly metabolized by CYP2B6 [32] and the *CYP2B6* 516G>T genotype has been shown
265 to reduce the rate of efavirenz biotransformation to its major metabolite, efavirenz 8-hydroxylation [33].

266 We found that on *CYP2B6* 516G>T genotype was strongly associated with efavirenz CVF disposition in
267 pregnant and postpartum women. Efavirenz concentration in the CVF varies depending on *CYP2B6* 516GT
268 genotypes during pregnancy and postpartum, with the lowest CVF exposure measured in subjects stratified
269 as *CYP2B6* 516GG genotype. The overall CVF exposure of efavirenz in pregnant women classified as *CYP2B6*
270 516GG genotype was lower by 43.9% compared to those classified as *CYP2B6* 516GT genotype. On the
271 other hand, the overall efavirenz CVF exposure in postpartum women classified *CYP2B6* 516TT genotype
272 exceeded those classified as *CYP2B6* 516GG and *CYP2B6* 516GT by 273% and 27.0%, respectively. This
273 findings suggests that *CYP2B6* Single Nucleotide Polymorphisms (SNPs) play a role in efavirenz CVF
274 disposition

275 Efavirenz CVF C_{min} was above the reported value of 126 ng/mL for the wild type HIV-1 in 75% of postpartum
276 women with the *CYP2B6* 516GG genotype, compared to 100% in pregnant women with the same genotype.
277 The genotype-dependent changes in the efavirenz CVS exposure observed in this study may therefore be
278 explained by possible genotype-dependent differences in efavirenz autoinduction in the human female
279 genital tract. Unfortunately, the expression of *CYP2B6* isoenzyme and its potential autoinduction in the
280 human female genital tract or any other genetic factors was not directly assessed in this study. This is
281 considered one of the limitations of this study and further studies in this area are recommended. Our
282 results supports *CYP2B6* 516G>T-guided dosing of efavirenz in pregnant women.

283 The findings from this study need to be interpreted with caution and in the context of the limitation
284 associated with the conduct of this study. Firstly, the women who contributed the intensive
285 pharmacokinetic samples during pregnancy were different from cohorts who contributed the postpartum
286 samples. Since the cohorts of the pregnant women were not used as their own postpartum control, there
287 may be some bias in the interpretation of the effect of pregnancy and host genetics on efavirenz CVF
288 exposure.

289 In conclusion, the study established pregnancy and *CYP2B6* SNPs play an important role in efavirenz
290 disposition into the female genitalia.

291 **Acknowledgements**

292 The authors acknowledge bioanalytical facility support from the Obafemi Awolowo University Bioanalytical
293 Laboratory, Nigeria and the University of Liverpool, United Kingdom.

294

295

296

297

298

299

300

301

302

303

304

305

306

307

308

309

310

311

312

313 **Figure Legends**

314 Figure 1: Association of pooled *CYP2B6* c. 516/985 with EFV CVS concentrations during pregnancy in the
315 preliminary phase. *P* values on figures are for Mann-Whitney U / Kruskal Wallis test.

316 Figure 2: Efavirenz CVF concentration–time profiles (mean, SEM) during pregnancy and postpartum (A).
317 Comparison shows decreased exposure during pregnancy (n = 12) compared with postpartum (n = 12).
318 Upon stratification of patients based on *CYP2B6* 516G>T status showed decreased exposure during
319 pregnancy (n = 6) compared with postpartum (n = 4) in patients with the GG genotype(B). Similarly,
320 efavirenz exposure decreased in pregnant women (n=6) compared to postpartum women (n=5) with the GT
321 genotype (C). None of the pregnant women recruited into the intensive phase of this study had the TT
322 genotype. Median (range) C_{min} , C_{max} , and AUC_{0-24} of postpartum women (n=3) with the TT genotype status
323 were 972 (587-2383), 2587 (1633-4365) and 39673 (25147-64938), respectively.

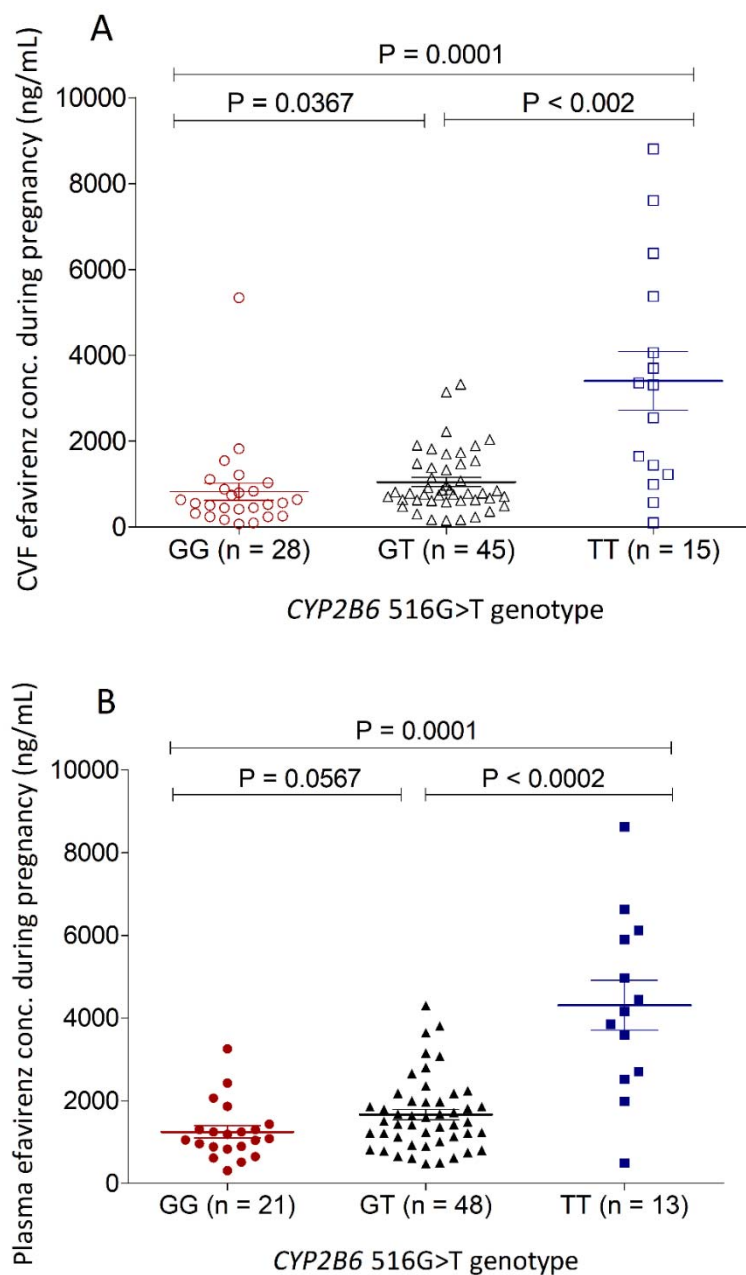
324 **References**

- 325 1 Devanathan AS, Cottrell ML. Pharmacology of HIV Cure: Site of Action. *Clin. Pharmacol. Ther.* 109(4),
326 841–855 (2021).
- 327 2 Kwara A, DeLong A, Rezk N *et al.* Antiretroviral Drug Concentrations and HIV RNA in the Genital Tract of
328 HIV-Infected Women Receiving Long-Term Highly Active Antiretroviral Therapy. *Clin. Infect. Dis.* 46(5),
329 719–725 (2008).
- 330 3 Adams JL, Patterson KB, Prince HM *et al.* Single and Multiple Dose Pharmacokinetics of Dolutegravir in
331 the Genital Tract of HIV Negative Women. *Antivir. Ther.* 18(8), 1005–1013 (2013).
- 332 4 Neely M, Louie S, Xu J *et al.* Simultaneous plasma and genital pharmacokinetics and pharmacodynamics
333 of atazanavir and efavirenz in HIV-infected women starting therapy. *J. Clin. Pharmacol.* 55(7), 798–808
334 (2015).
- 335 5 Gianella S, Marconi VC, Berzins B *et al.* Genital HIV-1 Shedding with Dolutegravir (DTG) plus Lamivudine
336 (3TC) Dual Therapy. *J. Acquir. Immune Defic. Syndr.* 1999 79(5), e112–e114 (2018).
- 337 6 Olagunju A, Nwogu J, Eniayewu O *et al.* Validation and clinical application of a method to quantify
338 efavirenz in cervicovaginal secretions from flocked swabs using liquid chromatography tandem mass
339 spectrometry. *Wellcome Open Res.* 6, 246 (2022).
- 340 7 Olagunju A, Bolaji O, Amara A *et al.* Pharmacogenetics of pregnancy-induced changes in efavirenz
341 pharmacokinetics. *Clin. Pharmacol. Ther.* 97(3), 298–306 (2015).
- 342 8 Olagunju A, Bolaji O, Neary M, Back D, Khoo S, Owen A. Pregnancy affects nevirapine pharmacokinetics:
343 evidence from a CYP2B6 genotype-guided observational study. *Pharmacogenet. Genomics* 26(8), 381–
344 389 (2016).
- 345 9 Mulligan N, Best BM, Wang J *et al.* Dolutegravir pharmacokinetics in pregnant and postpartum women
346 living with HIV. *AIDS Lond. Engl.* 32(6), 729–737 (2018).

- 347 10 Bukkems VE, Necsoi C, Hidalgo Tenorio C *et al.* Tenofovir Alafenamide Plasma Concentrations Are
348 Reduced in Pregnant Women Living With Human Immunodeficiency Virus (HIV): Data From the PANNA
349 Network. *Clin. Infect. Dis.* 75(4), 623–629 (2022).
- 350 11 Saracino A, Di Stefano M, Vimercati A *et al.* Cervicovaginal HIV-1 Shedding in Pregnant Women near
351 Delivery. *Antivir. Ther.* 6(1), 79–81 (2001).
- 352 12 Frenkel LM, Morrison RL, Fuller TL *et al.* Brief Report: Vaginal Viral Shedding With Undetectable Plasma
353 HIV Viral Load in Pregnant Women Receiving 2 Different Antiretroviral Regimens: A Randomized Clinical
354 Trial. *J. Acquir. Immune Defic. Syndr.* 1999 88(4), 361–365 (2021).
- 355 13 Keita A, Rigai J, Pillet S *et al.* Evidence of HIV-1 Genital Shedding after One Year of Antiretroviral
356 Therapy in Females Recently Diagnosed in Bamako, Mali. *Microorganisms* 9(10), 2164 (2021).
- 357 14 Townsend CL, Cortina-Borja M, Peckham CS, de Ruiter A, Lyall H, Tookey PA. Low rates of mother-to-
358 child transmission of HIV following effective pregnancy interventions in the United Kingdom and Ireland,
359 2000–2006. *AIDS* 22(8), 973 (2008).
- 360 15 Baeten JM, Kahle E, Lingappa JR *et al.* Genital HIV-1 RNA Predicts Risk of Heterosexual HIV-1
361 Transmission. *Sci. Transl. Med.* 3(77), 77ra29–77ra29 (2011).
- 362 16 King CC, Ellington SR, Davis NL *et al.* Prevalence, Magnitude, and Correlates of HIV-1 Genital Shedding in
363 Women on Antiretroviral Therapy. *J. Infect. Dis.* 216(12), 1534–1540 (2017).
- 364 17 UNAIDS. “global hiv & aids statistics — fact sheet 2023 - Google Search” (2023).
365 [https://www.google.com/search?q=global+hiv+%26+aids+statistics+%E2%80%94+fact+sheet+2023&rlz=](https://www.google.com/search?q=global+hiv+%26+aids+statistics+%E2%80%94+fact+sheet+2023&rlz=1C1JZAP_enNG1061NG1061&oq=Global+HIV+%26+AIDS+statistics+%E2%80%94+Fact+sheet+2023&aqs=chrome.0.0i512.3097j0j4&sourceid=chrome&ie=UTF-8)
366 [1C1JZAP_enNG1061NG1061&oq=Global+HIV+%26+AIDS+statistics+%E2%80%94+Fact+sheet+2023&aqs](https://www.google.com/search?q=global+hiv+%26+aids+statistics+%E2%80%94+fact+sheet+2023&rlz=1C1JZAP_enNG1061NG1061&oq=Global+HIV+%26+AIDS+statistics+%E2%80%94+Fact+sheet+2023&aqs=chrome.0.0i512.3097j0j4&sourceid=chrome&ie=UTF-8)
367 [=chrome.0.0i512.3097j0j4&sourceid=chrome&ie=UTF-8.](https://www.google.com/search?q=global+hiv+%26+aids+statistics+%E2%80%94+fact+sheet+2023&rlz=1C1JZAP_enNG1061NG1061&oq=Global+HIV+%26+AIDS+statistics+%E2%80%94+Fact+sheet+2023&aqs=chrome.0.0i512.3097j0j4&sourceid=chrome&ie=UTF-8)
- 368 18 Kourtis AP, Lee FK, Abrams EJ, Jamieson DJ, Bulterys M. Mother-to-child transmission of HIV-1: timing
369 and implications for prevention. *Lancet Infect. Dis.* 6(11), 726–732 (2006).

- 370 19 Duri K, Munjoma PT, Mazhandu AJ *et al.* Predictors and Timing to Viral Suppression in HIV-Infected
371 Pregnant Women in the University of Zimbabwe Birth Cohort Study During the Era of Lifelong
372 Antiretroviral Therapy (Option B+ Treatment Strategy). *Front. Virol.* 2 (2022).
- 373 20 Cottrell ML, Prince HMA, Allmon A *et al.* Cervicovaginal and Rectal Fluid as a Surrogate Marker of
374 Antiretroviral Tissue Concentration: Implications for Clinical Trial Design. *J. Acquir. Immune Defic. Syndr.*
375 1999 72(5), 498–506 (2016).
- 376 21 Bennetto-Hood C, Johnson VA, King JR, Hoesley CJ, Acosta EP. Novel Methodology for Antiretroviral
377 Quantitation in the Female Genital Tract. *HIV Clin. Trials* 10(3), 193–199 (2009).
- 378 22 Olagunju A, Anweh D, Okafor O *et al.* Viral and antiretroviral dynamics in HIV mother-to-child
379 transmission fluids (VADICT)–Protocol and data analysis plan for a cohort study. *Wellcome Open Res.*
380 4(34), 34 (2019).
- 381 23 Olagunju A, Nwogu J, Eniayewu O *et al.* Validation and clinical application of a method to quantify
382 efavirenz in cervicovaginal secretions from flocked swabs using liquid chromatography tandem mass
383 spectrometry. *Wellcome Open Res.* 6, 246–246 (2021).
- 384 24 Amara AB, Else LJ, Tjia J *et al.* A validated method for quantification of efavirenz in dried blood spots
385 using high-performance liquid chromatography–mass spectrometry. *Ther. Drug Monit.* 37(2), 220–228
386 (2015).
- 387 25 Eyles D, Anderson C, Ko P *et al.* A sensitive LC/MS/MS assay of 25OH vitamin D3 and 25OH vitamin D2 in
388 dried blood spots. *Clin. Chim. Acta Int. J. Clin. Chem.* 403(1–2), 145–151 (2009).
- 389 26 Cu-Uvin S, Caliendo AM, Reinert S *et al.* Effect of highly active antiretroviral therapy on cervicovaginal
390 HIV-1 RNA. *AIDS Lond. Engl.* 14(4), 415–421 (2000).
- 391 27 Clavel C, Peytavin G, Tubiana R *et al.* Raltegravir Concentrations in the Genital Tract of HIV-1-Infected
392 Women Treated with a Raltegravir-Containing Regimen (DIVA 01 Study). *Antimicrob. Agents Chemother.*
393 55(6), 3018–3021 (2011).

- 394 28 Dumond JB, Yeh RF, Patterson KB *et al.* Antiretroviral drug exposure in the female genital tract:
395 implications for oral pre- and post-exposure prophylaxis. *AIDS Lond. Engl.* 21(14), 1899–1907 (2007).
- 396 29 Salas Herrera IG, Pearson RM, Turner P. Quantitation of albumin and alpha-1-acid glycoprotein in human
397 cervical mucus. *Hum. Exp. Toxicol.* 10(2), 137–139 (1991).
- 398 30 Dumond JB, Patterson KB, Pecha AL *et al.* Maraviroc Concentrates in the Cervicovaginal Fluid and Vaginal
399 Tissue of HIV-Negative Women. *J. Acquir. Immune Defic. Syndr.* 1999 51(5), 546–553 (2009).
- 400 31 Anderson GD. Pregnancy-induced changes in pharmacokinetics: a mechanistic-based approach. *Clin.*
401 *Pharmacokinet.* 44(10), 989–1008 (2005).
- 402 32 Ward BA, Gorski JC, Jones DR, Hall SD, Flockhart DA, Desta Z. The cytochrome P450 2B6 (CYP2B6) is the
403 main catalyst of efavirenz primary and secondary metabolism: implication for HIV/AIDS therapy and
404 utility of efavirenz as a substrate marker of CYP2B6 catalytic activity. *J. Pharmacol. Exp. Ther.* 306(1),
405 287–300 (2003).
- 406 33 Olagunju A, Bolaji O, Amara A *et al.* Pharmacogenetics of pregnancy-induced changes in efavirenz
407 pharmacokinetics. *Clin. Pharmacol. Ther.* 97(3), 298–306 (2015).
- 408



409

410 Figure 1: Association of pooled *CYP2B6* 516G>T with EFV Cervicovaginal fluid (CVF) concentrations during
411 pregnancy. *P* values on figures are for Mann-Whitney U / Kruskal Wallis test. GG; patients with two normal
412 function *CYP2B6* allele, GT; patients with one normal and one decreased function *CYP2B6* allele, TT;
413 patients with two decreased function *CYP2B6* alleles

414 **Table 1:** Univariate linear regression analysis of factors influencing efavirenz CVF disposition in pregnant
415 women.

Predictors	β (ng/mL) [90% CI]	<i>p</i> -values
Age (years)	54.9 (-5.41 – 115)	0.134
Body weight (kg)	-4.31 (-24.0 – 15.4)	0.716
Time post-dose (h)	-42.3 (-246 – 161)	0.729
BMI (kg/m ²)	4.64 (-43.6 – 52.9)	0.873
CYP2B6 516G>T	997.0 (598 – 1357)	5.7 x 10 ⁻⁵
CYP2B6 983T>C	-302 (-1189 – 586)	0.573
CYP2B6 516/983 G>T	916 (541 – 1290)	1.2 x 10 ⁻³

416
417
418
419
420
421
422
423
424
425
426
427
428
429
430
431
432

434 **Table 2:** Efavirenz CVF pharmacokinetics in genetically stratified pregnant and postpartum women

435 Results are presented in median (Interquartile range, IQR).

436

PK parameters	Combined (n=12)	CYP2B6 516GG (n = 6)	CYP2B6 516GT (n = 6)	
Pregnancy				
C_{\min} ($\mu\text{g/mL}$)	243 (168 – 402)	169 (164 – 242)	330 (250 – 440)	
C_{\max} ($\mu\text{g/mL}$)	1031 (595 – 1771)	664(596 – 1069)	1550 (1090 – 2090)	
AUC_{0-24h} ($\mu\text{g.h/mL}$)	16465 (9356 – 30417)	11577 (7507 – 13284)	20671 (15993 – 28712)	
CL/F (L/h)	36.6 (19.7 – 65.1)	52.0 (42.0 – 79.9)	30 (21 – 37.6)	
T_{\max} (h)	8.00 (7.00 – 9.00)	8.00 (4.00 – 12.0)	8.00 (8.00 – 8.00)	
Postpartum				
	Combined (n=12)	CYP2B6 516GG (n = 4)	CYP2B6 516GT (n = 5)	CYP2B6 516TT (n = 3)
C_{\min} (ng/mL)	447 (159 – 974)	151 (116 – 225)	814 (496 – 981)	972 (587 – 2383)
C_{\max} (ng/mL)	1618 (675 – 2695)	636 (583 – 1107)	1695(1540 – 3003)	2587 (1633 – 4365)
AUC_{0-24h} (ng.h/mL)	30715 (10980 – 43714)	10630(9848 – 15875)	31229 (27660 – 41873)	39673 (25147 – 64938)

CL/F (L/h)	19.5 (13.8 – 54.7)	57.0 (46.0 – 61.1)	19.0 (14.0 – 22.0)	15 (10.9 – 35.8)
T _{max} (h)	8.0 (8.0 – 8.0)	8.0 (7.0 – 8.0)	8.0 (8.0 – 8.0)	8.0 (8.0 – 8.0)

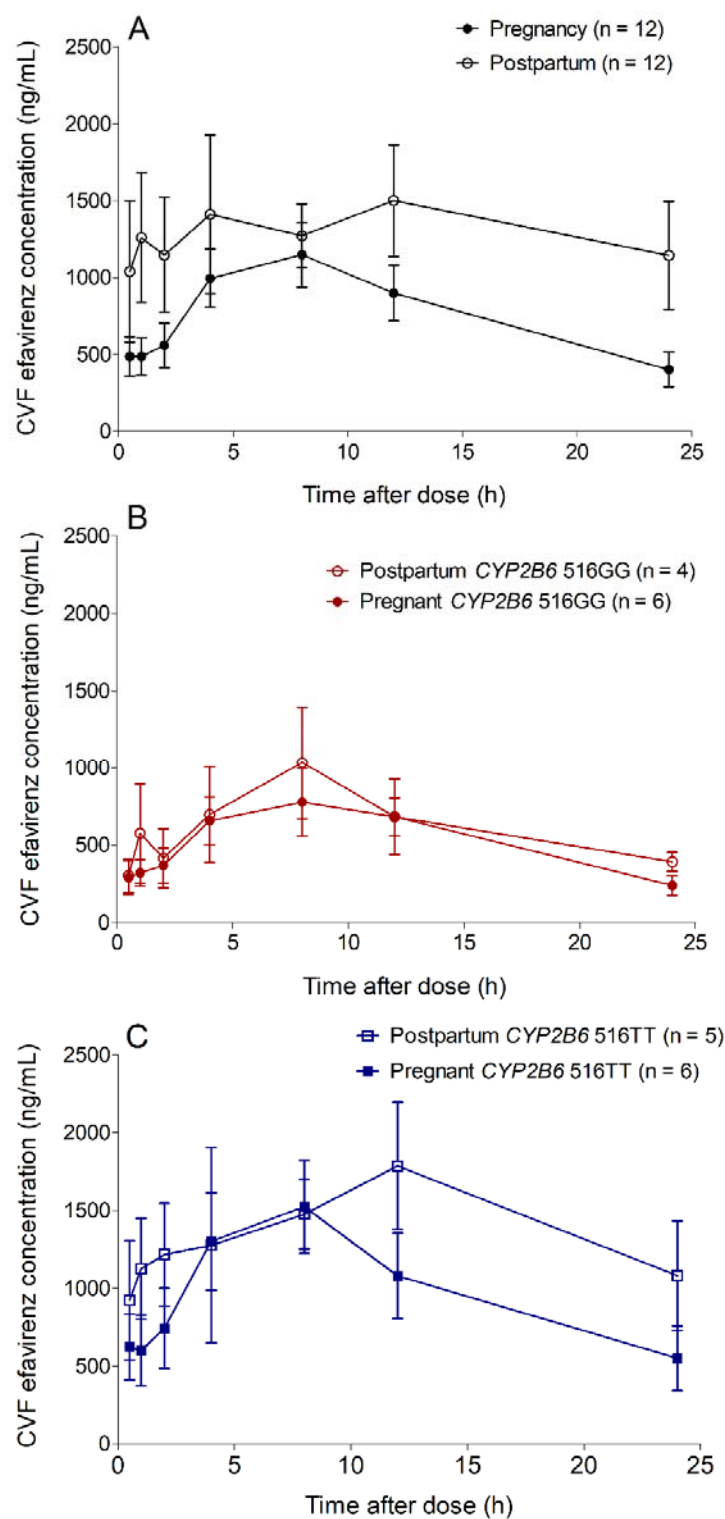


Figure 2: Efavirenz CVF concentration–time profiles (mean, SEM) during pregnancy and postpartum

