

1 **Effect of isokinetic eccentric training on the human**
2 **shoulder strength, flexibility, and muscle architecture in**
3 **physically active men: a preliminary study**

4

5 Sebastian Vetter^{1,*}, Pierre Hepp², Axel Schleichardt³, Stefan Schleifenbaum², Maren Witt¹, Christian
6 Roth^{4,¶}, Hans-Peter Köhler^{1,¶}

7

8 ¹Department of Biomechanics in Sports, Leipzig University, Leipzig, Germany

9 ²Clinics of Orthopedics, Trauma and Plastic Surgery, Leipzig University, Leipzig, Germany

10 ³Department of Biomechanics, Institute for Applied Training Science, Leipzig Germany

11 ⁴Clinics of Diagnostic and Interventional Radiology, Leipzig University, Leipzig, Germany

12

13 *Corresponding author:

14 Email: sebastian.vetter@uni-leipzig.de (SV)

15

16

17 [¶]These authors contributed equally to this work.

18

19 **Abstract**

20 Strengthening the rotator cuff muscles is important for injury prevention and rehabilitation.
21 However, there is considerable evidence that range of motion and fascicle length are risk factors for
22 injury. Since muscle fascicle length improves motor performance and reduces the risk of injury, it may
23 be an important variable to promote multidirectional changes in the function and macroscopic structure
24 of the target muscle. As a well-established intervention strategy, passive stretching seems best for
25 improving the flexibility in terms of range of motion. But stretching and range of motion seem to have
26 little effect on fascicle length changes and injury risk. However, recent reviews suggest that eccentric
27 exercises improve functional and structural measures for the lower limbs. Since a research gap exists
28 for the shoulder joint it has to be clarified if eccentric training for the external rotator cuff muscles
29 produces similar functional and structural changes for a non-specific shoulder trained healthy population.
30 The purpose of this study was to evaluate the effects of highly standardized eccentric isokinetic
31 resistance training on the function and structure of the dominant shoulder external rotator cuff muscles.
32 In addition, the feasibility of a new method of measuring flexibility and muscle diffusion tensor imaging
33 to quantify three-dimensional changes in muscle fibers was tested. Therefore, 16 physically active men
34 were recruited in October 2021. The right shoulder eccentric strength was trained twice a week for six
35 weeks at 30°/s using an isokinetic dynamometer. The eccentric training protocol consisted of five sets
36 and ten repetitions with subjective maximal effort. The primary outcome measures were for the external
37 rotator cuff muscles eccentric and concentric mean and peak torque at 30, 60 and 180°/s, flexibility in
38 terms of active and passive stretching, fascicle length and fascicle volume for the supraspinatus and
39 infraspinatus muscles. The findings showed a training effect for eccentric strength (+24%). For the
40 external rotator cuff muscles, the torque-angle relationship increased, especially in the final phase of
41 range of motion, even though a 4% decrease was seen after the passive stretch test. Positive changes in
42 muscle structure were shown for fascicle length (+16%) and fascicle volume (+19%). Secondary
43 outcome measures for the internal rotator cuff muscles did not show significant changes from baseline
44 to post-test. Based on the study results, we can conclude that eccentric isokinetic training has a
45 significant effect on the function and macroscopic structure of the external rotator cuff muscles in a non-

46 specifically trained, healthy male population. To our knowledge, this is the first eccentric training study
47 using both isokinetic dynamometer and muscle diffusion tensor imaging to assess functional and
48 structural changes in the human shoulder rotator cuff muscles. The methods were shown to be feasible
49 for interventional studies. Based on these results, populations such as high-performance handball players
50 with highly trained shoulders should be included in future studies.

51 **Introduction**

52 Shoulder injuries are an ongoing problem in general practice[1]. The lifetime prevalence of
53 shoulder problems is approximately 31 %[2]. Key factors for the reduction of injury rates seem to be
54 joint range of motion (ROM) and strength[3–6]. Structural deficits in muscle fascicle length (FL), which
55 are also associated to ROM and strength, can also be seen as potential risk factors[7,8]. However, most
56 exercise-based interventions appear to target changes in functional outcomes for flexibility and strength
57 without significant reduction in injury rates[9–11].

58 In contrast, a recent meta-analysis of 8459 athletes shows that eccentric field exercises
59 implemented in sports athletic training halve the risk of hamstring injuries[12]. Eccentric training
60 effectively induces tissue damage and hypertrophic response. Interestingly, following eccentric strength
61 training, fiber lengthening and a decrease in fiber pennation angle seem to be a major reason for a
62 positive change in muscle volume and motor performance[13]. However, exercises that promote muscle
63 fascicle lengthening seem to be of considerable interest as injury prevention strategies and for improving
64 motor performance[13–15].

65 Recently, eccentric training interventions have received greater attention in research with the
66 objective of better understanding functional and structural changes through these forms of
67 interventions[16,17]. However, there is still a lack of studies focusing on the musculature of the shoulder
68 joint[18]. Furthermore, since structural changes are commonly obtained with 2D ultrasound imaging,
69 even less is known about the three-dimensional changes in muscle fiber architecture. As a promising
70 approach muscle diffusion tensor imaging (mDTI) is able to show the complexity of changes in different
71 muscles[19–21].

72 The aim of this study was to investigate the structural and functional alteration following a six-
73 week isokinetic eccentric strength training. In addition, this study will test the feasibility of a newly
74 developed isokinetic functional stretch test as well as the feasibility of mDTI to quantify changes in the
75 muscle parameters for the shoulder external rotator cuff muscles. Main outcome measures were
76 eccentric and concentric mean and peak torque of the external rotator cuff muscles at an isokinetic mode
77 with 30°/s, 60°/s, and 180°/s movement velocity and analysis of the torque angle relationship. For
78 flexibility, active ROM (aROMmax) and submaximal and maximum passive ROM (pROMsub and
79 pROMmax) and its passive torque angle relation were obtained. To quantify changes in the infraspinatus
80 and supraspinatus muscle, mean fractional anisotropy (FA), fascicle length (FL) and fascicle volume
81 (FV) were calculated based on mDTI.

82 **Materials and Methods**

83 This is a preliminary experimental study[22]. The recruitment period for this study was from
84 October 18 to December 17, 2021. The study protocol was approved by the Leipzig University ethics
85 committee (ethical approval nr: 362/21-ek) and is registered in the German Clinical Trials Register
86 (DRKS00032375). The study was performed according to the declaration of Helsinki. All subjects gave
87 written informed consent. The authors had no access to information that could identify individual
88 participants during or after data collection.

89 **Sample**

90 The sample consisted of 16 active male student athletes for isokinetic measurements (23.3 ± 3.9
91 years; 181.2 ± 6.9 cm body height; 76.4 ± 7.4 kg body mass). The physical activity of the recruited
92 population is characterized by strength training and individually varied activities such as skiing, judo,
93 soccer, running, handball, or javelin throwing at least twice a week. Out of this population eleven
94 subjects were randomly chosen for magnetic resonance imaging (MRI). All participants were required
95 to have a healthy dominant right shoulder. Subjects were excluded, if they showed a history of
96 musculoskeletal disorders, had regular medication, discomfort, pain, or known lesions in the right

97 shoulder. In addition, five days prior to data collection, participants were instructed to discontinue any
98 intense and exceptional physical activity or heavy training.

99 **Eccentric isokinetic resistance training intervention**

100 A total of twelve eccentric isokinetic strength training sessions for the external rotator cuff
101 muscles were performed over a period of six weeks (twice a week). Training was performed using BTE
102 Primus RS isokinetic dynamometer (Baltimore Therapeutic Equipment Company, Hanover, MD, USA).
103 Prior to the start of the intervention, all subjects completed two sessions of familiarization with the
104 eccentric training and testing procedure.

105 The training protocol followed the recommendations from Toigo and Boutellier[23] and was
106 standardized in terms of weeks and days of training, ROM, movement velocity, load magnitude, number
107 of sets and repetitions, and exercise execution regulations (Table 1). After two weeks of intervention,
108 the total ROM was shifted 15 degrees toward the internal ROM and the load level was increased based
109 on the load level of the last three sessions. The training was performed in prone position with 90°
110 shoulder abduction and 90° elbow flexion.

111 **Table 1. Eccentric resistance exercise determinants.**

Resistance exercise determinants	Eccentric isokinetic internal rotation
Number of repetitions	10 repetitions
Load magnitude	± 10% 10-Repetition Maximum
Time under tension	~4 seconds
Rest in-between repetitions	~4 seconds
Volitional muscular failure	no
Range of motion	120° (from 60° external to 60° internal rotation)
Movement speed	30°/s
Exercise execution	Prone Position Fixed joints: elbow (90° flexion) and Hand (0° neutral) rotating joint: shoulder (90° abduction)
Fractional and temporal distribution of the contraction modes per repetition and duration of a repetition	4 seconds eccentric 0 seconds isometric

	0 seconds concentric
Number of sets	5 Sets
Rest in between sets	120 seconds
Number of exercise interventions	2/ week
Wamp-Up	Shoulder rotation and pull-ups
Recovery time in-between exercise sessions	48–76 hours
Duration of experimental period	6 weeks

112

113 **Data acquisition**

114 Functional and structural parameters of the right shoulder were assessed using diffusion-weighted
115 MRI scans and isokinetic dynamometry three to five days before the first and after the final eccentric
116 intervention session.

117 **Isokinetic Testing**

118 IsoMed 2000 (D&R Ferstl GmbH, Hemau, Germany) was used to test the ROM and strength of
119 the right shoulders external and internal rotator cuff muscles. Each subject was tested in the supine
120 position with fixed shoulder-arm joints (Fig 1) as for the eccentric training described (Table 1). In
121 addition, the shoulder was fixed ventrally to prevent shoulder elevation in an individually standardized
122 manner.

123 Active stretch testing consisted of 15 trials alternating between internal and external rotation.
124 Volunteers were instructed to move the apparatus slowly and with ease until aROMmax. The turning
125 point were reached when the subject was unable to continue the antagonist stretch generated by the
126 agonist muscles. Passive stretching tests were performed at an isokinetic speed of 5°/s. The passive
127 stretch involved 15 trials of alternating internal and external rotation with eyes closed and muscles
128 subjectively relaxed until pROMmax, characterized by 8 Nm of passive torque, was reached.

129 The voluntary maximum strength tests were performed separately for concentric and eccentric
130 rotation, also alternating between internal and external rotation. Strength measurements were performed
131 over a 160° ROM (70° internal rotation and 90° external rotation) at an isokinetic speed of 60°/s, 180°/s

132 and 30°/s. All tests were performed with a rest period of 60 seconds. Each subject's position and
133 dynamometer adapter gravity correction value and settings were individualized at baseline and used for
134 post-tests (Fig 1).

135

136 **Fig 1. Functional testing using ISOMED 2000 isokinetic dynamometer.**

137

138 **Magnetic Resonance Imaging**

139 A 3-Tesla Siemens MAGNETOM Prisma scanner (Siemens Healthcare, Erlangen, Germany)
140 with a shoulder coil (XL, 16-channel) was used for MRI scans. The participants lay in a head first supine
141 position with the right arm in the neutral position and the hand supinated. The MR protocol consisted of
142 a T1-weighted and a diffusion-weighted sequence. The T1-weighted sequence consisted the following
143 parameter settings: repetition and echo time TR/TE = 492/20 ms, slice thickness = 0.7 mm, flip angle =
144 120°, field of view = 180 x 180 mm², matrix = 256x256 mm². Diffusion-weighted sequence were
145 acquired as following: repetition and echo time TR/TE = 6100/69 ms, slice thickness = 5.2 mm, flip
146 angle = 90°, field of view = 240 x 240 mm², matrix = 122 x 122 mm², 48 diffusion sampling directions
147 with b = 400 s/mm². Total scan time reached 12 minutes.

148 **Data processing**

149 MATLAB v.R2022a (MathWorks, Natick, USA) was used to process the isokinetic dynamometer
150 data. Stretching parameter calculations were based on the average of the third through seventh trials in
151 each test, with the first two trials excluded and defined as familiarization. pROMmax was calculated
152 when subjects reached the end point characterized by either 8 Nm or 100° internal rotation and 130°
153 external rotation depending on the target muscle for the test. For further analysis of changes in the
154 morphology of the passive torque-angle curves, a three-parametric e-function (Appendix) was fitted
155 from each subject's individual offset start angle to the 100° internal rotation and 130° external rotation
156 end points (100% stretch), which are shown in percent stretch in the figures. The evaluated e-function
157 was then used to calculate the angle at the instant of 0.01 Nm/degree (pROMsub) and to calculate the

158 fit to the defined end points using a statistical parametric mapping (SPM1d) method in MATLAB
159 (Appendix).

160 For strength analysis, the mean of three maximum consecutive repetitions were used. Raw data
161 were filtered using a 6 Hz cutoff frequency[24]. From each test, the acceleration and deceleration phases
162 were cut, leaving only the interval with the desired isokinetic velocity. The maximum torque was then
163 identified in the isokinetic phase and the mean torque was calculated over this phase. Descriptive and
164 inferential statistics in SPSS v.27 (IBM, Armonk, New York, USA) used absolute torque. For
165 comparison of curve morphology using SPM1d, data were normalized to body mass[24,25].

166 MRI data were first processed using Mimics Materialise v.24.0 (Leuven, Belgium) for manually
167 segment the supraspinatus and infraspinatus muscles to extract a volume of interest (VOI). This
168 segmentation method showed excellent reliability for the tractography outcome measures[26]. Then, the
169 diffusion-weighted images were processed and corrected using DSI Studio (v. 3rd of December 2021.
170 <http://dsi-studio.labsolver.org>). Based on VOI-based deterministic fiber tractography, FA, muscle FL
171 and FV were calculated using the integrated statistics tool in DSI Studio (Fig 2). More details for the
172 MRI and segmentation can be found in a previous methods paper[26].

173

174 **Fig 2. Right shoulder dorsal view tractography.** a) coronal plane supraspinatus muscle fiber with
175 directional coloring, b) infraspinatus muscle, c-e) sagittal, coronal and axial view on diffusion-
176 weighted-images and volume of interest.

177

178 **Statistics**

179 MATLAB v.R2022a (MathWorks, Natick, USA) and SPSS v.27 (IBM, Armonk, New York, USA)
180 were used for statistics. Descriptive results were based on mean and standard deviation (\pm). Participants
181 were excluded from further analysis if the data distribution showed outliers and z-transformed values
182 exceeded 2.5. For statistical analysis, missing variables were calculated in SPSS. Repeated measures
183 multivariate analysis of variance (MANOVA) was used to show main effects and interactions between
184 different factors. For statistics of strength parameters, the factors were time (pre and post), mode

185 (eccentric and concentric), and speed (30°/s, 60°/s and 180°/s). For flexibility parameters, the factors
186 were time (pre and post) and test (aROM and pROM). For muscle parameters, the factor for statistical
187 analysis were time (pre and post). Statistics were separated for the muscles.

188 For further post-hoc mean comparisons, repeated measures univariate analysis of variances
189 (ANOVA) and paired t-tests were used. The p -value was set at 0.05. Differences between the torque-
190 angle curves were calculated using SPM1d integrated in MATLAB.

191 **Results**

192 All 16 subjects completed twelve training sessions within six weeks. Data were tested for normal
193 distribution and homogeneity. One outlier was excluded for supraspinatus muscle analysis, and three
194 subjects were excluded due to invalid test performance for the active stretch test and a truncated
195 proximal field of view on MRI for the infraspinatus muscle.

196 **External rotator cuff muscles functional and structural changes**

197 A three-factors repeated measures MANOVA were calculated for external and internal rotator
198 cuff muscles strength. Overall, the external rotator cuff muscles showed a significant time x mode
199 interaction for the parameter mean torque ($F(1,14) = 5.82; p = .030; \eta^2 = .293$) and peak torque ($F(1,14) = 3.58; p = .080; \eta^2 = .203$). Also, an interaction effect was found for time x speed for mean
200 torque: ($F(1,14) = 5.29; p = .011; \eta^2 = .274$) and peak torque ($F(1,429; 20,004) = 3.51; p = .063; \eta^2 = .200$). The interaction effect of time x mode was significant for the 30°/s velocity strength tests (Wilks-
201 Lambda = .450; $F(2,13) = 7.93; p = .006; \eta^2 = .550$).

202 For analysis of the stretching tests and ROM results, a one-way MANOVA showed significant
203 pre-post decreases for the trained external rotator cuff muscle parameters (Wilks-Lambda = .572; $F(2,14) = 5.25; p = .020; \eta^2 = .428$). Furthermore, the analysis for the aROMmax revealed a significant pre-
204 post decrease for the internal rotator cuff muscles ($t(12) = 2.37; p = .018; d = .657$). The pre-post
205 differences for the external rotator cuff muscles for each factor and parameter can be found in Table 2.

206 Muscle structural changes were calculated for the supraspinatus muscle and showed a non-
207 significant result (Wilks-Lambda = .363; $F(2,8) = 7.03; p = .017; \eta^2 = .637$). However, post-hoc tests
208

211 for the pre-post differences can be found for FL ($t(9) = 3.53$; $p = .003$; $d = 1.117$) and FV ($t(9) = 3.82$;
212 $p = .002$; $d = 1.207$). The Infraspinatus muscle did not show statistically significant pre-post differences
213 (Table 2). Furthermore, no changes were found for the metric FA and for all secondary outcome
214 measures (Table 3).

215 **Table 2. Results for the external rotator cuff muscles.**

Muscle	parameter		Pre	Post	$\Delta\%$	p	
External rotator cuff muscles	Strength eccentric (Nm)						
	Mean torque	30°/s		28.68 (6.31)	35.57 (6.58)	+24.02	.008
		60°/s		33.01 (6.92)	37.42 (7.31)	+13.36	.098
		180°/s		36.60 (7.97)	40.73 (8.42)	+11.30	.145
	Peak torque	30°/s		37.70 (7.76)	44.04 (7.80)	+16.82	.031
		60°/s		41.12 (8.25)	45.34 (8.93)	+10.25	.150
		180°/s		42.50 (8.94)	46.22 (9.29)	+8.76	.190
	Strength concentric (Nm)						
	Mean torque	30°/s		22.55 (4.52)	23.07 (4.10)	+2.32	.451
		60°/s		22.86 (4.23)	24.45 (4.57)	+6.93	.227
		180°/s		21.75 (4.55)	21.48 (4.14)	-1.29	.374
	Peak torque	30°/s		28.61 (5.54)	30.49 (5.41)	+6.57	.226
		60°/s		29.41 (5.25)	31.38 (6.31)	+6.70	.253
		180°/s		25.69 (4.63)	25.23 (4.77)	-1.81	.345
	Flexibility (internal rotation)						
	Active stretch	aROMmax (°)		71.59 (8.62)	66.82 (7.72)	-6.66	.018
	Passive stretch	pROMsub (°)		60.95 (10.70)	58.06 (9.48)	-4.74	.009
		pROMmax (°)		86.63 (9.65)	83.46 (8.50)	-3.66	.002
Infraspinatus	Fascicle length (mm)		66.55 (6.15)	64.63 (4.80)	-2.89	.277	
	fascicle volume (mm ³)		257.83 (30.21)	258.29 (35.33)	+0.18	.492	
	Fractional anisotropy		0.2500 (0.02)	0.2486 (0.02)	-0.56	.690	
Supraspinatus	Fascicle length (mm)		36.76 (6.93)	42.68 (7.94)	+16.1	.003	
	fascicle volume (mm ³)		143.17 (29.34)	170.54 (23.42)	+19.12	.002	
	Fractional anisotropy		0.2855 (0.02)	0.2845 (0.02)	-0.35	.889	

216 Columns indicate the absolute mean pre and post test values, percentage change ($\Delta\%$) and significance (p). Nm, newton
217 meter; aROMmax, maximum active range of motion; pROMsub, submaximal passive range of motion; pROMmax,
218 maximum passive range of motion; °, angle degree; °/s, degrees per second (movement velocity); mm, millimeter; mm³,
219 cubic millimeter; values in brackets, standard deviation.

220

221 Internal rotator cuff muscles functional changes

222 A three-factors repeated measures MANOVA were calculated for the internal rotator cuff
223 muscles strength showing no significant changes in all metrics Furthermore, a one-way MANOVA for
224 the stretching tests showed no significant changes (Table 3).

225 **Table 3. Results for the internal rotator cuff muscles.**

Muscle	parameter		Pre	Post	$\Delta\%$	<i>p</i>	
Internal rotator cuff muscles	Strength eccentric (Nm)						
	Mean torque	30°/s		31.35 (9.45)	33.02 (10.41)	+5.33	.363
		60°/s		39.54 (8.39)	40.54 (10.83)	+2.53	.432
		180°/s		41.64 (9.85)	41.86 (13.65)	+0.55	.475
	Peak torque	30°/s		45.71 (15.14)	52.42 (16.85)	+14.68	.139
		60°/s		51.39 (13.60)	55.20 (14.22)	+7.42	.258
		180°/s		53.59 (17.00)	55.58 (19.29)	+3.71	.429
	Strength concentric (Nm)						
	Mean torque	30°/s		22.63 (6.14)	21.90 (6.74)	-3.22	.337
		60°/s		27.33 (5.54)	26.67 (7.19)	-2.40	.354
		180°/s		24.56 (5.91)	24.65 (6.58)	+0.36	.474
	Peak torque	30°/s		33.60 (9.39)	36.11 (10.30)	+7.45	.295
		60°/s		35.98 (8.45)	37.80 (10.31)	+5.06	.355
		180°/s		31.70 (8.69)	32.37 (8.48)	+2.13	.459
	Flexibility						
	Active stretch	aROMmax (°)		98.93 (0.88)	101.53 (7.55)	-2.63	.092
	Passive stretch	pROMsub (°)		82.88 (7.84)	81.24 (8.20)	-1.98	.142
		pROMmax (°)		109.44 (7.34)	108.33 (8.56)	-1.01	.226

226 Columns indicate the absolute mean pre and post test values, percentage change ($\Delta\%$) and significance (*p*). Nm, newton
227 meter; aROMmax, maximum active range of motion; pROMsub, submaximal passive range of motion; pROMmax,
228 maximum passive range of motion; °, angle degree; °/s, degrees per second (movement velocity); values in brackets, standard
229 deviation.

230

231 Changes in eccentric and concentric torque-angle curves

232 For the external rotator cuff muscles strength tests, SPM1d analysis of the torque-angle
233 relationship revealed significant changes between neutral position and 60° internal rotation in the
234 eccentric test with an isokinetic speed of 30°/s. The eccentric test with 60°/s movement velocity showed

235 a significant increase in torque between 30 and 60° internal rotation(Fig 3). SPM1d analysis of the
236 internal rotator cuff muscles showed a significant change in curve morphology in the internal rotation
237 in the 60-40° ROM and in the final ROM above 80° (Fig 4).

238

239 **Fig 3. External rotator cuff muscles torque-angle-curves.** Pre- (blue) and Post-measurement (red)
240 torque angle curves for 30°/s, 60°/s and 180°/s (top-to-bottom) for the eccentric (left column) and
241 concentric (right column) strength. The dash-dotted line indicates the *t*-values calculated by the
242 Statistical Parametric Mapping method (SPM1d) for each angle, the dashed line indicates the critical *t*-
243 value. If the *t*-values exceed the critical value, significant differences exist between pre- and post-
244 measurement and are marked as grey area.

245

246 **Fig 4. Internal rotator cuff muscles torque-angle-curves.** Pre- (blue) and Post-measurement (red)
247 torque angle curves for 30°/s, 60°/s and 180°/s (top-to-bottom) for the eccentric (left column) and
248 concentric (right column) strength. The dash-dotted line indicates the *t*-values calculated by the
249 Statistical Parametric Mapping method (SPM1d) for each angle, the dashed line indicates the critical *t*-
250 value. If the *t*-values exceed the critical value, significant differences exist between pre- and post-
251 measurement and are marked as grey area.

252

253 **Changes in passive torque-angle curves**

254 For the external rotator cuff muscles passive stretching tests SPM1d analysis showed an increase
255 in passive stretching torque-angle relationship from 40° ROM to 100° ROM (Fig 5). No differences in
256 passive torque-angle relationship were statistically confirmed for the internal rotator cuff muscles (Fig
257 6 and Table 3).

258

259 **Fig 5. External rotator cuff muscles passive stretching torque-angle-curves.** Pre and post group
260 torque angle curves (blue and red) extrapolated from the individual offset start angle of each subject to
261 100° of internal rotation (100% extension during testing). Newton meters (Nm) are expressed relative
262 to the body mass (kg) of each subject. The dotted line indicates the *t*-values calculated by the statistical

263 parametric mapping method (SPM1d) for each angle, the dashed line indicates the critical t -value.

264 Significant differences are indicated by the gray area in the figure.

265

266 **Fig 6. Internal rotator cuff muscles passive stretching torque-angle-curves.** Pre-post (blue-red)

267 group torque-angle curves extrapolated from each subject's individual offset start angle to 130° of

268 external rotation (100% extension in test). Newton meters (Nm) are relative to each subject's body

269 mass (kg). The dash-dotted line indicates the t -values calculated by the Statistical Parametric Mapping

270 method (SPM1d) for each angle, the dashed line indicates the critical t -value. Significant differences

271 are indicated by the gray area.

272

273 Discussion

274 The purpose of this study was to determine if eccentric resistance training could produce similar
275 and plausible results for the shoulder compared to other lower extremity studies and to evaluate the
276 feasibility of the study methodology. We hypothesized that 6 weeks of 30°/s isokinetic eccentric internal
277 rotation resistance training targeting the external rotator cuff muscles, would have positive effects on
278 eccentric strength, active and passive stretching behavior, and supraspinatus and infraspinatus muscles
279 FA, FL and FV. However, the eccentric strength of the external rotator cuff muscles increased
280 significantly by +24% in the 30°/s test in particular in the final ROM of the isokinetic phase (Fig 3).
281 Flexibility tests showed a significant decrease in both the aROMmax (-7%) and the pROMmax (-5%),
282 while the passive torque angle relation increased. In addition, the supraspinatus FL increased
283 significantly by +16% and the FV increased by +19%. Other primary outcome measures, such as
284 concentric strength for the trained external rotator cuff muscles, changed up to +7% but not statistically
285 significant. Secondary outcome measures showed no statistically significant changes in internal rotator
286 cuff strength and flexibility tests.

287 Strength tests results are plausible and comparable to other lower extremity eccentric isokinetic
288 dynamometer training studies, explaining a 19% gain in eccentric strength and a 9% improvement for
289 the concentric strength[18]. Several mechanisms and adaptations may account for the changes in

290 strength. First, the changes in strength and FV are addressed in terms of calculated fiber elongation[13]
291 and the documented right shift in the torque-angle relationship (Fig 3), which has been discussed as a
292 functional correlate of sarcomere formation[13,23,27]. Second, the changes found are primarily
293 concerned with possible changes in FV as a possible surrogate parameter for physiological cross-
294 sectional area of a muscle.

295 As multiple tissues define the ROM of the shoulder, a decrease in flexibility can be attributed to
296 the function and structure of the glenohumeral joint. Since the shoulder joint consists of at least three
297 other joints, not only the stabilizing muscles, but also passive structures such as the capsule determine
298 its function. Therefore, Zandt et al.[28] expected low adaptability for rotator cuff muscles following
299 eccentric resistance training. Furthermore, Camargo and colleagues[29], summarized that the stimulation
300 of the target muscle seems to be problematic for shoulder rotational movements. However, this study
301 showed interesting changes in joints flexibility while parametrizing the passive stretching torque-angle
302 curves and extracting parameters that characterize the changes in the stretching behavior until the final
303 stretch was reached. Our results show that a decrease in ROM after eccentric resistance training can be
304 explained by an increase in the torque-angle relationship during the passive stretch test. This can be
305 explained by changes in stiffness either due to addition in sarcomeres in series or due to chronic titin
306 elongation and therefore sarcomere lengthening[30,31]. Therefore, this approach provides new
307 information on the stretch behavior of human shoulder external rotator cuff muscles after resistance
308 training without using imaging techniques to quantify tissue stiffness[32].

309 This study shows a 16% increase in FL following eccentric training. Changes in FL can be
310 attributed to either sarcomere elongation or sarcomerogenesis[30,31]. However, this study found a
311 positive change in FV and in torque-angle-relationship, which can be interpreted as an indicative for
312 sarcomerogenesis, as these changes appear to be a functional correlate of sarcomere addition in series
313 [13,23,27]. Compared to other eccentric training studies, this change in FL shows to be 6% above the
314 mean fiber lengthening reported for the lower limbs in a systematic review[18]. However, this review
315 article also showed a wide range for adaptation, ranging from a 3% non-significant decrease in FL[33]
316 to a possible 33% increase in FL for the hamstrings muscles[34]. Since the review article showed small
317 differences in training method and exercise load between these two studies, the ultrasound imaging

318 method applied was discussed as a possible reason for measuring different values in FL changes.
319 Compared to MRI methods, 2D ultrasound imaging appears to be less objective and reliable[35]. To our
320 knowledge, Suskens and colleagues[21] published the first study using MRI-based mDTI and observed
321 a 14% (2 cm) increase in FL after eccentric resistance training. While Suskens and colleagues [21] trained
322 the lower extremities, our study appears to be the first to demonstrate architectural changes of the
323 shoulder after eccentric training using mDTI. However, plausible changes in FL were observed in this
324 study, which are also reflected in the observed changes in FV. In terms of baseline fiber length and FV,
325 the demonstrated results appear to be comparable to anatomical studies indicating a wide range of mean
326 fiber length between 2.8 and 8.3 cm[36,37] and 6.6 cm for the infraspinatus muscle[37]. Since the
327 population, measurement method, and number of fascicles measured can lead to incomparability
328 between studies[36], this study appears to show results within the range for typical structural shape and
329 adaption capacity.

330 **Limitations**

331 There are several limitations that should be noted. First, this is a preliminary study without a
332 control group and resulting in missing or bad data. However, this study was conducted to demonstrate
333 the feasibility of training and diagnostics and to show the potential results for physically active men to
334 have a basis for interpretation for future studies. Second, the sample size limited the statistical power
335 and therefore some variables showed some trends but did not reach significance regardless of the
336 analysis methods performed. Therefore, analysis revealed low sample size for the independent analysis
337 for active stretching tests and MRI measurements and results have to be interpreted with caution. Third,
338 the eccentric external rotation exercises used in this study may not account for strength training-induced
339 changes in muscle architecture to the same extent as abduction exercises[29,38,39]. However, because
340 of the widespread deficit in internal rotation of the glenohumeral joints as a risk factor for injury[40,41],
341 rotational exercises have been used to directly target the major functional limitations of most subjects.
342 Furthermore, the training with an isokinetic machine was very specific, whereas several subjects showed
343 irritations in the torque-angle curves during training and testing. Therefore, it is possible that free-weight
344 eccentric resistance training may produce at least the same effects as isokinetic training in such a

345 population. Fourth, the stretching tests may not be comparable to other studies that primarily used
346 physical therapists[29,38,39] to determine ROM of the glenohumeral joints. However, as most studies
347 determine submaximal ROM without reaching an individual maximum stretch pain and with low
348 standardization in how ROMmax is defined[17], this test is able to show stretching behavior in a
349 standardized manner until a predefined torque or angle of motion is reached. However, the comparisons
350 of curve morphology using SPM1d show an exploratory approach as there is no study to compare to.
351 Last, differences in anatomical and diffusion-weighted MRI scan parameter settings led to difficulties
352 in image registration and resampling. Because of these difficulties, four subjects were excluded from
353 the infraspinatus analysis due to a proximally restricted field of view. In addition, the stopping criteria
354 for fiber tracking resulted in interpolations and different tract densities between subjects. However, DTI
355 represents the diffusion of tissue water molecules to calculate fiber length based on reconstructed tensors.
356 Therefore, DTI results should be interpreted with caution.

357 **Conclusion**

358 Following this study, it was shown that eccentric training can induce improvements in functional
359 and structural measures of the shoulder external rotator cuff muscles. To our best knowledge, this is the
360 first study using this experimental setting to determine baseline to posttest changes following eccentric
361 strength training. Therefore, a major aim of this study was to evaluate the feasibility of the methods. In
362 terms of feasibility, this study demonstrated that the eccentric intervention was able to confirm
363 hypotheses regarding strength and muscle fiber length. Regarding the test methods, the e-function used
364 to extrapolate a passive stretch torque-angle curve showed plausible results and was therefore considered
365 feasible, as was DTI, which showed comparable results to the other studies mentioned in the Discussion
366 section. Automatic segmentation approaches can be considered to speed up mDTI analysis. It remains
367 to be proven whether these effects are still significant when compared to conventional shoulder
368 prevention strategies in a randomized controlled trial. Furthermore, it is unknown whether this training
369 program would produce similar results for a chronic high-impact shoulder for a sample of overhead
370 athletes.

371 **Acknowledgments**

372 We are grateful to all the scientists, support staff, and recruited individuals for their participation
373 in this study. We would also like to thank Frank Yeh for the software support from DSI Studio.

374

375 **References**

- 376 1. Greving K, Dorrestijn O, Winters JC, Groenhof F, Van Der Meer K, Stevens M, et al. Incidence,
377 prevalence, and consultation rates of shoulder complaints in general practice. *Scandinavian*
378 *Journal of Rheumatology*. 2012. pp. 150–155. doi:10.3109/03009742.2011.605390
- 379 2. Luime J, Koes B, Hendriksen I, Burdorf A, Verhagen A, Miedema H, et al. Prevalence and
380 incidence of shoulder pain in the general population; a systematic review. *Scand J Rheumatol*.
381 2004;33: 73–81. doi:10.1080/03009740310004667
- 382 3. Burkhart SS, Morgan CD, Ben Kibler W. The disabled throwing shoulder: Spectrum of
383 pathology Part I: Pathoanatomy and biomechanics. *Arthroscopy - Journal of Arthroscopic and*
384 *Related Surgery*. 2003;19: 404–420. doi:10.1053/jars.2003.50128
- 385 4. Hoppe MW, Brochhagen J, Tischer T, Beitzel K, Seil R, Grim C. Risk factors and prevention
386 strategies for shoulder injuries in overhead sports: an updated systematic review. *Journal of*
387 *Experimental Orthopaedics*. Springer Science and Business Media Deutschland GmbH; 2022.
388 doi:10.1186/s40634-022-00493-9
- 389 5. Murphy DF, Connolly DAJ, Beynnon BD. Risk factors for lower extremity injury: A review of
390 the literature. *British Journal of Sports Medicine*. 2003. pp. 13–29. doi:10.1136/bjism.37.1.13
- 391 6. Wilk KE, Andrews JR, Arrigo CA, Keirns MA, Erber DJ. The strength characteristics of internal
392 and external rotator muscles in professional baseball pitchers. *American Journal of Sports*
393 *Medicine*. 1993;21: 61–66. doi:10.1177/036354659302100111
- 394 7. Ribeiro-Alvares JB, Dornelles MP, Fritsch CG, de Lima-E-Silva FX, Medeiros TM, Severo-
395 Silveira L, et al. Prevalence of hamstring strain injury risk factors in professional and under-20
396 male football (Soccer) players. *J Sport Rehabil*. 2020;29: 339–345. doi:10.1123/jsr.2018-0084
- 397 8. Timmins RG, Bourne MN, Shield AJ, Williams MD, Lorenzen C, Opar DA. Short biceps
398 femoris fascicles and eccentric knee flexor weakness increase the risk of hamstring injury in
399 elite football (soccer): A prospective cohort study. *Br J Sports Med*. 2016;50: 1524–1535.
400 doi:10.1136/bjsports-2015-095362

- 401 9. Achenbach L, Huppertz G, Zeman F, Weber J, Luig P, Rudert M, et al. Multicomponent
402 stretching and rubber band strengthening exercises do not reduce overuse shoulder injuries: A
403 cluster randomised controlled trial with 579 handball athletes. *BMJ Open Sport Exerc Med.*
404 2022;8. doi:10.1136/bmjsem-2021-001270
- 405 10. Niederbracht Y, Shim AL, Sloniger MA, Paternostro-Bayles M, Short TH. Effects of a shoulder
406 injury prevention strength training program on eccentric external rotator muscle strength and
407 glenohumeral joint imbalance in female overhead activity athletes. *J Strength Cond Res.*
408 2008;22: 140–145. doi:10.1519/JSC.0B013E31815F5634
- 409 11. Thacker SB, Gilchrist J, Stroup DF, Kimsey CD. The Impact of Stretching on Sports Injury Risk:
410 A Systematic Review of the Literature. *Medicine and Science in Sports and Exercise.* 2004. pp.
411 371–378. doi:10.1249/01.MSS.0000117134.83018.F7
- 412 12. Van Dyk N, Behan FP, Whiteley R. Including the Nordic hamstring exercise in injury
413 prevention programmes halves the rate of hamstring injuries: A systematic review and meta-
414 analysis of 8459 athletes. *Br J Sports Med.* 2019;53: 1362–1370. doi:10.1136/bjsports-2018-
415 100045
- 416 13. Franchi MV., Reeves ND, Narici MV. Skeletal muscle remodeling in response to eccentric vs.
417 concentric loading: Morphological, molecular, and metabolic adaptations. *Frontiers in*
418 *Physiology.* Frontiers Media S.A.; 2017. doi:10.3389/fphys.2017.00447
- 419 14. Hinks A, Franchi MV., Power GA. The influence of longitudinal muscle fascicle growth on
420 mechanical function. *J Appl Physiol.* 2022;133: 87–103.
421 doi:10.1152/JAPPLPHYSIOL.00114.2022
- 422 15. Abe T, Kumagai K, Brechue WF. Fascicle length of leg muscles is greater in sprinters than
423 distance runners. *Med Sci Sports Exerc.* 2000;32: 1125–1129. doi:10.1097/00005768-
424 200006000-00014
- 425 16. Gérard R, Gojon L, Declève P, Van Cant J. The effects of eccentric training on biceps femoris
426 architecture and strength: A systematic review with meta-analysis. *J Athl Train.* 2020;55: 501–
427 514. doi:10.4085/1062-6050-194-19

- 428 17. O’Sullivan K, McAuliffe S, DeBurca N. The effects of eccentric training on lower limb
429 flexibility: A systematic review. *British Journal of Sports Medicine*. 2012. pp. 838–845.
430 doi:10.1136/bjsports-2011-090835
- 431 18. Vetter S, Schleichardt A, Köhler HP, Witt M. The Effects of Eccentric Strength Training on
432 Flexibility and Strength in Healthy Samples and Laboratory Settings: A Systematic Review.
433 *Frontiers in Physiology*. Frontiers Media S.A.; 2022. doi:10.3389/fphys.2022.873370
- 434 19. Damon BM, Buck AKW, Ding Z. Diffusion-tensor MRI-based skeletal muscle fiber tracking.
435 *Imaging in Medicine*. 2011. pp. 675–687. doi:10.2217/iim.11.60
- 436 20. Soares JM, Marques P, Alves V, Sousa N. A hitchhiker’s guide to diffusion tensor imaging.
437 *Front Neurosci*. 2013. doi:10.3389/fnins.2013.00031
- 438 21. Suskens JJM, Secondulfo L, Kiliç Ö, Hooijmans MT, Reurink G, Froeling M, et al. Effect of
439 two eccentric hamstring exercises on muscle architectural characteristics assessed with diffusion
440 tensor MRI. *Scand J Med Sci Sports*. 2022. doi:10.1111/sms.14283
- 441 22. Vetter S. Dataset_preliminary experimental study: Effect of isokinetic eccentric resistance
442 training on strength, flexibility and muscle architecture. *Figshare Dataset*. 2023.
443 doi:10.6084/m9.figshare.24161040.v1
- 444 23. Toigo M, Boutellier U. New fundamental resistance exercise determinants of molecular and
445 cellular muscle adaptations. *European Journal of Applied Physiology*. 2006. pp. 643–663.
446 doi:10.1007/s00421-006-0238-1
- 447 24. Zanca GG, Oliveira AB, Saccol MF, Mattiello-Rosa SM. Isokinetic dynamometry applied to
448 shoulder rotators – Velocity limitations in eccentric evaluations. *J Sci Med Sport*. 2011;14: 541–
449 546. doi:10.1016/J.JSAMS.2011.05.002
- 450 25. Alt T, Komnik I, Severin J, Nodler YT, Benker R, Knicker AJ, et al. Swing Phase Mechanics
451 of Maximal Velocity Sprints-Does Isokinetic Lower-Limb Muscle Strength Matter? *Int J Sports*
452 *Physiol Perform*. 2021;16: 974–984. doi:10.1123/IJSPP.2020-0423
- 453 26. Vetter S, Köhler HP, Hepp P, Steinke H, Schleifenbaum S, Theopold J, Kiem S, Witt M,
454 Henkelmann J, Roth C (2023). Diffusion tensor imaging: Influence of segmentation on fiber

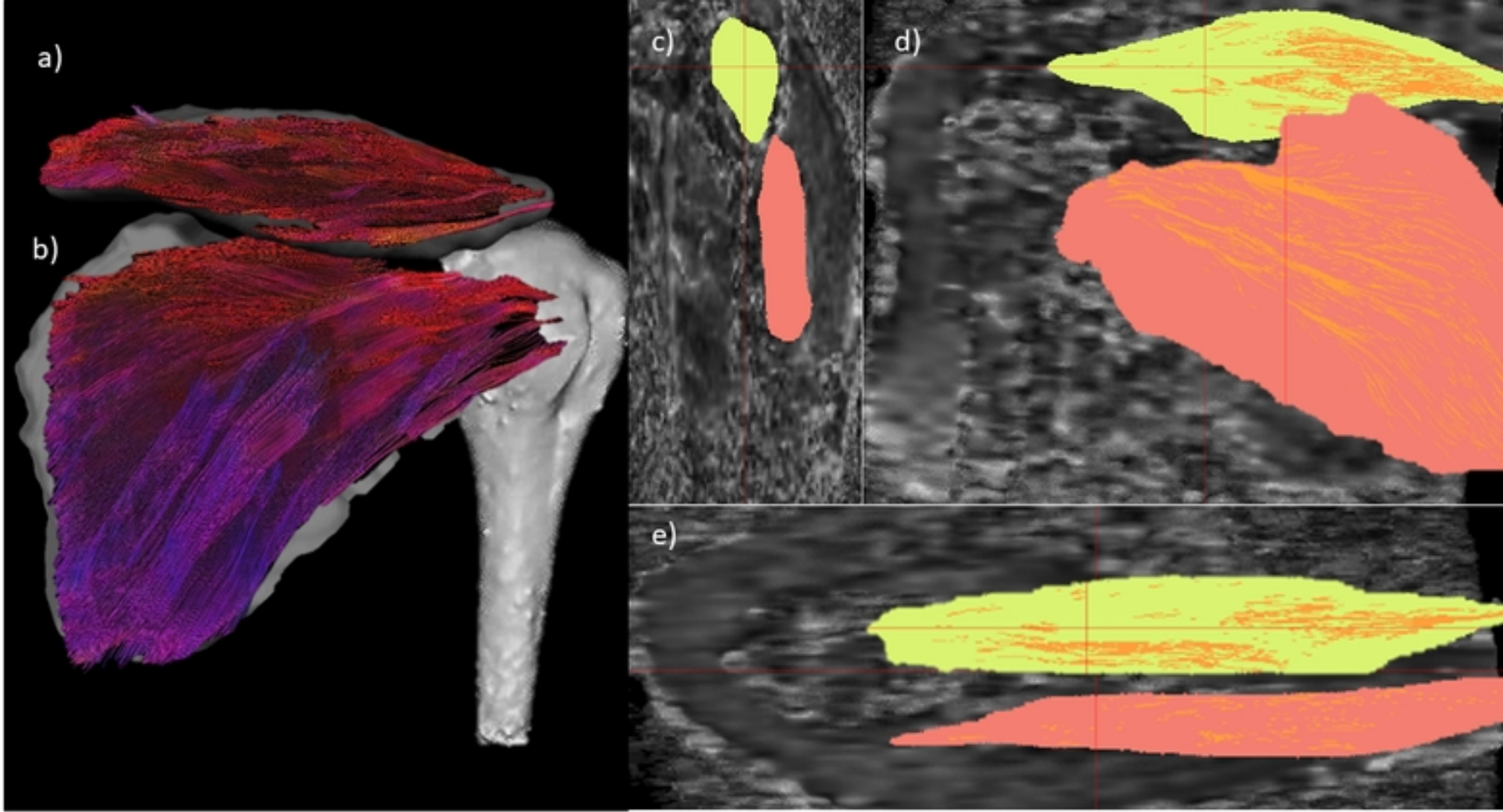
- 455 tracking in the supraspinatus muscle—An inter-operator reliability analysis. PLOS ONE, 18(9),
456 e0286280. <https://doi.org/10.1371/JOURNAL.PONE.0286280>
- 457 27. Blazevich AJ, Cannavan D, Coleman DR, Horne S. Influence of concentric and eccentric
458 resistance training on architectural adaptation in human quadriceps muscles. J Appl Physiol.
459 2007;103: 1565–1575. doi:10.1152/jappphysiol.00578.2007
- 460 28. Zandt JF, Hahn D, Buchmann S, Beitzel K, Schwirtz A, Imhoff AB, et al. Kann exzentrisches
461 Training in der konservativen Therapie von chronischen Supraspinatus-Tendinopathien effektiv
462 sein? Eine Übersicht zur aktuellen Literatur. Sportverletzung Sportschaden. 2010;24: 190–197.
463 doi:10.1055/s-0029-1245816
- 464 29. Camargo PR, Albuquerque-Sendín F, Salvini TF. Eccentric training as a new approach for
465 rotator cuff tendinopathy: Review and perspectives. World J Orthop. 2014;5: 634–644.
466 doi:10.5312/wjo.v5.i5.634
- 467 30. Herzog W, Fontana H de B. Does eccentric exercise stimulate sarcomerogenesis? Journal of
468 Sport and Health Science. Elsevier B.V.; 2022. pp. 40–42. doi:10.1016/j.jshs.2021.10.001
- 469 31. Butterfield TA, Herzog W. The magnitude of muscle strain does not influence serial sarcomere
470 number adaptations following eccentric exercise. Pflugers Arch. 2006;451: 688–700.
471 doi:10.1007/s00424-005-1503-6
- 472 32. Moreau B, Vergari C, Gad H, Sandoz B, Skalli W, Laporte S. Non-invasive assessment of
473 human multifidus muscle stiffness using ultrasound shear wave elastography: A feasibility study.
474 Proc Inst Mech Eng H. 2016;230: 809–814. doi:10.1177/0954411916656022/
- 475 33. Guilhem G, Cornu C, Maffiuletti NA, Guével A. Neuromuscular adaptations to isoload versus
476 isokinetic eccentric resistance training. Med Sci Sports Exerc. 2013;45: 326–335.
477 doi:10.1249/MSS.0b013e31826e7066
- 478 34. Potier TG, Alexander CM, Seynnes OR. Effects of eccentric strength training on biceps femoris
479 muscle architecture and knee joint range of movement. Eur J Appl Physiol. 2009;105: 939–944.
480 doi:10.1007/s00421-008-0980-7

- 481 35. Khim Kwah L, Pinto RZ, Diong J, Herbert RD. Reliability and validity of ultrasound
482 measurements of muscle fascicle length and pennation in humans: a systematic review. *J Appl*
483 *Physiol.* 2013;114: 761–769. doi:10.1152/jappphysiol.01430.2011.-Ultrasound
- 484 36. Kim SY, Boynton EL, Ravichandiran K, Fung LY, Bleakney R, Agur AM. Three-dimensional
485 study of the musculotendinous architecture of supraspinatus and its functional correlations.
486 *Clinical Anatomy.* 2007;20: 648–655. doi:10.1002/ca.20469
- 487 37. Ward SR, Hentzen ER, Smallwood LH, Eastlack RK, Burns KA, Fithian DC, et al. Rotator cuff
488 muscle architecture: Implications for glenohumeral stability. *Clin Orthop Relat Res.* 2006;448:
489 157–163. doi:10.1097/01.blo.0000194680.94882.d3
- 490 38. Kim SY, Ko JB, Farthing JP, Butcher SJ. Investigation of supraspinatus muscle architecture
491 following concentric and eccentric training. *J Sci Med Sport.* 2015;18: 378–382.
492 doi:10.1016/j.jsams.2014.05.007
- 493 39. Uhl TL, Rice T, Papotto B, Butterfield TA. Effectiveness of a home-based eccentric-exercise
494 program on the torque-angle relationship of the shoulder external rotators: A pilot study. *J Sport*
495 *Rehabil.* 2017;26: 141–150. doi:10.1123/JSR.2017-0020
- 496 40. Luig P, Krutsch W, Henke T, Klein C, Bloch H, Platen P, et al. Contact-but not foul play-
497 dominates injury mechanisms in men’s professional handball: A video match analysis of 580
498 injuries. *Br J Sports Med.* 2020;54: 984–990. doi:10.1136/bjsports-2018-100250
- 499 41. Johnson JE, Fullmer JA, Nielsen CM, Johnson JK, Moorman III CT. Glenohumeral Internal
500 Rotation Deficit and Injuries A Systematic Review and Meta-analysis. [cited 7 Jun 2023].
501 doi:10.1177/2325967118773322

502

503 **Supporting information**

504 **Data availability.** The dataset is available on a public repository on
505 <https://doi.org/10.6084/m9.figshare.24161040.v1>



Right shoulder dorsal view tractography. a) coronal plane supraspinatus muscle fibers. b) coronal plane infraspinatus muscle fibers. c) sagittal plane supraspinatus muscle fibers. d) sagittal plane infraspinatus muscle fibers. e) axial plane supraspinatus muscle fibers.

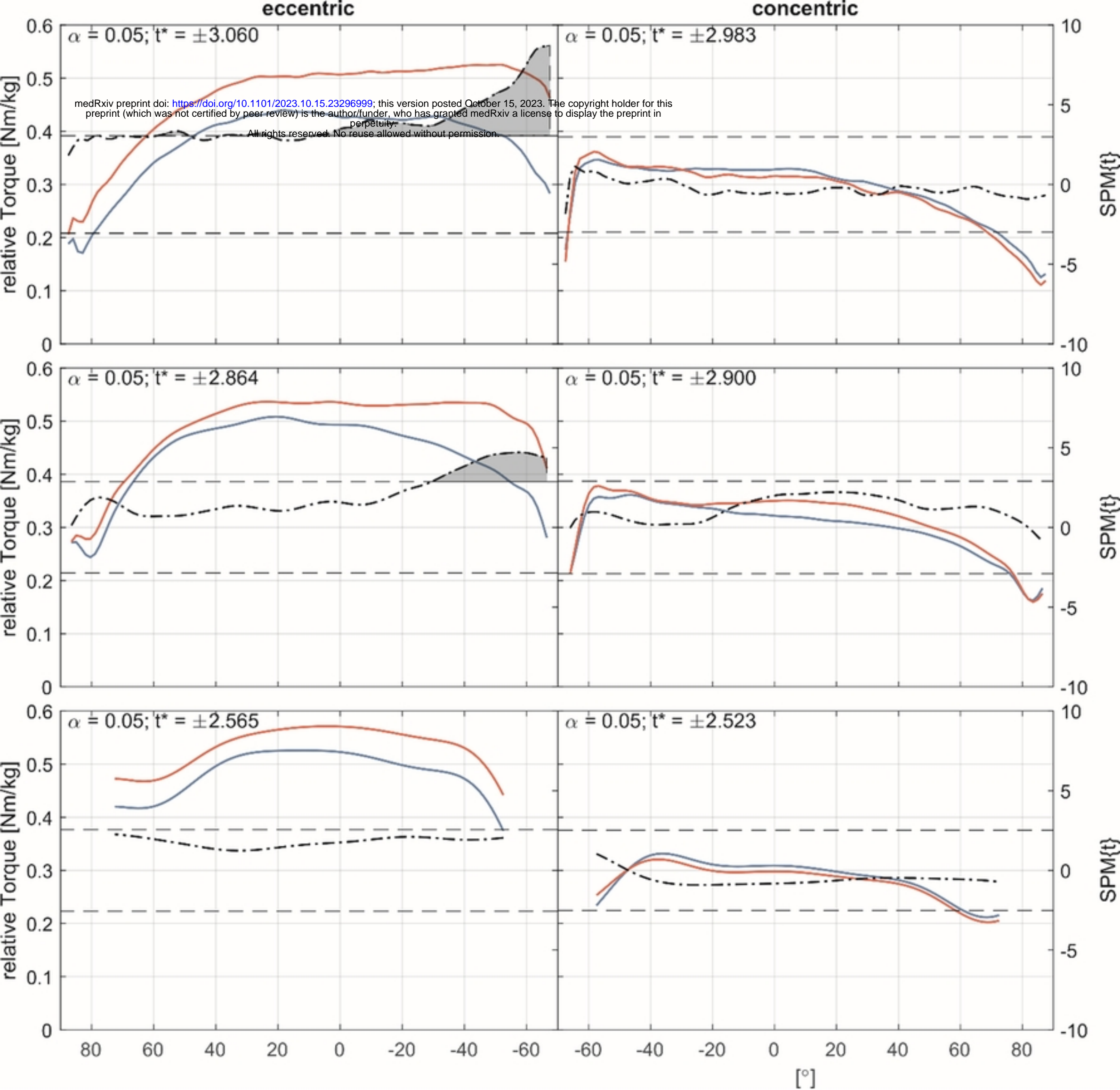


Fig 3. External rotator cuff muscles torque-angle-curves. Pre- (blue)

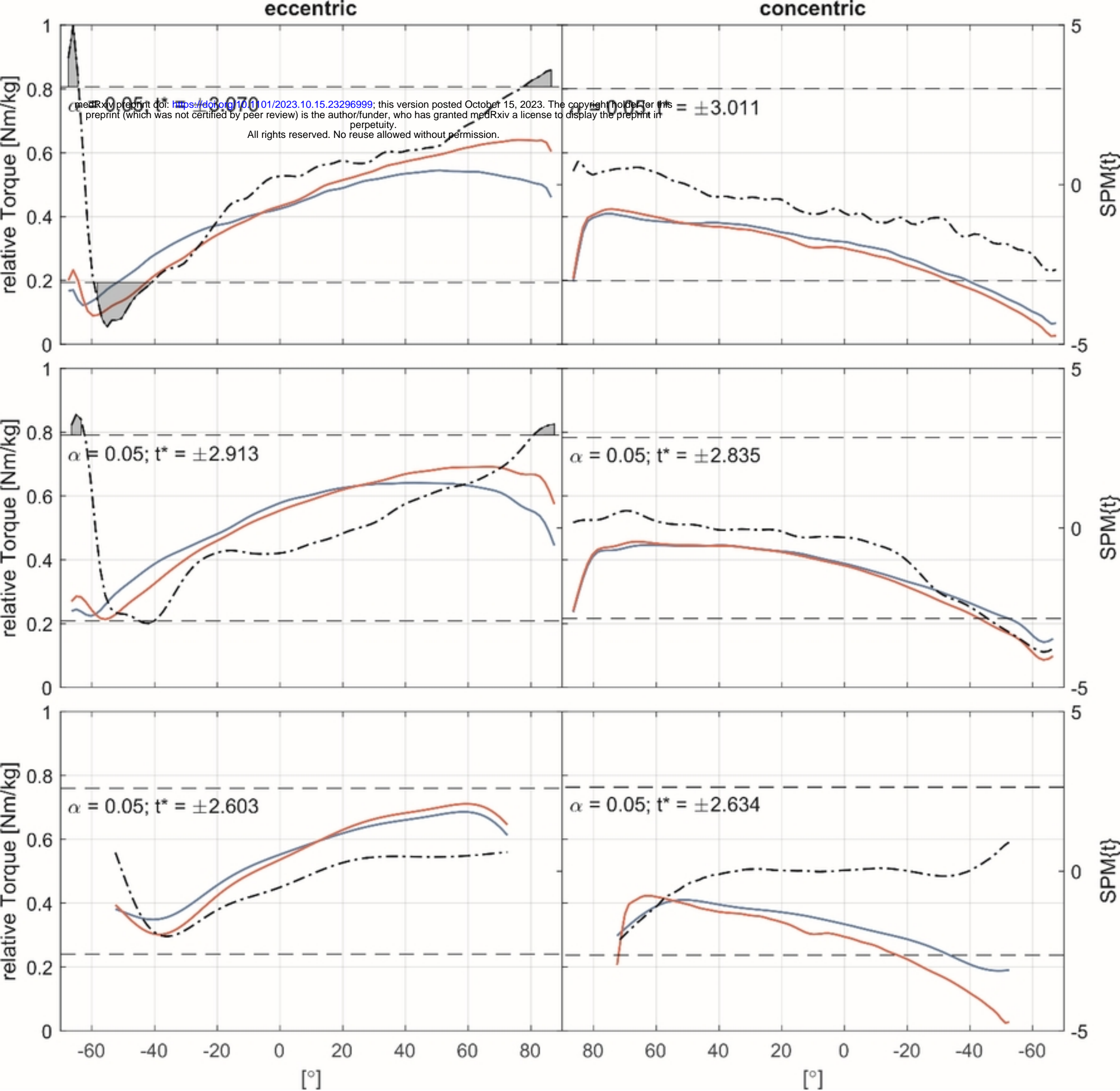


Fig 4. Internal rotator cuff muscles torque-angle-curves. Pre- (blue)

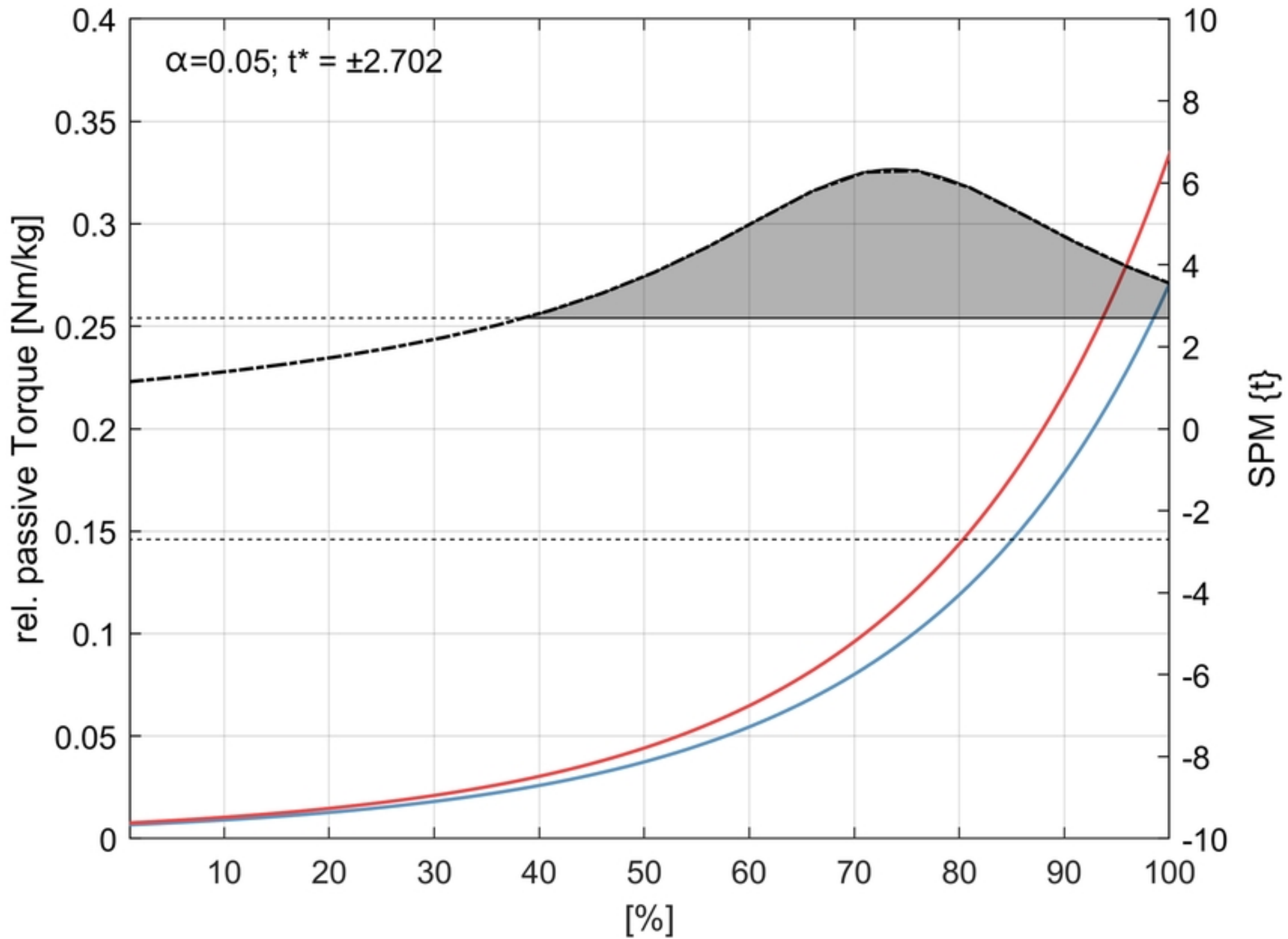


Fig 5. External rotator cuff muscles passive stretching torque-angle

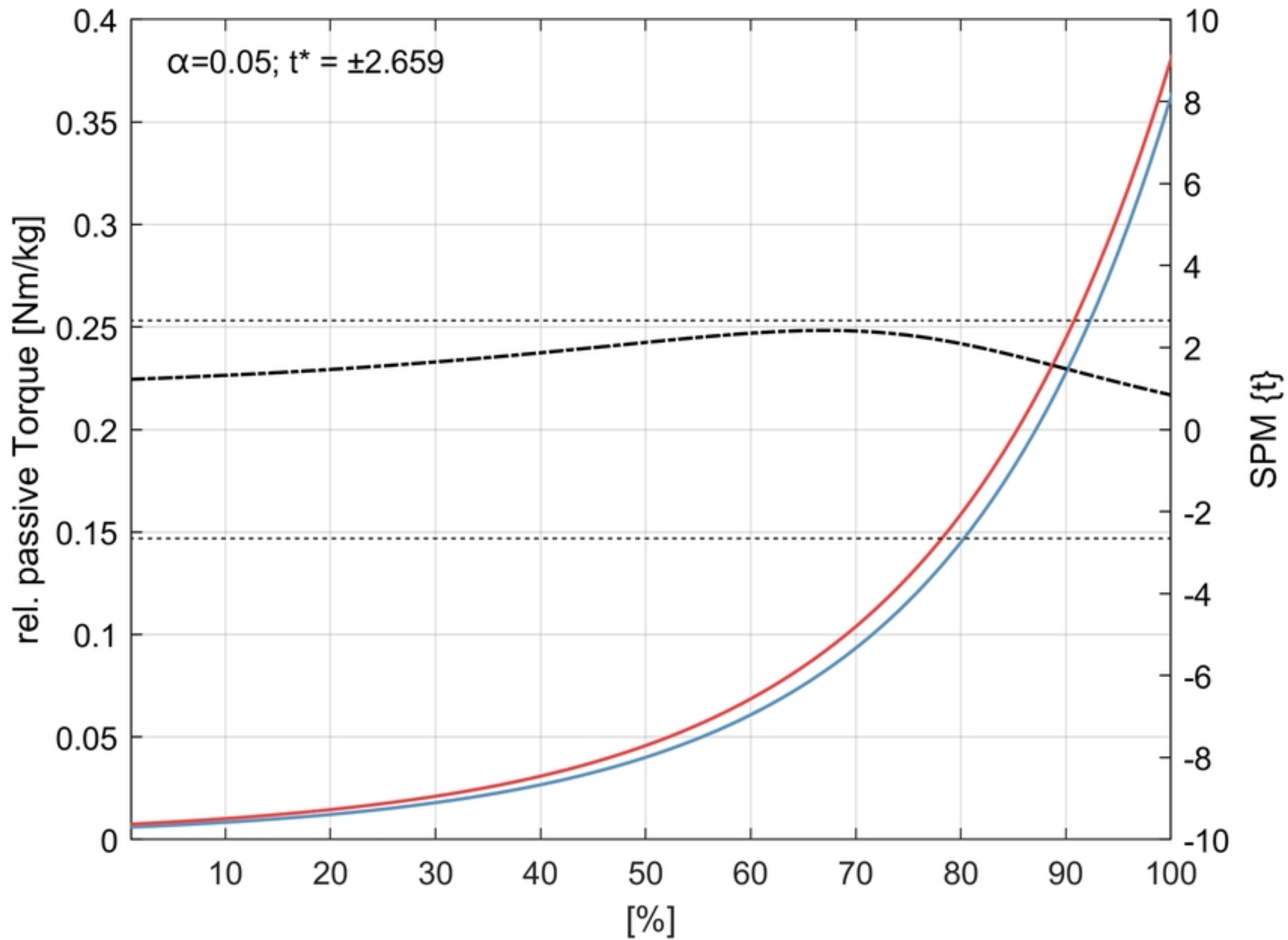


Fig 6. Internal rotator cuff muscles passive stretching torque-angle