

1 **Atrial functional substrates for the prediction of atrial fibrillation recurrence after**
2 **pulmonary vein isolation**

3

4 **Short title:** Functional substrate and atrial fibrillation recurrence

5

6 **Authors:**

7 Masaharu Masuda, MD, PhD; Yasuhiro Matsuda, MD; Hiroyuki Uematsu, MD; Mitsutoshi Asai,
8 MD, PhD; Shin Okamoto, MD; Takayuki Ishihara, MD; Kiyonori Nanto, MD; Takuya
9 Tsujimura, MD; Yosuke Hata, MD; Naoko Higashino, MD; Sho Nakao, MD; Toshiaki Mano,
10 MD, PhD

11

12 **Authors' affiliations:**

13 Kansai Rosai Hospital Cardiovascular Center, 3-1-69 Inabaso, Amagasaki, Hyogo 660-8511,
14 Japan

15 **Total word count:** 4927 words

16 **Conflict of interest:** Masaharu Masuda receive lecture fee from Boston scientific.

17 ***Corresponding author:**

18 Masaharu Masuda

19 Kansai Rosai Hospital Cardiovascular Center

20 3-1-69 Inabaso, Amagasaki-shi, Hyogo, 660-8511, Japan

21 Tel: +81-6-6416-1221

22 Fax: +81-6-6419-1870

23 E-mail: masuda-masaharu@kansai.hjohas.go.jp

25 **Abstract**

26 **Background:** Low-voltage areas have been used as atrial structural substrates in estimating
27 fibrotic degeneration in patients with atrial fibrillation (AF). The high-resolution maps obtained
28 by recently developed mapping catheters allow the visualization of several functional
29 abnormalities.

30 **Objectives:** We investigated the association between left atrial (LA) functional abnormal
31 findings on a high-resolution substrate map and AF recurrence in patients who underwent
32 pulmonary vein isolation without any additional LA substrate ablation.

33 **Methods:** One hundred consecutive patients who underwent second ablation for AF (paroxysmal,
34 48%; persistent, 52%) were considered for enrollment. Patients with extra-pulmonary-vein LA
35 substrate ablation during the initial and second ablation were excluded. LA mapping was
36 performed using a 64-pole mini-basket catheter on the Rhythmia mapping system. Patients were
37 followed for 2 years.

38 **Results:** AF recurrence developed in 39 (39%) patients. On the high-resolution substrate map,
39 AF recurrence was associated with the presence of the following findings: low-voltage areas
40 (<1.0 mV, $>5\text{cm}^2$; hazard ratio [HR]=2.53; 95% confidence interval [CI]=1.30-4.93; $p<0.006$),
41 fractionated-electrogram areas (≥ 5 peaks, $>5\text{cm}^2$; HR=2.15, 95%CI=1.10-4.19; $p=0.025$), LA
42 conduction time of >130 msec (HR=3.11, 95%CI=1.65-5.88, $p<0.0001$), deceleration zone (≥ 5
43 isochrones/ cm^2 ; HR=1.97, 95%CI=1.04-3.37, $p=0.039$), and multiple septal breakout points
44 (HR=3.27, 95%CI=1.50-7.16, $p=0.003$). Accumulation of these risk factors increased AF
45 recurrence in a stepwise manner, with an HR=1.90, 95%CI=1.44-2.52, $p<0.00001$ for each
46 additional risk factor.

47 **Conclusion:** A high-resolution map revealed new LA functional substrates associated with AF
48 recurrence. Implementation of functional substrates may improve the prediction of AF
49 recurrence after ablation, and possibly aid the development of tailored AF ablation strategies.

50 **Key words**

51 Atrial fibrillation, functional substrate, ablation, slow conduction, rotational activation,
52 low-voltage area, fractionated-electrogram area, recurrence

53

54 **Introduction**

55 Pulmonary vein isolation is a cornerstone of atrial fibrillation (AF) ablation.¹ However, a
56 considerable number of patients experience recurrence of AF. The main causes of AF recurrence
57 following initial AF ablation are advanced atrial remodeling in addition to electrical reconnection
58 between the left atrium to pulmonary vein.

59 Identifying patients who need additional left atrial (LA) ablation after pulmonary vein
60 isolation is critically important. In this respect, the presence of left atrial (LA) low-voltage areas
61 on a substrate map has been demonstrated to correlate well with atrial myocardial degeneration,
62 including fibrosis,² and is a predictor of recurrence of atrial tachyarrhythmias after pulmonary
63 vein isolation.³⁻⁵ However, atrial bipolar voltage is not enough to understand the atrial
64 arrhythmogenic substrate, or to predict rhythm outcome with sufficient accuracy.

65 Recent innovations in 3-dimensional mapping systems and mapping catheters have
66 increased mapping density and recorded signal quality, resulting in high-resolution substrate
67 maps which enable the depiction of more detailed substrate, such as local electrogram
68 fractionation and abnormal propagation pattern. These functional substrates may represent atrial
69 electrical remodeling which predisposes to AF development, and in turn enable the prediction of
70 AF recurrence after pulmonary vein isolation.

71 Here, we investigated the association between LA functional substrates and long-term
72 rhythm outcomes in patients who underwent pulmonary vein isolation.

73

74 **Methods**

75 *Patients*

76 From September 2016 to August 2019, consecutive patients who underwent a second ablation for
77 AF with LA mapping using the RHYTHMIA system (Boston Scientific, Marlborough
78 [Cambridge] MA, USA) at our institution were considered for enrollment. To avoid the influence
79 of adjunctive substrate ablation in addition to pulmonary vein isolation, patients who underwent
80 extra-pulmonary-vein ablation at the initial or second ablation were excluded (Supplementary
81 Figure 1). Other exclusion criteria were inappropriate substrate mapping, age < 20 years, and
82 prior cardiac surgery.

83 This study complied with the Declaration of Helsinki. The protocol was approved by our
84 institutional review board, and written informed consent for the ablation and participation in the
85 study was obtained from all patients.

86

87 *Substrate mapping*

88 Electrophysiological studies and catheter ablation were performed under general anesthesia with
89 propofol and fentanyl. A 6-Fr decapolar electrode was inserted into the coronary sinus and a
90 second 6-Fr decapolar electrode was placed in the right atrium. Following transseptal puncture at
91 the fossa ovalis, two long sheaths were introduced into the left atrium using a single transseptal
92 puncture technique. Mapping and ablation were then performed under guidance from the
93 electroanatomical mapping system (RHYTHMIA[®]).

94 Prior to ablation, substrate mapping was performed under paced rhythm from the high
95 right atrium or great cardiac vein. A mini-basket array catheter with 64 mini-electrodes
96 (IntellaMap Orion[®], Boston Scientific) was moved to draw the whole LA surface. Mapping was

97 continued until coverage of the entire LA surface using an interpolation threshold of 5 mm.
98 Adequate endocardial contact was confirmed by stable electrograms and distance to the
99 geometry surface. The criteria used for beat acceptance included stable cycle length, stable
100 timing difference between two reference electrodes placed in the coronary sinus, respiratory
101 gating, stable catheter location, and a stable catheter signal compared to adjacent points. The
102 confidence mask and projection distance were set at 0.03 mV and 2 mm, respectively, and band
103 pass filter was set at 30 to 500 Hz.

104

105 *Catheter ablation*

106 Following substrate mapping, ablation was performed. When electrical reconnection
107 between left atrium and pulmonary vein was observed, re-isolation of pulmonary vein was
108 performed by radiofrequency application at the conduction gaps. Atrial burst pacing (cycle
109 length 200 to 300 ppm for 5 sec) was performed, followed by a high-dose isoproterenol
110 provocation test (infusion of 5, 10, and 20 µg/min isoproterenol for 2 min each) to induce AF or
111 atrial tachycardia. AF-triggering ectopies or frequent ectopies originating from the superior vena
112 cava (SVC) were eliminated by circumferential SVC isolation. Non-PV/SVC AF-triggering
113 ectopies were ablated at the earliest activation site. A spontaneously developed or induced AT
114 was also mapped using the electroanatomical mapping system. Focal ablation targeting the
115 earliest activation site for a centrifugal AT or ablation crossing the reentrant circuit for a
116 macro-reentrant AT was performed. As mentioned above, patients with LA ablation were
117 excluded from enrollment.

118

119 *Assessment of LA substrate*

120 Any of the following abnormal findings were measured on an offline work station by a medical
121 engineer blinded to rhythm outcomes. Isolated areas encircled by ablation lesions for pulmonary
122 vein isolation were not included in measurement. Representative maps demonstrating abnormal
123 substrates are shown in the Figure 1.

124 Low-voltage areas were defined as areas with bipolar voltage $< 0.50\text{mV}$ or 1.0 mV , and
125 were highlighted by setting the threshold values of the color bar on voltage map. The size of the
126 low-voltage areas was measured by manually tracing the border of the areas.

127 Fractionated-electrogram areas were defined as areas where fractionated signals were
128 recorded, and were highlighted under complex activation mode in the LUMIPOINT module. The
129 size of fractionated areas was measured by manually tracing the border of the areas. The number
130 of peaks used to determine a fractionated signal was set at 5 or 7.

131 To assess local conduction speed, the activation map was displayed with 12 equally
132 distributed isochrones covering the entire LA activation time. Deceleration zones were defined
133 as regions with isochronal crowding of ≥ 4 or ≥ 5 isochrones within a 1-cm radius. Rotational
134 activation pattern was defined in sites showing wavefront propagation rotating $> 90^\circ$ (inward
135 curvature) directly above or at the edge of the isochronal crowding zone.

136 Septal propagation was assessed by counting the number of break-out points on the left
137 septal wall. This measurement was performed only in patients with pacing from the right atrium.
138 Wavefront propagation was assessed by activation search mode in the LUMIPOINT module.
139 Multiple septal break-out points were recognized when the number of break-out points was ≥ 2
140 or 3. Supplementary video 1 demonstrates a propagation map with multiple septal break-out
141 points and rotational activation pattern.

142 LA conduction time was calculated as the time difference between the start of LA
143 activation, usually at the LA septum, and the end of LA activation, usually at the lateral mitral
144 annulus. Prolongation of LA conduction time was defined when this value was ≥ 130 msec.

145

146 *Follow-up*

147 Patients were followed up every 2 to 4 weeks at the dedicated arrhythmia clinic of our institution.
148 Routine ECGs were obtained at each outpatient visit, and 24-h ambulatory Holter monitoring
149 was performed every 3 months post-ablation. When patients experienced symptoms suggestive
150 of an arrhythmia, a surface ECG, ambulatory ECG, and/or cardiac event recording were also
151 obtained. Any of the following events from the initial 3 months after the ablation (blinking
152 period) were considered to indicate AF recurrence: (1) atrial tachyarrhythmias recorded on a
153 routine or symptom-triggered ECG during an outpatient visit; or (2) atrial tachyarrhythmias of at
154 least 30-sec duration on ambulatory ECG monitoring. No antiarrhythmic drugs were prescribed 3
155 months post-ablation unless recurrent atrial tachyarrhythmias were observed.

156

157 *Statistical analysis*

158 Continuous data are expressed as the mean \pm standard deviation (SD) or median (interquartile
159 range). Categorical data are presented as absolute values and percentages. Tests for significance
160 were conducted using the unpaired t-test or nonparametric test (Mann-Whiney U test) for
161 continuous variables, and the chi-square test or Fisher's exact test for categorical variables. Cox
162 proportional hazard models were used to determine parameters on the substrate map that were
163 associated with AF recurrence. To estimate the optimal cut-off values for the prediction of AF
164 recurrence, receiver-operating characteristic curves were constructed for low-voltage areas,

165 fractionated-electrogram area sizes and LA conduction time. Survival rates free from atrial
166 tachyarrhythmias were calculated using the Kaplan-Meier method. Comparison of survival
167 curves between groups was assessed with the 2-sided Mantel-Haenszel (log-rank) test. All
168 analyses were performed using SPSS version 15.0 software (SPSS, Inc., Chicago, IL, USA).

169

170 **Results**

171 *Baseline and procedural characteristics*

172 During the study period, 270 patients underwent second ablation for AF using the Rhythmia
173 system (Supplementary Figure 1). Among these, 156 patients with LA ablation outside of
174 pulmonary veins and 14 with an inappropriate substrate map were excluded. Finally, 100 patients
175 were enrolled in the study. Mapping was performed under pacing from the right atrium (81%)
176 and great cardiac vein (19%).

177 During 2-year follow-up, 39 (39%) patients developed AF recurrence. Baseline
178 characteristics were compared between those with and without AF recurrence (Table 1). Patients
179 with AF recurrence were more likely to have long-standing persistent AF and a history of stroke
180 or thromboembolism; and had a higher CHA₂DS₂VASc score, N-terminal prohormone of brain
181 natriuretic peptide level, and larger left atrium.

182 There was no difference in the distribution of ablation lesions during the initial and
183 second ablation between those with and without AF recurrence. In patients with AF recurrence,
184 less frequent use of cryoballoon during the initial ablation and more mapping points during the
185 second ablation were observed. In the second ablation, the majority of patients (73%) had
186 electrical reconnections between left atrium and pulmonary veins, and underwent re-isolation of
187 pulmonary veins.

188

189 *Low-voltage areas*

190 ROC analyses demonstrated that a voltage cut-off value of 1.0 mV had a higher area under the
191 curve than that of 0.50 mV (Figure 2). When low voltage was defined as < 1.0 mV, a
192 low-voltage-area size of 5.1 cm^2 predicted AF recurrence with a sensitivity of 67% and
193 specificity of 64%. Patients with low-voltage areas (< 1.0 mV and $\geq 5 \text{ cm}^2$) had more frequent
194 AF recurrence (Figure 3 and 4).

195

196 *Fractionated-electrogram areas*

197 Fractionated-electrogram areas defined as a peak number of ≥ 5 had a higher area under the
198 curve than those defined as ≥ 7 on ROC analysis for the estimation of AF recurrence (Figure 2),
199 and predicted AF recurrence with a sensitivity of 51% and specificity of 85% when using a
200 cut-off value of 7.3 cm^2 . Patients with fractionated-electrogram areas (≥ 5 peaks and $\geq 5 \text{ cm}^2$)
201 had more frequent AF recurrence (Figure 3 and 4).

202

203 *Deceleration zones*

204 Deceleration zones defined as isochronal crowding of ≥ 4 or ≥ 5 isochrones within a 1-cm radius
205 were observed in 80 (80%) and 30 (30%) patients, respectively. Patients with a deceleration zone
206 (≥ 5 isochrones) has more frequent AF recurrence than those without (Figure 3 and 4).

207

208 *Rotational activation pattern*

209 Rotational activation pattern was observed in 43 (43%) patients. By location, rotational
210 activation patterns were predominantly at the anterior region (19 patients) and septal regions (19
211 patients), followed by the posterior region (6 patients) and roof region (3 patients). There was no

212 statistically significant association between rotational activation pattern and AF recurrence
213 (Figure 3 and 4).

214

215 *Multiple septal breakout points*

216 Among 81 patients who underwent mapping under paced beat from the high right atrium,
217 multiple septal break-out points with ≥ 2 points and ≥ 3 points were observed in 38 of 81 (47%)
218 and 13 (16%) patients. Patients with multiple septal break-out points had more frequent AF
219 recurrence than those without (Figure 3 and 4).

220

221 *LA conduction time*

222 Patients with AF recurrence had a longer LA conduction time than those without (125 ± 25 vs.
223 110 ± 18 msec, $p = 0.002$). ROC analysis revealed that the prediction of AF recurrence using LA
224 conduction time had an area under the curve of 0.669 with an optimal cut-off value of LA
225 conduction time of 127 msec, which predicted AF recurrence with a sensitivity of 46% and
226 specificity of 85% (Figure 2). Patients with LA conduction times of ≥ 130 msec had more
227 frequent AF recurrence than those without (Figure 3 and 4).

228

229 *Accumulation of risk factors and AF recurrence*

230 Figure 5 depicts the distribution of low-voltage-area size and fractionated-electrogram-area size
231 in each patient. Low-voltage-area and fractionated-electrogram-area sizes showed a weak
232 correlation ($r=0.399$, $p < 0.001$). AF recurrence rates increased in the order of patients without
233 low-voltage areas or fractionated-electrogram areas, those with either, and those with both.

234 AF recurrence rates stratified by the number of risk factors on a substrate map are
235 shown in Figure 6. Accumulation of these risk factors increased AF recurrence rate in step with a
236 hazard ratio of 1.90, 95% confidence interval of 1.44 - 2.52, $p < 0.00001$, for each additional risk
237 factor.

238

239 **Discussion**

240 This observational study investigated the impact of LA functional substrates obtained with a
241 high-resolution substrate map on AF recurrence in 100 patients who underwent second AF
242 ablation including pulmonary vein isolation without any additional LA substrate ablation. These
243 patients are thought to have durably isolated pulmonary veins and ablation-naïve atrial muscle,
244 which is thought to be ideal for the assessment of atrial arrhythmogenic substrate. The main
245 findings were as follows. Factors associated with 2-year AF recurrence were the presence of
246 low-voltage areas, fractionated-electrogram areas, prolonged LA conduction time, deceleration
247 zone, and multiple septal break-out points. Duplication of these risk factors increased AF
248 recurrence in a step-wise fashion. This is the first study to conclusively assess the prognostic
249 impact of functional substrate of high-resolution maps on AF recurrence after pulmonary vein
250 isolation.

251

252 *Low-voltage areas*

253 The presence of low-voltage areas was associated with atrial myocardial fibrotic degeneration
254 based on histopathological analysis of atrial myocardial specimens.² Atrial fibrotic degeneration
255 leads to conduction disturbance and shortening of action potential duration, predisposing to
256 non-pulmonary-vein AF trigger and maintenance of AF reentrant activity.⁶⁻⁹

257 The cut-off value of 1.0 mV for the definition of low-voltage areas had better predictive
258 accuracy than that of the classically used 0.5 mV.³⁻⁵ This difference is likely attributable to the
259 smaller electrode size of the Orion mapping catheter (printed electrode with 0.4-mm² surface
260 area) than those of the mapping catheters used in most previous studies (≥ 1.0 -mm length). The
261 very small printed electrode on the Orion catheter can record higher signal voltage than relatively
262 large electrodes, especially at diseased areas.^{10,11}

263

264 *Fractionated-electrogram areas*

265 Fractionated electrograms can be generated by diseased myocardium with multiple wave-front
266 propagation and/or conduction disturbance, and are possibly associated with AF
267 development.^{12,13} Precise recording of fractionated electrograms can be achieved by the very
268 small electrode on the Orion catheter with minimal influence of far-field signals and the
269 excellent noise filtering installed on the Rhythmia system. Nevertheless, one problem with
270 utilizing fractionated electrograms as arrhythmogenic substrate is that electrograms with multiple
271 peaks can also be recorded by physiological phenomena such as collision of the propagation
272 wave front and contamination of recording signals due to far-field electrical activities. Selecting
273 a cut-off number of peaks to define the fractionated-electrogram area may help differentiate
274 arrhythmogenic substrate from physiological phenomena. In this study, ≥ 5 peaks of better
275 predicted AF recurrence than ≥ 7 . As presented in Figure 1, the fractionated-electrogram area
276 defined using a cut-off value of ≥ 7 was confined, even in the majority of patients with AF
277 recurrence, suggesting that it was too specific to efficiently predict AF recurrence.

278 A previous study reported that a low-voltage area and fractionated-electrogram area do
279 not always coexist, and sometimes demonstrate different distributions.¹⁴ The higher AF

280 recurrence rate we saw in patients with both low-voltage areas and fractionated-electrogram
281 areas than in those who had either of them suggests that reduced voltage and electrogram
282 fractionation represent different pathophysiological phenomena, and that their duplication
283 represents an advanced arrhythmogenic substrate.

284

285 *Local conduction disturbance*

286 The presence of deceleration zones and multiple septal break-out points, both of which represent
287 local conduction disturbance, was associated with frequent AF recurrence. Local conduction
288 disturbance could not only serve as a slow conduction channel of reentrant regular atrial
289 tachycardia, but could also be associated with LA global substrate predisposing to AF
290 development.

291 A deceleration zone or localized conduction slowing area first attracted interest in the
292 field of ventricular tachycardia, wherein these findings were associated with a critical isthmus of
293 macro-reentrant ventricular tachycardia.^{15,16} In paroxysmal AF patients, the presence of a
294 deceleration zone was reported to be associated with frequent AF recurrence after pulmonary
295 vein isolation.¹⁷ Multiple septal breakout points would derive from conduction disturbance of the
296 connection between the right and left atrium, including the Bachman bundle.

297 In contrast, a rotational activation pattern was not statistically associated with AF
298 recurrence. The somewhat arbitrary judgement of rotational activation might limit the predictive
299 accuracy of this finding.

300

301 *Prolonged total LA conduction time*

302 Total LA conduction time is determined by LA conduction speed and distance, both of which are
303 influenced by the severity of myocardial remodeling across the whole LA chamber. Accordingly,
304 prolongation of total LA conduction time would indicate an arrhythmogenic substrate which
305 predisposes to reentrant tachyarrhythmia, including AF. Previous studies have also reported an
306 association between AF recurrence and total atrial conduction times as measured by a
307 3-dimensional mapping system and P wave duration on the surface electrocardiogram.^{18,19}

308

309 *Prediction of AF recurrence using functional substrate*

310 In this study, the atrial functional substrate, such as fractionated-electrogram area, total
311 LA conduction time, deceleration zone, and multiple septal break-out points, were individually
312 associated with AF recurrence in patients who underwent pulmonary vein isolation alone. In
313 addition, accumulation of these risk factors increased the risk of AF recurrence in a stepwise
314 manner, possibly representing different electrophysiological phenomena which predispose to AF.
315 Implementation of functional substrate detected by high-resolution mapping enables the
316 identification of patients in whom PVI alone is not enough.

317 The results of STAR-AF II showed that pulmonary vein isolation without additional
318 substrate ablation is generally appropriate for the catheter ablation of persistent AF.²⁰ However,
319 in the clinical setting, pulmonary vein isolation alone does not always achieve sinus rhythm
320 maintenance. Assessment of functional substrate obtained by high-resolution mapping would
321 help identify AF patients who require additional ablation beyond pulmonary vein isolation.

322 Nevertheless, an important feature of this study is that it did not identify which kinds of
323 outside-of-pulmonary-vein substrate would be ablation targets. Although the possible efficacy of
324 ablation targeting fractionated-electrogram areas or deceleration zones has been reported in

325 single-center clinical studies with small sample sizes, the clinical impact of ablation targeting
326 functional substrate on AF recurrence remains to be determined. Identifying optimal ablation
327 strategies tailored by atrial substrates will require large-scale multicenter randomized controlled
328 trials.

329

330 *Limitations*

331 Several limitations of this study warrant mention. First, AF and electrical cardioversion prior to
332 the ablation procedure can affect the LA substrate map. Second, isolation areas encircled by PVI
333 lines were dependent on operator preference, patient anatomy, and ablation device. A wider PVI
334 might include areas with LA arrhythmogenic substrate. Third, AF recurrence after discharge was
335 quantified on the basis of the patient symptoms, giving rise to the possibility that asymptomatic
336 episodes of AF might have been missed. Fourth, the present results are based on a relatively
337 small sample size, retrospective design, and patient enrollment from a single center. Multicenter,
338 prospective, and larger-scale future studies are required to confirm the results.

339

340

341

Conclusion

342 In addition to low-voltage areas, we also found that fractionated-electrogram area, prolonged
343 total LA conduction time, deceleration zone, and multiple septal break-out points were
344 associated with AF recurrence after PVI in AF patients. Implementing functional substrate
345 detected by high-resolution mapping enables the identification of patients in whom PVI alone is
346 not enough.

347

348
349
350
351
352
353
354
355
356
357
358
359
360
361
362
363
364
365
366
367
368
369
370

References

1. Haïssaguerre M, Jaïs P, Shah DC, et al. Spontaneous initiation of atrial fibrillation by ectopic beats originating in the pulmonary veins. *N Engl J Med* 1998; 339: 659-666.
2. Yamaguchi T, Otsubo T, Takahashi Y, et al. Atrial structural remodeling in patients with atrial fibrillation is a diffuse fibrotic process: evidence from high-density voltage mapping and atrial biopsy. *J Am Heart Assoc* 2022; 11: e024521.
3. Rolf S, Kircher S, Arya A, et al. Tailored atrial substrate modification based on low-voltage areas in catheter ablation of atrial fibrillation. *Circ Arrhythm Electrophysiol* 2014; 7: 825-833.
4. Masuda M, Fujita M, Iida O, et al. Left atrial low-voltage areas predict atrial fibrillation recurrence after catheter ablation in patients with paroxysmal atrial fibrillation. *Int J Cardiol* 2018; 257: 97-101.
5. Kanda T, Masuda M, Asai M, et al. Impact of left atrial low-voltage areas during initial ablation procedures on very late recurrence of atrial fibrillation. *J Cardiovasc Electrophysiol* 2022;33:1697-1704.
6. Kostin S, Klein G, Szalay Z, Hein S, Bauer EP, Schaper J. Structural correlate of atrial fibrillation in human patients. *Cardiovasc Res* 2002; 54: 361-379.
7. McArthur L, Chilton L, Smith GL, Nicklin SA. Electrical consequences of cardiac myocyte: fibroblast coupling. *Biochem Soc Trans* 2015; 43: 513-518.
8. Maleckar MM, Greenstein JL, Giles WR, Trayanova NA. Electrotonic coupling between human atrial myocytes and fibroblasts alters myocyte excitability and repolarization. *Biophys J* 2009;97:2179-2190.
9. McDowell KS, Vadakkumpadan F, Blake R, et al. Mechanistic inquiry into the role of tissue remodeling in fibrotic lesions in human atrial fibrillation. *Biophys J* 2013;104:2764-2773.

- 371 10. Anter E, Tschabrunn CM, Josephson ME. High-resolution mapping of scar-related atrial
372 arrhythmias using smaller electrodes with closer interelectrode spacing. *Circ Arrhythm*
373 *Electrophysiol* 2015; 8: 537-545.
- 374 11. Masuda M, Fujita M, Iida O, et al. Comparison of electrogram waveforms between a
375 multielectrode mapping catheter and a linear ablation catheter. *Pacing Clin Electrophysiol*
376 2019; 42: 515-520.
- 377 12. Ohe T, Matsuhisa M, Kamakura S, et al. Relation between the widening of the
378 fragmented atrial activity zone and atrial fibrillation. *Am J Cardiol* 1983;52:1219–
379 1222.
- 380 13. Hirokami J, Hiroshima K, Yamaji K, et al. Relationship between fractionated signal areas in
381 the atrial muscle during sinus rhythm and atrial pacing and non-pulmonary vein foci: novel
382 mapping strategy. *Circ Arrhythm Electrophysiol* 2020;13: e008667.
- 383 14. Huang T, Chen J, Müller-Edenborn B, Mayer L, Eichenlaub M, Moreno Weidmann Z,
384 Allgeier J, Bohnen M, Lehrmann H, Trenk D, Schoechlin S, Westermann D, Arentz T, Jadidi
385 A. Validating left atrial fractionation and low-voltage substrate during atrial fibrillation and
386 sinus rhythm-A high-density mapping study in persistent atrial fibrillation. *Front Cardiovasc*
387 *Med* 2022; 9:1000027.
- 388 15. Irie T, Yu R, Bradfield JS, et al. Relationship between sinus rhythm late activation zones and
389 critical sites for scar - related ventricular tachycardia: systematic analysis of isochronal late
390 activation mapping. *Circ Arrhythm Electrophysiol* 2015;8:390-399.
- 391 16. Ueda A, Soejima K, Nakahara S, et al. Conduction slowing area during sinus rhythm harbors
392 ventricular tachycardia isthmus. *J Cardiovasc Electrophysiol* 2020;31:440–449.

- 393 17. Kuo MJ, Ton AN, Lo LW, et al. Abnormal Conduction Zone Detected by Isochronal Late
394 Activation Mapping Accurately Identifies the Potential Atrial Substrate and Predicts the Atrial
395 Fibrillation Ablation Outcome After Pulmonary Vein Isolation. *Circ Arrhythm Electrophysiol*
396 2023;16:e011149.
- 397 18. Kurata N, Masuda M, Kanda T, et al. Slow whole left atrial conduction velocity after
398 pulmonary vein isolation predicts atrial fibrillation recurrence. *J Cardiovasc Electrophysiol*
399 2020;31:1942-1949.
- 400 19. Jadidi A, Müller-Edenborn B, Chen J, et al. The Duration of the Amplified Sinus-P-Wave
401 Identifies Presence of Left Atrial Low Voltage Substrate and Predicts Outcome After
402 Pulmonary Vein Isolation in Patients With Persistent Atrial Fibrillation. *JACC Clin*
403 *Electrophysiol* 2018;4:531-543.
- 404 20. Verma A, Jiang CY, Betts TR, Chen J, Deisenhofer I, Mantovan R, Macle L, Morillo CA,
405 Haverkamp W, Weerasooriya R, Albenque JP, Nardi S, Menardi E, Novak P, Sanders P;
406 STAR AF II Investigators. Approaches to catheter ablation for persistent atrial fibrillation. *N*
407 *Engl J Med* 2015;372:1812-22.

408
409

Figure legends

410 **Graphical abstract. Abnormal LA substrates and accumulation of risk factors**

411 Study design, representative maps demonstrating abnormal substrates, and AF recurrence rates
412 stratified by the number of risk factors are shown. Accumulation of these risk factors increased
413 AF recurrence rates in a stepwise manner with an HR = 1.90, 95% CI = 1.44 - 2.52, $p < 0.00001$,
414 for 1 risk increase. AF indicates atrial fibrillation; HR, hazard ratio; CI, confidence interval.

415

416 **Figure 1. Abnormal LA substrates**

417 Representative maps demonstrating abnormal substrates are shown. Low-voltage areas were
418 defined as areas with a bipolar voltage < 0.50 mV or 1.0 mV. Fractionated-electrogram areas
419 were defined as areas where fractionated signals had ≥ 5 or 7 peaks. Deceleration zones were
420 defined as regions with isochronal crowding of ≥ 5 isochrones within a 1 -cm radius among 12
421 isochrones which evenly divide the entire LA activation time. Rotational activation patterns were
422 defined as sites showing wavefront propagation rotating $> 90^\circ$ (inward curvature) directly above
423 or at the edge of the isochronal crowding zone. Multiple septal break-out points were defined
424 when the number of left septal activation break-out points was ≥ 2 . An LA conduction time of \geq
425 130 msec was considered prolonged.

426

427 **Figure 2. Continuous variables on ROC curves for the prediction of AF recurrence and**
428 **scatter plots between with and without AF recurrence**

429 Associations between AF recurrence and low-voltage-area sizes using 2 definition of low voltage
430 (A, B), fractionated-electrogram-area size using 2 definitions of number of peaks (C, D), and LA
431 conduction time were depicted on ROC curves and scatter plots. ROC indicates receiver-operator
432 curve.

433

434 **Figure 3. Forrester plots of hazard ratios of abnormal findings on the substrate map for AF**
435 **recurrence**

436 Hazard ratio, 95% confidence interval, and p value of each parameter for the prediction of AF
437 recurrence are shown. In total study patients, low-voltage areas (< 0.50 mV and < 1.0 mV, ≥ 5
438 cm^2), fractionated-electrogram areas (≥ 5 peaks), deceleration zones (≥ 5 isochrones/ cm^2), and
439 prolonged LA conduction time (≥ 120 msec and ≥ 130 msec) were associated with frequent AF

440 recurrence. In patients with substrate mapping under paced beat from the high right atrium,
441 multiple septal break-out points (≥ 2 points and ≥ 3 points) predicted frequent AF recurrence.

442

443 **Figure 4. AF-recurrence-free Kaplan-Meier curves stratified by the presence or absence of**
444 **abnormal findings on the substrate map**

445 Patients with low-voltage areas (< 1.0 mV and ≥ 5 cm²), fractionated-electrogram areas (≥ 5
446 peaks and ≥ 5 cm²), deceleration zones (≥ 5 isochrones/cm²), multiple septal break-out points (2
447 points and ≥ 3 points), and prolonged LA conduction time (≥ 130 msec) had lower AF-free
448 survival rates during the 2-year follow-up period. No statistical difference was observed between
449 patients with and without rotation activation pattern.

450

451 **Figure 5. Low-voltage-area size and fractionated-area size in relation to AF recurrence**

452 Scatter plots demonstrate the association between low-voltage-area (< 1.0 mV) size and
453 fractionated-electrogram-area (≥ 5 peaks) size in each patient. Red and blue dots indicate patients
454 with and without AF recurrence. AF recurrence rates were compared between 4 groups (A-D)
455 stratified by the presence of low-voltage area and fractionated-electrogram area.
456 Low-voltage-area and fractionated-electrogram-area sizes showed a weak correlation. Combined
457 presence of the two substrates demonstrated very high AF recurrence rates. AF indicates atrial
458 fibrillation.

459

460 **Figure 6. Accumulation of risk factors on the substrate map and AF recurrence**

461 AF recurrence rates stratified by the number of risk factors on the substrate map are shown.
462 Accumulation of these risk factors increased AF recurrence rates in a stepwise manner with an

463 HR = 1.90, 95% CI = 1.44 - 2.52, $p < 0.00001$, for 1 risk increase. AF indicates atrial fibrillation;
464 HR, hazard ratio; CI, confidence interval.

465

466 **Supplementary Figure 1. Patient flow chart**

467 Among 312 consecutive patients who underwent second ablation for AF, 42 patients examined
468 with another 3-dimensional mapping system, 156 patients with LA ablation outside of the
469 pulmonary vein, and 12 patients without an appropriate substrate map were excluded. The
470 remaining 100 patients were included in the study, and divided into 2 groups: patient with AF
471 recurrence (n=39) and those without (n=61). AF indicates atrial fibrillation; PV, pulmonary vein.

472

473 **Supplementary Video 1. Abnormal functional substrate**

474 A propagation map with multiple septal break-out points and rotational activation pattern is
475 shown.

476

477

478 **Table 1. Patient characteristics**

| Variable | AF recurrence | | p |
|---|----------------|-----------------|-------|
| | With n=39 | Without n=61 | |
| Age, years | 67.8 ± 9.3 | 65.2 ± 10.5 | 0.22 |
| Female, n (%) | 10 (26) | 21 (34) | 0.35 |
| Body mass index, kg/m ² | 24.9 ± 5.1 | 24.1 ± 3.2 | 0.11 |
| Type of atrial fibrillation, n (%) | | | 0.045 |
| <i>Paroxysmal</i> | 15 (38) | 33 (54) | |
| <i>Persistent (< 1 year)</i> | 15 (38) | 24 (39) | |
| <i>Long-standing persistent (≥ 1 year)</i> | 9 (23) | 4 (7) | |
| Hypertension, n (%) | 23 (59) | 32 (52) | 0.43 |
| Diabetes mellitus, n (%) | 6 (15) | 8 (13) | 0.75 |
| History of heart failure, n (%) | 8 (21) | 4 (7) | 0.054 |
| History of stroke/thromboembolism, n (%) | 7 (18) | 1 (2) | 0.005 |
| Vascular disease, n (%) | 8 (21) | 7 (11) | 0.22 |
| CHA ₂ DS ₂ -VASc | 2.7 ± 1.5 | 2.0 ± 1.4 | 0.020 |
| Estimated glomerular filtration ratio, ml/min | 65.0 ± 17.5 | 67.0 ± 14.8 | 0.56 |
| NT-pro BNP, pg/ml | 539 (210, 872) | 147 (84, 393) | 0.030 |
| Echocardiography findings | | | |
| <i>LA diameter, mm</i> | 43.1 ± 8.0 | 39.5 ± 5.8 | 0.025 |
| <i>Left ventricular ejection fraction, %</i> | 60.0 ± 14.3 | 62.6 ± 9.4 | 0.34 |

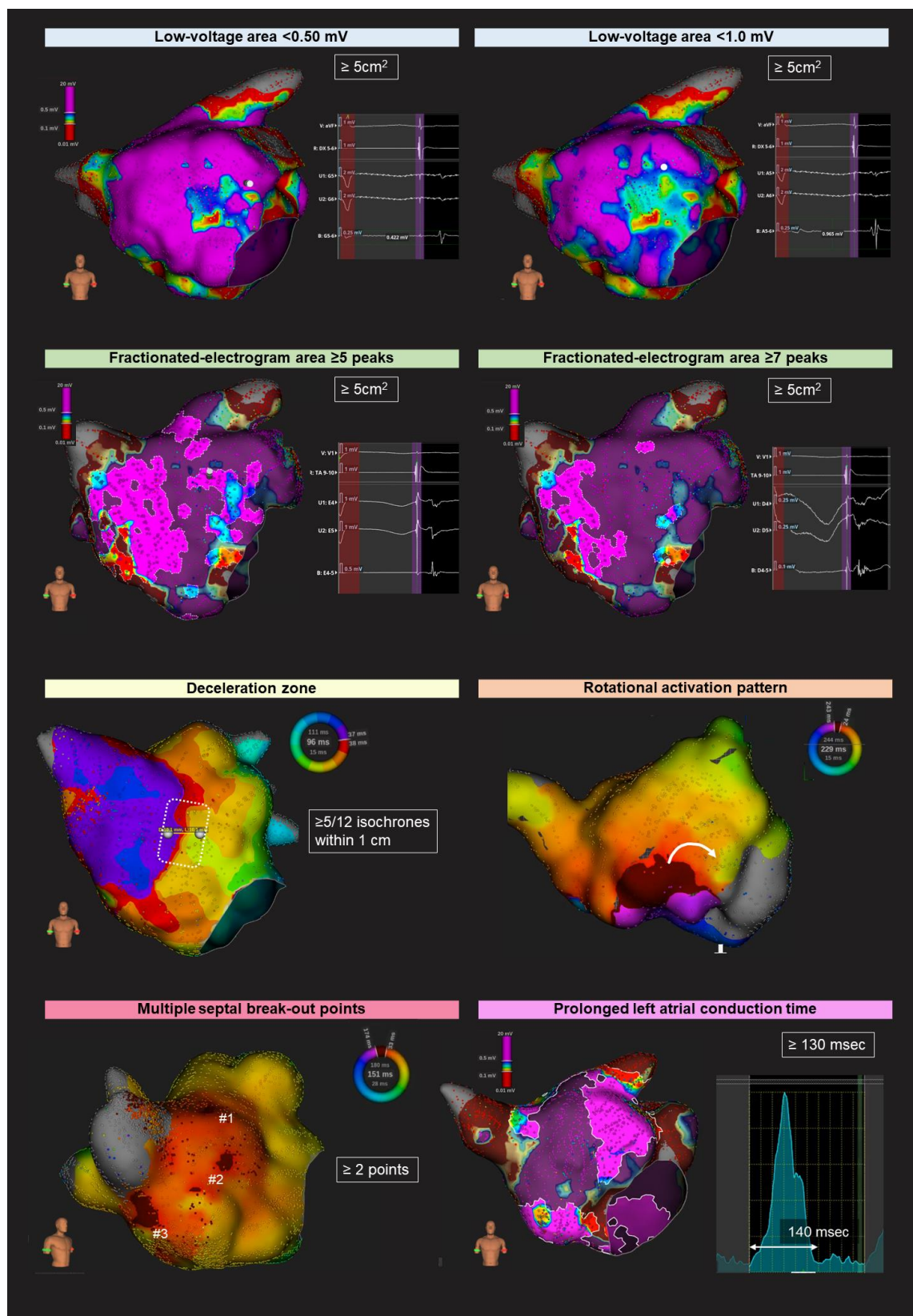
479 AF, atrial fibrillation; NT-pro BNP, N-terminal prohormone of brain natriuretic peptide

480

481 **Table 2. Ablation procedures**
482

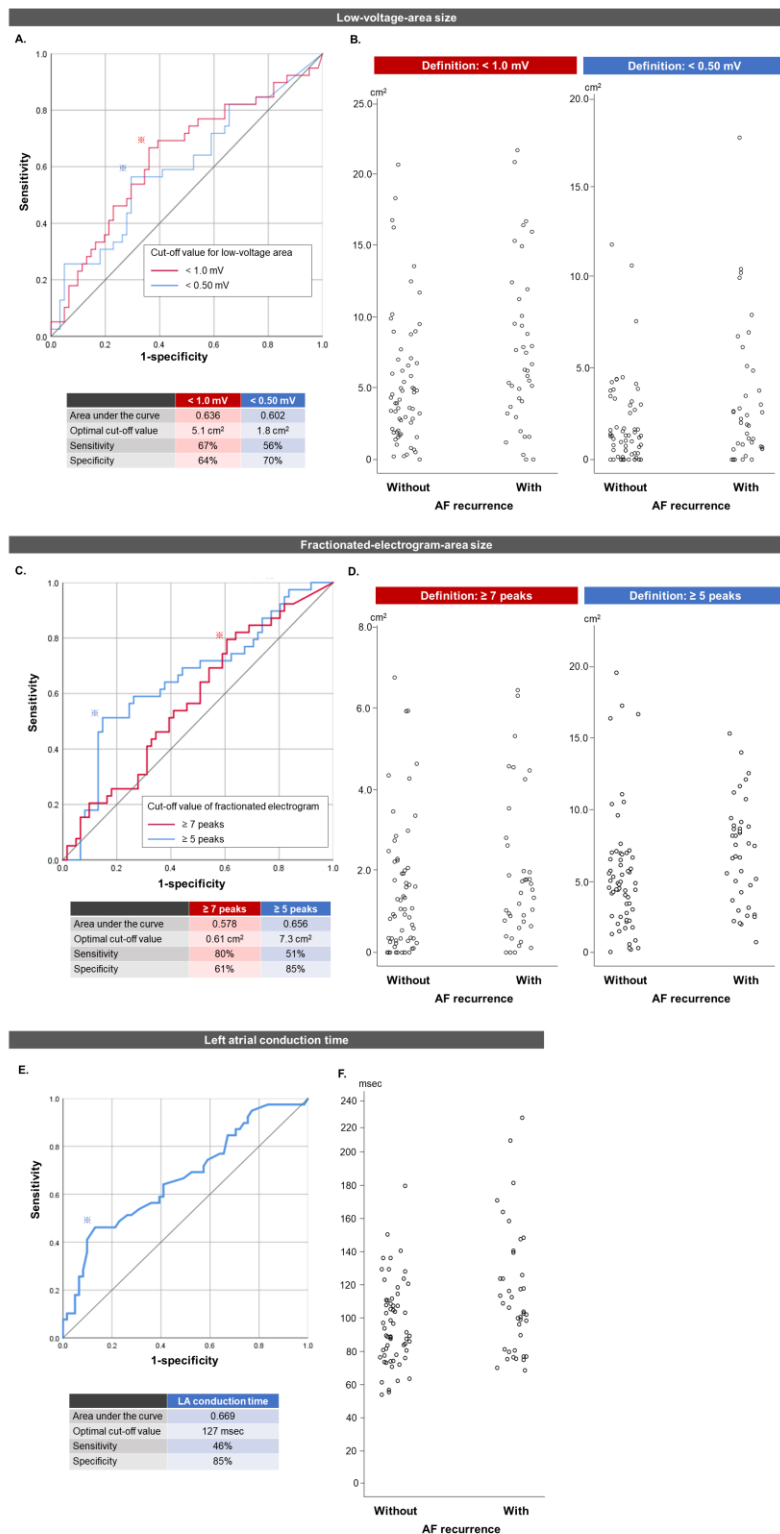
| Variable | AF recurrence | | p |
|---|---------------|-----------------|-------|
| | With n=39 | Without n=61 | |
| Initial ablation | | | |
| Energy source for pulmonary vein isolation, n (%) | | | 0.039 |
| <i>Radiofrequency energy</i> | 33 (85) | 40 (66) | |
| <i>Cryo energy</i> | 6 (15) | 21 (34) | |
| Achievement of pulmonary vein isolation, n (%) | 39 (100) | 61 (100) | 1.0 |
| Cavotricuspid isthmus ablation, n (%) | 8 (21) | 10 (16) | 0.60 |
| Isolation of superior vena cava, n (%) | 1 (3) | 2 (3) | 1.00 |
| Non-pulmonary-vein trigger ablation, n (%) | 2 (5) | 4 (7) | 1.00 |
| Second ablation | | | |
| Mapping points, points | 6,431 ± 2,377 | 5,363 ± 1,792 | 0.012 |
| Re-isolation of reconnected pulmonary vein, n (%) | 26 (67) | 47 (77) | 0.25 |
| Cavotricuspid isthmus ablation, n (%) | 8 (21) | 16 (26) | 0.11 |
| Isolation of superior vena cava, n (%) | 10 (26) | 8 (13) | 0.51 |
| Non-pulmonary-vein trigger ablation, n (%) | 6 (15) | 16 (26) | 0.19 |

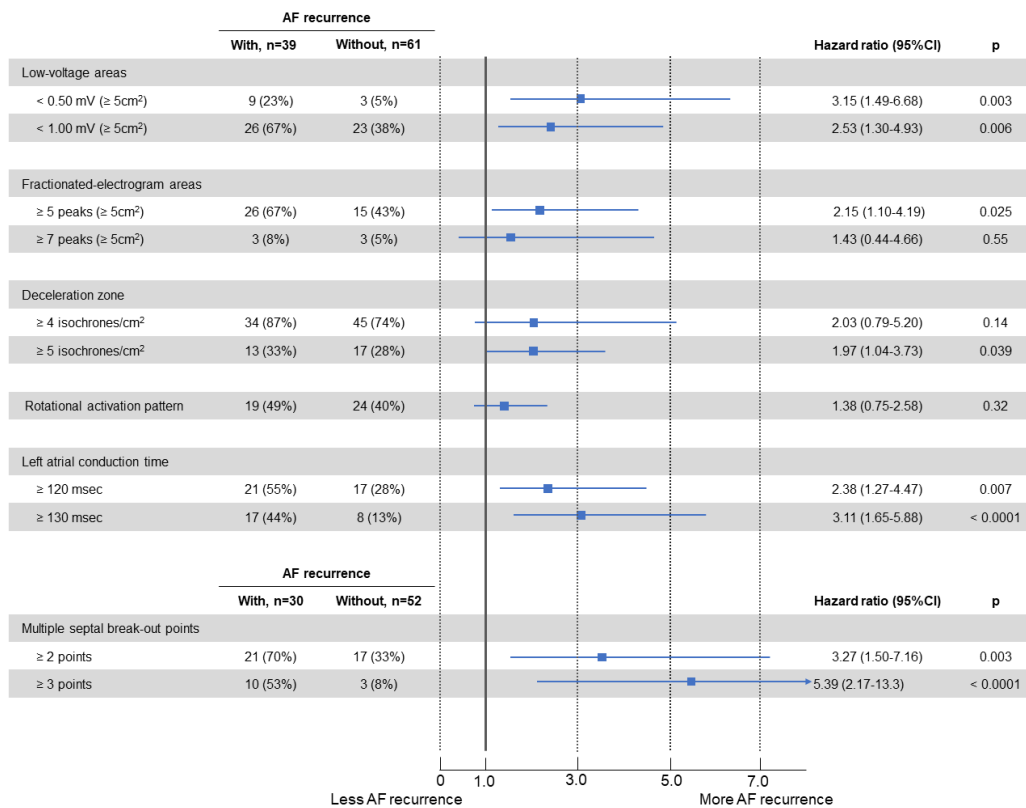
483
484



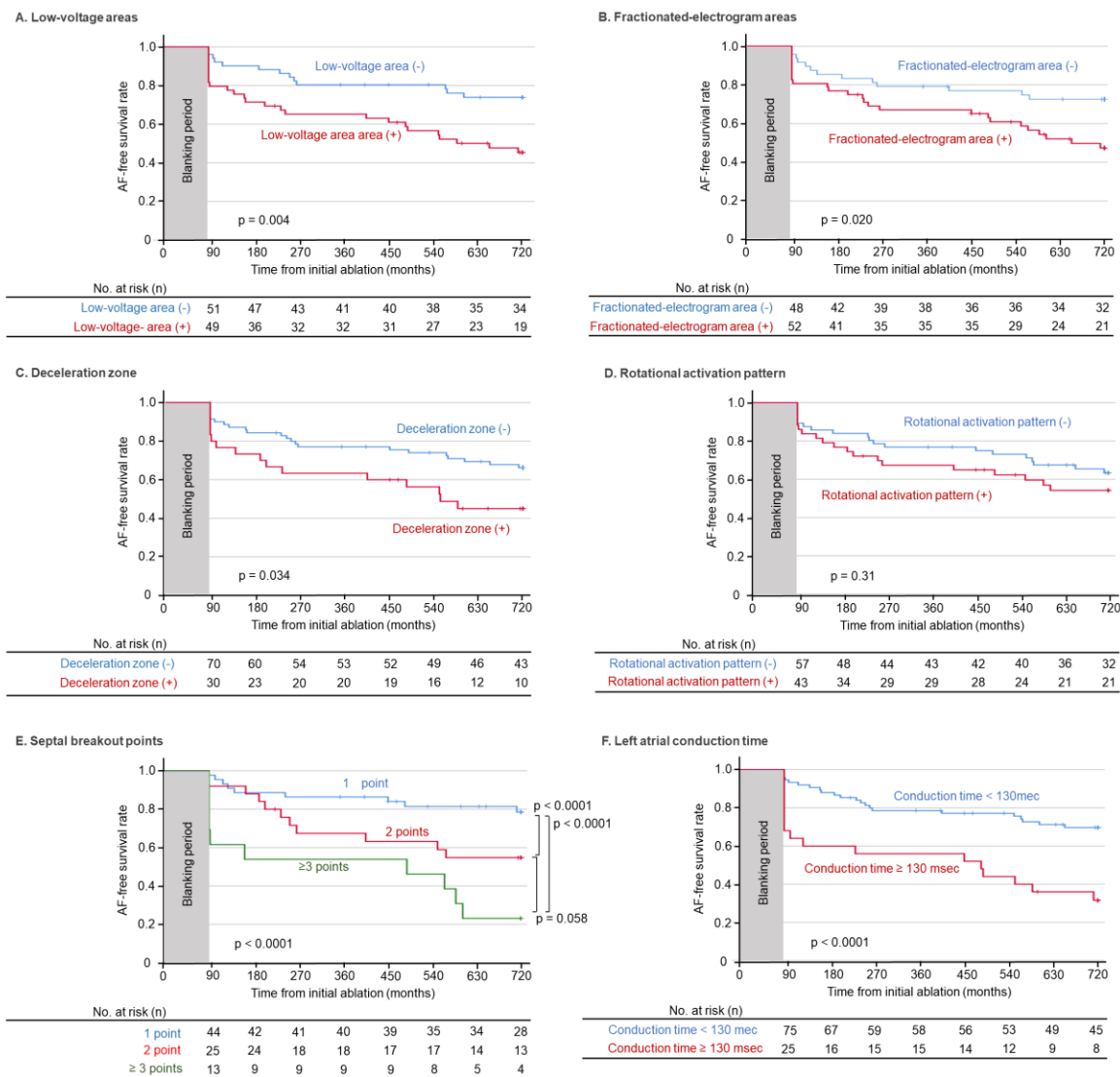
485 **Figure 1**

486



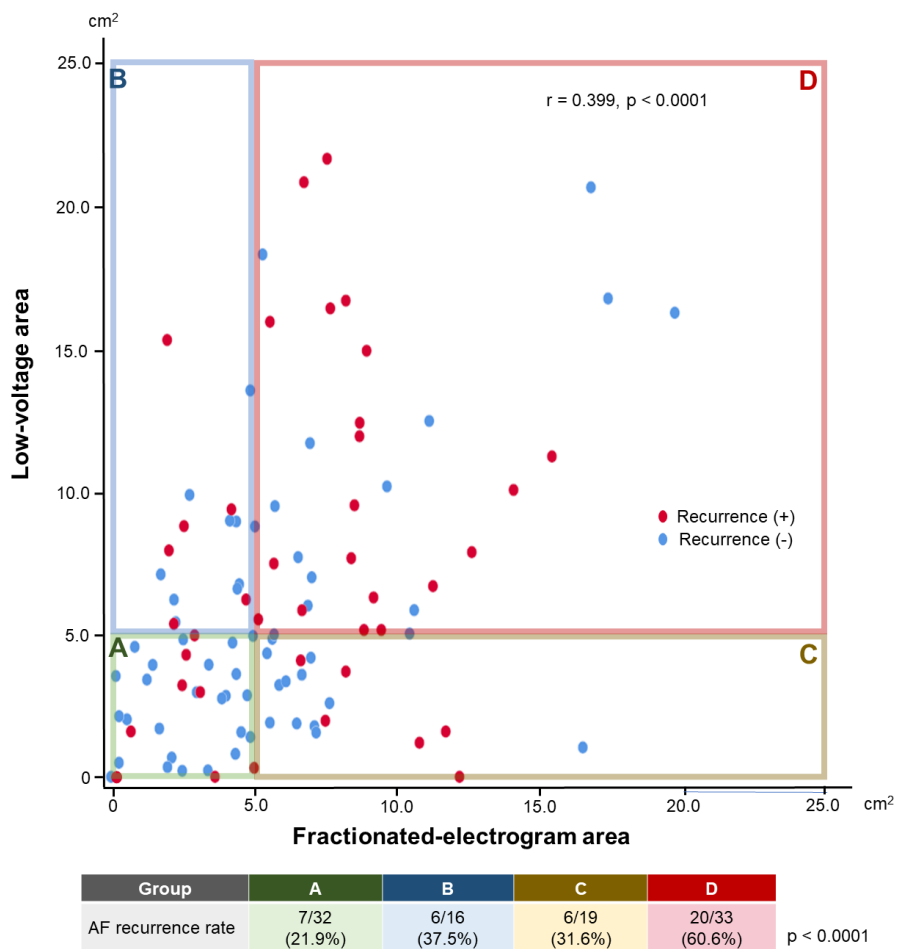


489 **Figure 3**
490



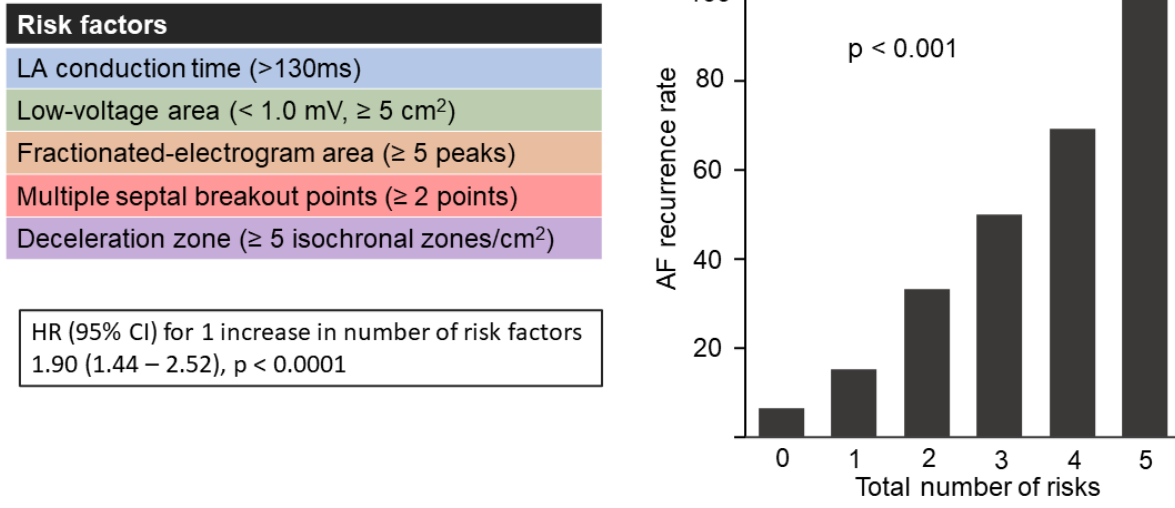
491 **Figure 4**

492



493 **Figure 5**

494

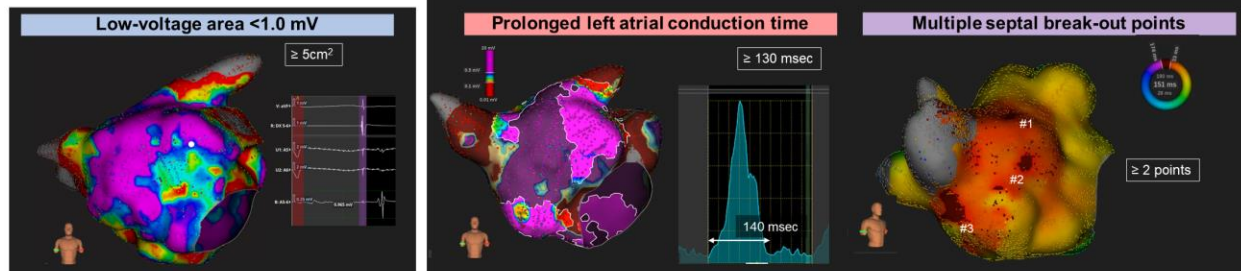


495 **Figure 6**
496



100 patients with pulmonary vein isolation without any left atrial substrate ablation
Left atrial mapping was performed using Rhythmia/ Orion mapping catheter.

Patients were followed up for 2 years.



| Risk factors | |
|---|--|
| Low-voltage area (< 1.0 mV, ≥ 5 cm ²) | |
| Fractionated-electrogram area (≥ 5 peaks, ≥ 5 cm ²) | |
| Deceleration zone (≥ 5 isochronal zones/cm ²) | |
| Prolonged left atrial conduction time (>130msec) | |
| Multiple septal breakout points (≥ 2 points) | |

HR (95% CI) for 1 increase in number of risk factors
1.90 (1.44 – 2.52), p < 0.0001

