

1 **Early Real-world Implant Experience with a Helix-fixation Ventricular Leadless Pacemaker**

2 Devi G. Nair, MD¹; Derek V. Exner, MD, MPH²; Vivek Y. Reddy, MD³; Nima Badie, PhD⁴; David Ligon, MS⁴;
3 Marc A. Miller, MD³; Bridget Lee, DO¹; Brandon Doty, DO¹; Athanasios Thomaides, MD⁵; Zayd Eldadah,
4 MD, PhD⁵; Malick Islam, MD⁵; Cyrus Hadadi, MD⁵

5

6 **Author Affiliations:**

- 7 1. St. Bernards Healthcare, Jonesboro, Arkansas, USA
8 2. Libin Cardiovascular Institute, Calgary, Canada
9 3. Icahn School of Medicine at Mount Sinai, New York, New York, USA
10 4. Abbott, Sunnyvale, CA, USA
11 5. MedStar Heart and Vascular Institute, MedStar Washington Hospital Center, Washington, DC,
12 USA
13

14 **Corresponding Author:**

15 Devi Gopinath Nair, MD, FACC, FHRS
16 Director of Cardiac Electrophysiology & Research
17 St. Bernards Medical Center, Jonesboro, Arkansas & White River Medical Center, Batesville, Arkansas
18 Director, Arrhythmia Research Group
19 Assistant Professor, University of Arkansas Medical Sciences, Arkansas
20 drdevignair@gmail.com
21
22

23 **Brief Title:** Implant Experience with Helix-fixation Leadless Pacemaker

24 **Word count:** 3588

25 **Funding Sources:** No funding reported for data collection. Data analysis and manuscript preparation
26 supported by Abbott.

27 **Conflicts of Interest / Competing Interests:**

28 DGN has served on the advisory board, served as a consultant, or received honoraria, research grants, or
29 support from Medtronic Inc, Boston Scientific Corporation, Abbott, Biosense Webster, and Adagio
30 Medical. DVE has served as a consultant and received honoraria and research grants from Abbott; and

31 unrelated to this manuscript, serves as a consultant for Boston Scientific, Medtronic, and GE Healthcare
32 and has equity in Clarius, CorVista eMurmur, HelpWear, and ProtonIntel. VYR has served as a consultant
33 to Abbott; and unrelated to this manuscript, he serves as a consultant for and has equity in Ablacon,
34 Acutus Medical, Affera-Medtronic, Apama Medical-Boston Scientific, Anumana, APN Health, Aquaheart,
35 Atacor, Autonomix, Axon Therapies, Backbeat, BioSig, CardiaCare, CardioNXT / AFTx, Circa Scientific,
36 CoRISMA, Corvia Medical, Dinova-Hangzhou DiNova EP Technology, East End Medical, EPD-Philips, EP
37 Frontiers, Epix Therapeutics-Medtronic, EpiEP, Eximo, Farapulse-Boston Scientific, Field Medical,
38 Focused Therapeutics, HRT, Intershunt, Javelin, Kardium, Keystone Heart, LuxMed, Medlumics,
39 Middlepeak, Neutrace, Nuvera-Biosense Webster, Oracle Health, Restore Medical, Sirona Medical,
40 SoundCath, Valcare; unrelated to this work, has served as a consultant for AtriAN, Biosense-Webster,
41 BioTel Heart, Biotronik, Boston Scientific, Cairdac, Cardiofocus, Cardionomic, CoreMap, Fire1, Gore &
42 Associates, Impulse Dynamics, Medtronic, Novartis, Philips, Pulse Biosciences; and has equity in DRS
43 Vascular, Manual Surgical Sciences, Newpace, Nyra Medical, Surecor, and Vizaramed. NB and DL are
44 employees of Abbott. ZE received consulting honoraria from AtriCure. MI received honoraria from
45 Boston scientific and Biosense Webster. CH served as a consultant, or received honoraria, research
46 grants, or support from Abbott and Biotronik.

47

48 **Abstract**

49 **Background:** Roughly 1 in 6 patients receiving conventional transvenous pacemaker systems experience
50 significant complications within 1 year of implant, mainly due to the transvenous lead and subcutaneous
51 pocket. A new helix-fixation single-chamber ventricular leadless pacemaker (LP) system capable of pre-
52 deployment exploratory electrical mapping is commercially available. Such an LP may mitigate
53 complications while streamlining the implantation.

54 **Objectives:** Evaluate the initial real-world implant experience of the helix-fixation LP following its
55 commercial release.

56 **Methods:** In patients indicated for single-chamber right ventricular pacing, helix-fixation Aveir VR LPs
57 (Abbott, Abbott Park, IL) were implanted using the dedicated loading tool, introducer, and delivery
58 catheter. Implant procedural characteristics, electrical parameters, and any 30-day procedure-related
59 adverse events of consecutive implant attempts were retrospectively evaluated.

60 **Results:** A total of 167 patients with Class I indication for permanent pacing received implants in 4 North
61 American centers (57% male, 70 years old). Pre-fixation electrical mapping of potential sites allowed
62 repositioning to be avoided in 95.7% of patients. Median [interquartile range] LP procedure and
63 fluoroscopy durations were 25.5 min [20.0, 35.0] and 5.7 min [4.0, 9.2], respectively. Pacing capture
64 threshold, sensed R-wave amplitude, and impedance were 0.8 V [0.5, 1.3], 9.0 mV [6.0, 12.0], and 705 Ω
65 [550, 910], respectively. Implantation was successful in 98.8% of patients, with 98.2% free from acute
66 adverse events.

67 **Conclusion:** The initial, real-world experience of the helix-fixation ventricular leadless pacemaker
68 demonstrated safe and efficient implantation with minimal repositioning, viable electrical metrics, and
69 limited acute complications.

70

71 **Keywords:** Leadless pacemaker; helix fixation; single-chamber pacemaker; implant procedure;

72 pacemaker complications; Aveir

73

74

75

76 **Introduction**

77 Despite nearly 70 years of research and clinical experience with traditional pacemakers and
78 transvenous leads, roughly 1 in 6 patients will experience complications within the first year post-
79 implant.¹⁻³ Common pacemaker complications are known to easily double the cost of an otherwise
80 uncomplicated procedure.^{1,4} The majority of these complications – including lead dislodgement, lead
81 fracture, pocket infection, valve regurgitation, hematoma, and pneumothorax – were directly attributed
82 to the transvenous lead and subcutaneous pulse generator pocket.¹⁻³ The leadless pacemaker (LP) is a
83 miniaturized alternative to the transvenous pacemaker and is housed entirely within the target
84 chamber. Without a need for transvenous leads or a generator pocket, LPs may mitigate the associated
85 complications⁵ while streamlining the implant procedure and accelerating patient recovery⁶.

86 The Aveir VR leadless pacemaker (Abbott, Abbott Park, IL) is a commercially available, single-
87 chamber ventricular LP. Features unique to this LP include a helix-based fixation mechanism, pre-
88 deployment exploratory electrical mapping capability, and distinct catheters designed specifically for
89 streamlined delivery and retrieval.⁷ This novel LP system has yet to be systematically evaluated in a real-
90 world clinical setting following its commercial release in the United States. This study reports the initial,
91 real-world implant experience of the LP in four North American Centers.

92

93 **Methods**

94 **Study Design**

95 This retrospective study was performed according to the principles outlined in the Declaration
96 of Helsinki and the Good Clinical Practice guidelines of the European Commission. Patients at least 18
97 years of age who met standard criteria for permanent pacing, and in whom the helix-fixation LP was

98 prescribed were included in the analysis. Records from consecutive patients undergoing implantation at
99 the four participating centers were retrospectively reviewed. All patients provided written informed
100 consent. The LP device, implant procedure, and procedural analyses are described below.

101 **Device Description**

102 The Aveir VR leadless pacemaker (Abbott, Abbott Park, IL) contains a pulse-generator, battery,
103 helix-fixation mechanism, docking mechanism, and pacing/sensing electrodes designed to provide
104 pacing in the RV, as shown in **Figure 1**. At the distal end, the LP employs an outer helix as the primary
105 fixation mechanism, and a central, inner dome-shaped electrode as the cathode. The proximal end of
106 the LP case serves as the LP anode, separated from the cathode by parylene insulation coating. It also
107 features a docking button that facilitates coupling and torque transfer interactions with the delivery and
108 retrieval catheters.

109 **Implant Procedure**

110 Each LP device was implanted per standard Instructions for Use (IFU). The 25 Fr inner diameter
111 Aveir Introducer (Abbott) was first placed in the right or left femoral vein via standard percutaneous
112 access. The catheter system includes a steerable delivery catheter, integrated guiding catheter with
113 protective sleeve, and hemostasis valve bypass tool to dilate the introducer sheath hemostasis valve.
114 The LP, pre-packaged in the Aveir Loading Tool (Abbott), was tethered to the Aveir Delivery Catheter
115 (Abbott) and pulled in to fully dock with the delivery catheter docking cap, and the protective sleeve was
116 advanced over the LP. The catheter and LP were advanced through the existing introducer into the
117 femoral vein and fluoroscopically guided through the peripheral vasculature to the RV chamber. **Figure 2**
118 provides fluoroscopic images illustrating an LP delivery example. Intracardiac ultrasound was used as per
119 operator preference.

120 Once the RV was fluoroscopically surveyed using contrast injection and a potential implant site
121 was selected (**Figure 2A**), the protective sleeve was retracted to expose the LP, and LP-myocardial
122 electrical contact was evaluated by using the Merlin Patient Care System (i.e., programmer; Abbott).
123 Briefly, the Programmer was connected to the Aveir Link Module (Abbott), which served as an interface
124 to electrocardiogram (ECG) patch electrodes on the patient’s torso and provided bi-directional
125 telemetry communication with the LP. The pacing capture threshold (PCT), sensed R-wave amplitude,
126 pacing impedance, and current of injury EGM (COI) electrograms were collected prior to deployment,
127 with the LP still fully engaged with the delivery catheter (i.e., “mapping” stage). With the LP at an
128 acceptable location ($PCT \leq 3.0 \text{ V}$, sensed amplitude $\geq 1.0 \text{ mV}$), the delivery catheter control knob was
129 used to rotate the LP until complete helix-myocardium engagement, as evident by 1.25-1.5 rotations of
130 the radiopaque LP chevron (**Figure 2B**). In a minority of patients, the LP was moved to an alternative site
131 and mapping was repeated.

132 The LP was then undocked from the delivery catheter docking cap, while still maintaining
133 contact by the two delivery catheter tethers (i.e., “tethered” stage, **Figure 2C**), thus allowing mechanical
134 and electrical evaluation, absent any substantial delivery catheter forces. LP mechanical stability was
135 verified fluoroscopically by a catheter deflection test, and electrical contact was confirmed by repeat
136 PCT, sensed amplitude, pacing impedance, and COI measurements.

137 With the LP engaged at an acceptable location, it was released from the tethers using the LP
138 release knob, the catheter was removed (i.e., “released” stage, **Figure 2D**), and final acceptable
139 electrical measurements were verified. Prior to patient discharge, the PCT, sensed amplitude, pacing
140 impedance were measured. Any adverse events observed during the implant procedure or within 30
141 days post-implant were noted.

142 **Quantitative Analysis**

143 For each LP implant procedure, the number of distinct mapping sites and deployment sites were
144 noted, as was the final release location. Electrical metrics (i.e., PCT, sensed R-wave amplitude, and
145 pacing impedance) were measured immediately upon LP release for all patients. In a subset of patients,
146 electrical metrics were also measured with the LP still tethered, prior to release. Tether vs. release
147 differences were evaluated using Wilcoxon signed-rank tests, with $P < 0.05$ deemed significant.

148 The LP implant procedure duration was quantified as the time from delivery catheter
149 introduction to removal. The fluoroscopy duration was quantified as the sum of all discrete uses of
150 fluoroscopy related to LP implantation. Continuous variables are presented as median [interquartile
151 range], including full range (min-max) when warranted. Adverse event-free rate and implant success
152 rate are reported with Clopper-Pearson 95% binomial proportion confidence intervals.

153

154 **Results**

155 **Study Population**

156 A total of 167 patients were evaluated at 4 North American centers, with baseline patient
157 characteristics provided in **Table 1**. Single-chamber pacemaker indications in this cohort predominantly
158 included 3rd degree AV block (38.3%), permanent atrial fibrillation (29.3%), tachy-brady syndrome
159 (23.4%), sinus node dysfunction (19.8%), and paroxysmal atrial fibrillation (18.0%). Note that some
160 patients presented with multiple indications.

161 **Implant Procedure Characteristics**

162 The implant procedure characteristics for this population are shown in **Figure 3**. The pre-fixation
163 electrical mapping capability, unique to these helix-fixation LPs, resulted in one site mapped in 74.7% of
164 patients, two sites mapped in 21.6% of patients, and 3-5 sites mapped in the remaining 3.7% of patients.
165 This mapping capability ultimately resulted in the LP being deployed without post-fixation repositioning
166 in 95.7% of patients; a single repositioning attempt was required in the remaining 4.3% of patients,
167 including intraprocedural retrieval and reimplantation due to elevated PCT in 1.2% of patients.

168 LPs were predominantly implanted in the low RV septum (92.6%), with placement in the mid
169 septum in the remainder. The median total procedure duration was 25.5 min [20.0, 35.0] (range: 14.0-
170 107.0), with a median fluoroscopy duration of 5.7 min [4.0, 9.2] (range: 1.4-44.9), as shown in **Figure 4**.

171 **Electrical Performance**

172 Immediately after LP deployment and release, the electrical measurements were as follows (see
173 **Table 2**). The median PCT at 0.4 ms pulse-width was 0.8 V [0.5, 1.3] (range: 0.3-4.5); sensed R-wave
174 amplitude 9.0 mV [6.0, 12.0] (range: 2.0-28.0); pacing impedance 705 Ω [550, 910] (range: 310-1800). A
175 PCT \leq 2.0 V was observed in 96.3% of patients, and PCT \leq 3.0 V were observed in 99.4% of patients (i.e.,
176 allowing a 2x safety margin with a maximum pulse amplitude of 6.0 V). Sensed R-wave amplitudes \geq 3.0
177 mV (i.e., allowing sensing at the nominal VLP sensitivity threshold) were observed in 99.4% of patients,
178 with amplitudes \geq 1.0 mV observed in 100.0% of patients. While the current-of-injury electrograms were
179 monitored, they were not quantitatively evaluated in this study.

180 Changes in electrical measurements between the procedural state when the LP was still
181 tethered to the delivery catheter (i.e., could still be re-docked and repositioned) and when the LP was
182 subsequently released are shown in **Figure 5**. In the subset of patients for which pre-release “tethered”
183 measurements were captured (N=31/167), median tether-release changes in PCT, sensed R-wave

184 amplitude, and impedance of -0.5 V [-0.9, -0.3] (P<0.001), +0.5 mV [-1.0, 2.0] (P=0.205), and -30 Ω [-68,
185 25] (P=0.069) were observed.

186 **Adverse Events**

187 The distribution of 30-day adverse events related to the Aveir VR implant procedure are
188 provided in **Figure 6**. Adverse events were absent in 98.2% of patients (95% confidence interval: 94.8-
189 99.6%), and were observed in three patients (1.8%). These include one patient with a pericardial
190 effusion resulting in aborting of the implant procedure, sternotomy, stitch repair, and placement of
191 epicardial leads (0.6%); one patient with delivery catheter tether fatigue during redocking before re-
192 implantation with new device (0.6%); and one patient with leadless pacemaker dislodgement on the first
193 post-procedural day, requiring device re-capture and replacement with a transvenous system (0.6%).
194 Overall, the LP implants were completed successfully in 98.8% of patients (95% confidence interval:
195 95.7-99.9%), with two implants aborted due to the aforementioned pericardial effusion and
196 dislodgement on the first post-procedural day.

197

198 **Discussion**

199 This initial, multi-center experience with the helix-fixation ventricular leadless pacemaker
200 demonstrated safe and efficient real-world implantation. This LP system includes several features
201 designed to facilitate implant site selection, streamline the implant procedure, and establish secure
202 electrical contact. This evaluation demonstrated swift implant procedures, viable electrical metrics, and
203 minimal acute complications.

204 The mapping capability, unique to these helix-fixation leadless devices, allows electrical contact
205 with the myocardium to be evaluated before committing to an implant site. This pre-deployment

206 verification resulted in viable electrical metrics to be achieved with minimal repositioning, which may
207 have played a role in minimizing median LP procedure and fluoroscopy times to 25.5 min and 5.7 min,
208 respectively. Although the first mapped RV site exhibited adequate electrical measurements in most
209 patients, additional sites were mapped prior to fixation in roughly 1 in 4 patients. Consequently, LP
210 repositioning after fixation, which can potentially lead to downstream clinical complications, was
211 avoided in 95.7% of patients; only one repositioning was required in the remaining 4.3%. In other words,
212 no LP implants required more than one repositioning attempt. In contrast, a commercial evaluation of
213 the tines-fixation LP (Micra VR) reported that 22.7% of those implants required more than one
214 repositioning attempt (i.e., 3 or more deployments).⁸

215 Successful electrical contact between each LP and the host myocardium was evident by post-
216 release LP measurements conducted via the device programmer during the implant procedure. The LP
217 exhibited a median PCT value of 0.8 V at 0.4 ms pulse-width (96.3% of devices presenting $PCT \leq 2.0$ V),
218 sensed R-wave amplitude of 9.0 mV, and impedance of 705 Ω . Taken together, these electrical metrics
219 demonstrate LP-myocardial contact capable of providing effective pacing and sensing after device
220 deployment. These commercial electrical measurements are consistent with the results from the first-in-
221 human experience with this helix-fixation LP in the LEADLESS II IDE Study (Phase 2), which reported
222 similar mean implant PCT values of 0.8 V (0.4 ms pulse-width), mean sensed R-wave amplitudes of 8.8
223 mV, and mean impedance values of 796 Ω .⁹

224 The step-wise LP implant procedure allows electrical measurements to be verified at sequential
225 stages of commitment to a particular implant site. In a subset of devices in which pre-release (i.e.,
226 “tethered”) and post-release measurements were captured, a significant PCT improvement (0.5 V,
227 approximately 33%) with relatively stable sensed amplitude and impedance values was observed upon
228 release by the delivery catheter tethers. PCT improvement after release may be attributed to (a) time
229 elapsing from the acute current of injury imposed by the active fixation mechanism, and/or (b) the

230 release of tension maintained by the delivery catheter tethers. These dynamics highlight the need to
231 monitor changes in PCT in the initial post-implant phase, prior to repositioning of the device due to a
232 slightly elevated PCT.

233 The delivery catheter, in conjunction with the loading tool and introducer, resulted in
234 complication-free implants in 98.2% of patients and successful implants in 98.8%. These rates are
235 consistent with the 96.2% complication-free rate and 97.6% implant success rate reported in the
236 LEADLESS II IDE Study (Phase 2).⁹

237 **Limitations**

238 As this was an evaluation of the initial experience with helix-fixation LP implants at 4 centers,
239 the main limitation of the study was the sample size. Larger, real-world, multi-center studies are needed
240 for a more comprehensive assessment of the implant procedure across broader implanter experience
241 levels, patient population demographics, and RV implant sites. The limited sample size also precluded
242 any statistical conclusions surrounding complications, which were infrequent.

243 Data regarding implant stability and electrical measurements were limited to the acute, post-
244 implant period. While commercial projections beyond this time-point would be speculative, promising
245 long-term implant stability and electrical measurements have been shown in clinical trials.⁹

246

247 **Conclusions**

248 The initial, real-world experience of the mapping-capable helix-fixation ventricular leadless
249 pacemaker demonstrated safe and efficient implantation with minimal repositioning, viable electrical
250 metrics, limited adverse events during implant or recovery, and a 98.8% implant success rate—all
251 consistent with results from the LEADLESS II IDE Study.

253 References

254

- 255 1. Cantillon DJ, Exner DV, Badie N, Davis K, Gu NY, Nabutovsky Y and Doshi
256 R. Complications and Health Care Costs Associated With Transvenous Cardiac
257 Pacemakers in a Nationwide Assessment. *JACC: Clinical Electrophysiology*.
258 2017;3:1296-1305.
- 259 2. Kirkfeldt RE, Johansen JB, Nohr EA, Jorgensen OD and Nielsen JC.
260 Complications after cardiac implantable electronic device implantations: An
261 analysis of a complete, nationwide cohort in Denmark. *European Heart Journal*.
262 2014;35:1186-1194.
- 263 3. Udo EO, Zuithoff NP, van Hemel NM, de Cock CC, Hendriks T, Doevendans
264 PA and Moons KG. Incidence and predictors of short- and long-term
265 complications in pacemaker therapy: the FOLLOWPACE study. *Heart Rhythm*.
266 2012;9:728-735.
- 267 4. Tobin K, Stewart J, Westveer D and Frumin H. Acute complications of
268 permanent pacemaker implantation: their financial implication and relation to
269 volume and operator experience. *The American journal of cardiology*.
270 2000;85:774-6, A9.
- 271 5. Sattar Y, Ullah W, Roomi S, Rauf H, Mukhtar M, Ahmad A, Ali Z, Abedin
272 MS-U and Alraies MC. Complications of leadless vs conventional (lead)
273 artificial pacemakers - a retrospective review. *Journal of Community Hospital*
274 *Internal Medicine Perspectives*. 2020;10:328-333.
- 275 6. Tjong FVY and Reddy VY. Permanent Leadless Cardiac Pacemaker Therapy: A
276 Comprehensive Review. *Circulation*. 2017;135:1458-1470.
- 277 7. Reddy VY, Exner DV, Doshi R, Tomassoni G, Bunch TJ, Estes NAM, Neuzil
278 P, Paulin FL, Garcia Guerrero JJ, Cantillon DJ and Investigators LI. Primary
279 Results on Safety and Efficacy From the LEADLESS II-Phase 2 Worldwide
280 Clinical Trial. *JACC Clin Electrophysiol*. 2022;8:115-117.
- 281 8. Roberts PR, Clementy N, Al Samadi F, Garweg C, Martinez-Sande JL,
282 Iacopino S, Johansen JB, Vinolas Prat X, Kowal RC, Klug D, Mont L, Steffel J,
283 Li S, Van Osch D and El-Chami MF. A leadless pacemaker in the real-world
284 setting: The Micra Transcatheter Pacing System Post-Approval Registry. *Heart*
285 *Rhythm*. 2017;14:1375-1379.
- 286 9. Reddy VY, Exner DV, Doshi R, Tomassoni G, Bunch TJ, Friedman P, Estes
287 NAM, Neuzil P, de la Concha JF, Cantillon DJ and Investigators LI. 1-Year
288 Outcomes of a Leadless Ventricular Pacemaker: The LEADLESS II (Phase 2)
289 Trial. *JACC Clin Electrophysiol*. 2023;9:1187-1189.

290

291

292 **Tables**

293 **Table 1.** Baseline patient characteristics.

Characteristic at Implant	Value
Sample size, n	167
Age, years (median [interquartile range])	74 [66 to 82]
Gender, %	
<i>Male</i>	56.6
<i>Female</i>	43.4
Indication*, %	298
<i>Sinus Node Dysfunction</i>	19.8
<i>AV Block</i>	299
<i>2nd Degree</i>	1.8
<i>3rd Degree</i>	38.3
<i>AF</i>	
<i>Paroxysmal</i>	18.0
<i>Permanent</i>	29.3
<i>Aflutter</i>	1.8
<i>AVN Ablation</i>	1.8
<i>Bradycardia</i>	13.8
<i>Tachy-Brady Syndrome</i>	23.4
<i>Pause</i>	6.0

304 * Indication percentages exceed 100%, as patients may present multiple indications

305

306

307 **Table 2.** Aveir VR electrical measurements at implant, immediately after LP release.

Electrical Measurement	Median [Interquartile Range]	Sample Size
Pacing Capture Threshold @ 0.4 ms, V	0.8 [0.5, 1.3]	164
Sensed R-wave Amplitude, mV	9.0 [6.0, 12.0]	156
Pacing Impedance, Ω	705 [550, 910]	164

308

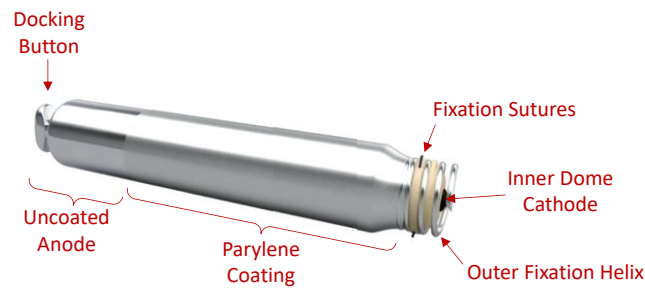
309

310

311 **Figures**

312

313 **Figure 1.** Helix-fixation ventricular leadless pacemaker. The distal outer helix facilitates torque-driven
314 fixation and retrieval; fixation sutures enhance implant stability. The proximal docking button facilitates
315 contact by the delivery or retrieval catheter. Electrical stimulation and wireless communication are
316 achieved via the uncoated case on the proximal end (anode) and inner dome electrode on the distal end
317 (cathode), isolated electrically by parylene insulation coating on the device case.



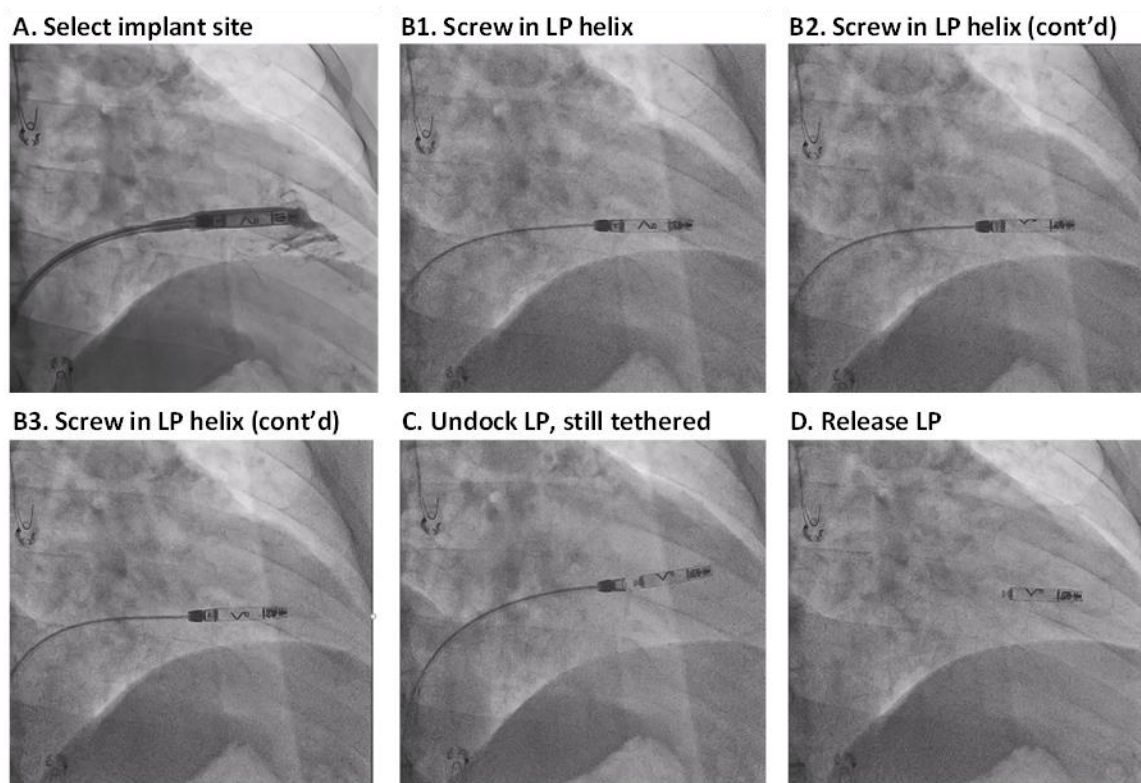
318

319

320

321

322 **Figure 2.** Fluoroscopic images demonstrate an example LP delivery from a right anterior oblique view.
323 (A) Implant site is selected using contrast agent with the protective sheath still in place. (B1, B2, B3)
324 With acceptable electrical metrics, the LP helix is screwed into the myocardium, as visualized by the
325 directional chevron marker rotating clockwise from behind the LP to in front of the LP. (C) LP is
326 undocked from the delivery catheter cap, revealing the LP docking button, yet is still tethered for
327 potential re-docking. (D) With acceptable electrical metrics verified, the LP is released from the delivery
328 catheter tethers.

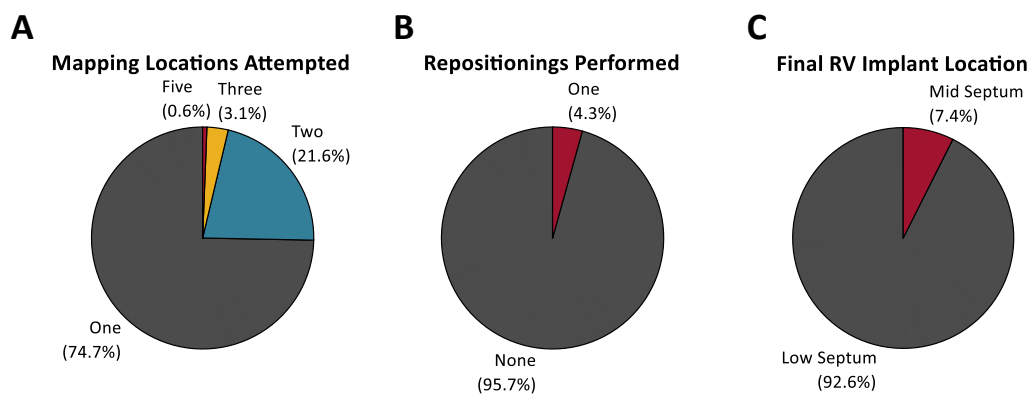


329

330

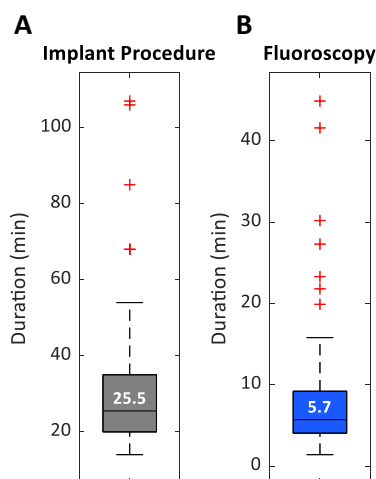
331

332 **Figure 3.** LP implant procedure population characteristics. Proportion of patients by (A) number of
333 mapping locations attempted prior to implant, (B) number of device repositioning instances performed
334 prior to release, and (C) final implant location.



335
336
337
338
339
340
341
342
343
344
345
346
347
348
349

350 **Figure 4.** Implant procedure durations. (A) LP procedure duration, from delivery catheter introduction to
351 retrieval, and (B) total cumulative fluoroscopy duration. Standard box plots show median (horizontal
352 line), interquartile range (box), non-outlier range (dashed whiskers), and individual outlier values
353 beyond 1.5x [interquartile range] from each of the two quartiles (red “+” symbol).

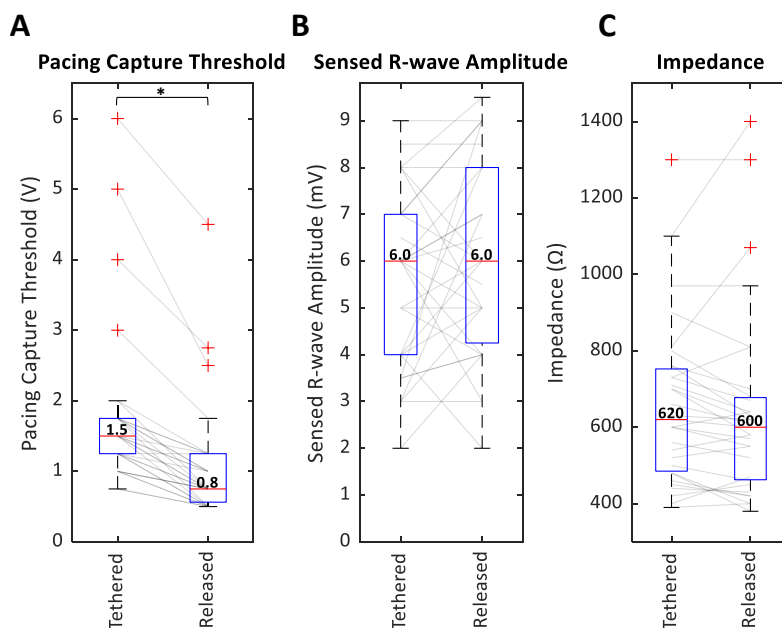


354

355

356

357 **Figure 5.** Changes in LP electrical measurements from when the device is tethered vs. released from the
358 delivery catheter. (A) Pacing capture threshold at 0.4 ms, (B) sensed R-wave amplitude, and (C) pacing
359 impedance are shown for the patient subgroup (N=31) with available data for both tether and release.
360 Asterisk indicates $P < 0.05$.



361

362

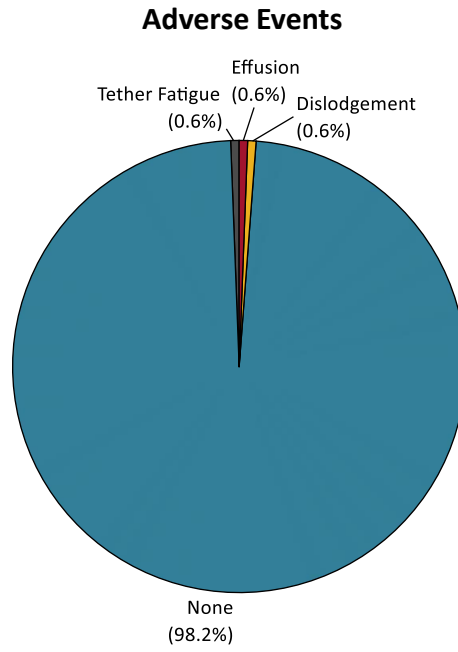
363

364

365

366

367 **Figure 6.** Distribution of adverse events related to Aveir VR implant procedure.



368