



19

## 20 **Abstract**

21 Background: Early in the 2022 mpox outbreak, vaccine doses and administrative capacity were  
22 limited. The US recommendation was to administer two doses of the JYNNEOS® vaccine 4  
23 weeks apart. However, because of the limited vaccine supply and high demand, New York City  
24 (NYC) prioritized administration of first doses to reach a larger portion of the impacted  
25 population as quickly as possible. We estimated mpox cases averted compared to strategies that  
26 prioritized 2-dose vaccination for a smaller portion of the population.

27 Methods: We fit a dynamic network transmission model to incident mpox cases reported by  
28 NYC, as well as to first and second vaccine doses administered from May 2022 through March  
29 2023. Model output consisted of predicted cases over time when vaccine doses were  
30 administered with the ‘first-dose priority’ strategy, compared with counterfactual simulations  
31 where individuals were either pre-allocated full courses of the vaccine (‘second-dose priority’  
32 strategy), or not pre-allocated doses, but where doses were administered to those eligible for a  
33 second dose ahead of those waiting for a first dose (‘intermediate’ strategy).

34 Results: We estimate that NYC’s ‘first-dose priority’ strategy averted 81% [IQR:75%–86] of  
35 potential mpox cases. Their ‘first-dose priority’ strategy was more effective than alternatives,  
36 averting 3.0% [IQR:1.2%–4.5%] more cases than the ‘intermediate’ strategy, and 9.5%  
37 [IQR:7.7%–12%] more cases than the ‘second-dose priority’ strategy.

38 Conclusions: A focus on widespread, 1 dose vaccination during future mpox outbreaks can  
39 reduce cases and limit transmission in scenarios of limited vaccine supply, limited vaccine  
40 administration capacity, or increased demand.

## 41 **Introduction**

42 Over 30,000 individuals in the United States were diagnosed with mpox in 2022, with  
43 33% of these cases occurring in May through July, and daily cases peaking on August 1<sup>st</sup>.  
44 Official CDC guidance was to administer two doses of the JYNNEOS® vaccine 4 weeks apart to  
45 priority populations (primarily gay, bisexual, and other men who have sex with men, hereafter  
46 referred to as MSM, with multiple recent sexual partners) [1]. During this period of rapidly  
47 increasing daily cases, demand for vaccination exceeded available doses of the JYNNEOS®  
48 vaccine and the capacity for administration in many jurisdictions. Given the rapidly increasing  
49 number of cases in New York City (NYC) and the resultant need to protect priority populations  
50 as quickly as possible, NYC focused their vaccination campaign on widespread, 1 dose  
51 vaccination, (a ‘first-dose priority’ strategy), with plans to administer second doses when supply  
52 and demand allowed, rather than following official CDC recommendations, which would have  
53 resulted in earlier 2 dose vaccination in a narrower portion of the population. Due to the urgency  
54 of the outbreak, NYC Health was required to make this decision with limited data on the  
55 effectiveness of 2 dose vs. 1 dose vaccination.

56 Understanding the relative impact of prioritizing 2-dose vaccination in a relatively  
57 narrow portion of the population (referred to as narrow, 2 dose vaccination) compared to a ‘first-  
58 dose priority’ strategy (referred to as widespread, 1 dose vaccination) may inform vaccination  
59 strategies in potential future mpox outbreaks [2]. We used vaccine administration and case report  
60 data from NYC to calibrate a dynamic network model of sexually transmitted monkeypox virus  
61 infection among MSM. We then estimated the number of mpox cases averted by vaccine  
62 administration in NYC over one year. We further estimated the effectiveness of strategies that  
63 focused on administering single doses of the vaccine to a widespread portion of the eligible

64 population, as happened in NYC (the “first-dose priority” strategy), compared to an  
65 administration strategy of pre-allocating a full course of doses to a narrow portion of the eligible  
66 population (the “second-dose priority” strategy), as well as a vaccine strategy of not pre-  
67 allocating doses, but choosing to administer vaccines to those eligible for a second dose ahead of  
68 completely unvaccinated individuals (the “intermediate” strategy).

## 69 **Methods**

70 We used a previously described dynamic network model of sexually associated  
71 monkeypox virus transmission in MSM [2–4], with parameters updated based on nationally  
72 distributed surveys of sexual behavior among MSM from 2017-2019 (the ARTnet study) [5].  
73 This model simulates the 167,000 MSM living in NYC, and a changing network of sexual  
74 partnerships between them. We model three types of sexual partnerships: individuals in our  
75 model can have 0 or 1 ‘Main’ partners (defined as enduring sexual partners who took priority  
76 over others), between 0 and 3 ‘Casual partners’ (defined as enduring sexual partners besides the  
77 main partner), and 0 or 1 ‘one-time’ partners per timestep (defined as partners without repeat  
78 sexual contact). For each timestep in the model, enduring partnerships have a probability of  
79 forming and dissolving, and individuals have a probability of engaging in one-time partnerships  
80 based on their assignment to one of 6 sexual activity groups, with activity group 1 representing  
81 the lowest sexual activity level (never engaging in one-time partnerships) and activity group 6  
82 representing the highest sexual activity level (30% chance of engaging in a one-time partnership  
83 per day). All network parameters can be found in Table S1.

84 We used an SEIR (susceptible, exposed, infectious, resistant) natural history in our  
85 model, expanded to account for pre-symptomatic transmission and multi-dose vaccination [6].  
86 Individuals start in the susceptible (*S*) class. An infectious individual has a probability of

87 infecting a susceptible partner given by the probability of sexual contact per timestep multiplied  
88 by the probability of infection per sexual exposure ( $\mu$ ). Upon acquiring infection, individuals  
89 enter a pre-symptomatic non-infectious state ( $E$ ), after which they have a probability per day of  
90 entering the pre-symptomatic and infectious state ( $P$ ), then the symptomatic and infectious state  
91 ( $I$ ), and finally the recovered and resistant state ( $R$ ). Individuals can also be vaccinated with 1  
92 ( $V1$ ) or 2 ( $V2$ ) doses of the vaccine, with effects described below. Symptom onset reduces sexual  
93 contact rate with ‘main’ and ‘casual’ partners by 50% and causes individuals to move to one  
94 lower sexual activity level until they recover. A proportion of individuals, ( $\rho$ ), will test for mpox  
95  $\gamma$  days after they develop symptoms, with  $\gamma$  based on the date-varying time between reported  
96 symptom onset and mpox tests in case data. After a positive mpox test, individuals become  
97 aware of their infection status, and no longer transmit the virus through sexual activity.  
98 Individuals who learn their infection status sustain contact with their ‘main’ partner such that  
99 they have a 10% chance of infecting their ‘main’ partner over the duration of the infection,  
100 reflecting prior estimates of household transmission [7]. Infected individuals who seek medical  
101 care are reported as diagnosed cases, hereafter referred to as *cases*.

102 We initiated the model by introducing 5 newly exposed individuals into the two highest  
103 sexual activity groups on May 14<sup>th</sup>. This produced a median of 5 cumulative cases in the model  
104 on May 31<sup>st</sup>, matching case data from NYC.

105 Our network does not account for potential periods of increased sexual activity associated  
106 with the high frequency of MSM gatherings (e.g., pride festivals) throughout the summer.  
107 Additionally, we assume that importation of mpox cases from countries impacted by mpox prior  
108 to the outbreak in the United States may have fed the initial surge of mpox cases. Thus, we  
109 model a ‘surge period’ during which we randomly select individuals in the top two sexual

110 activity groups to enter the  $E$  state via ‘extra-network’ contacts at a rate fit to incident case report  
111 data (see fitting procedure below). We set this surge period to occur in the two weeks after NYC  
112 Pride (June 26<sup>th</sup> – July 10<sup>th</sup>) but note that there were many MSM oriented gatherings in NYC at  
113 this time and are not assuming that a disproportionate level of exposures happened at any  
114 specific event.

115 Over the course of each simulation, individuals decrease their probability of one-time  
116 partnerships and their rate of sexual contact with casual partners as a function of perceived risk  
117 of mpox [8]. We parameterize this perceived risk based on frequency of mpox discussion on  
118 online LGBT+ discussion forums over time, as discussed by Clay et al. [4], and fit the magnitude  
119 of this behavioral adaptation to incident case report data (see fitting procedure below).

## 120 *Vaccination*

121 We ran three vaccination scenarios (Figure 1). We first ran a scenario where first and  
122 second doses administered per week matched those reported by NYC through March 18, 2023.  
123 This scenario is our baseline ‘first-dose priority’ strategy, as prioritizing widespread, 1 dose  
124 vaccination was the goal of NYC’s vaccination campaign. We then ran a counterfactual scenario  
125 where the total doses administered per week matched those in our ‘first-dose priority’ strategy,  
126 but during each timestep, doses were always administered first to individuals who were due for a  
127 second dose, and first doses were only given once there were no individuals waiting for a second  
128 dose (‘intermediate’ strategy). Finally, we ran an additional counterfactual scenario where  
129 individuals receiving their first dose were pre-allocated a second dose to be administered five  
130 weeks later, reflecting average time between doses in other jurisdictions (appendix). Thus, every  
131 individual completed their course on time, but total dose administration was slowed (‘second-  
132 dose priority’ strategy). The cumulative number of cases averted by vaccine administration was

133 calculated as the cumulative number of cases in the ‘no vaccination’ scenario minus the  
134 cumulative cases in a scenario with vaccine administration. We compared the number of cases  
135 averted by the baseline scenario to the number of cases averted by the counterfactual vaccination  
136 scenarios.

137 While MSM, transgender, gender non-conforming and non-binary adults (TGNCNB)  
138 with multiple sexual partners were all initially eligible for mpox vaccination, we only model  
139 MSM due to availability of sexual network data [5]. According to a 2020 citywide population-  
140 based survey, MSM made up 82% of MSM and TGNCNB adults in NYC with 2+ sexual  
141 partners over a 12-month period [9]. Thus, we assume that 82% of mpox vaccines administered  
142 in NYC were administered to MSM in our model.

143 As vaccines were originally intended for selected groups, including individuals with  
144 multiple recent sexual partners [10], we only vaccinate individuals in the top two sexual activity  
145 groups for the first four weeks of vaccination, only vaccinate individuals in the top four sexual  
146 activity groups for the next four weeks of vaccination, and only vaccinate individuals with a non-  
147 zero probability of engaging in one-time sexual partnerships for the rest of the simulation. In our  
148 model, susceptible ( $S$ ) and pre-symptomatic ( $E, P$ ) individuals are eligible for vaccination.  
149 However, vaccination does not prevent individuals in the  $E$  or  $P$  class from becoming infectious.  
150 Individuals are eligible for second doses of the vaccine if they have received their first dose at  
151 least four weeks in the past. In the case of breakthrough infections (i.e. infections of vaccinated  
152 individuals), we assume these individuals enter the pre-symptomatic ( $E$ ) class, i.e., prior  
153 vaccination has no effects on subsequent contagiousness or pathogenicity.

154 CDC recently published JYNNEOS® effectiveness estimates (the overall reduction in  
155 infection risk for a vaccinated individual compared to an unvaccinated individual over an

156 observed period) of 75.2% for one dose, and 85.9% for two doses [11]. We use these values in  
157 our model as per-exposure reductions in transmission probability due to vaccination, hereafter  
158 referred to as per-exposure vaccine efficacy. Setting vaccine effectiveness equal to per-exposure  
159 vaccine efficacy requires the assumption that individuals in the vaccine effectiveness study were  
160 not exposed to mpox multiple times (Figure S2). If individuals in the vaccine effectiveness study  
161 were exposed to mpox multiple times, we would expect for per-exposure vaccine efficacy to be  
162 greater than vaccine effectiveness. We thus repeated our analysis while increasing per-exposure  
163 vaccine efficacy by 10% and found no qualitative difference in our results (Figures S4-6). In all  
164 scenarios, we assume that doses become effective two weeks after administration.

### 165 *Fitting Process*

166 Our model has three free parameters whose values were informed via fitting: (1) the  
167 probability of transmission per exposure ('transmission probability',  $\mu$ ), (2) the number of  
168 additional individuals infected per day by extra-network contacts during the 'surge period'  
169 ('surge exposures',  $\varepsilon$ ), and (3) the maximum percent reduction in probability of one-time or  
170 casual sexual contact per day in response to perceived risk of mpox ('behavioral adaptation',  $\omega$ ).  
171 We fit these parameters to incident daily cases in NYC using a 5-step process.

172 First, we used Latin Hypercube Sampling (LHS) to generate 1,000 unique parameter sets,  
173 sampling between 40% and 100% transmission probability, between 100 and 1,000 surge  
174 exposures, and between 0% and 60% behavioral adaptation. Prior studies used transmission  
175 probability values below our minimum [12], but these lower values were based off estimates of  
176 household, rather than sexual, transmission, and do not generate sustained transmission in our  
177 network.



178           Second, we simulated a single run of outbreak dynamics under the baseline ‘first-dose  
179 priority’ strategy employed by NYC for each LHS-generated parameter set from May 14, 2022  
180 to January 18, 2023 (250 simulated days). Third, we filtered out parameter sets which predicted a  
181 final cumulative case incidence outside of that observed in NYC +/- 50%. Fourth, for each  
182 remaining parameter set, we calculated the likelihood that the simulated number of incident daily  
183 cases could generate the observed number of incident daily cases through Jan 18 using a negative  
184 binomial probability distribution. Finally, we drew 100 parameter sets (with replacement) with  
185 the calculated likelihood used as the relative draw probability for each parameter set. These 100  
186 drawn parameter sets represent the posterior distributions of our fit parameters.

187           For each of these 100 parameter sets, we ran each of our vaccine model scenarios (Figure  
188 1) from May 14, 2022 to May 14, 2023 and compared median and interquartile ranges of  
189 cumulative cases over time for each vaccine administration strategy. We additionally ran a third  
190 counterfactual model scenario where no vaccines were administered to measure the total percent  
191 of cases averted by vaccination compared to the ‘first-dose priority’ strategy (baseline model).

## 192 **Results**

193           Our fitting procedure selected for a transmission probability of 59% [IQR: 55% – 65%],  
194 440 surge exposures [IQR: 280 – 560], and behavioral adaptation of 37% [IQR: 26% – 47%]  
195 (Figure 2, Table 2). The posteriors of transmission probability and behavioral adaptation are both  
196 correlated with surge exposures (Figure S3). Thus, these parameter estimates should not be used  
197 in other contexts.

198           Our model estimates that there would have been 17,800 cumulative cases [IQR: 13,000 –  
199 25,900] by May 14, 2023 in the counterfactual scenario with no vaccination. Our model further

200 estimates that the baseline ‘first-dose priority’ strategy averted 81% [IQR: 75% – 86%] of these  
201 cases (Figure 3).

202           Taking the difference in cases averted across all parameter sets, we estimate that  
203 compared to the baseline ‘first-dose priority’ strategy employed by NYC, the counterfactual  
204 ‘intermediate’ strategy would have averted 3.0% [IQR: 1.2% – 4.5%] fewer cases, and the  
205 counterfactual ‘second-dose priority’ strategy would have averted 9.5% [IQR: 7.7% – 12%]  
206 fewer cases (Figure 4A). This would result in up to 2,000 fewer cases averted had NYC chosen  
207 an alternative vaccine administration strategy. This result is driven by exposure heterogeneity  
208 and incremental dose efficacy. In our model, the first individuals vaccinated have a one-time  
209 partner acquisition rate 250 times greater than individuals vaccinated later in the outbreak (Table  
210 S1), which favors narrow, 2 dose vaccination of individuals with higher sexual activity.  
211 However, this exposure heterogeneity is overwhelmed by the second vaccine dose adding  
212 relatively little incremental protection (10.7%) compared to the first dose (75.2%), which favors  
213 widespread, 1 dose vaccination.

214           NYC was allocated a relatively high number of JYNNEOS doses per high priority  
215 individual compared to many other jurisdictions. Thus, we conducted additional analyses,  
216 reducing doses administered in the NYC model by 75% to estimate whether the optimal vaccine  
217 administration strategy would differ if NYC had been allocated fewer doses. We found that in  
218 this scenario, the baseline ‘first-dose priority’ strategy was even more superior, averting 43%  
219 [IQR: 39% – 48%] of cases, while the counterfactual ‘intermediate’ strategy averted 11% [IQR:  
220 2.0% – 18%] fewer cases, and the counterfactual ‘second-dose priority’ strategy averted 25%  
221 [IQR: 13% – 34%] fewer cases than the ‘first-dose priority’ strategy (Figure 4B).

222 In addition to incremental dose efficacy and heterogeneity in exposure probabilities, the  
223 overall transmissibility of a pathogen will influence whether widespread, 1 dose vaccination or  
224 narrow, 2 dose vaccination is favored. When we increase per-exposure vaccine efficacy  
225 (appendix S.5), our fitting procedure selected parameter sets with higher monkeypox virus  
226 transmissibility, increasing cumulative cases in the no-vaccine scenario by 8.2% (Figure 2 vs.  
227 Figure S5). Because most transmission events in our model happen among high-activity  
228 individuals, in this higher transmissibility scenario, high activity individuals may need more per-  
229 exposure protection to reduce the effective growth rate of mpox to below 1. This favors narrow,  
230 2 dose vaccination strategies more than our primary analysis (Figure 2), resulting in all vaccine  
231 administration strategies averting similar numbers of cases (Figure S6).

## 232 **Discussion**

233 During the 2022 mpox outbreak, demand for vaccines initially outstripped supply,  
234 preventing 2 dose vaccination for the total population likely to benefit from vaccination. Thus,  
235 NYC prioritized administration of first doses to reach a larger portion of the impacted population  
236 as quickly as possible. In this analysis, we modeled the strategy focusing on widespread, 1 dose  
237 vaccination employed by NYC, compared to counterfactual strategies focusing on 2 dose  
238 vaccination in narrower portions of the population. We estimated that the NYC vaccine rollout  
239 prevented 81% of potential mpox cases. We further estimated that NYC's strategy of prioritizing  
240 widespread, 1 dose vaccination (the 'first-dose priority' strategy) averted more cases than  
241 alternative strategies prioritizing narrow, 2 dose vaccination, and would also have been the  
242 superior strategy had vaccine supply been even more limited.

243 Increasing vaccine coverage will decrease the probability of future mpox outbreaks and  
244 decrease the size of outbreaks if they occur [2]. CDC estimates that a vaccination threshold of

245 50% among priority populations (HIV PrEP indicated MSM and MSM living with HIV) would  
246 prevent monkeypox virus transmission [2]. However, 70% of analyzed jurisdictions, including  
247 urban centers with large MSM populations, are currently below this thresholds, with 34% of  
248 analyzed jurisdictions having vaccinated 25% or less of the priority population [2]. Thus, CDC  
249 recommends the continued vaccination of priority populations to prevent future mpox outbreaks  
250 [13]. Currently, vaccine availability outstrips demand among priority populations, and state and  
251 local health departments do not need to decide whether to prioritize narrow, 2 dose vaccination  
252 or widespread, 1 dose vaccination. Rather, state and local health departments can focus both on  
253 initiating the vaccine series for those in priority population who remain unvaccinated or have  
254 recently entered the priority population, followed by completion of the 2 dose vaccine series.  
255 Completing the vaccine series is important as the duration of effectiveness of a single dose is not  
256 known.

257         Given the potential for mpox resurgence as well as for mpox to spread to populations not  
258 previously impacted by mpox, demand for mpox vaccines could increase, potentially exceeding  
259 vaccine supply or vaccination capacity. In either situation, local and state health departments  
260 may consider whether to focus on prioritizing narrow, 2 dose vaccination, or widespread, 1 dose  
261 vaccination. Our analysis shows that in NYC, prioritizing widespread, 1 dose vaccination averted  
262 the greatest number of cases, making it the superior strategy, though it may be equivalent to  
263 other strategies if we are underestimating per-exposure vaccine efficacy. Even if all strategies  
264 were equivalent in averting cases, prioritizing widespread, 1 dose vaccination has the benefit of  
265 improving vaccine equity. In recent vaccine rollouts, groups who have historically faced  
266 systematic barriers to accessing healthcare received a disproportionately small number of initial  
267 vaccine doses [14]. Narrow, 2 dose vaccination strategies, which focus on concentrating all

268 vaccine doses in a smaller number of individuals who access vaccine doses first, may thus  
269 exacerbate health inequities. This is particularly problematic as individuals are most likely to  
270 have close sexual contact with individuals of the same race or socioeconomic status [15].  
271 Narrow, 2 dose strategies may thus lead to uncontrolled transmission in groups already facing a  
272 disproportionate burden of most health problems, exacerbating health disparities.

273         Vaccination can yield greater health benefits when the selection of vaccine administration  
274 strategies takes into account heterogeneity in immune function, which may in turn generate  
275 heterogeneity in both individual susceptibility and vaccine effectiveness. People with HIV  
276 (PWH) make up 19% of MSM [16,17], but 55% of mpox cases in the United States with known  
277 and recorded HIV status. The disproportionate representation of PWH among mpox cases may  
278 be caused by (a) PWH having a higher probability of mpox exposure, (b) PWH having a greater  
279 susceptibility to monkeypox virus infection, or (c) PWH being more likely to experience mpox  
280 symptoms when infected, given that coinfection between HIV and mpox can lead to severe, life-  
281 threatening outcomes in individuals not receiving antiretroviral therapy and who had low CD4  
282 counts [18]. JYNNEOS® vaccination has reduced efficacy in individuals living with  
283 immunocompromising conditions, including uncontrolled HIV, with a reduction in first-dose  
284 effectiveness of 21.1%, and a reduction of second-dose effectiveness of 17.6%. Further, the  
285 incremental effectiveness of second dose vaccination is higher in people living with  
286 immunocompromising conditions than in others, with second dose vaccination increasing  
287 effectiveness by 20.8 percentage points, compared to 10.7 percentage points. Thus, because  
288 PWH may be more likely to acquire mpox, are more likely to experience severe symptoms, and  
289 benefit more from receiving a second vaccine dose than others, future vaccination strategies may  
290 benefit from giving PWH 2 dose vaccine courses as quickly as possible, even if the larger

291 vaccine strategy is for widespread, 1 dose vaccination. This strategy could be paired with further  
292 efforts to connect people living with uncontrolled HIV to HIV services, given that increased  
293 CD4 counts may increase vaccine efficacy and reduce severity of mpox.

294 Choosing whether to prioritize completion of a multi-dose course in a narrow portion of  
295 the population at high likelihood of infection, versus widespread, 1 dose vaccination will arise in  
296 future outbreaks of other diseases, whenever vaccination involves multiple doses [19]. When  
297 choosing between vaccination strategies during an outbreak, public health agencies need to be  
298 quick, flexible, and make decisions with limited data. Mathematical modelers can conduct  
299 studies now, before those outbreaks occur, that will allow public health officials to make  
300 informed decisions during the initial stages of an outbreak. The optimal vaccine strategy in an  
301 outbreak will depend on multiple factors, including the incremental effectiveness of first vs.  
302 second doses, the population contact network, vaccine administration capacity, and the epidemic  
303 growth rate. Modeling studies can explore how these parameters shift the optimal vaccination  
304 strategy, while connecting these parameters to pre-existing data (e.g., the population contact  
305 network), or data that can be easily collected in the early stages of an outbreak (e.g. epidemic  
306 growth rate). Results from these studies can inform decisions for public health officials, leading  
307 to quick, evidence-based public health leadership.

### 308 **Acknowledgments**

309 The findings and conclusions in this report are those of the authors and do not necessarily  
310 represent the views of the Centers for Disease Control and Prevention or the National Cancer  
311 Institute. We would like to thank Dr. Jennifer Rosen for her support.

### 312 **Data Availability**

313 Data and code available upon reasonable request to authors.

314

## 315 **Bibliography**

- 316 1. JYNNEOS Vaccine | Mpox | Poxvirus | CDC [Internet]. [cited 2023 May 17]. Available  
317 from: <https://www.cdc.gov/poxvirus/mpox/interim-considerations/jynneos-vaccine.html>
- 318 2. Pollock ED, Clay PA, Keen A, et al. Potential for Recurrent Mpox Outbreaks Among  
319 Gay, Bisexual, and Other Men Who Have Sex with Men — United States, 2023. *MMWR*  
320 *Morb Mortal Wkly Rep* [Internet]. **2023** [cited 2023 May 26]; 72(21):568–573. Available  
321 from: <https://www.cdc.gov/mmwr/volumes/72/wr/mm7221a1.htm>
- 322 3. Spicknall IH, Pollock ED, Clay PA, et al. Modeling the impact of sexual networks in the  
323 transmission of Monkeypox virus among gay, bisexual, and other men who have sex with  
324 men — United States, 2022 [Internet]. 2022 [cited 2022 Oct 25]. Available from:  
325 <https://stacks.cdc.gov/view/cdc/120698>
- 326 4. Clay PA, Asher JM, Carnes N, et al. Modelling the impact of vaccination and sexual  
327 behavior change on reported cases of mpox in Washington D.C. *medRxiv* [Internet]. Cold  
328 Spring Harbor Laboratory Press; **2023** [cited 2023 May 17]; :2023.02.10.23285772.  
329 Available from: <https://www.medrxiv.org/content/10.1101/2023.02.10.23285772v1>
- 330 5. Weiss KM, Goodreau SM, Morris M, et al. Egocentric sexual networks of men who have  
331 sex with men in the United States: Results from the ARTnet study. *Epidemics*. Elsevier;  
332 **2020**; 30:100386.
- 333 6. Brosius I, Dijck C Van, Coppens J, et al. Presymptomatic viral shedding in high-risk

- 334 mpox contacts: A prospective cohort study. *J Med Virol* [Internet]. John Wiley & Sons,  
335 Ltd; **2023** [cited 2023 May 17]; 95(5):e28769. Available from:  
336 <https://onlinelibrary.wiley.com/doi/full/10.1002/jmv.28769>
- 337 7. Beer EM, Bhargavi Rao V. A systematic review of the epidemiology of human  
338 monkeypox outbreaks and implications for outbreak strategy. *PLoS Negl Trop Dis*  
339 [Internet]. Public Library of Science; **2019** [cited 2023 Jan 27]; 13(10):e0007791.  
340 Available from:  
341 <https://journals.plos.org/plosntds/article?id=10.1371/journal.pntd.0007791>
- 342 8. Delaney KP, Sanchez T, Hannah M, et al. Strategies Adopted by Gay, Bisexual, and Other  
343 Men Who Have Sex with Men to Prevent Monkeypox virus Transmission — United  
344 States, August 2022. *MMWR Morb Mortal Wkly Rep* [Internet]. Centers for Disease  
345 Control MMWR Office; **2022** [cited 2022 Oct 25]; 71(35). Available from:  
346 <https://www.cdc.gov/mmwr/volumes/71/wr/mm7135e1.htm>
- 347 9. New York City Department of Health and Mental Hygiene. EpiQuery - Community  
348 Health Survey 2020 [Internet]. [cited 2023 Aug 4]. Available from: [https://a816-](https://a816-health.nyc.gov/hdi/epiquery/visualizations?PageType=ps&PopulationSource=CHS)  
349 [health.nyc.gov/hdi/epiquery/visualizations?PageType=ps&PopulationSource=CHS](https://a816-health.nyc.gov/hdi/epiquery/visualizations?PageType=ps&PopulationSource=CHS)
- 350 10. FACT SHEET: Biden-Harris Administration’s Monkeypox Outbreak Response | The  
351 White House [Internet]. [cited 2022 Nov 1]. Available from:  
352 [https://www.whitehouse.gov/briefing-room/statements-releases/2022/06/28/fact-sheet-](https://www.whitehouse.gov/briefing-room/statements-releases/2022/06/28/fact-sheet-biden-harris-administrations-monkeypox-outbreak-response/)  
353 [biden-harris-administrations-monkeypox-outbreak-response/](https://www.whitehouse.gov/briefing-room/statements-releases/2022/06/28/fact-sheet-biden-harris-administrations-monkeypox-outbreak-response/)
- 354 11. Dalton AF, Diallo AO, Chard AN, et al. Estimated Effectiveness of JYNNEOS Vaccine in  
355 Preventing Mpox: A Multijurisdictional Case-Control Study — United States, August 19,



- 356 2022–March 31, 2023. *MMWR Morb Mortal Wkly Rep* [Internet]. **2023** [cited 2023 May  
357 23]; 72(20):553–558. Available from:  
358 <https://www.cdc.gov/mmwr/volumes/72/wr/mm7220a3.htm>
- 359 12. Endo A, Murayama H, Abbott S, et al. Heavy-tailed sexual contact networks and  
360 monkeypox epidemiology in the global outbreak, 2022. *Science* (80- ) [Internet].  
361 American Association for the Advancement of Science; **2022** [cited 2023 Jan 27];  
362 378(6615). Available from: <https://www.science.org/doi/10.1126/science.add4507>
- 363 13. Vaccination | Mpox | Poxvirus | CDC [Internet]. [cited 2023 May 26]. Available from:  
364 <https://www.cdc.gov/poxvirus/mpox/interim-considerations/overview.html>
- 365 14. Baack BN, Abad N, Yankey D, et al. COVID-19 Vaccination Coverage and Intent Among  
366 Adults Aged 18–39 Years — United States, March–May 2021. *Morb Mortal Wkly Rep*  
367 [Internet]. Centers for Disease Control and Prevention; **2021** [cited 2023 May 26];  
368 70(25):928. Available from: </pmc/articles/PMC8224866/>
- 369 15. Hernández-Romieu AC, Sullivan PS, Rothenberg R, et al. Heterogeneity of HIV  
370 prevalence among the sexual networks of Black and White MSM in Atlanta: illuminating  
371 a mechanism for increased HIV risk for young Black MSM. *Sex Transm Dis* [Internet].  
372 NIH Public Access; **2015** [cited 2022 Oct 26]; 42(9):505. Available from:  
373 </pmc/articles/PMC4536576/>
- 374 16. Linley L, Johnson AS, Song R, et al. Estimated HIV incidence and prevalence in the  
375 United States 2010–2019 [Internet]. 2021 [cited 2023 May 18]. Available from:  
376 <https://stacks.cdc.gov/view/cdc/112160>
- 377 17. Grey JA, Bernstein KT, Sullivan PS, et al. Estimating the Population Sizes of Men Who

- 378 Have Sex With Men in US States and Counties Using Data From the American  
379 Community Survey. *JMIR Public Heal Surveill* 2016;2(1)e14  
380 <https://publichealth.jmir.org/2016/1/e14> [Internet]. *JMIR Public Health and Surveillance*;  
381 **2016** [cited 2022 Oct 31]; 2(1):e5365. Available from:  
382 <https://publichealth.jmir.org/2016/1/e14>
- 383 18. Mitjà O, Alemany A, Marks M, et al. Mpox in people with advanced HIV infection: a  
384 global case series. *Lancet*. Elsevier; **2023**; 401(10380):939–949.
- 385 19. Adult Immunization Schedule – Healthcare Providers | CDC [Internet]. [cited 2023 May  
386 19]. Available from: <https://www.cdc.gov/vaccines/schedules/hcp/imz/adult.html>
- 387 20. Aral SO, Blanchard JF. The Program Science initiative: improving the planning,  
388 implementation and evaluation of HIV/STI prevention programs. *Sex Transm Infect*  
389 [Internet]. BMJ Publishing Group Ltd; **2012** [cited 2023 Aug 1]; 88(3):157–159.  
390 Available from: <https://sti.bmj.com/content/88/3/157>
- 391 21. Charniga K, Masters NB, Slayton RB, et al. Estimating the incubation period of  
392 monkeypox virus during the 2022 multi-national outbreak. *medRxiv* [Internet]. Cold  
393 Spring Harbor Laboratory Press; **2022** [cited 2023 May 17]; :2022.06.22.22276713.  
394 Available from: <https://www.medrxiv.org/content/10.1101/2022.06.22.22276713v2>
- 395 22. Farley TA, Cohen DA, Elkins W. Asymptomatic sexually transmitted diseases: the case  
396 for screening. *Prev Med (Baltim)*. Academic Press; **2003**; 36(4):502–509.
- 397 23. Jenness SM, Weiss KM, Goodreau SM, et al. Incidence of Gonorrhea and Chlamydia  
398 Following Human Immunodeficiency Virus Preexposure Prophylaxis Among Men Who  
399 Have Sex With Men: A Modeling Study. *Clin Infect Dis* [Internet]. Oxford Academic;

400 **2017** [cited 2023 Feb 16]; 65(5):712–718. Available from:

401 <https://academic.oup.com/cid/article/65/5/712/3824878>

402 Table 1: Model parameters. Values given as a range represent priors of parameters fit to data.

Parameter Description	Value	Source
Initial Conditions		
Population size	167,000	EpiQuery - Community Health Survey 2020: NYC Department of Health and Mental Hygiene.
Initial number infectious individuals	5	Model Assumption
Date seeded with initial infections	May 14 <sup>th</sup>	Selected to align date of 5 cases in median model output and case reports
Surge Exposures (Number individuals infected from June 26 – July 10, a period of large gatherings of gay, bisexual, and other men who have sex with men)	[100 – 1000]	Fit to case report data
Natural History Parameters		

Transmission Probability  (Probability of transmission per sexual contact)	[40% – 100%]	Fit to case report data
Mean duration of post-exposure, pre-symptomatic period	7.6 days	Charniga K, Masters NB, Slayton RB, et al. Estimating the incubation period of monkeypox virus during the 2022 multi-national outbreak. medRxiv. <b>2022</b>
Mean duration of pre-symptomatic infectious period	4 days	Brosius I, Dijck C Van, Coppens J, et al. Presymptomatic viral shedding in high-risk mpox contacts: A prospective cohort study. J Med Virol [Internet]. <b>2023</b>
Mean duration of infectious period	27 days	Spicknall IH, Pollock ED, Clay PA, et al. Modeling the impact of sexual networks in the transmission of Monkeypox virus among gay, bisexual, and other men who

		have sex with men — United States, 2022. MMWR. <b>2022</b>
Treatment Seeking and Vaccine Parameters		
Probability of seeking treatment	0.8	Farley TA, Cohen DA, Elkins W. Asymptomatic sexually transmitted diseases: the case for screening. Prev Med. <b>2003</b>
Duration of infectious period if seeking treatment (time until medical attention post-symptoms)	15 days on first day of simulation, linearly decreases to 5.0 days on day 42 of simulation, stays at 5.0 days for rest of simulation.	Case Report Data
First dose per-exposure vaccine efficacy	75.2% (85% in sensitivity analysis)	Dalton AF, Diallo AO, Chard AN, et al. Estimated
Second dose per-exposure vaccine efficacy	85.9% (95% in sensitivity analysis)	Effectiveness of JYNNEOS Vaccine in Preventing Mpox: A Multijurisdictional Case-Control Study — United States, August 19, 2022–March 31, 2023. MMWR. <b>2023</b>

Minimum time between first and second dose	28 days	JYNNEOS Vaccine   Mpox   Poxvirus   CDC [Internet].
Behavior Change Parameters		
Behavioral Adaptation (Maximum percent reduction in daily probability of forming one-time sexual partnerships.)	[0% – 60%]	Fit to case report data

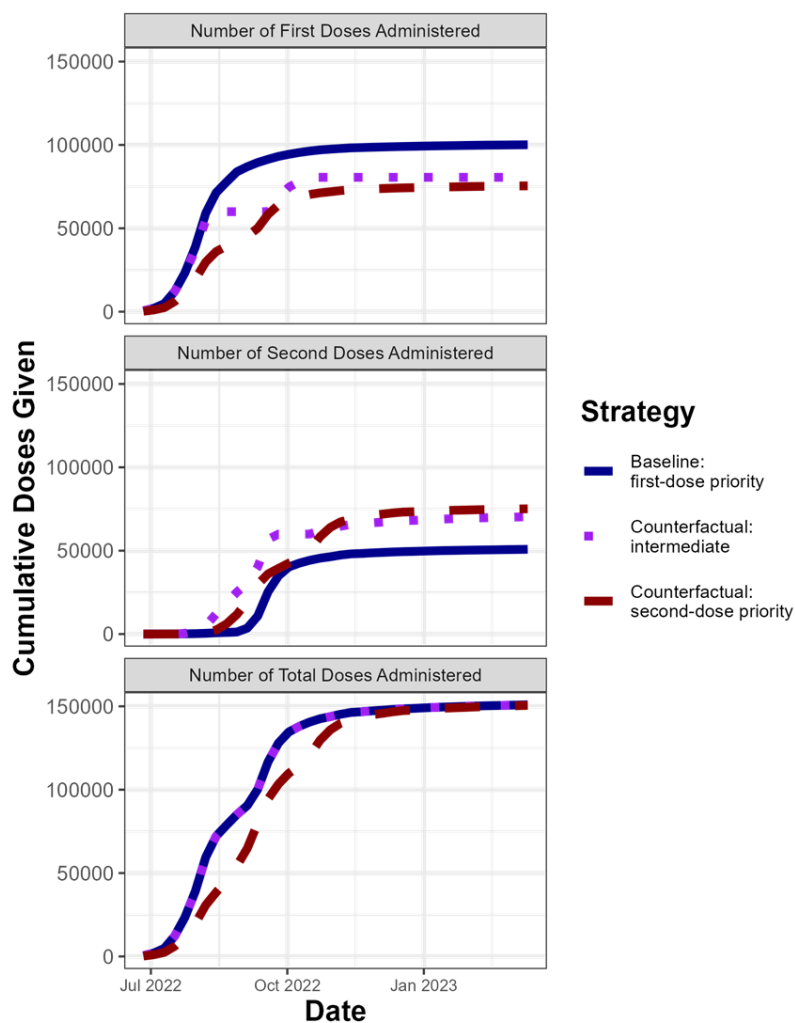
403

404 Table 2: Posterior values of parameters fit to incident cases.

Parameter	Median	1 <sup>st</sup> quartile	3 <sup>rd</sup> Quartile
Surge Exposures (Number individuals infected from June 26 – July 10, a period of large gatherings of gay, bisexual, and men who have sex with men)	440	280	560
Transmission Probability (Probability of transmission per sexual contact)	59%	55%	65%
Behavioral Adaptation (Maximum percent reduction)	37%	26%	47%

in daily probability of forming one-time sexual partnerships.)			
--	--	--	--

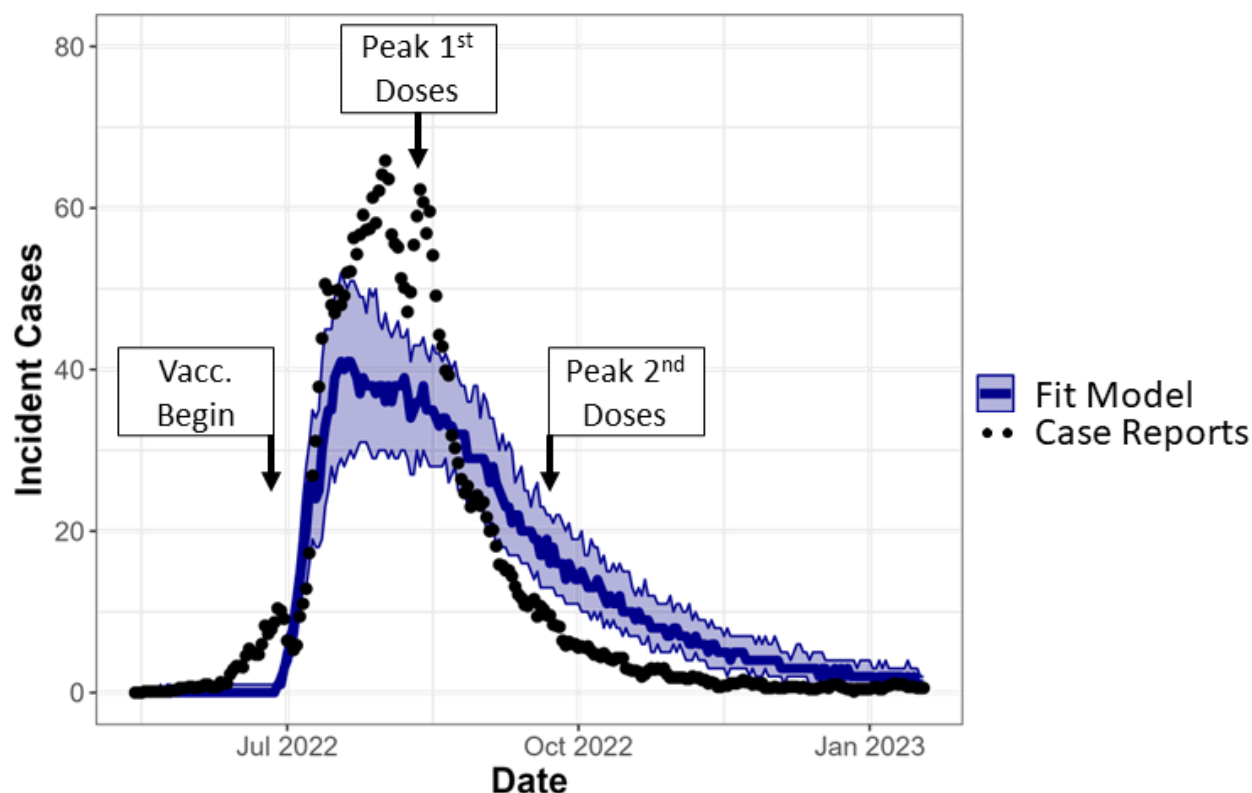
405



406

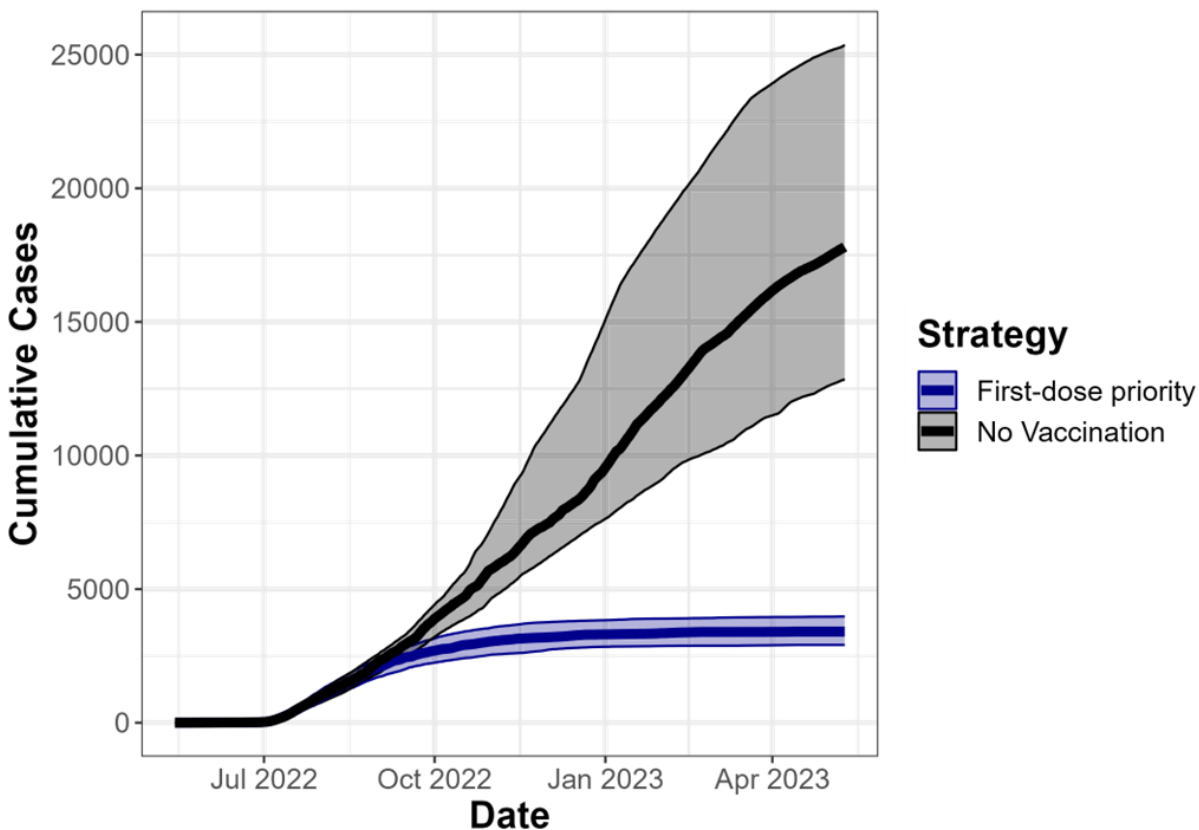
407 **Figure 1:** Allocation of doses over time for each vaccine administration strategy\*. Y-axis shows number  
408 of doses given over time on the X-axis. Top two panels indicate number of first and second doses given,  
409 respectively, for each vaccine administration strategy while bottom panel indicates the sum of first and  
410 second doses given for each vaccine administration strategy. Colors indicate different vaccine  
411 administration strategies.

412 \*First-dose priority: first and second doses in model are based on first and second doses administered by  
413 NYC. Intermediate: Individuals who are eligible for a second dose receive priority for available doses, but  
414 there is no preallocation. Second-dose priority: doses are preallocated to ensure that all individuals  
415 receive full course of this vaccine.



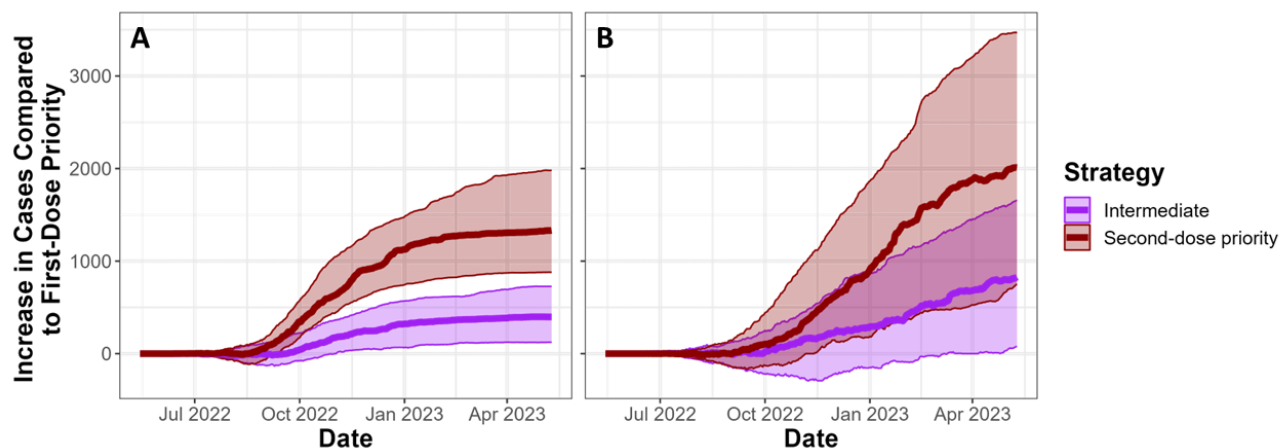
416  
417 **Figure 2:** Mpxv model fit to data. Dots indicate the 1 week running mean of incident daily cases in NYC,  
418 used as our fitting target. Blue line in represents median incident daily cases of model runs from the 100  
419 parameter sets selected in our fitting procedure, with band representing interquartile range of model runs,  
420 assuming a ‘first-dose priority’ strategy. Labels indicate the beginning of pre-exposure vaccination on  
421 June 26<sup>th</sup>, peak administration of first doses, occurring the week of August 7<sup>th</sup>, and peak administration of  
422 second doses, occurring the week of September 18<sup>th</sup>.





423

424 **Figure 3:** Estimated cumulative cases over a year under the ‘first-dose priority’ strategy employed by  
425 NYC compared to a ‘no vaccination’ scenario. Lines represent median cumulative cases of model runs  
426 from the 100 parameter sets selected in our fitting procedure, with bands representing interquartile ranges  
427 of model runs.



428

429 **Figure 4:** Comparison of different vaccine administration strategies\*. We show the difference in cases  
430 under the ‘intermediate’ or ‘second-dose priority’ strategy compared to the ‘first-dose priority’ strategy  
431 on the Y-axis, over time on the X-axis. Solid lines indicate median values across fit parameter sets, and  
432 transparent bands indicate interquartile ranges across parameter sets. Panel A uses vaccine administration  
433 numbers shown in Figure 1, while panel B cuts doses given by 75% to emulate jurisdictions with lower  
434 dose availability.

435 \*First-dose priority: first and second doses in model are based on first and second doses administered by  
436 NYC. Intermediate: Individuals who are eligible for a second dose receive priority for available doses, but  
437 there is no preallocation. Second-dose priority: doses are preallocated to ensure that all individuals  
438 receive full course of this vaccine.