

1 **New POCT instrument, GBTsol ICA system for**
2 **HIV monitoring by CD4 and CD8 enumeration**
3 **in resource-poor settings**

4
5 Stephe Sung^{1¶}, Hyon-Suk Kim^{2&}, Jaewoo Song^{2&}, Jaeyoung Lee^{1¶}, Shabnam Aghamoradi^{1¶*},
6 Seungrim Baek^{1¶}

7
8 ¹Glory Biotechnologies Corp., Seoul, Republic of Korea

9 ²Department of Laboratory Medicine, College of Medicine, Yonsei University, Seoul,
10 Republic of Korea

11

12

13

14 * Corresponding author

15 E-mail: shabnam@glorybt.com

16

17 ¶These authors contributed equally to this work.

18 &These authors also contributed equally to this work.

19

20

21

22

23

24

25

26

27

28 **Abstract**

29 According to WHO report 39.0 million (33.1–45.7 million) people around the world were
30 living with HIV infection till Dec of 2022. One method that we need for treatment and
31 monitoring of HIV patients is CD4 counting and CD4/CD8 ratio. For this purpose, there are
32 many different laboratory test with technical complexity and in other hand most of them are
33 time consuming, expensive or cannot be used in resource limited places.

34 This work demonstrates POCT microchip platform for enumerating leukocytes, CD4+ T-
35 lymphocytes, and CD8+ T lymphocytes from whole blood, using fluorochrome-conjugated
36 primary antibodies as a detection method.

37 This device and its method omits all obstacles for WBC and CD4, CD8 T lymphocytes and it
38 offers fast, cost effective and easy absolute WBC and CD4, CD8 T lymphocytes count for
39 monitoring HIV patients' immune situation with high accuracy which can be implemented
40 insource limited stings or doctors' office.

41 We incubated Phycoerythrin (PE) conjugated primary antibodies specific to CD4 and CD8
42 antigens to enumerate CD4+ and CD8+ T cells, respectively. Comparison studies were
43 performed with FACS count to evaluate total leukocytes, CD4+T cell number, and CD8+T cell
44 number in whole blood samples for monitoring the immune systems of patients with human
45 immunodeficiency virus (HIV)/AIDS. Statistical analyses for precision, correlation, and
46 agreement were performed. Coefficients of variation (CV) ranging from 0.67% to 12.78%, 0.81
47 to 13.68%, and 0.29% to 8.33% were obtained for CD4, CD8 and leukocyte recovery
48 respectively. A significant correlation was found between the two assays for CD4 count and
49 CD8 count, with correlation coefficients of 0.90 and 0.91, respectively. Using Bland-Altman
50 plots, a mean bias of 23, 38, and 490 cells/ μ L (95% CI, n=113) was obtained for CD4, CD8,
51 and total leukocyte count, respectively. These data show that the GBTsol ICA (Immune Cell

52 Analyzer) is comparable to the FACS count platform method for measuring the amounts of
53 CD4 T cells, CD8 T cells, and total leukocytes in blood samples for the purpose of monitoring
54 HIV/AIDS patients with cheap, easy and fast way.

55

56

57

58

59

60

61

62

63

64

65

66

67

68

69 **Keywords:** CD marker, Point-of-care Testing (POCT), Leukocyte, Acquired Immune
70 Deficiency Syndrome, CD4/CD8, immune cell counting, AIDS, HIV

71 **Introduction**

72 **1.Importance of CD4 and CD8 enumeration monitoring in HIV/AIDS** 73 **patients**

74 According to who report 39.0 million (33.1–45.7 million) people around the world were living
75 with HIV infection till Dec of 2022 that most of them live in source limited places.

76 One method that we need for treatment and monitoring of HIV patients is CD4 counting and
77 CD4/CD8 ratio. For this purpose, there are many different laboratory test with technical
78 complexity and in other hand most of these method is time consuming, expensive or cannot be
79 used in resource limited places. The CD4 cell count has played a central role in the care of
80 HIV-infected children and adults as a measurement of immunosuppression and deciding for
81 antiretroviral therapy (ART). Routine accumulation of CD4 data at diagnosis continues to
82 contribute to treatment priorities and remains critical in identifying late diagnosis [1-3].

83 One of the reasons behind underutilization of CD4 results is accessibility of clinical centers
84 and centralized clinical laboratories, where currently available technology such as flow
85 cytometry, which is the gold standard method, has been used for 40 years. However, there are
86 many limitations to traditional flow cytometry, including the ability of laser to analyse only
87 one cell at a time, cells must be in suspension to be analysed, highly trained technicians are
88 required, intensive quality control measures are needed, and cells must be viable to be
89 analysed. These requirements have constrained CD4 testing in several resource-constrained
90 settings, most particularly for rural settings where clinical laboratories are not easily accessible
91 [4-8]. Along with the above-mentioned limitations, flow cytometry measurement suffers from
92 a lack of standardization, and reproducible protocols for sample preparation, including RBC

93 lysis, cell staining, gating strategies, and acquisition protocols, have proven difficult to remain
94 constant over multicenter clinical studies [9]. Moreover, patients in many countries lack a
95 unique patient number, making it very difficult to trace test results from different laboratories,
96 especially in patients referred between hospitals and clinics. Long turn-around times for tests
97 sent to central labs delay clinical decision-making and place a significant strain on patients.
98 Conventional tests involve transportation of samples in complex and insufficient transport
99 networks and on lengthy, rough highways. These transport networks are restricted, costly, and
100 often compounded by short sample stability problems. In one study in Mozambique, Malawi,
101 and South Africa, as many as 50% of CD4 test results did not return to clinics for follow up
102 [10]. To address this drawback, health care programs are utilizing POCT for CD4 results to
103 facilitate care for the individual, leading to higher retention in care and reduced loss to follow-
104 up [11]. Point-of-care testing (POCT) are typically used by technicians and other clinical
105 personnel who may not necessarily be adequately trained. Therefore, accuracy, reproducibility,
106 low cost, time effective, sensitivity, and specificity remain the most important factors related
107 to POC technologies. One such POCT instrument is the GBTsol ICA, which has shown high
108 accuracy, reproducibility, low cost, and time effectiveness. This commercial tool of twenty-
109 first century with peculiar CD marker measurements method within multiple maladies provides
110 a solution when and where the absence of similarities in others cannot. Hence, in this study,
111 we focused on the accuracy, reproducibility, and time effectiveness of POC technology
112 (GBTsol ICA) compared to the results of FACS count data. The POC technology (GBTsol
113 ICA) is based on leukocyte separation from whole blood, labelling of all leukocytes with DNA
114 fluorescent stains, and CD marker enumeration (CD4+ and CD8+) using primary antibodies
115 conjugated with fluorescent markers.

117 **2. GBTsol ICA system**

118 GBTsol ICA system is composed of three main part. First one is ICA reader machine the second
119 one is cartridge and third part is about reagents and optimized PE conjugated CD marker
120 antibody. Each part is designed in details which has their own consequential rule in
121 experiments' result.

122 Inside the ICA reader machine different part works together the hard ware part from cartridge
123 grabber to suction pump, camera, LED and so on. In other hand an associated computer
124 software algorithm is responsible for analysing and converting raw digital image data into
125 counts and percentages which displaying result on device screen in less than 5 minutes and no
126 need for manual cell counting and being worry about human counting errors Fig.1.

127 The cartridge is disposable and made of three part with specified height and filter membrane
128 with 3um pores, it plays key rule in separating WBC which no need to do RBC lyse or use
129 centrifuge for cell separating which can result in cell lost during experiment.

130 As CD marker antibody we used mouse IgG Anti-Human CD4-PE from clone RPA-T4 for
131 CD4 marker detection and Mouse IgG Anti-Human CD8-PE from clone OKT-8 for CD8
132 marker detection. Which are optimized with high purification antibodies and can react with
133 whole blood, no need to lyse RBC and reaction complete just in five minutes. Other reagent
134 and buffers for experiment optimized by designing and processing different protocol to get the
135 best positive signal with low background results wih high accuracy and reproducibility which
136 was validated through testing in Yonsei Medical Center Sinchon Severance Hospital. The data
137 showed close agreement with flow cytometry.

138

139 **Methods and materials**

140 Phycoerythrin (PE) conjugated CD4 and CD8 primary mouse antibodies respectively, were
141 centrifuged briefly prior to use. Analytical grade chemicals and reagent grade solvents were
142 used for all buffers and solutions. Dimethyl sulfoxide (DMSO), 0.5% trypsin-
143 ethylenediaminetetraacetic acid (EDTA) solution (10X), and phosphate buffered saline (PBS,
144 pH 7.4) were procured from Sigma Chemical Co. (St. Louis, MO, USA). Fixative and flow
145 cytometry (FC) reagents were acquired from Beckman Coulter (Fullerton, CA). Rainbow
146 microsphere beads were purchased from BD Biosciences, (San Diego, USA). Whole blood
147 samples were obtained by a phlebotomist from anonymous donors at Severance Hospital
148 (Yonsei University, Seoul), in accordance with Institutional Review Board (IRB, 1-2018-009)
149 procedures, by a standard venipuncture technique using EDTA as an anticoagulant in 5mL
150 tubes. Samples were evaluated within 24 hours of collection. Data were obtained from
151 16/04/2018 to 15/08/2018 .

152 **1.Development of biomarker detection kit methodology**

153 Typically, when a patient with HIV/AIDS visits a doctor, blood is collected and sent to the
154 clinical laboratory for CD4 and CD4/CD8 tests with WBC count. Test results may be submitted
155 to the doctor within 24 to 48 hours or up to 1 week depending on number of technicians in
156 laboratory, distance, resources available, and chosen biomarker test. The device presented here
157 is a POC detection kit designed to be used by a health care provider to readily identify and
158 diagnose CD4, CD8 and leukocyte counts.

159 The GBTsol ICA detection kit consists of the following:

160 1)A micro-separation filter for entrapment of leukocytes. 2)A tube containing a leukocyte-
161 specific antibody for a specific test. 3)A tube containing reaction buffer for specific reactions
162 (i.e., CD4, CD8, leukocyte counting).4)A tube containing washing solution to remove other
163 proteins non-specifically bound to the micro-separation filter.

164 Each test using a different kit: GBTsol ICA001 for CD4 count, GBTsol ICA002 for CD8 count,
165 and GBTsol ICA 003 for leukocyte count.

166 The GBTsol ICA procedure involves five steps. 1) Incubation of sample and respective
167 antibody depending on test i.e., CD4 test, CD8 Test or Leukocyte test. 2)Wetting step- For
168 removal of dust particle or any other unwanted substance from the Cartridge to lower
169 background noise.

170 3) Sampling step- For dispensing the incubated sample to the GBTsol ICA.

171 4)Washing Step- For the removal of extra antibody or unconjugated antibody from the
172 cartridge. 5)Processing step- For quantitative result for the CD4, CD8 and Leukocytes
173 respectively.

174 After the sample is added, the user injects a washing solution, after which the instrument
175 processes the sample automatically. Results can be printed or sent to a storage device.

176 **2.Sensitivity test**

177 To establish assay sensitivity, samples of microsphere rainbow beads of different
178 concentrations were dispersed in phosphate buffer saline (pH-7.0) (100, 250, 500, 1000, 1500,
179 2000, 2500, 3000, 3500, 4000, 4500, 5000 microsphere rainbow beads/ μ L), and bead counts
180 were performed using GBTsol ICA following the method for cell counting. Counts were
181 repeated three times to determine the average number of microsphere rainbow beads.

182 **3. Identification of leukocytes and enumeration of specific blood cell** 183 **subsets**

184 Human blood samples were collected in EDTA tube and antibodies utilized in these studies
185 were stored at 4~8oC. Each blood sample (5µL) was mixed with cell-staining solution (5uL)
186 (GBTsol ICA-001), (GBTsol ICA-002) containing fluorescently labeled antibodies targeting
187 CD antigens and incubated at room temperature for 5 min after incubation 990uL of reaction
188 buffer was added. Samples were directly dispensed on the GBTsol ICA cartridge for
189 enumeration of CD markers. GBTsol ICA is a semi-automated and fully quantitative device.
190 After sample injection, the tests were carried out automatically to generate results.

191 **4. Flow cytometry analysis**

192 FACSCount flow cytometer (NAVIOUS Ex Flow Cytometer Leukocyte Count) using a
193 protocol provided by the manufacturer was used as a reference method. BD True count tubes
194 (BD Biosciences) were used for determining absolute leukocyte, CD4+, and CD8+ cell counts.

195 **Data management and analysis**

196 All study data were collected and managed using electronic data capture tools based on our
197 own algorithm and hosted at Glory Biotechnologies Corp., which is a secure, password-
198 protected, web-based application designed to support data capture for research studies. All data
199 were entered once, and each entry was checked for accuracy and was only available to staff
200 directly involved in data entry or analysis. Leukocytes, CD8, and CD4 results were analyzed
201 with Microsoft Excel after being exported directly from the GBTsol ICA device to determine
202 the number of tests performed, invalid test rates, and types of invalid tests. Error was estimated
203 by scatterplot and best-line analyses with linear regression to determine the coefficient of

204 determination (R2), and Bland-Altman analysis was performed to determine systematic bias,
205 limit of agreement (LOA), and imprecision of the GBTsol ICA.

206 **Image analysis of leukocytes and specific blood cell subsets**

207 Each blood sample was stained with fluorescently labeled antibodies targeting specific CD
208 antigens for 5 min. Fluorescence intensities, cell size and shape were used to identify
209 leukocytes. Specific surface markers were used when classifying leukocyte subpopulation
210 specific fluorescent dye conjugated to antibodies against each specific CD marker.

211 **Results and Discussion**

212 The need for rapid, reproducible, sensitive, accurate, and non-troublesome tests is of major
213 importance in healthcare. Such a test has obvious advantages over existing tests, as well as
214 other instrument-based systems using microfluidics technology to count cells on cartridges.

215 **Specimen collection and GBTsol ICA performance**

216 A total of 113 patients from Severance Hospital were tested in four months period. Patient age
217 ranged from 8 to 65 years.

218 Overall, there were few compromised specimens due to difficulties or errors associated with
219 blood collection. Out of 113 CD4 and CD8 tests performed by GBTsol ICA, 2 tests (1.76%)
220 for CD4 and 2 tests (1.76%) for CD8 failed because of pipetting error or improper sample
221 handling. Out of 113 tests for CD4 and CD8, 1 (0.88%) of each sample were clotted before
222 conducting the CD4 and CD8 tests, respectively (Tables 1 and 2). 0.88% of CD4 tests and
223 0.88% of CD8 tests were aborted before the test was complete. GBTsol ICA instrument error

224 is likely to occur with improper loading, i.e., volume loaded is either too small or too large
225 (Tables 1 and 2).

226 However, the GBTsol ICA CD4 and CD8 test cartridges or analyzers could not be totally ruled
227 out as the cause of invalid test results. Operation abortion of GBTsol ICA CD4 and CD8 tests
228 can occur due to mechanical problems or technical problems with the analyser itself or due to
229 testing procedure errors by research personnel. We tried to analyse invalid GBTsol ICA test
230 rates to determine if a particular problem was more responsible for invalid GBTsol ICA tests
231 and concluded that pipetting error or improper sample handling was the major reason for
232 invalid tests. However, out of 113 GBTsol ICA tests for CD4 and CD8, no tests were invalid
233 due to an error message reported by GBTsol ICA respectively. Further investigation suggests
234 that CD4 and CD8 counts less than 100 and greater than 9000, respectively, are not suitable for
235 analysis with GBTsol ICA (data not shown).

236 However, many existing laboratory tests are time consuming, tedious, and need trained
237 personnel and expensive equipment [12]. POC-CD4 testing is valuable in scale up of ART for
238 HIV care and linkage to treatment in high-risk, resource-restricted settings as conventional
239 flow cytometry measurement of CD4 count generally necessitates samples be sent to a central
240 research facility, which might be off site, with results delayed by 24~72 hours or even up to 7
241 days¹³. POC innovations can lessen such deferrals, allowing faster care. For improvement of
242 testing, high-caliber and low-cost CD4 assays must be accessible for use in resource-restricted
243 settings [12,14]. Such POC instrument and assays must give precise and dependable CD4
244 results and must be simple to use. Therefore, in this study a novel immunofluorescence test
245 based on biomarker-specific antibodies was used to detect specific CD markers and validated
246 for CD4 and CD8 monitoring for HIV/AIDS patients. This study demonstrates high accuracy

247 and reproducibility in predicting CD4 and CD8 counts using the GBTsol ICA device compared
248 to flow cytometry at Severance Hospital, Yonsei University, Seoul, South Korea.

249 **Reproducibility and efficiency of GBTsol ICA**

250 To evaluate the detection sensitivity of GBTsol ICA, rainbow beads at concentrations of 100,
251 250, 500, 1000, 1500, 2000, 2500, 3000, 3500, 4000, 4500, and 5000 rainbow beads/ μ L were
252 subjected to GBTsol ICA and detected using the device. The calculated detection efficiency
253 was consistently greater than 90% when 100 to 5000 beads were present per 200 μ L of rainbow
254 bead sample (Fig. 2). The CV of the different bead concentrations ranged from 2.21 to 5.38%,
255 which adheres to the WHO recommendation $< 15\%$ if the count is up to 500 and $< 10\%$ if the
256 count is 5000. Accordingly, the GBTsol ICA showed excellent detection efficiency and
257 reproducibility, enabling us to accurately detect CD4, CD8 and leukocyte. (Fig. 4 (A, B), 5 (A,
258 B), 6 (A, B). The GBTsol ICA POC analyzer displayed high reproducibility using normal and
259 low concentrations of beads with coefficients of variation $< 5\%$. In this study, the GBTsol ICA
260 POC analyzer overestimated counts compared to the BD FACSCCount method in CD4+ T-cell
261 enumeration, in agreement with most studies using capillary or venous blood [15-18]. This
262 overestimation was minimal and is not clinically significant. Differences have been reported in
263 conventional CD4 testing platforms between the BD FACSCCount and the BD FACSCalibur,
264 where the mean bias between the two platforms was -76 cells/ mm^3 (95% CI, LOA -
265 316.0~163.0)[19]. Adequate correlation for CD4, CD8, and leukocyte counts between the
266 GBTsol ICA analyzer and the FACSCalibur (0.90, 0.91 and 0.90, respectively) corroborates
267 similar findings [13]. Although a correlation > 0.90 was observed between the two platforms
268 for CD4 enumeration, differences were due to variability of instruments settings, antibodies
269 and fluorochromes used, sample volume inputs, and assay procedures and methods.

270

271 **WBC count by GBTsol ICA**

272 Leukocyte count was determined by GBTsol ICA for all 113 samples collected within 24 hours
273 and was compared with FACSCCount. The recovery of leukocytes was greater than 92%
274 compared to FACSCCount, as shown in Fig. 3. The coefficient of determination (R^2) was 0.90,
275 the mean bias between the two platforms was 490 cells/ μ L (95% CI LoA 139.25~840.84,
276 $n=113$), and the SD mean was 178.97 (Fig. 4A). These results corroborated to FACSCCount
277 results with high accuracy.

278 **CD4 enumeration by GBTsol ICA**

279 A total of 113 patient samples was collected over a period of 4 months under supervision of
280 Yonsei University IRB board members. 200 μ L of sample containing 1 μ L of blood was
281 subjected to GBTsol ICA. Next, we tested human whole blood samples with different known
282 CD4⁺ T-cell counts (as determined by flow cytometry) using the GBTsol ICA. After
283 subtracting the count due to nonspecific binding, we plotted the number of captured cells as a
284 function of CD4 count (Fig. 5A). We obtained a correlation coefficient of 0.90 between our
285 assay and standard flow cytometry. While we intended to use fluorescence only to examine
286 cell capture and noted difficulties in counting individual T-cells in clumps, CD4 count
287 exhibited CVs of 0.67~12.78%. However, Bland-Altman analysis showed a mean bias of 23
288 with a 95% CI LoA of -86.47~186.16 ($n=113$) (Fig. 5B).

289 A recent report revealed that same-day POC CD4 testing had no benefit in health outcomes
290 [27]. As supported by other studies [20,21,25,26], we posit the feasibility of use of an existing
291 framework for creation of a small-scale POC research facility to offer tests for staging and
292 pathology of ART.

293 The overall accuracy of the GBTSol ICA test in samples was observed, and the correlation
294 coefficient was 0.99 to determine the validity of GBTSol ICA. However, in CD4 T-cell count,
295 we observed an overestimation of count. Misclassification, overestimation, or underestimation
296 has been documented in several studies using the PIMA POC analyzer [12,17,20-24].

297 **Enumeration of CD8 by GBTSol ICA**

298 All samples used for CD4 enumeration were subjected to GBTSol ICA for enumeration of
299 CD8+ T cells. We obtained a correlation coefficient of 0.91 between our assay and standard
300 flow cytometry. In addition, we observed that the number of CD8 count exhibited CVs of
301 0.81~13.68% (Fig. 6A). However, the Bland-Altman analysis showed a mean bias of 38 with
302 a 95% CI of LoA of -149.84 ~ 226.13 (n=113) (Fig. 6B).

303 From an operational perspective, use of the GBTSol ICA POC analyzer produced similar results
304 to other studies using venous or capillary blood [12,13,20,22,27]. We experienced test aborted
305 and pipetting/ Human errors of 0.88% % and 1.76% for CD4 and CD8. The operator used in
306 our study was a trained researcher rather than a health professional, such as a nurse or
307 counsellor. Our studies suggest that GBTSol ICA POC is interchangeable with conventional
308 platforms and provides results quite similar to those of PIMA POC technologies
309 [12,16,17,19,20,22,27]. Further testing is needed in communities with HIV/AIDS infection,
310 performed by different health professionals, technicians, and hospitals to verify the coefficient
311 of variation of repeatability and misclassification in favor of under treatment compared to
312 FACSCalibur [19].

313 Researchers in South Africa observed a median time for patients to return for their CD4 results
314 was 8 days and 7 days in those with ≤ 200 cells/mm³, with a median of 49 days regardless of
315 CD4+ T-cell count from CD4 testing to ART initiation. Use of POC technologies facilitates

316 fast tracking of patients, saves time, and helps in management of HIV treatment, care, and
317 monitoring [28].

318 **Conclusions**

319 As suggested in a recent systematic review [29], such a resource should streamline
320 administration by limiting patient visits to centers [30], tend to psychosocial issues and
321 boundaries to healthcare [31], enhance counselling and peer support for patients in need [32],
322 optimize the significance of starting and continuing ART if eligible [33], and provide positive
323 wellbeing coaching and encouragement for patients. A family-focused model of coordinated
324 human services consolidating the greater part of the previously mentioned healthcare
325 framework has recently appeared in a comparable populace, yielding high adherence (94%)
326 and maintenance of HIV- 1- positive individuals [34,35]. In this study, we compared a device
327 that enabled highly efficient separation of leukocytes from small amounts of whole blood less
328 than that required by conventional techniques and provided highly accurate enumeration of
329 total numbers of leukocytes and their subsets. We demonstrated that the CD4 and CD8 counts
330 from a few microliters of whole blood using our method had good correlation to flow cytometry
331 analysis.

332 Thus, our device has potential as an inexpensive yet efficient tool for rapid counting, allowing
333 more detailed leukocyte studies as well as monitoring of HIV/AIDS patients in decentralized
334 sites. The accuracy and simplicity of absolute leukocyte counting offer a range of potential
335 applications in single-cell analysis, including POC diagnostic systems such as human CD
336 marker enumerations for various applications. Previous studies have shown that provision of
337 immediate CD4T+ cell count increased the number of patients receiving care and minimized
338 patient failure to obtain treatment (33%) [11,25,33,36,37].

339 In conclusion, the overall agreement between FACSCount and the GBTsol ICA analyzer for
340 CD4 T-cell enumeration was acceptable, with a clinically nonsignificant mean bias and high
341 accuracy and reproducibility. We found no significant differences in the results produced from
342 GBTsol ICA compared to those of FACSCount. The GBTsol ICA POC CD4 test exhibited a
343 potential role in CD4 and CD8 T-cell enumeration. This platform can expand access to CD4
344 testing, particularly in rural settings where needs are currently unmet by existing laboratory
345 testing networks.

346 **Acknowledgement**

347 This study was approved by the Institutional Review Board (IRB) of Severance Hospital
348 (Seoul, Republic of Korea), an affiliated hospital of Yonsei University Health System
349 (Approval Number: 1-2016-0037). The clinical blood samples were residual blood samples
350 that had been acquired and processed in clinical labs. The acquisition of written consent forms
351 from the patients was waived for using the remaining blood samples after clinical laboratory
352 tests under the IRB. All experiments were conducted in accordance with the relevant guidelines
353 and regulations.

354

355

356

357

358

359

360 Reference

- 361 1.A. Antinori, T. Coenen, D. Costagiola, N. Dedes, M. Ellefson, J. Gatell, E. Girardi, M.
362 Johnson, O. Kirk, J. Lundgren, A. Mocroft, A. D'Arminio Monforte, A. Phillips, D. Raben, J.
363 K. Rockstroh, C. Sabin, A. Sönnnerborg, F. De Wolf, HIV medicine, 2011, 12, 61-64.
- 364 2.B.D. Rice, Z. Yin, A.E. Brown, S. Croxford, S. Conti, D. De Angelis, V.C. Delpech,
365 AIDS and Behavior, 2017, 21, 83-90.
- 366 3.A. Mocroft, J. D. Lundgren, M. L. Sabin, N. Brockmeyer, J. Casabona, A. Castagna, D. Dabis
367 F, S. De wit, G. Fätkenheuer, H. Furrer, A. M. Johnson, M. K. Lazanas, C. Leport,
368 S. Moreno, N. Obel, F. A. Post, J. Reekie, P. Reiss, C. Sabin, A. Skaletz-Rorowski, I. Suarez-
369 Lozano, C. Torti, J. Warszawski, R. Zangerle, C. Fabre-Colin, J. Kjaer, J. Grarup, O. Kirk,
370 PLoS Med., 2013, 10, e1001510.
- 371 4.V. Habiyambere, N. Ford, D. Low-Beer, J. Nkengasong, A. Sands, M. Pérez González,
372 P. Fernandes, E. Milgotina, PLoS medicine, 2016, 13, e1002088.
- 373 5.P. K. Drain, E. P. Hyle, F. Noubary, K. A. Freedberg, D. Wilson, W. R. Bishai, W. Rodriguez,
374 IV. Bassett, Lancet Infect Dis., 2014, 14, 239-49.
- 375 6.I. V. Bassett, B. Wang, S. Chetty, M. Mazibuko, B. Bearnot, J. Giddy, Z. Lu, E. Losina,
376 R. P. Walensky, K. A. Freedberg, J. Acquir. Immune. Defic. Syndr., 2009, 51, 135-139.
- 377 7.P. K. Drain, C. Rousseau, Curr. Opin. HIV AIDS, 2017, 12, 175-181.
- 378 8.F. Vogt, K. Tayler-Smith, A. Bernasconi, E. Makondo, F. Taziwa, B. Moyo, L. Havazvidi,
379 S. Satyanarayana, M. Manzi, M. Khogali, A. Reid, PLoS One, 2015, 10, e0129166.

- 380 9.A. Matson, N. Soni, J. Sheldon, *Anaesth. Intensive Care.*, 1991, 19, 182-186.
- 381 10. Initiative, C. H. A. in CHAI data from Mozambique, Malawi and South Africa. Data
382 presented at AIDS conference, 2016.
- 383 11. I. V. Jani, N. E. Siteo, E. R. Alfai, P. L. Chongo, J. I. Quevedo, B. M. Rocha, J. D. Lehe,
384 T. F. Peter, *Lancet*, 2011, 378, 1572-1579.
- 385 12. R. Zachariah, S. D. Reid, P. Chaillet, M. Massaquoi, E. J. Schouten, A. D. Harries, *Trop.*
386 *Med. Int. Health.*, 2011, 16, 37-41.
- 387 13. A. D. Harris, E. J. Schouten, E. Libamba, *The Lancet*, 2006, 367, 1870-1872.
- 388 14. E. Wynberg, G. Cooke, A. Shroufi, S. D. Reid, N. Ford, *J. Int. AIDS Soc.*, 2014, 17, 18809.
- 389 15. D. K. Glencross, G. Janossy, L. M. Coetzee, D. Lawrie, H. M. Aggett, L. E. Scott, I. Sanne,
390 J. A. McIntyre, W. Stevens, *Cytometry B Clin Cytom.*, 2008, 74, S40-S51.
- 391 16. K. Sukapirom, N. Onlamoon, C. Thepthai, K. Polsrila, B. Tassaneetrithep, K.
392 Pattanapanyasat, *J. Acquir. Immune Defic. Syndr.*, 2011, 58, 141-147.
- 393 17. S. Mtapuri-Zinyowera, M. Chideme, D. Mangwanya, O. Mugurungi, S. Gudukeya, K.
394 Hatzold, A. Mangwiro, G. Bhattacharya, J. Lehe, T. Peter, *J. Acquir. Immune Defic. Syndr.*,
395 2010, 55, 1-7.
- 396 18. N. Schaik, K. Kranzer, R. Wood, L. G. Bekker, 18th Conference on Retroviruses and
397 Opportunistic Infections, 2010.
- 398 19. S. Herbert, S. Edwards, G. Carrick, A. Copas, C. Sandford, M. Amphlett, P. Benn, *Sex*
399 *Transm. Infect.*, 2012, 88, 413-417.
- 400 20. D. K. Glencross, L. M. Coetzee, N. Cassim, *PLoS One*, 2014, 9, e114727.

- 401 21.N. Cassim, L. M. Coetzee, K. Schnippel, D. K. Glencross, PLoS One, 2014, 9, e115420.
- 402 22.P. A. Diaw, G. Daneau, A. A. Coly, B. P. Ndiaye, D. Wade, M. Camara, S. Mboup, L.
403 Kestens, T. N. Dieye, J. Acquir. Immune Defic. Syndr., 2011, 58, e103-11.
- 404 23.R. M. Galiwango, L. Lubyayi, R. Musoke, S. Kalibbala, M. Buwembo, J. Kasule, D.
405 Serwadda, R. H. Gray, S. J. Reynolds, L. W. Chang, PLoS One, 2014, 9, e88928.
- 406 24.D. Wade, P. A. Diaw, G. Daneau, M. Camara, T. N. Dieye, S. Mboup, L. Kestens, PLoS
407 One, 2013, 8, e75484.
- 408 25.M. Faal, N. Naidoo, D. K. Glencross, W. D. Venter, R. Osih, J. Acquir. Immune Defic.
409 Syndr., 2011, 58, e54-9.
- 410 26.D. K. Glencross, L. M. Coetzee, M. Faal, M. Masango, W. S. Stevens, W. F. Venter, R.
411 Osih, J. Int. AIDS Soc., 2012, 15,1-3.
- 412 27.M. Thakar, B. Mahajan, N. Shaikh, S. Bagwan, S. Sane, S. Kabra, B. Rewari, M. Shaukat,
413 N. Singh, P. Trevor, R. Paranjape, AIDS Res. Ther., 2012, 9, 1-7.
- 414 28.M. Skhosana, S. Reddy, T. Reddy, S. Ntoyanto, E. Spooner, G. Ramjee, N. Ngomane, A,
415 Coutsooudis, P. Kiepiela, South Afr. J. HIV Med., 2016, 17, 444.
- 416 29.D. Govindasamy, J. Meghij, E. Kebede Negussi, R. Clare Baggaley, N. Ford, K, Kranzer,
417 J. Int. AIDS Soc., 2014, 17, 19032.
- 418 30.L. Myer, K. Daskilewicz, J. McIntyre, L. G. Bekker, J. Int. AIDS Soc., 2013, 16, 18649.
- 419 31.D. Govindasamy, N. Ford, K. Kranzer, AIDS, 2012, 26, 2059-2067.
- 420 32.L. Muhamadi, N. M. Tumwesigye, D. Kadobera, G. Marrone, F. Wabwire-Mangen, G,
421 Pariyo, S, Peterson, A. M. Ekström, Trials, 2011, 12, 1-11.

- 422 33.G. E. Patten, L. Wilkinson, K. Conradie, P. Isaakidis, A. D. Harries, M. E. Edginton, V. De
423 Azevedo, G. van Cutsem, J. Int. AIDS Soc., 2013, 16, 18518.
- 424 34.L. Kwaan, G. Kindra, L. Mdutyana, A. Coutsoadis, Southern African Journal of HIV
425 Medicine, 2010, 11, 8-10.
- 426 35.A. Coutsoadis, E. Spooner, G. Kindra, N. Ndlovu, Department of Paediatrics and Child
427 Health, University of KwaZulu-Natal, 2013.
- 428 36.B. A. Larson, K. Schnippel, B. Ndibongo, T. Xulu, A. Brennan, L. Long, M. P. Fox, S.
429 Rosen, J. Acquir. Immune. Defic. Syndr., 2012, 61, e13-7.
- 430 37.K. Kranzer, D. Govindasamy, N. Ford, V. Johnston, S. D. Lawn, J. Int. AIDS Soc., 2012,
431 15, 17383.
- 432
- 433
- 434

Table 1. Reason for CD4 results recording failure out of 113 tests performed

GBTsol ICA reading error	0	0%
Pipetting/Human error	2	1.76%
Blood Clotted	1	0.88%
Test Aborted	1	0.88%
Total	4	3.53%

medRxiv preprint doi: <https://doi.org/10.1101/2020.03.02.20019188>; this version posted October 2, 2020. The copyright holder for this preprint (which was not certified by peer review) is the author/funder, who has granted medRxiv a license to display the preprint in perpetuity. It is made available under a [CC-BY 4.0 International license](https://creativecommons.org/licenses/by/4.0/).

Table 2. Reason for CD8 results recording failure out of 113 tests performed

GBTsol ICA reading error	0	0%
Pipetting/Human error	2	1.76%
Blood Clotted	1	0.88%
Test Aborted	1	0.88%
Total	4	3.53%

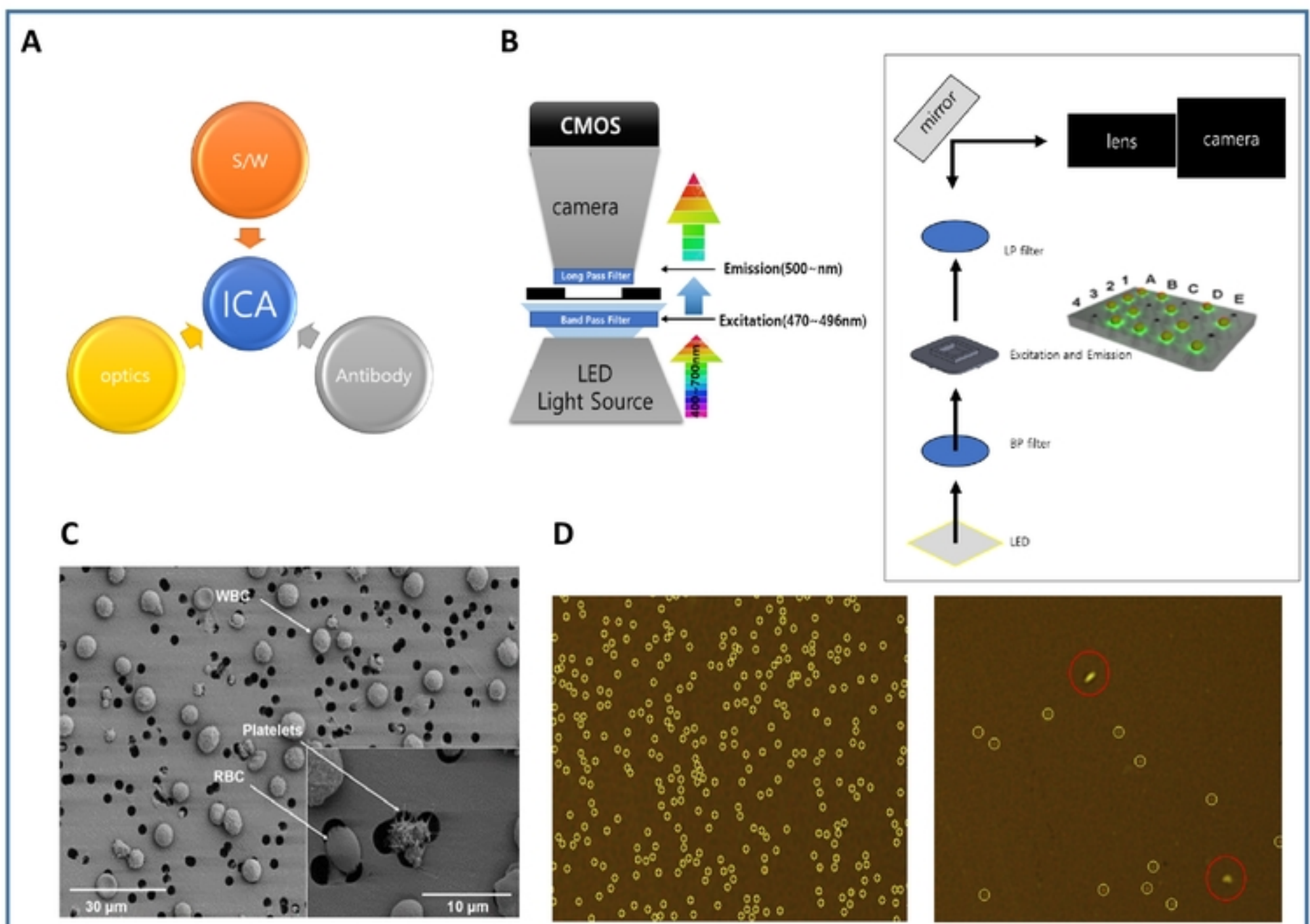


Figure 1. Component of ICA sol system imaging and analyzing.

- (A) ICA imaging system consist of optic part (Cool LED, Filter, CMOS CAMERA), Software part (graphical user interface, GUI, Image Capture, Analyzing), Biotechnology part (CD and WBC antibody Fluorescence Dye).
- (B) In optic parts LPF (Long-Pass Filter) filtering out unwanted wavelengths of fluorescence. BPF (Band-Pass Filter) allows signals within a selected range of frequencies to be detect, while preventing signals at unwanted frequencies from getting through. Target cells will be visible by immunofluorescence antibody markers.
- (C) Cells more than 3um cannot pass through filter membrane but filter will let the excess dye pass through it during the washing.
- (D) Software part counts signal and filters the signal with different size or shape from target cell.

medRxiv preprint doi: <https://doi.org/10.1101/2023.10.12.23296940>; this version posted October 13, 2023. The copyright holder for this preprint (which was not certified by peer review) is the author/funder, who has granted medRxiv a license to display the preprint in perpetuity. It is made available under a [CC-BY 4.0 International license](https://creativecommons.org/licenses/by/4.0/).

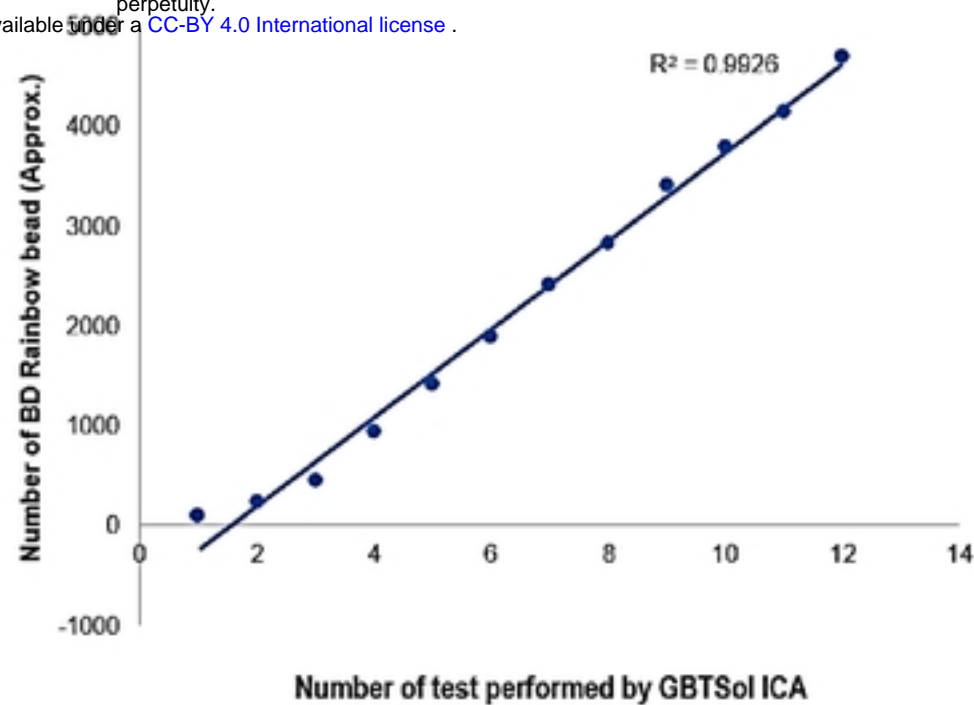


Figure 2. Evaluation of the sensitivity of GBTsol ICA at various target concentrations. A known number of rainbow microsphere beads (100-5000 beads) was added into 1 mL phosphate buffered saline (pH.7.0) and detected using the device integrated with a size-selective micro cavity array. The plot represents the number of cells recovered and the number of tests performed (n=12). CV ranged from 2.28 to 5.38%, and the correlation coefficient (R2) was 0.99.

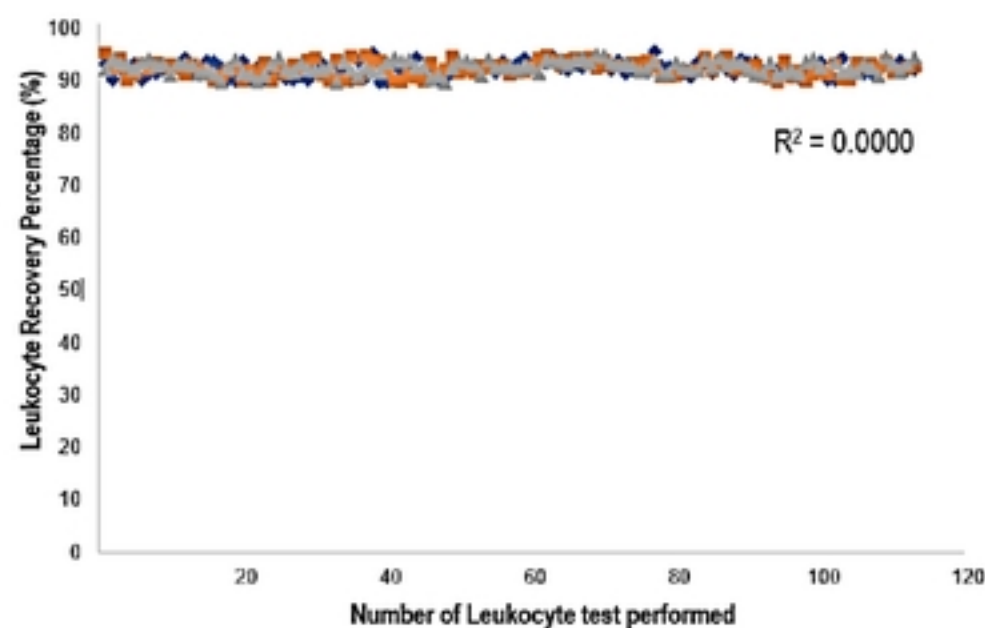


Figure 3. Leukocyte recovery rate from 113 blood samples using the GBTsol ICA device. Blood samples containing 1uL of whole blood were introduced into the leukocyte- counting device GBTsol ICA. Total leukocytes recovered by the GBTsol ICA were enumerated by an internal computer algorithm using RGB values. Leukocytes were incubated with DNA staining solution from the kit (GBTsol ICA-001). All counts with GBTsol ICA were repeated three times. The average number of leukocytes per microliter of whole blood was calculated. The correlation value was 0.98, the precision value was <10% (CV%), and the Leukocyte recovery percent was > 92%. Method comparison and correlation studies for total leukocyte counts of 113 human blood samples.

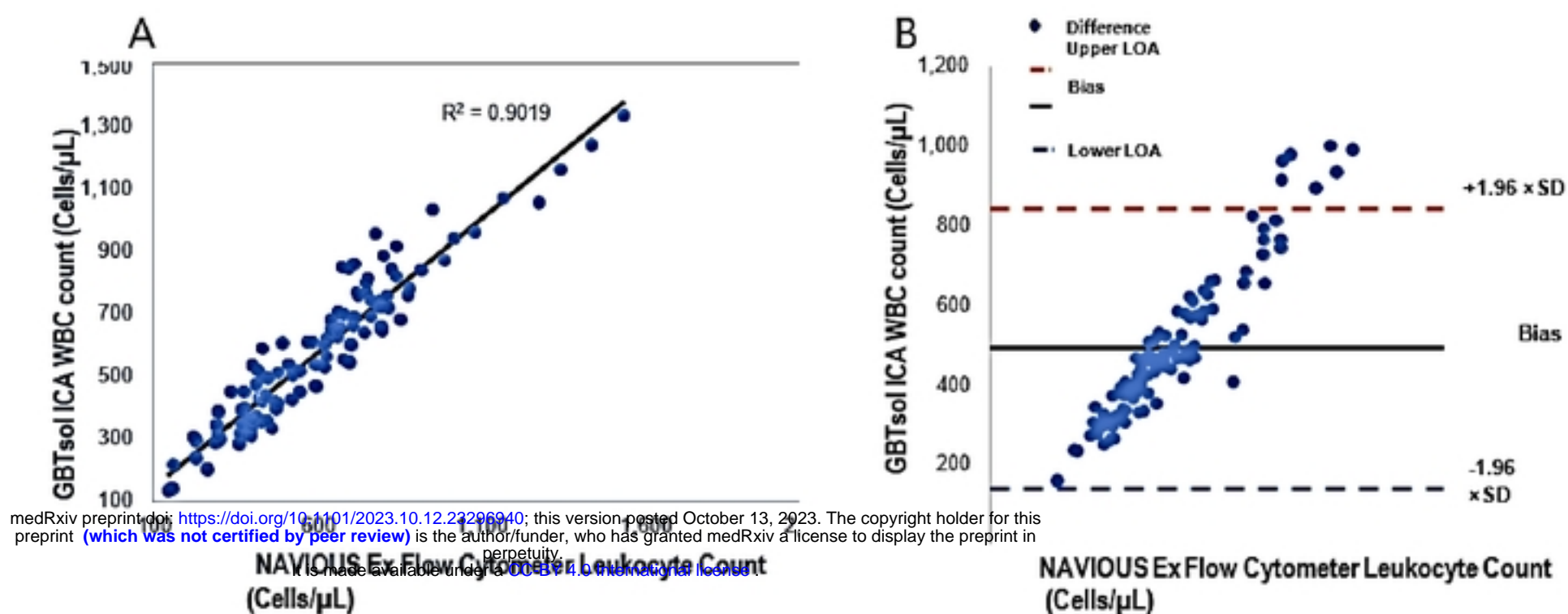


Figure 4. Linear regression and Bland-Altman analysis of GBTsol ICA and FACS count for WBC. In a comparison using venous blood for GBTsol ICA and FACScount, the coefficient of determination (R^2) was 0.90 while the mean bias between these two platforms was 490 cells/ μ L (CI-95%, LoA 139.25 to 840.84, $n=113$) and the SD mean was 178.97. In the Bland Altman plot (Right), the difference between the 0 line and the black line indicates the bias of GBTsol ICA minus the NAVIOUS Ex Flow cytometer.

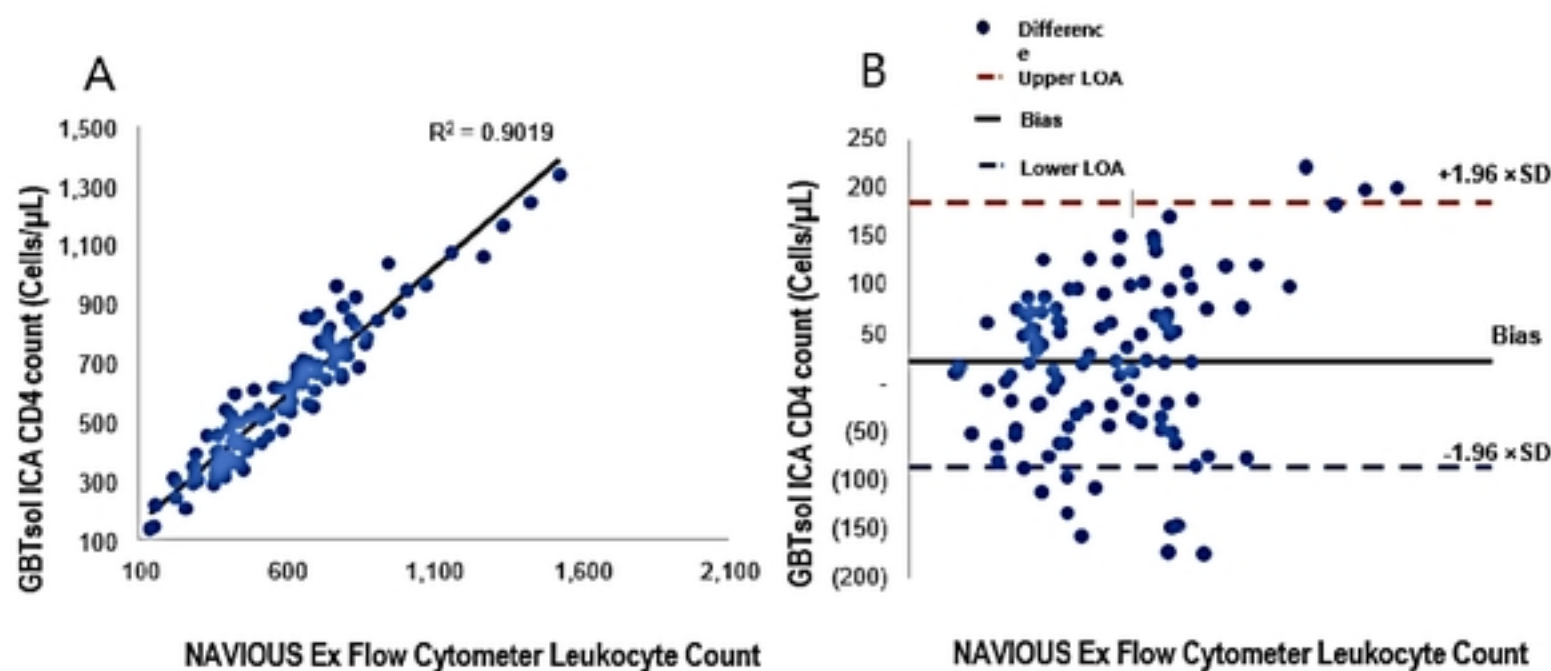


Figure 5. Linear regression and Bland-Altman analysis of GBTsol ICA and FACS count for CD4. In a comparison using venous blood for GBTsol ICA and FACScount, the coefficient of determination (R^2) was 0.90 while the mean bias between these two platforms was 23 cells/ μ L (CI-95%, LoA -86.47 to 186.16, $n=113$) and the SD mean was 83.23. In the Bland Altman plot (Right), the difference between the 0 line and the black line indicates the bias of GBTsol ICA minus the NAVIOUS Ex Flow Cytometer.

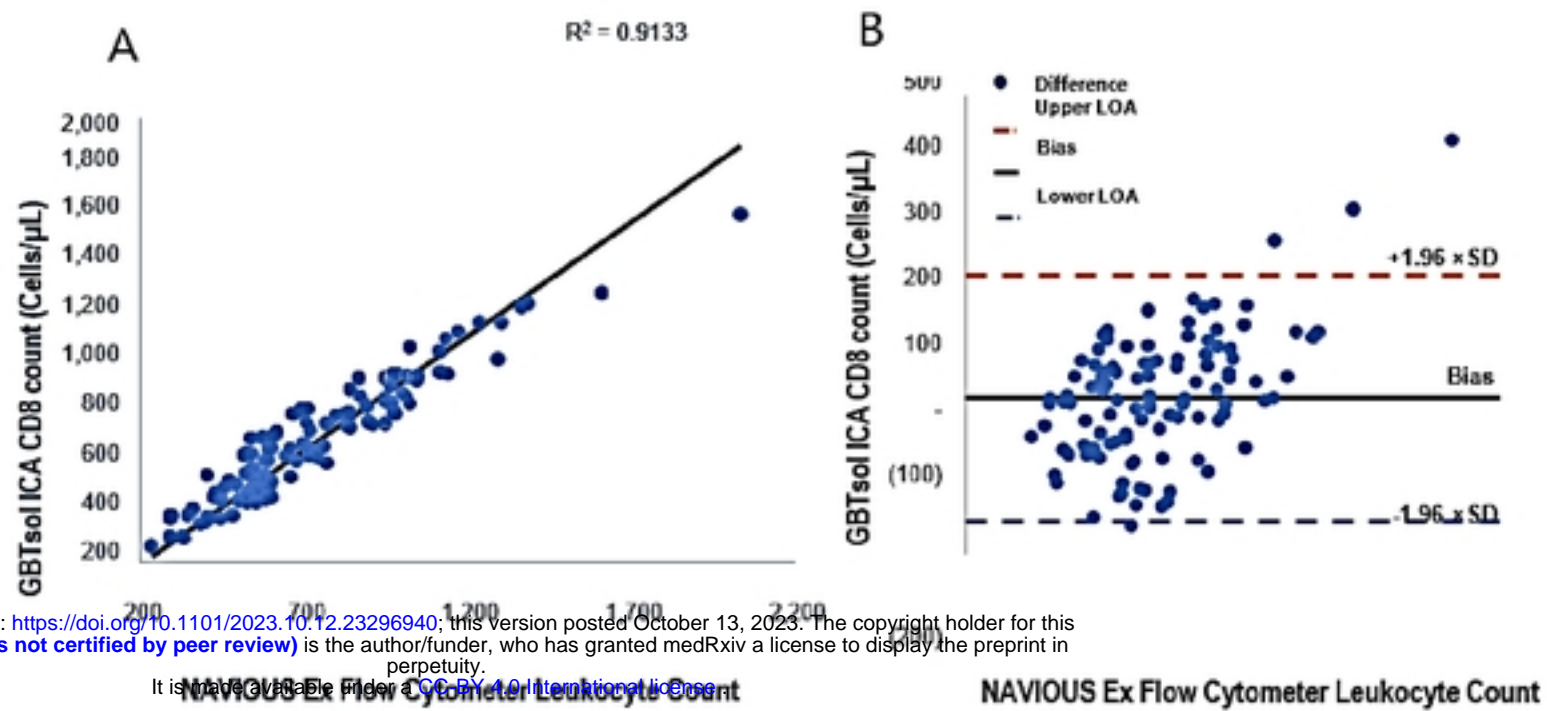


Figure 6. Linear regression and Bland-Altman analysis of GBTsol ICA and FACS count for CD8. In a comparison using venous blood for GBTsol ICA and FACScount, the coefficient of determination (R^2) was 0.91 while the mean bias between these two platforms was 38 cells/ μ L (CI-95%, LoA -149.84 to 226.13, $n=113$) and the SD mean was 95.91. In the Bland Altman plot (Right), the difference between the 0 line and the black line indicates the bias of GBTsol ICA minus the NAVIOUS Ex Flow Cytometer.