

Parental infertility and offspring cardiometabolic trajectories up to 25 years: a pooled analysis of three European cohorts

Running title: Infertility and offspring CVD factors

Álvaro Hernáez, PharmD, PhD^{a,b,c,†,*}; Ahmed Elhakeem, PhD^{d,e,†}; Henrique Barros, MD, PhD^{f,g}; Tanja G. M. Vrijkotte, PhD^h; Abigail Fraser, PhD^{d,e}; Deborah A. Lawlor, MD, PhD^{d,e,i}; Maria C. Magnus, PhD^a

- a. Centre for Fertility and Health, Norwegian Institute of Public Health, Oslo, Norway.
- b. Blanquerna School of Health Sciences, Universitat Ramon Llull, Barcelona, Spain.
- c. Consorcio CIBER, M.P. Fisiopatología de la Obesidad y Nutrición (CIBEROBN), Instituto de Salud Carlos III, Madrid, Spain.
- d. MRC Integrative Epidemiology Unit at the University of Bristol, Bristol, UK.
- e. Population Health Sciences, Bristol Medical School, University of Bristol, Bristol, UK.
- f. EPIUnit - Instituto de Saúde Pública, Universidade do Porto, Porto, Portugal
- g. Laboratório para a Investigação Integrativa e Translacional em Saúde Populacional, Porto, Portugal
- h. Amsterdam UMC, University of Amsterdam, Department of Public and Occupational Health, Amsterdam Public Health Research Institute, Amsterdam, Amsterdam Reproduction & Development Research Institute, The Netherlands
- i. National Institute for Health Research Bristol Biomedical Research Centre, Bristol, UK

†: both authors contributed equally to this work

Corresponding author:

Alvaro Hernaez, PharmD, PhD

NOTE: This preprint reports new research that has not been certified by peer review and should not be used to guide clinical practice.
Centre for Fertility and Health, Norwegian Institute of Public Health

Mailing address: PO 222 Skøyen, 0213 Oslo, Norway

Telephone: (+47) 95523951

e-mail: alvaro.hernaez@fhi.no

Article type: Cohort study

Funding statement

This project received funding from the European Research Council under the European Union's Horizon 2020 research and innovation program (grant agreement number 947684). It received additional support from other European Research Council projects (grant agreements 101021566, 874739, and 733206). This work was also partly supported by the Research Council of Norway through its Centres of Excellence funding scheme, project number 262700, and the project "Women's fertility – an essential component of health and well-being", number 320656, and the British Heart Foundation (CH/F/20/90003 and AA/18/1/34219). ALSPAC core funding is provided by the UK Medical Research Council and Wellcome Trust (217065/Z/19/Z) and the University of Bristol. A comprehensive list of grants funding is available on the ALSPAC website (<http://www.bristol.ac.uk/alspac/external/documents/grant-acknowledgements.pdf>). G21 core funding was provided by Programa Operacional de Saúde "Saúde XXI", Quadro Comunitário de Apoio III, Administração Regional de Saúde Norte (Regional Department of Ministry of Health) and Foundation for Science and Technology (UIDB/04750/2020, Unidade de Investigação em Epidemiologia, Instituto de Saúde Pública da Universidade do Porto). ABCD core funding is provided by the Amsterdam Academic Medical Centre, the Amsterdam Public Health Services, and the Dutch Organization for Health Research and Development (ZonMw). A.E., A.F. and D.A.L. work in, or are affiliated to, a unit that is supported by the University of Bristol and UK Medical Research Council (MC_UU_00032/05). The funders had no role in the collection, analysis, and interpretation of data; in the writing of the report; or in the decision to submit the article for publication.

Disclosure statement

All authors have completed the ICMJE uniform disclosure form at

www.icmje.org/coi_disclosure.pdf. T.G.M.V. received grants from the Amsterdam Academic Medical Centre, Amsterdam Public Health Services, and Dutch Organization for Health Research and Development during the study. D.A.L. received support from the UK Medical Research Council, National Institute of Health Research, European Research Council and British Heart Foundation during the course of this study. M.C.M. received grants from the European Research Council during the study. The rest of the authors declare that no competing interests exist.

Attestation statements

- Data regarding any of the participants of the study has not been previously published unless specified.
- Data will be made available to the editors of the journal for review or query upon request.

Data sharing statement

Consent given by the participants does not allow individual level participant data to be presented in repositories or journals. Data used in this study is available to bona fide researchers upon request to each cohort (ALSPAC: application to the ALSPAC Executive Committee through <https://proposals.epi.bristol.ac.uk/>; G21: application to Dr. Henrique Barros, henrique.barros@ispup.up.pt; ABCD: application according to the guidelines in the ABCD website [<https://www.amc.nl/web/abcd-studie-2/abcd-studie/achtergrondinformatie-abcd-studie.htm>], directed to abcd@amsterdamumc.nl). Please contact Prof. Deborah A. Lawlor (d.a.lawlor@bristol.ac.uk) and Dr. Ahmed Elhakeem (a.elhakeem@bristol.ac.uk) if you have relevant data and would like to join the A.R.T-HEALTH partnership (<https://arthealth.bristol.ac.uk/>) and contribute to future collaborations.

Word count: 3,494

Capsule

BMI and blood pressure are higher from childhood to early adulthood in the offspring of couples with infertility.

1 **ABSTRACT**

2

3 **Objective:** To assess whether parental infertility is associated with differences in
4 cardiometabolic trajectories in offspring from childhood to 25 years of age.

5 **Design:** Pooled analysis of three European pregnancy cohort studies.

6 **Subjects:** Up to 14,609 singletons from three pregnancy cohorts (the UK Avon Longitudinal
7 Study of Parents and Children, the Portuguese Geraçao 21, and the Amsterdam Born
8 Children and their Development study).

9 **Exposure:** Parental infertility defined as time-to-pregnancy ≥ 12 months.

10 **Main Outcome Measures:** Trajectories of body mass index (BMI), waist circumference,
11 systolic blood pressure (SBP), diastolic blood pressure (DBP), low-density lipoprotein
12 cholesterol (LDL-C), high-density lipoprotein cholesterol (HDL-C), triglycerides, and glucose
13 from childhood to 25 years of age were compared in offspring of couples with and without
14 infertility. Trajectories were modelled using mixed-effects models with natural cubic splines
15 adjusting for cohort, sex of the offspring, and maternal factors (age, body mass index,
16 smoking, educational level, parity, and ethnicity). Predicted levels of cardiometabolic traits up
17 to 25 years of age were compared by parental infertility.

18 **Results:** Offspring of couples with infertility had increasingly higher BMI (difference in mean
19 predicted levels by age 25: $+1.09 \text{ kg/m}^2$, 95% confidence interval [0.68 to 1.50]) and
20 suggestively higher DBP at age 25 ($+1.21 \text{ mmHg}$ [0.00 to 2.43]). Their LDL-C tended to be
21 higher, and their HDL-C values tended to be lower over time (age 25, LDL-C: $+4.07\%$ [-0.79
22 to 8.93]; HDL-C: -2.78% [-6.99 to 1.43]). At middle-late adolescence, offspring of couples
23 with infertility had higher waist circumference (age 17: $+1.05 \text{ cm}$ [0.11 to 1.99]) and SBP (age
24 17: $+0.93 \text{ mmHg}$ [0.044 to 1.81]), but these differences attenuated at later ages. No clear
25 inter-group differences in triglyceride and glucose trajectories were observed. Further
26 adjustment for paternal age, body mass index, smoking, and educational level, and both
27 parent's history of diabetes and hypertension in the cohort with this information available
28 (Avon Longitudinal Study of Parents and Children) did not attenuate inter-group differences.

29 **Conclusion:** Offspring of couples with infertility have increasingly higher BMI over the years,
30 suggestively higher blood pressure levels, and tend to have greater values of LDL-C and
31 lower values of HDL-C with age.

32

33 **KEYWORDS**

34 Infertility; offspring; cardiometabolic; trajectories; ALSPAC

35 INTRODUCTION

36

37 Cardiovascular disease is more incident among individuals reporting fertility problems (1-6).
38 Women with infertility have higher body mass index (BMI), waist circumference (WC), and
39 triglycerides, greater odds of diabetes, and lower concentrations of high-density lipoprotein
40 cholesterol (HDL-C) compared to fertile women (7), and men with infertility are more prone to
41 be obese and hypertensive (8). A more adverse cardiometabolic health could also be present
42 in their offspring. First, cardiometabolic disease and its risk factors are inheritable (9).
43 Second, infertility is linked to pregnancy complications such as gestational diabetes (10) and
44 hypertensive disorders of pregnancy (11), which are associated with increased
45 cardiometabolic risk in the offspring (12, 13). Third, couples with fertility problems are likely to
46 use assisted reproductive technologies (ART), which are related to differences in
47 cardiometabolic trajectories in the offspring (14, 15). We previously reported that ART-
48 conceived offspring had a lower BMI, WC, and systolic and diastolic blood pressure (SBP
49 and DBP, respectively) in childhood, and subtle trajectories to higher SBP and triglycerides in
50 young adulthood, although these differences were small (14, 15). Only three other studies to
51 date have examined cardiometabolic risk factors in offspring of individuals with infertility (16-
52 18), most focused on changes in BMI, and reported minimal or null differences between
53 offspring of couples with and without infertility. Whether differences in cardiometabolic
54 trajectories of offspring conceived by ART are due to ART procedures or underlying parental
55 infertility remains unclear.

56 Our study therefore aims to determine the association of parental infertility (not
57 considering ART use) with offspring trajectories of BMI, WC, SBP, DBP, LDL-C, HDL-C,
58 triglycerides, and glucose from birth to adulthood.

59 **METHODS**

60

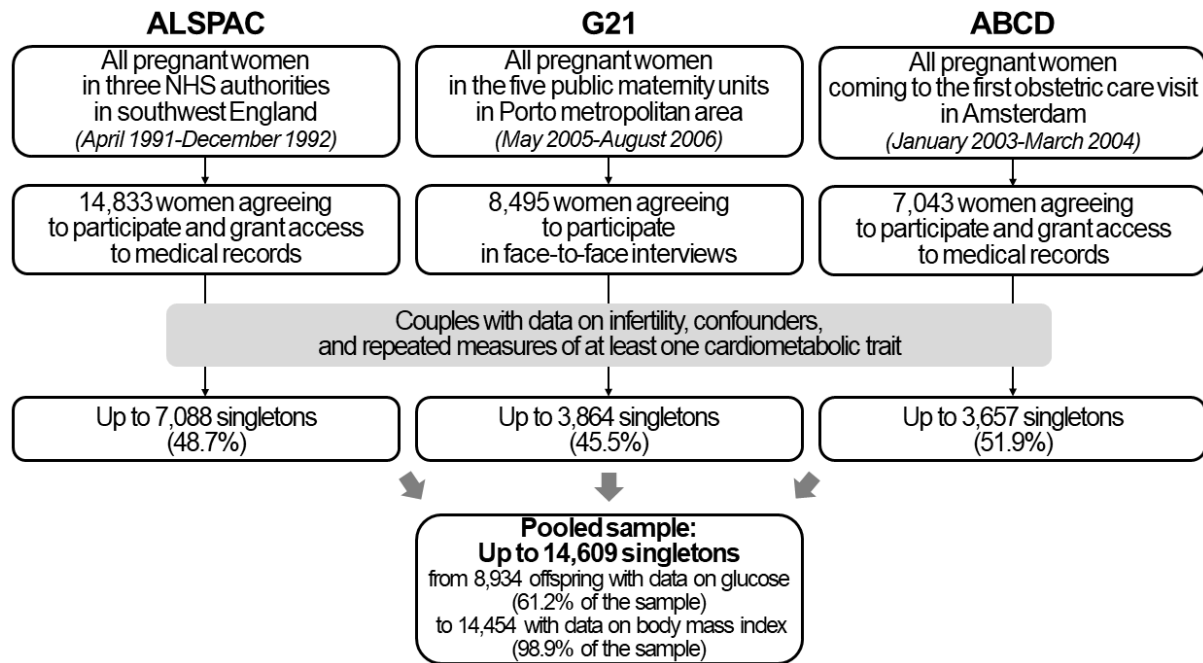
61 *Population description*

62 Our analyses are part of the Assisted Reproductive Technology and Health (A.R.T-HEALTH)
63 partnership (14, 15). All cohorts in the partnership were invited to participate in this study,
64 with the inclusion criteria being that they had information on time to pregnancy and two or
65 more measurements taken at different times for at least one of the eight cardiometabolic
66 traits of interest. Three cohorts fulfilled these requirements: the UK Avon Longitudinal Study
67 of Parents and Children [ALSPAC; birth years: 1990-1992] (19-23), the Portuguese Geração
68 21 [G21; birth years: 2000-2006] (24), and the Dutch Amsterdam Born Children and their
69 Development Study [ABCD; birth years 2003-2004] (25). A detailed description of the
70 number of mothers, partners, pregnancies, and offspring included ALSPAC is available in the
71 **Supplementary Materials**. ALSPAC study data were collected and managed using
72 Research Electronic Data Capture electronic data capture tools hosted at the University of
73 Bristol (26). The ALSPAC study website ([http://www.bristol.ac.uk/alspac/researchers/our-](http://www.bristol.ac.uk/alspac/researchers/our-data/)
74 [data/](http://www.bristol.ac.uk/alspac/researchers/our-data/)) contains details of all the data that is available through a searchable data dictionary
75 and variable search tool.

76 **Figure 1** shows the flow chart of the study. Our analyses considered singletons only
77 and are reported following the guidelines described by the STrengthening the Reporting of
78 OBservational studies in Epidemiology statement.

79

80 **Figure 1.** Flow chart of the study



81

82 *Infertility*

83 The three cohorts asked the mothers how long (in months) they tried to conceive before

84 becoming pregnant. Infertility was defined as a time-to-pregnancy greater than 12 months.

85 Offspring of couples reporting a time-to-pregnancy ≤ 12 months (“fertile”) were included in the

86 reference group. Unplanned pregnancies were included in the reference group. ART-

87 conceived offspring were excluded from the analyses.

88

89 *Cardiometabolic risk factors in the offspring*

90 ALSPAC collected data of BMI (median number of measures: 10 [interquartile range -IQR-

91 9]; age range: 0 to 26 years), WC (median: 7 measures [IQR 4]; 2-26 years), blood pressure

92 (median: 7 measures [IQR 4]; 3-26 years), lipid profile (median: 2 measures [IQR 3]; 3-26

93 years) and glucose (median: 2 measures [IQR 2]; 7-26 years). G21 collected data of BMI

94 (median: 18 measures [IQR 9]; 0-12 years) and the rest of risk factors (up to 3 measures; 3-

95 12 years). ABCD collected data of BMI (median: 11 measures [IQR 4]; 0-12 years) and the

96 rest of risk factors (up to 2 measures; 5-13 years). The combined dataset had repeated

97 measures of BMI (median: 12 measures [IQR 7]), WC (median: 3 measures [IQR 4]), blood

98 pressure (median: 3 measures [IQR 5]), lipid profile (median: 2 measures [IQR 2]), and

99 glucose (median: 2 measures [IQR 1]). The number of participants with cardiometabolic trait
100 data at each visit is available in **Supplemental Table 1**.

101 In ALSPAC, height and weight come from parental questionnaires (before age 16),
102 self-measurements (after age 16), health records, school records, or research clinics, while
103 waist circumference was measured to the nearest mm at research clinics. In G21,
104 anthropometric data was obtained by trained examiners. In ABCD, anthropometric
105 information came from the Youth Health Care registration of the Public Health Service in
106 Amsterdam (by trained nurses) or research clinics. Blood pressure was measured at rest
107 with validated sphygmomanometers (ALSPAC: average of 2 measurements; G21: average
108 of 2 measurements if the difference between them was <5 mmHg [if greater, a third
109 measurement was conducted and the mean of the two closest ones was calculated]; ABCD:
110 average of 2 measurements). Regarding the biochemical determinations, in ALSPAC, lipids
111 were measured by standard laboratory tests (following the standard Lipid Research Clinics
112 Protocol, using enzymatic reagents) in non-fasting plasma/serum up to age 9 and in fasting
113 samples for older ages, and glucose was quantified in non-fasting venous blood samples by
114 nuclear magnetic resonance at age 7 and by standard laboratory tests in fasting samples at
115 older ages (as above). In G21, lipids and glucose were assessed in fasting venous blood
116 samples (lipids: enzymatic colorimetric assays; glucose: hexokinase method). In ABCD,
117 lipids and glucose were measured using a validated ambulatory collection kit on fasting
118 capillary blood samples (Demecal: Lab Anywhere, Haarlem, the Netherlands). LDL-C was
119 calculated using the Friedewald formula ($LDL-C = total\ cholesterol - HDL-C -$
120 $[triglycerides/5]$).

121

122 *Confounders*

123 Prior to analyses, we defined confounders as known/plausible causes of parental infertility
124 and offspring cardiometabolic traits: parental age, socioeconomic position (education as a
125 proxy), ethnicity, parity/number of children, and pre-pregnancy/early-pregnancy
126 cardiometabolic risk factors of the parents (BMI, smoking, hypertension, diabetes) (14, 15).

127 As some were assessed during pregnancy, we assumed a strong correlation between pre-
128 pregnancy and during-pregnancy measures. As we pooled individual participant data into
129 one database, we only included confounders that were available in all studies and
130 harmonized them to the lowest common denominator (14, 15). These were: maternal age at
131 pregnancy/birth (years, continuous), pre-pregnancy or early pregnancy maternal BMI (kg/m²,
132 continuous), pre-pregnancy or early pregnancy maternal smoking (yes/no), maternal
133 educational level (medium-high level/low level; medium-high education level was defined as
134 13+ years [ALSPAC], 10+ years [G21], and 14+ years of schooling [ABCD], while low
135 education level was defined as any shorter duration of schooling), parity (0/1 or more), and
136 ethnicity/country of birth (European/other). We also adjusted for offspring sex to improve
137 estimate precision. ALSPAC had further information on paternal pre-pregnancy age
138 (continuous), early-pregnancy BMI (continuous), history of smoking (yes/no), and educational
139 level (medium-high level/low level, as described above), and both parents' history of diabetes
140 and hypertension (yes/no).

141

142 *Ethics*

143 All cohorts comply with the Declaration of Helsinki for Medical Research involving Human
144 Subjects. In all three studies informed written consent for the collection and use of data was
145 provided by parents up to offspring age 16, 12, and 13 (in ALSPAC, G21, and ABCD,
146 respectively) and thereafter by the offspring in ALSPAC. In ALSPAC, ethical approval is
147 provided by the ALSPAC Ethics and Law Committee and UK Local Research Ethics
148 Committees (<http://www.bristol.ac.uk/alspac/researchers/research-ethics/>), consent for
149 biological samples was collected following the Human Tissue Act (2004), and informed
150 consent for the use of data collected via questionnaires and clinics was obtained following
151 the recommendations of the ALSPAC Ethics and Law Committee at the time. In G21, ethical
152 approval is provided by the Ethics Committee of Hospital de São João and the Institute of
153 Public Health of the University of Porto. In ABCD, it is provided by the Netherlands Central

154 Committee on Research involving Human Subjects, the Medical Ethical Committees of the
155 participating hospitals, and the Registration Committee of the Municipality of Amsterdam.

156

157 *Statistical analyses*

158 We described normally distributed variables with means and standard deviations and
159 categorical variables with proportions. Differences in baseline characteristics of participants
160 included and not included in our analyses were studied using t-tests and chi-squared tests
161 for normally distributed continuous variables and categorical variables, respectively.

162 Individual participant data was merged and analyzed together. We assessed the
163 association of parental infertility with offspring age-related cardiometabolic trajectories using
164 mixed effects linear regression with natural cubic splines (27). We used a natural cubic spline
165 function for age as a fixed effect to model the cardiometabolic health trajectories, which
166 allowed for the detection of non-linear changes in outcomes with age. Models included seven
167 knots for BMI, five for WC, three for SBP and DBP, two for lipid profile measures, and one for
168 glucose (14, 15). Knots were placed at equal quantiles of age. Each cohort contributed data
169 for different age ranges (ALSPAC up to age 26, G21 up to 12, and ABCD up to 13). Main
170 analyses were adjusted for cohort, offspring sex, maternal age, maternal BMI, maternal
171 smoking, maternal educational level, parity, and ethnicity, and included an interaction term
172 between age at cardiometabolic measurements and parental infertility to allow for different
173 trajectories in offspring born of couples with infertility and those without. We used predicted
174 values to plot mean trajectories in both populations and used them to calculate the mean
175 differences in cardiometabolic factors between ages 1 and 25 every 2 years. Differences in
176 the measured values are presented for BMI, WC, SBP and DBP. LDL-C, HDL-C,
177 triglycerides, and glucose were log-transformed prior to analysis and inter-group differences
178 presented are the percent difference between the exposure groups. Participants with missing
179 covariates were excluded from the analyses.

180 As we were unable to adjust for all a priori defined confounders in the main analyses,
181 in the subsample of ALSPAC participants with available data on the confounders in the main

182 analyses plus the additional confounders (paternal age, BMI, smoking, and educational level,
183 and both parent's history of diabetes and hypertension, $n = 3,847$), we compared the
184 analyses adjusted for the covariates available in all three cohorts and those adjusted for all
185 the confounders. Besides, we conducted three sensitivity analyses. First, to check the
186 consistency of trajectories across cohorts, we conducted trajectory analyses in ALSPAC,
187 G21 and ABCD separately and compared their shapes by visual inspection. Second, to
188 check the assumption that the results are from the same underlying population, we limited
189 our analyses to the age range for which there is information in the three cohorts (ages 1-15
190 for BMI, ages 5-11 for the other outcomes) and compared their shapes with the main results
191 by visual inspection. Finally, to check whether our results were consistent with a broader
192 definition of infertility (time-to-pregnancy >12 months + ART use), we repeated the analyses
193 using the definition for the exposure that also included offspring conceived by ART.

194 All analyses were performed in R Software version 4.0.3.

195 **RESULTS**

196

197 *Study population*

198 We studied up to 14,609 singleton offspring of whom 1,351 (9.5%) were born to couples with
199 infertility. Maternal age at birth, BMI and smoking were similar across cohorts. Nevertheless,
200 low maternal education and high parity were more frequent in ALSPAC, and a higher
201 proportion of participants of non-European origin was observed in ABCD (**Table 1**).

202

203 **Table 1.** Participant characteristics by cohort

	ALSPAC (<i>n</i> = 7,088)	G21 (<i>n</i> = 3,864)	ABCD (<i>n</i> = 3,657)
Cohort country	UK	Portugal	Netherlands
Birth years	1990-1992	2005-2006	2003-2003
Couples with infertility, <i>n</i> (%)	652 (9.2)	368 (9.5)	372 (10.2)
Sex of offspring:			
Female, <i>n</i> (%)	3,472 (49.0)	1,899 (49.1)	1,855 (50.7)
Male, <i>n</i> (%)	3,616 (51.0)	1,965 (50.9)	1,802 (49.3)
Maternal age at birth/pregnancy, mean ± SD	29.5 ± 4.1	30.0 ± 4.5	31.5 ± 4.8
Maternal pre-pregnancy BMI, mean ± SD	22.9 ± 3.7	23.9 ± 4.0	23.1 ± 3.9
Maternal pre-pregnancy smoking:			
No, <i>n</i> (%)	5,760 (81.3)	3,131 (81.0)	2,814 (76.9)
Yes, <i>n</i> (%)	1,328 (18.7)	733 (19.0)	843 (23.1)
Maternal education			
Low, <i>n</i> (%)	4,304 (60.7)	1,597 (41.3)	1,087 (29.7)
Medium/High, <i>n</i> (%)	2,784 (39.3)	2,267 (58.7)	2,570 (70.3)
Maternal parity:			
No previous births, <i>n</i> (%)	3,070 (43.3)	2,388 (61.8)	2,122 (58.0)

1 or more, <i>n</i> (%)	4,018 (56.7)	1,476 (38.2)	1,535 (42.0)
Maternal ethnicity/country of birth:			
European, <i>n</i> (%)	6,967 (98.3)	3,507 (90.8)	2,780 (76.0)
Other, <i>n</i> (%)	121 (1.7)	357 (9.2)	877 (24.0)

204

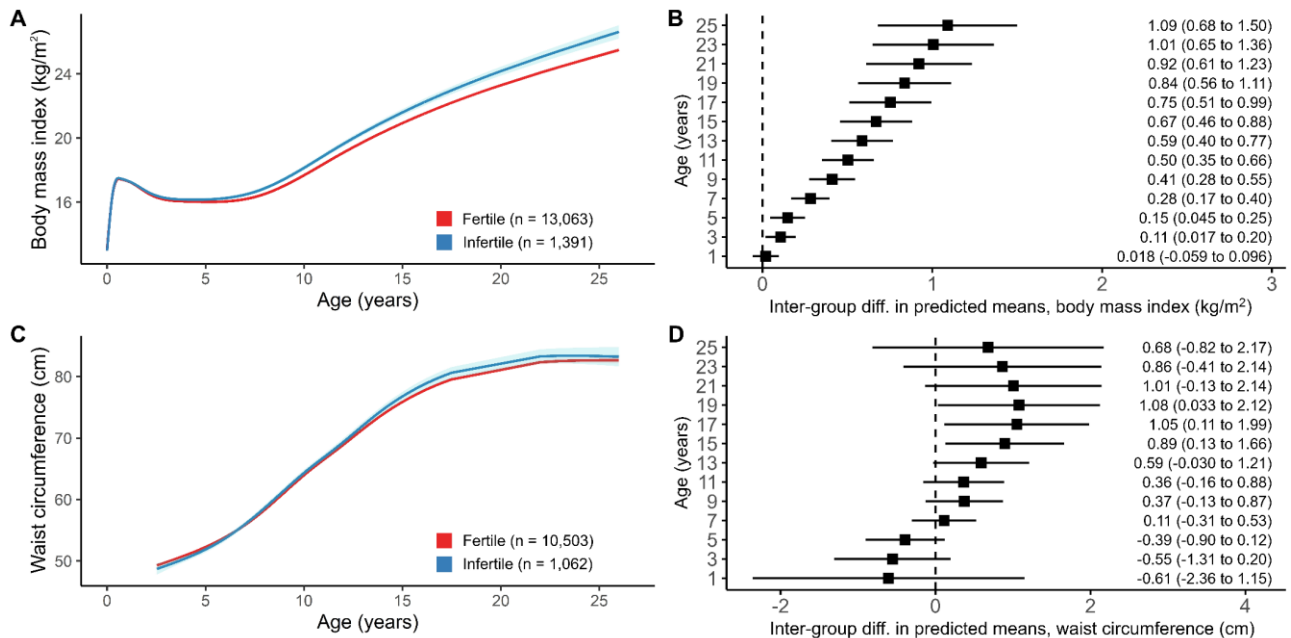
205 Parents of non-included offspring were younger, more prone to be smokers (in
206 ALSPAC and ABCD), less educated (in ALSPAC and G21), more likely to be of non-
207 European origin, and more likely to have more than one offspring (in G21 and ABCD)
208 **(Supplemental Table 2).**

209

210 *Adiposity trajectories*

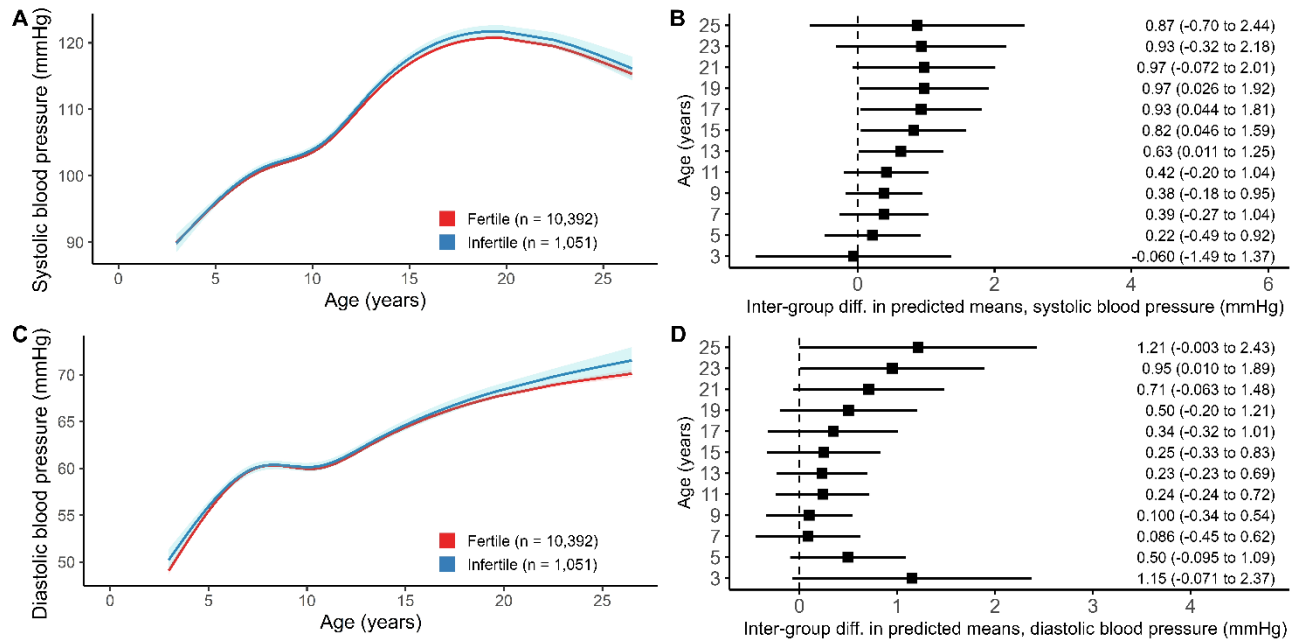
211 In the adjusted analyses with pooled individual participant data, BMI differences emerged in
212 childhood and increased with age (**Figure 2A**). At age 25, offspring of couples with infertility
213 had higher mean BMI (+1.09 kg/m², 95% CI 0.68 to 1.50, **Figure 2B**). Offspring of couples
214 with infertility presented lower mean WC during childhood (age 5: -0.39 cm, 95% CI -0.90 to
215 0.12), which evolved to higher values during adolescence (age 17: +1.05 cm, 95% 0.11 to
216 1.99), and these differences were attenuated in adulthood (**Figures 2C and 2D**).

217 **Figure 2.** Trajectories of cardiometabolic traits from birth to early adulthood in offspring of
 218 couples with (blue) and without infertility (red) and differences in mean predicted values for
 219 body mass index (A-B) and waist circumference (C-D).



220
 221 *Blood pressure*
 222 Offspring of couples with infertility had slightly higher mean SBP and DBP values (**Figures**
 223 **3A** and **3C**). Inter-group differences for SBP peaked around late adolescence (age 17: +0.93
 224 mmHg, 95% CI 0.04 to 1.81, **Figure 3B**) and those of DBP in early adulthood (age 25: +1.21
 225 mmHg, 95% CI -0.003 to 2.43, **Figure 3D**).

226 **Figure 3.** Trajectories of cardiometabolic traits from birth to early adulthood in offspring of
 227 couples with (blue) and without infertility (red) and differences in mean predicted values for
 228 systolic blood pressure (A-B) and diastolic blood pressure (C-D).

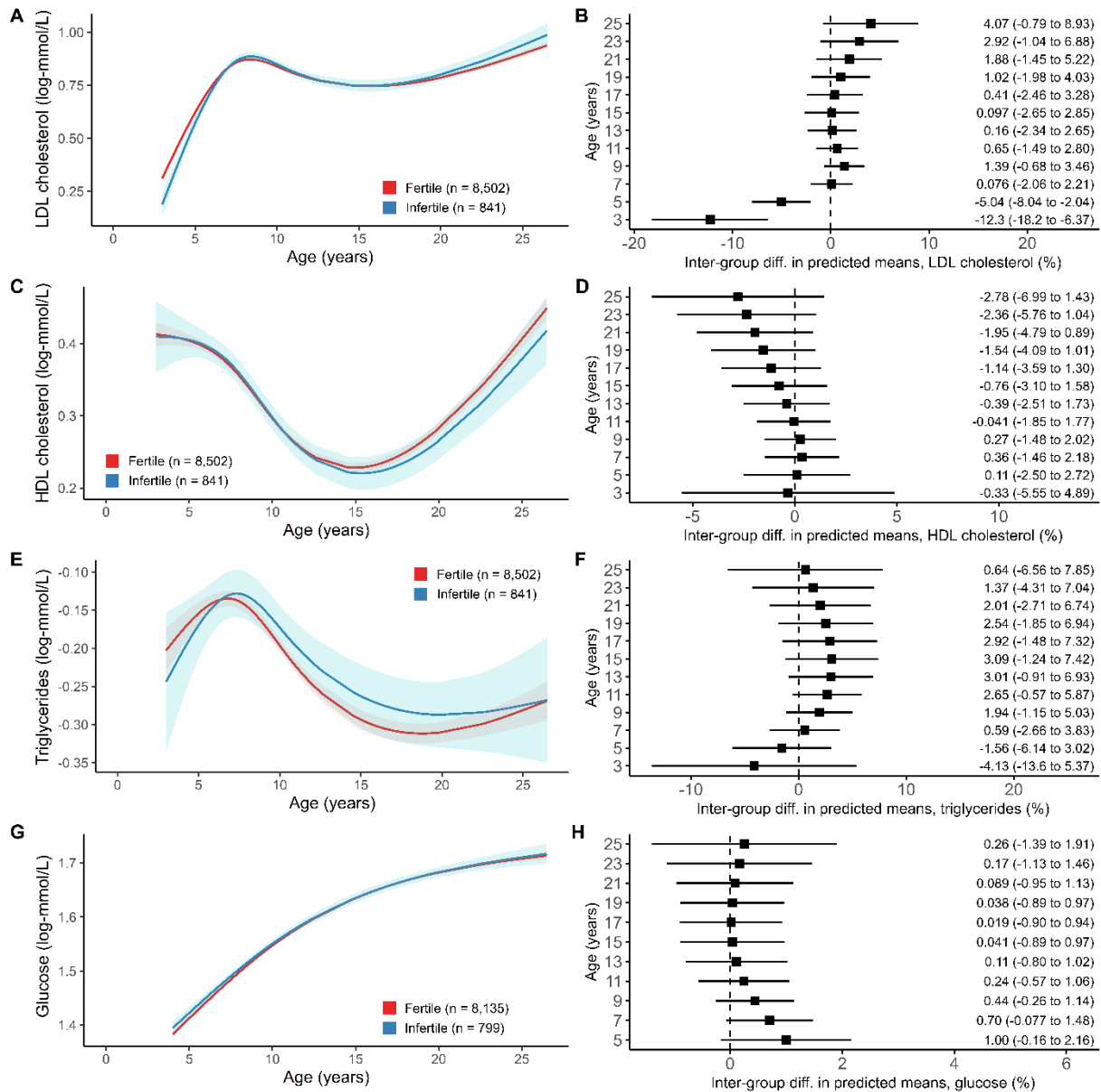


229

230 *Lipid profile and glucose*

231 No clear associations between parental infertility and lipid profile and glucose in the offspring
 232 were seen. Offspring of couples with infertility had lower average LDL-C during childhood
 233 (age 5: -5.04%, 95% CI -8.04 to -2.04), these differences disappeared by age 7, and tended
 234 to increase over time from adolescence, which resulted in suggestively higher values in early
 235 adulthood (age 25: +4.07%, 95% -0.79 to 8.93, **Figures 4A and 4B**). Offspring of couples
 236 with infertility also tended to have lower HDL-C levels, and this difference increased over
 237 time (age 25: -2.78%, 95% CI -6.99 to 1.43, **Figure 4C and Figure 4D**). Triglyceride
 238 differences between offspring of couples with and without infertility were imprecise, with the
 239 largest difference seen during adolescence (age 15: +3.09%, 95% CI -1.24 to 7.42, **Figures**
 240 **4E and 4F**). Glucose levels in offspring of infertile parents was only higher in childhood (age
 241 5: +1.00%, 95% CI -0.16 to 2.16) but differences attenuated at later ages (**Figures 4G and**
 242 **4H**).

243 **Figure 4.** Trajectories of cardiometabolic traits from birth to early adulthood in offspring of
 244 couples with (blue) and without infertility (red) and differences in mean predicted values for
 245 LDL cholesterol (A-B), HDL cholesterol (C-D), triglycerides (E-F), and glucose (G-H).



246

247 *Additional analyses*

248 Further adjustment for the partner's confounders and both parents' history of diabetes and
 249 hypertension in ALSPAC did not attenuate the inter-group differences in trajectories for any
 250 of the cardiometabolic traits (**Supplemental Figure 1**).

251 We observed no substantial differences in the cohort-specific trajectories for adiposity
 252 measures (**Supplemental Figure 2**). We also observed no substantial differences in the

253 cohort-specific trajectories for SBP. However, the DBP trajectories in G21 seemed different
254 to what was observed in the other two cohorts. Nevertheless, inter-group differences in DBP
255 in early adulthood in the main analyses were consistent with those observed for ALSPAC
256 data only (**Supplemental Figure 3**). We further observed no substantial differences in the
257 cohort-specific trajectories for LDL-C and glucose (**Supplemental Figure 4A and 4D**), but
258 the shape of HDL-C and triglyceride trajectories seemed not comparable across cohorts
259 (**Supplemental Figure 4B and 4C**).

260 Cardiometabolic trajectories in the age range for which there is information in the
261 three cohorts was comparable for anthropometric measures, blood pressure, and LDL-C, but
262 not for HDL-C, triglycerides, and glucose (**Supplemental Figure 5**). Including ART in the
263 definition of infertility slightly attenuated the differences in BMI between offspring of couples
264 with infertility and those without but it did not notably change the rest of the results
265 (**Supplemental Figure 6**).

266 **DISCUSSION**

267

268 We found that offspring of couples with infertility had higher BMI from childhood to adulthood
269 (differences widened with age and reached their maximum at 25 years, with a difference of
270 1.1 kg/m²), higher WC during adolescence (these differences attenuated in later ages),
271 slightly higher mean SBP and DBP from childhood to adulthood, and tended to have higher
272 LDL-C and lower HDL-C in adulthood (these trends emerged in adolescence and broadened
273 over time). The observed differences were modest but robust to adjustment including for
274 parental risk factors for cardiovascular disease and infertility.

275 There is limited evidence available on differences in cardiometabolic health according
276 to parental infertility. In a previous study of 4,151 Danish singletons with 1-28 measures of
277 weight between ages 0-20, offspring of couples with infertility showed a greater linear
278 increase in weight per year until age 10 (16). Two other studies (one with 1,773 Danish
279 children with 1 BMI measurement at age 5, one with 79,740 Norwegian children with 12 BMI
280 measurements between ages 0-7) reported no association between parental infertility and
281 offspring BMI (17, 18), which is consistent with our findings of no differences up to age 7. We
282 did not find more studies on the topic that did not involve participants from ALSPAC, G21 or
283 ABCD (the only other study available is based on ABCD data (28)).

284 Previous bibliography has focused on differences in cardiometabolic health according
285 to conception by ART. The work presented here builds on two previous papers of ours in
286 which we explored the association of ART conception with cardiometabolic traits, cross-
287 sectionally at different ages from infancy to 26 years in all the A.R.T.-HEALTH partnership
288 cohorts, and with cardiometabolic trajectories in a subgroup of the three cohorts included in
289 this study plus a fourth cohort (GUSTO) (14, 15). In the cross-sectional analyses, ART-
290 conceived offspring had slightly lower mean BMI and WC up to age 9 compared to naturally
291 conceived offspring, shifted toward higher adiposity values from age 17 (15), and had higher
292 LDL-C and HDL-C levels and no differences in blood pressure, triglycerides, and glucose
293 (14). In the trajectory analyses, ART-conceived offspring tended to have higher SBP and

294 lower HDL-C over time and had higher glucose during the preschool years (14). Other
295 studies have reported that ART-conceived offspring have lower BMI values under age 5 (29)
296 but a higher risk of obesity during later childhood and adolescence (30) and greater linear
297 increments in weight until age 20 (16). They also have lower blood pressure at age 6 (29)
298 and no increased risk of diabetes during childhood and adolescence (30). Overall, studies on
299 ART-conceived offspring agree with our findings, showing a trend towards higher values of
300 adiposity in adulthood, higher blood pressure, a trend towards lower HDL-C with age, and
301 lack of associations with glucose and triglycerides. According to our results, underlying
302 parental infertility might explain at least part of the differences in cardiometabolic health
303 associated with ART use as differences in cardiometabolic health remained when ART-
304 conceived offspring were excluded from analyses.

305 There are several potential explanations for the association between parental
306 infertility and poorer cardiometabolic health in the offspring. Individuals with infertility are
307 prone to have impaired cardiometabolic risk factors (7, 8), which may be inherited by their
308 offspring (9). Infertility could be due to underlying conditions in women such as polycystic
309 ovary syndrome, which is also linked to poorer cardiometabolic health in their offspring (31-
310 33). In parallel, a shared detrimental environment (e.g., unhealthy diet, lack of physical
311 activity) could explain both fertility problems in the parents and the differences in
312 cardiometabolic health in the offspring (34, 35).

313 This work has some limitations. Our exposure (parental infertility) is a couple-
314 dependent measure, and we could not determine whether the fertility problems originated in
315 the mothers, their male partners, or both. Regarding confounding, we a priori acknowledged
316 known/plausible causes of parental infertility and offspring cardiometabolic traits and several
317 sources of residual confounding. Some confounders were assessed during pregnancy (after
318 the exposure), and we had to assume that there was a strong correlation between pre-
319 pregnancy and during-pregnancy measures. Results in ALSPAC adjusting for confounders
320 available in all three cohorts were not different from those after adjusting for the common
321 covariates plus paternal education, smoking and BMI and paternal and maternal

322 hypertension and diabetes. Residual confounding by paternal dyslipidemia may explain
323 some of the associations, particularly those with offspring lipids, as this variable was
324 unavailable. The harmonisation of confounders to the lowest common denominator may
325 have also resulted in additional residual confounding. Another limitation of our study involves
326 the differential age ranges in our cardiometabolic trait data across the three cohorts. For G21
327 and ABCD, data are limited to ages 3-12, whereas ALSPAC extends up to age 26.
328 Consequently, our findings regarding cardiometabolic trajectories from age 13 to 26 are
329 solely driven by ALSPAC. We assumed that the cardiometabolic trajectories for the three
330 cohorts, given their shared European origin, would align. However, this assumption may not
331 be entirely precise, as there were inconsistencies in the trajectories within each cohort.
332 These discrepancies may be attributed to the limited number of data points for two of the
333 cohorts, which may have affected the construction of polynomial equations and complicated
334 a qualitative comparison between cohorts. Thus, our conclusions beyond the age of 13 may
335 be subject to potential biases, they should be carefully interpreted and validated in further
336 studies incorporating additional time points in adolescence, early adulthood, or later in life.
337 Our results may have also been affected by selection bias, as there were some differences
338 between included and non-included participants (included participants were older, less prone
339 to be smokers, more educated, more likely to be of European origin, and less likely to have
340 more than one offspring). Finally, our study population, primarily of European origin, may limit
341 the generalizability of our findings to populations with similar genetic backgrounds.

342

343

344 **CONCLUSIONS**

345

346 Offspring of couples with infertility, compared to those of fertile couples, had increasing BMI
347 differences over time, higher WC in adolescence (which was later attenuated), slightly higher
348 blood pressure from childhood to adulthood, and tended to have higher LDL-C levels and
349 lower HDL-C with age (starting in their adolescence). To the best of our knowledge, this is

350 the largest study assessing the differences in cardiometabolic trajectories between birth and
351 early adulthood according to parental infertility. These findings require validation in larger
352 cohorts, measures in older ages, and a better understanding of their mechanisms but
353 suggest that parental infertility may be an indicator of a poorer cardiometabolic profile in
354 offspring.

355 **ACKNOWLEDGEMENTS**

356

357 We are extremely grateful to: all the families who took part in the ALSPAC study, the
358 midwives for their help in recruiting them, and the whole ALSPAC team, which includes
359 interviewers, computer and laboratory technicians, clerical workers, research scientists,
360 volunteers, managers, receptionists and nurses; all women who participated in G21 and the
361 whole G21 team; and the hospitals, obstetric clinics, and general practitioners who
362 implemented the ABCD study and all women who participated in ABCD for their cooperation.

363 **REFERENCES**

364

- 365 1. Magnus MC, Fraser A, Rich-Edwards JW, Magnus P, Lawlor DA, Håberg SE. Time-to-pregnancy
366 and risk of cardiovascular disease among men and women. *Eur J Epidemiol* 2021;36:383-91.
- 367 2. Skåra KH, Åsvold BO, Hernáez Á, Fraser A, Rich-Edwards JW, Farland LV *et al.* Risk of
368 cardiovascular disease in women and men with subfertility: the Trøndelag Health Study. *Fertility and*
369 *Sterility* 2022.
- 370 3. Farland LV, Wang YX, Gaskins AJ, Rich-Edwards JW, Wang S, Magnus MC *et al.* Infertility and
371 Risk of Cardiovascular Disease: A Prospective Cohort Study. *J Am Heart Assoc* 2023;12:e027755.
- 372 4. Murugappan G, Leonard SA, Farland LV, Lau ES, Shadyab AH, Wild RA *et al.* Association of
373 infertility with atherosclerotic cardiovascular disease among postmenopausal participants in the
374 Women's Health Initiative. *Fertil Steril* 2022;117:1038-46.
- 375 5. Gleason JL, Shenassa ED, Thoma ME. Self-reported infertility, metabolic dysfunction, and
376 cardiovascular events: a cross-sectional analysis among U.S. women. *Fertil Steril* 2019;111:138-46.
- 377 6. Chen PC, Chen YJ, Yang CC, Lin TT, Huang CC, Chung CH *et al.* Male Infertility Increases the
378 Risk of Cardiovascular Diseases: A Nationwide Population-Based Cohort Study in Taiwan. *World J*
379 *Mens Health* 2022;40:490-500.
- 380 7. Mahalingaiah S, Sun F, Cheng JJ, Chow ET, Lunetta KL, Murabito JM. Cardiovascular risk
381 factors among women with self-reported infertility. *Fertil Res Pract* 2017;3:7.
- 382 8. Choy JT, Eisenberg ML. Male infertility as a window to health. *Fertil Steril* 2018;110:810-4.
- 383 9. Hanson M. The inheritance of cardiovascular disease risk. *Acta Paediatr* 2019;108:1747-56.
- 384 10. Tobias DK, Chavarro JE, Williams MA, Buck Louis GM, Hu FB, Rich-Edwards J *et al.* History of
385 infertility and risk of gestational diabetes mellitus: a prospective analysis of 40,773 pregnancies. *Am J*
386 *Epidemiol* 2013;178:1219-25.
- 387 11. Sibai BM. Subfertility/infertility and assisted reproductive conception are independent risk
388 factors for pre-eclampsia. *Bjog* 2015;122:923.
- 389 12. Hoodbhoy Z, Mohammed N, Nathani KR, Sattar S, Chowdhury D, Maskatia S *et al.* The Impact
390 of Maternal Preeclampsia and Hyperglycemia on the Cardiovascular Health of the Offspring: A
391 Systematic Review and Meta-Analysis. *Am J Perinatol* 2021.
- 392 13. Pathirana MM, Lassi ZS, Roberts CT, Andraweera PH. Cardiovascular risk factors in offspring
393 exposed to gestational diabetes mellitus in utero: systematic review and meta-analysis. *J Dev Orig*
394 *Health Dis* 2020;11:599-616.
- 395 14. Elhakeem A, Taylor AE, Inskip HM, Huang JY, Mansell T, Rodrigues C *et al.* Long-term
396 cardiometabolic health in people born after assisted reproductive technology: a multi-cohort
397 analysis. *Eur Heart J* 2023.
- 398 15. Elhakeem A, Taylor AE, Inskip HM, Huang J, Tafflet M, Vinther JL *et al.* Association of Assisted
399 Reproductive Technology With Offspring Growth and Adiposity From Infancy to Early Adulthood.
400 *JAMA Netw Open* 2022;5:e2222106.
- 401 16. Hinchely Ebdrup N, Hohwü L, Bay B, Obel C, Knudsen UB, Kesmodel US. Long-term growth in
402 offspring of infertile parents: A 20-year follow-up study. *Acta Obstet Gynecol Scand* 2021;100:1849-
403 57.
- 404 17. Bay B, Mortensen EL, Kesmodel US. Is subfertility or fertility treatment associated with long-
405 term growth in the offspring? A cohort study. *Fertil Steril* 2014;102:1117-23.
- 406 18. Magnus MC, Wilcox AJ, Fadum EA, Gjessing HK, Opdahl S, Juliusson PB *et al.* Growth in
407 children conceived by ART. *Hum Reprod* 2021;36:1074-82.
- 408 19. Boyd A, Golding J, Macleod J, Lawlor DA, Fraser A, Henderson J *et al.* Cohort Profile: the
409 'children of the 90s'--the index offspring of the Avon Longitudinal Study of Parents and Children. *Int J*
410 *Epidemiol* 2013;42:111-27.

- 411 20. Fraser A, Macdonald-Wallis C, Tilling K, Boyd A, Golding J, Davey Smith G *et al.* Cohort Profile:
412 the Avon Longitudinal Study of Parents and Children: ALSPAC mothers cohort. *Int J Epidemiol*
413 2013;42:97-110.
- 414 21. Major-Smith D, Heron J, Fraser A, Lawlor D, Golding J, Northstone K. The Avon Longitudinal
415 Study of Parents and Children (ALSPAC): a 2022 update on the enrolled sample of mothers and the
416 associated baseline data [version 2; peer review: 2 approved]. *Wellcome Open Research* 2023;7.
- 417 22. Northstone K, Ben Shlomo Y, Teyhan A, Hill A, Groom A, Mumme M *et al.* The Avon
418 Longitudinal Study of Parents and children ALSPAC G0 Partners: A cohort profile [version 2; peer
419 review: 1 approved]. *Wellcome Open Research* 2023;8.
- 420 23. Northstone K, Lewcock M, Groom A, Boyd A, Macleod J, Timpson N *et al.* The Avon
421 Longitudinal Study of Parents and Children (ALSPAC): an update on the enrolled sample of index
422 children in 2019 [version 1; peer review: 2 approved]. *Wellcome Open Research* 2019;4.
- 423 24. Araújo FA, Lucas R, Simpkin AJ, Heron J, Alegrete N, Tilling K *et al.* Associations of
424 anthropometry since birth with sagittal posture at age 7 in a prospective birth cohort: the Generation
425 XXI Study. *BMJ open* 2017;7:e013412.
- 426 25. van Eijsden M, Vrijkotte TG, Gemke RJ, van der Wal MF. Cohort profile: the Amsterdam Born
427 Children and their Development (ABCD) study. *Int J Epidemiol* 2011;40:1176-86.
- 428 26. Harris PA, Taylor R, Thielke R, Payne J, Gonzalez N, Conde JG. Research electronic data
429 capture (REDCap)--a metadata-driven methodology and workflow process for providing translational
430 research informatics support. *J Biomed Inform* 2009;42:377-81.
- 431 27. Elhakeem A, Hughes RA, Tilling K, Cousminer DL, Jackowski SA, Cole TJ *et al.* Using linear and
432 natural cubic splines, SITAR, and latent trajectory models to characterise nonlinear longitudinal
433 growth trajectories in cohort studies. *BMC Med Res Methodol* 2022;22:68.
- 434 28. Pontesilli M, Painter RC, Grooten IJ, van der Post JA, Mol BW, Vrijkotte TG *et al.* Subfertility
435 and assisted reproduction techniques are associated with poorer cardiometabolic profiles in
436 childhood. *Reprod Biomed Online* 2015;30:258-67.
- 437 29. Huang JY, Cai S, Huang Z, Tint MT, Yuan WL, Aris IM *et al.* Analyses of child cardiometabolic
438 phenotype following assisted reproductive technologies using a pragmatic trial emulation approach.
439 *Nat Commun* 2021;12:5613.
- 440 30. Norrman E, Petzold M, Gissler M, Spangmose AL, Opdahl S, Henningsen AK *et al.*
441 Cardiovascular disease, obesity, and type 2 diabetes in children born after assisted reproductive
442 technology: A population-based cohort study. *PLoS Med* 2021;18:e1003723.
- 443 31. Chen X, Koivuaho E, Piltonen TT, Gissler M, Lavebratt C. Association of maternal polycystic
444 ovary syndrome or anovulatory infertility with obesity and diabetes in offspring: a population-based
445 cohort study. *Hum Reprod* 2021;36:2345-57.
- 446 32. Gunning MN, Sir Petermann T, Crisosto N, van Rijn BB, de Wilde MA, Christ JP *et al.*
447 Cardiometabolic health in offspring of women with PCOS compared to healthy controls: a systematic
448 review and individual participant data meta-analysis. *Hum Reprod Update* 2020;26:103-17.
- 449 33. Wei SQ, Bilodeau-Bertrand M, Auger N. Association of PCOS with offspring morbidity: a
450 longitudinal cohort study. *Hum Reprod* 2022;37:2135-42.
- 451 34. Aoun A, Khoury VE, Malakieh R. Can Nutrition Help in the Treatment of Infertility? *Prev Nutr*
452 *Food Sci* 2021;26:109-20.
- 453 35. Xie F, You Y, Guan C, Gu Y, Yao F, Xu J. Association between physical activity and infertility: a
454 comprehensive systematic review and meta-analysis. *J Transl Med* 2022;20:237.

455

1 **SUPPLEMENTAL MATERIALS**

2

3 **SUPPLEMENTAL METHODS**

4

5 **Detailed description of study numbers in ALSPAC**

6 Pregnant women resident in Avon, United Kingdom, with expected dates of delivery between
7 April 1, 1991 and December 31, 1992 were invited to participate in the study. 20,248
8 pregnancies were identified as eligible and the initial number of pregnancies enrolled was
9 14,541. Of the initial pregnancies, there was a total of 14,676 fetuses, resulting in 14,062 live
10 births and 13,988 children who were alive at 1 year of age. When the oldest children were
11 approximately 7 years of age, an attempt was made to bolster the initial sample with eligible
12 cases who had failed to join the study originally. As a result, when considering variables
13 collected from the age of seven onwards (and potentially abstracted from obstetric notes),
14 there are data available for more than the 14,541 pregnancies mentioned above. The total
15 sample size for analyses using any data collected after the age of seven is 15,447
16 pregnancies, resulting in 15,658 fetuses. Of these, 14,901 children were alive at age 1.

17 Of the original 14,541 initial pregnancies, 338 were from a woman who had already
18 enrolled with a previous pregnancy, meaning 14,203 unique mothers were initially enrolled in
19 the study. As a result of the additional phases of recruitment, a further 630 women who did
20 not enroll originally have provided data since their child was 7 years of age. This provides a
21 total of 14,833 unique women (G0 mothers) enrolled in ALSPAC as of September 2021.

22 G0 partners were invited to complete questionnaires by the mothers at the start of the
23 study and they were not formally enrolled at that time. 12,113 G0 partners have been in
24 contact with the study by providing data and/or formally enrolling when this started in 2010.
25 3,807 G0 partners are currently enrolled.

26 **SUPPLEMENTAL TABLES**

27

28 **Supplemental Table 1.** Number of participants with information on each cardiometabolic

29 parameter available in study visits (in increasing order of the average age of the

30 participants).

Visit	Age, years [mean (SD)]	BMI	WC	Blood pressure	Lipids	Glucose
ALSPAC						
#1	0.1 (0.0)	6143	-	-	-	-
#2	0.3 (0.0)	611	-	-	-	-
#3	0.7 (0.0)	807	-	-	-	-
#4	0.8 (0.1)	5805	-	-	-	-
#5	1.5 (0.0)	721	-	-	-	-
#6	1.7 (0.2)	5349	-	-	-	-
#7	2.1 (0.0)	656	-	-	-	-
#8	2.6 (0.0)	687	690	-	-	-
#9	3.1 (0.0)	663	661	638	216	-
#10	3.6 (0.0)	661	657	-	383	-
#11	3.7 (0.2)	4954	-	-	-	-
#12	4.1 (0.0)	656	654	617	-	-
#13	5.2 (0.1)	624	619	593	-	-
#14	7.5 (0.2)	4683	4685	4603	3087	3122
#15	8.6 (0.2)	3944	-	-	-	-
#16	9.9 (0.3)	4370	4408	4357	2906	-
#17	10.7 (0.2)	4311	4337	4159	-	-
#18	11.8 (0.2)	4123	4122	4075	-	-
#19	12.8 (0.2)	3892	3905	3870	-	-
#20	13.9 (0.2)	3618	3613	3157	-	-

#21	15.5 (0.3)	3172	2643	3110	2038	2038
#22	17.8 (0.4)	2933	-	2721	1910	1910
#23	24.0 (0.8)	2330	2324	2341	1913	1914
G21						
#1	0.1 (0.6)	3864	-	-	-	-
#2	0.2 (0.8)	3847	-	-	-	-
#3	0.3 (0.9)	3825	-	-	-	-
#4	0.5 (1.0)	3805	-	-	-	-
#5	0.6 (1.1)	3772	-	-	-	-
#6	0.8 (1.1)	3737	-	-	-	-
#7	1.0 (1.2)	3699	-	-	-	-
#8	1.2 (1.3)	3652	-	-	-	-
#9	1.4 (1.4)	3596	-	-	-	-
#10	1.8 (1.6)	3531	-	-	-	-
#11	2.2 (1.8)	3449	-	-	-	-
#12	2.6 (2.1)	3319	-	-	-	-
#13	3.1 (2.3)	3170	-	-	-	-
#14	3.6 (2.5)	2986	-	-	-	-
#15	4.1 (2.7)	2788	-	-	-	-
#16	4.3 (0.4)	-	3394	2679	900	900
#17	4.6 (2.8)	2539	-	-	-	-
#18	5.1 (3.0)	2305	-	-	-	-
#19	5.6 (3.0)	2055	-	-	-	-
#20	5.9 (3.0)	1803	-	-	-	-
#21	6.4 (3.0)	1587	-	-	-	-
#22	6.8 (3.0)	1376	-	-	-	-
#23	7.1 (0.2)	-	3371	3364	2607	2617

#24	7.2 (3.0)	1164	-	-	-	-
#25	7.6 (3.0)	974	-	-	-	-
#26	7.8 (2.9)	796	-	-	-	-
#27	8.2 (2.9)	652	-	-	-	-
#28	8.4 (2.9)	503	-	-	-	-
#29	8.7 (2.9)	392	-	-	-	-
#30	8.9 (2.8)	297	-	-	-	-
#31	9.0 (2.5)	14	-	-	-	-
#32	9.1 (2.7)	217	-	-	-	-
#33	9.2 (2.8)	50	-	-	-	-
#34	9.3 (2.7)	76	-	-	-	-
#35	9.3 (2.8)	162	-	-	-	-
#36	9.4 (2.8)	117	-	-	-	-
#37	9.6 (2.3)	12	-	-	-	-
#38	9.6 (2.8)	36	-	-	-	-
#39	9.9 (1.5)	8	-	-	-	-
#40	10.0 (2.8)	28	-	-	-	-
#41	10.1 (0.3)	-	3143	3146	2217	2234
#42	11.0 (1.6)	8	-	-	-	-
#43	11.6 (0.9)	6	-	-	-	-
#44	12.1 (0.6)	4	-	-	-	-
#45	12.3 (0.6)	2	-	-	-	-
ABCD						
#1	0.4 (0.6)	2704	-	-	-	-
#2	0.4 (0.7)	1930	-	-	-	-
#3	0.5 (0.5)	2872	-	-	-	-
#4	0.6 (0.4)	2880	-	-	-	-

#5	0.8 (0.5)	2867	-	-	-	-
#6	0.8 (1.1)	595	-	-	-	-
#7	1.1 (0.6)	2779	-	-	-	-
#8	1.3 (1.0)	257	-	-	-	-
#9	1.5 (0.9)	2684	-	-	-	-
#10	2.0 (1.1)	2621	-	-	-	-
#11	2.7 (1.3)	2476	-	-	-	-
#12	3.3 (1.4)	2143	-	-	-	-
#13	3.8 (1.4)	1623	-	-	-	-
#14	4.1 (1.4)	1076	-	-	-	-
#15	4.1 (2.2)	69	-	-	-	-
#16	4.3 (1.0)	7	-	-	-	-
#17	4.4 (1.5)	78	-	-	-	-
#18	4.5 (1.4)	636	-	-	-	-
#19	4.5 (1.4)	50	-	-	-	-
#20	4.5 (1.4)	336	-	-	-	-
#21	4.7 (1.4)	162	-	-	-	-
#22	4.8 (1.3)	19	-	-	-	-
#23	5.0 (1.0)	4	-	-	-	-
#24	5.8 (0.5)	2089	2087	2014	1373	1373
#25	10.6 (0.4)	1870	-	-	-	-
#26	11.8 (0.4)	711	712	654	577	579

32 **Supplemental Table 2.** Differences in included versus non-included participants

33

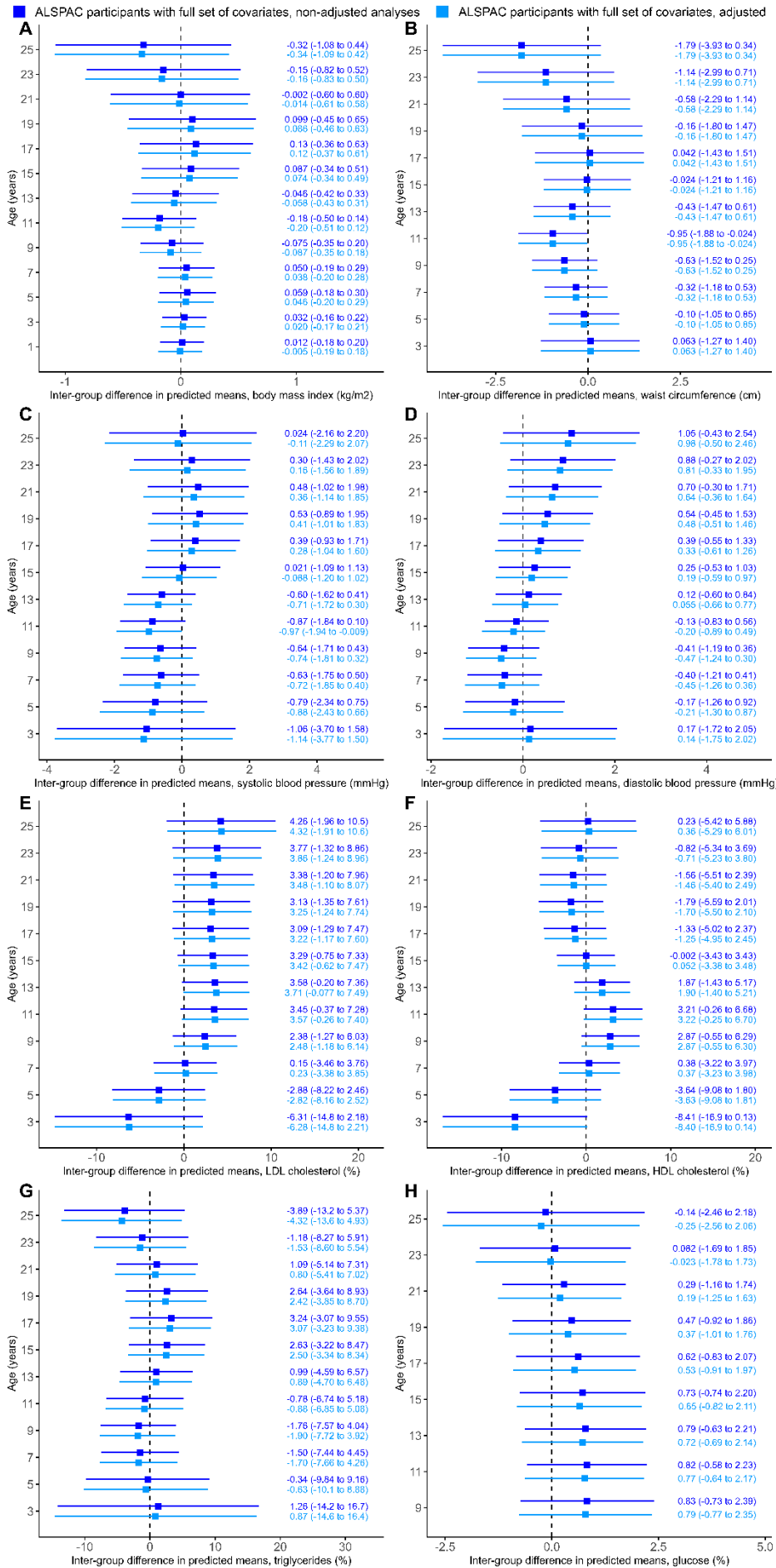
	ALSPAC		G21		ABCD	
	Included	Non-included	Included	Non-included	Included	Non-included
Sex of offspring:						
Female, %	49.0	50.2	50.7	47.2	49.1	44.9
Male, %	51.0	49.8	49.3	52.8	50.9	55.1
Maternal age at birth/pregnancy, mean \pm SD	29.5 \pm 4.1	25.6 \pm 5.1	31.5 \pm 4.8	30.8 \pm 5.7	30.0 \pm 4.5	27.7 \pm 5.8
Maternal pre-pregnancy BMI, mean \pm SD	22.9 \pm 3.7	22.7 \pm 4.1	23.1 \pm 3.9	22.6 \pm 3.8	23.9 \pm 4.0	23.7 \pm 3.5
Maternal pre-pregnancy smoking:						
No, %	81.3	60.6	76.9	78.0	81.0	68.5
Yes, %	18.7	39.4	23.1	22.0	19.0	31.5
Maternal education						
Low, %	60.7	77.6	29.7	61.6	41.3	38.7
Medium/High, %	39.3	22.4	70.3	38.4	58.7	61.3
Maternal parity:						
0, %	43.3	45.4	58.0	49.2	61.8	56.7

1 or more, %	56.7	54.6	42.0	50.8	38.2	43.3
Maternal ethnicity/country of birth:						
European, %	98.3	93.5	76.0	32.5	90.8	83.4
Other, %	1.7	6.5	24.0	67.5	9.2	16.6

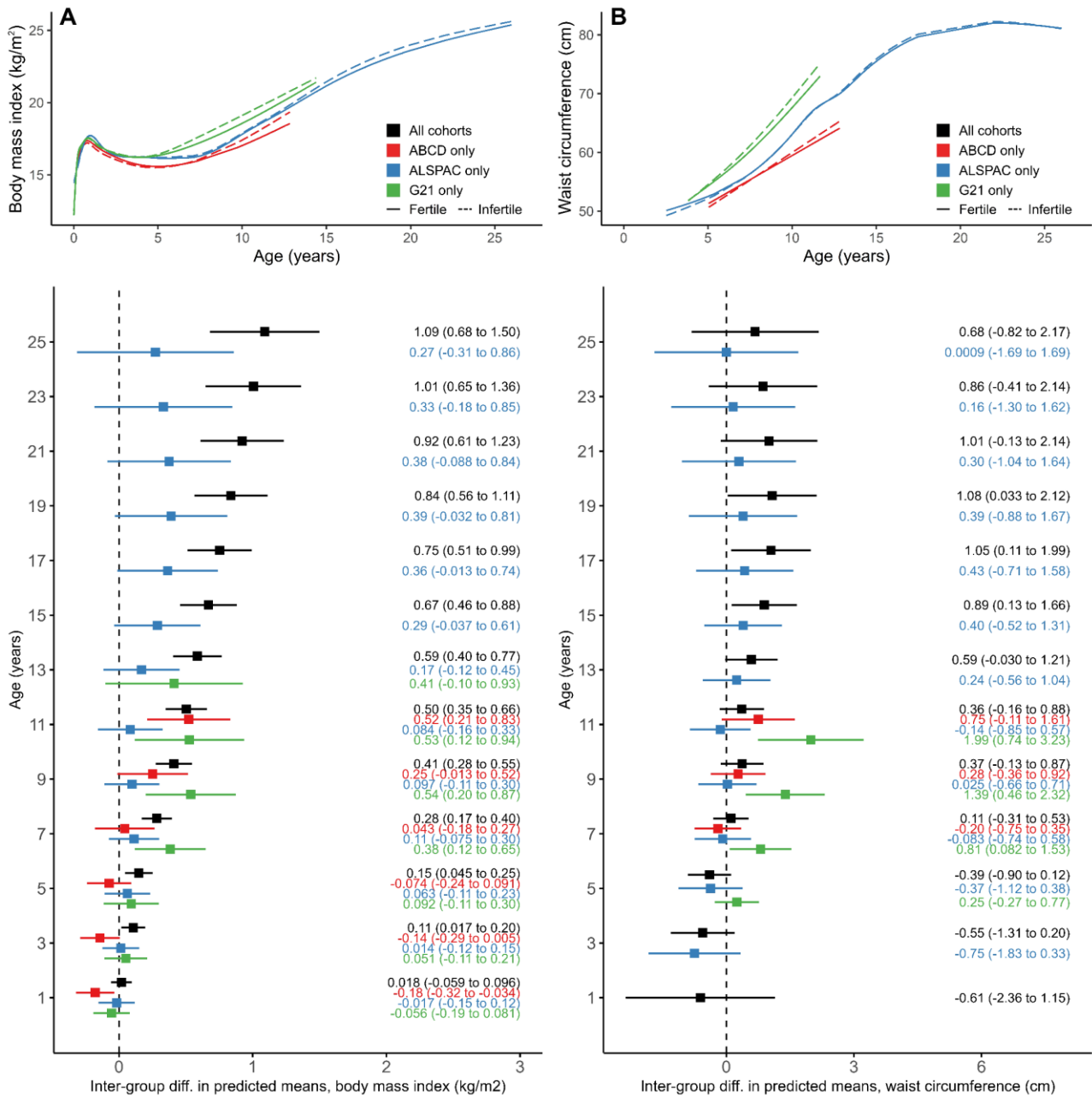
35 **SUPPLEMENTAL FIGURES**

36

37 **Supplemental Figure 1.** Inter-group differences in ALSPAC participants in mean predicted
38 values for cardiometabolic traits. Dark blue: analyses adjusted for sex of the offspring,
39 cohort, maternal age, maternal BMI, maternal smoking, maternal education, parity, and
40 ethnicity. Light blue: analyses adjusted for the previous confounders + partner's age, BMI,
41 smoking, and educational level, and both parent's history of diabetes and hypertension.
42 A: body mass index. B: waist circumference. C: systolic blood pressure. D: diastolic blood
43 pressure. E: LDL cholesterol. F: HDL cholesterol. G: triglycerides. H: glucose.

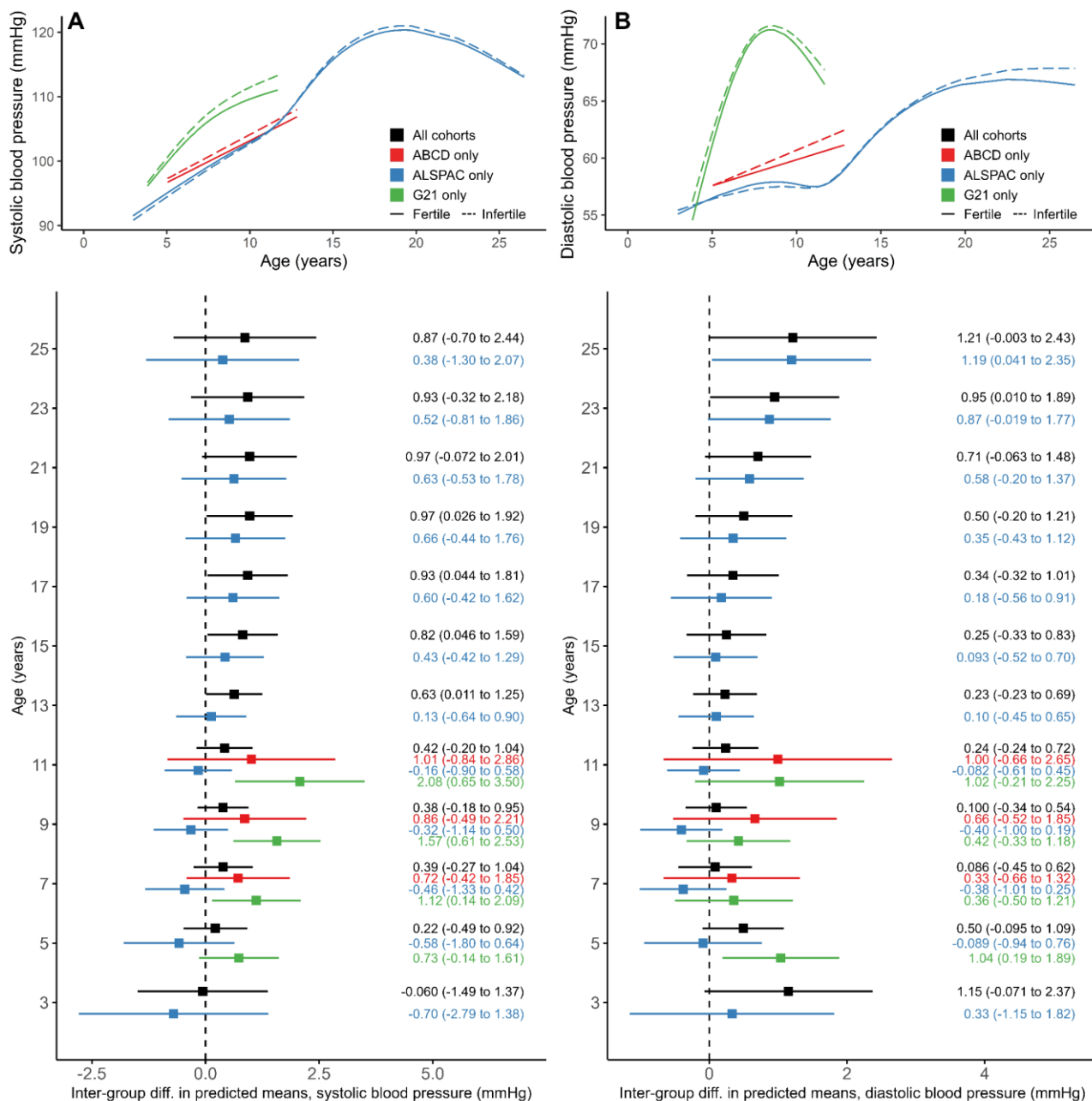


45 **Supplemental Figure 2.** Cohort-specific trajectories (ABCD: red; ALSPAC: blue; G21:
46 green) from childhood to early adulthood in offspring of couples with (continuous line) and
47 without infertility (dashed line), and inter-group differences in mean predicted values for body
48 mass index (A) and waist circumference (B).



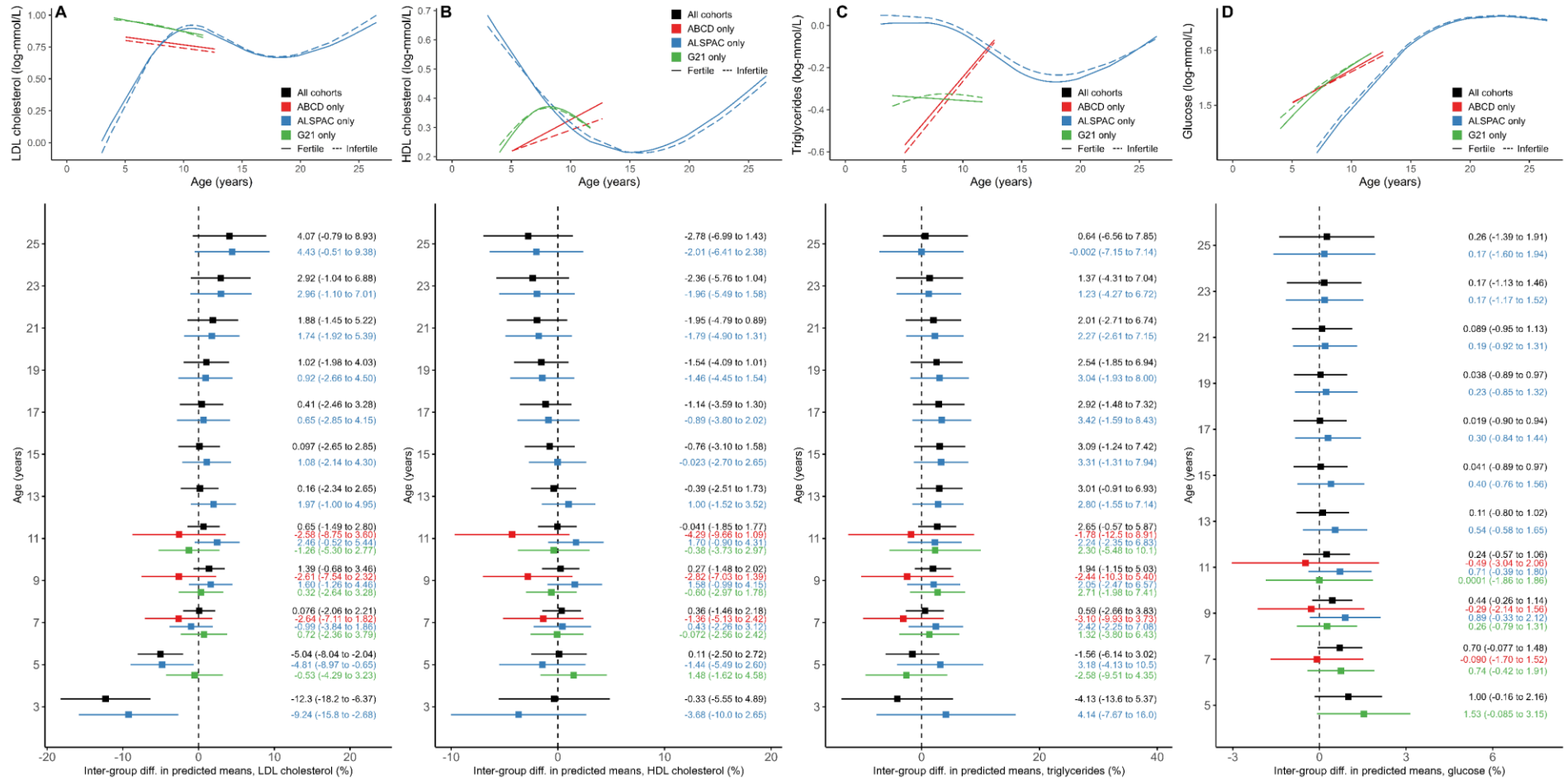
49
50 Models are adjusted for sex of the offspring, cohort, maternal age, maternal BMI, maternal
51 smoking, maternal education, parity, and ethnicity.

52 **Supplemental Figure 3.** Cohort-specific trajectories (ABCD: red; ALSPAC: blue; G21:
53 green) from childhood to early adulthood in offspring of couples with (continuous line) and
54 without infertility (dashed line), and inter-group differences in mean predicted values for
55 systolic blood pressure (A) and diastolic blood pressure (B).



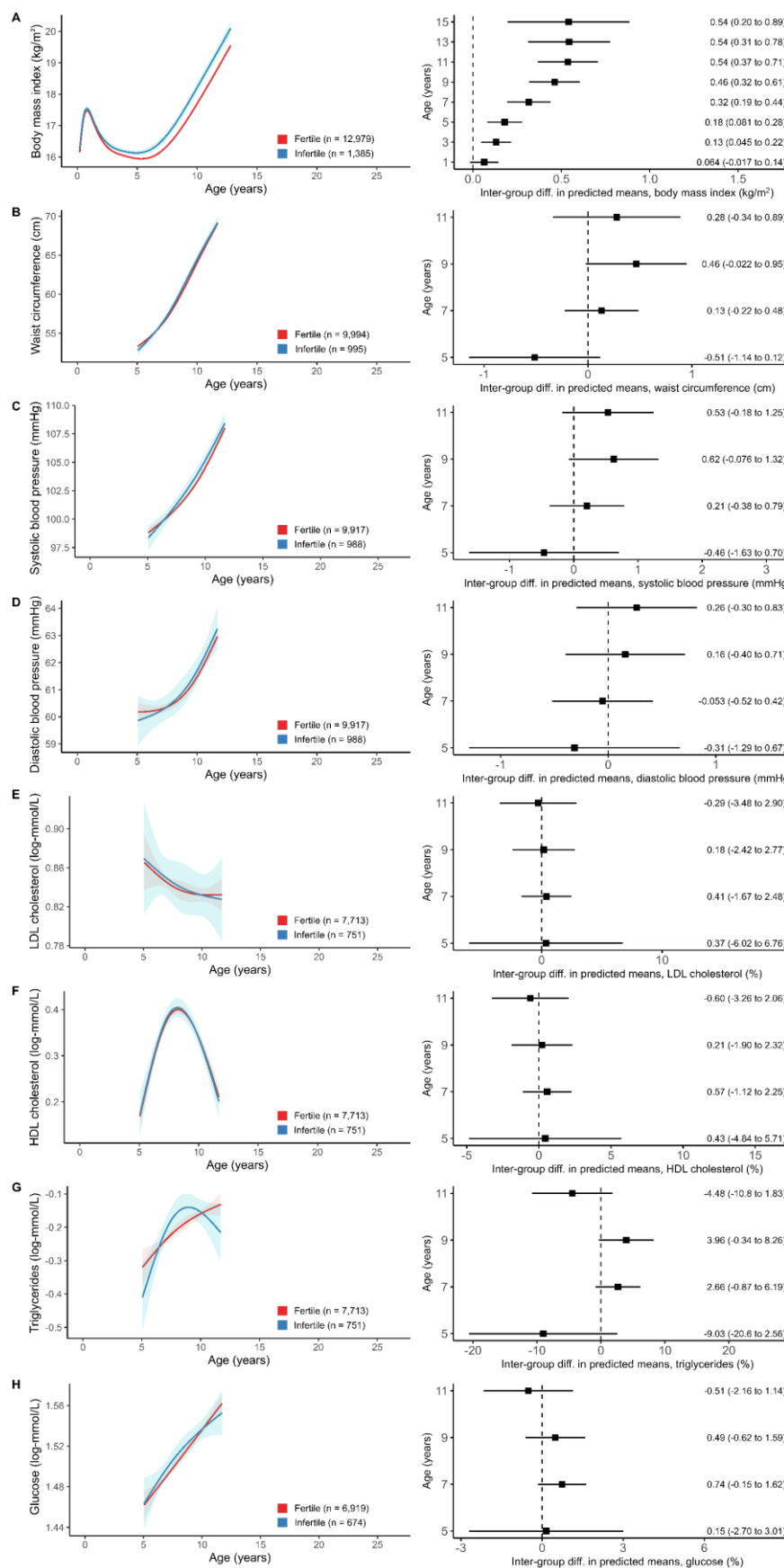
56
57 Models are adjusted for sex of the offspring, cohort, maternal age, maternal BMI, maternal
58 smoking, maternal education, parity, and ethnicity.

59 **Supplemental Figure 4.** Cohort-specific trajectories (ABCD: red; ALSPAC: blue; G21: green) from childhood to early adulthood in offspring of
 60 couples with (continuous line) and without infertility (dashed line), and inter-group differences in mean predicted values for LDL cholesterol (A),
 61 HDL cholesterol (B), triglycerides (C), and glucose (D).



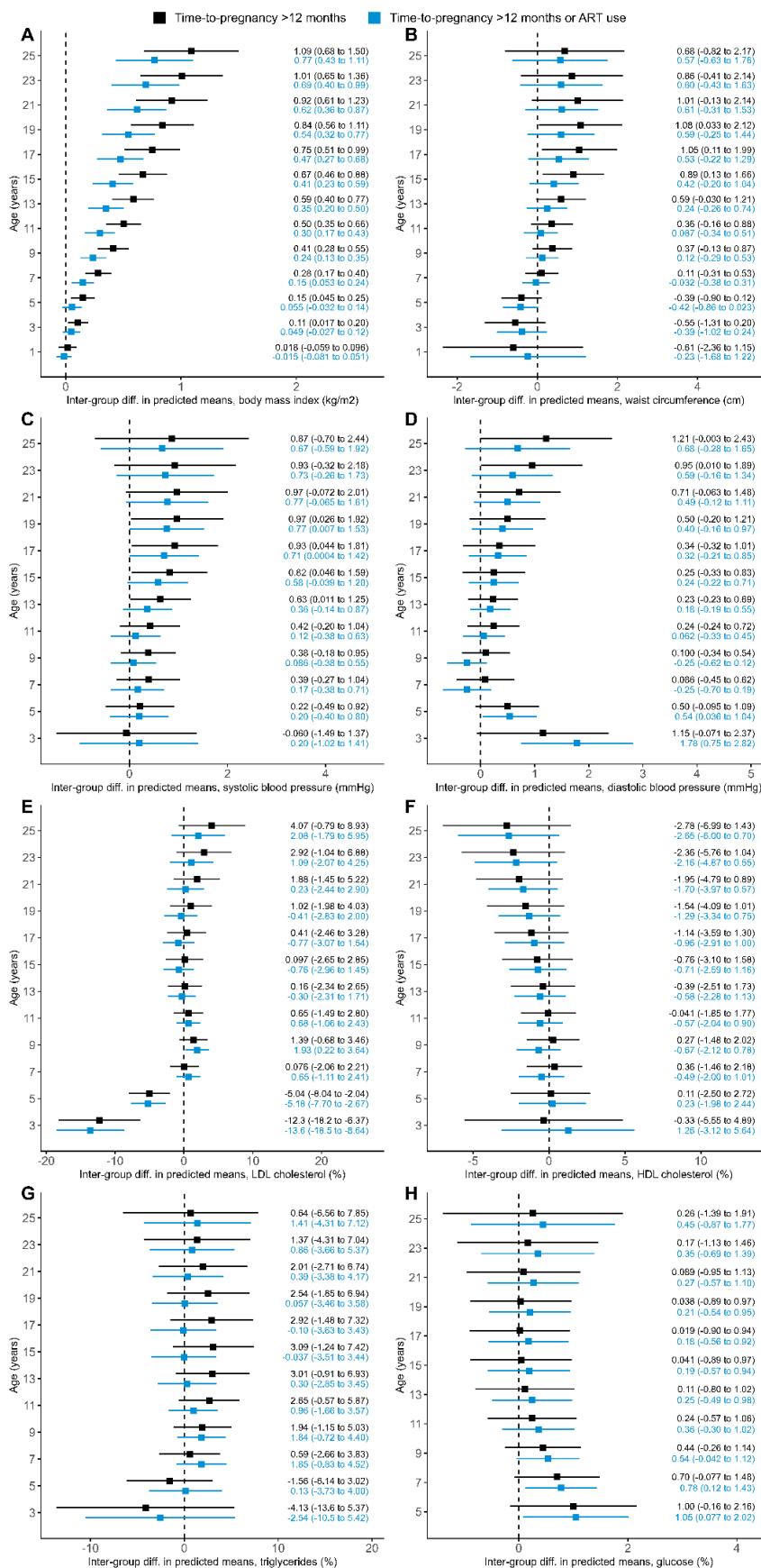
62 Models are adjusted for sex of the offspring, cohort, maternal age, maternal BMI, maternal smoking, maternal education, parity, and ethnicity.

63 **Supplemental Figure 5.** Inter-group differences in mean predicted values for
64 cardiometabolic traits in the age ranges for which there is information in the three cohorts.
65 A: body mass index. B: waist circumference. C: systolic blood pressure. D: diastolic blood
66 pressure. E: LDL cholesterol. F: HDL cholesterol. G: triglycerides. H: glucose.



67 Models are adjusted for sex of the offspring, cohort, maternal age, maternal BMI, maternal
68 smoking, maternal education, parity, and ethnicity.

69 **Supplemental Figure 6.** Inter-group differences in mean predicted values for
70 cardiometabolic traits using the standard definition of infertility (time-to-pregnancy > 12
71 months, black) and the expanded one (time-to-pregnancy > 12 months or ART use, blue).
72 A: body mass index. B: waist circumference. C: systolic blood pressure. D: diastolic blood
73 pressure. E: LDL cholesterol. F: HDL cholesterol. G: triglycerides. H: glucose.



74 Models are adjusted for sex of the offspring, cohort, maternal age, maternal BMI, maternal

75 smoking, maternal education, parity, and ethnicity.