

# 1 **Virologic outcomes on dolutegravir-, atazanavir-, or efavirenz-based**

## 2 **ART in urban Zimbabwe: A longitudinal study**

3 Tinei Shamu<sup>1,2,3\*</sup>, Matthias Egger<sup>2,4,5</sup>, Tinashe Mudzviti<sup>1,6</sup>, Cleophas Chimbetete<sup>1</sup>,

4 Justen Manasa<sup>7</sup>, Nanina Anderegg<sup>1,4</sup>

5 <sup>1</sup> Newlands Clinic, Harare, Zimbabwe

6 <sup>2</sup> Institute of Social and Preventive Medicine, University of Bern, Switzerland

7 <sup>3</sup> Graduate School of Health Sciences, University of Bern, Switzerland

8 <sup>4</sup> Centre for Infectious Disease Epidemiology and Research, School of Public Health, University

9 of Cape Town, Cape Town, South Africa

10 <sup>5</sup> Population Health Sciences, Bristol Medical School, University of Bristol, Bristol, United

11 Kingdom

12 <sup>6</sup> Department of Pharmacy and Pharmaceutical Sciences, University of Zimbabwe, Harare,

13 Zimbabwe

14 <sup>7</sup> Innovation Hub, University of Zimbabwe, Harare, Zimbabwe

15 \* Corresponding Author

16 E-mail: [tineis@newlandsclinic.org.zw](mailto:tineis@newlandsclinic.org.zw) (TS)

## 17 **Abstract**

18           There are few data from sub-Saharan Africa on the virological outcomes associated with  
19 second-line ART based on protease inhibitors or dolutegravir (DTG). We compared viral load  
20 (VL) suppression among people living with HIV (PLWH) on atazanavir (ATV/r)- or dolutegravir  
21 (DTG)-based second-line ART with PLWH on efavirenz (EFV)-based first-line ART. We  
22 analyzed data from the electronic medical records system of Newlands Clinic in Harare,  
23 Zimbabwe. We included patients aged  $\geq 12$  years when commencing first-line EFV-based ART or  
24 switching to second-line DTG- or ATV/r-based ART with  $\geq 24$  weeks follow-up after start or  
25 switch. We computed suppression rates (HIV VL  $< 50$  copies/mL) at weeks 12, 24, 48, 72, and 96  
26 and estimated the probability of VL suppression by treatment regimen, time since start/switch of  
27 ART, sex, age, and CD4 cell count (at start/switch) using logistic regression in a Bayesian  
28 framework. We included 7013 VL measurements of 1049 PLWH (61% female) initiating first-line  
29 ART and 1114 patients (58% female) switching to second-line ART. Among those switching, 872  
30 (78.3%) were switched to ATV/r and 242 (21.7%) to DTG. VL suppression was lower in second-  
31 line ART patients than first-line ART patients, except at week 12, when those on DTG showed  
32 higher suppression than those on EFV (aOR 2.10, 95%-credible interval [CrI] 1.48-3.00) and  
33 ATV/r-based regimens (aOR 1.87, 95%-CrI 1.32-2.71). In weeks  $\geq 48$ , first-line patients had  
34 around 3 times the odds of VL suppression compared to second-line patients. There was no  
35 evidence of a difference between DTG and ATV/r for follow-up times  $\geq 24$  weeks in PLWH on  
36 second-line. Second-line ART patients had lower VL suppression rates than those receiving first-  
37 line ART, and there was no difference in suppression between DTG- and ATV/r-based second-  
38 line ART  $\geq 6$  months after switching. Virologic monitoring and adherence support remain essential  
39 to prevent second-line treatment failure in settings with limited treatment options.

## 40 Introduction

41 Antiretroviral therapy (ART) has become more effective, more affordable, and safer since  
42 the advent of combination therapy in the mid-90s [1]. Currently, the integrase inhibitor  
43 dolutegravir (DTG) in combination with two nucleoside reverse transcriptase inhibitors (NRTIs)  
44 is recommended for patients initiating ART and for second-line ART among patients who  
45 experienced virologic failure on regimens that did not include DTG [2]. Previously, efavirenz  
46 (EFV) was recommended for first-line, and the ritonavir-boosted protease inhibitors atazanavir  
47 (ATV/r) or lopinavir (LPV/r) for second-line ART, always combined with two NRTIs. DTG  
48 achieves earlier virologic suppression compared to ritonavir-boosted protease inhibitors, has fewer  
49 toxicities and may have a lower or similar incidence of resistance among patients receiving second-  
50 line ART [2–4]. Compared with efavirenz, DTG had superior viral suppression over 96 weeks,  
51 was protective against drug resistance, and led to fewer discontinuations [5–7].

52 The success of second-line ART depends on several factors. Poor adherence to treatment has  
53 been identified in many studies as the critical determinant of virologic failure and the emergence  
54 of drug resistance [8,9]. A high viral load, a low CD4 cell count or advanced HIV infection at the  
55 time of switching, concomitant treatment for tuberculosis, and younger age are also associated  
56 with poorer outcomes on second-line ART [10–13]. The availability of DTG in a fixed dose  
57 combination with lamivudine (3TC) and tenofovir disoproxil fumarate (TDF), commonly referred  
58 to as TLD, may improve treatment compliance and lead to better virologic suppression rates among  
59 people living with HIV (PLWH) on second-line ART [2].

60 Compared with boosted protease inhibitors for ART naïve and treatment-experienced  
61 PLWH with background NRTI resistance, DTG was neither inferior nor superior for viral

62 suppression [14–16]. In PLWH switching to DTG-based second-line ART, viral replication is  
63 typically reduced to undetectable levels within the first four to 24 weeks of therapy [17,18].  
64 However, long-term real-world virologic suppression and clinical outcomes after switching to  
65 second-line ART are less well documented. Indeed, there is a lack of data on the outcomes  
66 associated with second-line ART based on boosted protease inhibitors and second-line and first-  
67 line ART based on DTG-containing regimens, particularly in sub-Saharan Africa. We compared  
68 virologic suppression among adolescents and adults switching to DTG- or ATV/r-based second-  
69 line ART after experiencing virologic failure with those starting EFV-based first-line ART in an  
70 HIV care and treatment program in Zimbabwe.

## 71 **Methods**

### 72 **Setting and data**

73 We analyzed data of patients receiving ART at Newlands Clinic in Harare, Zimbabwe.  
74 Newlands Clinic is an outpatient HIV referral centre with approximately 7,300 patients in care as  
75 of June 2022. The clinic provides comprehensive HIV care to clients of low socio-economic status,  
76 including ART, laboratory monitoring, psychosocial support, reproductive health care and other  
77 ancillary services. It is supported by the Ruedi Luethy Foundation, a Swiss-based private voluntary  
78 organization, and part of the International epidemiology Databases to Evaluate AIDS (IeDEA) in  
79 Southern Africa. More details on the clinic’s activities are provided elsewhere [19,20]. From 2010  
80 to 2019, EFV-based ART was predominantly used as first-line ART and ATV/r as second-line  
81 ART at Newlands Clinic. Since 2019, DTG-based ART has been used both in first- and second-  
82 line ART [2,21].

83           The present analysis was based on the database compiled from the clinic’s electronic  
84   medical records system. The system is password protected, and only approved clinic staff can log  
85   in and view patient records in accordance with the level of permission. We abstracted longitudinal  
86   data of patients receiving ART between February 2013 and June 2022, including demographic  
87   information, CD4 cell counts, and HIV-1 RNA viral loads. Viral loads were typically measured at  
88   the time of switching or starting (baseline). After baseline, viral loads were measured at weeks 12  
89   and 24 and then every 24 weeks. Measurements were done using the COBAS  
90   Ampliprep/Taqman48 platform and Roche HIV-1 version 1.0 kits. CD4 counts were measured at  
91   baseline using a Partec Cyflow Counter II machine with CD4 Easy Count reagents by Sysmex.

92           Patients enrolling into care at Newlands Clinic provided informed written consent that  
93   allows the use of data accumulating during their routine care for research under the IeDEA  
94   collaboration. IeDEA was approved by the Medical Research Council of Zimbabwe (MRCZ No.  
95   A1336) [22]. The study data were stored in a password protected electronic medical records system  
96   and were accessed on the 30<sup>th</sup> of August 2022 by authorised clinic personnel. The abstracted data  
97   were supplied to the statistical analysis team as de-identified records that could not be traced to  
98   individual patients.

## 99   **Inclusion criteria**

100           We included patients aged 12 years and older at the time of commencing ART or switching  
101   to second-line ART who had at least 24 weeks on the new ART regimen. For patients commencing  
102   ART, we included those starting with a regimen containing EFV, lamivudine (3TC) and one of  
103   tenofovir (TDF), zidovudine (AZT), or abacavir (ABC). For second-line ART, we included  
104   patients switching with a viral load above 200 copies/mL from an NNRTI-based first-line to

105 second-line regimens containing DTG or ATV/r combined with an NRTI backbone, as described  
106 above.

## 107 **Outcome**

108 The outcome of interest was viral load suppression (HIV viral load <50 copies/mL) at week  
109 12, 24, 48, 72 and 96 after baseline, in line with the clinic visits with scheduled VL measurements.  
110 We allowed for a one-month window around these time points to account for shifts in visit dates.  
111 For example, the “Week 24” measurements included VL measurements done  $24 \pm 4$  weeks after  
112 baseline. If several measurements were available, the one closest to the visit date was chosen for  
113 analysis. Some VL measurements fell between two windows (for example, a measurement drawn  
114 35 weeks after baseline was neither assigned to “Week 24” nor to “Week 48”). These  
115 measurements were used to impute missing VL information when a patient did not have a VL  
116 measurement for a visit date but did have a measurement right before and after the window around  
117 the visit date. We assumed that the missing measurement indicated suppressed or unsuppressed  
118 VL if both measurements (before and after) showed a suppressed or unsuppressed VL. If the  
119 measurements before and after were different (suppressed and unsuppressed), we did not impute  
120 the VL suppression information for the visit date.

## 121 **Explanatory variables**

122 Explanatory variables included the time of the VL measurement (as defined above as Week  
123 12, Week 24, Week 48, Week 72, or Week 96 after baseline), the ART regimen, the patient’s sex,  
124 age and CD4 cell count at baseline. Age at baseline was grouped into 12-19 years, 20-29, 30-39  
125 years and  $\geq 40$  years. CD4 cell count at baseline was grouped into 0-199 cells/mm<sup>3</sup>, 200-349

126 cells/mm<sup>3</sup> and  $\geq 350$  cells/mm<sup>3</sup>. ART regimens included “EFV” for first-line ART, and “ATV/r”  
127 and “DTG” for second-line ART.

## 128 **Statistical analysis**

129 We calculated crude proportions of viral load suppression after baseline by ART regimen.  
130 We then estimated the probability of viral load suppression using multivariable logistic regression  
131 models in a Bayesian framework. To account for the dependence of viral load measurements  
132 within patients, we included a random intercept by patient. As fixed effects, we included the  
133 covariates ART regimen, time since baseline, sex, age and CD4 cell count. We checked if the  
134 inclusion of any two-way interaction between covariates improved the model fit in two steps. First,  
135 we compared model fits of the simple model without any interactions to alternative models  
136 containing one single two-way interaction. All two-way interactions for whom the comparison to  
137 the simple model showed a difference in expected log pointwise density that was larger two times  
138 its standard error were considered "eligible" for inclusion in the final model [23]. In the second  
139 step, we looked at all possible combinations of the eligible two-way interactions. The final model  
140 was the one with the best fit (again, according to the expected density).

141 We report adjusted odds ratios (aOR) for VL suppression and crude and predicted  
142 proportions of VL suppression with 95% credible intervals (CrIs). For both aORs and predicted  
143 probabilities, we report marginalized (“sample-averaged”) estimates derived by integrating over  
144 the distribution of random effects. Next to reporting predicted proportions stratified by all levels  
145 of covariates, we also report them standardized and non-standardized by time and treatment  
146 regimen. For standardized predictions, we predicted the probability of VL suppression at weeks  
147 12, 24, 48, 72, and 96 for every study patient, assuming they were on DTG, then assuming they

148 were on ATV/r and finally on EFV. We then averaged all the predicted probabilities of viral load  
149 suppression for each treatment regimen and time point. Non-standardized predictions consisted of  
150 predicting the probability of VL suppression for the observed data only.

151



## 152 **Results**

153 Overall, we included 2163 PLWH (59.9% female), of whom 1114 were switching to  
154 second-line ART, and 1049 were initiating first-line ART ([Table 1](#)). Patients switching to second-  
155 line ART were younger (median age 29 years; IQR 19-42) than those starting first-line ART (36  
156 years; IQR 28-44). Among the second-line ART patients, 872 (78.3%) switched to ATV/r-based  
157 ART, while 242 (21.7%) switched to DTG-based ART ([Table 1](#)). Patients switching to ATV/r-  
158 based second-line ART had lower CD4 cell counts than those switching to DTG or starting an  
159 EFV-based first-line regimen ([Table 1](#)). The 2163 patients contributed 7413 VL measurements, of  
160 which (7181, 96.9%) were observed and 232 (3.0%) imputed. Around three-quarters of patients  
161 had a VL measurement at shorter follow-up times (weeks 12, 24, 48), while this proportion was  
162 lower for longer follow-up times ([Table 1](#)). For DTG, fewer patients had a VL measurement at  
163 longer follow-up times than the other two regimens. As indicated by the later calendar years of  
164 starting/switching ART for DTG, this was mainly due to the follow-up time of patients switching  
165 to DTG being too short to contribute VL measurements for later weeks ([Table 1](#)). Only a few  
166 patients were lost to follow-up or died during the follow-up time relevant to this study ([Table 1](#)).

167

168 **Table 1. Baseline demographic and clinical characteristics of patients by treatment regimen.**

	First line	Second line		Overall
	EFV	ATV/r	DTG	
<b>Total</b>	1049	872	242	2163
<b>Female</b>	645 (61.5%)	506 (58.0%)	145 (59.9%)	1296 (59.9%)
<b>Male</b>	404 (38.5%)	366 (42.0%)	97 (40.1%)	867 (40.1%)
<b>Age [years]</b>				
<b>Median (IQR)</b>	36 (28-44)	29 (19-41.25)	28.5 (19-42)	34 (22-43)
<b>12 - 19</b>	97 (9.2%)	224 (25.7%)	67 (27.7%)	388 (17.9%)
<b>20 - 29</b>	202 (19.3%)	219 (25.1%)	58 (24.0%)	479 (22.1%)
<b>30 - 39</b>	348 (33.2%)	161 (18.5%)	49 (20.2%)	558 (25.8%)
<b>40+</b>	402 (38.3%)	268 (30.7%)	68 (28.1%)	738 (34.1%)
<b>CD4 cell count [cells/mm<sup>3</sup>]</b>				
<b>Median (IQR)</b>	251 (122-363)	182 (73-331)	253 (78-469)	224 (97-360)
<b>&lt;200</b>	426 (40.6%)	461 (52.9%)	98 (40.5%)	985 (45.5%)
<b>200-349</b>	331 (31.6%)	219 (25.1%)	51 (21.1%)	601 (27.8%)
<b>&gt;=350</b>	292 (27.8%)	192 (22.0%)	93 (38.4%)	577 (26.7%)
<b>Number of viral load measurements</b>				
<b>Median (IQR)</b>	4 (2-4)	4 (3-5)	3 (2-4)	4 (3-4)
<b>Viral load suppression</b>				
<b>at week 12</b>	800 (76.3%)	683 (78.3%)	202 (83.5%)	1685 (77.9%)
<b>at week 24</b>	884 (84.3%)	722 (82.8%)	175 (72.3%)	1781 (82.3%)
<b>at week 48</b>	812 (77.4%)	663 (76.0%)	155 (64.0%)	1630 (75.4%)
<b>at week 72</b>	424 (40.4%)	506 (58.0%)	108 (44.6%)	1038 (48.0%)
<b>at week 96</b>	627 (59.8%)	565 (64.8%)	87 (36.0%)	1279 (59.1%)
<b>Year of ART start/switch</b>				
<b>Median (IQR)</b>	2016 (2015-2017)	2017 (2016-2018)	2021 (2020-2021)	2017 (2016-2018)
<b>Status at end of follow-up*</b>				
<b>In care</b>	988 (94.2%)	832 (95.4%)	230 (95.0%)	2050 (94.8%)
<b>LTFU</b>	42 (4.0%)	18 (2.1%)	4 (1.7%)	64 (3.0%)
<b>Dead</b>	19 (1.8%)	22 (2.5%)	8 (3.3%)	49 (2.3%)

169 \* LTFU and Dead correspond to patients who were lost to follow-up or died within the follow-up time  
 170 relevant to this study. In care corresponds to those who remained in care by week 100 after  
 171 starting/switching ART or at database closure, whichever came first. EFV, efavirenz; ATV/r, ritonavir-  
 172 boosted atazanavir; DTG, dolutegravir; IQR, interquartile range; LTFU, lost to follow-up.

173  
 174 Crude rates of virologic suppression were lower on second-line ART than first-line ART  
 175 (Figure 1). The exception was week 12 when the DTG-based regimen showed higher suppression  
 176 (crude proportion 69.9%, 95%-CrI 63.6-75.9%) than ATV/r (crude proportion 53.9%, 95%-CrI  
 177 50.1-57.8%) and EFV-based regimens (crude proportion 57.1%, 95%-CrI 53.6-60.5%). Among

178 the second-line ART regimens, crude rates of virologic suppression for follow-up times greater  
179 than 24 weeks were slightly higher for DTG (73.5%, 95%-CrI 69.7-77.5%) compared to ATV/r  
180 (68.2%, 95%-CrI 66.2-70.0%).

181 **Figure 1. Crude proportions (with 95% credible intervals) of viral load suppression by**  
182 **treatment regimen and time post switch (ATV/r, DTG) or start (EFV) of ART.** EFV,  
183 efavirenz; ATV/r, ritonavir-boosted atazanavir; DTG, dolutegravir.

184

185 Only the two-way interactions between time and ART regimen and between time and age  
186 met the criteria for potential inclusion in the final model. The model including only the time-ART  
187 regimen interaction, and the model including both the time-ART regimen and the time-age  
188 interaction led to similar model fits, with a slightly better fit for the simpler model (Supplementary  
189 Table S1). The final logistic regression model thus only included the two-way interaction between  
190 time and ART regimen. The final model fitted the data well, with a few exceptions when there was  
191 large uncertainty due to small numbers (Supplementary Figure S1).

192 The regression model confirmed the higher odds of VL suppression for DTG at short  
193 follow-up (aOR 1.87, 95% CrI 1.32-2.71 comparing DTG to ATV/r at Week 12 and aOR 2.10,  
194 95% CrI 1.48-3.00 comparing DTG to EFV, Figure 2). While for DTG, the odds of VL suppression  
195 did not increase substantially for longer follow-up periods, they did so for patients on ATV/r and  
196 even more for those on EFV (Figure 2, Figure 3). After 24 weeks, the estimated odds of VL  
197 suppression were relatively stable for both second-line regimens, and there was no evidence of a  
198 difference between DTG and ATV/r. For EFV, the odds of VL suppression also reached a stable  
199 plateau but slightly later, at 48 weeks. At that time, the odds of VL suppression was estimated to

200 be around 3 times higher than the second-line regimens ([Figure 2](#), [Figure 3](#)). Apart from the  
201 differences between first- and second-line regimens, the odds of VL suppression were higher for  
202 females and increased with age and CD4 cell count ([Figure 2](#)). VL suppression was lowest for  
203 adolescents, with estimated suppression rates mostly below 75% in adolescents switching to  
204 second-line ART and below 60% for those switching with CD4 cell counts below 200 cells/mm<sup>3</sup>  
205 ([Supplementary Figure S1](#)).

206 **Figure 2. Adjusted odds ratios (aOR) for viral load suppression with 95% (red) credible**  
207 **intervals.** Results derived from a Bayesian logistic regression model including a random intercept  
208 by patient and the covariates sex, baseline age, baseline CD4 cell count, time since start/switch,  
209 and ART regimen. The model also includes a two-way interaction between ART regimen and time  
210 since start/switch, so that the aORs comparing ART regimens are shown stratified by time.  
211 Estimates are marginalized by integration over the distribution of random effects. EFV, efavirenz;  
212 ATV/r, ritonavir-boosted atazanavir; DTG, dolutegravir.

213 **Figure 3. Non-standardized (left panel) and standardized (right panel) predicted**  
214 **proportions and 95% credible intervals of viral load suppression by treatment regimen and**  
215 **time since switch (DTG, ATV/r) or start (EFV).** Results from a Bayesian logistic regression  
216 model including a random intercept by patient and the covariates sex, baseline age, baseline CD4  
217 cell count, time since start/switch, ART regimen, and a two-way interaction between time since  
218 start/switch and ART regimen. Estimates are marginalized by integrating over the distribution of  
219 random effects.

220 Standardized and non-standardized differences in VL suppression rates between regimens  
221 were overall similar, but standardization attenuated differences between the two second-line  
222 regimens ([Figure 3](#)). At week 48, standardized predicted proportions of VL suppression were

223 89.1% (95% CrI 86.9-90.9%) for EFV, 74.5% (95%-CrI 68.0-80.7%) for DTG, and 72.9% (95%-  
224 CrI 69.5-76.1%) for ATV/r ([Figure 3](#)). Corresponding non-standardized proportions of VL  
225 suppression at week 48 were 90.3% (95%-CrI 88.4-91.9%) for EFV, 72.9% (95%-CrI 66.1-79.3%)  
226 for DTG, and 69.9% (95%-CrI 66.2-73.2%) for ATV/r ([Figure 3](#)).

227

## 228 **Discussion**

229 In this longitudinal analysis of routine clinical data collected in an urban ART program in  
230 Zimbabwe, we examined virologic suppression among PLWH switching to DTG- or ATV/r-based  
231 second-line ART after experiencing virologic failure, and PLWH starting ART on EFV-based  
232 first-line regimens. Suppression rates were highest for first-line patients receiving EFV-based ART  
233 from weeks 24 through 96. Older age and higher CD4 cell count at switch or start were associated  
234 with higher odds of virologic suppression. In contrast, male sex was associated with reduced odds  
235 of virologic suppression across all regimens. Our results confirm the more rapid suppression of  
236 viral replication with DTG-based ART than EFV-based ART, even if used in second-line ART  
237 [3,4].

238 Our study's limitations include the absence of objective measures of treatment adherence  
239 and baseline drug resistance profiles. Also, not all patients had VL measurements taken at all time  
240 points, especially in later weeks and patients switching to DTG. This was mainly due to the shorter  
241 follow-up time of patients switching to DTG. Contrary to EFV and ATV/r, which were mainly  
242 used before 2019 and thus allowed most patients to have  $\geq 2$  years of follow-up, DTG was only  
243 introduced in 2019. Therefore, recently switched patients can only contribute VL measurements  
244 to the earlier weeks. Further, many patients switched to DTG-based second-line during the Covid-

245 19 national lockdown period. The different periods are a limitation of this study, as we cannot  
246 exclude residual confounding by the Covid-19 pandemic or other factors that might have changed  
247 over time.

248 Our study took advantage of a long-standing, well-characterized cohort with high retention  
249 in care and reliable data collection [20]. This is reflected in the fact that we had little loss to follow-  
250 up over the study period and very few missing CD4 counts, which is rare for observational cohorts  
251 in similar settings. Another strength lies in using a Bayesian approach, which allowed us to test  
252 for many interactions and calculate standardized probabilities of viral load suppression that allow  
253 more informative comparisons between treatment regimens correcting for differences in  
254 characteristics between first- and second-line patients.

255 Many of the PLWH on second-line ART will probably have a history of poor adherence,  
256 which led to virologic failure on first-line ART and, in some patients, could have led to the  
257 development of drug resistance. However, NNRTI pretreatment resistance likely played a more  
258 significant role in the last decade [24–27]. Second-line virologic failure (DTG or ATV/r) may  
259 more likely be related to poor treatment compliance based on literature showing almost no  
260 pretreatment or transmitted drug resistance among protease inhibitor- and INSTI-naïve PLWH in  
261 Zimbabwe and the demonstrated efficacy of both DTG and protease inhibitors with suboptimal  
262 NRTI backbones [15,25,28–30]. In addition, a longer duration of ART is associated with a higher  
263 likelihood of treatment failure [31,32]. Even though both DTG and ATV/r are potent  
264 antiretrovirals, with DTG being superior to EFV for both viral suppression and tolerability  
265 [5,7,33], the overall suppression rates among the second-line patients were lower than those  
266 observed for first-line patients in all age groups, sex, and baseline CD4 cell count strata. This  
267 suggests that for patients with a history of treatment failure, switching to DTG or ATV/r alone

268 without other adherence support interventions may not be sufficient to reach the programmatic  
269 targets of 95% or higher VL suppression [34,35]. Failure to achieve virologic suppression among  
270 patients receiving second-line DTG-based ART can expose these patients to the emergence of drug  
271 resistance against DTG and the beginning of transmitted drug resistance to the INSTI class. Several  
272 cases of acquired and pretreatment DTG resistance have already been reported [36–38].

273         Almost half of the patients analyzed in this study had advanced HIV disease with baseline  
274 CD4 cell counts <200cells/mm<sup>3</sup>. Although lower CD4 cell counts are the consequence of HIV  
275 replication, it is unclear why lower baseline CD4 counts are associated with failure to suppress VL  
276 across all the regimens in this study. Higher viral loads at ART commencement are associated with  
277 prolonged durations before viral suppression leading to increased odds of virologic failure on  
278 NNRTI containing ART [39,40]. Further, severe immune suppression might indicate a lower  
279 commitment to starting/switching ART or engaging in adherence support initiatives, which in turn  
280 is likely associated with reduced treatment adherence [35]. Low CD4 cell counts when switching  
281 to second-line ART may also result from previous loss to follow-up, treatment interruption, or  
282 inconsistent clinic visits. Some studies have also shown a relationship between low baseline CD4  
283 cell counts and subsequent virologic failure, while another study from Mozambique showed an  
284 association between higher baseline CD4 cell counts and virologic failure [24,41,42].

285         Patients switching to second-line ART were younger than those starting first-line.  
286 Likewise, younger patients were also less likely to achieve virologic suppression across all  
287 regimens. Younger age has previously been associated with poorer adherence and virologic failure  
288 without accompanying drug resistance [24,43]. This observation warrants investment in custom  
289 treatment support interventions that foster improved treatment adherence among young PLWH.

## 290 **Conclusion**

291 Patients receiving second-line ART were less likely to achieve virologic suppression than  
292 those on first-line ART, despite switching to robust or even superior regimens. The probability of  
293 virologic suppression increased with increasing age and baseline CD4 cell count. Further efforts  
294 are needed to enhance treatment adherence among young PLWH and, more broadly, those  
295 switching after virologic failure in settings with limited treatment options.

296



## 297 **Acknowledgements**

298           We acknowledge Ruedi Luethy and the Newlands Clinic staff and clients for making this  
299 work possible.

300

## 301 **References**

- 302 1. Tseng A, Seet J, Phillips EJ. The evolution of three decades of antiretroviral therapy:  
303 challenges, triumphs and the promise of the future. *Br J Clin Pharmacol.* 2015;79: 182–194.  
304 doi:10.1111/bcp.12403
- 305 2. Global HIV, Hepatitis and Sexually Transmitted Infections Programmes GRC.  
306 Consolidated guidelines on HIV prevention, testing, treatment, service delivery and  
307 monitoring: recommendations for a public health approach. Geneva: World Health  
308 Organization; 2021. Available: <https://www.who.int/publications-detail-redirect/9789240031593>
- 310 3. Lunzen J van, Maggiolo F, Arribas JR, Rakhmanova A, Yeni P, Young B, et al. Once daily  
311 dolutegravir (S/GSK1349572) in combination therapy in antiretroviral-naïve adults with  
312 HIV: planned interim 48 week results from SPRING-1, a dose-ranging, randomised, phase  
313 2b trial. *Lancet Infect Dis.* 2012;12: 111–118. doi:10.1016/S1473-3099(11)70290-0
- 314 4. Cottrell ML, Hadzic T, Kashuba ADM. Clinical pharmacokinetic, pharmacodynamic and  
315 drug-interaction profile of the integrase inhibitor dolutegravir. *Clin Pharmacokinet.*  
316 2013;52: 981–994. doi:10.1007/s40262-013-0093-2
- 317 5. Walmsley S, Baumgarten A, Berenguer J, Felizarta F, Florence E, Khuong-Josses M-A, et  
318 al. Brief Report: Dolutegravir Plus Abacavir/Lamivudine for the Treatment of HIV-1  
319 Infection in Antiretroviral Therapy-Naïve Patients: Week 96 and Week 144 Results From  
320 the SINGLE Randomized Clinical Trial. *JAIDS J Acquir Immune Defic Syndr.* 2015;70:  
321 515. doi:10.1097/QAI.0000000000000790
- 322 6. Stellbrink H-J, Reynes J, Lazzarin A, Voronin E, Pulido F, Felizarta F, et al. Dolutegravir  
323 in antiretroviral-naïve adults with HIV-1: 96-week results from a randomized dose-ranging  
324 study. *AIDS.* 2013;27: 1771. doi:10.1097/QAD.0b013e3283612419
- 325 7. Kanters S, Vitoria M, Zoratti M, Doherty M, Penazzato M, Rangaraj A, et al. Comparative  
326 efficacy, tolerability and safety of dolutegravir and efavirenz 400mg among antiretroviral  
327 therapies for first-line HIV treatment: A systematic literature review and network meta-  
328 analysis. *EClinicalMedicine.* 2020;28. doi:10.1016/j.eclinm.2020.100573

- 329 8. Ajose O, Mookerjee S, Mills EJ, Boulle A, Ford N. Treatment outcomes of patients on  
330 second-line antiretroviral therapy in resource-limited settings: a systematic review and  
331 meta-analysis. *AIDS*. 2012;26: 929–938. doi:10.1097/QAD.0b013e328351f5b2
- 332 9. Edessa D, Sisay M, Asefa F. Second-line HIV treatment failure in sub-Saharan Africa: A  
333 systematic review and meta-analysis. *PLOS ONE*. 2019;14: e0220159.  
334 doi:10.1371/journal.pone.0220159
- 335 10. Chkhartishvili N, Sharvadze L, Dvali N, Karchava M, Rukhadze N, Lomtadze M, et al.  
336 Virologic outcomes of second-line antiretroviral therapy in Eastern European country of  
337 Georgia. *AIDS Res Ther*. 2014;11: 18. doi:10.1186/1742-6405-11-18
- 338 11. Musana H, Ssensamba JT, Nakafeero M, Mugerwa H, Kiweewa FM, Serwadda D, et al.  
339 Predictors of failure on second-line antiretroviral therapy with protease inhibitor mutations  
340 in Uganda. *AIDS Res Ther*. 2021;18: 1–10. doi:10.1186/s12981-021-00338-y
- 341 12. Seid A, Cherie N, Ahmed K. Determinants of Virologic Failure Among Adults on Second  
342 Line Antiretroviral Therapy in Wollo, Amhara Regional State, Northeast Ethiopia.  
343 *HIVAIDS - Res Palliat Care*. 2020;12: 697–706. doi:10.2147/HIV.S278603
- 344 13. Gill N, Bergh RV den, Kyaw KWY, Laxmeshwar C, Das M, Rastogi S, et al. Genotyping  
345 and outcomes of presumptive second line ART failure cases switched to third line or  
346 maintained on second line ART in Mumbai, India. *PLOS ONE*. 2019;14: e0225631.  
347 doi:10.1371/journal.pone.0225631
- 348 14. Orrell C, Hagins DP, Belonosova E, Porteiro N, Walmsley S, Falcó V, et al. Fixed-dose  
349 combination dolutegravir, abacavir, and lamivudine versus ritonavir-boosted atazanavir  
350 plus tenofovir disoproxil fumarate and emtricitabine in previously untreated women with  
351 HIV-1 infection (ARIA): week 48 results from a randomised, open-label, non-inferiority,  
352 phase 3b study. *Lancet HIV*. 2017;4: e536–e546. doi:10.1016/S2352-3018(17)30095-4
- 353 15. Paton NI, Musaaazi J, Kityo C, Walimbwa S, Hoppe A, Balyegisawa A, et al. Dolutegravir  
354 or Darunavir in Combination with Zidovudine or Tenofovir to Treat HIV. *N Engl J Med*.  
355 2021;385: 330–341. doi:10.1056/NEJMoa2101609
- 356 16. Brown D, Kaplan R, Losso M, Brites C, Wang R, Underwood M, et al. Efficacy of second-  
357 line dolutegravir plus 2 nucleoside reverse transcriptase inhibitors by baseline nucleoside  
358 reverse transcriptase inhibitor resistance and nucleoside reverse transcriptase inhibitor use  
359 in the DAWNING study. *Antivir Ther*. 2022;27: 13596535221077487.  
360 doi:10.1177/13596535221077487
- 361 17. Todd S, Rafferty P, Walker E, Hunter M, Dinsmore W, Donnelly C, et al. Early clinical  
362 experience of dolutegravir in an HIV cohort in a larger teaching hospital. *Int J STD AIDS*.  
363 2017;28: 1074–1081. doi:10.1177/0956462416688127
- 364 18. Correa A, Monteiro P, Calixto F, Batista J d’Arc L, Ximenes RA de A, Montarroyos UR.  
365 Dolutegravir: Virologic response and tolerability of initial antiretroviral regimens for adults  
366 living with HIV. *PLOS ONE*. 2020;15: e0238052. doi:10.1371/journal.pone.0238052

- 367 19. Chimbetete C, Shamu T, Keiser O. Zimbabwe's national third-line antiretroviral therapy  
368 program: Cohort description and treatment outcomes. PLOS ONE. 2020;15: e0228601.  
369 doi:10.1371/journal.pone.0228601
- 370 20. Shamu T, Chimbetete C, Shawarira–Bote S, Mudzviti T, Luthy R. Outcomes of an HIV  
371 cohort after a decade of comprehensive care at Newlands Clinic in Harare, Zimbabwe:  
372 TENART cohort. PLOS ONE. 2017;12: e0186726. doi:10.1371/journal.pone.0186726
- 373 21. Guidelines for Antiretroviral Therapy for the Prevention and Treatment of HIV in  
374 Zimbabwe, 2016. National Medicines and Therapeutics Policy Advisory Committee  
375 (NMT PAC) and The AIDS and TB Directorate, Ministry of Health and Child Care,  
376 Zimbabwe; 2016.
- 377 22. Chammartin F, Dao Ostinelli CH, Anastos K, Jaquet A, Brazier E, Brown S, et al.  
378 International epidemiology databases to evaluate AIDS (IeDEA) in sub-Saharan Africa,  
379 2012-2019. BMJ Open. 2020;10: e035246. doi:10.1136/bmjopen-2019-035246
- 380 23. Vehtari A, Gelman A, Gabry J. Practical Bayesian model evaluation using leave-one-out  
381 cross-validation and WAIC. Stat Comput. 2017;27: 1413–1432. doi:10.1007/s11222-016-  
382 9696-4
- 383 24. Lailulo Y, Kitenge M, Jaffer S, Aluko O, Nyasulu PS. Factors associated with antiretroviral  
384 treatment failure among people living with HIV on antiretroviral therapy in resource-poor  
385 settings: a systematic review and metaanalysis. Syst Rev. 2020;9: 292. doi:10.1186/s13643-  
386 020-01524-1
- 387 25. Kouamou V, Mavetera J, Manasa J, Ndhlovu CE, Katzenstein D, McGregor AM.  
388 Pretreatment HIV Drug Resistance Among Adults Initiating or Re-Initiating First-Line  
389 Antiretroviral Therapy in Zimbabwe: Fast-Tracking the Transition to Dolutegravir-Based  
390 First-Line Regimens? AIDS Res Hum Retroviruses. 2021;37: 776–783.  
391 doi:10.1089/AID.2020.0242
- 392 26. Neuhann F, de Forest A, Heger E, Nhlema A, Scheller C, Kaiser R, et al. Pretreatment  
393 resistance mutations and treatment outcomes in adults living with HIV-1: a cohort study in  
394 urban Malawi. AIDS Res Ther. 2020;17: 22. doi:10.1186/s12981-020-00282-3
- 395 27. Boender TS, Hoenderboom BM, Sigaloff KCE, Hamers RL, Wellington M, Shamu T, et al.  
396 Pretreatment HIV drug resistance increases regimen switches in sub-Saharan Africa. Clin  
397 Infect Dis Off Publ Infect Dis Soc Am. 2015;61: 1749–1758. doi:10.1093/cid/civ656
- 398 28. Mungati M, Mhangara M, Gonese E, Mugurungi O, Dzangare J, Ngwende S, et al. Pre-  
399 treatment drug resistance among patients initiating antiretroviral therapy (ART) in  
400 Zimbabwe: 2008–2010. BMC Res Notes. 2016;9: 302. doi:10.1186/s13104-016-2101-8
- 401 29. Madyadi A, Dhoro M, Shamu T, Washaya T, Kouamou V, Chimukangara B, et al. HIV-1  
402 Genetic Diversity and Natural Polymorphisms of the Integrase Gene in Integrase Inhibitor-  
403 Naive Patients in Harare, Zimbabwe. AIDS Res Hum Retroviruses. 2021;37: 954–961.  
404 doi:10.1089/aid.2021.0084

- 405 30. Maartens G, Meintjes G. Resistance matters in EARNEST. *Lancet HIV*. 2017;4: e323–  
406 e324. doi:10.1016/S2352-3018(17)30087-5
- 407 31. Mehari EA, Muche EA, Gonete KA. Virological Suppression and Its Associated Factors of  
408 Dolutegravir Based Regimen in a Resource-Limited Setting: An Observational  
409 Retrospective Study in Ethiopia. *HIV/AIDS Auckl NZ*. 2021;13: 709–717.  
410 doi:10.2147/HIV.S316776
- 411 32. Getawa S, Fentahun A, Adane T, Melku M. Antiretroviral Treatment Failure and  
412 Associated Factors Among HIV-Infected Children on Antiretroviral Therapy: A  
413 Retrospective Study. *HIV/AIDS - Res Palliat Care*. 2021;13: 229–237.  
414 doi:10.2147/HIV.S294046
- 415 33. Fernández-Bargiela N, Rotea-Salvo S, Margusino-Framiñán L, Balboa-Barreiro V, Martín-  
416 Herranz I, Castro-Iglesias Á, et al. Discontinuation due to neuropsychiatric adverse events  
417 with efavirenz- and dolutegravir-based antiretroviral therapy: a comparative real-life study.  
418 *Eur J Hosp Pharm*. 2022;29: 207–211. doi:10.1136/ejhpharm-2020-002374
- 419 34. Frescura L, Godfrey-Faussett P, Feizzadeh A. A, El-Sadr W, Syarif O, Ghys PD. Achieving  
420 the 95 95 95 targets for all: A pathway to ending AIDS. *PLoS ONE*. 2022;17: e0272405.  
421 doi:10.1371/journal.pone.0272405
- 422 35. Kasimonje B, Shamu T, Mudzviti T, Luethy R. Group counselling for adherence support  
423 among young people failing first-line antiretroviral therapy in Zimbabwe. *South Afr J HIV  
424 Med*. 2021;22. doi:10.4102/sajhivmed.v22i1.1292
- 425 36. Chimbetete C, Chirimuta L, Pascoe M, Keiser O. A case report of untreatable HIV infection  
426 in Harare, Zimbabwe. *South Afr J HIV Med*. 2019;20: 1–4.  
427 doi:10.4102/sajhivmed.v20i1.885
- 428 37. Chirimuta LAM, Pascoe MJ, Lowe S. Emergent dolutegravir resistance in integrase-naïve,  
429 treatment experienced patients from Zimbabwe. *South Afr J HIV Med*. 2022;23: 3.  
430 doi:10.4102/sajhivmed.v23i1.1435
- 431 38. van Oosterhout JJ, Chipungu C, Nkhoma L, Kanise H, Hosseinipour MC, Sagno JB, et al.  
432 Dolutegravir Resistance in Malawi’s National HIV Treatment Program. *Open Forum Infect  
433 Dis*. 2022;9: ofac148. doi:10.1093/ofid/ofac148
- 434 39. Stephan C, Hill A, Sawyer W, van Delft Y, Moecklinghoff C. Impact of baseline HIV-1  
435 RNA levels on initial highly active antiretroviral therapy outcome: a meta-analysis of  
436 12,370 patients in 21 clinical trials\*. *HIV Med*. 2013;14: 284–292. doi:10.1111/hiv.12004
- 437 40. Gupta R, Hill A, Sawyer AW, Pillay D. Emergence of Drug Resistance in HIV Type 1–  
438 Infected Patients after Receipt of First-Line Highly Active Antiretroviral Therapy: A  
439 Systematic Review of Clinical Trials. *Clin Infect Dis*. 2008;47: 712–722.  
440 doi:10.1086/590943

- 441 41. Greig JE, Cros PA du, Mills C, Ugwoeruchukwu W, Etsetowaghan A, Grillo A, et al.  
442 Predictors of Raised Viral Load during Antiretroviral Therapy in Patients with and without  
443 Prior Antiretroviral Use: A Cross-Sectional Study. PLOS ONE. 2013;8: e71407.  
444 doi:10.1371/journal.pone.0071407
- 445 42. Palladino C, Briz V, Bellón JM, Bártolo I, Carvalho P, Camacho R, et al. Predictors of  
446 Attrition and Immunological Failure in HIV-1 Patients on Highly Active Antiretroviral  
447 Therapy from Different Healthcare Settings in Mozambique. PLOS ONE. 2013;8: e82718.  
448 doi:10.1371/journal.pone.0082718
- 449 43. Chimbetete C, Katzenstein D, Shamu T, Spoerri A, Estill J, Egger M, et al. HIV-1 Drug  
450 Resistance and Third-Line Therapy Outcomes in Patients Failing Second-Line Therapy in  
451 Zimbabwe. Open Forum Infect Dis. 2018;5: ofy005. doi:10.1093/ofid/ofy005

452

## 453 **Supporting information**

454 **S1 Table. Model comparison: Difference in expected log pointwise predictive density**  
455 **(ELPD) and its standard error for a new dataset estimated by approximate leave-one out**  
456 **cross validation.**

457 **S2 Figure. Predicted (colour) and crude/observed (black) proportions (with 95% credible**  
458 **intervals) of viral load suppression stratified by all covariates included in the model fit.**

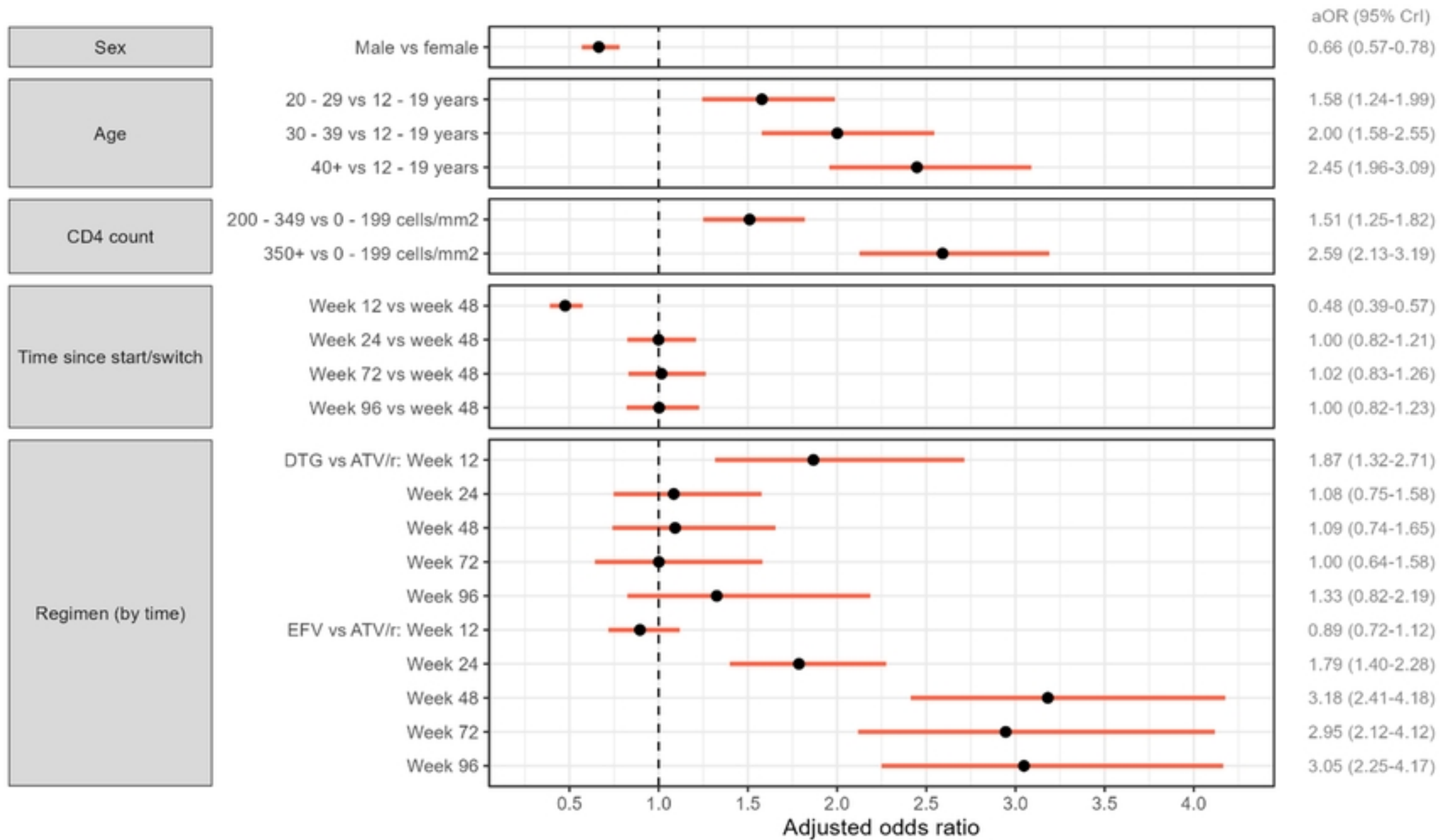


Figure 2

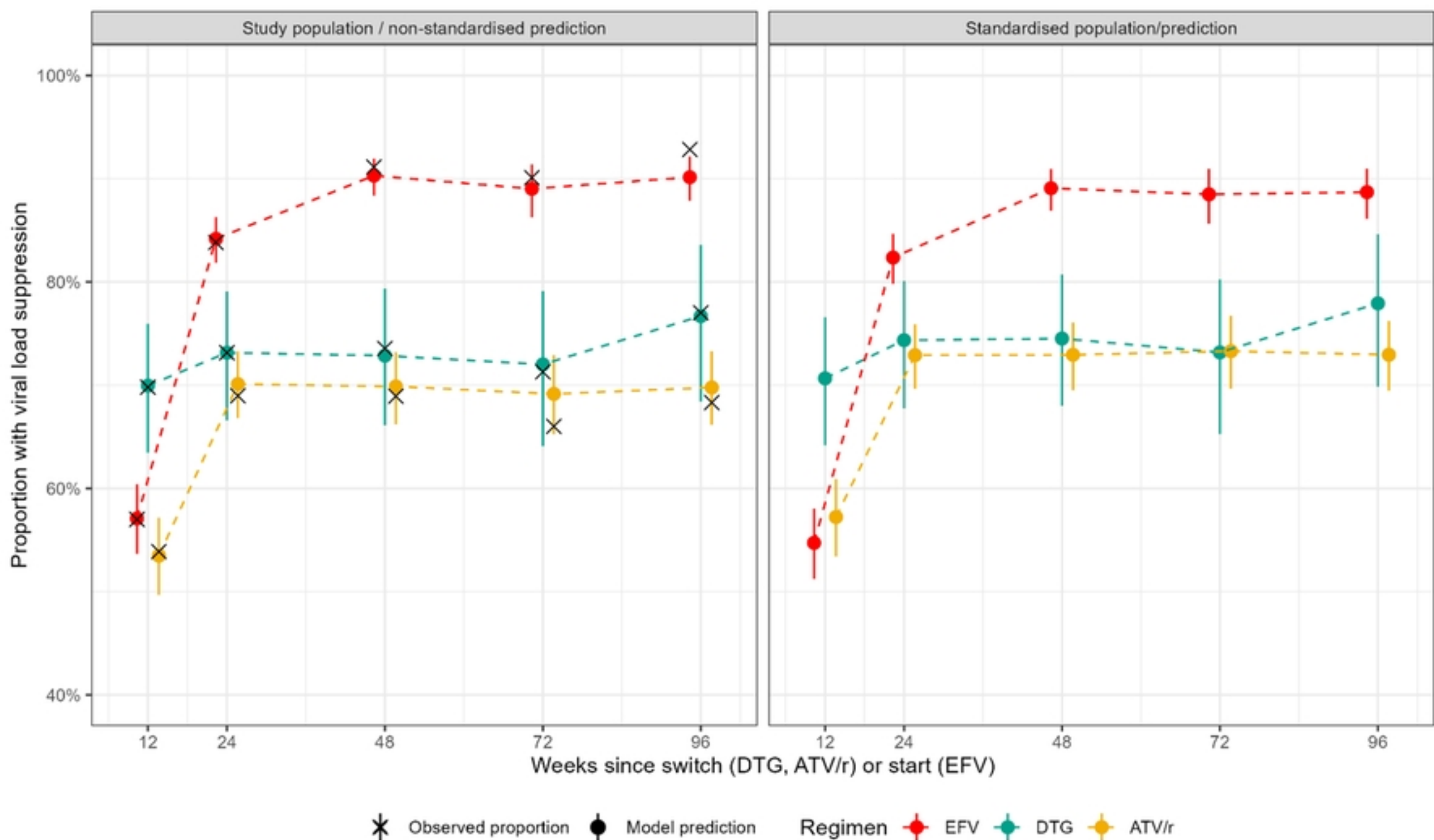


Figure 3

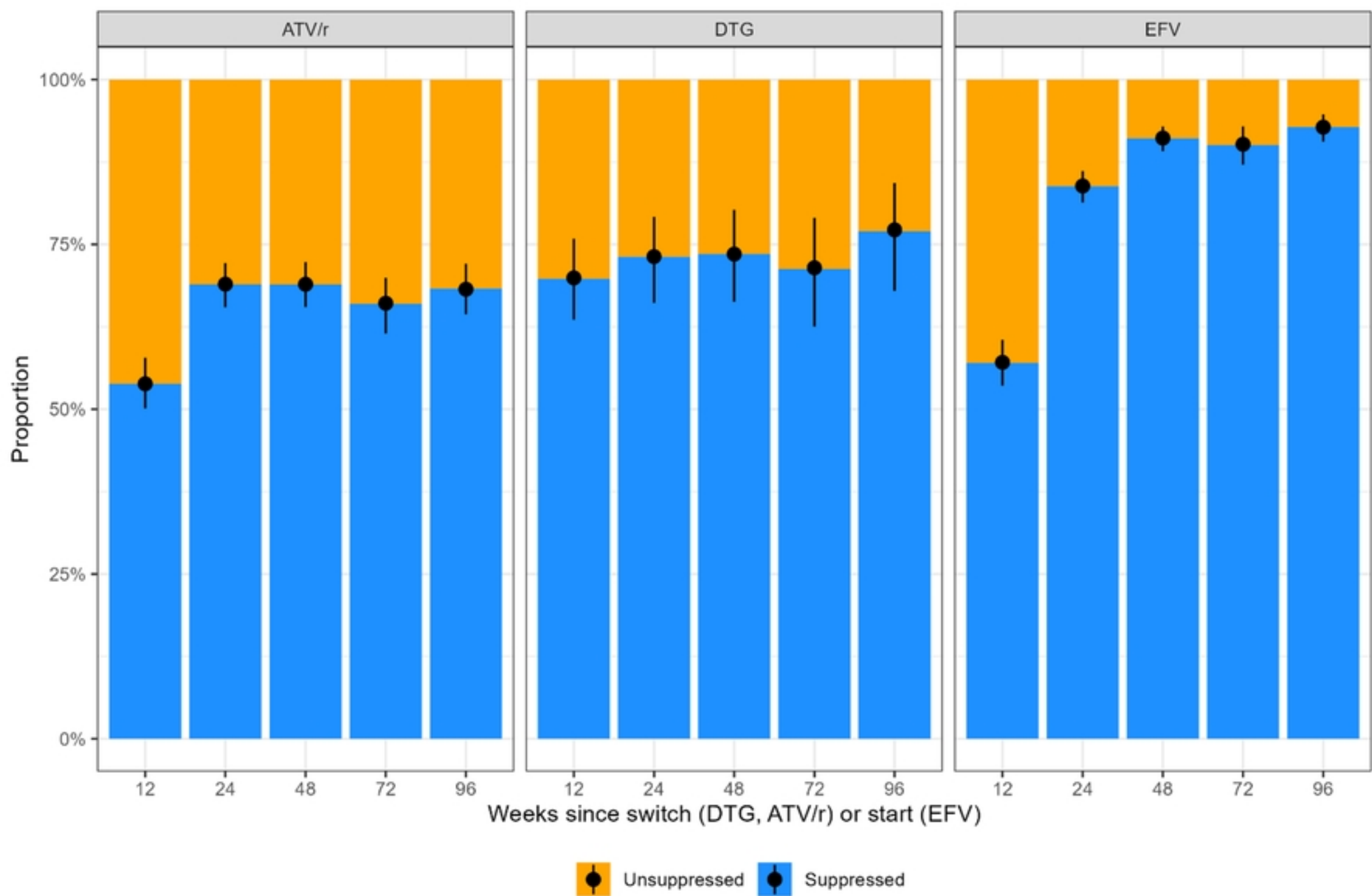


Figure 1