

1 **Differential clinical characteristics across traditional Chinese medicine (TCM)** 2 **syndromes in patients with sickle cell disease**

3
4 **Ying Wang^{1,2*}, David D Wang³, Andrew Q Pucka¹, Andrew RW O'Brien^{2,4}, Steven E Harte⁵**
5 **and Richard E Harris^{5,6}**

6 ¹Department of Anesthesia, Stark Neurosciences Research Institute, Indiana University School
7 of Medicine, Indianapolis, IN, USA

8 ²Division of Hematology/Oncology, Department of Medicine, Indiana University School of
9 Medicine, Indianapolis, IN, USA

10 ³Center for Integrative Health, The Ohio State University, Columbus, OH, USA

11 ⁴Indiana University Simon Cancer Center, Indianapolis, IN, USA

12 ⁵Chronic Pain and Fatigue Research Center, Department of Anesthesiology, University of
13 Michigan Medical School, Ann Arbor, MI, USA

14 ⁶Susan Samueli Integrative Health Institute, and Department of Anesthesiology and
15 Perioperative Care, School of Medicine, University of California at Irvine, Irvine, CA, USA

16 *** Correspondence:**
17 Corresponding Author
18 ywa12@iu.edu

19
20 **Key words:** Sickle cell disease, Pain, Traditional Chinese Medicine, Syndrome differentiation,
21 Acupuncture, Patient-reported outcomes, Quantitative sensory testing, Morphine milligram
22 equivalents

23 **Abstract**

24 **Background:** Pain is a common, debilitating, and poorly understood complication of sickle cell
25 disease (SCD). The need for clinical pain management of SCD is largely unmet and relies on
26 opioids as the main therapeutic option, which leads to a decreased quality of life (QoL).
27 According to the literature, acupuncture has shown certain therapeutic effects for pain
28 management in SCD. However, these clinical studies lack the guidance of Traditional Chinese
29 Medicine (TCM) Syndrome Differentiation principles for treatment.

30 **Aim:** To characterize differences in clinical presentation amongst TCM-diagnosed syndromes in
31 SCD patients.

32 **Method:** 52 patients with SCD and 28 age- and sex-matched healthy controls (HCs) were
33 enrolled in an ongoing trial of acupuncture. Each participant completed a series of
34 questionnaires on pain, physical function, fatigue, sleep, anxiety, depression, and QoL and
35 underwent cold- and pressure-based quantitative sensory testing at baseline. Data on
36 prescription opioid use over the 12 months prior to study enrollment was used to calculate mean
37 daily morphine milligram equivalents (MME). Differences among the three TCM syndromes
38 were analyzed by one-way ANOVA followed by Tukey post hoc testing. Two-sample t-tests
39 were used to compare SCD and HC groups.

TCM Syndrome Differentiation in SCD

40 **Results:** TCM diagnosis criteria classified SCD patients into one of three TCM syndromes: a)
41 Equal; b) Deficiency; and c) Stagnation. The Stagnation group exhibited higher pain
42 interference, physical dysfunction, nociplastic pain, fatigue, anxiety, depression, MME
43 consumption, and lower sleep quality and QoL compared to the Equal group. Few differences
44 were observed between HCs and the Equal SCD group across outcomes. Deficiency and
45 Stagnation groups were differentiated with observed- and patient-reported clinical
46 manifestations.

47 **Conclusion:** These findings suggest that TCM-diagnosed syndromes in SCD can be
48 differentially characterized using validated objective and patient-reported outcomes. Because
49 characteristics of pain and co-morbidities in each SCD patient are unique, targeting specific
50 TCM “syndromes” may facilitate treatment effectiveness with a syndrome-based personalized
51 treatment plan that conforms to TCM principles. These findings lay the foundation for the
52 development of tailored acupuncture interventions based on TCM syndromes for managing pain
53 in SCD. Larger samples are required to further refine and validate TCM diagnostic criteria for
54 SCD.

55

56

TCM Syndrome Differentiation in SCD

57 1. Introduction

58
59 Pain in sickle cell disease (SCD) is both common and debilitating. While the pain can be chronic
60 in nature, severe acute vaso-occlusive pain crises (VOC) are also present in many of these
61 individuals, resulting in recurrent pain episodes that are unpredictable, and frequently require
62 hospitalization. As such VOCs are a leading factor lowering the quality of life (QoL) in SCD (1).
63 While opioids are the main therapeutic option for managing these events, there are limited
64 alternative and effective treatments beyond opioids for these patients (2).

65 Acupuncture, a mainline component of traditional Chinese medicine (TCM), has been used for
66 over four-thousand years and has been recognized as an effective treatment approach for
67 chronic and acute pain conditions (3, 4). Emerging data suggests that acupuncture may
68 alleviate pain in both adult and pediatric patients with SCD (5-8). However, a key principle of
69 TCM practice is “treatment based on differentiation of syndrome” wherein patients are evaluated
70 on a set of diagnostic criteria which can allow classification into a specific TCM syndrome for
71 customized treatment. This classification, along with consideration of additional individual
72 specific symptom patterns, guides the tailored selection of acupuncture points to treat a
73 particular patient (9, 10).

74 Two recent studies categorized different TCM patterns in women with pelvic pain (11) or
75 fibromyalgia (12). These studies showed that there were 6 TCM patterns in female patients with
76 pelvic pain whereas 3 TCM patterns in women with fibromyalgia. There have been no studies
77 on TCM syndrome differentiation in SCD. The small sample size and failure to apply TCM
78 principles in previous studies of SCD have made it difficult to assess the full potential benefit of
79 acupuncture for SCD. For example, it is not known if subgroups of SCD patients exhibit different
80 pathogenic features when classified by TCM principles. Identification of different subtypes may
81 also be relevant for other therapies in SCD.

82 The classic pathophysiology of SCD is polymerization of deoxy sickle hemoglobin which leads
83 to a complex interplay of disrupted red blood cell rheology, hemolysis, inflammation, and
84 vasculopathy. However, pain in SCD is not well understood, and is characterized by substantial
85 heterogeneity in clinical manifestation and underlying pathophysiology (16-24). Notably, clinical
86 pain varies in many aspects including quality, intensity, location, and duration under both
87 chronic and VOC stages. The onset of VOCs can happen anywhere in the body, with the most
88 painful sites being consistent or fixed, and ranging from mild to severe intensity during a specific
89 VOC crisis. The frequency of VOCs also varies widely in SCD with a recent systematic review
90 reporting a range of 0 to 18.2 per year (25), and variable distribution of VOCs throughout the
91 year between individuals. Finally, occurrence of VOCs can also be triggered by various
92 multidimensional factor(s), such as temperature, mental stress, dehydration, and/or fatigue.
93 These individual differences add significant challenges in the currently unmet management of
94 clinical pain in SCD and thus strongly warrants the need for individualized diagnosis and
95 personalized treatment. Establishing TCM syndrome differentiation in SCD to help guide
96 acupuncture treatment is the current priority.

97 Here we report preliminary baseline data from our ongoing randomized sham-controlled trial of
98 acupuncture for SCD (ClinicalTrials.gov Identifier: NCT05045820). Patients with SCD were
99 classified into three different TCM syndrome groups prior to treatment according to TCM
100 principles. Our objective was to investigate differences in patient reported outcome measures

TCM Syndrome Differentiation in SCD

101 (PROMs), quantitative sensory testing (QST), and blood-based assessments across these TCM
102 syndrome groups.

103 **2. Methods**

104 **2.1. Participants**

105 Fifty-two patients with SCD (25 male and 27 female), aged 14-73, were enrolled. The main
106 inclusion eligibility criteria included: 1) experiencing chronic pain in the past 6 months or at least
107 one VOC in the past 12 months, 2) no recent history of initiating or adjusting the dose of
108 stimulant medications, 3) willing to maintain current treatments, and 4) willing to not introduce
109 any new medications or treatment modalities for control of pain symptoms during the study.
110 Detailed inclusion and exclusion criteria can be found in Supplementary Table 1. Participants'
111 demographics can be found in Table 1. Twenty-eight pain-free ethnicity-, age- and gender-
112 matched participants without SCD were enrolled as healthy controls (HCs). A subset of SCD
113 and HCs were matched on age and gender for comparisons of PROMs (n=25-27 each) and
114 QST (n=21-28 each).

115 Patients underwent a TCM diagnostic examination and phenotyping with validated PROMs,
116 QST, and blood tests. HCs completed PROMs, QST, and blood tests. The study was approved
117 by the Institutional Review Board at Indiana University. All patients provided written informed
118 consent before the study.

119 **2.2. TCM diagnosis**

120 Participants who completed the baseline stage of data collection were then randomized to either
121 verum or sham acupuncture for 5 weeks. All data presented here are cross-sectional at
122 baseline. Longitudinal results related with acupuncture intervention will be reported elsewhere.
123 TCM diagnosis was performed before the treatment by one practitioner with over 15 years of
124 clinical experience. This practitioner utilized a standardized procedure with TCM diagnostic
125 methods such as "Observation," "Listening and Smelling," "Inquiry," and "Pulse-feeling and
126 palpation" (see Supplementary Table 2) (26). Following differentiation of syndrome, patients
127 were classified into one of three TCM syndrome groups: a) "Stagnation greater than deficiency"
128 (abbreviated as "Stagnation"), b) "Deficiency greater than stagnation" (abbreviated as
129 "Deficiency"), and c) "Equal stagnation and deficiency" (abbreviated as "Equal"). Diagnoses
130 were confirmed in a blinded manner by a second practitioner with more than 20 years of
131 experience.

132 **2.3. Patient reported outcome measures (PROMs)**

133 Pain (pain intensity and interference), physical function, and satisfaction with one's social role
134 were assessed with the PROMIS-29 (27). Neuropathic pain symptoms were evaluated using the
135 PainDETECT (28, 29). The Fibromyalgia Survey Questionnaire (FSQ), which consists of the
136 Widespread Pain Index and the Symptom Severity scale (30, 31), was utilized as a surrogate
137 measure of nociplastic pain. Fatigue and quality of sleep were assessed using the Multi-
138 dimensional Fatigue Inventory (MFI) (32) and the Pittsburgh Sleep Quality Index (PSQI) (17),
139 respectively. Anxiety and depression were evaluated using Hospital Anxiety and Depression
140 Scale (HADS) (17).

141 **2.4. Quantitative sensory testing (QST)**

TCM Syndrome Differentiation in SCD

142 QST is an established experimental protocol that examines ascending excitatory and descending
143 inhibitory aspects of pain processing by assessing an individual's perceptual response to applied
144 stimuli. QST was conducted at up to three different body sites: the primary testing site was the
145 most painful area of the body as reported by each patient; the dominant-side ventral forearm,
146 and/or the dominant-side upper trapezius muscle as in previous SCD studies (33, 34). For non-
147 SCD controls, primary testing sites matched those identified in SCD patients in addition to testing
148 at the dominant forearm and/or trapezius.

149 Thermal (heat/cold) Detection / Pain Threshold was determined at each testing site using a
150 TCA11 (QST-Lab, France) with a thermal probe in contact with the subject's skin surface. The
151 thermode temperature was increased/decreased from a baseline temperature by adapting to the
152 individual 's own body temperature at a rate of 0.5-1 °C/s. Subjects indicated the thermal detection
153 threshold (when they first felt the thermal stimuli) and the pain threshold (when they first felt pain
154 from the thermal stimuli). The average of three trials of each test was used for analysis.

155 Mechanical Detection Threshold / Mechanical Pain Threshold was examined using von Frey
156 monofilaments (Stoelting Co., USA) and calibrated pinprick stimuli (MRC Systems GmbH,
157 Germany). Each von Frey monofilament was applied three times in ascending sequence until the
158 stimulus was detected in at least two of the three trials. Then, the next lower von Frey
159 monofilament was applied, and the lowest filament to be detected at least twice was determined
160 as the mechanical detection threshold. The mechanical pain threshold was determined using
161 different pinprick probes applied to the skin surface of each site. Testing started with a stimulation
162 intensity of 8 mN and in each case, the next higher pinprick stimulator was applied until the
163 perception of "touch" changed its quality towards an additional "sharp", "pricking" or "stinging"
164 impression. The corresponding intensity represented the first suprathreshold value. Once the first
165 painful stimulus was perceived, the testing direction was changed towards lower stimulus
166 intensities until the first stimulus, when applied to the skin, that was perceived as "blunt" and no
167 longer as being "sharp", "pricking" or "stinging" (subthreshold value). Again, a directional change
168 towards higher intensities occurred and the cycle was repeated until all five supra- and five
169 subthreshold values were found that represent the inflection point to determine the mechanical
170 pain threshold.

171 Temporal Summation of Pain (TSP) was assessed using single stimulus in triplicate with a 256
172 mN pinprick (MRC Systems GmbH) applied to the skin surface of the selected sites, followed by
173 a series of 10 identical stimuli (1 Hz – metronome-guided). TSP was calculated as the average
174 pain rating from the series of 10 stimuli minus the average pain rating from the three trials with
175 the single stimulus.

176 Pressure Pain Threshold (PPT) / Pressure Pain Tolerance (PPTol) was assessed using a digital,
177 handheld, clinical grade pressure algometer (Algometer II, Somedic SenseLab AB, Sweden). The
178 pressure was manually increased at a rate of 50 kPa/s (1000 kPa max) until participants indicated
179 that the sensation of pressure becomes one of faint pain (PPT) and the maximum pressure pain
180 that the participant can tolerate (PPTol), respectively. The average of 3 trials per site was used
181 for analysis.

182 Conditioned Pain Modulation (CPM): A sustained pressure pain stimulus was used as the
183 conditioning stimulus delivered using a cuff inflator on the gastrocnemius muscle of the non-
184 dominant leg to elicit moderate pain (pain rating at 40-60 on a scale of 100) (35, 36). The PPT
185 was then measured 3 times at the primary site and at the dominant trapezius muscle prior to and
186 during the cuff stimulation. Pain ratings were obtained every 15 s prior to and during cuff
187 conditioned stimuli. CPM magnitude was calculated as PPT during cuff pressure minus PPT at
188 baseline .

TCM Syndrome Differentiation in SCD

189

190 **2.5. SCD specific outcomes and morphine milligram equivalent (MME)**

191 The severity and frequency of pain crises were assessed by the Adult Sickle Cell Quality-of-Life
192 Measurement Information System (ASCQ-ME) (37), and the number of patient-reported pain
193 crises in the preceding 12 months was documented, a method which is commonly used in pain
194 research for SCD (18, 38). Pain-related QoL was evaluated using the Pediatric Quality of Life
195 Inventory (PedsQL) (39). The average MME in the preceding 12 months was calculated using
196 prescription data for opioid use before study enrollment. These data were retrieved from
197 patients' medical records and used to calculate the mean daily MME for each opioid, following
198 the Centers for Disease Control recommended MME dose calculation formula (40): {strength
199 per unit X number of units X number of prescriptions X MME conversion factor} / number of
200 days = MME/Day.

201 **2.6. Hematological analysis**

202 Laboratory blood testing, including complete blood cell count, reticulocytes, and hemoglobin
203 electrophoresis, was conducted on the day of TCM diagnosis (Supplementary Table 5).

204 **2.7. Statistical analysis**

205 Assessment of differences between TCM syndrome groups was performed using one-way
206 analysis of variance (ANOVA) followed by Tukey post hoc testing. Two-sample t-tests (two
207 tailed) were used to compare a subset of SCD patients and matched HCs at baseline. P-values
208 less than 0.05 were considered significant. All analyses were conducted using GraphPad Prism
209 software.

210 **3. Results**

211 **3.1. Demographics**

212 Demographic information is shown in Table 1. TCM groups did not differ in age ($p=0.373$),
213 although the Stagnation group presented with a lower median age as compared to other groups.
214 The Deficiency group showed significantly lower weight and body mass index (BMI) as
215 compared with both the HCs and Stagnation group ($p=0.0032$; $p=0.0002$), respectively. The
216 Stagnation group also had more participants numerically with chronic transfusion compared to
217 the Deficiency and Equal groups. The distribution of hydroxyurea users was also numerically
218 higher in the Deficiency group compared to the other two groups, but this was not statistically
219 significant. Each SCD genotype was equally distributed across the three TCM groups.

220 **3.2. Clinical Characteristics**

221 All three TCM syndrome groups showed increased pain intensity and interference, as well as
222 symptoms of neuropathic pain, compared to the control group (Table 2). However, only the
223 Stagnation and Deficiency groups reported worse sleep quality, increased levels of fatigue,
224 anxiety, and depression relative to HCs. In addition, it is worth noting that patients with SCD
225 also reported pain in more body areas on the Widespread Pain Index and higher overall
226 fibromyalgia severity. In a subset of SCD patients and matched HCs, the patients reported
227 comprehensive physiological and psychological dysfunction (Supplementary Table 3),
228 consistent with previous studies (17, 20, 28, 37).

TCM Syndrome Differentiation in SCD

229 Compared to the Equal group, both the Stagnation ($p=0.0013$) and Deficiency ($p=0.0046$)
230 groups reported increased multi-dimensional pain interference. Both groups also showed higher
231 total scores for the FSQ ($p=0.0328$ Vs Deficiency and $p=0.0477$ Vs Stagnation) compared to the
232 Equal group, while the Stagnation group displayed significantly higher Symptom Severity
233 Scores ($p=0.0013$). Additionally, both the Deficiency and Stagnation groups exhibited worse
234 sleep quality than the Equal group ($p=0.0293$ Vs Deficiency and $p=0.0277$ Vs Stagnation).
235 Furthermore, compared to the Equal group, the Stagnation group showed significantly reduced
236 physical function ($p=0.0131$) and elevated fatigue ($p=0.0342$), anxiety ($p=0.0119$), and
237 depression ($p=0.0035$).

238 Notably, the Stagnation ($n=6.526 \pm 4.718$) and Deficiency ($n=5.19 \pm 3.855$) groups exhibited a
239 higher frequency of pain crises compared to the Equal group ($n=1.714 \pm 1.684$) (Fig.1A) along
240 with higher combined pain crisis recency/severity as assessed by the ASCQ-ME (Fig. 1C), and
241 lowest SCD pain-related QoL (Fig 1E), despite no difference in pain severity during crisis
242 between groups (Fig. 1D). Additionally, both Stagnation ($p=0.0011$) and Deficiency ($p=0.0029$)
243 groups had significantly higher opioid usage over the past 12 months compared to the Equal
244 group (Fig. 1B).

245 **QST**

246 Interestingly, no significant differences between TCM groups on any QST outcomes were
247 detected (Table 3), although Deficiency showed an insignificantly elevated MPT (95.38 ± 57.83)
248 and HPT (8.940 ± 2.817) in the forearm whereas Equal group displayed a slightly increased
249 PPT (243.9 ± 94.83) in the trapezius as compared with two other groups for each test.
250 Consistent with previous studies, the differences between SCD and their matched healthy
251 controls exhibited robust changes across mechanical and thermal sensitivity indexes
252 (Supplementary Table 4). In a separate matched subset of SCD patients ($n=28$) and HCs
253 ($n=28$), the patients exhibited decreased mechanical detection thresholds ($p=0.0261$ at the
254 primary painful site), increased mechanical pain thresholds (primary painful site: $p=0.0238$;
255 forearm: $p=0.0358$), pressure pain thresholds (primary painful site: $p=0.0003$; trapezius:
256 $p=0.0107$), pressure pain tolerance (primary painful site: $p=0.0009$; trapezius: $p = 0.0186$), and
257 cold pain thresholds (primary painful site: $p=0.0332$; forearm: $p = 0.0250$), indicating an overall
258 pattern of increased mechanical and thermal sensitivity in SCD.

259 **Hematological Indexes**

260 Fresh blood samples from all patients were analyzed for CBC with differential and hemoglobin
261 electrophoresis (refer to Supplementary Table 5). Most hematological indexes did not present
262 any differences across the three different TCM syndrome groups. However, the Deficiency and
263 Stagnation groups, but not the Equal group, exhibited significantly higher WBC levels compared
264 to HCs.

265 **4. Discussion**

266 Pain and other symptoms are heterogeneously expressed across SCD patients (41). Indeed,
267 the existing literature supports the notion that not all SCD patients have the same underlying
268 pathophysiology, similar to other chronic pain disorders (42). The present work describes
269 individual characteristics that differ between patients with SCD that are categorized by TCM
270 diagnosis.

TCM Syndrome Differentiation in SCD

271 Chronic anemia, recurrent acute vaso-occlusive, and chronic pain are common manifestations
272 of SCD caused by complex pathophysiology from hemoglobin S polymerization, hemolysis,
273 endothelial dysfunction, and vaso-occlusion (43). According to the theory of TCM, symptoms
274 such as low energy or excessive fatigue, sallow complexion, and pale lips and nails, which are
275 caused by chronic anemia, are considered clinical manifestations of deficiency of both qi and
276 blood (9). Recurrent pain in the chest, waist, back, and limbs, including severe pain and swelling
277 of hands and feet caused by capillary microthrombosis, are considered clinical manifestation of
278 blood stasis blocking meridians (44). As such, from a TCM perspective, the pathogenesis of
279 SCD primarily manifests as a deficiency of both qi and blood, accompanied by blood stasis
280 obstructing the meridians. Many individuals across our three TCM syndrome groups
281 consistently displayed anemic manifestations such as pale lips and nails. The features of tongue
282 observed in the TCM syndrome groups mainly reflected blood stasis-related manifestations,
283 such as purple/dark spots in the tongue body. Many individuals across all TCM syndrome
284 groups also presented with weak or thin wiry pulse, with more individuals in the Stagnation
285 group who exhibited knotted pulse features indicating stagnation syndrome. These are
286 consistent with characteristics of the "Bi Syndrome" that has insufficient righteousness and
287 obstruction of meridians by pathogenic factors (45). Moreover, because of its severe pain as the
288 signature of the condition, it may be considered as a form of "Painful Bi" and "Blood Stasis Bi"
289 within the scope of "Bi Syndrome" as the intense pain is mainly caused by the obstruction of
290 meridians by blood stasis.

291 Individuals with SCD enrolled in our study were classified into three main TCM syndromes:
292 Equal, Deficiency, and Stagnation. These syndromes were primarily differentiated on the
293 characteristics of pain (e.g., quality, intensity, onset, time of duration), physical dysfunction (e.g.,
294 fatigue/weak), followed by other symptoms (e.g., ease of sweating, facial complexion, voice, lips
295 or nails, characteristics of "Tongue" and "Pulses"). See Supplementary Table 2 for a full
296 description of diagnostic criteria.

297 The three TCM syndrome groups were differentiated in patient-reported outcomes that were
298 related to pain and somatic symptoms, such as fatigue, physical function, sleep disturbance, as
299 well as SCD related outcomes, including VOC specific pain and frequency and opioid
300 consumption. Noticeably, the Stagnation and Deficiency groups showed greater nociplastic pain
301 features and worse sleep compared to the Equal group. The Stagnation group also exhibited
302 the lowest QOL scores compared to the Equal group. Additionally, the Stagnation group also
303 displayed worse physical dysfunction, and higher levels of anxiety and depression as compared
304 to the other two groups. These results suggest that the Stagnation group may have more
305 nociplastic pain symptoms and other characteristics (sleep/fatigue/mood) that are commonly
306 amplified in fibromyalgia, the canonical nociplastic pain condition. Interestingly, the three groups
307 did not differ significantly in neuropathic pain or QST outcomes (see below). These data
308 suggest that the three TCM groups did not differ with respect to nociceptive and neuropathic
309 pain. Notably, both the Stagnation and Deficiency groups also had more intense pain-related
310 clinical symptoms (Table 2) but differed in the duration and character of pain at the chronic
311 stage of SCD and during acute SCD episodes (Fig.1).

312
313 With respect to SCD pathology, both Stagnation and Deficiency groups presented with higher
314 frequency of VOCs (Fig. 1A and C) and opioid usage (MME) compared to Equal group (Fig.
315 1B). This increase in opioid requirement in the Stagnation group is consistent with nociplastic
316 pain patients having reduced endogenous opioid efficacy (46). Importantly, the Stagnation group
317 also reported the most frequent, intense, and sudden onset of VOCs as their main

TCM Syndrome Differentiation in SCD

318 symptoms/signs, whereas the chief complaint of Deficiency group was more reflected in fatigue,
319 weakness and chronic pain as summarized in Supplementary Table 2. This may explain the
320 difference in general overall pain interference reported across the TCM syndrome groups, with
321 the Stagnation group reporting the highest pain interference.

322
323 We also observed differences between the Deficiency and other two groups based on pain
324 presentation. Noticeably, chronic pain was not always present and was sometimes absent in
325 individuals of both Equal and Stagnation groups. The Deficiency group experienced more
326 profound chronic pain along with Qi and Blood deficiency syndrome as reported in
327 Supplementary Table 2. This long-term persistent pain with recurrent VOCs in the Deficiency
328 group could be related to the significantly lower weight and BMI (Table 1) and RBC
329 (Supplementary Table 5) as compared with Stagnation, which may further explain other co-
330 existing symptoms such as intense fatigue, weakness, and profuse sweating that are also
331 associated with “deficiency” in TCM (Supplementary Table 2).

332
333 The symptoms that may reflect a higher prevalence of “blood stasis” were more prominent in the
334 Stagnation group whereas symptoms of more “blood and Qi Deficiency” were found in the
335 Deficiency group from the TCM perspective. These data suggest a more personalized
336 acupuncture treatment with selected acupoints and corresponding needling manipulations
337 (“reinforce” / “reduce” / “non-reinforce or reduce”) may be needed to treat individual patients
338 based on selected acupoints based on both TCM syndrome differentiation and individual
339 symptoms.

340
341 Interestingly, the SS type of SCD seems to be equally distributed across the three TCM
342 syndrome groups. The SCD subtype HbSS is known to be a more severe form of the disease
343 on average compared to the HbSC genotype (47, 48), and it is positively correlated with the
344 degree of psychological symptoms experienced by the patient (48, 49). More importantly, even
345 though the WBC % was lower in the Equal group, this group presented with comparable levels
346 of all pathological hematological indexes as compared to the two other groups (Supplementary
347 Table 5). This finding may suggest that the less severe clinical symptoms presented in the
348 individuals of Equal group are not related to the SCD genotype but may be associated with
349 other underlying pathophysiological mechanisms in these patients.

350
351 In an effort to examine participant differences in touch and pain sensitivity we also conducted a
352 battery of QST using methods that have been widely applied across various chronic pain
353 conditions. Existing literature documenting altered QST thresholds using fixed testing sites in
354 SCD has identified increased sensitivity in response to thermal/mechanical painful stimuli
355 compared to non-SCD pain-free HCs (17, 33, 34, 50). However, pain in SCD can occur
356 anywhere in the body or sometimes throughout the entire body during an active crisis, and the
357 features and locations of pain can vary significantly among individuals. In our study, patients
358 reported a variety of painful locations including: the lower- and mid- to upper-back, hips,
359 shoulders, thighs, knees, and lower extremities. This occurred during both the steady phase and
360 active crises. Moreover, the painful locations during acute pain episodes under VOC could also
361 be exaggerated or replaced by more painful regions elsewhere (e.g., chest, large joints) or a
362 combination of locations. We did not detect any significant differences in QST outcomes across
363 the three TCM patterns. This suggests that our TCM syndromes were not different across
364 nociceptive experimental pain stimuli. Of note, the 3 TCM groups also did not differ in
365 neuropathic pain symptoms assessed with the PainDETECT questionnaire. As mentioned
366 above, the Stagnation and Deficiency groups displayed higher nociplastic pain symptoms than

TCM Syndrome Differentiation in SCD

367 the Equal groups which was driven mostly by the Symptom Severity sub-scale for the
368 Stagnation group. Overall, these data may suggest involvement of nociplastic pain mechanisms
369 in SCD moreso in the Stagnation and Deficiency groups than the Equal group.

370 Our study has limitations. This is a cross-sectional study; therefore, causation cannot be
371 determined. For example, the two TCM patterns (“Stagnation” and “Deficiency”) had significantly
372 higher opioid consumption (MME) than “Equal” pattern before enrollment, as such we could not
373 determine if there was a relationship between the level of opioid consumption and TCM pattern.
374 Moreover, we could not gauge the potential effects of this medication usage on TCM patterns.
375 The consistent performance of accurate diagnosis relies on the clinical experience of the
376 practitioner and requires training. Our diagnosis criteria were also established based on the
377 enrolled SCD patients in this study and therefore may not be a definitive reference for these
378 results. In addition, the 3 TCM syndromes did not differentiate in other objective parameters
379 such as laboratory exams or QST but primarily in patient-reported outcomes. Thus, this study
380 lacks objective markers associated with different TCM patterns. Future studies should consider
381 a more comprehensive diagnosis regimen at different stages of the disease (e.g., patients at
382 active VOC stages can have different subtypes of Stagnation). The diagnosis criteria should be
383 further validated and standardized in a larger sample size.

384
385 To our knowledge, this is the first and largest clinical trial investigating TCM syndrome
386 diagnoses in SCD. Optimal therapeutic effects could be achieved by administering the TCM-
387 guided treatment protocol with the appropriate acupuncture points and needling manipulations
388 (51). The implementation of TCM syndrome diagnosis can not only guide the acupuncture
389 treatment but also other alternative treatment such as herbology to facilitate consistent and
390 personalized integrative care. The present study provides a novel and objective clinical
391 relevance for TCM diagnosis and lays the foundation for assessing the outcomes of TCM-
392 guided interventions for managing pain not only in SCD but also other clinical population with
393 complex pathophysiology and large heterogeneity needing individualized treatment for optimal
394 clinical outcomes. More in-depth investigations are warranted to enhance evidence-based
395 integrative and complementary pain management in challenging clinical populations such as
396 SCD.

397 **5. Author Contributions**

398 Y.W., D.D.W., and A.Q.P. analyzed, validated, and interpreted the data; Y.W. drafted the
399 manuscript; D.D.W., S.E.H., and R.E.H. revised the manuscript and helped with data
400 interpretation; Y.W. and A.R.O. directed patient recruitment; Y.W. designed the study,
401 supervised the overall study performance, and edited the manuscript.

402 **6. Acknowledgement**

403 The authors would like to thank Brandon Alec Reyes, Tyler James Barret, Nayana Dutt, Payton
404 Mittman, and Bea Paras for assisting with data collection; Candice Debats and Justin Smith for
405 assisting with chart info retrieval and data summarization; and Siddhi Gandhi, Charanjit Kaur,
406 and Veena Vijayan for data management and validation, as well as all the providers affiliated
407 with Indiana University Health and Indiana Hemophilia & Thrombosis Center for patient referral
408 to this study. The authors also thank Indiana University Clinical Research Center and Indiana
409 University Research MRI Center for resource support.

410 **7. Conflict of interest**

TCM Syndrome Differentiation in SCD

411 S.H.E. has consulted for Aptinyx, Memorial Sloan Kettering Cancer Institute, University of North
412 Carolina-Chapel Hill, and University of Glasgow and received grant funding from NIH, Arbor
413 Medical Innovations, and Aptinyx. R.E.H has consulted for Pfizer, Aptinyx Inc. and has received
414 grant funding from Pfizer, Aptinyx, and Cerephex. and National Institutes of Health (NIH). The
415 remaining authors declare no competing interests.

416 **8. Funding Support**

417 This work was supported by NIH K99/R00 award (Grant # 4R00AT010012) and Indiana
418 University Health – Indiana University School of Medicine Strategic Research Initiative funding
419 to Y.W.

420

TCM Syndrome Differentiation in SCD

421 **Tables/Figures**

422 **Table 1.** Demographics. Demographic information of participants in each TCM group and HCs
423 were collected during the screening visit. The demographic indexes did not differ across groups
424 except that weight and body mass index was significantly lower in Deficiency compared to HCs
425 and Stagnation.

426 **Table 2. TCM Groups Differed on Patient Reported Outcomes.** Patient reported outcomes in
427 related with pain (intensity and interference), neuropathic and nociplastic pain syndromes,
428 physical function, sleep, and fatigue were assessed with PROMIS-29, PainDETECT,
429 Fibromyalgia Survey Questionnaires, the Pittsburgh Sleep Quality Index, Multi-dimensional
430 Fatigue Inventory, as well as Hospital Anxiety and Depression Scale. Patients with SCD
431 reported increased pain, physiological and psychological dysfunction as compared with HCs.
432 The Stagnation and Deficiency groups displayed worse outcomes than the Equal group.

433 **Figure 1. SCD Patients Differed on VOC, MME and QoL Across TCM Groups.** The severity
434 and frequency of pain crises and SCD Pain-related QoL were assessed by the ASCQ-ME (**C**)
435 and PedsQL (**E**), respectively while the number of patient-reported pain crises in the preceding
436 12 months was also shown (**A**). The average MME in the preceding 12 months was calculated
437 using: {strength per unit X number of units X number of prescriptions X MME conversion factor}
438 / number of days = MME/Day. Stagnation and Deficiency groups exhibited a higher frequency of
439 pain crises compared to the Equal group ($n=1.714 \pm 1.684$) (**A and C**) and lowest SCD pain-
440 related QoL (**E**). No difference in pain severity during crisis between groups (**D**). Importantly,
441 both Stagnation and Deficiency groups had significantly higher opioid usage over the past 12
442 months compared to the Equal group (**B**).

443 **Table 3. TCM Groups Did not Differ on QST.** No significant differences between TCM groups
444 on any QST outcomes were detected although Deficiency showed an insignificantly elevated
445 Mechanical Pain Threshold and Heat Pain Threshold in the forearm whereas Equal group
446 displayed a slightly but insignificantly increased Pressure Pain Threshold in the trapezius as
447 compared with two other groups.

448 **Supplementary Table 1.** Study Eligibility Criteria.

449 **Supplementary Table 2.** TCM Diagnosis Criteria.

450 **Supplementary Table 3.** Patient with SCD Differed with HCs in Patient Reported Outcomes.

451 **Supplementary Table 4.** Patient with SCD Differed with HCs in QST.

452 **Supplementary Table 5.** Patient with SCD Differed with HCs in Hematological Measures.

453

454

455

TCM Syndrome Differentiation in SCD

456 References

- 457 1. Osunkwo, I., Andemariam, B., Minniti, C.P., Inusa, B.P.D., El Rassi, F., Francis-Gibson,
458 B., et al. Impact of sickle cell disease on patients' daily lives, symptoms reported, and disease
459 management strategies: Results from the international Sickle Cell World Assessment Survey
460 (SWAY). *Am J Hematol.* 2021;96(4):404-17.
- 461 2. Sagi, V., Mittal, A., Tran, H., Gupta, K. Pain in sickle cell disease: current and potential
462 translational therapies. *Transl Res.* 2021;234:141-58.
- 463 3. Vickers, A.J., Cronin, A.M., Maschino, A.C., Lewith, G., MacPherson, H., Foster, N.E., et
464 al. Acupuncture for chronic pain: individual patient data meta-analysis. *Arch Intern Med.*
465 2012;172(19):1444-53.
- 466 4. Xiang, A., Cheng, K., Shen, X., Xu, P., Liu, S. The Immediate Analgesic Effect of
467 Acupuncture for Pain: A Systematic Review and Meta-Analysis. *Evid Based Complement*
468 *Alternat Med.* 2017;2017:3837194.
- 469 5. Williams, H., Tanabe, P. Sickle Cell Disease: A Review of Nonpharmacological
470 Approaches for Pain. *J Pain Symptom Manage.* 2016;51(2):163-77.
- 471 6. Lu, K., Cheng, M.C., Ge, X., Berger, A., Xu, D., Kato, G.J., et al. A retrospective review
472 of acupuncture use for the treatment of pain in sickle cell disease patients: descriptive analysis
473 from a single institution. *Clin J Pain.* 2014;30(9):825-30.
- 474 7. Tsai, S.L., McDaniel, D., Taromina, K., Lee, M.T. Acupuncture for Sickle Cell Pain
475 Management in a Pediatric Emergency Department, Hematology Clinic, and Inpatient Unit.
476 *Medical Acupuncture.* 2015;27(6):510-4.
- 477 8. Li, H., Patil, C.L., Molokie, R.E., Njoku, F., Steffen, A.D., Doorenbos, A.Z., et al.
478 Acupuncture for chronic pain in adults with sickle cell disease: a mixed-methods pilot study.
479 *Acupunct Med.* 2021;39(6):612-8.
- 480 9. Zhang, F. *The Pattern Identification and Treatment of Acumoxotherapy.* Beijing: 2000;
481 2000.
- 482 10. Flaws, B., Sionneau, P. *The Treatment of Modern Western Medical Diseases with*
483 *Chinese Medicine.* Boulder, CO: Blue Poppy Press; 2002.
- 484 11. Arentz, S., Smith, C., Redmond, R., Abbott, J., Armour, M. A cross-sectional study of
485 traditional Chinese medicine practitioner's knowledge, treatment strategies and integration of
486 practice of chronic pelvic pain in women. *BMC Complement Med Ther.* 2021;21(1):174.
- 487 12. Mist, S.D., Wright, C.L., Jones, K.D., Carson, J.W. Traditional Chinese medicine
488 diagnoses in a sample of women with fibromyalgia. *Acupunct Med.* 2011;29(4):266-9.
- 489 13. Deng, G., Mao, J.J. Acupuncture to Reduce Opioid Consumption in Patients with Pain:
490 Getting to the Right Points. *Pain Med.* 2019;20(2):207-8.
- 491 14. Zheng, Z., Gibson, S., Helme, R.D., Wang, Y., Lu, D.S., Arnold, C., et al. Effects of
492 Electroacupuncture on Opioid Consumption in Patients with Chronic Musculoskeletal Pain: A
493 Multicenter Randomized Controlled Trial. *Pain Med.* 2019;20(2):397-410.
- 494 15. Hamza, M.A., White, P.F., Ahmed, H.E., Ghoname, E.A. Effect of the frequency of
495 transcutaneous electrical nerve stimulation on the postoperative opioid analgesic requirement
496 and recovery profile. *Anesthesiology.* 1999;91(5):1232-8.
- 497 16. Campbell, C.M., Carroll, C.P., Kiley, K., Han, D., Haywood, C., Jr., Lanzkron, S., et al.
498 Quantitative sensory testing and pain-evoked cytokine reactivity: comparison of patients with
499 sickle cell disease to healthy matched controls. *Pain.* 2016;157(4):949-56.
- 500 17. Campbell, C.M., Moscou-Jackson, G., Carroll, C.P., Kiley, K., Haywood, C., Jr.,
501 Lanzkron, S., et al. An Evaluation of Central Sensitization in Patients With Sickle Cell Disease. *J*
502 *Pain.* 2016;17(5):617-27.
- 503 18. Darbari, D.S., Hampson, J.P., Ichesco, E., Kadom, N., Vezina, G., Evangelou, I., et al.
504 Frequency of Hospitalizations for Pain and Association With Altered Brain Network Connectivity
505 in Sickle Cell Disease. *J Pain.* 2015;16(11):1077-86.

TCM Syndrome Differentiation in SCD

- 506 19. Belfer, I., Youngblood, V., Darbari, D.S., Wang, Z., Diaw, L., Freeman, L., et al. A GCH1
507 haplotype confers sex-specific susceptibility to pain crises and altered endothelial function in
508 adults with sickle cell anemia. *Am J Hematol.* 2014;89(2):187-93.
- 509 20. Brandow, A.M., Stucky, C.L., Hillery, C.A., Hoffmann, R.G., Panepinto, J.A. Patients with
510 sickle cell disease have increased sensitivity to cold and heat. *Am J Hematol.* 2013;88(1):37-43.
- 511 21. Cataldo, G., Rajput, S., Gupta, K., Simone, D.A. Sensitization of nociceptive spinal
512 neurons contributes to pain in a transgenic model of sickle cell disease. *Pain.* 2015;156(4):722-
513 30.
- 514 22. Hillery, C.A., Kerstein, P.C., Vilceanu, D., Barabas, M.E., Retherford, D., Brandow, A.M.,
515 et al. Transient receptor potential vanilloid 1 mediates pain in mice with severe sickle cell
516 disease. *Blood.* 2011;118(12):3376-83.
- 517 23. Vincent, L., Vang, D., Nguyen, J., Gupta, M., Luk, K., Ericson, M.E., et al. Mast cell
518 activation contributes to sickle cell pathobiology and pain in mice. *Blood.* 2013;122(11):1853-62.
- 519 24. Bogdanova, A., Kaestner, L., Simionato, G., Wickrema, A., Makhro, A. Heterogeneity of
520 Red Blood Cells: Causes and Consequences. *Front Physiol.* 2020;11:392.
- 521 25. Zaidi, A.U., Glaros, A.K., Lee, S., Wang, T., Bhojwani, R., Morris, E., et al. A systematic
522 literature review of frequency of vaso-occlusive crises in sickle cell disease. *Orphanet J Rare*
523 *Dis.* 2021;16(1):460.
- 524 26. Lufen, W. *Diagnosis of Traditional Chinese Medicine: Shanghai College of Traditional*
525 *Chinese Medicine; 2002.*
- 526 27. Curtis, S., Brandow, A.M. Responsiveness of Patient-Reported Outcome Measurement
527 Information System (PROMIS) pain domains and disease-specific patient-reported outcome
528 measures in children and adults with sickle cell disease. *Hematology Am Soc Hematol Educ*
529 *Program.* 2017;2017(1):542-5.
- 530 28. Brandow, A.M., Farley, R.A., Panepinto, J.A. Neuropathic pain in patients with sickle cell
531 disease. *Pediatr Blood Cancer.* 2014;61(3):512-7.
- 532 29. Freynhagen, R., Baron, R., Gockel, U., Tolle, T.R. painDETECT: a new screening
533 questionnaire to identify neuropathic components in patients with back pain. *Curr Med Res*
534 *Opin.* 2006;22(10):1911-20.
- 535 30. Clauw, D.J. Fibromyalgia: a clinical review. *JAMA.* 2014;311(15):1547-55.
- 536 31. Dudeney, J., Law, E.F., Meyyappan, A., Palermo, T.M., Rabbitts, J.A. Evaluating the
537 psychometric properties of the Widespread Pain Index and the Symptom Severity scale in youth
538 with painful conditions. *Can J Pain.* 2019;3(1):137-47.
- 539 32. Lin, J.M., Brimmer, D.J., Maloney, E.M., Nyarko, E., Belue, R., Reeves, W.C. Further
540 validation of the Multidimensional Fatigue Inventory in a US adult population sample. *Popul*
541 *Health Metr.* 2009;7:18.
- 542 33. Darbari, D.S., Vaughan, K.J., Roskom, K., Seamon, C., Diaw, L., Quinn, M., et al.
543 Central sensitization associated with low fetal hemoglobin levels in adults with sickle cell
544 anemia. *Scand J Pain.* 2017;17:279-86.
- 545 34. Miller, R.E., Brown, D.S., Keith, S.W., Hegarty, S.E., Setty, Y., Campbell, C.M., et al.
546 Quantitative sensory testing in children with sickle cell disease: additional insights and future
547 possibilities. *Br J Haematol.* 2019;185(5):925-34.
- 548 35. Nahman-Averbuch, H., Yarnitsky, D., Granovsky, Y., Gerber, E., Dagul, P., Granot, M.
549 The role of stimulation parameters on the conditioned pain modulation response. *Scand J Pain.*
550 *2013;4(1):10-4.*
- 551 36. Schoen, C.J., Ablin, J.N., Ichesco, E., Bhavsar, R.J., Kochlefl, L., Harris, R.E., et al. A
552 novel paradigm to evaluate conditioned pain modulation in fibromyalgia. *J Pain Res.*
553 *2016;9:711-9.*

TCM Syndrome Differentiation in SCD

- 554 37. Treadwell, M.J., Hassell, K., Levine, R., Keller, S. Adult sickle cell quality-of-life
555 measurement information system (ASCQ-Me): conceptual model based on review of the
556 literature and formative research. *Clin J Pain*. 2014;30(10):902-14.
- 557 38. Wang, Y., Hardy, S.J., Ichesco, E., Zhang, P., Harris, R.E., Darbari, D.S. Alteration of
558 grey matter volume is associated with pain and quality of life in children with sickle cell disease.
559 *Transl Res*. 2022;240:17-25.
- 560 39. Panepinto, J.A., Torres, S., Bendo, C.B., McCavit, T.L., Dinu, B., Sherman-Bien, S., et
561 al. PedsQL sickle cell disease module: feasibility, reliability, and validity. *Pediatr Blood Cancer*.
562 2013;60(8):1338-44.
- 563 40. Dowell D, R.K., Jones CM, Baldwin GT, Chou R. CDC Clinical Practice Guideline for
564 Prescribing Opioids for Pain — United States, 2022. *MMWR Recomm Rep*. 2022;71(No. RR-
565 3):1–95.
- 566 41. McClish, D.K., Smith, W.R., Dahman, B.A., Levenson, J.L., Roberts, J.D., Penberthy,
567 L.T., et al. Pain site frequency and location in sickle cell disease: the PiSCES project. *Pain*.
568 2009;145(1-2):246-51.
- 569 42. Fillingim, R.B. Individual differences in pain: understanding the mosaic that makes pain
570 personal. *Pain*. 2017;158 Suppl 1(Suppl 1):S11-S8.
- 571 43. Sundd, P., Gladwin, M.T., Novelli, E.M. Pathophysiology of Sickle Cell Disease. *Annu*
572 *Rev Pathol*. 2019;14:263-92.
- 573 44. Maciocia, G. The Foundations of Chinese Medicine. Singapore: Longman Singapore
574 Publishers (Pte) Ltd; 1994.
- 575 45. Wang, C., Shen, P., Hu, Y. Practical Chinese Medicine Rheumatology (Second Edition).
576 Beijing: People's Health Publishing House; 2009.
- 577 46. Schrepf, A., Harper, D.E., Harte, S.E., Wang, H., Ichesco, E., Hampson, J.P., et al.
578 Endogenous opioidergic dysregulation of pain in fibromyalgia: a PET and fMRI study. *Pain*.
579 2016;157(10):2217-25.
- 580 47. Konotey-Ahulu, F.I.D. The sickle cell disease patient : natural history from a clinico-
581 epidemiological study of the first 1550 patients of Korle Bu Hospital Sickle Cell Clinic. London:
582 Macmillan; 1991. xix, 643 P. p.
- 583 48. Platt, O.S., Brambilla, D.J., Rosse, W.F., Milner, P.F., Castro, O., Steinberg, M.H., et al.
584 Mortality in sickle cell disease. Life expectancy and risk factors for early death. *N Engl J Med*.
585 1994;330(23):1639-44.
- 586 49. Scott, K.D., Scott, A.A. Cultural Therapeutic Awareness and Sickle Cell Anemia. *Journal*
587 *of Black Psychology*. 1999;25(3):316-35.
- 588 50. Carroll, C.P., Lanzkron, S., Haywood, C., Jr., Kiley, K., Pejsa, M., Moscou-Jackson, G.,
589 et al. Chronic Opioid Therapy and Central Sensitization in Sickle Cell Disease. *Am J Prev Med*.
590 2016;51(1 Suppl 1):S69-77.
- 591 51. Xinnong, C. Chinese Acupuncture and Moxibustion. 4th ed: Foreign Languages Press;
592 2019.

593

Table 1 Demographics

Subjects' characteristics (n=52)	TCM#1 (Equal) (n=13)	TCM#2 (Deficiency) (n=20)	TCM#3 (Stagnation) (n=19)	Healthy (n=28)
Age (year), median (range)	37 (14-49)	36.5 (18-73)	30 (14-58)	33 (14-65)
Female, n (%)	5 (38.5)	9 (45.0)	12 (63.2)	17 (60.7)
Height (cm), median (range)	173.4 (161.5 - 185.2)	168.9 (150.4-184.3)	168.1 (154.7 - 181.1)	168.15 (154.8 - 184.4)
Weight (kg), median (range)	73.4 (54.4 - 112.6)	62.9 (37.6-106.2) **##	80.8 (56.8 - 123.5)	75.8 (50.4 - 112.4)
Body mass index, median (range)	23.7 (19.3 - 33.7)	20.6 (16.5 - 35.6) **###	28.6 (19.7 - 35.6)	26.7 (19 - 42.8)
SCD type diagnosis (n=52)				
SS or Sβ0/SC/Sβ+ thalassemia (n / n / n)	7 / 6 / 0	15 / 1 / 4	11 / 7 / 1	N/A
Hematological treatment (n=52)				
Chronic transfusion therapy, n (%)	0	3 (15)	1 (7)	N/A
Hydroxyurea, n (%)	7 (53.8)	14 (70)	8 (53.8)	N/A

**p< 0.01 compared with Healthy, ##p< 0.01 compared with Stagnation, ###p< 0.001 compared with Stagnation

Table 2. TCM Groups Differed on Patient Reported Outcomes

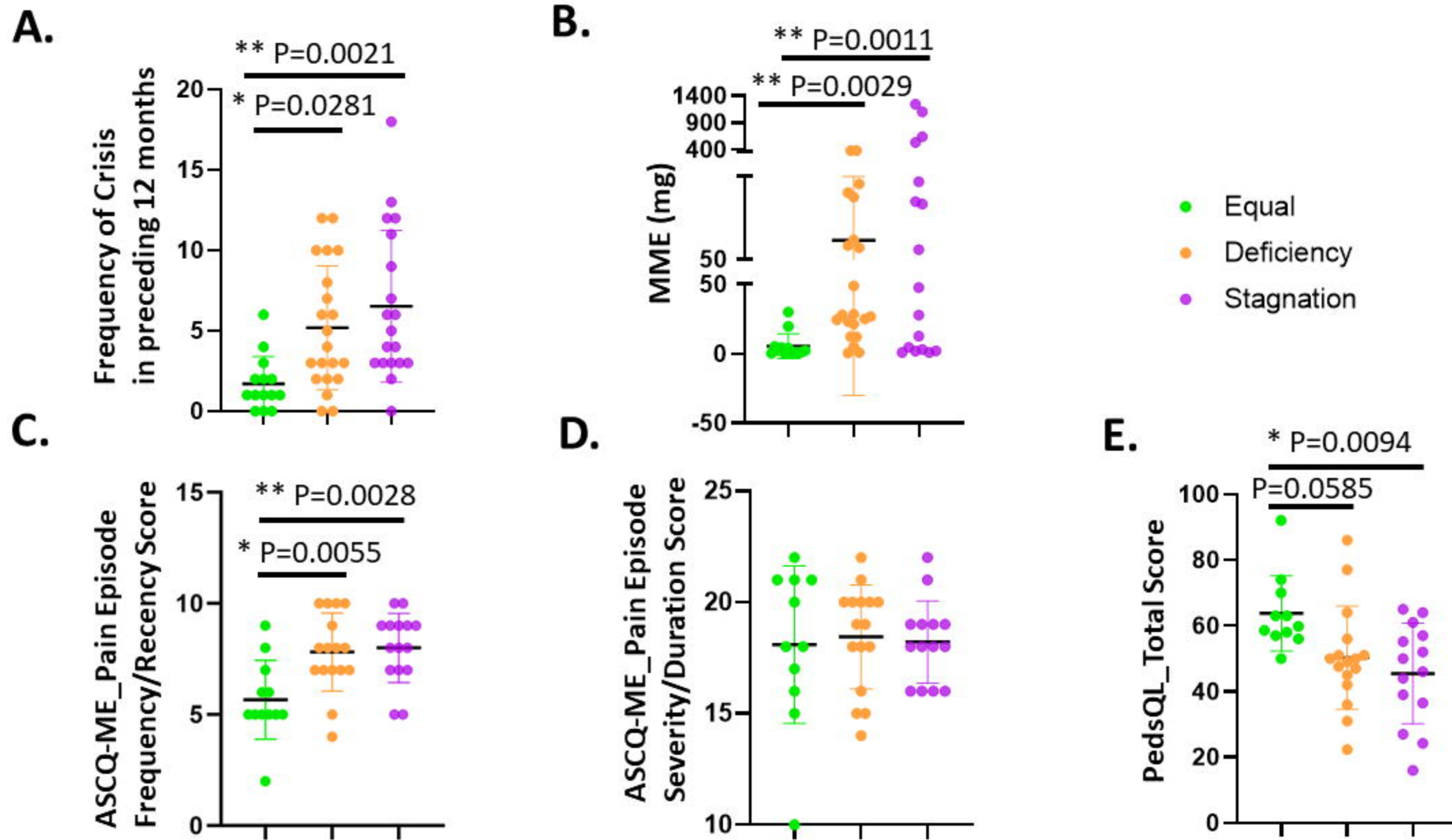
Patient-reported outcomes	Score name (value range)	TCM#1 (Equal) (Mean ± SD)	TCM#2 (Deficiency) (Mean ± SD)	TCM#3 (Stagnation) (Mean ± SD)	Healthy (Mean ± SD)
PainDETECT	Total score (7-47)	18.92 ± 3.825 ****	18.25 ± 8.095 ****	22.47 ± 9.172 ****	7.273 ± 0.8013
PROMIS-29	Pain Intensity (0-10)	3.583 ± 2.314 ****	5.6 ± 1.639 ****#	5.75 ± 1.88 ****##	0.5000 ± 1.244
	Pain Interference (4-20)	11.50 ± 5.072 ****	16.63 ± 5.830 ****##	17.27 ± 3.369 ****##	4.781 ± 1.791
	Physical function (4-20)	6.417 ± 1.975	8.438 ± 3.949 ***	10.00 ± 4.536 ****#	4.333 ± 1.407
	Satisfaction with social role (4-20)	14.42 ± 5.368	7.875 ± 3.757 ****###	9.933 ± 4.574 ****#	17.50 ± 3.556
Fibromyalgia Survey Questionnaire	Widespread Pain Index (0-19)	4.667 ± 4.228 **	7.563 ± 4.066 ****	6.267 ± 4.496 ****	0.6061 ± 1.391
	Symptom Severity Score (0-12)	2.917 ± 1.832	5.313 ± 3.516 ****	6.667 ± 2.637 ****##	1.606 ± 1.999
	Total Score (0-31)	7.583 ± 5.632 *	12.88 ± 6.879 ****#	12.67 ± 5.367 ****#	2.212 ± 3.090
Pittsburgh Sleep Quality Index (PSQI)	Global PSQI Index	12.17 ± 8.032	20.73 ± 9.293 ****#	20.80 ± 8.046 ****#	10.91 ± 6.760
Multi-dimensional Fatigue Inventory (MFI)	Total MFI Score (0-100)	45.58 ± 9.395	56.00 ± 19.73 *	61.60 ± 15.29 ****#	41.91 ± 13.46
Hospital Anxiety and Depression Scale	Anxiety Score (0-21)	4.250 ± 2.417	6.250 ± 3.924 *	8.714 ± 5.413 ****##	2.719 ± 2.679
	Depression Score (0-21)	2.833 ± 2.038	5.250 ± 3.697 **	6.714 ± 3.750 ****##	1.938 ± 1.795

*p < 0.05 compared with Healthy, **p < 0.01 compared with Healthy, ***p < 0.001 compared with Healthy, ****p < 0.0001 compared with Healthy, #p < 0.05 compared with Equal, ##p < 0.01 compared with Equal, ###p < 0.001 compared with Equal.

Table 3. TCM Groups Did not Differ on QST

Score name	TCM#1 (Equal) (Mean ± SD)	TCM#2 (Deficiency) (Mean ± SD)	TCM#3 (Stagnation) (Mean ± SD)	Healthy (Mean ± SD)
Mechanical Detection Threshold (forearm)	0.2673 ± 0.1852	0.3346 ± 0.6821	0.4193 ± 0.2986	0.4276 ± 0.2605
Mechanical Pain Threshold (forearm)	61.00 ± 61.01	95.38 ± 57.83	70.68 ± 49.89	93.64 ± 85.84
Temporal Summation (forearm)	14.31 ± 11.94	12.46 ± 9.314	15.13 ± 12.70	11.54 ± 11.90
Cold Detection Threshold (forearm)	-1.983 ± 0.7309	-1.947 ± 0.7643	-2.907 ± 1.328	-2.400 ± 1.147
Cold pain Threshold (forearm)	-8.864 ± 7.710	-10.19 ± 7.673	-9.147 ± 5.725	-14.41 ± 9.501
Heat Detection Threshold (forearm)	3.508 ± 1.179	3.233 ± 1.174	3.820 ± 2.474	3.424 ± 1.710
Heat pain Threshold (forearm)	6.892 ± 4.024	8.940 ± 2.817	7.927 ± 3.499	8.038 ± 3.296
Pressure Pain Threshold (Trapezius)	243.9 ± 94.83	215.1 ± 100.5	219.5 ± 76.08	271.8 ± 122.8
Pressure Pain Tolerance (Trapezius)	336.9 ± 145.5	324.0 ± 124.8	386.6 ± 175.7	439.6 ± 244.0
Conditioned Pain Modulation (Trapezius)	46.67 ± 56.90	49.21 ± 101.8	70.71 ± 105.2	35.53 ± 54.81

Fig. 1 SCD Patients Differed on VOC, MME and QoL Across TCM Groups



Supplementary Table 1. Study Eligibility Criteria

Inclusion Criteria

- Any gender
- 14-17 (Adolescents) and 18-80 (Adults) years old
- Right-handed
- Have been diagnosed with SCD (includes but not limited to SS, SC or other type) and experiencing chronic pain in the past 6 months or vaso-occlusive crisis (VOC) in the past 12 months.
- Subjects with ongoing VOC (or hospitalization during enrollment will not be scheduled for QST and MRI sessions, other scheduled sessions will remain.
- Willing to limit the current and the introduction of any new medications or treatment modalities for control of pain symptoms during the study visits.
- Able to travel to the study site for participating scheduled visits (questionnaires, QST, EEG and MRI) and receive acupuncture treatments up to two times weekly for 5 weeks as scheduled.
- Fluent in English and capable of giving written informed consent.

Exclusion Criteria

- Subjects with Covid-19 suspicion or confirmation
- Recent/ongoing alternative pain management with acupuncture or acupuncture-related techniques within the last 6-months.
- Presence of a known coagulation abnormality: Thrombocytopenia (mild thrombocytopenia with a platelets range of 51,000-100,000/ul will be further evaluated for inclusion consideration), or bleeding diathesis that may preclude the safe use of acupuncture.
- Presence of a concurrent autoimmune or inflammatory disease such as rheumatoid arthritis, systemic lupus erythematosus, inflammatory bowel disease, etc. that causes pain or any other chronic pain condition with pain greater than sickle pain.
- Recent (30 days) initiation or dose adjustment of stimulant medications, such as those used to treat ADD/ADHD (e.g., amphetamine/dextroamphetamine [Adderall®], methylphenidate, dextroamphetamine), or the fatigue associated with sleep apnea or shift work (e.g., modafinil).
- Disease/Condition History: Head injury with substantial loss of consciousness, peripheral neuropathy of known cause that interferes with activities of daily living, known non-SCD related Severe psychiatric illnesses (e.g. current schizophrenia, major depression with suicidal ideation), and/or significant visual, motor, or auditory impairment that would interfere with ability to perform study visits-related activities
- Contraindications to MRI scans includes but are not limited to: surgical clips, surgical staples, metal implants, cardiac rhythmic disorders, seizure disorders, and certain metallic dental material will not be scheduled for MRI visits.
- Exclusion for partial QST or MRI scan session: History vascular surgery in lower limbs or current lower limb vascular dysfunction will not receive conditioned pressure pain stimuli in the lower limb.
- Subjects with Worker's Compensation, Workman's Compensation, civil litigation or disability claims pertinent to the subject's sickle disease; current involvement in out-of-court settlements for claims pertinent to the subject's sickle disease; or currently receiving monetary compensation as a result of any of the above.
- Participation of other studies: Concurrent participation in other therapeutic trials with overlapping research purposes.
- Pregnant or nursing.

Supplementary Table 2. TCM Syndrome Diagnostic Criteria in SCD

TCM Groups Diagnosis	TCM#1 Equal Deficiency and Stagnation	TCM#2 Deficiency Greater Than Stagnation	TCM#3 Stagnation Greater Than Deficiency
Main Symptoms/signs	<p>Mild or moderate chronic pain only, or infrequent acute pain only, or chronic pain with infrequent acute pain</p> <p>Tongue body: light red or slightly pale, or with purple spots Pulses: thin, wiry, or normal</p>	<p>Group Symptoms 1: Fatigue; weakness; shortness of breath; worsening after exertion; dull, sallow or pale complexion; pale lips and nails</p> <p>Group Symptoms 2: chronic pain only, or chronic pain that gets progressively worse before VOC; dull, or stabbing or sharp pain; mild or moderate or severe pain level; pain better by pressing</p> <p>Tongue body: pale or pale with purple spots Pulses: thin, weak and /or deep</p>	<p>Group symptoms 1: Chronic pain with frequent sudden onset of acute pain; stabbing or sharp pain; moderate or severe pain level; pain aggravated by pressing</p> <p>Group symptoms 2: Fatigue; weakness; shortness of breath; worsening after exertion; dull, sallow or pale complexion; pale lips and nails</p> <p>Tongue body: pale with purple spots, or dark Pulses: wiry, or choppy or knotted</p>
TCM diagnostic Criteria	Meet neither TCM#2 nor TCM#3	<p>Meet:</p> <ol style="list-style-type: none"> 1. Four or more in group symptoms 1; two or more in group symptoms 2 Or 2. Three or more in group symptoms 1; two or more symptoms in group symptoms 2; Tongue and pulse signs 	<p>Meet:</p> <ol style="list-style-type: none"> 1. Three or more symptoms in group symptoms 1; two or more in group symptoms 2 Or 2. Two or more in group symptoms 1; two or more in group symptoms 2; tongue and pulse signs

Supplementary Table 3. Patient with SCD Differed with HCs in Patient Reported Outcomes

Patient-reported outcomes	Score name (value range)	Healthy (Mean \pm SD) (n=28)	Matched SCD (Mean \pm SD) (n=28)	P value
PainDETECT	Total score (7-47)	7.259 \pm 0.8130	15.11 \pm 10.51	<0.0007 ***
PROMISE-29	Pain Intensity (0-10)	0.3846 \pm 1.169	4.500 \pm 2.232	<0.0001 ****
	Pain Interference (4-20)	4.731 \pm 1.867	12.54 \pm 7.201	<0.0001 ****
	Physical function (4-20)	4.333 \pm 1.544	9.852 \pm 4.312	<0.0001 ****
	Satisfaction with social role (4-20)	17.77 \pm 3.278	8.885 \pm 5.694	<0.0001 ****
Fibromyalgia Survey Questionnaire	Widespread Pain Index (0-19)	0.4444 \pm 1.188	6.259 \pm 3.996	<0.0001 ****
	Symptom Severity Score (0-12)	1.556 \pm 1.928	5.296 \pm 2.399	<0.0001 ****
	Total Score (0-31)	2.000 \pm 2.746	9.333 \pm 5.704	<0.0001 ****
Pittsburgh Sleep Quality Index (PSQI)	Global PSQI Index (0-47)	9.880 \pm 5.681	20.52 \pm 6.325	<0.0001 ****
Multi-dimensional Fatigue Inventory	Total Score (0-100)	40.85 \pm 12.95	53.92 \pm 17.90	0.0062 **
Hospital Anxiety and Depression Scale	Anxiety Score (0-21)	2.680 \pm 2.839	18.16 \pm 19.38	0.0007 ***
	Depression Score (0-21)	2.040 \pm 1.904	7.200 \pm 6.069	0.0011 **

p < 0.05, **p < 0.01, ***p < 0.001, *p < 0.0001**

Supplementary Table 4. Patient with SCD Differed with HCs in QST

Score name	Matched Healthy (n=28) (Mean \pm SD)	Matched SCD (n=28) (Mean \pm SD)	P value
Mechanical Detection Threshold (Forearm)	0.4435 \pm 0.2664	0.3140 \pm 0.2759	0.1152
Mechanical Detection Threshold (Primary site)	0.5368 \pm 0.5209	0.2596 \pm 0.2365	0.0261*
Mechanical Pain Threshold (Forearm)	102.5 \pm 91.86	58.56 \pm 46.48	0.0358*
Mechanical Pain Threshold (Primary site)	109.8 \pm 64.27	66.37 \pm 79.31	0.0238*
Mechanical Temporal Summation (Forearm)	11.72 \pm 12.22	12.30 \pm 9.162	0.8571
Mechanical Temporal Summation (Primary site)			
Cold Detection Threshold (compared to BL skin temperature) (Forearm)	-2.396 \pm 1.191	-2.354 \pm 1.124	0.9067
Cold Detection Threshold (compared to BL skin temperature) (Primary site)	-2.723 \pm 2.065	-2.900 \pm 1.724	0.7631
Cold pain Threshold (compared to BL skin temperature) (Forearm)	-14.74 \pm 9.513	-9.082 \pm 5.309	0.0250*
Cold pain Threshold (compared to BL skin temperature) (Primary site)	-15.26 \pm 10.31	-9.288 \pm 6.539	0.0332*
Heat Detection Threshold (compared to BL skin temperature) (Forearm)	3.589 \pm 1.627	3.596 \pm 1.654	0.9872
Heat Detection Threshold (compared to BL skin temperature) (Primary site)	4.233 \pm 1.547	4.078 \pm 2.103	0.8000
Heat pain Threshold (compared to BL skin temperature) (Forearm)	8.307 \pm 3.234	8.126 \pm 2.888	0.8534
Heat pain Threshold (compared to BL skin temperature) (Primary site)	8.522 \pm 2.817	8.109 \pm 2.805	0.6516
Pressure Pain Threshold (Trapezius)	296.0 \pm 121.2	222.4 \pm 79.85	0.0107*
Pressure Pain Threshold (Primary site)	608.2 \pm 304.2	372.3 \pm 173.3	0.0003***
Pressure Pain Tolerance (Trapezius)	466.8 \pm 253.0	357.4 \pm 177.4	0.0186*
Pressure Pain Tolerance (Primary site)	362.9 \pm 196.7	211.3 \pm 92.31	0.0009***
Conditioned Pain Modulation (Trapezius)	39.57 \pm 61.13	50.11 \pm 51.34	0.4759

*p < 0.05, **p < 0.01, ***p < 0.001

Supplementary Table 5. Patient with SCD Differed with HCs in Hematological Measures

Hematological Indexes	Parameter [Reference range]	TCM#1 (Equal) (n=12) (Mean ± SD)	TCM#2 (Deficiency) (n=14) (Mean ± SD)	TCM#3 (Stagnation) (n=13) (Mean ± SD)	Healthy (n=28) (Mean ± SD)
Hemogram/Platelets /WBC Differential	WBC (k/cumm) [3.6-10.6]	7.918 ± 2.252	9.007 ± 5.489 **	9.738 ± 3.469 ***	5.446 ± 1.631
	RBC (million/cumm) [4.18-5.51]	3.105 ± 0.7875 ****	2.639 ± 0.6678 ****	3.379 ± 0.7493 ****&	4.633 ± 0.5746
	Hgb (GM/dL) [13.4-17.0]	10.13 ± 2.169 ****	9.050 ± 1.899 ****	10.23 ± 1.494 ****	13.05 ± 1.584
	Hct (%) [40.0-54.0]	28.65 ± 6.320 ****	26.55 ± 5.469 ****	30.12 ± 4.252 ****	39.33 ± 4.367
	MCV (fL) [81-99]	93.82 ± 12.28	103.1 ± 17.26 ****	91.08 ± 12.49 &	85.25 ± 5.575
	MCH (pg) [27.0-34.0]	33.16 ± 4.526 *	35.16 ± 6.541 ****	31.00 ± 4.949	28.26 ± 2.286
	RDW (%) [11.5-14.5]	20.88 ± 4.710 ****	19.89 ± 4.293 ****	17.48 ± 2.576 **#	13.98 ± 0.8828
	Platelet (k/cumm) [150-450]	367.2 ± 192.8 *	331.0 ± 170.1*	380.6 ± 103.4 **	241.7 ± 38.56
Reticulocytes	Reticulocyte Count (%) [0.5-2.5]	6.636 ± 3.978 ****	5.846 ± 3.678 ****	4.733 ± 3.408 **	1.282 ± 0.4982
	Absolute Retic Number (k/cumm) [21.0-115.0]	189.5 ± 91.40 ****	147.7 ± 91.51 **	151.1 ± 83.19 **	60.20 ± 27.44
Hemoglobinopathy Studies	Hemoglobin A % [94.0-98.5]	16.80 ± 5.657 ****	25.70 ± 13.88 ****	13.34 ± 11.15 ****	92.54 ± 13.09
	Hemoglobin F % [0.0-2.0]	9.288 ± 8.363	15.08 ± 10.68	8.970 ± 7.746	N/A
	Hemoglobin S % [0.0-0.0]	65.64 ± 16.64	67.05 ± 11.63	57.91 ± 18.04	N/A
	Hemoglobin A2 % [1.5-3.5]	2.933 ± 0.9341	3.342 ± 1.145	3.350 ± 1.033	2.578 ± 0.3029

*p < 0.05 compared with Healthy, **p < 0.01 compared with Healthy, ***p < 0.001 compared with Healthy, ****p < 0.0001 compared with Healthy, &p < 0.05 compared with Deficiency Group, #p < 0.05 compared with Equal Group.