

1           **Hs-CRP is associated with Heart Failure Hospitalization in Patients with**  
2           **MAFLD and Normal LVEF Undergoing Coronary Angiography**

3

4   **Running Title:** Serum hs-CRP in MAFLD with HF

5   **Authors' names:**

6   Xiao-Dong Zhou,MM<sup>1¶</sup>, Qin-Fen Chen,MD<sup>2,3¶</sup>, Giovanni Targher,MD<sup>4,5</sup>, Christopher  
7   D. Byrne,MD<sup>6</sup>, Michael D. Shapiro,MD<sup>7</sup>, Na Tian,MM<sup>8</sup>, Tie Xiao,BM<sup>8</sup>,Ki-Chul  
8   Sung,MD<sup>9</sup>, Gregory Y. H. Lip,MD<sup>10</sup>, Ming-Hua Zheng,MD,PhD<sup>8,11,12\*</sup>

9   **Institutions:**

10   <sup>1</sup>Department of Cardiovascular Medicine, the Heart Center, the First Affiliated

11   Hospital of Wenzhou Medical University, Wenzhou 325000, China;

12   <sup>2</sup>Medical Care Center, the First Affiliated Hospital of Wenzhou Medical University,  
13   Wenzhou 325000, China;

14   <sup>3</sup>Institute of Aging, Key Laboratory of Alzheimer's Disease of Zhejiang Province,  
15   Zhejiang Provincial Clinical Research Center for Mental Disorders, Wenzhou  
16   Medical University, Wenzhou, 325000, China;

17   <sup>4</sup>Department of Medicine, Section of Endocrinology, Diabetes, and Metabolism,  
18   University of Verona, Verona, Italy;

19   <sup>5</sup>IRCCS Sacro Cuore Don Calabria Hospital, Negrar (VR), Verona, Italy;

20   <sup>6</sup>Southampton National Institute for Health and Care Research Biomedical Research  
21   Centre, University Hospital Southampton, and University of Southampton,  
22   Southampton General Hospital, Southampton, UK;

23   <sup>7</sup>Center for Prevention of Cardiovascular Disease, Section on Cardiovascular  
24   Medicine, Wake Forest University School of Medicine, Winston-Salem, NC, USA;

25 <sup>8</sup>MAFLD Research Center, Department of Hepatology, the First Affiliated Hospital of  
26 Wenzhou Medical University, Wenzhou, China;

27 <sup>9</sup>Department of Internal Medicine, Division of Cardiology, Kangbuk Samsung  
28 Hospital, Sungkyunkwan University School of Medicine, Seoul, Korea;

29 <sup>10</sup>Liverpool Centre for Cardiovascular Science at University of Liverpool, Liverpool  
30 John Moores University and Liverpool Heart & Chest Hospital, Liverpool, United  
31 Kingdom; and Danish Center for Health Services Research, Department of Clinical  
32 Medicine, Aalborg University, Aalborg, Denmark;

33 <sup>11</sup>Institute of Hepatology, Wenzhou Medical University, Wenzhou, China;

34 <sup>12</sup>Key Laboratory of Diagnosis and Treatment for the Development of Chronic Liver  
35 Disease in Zhejiang Province, Wenzhou, China.

36

37 <sup>¶</sup>**Co-first authors:** Xiao-Dong Zhou and Qin-Fen Chen

38 <sup>\*</sup>**Corresponding author:**

39 Ming-Hua Zheng, MD, PhD

40 MAFLD Research Center, Department of Hepatology, the First Affiliated Hospital of  
41 Wenzhou Medical University, Wenzhou, China.

42 E-mail: zhengmh@wmu.edu.cn; phone: (86) 577-55579611; fax: (86) 577-55578522

43

44 **Electronic word count:** 3479

45 **Number of figures and tables:** 4 figures, 2 tables, 1 supplementary figure and 2  
46 supplements.

47

48

49 **Conflict of Interest:**

50 GYHL: Consultant and speaker for BMS/Pfizer, Boehringer Ingelheim,  
51 Daiichi-Sankyo, Anthos. No fees are received personally. He is a NIHR Senior  
52 Investigator and co-principal investigator of the AFFIRMO project on multimorbidity  
53 in AF, which has received funding from the European Union’s Horizon 2020 research  
54 and innovation programme under grant agreement No 899871. Other authors have no  
55 conflicts of interest.  
56

57 **Abstract**

58 **Background:** Systemic chronic inflammation plays a role in the pathophysiology of

59 both heart failure with preserved ejection fraction (HFpEF) and metabolic

60 dysfunction-associated fatty liver disease (MAFLD).

61 **Aim:** This study aimed to investigate whether serum high-sensitivity C-reactive

62 protein (hs-CRP) levels were associated with the future risk of heart failure (HF)

63 hospitalization in patients with MAFLD and a normal left ventricular ejection fraction

64 (LVEF).

65 **Methods:** The study enrolled consecutive individuals with MAFLD and normal

66 LVEF who underwent coronary angiography for suspected coronary heart disease.

67 The study population was subdivided into non-HF, pre-HFpEF, and HFpEF groups at

68 baseline. The study outcome was the first hospitalization for HF.

69 **Results:** In 10,019 middle-aged individuals (mean age  $63.3 \pm 10.6$  years; 38.5%

70 female), the prevalence rates of HFpEF and pre-HFpEF were 34.2% and 34.5%, with

71 a median serum hs-CRP level of 4.5 mg/L (IQR: 1.9-10 mg/L) and 5.0 mg/L (IQR:

72 2.1-10.1 mg/L), respectively. Serum hs-CRP levels were significantly higher in the

73 pre-HFpEF and HFpEF groups than in the non-HF group. HF hospitalizations

74 occurred in 1942 (19.4%) patients over a median of 3.2 years, with rates of 3.7% in

75 non-HF, 20.8% in pre-HFpEF, and 32.1% in HFpEF, respectively. Cox regression

76 analyses showed that patients in the highest hs-CRP level quartile had a ~4.5-fold

77 increased risk of being hospitalized for HF compared to those in the lowest hs-CRP

78 level quartile (adjusted-Hazard Ratio 4.42, 95% CI 3.72-5.25).

79 **Conclusions:** There was a high prevalence of baseline pre-HFpEF and HFpEF in

80 subjects with MAFLD. There was an increased risk of HF hospitalization in those

81 with elevated hs-CRP levels.

82

83 **Keywords:** high-sensitivity C-reactive protein, metabolic dysfunction-associated fatty

84 liver disease, heart failure with preserved ejection fraction, heart failure

85 hospitalization.

86 **Introduction**

87 Metabolic dysfunction-associated fatty liver disease (MAFLD), formerly named  
88 non-alcoholic fatty liver disease, is a highly prevalent metabolic liver condition  
89 worldwide, affecting up to nearly 30% of the general adult population.<sup>1-5</sup> Recent  
90 cohort studies suggested that patients with MAFLD have an increased risk of  
91 developing new-onset heart failure (HF), especially HF with preserved ejection  
92 fraction (HFpEF).<sup>6-8</sup> A comprehensive meta-analysis of longitudinal cohort studies  
93 (including ~11 million middle-aged individuals from different countries) showed that  
94 MAFLD was associated with a 1.5-fold increased risk of new-onset HF over a median  
95 of 10 years.<sup>9</sup>

96  
97 Despite a normal left ventricular ejection fraction (LVEF), HFpEF is a common  
98 chronic cardiac condition globally, where metabolic dysfunction (e.g., obesity and  
99 type 2 diabetes) and low-grade chronic inflammation may contribute importantly to  
100 its pathogenesis.<sup>10-12</sup> HFpEF is associated with a substantially higher risk of adverse  
101 cardiovascular events and all-cause mortality.<sup>10-12</sup>

102  
103 Empiric evidence suggests that the unifying link between MAFLD and HFpEF is  
104 low-grade chronic inflammation, which may adversely affect cardiomyocyte  
105 function.<sup>13-16</sup> This low-grade inflammatory state is characterized by an increase in  
106 various biomarkers in the bloodstream.<sup>17,18</sup> For example, high-sensitivity C-reactive  
107 protein (hs-CRP) is one of the most widely used biomarkers for systemic  
108 inflammation, and an increase in hs-CRP is predictive of adverse cardiovascular

109 events, such as myocardial infarction, stroke, and HF.<sup>19-21</sup> However, to our knowledge,  
110 the ability of serum hs-CRP level to predict future HF events in patients with MAFLD  
111 and preserved LVEF has not been explored.

112

113 The main aims of our study were as follows: (1) to examine the prevalence of HFpEF  
114 among patients with MAFLD and suspected coronary artery disease (CAD)  
115 undergoing elective coronary angiography; and (2) to evaluate the associations  
116 between increased serum hs-CRP levels and the future risk of HF hospitalizations in  
117 this patient population.

118

## 119 **Methods**

### 120 *Study Design*

121 This retrospective longitudinal study enrolled individuals diagnosed with MAFLD  
122 and suspected CAD who had undergone conventional echocardiograms at the First  
123 Affiliated Hospital of Wenzhou Medical University between January 2009 and  
124 February 2023. The inclusion criteria were as follows: (1) aged 18 years or older; (2)  
125 diagnosis of MAFLD; (3) presence of LVEF  $\geq 50\%$  on echocardiography; and (4)  
126 acceptance to undergo an elective coronary angiography. Patients who did not meet  
127 the inclusion criteria (mentioned above), patients who were unable to provide  
128 informed consent, those who had had any acute inflammatory condition, and any  
129 other organ failure, rheumatological disorder, malignancy, or those lost at follow-up,  
130 were excluded from the study (as specified in **Supplementary Figure 1**).

131 Baseline data for all patients were collected retrospectively through electronic medical  
132 records, which provided various details such as medical history, demographic

133 variables, clinical and laboratory data, current use of medications, liver ultrasound  
134 results, echocardiography evaluation findings, and subsequent follow-up data.

135 The study was conducted in compliance with the Declaration of Helsinki, and the  
136 ethics committee of the First Affiliated Hospital of Wenzhou Medical University  
137 approved the study protocol with a waiver for informed consent due to the  
138 infeasibility of obtaining informed consent given the study's retrospective design. The  
139 data that support the findings of this study are available from the first author  
140 (zhouxiaodong@wmu.edu.cn) upon reasonable request.

141

#### 142 ***MAFLD Diagnosis***

143 In all patients, MAFLD was diagnosed by the presence of hepatic steatosis on liver  
144 ultrasound or blood biomarkers/scores in combination with at least one of the  
145 following metabolic risk factors: overweight/obesity, type 2 diabetes, or at least two  
146 of the following metabolic abnormalities: 1) waist circumference  $\geq 90/80$  cm in men  
147 and women; 2) blood pressure  $\geq 130/85$  mmHg or specific drug treatment; 3) serum  
148 triglycerides  $\geq 150$  mg/dl ( $\geq 1.70$  mmol/L) or specific drug treatment; 4) serum  
149 high-density lipoprotein (HDL)-cholesterol  $< 40$  mg/dl ( $< 1.0$  mmol/L) for men and  
150  $< 50$  mg/dl ( $< 1.3$  mmol/L) for women or specific drug treatment; 5) prediabetes,  
151 defined as fasting glucose levels between 100 to 125 mg/dl [5.6 to 6.9 mmol/L], or  
152 HbA1c levels ranging from 5.7% to 6.4% [39 to 47 mmol/mol]; 6) a Homeostasis  
153 Model Assessment (HOMA) score for insulin resistance of  $\geq 2.5$ ; and 7) a plasma  
154 hs-CRP level of  $> 2$  mg/L.<sup>22,23</sup> FIB-4 index was calculated as follows: age  $\times$  aspartate



155 aminotransferase (U/L)/[platelet ( $10^9/L$ )  $\times$  alanine aminotransferase1/2 (U/L)].<sup>24</sup>

156 Serum hs-CRP was measured using an immuno-turbidimetry assay in a Beckman

157 Coulter analyzer (AU5800).

158

### 159 ***Baseline HF status***

160 The study population was subdivided into the non-HF, pre-HFpEF, and HFpEF groups

161 according to the presence or absence of HF symptoms and impaired cardiac function

162 at baseline. The diagnosis of pre-HFpEF was defined as asymptomatic patients

163 (absence of signs or symptoms of HF) with ‘preserved’ ejection fraction (LVEF  $\geq 50\%$ )

164 who had at least one of the following conditions: evidence of structural heart disease

165 (including left atrial enlargement), and/or diastolic dysfunction, presence of multiple

166 cardiovascular risk factors with elevated levels of natriuretic peptides, or persistently

167 elevated cardiac troponins, in the absence of competing diagnoses.<sup>25,26</sup> The diagnosis

168 of HFpEF was defined as symptomatic patients with ‘preserved’ ejection fraction

169 (LVEF  $\geq 50\%$ ) who had at least one of the following conditions: evidence of structural

170 heart disease (including left atrial enlargement) and/or diastolic dysfunction, multiple

171 cardiovascular risk factors with elevated levels of serum natriuretic peptides, or

172 persistently elevated cardiac troponins, in the absence of competing diagnoses.<sup>25,26</sup> In

173 contrast to ‘true HFpEF’, the key clinical component of pre-HFpEF was the absence

174 of HF signs and symptoms.

175

### 176 ***Coronary Angiography***

177 All study patients underwent elective coronary angiography to quantify the presence  
178 of CAD. The reports of coronary angiographies of all patients were meticulously  
179 reviewed and categorized in cooperation with the study's cardiologist, X-D Zhou.  
180 Mild CAD was defined as coronary stenoses <50%, moderate CAD as stenoses  
181 50-70%, and severe CAD as having at least one proximal coronary artery with >70%  
182 stenosis based on angiography.<sup>27</sup>

183

#### 184 ***Study Outcomes***

185 Clinical follow-up data were collected from inpatient and outpatient medical records  
186 to analyze the clinical study outcome. The length of the follow-up was determined as  
187 the time between the MAFLD diagnosis and the first occurrence of either the end of  
188 clinical follow-up or the time-to-event endpoints, whichever came first. Patients were  
189 followed until April 2023 to examine the clinical outcome for prognostic purposes  
190 systematically. The primary outcome of the study was the first hospitalization for HF.

191

#### 192 ***Statistical Analysis***

193 All statistical analyses were performed using the IBM SPSS software, version 23.0 for  
194 Windows. Continuous variables were expressed as means  $\pm$  SD or medians  
195 (interquartile ranges, IQR), and categorical variables as percentages. Statistical  
196 comparisons between the study groups were carried out using the unpaired Student's  
197 *t*-test (for normally distributed continuous variables), the Mann-Whitney U test (for  
198 non-normally distributed continuous variables), and the chi-squared test (for  
199 categorical variables). We performed unadjusted and adjusted Cox proportional  
200 hazards models to examine the association between serum hs-CRP levels (stratified by

201 increasing quartiles, from Q1 to Q4) and the risk of HF hospitalization during the  
202 follow-up period. The Cox proportional hazards models provided the hazard ratios  
203 (HR) and 95% confidence intervals (CI). Furthermore, a Kaplan-Meier survival  
204 analysis was also performed to calculate the event-free survival curves, and the  
205 log-rank test was used to test the presence of any significant differences between the  
206 curves. A statistically significant level was considered as P-value <0.05 (two-tailed).

207

## 208 **Results**

### 209 *Baseline Characteristics*

210 The final sample for analysis consisted of 10,019 middle-aged Chinese patients (mean  
211 age 63.3±10.6 years; 38.5% female) with MAFLD and suspected CAD who  
212 underwent elective coronary angiography, after excluding patients who did not meet  
213 the study's inclusion criteria (**Supplementary Figure 1**). At baseline, 3,133 (31.3%)  
214 patients had non-HF, 3,427 (34.2%) had pre-HFpEF, and 3,459 (34.5%) had HFpEF,  
215 respectively. Detailed baseline characteristics, traditional cardiovascular risk factors,  
216 and laboratory parameters of patients stratified by different baseline HF statuses are  
217 shown in **Table 1**. Patients with HFpEF were older, had more comorbidities, a more  
218 atherogenic risk profile, a greater prevalence of severe coronary stenosis, larger left  
219 ventricular end-diastolic diameter, higher FIB-4 score, and lower HSI score compared  
220 to the other two patient groups. Serum hs-CRP levels both in the pre-HFpEF group  
221 (4.5 mg/L; IQR: 1.9-10 mg/L) and in the HFpEF group (5.0 mg/L; IQR: 2.1-10.1  
222 mg/L) were significantly higher than those in the non-HF group (2.7 mg/L; IQR:  
223 1.1-5.0 mg/L).

224

225 ***Pre-HFpEF and HFpEF prevalence, and incident HF hospitalization***

226 As shown in **Figure 1**, about two-thirds of patients had pre-HFpEF or HFpEF and the  
227 prevalence rates of these two cardiac conditions increased across quartiles of serum  
228 hs-CRP at baseline. During a median follow-up period of 3.2 years (IQR: 0.9-5.9  
229 years), hospitalizations for HF occurred in 1942 (19.4%) patients, with an incidence  
230 rate of 6.1 events per 100 person-years. As also shown in the figure (panel C), patients  
231 with HFpEF or pre-HFpEF at baseline were more likely to be hospitalized for HF than  
232 those in the non-HF group.

233

234 ***Hs-CRP and risk of incident HF hospitalization***

235 As shown in **Table 2**, patients in the highest baseline quartile of hs-CRP levels had a  
236 markedly higher risk of HF hospitalization compared to those in the lowest hs-CRP  
237 quartile (unadjusted HR 6.937, 95% 5.857-8.215). Increased serum hs-CRP levels  
238 were significantly associated with a higher risk of HF hospitalization (HR 4.421, 95%  
239 3.720-5.254), even after adjustment for age, sex, smoking history, alcohol intake,  
240 BMI, hypertension, diabetes, dyslipidemia, atrial fibrillation, previous stroke,  
241 previous myocardial infarction, chronic kidney disease, and current use of loop  
242 diuretics, spironolactone, ACEI/ARB/ARNIs or beta-blockers. A Kaplan-Meier  
243 survival analysis showed a significant incremental increase in the risk of HF  
244 hospitalization across serum hs-CRP quartiles (P <0.001 by the log-rank test, **Figure**  
245 **2**).

246

247 ***Hs-CRP and increased risk of HF hospitalization in subgroups***

248 We performed subgroup analyses to examine the significant associations between  
249 serum hs-CRP quartiles and the risk of HF hospitalization. This risk remained  
250 statistically significant even after adjusting for potential confounders, i.e., regardless  
251 of the HF status (**Table 2** and **Figure 3**), the severity of coronary stenoses  
252 (**Supplementary Table 1** and **Figure 3**), or FIB-4 score at baseline (**Supplementary**  
253 **Table 2** and **Figure 4**).

254

## 255 **Discussion**

256 The key findings from this analysis are summarized as follows: (1) pre-HFpEF and  
257 HFpEF are two highly prevalent cardiac conditions affecting up to nearly two-thirds  
258 of this patient population with MAFLD; (2) patients with pre-HFpEF or HFpEF are at  
259 higher risk of being hospitalized for HF than the non-HF patient group, with incidence  
260 rates of 3.7% in non-HF, 20.8% in pre-HFpEF, and 32.1% in HFpEF, respectively; (3)  
261 serum hs-CRP levels are increased in patients with pre-HFpEF or HFpEF; and  
262 increased hs-CRP levels predicted the future risk of hospitalization for HF, regardless  
263 of the different HF status and the severity of coronary stenosis at baseline.

264

265 While serum hs-CRP levels are closely associated with an elevated risk of adverse  
266 cardiac events in individuals with cardiometabolic disease, there is limited data that  
267 specifically evaluate the connections between serum hs-CRP and HFpEF in patients  
268 with MAFLD. Our study provides novel data from a large cohort of MAFLD patients  
269 with suspected CAD to address this question.

270

271 ***Prevalence of HFpEF in MAFLD***

272 Patients with MAFLD often have multiple cardiometabolic disorders leading to  
273 myocardial remodeling and diastolic dysfunction over time.<sup>28-30</sup> However, these  
274 individuals are more likely to develop HFpEF than patients with HF with reduced  
275 LVEF (HFrEF).<sup>31,32</sup> Hence, understanding the prevalence of pre-HFpEF and HFpEF  
276 among patients with MAFLD is clinically important for promptly identifying  
277 individuals at higher risk of developing HF and who may benefit from targeted  
278 pharmacotherapies to reduce their HF risk.

279 In the present large study, a significant proportion of our individuals with MAFLD  
280 and normal LVEF had pre-HFpEF or HFpEF (about 34% for every condition).  
281 Moreover, the overall rates of HF hospitalization we observed in our study were  
282 nearly 5-8 times greater in the pre-HFpEF and HFpEF groups than in the non-HF  
283 group, with rates of 20.8% in pre-HFpEF vs. 32.1% in HFpEF vs. 3.7% in non-HF.

284

285 ***Chronic inflammation may link MAFLD to HFpEF***

286 Low-grade chronic inflammation is a common mechanism that may  
287 pathophysiologically link MAFLD to the development and progression of  
288 HFpEF.<sup>13,33,34</sup> MAFLD, especially in its more advanced histological forms, may exert  
289 adverse effects mainly through the systemic release of multiple pro-inflammatory,  
290 pro-oxidant, and pro-fibrotic mediators, thus contributing to the development of  
291 various extrahepatic complications, including functional and structural cardiac  
292 abnormalities that can lead to new-onset HFpEF.<sup>35-38</sup>

293

294 ***Hs-CRP levels, pre-HFpEF or HFpEF and the future risks of HF hospitalization***

295 The findings of our study highlight the importance of measuring serum hs-CRP levels  
296 in patients with MAFLD and suspected CAD and represent an essential consideration  
297 for hepatologists when assessing the future risk of HF hospitalization in this patient  
298 population. Hepatologists may overlook hs-CRP measurements when MAFLD  
299 presents with preserved LVEF and no obvious signs and symptoms of HF.

300 In our study, we found that compared to those with the lowest serum hs-CRP levels,  
301 patients with increased hs-CRP levels not only had significantly higher prevalence  
302 rates of pre-HFpEF and HFpEF but also had higher incidence rates of HF  
303 hospitalization over a mean period of 3.2 years, irrespective of the severity of  
304 coronary stenosis or different HF status at baseline. Thus, serum hs-CRP may be a  
305 biomarker for predicting the future risk of HF hospitalization in patients with MAFLD.  
306 The present findings also suggest that hepatologists need to pay greater attention to  
307 the potential risk of HF in patients with MAFLD and normal LVEF.

308

309 ***Limitations***

310 The current study has some important limitations. First, we conducted the research  
311 retrospectively at a single academic center, which may have resulted in selection bias.  
312 Second, we acknowledge that the study patients referred for elective coronary  
313 angiography may have experienced referral bias, leading to an increased risk of  
314 having HF among people suspected of CAD. Third, the length of follow-up was  
315 relatively short. Finally, we recognize that using electronic medical records may have  
316 led to an underestimation of HF hospitalization rates since these records may not have  
317 captured instances where patients were admitted to hospitals outside our institution.

318

319 **Conclusions**

320 Among Chinese middle-aged individuals with MAFLD and suspected CAD  
321 undergoing elective coronary angiography, there was a high prevalence of baseline  
322 pre-HFpEF and HFpEF in subjects with MAFLD. There was an increased risk of HF  
323 hospitalization in those with elevated hs-CRP levels.

324

325 **Funding:**

326 This paper was funded by grants from the National Natural Science Foundation of  
327 China (82070588), High Level Creative Talents from Department of Public Health in  
328 Zhejiang Province (S2032102600032) and Project of New Century 551 Talent  
329 Nurturing in Wenzhou. GT is supported in part by grants from the School of Medicine,  
330 University of Verona, Verona, Italy. CDB is supported in part by the Southampton  
331 NIHR Biomedical Research Centre (NIHR203319), UK.

332

333 **Authorship contribution statement:**

334 **Xiao-Dong Zhou:** Conceptualization, Formal analysis, Investigation, Data curation,  
335 Writing - original draft, Visualization. **Qin-Fen Chen:** Conceptualization, Formal  
336 analysis, Investigation, Data curation, Writing - original draft, Visualization.

337 **Giovanni Targher:** Investigation. **Christopher D. Byrne:** Investigation. **Michael D.**

338 **Shapiro:** Investigation. **Na Tian:** Investigation. **Tie Xiao:** Investigation. **Ki-Chul**

339 **Sung:** Investigation. **Gregory Y. H. Lip:** Investigation. **Ming-Hua Zheng:**

340 Conceptualization, Investigation, Supervision, Project administration, Funding

341 acquisition, Writing - review & editing.



342 **References**

- 343 1. Feng G, Valenti L, Wong V, Fouad Y, Yilmaz Y, Kim W, Sebastiani G,  
344 Younossi ZM, Hernandez-Gea V, Zheng MH. Re-compensation in cirrhosis:  
345 unraveling the evolving natural history of nonalcoholic fatty liver disease. *Nat*  
346 *Rev Gastroenterol Hepatol*. 2023:accepted in Sep 5, 2023.
- 347 2. Younossi Z, Koenig A, Abdelatif D, Fazel Y, Henry L, Wymer M. Global  
348 epidemiology of nonalcoholic fatty liver disease-Meta-analytic assessment of  
349 prevalence, incidence, and outcomes. *Hepatology (Baltimore, Md)*.  
350 2016;64:73-84. doi: 10.1002/hep.28431
- 351 3. Duell PB, Welty FK, Miller M, Chait A, Hammond G, Ahmad Z, Cohen DE,  
352 Horton JD, Pressman GS, Toth PP. Nonalcoholic Fatty Liver Disease and  
353 Cardiovascular Risk: A Scientific Statement From the American Heart  
354 Association. *Arterioscler Thromb Vasc Biol*. 2022;42:e168-e185. doi:  
355 10.1161/atv.000000000000153
- 356 4. Lazarus J, Mark H, Anstee Q, Arab J, Batterham R, Castera L, Cortez-Pinto H,  
357 Crespo J, Cusi K, Dirac M, et al. Advancing the global public health agenda  
358 for NAFLD: a consensus statement. *Nature reviews Gastroenterology &*  
359 *hepatology*. 2022;19:60-78. doi: 10.1038/s41575-021-00523-4
- 360 5. Li J, Zou B, Yeo YH, Feng Y, Xie X, Lee DH, Fujii H, Wu Y, Kam LY, Ji F, et  
361 al. Prevalence, incidence, and outcome of non-alcoholic fatty liver disease in  
362 Asia, 1999-2019: a systematic review and meta-analysis. *Lancet Gastroenterol*  
363 *Hepatol*. 2019;4:389-398. doi: 10.1016/s2468-1253(19)30039-1

- 364 6. Zhou XD, Cai J, Targher G, Byrne CD, Shapiro MD, Sung KC, Somers VK,  
365 Chahal CAA, George J, Chen LL, et al. Metabolic dysfunction-associated fatty  
366 liver disease and implications for cardiovascular risk and disease prevention.  
367 *Cardiovasc Diabetol.* 2022;21:270. doi: 10.1186/s12933-022-01697-0
- 368 7. Packer M. Atrial Fibrillation and Heart Failure With Preserved Ejection  
369 Fraction in Patients With Nonalcoholic Fatty Liver Disease. *The American*  
370 *journal of medicine.* 2020;133:170-177. doi: 10.1016/j.amjmed.2019.09.002
- 371 8. Sun DQ, Targher G, Byrne CD, Wheeler DC, Wong VW, Fan JG, Tilg H, Yuan  
372 WJ, Wanner C, Gao X, et al. An international Delphi consensus statement on  
373 metabolic dysfunction-associated fatty liver disease and risk of chronic kidney  
374 disease. *Hepatobiliary Surg Nutr.* 2023;12:386-403. doi:  
375 10.21037/hbsn-22-421
- 376 9. Mantovani A, Petracca G, Csermely A, Beatrice G, Bonapace S, Rossi A, Tilg  
377 H, Byrne C, Targher G. Non-alcoholic fatty liver disease and risk of new-onset  
378 heart failure: an updated meta-analysis of about 11 million individuals. *Gut.*  
379 2022. doi: 10.1136/gutjnl-2022-327672
- 380 10. Dunlay SM, Roger VL, Redfield MM. Epidemiology of heart failure with  
381 preserved ejection fraction. *Nat Rev Cardiol.* 2017;14:591-602. doi:  
382 10.1038/nrcardio.2017.65
- 383 11. Sung K, Yoo T, Lee M, Byrne C, Zheng M, Targher G. Comparative  
384 Associations of Nonalcoholic Fatty Liver Disease and Metabolic  
385 Dysfunction-Associated Fatty Liver Disease With Coronary Artery

- 386           Calcification: A Cross-Sectional and Longitudinal Cohort Study.
- 387           *Arteriosclerosis, thrombosis, and vascular biology*. 2023;43:482-491. doi:
- 388           10.1161/atvbaha.122.318661
- 389    12.    AbouEzzeddine OF, Kemp BJ, Borlaug BA, Mullan BP, Behfar A, Pislaru SV,
- 390           Fudim M, Redfield MM, Chareonthaitawee P. Myocardial Energetics in Heart
- 391           Failure With Preserved Ejection Fraction. *Circulation Heart failure*.
- 392           2019;12:e006240. doi: 10.1161/circheartfailure.119.006240
- 393    13.    Salah HM, Pandey A, Soloveva A, Abdelmalek MF, Diehl AM, Moylan CA,
- 394           Wegermann K, Rao VN, Hernandez AF, Tedford RJ, et al. Relationship of
- 395           Nonalcoholic Fatty Liver Disease and Heart Failure With Preserved Ejection
- 396           Fraction. *JACC Basic to translational science*. 2021;6:918-932. doi:
- 397           10.1016/j.jacbts.2021.07.010
- 398    14.    Wang A, Li Z, Sun Z, Wang Y, Fu S, Zhang D, Ma X. Heart failure with
- 399           preserved ejection fraction and non-alcoholic fatty liver disease: new insights
- 400           from bioinformatics. *ESC heart failure*. 2023;10:416-431. doi:
- 401           10.1002/ehf2.14211
- 402    15.    Salah HM, Pandey A, Van Spall HGC, Michos ED, McGarrah RW, Fudim M.
- 403           Meta-Analysis of Nonalcoholic Fatty Liver Disease and Incident Heart Failure.
- 404           *The American journal of cardiology*. 2022;171:180-181. doi:
- 405           10.1016/j.amjcard.2022.02.012
- 406    16.    Minhas AMK, Bhopalwala HM, Dewaswala N, Salah HM, Khan MS, Shahid I,
- 407           Biegus J, Lopes RD, Pandey A, Fudim M. Association of Non-Alcoholic Fatty

- 408 Liver Disease With in-Hospital Outcomes in Primary Heart Failure  
409 Hospitalizations With Reduced or Preserved Ejection Fraction. *Current*  
410 *problems in cardiology*. 2023;48:101199. doi:  
411 10.1016/j.cpcardiol.2022.101199
- 412 17. Lawler PR, Bhatt DL, Godoy LC, Lüscher TF, Bonow RO, Verma S, Ridker  
413 PM. Targeting cardiovascular inflammation: next steps in clinical translation.  
414 *European heart journal*. 2021;42:113-131. doi: 10.1093/eurheartj/ehaa099
- 415 18. Peters AE, Pandey A, Ayers C, Wegermann K, McGarrah RW, Grodin JL,  
416 Abdelmalek MF, Bekfani T, Blumer V, Diehl AM, et al. Association of liver  
417 fibrosis risk scores with clinical outcomes in patients with heart failure with  
418 preserved ejection fraction: findings from TOPCAT. *ESC heart failure*.  
419 2021;8:842-848. doi: 10.1002/ehf2.13250
- 420 19. Li Y, Zhong X, Cheng G, Zhao C, Zhang L, Hong Y, Wan Q, He R, Wang Z.  
421 Hs-CRP and all-cause, cardiovascular, and cancer mortality risk: A  
422 meta-analysis. *Atherosclerosis*. 2017;259:75-82. doi:  
423 10.1016/j.atherosclerosis.2017.02.003
- 424 20. Gu HQ, Yang KX, Lin JX, Jing J, Zhao XQ, Wang YL, Liu LP, Meng X, Jiang  
425 Y, Li H, et al. Association between high-sensitivity C-reactive protein,  
426 functional disability, and stroke recurrence in patients with acute ischaemic  
427 stroke: A mediation analysis. *EBioMedicine*. 2022;80:104054. doi:  
428 10.1016/j.ebiom.2022.104054
- 429 21. Lee M, Lee K, Kim DW, Cho JS, Kim TS, Kwon J, Kim CJ, Park CS, Kim HY,

- 430 Yoo KD, et al. Relationship of Serial High-Sensitivity C-Reactive Protein  
431 Changes to Long-term Clinical Outcomes in Stabilised Patients After  
432 Myocardial Infarction. *The Canadian journal of cardiology*. 2022;38:92-101.  
433 doi: 10.1016/j.cjca.2021.10.007
- 434 22. Eslam M, Alkhoury N, Vajro P, Baumann U, Weiss R, Socha P, Marcus C, Lee  
435 WS, Kelly D, Porta G, et al. Defining paediatric metabolic  
436 (dysfunction)-associated fatty liver disease: an international expert consensus  
437 statement. *The lancet Gastroenterology & hepatology*. 2021;6:864-873. doi:  
438 10.1016/s2468-1253(21)00183-7
- 439 23. Eslam M, Newsome P, Sarin S, Anstee Q, Targher G, Romero-Gomez M,  
440 Zelber-Sagi S, Wai-Sun Wong V, Dufour J, Schattenberg J, et al. A new  
441 definition for metabolic dysfunction-associated fatty liver disease: An  
442 international expert consensus statement. *Journal of hepatology*.  
443 2020;73:202-209. doi: 10.1016/j.jhep.2020.03.039
- 444 24. Kim BK, Kim DY, Park JY, Ahn SH, Chon CY, Kim JK, Paik YH, Lee KS,  
445 Park YN, Han KH. Validation of FIB-4 and comparison with other simple  
446 noninvasive indices for predicting liver fibrosis and cirrhosis in hepatitis B  
447 virus-infected patients. *Liver Int*. 2010;30:546-553. doi:  
448 10.1111/j.1478-3231.2009.02192.x
- 449 25. Ledwidge M, Dodd JD, Ryan F, Sweeney C, McDonald K, Fox R, Shorten E,  
450 Zhou S, Watson C, Gallagher J, et al. Effect of Sacubitril/Valsartan vs  
451 Valsartan on Left Atrial Volume in Patients With Pre-Heart Failure With

- 452 Preserved Ejection Fraction: The PARABLE Randomized Clinical Trial.  
453 *JAMA cardiology*. 2023;8:366-375. doi: 10.1001/jamacardio.2023.0065
- 454 26. Bayes-Genis A, Pascual-Figal D, Núñez J. The pre-HFpEF stage: a new entity  
455 that requires proper phenotyping for better management. *Eur J Prev Cardiol*.  
456 2021;28:935-936. doi: 10.1177/2047487320902326
- 457 27. Grundy SM, Stone NJ, Bailey AL, Beam C, Birtcher KK, Blumenthal RS,  
458 Braun LT, de Ferranti S, Faiella-Tommasino J, Forman DE, et al. 2018  
459 AHA/ACC/AACVPR/AAPA/ABC/ACPM/ADA/AGS/APhA/ASPC/NLA/PC  
460 NA Guideline on the Management of Blood Cholesterol: A Report of the  
461 American College of Cardiology/American Heart Association Task Force on  
462 Clinical Practice Guidelines. *Circulation*. 2019;139:e1082-e1143. doi:  
463 10.1161/cir.0000000000000625
- 464 28. Zhou X, Targher G, Byrne C, Somers V, Kim S, Chahal C, Wong V, Cai J,  
465 Shapiro M, Eslam M, et al. An international multidisciplinary consensus  
466 statement on MAFLD and the risk of CVD. *Hepatology international*.  
467 2023;1-19. doi: 10.1007/s12072-023-10543-8
- 468 29. VanWagner LB, Wilcox JE, Colangelo LA, Lloyd-Jones DM, Carr JJ, Lima JA,  
469 Lewis CE, Rinella ME, Shah SJ. Association of nonalcoholic fatty liver  
470 disease with subclinical myocardial remodeling and dysfunction: A  
471 population-based study. *Hepatology (Baltimore, Md)*. 2015;62:773-783. doi:  
472 10.1002/hep.27869
- 473 30. Packer M. Atrial Fibrillation and Heart Failure With Preserved Ejection

- 474 Fraction in Patients With Nonalcoholic Fatty Liver Disease. *The American*  
475 *journal of medicine*. 2020;133:170-177. doi: 10.1016/j.amjmed.2019.09.002
- 476 31. Fudim M, Zhong L, Patel K, Khara R, Abdelmalek M, Diehl A, McGarrah R,  
477 Molinger J, Moylan C, Rao V, et al. Nonalcoholic Fatty Liver Disease and  
478 Risk of Heart Failure Among Medicare Beneficiaries. *Journal of the American*  
479 *Heart Association*. 2021;10:e021654. doi: 10.1161/jaha.121.021654
- 480 32. Hage C, Löfgren L, Michopoulos F, Nilsson R, Davidsson P, Kumar C,  
481 Ekström M, Eriksson MJ, Lyngå P, Persson B, et al. Metabolomic Profile in  
482 HFpEF vs HFrEF Patients. *Journal of cardiac failure*. 2020;26:1050-1059. doi:  
483 10.1016/j.cardfail.2020.07.010
- 484 33. Mantovani A, Byrne CD, Benfari G, Bonapace S, Simon TG, Targher G. Risk  
485 of Heart Failure in Patients With Nonalcoholic Fatty Liver Disease:  
486 JACC Review Topic of the Week. *J Am Coll Cardiol*. 2022;79:180-191. doi:  
487 10.1016/j.jacc.2021.11.007
- 488 34. Lim GB. Neuromodulation reduces inflammation in HFpEF. *Nature reviews*  
489 *Cardiology*. 2022;19:147. doi: 10.1038/s41569-022-00672-2
- 490 35. Everett BM, Cornel JH, Lainscak M, Anker SD, Abbate A, Thuren T, Libby P,  
491 Glynn RJ, Ridker PM. Anti-Inflammatory Therapy With Canakinumab for the  
492 Prevention of Hospitalization for Heart Failure. *Circulation*.  
493 2019;139:1289-1299. doi: 10.1161/circulationaha.118.038010
- 494 36. Byrne C, Targher G. Non-alcoholic fatty liver disease-related risk of  
495 cardiovascular disease and other cardiac complications. *Diabetes, obesity &*

496 *metabolism*. 2022;28-43. doi: 10.1111/dom.14484

497 37. Zhou Y, Zhou X, Wu S, Fan D, Van Poucke S, Chen Y, Fu S, Zheng M.

498 Nonalcoholic fatty liver disease contributes to subclinical atherosclerosis: A

499 systematic review and meta-analysis. *Hepatology communications*.

500 2018;2:376-392. doi: 10.1002/hep4.1155

501 38. Franssen C, Chen S, Unger A, Korkmaz HI, De Keulenaer GW, Tschöpe C,

502 Leite-Moreira AF, Musters R, Niessen HW, Linke WA, et al. Myocardial

503 Microvascular Inflammatory Endothelial Activation in Heart Failure With

504 Preserved Ejection Fraction. *JACC Heart failure*. 2016;4:312-324. doi:

505 10.1016/j.jchf.2015.10.007

506

507



508 **Tables**

509 **Table 1.** Baseline Clinical and Biochemical Characteristics of Patients with MAFLD  
510 and Suspected Coronary Artery Disease Stratified by Baseline Heart Failure Status.

511 **Table 2.** Associations between hs-CRP Concentration Quartiles and the Risk of Heart  
512 Failure Hospitalization in Patients with Different Heart Failure Status at baseline

513 **Supplementary Table 1.** Associations between hs-CRP Concentration Quartiles and  
514 the Risk of Heart Failure Hospitalization in Patients with Different Severity of  
515 Coronary Stenosis at baseline.

516 **Supplementary Table 2.** Associations between hs-CRP Concentration Quartiles and  
517 the Risk of Heart Failure in Patients with MAFLD and Different Categories of  
518 MAFLD-related Score.

519

520 **Figure Legends**

521 **Figure 1.** Prevalence rates of different categories of HF (i.e., non-HF, preHFpEF, and  
522 HFpEF) in the whole cohort (A) and patients stratified by quartiles (Q1 to Q4) of  
523 serum hs-CRP concentrations (B). Incidence rates of hospitalization for HF according  
524 to different HF categories at baseline (C).

525 **Figure 2.** Kaplan-Meier event-free survival curve of the risk for HF hospitalizations  
526 in the whole cohort of patients stratified by serum hs-CRP quartiles. P-values were  
527 tested by log-rank test. Under the x-axis are reported the number of subjects in each  
528 quartile at each time.

529

530 **Figure 3.** Hazard ratios (HR) and 95% confidence intervals for HF hospitalization in  
531 patients stratified by different status of HF and severity of coronary stenosis at  
532 baseline: (A) Non-HF; (B) Pre-HFpEF; (C) HFpEF; (D) Mild stenosis; (E) Moderate  
533 stenosis; and (F) Severe stenosis.

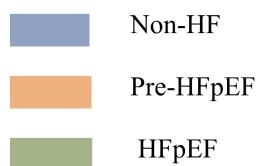
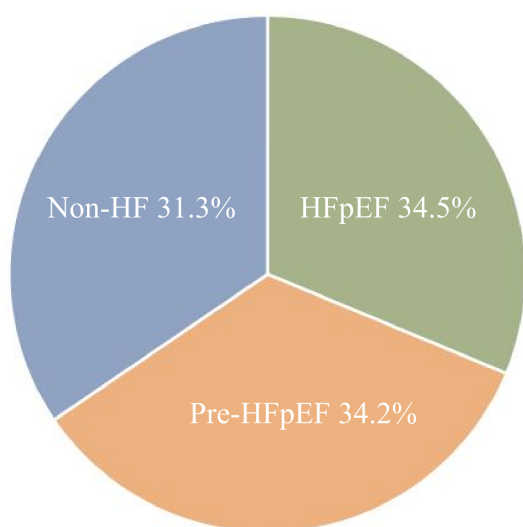
534

535 **Figure 4.** Hazard ratios (HR) and 95% confidence intervals for HF hospitalization in  
536 patients stratified by MAFLD-related scores: (A) FIB-4 <1.3; (B) FIB-4  $\geq$ 1.3 and <  
537 2.67; (C) FIB-4  $\geq$ 2.67.

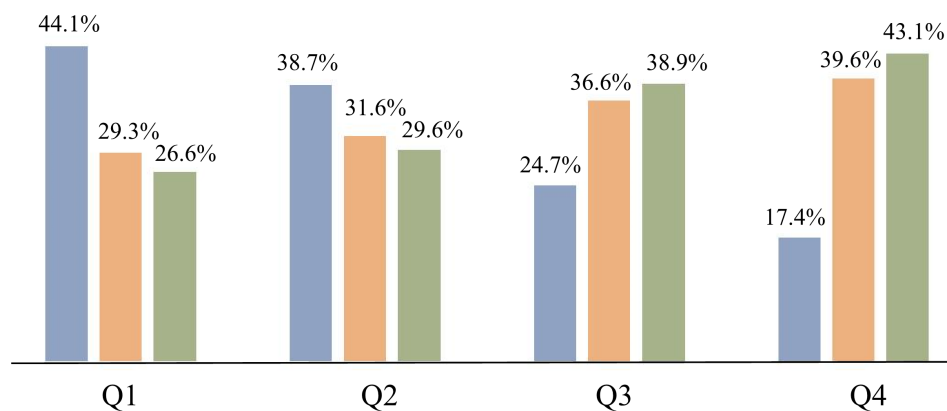
538

539 **Supplementary Figure 1.** Flowchart of the study design.

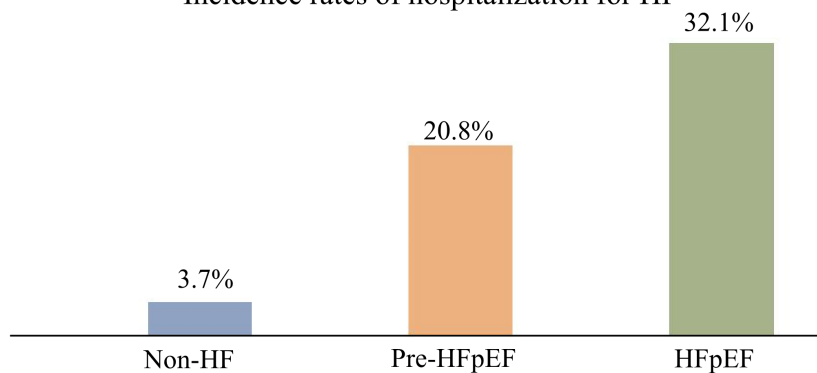
**A** Prevalence rates of different categories of HF

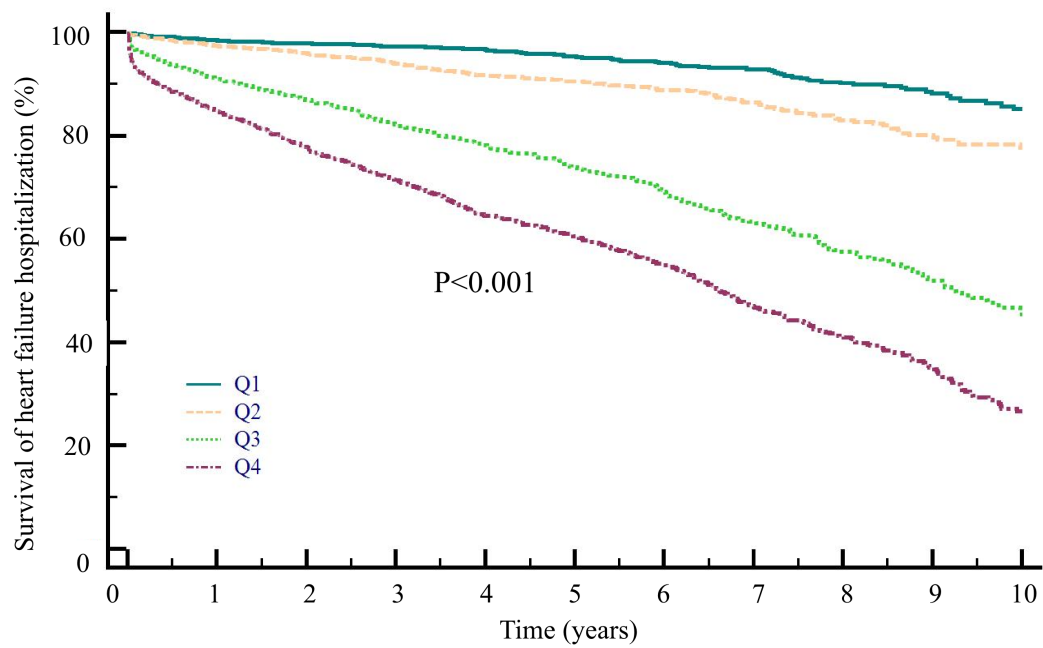


**B** Prevalence of HF by quartiles of hs-CRP concentration

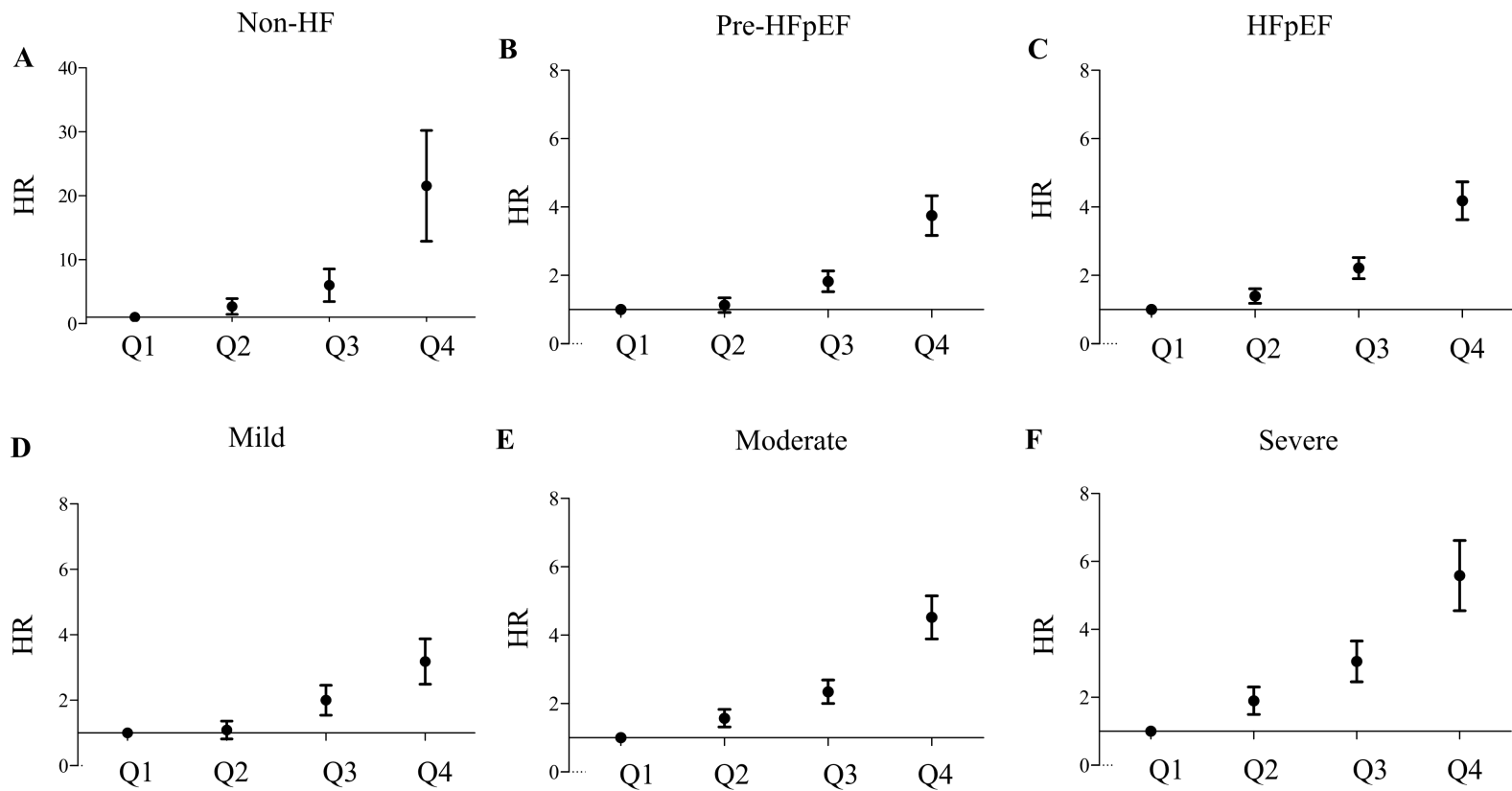


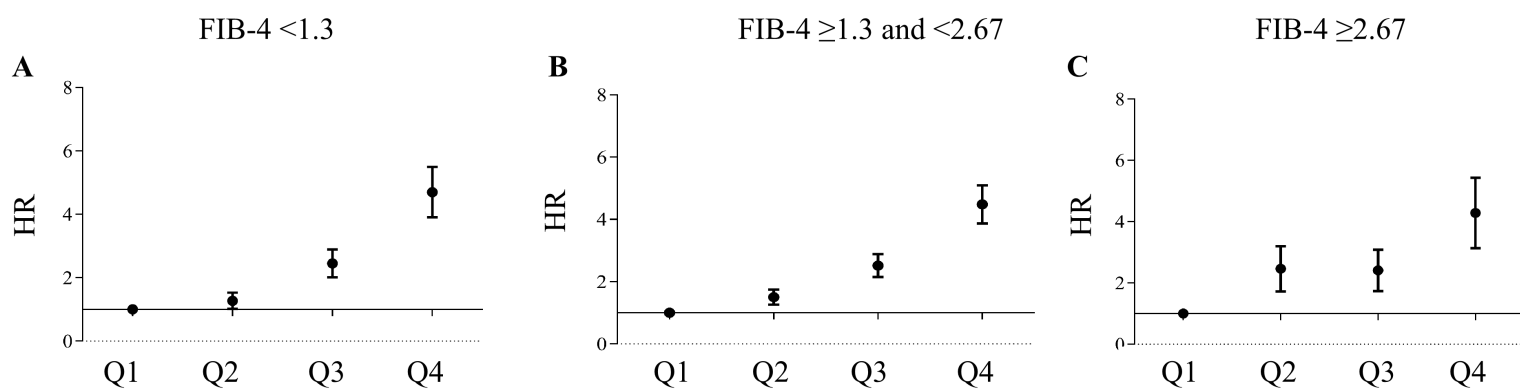
**C** Incidence rates of hospitalization for HF





Q1:	2498	1961	1722	1458	1183	955	720	523	358	227	129
Q2:	2436	1893	1647	1355	1056	801	636	475	324	194	115
Q3:	2498	1826	1523	1246	979	735	554	386	260	149	82
Q4:	2478	1752	1436	1129	856	667	483	326	220	113	50





**Table 1.** Baseline Clinical and Biochemical Characteristics of Patients with MAFLD and Suspected Coronary Artery Disease Stratified by Baseline Heart Failure Status

	All	Non-HF	Pre-HFpEF	HFpEF	<i>P</i> -value
Subjects, n	10019	3133	3427	3459	
Age, years	63.3±10.6	60.0±9.6	63.9±10.7	65.8±10.7	<0.001
Male sex, n (%)	6162 (61.5%)	2017 (64.4%)	2048 (59.8%)	2097 (60.6%)	<0.001
BMI, kg/m <sup>2</sup>	26.4±3.1	26.3±2.8	26.4±3.1	26.6±3.3	0.014
Current smokers, n (%)	4182 (41.7%)	1304 (41.6%)	1452 (42.4%)	1426 (41.2%)	0.621
Current drinking, n (%)	3270 (32.6%)	1065 (34%)	1112 (32.4%)	1093 (31.6%)	0.114
Follow-up period, years	3.2 (0.9-5.9)	3.4 (1.2-5.9)	3.2 (1.0-6.0)	2.8 (0.7-5.7)	0.084
Comorbidities, n (%)					
Hypertension	7790 (77.8%)	2328 (74.3%)	2720 (79.4%)	2742 (79.3%)	<0.001
Diabetes mellitus	4252 (42.4%)	1148 (36.6%)	1523 (44.4%)	1581 (45.7%)	<0.001
Dyslipidemia	6620 (66.1%)	2176 (69.5%)	2282 (66.6%)	2162 (62.5%)	<0.001
Atrial fibrillation	964 (9.6%)	175 (5.6%)	377 (11.0%)	412 (11.9%)	<0.001
Previous stroke	972 (9.7%)	237 (7.6%)	336 (9.8%)	399 (11.5%)	<0.001
Previous myocardial infarction	1828 (18.2%)	138 (4.4%)	834 (24.3%)	856 (24.7%)	<0.001
Chronic kidney disease	993 (9.9%)	130 (4.1%)	395 (11.5%)	468 (13.5%)	<0.001
Medications at admission, n (%)					
Loop diuretics	1838 (18.3%)	149 (4.8%)	715 (20.9%)	974 (28.2%)	<0.001
Spironolactone	1399 (14.0%)	143 (4.6%)	480 (14.0%)	776 (22.4%)	<0.001
ACEI/ARB/ARNIs	6303 (62.9%)	1761 (56.2%)	2239 (65.3%)	2303 (66.6%)	<0.001
Beta-blockers	6580 (65.7%)	1805 (57.6%)	2352 (68.6%)	2423 (70.0%)	<0.001
SGLT2-inhibitors	116 (1.2%)	25 (0.8%)	48 (1.4%)	43 (1.2%)	0.063
MAFLD-related scores					

FIB-4 index	1.9±2.4	1.5±2.5	2.0±2.2	2.1±2.5	<0.001
Hepatic steatosis index (HSI)	37.0±5.3	37.5±4.9	36.8±5.5	36.8±5.3	<0.001
Severity of coronary stenosis					<0.001
Mild CAD (<50%)	1916 (19.1%)	808 (25.8%)	516 (15.1%)	592 (17.1%)	
Medium CAD (50-70%)	4412 (44.0%)	1493 (47.7%)	1435 (41.9%)	1484 (42.9%)	
Severe CAD (>70%)	3691 (36.8%)	832 (26.6%)	1476 (43.1%)	1383 (40.0%)	
Echocardiographic parameters					
LVEF, %	65.3±6.9	67.0±6.0	65.0±7.1	64.1±7.2	<0.001
LAD, cm	41.6±6.7	40.5±5.2	41.9±6.9	42.5±7.4	<0.001
LVDD, cm	48.6±7.0	48.4±5.7	48.5±7.4	49.0±7.7	0.002
LVSD, cm	30.8±5.8	30.3±4.6	30.8±5.9	31.3±6.5	<0.001
PAP, mmHg	29.3±8.0	27.7±6.3	29.4±8.1	30.5±9.1	<0.001
Laboratory values					
hs-CRP, mg/L	3.4 (1.6-8.3)	2.7 (1.1-5.0)	4.5 (1.9-10.0)	5.0 (2.1-10.1)	<0.001
quartile 1 (≤3.26)	2549 (25.4%)	1123 (35.8%)	747 (21.8%)	679 (19.6%)	<0.001
quartile 2 (3.26-7.00)	2463 (24.6%)	954 (30.5%)	779 (22.7%)	730 (21.1%)	
quartile 3 (7.01-36.9)	2515 (25.1%)	622 (19.9%)	914 (26.7%)	979 (28.3%)	
quartile 4 (>36.9)	2492 (24.9%)	434 (13.9%)	987 (28.8%)	1071 (31.0%)	
NT-proBNP, ng/L	146.0 (56.4-557.0)	46.1 (26.0-74.0)	189.0 (76.2-638.0)	334.0 (128.0-1276.0)	<0.001
hs-cTnI, µg/L	0.0 (0.0-7.0)	0.0 (0.0-0.0)	0.0 (0.0-5.2)	3.0 (0.0-12.5)	<0.001
eGFR, mL/min × 1.73 m <sup>2</sup>	90.5 (73.95-102.2)	96.4 (84.2-106.8)	87.9 (70.9-100.1)	85.8 (66.2-98.5)	<0.001
Platelet count, 10 <sup>9</sup> /L	220±67	224±62	219±70	216±67	<0.001
AST/ALT ratio	1.11±0.47	1.20±0.45	1.07±0.44	1.06±0.49	<0.001
Albumin, g/dL	40.4±8.5	41.7±8.4	39.8±9.3	39.8±7.8	<0.001
HbA1c, %	7.0±2.2	6.7±1.4	7.0±1.6	7.1±3.1	<0.001

Data are expressed as means ± SD, medians (interquartile ranges, IQR), or percentages.



---

*Abbreviations:* ACEi: angiotensin converting enzyme inhibitor; ARBs: angiotensin II receptor blockers; ARNI: angiotensin receptor neprilysin inhibitor; BMI, body mass index; CAD, coronary artery disease; CI, confidence interval; HbA1c: glycated haemoglobin; MAFLD, metabolic dysfunction-associated fatty liver disease; hs-CRP, high-sensitivity C-reactive protein; hs-cTnI, high-sensitivity cardiac troponin I; NT-proBNP, N-terminal pro-brain natriuretic peptide; eGFR, estimated glomerular filtration rate; AST, alanine aminotransferase; AST, aspartate aminotransferase; LVEF, left ventricular ejection fraction; LAD, left atrial diameter; LVDD, left ventricular diastolic dysfunction; LVSD, left ventricular end-systolic dimension; PAP, pulmonary arterial pressure.

**Table 2.** Associations between hs-CRP Concentration Quartiles and the risk of Heart Failure Hospitalization in Patients with Different Heart Failure Status at baseline

Groups	hs-CRP quartile	Events, n (%)	Model 1 Hazard ratio (95% CI)	P	Model 2 Hazard ratio (95% CI)	P	Model 3 Hazard ratio (95% CI)	P
All subjects	Q1 (N=2506)	154 (6.1%)	<i>Ref.</i>		<i>Ref.</i>		<i>Ref.</i>	
	Q2 (N=2520)	249 (9.9%)	1.546 (1.265-1.891)	<0.001	1.488 (1.217-1.820)	<0.001	1.487 (1.216-1.818)	<0.001
	Q3 (N=2493)	492 (19.7%)	2.966 (2.475-3.554)	<0.001	2.591 (2.161-3.108)	<0.001	2.411 (2.010-2.893)	<0.001
	Q4 (N=2500)	1047 (41.9%)	6.937 (5.857-8.215)	<0.001	5.544 (4.672-6.579)	<0.001	4.421 (3.720-5.254)	<0.001
Non-HF	Q1 (N=1244)	8 (0.6%)	<i>Ref.</i>		<i>Ref.</i>		<i>Ref.</i>	
	Q2 (N=872)	14 (1.6%)	2.22 (0.931-5.291)	0.072	2.203 (0.924-5.253)	0.075	2.110 (0.883-5.040)	0.093
	Q3 (N=601)	26 (4.3%)	5.426 (2.456-11.988)	<0.001	5.351 (2.419-11.836)	<0.001	4.910 (2.216-10.883)	<0.001
	Q4 (N=416)	69 (16.6%)	21.697 (10.434-45.117)	<0.001	20.888 (9.978-43.726)	<0.001	18.065 (8.589-37.998)	<0.001
Pre-HFpEF	Q1 (N=655)	62 (9.5%)	<i>Ref.</i>		<i>Ref.</i>		<i>Ref.</i>	
	Q2 (N=833)	86 (10.3%)	1.047 (0.755-1.451)	0.783	1.091 (0.787-1.512)	0.603	1.171 (0.843-1.625)	0.346
	Q3 (N=954)	186 (19.5%)	1.911 (1.433-2.547)	<0.001	1.777 (1.332-2.370)	<0.001	1.734 (1.298-2.317)	<0.001
	Q4 (N=985)	380 (38.6%)	4.083 (3.121-5.341)	<0.001	3.663 (2.797-4.798)	<0.001	3.179 (2.420-4.175)	<0.001
HFpEF	Q1 (N=607)	84 (13.8%)	<i>Ref.</i>		<i>Ref.</i>		<i>Ref.</i>	
	Q2 (N=815)	123 (18.3%)	1.389 (1.063-1.815)	0.016	1.364 (1.044-1.783)	0.023	1.373 (1.050-1.795)	0.021
	Q3 (N=938)	369 (29.9%)	2.328 (1.824-2.972)	<0.001	2.170 (1.699-2.772)	<0.001	2.120 (1.658-2.712)	<0.001
	Q4 (N=1099)	598 (54.4%)	4.698 (3.737-5.905)	<0.001	4.108 (3.262-5.174)	<0.001	3.502 (2.776-4.417)	<0.001

Serum hs-CRP quartiles were defined as follows: Q1:  $\leq 3.26$  mg/L; Q2: 3.26-7.00 mg/L; Q3: 7.01-36.9 mg/L; and Q4:  $>36.9$  mg/L.

Cox regression Model 1: unadjusted;

Cox regression Model 2: adjusted for age and sex;

Cox regression Model 3: further adjusted for smoking, alcohol intake, BMI, hypertension, diabetes, dyslipidemia, atrial fibrillation, previous stroke, previous myocardial infarction, chronic kidney disease, and current use of loop diuretics, spironolactone, ACEI/ARB/ARNIs or beta-blockers.

*Abbreviations:* ACEi: angiotensin converting enzyme inhibitor; ARBs: angiotensin II receptor blockers; ARNI: angiotensin receptor neprilysin inhibitor; BMI, body

---

mass index; hs-CRP, high-sensitivity C-reactive protein.