

Authors:

Apurba Chakrabarti (University of Michigan)
John Giudicessi (Mayo Clinic)
Fatima Ezzeddine (Mayo Clinic)
Francisca Delling (University of California-San Francisco)
Shalini Dixit (University of California, San Francisco)
Yoojin Lee (University of California, San Francisco)
Daniele Muser (Hospital of the University of Pennsylvania)
Silvia Magnani (University Hospital)
Aniek van Wijngaarden (Leiden University Medical Center)
Nina Ajmone Marsan (Leiden University Medical Centre)
Marc Miller (Icahn School of Medicine at Mount Sinai)
Jonathan Gandhi (Icahn School of Medicine at Mount Sinai)
Maria Trivieri (Icahn School of Medicine at Mount Sinai)
Jonaz Font (Caen-Normandy University hospital)
Raphael Martins (CHU Rennes)
James McCaffrey (The George Washington University School of Medicine & Health Sciences)
Pasquale Santangeli (Cleveland Clinic)
Francis Marchlinski (Hospital of the University of Pennsylvania)
Himal Chapagain (UPMC)
Don Mathew (University of Pittsburgh Medical Center(UPMC))
Krishna Kancharla (University of Pittsburgh)
Faisal Syed (University of North Carolina, Chapel Hill)
Ahad Abid (University of North Carolina)
lukasz cerbin (University of Colorado)
Wendy Tzou (University of Colorado Anschutz Medical Campus)
lohit garg (University of Colorado School of Medicine)
Domenico Della Rocca (St. David's Medical Center, Austin)
Andrea Natale (Texas Cardiac Arrhythmia Institute, St. David's Medical Center, Austin, TX 78705, USA.)
Sanghamitra Mohanty (Texas Cardiac Arrhythmia Institute, Austin, TX)
Seth Sheldon (University of Kansas Medical Center)
Ling Kuo (Taipei Veterans General Hospital)
Kristina Haugaa (Oslo University Hospital, Rikshospitalet)
Eivind Aabel (Department of Cardiology, Oslo University Hospital)
Andres Enriquez (Queen's University)
Shingo Maeda (AOI Universal Hospital)
Amrisha Deshmukh (University of Michigan)
Michael Ghannam (University of Michigan)
Frank Bogun (University of Michigan)
Michael Ackerman (Mayo Clinic)
Jackson Liang (University of Michigan)

1 Risk Factors for Sudden Cardiac Arrest and Ventricular Arrhythmias in Arrhythmogenic 2 Mitral Valve Prolapse Syndrome

3
4
5 Apurba Chakrabarti MD*¹, John R. Giudicessi MD, PhD*², Fatima M. Ezzeddine MD²,
6 Francesca N. Delling MD, MPH³, Shalini Dixit MD³, Yoo Jin Lee MD³, Daniele Muser MD⁴,
7 Silvia Magnani MD⁵, Aniek Van Wijngaarden MD⁶, Nina Ajmone Marsan MD, PhD⁶, Marc A.
8 Miller MD⁷, Jonathan Gandhi MD⁷, Maria G. Trivieri MD, PhD⁷, Jonaz Font MD⁸, Raphael
9 Martins MD, PhD⁹, James A. McCaffrey MD¹⁰, Pasquale Santangeli MD, PhD¹¹, Francis E.
10 Marchlinski MD¹⁰, Himal Chapagain MD¹², Don Mathew MD¹², Krishna Kancharla MBBS¹²,
11 Faisal F. Syed MBChB¹³, Ahad Abid MD¹³, Lukasz Cerbin MD¹⁴, Wendy S. Tzou MD¹⁴, Lohit
12 Garg MBBS¹⁴, Domenico G. Della Rocca MD, PhD¹⁵, Andrea Natale MD¹⁵, Sanghamitra
13 Mohanty MD¹⁵, Seth H. Sheldon MD¹⁶, Ling Kuo MD¹⁷, Kristina H. Haugaa MD, PhD¹⁸, Eivind
14 W. Aabel MD, PhD¹⁸, Andres Enriquez MD¹⁹, Shingo Maeda MD, PhD²⁰, Amrish Deshmukh
15 MD¹, Michael Ghannam MD¹, Frank M. Bogun MD¹, Michael J. Ackerman MD, PhD**²,
16 Jackson J. Liang DO**¹

- 17
18 1. Division of Cardiovascular Medicine, University of Michigan, Ann Arbor, MI, United
19 States.
20 2. Department of Cardiovascular Medicine, Mayo Clinic, Rochester, MN, United States.
21 3. Division of Cardiology, University of California San Francisco, San Francisco, CA,
22 United States.
23 4. Cardiothoracic Department, University of Udine, Udine, Italy.
24 5. Cardiology Department and Intensive Care Unit, San Paolo Hospital, Università degli
25 Studi di Milano, Milan, Italy.
26 6. Department of Cardiology, Leiden University Medical Center, Leiden, Netherlands.
27 7. Helmsley Electrophysiology Center, Mount Sinai School of Medicine, New York, NY,
28 United States.
29 8. Department of Cardiology, University Hospital of Caen, Caen, France.
30 9. Department of Cardiology, Centre Hospitalier Universitaire de Rennes, Rennes, France.
31 10. Division of Cardiovascular Medicine, Hospital of the University of Pennsylvania,
32 Philadelphia, PA, United States.
33 11. Department of Cardiovascular Medicine, Cleveland Clinic Foundation, Cleveland, OH,
34 United States.
35 12. Department of Cardiovascular Diseases, University of Pittsburgh, Pittsburgh, PA, United
36 States.
37 13. Division of Cardiology, University of North Carolina, Chapel Hill, Chapel Hill, NC,
38 United States
39 14. Division of Cardiology, University of Colorado Denver, Aurora, CO, United States.
40 15. Texas Cardiac Arrhythmia Institute, St. David's Medical Center, Austin, TX, United
41 States.
42 16. Department of Cardiovascular Medicine, University of Kansas School of Medicine,
43 Kansas City, KS, United States.
44 17. Department of Cardiology, Taipei Veterans General Hospital, Taipei, Taiwan.
45 18. ProCardio Center for Research Based Innovation, Oslo University Hospital,
46 Rikshospitalet, Oslo, Norway.

47 19. Division of Cardiology, Queens University, Kingston, Ontario, Canada.
48 20. Arrhythmia Advanced Therapy Center, AOI Universal Hospital, Kawasaki, Japan.

49
50 *Co-equal first authors
51 **Co-equal last authors

52
53 Short title: Ventricular Arrhythmias in Mitral Valve Prolapse

54
55 Funding: None
56 Disclosures: No relevant relationships with industry

57
58 Address for Correspondence:
59 Jackson J. Liang, DO
60 Internal Medicine-Cardiovascular
61 2139 Frankel Cardiovascular Center
62 1425 E. Ann Street, Ann Arbor MI 48109-5853
63 Liangjac@med.umich.edu

64
65 Total Word Count: 3593

66
67
68
69
70
71
72
73
74
75
76
77
78
79
80
81
82
83
84
85
86
87
88
89
90
91
92

93
94
95
96
97
98
99
100
101
102
103
104
105
106
107
108
109
110
111
112
113
114
115
116
117
118
119
120
121
122
123
124
125
126
127
128
129

130

131

132

133

ABSTRACT

Background: Patients with the arrhythmogenic mitral valve prolapse syndrome (AMVPS) are at increased risk for life-threatening ventricular arrhythmias (VAs), but studies have been limited by small sample sizes. We sought to assemble an international AMVPS registry to delineate clinical, imaging, treatment characteristics, and risk factors for sudden cardiac arrest (SCA).

Methods: We retrospectively identified two groups of subjects with AMVPS: 1) the MVP-SCA group with SCA, sustained ventricular tachycardia (VT), and ventricular fibrillation (VF); and 2) the MVP-PVC group with significant premature ventricular complexes (PVCs) only. Deidentified data was abstracted locally and combined centrally.

Results: We included 217 subjects with AMVPS: 148 (68%) had SCA or VT/VF (MVP-SCA group) and 69 (32%) had PVCs only (MVP-PVC group). Phenotypically, both groups were similar [mean age 44.2±16.7 years, 66% female, 76% with bileaflet prolapse, 55% with mitral annular disjunction (MAD)]. Syncope was more common in the MVP-SCA group than the MVP-PVC group (47% vs 22%, p=0.001) as were anterolateral T-wave inversions (TWIs, 22% vs 7%, p=0.011). Prior mitral valve surgery was less common in the MVP-SCA group (6% vs 20%, p=0.002). These differences remained significant after multivariable adjustment. An electrophysiology (EP) study was negative in 15/45 (33%) of the MVP-SCA subjects.

Conclusions: In this international registry, AMVPS subjects were young, female, and had bileaflet prolapse with MAD. A history of syncope and anterolateral TWIs were associated with SCA. Prior mitral valve surgery was less common in SCA subjects. A negative EP study had limited negative predictive value in high-risk patients.

Keywords: arrhythmogenic mitral valve prolapse syndrome, sudden cardiac arrest, premature ventricular contraction, mitral annular disjunction, electrophysiology study, T wave inversion

Abbreviations: AMVPS-arrhythmogenic mitral valve prolapse syndrome, CI: confidence interval, CMR-cardiac magnetic resonance imaging, DE-delayed enhancement, EF-ejection fraction, EPS-electrophysiology study, ICD-implantable cardiac defibrillator, LV-left ventricle, MAD-mitral annular disjunction, MV-mitral valve, MVP-mitral valve prolapse, OR-odds ratio, PVC-premature ventricular contraction, RV-right ventricle, SCA-sudden cardiac arrest, SD-standard deviation, TWI-T wave inversion, VA-ventricular arrhythmias, VF-ventricular fibrillation, VT-ventricular tachycardia

134 **INTRODUCTION**

135 Mitral valve prolapse (MVP) is a common cause of primary mitral regurgitation worldwide,
136 affecting 1-3% of the general population.¹⁻³ While the majority of patients with MVP have
137 benign outcomes, a subset of patients may experience valvular or arrhythmic complications.
138 Valvular complications include endocarditis, thromboembolism, and stroke as well as valvular
139 heart failure and need for mitral valve surgery.⁴⁻⁶

140
141 Recently, increasing attention has been placed on arrhythmic complications which include
142 sudden cardiac arrest (SCA), ventricular tachycardia (VT), ventricular fibrillation (VF), and
143 symptomatic premature ventricular complexes (PVCs). MVP patients with these arrhythmias and
144 no other plausible alternative etiologies have been labeled with the arrhythmogenic MVP
145 syndrome (AMVPS). Community dwelling patients with MVP experience SCA at rates as low as
146 0.14 per 100 patient-years.³ However, rates may be 0.4% or even higher in those referred to
147 tertiary centers or with risk factors.^{4,6} Given the relatively high prevalence of MVP, even a low
148 incidence of SCA and VT/VF translates into a significant public health concern. Indeed, autopsy
149 studies of younger patients with otherwise unexplained SCA have shown prevalence of MVP
150 between 2-11%.^{4,8,9}

151
152 Multiple prior studies have sought to identify risk factors to discriminate those at high risk of
153 arrhythmic complications from those with a more benign outcome. These risk factors are
154 electrocardiographic, cardiac monitoring, imaging abnormalities such as inferolateral T-wave
155 inversions (TWIs), non-sustained VT and complex PVCs,^{3,7,9,10} thickened bileaflet prolapse with
156 Barlow's valve morphology and severe mitral regurgitation,¹⁰⁻¹² and papillary muscle and left

157 ventricular (LV) delayed enhancement on cardiac magnetic resonance imaging (CMR).^{7,13}
158 Recent research has shown that abnormal separation of the mitral annulus from the basal left
159 ventricular myocardium, termed mitral annular disjunction (MAD), is associated with SCA and
160 VT/VF.¹⁴⁻¹⁸

161
162 To date, most studies of patients with AMVPS have utilized small sample sizes from single
163 centers or populations with a small proportion of patients with SCA. These limitations have
164 made it difficult to characterize the general AMVPS population at highest risk for SCA. We
165 therefore sought to create an international registry of patients with MVP and SCA, VT or VF, or
166 significant PVCs and to define the clinical, imaging, and treatment characteristics as well as risk
167 factors for SCA.

168

169 **METHODS**

170 *Patient population*

171 Patients with MVP and VAs were retrospectively identified at 20 international centers. MVP was
172 defined according to the standard definition, with ≥ 2 millimeters of displacement of the mitral
173 valve leaflets into the left atrium during systole by transthoracic cardiac imaging.¹⁹ Ventricular
174 arrhythmias (VAs) included unexplained SCA, or documented sustained monomorphic VT,
175 polymorphic VT, VF, and significant PVCs. Significant PVCs were defined as symptomatic
176 PVCs, pleomorphic or bigeminal PVCs, PVCs with a $>5\%$ burden, or PVCs requiring anti-
177 arrhythmic drug or catheter ablation therapy. The index enrollment event was the time of SCA or
178 VT/VF in those with sustained VA or SCA. In patients enrolled for significant PVCs, the time of
179 first evaluation for PVCs at the participating institution was considered the enrollment event.

180 VAs were attributed to MVP after evaluation excluding other known causes. Patients with
181 cardiomyopathy unrelated to MVP, arrhythmic syndromes, channelopathies, and prior
182 myocardial infarction were excluded. The study was approved by the Institutional Review Board
183 of the coordinating center (University of Michigan).

184

185 *Data abstraction*

186 De-identified data was collected retrospectively at the individual institutional level into a
187 standardized worksheet and deidentified data were transmitted to a central database for analysis.
188 Data abstracted included baseline demographics, clinical comorbidities and medications,
189 presence of cardiac implantable electronic devices, electrocardiography, echocardiography,
190 ambulatory cardiac monitoring, and CMR. We also examined findings from invasive testing and
191 treatment when performed, including electrophysiology study, catheter ablation procedures, and
192 cardiac surgery. Testing procedures were done according to local institutional protocols and were
193 not standardized across the cohort. Not all subjects had all types of imaging or testing done.

194

195 For analysis, inferolateral T-wave inversions (TWI) were defined as T-wave inversion in at least
196 two of leads II, III, aVF, I and aVL. Anterolateral TWI was defined as inversions in leads V5 or
197 V6. A Barlow morphology valve was defined as those with bileaflet prolapse with leaflets at
198 least 5mm in thickness. The grading of mitral regurgitation was determined based on local
199 institutional practice. Mitral annular disjunction (MAD) was defined as measurable systolic
200 separation of the mitral valve leaflet insertion point from the basal left ventricular myocardium
201 with excursion into the left atrium.

202

203 The patient population was stratified based on the presence of SCA or sustained VT/VF (MVP-
204 SCA) versus those with significant PVCs without SCA or VT/VF (MVP-PVC).

205

206 *Statistical analysis*

207 Continuous variables were reported as mean \pm standard deviation and were compared by
208 Student's t-test. Categorical variables were reported as percentages and compared using chi-
209 square tests. If any analysis group included fewer than 25 patients and failed a Shapiro-Wilks
210 normality test, we utilized non-parametric tests including a Mann-Whitney test for continuous
211 variables and the Fisher's exact test for categorical variables.

212

213 We also performed adjustment with multivariable logistic regression. We included variables that
214 had significant differences ($p < 0.05$) between the MVP-SCA and MVP-PVC groups. We only
215 included variables where the difference could not be explained by inclusion criteria (*e.g.* PVC
216 group including patients with palpitations or higher PVC burden). Sensitivity analyses using
217 logistic regression models using plausibly significant characteristics that were not statistically
218 different were also done. These models included the following variables: age, sex, bileaflet
219 prolapse, MAD, left ventricular ejection fraction by echocardiography, inferolateral TWI as well
220 as prior beta blocker prescription, history of syncope, prior mitral valve surgery, and
221 anterolateral TWI. Given the possibility of interaction between age and mitral valve surgery (*i.e.*
222 the probability of SCA event and mitral valve surgery might be different if the subject required
223 mitral valve surgery at age 30 or age 70 years), models were created with and without mitral
224 valve surgery and age interaction term. Of note, CMR results were not used in multivariable

225 adjustment due to the significantly smaller sample size of patients who completed CMR.

226 Statistical analysis was completed with STATA version 14.2 (College Station, Texas, USA).

227

228 **RESULTS**

229 *Demographics*

230 We identified 217 subjects across 20 institutions (Table 1). A total of 148 (68.2%) subjects had
231 prior SCA, sustained VT, or VF and these patients comprised the MVP-SCA group. Specifically,
232 96 subjects (44.2%) had SCA, 43 subjects (19.8%) had monomorphic VT, 23 subjects (10.6%)
233 had polymorphic VT, 75 subjects (34.6%) had VF, and 8 subjects (3.7%) had electrical storm
234 (Figure 1). Some subjects had more than one VA. Sixty-nine subjects (31.8%) had significant
235 PVCs without SCA or VT/VF, and these patients comprised the MVP-PVC group. Overall, most
236 subjects were young (44.2 ± 16.7 years) and female gender (n=144, 66.4%) with no differences
237 between the groups.

238

239 *Background therapy*

240 Prior mitral valve repair/replacement was significantly less common in the MVP-SCA group
241 (n=8, 5.5%) compared to the MVP-PVC group (n=13, 19.7%, $p=0.002$, Table 1). Beta blockers
242 were less commonly prescribed in the MVP-SCA group compared to the MVP-PVC group
243 [n=51 (35.7%) versus n=35 (51.5%), respectively, $p=0.029$]. There was no difference in
244 prescription of anti-arrhythmic drug therapy between MVP-SCA and MVP-PVC groups.

245

246 *Mitral valve apparatus*

247 Combined data from echocardiography and cardiac magnetic resonance imaging (CMR) showed
248 that out of 204 patients with data on prolapsing leaflets, bileaflet prolapse was present in most
249 patients in both groups [MVP-SCA n=103 (73.1%), MVP-PVC n=53 (84.1%), p=0.108]. A
250 smaller subset of 152/217 (70.0%) patients had data on mitral valve leaflet thickness and
251 morphology. Of those 152 subjects, 99 (65.1%) had a Barlow morphology with no differences
252 between groups [MVP-SCA n=73 (67.6%), MVP-PVC n=26 (59.1%), p=0.351]. Less than half
253 of patients had moderate or worse mitral valve regurgitation (Table 2). MAD (from either
254 echocardiography or CMR) was present in a little over half patients [MVP-SCA n=82 (55.4%),
255 MVP-PVC n=38 (55.1%), p=0.963, Figure 2B]. There were no statistically significant
256 differences between the MVP-SCA and MVP-PVC groups for mitral valve characteristics.

257

258 *Symptoms and the AMVPS*

259 Historical data about the presence of symptoms associated with the AMVPS were available in
260 172 (79.3%) subjects (Table 1). Syncope was significantly more common in the MVP-SCA
261 versus MVP-PVC group [n=53 (47.3%) versus n=13 (21.7%), p=0.001]. Palpitations were
262 significant less common in the MVP-SCA group (n=62, 55.4%) compared to the MVP-PVC
263 group (n=46, 76.7%, p=0.008). Lightheadedness was numerically less common in the MVP-SCA
264 versus MVP-PVC group [n=32 (28.6%) versus n=26 (43.3%), respectively] but the difference
265 was non-significant with a p=0.063. There were no differences in the prevalence of symptoms of
266 chest pain, near syncope, dyspnea, fatigue, or anxiety.

267

268 *Electrocardiography*

269 In the 174 subjects (80.1%) where electrocardiographic (ECG) data was available, the corrected
270 QT interval in the MVP-SCA group was 438 ± 24 msec versus 445 ± 25 msec in the MVP-PVC
271 group ($p=0.072$, Table 3). While present in over half of patients, there was no difference in the
272 presence of inferolateral TWIs [MVP-SCA $n=69$ (59.5%), MVP-PVC $n=29$ (50.0%), $p=0.234$].
273 While anterolateral TWIs were less frequently seen in the overall cohort ($n=30$, 17.2%), they
274 were present more often in the MVP-SCA group ($n=26$, 22.4%) than the MVP-PVC group ($n=4$,
275 6.9%, $p=0.011$).

276

277 *Ambulatory cardiac monitoring*

278 One hundred twenty-eight subjects (59.0%) had data from ambulatory cardiac monitoring (Table
279 3). The PVC burden was significantly lower in the MVP-SCA group versus the MVP-PVC
280 group ($6.4\% \pm 7.0\%$ vs $9.6\% \pm 9.6\%$, $p=0.031$). Most subjects had PVCs with a right bundle
281 branch (RBBB, Figure 2A) morphology ($n=63$, 88.7%) with no difference between groups.
282 Bigeminal PVCs were significantly less common in the MVP-SCA group. Most patients had at
283 least one episode of one non-sustained VT ($n=96$, 75.0%), but there was no difference between
284 groups. Eighty-two of 128 subjects had data on the maximum rate of episodes of non-sustained
285 VT. There was no difference in the prevalence of patients with a maximum rate of non-sustained
286 VT > 180 beats per minute (bpm) between groups.

287

288 *Echocardiography*

289 One hundred seventy-nine subjects (82.5%) had complete data from echocardiography available
290 (Table 2). Overall, subjects in both groups had normal LV ejection fraction and LV size with no
291 differences between groups. Most patients did have left atrial enlargement but there was no

292 difference between groups. One-hundred patients (46.1%) had data on the presence of
293 Picklehaube sign.^{20,21} Twenty-nine patients (29.0%) had the Picklehuabe sign, but there was no
294 difference between groups.

295

296 *Cardiac magnetic resonance imaging (CMR)*

297 Ninety-seven subjects (44.7%) had contrast enhanced CMR data available (Table 2). There were
298 no differences in delayed enhancement (DE) distribution between the MVP-SCA and MVP-PVC
299 groups. Thirteen subjects (13.4%) had DE involving either the anterolateral or posteromedial
300 papillary muscles. More subjects had DE of either inferior (n=18, 18.6%) or inferolateral (n=31,
301 32.0%) LV myocardium. Forty-five subjects (46.4%) had at least one area of DE. In our cohort,
302 99 subjects (45.6%) had information on presence of inferior or inferolateral DE on CMR and
303 TWI on surface ECG. A total of 40/99 (40.4%) patients had DE in the inferior or inferolateral
304 LV myocardium. Of these 31/40 (77.5%) patients had inferolateral TWI and only 9/40 (22.5%)
305 had DE but no corresponding inferolateral TWI (p=0.019). Of the 2/97 (4.1%) that had
306 anterolateral DE in the LV myocardium, none had associated anterolateral TWI.

307

308 *Electrophysiology study*

309 A total of 150 subjects underwent an electrophysiology study (EPS) with programmed
310 ventricular stimulation. Subjects in the MVP-SCA group were less likely to undergo EPS than in
311 the MVP-PVC group (Table 4). In those that did undergo an EPS, there was no difference in the
312 prevalence of inducible VT/VF between groups. Importantly, of the 45 subjects in the MVP-
313 SCA group who had prior SCA or sustained VT/VF and underwent EPS, 15/45 (33.3%) were
314 non-inducible during an EPS despite a prior arrhythmic event. Of those in the MVP-SCA group

315 with a negative EPS, 6/15 had prior monomorphic VT, 1/15 had polymorphic VT, 7/15 had VF
316 and one had an unknown arrhythmia inciting SCA.

317

318 *Mitral valve surgery and device therapy*

319 After the index event, mitral valve repair/replacement was performed in a minority of patients
320 with no differences between either group [MVP-SCA n=11 (7.8%), MVP-PVC n=3, (5.6%),
321 p=0.761, Table 4]. Implantable cardiac defibrillators were placed commonly in both groups after
322 the index event but significantly more in the MVP-SCA group (n=128, 87.1%) versus the MVP-
323 PVC group (n=33, 47.8%, p<0.001).

324

325 *Invasive catheter ablation*

326 PVC ablation was performed less often in the MVP-SCA group (n=50, 35.0%) versus the MVP-
327 PVC group (n=35, 54.7%, p=0.008, Table 4). Of the 85 subjects who underwent PVC ablation,
328 the most common sites of origin for PVCs (Figure 3A) were the posteromedial papillary muscle
329 (n=48), anterolateral papillary muscle (n=37), mitral annulus (n=11, Figure 2C), left ventricular
330 (LV) inferolateral wall (n=9), fascicles (n=7), LV septum (n=7), LV inferior wall (n=6), LV
331 outflow tract (n=5), right ventricular (RV) outflow tract (n=5), or LV anterolateral wall (n=2).
332 VT ablation was performed in a minority of patients (Table 4) with no differences between
333 groups. Sites of origin for VTs (Figure 3B) included posteromedial papillary muscle (n=6),
334 fascicles (n=6), mitral annulus (n=6), anterolateral papillary muscle (n=5), LV inferolateral wall
335 (n=4), LV inferior wall (n=3), right ventricular source (n=2), LV apex (n=1), and LV
336 anterolateral wall (n=2). Each subject may have had more than one focus of PVC or VTs.

337

338 *Multivariable risk adjustment*

339 The presence of anterolateral TWIs, a history of syncope, a prior beta blocker prescription, and
340 prior mitral valve surgery had statistically significant ($p < 0.05$) differences between MVP-PVC
341 and MVP-SCA groups. Other variables, such as PVC burden, the presence the PVC bigeminy,
342 and a history of palpitations were also significantly different. However, these differences could
343 be explained by the inclusion criteria for PVC group which included PVC burden $> 5\%$, PVC
344 bigeminy, and symptomatic PVCs. Therefore, these variables were excluded. CMR data was also
345 excluded due to smaller sample sizes. A multivariable logistic regression model of the four
346 significant variables showed persistent significance of prior mitral valve surgery [Odds Ratio
347 (OR) 0.17, 95% confidence interval (CI, 0.05, 0.57), $p = 0.004$], anterolateral TWI [OR 5.4, 95%
348 CI (1.6, 17.7), $p = 0.005$], and a history of syncope [OR 3.0, 95% CI (1.4, 6.6), $p = 0.007$] but beta
349 blocker prescription was no longer significant [OR 0.51, 95% CI (0.25, 1.0), $p = 0.06$]. This
350 model is shown in Figure 4.

351

352 Sensitivity analysis was done with additional logistic regression models including other
353 clinically significant variables that were not statistically different between groups (age, sex,
354 bileaflet prolapse, MAD, LV ejection fraction by echocardiography, inferolateral TWI as well as
355 prior beta blocker prescription, history of syncope, prior mitral valve surgery, and anterolateral
356 TWI). These are shown in supplemental data. These combined models showed that the presence
357 of anterolateral TWIs and a history of syncope remained significantly associated with increased
358 SCA and beta blocker prescription remained non-significantly associated with SCA. The
359 association of mitral valve surgery and SCA was significant if its interaction with age was

360 included (see supplemental Tables S1 and S2). No other variables were significantly associated
361 with SCA.

362

363 **DISCUSSION**

364 This study represents the largest multicenter series characterizing patients with AMVPS at
365 highest arrhythmic risk, including those with SCA. This cohort of 217 subjects included 96
366 patients (44%) with SCA and 52 (24%) patients with sustained VT/VF. This study expands upon
367 the initial comprehensive description of AMVPS that stemmed from an analysis of 10/24 SCA
368 survivors with structurally normal hearts that had bileaflet MVP where the key components of
369 AMVPS were defined.⁹ In contrast, the largest previous case series examining AMVPS included
370 295 patients with some VAs but only 10 patients (3.3%) were SCA survivors.¹⁰ Although our
371 analysis compared MVP subjects with SCA or VT/VF versus those with significant PVCs, both
372 groups included subjects that would meet multiple risk criteria for SCA (*e.g.* non-sustained VT,
373 bigeminal PVCs, MAD).

374

375 In general, our cohort phenotypically characterizes patients with AMVPS as typically younger,
376 female gender, with bileaflet prolapse and MAD (Figure 5). Over half had mild or less mitral
377 regurgitation. Cardiac monitoring shows frequent inferolateral TWIs, frequent PVCs (average
378 7.6%), typically with RBBB morphology, often with PVC bigeminy and non-sustained VT.
379 Forty-six percent of patients will have some DE on CMR, but only a minority will have papillary
380 muscle LGE in our study. These characteristics have also been previously documented in prior
381 studies.^{3,7,9,11,12,15,16,22,23}

382

383 Our subjects were predominately female and younger age, which has been seen in most studies
384 enriched with MVP patients with SCA.^{7,9,23-25} In other studies with a lower proportion of patients
385 with SCA, the average age was higher and a greater proportion of males were seen.^{16,26} It is
386 possible that the population at highest risk of SCA is younger and female although not all
387 autopsy studies have shown a female or younger age predominance.⁸

388

389 Thus far, there is limited evidence supporting the therapeutic use of any medications for AMVPS.
390 In our study, beta blocker prescription was significantly less common in patients with MVP-SCA
391 than in those with MVP-PVC group. Beta blockers have been recommended in the past for
392 patients with symptomatic VAs, including for patients with MVP,²⁷ but to our knowledge there
393 has not been any data supporting their efficacy specifically in MVP patients. The causality of this
394 association remains unclear; it is possible that those in the MVP-PVC group were more
395 frequently treated with beta-blockers for symptomatic PVCs. Indeed, after multivariable
396 adjustment, beta blocker prescription was not associated with reduced chance of SCA.
397 Nevertheless, the possible protective association between beta blockers and SCA or sustained
398 VT/VF warrants further exploration in prospective studies. A small case series has examined the
399 efficacy of flecainide in patients with AMVPS and arrhythmias not responding to beta
400 blockers,²⁸ however data on specific anti-arrhythmic drugs was unavailable in our registry.

401

402 Studies examining the protective role of mitral valve surgery in treating AMVPS have shown
403 mixed results in the past.²⁹⁻³³ In our study, a history of prior mitral valve surgery was
404 significantly less common in MVP-SCA patients although this relationship was weakened after
405 controlling for age (Figure 5). Another large retrospective study of MVP patients showed that the

406 association between VAs and excess mortality was abrogated in MVP patients that underwent
407 mitral valve surgery but not those undergoing medical management.¹⁰ Others have hypothesized
408 that repeated mechanical strain from the abnormal mitral valve apparatus might contribute to
409 cardiac fibrosis and arrhythmogenesis over time.³⁴ It follows logically that mitral valve repair or
410 replacement, which would potentially improve valve mechanics, may limit progression of
411 fibrosis and therefore reduce the onset of serious ventricular arrhythmias. However, it is also
412 possible that this association is from the bias that older survivors are more likely to undergo
413 valve surgery. Given that the majority of the patients in the current series had only mild or less
414 mitral regurgitation, surgical intervention would usually not be indicated for valvular reasons. In
415 patients with valvular indications for surgery, arrhythmic benefits may play a supportive role for
416 surgery, but this concept requires further evaluation in prospective studies.

417
418 The existence of a symptom complex associated with MVP is controversial. In our study, a
419 history of syncope was more common in the MVP-SCA than the MVP-PVC group while
420 symptoms such as palpitations and lightheadedness, while somewhat common, were not
421 associated with SCA. This suggests that particular attention should be placed on MVP patients
422 with syncope compatible with an arrhythmic etiology. These patients may warrant further testing.
423 This is consistent with the published expert consensus statement.³⁵

424
425 Several studies have shown inferolateral TWIs associated with AMVPS and in our population
426 over half of patients did have inferolateral TWIs.^{7,16,18} A novel finding in the current study was
427 that anterolateral TWIs (involving precordial leads V5 or V6), while significantly less prevalent
428 overall, were significantly more common among MVP-SCA subjects compared with MVP-PVC

429 subjects (Figure 5). Anterolateral TWI were not associated with DE on CMR. In contrast, the
430 presence of DE in the LV inferior or inferolateral myocardium was associated with presence
431 inferolateral TWIs. This lends credence to the hypothesis that cardiac fibrosis leads to
432 repolarization abnormalities in the corresponding myocardium and may contribute to electrical
433 instability and arrhythmogenesis.

434

435 Electrophysiology studies are performed in a wide variety of patient groups to help stratify risk
436 of VAs. The predictive validity of EPS in patients diagnosed with AMVPS is not well
437 documented. One-third of patients in the current series with a history of SCA or sustained
438 VT/VF still had a negative EPS, suggesting that EPS alone as a diagnostic study may have
439 limited negative predictive value in otherwise high-risk patients. Importantly, most centers
440 perform programmed ventricular stimulation from one or two right ventricular sites. However,
441 given the possibility of site-specificity for programmed ventricular stimulation, since the
442 arrhythmia substrates in MVP-SCA are predominantly in the LV, programmed stimulation from
443 both the right and left ventricles may increase predictive value of EPS.

444

445 Our study has several important limitations. First, due to its retrospective nature, causality cannot
446 be inferred. Due to the multicenter design, there was variable work-up performed and access to
447 records; many subjects did not have all forms of testing. Missing data could introduce bias.

448 Additionally, the performance and interpretation of testing, imaging, and treatment could not be
449 standardized. Since our series did not have control group of low or average arrhythmia risk

450 MVP patients, we are unable to specifically identify risk factors that delineate patients at low and
451 high risk of arrhythmias.

452 **CONCLUSIONS**

453 In this large international registry, subjects with arrhythmogenic mitral valve prolapse syndrome
454 were younger, female, and typically had bileaflet MVP, mitral annular disjunction, inferolateral
455 T-wave inversions, non-sustained VT, and frequent PVCs often with PVC bigeminy. Less than
456 half of patients had abnormal delayed enhancement on cardiac magnetic resonance imaging. A
457 history of syncope and anterolateral T-wave inversions were more common in patients who
458 survived SCA or sustained VT/VF than in those with PVCs alone. A history of prior mitral valve
459 surgery was less common in SCA and VT/VF patients than in PVC patients. A negative EP study
460 had limited negative predictive value in high-risk patients.

461

462

463

464

465

466

467

468

469

470

471

472

473

474

475 SOURCES OF FUNDING: None

476

477 DISCLOSURES: No relevant relationships with industry

478

479

480

481

482

483

484

485

486 REFERENCES

- 487 1. Freed LA, Levy D, Levine RA, Larson MG, Evans JC, Fuller DL, Lehman B, Benjamin EJ.
488 Prevalence and Clinical Outcome of Mitral-Valve Prolapse. *N Engl J Med*. 1999;341:1–7.
- 489 2. Devereux RB, Jones EC, Roman MJ, Howard BV, Fabsitz RR, Liu JE, Palmieri V, Welty
490 TK, Lee ET. Prevalence and correlates of mitral valve prolapse in a population-based
491 sample of American Indians: the strong heart study. *Am J Med*. 2001;111:679–685.
- 492 3. Nalliah CJ, Mahajan R, Elliott AD, Haqqani H, Lau DH, Vohra JK, Morton JB, Semsarian
493 C, Marwick T, Kalman JM, Sanders P. Mitral valve prolapse and sudden cardiac death: a
494 systematic review and meta-analysis. *Heart*. 2019;105:144–151.
- 495 4. Nishimura RA, McGoon MD, Shub C, Miller FA, Ilstrup DM, Tajik AJ.
496 Echocardiographically Documented Mitral-Valve Prolapse: Long-Term Follow-up of 237
497 Patients. *N Engl J Med*. 1985;313:1305–1309.
- 498 5. Avierinos J-F, Gersh BJ, Melton LJ, Bailey KR, Shub C, Nishimura RA, Tajik AJ,
499 Enriquez-Sarano M. Natural History of Asymptomatic Mitral Valve Prolapse in the
500 Community. *Circulation*. 2002;106:1355–1361.
- 501 6. Düren DR, Becker AE, Dunning AJ. Long-term follow-up of idiopathic mitral valve
502 prolapse in 300 patients: a prospective study. *J Am Coll Cardiol*. 1988;11:42–47.
- 503 7. Basso C, Perazzolo Marra M, Rizzo S, De Lazzari M, Giorgi B, Cipriani A, Frigo AC,
504 Rigato I, Migliore F, Pilichou K, Bertaglia E, Cacciavillani L, Bauce B, Corrado D, Thiene
505 G, Illiceto S. Arrhythmic Mitral Valve Prolapse and Sudden Cardiac Death. *Circulation*.
506 2015;132:556–566.
- 507 8. Delling FN, Aung S, Vittinghoff E, Dave S, Lim LJ, Olgin JE, Connolly A, Moffatt E,
508 Tseng ZH. Antemortem and Post-Mortem Characteristics of Lethal Mitral Valve Prolapse
509 Among All Countywide Sudden Deaths. *JACC Clin Electrophysiol*. 2021;7:1025–1034.
- 510 9. Sriram CS, Syed FF, Ferguson ME, Johnson JN, Enriquez-Sarano M, Cetta F, Cannon BC,
511 Asirvatham SJ, Ackerman MJ. Malignant Bileaflet Mitral Valve Prolapse Syndrome in
512 Patients With Otherwise Idiopathic Out-of-Hospital Cardiac Arrest. *J Am Coll Cardiol*.
513 2013;62:222–230.
- 514 10. Essayagh B, Sabbag A, Antoine C, Benfari G, Yang L-T, Maalouf J, Asirvatham S,
515 Michelena H, Enriquez-Sarano M. Presentation and Outcome of Arrhythmic Mitral Valve
516 Prolapse. *J Am Coll Cardiol*. 2020;76:637–649.
- 517 11. Turker Y, Ozaydin M, Acar G, Ozugul M, Hoscan Y, Varol E, Dogan A, Erdogan D, Yucel
518 H. Predictors of ventricular arrhythmias in patients with mitral valve prolapse. *Int J*
519 *Cardiovasc Imaging*. 2010;26:139–145.

- 520 12. van Wijngaarden AL, Kruithof BPT, Vinella T, Barge-Schaapveld DQCM, Ajmone Marsan
521 N. Characterization of Degenerative Mitral Valve Disease: Differences between
522 Fibroelastic Deficiency and Barlow's Disease. *J Cardiovasc Dev Dis*. 2021;8:23.
- 523 13. Constant Dit Beaufils A-L, Huttin O, Jobbe-Duval A, Senage T, Filippetti L, Piriou N,
524 Cueff C, Venner C, Mandry D, Sellal J-M, Le Scouarnec S, Capoulade R, Marrec M,
525 Thollet A, Beaumont M, Hossu G, Toquet C, Gourraud J-B, Trochu J-N, Warin-Fresse K,
526 Marie P-Y, Schott J-J, Roussel J-C, Serfaty J-M, Selton-Suty C, Le Tourneau T.
527 Replacement Myocardial Fibrosis in Patients With Mitral Valve Prolapse: Relation to
528 Mitral Regurgitation, Ventricular Remodeling, and Arrhythmia. *Circulation*.
529 2021;143:1763–1774.
- 530 14. Chakrabarti AK, Deshmukh A, Liang JJ, Madamanchi C, Ghannam M, Morady F, Bogun F.
531 Mitral Annular Substrate and Ventricular Arrhythmias in Arrhythmogenic Mitral Valve
532 Prolapse With Mitral Annular Disjunction. *JACC Clin Electrophysiol*. 2023;9(8 Pt 1):1265-
533 1275.
- 534 15. Dejgaard LA, Skjølsvik ET, Lie ØH, Ribe M, Stokke MK, Hegbom F, Scheirlynck ES,
535 Gjertsen E, Andresen K, Helle-Valle TM, Hopp E, Edvardsen T, Haugaa KH. The Mitral
536 Annulus Disjunction Arrhythmic Syndrome. *J Am Coll Cardiol*. 2018;72:1600–1609.
- 537 16. Essayagh B, Sabbag A, Antoine C, Benfari G, Batista R, Yang L-T, Maalouf J, Thapa P,
538 Asirvatham S, Michelena HI, Enriquez-Sarano M. The Mitral Annular Disjunction of
539 Mitral Valve Prolapse. *JACC Cardiovasc Imaging*. 2021;14 (11):2073–2087
- 540 17. Perazzolo Marra M, Basso C, De Lazzari M, Rizzo S, Cipriani A, Giorgi B, Lacognata C,
541 Rigato I, Migliore F, Pilichou K, Cacciavillani L, Bertaglia E, Frigo AC, Bauce B, Corrado
542 D, Thiene G, Iliceto S. Morphofunctional Abnormalities of Mitral Annulus and Arrhythmic
543 Mitral Valve Prolapse. *Circ Cardiovasc Imaging*. 2016;9(8):e005030.
- 544 18. van Wijngaarden AL, de Riva M, Hiemstra YL, van der Bijl P, Fortuni F, Bax JJ, Delgado
545 V, Ajmone Marsan N. Parameters associated with ventricular arrhythmias in mitral valve
546 prolapse with significant regurgitation. *Heart*. 2021;107:411–418.
- 547 19. Zoghbi WA, Adams D, Bonow RO, Enriquez-Sarano M, Foster E, Grayburn PA, Hahn RT,
548 Han Y, Hung J, Lang RM, Little SH, Shah DJ, Shernan S, Thavendiranathan P, Thomas JD,
549 Weissman NJ. Recommendations for Noninvasive Evaluation of Native Valvular
550 Regurgitation. *J Am Soc Echocardiogr*. 2017;30:303–371.
- 551 20. Muthukumar L, Rahman F, Jan MF, Shaikh A, Kalvin L, Dhala A, Jahangir A, Tajik AJ.
552 The Pickelhaube Sign. *JACC Cardiovasc Imaging*. 2017;10:1078–1080.
- 553 21. Ignatowski D, Schweitzer M, Pesek K, Jain R, Muthukumar L, Khandheria BK, Tajik AJ.
554 Pickelhaube Spike, a High-Risk Marker for Bileaflet Myxomatous Mitral Valve Prolapse:
555 Sonographer's Quest for the Highest Spike. *J Am Soc Echocardiogr*. 2020;33:639–640.

- 556 22. Han H, Ha FJ, Teh AW, Calafiore P, Jones EF, Johns J, Koshy AN, O'Donnell D, Hare DL,
557 Farouque O, Lim HS. Mitral Valve Prolapse and Sudden Cardiac Death: A Systematic
558 Review. *J Am Heart Assoc.* 2018;7(23):e010584.
- 559 23. Syed FF, Ackerman MJ, McLeod CJ, Kapa S, Mulpuru SK, Sriram CS, Cannon BC,
560 Asirvatham SJ, Noseworthy PA. Sites of Successful Ventricular Fibrillation Ablation in
561 Bileaflet Mitral Valve Prolapse Syndrome. *Circ Arrhythm Electrophysiol.*
562 2016;9(5):e004005
- 563 24. Aabel EW, Chivulescu M, Lie ØH, Hopp E, Gjertsen E, Ribe M, Helle-Valle TM,
564 Edvardsen T, Hegbom F, Dejgaard LA, Haugaa KH. Ventricular arrhythmias in arrhythmic
565 mitral valve syndrome—a prospective continuous long-term cardiac monitoring study.
566 *Europace.* 2023;25(2):506-516.
- 567 25. Han H, Parsons SA, Teh AW, Sanders P, Neil C, Leong T, Koshy AN, Vohra JK, Kalman
568 JM, Smith K, O'Donnell D, Hare DL, Farouque O, Lim HS. Characteristic
569 Histopathological Findings and Cardiac Arrest Rhythm in Isolated Mitral Valve Prolapse
570 and Sudden Cardiac Death. *J Am Heart Assoc.* 2020;9(7):e015587.
- 571 26. Nordhues BD, Siontis KC, Scott CG, Nkomo VT, Ackerman MJ, Asirvatham SJ,
572 Noseworthy PA. Bileaflet Mitral Valve Prolapse and Risk of Ventricular Dysrhythmias and
573 Death: Dysrhythmias and Death in BiMVP. *J Cardiovasc Electrophysiol.* 2016;27:463–468.
- 574 27. Miller MA, Dukkipati SR, Turagam M, Liao SL, Adams DH, Reddy VY. Arrhythmic
575 Mitral Valve Prolapse. *J Am Coll Cardiol.* 2018;72:2904–2914.
- 576 28. Aabel EW, Dejgaard LA, Chivulescu M, Helle-Valle TM, Edvardsen T, Hasselberg NE,
577 Hegbom F, Lie ØH, Haugaa KH. Flecainide in patients with arrhythmic mitral valve
578 syndrome: A case series. *Heart Rhythm.* 2023;20:635–636.
- 579 29. Kay JH, Krohn BG, Zubiato P, Hoffman RL. Surgical correction of severe mitral prolapse
580 without mitral insufficiency but with pronounced cardiac arrhythmias. *J Thorac Cardiovasc*
581 *Surg.* 1979;78:259–268.
- 582 30. Pocock WA, Barlow JB, Marcus RH, Barlow CW. Mitral valvuloplasty for life-threatening
583 ventricular arrhythmias in mitral valve prolapse. *Am Heart J.* 1991;121:199–202.
- 584 31. Reece IJ, Cooley DA, Painvin GA, Okereke OIJ, Powers PL, Pechacek LW, Frazier OH.
585 Surgical Treatment of Mitral Systolic Click Syndrome: Results in 37 Patients. *Ann Thorac*
586 *Surg.* 1985;39:155–158.
- 587 32. Naksuk N, Syed FF, Krittanawong C, Anderson MJ, Ebrille E, DeSimone CV, Vaidya VR,
588 Ponamgi SP, Suri RM, Ackerman MJ, Nkomo VT, Asirvatham SJ, Noseworthy PA. The
589 effect of mitral valve surgery on ventricular arrhythmia in patients with bileaflet mitral
590 valve prolapse. *Indian Pacing Electrophysiol J.* 2016;16:187–191.
- 591 33. Vaidya VR, DeSimone CV, Damle N, Naksuk N, Syed FF, Ackerman MJ, Ponamgi SP,
592 Nkomo VT, Suri RM, Noseworthy PA, Asirvatham SJ. Reduction in malignant ventricular

593 arrhythmia and appropriate shocks following surgical correction of bileaflet mitral valve
594 prolapse. *J Interv Card Electrophysiol*. 2016;46:137–143.

595 34. Basso C, Iliceto S, Thiene G, Perazzolo Marra M. Mitral Valve Prolapse, Ventricular
596 Arrhythmias, and Sudden Death. *Circulation*. 2019;140:952–964.

597 35. Sabbag A, Essayagh B, Barrera JDR, Basso C, Berni A, Cosyns B, Deharo J-C, Deneke T,
598 Di Biase L, Enriquez-Sarano M, Donal E, Imai K, Lim HS, Marsan NA, Turagam MK,
599 Peichl P, Po SS, Haugaa KH, Shah D, de Riva Silva M, Bertrand PB, Saba M, Dweck M,
600 Townsend SN, Ngarmukos T, Fenelon G, Santangeli P, Sade LE, Corrado D, Lambiase P,
601 Sanders P, Delacrétaiz E, Jahangir A, Kaufman ES, Saggi DK, Pierard L, Delgado V,
602 Lancellotti P. EHRA expert consensus statement on arrhythmic mitral valve prolapse and
603 mitral annular disjunction complex in collaboration with the ESC Council on valvular heart
604 disease and the European Association of Cardiovascular Imaging endorsed cby the Heart
605 Rhythm Society, by the Asia Pacific Heart Rhythm Society, and by the Latin American
606 Heart Rhythm Society. *Europace*. 2022;24(12):1981-2003.

607

608

609 Table 1. Demographic, clinical, and symptom characteristics,

	Sample size	MVP-PVC	MVP-SCA	Total	P value
Total sample size	217	69 (31.8%)	148 (68.2)	217 (100)	---
Age, years (± SD)	203	45.5 (19.9)	43.7 (15.4)	44.2 (16.7)	0.493
Female, n (%)	217	44 (63.8)	100 (67.6)	144 (66.4)	0.581
CAD, n (%)	215	2 (2.9)	5 (3.4)	7 (3.3)	1.00
LV ejection fraction <50%, n (%)	213	10 (14.7)	19 (13.1)	29 (13.6)	0.831
Prior MV surgery, n (%)	212	13 (19.7)	8 (5.5)	21 (9.9)	0.002
Beta blocker prescription, n (%)	211	35 (51.5)	51 (35.7)	86 (40.8)	0.029
Anti-arrhythmic drug prescription, n (%)	205	8 (12.1)	28 (20.1)	36 (17.6)	0.175
Symptoms of MVP syndrome					
Syncope, n (%)	172	13 (21.7)	53 (47.3)	66 (38.4)	0.001
Chest pain, n (%)	172	13 (21.7)	15 (13.4)	28 (16.3)	0.195
Palpitations, n (%)	172	46 (76.7)	62 (55.4)	108 (62.8)	0.008
Lightheadedness, n (%)	172	26 (43.3)	32 (28.6)	58 (33.7)	0.063
Dyspnea, n (%)	172	10 (16.7)	19 (17.0)	29 (16.9)	1.00
Fatigue, n (%)	172	11 (18.3)	20 (17.9)	31 (18.0)	1.00
Anxiety, n (%)	172	6 (10.0)	18 (16.1)	24 (14.0)	0.358

610 CAD-coronary artery disease, MV-mitral valve, MVP-mitral valve prolapse, LV-left ventricle,
 611 PVC-premature ventricular contraction, SCA-sudden cardiac arrest, SD-standard deviation

612 Table 2. Echocardiographic and cardiac magnetic resonance imaging (CMR) results

	Sample size	MVP-PVC	MVP-SCA	Total	P value
Echocardiography					
LV ejection fraction, % (\pm SD)	179	58.0 (7.1)	58.3 (8.1)	58.2 (7.8)	0.797
LV end diastolic diameter, mm (\pm SD)	179	55.0 (6.2)	53.7 (7.0)	54.1 (6.8)	0.249
Bileaflet prolapse, n (%)	179	40 (74.1)	89 (71.2)	129 (72.1)	0.694
Mitral annular disjunction, n (%)	179	32 (59.3)	72 (57.6)	104 (58.1)	0.836
Moderate or worse mitral regurgitation, n (%)	179	18 (33.3)	52 (41.6)	70 (39.1)	0.320
Left atrial enlargement, n (%)	159	29 (61.7)	73 (65.2)	102 (64.2)	0.719
Picklehaube sign, n (%)	100	6 (22.2)	23 (31.5)	29 (29.0)	0.460
Cardiac magnetic resonance imaging					
LV ejection fraction, % (\pm SD)	97	54.5 (8.8)	56.9 (11.4)	56.1 (10.7)	0.317
Bileaflet prolapse, n (%)	97	15 (48.4)	28 (42.4)	43 (44.3%)	0.663
Mitral annular disjunction, n (%)	97	8 (25.8)	26 (39.4)	34 (35.1%)	0.255
DE-anterolateral papillary muscle, n (%)	97	3 (9.7)	5 (7.6)	8 (8.3)	0.708
DE-posteromedial papillary muscle, n (%)	97	5 (16.1)	7 (10.6)	12 (12.4)	0.513
DE-LV inferior wall, n (%)	97	6 (19.4)	12 (18.2)	18 (18.6)	1.00
DE-LV inferolateral wall, n (%)	97	12 (38.7)	19 (28.8)	31 (32.0)	0.357
DE-LV anterior wall, n (%)	97	2 (6.5)	0 (0)	2 (2.1)	0.100
DE-LV anterolateral wall, n (%)	97	2 (6.5)	0 (0)	2 (2.1)	0.100

613

614 DE-delayed enhancement, MVP-mitral valve prolapse, LV-left ventricle, PVC-premature ventricular contraction, SCA-sudden cardiac arrest, SD-standard deviation

615 Table 3. Electrocardiographic and ambulatory cardiac monitoring results

	Sample size	MVP-PVC	MVP-SCA	Total	P value
Electrocardiography					
QTc, msec (SD)	174	445.3 (25.0)	438.1 (24.3)	440.5 (24.7)	0.072
Anteroseptal (V1-V4) TWI, n (%)	174	12 (20.7)	23 (19.8)	35 (20.1)	1.000
Anterolateral (V5-V6), TWI, n (%)	174	4 (6.9)	26 (22.4)	30 (17.2)	0.011
Inferolateral (II, III, aVF, I, aVL) TWI, n (%)	174	29 (50.0)	69 (59.5)	98 (56.3)	0.234
Ambulatory cardiac monitoring					
PVC burden, % (SD)	128	9.6 (9.6)	6.4 (7.0)	7.6 (8.2)	0.031
PVC RBBB morphology, n (%)	71	25 (86.2)	38 (90.5)	63 (88.7)	0.708
PVC LBBB morphology, n (%)	71	3 (10.3)	2 (4.8)	5 (7.0)	0.393
PVC bigeminy, n (%)	100	33 (91.7)	44 (68.8)	77 (77.0)	0.012
NSVT, n (%)	128	38 (80.9)	58 (71.6)	96 (75.0)	0.293
NSVT >180 bpm, n (%)	82	14 (45.2)	15 (29.4)	29 (35.4)	0.162

616

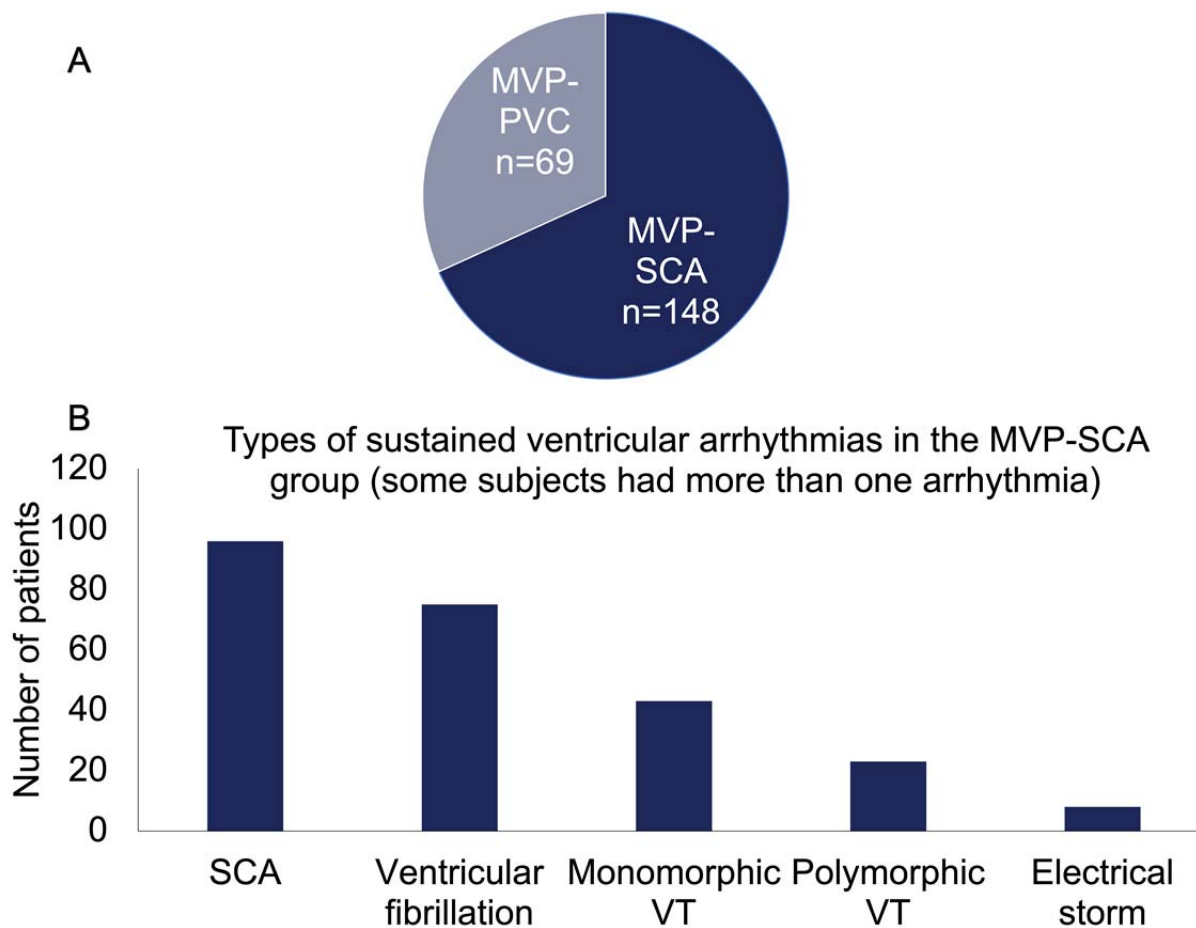
617 Bpm-beats per minute, LBBB-left bundle branch block, MVP-mitral valve prolapse, NSVT-non-sustained ventricular tachycardia, PVC-premature ventricular contraction, RBBB-right bundle branch block, SCA-sudden cardiac arrest, SD-standard deviation, TWI-T wave inversions

618 Table 4. Percutaneous catheter ablation, cardiac implantable device therapy, and surgical
619 treatments

	Sample size	MVP-PVC	MVP-SCA	Total	P value
ICD placed during follow-up, n (%)	216	33 (47.8)	128 (87.1)	161 (74.5)	<0.001
MV surgery during follow-up, n (%)	195	3 (5.6)	11 (7.8)	14 (7.2)	0.761
EPS performed, n (%)	150	27 (64.3)	45 (41.7)	72 (48.0)	0.018
EPS positive, n (%)	72	12 (44.4)	30 (66.7)	42 (58.3)	0.085
PVC ablation, n (%)	207	35 (54.7)	50 (35.0)	85 (41.1)	0.008
VT ablation, n (%)	146	8 (18.2)	18 (17.7)	26 (17.8)	1.000

620
621 EPS-electrophysiology study, ICD-implantable cardiac defibrillator, MV-mitral valve, MVP-
622 mitral valve prolapse, PVC-premature ventricular contraction, SCA-sudden cardiac arrest,
623 VT-ventricular tachycardia

624
625
626
627
628
629
630
631
632
633
634
635
636
637
638
639
640
641
642
643
644
645
646
647
648
649



650

651 Figure 1. Ventricular arrhythmias in the AMVPS registry. A) The proportions of patients in the
652 MVP-PVC versus MVP-SCA groups. B) Specific ventricular arrhythmias for the MVP-SCA
653 group. Some subjects had more than one type of ventricular arrhythmia.

654

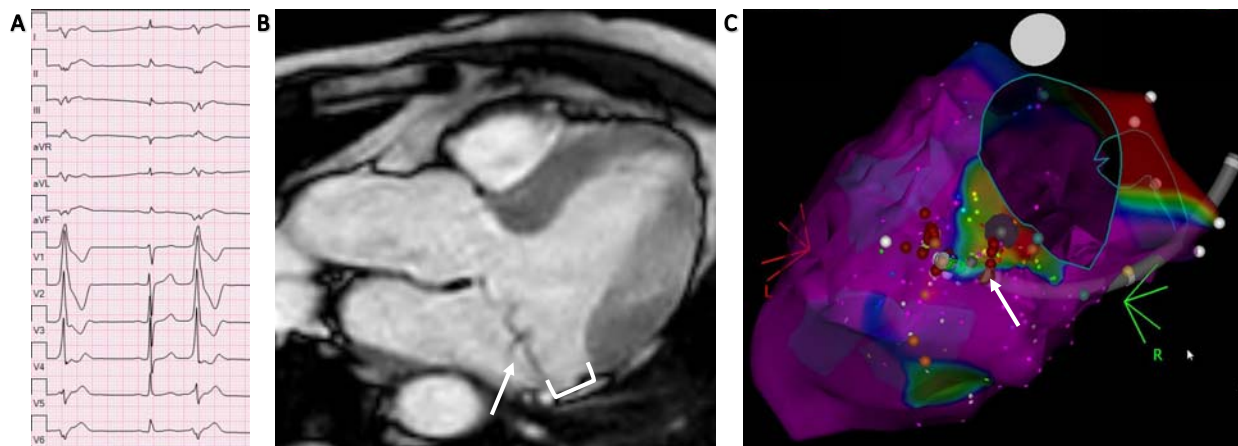
655

656

657

658

659



660

661 Figure 2. Representative AMVPS subject with PVC bigeminy, bileaflet MVP, MAD and mitral
662 annular origin of PVCs. A) Frequent right bundle superior axis PVCs B) CMR 3 chamber view
663 of the same subject with bileaflet MVP (arrow) and MAD (bracket) C) Electroanatomic map
664 created during invasive catheter ablation showing bipolar voltage and identifying a matching
665 focus (arrow) of the PVC at the mitral annulus in an area of abnormal voltage.

666

667

668

669

670

671

672

673

674

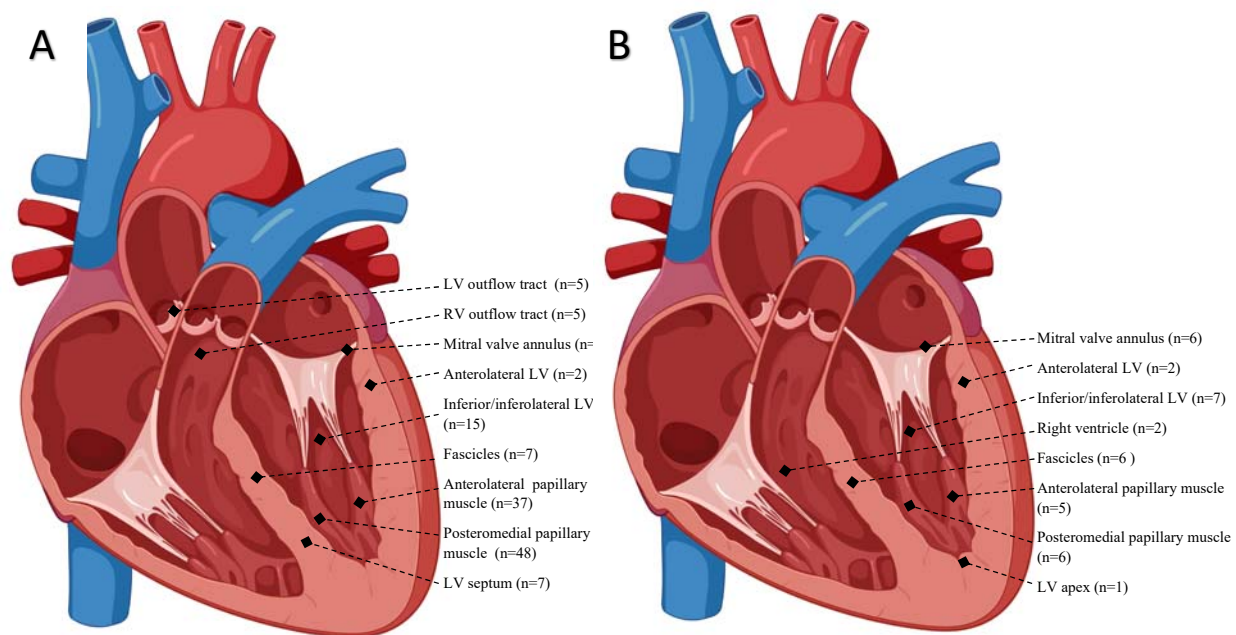
675

676

677

678

679



680

681 Figure 3. Sites of origin for PVCs and VTs in subjects undergoing catheter ablation. A)

682 Schematic demonstrating sites of origin for PVCs in 85 patients that underwent PVC ablation. B)

683 Sites of origin for VTs in 26 patients that underwent VT ablation. Some subjects had more than

684 one focus of PVC or VT.

685

686

687

688

689

690

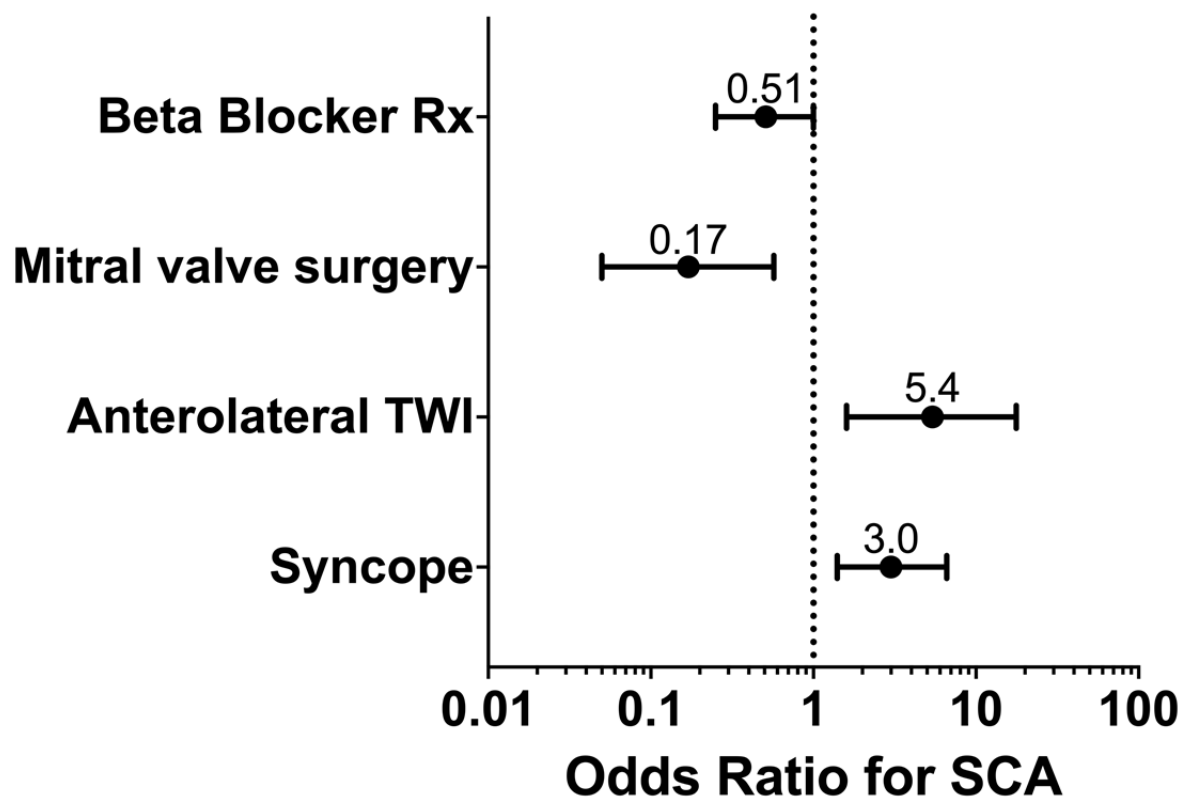
691

692

693

694

695



696

697 Figure 4. Multivariable logistic regression model. Model analyzing the association of a history

698 of syncope, beta blocker prescription, mitral valve (MV) surgery, and anterolateral TWI with

699 SCA or VT/VF.

700

701

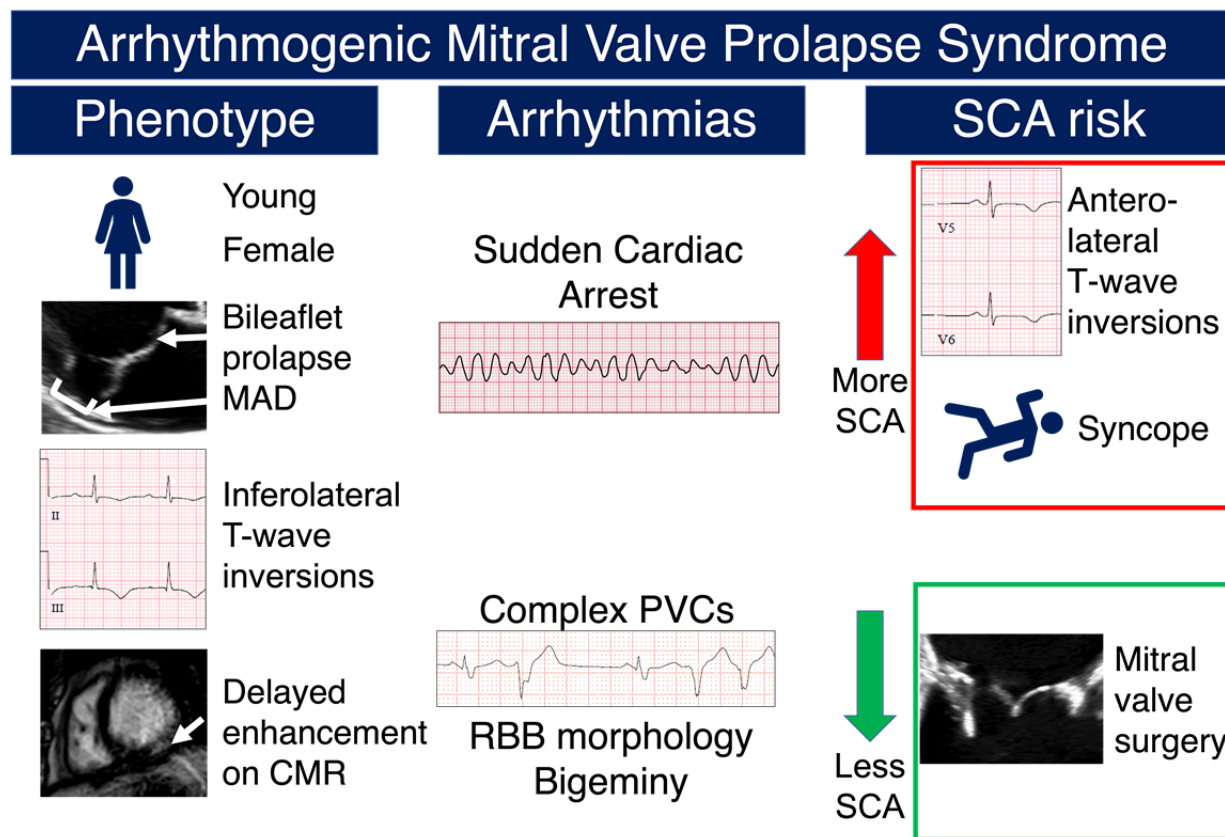
702

703

704

705

706



707

708 Figure 5. The Arrhythmogenic Mitral Valve Prolapse Syndrome (AMVPS): phenotype,
 709 arrhythmias, and risk factors for SCA. Subjects with AMVPS have a typical phenotype with
 710 associated clinical, electrocardiographic, echocardiographic findings, and cardiac magnetic
 711 resonance imaging (MRI) characteristics (left column). These patients are at risk for otherwise
 712 unexplained ventricular arrhythmias including SCA, VT/VF, and significant PVCs (middle
 713 column). Clinical and electrocardiographic features more common in MVP patients with SCA or
 714 sustained VT/VF compared to PVC patients are shown in the red box (right column, top half)
 715 and features less common in SCA patients compared to PVC patients are shown in the green box
 716 (right column, bottom half).