

1 **Bone canonical Wnt signaling is downregulated in type 2 diabetes and**  
2 **associates with higher Advanced Glycation End-products (AGEs) content and**  
3 **reduced bone strength**

4  
5 Giulia Leanza MSc, PhD<sup>1,2</sup>, Francesca Cannata MSc, PhD<sup>1</sup>, Malak Faraj MSc<sup>1</sup>, Claudio Pedone  
6 MD, PhD<sup>3</sup>, Viola Viola MSc<sup>1</sup>, Flavia Tramontana MSc, PhD<sup>1,2</sup>, Niccolò Pellegrini MSc<sup>1</sup>,  
7 Gianluca Vadalà, MD, PhD<sup>4</sup>, Alessandra Piccoli PhD<sup>1</sup>, Rocky Strollo MD, PhD<sup>5</sup>, Francesca  
8 Zalfa, MSc, PhD<sup>6,7</sup>, Alec Beeve PhD<sup>8</sup>, Erica L Scheller DDS, PhD<sup>8</sup>, Simon Tang PhD<sup>9</sup>, Roberto  
9 Civitelli MD<sup>8</sup>, Mauro Maccarrone PhD<sup>10,11</sup>, Rocco Papalia MD, PhD<sup>4,\*†</sup> and Nicola Napoli MD,  
10 PhD<sup>1,2,8\*†</sup>

11  
12 <sup>1</sup> Department of Medicine and Surgery, Research Unit of Endocrinology and Diabetes,  
13 Università Campus Bio-Medico di Roma, Via Alvaro del Portillo 21, 00128 Roma, Italy;

14 <sup>2</sup> Operative Research Unit of Osteometabolic and Thyroid Diseases, Fondazione Policlinico  
15 Universitario Campus Bio-Medico, Via Alvaro del Portillo, 200 – 00128, Roma, Italy;

16 <sup>3</sup> Operative Research Unit of Geriatrics, Fondazione Policlinico Universitario Campus Bio-  
17 Medico, Via Alvaro del Portillo, 200 – 00128, Roma, Italy;

18 <sup>4</sup> Operative Research Unit of Orthopedic and Trauma Surgery, Fondazione Policlinico  
19 Universitario Campus Bio-Medico, Via Alvaro del Portillo, 200 – 00128, Roma, Italy;

20 <sup>5</sup> Department of Human Sciences and Promotion of the Quality of Life San Raffaele Roma Open  
21 University Via di Val Cannuta 247, 00166 Roma, Italy

22 <sup>6</sup> Predictive Molecular Diagnostic Unit, Pathology Department, Fondazione Policlinico  
23 Universitario Campus Bio-Medico, Via Alvaro del Portillo, 200 – 00128, Roma, Italy;

24 <sup>7</sup> Microscopic and Ultrastructural Anatomy Unit, Università Campus Bio-Medico di Roma, Via  
25 Alvaro del Portillo 21, 00128 Roma, Italy

26 <sup>8</sup> Department of Medicine, Division of Bone and Mineral Diseases. Musculoskeletal Research  
27 Center, Washington University School of Medicine, St. Louis, MO USA;

28 <sup>9</sup> Department of Orthopaedic Surgery, Washington University in St. Louis, St. Louis, MO, USA;

29 <sup>10</sup> Department of Biotechnological and Applied Clinical Sciences, University of L'Aquila, Via  
30 Vetoio snc, 67100 L'Aquila, Italy;

31 <sup>11</sup> European Center for Brain Research, Santa Lucia Foundation IRCCS, 00164 Roma, Italy

32

33

34 † These authors are equally senior authors.

35

36 *\*Corresponding Authors:*

37 Nicola Napoli, MD PhD

38 Department of Medicine and Surgery

39 Research Unit of Endocrinology and Diabetes

40 Università Campus Bio-Medico di Roma

41 Via Alvaro del Portillo 21

42 00128 Roma, Italy

43 [n.napoli@unicampus.it](mailto:n.napoli@unicampus.it)

44

45 Rocco Papalia, MD PhD

46 Operative Research Unit of Orthopedic and Trauma Surgery

47 Fondazione Policlinico Campus Bio-Medico di Roma

48 Via Alvaro del Portillo 200

49 00128 Roma, Italy

50 [r.papalia@fondazionepoliclinico.it](mailto:r.papalia@fondazionepoliclinico.it)

51

52 *Short title:* Wnt signaling in bone of type 2 diabetes

53

54 **Keywords:** Diabetes, Bone, Wnt signaling, AGEs

55

56 **Disclosures**

57 All authors have nothing to disclose relevant to this work.

58

59

## 60 Abstract

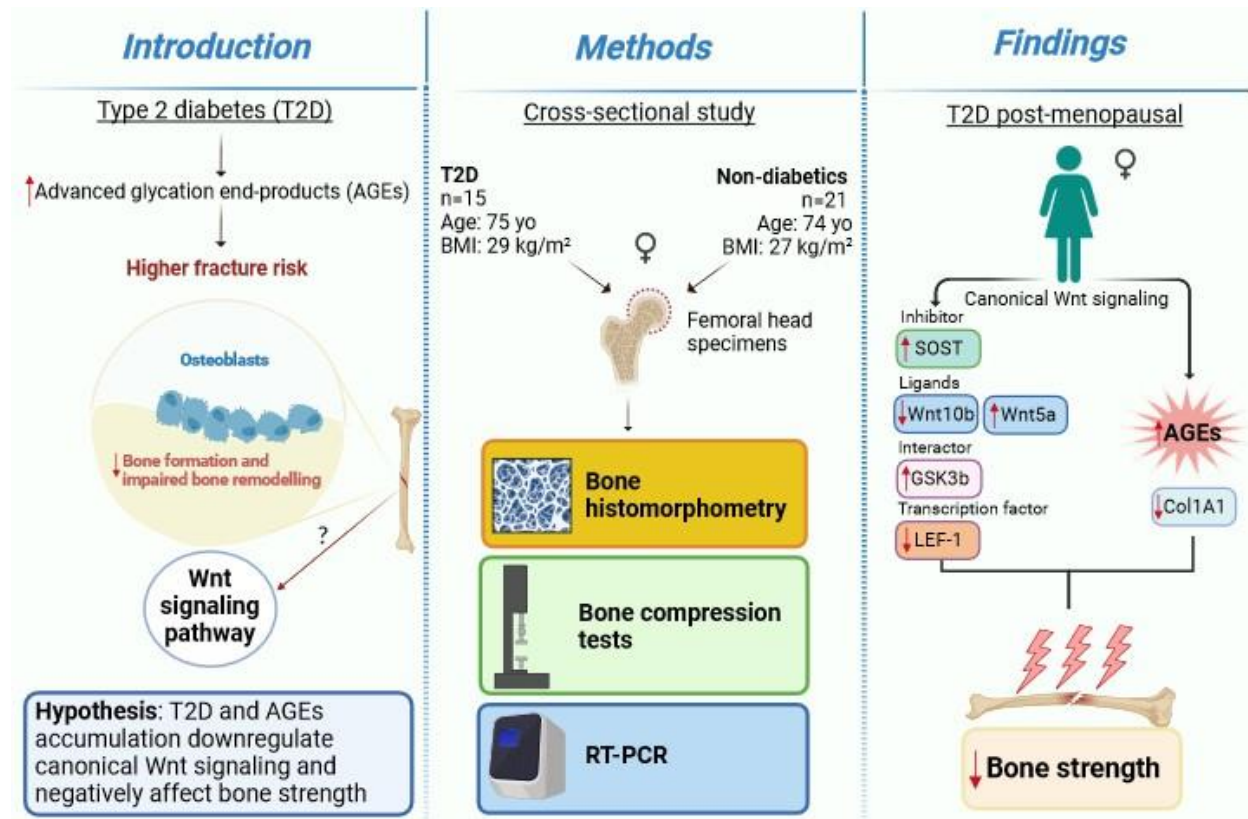
61 Type 2 diabetes (T2D) is associated with higher fracture risk, despite normal or high bone mineral  
62 density. We reported that bone formation genes (*SOST* and *RUNX2*) and Advanced Glycation End-  
63 products (AGEs) were impaired in T2D. We investigated Wnt signaling regulation and its  
64 association with AGEs accumulation and bone strength in T2D from bone tissue of 15 T2D and  
65 21 non-diabetic postmenopausal women undergoing hip arthroplasty. Bone histomorphometry  
66 revealed a trend of low mineralized volume in T2D [(T2D 0.249% (0.156-0.366) vs non-diabetic  
67 subjects 0.352% (0.269-0.454);  $p=0.053$ )], as well as reduced bone strength [T2D 21.60 MPa  
68 (13.46-30.10) vs non-diabetic subjects 76.24 MPa (26.81-132.9);  $p=0.002$ ]. We also showed that  
69 gene expression of Wnt agonists *LEF-1* ( $p=0.0136$ ) and *WNT10B* ( $p=0.0302$ ) were lower in T2D.  
70 Conversely, gene expression of *WNT5A* ( $p=0.0232$ ), *SOST* ( $p<0.0001$ ) and *GSK3B* ( $p=0.0456$ )  
71 were higher, while collagen (*COL1A1*) was lower in T2D ( $p=0.0482$ ). AGEs content was  
72 associated with *SOST* and *WNT5A* ( $r=0.9231$ ,  $p<0.0001$ ;  $r=0.6751$ ,  $p=0.0322$ ), but inversely  
73 correlated with *LEF-1* and *COL1A1* ( $r= -0.7500$ ,  $p=0.0255$ ;  $r= -0.9762$ ,  $p=0.0004$ ). *SOST* was  
74 associated with glycemic control and disease duration ( $r=0.4846$ ,  $p=0.0043$ ;  $r=0.7107$ ,  
75  $p=0.00174$ ), whereas *WNT5A* and *GSK3B* were only correlated with glycemic control ( $r=0.5589$ ,  
76  $p=0.0037$ ;  $r=0.4901$ ,  $p=0.0051$ ). Finally, Young's Modulus was negatively correlated with *SOST*  
77 ( $r=-0.5675$ ,  $p=0.0011$ ), *AXIN2* ( $r=-0.5523$ ,  $p=0.0042$ ) and *SFRP5* ( $r=-0.4442$ ,  $p=0.0437$ ), while  
78 positively correlated with *LEF-1* ( $r=0.4116$ ,  $p=0.0295$ ) and *WNT10B* ( $r=0.6697$ ,  $p=0.0001$ ). These  
79 findings suggest that Wnt signaling, and AGEs could be the main determinants of bone fragility  
80 in T2D.

81

82

83

84 **Graphical abstract**



85

86

87

88

89

90

91

92

93

## 94 **Introduction**

95 Type 2 diabetes (T2D) is a metabolic disease, with an increasing worldwide prevalence,  
96 characterized by chronic hyperglycemia and adverse effects on multiple organ systems, including  
97 bones [1]. Patients with T2D have an increased fracture risk, particularly at the hip, compared to  
98 individuals without diabetes. A recent meta-analysis reported that individuals with T2D have  
99 1.27 relative risk (RR) of hip fracture compared to non-diabetic controls [2]. Fragility fractures  
100 in patients with T2D occur at normal or even higher bone mineral density compared to healthy  
101 subjects, implying compromised bone quality in diabetes. T2D is associated with a reduced bone  
102 turnover [3], as shown by lower serum levels of biochemical markers of bone formation, such as  
103 procollagen type1 amino-terminal propeptide (P1NP) and osteocalcin, and bone resorption, C-  
104 terminal cross-linked telopeptide (CTX) in diabetic patients compared to nondiabetic individuals  
105 [4–7]. Accordingly, dynamic bone histomorphometry of T2D postmenopausal women showed a  
106 lower bone formation rate, mineralizing surface, osteoid surface, and osteoblast surface[8]. Our  
107 group recently demonstrated that T2D is also associated with increased *SOST* and decreased  
108 *RUNX2* genes expression, compared to non-diabetic subjects[9]. Moreover, we have proved in a  
109 diabetic model that a sclerostin-resistant *Lrp5* mutation, associated with high bone mass, fully  
110 protected bone mass and strength even after prolonged hyperglycemia [10]. Sclerostin is a potent  
111 inhibitor of the canonical Wnt signaling pathway, a key pathway that regulates bone homeostasis  
112 [11].

113 Diabetes and chronic hyperglycemia are also characterized by increased advanced glycation end-  
114 products (AGEs) production and deposition [12]. AGEs may interfere with osteoblast  
115 differentiation, attachment to the bone matrix, function, and survival [13,14]. AGEs also alter  
116 bone collagen structure and reduce the intrinsic toughness of bone, thereby affecting bone

117 material properties [9,15,16]. In this work,we hypothesized that T2D and AGEs accumulation  
118 downregulate Wnt canonical signaling and negatively affect bone strength.. Results confirmed  
119 that T2D downregulates Wnt beta/catenin signaling and reduces collagen mRNA levels and bone  
120 strength, in association with AGEs accumulation.

121

## 122 **Materials and Methods**

### 123 **Study subjects**

124 We enrolled a total of 36 postmenopausal women (15 with T2D and 21 non-diabetic controls)  
125 undergoing hip arthroplasty for osteoarthritis, consecutively screened to participate in this study  
126 between 2020 and 2022. Diabetes status was confirmed by the treating diabetes physician.  
127 Participants were diagnosed with diabetes when they had fasting plasma glucose (FPG)  $\geq 126$   
128 mg/dl or 2-h plasma glucose (2-h PG)  $\geq 200$  mg/dl during a 75-g oral glucose tolerance test  
129 (OGTT); or hemoglobin A1c (HbA1c)  $\geq 6.5\%$  in accordance with the American Diabetes  
130 Association diagnostic criteria. Eligible participants were  $\geq 60$  years of age. Exclusion criteria  
131 were any diseases affecting bone or malignancy. Additionally, individuals treated with  
132 medications affecting bone metabolism such as estrogen, raloxifene, tamoxifen,  
133 bisphosphonates, teriparatide, denosumab, thiazolidinediones, glucocorticoids, anabolic steroids,  
134 and phenytoin, and those with hypercalcemia or hypocalcemia, hepatic or renal disorder,  
135 hypercortisolism, current alcohol or tobacco use were excluded. The study was approved by the  
136 Ethics Committee of the Campus Bio-Medico University of Rome and all participants provided  
137 written informed consent. All procedures were conducted in accordance with the Declaration of  
138 Helsinki.

139

## 140 **Specimen preparation**

141 Femoral head specimens were obtained during hip arthroplasty. As described previously [9],  
142 trabecular bone specimens were collected fresh and washed multiple times in sterile PBS until  
143 the supernatant was clear of blood. Bone samples were stored at – 80 °C until analysis.

## 144 **Bone histomorphometry**

145 Trabecular bone from femur heads were fixed in 10% neutral buffered formalin for 24 h prior to  
146 storage in 70% ethanol. Tissues were embedded in methacrylate and sectioned sagittally  
147 by the Washington University Musculoskeletal Histology and Morphometry Core. Sections were  
148 stained with Goldner's trichrome. Then, a rectangular region of interest containing trabecular  
149 bone was chosen below the cartilage-lined joint surface and primary spongiosa. This region had  
150 an average dimension of 45 mm<sup>2</sup>. Tissue processing artifacts, such as folding and edges, were  
151 excluded from the ROI. A threshold was chosen using the Bioquant Osteo software to  
152 automatically select trabeculae and measure bone volume. Finally, Osteoid was highlighted in  
153 the software and quantified semi-automatically using a threshold and correcting with the brush  
154 tool. Unstained and TRAP-stained (Sigma) slides were imaged at ×20 high resolution using a  
155 NanoZoomer 2.0 with bright field and FITC/TRITC (Hamamatsu Photonics). Images were then  
156 analyzed via Bioquant Osteo software according to the manufacturer's instructions and published  
157 standards (v18.2.6, Bioquant Image Analysis Corp., Nashville, TN).

## 158 **Bone compression tests**

159 We used cylindrical bone specimens of trabecular core (with a diameter of 10 mm and a length  
160 of 20 mm) from 10 T2D and 21 non-diabetic subjects to measure bone mechanical parameters  
161 (Young's modulus, ultimate strength and yield strength), as previously described [9].

## 162 **RNA extraction and gene expression by RT-PCR**

163 Total RNA from trabecular bone samples was extracted using TRIzol (Invitrogen) following the  
164 manufacturer's instructions. The concentration and purity of the extracted RNA were assessed  
165 spectrophotometrically (TECAN, InfiniteM200PRO), and only samples with 260/280 absorbance  
166 ratio between 1.8 and 2 were used for reverse transcription using High-Capacity cDNA Reverse  
167 Transcription Kit (Applied Biosystems, Carlsbad, CA) according to the manufacturer's  
168 recommendations. Transcription products were amplified using TaqMan real-time PCR (Applied  
169 Biosystems, Carlsbad, CA) and a standard protocol (95°C for 10 minutes; 40 cycles of 95°C for  
170 15 seconds and 60°C for 1 minute; followed by 95°C for 15 seconds, 60°C for 15 seconds, and  
171 95°C for 15 seconds).  $\beta$ -Actin expression was used as an internal control (housekeeping gene).  
172 Relative expression levels of Sclerostin (*SOST*), Dickkopf-1 (*DKK-1*), Wnt ligands (*WNT5A* and  
173 *WNT10B*), T-cell factor/ lymphoid enhancer factor 1 (*LEF-1*), collagen type I alpha 1 chain  
174 (*COL1A1*), glycogen synthase kinase 3 beta (*GSK3B*), axis inhibition protein 2 (*AXIN2*), beta-  
175 catenin (*BETA-CATENIN*) and secreted frizzled-related protein 5 (*SFRP5*) were calculated using  
176 the  $2^{-\Delta C_t}$  method.

## 177 **Statistical analysis**

178 Data were analyzed using GraphPad Prism 9.0 (GraphPad Software, San Diego, CA). Patients'  
179 characteristics were described using means and standard deviations or medians and 25th-75th  
180 percentiles, as appropriate, and percentages. Group data are presented in boxplots with median  
181 and interquartile range; whiskers represent maximum and minimum values. We assessed data  
182 for normality and Mann-Whitney test was used to compare variables between groups. Data were  
183 analyzed using nonparametric Spearman correlation analysis and the correlation coefficients (r)



184 were used to assess the relationship between variables. We used Grubbs' Test to assess and  
185 exclude outliers.

## 186 **RESULTS**

### 187 **Subject characteristics**

188 Clinical characteristics of study subjects are presented in Table 1. T2D and non-diabetic subjects  
189 did not differ in age, BMI and menopausal age. As expected, fasting glucose was significantly  
190 higher in T2D compared to non-diabetic subjects [112.00 mg/dl (104.0-130.0 ) mg/dl, vs. 94.00  
191 (87.2-106.3), respectively;  $p=0.009$ ]. Median HbA1c was determined in all T2D subjects within  
192 three months before surgery [(6.95% (6.37-7.37)]. Median disease duration in T2D subjects was  
193 [14.50 years (7.25-19.25)]. Diabetes medications included monotherapy with metformin ( $n=12$ )  
194 and combination therapy with metformin plus insulin and glinide ( $n=3$ ). There were no  
195 differences in serum calcium, eGFR (CKD-EPI equation) and serum blood urea nitrogen.

### 196 **Bone Histomorphometry**

197 Bone samples of 8 T2D and 9 non-diabetic subjects were used for histomorphometry analysis.  
198 We found no significant differences in BV/TV and osteoid volume, while mineralized  
199 volume/total volume (Md.V/TV) trended lower in T2D subjects relative to controls [0.249%  
200 (0.156-0.336) vs 0.352% (0.269-0.454);  $p=0.053$ ] (Table 2).

### 201 **Bone compression tests**

202 Young's modulus was lower in T2D compared to non-diabetic subjects [21.6 MPa (13.46-30.10)  
203 vs. 76.24 MPa (26.81-132.9);  $p=0.0025$ ], while ultimate strength and yield strength were not  
204 different between the two groups (Table 3).

## 205 **Gene Expression**

206 *SOST* mRNA was significantly higher in T2D than in non-diabetic subjects (Fig. 1A,  $p < 0.0001$ ),  
207 whereas there was no difference in *DKK1* gene expression between the two groups (Fig. 1B). Of  
208 note, *SOST* mRNA transcript was very low in the majority of non-diabetic subjects (Fig. 1A).  
209 *LEF-1* (Fig. 1C,  $p = 0.0136$ ), *WNT10B* (Fig. 1D,  $p = 0.0302$ ) and *COL1A1* (Fig. 1F,  $p = 0.0482$ )  
210 mRNA transcripts were significantly lower in T2D compared to non-diabetic subjects.  
211 Conversely, *WNT5A* was higher in T2D relative to non-diabetics (Fig. 1E,  $p = 0.0232$ ). Moreover,  
212 *GSK3B* was significantly increased in T2D compared to non-diabetic subjects (Fig. 1G,  
213  $p = 0.0456$ ), but we did not find any significant difference in gene expression of *AXIN2*, *BETA-*  
214 *CATENIN* and *SFRP5* (Fig. 1H-J) between our groups.

## 215 **Correlation analysis of Wnt target genes, AGEs and glycemic control**

216 As shown in figure 2, AGEs were inversely correlated with *LEF-1* (Fig. 2A,  $p = 0.0255$ ) and  
217 *COL1A1* mRNA abundance (Fig. 2B,  $p = 0.0004$ ), whereas they were positively correlated with  
218 *SOST* (Fig. 2C,  $p < 0.0001$ ) and *WNT5A* mRNA (Fig. 2D,  $p = 0.0322$ ). There was no correlation  
219 between AGEs content and *WNT10B* (Fig. 2E;  $p = 0.1938$ ) or *DKK1* gene expression (Fig. 2F;  
220  $p = 0.9349$ ). Likewise, we did not find any significant correlation between *LEF-1*, *WNT5A*,  
221 *WNT10B*, *DKK-1*, *COL1A1* expression in bone and glycemic control in T2D individuals  
222 (Supplemental Figure 1A-D). However, there were positive correlations between *SOST* and fasting  
223 glucose levels (Fig. 3A,  $p = 0.0043$ ), *SOST* and disease duration (Fig. 3B,  $p = 0.00174$ ), *WNT5A*,  
224 *GSK3B* and fasting glucose levels (Fig. 3C,  $p = 0.0037$ ; Fig. 3D,  $p = 0.0051$ ).

225

226

## 227 **Correlation analysis of Wnt target genes and bone mechanical parameters**

228 As shown in Figure 4, Young's Modulus was negatively correlated with *SOST* (Fig.4A, p=0.0011),  
229 *AXIN2* (Fig. 4D, p=0.0042) and *SFRP5* (Fig 4F, p=0.0437), while positively correlated with *LEF*  
230 *-1* (Fig. 4B, p=0.0295) and *WNT10B* (Fig. 4C, p=0.0001). Ultimate strength was associated with  
231 *WNT10B* (Fig. 4F, p=0.0054) and negatively correlated with *AXIN2* (Fig. 4G, p=0.0472). Finally,  
232 yield strength was associated with *LEF-1* (Fig. 4H, p=0.0495) and *WNT10B* (Fig. 4I, p=0.0020)  
233 and negatively correlated with *GSK3B* (Fig. 4J, p=0.0245), *AXIN2* (Fig. 4K, p=0.0319), and  
234 *SFRP5* (Fig. 4L, p=0.0422). Non-significant correlations are reported in Supplementary figure 2  
235 (A-Q).

## 236 **Discussion**

237 We show that key components of the Wnt/beta-catenin signaling are abnormally expressed in the  
238 bone of postmenopausal women with T2D and they are associated with AGEs and reduced bone  
239 strength. *LEF-1*, a transcription factor that mediates responses to Wnt signal and Wnt target  
240 genes itself, and *WNT10B*, an endogenous regulator of Wnt/ $\beta$ -catenin signaling and skeletal  
241 progenitor cell fate, are both downregulated in bone of postmenopausal women with T2D.  
242 Consistently, in this group, the expression of the Wnt inhibitor, *SOST* is increased, suggesting  
243 suppression of Wnt/ $\beta$ -catenin signaling. Interestingly, our data suggest that sclerostin expression  
244 is very low in healthy postmenopausal women not affected by osteoporosis. Moreover, we  
245 reported an increase in the expression level of bone *GSK3B*, in line with downregulated Wnt/ $\beta$ -  
246 catenin signaling in T2D. Our data also show that the expression of *WNT5A*, a non-canonical  
247 ligand linked to inhibition of Wnt/beta-catenin signaling was increased, whereas *COL1A1* was  
248 decreased. These findings are consistent with reduced bone formation and suppression of Wnt  
249 signaling in T2D. We have previously reported upregulation of *SOST* and downregulation of

250 *RUNX2* mRNA in another cohort of postmenopausal women with T2D [9]. Of note, the cohort of  
251 T2D subjects studied here had glycated hemoglobin within therapeutic targets, implying that the  
252 changes in gene transcription we identified persist in T2D bone despite good glycemic control.  
253 High circulating sclerostin has been reported in diabetes [17,18], and increased sclerostin is  
254 associated with fragility fractures [19]. Aside from confirming higher *SOST* expression, we also  
255 show that other Wnt/ $\beta$ -catenin osteogenic ligands are abnormally regulated in the bone of T2D  
256 postmenopausal women. *WNT10B* is a positive regulator of bone mass; transgenic  
257 overexpression in mice results in increased bone mass and strength [20], whereas genetic  
258 ablation of *WNT10B* is characterized by reduced bone mass [21,22], and decreased number and  
259 function of osteoblasts [21]. More to the point, *WNT10B* expression is reduced in the bone of  
260 diabetic mice [23]. Therefore, the reduced *WNT10B* in human bone we found in the present  
261 study further supports the hypothesis of reduced bone formation in T2D. Accordingly, *LEF-1*  
262 gene expression was also downregulated confirming that Wnt/beta-catenin pathway is decreased  
263 in T2D. Importantly, the overexpression of *LEF-1* induces the expression of osteoblast  
264 differentiation genes (osteocalcin and *COL1A1*) in differentiating osteoblasts [24]. In fact, in this  
265 study we also demonstrated that a downregulation of *LEF-1* in T2D bone goes along with a  
266 downregulation of *COL1A1*, strengthen data of a reduced production of bone matrix most likely  
267 as the result of reduced osteoblasts synthetic activity in diabetes [8,25]. Reduced *RUNX2* in  
268 T2D postmenopausal women also confirms previous findings [9] and further supports the notion  
269 of reduced osteoblast differentiation or function in diabetes. On the other hand, the contribution  
270 of upregulated *WNT5A* in diabetic bone is more complex. *WNT5A* regulates Wnt/beta-catenin  
271 signaling depending on the receptor availability [26]. Non-canonical *WNT5A* activates  $\beta$ -catenin-  
272 independent signaling, including the Wnt/ $Ca^{++}$  [27] and planar cell polarity pathways [28].

273 Heterozygous *Wnt5a* null mice have low bone mass with impaired osteoblast and osteoclast  
274 differentiation [29]. *Wnt5a* inhibits *Wnt3a* protein by downregulating beta/catenin-induced  
275 reporter gene expression [26]. In line with these findings, we showed that there was an increased  
276 gene expression of *WNT5A* in bone of T2D postmenopausal women, confirming a  
277 downregulated Wnt/beta-catenin signaling and impaired osteoblasts function. Moreover, *GSK3B*  
278 is a widely expressed serine/threonine kinase involved in multiple pathways regulating immune  
279 cell activation and glucose metabolism. Preclinical studies reported that *GSK3B* is a negative  
280 regulator of Wnt/beta-catenin signaling and bone metabolism [30,31], and its increase is  
281 associated with T2D and alterations in insulin secretion and sensitivity [32,33]. Our data,  
282 confirmed that *GSK3B* is increased in T2D postmenopausal women and it is associated with  
283 reduced yield strength. In fact, we also showed an impaired bone mechanical plasticity in T2D,  
284 in line with other studies showing a reduced bone strength [16,34,35]. In addition, this study  
285 reported significant correlations of bone mechanical parameters and Wnt target genes, which  
286 might reflect the biological effect of downregulated Wnt signaling and AGEs accumulation on  
287 bone mechanical properties in diabetes.

288 We have previously shown that AGEs content is higher in T2D bone compared to non-diabetic  
289 bone, even in patients with well-controlled T2D [9]. Here we show that AGEs accumulation is  
290 positively correlated with *SOST*, *WNT5A* and *GSK3B* gene expression, and negatively correlated  
291 with *LEF-1*, *WNT10B*, and *COL1A1* mRNA. These findings are consistent with the hypothesis  
292 that AGEs accumulation is associated with impaired Wnt signaling and low bone turnover in  
293 T2D. We did not find any abnormalities in histomorphometric parameters in our subjects with  
294 T2D, consistent with our previous report [9]. Reduced osteoid thickness and osteoblast number  
295 were reported in premenopausal T2D women with poor glycemic control compared to non-

296 diabetic subjects but not in the group with good glycemic control [36]. Therefore, good  
297 glycemic control appears to prevent or rescue any changes in static histologic parameters of bone  
298 turnover that might be caused by uncontrolled diabetes.

299 Our study has some limitations. One is the cross-sectional design; another one is the relatively  
300 small number of T2D subjects enrolled. Moreover, we measured the mRNA abundance of the  
301 genes of interest, and we cannot assume that the differences we found reflect differences in  
302 protein abundance. Although osteoarthritis may affect some of the genes we studied [37], all  
303 study subjects were affected by variable degree of osteoarthritis, and the effect of such potential  
304 confounder is not likely to be different between T2D and control subjects. Finally, we did not use  
305 the tetracycline double-labeled technique to investigate dynamic bone parameters.

306 The main strength of our study is that this study is the first to explore the association of AGEs on  
307 Wnt pathway in postmenopausal T2D women. Moreover, we measured the expression of several  
308 Wnt genes directly on bone samples of postmenopausal T2D women.

309 In conclusion, our data show that, despite good glycemic control, T2D decreases expression of  
310 *COL1A1* and Wnt genes that regulate bone turnover, in association with increased AGEs content  
311 and reduced bone strength. These results may help understand the mechanisms underlying bone  
312 fragility in T2D.

313

314

315

316

317 **Acknowledgements**

318 This work was supported by an internal Grant of Campus Bio-Medico University of Rome.

319

320

321 **Author Contributions:** Conceptualization, N.N, R.P., M.M and R.S.; methodology, G.L., F.C.,  
322 M.F., V.V., F.T., N.P., A.B., S.T.; software, G.L., C.P., A.B., and E.S.; validation, N.N. and  
323 G.L.; formal analysis, N.N. and G.L.; investigation, N.N., R.S., M.M. and R.P.; resources, N.N,  
324 G.V., R.P. M.M., and R.S.; data curation, G.L. and N.P.; writing—original draft preparation,  
325 G.L., M.F., N.P., R.C. and N.N.; writing—review and editing, G.L., N.N., C.P., N.P., F.Z., E.S.,  
326 R.S. and R.C.; visualization, N.N. and R.S.; supervision, N.N., R.P., and M.M.; project  
327 administration, N.N. and G.L.; funding acquisition, N.N. and R.S. All authors have read and  
328 agreed to the published version of the manuscript.

329

330

331

332

333

334

335

336

## 337 **References**

- 338 [1] Hofbauer LC, Busse B, Eastell R, Ferrari S, Frost M, Müller R, et al. Bone fragility in  
339 diabetes: novel concepts and clinical implications. *Lancet Diabetes Endocrinol*  
340 2022;10:207–20. [https://doi.org/10.1016/S2213-8587\(21\)00347-8](https://doi.org/10.1016/S2213-8587(21)00347-8).
- 341 [2] Wang H, Ba Y, Xing Q, Du J-L. Diabetes mellitus and the risk of fractures at specific  
342 sites: a meta-analysis. *BMJ Open* 2019;9:e024067. [https://doi.org/10.1136/bmjopen-2018-](https://doi.org/10.1136/bmjopen-2018-024067)  
343 024067.
- 344 [3] Rubin MR, Patsch JM. Assessment of bone turnover and bone quality in type 2 diabetic  
345 bone disease: current concepts and future directions. *Bone Res* 2016;4:16001.  
346 <https://doi.org/10.1038/boneres.2016.1>.
- 347 [4] Napoli N, Strollo R, Defeudis G, Leto G, Moretti C, Zampetti S, et al. Serum Sclerostin  
348 and Bone Turnover in Latent Autoimmune Diabetes in Adults. *J Clin Endocrinol Metab*  
349 2018;103:1921–8. <https://doi.org/10.1210/jc.2017-02274>.
- 350 [5] Hygum K, Starup-Linde J, Harsløf T, Vestergaard P, Langdahl BL. MECHANISMS IN  
351 ENDOCRINOLOGY: Diabetes mellitus, a state of low bone turnover - a systematic  
352 review and meta-analysis. *Eur J Endocrinol* 2017;176:R137–57.  
353 <https://doi.org/10.1530/EJE-16-0652>.
- 354 [6] Starup-Linde J, Vestergaard P. Biochemical bone turnover markers in diabetes mellitus -  
355 A systematic review. *Bone* 2016;82:69–78. <https://doi.org/10.1016/j.bone.2015.02.019>.
- 356 [7] Starup-Linde J, Lykkeboe S, Gregersen S, Hauge E-M, Langdahl BL, Handberg A, et al.  
357 Differences in biochemical bone markers by diabetes type and the impact of glucose.



- 358 Bone 2016;83:149–55. <https://doi.org/10.1016/j.bone.2015.11.004>.
- 359 [8] Manavalan JS, Cremers S, Dempster DW, Zhou H, Dworakowski E, Kode A, et al.  
360 Circulating osteogenic precursor cells in type 2 diabetes mellitus. *J Clin Endocrinol Metab*  
361 2012;97:3240–50. <https://doi.org/10.1210/jc.2012-1546>.
- 362 [9] Piccoli A, Cannata F, Strollo R, Pedone C, Leanza G, Russo F, et al. Sclerostin  
363 Regulation, Microarchitecture, and Advanced Glycation End-Products in the Bone of  
364 Elderly Women With Type 2 Diabetes. *J Bone Miner Res* 2020;35:2415–22.  
365 <https://doi.org/10.1002/jbmr.4153>.
- 366 [10] Leanza G, Fontana F, Lee S-Y, Remedi MS, Schott C, Ferron M, et al. Gain-of-Function  
367 Lrp5 Mutation Improves Bone Mass and Strength and Delays Hyperglycemia in a Mouse  
368 Model of Insulin-Deficient Diabetes. *J Bone Miner Res* 2021;36:1403–15.  
369 <https://doi.org/10.1002/jbmr.4303>.
- 370 [11] Maeda K, Kobayashi Y, Koide M, Uehara S, Okamoto M, Ishihara A, et al. The  
371 Regulation of Bone Metabolism and Disorders by Wnt Signaling. *Int J Mol Sci* 2019;20.  
372 <https://doi.org/10.3390/ijms20225525>.
- 373 [12] Tan KCB, Chow W-S, Ai VHG, Metz C, Bucala R, Lam KSL. Advanced glycation end  
374 products and endothelial dysfunction in type 2 diabetes. *Diabetes Care* 2002;25:1055–9.  
375 <https://doi.org/10.2337/diacare.25.6.1055>.
- 376 [13] Kume S, Kato S, Yamagishi S, Inagaki Y, Ueda S, Arima N, et al. Advanced glycation  
377 end-products attenuate human mesenchymal stem cells and prevent cognate differentiation  
378 into adipose tissue, cartilage, and bone. *J Bone Miner Res* 2005;20:1647–58.  
379 <https://doi.org/10.1359/JBMR.050514>.

- 380 [14] Sanguineti R, Storace D, Monacelli F, Federici A, Odetti P. Pentosidine effects on human  
381 osteoblasts in vitro. *Ann N Y Acad Sci* 2008;1126:166–72.  
382 <https://doi.org/10.1196/annals.1433.044>.
- 383 [15] Yamamoto M, Sugimoto T. Advanced Glycation End Products, Diabetes, and Bone  
384 Strength. *Curr Osteoporos Rep* 2016;14:320–6. [https://doi.org/10.1007/s11914-016-0332-](https://doi.org/10.1007/s11914-016-0332-1)  
385 1.
- 386 [16] Furst JR, Bandeira LC, Fan W-W, Agarwal S, Nishiyama KK, McMahon DJ, et al.  
387 Advanced Glycation Endproducts and Bone Material Strength in Type 2 Diabetes. *J Clin*  
388 *Endocrinol Metab* 2016;101:2502–10. <https://doi.org/10.1210/jc.2016-1437>.
- 389 [17] García-Martín A, Rozas-Moreno P, Reyes-García R, Morales-Santana S, García-Fontana  
390 B, García-Salcedo JA, et al. Circulating levels of sclerostin are increased in patients with  
391 type 2 diabetes mellitus. *J Clin Endocrinol Metab* 2012;97:234–41.  
392 <https://doi.org/10.1210/jc.2011-2186>.
- 393 [18] Gennari L, Merlotti D, Valenti R, Ceccarelli E, Ruvio M, Pietrini MG, et al. Circulating  
394 sclerostin levels and bone turnover in type 1 and type 2 diabetes. *J Clin Endocrinol Metab*  
395 2012;97:1737–44. <https://doi.org/10.1210/jc.2011-2958>.
- 396 [19] Yamamoto M, Yamauchi M, Sugimoto T. Elevated sclerostin levels are associated with  
397 vertebral fractures in patients with type 2 diabetes mellitus. *J Clin Endocrinol Metab*  
398 2013;98:4030–7. <https://doi.org/10.1210/jc.2013-2143>.
- 399 [20] Longo KA, Wright WS, Kang S, Gerin I, Chiang S-H, Lucas PC, et al. Wnt10b inhibits  
400 development of white and brown adipose tissues. *J Biol Chem* 2004;279:35503–9.  
401 <https://doi.org/10.1074/jbc.M402937200>.

- 402 [21] Bennett CN, Longo KA, Wright WS, Suva LJ, Lane TF, Hankenson KD, et al. Regulation  
403 of osteoblastogenesis and bone mass by Wnt10b. *Proc Natl Acad Sci U S A*  
404 2005;102:3324–9. <https://doi.org/10.1073/pnas.0408742102>.
- 405 [22] Kubota T, Michigami T, Ozono K. Wnt signaling in bone metabolism. *J Bone Miner*  
406 *Metab* 2009;27:265–71. <https://doi.org/10.1007/s00774-009-0064-8>.
- 407 [23] Zhang J, Motyl KJ, Irwin R, MacDougald OA, Britton RA, McCabe LR. Loss of Bone  
408 and Wnt10b Expression in Male Type 1 Diabetic Mice Is Blocked by the Probiotic  
409 *Lactobacillus reuteri*. *Endocrinology* 2015;156:3169–82.  
410 <https://doi.org/10.1210/EN.2015-1308>.
- 411 [24] Hoepfner LH, Secreto F, Jensen ED, Li X, Kahler RA, Westendorf JJ. Runx2 and bone  
412 morphogenic protein 2 regulate the expression of an alternative Lef1 transcript during  
413 osteoblast maturation. *J Cell Physiol* 2009;221:480–9. <https://doi.org/10.1002/jcp.21879>.
- 414 [25] Khan MP, Singh AK, Joharapurkar AA, Yadav M, Shree S, Kumar H, et al.  
415 Pathophysiological Mechanism of Bone Loss in Type 2 Diabetes Involves Inverse  
416 Regulation of Osteoblast Function by PGC-1 $\alpha$  and Skeletal Muscle Atrogenes: AdipoR1  
417 as a Potential Target for Reversing Diabetes-Induced Osteopenia. *Diabetes* 2015;64:2609–  
418 23. <https://doi.org/10.2337/db14-1611>.
- 419 [26] Mikels AJ, Nusse R. Purified Wnt5a protein activates or inhibits beta-catenin-TCF  
420 signaling depending on receptor context. *PLoS Biol* 2006;4:e115.  
421 <https://doi.org/10.1371/journal.pbio.0040115>.
- 422 [27] Dejmek J, Säfholm A, Kamp Nielsen C, Andersson T, Leandersson K. Wnt-5a/Ca<sup>2+</sup>-  
423 induced NFAT activity is counteracted by Wnt-5a/Yes-Cdc42-casein kinase 1alpha

- 424 signaling in human mammary epithelial cells. *Mol Cell Biol* 2006;26:6024–36.  
425 <https://doi.org/10.1128/MCB.02354-05>.
- 426 [28] Oishi I, Suzuki H, Onishi N, Takada R, Kani S, Ohkawara B, et al. The receptor tyrosine  
427 kinase Ror2 is involved in non-canonical Wnt5a/JNK signalling pathway. *Genes Cells*  
428 2003;8:645–54. <https://doi.org/10.1046/j.1365-2443.2003.00662.x>.
- 429 [29] Maeda K, Kobayashi Y, Udagawa N, Uehara S, Ishihara A, Mizoguchi T, et al. Wnt5a-  
430 Ror2 signaling between osteoblast-lineage cells and osteoclast precursors enhances  
431 osteoclastogenesis. *Nat Med* 2012;18:405–12. <https://doi.org/10.1038/nm.2653>.
- 432 [30] McManus EJ, Sakamoto K, Armit LJ, Ronaldson L, Shpiro N, Marquez R, et al. Role that  
433 phosphorylation of GSK3 plays in insulin and Wnt signalling defined by knockin analysis.  
434 *EMBO J* 2005;24:1571–83. <https://doi.org/10.1038/sj.emboj.7600633>.
- 435 [31] Chen Y, Chen L, Huang R, Yang W, Chen S, Lin K, et al. Investigation for GSK3 $\beta$   
436 expression in diabetic osteoporosis and negative osteogenic effects of GSK3 $\beta$  on bone  
437 marrow mesenchymal stem cells under a high glucose microenvironment. *Biochem*  
438 *Biophys Res Commun* 2021;534:727–33. <https://doi.org/10.1016/j.bbrc.2020.11.010>.
- 439 [32] Nunez Lopez YO, Iliuk A, Petrilli AM, Glass C, Casu A, Pratley RE. Proteomics and  
440 Phosphoproteomics of Circulating Extracellular Vesicles Provide New Insights into  
441 Diabetes Pathobiology. *Int J Mol Sci* 2022;23. <https://doi.org/10.3390/ijms23105779>.
- 442 [33] Xia H, Scholtes C, Dufour CR, Ouellet C, Ghahremani M, Giguère V. Insulin action and  
443 resistance are dependent on a GSK3 $\beta$ -FBXW7-ERR $\alpha$  transcriptional axis. *Nat Commun*  
444 2022;13:2105. <https://doi.org/10.1038/s41467-022-29722-6>.

- 445 [34] Farr JN, Drake MT, Amin S, Melton LJ, McCready LK, Khosla S. In vivo assessment of  
446 bone quality in postmenopausal women with type 2 diabetes. *J Bone Miner Res*  
447 2014;29:787–95. <https://doi.org/10.1002/jbmr.2106>.
- 448 [35] Hunt HB, Torres AM, Palomino PM, Marty E, Saiyed R, Cohn M, et al. Altered Tissue  
449 Composition, Microarchitecture, and Mechanical Performance in Cancellous Bone From  
450 Men With Type 2 Diabetes Mellitus. *J Bone Miner Res* 2019;34:1191–206.  
451 <https://doi.org/10.1002/jbmr.3711>.
- 452 [36] Andrade VFC, Chula DC, Sabbag FP, Cavalheiro DD da S, Bavia L, Ambrósio AR, et al.  
453 Bone Histomorphometry in Young Patients With Type 2 Diabetes is Affected by Disease  
454 Control and Chronic Complications. *J Clin Endocrinol Metab* 2020;105.  
455 <https://doi.org/10.1210/clinem/dgz070>.
- 456 [37] Weivoda MM, Youssef SJ, Oursler MJ. Sclerostin expression and functions beyond the  
457 osteocyte. *Bone* 2017;96:45–50. <https://doi.org/10.1016/j.bone.2016.11.024>.
- 458
- 459
- 460
- 461
- 462
- 463
- 464

465 **Table 1.** Clinical features of the study subjects

	<b>T2D subjects (n=15)</b>	<b>Non-diabetic subjects (n=21)</b>	<b>P value</b>
Age (years)	73.00 (67.00-80.00)	73.00 (68.50-79.00)	0.644
BMI (kg/m <sup>2</sup> )	30.81 (24.44-34.00)	25.00 (24.00-31.50)	0.117
Menopausal age (years)	50.00 (42.50-52.75)	52.00 (48.00-53.00)	0.344
Fasting glucose levels (mg/dl)	112.00 (104.00-130.0)	94.00 (87.25-106.3)	**0.009
Disease duration (years)	14.50 (7.25-19.25)	-	-
HbA1c (%)	6.95 (6.37-7.37)	-	-
Serum calcium (mg/dl)	9.05 (8.800-9.550)	9.15 (9.000-9.550)	0.535
eGFR (mL/min/1.73 m <sup>2</sup> )	78,30 (59.90-91.10)	75.60 (61.35-88.55)	0.356
Serum blood urea nitrogen (mg/dl)	42.00 (36.00-53.00)	37.00 (31.75-46.50)	0.235

466

467 **Table 1.** Results were analyzed using unpaired T-test with Welch's correction. Results are

468 presented as median and percentiles (25th and 75th).

469

470

471

472 **Table 2.** Histomorphometric parameters of trabecular bone of the study subjects

	T2D subjects (n=8)	Non-diabetic subjects (n=9)	P value
BV/TV (%)	0.248 (0.157-0.407)	0.358 (0.271-0.456)	0.120
Md.V/BV (%)	0.994(0.984-0.998)	0.995 (0.985-0.997)	0.998
Md.V/TV (%)	0.249 (0.156-0.366)	0.352 (0.269-0.454)	0.053
OV/BV (%)	0.009 (0.002-0.009)	0.004 (0.002-0.015)	0.704
OV/TV (%)	0.001 (0.0002-0.0058)	0.001 (0.0007-0.0056)	0.896
OS/BS (%)	0.026 (0.022-0.161)	0.035 (0.009-0.117)	0.525

473

474 **Table 2.** Results were analyzed using unpaired T-test with Welch’s correction and are presented

475 as median and percentiles (25th and 75th).

476

477 **Table 3.** Bone mechanical parameters of trabecular bone of the study subjects

	<b>T2D subjects</b>	<b>Non-diabetic</b>	<b>P value</b>
	<b>(n=10)</b>	<b>subjects</b>	
		<b>(n=21)</b>	
Young's modulus (MPa)	21.60 (13.46- 30.10)	76.24 (26.81- 132.9)	0.002
Ultimate strength (MPa)	3.015 (2.150- 13,86)	7.240 (3.150- 8.898)	0.914
Yield strength (MPa)	2.525 (1.943- 6.393)	6.150 (3.115- 7.423)	0.159

478

479 **Table 3.** Results were analyzed using unpaired T-test with Welch's correction and are presented  
480 as median and percentiles (25th and 75th).

481

482

483

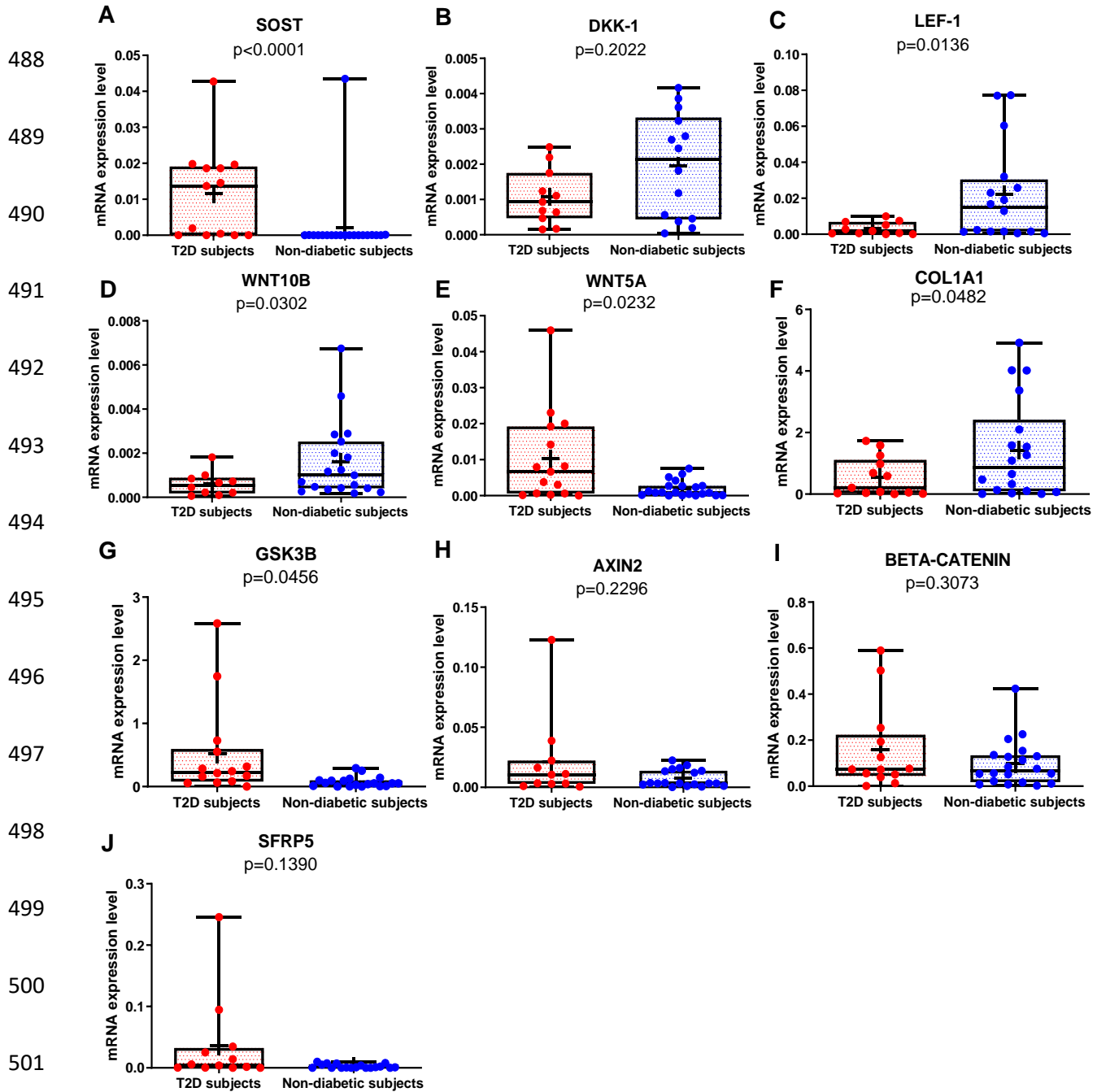
484

485



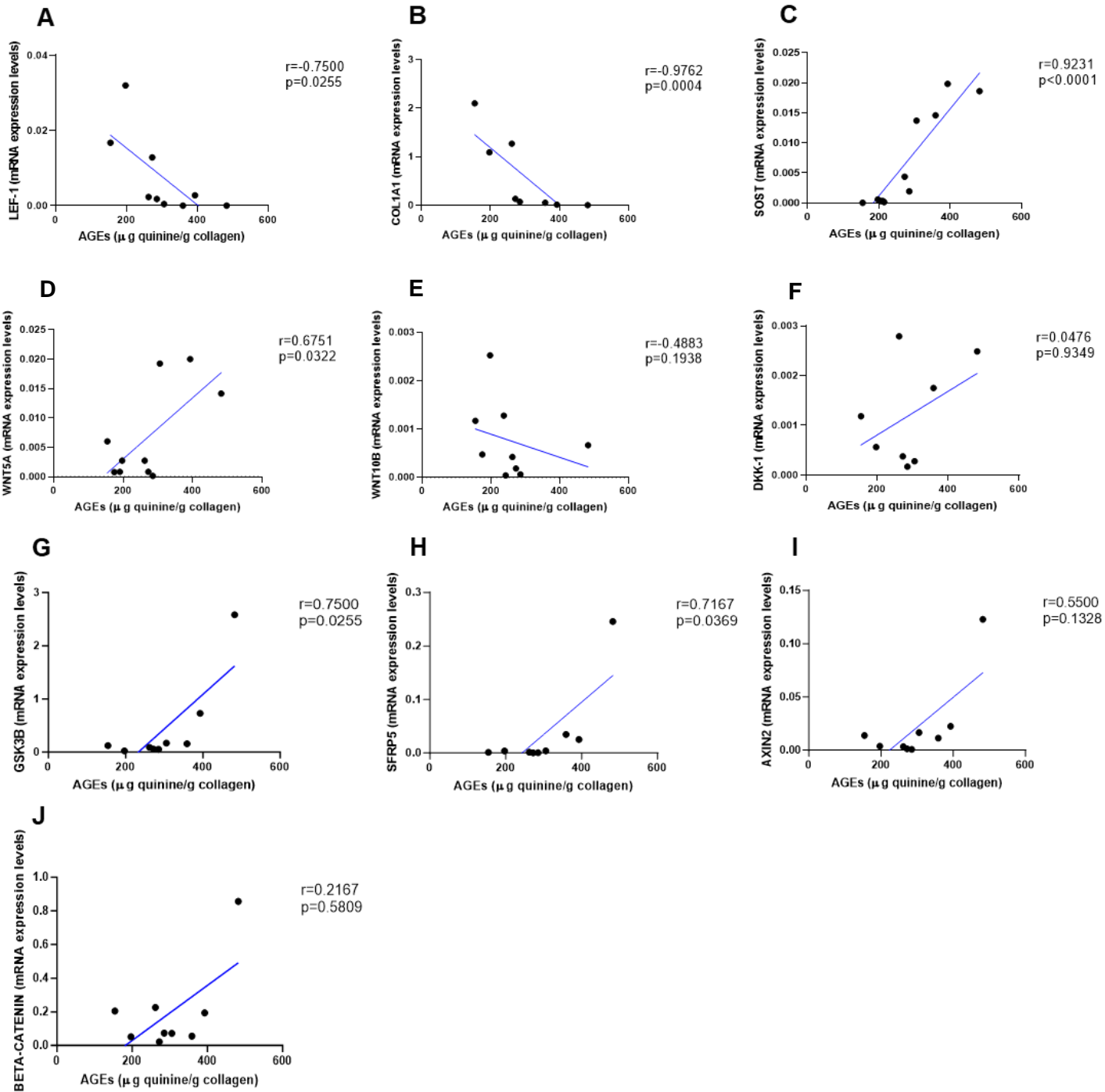
486 **Figure 1.**

487



504 **Figure 2.**

505

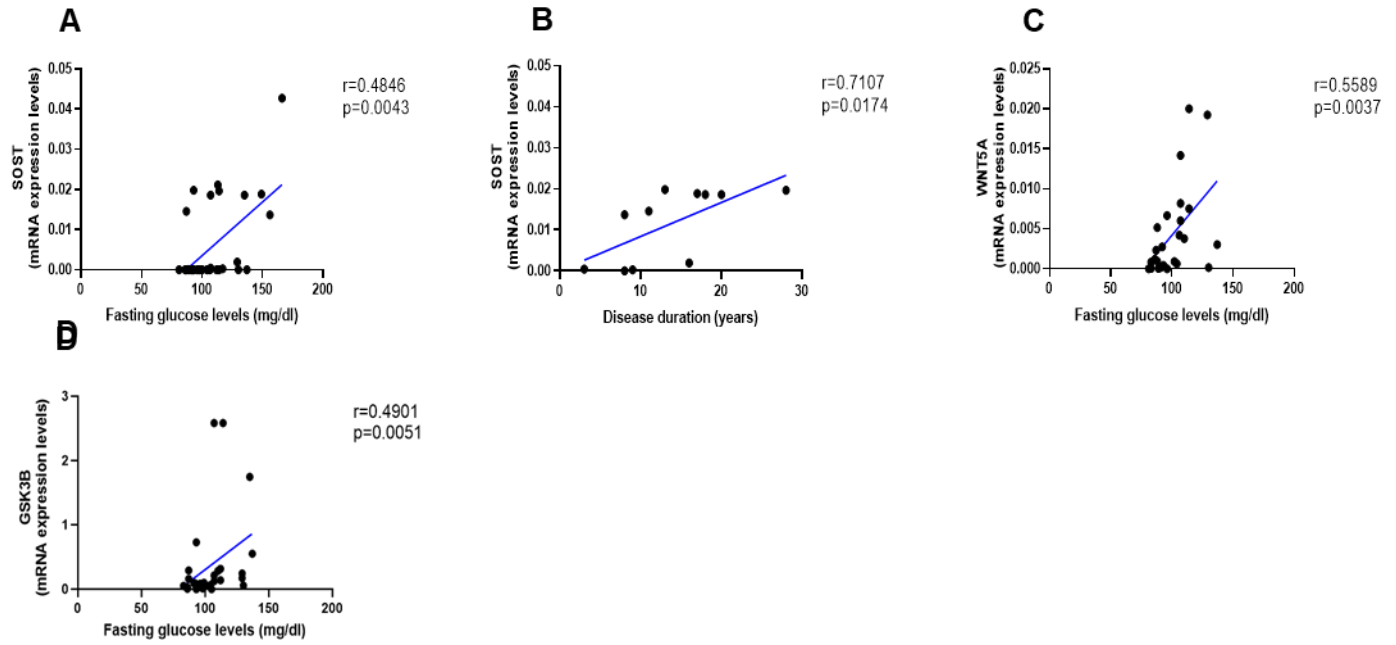


506

507

508 **Figure 3.**

509



510

511

512

513

514

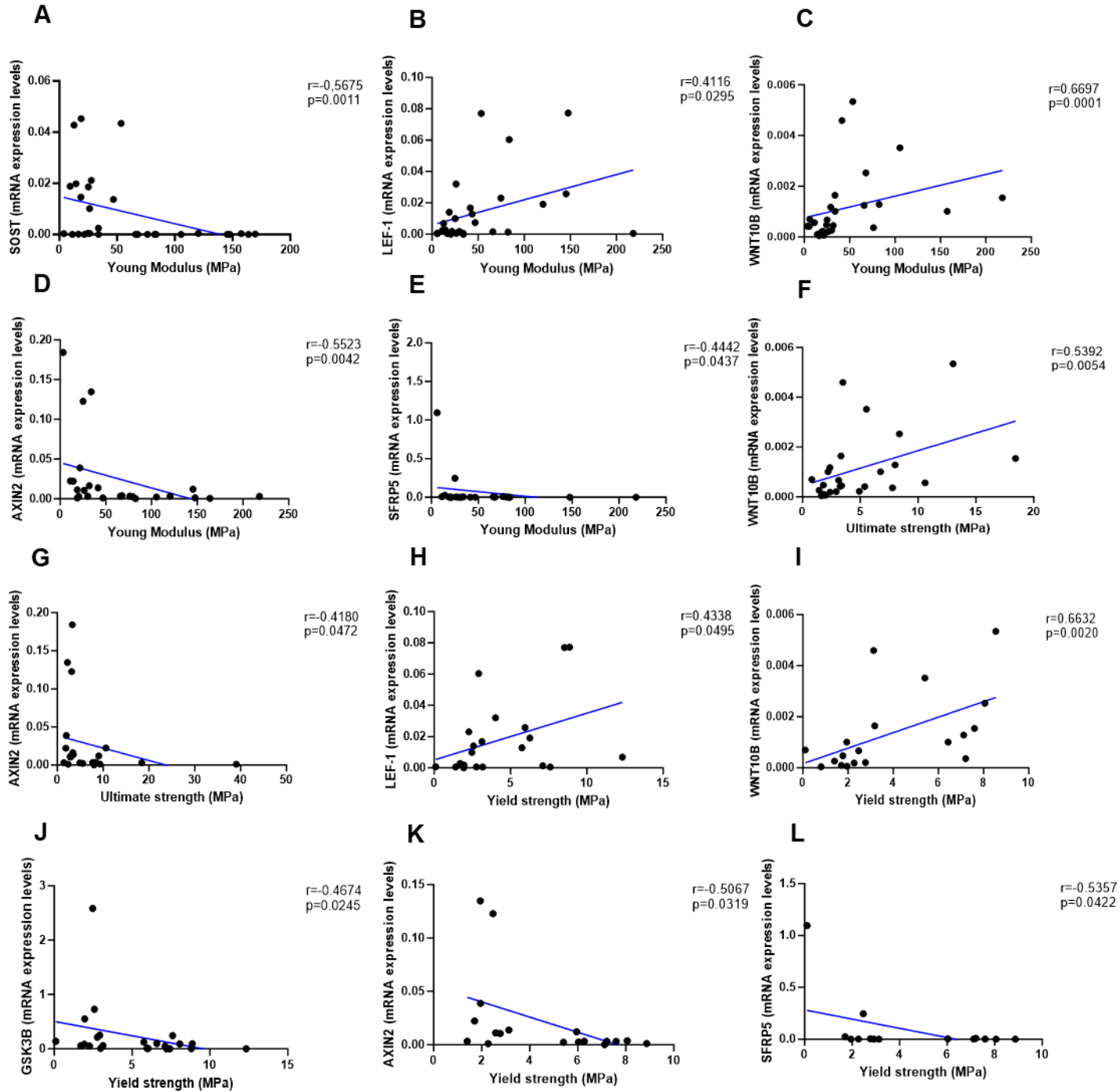
515

516

517

518

519 **Figure 4.**



520

521

522

## 523 **Figure Legends**

524 **Figure 1.** Gene expression analysis in trabecular bone samples. (A) SOST mRNA levels resulted  
525 higher in T2D subjects versus Nondiabetic subjects ( $p < 0.0001$ ). (B) DKK-1 mRNA expression  
526 level was not different between groups ( $p = 0.2022$ ). (C) LEF-1 mRNA levels resulted lower in  
527 T2D subjects versus nondiabetics subjects ( $p = 0.0136$ ). (D) WNT10B mRNA expression level  
528 was lower in T2D subjects versus nondiabetic subjects ( $p = 0.0302$ ). (E) WNT5A mRNA resulted  
529 higher in T2D subjects versus nondiabetics subjects ( $p = 0.0232$ ). (F) COL1A1 mRNA levels  
530 resulted lower in T2D subjects versus Nondiabetic subjects ( $p = 0.0482$ ). (G) GSK3B mRNA  
531 levels resulted higher in T2D subjects versus Nondiabetic subjects ( $p = 0.0456$ ). (H-J) AXIN2,  
532 BETA-CATENIN, SFRP5 mRNA levels were not different between groups ( $p = 0.2296$ ,  
533  $p = 0.3073$ ;  $p = 0.1390$ ). Data are expressed as fold changes over beta-actin Medians and  
534 interquartile ranges, differences between non-diabetics and T2D subjects were analyzed using  
535 Mann-Whitney test.

536 **Figure 2.** Relationship between AGEs ( $\mu\text{g}$  quinine/g collagen) bone content and mRNA level of  
537 the Wnt signaling key genes in T2D and non-diabetic subjects. (A) LEF-1 negatively correlated  
538 with AGEs ( $r = -0.7500$ ;  $p = 0.0255$ ). (B) COL1A1 negatively correlated with AGEs ( $r = -0.9762$ ;  
539  $p = 0.0004$ ). (C) SOST mRNA level expression positively correlated with AGEs ( $r = 0.9231$ ;  
540  $p < 0.0001$ ). (D) WNT5A mRNA expression level positively correlated with AGEs ( $r = 0.6751$ ;  
541  $p = 0.0322$ ). (E) WNT10B mRNA expression level was not correlated with AGEs ( $r = -0.4883$ ;  
542  $p = 0.1938$ ). (F) DKK1 mRNA expression level was not correlated with AGEs ( $r = 0.0476$ ;  
543  $p = 0.9349$ ). (G) GSK3B mRNA expression level was positively correlated with AGEs ( $r = 0.7500$ ;  
544  $p = 0.0255$ ). (H) SFRP5 mRNA expression level was positively correlated with AGEs ( $r = 0.7167$ ;  
545  $p = 0.0369$ ). (I) AXIN2 and (J) SFRP5 mRNA expression levels were not correlated with AGEs

546 (r=0.5500, p=0.1328; r=0.2167, p=0.5809). Data were analyzed using nonparametric Spearman  
547 correlation analysis and r represents the correlation coefficient.

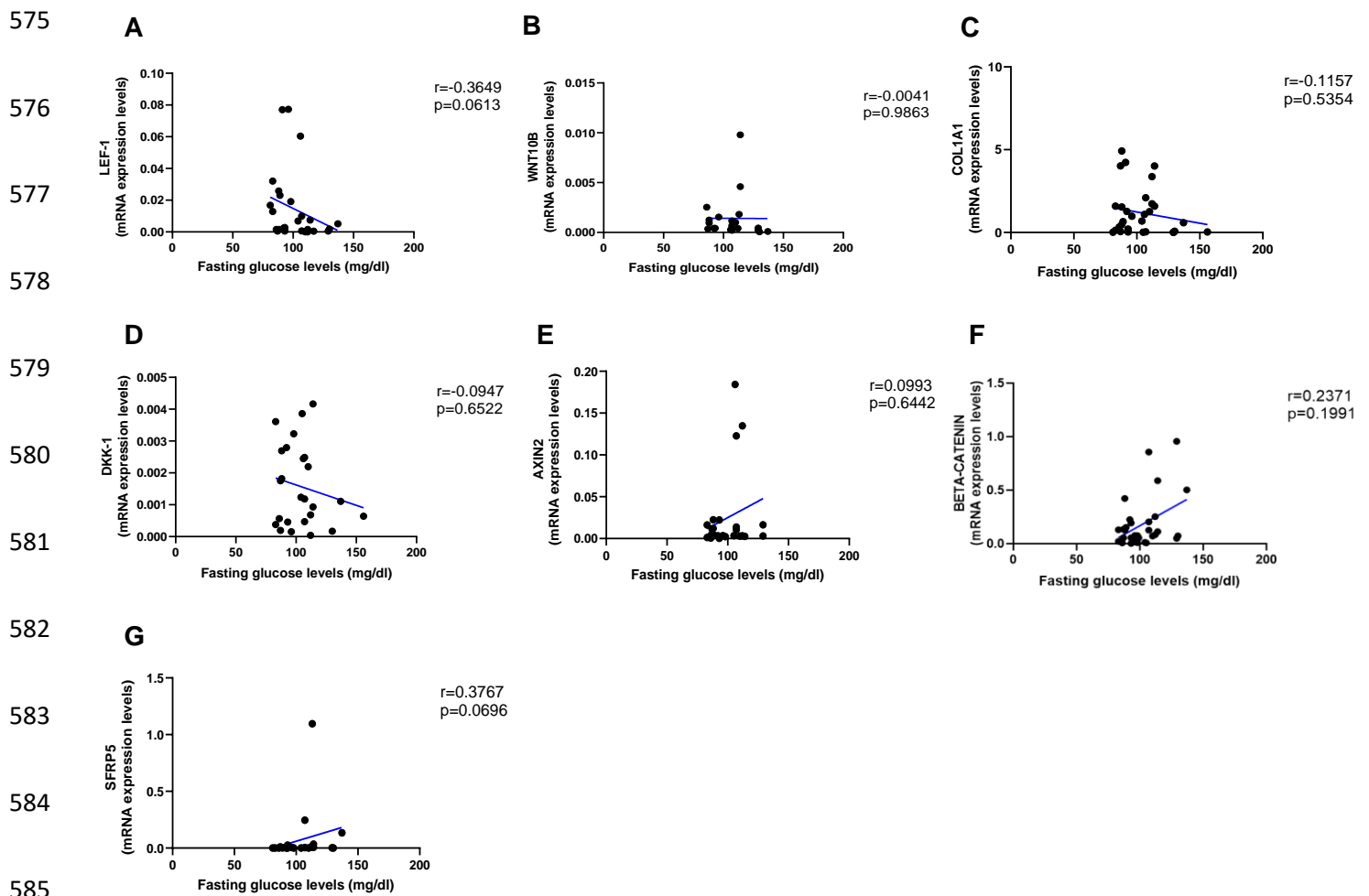
548 **Figure 3.** Relationship between fasting glucose levels (mg/dl) and disease duration with SOST  
549 and WNT5A mRNA levels. (A) SOST positively correlated with fasting glucose levels  
550 (r=0.4846; p=0.0043). (B) SOST positively correlated with disease duration (r=0.7107;  
551 p=0.0174). (C) WNT5A positively correlated with fasting glucose levels (r=0.5589; p=0.0037).  
552 (D) GSK3B positively correlated with fasting glucose levels (r=0.4901; p=0.0051). Data were  
553 analyzed using nonparametric Spearman correlation analysis and r represents the correlation  
554 coefficient.

555 **Figure 4.** Relationship between Young Modulus (MPa), Ultimate strength (MPa) and Yield  
556 strength (MPa) with mRNA levels of the Wnt signaling key genes in T2D and non-diabetic  
557 subjects. (A) SOST negatively correlated with Young Modulus (MPa); (r=-0.5675; p=0.0011).  
558 (B) LEF-1 positively correlated with Young Modulus (MPa); (r=0.4116; p=0.0295). (C)  
559 WNT10B positively correlated with Young Modulus (MPa); (r=0.6697; p=0.0001). (D) AXIN2  
560 negatively correlated with Young Modulus (MPa); (r=-0.5523; p=0.0042). (E) BETA-CATENIN  
561 negatively correlated with Young Modulus (MPa); (r=-0.5244; p=0.0050). (F) SFRP5 negatively  
562 correlated with Young Modulus (MPa); (r=-0.4442; p=0.0437). (G) WNT10B positively  
563 correlated with Ultimate strength (MPa); (r=0.5392; p=0.0054). (H) AXIN2 negatively  
564 correlated with Ultimate strength (MPa); (r=-0.4180; p=0.0472). (I) BETA-CATENIN  
565 negatively correlated with Ultimate strength (MPa); (r=-0.5528; p=0.0034). (J) LEF-1 positively  
566 correlated with Yield strength (MPa); (r=0.4338; p=0.0495). (K) WNT10B positively correlated  
567 with Yield strength (MPa); (r=0.6632; p=0.0020). (L) GSK3B negatively correlated with Yield  
568 strength (MPa); (r=-0.4674; p=0.0245). (M) AXIN2 negatively correlated with Yield strength

569 (MPa); ( $r=-0.5067$ ;  $p=0.0319$ ). (N) BETA-CATENIN negatively correlated with Yield strength  
570 (MPa); ( $r=-0.5491$ ;  $p=0.0149$ ). (O) SFRP5 negatively correlated with Yield strength (MPa); ( $r=-$   
571  $0.5357$ ;  $p=0.0422$ ). Data were analyzed using nonparametric Spearman correlation analysis and  $r$   
572 represents the correlation coefficient.

573

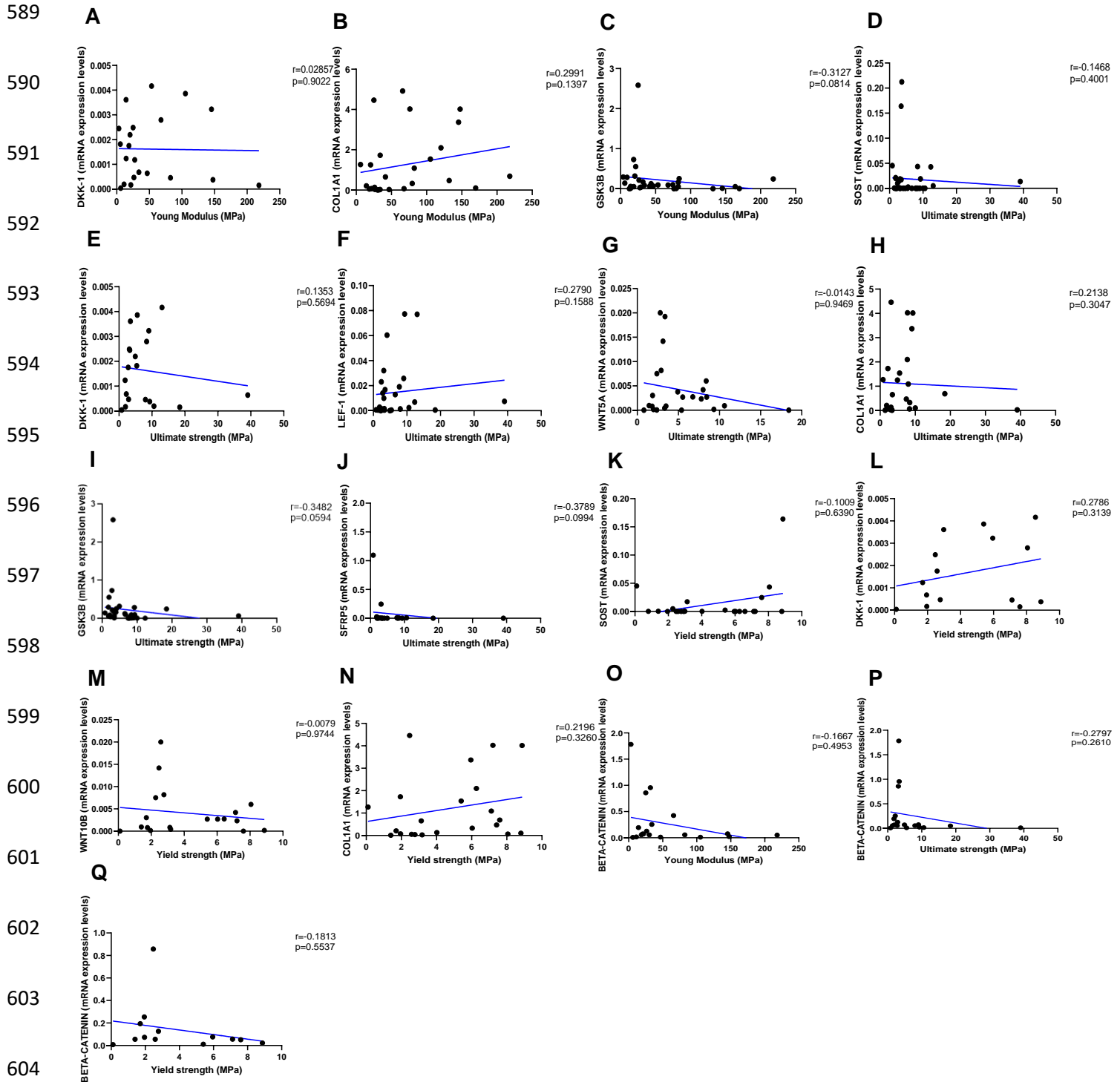
574 **Supplementary figure 1.**



586

587

588 **Supplementary figure 2.**





606 **Legend of supplementary figures**

607 **Supplementary figure 1.** Relationship between fasting glucose levels (mg/dl) and LEF-1,  
608 WNT5A, WNT10B, DKK-1, COL1A1 mRNA levels. (A-E) Data showed negative correlations  
609 between fasting glucose levels (mg/dl) and (A) LEF-1 ( $r=-0.3649$ ;  $p=0.0613$ ), (B) WNT10B ( $r=-$   
610  $0.0041$ ;  $p=0.9863$ ), (C) COL1A1 ( $r=-0.1157$ ;  $p=0.5354$ ), (D) DKK-1 ( $r=-0.0947$ ;  $p=0.6522$ )  
611 mRNA levels. Data showed positive correlations between fasting glucose levels (mg/dl) with (E)  
612 AXIN2 ( $r=0.0993$ ;  $p=0.6442$ ), (F) BETA-CATENIN ( $r=0.2371$ ;  $p=0.1991$ ) and (G) SFRP5  
613 ( $r=0.3767$ ;  $p=0.0696$ ). Data were analyzed using nonparametric Spearman correlation analysis  
614 and  $r$  represents the correlation coefficient.

615 **Supplementary figure 2.** Relationship between Young Modulus (MPa), Ultimate strength  
616 (MPa) and Yield strength (MPa) with mRNA levels of the Wnt signaling genes in T2D and non-  
617 diabetic subjects. (A) DKK-1 positively correlated with Young Modulus (MPa); ( $r=0.02857$ ;  
618  $p=0.9022$ ). (B) COL1A1 positively correlated with Young Modulus (MPa); ( $r=0.2991$ ;  
619  $p=0.1397$ ). (C) GSK3B negatively correlated with Young Modulus (MPa); ( $r=-0.3127$ ;  
620  $p=0.0814$ ). (D) SOST negatively correlated with Ultimate strength (MPa); ( $r=-0.1468$ ;  
621  $p=0.4001$ ). (E) DKK-1 negatively correlated with Ultimate strength (MPa); ( $r=0.1353$ ;  
622  $p=0.5694$ ). (F) LEF-1 positively correlated with Ultimate strength (MPa); ( $r=0.2790$ ;  $p=0.1588$ ).  
623 (G) WNT5A negatively correlated with Ultimate strength (MPa); ( $r=-0.0143$ ;  $p=0.9469$ ). (H)  
624 COL1A1 positively correlated with Ultimate strength (MPa); ( $r=0.2138$ ;  $p=0.3047$ ). (I) GSK3B  
625 negatively correlated with Ultimate strength (MPa); ( $r=-0.3482$ ;  $p=0.0594$ ). (J) SFPR5  
626 negatively correlated with Ultimate strength (MPa); ( $r=-0.3789$ ;  $p=0.0994$ ). (K) SOST positively  
627 correlated with Yield strength (MPa); ( $r=0.1009$ ;  $p=0.6390$ ). (L) DKK-1 positively correlated  
628 with Yield strength (MPa); ( $r=0.2786$ ;  $p=0.3139$ ). (M) WNT10B negatively correlated with

629 Yield strength (MPa); ( $r=-0.0079$ ;  $p=0.9744$ ). (N) COL1A1 positively correlated with Yield  
630 strength (MPa); ( $r=0.2196$ ;  $p=0.3260$ ). (O) BETA-CATENIN negatively correlated with Young  
631 Modulus strength (MPa); ( $r=-0.1667$ ;  $p=0.4953$ ). (P) BETA-CATENIN negatively correlated  
632 with Ultimate strength (MPa); ( $r=-0.2797$ ;  $p=0.2610$ ). (Q) BETA-CATENIN negatively  
633 correlated with Yield strength (MPa); ( $r=-0.1813$ ;  $p=0.5537$ ). Data were analyzed using  
634 nonparametric Spearman correlation analysis and  $r$  represents the correlation coefficient.

635

636

637

638

639

640

641

642

643

644

645

646

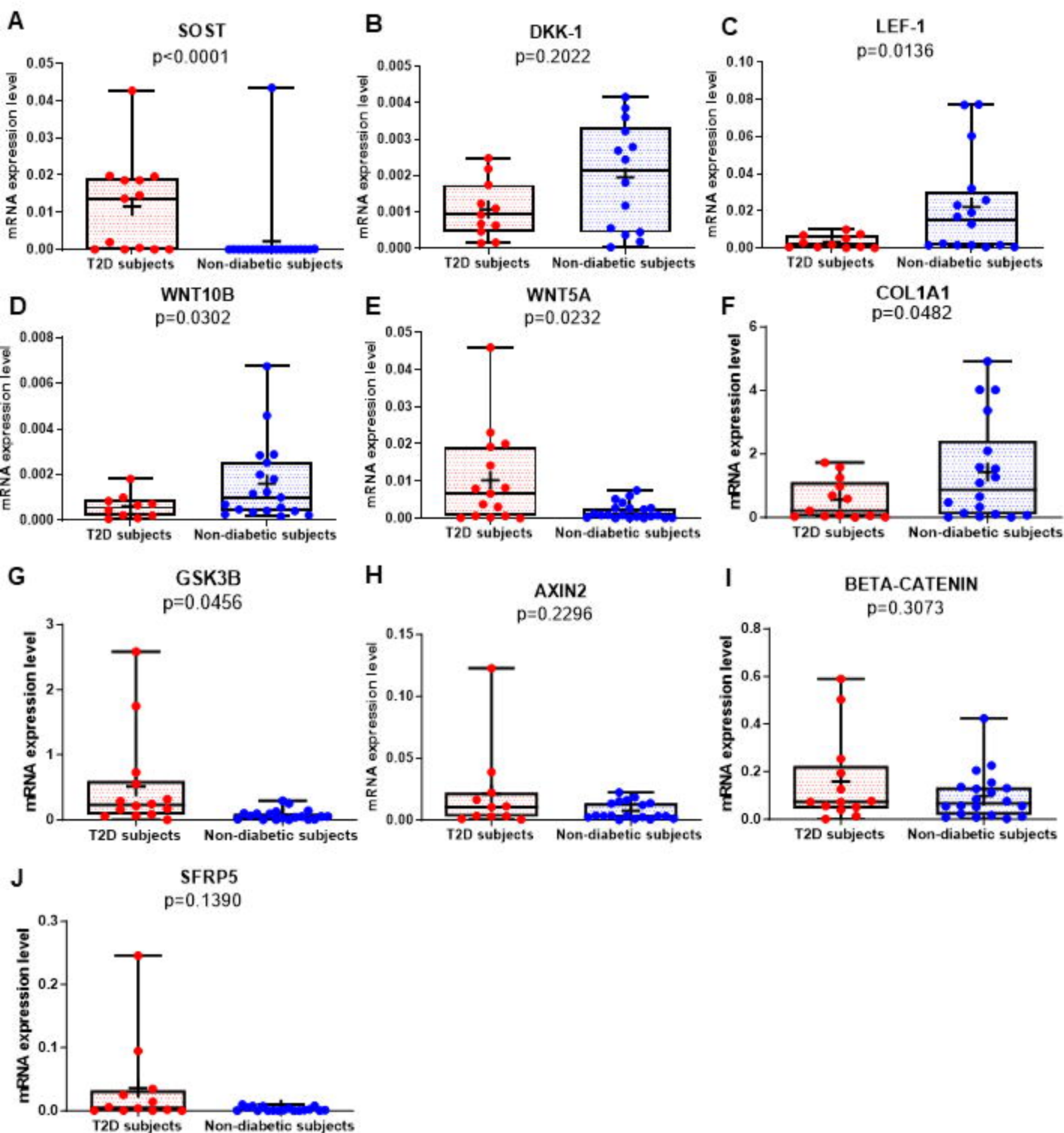


Figure 1

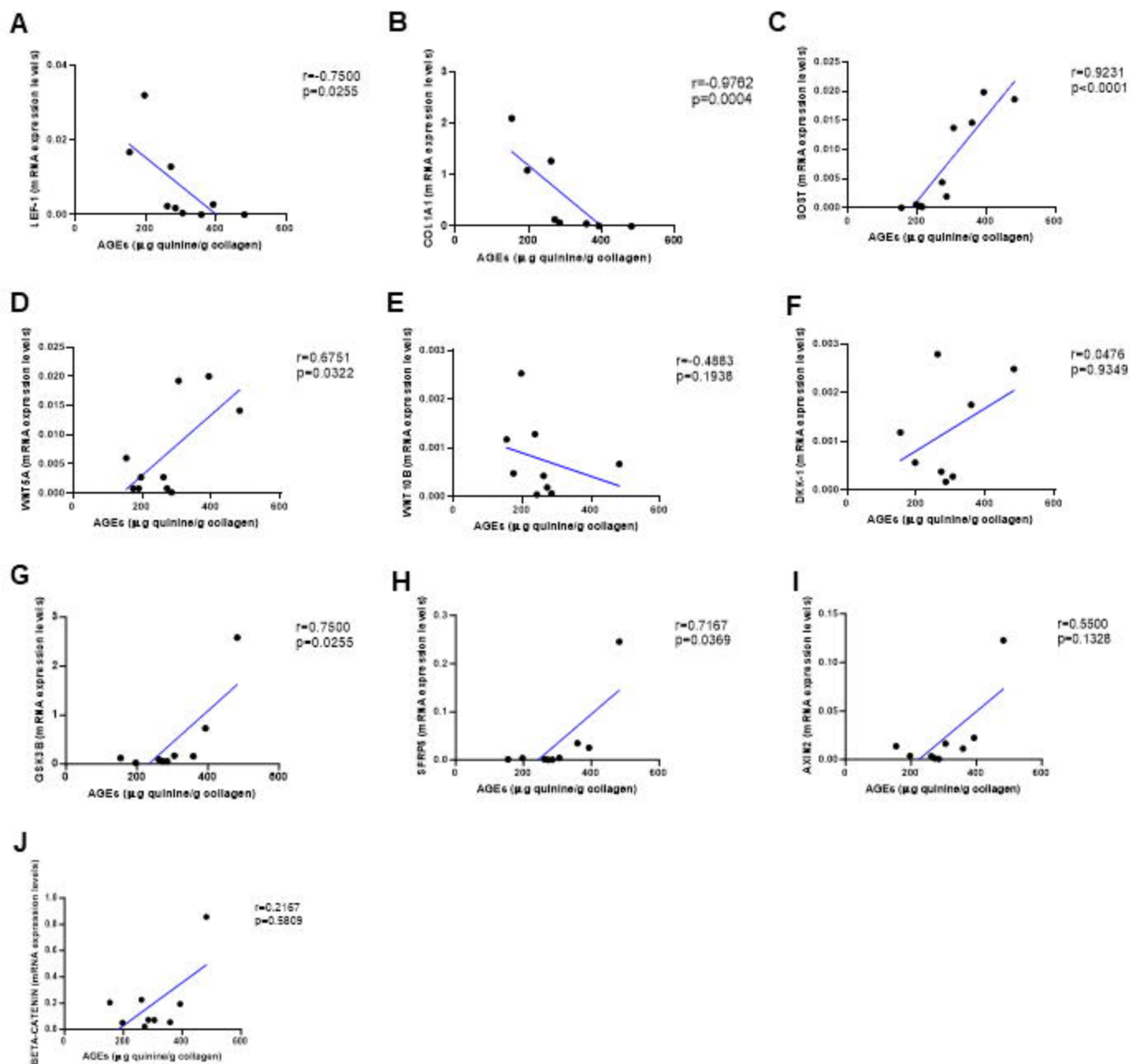


Figure 2

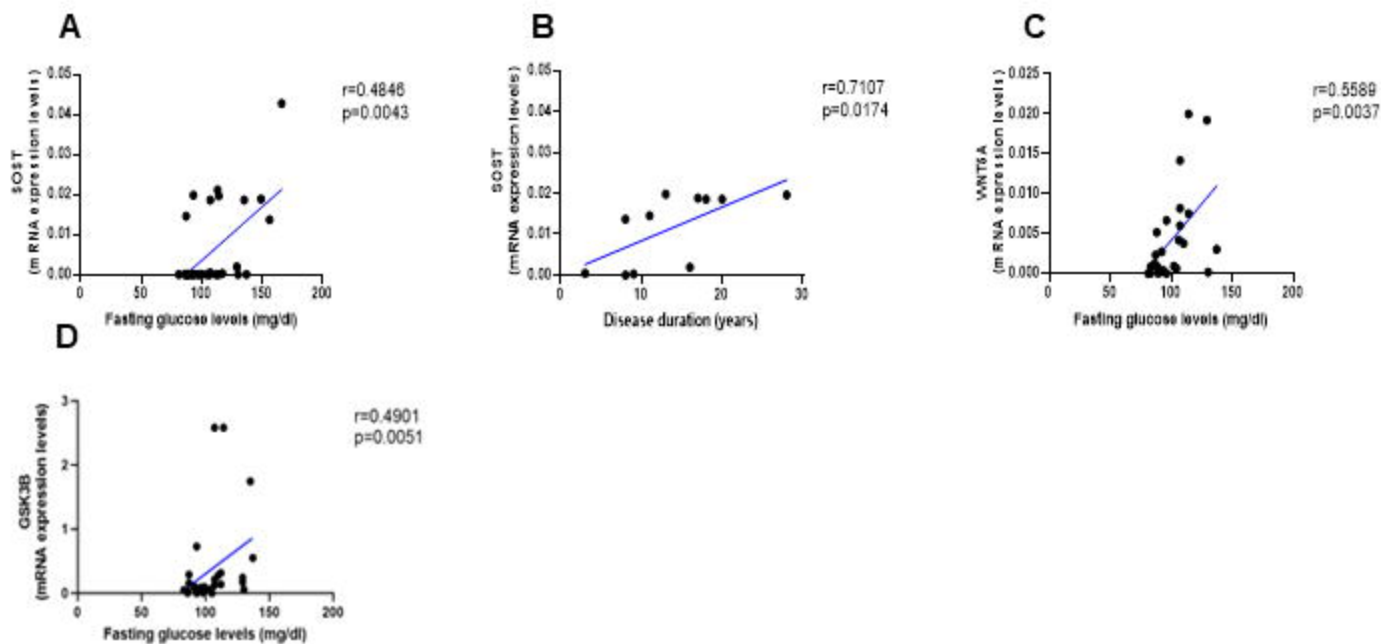


Figure 3

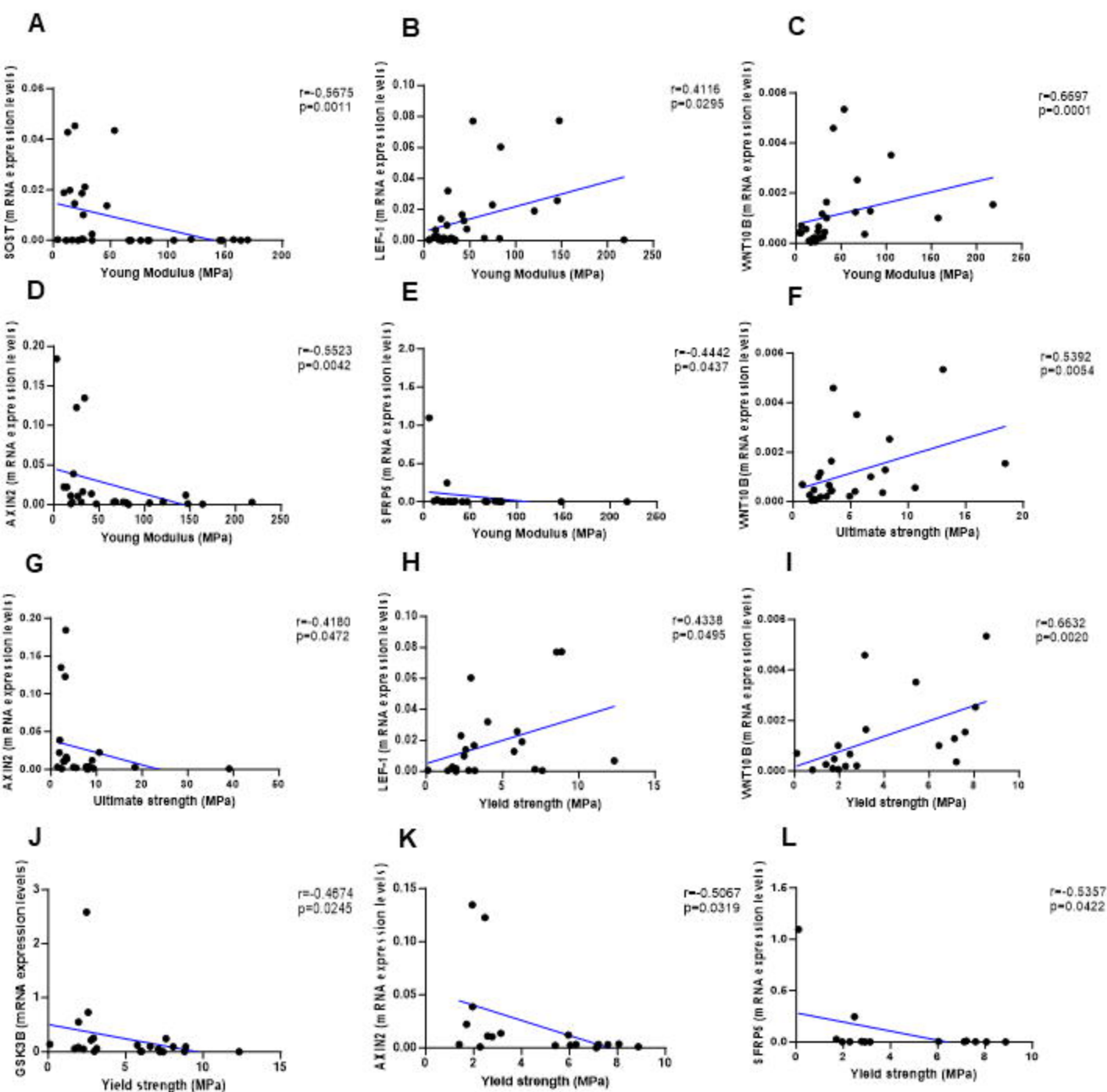


Figure 4