

1 **Population health and health sector cost impacts of the UK Soft Drinks Industry Levy: a modelling study**

2

3 Linda J Cobiac (0000-0002-2271-6494), Cherry Law (0000-0003-0686-1998), Richard Smith (0000-0003-
4 3837-6559), Steven Cummins (0000-0002-3957-4357), Harry Rutter (0000-0002-9322-0656), Mike
5 Rayner (0000-0003-0479-6483), Oliver Mytton (0000-0003-3218-9912), Adam D M Briggs (0000-0002-
6 2314-1039), Henning Tarp Jensen (0000-0003-4526-458X), Marcus Keogh-Brown (0000-0002-7556-
7 0016), Jean Adams (0000-0002-5733-7830), Martin White (0000-0002-1861-6757), Peter Scarborough
8 (0000-0002-2378-2944)

9

10 *Affiliations:*

11 Linda J Cobiac

12 Principal Research Fellow

13 Griffith University, Parklands Drive, Southport, QLD, 4222, Australia

14

15 Cherry Law

16 Lecturer in Applied Economics

17 University of Reading, Reading, RG6 6EU, UK

18

19 Richard Smith

20 Professor of Health Economics and Deputy Pro Vice Chancellor

21 University of Exeter, Exeter, EX1 2LU, UK

NOTE: This preprint reports new research that has not been certified by peer review and should not be used to guide clinical practice.

22

23 Steven Cummins

24 Professor of Population Health & NIHR Senior Investigator

25 Population Health Innovation Lab, Department of Public Health, Environments & Society, London

26 School of Hygiene and Tropical Medicine, 15-17 Tavistock Place, London, WC1H 9SH, UK

27

28 Harry Rutter

29 Professor of Global Public Health

30 University of Bath, BA2 7AY, UK

31

32 Mike Rayner

33 Professor of Population Health

34 Nuffield Department of Population Health, University of Oxford, Oxford, OX3 7LF, UK

35

36 Oliver Mytton

37 Honorary Public Health Consultant

38 Great Ormond Street Hospital Institute of Child Health, UCL, 30 Guilford St, London WC1N 1EH, UK

39

40 Adam D M Briggs

41 Honorary Associate Professor

42 Warwick Medical School, University of Warwick, Coventry, CV4 7AL, UK

43

44 Henning Tarp Jensen

45 Associate Professor in Macroeconomics and Simulation Modelling

46 London School of Hygiene and Tropical Medicine, Keppel Street, London, WC1E 7HT, UK

47

48 Marcus Keogh-Brown

49 Associate Professor in Economic Modelling

50 London School of Hygiene and Tropical Medicine, 15-17 Tavistock Place, London, WC1H 9SH, UK

51

52 Jean Adams

53 Associate Professor

54 MRC Epidemiology Unit, University of Cambridge, Cambridge, UK

55

56 Martin White

57 Professor of Population Health Research

58 MRC Epidemiology Unit, University of Cambridge, Cambridge, UK

59

60 Peter Scarborough

61 Professor of Population Health

62 Nuffield Department of Population Health, University of Oxford, Oxford, OX3 7LF, UK

63

64 Correspondence to: Peter Scarborough peter.scarborough@ndph.ox.ac.uk

65

66 **Contributor and guarantor information**

67 PS acts as guarantor for this manuscript. Contributions to development of the manuscript are as
68 follows: Conception of idea – LJC, RS, HR, MR, AB, MW, PS; Study design – LJC, CL, OM, AB, MW, PS;
69 Grant application – RS, SC, HR, MR, OM, AB, JA, MW, PS; Literature review – LJC, PS; Development of
70 methods – LJC, CL, PS; Data management – LJC, CL; Data analysis – LJC; Data interpretation – LJC, CL,
71 RS, SC, OM, HTJ, MK-B, JA, MW, PS; First draft of manuscript – LJC; Comments on drafts – all authors.
72 The corresponding author attests that all listed authors meet authorship criteria and that no others
73 meeting the criteria have been omitted.

74

75 **Copyright / license to publish**

76 The Corresponding Author has the right to grant on behalf of all authors and does grant on behalf of
77 all authors, a worldwide licence to the Publishers and its licensees in perpetuity, in all forms, formats
78 and media (whether known now or created in the future), to i) publish, reproduce, distribute, display
79 and store the Contribution, ii) translate the Contribution into other languages, create adaptations,
80 reprints, include within collections and create summaries, extracts and/or, abstracts of the
81 Contribution, iii) create any other derivative work(s) based on the Contribution, iv) to exploit all
82 subsidiary rights in the Contribution, v) the inclusion of electronic links from the Contribution to
83 third party material where-ever it may be located; and, vi) licence any third party to do any or all of
84 the above.

85

86 **Competing interests**

87 All authors have completed the ICMJE uniform disclosure form at [http://www.icmje.org/disclosure-](http://www.icmje.org/disclosure-of-interest/)
88 [of-interest/](http://www.icmje.org/disclosure-of-interest/) and declare:

89

90 **Data sharing statement**

91 All data used to support the PRIMETIME model and the analyses conducted in this paper are
92 available in the public domain, some with licensed agreements from relevant data archives (e.g. the
93 UK Data Archive <https://www.data-archive.ac.uk/>).

94

95 **Transparency declaration**

96 The contributing author and guarantor (PS) affirms that the manuscript is an honest, accurate, and
97 transparent account of the study being reported; that no important aspects of the study have been
98 omitted; and that any discrepancies from the study as originally planned have been explained.

99

100 **Funding source**

101 This research is supported by a project grant from the NIHR Public Health Research Programme
102 (NIHR PHR 16/130/01). PS is supported by the NIHR Biomedical Research Centre at Oxford (IS-BRC-
103 1215-20008). PS is supported by a BHF Intermediate Basic Science Research Fellowship
104 (FS/15/34/31656). OM is supported by a UKRI Future Leaders Fellowship (MR/T041226/1). MR is
105 supported by the NIHR Project Grant and the Nuffield Department of Population Health, University
106 of Oxford. MW and JMA are supported by an intramural programme grant within the MRC
107 Epidemiology Unit (MC/UU/00006/7).

108 What is already known on this topic

- 109 • Numerous modelling studies have shown that sugar-sweetened beverage taxes are likely to
110 be cost-effective and improve population health, whether the tax is applied on the volume
111 of product or to the sugar content (absolute or tiered), but there have been few modelling
112 studies that have been informed by evaluation of real-world taxes.
- 113 • A volumetric sugar-sweetened beverage tax of 1 peso per litre, implemented in Mexico in
114 2014, reduced purchases of sugar-sweetened beverages by 7.6% in the first two years, and
115 health economic modelling estimated that it would be cost-effective from a health sector
116 perspective.
- 117 • In the UK, the Soft Drinks Industry Levy (SDIL), announced in March 2016 and implemented
118 in April 2018, was designed as a tiered levy to encourage soft drink manufacturers to reduce
119 sugar content. Follow-up at one year indicates that it has reduced purchases of sugar from
120 drinks by 8.0 g/household/week (95% confidence interval: 2.4 to 13.6).

121 What this study adds

- 122 • Population health modelling suggests that changes in sugar consumption due to the SDIL will
123 reduce prevalence of overweight/obesity and related diseases and improve dental health in
124 the UK, including 12,000 (95% uncertainty interval: 3,700 to 20,000) fewer cases of type 2
125 diabetes, 3,800 (1,200 to 6,700) fewer cases of cardiovascular diseases, 350 (110 to 590)
126 fewer cases of obesity-related cancer, and 270,000 (35,000 to 600,000) fewer dental caries,
127 in the first ten years after implementation.
- 128 • Health economic modelling indicates that over the lifetime of the current UK population the
129 SDIL could add 200,000 quality-adjusted life years (63,500 to 342,000) and avert £174 million
130 (£53.6 to £319) in health care costs, leading to a net monetary benefit of £12.2 billion (£3.88
131 to £20.8) for the health sector.

- 132 • This study of the UK SDIL tiered tax on sugar content provides further evidence that sugar-
- 133 sweetened beverage taxes have the potential to achieve meaningful improvements in
- 134 population health and reduce health sector spending.

135 **Abstract**

136 *Objective:* To model future impacts of the UK Soft Drinks Industry Levy (SDIL) on population health
137 and health sector costs, and to estimate net monetary benefit to the health system.

138 *Design:* Proportional multi-state lifetable modelling study

139 *Setting:* United Kingdom

140 *Population:* All children and adults

141 *Intervention:* The SDIL is a two-tier levy of £0.18 per litre on drinks with between 5g and 8g of total
142 sugars per 100mL, and £0.24 per litre on drinks with 8g or more of total sugars per 100mL. We
143 estimated a per person reduction in sugar from previous interrupted time series analysis, which found
144 an 8.0 g/household/week (95% confidence interval: 2.4 to 13.6) reduction in sugar in purchased drinks
145 at one year after implementation.

146 *Main outcome measures:* We evaluated impact of the sugar reduction on: (a) prevalence of
147 overweight and obesity, obesity-related diseases and dental health out to 2050; and (b) lifetime
148 population health (measured in quality-adjusted life years [QALYs]), change in costs to the health
149 sector and the resulting net monetary benefit.

150 *Results:* The model predicts that the SDIL will reduce prevalence of overweight and obesity in the UK
151 by 0.18 percentage points (95% uncertainty interval: 0.059 to 0.31) for males and 0.20 percentage
152 points (0.064 to 0.34) for females, for as long as the sugar-reduction effects of the SDIL are sustained.
153 In the first ten years of implementation, the reductions in sugar and overweight/obesity are predicted
154 to prevent 270,000 (35,000 to 600,000) dental caries, 12,000 (3,700 to 20,000) cases of type 2
155 diabetes, 3,800 (1,200 to 6,700) cases of cardiovascular diseases, and 350 (110 to 590) cases of
156 obesity-related cancer. For the current UK population, it is estimated the SDIL will add 200,000 QALYs
157 (63,500 to 342,000) over their lifetime and avert £174 million (£53.6 to £319) in their costs of health

158 care (discounted at UK Treasury rates). At a UK Treasury value of £60,000 per QALY, it is estimated the
159 SDIL will produce a net monetary benefit of £12.2 billion (£3.88 to £20.8) for the health system.

160 *Conclusion:* This study of the UK SDIL tiered tax on sugar content provides further evidence that sugar-
161 sweetened beverage taxes have the potential to achieve meaningful improvements in population
162 health and reduce health sector spending.

163

164 **Introduction**

165 In 2016 the UK Chancellor of the Exchequer announced that the UK Government would implement
166 incentives for soft drink manufacturers, importers and bottlers to reduce the amount of sugar in soft
167 drinks in the UK.¹ The Soft Drinks Industry Levy (SDIL) was implemented in 2018 as a two tier levy of
168 £0.18 per litre on drinks with between 5g and 8g of total sugars per 100mL, and £0.24 per litre on
169 drinks with 8g or more of total sugars per 100mL.² The levy targets soft drinks where sugar or similar
170 sweeteners, such as honey, are added during the manufacturing process. Fruit or vegetable juices with
171 no added sugar, and drinks that are at least 75% milk, among others, are excluded.

172

173 Sugar-sweetened beverages are a rational target for a levy, since they provide no nutritional benefit
174 in the diet. Experimental studies have shown that they are associated with weight gain in children.^{3,4}
175 Those who regularly consume these drinks are more likely to have overweight or obesity, and
176 experience type 2 diabetes and cardiovascular disease.⁵⁻⁹ The low impact of these drinks on feelings
177 of satiety, and subsequent over-consumption of calories, is understood to be a key mechanism
178 underlying these effects, although there is also emerging evidence of other adverse metabolic
179 mechanisms.¹⁰ Oral health is also affected, with greater consumption of sugar-sweetened beverages
180 associated with increased risk of dental caries.¹¹

181

182 Previous modelling analyses predicted that a sugar-sweetened beverage tax in the UK would improve
183 population health by reducing prevalence of obesity and rates of cardiovascular disease, diabetes,
184 cancer and dental caries.^{12,13} But these studies relied on speculation of the likely effects on product
185 reformulation and changes in market share of products with different levels of sugar content, and
186 relied on price elasticities to estimate consumer responses to potential changes in price. Following
187 implementation of the SDIL in the UK, we now have the opportunity to examine the population health
188 and health care cost implications of the tax based on real-world evaluation of the effects on sugar

189 content and drink purchasing. While many countries have now implemented sugar-sweetened
190 beverage taxes,¹⁴ to date only in Mexico has evidence from a real-world evaluation been used to
191 examine the future consequences for population health and health care expenditure. In the first two
192 years after implementation of a 1 peso per litre tax in Mexico in 2014, purchases of sugar-sweetened
193 beverages reduced by an average of 7.6%.¹⁵ Health economic modelling estimated that the tax would
194 be cost-effective from a health sector perspective, predicting significant reductions in prevalence of
195 obesity and cases of diabetes, cardiovascular disease and cancers, and reduced health care
196 expenditure.

197

198 In this study, we model the health implications of the SDIL in the UK, based on real-world evaluation
199 of its effects on the sugar content and purchasing of soft drinks. Interrupted time series analyses of
200 purchasing trends before and after the announcement and implementation of the SDIL found that at
201 one year after implementation the purchased volume of soft drinks had increased by 188.8
202 mL/household/week (95% confidence interval: 30.7 to 346.9) but that the amount of sugar in
203 purchased drinks had decreased by 8.0 g/household/week (13.6 to 2.4 g).¹⁶ We model the future
204 impacts of this sugar reduction on obesity, diabetes, cardiovascular disease, cancer and dental health
205 in the UK population, and the cost implications of these changes for the health sector.

206

207 **Methods**

208 We modelled the health and health care cost impacts of the SDIL using PRIMETIME,¹⁷ a proportional
209 multi-state lifetable model developed in the UK for simulating population health and cost impacts of
210 public health interventions and scenarios. PRIMETIME simulates the changing health of a population
211 through time. From changes in prevalence of behavioural risk factors, such as obesity, the model can
212 simulate impacts on incidence, prevalence and mortality of non-communicable diseases, including

213 cardiovascular diseases, diabetes and cancers. These changes in disease influence both the years of
214 life that are lived by the population and their quality of life, from which we can estimate the impact
215 of an intervention or scenario on life expectancy, quality-adjusted life years (QALYs) and health sector
216 costs (Figure 1). A full description of the PRIMETIME input data for these analyses are shown in Text
217 S1.

218

219 *SDIL effect on sugar purchasing*

220 We derived the effect of the SDIL on purchased sugar in drinks from the results of an interrupted time
221 series analysis.¹⁰ This evaluation study analysed commercial household purchasing panel data from
222 before announcement of the SDIL (March 2014-March 2016) to one year post-implementation (April
223 2018-March 2019). The data included purchases of drinks eligible for the levy (e.g. soft drinks) and
224 drinks that were exempt (e.g. milk, milk-based drinks, alcoholic drinks, no-added-sugar fruit juices and
225 drinks sold as powders), to capture potential substitution effects. The panel data only included
226 purchases for consumption at home; drinks purchased and consumed outside the home (e.g. as part
227 of a meal, on a journey, or at a restaurant) were excluded. The study found a net reduction in
228 purchased sugar of 8.0 g/household/week (13.6 to 2.4 g).¹⁶ From this, we estimated an average per
229 person reduction in sugar consumption, assuming an average of 2.4 people per household,¹⁸ and
230 assuming that changes in purchases translate directly into changes in dietary sugar intake.^{19,20} We did
231 not assume any variation in modelled consumption by age or sex, since examination of National Diet
232 and Nutrition Survey data in the years before the announcement of the SDIL did not indicate any
233 observable variation by age or sex in the consumption of sugar from across the range of included
234 drinks (soft drinks, bottled water, milk and milk-based drinks, no-added-sugar juices and drinks sold
235 as powders).²¹

236

237 *Dental caries*

238 We defined dental caries by the number of decayed, missing and filled permanent (DMFT) or
239 deciduous (dmft) teeth. In the absence of UK-specific data, we estimated the effect of the sugar
240 reduction on dental caries, based on the results of a longitudinal analysis of sugar consumption and
241 dental caries in three national surveys (2000, 2004 and 2011) in Finland.^{12 22} In this study, Bernabe et
242 al found an increase of 0.09 DMFT (95% CI: 0.02 to 0.15) for each additional 10g of sugar consumed
243 each day over the 11 year period, in the study population aged 30+ years. Given a substantial body of
244 evidence demonstrating a relationship between the amount of sugar consumed and development of
245 dental caries in both children and adults,²³ we assumed the dose-response relationship applied equally
246 to dmft.

247

248 For children, we determined current dmft and DMFT rates from the Children's Dental Health Survey
249 2013.²⁴ For adults, we derived DMFT rates from separately measured numbers of decayed, missing
250 and filled teeth reported in the Adult Dental Health Survey 2009,²⁵ adjusting for congenital tooth
251 absence, tooth extraction from causes other than dental decay (e.g. periodontal disease, trauma) and
252 edentulism.²⁶⁻²⁸

253

254 *Body mass index*

255 We estimated the effect of sugar reduction on body mass index (BMI) using energy balance
256 equations for children and adults,^{29 30} assuming 3.75 kcal per gram of sugar,³¹ and no compensatory
257 changes in energy expenditure or substitution of calories from other foods or drinks. Carbohydrates
258 consumed in liquid form do not have the same effects on feelings of satiety that they do when
259 consumed in solid food,^{32 33} which may lessen the desire to increase consumption and calorie intake
260 from other foods or drinks. Studies of sugar-sweetened beverage taxes do not indicate

261 compensatory increases in food purchasing.^{34 35} In the evaluation of the SDIL, there was evidence of
262 increases in purchasing of low or no sugar drinks, due to reformulation (which are accounted for in
263 our modelling), but there was no evidence of an increase in purchasing of confectionery (a potential
264 substitute for sugar and/or calorie intake) over the time period of announcement and
265 implementation of the SDIL.³⁶

266

267 We modelled the SDIL effect on BMI as a change in trajectory of the shape and scale of the
268 lognormal distribution of BMI, by age and sex, based on prediction models developed and validated
269 on 27 years of Health Survey for England data.³⁷ For the main analyses we used non-linear prediction
270 models that forecast mean BMI heading towards an asymptote. In sensitivity analyses we used linear
271 prediction models that forecast mean BMI reaching a peak within the next decade and declining
272 thereafter. Prevalence of overweight and obesity were defined using BMI thresholds from the
273 International Obesity Taskforce.³⁸

274

275 *Disease modelling*

276 We evaluated the impact of BMI changes on the incidence of five cardiovascular and metabolic
277 diseases (ischaemic heart disease, ischaemic stroke, intracerebral haemorrhage, hypertensive heart
278 disease atrial fibrillation/flutter, and diabetes mellitus type 2) and eight obesity-related cancers
279 (colorectal cancer, post-menopausal breast cancer, uterine cancer, oesophageal cancer, kidney
280 cancer, pancreatic cancer, liver cancer and multiple myeloma).³⁹⁻⁴² We estimated the impact of
281 changes in the distribution of BMI on the incidence of disease by calculating population impact
282 fractions (PIFs).⁴³ A PIF is an estimate of the percentage reduction in rate of disease in a population,
283 and is a function of the baseline distribution of a risk factor, the scenario distribution of a risk factor,
284 and the dose-response relationship between the risk factor and a disease. Dose-response

285 relationships were defined by relative risks from meta-analyses of prospective cohort analyses (see
286 Text S1 for references).

287

288 For PRIMETIME analyses, we derived baseline incidence, prevalence and case fatality rates for each of
289 the modelled diseases in the UK using incidence, prevalence and mortality data from the Global
290 Burden of Disease (GBD) and the disbayes R package to derive epidemiologically consistent rates of
291 case fatality, which are not explicitly reported in the GBD reports (see details in Text S1).^{44 45} To
292 estimate background trends in disease incidence and case fatality rates, we estimated rates for 2015
293 (the baseline year) and 2005 and allowed a linear annual progression between these years to continue
294 into the forecast range for ten years at which point incidence and case fatality rates remain constant.

295

296 *Quality adjusted life years*

297 From simulation of the obesity-related diseases, PRIMETIME estimates the impact of the SDIL on
298 population mortality and life expectancy. We determined quality-adjusted life years (QALYs) by
299 adjusting the predicted years of life lived by disease-specific utility weights (see Text S1) which reflect
300 quality of life associated with diseases at each age and sex.⁴⁶

301

302 *Health system costs*

303 We derived health care costs for the 2018-19 budget year and adjusted to the 2015 modelling baseline
304 year using the Consumer Price Index.⁴⁷ National Health Service (NHS) costs of treating disease were
305 derived from Department of Health and Social Care budget allocations to: (a) clinical commissioning
306 groups, which are responsible for hospital and community healthcare services in England; (b) primary
307 care and (c) specialised services, which focus on conditions that are particularly expensive or have a
308 small patient population. From the total costs of treating each modelled disease, we estimated an

309 average cost per prevalent case, by dividing by the average number of prevalent cases in 2018-19.
310 From the total costs of treating all other diseases that were not explicitly modelled in PRIMETIME, we
311 estimated an average cost per person in the population in 2018-19. For dental caries, where outcomes
312 are modelled in units of decayed, missing or filled teeth, rather than population cases, we estimated
313 the average cost of treatment from the total value of NHS dental contract payments, the total Units
314 of Dental Activity that were carried out, and the number of Units of Dental Activity associated with
315 dental clinic fillings and extractions. The GP patient survey on dental care suggests that around 42%
316 of all dental patients opt for private rather than NHS dental care, which is typically associated with
317 higher fees than those charged by a NHS provider.⁴⁸ Thus, our estimates of health care cost impacts
318 for dental care are likely to be conservative.

319

320 *Net monetary benefit*

321 Net monetary benefit is a measure favoured by the UK Treasury. It reflects the value of an intervention
322 in monetary terms and can be derived from the net intervention impacts on costs to the health sector
323 and population health, assuming a willingness-to-pay threshold for health.⁴⁹ We determined the net
324 monetary benefit of the SDIL policy from PRIMETIME estimates of the lifetime health (QALY) and cost
325 impacts. A QALY was valued at £60,000 as recommended by UK Treasury,⁵⁰ and health care costs were
326 fixed at 2015 prices. Both QALYs and costs were discounted using declining long term discount rates,
327 as recommended by UK Treasury, to capture both social time preferences and intergenerational
328 transfer of wealth: 3.5% costs and 1.5% health (0 to 30 years), 3% costs and 1.29% health (31-75 years)
329 and 2.5% costs and 1.07% health (76-125 years).⁵¹

330

331 *PRIMEtime simulation*

332 We ran both open- and closed-cohort simulations with the PRIMEtime model. To report changes in
333 prevalence of overweight/obesity and rates of disease, we ran the PRIMEtime model until to 2055
334 while continuing to add new birth cohorts to the simulation, so that the denominator for estimating
335 rates would remain representative of the whole population (open cohort simulation). Estimates of
336 future births in the UK were based on population projections from the Office for National Statistics.⁵²
337 To estimate lifetime impact of the SDIL on QALYs and costs to the health sector, we ran the PRIMEtime
338 model until everyone in the 2015 UK population had died (a closed cohort analysis).

339

340 *Uncertainty Analyses*

341 We estimated 95% uncertainty intervals around all model outputs, by repeating the simulations 3000
342 times, iteratively drawing from uncertainty distributions around PRIMEtime inputs, including the SDIL
343 effect on sugar, relative risks of obesity-related diseases, the sugar-DMFT dose-response relationship,
344 disease utility weights and health care costs. For health care costs, we were only able to derive point
345 estimates for unit costs, so for uncertainty analyses we assumed that the cost followed a lognormal
346 distribution with the point estimate as mean and standard deviation 20% of the point estimate.
347 Contribution of these parameters to the uncertainty in model outputs was assessed in univariate
348 analyses and displayed in a tornado diagram.⁵³ The total number of iterations (3000) was sufficient to
349 report stable outcomes to three significant figures.

350

351 *Sensitivity analyses*

352 We examined the sensitivity of the modelled estimates of QALYs, costs and net monetary benefit to a
353 number of factors, including the addition of diseases not included in the study protocol, but with
354 evidence of an association with obesity, alternative discount rates, variations in background trends in

355 BMI and disease rates, and the rate at which change in obesity is assumed to have an impact on
 356 disease incidence (Table 1). We also evaluated net monetary benefit at a range of willingness-to-pay
 357 values for the QALY, ranging from zero to double the UK Treasury rate.

358

359 *Table 1 Sensitivity analyses*

Sensitivity analysis	Base case scenario	Sensitivity scenario
Added diseases	Ischaemic heart disease, ischaemic stroke, intracerebral haemorrhage, hypertensive heart disease atrial fibrillation/flutter, diabetes mellitus type 2, colorectal cancer, post-menopausal breast cancer, uterine cancer, oesophageal cancer, kidney cancer, pancreatic cancer, liver cancer and multiple myeloma	As for base case scenario + asthma, low back pain, osteoarthritis of the hip and knee, depression, and gallbladder and biliary diseases. ⁵⁴⁻⁶⁰
BMI linear trend	Non-linear background trend in BMI (model predicts that slowing rates of increase in BMI will ultimately reach an asymptote – see Figure S2 in Text S1). ³⁷	Linear trend (model predicts that slowing rates of increase in BMI will peak and then decrease – see Figure S2 in Text S1). ³⁷
BMI no trend	Non-linear background trend in BMI (model predicts that slowing rates of increase in BMI will ultimately reach an asymptote – see Figure S2 in Text S1). ³⁷	No background trend in BMI, i.e. prevalence of overweight and obesity remain stable at 2015 levels.

No disease trends	Trends in disease incidence and case fatality applied for 10 years and then remain stable.	No background trends in disease rates; rates remain stable at 2015 levels.
No effect lags	Linear increase to full effect of BMI changes on disease incidence at 5 years for cardiovascular and metabolic diseases and 20 years for cancers.	Immediate effect of BMI changes on disease incidence.
NICE discount rates	UK Treasury tiered rates (0-30, 31-75, 76+ years): ⁵¹ 3.5%, 3%, 2.5% for health 1.5%, 1.29%, 1.07% for costs	National Institute for Health and Care Excellence (NICE) flat rate of 3.5% for costs and health outcomes. ⁶¹
Undiscounted	UK Treasury tiered rates (0-30, 31-75, 76+ years): ⁵¹ 3.5%, 3%, 2.5% for health 1.5%, 1.29%, 1.07% for costs	No discounting of costs or health outcomes (i.e. 0%).

360

361 *Patient and Public Involvement*

362 This study did not involve any patients or members of the public.

363

364 *Ethics approval*

365 This study used publicly available secondary data and did not involve collecting primary data from
366 human participants. Ethical approval was therefore not required.

367

368 **Results**

369 *Overweight and obesity*

370 Assuming the sugar reduction effects of the SDIL are sustained to 2055, the model predicts that the
371 SDIL will lead to a reduction in prevalence of both overweight and obesity in the UK population (*Figure*
372 *2*). The combined prevalence of overweight and obesity is reduced by 0.18 percentage points (95%
373 uncertainty interval: 0.059 to 0.31) for males and 0.20 percentage points (0.064 to 0.34) for females.
374 This is equivalent to 685 thousand (220 to 1,160 thousand) fewer males and 760 thousand (245 to
375 1,290 thousand) fewer females with overweight or obesity.

376

377 *Obesity-related disease and dental health*

378 Table 2 shows the predicted impact of the modelled reductions in prevalence of overweight and
379 obesity on new cases of obesity-related disease and dental health in the UK population. In the first ten
380 years after implementation of the SDIL, it is estimated there will be 12,000 (3,700 to 20,000) fewer
381 cases of type 2 diabetes, 3,800 (1,200 to 6,700) fewer cases of cardiovascular diseases, 350 (110 to
382 590) fewer cases of obesity-related cancers, and 270,000 (35,000 to 600,000) fewer dental caries.

383

384 *Table 2 SDIL impact on incident cases of disease and dental caries, in the ten years following SDIL implementation.*

Cases	Male	Female
Ischaemic heart disease	-1,400 (-2,400 to -440)	-620 (-1,100 to -200)
Ischaemic stroke	-190 (-340 to -59)	-200 (-370 to -63)
Intracerebral haemorrhage	-100 (-190 to -29)	-110 (-210 to -29)
Hypertensive heart disease	-130 (-260 to -28)	-150 (-300 to -36)
Atrial fibrillation and flutter	-520 (-960 to -160)	-440 (-820 to -140)

Diabetes mellitus type 2	-6,300 (-11,000 to -2,000)	-5,300 (-9,000 to -1,700)
Breast cancer	-	-85 (-150 to -26)
Colon and rectum cancer	-15 (-30 to -4.1)	-14 (-28 to -3.9)
Esophageal cancer	-39 (-72 to -12)	-22 (-40 to -6.6)
Kidney cancer	-18 (-33 to -5.5)	-13 (-24 to -4)
Liver cancer	-21 (-41 to -5.6)	-16 (-32 to -4.3)
Multiple myeloma	-5.4 (-9.5 to -1.7)	-4.8 (-8.4 to -1.5)
Pancreatic cancer	-9.2 (-18 to -2.7)	-11 (-22 to -3.2)
Uterine cancer	-	-72 (-120 to -23)
Dental caries*	-130,000 (-290,000 to -17,000)	-140,000 (-300,000 to -18,000)

NB. Values are modelled point estimate and 95% uncertainty interval based on 3000 iterations of a Monte Carlo analysis. All results are presented to three significant figures.

** Dental caries are measured as the number of decayed, missing and filled teeth.*

385

386 *Quality adjusted life years and health care costs*

387 The model predicts that the SDIL will lead to a population health gain of 200,000 QALYs (63,500 to
 388 342,000) over the lifetime of the 2015 UK population (Table 3). It is estimated there will be a £174
 389 million (£53.6 to £320) reduction in costs to the health service for treatment of dental caries and
 390 obesity-related diseases, which will be countered by a small £94.6 thousand (£30.6 to £162) increase
 391 in costs of treatment for other diseases (e.g. injuries, dementia, etc.) that occur due to additional years
 392 of life lived. This leads to a net cost-saving of £174 million (£53.6 to £319). At the UK Treasury value
 393 of £60,000 per QALY, the net effect of these modelled lifetime impacts on health and health care costs
 394 is a net monetary benefit of £12.2 billion (£3.88 to £20.8). Net monetary benefit is linearly related to
 395 the willingness-to-pay value for the QALY: different values can be estimated from Figure S2 in Text S2.

396

397 *Table 3 Lifetime population health and health care cost impacts and net monetary benefit of the SDIL*

Sex	QALY (years)	Costs of explicitly modelled diseases (£ million)*	Costs of all other diseases (£ million)	Net monetary benefit (£ million)
Female	98,600 (31,500 to 168,000)	-100 (-186 to -31)	0.0476 (0.0154 to 0.0811)	-
Male	101,000 (32,100 to 174,000)	-73.9 (-138 to -21.9)	0.047 (0.0152 to 0.0808)	-
Total	200,000 (63,500 to 342,000)	-174 (-320 to -53.6)	0.0946 (0.0306 to 0.162)	12,200 (3,880 to 20,800)

NB. Values are modelled point estimate and 95% uncertainty interval based on 3000 iterations of a Monte Carlo analysis. All results are presented to three significant figures. Values are discounted using UK Treasury tiered discount rates and a QALY is valued at the UK Treasury rate of £60,000 in calculating the total net monetary benefit.

** Dental caries and obesity-related diseases.*

398

399 *Uncertainty analyses*

400 Examination of the tornado diagram (Figure 3) shows that the majority of uncertainty in the
 401 magnitude of the health gains, net costs and net monetary benefit is due to the wide confidence
 402 interval around the effect of the SDIL on sugar in purchased drinks. The uncertainty in the unit costs
 403 of disease, which we estimated as a standard deviation equal to 20% of the point-estimate cost, also
 404 has sizeable impact on the net health care costs.

405

406 *Sensitivity analyses*

407 In sensitivity analyses, the health gains, net cost-savings and positive net monetary benefit remained
 408 significant under all scenarios evaluated, although the magnitude of the estimates varied (Figure 4).

409 Modelled estimates were most sensitive to the discount rates chosen for analysis. For example, the
410 net monetary benefit of the SDIL was 37% lower if discounted using NICE rates of 3.5% for both QALYS
411 and costs, but 79% higher with no discounting of QALYs or costs. The addition of potential BMI-related
412 changes in asthma, depressive disorders, gallbladder and biliary diseases, low back pain and
413 osteoarthritis of the hip and knee increased cost-savings (+62%) more than it increased QALYs (+12%),
414 which led to a 13% higher net monetary benefit. The choice of background trend model (linear vs non-
415 linear) had relatively little impact on health economic outcomes (<1% change in net monetary benefit),
416 but the net monetary benefit was 8.9% higher when assuming no background trends at all in BMI (see
417 Figure S1 in Text S2 for comparison of the impact on prevalence of overweight and obesity) . Removing
418 the assumed lags in effect of changes in BMI on disease incidence (5 years for cardiovascular disease
419 and 20 years for cancer) increased net monetary benefit by 6.5%, while removing background trends
420 in diseases reduced net monetary benefit by 2.9%.

421

422 Discussion

423 *Statement of principal findings*

424 We evaluated the population health and health sector impacts of the SDIL, using the PRIMETIME model
425 to simulate the likely impact on obesity, disease and health care costs from the observed effects on
426 sugar purchased in drinks for in-home consumption. The model predicts that the reductions in sugar
427 will reduce prevalence of overweight and obesity in the UK, preventing type 2 diabetes, cardiovascular
428 disease and obesity-related cancers, and it will improve dental health. For the current UK population,
429 it is estimated the SDIL will add 200,000 QALYs (63,500 to 342,000) over their lifetime and avert £174
430 million (£53.6 to £319) in their costs of health care, producing a net monetary benefit of £12.2 billion
431 (£3.88 to £20.8) for the health system. There are relatively wide uncertainty intervals around the
432 model predictions, which chiefly reflect the wide uncertainty in the effect of the SDIL on sugar
433 purchased in drinks (-8.0 g/household/week [95% confidence interval: -13.6 to -2.4]).¹⁶ Nevertheless,

434 the beneficial impacts of the SDIL are robust to variations in modelling assumptions around
435 background trends in BMI and disease rates, lags in the effect of the SDIL on disease, and discount
436 rates.

437

438 *Comparison with other literature*

439 Our results are consistent with previous modelling studies, which have predicted health and monetary
440 benefits of a tax targeting sugar-sweetened beverages in the UK.^{12 13} Since these studies preceded
441 implementation of the SDIL, they relied on price elasticity data to estimate the likely consumer
442 response to a hypothetical tax on sugar-sweetened beverages. Such studies cannot directly capture
443 potential supply-side responses, such as reformulation, or consumer responses to the signalling of
444 health concerns potentially associated with a government initiating an intervention targeting sugar-
445 sweetened beverages.⁶² By drawing on real-world evaluation of the SDIL, our modelling study provides
446 stronger evidence of the likely health and health sector benefits of implementing a tax targeting sugar-
447 sweetened beverages in the UK.

448

449 As of December 2021, 40 countries are reported to have announced or implemented some form of
450 sugar-sweetened beverage tax.¹⁴ There is a growing body of evidence demonstrating the effectiveness
451 of taxes in reducing purchasing or consumption of sugar-sweetened beverages,⁶² but to date only in
452 Mexico has this evidence from real-world evaluation been used to examine the future consequences
453 for population health and health care expenditure. Like our study, modelling of the sugar-sweetened
454 beverage tax implemented in Mexico⁵⁵ estimated that the tax would be a cost-effective intervention
455 for improving population health from a health care perspective.⁶³ There are differences in the design
456 of the taxes between the two countries: Mexico implemented a 1 peso per litre excise tax, which
457 raised the retail price of drinks; whereas the UK implemented a tiered levy on drinks, as an incentive

458 for drink manufacturers to reduce the sugar content of drinks. But overall, the results of the modelling
459 analyses were relatively similar: predicting small but significant reductions in obesity prevalence (<1%)
460 leading to large reductions in cases of diabetes, cardiovascular disease and cancers, and reduced
461 health care expenditure.

462

463 *Strengths and weaknesses of the study*

464 A key uncertainty in modelling the population health impacts of sugar-sweetened beverage taxes is
465 the pathway by which the change in drink consumption or sugar-content of drinks influences disease.
466 The evaluation of the UK SDIL found a reduction in sugar purchased in drinks.¹⁶ In our modelling
467 analyses, we estimated the equivalent reduction in calories, and simulated effects of reduced energy
468 intake on BMI and obesity-related disease. There is a wealth of observational and trial evidence
469 supporting the causal relationship between the intake of sugar and sugar-sweetened beverages, and
470 obesity.^{9 64} But there is also a growing body of evidence, including lab studies and prospective cohort
471 studies, suggesting that the metabolism of sugars in sugar-sweetened beverages may have cardio-
472 metabolic effects that are over and above the impacts on energy intake that we have accounted for
473 in our modelling.⁶⁵ By restricting our cardiovascular disease and cancer modelling to the direct calorific
474 impact on body weight, we may have underestimated the full impact of the SDIL.

475

476 We also did not evaluate the effect of any change in consumption of non-sugar sweeteners that may
477 have occurred in the reformulation of drink products with the SDIL. Randomised controlled trials
478 suggest that people consuming non-sugar sweeteners as a replacement for sugars have a lower body
479 weight or BMI at the end of the trial, but longer-term prospective cohort studies suggest there be an
480 increased risk of diabetes and cardiovascular disease with consumption of non-sugar sweeteners.⁶⁶ It
481 is possible these observed associations with harmful effects are due to reverse causation and/or

482 residual confounding. We did not model the effects, if any, of possible increases in consumption of
483 non-sugar sweeteners on population health due to the SDIL.

484

485 The interrupted time series analysis of the SDIL was based on household-level purchasing data, hence
486 we were not able to determine how the changes in household sugar purchasing may have impacted
487 differently on individuals within the household (e.g. adults vs children). Additionally, the interrupted
488 time series analysis only included data on products brought into the home.³⁶ Out-of-home purchases
489 account for around 10-12% of expenditure on cold non-alcohol beverages in the UK.⁶⁷ If the SDIL has
490 a similar impact on sugar in drinks purchases out-of-home then the SDIL may have had a larger impact
491 on health than we have modelled here, but further work is needed to understand the impacts of the
492 SDIL on out-of-home purchases.

493

494 Additionally, we do not know the impact of product wastage within the home. The reduction in sugar
495 that we have modelled is a net effect of changing sugar content and changing purchase volume of
496 taxed and untaxed products. Analyses of UK household waste in 2012 estimated volumetric wastage
497 proportions of 5.2% for bottled water, 7.2% for carbonated soft drink, 8.6% for squash, 12.0% for fruit
498 juices and smoothies and 7.0% for milk.⁶⁸ This suggests that waste may vary by drink type, but the net
499 waste effect due to changing proportions of different product purchasing was not estimated in the
500 time series analyses of the SDIL effect. Further, we do not know if product wastage is influenced by
501 possible taste changes due to product reformulation.

502

503 *Implications*

504 Sugar-sweetened beverage taxes are among the suite of “best buy” interventions recommended by
505 the World Health Organization (WHO) for addressing childhood obesity and preventing non-

506 communicable diseases.^{69 70} From an economic perspective, the costs of treating dental caries and
507 obesity-related diseases that stem from drinking sugar-sweetened beverages are a negative
508 externality, and taxes are a potential way of internalising these costs. Our modelling of the UK SDIL
509 and the modelling of the sugar-sweetened beverage tax in Mexico indicate that these interventions
510 are likely to both improve population health and reduce health sector expenditure.

511

512 The WHO recommends limiting free sugar consumption to a maximum of 10% of energy intake.⁷¹ The
513 high levels of potential harm, low nutritional benefit and discretionary nature of sugar-sweetened
514 beverages make them an ideal target for reducing free sugar intake. In the UK, however, the SDIL on
515 its own will not be enough to reduce free sugar consumption to the levels recommended by the WHO.
516 In the UK, non-alcoholic beverages account for a large proportion of free sugar intake, particularly in
517 teenagers (34%), but across all ages the majority of free sugars are consumed in foods such as cereal
518 and cereal products (e.g. cakes, pastries), discretionary sugars (e.g. in tea and coffee), preserves and
519 sweet spreads, confectionery and dairy products (e.g. yoghurt and dairy desserts).⁷² Widening the
520 remit of food taxes to include free sugar from all sources could be a useful tool to prompt both
521 reformulation and reduce purchasing of high sugar foods.^{73 74} Such a tax was proposed in the National
522 Food Strategy review commissioned by the UK Government.⁷⁵ Estimates suggest this tax may reduce
523 [free] sugar consumption by as much as 4-10g/person/day,⁷⁶ which is substantially more than the
524 sugar reduction associated with the SDIL (approximately 0.48 g/person/day),¹⁶ but further modelling
525 of the National Food Strategy tax scenarios is needed to fully account for changes in demand across
526 the food system. Studies from Australia and New Zealand suggest that there are likely to be population
527 health benefits from combining food and drink taxes and/or subsidies, such as a tax on sugar-
528 sweetened beverages and a subsidy on fruits and vegetables.^{77 78} But further work exploring the public
529 acceptability of fiscal policies in the food system, and working with the public to design food tax and
530 subsidy scenarios, may also help to build trust and political support for new interventions in the UK.

531

532 *Unanswered questions and future research*

533 In this study we examined impacts of the SDIL on population health and costs of health care, but there
534 are also likely to be broader societal impacts stemming from reductions in obesity-related diseases,
535 such as increased productivity in working-age adults and reduced costs of social care at older ages.
536 We determined net monetary benefit of the SDIL from the averted health care costs and by applying
537 a value of statistical life to the QALY gain, but we did not include costs of delivering the intervention.
538 However, in ongoing macroeconomic work we are examining a much wide range of impacts on UK
539 Treasury, industry and consumers (e.g. changes in revenue, employment, GDP and household
540 spending) and in forthcoming assessment we will be presenting a wider range of both health and
541 economic indicators. Additionally, in ongoing work we are exploring the socio-economic implications
542 of the SDIL for population health.

543

544 **Conclusion**

545 The UK SDIL is a tiered levy designed to encourage drink manufacturers to reduce sugar content.
546 Analysis at one year after implementation in April 2018 found that it had reduced sugar in drinks
547 purchased for home consumption by 8.0 g/household/week (95% confidence interval: 2.4 to 13.6).
548 Population health modelling suggests that these changes in sugar consumption, if sustained, will
549 reduce prevalence of overweight/obesity and related diseases and improve dental health in the UK.
550 Health economic analysis indicates that over the lifetime of the current UK population the SDIL could
551 add 200,000 quality-adjusted life years (63,500 to 342,000) and avert £174 million (£53.6 to £319) in
552 health care costs, leading to a net monetary benefit of £12.2 billion (£3.88 to £20.8) for the health
553 sector. This study provides further evidence that sugar-sweetened beverage taxes have the potential
554 to achieve meaningful improvements in population health and reduce health sector spending.

555

556 **References**

- 557 1. HM Revenue & Customs. Soft Drinks Industry Levy: UK Government; 2016 [Available from:
558 <https://www.gov.uk/government/publications/soft-drinks-industry-levy/soft-drinks-industry-levy>
559 accessed 7 April 2021.
- 560 2. HM Revenue & Customs. Soft Drinks Industry Levy: Detailed Information: UK Government;
561 [Available from: <https://www.gov.uk/topic/business-tax/soft-drinks-industry-levy> accessed 7 April
562 2021.
- 563 3. de Ruyter JC, Olthof MR, Seidell JC, et al. A trial of sugar-free or sugar-sweetened beverages and
564 body weight in children. *N Engl J Med* 2012;367(15):1397-406.
- 565 4. Ebbeling CB, Feldman HA, Chomitz VR, et al. A randomized trial of sugar-sweetened beverages and
566 adolescent body weight. *N Engl J Med* 2012;367:1407-16.
- 567 5. Malik VS, Li Y, Pan A, et al. Long-term consumption of sugar-sweetened and artificially sweetened
568 beverages and risk of mortality in US adults. *Circulation* 2019;139(18):2113-25.
- 569 6. Huang C, Huang J, Tian Y, et al. Sugar sweetened beverages consumption and risk of coronary
570 heart disease: a meta-analysis of prospective studies. *Atherosclerosis* 2014;234(1):11-16.
- 571 7. Narain A, Kwok C, Mamas M. Soft drinks and sweetened beverages and the risk of cardiovascular
572 disease and mortality: a systematic review and meta-analysis. *Int J Clin Pract* 2016;70(10):791-805.

- 573 8. Malik VS, Popkin BM, Bray GA, et al. Sugar-sweetened beverages and risk of metabolic syndrome
574 and type 2 diabetes: a meta-analysis. *Diabetes Care* 2010;33(11):2477-83.
- 575 9. Malik VS, Pan A, Willett WC, et al. Sugar-sweetened beverages and weight gain in children and
576 adults: a systematic review and meta-analysis. *The American journal of clinical nutrition*
577 2013;98(4):1084-102.
- 578 10. Hu FB, Malik VS. Sugar-sweetened beverages and risk of obesity and type 2 diabetes:
579 epidemiologic evidence. *Physiol Behav* 2010;100(1):47-54.
- 580 11. Valenzuela MJ, Waterhouse B, Aggarwal VR, et al. Effect of sugar-sweetened beverages on oral
581 health: A systematic review and meta-analysis. *Eur J Public Health* 2021;31(1):122-29.
- 582 12. Briggs AD, Mytton OT, Kehlbacher A, et al. Health impact assessment of the UK soft drinks
583 industry levy: a comparative risk assessment modelling study. *The Lancet Public Health* 2016
- 584 13. Collins B, Capewell S, O'Flaherty M, et al. Modelling the health impact of an english sugary drinks
585 duty at national and local levels. *PLoS ONE* 2015;10(6):e0130770.
- 586 14. WCRF. NOURISHING database: World Cancer Research Fund International; [Available from:
587 <https://policydatabase.wcrf.org/> accessed 18 June 2021.
- 588 15. Colchero MA, Rivera-Dommarco J, Popkin BM, et al. In Mexico, evidence of sustained consumer
589 response two years after implementing a sugar-sweetened beverage tax. *Health Aff (Millwood)*
590 2017;36(3):564-71.

- 591 16. Penney T, Campus K, Cummins S, et al. Changes in British household purchases of soft drinks
592 associated with implementation of the Soft Drinks Industry Levy: a controlled interrupted time series
593 analysis. *BMJ* 2020
- 594 17. Cobiac LJ, Law C, Scarborough P. PRIMETIME: an epidemiological model for informing diet and
595 obesity policy. *medRxiv* 2022:2022.05.18.22275284. doi: 10.1101/2022.05.18.22275284
- 596 18. Number of households by household size and age of household reference person (HRP), English
597 regions and UK constituent countries, 2019 UK: Office for National Statistics; 2019 [Available from:
598 [https://www.ons.gov.uk/peoplepopulationandcommunity/birthsdeathsandmarriages/families/adho](https://www.ons.gov.uk/peoplepopulationandcommunity/birthsdeathsandmarriages/families/adhoc/11520numberofhouseholdsbyhouseholdsizeandageofhouseholdreferencepersonhrpenglishregion)
599 [cs/11520numberofhouseholdsbyhouseholdsizeandageofhouseholdreferencepersonhrpenglishregion](https://www.ons.gov.uk/peoplepopulationandcommunity/birthsdeathsandmarriages/families/adhoc/11520numberofhouseholdsbyhouseholdsizeandageofhouseholdreferencepersonhrpenglishregion)
600 [sandukconstituentcountries2019](https://www.ons.gov.uk/peoplepopulationandcommunity/birthsdeathsandmarriages/families/adhoc/11520numberofhouseholdsbyhouseholdsizeandageofhouseholdreferencepersonhrpenglishregion) accessed 22 June 2019.
- 601 19. Appelhans BM, French SA, Tangney CC, et al. To what extent do food purchases reflect shoppers'
602 diet quality and nutrient intake? *Int J Behav Nutr Phys Act* 2017;14(1):46. doi: 10.1186/s12966-017-
603 0502-2
- 604 20. Eyles H, Jiang Y, Mhurchu CN. Use of household supermarket sales data to estimate nutrient
605 intakes: a comparison with repeat 24-hour dietary recalls. *J Am Diet Assoc* 2010;110(1):106-10.
- 606 21. England PH. Results of the National Diet and Nutrition Survey (NDNS) rolling programme for 2014
607 to 2015 and 2015 to 2016. UK: Public Health England and Food Standards Agency 2018.
- 608 22. Bernabé E, Vehkalahti MM, Sheiham A, et al. The shape of the dose-response relationship
609 between sugars and caries in adults. *J Dent Res* 2016;95(2):167-72.

- 610 23. Moynihan P, Kelly S. Effect on caries of restricting sugars intake: systematic review to inform
611 WHO guidelines. *J Dent Res* 2014;93(1):8-18.
- 612 24. Children's Dental Health Survey, 2013. UK Data Service. Available from:
613 <http://doi.org/10.5255/UKDA-SN-7774-12015>.
- 614 25. Adult Dental Health Survey, 2009. UK Data Service. Available from:
615 <http://doi.org/10.5255/UKDA-SN-6884-22012>.
- 616 26. Khalaf K, Miskelly J, Voge E, et al. Prevalence of hypodontia and associated factors: a systematic
617 review and meta-analysis. *J Orthod* 2014;41(4):299-316.
- 618 27. McCaul L, Jenkins W, Kay E. The reasons for the extraction of various tooth types in Scotland: a
619 15-year follow up. *J Dent* 2001;29(6):401-07.
- 620 28. Richards W, Ameen J, Coll A, et al. Reasons for tooth extraction in four general dental practices in
621 South Wales. *Br Dent J* 2005;198(5):275-78.
- 622 29. Hall KD, Butte NF, Swinburn BA, et al. Dynamics of childhood growth and obesity: development
623 and validation of a quantitative mathematical model. *The lancet Diabetes & endocrinology*
624 2013;1(2):97-105.
- 625 30. Hall KD, Sacks G, Chandramohan D, et al. Quantification of the effect of energy imbalance on
626 bodyweight. *Lancet* 2011;378(9793):826-37.

- 627 31. FAO. Food energy - methods of analysis and conversion factors. Report of a Technical Workshop,
628 Rome, 3-6 December 2002. Rome: Food and Agriculture Organization of the United Nations, 2003.
- 629 32. DiMeglio DP, Mattes RD. Liquid versus solid carbohydrate: effects on food intake and body
630 weight. *Int J Obes* 2000;24(6):794-800.
- 631 33. Pan A, Hu FB. Effects of carbohydrates on satiety: differences between liquid and solid food. *Curr*
632 *Opin Clin Nutr Metab Care* 2011;14(4):385-90.
- 633 34. Finkelstein EA, Zhen C, Bilger M, et al. Implications of a sugar-sweetened beverage (SSB) tax
634 when substitutions to non-beverage items are considered. *J Health Econ* 2013;32(1):219-39.
- 635 35. Waterlander WE, Mhurchu CN, Steenhuis IH. Effects of a price increase on purchases of sugar
636 sweetened beverages. Results from a randomized controlled trial. *Appetite* 2014;78:32-39.
- 637 36. Rogers N, Pell D, Mytton O, Penney T, Briggs A, Cummins S, et al. Changes in soft drinks
638 purchased by British households associated with the UK soft drinks industry levy: a controlled
639 interrupted time series analysis. *BMJ Open* (Under review).
- 640 37. Cobiac LJ, Scarborough P. Modelling future trajectories of obesity and body mass index in
641 England. *PLoS ONE* 2021;16(6):e0252072. doi: 10.1371/journal.pone.0252072
- 642 38. Cole TJ, Lobstein T. Extended international (IOTF) body mass index cut-offs for thinness,
643 overweight and obesity. *Pediatric obesity* 2012;7(4):284-94.

644 39. Aune D, Sen A, Schlesinger S, et al. Body mass index, abdominal fatness, fat mass and the risk of
645 atrial fibrillation: a systematic review and dose–response meta-analysis of prospective studies. *Eur J*
646 *Epidemiol* 2017;32(3):181-92.

647 40. Singh GM, Danaei G, Farzadfar F, et al. The age-specific quantitative effects of metabolic risk
648 factors on cardiovascular diseases and diabetes: a pooled analysis. *PLoS ONE* 2013;8(7):e65174.

649 41. World Cancer Research Fund. Diet, Nutrition, Physical Activity and Cancer: a Global Perspective,
650 Third Expert Report: World Cancer Research Fund; American Institute for Cancer Research, 2018.

651 42. Kyrgiou M, Kalliala I, Markozannes G, et al. Adiposity and cancer at major anatomical sites:
652 umbrella review of the literature. *Bmj* 2017;356

653 43. Barendregt J, Veerman L. Categorical versus continuous risk factors, and the calculation of
654 potential impact fractions. *J Epidemiol Community Health* 2009;jech.2009.090274. doi:
655 10.1136/jech.2009.090274

656 44. Global Burden of Disease Study 2015 (GBD 2015) Data Resources: Institute for Health Metrics
657 and Evaluation, University of Washington; 2016 [Available from: [http://ghdx.healthdata.org/gbd-](http://ghdx.healthdata.org/gbd-2015)
658 2015 accessed 12 December 2016 2016.

659 45. Jackson C, Zapata-Diomedes B, Woodcock J. Bayesian multistate modelling of incomplete chronic
660 disease burden data. *arXiv preprint arXiv:211114100* 2021

- 661 46. Sullivan PW, Slejko JF, Sculpher MJ, et al. Catalogue of EQ-5D scores for the United Kingdom.
662 *Med Decis Making* 2011;31(6):800-04.
- 663 47. CPI INDEX 06 : HEALTH 2015=100 United Kingdom: Office for National Statistics; [Available from:
664 <https://www.ons.gov.uk/economy/inflationandpriceindices/timeseries/d7bz/mm23> accessed 14
665 May 2021.
- 666 48. Dale V, Gutacker N, Bloor K. NHS dental charges and the effect of increases on access: an
667 exploration.
- 668 49. Briggs A, Claxton K, Sculpher M. Decision modelling for health economic evaluation. New York:
669 Oxford University Press 2006.
- 670 50. Glover D, Henderson J. Quantifying health impacts of government policies. 2010.
671 [https://assets.publishing.service.gov.uk/government/uploads/system/uploads/attachment_data/file](https://assets.publishing.service.gov.uk/government/uploads/system/uploads/attachment_data/file/216003/dh_120108.pdf)
672 [/216003/dh_120108.pdf](https://assets.publishing.service.gov.uk/government/uploads/system/uploads/attachment_data/file/216003/dh_120108.pdf) (accessed 21 October 2021).
- 673 51. HM Treasury. The Green Book: Central Government Guidance on Appraisal and Evaluation. UK:
674 HM Treasury, 2018.
- 675 52. Office for National Statistics. 2016-based National Population Projections 2017 [Available from:
676 [https://www.ons.gov.uk/peoplepopulationandcommunity/populationandmigration/populationproje](https://www.ons.gov.uk/peoplepopulationandcommunity/populationandmigration/populationprojections/datasets/z3zippedpopulationprojectionsdatafilesengland)
677 [ctions/datasets/z3zippedpopulationprojectionsdatafilesengland](https://www.ons.gov.uk/peoplepopulationandcommunity/populationandmigration/populationprojections/datasets/z3zippedpopulationprojectionsdatafilesengland) accessed 1 September 2020.

- 678 53. Eschenbach TG. Spiderplots versus tornado diagrams for sensitivity analysis. *Interfaces*
679 1992;22(6):40-46.
- 680 54. Azizpour Y, Delpisheh A, Montazeri Z, et al. Effect of childhood BMI on asthma: a systematic
681 review and meta-analysis of case-control studies. *BMC Pediatr* 2018;18(1):1-13.
- 682 55. Beuther DA, Sutherland ER. Overweight, obesity, and incident asthma: a meta-analysis of
683 prospective epidemiologic studies. *Am J Respir Crit Care Med* 2007;175(7):661-66.
- 684 56. Shiri R, Karppinen J, Leino-Arjas P, et al. The association between obesity and low back pain: a
685 meta-analysis. *Am J Epidemiol* 2010;171(2):135-54.
- 686 57. Jiang L, Rong J, Wang Y, et al. The relationship between body mass index and hip osteoarthritis: a
687 systematic review and meta-analysis. *Joint Bone Spine* 2011;78(2):150-55.
- 688 58. Silverwood V, Blagojevic-Bucknall M, Jinks C, et al. Current evidence on risk factors for knee
689 osteoarthritis in older adults: a systematic review and meta-analysis. *Osteoarthritis Cartilage*
690 2015;23(4):507-15.
- 691 59. Amiri S, Behnezhad S, Nadinlui KB. Body Mass Index (BMI) and risk of depression in adults: A
692 systematic review and meta-analysis of longitudinal studies. *Obesity Medicine* 2018;12:1-12.
- 693 60. Aune D, Norat T, Vatten LJ. Body mass index, abdominal fatness and the risk of gallbladder
694 disease. *Eur J Epidemiol* 2015;30(9):1009-19.

- 695 61. NICE. Guide to the Methods of Technology Appraisal. London: National Institute for Health and
696 Care Excellence, 2013.
- 697 62. Teng AM, Jones AC, Mizdrak A, et al. Impact of sugar-sweetened beverage taxes on purchases
698 and dietary intake: Systematic review and meta-analysis. *Obes Rev* 2019;20(9):1187-204.
- 699 63. Basto-Abreu A, Barrientos-Gutiérrez T, Vidaña-Pérez D, et al. Cost-Effectiveness Of The Sugar-
700 Sweetened Beverage Excise Tax In Mexico. *Health Aff (Millwood)* 2019;38(11):1824-17. doi:
701 <http://dx.doi.org/10.1377/hlthaff.2018.05469>
- 702 64. Te Morenga L, Mallard S, Mann J. Dietary sugars and body weight: systematic review and meta-
703 analyses of randomised controlled trials and cohort studies. *BMJ : British Medical Journal*
704 2013;346:e7492. doi: 10.1136/bmj.e7492
- 705 65. Malik VS, Hu FB. Sugar-sweetened beverages and cardiometabolic health: an update of the
706 evidence. *Nutrients* 2019;11(8):1840.
- 707 66. Rios-Leyvraz M, Montez J, Organization WH. Health effects of the use of non-sugar sweeteners: a
708 systematic review and meta-analysis. 2022
- 709 67. Cornelsen L, Berger N, Cummins S, et al. Socio-economic patterning of expenditures on 'out-of-
710 home' food and non-alcoholic beverages by product and place of purchase in Britain. *Soc Sci Med*
711 2019;235:112361.

712 68. Quested T, Murphy L. Household food and drink waste: A product focus. United Kingdom: WRAP,
713 2014.

714 69. WHO. Report on the commission on ending childhood obesity. Geneva: World Health
715 Organization, 2016.

716 70. WHO. Tackling NCDs: 'best buys' and other recommended interventions for the prevention and
717 control of noncommunicable diseases. Geneva: World Health Organization, 2017.

718 71. WHO. Guideline: Sugars intake for adults and children. Geneva: World Health Organization,
719 2015.

720 72. Amoutzopoulos B, Steer T, Roberts C, et al. Free and added sugar consumption and adherence to
721 guidelines: the UK National Diet and Nutrition Survey (2014/15–2015/16). *Nutrients* 2020;12(2):393.

722 73. Scheelbeek PF, Cornelsen L, Marteau TM, et al. Potential impact on prevalence of obesity in the
723 UK of a 20% price increase in high sugar snacks: modelling study. *bmj* 2019;366

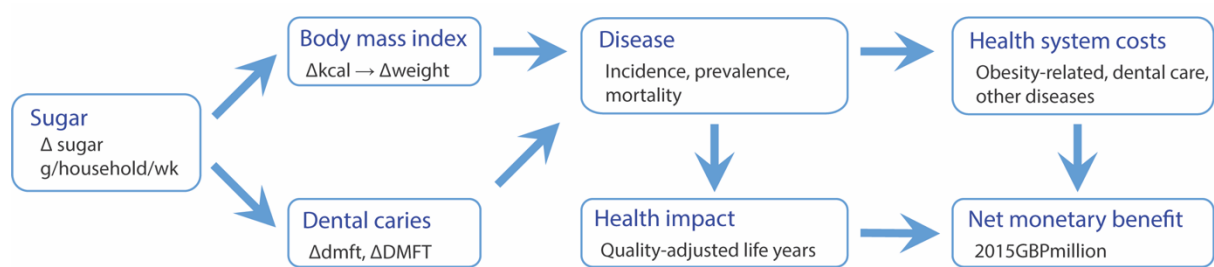
724 74. Smith RD, Cornelsen L, Quirmbach D, et al. Are sweet snacks more sensitive to price increases
725 than sugar-sweetened beverages: analysis of British food purchase data. *BMJ open*
726 2018;8(4):e019788.

727 75. National Food Strategy team. National Food Strategy independent review: the plan. London:
728 National Food Strategy, 2021.

- 729 76. Griffith R, Jenneson V, James J, et al. The impact of a tax on added sugar and salt. London:
730 Institute for Fiscal Studies, 2021.
- 731 77. Blakely T, Cleghorn C, Mizdrak A, et al. The effect of food taxes and subsidies on population
732 health and health costs: a modelling study. *The Lancet Public Health* 2020;5(7):e404-e13.
- 733 78. Cobiac LJ, Tam K, Veerman L, et al. Taxes and Subsidies for Improving Diet and Population Health
734 in Australia: A Cost-Effectiveness Modelling Study. *PLoS Med* 2017;14(2):e1002232. doi:
735 10.1371/journal.pmed.1002232
- 736

737

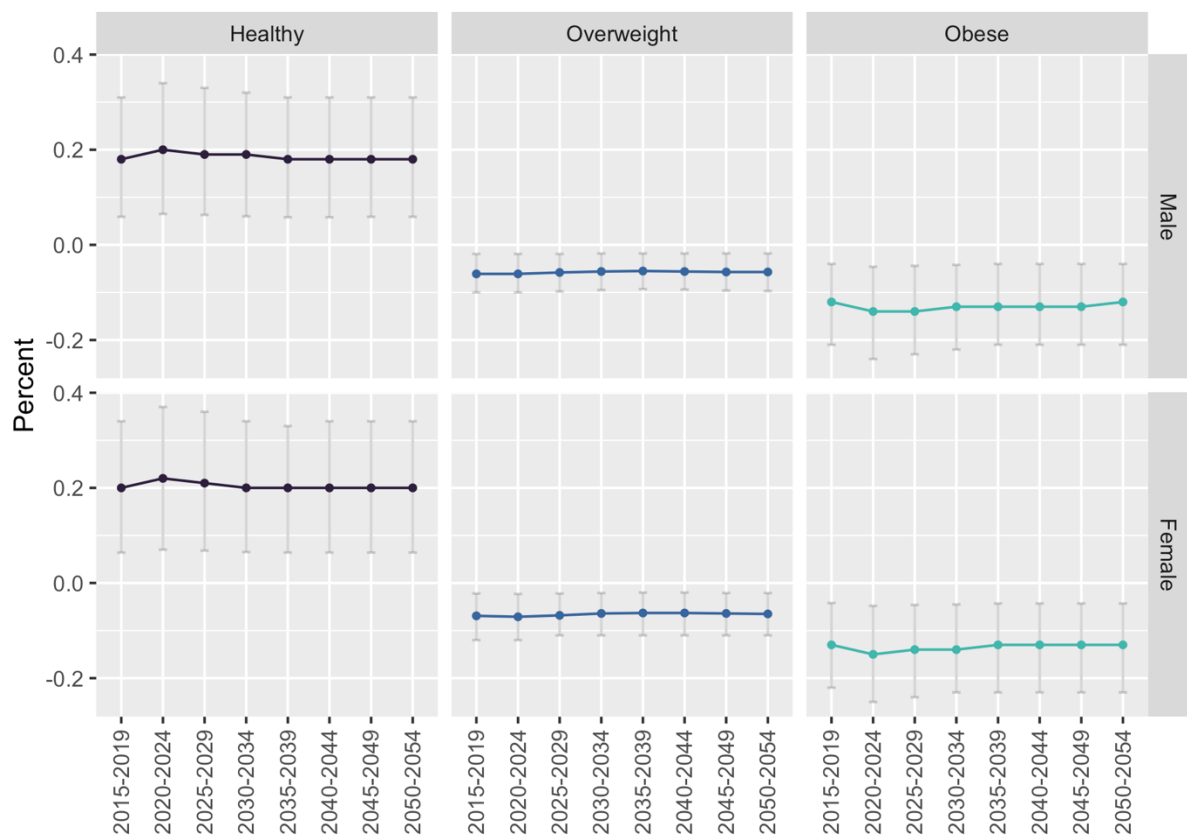
738



739

740 *Figure 1 Modelling the effects of the SDIL on population health and health system costs (NB. dmft/DMFT – decayed missing*
 741 *and filled deciduous/permanent teeth)*

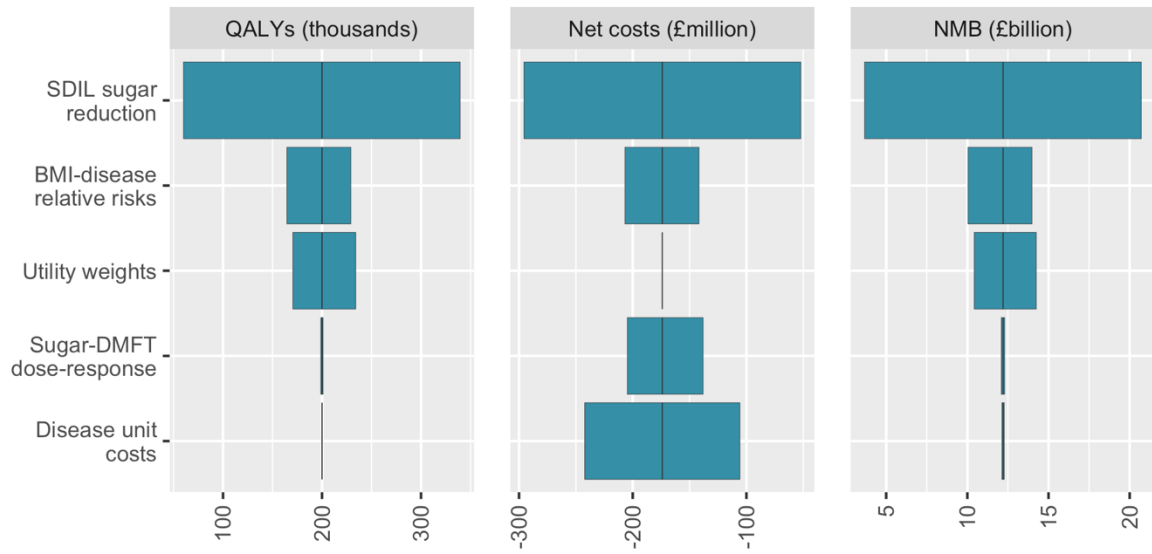
742



743

744 *Figure 2 SDIL impact on prevalence of Healthy weight, Overweight and Obesity in the UK population over time*

745

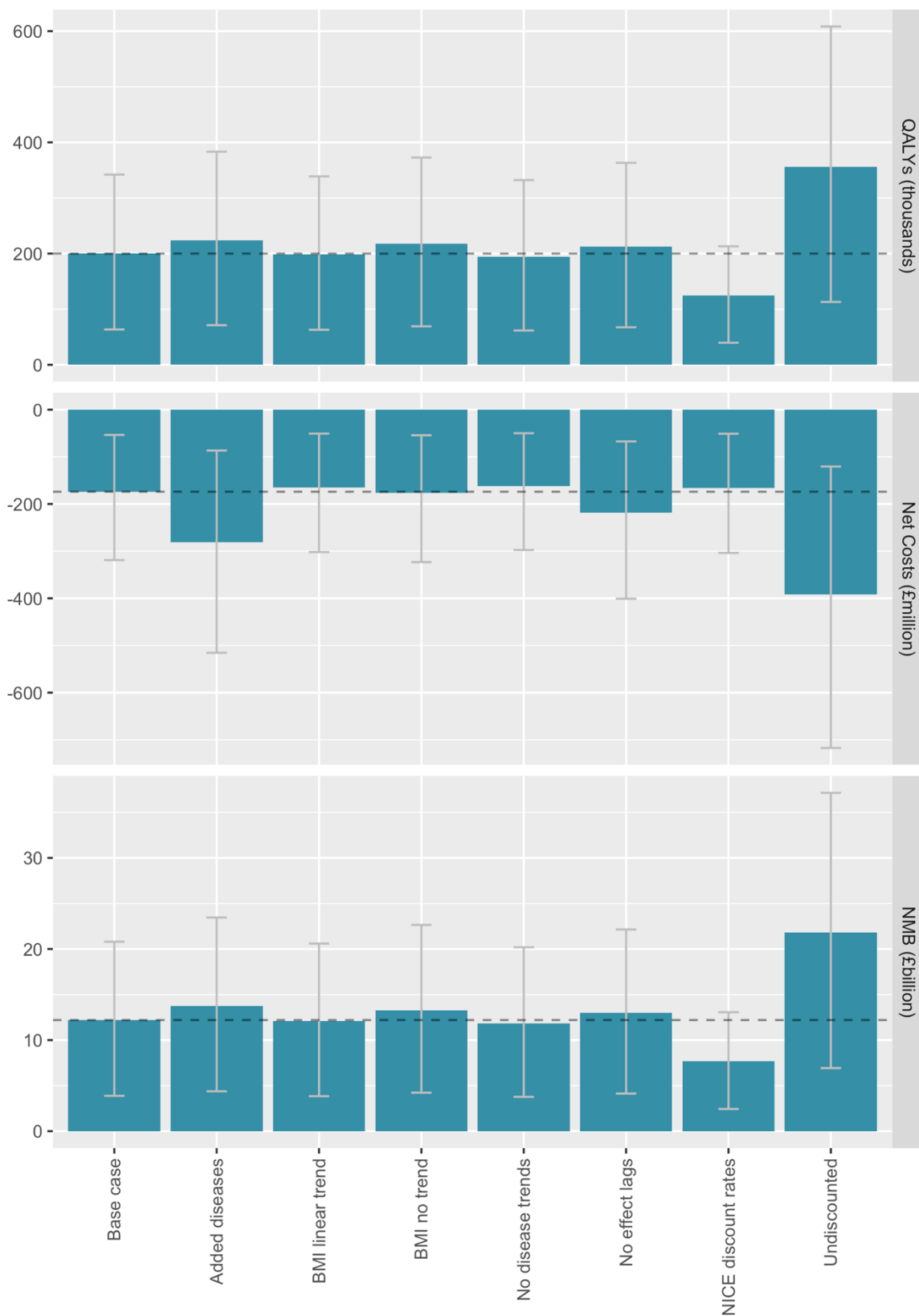


746

747 *Figure 3 Tornado plots illustrating the contribution of uncertainty around model input parameters to the uncertainty in model*

748 *outputs – QALYs, net costs and net monetary benefit (NMB).*

749



750

751 *Figure 4 Sensitivity of net monetary benefit to a range of modelling assumptions.*

Text S1 – PRIMETIME data inputs

1. Population numbers	2
2. All-cause mortality rates	3
3. Background trends in overweight and obesity	4
4. Dental caries rates	5
5. Disease incidence rates.....	6
6. Disease case fatality rates.....	7
7. Disease prevalence	8
8. Background trends in disease incidence and case fatality.....	9
9. Relative risks of disease	10
10. Utility weights	12
11. Disease costs.....	13

1. Population numbers

Table S1 UK population by age and sex from the Human Mortality Database¹ (all ages in 2015) and population projections from the Office for National Statistics² (future 0-4 year olds)

Age group (years)	Year0*	Starting population	
		Male	Female
0-4	2050	2,088,536	1,990,411
0-4	2045	2,069,673	1,972,502
0-4	2040	1,999,663	1,905,857
0-4	2035	1,953,494	1,861,924
0-4	2030	1,968,036	1,875,882
0-4	2025	1,994,735	1,901,451
0-4	2020	2,006,190	1,910,568
0-4	2015	2,063,050	1,963,632
5-9	2015	1,999,632	1,907,222
10-14	2015	1,809,767	1,725,856
15-19	2015	1,970,469	1,866,308
20-24	2015	2,191,121	2,113,257
25-29	2015	2,213,208	2,203,621
30-34	2015	2,171,167	2,197,785
35-39	2015	2,009,195	2,027,365
40-44	2015	2,149,871	2,195,049
45-49	2015	2,292,536	2,359,142
50-54	2015	2,227,216	2,284,486
55-59	2015	1,924,116	1,972,675
60-64	2015	1,716,700	1,789,959
65-69	2015	1,742,943	1,845,273
70-74	2015	1,273,261	1,406,103
75-79	2015	985,818	1,165,295
80-84	2015	671,986	903,785
85-89	2015	366,304	604,483
90-94	2015	134,860	309,232
95-100	2015	22,305	82,158

* Year0 reflects the year in which future cohorts enter the PRIMETIME model simulation.

2. All-cause mortality rates

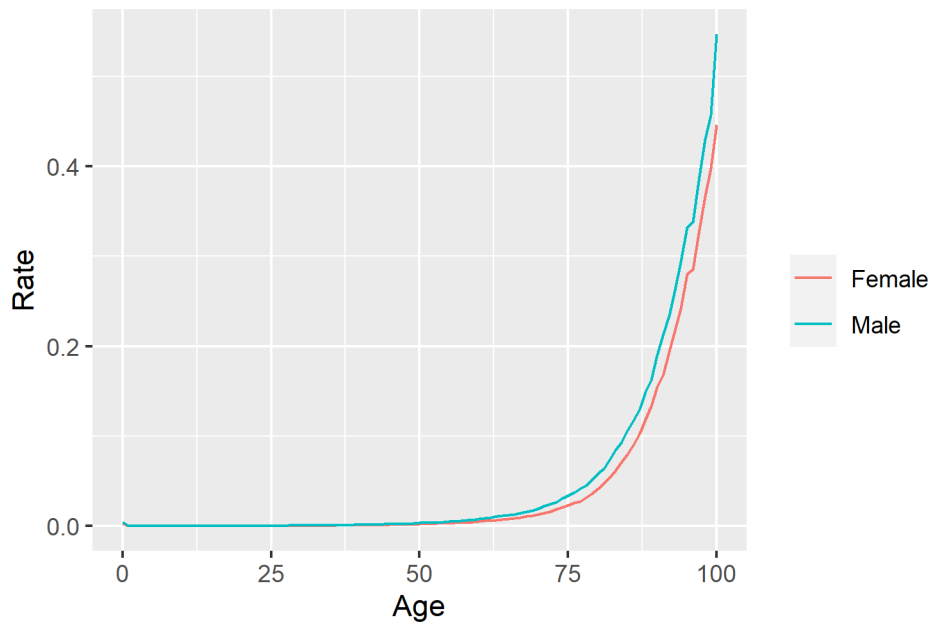


Figure S1 UK all-cause mortality, by single year of age and sex, from the Human Mortality Database.¹

3. Background trends in overweight and obesity

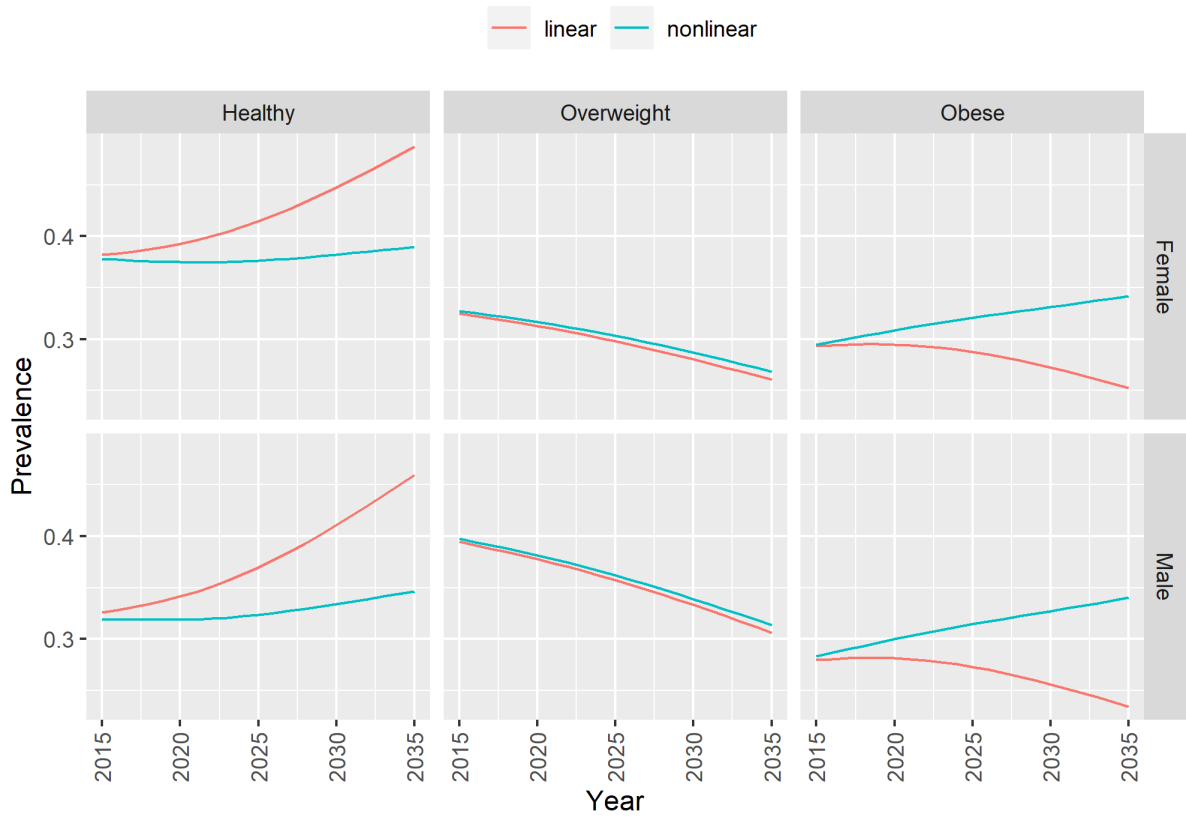


Figure S2 Predicted trends in overweight and obesity with non-linear (base case) and linear (sensitivity) models from Cobiac et al.³

4. Dental caries rates

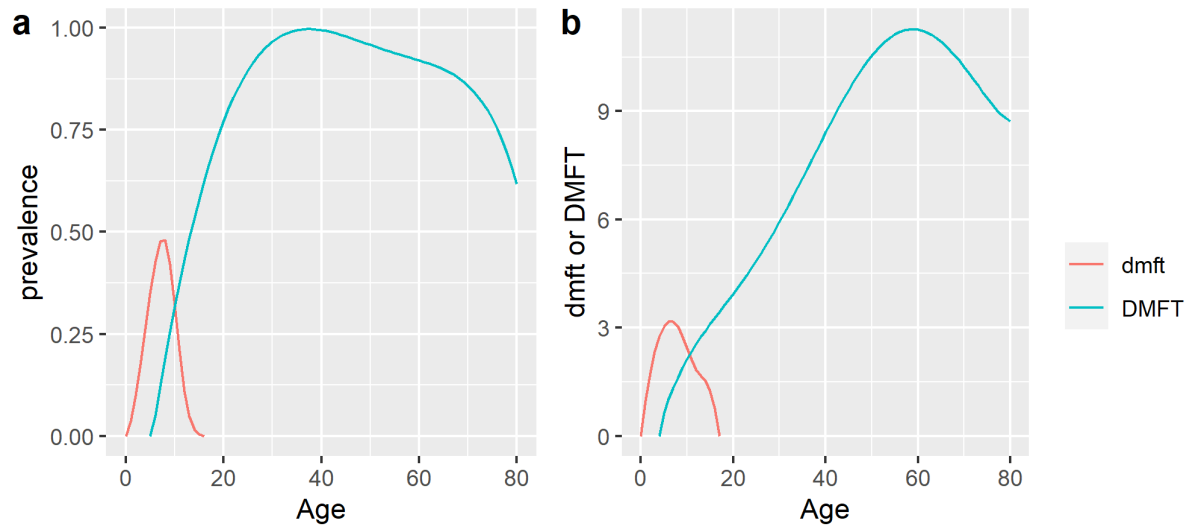


Figure S3 (a) prevalence of and (b) mean number of decayed, missing and filled teeth that are deciduous (dmft) and permanent (DMFT); derived from data collected in the Child and Adult Dental Health Surveys,^{4,5} adjusted for congenital tooth absence,⁶ and causes of tooth extraction.^{7,8}

5. Disease incidence rates

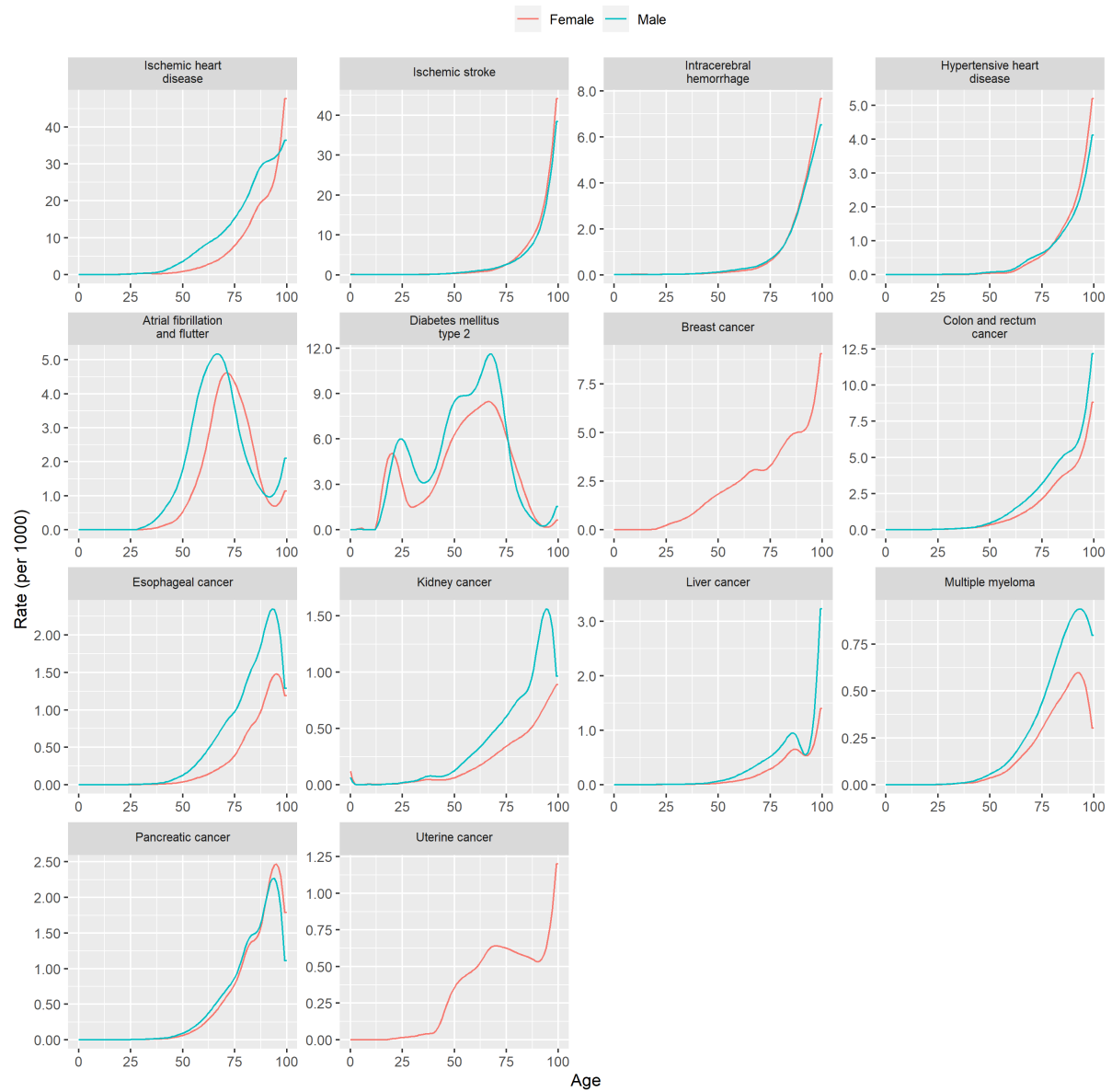


Figure S4 Incidence rates, derived from Global Burden of Disease⁹ estimates using disbayes.¹⁰ (NB. Graphs are presented on different scales to show detail, but in some cases this may give an exaggerated appearance of variability across ages.

6. Disease case fatality rates

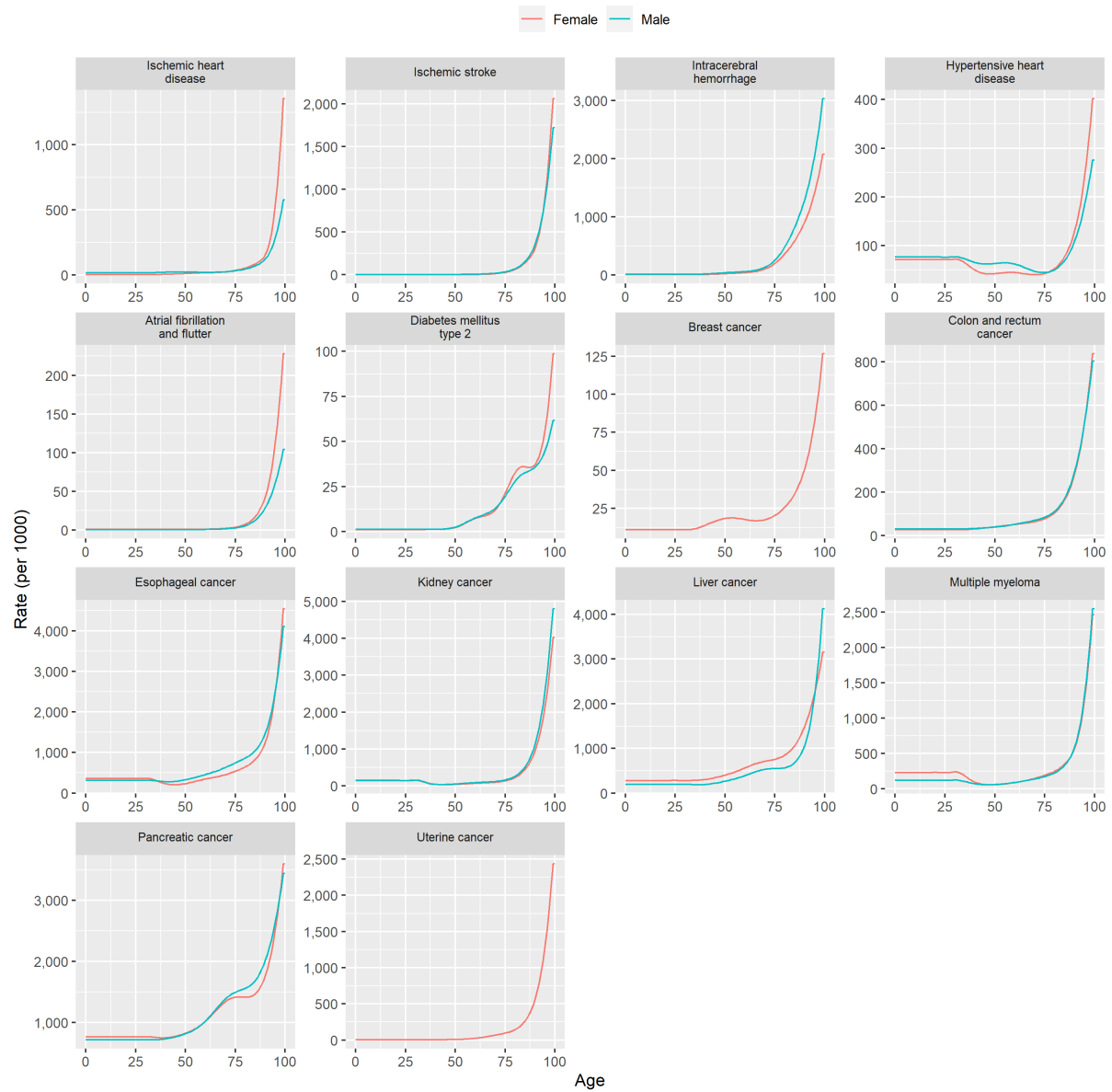


Figure S5 Case fatality rates, derived from Global Burden of Disease⁹ estimates using *disbayes*.¹⁰

7. Disease prevalence

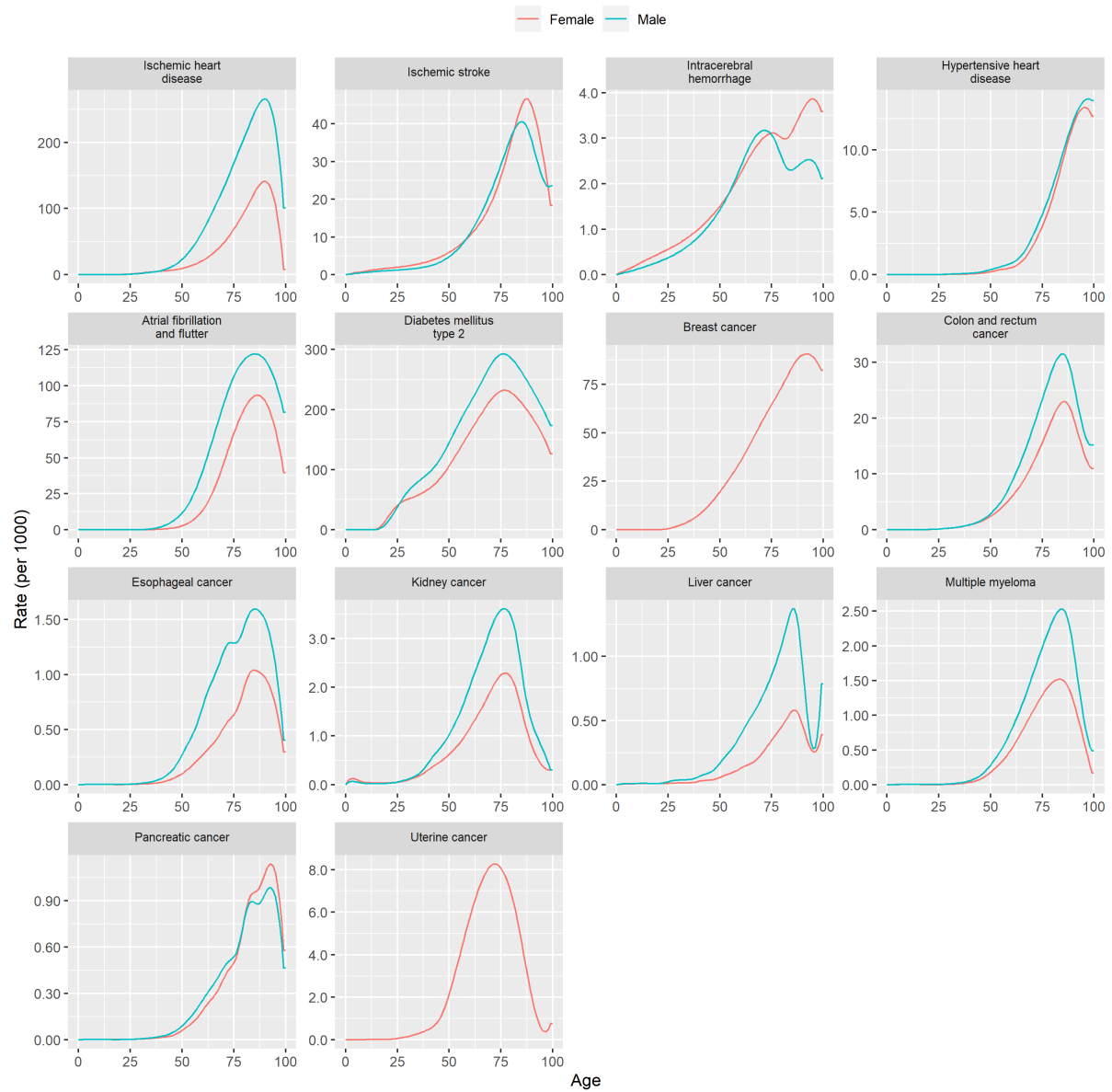


Figure S6 Starting prevalence rates, derived from Global Burden of Disease⁹ estimates using disbayes.¹⁰

8. Background trends in disease incidence and case fatality

Table S2 Annual trends in incidence rates, by sex and age group

Cause	Male			Female		
	0-34	35-64	65+	0-34	35-64	65+
Ischaemic heart disease	0.0052	0.0013	-0.0205	-0.0030	0.0007	-0.0156
Ischaemic stroke	0.0033	-0.0172	-0.0320	-0.0007	-0.0180	-0.0318
Intracerebral haemorrhage	-0.0051	-0.0202	-0.0041	-0.0091	-0.0203	-0.0121
Hypertensive heart disease	0.0185	-0.0027	0.0034	0.0086	0.0028	0.0037
Atrial fibrillation and flutter	0.0069	0.0142	0.0023	0.0069	0.0120	-0.0019
Diabetes mellitus type 2	0.0379	0.0261	0.0220	0.0376	0.0303	0.0131
Breast cancer	0.0112	-0.0073	0.0042	NA	NA	NA
Colon and rectum cancer	0.0359	0.0013	0.0008	0.0295	0.0003	-0.0021
Oesophageal cancer	0.0105	-0.0066	-0.0078	0.0166	-0.0046	-0.0028
Kidney cancer	0.0147	0.0015	0.0136	0.0214	0.0057	0.0093
Liver cancer	0.0291	0.0372	0.0418	0.0359	0.0372	0.0398
Multiple myeloma	0.0020	-0.0056	0.0056	0.0028	0.0009	0.0079
Pancreatic cancer	0.0102	0.0024	0.0076	0.0126	0.0030	0.0068
Uterine cancer	0.0395	0.0209	0.0269	NA	NA	NA

Table S3 Annual trends in case fatality rates, by sex and age group

Cause	Male			Female		
	0-34	35-64	65+	0-34	35-64	65+
Ischaemic heart disease	-0.0023	-0.0348	-0.0503	0.0127	-0.0325	-0.0467
Ischaemic stroke	-0.0647	-0.0424	-0.0292	-0.0547	-0.0320	-0.0285
Intracerebral haemorrhage	-0.0234	-0.0178	-0.0055	-0.0142	-0.0137	-0.0052
Hypertensive heart disease	-0.0668	-0.0200	0.0170	0.0257	0.0088	0.0184
Atrial fibrillation and flutter	0.0091	-0.0061	0.0098	-0.0174	-0.0126	0.0081
Diabetes mellitus type 2	-0.0084	-0.0017	-0.0048	-0.0122	-0.0013	-0.0038
Breast cancer	-0.0055	-0.0198	-0.0182	NA	NA	NA
Colon and rectum cancer	-0.0112	-0.0094	-0.0186	-0.0108	-0.0117	-0.0206
Oesophageal cancer	-0.0117	-0.0140	-0.0104	-0.0058	-0.0084	-0.0094
Kidney cancer	-0.0060	-0.0086	-0.0175	-0.0046	-0.0096	-0.0134
Liver cancer	-0.0206	-0.0110	-0.0099	-0.0218	-0.0201	-0.0195
Multiple myeloma	-0.0132	-0.0078	-0.0129	-0.0041	-0.0083	-0.0144
Pancreatic cancer	-0.0133	-0.0054	-0.0061	-0.0068	-0.0039	-0.0047
Uterine cancer	-0.0197	-0.0096	-0.0163	NA	NA	NA

9. Relative risks of disease

Table S4 Relative risks of modelled obesity-related diseases

Disease	Population subgroup	Units/Category	Mean relative risk (95% CI)	Source
Ischaemic heart disease	35-44	per 5kg/m ³²	1.66 (1.51 to 1.84)	Singh et al 2013 ¹¹
	45-54	per 5kg/m ³¹	1.55 (1.46 to 1.64)	
	55-64	per 5kg/m ³⁰	1.44 (1.4 to 1.48)	
	65-74	per 5kg/m ²⁹	1.35 (1.32 to 1.38)	
	75-84	per 5kg/m ²⁸	1.26 (1.2 to 1.32)	
	85+	per 5kg/m ²⁷	1.14 (1.04 to 1.26)	
Ischaemic stroke	35-44	per 5kg/m ²⁶	1.86 (1.67 to 2.08)	Singh et al 2013 ¹¹
	45-54	per 5kg/m ²⁵	1.67 (1.53 to 1.81)	
	55-64	per 5kg/m ²⁴	1.5 (1.4 to 1.6)	
	65-74	per 5kg/m ²³	1.35 (1.28 to 1.41)	
	75-84	per 5kg/m ²²	1.21 (1.16 to 1.26)	
	85+	per 5kg/m ²¹	1.04 (0.96 to 1.12)	
Intracerebral haemorrhage	35-44	per 5kg/m ²⁰	2.54 (1.96 to 3.28)	Singh et al 2013 ¹¹
	45-54	per 5kg/m ¹⁹	2.1 (1.66 to 2.66)	
	55-64	per 5kg/m ¹⁸	1.75 (1.44 to 2.13)	
	65-74	per 5kg/m ¹⁷	1.48 (1.29 to 1.71)	
	75-84	per 5kg/m ¹⁶	1.3 (1.21 to 1.4)	
	85+	per 5kg/m ¹⁵	1.05 (0.92 to 1.2)	
Hypertensive heart disease	35-44	per 5kg/m ¹⁴	2.15 (0.8 to 5.78)	Singh et al 2013 ¹¹
	45-54	per 5kg/m ¹³	2.02 (0.97 to 4.21)	
	55-64	per 5kg/m ¹²	1.9 (1.17 to 3.07)	
	65-74	per 5kg/m ¹¹	1.81 (1.45 to 2.26)	
	75-84	per 5kg/m ¹⁰	1.63 (1.53 to 1.74)	
	85+	per 5kg/m ⁹	1.45 (1.05 to 2.01)	
Diabetes mellitus 2	35-44	per 5kg/m ⁸	3.07 (2.28 to 4.15)	Singh et al 2013 ¹¹
	45-54	per 5kg/m ⁷	2.66 (2.15 to 3.3)	
	55-64	per 5kg/m ⁶	2.32 (2.04 to 2.63)	
	65-74	per 5kg/m ⁵	2.03 (1.95 to 2.11)	

	75-84	per 5kg/m ⁴	1.7 (1.61 to 1.79)		
	85+	per 5kg/m ³	1.38 (1.23 to 1.56)		
Atrial fibrillation and flutter	–	per 5kg/m ²	1.28 (1.2 to 1.38)	Aune et al 2017 ¹²	
Gallbladder and biliary diseases	–	per 5kg/m ¹	1.63 (1.49 to 1.78)	Aune et al 2015 ¹³	
Colon and rectum cancer	–	per 5kg/m ⁰	1.05 (1.03 to 1.07)	WCRF 2018 ¹⁴	
Breast cancer	women	per 5kg/m ¹	1.12 (1.09 to 1.15)	WCRF 2018 ¹⁴	
Uterine cancer	women	per 5kg/m ²	1.54 (1.47 to 1.61)	Kyrgiou et al 2017 ¹⁵	
Oesophageal cancer	adeno-carcinoma	per 5kg/m ³	1.54 (1.41 to 1.67)	Kyrgiou et al 2017 ¹⁵	
		squamous cell carcinoma	per 5kg/m ⁴		0.63 (0.53 to 0.75)
Kidney cancer	men	per 5kg/m ⁵	1.24 (1.17 to 1.32)	Kyrgiou et al 2017 ¹⁵	
	women	per 5kg/m ⁶	1.33 (1.25 to 1.42)		
Pancreatic cancer	–	per 5kg/m ²	1.1 (1.06 to 1.14)	Kyrgiou et al 2017 ¹⁵	
Multiple myeloma	–	per 5kg/m ²	1.12 (1.09 to 1.15)	Kyrgiou et al 2017 ¹⁵	
Liver cancer	–	per 5kg/m ²	1.3 (1.16 to 1.46)	WCRF 2018 ¹⁴	
Asthma*	<18 years	Healthy	1	Azizpour et al 2018 ¹⁶	
		Overweight	1.64 (1.13 to 2.38)		
		Obese	1.92 (1.39 to 2.65)		
	18+ years	Healthy	1		Beuther et al 2007 ¹⁷
		Overweight	1.38 (1.17 to 1.62)		
		Obese	1.92 (1.43 to 2.59)		
Low back pain*	–	Healthy	1	Shiri et al 2010 ¹⁸	
		Overweight	1.08 (0.9 to 1.29)		
		Obese	1.42 (1.11 to 0.181)		
Osteoarthritis knee*	50+ years	Healthy	1	Silverwood et al 2015 ¹⁹	
		Overweight	1.98 (1.57 to 2.2)		
		Obese	2.66 (2.15 to 3.28)		
Osteoarthritis hip*	–	per 5kg/m ²	1.11 (1.07 to 1.16)	Jiang et al 2011 ²⁰	
Depressive disorders*	–	Healthy	1	Amiri et al 2018 ²¹	
		Overweight	1.04 (0.99 to 1.11)		
		Obese	1.15 (1.06 to 1.25)		

* Disease included in sensitivity analyses only

Table S5 Relative risk of ischaemic heart disease and ischaemic stroke in people with type 2 diabetes

Disease	Population subgroup	Units/Category	Mean relative risk (95% CI)	Source
Ischaemic heart disease	men	Diabetes	1.85 (1.64 to 2.1)	Peters et al 2014 ²²
	women	Diabetes	2.63 (2.27 to 3.06)	
Ischaemic stroke	men	Diabetes	1.83 (1.6 to 2.08)	Peters et al 2014 ²³
	women	Diabetes	2.28 (1.93 to 2.69)	

10. Utility weights

Table S6 Disease-specific utility weights, estimated for the UK by Sullivan et al²⁴

Disease	ICD9 code	Mean utility (SD)
Ischaemic heart disease incidence	icd410	-0.063 (0.013)
Ischaemic heart disease prevalence	icd412	-0.037 (0.026)
Ischaemic stroke incidence	icd436	-0.117 (0.012)
Ischaemic stroke prevalence	icd438	-0.073 (0.024)
Intracerebral haemorrhage incidence	icd436	-0.117 (0.012)
Intracerebral haemorrhage prevalence	icd438	-0.073 (0.024)
Hypertensive heart disease	icd401	-0.046 (0.004)
Diabetes mellitus type 2	icd250	-0.071 (0.005)
Atrial fibrillation and flutter	icd427	-0.038 (0.007)
Colon and rectum cancer	icd153	-0.067 (0.017)
Breast cancer	icd174	-0.019 (0.014)
Uterine cancer	icd202	-0.010 (0.026)
Oesophageal cancer	icd202	-0.010 (0.026)
Kidney cancer	icd189	-0.048 (0.041)
Pancreatic cancer	icd202	-0.010 (0.026)
Multiple myeloma	icd195	-0.086 (0.027)
Liver cancer	icd155	-0.093 (0.044)
Asthma	icd493	-0.046 (0.006)
Low back pain	icd724	-0.087 (0.006)
Osteoarthritis hip	icd715	-0.114 (0.008)
Osteoarthritis knee	icd715	-0.114 (0.008)
Depressive disorders	icd296	-0.127 (0.010)
Dental caries	icd521	-0.002 (0.012)
Gallbladder and biliary diseases	icd574-76*	-0.062 (0.018)

* weighted by Hospital Episode Statistics admissions primary diagnosis for ICD10 K80-83.²⁵

Table S7 Parameters for estimating background utility weight, , estimated for the UK by Sullivan et al²⁴

Parameter	Mean utility (SD)
Age (continuous years)	-0.00027 (0.00017)
Male	0.0010 (0.00063)
Age 10-19	0.913 (0.0045)
Age 20-29	0.905 (0.0021)
Age 30-39	0.879 (0.0021)
Age 40-49	0.837 (0.0028)
Age 50-59	0.798 (0.0035)
Age 60-69	0.774 (0.0039)
Age 70-79	0.723 (0.0049)
Age 80-89	0.657 (0.0075)

11. Disease costs

Table S8 Costs of treatment in the National Health Service

Condition	Units	Mean cost (SD)*
Dental caries	dmft/DMFT**	£85 (£17)
Ischaemic heart disease	prevalent case	£606 (£121)
Ischaemic stroke	prevalent case	£1,950 (£390)
Intracerebral haemorrhage	prevalent case	£2,563 (£513)
Hypertensive heart disease	prevalent case	£103 (£21)
Diabetes mellitus type 2	prevalent case	£187 (£37)
Atrial fibrillation and flutter	prevalent case	£195 (£39)
Colon and rectum cancer	incident case	£9,204 (£1,841)
Breast cancer	incident case	£12,433 (£2,487)
Uterine cancer	incident case	£2,060 (£412)
Oesophageal cancer	incident case	£2,421 (£484)
Kidney cancer	incident case	£4,979 (£996)
Pancreatic cancer	incident case	£2,695 (£539)
Multiple myeloma	incident case	£22,915 (£4,583)
Liver cancer	incident case	£2,172 (£434)
Asthma	incident case	£4,186 (£837)
Low back pain	incident case	£425 (£85)
Osteoarthritis hip	incident case	£13,951 (£2,790)
Osteoarthritis knee	incident case	£1,799 (£360)
Depressive disorders	incident case	£410 (£82)
Gallbladder and biliary diseases	incident case	£372 (£74)
Total non-modelled diseases	person	£1,099 (£220)

* Standard deviation estimated as 20% of point estimate.

** Decayed missing and filled deciduous (dmft) and permanent (DMFT) teeth.

References

1. University of California Berkeley (USA), Max Planck Institute for Demographic Research (Germany). Human Mortality Database [Available from: <https://www.mortality.org> accessed 5 May 2021.
2. Office for National Statistics. 2016-based National Population Projections 2017 [Available from: <https://www.ons.gov.uk/peoplepopulationandcommunity/populationandmigration/populationprojections/datasets/z3zippedpopulationprojectionsdatafilesengland> accessed 1 September 2020.
3. Cobiac LJ, Scarborough P. Modelling future trajectories of obesity and body mass index in England. *PLoS ONE* 2021;16(6):e0252072. doi: 10.1371/journal.pone.0252072
4. Adult Dental Health Survey, 2009. UK Data Service. Available from: <http://doi.org/10.5255/UKDA-SN-6884-22012>.
5. Children's Dental Health Survey, 2013. UK Data Service. Available from: <http://doi.org/10.5255/UKDA-SN-7774-12015>.
6. Khalaf K, Miskelly J, Voge E, et al. Prevalence of hypodontia and associated factors: a systematic review and meta-analysis. *J Orthod* 2014;41(4):299-316.
7. McCaul L, Jenkins W, Kay E. The reasons for the extraction of various tooth types in Scotland: a 15-year follow up. *J Dent* 2001;29(6):401-07.
8. Richards W, Ameen J, Coll A, et al. Reasons for tooth extraction in four general dental practices in South Wales. *Br Dent J* 2005;198(5):275-78.
9. Global Burden of Disease Study 2015 (GBD 2015) Data Resources: Institute for Health Metrics and Evaluation, University of Washington; 2016 [Available from: <http://ghdx.healthdata.org/gbd-2015> accessed 12 December 2016 2016.
10. Jackson C. disbayes [Available from: <https://github.com/chjackson/disbayes> accessed 5 May 2021.
11. Singh GM, Danaei G, Farzadfar F, et al. The age-specific quantitative effects of metabolic risk factors on cardiovascular diseases and diabetes: a pooled analysis. *PLoS ONE* 2013;8(7):e65174.
12. Aune D, Sen A, Schlesinger S, et al. Body mass index, abdominal fatness, fat mass and the risk of atrial fibrillation: a systematic review and dose–response meta-analysis of prospective studies. *Eur J Epidemiol* 2017;32(3):181-92.

13. Aune D, Norat T, Vatten LJ. Body mass index, abdominal fatness and the risk of gallbladder disease. *Eur J Epidemiol* 2015;30(9):1009-19.
14. World Cancer Research Fund. Diet, Nutrition, Physical Activity and Cancer: a Global Perspective, Third Expert Report: World Cancer Research Fund; American Institute for Cancer Research, 2018.
15. Kyrgiou M, Kalliala I, Markozannes G, et al. Adiposity and cancer at major anatomical sites: umbrella review of the literature. *Bmj* 2017;356
16. Azizpour Y, Delpisheh A, Montazeri Z, et al. Effect of childhood BMI on asthma: a systematic review and meta-analysis of case-control studies. *BMC Pediatr* 2018;18(1):1-13.
17. Beuther DA, Sutherland ER. Overweight, obesity, and incident asthma: a meta-analysis of prospective epidemiologic studies. *Am J Respir Crit Care Med* 2007;175(7):661-66.
18. Shiri R, Karppinen J, Leino-Arjas P, et al. The association between obesity and low back pain: a meta-analysis. *Am J Epidemiol* 2010;171(2):135-54.
19. Silverwood V, Blagojevic-Bucknall M, Jinks C, et al. Current evidence on risk factors for knee osteoarthritis in older adults: a systematic review and meta-analysis. *Osteoarthritis Cartilage* 2015;23(4):507-15.
20. Jiang L, Rong J, Wang Y, et al. The relationship between body mass index and hip osteoarthritis: a systematic review and meta-analysis. *Joint Bone Spine* 2011;78(2):150-55.
21. Amiri S, Behnezhad S, Nadinlui KB. Body Mass Index (BMI) and risk of depression in adults: A systematic review and meta-analysis of longitudinal studies. *Obesity Medicine* 2018;12:1-12.
22. Peters SA, Huxley RR, Woodward M. Diabetes as risk factor for incident coronary heart disease in women compared with men: a systematic review and meta-analysis of 64 cohorts including 858,507 individuals and 28,203 coronary events. *Diabetologia* 2014;57(8):1542-51.
23. Peters SA, Huxley RR, Woodward M. Diabetes as a risk factor for stroke in women compared with men: a systematic review and meta-analysis of 64 cohorts, including 775 385 individuals and 12 539 strokes. *Lancet* 2014;383(9933):1973-80.
24. Sullivan PW, Slejko JF, Sculpher MJ, et al. Catalogue of EQ-5D scores for the United Kingdom. *Med Decis Making* 2011;31(6):800-04.
25. NHS Digital. Hospital Episode Statistics for England: Admitted Patient Care statistics, 2019-20 2020 [Available from: <https://digital.nhs.uk/data-and-information/publications/statistical/hospital-admitted-patient-care-activity/2019-20> accessed 21 April 2021.

Text S2 – Additional results

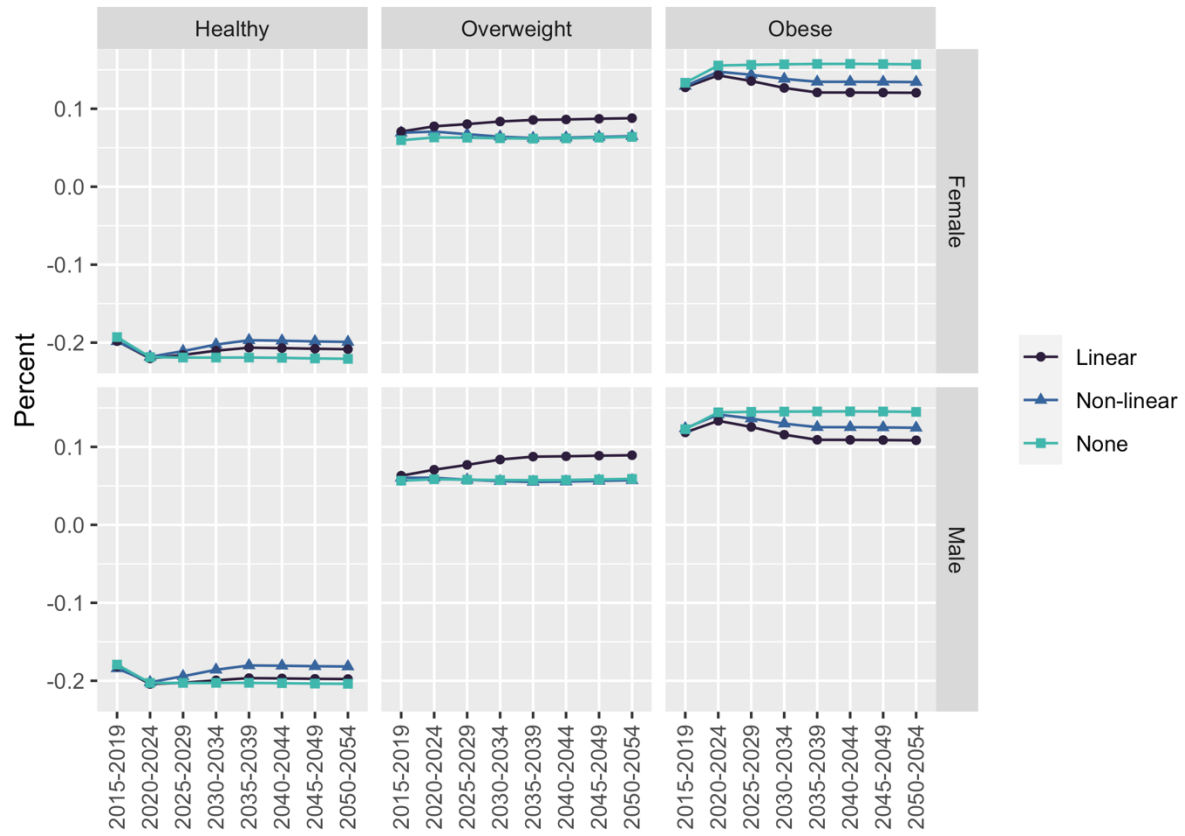


Figure S1 Sensitivity of predicted prevalence of overweight and obesity to the choice of BMI projection model (described in Table 1)

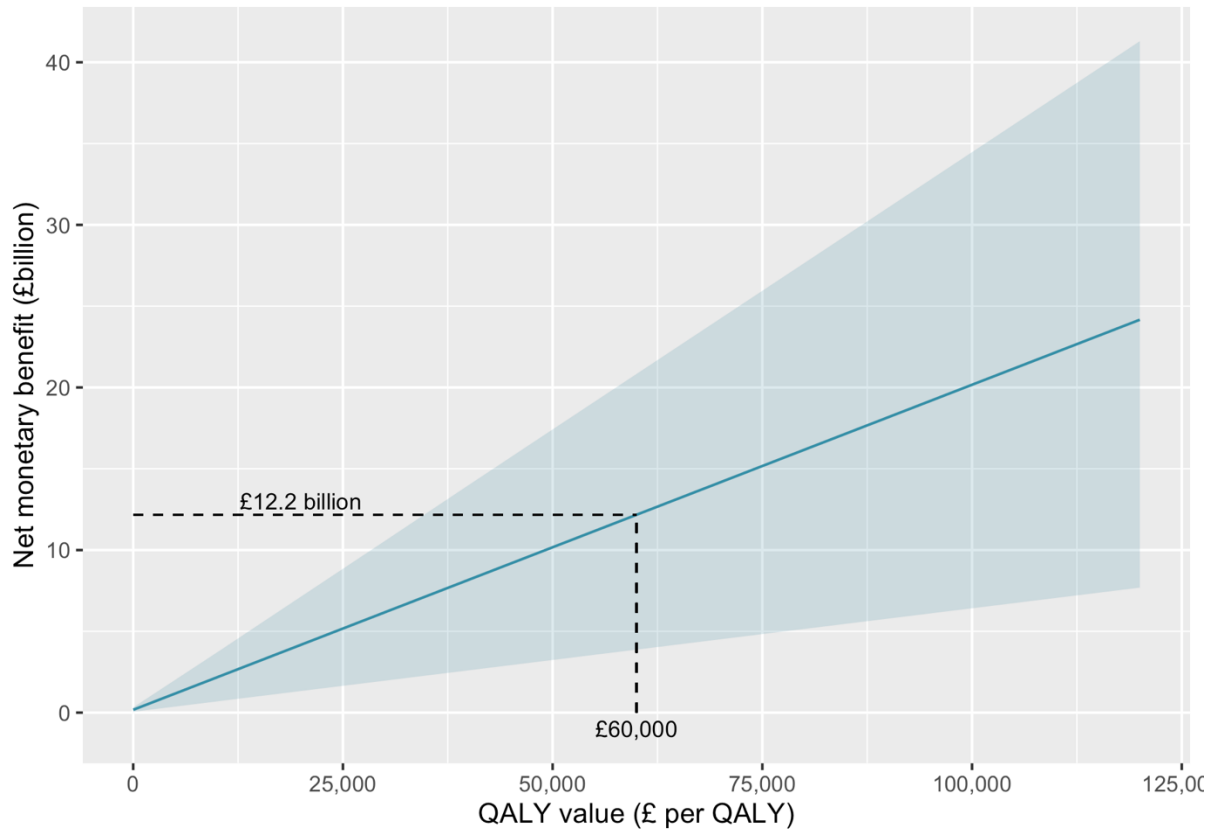


Figure S2 Net monetary benefit against the willingness-to-pay threshold (UK Treasury recommends a value of £60,000 per QALY)

