

1 **Full title: Development and validation of a nomogram for predicting overall**
2 **survival of patients with ischemic cardiomyopathy and heart failure: a post-hoc**
3 **analysis of the Surgical Treatments for Ischemic Heart Failure (STICH) trail.**

4

5 **Authors:**

6 Pengju Guo *, MD, PhD; Chang He, MD; Junlei Li, MD, PhD; Youxu Jiang, MD, PhD;
7 Feng Wang, MD; Jiaxiang Wang, MD; Bin Lin, MD; Deguang Feng, MD.

8

9 **Pengju Guo**, Department of Cardiovascular surgery, the First Affiliated Hospital of
10 Zhengzhou University, Zhengzhou, Henan 450000, People's Republic of China,
11 fccguopj@zzu.edu.cn

12 **Chang He**, Department of Cardiovascular surgery, the First Affiliated Hospital of
13 Zhengzhou University, Zhengzhou, Henan 450000, People's Republic of China,
14 hchleo@yeah.net

15 **Junlei Li**, Department of Cardiology, the First Affiliated Hospital of Zhengzhou
16 University, Zhengzhou, Henan 450000, People's Republic of China,
17 junleizzu@163.com

18 **Youxu Jiang**, Department of Cardiology, the Second Affiliated Hospital of
19 Zhengzhou University, Zhengzhou, Henan 450000, People's Republic of China,
20 doctorjyx@163.com

21 **Feng Wang**, Department of Cardiovascular surgery, the First Affiliated Hospital of
22 Zhengzhou University, Zhengzhou, Henan 450000, People's Republic of China,

23 wangfeng171620@163.com

24 **Jiaxiang Wang**, Department of Cardiovascular surgery, the First Affiliated Hospital of

25 Zhengzhou University, Zhengzhou, Henan 450000, People's Republic of China,

26 wangjiaxiang171619@163.com

27 **Bin Lin**, Department of Cardiovascular surgery, the First Affiliated Hospital of

28 Zhengzhou University, Zhengzhou, Henan 450000, People's Republic of China,

29 linbin171621@163.com

30 **Deguang Feng**, Department of Cardiovascular surgery, the First Affiliated Hospital of

31 Zhengzhou University, Zhengzhou, Henan 450000, People's Republic of China,

32 fengdeguang171618@163.com

33

34 **Shout title:** STICH trial: Nomogram to predict overall survival.

35

36 *** Corresponding author:**

37 **Pengju Guo**, fccguopj@zzu.edu.cn; address: No.1 Jianshe Dong Road, ErQi District,

38 Zhengzhou, Henan, China.

39

40 **Total word count:** 5931

41

42 **Development and validation of a nomogram for predicting overall survival of**
43 **patients with ischemic cardiomyopathy and heart failure: a post-hoc analysis of**
44 **the Surgical Treatments for Ischemic Heart Failure (STICH) trail.**

45

46 **Abstract**

47 **Purpose:** To establish a nomogram for predicting the overall survival (OS) of patients
48 with ischemic cardiomyopathy and heart failure based on the Surgical Treatment for
49 Ischemic Heart Failure (STICH) trail.

50 **Methods:** Patients who had valid key variables in the hypothesis 1 were included and
51 randomly divided into the training and validation groups (7:3 ratio). Using Cox
52 proportional hazards model, predictors for the OS in training group were identified
53 and integrated to establish a nomogram for predicting 1-year, 3-year, 5-year, and
54 ten-year survival probability. The nomogram performance was evaluated using
55 Harrell's concordance index (C-index), time-dependent receiver operating
56 characteristic curve, decision curve analysis, and Kaplan-Meier survival analysis.

57 **Results:** 940 of 1212 patients who had valid key variables were included. Seven
58 predictors, including treatment type, gender, estimated glomerular filtration rate,
59 Charlson co-morbidity index, 6-minute walk, end-systolic volume index and mitral
60 regurgitation class were identified to establish the nomogram. The C-indices of the
61 nomogram were 0.641 (95% CI: 0.627-0.655) and 0.649 (95% CI: 0.627-0.671) for
62 training and validation groups, respectively. The calibration curves revealed
63 consistency between predicted and observed survival. The area under 1-year, 3-year,

64 5-year, and ten-year OS receiver operating characteristic curves were 0.634, 0.616,
65 0.630 and 0.638 in the training group, respectively. Decision curve analysis showed
66 effective net benefits of the model in clinical decision-making. Divided by the cutoff
67 values of prognostic indices, low-risk patients showed better OS than those with high
68 risk in training and validation groups (both $p < 0.0001$).

69 **Conclusion:** The current nomogram can effectively predict the OS of patients with
70 ischemic cardiomyopathy and heart failure, provide information about multidisciplinary
71 therapeutic that may prolong the survival time, and serve as a perfect tool in
72 conjunction with the STS and EuroSCORE II risk models in clinical decision making.

73

74 **Keywords:** Ischemic cardiomyopathy; Heart failure; Coronary artery bypass grafting;
75 Survival; STICH

76

77 **Nonstandard Acronyms and Abbreviations**

OS	overall survival
ICM	ischemic cardiomyopathy
CABG	coronary artery bypass grafting
PCI	percutaneous coronary intervention
LVEF	left ventricular ejection fraction
CAD	coronary artery disease
NYHA	New York Heart Association
MR	mitral regurgitation

ESVI	end-systolic volume index
eGFR	estimated glomerular filtration rate
CKD-EPI	Chronic Kidney Disease Epidemiology Collaboration
CCI	Charlson co-morbidity index
MED	medical
IQR	interquartile range
ROC	receiver operating characteristic
DCA	Decision Curve Analysis
HR	hazards ratio
CI	confidence interval
AUC	area under curve

78

79

80 **1. Introduction**

81 Multifaceted strategies to address the control of worldwide prevalence of ischemic
82 cardiomyopathy (ICM) and heart failure, which are projected to affect 8 million US
83 population by 2030, have progressively gained advances during last decades.¹
84 Coronary artery bypass grafting (CABG) has become the preferred recommendation
85 for patients with ICM and heart failure in contemporary guidelines with decreasing
86 heterogeneous consensus.²⁻⁴ However, the realistic concern of triple risk of death
87 within the initial 30 days after randomization among patients who underwent CABG
88 plus medical therapy compared with those received medical therapy alone, identified
89 by the Surgical Treatment for Ischemic Heart Failure (STICH) trial, makes the
90 ultimate clinical decision requiring courage to take a crucial step.^{5,6} This trend toward
91 conservation has resulted the overzealous use of percutaneous coronary intervention
92 (PCI) by nearly triple usage higher than CABG at clinician discretion, but without
93 high-quality evidence.^{7,8} Due to the Society of Thoracic Surgeons (STS) and
94 EuroSCORE II risk models were developed to estimate the early postoperative
95 mortality, the long-term survival in this difficult management but life-prolonging
96 entity can be hardly predicted.^{9,10} Similarly, given the extensive coexisting
97 comorbidities among patients with ICM and heart failure, a dilemma surrounding the
98 implement of the SYNTAX (Synergy Between PCI with TAXUS and Cardiac Surgery)
99 score II 2020 is the interobserver variability and absence of clinical variables, which
100 may largely compromise the generalizability of the model.^{11,12}

101 Landmark results of the STICH trail have driven progress in our understanding of

102 this specific cohort.^{5,13} In the setting of contemporary era of personalized medicine,
103 clinical decision should be patient-centered, which can be achieved through the
104 ascertainment and quantification of survival probability with the engagement of
105 clinicians and patients. However, to the best of our knowledge, there is no specific
106 risk model to predict the overall survival (OS) of patients with ICM and heart failure.
107 Accordingly, we constructed a nomogram based on clinical variables derived from the
108 STICH trial to predict the OS of this specific cohort.

109

110 **2. Methods**

111 **2.1 Patient source**

112 The current study was a post-hoc analysis of the STICH trial (funded by the
113 National Institutes of Health, NCT00023595), and approved by the National Heart,
114 Lung, and Blood Institute and our institutional review board (2022-KY-1409-002). The
115 data was accessed via the Biologic Specimen and Data Repository Information
116 Coordinating Center. The STICH trial and extended follow-up have previously
117 reported in detail.^{5,14} Among 1212 patients with an left ventricular ejection fraction
118 (LVEF) \leq 35% and coronary artery disease (CAD) amenable to CABG in hypothesis 1,
119 940 patients, who had valid preoperative information of age, gender, race, New York
120 Heart Association (NYHA) heart function class, medical history, mitral regurgitation
121 (MR) class, previous revascularization (CABG or PCI), distance of 6-minute walk,
122 LVEF, left ventricular end-systolic volume index (ESVI), Duke CAD index, creatinine,
123 and follow-up information of treatment received, days from randomization to CABG,

124 years of follow-up time, and patients status at the last follow-up, were included in the
125 current study. The detail screening process of patients was shown in Figure 1. The
126 eligible cases were randomly stratified into training and validation groups (7:3 ratio).
127 Each patient provided written informed consent and the investigation complied with
128 the principles outlined in the Declaration of Helsinki.

129 **2.2 Measurable variables and outcomes**

130 For ease of comparison, age (≤ 50 , 51 – 60, 61 – 70, and ≥ 71 years), 6-minute
131 walk (≤ 300 and > 300 m), LVEF ($\leq 20\%$, 21 – 25%, 26 – 30%, and 31 – 35%), ESVI (\leq
132 60, 61 – 90, and ≥ 90 ml/m²), and Duke CAD Index (≤ 40 , 41 – 70, 71 – 100) were
133 translated into categorical variables. The estimated glomerular filtration rate (eGFR)
134 was calculated using the Chronic Kidney Disease Epidemiology Collaboration
135 (CKD-EPI) equation, and then categorized as > 60 ml/min per 1.73m² or ≤ 60 ml/min
136 per 1.73m².¹⁵ The Charlson co-morbidity index (CCI) for each patient was accounted
137 based on medical history.^{16,17}

138 Considering the predictive nature of the model, patients who received CABG within
139 90 days after randomization were assigned to the CABG group (CABG + MED) in the
140 current study, and to medical group (MED) otherwise regardless of whether CABG
141 was implemented exceeding 90 days after randomization. The patient status at the
142 last follow-up was screened and OS was considered as the primary outcome of
143 interest. The duration of survival was defined as the date from randomization to the
144 data of death or last contact.

145 **2.3 Statistical analysis**

146 Baseline characteristics were described by frequencies and percentages for
147 categorical variables and by medians (interquartile range [IQR]) for continuous
148 variables. Baseline differences between training and validation groups were
149 compared using Chi-square or Fisher's exact tests for categorical variable. Univariate
150 and multivariate Cox proportional hazards models were performed to identify the
151 independent predictors for OS in the training group.

152 Based on the predictors identified by multivariate Cox proportional hazards model,
153 current nomogram was developed to predict the 1-year, 3-year, 5-year, and ten-year
154 survival probability of patients with ICM and heart failure. Harrell's concordance index
155 (C-index) and time-dependent receiver operating characteristic (ROC) curve were
156 used to evaluate the discrimination of the nomogram for predicting the survival
157 outcomes between different patients. The differences between predicted and actual
158 risks were visualized using calibration curves. Bootstraps with 1000 resamples were
159 performed to calculate the C-indices and plot calibration curves. The net benefit of the
160 nomogram for decision-making was evaluated using Decision Curve Analysis (DCA).
161 The prognostic index of 1-year OS for each patient was calculated using independent
162 predictors and corresponding hazards ratio. Based on the cutoff values of prognostic
163 indices, the training and validation groups were stratified into high-risk and low-risk
164 groups, respectively. Kaplan-Meier survival analysis and log rank test were used to
165 compare the OS between high-risk and low-risk groups.

166 All statistical analyses were conducted using R software (version 4.2.2,
167 <http://www.r-project.org/>) and two-sided. Statistical significance was set at $P < 0.05$.

168

169 **3. Results**

170 **3.1. Baseline characteristics**

171 A total of 940 patients who had valid key variables were included, and randomly
172 stratified into training group (660 cases) and validation group (280 cases) based on
173 7:3 ratio. The baseline characteristics of entire cohort, training and validation groups
174 were showed in the Table 1. There was no significant difference between training and
175 validation groups with regard to each variable. The median follow-up time was 7.3
176 years (IQR: 2.9 - 9.4 years) for training group and 6.7 years (IQR: 3.2 - 9.3 years) for
177 validation group. There were 406 and 177 deaths recorded in the training and
178 validation groups, respectively.

179 **3.2. Identification of the independent predictors**

180 Univariate and multivariate Cox proportional hazards models were performed to
181 identify the independent predictors for OS in the training group. In the multivariate
182 analysis, seven variables, including treatment type ($P = 0.032$), gender ($P < 0.001$),
183 eGFR ($P = 0.018$), CCI score ($P = 0.002$), 6-minute walk ($P = 0.040$), ESVI ($P = 0.006$)
184 and MR class ($P < 0.001$) were identified as the independent predictors for OS (Table
185 2).

186 **3.3. Nomogram establishment and verification**

187 The 1-year, 3-year, 5-year, and ten-year predictive nomogram of OS for patients
188 with ICM and heart failure were established after incorporating the seven independent
189 predictors in the multivariate Cox proportional hazards model. (Figure. 2)

190 Using bootstraps with 1000 resamples, the C-indices of the nomogram were 0.641
191 (95% CI: 0.627-0.655) and 0.649 (95% CI: 0.627-0.671) for training and validation
192 groups, respectively. The predicted and actual risks of 1-year, 3-year, 5-year, and
193 ten-year OS were consistent as shown in the calibration curves (Figure. 3). The
194 values of area under curve (AUC) were 0.634, 0.616, 0.630 and 0.638 for 1-year,
195 3-year, 5-year and ten-year ROC curves in the training group, respectively (Figure. 4).
196 DCA curves identified the 1-year, 3-year, 5-year and ten-year net benefits during the
197 clinical application of the nomogram in decision-making for patients with ICM and
198 heart failure in training and validation groups (Figure. 5). Of note, a tangible elevated
199 trend of net benefit was shown with the extension of predicted nodal time in DCA
200 curves. The prognostic index of 1-year OS for each patient calculated by the
201 independent predictors and corresponding hazards ratio, and the cutoff values of
202 prognostic indices were 6.698 and 6.833 for training and validation groups,
203 respectively. Based on the respective cutoff values, the two groups were stratified
204 into high-risk and low-risk groups, respectively. The Kaplan-Meier survival analysis
205 identified better OS among patients with low-risk group compared to those with
206 high-risk group in training and validation groups (both $P < 0.0001$), confirming the
207 excellent discriminatory power of the nomogram (Figure. 6).

208

209 **4. Discussion**

210 The cardinal principle of management of patients with ICM and heart failure is to
211 improve the health status-related quality of life and prolong lifespan. However, in light

212 of the dismal prognosis and scant randomized trials, divergent viewpoints have
213 evolved among practitioners when treating this specific cohort. From this perspective,
214 a rigorous selection process with the assistance of a specialized model covering
215 universal and homogeneous variables among these patients to quantify the survival
216 probability and optimize the prognostic discrimination should be implemented during
217 counselling for clinical decision-making.

218 Several strengths of current nomogram are noteworthy. First, the current
219 nomogram may inform practice in an area where, up to now, there has been no
220 specialized model to predict overall survival for patients with ICM and heart failure.
221 Second, the enrolled variables including the evaluation of cardiac function, physical
222 status, comorbidities, demographics, and treatment type are multifaceted and easily
223 accessible, and on this premise, the current nomogram may provide ease of use in
224 the clinical setting. Third, considering the mutual causality between renal insufficiency
225 and heart failure, according to the recommendation of the Kidney Disease: Improving
226 Global Outcomes (KDIGO) organization, the estimated glomerular filtration rate
227 calculated by CKD-EPI equation was endorsed to precisely evaluate the renal
228 function instead of creatinine or creatinine clearance rate.¹⁸ Fourth, it was reported
229 more than 70% of patients enrolled in the STICH trial had a severe burden of medical
230 co-morbidities at baseline, resulting in a ten-year mortality of approximately 70% in
231 that cohort.¹⁹ Therefore, in the current study, the available medical co-morbid
232 conditions among these fragile patients were numerically quantified by the CCI in an
233 effort to provide the linear relation of risk between CCI score and OS. Fifth, in light of

234 the tangible elevated trend of net benefit shown with the extension of predicted nodal
235 time in DCA curves, the current nomogram can be used as a supplement to the STS
236 and EuroSCORE II risk models for predicting long-term survival. Taken as a whole,
237 the aforementioned strengths endowed practicality and generalizability to current
238 nomogram in clinical decision making with the engagement of clinicians and patients.

239 The twice risk of mortality for male compared to female deserves attention in
240 current study. Our result was in agreement with the finding of Pina et.al, who
241 identified a significant diminished all-cause mortality of 33% lower among female
242 compared to male based on STICH trail.²⁰ The extended follow-up of the
243 MAIN-COMPARE (Ten-Year Outcomes of Stents Versus Coronary-Artery Bypass
244 Grafting for left Main Coronary-Artery Bypass Grafting for Left Main Coronary Artery
245 Disease) trail also revealed lower all-cause mortality and serious composite
246 outcomes at 10 years in female compared with male, and this difference was mainly
247 driven by the higher event rate in male during the late period between 5 and 10
248 years.²¹ On the contrary, multiple lines of evidence have documented the poorer
249 prognosis of female compared to male due to various pathologic resultant such as
250 medical co-morbid conditions, coronary microvascular dysfunction and diastolic filling
251 pattern.²²⁻²⁴ However, the 2021 ACC/AHA/SCAI guideline for coronary artery
252 revascularization highlighted that treatment decisions for patients with CAD requiring
253 revascularization should be based on clinical indications, regardless of gender, race,
254 or ethnicity in an effort to mitigate disparities of care.² Yoon et.al reported that for
255 elderly patients with ICM who had a LVEF < 40% and left ventricular end diastolic

256 dimension > 55mm, different genders represented distinctly predominant series of
257 risk factors of mortality.²⁵ On this premise, the aforementioned perspectives were not
258 inevitable in contrast to our result, and this lack of consistency should be expounded
259 in the setting of heterogeneous confounders with respect to study cohorts, genetics,
260 neuroendocrine activation, anatomic complexity, medications prescribed and their
261 response to the disease process, and weights of variables.²⁶ Actually, continuing
262 debate still urges additional attempts to address a consensus surrounding the
263 interaction between gender and long-term survival in patients with CAD.

264 Several important variables with regard to the evaluation of cardiac function were
265 failed to contribute to the construction of the current nomogram after adjusting for
266 baseline characteristics. Undoubtedly, the hierarchical thresholds of LVEF can be
267 used as a perfect tool to identify different subsets of patients with CAD, who have
268 various degrees of damaged left ventricular segmental systolic function. This
269 notwithstanding, it may not portend that they can invariably provide sufficient
270 efficiency to predict survival for some specific cohorts. The current study was in
271 agreement with several contemporary studies that had revealed inability of LVEF to
272 shed light on short-term and long-term survival in patients with severe heart
273 failure.²⁷⁻³⁰ Withal, the underestimated LVEF caused by MR that accounted for 65%
274 patients in the current cohort might also contribute to the negative statistical power.
275 Indeed, in addition to LVEF, a series of cardiac substrate measured by
276 echocardiography that are independent of LVEF, such as E/A ratio, severity of MR,
277 sphericity index, ESVI, end-diastolic volume index, pulmonary artery pressure and

278 mechanical dyssynchrony, may typically present various degrees of adverse changes
279 accompanied by progressive left ventricular dilatation and adverse remodeling, and
280 have been identified as the independent risk factors for mortality.³⁰ However, due to
281 the large number of missing values in the STICH data, some of aforementioned
282 variables were not analyzed, thus adding residual confounding to current study.

283 Another indolent variable was NYHA heart failure classification which conferred a
284 graded risk of mortality in the univariate Cox model but was blunted in multivariate
285 analysis. This unexpected result ran counter to the prevailing wisdom of accumulated
286 dogmas suggesting NYHA heart failure classification as a foundational criterion for
287 risk stratification. However, the variable subjectivity and poor reproducibility have
288 raised concerns about the accuracy of NYHA heart failure classification in evaluating
289 prognosis. The findings of Caraballo et al. who conducted secondary analyses of four
290 multicenter National Institutes of Health-funded heart failure clinical trials
291 demonstrated poor discrimination across the spectrum of functional impairment and
292 unreliable prediction of survival, based on NYHA heart failure classification.³¹ Greene
293 et al. compared the NYHA heart failure classification and the Kansas City
294 Cardiomyopathy Questionnaire Overall Summary Score (KCCQ-OS) with respect to
295 clinically meaningful changes in health status over time, and found that changes in
296 NYHA heart failure classification failed to translated into a benefit of clinical outcomes
297 with respect to all-cause mortality, heart failure hospitalization, and these two
298 composition.³² Obviously, the STICH trail inevitably suffered the aforementioned
299 limitations from the fact that patients were recruited from 99 medical centers in 22

300 countries.

301 The current study can provide actionable evidence for contemporary practice in the
302 following aspects. First, our results enhanced the consensus that CABG in
303 conjunction with guideline-directed medical therapies could be the preferred
304 recommendation for patients with ICM and heart failure by reducing 20% risk of
305 all-cause mortality compared to medical therapy alone. Second, on the basis of
306 concern about the high weight of comorbidities in current nomogram, a
307 comprehensive multidisciplinary therapeutic is warranted and may potentially improve
308 the survival time. Third, given the reversibility of ischemic MR, strategies to reduce
309 the severity of MR are urgent in an effort to reduce the mortality, whether or not
310 CABG or medical therapy alone is selected. Fourth, the current nomogram in
311 conjunction with the STS and EuroSCORE II risk models may serve as a perfect tool
312 in clinical decision making with the engagement of clinicians and patients.

313 Our study cannot avoid certain inevitable limitations due to the post-hoc nature and
314 lack of external validation. Due to the large number of missing values, several vital
315 variables were not collected, and selection biases added insufficiently corrected
316 residual confounding to current study. The small size of subgroups of MR and NYHA
317 heart failure classification can be translated into heterogeneity, compromising the
318 reliability of the nomogram. The fact that several medical co-morbidities were not
319 recorded in the STICH trial caused the underestimated CCI scores. Based on the
320 STICH protocol, the generalizability of current nomogram might not be suitable for
321 patients who have the conditions among exclusion criteria. Therefore, our results

322 should be interpreted with caution and external validation is warranted.

323

324 **5. Conclusion**

325 The current study developed a specified nomogram containing seven multifaceted
326 and easily accessible variables to predict the OS for patients with ICM and heart
327 failure, and provided information about multidisciplinary therapeutic that may prolong
328 the survival time. This nomogram in conjunction with the STS and EuroSCORE II risk
329 models may serve as a perfect tool in clinical decision making with the engagement of
330 clinicians and patients.

331

332 **Acknowledgments:** Conception and design: Pengju Guo and Chang He. Acquisition
333 of data: Pengju Guo. Analysis and interpretation of data: Pengju Guo and Chang He;
334 Manuscript writing: Pengju Guo. Revision: Junlei LI, Youxu Jiang, Feng Wang,
335 Jiaxiang Wang, Bin Lin, and Deguang Feng. All the authors listed have approved the
336 manuscript that is enclosed and agree with its content.

337 **Sources of Funding:** None.

338 **Disclosures:** All authors have declared no conflicts of interest.

339

340 **References**

- 341 1. Virani SS, Alonso A, Benjamin EJ, Bittencourt MS, Callaway CW, Carson AP,
342 Chamberlain AM, Chang AR, Cheng S, Delling FN, et al. Heart Disease and
343 Stroke Statistics-2020 Update: A Report From the American Heart Association.

- 344 *Circulation*. 2020;141:e139-e596. doi: 10.1161/CIR.0000000000000757
- 345 2. Lawton JS, Tamis-Holland JE, Bangalore S, Bates ER, Beckie TM, Bischoff
346 JM, Bittl JA, Cohen MG, DiMaio JM, Don CW, et al. 2021 ACC/AHA/SCAI
347 Guideline for Coronary Artery Revascularization: A Report of the American
348 College of Cardiology/American Heart Association Joint Committee on Clinical
349 Practice Guidelines. *Circulation*. 2022;145:e18-e114. doi:
350 10.1161/CIR.0000000000001038
- 351 3. Neumann FJ, Sousa-Uva M, Ahlsson A, Alfonso F, Banning AP, Benedetto U,
352 Byrne RA, Collet JP, Falk V, Head SJ, et al. 2018 ESC/EACTS Guidelines on
353 myocardial revascularization. *Eur Heart J*. 2019;40:87-165. doi:
354 10.1093/eurheartj/ehy394
- 355 4. Heidenreich PA, Bozkurt B, Aguilar D, Allen LA, Byun JJ, Colvin MM, Deswal A,
356 Drazner MH, Dunlay SM, Evers LR, et al. 2022 AHA/ACC/HFSA Guideline for
357 the Management of Heart Failure: A Report of the American College of
358 Cardiology/American Heart Association Joint Committee on Clinical Practice
359 Guidelines. *Circulation*. 2022;145:e895-e1032. doi:
360 10.1161/CIR.0000000000001063
- 361 5. Velazquez EJ, Lee KL, Jones RH, Al-Khalidi HR, Hill JA, Panza JA, Michler RE,
362 Bonow RO, Doenst T, Petrie MC, et al. Coronary-Artery Bypass Surgery in
363 Patients with Ischemic Cardiomyopathy. *N Engl J Med*. 2016;374:1511-1520.
364 doi: 10.1056/NEJMoa1602001
- 365 6. Wrobel K, Stevens SR, Jones RH, Selzman CH, Lamy A, Beaver TM, Djokovic

- 366 LT, Wang N, Velazquez EJ, Sopko G, et al. Influence of Baseline
367 Characteristics, Operative Conduct, and Postoperative Course on 30-Day
368 Outcomes of Coronary Artery Bypass Grafting Among Patients With Left
369 Ventricular Dysfunction: Results From the Surgical Treatment for Ischemic
370 Heart Failure (STICH) Trial. *Circulation*. 2015;132:720-730. doi:
371 10.1161/CIRCULATIONAHA.114.014932
- 372 7. Crea F. Treatment of heart failure across the spectrum of left ventricular
373 ejection fraction and an update on cardiac amyloidosis and ischaemic
374 cardiomyopathy. *Eur Heart J*. 2022;43:351-354. doi:
375 10.1093/eurheartj/ehab906
- 376 8. Pathak S, Lai FY, Miksza J, Petrie MC, Roman M, Murray S, Dearling J,
377 Perera D, Murphy GJ. Surgical or percutaneous coronary revascularization for
378 heart failure: an in silico model using routinely collected health data to emulate
379 a clinical trial. *Eur Heart J*. 2023;44:351-364. doi: 10.1093/eurheartj/ehac670
- 380 9. O'Brien SM, Feng L, He X, Xian Y, Jacobs JP, Badhwar V, Kurlansky PA,
381 Furnary AP, Cleveland JC, Jr., Lobdell KW, et al. The Society of Thoracic
382 Surgeons 2018 Adult Cardiac Surgery Risk Models: Part 2-Statistical Methods
383 and Results. *Ann Thorac Surg*. 2018;105:1419-1428. doi:
384 10.1016/j.athoracsur.2018.03.003
- 385 10. Nashef SA, Roques F, Sharples LD, Nilsson J, Smith C, Goldstone AR,
386 Lockowandt U. EuroSCORE II. *Eur J Cardiothorac Surg*. 2012;41:734-744;
387 discussion 744-735. doi: 10.1093/ejcts/ezs043

- 388 11. Takahashi K, Serruys PW, Fuster V, Farkouh ME, Spertus JA, Cohen DJ, Park
389 SJ, Park DW, Ahn JM, Kappetein AP, et al. Redevelopment and validation of
390 the SYNTAX score II to individualise decision making between percutaneous
391 and surgical revascularisation in patients with complex coronary artery disease:
392 secondary analysis of the multicentre randomised controlled SYNTAXES trial
393 with external cohort validation. *Lancet*. 2020;396:1399-1412. doi:
394 10.1016/S0140-6736(20)32114-0
- 395 12. Lawton JS, Tamis-Holland JE, Bangalore S, Bates ER, Beckie TM, Bischoff
396 JM, Bittl JA, Cohen MG, DiMaio JM, Don CW, et al. 2021 ACC/AHA/SCAI
397 Guideline for Coronary Artery Revascularization: Executive Summary: A
398 Report of the American College of Cardiology/American Heart Association
399 Joint Committee on Clinical Practice Guidelines. *Circulation*. 2022;145:e4-e17.
400 doi: 10.1161/CIR.0000000000001039
- 401 13. Velazquez EJ, Lee KL, Deja MA, Jain A, Sopko G, Marchenko A, Ali IS,
402 Pohost G, Gradinac S, Abraham WT, et al. Coronary-artery bypass surgery in
403 patients with left ventricular dysfunction. *N Engl J Med*. 2011;364:1607-1616.
404 doi: 10.1056/NEJMoa1100356
- 405 14. Velazquez EJ, Lee KL, O'Connor CM, Oh JK, Bonow RO, Pohost GM,
406 Feldman AM, Mark DB, Panza JA, Sopko G, et al. The rationale and design of
407 the Surgical Treatment for Ischemic Heart Failure (STICH) trial. *J Thorac
408 Cardiovasc Surg*. 2007;134:1540-1547. doi: 10.1016/j.jtcvs.2007.05.069
- 409 15. Levey AS, Stevens LA, Schmid CH, Zhang YL, Castro AF, 3rd, Feldman HI,

- 410 Kusek JW, Eggers P, Van Lente F, Greene T, et al. A new equation to estimate
411 glomerular filtration rate. *Ann Intern Med.* 2009;150:604-612. doi:
412 10.7326/0003-4819-150-9-200905050-00006
- 413 16. Charlson ME, Pompei P, Ales KL, MacKenzie CR. A new method of classifying
414 prognostic comorbidity in longitudinal studies: development and validation. *J*
415 *Chronic Dis.* 1987;40:373-383. doi: 10.1016/0021-9681(87)90171-8
- 416 17. Charlson M, Szatrowski TP, Peterson J, Gold J. Validation of a combined
417 comorbidity index. *J Clin Epidemiol.* 1994;47:1245-1251. doi:
418 10.1016/0895-4356(94)90129-5
- 419 18. Stevens PE, Levin A, Kidney Disease: Improving Global Outcomes Chronic
420 Kidney Disease Guideline Development Work Group M. Evaluation and
421 management of chronic kidney disease: synopsis of the kidney disease:
422 improving global outcomes 2012 clinical practice guideline. *Ann Intern Med.*
423 2013;158:825-830. doi: 10.7326/0003-4819-158-11-201306040-00007
- 424 19. Ambrosy AP, Stevens SR, Al-Khalidi HR, Rouleau JL, Bouabdallaoui N,
425 Carson PE, Adlbrecht C, Cleland JGF, Dabrowski R, Golba KS, et al. Burden
426 of medical co-morbidities and benefit from surgical revascularization in
427 patients with ischaemic cardiomyopathy. *Eur J Heart Fail.* 2019;21:373-381.
428 doi: 10.1002/ejhf.1404
- 429 20. Pina IL, Zheng Q, She L, Szwed H, Lang IM, Farsky PS, Castelvechio S,
430 Biernat J, Paraforos A, Kosevic D, et al. Sex Difference in Patients With
431 Ischemic Heart Failure Undergoing Surgical Revascularization: Results From

- 432 the STICH Trial (Surgical Treatment for Ischemic Heart Failure). *Circulation*.
433 2018;137:771-780. doi: 10.1161/CIRCULATIONAHA.117.030526
- 434 21. Yoon YH, Ahn JM, Lee JB, Kang DY, Park H, Jeong YJ, Lee J, Kim JH, Yang
435 Y, Hyun J, et al. Time-Dependent Impact of Sex on the Long-Term Outcomes
436 After Left Main Revascularization. *J Am Heart Assoc*. 2022;11:e021720. doi:
437 10.1161/JAHA.121.021720
- 438 22. Sun LY, Tu JV, Bader Eddeen A, Liu PP. Prevalence and Long-Term Survival
439 After Coronary Artery Bypass Grafting in Women and Men With Heart Failure
440 and Preserved Versus Reduced Ejection Fraction. *J Am Heart Assoc*. 2018;7.
441 doi: 10.1161/JAHA.118.008902
- 442 23. Taqueti VR, Di Carli MF. Coronary Microvascular Disease Pathogenic
443 Mechanisms and Therapeutic Options: JACC State-of-the-Art Review. *J Am*
444 *Coll Cardiol*. 2018;72:2625-2641. doi: 10.1016/j.jacc.2018.09.042
- 445 24. Kwan AC, Wei J, Ouyang D, Ebinger JE, Merz CNB, Berman D, Cheng S. Sex
446 differences in contributors to coronary microvascular dysfunction. *Front*
447 *Cardiovasc Med*. 2023;10:1085914. doi: 10.3389/fcvm.2023.1085914
- 448 25. Yoon HJ, Kim KH, Lee N, Park H, Kim HY, Cho JY, Ahn Y, Jeong MH.
449 Sex-Specific Predictors of Long-Term Mortality in Elderly Patients with
450 Ischemic Cardiomyopathy. *J Clin Med*. 2023;12. doi: 10.3390/jcm12052012
- 451 26. Mosca L, Barrett-Connor E, Wenger NK. Sex/gender differences in
452 cardiovascular disease prevention: what a difference a decade makes.
453 *Circulation*. 2011;124:2145-2154. doi:

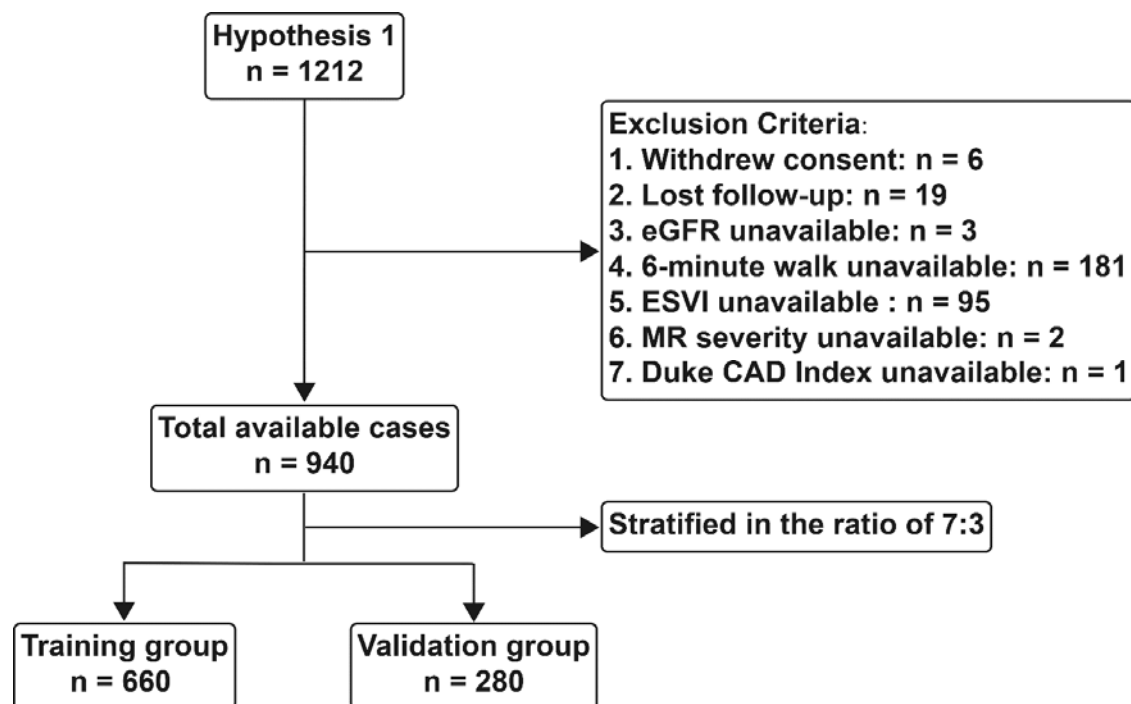
- 454 10.1161/CIRCULATIONAHA.110.968792
- 455 27. Alla F, Briancon S, Juilliere Y, Mertes PM, Villemot JP, Zannad F. Differential
456 clinical prognostic classifications in dilated and ischemic advanced heart
457 failure: the EPICAL study. *Am Heart J.* 2000;139:895-904. doi:
458 10.1016/s0002-8703(00)90023-1
- 459 28. Zhou Z, Zhuang X, Liu M, Jian B, Fu G, Liao X, Wu Z, Liang M. Left ventricular
460 volume change and long-term outcomes in ischaemic cardiomyopathy with or
461 without surgical revascularisation: A post-hoc analysis of a randomised
462 controlled trial. *EClinicalMedicine.* 2022;53:101626. doi:
463 10.1016/j.eclinm.2022.101626
- 464 29. Prior DL, Stevens SR, Holly TA, Krejca M, Paraforos A, Pohost GM, Byrd K,
465 Kukulski T, Jones RH, Desvigne-Nickens P, et al. Regional left ventricular
466 function does not predict survival in ischaemic cardiomyopathy after cardiac
467 surgery. *Heart.* 2017;103:1359-1367. doi: 10.1136/heartjnl-2016-310693
- 468 30. Kim KH, She L, Lee KL, Dabrowski R, Grayburn PA, Rajda M, Prior DL,
469 Desvigne-Nickens P, Zoghbi WA, Senni M, et al. Incremental prognostic value
470 of echocardiography of left ventricular remodeling and diastolic function in
471 STICH trial. *Cardiovasc Ultrasound.* 2020;18:17. doi:
472 10.1186/s12947-020-00195-1
- 473 31. Caraballo C, Desai NR, Mulder H, Alhanti B, Wilson FP, Fiuzat M, Felker GM,
474 Piña IL, O'Connor CM, Lindenfeld J, et al. Clinical Implications of the New York
475 Heart Association Classification. *Journal of the American Heart Association.*

476 2019;8. doi: 10.1161/jaha.119.014240

477 32. Greene SJ, Butler J, Spertus JA, Hellkamp AS, Vaduganathan M, DeVore AD,
478 Albert NM, Duffy CI, Patterson JH, Thomas L, et al. Comparison of New York
479 Heart Association Class and Patient-Reported Outcomes for Heart Failure
480 With Reduced Ejection Fraction. *JAMA Cardiology*. 2021;6. doi:
481 10.1001/jamacardio.2021.0372

482

483



484

485 **Figure 1.** Flow diagram of patient selection. eGFR = estimated glomerular filtration

486 rate; ESVI = end-systolic volume index; MR = mitral regurgitation; CAD = coronary

487 artery disease.

488

489

Variables	Overall (n = 940)	Training group (n = 660)	Validation group (n = 280)	p value
Age (%)				0.564
≤ 50	139 (14.8)	103 (15.6)	36 (12.9)	
51 - 60	384 (40.9)	273 (41.4)	111 (39.6)	
61 - 70	284 (30.2)	193 (29.2)	91 (32.5)	
≥ 71	133 (14.1)	91 (13.8)	42 (15.0)	
Gender (%)				0.603
Male	828 (88.1)	579 (87.3)	249 (88.9)	
Female	112 (11.9)	81 (12.3)	31 (11.1)	
Ethnicity (%)				0.610
White	639 (68.0)	452 (68.5)	187 (66.8)	
Other	301 (32.0)	208 (31.5)	93 (33.3)	
eGFR (%)				0.117

> 60 ml/min per 1.73m ²	697 (74.1)	499 (75.6)	198 (70.7)	
≤ 60 ml/min per 1.73m ²	243 (25.9)	161 (24.4)	82 (29.3)	
NYHA heart failure (%)				0.603
Class I	117 (12.4)	85 (12.9)	32 (11.4)	
Class II	493 (52.4)	338 (51.2)	155 (55.4)	
Class III	310 (33.0)	224 (33.9)	86 (30.7)	
Class IV	20 (2.2)	13 (2.0)	7 (2.5)	
CCI score (IQRs)	5 (4-6)	5 (4-6)	5 (4-6)	0.418
Atrial flutter history (%)				0.785
Yes	115 (12.2)	82 (12.4)	33 (11.8)	
No	825 (87.8)	578 (87.6)	247 (88.2)	
6-minute walk (%)				0.305
≤ 300 m	346 (36.8)	236 (35.8)	110 (39.3)	
> 300 m	594 (63.2)	424 (64.2)	170 (60.7)	

LVEF (%)					0.457
≤ 20%	173 (18.4)	117 (17.7)	56 (20.0)		
21 - 25%	216 (23.0)	154 (23.4)	62 (22.1)		
26 - 30%	281 (29.9)	191 (28.9)	90 (32.2)		
31 - 35%	270 (28.7)	198 (30.0)	72 (25.7)		
ESVI (%)					0.965
≤ 60 ml/m ²	263 (28.0)	184 (27.9)	79 (28.3)		
61 - 90ml/m ²	369 (39.2)	258 (39.1)	111 (39.6)		
> 90 ml/m ²	308 (32.8)	218 (33.0)	90 (32.1)		
Previous revascularization					0.441
(%)					
Yes	137 (14.6)	100 (15.2)	37 (13.2)		
No	803 (85.4)	560 (84.8)	243 (86.8)		
Mitral regurgitation (%)					0.865

None or trace	332 (35.3)	235 (35.6)	97 (34.6)	
Mild	435 (46.3)	301 (45.6)	134 (47.9)	
Moderate	144 (15.3)	102 (15.5)	42 (15.0)	
Severe	29 (3.1)	22 (3.3)	7 (2.5)	
Duke CAD Index (%)				0.471
≤ 40	277 (29.5)	187 (28.3)	90 (32.1)	
41 - 70	345 (36.7)	244 (37.0)	101 (36.1)	
71 - 100	318 (33.8)	229 (34.7)	89 (31.8)	

490

491 **Table 1.** Baseline characteristics for entire cohort, training and validation groups. eGFR = estimated glomerular filtration rate; NYHA
492 = New York Heart Association; CCI = Charlson co-morbidity index; LVEF = left ventricular ejection fraction; ESVI = end-systolic
493 volume index; CAD = coronary artery disease.

494

495

Variables	Univariable			Multivariable		
	HR	95% CI	p value	HR	95% CI	p value
Age			0.001			0.391
≤ 50	1.0	reference		1.0	reference	
51 - 60	1.331	0.971 – 1.826	0.076	0.997	0.708 – 1.405	0.987
61 - 70	1.745	1.263 – 2.411	< 0.001	1.106	0.734 – 1.667	0.630
≥ 71	1.786	1.236 – 2.578	0.002	0.847	0.509 – 1.407	0.521
Gender						
Female	1.0	reference		1.0	reference	
Male	1.756	1.241 – 2.485	0.001	2.069	1.447 – 2.957	< 0.001
Ethnicity						
White	1.0	reference				
Other	0.982	0.792 – 1.217	0.867			
eGFR						

> 60 ml/min per 1.73m ²	1.0	reference		1.0	reference	
≤ 60 ml/min per 1.73m ²	1.58	1.278 – 1.953	< 0.001	1.342	1.051 – 1.713	0.018
NYHA heart failure			0.040			0.718
Class I	1.0	reference		1.0	reference	
Class II	1.072	0.780 – 1.474	0.670	0.908	0.657 – 1.256	0.560
Class III	1.402	1.011 – 1.944	0.043	1.026	0.726 – 1.449	0.885
Class IV	1.689	0.827 – 3.449	0.150	1.106	0.527 – 2.319	0.790
CCI score	1.215	1.139 – 1.297	< 0.001	1.175	1.063 – 1.300	0.002
Atrial flutter history						
No	1.0	reference		1.0	reference	
Yes	1.646	1.253 – 2.162	< 0.001	1.315	0.985 – 1.756	0.064
6-minute walk						
≤ 300 m	1.0	reference		1.0	reference	
> 300 m	0.762	0.624 – 0.931	0.008	0.796	0.640 – 0.989	0.040

LVEF				0.050			
≤ 20%	1.0	reference					
21 - 25%	0.931	0.696 – 1.247	0.633				
26 - 30%	0.706	0.529 – 0.943	0.018				
31 - 35%	0.760	0.572 – 1.009	0.058				
ESVI			< 0.001				0.006
≤ 60 ml/m ²	1.0	reference		1.0	reference		
61 - 90ml/m ²	1.458	1.132 – 1.877	0.003	1.441	1.109 – 1.874	0.006	
> 90 ml/m ²	1.608	1.241 – 2.082	< 0.001	1.517	1.161 – 1.981	0.002	
Previous							
revascularization							
No	1.0	reference					
Yes	1.043	0.799 – 1.362	0.758				
Mitral regurgitation			< 0.001				< 0.001

None or trace	1.0	reference		1.0	reference	
Mild	1.148	0.918 – 1.436	0.226	1.181	0.941 – 1.482	0.151
Moderate	1.769	1.328 – 2.357	< 0.001	1.467	1.091 – 1.971	0.011
Severe	2.747	1.676 – 4.503	< 0.001	3.359	2.022 – 5.580	< 0.001
Duke CAD Index			0.300			
≤ 40	1.0	reference				
41 - 70	1.023	0.801 – 1.308	0.853			
71 - 100	1.180	0.923 – 1.510	0.187			
Treatment						
MED	1.0	reference		1.0	reference	
CABG + MED	0.764	0.628 – 0.930	0.007	0.802	0.655 – 0.981	0.032

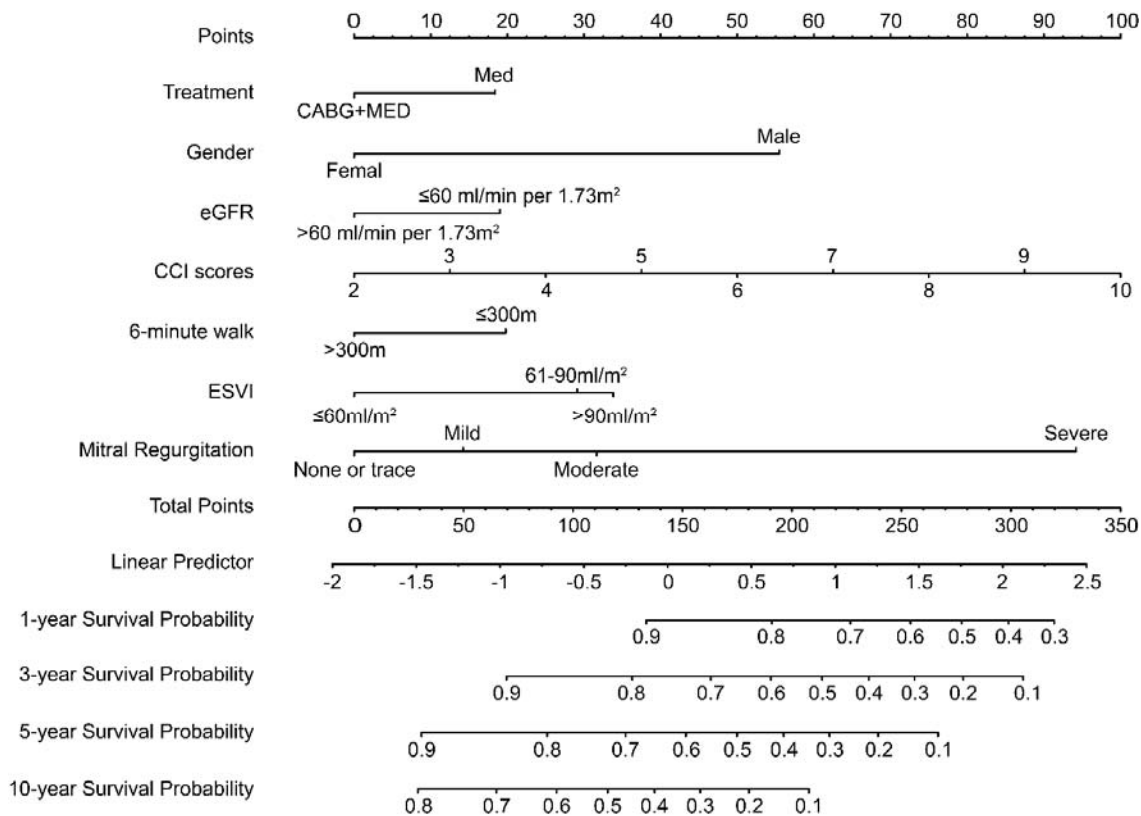
496

497 **Table 2.** Univariate and multivariate Cox proportional hazards models of OS for patients with ischemic cardiomyopathy and heart
 498 failure in the training group. HR = hazards ratio; CI = confidence interval; eGFR = estimated glomerular filtration rate; NYHA = New

499 York Heart Association; CCI = Charlson co-morbidity index; LVEF = left ventricular ejection fraction; ESVI = end-systolic volume
500 index; CAD = coronary artery disease; CABG = coronary artery bypass grafting; MED = medical.

501

502

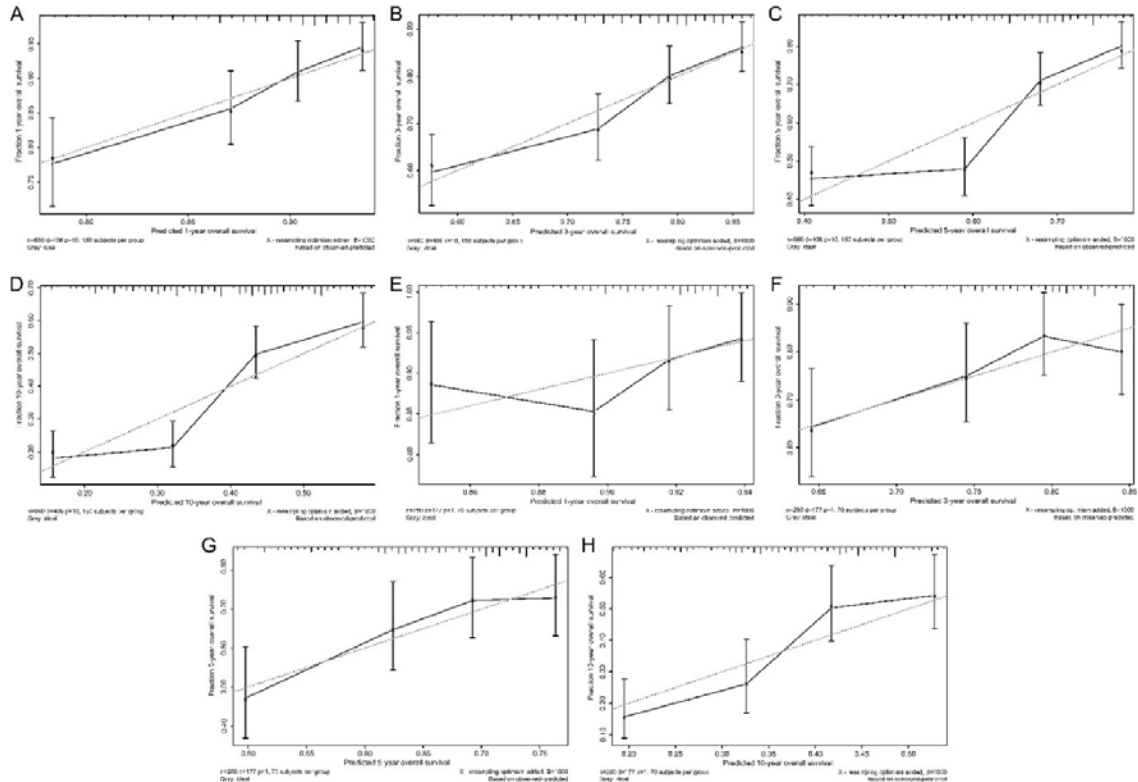


503

504 **Figure 2.** Nomogram for 1-year, 3-year, 5-year, and ten-year prediction of overall
 505 survival for patients with ischemic cardiomyopathy and heart failure. CABG =
 506 coronary artery bypass grafting; MED = medical; eGFR = estimated glomerular
 507 filtration rate; CCI = Charlson co-morbidity index; ESVI = end-systolic volume index.

508

509

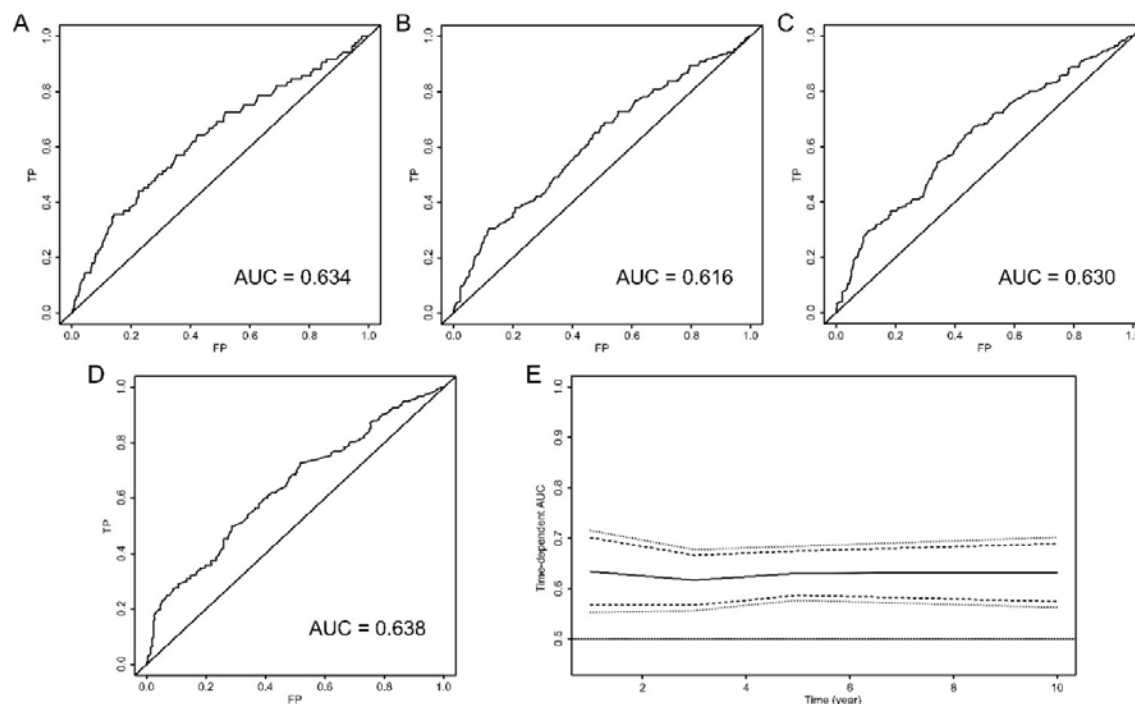


510

511 **Figure 3.** Calibration curves of 1-year, 3-year, 5-year, and ten-year overall survival
 512 (OS) for patients with ischemic cardiomyopathy and heart failure. A: 1-year OS in
 513 training group; B: 3-year OS in the training group; C: 5-year OS in the training group;
 514 D: ten-year OS in the training group; E: 1-year OS in the validation group; F: 3-year
 515 OS in the validation group; G: 5-year OS in the validation group; H: ten-year OS in the
 516 validation group.

517

518

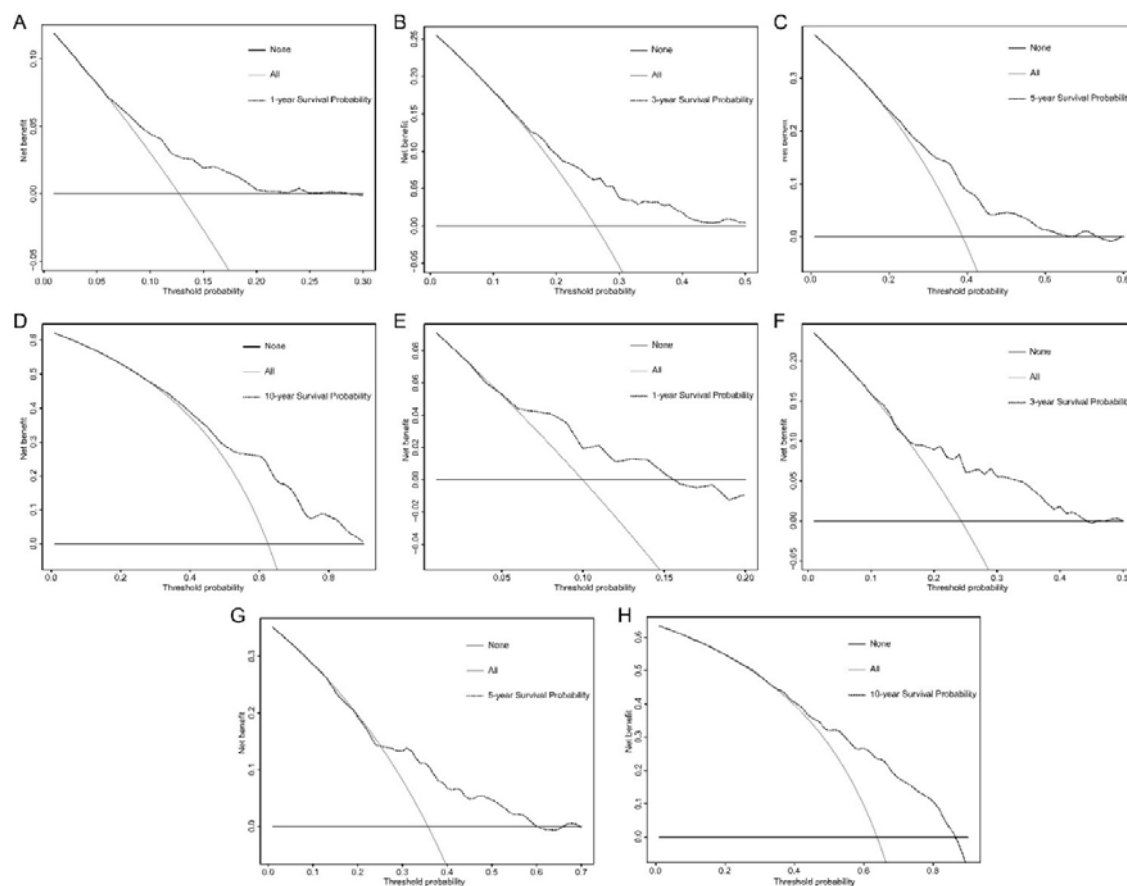


519

520 **Figure 4.** Time-dependent receiver operating characteristic curves of the overall
521 survival (OS) in the training group for patients with ischemic cardiomyopathy and
522 heart failure. A: 1-year OS; B: 3-year OS; C: 5-year OS; D: ten-year OS; E:
523 time-dependent area under curve (AUC).

524

525



526

527 **Figure 5.** Decision Curve Analysis of the nomogram in training group (A: 1-year OS,

528 B: 3-year OS, C: 5-year OS, D: ten-year OS) and verification group (E: 1-year OS, F:

529 3-year OS, G: 5-year OS, H: ten-year OS). The horizontal black solid lines assumed

530 all cases were alive, and the oblique gray solid lines assumed all cases were dead.

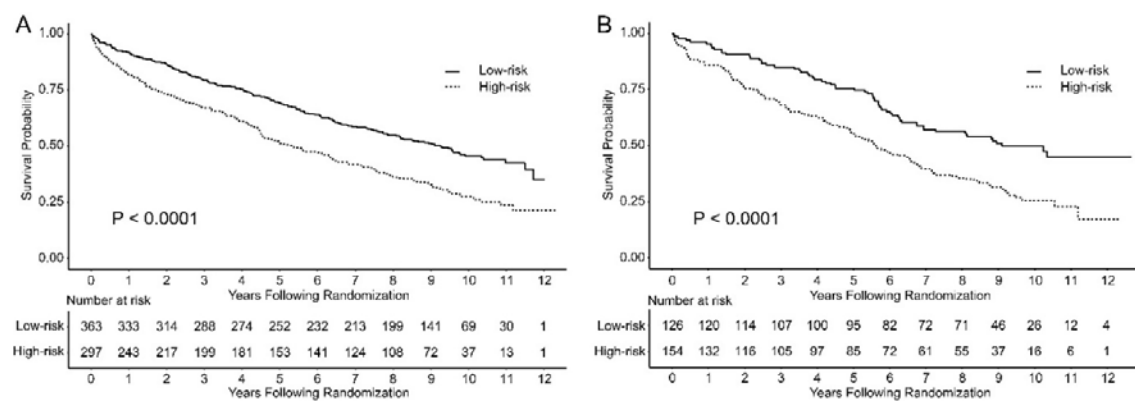
531 The black dash lines represented net benefit of the model during the application in

532 clinical decision-making. OS = overall survival.

533

534

535



536

537 **Figure 6.** Kaplan-Meier survival analysis of overall survival among patients with
 538 low-risk group and patients with high-risk group in training and validation groups. A:
 539 training group; B: validation group.

540