

1 **Egg Consumption and Bone Mass Density among the Elderly: A Scoping**  
2 **Review**

3  
4 **Mobolaji T. Olagunju<sup>1¶</sup>, Olunike R. Abodunrin<sup>1¶</sup>, Ifeoluwa O. Omotoso<sup>2¶</sup>, Ifeoluwa E.**  
5 **Adewole<sup>3&</sup>, Oluwabukola M. Ola<sup>3&</sup>, Chukwuemeka Abel<sup>3&</sup>, Folahanmi T. Akinsolu<sup>3,4\*¶</sup>,**  
6

7 **<sup>1</sup>Nanjing Medical University, China**

8 **<sup>2</sup>Chongqing Medical University, China**

9 **<sup>3</sup>Lead City University, Ibadan**

10 **<sup>4</sup>Nigerian Institute of Medical Research, Lagos**

11

12 **[\\*Folahanmi.tomiwa@gmail.com](mailto:Folahanmi.tomiwa@gmail.com)**

13

14 **<sup>¶</sup>These authors contributed equally to this work.**

15 **<sup>&</sup>These authors also contributed equally to this work.**

16 **Abstract**

17 **Introduction:** Eggs offer a range of essential nutrients that could potentially support skeletal  
18 health as individuals age. Maintaining bone density is crucial for reducing the risk of fractures and  
19 improving overall mobility and quality of life in later years. Understanding the potential benefits  
20 of habitual egg consumption on bone mass density among older people is essential, given that the  
21 natural decline in bone mass density occurs with age. This area of research has not garnered  
22 sufficient attention basically because of the mixed reactions and conflicting reports about the safety  
23 of egg consumption especially among the elderly hence the scoping review aims to systematically  
24 examine the existing literature to map the evidence regarding the association between habitual egg  
25 consumption and bone mass density in elderly individuals.

26 **Methodology:** The scoping review adhered to the Preferred Reporting Items for Systematic  
27 Reviews and Meta-Analyses Extension for Scoping Reviews (PRISMA-ScR) guidelines to ensure  
28 methodological rigor and transparency. Five electronic databases were searched for published  
29 pieces of literature. The review included letters, reviews, observational studies, and experimental  
30 studies, while the exclusion criteria were books, grey literature, and publications not in English.

31 **Results:** Out of an initial 315 studies found across five databases, 27 duplicates were removed.  
32 After screening, 283 studies were excluded as they did not meet the study eligibility criteria. Only  
33 two studies were finally included in the review, with two excluded due to focusing on eggshell  
34 powder's impact on elderly bone mass and one involving children.

35 **Conclusion:** Limited research on the link between egg consumption and bone mass density in the  
36 elderly highlights the need for further investigation. Concerns about cholesterol have  
37 overshadowed potential benefits. Given aging populations and bone health challenges, exploring  
38 eggs' role in preventing falls and fractures is essential for a proactive approach to elderly well-  
39 being.

40

41 **Keywords:** Egg Consumption; Bone Mass Density; Elderly; Cholesterol; Aging and Mobility

## 42 **Introduction**

43 Eggs are often considered nutritional powerhouses, and their potential contribution to bone health  
44 is increasingly recognized [1], attributed to the rich array of essential nutrients found in eggs that  
45 play pivotal roles in improving bone strength and overall skeletal well-being[2].

46 Firstly, eggs contain Vitamin D, a vital nutrient known for its role in calcium absorption. Calcium,  
47 in turn, is a cornerstone in bone mineralization and density[3]. Adequate Vitamin D intake ensures  
48 that the body's calcium is effectively absorbed and utilized in bone-building, thus promoting bone  
49 health[4]. Furthermore, eggs are a source of Zinc, a mineral crucial in supporting bone formation  
50 and repair processes[5]. Zinc contributes to synthesizing collagen, a protein essential for  
51 maintaining bone structure and integrity. Its involvement in bone health has been highlighted in  
52 various studies[5].

53 Eggs also feature osteogenic bioactive components such as lutein and zeaxanthin. While these  
54 compounds are better known for their role in eye health and reducing the risk of age-related  
55 macular degeneration, their potential impact on bone health is emerging. By mitigating oxidative  
56 stress and inflammation, lutein and zeaxanthin may indirectly support overall health, including  
57 bone health[6,7].

58 It's worth noting that previous research primarily focused on individual nutrient components of  
59 eggs, such as calcium [8], protein [9], and, vitamin D [10] about bone health. These nutrients are  
60 critical for maintaining strong bones, and their presence in eggs underscores the potential benefits  
61 of egg consumption [3,4,8–10]. Historically, whole eggs have faced scrutiny due to their high  
62 cholesterol content, and concerns about their impact on cardiovascular health have been the subject  
63 of research[11–14]. However, recent studies have challenged this notion, suggesting that moderate  
64 egg consumption may not significantly increase the risk of heart disease [13,14]. Yet, the specific  
65 associations between habitual egg consumption and bone health remain relatively uncharted in  
66 nutrition research.

67 Peak bone mass, reached in the third or fourth decade of life[7,15], is a critical foundation for  
68 skeletal health. However, as individuals age beyond this point, a consistent and natural decline in  
69 bone mass density impacts both women and men[15,16]. This age-related reduction in bone mass  
70 density plays a pivotal role in the increased susceptibility to vertebral fractures among the elderly  
71 population (ref). Understanding the factors that influence bone health during aging is paramount,

72 and dietary habits are a contributing factor. Habitual egg consumption has emerged as a potential  
73 dietary strategy to promote and maintain good bone health, particularly among older people [17].  
74 The unique nutritional composition of eggs, including vital nutrients like Vitamin D, Zinc, and  
75 protein, may play a significant role in supporting bone density and minimizing age-related bone  
76 loss[18].

77 This scoping review aims to systematically examine the existing literature to map the evidence  
78 regarding the association between habitual egg consumption and bone mass density in elderly  
79 individuals. By synthesizing the available research, we can gain valuable insights into the potential  
80 benefits of including eggs as a dietary component in promoting skeletal health during aging.

81

## 82 **METHODOLOGY**

83 The scoping review adhered to the Preferred Reporting Items for Systematic Reviews and Meta-  
84 Analyses Extension for Scoping Reviews (PRISMA-ScR) guidelines[19] to ensure  
85 methodological rigor and transparency.

86

### 87 **Research Question**

88 The following inquiry steered the review:

89 i. What evidence exists regarding the association between egg consumption and bone mass density  
90 in older individuals?

91

### 92 **Articles Identification**

93 The initial search was conducted in June 2023 on five electronic databases: Scopus, CINAHL,  
94 Web of Science, Medline, and PubMed. The search was performed using the following search  
95 strategies enumerated in Appendix 1. No protocol was published for this review.

96

### 97 **Eligibility Criteria and Article Selection**

98 The literature obtained through database searches was imported into Rayyan's reference  
99 management software. Duplicates were removed using the "duplicate items" function. Three  
100 independent reviewers (OA, IO, and MT) conducted title and abstract screening, following the  
101 eligibility criteria set for this review. A full-text review of the remaining publications was then

102 completed independently by five researchers (OA, IO, MT, BM, and FT). No attempts were made  
103 to contact authors or institutions to find additional sources. Any published manuscript presenting  
104 findings related to the association between egg consumption and bone mass density, English  
105 publications, and full texts available for extracting all relevant information were considered for  
106 study inclusion. The review included letters, reviews, observational studies, and experimental  
107 studies, while the exclusion criteria were books and grey literature publications and publications  
108 not in English.

109

### 110 **Data Charting**

111 Information on the paper identifiers (title, author, link), the country, year of publication, the study  
112 aims, study design, study location, the quantity of egg consumption, frequency of egg consumption,  
113 reported impact and effect size were extracted from the publications included in this review. The  
114 extracted information from each publication was compiled and summarized in Table 1.

115

## 116 **RESULTS**

117 The initial search using the predefined search terms from five databases yielded 315 studies. From  
118 the studies, 27 duplicates were removed, and the remaining 288 studies were screened. After  
119 screening, 283 studies were excluded because they did not meet the eligibility criteria. Five articles  
120 were sought for retrieval, of which three were excluded because two were studies on the impact of  
121 eggshell powder on bone mass among older people, and the last was a study conducted among  
122 children (Figure 1). Only two of the studies were included in the review. Table 1 shows the details  
123 of the included articles addressing the association between habitual egg consumption and bone  
124 mass density among older people.

125

126

127

128

129

130

131

132

133 Insert “Figure 1: Study Flow chart.”

134

### 135 **Overview of Studies**

136 The study conducted by Pujia et al. (2022) delves into the association between egg consumption  
137 and bone health, particularly whole-body bone mineral density (BMD) and the T-score, a key  
138 metric for diagnosing osteoporosis and assessing treatment effectiveness. In an aging population  
139 of 176 individuals aged 65 years and older, the researchers aimed to unravel the potential impact  
140 of egg consumption on bone density. Eggs were singled out due to their intriguing bioactive  
141 compounds, which might have positive implications for BMD. The study unearthed a statistically  
142 significant positive association between whole-body T-scores and egg consumption. Those who  
143 consumed more eggs exhibited higher T-scores, suggesting better bone density. Gender and body  
144 mass index (BMI) also influence bone health. Females had notably higher T-scores, and  
145 individuals with higher BMI tended to have better bone density. Intriguingly, multiple fractures  
146 were negatively associated with daily egg intake, implying that those who consumed more eggs  
147 were less prone to experiencing multiple fractures. HDL-C levels were linked positively with  
148 multiple fractures, indicating a potential role for cholesterol in bone health. This study provides  
149 novel insights into the relationship between egg consumption and bone health in older people. It  
150 suggests that whole eggs might positively impact bone density, potentially reducing the risk of  
151 osteoporosis and fractures in older individuals. However, the study's cross-sectional nature limits  
152 its ability to establish causation, and further research, ideally in the form of randomized controlled  
153 trials, is needed to confirm these findings. If substantiated, this study could pave the way for whole  
154 eggs as a viable dietary strategy for maintaining bone health in older people, addressing a crucial  
155 aspect of overall well-being in aging populations.

156 The research conducted by Zeng et al. (2013) focused on exploring the potential link between the  
157 consumption of red meat, poultry (with or without skin), and eggs and the subsequent risk of hip  
158 fractures among elderly Chinese individuals. The study adopted a case–control design, with  
159 meticulous matching resulting in 646 pairs of participants from Guangdong Province, a coastal  
160 region in China. The study specifically targeted hip fractures, a significant concern among older  
161 people due to their impact on mobility and overall well-being. By investigating the dietary habits  
162 of these individuals, the researchers sought to identify any associations between food intake and  
163 hip fracture risk. The study's results indicated that, on average, men consumed around 20.2 g/d of

164 the examined foods, while women's intake was slightly higher at 22.6 g/d. Upon analysis, the odds  
165 ratio (OR) for the risk of hip fracture about red meat, poultry, and eggs consumption was calculated  
166 at 0.99 (with a confidence interval of 0.63 to 1.56). This result suggests no conclusive evidence of  
167 a substantial association between egg consumption and the subsequent risk of hip fractures among  
168 the elderly participants. While the study's findings do not indicate an egg consumption and hip  
169 fracture risk link, it is essential to consider the complexity of dietary patterns and potential  
170 confounding factors that may influence such outcomes. Overall, the research contributes to the  
171 ongoing discourse on nutrition and its impact on bone health, particularly in the context of the  
172 elderly population.

Table 1: Characteristics of Included Studies

S/N	Title	Author (year of publication)	Study Aim	Publication Type	Gender distribution	Study Participants
1	Relationship between osteoporosis, multiple fractures, and egg intake in healthy elderly	Pujia et al. (2021)	To assess the association between eggs consumption and bone density in a population of the elderly.	Cross-sectional study	Female- 112 Male- 64	Participants were recruited from February 2013 to August 2016, and this study was a secondary analysis of baseline data obtained from a study named: “Effect of the Mediterranean Diet on cognitive function in the elderly.”
2	The association of red meat, poultry, and egg consumption with risk of hip fractures in elderly Chinese: A case-control study	Zeng et al., (2013)	To examine whether the dietary intake of different types of red meat, poultry (with or without skin), and eggs are associated with a subsequent risk of hip fracture in a 1:1 matched case-control study with 646 pairs of elderly Chinese from Guangdong Province.	Case-Control study	646 case patients and 646 matched control subjects (484 female pairs and 162 male pairs)	<p>the cases were hip fracture patients admitted consecutively to four hospitals: the First Affiliated Hospital of Sun Yat-sen University, Guangzhou Orthopedics Trauma Hospital, Guangdong General Hospital, and the Orthopedics Hospital of Baishi District in Jiangmen City, Guangdong province. Between June 2009 and January 2013, 1281 patients aged 55 to 80 who had resided in Guangdong province for over 10 years were admitted with hip fractures diagnosed within 2 weeks of their potential enrollment into the study and confirmed by X-ray image.</p> <p>Controls were individually matched to the cases by sex and years. Controls were subject to the same inclusion and exclusion criteria as cases except for history of fracture. There were two sets of controls: 183 (28.3%) hospital controls were in-patients who were admitted to the above-mentioned hospitals and Zhongshan Ophthalmic Center within one week and could be matched to the cases; 463 (71.7%) community controls were apparently healthy community residents recruited in the same cities</p>



Table 2: Study findings

S/N	Title	Author (Year of publication)	Reported Quantity of Egg Consumed	Frequency of Egg Consumption	Reported effect on BMD	Conclusion
1	Relationship between osteoporosis, multiple fractures, and egg intake in healthy elderly	Pujia et al. (2021)	About 56% of study participants consumed from 1 to 5 eggs/weeks, with an average weekly consumption of one egg per week.	Weekly	WB T-score correlated positively with daily egg consumption ( $r = 0.16$ ; $P = 0.027$ ) Multiple fractures correlated negatively with egg intake ( $r = -0.39$ ; $P = 0.014$ ). WB T-score remained positively associated with egg intake ( $B = 0.02$ ; $P = 0.02$ ) at regression analysis	This cross-sectional study provides evidence of a positive link between whole egg consumption and WB-BMD. If confirmed through future randomized controlled trials, considering the high nutritional value of eggs, their economic accessibility on the marketplace, and recent dietary guidelines, the incorporation of whole eggs into the diet of the elderly could have a significant public health impact, including osteoporosis prevention and fracture risk reduction.
2	The association of red meat, poultry, and egg consumption with risk of hip fractures in elderly Chinese: A case-control study	Zeng et al., (2013)	Mean intake for men = 20.2 g/d, and 22.6 g/d for women	Daily	No evidence of an association between egg intake and the risk of hip fracture (OR = 0.99; 95% CI: 0.63, 1.56)	our findings suggest that greater consumption of fatty, but not lean, red meat and egg is associated with higher risk of hip fractures. Further studies are needed to confirm the beneficial effect of lean poultry on the prevention of hip fractures.

## Discussion

The scoping review highlights that only two studies show the relationship between habitual egg consumption and elderly's bone fracture risk. Both studies had contradictory findings, though the two studies used different study designs and had different study outcomes. This scoping review shows a noticeable gap in the existing literature concerning the potential relationship between habitual egg consumption and bone mass density in the elderly population. This scarcity of research underscores the need for further investigation to establish a clearer understanding of the potential causal relationship between these variables.

The few primary studies examining the association between egg consumption and bone health among the elderly draw attention to a gap that may have been created because of the concerns about the cholesterol content found in eggs and its link with the increased risk of cardiovascular diseases and in Italy, linked to a higher risk of overall mortality and mortality due to cancer[20], Spain[21], and China[22]. Yet the protein content of eggs, such as ovotransferrin, has bone-preserving properties through inhibition of the bone resorption process[23]. There is also suggestive evidence that carotenoids in egg yolk could prevent bone loss[24,25]. Egg consumption is also associated with dyslipidemia, a condition characterized by abnormal blood lipid levels. Eggs, a rich source of dietary cholesterol, have historically been of concern because of their impact on blood cholesterol levels. The relationship between egg consumption and dyslipidemia can vary among individuals and is influenced by genetics and overall diet[26,27].

With advancing age, the issue of bone health becomes increasingly critical due to the heightened susceptibility to bone frailty and the associated risk of falls and fractures, which can have severe consequences, especially among older people [17,28]. Recognizing this vulnerability, it becomes imperative to provide older people with comprehensive lifestyle and dietary recommendations that empower them to make informed choices to maintain their health and well-being[29]. Interestingly, emerging evidence suggests that eggs, often overlooked due to concerns about their cholesterol content, contain compounds that could contribute to bone development and enhance bone strength. Recognizing eggs' potential role in bone health signifies the importance of considering them as a dietary component for the aging population. While the potential cardiovascular risks of consuming cholesterol-rich foods like eggs have garnered significant attention, the flip side of the coin reveals a more nuanced story. Recent research has highlighted that some cholesterol in eggs may possess

protective qualities against dyslipidemia, a condition characterized by abnormal levels of lipids in the blood, intricately linked to cardiovascular health[30,31]. These contradictory findings emphasize the complexity of the relationship between egg consumption, cholesterol, and overall health, suggesting that a blanket assessment of eggs as detrimental may not be entirely accurate[32].

In the broader context of bone health, eggs emerge as a potential source of nutrients that could contribute to maintaining bone density and reducing the risk of fractures among older people [33]. As a rich source of protein, eggs provide essential amino acids that play a role in bone matrix formation and maintenance[2]. Additionally, eggs are a natural source of vitamin D, a vital nutrient that aids in calcium absorption and bone mineralization. Combining these nutrients makes eggs a unique dietary option that aligns with the nutritional requirements necessary to support bone health in aging individuals[34].

Addressing the current research gap concerning the relationship between egg consumption and bone mass density is essential for advancing our knowledge of bone health and advocating evidence-based dietary recommendations for older people. As the population ages, preserving mobility and reducing the risk of falls and fractures becomes increasingly paramount[29]. Therefore, adopting a comprehensive approach that includes dietary components like eggs, appropriate exercise, and other lifestyle adjustments could play a pivotal role in promoting healthier aging.

One of the strengths of this paper was assessing the effect of habitual bone consumption on bone mass density in a larger population than reported in a single study, which helps estimate effect size better and makes it easier to make recommendations to the broader population of older adults scientifically. One major limitation of the study is the dearth of studies on the subject of discourse, which would provide an excellent way to dispel myths and fads surrounding the habitual consumption of eggs with sufficient scientific evidence on the subject across a wider population. Also, the study is limited in the uniformity of study design across the studies included.

In conclusion, the limited research exploring the potential link between regular egg consumption and bone mass density, especially among older people, highlights the necessity for more extensive investigation. The reluctance to delve into this relationship may partly stem from concerns regarding cholesterol content, which has historically overshadowed the potential health benefits of eggs. Nonetheless, considering the elderly population's susceptibility to bone-related issues and

the urgency of taking proactive measures to prevent falls and fractures, it becomes imperative to examine the potential contributions of eggs to bone health. As research advances, a balanced assessment of how eggs impact bone and cardiovascular health should guide dietary recommendations. This approach acknowledges the complexity of the nutritional composition of eggs and their potential role in enhancing the well-being of the aging population.

## **Acknowledgment**

We extend our heartfelt gratitude to Prof. Morenike Ukpong for her invaluable contribution in reviewing the manuscript. Her keen insights and rigorous evaluation significantly enhanced the quality and rigor of this work. Her expertise and constructive feedback were indispensable in refining our manuscript, thereby advancing the discourse in this field. We also appreciate her time and dedication amidst her other professional commitments. Her willingness to engage and collaborate with us has enriched our research, and for that, we are sincerely thankful.

## References

- [1] Wu J. Eggs as functional foods and nutraceuticals for human health. Royal Society of Chemistry; 2019.
- [2] Rizzoli R, Biver E, Brennan-Speranza TC. Nutritional intake and bone health. *The Lancet Diabetes & Endocrinology* 2021;9:606–21.
- [3] Turner AG, Anderson PH, Morris HA. Vitamin D and bone health. *Scandinavian Journal of Clinical and Laboratory Investigation* 2012;72:65–72.
- [4] Ebeling PR. Vitamin D and bone health: epidemiologic studies. *BoneKEy Reports* 2014;3.
- [5] Frassinetti S, Bronzetti GL, Caltavuturo L, Cini M, Della Croce C. The role of Zinc in life: a review. *Journal of Environmental Pathology, Toxicology and Oncology* 2006;25.
- [6] Coheley LM, Kindler JM, Laing EM, Oshri A, Hill Gallant KM, Warden SJ, et al. Whole egg consumption and cortical bone in healthy children. *Osteoporosis International* 2018;29:1783–91.
- [7] Lu J, Shin Y, Yen M-S, Sun SS. Peak bone mass and patterns of change in total bone mineral density and bone mineral contents from childhood into young adulthood. *Journal of Clinical Densitometry* 2016;19:180–91.
- [8] Cashman K. Calcium intake, calcium bioavailability and bone health. *British Journal of Nutrition* 2002;87:S169–77.
- [9] Teucher B, Dainty JR, Spinks CA, Majsak-Newman G, Berry DJ, Hoogewerff JA, et al. Sodium and bone health: impact of moderately high and low salt intakes on calcium metabolism in postmenopausal women. *Journal of Bone and Mineral Research* 2008;23:1477–85.
- [10] Winzenberg T, Jones G. Vitamin D and bone health in childhood and adolescence. *Calcified Tissue International* 2013;92:140–50.
- [11] Qin C, Lv J, Guo Y, Bian Z, Si J, Yang L, et al. Associations of egg consumption with cardiovascular disease in a cohort study of 0.5 million Chinese adults. *Heart* 2018;104:1756–63.
- [12] Guo J, Hobbs DA, Cockcroft JR, Elwood PC, Pickering JE, Lovegrove JA, et al. Association between egg consumption and cardiovascular disease events, diabetes and all-cause mortality. *European Journal of Nutrition* 2018;57:2943–52.

- [13] Krittanawong C, Narasimhan B, Wang Z, Virk HUH, Farrell AM, Zhang H, et al. Association between egg consumption and risk of cardiovascular outcomes: a systematic review and meta-analysis. *The American Journal of Medicine* 2021;134:76–83.
- [14] Zhang F, Li J, Chang C, Gu L, Xiong W, Su Y, et al. The Association of Dietary Cholesterol from Egg Consumption on Cardiovascular Diseases Risk Varies from Person to Person. *Journal of Agricultural and Food Chemistry* 2022;70:14977–88.
- [15] Bonjour J-P, Chevalley T, Ferrari S, Rizzoli R. The importance and relevance of peak bone mass in the prevalence of osteoporosis. *Salud Publica de Mexico* 2009;51:s5–17.
- [16] Curtis E, Litwic A, Cooper C, Dennison E. Determinants of muscle and bone aging. *Journal of Cellular Physiology* 2015;230:2618–25.
- [17] Martin FC. Frailty, sarcopenia, falls and fractures. *Orthogeriatrics* 2017:47–61.
- [18] Martiniakova M, Babikova M, Mondockova V, Blahova J, Kovacova V, Omelka R. The role of macronutrients, micronutrients and flavonoid polyphenols in the prevention and treatment of osteoporosis. *Nutrients* 2022;14:523.
- [19] Tricco AC, Lillie E, Zarin W, O’Brien KK, Colquhoun H, Levac D, et al. PRISMA extension for scoping reviews (PRISMA-ScR): checklist and explanation. *Annals of Internal Medicine* 2018;169:467–73.
- [20] Ruggiero E, Di Castelnuovo A, Costanzo S, Persichillo M, De Curtis A, Cerletti C, et al. Egg consumption and risk of all-cause and cause-specific mortality in an Italian adult population. *Eur J Nutr* 2021;60:3691–702. <https://doi.org/10.1007/s00394-021-02536-w>.
- [21] Zamora-Ros R, Cayssials V, Cleries R, Redondo ML, Sánchez M-J, Rodríguez-Barranco M, et al. Moderate egg consumption and all-cause and specific-cause mortality in the Spanish European Prospective into Cancer and Nutrition (EPIC-Spain) study. *Eur J Nutr* 2019;58:2003–10. <https://doi.org/10.1007/s00394-018-1754-6>.
- [22] Xu L, Lam TH, Jiang CQ, Zhang WS, Zhu F, Jin YL, et al. Egg consumption and the risk of cardiovascular disease and all-cause mortality: Guangzhou Biobank Cohort Study and meta-analyses. *Eur J Nutr* 2019;58:785–96. <https://doi.org/10.1007/s00394-018-1692-3>.
- [23] Shang N, Wu J. Egg white ovotransferrin attenuates RANKL-induced osteoclastogenesis and bone resorption. *Nutrients* 2019;11:2254.

- [24] Miranda JM, Anton X, Redondo-Valbuena C, Roca-Saavedra P, Rodriguez JA, Lamas A, et al. Egg and egg-derived foods: effects on human health and use as functional foods. *Nutrients* 2015;7:706–29.
- [25] USDA F. United States Department of Agriculture Foreign Agricultural Service, Global Agricultural Trade System (GATS), Forest products trade statistics. Access: [Http://Www Fas Usda Gov/Gats/Default Aspx](http://www.fas.usda.gov/gats/default.aspx) 2011.
- [26] Jacobson TA, Maki KC, Orringer CE, Jones PH, Kris-Etherton P, Sikand G, et al. National Lipid Association recommendations for patient-centered management of dyslipidemia: part 2. *Journal of Clinical Lipidology* 2015;9:S1–122.
- [27] Godos J, Micek A, Brzostek T, Toledo E, Iacoviello L, Astrup A, et al. Egg consumption and cardiovascular risk: a dose–response meta-analysis of prospective cohort studies. *European Journal of Nutrition* 2021;60:1833–62.
- [28] Aspray TJ, Hill TR. Osteoporosis and the Ageing Skeleton. In: Harris JR, Korolchuk VI, editors. *Biochemistry and Cell Biology of Ageing: Part II Clinical Science*, Singapore: Springer; 2019, p. 453–76. [https://doi.org/10.1007/978-981-13-3681-2\\_16](https://doi.org/10.1007/978-981-13-3681-2_16).
- [29] Izquierdo M, Merchant RA, Morley JE, Anker SD, Aprahamian I, Arai H, et al. International exercise recommendations in older adults (ICFSR): expert consensus guidelines. *The Journal of Nutrition, Health & Aging* 2021;25:824–53.
- [30] Thomas MS, Calle M, Fernandez ML. Healthy plant-based diets improve dyslipidemias, insulin resistance, and inflammation in metabolic syndrome. A narrative review. *Advances in Nutrition* 2022.
- [31] Pereira T. Dyslipidemia and cardiovascular risk: lipid ratios as risk factors for cardiovascular disease. *Dyslipidemia-From Prevention to Treatment* 2012;14:279–302.
- [32] Charoenngam N, Shirvani A, Holick MF. Vitamin D for skeletal and non-skeletal health: What we should know. *Journal of Clinical Orthopaedics and Trauma* 2019;10:1082–93.
- [33] Fratoni V, Brandi ML. B vitamins, homocysteine and bone health. *Nutrients* 2015;7:2176–92.
- [34] Puglisi MJ, Fernandez ML. The health benefits of egg protein. *Nutrients* 2022;14:2904.





**PUBMED Database**  
**Search Outcome = 6**

SN	Keywords	Search Strings
1	<b>(Egg Consumption) OR (Egg intake)</b>	((("ovum"[MeSH Terms] OR "ovum"[All Fields] OR "egg"[All Fields]) AND ("consumptions"[All Fields] OR "economics"[MeSH Terms] OR "economics"[All Fields] OR "consumption"[All Fields])) OR ((("ovum"[MeSH Terms] OR "ovum"[All Fields] OR "egg"[All Fields]) AND ("intake"[All Fields] OR "intake s"[All Fields] OR "intakes"[All Fields])))
2	<b>BMD OR Osteoporosis OR Osteopenia</b>	"bone mass density"[Title/Abstract] OR "Osteoporosis"[Title/Abstract] OR "Osteopenia"[Title/Abstract] OR "bone densities"[Title/Abstract] OR "density bone"[Title/Abstract] OR "bone mineral density"[Title/Abstract] OR "bone mineral densities"[Title/Abstract] OR "density bone mineral"[Title/Abstract] OR "bone mineral content"[Title/Abstract] OR "bone mineral contents"[Title/Abstract] OR "Osteoporoses"[Title/Abstract] OR "osteoporosis post traumatic"[Title/Abstract] OR "osteoporosis post traumatic"[Title/Abstract] OR ("Post-Traumatic"[All Fields] AND "Osteoporoses"[Title/Abstract]) OR "post traumatic osteoporosis"[Title/Abstract] OR "osteoporosis senile"[Title/Abstract] OR ((("Osteoporosis"[MeSH Terms] OR "Osteoporosis"[All Fields] OR "Osteoporoses"[All Fields] OR "osteoporosis, postmenopausal"[MeSH Terms] OR ("Osteoporosis"[All Fields] AND "postmenopausal"[All Fields]) OR "postmenopausal osteoporosis"[All Fields]) AND "Senile"[Title/Abstract]) OR ("Senile"[All Fields] OR "seniles"[All Fields] OR "senility"[All Fields]) AND "Osteoporoses"[Title/Abstract]) OR ((("Osteoporosis"[MeSH Terms] OR "Osteoporosis"[All Fields] OR "Osteoporoses"[All Fields] OR "osteoporosis, postmenopausal"[MeSH Terms] OR ("Osteoporosis"[All Fields] AND "postmenopausal"[All Fields]) OR "postmenopausal osteoporosis"[All Fields]) AND "Involutional"[Title/Abstract]) OR "senile osteoporosis"[Title/Abstract] OR "osteoporosis age related"[Title/Abstract] OR "osteoporosis age related"[Title/Abstract] OR "bone loss age related"[Title/Abstract] OR "age related bone loss"[Title/Abstract] OR "age related bone losses"[Title/Abstract] OR "bone loss age related"[Title/Abstract] OR (((("bone and bones"[MeSH Terms] OR ("Bone"[All Fields] AND "bones"[All Fields]) OR "bone and bones"[All Fields] OR "Bone"[All Fields]) AND "Losses"[All Fields]) AND "Age-Related"[Title/Abstract]) OR "age related osteoporosis"[Title/Abstract] OR "age related osteoporosis"[Title/Abstract] OR "age related osteoporoses"[Title/Abstract] OR ((("Osteoporosis"[MeSH Terms] OR "Osteoporosis"[All Fields] OR "Osteoporoses"[All Fields] OR "osteoporosis, postmenopausal"[MeSH Terms] OR ("Osteoporosis"[All Fields] AND "postmenopausal"[All Fields]) OR "postmenopausal osteoporosis"[All Fields]) AND "Age-Related"[Title/Abstract]) OR "metabolic bone diseases"[Title/Abstract] OR "bone disease metabolic"[Title/Abstract] OR "metabolic bone disease"[Title/Abstract] OR "Osteopenia"[Title/Abstract] OR "Osteopenias"[Title/Abstract] OR "low bone density"[Title/Abstract] OR "bone density low"[Title/Abstract]

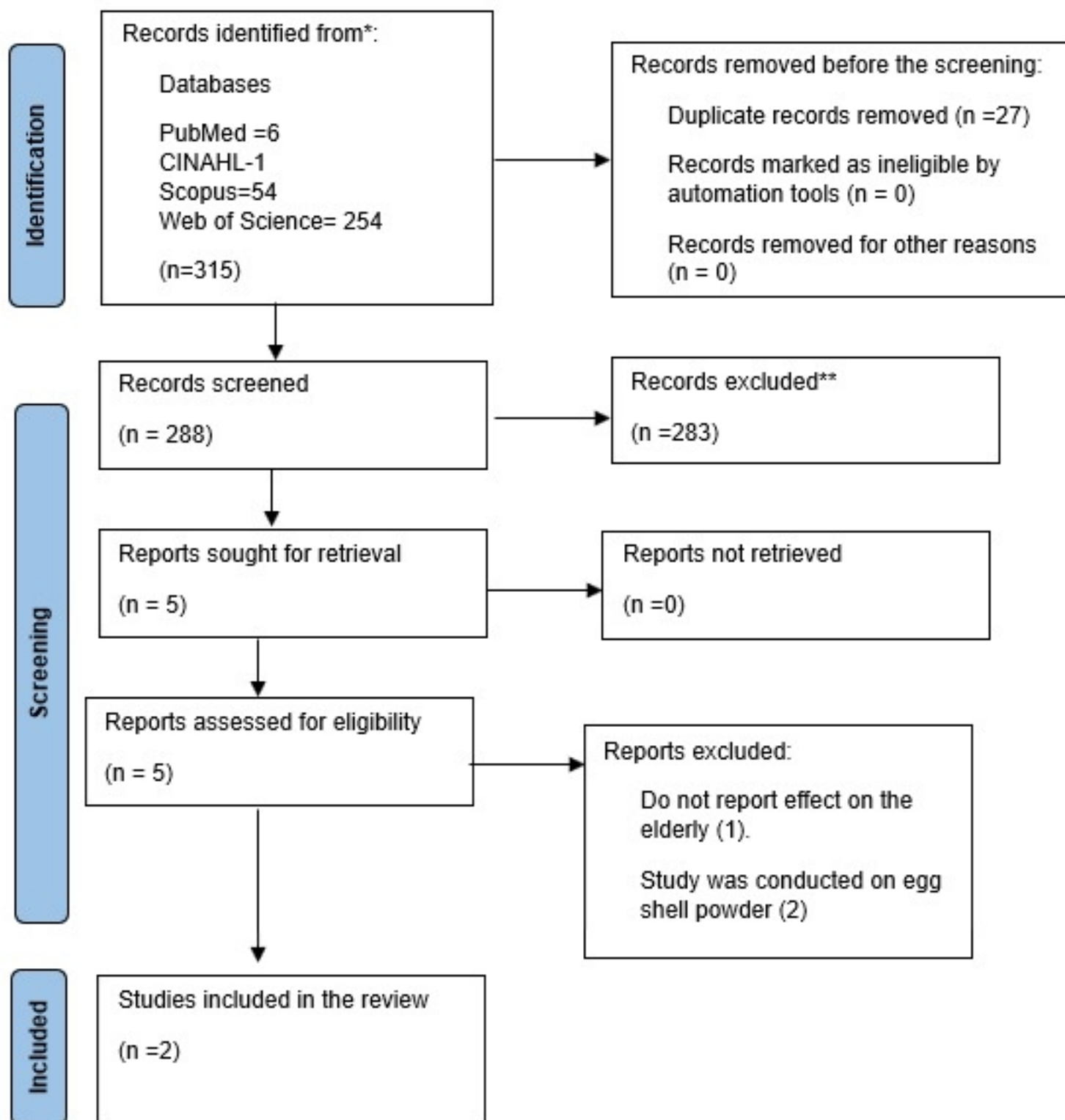
		OR "low bone densities"[Title/Abstract] OR "low bone mineral density"[Title/Abstract]
3	Elderly Or Aged	"Elderly"[Title/Abstract] OR "Aged"[Title/Abstract]

### SCOPUS Database

Search Outcome= 54

SN	Keywords	Search Strings
	<b>Egg Consumption OR Egg intake</b>	egg AND consumption OR egg AND intake
	<b>Bone Mass Density</b>	bone AND mass AND density OR osteoporosis OR bone AND density OR bone AND loss OR bone AND mineral AND density OR bone AND strength
	<b>Elderly or Aged</b>	elderly OR aged OR elder OR elderly AND people OR old AND people

## Identification of studies via databases



From: Page MJ, McKenzie JE, Bossuyt PM, Boutron I, Hoffmann TC, Mulrow CD, et al. The PRISMA 2020 statement: an updated guideline for reporting systematic reviews. *BMJ* 2021;372:n71. doi: 10.1136/bmj.n71