

## 1 **Global distribution of *Leptospira* serovar isolations and detections from** 2 **animal host species: a systematic review and online database**

3  
4 Nienke N. Hagedoorn<sup>1</sup>, Michael J. Maze<sup>\*^1,2</sup>, Manuela Carugati<sup>3</sup>, Shama Cash-Goldwasser<sup>4</sup>,  
5 Kathryn J. Allan<sup>5</sup>, Kevin Chen<sup>6</sup>, Brieuc Cossic<sup>7</sup>, Elena Demeter<sup>7</sup>, Sarah Gallagher<sup>8</sup>, Richard  
6 German<sup>8</sup>, Renee L. Galloway<sup>9</sup>, Josipa Habuš<sup>10</sup>, Matthew P. Rubach<sup>3,4,11</sup>, Kanae Shiokawa<sup>12</sup>,  
7 Nadezhda Sulikhan<sup>13</sup>, and John A. Crump<sup>1,3,4,11</sup>

8  
9 <sup>1\*</sup> Centre for International Health, University of Otago, Dunedin, New Zealand

10 <sup>2</sup> Department of Medicine, University of Otago, Christchurch, New Zealand

11 <sup>3</sup> Division of Infectious Diseases, Duke University Medical Center, Durham, United States of  
12 America

13 <sup>4</sup> Duke Global Health Institute, Duke University, Durham, NC, United States of America

14 <sup>5</sup> Boyd Orr Centre for Population and Ecosystem Health, Institute of Biodiversity, Animal  
15 Health and Comparative Medicine, University of Glasgow, Glasgow, UK

16 <sup>6</sup> Infectious Diseases Department, Te Whatu Ora Hauora a Toi Bay of Plenty, New Zealand

17 <sup>7</sup> College of Veterinary Medicine, Ithaca, NY, United States of America

18 <sup>8</sup> Health Sciences Library, University of Otago, Dunedin, New Zealand

19 <sup>9</sup> Bacterial Special Pathogens Branch, US Centers for Disease Control and Prevention,  
20 Atlanta, GA, United States of America

21 <sup>10</sup> Faculty of Veterinary Medicine, University of Zagreb

22 <sup>11</sup> Kilimanjaro Christian Medical University College, Tumaini University, Moshi, Tanzania

23 <sup>12</sup> School of Veterinary Medicine, Ross University, St Kitts

24 <sup>13</sup> Federal Scientific Center of East Asia Terrestrial Biodiversity, FEB Russian Academy of  
25 Sciences, Vladivostok, Russia

### 26 27 **\*Corresponding author:**

28 Michael J. Maze, [Michael.maze@otago.ac.nz](mailto:Michael.maze@otago.ac.nz)

29 Address: Department of Medicine

30 University of Otago Christchurch

31 2 Riccarton Avenue

32 Christchurch 8011

33 New Zealand

34

35 ^Contributed equally

36

37 **Abstract**

38 **Objectives:** *Leptospira*, the spirochaete causing leptospirosis, can be classified into >250  
39 antigenically distinct serovars. Although knowledge of the animal host species and  
40 geographic distribution of *Leptospira* serovars is critical to understand the human and  
41 animal epidemiology of leptospirosis, currently data are fragmented. We aimed to  
42 systematically review the literature on animal host species and geographic distribution of  
43 *Leptospira* serovars to examine associations between serovars with animal host species and  
44 regions, and to identify geographic regions in need of study.

45 **Methods:** Nine library databases were searched from inception through 9 March 2023 using  
46 keywords including *Leptospira*, animal, and a list of serovars. We sought reports of  
47 detection of *Leptospira*, from any animal, characterized by cross agglutinin absorption test,  
48 monoclonal antibody typing, serum factor analysis, or pulsed-field gel electrophoresis to  
49 identify the serovar.

50 **Results:** We included 409 reports, published from 1927 through 2022, yielding data on 154  
51 *Leptospira* serovars. The reports included data from 66 (26.5%) of 249 countries. Detections  
52 were from 144 animal host species including 135 (93.8%) from the class Mammalia, 5 (3.5%)  
53 from Amphibia, 3 (2.1%) from Reptilia, and 1 (0.7%) from Arachnida. Across the animal host  
54 species, *Leptospira* serovars that were detected in the largest number of animal species  
55 included Grippotyphosa (n=39), Icterohaemorrhagiae (n=29), Pomona (n=28), Australis  
56 (n=25), and Ballum (n=25). Of serovars, 76 were detected in a single animal host species. We  
57 created an online database to identify animal host species for each serovar by country.

58 **Conclusions:** We found that many countries have few or no *Leptospira* serovars detected  
59 from animal host species and that many serovars were detected from a single animal  
60 species. Our study highlights the importance of efforts to identify animal host species of  
61 leptospirosis, especially in places with a high incidence of human leptospirosis. We provide  
62 an updated resource for leptospirosis researchers.

63 Key words: *Leptospira*; serovar; animals; systematic review; epidemiology

64

65 **Conflict of interest statement**

66 The authors declare that they have no known competing financial interests or personal  
67 relationships that could have appeared to influence the work reported in this paper.

68

69 **Funding statement**

70 This research was supported by the joint US National Institutes of Health  
71 (NIH:[www.nih.gov](http://www.nih.gov))-National Science Foundation (NSF:[www.nsf.gov](http://www.nsf.gov)) Ecology of Infectious  
72 Disease program (R01TW009237) and the Research Councils UK, Department for  
73 International Development (UK) and UK Biotechnology and Biological Sciences Research  
74 Council (BBSRC:[www.bbsrc.ac.uk](http://www.bbsrc.ac.uk)) (grant numbers BB/J010367/1, BB/L018926, BB/L017679,  
75 BB/L018845). MJM received support from University of Otago scholarships: the Prof. Sandy  
76 Smith Memorial Scholarship, the Frances G. Cotter Scholarship and the MacGibbon Travel  
77 Fellowship. SCG and MPR received support from National Institutes of Health Research  
78 Training Grants (R25 TW009337 and R25 TW009343) funded by the Fogarty International  
79 Center and the National Institute of Mental Health. KJA received support from the  
80 Wellcome Trust ([www.wellcome.ac.uk](http://www.wellcome.ac.uk))(096400/Z/11/Z). MPR and JAC received support  
81 from a US National Institutes of Health National Institute for Allergy and Infectious grant  
82 (R01 AI121378). NNH received support from the EU Horizon 2020 research and innovation  
83 programme under the project Vacc-iNTS (grant agreement number 815439). The funders  
84 had no role in study design, data collection and analysis, decision to publish, or preparation  
85 of the manuscript.

## 86 Introduction

87 Leptospirosis is a widespread zoonotic disease caused by bacteria from the genus  
88 *Leptospira*, which can infect and cause disease in both animals and humans.(1) *Leptospira*  
89 can be antigenically subdivided into >250 serovars that can be grouped into 30  
90 serogroups.(2, 3) The antigenic classification into serovars is distinct from genomic  
91 classification systems of species or sequence type with imperfect overlap.(4)

92

93 Although *Leptospira* detections have been described in a large range of animal host species  
94 including mammals, reptiles, and amphibians,(5, 6) *Leptospira* spp. serovars (hereafter  
95 shortened as serovars) are thought to vary in their degree of adaptation to animal species.  
96 In some animal hosts, certain serovars may cause disease and establish chronic infection in  
97 which *Leptospira* persist in the renal and reproductive tracts and produce prolonged genito-  
98 urinary shedding. Some host-adapted serovars have their reservoir in specific animal host  
99 species, for instance serovar Icterohaemorrhagiae in *Rattus* species, and serovar Hardjo in  
100 *Bos taurus* (cattle).(6, 7)

101

102 Human *Leptospira* infection occurs through either direct contact with an infected animal or  
103 contact with soil or water contaminated by the urine of an infected animal.(8) *Leptospira*  
104 infection is responsible for >1 million human illnesses and 59,000 human deaths annually.(9)  
105 High incidence of leptospirosis is observed in tropical regions, urban slum environments, or  
106 following flooding. Because *Leptospira* are rarely isolated in culture and uncommonly  
107 detected using molecular methods from human samples, serology retains a critical role in  
108 the diagnosis of human leptospirosis. Serology can identify infecting *Leptospira* to the  
109 serogroup level which could aid to identify possible animal species as source of the human  
110 infection. Knowledge of local serogroups also informs the serovar composition of  
111 microscopic agglutination testing (MAT) antigen panels for locations.(10)

112

113 Knowledge of infecting serovar may have clinical implications as, although unconfirmed,  
114 there is some evidence that different serovars cause varied disease severity.(11)

115 Understanding the animal host range and geographic distribution of serovars is essential  
116 during epidemiologic investigations to identify local animal hosts of serovars infecting  
117 people. Such information can subsequently inform control, potentially through diverse

118 applications such as livestock vaccine composition, or rodent control programmes.(12)  
119 Conversely, gaps in our understanding of geographic and animal host distribution can impair  
120 control efforts when important host species are unrecognized.

121

122 To the best of our knowledge, the ‘Leptospiral serotype distribution lists’ in 1966,(13) and  
123 the update in 1975 (14) were the last publications that systematically documented the  
124 animal host range and geographic distribution of serovars. There has since been  
125 considerable research on leptospirosis, with developments in classification, and recognition  
126 of new serovars.(4) Further, the development of systematic review methods may identify  
127 additional reports prior to 1975 that were not included in the historic distribution lists.

128 Although recent systematic reviews have focused on specific regions or animals,(15-17) a  
129 comprehensive and updated resource documenting the animal host range of serovars is  
130 lacking. Therefore, we aimed to synthesize the literature on animal host species and  
131 geographic distribution of *Leptospira* serovars to (i) examine associations between serovars  
132 with animal host species and regions, (ii) identify geographic regions in need of study, and  
133 (iii) make data available through a curated online database.

134

## 135 **Methods**

136 We undertook a systematic review to identify all reports of *Leptospira* spp. identified to the  
137 serovar level detected in animal hosts. Our review followed Preferred Reporting Items for  
138 Systematic Reviews and Meta-Analyses (PRISMA) guidelines.(18) Although the International  
139 Prospective Register of Systematic Reviews (PROSPERO)(19) recently has allowed  
140 registration of systematic reviews of animal studies, this was not available at the start of our  
141 study in 2015. We searched nine databases: BIOSIS; CAB abstracts, including Aquaculture  
142 Compendium, CABI Full Text, Global Health and Leisure Tourism; Ovid Medline; PubMed;  
143 Proquest Agricultural Science Collection; Scopus; Web of Science; Wildlife and Ecology  
144 Studies Worldwide; and Zoological Record. Key search terms included ‘animal’, ‘*Leptospira*’,  
145 ‘serovar’, and a list of serovars (Text S1). A clinical librarian (SG) searched each database 28-  
146 31 August 2015. The search was updated on 9 March 2023. Our search was not limited by  
147 year, publication type, or language. In addition, we searched the Amsterdam Medical Centre  
148 *Leptospira* library for additional articles listed for reference strain provenance.(3)

149

150 We included papers that reported *Leptospira* infection in an animal host, detected by  
151 culture or molecular testing, in which *Leptospira* was characterized to the serovar level by  
152 an acceptable method. Acceptable methods for identifying serovar included cross agglutinin  
153 absorption test (CAAT), monoclonal antibody typing, serum factor analysis, and pulsed-field  
154 gel electrophoresis (PFGE).(20-22) We included reports where typing methods were not  
155 explicitly stated but were performed at a reference laboratory and could be inferred to use  
156 the acceptable methods. We included only papers in which the common or scientific name  
157 of the animal was provided. We excluded papers in which animals had been experimentally  
158 infected and in which the isolate was not characterized to the serovar level.

159

160 First, a single author (MJM or NNH) reviewed all titles and abstracts for eligibility. For  
161 reports that passed abstract and title review, two independent reviewers (MJM and one of  
162 BC, ED, JH, KC, KS, MC, MPR, NNH, NS, SCG) reviewed the full-text. Final decision on  
163 eligibility was resolved through consensus or by decision of a third reviewer (JAC).

164

#### 165 **Data abstraction**

166 Data were abstracted into the database Airtable (Airtable, San Francisco, CA, United States)  
167 by MJM or NNH. We recorded: the period of sample collection; common and scientific name  
168 of the infected animal; country, number, age, and health status of the infected animal; the  
169 biologic sample from which *Leptospira* was detected; methods used for *Leptospira* detection  
170 and serovar determination; and serovar. For detections of serovar Hardjo, we also collected  
171 the subtype as Bovis, Prajitno, or not determined.

172

173 Publication year was grouped into 25-year periods. Geographic region was determined to  
174 the country level as defined by the United Nations (UN) and countries were grouped  
175 according to UN region and subregion.(23) We used the Integrated Taxonomic Information  
176 System to update and correct animal host scientific names that had changed from historic  
177 publications.(24) We inferred animal scientific names to either the genus or species level  
178 from common names for livestock species (e.g., *Bos taurus* for cattle), and for animal  
179 common names that described a single genus or species. Subsequently, all animals were

180 grouped by animal order and animal class. The serogroup to which each serovar belonged  
181 was determined from existing reference lists.(3, 25)

182

### 183 **Data analysis**

184 First, we described the publication year, country, and methods for serovar determination of  
185 the included reports. Second, we described the number of reported serovars and the  
186 number of unique animal host species with detected serovars. Third, we evaluated the  
187 animal host species range of detected serovars. For each serovar, we aggregated the  
188 number of detections by animal host identified to genus, species and order level, and  
189 visualised the serovar distribution by animal hosts using heat maps.

190

191 For the geographical distribution of serovar detections, we described the number of unique  
192 serovar detections by UN region and subregion. For each UN region and subregion, we  
193 counted the number of reports of animal detections per serovar. In addition, we counted  
194 the serovars that were detected in each UN region, and the serovars that were detected in a  
195 single region. The analysis of the geographical distribution of serovars were repeated for the  
196 three animal host orders with the largest number of reports.

197

198 Among countries with an estimated incidence of human leptospirosis >50 cases per 100,000  
199 people,(9) we counted the number of reports of serotyped *Leptospira* detected in animal  
200 host species.

201

202 We generated summary tables of abstracted data of serovar detections per animal host  
203 species and geographic area, grouped by serogroup. In addition to tables, we developed an  
204 online searchable database named for Dr. Leopold Kirschner,(26, 27) a prominent  
205 leptospirosis researcher who worked at the University of Otago. Data analyses were  
206 performed in R version 4.2.

### 207 **Results**

208 We identified 11,173 unique reports (Figure 1), with 1,862 (17.7%) included for full-text  
209 review after title and abstract screening. We completed full-text review of 1,697 (91.1%)  
210 reports, could not locate 79 (4.2%) reports, and were unable to translate 86 (4.6%) (Table



211 S2, Text S3). Analysis included 409 reports: thirteen (3.2%) reports were published from  
212 1927-1950, 158 (38.6%) from 1951-1975, 160 (39.1%) from 1976-2000, and 78 (19.1%) from  
213 2001-2022 (Figure S5). For the reported methods of serovar detection, 265 (64.8%) reports  
214 used CAAT, 61 (14.9%) used monoclonal antibodies, 42 (10.3%) used PFGE, and 14 (3.4%)  
215 used serum factor analysis. For 66 (16.1%) reports, serovar detection was inferred to be  
216 performed by acceptable techniques at a reference laboratory. Multiple methods were used  
217 in 34 (8.1%) reports (Table S6).

218

### 219 **Serovar detections across animal host species**

220 The median (IQR) number of individual animal hosts contributing serotyped isolates was 4  
221 (1-13) across 366 reports with available data. Overall, the 409 reports yielded data on 144  
222 different animal hosts for which genus and species were identifiable, and an additional 6  
223 animal hosts for which only the animal order could be identified. Among the 144 reported  
224 animal host species, 135 (93.8%) were from the class Mammalia, 5 (3.5%) from Amphibia, 3  
225 (2.1%) from Reptilia, and 1 (0.7%) from Arachnida. Of the 16 identified animal host orders,  
226 Rodentia (e.g., rats) were described in 186 (45.5%) reports, Artiodactyla (e.g., cattle) in 148  
227 reports (36.2%), Carnivora (e.g., dog) in 85 (20.8%) reports, Didelphimorphia (e.g., opossum)  
228 in 24 (5.9%) reports, and Eulipotyphla (e.g., shrew) in 19 (4.6%) reports. Other animal host  
229 orders are shown in Table S7. Animal age and animal health status were not provided, in  
230 293 (71.6%) and 295 (72.1%) reports, respectively (Table S8).

231

232 Among the 409 reports, the median (IQR) number of detected serovars was 1 (1-2). Overall,  
233 154 different serovars were reported from 25 serogroups. Five serovars could not be  
234 classified to the serogroup level. Serovars that were most frequently reported included  
235 Icterohaemorrhagiae (n=63), Pomona (n=61), Hardjo (n=54), Canicola (n=51), Grippotyphosa  
236 (n=48), and Ballum (n=40) (Figure 2A). Among 53 reports that detected serovar Hardjo, 11  
237 included serovar Hardjo subtype Bovis, 6 included serovar Hardjo subtype Prajitno, and in  
238 42 Hardjo subtype was not further determined. Across 144 animal host species with an  
239 identifiable genus and species, the serovars detected in the largest number of different  
240 animal species included Grippotyphosa (n=39), Icterohaemorrhagiae (n=29), Pomona  
241 (n=28), Australis (n=25), and Ballum (n=25) (Figure 2B). Of serovars, 76 were detected in one  
242 animal host species, and 32 serovars in two animal host species. Among animal host species,

243 the largest number of serovars were detected in *Bos taurus* (n=43), *Rattus rattus* (n=30),  
244 *Mus musculus* (n=23), *Sus scrofa* (n=23), *Canis lupus* (n=21), and *Rattus norvegicus* (n=20)  
245 (Figure S8).

246

247 The number of detected serovars ranged from 1 through 90 across the 16 animal host  
248 orders: 90 serovars in Rodentia, 58 in Artiodactyla, 34 in Carnivora, 31 in Didelphimorphia,  
249 17 in Eulipotyphla, and 10 or less serovars in the other 11 animal host orders (Figure 3).

250 Serovar Grippotyphosa was detected in 10 animal host orders. 95 serovars were detected in  
251 a single animal host order, and 33 serovars in two animal host orders. The median (IQR)  
252 number of animal host orders in which the remaining 25 serovars were detected was 4 (3-  
253 5).

254

#### 255 **Serovar geographical distribution**

256 Of 409 included reports, 28 (6.9%) were from Africa, 169 (41.3%) from the Americas, 90  
257 (22.0%) from Asia, 103 (25.2%) from Europe, 23 (5.6%) from Oceania, and none from  
258 Antarctica (Table 1, Figure S4). UN subregions lacking reported data were Middle Africa and  
259 Micronesia. The reports included data from 66 (26.5%) of 249 countries, including 9 (15.0%)  
260 of 60 countries in Africa, 17 (29.8%) of 57 countries in the Americas, 15 (30.0%) of 50  
261 countries in Asia, 21 (40.4%) of 52 countries in Europe, and 4 (13.8%) of 29 countries in  
262 Oceania (Table 1). The number of detected serovars varied by region: 29 serovars were  
263 detected in Africa, 86 serovars in the Americas, 54 serovars in Asia, 36 serovars in Europe,  
264 and 20 serovars in Oceania (Table 1). Serovars detected at least once from each of the five  
265 UN regions included serovars Australis, Ballum, Grippotyphosa, Hardjo, and Pomona. Of 117  
266 serovars that were detected in a single UN region, 13 (11.1%) were detected in Africa, 60  
267 (51.3%) in the Americas, 27 (23.1%) in Asia, 10 (8.5%) in Europe, and 7 (5.9%) in Oceania.

268

269 Of 27 countries with an estimated annual incidence of leptospirosis >50 per 100,000  
270 people, (9) 6 (22.2%) countries had available reports of *Leptospira* detection from an animal  
271 host species and 21 (77.8%) had no report. Across the six countries with reports, the median  
272 (IQR) number of reports was 2 (1-4) (Table S9). Of the 21 countries with no reports, five  
273 (Comoros, Mauritius, Rwanda, Sao Tome and Principe, Seychelles) were in Africa, five  
274 (Antigua and Barbuda, Jamaica, Saint Kitts and Nevis, Saint Lucia, Saint Vincent, and the

275 Grenadines) in the Americas, two (Maldives, Timor-Leste) in Asia, and nine (Fiji, Kiribati,  
276 Federal states of Micronesia, Palau, Samoa, Solomon Islands, Tonga, Tuvalu, Vanuatu) in  
277 Oceania.

278

279 The largest number of reports were on animal host order Rodentia, Artiodactyla, and  
280 Carnivora. Of 90 serovars detected in hosts of the order Rodentia (Figure 4), serovars  
281 detected at least once from each UN region were serovars Australis, Ballum, and  
282 Grippotyphosa. Of 58 serovars detected in hosts of order Artiodactyla, serovars detected at  
283 least once from each UN region included serovars Grippotyphosa, Hardjo, and Pomona. The  
284 distribution of serovar Hardjo subtypes among Artiodactyla order hosts was subtype Bovis  
285 in four regions (Africa, the Americas, Europe, and Oceania), subtype Prajitno in two regions  
286 (Europe, the Americas), and subtype not determined in all five regions. Of 34 serovars  
287 detected in hosts of order Carnivora, no serovars were detected in all five UN regions.

288

289 Serogroups from which all serovars were isolated in animal hosts from a single UN  
290 subregion included serogroups Cynopteri and Iquitos reported only from South America  
291 (Peru), and serogroup Hurstbridge reported only from Australia and New Zealand  
292 (Australia).

293

#### 294 **Online database**

295 The animal host species and country of origin for serovars are shown in Table S10 and the  
296 curated online database can be found at  
297 <https://www.otago.ac.nz/internationalhealth/research/leptospirosis/> [this is a pilot version,  
298 the final version will be available upon publication]. The database is searchable by serovar,  
299 serogroup, country, animal scientific name, and animal common name.

#### 300 **Discussion**

301 With this systematic review, we synthesize the literature on *Leptospira* serovar isolations  
302 and detections in animal host species and make these data available through a curated  
303 online database. This updated *Leptospira* serovar database on serovar animal host range  
304 could aid investigations of and response to leptospirosis outbreaks,(10) and inform  
305 leptospirosis control programs by suggesting which animal host species might be the source

306 of infection. For example, in a human population in rural Rwanda, Ntabanganhiman *et al.*  
307 found a high prevalence of *Leptospira* in human samples.(28) Of these, MAT results  
308 suggested that most infections were caused by serogroup *Icterohaemorrhagiae*, but the  
309 potential animal source of infection was unclear and there are not typed *Leptospira* isolates  
310 from Rwanda. Our systematic review found that serovars from the *Icterohaemorrhagiae*  
311 serogroup have been isolated from pouched rats and cattle in countries neighbouring  
312 Rwanda, providing hypotheses regarding possible host animal sources. (29-32) In addition,  
313 our database may facilitate detection of cases of human leptospirosis by informing serovar  
314 composition of MAT antigen panels.

315

316 Our systematic review used a rigorous process and included published reports that were  
317 indexed in the searched databases and used acceptable methods for serovar determination.  
318 We identified serovar detections in animal hosts in 66 countries. Previous reviews in 1966  
319 and the update in 1975 reported detections in animals in 71 countries respectively, but  
320 were based on unpublished data and personal communications.(13, 14) Since country  
321 borders and country names have changed over the period in which included reports were  
322 published, a comparison of number of countries was not possible.

323

324 Overall, *Leptospira* detections were reported from a small proportion of all known animal  
325 species. Serotyped *Leptospira* detections were predominantly from mammals, but among  
326 mammals, we found *Leptospira* detections from <2% of the approximately 6,000 currently  
327 described mammalian species.(24) There were also reports of detection from reptiles and  
328 amphibians, and one report of detection from arachnids. We did not identify reports of  
329 detection of adequately typed *Leptospira* from birds or fish.(33, 34) Some *Leptospira*  
330 serovars were detected from a limited number of animal species whereas others were  
331 detected from a diversity of animal species. For instance, serovar Grippotyphosa showed  
332 the largest host range with detections across 39 different animal host species from 10  
333 animal host orders. On the other hand, some frequently reported serovars were detected in  
334 one or two animal species. For example, serovar Hardjo was mainly detected in cattle, and  
335 serovar Canicola in dogs. More than 100 serovars were detected in only one or two animal  
336 species. It is possible that human *Leptospira* infection with a serovar that has a narrow host  
337 range implicates the likely source of infection. However, variation in the number of serovar

338 detections by animal species was potentially influenced by differences in host susceptibility,  
339 and lack of research on many animal species. Our results should be interpreted with caution  
340 and the lack of identification of a serovar from any particular animal species should not be  
341 interpreted as an inability to infect that species.

342

343 We have confirmed that *Leptospira* are geographically widespread, with typed isolates  
344 detected from animal hosts in every continent except Antarctica. Despite this, there are  
345 many countries with few or no serovar detections, including countries in Africa and Oceania  
346 thought to have a high incidence of human leptospirosis.(9) It is likely that the absence of  
347 information reflects a lack of research rather than an absence of animal *Leptospira* infection  
348 in those countries. We note that many countries with a high incidence of human  
349 leptospirosis that lacked data on *Leptospira* detection from animal hosts are island  
350 nations.(9, 15) Importantly, each island might have local variation in factors influencing  
351 leptospirosis epidemiology including biodiversity, ecosystem, and human-animal  
352 interactions.

353

354 There were several serovars and serogroups reported from a limited geographic range,  
355 while others had a broader geographic distribution. An example of a serovar with a limited  
356 geographic range is serovar Saxkoebing, detected exclusively in Europe. However, as it was  
357 detected in mice, voles and dogs, which are widespread in other regions, it is possible that  
358 the geographic range of serovar Saxkoebing is wider than what is currently reported. On the  
359 other hand, serovars Australis, Ballum, Grippytyphosa, Hardjo, and Pomona were identified  
360 in all five UN regions, suggesting wider geographic distribution.

361

362 Of the >250 serovars of *Leptospira* recorded,(20) we identified reports of detection of 154  
363 serovars from animal hosts. Data on detection from an animal species are lacking for many  
364 serovars. For many others, we found just a single report of detection in an animal species.  
365 Potential explanations include highly localized epidemiology of particular serovars,  
366 occasional exposure of animals to serovars for which the environment acts as a reservoir,  
367 variation in host range for some serovars, or insufficient research and reporting of animal  
368 *Leptospira* infection in many areas.

369

370 Our study has some limitations. We cannot establish if the absence of a serovar from a  
371 location or animal is a result of a report being missed by our systematic review process; or  
372 not being sought, detected, or reported by researchers; or not being present. *Leptospira*  
373 culture is insensitive and shedding of bacteria by host animals can be intermittent.(35, 36)  
374 Loss of provenance of isolates is also a limitation of our study, as detailed typing of isolates  
375 by reference laboratories may be performed without citing the origin of the isolate. It is also  
376 likely that there has been misclassification of reported isolates, particularly as serovar  
377 classification has undergone several major changes, with the alteration in the definition of  
378 serovar, and renaming of serovars.(4, 20, 37) Early serotype determinations were not  
379 standardized and the reference standard for most of the 20<sup>th</sup> century, CAAT, is a complex  
380 test to perform. As evidence of these difficulties, we identified published reports in which  
381 authors identified errors in their own earlier classification of isolates.(38, 39) Lastly, we did  
382 not perform a bias assessment of the included reports as we focused solely on serovar  
383 detections of animal hosts and only selected reports that used appropriate methods of  
384 serovar detections.

385

## 386 **Conclusion**

387 In conclusion, we have performed a systematic review on *Leptospira* serovar isolations and  
388 detections from animal host species worldwide using contemporary systematic review  
389 methods and made them available in a curated publicly accessible database. In so doing, we  
390 have identified that there are few published data on *Leptospira* serovars from animal host  
391 species from multiple countries considered to have a high incidence of human leptospirosis,  
392 especially those in Africa and Oceania. We anticipate that our updated review and database  
393 will provide a useful resource for public health practitioners and leptospirosis researchers,  
394 and inform efforts to control and prevent leptospirosis.

395

## 396 **Acknowledgments**

397 The authors would like to thank University of Otago librarians, particularly Jacinda Boivin,  
398 Jessie Neilson, Susan Pennock, Dierdre O'Neill, Jan Wyllie and Tanya Low; as well as  
399 colleagues at libraries around the world who helped collect the full-text articles for review.  
400 The authors would also like to thank Gary Niemi, Geoffrey Hughes, Louis Prior, and Kevin

401 Maeer, Applications Development Team, Information Systems Group, ITS, University of  
402 Otago, for development of the online database.

403

#### 404 **Disclaimer**

405 The findings and conclusions in this report are those of the authors and do not necessarily  
406 represent the official position of the US Centers for Disease Control and Prevention. Use of  
407 trade names and commercial sources is for identification only and does not imply  
408 endorsement by the US Department of Health and Human Services or the Centers for  
409 Disease Control and Prevention.

410

#### 411 **Data availability statement**

412 Data underlying the study can be accessed in the curated online database

413 (<https://www.otago.ac.nz/internationalhealth/research/leptospirosis/>).

414 For other data requests or questions contact the corresponding author:

415 [Michael.maze@otago.ac.nz](mailto:Michael.maze@otago.ac.nz).

416

#### **Figure captions**

**Figure 1** – Flow diagram of the article review process for the systematic review of reports on *Leptospira* serovar isolations and detections in animal host species published 1927-2022

Legend: \*Multiple reasons for exclusion possible

**Figure 2** – Frequency of number of reports per *Leptospira* serovar detected from animal hosts, per UN region (A), and frequency of unique animal host species in which each *Leptospira* serovar was detected (B) in the systematic review of reports on *Leptospira* serovar isolations and detections in animal host species published 1927-2022

Legend: A: Reports that described different regions are counted multiple times. Serovar Pomona was described in 62 reports; serovar Hardjo was described in 53 reports.

**Figure 3** – Heat map of detected *Leptospira* serovars in 16 animal host orders in the systematic review of reports on *Leptospira* serovar isolations and detections in animal host species published 1927-2022

**Figure 4** – Frequency of number of reports that detected *Leptospira* serovars per UN region, stratified for Rodentia (A), Artiodactyla (B), and Carnivora (C) in the systematic review of reports on *Leptospira* serovar isolations and detections in animal host species published 1927-2022

Legend: \*Serovars that were detected in only one report are not shown.

### Supporting information captions

**Text S1.** Searches performed during the systematic review of reports on *Leptospira* serovar isolations and detections in animal host species, 9 March 2023

**Table S2.** Publication language of reports selected for full-text review during the systematic review of reports on *Leptospira* serovar isolations and detections in animal **host species**

**Text S3.** Reports identified until 9 March 2023 which met criteria for full-text review but could not be reviewed in the systematic review of reports on *Leptospira* serovar isolations and detections in animal host species

**Figure S4.** Global frequency of number of reports per country identified in the systematic review of reports on *Leptospira* serovar isolations and detections in animal host species published 1927-2022

**Figure S5.** Histogram of publication years of reports in the systematic review of reports on *Leptospira* serovar isolations and detections in animal host species published 1927-2022

**Table S6.** Characteristics of reports included in the systematic review of reports on *Leptospira* serovar isolations and detections in animal host species published 1927-2022

**Table S7.** Number of reports of *Leptospira* serovar detected per animal host order in the systematic review of reports on *Leptospira* serovar isolations and detections in animal host species published 1927-2022

**Figure S8.** Heat map of detected *Leptospira* serovar in 16 animal host orders per animal host genus in the systematic review of reports on *Leptospira* serovar isolations and detections in animal host species published 1927-2022 (409 reports) (A, Rodentia; B, Artiodactyla; C, Carnivora; D, Didelphimorphia; E, Eulipotyphla; F, Perissodactyla; G, Anura; H, Peramelemorphia; I, Cingulata; J, Squamata; K, Chiroptera; L, 5 animal orders with 1 serovar (Diprotodontia, Ixodidae, Lagomorpha, Primates, Testudines)

**Table S9.** Table of estimated human leptospirosis morbidity and mortality by Costa *et al.* and number of reports, number of serovars, and number of animal hosts identified in the



systematic review of reports on *Leptospira* serovar isolations and detections in animal host species published 1927-2022

**Table S10.** Summary tables of *Leptospira* serovar isolations and detections in animal host species published 1927-2022, sorted by serogroup, serovar, and animal genus and species

**Table S11.** PRISMA checklist

**Table 1 – Geographical distribution and animal host range of reports included in the systematic review for the isolations and detections of *Leptospira* serovars, published 1927-2022**

UN region and subregions <sup>^</sup>	Number of reports, % of total reports*	Number of countries/total number of countries, % ±	Number of unique serovars	Serovars with rank order 1, 2 or 3 for number of reports, ordered by frequency (number of reports)	Number of unique animal orders	Animal host orders with rank order 1, 2 or 3 for number of reports, ordered by frequency (number of reports)
	n (%)	n/n (%)	n		n	
<b>Overall</b>	<b>409 (100)</b>	<b>66/249 (26.5)</b>	<b>154</b>	<b>Icterohaemorrhagiae (63); Pomona (61); Hardjo (54)</b>	<b>16</b>	<b>Rodentia (186); Artiodactyla (148); Carnivora (85)</b>
<b>Africa<sup>^</sup></b>	<b>28 (6.9)</b>	<b>9/60 (15.0)</b>	<b>29</b>	<b>Icterohaemorrhagiae (7); Grippotyphosa (6); Canicola (5)</b>	<b>4</b>	<b>Artiodactyla (17); Rodentia (12); Carnivora (3)</b>
Eastern Africa	14 (3.4)	4/22 (18.2)	22	Kenya (3); [11 serovars] (2)#	3	Artiodactyla (10); Rodentia (5); Eulipotyphla (1)
Northern Africa	6 (1.5)	3/7 (42.9)	6	Icterohaemorrhagiae (4); Grippotyphosa (3); Canicola (1); Patoc (1); Polonica (1); Pyrogenes (1)	3	Rodentia (5); Carnivora (2); Artiodactyla (1)
Southern Africa	5 (1.2)	1/5 (20.0)	4	Canicola (2); Hardjo (1); Icterohaemorrhagiae (1); Pomona (1)	3	Artiodactyla (3); Carnivora (1); Rodentia (1)
Western Africa	3 (0.7)	1/17 (5.9)	10	[10 serovars] (1)	2	Artiodactyla (3); Rodentia (1)
<b>The Americas</b>	<b>169 (41.3)</b>	<b>17/57 (29.8)</b>	<b>86</b>	<b>Pomona (43); Icterohaemorrhagiae (31); Ballum (27)</b>	<b>13</b>	<b>Rodentia (66); Artiodactyla (60); Carnivora (52)</b>
Caribbean	18 (4.4)	6/28 (21.4)	26	Copenhageni (8); Bim (5); Ballum (4); Icterohaemorrhagiae (4)	5	Rodentia (11); Carnivora (10); Anura (5)
Central America	4 (1.0)	3/8 (37.5)	24	[24 serovars] (1)#	3	Didelphimorphia (3); Rodentia (3); Carnivora (2)
Northern America	82 (20.0)	2/5 (40.0)	23	Pomona (29); Ballum (18); Hardjo (15); Icterohaemorrhagiae (15)	11	Artiodactyla (31); Carnivora (31); Rodentia (23)
Southern America	65 (15.9)	6/16 (37.5)	48	Pomona (14); Copenhageni (12); Icterohaemorrhagiae (12)	8	Rodentia (29); Artiodactyla (27); Carnivora (9)
<b>Asia</b>	<b>90 (22.0)</b>	<b>15/50 (30.0)</b>	<b>54</b>	<b>Javanica (24); Canicola (17); Australis (14)</b>	<b>7</b>	<b>Rodentia (50); Artiodactyla (24); Carnivora (19)</b>
Central Asia	1 (0.2)	1/5 (20.0)	1	Grippotyphosa (1)	1	Ixodidae (1)
Eastern Asia	25 (6.1)	3/7 (42.9)	23	Australis (5); Canicola (4); Hebdomadis (4); Icterohaemorrhagiae (4); Javanica (4); Lai (4)	4	Rodentia (16); Carnivora (6); Artiodactyla (4)
Southern Asia	22 (5.4)	5/11 (45.5)	14	Javanica (7); Canicola (4); Grippotyphosa (3)	4	Rodentia (13); Artiodactyla (7); Carnivora (4)
South-Eastern Asia	31 (7.6)	3/9 (33.3)	29	Javanica (13); Bataviae (12); Australis (8)	4	Rodentia (15); Artiodactyla (11); Carnivora (8)
Western Asia	11 (2.7)	3/18 (16.7)	11	Szwajizak (4); Ballum (3); Canicola (3); Grippotyphosa (3)	4	Rodentia (6); Eulipotyphla (4); Artiodactyla (2)
<b>Europe</b>	<b>103 (25.2)</b>	<b>21/52 (40.4)</b>	<b>36</b>	<b>Hardjo (23); Icterohaemorrhagiae (15); Bratislava (14)</b>	<b>6</b>	<b>Rodentia (48); Artiodactyla (42); Carnivora (10); Eulipotyphla</b>
Eastern Europe	29 (7.1)	7/10 (70.0)	25	Grippotyphosa (6); Pomona (5); Sejroe (5); Tarassovi (5)	5	Rodentia (20); Artiodactyla (7); Eulipotyphla (4)
Northern Europe	35 (8.6)	3/17 (17.6)	14	Hardjo (18); Bratislava (8); Muenchen (8)	5	Artiodactyla (26); Rodentia (9); Perissodactyla (5)

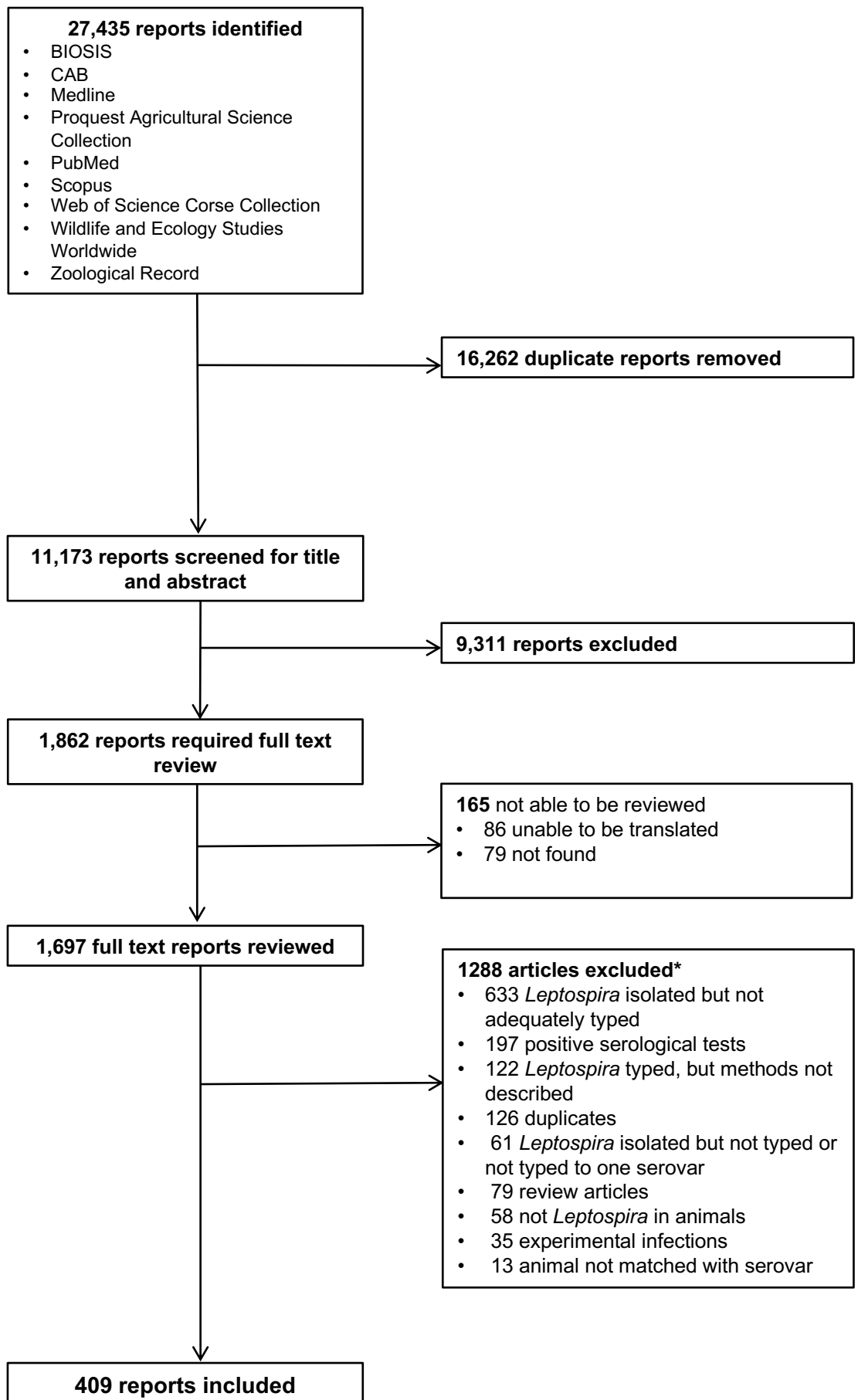
Southern Europe	20	(4.9)	4/16	(25.0)	22	Icterohaemorrhagiae (7); Mozdok (5); Arborea (4)	5	Rodentia (11); Carnivora (4); Artiodactyla (3)
Western Europe	21	(5.1)	7/9	(77.8)	15	Grippytyphosa (5); Copenhageni (4); Lora (4)	5	Rodentia (8); Artiodactyla (6); Carnivora (3); Perissodactyla (3)
<b>Oceania<sup>^</sup></b>	<b>23</b>	<b>(5.6)</b>	<b>4/29</b>	<b>(13.8)</b>	<b>20</b>	<b>Australis (5); Balcanica (5); Ballum (5)</b>	<b>6</b>	<b>Rodentia (10); Artiodactyla (9); Diprotodontia (5)</b>
Australia and New Zealand	21	(5.1)	2/6	(33.3)	19	Balcanica (5); Ballum (5); Australis (4); Hardjo (4); Tarassovi (4); Zaroni (4)	6	Artiodactyla (9); Rodentia (9); Diprotodontia (5)
Melanesia	1	(0.2)	1/5	(20.0)	1	Guidae (1)	1	Peramelemorphia (1)
Polynesia	1	(0.2)	1/10	(10.0)	1	Australis (1)	1	Rodentia (1)

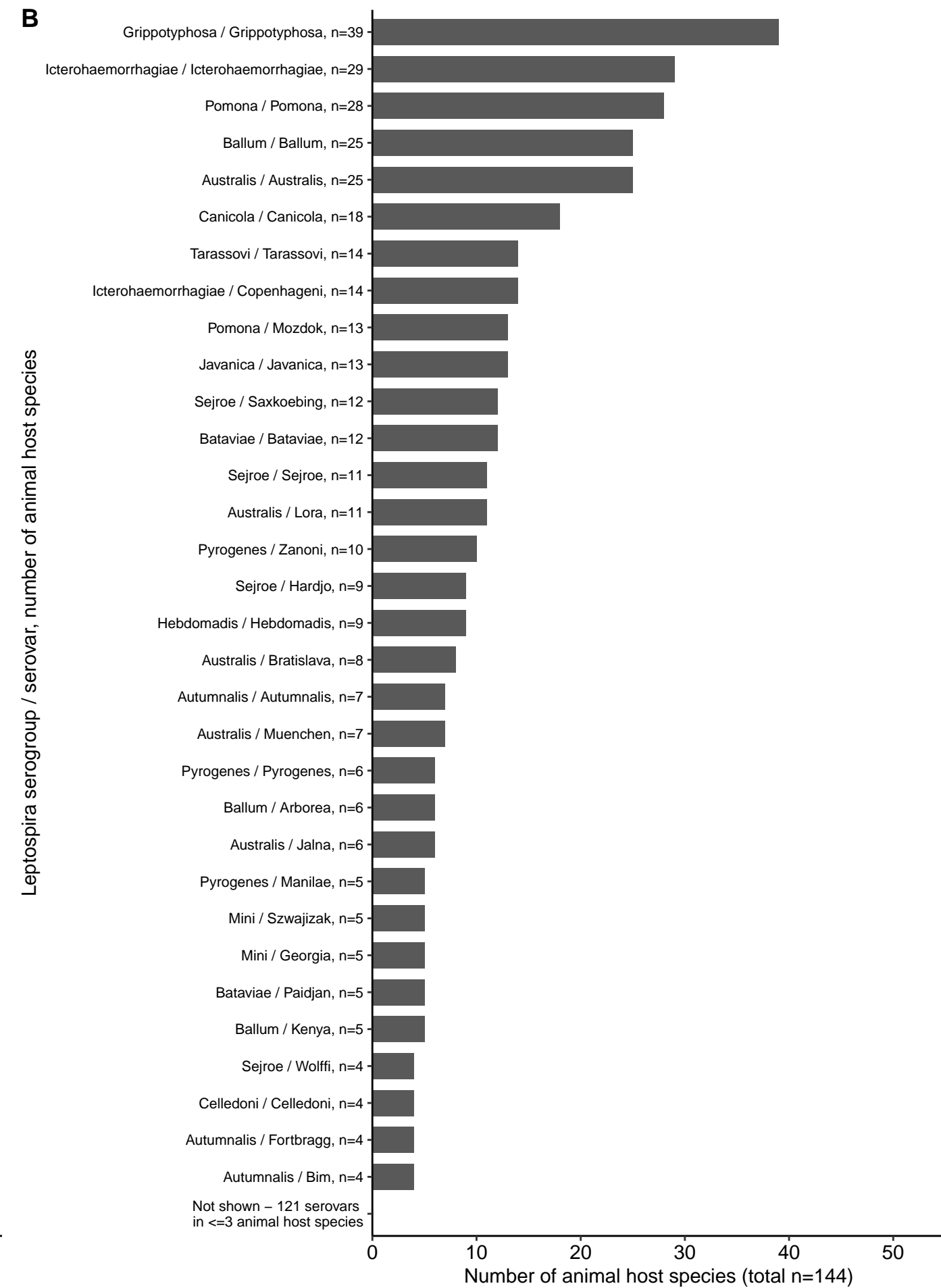
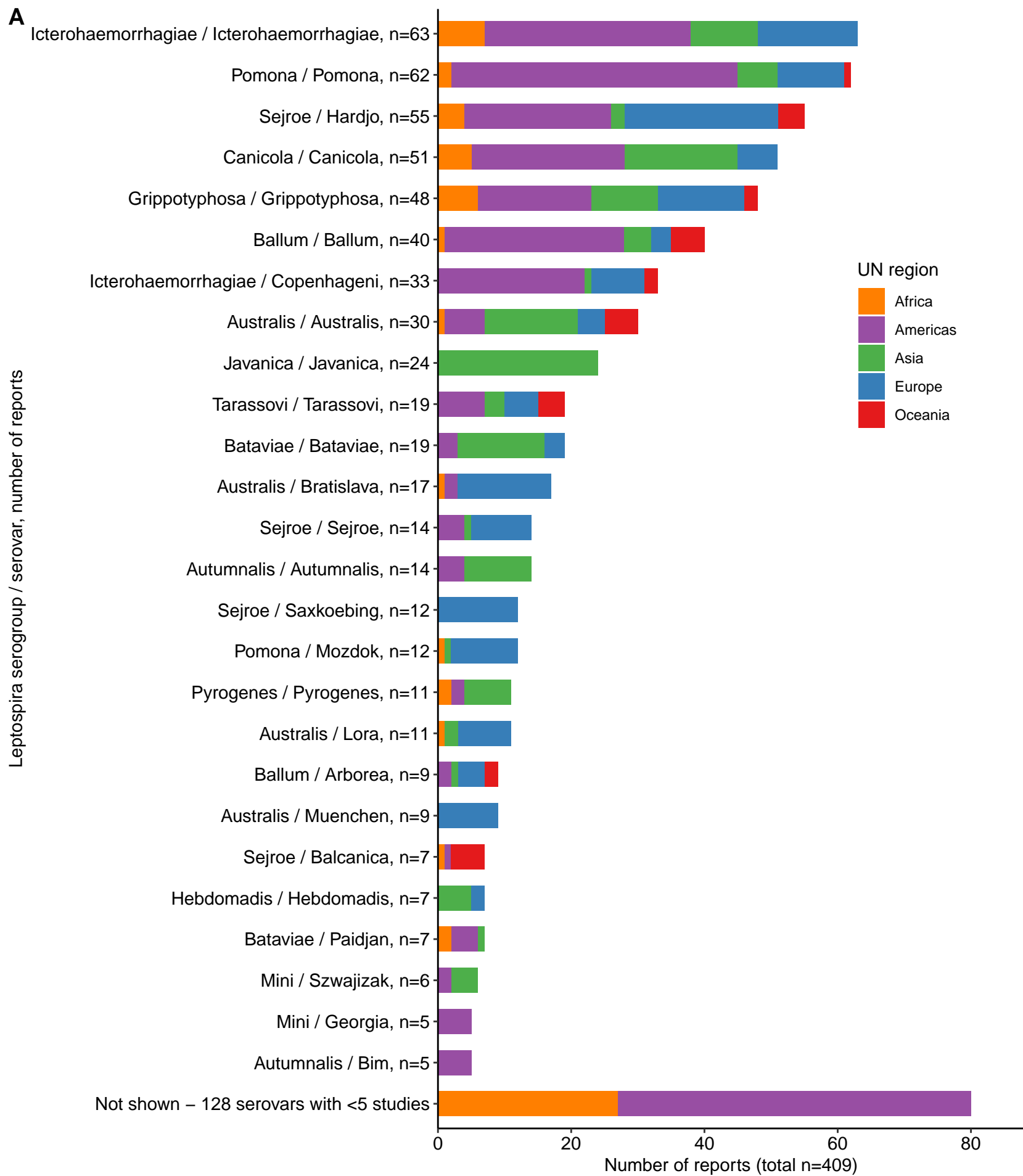
<sup>^</sup>No data reported from Middle Africa (9 countries), Micronesia (8 countries), or Antarctica (1 country). \*The number of reports exceeds the total number of reports (n=409) since some reported data from multiple regions or subregions. <sup>±</sup>Some reports included data from multiple countries. #Eastern Africa: 11 serovars that had rank order 2; Central America: 24 serovars that had rank order 1

## References

1. Adler B, Moctezuma AD. Leptospira and leptospirosis. *Veterinary Microbiology*. 2010;140(3-4):287-96.
2. Cameron CE. Leptospiral structure, physiology, and metabolism. *Current topics in microbiology and immunology*. 2015;387:21-41.
3. Amsterdam Medical Centre *Leptospira* library [Available from: <http://leptospira.amc.nl/leptospira-library/>].
4. Levett PN. Systematics of leptospiraceae. *Current topics in microbiology and immunology* 2015. p. 11-20.
5. Cilia G, Albin S, Fratini F. Insight into the epidemiology of leptospirosis: A review of *Leptospira* isolations from “unconventional” hosts. *Animals*. 2021;11(1):191.
6. Ellis WA. Animal Leptospirosis. In: Adler B, editor. *Leptospira and Leptospirosis*. *Current Topics in Microbiology and Immunology*. 387 2015. p. 99-137.
7. Bharti AR, Nally JE, Ricaldi JN, Matthias MA, Diaz MM, Lovett MA, et al. Leptospirosis: a zoonotic disease of global importance. *Lancet Infect Dis*. 2003;3(12):757-71.
8. Haake DA, Levett PN. Leptospirosis in humans. *Current topics in microbiology and immunology*. 2015;387:65-97.
9. Costa F, Hagan JE, Calcagno J, Kane M, Torgerson P, Martinez-Silveira MS, et al. Global morbidity and mortality of leptospirosis: a systematic review. *PLoS Negl Trop Dis*. 2015;9(9):e0003898.
10. Sykes JE, Reagan KL, Nally JE, Galloway RL, Haake DA. Role of Diagnostics in Epidemiology, Management, Surveillance, and Control of Leptospirosis. *Pathogens*. 2022;11(4).
11. Herrmann-Storck C, Saint Louis M, Foucand T, Lamaury I, Deloumeaux J, Baranton G, et al. Severe Leptospirosis in Hospitalized Patients, Guadeloupe. *Emerging Infectious Diseases*. 2010;16(2):331-4.
12. Zeng Z, Chen H, Xu J, Zhang H, Xu C, Fan L, et al. Characteristics of leptospirosis cases, prevention and control managements 1955–2020, Guangzhou, China. *One Health*. 2023;16:100541.
13. Galton MM. *Leptospiral serotype distribution lists according to host and geographic area*. Atlanta, Georgia, United States of America: Center for Disease Control; 1966.
14. Sulzer CR. *Leptospiral serotype distribution lists according to host and geographic area, July 1966 to July 1973*. Atlanta, GA: US Department of Health, Education, and Welfare; 1975.
15. Guernier V, Goarant C, Benschop J, Lau CL. A systematic review of human and animal leptospirosis in the Pacific Islands reveals pathogen and reservoir diversity. *PLoS Negl Trop Dis*. 2018;12(5):e0006503.
16. Browne ES, Calfe JLR, Jesus ERS, Zeppelini CG, Cremonese C, Costa F. A systematic review of the geographic distribution of pathogenic *Leptospira* serovars in the Americas, 1930-2017. *An Acad Bras Cienc*. 2022;94(3):e20201026.
17. Esteves SB, Gaeta NC, Batista JMN, Dias RA, Heinemann MB. *Leptospira* sp. infection in bats: A systematic review and meta-analysis. *Transbound Emerg Dis*. 2022;69(5):e2456-e73.
18. Moher D, Liberati A, Tetzlaff J, Altman DG, Group P. Preferred reporting items for systematic reviews and meta-analyses: the PRISMA statement. *PLoS Medicine*. 2009;6(7):e1000097.
19. PROSPERO: International prospective register of systematic reviews 2018 [Available from: <https://www.crd.york.ac.uk/prospero/>].
20. Kmety E, Dikken H. *Classification of the species Leptospira interrogans and history of its serovars*. Groningen, Netherlands: University Press Groningen; 1993.
21. Faine S, Adler B, Bolin CA, Perolat P. *Leptospira and Leptospirosis*: MediSci; 1999.
22. Guernier V, Allan KJ, Goarant C. Advances and challenges in barcoding pathogenic and environmental *Leptospira*. *Parasitology*. 2017:1-13.
23. United Nations. Standard country or area codes for statistical use (M49) [cited 2022 7/November/2022]. Available from: <https://unstats.un.org/unsd/methodology/m49/overview/>.
24. *Mammal species of the world*. 3rd ed. Wilson DE, Reeder DM, editors. Baltimore: Johns Hopkins University Press; 2005.

25. Kmetky E, Dikken H. Classification of the species *Leptospira interrogans* and history of its serovars. Groningen, Netherlands: University Press Groningen; 1993.
26. Ramadass P, Jarvis BD, Corner RJ, Penny D, Marshall RB. Genetic characterization of pathogenic *Leptospira* species by DNA hybridization. *Int J Syst Bacteriol*. 1992;42(2):215-9.
27. Whitcombe E, Maze MJ, Crump JA. Leopold Kirschner, Edward Sayers, and Neil Bruère: the initial descriptions of leptospirosis in New Zealand. *Aust N Z J Public Health*. 2020;44(1):5-7.
28. Ntabanganyimana E, Giraneza R, Dusabejambo V, Bizimana A, Hamond C, Iyamuremye A, et al. Sero-prevalence of anti-*Leptospira* antibodies and associated risk factors in rural Rwanda: A cross-sectional study. *PLOS Neglected Tropical Diseases*. 2021;15(12):e0009708.
29. Feresu SB. DNA relatedness of *Leptospira* strains isolated from beef cattle in Zimbabwe. *International Journal of Systematic Bacteriology*. 1999;49(3):1111-7.
30. Mgode GF, Machang'u RS, Goris MG, Engelbert M, Sondij S, Hartskeerl RA. New *Leptospira* serovar Sokoine of serogroup Icterohaemorrhagiae from cattle in Tanzania. *International Journal of Systematic and Evolutionary Microbiology*. 2006;56(Part 3):593-7.
31. Feresu SB, Bolin CA, Korver H. A new leptospiral serovar in the Icterohaemorrhagiae serogroup isolated from an ox in Zimbabwe. *International Journal of Systematic Bacteriology*. 1993;43(1):179-82.
32. Mgode GF, Machang'u RS, Mhamphi GG, Katakweba A, Mulungu LS, Durnez L, et al. *Leptospira* serovars for diagnosis of leptospirosis in humans and animals in Africa: common *Leptospira* isolates and reservoir hosts. *PLoS Negl Trop Dis*. 2015;9(12):e0004251.
33. Mgode GF, Mhamphi G, Katakweba A, Thomas M. *Leptospira* infections in freshwater fish in Morogoro Tanzania: a hidden public health threat. *Tanzan J Health Res*. 2014;16(2):112-7.
34. Addamiano L, Babudieri B, Bussinello E, Giusti G, Salvi A. Research and experimental studies on leptospirosis in birds. *Rendiconti dell'Istituto Superiore di Sanita*. 1960;23(5):482-96.
35. Terpstra W. Human leptospirosis: guidance for diagnosis, surveillance and control: World Health Organization; 2003.
36. Rocha BR, Narduche L, Oliveira CS, Martins G, Lilenbaum W. Molecular demonstration of intermittent shedding of *Leptospira* in cattle and sheep and its implications for control. *Ciencia Rural*. 2017;47(8).
37. Wolff JW, Broom JC. The genus *Leptospira* Noguchi, 1917; problems of classification and a suggested system based on antigenic analysis. *Doc Med Geogr Trop*. 1954;6:78-95.
38. Ferris DH, Rhoades HE, Hanson LE. The isolation of *Leptospira hyos* from a new host, *Peromyscus maniculatus*. *Cornell Vet*. 1959;49(3):344-9.
39. Ferris DH, Rhoades HE, Hanson LE, Galton MM, Mansfield ME. Research into the nidality of *Leptospira ballum* in campestral hosts including the hog-nosed snake (*Heterodon platyrhinus*). *Cornell Vet*. 1961;51(3):405-19.



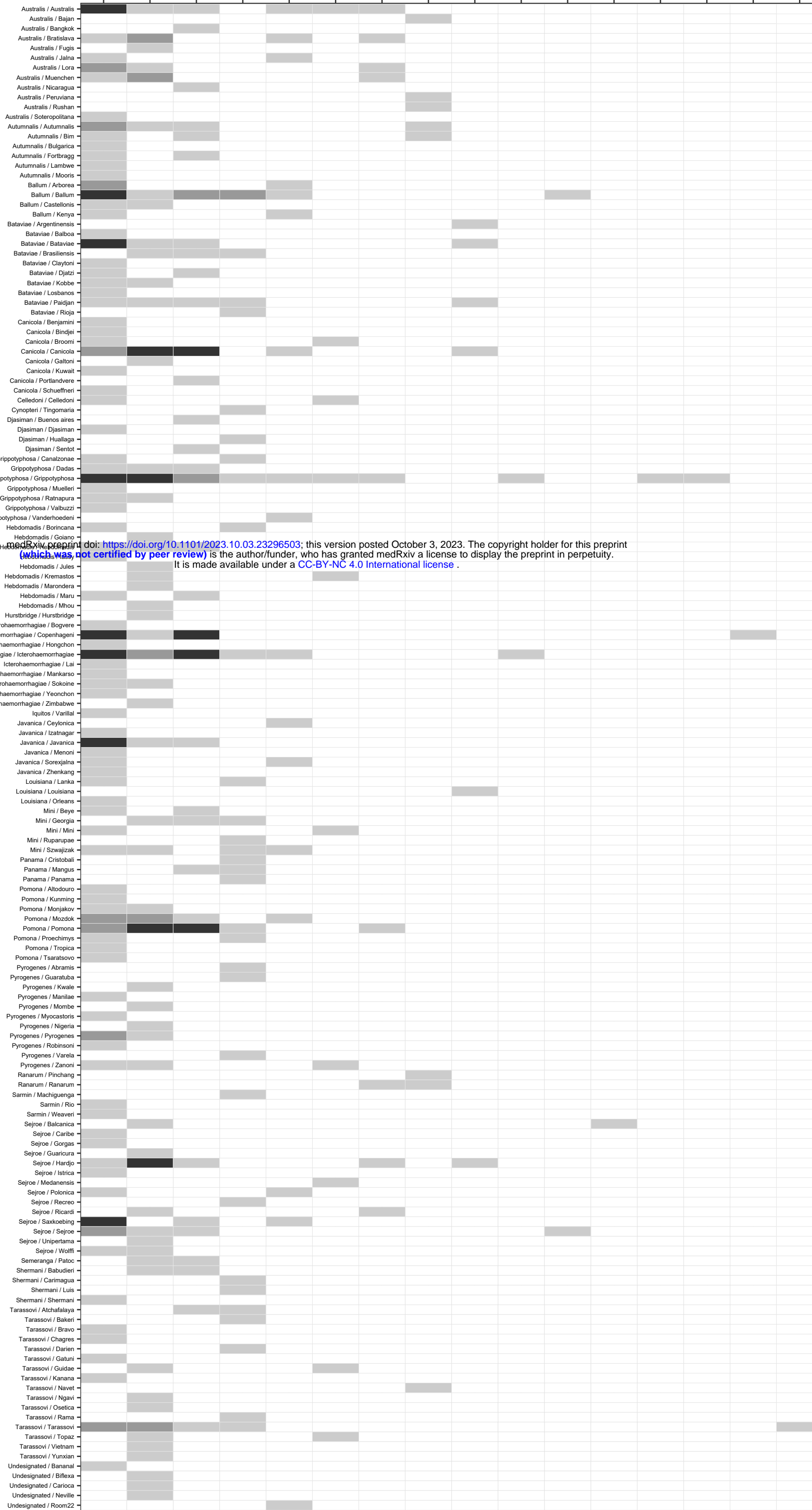


Number of reports (total n=409)



Animal host order  
(Number of Leptospira serovars per animal host order)

Rodentia n=90 Artiodactyla n=58 Carnivora n=34 Didelphimorphia n=31 Eulipotyphla n=17 Peramelemorphia n=10 Perissodactyla n=9 Anura n=8 Cingulata n=6 Chiroptera n=2 Squamata n=2 Diprotodontia n=1 Ixodidae n=1 Lagomorpha n=1 Primates n=1 Testudines n=1



medRxiv preprint doi: <https://doi.org/10.1101/2023.10.03.23296503>; this version posted October 3, 2023. The copyright holder for this preprint (which was not certified by peer review) is the author/funder, who has granted medRxiv a license to display the preprint in perpetuity. It is made available under a CC-BY-NC 4.0 International license .

Leptospira serogroup / serovar



