

1 Repeat Testing of Mpox Specimens with Late CTs Improves Detection of Potential False

2 Positive Cases

3

4 Ryan C. Shean^{1,2}, Weston C. Hymas², Jeremy Klein², Michael Pyne², David R. Hillyard^{1,2},

5 Benjamin T. Bradley^{1,2,#}

6

7 ¹Department of Pathology, University of Utah, Salt Lake City UT, USA

8 ²ARUP Laboratories, Salt Lake City, UT, USA

9

10 #Address correspondence to Ben T. Bradley, Ben.Bradley@hsc.utah.edu

11 Running Title: MPXV repeat testing improves false positive detection

12 Keywords: Monkeypox virus, mpox, MPXV, false positive, PCR

13 **Abstract**

14 The global outbreak of mpox necessitated the rapid development of clinical assays for
15 monkeypox virus detection. While the majority of mpox specimens have high viral loads with
16 corresponding early CT values, reports have indicated some specimens with late CT values can
17 represent false positive results. To mitigate this risk, the Centers for Disease Control and
18 Prevention (CDC) published an advisory recommending repeat testing of all specimens with CT
19 values ≥ 34 . However, limited experimental data was available to support this specific cutoff. In
20 this study, we examine whether a more conservative approach in which all specimens with CT
21 values ≥ 29 are repeated would improve the detection of potential false positive results.
22 Compared to the CDC algorithm, our approach identified an additional 20% (5/25) of potential
23 false positive results. To assess the impact of this cutoff on laboratory workload, we estimated
24 the expected increase in test volume and turnaround time (TAT) relative to the CDC method.
25 Using a lower repeat threshold, test volume increased by 0.7% and the mean TAT for positive
26 specimens increased by less than 15 minutes. Overall, a lower threshold than recommended by
27 the CDC for repeating late CT mpox specimens may reduce the number of false positives
28 reported while minimally impacting testing volume and TAT.

29

30 Introduction

31 Monkeypox virus (MPXV) is a double stranded DNA virus in the *Orthopoxvirus* genus,
32 which also includes variola virus, the causative agent of smallpox. In July 2022 the World Health
33 Organization declared a Public Health Emergency of International Concern due to an outbreak of
34 MPXV with sustained human-to-human transmission in multiple non-endemic countries¹. At the
35 beginning of the outbreak, testing capacity in the United States was limited to the Centers for
36 Disease Control and Prevention (CDC) and members of the Laboratory Response Network. In
37 June 2022, clinical laboratories, using the assay developed by the CDC, began adding additional
38 testing capacity². This was followed over the subsequent weeks by other clinical microbiology
39 laboratories that either adapted the CDC assay or validated their own laboratory developed test in
40 accordance with recommendations from the FDA³. Additionally, several manufacturers received
41 emergency use authorization (EUA) for orthopoxvirus or MPXV-specific assays following the
42 EUA declaration on September 17th, 2022.

43 The majority of specimens collected from individuals with mpox have demonstrated high
44 viral loads with corresponding early CT values⁴. However, shortly after the outbreak began,
45 reports of false positive mpox cases began to surface. In a series of three false positive cases, all
46 specimens had late CT values ranging from 34.3 to 36.7⁵. In September 2022, the CDC
47 published an advisory recommending repeat testing of all specimens with CT values ≥ 34 ⁶. Due
48 to the limited data surrounding the utility of this cutoff, our institution adopted a more
49 conservative strategy of repeating all positive specimens with a CT ≥ 29 from 9/15/22 to 11/4/22.
50 Here we present a retrospective analysis of this data to better understand the clinical and
51 laboratory impact of a more stringent repeat threshold.

52

53 **Materials and Methods**

54 *MPXV PCR testing*

55 Detection of monkeypox virus at ARUP was performed as previously described⁴. In
56 brief, specimens received as dry swabs were resuspended in PBS prior to further processing.
57 DNA from VTM and dry swabs was extracted and amplified on the Roche cobas 6800 platform.
58 Roche omni channel reagents with lab-developed primers and probes were used for detection of
59 a conserved region of the polymerase gene present in non-variola orthopoxviruses⁷.

60

61 *Data extraction and labeling*

62 Data for individual specimens were extracted from the Laboratory Information System
63 (LIS) at the end of the study period. All tests with a completed time logged in the LIS between
64 00:00 on 9/15/22 and 23:59 on 11/4/22 were included. Information gathered for each specimen
65 included a unique deidentified specimen ID, unique deidentified patient ID, age and sex of
66 patient, initial CT value (CT1), CT value of repeated test if performed (CT2), swab type (Dry,
67 VTM, or Other), collection site, collection time, in-lab time, and completion time. Samples were
68 retrospectively classified based on their CT1 value as “detected” or “not detected”. “Detected”
69 specimens were samples with CT1 <50. “Not detected” specimens were samples with CT1 = 50
70 (value provided by the instrument when no amplification curve is detected). “Detected”
71 specimens were further sub-categorized as “positive”, “low positive”, or “indeterminate” based
72 on CT1 and CT2 results. “Positive” specimens were samples with CT1 <29. “Low positive”
73 specimens were samples with CT1 values between ≥ 29 and <50 and CT2 values <50.
74 “Indeterminate” specimens also had CT1 values between ≥ 29 and <50 but with a CT2 value =
75 50. Nine specimens had their CT2 values excluded because the CT1 values were <29. These

76 samples were repeated due to run control failures or when collected from pediatric patients (all
77 pediatric specimens were repeated regardless of CT value). The impact of repeat testing on
78 pediatric specimens was previously examined⁸. 21 specimens with a CT1 \geq 29 failed to undergo
79 repeat testing due to low specimen volume. These were classified as “detected” and excluded
80 from sub-categorization.

81

82 *Ethics, data analysis, and statistics*

83 University of Utah granted an IRB exemption ID#00158025. Deidentified data was
84 processed in Python 3.8 and detailed statistical analysis was performed in R v4.2⁹.

85

86 **Results**

87 *Descriptive epidemiology of MPXV PCR testing*

88 A total of 4,233 specimens were analyzed over the 51-day study period with an average
89 of 88.2 tests per day (Fig. 1). During this period, MPXV was initially detected in 18.7%
90 (790/4,233) of specimens. Of the 790 specimens in which MPXV was detected 23.3% (184/790)
91 had a CT1 at or above the repeat threshold of CT 29 and were repeated. Of the 184 tests that
92 were repeated 86.4% (159/184) produced a valid CT2 signal and were classified as “low
93 positive”. 13.6% (25/184) of these specimens failed to repeat and were classified as
94 “indeterminate”. Total testing volume decreased by an average of 1.8 tests/day over the study
95 period, however, detection rate and rate of low positives remained relatively stable.

96 Specimens were collected from 3,111 individuals over the study period (Table 1). The
97 average age of tested individuals was 34.4 years (SD 17.0) and 68.2% of patients were male.
98 Overall, there was a significant association between categorical result and sex (Pearson’s Chi-

99 squared test $p < 0.05$). In cross-group comparisons, male individuals comprised a smaller
100 proportion of negative results (62.7%) than either positive (93.0%) or low positive (92.8%)
101 results (pairwise Bonferroni corrected Pearson's chi-squared tests $p < 0.008$). There was no
102 significant association between age of patient and result.

103

104 *A Lower Repeat Threshold Improves Specificity of MPXV Detection*

105 For samples with MPXV detected, the mean CT1 value was 20.5 (SD 4.0) for positives,
106 34.3 (SD 3.1) for low positives, and 37.6 (SD 3.6) for indeterminate samples. The average CT2
107 for low positives was 33.9 (SD 3.3). Per our algorithm, repeat testing was not performed for
108 positive samples and CT2 values for indeterminate specimens were set at 50 (i.e. no valid curve).
109 There was good correlation between the CT1 and CT2 of low positive specimens with an r-
110 squared of 0.8 and standard error of 0.03 (Figure 2). During the study period a total of 184
111 specimens were repeated according to our algorithm. While the majority of specimens (86.4%,
112 159/184) detected MPXV upon repeat testing, 13.6% (25/184) of samples failed to repeat and
113 were subsequently categorized as indeterminate. CT1 values for indeterminate specimens ranged
114 from 29.5 to 44.2. (Figure 3). While 80% (20/25) of these samples were at or above the CDC's
115 recommended repeat threshold of 34, there were five specimens (CT1 values 29.5, 30.8, 31.1,
116 32.4, 33.3) below this cutoff. Compared to this study's repeat algorithm, the CDC's algorithm
117 had a sensitivity of 100% (95% CI: 97.7% – 100%) and a specificity of 80% (95% CI: 59.3% –
118 93.17%) for MPXV detection in specimens with CT1 values ≥ 29 .

119

120 *A Lower Repeat Threshold Minimally Impacts Test Volume and Turn-around Times*

121 As repeat testing could lead to unsustainable testing volume or prolonged turn-around
122 times (TAT), we examined changes in testing volume and TAT associated with repeat thresholds
123 of 29 or 34 as compared to a no-repeat baseline. Sub-analyses were performed assuming a mpox
124 prevalence of 3%, 10%, 18% (the average overall detection rate during our study period), and
125 30%. The increase in testing volume ranged from 0.6% to 6.0% and 0.5% to 4.8% for a repeat
126 threshold of 29 or 34, respectively (Figure 4A). During the study period, using a lower repeat
127 threshold of 29 led to an additional 1.4 tests per day as compared to the CDC's recommendation.

128 TAT was assessed based on the time from specimen receipt to final result (i.e. in-lab TAT)
129 due to variations in specimen shipping practices. Overall, the mean in-lab TAT for positive
130 specimens increased by 0.15 to 1.82 hours depending on the prevalence of mpox and repeat
131 threshold employed. When comparing TAT between repeat thresholds, using a CT of 29 versus
132 34 for repeat testing prolonged the mean in-lab TAT of positive specimens by less than 30
133 minutes (Figure 4B). On a per specimen basis, the average in-lab TAT was 33.1 hours (SD 16.2)
134 for all samples, 31.9h (SD 14.2) for positives, 31.7h (SD 14.7) for negatives, 61.8h (SD 21.4) for
135 low positives and 63.6h (SD 25.7) for indeterminate samples. Repeating a specimen added an
136 average of 31.7h (SD 29.1) to the in-lab TAT. However, time to receipt remained the largest
137 contributor to overall TAT at 72.8h (SD 43.0) (Figure 5).

138

139 **Discussion**

140 Here we assess over 4,000 MPXV PCR results from a large reference laboratory to
141 examine the impact of repeating late CT specimens on patient results. We found that a reflex CT
142 of 29 as compared to 34 potentially reduces the number of false positive results reported. We also

143 demonstrate that regardless of the repeat threshold selected, there is minimal impact to testing
144 volume and TAT.

145 False positive results may be due to a number of pre-analytic factors including
146 mislabeling, sampling error, or contamination of collection devices and reagents^{10,11}. There are
147 also a variety of analytic errors that can occur such as pipetting error and specimen cross-
148 contamination¹². From the perspective of a clinical microbiology laboratory, closed tube systems
149 and a reduction in the number of technicians handling the specimen can lower contamination
150 rates; however, no system is perfect¹³. Specific challenges to preventing cross-contamination
151 during the mpox epidemic included the high prevalence of positive samples (18% during the
152 study period) and the relatively high level of MPXV DNA within positive specimens (mean CT
153 of 20.5 for positive specimens). These problems are not unique to MPXV and may be seen in
154 other viruses with extremely high viral loads, such as BK virus. False positive results have
155 previously been shown with PCR assays for BK virus, including on the instrument used in this
156 study¹⁴

157 A central question to this study is whether the specimens we categorized as indeterminate
158 (i.e. those which failed to repeat) represent a false positive result or are an artifact of stochastic
159 effect near the assay's limit of detection (LOD). When validating our assay, we established the
160 97.5% (39/40 repeats) LOD at 80 copies per reaction which corresponded to an average CT of
161 39.5 (SD 1.03, 95% CI 37.8 – 41.6). Thus, we are reasonably confident that specimens at or
162 below this CT value should consistently repeat as detected. In this study, 72% (18/25) of
163 indeterminate specimens had a CT value less than our LOD of 39.5. Therefore, we believe the
164 majority of indeterminate results, and in particular those identified only by the lower cutoff,
165 represent false positive results.

166 Despite the CDC's recommendation, there has been little uniformity in the adoption of
167 MPXV repeat cutoffs. Of the 6 MPXV assays granted emergency use authorization, only one
168 outlines a repeat strategy¹⁵. For this specific assay, the repeat threshold is set between a CT of 38
169 and 40 with the assay's LOD determined to be at a CT of 36.0 (100 copies/mL). Selecting a
170 repeat threshold above an assay's LOD provides limited clinical utility as specimens which fail
171 to repeat have a higher likelihood of representing the stochastic effect of low DNA
172 concentrations. We selected a repeat threshold 10 cycles lower than the established LOD to more
173 confidently identify cases which fail to repeat as false positives.

174 This study is unique in that it analyzes mpox specimens collected from sites across the
175 US and includes a relatively large cohort. During the study period, we reported approximately
176 13% of the total number of mpox tests registered by the CDC¹⁶. However, these results may not
177 translate uniformly to other laboratories. Labs with a lower throughput who have not automated
178 this process or use a different instrument may experience different sources of error which could
179 impact the likelihood of false positives. Limitations of this study include its retrospective and
180 descriptive nature, use of data from a single reference laboratory, and limited clinical data to
181 adjudicate indeterminate specimens.

182 While the initial surge of mpox cases has abated, the question of whether this virus will
183 endemically circulate in humans remains^{17,18}. Currently, data from the CDC and our institution
184 show a positivity rate of approximately 10%, arguing that laboratories will continue to face
185 testing challenges related to specimens with late CT values. As these results may have significant
186 social and psychological impact, reducing false positive mpox results is critical^{19,20}. The CDC's
187 recommendations provide a suitable starting point for laboratories performing mpox testing;

188 however, each laboratory should carefully inspect the performance of its assay to determine the
189 optimal repeat thresholds.

190

191 **References**

- 192 (1) WHO Director-General's statement at the press conference following IHR Emergency
193 Committee regarding the multi-country outbreak of monkeypox - 23 July 2022.
194 [https://www.who.int/director-general/speeches/detail/who-director-general-s-statement-on-](https://www.who.int/director-general/speeches/detail/who-director-general-s-statement-on-the-press-conference-following-IHR-emergency-committee-regarding-the-multi-country-outbreak-of-monkeypox--23-july-2022)
195 [the-press-conference-following-IHR-emergency-committee-regarding-the-multi--country-](https://www.who.int/director-general/speeches/detail/who-director-general-s-statement-on-the-press-conference-following-IHR-emergency-committee-regarding-the-multi-country-outbreak-of-monkeypox--23-july-2022)
196 [outbreak-of-monkeypox--23-july-2022](https://www.who.int/director-general/speeches/detail/who-director-general-s-statement-on-the-press-conference-following-IHR-emergency-committee-regarding-the-multi-country-outbreak-of-monkeypox--23-july-2022) (accessed 2023-06-19).
- 197 (2) Affairs (ASPA), A. S. for P. HHS Expanding Monkeypox Testing Capacity to Five
198 Commercial Laboratory Companies. HHS.gov.
199 [https://www.hhs.gov/about/news/2022/06/22/hhs-expanding-monkeypox-testing-capacity-](https://www.hhs.gov/about/news/2022/06/22/hhs-expanding-monkeypox-testing-capacity-five-commercial-laboratory-companies.html)
200 [five-commercial-laboratory-companies.html](https://www.hhs.gov/about/news/2022/06/22/hhs-expanding-monkeypox-testing-capacity-five-commercial-laboratory-companies.html) (accessed 2023-06-19).
- 201 (3) Health, C. for D. and R. Monkeypox (mpox) and Medical Devices. FDA.
202 [https://www.fda.gov/medical-devices/emergency-situations-medical-devices/monkeypox-](https://www.fda.gov/medical-devices/emergency-situations-medical-devices/monkeypox-mpox-and-medical-devices)
203 [mpox-and-medical-devices](https://www.fda.gov/medical-devices/emergency-situations-medical-devices/monkeypox-mpox-and-medical-devices) (accessed 2023-09-08).
- 204 (4) Lieberman, N. A. P.; Mathias, P. C.; Bradley, B. T.; Greninger, A. L. Clinical Performance
205 and Trends during the First Two Months of Monkeypox Virus PCR Testing at Two United
206 States Reference Labs. *J. Clin. Microbiol.* **2022**, 60 (12), e01371-22.
207 <https://doi.org/10.1128/jcm.01371-22>.
- 208 (5) Minhaj, F. S.; Petras, J. K.; Brown, J. A.; Mangla, A. T.; Russo, K.; Willut, C.; Lee, M.;
209 Beverley, J.; Harold, R.; Milroy, L.; Pope, B.; Gould, E.; Beeler, C.; Schneider, J.; Mostafa,
210 H. H.; Godfred-Cato, S.; Click, E. S.; Borah, B. F.; Galang, R. R.; Cash-Goldwasser, S.;
211 Wong, J. M.; McCormick, D. W.; Yu, P. A.; Shelus, V.; Carpenter, A.; Schatzman, S.; Lowe,
212 D.; Townsend, M. B.; Davidson, W.; Wynn, N. T.; Satheshkumar, P. S.; O'Connor, S. M.;
213 O'Laughlin, K.; Rao, A. K.; McCollum, A. M.; Negrón, M. E.; Hutson, C. L.; Salzer, J. S.;

- 214 CDC Monkeypox Emergency Response Team; CDC Monkeypox Emergency Response
215 Team. Orthopoxvirus Testing Challenges for Persons in Populations at Low Risk or Without
216 Known Epidemiologic Link to Monkeypox - United States, 2022. *MMWR Morb. Mortal.*
217 *Wkly. Rep.* **2022**, 71 (36), 1155–1158. <https://doi.org/10.15585/mmwr.mm7136e1>.
- 218 (6) 08/23/2022: Lab Advisory: Mpox Virus Testing Considerations to Prevent False Positive
219 Test Results. [https://www.cdc.gov/locs/2022/08-23-2022-Lab-Advisory-](https://www.cdc.gov/locs/2022/08-23-2022-Lab-Advisory-Monkeypox_Virus_Testing_Considerations_Prevent_False_Positive_Test_Results.html)
220 [Monkeypox_Virus_Testing_Considerations_Prevent_False_Positive_Test_Results.html](https://www.cdc.gov/locs/2022/08-23-2022-Lab-Advisory-Monkeypox_Virus_Testing_Considerations_Prevent_False_Positive_Test_Results.html)
221 (accessed 2023-06-18).
- 222 (7) Li, Y.; Olson, V. A.; Laue, T.; Laker, M. T.; Damon, I. K. Detection of Monkeypox Virus
223 with Real-Time PCR Assays. *J. Clin. Virol. Off. Publ. Pan Am. Soc. Clin. Virol.* **2006**, 36
224 (3), 194–203. <https://doi.org/10.1016/j.jcv.2006.03.012>.
- 225 (8) Ma, A.; Bradley, B. T. Clinical Testing of Pediatric Mpox Specimens: Unique Features and
226 Challenges in a Low Prevalence Population. *J. Clin. Virol. Off. Publ. Pan Am. Soc. Clin.*
227 *Virol.* **2023**, 163, 105447. <https://doi.org/10.1016/j.jcv.2023.105447>.
- 228 (9) R Core Team. R: A Language and Environment for Statistical Computing; R Foundation for
229 Statistical Computing: Vienna, Austria, 2023.
- 230 (10) Najat, D. Prevalence of Pre-Analytical Errors in Clinical Chemistry Diagnostic Labs in
231 Sulaimani City of Iraqi Kurdistan. *PLOS ONE* **2017**, 12 (1), e0170211.
232 <https://doi.org/10.1371/journal.pone.0170211>.
- 233 (11) Sotoudeh Anvari, M.; Gharib, A.; Abolhasani, M.; Azari-Yam, A.; Hossieni Gharalari, F.;
234 Safavi, M.; Zare Mirzaie, A.; Vasei, M. Pre-Analytical Practices in the Molecular
235 Diagnostic Tests, A Concise Review. *Iran. J. Pathol.* **2021**, 16 (1), 1–19.
236 <https://doi.org/10.30699/ijp.2020.124315.2357>.

- 237 (12) Taylor, S. C.; Nadeau, K.; Abbasi, M.; Lachance, C.; Nguyen, M.; Fenrich, J. The Ultimate
238 qPCR Experiment: Producing Publication Quality, Reproducible Data the First Time.
239 Trends Biotechnol. **2019**, 37 (7), 761–774. <https://doi.org/10.1016/j.tibtech.2018.12.002>.
- 240 (13) Rahbari, R.; Moradi, N.; Abdi, M. rRT-PCR for SARS-CoV-2: Analytical Considerations.
241 Clin. Chim. Acta Int. J. Clin. Chem. **2021**, 516, 1–7.
242 <https://doi.org/10.1016/j.cca.2021.01.011>.
- 243 (14) Fritzsche, A.; Berneking, L.; Nörz, D.; Reucher, S.; Fischer, N.; Roggenkamp, H.;
244 Aepfelbacher, M.; Rohde, H.; Pfefferle, S.; Lütgehetmann, M. Clinical Evaluation of a
245 Laboratory-Developed Quantitative BK Virus-PCR Assay Using the Cobas® Omni Utility
246 Channel. J. Virol. Methods **2021**, 290, 114093.
247 <https://doi.org/10.1016/j.jviromet.2021.114093>.
- 248 (15) Health, C. for D. and R. Monkeypox (mpox) Emergency Use Authorizations for Medical
249 Devices. FDA. [https://www.fda.gov/medical-devices/emergency-use-authorizations-](https://www.fda.gov/medical-devices/emergency-use-authorizations-medical-devices/monkeypox-mpox-emergency-use-authorizations-medical-devices)
250 [medical-devices/monkeypox-mpox-emergency-use-authorizations-medical-devices](https://www.fda.gov/medical-devices/emergency-use-authorizations-medical-devices/monkeypox-mpox-emergency-use-authorizations-medical-devices)
251 (accessed 2023-09-19).
- 252 (16) Non-Variola Orthopoxvirus and Mpox Virus Laboratory Testing Data | Mpox | Poxvirus |
253 CDC. [https://www-cdc-gov.ezproxy.lib.utah.edu/poxvirus/mpox/response/2022/2022-lab-](https://www-cdc-gov.ezproxy.lib.utah.edu/poxvirus/mpox/response/2022/2022-lab-test.html)
254 [test.html](https://www-cdc-gov.ezproxy.lib.utah.edu/poxvirus/mpox/response/2022/2022-lab-test.html) (accessed 2023-09-08).
- 255 (17) Reardon, S. What Does the Future Look like for Monkeypox? Nature **2022**, 610 (7931),
256 250–252. <https://doi.org/10.1038/d41586-022-03204-7>.
- 257 (18) Mega, E. R. Why Scientists Fear Monkeypox Spreading in Wild Animals. Nature **2022**.
258 <https://doi.org/10.1038/d41586-022-03048-1>.

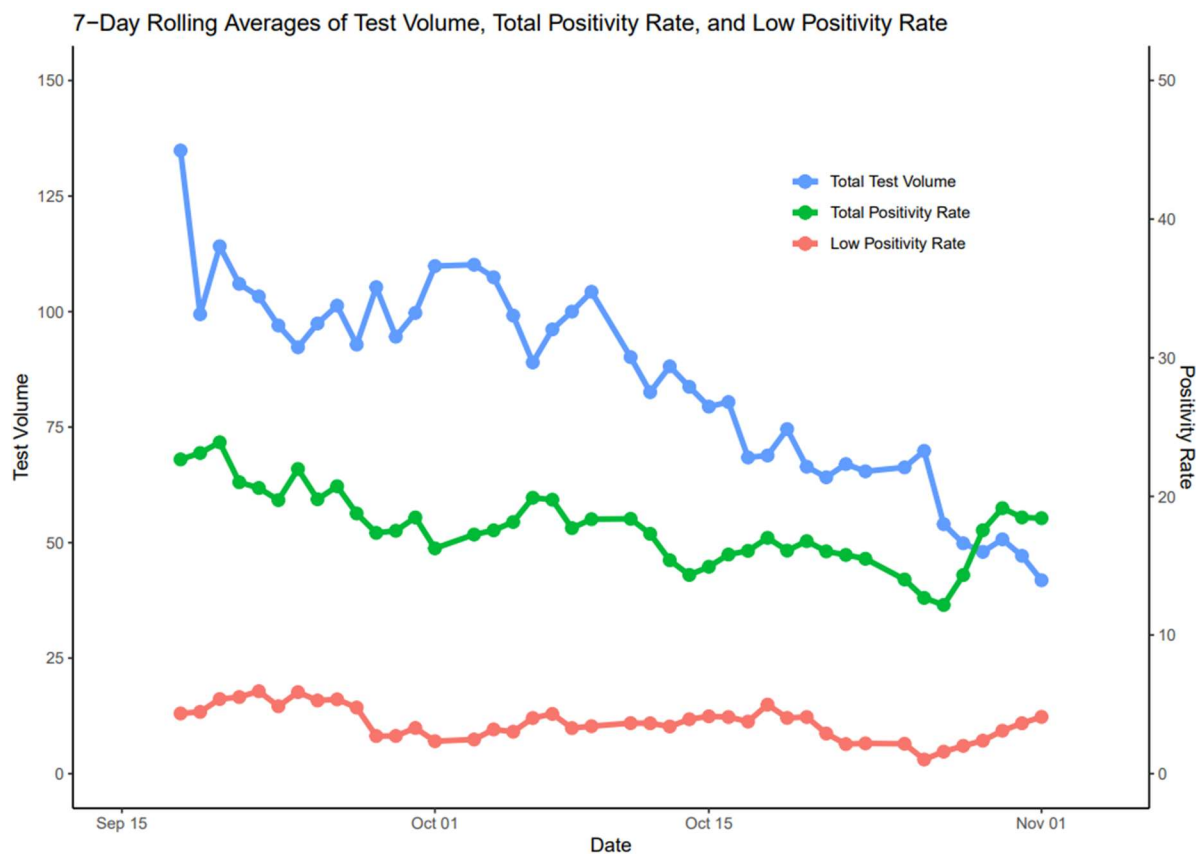
- 259 (19) Happi, C.; Adetifa, I.; Mbala, P.; Njouom, R.; Nakoune, E.; Happi, A.; Ndodo, N.;
- 260 Ayansola, O.; Mboowa, G.; Bedford, T.; Neher, R. A.; Roemer, C.; Hodcroft, E.; Tegally,
- 261 H.; O’Toole, Á.; Rambaut, A.; Pybus, O.; Kraemer, M. U. G.; Wilkinson, E.; Isidro, J.;
- 262 Borges, V.; Pinto, M.; Gomes, J. P.; Freitas, L.; Resende, P. C.; Lee, R. T. C.; Maurer-Stroh,
- 263 S.; Baxter, C.; Lessells, R.; Ogwell, A. E.; Kebede, Y.; Tessema, S. K.; de Oliveira, T.
- 264 Urgent Need for a Non-Discriminatory and Non-Stigmatizing Nomenclature for
- 265 Monkeypox Virus. *PLoS Biol.* **2022**, 20 (8), e3001769.
- 266 <https://doi.org/10.1371/journal.pbio.3001769>.
- 267 (20) Turpin, R. E.; Mandell, C.; Camp, A. D.; Davidson Mhonde, R. R.; Dyer, T. V.; Mayer, K.
- 268 H.; Liu, H.; Coates, T.; Boekeloo, B. O. Monkeypox-Related Stigma and Vaccine
- 269 Challenges as a Barrier to HIV Pre-Exposure Prophylaxis among Black Sexual Minority
- 270 Men. *Int. J. Environ. Res. Public. Health* **2023**, 20 (14), 6324.
- 271 <https://doi.org/10.3390/ijerph20146324>.
- 272
- 273

274 **Table 1** – Patient characteristics by MPXV detection result

Result	Patients (n, %)	Mean Age (y, SD)	Gender
Positive	446 (14.3%)	35.5 (10.3)	93.0% M 7.0% F 0.0% U
Low Positive	98 (3.15%)	32.9 (11.9)	92.9% M 6.1% F 1.0% U
Indeterminate	16 (0.51%)	33.9 (11.7)	75.0% M 25.0% F 0.0% U
Negative	2542 (81.7%)	34.3 (18.1)	62.7% M 37.1% F 0.2% U
Total	3111 (100%)	34.4 (17.0)	68.2% M 31.6% F 0.2% U

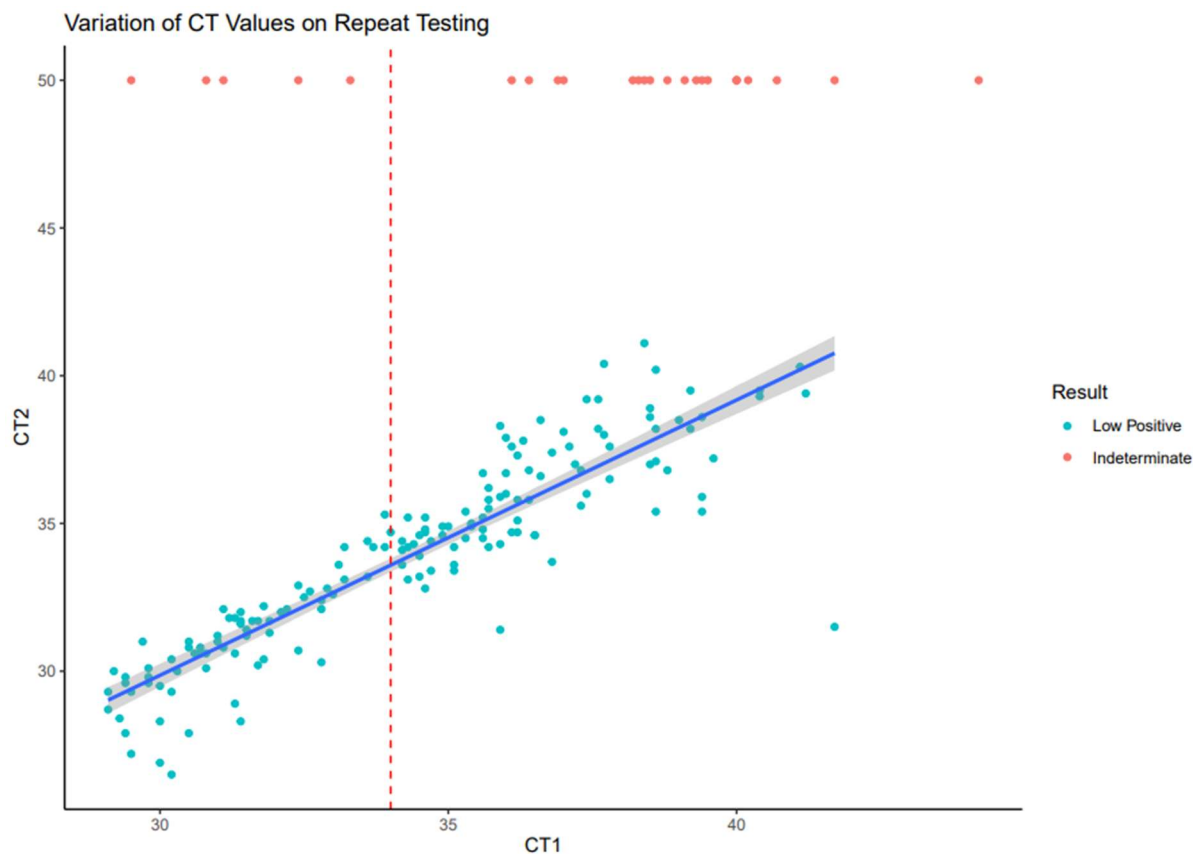
275

276

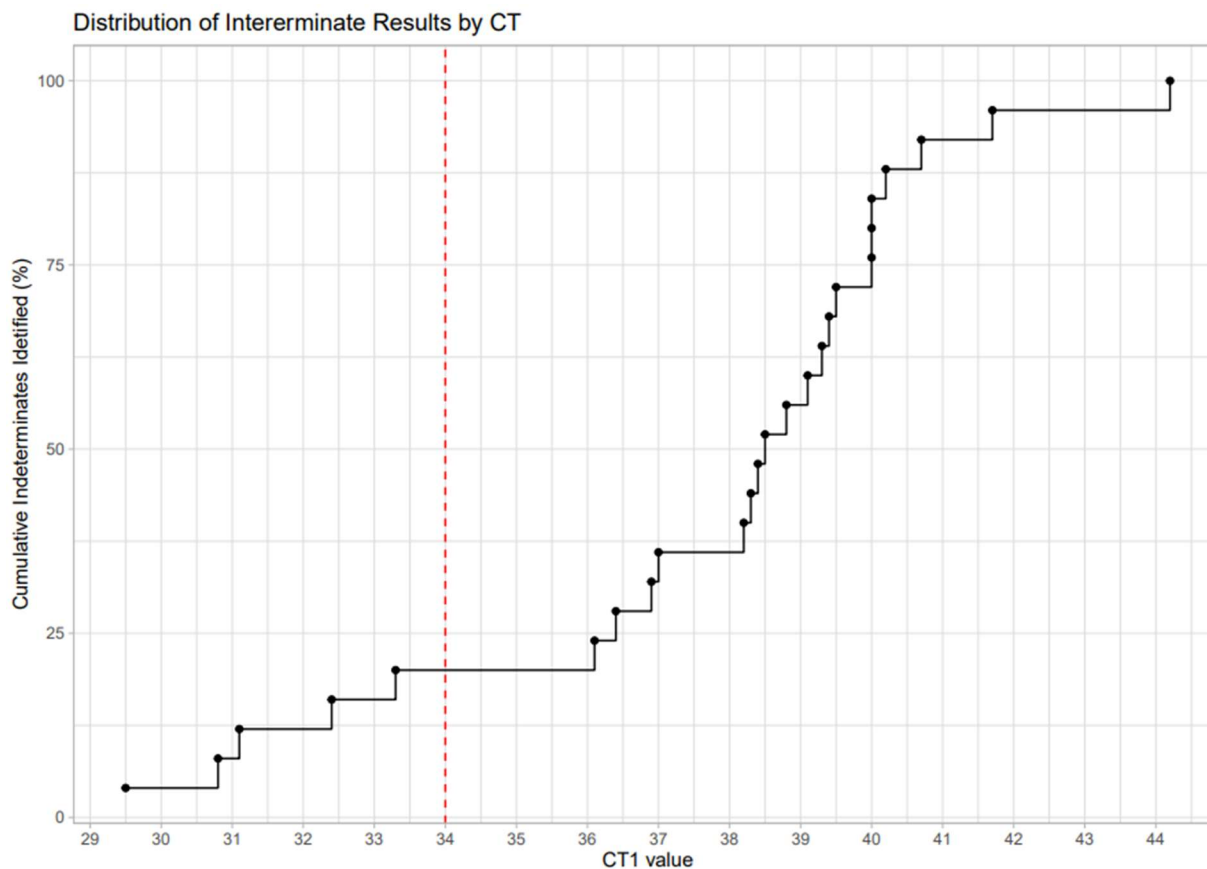


277
278 **Figure 1 – 7-Day Rolling Averages of Test Volume, Total Positivity Rate, and Low Positivity**
279 **Rate**

280 Total test volume is represented by the blue line and measured in tests per day on the left Y-axis.
281 Percent of total tests with MPXV detected (CT1 <50) and percent of specimens falling within the
282 repeat threshold (CT1 \geq 29 and <50) are indicated by the green and red lines, respectively.
283 Positivity rates are measured relative to the total test volume and mapped to the right Y-axis.
284



285
286 **Figure 2 – Variation of CT Values on Repeat Testing**
287 Comparison of CT values for initial (CT1) vs. repeated (CT2) tests during the study period,
288 including both low positive results (CT1 ≥ 29 to < 50 ; CT2 < 50) and indeterminate results (CT1
289 ≥ 29 to < 50 ; CT2 = 50). The CDC’s recommended repeat threshold (CT ≥ 34) is represented by
290 red dotted line. Linear best fit line and 95% confidence interval for low positive results are
291 represented by the blue line and gray shading. R-squared value for low-positive only results was
292 0.8. The r-squared value decreased to 0.43 when indeterminate results were included.
293

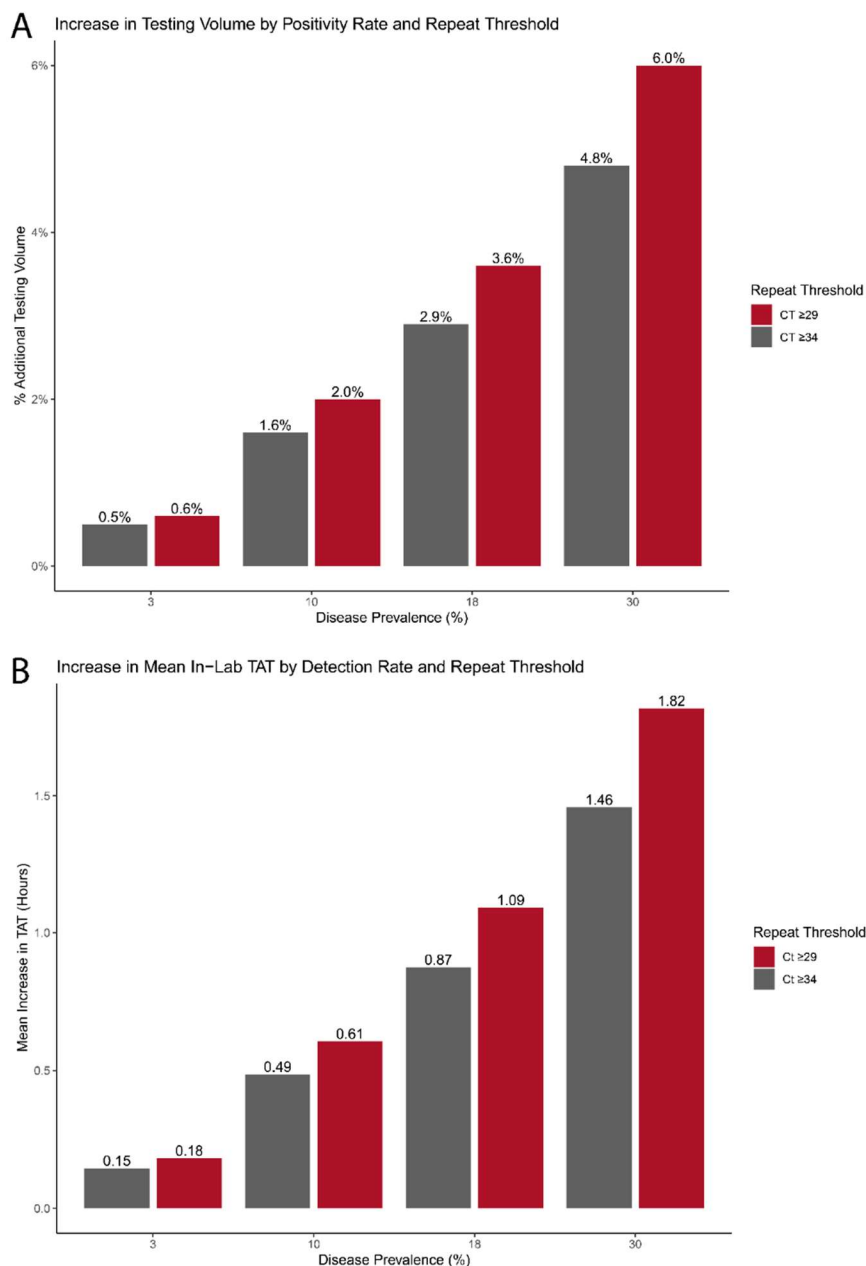


294

295 **Figure 3 – Distribution of Indeterminate Results by CT1**

296 Cumulative percentage of indeterminate results in our study distributed by CT1 value. Each point
297 represents one indeterminate result. Red dotted line represents the CDC’s recommended repeat
298 testing cutoff (CT ≥ 34).

299

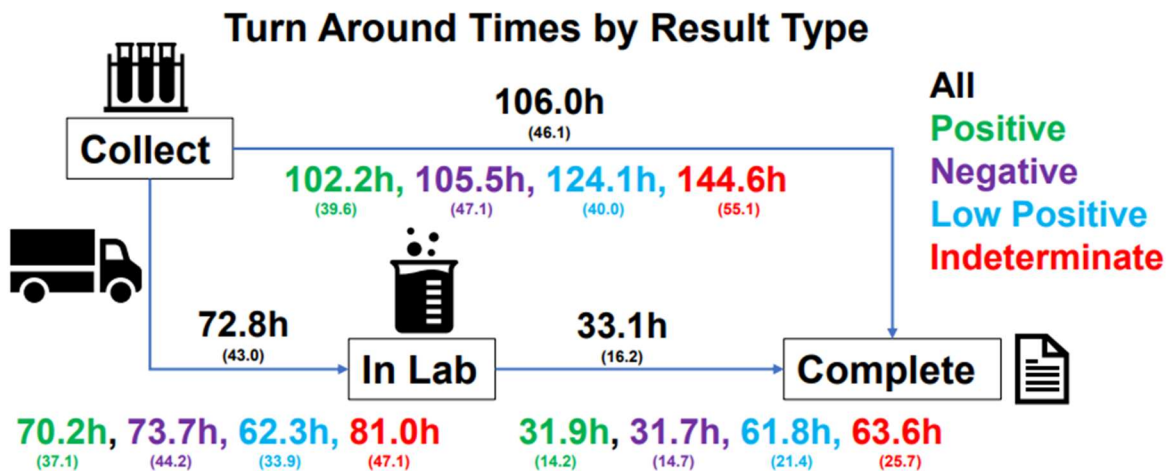


300

301 **Figure 4 - Impact of Repeat Thresholds on Overall Test Volume and In-lab TAT.**

302 A) Comparison of repeat thresholds on overall test volume based on different levels of mpox
303 prevalence in the test population. Y-axis represent relative increase in volume versus a no-repeat
304 approach. B) Comparison of repeat thresholds on mean in-lab TAT for specimens with MPXV
305 detected based on prevalence. Y-axis represents the mean increase of in-lab TAT in hours versus
306 a no-repeat approach.

307



308

309 **Figure 5 – Turn Around Time by Final Result**

310 Breakdown of turn-around time by final assigned result. All times are in hours. Total time
 311 between collection and completion shown on top arrow. Values are provided as mean with
 312 standard deviation in parenthesis.

313