

# Assessing the health impacts associated with active transportation within four different pathways to net-zero carbon emissions in France

Léo Moutet,<sup>1</sup> Aurélien Bigo,<sup>2</sup> Philippe Quirion,<sup>3</sup> Laura Temime,<sup>1</sup> and Kévin Jean<sup>1</sup>

<sup>1</sup> MESuRS Laboratory, Conservatoire national des Arts et Métiers (Cnam), Paris, France

<sup>2</sup> Chair Energy and Prosperity, Paris, France

<sup>3</sup> Centre International de Recherche sur l'Environnement et le Développement (CIRED), Centre National de la Recherche Scientifique, (CNRS), Nogent-sur-Marne, France

## Contact information:

Léo MOUTET, MESuRS Laboratory, Conservatoire national des Arts et Métiers, 292 Rue Saint-Martin Paris, France.

Email: [leo.moutet@lecnam.net](mailto:leo.moutet@lecnam.net)

## Abstract

**Background:** In the transport sector, efforts to achieve carbon neutrality may generate public health cobenefits by promoting physical activity.

**Objective:** This study aims to quantify the health impacts related to active transportation based on four different scenarios leading France toward carbon neutrality in 2050.

**Methods:** The French Agency for Ecological Transition developed four consistent and contrasting scenarios (Transitions2050 scenarios : S1 to S4) achieving carbon neutrality by 2050 as well as a business-as-usual (BAU) scenario that extends our current lifestyles until 2050, without reaching net-zero. For each Transitions2050 scenario, we distributed the mobility demand for walking, cycling and e-cycling across age groups. Relying on the health impact assessment framework, we quantified the impacts of the corresponding physical activity on all-cause mortality. The impact of each of the carbon neutrality scenarios was determined by comparison with estimates from the BAU scenario.

**Results:** In S1 and S2 scenarios, volumes of active transportation are projected to increase to fulfil the World Health Organisations recommendations by 2050, while they increase slightly in S3 and decrease in S4. S2 scenario reaches the highest levels of health cobenefits, with 497,000 deaths prevented between 2021 and 2050. This would translate into a life expectancy gain of 3.0 months for the general population in 2050, mainly driven by e-bikes. S1 would provide smaller but important health benefits, while these benefits would be modest for S3. On the contrary, S4 implies 52,000 additional deaths as compared to the BAU scenario, and a loss of 0.2 month in life expectancy.

36 **Discussion:** Different ways to decarbonize mobility in a net-zero perspective may achieve very  
37 contrasting public health cobenefits. This study illustrates how the public health dimension may  
38 provide a relevant insight in choices of collective transformation toward net-zero societies.

## 39 Introduction

40

41 The Paris agreement, adopted in 2015, establish the objective of constraining the rise in average  
42 global temperature to 2°C above preindustrial levels (UNFCCC (United nations Framework  
43 Convention on Climate Change ), 21st session 2015). To achieve this, a substantial reduction of 43%  
44 in greenhouse gas (GHG) emissions by 2030 is necessary (IPCC (Intergovernmental Panel on Climate  
45 Change) 2023). The sixth report from the Intergovernmental Panel on Climate Change (IPCC)  
46 highlights the importance of numerous actions that effectively reduce our carbon footprint while  
47 concurrently promoting human health. These health co-benefits manifest across several dimensions  
48 such as diet, transport, energy supply or green and blue infrastructures (IPCC (Intergovernmental  
49 Panel on Climate Change) 2023).

50 The transport sector accounted for approximately 15% of anthropogenic GHG globally in 2019 (IPCC  
51 (Intergovernmental Panel on Climate Change) 2023). In France, it contributes up to 31% of GHG  
52 emissions (HCC (The High Council on Climate) 2021). Amongst the many existing levers to limit these  
53 emissions (electrification of the energy supply, increased vehicle occupancy, lower transport  
54 demand...), some have the potential to yield health co-benefits. Among those, shifting to active  
55 modes of transportation offers the additional advantage of mainly relying on local decisions such as  
56 reallocation of existing infrastructures and land use planning (Stappers et al. 2023).

57 Active transportation encompasses essential daily activities (e.g., commuting to work, visiting the  
58 doctor, shopping) as well as leisure activities (e.g., cultural outings, sports) and has indeed been  
59 identified as a lever for achieving socio-economic, air quality, and public health co-benefits (IPCC  
60 (Intergovernmental Panel on Climate Change) 2023). However, physical activity levels worldwide  
61 have failed to meet international recommendations, affecting both adolescents and adults (Guthold  
62 et al. 2018). In high-income countries, 9.3% of overall mortality can be attributed to physical  
63 inactivity (Katzmarzyk et al. 2021). Insufficient physical activity also incurs substantial monetary costs  
64 for public and private healthcare systems and households while leading to decreased productivity  
65 (Ding et al. 2016). A 2017 study focusing on urban populations estimated that meeting international  
66 guidelines on physical activity, air pollution, noise, heat, and access to green spaces could prevent  
67 20% of deaths. Among these factors, physical activity yielded the largest proportion of preventable  
68 deaths (Mueller et al. 2017).

69 The health benefits associated with active transportation may be substantiated by various health  
70 impact assessment methods that consider diverse parameters, regardless of the geographical  
71 context (Mueller et al. 2015). Institutions and organisations have devised prospective pathways  
72 outlining the necessary transformations required for the societies to attain the objectives of the Paris  
73 agreement. Numerous studies quantify the health impacts of active commuting in prospective  
74 scenarios, with a majority conducted in Europe, North America or Oceania, primarily focusing on  
75 urban areas (Mueller et al. 2015; Rojas-Rueda et al. 2016). Nevertheless, to the best of our  
76 knowledge, only one study has been conducted at the national level in France, quantifying the  
77 impacts of a single scenario compared to the baseline levels of 2021 (Barban et al. 2022).

78 In this study, we quantified the health impacts related to physical activity through active  
79 transportation based on four consistent and contrasting scenarios leading France toward carbon  
80 neutrality in 2050.

## 81 Methods

### 82 The ADEME Transition scenarios

83 In 2021, ADEME (The French Agency for Ecological Transition) released the outcomes of a  
84 prospective project “Transitions2050”, describing four scenarios (S1 to S4). Each of these scenarios is  
85 designed to achieve carbon neutrality by 2050 in metropolitan France following distinct trajectories  
86 corresponding to different societal choices (Figure 1) (The French Agency for Ecological Transition).  
87 Additionally, a business-as-usual scenario (BAU) was formulated, representing a projection of our  
88 current lifestyle trends until 2050, without achieving carbon neutrality. It partly corresponds to an  
89 extension of certain past trends and partly to evolutions already underway.

90

91 Figure 1 - Summary of ADEME's prospective carbon neutral scenarios.

#### S1 FRUGAL GENERATION

Significant changes in the way we travel, keep warm, eat, buy and use equipment will occur to achieve carbon neutrality only with natural sinks (forests and soils), thus preserving the associated ecological services.



#### S3 GREEN TECHNOLOGIES

Technological development provides more of the answers to environmental challenges than changes towards more sufficient consumption patterns.



92

93 Credit: @ADEME - [Transition\(s\) 2050](https://www.ademe.fr/transition-2050) - Illustrations : S. Kiehl

94



#### S2 REGIONAL COOPERATION

To achieve carbon neutrality, society relies on a progressive but steady change of the economic system towards a sustainable path combining sufficiency and efficiency.



#### S4 RESTORATION GAMBLE

Society places its trust in its ability to manage and even repair social and ecological systems with more material and financial resources to maintain a liveable world. Carbon capture and storage technologies, which are essential, are uncertain and consume electricity.

95

96 Each Transitions2050 scenario describes the evolution of the main energy consumption drivers over  
 97 time, especially the demand for transportation for various modes of transportation (Table 1). Within  
 98 these estimates, three active modes are considered: cycling, E-cycling and walking, without  
 99 accounting for recreational activity. Note that the estimates for walking encompass distances  
 100 covered while transitioning to or from another mode of transport, especially public transportation  
 101 (e.g train or bus). For each active travel mode, the scenarios express the yearly national demand in  
 102 terms of Giga passenger-kilometres (Gpkm) at five-year intervals over the period 2015-2050. For this  
 103 study, passenger-kilometres values were linearly interpolated for each year within the intervals.

104

105 Table 1 – Transport sector and active mobility in ADEME’s prospective scenarios

Scenarios	Frugal generation (S1)	Regional cooperation (S2)	Green technologies (S3)	Restoration gamble (S4)	Business-as-usual (BAU)
Decarbonation of the transport sector	A significant drop in transport demand. Modal shift and vehicle occupancy expand.	Modal shift at the heart of the transition. More vehicle occupancy and a decrease in transport demand.	Efforts are mainly applied to energy efficiency and decarbonation of the energy production.	Energy production and digital technologies drive the transition. Energy efficiency also improves.	Projection of our present lifestyles.
Evolution of per-capita transport distances (in km) from 2015 to 2050	Walk : +15 % Total cycle : +730 %	Walk : +25 % Total cycle : +1,007 %	Walk : +6 % Total cycle : +336 %	Walk : -8 % Total cycle : +92%	Walk : +1 % Total cycle : +92 %

106

107

108

109

110

111

112

113

114

115

116

117

118

## 119 Age-specific allocation of active transport demands

120 For each Transitions2050 scenario and mode of transportation, the passenger-kilometres were  
121 distributed among age groups according to the mode-specific age distributions observed in the 2019  
122 French mobility survey (Ministry of Ecological Transition).

123 In addition, we allocated the total number of kilometres cycled between E-bikes and mechanical  
124 bicycles differently based on age groups. This allocation was done in order to achieve two objectives:  
125 i) replicate the observed 6.7-year age difference between E-bikers and cyclists as reported in a recent  
126 multi-country study (Castro et al. 2019), and ii) reflect the changing relative contribution of E-bikes to  
127 the total cycling distance over time, as assumed in each scenario.

128 Further details regarding these calculations are provided in the Supplementary Materials.

129

## 130 Demographic projections

131 Population projections, including mortality and life expectancy, for different years and age groups,  
132 were accessed from publicly available data provided by the French national institute of statistics and  
133 economic studies (INSEE). These same data were also used by ADEME in the design of all their  
134 transition scenarios.

135

## 136 Health impact assessment

137 We relied on international guidelines to model and report the health effects associated with active  
138 transportation of the Transitions2050 scenarios for metropolitan France over the 2021-2050 period  
139 (Hess et al. 2020).

140 For each age group, yearly distances travelled were converted into exposure times for walking,  
141 cycling or E-cycling using the following average speeds, respectively: 4.8, 14.9 and 18.1 km.h<sup>-1</sup>  
142 (Egiguren et al. 2021; Götschi et al. 2020). First, we compared the resulting total duration of active  
143 travel to international recommendations for weekly moderate physical activity, averaged over the  
144 entire adult population.

145

146 The health impacts (number of deaths averted) generated by physical activity associated with active  
147 transportation were calculated, using a linear dose-response function between duration spent in  
148 active transportation and the reduction in all-cause mortality, weighted by the specific mortality rate  
149 and size of the population:

$$Nprev_{a,s} = (1 - RR_{REF}) \times \left( \frac{Specific\ duration_{a,s}}{Reference\ duration} \right) \times MR_a \times POP_a$$

150 With:

151  $Nprev_{a,s}$  : Number of death prevented

152  $RR_{REF}$  : Relative risk of all-cause mortality associated with the reference duration of active travel  
153 (Kelly et al. 2014).

154 *Specific duration*<sub>a,s</sub> : Projected in the scenarios and distributed across age groups

155 *Reference duration* : 168 minutes for walking and 100 minutes for cycling as estimated in a meta-  
156 analysis of 18 cohorts (Kelly et al. 2014). This correspond to an energy expenditure of 11.25  
157 MET.hour.week<sup>-1</sup>.

158 *MR<sub>a</sub>* : Specific mortality rate of an age categorie *a*

159 *POP<sub>a</sub>* : Population of the age category *a*

160 We used a relative risk (RR<sub>REF</sub>) of 0.89 for all-cause mortality when engaging weekly in 168 minutes of  
161 walking, with maximum risk reduction of 30%, and a relative risk of 0.90 for 100 minutes of cycling,  
162 with a maximum risk reduction of 45%. Health impacts are therefore capped above 460 minutes of  
163 walking and 447 minutes of cycling (Kelly et al. 2014). We constrained the benefits associated with  
164 physical activity to the population aged between 20 and 89 years. This restriction was made based on  
165 the fact that the relative risk estimates for cycling and walking were extrapolated from studies  
166 encompassing individuals within the age range of 20 to 93 years (Kelly et al. 2014) and the data used  
167 for age distribution of cycling distances were collected from individuals aged between 15 and 89  
168 years (Ministry of Ecological Transition). The assumed ratio of energy expenditure between E-bikes  
169 and bikes was 0.90, as recently used by studies conducted at European and international city levels  
170 (Egiguren et al. 2021). The impacts were evaluated for each age group, taking into account the  
171 respective population size and mortality rate. The total count of deaths prevented by each scenario  
172 was obtained, together with the number of years of life lost (YLL) prevented, by subtracting from the  
173 estimated number of deaths prevented in this scenario the estimated number of deaths prevented in  
174 the BAU scenario. Finally, based on the estimate of the number of deaths prevented, life tables were  
175 generated in order to compute the life expectancy in each scenario.

## 176 Monetizing the health impacts

177 We further estimated the intangible costs associated with the health impact of each scenario, using  
178 the value of a statistical life year (VSLY) that is recommended in France for the socioeconomic  
179 assessment of public investments (Emile 2013). In France, the VSLY is projected to be €151,000 in  
180 2025, and this figure is anticipated to increase to €202,000 by 2050.

181 The VSLY was multiplied by the number of YLL prevented to calculate the monetary impacts of  
182 mortality risk reduction. All monetarized values were expressed in €<sub>2022</sub>.

183 All the estimates were presented alongside uncertainty intervals (UI), which were determined using  
184 the lower and upper bounds of the 95% confidence interval (CI) of the RR used.

## 185 Sensitivity analyses

186 We performed five distinct sensitivity analyses. First, we explored a more favourable RR associated  
187 with cycling (0.81 instead of 0.90 per 100 minutes of cycling), as estimated by a recent meta-analysis  
188 (Zhao et al. 2021). Second, we explored alternative walking and cycling speeds, respectively 3.6 and  
189 13 km.h<sup>-1</sup> (The French Agency for Ecological Transition). Third, we investigated an alternative ratio of  
190 0.78 between E-bike and cycling energy expenditures (Berntsen et al. 2017). Fourth, for scenarios S1  
191 and S2, we assumed that the high increase of cycling overall would affect the demography of cyclist  
192 toward a flatter age distribution, as those observed in countries with a high cycling culture, such as  
193 Denmark. We therefore evolved gradually between 2021 to 2035 the distribution of age-specific  
194 contribution of kilometres cycled from the levels observed in France (Ministry of Ecological  
195 Transition) to those reported in Denmark (Center for Transport Analytics, Transport) (see

196 supplementary materials). Lastly, we constrained the benefits of active transportation to the age  
197 range of 20 to 75 years, as opposed to the wider scope of 20 to 89 years in the main analysis. All  
198 analyses were conducted using the R software version 4.2.3; all data and codes are publicly available  
199 at: <https://github.com/LeoMoutet/HIA-transport>.



## 200 Results

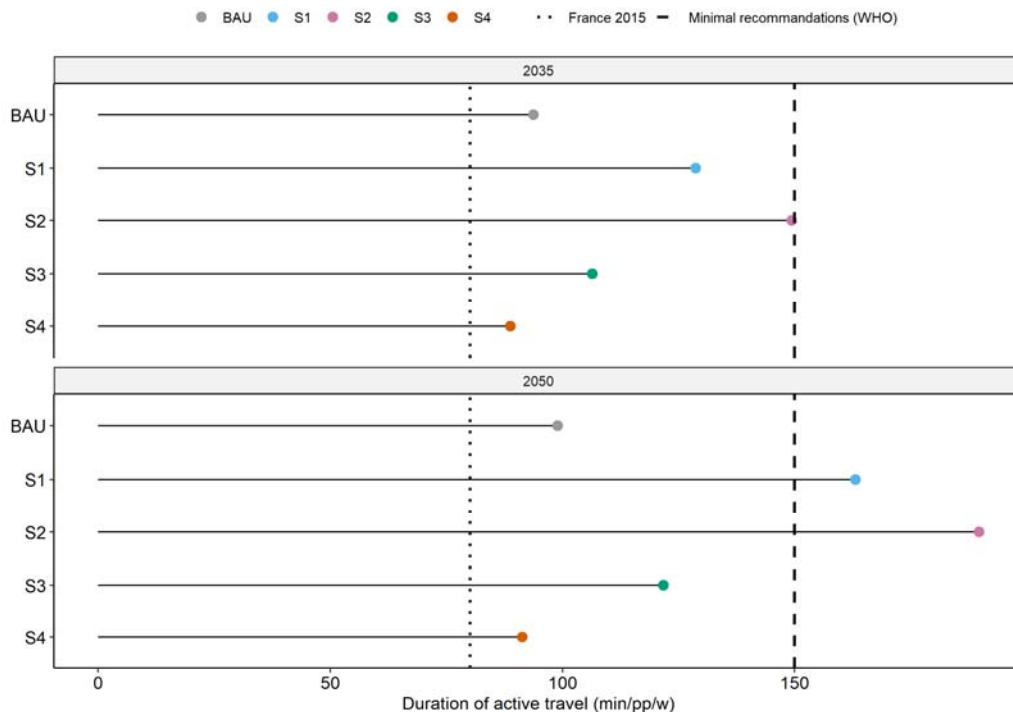
### 201 Projection of active transport

202 Time changes in transport demand from 2021 to 2050 are presented in supplementary materials  
203 (Figure S1) for each mode of active transport and scenario.

204 Figure 2 compares the estimated average weekly durations of active transportation obtained under  
205 each scenarios by 2035 and 2050 with both the 2015 French situation and the minimal  
206 recommendations set by the World Health Organization (WHO), that is, 150 minutes of moderate-  
207 intensity aerobic physical activity per week. In 2015, the active transportation levels in the French  
208 population allowed for a weekly average of 80 minutes of moderate-intensity aerobic physical  
209 activity (The French Agency for Ecological Transition). In the S2 scenario, in 2035, the average levels  
210 of physical activity through active transportation alone are expected to attain the minimal WHO  
211 recommendations. The S1 scenario nearly achieves these levels by 2035 and surpasses them by 2050.  
212 In contrast, the S3 scenario falls short of reaching the minimal recommended levels of physical  
213 activity, both in the medium term (2035) and the long term (2050). Both the BAU scenario and the S4  
214 scenario project minimal increases in active transportation compared to 2015, and fail to reach  
215 WHO's minimal recommendations, even by 2050. These results are detailed by age groups in  
216 supplementary materials (Figure S2).

217

218 Figure 2 - Duration (averaged for the 20-89 years old) of physical activity generated by active  
219 transportation in 2035 and 2050 compared to the French levels in 2015 (all estimated by ADEME  
220 Transition scenarios) and the WHO guidelines for moderate physical activity [26].



221

222

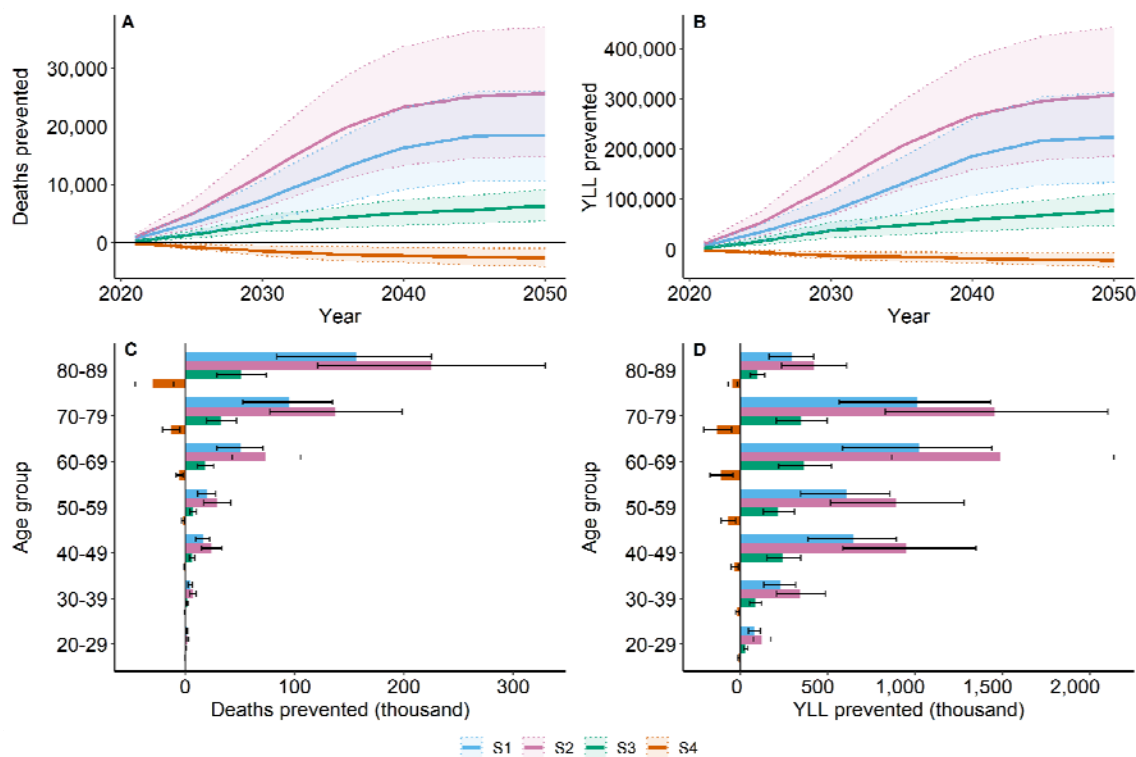
## 223 Quantitative health impact assessment

224 The time-varying health effects expected in each scenario are presented in Figure 3 as numbers of  
225 prevented deaths and YLL compared to the BAU. The disparities in health impacts among scenarios  
226 become more pronounced as time progresses. From 2030 to 2040, the benefits of S1 and S2  
227 scenarios experience a large increase, while the benefits of S3 scenario show a more linear  
228 progression. On the other hand, S4 scenario has negative impacts that intensify over time and remain  
229 noticeable for all age groups above 50 years old. Deaths prevented by scenarios S1-S3 are highest in  
230 the 80-89 age group, and YLL prevented increase for younger ages, plateau for the 40-59 and the 60-  
231 79 years old age groups, and are limited amongst 80-89 years old.

232 For all age groups, the benefits of S2 surpass all other scenarios while the benefits of S1 outweigh  
233 those of S3. The YLL metric makes these benefits apparent for younger age groups (from 20 years old  
234 on). The health impacts of S4 remain small, though negative.

235

236 Figure 3 - Deaths prevented (A and C) and YLL prevented (B and D) by year (A and B) and age group (C  
237 and D, cumulative for the 2021-2050 period) for each transition scenario compared to the BAU.

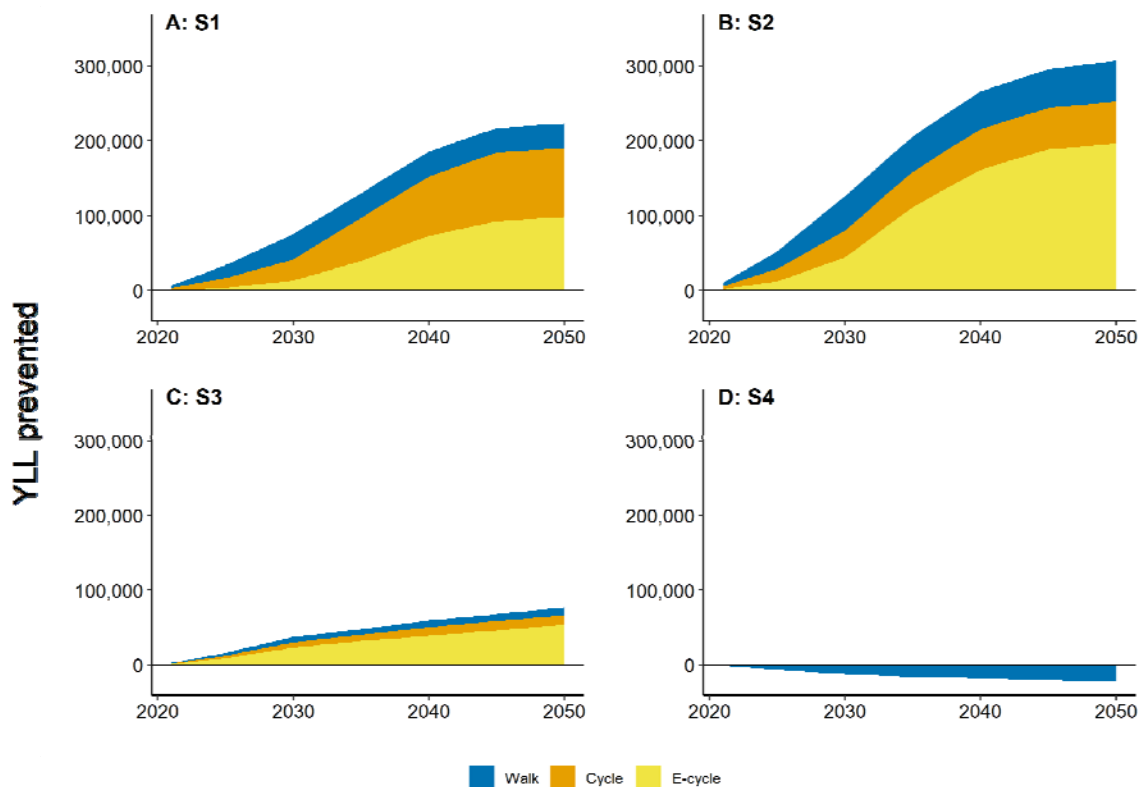


238

239

240 Figure 4 distinguishes the health benefits of the different scenarios by type of active transportation.  
 241 Starting from 2030 onwards, scenarios S1 and S2 demonstrate a rapid increase in the health benefits  
 242 associated with E-cycling, while its progression in S3 is more linear. The health benefits in the first  
 243 scenario mainly come from cycling, with more or less equal contributions of classical and E-cycling  
 244 throughout the period from 2021 to 2050. In scenarios S2 and S3, E-cycling emerges as the mode of  
 245 active transportation contributing to the majority of health benefits, while walking and cycling  
 246 provide similar benefits each year. On the other hand, scenario S4, which is comparable to the BAU  
 247 scenario in terms of cycling mobility, exhibits lower levels of walking. Consequently, the health  
 248 detriments observed in scenario S4 can be entirely attributed to the decrease in pedestrian mobility.

249 Figure 4 - Years of Life Lost (YLL) prevented as a function of time and type of active transportation,  
 250 under (A) scenario S1, (B) scenario S2, (C) scenario S3, and (D) scenario S4.



251

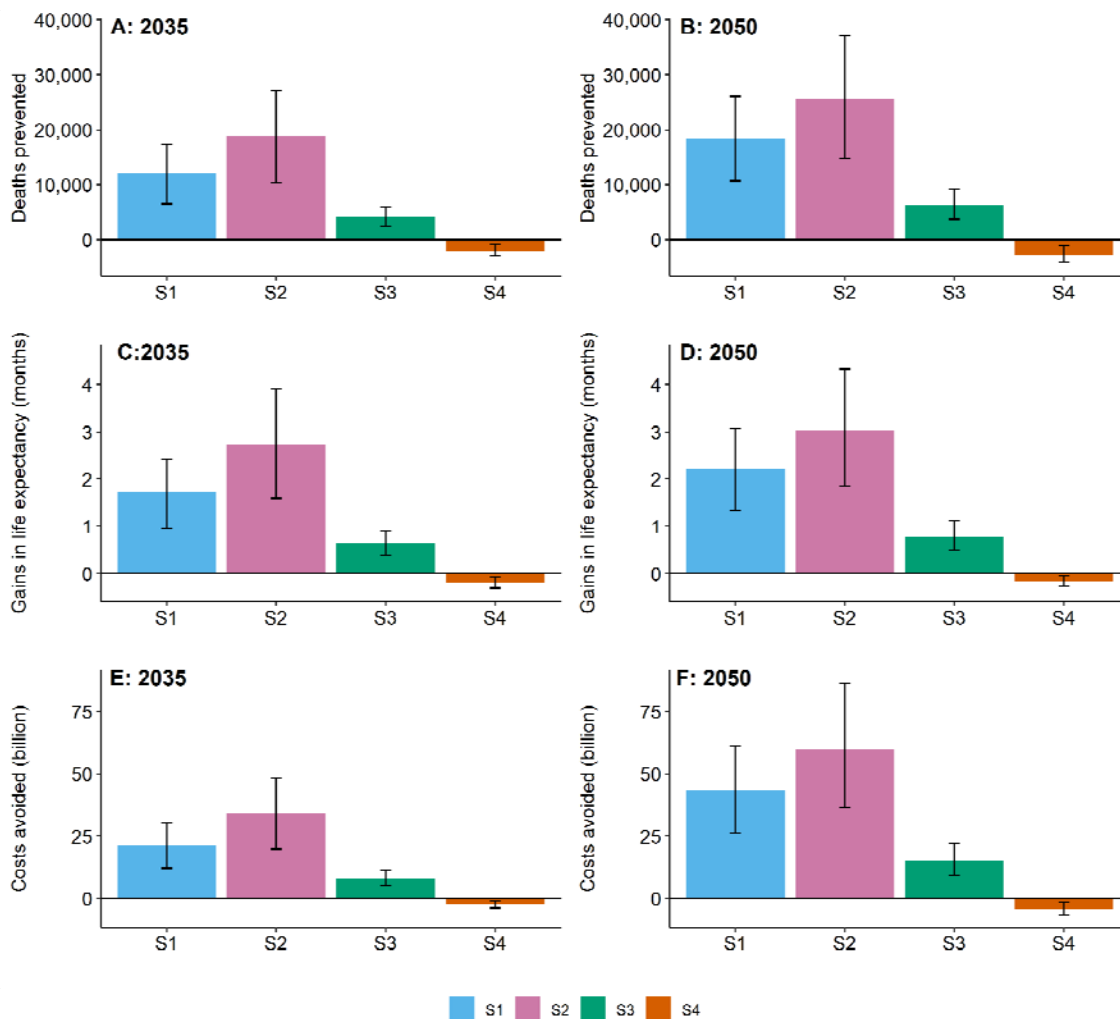
252 Figure 5 presents the annual health and economic benefits of each scenario at medium (2035) and  
 253 long (2050) term. Here again, scenario S2 shows a larger impact over all other scenarios, S1 exhibits a  
 254 superiority over scenario S3, and scenario S4 has detrimental health impacts as compared to the  
 255 BAU. The number of deaths prevented in 2050 by active transportation reaches 25,569 [14,773-  
 256 37,221] with the trajectories projected for scenario S2, 18,436 [10,645-26,067] with scenario S1 and  
 257 6,300 [3,739-9,117] with scenario S3. Scenario S4 would induce an additional 2,658 [962-4,106]  
 258 deaths.

259 Life expectancy of the French population in 2050 would improve by 3.0 [1.9-4.3] months by achieving  
 260 modal shift as described in scenario S2, 2.2 [1.3-3.1] months with scenario S1, 0.8 [0.5-1.1] months  
 261 with scenario S3 and would decrease by 0.2 [0.1-0.3] months with scenario S4.

262 For 2035, the annual corresponding monetarized health benefits (based on the YLL) range from €33.9  
 263 [IC: 19.7-48.5] billion with scenario S2 to €7.9 [IC: 4.8-11.2] billion with scenario S3. Scenario S4  
 264 corresponds to a net detrimental monetarized health impact of €2.5 [1.0-3.9] billion.

265

266 Figure 5 - Deaths prevented (A and B), gain in life expectancy (C and D) and cost avoided (E and F) by  
 267 2035 (A, C and E) and 2050 (B, D and F).



268

269

## 270 Sensitivity Analyses

271 Table 2 summarizes the results of our sensitivity analyses. Overall, the parameter choice which  
 272 affects the most our estimates is the RR value for cycling. Assuming a more favourable RR leads to  
 273 notable increases in the YLL estimated, around +50 to +70%. Modifying the speeds of walking and  
 274 cycling has less but substantial effects of about +20% in the YLL prevented. By lowering the speeds,  
 275 the duration of exposure to physical activity is extended, leading to higher health impacts. The third  
 276 sensitivity analysis, focusing on the ratio of energy expenditure provided by an E-bike compared to a  
 277 mechanical one slightly reduces the health impact, by less than 10% of YLL prevented. In scenarios  
 278 characterized by high levels of cycling (S1 and S2), using the gradual shape of the age distribution of  
 279 cycling kilometres of France in 2021 to Denmark in 2035 (and on to 2050) leads to a minor decrease  
 280 in the number of prevented YLL. Considering Denmark's relative age contribution for cycling  
 281 kilometres leads to less deaths prevented in older age groups (Supplementary materials, figure S5),  
 282 and so has limited impacts on YLL prevented. Restricting the health effects to individuals below the  
 283 age of 75 reduces the YLL prevented ascribed to active transportation by about 20%.

284 For each analysis and any choices of the parameters, the ranking of scenarios according to their  
 285 health impacts remained unchanged, with S2 as the most beneficial scenario, followed by S1 and  
 286 then S3, while S4 yielded negative health impacts.

287

288 Table 2 - Health impacts of active transportation for ADEME's scenarios. Main and sensitivity  
 289 analysis.

	<b>Cumulative YLL prevented for 2021-2050 [CI], in million</b>			
	<b>S1</b>	<b>S2</b>	<b>S3</b>	<b>S4</b>
Main analysis	3.9 (2.2, 5.5)	5.7 (3.3, 8.1)	1.4 (0.8, 2.0)	-0.4 (-0.7, -0.2)
RR <sub>cycle</sub> = 0.81 (Zhao et al. 2021)	6.7 (3.1, 10.5)	9.7 (4.6, 15.7)	2.4 (1.2, 4.0)	-0.4 (-0.7, -0.2)
Alternative speeds: walking = 3.6 km.h <sup>-1</sup> ; cycling = 13 km.h <sup>-1</sup> (The French Agency for Ecological Transition)	4.6 (2.6, 6.5)	6.7 (3.9, 9.7)	1.6 (0.8, 2.3)	-0.6 (-0.9, -0.2)
Ratio MET <sub>E-cycle/cycle</sub> = 0.78 (Berntsen et al. 2017)	3.7 (2.2, 5.5)	5.2 (3.3, 8.1)	1.3 (0.8, 2.0)	-0.4 (-0.7, -0.2)
Age distribution of cycling evolves with high levels of cycling (S1 and S2)*	3.8 (2.2, 5.3)	5.4 (3.2, 7.8)	1.4 (0.8, 2.0)	-0.4 (-0.7, -0.2)
No effect >75 years old	3.2 (1.8, 4.5)	4.6 (2.8, 6.7)	1.1 (0.7, 1.6)	-0.3 (-0.5, -0.1)

290 YLL = Years of life lost ; CI = Confidence interval ; RR = Relative risk ; MET = Metabolic equivalent of task.

291 \*The distribution of age-specific contribution of cycling kilometres evolve gradually between 2021 and 2035 from the levels  
 292 observed in France to those reported in Denmark (Supplementary materials).

293

## 294 Discussion

### 295 Main results

296 In this study, we highlight the widely varying potential health benefits of transport transition  
297 pathways towards carbon neutrality, through their impact on active transport. Future pathways  
298 promoting modal shift to active modes of transportation facilitate the attainment of the minimal  
299 recommendation on physical activity set by the WHO solely through transport activities. Conversely,  
300 policies wagering on future technological developments to attain carbon neutrality are likely to  
301 intensify the lack of physical activity and its harmful health impacts in the general population.  
302 According to the extent of modal shift, and compared to the BAU, health impacts at the 2035 horizon  
303 may range from 19,000 deaths prevented to 2,000 additional deaths, representing respectively €34  
304 billion annual savings and €3 billion additional mortality costs. Qualitative results and the ranking of  
305 Transitions2050 scenarios remained consistent through several sensitivity analyses.

### 306 Literature comparison

307 For all scenarios, the majority of health benefits may be explained by an achievable increase in  
308 cycling mobility, particularly through the use of E-bikes. The most optimistic scenario reaches 20  
309 kilometres cycled and 7 kilometres walked per person weekly, representing roughly 20 minutes per  
310 day of active transportation. Such increase in active transportation seem considerable as compared  
311 to the levels reported before 2020. However, they remain lower to those reported in other European  
312 countries: In Netherlands, active transportation represent between 24 and 28 minutes daily (Fishman  
313 et al. 2015) and more than 50% of trips <2 kilometres and 30% of trips between 2 to 5 kilometres are  
314 undertaken using bicycles (Goel et al. 2021). This highlights the margin of progression for active  
315 transportation in France, where only 5% of the active population uses a bike for trips covering less  
316 than 5 kilometres, while 60% opt for a car (Chantal Brutel, Jeanne Pages 2021). The anticipated levels  
317 of active transportation in S1 and S2 scenarios therefore appear to be quite achievable.

318 The method we used for quantifying health and economic impacts follows the recommended steps  
319 and parameters outlined by the WHO and environmental economists. These approaches are widely  
320 described and employed in various scientific studies (Emile 2013; Götschi et al. 2020; Smith et al.  
321 2021). A health impact assessment study on the transport sector was previously conducted in France  
322 using a similar method (Barban et al. 2022). The scenario explored in this study projected active  
323 transportation levels similar to those observed in the S1 scenario, and the estimated health impacts  
324 were similar to those we obtain. Studies comparing multiple scenarios consistently demonstrate  
325 significant differences in the health impacts of active transportation: Climate policy strategies that  
326 prioritize health-promoting pathways and are built upon the behaviours of the population yield more  
327 significant health benefits (Hamilton et al. 2021; Milner et al. 2023).

328 Preventing, as we predict in scenario S2, 19,000 deaths annually by 2035 solely through deliberate  
329 decisions in the development of the transportation sector holds significant importance for public  
330 health prevention as it corresponds to 2.8% of all-cause mortality projected for this year (INSEE).  
331 Indeed, in comparison, in France, it is estimated that exposure to PM2.5 is responsible for 40,000  
332 deaths annually (Santé publique France 2021) while heat-attributable deaths reached up to 7,000 in  
333 2022 (Santé publique France 2023). In the transport sector, all road-related fatalities in France range  
334 between 3,000 and 4,000 deaths annually (excepted in 2020 and 2021) (ONISR (Observatoire  
335 national interministériel de la sécurité routière) 2023). From a benefit-cost perspective, based on a  
336 UK case-study, the economic gain of prevented mortality generated by an additional 267 regular  
337 cyclists per kilometres of a new separated cycleway breaks even on the costs of construction (Candio  
338 and Frew 2023).

339 The adoption of electric modes of transportation is widely recognized as a strategy for mitigating  
340 emissions within the transportation sector. However, it is important to acknowledge that electric  
341 vehicles, along with the high battery metals demand (European Federation for Transport and  
342 Environment 2023), can also contribute to pollutant emissions through the dispersion of road dust  
343 particles and the degradation of tires and brakes wear (Bourliva et al. 2017). In the transport sector,  
344 modal shift and decarbonation of the energy supply can yield larger health co-benefits (Milner et al.  
345 2023). The promotion of E-bikes is a cost-effective approach to reduce transport associated carbon  
346 emissions while improving health and mobility (Jenkins et al. 2022). The allocation of more areas to  
347 bicycle infrastructure can also optimize the utilization of public space (Gössling et al. 2016).

348 Other outcomes have to be taken into account when outlining health effects of modal shift such as  
349 air pollution, road injuries or noise. Regardless of the specific assumptions, the health benefits of  
350 active transportation consistently outweigh the potential adverse effects stemming from exposure to  
351 air pollution and traffic-related incidents (Mueller et al. 2018). Among various modes of  
352 transportation, car users exhibit highest levels of exposure to air pollutants such as PM<sub>2.5</sub>, black  
353 carbon, and CO (de Nazelle et al. 2017). The association with road injuries depends greatly on the  
354 assumptions made on the fatality and injury rates of cyclists (Quam et al. 2017) as well as the quality  
355 of transport infrastructures (WHO 2022). Furthermore, each incremental shift from cars to bicycles  
356 corresponds to a noteworthy decrease in pollutant emissions (Bernard et al. 2021). For instance, it  
357 has been estimated that an individual who replaces one car trip per day with a bicycle trip over 200  
358 days can reduce their CO<sub>2</sub> emissions by 0.5 tons per year (Brand et al. 2021). Noise pollution would  
359 also benefit from modal shift, which would yield positive impacts on health-related quality of life,  
360 mediated by annoyance and sleep disturbance (Héritier et al. 2014). It is also expected that a general  
361 increase of physical activity reduces morbidity related to cardiovascular risks, cancer, osteoporosis,  
362 depression and low back pain (Miller et al. 2016). Further impacts related to quality of life can also  
363 benefit from active transportation such as work performance and productivity (Ding et al. 2016).

364

## 365 **Limitation**

366 Using the transport demand as a proxy for physical activity allows for a quantification of health  
367 impacts associated with specific active modes of transport but does not encompass several variations  
368 in the population. For example, given the expectation that scenarios S3 and S4 would limit active  
369 transportation primarily to those who are already physically active, while scenarios S1 and S2 would  
370 promote active transportation for a broader population, including individuals who are sedentary, a  
371 more targeted distribution of transport demand could be achieved. This distribution would involve a  
372 heterogeneous allocation of distances within age groups. By implementing such an allocation  
373 strategy, the differences in health impacts between high cycling (S1, S2) and low cycling (S3, S4)  
374 scenarios could be amplified. Another limitation linked to this proxy is that the physical activities  
375 performed out of transport context are not taken into account, despite their anticipated distinct  
376 evolution across scenarios. However, several studies suggest that active transportation adds to  
377 rather than replaces other physical activities (Laeremans et al. 2017).

378 Using a relative risk from a meta-analysis provides a robust association between physical activity and  
379 mortality reduction but does not allow to specify distinct relative benefits based on age, gender, or  
380 socio-occupational category. A recent meta-analysis showed no significant differences in the  
381 association of cycling with all-cause mortality for gender groups and among individuals aged above or  
382 below 50 years (Zhao et al. 2021). Additional cohort studies are needed to assess the potential  
383 heterogeneity of the association between more specific age groups and socio-occupational  
384 categories.



385 Our analysis incorporates a dose-response functions that account for cycling and walking-related  
386 mortality, primarily including impacts from physical activity, but also from air pollution exposure and  
387 road injuries (de Nazelle et al. 2011). Higher modal shift scenarios lead to an accelerated reduction in  
388 air pollution exposure, while evidence shows a non-linear relationship between the number of  
389 cyclists and road injuries (Jacobsen et al. 2015). Using the same dose-response function across years  
390 may lead to underestimating health benefits and narrowing the differences between scenarios.

391 Our results are calculated from a projected scenario, the BAU. This inherent uncertainty may  
392 introduce variability in the absolute results of each scenario, yet it does not alter the relative  
393 hierarchy of their respective impacts.

394 All in all, it is important to acknowledge that a health impact assessment study only provides  
395 theoretical estimates of health and economic impacts, and that its quantitative results should not be  
396 over-interpreted. However, the magnitude of effects and the comparison of scenarios allow for a  
397 better interpretation of the co-benefits and potential implications of specific public policies.

398

399

## 400 Conclusion

401 Different carbon neutral trajectories imply distinct health benefits, this holds particularly true within  
402 the transport sector. The implementation of public policies promoting modal shift effectively  
403 improves population health while reducing the use of fossil fuels and pollutant emissions. In France,  
404 directing transportation towards active modes would yield significant health co-benefits. Transition  
405 trajectories primarily relying on technological interventions offer minimal benefits and may even  
406 exacerbate the lack of physical activity in the population. In a context of reaching towards carbon  
407 neutrality, these results may help guide decision-makers in the choice of optimal transition  
408 strategies.

409

## 410 Acknowledgments

411 We are thankfull to Stephane Barbusse (ADEME - The French Agency for Ecological Transition) for  
412 useful elements and discussions regarding the ADEME Transitions2050 scenarios.

413

## 414 Authors contributions

415 PQ and KJ conceived the design of this study. LM produced output, figures and tables. AB contributed  
416 to data acquisition. LM, LT and KJ interpreted the results and wrote the original draft of the article.  
417 AB and PQ contributed to critical feedbacks on the methodology and interpretation of the results.

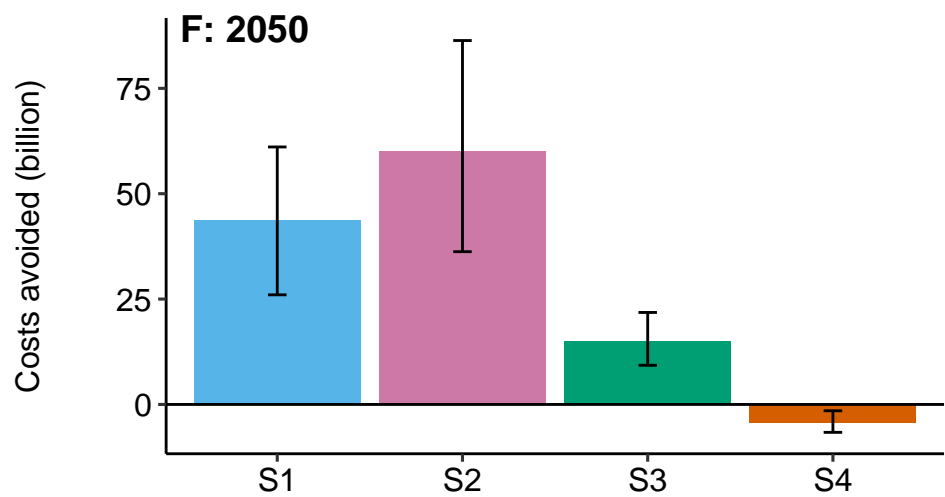
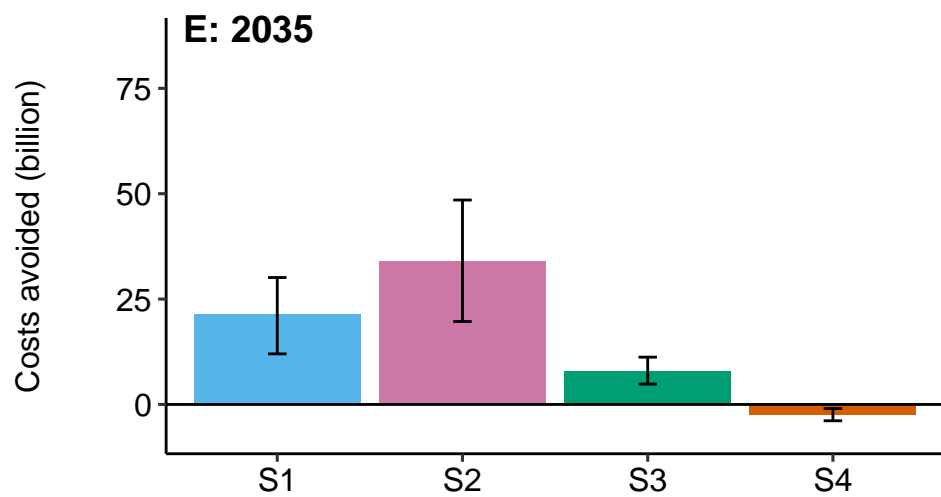
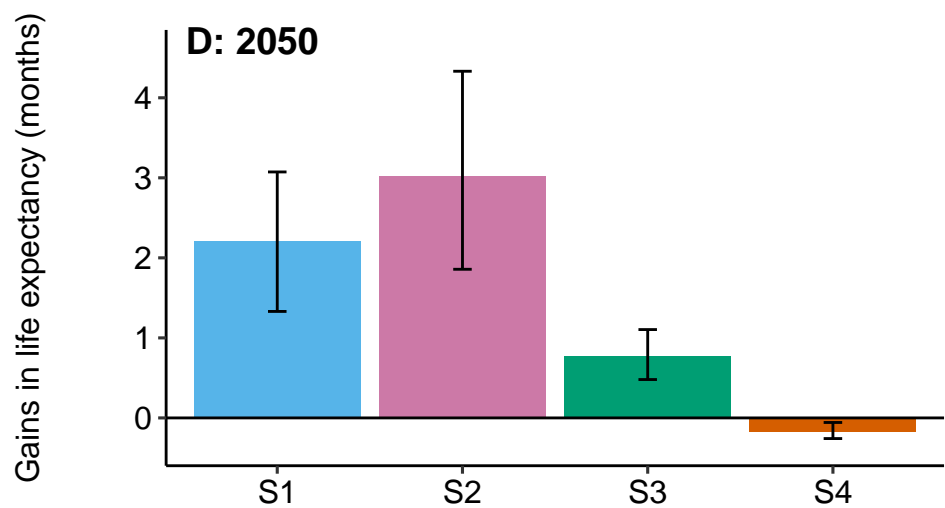
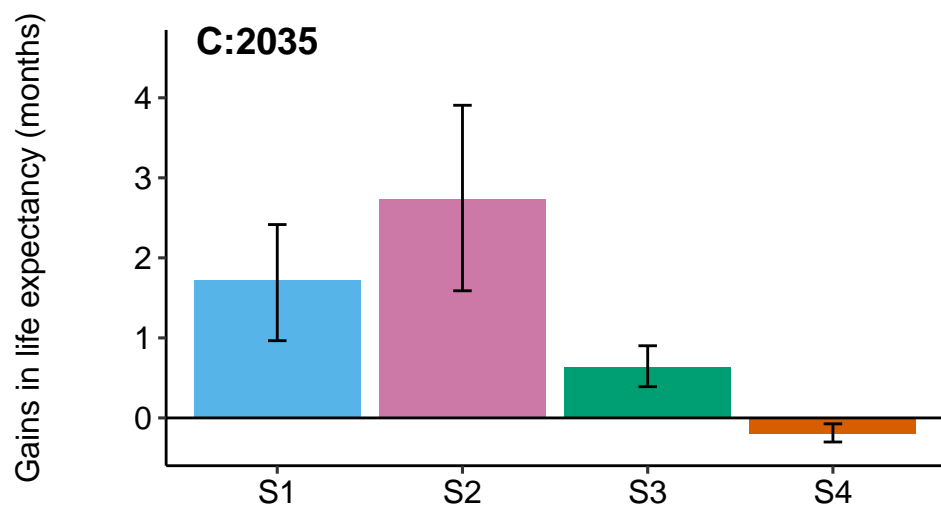
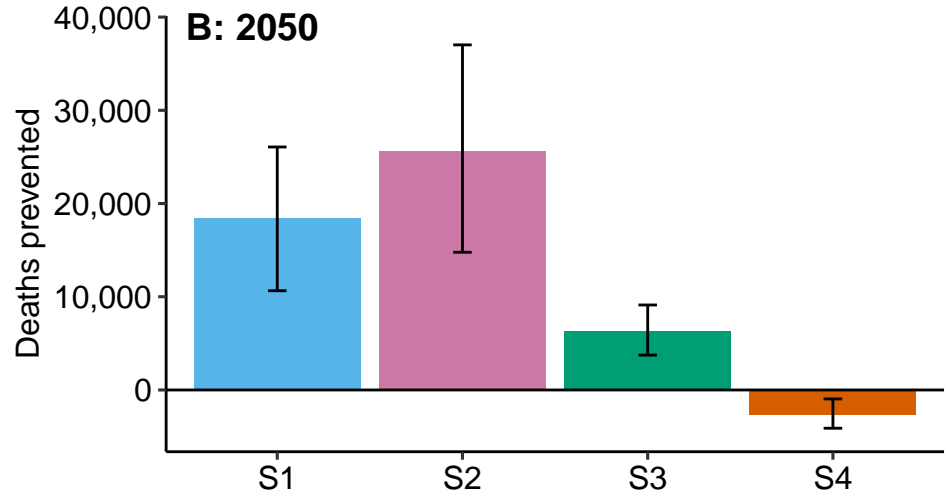
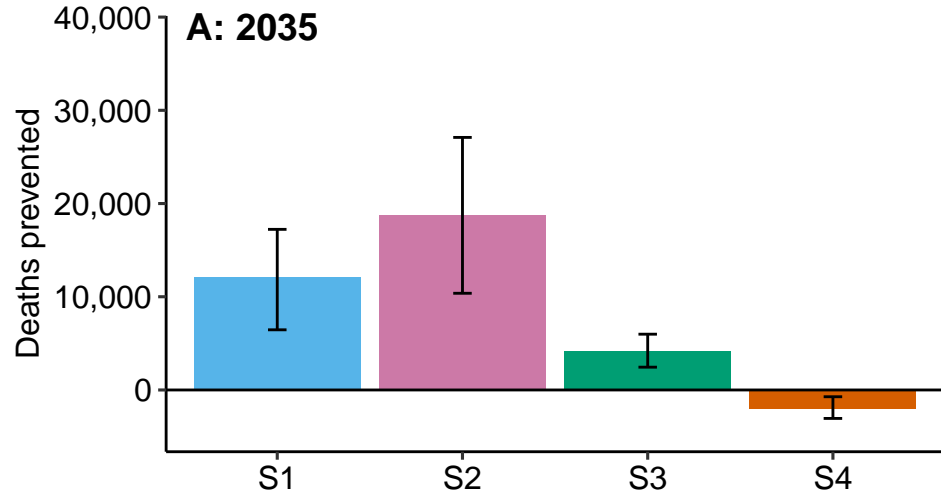
## 418 References

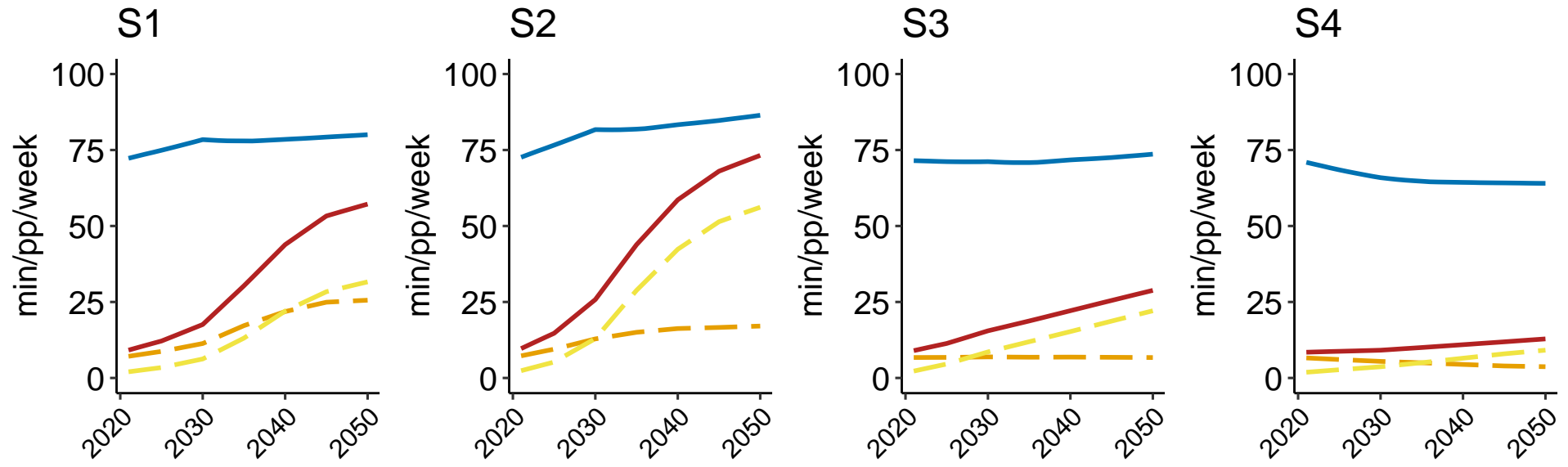
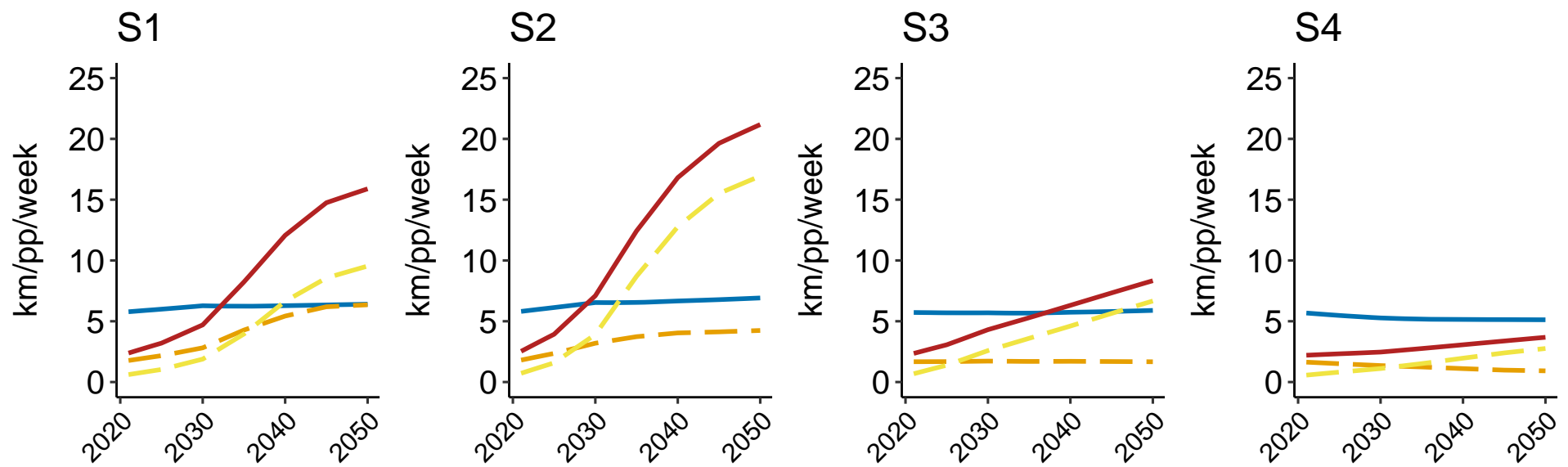
- 419 Barban P, De Nazelle A, Chatelin S, Quirion P, Jean K. 2022. Assessing the Health Benefits of Physical  
420 Activity Due to Active Commuting in a French Energy Transition Scenario. *Int J Public Health*  
421 67:1605012; doi:10.3389/ijph.2022.1605012.
- 422 Bernard P, Chevance G, Kingsbury C, Baillet A, Romain A-J, Molinier V, et al. 2021. Climate Change,  
423 Physical Activity and Sport: A Systematic Review. *Sports Med* 51:1041–1059;  
424 doi:10.1007/s40279-021-01439-4.
- 425 Berntsen S, Malnes L, Langåker A, Bere E. 2017. Physical activity when riding an electric assisted  
426 bicycle. *Int J Behav Nutr Phys Act* 14:55; doi:10.1186/s12966-017-0513-z.
- 427 Bourliva A, Christophoridis C, Papadopoulou L, Giouri K, Papadopoulos A, Mitsika E, et al. 2017.  
428 Characterization, heavy metal content and health risk assessment of urban road dusts from  
429 the historic center of the city of Thessaloniki, Greece. *Environ Geochem Health* 39:611–634;  
430 doi:10.1007/s10653-016-9836-y.
- 431 Brand C, Götschi T, Dons E, Gerike R, Anaya-Boig E, Avila-Palencia I, et al. 2021. The climate change  
432 mitigation impacts of active travel: Evidence from a longitudinal panel study in seven  
433 European cities. *Global Environmental Change* 67:102224;  
434 doi:10.1016/j.gloenvcha.2021.102224.
- 435 Candio P, Frew E. 2023. How much behaviour change is required for the investment in cycling  
436 infrastructure to be sustainable? A break-even analysis. *N. Tadjik, ed PLoS ONE* 18:e0284634;  
437 doi:10.1371/journal.pone.0284634.
- 438 Castro A, Gaupp-Berghausen M, Dons E, Standaert A, Laeremans M, Clark A, et al. 2019. Physical  
439 activity of electric bicycle users compared to conventional bicycle users and non-cyclists:  
440 Insights based on health and transport data from an online survey in seven European cities.  
441 *Transportation Research Interdisciplinary Perspectives* 1:100017;  
442 doi:10.1016/j.trip.2019.100017.
- 443 Center for Transport Analytics, Transport. The Danish National Travel Survey.
- 444 Chantal Brutel, Jeanne Pages. 2021. La voiture reste majoritaire pour les déplacements domicile-  
445 travail, même pour de courtes distances.
- 446 de Nazelle A, Bode O, Orjuela JP. 2017. Comparison of air pollution exposures in active vs. passive  
447 travel modes in European cities: A quantitative review. *Environ Int* 99:151–160;  
448 doi:10.1016/j.envint.2016.12.023.
- 449 de Nazelle A, Nieuwenhuijsen MJ, Antó JM, Brauer M, Briggs D, Braun-Fahrlander C, et al. 2011.  
450 Improving health through policies that promote active travel: a review of evidence to  
451 support integrated health impact assessment. *Environ Int* 37:766–777;  
452 doi:10.1016/j.envint.2011.02.003.
- 453 Ding D, Lawson KD, Kolbe-Alexander TL, Finkelstein EA, Katzmarzyk PT, van Mechelen W, et al. 2016.  
454 The economic burden of physical inactivity: a global analysis of major non-communicable  
455 diseases. *Lancet* 388:1311–1324; doi:10.1016/S0140-6736(16)30383-X.
- 456 Eiguren J, Nieuwenhuijsen MJ, Rojas-Rueda D. 2021. Premature Mortality of 2050 High Bike Use  
457 Scenarios in 17 Countries. *Environ Health Perspect* 129:127002; doi:10.1289/EHP9073.

- 458 Emile Q. 2013. L'évaluation socioéconomique des investissements publics.
- 459 European Federation for Transport and Environment. 2023. Clean and lean: Battery metals demand  
460 from electrifying passenger transport.
- 461 Fishman E, Böcker L, Helbich M. 2015. Adult active transport in the Netherlands: an analysis of its  
462 contribution to physical activity requirements. *PLoS One* 10:e0121871;  
463 doi:10.1371/journal.pone.0121871.
- 464 Goel R, Goodman A, Aldred R, Nakamura R, Tatah L, Garcia LMT, et al. 2021. Cycling behaviour in 17  
465 countries across 6 continents: levels of cycling, who cycles, for what purpose, and how far?  
466 *Transport Reviews* 0:1–24; doi:10.1080/01441647.2021.1915898.
- 467 Gössling S, Schröder M, Späth P, Freytag T. 2016. Urban Space Distribution and Sustainable  
468 Transport. *Transport Reviews* 36:659–679; doi:10.1080/01441647.2016.1147101.
- 469 Götschi T, Kahlmeier S, Castro A, Brand C, Cavill N, Kelly P, et al. 2020. Integrated Impact Assessment  
470 of Active Travel: Expanding the Scope of the Health Economic Assessment Tool (HEAT) for  
471 Walking and Cycling. *Int J Environ Res Public Health* 17:7361; doi:10.3390/ijerph17207361.
- 472 Guthold R, Stevens GA, Riley LM, Bull FC. 2018. Worldwide trends in insufficient physical activity from  
473 2001 to 2016: a pooled analysis of 358 population-based surveys with 1.9 million  
474 participants. *Lancet Glob Health* 6:e1077–e1086; doi:10.1016/S2214-109X(18)30357-7.
- 475 Hamilton I, Kennard H, McGushin A, Höglund-Isaksson L, Kiesewetter G, Lott M, et al. 2021. The  
476 public health implications of the Paris Agreement: a modelling study. *The Lancet Planetary  
477 Health* 5:e74–e83; doi:10.1016/S2542-5196(20)30249-7.
- 478 HCC (The High Council on Climate). 2021. Renforcer l'atténuation, engager l'adaptation [Reinforce  
479 Mitigation, Engage Adaptation].
- 480 Héritier H, Vienneau D, Frei P, Eze I, Brink M, Probst-Hensch N, et al. 2014. The Association between  
481 Road Traffic Noise Exposure, Annoyance and Health-Related Quality of Life (HRQOL). *IJERPH*  
482 11:12652–12667; doi:10.3390/ijerph111212652.
- 483 Hess JJ, Ranadive N, Boyer C, Aleksandrowicz L, Anenberg SC, Aunan K, et al. 2020. Guidelines for  
484 Modeling and Reporting Health Effects of Climate Change Mitigation Actions. *Environ Health  
485 Perspect* 128:115001; doi:10.1289/EHP6745.
- 486 INSEE (National Institute of Statistics and Economic Studies). Projections de population 2005-2050  
487 par sexe et âge.
- 488 IPCC (Intergovernmental Panel on Climate Change). 2023. SYNTHESIS REPORT OF THE IPCC SIXTH  
489 ASSESSMENT REPORT (AR6).
- 490 Jacobsen PL, Ragland DR, Komanoff C. 2015. Safety in Numbers for walkers and bicyclists: exploring  
491 the mechanisms. *Injury Prevention* 21:217–220; doi:10.1136/injuryprev-2015-041635.
- 492 Jenkins M, Lustosa L, Chia V, Wildish S, Tan M, Hoornweg D, et al. 2022. What do we know about  
493 pedal assist E-bikes? A scoping review to inform future directions. *Transport Policy* 128:25–  
494 37; doi:10.1016/j.tranpol.2022.09.005.

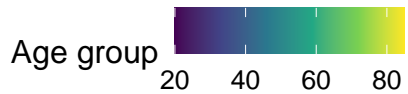
- 495 Katzmarzyk PT, Friedenreich C, Shiroma EJ, Lee I-M. 2021. Physical inactivity and non-communicable  
496 disease burden in low-income, middle-income and high-income countries. *Br J Sports Med*  
497 *bjsports-2020-103640*; doi:10.1136/bjsports-2020-103640.
- 498 Kelly P, Kahlmeier S, Götschi T, Orsini N, Richards J, Roberts N, et al. 2014. Systematic review and  
499 meta-analysis of reduction in all-cause mortality from walking and cycling and shape of dose  
500 response relationship. *Int J Behav Nutr Phys Act* 11:132; doi:10.1186/s12966-014-0132-x.
- 501 Laeremans M, Gotschi T, Dons E, Kahlmeier S, Brand C, de Nazelle A, et al. 2017. Does an Increase in  
502 Walking and Cycling Translate into a Higher Overall Physical Activity Level? *Journal of*  
503 *Transport & Health* 5:S20; doi:10.1016/j.jth.2017.05.301.
- 504 Miller KR, McClave SA, Jampolis MB, Hurt RT, Krueger K, Landes S, et al. 2016. The Health Benefits of  
505 Exercise and Physical Activity. *Curr Nutr Rep* 5:204–212; doi:10.1007/s13668-016-0175-5.
- 506 Milner J, Turner G, Ibbetson A, Colombo PE, Green R, Dangour AD, et al. 2023. Impact on mortality of  
507 pathways to net zero greenhouse gas emissions in England and Wales: a multisectoral  
508 modelling study. *The Lancet Planetary Health* 7:e128–e136; doi:10.1016/S2542-  
509 5196(22)00310-2.
- 510 Ministry of Ecological Transition. *Enquête mobilité des personnes de 2019*.
- 511 Mueller N, Rojas-Rueda D, Basagaña X, Cirach M, Cole-Hunter T, Dadvand P, et al. 2017. Urban and  
512 Transport Planning Related Exposures and Mortality: A Health Impact Assessment for Cities.  
513 *Environ Health Perspect* 125:89–96; doi:10.1289/EHP220.
- 514 Mueller N, Rojas-Rueda D, Cole-Hunter T, de Nazelle A, Dons E, Gerike R, et al. 2015. Health impact  
515 assessment of active transportation: A systematic review. *Prev Med* 76:103–114;  
516 doi:10.1016/j.yjmed.2015.04.010.
- 517 Mueller N, Rojas-Rueda D, Salmon M, Martinez D, Ambros A, Brand C, et al. 2018. Health impact  
518 assessment of cycling network expansions in European cities. *Preventive Medicine* 109:62–  
519 70; doi:10.1016/j.yjmed.2017.12.011.
- 520 ONISR (Observatoire national interministériel de la sécurité routière). 2023. *Accidentalité routière*  
521 *2022 en France*.
- 522 Quam VGM, Rocklöv J, Quam MBM, Lucas RAI. 2017. Assessing Greenhouse Gas Emissions and  
523 Health Co-Benefits: A Structured Review of Lifestyle-Related Climate Change Mitigation  
524 Strategies. *Int J Environ Res Public Health* 14; doi:10.3390/ijerph14050468.
- 525 Rojas-Rueda D, de Nazelle A, Andersen ZJ, Braun-Fahrländer C, Bruha J, Bruhova-Foltynova H, et al.  
526 2016. Health Impacts of Active Transportation in Europe. K.L. Ebi, ed *PLoS ONE* 11:e0149990;  
527 doi:10.1371/journal.pone.0149990.
- 528 Santé publique France. 2023. *Estimation de la fraction de la mortalité attribuable à l'exposition de la*  
529 *population générale à la chaleur en France métropolitaine Application à la période de*  
530 *surveillance estivale (1er juin -15 septembre) 2014-2022*.
- 531 Santé publique France. 2021. *Impact de la pollution de l'air ambiant sur la mortalité en France*  
532 *métropolitaine: réduction en lien avec le confinement du printemps 2020 et nouvelles*  
533 *données sur le poids total pour la période 2016-2019*.

- 534 Smith R, Thomas C, Squires H, Götschi T, Kahlmeier S, Goyder E. 2021. The price of precision: trade-  
535 offs between usability and validity in the World Health Organization Health Economic  
536 Assessment Tool for walking and cycling. *Public Health* 194:263–269;  
537 doi:10.1016/j.puhe.2021.03.016.
- 538 Stappers NEH, Bekker MPM, Jansen MWJ, Kremers SPJ, de Vries NK, Schipperijn J, et al. 2023. Effects  
539 of major urban redesign on sedentary behavior, physical activity, active transport and health-  
540 related quality of life in adults. *BMC Public Health* 23:1157; doi:10.1186/s12889-023-16035-  
541 6.
- 542 The French Agency for Ecological Transition. Futures in transition - Scenarios. Available:  
543 <https://www.ademe.fr/en/futures-in-transition/scenarios/> [accessed 3 June 2023a].
- 544 The French Agency for Ecological Transition. Transitions 2050 - Portail de données. Available:  
545 <https://data-transitions2050.ademe.fr/datasets?topics=vKftP1ZR0-SvQtrX4J5pS> [accessed 26  
546 July 2023b].
- 547 UNFCCC (United nations Framework Convention on Climate Change ), 21st session. 2015. Paris  
548 Agreement.
- 549 WHO guidelines on physical activity and sedentary behaviour. 2020. World Health  
550 Organization: Geneva.
- 551 WHO (World Health Organisation). Regional Office for Europe. 2022. Walking and cycling: latest  
552 evidence to support policy-making and practice.
- 553 Zhao Y, Hu F, Feng Y, Yang X, Li Y, Guo C, et al. 2021. Association of Cycling with Risk of All-Cause and  
554 Cardiovascular Disease Mortality: A Systematic Review and Dose-Response Meta-analysis of  
555 Prospective Cohort Studies. *Sports Med* 51:1439–1448; doi:10.1007/s40279-021-01452-7.
- 556
- 557

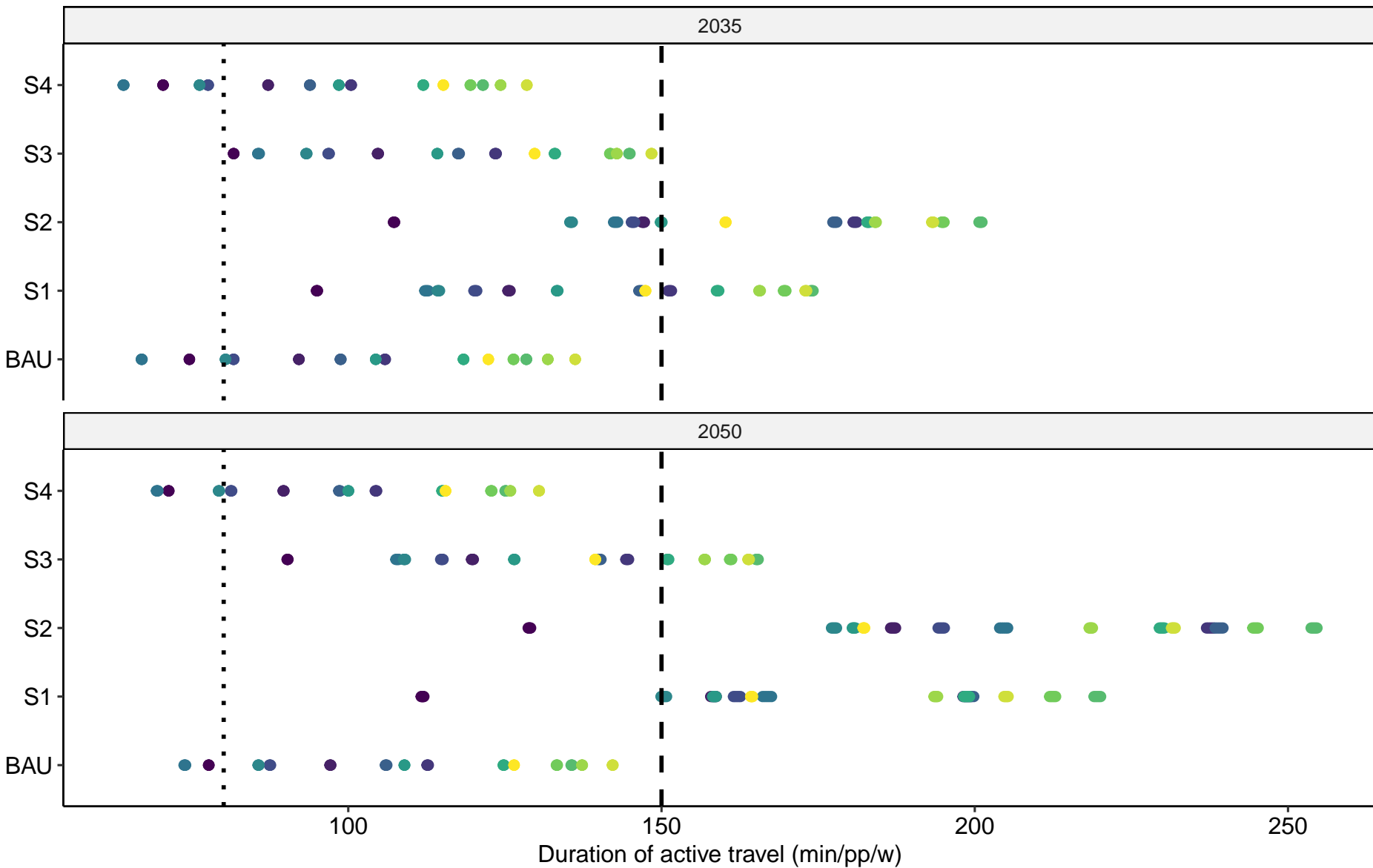




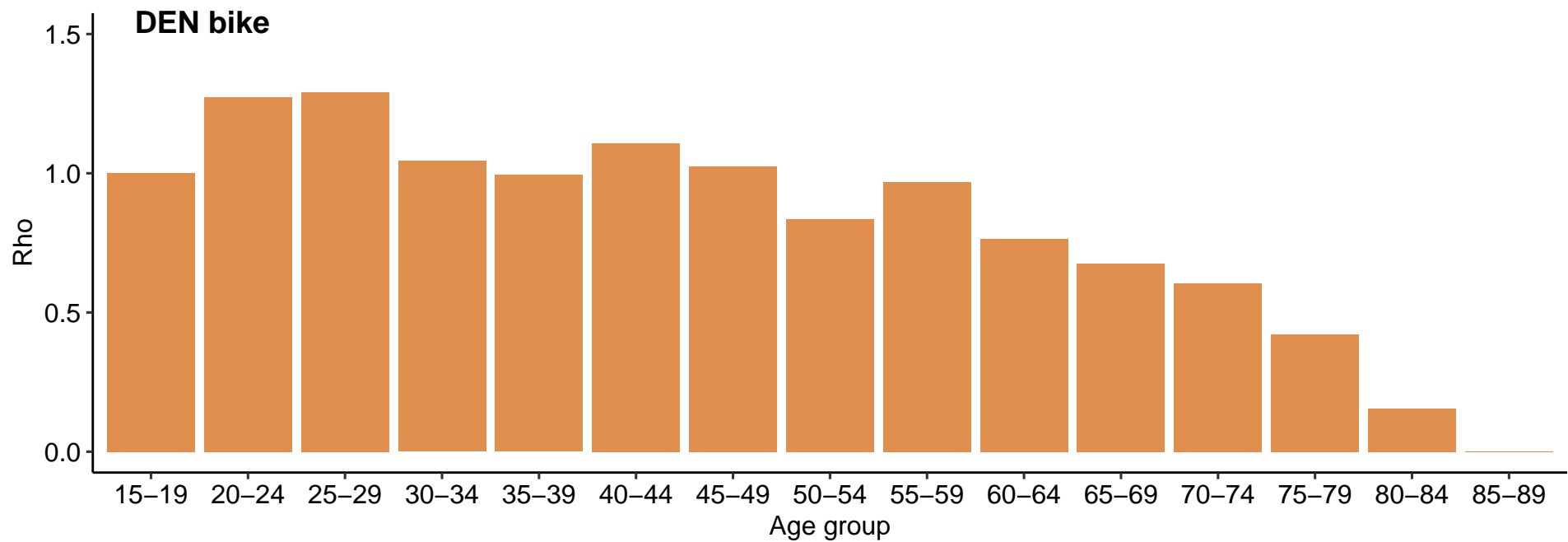
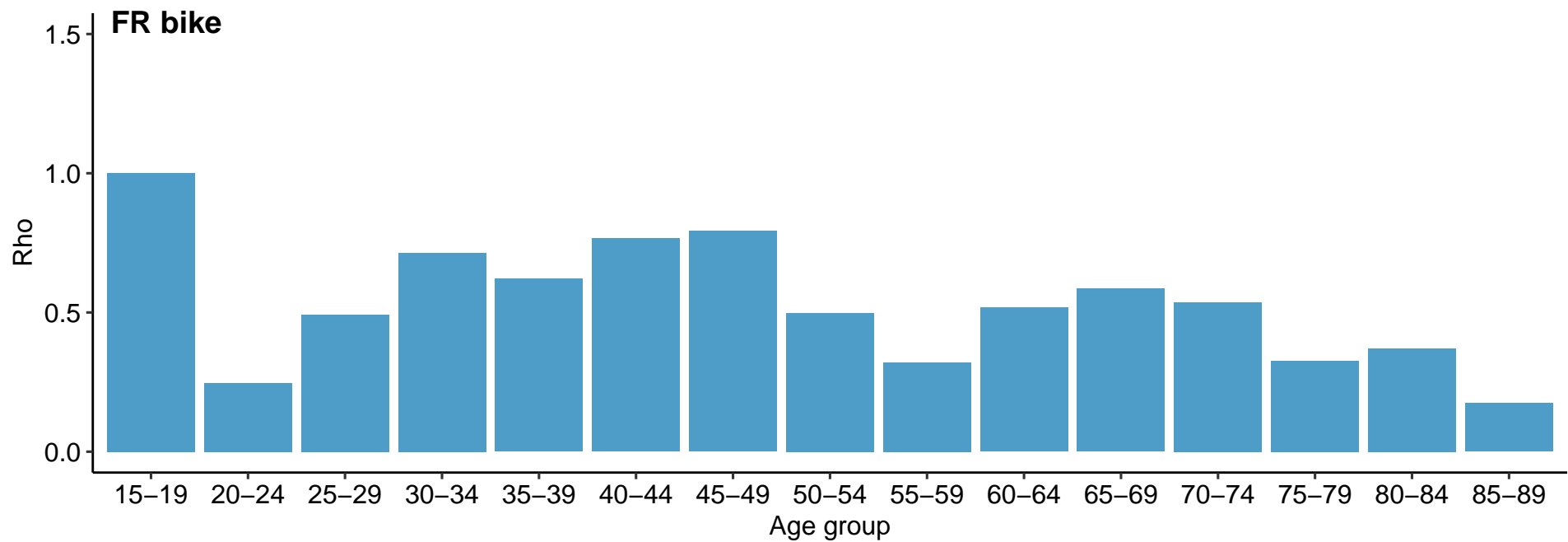
— Walk    - - - Cycle    - - - E-cycle    — Total cycle



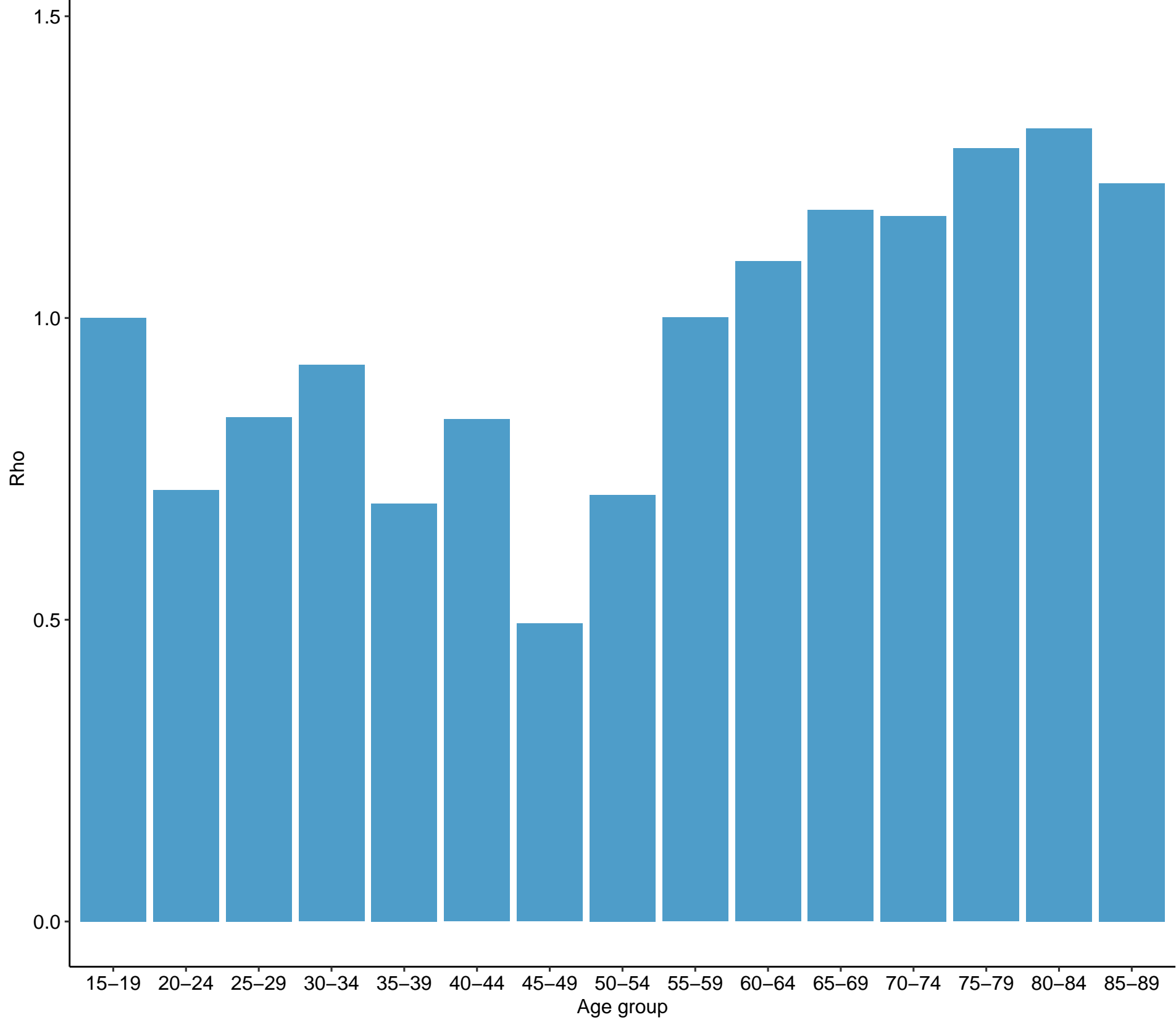
France 2015 Minimal recommendations (WHO)

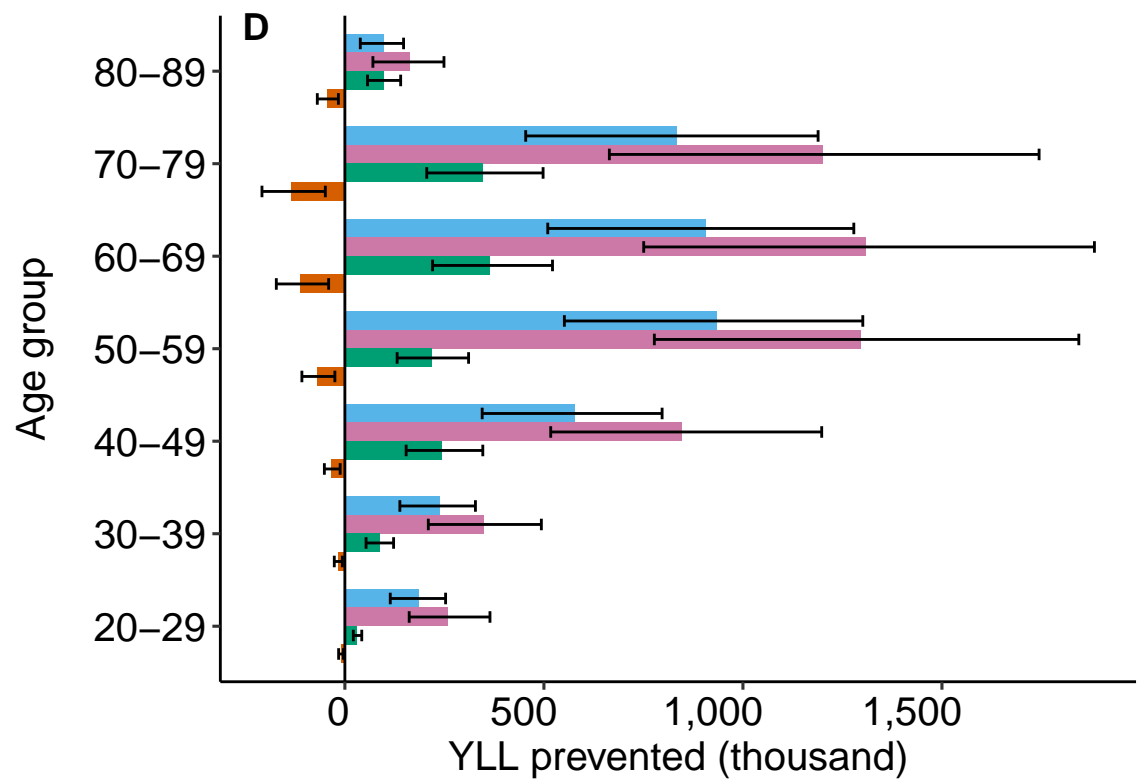
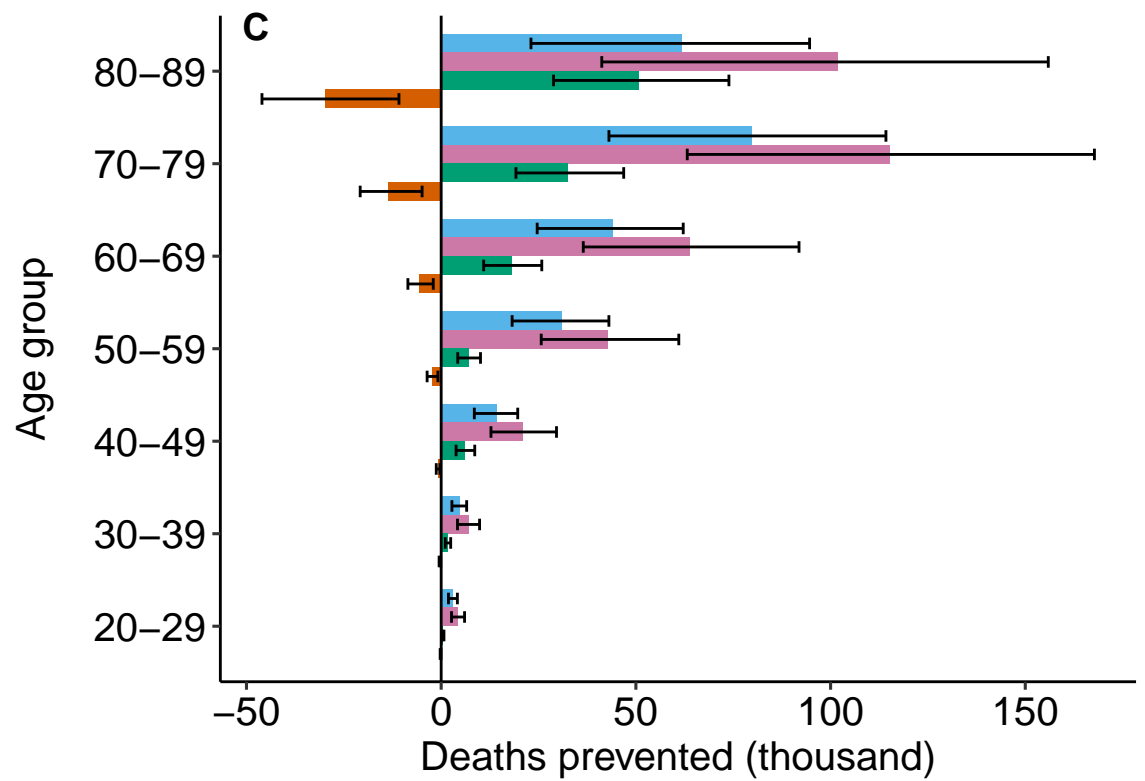
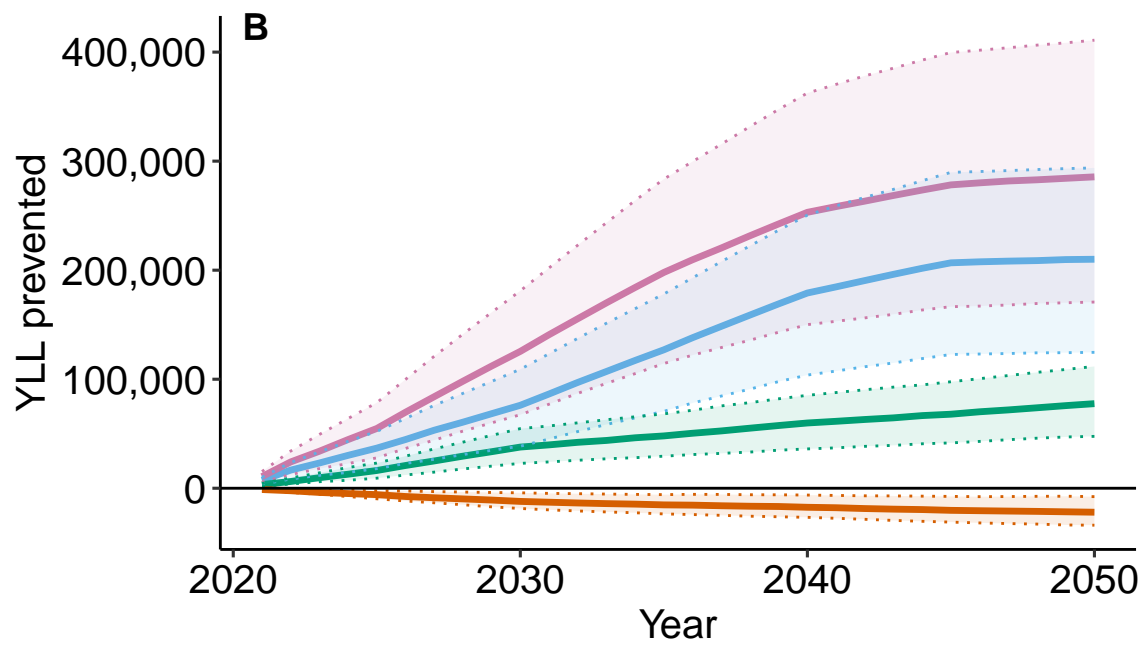
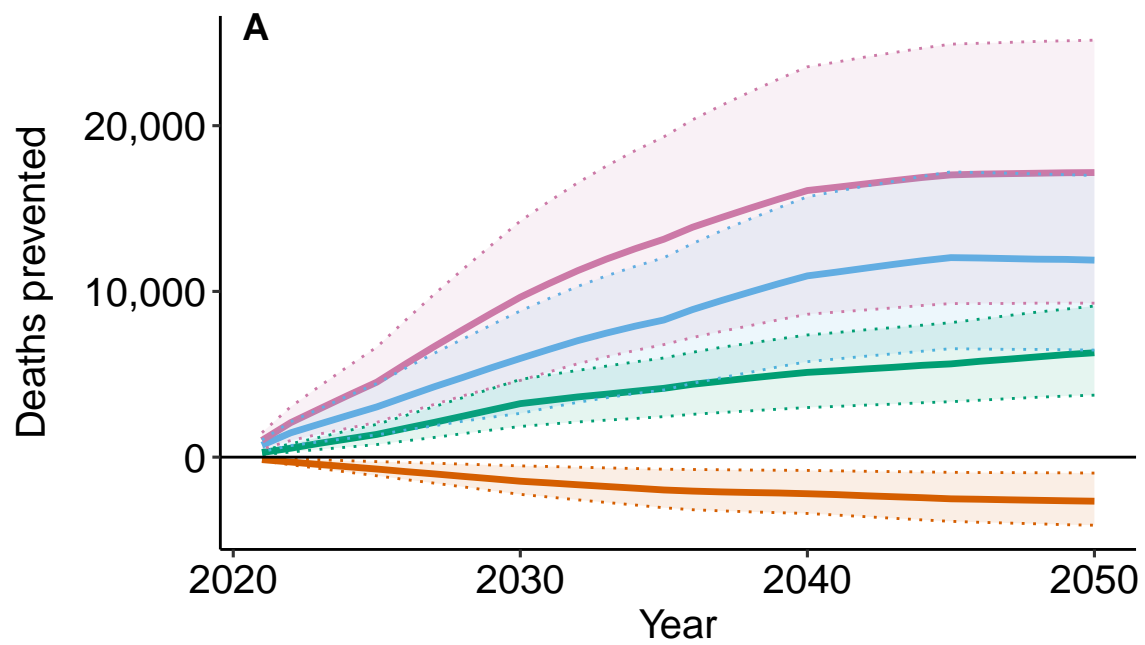






# FR walk





— S1 — S2 — S3 — S4

# 4 SCENARIOS

## for a carbon neutral society

### S1 FRUGAL GENERATION

Significant changes in the way we travel, keep warm, eat, buy and use equipment will occur to achieve carbon neutrality only with natural sinks (forests and soils), thus preserving the associated ecological services.



### S3 GREEN TECHNOLOGIES

Technological development provides more of the answers to environmental challenges than changes towards more sufficient consumption patterns.



### S2 REGIONAL COOPERATION

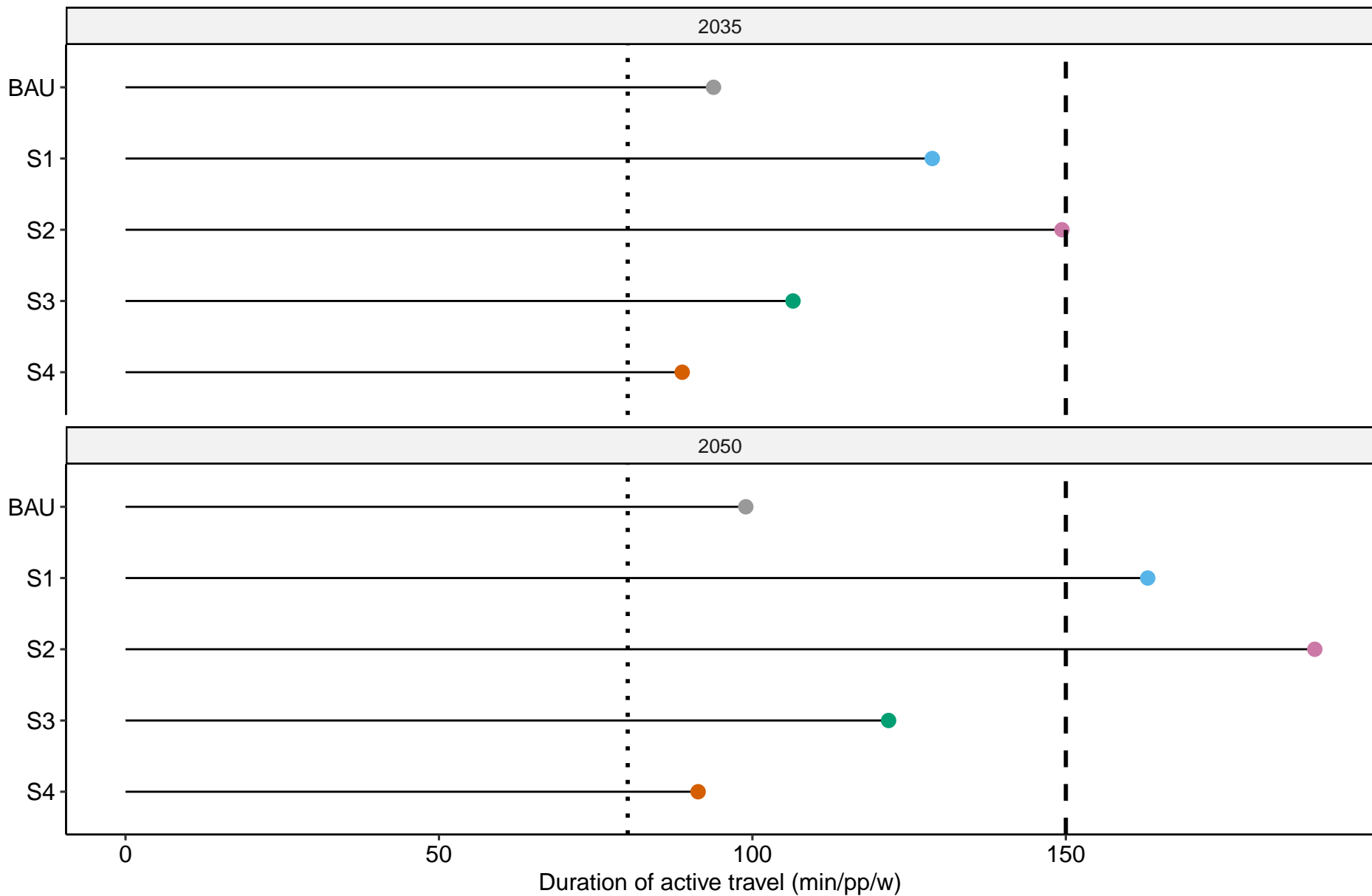
To achieve carbon neutrality, society relies on a progressive but steady change of the economic system towards a sustainable path combining sufficiency and efficiency.

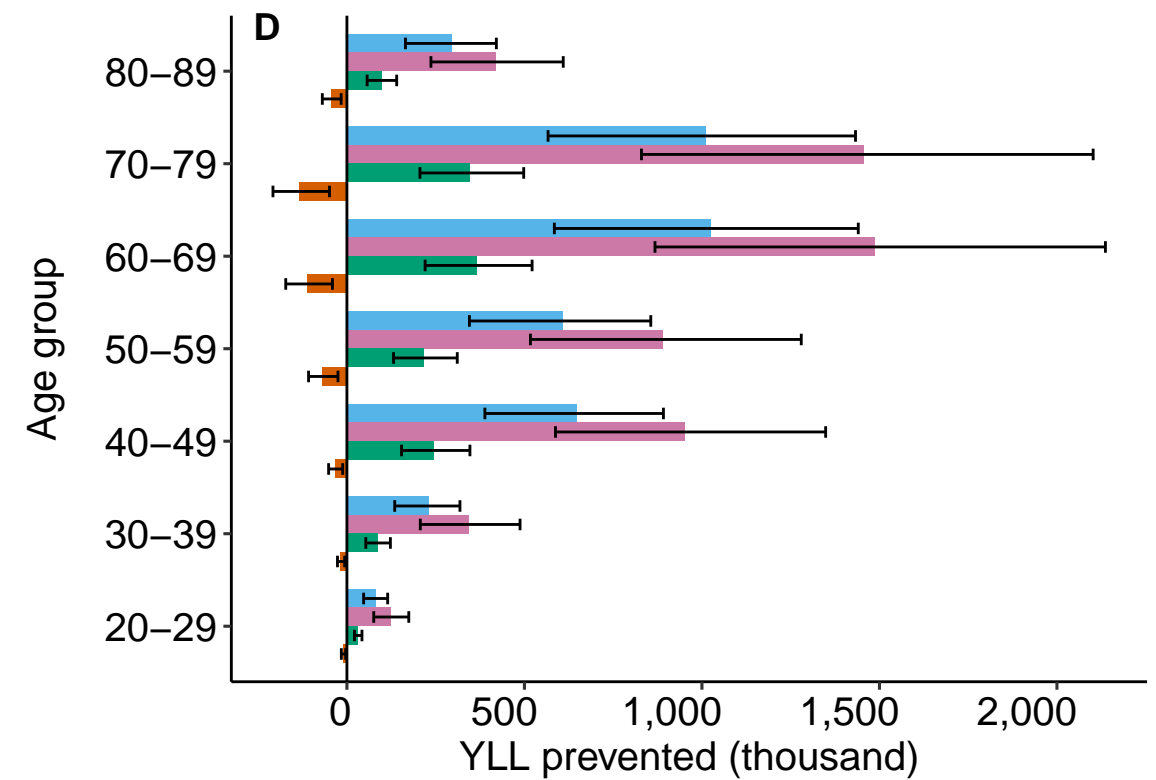
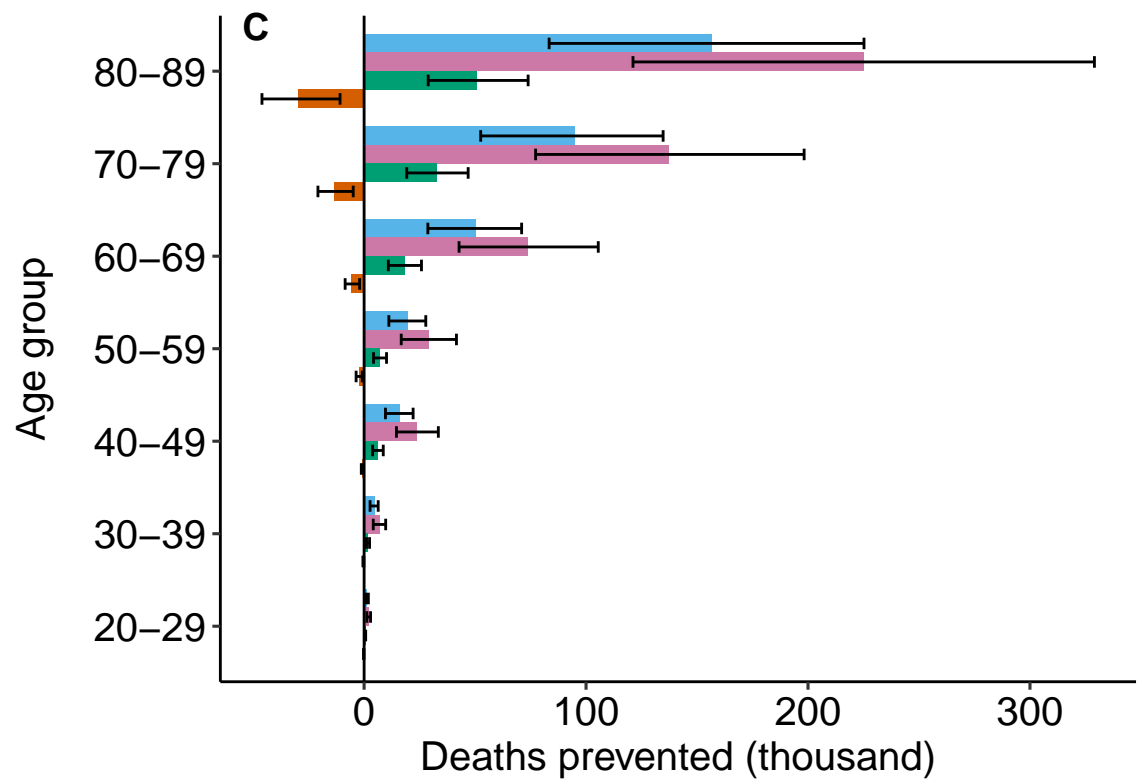
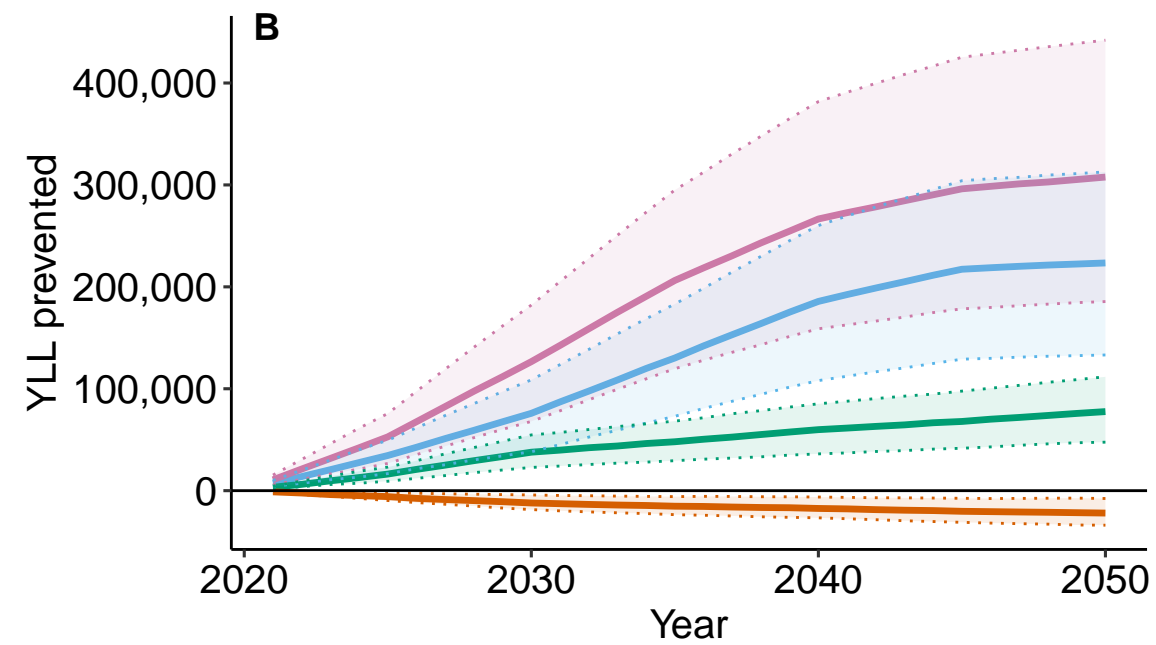
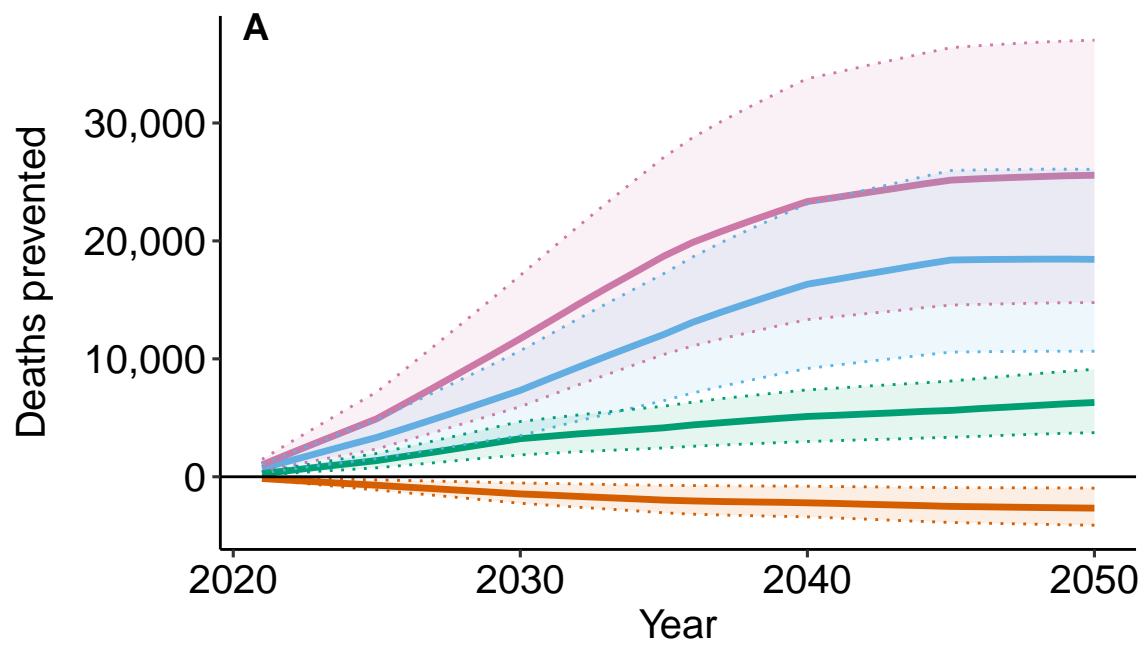


### S4 RESTORATION GAMBLE

Society places its trust in its ability to manage and even repair social and ecological systems with more material and financial resources to maintain a liveable world. Carbon capture and storage technologies, which are essential, are uncertain and consume electricity.

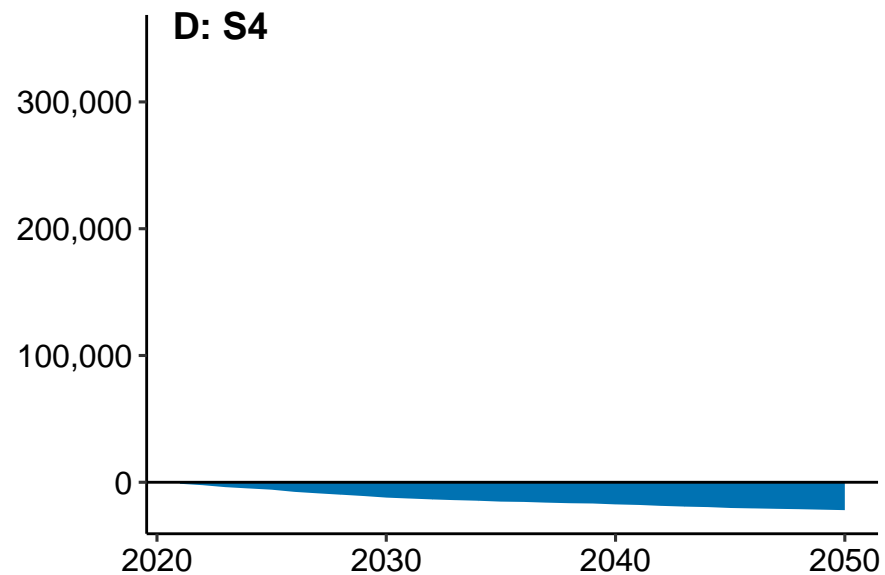
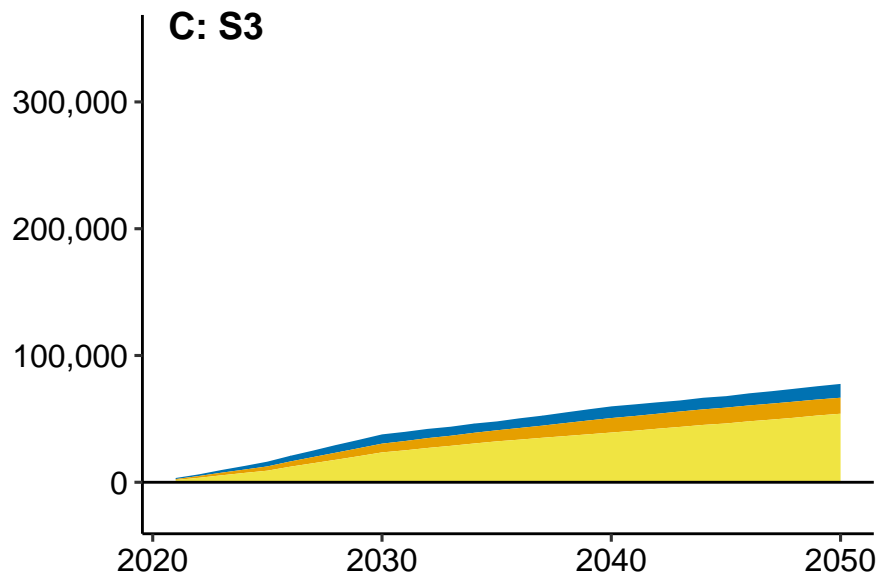
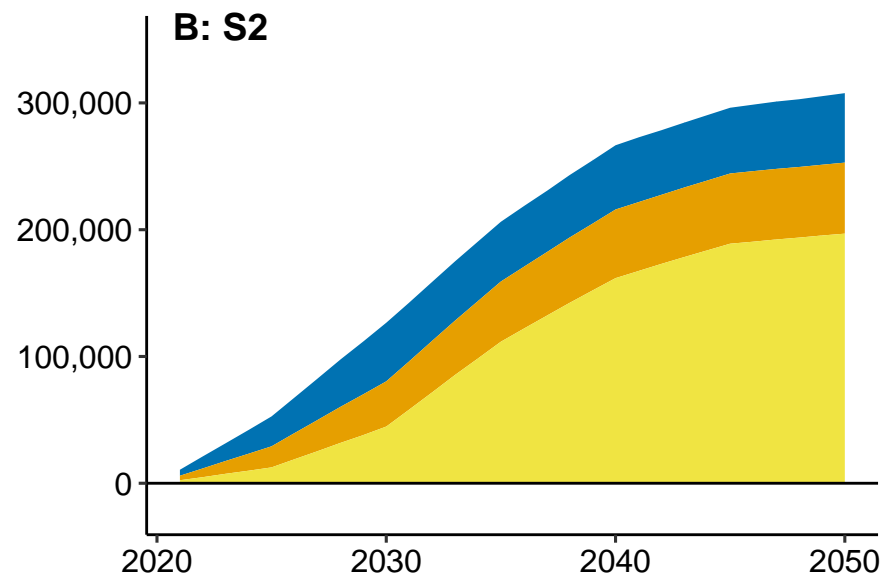
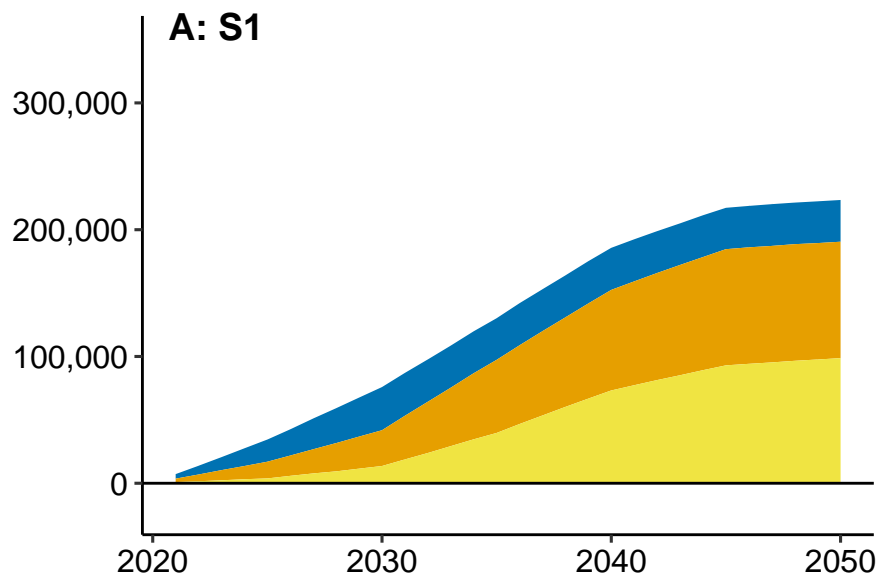
● BAU ● S1 ● S2 ● S3 ● S4    ··· France 2015    - - - Minimal recommendations (WHO)





— S1 — S2 — S3 — S4

YLL prevented



Walk Cycle E-cycle