

1 Different pathways toward net-zero emissions imply  
2 diverging health impacts: a health impact assessment study for  
3 France  
4

5 *Léo Moutet,<sup>1,\*</sup>, Aurélien Bigo,<sup>2</sup> Philippe Quirion,<sup>3</sup> Laura Temime,<sup>1</sup> and Kévin Jean<sup>1</sup>*

6 <sup>1</sup> MESuRS Laboratory, Conservatoire national des Arts et Métiers (Cnam), Paris, France

7 <sup>2</sup> Chair Energy and Prosperity, Paris, France

8 <sup>3</sup> Centre International de Recherche sur l'Environnement et le Développement (CIRED), Centre  
9 National de la Recherche Scientifique, (CNRS), Nogent-sur-Marne, France

10 \* Author to whom any correspondence should be addressed.

11 **Email:** [leo.moutet@lecnam.net](mailto:leo.moutet@lecnam.net)

12  
13 **Keywords:** Health impact assessment, Public health, Net-zero, Transition scenarios, Active transport  
14  
15  
16  
17  
18  
19  
20  
21  
22  
23  
24  
25  
26  
27  
28  
29  
30  
31  
32

## 33 Abstract

34

35 **Background:** In the transport sector, efforts to achieve carbon neutrality may generate public health  
36 cobenefits by promoting physical activity.

37 **Objective:** This study aims to quantify the health impacts related to active transportation based on  
38 four different scenarios leading France toward carbon neutrality in 2050.

39 **Methods:** The French Agency for Ecological Transition developed four consistent and contrasting  
40 scenarios (S1 to S4) achieving carbon neutrality by 2050 as well as a business-as-usual (BAU)  
41 scenario that extends our current lifestyles until 2050, without reaching net-zero. For each of these  
42 *Transitions2050* scenarios, we distributed the mobility demand for walking, cycling and e-cycling  
43 across age groups. Relying on the health impact assessment framework, we quantified the impacts of  
44 the corresponding physical activity on all-cause mortality. The impact of each of the carbon neutrality  
45 scenarios was determined by comparison with estimates from the BAU scenario.

46 **Results:** In S1 and S2 scenarios, volumes of active transportation are projected to increase to fulfil the  
47 World Health Organisations recommendations by 2050, while they increase slightly in S3 and  
48 decrease in S4. S2 scenario reaches the highest levels of health cobenefits, with 494,000 deaths  
49 prevented between 2021 and 2050. This would translate into a life expectancy gain of 3.0 months for  
50 the general population in 2050, mainly driven by e-bikes. S1 would provide smaller but important  
51 health benefits, while these benefits would be modest for S3. On the contrary, S4 implies 52,000  
52 additional deaths as compared to the BAU scenario, and a loss of 0.2 month in life expectancy.

53 **Discussion:** Different ways to decarbonize mobility in a net-zero perspective may achieve very  
54 contrasting public health cobenefits. This study illustrates how the public health dimension may  
55 provide a relevant insight in choices of collective transformation toward net-zero societies.

56

57

58

59

60

61

62

63

64

65

66

67

68

69

## 70 Introduction

71

72 The Paris agreement, adopted in 2015, establish the objective of constraining the rise in average global  
73 temperature to 2°C above preindustrial levels (UNFCCC (United nations Framework Convention on  
74 Climate Change ), 21st session, 2015). To achieve this, a substantial reduction of 43% in greenhouse  
75 gas (GHG) emissions by 2030 is necessary (IPCC (Intergovernmental Panel on Climate Change),  
76 2023). The sixth report from the Intergovernmental Panel on Climate Change (IPCC) highlights the  
77 importance of numerous actions that effectively reduce our carbon footprint while concurrently  
78 promoting human health. These health co-benefits manifest across several dimensions such as diet,  
79 transport, energy supply or green and blue infrastructures (IPCC (Intergovernmental Panel on Climate  
80 Change), 2023).

81 The transport sector accounted for approximately 15% of anthropogenic GHG globally in 2019 (IPCC  
82 (Intergovernmental Panel on Climate Change), 2023). In France, it contributes up to 31% of GHG  
83 emissions (HCC (The High Council on Climate), 2021). Amongst the many existing levers to limit  
84 these emissions (electrification of the energy supply, increased vehicle occupancy, lower transport  
85 demand...), some have the potential to yield health co-benefits. Among those, shifting to active modes  
86 of transportation offers the additional advantage of mainly relying on local decisions such as  
87 reallocation of existing infrastructures and land use planning (Stappers et al., 2023).

88 Active transportation encompasses essential daily activities (e.g., commuting to work, visiting the  
89 doctor, shopping) as well as leisure activities (e.g., cultural outings, sports) and has indeed been  
90 identified as a lever for achieving socio-economic, air quality, and public health co-benefits (IPCC  
91 (Intergovernmental Panel on Climate Change), 2023). However, physical activity levels worldwide  
92 have failed to meet international recommendations, affecting both adolescents and adults (Guthold et  
93 al., 2018). In high-income countries, 9.3% of overall mortality can be attributed to physical inactivity  
94 (Katzmarzyk et al., 2021). Insufficient physical activity also incurs substantial monetary costs for  
95 public and private healthcare systems and households while leading to decreased productivity (Ding et  
96 al., 2016). A 2017 study focusing on urban populations estimated that meeting international guidelines  
97 on physical activity, air pollution, noise, heat, and access to green spaces could prevent 20% of deaths.  
98 Among these factors, physical activity yielded the largest proportion of preventable deaths (Mueller et  
99 al., 2017).

100 The health benefits associated with active transportation may be substantiated by various health  
101 impact assessment methods that consider diverse parameters, regardless of the geographical context  
102 (Mueller et al., 2015). Institutions and organisations have devised prospective pathways outlining the  
103 necessary transformations required for the societies to attain the objectives of the Paris agreement.  
104 Numerous studies quantify the health impacts of active commuting in prospective scenarios, with a  
105 majority conducted in Europe, North America or Oceania, primarily focusing on urban areas (Mueller  
106 et al., 2015; Rojas-Rueda et al., 2016). Nevertheless, to the best of our knowledge, only one study has  
107 been conducted at the national level in France, quantifying the impacts of a single scenario compared  
108 to the baseline levels of 2021 (Barban et al., 2022).

109 In this study, we quantified the health impacts related to physical activity through active transportation  
110 based on four consistent and contrasting scenarios leading France toward carbon neutrality in 2050.

111

112

113

## 114 Methods

### 115 The ADEME Transition scenarios

116 In 2021, ADEME (The French Agency for Ecological Transition) released the outcomes of a  
117 prospective project *Transitions2050*, describing four scenarios (S1 to S4). Each of these scenarios is  
118 designed to achieve carbon neutrality by 2050 in metropolitan France following distinct trajectories  
119 corresponding to different societal choices (Figure 1) (The French Agency for Ecological Transition,  
120 n.d.). Additionally, a business-as-usual scenario (BAU) was formulated, representing a projection of  
121 our current lifestyle trends until 2050, without achieving carbon neutrality. It partly corresponds to an  
122 extension of certain past trends and partly to evolutions already underway.  
123

## 4 SCENARIOS for a carbon neutral society

### S1 FRUGAL GENERATION

Significant changes in the way we travel, keep warm, eat, buy and use equipment will occur to achieve carbon neutrality only with natural sinks (forests and soils), thus preserving the associated ecological services.



### S3 GREEN TECHNOLOGIES

Technological development provides more of the answers to environmental challenges than changes towards more sufficient consumption patterns.



### S2 REGIONAL COOPERATION

To achieve carbon neutrality, society relies on a progressive but steady change of the economic system towards a sustainable path combining sufficiency and efficiency.



### S4 RESTORATION GAMBLE

Society places its trust in its ability to manage and even repair social and ecological systems with more material and financial resources to maintain a liveable world. Carbon capture and storage technologies, which are essential, are uncertain and consume electricity.

124  
125 **Figure 1.** Summary of ADEME's prospective carbon neutral scenarios.

126 Credit: @ADEME - [Transition\(s\) 2050](https://www.ademe.fr/en/transition-2050) - Illustrations : S. Kiehl

127

128  
129  
130  
131  
132  
133  
134  
135  
136  
137  
138

Each *Transitions2050* scenario describes the evolution of the main energy consumption drivers over time, especially the demand for transportation for various modes of transportation (Table 1 & Table S1). Within these estimates, three active modes are considered: cycling, E-cycling and walking, without accounting for recreational activity. Note that the estimates for walking encompass distances covered while transitioning to or from another mode of transport, especially public transportation (e.g train or bus). For each active travel mode, the scenarios express the yearly national demand in terms of Giga passenger-kilometres (Gpkm) at five-year intervals over the period 2015-2050. For this study, passenger-kilometres values were linearly interpolated for each year within the intervals.

Scenarios	Frugal generation (S1)	Regional cooperation (S2)	Green technologies (S3)	Restoration gamble (S4)	Business-as-usual (BAU)
Decarbonation of the transport sector	A significant drop in transport demand. Modal shift and vehicle occupancy expand.	Modal shift at the heart of the transition. More vehicle occupancy and a decrease in transport demand.	Efforts are mainly applied to energy efficiency and decarbonation of the energy production.	Energy production and digital technologies drive the transition. Energy efficiency also improves.	Projection of our present lifestyles.
Evolution of per-capita transport distances from 2015 to 2050	Walk : +15 % Total cycle : +730 %	Walk : +25 % Total cycle : +1,007 %	Walk : +6 % Total cycle : +336 %	Walk : -8 % Total cycle : +92%	Walk : +1 % Total cycle: +92 %

139 **Table 1.** Transport sector and active mobility in ADEME’s prospective scenarios

140

### 141 [Age-specific allocation of active transport demands](#)

142 For each scenario and mode of transportation, the passenger-kilometres were distributed among age  
143 groups according to the mode-specific age distributions observed in the 2019 French mobility survey  
144 (Ministry of Ecological Transition, n.d.).

145 In addition, we allocated the total number of kilometres cycled between E-bikes and mechanical  
146 bicycles differently based on age groups. This allocation was done in order to achieve two objectives:  
147 i) replicate the observed 6.7-year age difference between E-bikers and cyclists as reported in a recent  
148 multi-country study (Castro et al., 2019), and ii) reflect the changing relative contribution of E-bikes to  
149 the total cycling distance over time, as assumed in each scenario.

150 Further details regarding these calculations are provided in the Supplementary Materials.

151

### 152 [Demographic projections](#)

153 Population projections, including mortality and life expectancy, for different years and age groups,  
154 were accessed from publicly available data provided by the French national institute of statistics and

155 economic studies (INSEE, n.d.). These same data were also used by ADEME in the design of all their  
156 transition scenarios.

157

## 158 Health impact assessment

159 We relied on international guidelines to model and report the health effects associated with active  
160 transportation of the *Transitions2050* scenarios for metropolitan France over the 2021-2050 period  
161 (Hess et al., 2020). Our health modelling method relies on principles similar to the HEAT tool  
162 developed by WHO (Götschi et al., 2020), but differs in two major aspects. First, we only explicitly  
163 considered physical activity for the pathway linking active transport and health. Second, we accounted  
164 for the age-distribution of current levels of active transport in France and for the age-difference  
165 between e-bike and classical bike users.

166 For each age group, yearly distances travelled were converted into exposure times for walking, cycling  
167 or E-cycling using the following average speeds, respectively: 4.8, 14.9 and 18.1 km.h<sup>-1</sup> (Egiguren et  
168 al., 2021; Götschi et al., 2020). First, we compared the resulting total duration of active travel to  
169 international recommendations for weekly moderate physical activity, averaged over the entire adult  
170 population.

171

172 The health impacts (number of deaths averted) generated by physical activity associated with active  
173 transportation were calculated, using a linear dose-response function between duration spent in active  
174 transportation and the reduction in all-cause mortality, weighted by the specific mortality rate and size  
175 of the population:

$$Nprev_{a,s} = (1 - RR_{REF}) \times \left( \frac{Specific\ duration_{a,s}}{Reference\ duration} \right) \times MR_a \times POP_a$$

176 With:

177  $Nprev_{a,s}$  : Number of death prevented

178  $RR_{REF}$  : Relative risk of all-cause mortality associated with the reference duration of active travel  
179 (Kelly et al., 2014).

180  $Specific\ duration_{a,s}$  : Projected in the scenarios and distributed across age groups

181  $Reference\ duration$  : 168 minutes for walking and 100 minutes for cycling as estimated in a meta-  
182 analysis of 18 cohorts (Kelly et al., 2014). This correspond to an energy expenditure of 11.25  
183 MET.hour.week<sup>-1</sup>.

184  $MR_a$  : Specific mortality rate of an age categorie  $a$

185  $POP_a$  : Population of the age category  $a$

186 We used a relative risk ( $RR_{REF}$ ) of 0.89 for all-cause mortality when engaging weekly in 168 minutes  
187 of walking, with maximum risk reduction of 30%, and a relative risk of 0.90 for 100 minutes of  
188 cycling, with a maximum risk reduction of 45%. Health impacts are therefore capped above 460  
189 minutes of walking and 447 minutes of cycling (Kelly et al., 2014). We constrained the benefits  
190 associated with physical activity to the population aged between 20 and 89 years. This restriction was  
191 made based on the fact that the relative risk estimates for cycling and walking were extrapolated from  
192 studies encompassing individuals within the age range of 20 to 93 years (Kelly et al., 2014) and the  
193 data used for age distribution of cycling distances were collected from individuals aged between 15

194 and 89 years (Ministry of Ecological Transition, n.d.). The assumed ratio of energy expenditure  
195 between moderate assistance E-bikes and bikes was 0.89, as estimated by a recent meta-analysis  
196 (McVicar et al., 2022). The impacts were evaluated for each age group, taking into account the  
197 respective population size and mortality rate. The total count of deaths prevented by each scenario was  
198 obtained, together with the number of years of life lost (YLL) prevented, by subtracting from the  
199 estimated number of deaths prevented in this scenario the estimated number of deaths prevented in the  
200 BAU scenario. Finally, based on the estimate of the number of deaths prevented, life tables were  
201 generated in order to compute the life expectancy in each scenario.

## 202 Monetizing the health impacts

203 We further estimated the intangible costs associated with the health impact of each scenario, using the  
204 value of a statistical life year (VSLY) that is recommended in France for the socioeconomic  
205 assessment of public investments (Emile, 2013). In France, the VSLY is projected to be €151,000 in  
206 2025, and this figure is anticipated to increase to €202,000 by 2050.

207 The VSLY was multiplied by the number of YLL prevented to calculate the monetary impacts of  
208 mortality risk reduction. All monetarized values were expressed in €<sub>2022</sub>.

209 All the estimates were presented alongside uncertainty intervals (UI), which were determined using  
210 the lower and upper bounds of the 95% confidence interval (CI) of the RR used.

## 211 Sensitivity analyses

212 We performed five distinct sensitivity analyses. First, we explored a more favourable RR associated  
213 with cycling (0.81 instead of 0.90 per 100 minutes of cycling), as estimated by a recent meta-analysis  
214 (Zhao et al., 2021). Second, we explored alternative walking and cycling speeds, respectively 3.6 and  
215 13 km.h<sup>-1</sup> (The French Agency for Ecological Transition, n.d.). Third, we investigated an alternative  
216 ratio of 0.78 between E-bike and cycling energy expenditures (Berntsen et al., 2017). Fourth, for  
217 scenarios S1 and S2, we assumed that the high increase of cycling overall would affect the  
218 demography of cyclist toward a flatter age distribution, as those observed in countries with a high  
219 cycling culture, such as Denmark. We therefore evolved gradually between 2021 to 2035 the  
220 distribution of age-specific contribution of kilometres cycled from the levels observed in France  
221 (Ministry of Ecological Transition, n.d.) to those reported in Denmark (Center for Transport Analytics,  
222 Transport, n.d.) (see supplementary materials). Lastly, we constrained the benefits of active  
223 transportation to the age range of 20 to 75 years, as opposed to the wider scope of 20 to 89 years in the  
224 main analysis.

225

226

227

228

229

230

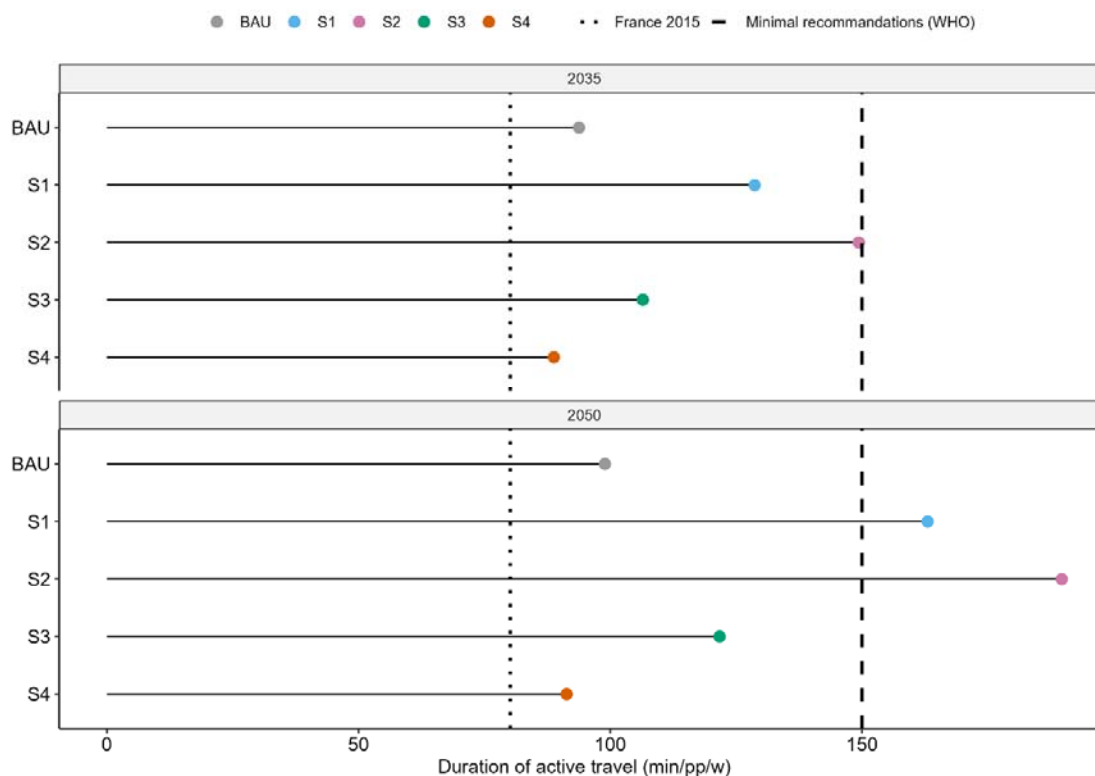
## 231 Results

### 232 Projection of active transport

233 Time changes in transport demand from 2021 to 2050 are presented in supplementary materials  
234 (Figure S1) for each mode of active transport and scenario.

235 Figure 2 compares the estimated average weekly durations of active transportation obtained under  
236 each scenarios by 2035 and 2050 with both the 2015 French situation and the minimal  
237 recommendations set by the World Health Organization (WHO), that is, 150 minutes of moderate-  
238 intensity aerobic physical activity per week. In 2015, the active transportation levels in the French  
239 population allowed for a weekly average of 80 minutes of moderate-intensity aerobic physical activity  
240 (The French Agency for Ecological Transition, n.d.). In the S2 scenario, in 2035, the average levels of  
241 physical activity through active transportation alone are expected to attain the minimal WHO  
242 recommendations. The S1 scenario nearly achieves these levels by 2035 and surpasses them by 2050.  
243 In contrast, the S3 scenario falls short of reaching the minimal recommended levels of physical  
244 activity, both in the medium term (2035) and the long term (2050). Both the BAU scenario and the S4  
245 scenario project minimal increases in active transportation compared to 2015, and fail to reach WHO's  
246 minimal recommendations, even by 2050. These results are detailed by age groups in supplementary  
247 materials (Figure S2).

248



249

250 **Figure 2.** Duration (averaged for the 20-89 years old) of physical activity generated by active  
251 transportation in 2035 and 2050 compared to the French levels in 2015 (all estimated by ADEME  
252 Transition scenarios) and the WHO guidelines for moderate physical activity [26].

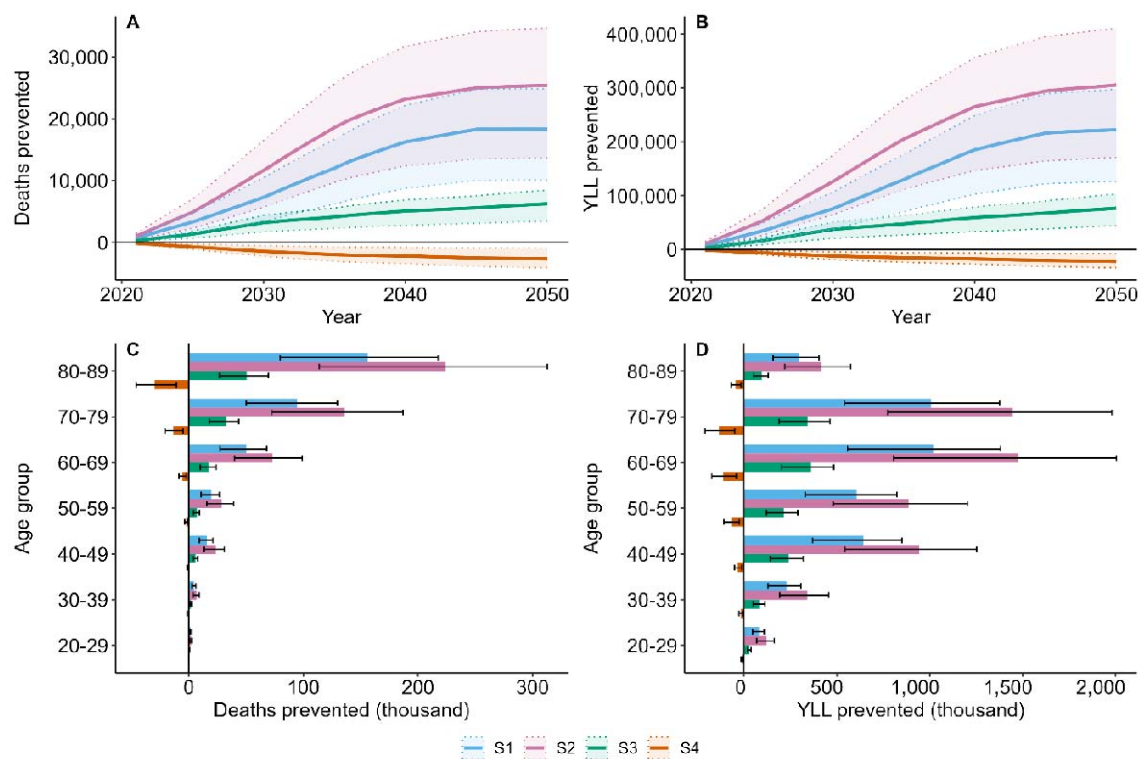


## 253 Quantitative health impact assessment

254 The time-varying health effects expected in each scenario are presented in Figure 3 as numbers of  
255 prevented deaths and YLL compared to the BAU. The disparities in health impacts among scenarios  
256 become more pronounced as time progresses. From 2030 to 2040, the benefits of S1 and S2 scenarios  
257 experience a large increase, while the benefits of S3 scenario show a more linear progression. On the  
258 other hand, S4 scenario has negative impacts that intensify over time and remain noticeable for all age  
259 groups above 50 years old. Deaths prevented by scenarios S1-S3 are highest in the 80-89 age group,  
260 and YLL prevented increase for younger ages, plateau for the 40-59 and the 60-79 years old age  
261 groups, and are limited amongst 80-89 years old.

262 For all age groups, the benefits of S2 surpass all other scenarios while the benefits of S1 outweigh  
263 those of S3. The YLL metric makes these benefits apparent for younger age groups (from 20 years old  
264 on). The health impacts of S4 remain small, though negative.

265



266

267 **Figure 3.** Deaths prevented (a) and (c) and YLL prevented (b) and (d) by year ((a) and (b)) and age  
268 group ((c) and (d)), cumulative for the 2021-2050 period) for each transition scenario compared to the  
269 BAU.

270

271

272

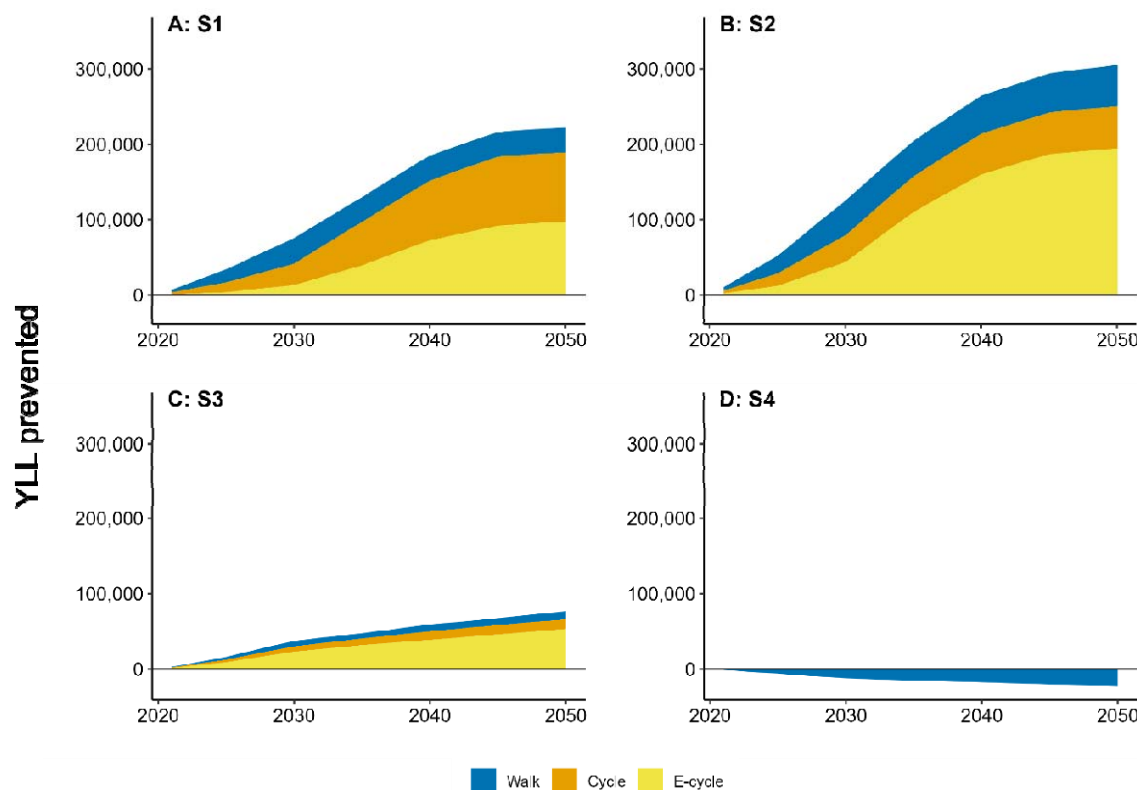
273

274

275

276 Figure 4 distinguishes the health benefits of the different scenarios by type of active transportation.  
277 Starting from 2030 onwards, scenarios S1 and S2 demonstrate a rapid increase in the health benefits  
278 associated with E-cycling, while its progression in S3 is more linear. The health benefits in the first  
279 scenario mainly come from cycling, with more or less equal contributions of classical and E-cycling  
280 throughout the period from 2021 to 2050. In scenarios S2 and S3, E-cycling emerges as the mode of  
281 active transportation contributing to the majority of health benefits, while walking and cycling provide  
282 similar benefits each year. On the other hand, scenario S4, which is comparable to the BAU scenario  
283 in terms of cycling mobility, exhibits lower levels of walking. Consequently, the health detriments  
284 observed in scenario S4 can be entirely attributed to the decrease in pedestrian mobility.

285



286

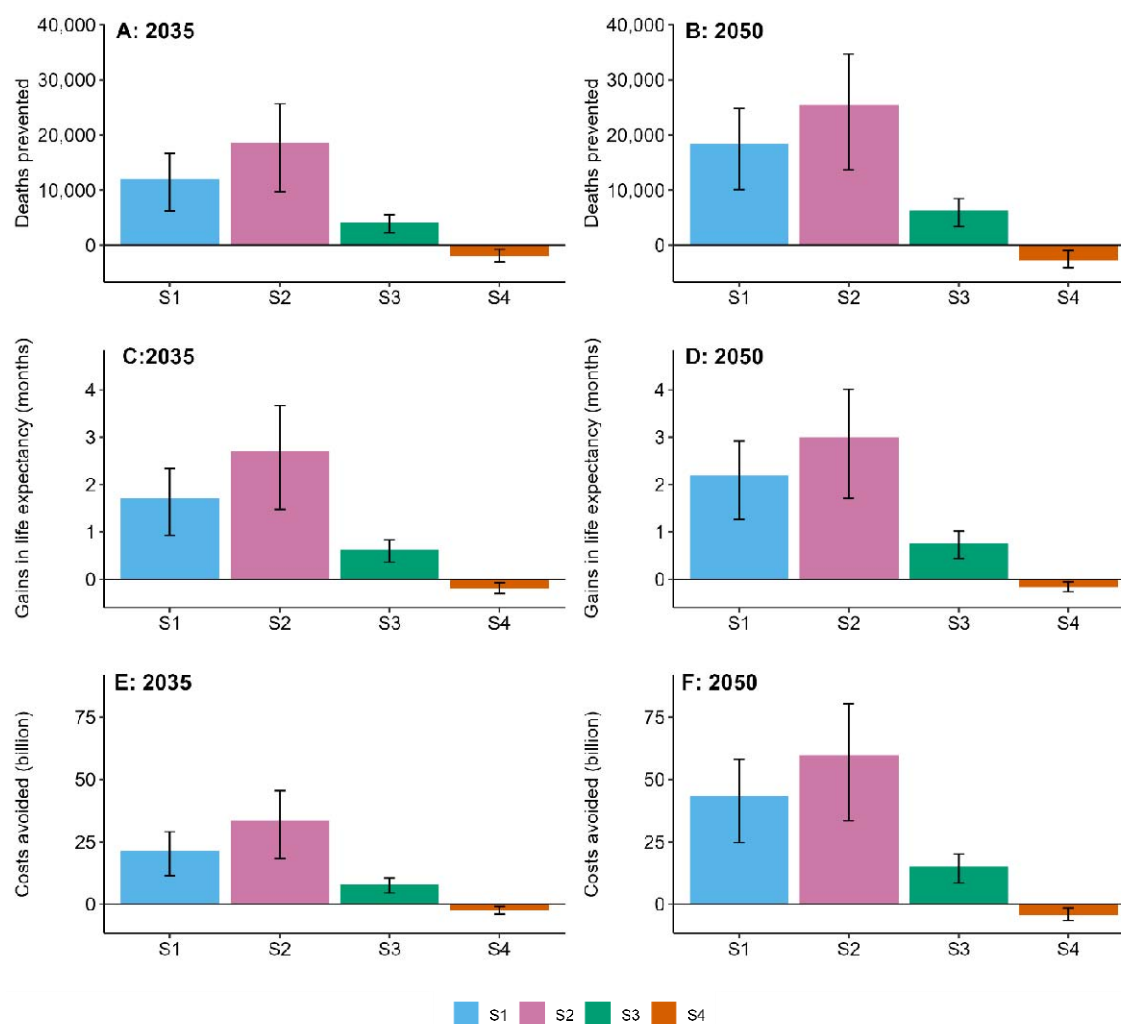
287 **Figure 4.** Years of Life Lost (YLL) prevented as a function of time and type of active transportation,  
288 under (a) scenario S1, (b) scenario S2, (c) scenario S3, and (d) scenario S4.

289 Figure 5 presents the annual health and economic benefits of each scenario at medium (2035) and long  
290 (2050) term. Here again, scenario S2 shows a larger impact over all other scenarios, S1 exhibits a  
291 superiority over scenario S3, and scenario S4 has detrimental health impacts as compared to the BAU.  
292 The number of deaths prevented in 2050 by active transportation reaches 25,402 [13,687-34,661] with  
293 the trajectories projected for scenario S2, 18,345 [10,083-24,833] with scenario S1 and 6,250 [3,443-  
294 8,469] with scenario S3. Scenario S4 would induce an additional 2,658 [962-4,106] deaths.

295 Life expectancy of the French population in 2050 would improve by 3.0 [1.7-4.0] months by achieving  
296 modal shift as described in scenario S2, 2.2 [1.3-2.9] months with scenario S1, 0.8 [0.4-1.0] months  
297 with scenario S3 and would decrease by 0.2 [0.1-0.3] months with scenario S4.

298 For 2035, the annual corresponding monetarized health benefits (based on the YLL) range from €33.7  
299 [IC: 18.3-45.5] billion with scenario S2 to €7.8 [IC: 4.5-10.4] billion with scenario S3. Scenario S4  
300 corresponds to a net detrimental monetarized health impact of €2.5 [1.0-3.9] billion.

301



302

303 **Figure 5.** Deaths prevented ((a) and (b)), gain in life expectancy ((c) and (d)) and cost avoided ((e)  
304 and (f)) by 2035 ((a), (c), (e)) and 2050 ((b), (d), (f)).

## 305 Sensitivity Analyses

306 Table 2 summarizes the results of our sensitivity analyses. Overall, the parameter choice which affects  
 307 the most our estimates is the RR value for cycling. Assuming a more favourable RR leads to notable  
 308 increases in the YLL estimated, around +50 to +70%. Modifying the speeds of walking and cycling  
 309 has less but substantial effects of about +20% in the YLL prevented. By lowering the speeds, the  
 310 duration of exposure to physical activity is extended, leading to higher health impacts. The third  
 311 sensitivity analysis, focusing on the ratio of energy expenditure provided by an E-bike compared to a  
 312 mechanical one slightly reduces the health impact, by less than 10% of YLL prevented. In scenarios  
 313 characterized by high levels of cycling (S1 and S2), using the gradual shape of the age distribution of  
 314 cycling kilometres of France in 2021 to Denmark in 2035 (and on to 2050) leads to a minor decrease  
 315 in the number of prevented YLL. Considering Denmark's relative age contribution for cycling  
 316 kilometres leads to less deaths prevented in older age groups (Supplementary materials, figure S5),  
 317 and so has limited impacts on YLL prevented. Restricting the health effects to individuals below the  
 318 age of 75 reduces the YLL prevented ascribed to active transportation by about 20%.

319 For each analysis and any choices of the parameters, the ranking of scenarios according to their health  
 320 impacts remained unchanged, with S2 as the most beneficial scenario, followed by S1 and then S3,  
 321 while S4 yielded negative health impacts.

322

	<b>Cumulative YLL prevented for 2021-2050 [CI], in million</b>			
	<b>S1</b>	<b>S2</b>	<b>S3</b>	<b>S4</b>
Main analysis	3.9 (2.1, 5.2)	5.6 (3.1, 7.6)	1.4 (0.8, 1.8)	-0.4 (-0.7, -0.2)
RR <sub>cycle</sub> = 0.81 (Zhao et al., 2021)	6.6 (3.0, 10.0)	9.6 (4.3, 14.5)	2.4 (1.1, 3.7)	-0.4 (-0.7, -0.2)
Alternative speeds: walking = 3.6 km.h <sup>-1</sup> ; cycling = 13 km.h <sup>-1</sup> (The French Agency for Ecological Transition, n.d.)	4.6 (2.5, 6.3)	6.7 (3.6, 9.1)	1.6 (0.9, 2.2)	-0.6 (-0.9, -0.2)
Ratio MET <sub>E-cycle/cycle</sub> = 0.78 (Berntsen et al., 2017)	3.7 (2.0, 5.0)	5.2 (2.9, 7.1)	1.3 (0.7, 1.7)	-0.4 (-0.7, -0.2)
Age distribution of cycling evolves with high levels of cycling (S1 and S2)*	3.8 (2.1, 5.1)	5.4 (2.9, 7.3)	1.4 (0.8, 1.8)	-0.4 (-0.7, -0.2)
No effect >75 years old	3.2 (1.8, 4.3)	4.6 (2.6, 6.2)	1.1 (0.6, 1.5)	-0.3 (-0.5, -0.1)

323 YLL = Years of life lost ; CI = Confidence interval ; RR = Relative risk ; MET = Metabolic equivalent of task.

324 \*The distribution of age-specific contribution of cycling kilometres evolve gradually between 2021 and 2035 from the levels  
 325 observed in France to those reported in Denmark (Supplementary materials).

326 **Table 2.** Health impacts of active transportation for ADEME's scenarios. Main and sensitivity  
 327 analysis

328

329

330

331

332

## 333 Discussion

### 334 Main results

335 In this study, we highlight the widely varying potential health benefits of transport transition pathways  
336 towards carbon neutrality, through their impact on active transport. Future pathways promoting modal  
337 shift to active modes of transportation facilitate the attainment of the minimal recommendation on  
338 physical activity set by the WHO solely through transport activities. Conversely, policies wagering on  
339 future technological developments to attain carbon neutrality are likely to intensify the lack of physical  
340 activity and its harmful health impacts in the general population. According to the extent of modal  
341 shift, and compared to the BAU, health impacts at the 2035 horizon may range from 19,000 deaths  
342 prevented to 2,000 additional deaths, representing respectively €34 billion annual savings and €3  
343 billion additional mortality costs. Qualitative results and the ranking of *Transitions2050* scenarios  
344 remained consistent through several sensitivity analyses.

### 345 Literature comparison

346 For all scenarios, the majority of health benefits may be explained by an achievable increase in cycling  
347 mobility, particularly through the use of E-bikes. The most optimistic scenario reaches 20 kilometres  
348 cycled and 7 kilometres walked per person weekly, representing roughly 20 minutes per day of active  
349 transportation. Such increase in active transportation seem considerable as compared to the levels  
350 reported before 2020. However, they remain lower to those reported in other European countries: In  
351 Netherlands, active transportation represent between 24 and 28 minutes daily (Fishman et al., 2015)  
352 and more than 50% of trips <2 kilometres and 30% of trips between 2 to 5 kilometres are undertaken  
353 using bicycles (Goel et al., 2021). This highlights the margin of progression for active transportation in  
354 France, where only 5% of the active population uses a bike for trips covering less than 5 kilometres,  
355 while 60% opt for a car (Chantal Brutel, Jeanne Pages, 2021). The anticipated levels of active  
356 transportation in S1 and S2 scenarios therefore appear to be quite achievable.

357 The method we used for quantifying health and economic impacts follows the recommended steps and  
358 parameters outlined by the WHO and environmental economists. These approaches are widely  
359 described and employed in various scientific studies (Emile, 2013; Götschi et al., 2020; Smith et al.,  
360 2021). A health impact assessment study on the transport sector was previously conducted in France  
361 using a similar method (Barban et al., 2022). The scenario explored in this study projected active  
362 transportation levels similar to those observed in the S1 scenario, and the estimated health impacts  
363 were similar to those we obtain. Studies comparing multiple scenarios consistently demonstrate  
364 significant differences in the health impacts of active transportation: Climate policy strategies that  
365 prioritize health-promoting pathways and are built upon the behaviours of the population yield more  
366 significant health benefits (Hamilton et al., 2021; Milner et al., 2023).

367 Preventing, as we predict in scenario S2, 19,000 deaths annually by 2035 solely through deliberate  
368 decisions in the development of the transportation sector holds significant importance for public health  
369 prevention as it corresponds to 2.8% of all-cause mortality projected for this year (INSEE, n.d.).  
370 Indeed, in comparison, in France, it is estimated that exposure to PM2.5 is responsible for 40,000  
371 deaths annually (Santé publique France, 2021) while heat-attributable deaths reached up to 7,000 in  
372 2022 (Santé publique France, 2023). In the transport sector, all road-related fatalities in France range  
373 between 3,000 and 4,000 deaths annually (excepted in 2020 and 2021) (ONISR (Observatoire national  
374 interministériel de la sécurité routière), 2023). From a benefit-cost perspective, based on a UK case-  
375 study, the economic gain of prevented mortality generated by an additional 267 regular cyclists per  
376 kilometres of a new separated cycleway breaks even on the costs of construction (Candio and Frew,  
377 2023).

378 The adoption of electric modes of transportation is widely recognized as a strategy for mitigating  
379 emissions within the transportation sector. However, it is important to acknowledge that electric  
380 vehicles, along with the high battery metals demand (European Federation for Transport and

381 Environment, 2023), can also contribute to pollutant emissions through the dispersion of road dust  
382 particles and the degradation of tires and brakes wear (Bourliva et al., 2017). In the transport sector,  
383 modal shift and decarbonation of the energy supply can yield larger health co-benefits (Milner et al.,  
384 2023). The promotion of E-bikes is a cost-effective approach to reduce transport associated carbon  
385 emissions while improving health and mobility (Jenkins et al., 2022). The allocation of more areas to  
386 bicycle infrastructure can also optimize the utilization of public space (Gössling et al., 2016).

387 Other outcomes have to be taken into account when outlining health effects of modal shift such as air  
388 pollution, road injuries or noise. As the health risk estimate relies on a prospective cohort, these  
389 factors are implicitly incorporated into the relative risks. Regardless of the specific assumptions, the  
390 health benefits of active transportation consistently outweigh the potential adverse effects stemming  
391 from exposure to air pollution and traffic-related incidents (Mueller et al., 2018). Among various  
392 modes of transportation, car users exhibit highest levels of exposure to air pollutants such as PM<sub>2.5</sub>,  
393 black carbon, and CO (de Nazelle et al., 2017). The association with road injuries depends greatly on  
394 the assumptions made on the fatality and injury rates of cyclists (Quam et al., 2017) as well as the  
395 quality of transport infrastructures (WHO, 2022). Furthermore, each incremental shift from cars to  
396 bicycles corresponds to a noteworthy decrease in pollutant emissions (Bernard et al., 2021). For  
397 instance, it has been estimated that an individual who replaces one car trip per day with a bicycle trip  
398 over 200 days can reduce their CO<sub>2</sub> emissions by 0.5 tons per year (Brand et al., 2021). Noise  
399 pollution would also benefit from modal shift, which would yield positive impacts on health-related  
400 quality of life, mediated by annoyance and sleep disturbance (Héritier et al., 2014). It is also expected  
401 that a general increase of physical activity reduces morbidity related to cardiovascular risks, cancer,  
402 osteoporosis, depression and low back pain (Miller et al., 2016). Further impacts related to quality of  
403 life can also benefit from active transportation such as work performance and productivity (Ding et al.,  
404 2016).

405

## 406 Limitation

407 Using the transport demand as a proxy for physical activity allows for a quantification of health  
408 impacts associated with specific active modes of transport but does not encompass several variations  
409 in the population. For example, given the expectation that scenarios S3 and S4 would limit active  
410 transportation primarily to those who are already physically active, while scenarios S1 and S2 would  
411 promote active transportation for a broader population, including individuals who are sedentary, a  
412 more targeted distribution of transport demand could be achieved. This distribution would involve a  
413 heterogeneous allocation of distances within age groups. By implementing such an allocation strategy,  
414 the differences in health impacts between high cycling (S1, S2) and low cycling (S3, S4) scenarios  
415 could be amplified. Another limitation linked to this proxy is that the physical activities performed out  
416 of transport context are not taken into account, despite their anticipated distinct evolution across  
417 scenarios. However, several studies suggest that active transportation adds to rather than replaces other  
418 physical activities (Laeremans et al., 2017).

419 Using a relative risk from a meta-analysis provides a robust association between physical activity and  
420 mortality reduction but does not allow to specify distinct relative benefits based on age, gender, or  
421 socio-occupational category. A recent meta-analysis showed no significant differences in the  
422 association of cycling with all-cause mortality for gender groups and among individuals aged above or  
423 below 50 years (Zhao et al., 2021). Additional cohort studies are needed to assess the potential  
424 heterogeneity of the association between more specific age groups and socio-occupational categories.

425 Our analysis does not explicitly take into account the potential adverse effects of cycling and walking,  
426 such as crashes and exposure to air pollution. However, since our assessment relies on a dose-response  
427 function linking physical activity and all-cause mortality, these harmful effects are implicitly  
428 considered. In addition, it is very likely that our analysis involves an overestimation of the adverse

429 effects of traffic-related pollution and crashes, especially in scenarios identified as the most favourable  
430 (S1 and S2). Indeed, in S1 and S2, the kilometres travelled by cars are assumed to decrease  
431 dramatically, and substantially more than in TEND, S3, and S4 (Table S1). In Europe, differences in  
432 overall crash rates between cities are driven largely by crashes that involved motor-vehicles (Branion-  
433 Calles et al., 2020). This reduction of car traffic in S1 and S2 would also lead to a decrease in the  
434 exposure of pedestrians and cyclists to traffic-related air pollution. At last, these scenarios involve a  
435 substantial increase in bike volumes (Figure S1) while evidence suggests that the individual risk of  
436 fatal crashes during walking and cycling decreases as the volumes of active transportation increase  
437 (Jacobsen et al., 2015; WHO, 2022).

438 Our results are calculated from a projected scenario, the BAU. This inherent uncertainty may  
439 introduce variability in the absolute results of each scenario, yet it does not alter the relative hierarchy  
440 of their respective impacts.

441 All in all, it is important to acknowledge that a health impact assessment study only provides  
442 theoretical estimates of health and economic impacts, and that its quantitative results should not be  
443 over-interpreted. However, the magnitude of effects and the comparison of scenarios allow for a better  
444 interpretation of the co-benefits and potential implications of specific public policies.

445

## 446 Conclusion

447 Different carbon neutral trajectories imply distinct health benefits, this holds particularly true within  
448 the transport sector. The implementation of public policies promoting modal shift effectively improves  
449 population health while reducing the use of fossil fuels and pollutant emissions. In France, directing  
450 transportation towards active modes would yield significant health co-benefits. Transition trajectories  
451 primarily relying on technological interventions offer minimal benefits and may even exacerbate the  
452 lack of physical activity in the population. In a context of reaching towards carbon neutrality, these  
453 results may help guide decision-makers in the choice of optimal transition strategies.

454

## 455 Data availability statements

456 All analyses were conducted using the R software version 4.2.3; all data and codes are publicly  
457 available at: <https://github.com/LeoMoutet/HIA-transport>.

458

## 459 Acknowledgments

460 We are thankful to Stephane Barbusse (ADEME - The French Agency for Ecological Transition) for  
461 useful elements and discussions regarding the ADEME *Transitions2050* scenarios.

462

## 463 Authors contributions

464 PQ and KJ conceived the design of this study. LM produced output, figures and tables. AB contributed  
465 to data acquisition. LM, LT and KJ interpreted the results and wrote the original draft of the article.  
466 AB and PQ contributed to critical feedbacks on the methodology and interpretation of the results.

467

## 468 Conflict of interests

469 The authors declare they have no actual or potential competing financial interests

## 470 References

- 471 Barban, P., De Nazelle, A., Chatelin, S., Quirion, P., Jean, K., 2022. Assessing the Health Benefits of  
472 Physical Activity Due to Active Commuting in a French Energy Transition Scenario. *Int J Public*  
473 *Health* 67, 1605012. <https://doi.org/10.3389/ijph.2022.1605012>
- 474 Bernard, P., Chevance, G., Kingsbury, C., Baillot, A., Romain, A.-J., Molinier, V., Gadais, T., Dancause,  
475 K.N., 2021. Climate Change, Physical Activity and Sport: A Systematic Review. *Sports Med* 51,  
476 1041–1059. <https://doi.org/10.1007/s40279-021-01439-4>
- 477 Berntsen, S., Malnes, L., Langåker, A., Bere, E., 2017. Physical activity when riding an electric assisted  
478 bicycle. *Int J Behav Nutr Phys Act* 14, 55. <https://doi.org/10.1186/s12966-017-0513-z>
- 479 Bourliva, A., Christophoridis, C., Papadopoulou, L., Giouri, K., Papadopoulos, A., Mitsika, E., Fytianos,  
480 K., 2017. Characterization, heavy metal content and health risk assessment of urban road  
481 dusts from the historic center of the city of Thessaloniki, Greece. *Environ Geochem Health*  
482 39, 611–634. <https://doi.org/10.1007/s10653-016-9836-y>
- 483 Brand, C., Götschi, T., Dons, E., Gerike, R., Anaya-Boig, E., Avila-Palencia, I., de Nazelle, A., Gascon,  
484 M., Gaupp-Berghausen, M., Iacorossi, F., Kahlmeier, S., Int Panis, L., Racioppi, F., Rojas-  
485 Rueda, D., Standaert, A., Stigell, E., Sulikova, S., Wegener, S., Nieuwenhuijsen, M.J., 2021. The  
486 climate change mitigation impacts of active travel: Evidence from a longitudinal panel study  
487 in seven European cities. *Global Environmental Change* 67, 102224.  
488 <https://doi.org/10.1016/j.gloenvcha.2021.102224>
- 489 Branion-Calles, M., Götschi, T., Nelson, T., Anaya-Boig, E., Avila-Palencia, I., Castro, A., Cole-Hunter,  
490 T., de Nazelle, A., Dons, E., Gaupp-Berghausen, M., Gerike, R., Int Panis, L., Kahlmeier, S.,  
491 Nieuwenhuijsen, M., Rojas-Rueda, D., Winters, M., 2020. Cyclist crash rates and risk factors  
492 in a prospective cohort in seven European cities. *Accid Anal Prev* 141, 105540.  
493 <https://doi.org/10.1016/j.aap.2020.105540>
- 494 Candio, P., Frew, E., 2023. How much behaviour change is required for the investment in cycling  
495 infrastructure to be sustainable? A break-even analysis. *PLoS ONE* 18, e0284634.  
496 <https://doi.org/10.1371/journal.pone.0284634>
- 497 Castro, A., Gaupp-Berghausen, M., Dons, E., Standaert, A., Laeremans, M., Clark, A., Anaya-Boig, E.,  
498 Cole-Hunter, T., Avila-Palencia, I., Rojas-Rueda, D., Nieuwenhuijsen, M., Gerike, R., Panis, L.I.,  
499 de Nazelle, A., Brand, C., Raser, E., Kahlmeier, S., Götschi, T., 2019. Physical activity of electric  
500 bicycle users compared to conventional bicycle users and non-cyclists: Insights based on  
501 health and transport data from an online survey in seven European cities. *Transportation*  
502 *Research Interdisciplinary Perspectives* 1, 100017.  
503 <https://doi.org/10.1016/j.trip.2019.100017>
- 504 Center for Transport Analytics, Transport, n.d. The Danish National Travel Survey.



- 505 Chantal Brutel, Jeanne Pages, 2021. La voiture reste majoritaire pour les déplacements domicile-  
506 travail, même pour de courtes distances. INSEE.
- 507 de Nazelle, A., Bode, O., Orjuela, J.P., 2017. Comparison of air pollution exposures in active vs.  
508 passive travel modes in European cities: A quantitative review. *Environ Int* 99, 151–160.  
509 <https://doi.org/10.1016/j.envint.2016.12.023>
- 510 Ding, D., Lawson, K.D., Kolbe-Alexander, T.L., Finkelstein, E.A., Katzmarzyk, P.T., van Mechelen, W.,  
511 Pratt, M., Lancet Physical Activity Series 2 Executive Committee, 2016. The economic burden  
512 of physical inactivity: a global analysis of major non-communicable diseases. *Lancet* 388,  
513 1311–1324. [https://doi.org/10.1016/S0140-6736\(16\)30383-X](https://doi.org/10.1016/S0140-6736(16)30383-X)
- 514 Eiguren, J., Nieuwenhuijsen, M.J., Rojas-Rueda, D., 2021. Premature Mortality of 2050 High Bike Use  
515 Scenarios in 17 Countries. *Environ Health Perspect* 129, 127002.  
516 <https://doi.org/10.1289/EHP9073>
- 517 Emile, Q., 2013. L'évaluation socioéconomique des investissements publics. Commissariat général à  
518 la stratégie et à la prospective.
- 519 European Federation for Transport and Environment, 2023. Clean and lean: Battery metals demand  
520 from electrifying passenger transport.
- 521 Fishman, E., Böcker, L., Helbich, M., 2015. Adult active transport in the Netherlands: an analysis of its  
522 contribution to physical activity requirements. *PLoS One* 10, e0121871.  
523 <https://doi.org/10.1371/journal.pone.0121871>
- 524 Goel, R., Goodman, A., Aldred, R., Nakamura, R., Tatah, L., Garcia, L.M.T., Zapata-Diomedes, B., de Sa,  
525 T.H., Tiwari, G., de Nazelle, A., Tainio, M., Buehler, R., Götschi, T., Woodcock, J., 2021. Cycling  
526 behaviour in 17 countries across 6 continents: levels of cycling, who cycles, for what purpose,  
527 and how far? *Transport Reviews* 0, 1–24. <https://doi.org/10.1080/01441647.2021.1915898>
- 528 Gössling, S., Schröder, M., Späth, P., Freytag, T., 2016. Urban Space Distribution and Sustainable  
529 Transport. *Transport Reviews* 36, 659–679. <https://doi.org/10.1080/01441647.2016.1147101>
- 530 Götschi, T., Kahlmeier, S., Castro, A., Brand, C., Cavill, N., Kelly, P., Lieb, C., Rojas-Rueda, D.,  
531 Woodcock, J., Racioppi, F., 2020. Integrated Impact Assessment of Active Travel: Expanding  
532 the Scope of the Health Economic Assessment Tool (HEAT) for Walking and Cycling. *Int J*  
533 *Environ Res Public Health* 17, 7361. <https://doi.org/10.3390/ijerph17207361>
- 534 Guthold, R., Stevens, G.A., Riley, L.M., Bull, F.C., 2018. Worldwide trends in insufficient physical  
535 activity from 2001 to 2016: a pooled analysis of 358 population-based surveys with 1.9  
536 million participants. *Lancet Glob Health* 6, e1077–e1086. [https://doi.org/10.1016/S2214-109X\(18\)30357-7](https://doi.org/10.1016/S2214-109X(18)30357-7)
- 538 Hamilton, I., Kennard, H., McGushin, A., Höglund-Isaksson, L., Kiesewetter, G., Lott, M., Milner, J.,  
539 Purohit, P., Rafaj, P., Sharma, R., Springmann, M., Woodcock, J., Watts, N., 2021. The public  
540 health implications of the Paris Agreement: a modelling study. *The Lancet Planetary Health* 5,  
541 e74–e83. [https://doi.org/10.1016/S2542-5196\(20\)30249-7](https://doi.org/10.1016/S2542-5196(20)30249-7)
- 542 HCC (The High Council on Climate), 2021. Renforcer l'atténuation, engager l'adaptation [Reinforce  
543 Mitigation, Engage Adaptation].

- 544 H eritier, H., Vienneau, D., Frei, P., Eze, I., Brink, M., Probst-Hensch, N., R osli, M., 2014. The  
545 Association between Road Traffic Noise Exposure, Annoyance and Health-Related Quality of  
546 Life (HRQOL). *IJERPH* 11, 12652–12667. <https://doi.org/10.3390/ijerph111212652>
- 547 Hess, J.J., Ranadive, N., Boyer, C., Aleksandrowicz, L., Anenberg, S.C., Aunan, K., Belesova, K., Bell,  
548 M.L., Bickersteth, S., Bowen, K., Burden, M., Campbell-Lendrum, D., Carlton, E., Ciss e, G.,  
549 Cohen, F., Dai, H., Dangour, A.D., Dasgupta, P., Frumkin, H., Gong, P., Gould, R.J., Haines, A.,  
550 Hales, S., Hamilton, I., Hasegawa, T., Hashizume, M., Honda, Y., Horton, D.E., Karambelas, A.,  
551 Kim, H., Kim, S.E., Kinney, P.L., Kone, I., Knowlton, K., Lelieveld, J., Limaye, V.S., Liu, Q.,  
552 Madaniyazi, L., Martinez, M.E., Mauzerall, D.L., Milner, J., Neville, T., Nieuwenhuijsen, M.,  
553 Pachauri, S., Perera, F., Pineo, H., Remais, J.V., Saari, R.K., Sampedro, J., Scheelbeek, P.,  
554 Schwartz, J., Shindell, D., Shyamsundar, P., Taylor, T.J., Tonne, C., Van Vuuren, D., Wang, C.,  
555 Watts, N., West, J.J., Wilkinson, P., Wood, S.A., Woodcock, J., Woodward, A., Xie, Y., Zhang,  
556 Y., Ebi, K.L., 2020. Guidelines for Modeling and Reporting Health Effects of Climate Change  
557 Mitigation Actions. *Environ Health Perspect* 128, 115001. <https://doi.org/10.1289/EHP6745>
- 558 INSEE, (National Institute of Statistics and Economic Studies), n.d. Projections de population 2005-  
559 2050 par sexe et  ge.
- 560 IPCC (Intergovernmental Panel on Climate Change), 2023. SYNTHESIS REPORT OF THE IPCC SIXTH  
561 ASSESSMENT REPORT (AR6).
- 562 Jacobsen, P.L., Ragland, D.R., Komanoff, C., 2015. Safety in Numbers for walkers and bicyclists:  
563 exploring the mechanisms. *Injury Prevention* 21, 217–220.  
564 <https://doi.org/10.1136/injuryprev-2015-041635>
- 565 Jenkins, M., Lustosa, L., Chia, V., Wildish, S., Tan, M., Hoornweg, D., Lloyd, M., Dogra, S., 2022. What  
566 do we know about pedal assist E-bikes? A scoping review to inform future directions.  
567 *Transport Policy* 128, 25–37. <https://doi.org/10.1016/j.tranpol.2022.09.005>
- 568 Katzmarzyk, P.T., Friedenreich, C., Shiroma, E.J., Lee, I.-M., 2021. Physical inactivity and non-  
569 communicable disease burden in low-income, middle-income and high-income countries. *Br J*  
570 *Sports Med* [bjsports-2020-103640](https://doi.org/10.1136/bjsports-2020-103640). <https://doi.org/10.1136/bjsports-2020-103640>
- 571 Kelly, P., Kahlmeier, S., G otschi, T., Orsini, N., Richards, J., Roberts, N., Scarborough, P., Foster, C.,  
572 2014. Systematic review and meta-analysis of reduction in all-cause mortality from walking  
573 and cycling and shape of dose response relationship. *Int J Behav Nutr Phys Act* 11, 132.  
574 <https://doi.org/10.1186/s12966-014-0132-x>
- 575 Laeremans, M., Gotschi, T., Dons, E., Kahlmeier, S., Brand, C., de Nazelle, A., Gerike, R.,  
576 Nieuwenhuijsen, M., Raser, E., Stigell, E., Anaya Boig, E., Avila-Palencia, I., Cole-Hunter, T.,  
577 Gaupp-Berghausen, M., Mueller, N., Pablo Orjuela, J., Racioppi, F., Standaert, A., Rojas-  
578 Rueda, D., Int Panis, L., 2017. Does an Increase in Walking and Cycling Translate into a Higher  
579 Overall Physical Activity Level? *Journal of Transport & Health* 5, S20.  
580 <https://doi.org/10.1016/j.jth.2017.05.301>
- 581 McVicar, J., Keske, M.A., Daryabeygi-Khotbehsara, R., Betik, A.C., Parker, L., Maddison, R., 2022.  
582 Systematic review and meta-analysis evaluating the effects electric bikes have on  
583 physiological parameters. *Scand J Med Sci Sports* 32, 1076–1088.  
584 <https://doi.org/10.1111/sms.14155>

- 585 Miller, K.R., McClave, S.A., Jampolis, M.B., Hurt, R.T., Krueger, K., Landes, S., Collier, B., 2016. The  
586 Health Benefits of Exercise and Physical Activity. *Curr Nutr Rep* 5, 204–212.  
587 <https://doi.org/10.1007/s13668-016-0175-5>
- 588 Milner, J., Turner, G., Ibbetson, A., Colombo, P.E., Green, R., Dangour, A.D., Haines, A., Wilkinson, P.,  
589 2023. Impact on mortality of pathways to net zero greenhouse gas emissions in England and  
590 Wales: a multisectoral modelling study. *The Lancet Planetary Health* 7, e128–e136.  
591 [https://doi.org/10.1016/S2542-5196\(22\)00310-2](https://doi.org/10.1016/S2542-5196(22)00310-2)
- 592 Ministry of Ecological Transition, n.d. Enquête mobilité des personnes de 2019.
- 593 Mueller, N., Rojas-Rueda, D., Basagaña, X., Cirach, M., Cole-Hunter, T., Dadvand, P., Donaïre-  
594 Gonzalez, D., Foraster, M., Gascon, M., Martinez, D., Tonne, C., Triguero-Mas, M., Valentín,  
595 A., Nieuwenhuijsen, M., 2017. Urban and Transport Planning Related Exposures and  
596 Mortality: A Health Impact Assessment for Cities. *Environ Health Perspect* 125, 89–96.  
597 <https://doi.org/10.1289/EHP220>
- 598 Mueller, N., Rojas-Rueda, D., Cole-Hunter, T., de Nazelle, A., Dons, E., Gerike, R., Götschi, T., Int Panis,  
599 L., Kahlmeier, S., Nieuwenhuijsen, M., 2015. Health impact assessment of active  
600 transportation: A systematic review. *Prev Med* 76, 103–114.  
601 <https://doi.org/10.1016/j.ypmed.2015.04.010>
- 602 Mueller, N., Rojas-Rueda, D., Salmon, M., Martinez, D., Ambros, A., Brand, C., de Nazelle, A., Dons, E.,  
603 Gaupp-Berghausen, M., Gerike, R., Götschi, T., Iacorossi, F., Int Panis, L., Kahlmeier, S., Raser,  
604 E., Nieuwenhuijsen, M., 2018. Health impact assessment of cycling network expansions in  
605 European cities. *Preventive Medicine* 109, 62–70.  
606 <https://doi.org/10.1016/j.ypmed.2017.12.011>
- 607 ONISR (Observatoire national interministériel de la sécurité routière), 2023. Accidentalité routière  
608 2022 en France.
- 609 Quam, V.G.M., Rocklöv, J., Quam, M.B.M., Lucas, R.A.I., 2017. Assessing Greenhouse Gas Emissions  
610 and Health Co-Benefits: A Structured Review of Lifestyle-Related Climate Change Mitigation  
611 Strategies. *Int J Environ Res Public Health* 14. <https://doi.org/10.3390/ijerph14050468>
- 612 Rojas-Rueda, D., de Nazelle, A., Andersen, Z.J., Braun-Fahrländer, C., Bruha, J., Bruhova-Foltynova, H.,  
613 Desqueyroux, H., Praznocy, C., Ragettli, M.S., Tainio, M., Nieuwenhuijsen, M.J., 2016. Health  
614 Impacts of Active Transportation in Europe. *PLoS ONE* 11, e0149990.  
615 <https://doi.org/10.1371/journal.pone.0149990>
- 616 Santé publique France, 2023. Estimation de la fraction de la mortalité attribuable à l'exposition de la  
617 population générale à la chaleur en France métropolitaine Application à la période de  
618 surveillance estivale (1er juin -15 septembre) 2014-2022.
- 619 Santé publique France, 2021. Impact de la pollution de l'air ambiant sur la mortalité en France  
620 métropolitaine: réduction en lien avec le confinement du printemps 2020 et nouvelles  
621 données sur le poids total pour la période 2016-2019.
- 622 Smith, R., Thomas, C., Squires, H., Götschi, T., Kahlmeier, S., Goyder, E., 2021. The price of precision:  
623 trade-offs between usability and validity in the World Health Organization Health Economic  
624 Assessment Tool for walking and cycling. *Public Health* 194, 263–269.  
625 <https://doi.org/10.1016/j.puhe.2021.03.016>

- 626 Stappers, N.E.H., Bekker, M.P.M., Jansen, M.W.J., Kremers, S.P.J., de Vries, N.K., Schipperijn, J., Van  
627 Kann, D.H.H., 2023. Effects of major urban redesign on sedentary behavior, physical activity,  
628 active transport and health-related quality of life in adults. *BMC Public Health* 23, 1157.  
629 <https://doi.org/10.1186/s12889-023-16035-6>
- 630 The French Agency for Ecological Transition, n.d. Futures in transition - Scenarios [WWW Document].  
631 URL <https://www.ademe.fr/en/futures-in-transition/scenarios/> (accessed 6.3.23a).
- 632 The French Agency for Ecological Transition, n.d. Transitions 2050 - Portail de données [WWW  
633 Document]. URL [https://data-transitions2050.ademe.fr/datasets?topics=vKftP1ZR0-](https://data-transitions2050.ademe.fr/datasets?topics=vKftP1ZR0-SvQtrX4J5pS)  
634 [SvQtrX4J5pS](https://data-transitions2050.ademe.fr/datasets?topics=vKftP1ZR0-SvQtrX4J5pS) (accessed 7.26.23b).
- 635 UNFCCC (United nations Framework Convention on Climate Change ), 21st session, 2015. Paris  
636 Agreement.
- 637 WHO guidelines on physical activity and sedentary behaviour, 2020. . World Health Organization,  
638 Geneva.
- 639 WHO, (World Health Organisation). Regional Office for Europe, 2022. Walking and cycling: latest  
640 evidence to support policy-making and practice.
- 641 Zhao, Y., Hu, F., Feng, Y., Yang, X., Li, Y., Guo, C., Li, Q., Tian, G., Qie, R., Han, M., Huang, S., Wu, X.,  
642 Zhang, Y., Wu, Y., Liu, D., Zhang, D., Cheng, C., Zhang, M., Yang, Y., Shi, X., Lu, J., Hu, D., 2021.  
643 Association of Cycling with Risk of All-Cause and Cardiovascular Disease Mortality: A  
644 Systematic Review and Dose-Response Meta-analysis of Prospective Cohort Studies. *Sports*  
645 *Med* 51, 1439–1448. <https://doi.org/10.1007/s40279-021-01452-7>
- 646
- 647