

1 Asymptomatic *Plasmodium falciparum* Carriage at the End of the Dry Season is 2 Associated with Subsequent Infection and Clinical Malaria in Eastern Gambia

3 Affiliations:

4 Balotin Fogang¹, Lionel Lellouche¹, Sukai Ceesay², Sainabou Drammeh², Fatou K. Jaiteh²,
5 Marc-Antoine Guery¹, Jordi Landier³, Cynthia Haanappel⁴, Janeri Froberg⁴, David Conway⁵,
6 Umberto D'Alessandro², Teun Bousema⁴, Antoine Claessens^{1,2,4}

7 ¹LPHI, MIVEGEC, University of Montpellier, CNRS, INSERM, Montpellier, France

8 ²Medical Research Council Unit The Gambia at the London School of Hygiene and Tropical
9 Medicine, Banjul, The Gambia

10 ³Aix Marseille Univ, IRD, INSERM, SESSTIM, ISSPAM, 27 boulevard Jean Moulin, 13005,
11 Marseille, France

12 ⁴Radboud university medical center, Radboud Institute for Health Sciences, Department of
13 Medical Microbiology, Nijmegen, The Netherlands

14 ⁵Department of Infection Biology, London School of Hygiene and Tropical Medicine,
15 London, UK

16 Corresponding author: antoine.claessens@umontpellier.fr

17

18 Abstract

19 **Background.** Chronic carriage of asymptomatic low-density *Plasmodium falciparum*
20 parasitaemia in the dry season may support maintenance of acquired immunity that protects
21 against clinical malaria. However, the relationship between chronic low-density infections and
22 subsequent risk of clinical malaria episodes remains unclear.

23 **Methods.** In a 2-years study (December 2014 to December 2016) in eastern Gambia, nine cross-
24 sectional surveys using molecular parasite detection were performed in the dry and wet season.
25 During the 2016 malaria transmission season, passive case detection identified episodes of
26 clinical malaria.

27 **Results.** Among the 5,256 samples collected, 444 (8.4%) were positive for *P. falciparum*. A
28 multivariate model identified village of residence, male sex, age ≥ 5 years old, anaemia, and
29 fever as independent factors associated with *P. falciparum* parasite carriage. Infections did not
30 cluster over time within the same households or recurred among neighbouring households.
31 Asymptomatic parasite carriage at the end of dry season was associated with a higher risk of
32 infection (Hazard Ratio, HR= 3.0, $p < 0.0001$) and clinical malaria (HR= 1.561, $p = 0.057$)
33 during the following transmission season. Age and village of residence were additional
34 predictors of infection and clinical malaria during the transmission season.

35 **Conclusion.** Chronic parasite carriage during the dry season is associated with an increased
36 risk of malaria infection and clinical malaria. It is unclear whether this is due to environmental
37 exposure or to other factors.

38 **Keywords.** *Plasmodium falciparum*, asymptomatic, clinical malaria, seasonal transmission

NOTE: This preprint reports new research that has not been certified by peer review and should not be used to guide clinical practice.

39 Introduction

40 Malaria continues to be a significant public health challenge in several parts of the
41 world, where it is responsible for a high burden of morbidity and mortality [1,2]. Despite the
42 impact of standard control interventions, asymptomatic *P. falciparum* infections continue to
43 pose a challenge to control efforts as they maintain residual transmission [3]. Where malaria
44 transmission is seasonal, most cases of clinical malaria occur between July and December, a
45 period covering the seasonal rains and the 2 months immediately following them, with a peak
46 in cases in November, while the dry season (January-June) is a period of low transmission, with
47 mainly asymptomatic chronic infections acquired during the previous transmission season
48 [4,5].

49 As malaria transmission has declined considerably in The Gambia [1], thanks to wide
50 scale up of vector control interventions, the prevalence of infection has become increasingly
51 heterogeneous [6–8]. To sustain the decline in malaria transmission and move towards
52 elimination, there is a need to evaluate and improve existing community-based interventions
53 through ongoing epidemiological surveillance and identification of associated factors.

54 A large proportion of asymptomatic individuals at the end of the transmission season remains
55 infected for several months, from January to June [9]. However, the relationship between these
56 chronic infections and the risk of infection and clinical malaria during the following
57 transmission season remains unclear, with conflicting information; some studies report a
58 protective effect [10–13] while others a higher risk of clinical malaria [14–17] or no consistent
59 association [6,18]. Such differences may be influenced by the age of the participants [17,18],
60 the intensity of malaria transmission [6,18] and the number of circulating *P. falciparum* clones
61 [13,14,19]. Importantly, variation in parasite exposure may also play a role.

62 Here, to characterise the dynamics of malaria transmission and identify associated risk
63 factors, we conducted a total of 9 cross-sectional surveys during the dry and wet seasons,
64 starting in December 2014. From July 2016, a longitudinal follow-up of treated asymptomatic
65 and non-infected participants with passive *P. falciparum* detection was carried out to assess the
66 impact of asymptomatic parasitaemia on subsequent infection and clinical malaria during the
67 transmission season.

68 **Materials and methods**

69 **Ethical considerations**

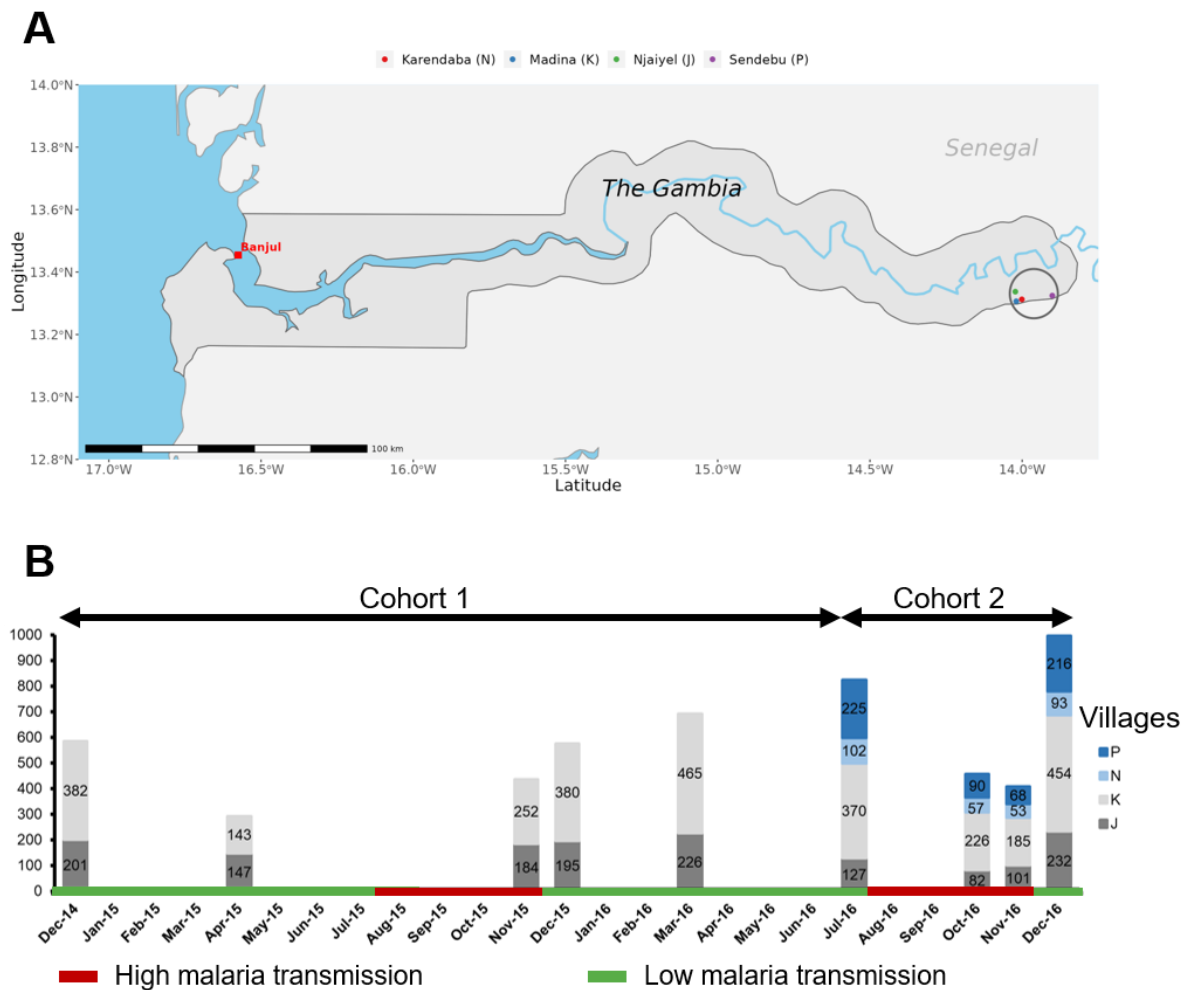
70 The study protocol was reviewed and approved by the Gambia Government/MRC Joint
71 Ethics Committee (SCC 1476, SCC 1318, L2015.50) and by the London School of Hygiene &
72 Tropical Medicine ethics committee (Ref 10982). The field studies were also approved by local
73 administrative representatives, the village chiefs. Written informed consent was obtained from
74 participants over 18 years old and from parents/guardians for participants under 18 years.
75 Written assent was obtained from all individuals aged 12-17 years.

76

77 **Study design and population**

78 The study was carried out in four villages (Madina Samako: K, Njayel: J, Sendebu: P, and
79 Karandaba: N) in Upper River Region (URR), eastern Gambia (Figure 1A) [9,20]. Over a two-
80 year period, two cohorts of individuals at least two years old were recruited; one cohort was
81 followed up between December 2014 and March 2016, and the other between July and
82 December 2016 (Figure 1B). All households were invited to participate in the study. The
83 number of participants per household ranged from 1 to 79, with a median of 7 (Q1, Q3 4, 11).
84 Five surveys covering the end of the transmission season (December 2014 and November and
85 December 2015) and the following dry season (April 2015 and March 2016) were carried out
86 in the first cohort in two-villages (J and K) (Figure 1B). Surveys on the second cohort were
87 carried out during the 2016 transmission season (July, October, November, and December) in
88 the four study villages (Figure 1B). During the surveys, structured questionnaires were used to
89 record individual information (village, household, age, sex, bed net use, history of fever,
90 temperature) from all participants. Moreover, households in the villages J and K were
91 geolocated using a global positioning system (GPS). During the 2016 transmission season
92 (July-December), a resident nurse delivered complimentary basic healthcare to all participants.
93 Suspected malaria cases (axillary temperature > 37.5 °C) were tested with a Rapid Diagnostic
94 Test (CareStart) and, if positive, treated with artemether-lumefantrine.

95



96

97 **Figure 1. Study site and design.** A) Map of The Gambia with the study site (4 villages) circled.
 98 B) Presentation of the two cohorts and the 2-year sampling period in the four villages. The bar
 99 charts show the cumulative number of fingerprick samples per timepoint for each village. The
 100 green colour represents the low malaria transmission season and the red colour represents the
 101 high transmission malaria season in The Gambia. The colours in the bars indicate village of
 102 residence (P= blue, N= light blue, K= light grey, J= grey).

103

104 Sample collection and malaria diagnostic

105 At each survey, approximately 200µl of blood was collected by fingerprick into an
 106 EDTA-coated tube. A few drops were used for a thick blood film and dry blood spots on filter
 107 paper (Whatman 3 Corporation, Florham Park, NJ, USA). Haemoglobin (Hb) was measured by
 108 HaemoCue 301 machine. Blood samples from EDTA tubes were processed on the same day
 109 for leucodepletion using a cellulose-based column (MN2100ff, similar to CF11) [21].

110 Thick blood films were stained with a 10% Giemsa solution for 10 minutes and parasite
 111 density estimated by counting the number of parasites per at least 200 white blood cells (WBC)
 112 and assuming 8,000 WBC/µL. Slides were considered negative if no parasites were detected by
 113 two microscopists after reading 500 WBC. A 20 % error check was used to identify
 114 discrepancies between slide readers. All discordant results were read by a senior microscopist
 115 whose results were taken as final.

116 For samples collected between December 2014 and March 2016, DNA extracted from
117 leukocyte-depleted red blood cells using the QIAgen MiniPrep kit was analyzed by nested PCR
118 targeting *P. falciparum* 18S small subunit rRNA (ssRNA) genes [22].

119 For samples collected from July to December 2016, DNA was extracted from dry blood spot
120 (DBS) by Chelex method [23] and analyzed by 18S small subunit of ribosomal RNA (rRNA)
121 qPCR and *var* gene acid terminal sequence (varATS) qPCR [24], as detailed in Supplementary
122 Figure 1.

123

124 **Statistical analysis**

125 Data were collected on paper-based case report forms (CRFs), double entered, and
126 checked for errors and discrepancies before statistical analysis. Statistical analyses were
127 performed using R studio version 4.2.3 [25]. Age was categorized into three groups: < 5 years,
128 5–14 years and ≥ 15 years. Anaemia was classified as mild, moderate or severe [26]
129 (**Supplementary Table 1**). Comparisons of proportions between groups were performed using
130 the chi-square χ^2 test; Spearman's correlation test was used to test the association between
131 quantitative variables. 95% confidence intervals for prevalence were calculated using standard
132 error based on Wilson Score Interval.

133 A multivariate mixed-effects logistic regression model, implemented with the R lme4
134 package, was used to determine factors independently associated with qPCR-detected *P.*
135 *falciparum* infection. This modelling approach incorporates both fixed and random effects,
136 making it suitable for analysing data with repeated or clustered observations. The mixed-effects
137 logistic regression model assumes that observations within groups or clusters defined by
138 random effects must be independent, and there should be no perfect separation in the data. In
139 this model all fixed-effect variables were adjusted for clustering at different months of data
140 collection (time of sampling), at the household level, and at the individual level, with the
141 individual level nested within the household level. This adjustment helps mitigate potential
142 biases stemming from temporal and household-level variability. The predictive factors (fixed-
143 effects) included villages, age, sex, anaemia, history of fever in the past week and fever at
144 inclusion (temperature > 37.5°C). For this analysis, only individuals in the second cohort were
145 included as complete epidemiological information for the first cohort was not available.

146 To assess the risk factors associated with subsequent infection or the first clinical
147 malaria episode during the transmission season, both univariate and multivariate shared frailty
148 mixed-effects survival models were applied. These models were implemented using the R
149 survival and coxme packages. They integrate components of survival analysis and mixed-
150 effects modelling, taking into consideration the inherent clustering or interdependence of
151 observations within groups or clusters. The explained variables in separated models included
152 the occurrence of infection or clinical malaria during the transmission season. In these models,
153 individuals were clustered according to the timing of reinfection or the onset of clinical malaria,
154 with each interval spanning one month. The random effect in the model pertained to households,
155 and the covariates included the infection status at the end of dry season, villages, age, sex,
156 anaemia status, history of fever in the past week, fever at inclusion (temperature > 37.5°C).
157 Kaplan-Meier survival curves were used to visualize the progression of malaria incidence or
158 clinical cases during the transmission season.

159 Spatial analysis of clusters of *Plasmodium* infections (hotspot) was performed using the
160 Bernoulli method in SaTScan version 10.1.2 [27]. In all analyses, P values < 0.05 were
161 considered statistically significant. All the graphs were performed using R studio.

162 **Results**

163 **Characteristics of the study cohorts**

164 Over a period of 2 years, 5256 blood samples were collected from 1471 individuals aged 2 to
 165 85 years (Fig. 1). The first cohort included 1003 participants and the second cohort 1284 participants,
 166 with 789 of them in both cohorts (Table 1). 46.3% (458) of cohort 1 were males and the median age
 167 was 11 years (Q1, Q3 5.5, 27). In the cohort 2, the median age was 12 years (Q1, Q3 6, 29), with
 168 more females than males. Anaemia prevalence was 42.8%, mostly mild (22.5%) and moderate
 169 (18.9%), with few cases of severe anaemia (1.4%) (Table 1). Fever at inclusion was rare (0.8%). Bed
 170 net use was high (76.4%).

171 **Table 1 : Characteristics of the study population**

Characteristics	Cohort 1: December 2014 – March 2016, % (n/N)	Cohort 2: July 2016 – December 2016, % (n/N)
Male sex	46.3 (458/989)	44.1 (565/1280)
Villages		
J	33.4 (335/1003)	20.6 (264/1284)
K	66.6 (668/1003)	48.4 (622/1284)
N	-	11.1 (142/1284)
P	-	19.9 (256/1284)
Age groups (years)		
< 5	22.1 (219/1003)	16.2 (207/1280)
5-14	33.9 (335/1003)	39.3 (503/1280)
>15	44.0 (435/1003)	44.5 (570/1280)
Anaemia*		
Non-anaemic	-	57.2 (688/1203)
Mild	-	22.5 (271/1203)
Moderate	-	18.9 (227/1203)
Severe	-	1.4 (17/1203)
Slept under a LLIN last night	-	76.4 (916/1195)
History of fever in the past week	-	4.0 (48/1195)
Fever at inclusion	-	0.8 (10/860)

172 *Anaemia is classified based on age and sex (WHO, 2011). LLIN: Long-lasting insecticidal net; - = not determined

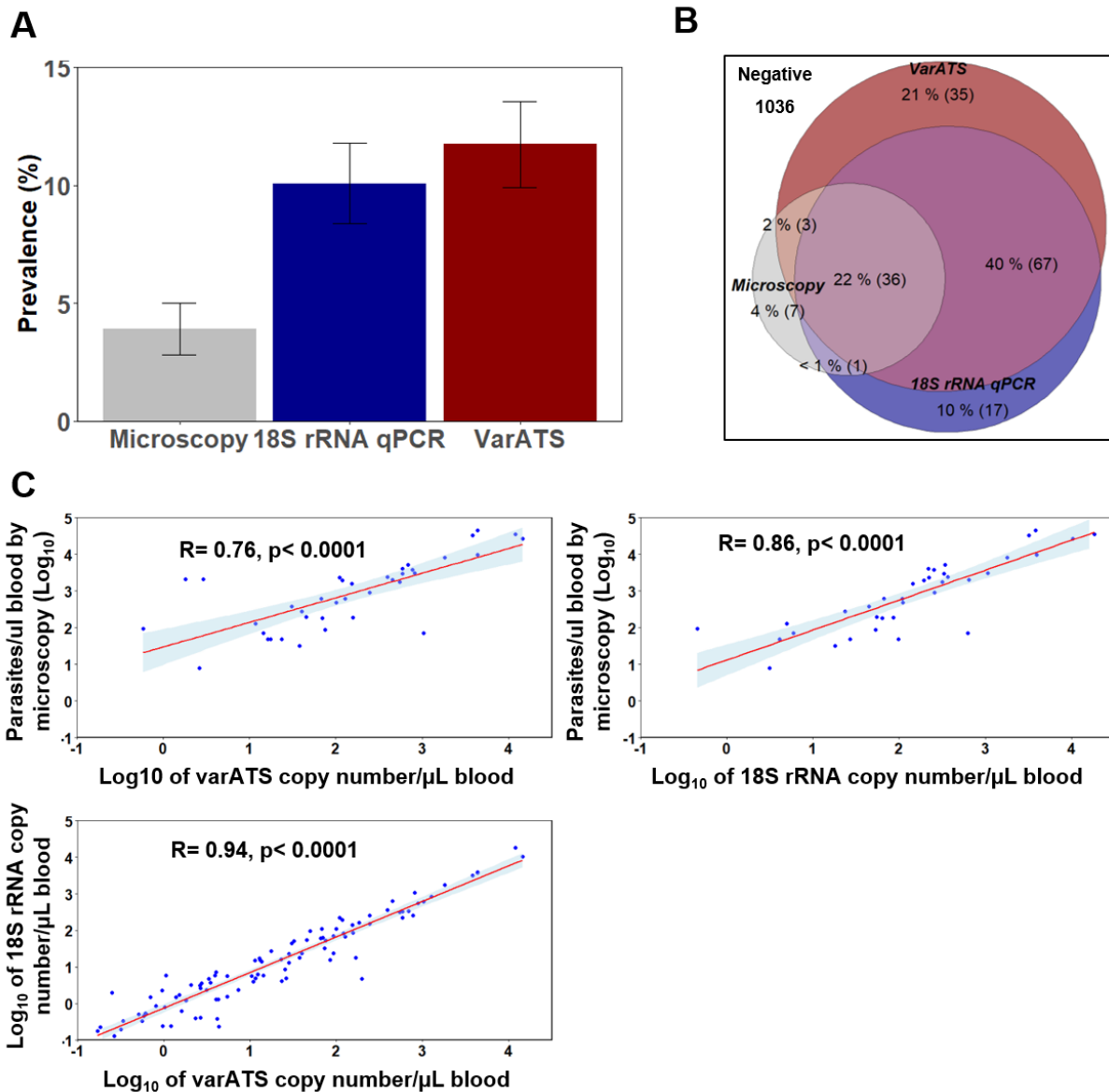
173

174 ***Plasmodium falciparum* prevalence in cohort 1**

175 Between December 2014 and March 2016, 155 (6%) of 2575 samples collected were positive.
 176 Prevalence varied substantially over time, between 1.7% and 5.4% during the dry season and up to
 177 14.4% during the transmission season (Supplementary Figure 2). Children under 5 years of age were
 178 less likely to be infected (Supplementary Figure 2), possibly reflecting the effects of Seasonal Malaria
 179 Chemoprevention (SMC). Parasite prevalence in older children and adults was similar and peaked
 180 towards the end of the transmission season (Supplementary Figure 2).

181 **VarATS qPCR is more sensitive than 18S qPCR and microscopy**

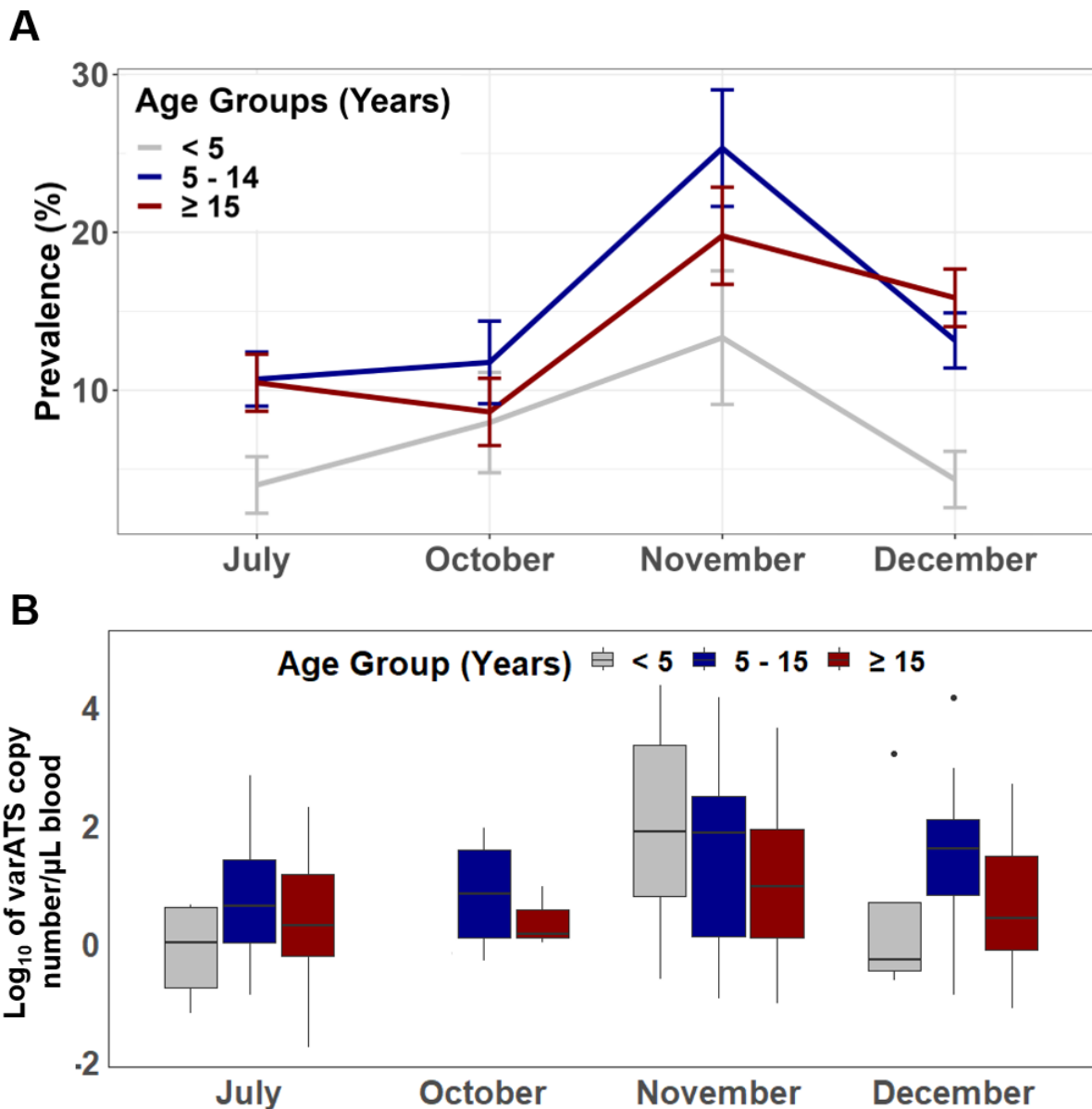
182 To increase the sensitivity of the *P. falciparum* detection relative to microscopy, two
183 quantitative PCR approaches targeting the 18S locus of the conserved small subunit of ribosomal
184 RNA (18S rRNA, 5-8 copies/genomes) and the acidic terminal sequence of the var gene (varATS,
185 ~60 copies/genomes) were evaluated using a set of samples from cohort 2. Using serial dilutions of
186 the laboratory-adapted *P. falciparum* 3D7 strain to determine analytical sensitivity, varATS reached
187 the limit of detection (LOD) of 0.22 parasites/ μ L of blood and was around 10 times more sensitive
188 than standard 18S rRNA qPCR with the LOD of 2.2 parasites/ μ L (Supplementary Figure 1). Out of
189 1202 fingerprick samples from this cohort screened by the 3 techniques, 11.7% (141), 10.1% (121)
190 and 3.9% (47) samples were positive for *P. falciparum* using varATS, 18S rRNA qPCR and light
191 microscopy, respectively (Figure 2A). Of 166 *Plasmodium* infections detected by the three diagnostic
192 tests combined, 18.9% (35) were only detected by varATS, while 10.2% (17) ($p= 0.0066$) and 4.2%
193 (7) ($p< 0.0001$) were detected only by 18S rRNA qPCR and microscopy, respectively (Figure 2B and
194 Supplementary Figure 3). There was a high level of agreement between varATS and 18S rRNA
195 qPCR, with 95.3% (1146 varATS+/18SRNA+ or varATS-/18SRNA-) samples with the same results
196 for both methods (Supplementary Figure 3). Parasite densities determined by varATS and 18S rRNA
197 qPCR correlated strongly with parasitemia quantified by microscopy ($r= 0.76$, $P< 0.0001$ and $r= 0.86$,
198 $P< 0.0001$ for VarATS and 18S rRNA qPCR, respectively), as well as with each other ($r= 0.94$, $P<$
199 0.0001) (Figure 2C). Because of the high concordance between the two molecular methods varATS
200 and 18S rRNA qPCR, results from the two molecular *Plasmodium* detection tools were combined in
201 a single analysis.



202
 203 **Figure 2. *Plasmodium* detection by different diagnostic tools.** A) Proportion of *P. falciparum*
 204 detected with different diagnostic methods. B) Venn diagram of *Plasmodium* positivity by varATS,
 205 18S rRNA qPCR and/or microscopy. C) Correlation in parasitaemia between diagnostic tools. Error
 206 bars in Fig A correspond to 95% confidence interval for estimated prevalence. Spearman rank
 207 correlation (panel C) is presented as the best fit line and the coefficient (r), as well as the p-value (p),
 208 are shown for each correlation pair between parasitaemia. LM: light microscopy. qPCR: quantitative
 209 polymerase chain reaction. rRNA: Ribosomal ribonucleic acid. ATS: acidic terminal segment.

210
 211 ***Plasmodium falciparum* prevalence in cohort 2**

212 *P. falciparum* prevalence was 9.3% (77/824) in July, 9.7% (44/455) in October, 20.6%
 213 (84/407) in November, and 12.9% (128/995) in December. This trend was observed in all age groups
 214 (Figure 3A). As shown in Figure 3A, children under 5 years of age had the lowest prevalence while
 215 older children the highest prevalence (Figure 3A). Bednet usage was high in all age groups (81% in
 216 < 5, 74% in 5-14, 77% in ≥ 15 years). Median varATS parasitaemia was usually higher in the older
 217 children than adults and young children (5-14 vs <5 years, p= 0.1553; 5-14 vs ≥15 years, p< 0.0001),
 218 but not in all surveys (Figure 3B).



219

220

221

222

223

224

225

226

227

228

229

230

231

232

233

Figure 3. Trend analysis for *P. falciparum* infection prevalence (A) and parasitaemia (B) by age groups in the second cohort (2016). In A, error bars represent 95% confidence intervals for prevalence.. Box in B plots representing interquartile ranges (25th, median and 75th percentile, whisker percentile (1st and 99th)). (B) Parasite density by varATS was not available for October in the <5 year group.

Risk factors associated with *P. falciparum* infection

A multivariate mixed-effects logistic regression model shows that sex, age, anaemia, fever at inclusion, and village of residence were independent factors associated with *P. falciparum* infections (Table 2). Indeed, risk of infection was 3-fold higher (OR= 3.134, $p < 0.0001$) in older children and 2.5-fold higher (OR= 2.616, $p < 0.0001$) in adults than in young children, likely indicating the effect of SMC in this age group.

Residents of villages K and P were more at risk of infection than those of village N (OR= 1.848, $p = 0.0236$ and OR= 3.499, $p < 0.0001$ for villages K and P, respectively). Individuals with

234 different degree of anaemia had higher odds of being infected by *P. falciparum* compared to non-
 235 anaemic individuals (Table 2). Fever at inclusion was strongly associated with infection (OR= **4.374** ,
 236 $p= 0.007$).

237 As malaria prevalence varied substantially between and within villages, the analysis
 238 investigated whether some households were hotspots of malaria transmission. Analyses focused on
 239 villages J and K, as data are available over a 2-year study period. By utilizing the Bernoulli spatial
 240 scan statistic in Satscan algorithm, two clusters in village J with a high prevalence of *P. falciparum*
 241 infections were identified (Supplementary Table 2). Similarly, in village K, three clusters of high
 242 *Plasmodium falciparum* infections at two different times (November and December 2016) were
 243 identified ($P < 0.05$) (Supplementary Table 2). However, when *P. falciparum* prevalence at the
 244 household level in the two villages was plotted over time, no evidence of clustering of infection over
 245 time within the same households or recurrent infections among neighbouring households was found
 246 (Supplementary Figure 4). This suggests that transmission is stochastic, with no evidence of sustained
 247 malaria hotspots in these villages.

248 **Table 2: Assessment of associated risk factors of *P. falciparum* infection**

249

Factors	Description (n)	% infections (n)	OR [95% CI]	P value
Sex	F (1513)	11.4 (172)	Ref	
	M (1162)	13.9 (162)	1.336 [1.031-1.731]	0.0280
Age groups (Years)	< 5 (474)	6.33 (30)	Ref	
	5-14 (1078)	13.8 (149)	3.134 [2.041-4.813]	< 0.0001
	≥ 15 (1123)	13.7 (154)	2.616 [1.697-4.032]	< 0.0001
Village of residence	J (542)	10.3 (56)	1.616 [0.895-2.916]	0.1110
	K (1235)	11.9 (147)	1.848 [1.085-3.146]	0.0236
	N (305)	7.9 (24)	Ref	
	P (599)	17.7 (106)	3.499 [2.026-6.043]	< 0.0001
History of fever in the past week	Yes (131)	14.5 (19)	1.021 [0.590-1.767]	0.9382
	No (2306)	12.49 (288)	Ref	
Anaemia*	Non-anaemic (1390)	10.6 (147)	Ref	
	Mild (550)	13.6 (75)	1.577 [1.155-2.155]	0.0042
	Moderate (493)	16.2 (80)	1.759 [1.294-2.392]	0.0003
	Severe (37)	29.7 (11)	3.942 [1.818-8.548]	0.0005
Fever at inclusion	Yes (19)	31.6 (6)	4.374 [1.496-12.78]	0.0070
	No (2446)	12.6 (307)	Ref	

250 Only individuals from the second cohort (N= 2681) were included in this multivariate mixed-effects logistic regression
 251 model because complete epidemiological information were only available for these individuals. In this model all fixed-
 252 effect variables were adjusted for clustering at different months of data collection (time of sampling), at the household
 253 level, and at the individual level, with the individual level nested within the household level. *Anaemia determined by
 254 age and sex according to the OMS 2011 report (OMS, 2011). Significant estimates are bolded. OR: odds ratio. CI:
 255 Confident interval. Ref: reference.

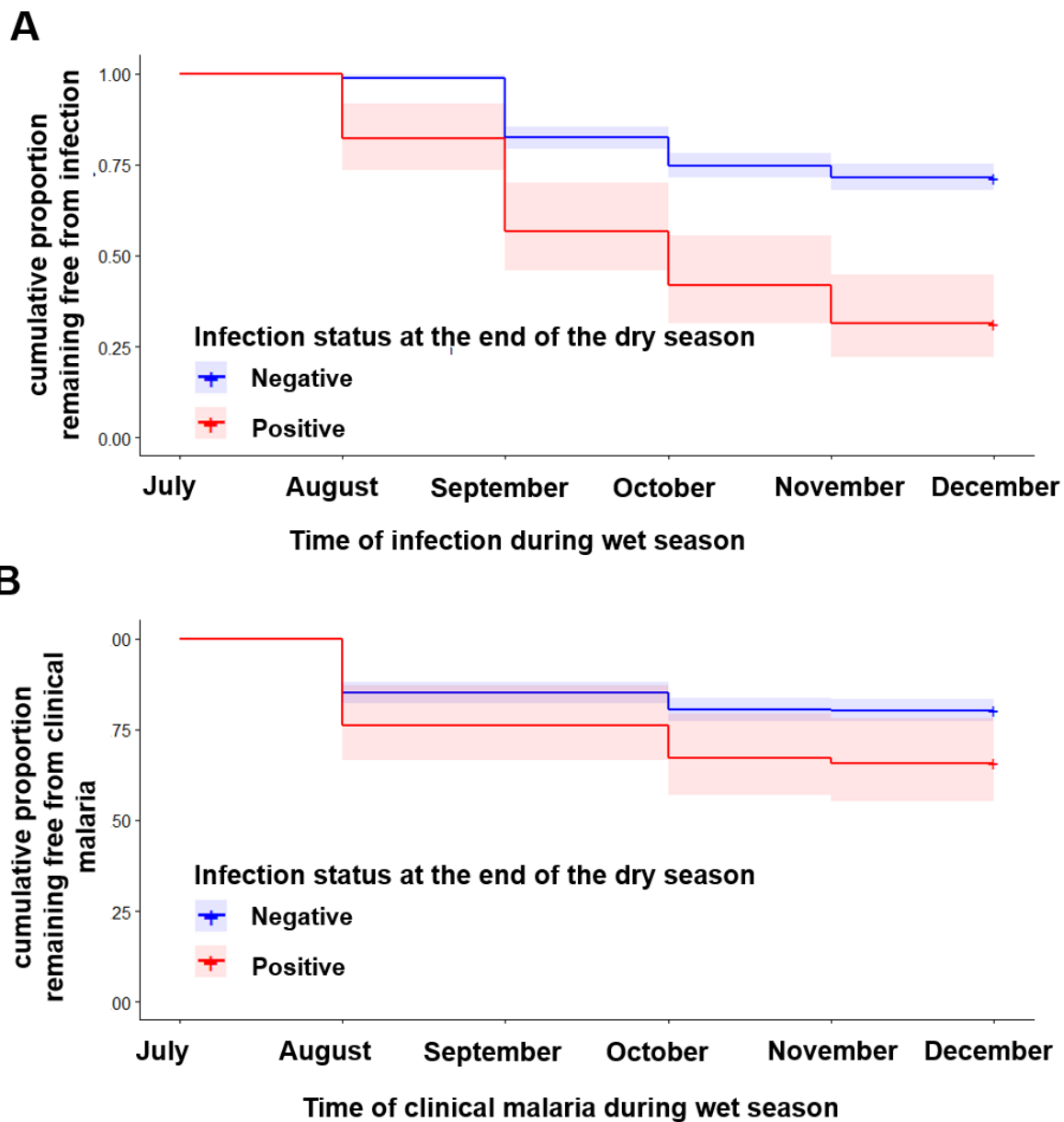
256

257 **Asymptomatic parasitaemia at the end of dry season is associated with infection and clinical**
258 **malaria during the following transmission season**

259 The individual risk of being infected during the transmission season according to the infection
260 status at the beginning of the transmission season was investigated (Figure 4 and Table 3). In July
261 2016, 67 individuals were asymptomatic carriers and treated with artesunate-lumefantrine
262 antimalarials; 68.7% (46) of them were re-infected during the transmission season. Among the 613
263 individuals non-infected in July 2016, 28.5% (175) of them became infected during the same period
264 (HR= 3.338, $p < 0.0001$) (Figure 4 and Table 3). The association between infection status and risk of
265 infection during the transmission season remains significant after adjustment for age and village (HR=
266 3.0, $p < 0.0001$) (Table 3). Multivariate analysis shows that age and village of residence were
267 independently associated with risk of infection (HR= 2.767, $p < 0.0001$ for age 5-14 years, HR= 3.063,
268 $p < 0.0001$ for age ≥ 15 years and HR= 2.375, $p = 0.0012$ for village P).

269 Individuals with a malaria parasite infection in July 2016 had a 2-fold higher risk of
270 experiencing a clinical malaria episode than those without infection (HR= 1.825, $p = 0.0086$); this
271 effect persisted after adjusting for age, village and anaemia (HR= 1.561, $p = 0.057$) (Table 4).
272 Additionally, age and villages were also independent predicting factors for clinical malaria during the
273 transmission season (HR= 3.404, $p = 0.0003$, HR= 3.951, $p < 0.0001$ and HR= 2.717, $p = 0.0054$ for
274 age 5-14 years, age ≥ 15 years and village P, respectively). Together, these data indicate that
275 asymptomatic carriage of parasites during the dry season is associated with an increased risk of
276 infection and clinical malaria during the following transmission season.

277



278

279 **Figure 4. Asymptomatic *P. falciparum* carriage at the end of dry season and during the**
 280 **subsequent transmission season. Being carrier in the dry season increases the risk of both *P.***
 281 ***falciparum* infection (A) and malaria symptoms in the following transmission season (B). Time to**
 282 **infection and/or onset of clinical malaria were grouped into a one-month interval.**

283

284 **Table 3: Predicted hazard of *P. falciparum* infection during the malaria transmission season**

Factors	Description (n)	% infections (n)	Univariate analysis		Multivariate analysis	
			HR [95% CI]	P value	HR [95% CI]	P value
Asymptomatic infection at the end of dry season	Yes (67)	68.7 (46)	3.388 [2.433-4.718]	<0.0001	3.0 [2.149-4.190]	<0.0001
	No (613)	28.5 (175)	Ref		Ref	
Sex	F (383)	31.3 (120)	1.155 [0.884-1.509]	0.29		
	M (295)	34.2 (101)	Ref			
	< 5 (129)	15.5 (20)	Ref		Ref	

Age groups (Years)	5-14 (296)	33.8 (100)	2.621 [1.617-4.245]	<0.0001	2.767 [1.704-4.493]	<0.0001
	≥ 15 (253)	39.9 (101)	2.917 [1.801-4.724]	<0.0001	3.063 [1.888-4.970]	<0.0001
Village of residence	J (107)	30.8 (33)	1.332 [0.748-2.373]	0.33	1.571 [0.870-2.837]	0.13
	K (304)	25.7 (78)	1.05 [0.626-1.760]	0.85	1.084 [0.637-1.845]	0.76
	N (73)	24.7 (18)	Ref			
	P (196)	46.9 (92)	2.255 [1.355-3.751]	0.0017	2.375 [1.407-4.007]	0.0012
History of fever in the past week	Yes (21)	38.1 (8)	1.253 [0.608-2.582]	0.54		
	No (647)	31.7 (205)	Ref			
Anaemia*	No (370)	32.7 (121)	Ref			
	Mild (155)	29.0 (45)	0.861 [0.610-1.217]	0.40		
	Moderate (135)	33.3 (45)	1.051 [0.743-1.485]	0.78		
	Severe (10)	40.0 (4)	1.549 [0.567-4.235]	0.39		
Fever at inclusion	Yes (7)	14.3 (1)	0.320 [0.044-2.310]	0.326		
	No (663)	32.3 (214)	Ref			

285 In this analysis only individuals with known infection status during the follow-up period were included (data on active or
 286 passive diagnosis of infection at least once during the follow-up period). * Anaemia determined by age and sex according
 287 to the OMS 2011 report (OMS, 2011). Significant estimates are bolded. HR.: Hazard ratio. CI: Confident interval. Ref:
 288 reference. Only factors associated with infection in the univariate analysis ($p < 0.05$) were included in the multivariate
 289 analysis.

290

291 **Table 4: Predicted hazard of clinical malaria during the malaria transmission season**

Factors	Description (n)	Univariate analysis			Multivariate analysis	
		% symptomatic infections (n)	HR [95% CI]	P value	HR [95% CI]	P value
Asymptomatic infection at the end of dry season	Yes (67)	34.3 (23)	1.826 [1.165-2.861]	0.0086	1.561[0.988-2.467]	0.057
	No (241)	19.7 (121)	Ref		Ref	
Sex	F (383)	19.6 (73)	1.306 [0.941-1.815]	0.11		
	M (295)	24.1 (71)	Ref			
Age groups (Years)	< 5 (129)	7.7 (10)	Ref		Ref	
	5-14 (296)	23.6 (70)	3.404 [1.751-6.617]	0.0003	3.404 [1.746-6.638]	0.0003
	≥ 15 (253)	25.5 (64)	3.656 [1.751-7.131]	0.0001	3.951 [2.024 -7.714]	< 0.0001
Village of residence	J (107)	23.4 (25)	2.024 [0.945-4.337]	0.07	2.115 [0.980-4.562]	0.056
	K (304)	16.4 (20)	1.347 [0.663-2.740]	0.41	1.299[0.636-2.651]	0.47
	N (73)	12.3 (9)	Ref		Ref	
	P (196)	30.6 (60)	2.721 [1.350-5.484]	0.0051	1.218[0.966-1.536]	0.095
History of fever in the past week	Yes (21)	19.0 (4)	0.889 [0.325-2.435]	0.82	2.717 [1.344-5.494]	0.0054
	No (647)	27.7 (134)	Ref			
Anaemia*	No (370)	23.2 (86)	1.672 [1.044-2.677]	0.032	1.744[1.187-2.797]	0.0231
	Mild (155)	14.2 (22)	Ref		Ref	
	Moderate (135)	22.2 (30)	1.619 [0.932-2.813]	0.087	1.620[0.933-2.812]	0.087
	Severe (10)	20.0 (2)	1.459 [0.341-6.231]	0.61	1.335[0.312-5.723]	0.07
Fever at inclusion	Yes (7)	14.3 (1)	0.535 [0.074-3.872]	0.676		
	No (663)	21.0 (139)	Ref			

292 In this analysis only individuals with known infection status during the follow-up period were included (data on active or
 293 passive diagnosis of infection at least once during the follow-up period). * Anaemia determined by age and sex according
 294 to the OMS 2011 report (OMS, 2011). Significant estimates are bolded. HR.: Hazard ratio. CI: Confident interval. Ref:

295 reference. Only factors associated with symptomatic infections in the univariate analysis ($p < 0.05$) were included in the
296 multivariate analysis.

297 Discussion

298 In The Gambia, there is a need to evaluate and improve existing community-based
299 interventions through ongoing epidemiological surveillance and the identification of risk factor for
300 parasite carriage. The dynamics and the factors associated with *P. falciparum* infections, and the link
301 between asymptomatic carriage before the transmission season and risk of infection and clinical
302 malaria were investigated over 2 years.

303 Consistent with previous studies in The Gambia [6,13,20], the prevalence of infection was
304 lower in children under 5 years of age than in older children and adults, possibly due to the seasonal
305 malaria chemoprophylaxis programme (monthly antimalarial treatment during the transmission
306 season) [28,29]. The higher prevalence of infection and high parasite densities in older children than
307 in adults may be the result of acquired immunity that makes adults better protected and able to better
308 control parasite growth when infected [30]. Furthermore, in line with acquired immunity with age,
309 when infected during the transmission season, children under 5 years old had a higher parasite density
310 compared to adults. We observed that individuals with different degrees of anaemia were more likely
311 to be infected with *P. falciparum* than non-anaemic individuals. This observation appears to be the
312 consequence of *Plasmodium* infection rather than the cause of infection, given that malaria is known
313 to be the main cause of anaemia in endemic areas [31,32].

314 There was significant variability in malaria prevalence between villages. These findings demonstrate
315 the heterogeneity of malaria transmission in the eastern Gambia, even among neighbouring villages.
316 Similarly, in a previous study [20], significant variation in malaria prevalence in this region was
317 observed, ranging from 21.17% to 49.13%. This discrepancy was attributed not only to the observed
318 higher insecticide resistance [33,34] but also to differences in vector composition. Indeed, *An.*
319 *gambiae s.s.* is more common in villages away from The Gambia river, while *An. arabiensis* and *An.*
320 *coluzzii* are more widespread near the river [34].

321 Due to the variation in malaria prevalence among neighbouring villages, there is a hypothesis
322 regarding the presence of sustained malaria transmission hotspots within the villages, where certain
323 households, based on the characteristics of the individuals and their environment, could sustain
324 transmission in the area. Although some households exhibited significantly high malaria prevalence
325 within villages, these households were not consistently the same, with no evidence of hotspot
326 households spreading malaria, suggesting that the transmission pattern follows a stochastic pattern in
327 the area [35]. Therefore, a targeted malaria prevention approach focusing households with highest
328 prevalence is unlikely to yield a lasting effect in this area. However, treating all malaria cases
329 identified in cohort 2 may have altered spatio-temporal patterns-

330 Asymptomatic carriage of *P. falciparum* at the end of the dry season was associated with both
331 an increased risk of infection and clinical malaria during the following transmission season.
332 Consistent with this, studies in seasonal malaria transmission areas where the dry season lasts for ~
333 6-8 months showed that asymptomatic *P. falciparum* infections at the end of dry season are associated
334 with the increase risk of the infection [16,36] or clinical malaria during the following transmission
335 season [14–17,37]. The main hypothesis is that although individuals were treated at the end of the
336 dry season, they continued to reside in the same environment where they were initially infected, with
337 potentially higher risk of being re-infected. Nevertheless, individuals testing negative at the end of
338 the dry season and being able to control new infections without developing symptoms suggests a
339 fairly effective immunity and the ability to suppress parasites below detection levels. However, our
340 data differs from other reports which show that asymptomatic *P. falciparum* infections at the end of

341 the dry season were associated with a reduced risk of clinical malaria in the following transmission
342 season [11–13,36,38]. Chronic infections and the maintenance of immunity could protect against high
343 parasitaemia and clinical malaria [39,40]. The discrepancy between asymptomatic infections being a
344 protection or a risk for reinfection/clinical malaria could be explained by the large range of malaria
345 transmission intensity between the cited studies, as well as local environmental conditions. For
346 example, a recent study conducted in The Gambia revealed that in the semi-urban villages dry season
347 carriage was associated with an increased risk of clinical malaria during the following transmission
348 season, whereas such risk was lower in rural villages [6]. Finally, a pooled analysis also demonstrated
349 the importance of transmission intensity with risks of subsequent clinical malaria, as well as host age
350 and polyclonality of infection [19] although this meta-analysis encompassed studies that evaluated
351 clinical infections within the same asymptomatic infection.

352 In conclusion, this 2-years study identified village of residence, anaemia, and fever at
353 enrolment as independent factors associated with *P. falciparum* infections in the eastern Gambia. *P.*
354 *falciparum* transmission pattern seems stochastic. The data further validate the notion that
355 asymptomatic parasitaemia carriage at the end of dry season correlates with a higher risk of infection
356 and clinical malaria during the following transmission season. Therefore, targeting asymptomatic
357 infections during the dry season may reduce the risk of clinical malaria in the following transmission
358 season.

359 **Financial support**

360 This work was funded by grants from the Netherlands Organization for Scientific Research (Vidi
361 fellowship NWO 016.158.306) and the Bill & Melinda Gates Foundation (INDIE OPP1173572), the
362 joint MRC/LSHTM fellowship, CNRS, the French National Research Agency (18-CE15-0009-01).
363 The "SPF- Post doc en France" programme of the "Fondation pour la Recherche Médicale" funded
364 the author "Balotin Fogang" (SPF202209015889).

365 **Competing interests**

366 No conflicts of interest were reported by the authors.

367 **Acknowledgements**

368 Our thanks go to Julia Mwesigwa and all fieldworkers involved in the study. We would like to thank
369 the inhabitants of the four villages (Madina Samako, Njayel, Sendebu, and Karanbada) in eastern part
370 of The Gambia who took part in this study.
371

372 **References**

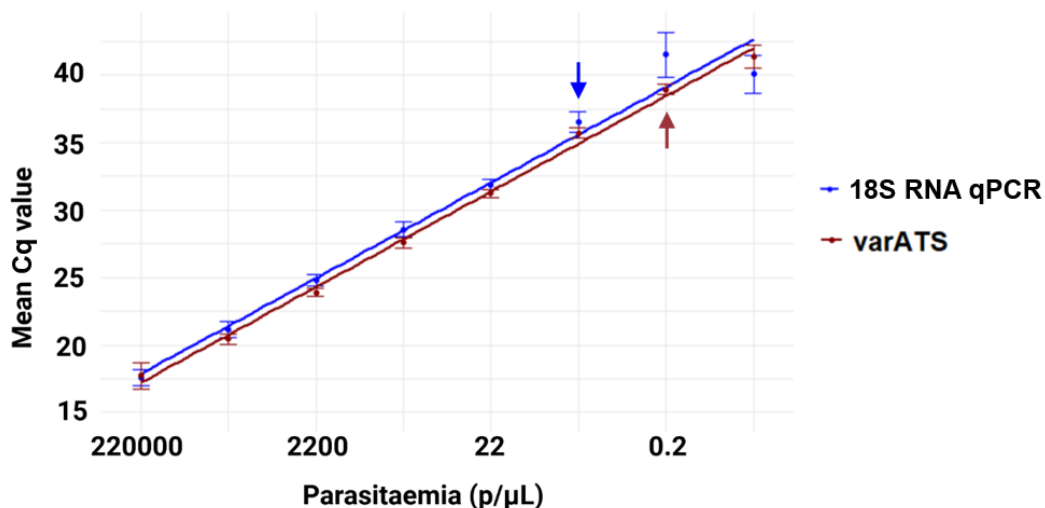
- 373 1. WHO. World Malaria Report 2022. Geneva, World Health Organization; 2022.
- 374 2. WHO. World Malaria Report 2021. Geneva, World Health Organization; 2021.
- 375 3. Andolina C, Rek JC, Briggs J, Okoth J, Musiime A, Ramjith J, et al. Sources of persistent malaria transmission in a
376 setting with effective malaria control in eastern Uganda: a longitudinal, observational cohort study. *Lancet Infect Dis.*
377 2021;21:1568–78.
- 378 4. Ceesay SJ, Casals-Pascual C, Erskine J, Anya SE, Duah NO, Fulford AJ, et al. Changes in malaria indices between
379 1999 and 2007 in The Gambia: a retrospective analysis. *The Lancet.* 2008;372:1545–54.
- 380 5. Ceesay SJ, Casals-Pascual C, Nwakanma DC, Walther M, Gomez-Escobar N, Fulford AJC, et al. Continued Decline
381 of Malaria in The Gambia with Implications for Elimination. *PLoS ONE.* 2010;5:e12242.
- 382 6. Ahmad A, Mohammed NI, Joof F, Affara M, Jawara M, Abubakar I, et al. Asymptomatic *Plasmodium falciparum*
383 carriage and clinical disease: a 5-year community-based longitudinal study in The Gambia. *Malar J.* 2023;22:82.
- 384 7. Mooney JP, DonVito SM, Jahateh M, Bittaye H, Bottomley C, D’Alessandro U, et al. Dry season prevalence of
385 *Plasmodium falciparum* in asymptomatic gambian children, with a comparative evaluation of diagnostic methods.
386 *Malar J.* 2022;21:171.
- 387 8. Mwesigwa J, Achan J, Di Tanna GL, Affara M, Jawara M, Worwui A, et al. Residual malaria transmission dynamics
388 varies across The Gambia despite high coverage of control interventions. *PLoS ONE.* 2017;12:e0187059.
- 389 9. Collins KA, Ceesay S, Drammeh S, Jaiteh FK, Guery MA, Lanke K, et al. A Cohort Study on the Duration of
390 *Plasmodium falciparum* Infections During the Dry Season in The Gambia. *J Infect Dis.* 2022;226:128–37.
- 391 10. Buchwald AG, Sixpence A, Chimanya M, Damson M, Sorkin JD, Wilson ML, et al. Clinical Implications of
392 Asymptomatic *Plasmodium falciparum* Infections in Malawi. *Clin Infect Dis Off Publ Infect Dis Soc Am.*
393 2019;68:106–12.

- 394 11. Males S, Gaye O, Garcia A. Long-term asymptomatic carriage of *Plasmodium falciparum* protects from malaria
395 attacks: a prospective study among Senegalese children. *Clin Infect Dis Off Publ Infect Dis Soc Am*. 2008;46:516–22.
- 396 12. Portugal S, Tran TM, Ongoiba A, Bathily A, Li S, Doumbo S, et al. Treatment of Chronic Asymptomatic
397 *Plasmodium falciparum* Infection Does Not Increase the Risk of Clinical Malaria Upon Reinfection. *Clin Infect Dis*.
398 2017;64:645–53.
- 399 13. Sondén K, Doumbo S, Hammar U, Vafa Homann M, Ongoiba A, Traoré B, et al. Asymptomatic Multiclonal
400 *Plasmodium falciparum* Infections Carried Through the Dry Season Predict Protection Against Subsequent Clinical
401 Malaria. *J Infect Dis*. 2015;212:608–16.
- 402 14. Berezcky S, Liljander A, Rooth I, Faraja L, Granath F, Montgomery SM, et al. Multiclonal asymptomatic
403 *Plasmodium falciparum* infections predict a reduced risk of malaria disease in a Tanzanian population. *Microbes Infect*.
404 2007;9:103–10.
- 405 15. Le Port A, Cot M, Etard J-F, Gaye O, Migot-Nabias F, Garcia A. Relation between *Plasmodium falciparum*
406 asymptomatic infection and malaria attacks in a cohort of Senegalese children. *Malar J*. 2008;7:193.
- 407 16. Liljander A, Bejon P, Mwacharo J, Kai O, Ogada E, Peshu N, et al. Clearance of asymptomatic *P. falciparum*
408 Infections Interacts with the number of clones to predict the risk of subsequent malaria in Kenyan children. *PloS One*.
409 2011;6:e16940.
- 410 17. Sumner KM, Mangeni JN, Obala AA, Freedman E, Abel L, Meshnick SR, et al. Impact of asymptomatic
411 *Plasmodium falciparum* infection on the risk of subsequent symptomatic malaria in a longitudinal cohort in Kenya.
412 Ferreira MU, Soldati-Favre D, Ferreira MU, Koepfli C, editors. *eLife*. 2021;10:e68812.
- 413 18. Wamae K, Wambua J, Nyangweso G, Mwambingu G, Osier F, Ndung'u F, et al. Transmission and Age Impact the
414 Risk of Developing Febrile Malaria in Children with Asymptomatic *Plasmodium falciparum* Parasitemia. *J Infect Dis*.
415 2019;219:936–44.
- 416 19. Eldh M, Hammar U, Arnot D, Beck H-P, Garcia A, Liljander A, et al. Multiplicity of Asymptomatic *Plasmodium*
417 *falciparum* Infections and Risk of Clinical Malaria: A Systematic Review and Pooled Analysis of Individual Participant
418 Data. *J Infect Dis*. 2020;221:775–85.
- 419 20. Mwesigwa J, Okebe J, Affara M, Di Tanna GL, Nwakanma D, Janha O, et al. On-going malaria transmission in The
420 Gambia despite high coverage of control interventions: a nationwide cross-sectional survey. *Malar J*. 2015;14:314.
- 421 21. Venkatesan M, Amaratunga C, Campino S, Auburn S, Koch O, Lim P, et al. Using CF11 cellulose columns to
422 inexpensively and effectively remove human DNA from *Plasmodium falciparum*-infected whole blood samples. *Malar*
423 *J*. 2012;11:41.
- 424 22. Snounou G, Pinheiro L, Gonçalves A, Fonseca L, Dias F, Brown KN, et al. The importance of sensitive detection of
425 malaria parasites in the human and insect hosts in epidemiological studies, as shown by the analysis of field samples
426 from Guinea Bissau. *Trans R Soc Trop Med Hyg*. 1993;87:649–53.
- 427 23. Plowe CV, Djimde A, Bouare M, Doumbo O, Wellems TE. Pyrimethamine and proguanil resistance-conferring
428 mutations in *Plasmodium falciparum* dihydrofolate reductase: polymerase chain reaction methods for surveillance in
429 Africa. *Am J Trop Med Hyg*. 1995;52:565–8.
- 430 24. Hofmann N, Mwingira F, Shekalaghe S, Robinson LJ, Mueller I, Felger I. Ultra-sensitive detection of *Plasmodium*
431 *falciparum* by amplification of multi-copy subtelomeric targets. *PLoS Med*. 2015;12:e1001788.
- 432 25. R Core Team. R: A Language and Environment for Statistical Computing. R Foundation for Statistical Computing;
433 2023.

- 434 26. OMS. Organisation Mondiale de la Santé 2011. Concentrations en hémoglobine permettant de diagnostiquer
435 l'anémie et d'en évaluer la sévérité. Genève, Organisation Mondiale de la Santé; 2011.
- 436 27. Kulldorff M. Bernoulli, Discrete Poisson and Continuous Poisson Models: Kulldorff M. A spatial scan statistic.
437 *Commun Stat Theory Methods*. 1997;26:1481–96.
- 438 28. Ahmad A, Prom A, Bradley J, Ndiath M, Etoketim B, Bah M, et al. Gametocyte carriage after seasonal malaria
439 chemoprevention in *Plasmodium falciparum* infected asymptomatic children. *Malar J*. 2021;20:169.
- 440 29. WHO. World Malaria Report 2017. Geneva, World Health Organization; 2017.
- 441 30. Filipe JAN, Riley EM, Drakeley CJ, Sutherland CJ, Ghani AC. Determination of the Processes Driving the
442 Acquisition of Immunity to Malaria Using a Mathematical Transmission Model. *PLOS Comput Biol*. 2007;3:e255.
- 443 31. Korenromp EL, Armstrong-Schellenberg JRM, Williams BG, Nahlen BL, Snow RW. Impact of malaria control on
444 childhood anaemia in Africa -- a quantitative review. *Trop Med Int Health TM IH*. 2004;9:1050–65.
- 445 32. White NJ. Anaemia and malaria. *Malar J* [Internet]. 2018 [cited 2019 Aug 31];17. Available from:
446 <https://www.ncbi.nlm.nih.gov/pmc/articles/PMC6194647/>
- 447 33. Tangena J-AA, Adiamoh M, D'Alessandro U, Jarju L, Jawara M, Jeffries D, et al. Alternative Treatments for Indoor
448 Residual Spraying for Malaria Control in a Village with Pyrethroid- and DDT-Resistant Vectors in The Gambia. *PLOS*
449 *ONE*. 2013;8:e74351.
- 450 34. Wilson AL, Pinder M, Bradley J, Donnelly MJ, Hamid-Adiamoh M, Jarju LBS, et al. Emergence of knock-down
451 resistance in the *Anopheles gambiae* complex in the Upper River Region, The Gambia, and its relationship with malaria
452 infection in children. *Malar J*. 2018;17:205.
- 453 35. Stresman GH, Mwesigwa J, Achan J, Giorgi E, Worwui A, Jawara M, et al. Do hotspots fuel malaria transmission: a
454 village-scale spatio-temporal analysis of a 2-year cohort study in The Gambia. *BMC Med*. 2018;16:160.
- 455 36. Stadler E, Cromer D, Ogunlade S, Ongoiba A, Doumbo S, Kayentao K, et al. Evidence for exposure dependent
456 carriage of malaria parasites across the dry season: modelling analysis of longitudinal data. *Malar J*. 2023;22:42.
- 457 37. Färnert A, Williams TN, Mwangi TW, Ehlin A, Fegan G, Macharia A, et al. Transmission-Dependent Tolerance to
458 Multiclonal *Plasmodium falciparum* Infection. *J Infect Dis*. 2009;200:1166–75.
- 459 38. Adu B, Issahaque Q, Sarkodie-Addo T, Kumordjie S, Kyei-Baafour E, Sinclair CK, et al. Microscopic and
460 Submicroscopic Asymptomatic *Plasmodium falciparum* Infections in Ghanaian Children and Protection against Febrile
461 Malaria. *Infect Immun*. 2020;88:10.1128/iai.00125-20.
- 462 39. Ademolue TW, Awandare GA. Evaluating antidisease immunity to malaria and implications for vaccine design.
463 *Immunology*. 2018;153:423–34.
- 464 40. Kimenyi KM, Wamae K, Ochola-Oyier LI. Understanding *P. falciparum* Asymptomatic Infections: A Proposition
465 for a Transcriptomic Approach. *Front Immunol*. 2019;10.

466

467 Supplementary Figures



468

469

470

471

472

473

474

475

476

477

478

479

480

481

482

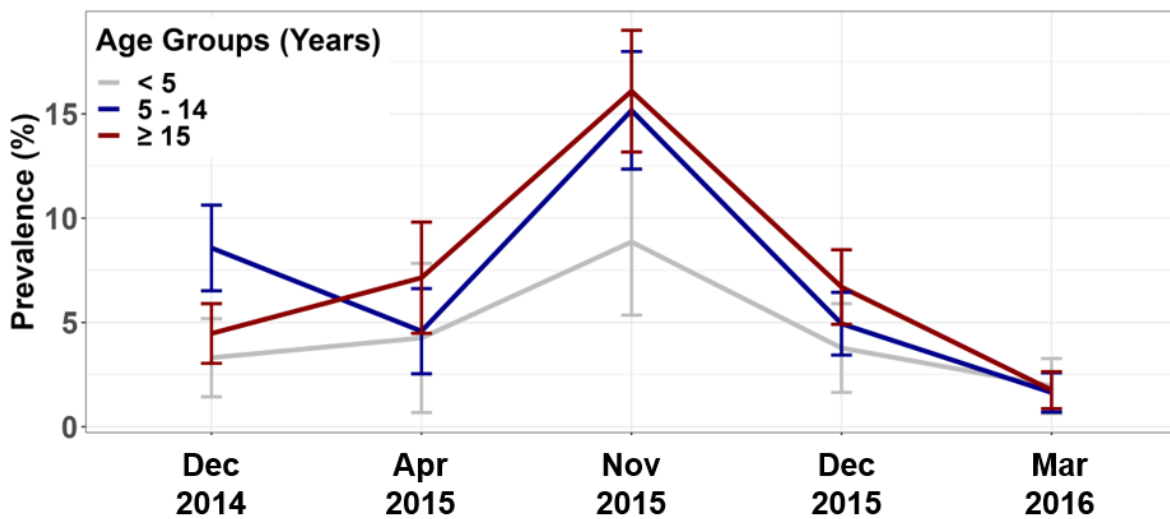
483

484

485

486

Supplementary Figure 1. varATS and 18S RNA standard curves using 3D7 gDNA. The scatter plot represents the mean Cq value of the amplification of 8 replicates of the 10-fold serial dilution of 220000 parasites/μL of ring stage lab adapted *P. falciparum* 3D7 strain. The arrows indicate the detection limits of the two tests (2.2 parasites/μL for 18S RNA qPCR and 0.2 for varATS). Data were generated with the following method: Ring stage laboratory-adapted *P. falciparum* strain 3D7 was used to determine analytical sensitivity and parasitemia by 10-fold dilution of 220000 parasites/μL of parasitemia in 50% haematocrit from an uninfected blood donor [24]. Dilutions were prepared as a DBS and genomic DNA was extracted as described above. Each DNA sample was tested in duplicate (field isolates and 3D7 strain) and the quantification curve was made from the 3D7 standard dilution. Cut-off values for positivity for 18S rRNA qPCR and varATS were dilutions 6 (parasitaemia of 2.2 parasites/μL) and 7 (parasitaemia of 0.22 parasites/μL), respectively. Samples were defined as *P. falciparum* positive if the Ct value was less than or equal to the Ct of the cut-off. Samples that exhibited amplification for both duplicates and had a visually clear amplification curve were considered positive if their CQ value exceeded dilution 7 but remained below the upper limit of the 95% confidence interval for this parasitemia. Parasite densities were determined using standard curves generated from 3D7 genomic DNA amplifications of all dilutions of each plate with known parasite density.

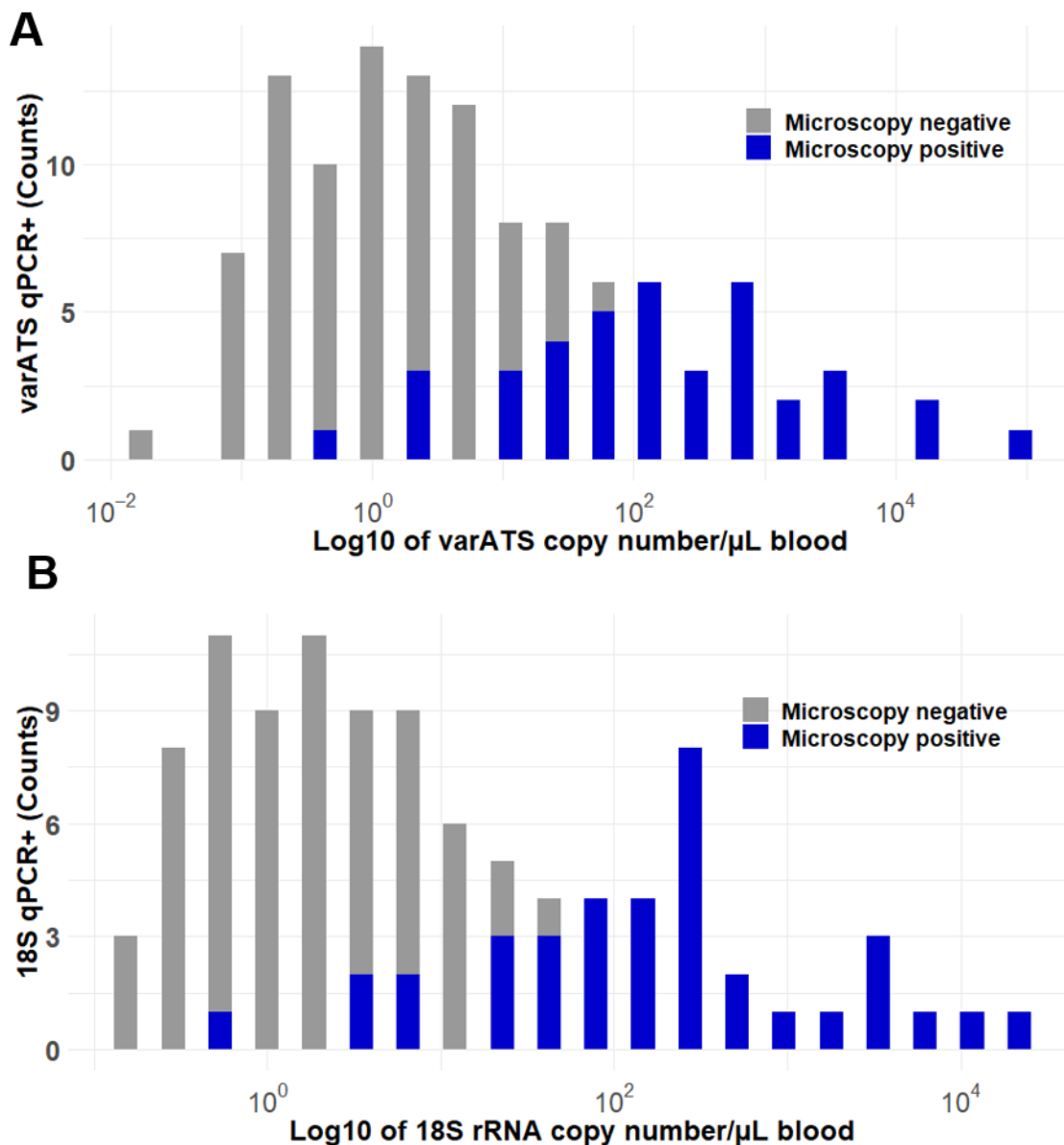


487

488

489 **Supplementary Figure 2: Trend analysis for *P. falciparum* infection prevalence by age groups**
490 **in the first cohort, by nested PCR.** Error bars represent 95% confidence intervals for prevalence.

491



492

493

494

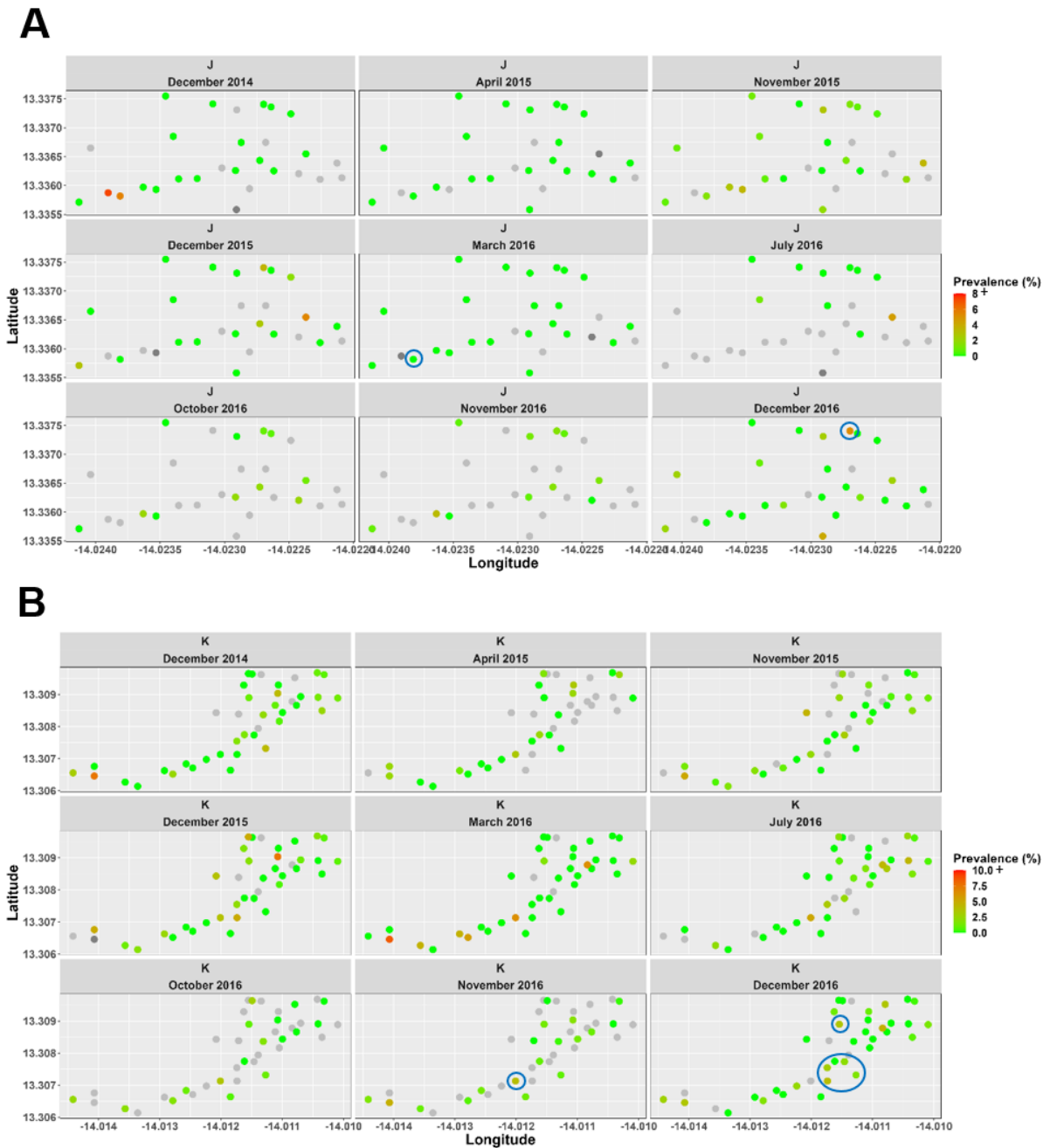
495

496

497

498

Supplementary Figure 3. Parasites prevalence by microscopy according to parasite densities measured by varATS (A) and 18S rRNA qPCR (B) molecular tools. Parasite densities quantified by varATS and 18S rRNA qPCR are presented (log10 scale with a bin size of 20) for both microscopy negative and microscopy positive.



499

500

501

502

503

504

Supplementary Figure 4. Spatio-temporal *P. falciparum* prevalence by household in villages J and K. *P. falciparum* prevalence in each household was normalized to the prevalence of infections per month in each village and only households with at least three individuals were considered. Grey colour represents the household with no data. The blue circles represent the significant hotspots ($p < 0.05$) determined using the Bernoulli spatial scan statistic in Satscan algorithm.

505 **Supplementary Tables**

506 **Supplementary Table 1. Hemoglobin levels (g/dl) and classification of anaemia (WHO, 2011)**

Population	Anaemia status			
	No anaemia	Mild	Moderate	severe
Children 6 to 59 months	≥ 11.0	10.0-10.9	7.0-9.9	< 7
Children 6 to 11 years	≥ 11.5	11.0-11.4	8.0-10.9	< 8
Children 12 to 14 years	≥ 12.0	11.0-11.9	8.0-10.9	< 8
Non-pregnant women > 15 years	≥ 12.0	11.0-11.9	8.0-10.9	< 8
Pregnant women > 15 years	≥ 11.0	10.0-10.9	7.0-9.9	< 7
Men > 15 years	≥ 13.0	11.0-12.9	8.0-10.9	< 8

507

508 **Supplementary Table 2: Household-based assessment of *P. falciparum* infection clusters using**
 509 **Bernoulli spatial scan statistic**

Villages	Sampling timepoint	Population	Infected	Prevalence of infections (%)	Identified Clusters	P-value
K	December 2014	373	30	8	K014	0.074
					K001, K003	0.126
					K037	0.638
					K032	0.999
	April 2015	141	14	9.9	K021, K022	0.53
					K001, K003, K002	0.85
					K009	0.95
	November 2015	247	36	14.6	K003	0.231
					K036	0.366
					K013, K014	0.954
	December 2015	375	25	6.2	K002, K003	0.107
					K021	0.478
					K020	0.794
					K038, K009, K010	0.863
	March 2016	460	9	2	K042, K005, K006, K041, K003	0.289
					K001, K003	0.255
July 2016	366	28	7.7	K028, K030, K027, K031	0.444	
				K010, K011, K036, K038, K009	0.622	
				K024	0.995	
				K001, K003, K005, K041, K007, K009	0.173	
October 2016	226	16	7.1	K019	0.91	

				K015	0.997	
	November 2016	185	39	21.1	K009	0.031
					K003	0.065
					K017, K021	0.971
	December 2016	449	64	14.2	K017	0.0025
					K037, K036, K038, K010	0.0036
					K001, K003	0.334
					K023	0.712
					K030	0.776
					K026	0.985
					K008	0.999
	December 2014	201	3	1.5	J014, J016	0.382
	April 2015	147	1	0.7	NC	
	November 2015	184	26	14.1	J013, J017	0.342
					J003, J006, J004	0.664
					J023	0.938
	December 2015	12	6	50	NC	
	March 2016	226	3	1.3	J016	0.023
	July 2016	227	4	3.1	J005, J006, J011, J009, J012, J022, J004, J018	0.357
J	October 2016	82	10	12.2	J007, J009	0.66
					J005, J011	0.72
	November 2016	101	23	22.8	J017	0.265
					J005	0.963
					J027	0.974
	December 2016	232	19	8.2	J027	0.0054
					J022	0.841
					J003	0.996
					J028	0.996
					J015	0.999

510 *P. falciparum* infections clusters were identified using Bernoulli spatial scan analysis method in SaTScan version 10.1.2.
511 NC: no cluster identified. In bold, the group with a significantly higher prevalence of *Plasmodium* infection ($p < 0.05$)
512 compared to other households at a given time