

1 Association between insecticide-treated bed net use and
2 Burkitt lymphoma incidence in children in sub-Saharan
3 Africa: a systematic review and population-level analysis

4
5 Nora Schmit¹, Jeevan Kaur², Elom K. Aglago^{3,4}

6
7 ¹ MRC Centre for Global Infectious Disease Analysis, Imperial College London, London, United
8 Kingdom.

9 ² Faculty of Medicine, Imperial College London, London, United Kingdom.

10 ³ Department of Epidemiology and Biostatistics, Imperial College London, School of Public Health,
11 London, United Kingdom.

12 ⁴ Faculty of Science and Technology, University of Kara, Kara, Togo.

13

14

15 Corresponding author:

16 Nora Schmit

17 MRC Centre for Global Infectious Disease Analysis

18 Imperial College London

19 St Mary's Campus

20 Norfolk Place, London W2 1PG

21 n.schmit17@imperial.ac.uk

22

1 **Abstract**

2 **Background**

3 Burkitt lymphoma (BL) is one of the most common childhood cancers in sub-Saharan Africa and
4 aetiologically linked to malaria. However, evidence for an effect of malaria interventions on BL is
5 limited. The aim of this study was to investigate the potential population-level association between
6 large-scale rollout of insecticide-treated bednets (ITNs) in sub-Saharan Africa in the 2000s and BL
7 incidence.

8 **Methods**

9 We conducted a systematic review in Embase, Global Health and MEDLINE to assemble all available
10 data on BL incidence rates in children aged 0-15 years in malaria-endemic sub-Saharan African
11 countries between Jan 1, 1990 and Feb 27, 2023. We calculated pooled estimates of BL incidence in
12 sub-Saharan Africa for the time periods before and after ITN introduction. We used model estimates
13 of sub-national ITN use to assess the association between average population ITN use and childhood
14 BL incidence rates in a negative binomial regression model.

15 **Results**

16 We included 23 studies comprising 66 datapoints on BL incidence based on 5,226 cancer cases from
17 locations with large-scale ITN use in 17 countries. BL rates were 44% (95% CI 12-64%) lower in the time
18 period after ITN introduction compared to before. The pooled incidence rate of BL was 1.36 (95% CI
19 0.88-2.10) and 0.76 (95% CI 0.50-1.16) per 100,000 person-years before and after introduction of ITNs,
20 respectively. After adjusting for potential confounders, a 1% increase in average ITN use in the
21 population in the 10 years before BL data collection was associated with a 2% (95% CI 1-4%) reduction
22 in BL incidence.

23 **Conclusion**

24 These findings suggest that large-scale rollout of ITNs in the 2000s was associated with a reduction in
25 childhood BL burden in sub-Saharan Africa. Although published data may not be representative of all
26 incidence rates across sub-Saharan Africa, our study highlights a potential additional benefit of malaria
27 control programmes.

28

1 Introduction

2 Burkitt lymphoma (BL) is an aggressive type of non-Hodgkin lymphoma and among the most common
3 childhood cancers in sub-Saharan Africa (1). Infection with the ubiquitous Epstein-Barr virus (EBV) is
4 an established risk factor for BL, and there is substantial epidemiological and biological evidence for
5 an aetiological relationship between *Plasmodium falciparum* malaria and BL in sub-Saharan Africa (1,
6 2). Malaria still poses an important public health problem, with over 200 million clinical cases annually
7 (3). Malaria parasite prevalence and the cumulative number of infections correlate with BL incidence
8 on the population level (4, 5), and individual-level associations between malaria infection or anti-
9 malarial antibody titres and BL risk have been reported (6).

10 This combined evidence raises the possibility that interventions against malaria might have
11 downstream beneficial effects on reducing the burden of BL. In an uncontrolled malaria suppression
12 trial in 1977-1982 in Tanzania, a substantial decline in BL incidence rates was observed during a mass
13 chloroquine distribution campaign, starting before the trial years and subsequently rising to pre-trial
14 levels (7). Two hospital-based case-control studies suggested vector control interventions could
15 potentially decrease the risk of developing BL in African children [odds ratio (OR) 0.2 (95% CI 0.03-0.9)
16 and 0.3 (95% CI 0.2–0.7) for children using mosquito nets or living in a household with insecticide use,
17 respectively] (8, 9). In contrast, a recent large population-based case-control study reported an
18 increased risk of BL in children having used a mosquito net the previous night (OR 2.4, 95% CI 1.8-3.2)
19 and in children living in households exposed to indoor residual insecticide spraying in the past year
20 (OR 2.3, 95% CI 1.8-3.1) (10). These mixed results may indicate a difficulty in accounting for residual
21 confounding from malaria burden in the study of such a rare disease, and for the temporal relationship
22 between intervention exposure and BL development (2, 10).

23 On the population level, the question of whether BL incidence has declined over time following scale-
24 up of malaria interventions has not been investigated. The 2000s marked a period of unprecedented
25 donor funding and the first time malaria interventions were rolled out in sub-Saharan Africa at a large
26 scale (3). Mass campaigns focused on distributing insecticide-treated nets (ITNs) and artemisinin-
27 based combination therapies (3). These control efforts reduced *P. falciparum* infection prevalence in
28 sub-Saharan Africa by an estimated 50% between 2000 and 2015, with most of this decline attributable
29 to ITNs (11).

30 In this study, we aimed to investigate the potential association between large-scale rollout of ITNs in
31 the early 2000s and BL incidence in sub-Saharan Africa using an ecological study design. First, we
32 conducted a systematic review to assemble all publicly available data on BL incidence rates in sub-
33 Saharan African children since 1990. We calculated pooled estimates of BL incidence across malaria-
34 endemic sub-Saharan African countries before and after large-scale ITN introduction and compared
35 time trends in incidence in individual locations. Second, we used model estimates of sub-national ITN
36 use (12) to investigate the association between average ITN use in the population and BL incidence in
37 children.

38 Methods

39 Systematic review

40 The systematic review was conducted on cancer registry publications and in literature databases. The
41 International Agency for Research on Cancer (IARC) collates data from population-based cancer
42 registries globally; we assembled BL incidence data from publications identified through a search of

1 IARC-associated websites. We also searched EMBASE, Global Health and Medline databases up to 27th
2 February 2023 using the Ovid platform for all studies on BL incidence rates in sub-Saharan Africa
3 published since 1st January 1990 without language restrictions. Search terms included keywords for
4 sub-Saharan African countries, BL and non-Hodgkin lymphoma and the outcome of interest (**Table S1**).

5 Epidemiological studies reporting the incidence rate of BL in children aged 0-15 years in malaria-
6 endemic sub-Saharan African countries were included. Both population-based and hospital-based
7 studies were considered for identification of cancer cases, but incidence rates had to apply to the
8 general population. The outcome of interest was incident cancer cases diagnosed as BL in a defined
9 population during a specified time period with a midpoint after 1990. Studies were eligible for
10 inclusion if they reported the number of BL cases and either the person-time at risk or the crude
11 incidence rate.

12 Articles were deduplicated and screened in the Covidence software. Screening was performed
13 independently by two reviewers blinded to each other's decision, and disagreements were resolved
14 through discussion. One article reported BL incidence in 0-19 year while otherwise meeting inclusion
15 criteria, but unpublished data in the 0-15 year group could not be obtained on request (4). Data was
16 extracted independently by the two reviewers into a pre-validated Microsoft Office Excel template,
17 with any differences resolved in a final assessment. Harmonised extracted data included study
18 location, time, study design, data collection and ascertainment methods, age range, number of cases,
19 person-years at risk, and incidence rate. Studies identified from the published literature were cross-
20 checked against the dataset extracted from cancer registry publications for duplicates and overlap in
21 data from the same registry. Their quality was scored based on three predefined criteria (data
22 collection, case ascertainment, and calculation of person-time at risk).

23 This systematic review was registered in the PROSPERO register (reference CRD42023411961) and is
24 reported according to PRISMA guidelines (13). Full methodological details can be found in the
25 Supplementary Materials.

26 **Statistical analysis**

27 Crude BL incidence rates in 0-15 year olds were converted to units of cases per 100,000 person-years.
28 Due to the rarity of the cancer, BL incidence is usually reported for aggregate time periods. In the
29 analysis, rates were assumed to apply to the calendar midpoint of the data collection period.

30 **Time trends in BL incidence**

31 To generate pooled incidence rates for sub-Saharan Africa in the period before and after large-scale
32 ITN introduction, we estimated the year of ITN introduction for each location with BL data. The Malaria
33 Atlas Project (MAP) generates comparable model estimates of yearly ITN use since 2000 at a fine
34 spatial resolution (12). Based on information about the covered population in each study, we linked
35 each BL datapoint to its corresponding first administrative level (admin1) unit. The urbanicity status of
36 the population covered by the study was used to split ITN use estimates into urban and rural areas
37 within each unit using a threshold density of 1500 people per square kilometre. We calculated the
38 mean ITN use weighted by the population at risk in each location over time.

39 ITN use has generally increased since 2000, but temporal patterns vary between locations (**Figure S1**).
40 To capture the beginning of large-scale population-wide ITN campaigns, we defined the year of ITN
41 introduction as the first year with at least 5% usage and an increasing trend. Several southern African
42 countries had nationwide BL data available but did not introduce ITNs at a large scale (mean ITN use
43 below 1%) (14) (**Figure S1**). These countries employed other malaria interventions (e.g. artemisinin-

1 based combination therapies and indoor residual spraying) (14); therefore, we considered their data
2 separately.

3 BL incidence rates in each group (time period before and after ITN introduction, and in countries
4 without large-scale ITN use) were analysed using a negative binomial regression model with person-
5 time at risk as an offset and including location-level random intercepts. The pooled BL incidence rate
6 with 95% confidence intervals was predicted for each group and for individual countries. Additionally,
7 for the subset of locations with at least one BL datapoint before and after ITN introduction, we
8 calculated the rate ratio for BL incidence after ITN introduction compared to before to assess trends in
9 BL incidence for each location individually.

10 **Population-level association between ITN use and BL incidence**

11 To investigate the association between average ITN use in the population and BL incidence in children,
12 we considered different time lags for population-level exposure to ITNs. The latency period between
13 malaria exposure and BL onset is not fully understood: most children in highly endemic areas have
14 their first exposure to both EBV and malaria in the first few years of life (15), while BL is most common
15 in children aged 5-10 years (1). This observation led to the hypothesis that repeated malaria infections
16 during childhood increase the risk of BL (5). Given this and the variable patterns in ITN scale-up (**Figure**
17 **S1**), we hypothesised that ITN use in a particular year would be a poor predictor of BL incidence and
18 instead used the mean population ITN use in the 10 years before BL data collection as measure of
19 exposure. In sensitivity analyses, we also tested models with mean population ITN use in the 5 or 15
20 years before BL data collection, as well as concurrent ITN use. We assumed no exposure to ITN use in
21 the population before the year 2000 (3).

22 We identified several *a priori* potential confounders for the population-level relationship between ITN
23 use and BL incidence: admin1-specific baseline malaria prevalence in 2000 (before implementation of
24 interventions) and concurrent HIV prevalence in adults, the country-specific human development
25 index (HDI) and the urbanicity status of the population covered by the cancer registry or study (**Table**
26 **1**).

27 We calculated crude and adjusted rate ratios for these predictors using a negative binomial model with
28 person-time at risk as an offset and including geographical location as a random intercept to account
29 for potential correlation in datapoints collected in the same area at different timepoints
30 (**Supplementary Materials**). We identified influential outliers in the regression model based on a
31 Cook's distance greater than 4/(total number of studies). In sensitivity analyses, we removed each
32 influential outlier in turn from the model and restricted the dataset to locations with BL data before
33 and after ITN introduction to evaluate the robustness of the findings.

34 All analyses were conducted in R statistical software (v4.2.2) using the *glmmTMB* (v1.1.7) and *ggeffects*
35 (v1.2.3) packages. MAP estimates of ITN use were extracted from the *foresite* package (v0.1.0, (16)).

36 **Results**

37 **Study characteristics**

38 The literature search returned a total of 2333 articles and 116 records identified on IARC-associated
39 websites (**Figure 1**). After screening and deduplication of the two sets of data sources, a total of 13
40 publications from literature databases and 10 IARC reports were included (1, 5, 17-37).

1 76 location- and time-specific BL incidence rates based on a total of 5,700 cases were extracted from
2 the 23 publications. Included data covered the 1990-2017 time period, with slightly more datapoints
3 available after 2005 (**Figure 2A**). 80% of datapoints came from population-based cancer registries.
4 Among the 13 studies identified in the literature search, quality scores ranged from 1 to 4 (highest
5 score; lowest risk of bias). Common limitations included passive case finding and inconsistent or poorly
6 defined confirmation of diagnosis (**Table S2**).

7 There was a moderate positive correlation between the mean reported BL incidence rate and the
8 number of datapoints in a country, but no relationship between the number of datapoints and the HDI
9 (**Figure 2B**). BL incidence rates came from 32 locations in 21 countries, with 0-8 per country (**Figure**
10 **2C**). Many countries in Central and West Africa had no data on BL incidence, while countries in East
11 and Southern Africa had better coverage. The actual catchment area covered in these countries was
12 usually very small (**Figure 2D**). Only The Gambia in West Africa, and South Africa, Eswatini, Botswana
13 and Namibia in Southern Africa had cancer registries with national-level coverage. However, these
14 Southern African countries generally had the lowest BL rates. They were also considered separately,
15 since analyses relating to ITN timing and use were restricted to the 66 other datapoints from locations
16 with large-scale ITN use, covering 17 countries.

17 **Time trends in BL incidence**

18 The median year of ITN introduction in the included locations was 2005 (range 2004-2011). BL
19 incidence was estimated to be 44% (95% CI 12-64%) lower in the time period after large-scale ITN
20 introduction compared to before. **Table 2** shows pooled incidence rates for each country for the period
21 before (years 1990-2008) and after (years 2007-2017) introduction of ITNs, and across the whole 1990-
22 2017 time period for countries without large-scale ITN use. Across countries, these pooled incidence
23 rates were 1.36 (95% CI 0.88-2.10) and 0.76 (95% CI 0.50-1.16) per 100,000 person years for the
24 periods before and after ITN introduction, respectively. The pooled rate was much lower in countries
25 without ITNs [0.18 (95% CI 0.07-0.46) per 100,000 person-years]. However, there was also large
26 variation in the estimated incidence rates between countries, ranging from 0.09 per 100,000 (95% CI
27 0.02-0.37) in Mali to 5.98 per 100,000 (95% CI 3.82-9.37) in Malawi before ITN introduction, and from
28 0.07 per 100,000 (95% CI 0.01-0.43) in Ethiopia to 8.52 per 100,000 (95% CI 2.75-26.33) in Malawi
29 after ITN introduction. 65% of all BL cases in the dataset were recorded in three countries (Kenya,
30 Uganda and Tanzania).

31 In locations with at least one datapoint before and after ITN introduction, rate ratios were highly
32 variable and time trends were not always consistent across locations (**Figure 3, Figure S2**). The
33 incidence rate appeared to be lower in the period after ITN introduction in 7 out of 12 locations, but
34 confidence intervals overlapped in 3 of these. The largest reductions were seen in Maputo in
35 Mozambique [92% (95% CI 69-98)], Brazzaville in Congo [88% (95% CI 67-96)] and in The Gambia [71%
36 (95% CI 33-88)]. These locations also had among the highest mean ITN use since 2000 (over 75th
37 percentile at 18%, 15% and 19%, respectively). In Bamako in Mali, the incidence rate in the 2005-2017
38 period was significantly higher than in 1988-1997. In the two registries without large-scale ITN use
39 (Namibia and South Africa), rates were slightly higher after 2005 than before, but there was no
40 significant difference between the two time periods.

41 **Population-level association between ITN use and BL incidence**

42 **Table 3** shows the crude and adjusted associations of BL incidence rates with average population ITN
43 use over 10 years and potential confounders. Univariate and multivariate showed comparable results.
44 There was evidence for a population-level association between ITN use and BL incidence rates after

1 adjusting for baseline malaria prevalence, adult HIV prevalence, country HDI level and population
2 urbanicity ($p=0.005$). A 1% increase in average ITN use was associated with a 2% (95% CI 1-4%)
3 reduction in BL incidence, as illustrated in **Figure 4**. Baseline malaria prevalence was positively
4 associated with BL incidence after adjusting for all other covariates, but there was no evidence for an
5 association with the other variables (**Table 3**).

6 Comparing the main result to different exposure time periods for ITN use, the association was similar
7 for average ITN use in the 5 and 15 years before the BL datapoint [rate ratio 0.98 (95% CI 0.97-0.99)
8 and 0.97 (95% CI 0.95-0.99), respectively]. In line with our hypothesis, concurrent ITN use in the
9 population was not strongly associated with BL incidence (rate ratio 0.99, 95% CI 0.98-1.00) (**Table S3**).
10 In additional sensitivity analyses, removing influential outlier studies and restricting the analysis to
11 locations with BL incidence data before and after ITN introduction did not affect conclusions about the
12 association between ITN use and BL incidence, though the strength of the association was lower in
13 some cases (**Table S4**).

14 Discussion

15 In this study, we investigated changes in BL incidence in sub-Saharan African children in relation to
16 large-scale introduction of ITNs in the early 2000s. In a systematic review, we identified 66 datapoints
17 on BL incidence from locations with large-scale ITN use, comprising 5,226 cancer cases and covering
18 17 countries between 1990 and 2017. We found BL rates were 44% (95% CI 12-64%) lower in the time
19 period after ITN introduction compared to before. Pooled incidence rates were estimated at 1.36 (95%
20 CI 0.88-2.10) and 0.76 (95% CI 0.50-1.16) per 100,000 person-years before and after ITN introduction,
21 respectively. In an ecological analysis, we described an association between increasing ITN use in the
22 population and decreases in childhood BL incidence after adjusting for potential confounders [rate
23 ratio 0.98 (95% CI 0.96-0.99) for average ITN use in the 10 years before BL data collection].

24 Previous studies and cancer registries have also noted a decreasing temporal trend in incidence, both
25 for BL (5, 17, 38, 39) and childhood non-Hodgkin lymphoma more generally (39). Given existing
26 evidence for an aetiological role of malaria infection in BL development, the population-level
27 association between ITN use and BL described in this study is plausible. ITNs offer both individual and
28 community-wide protection from malaria infection due to the protective physical barrier and the killing
29 effect of insecticides on mosquitoes, thereby reducing malaria prevalence (40). As previously
30 suggested for malaria infection, our results also point towards past cumulative rather than concurrent
31 exposure to ITNs as a predictor for lower BL incidence on the population level (5, 8).

32 However, several alternative factors could explain changes in BL incidence over time. Firstly, studies on
33 the effect of antiretroviral treatment (ART) coverage on incidence of HIV-related cancers suggest that
34 HIV trends in children could explain declines in incidence (39, 41). However, concurrent HIV prevalence
35 in adults was not associated with BL incidence in our study, and BL rates can also remain constant in
36 people living with HIV in the ART era (42).

37 Secondly, the variable time trends seen in individual registries suggest other influences on observed
38 BL incidence, which limit comparability of data from different time periods, locations and sources. The
39 coverage, completeness and diagnostic methods of a registry can vary significantly over time. In Mali,
40 BL incidence rates appeared to be higher in the period after ITN introduction, but the rate before ITN
41 introduction was based on only three cases detected over a 10-year period. Underdiagnosis of
42 childhood cancers was suspected at the time (29), with subsequent improvement in case finding
43 procedures reflected in total cancer numbers (31). Studies of temporal trends in population-based

1 cancer registries in Africa have also reported increases in incidence for other cancer types in adults
2 (43-45). Even though access to diagnosis might generally be expected to improve over time and lead
3 to higher rates, other factors such as intermittent political instability or funding disruption could also
4 contribute to variation in rates (31, 44, 46).

5 Despite improvements, cancer surveillance in sub-Saharan Africa is still of low quality overall (46).
6 While the historical data used in this study must be interpreted in the context of these limitations,
7 improved cancer surveillance is essential for assessing current and future cancer burden and mortality.
8 Our estimate of BL incidence in the period after ITN introduction can inform planning and targeting of
9 resources in cancer control programmes. It provides further support for the rate reported in a previous
10 study [0.64 per 100,000 person-years in 2018], which extrapolated national estimates of non-Hodgkin
11 lymphoma incidence in countries without primary BL data (47).

12 Burden estimates are of particular importance because access to effective treatment for childhood
13 cancer faces numerous challenges and remains a low priority for healthcare systems in sub-Saharan
14 Africa (48). Less than a third of children diagnosed with cancer are estimated to survive compared to
15 80% in high-income countries (49). The possibility that BL incidence may be decreasing in sub-Saharan
16 Africa following successful malaria control programmes therefore has positive implications in terms of
17 a reduced burden on patients and the health system. Given the comparatively higher political
18 commitment and funding for infectious disease programmes like malaria and HIV, a multidisciplinary
19 approach to addressing childhood cancer and infectious diseases has previously been suggested (49,
20 50). Collaboration with existing malaria programmes could raise awareness, attract funding and
21 increase political commitment to BL prevention, treatment and research (50). Nevertheless, with
22 plateauing funding and rising insecticide and treatment resistance, continued progress in malaria
23 control also needs to remain a priority.

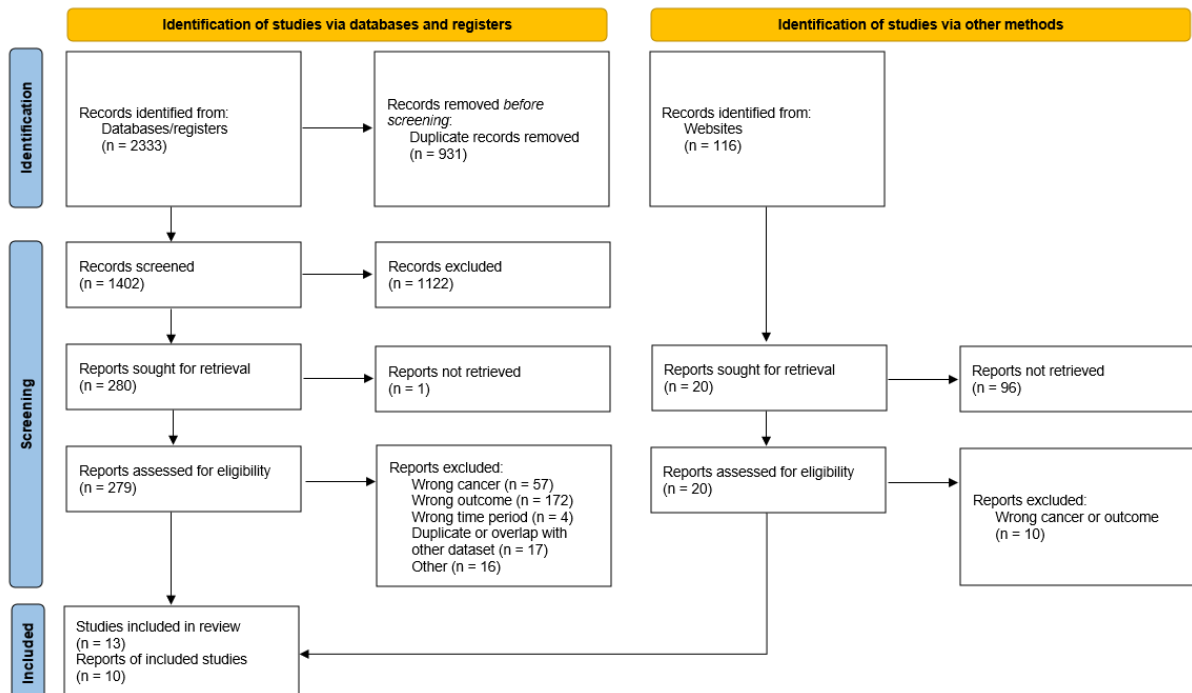
24 Our study used all publicly available data accrued over almost 30 years and, to the best of our
25 knowledge, provides the first evidence for a population-level decline in childhood Burkitt lymphoma
26 burden in malaria-endemic sub-Saharan Africa associated with large-scale rollout of ITNs for malaria
27 control. These findings provide support for the existing observational evidence base for a potential
28 role of malaria interventions in preventing BL in a context where conducting a randomised controlled
29 trial would be unfeasible and unethical.

30 Beyond the considerations already outlined, there were several additional limitations. Firstly, BL
31 incidence rates were assembled from various locations, and only a subset of these had data at more
32 than one timepoint. It is not known how representative this published data would be of all incidence
33 rates across malaria-endemic sub-Saharan Africa, and unknown systematic differences between the
34 locations included in the period before ITN introduction compared to after could have biased the
35 results. Secondly, our inclusion criteria were relatively broad to make use of all available data, but
36 different methods in recording of cancer incidence between locations and over time could have
37 affected the results, especially as confirmation of diagnosis was frequently suboptimal (**Table S2**). The
38 small case numbers in some studies also suggest substantial underdiagnosis. Lastly, since an ecological
39 study design was employed, the association between ITN use and BL should not be interpreted to
40 apply on the individual level; both ITN use and potential confounders only represent proxies for the
41 average exposure in the population, and were in many cases based on model estimates.

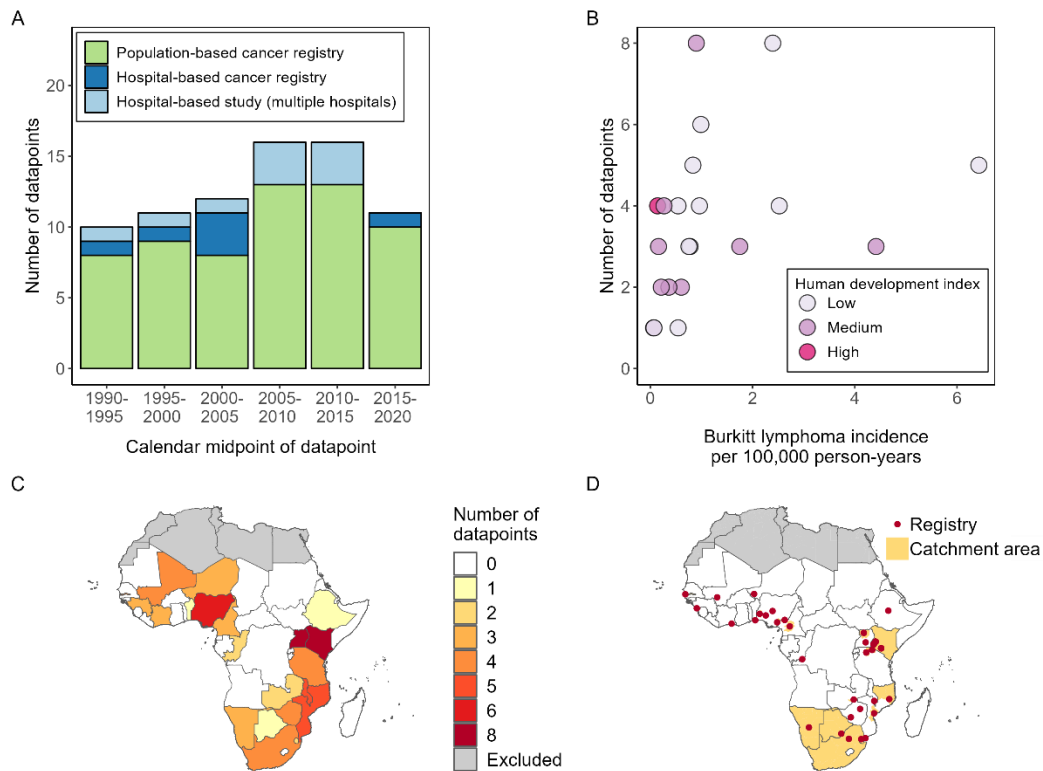
42 In conclusion, this study suggests that childhood BL burden in sub-Saharan Africa may be declining as
43 ITN use in the population increases. Analysis of all available data on BL incidence in malaria-endemic
44 African countries indicates that incidence is lower now than before the introduction of mass ITN
45 distribution programmes around 2005. However, data came from various sources and was often of low

- 1 quality, underlining the need for improved cancer surveillance in sub-Saharan Africa to allow robust
- 2 investigations of trends in cancer incidence.

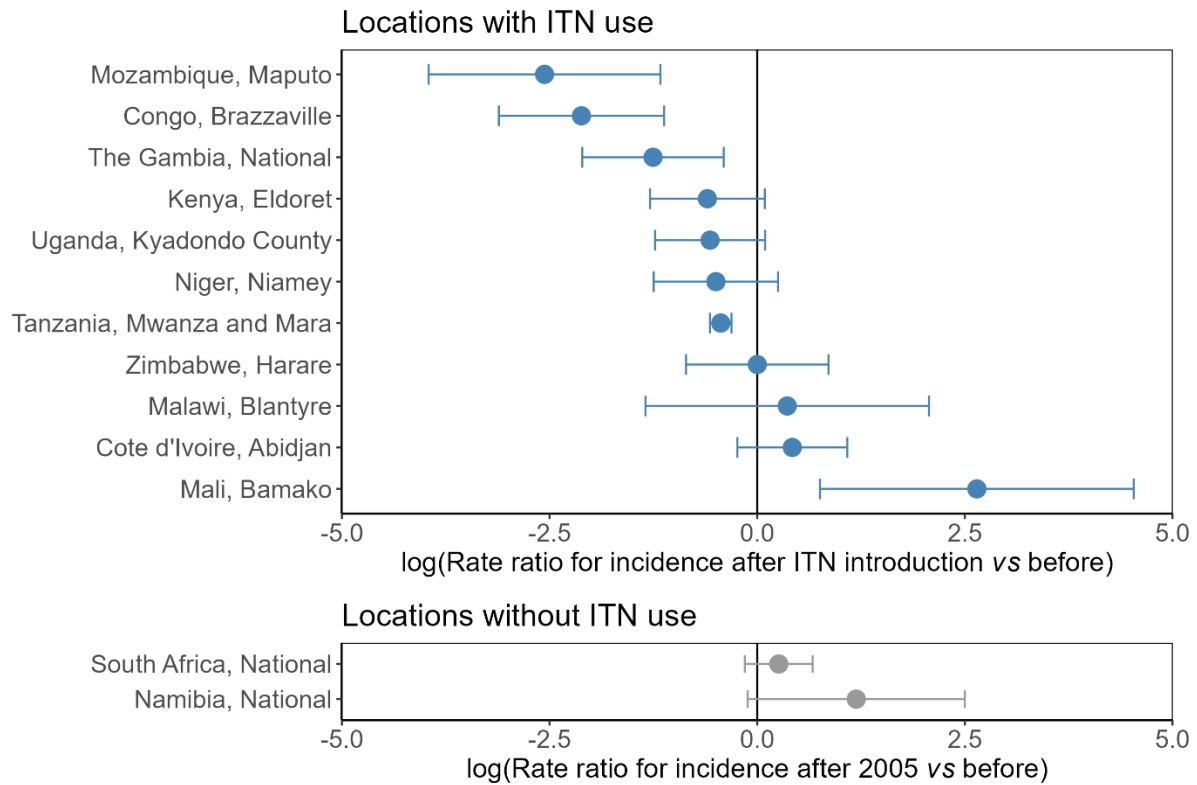
1 Figures



2
3 **Figure 1.** Flow diagram of the systematic review on Burkitt lymphoma incidence rates. Websites
4 associated with the International Agency for Research on Cancer (IARC) included IARC Publications,
5 the Global Cancer Observatory and the African Cancer Registry Network.

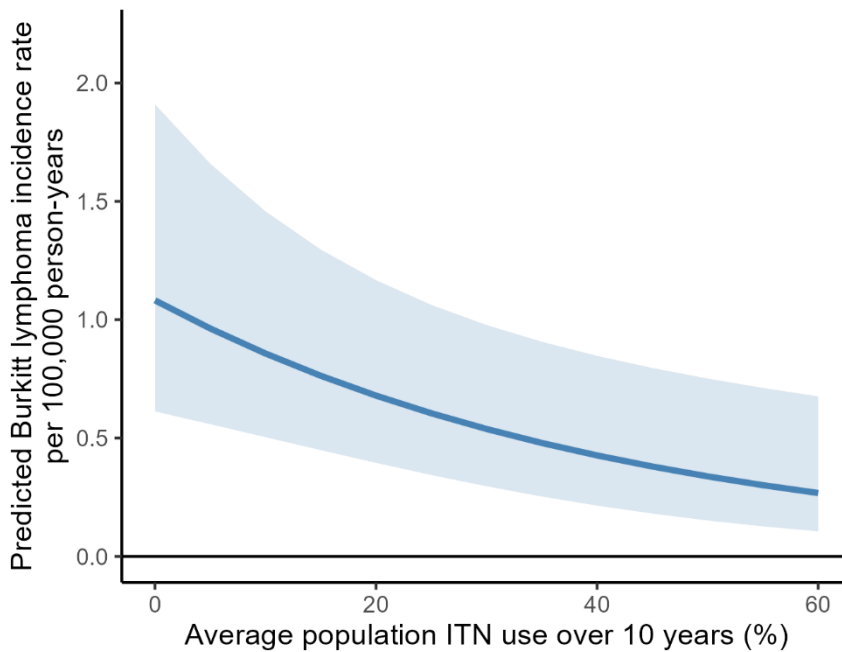


1
 2 **Figure 2.** Overview of published Burkitt lymphoma incidence rates between 1990 and 2023. Datapoints
 3 apply to different locations and/or different timepoints in a country. (a) Number of datapoints by study
 4 type and over time. Cancer data was usually reported for periods of several years, but the number of
 5 studies were grouped based on the midpoint of each time period. (b) Number of datapoints by mean
 6 reported Burkitt lymphoma incidence rate in each country. Colours represent the human development
 7 index level of the country. (c) Number of datapoints in each country. (d) Location and catchment area
 8 of the covered population for each incidence datapoint. Yellow shading indicates the first
 9 administrative unit covered by the registry or study. Red points indicate the location of the registry or
 10 main referral hospital site for each datapoint.



1

2 **Figure 3.** Rate ratios for Burkitt lymphoma incidence after insecticide-treated net (ITN) introduction
3 compared to before in different cancer registries/study locations. Rate ratios are shown on a
4 logarithmic scale for all locations with at least one datapoint in both time periods. Error bars represent
5 the 95% confidence intervals. Namibia and South Africa (grey) did not have wide-scale ITN use but
6 were separated into two time periods before and after 2005 (the median year of ITN introduction).



1
2 **Figure 4.** Exposure-response relationship between insecticide-treated net (ITN) use and the Burkitt
3 lymphoma incidence rate in sub-Saharan Africa in the multivariate model. ITN use represents the mean
4 ITN use in the population at the first administrative level in the 10 years before the Burkitt lymphoma
5 data collection period.

Tables

Table 1. Overview of model covariates and data sources. Summary statistics cover the 66 malaria-endemic locations in sub-Saharan Africa with data on Burkitt lymphoma incidence and large-scale insecticide-treated net (ITN) use. n = number of datapoints, IQR = interquartile range.

Covariate	Description	Source	Before ITN introduction		After ITN introduction	
			n (%)	Median [IQR]	n (%)	Median [IQR]
Average population ITN use over 10 years (%)	Mean of yearly location-specific ITN use in the population in the 10 years before (inclusive of) the midpoint year of the Burkitt lymphoma datapoint. ITN use represents the proportion of people who sleep under a net.	Malaria Atlas Project (12), <i>foresite</i> R package (16)	35 (53)	0.0 [0.0-0.8]	31 (47)	17.6 [11.0-29.0]
Baseline malaria parasite prevalence in 2000 (%)	Location-specific <i>P. falciparum</i> parasite prevalence in 2-10 year olds in 2000. The year 2000 is commonly considered as representing baseline endemicity levels before large-scale intervention use and marking the beginning of a historically unprecedented decline in malaria burden (51). Malaria prevalence correlates with Burkitt lymphoma incidence and is a key consideration in targeting malaria control programmes.	Malaria Atlas Project (52), <i>foresite</i> R package (16)	35 (53)	26.3 [22.2-48.7]	31 (47)	35.9 [19.5-50.8]
Concurrent HIV prevalence in 15-49 year olds (%)	Location-specific HIV prevalence in 15-49 year olds in the midpoint year of the Burkitt lymphoma datapoint as proxy for HIV prevalence in children. HIV infection is a strong risk factor for Burkitt lymphoma outside of sub-Saharan Africa, including in patients treated with antiretroviral therapy (53). HIV treatment programme scale-up also occurred in the 2000s and are supported by the same international funder as malaria (3, 54).	Dwyer-Lindgren et al 2019 (55)	35 (53)	7.8 [2.5-15.2]	31 (47)	5.3 [2.9-8.4]
Concurrent country Human Development Index (HDI) level	Country-specific human development index level in the midpoint year of the Burkitt lymphoma datapoint. The HDI is a summary measure of human development including life expectancy, education and income. HDI was	United Nations Human				

<i>HDI < 0.45</i>	categorised into two levels at the median value in the dataset due to an observed non-monotonic relationship between HDI and BL incidence. HDI correlates with cancer patterns (56) and could be related to access to malaria interventions.	Development Reports (57)	22 (33)	/	9 (14)	/
<i>HDI ≥ 0.45</i>			13 (20)	/	22 (33)	/
Population urbanicity status	Urbanicity status of the population covered by the cancer registry or study. Most population-based cancer registries are located in cities and cover urban populations (31), while malaria is more common in rural areas (58).	Burkitt lymphoma data sources				
<i>Urban</i>			16 (24)	/	18 (27)	/
<i>Both</i>			14 (21)	/	12 (18)	/
<i>Rural</i>			5 (8)	/	1 (2)	/

Table 2. Country-level pooled estimates of Burkitt lymphoma incidence. Estimates are presented separately for the time periods before and after introduction of insecticide-treated nets (ITNs) and for countries without large-scale use of ITNs. The number of datapoints can refer to different time periods or different studies in the same location. Incidence rates with 95% confidence intervals were calculated using a negative binomial model and adjusted for clustering in data from the same geographical location.

Country (sources)	Locations	Time periods	Number of datapoints	Number of cases	Person-time at risk	Adjusted incidence rate per 100,000 person-years (95% CI)
Time period before introduction of ITNs (1990-2008)						
Cameroon (20, 28, 33)	Northwest Province, Yaounde	2003-2006, 2007-2009, 2004-2006	3	239	6,275,949	4.36 (2.57-7.39)
Congo (29)	Brazzaville	1996-1999	1	11	1,017,088	1.08 (0.38-3.11)
Cote d'Ivoire (29)	Abidjan	1995-1997	1	49	3,788,100	1.29 (0.52-3.24)
Guinea (1, 29)	Conakry	1993-1995, 1996-1999, 2001-2010	3	52	9,029,258	0.75 (0.41-1.34)
Kenya (1, 23, 26, 29, 33)	Eldoret, Nationwide, Nyanza Province	1998-2006, 1988-1992, 1993-1997, 1999-2004	4	1,263	134,918,246	1.20 (0.77-1.89)
Malawi (18, 29, 32, 36)	Blantyre	1991-1995, 1996-1998, 1999-2001, 2003-2007	4	403	5,472,399	5.98 (3.82-9.37)
Mali (29)	Bamako	1988-1997	1	3	3,388,015	0.09 (0.02-0.37)
Mozambique (21)	Maputo	1991-2008	1	133	7,130,923	1.87 (0.76-4.55)
Niger (1, 29, 30)	Niamey	1993-1999, 2001-2005	2	29	3,366,189	0.87 (0.42-1.78)
Nigeria (29, 30)	Ibadan	1993-1999, 2006-2009	2	68	3,534,946	1.96 (1.01-3.80)
Tanzania (17)	Mwanza and Mara	2000-2004	1	540	10,114,350	5.34 (2.22-12.86)
The Gambia (1, 29, 30, 34)	National	1988-1996, 1997-1998, 2002-2006	3	45	7,965,430	0.63 (0.34-1.15)
Uganda (25, 27, 34-36)	Northern Uganda, Kyadondo County	1997-2001, 2002-2006, 1989-1991,	6	836	38,319,546	2.57 (1.78-3.72)

		1993-1997, 1998-2002, 2003-2007				
Zambia (19)	Nationwide	1990-1992	1	11	9,166,667	0.12 (0.04-0.34)
Zimbabwe (29, 35, 36)	Harare	1990-1997, 1998-2006	2	15	8,308,590	0.18 (0.08-0.40)
Total before introduction of ITNs		1990-2008	35	3,697	251,795,696	1.36 (0.88-2.10)
Time period after introduction of ITNs (2007-2017)						
Benin (31)	Cotonou	2014-2016	1	4	7,359,00	0.54 (0.12-2.39)
Congo (30, 31)	Brazzaville	2009-2016	1	6	4,606,275	0.13 (0.03-0.51)
Cote d'Ivoire (30, 31)	Abidjan	2012-2013, 2014-2015	2	118	6,008,792	1.98 (0.88-4.43)
Ethiopia (1, 31)	Addis Ababa	2011-2016	1	3	4,207,728	0.07 (0.01-0.35)
Kenya (1, 5, 30, 31)	Eldoret, Nairobi, Northwestern Kenya	2007-2011, 2007-2011, 2012-2014, 2012-2016	4	224	27,487,675	0.60 (0.33-1.08)
Malawi (1, 36)	Blantyre	2008-2010	1	102	1,197,708	8.52 (2.75-26.33)
Mali (30, 31, 33)	Bamako	2005-2009, 2010-2014, 2015-2017	3	121	10,353,780	1.25 (0.64-2.43)
Mozambique (22, 24, 30, 31)	Beira, Maputo, Northern Region	2009-2013, 2014-2017, 2014-2017, 2015	4	35	7,730,296	0.54 (0.27-1.07)
Niger (30)	Niamey	2006-2009	1	9	1,717,564	0.52 (0.14-1.90)
Nigeria (30, 31)	Abuja, Calabar, Ekiti	2013-2016, 2009-2013, 2016-2017, 2013-2017	4	13	4,426,697	0.43 (0.19-0.97)
Tanzania (5, 17, 31)	Mwanza and Mara	2005-2009, 2012-2015, 2016-2017	3	504	37,787,627	1.63 (0.84-3.16)
The Gambia (30)	National	2007-2011	1	6	3,723,130	0.16 (0.04-0.63)
Uganda (5, 31, 37)	Kyadondo County, Northern Uganda	2008-2013, 2010-2016	2	359	18,867,124	1.84 (0.83-4.08)
Zambia (31)	Lusaka	2011-2015	1	13	4,246,505	0.31 (0.09-1.06)

Zimbabwe (1, 31, 36)	Bulawayo, Harare	2013-2015, 2007-2015	2	12	5,181,909	0.30 (0.10-0.87)
Total after introduction of ITNs		2007-2017	31	1,529	138,278,710	0.76 (0.50-1.16)
Countries without large-scale ITN use (1990-2017)						
Botswana (1, 33)	National	1999-2008	1	4	6,334,397	0.06 (0.02-0.19)
Eswatini (29, 31)	National	1989-1999, 2016-2017	2	12	2,484,569	0.45 (0.23-0.90)
Namibia (29-31)	National	1995-1998, 2009, 2013-2015	3	12	5,945,760	0.20 (0.10-0.38)
South Africa (1, 29-31, 33)	National	2003-2007, 2008-2012, 2013-2016, 1989-1992, 1998-2006, 2007, 2008-2014	4	446	303,370,823	0.14 (0.11-0.19)
Total for countries without large-scale ITN use		1991-2017	10	474	318,135,549	0.18 (0.07-0.46)

Table 3. Negative binomial regression models for association between Burkitt lymphoma incidence and insecticide-treated net (ITN) use. ITN use represents the mean ITN use in the population at the first administrative level in the 10 years before the Burkitt lymphoma data collection period. The analysis was conducted on 66 incidence estimates based on 5,226 cases and a total population at risk of 390,074,406.

Covariate	Crude rate ratio (95% CI)	p-value	Adjusted rate ratio (95% CI)	p-value
Average population ITN use over 10 years (%)	0.98 (0.96-0.99)	0.003	0.98 (0.96-0.99)	0.005
Baseline malaria parasite prevalence in 2000 (%)	1.02 (1.00-1.04)	0.02	1.02 (1.01-1.04)	0.009
HIV prevalence in 15-49 year olds (%)	1.02 (0.96-1.08)	0.54	1.01 (0.96-1.07)	0.61
Country Human Development Index level				
<i>HDI < 0.45</i>	1.00 (reference)		1.00 (reference)	
<i>HDI ≥ 0.45</i>	0.75 (0.43-1.29)	0.29	0.95 (0.56-1.61)	0.85
Population urbanicity status				
<i>Urban</i>	1.00 (reference)		1.00 (reference)	
<i>Both</i>	1.70 (0.77-3.74)	0.19	1.27 (0.62-2.60)	0.51
<i>Rural</i>	1.92 (0.48-7.72)	0.36	2.17 (0.66-7.16)	0.20

Contributors

NS conceived the study. NS and JK conducted the systematic review and were responsible for data curation. EKA provided domain knowledge for the study and contributed to study design. NS conducted the analysis and wrote the first draft of the manuscript. All authors contributed to interpreting the results, reviewing and revising the manuscript, and approved the final version for submission.

Competing interests

We declare no competing interests.

Data availability statement

All data reported in this study were extracted from published studies. All covariate estimates used in the analysis are publicly available from the sources cited in the article.

Funding

NS acknowledges funding from a Wellcome Trust grant awarded to Prof Azra Ghani and Prof Katharina Hauck [reference 220900/Z/20/Z] and from the MRC Centre for Global Infectious Disease Analysis [reference MR/R015600/1], jointly funded by the UK Medical Research Council (MRC) and the UK Foreign, Commonwealth & Development Office (FCDO), under the MRC/FCDO Concordat agreement and is also part of the EDCTP2 programme supported by the European Union. EKA is supported by a Cancer Research UK (CRUK) grant awarded to Dr Tsilidis K [reference PPRCPJT\100005] and acknowledges funding from a return grant from the International Agency for Research on Cancer-World Health Organization (IARC-WHO). For the purpose of open access, the authors have applied a 'Creative Commons Attribution' (CC BY) license to any Author Accepted Manuscript version arising from this submission.

References

1. Stefan C, Bray F, Ferlay J, Liu B, Maxwell Parkin D. Cancer of childhood in sub-Saharan Africa. *Eccancermedalscience*. 2017;11:755.
2. Legason ID, Pfeiffer RM, Udquim KI, Bergen AW, Gouveia MH, Kirimunda S, et al. Evaluating the Causal Link Between Malaria Infection and Endemic Burkitt Lymphoma in Northern Uganda: A Mendelian Randomization Study. *EBioMedicine*. 2017;25:58-65.
3. World Health Organization. World malaria report 2020. Geneva: World Health Organization; 2020.
4. Gondwe Y, Salima A, Manda A, Ozuah N, Mapurisa G, Brandt K, et al. Spatial distribution of incident pediatric Burkitt lymphoma in central and northern Malawi and association with malaria prevalence. *Pediatr Blood Cancer*. 2022;69(10):e29867.
5. Broen K, Dickens J, Trangucci R, Ogwang MD, Tenge CN, Masalu N, et al. Burkitt lymphoma risk shows geographic and temporal associations with Plasmodium falciparum infections in Uganda, Tanzania, and Kenya. *Proc Natl Acad Sci U S A*. 2023;120(2):e2211055120.
6. Kotepui KU, Kotepui M. Malaria Infection and Risk for Endemic Burkitt Lymphoma: A Systematic Review and Meta-Analysis. *Int J Environ Res Public Health*. 2021;18(11).
7. Geser A, Brubaker G, Draper CC. Effect of a malaria suppression program on the incidence of African Burkitt's lymphoma. *Am J Epidemiol*. 1989;129(4):740-52.
8. Carpenter LM, Newton R, Casabonne D, Ziegler J, Mbulaiteye S, Mbidde E, et al. Antibodies against malaria and Epstein-Barr virus in childhood Burkitt lymphoma: a case-control study in Uganda. *Int J Cancer*. 2008;122(6):1319-23.
9. Mutalima N, Molyneux E, Jaffe H, Kamiza S, Borgstein E, Mkandawire N, et al. Associations between Burkitt lymphoma among children in Malawi and infection with HIV, EBV and malaria: results from a case-control study. *PLoS One*. 2008;3(6):e2505.
10. Peprah S, Ogwang MD, Kerchan P, Reynolds SJ, Tenge CN, Were PA, et al. Risk factors for Burkitt lymphoma in East African children and minors: A case-control study in malaria-endemic regions in Uganda, Tanzania and Kenya. *Int J Cancer*. 2020;146(4):953-69.
11. Bhatt S, Weiss DJ, Cameron E, Bisanzio D, Mappin B, Dalrymple U, et al. The effect of malaria control on Plasmodium falciparum in Africa between 2000 and 2015. *Nature*. 2015;526(7572):207-11.
12. Bertozzi-Villa A, Bever CA, Koenker H, Weiss DJ, Vargas-Ruiz C, Nandi AK, et al. Maps and metrics of insecticide-treated net access, use, and nets-per-capita in Africa from 2000-2020. *Nature Communications*. 2021;12(1):3589.
13. Page MJ, McKenzie JE, Bossuyt PM, Boutron I, Hoffmann TC, Mulrow CD, et al. The PRISMA 2020 statement: an updated guideline for reporting systematic reviews. *Bmj*. 2021;372:n71.
14. Cliff J, Lewin S, Woelk G, Fernandes B, Mariano A, Sevene E, et al. Policy development in malaria vector management in Mozambique, South Africa and Zimbabwe. *Health Policy Plan*. 2010;25(5):372-83.
15. Reynaldi A, Schlub TE, Chelimo K, Sumba PO, Piriou E, Ogolla S, et al. Impact of Plasmodium falciparum Coinfection on Longitudinal Epstein-Barr Virus Kinetics in Kenyan Children. *J Infect Dis*. 2016;213(6):985-91.
16. Winskill P. foresite: Access to Malaria Site Files. R package version 0.1.0. 2023 [Available from: <https://mrc-ide.github.io/foresite/>].
17. Aka P, Kawira E, Masalu N, Emmanuel B, Brubaker G, Magatti J, et al. Incidence and trends in Burkitt lymphoma in northern Tanzania from 2000 to 2009. *Pediatric blood & cancer*. 2012;59(7):1234-8.
18. Banda L, Parkin D, Dzamalala C, Liomba N. Cancer incidence in Blantyre, Malawi 1994–1998. *Tropical Medicine & International Health*. 2001;6(4):296-304.
19. Chintu C, Athale UH, Patil P. Childhood cancers in Zambia before and after the HIV epidemic. *Archives of Disease in childhood*. 1995;73(2):100-5.

20. Lewis N, Young J, Hesselning P, McCormick P, Wright N. Epidemiology of Burkitt's lymphoma in Northwest Province, Cameroon, 2003–2010. *Paediatrics and international child health*. 2012;32(2):82-5.
21. Lorenzoni C, Vilajeliu A, Carrilho C, Ismail MR, Castillo P, Augusto O, et al. Trends in cancer incidence in Maputo, Mozambique, 1991–2008. *PLoS One*. 2015;10(6):e0130469.
22. Lorenzoni CF, Ferro J, Carrilho C, Colombet M, Parkin DM. Cancer in Mozambique: results from two population-based cancer registries. *International Journal of Cancer*. 2020;147(6):1629-37.
23. Mwanda O, Rochford R, Moormann AM, Macneil A, Whalen C, Wilson M. Burkitt's lymphoma in Kenya: geographical, age, gender and ethnic distribution. *East African medical journal*. 2004(8 Suppl):S68-77.
24. O'Callaghan-Gordo C, Casabonne D, Carrilho C, Ferro J, Lorenzoni C, Zaqueu C, et al. Incidence of endemic Burkitt lymphoma in three regions of Mozambique. *The American Journal of Tropical Medicine and Hygiene*. 2016;95(6):1459.
25. Ogwang MD, Bhatia K, Biggar RJ, Mbulaiteye SM. Incidence and geographic distribution of endemic Burkitt lymphoma in northern Uganda revisited. *International journal of cancer*. 2008;123(11):2658-63.
26. Rainey JJ, Omenah D, Sumba PO, Moormann AM, Rochford R, Wilson ML. Spatial clustering of endemic Burkitt's lymphoma in high-risk regions of Kenya. *International journal of cancer*. 2007;120(1):121-7.
27. Wabinga HR, Mugerwa JW, Parkin DM, Wabwire-Mangen F. Cancer in Kampala, Uganda, in 1989–91: changes in incidence in the era of AIDS. *International Journal of Cancer*. 1993;54(1):26-36.
28. Wright N, Hesselning P, McCormick P, Tchintseme F. The incidence, clustering and characteristics of Burkitt lymphoma in the Northwest province of Cameroon. *Tropical doctor*. 2009;39(4):228-30.
29. Parkin DM, Ferlay J, Hamdi-Cherif M, Sitas F, Thomas JO, Wabinga H, et al., editors. *Cancer in Africa: epidemiology and prevention*. IARC Scientific Publications No 153. Lyon: International Agency for Research on Cancer; 2003.
30. Parkin D, Ferlay J, Jemal A, Borok M, Manraj S, N'da G, et al., editors. *Cancer in sub-Saharan Africa Vol 2*. IARC Scientific Publication No 167. Lyon: International Agency for Research on Cancer; 2018.
31. Parkin DM, Jemal A, Bray F, Korir AR, Kamate B, Singh E, et al., editors. *Cancer in sub-Saharan Africa Vol 3*. Geneva: Union for International Cancer Control; 2019.
32. Parkin D, Kramarova E, Draper G, Masuyer E, Michaelis J, Neglia J, et al., editors. *International Incidence of Childhood Cancer Vol 2*. IARC Scientific Publication No 144. Lyon: International Agency for Research on Cancer; 1998.
33. Hesselning P, Moreno F, Gloeckler Ries L, Shin H, Stiller C, Steliarova-Foucher E, et al. *International Incidence of Childhood Cancer Vol 3 [electronic version]*. Lyon: International Agency for Research on Cancer; 2017 [Available from: <https://iicc.iarc.fr/>].
34. Parkin D, Whelan S, Ferlay J, Teppo L, Thomas D, editors. *Cancer Incidence in Five Continents Vol VIII*. IARC Scientific Publications No 155. Lyon: International Agency for Research on Cancer; 2002.
35. Curado M-P, Edwards B, Shin HR, Storm H, Ferlay J, Heanue M, et al., editors. *Cancer Incidence in Five Continents Vol IX*. IARC Scientific Publications No 160. Lyon: International Agency for Research on Cancer; 2007.
36. Forman D, Bray F, Brewster D, Gombe Mbalawa C, Kohler B, Piñeros M, et al., editors. *Cancer Incidence in Five Continents Vol X*. IARC Scientific Publications No 164. Lyon: International Agency for Research on Cancer; 2013.
37. Bray F, Colombet M, Mery L, Piñeros M, Znaor A, Zanetti R, et al., editors. *Cancer Incidence in Five Continents Vol XI*. IARC Scientific Publication No 166. Lyon: International Agency for Research on Cancer; 2021.
38. Bukirwa P, Wabinga H, Namboozee S, Amulen PM, Joko WY, Liu B, et al. Trends in the incidence of cancer in Kampala, Uganda, 1991 to 2015. *Int J Cancer*. 2021;148(9):2129-38.

39. Stoeter O, Seraphin TP, Chitsike I, Chokunonga E, Kambugu JB, Wabinga H, et al. Trends in childhood cancer incidence in sub-Saharan Africa: Results from 25 years of cancer registration in Harare (Zimbabwe) and Kyadondo (Uganda). *Int J Cancer*. 2021;149(5):1002-12.
40. Killeen GF, Smith TA, Ferguson HM, Mshinda H, Abdulla S, Lengeler C, et al. Preventing childhood malaria in Africa by protecting adults from mosquitoes with insecticide-treated nets. *PLoS Med*. 2007;4(7):e229.
41. Mutyaba I, Phipps W, Krantz EM, Goldman JD, Namboozee S, Orem J, et al. A Population-Level Evaluation of the Effect of Antiretroviral Therapy on Cancer Incidence in Kyadondo County, Uganda, 1999-2008. *J Acquir Immune Defic Syndr*. 2015;69(4):481-6.
42. Dhokotera T, Bohlius J, Spoerri A, Egger M, Ncayiyana J, Olago V, et al. The burden of cancers associated with HIV in the South African public health sector, 2004-2014: a record linkage study. *Infect Agent Cancer*. 2019;14:12.
43. Joko-Fru WY, Jedy-Agba E, Korir A, Ogunbiyi O, Dzamalala CP, Chokunonga E, et al. The evolving epidemic of breast cancer in sub-Saharan Africa: Results from the African Cancer Registry Network. *Int J Cancer*. 2020;147(8):2131-41.
44. Jedy-Agba E, Joko WY, Liu B, Buziba NG, Borok M, Korir A, et al. Trends in cervical cancer incidence in sub-Saharan Africa. *Br J Cancer*. 2020;123(1):148-54.
45. Seraphin TP, Joko-Fru WY, Kamaté B, Chokunonga E, Wabinga H, Somdyala NIM, et al. Rising Prostate Cancer Incidence in Sub-Saharan Africa: A Trend Analysis of Data from the African Cancer Registry Network. *Cancer Epidemiol Biomarkers Prev*. 2021;30(1):158-65.
46. Bray F, Parkin DM. Cancer in sub-Saharan Africa in 2020: a review of current estimates of the national burden, data gaps, and future needs. *Lancet Oncol*. 2022;23(6):719-28.
47. Hämmerl L, Colombet M, Rochford R, Ogwang DM, Parkin DM. The burden of Burkitt lymphoma in Africa. *Infect Agent Cancer*. 2019;14:17.
48. Ngwa W, Addai BW, Adewole I, Ainsworth V, Alaro J, Alatise OI, et al. Cancer in sub-Saharan Africa: a Lancet Oncology Commission. *Lancet Oncol*. 2022;23(6):e251-e312.
49. The Lancet Child Adolescent H. Tackling childhood cancer in sub-Saharan Africa. *Lancet Child Adolesc Health*. 2022;6(7):445.
50. Mbulaiteye SM, Talisuna AO, Ogwang MD, McKenzie FE, Ziegler JL, Parkin DM. African Burkitt's lymphoma: could collaboration with HIV-1 and malaria programmes reduce the high mortality rate? *Lancet*. 2010;375(9726):1661-3.
51. Snow RW, Sartorius B, Kyalo D, Maina J, Amratia P, Mundia CW, et al. The prevalence of *Plasmodium falciparum* in sub-Saharan Africa since 1900. *Nature*. 2017;550(7677):515-8.
52. Weiss DJ, Lucas TC, Nguyen M, Nandi AK, Bisanzio D, Battle KE, et al. Mapping the global prevalence, incidence, and mortality of *Plasmodium falciparum*, 2000–17: a spatial and temporal modelling study. *The Lancet*. 2019;394(10195):322-31.
53. Atallah-Yunes SA, Murphy DJ, Noy A. HIV-associated Burkitt lymphoma. *The Lancet Haematology*. 2020;7(8):e594-e600.
54. GBD 2017 HIV collaborators. Global, regional, and national incidence, prevalence, and mortality of HIV, 1980-2017, and forecasts to 2030, for 195 countries and territories: a systematic analysis for the Global Burden of Diseases, Injuries, and Risk Factors Study 2017. *Lancet HIV*. 2019;6(12):e831-e59.
55. Dwyer-Lindgren L, Cork MA, Sligar A, Steuben KM, Wilson KF, Provost NR, et al. Mapping HIV prevalence in sub-Saharan Africa between 2000 and 2017. *Nature*. 2019;570(7760):189-93.
56. Sharma R, Aashima, Nanda M, Fronterre C, Sewagudde P, Ssentongo AE, et al. Mapping Cancer in Africa: A Comprehensive and Comparable Characterization of 34 Cancer Types Using Estimates From GLOBOCAN 2020. *Front Public Health*. 2022;10:839835.
57. United Nations Development Programme. Human Development Report 2021-22: Uncertain Times, Unsettled Lives: Shaping our Future in a Transforming World. . New York: United Nations Development Programme; 2022.

58. World Health Organization. World malaria report 2022. Geneva: World Health Organization; 2022. Report No.: 9240064893.