

## **Serotonin 1A receptor distribution in treatment-resistant depression during psychopharmacotherapy compared to healthy controls.**

Matej Murgaš MSc.<sup>1,2\*</sup>, Christian Milz MSc.<sup>1,2\*</sup>,  
Peter Stöhrmann MSc.<sup>1,2</sup>, Dr. Godber M. Godbersen<sup>1,2</sup>, Dr. Jakob Unterholzner<sup>1,2</sup>,  
Dr. Lukas Nics<sup>3</sup>, Prof. Georg S. Kranz<sup>1,4</sup>, Prof. Andreas Hahn<sup>1,2</sup>,  
Prof. Marcus Hacker<sup>3</sup>, Prof. Siegfried Kasper<sup>1,5</sup>, Prof. Rupert Lanzenberger<sup>1,2#</sup>  
(\* contributed equally)

<sup>1</sup>*Department of Psychiatry and Psychotherapy, Medical University of Vienna, Austria*

<sup>2</sup>*Comprehensive Center for Clinical Neurosciences and Mental Health, Medical University of Vienna, Austria*

<sup>3</sup>*Department of Biomedical Imaging and Image-guided Therapy, Division of Nuclear Medicine, Medical University of Vienna, Austria*

<sup>4</sup>*Department of Rehabilitation Sciences, The Hong Kong Polytechnic University, Hung Hom, Hong Kong*

<sup>5</sup>*Center for Brain Research, Department of Molecular Neuroscience, Medical University of Vienna, Vienna, Austria.*

### **# Correspondence to:**

Univ. Prof. Rupert Lanzenberger, MD, PD  
Department of Psychiatry and Psychotherapy  
Medical University of Vienna  
Währinger Gürtel 18-20, 1090 Vienna, Austria  
[rupert.lanzenberger@meduniwien.ac.at](mailto:rupert.lanzenberger@meduniwien.ac.at)  
<http://www.meduniwien.ac.at/neuroimaging/>

**NOTE: This preprint reports new research that has not been certified by peer review and should not be used to guide clinical practice.**

## ABSTRACT

Major depressive disorder (MDD) is associated with a high lifetime prevalence and is a major cause of disability. An additional burden on patients is that up to 60% of the first antidepressant (AD) trials do not provide adequate symptom relief and after two subsequent AD trials, a patient is referred to as treatment-resistant. The serotonin 1A receptor subtype (5-HT<sub>1A</sub>) has commonly been used to study pathophysiological alteration in MDD. However, PET data on treatment-resistant depression (TRD) populations is still limited.

In this cross-sectional study, 5-HT<sub>1A</sub> receptor binding was assessed in 20 TRD patients (9 female, mean age  $\pm$  SD, 29.0  $\pm$  5.2) and 20 healthy controls (HC) (10 female, mean age  $\pm$  SD, 33.2  $\pm$  8.2). Positron emission tomography (PET) scans with the radiotracer [*carbonyl*-<sup>11</sup>C]WAY-100635 were acquired and 5-HT<sub>1A</sub> non-displaceable binding potential (BP<sub>ND</sub>) was quantified using the multilinear reference tissue model 2, with the cerebellar white matter as reference region. Mean regional BP<sub>ND</sub> in five regions of interest (amygdala, anterior cingulate cortex, hippocampus, insula and orbitofrontal cortex) was compared in a repeated measures analysis of covariance (rmANCOVA) with age, sex and group as covariates.

Estimated marginal means showed slightly lower BP<sub>ND</sub> in TRD group (mean  $\pm$  SD = 5.464  $\pm$  0.247) than in the HC group (mean  $\pm$  SD = 5.938  $\pm$  0.245). However, the rmANCOVA showed no significant group difference ( $p = 0.659$ ).

Studies on 5-HT<sub>1A</sub> binding in MDD show heterogeneous results, where the directionality of difference as well as the significance of findings strongly depend on specific outcome measures (BP<sub>ND</sub>, BP<sub>F</sub> or BP<sub>P</sub>), reference region or quantification method. Here we showed no significant effect of TRD on BP<sub>ND</sub>, similar to other studies applying the same methodology for MDD cohorts.

## INTRODUCTION

Major depressive disorder (MDD) exhibits high lifetime prevalence and is one of the most common psychiatric disorders. In addition to being associated with a multitude of chronic disorders (e.g. asthma or hypertension), it also typically affects the financial and social aspects of life (1,2) and is connected to increased mortality (3). Despite having access to a variety of antidepressant treatment possibilities, only 40% of patients respond to first-line pharmacological treatment. A subpopulation of these non-responders even fail to respond to two adequate antidepressant trials (i.e. psychotherapeutic and/or pharmacological), thus representing treatment-resistant depression (TRD) patients (4). This could be due to a host of risk factors including higher suicidal risk or higher comorbid anxiety disorder (5).

The involvement of the serotonergic system in major depressive disorder has been extensively investigated in past decades (6). In this context, positron emission tomography (PET) has become a main modality for investigating pathophysiological states in psychiatric disorders *in vivo*. Previous studies involving the serotonergic system showed alterations in MDD subjects. For example, longitudinal effects SSRI treatment in MDD subjects have been shown measuring SERT occupancy before and after treatment (7). Another study unveiled that changes to 5-HT synthesis contributed to the progress of MDD (8). In particular, the serotonin 1A (5-HT<sub>1A</sub>) receptor is one of the most abundant receptors of the serotonergic system in the human brain, and thus also the most researched subtype of serotonin receptors. In the past, pathophysiological states and changes to its distribution in the cortex were connected to different psychiatric disorders, including depression (9). For instance, the reduction in 5-HT<sub>1A</sub> receptor availability across different brain regions was demonstrated in various cohorts of MDD patients (10,11). Specifically, receptor-rich regions of amygdala, anterior cingulate cortex, hippocampus, insula and orbitofrontal cortex, showed a decrease in several studies (12–14). Additionally, Albert et al. (11) were able to show that altered 5-HT<sub>1A</sub> receptor transcription affects the serotonergic system and might lead to depression.

In addition to insufficient or no response to conventional antidepressant treatment, several risk factors have been identified for TRD patients (5). Therefore, treatment-resistant depression should be seen as a condition extending beyond MDD. As such, investigations of 5HT<sub>1A</sub> receptor distribution, although extensively researched in MDD, are needed to investigate possible alterations in TRD. Until now, investigations on treatment-resistant depression included genetic factors (15) but assessment of 5HT<sub>1A</sub> receptor binding is limited.

In this work, we aim to unveil the differences in 5-HT<sub>1A</sub> binding between treatment-resistant depressive patients and healthy control subjects. In particular, we aim to investigate the differences in the high binding regions using *in vivo* positron emission imaging with the specific radioligand [*carbonyl*-<sup>11</sup>C]WAY-100635. In line with previous extensive work on major depression and associated changes to the serotonergic system, we hypothesize that there is a significant decrease in serotonin 1A receptor binding potential in TRD patients.

## **MATERIAL and METHODS**

### *Subjects and study design*

The dataset represents a collection of published studies alongside previously unpublished data. The data of healthy control subjects (HC) were taken from Lanzenberger et al. (16) and Baldinger et al. (17) (Registered at International Standard Randomized Controlled Trial Number Register as ISRCTN30885829). The part of treatment-resistant depression patient group data were adopted from Murgas and Unterholzner et al. (18) and complemented by an additional set of unpublished data collected from the same study (Registered at ClinicalTrials.gov as NCT02810717). For details on demographic information, see the Table 1 in results section. Only baseline PET measurements of the patients were included. However, patients were allowed for concomitant medication if it was stable for at least 4 weeks prior to the recruitment to study. To screen subjects for physical abnormalities, routine medical examinations were performed, including laboratory measurements, general physical and neurological status and an electrocardiogram. Moreover, clinical interviews by experienced psychiatrists ensured mental health of the HC group and excluded psychiatric comorbidities in TRD patients. The TRD group was recruited from the outpatient department and the hospital wards of the Department of Psychiatry and Psychotherapy at the Medical University of Vienna, Austria. Each patient was carefully screened using SCID IV (Structural Clinical Interview for DSM IV Diagnosis) by trained physician and included in the study only when fulfilling the criteria for single or recurrent major depression and having a score  $\geq 18$  on 17-item Hamilton Rating Scale for Depression (HAMD). Subjects gave informed written consent at the screening visit. All procedures were performed according to Declaration of Helsinki. All studies were approved by the Ethics Committee at the Medical University of Vienna (318/2002; 475/2011; 1761/2015).

### *Neuroimaging*

Imaging procedures for HC and TRD groups were similar although details may vary. For each subject, a 90-minute PET scan was acquired, using a GE Advance PET scanner

(General Electric Medical Systems, Milwaukee, Wisconsin) at the Department of Biomedical Imaging and Image-guided Therapy, Division of Nuclear Medicine, Medical University of Vienna, Austria. Acquisition in 3-D mode started with bolus infusion of the radioligand [*carbonyl*-<sup>11</sup>C]WAY-100635 with a dose of 4.6-5.4 MBq/kg. A 5-minute transmission scan in 2-dimensional mode with a retractable <sup>68</sup>Ge source was used for attenuation correction. Images were reconstructed as a 128 x 128 matrix (35 slices) with an iterative filtered back-projection algorithm with a spatial resolution of 4.36 mm full-width at half-maximum 1 cm next to the center of the field of view. Here, the number and the length of frames in the reconstructed dynamic images varies across the studies: Lanzenberger et al. uses 30 time frames (15 x 60 sec and 15 x 300 min), Baldinger et al. uses 50 time frames (12 x 5 sec, 6 x 10 sec, 3 x 20 sec, 6 x 30 sec, 4 x 60 sec, 5 x 120 sec and 14 x 300 sec) and patients group is reconstructed to 51 frames (12 x 5 sec, 6 x 10 sec, 3 x 20 sec, 6 x 30 sec, 9 x 60 sec, and 15 x 300 sec). The radioligand [*carbonyl*-<sup>11</sup>C]WAY-100635 was prepared at the cyclotron unit of the PET Center according to previously published methods (19).

Additionally, a structural T1-weighted MR image was acquired for each subject. TRD subjects were scanned at a 3T PRISMA MR Scanner (Siemens Medical, Erlangen, Germany) using the magnetization-prepared rapid gradient-echo sequence (TE/TR = 4.21/3000 ms, voxel size 1 x 1 x 1.1 mm<sup>3</sup>).

#### *Data processing and quantification*

Each PET scan was corrected for attenuation and scatter. Preprocessing was performed using SPM12 (The Wellcome Centre for Neuroimaging, [www.fil.ion.ucl.ac.uk](http://www.fil.ion.ucl.ac.uk)) and MATLAB R2018b (The Mathworks Inc., Natick, MA, USA). Correction for head motion was applied followed by its co-registration to the T1-weighted structural MR image. The structural image was then normalized to Montreal Neurologic Institute (MNI) space and the same transformations were applied to the co-registered dynamic PET images as well.

Time activity curves were extracted from the normalized PET scans for insula and cerebellar white matter (CWM). The former shows a high specific uptake of [*carbonyl*-<sup>11</sup>C]WAY-100635

whereas CWM is devoid of specific binding, making it a suitable choice for reference tissue models (20). Nondisplaceable binding potential ( $BP_{ND}$ ) was modelled with the multilinear reference tissue model 2 (MRTM2) (21) using the TACs as input in PMOD, version 3.5 (PMOD Technologies LLC, <https://www.pmod.com/web/>). Regions of interest were selected according to published data on changes in 5-HT<sub>1A</sub> binding in amygdala (AMY), anterior cingulate cortex (ACC), hippocampus (HIP), orbitofrontal cortex (OFC) and insula (INS) in patients suffering from major depression disorder (22). Mean  $BP_{ND}$  was extracted for each ROI using an in-house atlas (23).

### *Statistical analysis*

To correct for the different study protocols (i.e., frame length) of the PET scans included in the healthy control group, data harmonization was applied. Here we used the Matlab implementation of the ComBat toolbox (24,25) with age and sex as a covariate.

To test for the differences in 5-HT<sub>1A</sub> receptor distribution between healthy control subjects and patients we used a repeated measures analysis of covariance (rmANCOVA). Selected regions of interest were used as repeated measures, while sex and subject groups as factors and age as covariate. If not stated otherwise, all statistical analysis were performed in SPSS version 26 for Windows (SPSS Inc., Chicago, Illinois, USA; [www.spss.com](http://www.spss.com)).

## RESULTS

Data from 40 subjects were available for the comparison of serotonin 1A receptor distribution in selected regions. In particular, 20 HC subjects (mean age  $\pm$  SD, 33.2  $\pm$  8.2, 10 female) and 20 TRD patients (mean age  $\pm$  SD, 29.0  $\pm$  5.2, 9 female) were analyzed for this study.

Average regional  $BP_{ND}$  values of amygdala, anterior cingulate cortex, hippocampus, insula and orbitofrontal cortex showed lower binding in TRD patients than in HC subjects (see Figure 1).

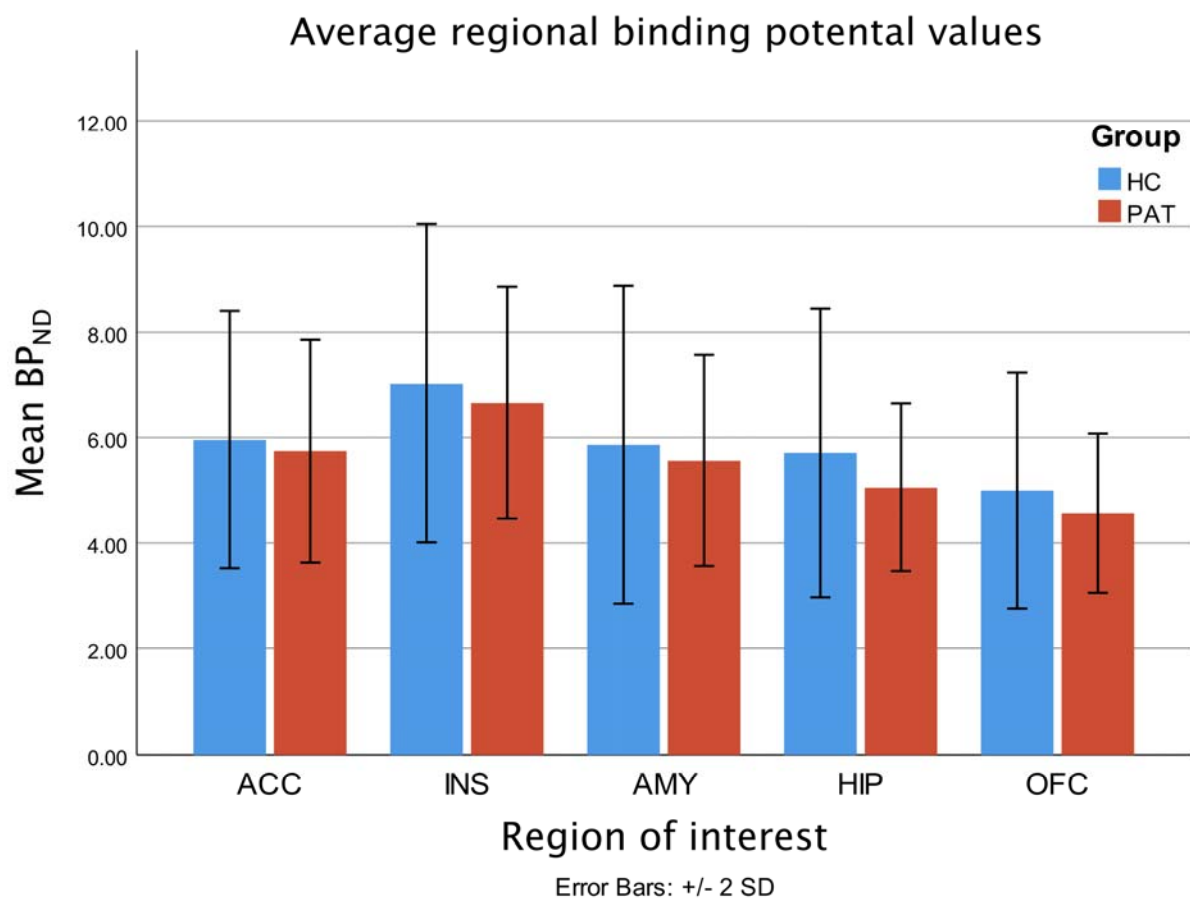


Figure 1: Barplot showing average  $BP_{ND}$  values of amygdala (AMY), anterior cingulate cortex (ACC), hippocampus (HIP), insula (INS) and orbitofrontal cortex (OFC) in both subject groups of healthy control subjects (HC) and TRD patients (PAT).

The rmANCOVA, using regional  $BP_{ND}$  values as repeated measures, showed no significant between-subject effect of the group ( $F = 1.747$ ,  $p = 0.195$ ), sex ( $F = 0.022$ ,  $p = 0.882$ ), age ( $F$



= 0.198,  $p = 0.659$ ) nor a two-way interaction between sex and group ( $F = 3.617$ ,  $p = 0.065$ ). Despite the non-significant result, the estimated marginal means showed slightly lower  $BP_{ND}$  in the TRD group (mean  $\pm$  SD =  $5.464 \pm 0.247$ ) than in HC group (mean  $\pm$  SD =  $5.938 \pm 0.245$ ). The low numerical difference between the groups is supported also by the visual comparison of 5-HT<sub>1A</sub> distribution (see Figure 2).

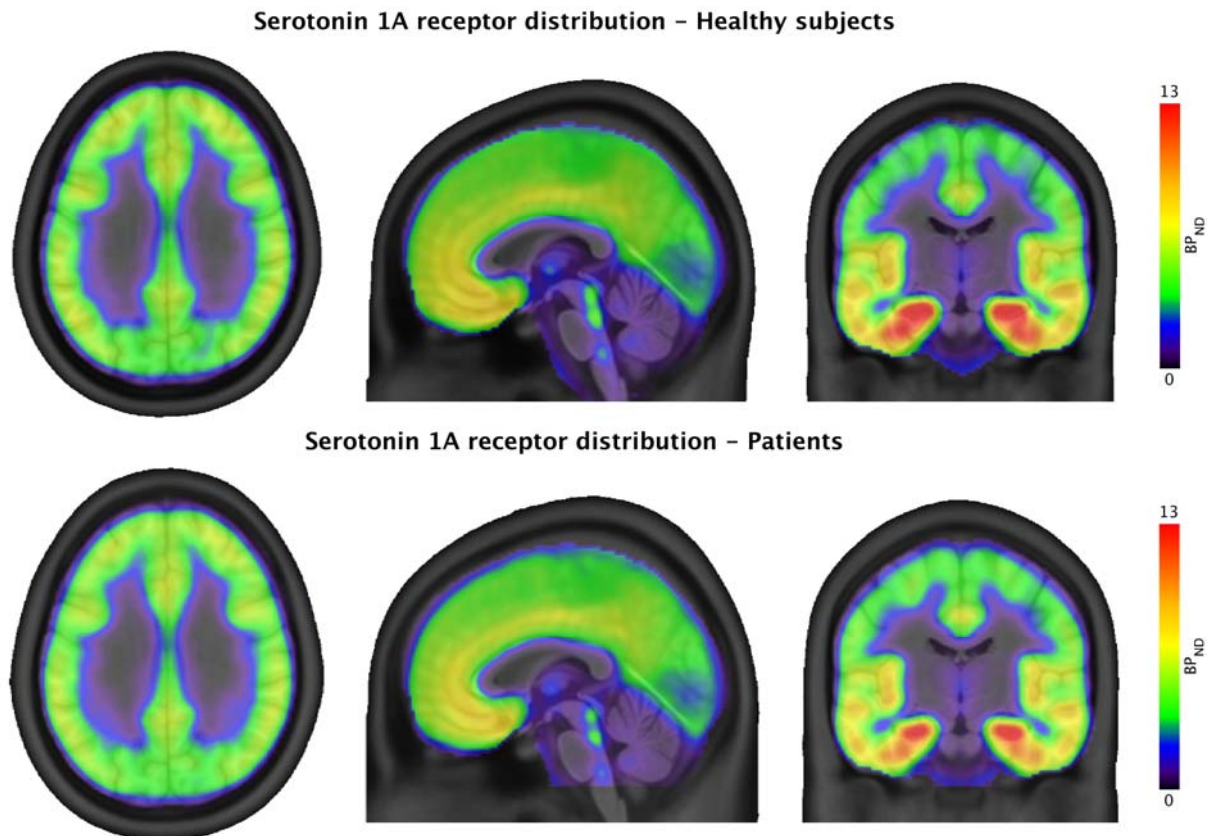


Figure 2: The tri-planar visualization (MNI coordinates  $x = 0$ ,  $y = -14$ ,  $z = 30$ ) of serotonin 1A receptor distribution measured by PET with [carbonyl-<sup>11</sup>C]WAY-100635 radioligand in healthy subjects group (top row) and TRD patients group (bottom row).

	TRD patients	HC subjects
N	20	20
Sex F/M	9/11	10/10
Age (mean $\pm$ SD)	$29.0 \pm 5.2$	$33.2 \pm 8.2$
HAM-D 17 (mean $\pm$ SD)	$21.3 \pm 3.6$	N/A

Table 1: Demographic information on treatment-resistant depressive (TRD) patients and healthy control (HC) subjects. F=Female, M=Male, HAMD=17-item Hamilton Rating Scale for Depression

## DISCUSSION

In this study, we investigated the differences between treatment-resistant depressive patients and healthy control subjects in the 5-HT<sub>1A</sub> receptor binding potential. Despite minor visual differences, we could not show a significant difference in serotonin 1A receptor binding between TRD and HC subjects across the investigated regions. In line with our results, Parsey et al. (13), using simplified reference tissue modeling (SRTM) with the CWM as a reference region, were not able to show a significant change in 5-HT<sub>1A</sub> BP<sub>ND</sub> in MDD patients. On the other hand, other study showed a non-significant increase in remittent MDD patients in comparison to HC subjects using SRTM with CWM as a reference region (26).

In contrast to the other studies, where MDD patients are typically drug-naïve, here we investigate a specific subgroup of treatment-resistant depressive patients who are medicated. Each patient was under medication affecting the serotonergic system and underwent at least two different pharmacological treatments in the past. Previous research has showed that such treatment might have region and substance-specific effects (27). In addition, long-term pharmacological treatment was suggested to reduce 5-HT<sub>1A</sub> concentrations in limbic regions (28) as well as in hippocampus (29). On the other hand comparing antidepressant medicated and drug-naïve patients showed no differences in BP<sub>ND</sub> between these two groups (30,31). Hence even though the possible effect of the treatment cannot be ruled out, we expect it could be negligible. Therefore our results in TRD patients can be compared to existing studies with MDD patients.

Publications with similar research aims and sample size using a MDD cohort but with a different methodology, report varying results, ranging from reduced 5-HT<sub>1A</sub> receptorbinding to a lack of significant differences or even increased binding. Hence, a consensus has been reached that the apparent contrasting effects of MDD on serotonin 1A receptor binding can be by large accredited to methodological discrepancies i.e. compared output measure (32). Multiple studies using the optimal modeling method of the two-tissue compartment model (2-TCM) with plasma-corrected arterial input function (AIF) have shown significant changes in

5-HT<sub>1A</sub> binding. While BP<sub>F</sub> was shown to increase in MDD patients (13,33), Hirvonen et al. (14) showed a significant decrease in BP<sub>P</sub>. On the other hand, no changes to BP<sub>ND</sub> in MDD patients were shown using 2-TCM with AIF (13,14). Inconsistency of the results based on the output measure emphasizes the role of careful interpretation of the results of the studies on 5-HT<sub>1A</sub> receptor binding changes in depressive patients.

The validity of the cerebellum or parts of the cerebellum as reference region for quantification of [*carbonyl*-<sup>11</sup>C]WAY-100635 binding has been extensively discussed. Comparison of the quantification results using different parts of the cerebellum as a reference region to the gold standard AIF modeling across multiple brain regions has also confirmed non-optimal performance of cerebellar gray matter (CGM) as a reference region while suggesting CWM as a better option (34). Higher 5-HT<sub>1A</sub> receptor abundance was suggested in blocking experiment that has showed stable levels of volume of distribution in CWM and decreased values of volume of distribution in CGM following pindolol application (13). This finding is also confirmed by autoradiogram results showing the lowest 5-HT<sub>1A</sub> receptor concentration in cerebellar white matter (20). Thus, results using other than cerebellar white matter as reference region should be interpreted with caution.

Some limiting factors to the study design have been identified. First, the control group comprises subjects from two different study setups. Having HC subjects and TRD patients from the same study would reduce differences in image acquisition and processing. However, differences within the HC group are only related to the reconstructed frame length of PET scans, which were accounted for by applying data harmonization applied after the BP<sub>ND</sub> quantification. Second, the lack of arterial blood samples prevented us from comparing BP<sub>ND</sub> to alternative outcome measures such as BP<sub>P</sub> or BP<sub>F</sub> using the gold standard of 2-TCM plus AIF. Finally, although patients did not change the medication, the diversity of the accompanying treatment might affect the final result. However due to the sample size and variety of concomitant medication such effect could not be investigated in the current study.

In conclusion, we were not able to show a significant decrease in serotonin 1A receptor concentration in treatment-resistant depressive subjects. This result is in line with previous findings with respect to the used methodology.

## **ACKNOWLEDGEMENTS**

This research was funded in whole, or in part, by Austrian Science Funds (FWF) [Grant number KLI 1006 to R. Lanzenberger, KLI 551 to S. Kasper]. M. Murgaš was funded by the Austrian Science Fund (FWF) [Grant number DOC 33-B27, Supervisor R. Lanzenberger].

We would like to express our gratitude towards Pia Baldinger-Melich, Gregor Gryglewski, Marius Hienert, Marie Spies, Christoph Kraus, Alexander Kautzky, Arkadiusz Komorowski, Paul Michenthaler, and Richard Frey for clinical support, and Murray B. Reed, Lucas Rischka and Sebastian Ganger for technical support, and all additional staff and students from the Neuroimaging Lab (NIL) involved in the realization of this research. We would like to thank to Department of Biomedical Imaging and Image-guided Therapy, Division of Nuclear Medicine, Medical University of Vienna, especially Cécile Philippe, Chrysoula Vraka and Wolfgang Wadsak, for support in radiosyntheses, close cooperation and technical support. Moreover, we would like to thank radiotechnologists, Ingrid Leitinger and Harald Ibeschitz, for operating PET.

## **CONFLICT OF INTEREST**

In the past three years S. Kasper has received grant/research support from Lundbeck; he has served as a consultant or on advisory boards for Angelini, Biogen, Esai, Janssen, IQVIA, Lundbeck, Mylan, Recordati, Sage and Schwabe; and he has served on speaker bureaus for Abbott, Angelini, Aspen Farmaceutica S.A., Biogen, Janssen, Lundbeck, Recordati, Sage, Sanofi, Schwabe, Servier, Sun Pharma and Vifor. Without any relevance to this work, R. Lanzenberger received investigator-initiated research funding from Siemens Healthcare regarding clinical research using PET/MR and travel grants and/or conference speaker honoraria from Bruker BioSpin, Shire, AstraZeneca, Lundbeck A/S, Dr. Willmar Schwabe GmbH, Orphan Pharmaceuticals AG, Janssen-Cilag Pharma GmbH, Heel and Roche Austria GmbH. in the years before 2020. He is a shareholder of the start-up company BM Health GmbH, Austria since 2019.. M. Hacker received consulting fees and/or honoraria from Bayer

Healthcare BMS, Eli Lilly, EZAG, GE Healthcare, Ipsen, ITM, Janssen, Roche, Siemens Healthineers. G.S. Kranz declares that he received conference speaker honorarium from Roche, AOP Orphan and Pfizer. The other authors do not report any conflict of interest.

#### **DATA AVAILIBILITY STATEMENT**

Raw data will not be publicly available due to reasons of data protection. Processed data and custom code can be obtained from the corresponding author with a data-sharing agreement, approved by the departments of legal affairs and data clearing of the Medical University of Vienna.

## REFERENCES

1. Kessler RC, Bromet EJ. The Epidemiology of Depression Across Cultures. <https://doi.org/10.1146/annurev-publhealth-031912-114409> [Internet]. 2013 Mar 20 [cited 2023 Sep 26];34:119–38. Available from: <https://www.annualreviews.org/doi/abs/10.1146/annurev-publhealth-031912-114409>
2. Liu Q, He H, Yang J, Feng X, Zhao F, Lyu J. Changes in the global burden of depression from 1990 to 2017: Findings from the Global Burden of Disease study. *J Psychiatr Res*. 2020 Jul 1;126:134–40.
3. Rehm J, Shield KD. Global Burden of Disease and the Impact of Mental and Addictive Disorders. *Curr Psychiatry Rep* [Internet]. 2019 Jan 1 [cited 2023 Sep 27];21(2):1–7. Available from: <https://link.springer.com/article/10.1007/s11920-019-0997-0>
4. Dold M, Kasper S. Evidence-based pharmacotherapy of treatment-resistant unipolar depression. *Int J Psychiatry Clin Pract* [Internet]. 2017 Jan 2 [cited 2023 Sep 26];21(1):13–23. Available from: <https://www.tandfonline.com/doi/abs/10.1080/13651501.2016.1248852>
5. Kautzky A, Dold M, Bartova L, Spies M, Kranz GS, Souery D, et al. Clinical factors predicting treatment resistant depression: affirmative results from the European multicenter study. *Acta Psychiatr Scand*. 2019;139(1).
6. Handschuh PA, Konadu ME, Spurny-Dworak B, Silberbauer LR, Murgas M, Lanzenberger R. Serotonin Receptors and Antidepressants: Neuroimaging Findings from Preclinical and Clinical Research. In: Kim YK, Amidfar M, editors. *Translational Research Methods for Major Depressive Disorder* [Internet]. New York, NY: Springer US; 2022. p. 373–429. Available from: [https://doi.org/10.1007/978-1-0716-2083-0\\_18](https://doi.org/10.1007/978-1-0716-2083-0_18)
7. James GM, Baldinger-Melich P, Philippe C, Kranz GS, Vanicek T, Hahn A, et al. Effects of selective serotonin reuptake inhibitors on interregional relation of serotonin transporter availability in major depression. *Front Hum Neurosci*. 2017;11.
8. Rosa-Neto P, Diksic M, Okazawa H, Leyton M, Ghadirian N, Mzengeza S, et al. Measurement of brain regional  $\alpha$ [11C]methyl-L-tryptophan trapping as a measure of serotonin synthesis in medication-free patients with major depression. *Arch Gen Psychiatry*. 2004;61(6).
9. Saulin A, Savli M, Lanzenberger R. Serotonin and molecular neuroimaging in humans using PET. *Amino Acids* 2011 42:6 [Internet]. 2011 Sep 24 [cited 2023 Sep 26];42(6):2039–57. Available from: <https://link.springer.com/article/10.1007/s00726-011-1078-9>
10. Drevets WC, Thase ME, Moses-Kolko EL, Price J, Frank E, Kupfer DJ, et al. Serotonin-1A receptor imaging in recurrent depression: replication and literature review. Vol. 34, *Nuclear Medicine and Biology*. 2007.
11. Albert PR, Lemonde S. 5-HT<sub>1A</sub> Receptors, Gene Repression, and Depression: Guilt by Association. <http://dx.doi.org/10.1177/1073858404267382> [Internet]. 2004 Dec 1 [cited 2023 Sep 26];10(6):575–93. Available from: <https://journals.sagepub.com/doi/10.1177/1073858404267382>
12. Parsey R V., Olvet DM, Oquendo MA, Huang YY, Ogden RT, Mann JJ. Higher 5-HT<sub>1A</sub> Receptor Binding Potential During a Major Depressive Episode Predicts Poor Treatment Response: Preliminary Data from a Naturalistic Study. *Neuropsychopharmacology* 2006 31:8 [Internet]. 2006 Jan 4 [cited 2023 Sep 26];31(8):1745–9. Available from: <https://www.nature.com/articles/1300992>
13. Parsey R V., Ogden RT, Miller JM, Tin A, Hesselgrave N, Goldstein E, et al. Higher Serotonin 1A Binding in a Second Major Depression Cohort: Modeling and Reference Region Considerations. *Biol Psychiatry*. 2010 Jul 15;68(2):170–8.
14. Hirvonen J, Karlsson H, Kajander J, Lepola A, Markkula J, Rasi-Hakala H, et al. Decreased brain serotonin 5-HT<sub>1A</sub> receptor availability in medication-naive patients with major depressive disorder: an in-vivo imaging study using PET and [carbonyl-<sup>11</sup>C]WAY-100635. *International Journal of Neuropsychopharmacology* [Internet]. 2008

- Jun 1 [cited 2023 Sep 26];11(4):465–76. Available from: <https://dx.doi.org/10.1017/S1461145707008140>
15. Bartova L, Dold M, Kautzky A, Fabbri C, Spies M, Serretti A, et al. Results of the European Group for the Study of Resistant Depression (GSRD) — basis for further research and clinical practice. *The World Journal of Biological Psychiatry* [Internet]. 2019 Jul 3 [cited 2023 Sep 27];20(6):427–48. Available from: <https://www.tandfonline.com/doi/abs/10.1080/15622975.2019.1635270>
  16. Lanzenberger R, Mitterhauser M, Spindelegger C, Wadsak W, Klein N, Mien LK, et al. Reduced Serotonin-1A Receptor Binding in Social Anxiety Disorder. *Biol Psychiatry*. 2007;61(9).
  17. Baldinger P, Höflich AS, Mitterhauser M, Hahn A, Rami-Mark C, Spies M, et al. Effects of Silexan on the serotonin-1A receptor and microstructure of the human brain: a randomized, placebo-controlled, double-blind, cross-over study with molecular and structural neuroimaging. *Int J Neuropsychopharmacol* [Internet]. 2014 Jan 1 [cited 2023 Sep 26];18(4):1–9. Available from: <https://pubmed.ncbi.nlm.nih.gov/25522403/>
  18. Murgaš M, Unterholzner J, Stöhrmann P, Philippe C, Godbersen GM, Nics L, et al. Effects of bilateral sequential theta-burst stimulation on 5-HT<sub>1A</sub> receptors in the dorsolateral prefrontal cortex in treatment-resistant depression: a proof-of-concept trial. *Transl Psychiatry*. 2023;13(1).
  19. Wadsak W, Mien LK, Ettliger DE, Eidherr H, Haeusler D, Sindelar KM, et al. 18F fluoroethylations: different strategies for the rapid translation of 11C-methylated radiotracers. *Nucl Med Biol*. 2007 Nov 1;34(8):1019–28.
  20. Parsey R V., Arango V, Olvet DM, Oquendo MA, Van Heertum RL, Mann JJ. Regional heterogeneity of 5-HT<sub>1A</sub> receptors in human cerebellum as assessed by positron emission tomography. *Journal of Cerebral Blood Flow and Metabolism* [Internet]. 2005 Jul 1 [cited 2023 Sep 26];25(7):785–93. Available from: <https://journals.sagepub.com/doi/10.1038/sj.jcbfm.9600072>
  21. Ichise M, Liow JS, Lu JQ, Takano A, Model K, Toyama H, et al. Linearized Reference Tissue Parametric Imaging Methods: Application to [ 11 C]DASB Positron Emission Tomography Studies of the Serotonin Transporter in Human Brain. 2003;
  22. Lanzenberger R, Baldinger P, Hahn A, Ungersboeck J, Mitterhauser M, Winkler D, et al. Global decrease of serotonin-1A receptor binding after electroconvulsive therapy in major depression measured by PET. *Mol Psychiatry* [Internet]. 2013 [cited 2023 Sep 26];18(1):93. Available from: <https://pmc/articles/PMC3526726/>
  23. Savli M, Bauer A, Mitterhauser M, Ding YS, Hahn A, Kroll T, et al. Normative database of the serotonergic system in healthy subjects using multi-tracer PET. *Neuroimage*. 2012 Oct 15;63(1):447–59.
  24. Fortin JP, Parker D, Tunç B, Watanabe T, Elliott MA, Ruparel K, et al. Harmonization of multi-site diffusion tensor imaging data. *Neuroimage*. 2017 Nov 1;161:149–70.
  25. Johnson WE, Li C, Rabinovic A. Adjusting batch effects in microarray expression data using empirical Bayes methods. *Biostatistics* [Internet]. 2007 Jan 1 [cited 2023 Sep 26];8(1):118–27. Available from: <https://dx.doi.org/10.1093/biostatistics/kxj037>
  26. Miller JM, Brennan KG, Ogden TR, Oquendo MA, Sullivan GM, Mann JJ, et al. Elevated Serotonin 1A Binding in Remitted Major Depressive Disorder: Evidence for a Trait Biological Abnormality. *Neuropsychopharmacology* 2009 34:10 [Internet]. 2009 May 20 [cited 2023 Sep 26];34(10):2275–84. Available from: <https://www.nature.com/articles/npp200954>
  27. Hensler JG. Regulation of 5-HT<sub>1A</sub> receptor function in brain following agonist or antidepressant administration. Vol. 72, *Life Sciences*. 2003.
  28. Spindelegger C, Lanzenberger R, Wadsak W, Mien LK, Stein P, Mitterhauser M, et al. Influence of escitalopram treatment on 5-HT<sub>1A</sub> receptor binding in limbic regions in patients with anxiety disorders. *Mol Psychiatry*. 2009;14(11).
  29. Haddjeri N, Blier P, Montigny C de. Long-Term Antidepressant Treatments Result in a Tonic Activation of Forebrain 5-HT<sub>1A</sub> Receptors. *The Journal of*



- Neuroscience [Internet]. 1998 Dec 1;18(23):10150. Available from: <http://www.jneurosci.org/content/18/23/10150.abstract>
30. Metts A V, Rubin-Falcone H, Ogden RT, Lin X, Wilner DE, Burke AK, et al. Antidepressant medication exposure and 5-HT<sub>1A</sub> autoreceptor binding in major depressive disorder. *Synapse* [Internet]. 2019 Jun 1;73(6):e22089. Available from: <https://doi.org/10.1002/syn.22089>
  31. Sargent PA, Kjaer KH, Bench CJ, Rabiner EA, Messa C, Meyer J, et al. Brain Serotonin<sub>1A</sub> Receptor Binding Measured by Positron Emission Tomography With [<sup>11</sup>C]WAY-100635: Effects of Depression and Antidepressant Treatment. *Arch Gen Psychiatry* [Internet]. 2000 Feb 1;57(2):174–80. Available from: <https://doi.org/10.1001/archpsyc.57.2.174>
  32. Shrestha S, Hirvonen J, Hines CS, Henter ID, Svenningsson P, Pike VW, et al. Serotonin-1A receptors in major depression quantified using PET: Controversies, confounds, and recommendations. *Neuroimage*. 2012 Feb 15;59(4):3243–51.
  33. Hesselgrave N, Parsey R V. Imaging the serotonin 1A receptor using [<sup>11</sup>C]WAY100635 in healthy controls and major depression. *Philos Trans R Soc Lond B Biol Sci* [Internet]. 2013 [cited 2023 Sep 27];368(1615). Available from: <https://pubmed.ncbi.nlm.nih.gov/23440462/>
  34. Hirvonen J, Kajander J, Allonen T, Oikonen V, Någren K, Hietala J. Measurement of serotonin 5-HT<sub>1A</sub> receptor binding using positron emission tomography and [carbonyl-<sup>11</sup>C]WAY-100635 - Considerations on the validity of cerebellum as a reference region. *Journal of Cerebral Blood Flow and Metabolism*. 2007;27(1).