

1 **Molecular analysis for ovarian cancer detection in patient-friendly samples**

2 Birgit M.M. Wever^{1,2}, Mirte Schaafsma^{1,2,3}, Maaïke C.G. Bleeker^{1,2}, Yara van den
3 Burgt^{1,2}, Rianne van den Helder^{1,2,3}, Christianne A.R. Lok³, Frederike Dijk^{2,4}, Ymke van
4 der Pol^{1,2}, Florent Mouliere^{1,2}, Norbert Moldovan^{1,2}, Nienke E. van Trommel³, Renske
5 D.M. Steenbergen^{1,2*}

6 ¹ Amsterdam UMC, location Vrije Universiteit Amsterdam, Department of Pathology,
7 Amsterdam, The Netherlands

8 ² Cancer Center Amsterdam, Imaging and Biomarkers, Amsterdam, The Netherlands

9 ³ Antoni van Leeuwenhoek/Netherlands Cancer Institute, Department of Gynecologic
10 Oncology, Center of Gynecologic Oncology Amsterdam, Amsterdam, The Netherlands

11 ⁴ Amsterdam UMC, location University of Amsterdam, Department of Pathology, The
12 Netherlands

13

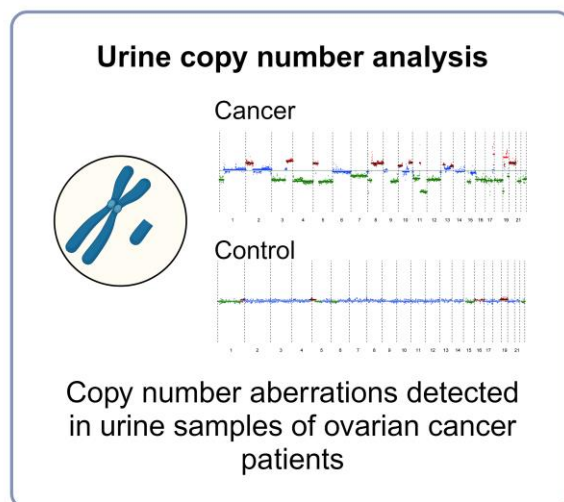
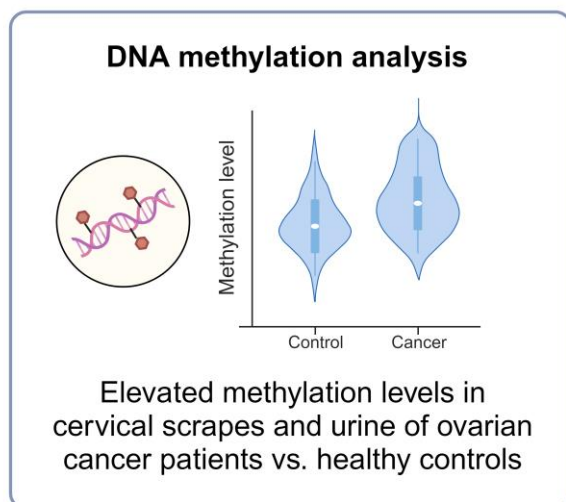
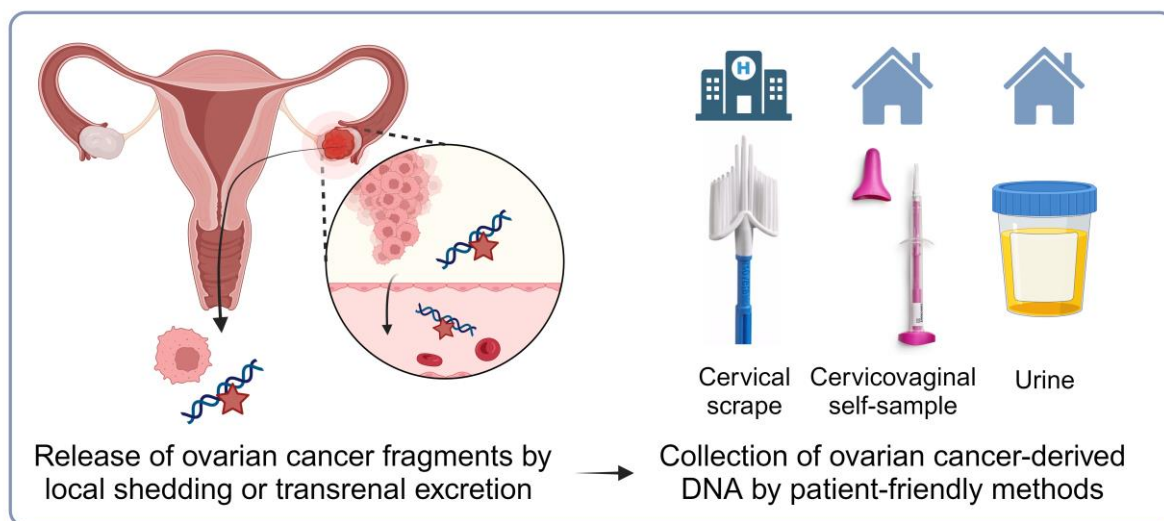
14 ***Corresponding author:** Amsterdam UMC, Vrije Universiteit Amsterdam, Department
15 of Pathology, Cancer Center Amsterdam, De Boelelaan 1117, PO Box 7057, 1007 MB,
16 Amsterdam, The Netherlands.

17 Telephone: 00-31-204442331; E-mail: r.steenbergen@amsterdamumc.nl

18 **HIGHLIGHTS**

- 19 • Ovarian cancer is often diagnosed at an advanced stage with a poor prognosis
- 20 • We studied the potential of molecular testing in different types of patient-friendly
21 material for ovarian cancer detection
- 22 • Elevated methylation of ovarian cancer-associated genes can be measured in
23 cervical scrapes and urine
- 24 • Copy number aberrations are detectable in urine of ovarian cancer patients
- 25 • DNA-based testing in cervical scrapes and urine could aid ovarian cancer
26 diagnosis upon further development

27 **GRAPHICAL ABSTRACT**



28

29 Created with BioRender.com.

30 **ABSTRACT**

31 **Background**

32 High ovarian cancer mortality rates motivate the development of effective and patient-
33 friendly diagnostics. Here, we explored the potential of molecular testing in patient-
34 friendly samples for ovarian cancer detection.

35 **Patients and methods**

36 Home-collected urine, cervicovaginal self-samples, and clinician-taken cervical
37 scrapes were prospectively collected from 54 patients diagnosed with a highly
38 suspicious ovarian mass (benign n=25, malignant n=29). All samples were tested for
39 nine methylation markers, using quantitative methylation-specific PCRs that were
40 verified on ovarian tissue samples, and compared to unpaired patient-friendly samples
41 of 110 healthy controls. Copy number analysis was performed on a subset of urine
42 samples of ovarian cancer patients by shallow whole-genome sequencing.

43 **Results**

44 Three methylation markers were significantly elevated in full void urine of ovarian
45 cancer patients as compared to healthy controls (*C2CD4D*, $p=0.008$; *CDO1*, $p=0.022$;
46 *MAL*, $p=0.008$), of which two were also discriminatory in cervical scrapes (*C2CD4D*,
47 $p=0.001$; *CDO1*, $p=0.004$). When comparing benign and malignant ovarian masses,
48 *GHSR* showed significantly elevated methylation levels in the urine sediment of
49 ovarian cancer patients ($p=0.024$). Other methylation markers demonstrated
50 comparably high methylation levels in benign and malignant ovarian masses.
51 Cervicovaginal self-samples showed no elevated methylation levels in patients with

52 ovarian masses as compared to healthy controls. Copy number changes were
53 identified in 4 out of 23 urine samples of ovarian cancer patients.

54 **Conclusion**

55 Our study revealed increased methylation levels of ovarian cancer-associated genes
56 and copy number aberrations in the urine of ovarian cancer patients. Our findings
57 support continued research into urine biomarkers for ovarian cancer detection and
58 highlight the importance of including benign ovarian masses in future studies to
59 develop a clinically useful test.

60 **Keywords**

61 Cervical scrape; Copy number aberrations; DNA Methylation; Ovarian cancer; Urine

62 INTRODUCTION

63 Ovarian cancer is the most lethal gynecological cancer worldwide, accounting for
64 207,252 deaths in 2020.¹ Due to non-specific or absence of symptoms at an early-
65 stage, patients typically present at a late-stage when prognosis is poor.² Five-year
66 overall survival rates sharply decrease with higher stage at diagnosis, with 92%
67 survival in early-stage disease compared to only 29% in late-stage disease.³ High
68 mortality rates prioritize the development of novel diagnostic approaches for ovarian
69 cancer. Although more ovarian cancer patients were diagnosed at an earlier stage with
70 screening strategies using conventional imaging and/or serum biomarkers (e.g., CA-
71 125), this did not translate into reduced overall cancer-specific mortality in general and
72 in high-risk populations.^{4, 5} In fact, the majority of ovarian cancers were not detected
73 during or after the trial. A more accurate and easily accessible test could potentially
74 overcome this problem.

75 Testing for ovarian cancer using biomarkers related to carcinogenesis could offer such
76 an accurate test. DNA methylation-mediated silencing of tumor suppressor genes
77 occurs early in cancer development and is therefore promising to detect cancer at an
78 early-stage.⁶ Methylation analysis in urine, cervicovaginal self-samples, and clinician-
79 taken cervical scrapes has already been proven to allow reliable detection of cervical^{7,}
80 ⁸ and endometrial cancer.^{9, 10} In urine, even signals of non-urogenital cancers,
81 including colorectal¹¹ and lung cancer^{12, 13}, are detectable by methylation testing. The
82 measurement of somatic mutations, aneuploidy, or DNA methylation in clinician-taken
83 cervical scrapes or blood demonstrated the high potential of molecular-based
84 diagnostic tests for ovarian cancer.¹⁴⁻¹⁷ However, these molecular changes have not
85 been investigated in home-collected urine and cervicovaginal self-samples of ovarian
86 cancer patients.

87 In this study, we explored the potential of molecular testing in home-collected urine
88 and cervicovaginal self-samples, and clinician-taken cervical scrapes for ovarian
89 cancer detection. Methylation markers considered suitable for the detection of ovarian
90 cancer included a combination of markers described in studies on cervical and
91 endometrial cancer detection in patient-friendly sample types (*GALR1*, *GHSR*, *MAL*,
92 *PRDM14*, *SST*, and *ZIC1*^{10, 18-20}), and ovarian cancer detection in cervical scrapes and
93 plasma (*C2CD4D*, *CDO1*, *NRN1*^{17, 21, 22}). In addition, the analysis of somatic copy
94 number aberrations (SCNA) and fragmentation patterns was performed using shallow
95 whole-genome sequencing on a subset of the samples to verify the presence of ovarian
96 cancer-derived DNA in urine.

97

98 **MATERIAL AND METHODS**

99 **Study population**

100 This study prospectively included patients with a highly suspicious ovarian mass
101 according to current triage methods (>40% risk of malignancy using the IOTA adnex
102 model).^{23, 24} Paired samples (*i.e.*, urine, cervicovaginal self-samples, and clinician-
103 taken cervical scrapes) were consecutively collected within the SOLUTION1 study,
104 between July 2018 and September 2022, at the Antoni van Leeuwenhoek hospital,
105 Amsterdam, The Netherlands. Samples were collected from patients who underwent
106 pelvic surgery with post-operatively confirmed ovarian cancer of any stage and
107 histological subtype, and patients with a benign ovarian mass who were referred to a
108 highly specialized tertiary oncology unit for further assessment. Patients scheduled for
109 pelvic surgery, involving exploratory laparotomy to determine the origin of their ovarian
110 mass or cytoreductive surgery, were asked to collect samples prior to surgery. Patients

111 without residual tumor/ovarian mass at time of inclusion or no possibility to collect
112 cytological or urine samples prior to surgery were excluded from participation. Patients
113 diagnosed with a borderline tumor were also excluded to focus on the most distinct
114 tumor types in this feasibility stage (*i.e.*, benign and malignant ovarian masses).
115 Patients of which not all three paired sample types (*i.e.*, cervical scrape, cervicovaginal
116 self-sample, and urine) were available were not excluded.

117 Control urine samples were obtained from the URIC biobank, including healthy women
118 without any prior cancer diagnosis within the last five years. Control cervicovaginal
119 self-samples and cervical scrapes were collected from high-risk human papillomavirus
120 (hrHPV)-negative women. Both were retrieved from leftover material of the Dutch
121 national cervical cancer screening program coordinated by the Dutch National Institute
122 for Public Health and the Environment (RIVM).

123 To verify the discriminatory power of the methylation assays and concordance of copy
124 number profiles, formalin-fixed paraffin-embedded (FFPE) and fresh frozen high grade
125 serous ovarian cancer (HGSOC) tissue samples were retrieved from the Pathology
126 archives of Amsterdam UMC, locations AMC and VUmc, Amsterdam, The
127 Netherlands. FFPE normal fallopian tube tissues were collected from patients
128 undergoing a hysterectomy for the treatment of benign endometrial conditions.

129 **Sample collection, processing, DNA extraction, and bisulfite modification**

130 The sample collection, processing, DNA extraction, and bisulfite modification
131 procedures were carried out as described previously for cervical^{8, 25} and endometrial
132 cancer.^{10, 19} A detailed description is provided in the Supplemental Methods. Briefly,
133 urine and cervicovaginal self-samples were collected at home and clinician-taken
134 cervical scrapes were collected before surgery. Urine was centrifuged and separated

135 into two fractions: the urine supernatant and the urine sediment. Both fractions and the
136 remaining full void urine were stored for further analysis. Following DNA extraction, up
137 to 250 ng of DNA was subjected to bisulfite modification.

138 **DNA methylation analysis by quantitative methylation-specific PCR**

139 Methylation levels of the *C2CD4D* (gene-ID: 100191040), *CDO1* (gene-ID: 1036),
140 *GALR1* (gene-ID: 2587), *GHSR* (gene-ID: 2693), *MAL* (gene-ID: 4118), *NRN1* (gene-
141 ID: 51299), *PRDM14* (gene-ID: 63978), *SST* (gene-ID: 6750), and *ZIC1* (gene-ID:
142 7545) genes were measured by quantitative methylation-specific polymerase chain
143 reactions (qMSP). Methylation markers were multiplexed to assess the methylation
144 levels of three genes (1: *GHSR/SST/ZIC1*, 2: *CDO1/MAL/PRDM14*, 3:
145 *C2CD4D/GALR1/NRN1*) and a reference gene (*ACTB*, gene-ID: 60) within the same
146 reaction. Methylation analysis of *CDO1*, *GALR1*, *GHSR*, *MAL*, *SST*, *PRDM14*, and
147 *ZIC1* was performed as described previously^{10, 18, 19} with a shortened amplicon size of
148 *ACTB*, *MAL* and *ZIC1* to facilitate methylation detection in fragmented urinary DNA.
149 Assays targeting *C2CD4D* and *NRN1* were designed based on gene loci discovered
150 and validated by others.^{17, 21} Primer and probe information is provided in Supplemental
151 Table 1. Reaction conditions, instrument identifications, and thermocycling parameters
152 are described in the Supplemental Methods. Double-stranded gBlocks™ Gene
153 Fragments (Integrated DNA Technologies) containing the target amplicons and H₂O
154 were taken along in each run as positive and negative control, respectively. Sample
155 quality and sufficient input was ensured by excluding samples with a *ACTB*
156 quantification cycle (Cq) ≥ 32. Methylation levels were calculated relative to *ACTB*
157 levels by the comparative Cq method: $2^{-(Cq \text{ marker} - Cq \text{ ACTB})} \times 100$.²⁶

158 All qMSP assays were designed, multiplexed and optimized according to parameters
159 described earlier.²⁷ Target specificity was validated *in silico* (BLAST). Correct amplicon
160 size was verified by agarose gel electrophoresis. Analytical validation was performed
161 using a dilution series of bisulfite treated methylated DNA from the SiHa cell line (100,
162 50, 10, 5, 1, 0.5%) within the range of 20 to 0.1 ng (Supplemental Table 2). The
163 discriminatory power of each assay was verified by comparing methylation marker
164 levels in tissue samples of ovarian cancer patients with those measured in normal
165 fallopian tube tissue.

166 **Shallow whole-genome sequencing**

167 Urine cell-free DNA (cfDNA) extracted from urine supernatant samples of ovarian
168 cancer patients was further characterized by shallow whole-genome sequencing (~1x
169 coverage). The cfDNA was quantified and analyzed using a Cell-free DNA ScreenTape
170 assay of the Agilent 4200 TapeStation System (Agilent) for quality control before
171 sequencing. Sequencing libraries of the first pilot series of urine supernatant DNA were
172 prepared using the ThruPLEX Plasma-seq Kit (Takara Bio, Mountain View, CA, USA)
173 for whole-genome sequencing according to manufacturers' instructions. The remaining
174 samples were prepared using the NEBNext® Enzymatic Methyl-seq (EM-seq) Kit
175 (NEB, Ipswich, MA, USA). EM-seq was performed according to manufacturers'
176 guidelines for standard insert libraries with 14 PCR cycles. Libraries were quantified
177 and quality checked using the D1000 ScreenTape Analysis Assay (Agilent) before
178 pooling. Paired-end 150 base pair (bp) libraries were pooled in equimolar amounts and
179 sequenced on a NovaSeq6000 (Illumina) (GenomeScan, Leiden). The processing of
180 sequencing data and subsequent analysis of SCNA and cfDNA fragmentation patterns
181 are provided in the Supplemental Methods. Shallow whole-genome sequencing of

182 paired FFPE primary tumor tissue was performed to verify copy number profile
183 concordance and is also described in the Supplemental Methods.

184 **Statistical analysis**

185 Methylation levels were expressed as 2^{\log} -transformed Cq ratios and presented in violin
186 plots. Tissue methylation levels were compared between two groups using the non-
187 parametric Mann-Whitney U test. Methylation levels of each gene in the remaining
188 sample types were compared between healthy controls and patients diagnosed with a
189 benign or malignant ovarian mass using the Kruskal-Wallis test. In case of a significant
190 Kruskal-Wallis test ($p < 0.05$), this was followed by post-hoc testing of 1) healthy controls
191 versus malignant ovarian masses, and 2) benign versus malignant ovarian masses
192 using the Mann-Whitney U test with Bonferroni correction.

193 The correlation between methylation levels of each DNA methylation marker between
194 paired samples of patients diagnosed with ovarian cancer was assessed using
195 Spearman's rank correlation. Correlation coefficient r was defined as very weak
196 ($r = 0.00-0.19$), weak ($r = 0.20-0.39$), moderate ($r = 0.40-0.59$), strong ($r = 0.60-0.79$),
197 or very strong ($r = 0.80-1.00$) and displayed in correlation matrices.

198 Fragment size profiles were visualized by density plots and analyzed by comparing
199 cfDNA reads of healthy controls and ovarian cancer patients with low (<5%) and high
200 ($\geq 5\%$) tumor fractions.

201 Data was collected using Castor EDC and analyzed using R (version 4.0.3 with
202 packages: cowplot, corrplot, dplyr, ggplot, ggpubr, and rstatix). P -values are two-sided
203 and considered statistically significant when $p < 0.05$.

204

205 **RESULTS**

206 **Study population**

207 A total of 428 samples of 164 participants were analyzed within this study. Samples
208 were prospectively collected from 54 patients undergoing pelvic surgery at a tertiary
209 oncology center because of a highly suspicious ovarian mass. Twenty-nine women
210 were diagnosed with ovarian cancer and 25 with a benign ovarian mass. For
211 comparison, 110 unpaired samples of healthy age-matched controls were collected.
212 Sample types included clinician-taken cervical scrapes (control n=40, benign n=22,
213 malignant n=24), cervicovaginal self-samples (control n=40, benign n=24, malignant
214 n=28), full void urine (control n=30, benign n=25, malignant n=28), urine supernatant
215 (control n=29, benign n=25, malignant n=29), and urine sediment (control n=30, benign
216 n=25, malignant n=29). Clinical characteristics of study participants are summarized in
217 Table 1.

218

Table 1: Clinical characteristics of study participants.

	n	%	Age: median (IQR)
<u>Ovarian cancer:</u>	29		59 (56 - 67)
Histology			
Serous carcinoma	22	75.9%	
Low-grade	4		
High-grade	18		
Clear cell carcinoma, high-grade*	3	10.3%	
Carcinosarcoma, high-grade	2	6.9%	
Endometrioid carcinoma, low-grade	1	3.4%	
Mucinous carcinoma, low-grade	1	3.4%	
Stage (FIGO 2014)			
IIB	5	17.2%	
IIC	1	3.4%	
IIIA	5	17.2%	
IIIB	4	13.8%	
IIIC	12	41.4%	
IV	2	6.9%	
<u>Benign ovarian mass:</u>	25		62 (54 - 69)
Histology			
Serous cystadeno(fibro)ma	8	32.0%	
Mucinous cystadenoma	6	24.0%	
Fibroma	4	16.0%	
Endometriosis cyst	4	16.0%	
Mature teratoma	3	12.0%	
<u>Healthy controls:</u>	110		
Sample type			
Urine	30		60 (53 - 74)
Cervicovaginal self-sample	40		60 (60 - 60)
Clinician-taken cervical scrape	40		60 (60 - 60)

*Including one mixed clear cell and low-grade endometrioid carcinoma.

219

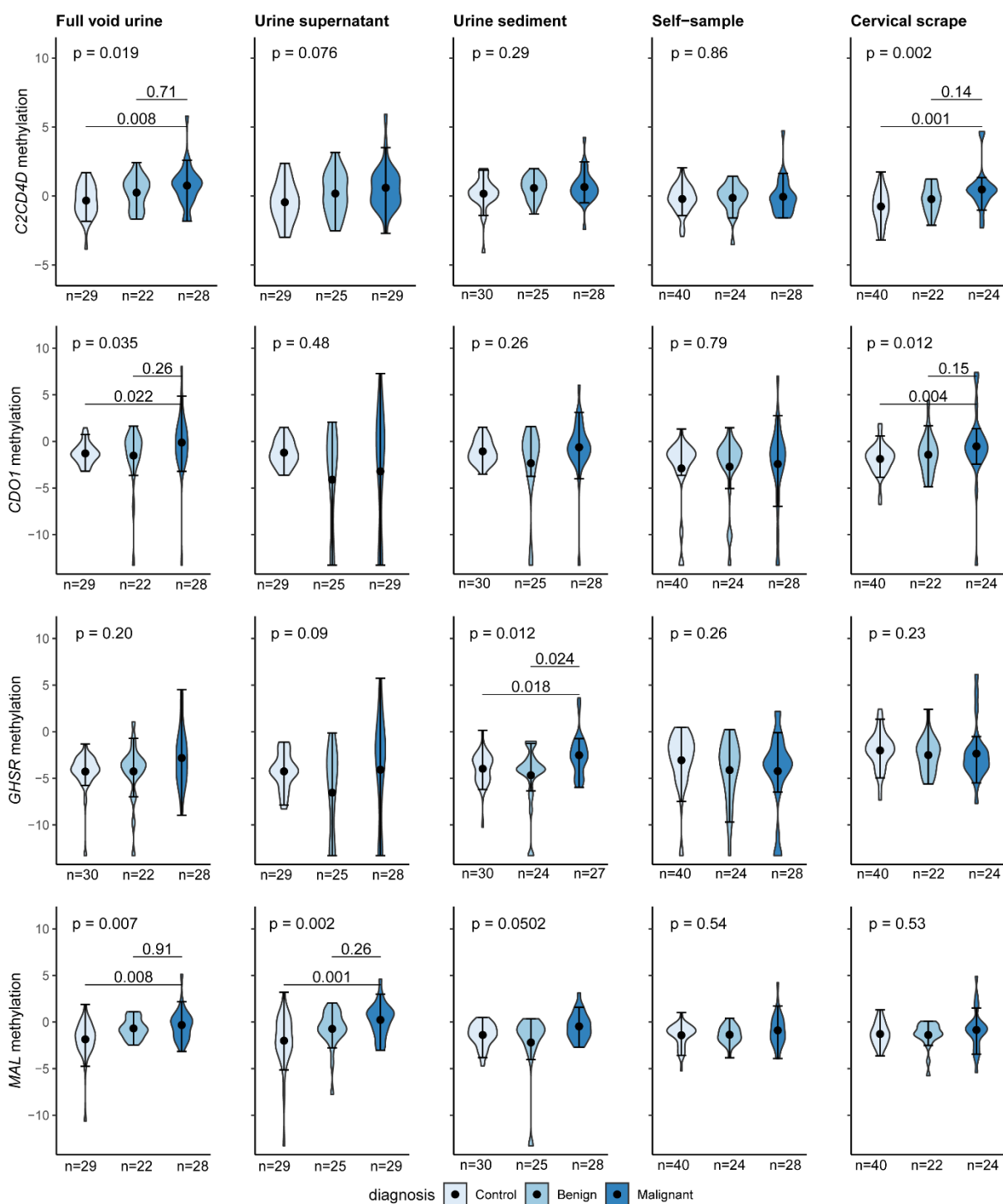
220 **DNA methylation levels are elevated in cervical scrapes and urine samples of**
221 **women with ovarian masses**

222 The discriminatory power of qMSP assays was verified in tissue, in which all markers
223 showed clear significant differences when comparing methylation levels in normal
224 fallopian tube (n=22) with HGSOE (n=35) tissues ($p < 0.0001$; Supplemental Figure 1,
225 Mann-Whitney U).

226 The feasibility of ovarian cancer detection in urine by methylation analysis was
227 evaluated by testing nine methylation markers in full void (*i.e.*, unfractionated) urine,
228 urine supernatant, and urine sediment of healthy controls and patients diagnosed with
229 a benign or malignant ovarian mass (Figure 1, Supplemental Figure 2-4). When
230 comparing healthy controls with ovarian cancer patients, three markers showed a
231 significant discrimination in full void urine (*C2CD4D*, $p=0.008$; *CDO1*, $p=0.022$; *MAL*,
232 $p=0.008$, Mann-Whitney U), one in urine supernatant (*MAL*, $p=0.001$) and one in urine
233 sediment (*GHSR*, $p=0.018$, Mann-Whitney U). Benign and malignant masses revealed
234 comparably high methylation levels for most methylation markers, except for *GHSR*.
235 *GHSR* showed significantly elevated methylation levels in the urine sediment of
236 ovarian cancer patients ($p=0.024$, Mann-Whitney U; Figure 1, Supplemental Figure 4).

237 Similarly, the feasibility of ovarian cancer detection in cervicovaginal self-samples and
238 clinician-taken cervical scrapes by methylation analysis was assessed by testing the
239 same methylation markers. While methylation levels of two markers were significantly
240 increased in clinician-taken cervical scrapes of ovarian cancer patients as compared
241 to controls (*C2CD4D*, $p=0.001$; *CDO1*, $p=0.004$, Mann-Whitney U), benign and
242 malignant ovarian masses could not be distinguished using these markers (Figure 1,
243 Supplemental Figure 5). None of the markers were significantly elevated in
244 cervicovaginal self-samples when comparing these groups (Figure 1, Supplemental
245 Figure 6).

246 Numbers were insufficient to compare methylation levels between different histological
247 subtypes and stages.



248

249 **Figure 1:** Methylation levels of most discriminating markers *C2CD4D*, *CDO1*, *GHSR*, and *MAL* in full
 250 void (unfractionated) urine, urine supernatant, urine sediment, cervicovaginal self-samples, and
 251 clinician-taken cervical scrapes of healthy controls and patients diagnosed with a benign or malignant
 252 ovarian mass. Methylation levels are expressed by 2log-transformed Cq ratios and bold circles represent
 253 medians.

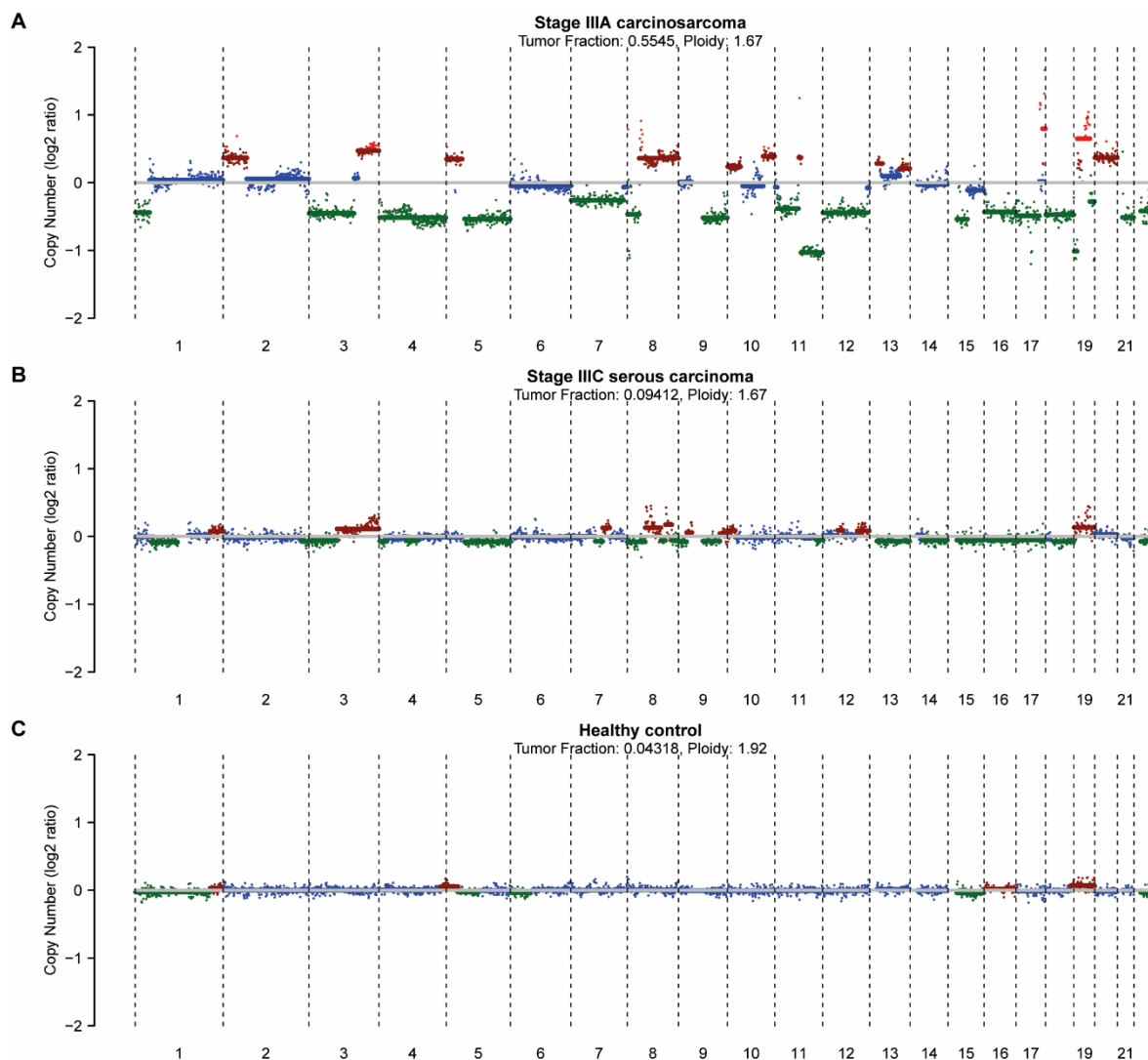
254

255 **DNA methylation levels are correlated between paired cervical scrapes and urine**
256 **samples**

257 DNA methylation levels of genes significantly discriminating between healthy and
258 malignant in cervical scrapes and urine (*i.e.*, *C2CD4D*, *CDO1*, *GHSR*, *MAL*) were
259 compared between paired samples to assess their correlation (Supplemental Figure
260 7). Paired cervical scrapes and urine were available for 23 ovarian cancer patients.
261 Individual markers in full void urine correlated moderately to strongly with urine
262 supernatant ($r = 0.52-0.61$) and urine sediment ($r = 0.67-0.76$). The full void urine
263 showed the best correlation with cervical scrapes ($r = 0.42-0.59$), while a weak
264 correlation was observed between the urine supernatant and cervical scrapes ($r =$
265 $0.33-0.45$).

266 **Copy number aberrations are detectable in urine cell-free DNA**

267 The presence of ovarian cancer-derived DNA in the urine was verified by analyzing a
268 subset of 25 urine supernatant samples of ovarian cancer patients ($n=23$) and healthy
269 controls ($n=2$) by shallow whole-genome sequencing. Sequencing yielded a sufficient
270 read count for all samples (median mapped paired read count of 55,133,492). Shallow
271 whole-genome sequencing coverage and quality statistics per urine sample are
272 provided in Supplemental Table 3. Aberrant genome-wide copy number profiles were
273 found in 4 out of 23 sequenced urine supernatant samples of ovarian cancer patients
274 (Figure 2, Supplemental Figure 8). Copy number profile concordance between urine
275 and the primary tumor tissue was verified for these cases (Supplementary Figure 8).



276

277 **Figure 2:** Illustrative examples of genome-wide somatic copy number profiles of urine supernatant
278 samples collected from patients with a stage IIIA carcinosarcoma (A), stage IIIC serous carcinoma (B),
279 and a healthy control (C). Estimated ploidy and tumor fraction are listed at the top of the plot. The y-axis
280 depicts the log₂ tumor to normal ratio.

281 The patient with the highest tumor fraction also showed the highest methylation levels
282 of *MAL* in the urine supernatant (Supplemental Figure 9). Additionally, fragment size
283 distributions were analyzed by comparing cfDNA reads of healthy controls and ovarian
284 cancer patients with low and high tumor fractions. Cancer samples with a high tumor
285 fraction (n=4) revealed a shorter modal fragment size of 80 bp as compared to 111 bp
286 in cancer samples with a low tumor fraction (n=19) and controls (n=2; Supplemental
287 Figure 10).

288 **DISCUSSION**

289 Both elevated methylation levels of a subset of markers and SCNA were detected in
290 home-collected urine samples of ovarian cancer patients by targeted qMSP assays
291 and shallow whole-genome sequencing, respectively. Urine is truly non-invasive and
292 unlocks at home collection of liquid biopsy to reduce in-person visits. Yet, an important
293 finding was that methylation levels in benign cases were similarly high, presenting a
294 challenge for the development of clinically useful tests.

295 While we tested for methylation markers described and also by us verified to be
296 associated with ovarian cancer, it was found that when tested in our patient-friendly
297 sample types most of these did not distinguish benign from malignant ovarian masses.
298 Only *GHSR* demonstrated slightly increased methylation levels in the urine sediment.
299 Benign ovarian masses included in this study were highly suspicious for malignancy
300 according to current triage methods (>40% risk of malignancy using the IOTA adnex
301 model) as samples were collected in a tertiary oncology unit. Half of the included
302 patients in our cohort were ultimately diagnosed with a benign ovarian mass,
303 underlining that current triage for referral to tertiary oncology care is suboptimal. The
304 majority of previous studies only included benign controls for methylation marker
305 discovery in tissue but not during marker validation in plasma, as recently reviewed by
306 Terp *et al.*¹⁵, or benign controls were not age-matched to cancers.²¹ Similarly, studies
307 on ovarian cancer detection in cervical scrapes did not include benign controls.^{16, 17}
308 The inclusion of age-matched patients diagnosed with benign and malignant ovarian
309 masses is essential to accurately assess the clinical value of DNA methylation testing
310 for ovarian cancer detection.

311 The presence of ovarian cancer-derived DNA in the urine is currently underexplored.
312 So far, only Valle *et al.* reported on the detection of somatic mutation profiles and

313 *HIST1H2BB/MAGI2* promoter methylation in a small paired series of ascites, blood,
314 tissue, urine, and vaginal swabs of HGSOE patients.²⁸ Their data on two patients
315 revealed that methylation levels in urinary cfDNA correlated stronger with tissue than
316 with blood, indicating the potential of urine-based ovarian cancer detection.
317 Unfortunately, the diagnostic potential of ovarian cancer detection in urine could not
318 be determined in the study of Valle *et al.* as no control samples were included.

319 In our study, different urine fractions were systematically compared to explore whether
320 a preferred urine sample type for ovarian cancer detection exists. Full void urine most
321 likely contains both genomic and cfDNA, whereas the urine sediment is enriched for
322 genomic DNA and the urine supernatant for transrenally excreted cfDNA.²⁹ This
323 assumption is confirmed by the strong correlation for *CDO1* between cervical scrapes
324 and urine sediment, while cervical scrapes and urine supernatant correlated weakly to
325 moderately. Most methylation markers significantly differentiated between healthy
326 controls and ovarian cancer patients in the full void urine (3/12), followed by urine
327 supernatant (1/12), and the urine sediment (1/12). These outcomes suggest that
328 tumor-derived methylation signals can originate from genomic DNA as well as
329 transrenally excreted cfDNA. Yet, larger samples sizes are needed to determine
330 whether a preferred urine sample type for methylation analysis exists.

331 In the present study, genes with elevated methylation levels in HGSOE tissue, were
332 not always measurable in urine. Our qMSP assays were designed to facilitate the
333 detection of methylation in small DNA fragments present in the urine as shown in our
334 previous studies.^{8, 10, 12} Yet, the current assays may not reach the limit of detection
335 needed for the low tumor-derived methylation signals. Nucleic acids that are released
336 from the bladder epithelium may further dilute the ovarian cancer signal in urine.
337 Another explanation for the absence of tumor-derived methylation signals of some

338 genes in the urine could be linked to the origin of urinary cfDNA. Urine cfDNA is
339 described to be even shorter as compared to plasma cfDNA (modal size of 82 vs. 167
340 basepairs)³⁰. Differences in fragmentation patterns between plasma and urine are
341 likely caused by Dnase1 cleavage activity in the urine and high concentrations of urea
342 and salt that affect histone-DNA binding³¹. Histone-bound DNA is more protected
343 against degradation as compared to DNA that is not histone-bound³². Hypothetically,
344 hypermethylated regions of interest that are not histone-bound could be further
345 degraded and become unmeasurable. We partly accounted for this by including
346 methylation markers with proven diagnostic value in plasma in our selection (*i.e.*,
347 *C2CD4D*^{21, 22}, *CDO1*²²), which both appeared suitable for ovarian cancer detection in
348 urine.

349 Clear SCNA profiles harboring common chromosomal gains (*e.g.*, 1q, 3q, 7q, 8q) and
350 losses (*e.g.*, 17p, 19q, 22q) could be obtained from four urine supernatant samples of
351 ovarian cancer patients, verifying the presence of tumor-derived DNA in the urine.³³
352 Furthermore, a focal amplification at chromosome 19 was identified in the urine of one
353 patient with stage IIIA serous carcinoma, which is a clinically relevant alteration that
354 has previously been described in a subgroup of serous ovarian cancers.³⁴ Aneuploidy
355 was detected previously in cervical scrape samples of ovarian cancer patients using
356 the PapSEEK test¹⁶. We also observed shorter fragment sizes in urine supernatant
357 samples with a high tumor fraction, which is another indication for the presence of
358 tumor-derived DNA in the urine, as shown previously in urine samples of glioma
359 patients³⁰.

360 Given the feasibility of ovarian cancer detection in cervical scrapes by DNA methylation
361 analysis^{14, 17}, similar findings were expected for self-collected cervicovaginal samples.
362 While *C2CD4D* and *CDO1* distinguished healthy versus malignant in cervical scrapes,

363 none of the markers showed elevated methylation levels in cervicovaginal self-
364 samples. Our findings are in line with those of van Bommel *et al.* who reported that
365 mutation analysis in cervicovaginal self-samples of ovarian cancer patients was not
366 feasible.³⁵ None of the pathogenic mutations found in surgical specimens could be
367 detected in cervicovaginal self-samples. Ovarian cancer signals might be more diluted
368 in cytological specimens collected from areas further away from the ovaries. This was
369 also observed for the PapSEEK test, which detected 45% of ovarian cancers when
370 using intrauterine sampling (Tao brush) as compared to 17% when using endocervical
371 sampling (Pap brush).¹⁶

372 Nevertheless, considering our relatively small sample size, we do not exclude the use
373 of cervicovaginal self-samples for ovarian cancer detection yet. The optimization of
374 pre-analytical factors, such as increased input of original sample or improved DNA
375 isolation methods, could enhance the ovarian cancer signal in vaginal samples.
376 Alternatively, a non-tumor DNA driven approach could be useful for ovarian cancer
377 detection in cervicovaginal self-samples, as recently described by Barrett *et al.*³⁶ Their
378 signature consisted of epigenetic differences in cervical cells and allowed ovarian
379 cancer detection in cervical scrapes with an area under the receiver operating
380 characteristic curve value of 0.76. Larger cohort studies, such as the Screenwide study
381 ³⁷, will provide further insight into the use of cervicovaginal self-samples for ovarian
382 cancer detection.

383 Strengths of this study include the collection of a unique paired sample series of both
384 patients diagnosed with a benign ovarian mass and with a malignant ovarian tumor,
385 covering most histological subtypes. Moreover, urine and cervicovaginal self-samples
386 were collected from home to assess the feasibility and potential of home-based
387 sampling for ovarian cancer. The successful sequencing of urine cfDNA of ovarian

388 cancer patients provides opportunities for future (epi)genome profiling using short- or
389 long-read sequencing technologies. Although we have demonstrated the potential
390 diagnostic value of urine for ovarian cancer, this study is limited by still relatively low
391 sample numbers and the lack of early-stage cancers (\leq FIGO stage 2A). Given the
392 heterogeneous nature of benign and malignant ovarian masses, larger sample series
393 are needed to conclude on the clinical applicability of home-collected cervicovaginal
394 self-samples and urine for ovarian cancer detection. Furthermore, direct comparisons
395 with paired plasma samples using DNA-based and other molecular biomarkers (*e.g.*,
396 HE4) would be informative for future studies.

397 This study supports limited existing data on ovarian cancer detection in cervical
398 scrapes by DNA methylation analysis. Moreover, it provides first proof of concept that
399 urine yields increased methylation levels of ovarian cancer-associated genes and
400 contains ovarian cancer-derived DNA as demonstrated by SCNA analysis. Our
401 findings support continued research into urine biomarkers for ovarian cancer detection
402 and highlight the importance of including benign ovarian masses in future studies.
403 Molecular biomarker testing in patient-friendly samples could facilitate earlier ovarian
404 cancer detection and triage women presenting with an ovarian mass to manage
405 specialist referral. Yet, further studies investigating alternative urine (methylation)
406 biomarkers are warranted to develop a clinically useful test.

407 **Glossary**

408 cfDNA: cell-free DNA

409 Cq: quantification cycle

410 FFPE: formalin-fixed paraffin-embedded

411 HGSOC: high grade serous ovarian cancer

412 hrHPV: high-risk human papillomavirus

413 qMSP: quantitative methylation-specific PCR

414 SCNA: somatic copy number aberrations

415 **Acknowledgements**

416 The authors thank Dr. Poell, Dr. Kasius, and Dr. Mom for the useful discussions and
417 support during funding acquisition. The authors also thank Dr. Y. Kim, J.M.P
418 Egthuijsen, N. Hogervorst, and N. Evander for technical assistance and A. Koch for
419 help during sample collection.

420 **Author contributions**

421 **BW:** Funding acquisition, resources, data curation, formal analysis, investigation,
422 visualization, methodology, writing-original draft. **MS:** Resources, data curation,
423 writing-review and editing. **MB:** Conceptualization, supervision, funding acquisition,
424 validation, writing-review and editing, project administration. **YB:** Investigation, data
425 curation, methodology, writing-review and editing. **RH:** Conceptualization, resources,
426 writing-review and editing. **CL:** Resources, writing-review and editing. **FD:** Resources,
427 writing-review and editing. **YP:** Investigation, writing-review and editing. **FM:**
428 Resources, formal analysis, visualization, methodology, writing-review and editing.
429 **NM:** Resources, formal analysis, visualization, methodology, writing-review and
430 editing. **NT:** Conceptualization, supervision, funding acquisition, resources, validation,
431 writing-review and editing, project administration. **RS:** Conceptualization, supervision,
432 funding acquisition, validation, writing-original draft, project administration.

433 **Funding information**

434 This research was funded by the CCA Foundation and Maarten van der Weijden
435 Foundation, who provided financial support for the conduct of the research and had no
436 role in conducting the research and preparation of the manuscript. RvdH was funded
437 by the Weijerhorst Foundation. NM and FM were funded by the Dutch Cancer Society
438 (grant number KWF: 12822).

439 **Conflict of interest statement**

440 RS has a minority share in Self-screen B.V., a spin-off company of Amsterdam UMC,
441 location VUmc. Self-screen B.V. holds patents and products related to the work. RS
442 and FM are co-inventors on multiple patents related to methylation markers and cfDNA
443 analysis, respectively. The authors have no other relevant affiliations or financial
444 involvement with any organization or entity with a financial interest in or financial
445 conflict with the subject matter or materials discussed in the manuscript apart from
446 those disclosed. No writing assistance was utilized in the production of this manuscript.

447 **Ethics statement**

448 All patients participating in the SOLUTION1 study were 18 years or older and signed
449 informed consent before sample collection. Ethical approval was obtained by the
450 Medical Ethical Committee of the VU University Medical Center for the use of samples
451 collected within the SOLUTION1 study (METc: 2016.213, Trial registration ID:
452 NL56664.029.16), samples stored in the URIC biobank (TcB 2018.657), and samples
453 archived in the biobank containing leftover material of the Dutch national cervical
454 cancer screening program (TcB 2020.245). The Code of Conduct for Responsible Use
455 of Left-over Material of the Dutch Federation of Biomedical Scientific Societies was
456 adhered for the use of tissue specimen.

457 **Data and code availability**

458 The sequencing dataset generated and analyzed during the current study is available
459 in the European Genome-Phenome Archive repository, under accession number
460 EGAD00001010848. The DNA methylation dataset generated and analyzed during
461 this study is available from the corresponding author on reasonable request.

462 REFERENCES

- 463 1. Sung H, Ferlay J, Siegel RL, Laversanne M, Soerjomataram I, Jemal A, Bray F. Global
464 Cancer Statistics 2020: GLOBOCAN Estimates of Incidence and Mortality Worldwide for 36 Cancers
465 in 185 Countries. *CA: A Cancer Journal for Clinicians* 2021;71:209-49.
- 466 2. Bankhead CR, Kehoe ST, Austoker J. Symptoms associated with diagnosis of ovarian
467 cancer: a systematic review. *BJOG: An International Journal of Obstetrics & Gynaecology*
468 2005;112:857-65.
- 469 3. Reid BM, Permeth JB, Sellers TA. Epidemiology of ovarian cancer: a review. *Cancer*
470 *Biology and Medicine* 2017;14:9-32.
- 471 4. Menon U, Gentry-Maharaj A, Burnell M, Singh N, Ryan A, Karpinskyj C, Carlino G, Taylor J,
472 Massingham SK, Raikou M, Kalsi JK, Woolas R, et al. Ovarian cancer population screening and
473 mortality after long-term follow-up in the UK Collaborative Trial of Ovarian Cancer Screening
474 (UKCTOCS): a randomised controlled trial. *Lancet* 2021;397:2182-93.
- 475 5. Pinsky PF, Yu K, Kramer BS, Black A, Buys SS, Partridge E, Gohagan J, Berg CD, Prorok
476 PC. Extended mortality results for ovarian cancer screening in the PLCO trial with median
477 15 years follow-up. *Gynecologic Oncology* 2016;143:270-75.
- 478 6. Ibrahim J, Peeters M, Van Camp G, Op de Beeck K. Methylation biomarkers for early
479 cancer detection and diagnosis: Current and future perspectives. *European Journal of Cancer*
480 2023;178:91-113.
- 481 7. Barrett JE, Sundström K, Jones A, Evans I, Wang J, Herzog C, Dillner J, Widschwendter M.
482 The WID-CIN test identifies women with, and at risk of, cervical intraepithelial neoplasia grade 3 and
483 invasive cervical cancer. *Genome Medicine* 2022;14:116.
- 484 8. van den Helder R, Steenbergen RDM, van Splunter AP, Mom CH, Tjong MY, Martin I,
485 Rosier-van Dunné FMF, van der Avoort IAM, Bleeker MCG, van Trommel NE. HPV and DNA
486 Methylation Testing in Urine for Cervical Intraepithelial Neoplasia and Cervical Cancer Detection.
487 *Clinical Cancer Research* 2022;28:2061-68.
- 488 9. Herzog C, Marín F, Jones A, Evans I, Reisel D, Redl E, Schreiberhuber L, Paytubi S,
489 Pelegrina B, Carmona Á, Peremiquel-Trillas P, Frias-Gomez J, et al. A Simple Cervicovaginal
490 Epigenetic Test for Screening and Rapid Triage of Women With Suspected Endometrial Cancer:
491 Validation in Several Cohort and Case/Control Sets. *Journal of Clinical Oncology* 2022;40:3828-38.
- 492 10. Wever BMM, van den Helder R, van Splunter AP, van Gent M, Kasius JC, Trum JW,
493 Verhoeve HR, van Baal WM, Hulbert A, Verhoef L, Heideman DAM, Lissenberg-Witte BI, et al. DNA
494 methylation testing for endometrial cancer detection in urine, cervicovaginal self-samples, and cervical
495 scrapes. *Int J Cancer* 2023.
- 496 11. Bach S, Paulis I, Sluiter NR, Tibbesma M, Martin I, van de Wiel MA, Tuynman JB, Bahce I,
497 Kazemier G, Steenbergen RDM. Detection of colorectal cancer in urine using DNA methylation
498 analysis. *Scientific Reports* 2021;11:2363.
- 499 12. Wever BMM, Bach S, Tibbesma M, ter Braak TJ, Wajon D, Dickhoff C, Lissenberg-Witte
500 BI, Hulbert A, Kazemier G, Bahce I, Steenbergen RDM. Detection of non-metastatic non-small-cell
501 lung cancer in urine by methylation-specific PCR analysis: A feasibility study. *Lung Cancer*
502 2022;170:156-64.
- 503 13. Liu B, Ricarte Filho J, Mallisetty A, Villani C, Kottorou A, Rodgers K, Chen C, Ito T, Holmes
504 K, Gastala N, Valyi-Nagy K, David O, et al. Detection of Promoter DNA Methylation in Urine and
505 Plasma Aids the Detection of Non-Small Cell Lung Cancer. *Clin Cancer Res* 2020;26:4339-48.
- 506 14. Chang CC, Wang HC, Liao YP, Chen YC, Weng YC, Yu MH, Lai HC. The feasibility of
507 detecting endometrial and ovarian cancer using DNA methylation biomarkers in cervical scrapings. *J*
508 *Gynecol Oncol* 2018;29:e17.
- 509 15. Terp SK, Stoico MP, Dybkær K, Pedersen IS. Early diagnosis of ovarian cancer based on
510 methylation profiles in peripheral blood cell-free DNA: a systematic review. *Clinical Epigenetics*
511 2023;15:24.
- 512 16. Wang Y, Li L, Douville C, Cohen JD, Yen TT, Kinde I, Sundfelt K, Kjær SK, Hruban RH,
513 Shih IM, Wang TL, Kurman RJ, et al. Evaluation of liquid from the Papanicolaou test and other liquid
514 biopsies for the detection of endometrial and ovarian cancers. *Sci Transl Med* 2018;10.
- 515 17. Wu T-I, Huang R-L, Su P-H, Mao S-P, Wu C-H, Lai H-C. Ovarian cancer detection by DNA
516 methylation in cervical scrapings. *Clinical Epigenetics* 2019;11:166.
- 517 18. Snoek BC, Splunter APV, Bleeker MCG, Ruiten MCV, Heideman DAM, Rurup WF, Verlaat
518 W, Schotman H, Gent MV, Trommel NEV, Steenbergen RDM. Cervical cancer detection by DNA
519 methylation analysis in urine. *Sci Rep* 2019;9:3088.

- 520 19. van den Helder R, Wever BMM, van Trommel NE, van Splunter AP, Mom CH, Kasius JC,
521 Bleeker MCG, Steenbergen RDM. Non-invasive detection of endometrial cancer by DNA methylation
522 analysis in urine. *Clinical Epigenetics* 2020;12:165.
- 523 20. De Strooper LM, van Zummeren M, Steenbergen RD, Bleeker MC, Hesselink AT, Wisman
524 GB, Snijders PJ, Heideman DA, Meijer CJ. CADM1, MAL and miR124-2 methylation analysis in
525 cervical scrapes to detect cervical and endometrial cancer. *J Clin Pathol* 2014;67:1067-71.
- 526 21. Widschwendter M, Zikan M, Wahl B, Lempiäinen H, Paprotka T, Evans I, Jones A, Ghazali
527 S, Reisel D, Eichner J, Rujan T, Yang Z, et al. The potential of circulating tumor DNA methylation
528 analysis for the early detection and management of ovarian cancer. *Genome Medicine* 2017;9:116.
- 529 22. Marinelli LM, Kisiel JB, Slettedahl SW, Mahoney DW, Lemens MA, Shridhar V, Taylor WR,
530 Staub JK, Cao X, Foote PH, Burger KN, Berger CK, et al. Methylated DNA markers for plasma
531 detection of ovarian cancer: Discovery, validation, and clinical feasibility. *Gynecol Oncol*
532 2022;165:568-76.
- 533 23. Meys EMJ, Jeelof LS, Ramaekers BLT, Dirksen CD, Kooreman LFS, Slangen BFM,
534 Kruitwagen RFP, Van Gorp T. Economic evaluation of an expert examiner and different ultrasound
535 models in the diagnosis of ovarian cancer. *European Journal of Cancer* 2018;100:55-64.
- 536 24. Van Calster B, Valentin L, Froyman W, Landolfo C, Ceusters J, Testa AC, Wynants L,
537 Sladkevicius P, Van Holsbeke C, Domali E, Fruscio R, Epstein E, et al. Validation of models to
538 diagnose ovarian cancer in patients managed surgically or conservatively: multicentre cohort study.
539 *BMJ* 2020;370:m2614.
- 540 25. van den Helder R, van Trommel NE, van Splunter AP, Lissenberg-Witte BI, Bleeker MCG,
541 Steenbergen RDM. Methylation analysis in urine fractions for optimal CIN3 and cervical cancer
542 detection. *Papillomavirus Res* 2020;9:100193.
- 543 26. Schmittgen TD, Livak KJ. Analyzing real-time PCR data by the comparative CT method.
544 *Nature Protocols* 2008;3:1101-08.
- 545 27. Snellenberg S, Strooper LMAD, Hesselink AT, Meijer CJLM, Snijders PJF, Heideman
546 DAM, Steenbergen RDM. Development of a multiplex methylation-specific PCR as candidate triage
547 test for women with an HPV-positive cervical scrape. *BMC Cancer* 2012;12:551.
- 548 28. Valle BL, Rodriguez-Torres S, Kuhn E, Díaz-Montes T, Parrilla-Castellar E, Lawson FP,
549 Folawiyo O, Ili-Gangas C, Brebi-Mieville P, Eshleman JR, Herman J, Shih I-M, et al. HIST1H2BB and
550 MAGI2 Methylation and Somatic Mutations as Precision Medicine Biomarkers for Diagnosis and
551 Prognosis of High-grade Serous Ovarian Cancer. *Cancer Prevention Research* 2020;13:783-94.
- 552 29. Hentschel AE, van den Helder R, van Trommel NE, van Splunter AP, van Boerdonk RAA,
553 van Gent M, Nieuwenhuijzen JA, Steenbergen RDM. The Origin of Tumor DNA in Urine of Urogenital
554 Cancer Patients: Local Shedding and Transrenal Excretion. *Cancers (Basel)* 2021;13.
- 555 30. Moulire F, Smith CG, Heider K, Su J, van der Pol Y, Thompson M, Morris J, Wan JCM,
556 Chandrananda D, Hadfield J, Grzelak J, Hudecova I, et al. Fragmentation patterns and personalized
557 sequencing of cell-free DNA in urine and plasma of glioma patients. *EMBO Mol Med* 2021;13:e12881.
- 558 31. Chen M, Chan RWY, Cheung PPH, Ni M, Wong DKL, Zhou Z, Ma ML, Huang L, Xu X, Lee
559 WS, Wang G, Lui KO, et al. Fragmentomics of urinary cell-free DNA in nuclease knockout mouse
560 models. *PLoS Genet* 2022;18:e1010262.
- 561 32. Han DSC, Ni M, Chan RWY, Chan VWH, Lui KO, Chiu RWK, Lo YMD. The Biology of
562 Cell-free DNA Fragmentation and the Roles of DNASE1, DNASE1L3, and DFFB. *Am J Hum Genet*
563 2020;106:202-14.
- 564 33. Micci F, Haugom L, Abeler VM, Davidson B, Tropé CG, Heim S. Genomic profile of
565 ovarian carcinomas. *BMC Cancer* 2014;14:315.
- 566 34. Sung CO, Song I-H, Sohn I. A distinctive ovarian cancer molecular subgroup characterized
567 by poor prognosis and somatic focal copy number amplifications at chromosome 19. *Gynecologic*
568 *oncology* 2014;132:343-50.
- 569 35. van Bommel MHD, Pijnenborg JMA, van der Putten LJM, Bulten J, Snijders MPLM,
570 Küsters-Vandeveldt HVN, Sweegers S, Vos MC, Ligtenberg MJL, Eijkelenboom A, de Hullu JA,
571 Reijnen C. Diagnostic accuracy of mutational analysis along the Müllerian tract to detect ovarian
572 cancer. *International Journal of Gynecologic Cancer* 2022;32:1568-75.
- 573 36. Barrett JE, Jones A, Evans I, Reisel D, Herzog C, Chindera K, Kristiansen M, Leavy OC,
574 Manchanda R, Bjørge L, Zikan M, Cibula D, et al. The DNA methylome of cervical cells can predict the
575 presence of ovarian cancer. *Nat Commun* 2022;13:448.
- 576 37. Peremiquel-Trillas P, Paytubi S, Pelegrina B, Frias-Gomez J, Carmona Á, Martínez JM, de
577 Francisco J, Benavente Y, Barahona M, Briansó F, Canet-Hermida J, Caño V, et al. An Integrated
578 Approach for the Early Detection of Endometrial and Ovarian Cancers (Screenwide Study): Rationale,
579 Study Design and Pilot Study. *Journal of Personalized Medicine* 2022;12:1074.