

# Temporal Trends in Antibiotic Resistance in Europe, 1998-2019

Martin Emons<sup>1,2</sup>, François Blanquart<sup>\*3</sup>, Sonja Lehtinen<sup>\*1</sup>

October 2022

<sup>1</sup> Department of Environmental System Science, Institute for Integrative Biology, ETH Zürich, Zürich, Switzerland

<sup>2</sup> Department of Molecular Life Sciences, University of Zurich and Swiss Institute of Bioinformatics, Zürich, Switzerland

<sup>3</sup> Center for Interdisciplinary Research in Biology, CNRS, Collège de France, PSL Research University, 75005 Paris, France

\* joint last authors

## Abstract

The emergence of resistant phenotypes following the introduction of new antibiotics is well documented. However, the subsequent dynamics of resistance frequencies over long time periods are less well understood: the extent to which resistance frequencies increase, the rate at which resistance frequencies change, and how this depends on antibiotic consumption remain open questions. Here, we systematically analyse the resistance trajectories emerging from 3,375,774 hospital bacterial isolates sampled from infections in Europe over 1998-2019, representing 887 bug-drug-country combinations. Our analyses support a model in which, after an initial increase, resistance frequencies reach a stable intermediate equilibrium. The plurality (37%) of analysed trajectories were best described as ‘stable’ (neither increasing nor decreasing). The second largest category of trajectories (21%) was those best described as ‘stabilising’ – i.e. showing a transition from increasing frequency to a stable plateau. The antibiotic consumption in a country predicts both the equilibrium frequency of the corresponding resistance and the speed at which this equilibrium is reached. Moreover, we find weak evidence that temporal fluctuations in resistance frequency are driven by temporal fluctuations in hospital antibiotic consumption. Overall, our results indicate that ever increasing antibiotic resistance frequencies are not inevitable and that antibiotic management limits resistance spread. A large fraction of the variability in the speed of increase and the equilibrium level of resistance remains unexplained by antibiotic use, suggesting other factors also drive resistance dynamics.

## 1 Introduction

Antibiotic resistance is a serious public health concern, with an estimated 5 million resistance-associated deaths per year globally [1]. The emergence of resistance phenotypes following the introduction of new antibiotics is well documented [2]. However, once present, the fate of these resistance phenotypes – i.e. the change in the frequency of resistance in the population over longer time frames – is less well understood. Existing studies into temporal trends in resistance frequencies, often focused on specific species-antibiotic (‘bug-drug’) combinations, report a variety of resistance trajectories – including increasing, decreasing, apparently stable, and non-monotonic time courses [3, 4, 5, 6, 7, 8, 9, 10, 11, 12, 13, 14]. A recent study looking at 13 bug-drug combinations across a large number of countries also reported a mixture of increasing and decreasing trends [15].

Beyond characterising overall trends, analysis of temporal trajectories has the potential to provide important additional insights into resistance dynamics. Predictions about medium to long-term resistance trends require an understanding of both the *speed* at which resistance frequencies change and how this speed itself changes – e.g. is there evidence of the rate of resistance increase slowing down as resistance frequencies get higher? In other words, if antibiotic consumption

**NOTE: This preprint reports new research that has not been certified by peer review and should not be used to guide clinical practice.**

47 rates remain relatively stable, are resistance frequencies expected to continue rising to eventually  
48 reach 100% ('fixation') or will we observe stabilisation at intermediate frequencies?

49 This question of fixation is particularly important as it informs long-term expectations about  
50 the burden of resistance and has received considerable attention in the theoretical literature. An  
51 intuitive understanding of resistance evolution suggests that fixation should occur if resistance  
52 is beneficial enough to emerge in the first place. The simplest models of resistance dynamics  
53 predict a logistic rise in resistance frequencies (Figure 1B), at a rate dependent on the population  
54 antibiotic consumption and fitness cost associated with resistance [16]. For example, under  
55 typical simplifying assumptions [16], if a population is prescribed an average of one course of  
56 antibiotics per person per year and if resistance has little cost, the growth advantage of resistance  
57 (called 'selection coefficient' in evolutionary biology) is of 1 per year. This is enough to shift  
58 the frequency of resistance from 1% to 99% in 9 years. A higher cost of resistance leads to a  
59 slower increase, but fixation is still expected – provided the cost is not so high that it outweighs  
60 the benefit of resistance, in which case resistance would not emerge in the first place. These  
61 intuitions also hold for many more complex models of resistance.

62 However, while some resistance trajectories (e.g. penicillin resistance in *Staphylococcus aureus*  
63 [4]) have indeed reached fixation, this is not the norm. An alternative model therefore suggests  
64 the presence of 'balancing selection' (sometimes also called 'negative frequency-dependent selec-  
65 tion') which acts to stabilise resistance frequencies at intermediate levels. Multiple mechanistic  
66 models may generate balancing selection, with stabilising mechanisms arising for example from  
67 host population structure [17, 18, 19], strain structure [20] or within-host dynamics [21]. Yet,  
68 the lack of observed fixation is not in itself evidence of stabilisation: trajectories could still be  
69 rising towards 100%. It is therefore important to systematically assess evidence of stabilisation  
70 – i.e. a rising phase in resistance followed by a plateau – in temporal trajectories across a range  
71 of bug-drug combinations.

72 Resistance trajectories also matter for understanding the relationship between antibiotic con-  
73 sumption and resistance. Antibiotic consumption correlates with resistance frequencies across  
74 European countries and US states [22, 23]. Under the fixation model, this correlation arises be-  
75 cause antibiotic consumption affects the *rate* at which resistance increases (Figure 1B,C). On the  
76 other hand, under the balancing selection model, the correlation between antibiotic consumption  
77 and resistance may arise not only because consumption affects the rate of increase in the rising  
78 ('non-equilibrium') phase, but also because consumption affects the *equilibrium frequency* of re-  
79 sistance (Figure 1E,F). This distinction matters for predicting the impact of reducing antibiotic  
80 consumption. Under the balancing selection model, if resistance is at equilibrium, reduction in  
81 antibiotic consumption would lead to a lower plateau. Under non-equilibrium dynamics however,  
82 a reduction in antibiotic consumption would either slow or reverse the rise in resistance.

83 Here we analyse a large number of bacterial isolates sampled from infections in Europe, collected  
84 by the European Centre for Disease Control and Prevention (ECDC), together with antibiotic  
85 consumption data. We provide a quantitative and systematic view of the temporal trends in  
86 resistance and their relation to antibiotic consumption. Firstly, we provide an overview of speed  
87 and direction of resistance dynamics and assess evidence for stabilisation. Secondly, we quantify  
88 the association between antibiotic consumption and i) the equilibrium frequency of resistance  
89 and ii) the speed of increase of resistance. Thirdly, we explore the correlation between year-  
90 on-year variation in antibiotic use and resistance. We thus provide a comprehensive picture of  
91 antibiotic resistance evolution in Europe over the past two decades.

## 92 2 Results

### 93 2.1 Resistance is not systematically increasing and dynamics are slow

94 We used data from the European Center for Disease Prevention and Control (ECDC) to sys-  
95 tematically investigate resistance trajectories in Europe from 1998 to 2019. In brief, the dataset  
96 consists of bacterial isolates tested for antibiotic resistance, with data for 8 species (*Streptococ-*  
97 *cus pneumoniae*, *Staphylococcus aureus*, *Enterococcus faecalis*, *Enterococcus faecium*, *Escherichia*  
98 *coli*, *Klebsiella pneumoniae*, *Pseudomonas aeruginosa*, and *Acinetobacter* spp.), 30 countries and  
99 36 antibiotics. Following data cleaning steps that filtered out trajectories with insufficient sam-  
100 ple size, the dataset retained for analysis consisted of 887 bug-drug-country combinations (see  
101 Methods for full details).

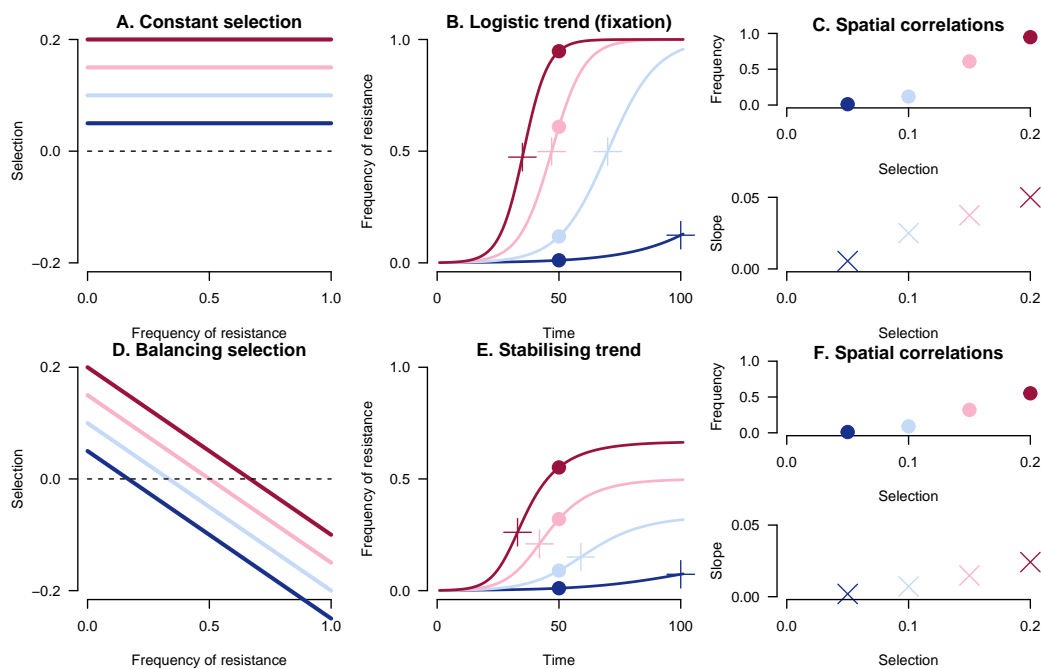


Figure 1: Schematic of constant selection (A, B, C) and balancing selection (D, E, F) models of resistance dynamics. The different colours represent different strengths of selection pressure. For balancing selection, we arbitrarily chose a linearly declining selection coefficient. B and E show the predicted trajectories for each of the models. The frequency dynamics are generally linked with the selection coefficient by the differential equation,  $\dot{l}_p = s(l_p)$  where  $l_p$  denotes the logit-transformed frequency of resistance ( $\ln[p/(1-p)]$ ), with  $p$  representing the frequency of resistance) and  $s(l_p)$  is the selection coefficient. A simple epidemiological model predicts a constant selection coefficient (A) equal to the antibiotic consumption rate minus the cost of antibiotic resistance [16]. This gives rise to a logistic trend to fixation (B). In contrast, balancing selection (D) leads to a stabilising trend (E). A number of candidate mechanisms lead to balancing selection, but no clear consensus has been reached on a definitive model. C, F: Both models generate a positive correlation between antibiotic consumption and the frequency (here at time 50, materialised by points on B, E) and maximum slope of resistance increase (crosses on B, E).

102 For an overview of the temporal trends in resistance, we began by fitting a standard logistic  
 103 model to each trajectory. Overall, increasing trajectories are more common than decreasing  
 104 ones, with 62% rising vs 38% declining. However, for most trajectories, the temporal trend is  
 105 not statistically significant at the 0.05 level: 29% of all trajectories are significantly rising and  
 106 16% significantly declining (see Figure 2). The median slope – i.e. selection coefficient in the  
 107 fixation model of resistance – is 0.056 per year for the rising trajectories (-0.051 for the declining  
 108 trajectories). In the fixation model of resistance, this translates to an increase from 1% to 99%  
 109 resistance in 165 years.

## 110 2.2 Evidence of stabilising resistance frequencies

111 In order to test whether resistance trajectories might be stabilising at an intermediate plateau,  
 112 we fitted two further models to each trajectory (see Methods for details and SI Figure 1): a  
 113 scaled logistic model, in which the frequency is increasing towards an intermediate plateau rather  
 114 than fixation, and a flat straight line with slope 0. Note that 10% of trajectories were not well  
 115 characterised by any of the models and were removed from further analysis. After exclusion of  
 116 these, the best model generally fit the data well (Figure 3).

117 We then compared the fits of the standard logistic (2 parameters), the scaled logistic (3 pa-  
 118 rameters) and flat line (1 parameter) models using the corrected Akaike Information Criterion  
 119 (AICc). Trajectories best characterised by the plateauing logistic were categorised as ‘stabilis-  
 120 ing’ (21%) and those best characterised by the flat line as ‘stable’ (37%). The trajectories best  
 121 characterised by the standard logistic model were further divided into ‘increasing (s)’ (17%),  
 122 ‘increasing (ns)’ (4%), ‘decreasing (ns)’ (4%) and ‘decreasing (s)’ (17%) categories, where ‘s’

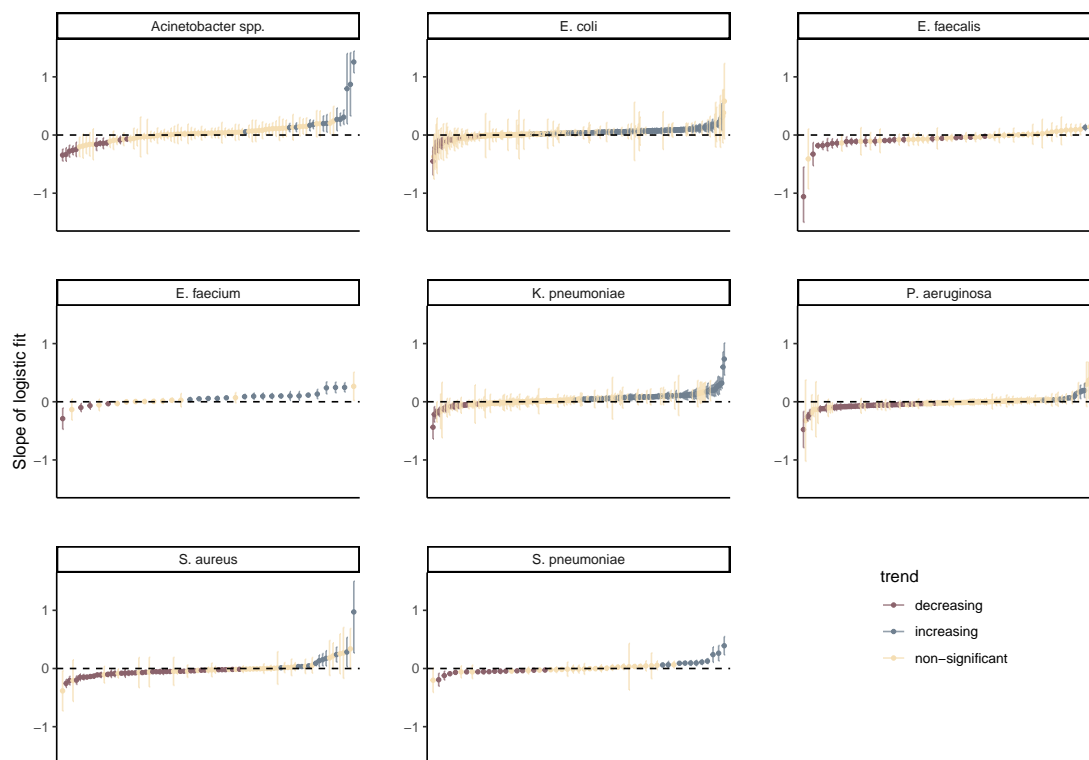


Figure 2: The speed of increase or decrease in European resistance frequencies, as measured by the slope parameter in a standard logistic model, for all bug-drug-country combinations. For clarity, 6 combinations with very high or low slopes (outside of the interval  $[-1.75; 1.75]$ ) have been excluded (see Supporting Information). The plot includes both in- and outpatients. The 95% confidence intervals assume normality.

123 and ‘ns’ denote statistical significance and non-significance at the 0.05 level.

124 Overall, these results suggest that resistance frequencies have indeed stabilised for many bug-  
 125 drug combinations (Figure 4): a large proportion of the trajectories which appeared to be  
 126 increasing in the standard logistic model are now classified as ‘stable’ or ‘stabilising’. This is  
 127 particularly striking for the species *E. coli* and *K. pneumoniae*. It is worth noting that the stabil-  
 128 ising trends give more support to the balancing selection model than the stable trends, because  
 129 the transition from increasing to stable resistance is observed for these trajectories.

130 To further understand the role of species, country and antibiotic class as determinants of ob-  
 131 served temporal trends, we performed a regression analysis (SI Section 2) to correct for corre-  
 132 lations among predictors (e.g. some species being more frequently sampled in some countries).  
 133 The results (SI Figures 2 and 3) are consistent with the information conveyed in Figure 4.

134 Finally, to gain further insight into the dynamics of the increasing trajectories, we compared  
 135 the rate at which resistance is rising for the ‘increasing (s)’ category and for the non-equilibrium  
 136 phase of the ‘stabilising’ category. If the ‘increasing’ trajectories also reflect non-equilibrium  
 137 dynamics, we would expect these rates to be similar. We quantified the speed of increase  
 138 for each trajectory as the maximal rate of increase in the time frame for which we had data  
 139 (Methods 4.4, SI Figure 4). The fastest rates of increase were in the ‘increasing (s)’ category.  
 140 On the other hand, the mean rate of increase was significantly lower for the ‘increasing (s)’ than  
 141 the ‘stabilising’ category (2.2 vs 3.9 percentage points per year,  $p = 4.7 \times 10^{-4}$  in a linear  
 142 regression model with ‘stabilising’ vs ‘increasing (s)’ as a predictor of the speed of increase,  $n$   
 143  $= 299$ ). This difference does not arise from confounding, as the effect remains significant in an  
 144 adjusted model ( $p = 1.9 \times 10^{-6}$  in a linear regression model with species, country and antibiotic  
 145 class as additional covariates). Thus while some of the increasing trajectories likely reflect  
 146 genuine non-equilibrium dynamics, the slow rate of change suggests some of these trajectories  
 147 may instead represent resistance frequencies responding to a changing selection pressure - due  
 148 to, for example, increasing antibiotic consumption (see SI Section 3 for caveats).

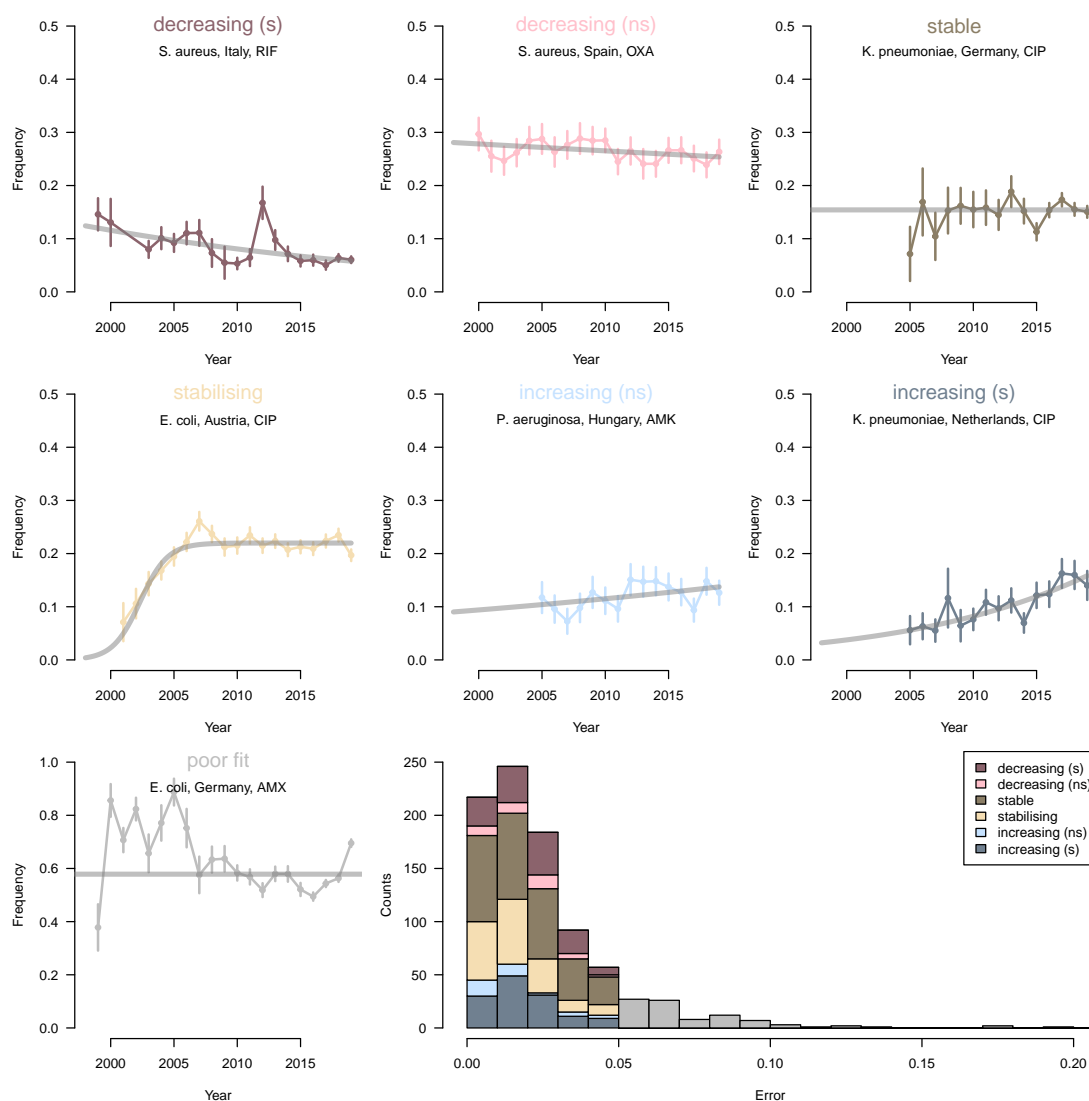


Figure 3: Example trajectories of antibiotic resistance illustrating the different categories. One example (a specific country, bug-drug combination) is shown for each category in the eight panels. The last panels shows the distribution of errors for each category, for all country-bug-drug combinations. Error is quantified as the mean of the absolute value of the deviation between model predicted and actual resistance frequency, and trajectories with poor fit (i.e. error above 0.05) are excluded from further analysis.

### 149 2.3 Consumption of antibiotics predicts the level of stabilisation and 150 the rate of increase of antibiotic resistance

151 Next, we investigated which properties of the temporal trajectories of antibiotic resistance are  
152 predicted by antibiotic use. We correlated both the plateau and maximum rate of increase of  
153 the resistance trajectories with the use of the corresponding antibiotic class across countries, for  
154 bug-drug combinations for which at least five countries had data (Methods).

155 First, we observed a positive correlation between the *plateau* level of resistance in the ‘stable’  
156 and ‘stabilising’ trajectories, and the consumption of the corresponding class of antibiotics in  
157 the community for most bug-drug combinations (Figure 5A). Overall, the mean correlation was  
158 significantly greater than 0 (mean correlation = 0.329 [0.18 – 0.48],  $N = 40$  combinations, t-test  
159  $p = 5.2 \times 10^{-5}$ ) and several individual correlations were significantly different from zero, despite  
160 considerable uncertainty in each correlation coefficient. This also held true when considering  
161 antibiotic use in the hospital instead of in the community (SI Figure 5); mean correlation  
162 = 0.322 [0.17 – 0.48],  $N = 31$  combinations, t-test  $p = 1.7 \times 10^{-4}$ ). This is consistent with  
163 selection by antibiotics increasing the plateau level of resistance.

164 Second, the rate of increase of resistance frequency for the ‘stabilising’ and ‘significantly in-

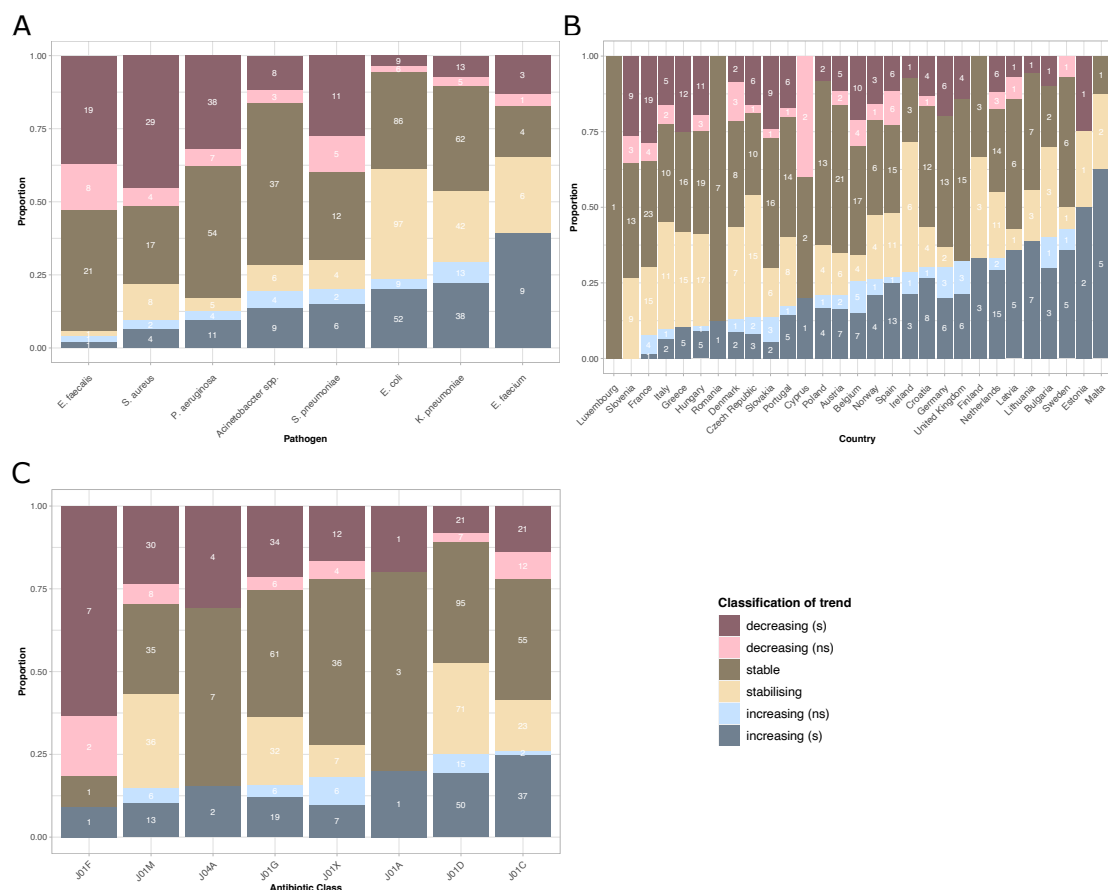


Figure 4: Proportion of trajectories falling into each temporal trend category, by species (A), country (B) and antibiotic class (C). The numbers give the actual sample size of trajectories in each category. This figure does not correct for correlations among the categories (e.g. some species being more frequently sampled in some countries). A corrected analysis is presented in SI Section 2 and is consistent with the information presented here.

165 'creasing' trajectories also exhibited a correlation with antibiotic use, but the signal was weaker  
 166 than for the plateau. In this analysis, the rate of increase was computed as the maximal slope  
 167 reached over the time-period in which we had resistance data. The individual correlations could  
 168 be either negative or positive and none were individually significantly different from 0 (Fig-  
 169 ure 5B). However, overall, the set of correlations had a mean significantly greater than 0 (mean  
 170 correlation = 0.18 [0.06; 0.30],  $N = 14$  combinations, t-test  $p = 0.005$ ). The mean was similar  
 171 when considering antibiotic use in the hospital sector, though not significantly different from  
 172 0 (mean correlation = 0.19 [-0.08; 0.45],  $N = 10$  combinations, t-test  $p = 0.15$ ) (SI Figure 5).  
 173 When restricting to stabilising trajectories only, we obtained very few bug-drug combinations,  
 174 most of them from *E. coli* and showing a positive correlation (SI Figure 6). All in all, there  
 175 was evidence that the rate of increase in antibiotic resistance is driven by antibiotic use.

176 Lastly, if we ignore temporal trends, the median level of resistance over time was also generally  
 177 positively correlated with consumption (SI Figure 7).

## 178 2.4 Antibiotic use as a predictor of temporal variation in antibiotic 179 resistance

180 Following the earlier result that 'increasing' trajectories may reflect a changing equilibrium  
 181 frequency, we investigated whether year-to-year variation in antibiotic use could cause corre-  
 182 sponding year-to-year fluctuations in the level of resistance. For each country, we computed  
 183 the temporal correlation of resistance with use of the corresponding antibiotic, for combinations  
 184 for which we had at least five years of data and for all categories of temporal trajectory. We  
 185 then averaged these temporal correlations over all countries and retained only bug-drug combi-  
 186 nations for which we had at least five countries. There was overall a positive mean correlation  
 187 between resistance and antibiotic use in the hospital sector (mean correlation = 0.06 [0.03; 0.09],



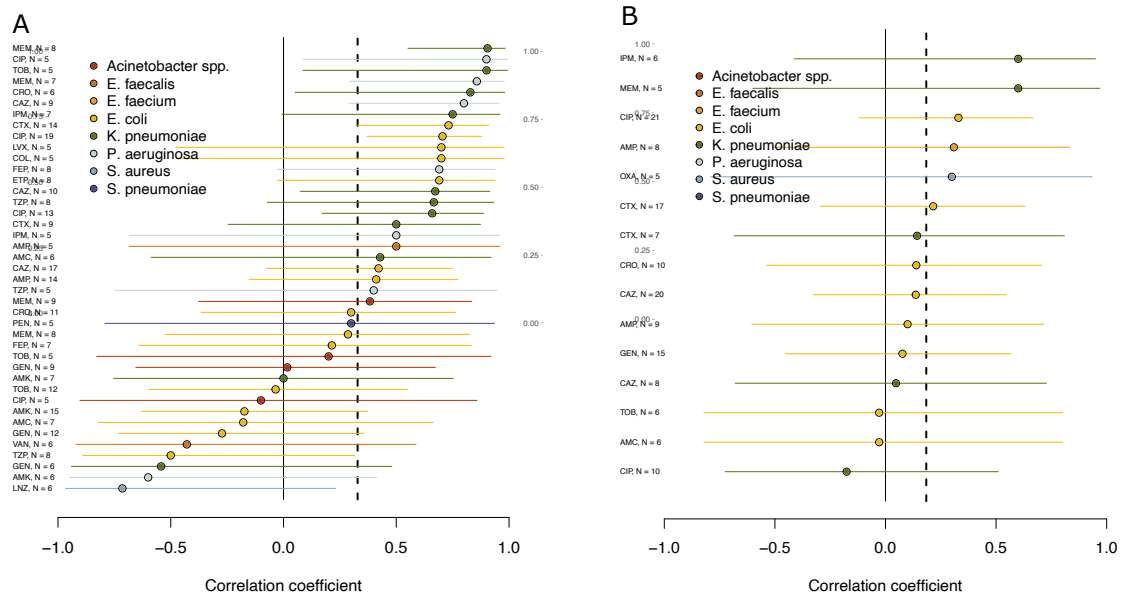


Figure 5: Spatial correlation coefficients between (A) the plateau frequency of antibiotic resistance, or (B) rate of increase, and the rate of use of the corresponding antibiotic in the community, for all bug-drug combinations. The number of countries included is indicated for each combination. The vertical dashed lines show the overall mean. Trends are similar when considering hospital instead of community use (SI Figure 5).

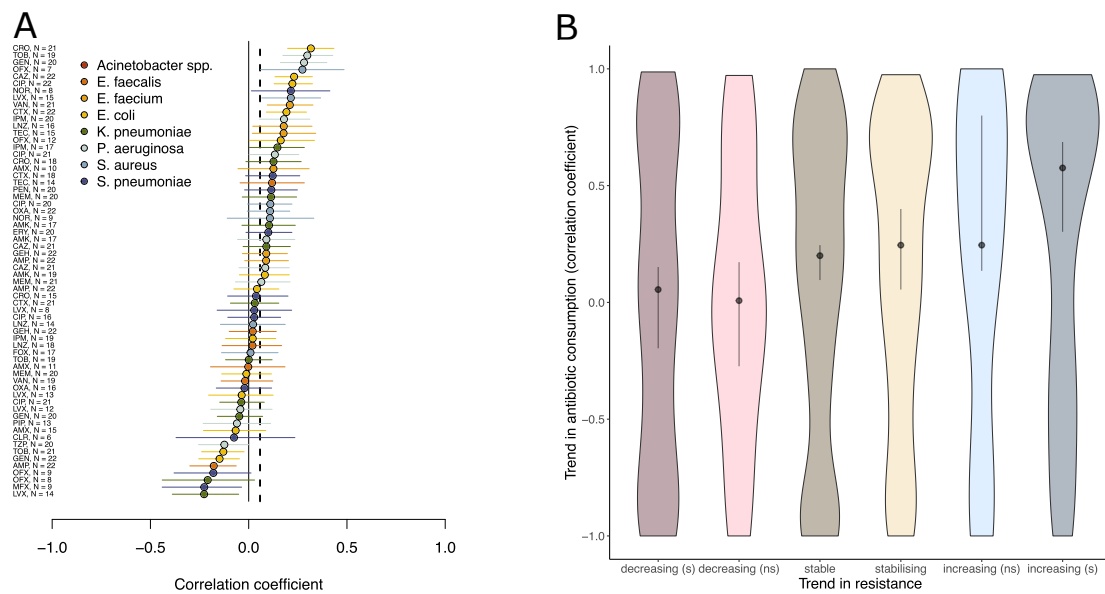


Figure 6: Temporal variation in hospital antibiotic use as a predictor of temporal variation in antibiotic resistance. (A), the temporal correlation of the frequency of resistance with hospital antibiotic use across bug-drug combinations. The number of countries included is indicated for each combination. The vertical dashed lines show the overall mean. (B), the distribution of temporal trends in antibiotic consumption in hospitals for each category of trend in resistance.

188  $N = 63$  combinations, t-test  $p = 6.8 \times 10^{-4}$ ) (Figure 6A), but this was not true when considering  
 189 the use of antibiotics in the community sector (mean correlation = 0.01 [-0.02; 0.04],  $N = 65$   
 190 combinations, t-test  $p = 0.6$ ) (SI Figure 8).

191 Because of the mixed evidence, to further investigate the possibility that the frequency of resis-  
 192 tance follows the fluctuations in antibiotic use, we computed two additional partially independent  
 193 indicators (SI Figure 9) [24]. These also suggested that antibiotic resistance follows temporal  
 194 fluctuations in the use of antibiotics in the hospital sector, but not in the community.

195 We last looked at whether *sustained* trends in antibiotic consumption (computed as the Spear-

196 man correlation between calendar year and consumption level) predict the temporal trajectory  
197 of antibiotic resistance. In other words, we tested whether increasing/decreasing resistance tra-  
198 jectories are associated with increasing/decreasing consumption of the corresponding antibiotic  
199 in the corresponding country. Hospital antibiotic consumption rate was increasing on average for  
200 all resistance trends (Figure 6 B), but the increase in consumption was significantly higher for  
201 the increasing (s and ns) than decreasing (s and ns) categories (Wilcox test,  $p = 0.002$ ). Again,  
202 no significant trend was found when considering community instead of hospital consumption  
203 (Wilcox test,  $p = 0.14$ ).

204 All in all these analyses provide some evidence that the frequency of antibiotic resistance follows  
205 changes in the use of the antibiotic – either year-on-year fluctuations and/or sustained trends –  
206 in the hospital, but not community sector.

## 207 2.5 Case-study: few rising trajectories in previously high-consumption 208 countries

209 Finally, we combined the insights above to further understand specific resistance trends. Some of  
210 the countries with the smallest proportion of increasing trajectories (Figure 4 and SI Figure 2),  
211 such as Greece, Italy, and France, were also the countries with highest levels of antibiotic use  
212 in the community in the early 2000s [22]. Confirming this observation, there was overall a  
213 significant negative correlation between antibiotic use in the community sector in 2000 and the  
214 proportion of increasing resistance trajectories (SI Figure 10C). Such trend was not observed  
215 for hospital consumption.

216 We hypothesised two non-mutually exclusive explanations for this intriguing finding. One pos-  
217 sibility is that countries with high community antibiotic use in the early 2000s have taken  
218 effective measures to halt the increase of antibiotic resistance. We looked at whether high  
219 community antibiotic use in 2000 correlated with a decrease in total antibiotic consumption  
220 during the study period. This was true in the hospital sector, but not in the community (SI  
221 Figure 10A,B). Alternatively, as high antibiotic consumption leads to a faster rise in resistance,  
222 trajectories in high consumption countries are more likely to have reached a plateau either be-  
223 fore or during the study period, while trajectories in lower consumption countries are still rising  
224 towards the plateau. This hypothesis requires that increasing trajectories reflect, at least in  
225 part, non-equilibrium dynamics. In support of this hypothesis, we found that countries with  
226 high community antibiotic consumption in 2000 had a faster rate of increase in the rising phase  
227 of the stabilising trajectories (Spearman’s rho: 0.71,  $p = 0.0014$ ).

## 228 3 Discussion

229 Our analysis of resistance trajectories in Europe suggests that antibiotic resistance frequencies  
230 are not consistently increasing and instead often appear stable over two decades. This obser-  
231 vation has been previously discussed in the context of *S. pneumoniae* [17, 18, 20] and, to a  
232 more limited extent, in other species [19]. Our work provides systematic evidence for stability  
233 and – notably – stabilisation of resistance in eight important bacterial species. However, a non-  
234 negligible minority of trajectories were categorised as either significantly increasing (17%) or  
235 significantly decreasing (17%). These trajectories could reflect either non-equilibrium dynamics  
236 or a changing equilibrium frequency in response to changing antibiotic use. While we cannot  
237 determine for certain which is the case for individual trajectories, our analysis suggests a mix  
238 of these scenarios.

239 There was considerable variability in trends by bacterial species, country, and antibiotic class.  
240 We were able to explain some of this variability. First, resistances were in part associated with  
241 the rate of use of the corresponding antibiotic. In addition to previous work showing a spatial  
242 correlation between median consumption and median resistance [22, 23], we evidenced the effect  
243 of antibiotic consumption on both the rise and the stable level of resistance. We also investigated  
244 the *temporal* correlation between antibiotic use and resistance frequency. Resistance was weakly  
245 associated with hospital – but not community – antibiotic consumption, both in terms of year-  
246 on-year fluctuations and sustained trends. Second, the species *E. coli* and *K. pneumoniae* were  
247 associated with a particularly large number of increasing or stabilising trajectories. This might  
248 be linked to the emergence and spread of the CTX-M beta-lactamase enzyme in the late 1990s  
249 and early 2000s [25]. Third, countries with high antibiotic consumption in 2000 [22] – e.g. Italy,  
250 Greece and France – saw fewer increasing resistance trajectories than other countries. This was



251 not straightforwardly explained by a decrease in antibiotic use, but might be explained by these  
252 trajectories having stabilised earlier in these countries than in others.

253 A large part of the variability in resistance within and across countries remained unexplained.  
254 One reason could be that differences in host population structure, and heterogeneity in antibiotic  
255 consumption *within* this structure, can lead to different resistance frequencies for populations  
256 with the same average consumption [19]. A second explanation is the spillover of resistance from  
257 neighbouring countries: even small amounts of migration from other countries are sufficient to  
258 influence local levels of resistance, which would tend to weaken the spatial correlation across  
259 countries [18, 26]. Thirdly, the coupling of multiple resistance genes co-occurring on bacterial  
260 strains ('linkage disequilibrium') [27] means that the frequency of resistance against a particular  
261 antibiotic could be affected by the consumption of other antibiotics. Finally, a number of studies  
262 have reported statistical associations between the frequency of resistance and other factors –  
263 e.g. temperature, pollution, governance- and infrastructure-related factors [15, 28, 29]. While  
264 this strongly suggests selection pressure is not solely dependent on antibiotic consumption,  
265 it is challenging to determine which factors are truly causal. Determining the causal role of  
266 factors beyond average antibiotic consumption requires detailed epidemiological and genomic  
267 data, including host metadata (host characteristics, geographic location), contact networks,  
268 and sequence data conveying the genetic coupling between different resistances and other loci  
269 determining important bacterial phenotypes.

270 One important limitation of our study is data quality and consistency across countries. The  
271 tested isolates do not necessarily reflect a random sample of bacteria circulating in the human  
272 population, or even of bacteria infecting hospital patients. For example, intensified testing  
273 in the context of hospital outbreaks might cause the over-representation of particular clones  
274 in a specific country and year. Resistance frequencies are not comparable across years if the  
275 threshold for resistance is changed, as was the case in France for *P. aeruginosa* [30]. The  
276 antibiotic consumption data is subject to similar data quality considerations. To limit the  
277 inclusion of biased or poor-quality data in our analyses, we did not consider the trajectories for  
278 which none of our models fitted the data well ('poor fit' category), and we removed temporal  
279 outliers from the consumption data. Despite these concerns, most trajectories were quite smooth  
280 temporally (Figure 3). Furthermore, while potential biases will affect the overall estimate of  
281 resistance frequency, as long as bias remains constant in time, they will not affect the detection  
282 and categorisation of temporal trends. Although the data from the ECDC may represent one  
283 of the largest and best standardised datasets on antibiotic resistance and consumption, it is  
284 limited to European countries. It is important to determine whether the pattern of stability  
285 and stabilising also holds elsewhere, particularly in low and middle income countries (LMICs).  
286 While data sources covering a wider range of countries exist (e.g. ResistanceMap<sup>1</sup> and ATLAS<sup>2</sup>),  
287 their temporal span is currently much smaller for LMICs than the two decades covered by the  
288 European network. Thus, while quantifying overall resistance trends in LMICs is possible [15],  
289 assessing evidence for stabilisation may prove more challenging.

290 Finally, the stability of resistance trends may not be robust to evolutionary innovation. With  
291 sustained selection pressure, bacteria may evolve new and less costly resistance mechanisms  
292 and compensatory mutations that alleviate the cost of resistance. This would result in the  
293 progressively increase the equilibrium level of resistance. While compensatory evolution is read-  
294 ily observed under laboratory conditions, its contribution to real-world resistance dynamics is  
295 unclear.

296 In conclusion, using antibiotic resistance data from 3,375,774 bacterial isolates from infections,  
297 encompassing 8 bacterial species, 30 European countries, and 20 years, we reveal that resis-  
298 tance trajectories are for the most part stable or stabilising. This overall behaviour of antibiotic  
299 resistance trajectories suggests that ever increasing antibiotic resistance is not inevitable and  
300 that resistance management can be effective in limiting resistance spread. Observed resistance  
301 dynamics were, to some extent, explainable by levels of antibiotic consumption. However, this  
302 explanatory power was relatively low, highlighting important gaps in our understanding of resis-  
303 tance dynamics. All in all, we open perspectives for further work elucidating how the complex  
304 ecology of bacteria determine the long-term fate of antibiotic resistance.

<sup>1</sup><https://resistancemap.onehealthtrust.org/AntibioticResistance.php>

<sup>2</sup><https://atlas-surveillance.com>

## 305 Acknowledgements

306 FB is funded by ERC StG 949208 EvoComBac. SL is funded by the Swiss National Science  
307 Foundation (PR00P3\_201618).

308 Data from The European Surveillance System—TESSy, provided by Finland, Sweden, Belgium,  
309 Germany, Greece, Ireland, Italy, Luxembourg, Netherlands, Norway, Portugal, United Kingdom,  
310 Austria, Bulgaria, Czech Republic, Denmark, Estonia, Spain, Malta, Slovenia, France, Croatia,  
311 Hungary, Poland, Slovakia, Romania Cyprus, Latvia, Lithuania and released by ECDC. The  
312 views and opinions of the authors expressed herein do not necessarily state or reflect those  
313 of ECDC. The accuracy of the authors' statistical analysis and the findings they report are  
314 not the responsibility of ECDC. ECDC is not responsible for conclusions or opinions drawn  
315 from the data provided. ECDC is not responsible for the correctness of the data and for data  
316 management, data merging and data collation after provision of the data. ECDC shall not be  
317 held liable for improper or incorrect use of the data.

## 318 4 Methods

### 319 4.1 Data

#### 320 4.1.1 Resistance Raw Data

321 The data on the antimicrobial resistance rates are released by the European Surveillance System  
322 - TESSy, provided by Finland, Sweden, Belgium, Germany, Greece, Ireland, Italy, Luxembourg,  
323 Netherlands, Norway, Portugal, United Kingdom, Austria, Bulgaria, Czech Republic, Denmark,  
324 Estonia, Spain, Malta, Slovenia, France, Croatia, Hungary, Poland, Slovakia, Romania Cyprus,  
325 Latvia, Lithuania and released by the European Centre for Disease Prevention and Control  
326 (ECDC). The data covers the years 1998-2019.

327 The raw data, available upon request from the ECDC, is in case-based format, and consists of, for  
328 each isolate: the date of the isolation, the pathogen, the patient type (inpatient or outpatient),  
329 and the antimicrobial resistance level (sensitive, intermediate, resistant according to EUCAST  
330 clinical breakpoints) to various antibiotics. Outpatients consist of patients presenting at the  
331 hospital for dialysis, other day hospital care, or emergency. A more detailed description of the  
332 raw resistance data is made available by the ECDC [31].

#### 333 4.1.2 Antibiotic Consumption Raw Data

334 Data on antibiotic consumption is publicly available from the ECDC, and consists of defined  
335 daily dose (DDD) per 1000 inhabitants by antibiotic class, country, year, sector (community,  
336 hospital care, total care) and uptake route (oral, parenteral, rectal, inhalation, implant, all).  
337 The dataset includes the same 30 countries as the resistance dataset, spans the years 1997-2016,  
338 and consists of the following classes of antibiotics: J01A (tetracyclines), J01B (amphenicols),  
339 J01C (penicillins), J01D (other betalactams), J01E (sulfonamides), J01F (macrolides), J01G  
340 (aminoglycosides), J01M (quinolones), J01R (combinations of antibacterials), J01X (others),  
341 P01A (agents against amoebiasis and other protozoal diseases), A07A (intestinal antiinfectives).  
342 A detailed description of the consumption data is made available by the ECDC [32].

### 343 4.2 Preprocessing

#### 344 4.2.1 Processing of antibiotic resistance data

345 We computed the frequency of resistant for each bug, drug, country, year, and patient type  
346 combination. Intermediate isolates were considered resistant. We compared the temporal trends  
347 in resistance in inpatients and outpatients for drug-pathogen-country combinations that had  
348 data on both types of patients. The temporal trends in outpatients and in patients were very  
349 correlated, with similar or higher levels of resistance in inpatients. Therefore we only considered  
350 resistance measured in inpatients for further analyses.

351 **4.2.2 List of the bug-drug combinations investigated:**

352 *S. aureus*: CIP CLO DAP DIC FLC FOX LNZ LVX MET NOR OFX OXA RIF TEC

353 *S. pneumoniae*: AZM CIP CLR CRO CTX ERY LVX MFX NOR OFX OXA PEN

354 *E. faecalis*: AMP AMX GEH LNZ TEC VAN

355 *E. faecium*: AMP AMX GEH LNZ TEC VAN

356 *E. coli*: AMC AMK AMP AMX CAZ CIP COL CRO CTX DOR ETP FEP GEN IPM LVX MEM MFX NAL NET NOR OFX PIP POL TGC TOB TZP

357 *K. pneumoniae*: AMC AMK CAZ CIP COL CRO CTX DOR ETP FEP GEN IPM LVX MEM MFX NAL NET NOR OFX PIP POL TGC TOB TZP

358 *P. aeruginosa*: AMK CAZ CIP COL DOR ETP FEP GEN IPM LVX MEM NET PIP POL TOB TZP

359 *Acinetobacter spp.*: AMC AMK AMP AMX CAZ CIP COL CTX DOR FOX GEH GEN IPM LVX MEM NAL NET POL TOB TZP VAN

### 360 4.2.3 Processing of antibiotic use data

361 For many countries and years, the total consumption of antibiotics by all routes of adminis-  
362 tration was reported. We primarily used this information when it was available. Moreover,  
363 some countries and years recorded the consumption decomposed by route of administration  
364 of antibiotics. This was most commonly oral and parenteral, and, less frequently, inhalation,  
365 rectal, implant, "other" routes. When total consumption was not available, we summed the  
366 consumption recorded over all routes to obtain an estimate of total consumption.

367 We considered consumption both in the hospital sector and in the community.

368 To remove all outliers for a given antibiotic class, country, sector, route of administration for  
369 each combination we removed datapoints for years not within  $\pm 3 \times IQR$  (IQR = Inter quartile  
370 range) of the temporal median.

### 371 4.3 Inferring temporal trends in antibiotic resistance

372 For combinations of bug, drug, country, we fitted logistic models to the temporal trends in the  
373 frequency of resistance. We only included the combinations with a time series of at least 5  
374 years, where all years had at least 30 isolates tested for drug resistance, and in total at least  
375 10 resistant bacterial isolates. Fitting was done with non-linear least square regression, with  
376 the function `nlsLM` from the `minpack.lm` R package, except for the flat line which was fit using  
377 `lm` from the base `stats` package [33, 34]. The error is assumed to be normally distributed and  
378 proportional to the inverse of the sample size for each year.

379 We fitted three models to the temporal trends data:

- 380 1. A standard logistic model with two parameters, an offset and a slope. The standard  
381 logistic model results in an increasing sigmoid from 0 to 1, or a decreasing sigmoid from 1  
382 to 0 if the slope is negative. This corresponds to the standard population genetics model  
383 describing the action of selection on resistance frequency. The resistance frequency  $f$  for  
384 year  $t$  under this model is given by:

$$f(t) = \frac{1}{1 + e^{-k_1(t-k_0)}} \quad (1)$$

385 where  $k_1$  is the slope parameter and  $k_0$  determines the offset.

- 386 2. A 'flat' model with slope 0 and an intercept. In this model, the resistance frequency  $f$  for  
387 year  $t$  is given by:

$$f(t) = k_2 \quad (2)$$

- 388 3. A plateauing logistic model with a maximum frequency below 1, where the sigmoid function  
389 is scaled by parameter  $k_2$ . In this model, the resistance frequency  $f$  for year  $t$  is given by:

$$f(t) = \frac{k_2}{1 + e^{-k_1(t-k_0)}} \quad (3)$$

390

391 We compared the models using the corrected Akaike Information Criterion (AICc), with the  
392 best model corresponding to the smallest AICc [35]. The AICc is given by:

$$2k - 2 \ln(\hat{L}) + \frac{2k^2 + 2k}{n - k - 1} \quad (4)$$

393 where  $\hat{L}$  is the maximum likelihood estimate,  $k$  the number of parameters and  $n$  the sample  
394 size.

395 We quantified the goodness of fit with the mean absolute error of the best fit model. For the  
396 two logistic models, we determined the statistical significance of the slope based on a threshold  
397 of  $p < 0.05$ .

398 This resulted in six categories of temporal trends:

- 399 (i) significantly increasing, when the best model was the standard logistic and the slope was  
400 significantly positive.

- 401 (ii) non-significantly increasing, when the best model was the standard logistic and the slope  
402 was positive but not significantly different from 0
- 403 (iii) non-significantly decreasing, when the best model was logistic and the slope was negative  
404 but not significantly different from 0.
- 405 (iv) significantly decreasing, when the best model was logistic and the slope was significantly  
406 negative.
- 407 (v) stable, when the best model was a flat fit.
- 408 (vi) stabilising, when the best model was the logistic with plateau different from 1.
- 409 Additionally, some trajectories were classified as ‘poor fit’ when the mean absolute error exceeded  
410 0.05 and were not analysed further. The ‘stabilising’ category can be subdivided further in  
411 ‘stabilising significantly increasing’ and ‘stabilising non-significantly increasing’ depending on  
412 the significance of the slope leading to the plateau.

#### 413 **4.4 Comparison of rate of resistance change across models**

414 The slope parameters in the standard and scaled logistic models ( $k_1$  in Equations 1 and 3) are  
415 not directly comparable. This is because the parameter reflects how quickly resistance will reach  
416 its maximum level. As the maximum is different in the two models, the same slope parameter  
417 in the two models translates to a different rate of change in the actual resistance frequencies.  
418 For the analyses in which we sought to compare the speed of change across the two models –  
419 i.e. the comparison of increasing and stabilising trajectories and the correlation with antibiotic  
420 usage – we computed a comparable measure of the change in resistance frequencies. Specifically,  
421 we looked at the maximal rate of change observed in the temporal window for which we had  
422 data.

#### 423 **4.5 Correlation between antimicrobial consumption and resistance**

424 We correlated antimicrobial consumption and resistance across countries and time. In all cases,  
425 we correlated the level of resistance to a particular antibiotic to the total consumption of all  
426 antibiotics of this class.

##### 427 **4.5.1 Correlation between antimicrobial consumption and resistance across coun- 428 tries**

429 For each bug-drug combination, we correlated across countries the median antibiotic consump-  
430 tion across years, to three properties of the resistance temporal trends. These three properties  
431 were the median resistance across years, the resistance plateau (for ‘stable’ and ‘stabilising’  
432 categories), the slope of the logistic (for ‘logistic significantly increasing’ and ‘stabilising sig-  
433 nificantly increasing’ categories). As described above, the slope was computed as the maximal  
434 rate of change reached in the temporal window for which we had data This ensures the slope  
435 is comparable across the logistic model with and without intermediate plateau, unlike the slope  
436 parameter of the logistic. We quantified the correlation with Spearman’s rank correlation coef-  
437 ficient across countries, for bug-drug combinations represented by at least five countries. The  
438 correlation was calculated using `SpearmanRho` from `DescTools version 0.99.49` [36].

439 This analysis resulted in a number of correlation coefficients. These coefficients are calculated  
440 for combinations of antibiotics prescribed in the community vs. the hospital sector, (we remind  
441 that we consider only resistance in inpatients), and of the three properties of temporal trends  
442 which are correlated (total of 6 combinations).

##### 443 **4.5.2 Correlation between antimicrobial consumption and resistance across time**

444 For each country-bug-drug combination, we correlated across years the level of resistance and  
445 level of antibiotic consumption. This results in a Spearman’s rank correlation coefficient for the  
446 country-bug-drug combinations and each of the four combinations of community vs. hospital  
447 sector. This was again calculated using `SpearmanRho` from `DescTools version 0.99.49` [36].  
448 We kept only country-bug-drug combinations with at least 5 years of data available. We aver-  
449 aged these correlations over countries for each bug-drug combination, retaining only bug-drug  
450 combinations for which 5 countries of more were represented. It is expected that the temporal



451 correlation between the frequency of resistance and the corresponding antibiotic use is positive  
452 if the bacterial population adapts to the changing use of specific antibiotic.

453 We additionally computed a cross-temporal correlation, whereby the consumption data were  
454 shifted by -1 and +1 year compared to the resistance data. To give additional indications that  
455 yearly variation in antibiotic resistance follows variation in consumption, we used these cross-  
456 temporal correlations. First, if the bacterial population adapts closely to the contemporaneous  
457 antibiotic use, it is expected that the "temporal adaptation" pattern formed by the cross-  
458 correlation for time-shifts  $-1$ ,  $0$  and  $+1$  is maximal at  $0$  [24]. We counted the fraction of  
459 bug-drug combinations for which temporal adaptation was maximal at  $0$  and calculated the  
460 probability of this fraction under a binomial model with true probability  $0.25$ . Second, we  
461 compared the temporal correlation with the spatial correlation across bug-drug combinations.  
462 Indeed, if the bacterial population evolves in response to changing antibiotic use, it is expected  
463 that levels of resistance match both the contemporaneous and local antibiotic use [24]. We  
464 therefore tested whether bug-drug combinations with stronger spatial correlations also exhibited  
465 stronger temporal correlations, by correlating the two correlations across bug-drug combinations  
466 (Figure 9).

## 467 4.6 Code Availability

468 All code is available on the following GitHub repository:

469 <https://github.com/mjemons/temporal-trends-AMR-manuscript>

470 All analyses were performed with R version  $4.2.3$  [34]. Packages are managed with `renv`  
471 [37].

## 472 References

- 473 [1] Christopher JL Murray, Kevin Shunji Ikuta, Fablina Sharara, Lucien Swetschinski,  
474 Gisela Robles Aguilar, Authia Gray, Chieh Han, Catherine Bisignano, Puja Rao, Eve Wool,  
475 Sarah C. Johnson, Annie J. Browne, Michael Give Chipeta, Frederick Fell, Sean Hackett,  
476 Georgina Haines-Woodhouse, Bahar H. Kashef Hamadani, Emmanuelle A. P. Kumaran,  
477 Barney McManigal, Ramesh Agarwal, Samuel Akech, Samuel Albertson, John Amuasi,  
478 Jason Andrews, Aleskandr Aravkin, Elizabeth Ashley, Freddie Bailey, Stephen Baker, Bud-  
479 dha Basnyat, Adrie Bekker, Rose Bender, Adhisivam Bethou, Julia Bielicki, Supawat  
480 Boonkasidecha, James Bukosia, Cristina Carvalheiro, Carlos Castañeda-Orjuela, Vilada  
481 Chansamouth, Suman Chaurasia, Sara Chiurchiù, Fazle Chowdhury, Aislinn J. Cook,  
482 Ben Cooper, Tim R. Cressey, Elia Criollo-Mora, Matthew Cunningham, Saffiatou Darboe,  
483 Nicholas P. J. Day, Maia De Luca, Klara Dokova, Angela Dramowski, Susanna J. Dunachie,  
484 Tim Eckmanns, Daniel Eibach, Amir Emami, Nicholas Feasey, Natasha Fisher-Pearson,  
485 Karen Forrest, Denise Garrett, Petra Gastmeier, Ababi Zergaw Giref, Rachel Claire Greer,  
486 Vikas Gupta, Sebastian Haller, Andrea Haselbeck, Simon I. Hay, Marianne Holm, Su-  
487 san Hopkins, Kenneth C. Iregbu, Jan Jacobs, Daniel Jarovsky, Fatemeh Javanmardi,  
488 Meera Khorana, Niranjana Kissoon, Elsa Kobeissi, Tomislav Kostyanev, Fiorella Krapp,  
489 Ralf Krumpal, Ajay Kumar, Hmwe Hmwe Kyu, Cherry Lim, Direk Limmathurotsakul,  
490 Michael James Loftus, Miles Lunn, Jianing Ma, Neema Mturi, Tatiana Munera-Huertas,  
491 Patrick Musicha, Marisa Marcia Mussi-Pinhata, Tomoka Nakamura, Ruchi Nanavati,  
492 Sushma Nangia, Paul Newton, Chanpheaktra Ngoun, Amanda Novotney, Davis Nwakanma,  
493 Christina W. Obiero, Antonio Olivas-Martinez, Piero Olliaro, Ednah Ooko, Edgar Ortiz-  
494 Brizuela, Anton Yariv Peleg, Carlo Perrone, Nishad Plakkal, Alfredo Ponce-de Leon, Math-  
495 ieu Raad, Tanusha Ramdin, Amy Riddell, Tamalee Roberts, Julie Victoria Robotham,  
496 Anna Roca, Kristina E. Rudd, Neal Russell, Jesse Schnall, John Anthony Gerard Scott,  
497 Madhusudhan Shivamallappa, Jose Sifuentes-Osornio, Nicolas Steenkeste, Andrew James  
498 Stewardson, Temenuga Stoeva, Nidanuch Tasak, Areerat Thaiprakong, Guy Thwaites,  
499 Claudia Turner, Paul Turner, H. Rogier van Doorn, Sithembiso Velaphi, Avina Vongpra-  
500 dith, Huong Vu, Timothy Walsh, Seymour Waner, Tri Wangrangsimakul, Teresa Wozniak,  
501 Peng Zheng, Benn Sartorius, Alan D. Lopez, Andy Stergachis, Catrin Moore, Christiane  
502 Dolecek, and Mohsen Naghavi. Global burden of bacterial antimicrobial resistance in 2019:  
503 a systematic analysis. *The Lancet*, 399(10325):629–655, February 2022. ISSN 0140-6736,  
504 1474-547X. doi: 10.1016/S0140-6736(21)02724-0. URL [https://www.thelancet.com/  
505 journals/lancet/article/PIIS0140-6736\(21\)02724-0/fulltext](https://www.thelancet.com/journals/lancet/article/PIIS0140-6736(21)02724-0/fulltext). Publisher: Elsevier.
- 506 [2] Christopher Witzany, Sebastian Bonhoeffer, and Jens Rolf. Is antimicrobial resistance  
507 evolution accelerating? *PLOS Pathogens*, 16(10):e1008905, October 2020. ISSN 1553-7374.  
508 doi: 10.1371/journal.ppat.1008905. URL [https://journals.plos.org/plospathogens/  
509 article?id=10.1371/journal.ppat.1008905](https://journals.plos.org/plospathogens/article?id=10.1371/journal.ppat.1008905). Publisher: Public Library of Science.
- 510 [3] Althea W McCormick, Cynthia G Whitney, Monica M Farley, Ruth Lynfield, Lee H Har-  
511 rison, Nancy M Bennett, William Schaffner, Arthur Reingold, James Hadler, Paul Cieslak,  
512 et al. Geographic diversity and temporal trends of antimicrobial resistance in streptococcus  
513 pneumoniae in the united states. *Nature medicine*, 9(4):424–430, 2003.
- 514 [4] L. Clifford McDonald. Trends in Antimicrobial Resistance in Health Care–Associated  
515 Pathogens and Effect on Treatment. *Clinical Infectious Diseases*, 42(Supplement.2):S65–  
516 S71, January 2006. ISSN 1058-4838. doi: 10.1086/499404. URL [https://doi.org/10.  
517 1086/499404](https://doi.org/10.1086/499404).
- 518 [5] Lotta Siira, Merja Rantala, Jari Jalava, Antti J. Hakanen, Pentti Huovinen, Tarja Kai-  
519 jalainen, Outi Lyytikäinen, and Anni Virolainen. Temporal trends of antimicrobial resis-  
520 tance and clonality of invasive Streptococcus pneumoniae isolates in Finland, 2002 to 2006.  
521 *Antimicrobial Agents and Chemotherapy*, 53(5):2066–2073, May 2009. ISSN 1098-6596. doi:  
522 10.1128/AAC.01464-08.
- 523 [6] A. Fenoll, J. J. Granizo, L. Aguilar, M. J. Giménez, L. Aragoneses-Fenoll, G. Hanquet,  
524 J. Casal, and D. Tarragó. Temporal trends of invasive Streptococcus pneumoniae serotypes  
525 and antimicrobial resistance patterns in Spain from 1979 to 2007. *Journal of Clinical  
526 Microbiology*, 47(4):1012–1020, April 2009. ISSN 1098-660X. doi: 10.1128/JCM.01454-08.

- 527 [7] Majdi N Al-Hasan, Brian D Lahr, Jeanette E Eckel-Passow, and Larry M Baddour. An-  
528 antimicrobial resistance trends of escherichia coli bloodstream isolates: a population-based  
529 study, 1998–2007. *Journal of antimicrobial chemotherapy*, 64(1):169–174, 2009.
- 530 [8] Robert D Kirkcaldy, Sarah Kidd, Hillard S Weinstock, John R Papp, and Gail A Bolan.  
531 Trends in antimicrobial resistance in neisseria gonorrhoeae in the usa: the gonococcal isolate  
532 surveillance project (gisp), january 2006–june 2012. *Sexually transmitted infections*, 89  
533 (Suppl 4):iv5–iv10, 2013.
- 534 [9] F.-P. Hu, Y. Guo, D.-M. Zhu, F. Wang, X.-F. Jiang, Y.-C. Xu, X.-J. Zhang, C.-X. Zhang,  
535 P. Ji, Y. Xie, M. Kang, C.-Q. Wang, A.-M. Wang, Y.-H. Xu, J.-L. Shen, Z.-Y. Sun, Z.-  
536 J. Chen, Y.-X. Ni, J.-Y. Sun, Y.-Z. Chu, S.-F. Tian, Z.-D. Hu, J. Li, Y.-S. Yu, J. Lin,  
537 B. Shan, Y. Du, Y. Han, S. Guo, L.-H. Wei, L. Wu, H. Zhang, J. Kong, Y.-J. Hu, X.-M. Ai,  
538 C. Zhuo, D.-H. Su, Q. Yang, B. Jia, and W. Huang. Resistance trends among clinical isolates  
539 in China reported from CHINET surveillance of bacterial resistance, 2005–2014. *Clinical  
540 Microbiology and Infection: The Official Publication of the European Society of Clinical  
541 Microbiology and Infectious Diseases*, 22 Suppl 1:S9–14, March 2016. ISSN 1469-0691. doi:  
542 10.1016/j.cmi.2016.01.001.
- 543 [10] Dee Shortridge, Ana C. Gales, Jennifer M. Streit, Michael D. Huband, Athanasios Tsakris,  
544 and Ronald N. Jones. Geographic and Temporal Patterns of Antimicrobial Resistance  
545 in *Pseudomonas aeruginosa* Over 20 Years From the SENTRY Antimicrobial Surveillance  
546 Program, 1997–2016. *Open Forum Infectious Diseases*, 6(Suppl 1):S63–S68, March 2019.  
547 ISSN 2328-8957. doi: 10.1093/ofid/ofy343.
- 548 [11] Jean Carlet, Vincent Jarlier, Jacques Acar, Olivier Debaere, Patrick Dehaumont, Bruno  
549 Grandbastien, Pierre Le Coz, Gerard Lina, Yves Pean, Claude Rambaud, France Roblot,  
550 Jérôme Salomon, Benoit Schlemmer, Pierre Tattevin, and Benoit Vallet. Trends in Antibi-  
551 otic Consumption and Resistance in France Over 20 Years: Large and Continuous Efforts  
552 but Contrasting Results. *Open Forum Infectious Diseases*, 7(11):ofaa452, November 2020.  
553 ISSN 2328-8957. doi: 10.1093/ofid/ofaa452.
- 554 [12] Rik Oldenkamp, Constance Schultsz, Emiliano Mancini, and Antonio Cappuccio. Filling  
555 the gaps in the global prevalence map of clinical antimicrobial resistance. *Proceedings of  
556 the National Academy of Sciences*, 118(1):e2013515118, 2021.
- 557 [13] Shirin Aliabadi, Elita Jauneikaite, Berit Müller-Pebody, Russell Hope, Karina-Doris Vihta,  
558 Carolyne Horner, and Céire E. Costelloe. Exploring temporal trends and risk factors for  
559 resistance in *Escherichia coli*-causing bacteraemia in England between 2013 and 2018: an  
560 ecological study. *The Journal of Antimicrobial Chemotherapy*, 77(3):782–792, February  
561 2022. ISSN 1460-2091. doi: 10.1093/jac/dkab440.
- 562 [14] European Centre for Disease Prevention, Control, and World Health Organization. Antimi-  
563 crobrial resistance surveillance in europe 2023 - 2021 data. *Stockholm*, 2023.
- 564 [15] Eve Rahbe, Laurence Watier, Didier Guillemot, Philippe Glaser, and Lulla Opatowski.  
565 Determinants of worldwide antibiotic resistance dynamics across drug-bacterium pairs: a  
566 multivariable spatial-temporal analysis using atlas. *The Lancet Planetary Health*, 7(7):  
567 e547–e557, 2023.
- 568 [16] Marc Lipsitch. The rise and fall of antimicrobial resistance. *Trends in Microbiology*, 9(9):  
569 438–444, September 2001. ISSN 0966-842X. doi: 10.1016/S0966-842X(01)02130-8. URL  
570 <https://www.sciencedirect.com/science/article/pii/S0966842X01021308>.
- 571 [17] Caroline Colijn, Ted Cohen, Christophe Fraser, William Hanage, Edward Goldstein,  
572 Noga Givon-Lavi, Ron Dagan, and Marc Lipsitch. What is the mechanism for persis-  
573 tent coexistence of drug-susceptible and drug-resistant strains of *Streptococcus pneumo-*  
574 *niae*? *Journal of The Royal Society Interface*, 7(47):905–919, June 2010. doi: 10.1098/  
575 rsif.2009.0400. URL [https://royalsocietypublishing.org/doi/full/10.1098/rsif.](https://royalsocietypublishing.org/doi/full/10.1098/rsif.2009.0400)  
576 [2009.0400](https://royalsocietypublishing.org/doi/full/10.1098/rsif.2009.0400). Publisher: Royal Society.
- 577 [18] François Blanquart, Sonja Lehtinen, Marc Lipsitch, and Christophe Fraser. The evolu-  
578 tion of antibiotic resistance in a structured host population. *Journal of The Royal So-*  
579 *ciety Interface*, 15(143):20180040, June 2018. doi: 10.1098/rsif.2018.0040. URL [https://royalsocietypublishing.org/doi/full/10.1098/rsif.](https://royalsocietypublishing.org/doi/full/10.1098/rsif.2018.0040)  
580 [2018.0040](https://royalsocietypublishing.org/doi/full/10.1098/rsif.2018.0040). Publisher: Royal  
581 Society.

- 582 [19] Madison S. Krieger, Carson E. Denison, Thayer L. Anderson, Martin A. Nowak, and Ali-  
583 son L. Hill. Population structure across scales facilitates coexistence and spatial heterogene-  
584 ity of antibiotic-resistant infections. *PLOS Computational Biology*, 16(7):e1008010, July  
585 2020. ISSN 1553-7358. doi: 10.1371/journal.pcbi.1008010. URL <https://journals.plos.org/ploscompbiol/article?id=10.1371/journal.pcbi.1008010>. Publisher: Public Li-  
587 brary of Science.
- 588 [20] Sonja Lehtinen, François Blanquart, Nicholas J. Croucher, Paul Turner, Marc Lipsitch, and  
589 Christophe Fraser. Evolution of antibiotic resistance is linked to any genetic mechanism af-  
590 fecting bacterial duration of carriage. *Proceedings of the National Academy of Sciences*, 114  
591 (5):1075–1080, January 2017. ISSN 0027-8424, 1091-6490. doi: 10.1073/pnas.1617849114.  
592 URL <https://www.pnas.org/content/114/5/1075>. Publisher: National Academy of Sci-  
593 ences Section: Biological Sciences.
- 594 [21] Nicholas G. Davies, Stefan Flasche, Mark Jit, and Katherine E. Atkins. Within-host  
595 dynamics shape antibiotic resistance in commensal bacteria. *Nature Ecology & Evolu-*  
596 *tion*, 3(3):440–449, March 2019. ISSN 2397-334X. doi: 10.1038/s41559-018-0786-x. URL  
597 <https://www.nature.com/articles/s41559-018-0786-x>. Number: 3 Publisher: Nature  
598 Publishing Group.
- 599 [22] Herman Goossens, Matus Ferech, Robert Vander Stichele, Monique Elseviers, and ESAC  
600 Project Group. Outpatient antibiotic use in Europe and association with resistance: a  
601 cross-national database study. *Lancet (London, England)*, 365(9459):579–587, February  
602 2005. ISSN 1474-547X. doi: 10.1016/S0140-6736(05)17907-0.
- 603 [23] Scott W Olesen, Michael L Barnett, Derek R MacFadden, John S Brownstein, Sonia  
604 Hernández-Díaz, Marc Lipsitch, and Yonatan H Grad. The distribution of antibiotic use and  
605 its association with antibiotic resistance. *eLife*, 7:e39435, December 2018. ISSN 2050-084X.  
606 doi: 10.7554/eLife.39435. URL <https://doi.org/10.7554/eLife.39435>. Publisher: eLife  
607 Sciences Publications, Ltd.
- 608 [24] François Blanquart and Sylvain Gandon. Time-shift experiments and patterns of adaptation  
609 across time and space. *Ecology letters*, 16(1):31–38, 2013.
- 610 [25] Paul-Louis Woerther, Charles Burdet, Elisabeth Chachaty, and Antoine Andremont. Trends  
611 in human fecal carriage of extended-spectrum  $\beta$ -lactamases in the community: toward the  
612 globalization of ctx-m. *Clinical microbiology reviews*, 26(4):744–758, 2013.
- 613 [26] Scott W Olesen, Marc Lipsitch, and Yonatan H Grad. The role of “spillover” in antibiotic  
614 resistance. *Proceedings of the National Academy of Sciences*, 117(46):29063–29068, 2020.
- 615 [27] Sonja Lehtinen, François Blanquart, Marc Lipsitch, Christophe Fraser, and with the Maela  
616 Pneumococcal Collaboration. On the evolutionary ecology of multidrug resistance in bac-  
617 teria. *PLoS pathogens*, 15(5):e1007763, 2019.
- 618 [28] Peter Collignon, John J Beggs, Timothy R Walsh, Sumanth Gandra, and Ramanan Laxmi-  
619 narayan. Anthropological and socioeconomic factors contributing to global antimicrobial  
620 resistance: a univariate and multivariable analysis. *The Lancet Planetary Health*, 2(9):  
621 e398–e405, 2018.
- 622 [29] Zhenchao Zhou, Xinyi Shuai, Zejun Lin, Xi Yu, Xiaoliang Ba, Mark A Holmes, Yonghong  
623 Xiao, Baojing Gu, and Hong Chen. Association between particulate matter (pm) 2· 5 air  
624 pollution and clinical antibiotic resistance: a global analysis. *The Lancet Planetary Health*,  
625 7(8):e649–e659, 2023.
- 626 [30] C Slekovec, J Robert, Denis Trystram, JM Delarbre, A Merens, N van Der Mee-Marquet,  
627 C de Gialluly, Y Costa, J Caillon, D Hocquet, et al. *Pseudomonas aeruginosa* in french  
628 hospitals between 2001 and 2011: back to susceptibility. *European journal of clinical mi-*  
629 *crobiology & infectious diseases*, 33:1713–1717, 2014.
- 630 [31] ECDC. TESSy-The European Surveillance System Antimicrobial resistance (AMR) report-  
631 ing protocol 2021 European Antimicrobial Resistance Surveillance Network (EARS-Net)  
632 surveillance data for 2020. (February):38, 2021. URL [https://www.ecdc.europa.eu/sites/default/files/documents/EARS-Net-reporting-protocol-2021\\_v2.pdf](https://www.ecdc.europa.eu/sites/default/files/documents/EARS-Net-reporting-protocol-2021_v2.pdf).  
633

- 634 [32] ECDC. TESSy -The European Surveillance System Antimicrobial consumption (AMC)  
635 reporting protocol 2022 European Surveillance of Antimicrobial Consumption Network  
636 (ESAC-Net) surveillance data for 2022. (March), 2022. URL [https://www.ecdc.europa.  
637 eu/sites/default/files/documents/ESACNet\\_protocol\\_2022.pdf](https://www.ecdc.europa.eu/sites/default/files/documents/ESACNet_protocol_2022.pdf).
- 638 [33] Timur V Elzhov, Katharine M Mullen, Andrej-Nikolai Spiess, and Ben Bolker Maintainer.  
639 minpack.lm: R Interface to the Levenberg-Marquardt Nonlinear Least-Squares Algorithm  
640 Found in MINPACK, Plus Support for Bounds. *R package version 1.2-1*, pages 1–14, 2016.  
641 URL <https://cran.r-project.org/web/packages/minpack.lm/minpack.lm.pdf>.
- 642 [34] R Core Team. *R: A Language and Environment for Statistical Computing*. R Foundation  
643 for Statistical Computing, Vienna, Austria, 2022. URL <https://www.R-project.org/>.
- 644 [35] Kenneth P Burnham and David R Anderson. Multimodel inference: understanding aic and  
645 bic in model selection. *Sociological methods & research*, 33(2):261–304, 2004.
- 646 [36] Andri Signorell, Ken Aho, Andreas Alfons, Nanina Anderegg, Tomas Aragon, Antti Arppe,  
647 Adrian Baddeley, Kamil Barton, Ben Bolker, Hans W Borchers, et al. DescTools: Tools for  
648 descriptive statistics. *R package version 0.99*, 28:17, 2019.
- 649 [37] Kevin Ushey. *renv: Project Environments*, 2023. URL [https://CRAN.R-project.org/  
650 package=renv](https://CRAN.R-project.org/package=renv). R package version 0.17.3.