

1 **Associations of Combined Phenotypic Aging and Genetic Risk with Incident**  
2 **Cancer: A Prospective Cohort Study**

3

4 Lijun Bian<sup>1,2†</sup>, Zhimin Ma<sup>1†</sup>, Xiangjin Fu<sup>1</sup>, Chen Ji<sup>1</sup>, Tianpei Wang<sup>1</sup>, Caiwang Yan<sup>1,2,3</sup>,  
5 Juncheng Dai<sup>1,2</sup>, Hongxia Ma<sup>1,2</sup>, Zhibin Hu<sup>1,2</sup>, Hongbing Shen<sup>1,2,4</sup>, Lu Wang<sup>3\*</sup>, Meng  
6 Zhu<sup>1,2,3\*</sup>, Guangfu Jin<sup>1,2,3\*</sup>

7

8 <sup>1</sup> Department of Epidemiology, Center for Global Health, School of Public Health,  
9 Nanjing Medical University, Nanjing, China.

10 <sup>2</sup> Jiangsu Key Lab of Cancer Biomarkers, Prevention and Treatment, Collaborative  
11 Innovation Center for Cancer Personalized Medicine and China International  
12 Cooperation Center for Environment and Human Health Nanjing Medical University,  
13 Nanjing, China.

14 <sup>3</sup> Department of Chronic Non-Communicable Disease Control, The Affiliated Wuxi  
15 Center for Disease Control and Prevention of Nanjing Medical University, Wuxi  
16 Center for Disease Control and Prevention, Wuxi Medical Center, Nanjing Medical  
17 University, Wuxi, China.

18 <sup>4</sup> Research Units of Cohort Study on Cardiovascular Diseases and Cancers, Chinese  
19 Academy of Medical Sciences, Beijing, China.

20

21 <sup>†</sup>These authors contributed equally to this work.

22 **\* Correspondence to:** Prof Guangfu Jin, Department of Epidemiology, Center for  
23 Global Health, School of Public Health, Nanjing Medical University, 101 Longmian  
24 Rd., Nanjing 211166, China. Email: [guangfujin@njmu.edu.cn](mailto:guangfujin@njmu.edu.cn); or Prof Meng Zhu,  
25 Department of Epidemiology, Center for Global Health, School of Public Health,  
26 Nanjing Medical University, 101 Longmian Rd., Nanjing 211166, China. E-mail:

27 zhmnjmu@njmu.edu.cn; or Prof Lu Wang, Department of Chronic  
28 Non-Communicable Disease Control, Wuxi Center for Disease Control and  
29 Prevention, Affiliated Wuxi Center for Disease Control and Prevention of Nanjing  
30 Medical University, 499 Jincheng Rd., Wuxi 214023, China. E-mail:  
31 wanglu123@njmu.edu.cn.

32 **Abstract**

33 **Background**

34 Age is the most important risk factor for cancer, but aging rates are heterogeneous  
35 across individuals. We explored a new measure of aging-Phenotypic Age  
36 (PhenoAge)-in the risk prediction of site-specific and overall cancer.

37 **Methods**

38 Using Cox regression models, we examined the association of Phenotypic Age  
39 Acceleration (PhenoAgeAccel) with cancer incidence by genetic risk group among  
40 374,463 participants from the UK Biobank. We generated PhenoAge using  
41 chronological age and 9 biomarkers, PhenoAgeAccel after subtracting the effect of  
42 chronological age by regression residual, and an incidence weighted overall cancer  
43 polygenic risk score (CPRS) based on 20 cancer site-specific polygenic risk scores  
44 (PRSs).

45 **Results**

46 Compared with biologically younger participants, those older had a significantly  
47 higher risk of overall cancer, with hazard ratios (HRs) of 1.22 (95% confidence  
48 interval, 1.18-1.27) in men, 1.26 (1.22-1.31) in women, respectively. A joint effect of  
49 genetic risk and PhenoAgeAccel was observed on overall cancer risk, with HRs of  
50 2.29 (2.10-2.51) for men and 1.94 (1.78-2.11) for women with high genetic risk and  
51 older PhenoAge compared with those with low genetic risk and younger PhenoAge.  
52 PhenoAgeAccel was negatively associated with the number of healthy lifestyle factors  
53 (Beta = -1.01 in men,  $P < 0.001$ ; Beta = -0.98 in women,  $P < 0.001$ ).

54 **Conclusions**

55 Within and across genetic risk groups, older PhenoAge was consistently related to an  
56 increased risk of incident cancer with adjustment for chronological age and the aging  
57 process could be retarded by adherence to a healthy lifestyle.

58 **Key Words:** Phenotypic aging; Polygenic risk score; Healthy lifestyle; Cancer risk.

## 59 **Introduction**

60 Cancer continues to be the leading cause of death globally and the reduction of  
61 cancer-related deaths remains to be a public health priority (Bray et al., 2018). The  
62 morbidity and mortality of cancer increase dramatically with age, which demonstrated  
63 that aging is the greatest risk factor for cancer (Siegel, Miller, & Jemal, 2018).

64 Although everyone gets older, individuals are aging at different rates (Rutledge, Oh,  
65 & Wyss-Coray, 2022). Therefore, the variation in the pace of aging between-person  
66 may reflect the differences in susceptibility to cancer and death. Thus, measurement  
67 of an individual's biological age, particularly at the early stage of life, may promote  
68 the primary and secondary prevention of cancer through earlier identification of high  
69 risk groups.

70 Recently, Morgan and colleagues developed and validated a novel multi-system-based  
71 aging measurement (Levine et al., 2018), Phenotypic Age (PhenoAge), which has  
72 been shown to capture long-term vulnerability to diseases like COVID-19, and  
73 strongly predict morbidity and mortality risk in diverse populations (Kuo, Pilling,  
74 Atkins, et al., 2021; Liu et al., 2018). However, it is largely unknown whether  
75 PhenoAge can predict overall cancer risk and identify high risk individuals for  
76 potential personalized prevention.

77 To date, more than 2,000 genetic loci have been identified as susceptibility markers  
78 for certain cancers by genome-wide association studies (GWAS) (Buniello et al.,  
79 2019). Although the effect of these individual loci is relatively modest on cancer risk,  
80 a polygenic risk score (PRS) combining multiple loci together as an indicator of  
81 genetic risk has been proved to effectively predict incidence of site-specific cancer  
82 (Dai et al., 2019; Lecarpentier et al., 2017; Mars et al., 2020). Recently, we  
83 systematically created site-specific cancer PRS for 20 cancer types, and constructed  
84 an incidence-weighted cancer polygenic risk score (CPRS) to assess the effect of  
85 genetic risk on overall incident cancer risk based on the UK Biobank (Zhu et al.,  
86 2021). Previous study had indicated an interaction between genetic factor and age on

87 cancer risk (Mavaddat et al., 2015). However, the extent to interaction between  
88 genetic factor and PhenoAge on overall cancer risk remained unclear.

89 In this study, we calculated PhenoAge in accordance with the method described  
90 previously and then evaluated the effectiveness of PhenoAge in predicting risk of  
91 overall cancer in the UK Biobank. We also assessed the extent to which a level of  
92 accelerated aging was associated with an increased overall cancer risk across groups  
93 with a different genetic risk defined by the CPRS.

94

## 95 **Methods**

### 96 **Participants**

97 The participants included in this study are derived from the UK Biobank. The UK  
98 Biobank is a large population-based cohort study and detail protocol is publicly  
99 available (Bycroft et al., 2018). In brief, approximately 500,000 participants aged  
100 40-70 were recruited from 22 assessment centers across England, Scotland, and Wales  
101 between 2006 and 2010 at baseline. Each eligible participant completed a written  
102 informed consent form and provided information on lifestyle and other potentially  
103 health-related aspects through extensive baseline questionnaires, interviews, and  
104 physical measurements. Meanwhile, biological samples of participants were also  
105 collected for biomarker assays and a blood draw was collected for genotyping. The  
106 UK Biobank study has approval from the Multi-center Research Ethics Committee,  
107 the National Information Governance Board for Health and Social Care in England  
108 and Wales, and the Community Health Index Advisory Group in Scotland  
109 (<http://www.ukbiobank.ac.uk/ethics/>).

### 110 **PhenoAge and PhenoAgeAccel PRS**

111 We calculated PhenoAge in accordance with the method described previously (Levine  
112 et al., 2018). Briefly, PhenoAge was calculated based on mortality scores from the  
113 Gompertz proportional hazard model on chronological age and 9 multi-system clinical

114 chemistry biomarkers (albumin, creatinine, glucose, [log] C-reactive protein [CRP],  
115 lymphocyte percent, mean cell volume, red blood cell distribution width, alkaline  
116 phosphatase, and white blood cell count) to predict all-cause mortality. The  
117 Biomarkers in the UK Biobank were measured at baseline (2006-2010) for all  
118 participants. To correct distribution skewness, we set the top and bottom 1% of values  
119 to the 99th and 1st percentiles. The formula of PhenoAge is given by

$$\text{PhenoAge} = 141.50 + \frac{\ln \left\{ (-0.00553) \times \frac{(-1.51714) \times \exp(xb)}{0.0076927} \right\}}{0.09165}$$

120 where

$$\begin{aligned}xb = & -19.907 - 0.0336 \times \text{albumin} + 0.0095 \times \text{creatinine} + 0.1953 \times \text{glucose} \\ & + 0.0954 \times \ln(\text{CRP}) - 0.0120 \times \text{lymphocytepercentage} + 0.0268 \\ & \times \text{mean corpuscular volume} + 0.3306 \\ & \times \text{red blood cell distribution width(RDW)} + 0.00188 \\ & \times \text{alkaline phosphatase} + 0.0554 \times \text{white blood cell count} \\ & + 0.0804 \times \text{age}\end{aligned}$$

121

122 Finally, we calculated Phenotypic Age Acceleration (PhenoAgeAccel), which was  
123 defined as the residual resulting from a linear model when regressing Phenotypic Age  
124 on chronological age. Therefore, PhenoAgeAccel represents Phenotypic Age after  
125 accounting for chronological age (i.e., whether a person appears older [positive value]  
126 or younger [negative value] than expected, biologically, based on his/her age).

127 55 independent PhenoAgeAccel-associated SNPs ( $P < 5 \times 10^{-8}$ ) and corresponding  
128 effect sizes were derived from a large-scale PhenoAgeAccel GWAS including  
129 107,460 individuals of European ancestry (Kuo, Pilling, Liu, Atkins, & Levine, 2021).  
130 A PhenoAgeAccel PRS was created using an additive model as previously described  
131 (Dai et al., 2019). In short, the genotype dosage of each risk allele for each individual

132 was summed after multiplying by its respective effect size of PhenoAgeAccel.

### 133 **PRS calculation and CPRS construction**

134 The calculation of site-specific cancer PRSs and the construction of CPRSs have been  
135 described in our previous published study (Zhu et al., 2021). In brief, for individual  
136 cancer, risk associated single nucleotide polymorphisms (SNPs) and corresponding  
137 effect sizes were derived from the largest published GWASs in terms of sample size.  
138 Next, the dosage of each risk allele for each individual was summed after  
139 multiplication with its respective effect size of site-specific cancer. Except for  
140 non-melanoma skin cancer and those without relevant GWAS or significant genetic  
141 loci published by now, we derived PRSs for 20 cancer types in this analysis. To  
142 generate an indicator of genetic risk for overall cancer, we constructed the CPRS as  
143 follows:

$$CPRS_i = \sum_{k=1}^K h_k PRS_{i,k}$$

144 Where  $CPRS_i$  is the cancer polygenic risk score of  $i^{\text{th}}$  individual,  $h_k$  is the  
145 age-standardized incidence of site-specific cancer  $k$  in UK population, and  $PRS_{i,k}$  is  
146 the aforementioned PRS of site-specific cancer  $k$ . Given the different spectrum of  
147 cancer incidence between men and women, CPRS were constructed for males and  
148 females, respectively.

### 149 **Assessment of healthy lifestyle**

150 We adopted five healthy lifestyle factors according to the World Cancer Research  
151 Fund/American Institute of Cancer Research recommendations  
152 (<https://www.aicr.org/cancer-prevention/>) (Shams-White et al., 2019), i.e., no current  
153 smoking, no alcohol consumption, regular physical activity, moderate BMI  
154 (body-mass index, 18.5~30), and a healthy diet pattern. Participants of no current  
155 smoking were defined as never smoker or former smokers who had quit smoking at  
156 least 30 years. No alcohol consumption was defined as never alcohol use. Regular  
157 physical activity was defined as at least 75 minutes of vigorous activity per week or

158 150 minutes of moderate activity per week (or an equivalent combination) or  
159 engaging in vigorous activity once and moderate physical activity at least 5 days a  
160 week (Lourida et al., 2019). A healthy diet pattern was ascertained consumption of an  
161 increased amount of fruits, vegetables, whole grains, fish and a reduced amount of red  
162 meats and processed meats (Lourida et al., 2019). The lifestyle index ranged from 0 to  
163 5, with higher index indicating a healthier lifestyle.

## 164 **Outcomes**

165 Outcomes of incident cancer events in the UK Biobank were ascertained through  
166 record electronic linkage with the National Health Service central registers and death  
167 registries in England, Wales and Scotland. Complete follow-up was updated to 31  
168 October 2015 for Scotland, and to 31 March 2016 for England & Wales. Cancer  
169 events were coded using the 10<sup>th</sup> Revision of the International Classification of  
170 Diseases. The outcome of all cancer events were obtained from data field 40006 and  
171 40005 of the UK Biobank.

## 172 **Statistical analysis**

173 Cancer risk of participants in the UK Biobank was assessed from baseline until to the  
174 date of diagnosis, death, loss to follow-up, or date of complete follow-up, whichever  
175 occurred first. Multivariable Cox proportional hazards regression analyses were  
176 performed to assess associations between PhenoAgeAccel and cancer risk and to  
177 estimate hazard ratios (HRs) as well as 95% confidence intervals (CI). Schoenfeld  
178 residuals and log-log inspection were used to test the assumption of proportional  
179 hazards. HRs associated with per 5 years increased of PhenoAgeAccel was calculated  
180 for site-specific cancer and overall cancer respectively. We compared HRs between  
181 biologically younger and older participants. In addition, we calculated HRs for  
182 participants at low (the bottom quintile of PhenoAgeAccel), intermediate (quintiles  
183 2-4), and high (the top quintile) accelerated aging, and HRs for participants splitted by  
184 decile of accelerated aging.

185 Meanwhile, participants were also divided into low (the bottom quintile of CPRS),



186 intermediate (quintiles 2-4), and high (the top quintile) genetic risk groups. Absolute  
187 risk within each subgroup defined by PhenoAgeAccel and CPRS were calculated as  
188 the percentage of incident cancer cases occurring in a given group. We calculated  
189 absolute risk increase as the difference in cancer incidences among given groups,  
190 extrapolated the difference in 5-year event rates among given groups. The 95% CIs  
191 for the absolute risk increase were derived by drawing 1,000 bootstrap samples from  
192 the estimation dataset. We performed additive interaction analysis between genetic  
193 risk (defined by CPRS) and PhenoAgeAccel on overall cancer risk, as well as genetic  
194 risk (defined by PhenoAgeAccel PRS) and lifestyle on PhenoAgeAccel using two  
195 indexes: the relative excess risk due to interaction (RERI) and the attributable  
196 proportion due to interaction (AP) (R. Li & Chambless, 2007). The 95% CIs of the  
197 RERI and AP were estimated by bootstrap (N = 5,000), which would contain 0 if there  
198 was no additive interaction. We also used multivariable linear regression models to  
199 assess associations between the PhenoAgeAccel and individual lifestyle factors with  
200 adjustment for age, family history of cancer, Townsend deprivation index, height, and  
201 the first 10 principal components of ancestry. All the above mentioned analyses were  
202 performed for men and women separately.

203 Participants with missing data on any of the covariates were multiple imputed, and  
204 independent analyses were also performed based on complete data for sensitivity  
205 analyses. Besides, to examine the reliability of our results, we conducted several  
206 sensitivity analyses: (1) reclassifying PhenoAgeAccel levels based on quartiles  
207 (bottom, 2-3, and top quartiles defined as low, intermediate, and high accelerated  
208 aging, respectively) or tertiles (corresponding to low, intermediate, and high  
209 accelerated aging) of PhenoAgeAccel; (2) reevaluating the effect of PhenoAgeAccel  
210 based on participants of unrelated British ancestry; (3) excluding incident cases of any  
211 cancer occurring during the two years of follow-up; and (4) retrained PhenoAge in  
212 cancer-free participants based on mortality. All *P* values were two-sided and  $P < 0.05$   
213 was considered statistically significant. All statistical analyses were performed with R  
214 software, version 3.6.3 (R Project for Statistical Computing).

215

## 216 **Results**

### 217 **Participants**

218 After removing participants who had withdrawn their consent, had been diagnosed  
219 with cancer before baseline, failed to be genotyped, reported a mismatch sex with  
220 genetic data, or with missing data on PhenoAge, the final analytic dataset included  
221 374,463 eligible participants (173,431 men and 201,032 women). Of which, 169,573  
222 participants were biologically older, with 92,189 men and 77,384 women, whose  
223 median PhenoAgeAccel were 3.28 (interquartile range [IQR]: 1.50 to 6.06) and 3.07  
224 (IQR: 1.33 to 5.79) respectively; 204,890 participants were biologically younger, with  
225 81,242 men and 123,648 women, whose median PhenoAgeAccel were -2.61 (IQR:  
226 -4.35 to -1.25) and -3.55 (IQR: -5.64 to -1.81) respectively (**Table 1, Appendix**  
227 **1-figure 1**).

### 228 **Associations of PhenoAgeAccel with cancer risk**

229 There were 22,370 incident cancer cases, with 11,532 men and 10,838 women, during  
230 a median follow-up of 7.09 years (IQR: 6.35 to 7.72). The PhenoAgeAccel was  
231 significantly associated with increased risk for cancer sites of lip-oral cavity-pharynx,  
232 esophagus, stomach, colon-rectum, pancreas, lung, breast, cervix uteri, corpus uteri,  
233 prostate, kidney, bladder, multiple myeloma, Hodgkin's disease, and lymphoid  
234 leukaemia, while negatively associated with risk of prostate cancer after adjusting for  
235 chronological age and other covariates (**Figure 1, Appendix 1-table 1**).

236 For overall cancer, we observed an obviously higher distribution of PhenoAgeAccel  
237 in incident cancer cases than participants without incident cancer in both men and  
238 women (**Figure 2A and B**). PhenoAgeAccel was significantly associated with an  
239 increased risk of overall cancer in men (HR = 1.15, 95% CI, 1.13-1.17,  $P < 0.0001$ )  
240 and women (HR = 1.15, 95% CI, 1.13-1.17,  $P < 0.0001$ ) per 5 years increase (**Table**  
241 **2**). We also observed a significantly gradient increase in incident cancer risk from  
242 decile 1 to decile 10 of PhenoAgeAccel (**Figure 2C and D**). Compared with

243 biologically younger participants, those older had a significantly higher risk of overall  
244 cancer, with HRs of 1.22 (95% CI, 1.18-1.27,  $P < 0.0001$ ) in men, 1.26 (95% CI,  
245 1.22-1.31,  $P < 0.0001$ ) in women, respectively (**Figure 2E and F**). Besides, Compared  
246 with individuals at low accelerated aging (the bottom quintile of PhenoAgeAccel),  
247 those in the intermediate (quintiles 2 to 4) and high accelerated aging (the top quintile)  
248 had a significantly higher risk of overall cancer, with HRs of 1.15 (95% CI, 1.09-1.21,  
249  $P < 0.0001$ ) and 1.44 (95% CI, 1.36-1.53,  $P < 0.0001$ ) in men, 1.15 (95% CI,  
250 1.09-1.21,  $P < 0.0001$ ) and 1.46 (95% CI, 1.38-1.55,  $P < 0.0001$ ) in women,  
251 respectively. These results did not change after adjustment for genetic risk and  
252 lifestyle factors (**Table 2**). Similar patterns were noted in a series of sensitivity  
253 analyses with reclassifying accelerated aging levels according to quartiles or tertiles  
254 of the PhenoAgeAccel (**Appendix 1-table 2**), exclusion of incident cancer cases  
255 occurred during the two years of follow-up (**Appendix 1-table 3**), in the unimputed  
256 data (**Appendix 1-table 4**), in the unrelated British population (**Appendix 1-table 5**),  
257 or using retrained PhenoAge in cancer-free participants (**Appendix 1-table 6**).

### 258 **Joint effect and interaction of genetic factor and PhenoAgeAccel on overall** 259 **cancer risk**

260 The overall incident cancer risk associated with both genetic risk and PhenoAgeAccel  
261 in a dose-response manner (**Figure 3**). Of participants with high genetic risk and older  
262 PhenoAge, the incidence rates of overall cancer per 100,000 person-years were  
263 estimated to be 1477.89 (95% CI, 1410.87-1544.92) in men and 1076.17 (95% CI,  
264 1014.14-1138.19) in women versus 581.06 (95% CI, 537.12-625.00) in men and  
265 594.71 (95% CI, 558.50-630.92) in women with low genetic risk and younger  
266 PhenoAge. Approximate double risks [HR, 2.29 (95% CI, 2.10-2.51) in men,  $P <$   
267  $0.0001$ ; 1.94 (95% CI, 1.78-2.11) in women,  $P < 0.0001$ ] were observed in  
268 participants with high genetic risk and older PhenoAge, compared with those with  
269 low genetic risk and younger PhenoAge. Similar patterns were noted by reclassifying  
270 accelerated aging levels into low (the bottom quintile of PhenoAgeAccel),  
271 intermediate (quintiles 2-4), and high (the top quintile) (**Appendix 1-figure 2**).

272 However, we did not observe interaction between genetic and PhenoAgeAccel on  
273 overall cancer risk in men and women (**Appendix 1-table 7**).

#### 274 **Disadvantages of older PhenoAge with overall incident cancer**

275 In further stratification analyses by genetic risk category with younger PhenoAge as  
276 the reference group, we confirmed that older PhenoAge was significantly associated  
277 with a higher incident cancer risk across genetic risk groups (**Table 3**). Among  
278 participants at high genetic risk, the standardized 5-year incident cancer rates were  
279 5.78% and 4.58% for biologically younger men and women versus 6.90% and 5.17%  
280 for those older, respectively. Similarly, among participants at low genetic risk, the  
281 standardized 5-year incident cancer rates increased from 2.71% and 2.83% for  
282 biologically younger to 3.87% and 3.39% for those older in men and women,  
283 respectively. Similar patterns were noted by reclassifying accelerated aging levels into  
284 low (the bottom quintile of PhenoAgeAccel), intermediate (quintiles 2-4), and high  
285 (the top quintile) (**Appendix 1-table 8**).

286 In addition, to evaluate the implication for cancer screening in populations with  
287 different PhenoAgeAccel, we estimated the 5-year absolute risk of overall cancer  
288 between biologically younger and older participants with the increasing of age.  
289 Assuming 2% of absolute risk within the next 5 years as the threshold to be  
290 recommended for cancer screening, biologically younger men would reach the  
291 threshold at age 52, whereas those older men would reach the threshold at age 50;  
292 similarly, biologically younger women would reach the 2% of 5-year absolute risk at  
293 age 46, whereas those older women would reach the threshold at age 44 (**Figure 4**).

#### 294 **Associations of lifestyle factors with PhenoAgeAccel**

295 In the UK Biobank, biologically younger men (9.6%, 7,781/81,242) and women  
296 (14.4%, 17,781/123,648) were more likely to have favorable lifestyle (4 to 5 healthy  
297 lifestyle factors) than older men (5.7%, 5,255/92,189) and women (9.3%,  
298 7,178/77,384) (**Table 1**). Among both men and women, we observed that  
299 PhenoAgeAccel decreased with the increase of healthy lifestyle factors (**Appendix**

300 **1-table 9**). In addition, we found a significant negative correlation between the  
301 number of healthy lifestyle factors and PhenoAgeAccel (Beta = -1.01 in men,  $P <$   
302 0.001; Beta = -0.98 in women,  $P <$  0.001) (**Appendix 1-table 10**). However, we did  
303 not observe any interaction between genetic risk and lifestyle on PhenoAgeAccel in  
304 both men and women (**Appendix 1-table 11**).

305

## 306 **Discussion**

307 In this study, we calculated PhenoAgeAccel to explore the effect of accelerated aging  
308 on the risk of cancer, and demonstrated a positive association between accelerated  
309 aging and increased cancer risk after adjustment for chronological age in the UK  
310 Biobank. Meanwhile, older PhenoAge was consistently associated with an increased  
311 absolute risk of incident cancer within each genetic risk group; and participants with  
312 high genetic risk and older PhenoAge had the greatest incident cancer risk. Therefore,  
313 our findings provided the evidence for PhenoAgeAccel to be used for risk  
314 stratification of cancer, which were independent from genetic risk. Moreover, we also  
315 demonstrated that participants with older biological age often reaches the screening  
316 threshold 2 years in advance compared with biologically younger peers; and keeping a  
317 healthy lifestyle can effectively slow down the aging process.

318 Older age has been long recognized as the main risk factor for cancer, and the  
319 multistage model of carcinogenesis posits that the exponential increase in cancer  
320 incidence with age were mainly resulted from the sequential accumulation of  
321 oncogenic mutations in different tissues throughout life (Laconi, Marongiu, &  
322 DeGregori, 2020). In consistent with this, age and exposure (i.e. smoking, ultraviolet  
323 light) dependent mutation signatures have been identified in several cancers by tissue  
324 sequencing (Alexandrov et al., 2020). However, biological aging is an enormously  
325 complex process and is thought to be influenced by multiple genetic and  
326 environmental factors (van Dongen et al., 2016). Therefore, several biomarkers, i.e.  
327 ‘ageing clocks’ derived from epigenomic, transcriptomic, proteomic and metabolomic

328 data, have been proposed to measure the biological age and predict risk of cancer and  
329 other diseases (Rutledge et al., 2022; Zhang et al., 2022). However, these measures  
330 were usually based on omics data and was not suitable for application in large  
331 population by now. As a result, results from this study would provide a cost-effective  
332 indicator for measuring of biological age as well as a novel biomarker for cancer risk  
333 prediction.

334 The associations between biological age and cancer risk has been investigated by  
335 several studies recently. Li et al. explored three DNA methylation phenotypic age and  
336 cancer risk in four subsets of a population-based cohort from Germany, and reported  
337 strong positive associations for lung cancer, while strong inverse associations for  
338 breast cancer (X. Li, Schotker, Holleczeck, & Brenner, 2022). Meanwhile, results  
339 from Melbourne Collaborative Cohort Study reported that epigenetic aging was  
340 associated with increased cancer risk of kidney cancer and B-cell lymphoma (Dugue  
341 et al., 2018). However, because of sample size, the association results were still  
342 inconsistent for DNA methylation phenotypic age among different studies. Leukocyte  
343 telomere length was also significantly associated with age and were regarded as an  
344 indicator of aging. Based on data from the UK Biobank, Schneider et al. recently  
345 explored the associations between telomere length and risk of several disease, and  
346 reported significant positive associations of telomere length for lymphoid leukemia,  
347 multiple myeloma, non-Hodgkin lymphoma, esophagus cancer, while negative  
348 associations for malignant neoplasm of brain, mesothelioma, and melanoma  
349 (Schneider et al., 2022). The positive associations were in consistent with our findings,  
350 however, the negative associations were not significant in our study. Meanwhile, the  
351 study did not indicate associations for other cancers, including cancers of lung,  
352 stomach, pancreases, and kidney, which showed relatively large effects ( $HR > 1.3$ ) in  
353 our study. These findings indicated that the different measures of biological age may  
354 reflect the different aspects of aging, and could be joint application in cancer risk  
355 assessment.

356 Recently, several studies have confirmed the associations between PhenoAgeAccel

357 and cancer risk. Mak et al. explored three measures of biological age, including  
358 PhenoAge, and assessed their associations with the incidence of overall cancer and  
359 five common cancers (breast, prostate, lung, colorectal, and melanoma) (Mak et al.,  
360 2023). In our previous study, we investigated the association between PhenoAgeAccel  
361 and lung cancer risk and analyzed the joint and interactive effects of PhenoAgeAccel  
362 and genetic factors on the risk of lung cancer (Ma et al., 2023). In comparison to these  
363 studies, our analysis expanded the range of cancers to 20 types and further explored  
364 the associations in different genetic and lifestyle contexts. Moreover, we also  
365 evaluated the potential implications of PhenoAge in population-level cancer screening.  
366 In addition, we observed a negative association between PhenoAgeAccel and prostate  
367 cancer risk. The unexpected association may have been confounded by diabetes and  
368 altered glucose metabolism, both of which are closely linked to aging. When we  
369 removed HbA1c and serum glucose from the biological age algorithms, the  
370 association became non-statistically significant. Similar findings were also reported  
371 by Mak et al. (Mak et al., 2023) and Dugue et al. (Dugue et al., 2021).

372 The associations between PhenoAgeAccel and increased cancer risk may be partly  
373 attribute to a result of decline in the immune system and accumulation of  
374 environmental carcinogenic factors. Recent GWASs of PhenoAgeAccel showed that  
375 SNPs associated with PhenoAgeAccel were enriched in pathways of immune system  
376 and activation of pro-inflammatory (Kuo, Pilling, Liu, Atkins, & Levine, 2021;  
377 Levine et al., 2018). In addition to genetics, behaviors (i.e. obesity, smoking, alcohol  
378 consumption, and physical activity), and life course circumstances (i.e.  
379 socioenvironmental circumstances during childhood and adulthood) were reported to  
380 account for about 30% variances of phenotypic aging (Liu et al., 2019). This was in  
381 accordance with our findings that, adherence to healthy lifestyles (involving no  
382 current smoking, normal BMI, regular physical activity, and healthy diet) could slow  
383 down the aging process. In other words, these healthy lifestyles considered in our and  
384 previous studies may be causal drivers of phenotypic aging, they represent a more  
385 targetable strategy for reducing overall cancer burden by retarding the aging process.

386 Therefore, PhenoAge provide a meaningful intermediate phenotype that can be used  
387 to guide interventions for high risk groups and track intervention efficacy (Liu et al.,  
388 2019).

389 This study has several strengths, including a large sample size, a prospective design of  
390 the UK Biobank study, and an effective application of PhenoAgeAccel in predicting  
391 risk of overall cancer. Nevertheless, we also acknowledge several limitations. First,  
392 we calculated PhenoAge based on 9 biomarkers from blood, which were measured at  
393 baseline. As such, we were unable to access the change of PhenoAgeAccel during the  
394 follow-up period. Second, previous studies have indicated that participants in the UK  
395 Biobank differ from the general UK population because of low participation and  
396 healthy volunteer bias (Fry et al., 2017). Finally, even though the findings were  
397 achieved from participants with diverse ethnic backgrounds of the UK Biobank, the  
398 generalizability of our findings should be further assessed in more diverse populations  
399 when available.

400 In summary, our study showed that accelerated aging, which was measured by  
401 PhenoAgeAccel, was consistently related to an increased risk of several site-specific  
402 cancer and overall cancer with adjustment for chronological age, within and across  
403 genetic risk groups. PhenoAgeAccel can serve as a productive tool to facilitate  
404 identification of cancer susceptible individuals, in combination with individual's  
405 genetic background, and act as an intermediate phenotype to guide interventions for  
406 high risk groups and track intervention efficacy.

407

408 **Ethics approval and consent to participate:** This research was conducted using the  
409 UK Biobank Resource (Application Number: 60169). UK Biobank has received  
410 ethics approval from the Research Ethics Committee (ref. 11/NW/0382).

411 **Availability of data and materials:** The data underlying the results presented in the  
412 study are available from the UK Biobank (<http://biobank.ndph.ox.ac.uk/showcase/>).

413 **Competing interests:** The authors declare that they have no competing interests.



414 **Funding:** This work was supported by National Natural Science Foundation of China  
415 (82230110, 82125033 to GJ; 82273714 to MZ); and the Excellent Youth Foundation  
416 of Jiangsu Province (BK20220100 to MZ).

#### 417 **Authors' Contributions**

418 **L. Bian:** Data curation, formal analysis, validation, visualization, writing—original  
419 draft, writing—review and editing. **Z. Ma:** Data curation, formal analysis, validation,  
420 visualization, writing—review and editing. **X. Fu:** Data curation, validation,  
421 visualization, writing—review and editing. **C. Ji:** Data curation, validation,  
422 visualization. **T. Wang:** Methodology, formal analysis, validation, visualization,  
423 writing—review and editing. **C. Yan:** Methodology, writing—review and editing. **J. Dai:**  
424 Methodology, writing—review and editing. **H. Ma:** Supervision, project administration,  
425 writing—review and editing. **Z. Hu:** Conceptualization, supervision, project  
426 administration, writing—review and editing. **H. Shen:** Conceptualization, resources,  
427 supervision, project administration, writing—review and editing. **L. Wang:**  
428 Conceptualization, formal analysis, supervision, validation, writing—review and  
429 editing. **M. Zhu:** Conceptualization, formal analysis, supervision, funding acquisition,  
430 validation, writing—original draft, writing—review and editing. **G. Jin:**  
431 Conceptualization, formal analysis, supervision, funding acquisition, validation,  
432 writing—review and editing.

#### 433 **Acknowledgments**

434 The authors thank the investigators and participants in UK Biobank for their  
435 contributions to this study.

#### 436 **References**

437 Alexandrov, L. B., Kim, J., Haradhvala, N. J., Huang, M. N., Tian Ng, A. W., Wu, Y., . . . Consortium, P.  
438 (2020). The repertoire of mutational signatures in human cancer. *Nature*, *578*(7793), 94-101.  
439 doi: 10.1038/s41586-020-1943-3  
440 Bray, F., Ferlay, J., Soerjomataram, I., Siegel, R. L., Torre, L. A., & Jemal, A. (2018). Global cancer  
441 statistics 2018: GLOBOCAN estimates of incidence and mortality worldwide for 36 cancers in  
442 185 countries. *CA Cancer J Clin*, *68*(6), 394-424. doi: 10.3322/caac.21492  
443 Buniello, A., MacArthur, J. A. L., Cerezo, M., Harris, L. W., Hayhurst, J., Malangone, C., . . . Parkinson, H.  
444 (2019). The NHGRI-EBI GWAS Catalog of published genome-wide association studies,

- 445 targeted arrays and summary statistics 2019. *Nucleic Acids Res*, 47(D1), D1005-D1012. doi:  
446 10.1093/nar/gky1120
- 447 Bycroft, C., Freeman, C., Petkova, D., Band, G., Elliott, L. T., Sharp, K., . . . Marchini, J. (2018). The UK  
448 Biobank resource with deep phenotyping and genomic data. *Nature*, 562(7726), 203-209. doi:  
449 10.1038/s41586-018-0579-z
- 450 Dai, J., Lv, J., Zhu, M., Wang, Y., Qin, N., Ma, H., . . . Shen, H. (2019). Identification of risk loci and a  
451 polygenic risk score for lung cancer: a large-scale prospective cohort study in Chinese  
452 populations. *Lancet Respir Med*, 7(10), 881-891. doi: 10.1016/S2213-2600(19)30144-4
- 453 Dugue, P. A., Bassett, J. K., Joo, J. E., Jung, C. H., Ming Wong, E., Moreno-Betancur, M., . . . Milne, R. L.  
454 (2018). DNA methylation-based biological aging and cancer risk and survival: Pooled analysis  
455 of seven prospective studies. *Int J Cancer*, 142(8), 1611-1619. doi: 10.1002/ijc.31189
- 456 Dugue, P. A., Bassett, J. K., Wong, E. M., Joo, J. E., Li, S., Yu, C., . . . Milne, R. L. (2021). Biological Aging  
457 Measures Based on Blood DNA Methylation and Risk of Cancer: A Prospective Study. *JNCI  
458 Cancer Spectr*, 5(1). doi: 10.1093/jncics/pkaa109
- 459 Fry, A., Littlejohns, T. J., Sudlow, C., Doherty, N., Adamska, L., Sprosen, T., . . . Allen, N. E. (2017).  
460 Comparison of Sociodemographic and Health-Related Characteristics of UK Biobank  
461 Participants With Those of the General Population. *Am J Epidemiol*, 186(9), 1026-1034. doi:  
462 10.1093/aje/kwx246
- 463 Kuo, C. L., Pilling, L. C., Atkins, J. L., Masoli, J. A. H., Delgado, J., Tignanelli, C., . . . Levine, M. E. (2021).  
464 Biological Aging Predicts Vulnerability to COVID-19 Severity in UK Biobank Participants. *J  
465 Gerontol A Biol Sci Med Sci*, 76(8), e133-e141. doi: 10.1093/gerona/glab060
- 466 Kuo, C. L., Pilling, L. C., Liu, Z., Atkins, J. L., & Levine, M. E. (2021). Genetic associations for two  
467 biological age measures point to distinct aging phenotypes. *Aging Cell*, 20(6), e13376. doi:  
468 10.1111/ace1.13376
- 469 Laconi, E., Marongiu, F., & DeGregori, J. (2020). Cancer as a disease of old age: changing mutational  
470 and microenvironmental landscapes. *Br J Cancer*, 122(7), 943-952. doi:  
471 10.1038/s41416-019-0721-1
- 472 Lecarpentier, J., Silvestri, V., Kuchenbaecker, K. B., Barrowdale, D., Dennis, J., McGuffog, L., . . . Ottini, L.  
473 (2017). Prediction of Breast and Prostate Cancer Risks in Male BRCA1 and BRCA2 Mutation  
474 Carriers Using Polygenic Risk Scores. *J Clin Oncol*, 35(20), 2240-2250. doi:  
475 10.1200/JCO.2016.69.4935
- 476 Levine, M. E., Lu, A. T., Quach, A., Chen, B. H., Assimes, T. L., Bandinelli, S., . . . Horvath, S. (2018). An  
477 epigenetic biomarker of aging for lifespan and healthspan. *Aging (Albany NY)*, 10(4), 573-591.  
478 doi: 10.18632/aging.101414
- 479 Li, R., & Chambless, L. (2007). Test for additive interaction in proportional hazards models. *Ann  
480 Epidemiol*, 17(3), 227-236. doi: 10.1016/j.annepidem.2006.10.009
- 481 Li, X., Schottker, B., Holleczeck, B., & Brenner, H. (2022). Associations of DNA methylation algorithms of  
482 aging and cancer risk: Results from a prospective cohort study. *EBioMedicine*, 81, 104083. doi:  
483 10.1016/j.ebiom.2022.104083
- 484 Liu, Z., Chen, X., Gill, T. M., Ma, C., Crimmins, E. M., & Levine, M. E. (2019). Associations of genetics,  
485 behaviors, and life course circumstances with a novel aging and healthspan measure:  
486 Evidence from the Health and Retirement Study. *PLoS Med*, 16(6), e1002827. doi:  
487 10.1371/journal.pmed.1002827
- 488 Liu, Z., Kuo, P. L., Horvath, S., Crimmins, E., Ferrucci, L., & Levine, M. (2018). A new aging measure

- 489 captures morbidity and mortality risk across diverse subpopulations from NHANES IV: A  
490 cohort study. *PLoS Med*, 15(12), e1002718. doi: 10.1371/journal.pmed.1002718
- 491 Lourida, I., Hannon, E., Littlejohns, T. J., Langa, K. M., Hyppönen, E., Kuzma, E., & Llewellyn, D. J. (2019).  
492 Association of Lifestyle and Genetic Risk With Incidence of Dementia. *Jama*, 322(5), 430-437.  
493 doi: 10.1001/jama.2019.9879
- 494 Ma, Z., Zhu, C., Wang, H., Ji, M., Huang, Y., Wei, X., . . . Shen, H. (2023). Association between biological  
495 aging and lung cancer risk: Cohort study and Mendelian randomization analysis. *iScience*,  
496 26(3), 106018. doi: 10.1016/j.isci.2023.106018
- 497 Mak, J. K. L., McMurrin, C. E., Kuja-Halkola, R., Hall, P., Czene, K., Jylhava, J., & Hagg, S. (2023). Clinical  
498 biomarker-based biological aging and risk of cancer in the UK Biobank. *Br J Cancer*, 129(1),  
499 94-103. doi: 10.1038/s41416-023-02288-w
- 500 Mars, N., Koskela, J. T., Ripatti, P., Kiiskinen, T. T. J., Havulinna, A. S., Lindbohm, J. V., . . . Ripatti, S.  
501 (2020). Polygenic and clinical risk scores and their impact on age at onset and prediction of  
502 cardiometabolic diseases and common cancers. *Nat Med*, 26(4), 549-557. doi:  
503 10.1038/s41591-020-0800-0
- 504 Mavaddat, N., Pharoah, P. D., Michailidou, K., Tyrer, J., Brook, M. N., Bolla, M. K., . . . Garcia-Closas, M.  
505 (2015). Prediction of breast cancer risk based on profiling with common genetic variants. *J*  
506 *Natl Cancer Inst*, 107(5). doi: 10.1093/jnci/djv036
- 507 Rutledge, J., Oh, H., & Wyss-Coray, T. (2022). Measuring biological age using omics data. *Nat Rev Genet*,  
508 23(12), 715-727. doi: 10.1038/s41576-022-00511-7
- 509 Schneider, C. V., Schneider, K. M., Teumer, A., Rudolph, K. L., Hartmann, D., Rader, D. J., & Strnad, P.  
510 (2022). Association of Telomere Length With Risk of Disease and Mortality. *JAMA Intern Med*,  
511 182(3), 291-300. doi: 10.1001/jamainternmed.2021.7804
- 512 Shams-White, M. M., Brockton, N. T., Mitrou, P., Romaguera, D., Brown, S., Bender, A., . . . Reedy, J.  
513 (2019). Operationalizing the 2018 World Cancer Research Fund/American Institute for Cancer  
514 Research (WCRF/AICR) Cancer Prevention Recommendations: A Standardized Scoring System.  
515 *Nutrients*, 11(7). doi: 10.3390/nu11071572
- 516 Siegel, R. L., Miller, K. D., & Jemal, A. (2018). Cancer statistics, 2018. *CA Cancer J Clin*, 68(1), 7-30. doi:  
517 10.3322/caac.21442
- 518 van Dongen, J., Nivard, M. G., Willemsen, G., Hottenga, J. J., Helmer, Q., Dolan, C. V., . . . Boomsma, D. I.  
519 (2016). Genetic and environmental influences interact with age and sex in shaping the human  
520 methylome. *Nat Commun*, 7, 11115. doi: 10.1038/ncomms11115
- 521 Zhang, D., Leeuwenburgh, C., Zhou, D., Gong, Y., Pahor, M., Licht, J. D., & Braithwaite, D. (2022).  
522 Analysis of Biological Aging and Risks of All-Cause and Cardiovascular Disease-Specific Death  
523 in Cancer Survivors. *JAMA Netw Open*, 5(6), e2218183. doi:  
524 10.1001/jamanetworkopen.2022.18183
- 525 Zhu, M., Wang, T., Huang, Y., Zhao, X., Ding, Y., Zhu, M., . . . Shen, H. (2021). Genetic Risk for Overall  
526 Cancer and the Benefit of Adherence to a Healthy Lifestyle. *Cancer Res*, 81(17), 4618-4627.  
527 doi: 10.1158/0008-5472.Can-21-0836
- 528

529 **Table 1. Baseline characteristics of participants stratified by PhenoAgeAccel categories**

	Men (n= 173431)		Women (n= 201032)	
	Biologically younger n=81242	Biologically older n=92189	Biologically younger n=123648	Biologically older n=77384
<b>PhenoAgeAccel, median (IQR), years</b>	-2.61 (-4.35--1.25)	3.28 (1.50-6.06)	-3.55 (-5.64--1.81)	3.07 (1.33-5.79)
<b>Age at baseline, median (IQR), years</b>	57.00 (49.00-62.00)	58.00 (50.00-64.00)	58.00 (51.00-63.00)	56.00 (48.00-62.00)
<b>Height, median (IQR), centimeters</b>	176.00 (171.00-181.00)	175.00 (171.00-180.00)	162.50 (158.00-167.00)	162.00 (158.00-166.50)
<b>Townsend deprivation index, median (IQR)</b>	-2.34 (-3.76-0.16)	-1.86 (-3.52-1.10)	-2.33 (-3.73-0.07)	-1.79 (-3.44-1.10)
<b>Family history of cancer, n (%)</b>				
No	53907 (66.35)	60654 (65.79)	79800 (64.54)	50924 (65.81)
Yes	27335 (33.65)	31535 (34.21)	43848 (35.46)	26460 (34.19)
<b>Healthy lifestyle factors, n (%)</b>				
No current smoking	46412 (57.13)	43216 (46.88)	78743 (63.68)	45416 (58.69)
No alcohol consumption	2064 (2.54)	2828 (3.07)	6221 (5.03)	5459 (7.05)
Normal BMI	66120 (81.39)	62654 (67.96)	103054 (83.34)	49003 (63.32)
Regular physical activity	54346 (66.89)	57733 (62.62)	80629 (65.21)	46468 (60.05)
Healthy diet	18540 (22.82)	15486 (16.80)	39547 (31.98)	19826 (25.62)
<b>Healthy lifestyle<sup>a</sup>, n (%)</b>				
Favorable	7781 (9.58)	5255 (5.70)	17781 (14.38)	7178 (9.28)
Intermediate	57683 (71.00)	57489 (62.36)	87272 (70.58)	49324 (63.74)
Unfavorable	15778 (19.42)	29445 (31.94)	18595 (15.04)	20882 (26.98)
<b>Albumin, median (IQR), (g/L)</b>	46.20 (44.62-47.85)	44.95 (43.28-46.64)	45.47 (43.87-47.12)	44.04 (42.42-45.70)
<b>Alkaline phosphatase, median (IQR), (U/L)</b>	75.00 (64.30-87.40)	82.80 (70.10-97.90)	78.70 (65.10-93.90)	86.20 (70.60-104.00)
<b>Creatinine, median (IQR), (umol/L)</b>	77.60 (70.90-84.70)	82.50 (74.40-91.60)	61.70 (56.00-67.90)	65.50 (58.90-73.20)
<b>Glucose, median (IQR), (mmol/l)</b>	4.82 (4.49-5.14)	5.09 (4.72-5.60)	4.84 (4.54-5.14)	5.05 (4.70-5.55)

<b>C-reactive protein, median (IQR), (mg/dL)</b>	0.09 (0.05-0.16)	0.19 (0.10-0.36)	0.10 (0.05-0.20)	0.25 (0.12-0.51)
<b>Lymphocyte percent, median (IQR), (%)</b>	29.86 (25.48-34.48)	25.60 (21.22-30.24)	31.09 (26.58-35.80)	27.00 (22.62-31.61)
<b>Mean cell volume, median (IQR), (fL)</b>	90.90 (88.46-93.30)	91.90 (89.10-94.74)	91.10 (88.60-93.54)	90.98 (87.64-94.02)
<b>Red cell distribution width, median (IQR), (%)</b>	13.01 (12.70-13.37)	13.63 (13.21-14.11)	13.10 (12.71-13.50)	13.90 (13.40-14.55)
<b>White blood cell count, median (IQR), (1000 cells/uL)</b>	6.12 (5.29-7.10)	7.27 (6.17-8.51)	6.24 (5.37-7.26)	7.41 (6.30-8.73)

530 <sup>a</sup>Healthy lifestyle was defined as favorable (4-5 healthy lifestyle factors), intermediate (2-3 healthy lifestyle factors), and unfavorable (0-1 healthy lifestyle  
531 factor).

532 **Table 2. Association between PhenoAgeAccel and cancer risk**

				Model 1 <sup>a</sup>		Model 2 <sup>b</sup>	
		N (cases)	Person-Years	HR (95% CI)	P value	HR (95% CI)	P value
Men	<b>Per 5 years increase Category</b>	173431 (11532)	1190628	1.15 (1.13-1.17)	1.55×10 <sup>-54</sup>	1.13 (1.11-1.15)	5.46×10 <sup>-44</sup>
	Biologically younger	81242 (4649)	564818	Ref.		Ref.	
	Biologically older	92189 (6883)	625810	1.22 (1.18-1.27)	5.31×10 <sup>-26</sup>	1.19 (1.15-1.24)	3.18×10 <sup>-20</sup>
	<b>Quintiles<sup>c</sup></b>						
	Low	34687 (1864)	242519	Ref.		Ref.	
	Intermediate	104058 (6668)	716312	1.15 (1.09-1.21)	2.17×10 <sup>-7</sup>	1.12 (1.07-1.18)	8.01×10 <sup>-6</sup>
	High	34686 (3000)	231797	1.44 (1.36-1.53)	1.01×10 <sup>-34</sup>	1.39 (1.31-1.47)	1.99×10 <sup>-27</sup>
	<b>P for trend</b>			3.03×10 <sup>-37</sup>		1.65×10 <sup>-29</sup>	
Women	<b>Per 5 years increase Category</b>	201032 (10838)	1393562	1.15 (1.13-1.17)	1.80×10 <sup>-53</sup>	1.13 (1.11-1.15)	1.35×10 <sup>-41</sup>
	Biologically younger	123648 (6229)	861570	Ref.		Ref.	
	Biologically older	77384 (4609)	531993	1.26 (1.22-1.31)	5.91×10 <sup>-33</sup>	1.23 (1.18-1.28)	2.71×10 <sup>-25</sup>
	<b>Quintiles<sup>c</sup></b>						
	Low	40207 (1946)	281912	Ref.		Ref.	
	Intermediate	120618 (6351)	836341	1.15 (1.09-1.21)	1.46×10 <sup>-7</sup>	1.13 (1.07-1.18)	5.89×10 <sup>-6</sup>
	High	40207 (2541)	275309	1.46 (1.38-1.55)	2.54×10 <sup>-36</sup>	1.40 (1.32-1.49)	5.94×10 <sup>-28</sup>
	<b>P for trend</b>			4.23×10 <sup>-37</sup>		1.36×10 <sup>-28</sup>	

533 <sup>a</sup> Cox proportional hazards regression adjusted for age, height, cancer family history, Townsend deprivation index at recruitment, and the first 10 principal  
534 components of ancestry.

535 <sup>b</sup> Cox proportional hazards regression adjusted for Model 1, as well as cancer polygenic risk score and healthy lifestyle.

536 <sup>c</sup> Defined by quintiles of PhenoAgeAccel: low (the bottom quintile), intermediate (quintiles 2-4) and high (the top quintile).

537 Abbreviations: CI, confidence interval; HR, hazards ratio; Ref, reference.

538 **Table 3. Risk of incident cancer according to PhenoAgeAccel categories within each genetic risk level <sup>a</sup>**

Gender	PhenoAgeAccel category	Low genetic risk		Intermediate genetic risk		High genetic risk	
		Biologically younger	Biologically older	Biologically younger	Biologically older	Biologically younger	Biologically older
Men	No. of cases/Person years	668/114962	1031/124526	2606/338950	4012/376782	1375/110907	1840/124502
	Hazards ratio (95% CI)	Ref.	1.29 (1.17-1.42)	Ref.	1.27 (1.21-1.33)	Ref.	1.10 (1.02-1.18)
	<i>P</i> value		3.53×10 <sup>-7</sup>		3.15×10 <sup>-21</sup>		1.07×10 <sup>-2</sup>
	Absolute risk (%) - 5 years (95% CI)	2.71 (2.49-2.94)	3.87 (3.60-4.14)	3.57 (3.41-3.72)	4.95 (4.78-5.13)	5.78 (5.44-6.11)	6.90 (6.55-7.26)
	Absolute risk increase (%) - 5 years (95% CI)	Ref.	1.16 (0.84-1.46)	Ref.	1.39 (1.19-1.60)	Ref.	1.13 (0.68-1.52)
Women	No. of cases/Person years	1030/173195	761/106937	3579/518611	2704/318753	1620/169764	1144/106303
	Hazards ratio (95% CI)	Ref.	1.25 (1.14-1.38)	Ref.	1.30 (1.24-1.37)	Ref.	1.19 (1.10-1.28)
	<i>P</i> value		2.65×10 <sup>-6</sup>		1.84×10 <sup>-24</sup>		8.19×10 <sup>-6</sup>
	Absolute risk (%) - 5 years (95% CI)	2.83 (2.63-3.02)	3.39 (3.12-3.65)	3.27 (3.15-3.39)	4.02 (3.86-4.19)	4.58 (4.33-4.83)	5.17 (4.84-5.49)
	Absolute risk increase (%) - 5 years (95% CI)	Ref.	0.56 (0.26-0.86)	Ref.	0.76 (0.57-0.93)	Ref.	0.59 (0.23-0.98)

539 <sup>a</sup> Cox proportional hazards regression is adjusted for age, height, family history of cancer, Townsend deprivation index, height and the first 10 principal  
540 components of ancestry.

541 Abbreviations: CI, confidence interval; Ref, reference.



542 **Figure legends**

543 **Figure 1. Association results of PhenoAgeAccel with site-specific cancer risk per**  
544 **5 years increased.** Cox proportional hazards regression adjusted for age, height,  
545 cancer family history, Townsend deprivation index at recruitment, and the first 10  
546 principal components of ancestry.

547  
548 **Figure 2. Effect of PhenoAgeAccel on the risk of incident cancer in the UK**  
549 **Biobank.** The distribution of PhenoAgeAccel between participants with incident  
550 cancer and those without incident cancer in the UK Biobank for men(A) and women  
551 (B). Participants in the UK Biobank were divided into ten equal groups according to  
552 the PhenoAgeAccel for men (C) and women (D), and the hazard ratios (HRs) of each  
553 group were compared with those in the bottom decile of PhenoAgeAccel. Error bars  
554 are 95% CIs. Standardized rates of cancer events in younger and older PhenoAge  
555 groups in the UK Biobank for men (E) and women (F). HRs and 95% CIs were  
556 estimated using Cox proportional hazard models with adjustment for age, height,  
557 family history of cancer, Townsend deprivation index, and the first 10 principal  
558 components of ancestry. Shaded areas are 95% CIs.

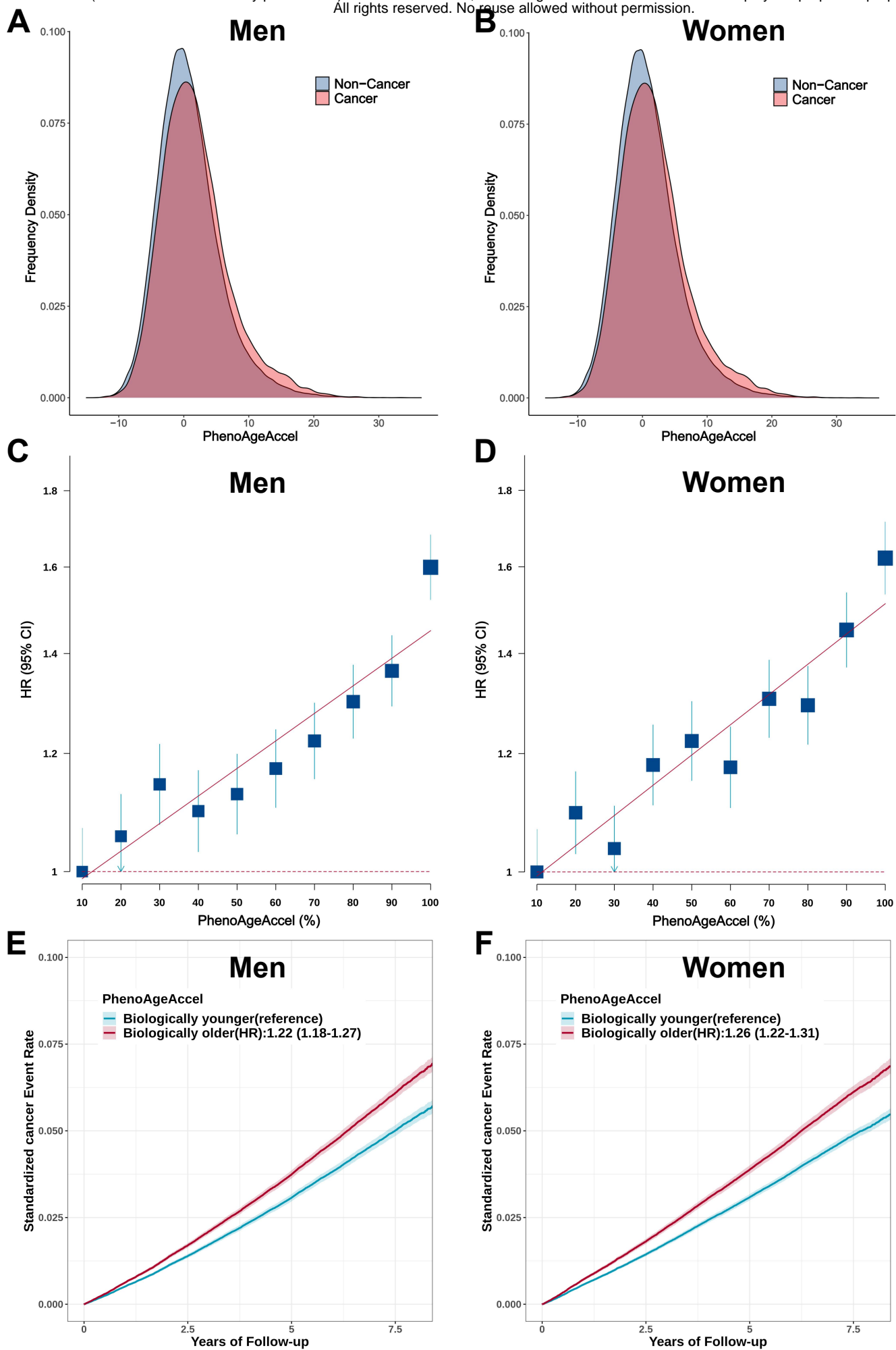
559  
560 **Figure 3. Risk of incident cancer according to genetic and PhenoAgeAccel**  
561 **categories in the UK Biobank for men (A) and women (B).** The HRs were  
562 estimated using Cox proportional hazard models with adjustment for age, height,  
563 family history of cancer, Townsend deprivation index, and the first 10 principal  
564 components of ancestry. Participants were divided into younger and older PhenoAge  
565 under different genetic risk groups.

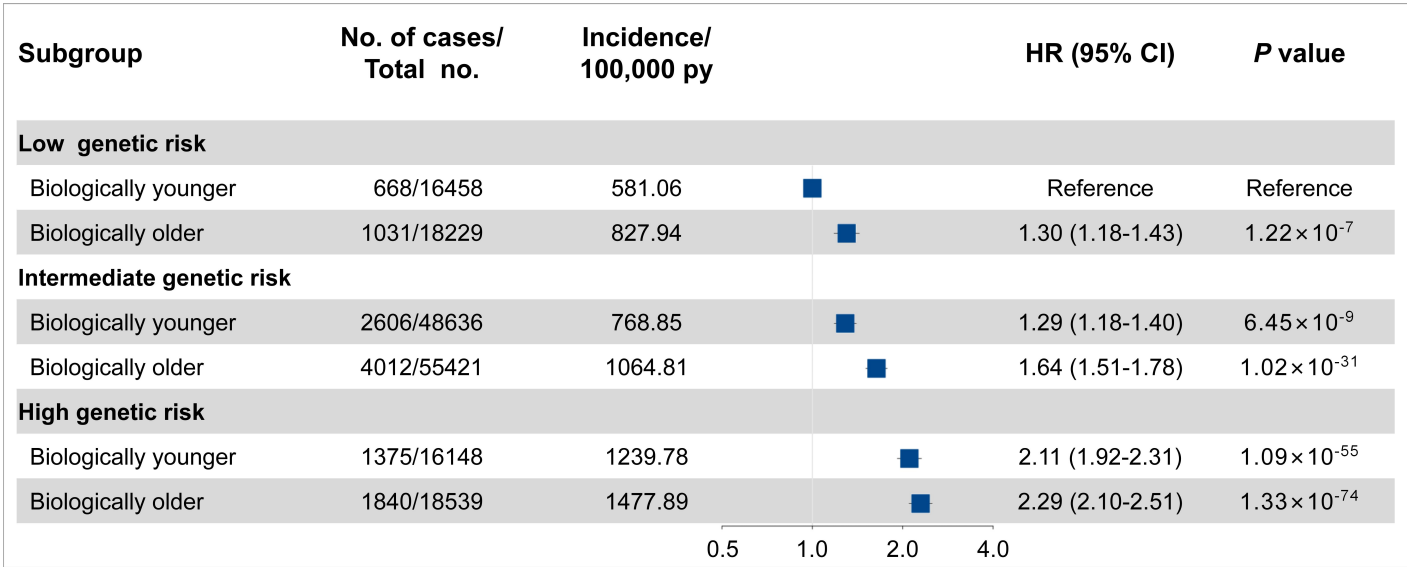
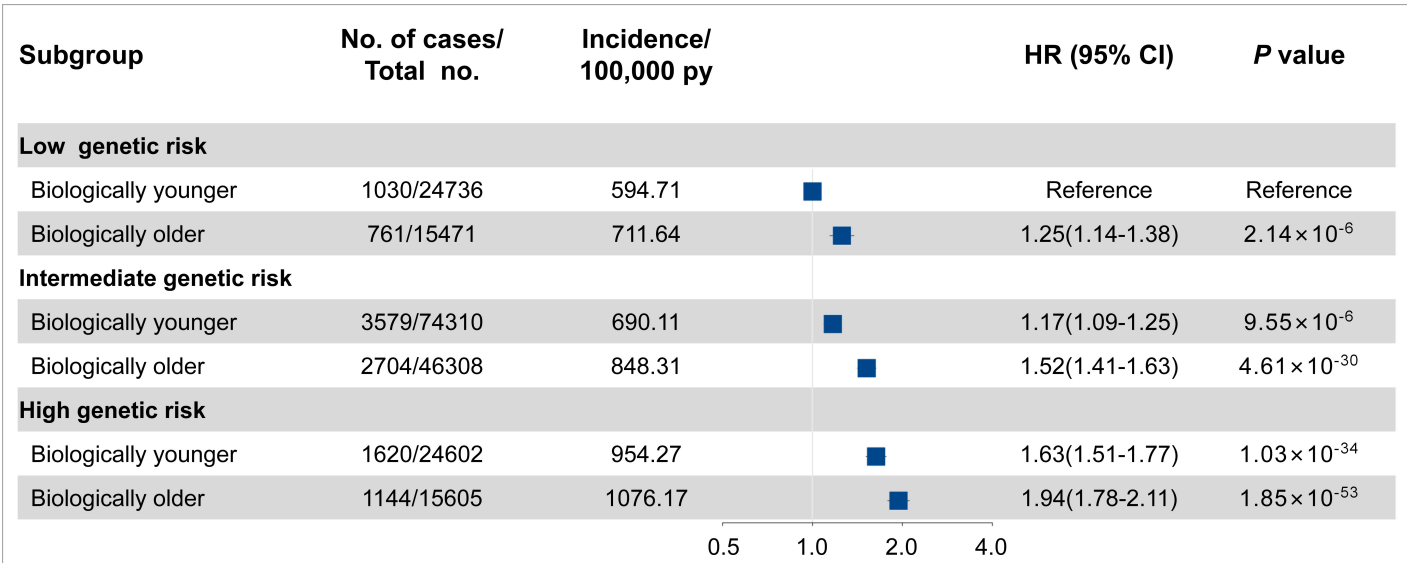
566  
567 **Figure 4. Absolute risk estimates of overall cancer based on the UK Biobank for**  
568 **men (A) and women (B).** The x-axis is chronological age. The curves describe  
569 average risk of participants in younger and older PhenoAge groups. The dashed curve  
570 represents the average risk of the whole population in different ages. The red  
571 horizontal dotted line represents 2% of 5-year absolute risks of overall cancer.

572

Cancer site (ICD-10 code)	No. of cases/Person years		HR (95% CI)	P value
<b>Lip, Oral Cavity, Pharynx (C00-C14)</b>				
Men	296/1220540		1.16 (1.04-1.29)	0.01
Women	149/1424826		1.11 (0.96-1.30)	0.17
<b>Oesophagus (C15)</b>				
Men	323/1220758		1.45 (1.32-1.59)	1.12×10 <sup>-15</sup>
Women	110/1425048		1.26 (1.07-1.49)	0.01
<b>Stomach (C16)</b>				
Men	209/1220987		1.35 (1.20-1.52)	3.91×10 <sup>-7</sup>
Women	83/1425127		1.27 (1.05-1.54)	0.01
<b>Colon, Rectum (C18-C20)</b>				
Men	1502/1217112		1.21 (1.15-1.27)	1.64×10 <sup>-15</sup>
Women	1121/1422055		1.12 (1.06-1.18)	9.96×10 <sup>-5</sup>
<b>Pancreas (C25)</b>				
Men	287/1221125		1.29 (1.17-1.44)	1.16×10 <sup>-6</sup>
Women	231/1425010		1.29 (1.15-1.45)	1.14×10 <sup>-5</sup>
<b>Lung, Bronchus, Trachea (C33-C34)</b>				
Men	944/1220097		1.54 (1.46-1.62)	1.11×10 <sup>-62</sup>
Women	810/1423938		1.39 (1.31-1.47)	2.47×10 <sup>-28</sup>
<b>Skin Melanoma (C43)</b>				
Men	545/1219710		0.98 (0.90-1.07)	0.68
Women	600/1423192		1.00 (0.92-1.08)	0.97
<b>Breast (C50)</b>				
Women	4553/1409789		1.07 (1.04-1.10)	1.52×10 <sup>-6</sup>
<b>Cervix Uteri (C53)</b>				
Women	59/1425046		1.27 (1.01-1.60)	0.04
<b>Corpus Uteri, NOS (C54-C55)</b>				
Women	724/1422850		1.27 (1.19-1.36)	2.99×10 <sup>-13</sup>
<b>Ovary (C56)</b>				
Women	476/1423963		1.10 (1.00-1.20)	0.04
<b>Prostate (C61)</b>				
Men	4736/1206048		0.94 (0.91-0.96)	1.42×10 <sup>-5</sup>
<b>Testis (C62)</b>				
Men	58/1221139		1.14 (0.88-1.49)	0.32
<b>Kidney (C64)</b>				
Men	401/1220361		1.26 (1.15-1.38)	3.07×10 <sup>-7</sup>
Women	217/1424679		1.57 (1.41-1.74)	1.86×10 <sup>-16</sup>
<b>Bladder (C67)</b>				
Men	399/1220186		1.17 (1.06-1.28)	1.14×10 <sup>-3</sup>
Women	125/1424878		1.39 (1.20-1.61)	9.07×10 <sup>-6</sup>
<b>Brain, Central Nerves (C70-C72)</b>				
Men	226/1221108		1.13 (1.00-1.28)	0.05
Women	154/1425069		0.95 (0.81-1.12)	0.52
<b>Thyroid (C73)</b>				
Men	53/1221160		0.98 (0.75-1.30)	0.91
Women	145/1424740		1.06 (0.91-1.24)	0.46
<b>Hodgkin's Disease (C81)</b>				
Men	37/1221245		1.34 (1.01-1.78)	0.04
Women	29/1425138		1.37 (0.99-1.88)	0.05
<b>Multiple Myeloma (C90)</b>				
Men	201/1220867		1.16 (1.01-1.32)	0.03
Women	156/1424868		1.18 (1.02-1.37)	0.02
<b>Lymphoid Leukaemia (C91)</b>				
Men	195/1220782		1.29 (1.14-1.47)	7.72×10 <sup>-5</sup>
Women	128/1424821		1.25 (1.07-1.46)	0.01

0.5 1.0 1.5 2.0



**A****B**

**A****B**